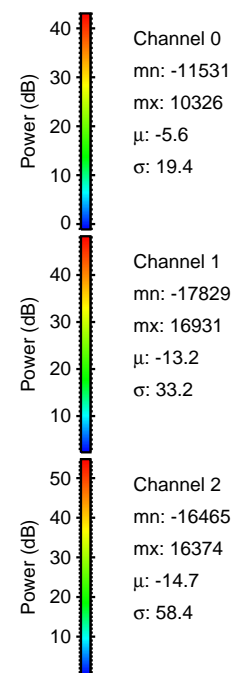
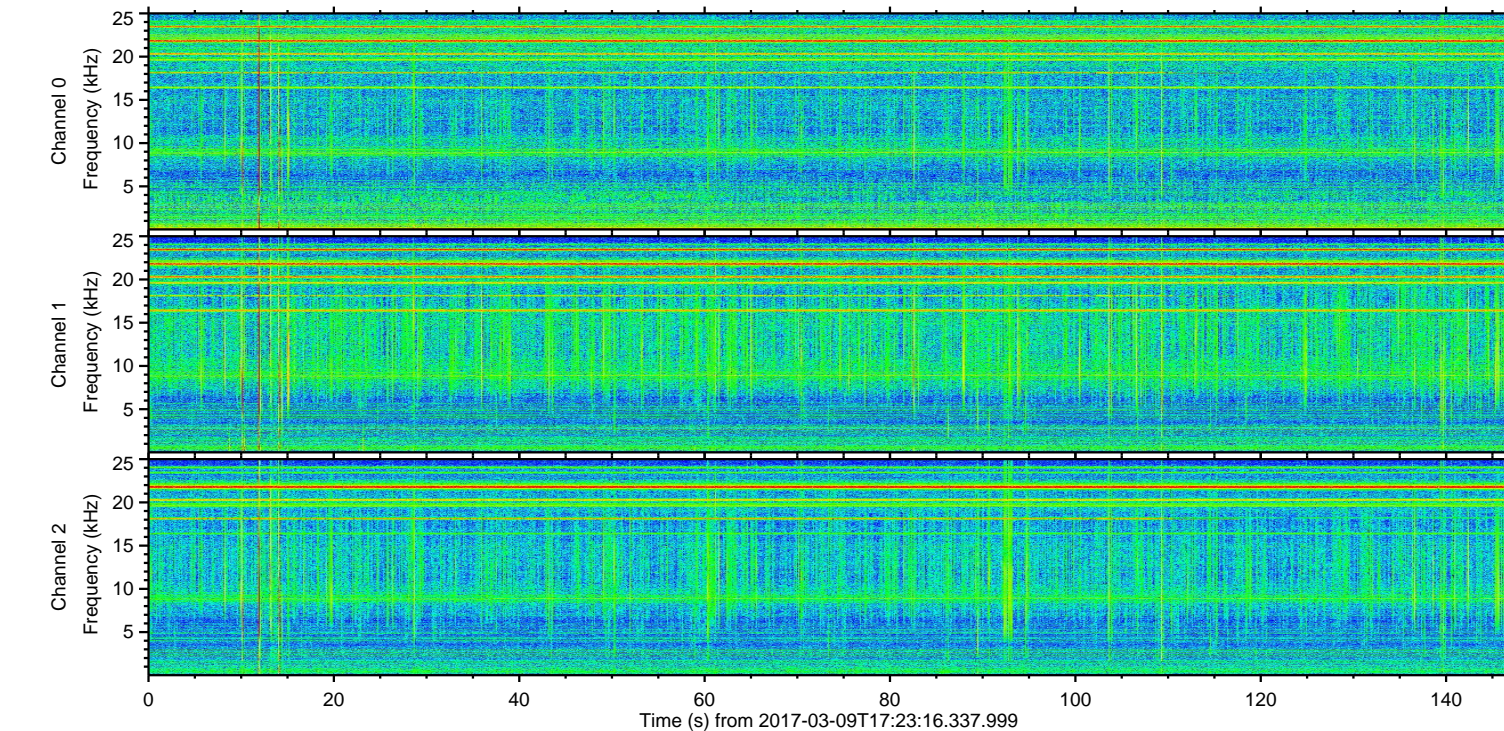
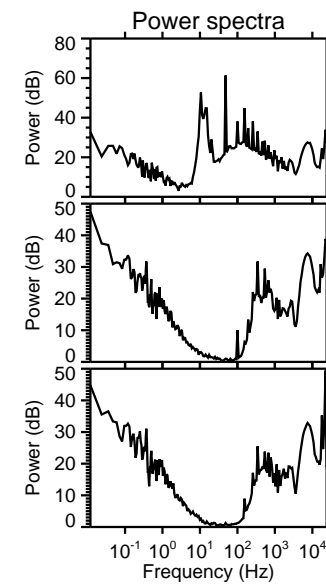
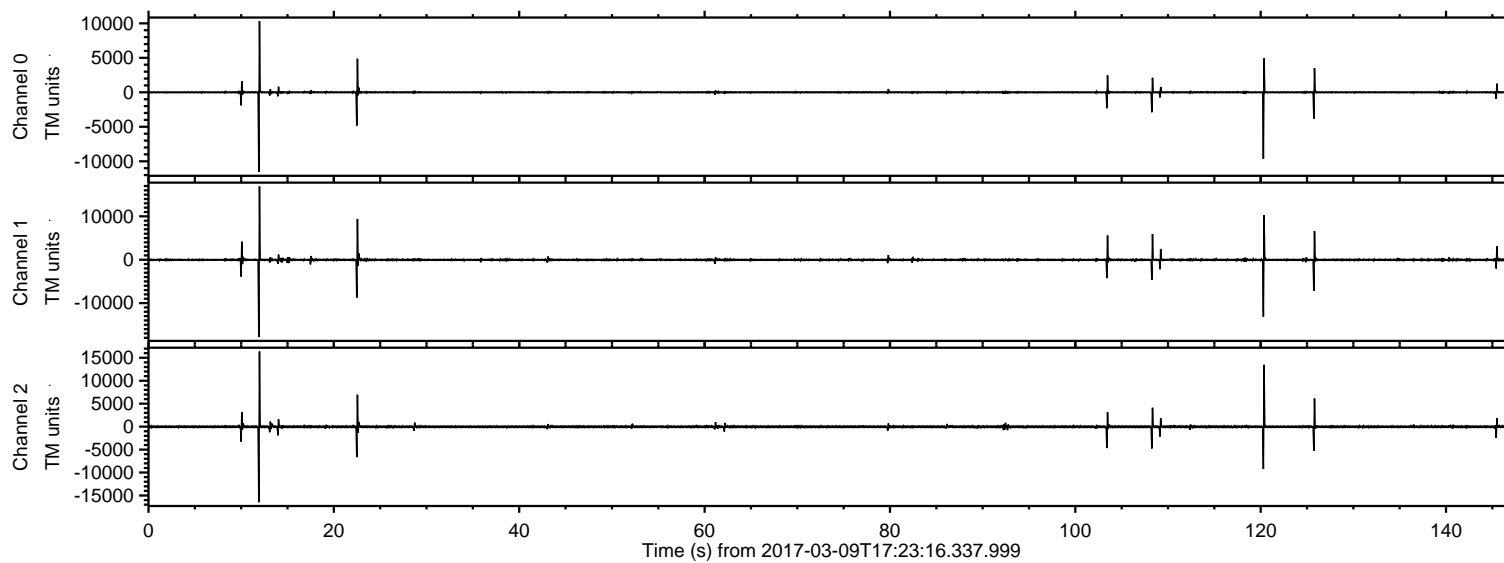


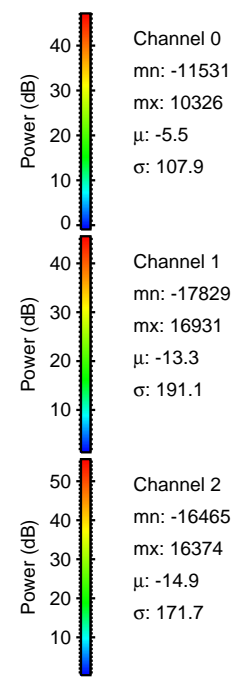
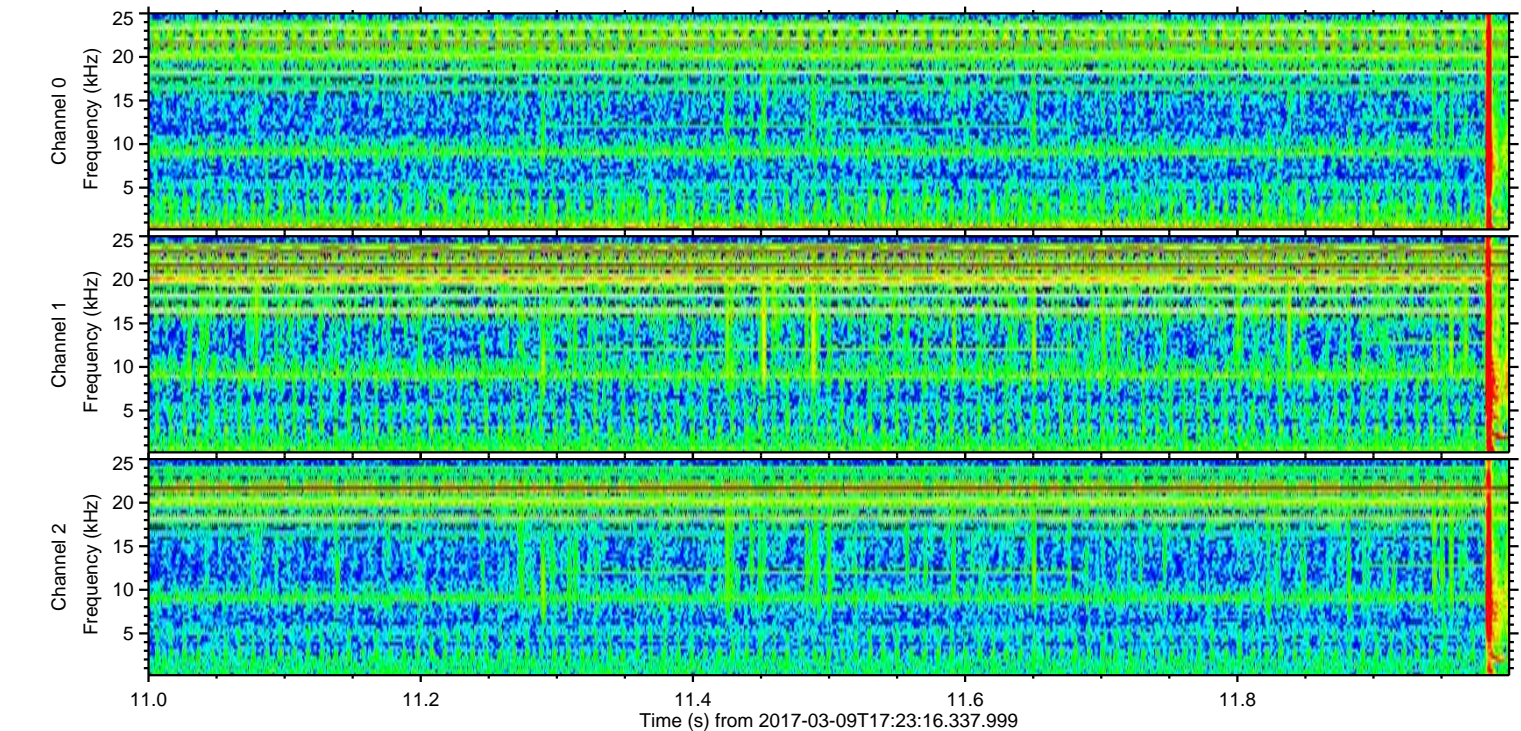
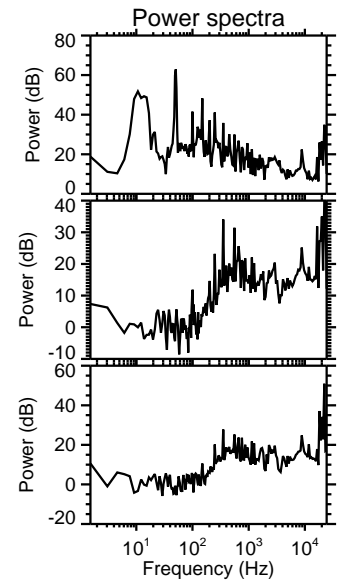
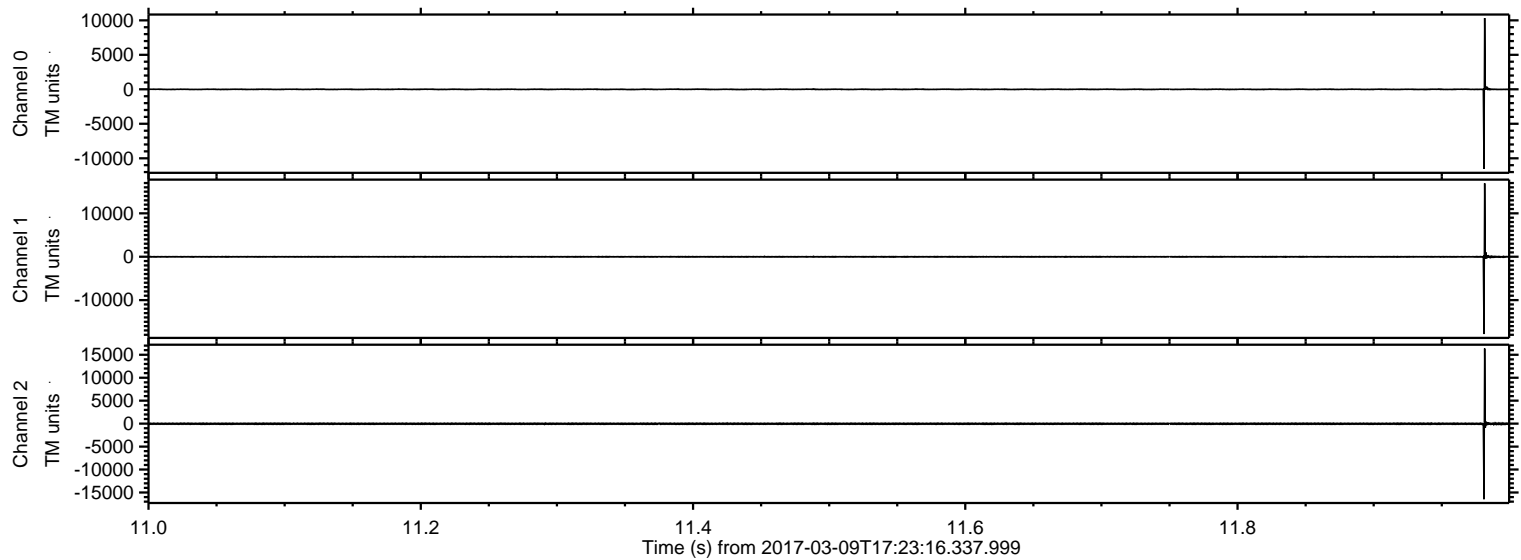
ELMAVAN 3D WAVEFORMS (Measured data sampled at 50 kHz) 51000 packets of 144 samples from 2017-03-09T17:23:16.337.999.

Processed Thu Mar 9 18:30:37 2017 by ELM ver.2012-10-06 from 001__elm20170309_172315__dat00.bin



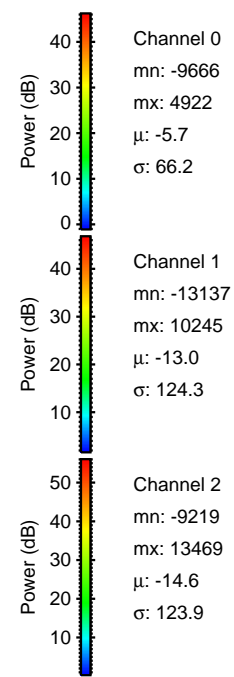
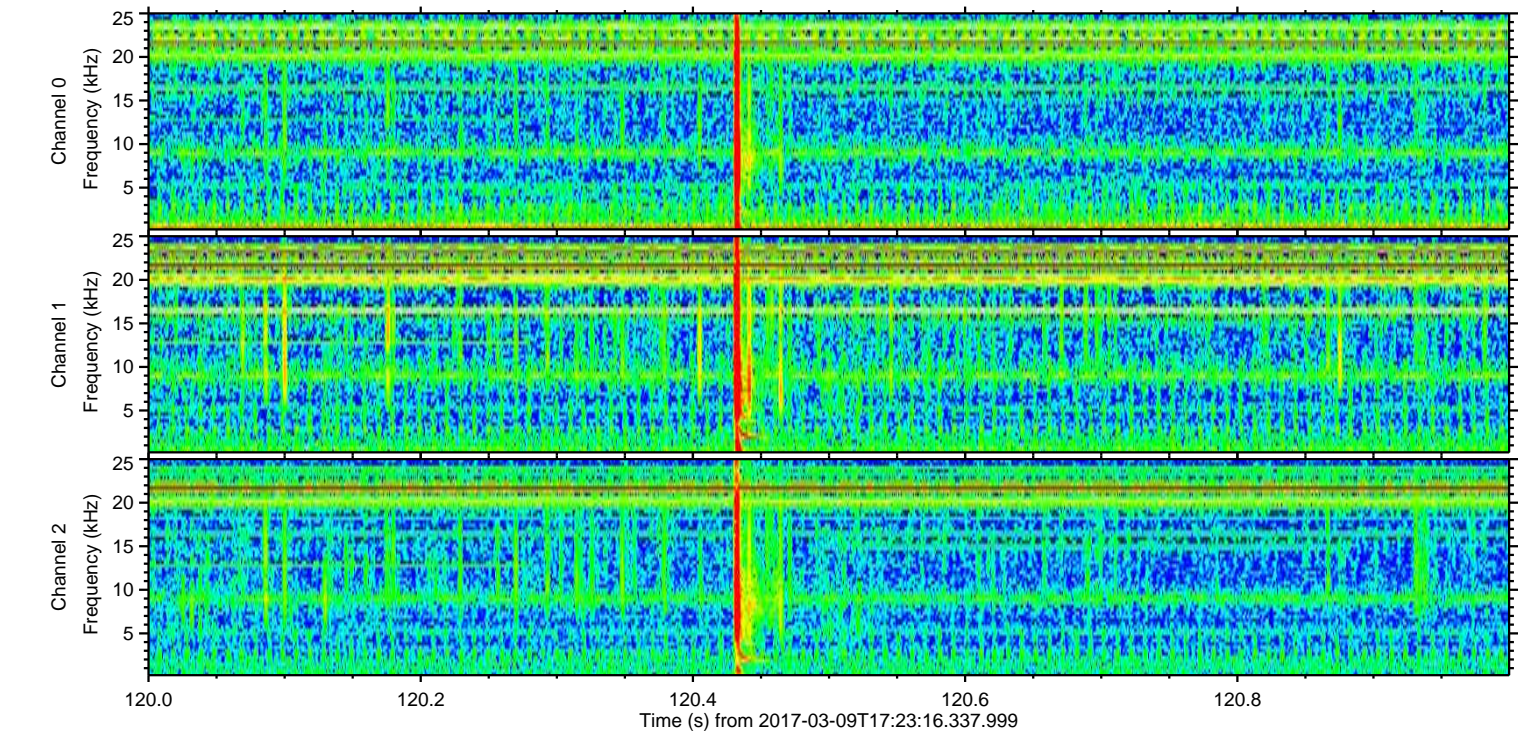
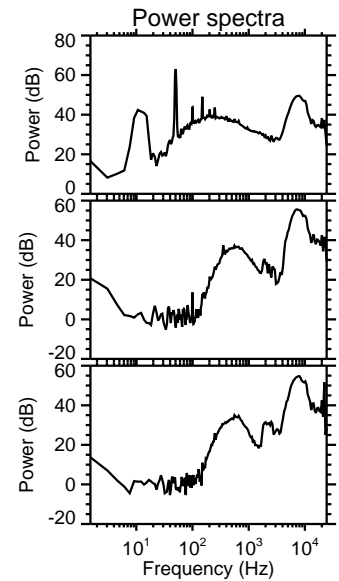
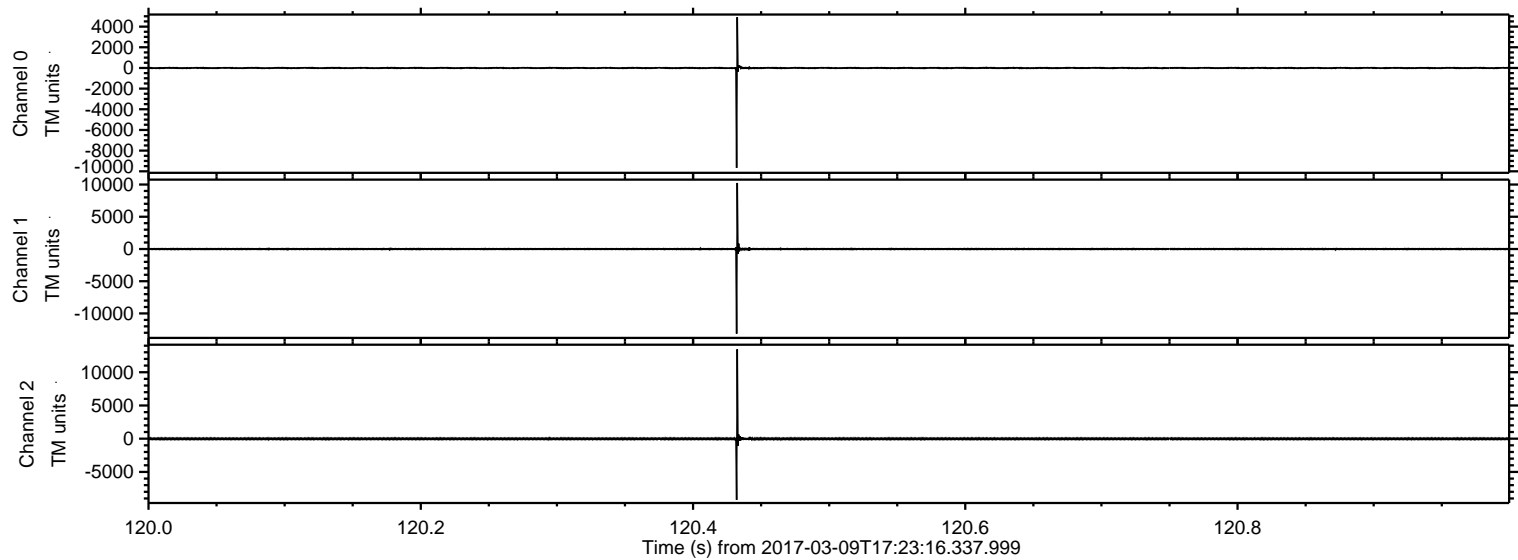
ELMAVAN 3D WAVEFORMS (Measured data sampled at 50 kHz) 51000 packets of 144 samples from 2017-03-09T17:23:16.337.999. Part 12/147

Processed Thu Mar 9 18:30:49 2017 by ELM ver.2012-10-06 from 001__elm20170309_172315__dat00.bin

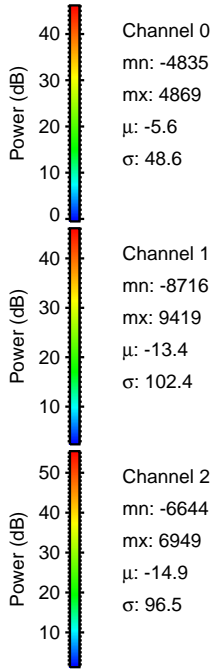
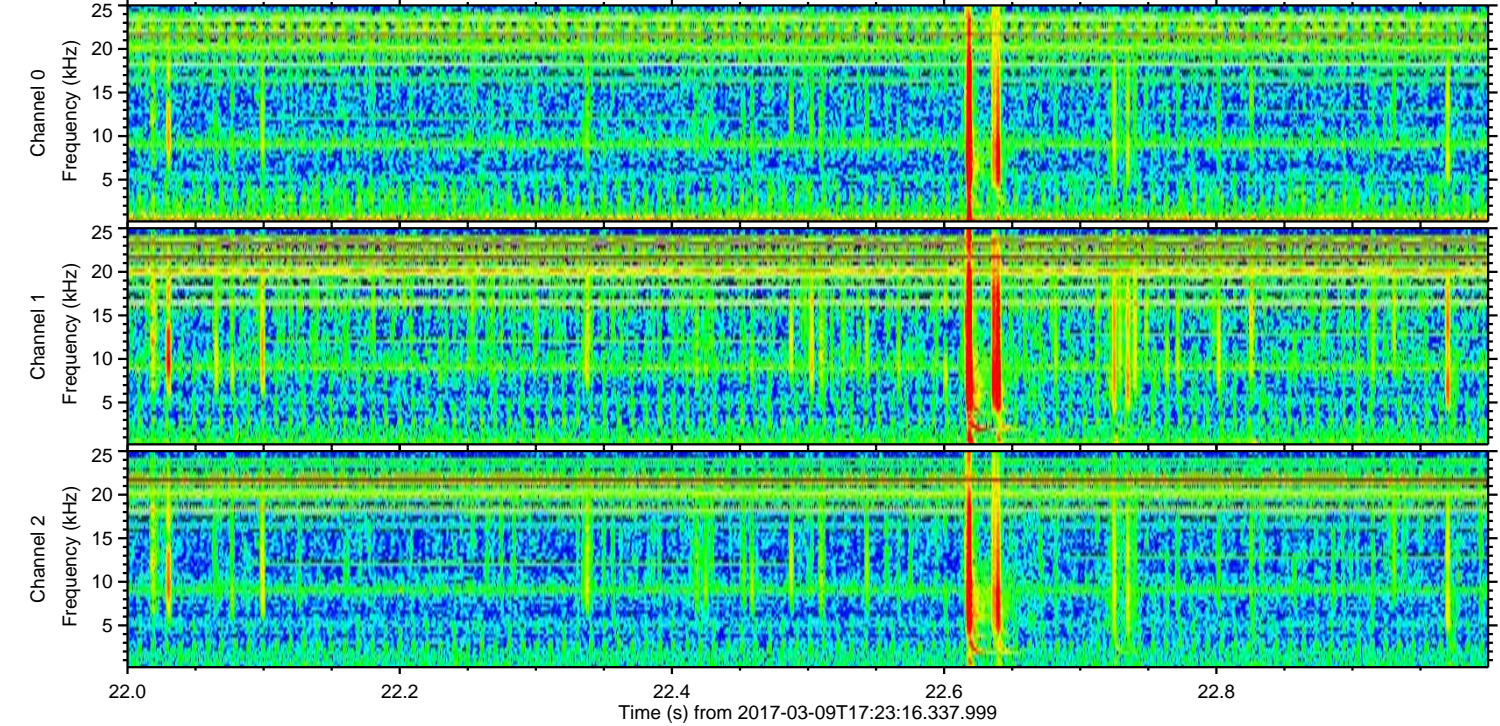
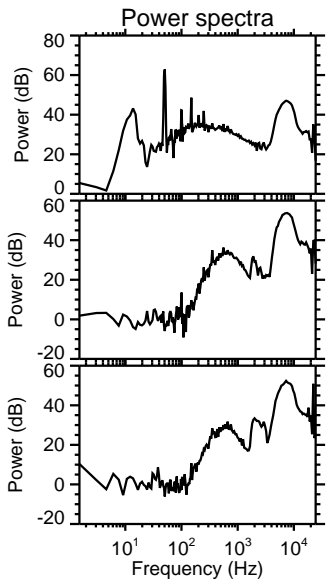
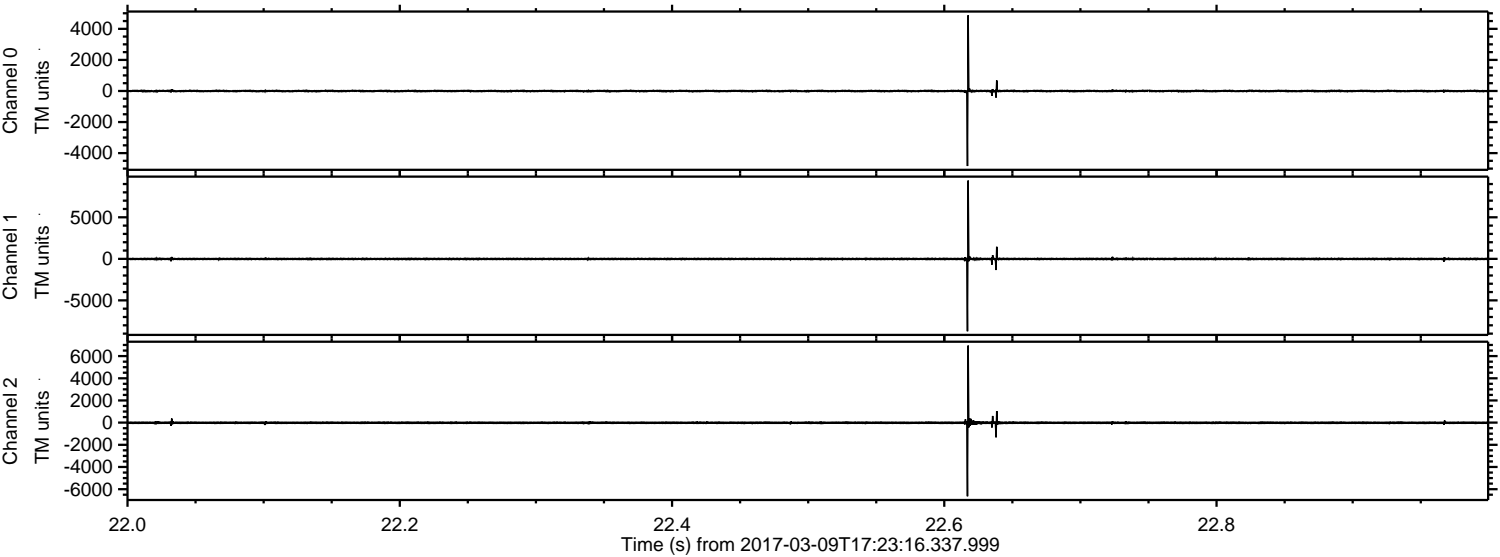


ELMAVAN 3D WAVEFORMS (Measured data sampled at 50 kHz) 51000 packets of 144 samples from 2017-03-09T17:23:16.337.999. Part 121/147

Processed Thu Mar 9 18:30:49 2017 by ELM ver.2012-10-06 from 001__elm20170309_172315__dat00.bin



Processed Thu Mar 9 18:30:50 2017 by ELM ver.2012-10-06 from 001__elm20170309_172315__dat00.bin



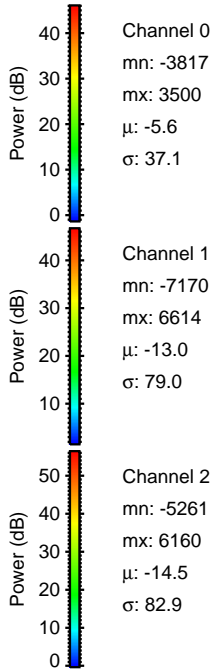
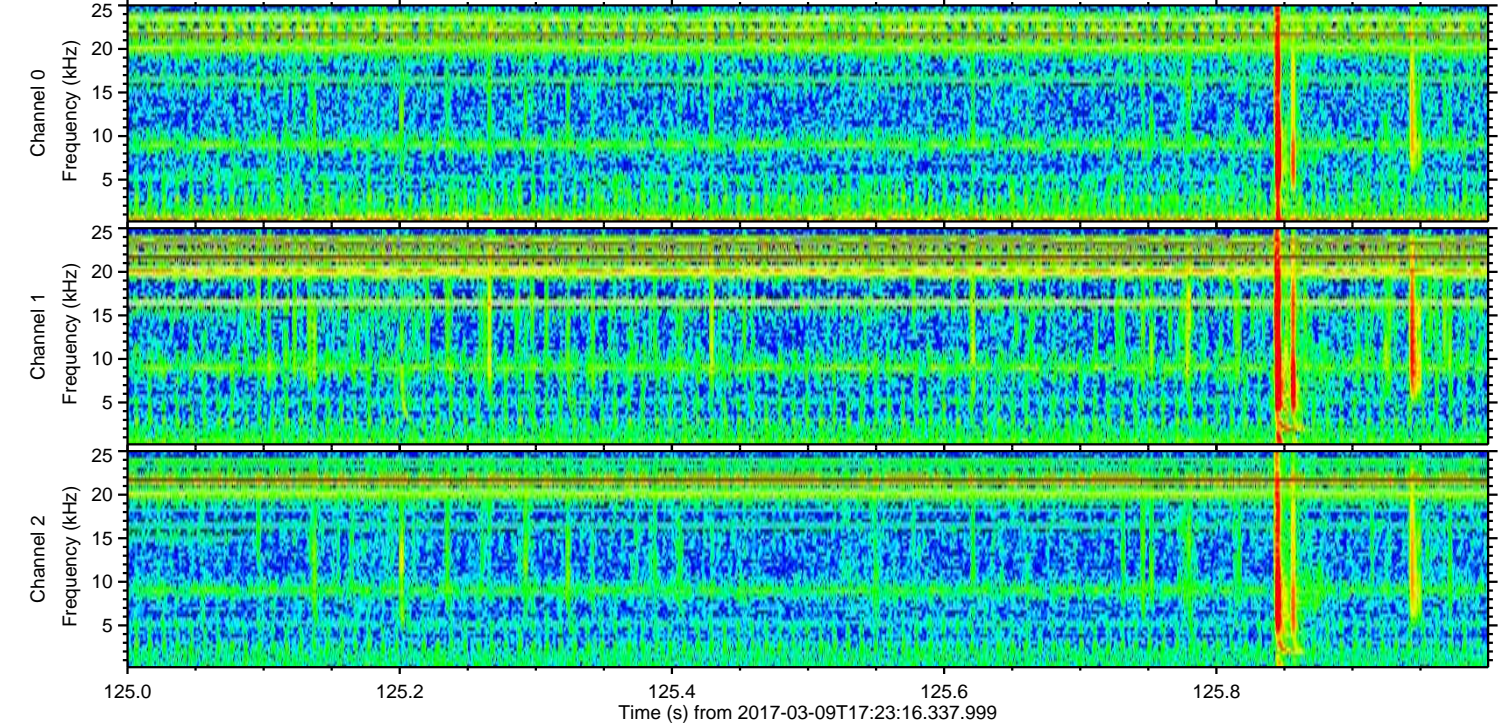
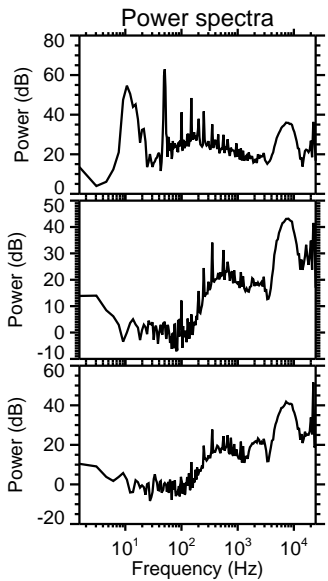
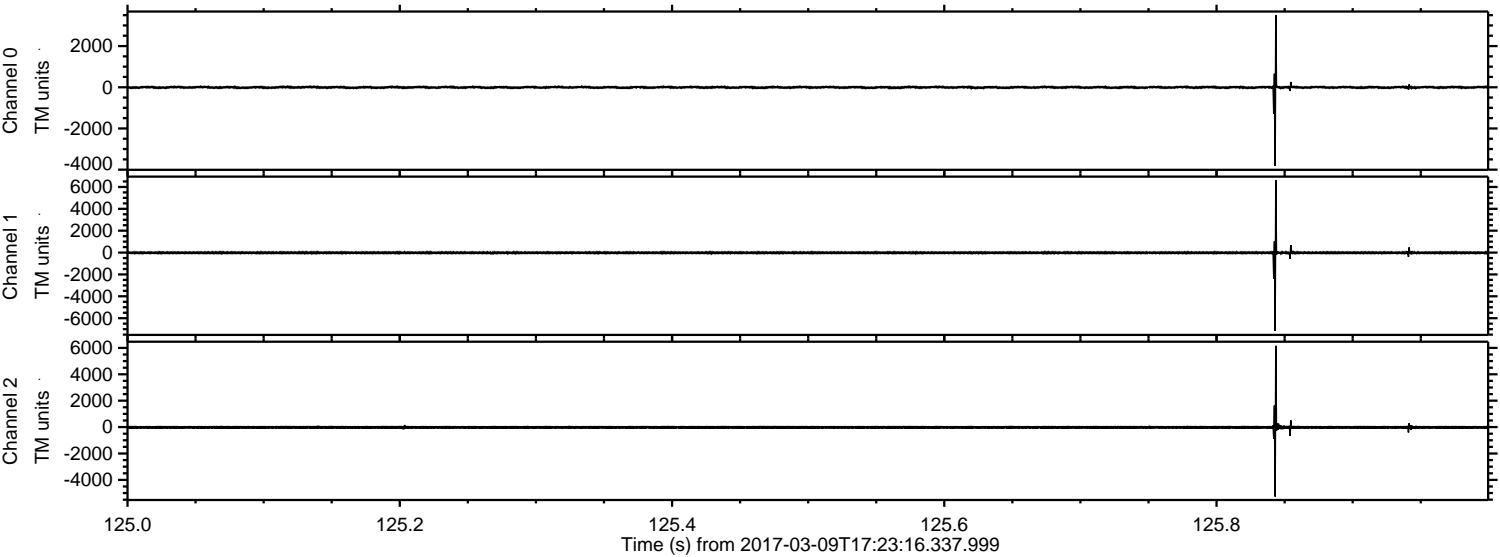
Channel 0
mn: -4835
mx: 4869
 μ : -5.6
 σ : 48.6

Channel 1
mn: -8716
mx: 9419
 μ : -13.4
 σ : 102.4

Channel 2
mn: -6644
mx: 6949
 μ : -14.9
 σ : 96.5

ELMAVAN 3D WAVEFORMS (Measured data sampled at 50 kHz) 51000 packets of 144 samples from 2017-03-09T17:23:16.337.999. Part 126/147

Processed Thu Mar 9 18:30:51 2017 by ELM ver.2012-10-06 from 001__elm20170309_172315__dat00.bin



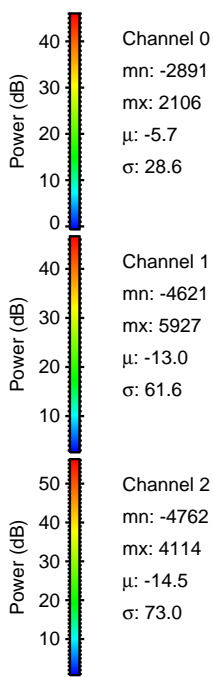
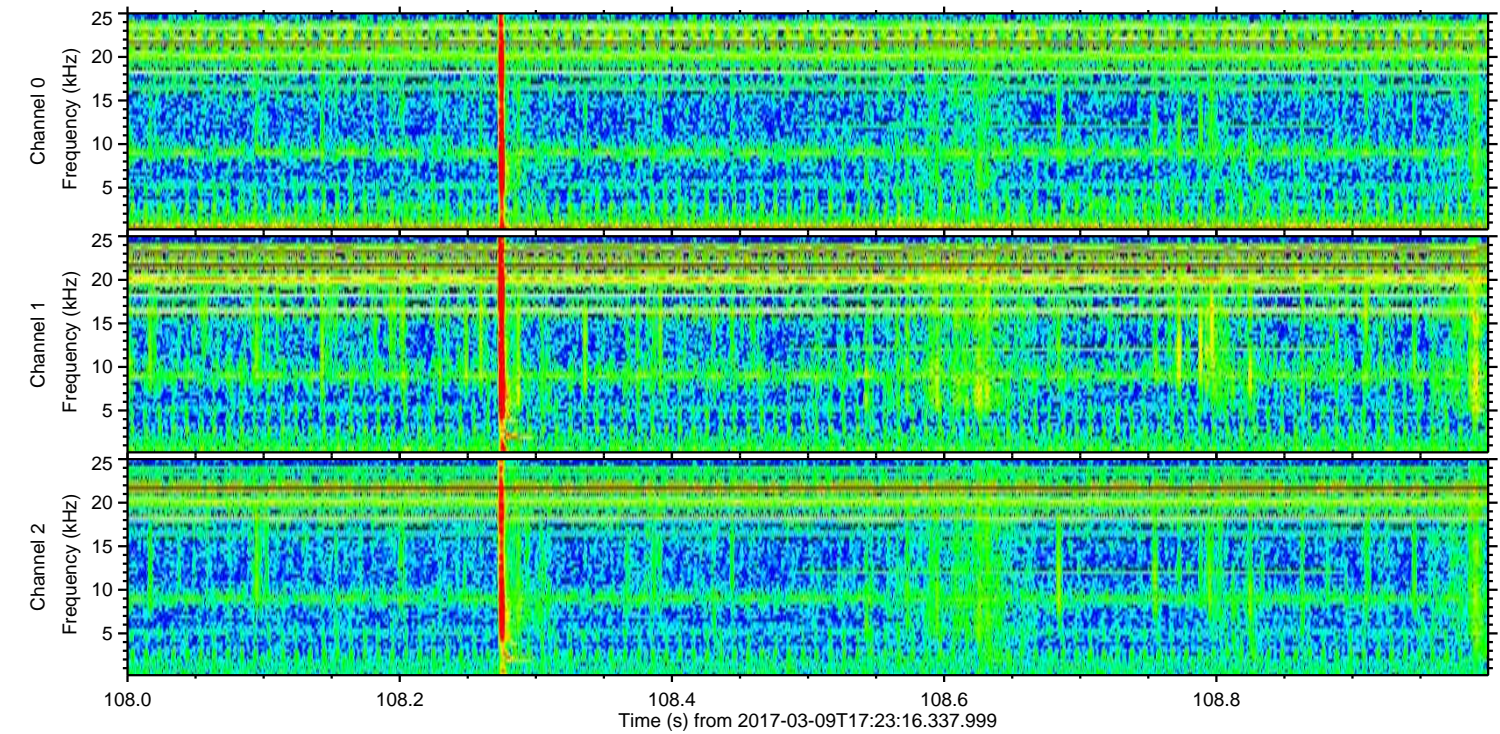
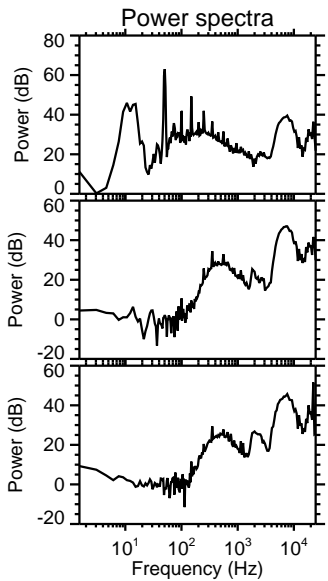
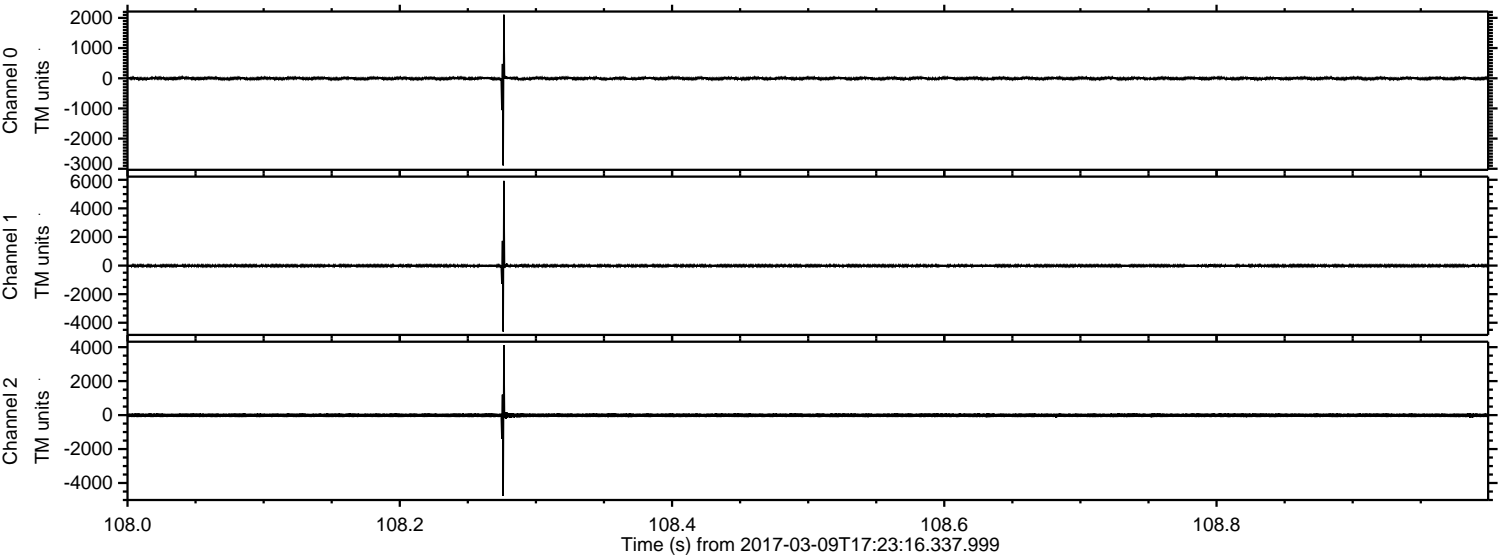
Channel 0
mn: -3817
mx: 3500
 μ : -5.6
 σ : 37.1

Channel 1
mn: -7170
mx: 6614
 μ : -13.0
 σ : 79.0

Channel 2
mn: -5261
mx: 6160
 μ : -14.5
 σ : 82.9

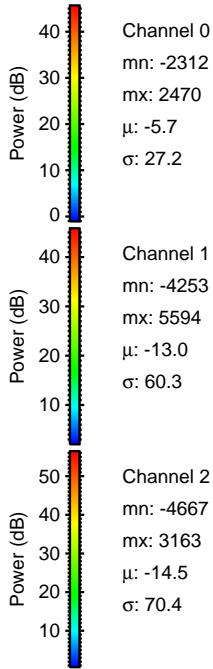
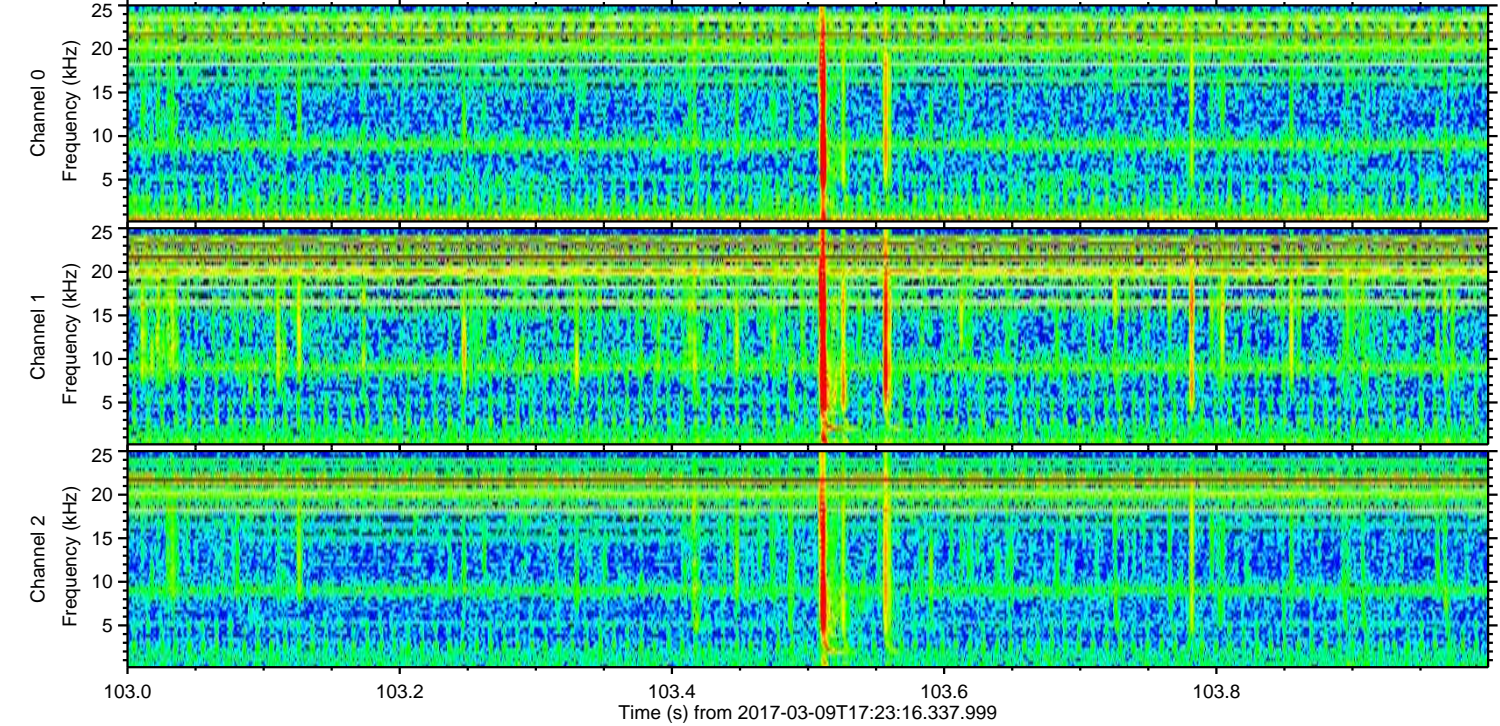
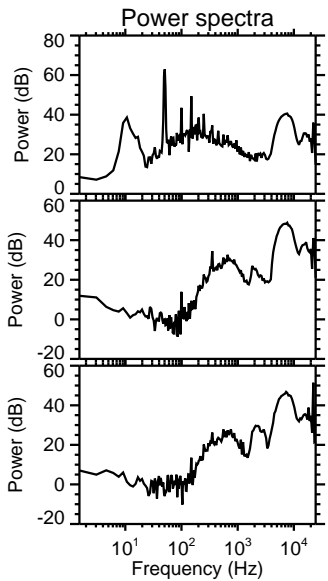
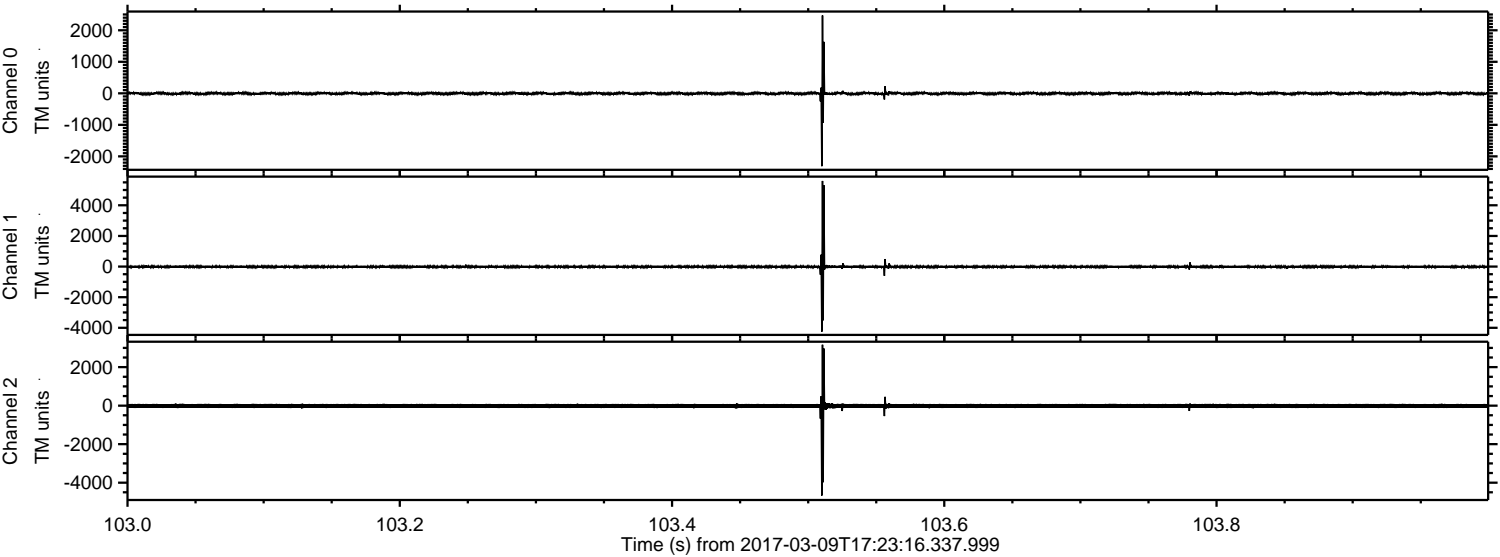
ELMAVAN 3D WAVEFORMS (Measured data sampled at 50 kHz) 51000 packets of 144 samples from 2017-03-09T17:23:16.337.999. Part 109/147

Processed Thu Mar 9 18:30:52 2017 by ELM ver.2012-10-06 from 001__elm20170309_172315__dat00.bin



ELMAVAN 3D WAVEFORMS (Measured data sampled at 50 kHz) 51000 packets of 144 samples from 2017-03-09T17:23:16.337.999. Part 104/147

Processed Thu Mar 9 18:30:53 2017 by ELM ver.2012-10-06 from 001__elm20170309_172315__dat00.bin



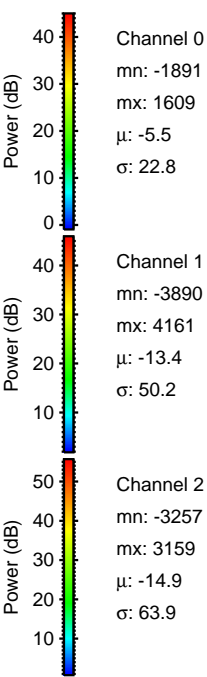
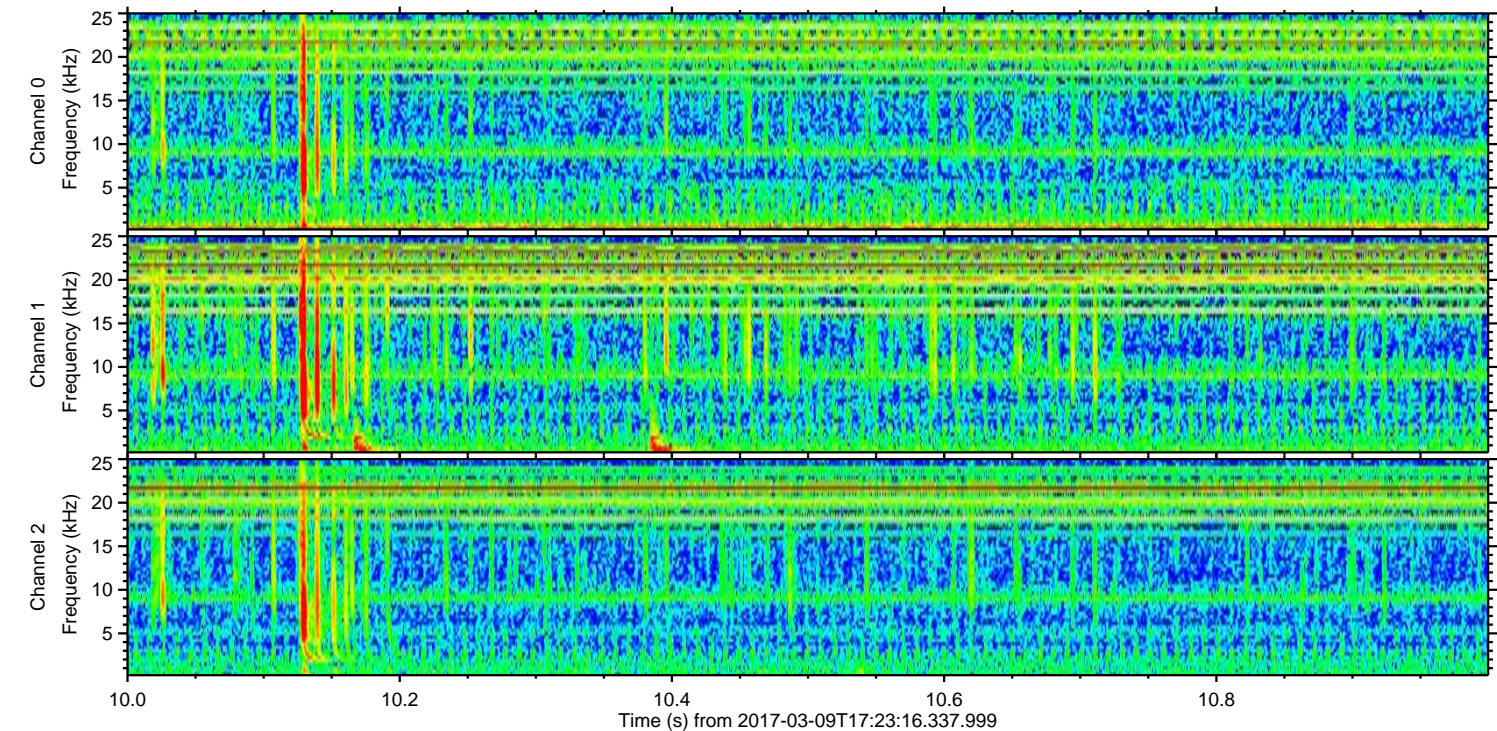
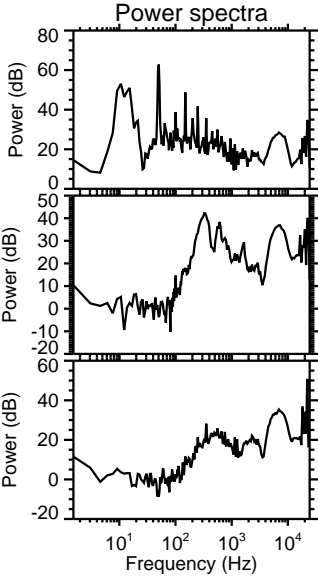
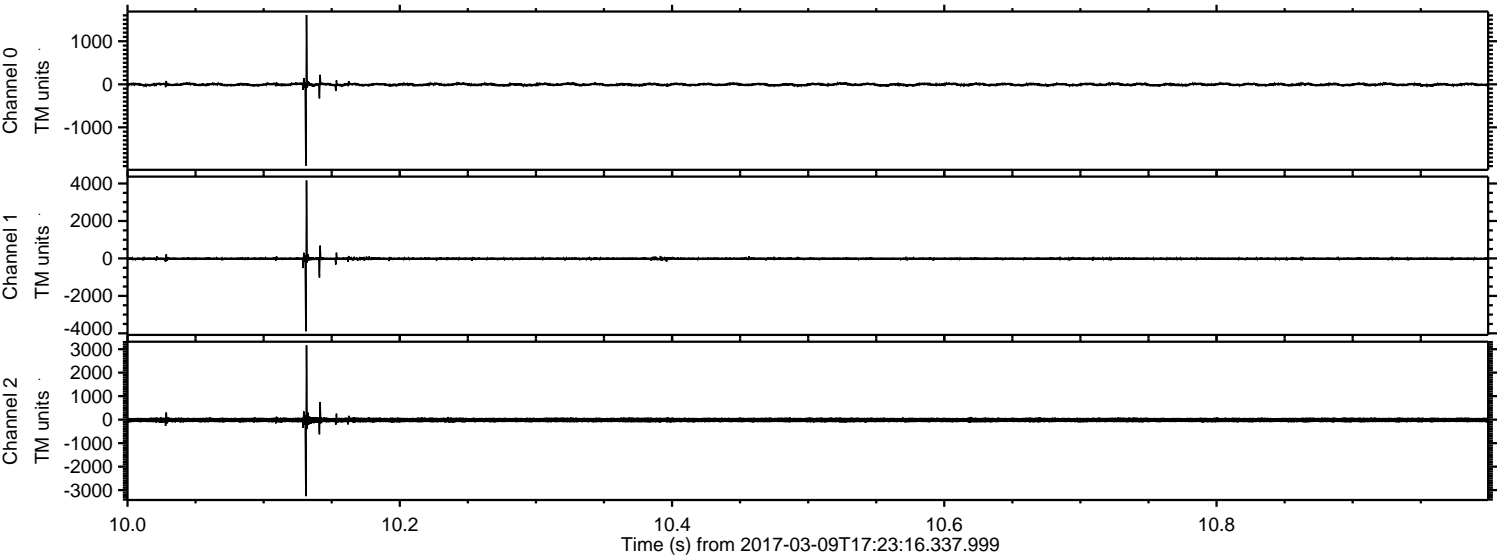
Channel 0
mn: -2312
mx: 2470
 μ : -5.7
 σ : 27.2

Channel 1
mn: -4253
mx: 5594
 μ : -13.0
 σ : 60.3

Channel 2
mn: -4667
mx: 3163
 μ : -14.5
 σ : 70.4

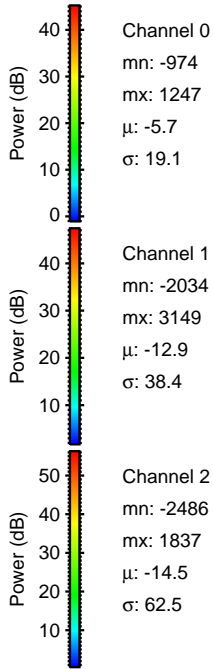
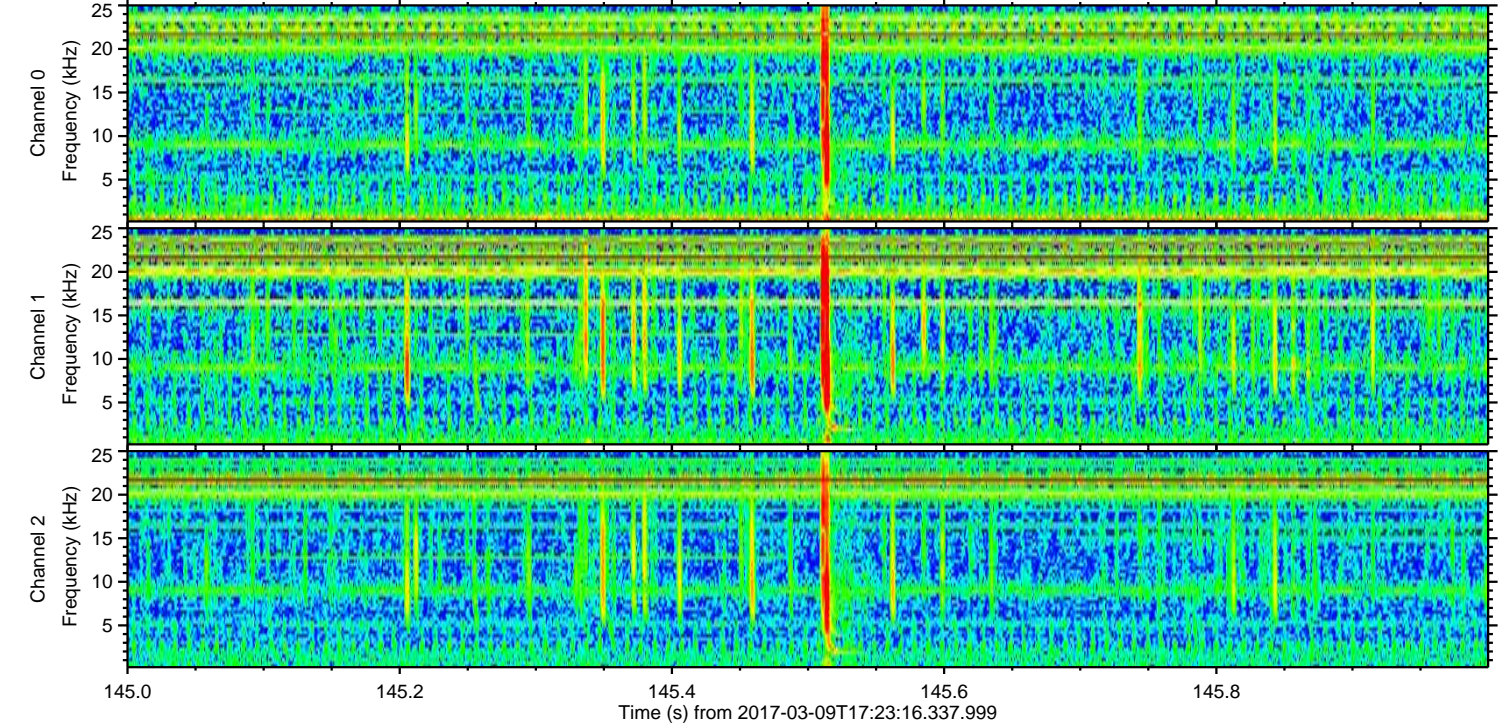
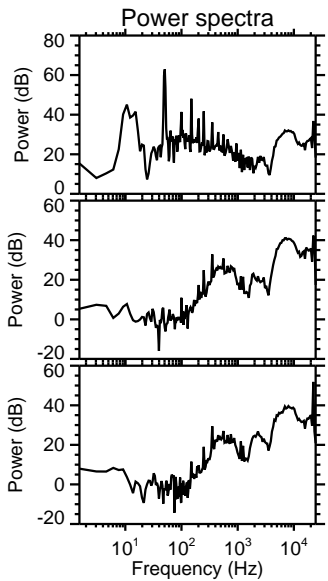
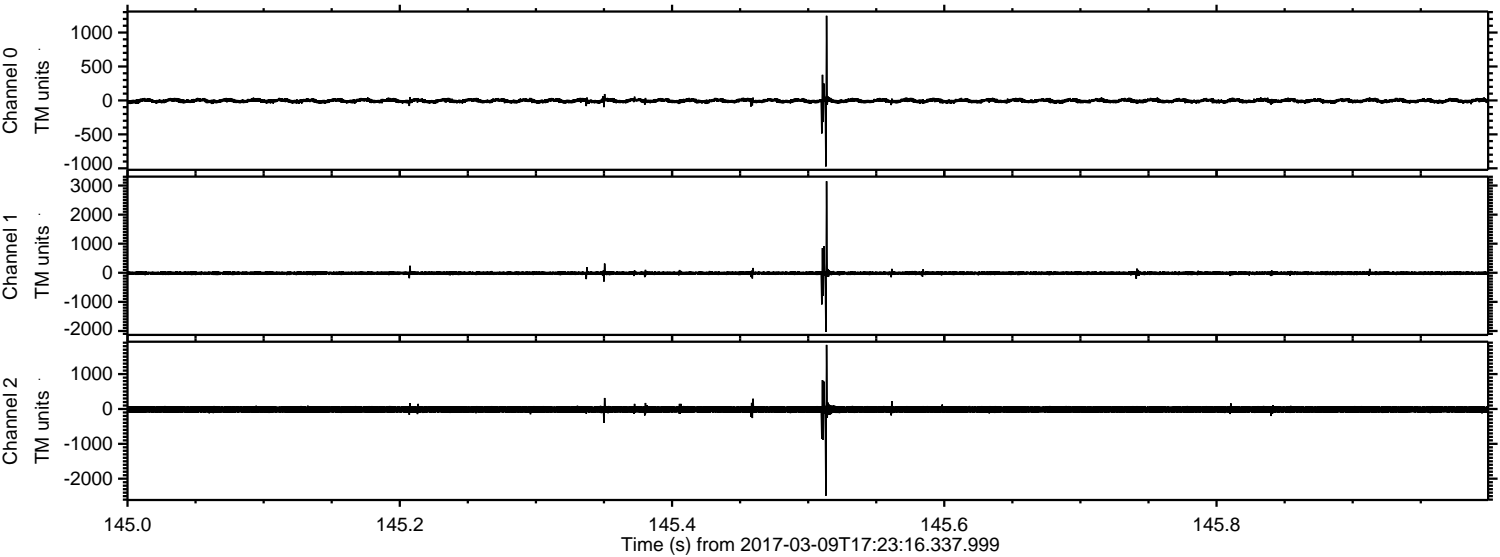
ELMAVAN 3D WAVEFORMS (Measured data sampled at 50 kHz) 51000 packets of 144 samples from 2017-03-09T17:23:16.337.999. Part 11/147

Processed Thu Mar 9 18:30:54 2017 by ELM ver.2012-10-06 from 001__elm20170309_172315__dat00.bin



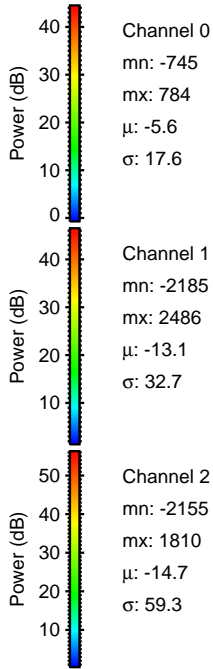
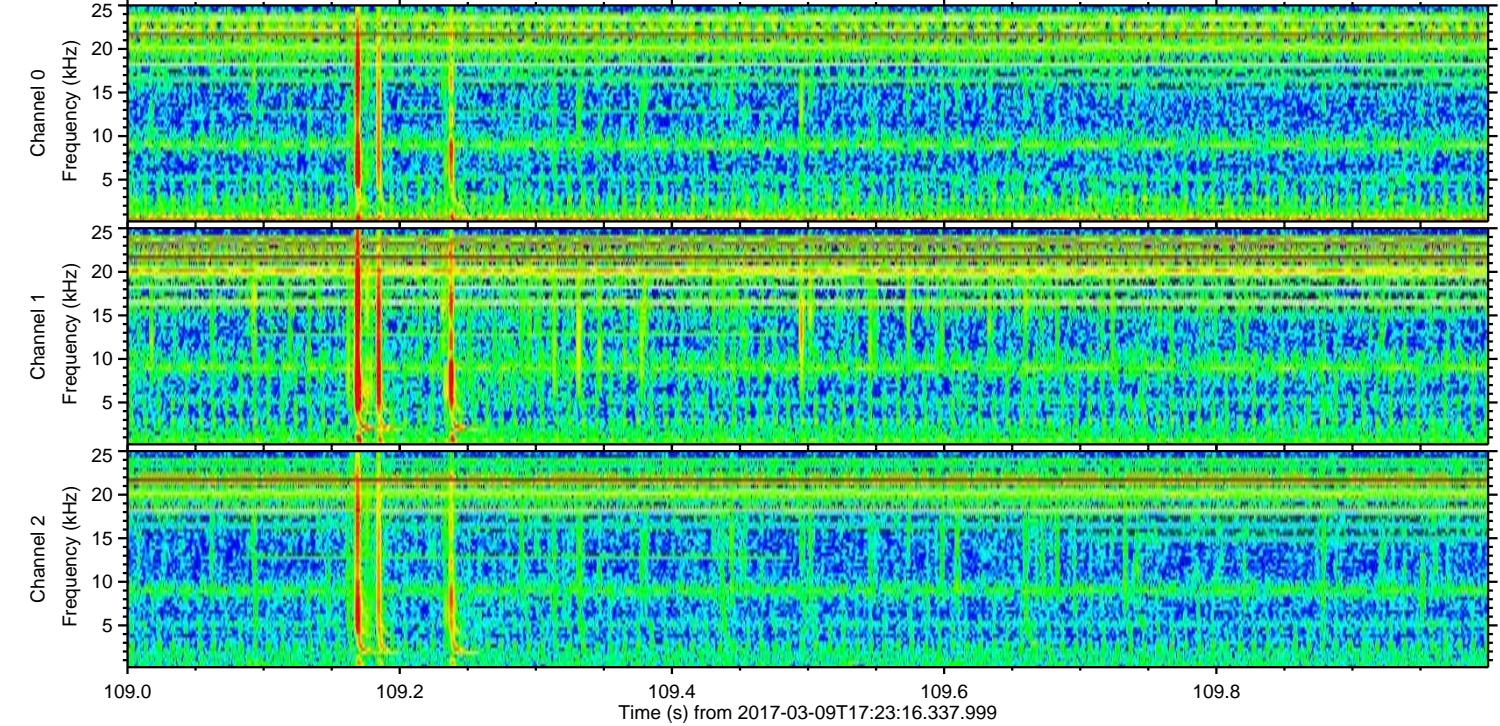
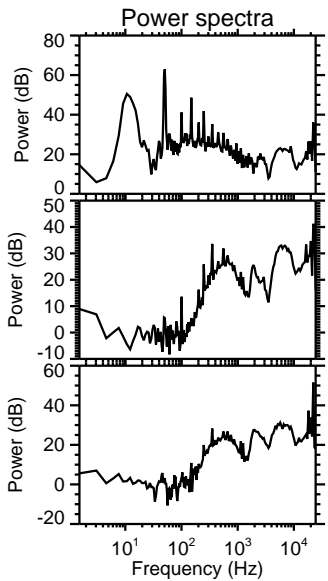
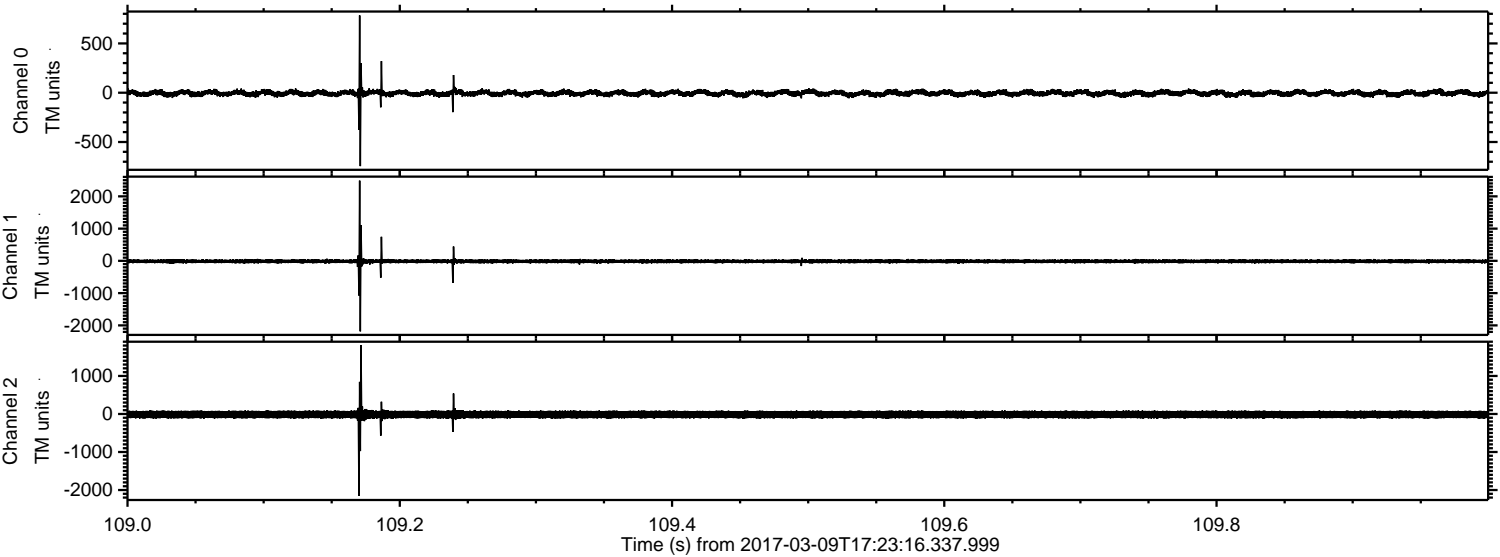
ELMAVAN 3D WAVEFORMS (Measured data sampled at 50 kHz) 51000 packets of 144 samples from 2017-03-09T17:23:16.337.999. Part 146/147

Processed Thu Mar 9 18:30:55 2017 by ELM ver.2012-10-06 from 001__elm20170309_172315__dat00.bin



ELMAVAN 3D WAVEFORMS (Measured data sampled at 50 kHz) 51000 packets of 144 samples from 2017-03-09T17:23:16.337.999. Part 110/147

Processed Thu Mar 9 18:30:56 2017 by ELM ver.2012-10-06 from 001__elm20170309_172315__dat00.bin



Channel 0
mn: -745
mx: 784
 μ : -5.6
 σ : 17.6

Channel 1
mn: -2185
mx: 2486
 μ : -13.1
 σ : 32.7

Channel 2
mn: -2155
mx: 1810
 μ : -14.7
 σ : 59.3

Processed Thu Mar 9 18:30:57 2017 by ELM ver.2012-10-06 from 001__elm20170309_172315__dat00.bin

