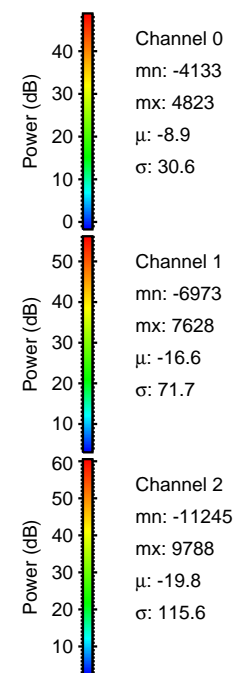
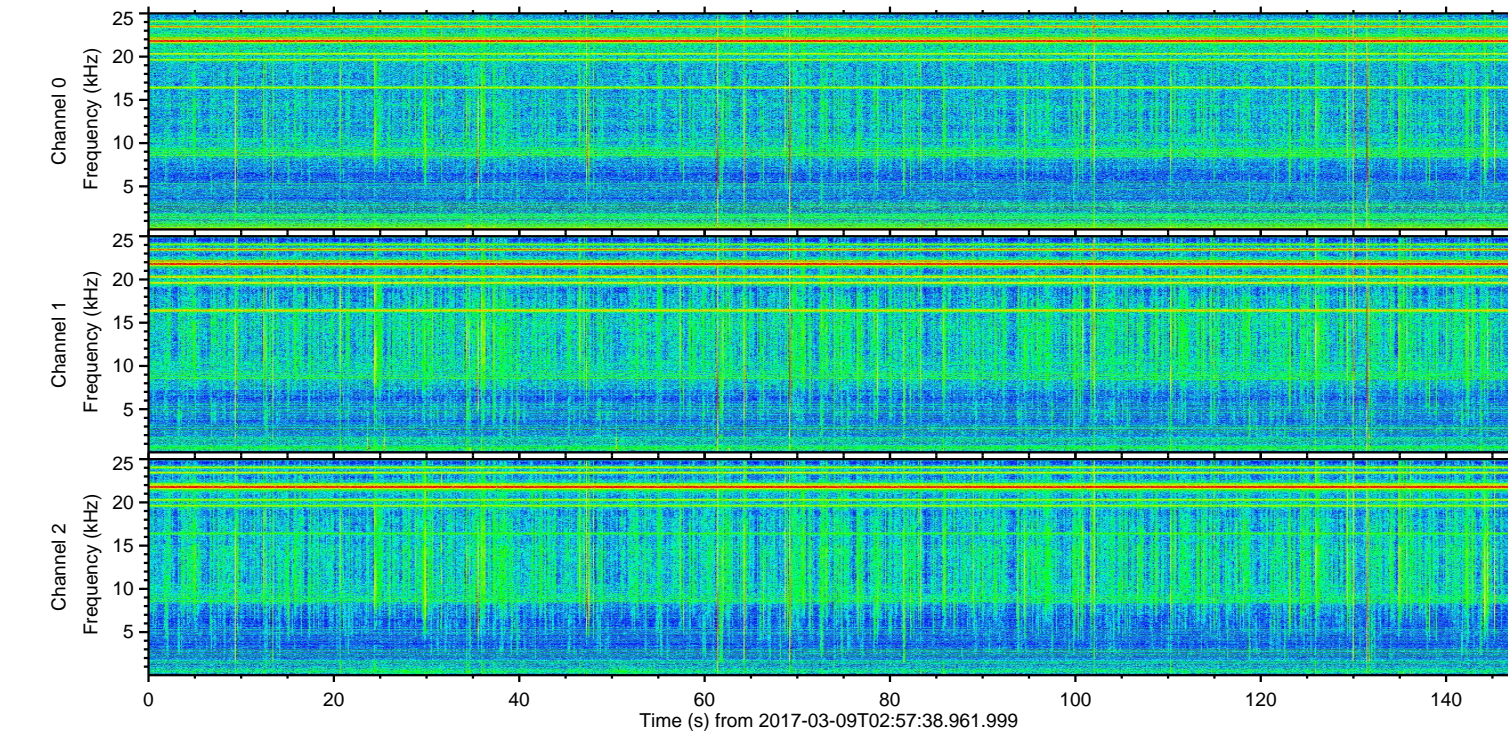
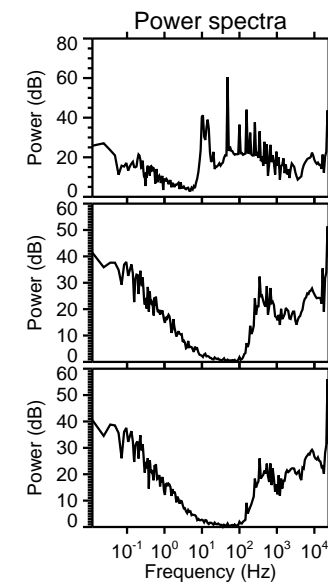
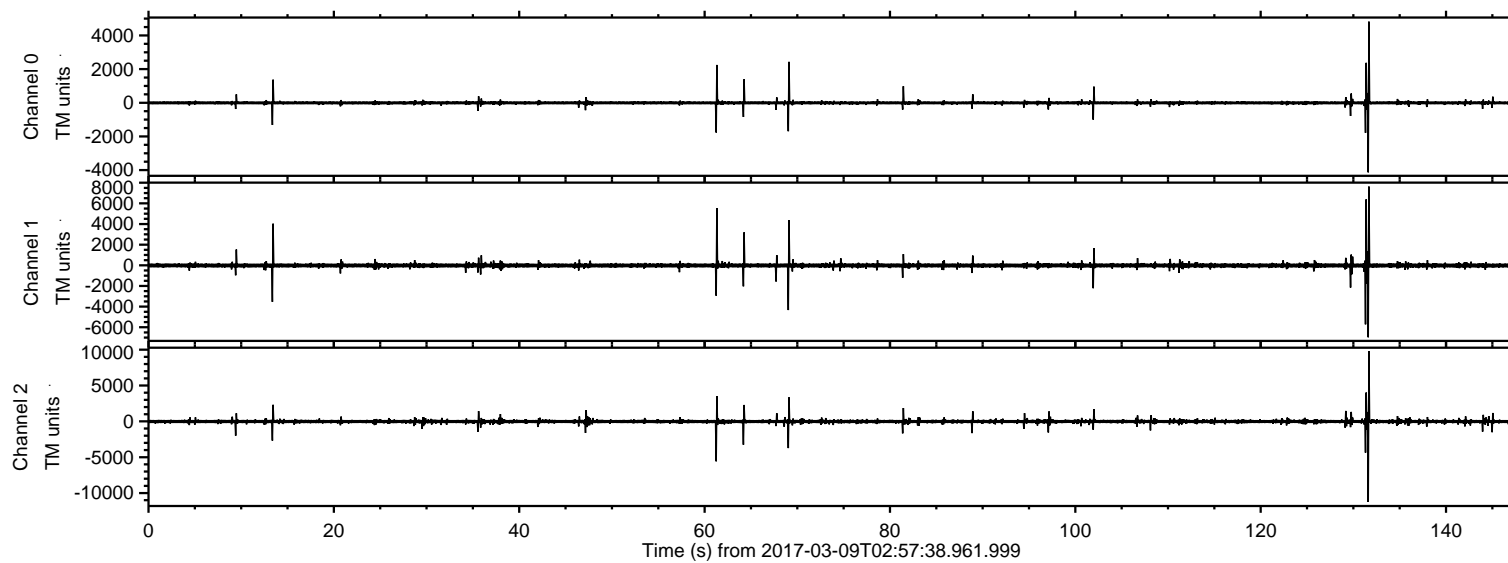


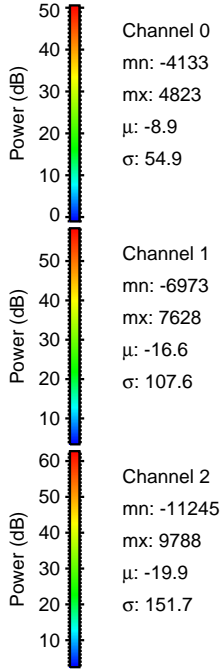
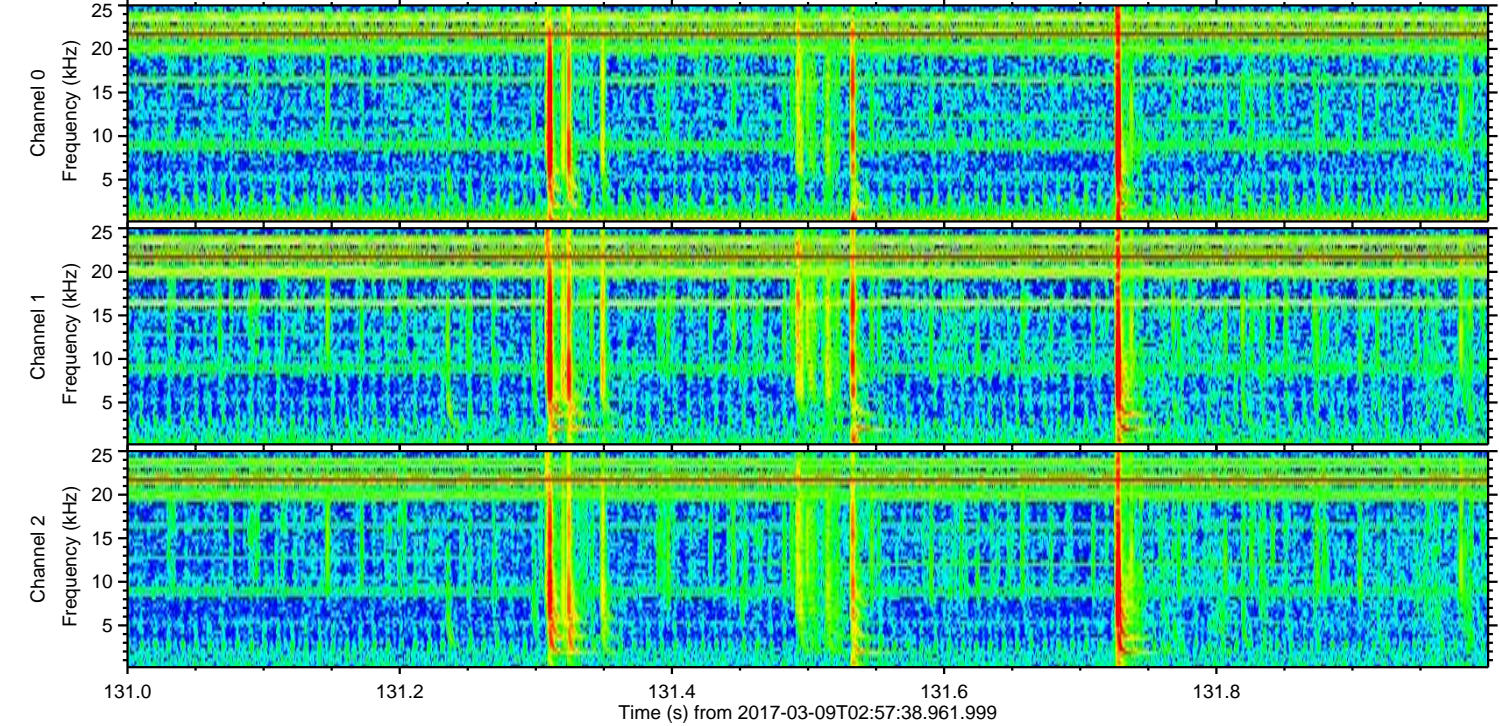
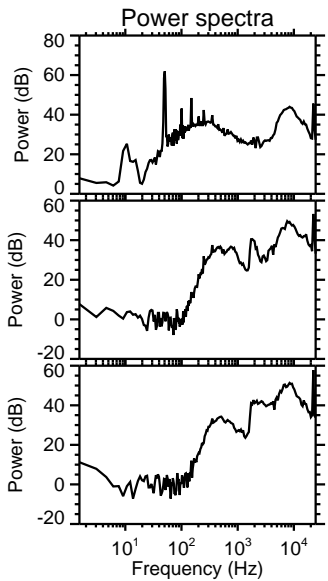
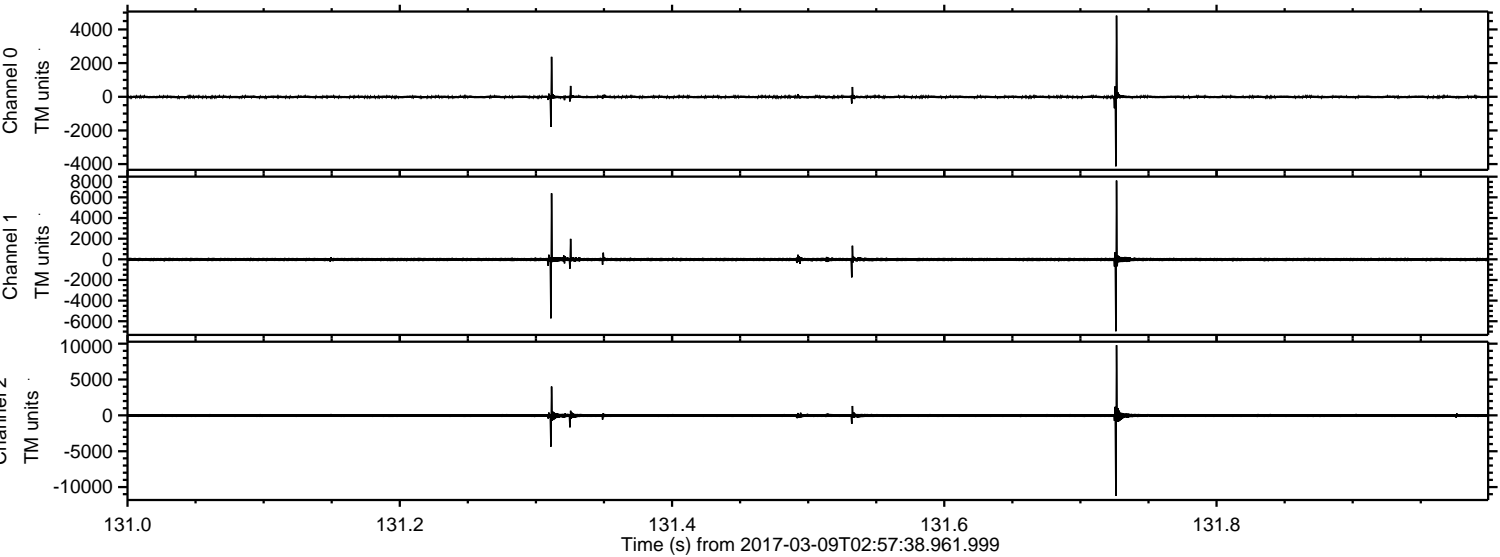
ELMAVAN 3D WAVEFORMS (Measured data sampled at 50 kHz) 51000 packets of 144 samples from 2017-03-09T02:57:38.961.999.

Processed Thu Mar 9 04:05:59 2017 by ELM ver.2012-10-06 from 001__elm20170309_025737__dat00.bin

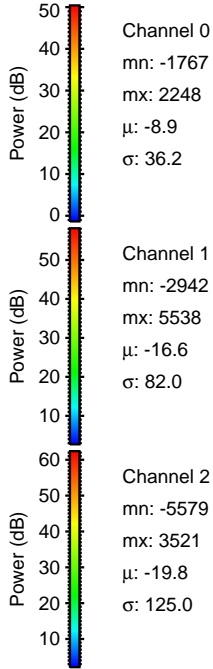
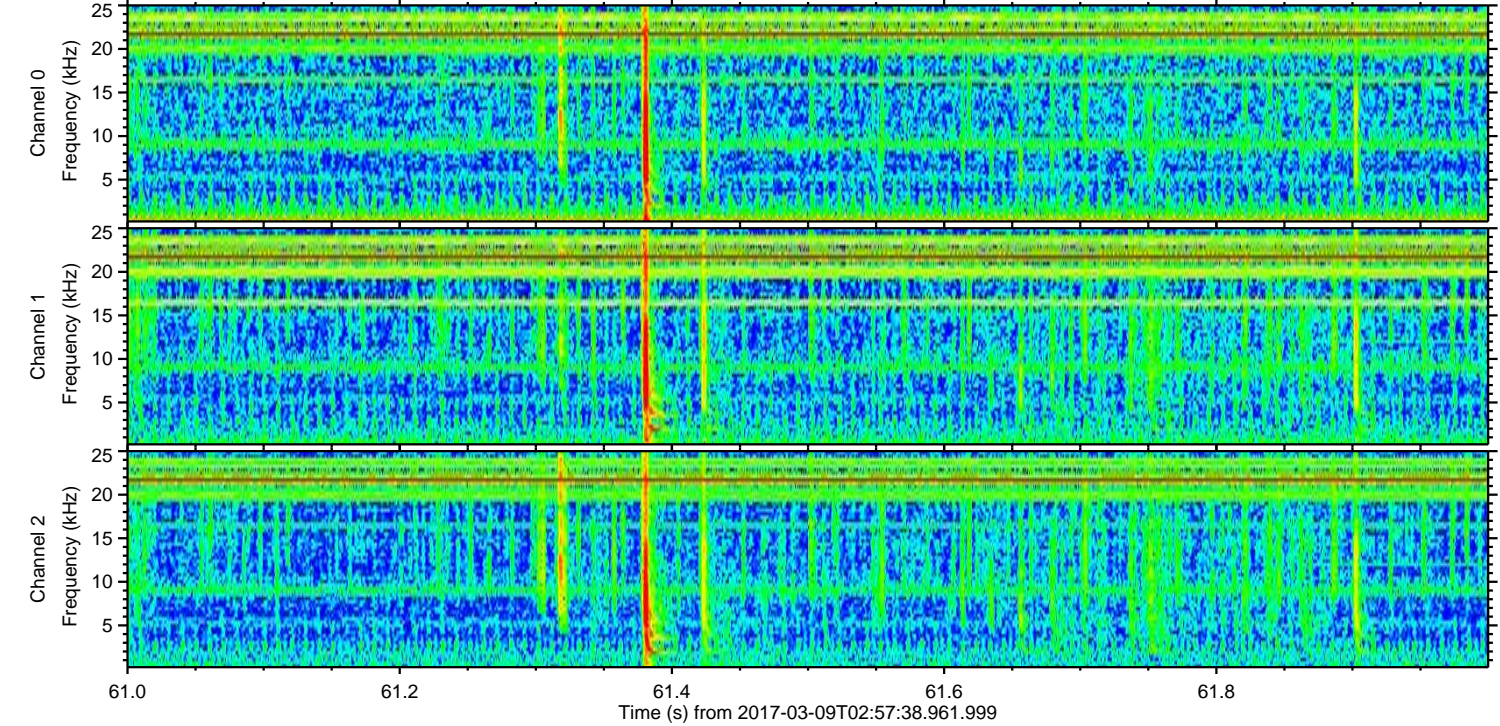
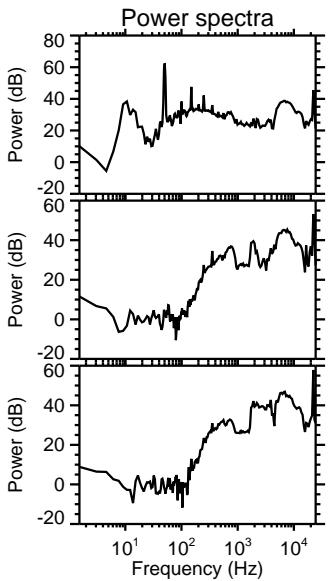
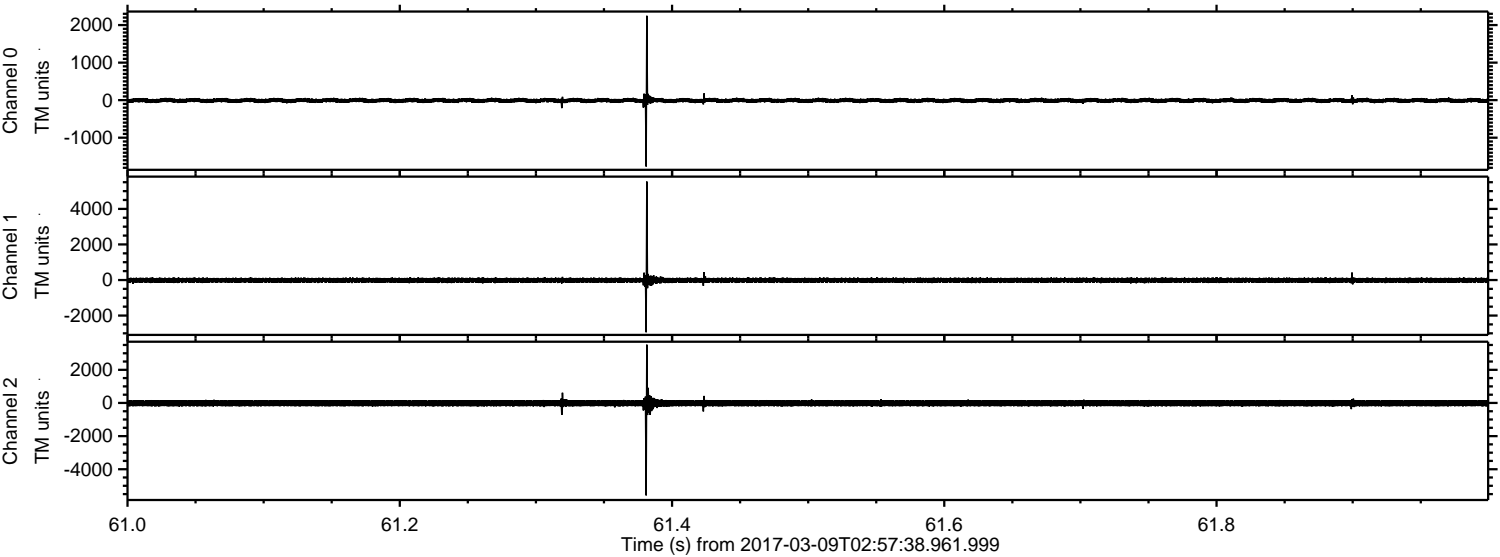


ELMAVAN 3D WAVEFORMS (Measured data sampled at 50 kHz) 51000 packets of 144 samples from 2017-03-09T02:57:38.961.999. Part 132/147

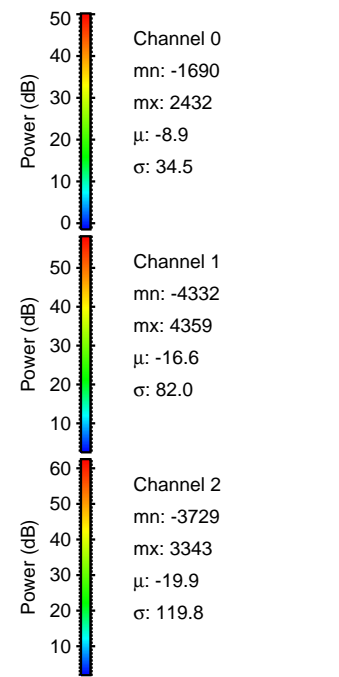
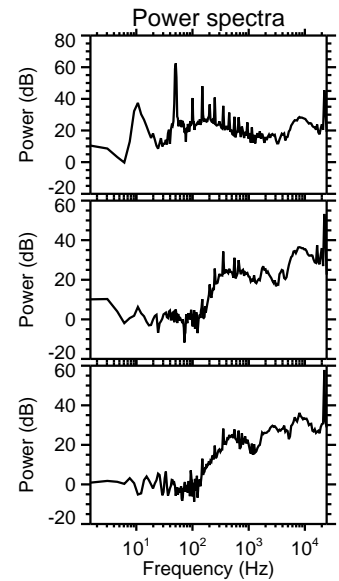
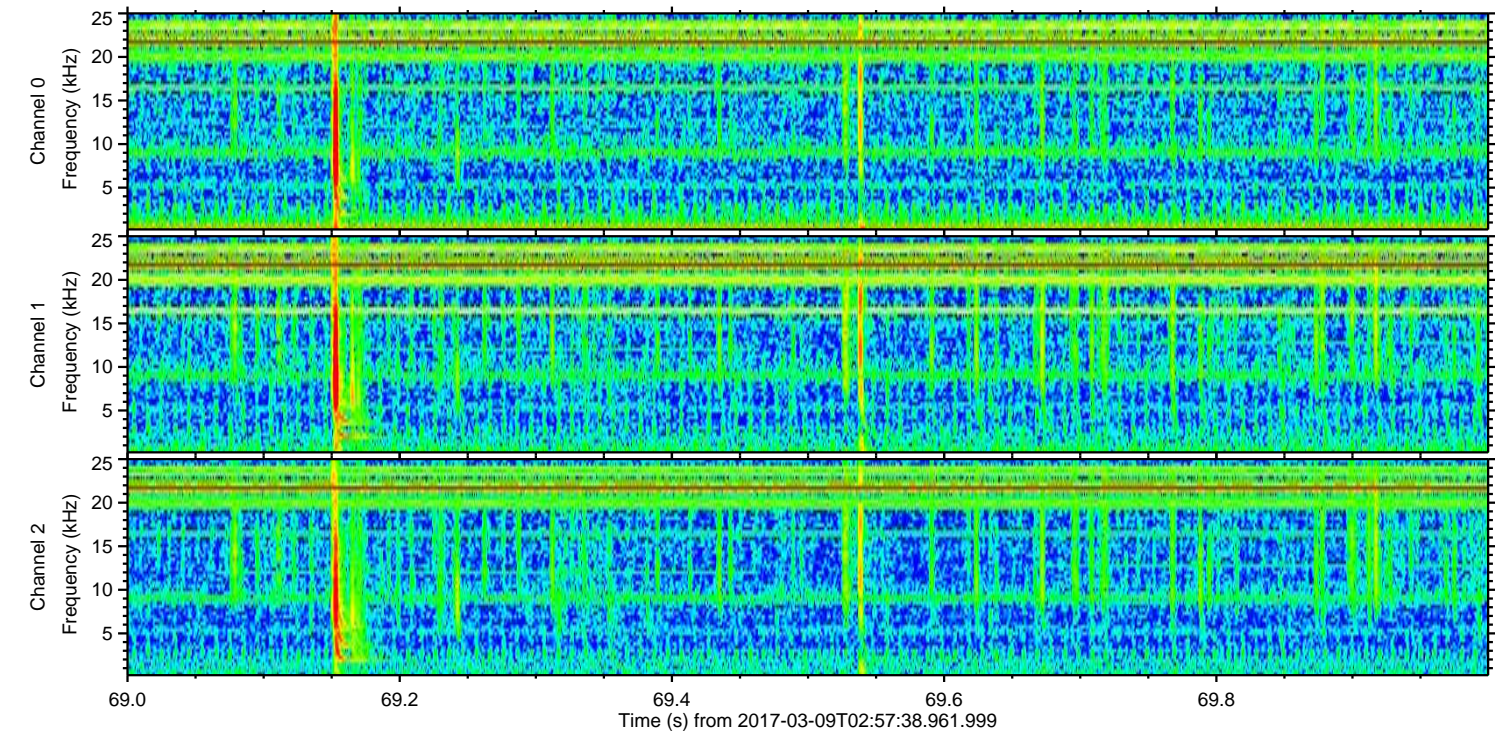
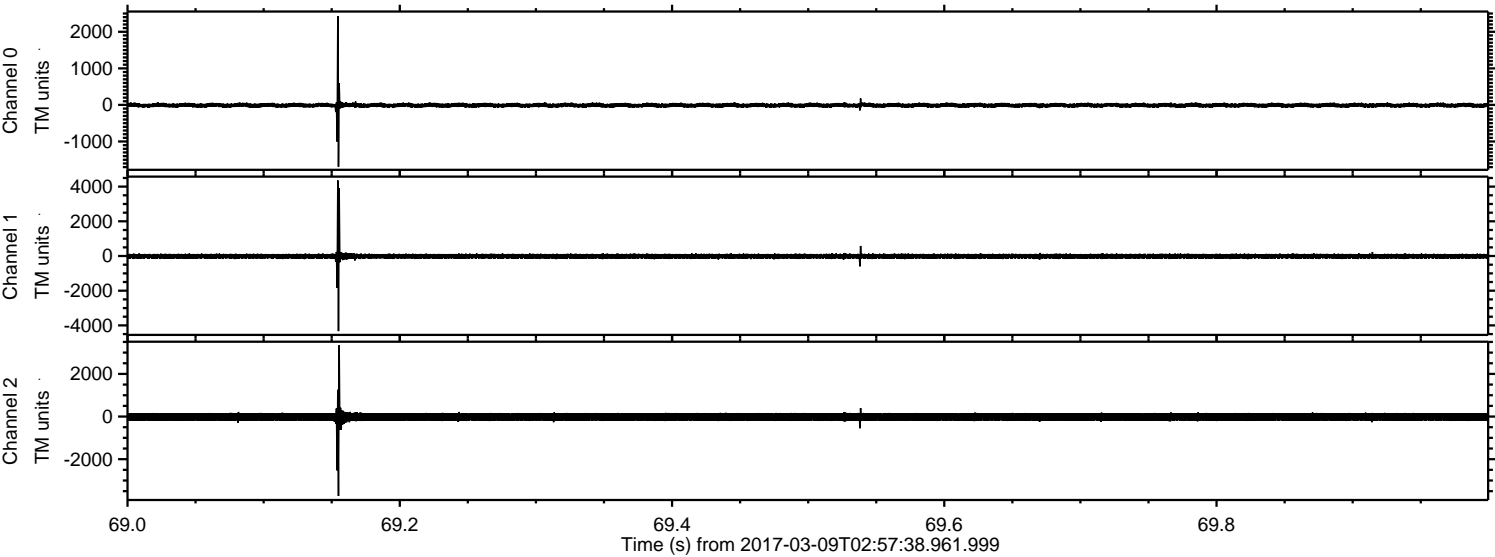
Processed Thu Mar 9 04:06:10 2017 by ELM ver.2012-10-06 from 001__elm20170309_025737__dat00.bin



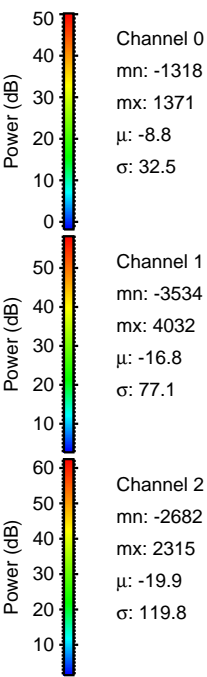
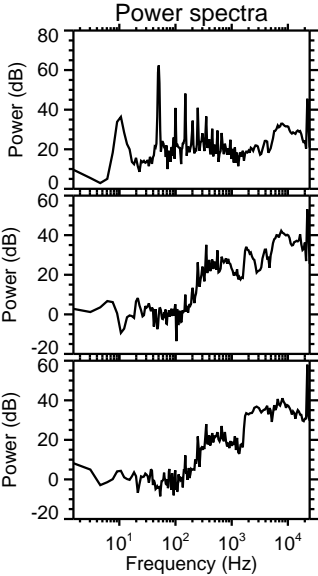
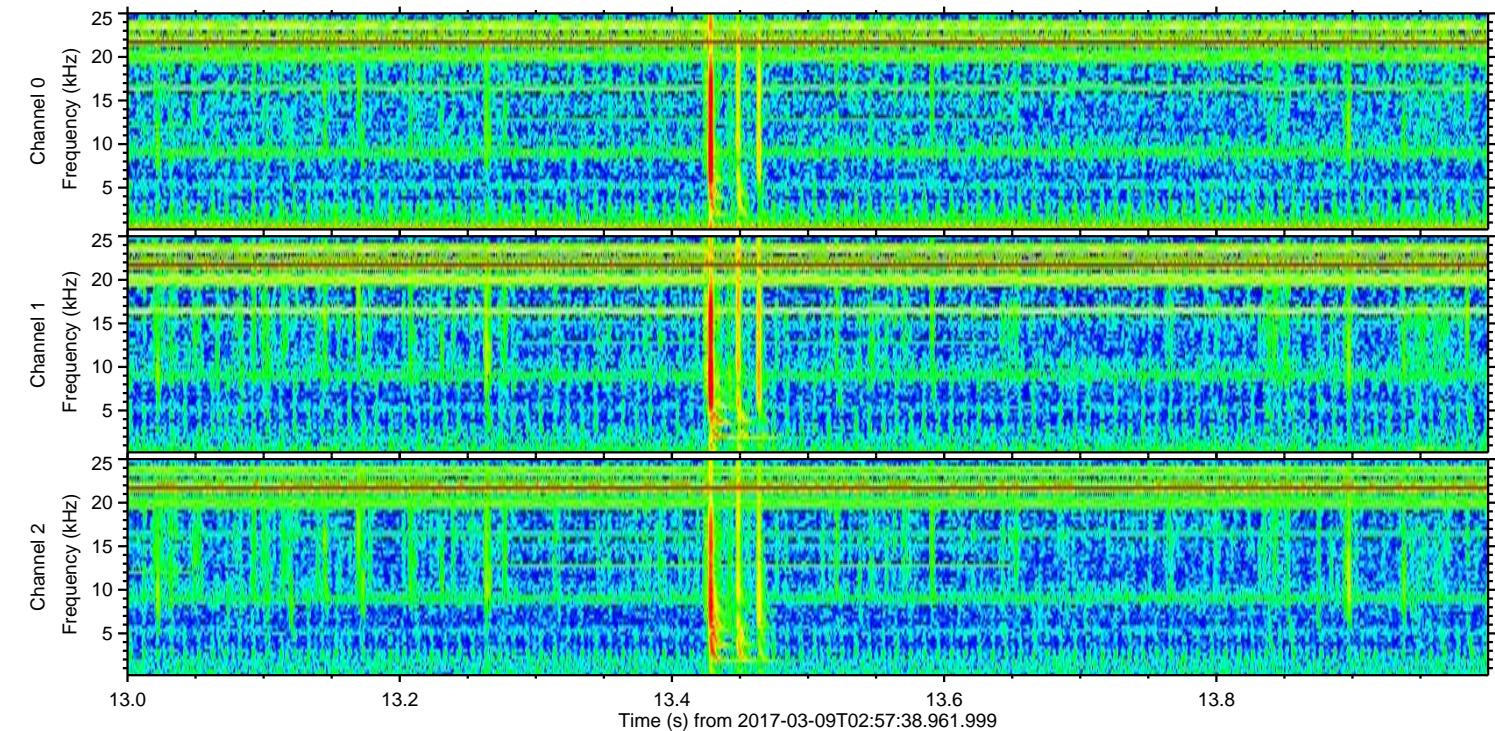
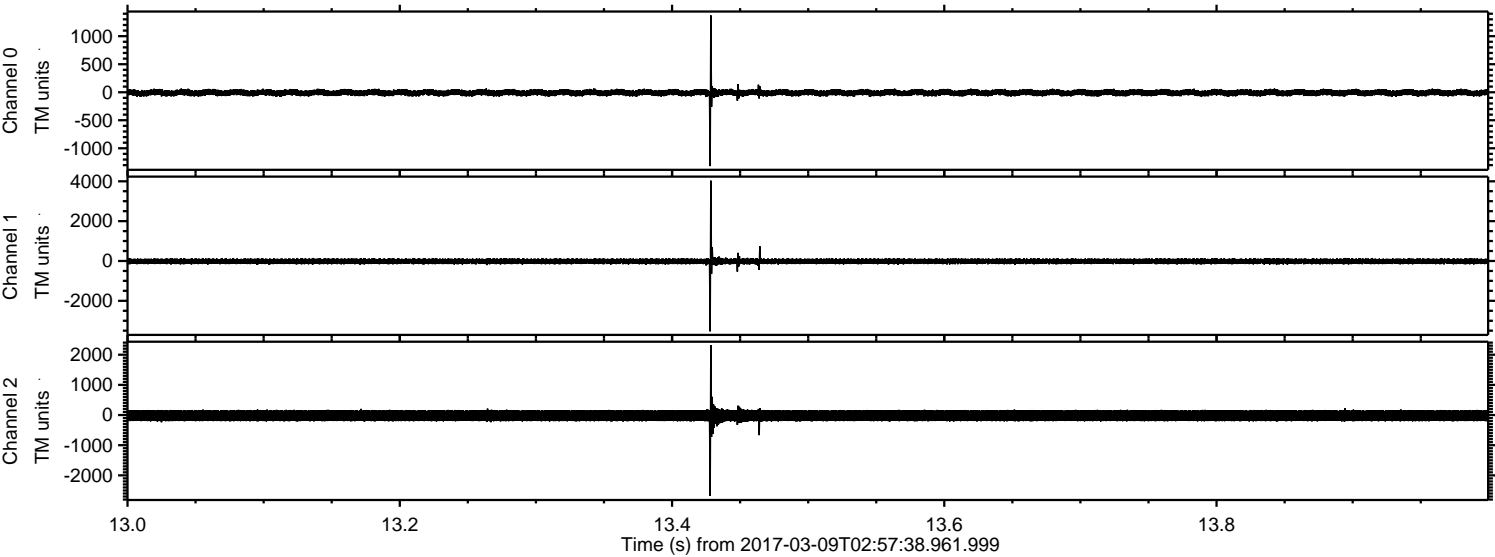
Processed Thu Mar 9 04:06:11 2017 by ELM ver.2012-10-06 from 001__elm20170309_025737__dat00.bin



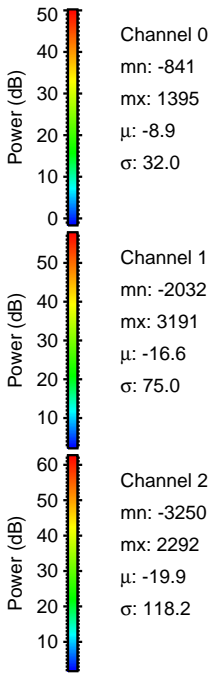
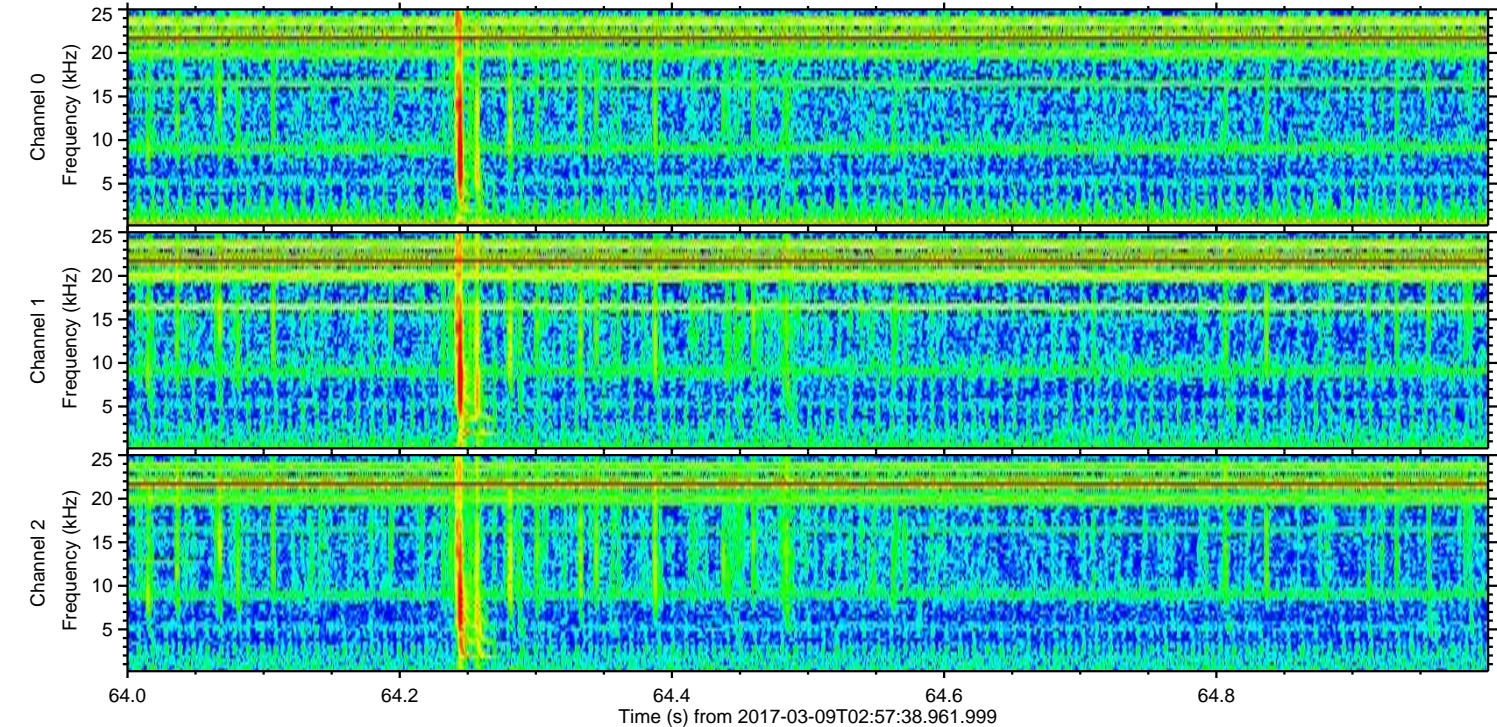
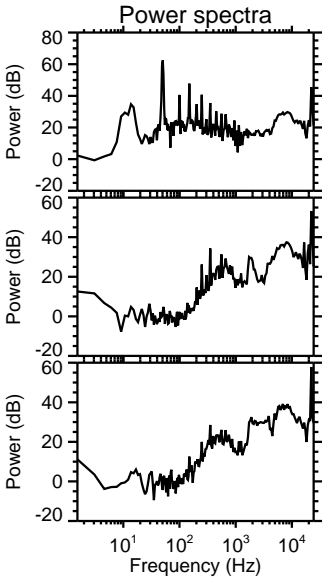
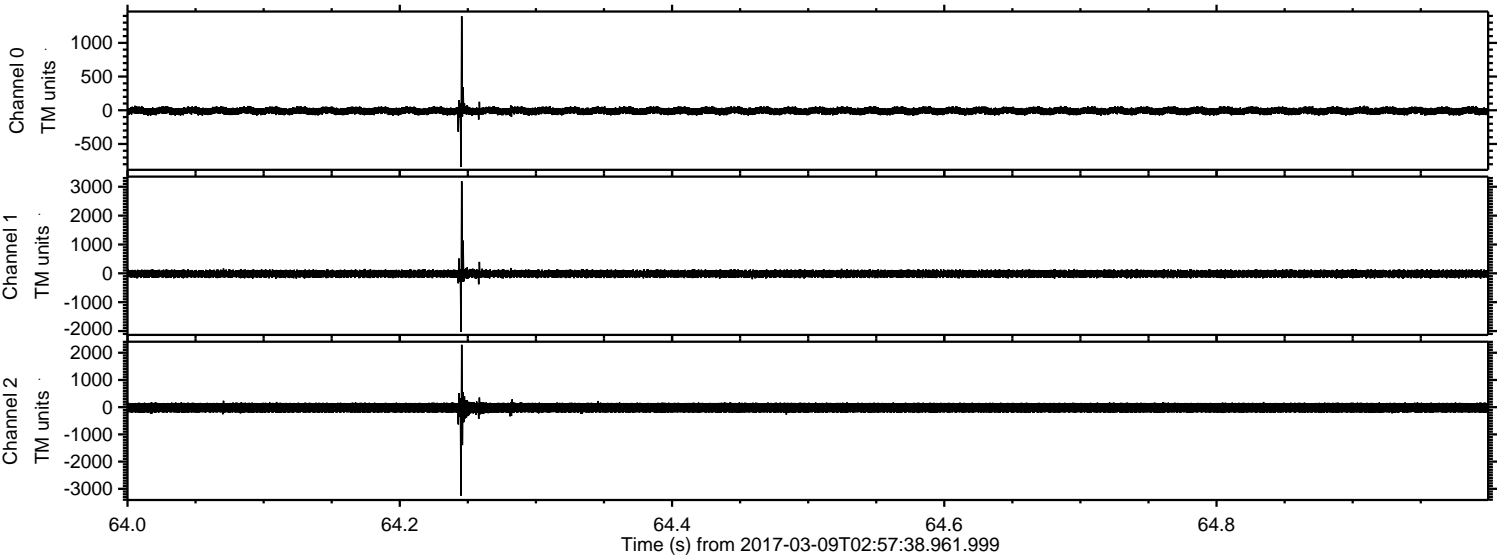
Processed Thu Mar 9 04:06:12 2017 by ELM ver.2012-10-06 from 001__elm20170309_025737__dat00.bin



Processed Thu Mar 9 04:06:13 2017 by ELM ver.2012-10-06 from 001__elm20170309_025737__dat00.bin

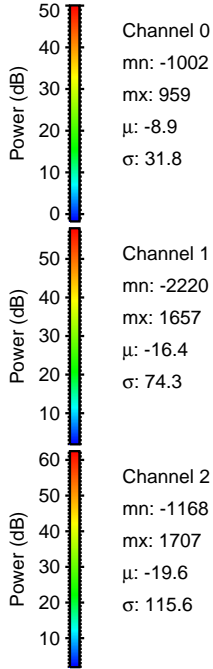
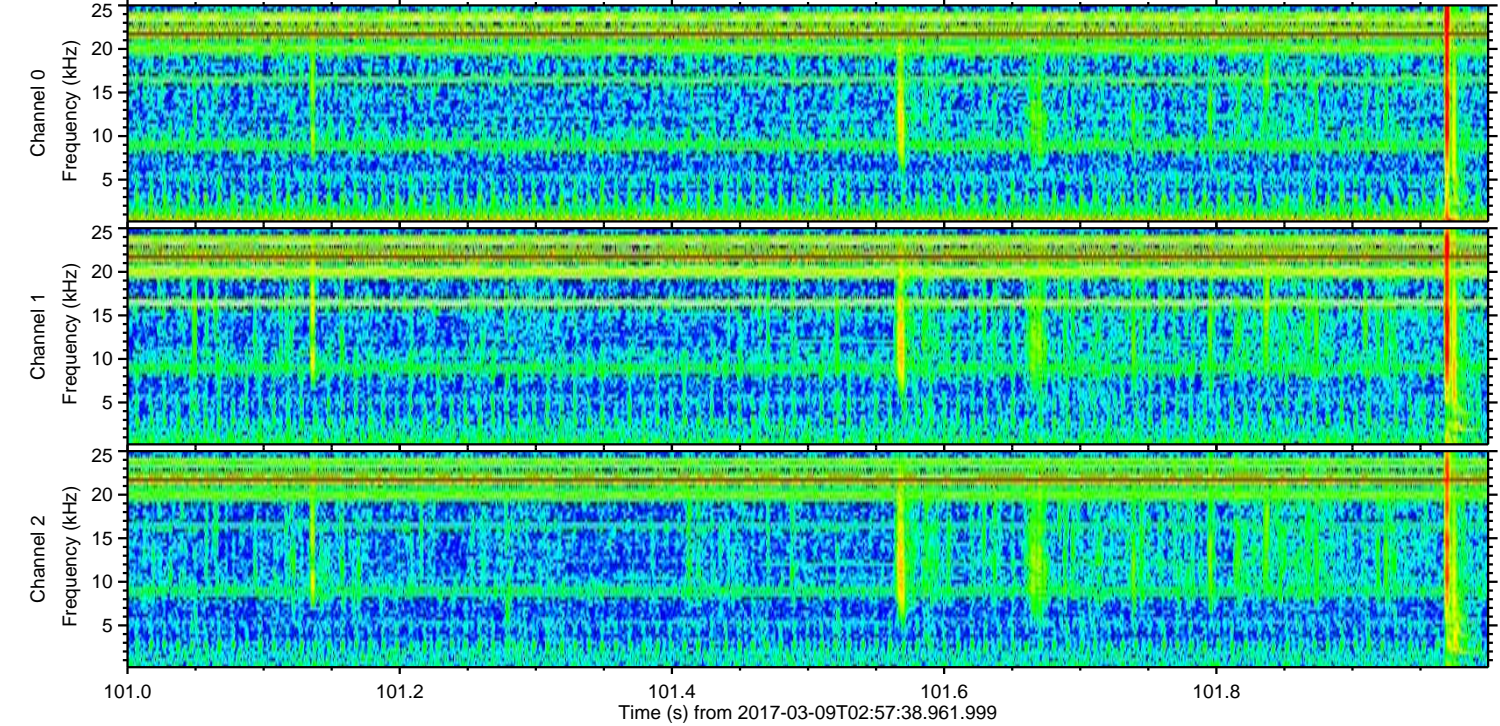
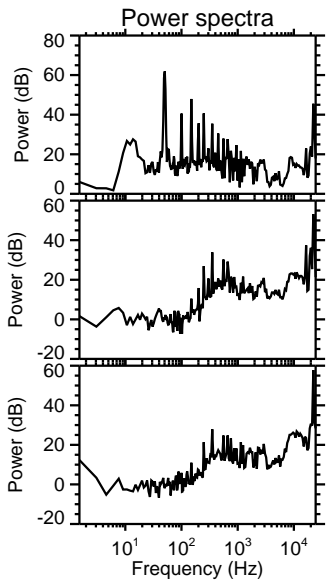
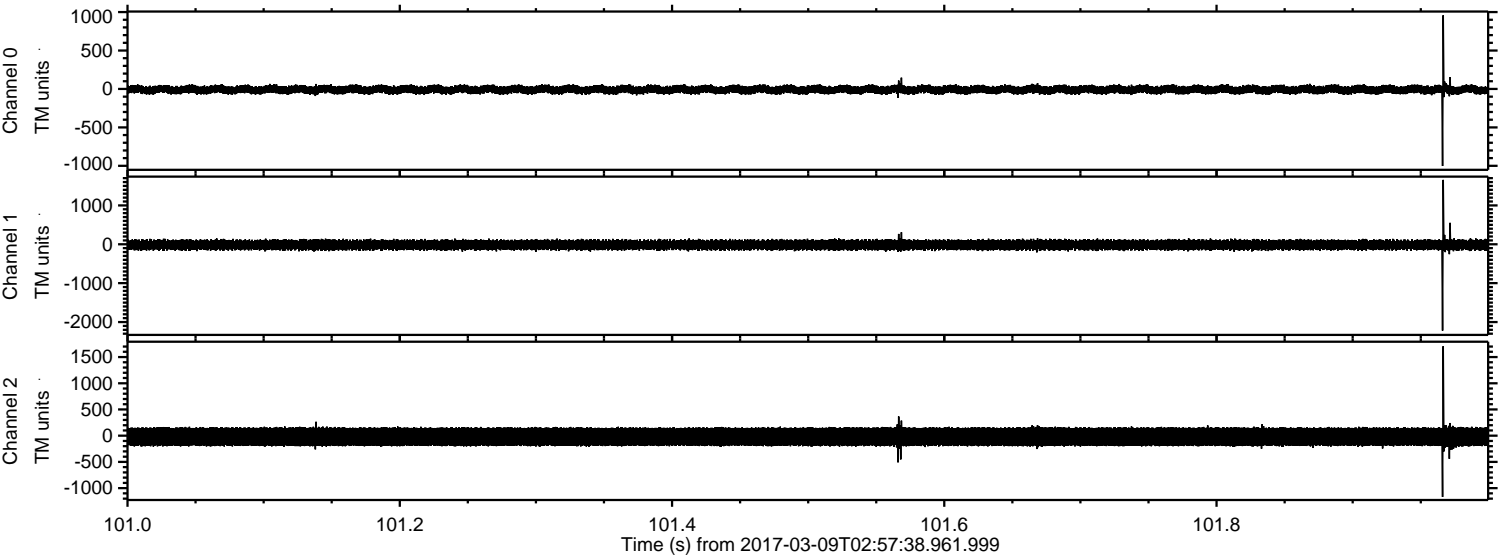


Processed Thu Mar 9 04:06:14 2017 by ELM ver.2012-10-06 from 001__elm20170309_025737__dat00.bin



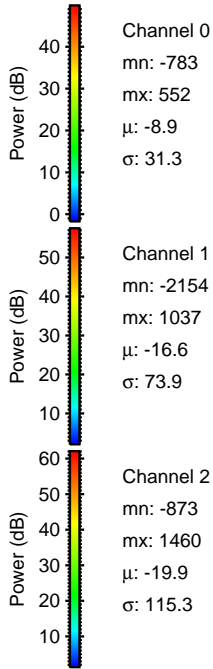
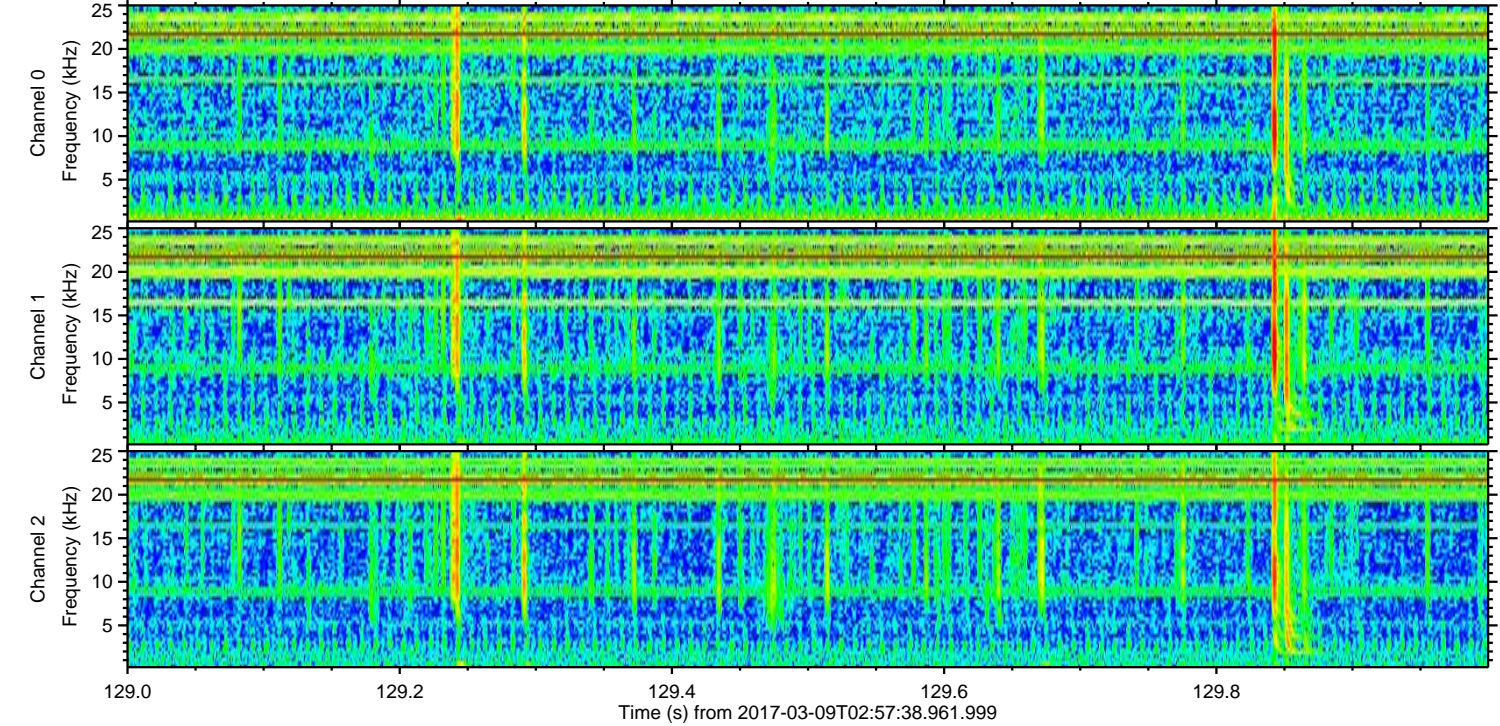
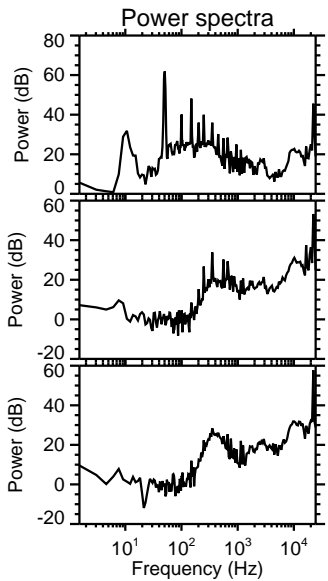
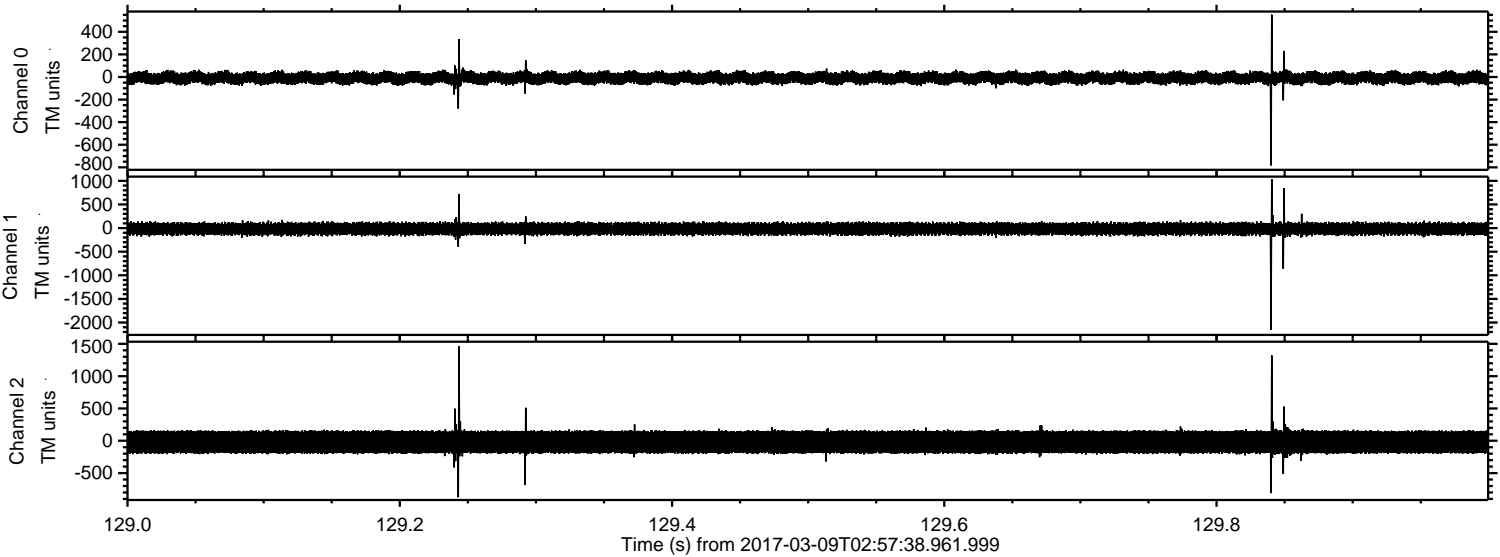
ELMAVAN 3D WAVEFORMS (Measured data sampled at 50 kHz) 51000 packets of 144 samples from 2017-03-09T02:57:38.961.999. Part 102/147

Processed Thu Mar 9 04:06:15 2017 by ELM ver.2012-10-06 from 001__elm20170309_025737__dat00.bin

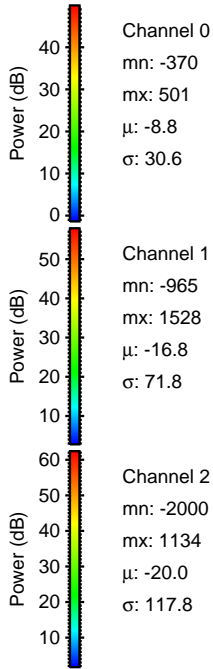
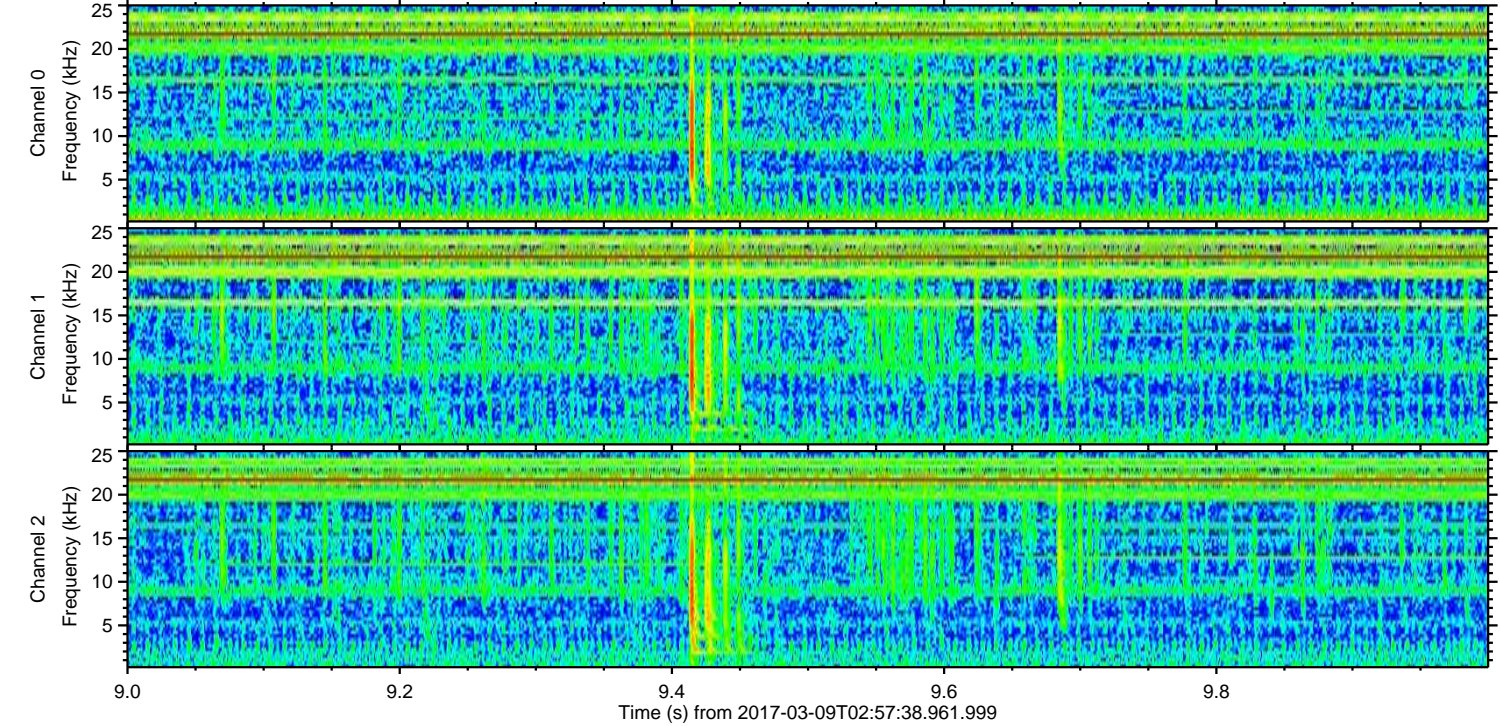
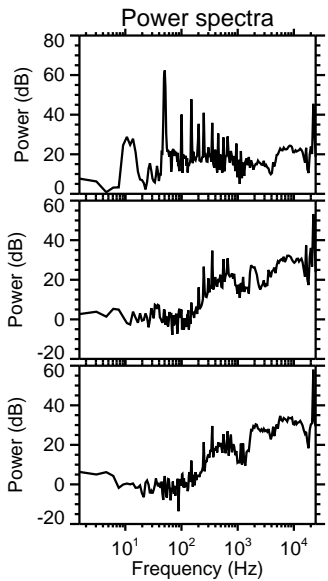
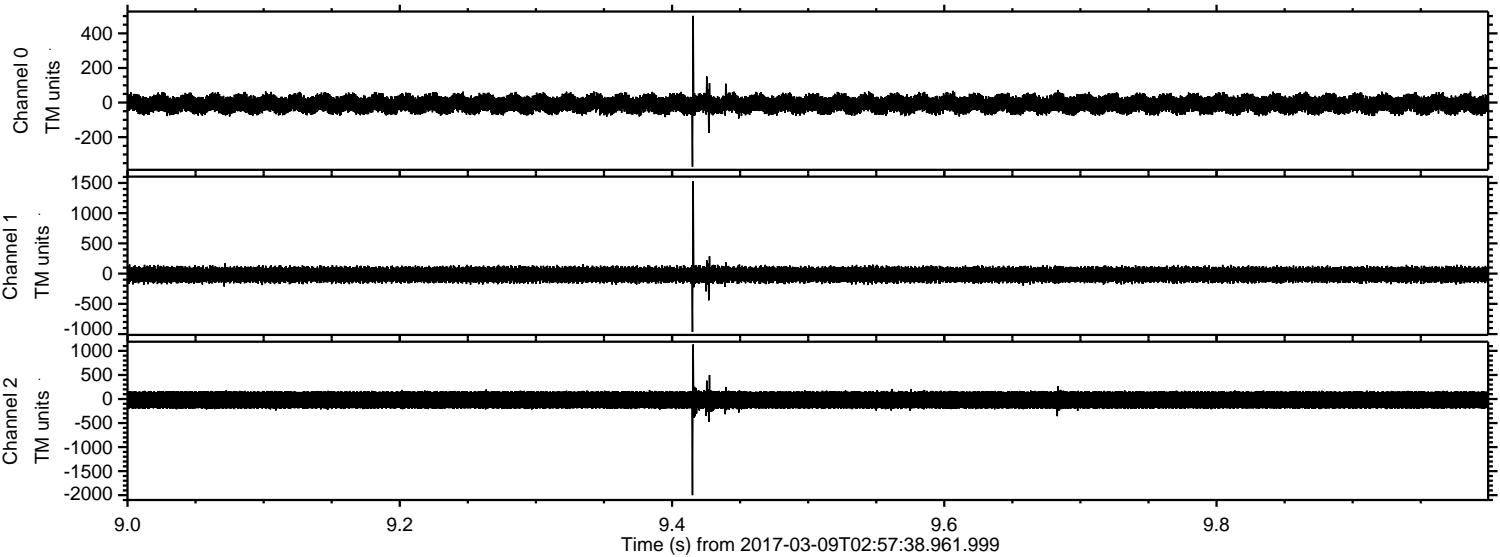


ELMAVAN 3D WAVEFORMS (Measured data sampled at 50 kHz) 51000 packets of 144 samples from 2017-03-09T02:57:38.961.999. Part 130/147

Processed Thu Mar 9 04:06:16 2017 by ELM ver.2012-10-06 from 001__elm20170309_025737__dat00.bin



Processed Thu Mar 9 04:06:17 2017 by ELM ver.2012-10-06 from 001__elm20170309_025737__dat00.bin

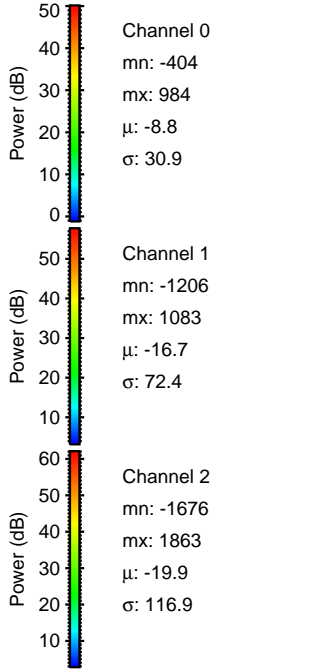
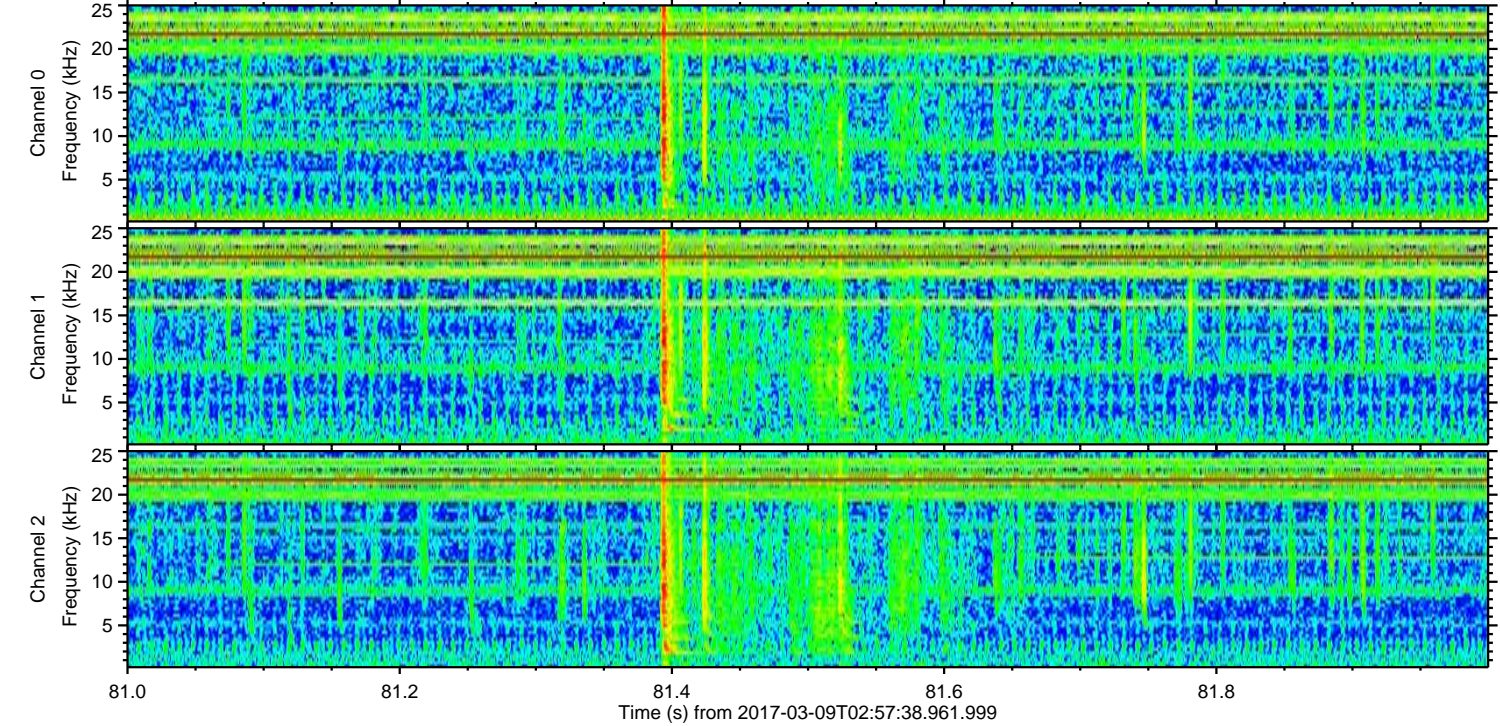
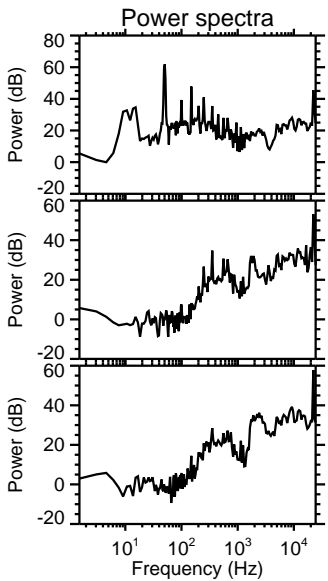
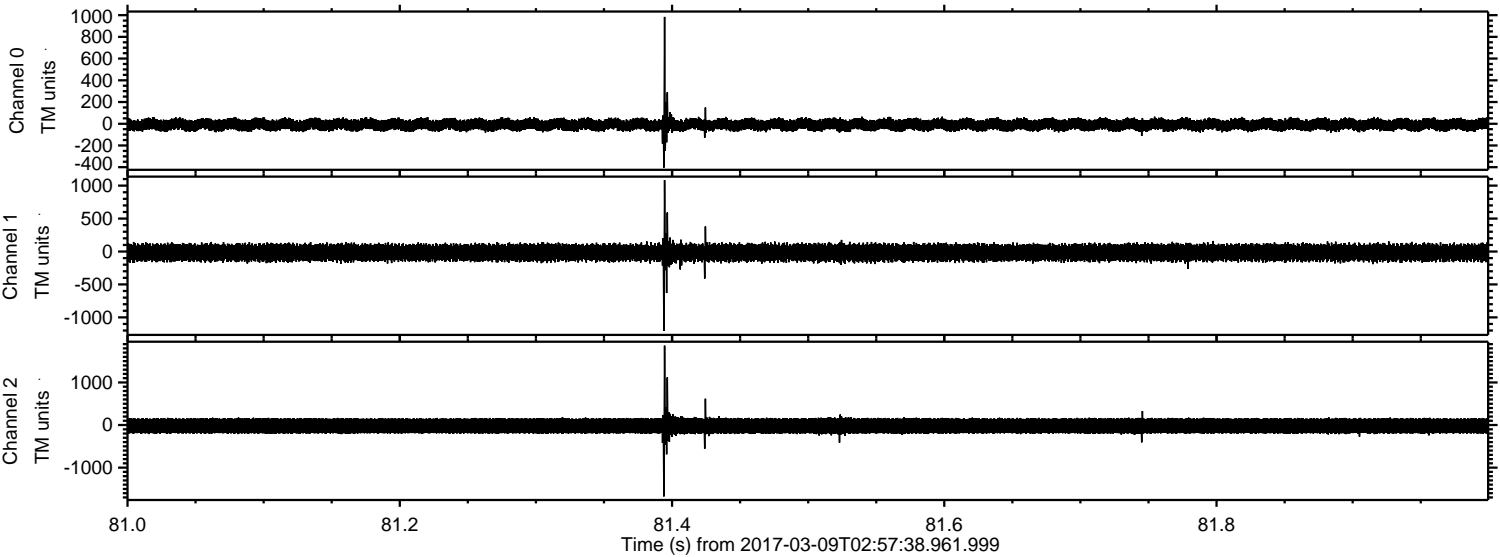


Channel 0
mn: -370
mx: 501
 μ : -8.8
 σ : 30.6

Channel 1
mn: -965
mx: 1528
 μ : -16.8
 σ : 71.8

Channel 2
mn: -2000
mx: 1134
 μ : -20.0
 σ : 117.8

Processed Thu Mar 9 04:06:18 2017 by ELM ver.2012-10-06 from 001__elm20170309_025737__dat00.bin



Processed Thu Mar 9 04:06:19 2017 by ELM ver.2012-10-06 from 001__elm20170309_025737__dat00.bin

