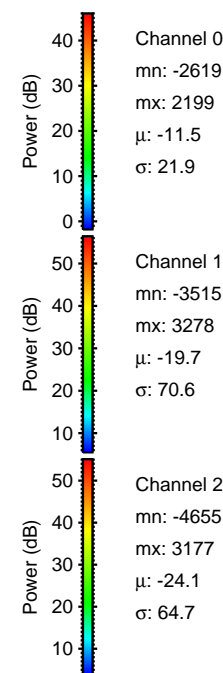
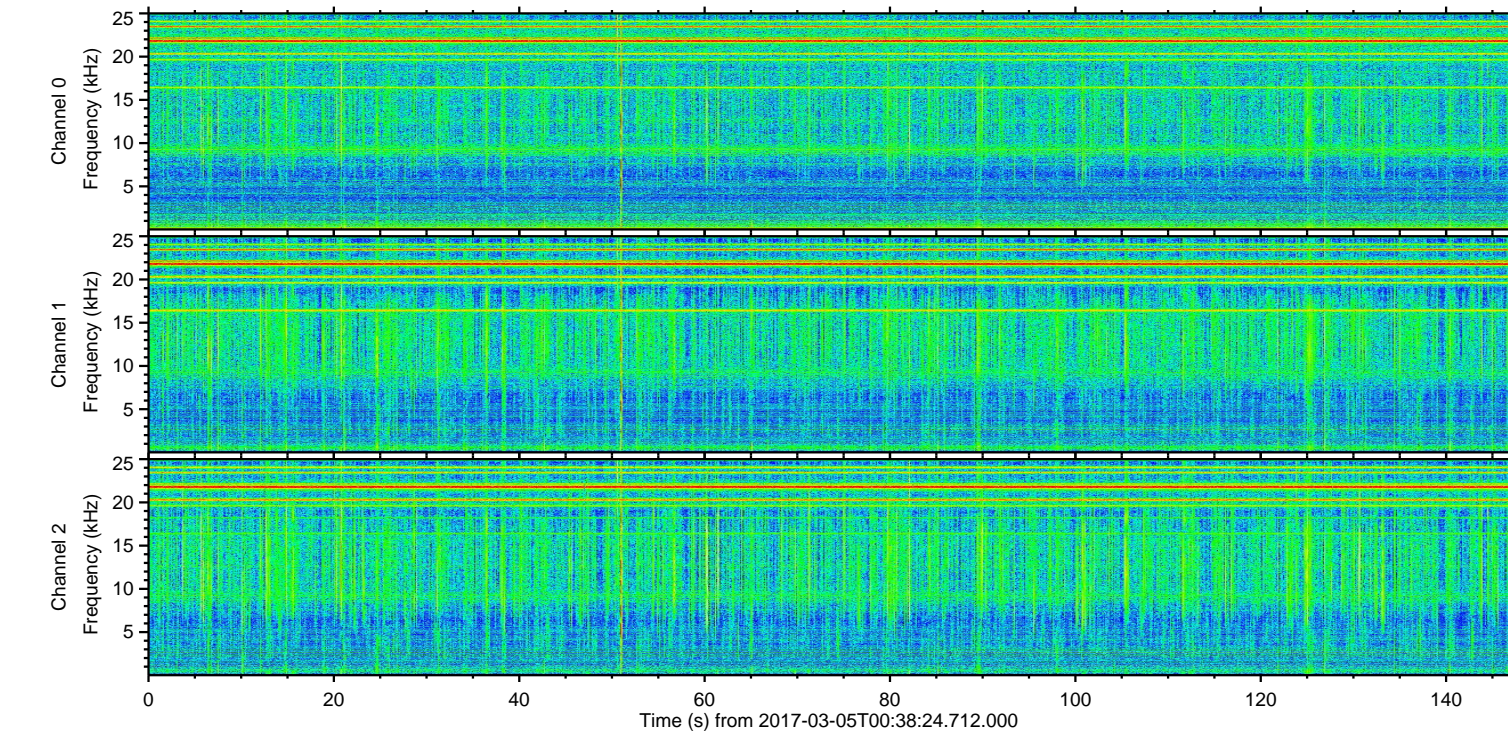
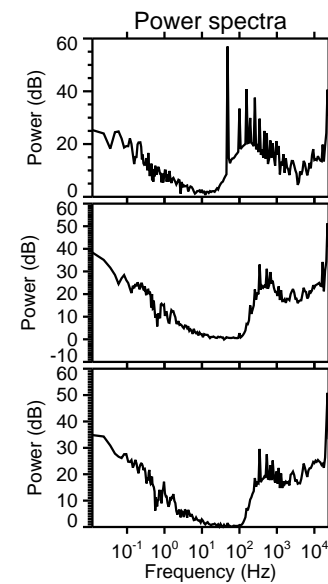
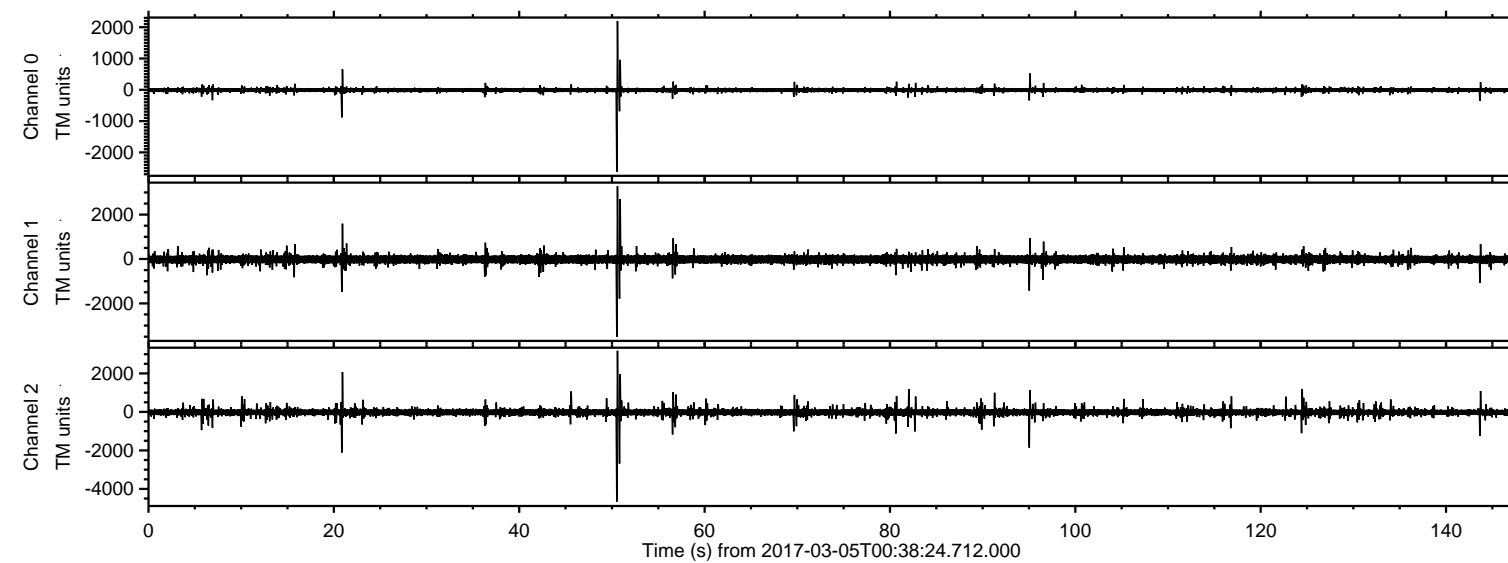


# ELMAVAN 3D WAVEFORMS (Measured data sampled at 50 kHz) 51000 packets of 144 samples from 2017-03-05T00:38:24.712.000.

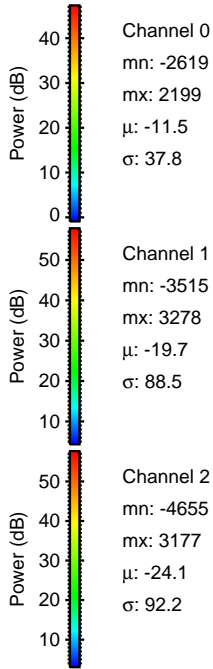
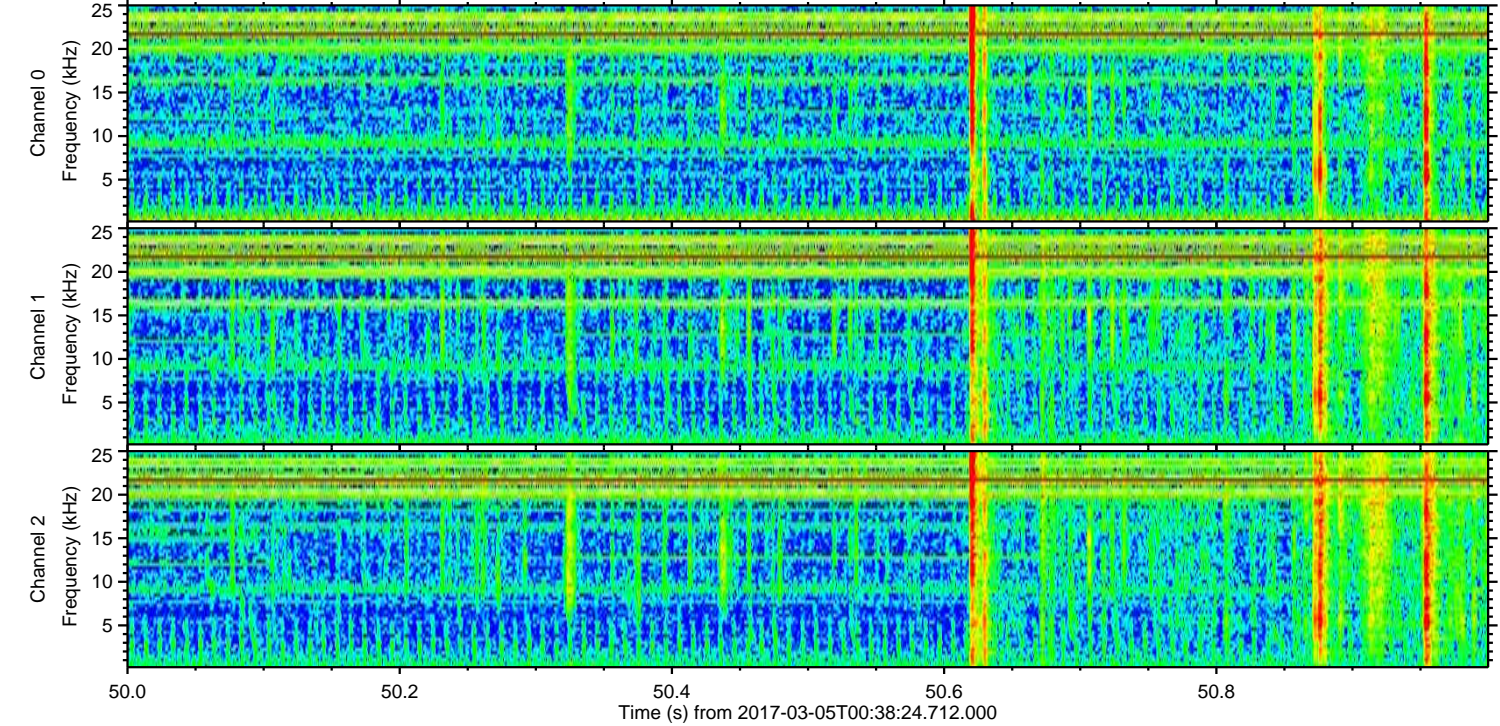
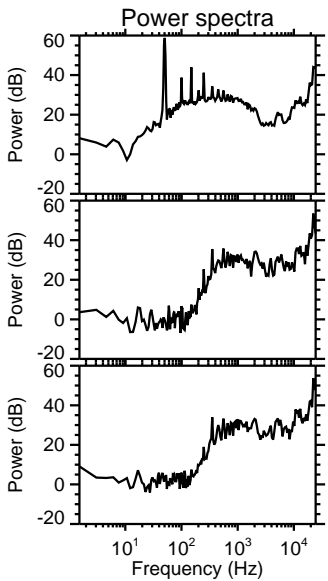
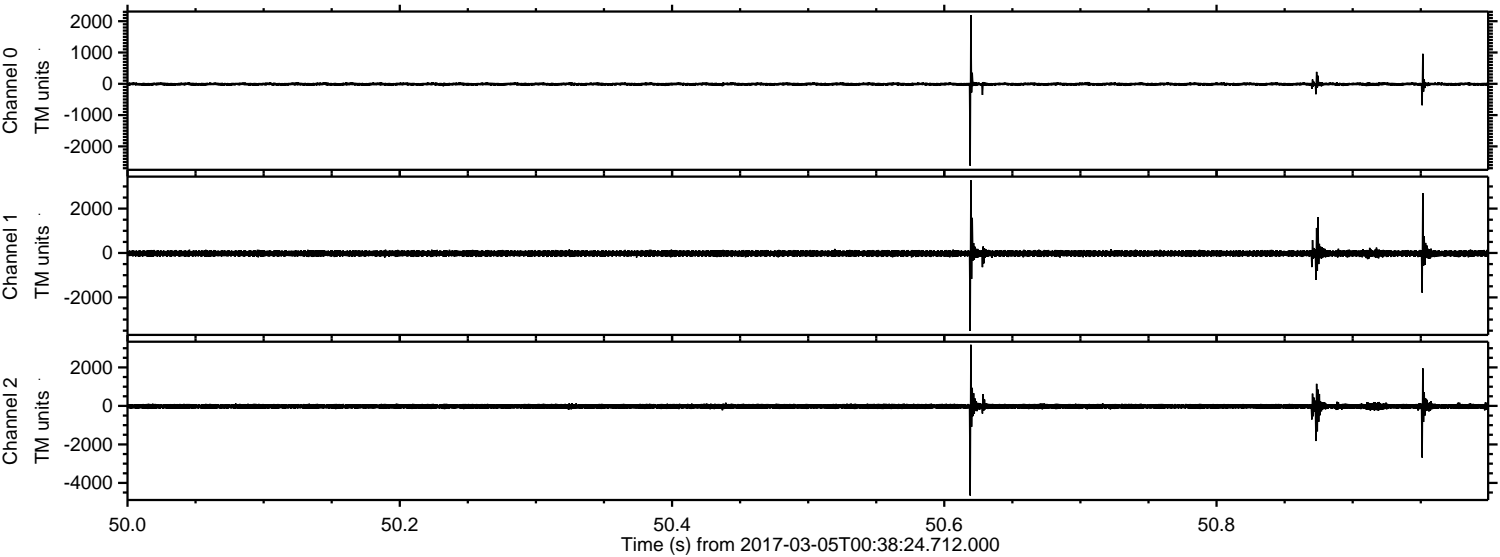
Processed Sun Mar 5 01:46:24 2017 by ELM ver.2012-10-06 from 001\_\_elm20170305\_003823\_\_dat00.bin





ELMAVAN 3D WAVEFORMS (Measured data sampled at 50 kHz) 51000 packets of 144 samples from 2017-03-05T00:38:24.712.000. Part 51/147

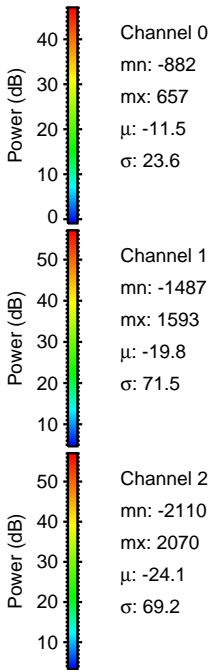
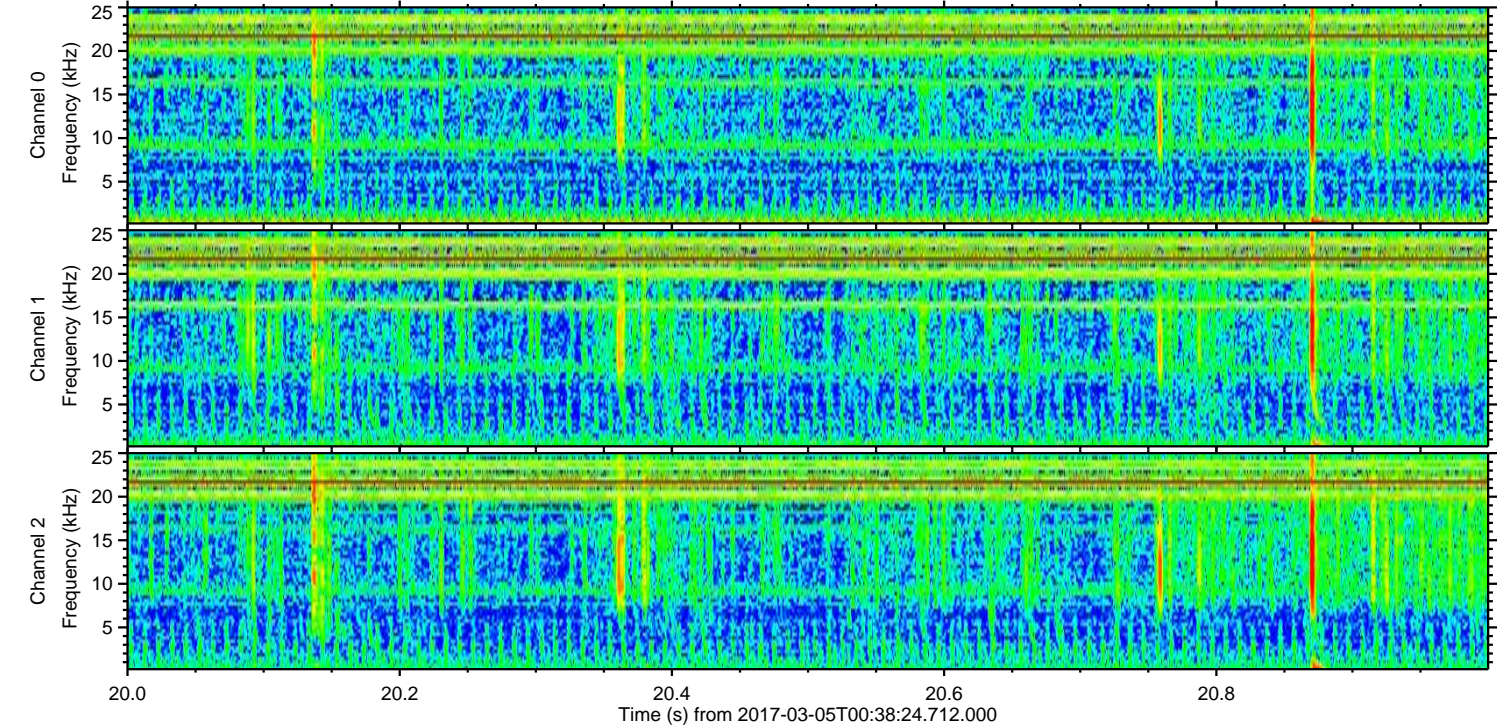
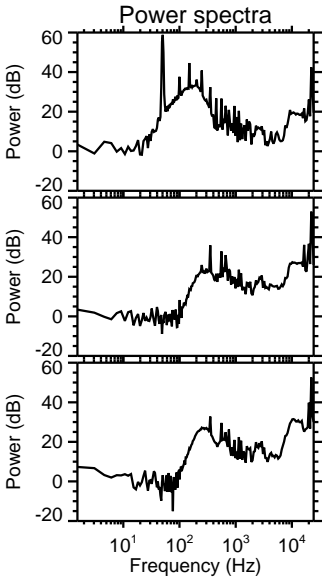
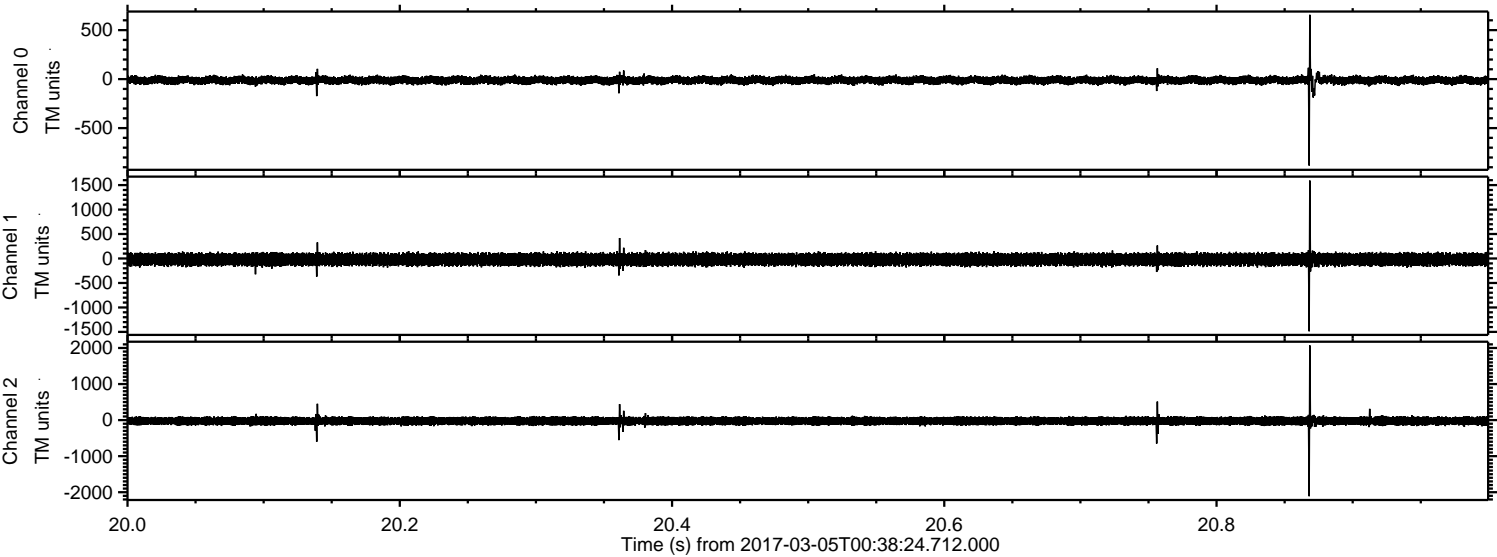
Processed Sun Mar 5 01:46:36 2017 by ELM ver.2012-10-06 from 001\_\_elm20170305\_003823\_\_dat00.bin





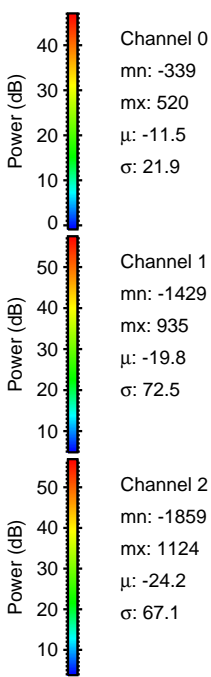
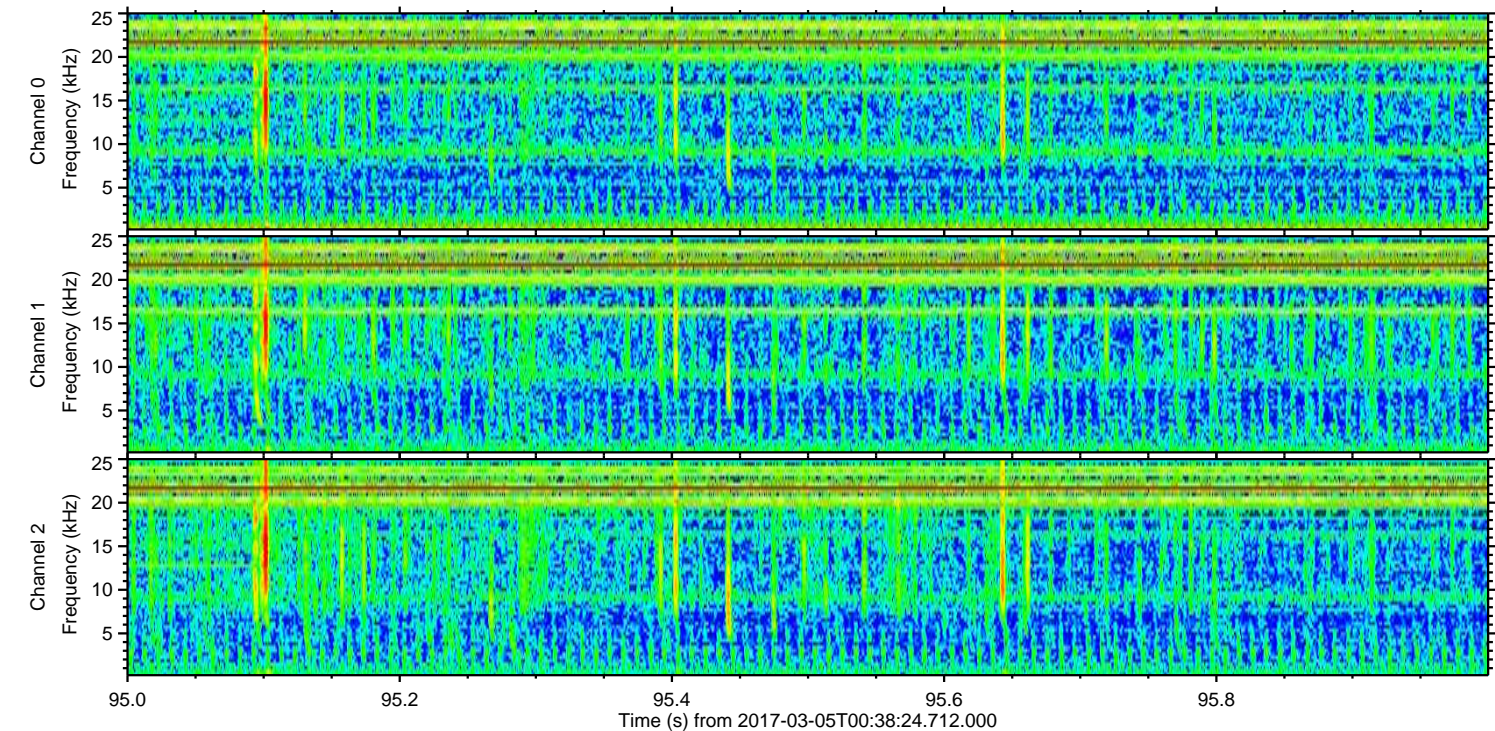
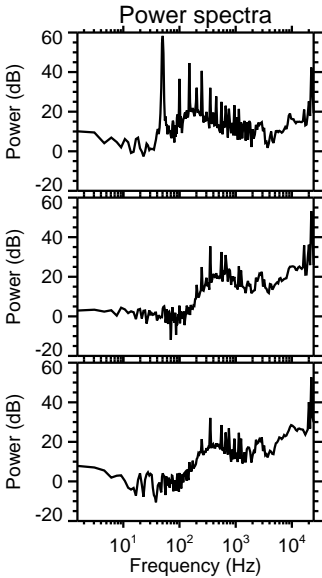
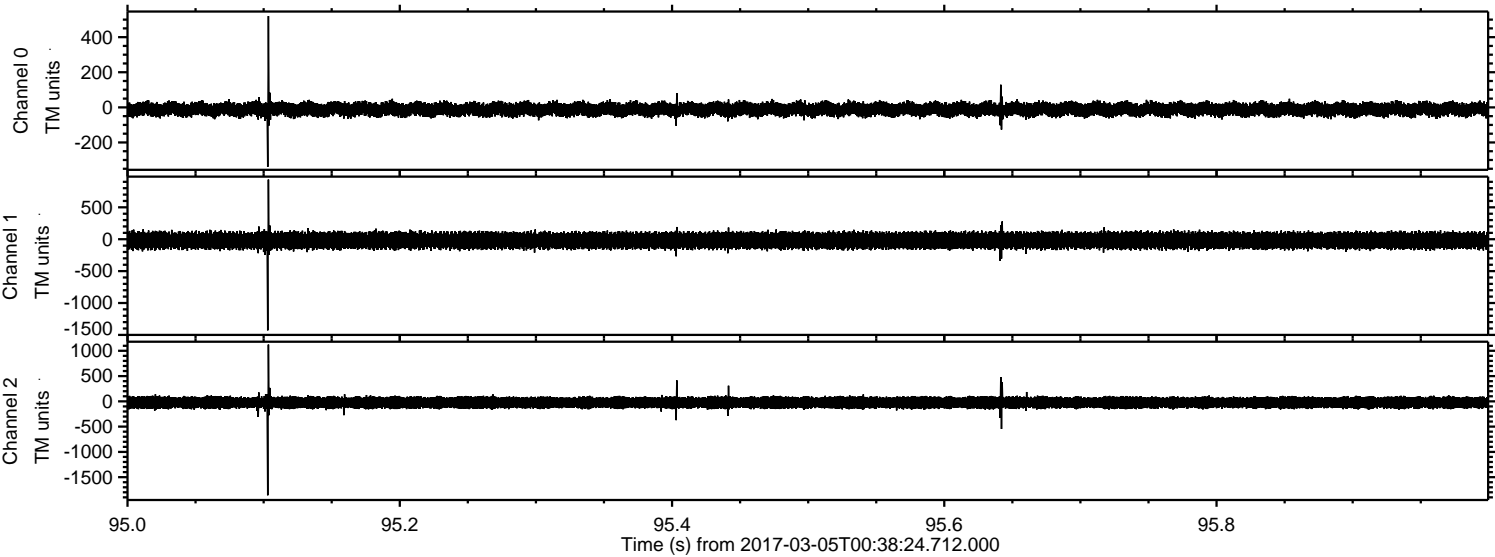
ELMAVAN 3D WAVEFORMS (Measured data sampled at 50 kHz) 51000 packets of 144 samples from 2017-03-05T00:38:24.712.000. Part 21/147

Processed Sun Mar 5 01:46:37 2017 by ELM ver.2012-10-06 from 001\_\_elm20170305\_003823\_\_dat00.bin





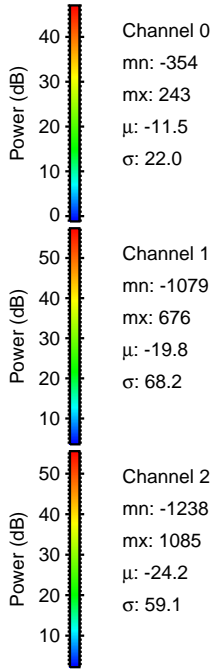
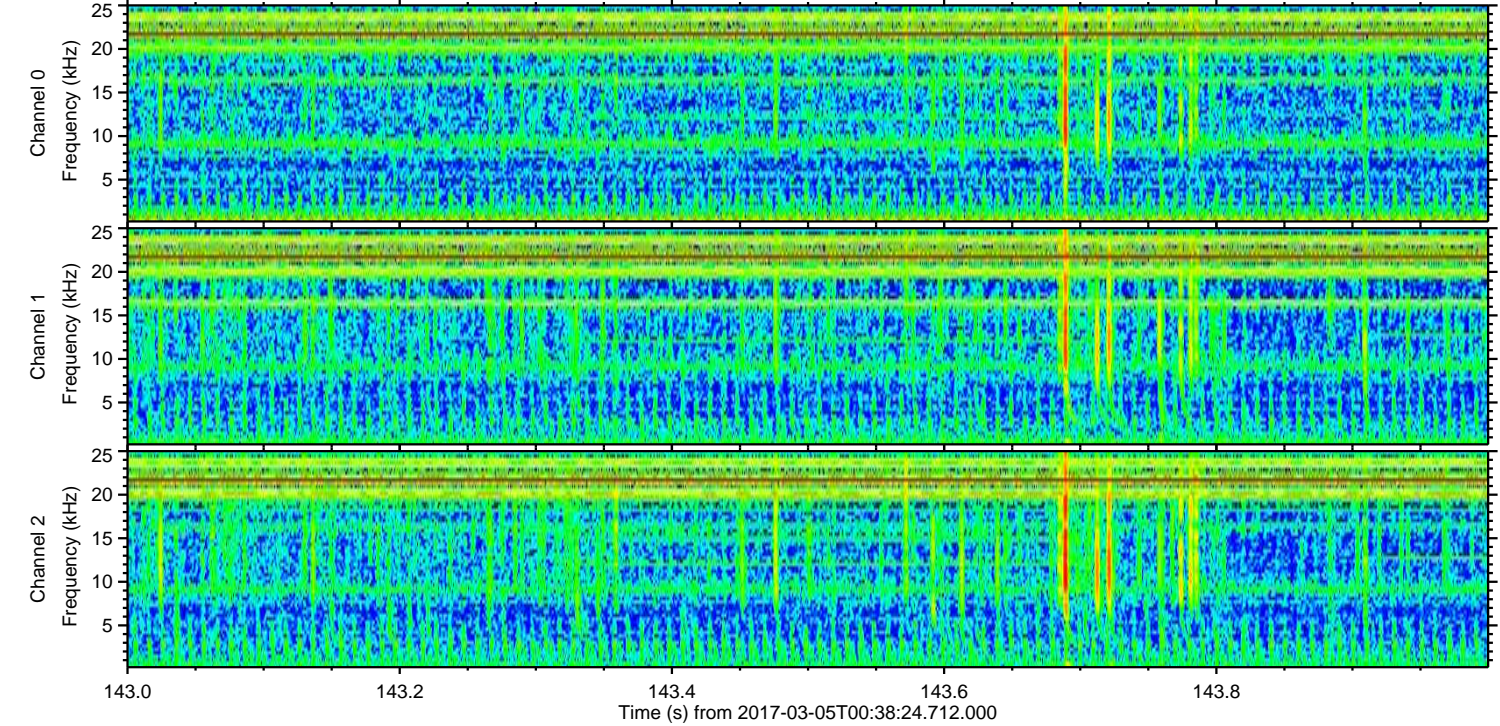
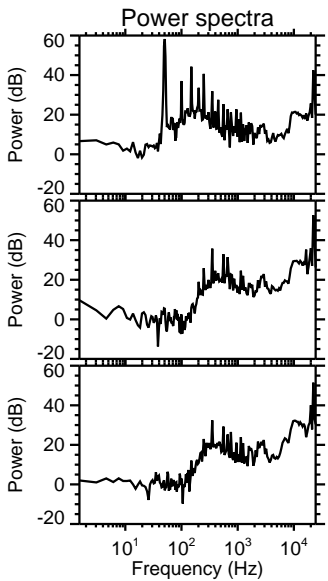
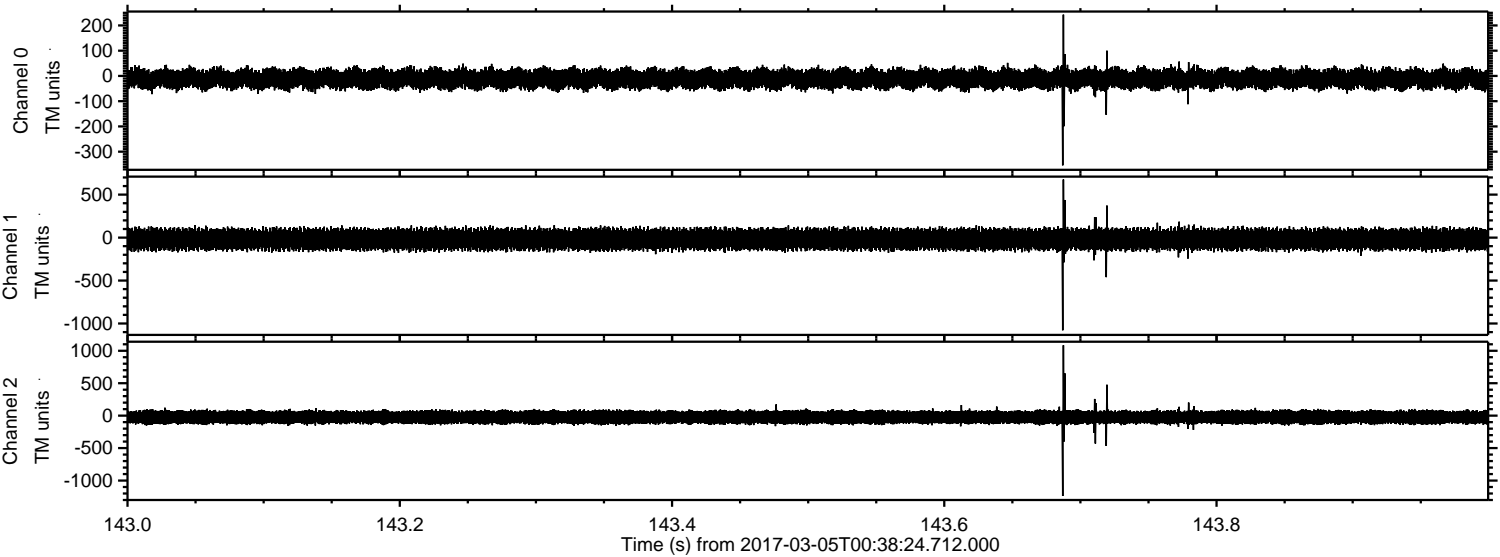
Processed Sun Mar 5 01:46:38 2017 by ELM ver.2012-10-06 from 001\_\_elm20170305\_003823\_\_dat00.bin





ELMAVAN 3D WAVEFORMS (Measured data sampled at 50 kHz) 51000 packets of 144 samples from 2017-03-05T00:38:24.712.000. Part 144/147

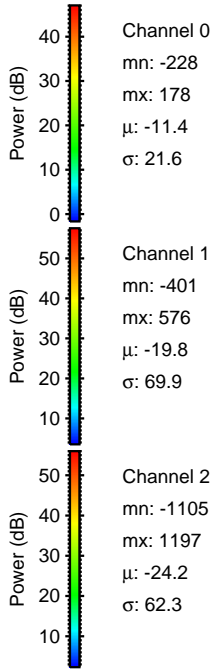
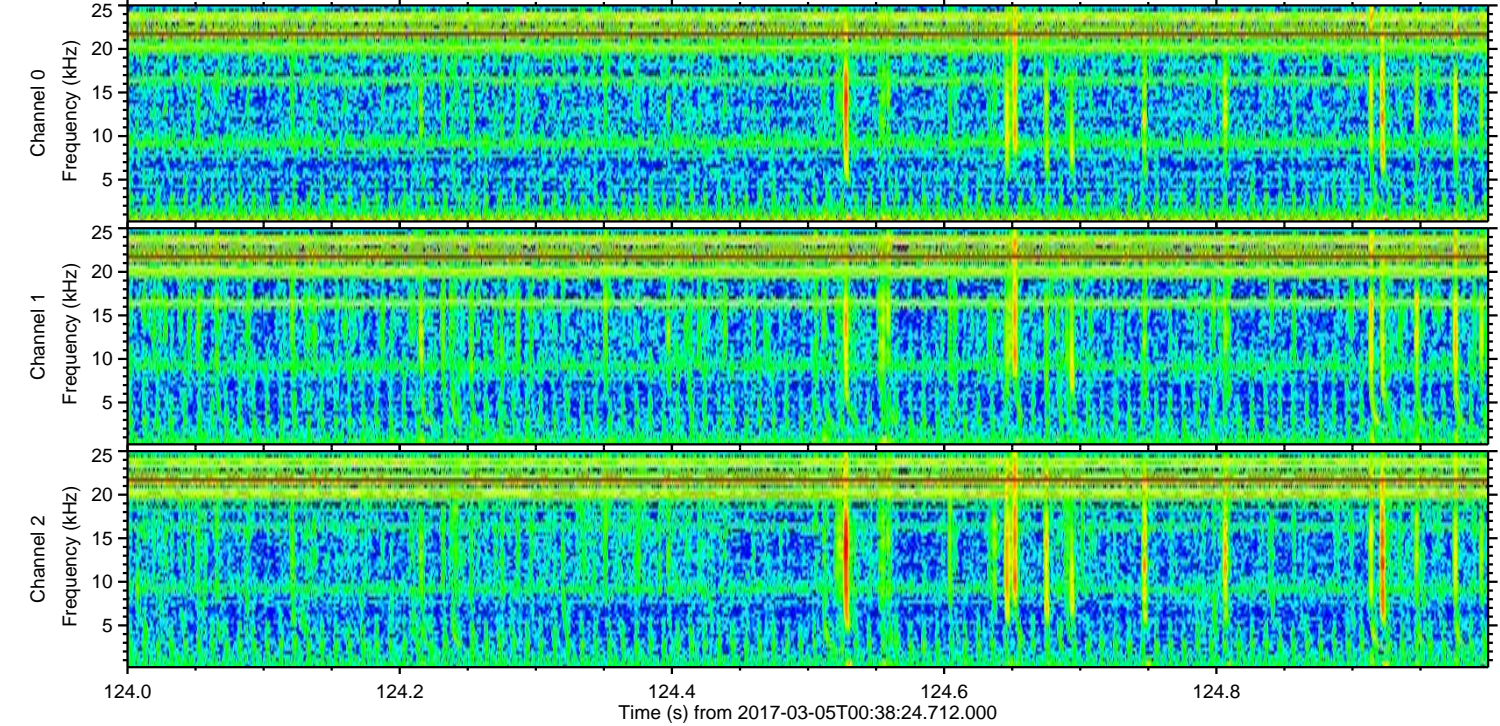
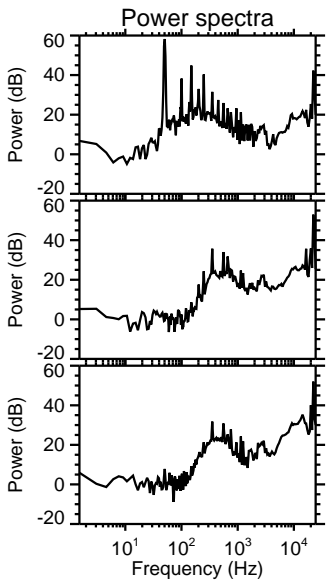
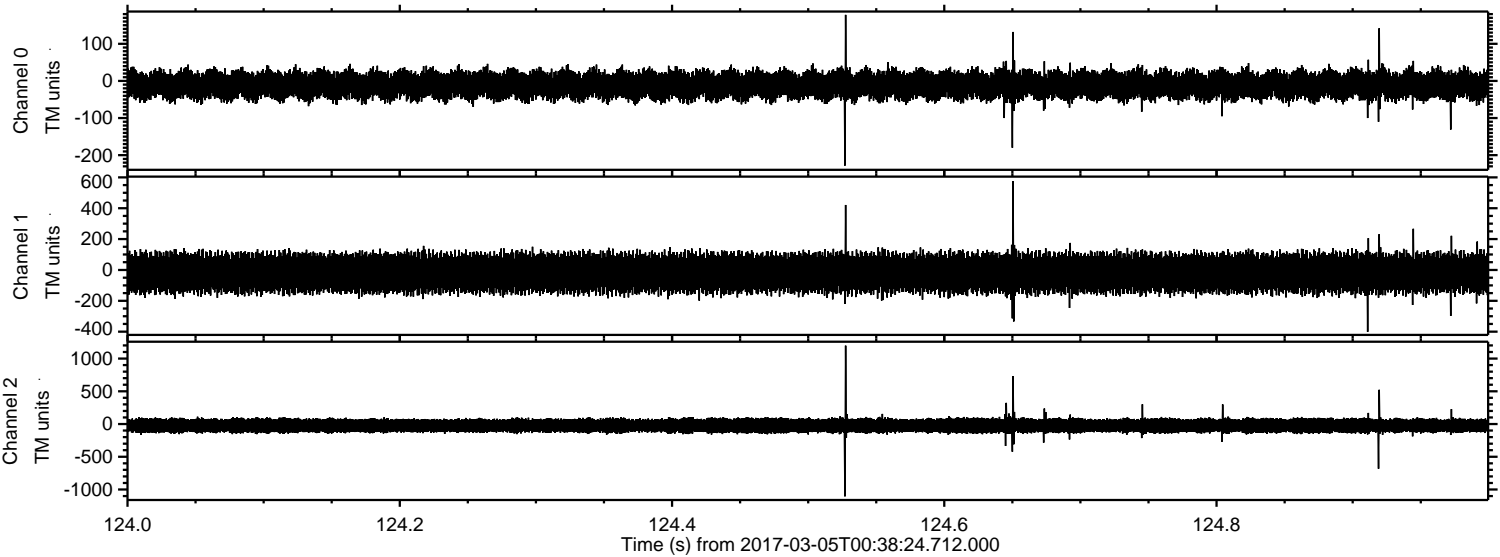
Processed Sun Mar 5 01:46:39 2017 by ELM ver.2012-10-06 from 001\_\_elm20170305\_003823\_\_dat00.bin





ELMAVAN 3D WAVEFORMS (Measured data sampled at 50 kHz) 51000 packets of 144 samples from 2017-03-05T00:38:24.712.000. Part 125/147

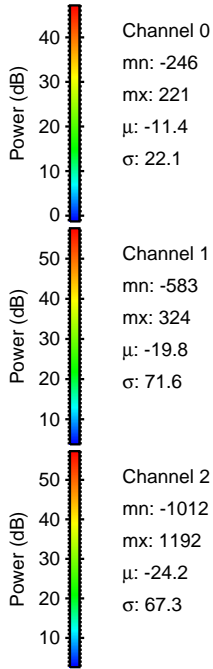
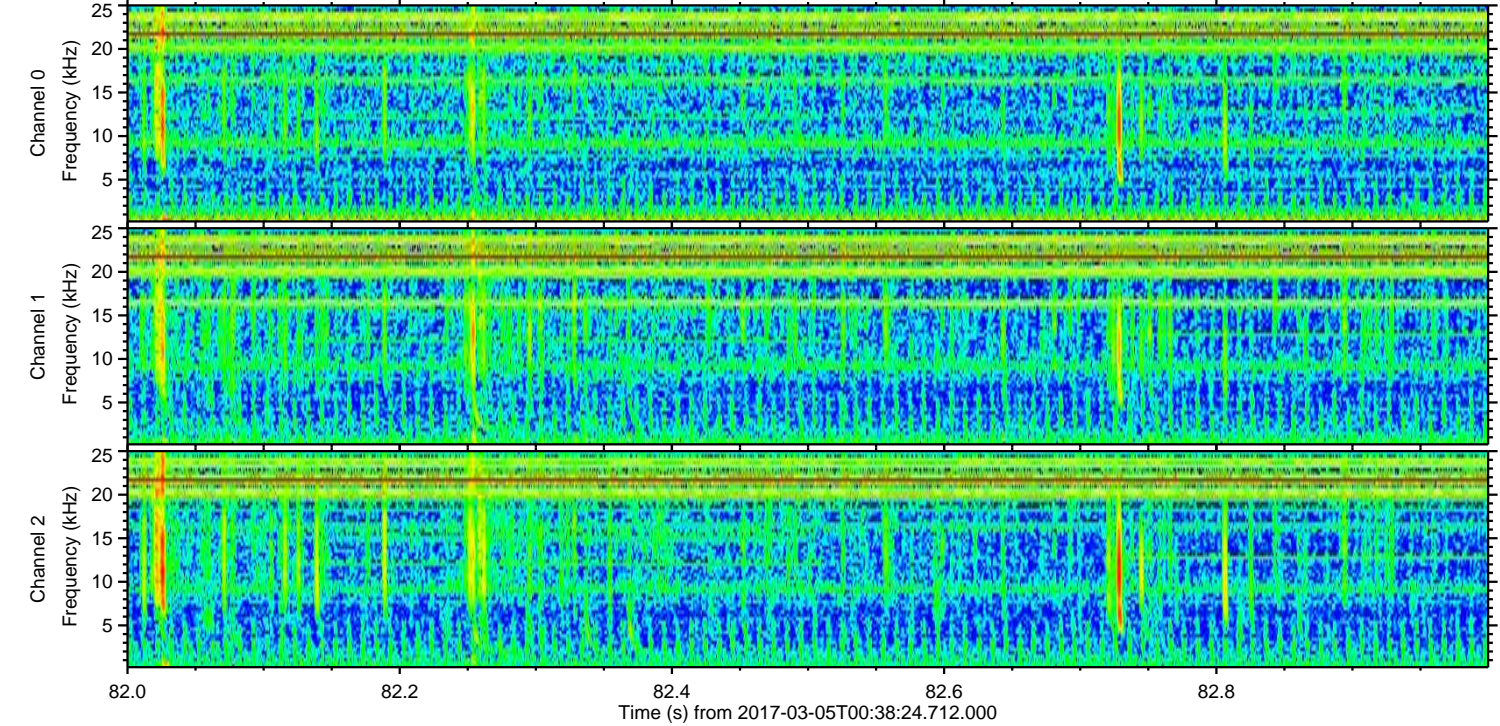
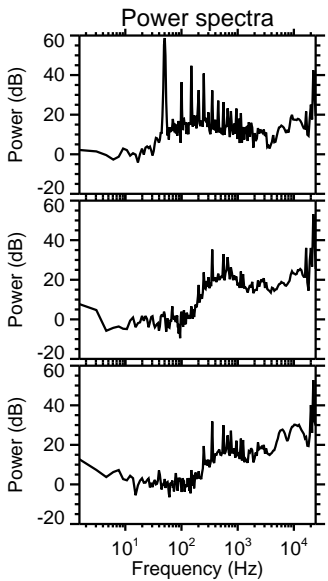
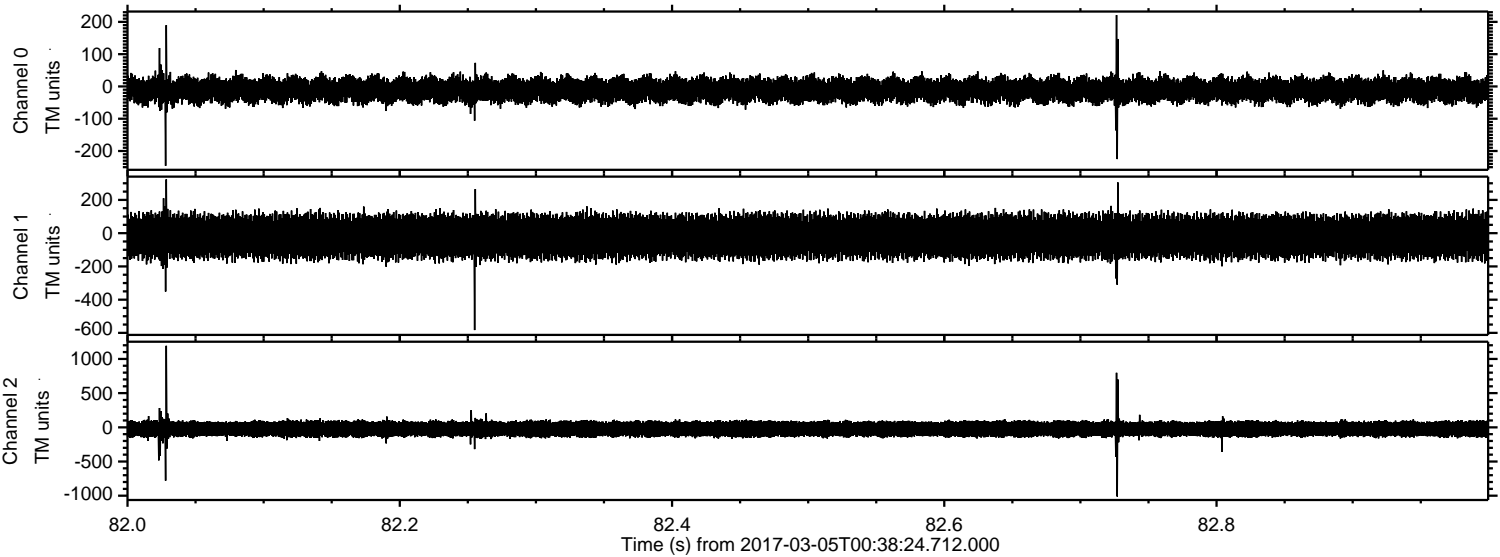
Processed Sun Mar 5 01:46:40 2017 by ELM ver.2012-10-06 from 001\_\_elm20170305\_003823\_\_dat00.bin





ELMAVAN 3D WAVEFORMS (Measured data sampled at 50 kHz) 51000 packets of 144 samples from 2017-03-05T00:38:24.712.000. Part 83/147

Processed Sun Mar 5 01:46:40 2017 by ELM ver.2012-10-06 from 001\_\_elm20170305\_003823\_\_dat00.bin



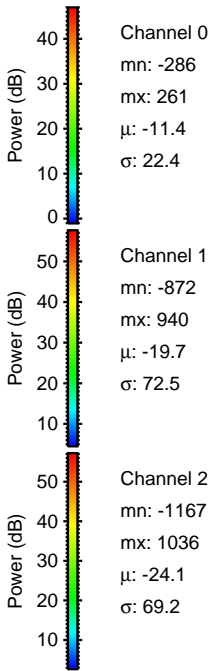
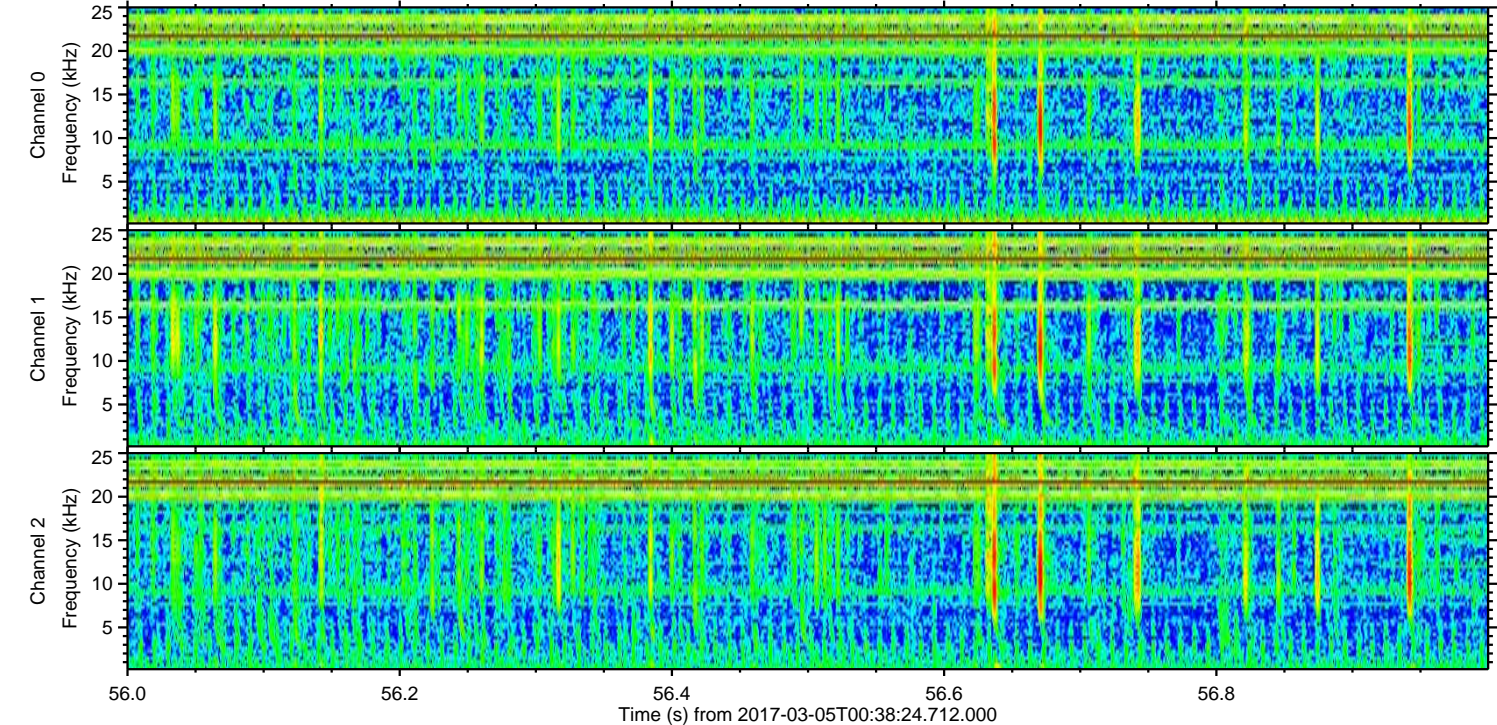
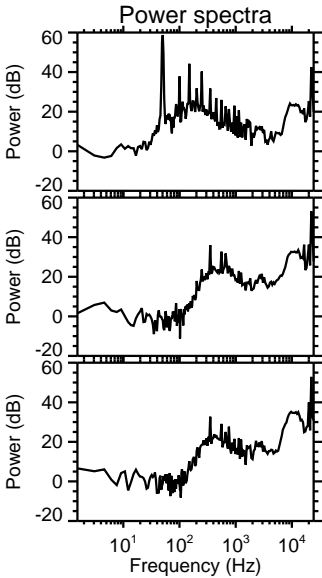
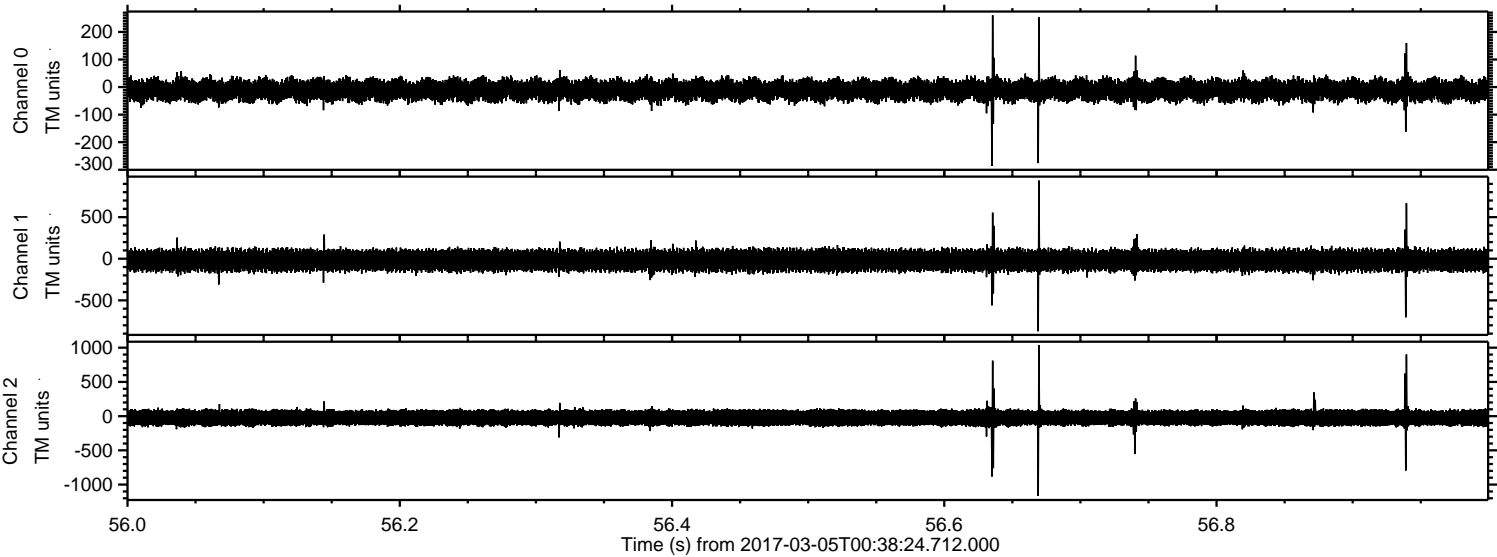
Channel 0  
mn: -246  
mx: 221  
 $\mu$ : -11.4  
 $\sigma$ : 22.1

Channel 1  
mn: -583  
mx: 324  
 $\mu$ : -19.8  
 $\sigma$ : 71.6

Channel 2  
mn: -1012  
mx: 1192  
 $\mu$ : -24.2  
 $\sigma$ : 67.3

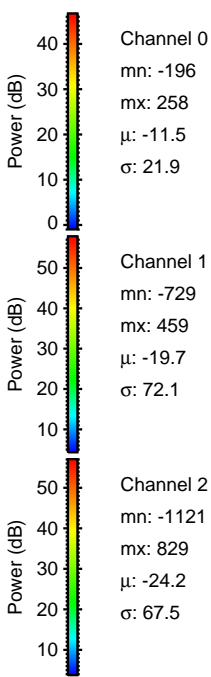
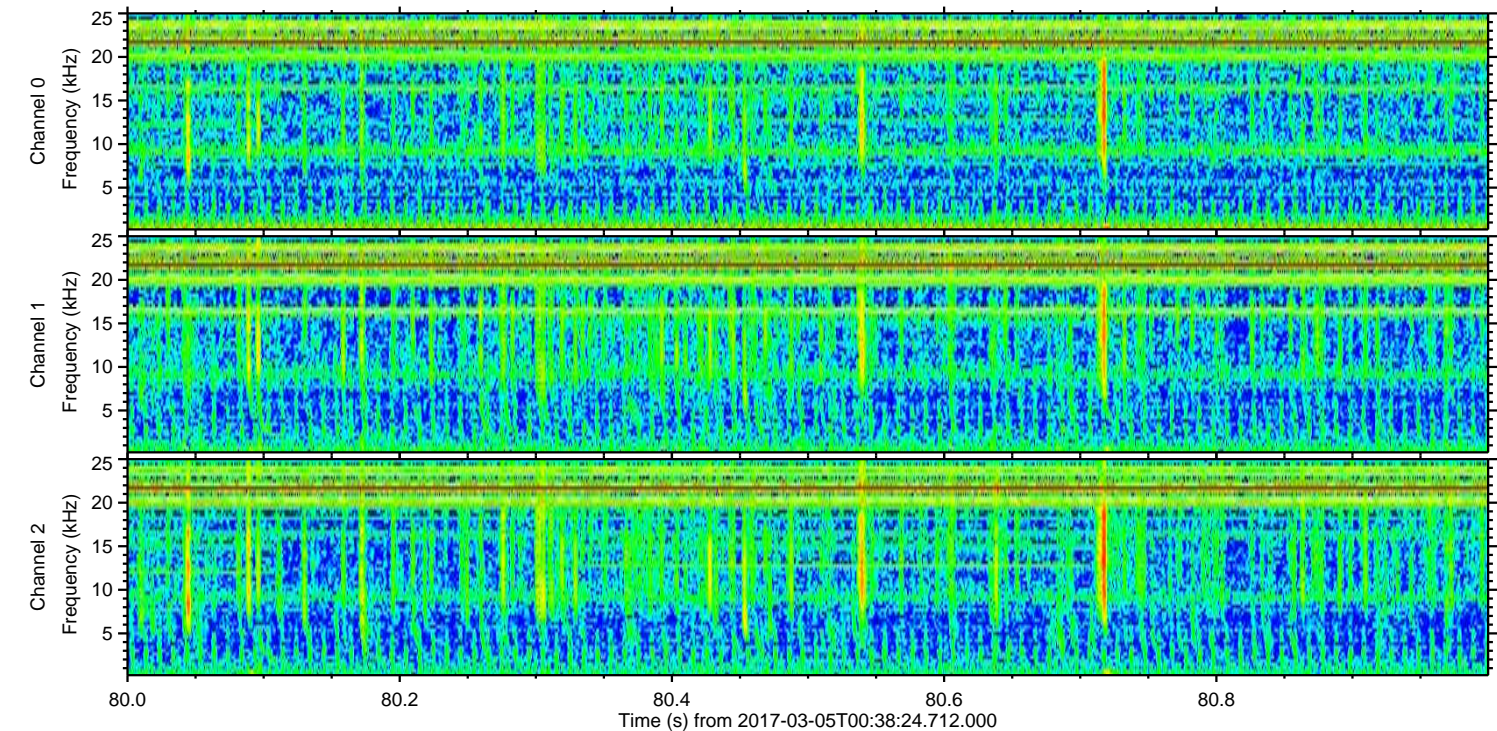
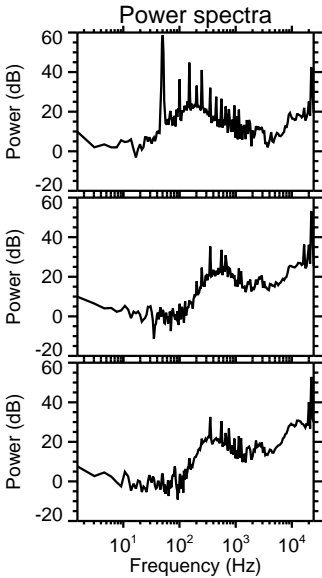
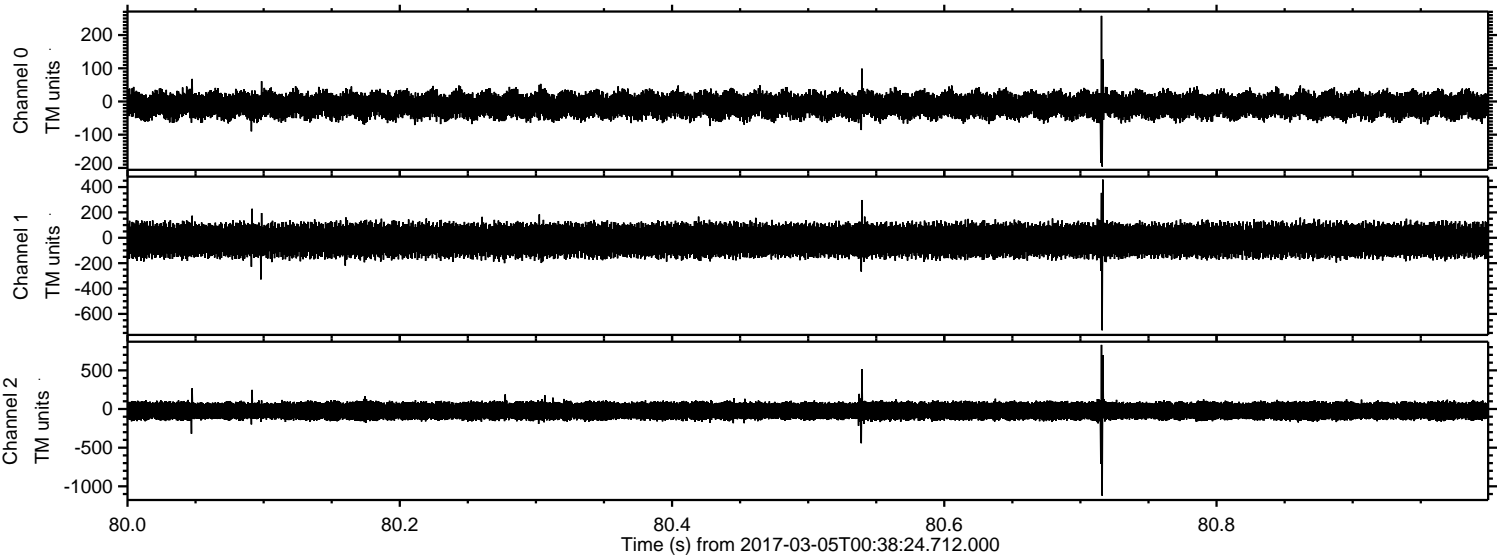


Processed Sun Mar 5 01:46:41 2017 by ELM ver.2012-10-06 from 001\_\_elm20170305\_003823\_\_dat00.bin





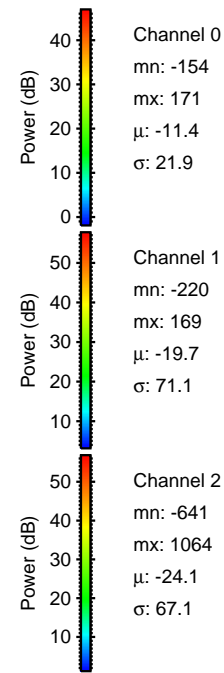
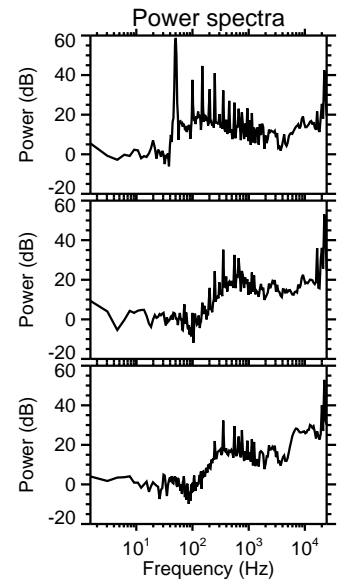
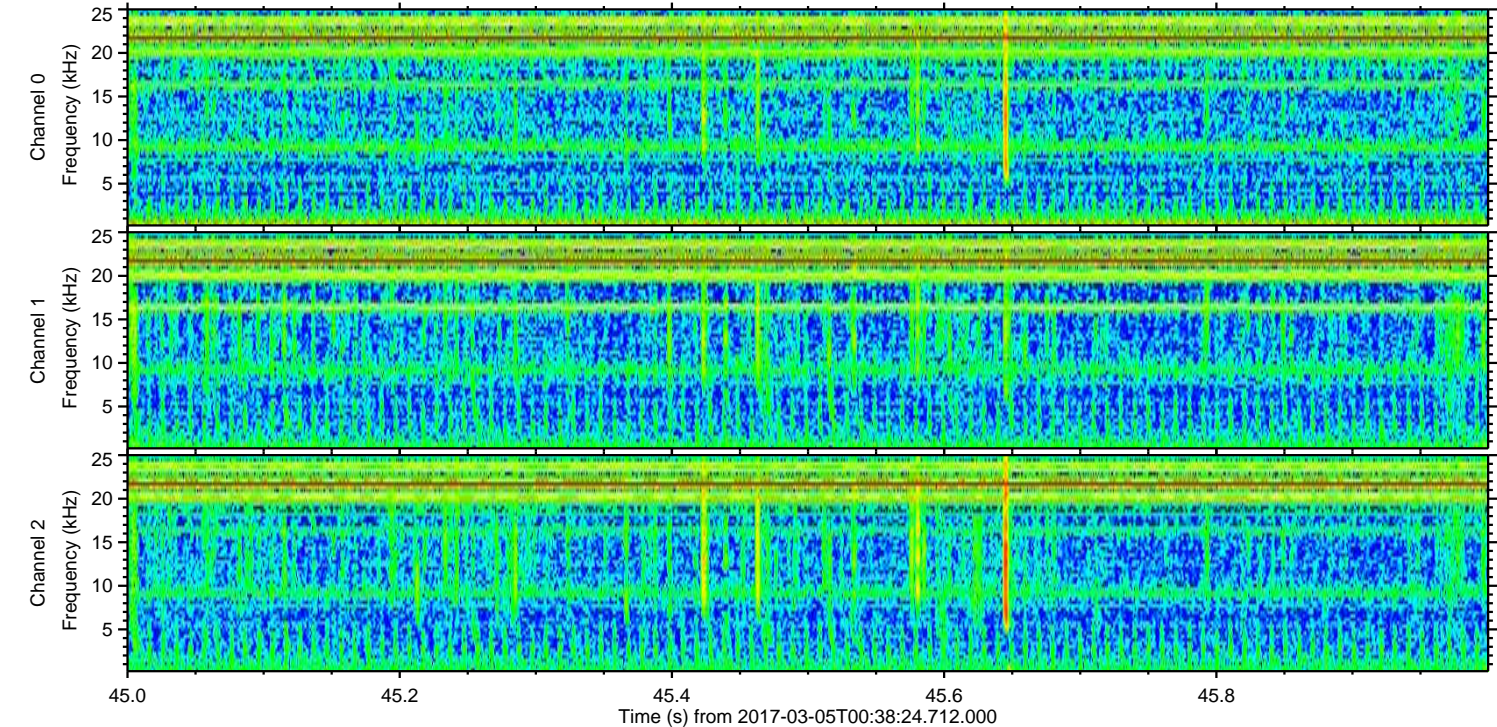
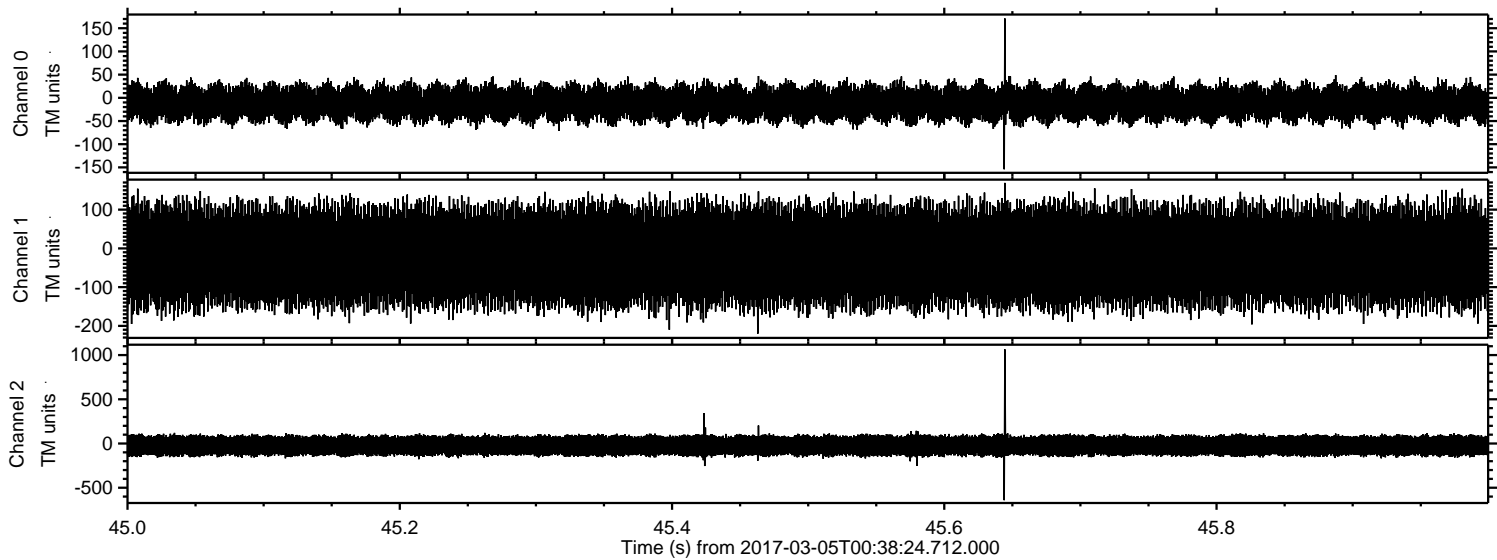
Processed Sun Mar 5 01:46:42 2017 by ELM ver.2012-10-06 from 001\_\_elm20170305\_003823\_\_dat00.bin





ELMAVAN 3D WAVEFORMS (Measured data sampled at 50 kHz) 51000 packets of 144 samples from 2017-03-05T00:38:24.712.000. Part 46/147

Processed Sun Mar 5 01:46:43 2017 by ELM ver.2012-10-06 from 001\_\_elm20170305\_003823\_\_dat00.bin





ELMAVAN 3D WAVEFORMS (Measured data sampled at 50 kHz) 51000 packets of 144 samples from 2017-03-05T00:38:24.712.000. Part 28/147

Processed Sun Mar 5 01:46:44 2017 by ELM ver.2012-10-06 from 001\_\_elm20170305\_003823\_\_dat00.bin

