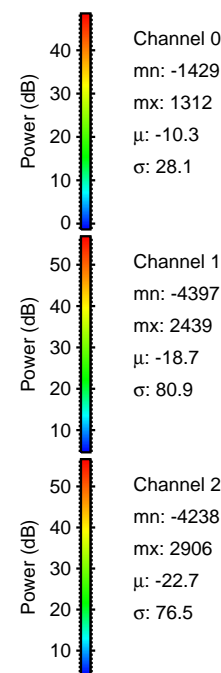
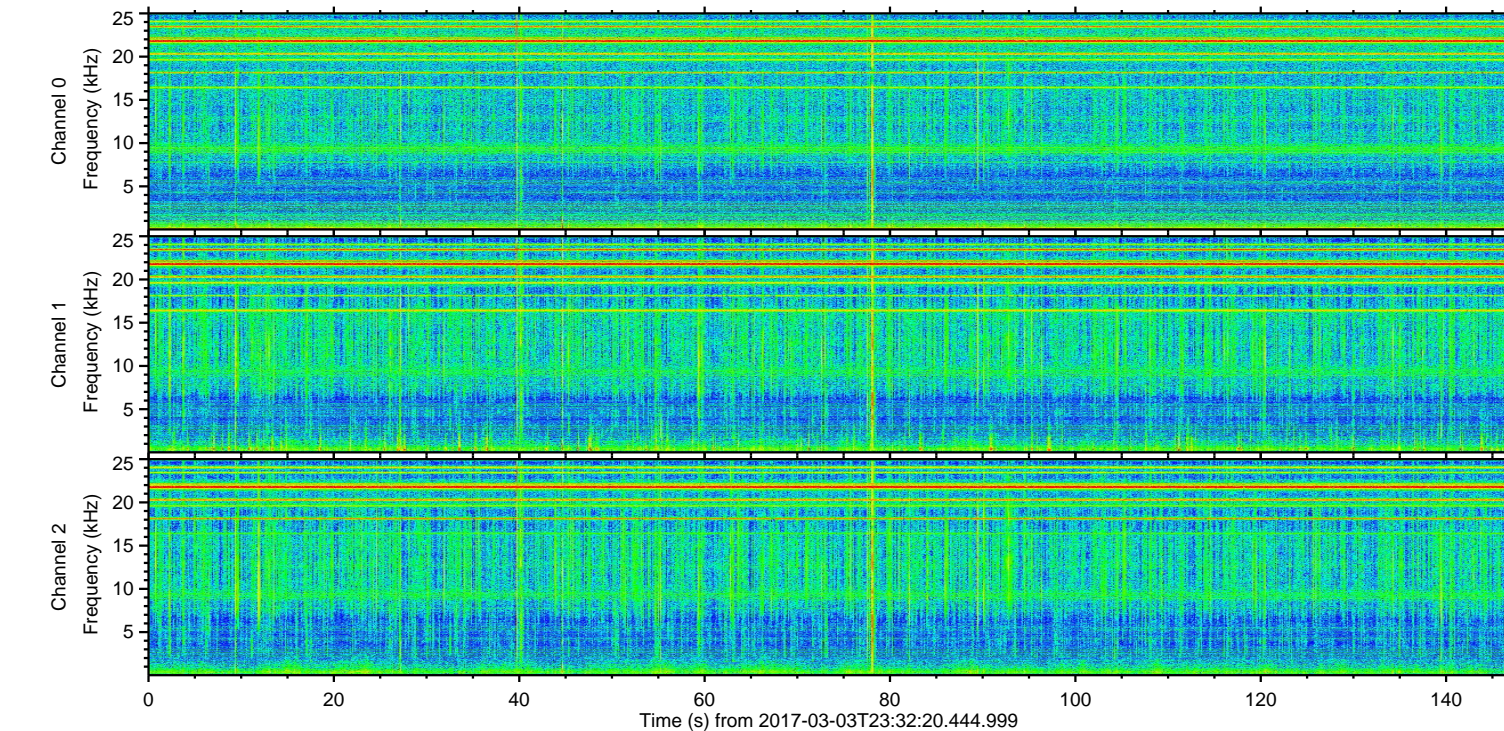
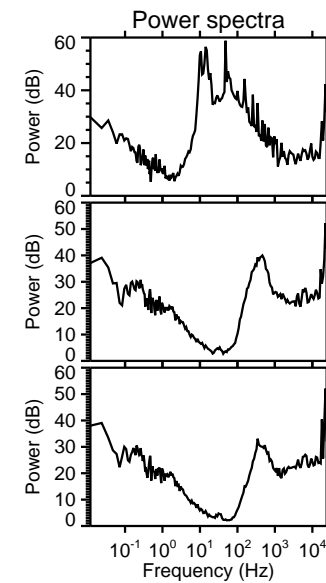
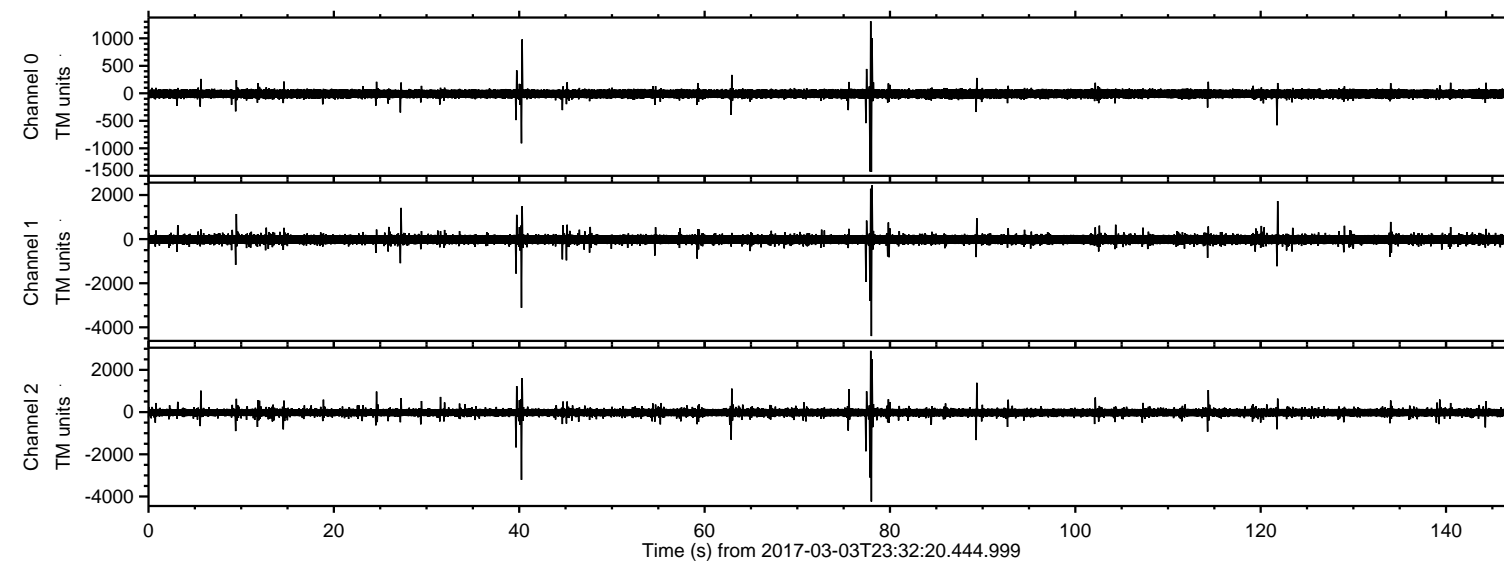


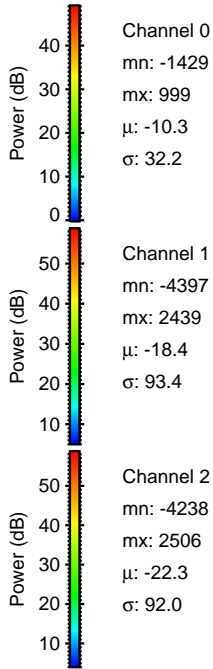
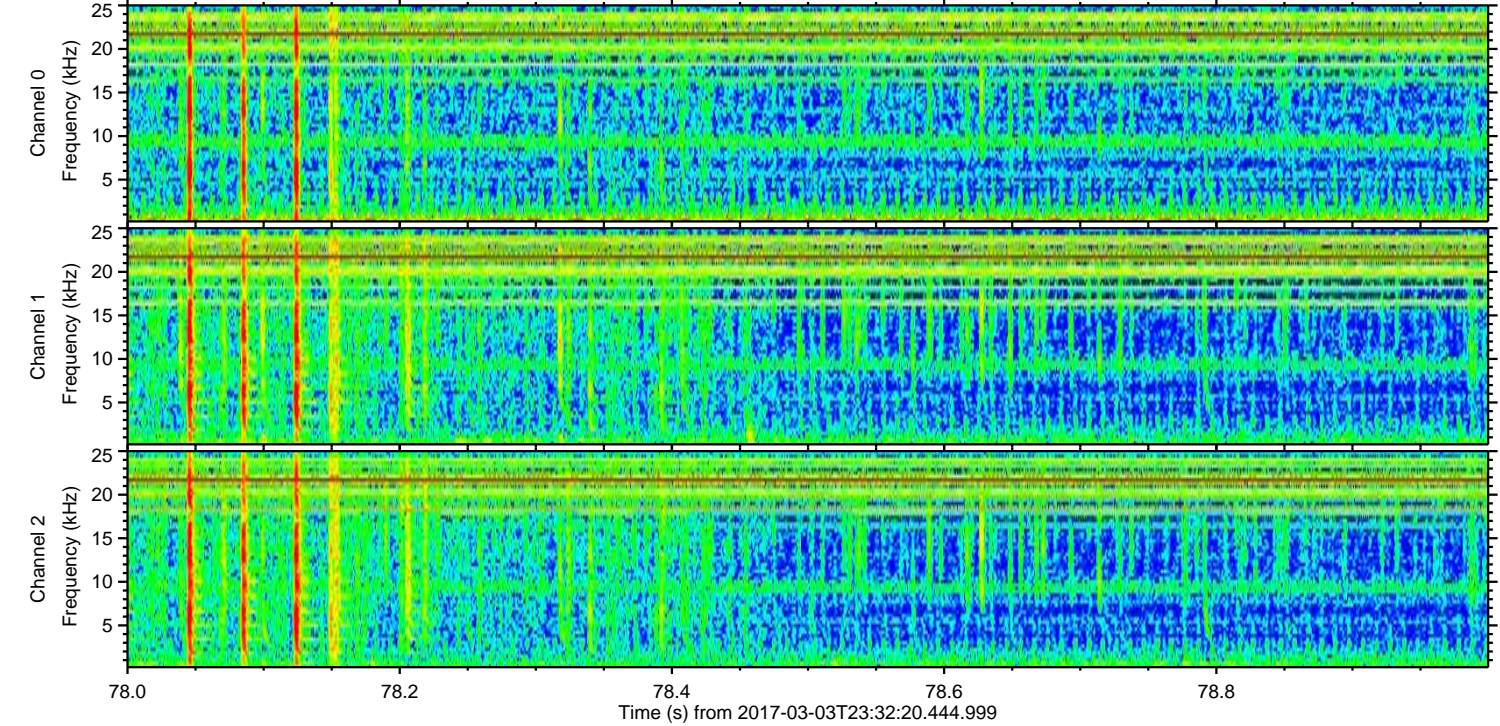
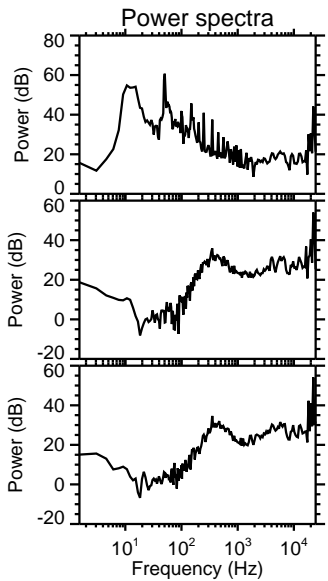
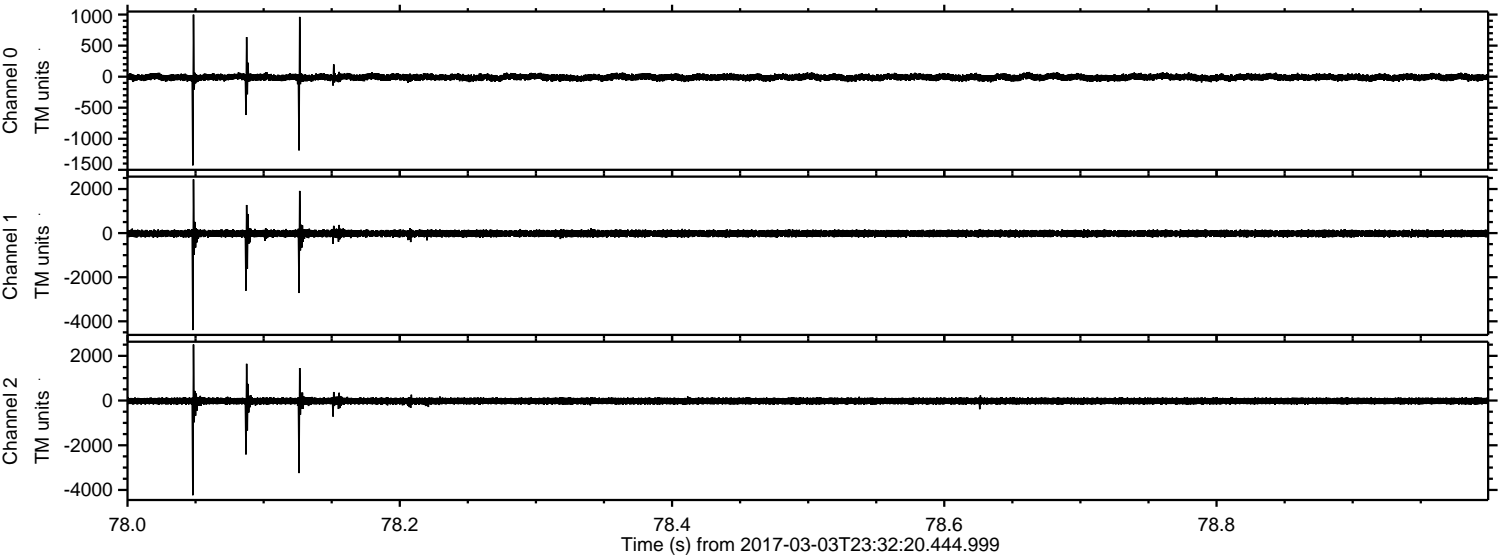
ELMAVAN 3D WAVEFORMS (Measured data sampled at 50 kHz) 51000 packets of 144 samples from 2017-03-03T23:32:20.444.999.

Processed Sat Mar 4 00:40:31 2017 by ELM ver.2012-10-06 from 001__elm20170303_233219__dat00.bin

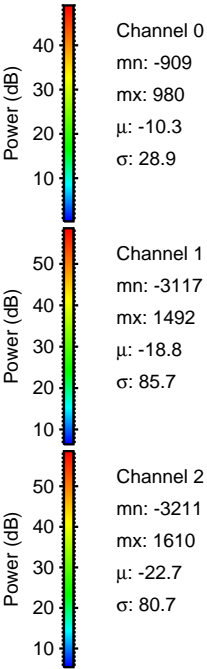
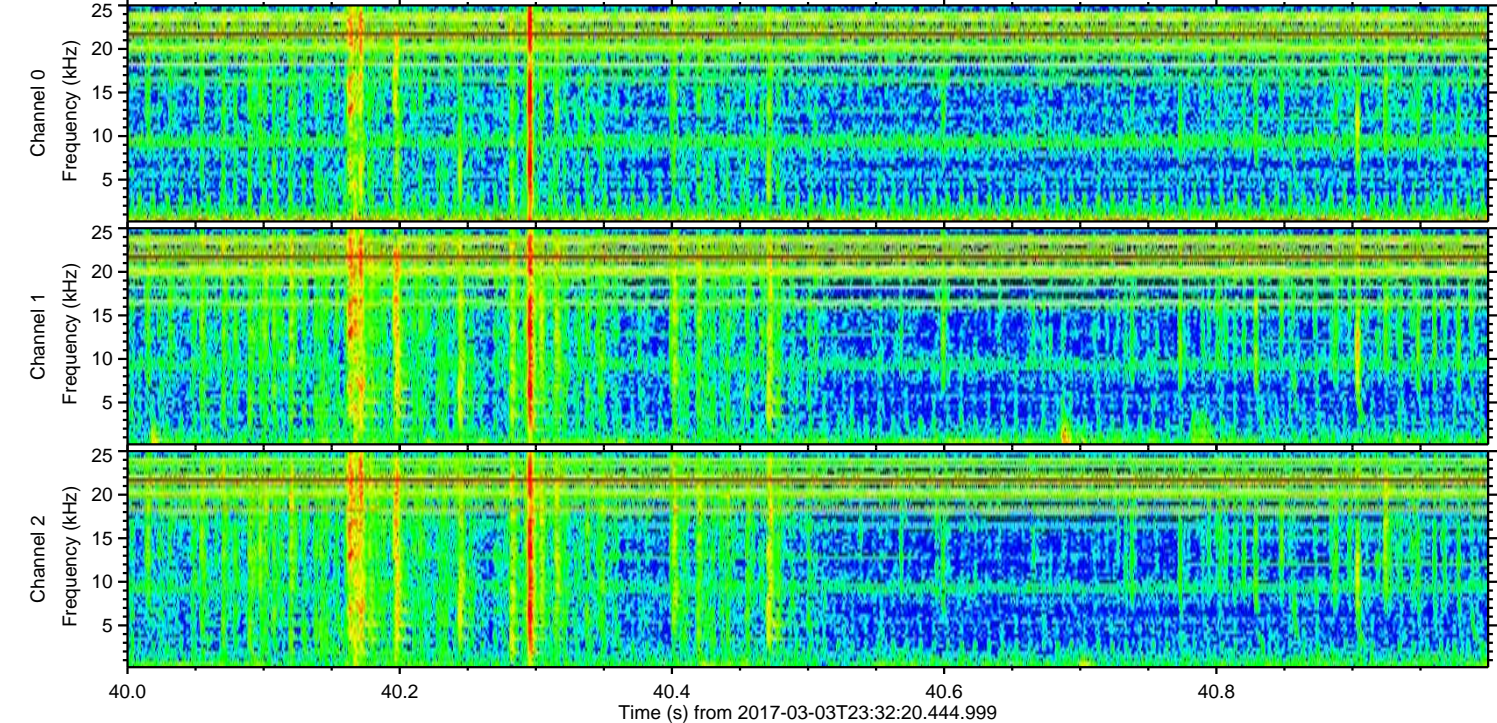
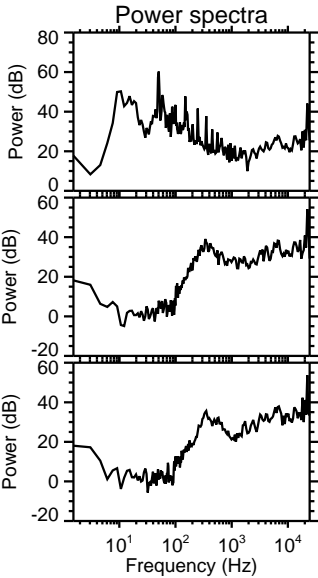
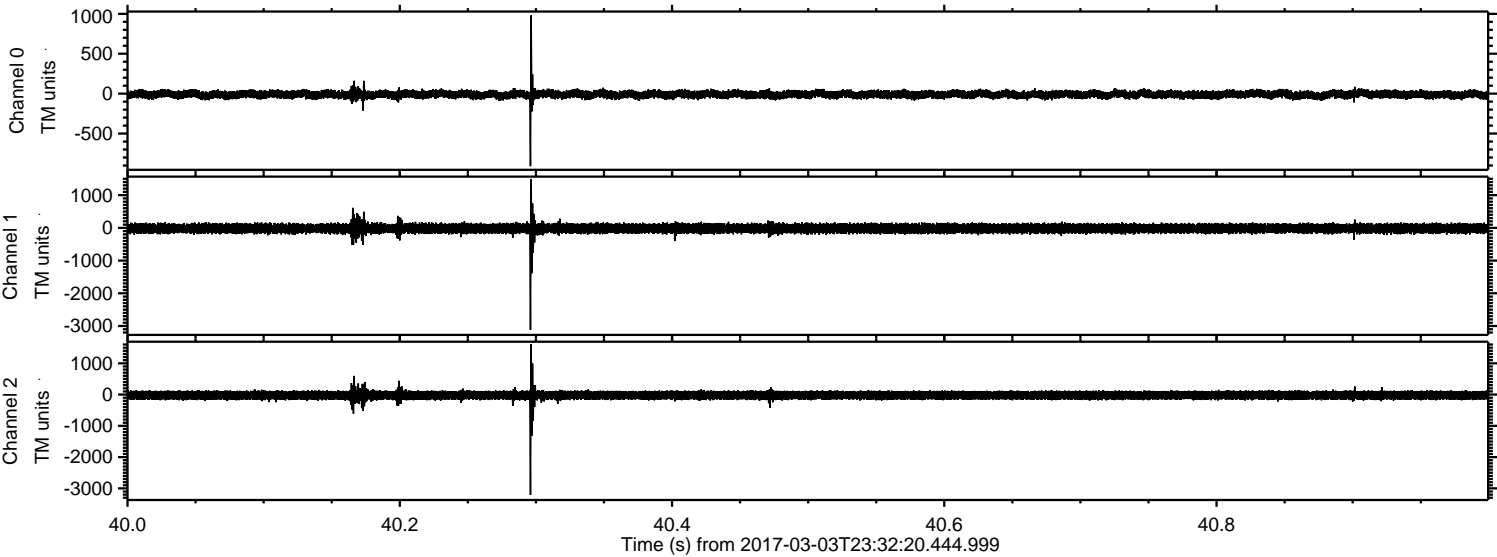


ELMAVAN 3D WAVEFORMS (Measured data sampled at 50 kHz) 51000 packets of 144 samples from 2017-03-03T23:32:20.444.999. Part 79/147

Processed Sat Mar 4 00:40:43 2017 by ELM ver.2012-10-06 from 001__elm20170303_233219__dat00.bin

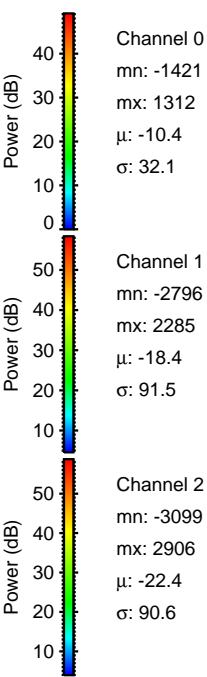
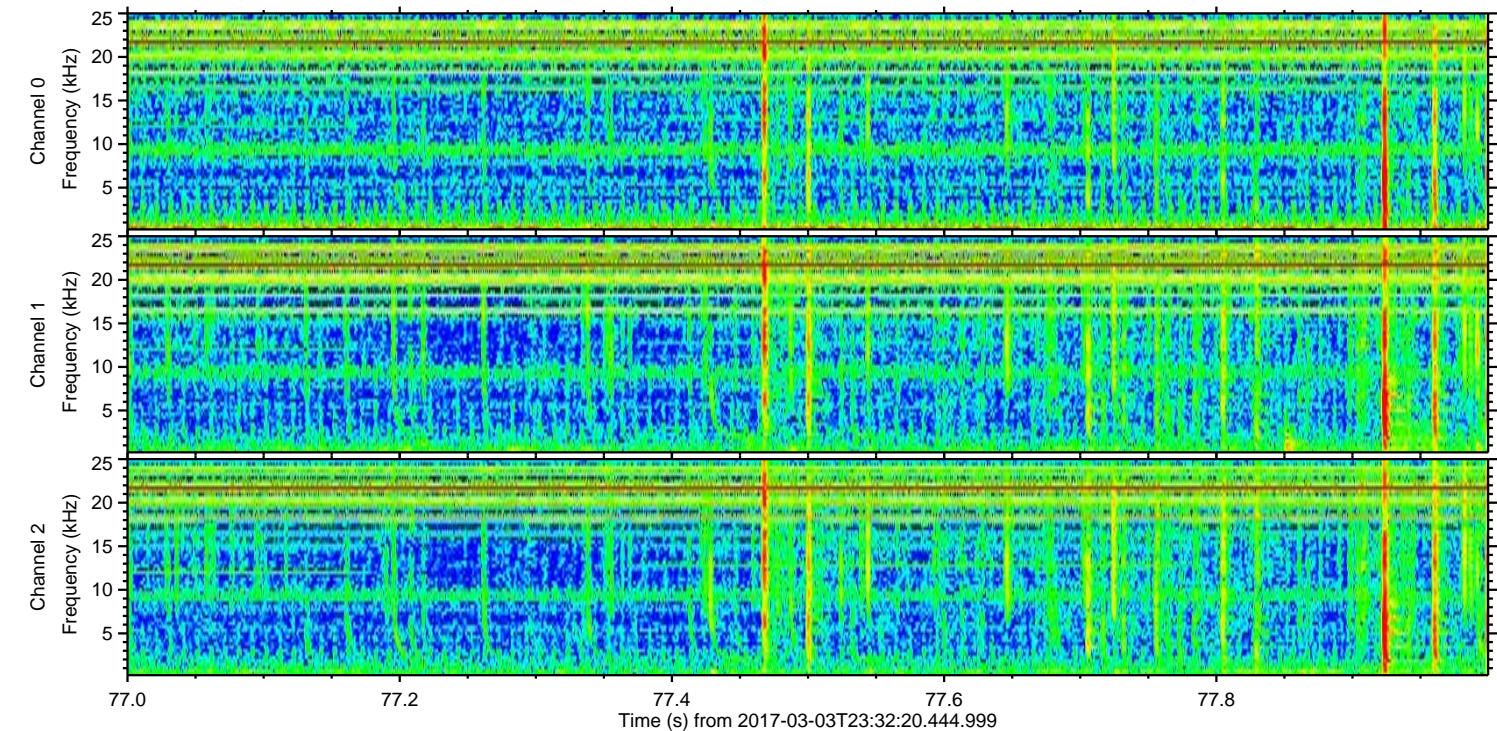
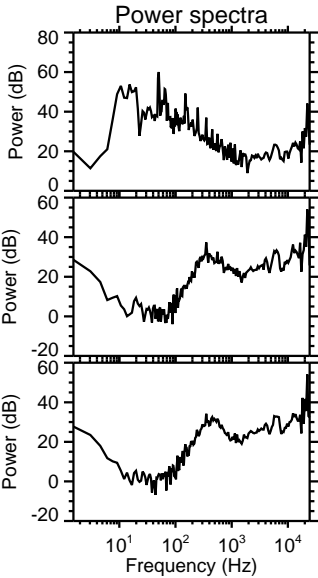
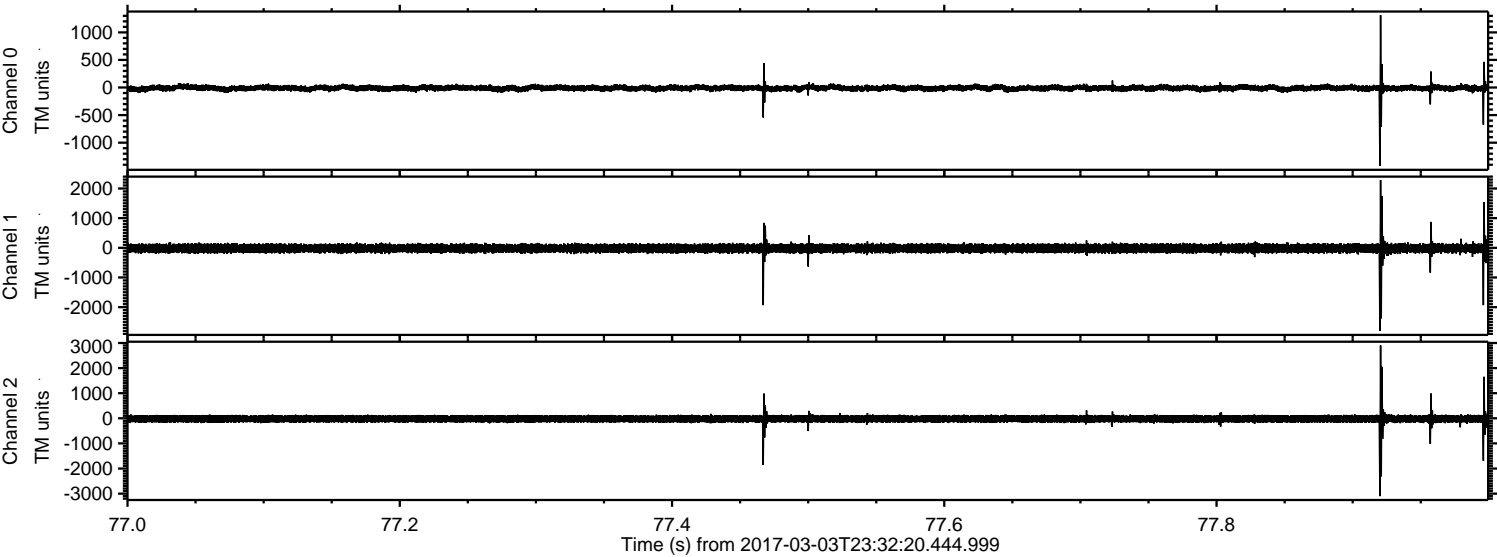


Processed Sat Mar 4 00:40:44 2017 by ELM ver.2012-10-06 from 001__elm20170303_233219__dat00.bin



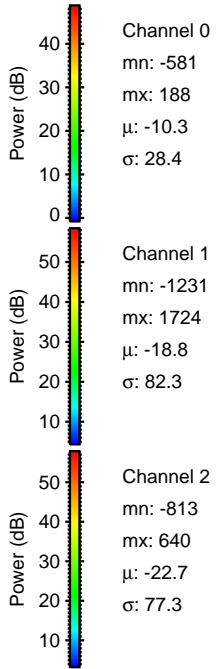
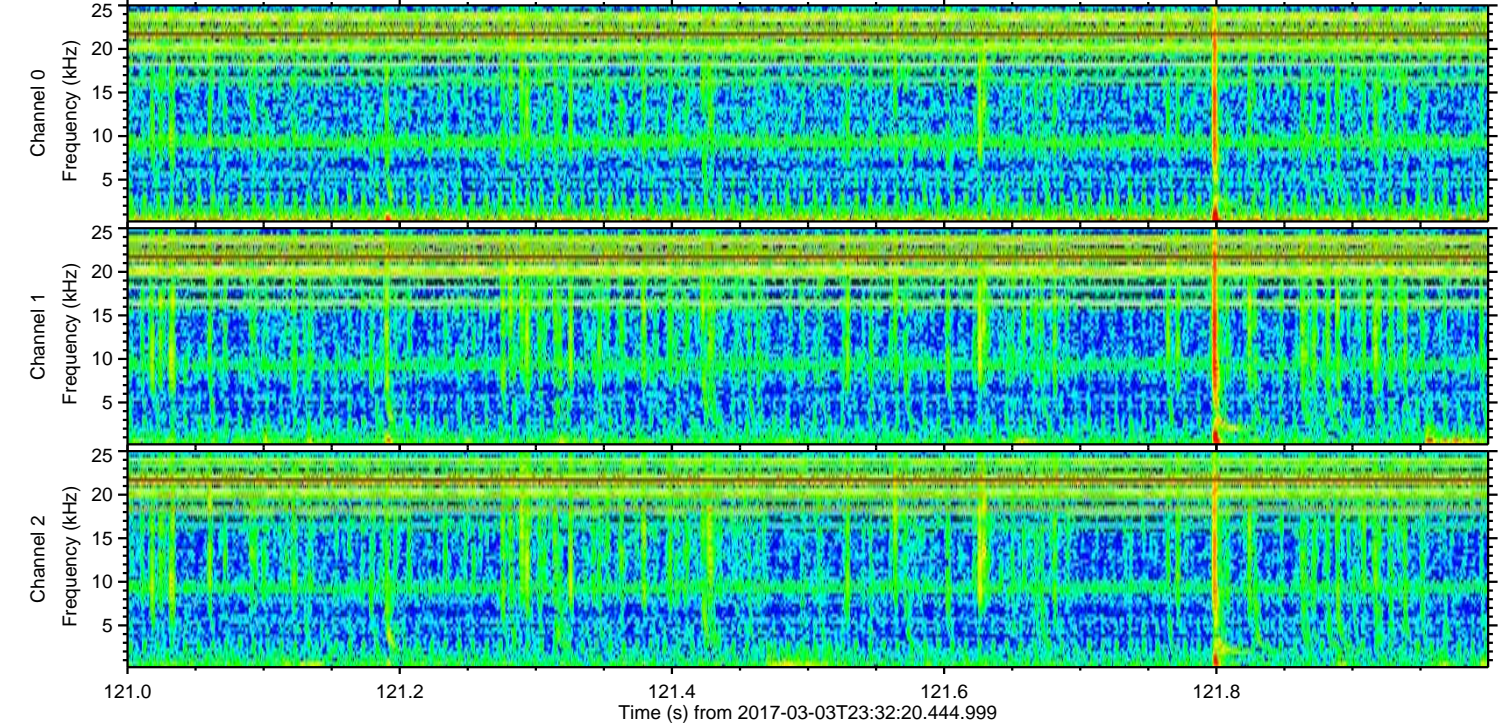
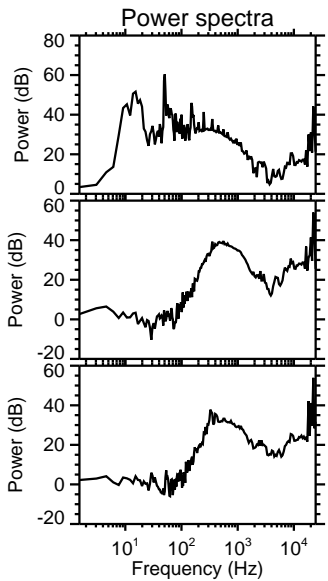
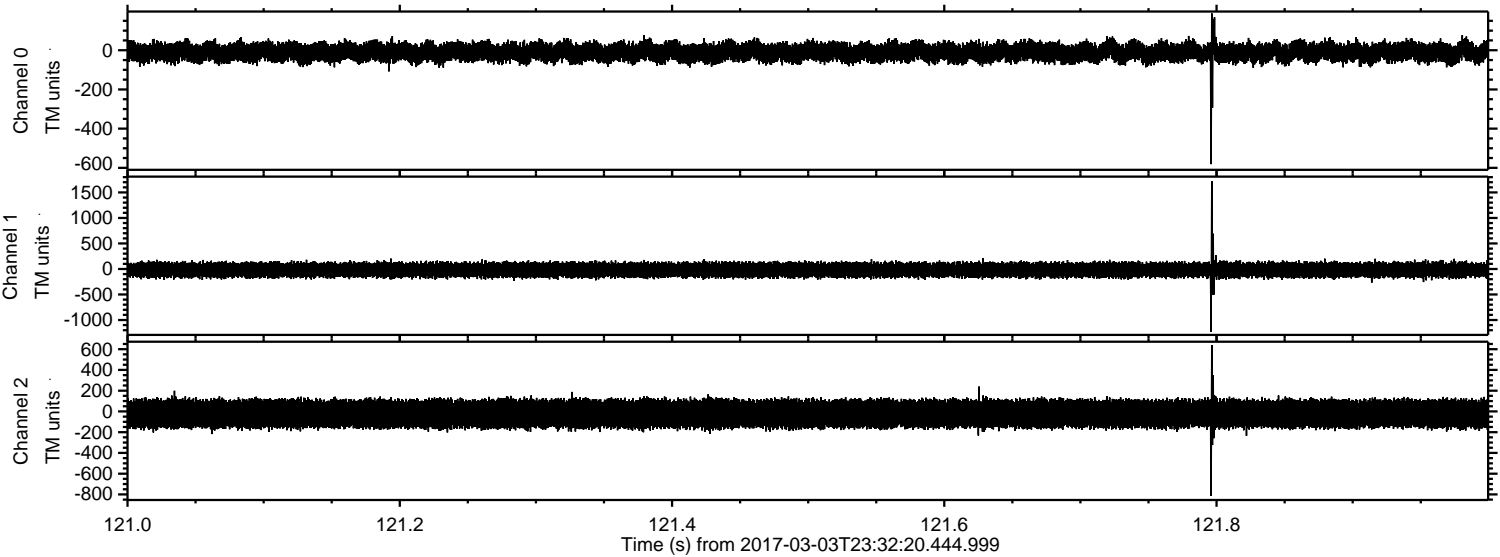
ELMAVAN 3D WAVEFORMS (Measured data sampled at 50 kHz) 51000 packets of 144 samples from 2017-03-03T23:32:20.444.999. Part 78/147

Processed Sat Mar 4 00:40:45 2017 by ELM ver.2012-10-06 from 001__elm20170303_233219__dat00.bin



ELMAVAN 3D WAVEFORMS (Measured data sampled at 50 kHz) 51000 packets of 144 samples from 2017-03-03T23:32:20.444.999. Part 122/147

Processed Sat Mar 4 00:40:45 2017 by ELM ver.2012-10-06 from 001__elm20170303_233219__dat00.bin



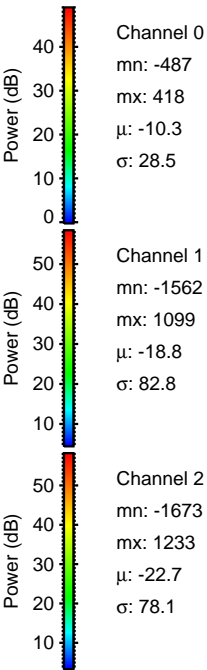
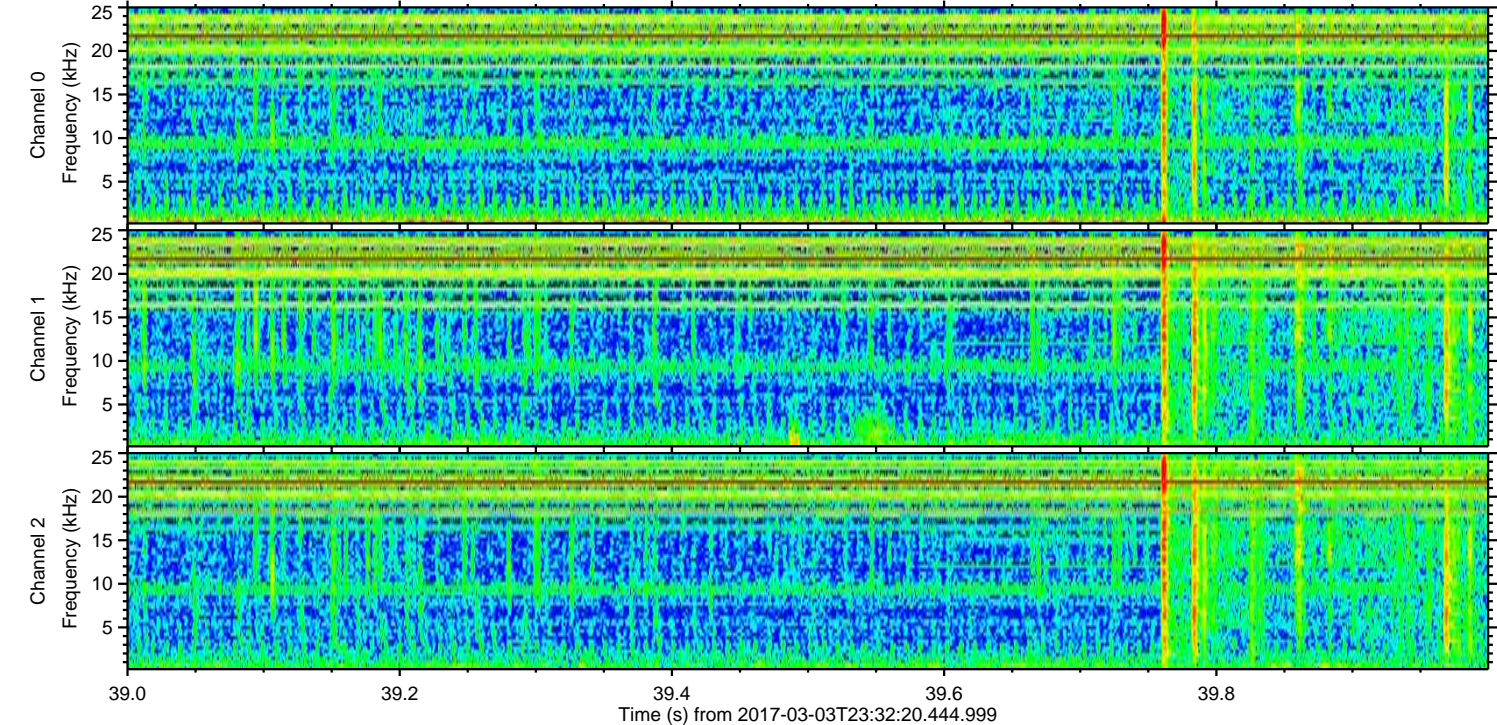
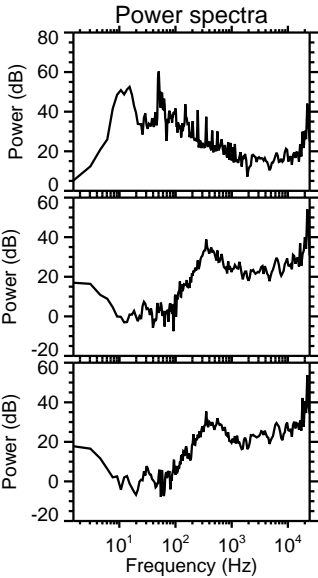
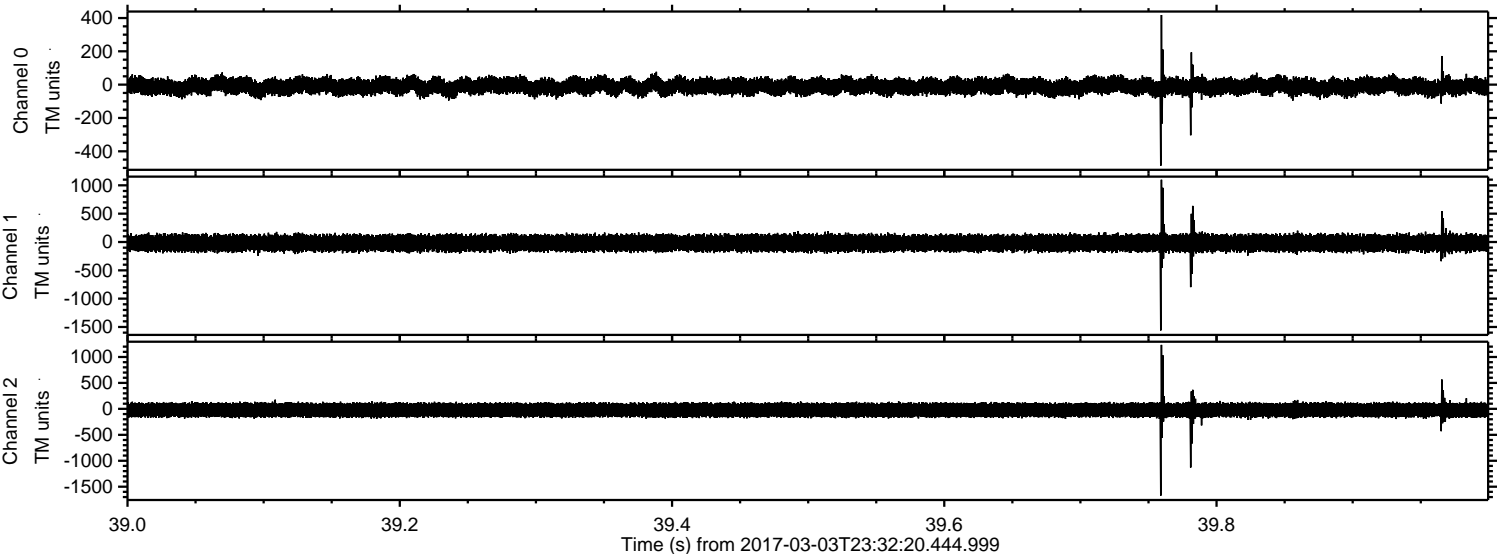
Channel 0
mn: -581
mx: 188
 μ : -10.3
 σ : 28.4

Channel 1
mn: -1231
mx: 1724
 μ : -18.8
 σ : 82.3

Channel 2
mn: -813
mx: 640
 μ : -22.7
 σ : 77.3

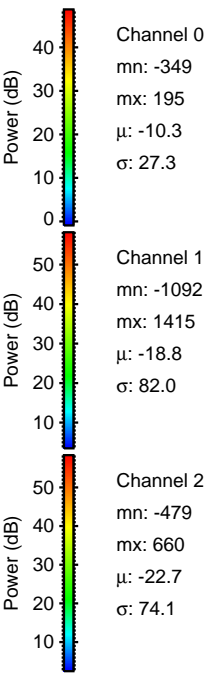
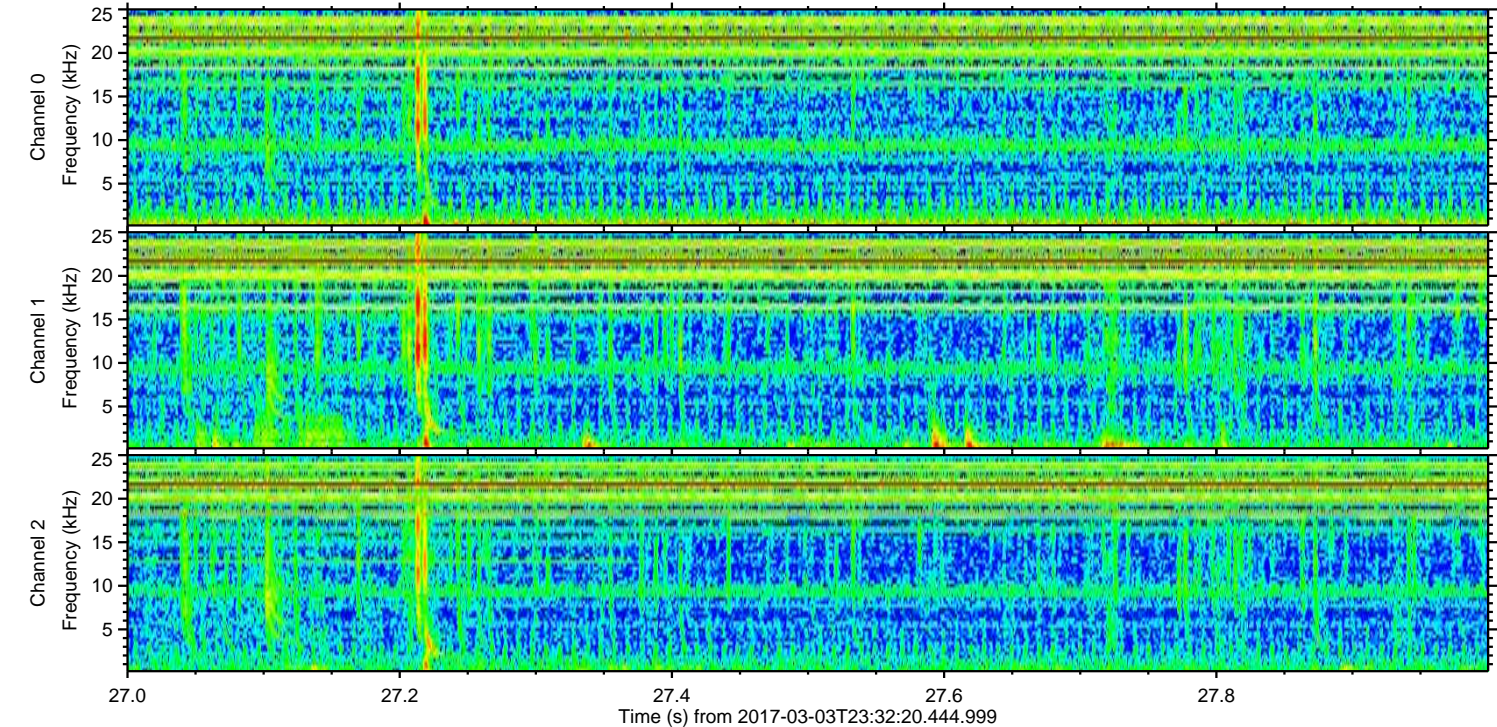
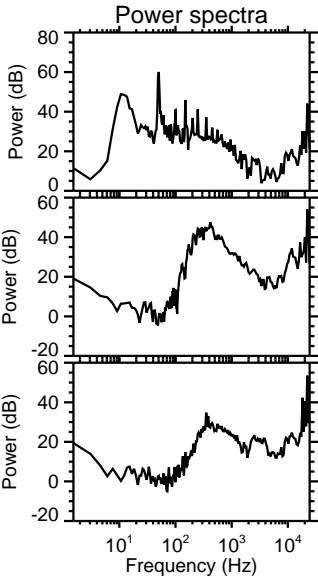
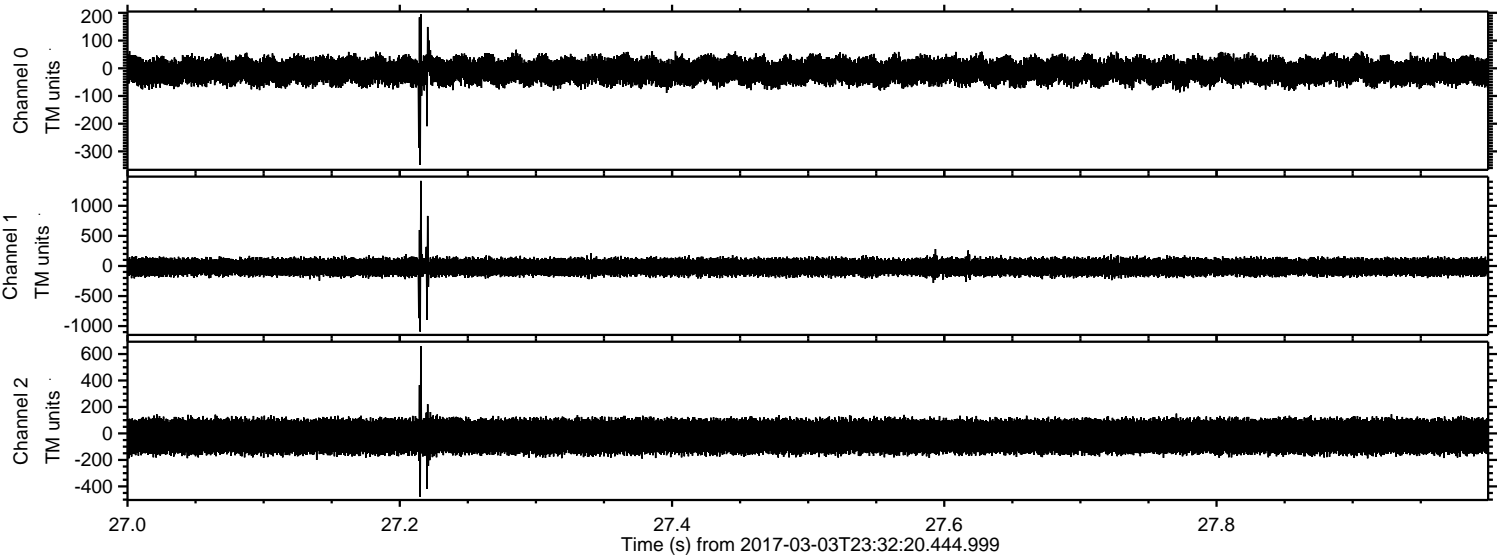
ELMAVAN 3D WAVEFORMS (Measured data sampled at 50 kHz) 51000 packets of 144 samples from 2017-03-03T23:32:20.444.999. Part 40/147

Processed Sat Mar 4 00:40:46 2017 by ELM ver.2012-10-06 from 001__elm20170303_233219__dat00.bin

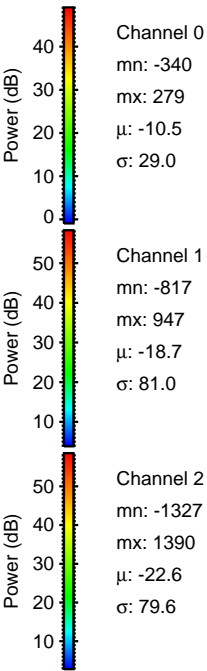
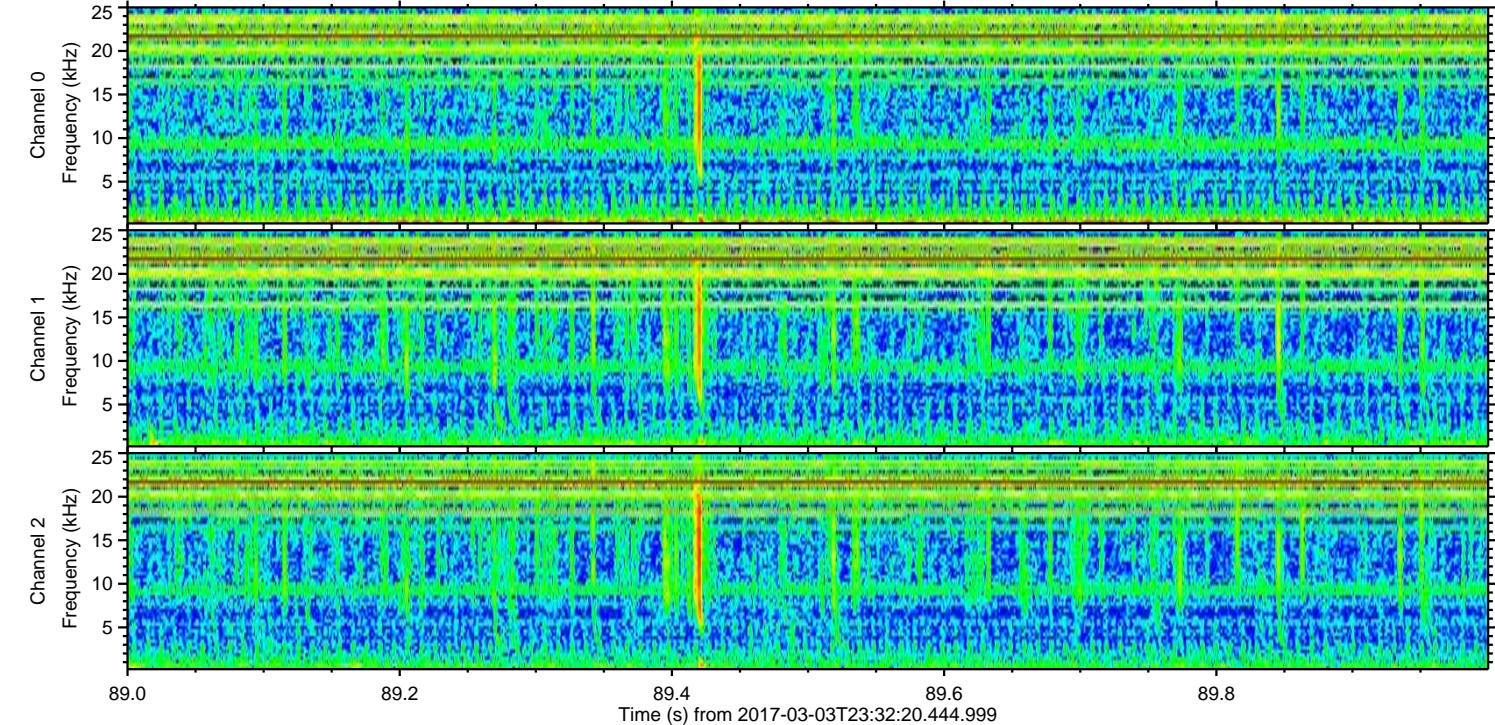
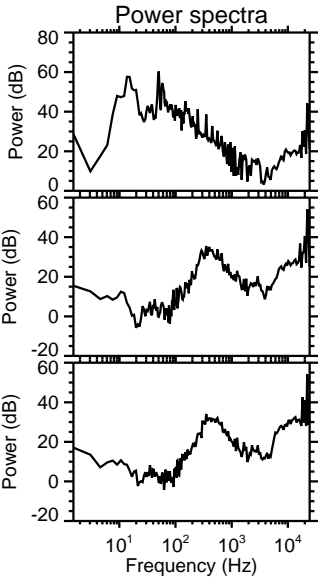
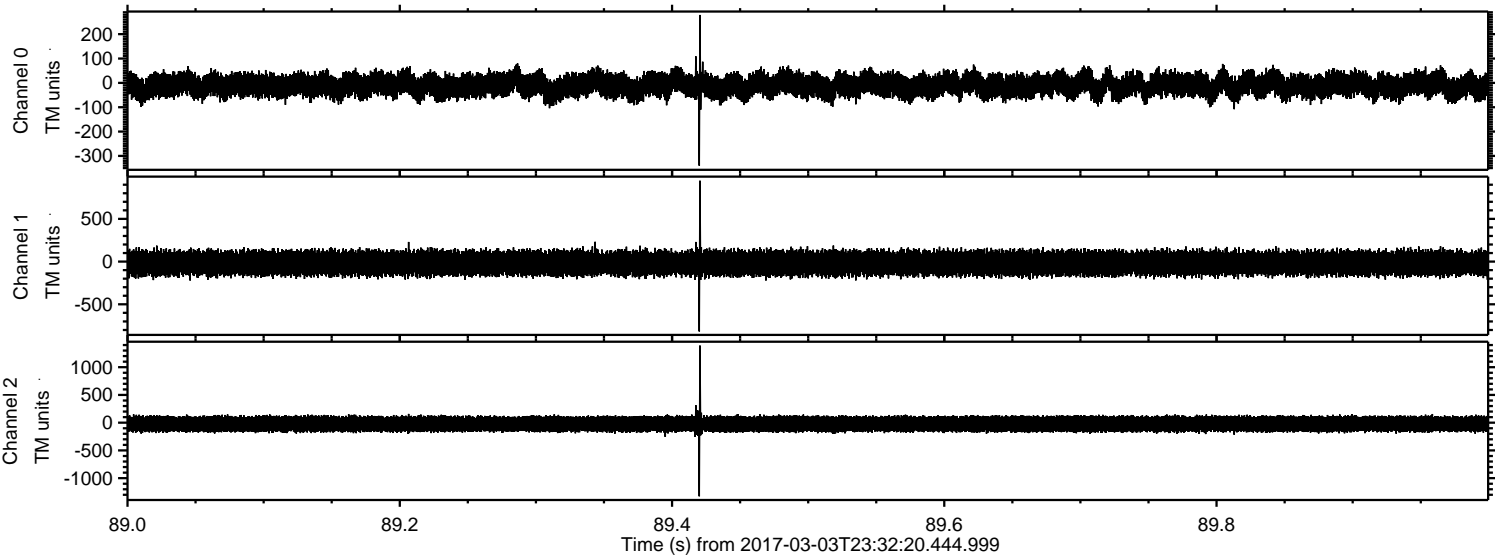


ELMAVAN 3D WAVEFORMS (Measured data sampled at 50 kHz) 51000 packets of 144 samples from 2017-03-03T23:32:20.444.999. Part 28/147

Processed Sat Mar 4 00:40:47 2017 by ELM ver.2012-10-06 from 001__elm20170303_233219__dat00.bin

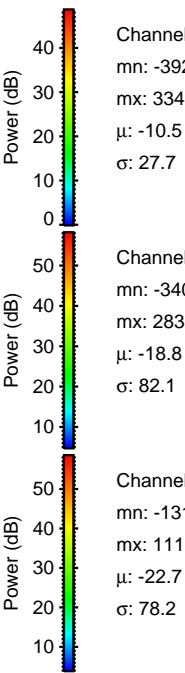
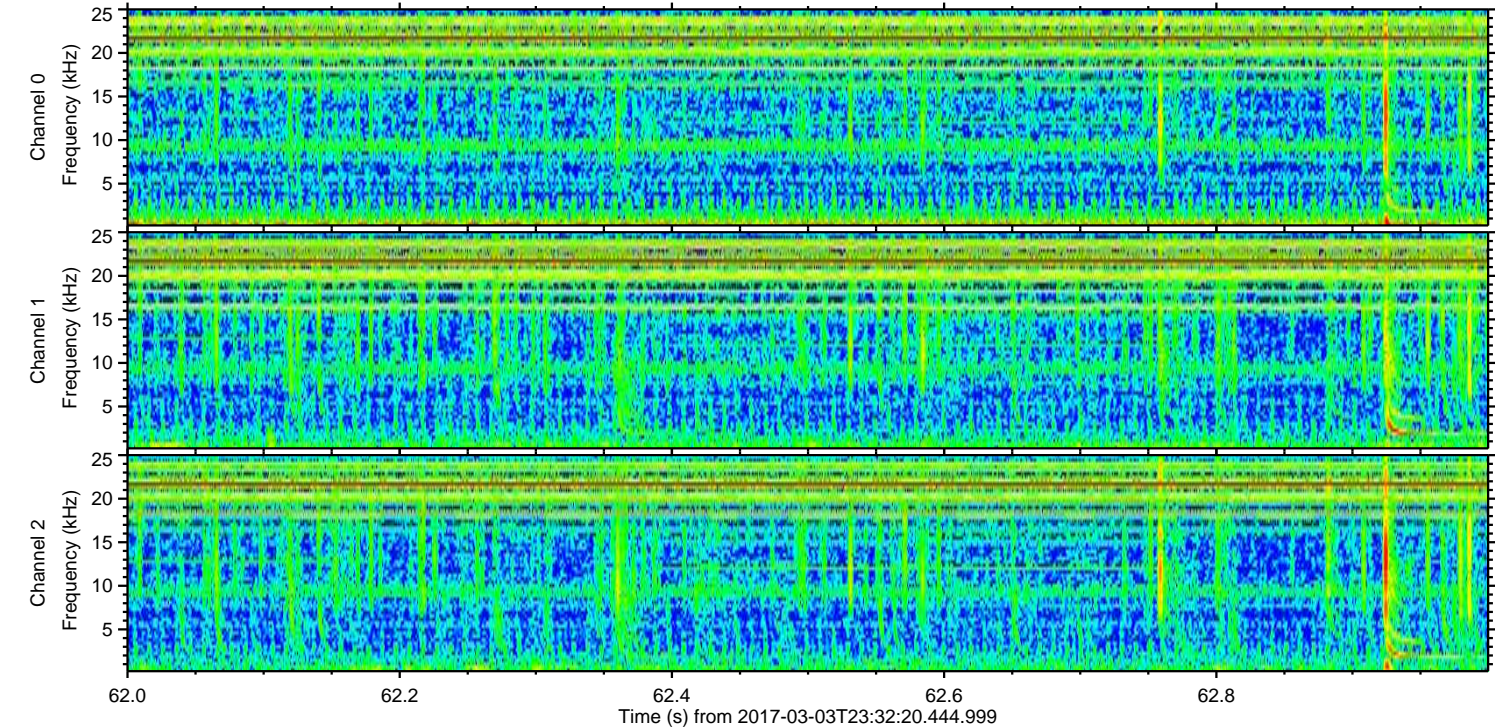
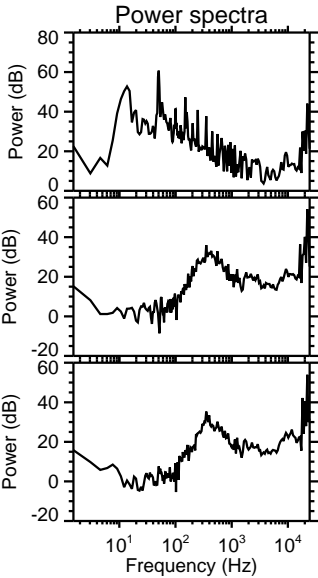
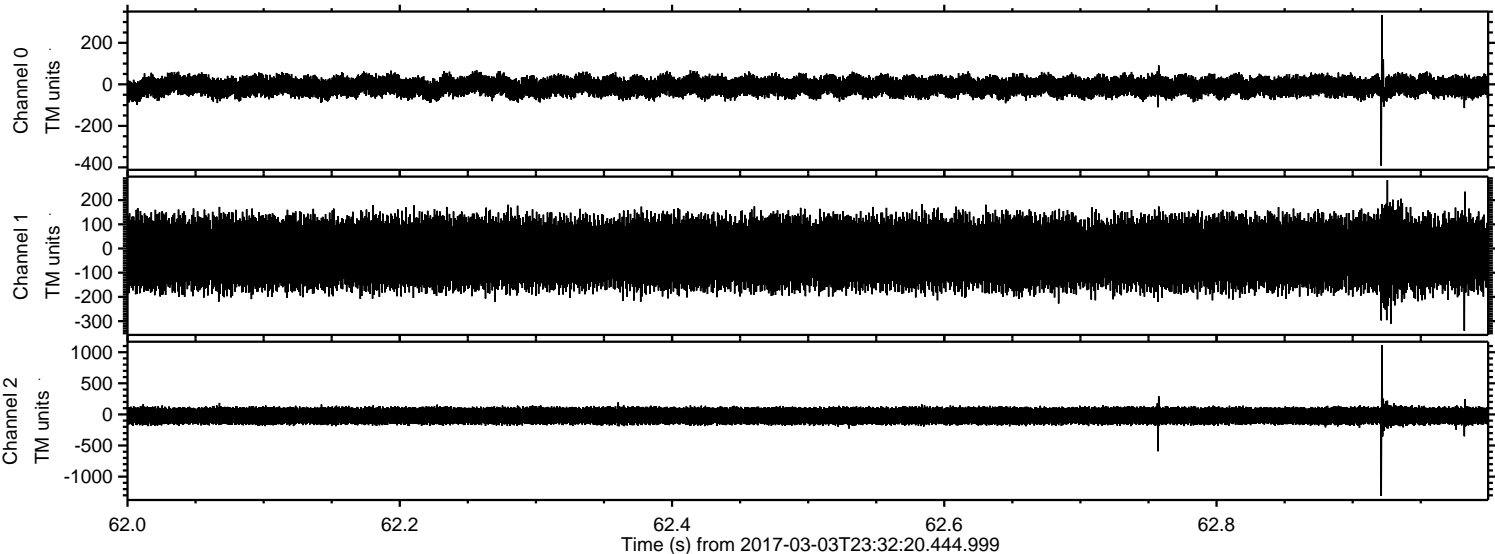


Processed Sat Mar 4 00:40:48 2017 by ELM ver.2012-10-06 from 001__elm20170303_233219__dat00.bin



ELMAVAN 3D WAVEFORMS (Measured data sampled at 50 kHz) 51000 packets of 144 samples from 2017-03-03T23:32:20.444.999. Part 63/147

Processed Sat Mar 4 00:40:49 2017 by ELM ver.2012-10-06 from 001__elm20170303_233219__dat00.bin



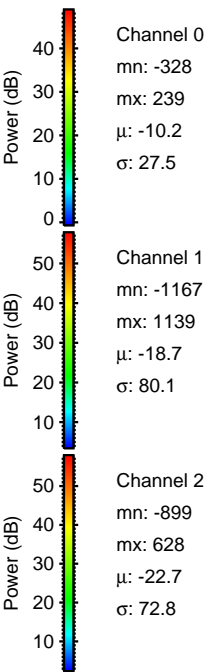
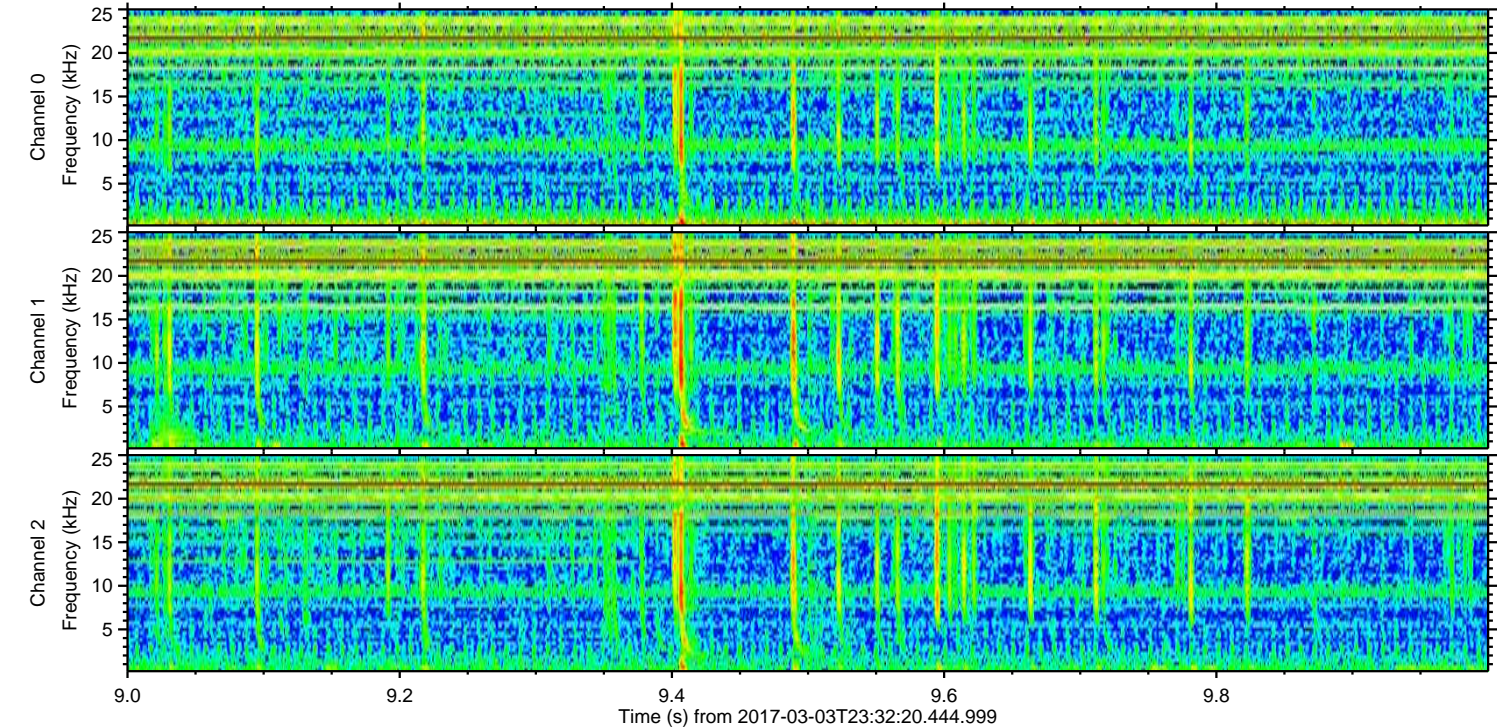
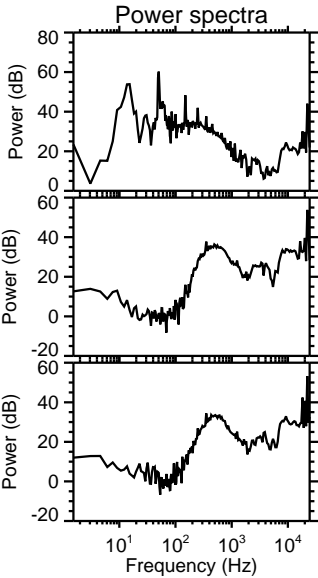
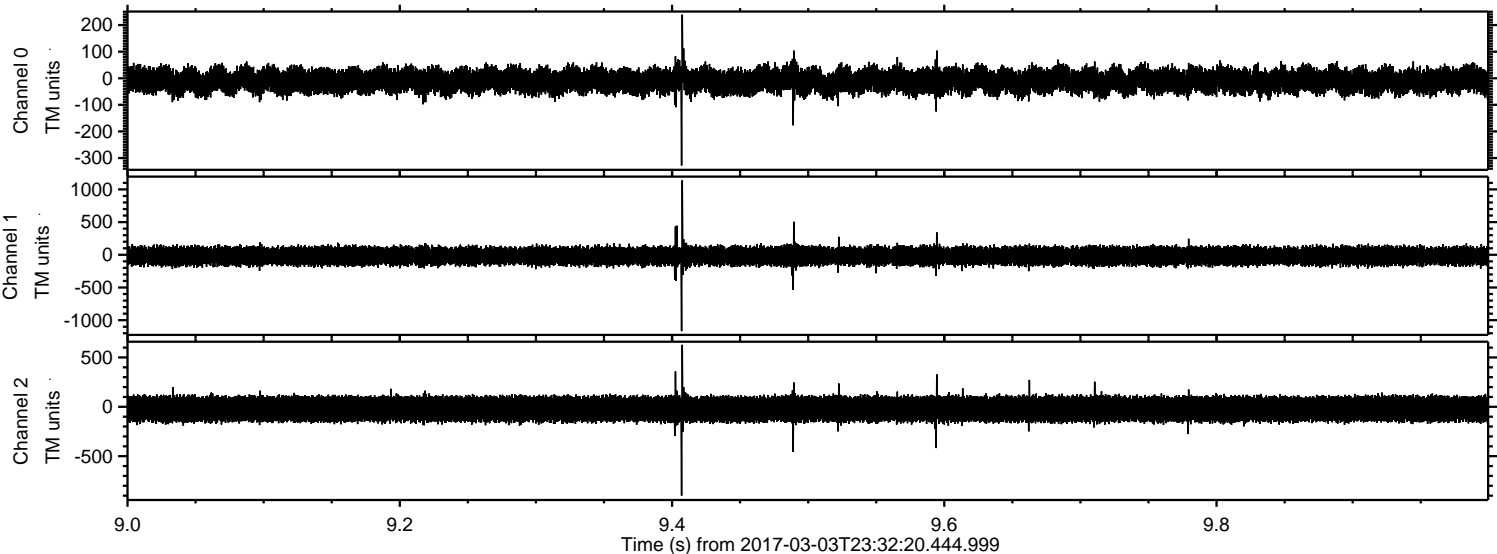
Channel 0
mn: -392
mx: 334
 μ : -10.5
 σ : 27.7

Channel 1
mn: -340
mx: 283
 μ : -18.8
 σ : 82.1

Channel 2
mn: -1310
mx: 1113
 μ : -22.7
 σ : 78.2

ELMAVAN 3D WAVEFORMS (Measured data sampled at 50 kHz) 51000 packets of 144 samples from 2017-03-03T23:32:20.444.999. Part 10/147

Processed Sat Mar 4 00:40:50 2017 by ELM ver.2012-10-06 from 001__elm20170303_233219__dat00.bin



ELMAVAN 3D WAVEFORMS (Measured data sampled at 50 kHz) 51000 packets of 144 samples from 2017-03-03T23:32:20.444.999. Part 74/147

Processed Sat Mar 4 00:40:51 2017 by ELM ver.2012-10-06 from 001__elm20170303_233219__dat00.bin

