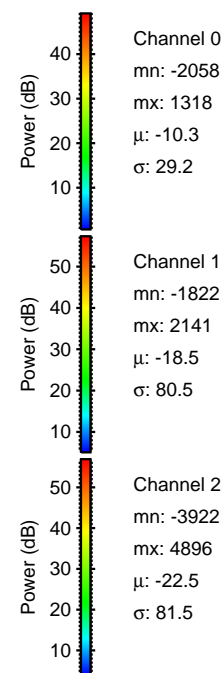
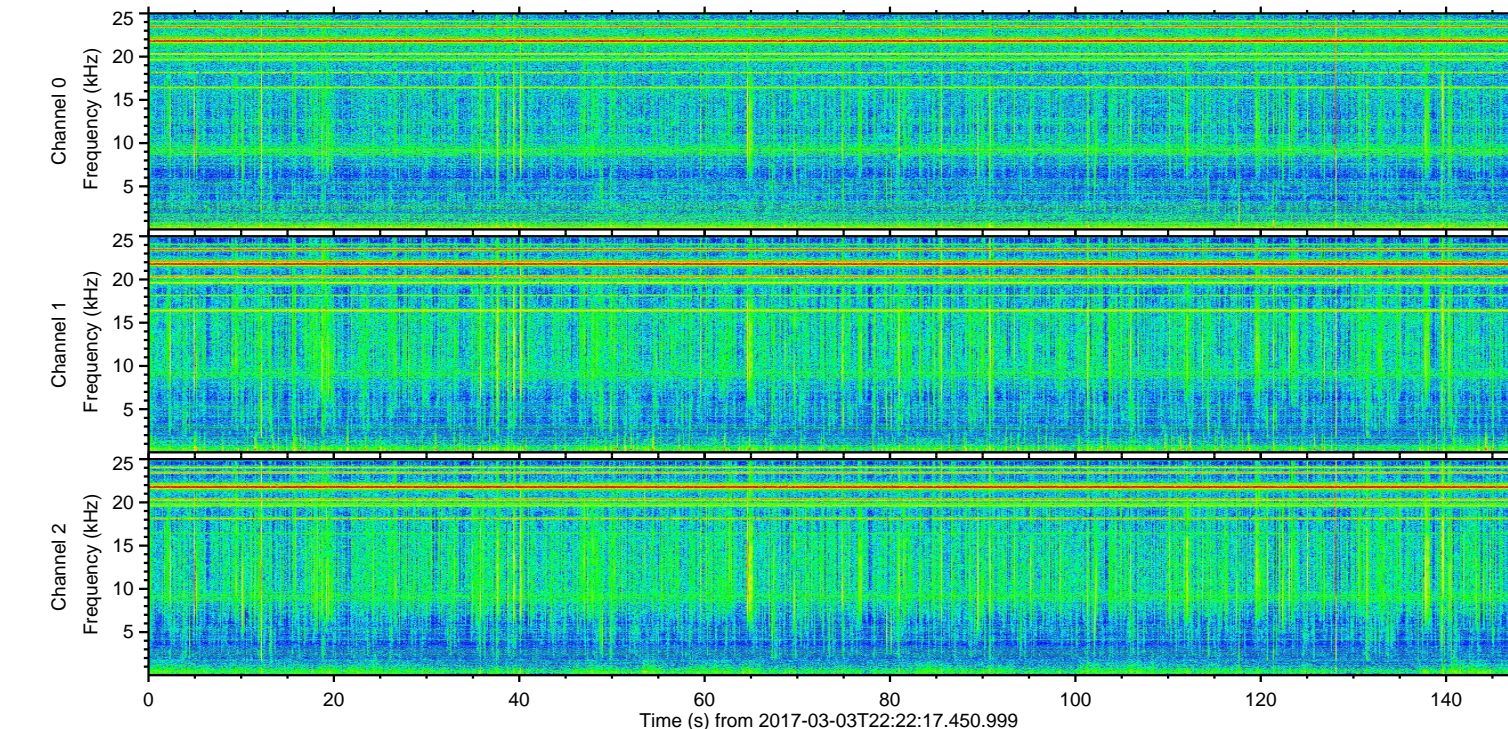
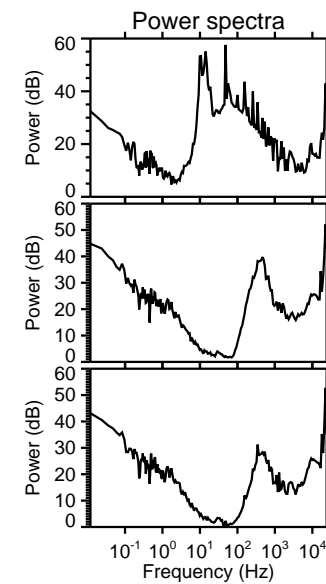
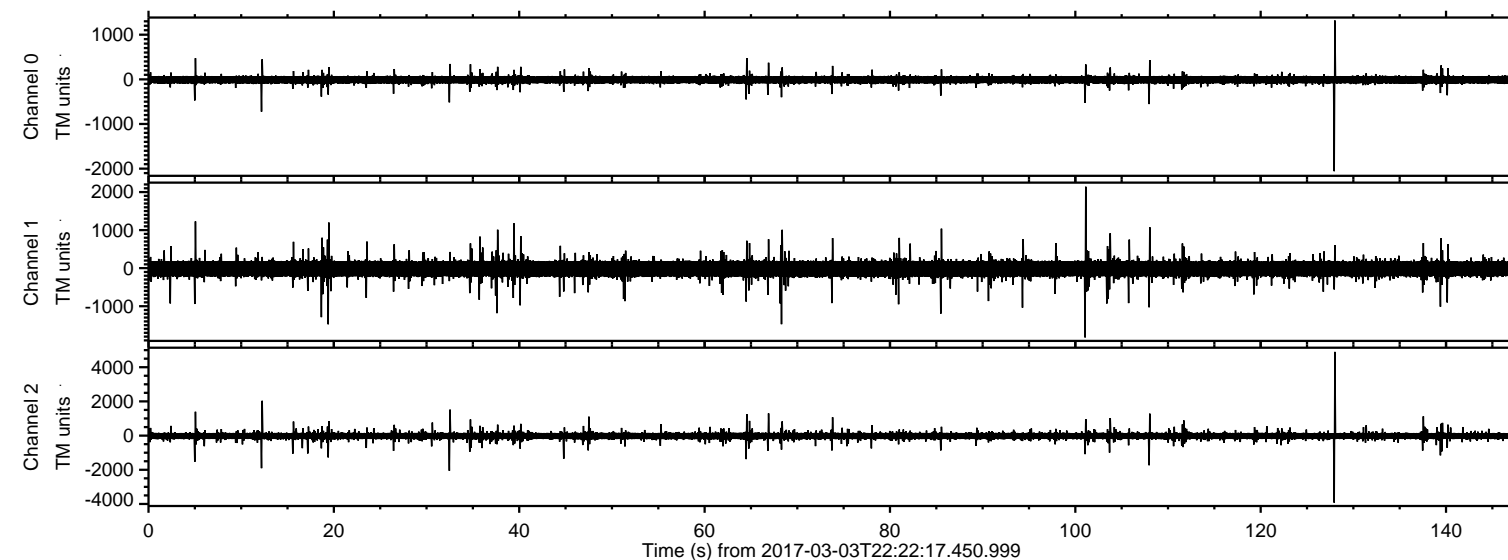


ELMAVAN 3D WAVEFORMS (Measured data sampled at 50 kHz) 51000 packets of 144 samples from 2017-03-03T22:22:17.450.999.

Processed Fri Mar 3 23:30:27 2017 by ELM ver.2012-10-06 from 001__elm20170303_222216__dat00.bin



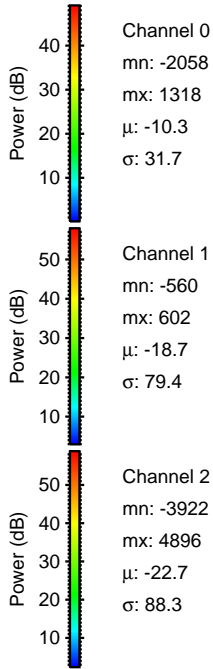
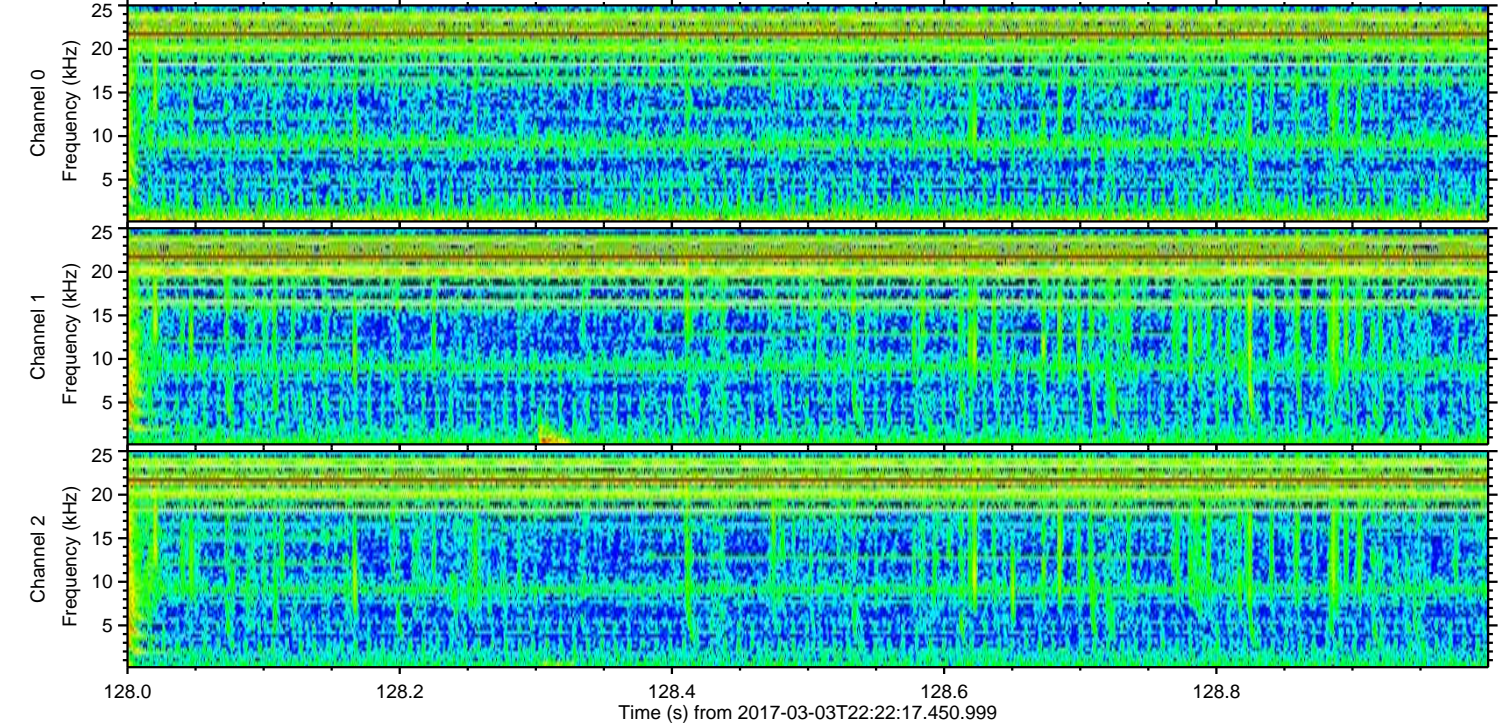
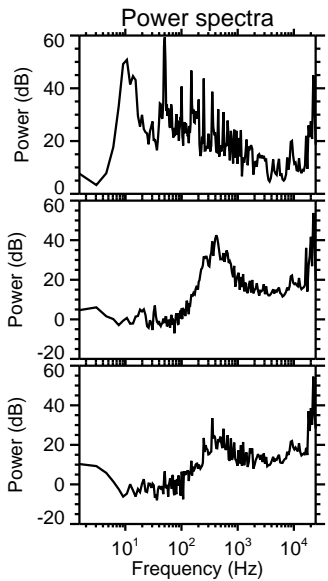
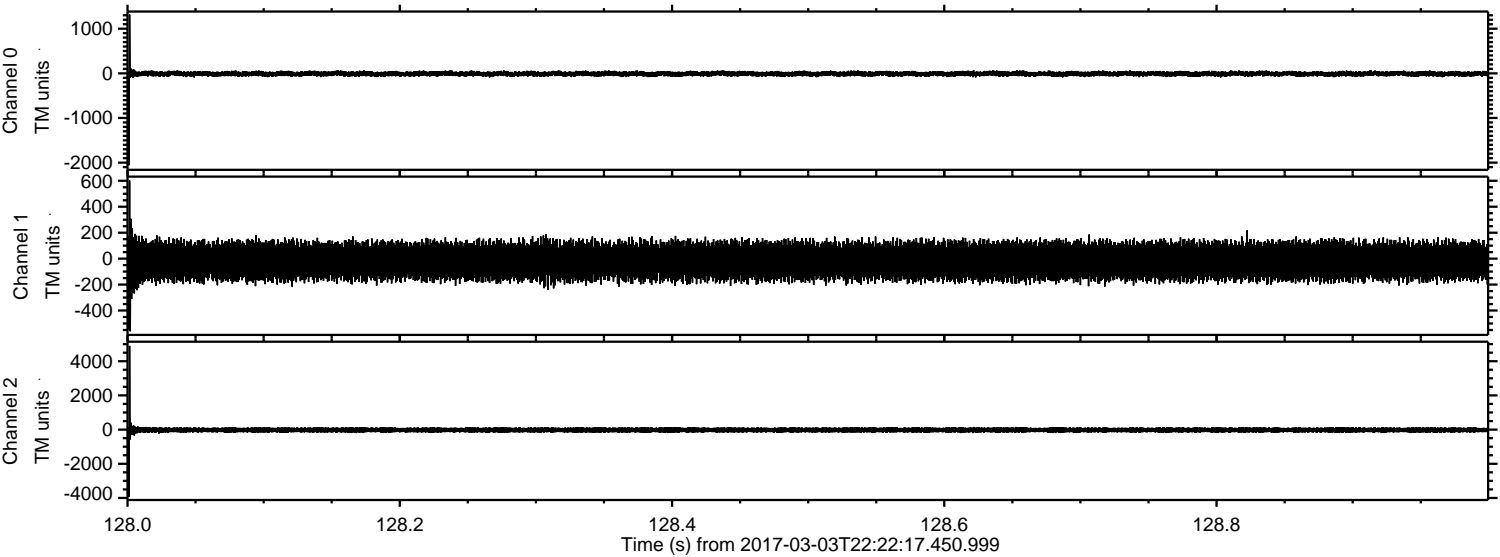
Channel 0
mn: -2058
mx: 1318
 μ : -10.3
 σ : 29.2

Channel 1
mn: -1822
mx: 2141
 μ : -18.5
 σ : 80.5

Channel 2
mn: -3922
mx: 4896
 μ : -22.5
 σ : 81.5

ELMAVAN 3D WAVEFORMS (Measured data sampled at 50 kHz) 51000 packets of 144 samples from 2017-03-03T22:22:17.450.999. Part 129/147

Processed Fri Mar 3 23:30:38 2017 by ELM ver.2012-10-06 from 001__elm20170303_222216__dat00.bin



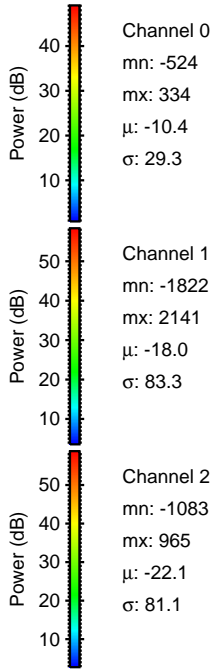
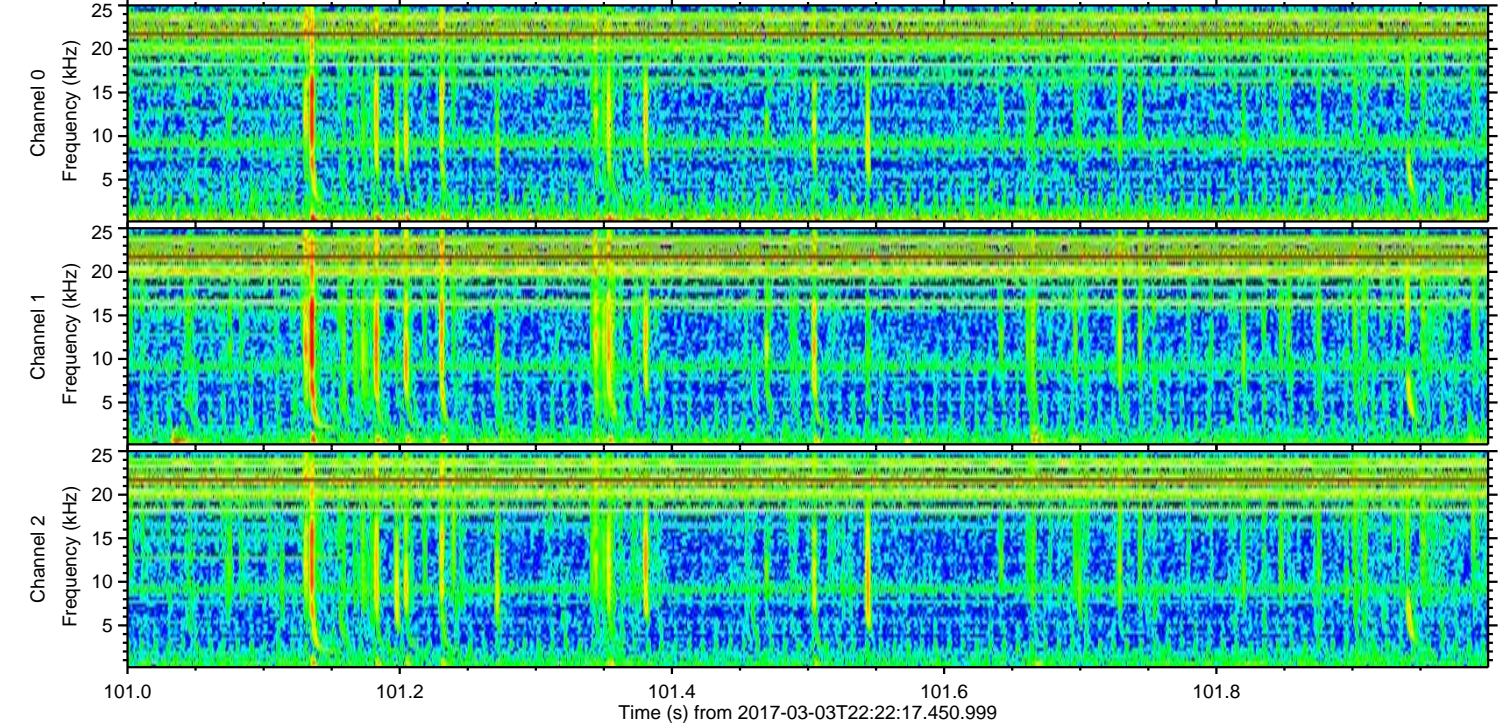
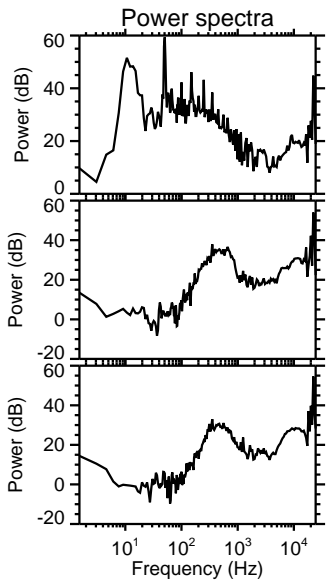
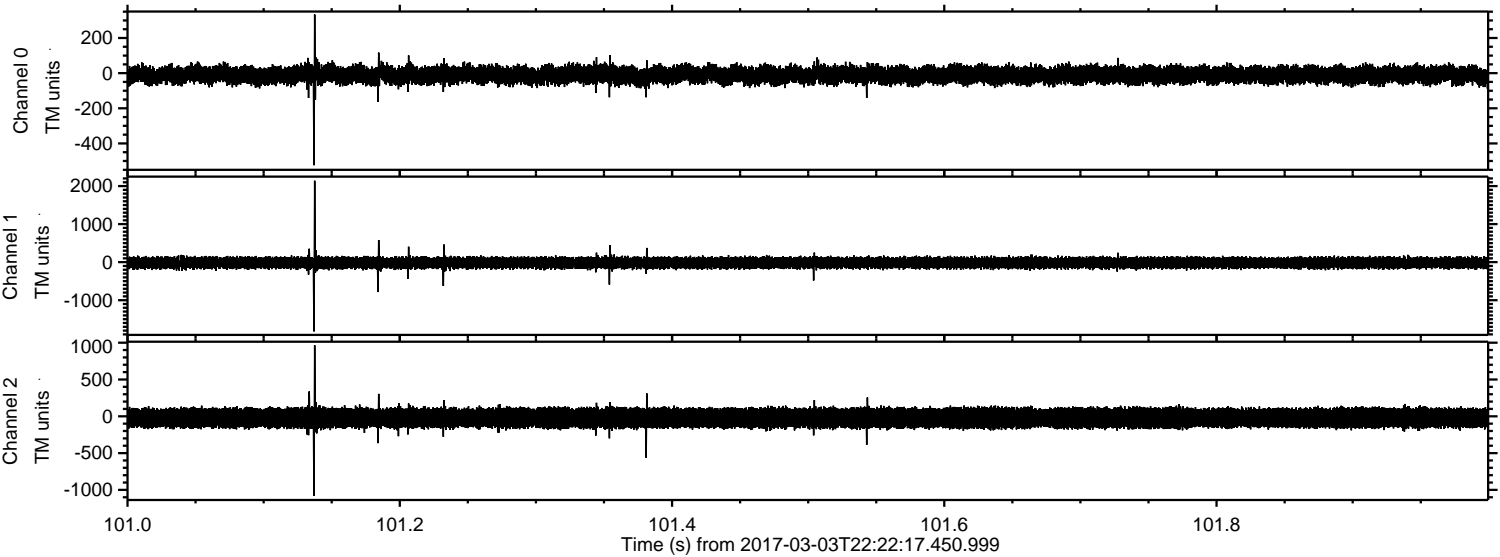
Channel 0
mn: -2058
mx: 1318
 μ : -10.3
 σ : 31.7

Channel 1
mn: -560
mx: 602
 μ : -18.7
 σ : 79.4

Channel 2
mn: -3922
mx: 4896
 μ : -22.7
 σ : 88.3

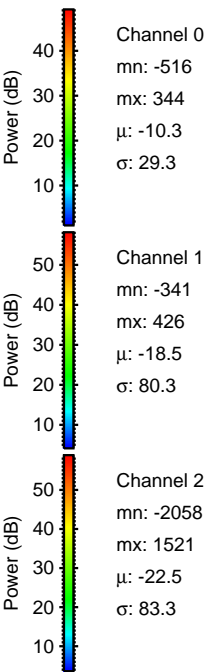
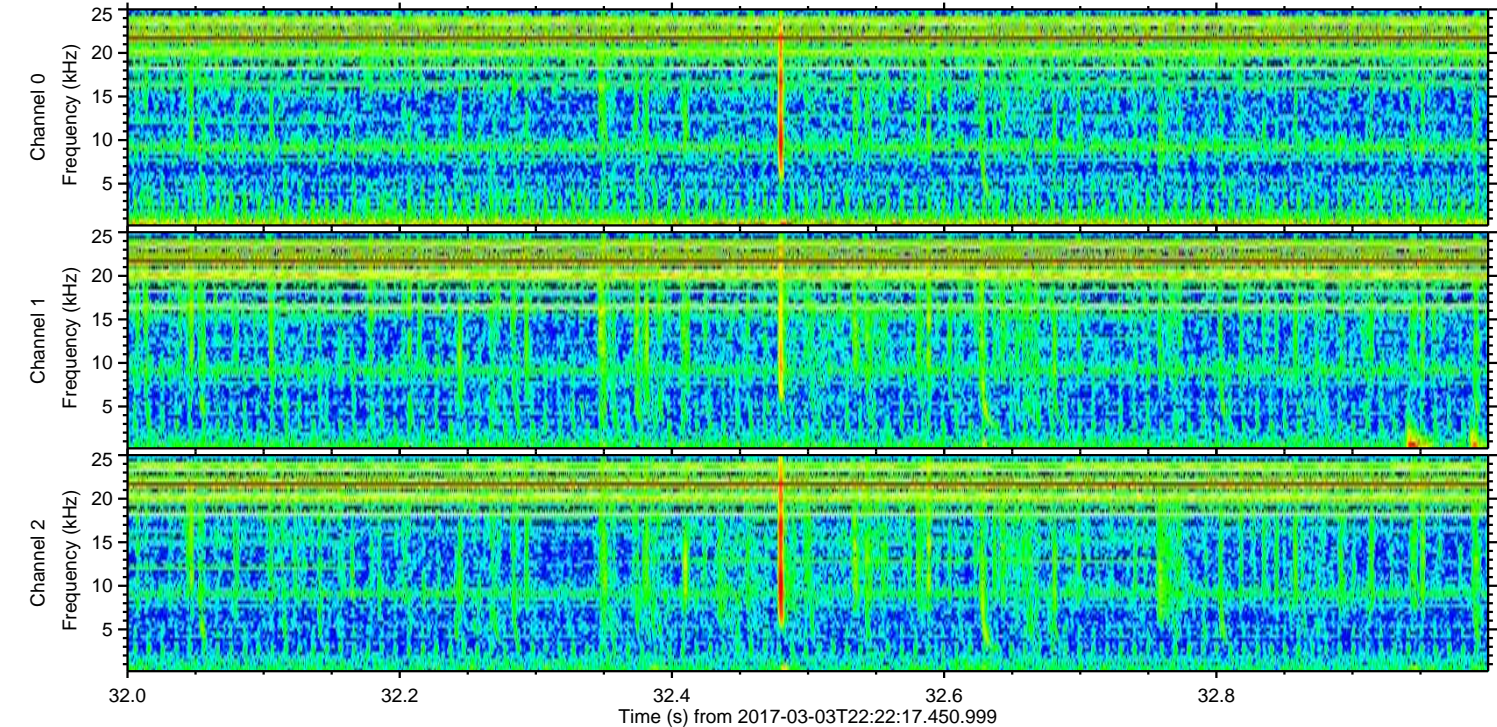
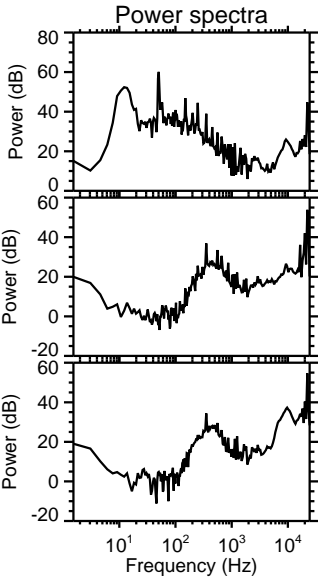
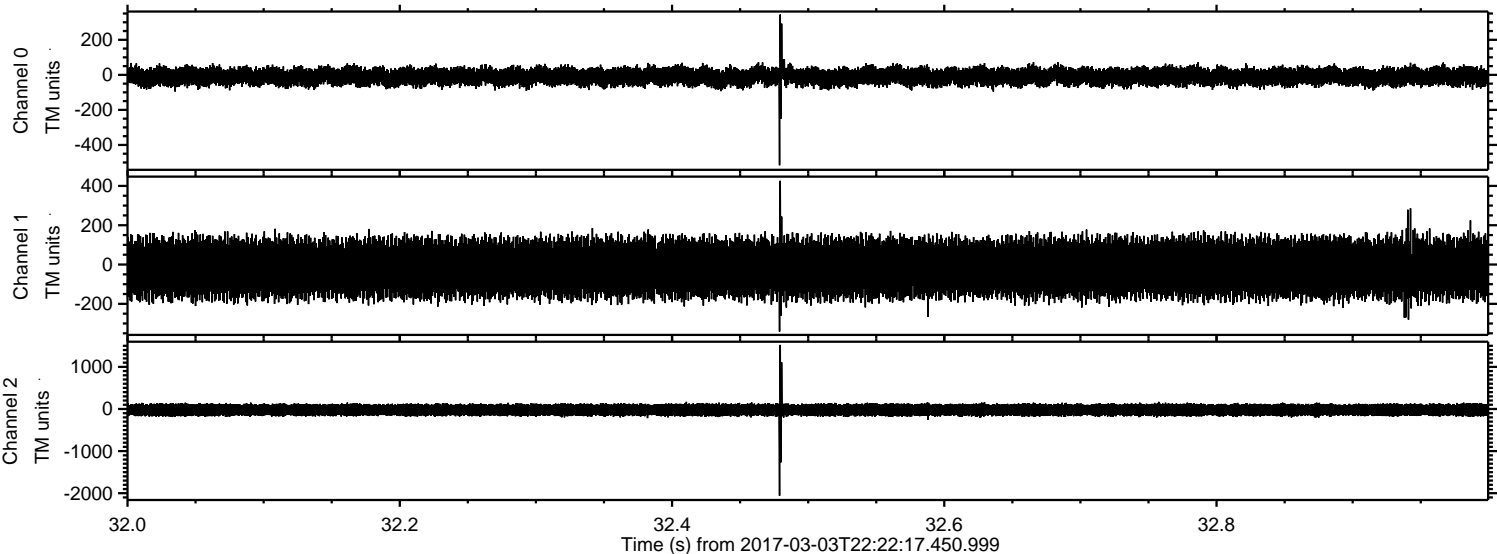
ELMAVAN 3D WAVEFORMS (Measured data sampled at 50 kHz) 51000 packets of 144 samples from 2017-03-03T22:22:17.450.999. Part 102/147

Processed Fri Mar 3 23:30:39 2017 by ELM ver.2012-10-06 from 001__elm20170303_222216__dat00.bin



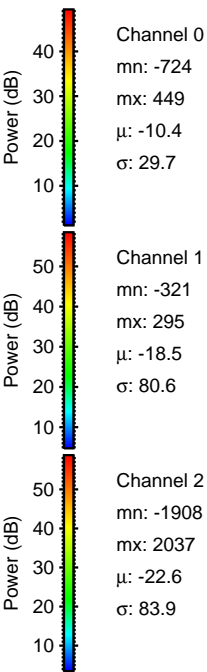
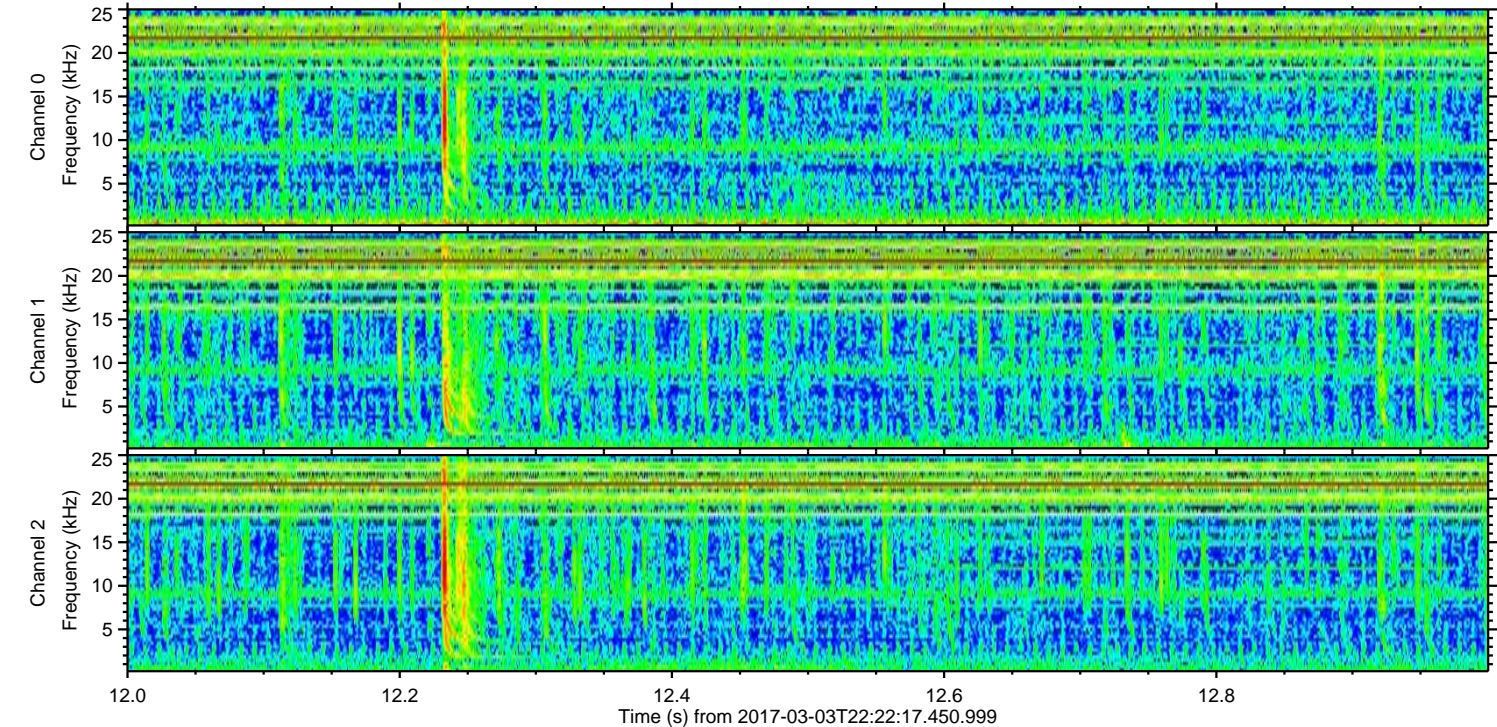
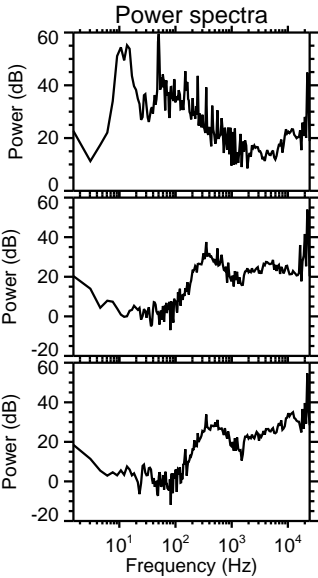
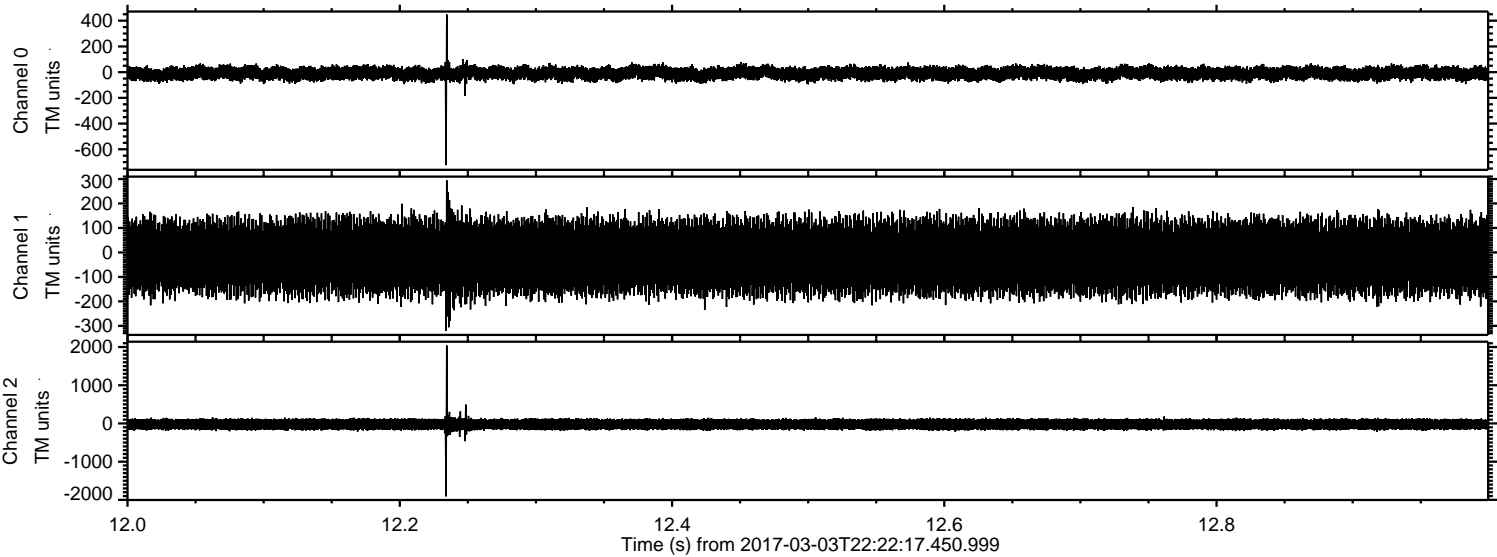
ELMAVAN 3D WAVEFORMS (Measured data sampled at 50 kHz) 51000 packets of 144 samples from 2017-03-03T22:22:17.450.999. Part 33/147

Processed Fri Mar 3 23:30:40 2017 by ELM ver.2012-10-06 from 001__elm20170303_222216__dat00.bin



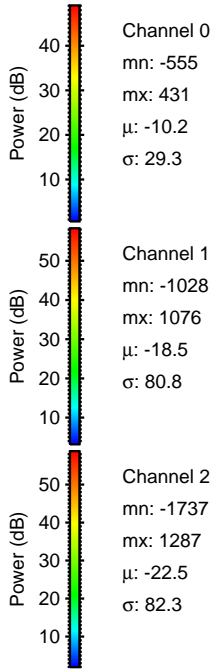
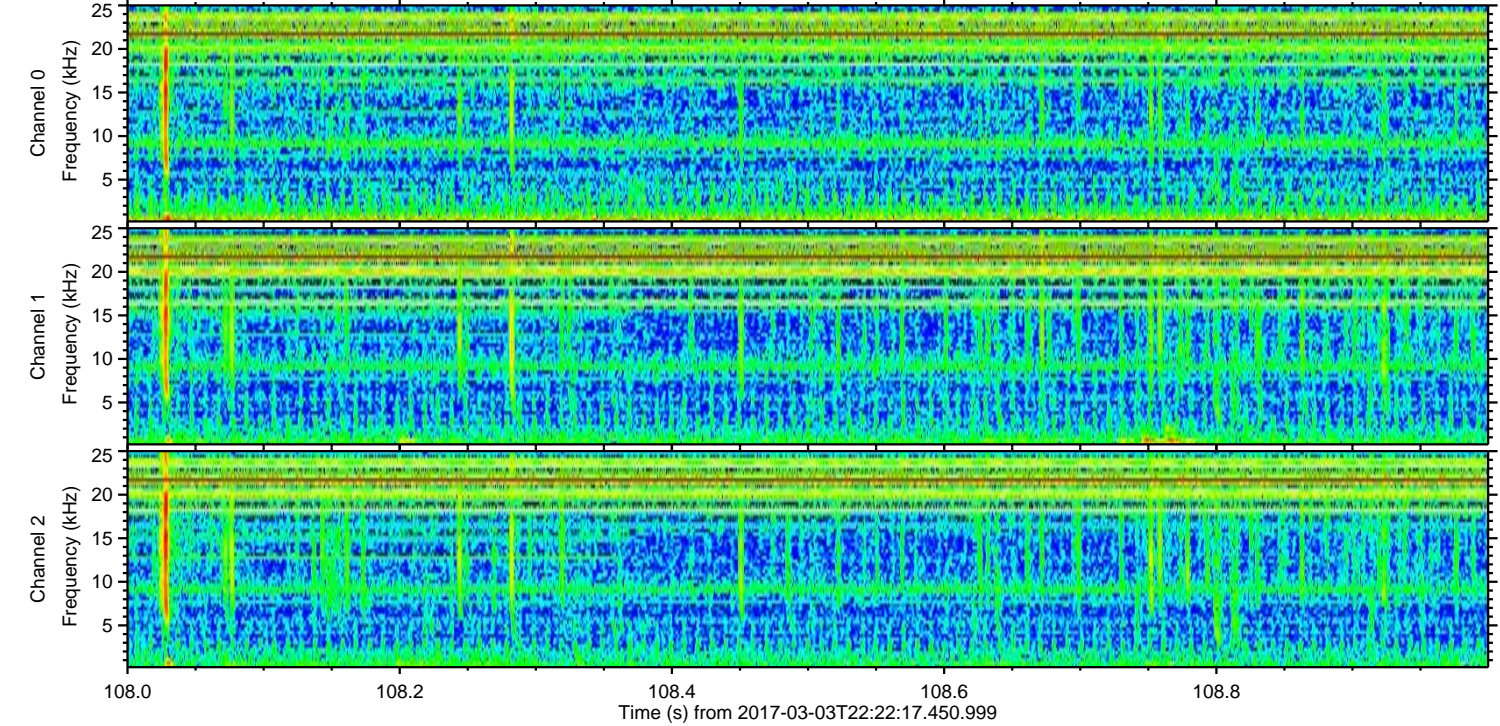
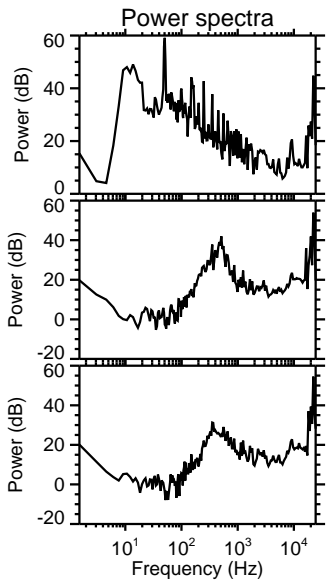
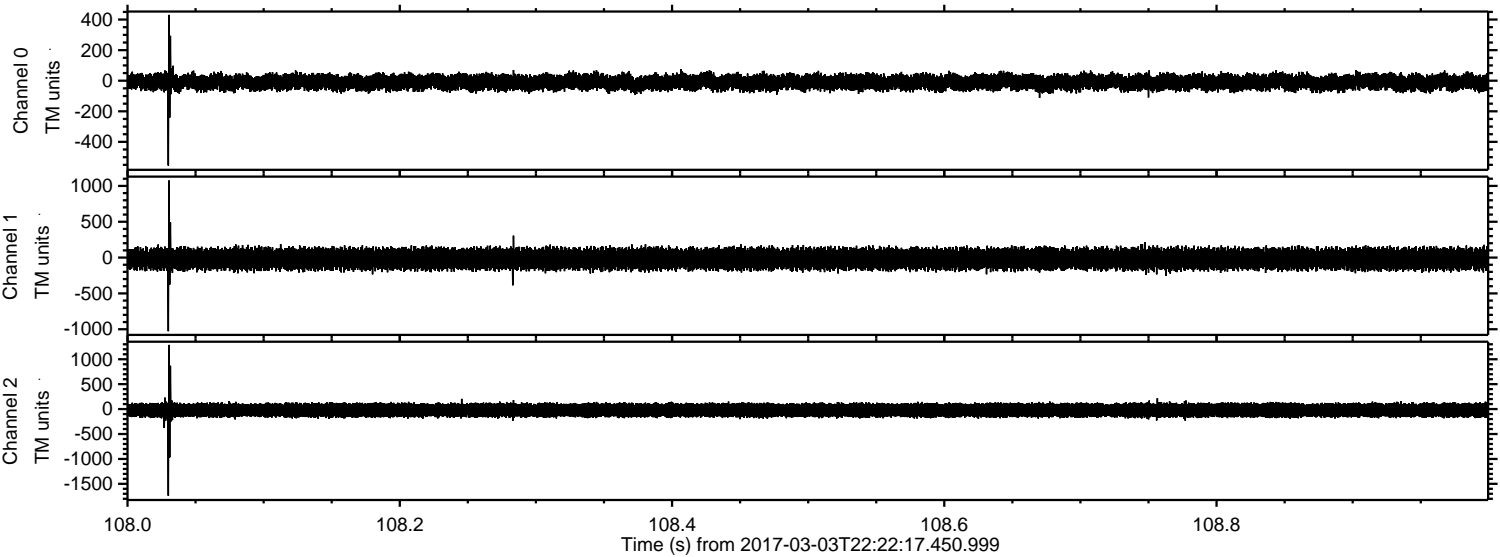
ELMAVAN 3D WAVEFORMS (Measured data sampled at 50 kHz) 51000 packets of 144 samples from 2017-03-03T22:22:17.450.999. Part 13/147

Processed Fri Mar 3 23:30:41 2017 by ELM ver.2012-10-06 from 001__elm20170303_222216__dat00.bin

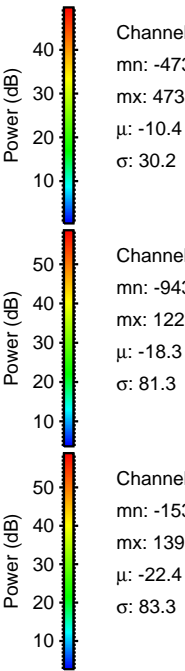
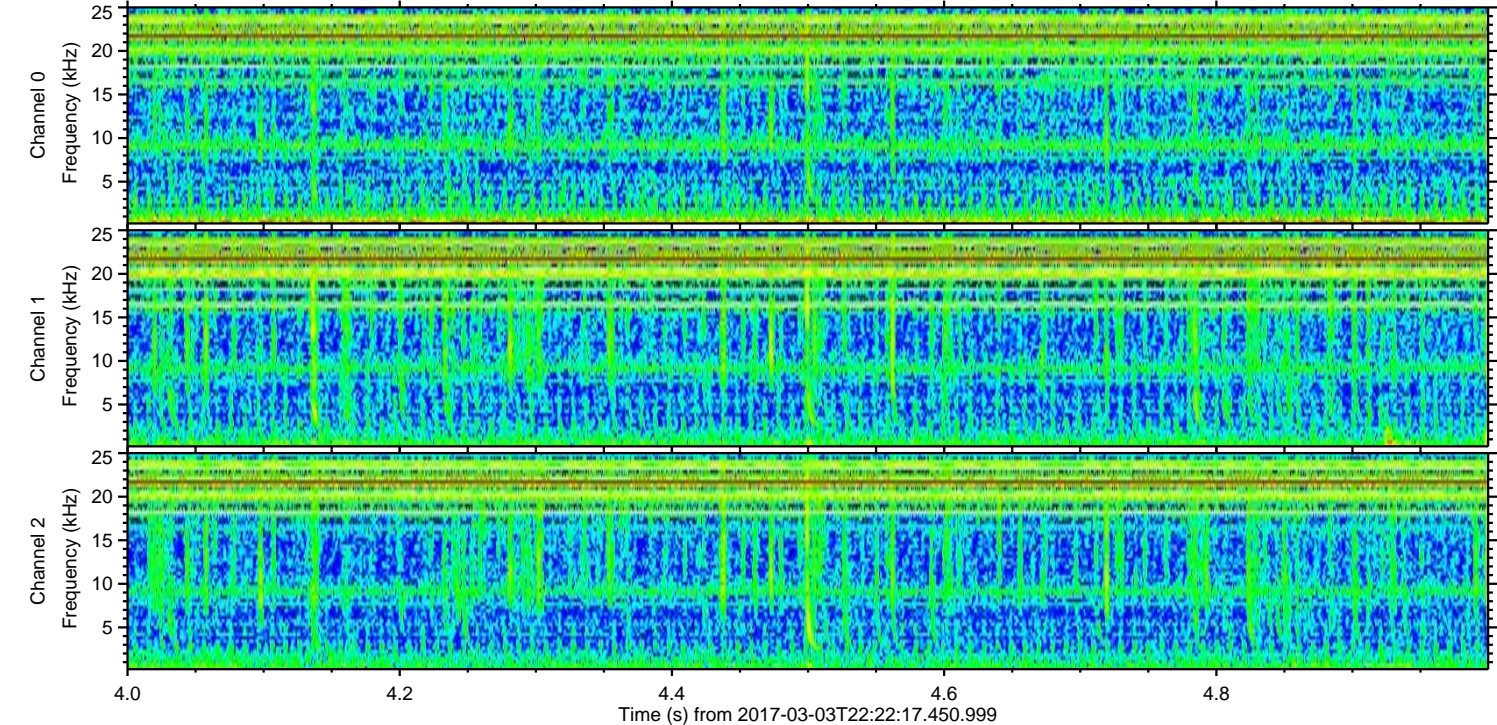
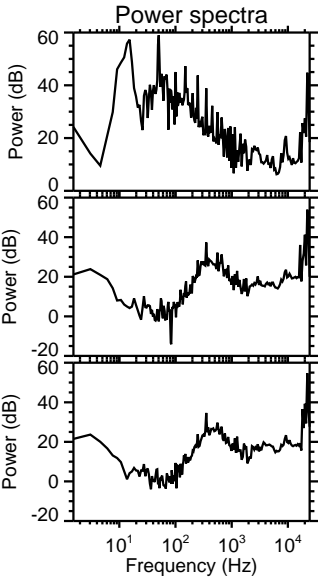
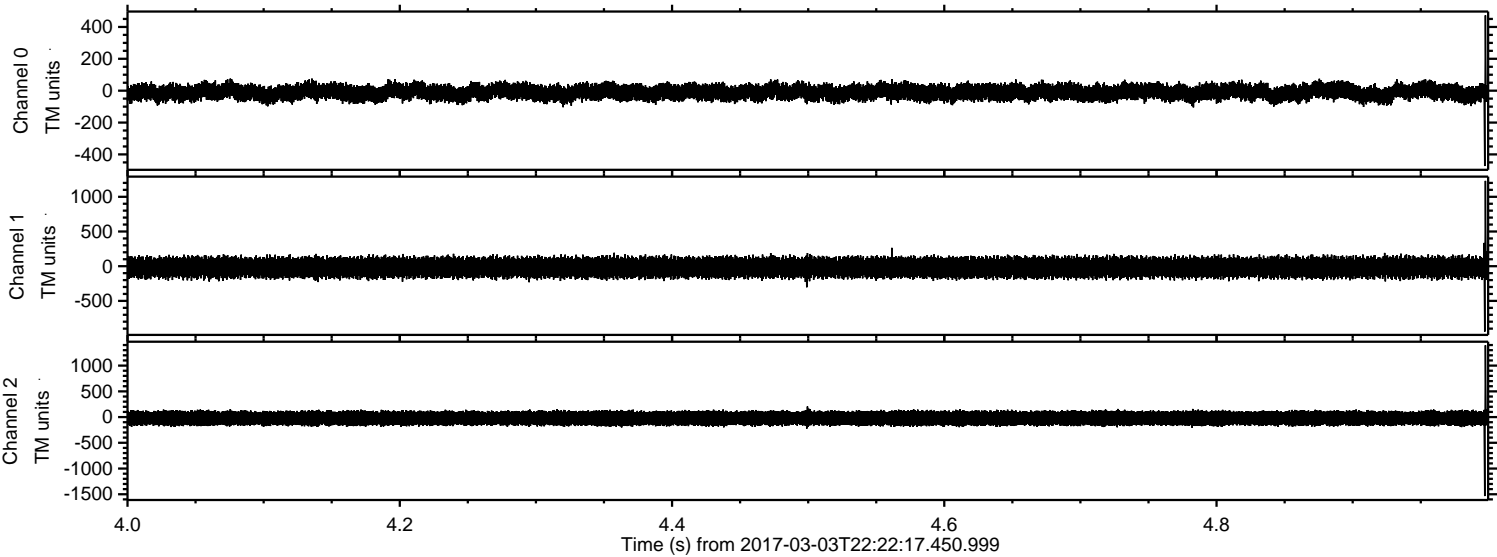


ELMAVAN 3D WAVEFORMS (Measured data sampled at 50 kHz) 51000 packets of 144 samples from 2017-03-03T22:22:17.450.999. Part 109/147

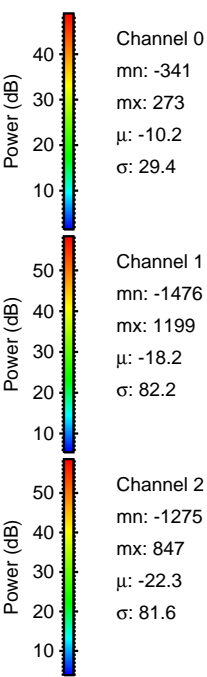
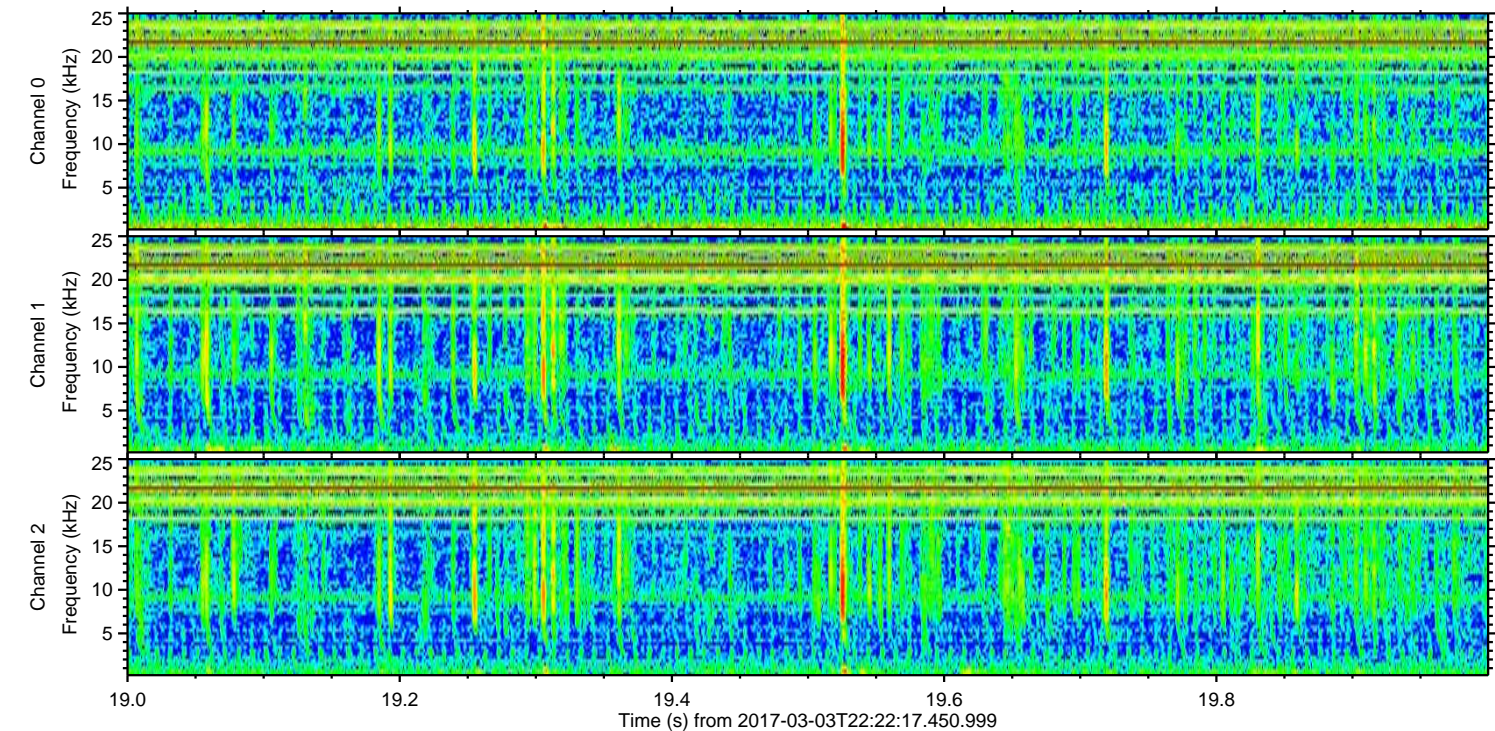
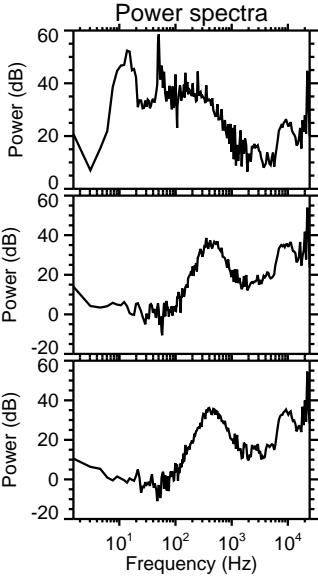
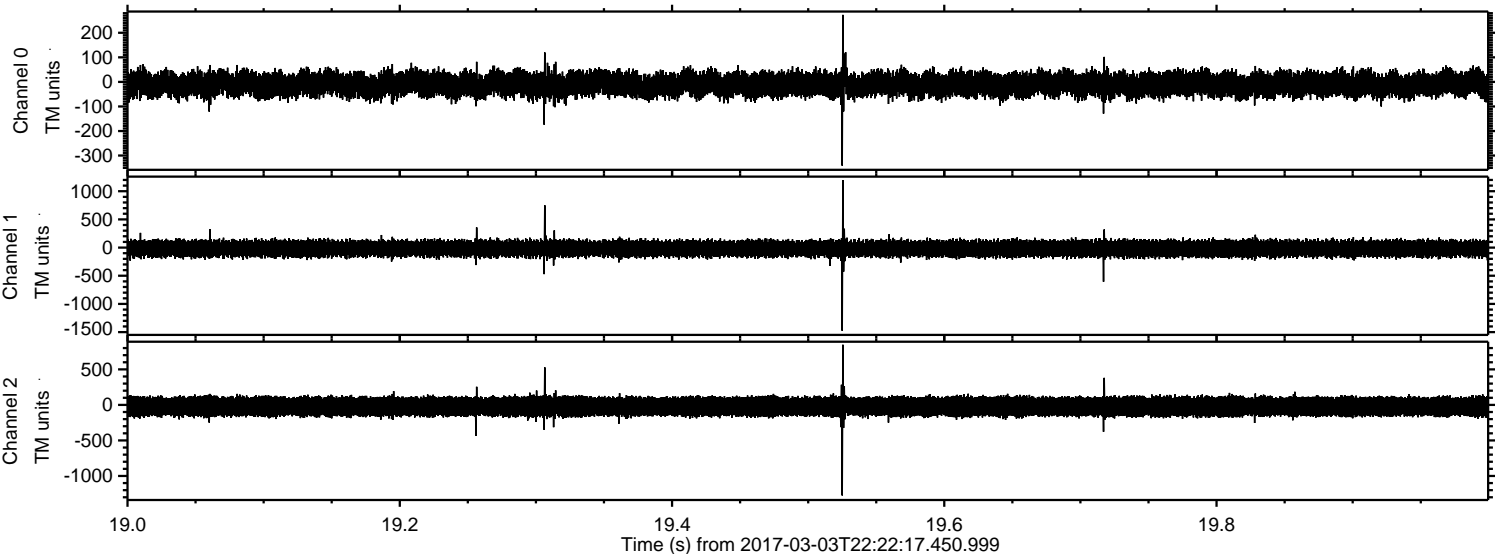
Processed Fri Mar 3 23:30:42 2017 by ELM ver.2012-10-06 from 001__elm20170303_222216__dat00.bin



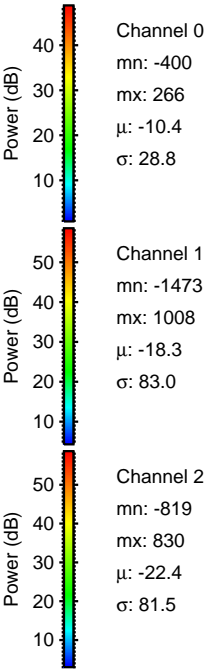
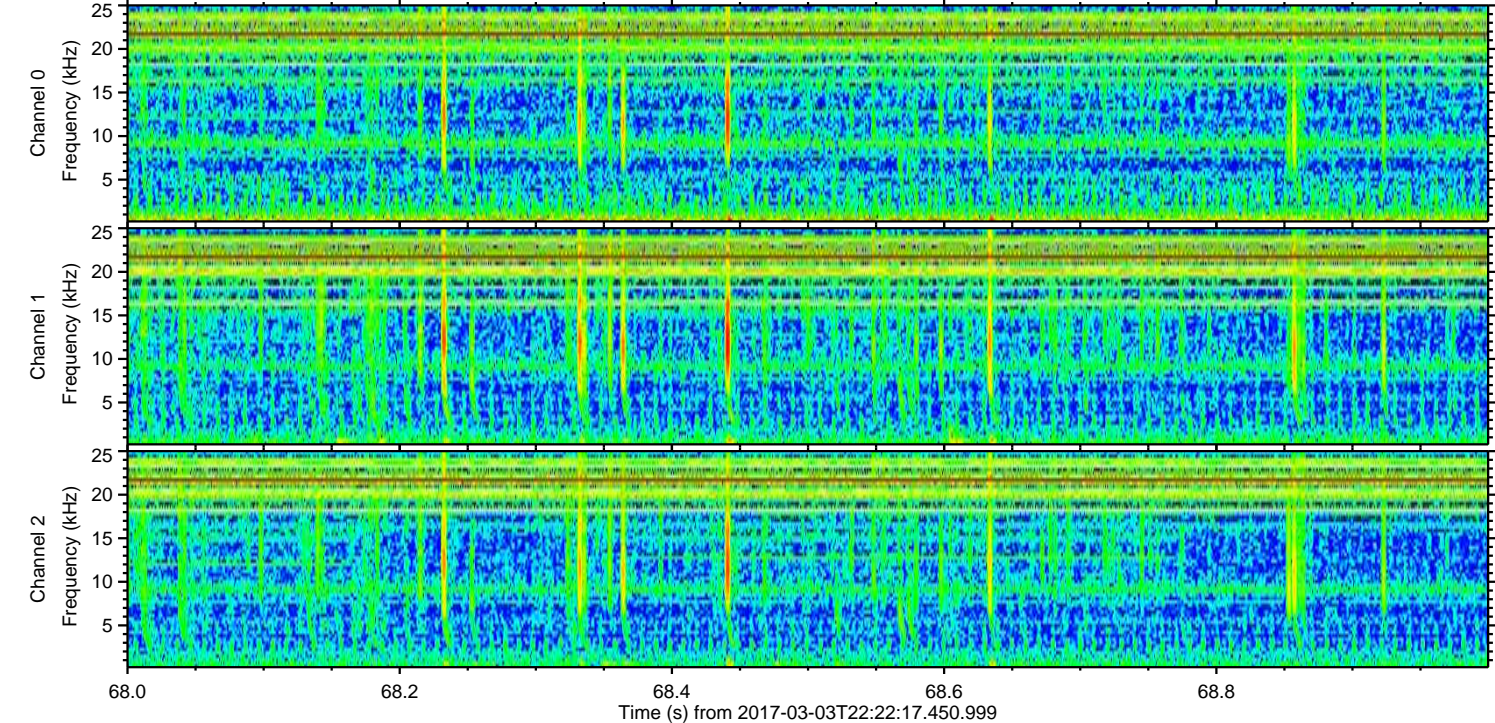
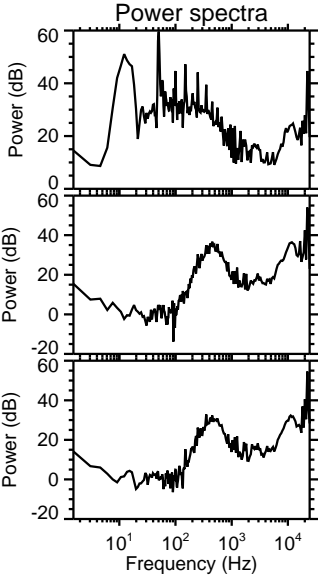
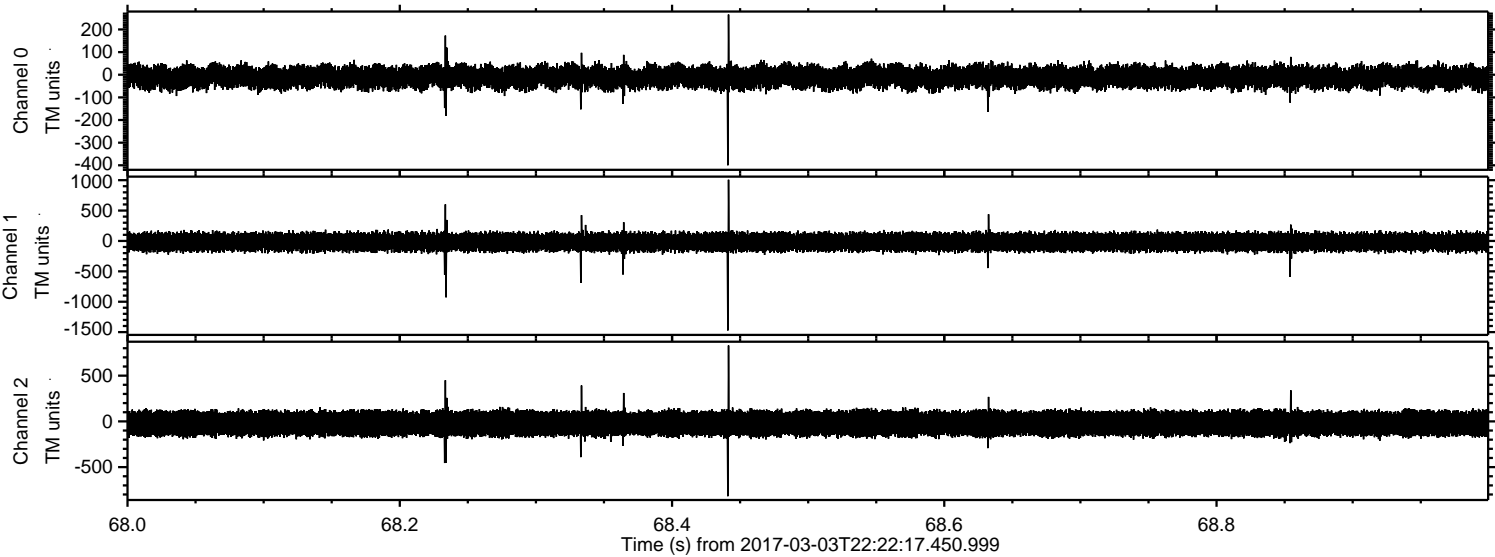
Processed Fri Mar 3 23:30:43 2017 by ELM ver.2012-10-06 from 001__elm20170303_222216__dat00.bin



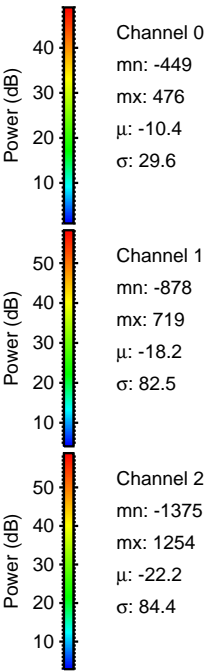
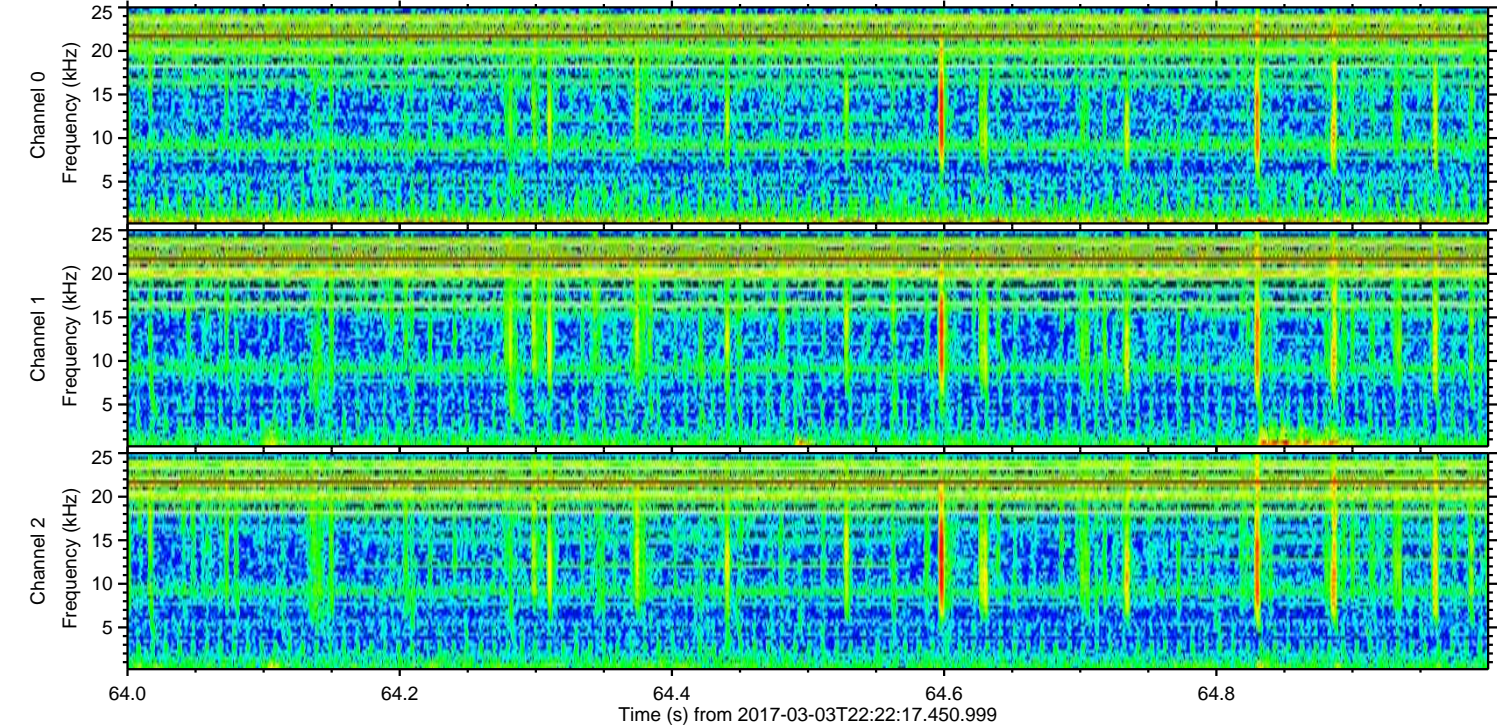
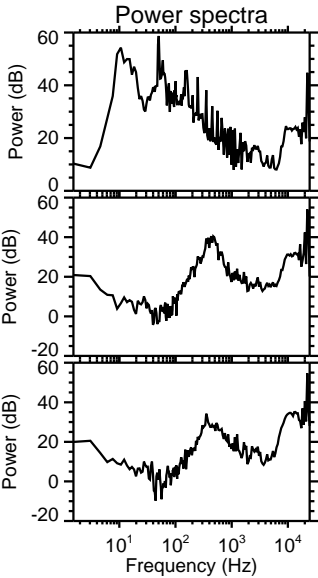
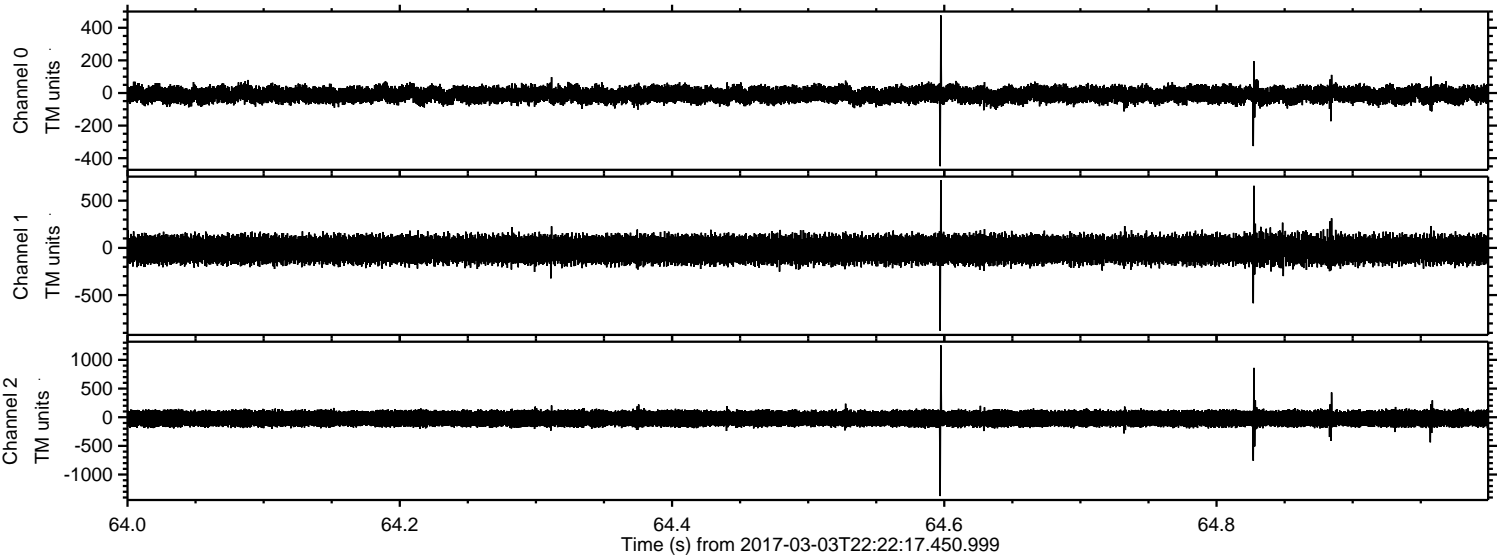
Processed Fri Mar 3 23:30:44 2017 by ELM ver.2012-10-06 from 001__elm20170303_222216__dat00.bin



Processed Fri Mar 3 23:30:45 2017 by ELM ver.2012-10-06 from 001__elm20170303_222216__dat00.bin



Processed Fri Mar 3 23:30:46 2017 by ELM ver.2012-10-06 from 001__elm20170303_222216__dat00.bin



Channel 0
mn: -449
mx: 476
 μ : -10.4
 σ : 29.6

Channel 1
mn: -878
mx: 719
 μ : -18.2
 σ : 82.5

Channel 2
mn: -1375
mx: 1254
 μ : -22.2
 σ : 84.4

Processed Fri Mar 3 23:30:47 2017 by ELM ver.2012-10-06 from 001__elm20170303_222216__dat00.bin

