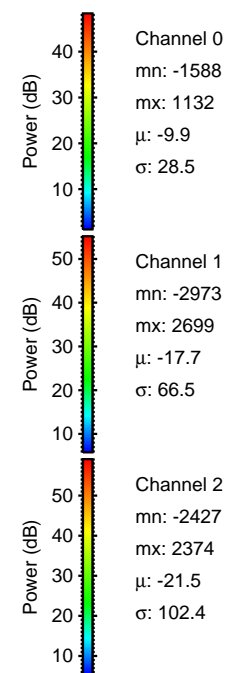
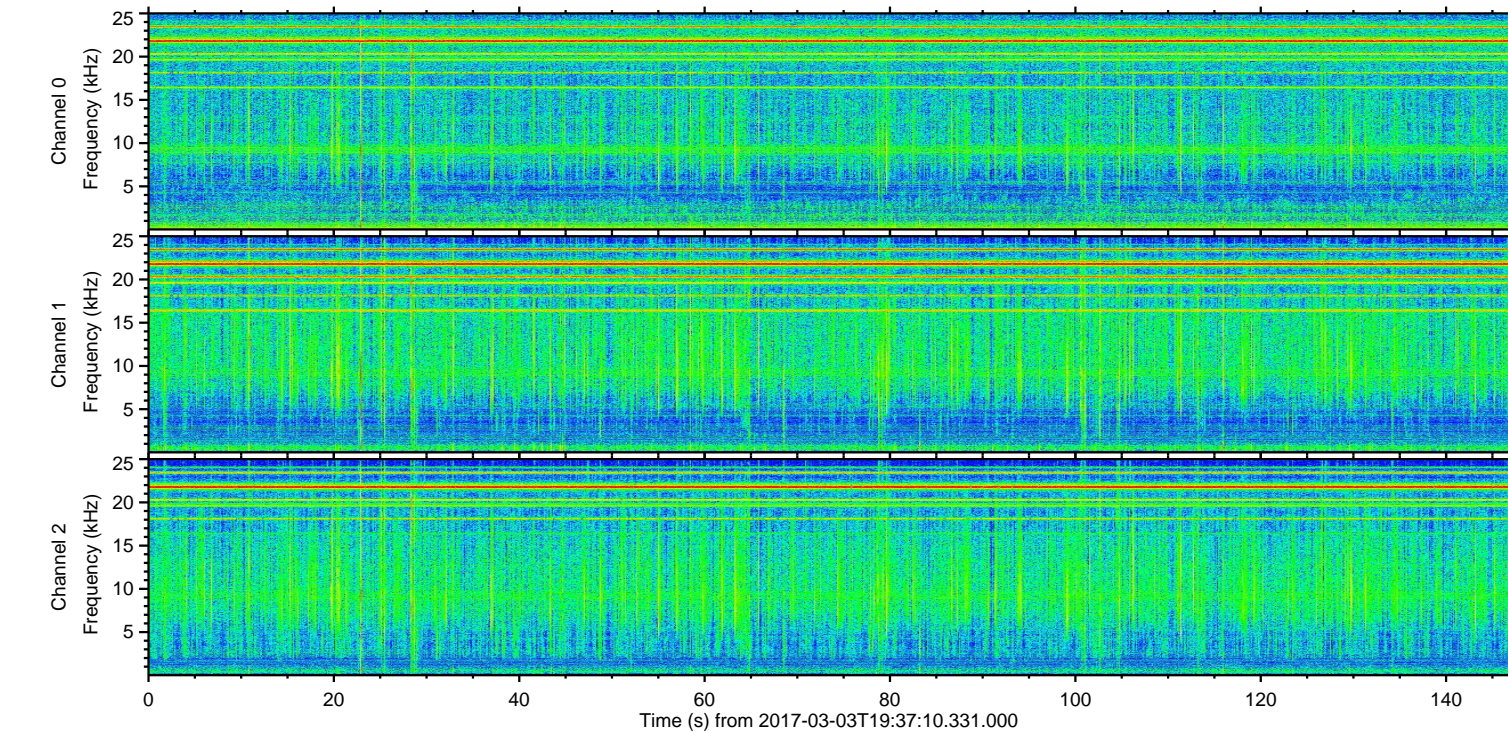
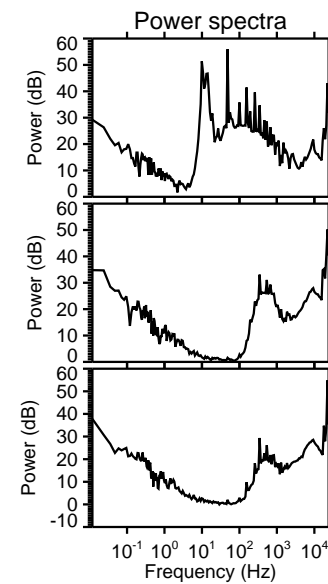
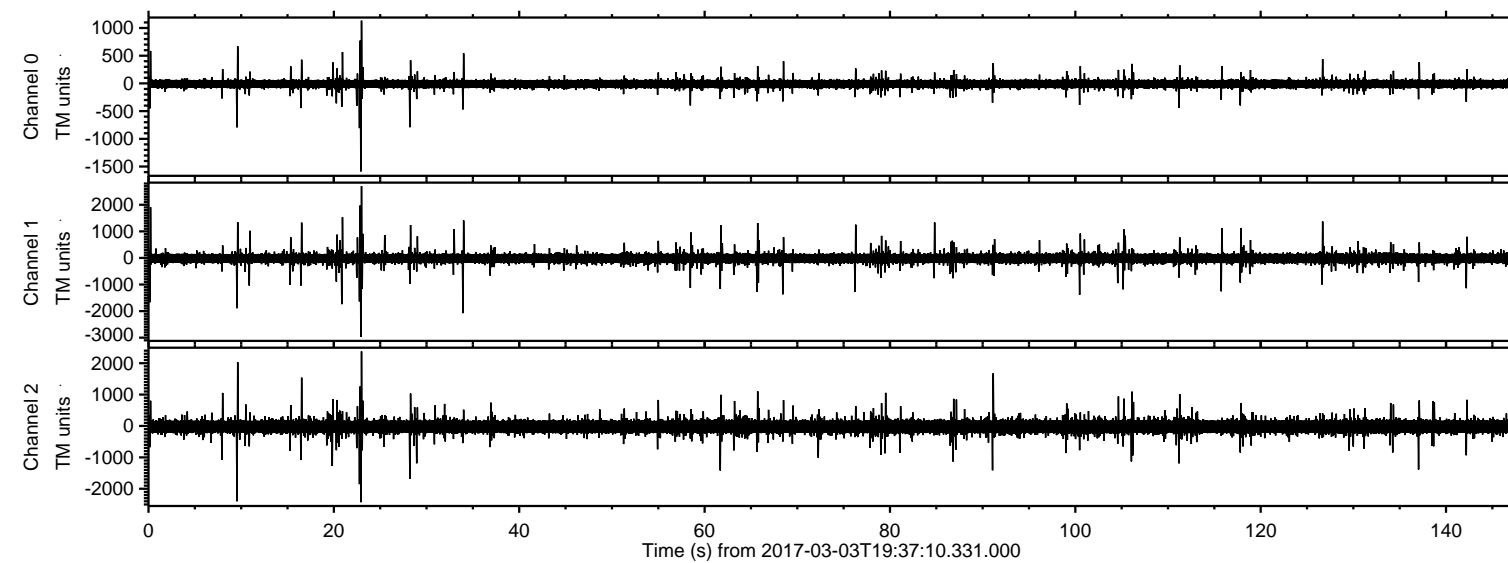


ELMAVAN 3D WAVEFORMS (Measured data sampled at 50 kHz) 51000 packets of 144 samples from 2017-03-03T19:37:10.331.000.

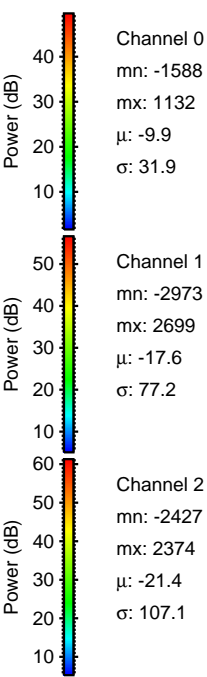
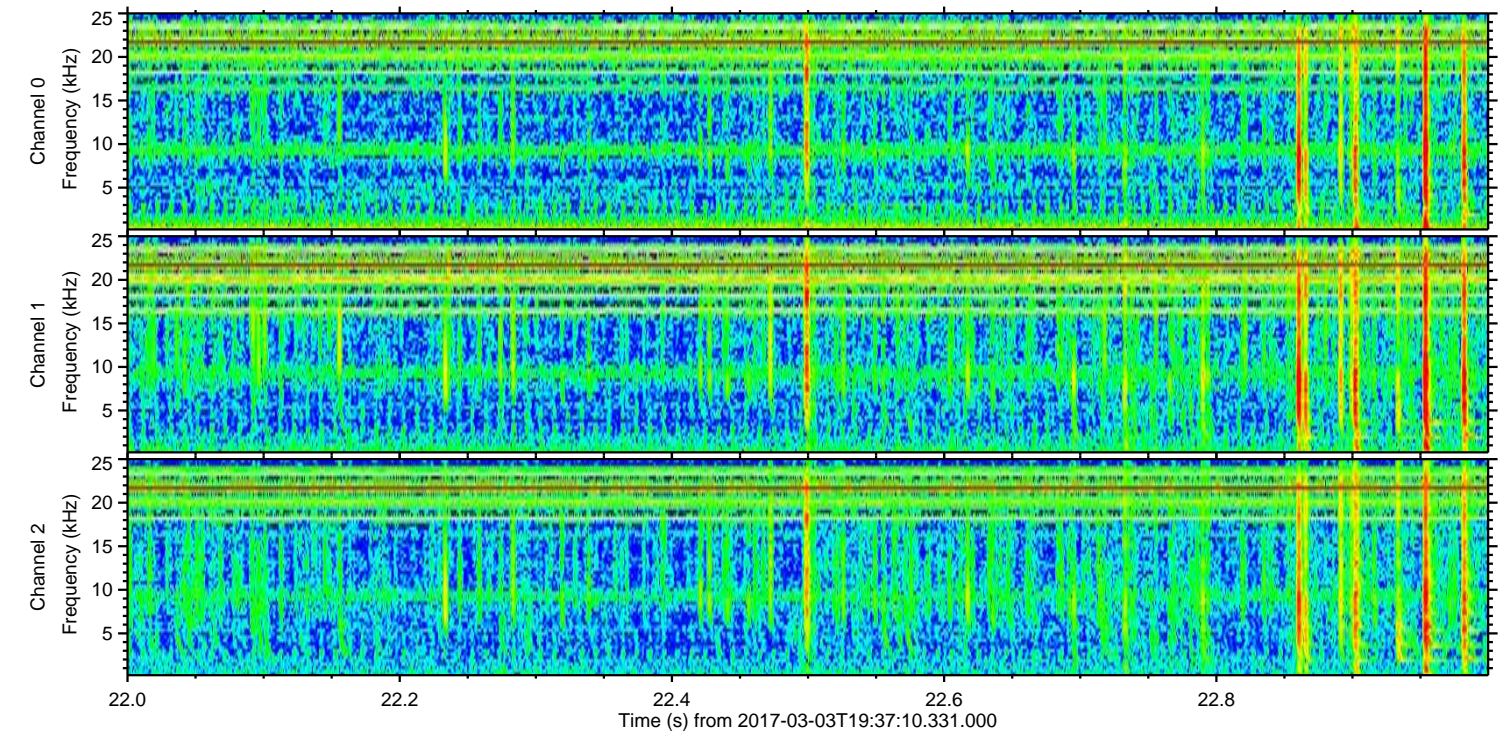
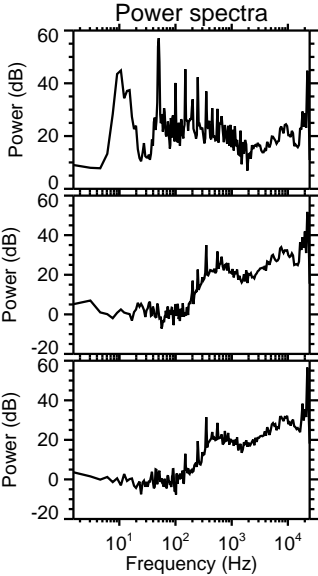
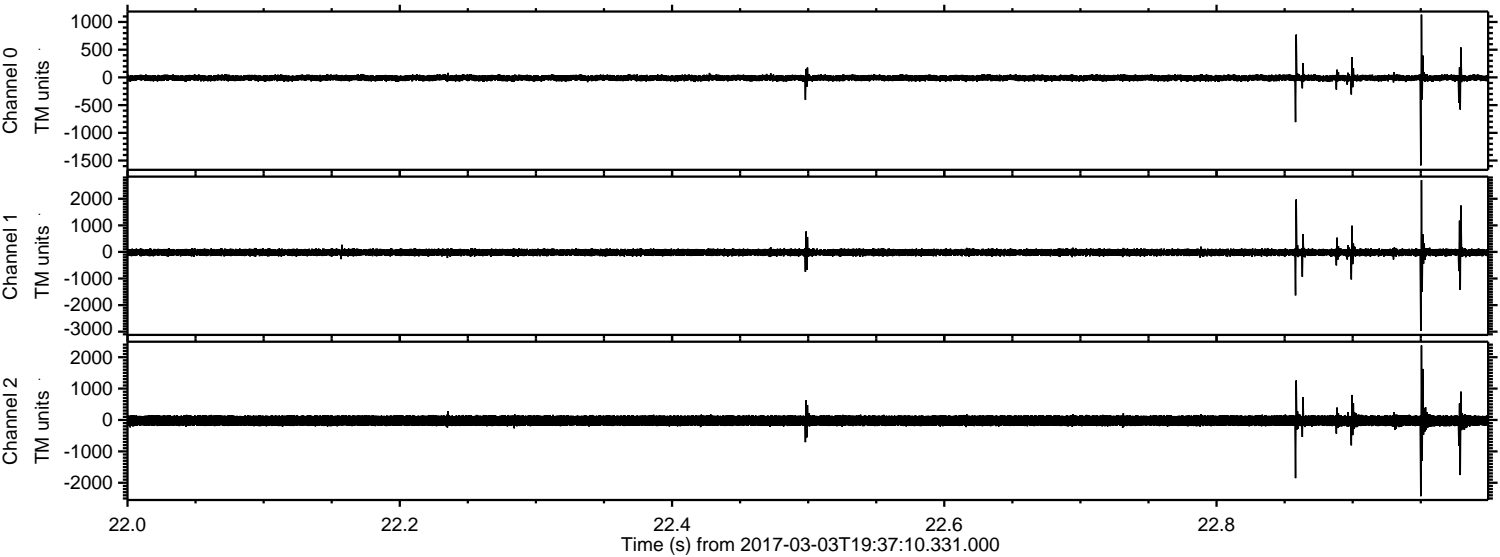
Processed Fri Mar 3 20:45:19 2017 by ELM ver.2012-10-06 from 001\_\_elm20170303\_193709\_\_dat00.bin





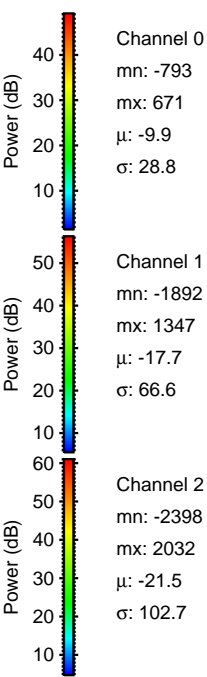
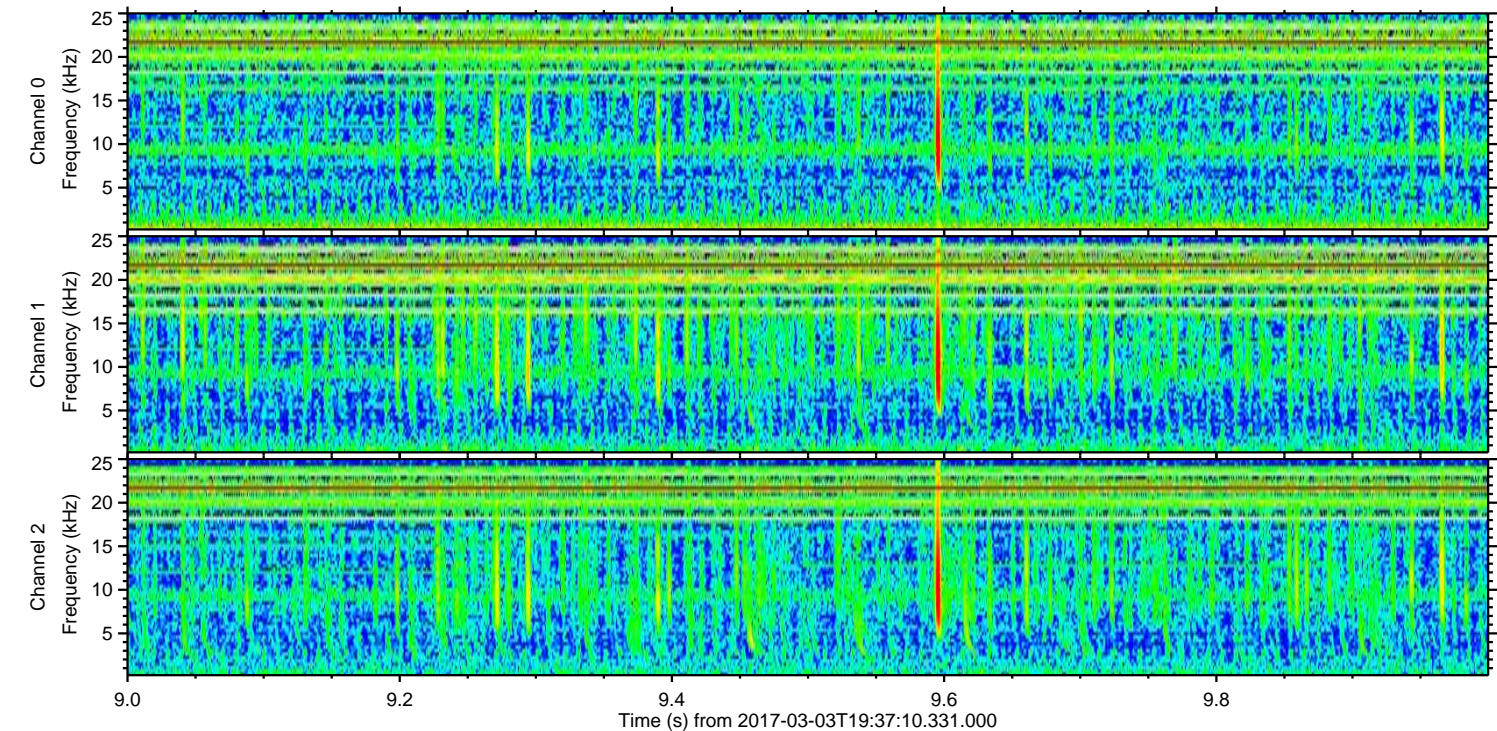
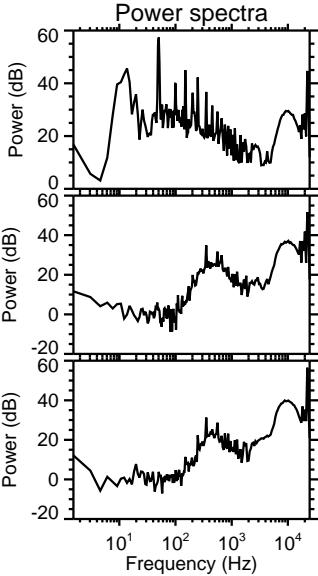
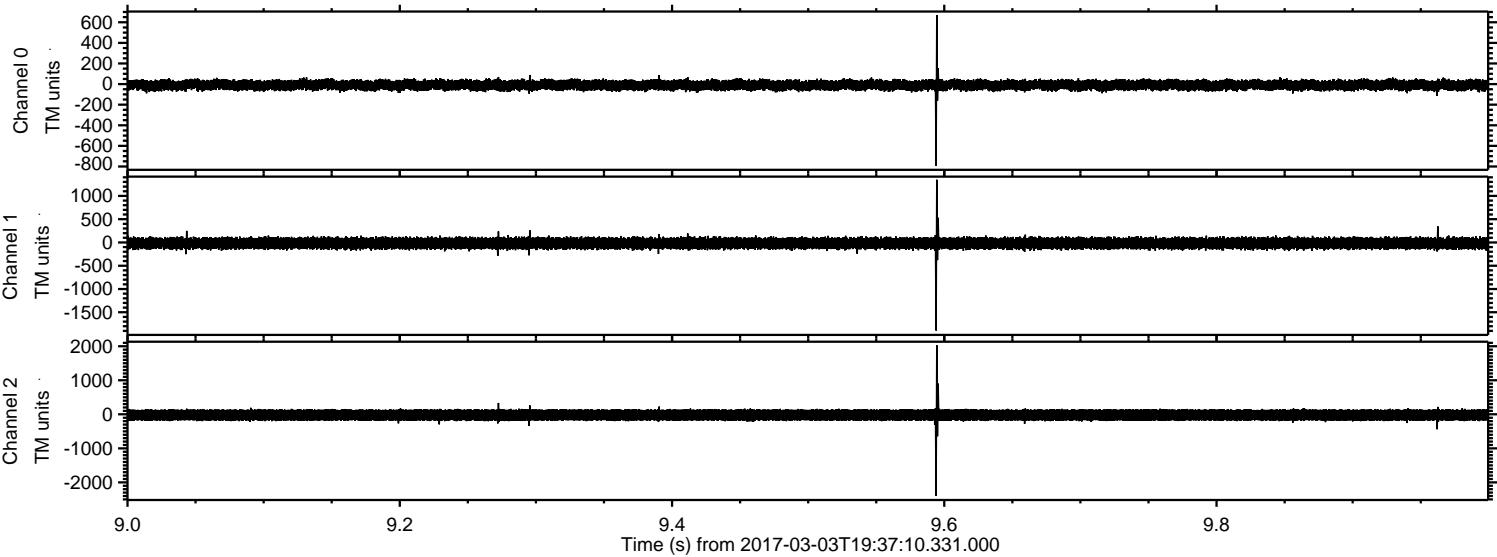
ELMAVAN 3D WAVEFORMS (Measured data sampled at 50 kHz) 51000 packets of 144 samples from 2017-03-03T19:37:10.331.000. Part 23/147

Processed Fri Mar 3 20:45:30 2017 by ELM ver.2012-10-06 from 001\_\_elm20170303\_193709\_\_dat00.bin





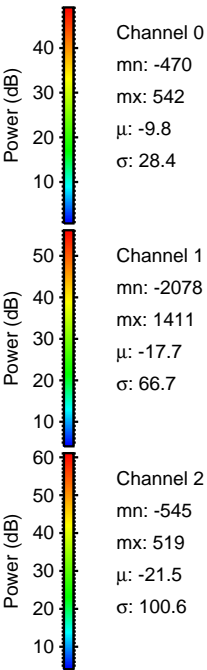
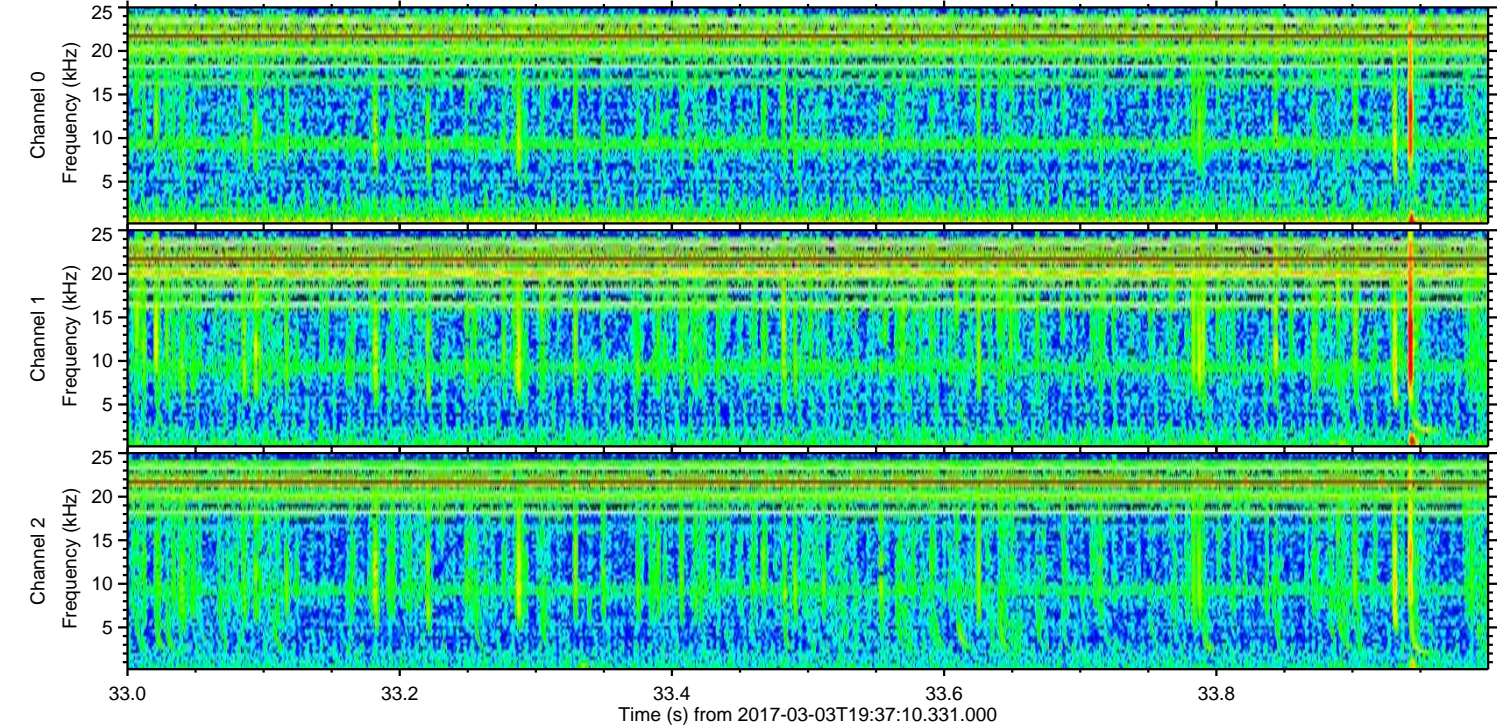
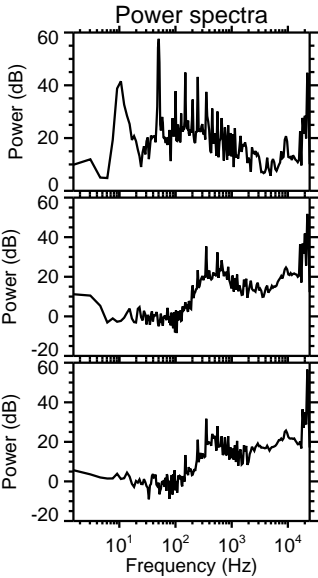
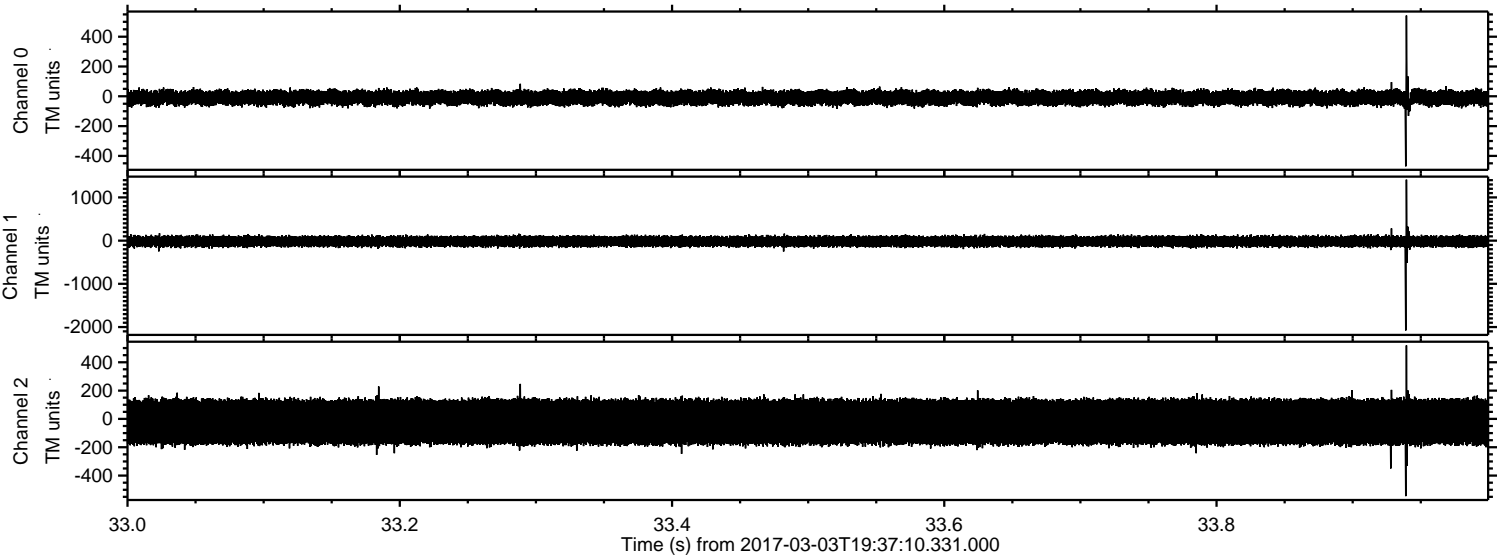
Processed Fri Mar 3 20:45:31 2017 by ELM ver.2012-10-06 from 001\_\_elm20170303\_193709\_\_dat00.bin





ELMAVAN 3D WAVEFORMS (Measured data sampled at 50 kHz) 51000 packets of 144 samples from 2017-03-03T19:37:10.331.000. Part 34/147

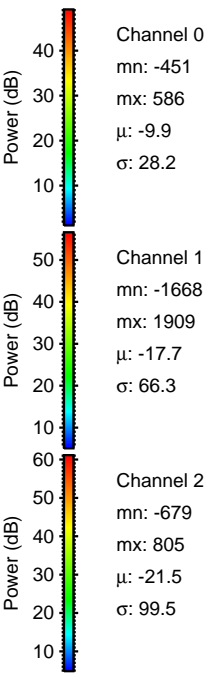
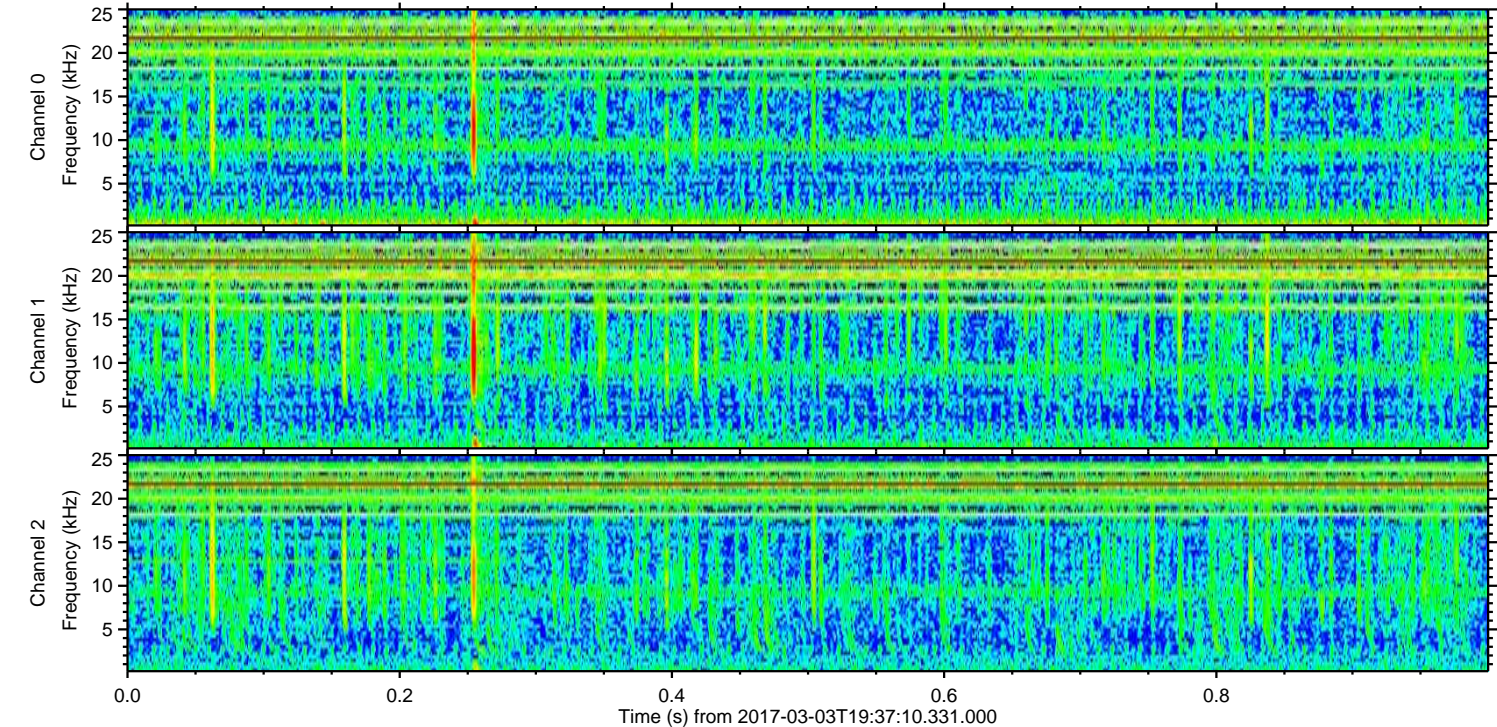
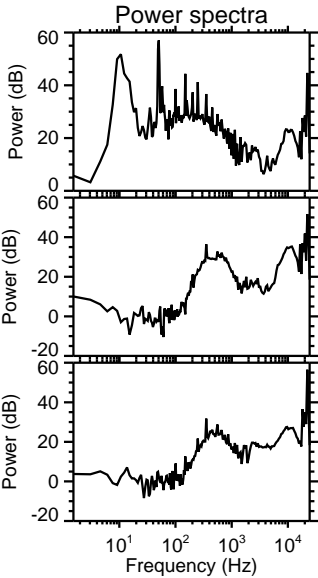
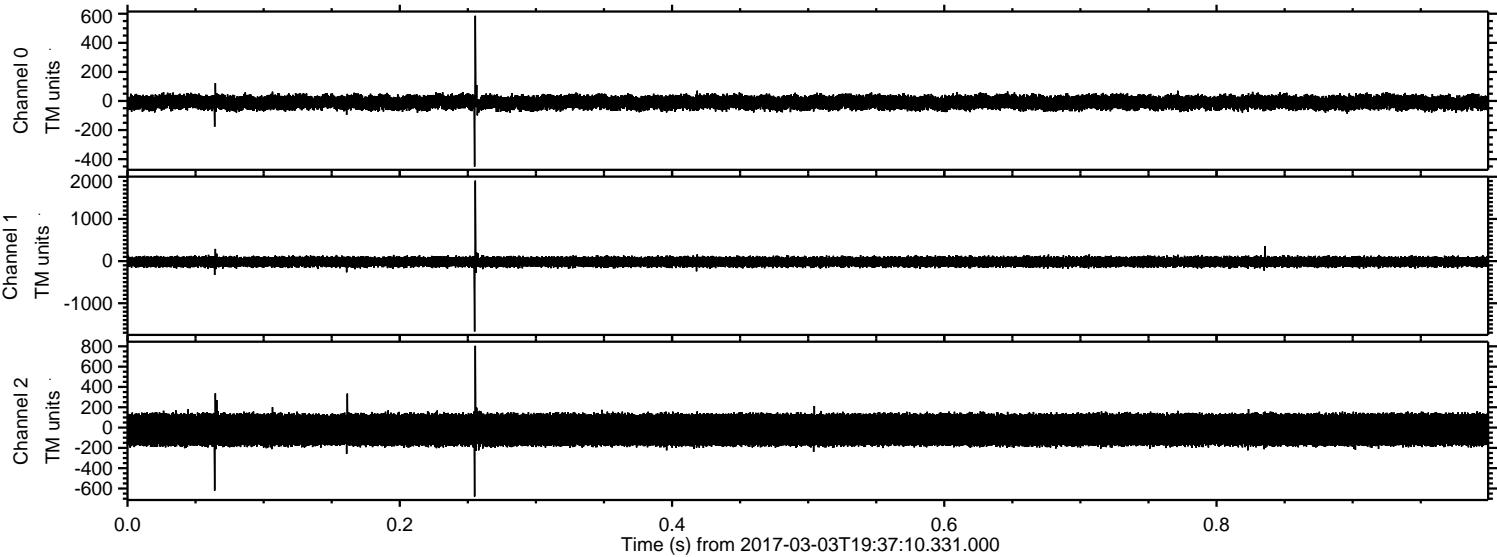
Processed Fri Mar 3 20:45:32 2017 by ELM ver.2012-10-06 from 001\_\_elm20170303\_193709\_\_dat00.bin





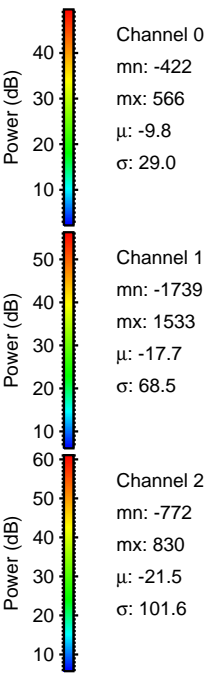
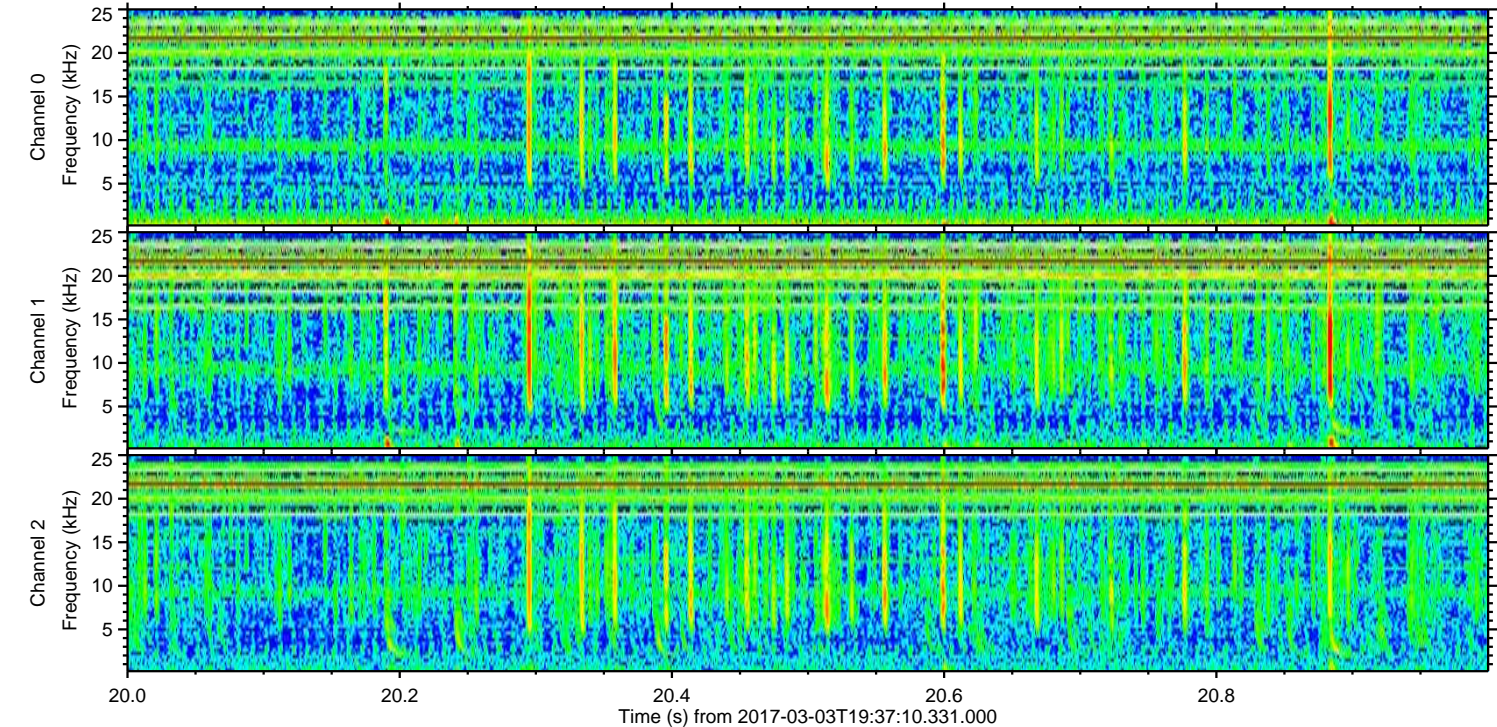
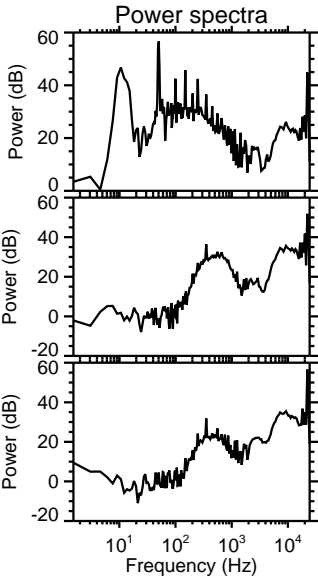
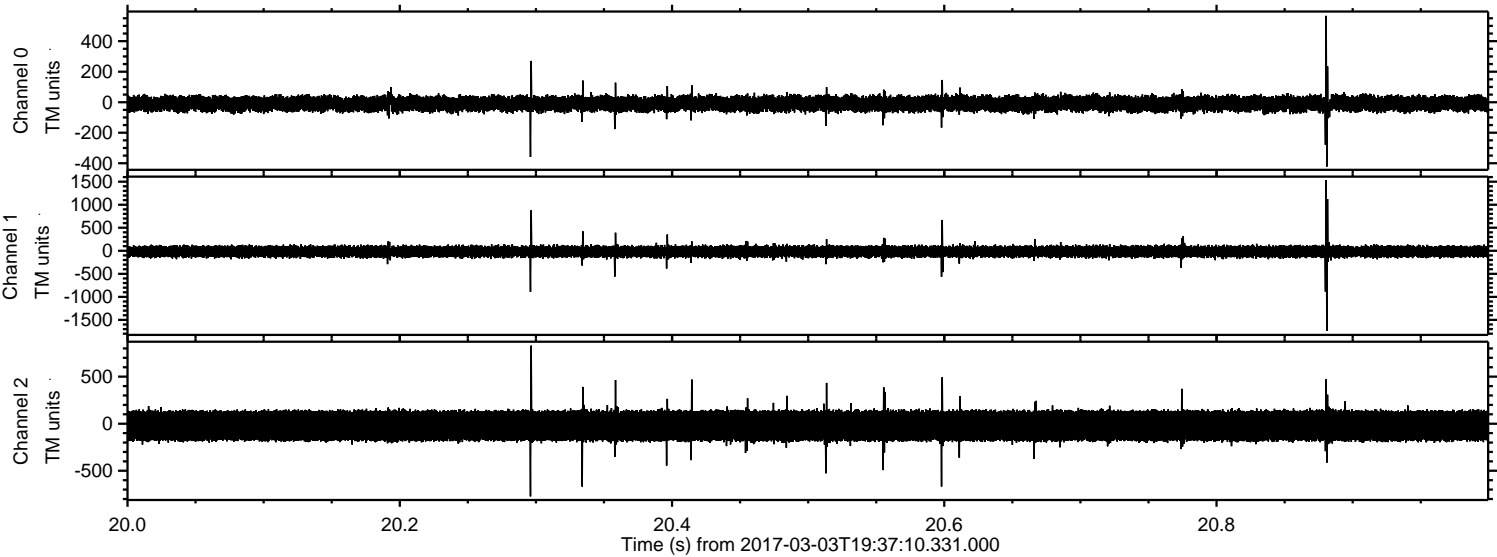
ELMAVAN 3D WAVEFORMS (Measured data sampled at 50 kHz) 51000 packets of 144 samples from 2017-03-03T19:37:10.331.000. Part 1/147

Processed Fri Mar 3 20:45:33 2017 by ELM ver.2012-10-06 from 001\_\_elm20170303\_193709\_\_dat00.bin





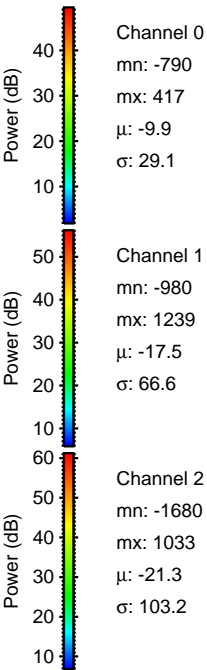
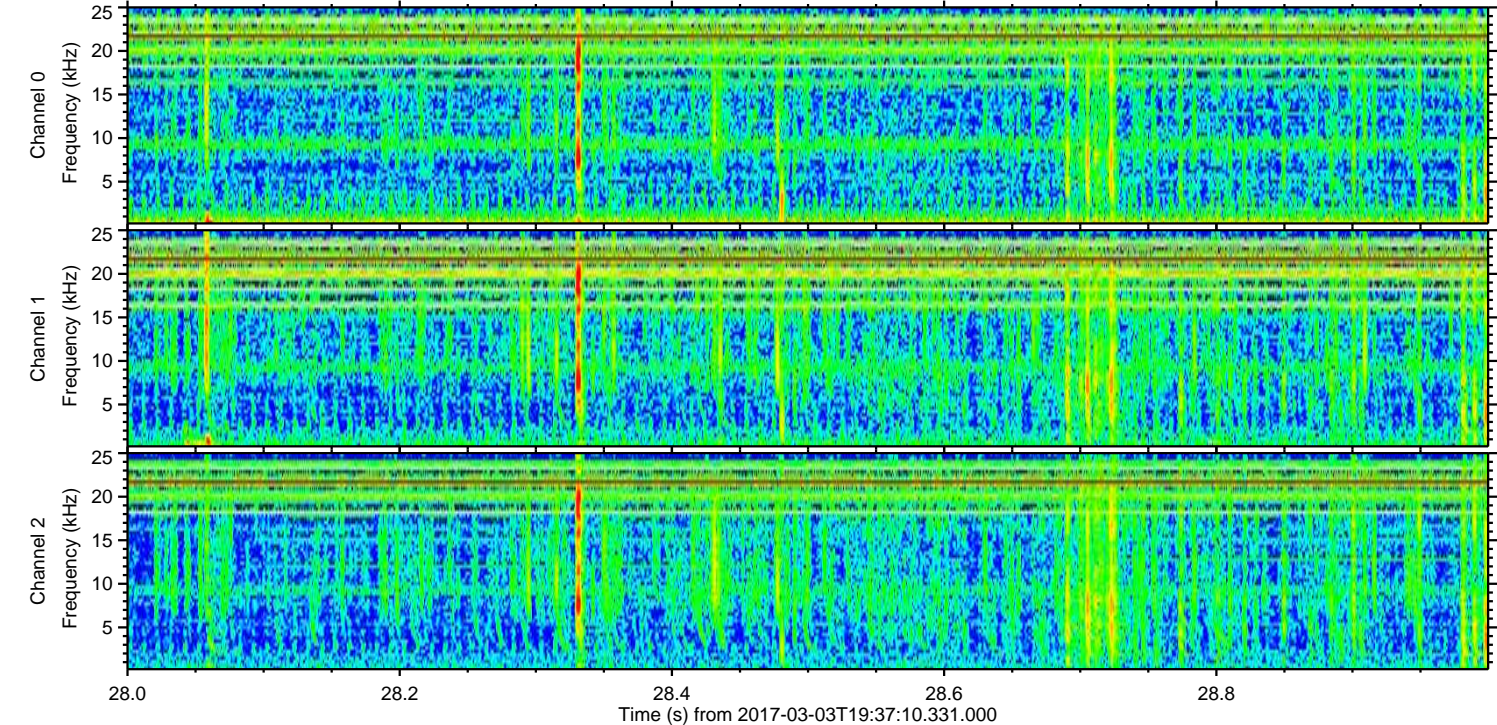
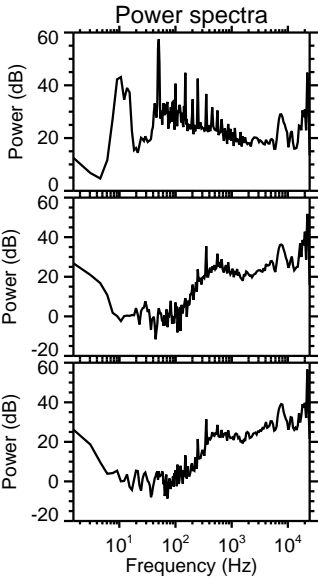
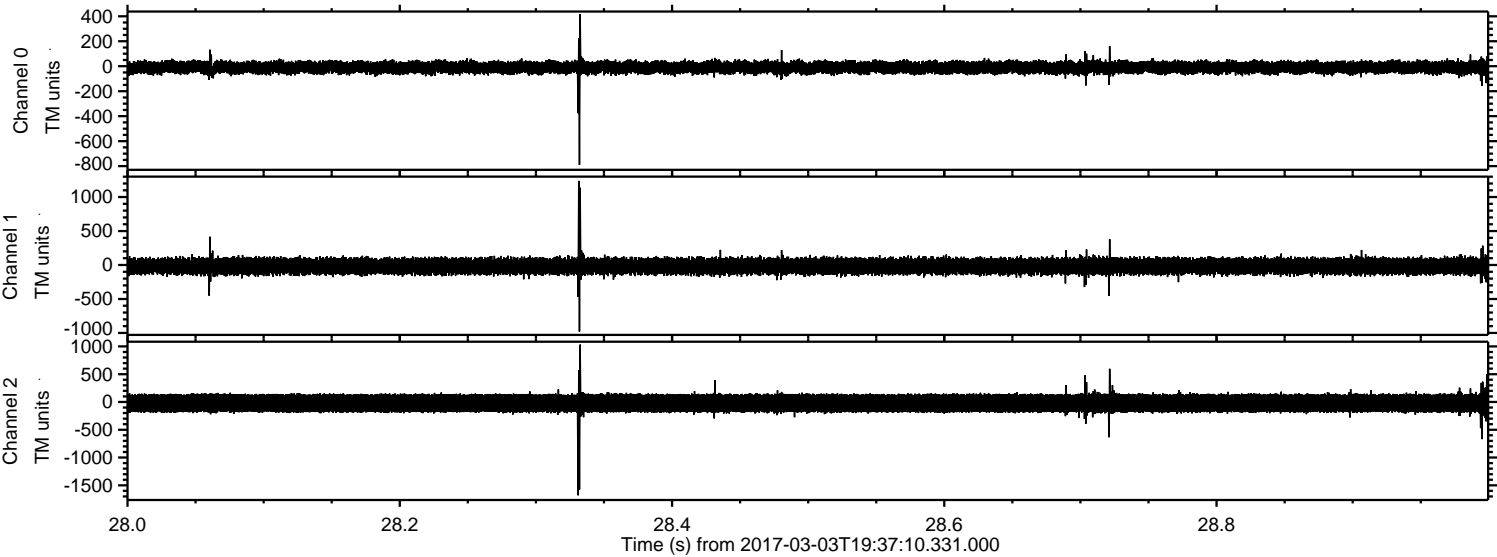
Processed Fri Mar 3 20:45:34 2017 by ELM ver.2012-10-06 from 001\_\_elm20170303\_193709\_\_dat00.bin





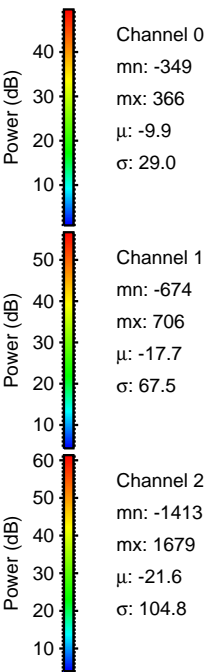
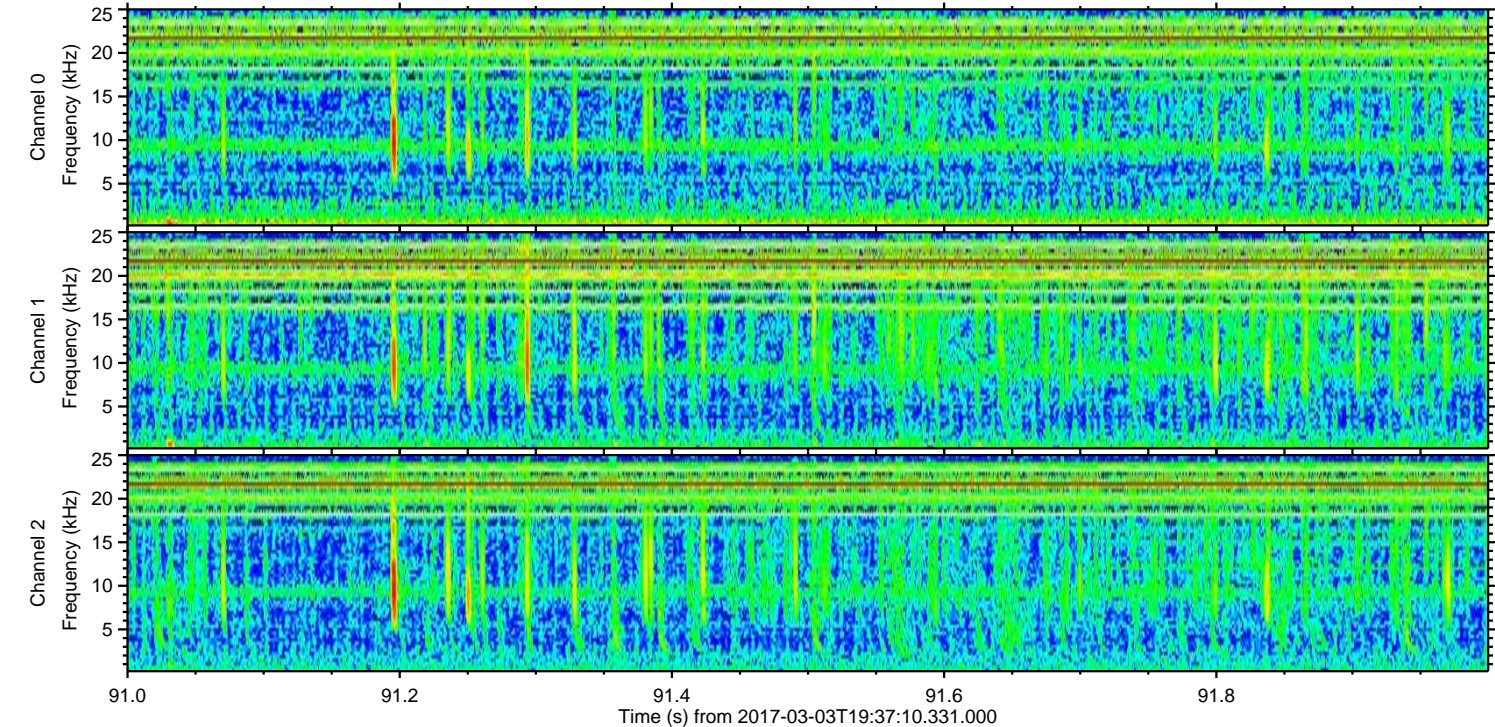
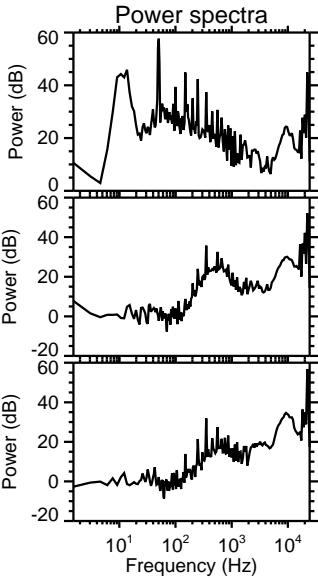
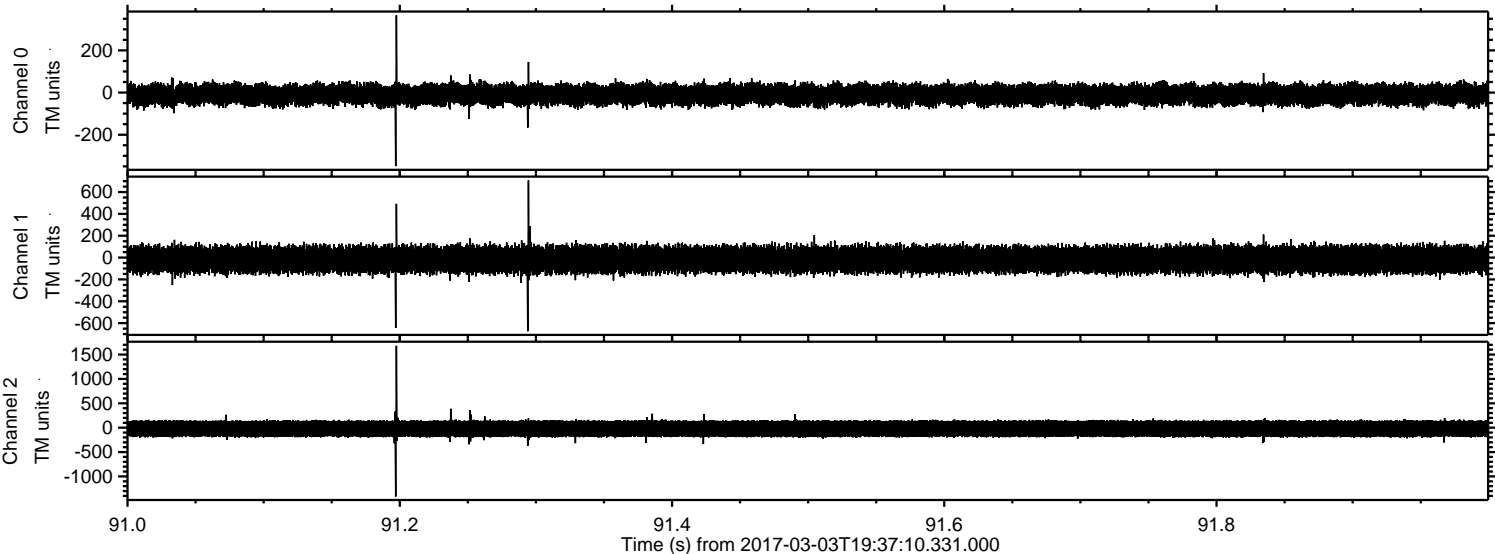
ELMAVAN 3D WAVEFORMS (Measured data sampled at 50 kHz) 51000 packets of 144 samples from 2017-03-03T19:37:10.331.000. Part 29/147

Processed Fri Mar 3 20:45:35 2017 by ELM ver.2012-10-06 from 001\_\_elm20170303\_193709\_\_dat00.bin





Processed Fri Mar 3 20:45:36 2017 by ELM ver.2012-10-06 from 001\_\_elm20170303\_193709\_\_dat00.bin



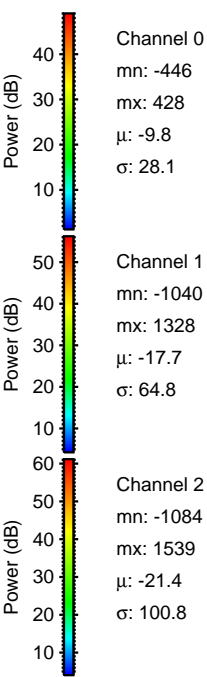
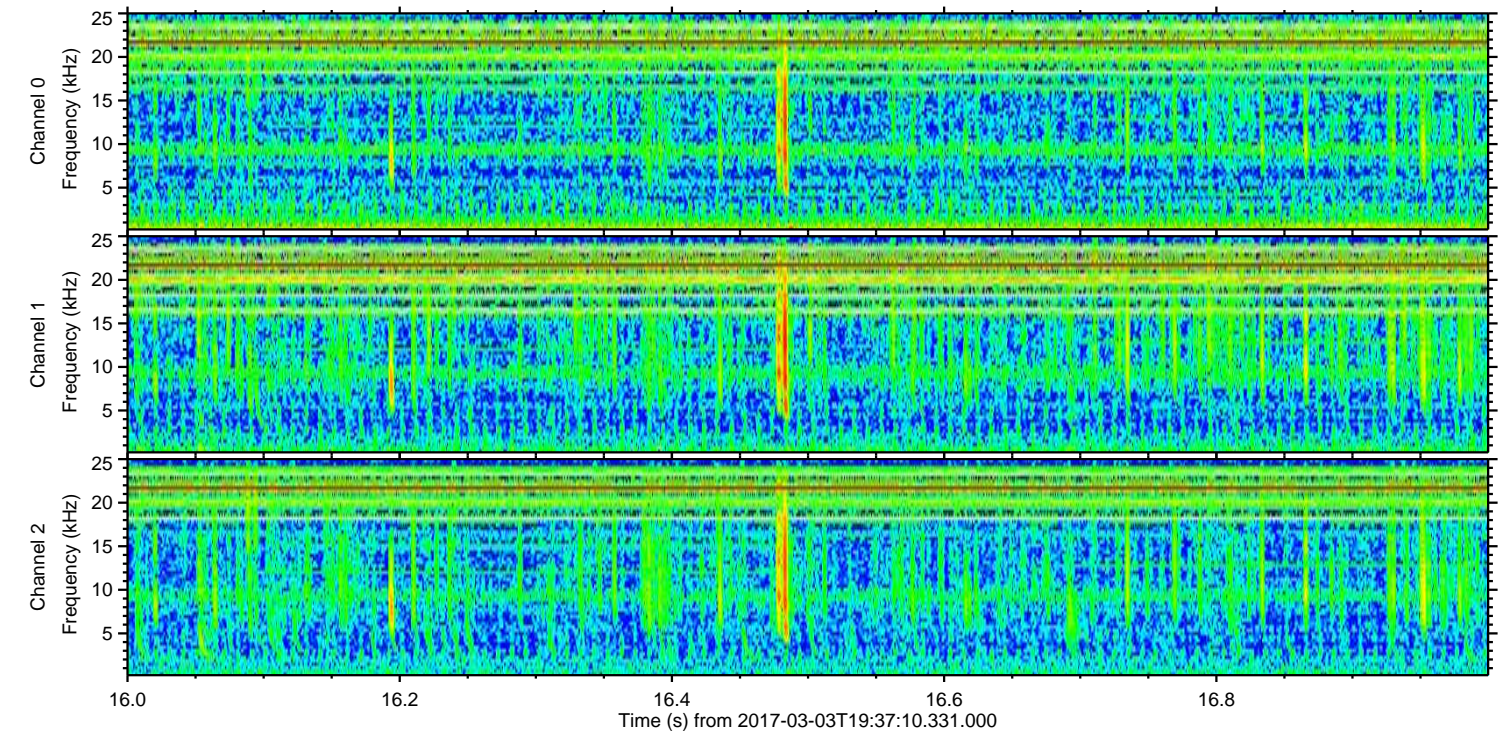
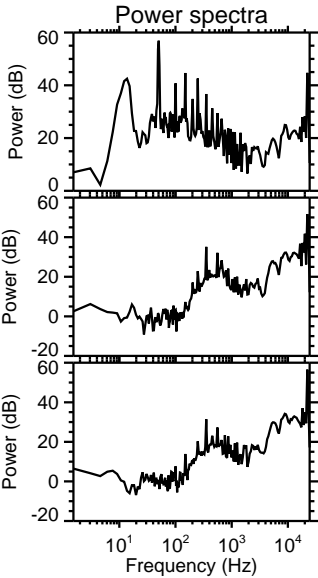
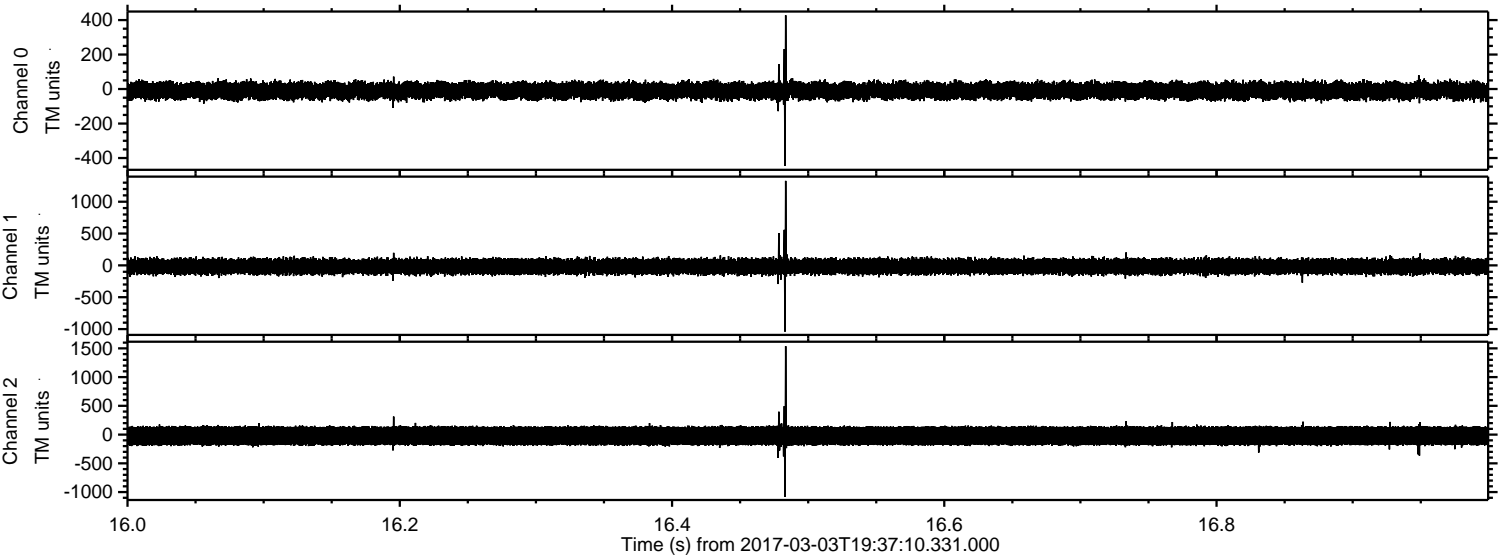
Channel 0  
mn: -349  
mx: 366  
 $\mu$ : -9.9  
 $\sigma$ : 29.0

Channel 1  
mn: -674  
mx: 706  
 $\mu$ : -17.7  
 $\sigma$ : 67.5

Channel 2  
mn: -1413  
mx: 1679  
 $\mu$ : -21.6  
 $\sigma$ : 104.8



Processed Fri Mar 3 20:45:37 2017 by ELM ver.2012-10-06 from 001\_\_elm20170303\_193709\_\_dat00.bin



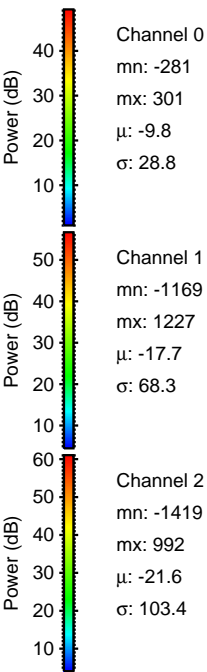
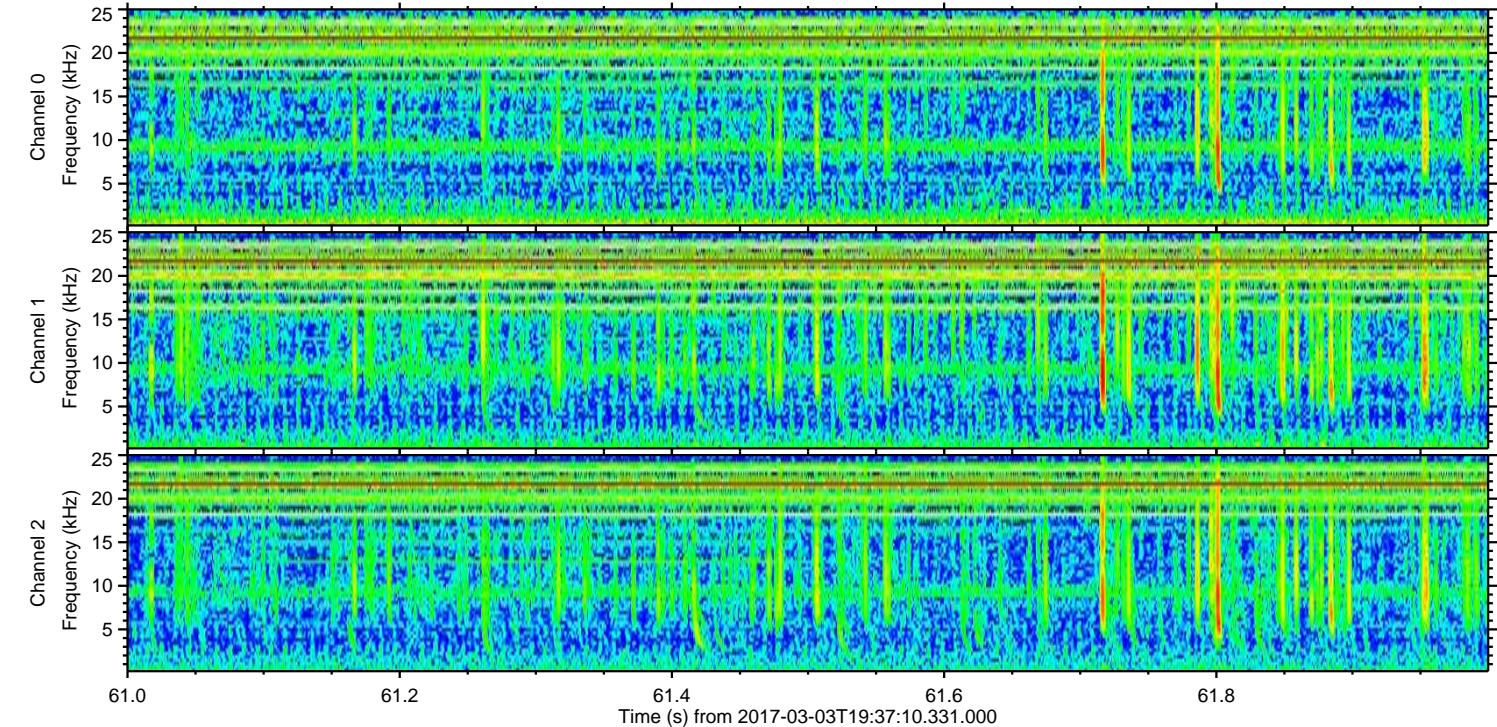
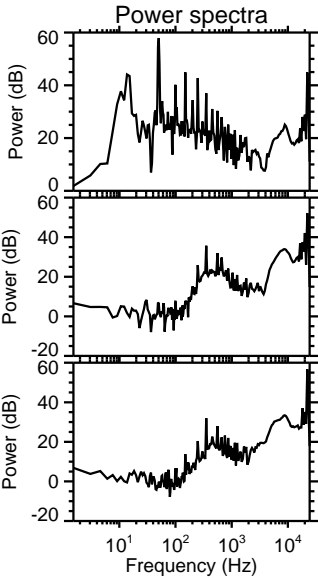
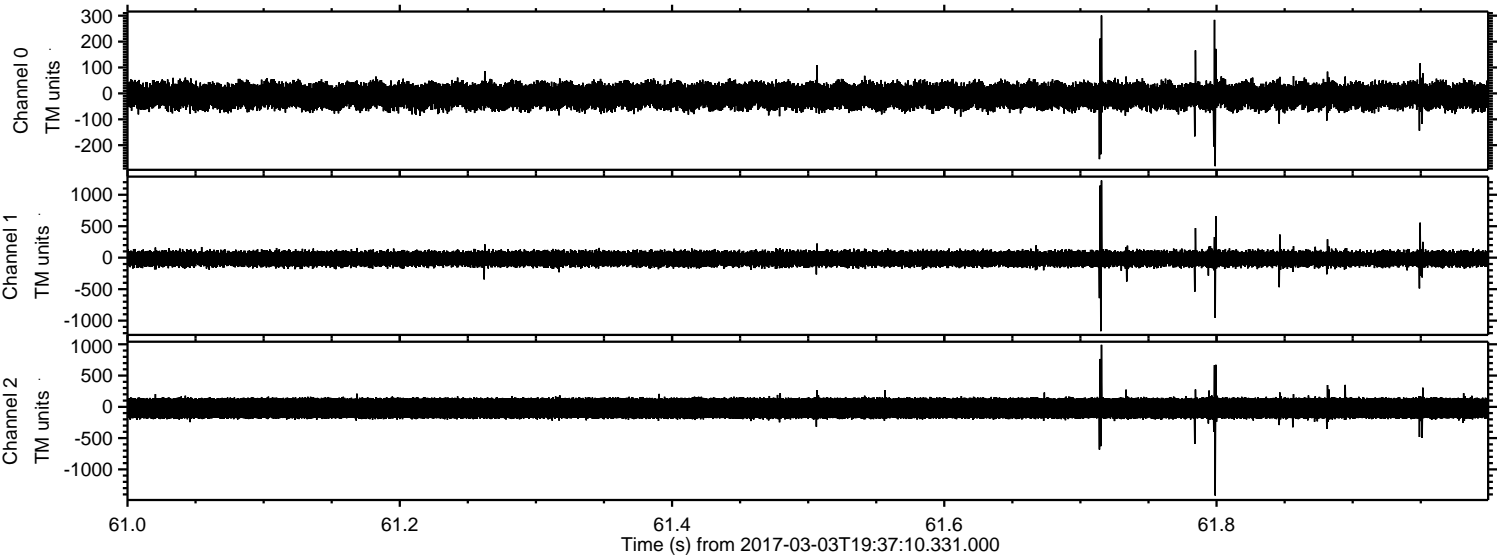
Channel 0  
mn: -446  
mx: 428  
 $\mu$ : -9.8  
 $\sigma$ : 28.1

Channel 1  
mn: -1040  
mx: 1328  
 $\mu$ : -17.7  
 $\sigma$ : 64.8

Channel 2  
mn: -1084  
mx: 1539  
 $\mu$ : -21.4  
 $\sigma$ : 100.8



Processed Fri Mar 3 20:45:38 2017 by ELM ver.2012-10-06 from 001\_\_elm20170303\_193709\_\_dat00.bin





Processed Fri Mar 3 20:45:39 2017 by ELM ver.2012-10-06 from 001\_\_elm20170303\_193709\_\_dat00.bin

