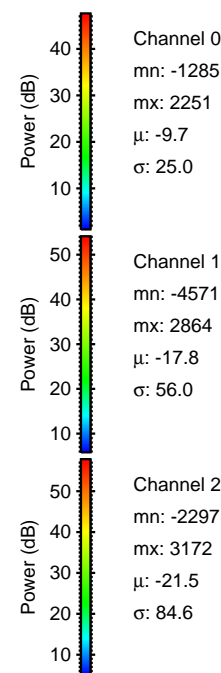
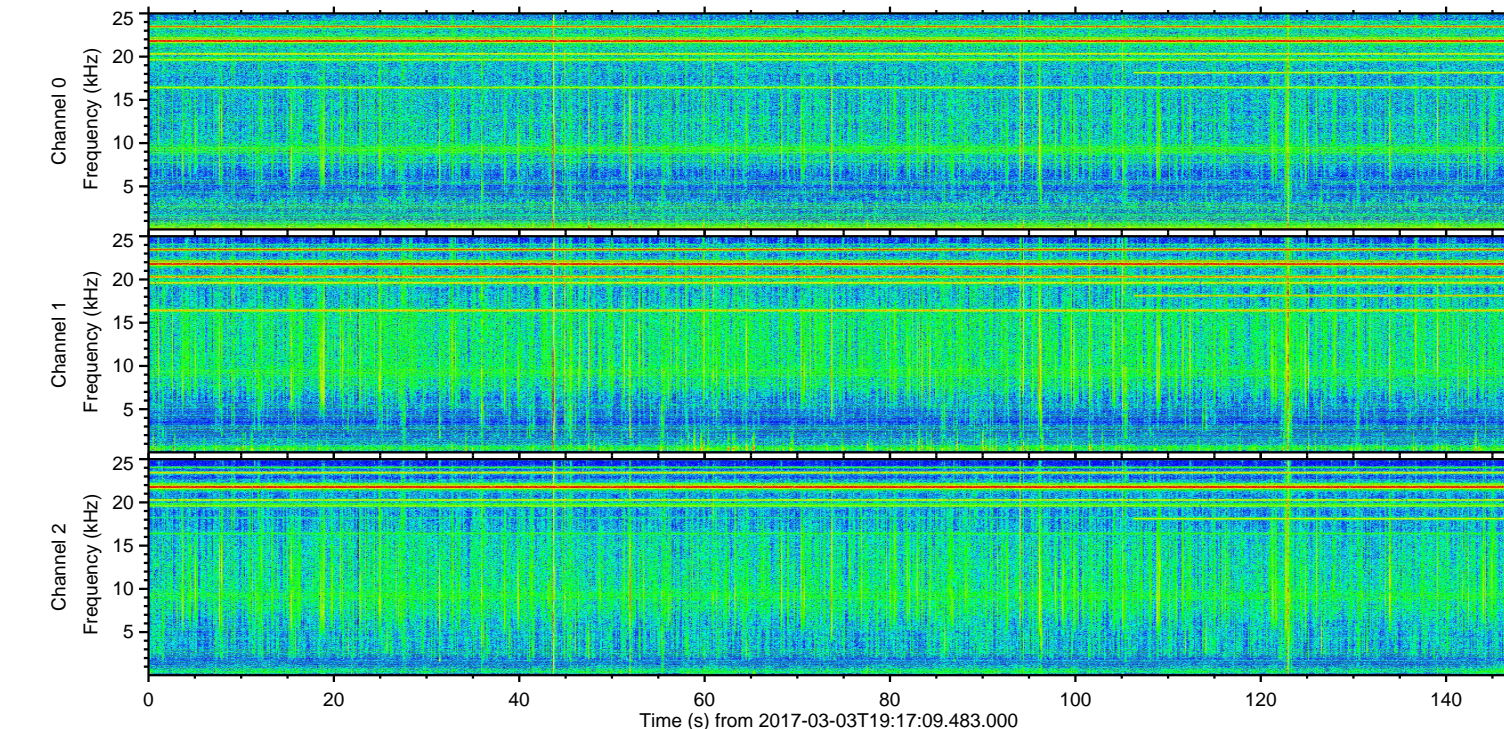
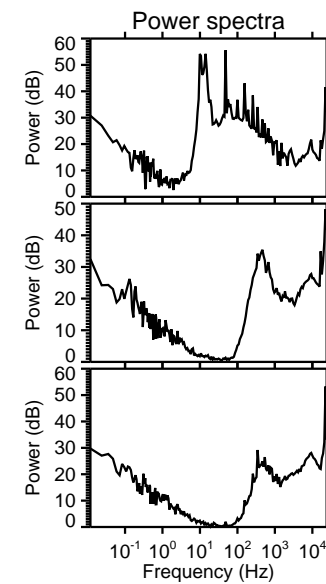
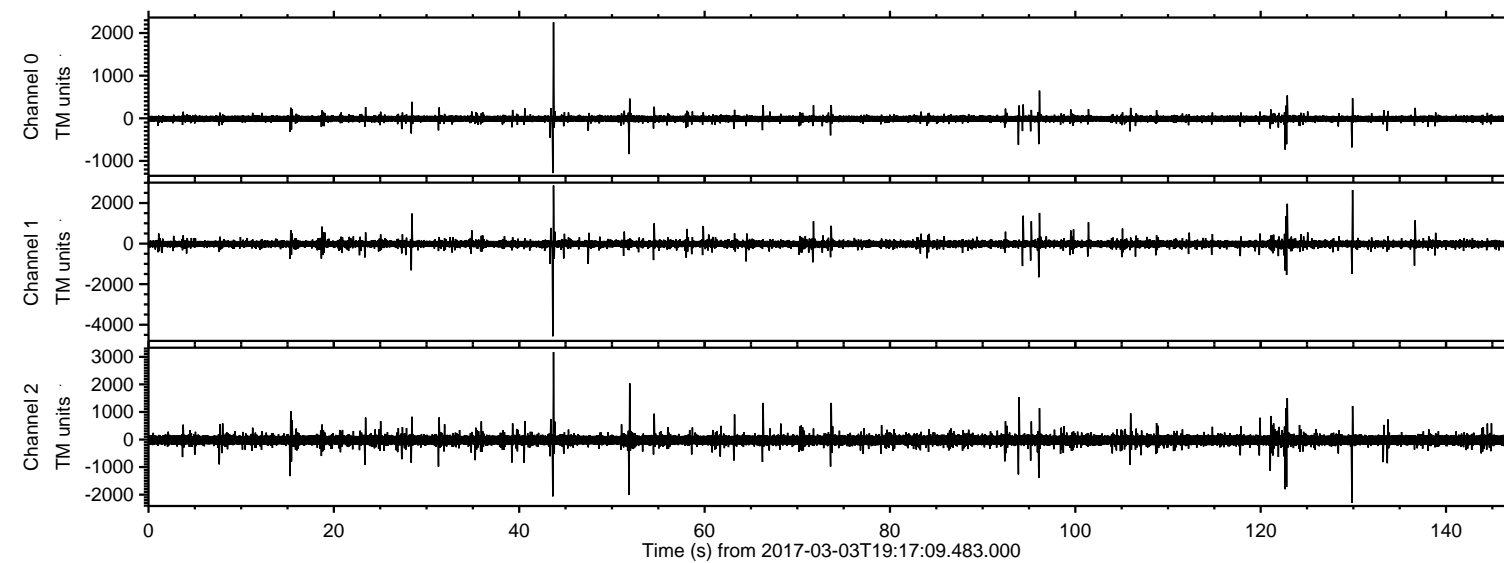
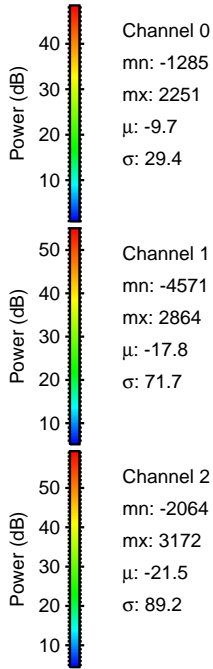
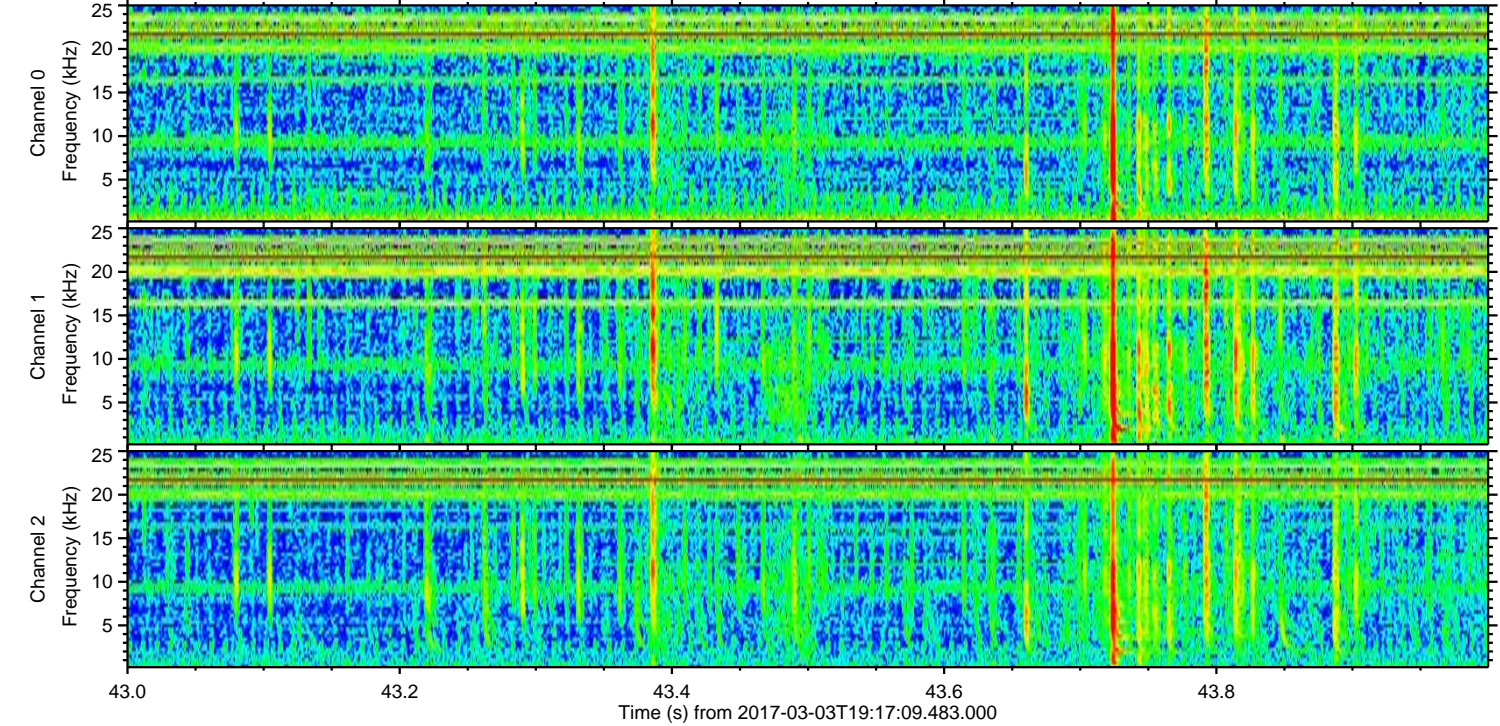
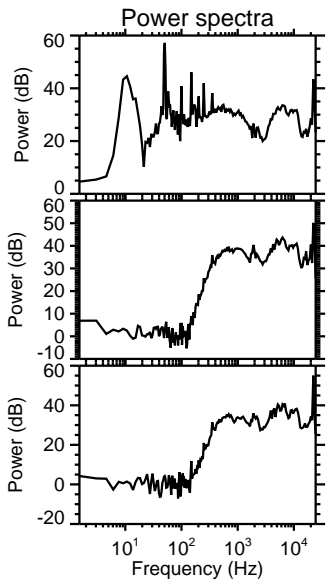
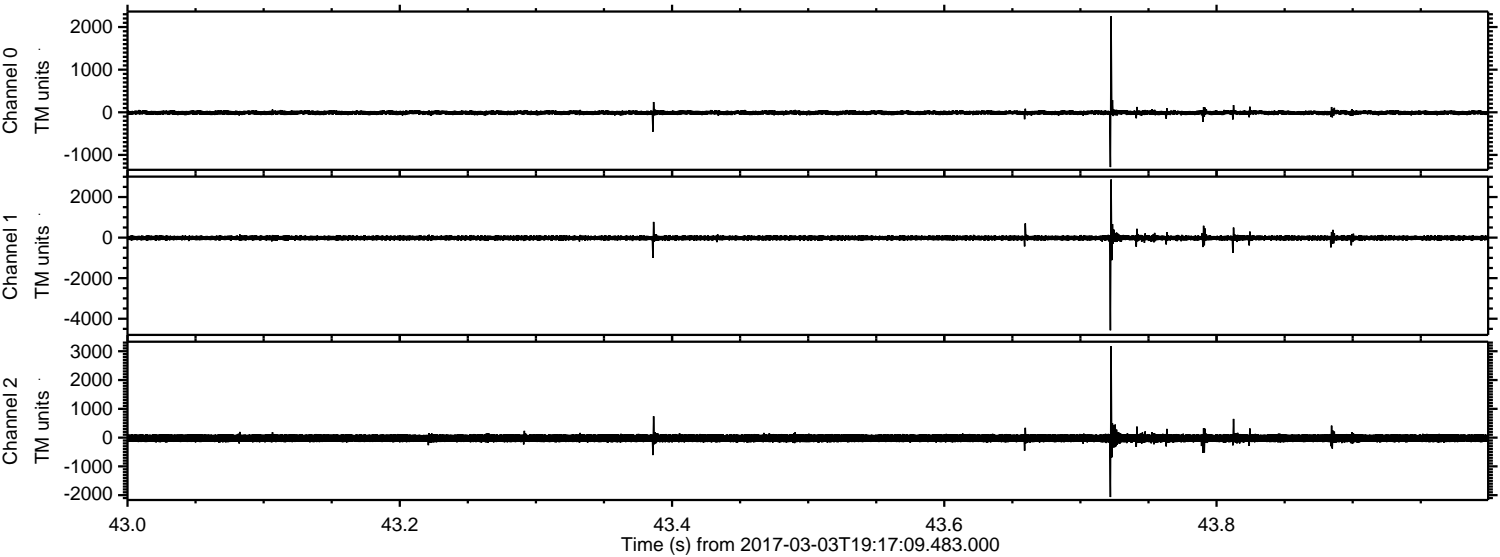


ELMAVAN 3D WAVEFORMS (Measured data sampled at 50 kHz) 51000 packets of 144 samples from 2017-03-03T19:17:09.483.000.

Processed Fri Mar 3 20:24:33 2017 by ELM ver.2012-10-06 from 001__elm20170303_191708__dat00.bin

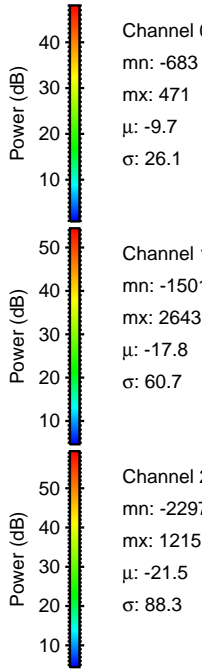
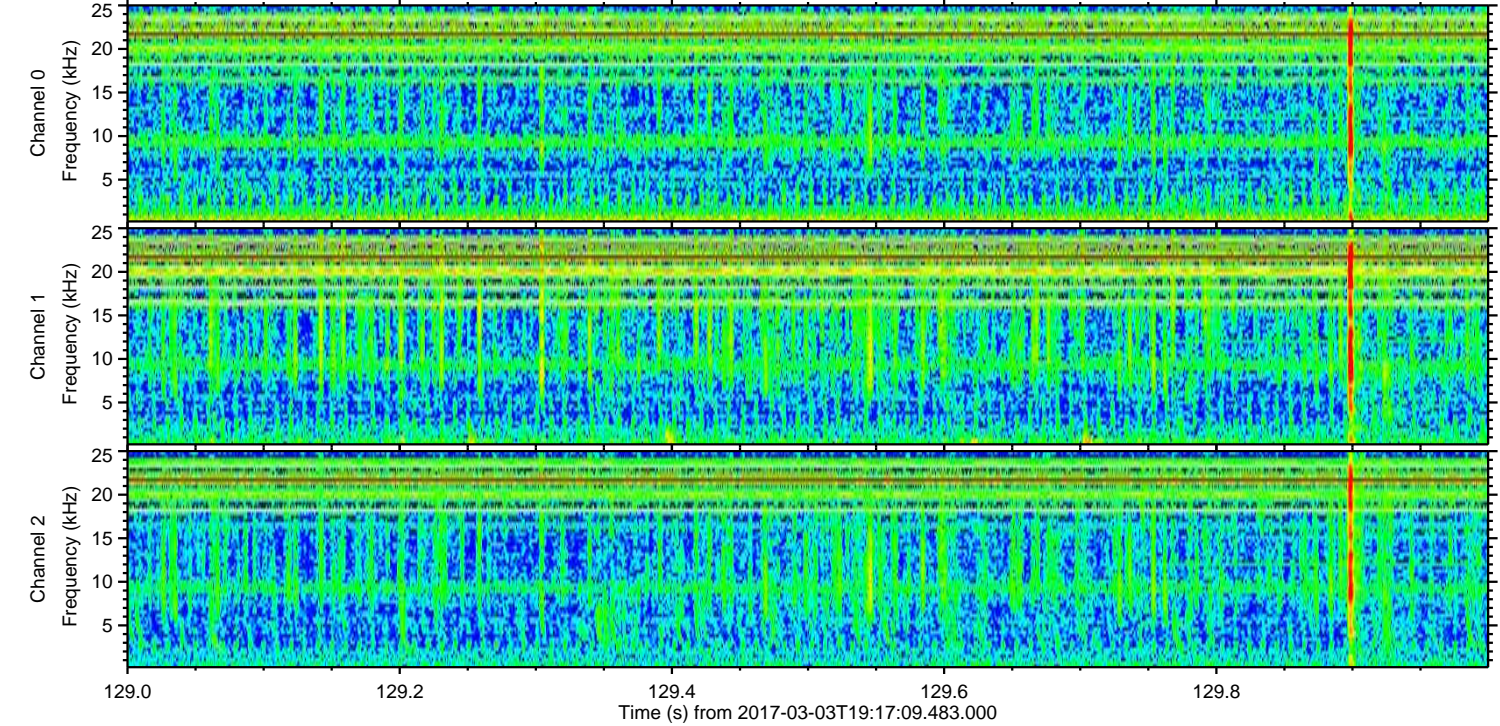
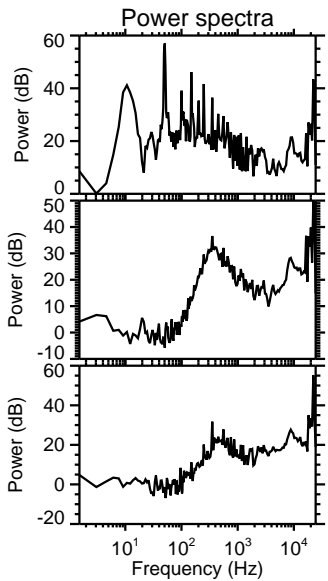
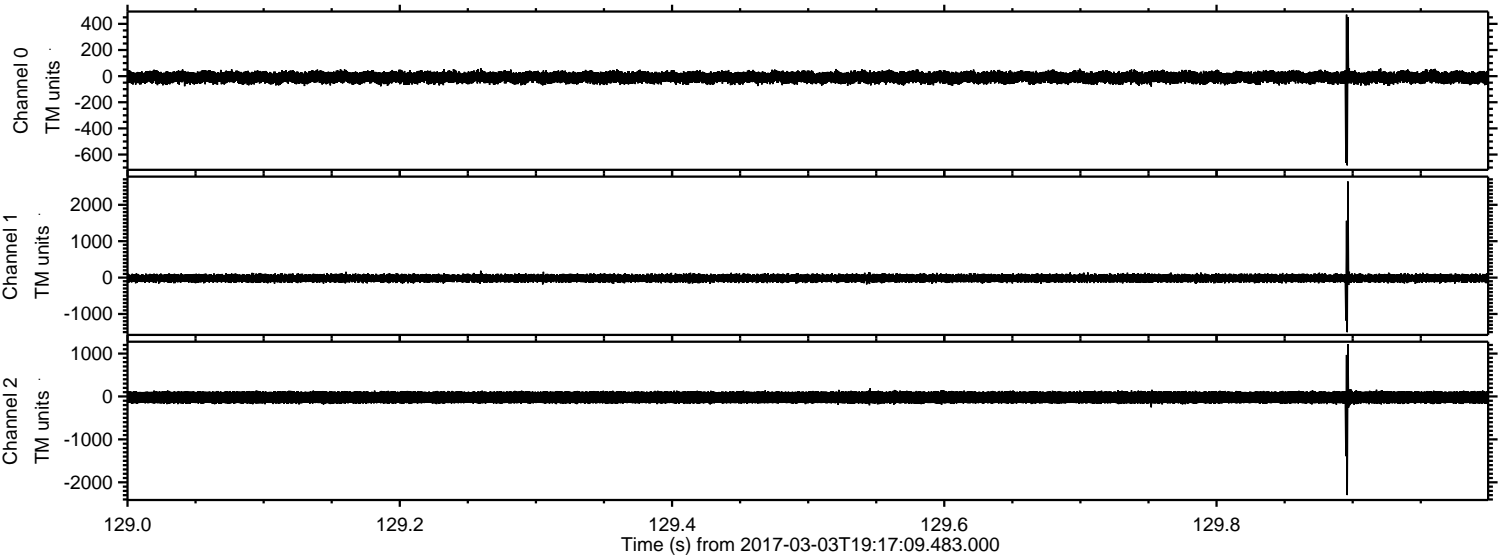


Processed Fri Mar 3 20:24:45 2017 by ELM ver.2012-10-06 from 001__elm20170303_191708__dat00.bin



ELMAVAN 3D WAVEFORMS (Measured data sampled at 50 kHz) 51000 packets of 144 samples from 2017-03-03T19:17:09.483.000. Part 130/147

Processed Fri Mar 3 20:24:46 2017 by ELM ver.2012-10-06 from 001__elm20170303_191708__dat00.bin

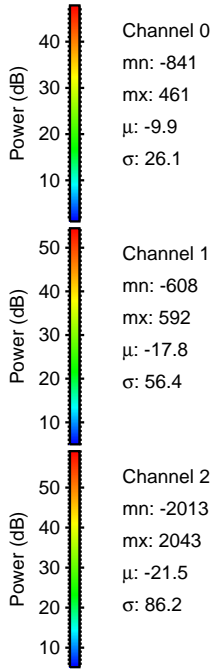
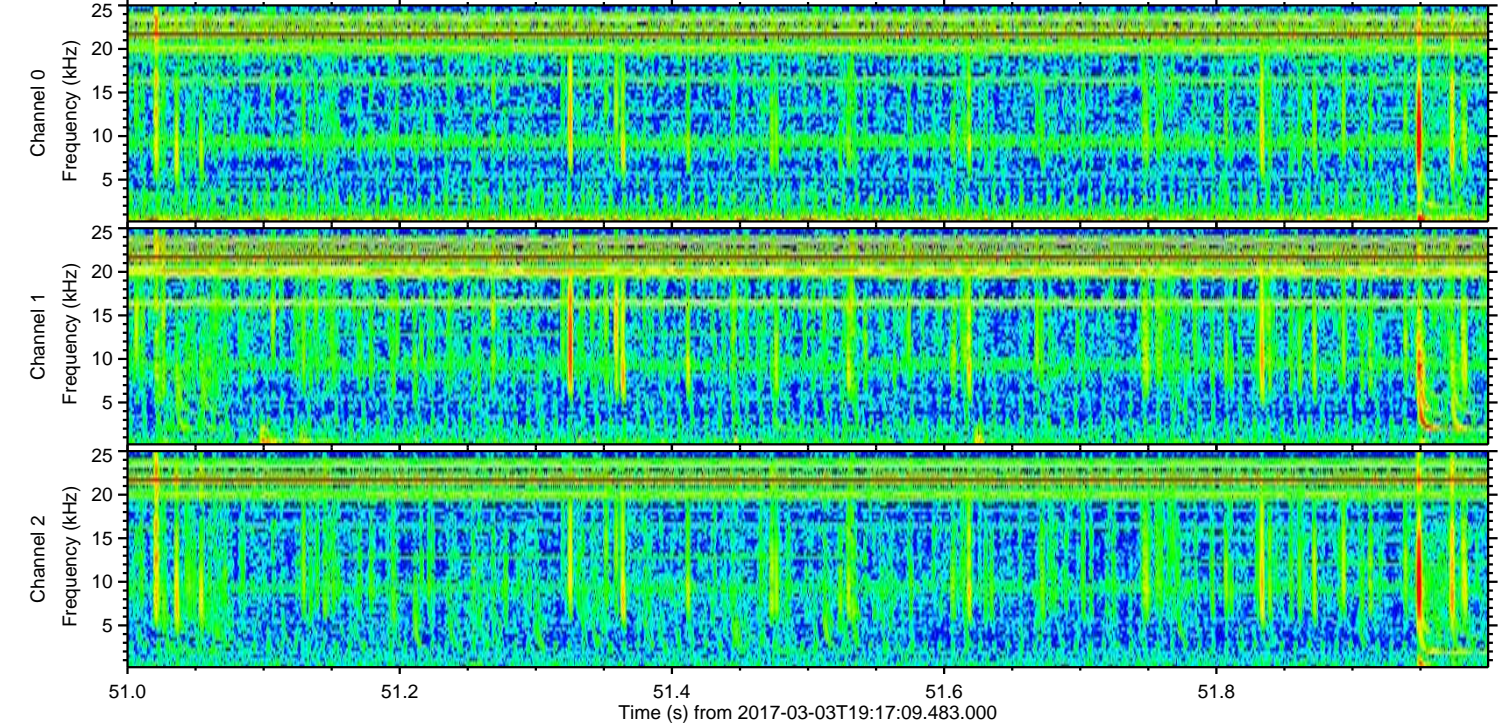
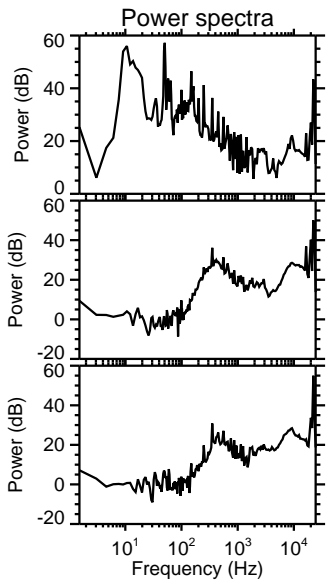
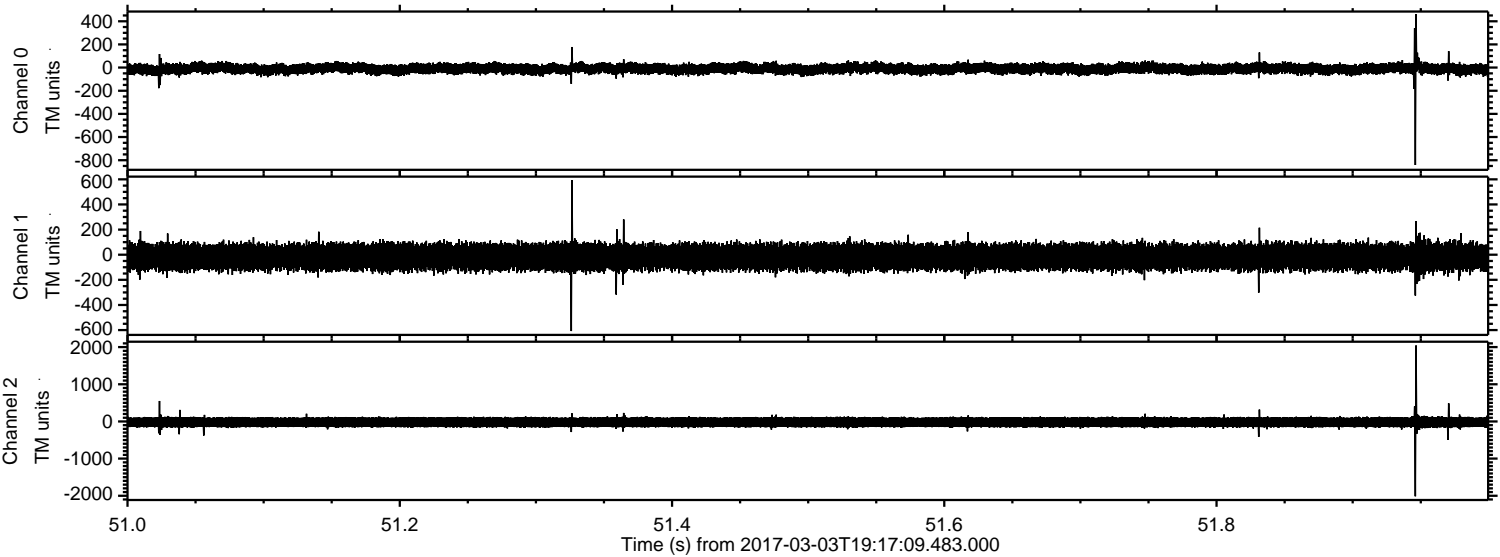


Channel 0
mn: -683
mx: 471
 μ : -9.7
 σ : 26.1

Channel 1
mn: -1501
mx: 2643
 μ : -17.8
 σ : 60.7

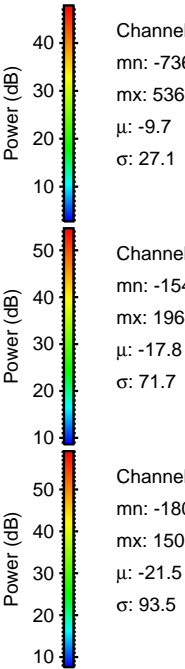
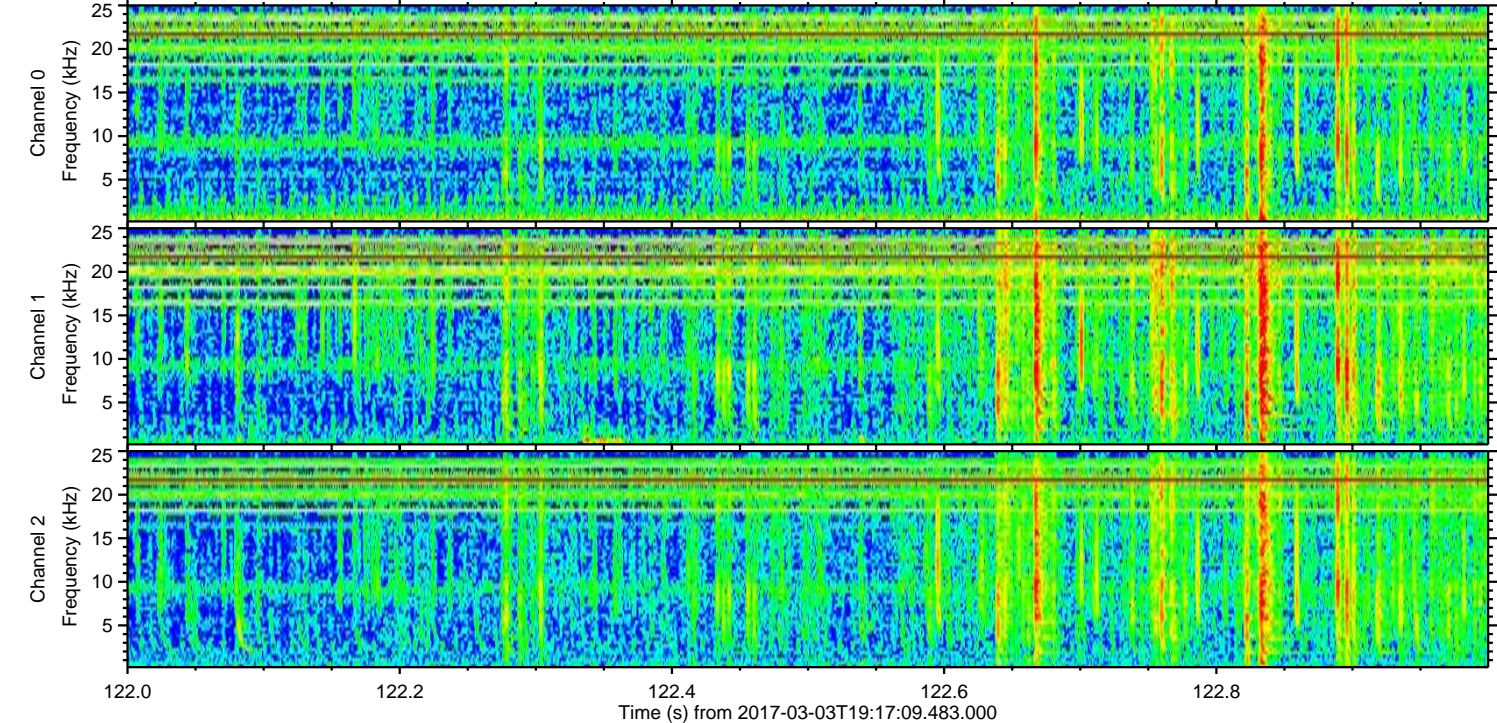
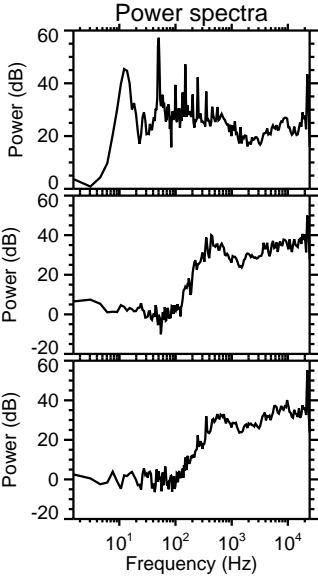
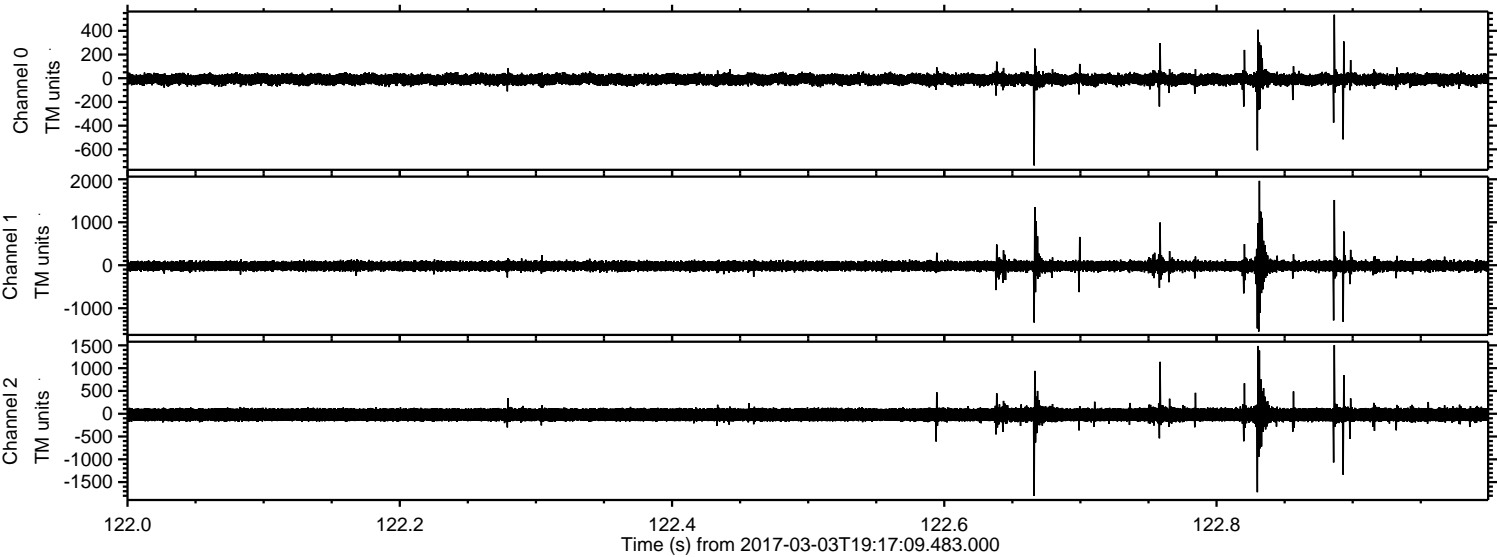
Channel 2
mn: -2297
mx: 1215
 μ : -21.5
 σ : 88.3

Processed Fri Mar 3 20:24:47 2017 by ELM ver.2012-10-06 from 001__elm20170303_191708__dat00.bin



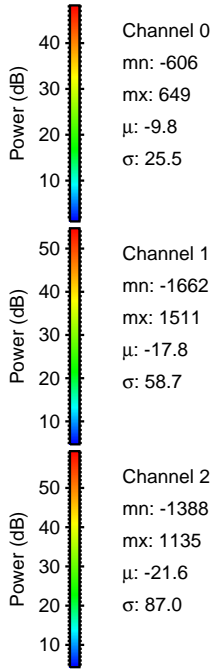
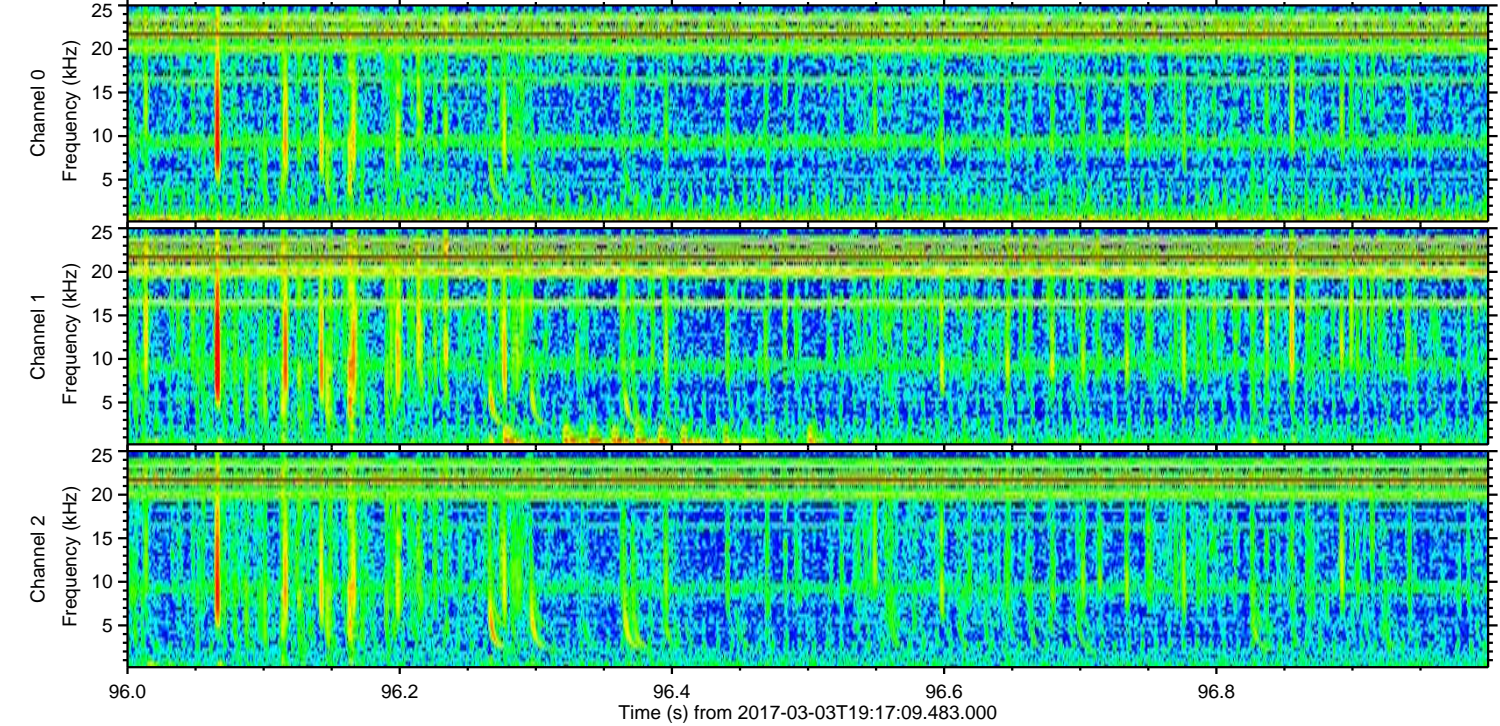
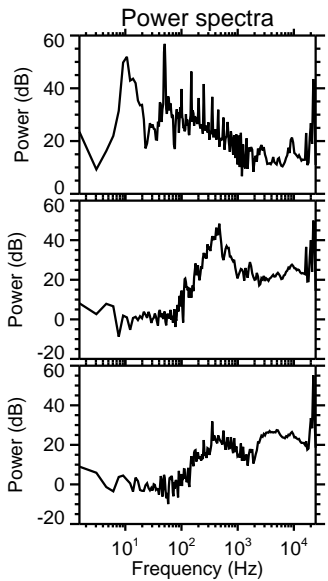
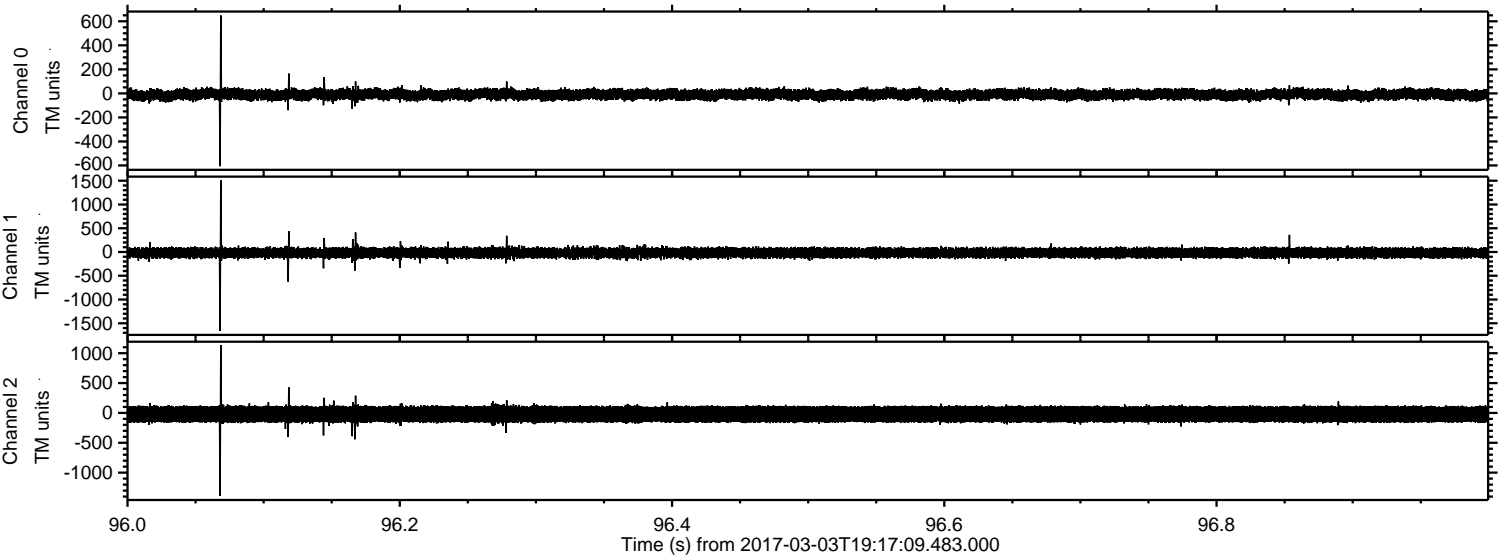
ELMAVAN 3D WAVEFORMS (Measured data sampled at 50 kHz) 51000 packets of 144 samples from 2017-03-03T19:17:09.483.000. Part 123/147

Processed Fri Mar 3 20:24:48 2017 by ELM ver.2012-10-06 from 001__elm20170303_191708__dat00.bin



ELMAVAN 3D WAVEFORMS (Measured data sampled at 50 kHz) 51000 packets of 144 samples from 2017-03-03T19:17:09.483.000. Part 97/147

Processed Fri Mar 3 20:24:48 2017 by ELM ver.2012-10-06 from 001__elm20170303_191708__dat00.bin

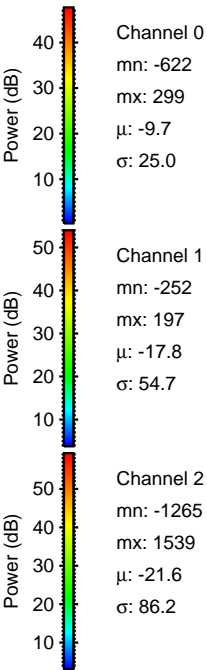
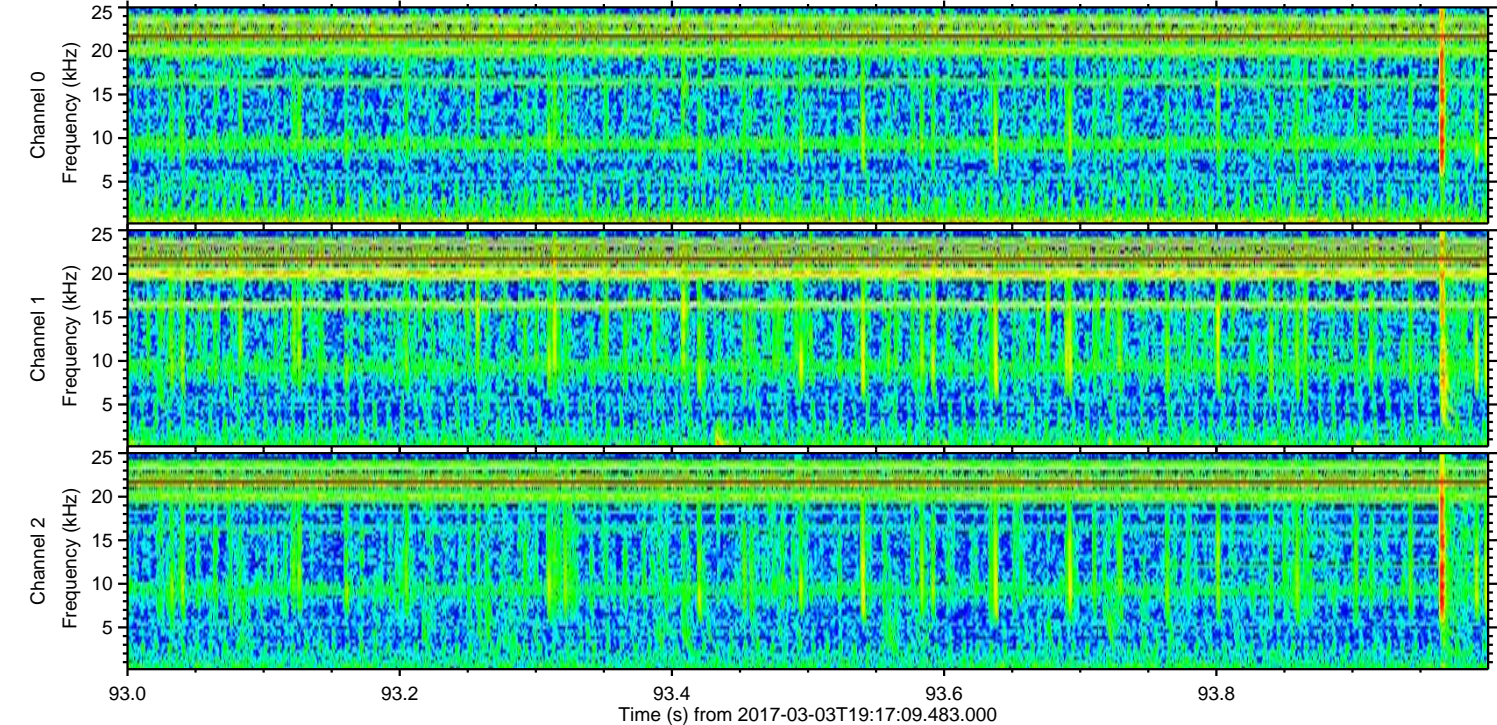
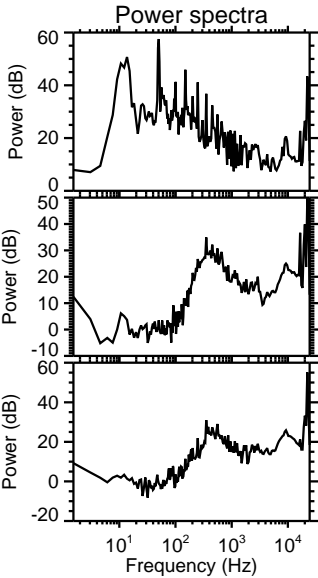
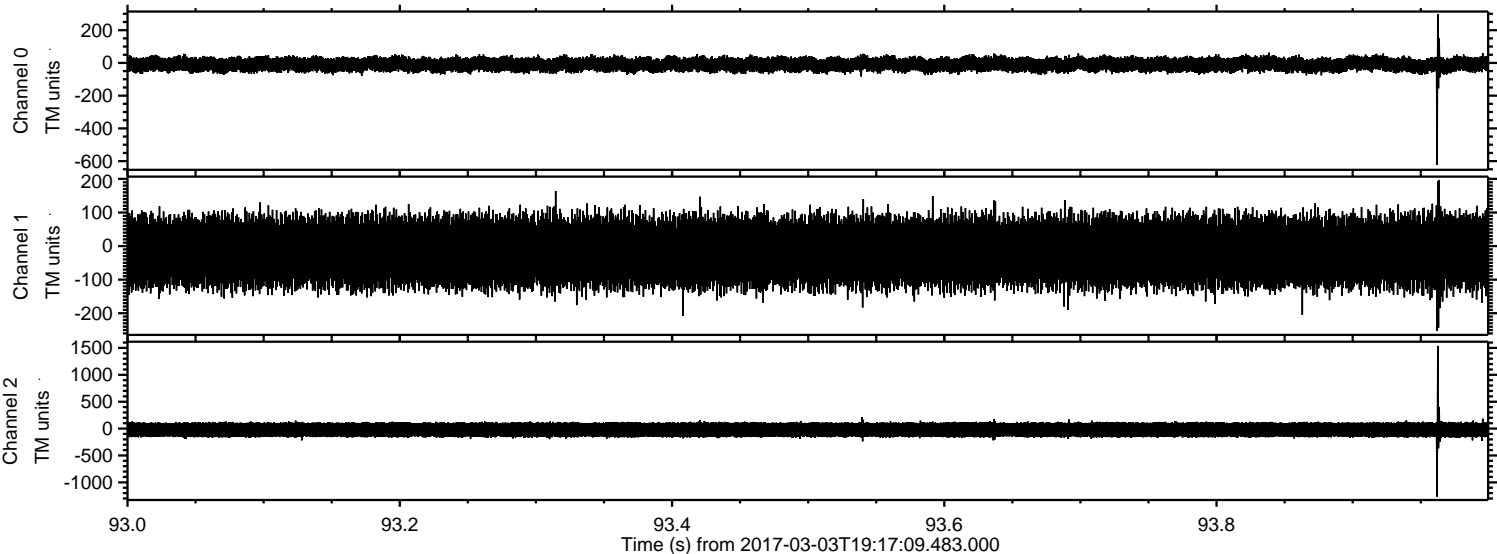


Channel 0
mn: -606
mx: 649
 μ : -9.8
 σ : 25.5

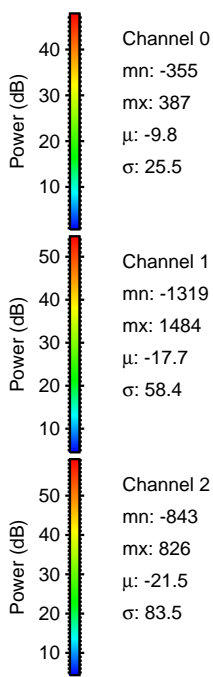
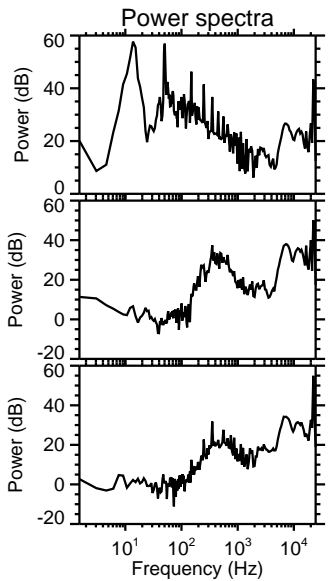
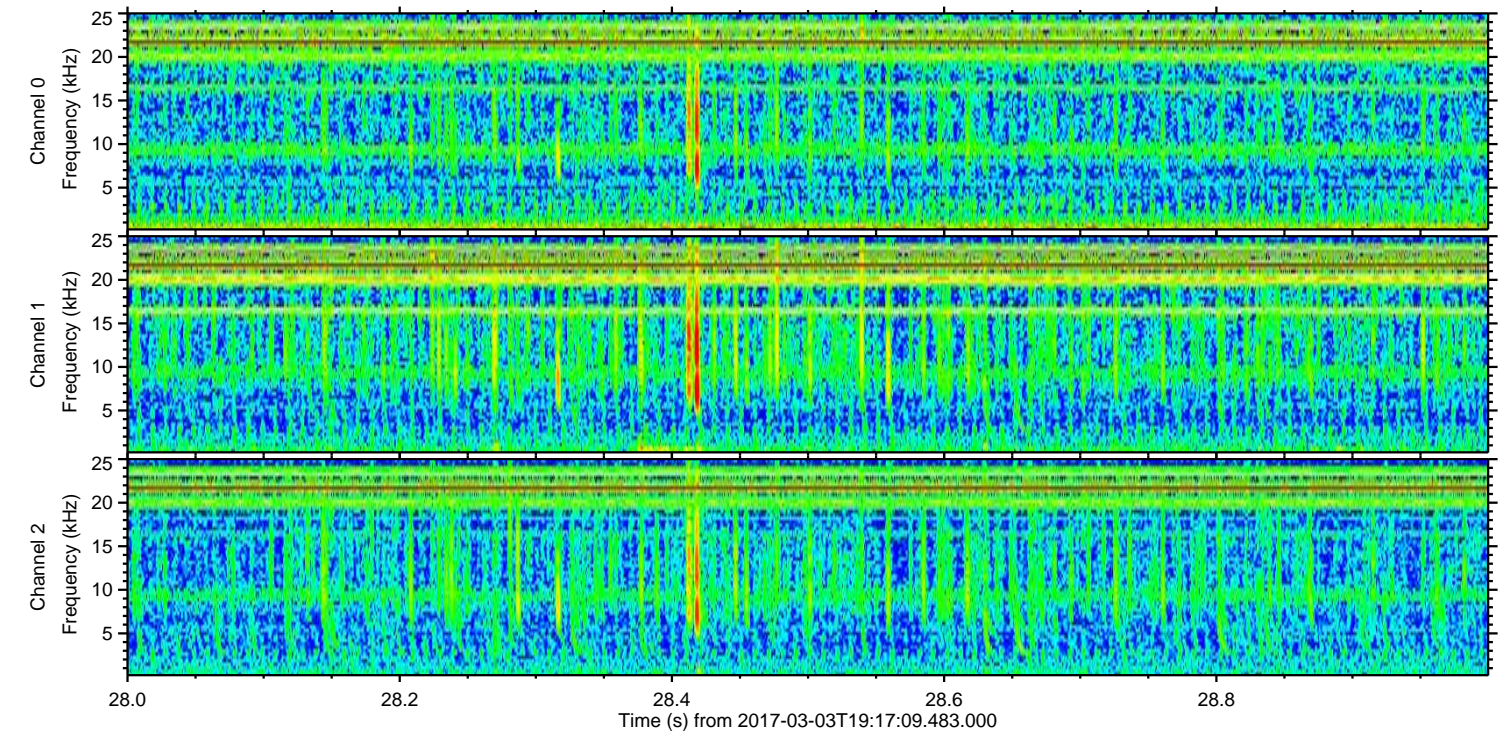
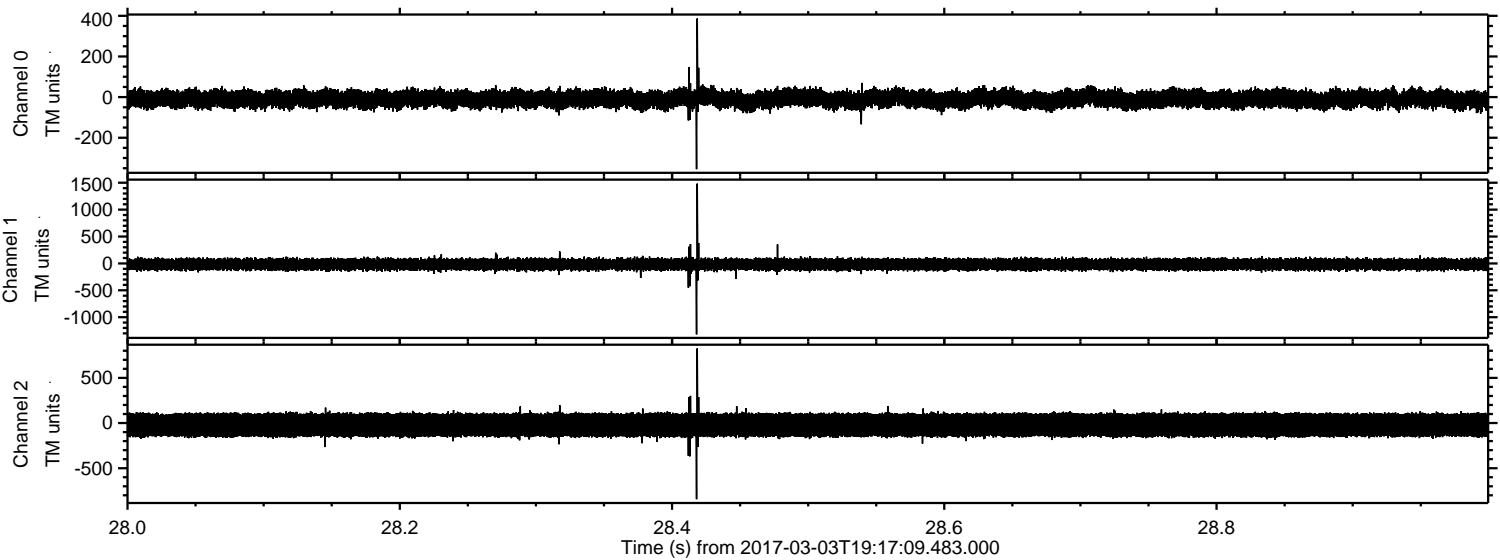
Channel 1
mn: -1662
mx: 1511
 μ : -17.8
 σ : 58.7

Channel 2
mn: -1388
mx: 1135
 μ : -21.6
 σ : 87.0

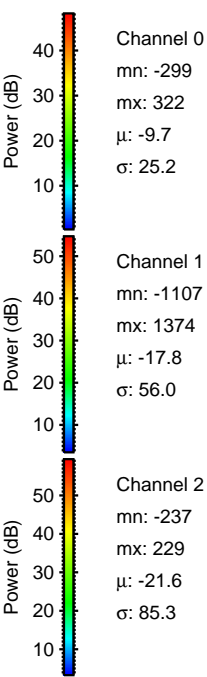
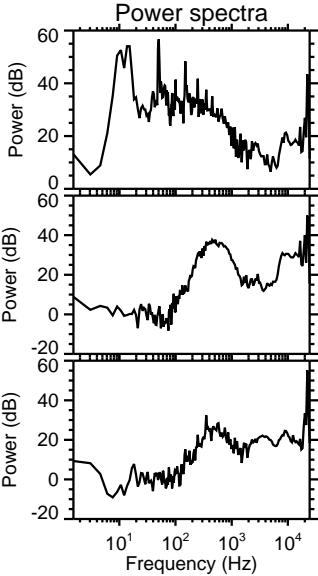
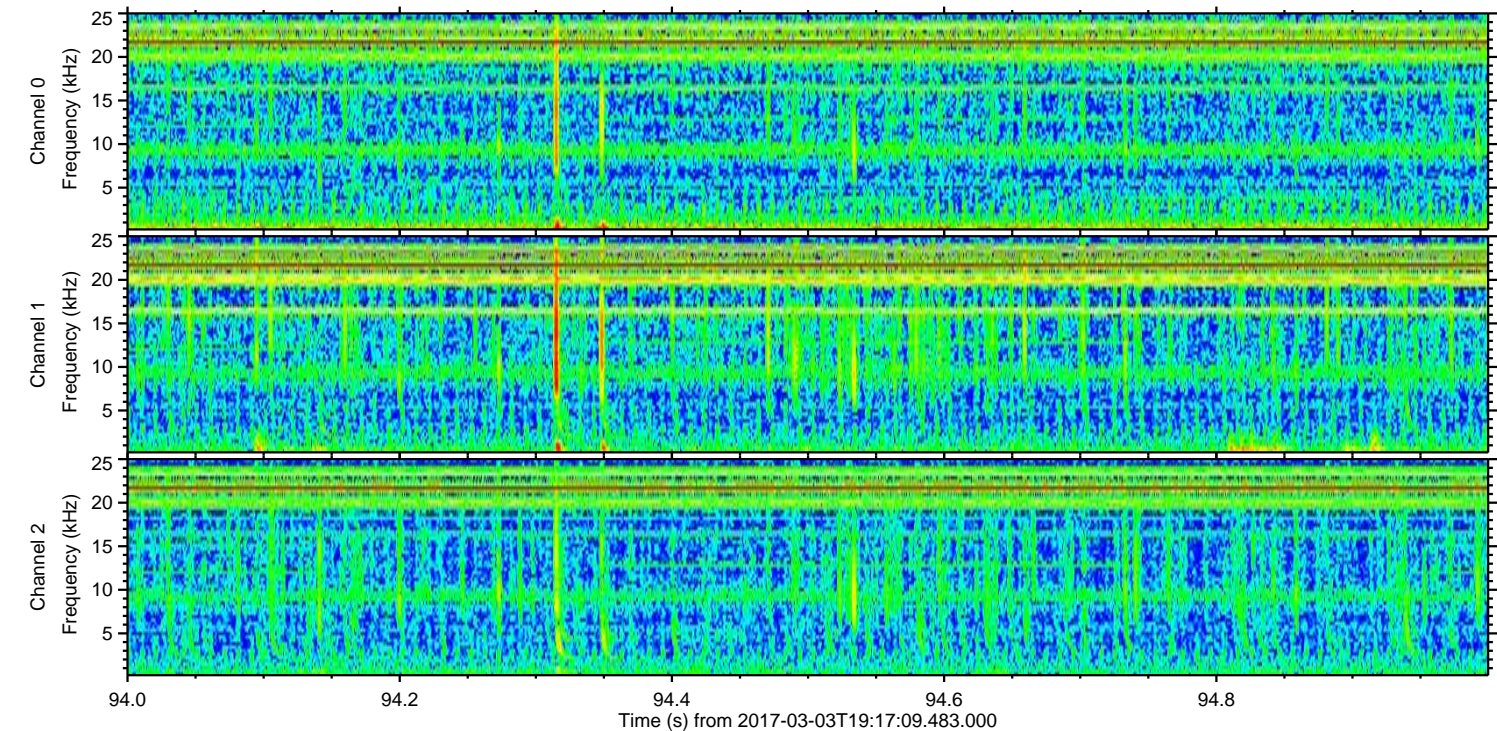
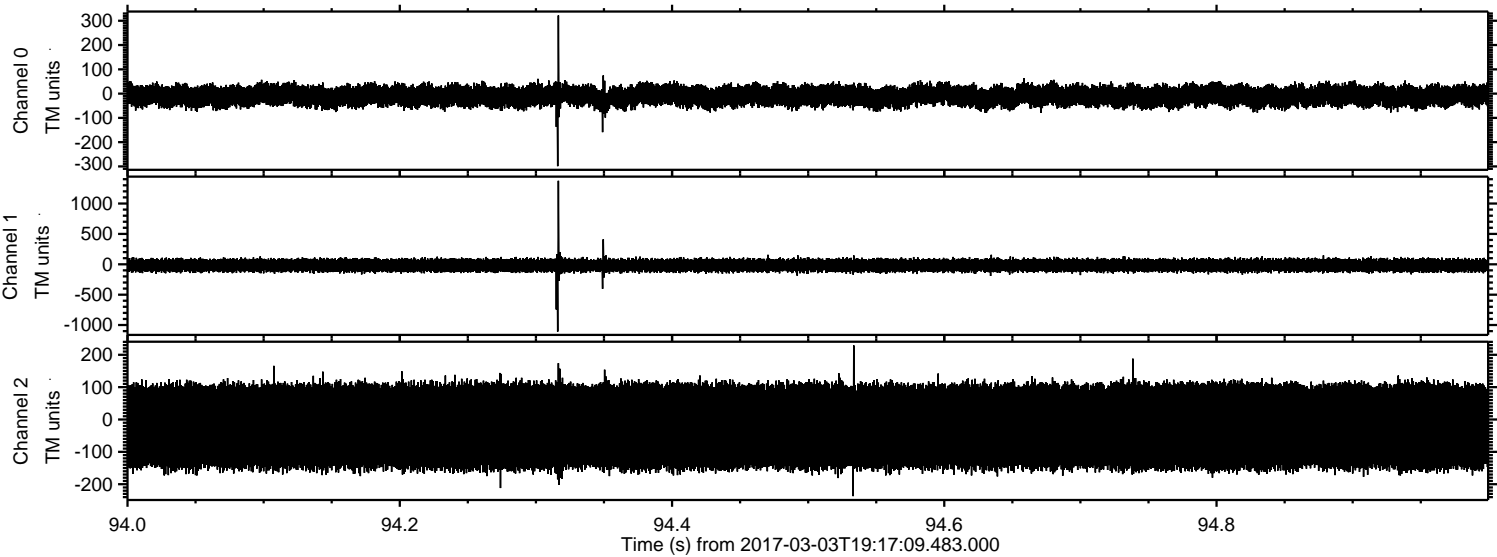
Processed Fri Mar 3 20:24:49 2017 by ELM ver.2012-10-06 from 001__elm20170303_191708__dat00.bin



Processed Fri Mar 3 20:24:50 2017 by ELM ver.2012-10-06 from 001__elm20170303_191708__dat00.bin



Processed Fri Mar 3 20:24:51 2017 by ELM ver.2012-10-06 from 001__elm20170303_191708__dat00.bin



Processed Fri Mar 3 20:24:52 2017 by ELM ver.2012-10-06 from 001__elm20170303_191708__dat00.bin

