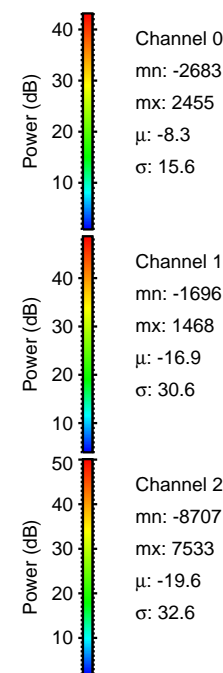
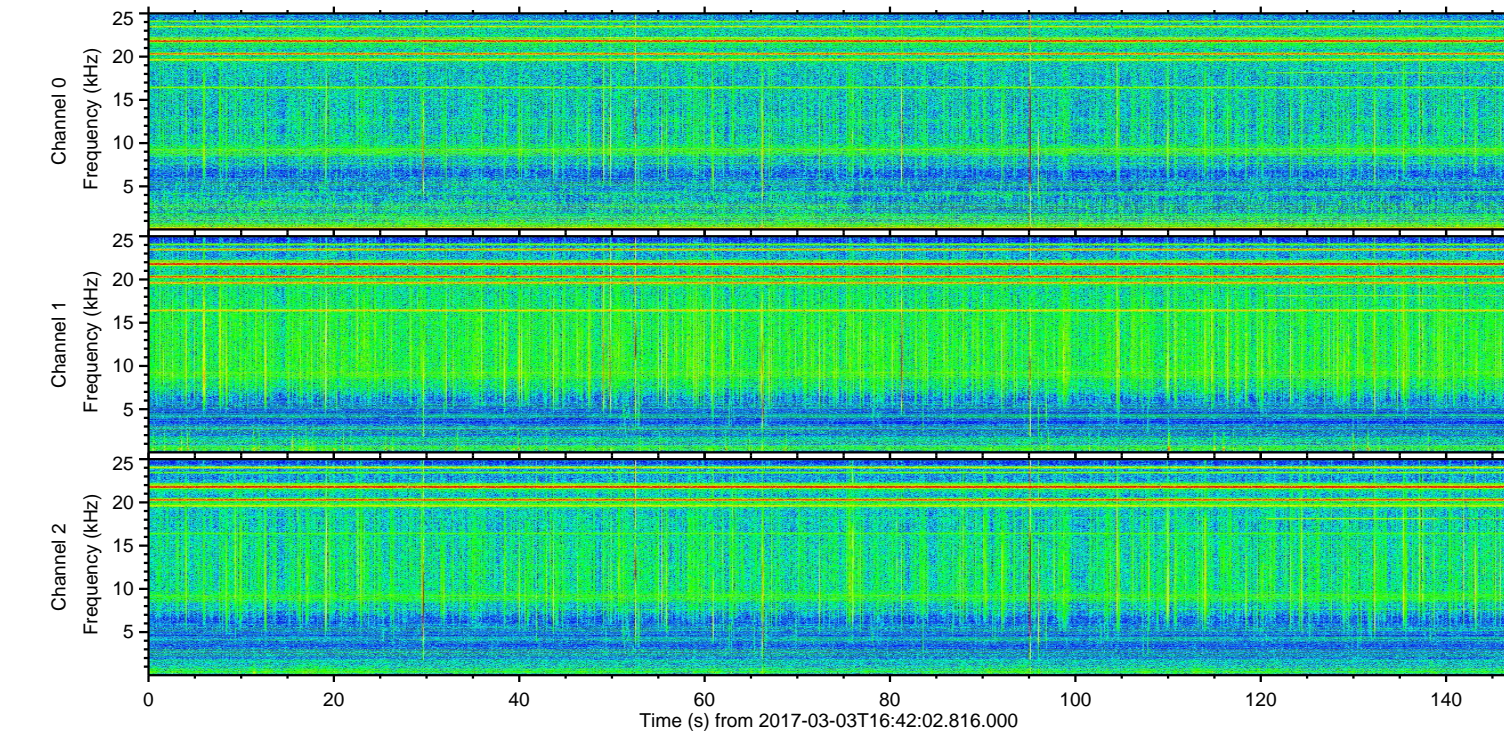
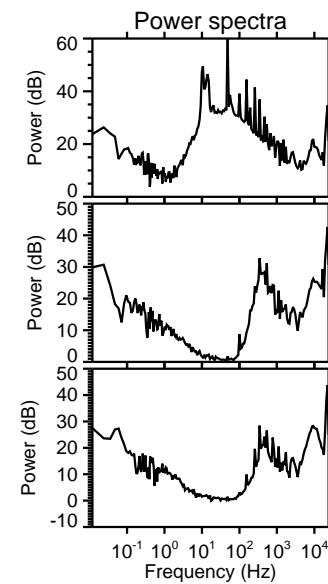
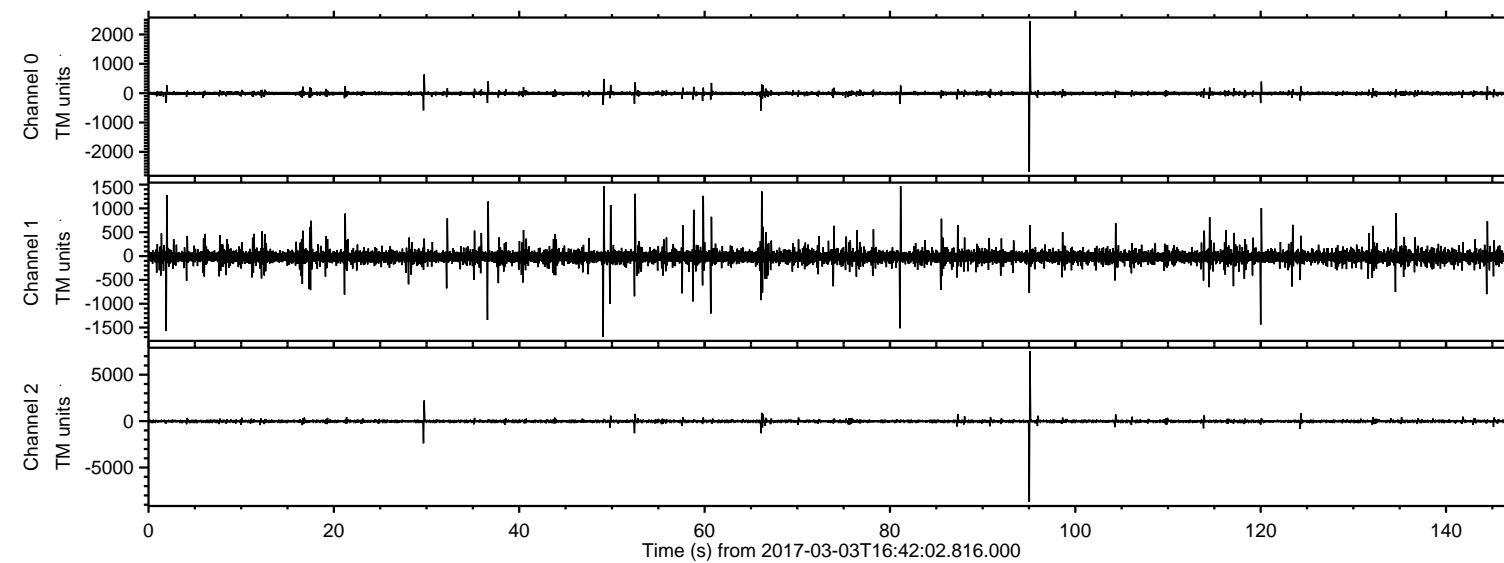
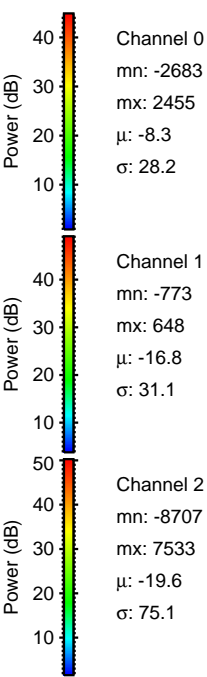
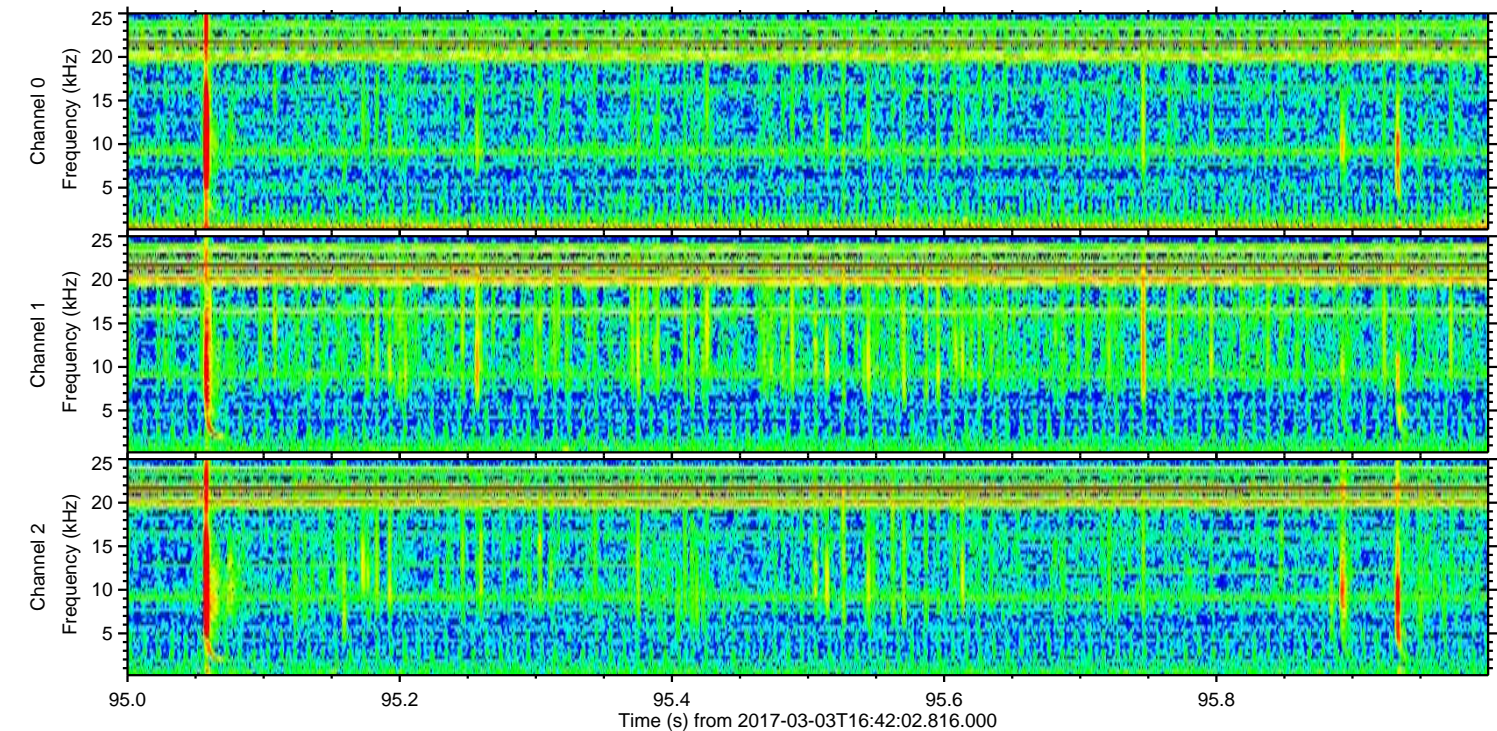
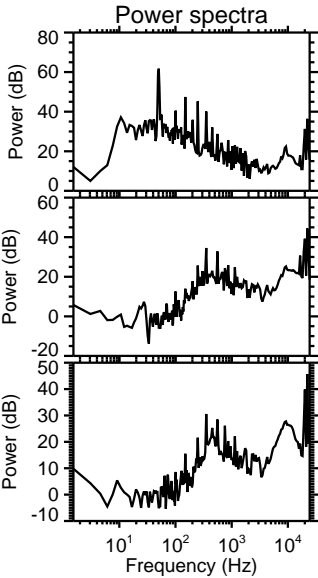
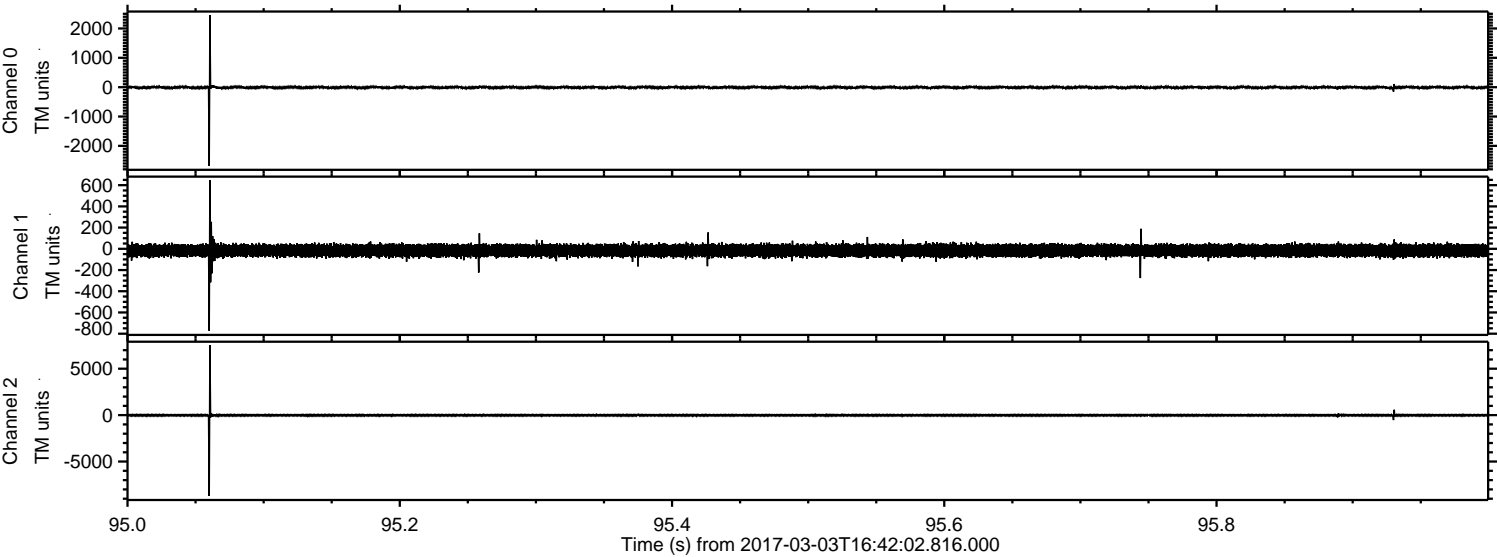


ELMAVAN 3D WAVEFORMS (Measured data sampled at 50 kHz) 51000 packets of 144 samples from 2017-03-03T16:42:02.816.000.

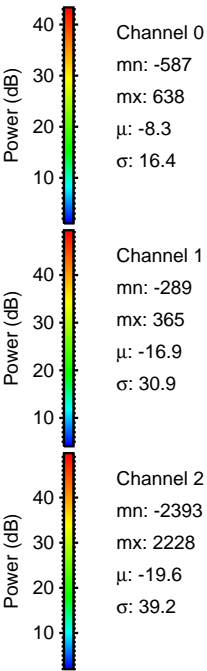
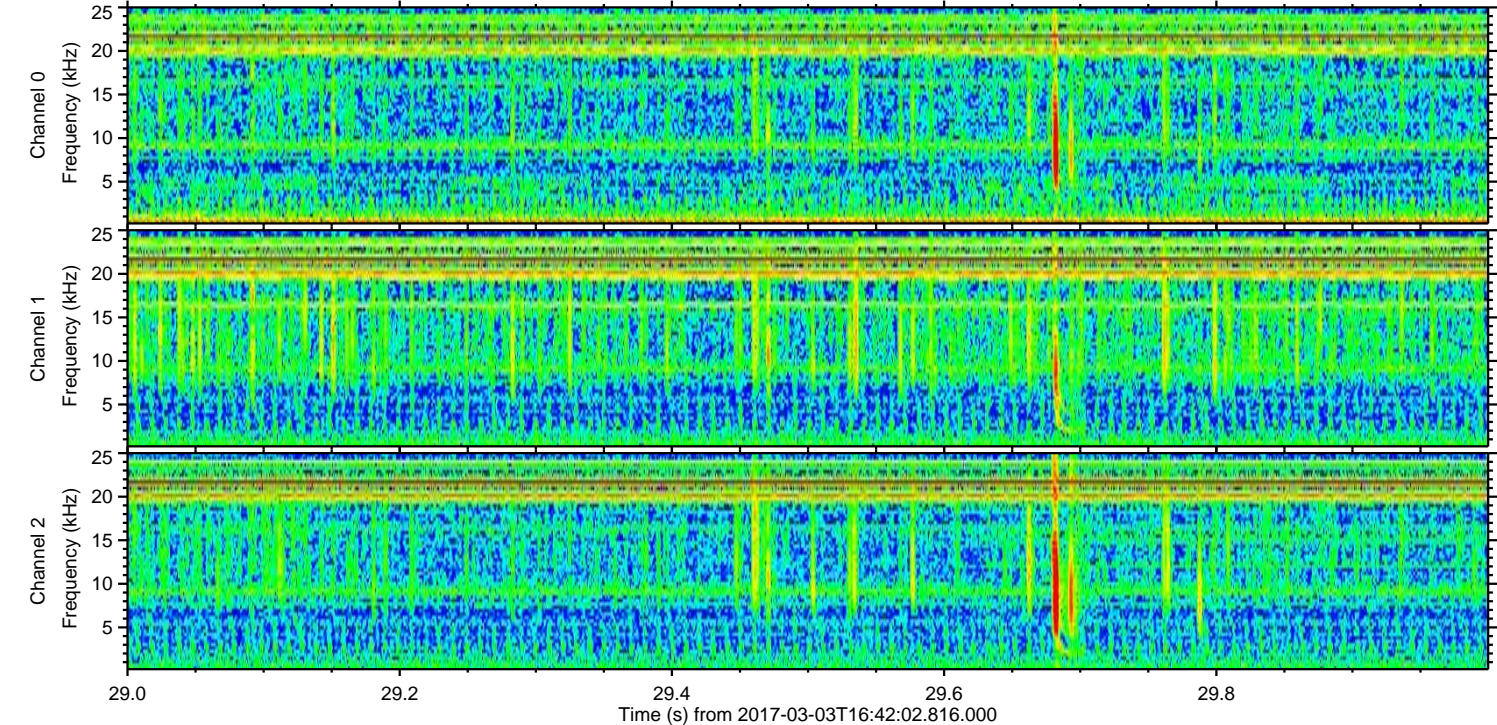
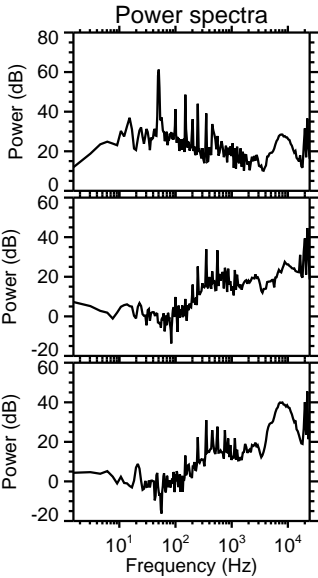
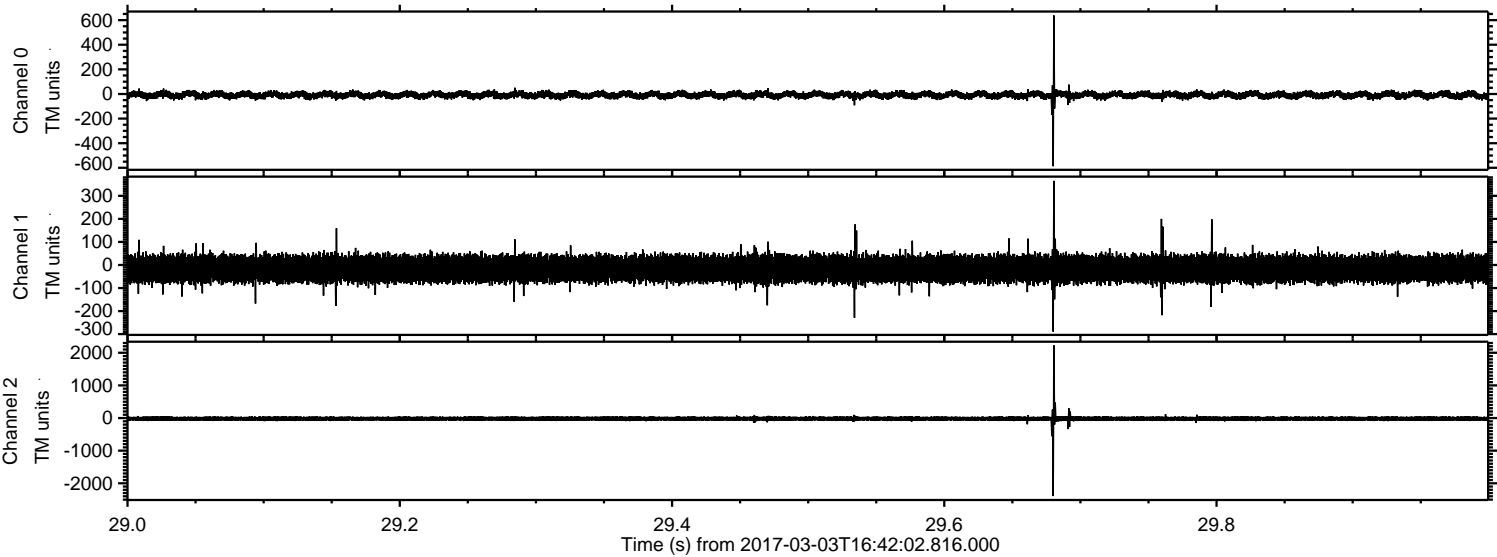
Processed Fri Mar 3 17:50:11 2017 by ELM ver.2012-10-06 from 001__elm20170303_164201__dat00.bin



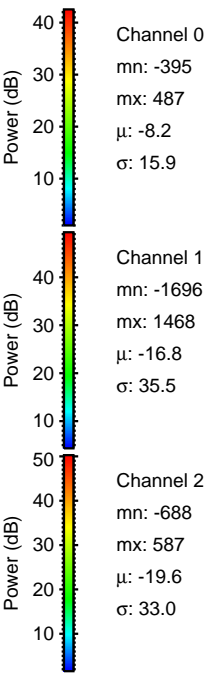
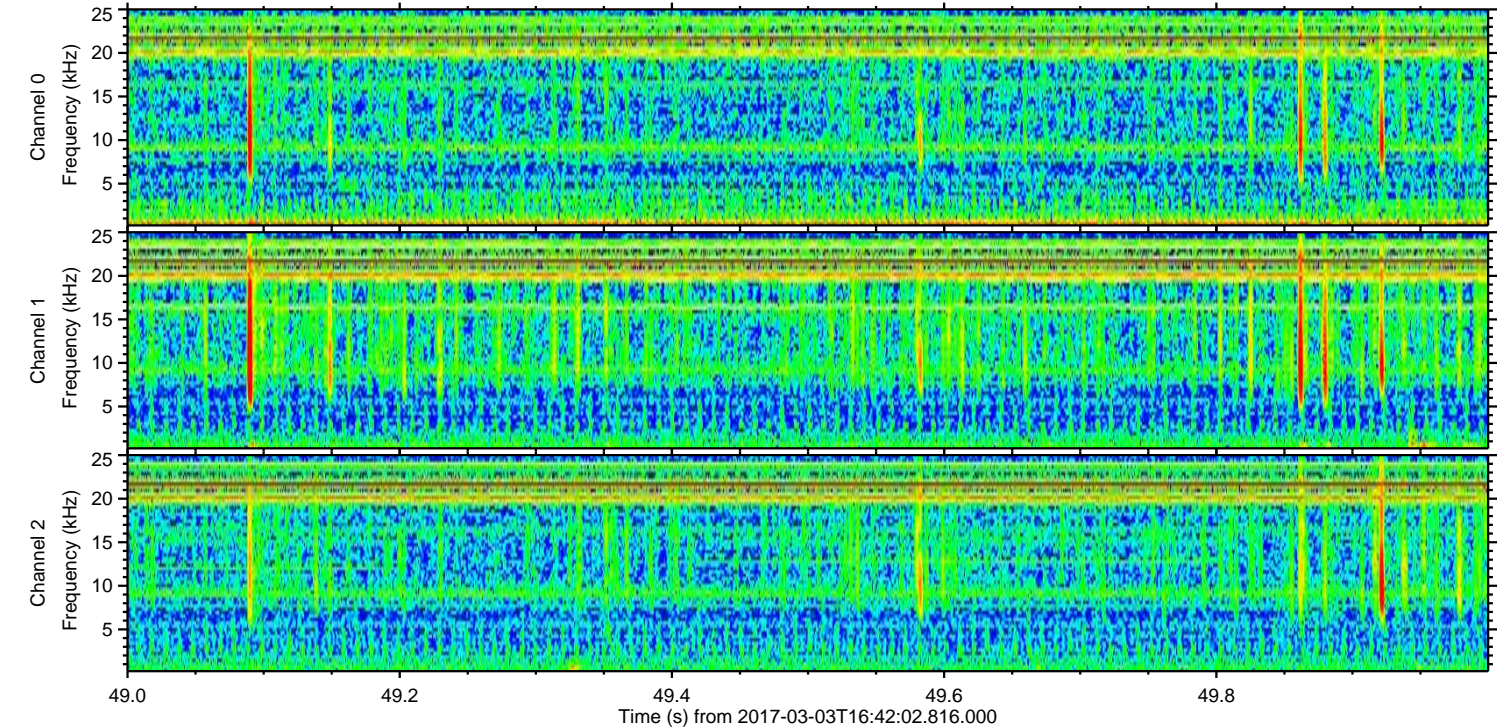
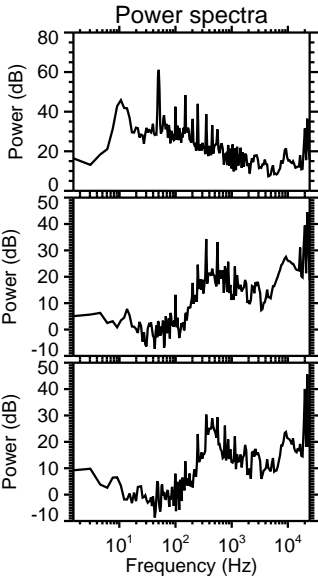
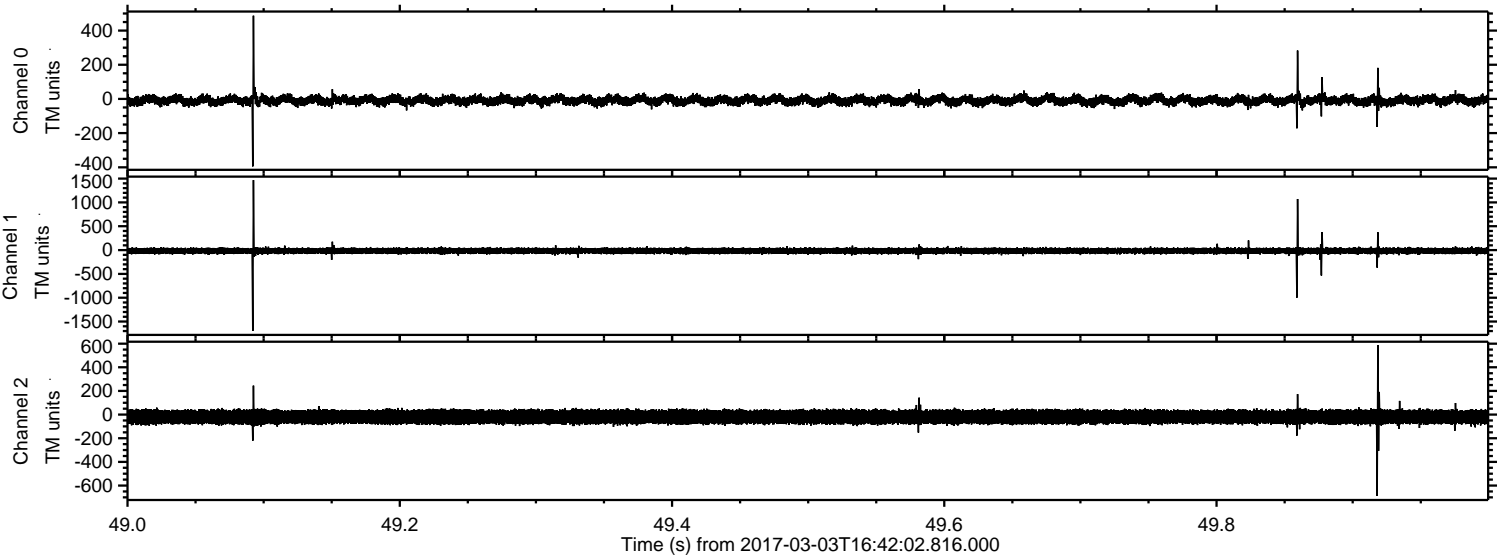
Processed Fri Mar 3 17:50:22 2017 by ELM ver.2012-10-06 from 001__elm20170303_164201__dat00.bin



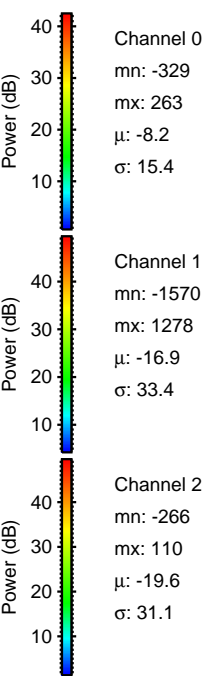
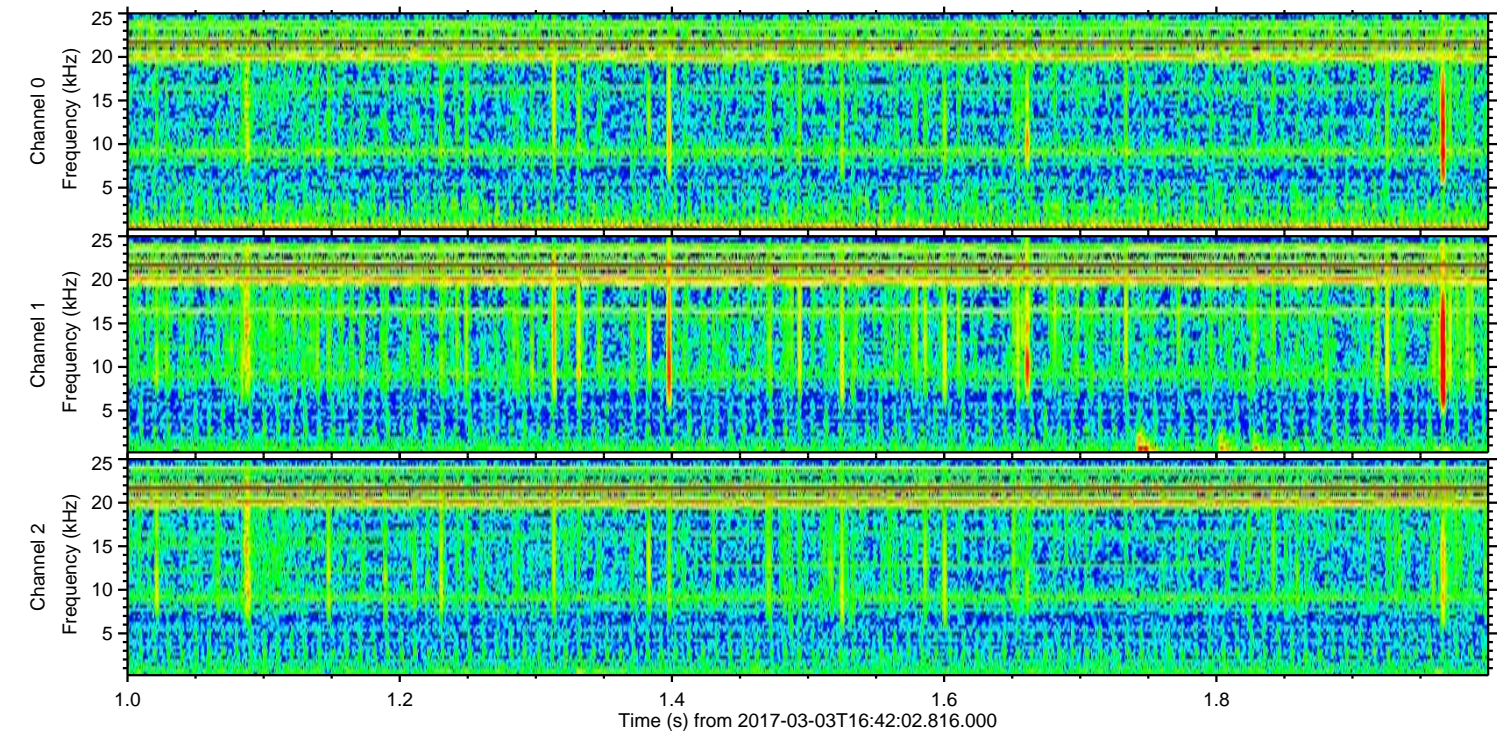
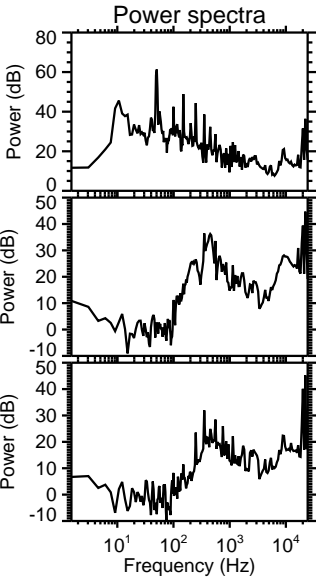
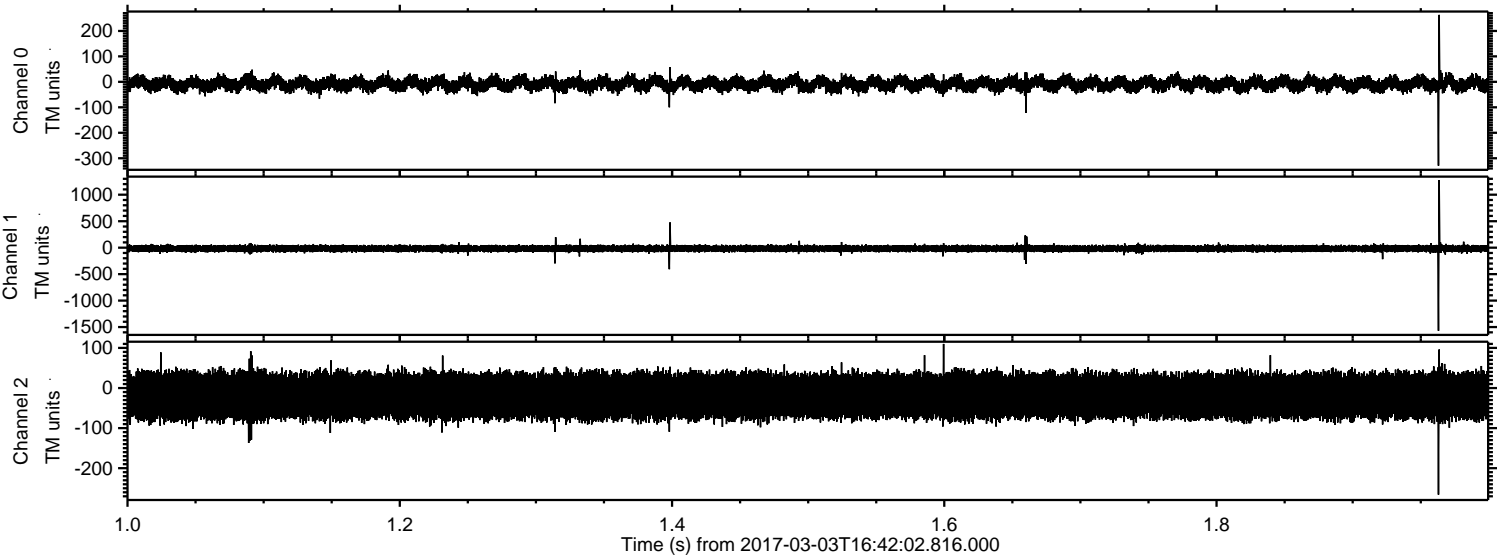
Processed Fri Mar 3 17:50:23 2017 by ELM ver.2012-10-06 from 001__elm20170303_164201__dat00.bin



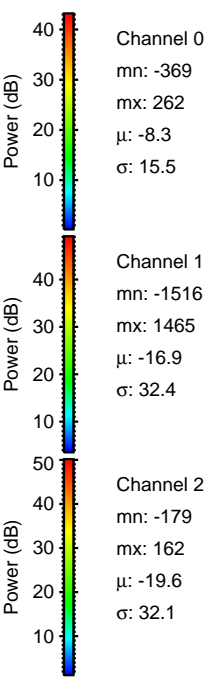
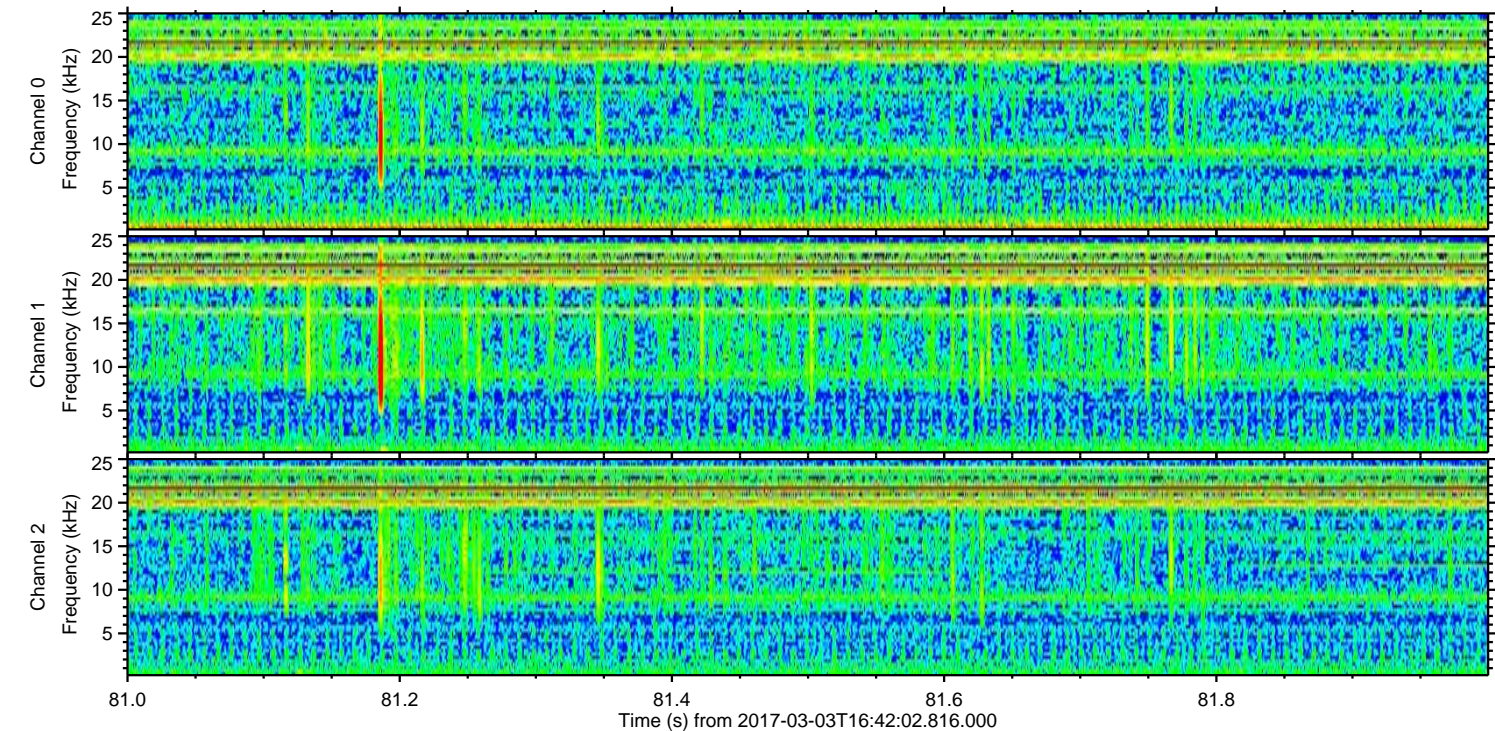
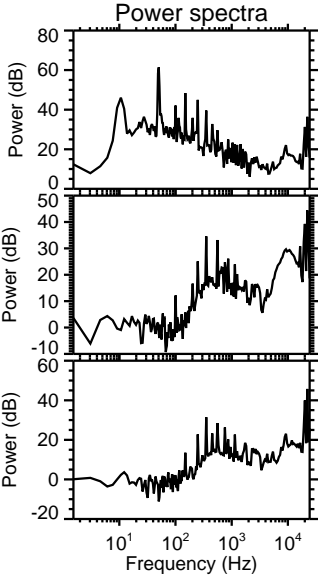
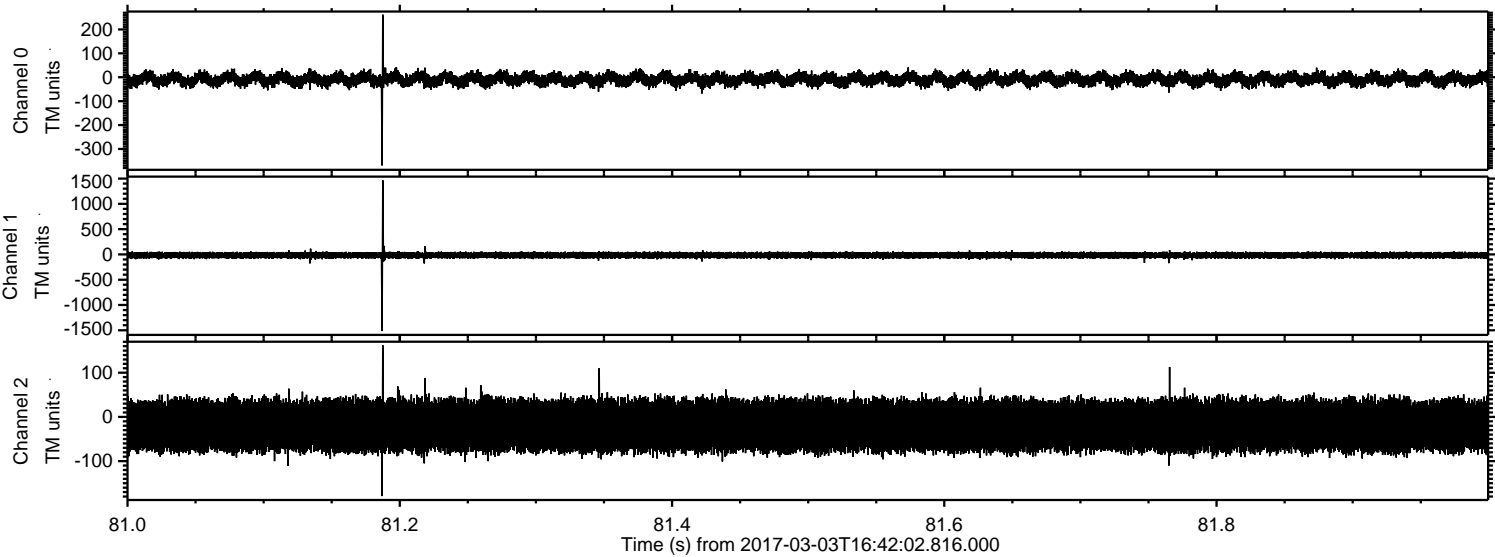
Processed Fri Mar 3 17:50:24 2017 by ELM ver.2012-10-06 from 001__elm20170303_164201__dat00.bin



Processed Fri Mar 3 17:50:25 2017 by ELM ver.2012-10-06 from 001__elm20170303_164201__dat00.bin

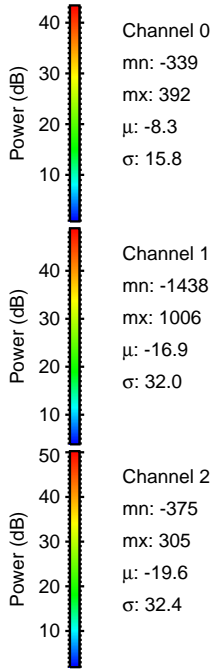
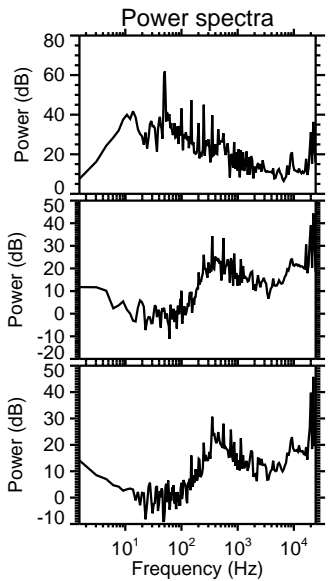
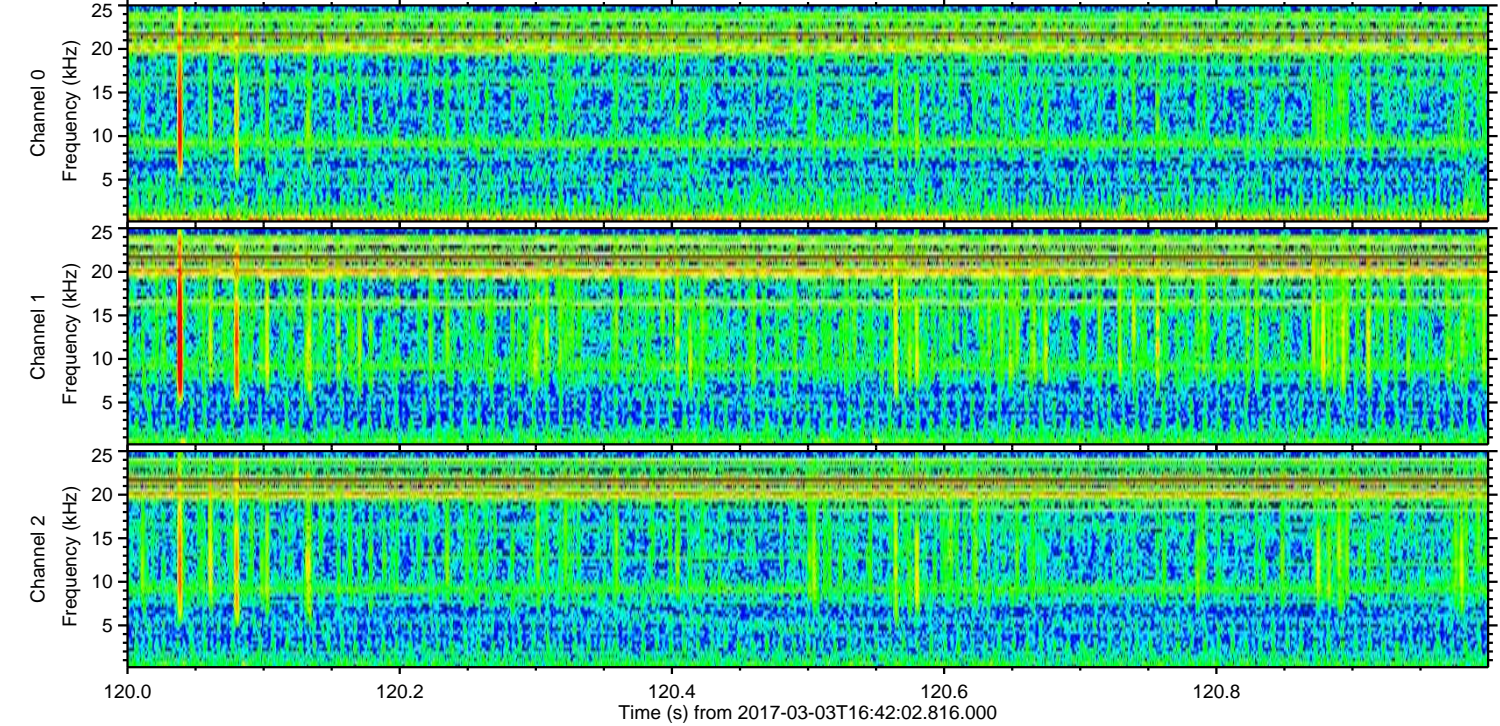
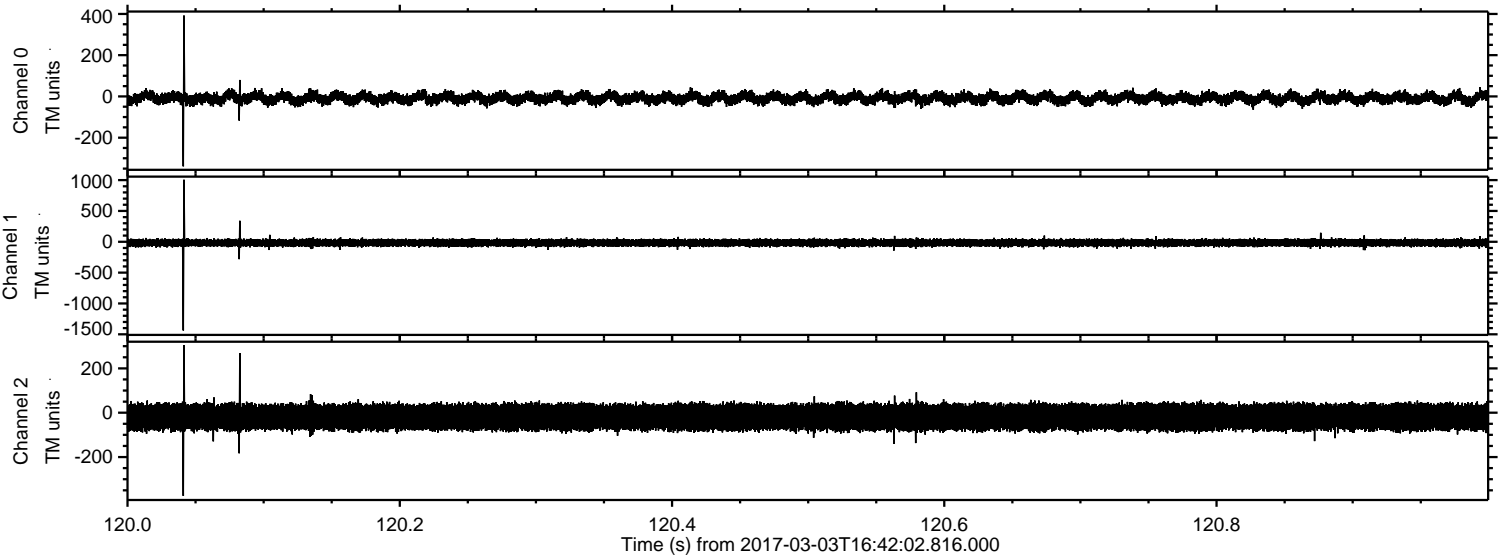


Processed Fri Mar 3 17:50:26 2017 by ELM ver.2012-10-06 from 001__elm20170303_164201__dat00.bin

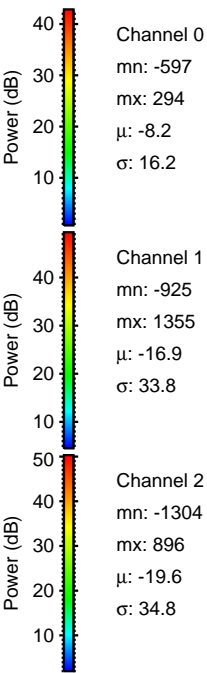
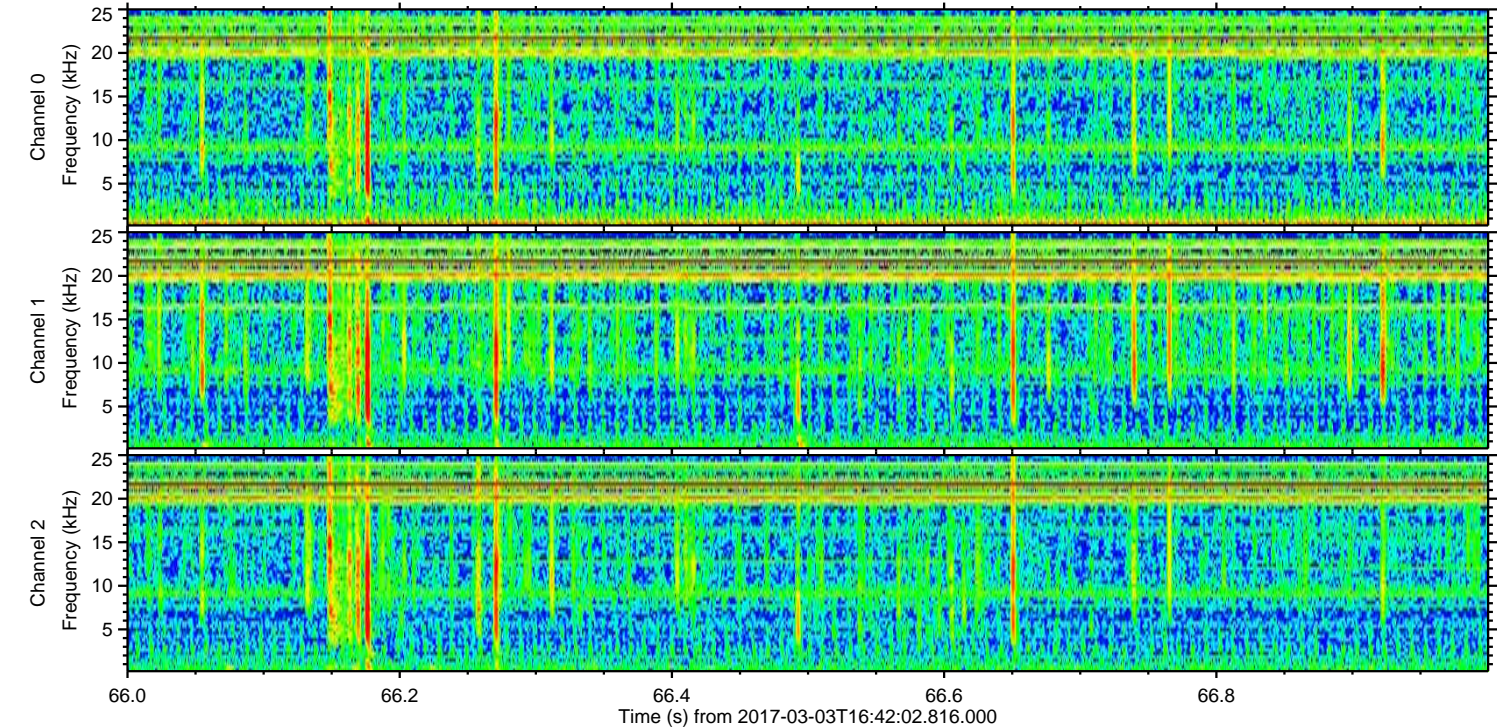
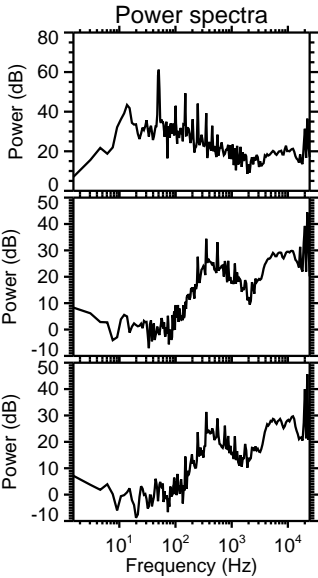
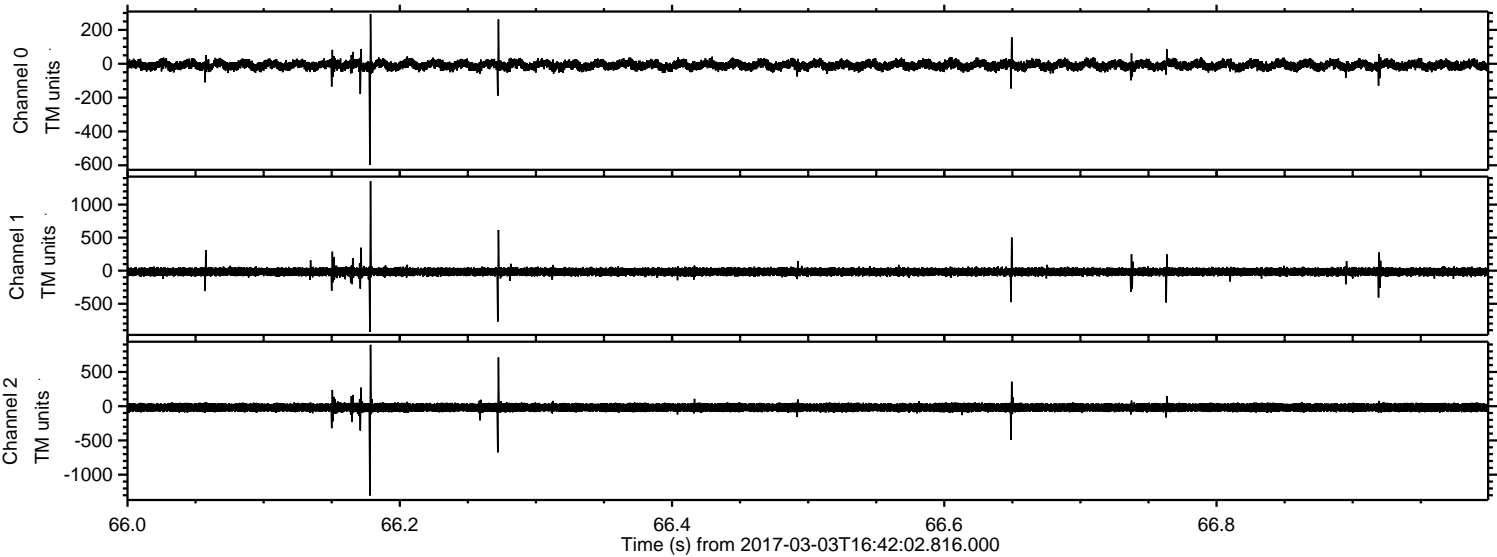


ELMAVAN 3D WAVEFORMS (Measured data sampled at 50 kHz) 51000 packets of 144 samples from 2017-03-03T16:42:02.816.000. Part 121/147

Processed Fri Mar 3 17:50:27 2017 by ELM ver.2012-10-06 from 001__elm20170303_164201__dat00.bin

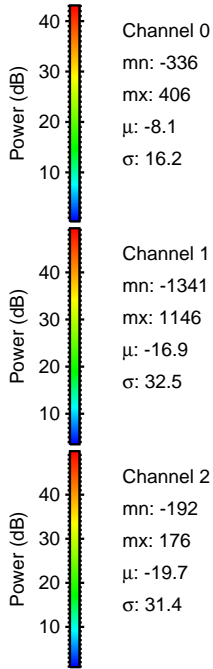
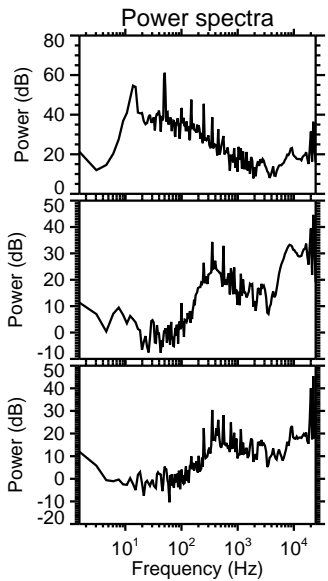
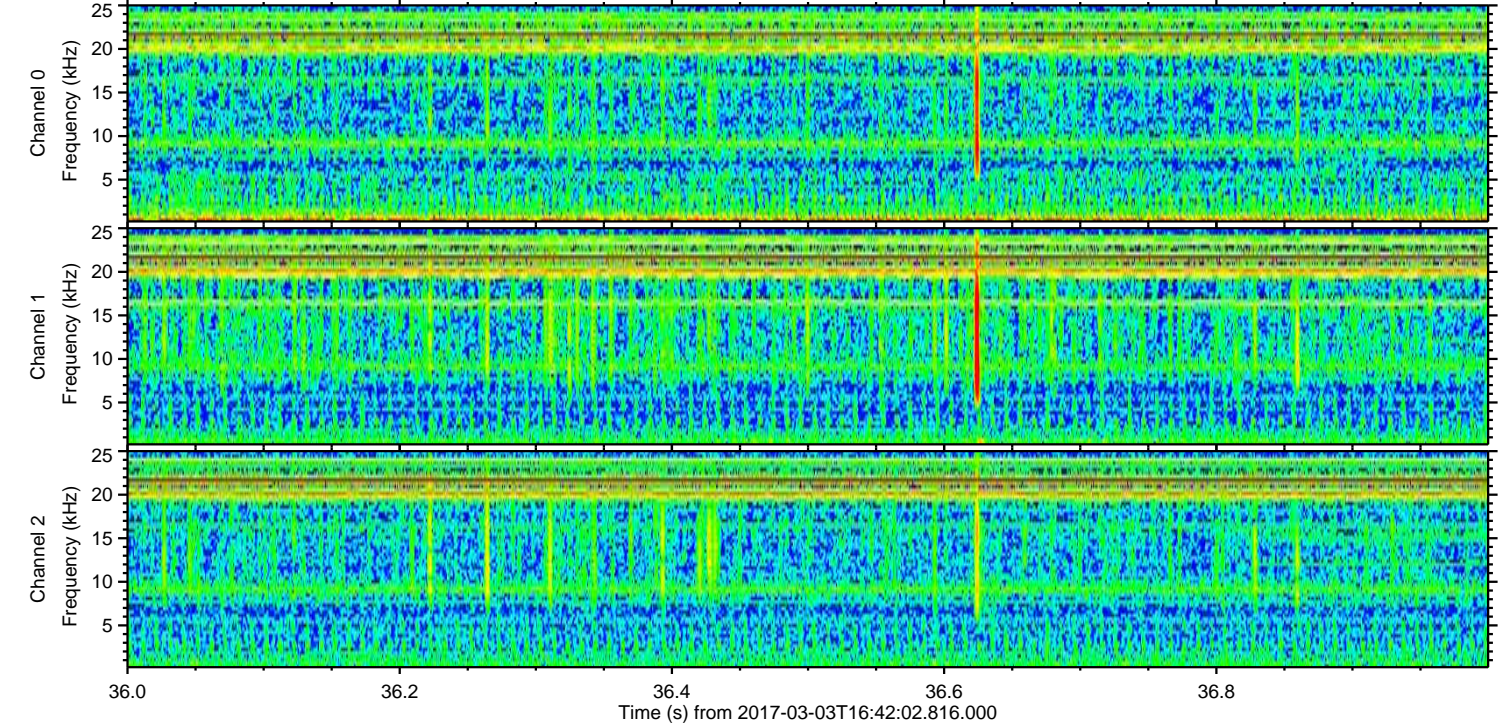
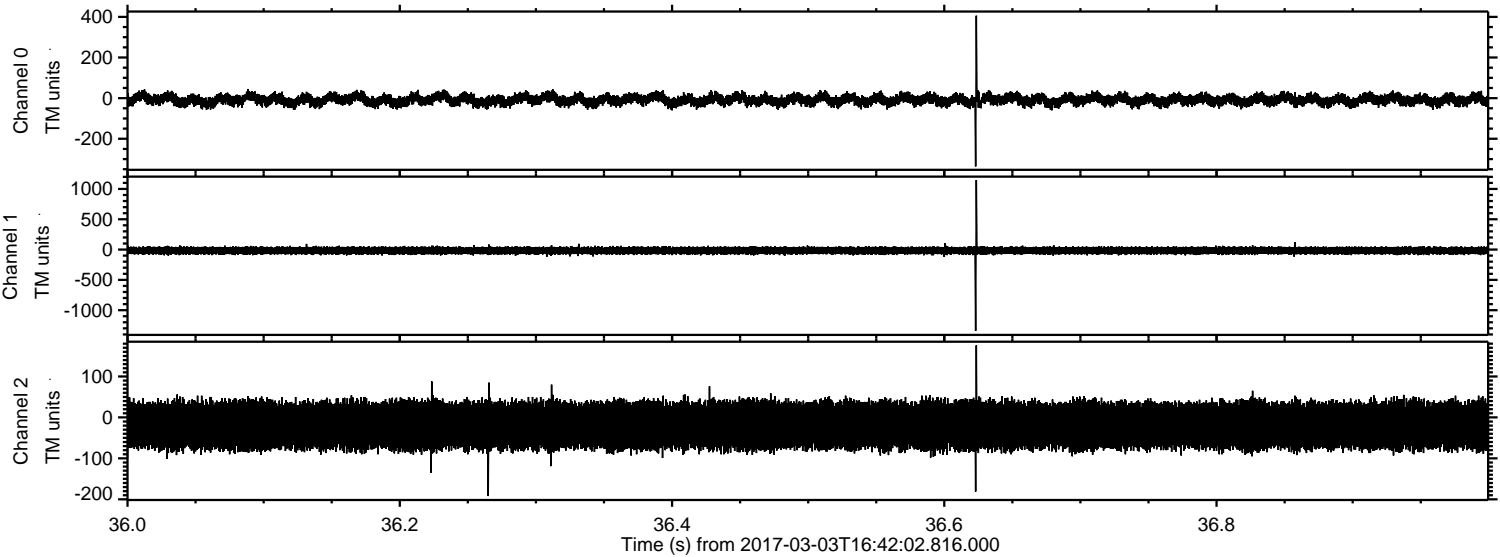


Processed Fri Mar 3 17:50:28 2017 by ELM ver.2012-10-06 from 001__elm20170303_164201__dat00.bin

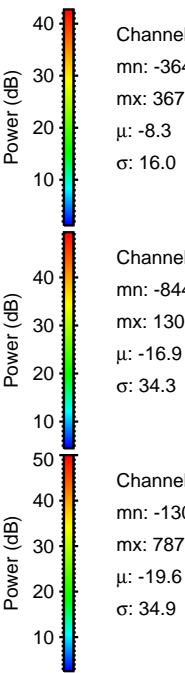
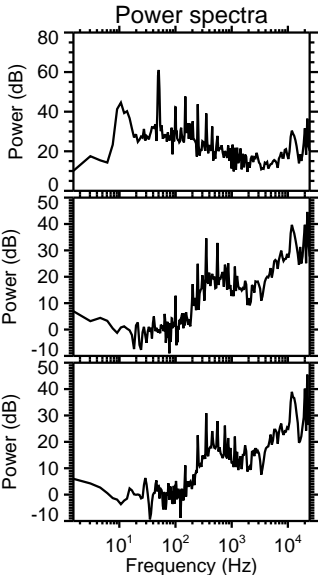
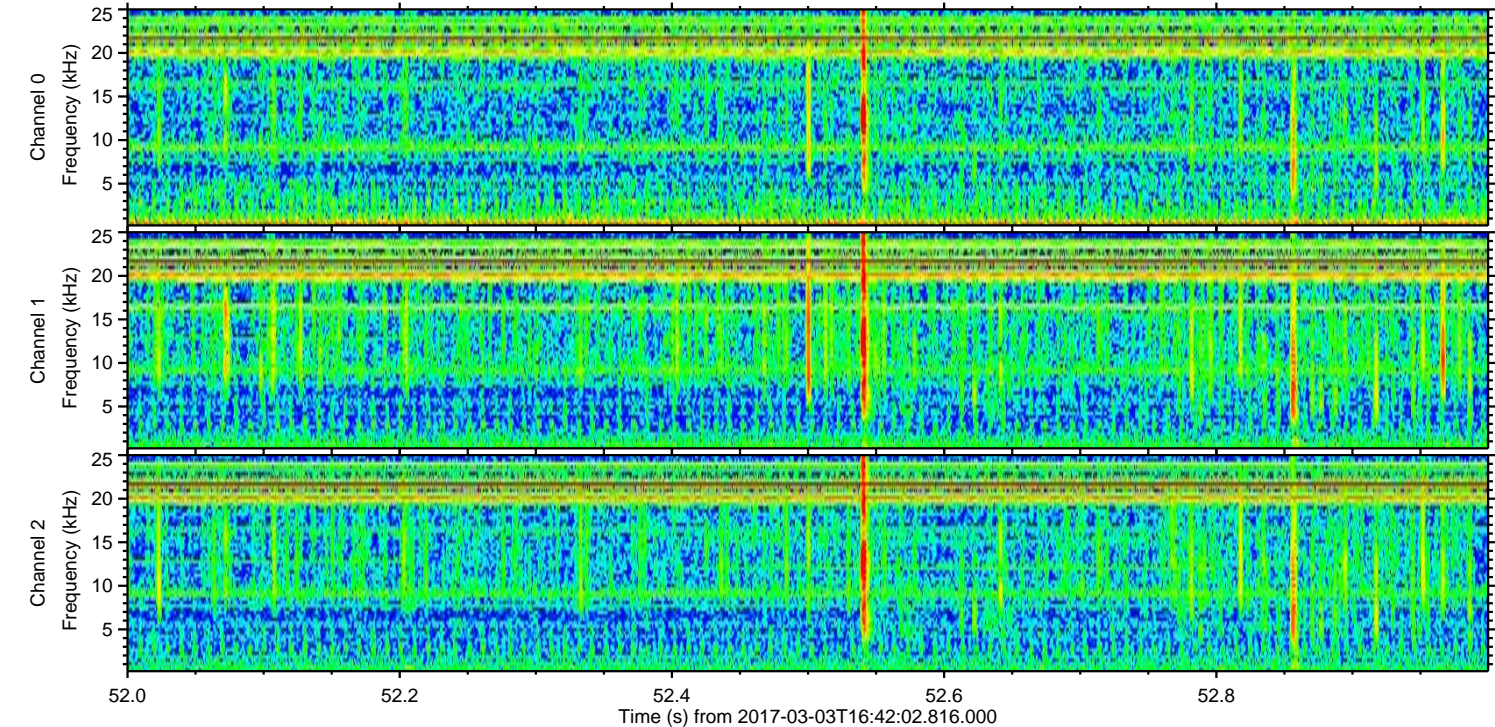
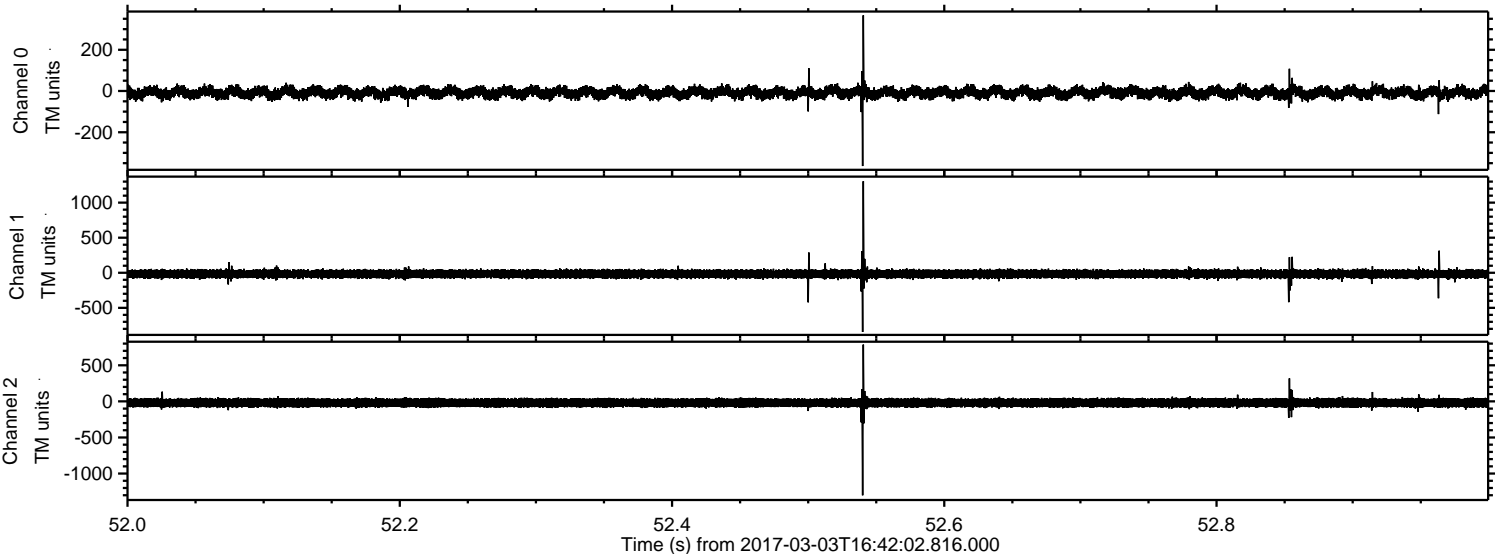


ELMAVAN 3D WAVEFORMS (Measured data sampled at 50 kHz) 51000 packets of 144 samples from 2017-03-03T16:42:02.816.000. Part 37/147

Processed Fri Mar 3 17:50:29 2017 by ELM ver.2012-10-06 from 001__elm20170303_164201__dat00.bin



Processed Fri Mar 3 17:50:30 2017 by ELM ver.2012-10-06 from 001__elm20170303_164201__dat00.bin



Channel 0
mn: -364
mx: 367
μ: -8.3
σ: 16.0

Channel 1
mn: -844
mx: 1306
μ: -16.9
σ: 34.3

Channel 2
mn: -1301
mx: 787
μ: -19.6
σ: 34.9

