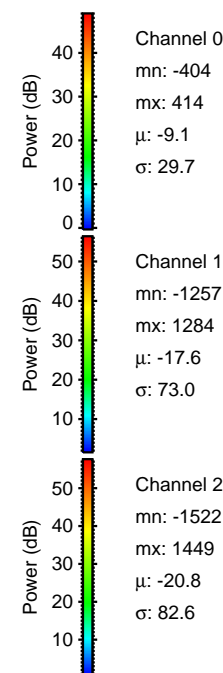
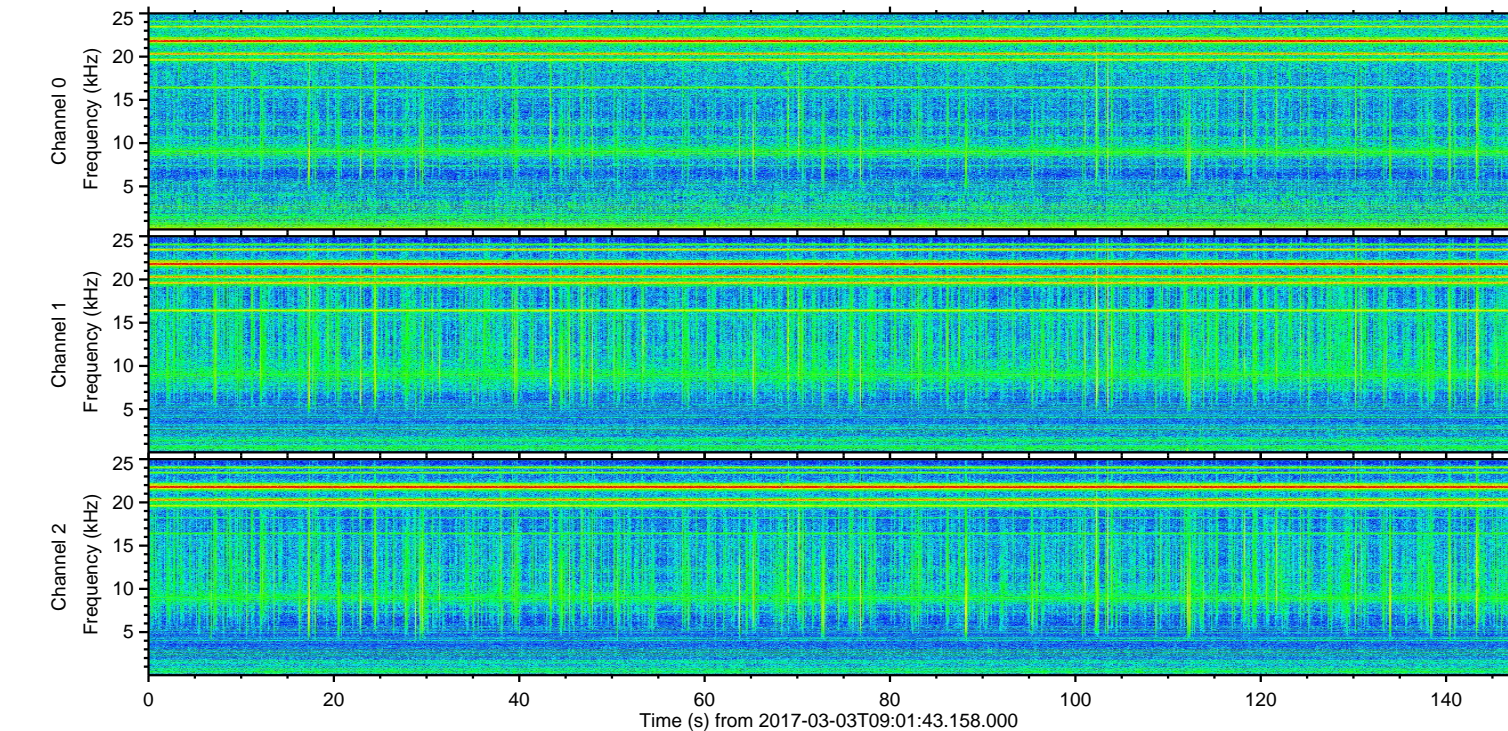
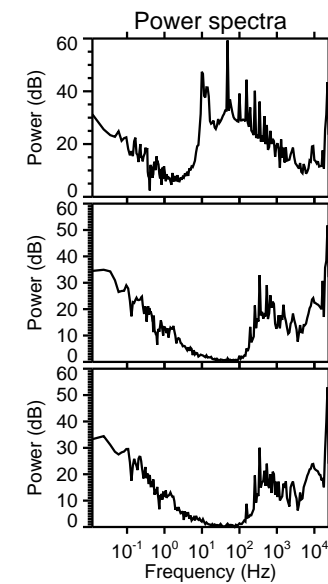
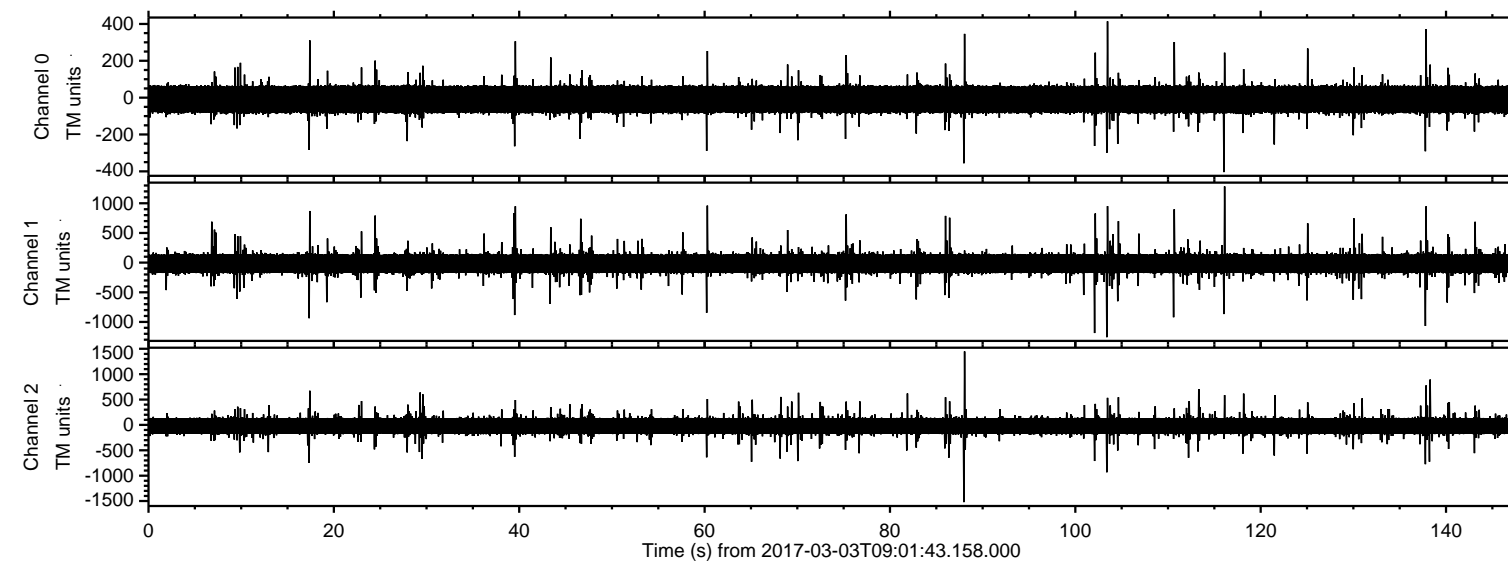
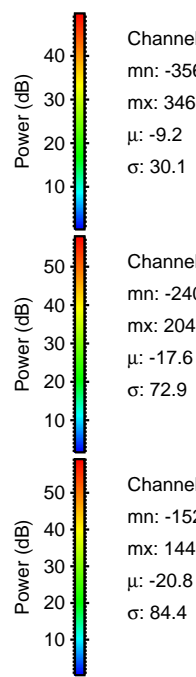
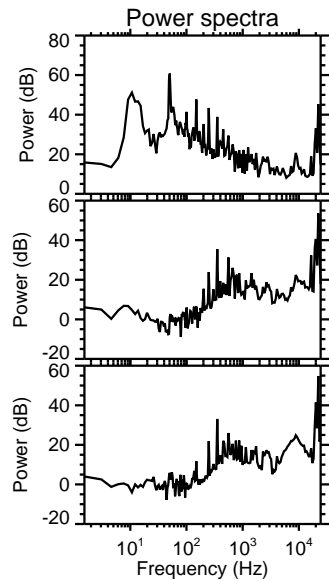
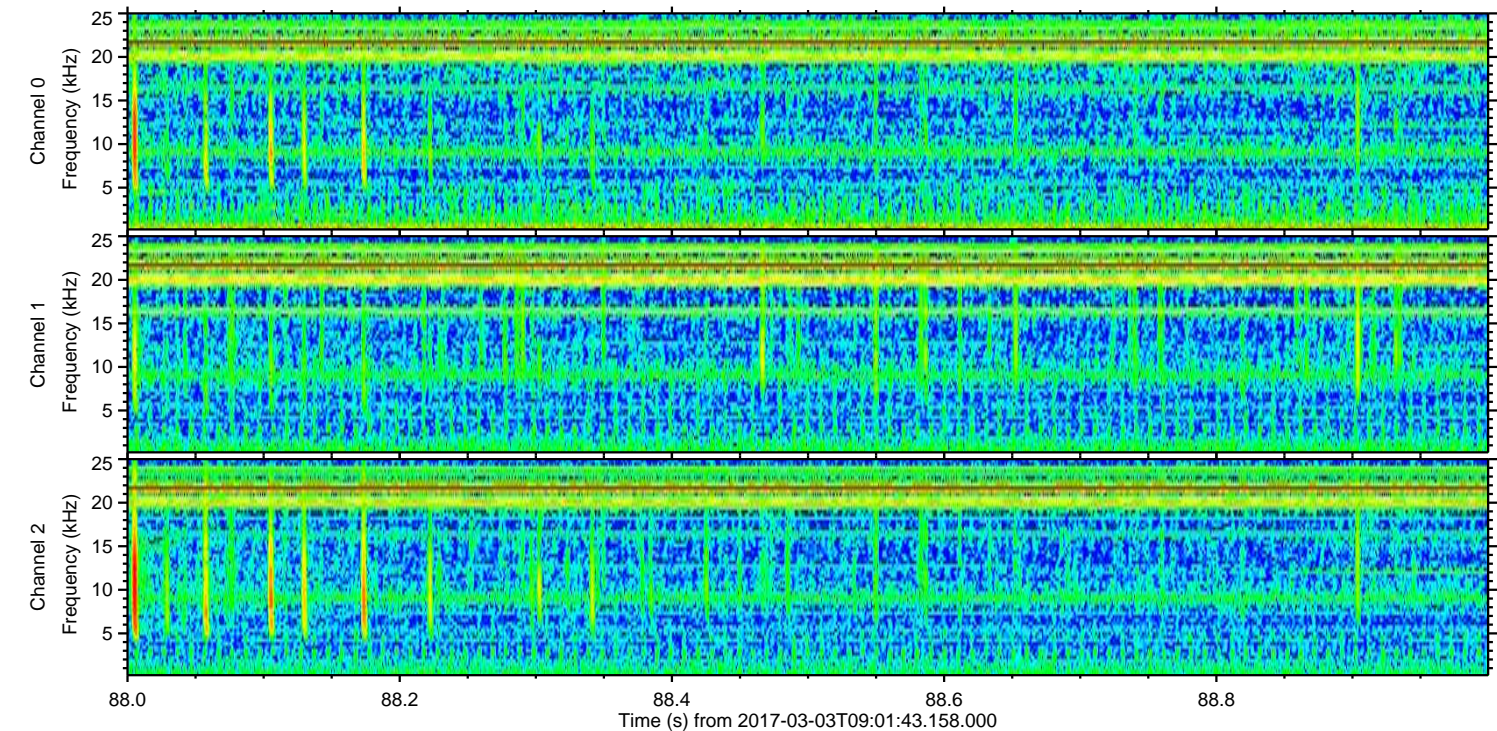
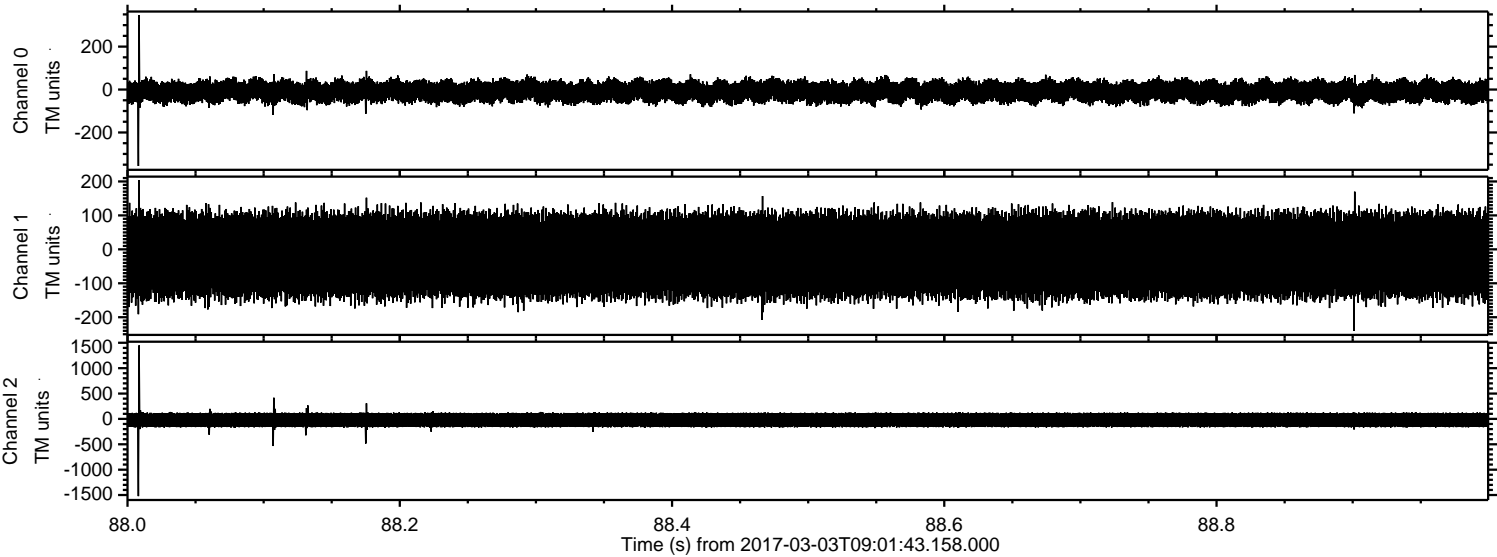


ELMAVAN 3D WAVEFORMS (Measured data sampled at 50 kHz) 51000 packets of 144 samples from 2017-03-03T09:01:43.158.000.

Processed Fri Mar 3 10:09:25 2017 by ELM ver.2012-10-06 from 001__elm20170303_090142__dat00.bin



Processed Fri Mar 3 10:09:37 2017 by ELM ver.2012-10-06 from 001__elm20170303_090142__dat00.bin

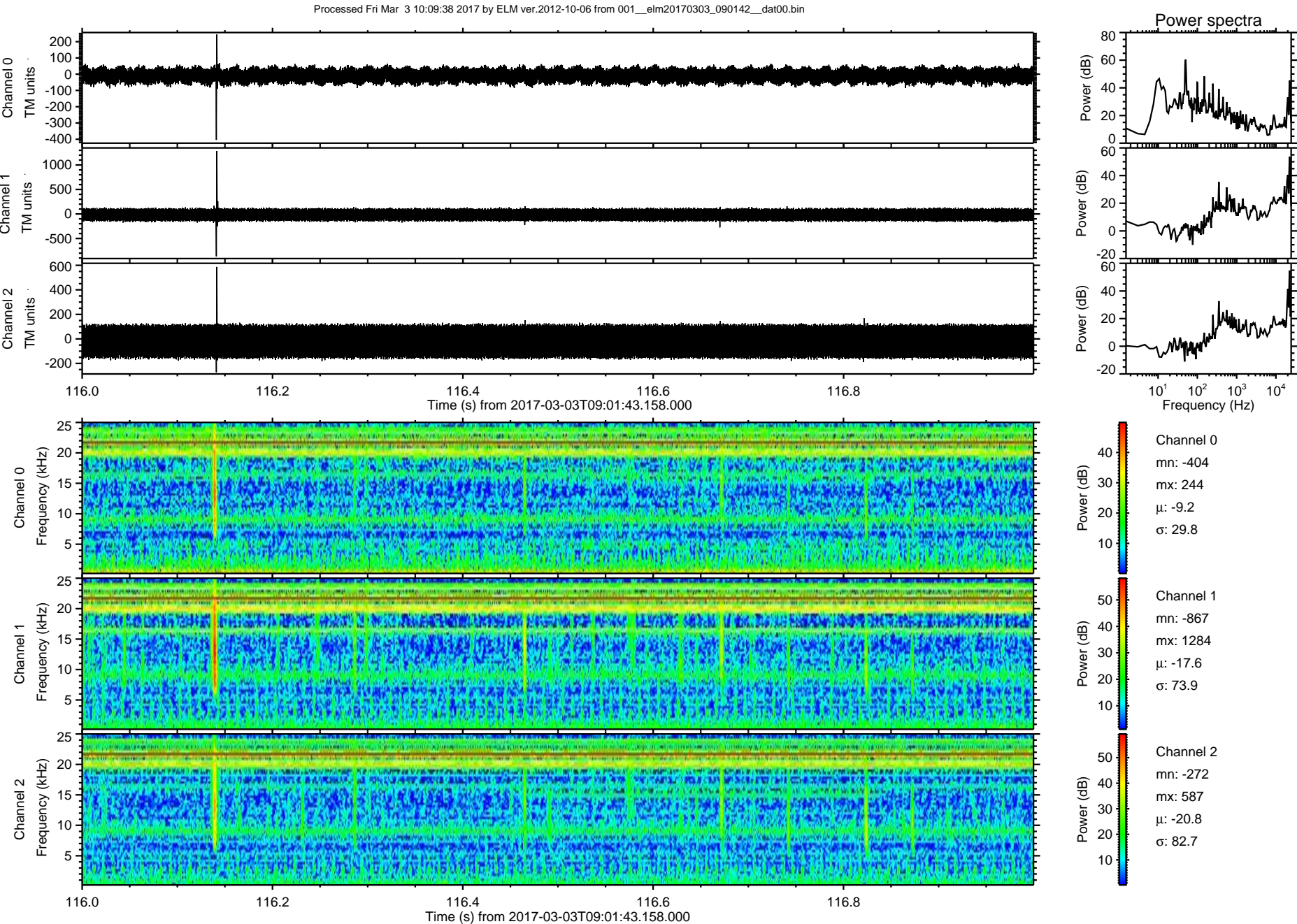


Channel 0
mn: -356
mx: 346
 μ : -9.2
 σ : 30.1

Channel 1
mn: -240
mx: 204
 μ : -17.6
 σ : 72.9

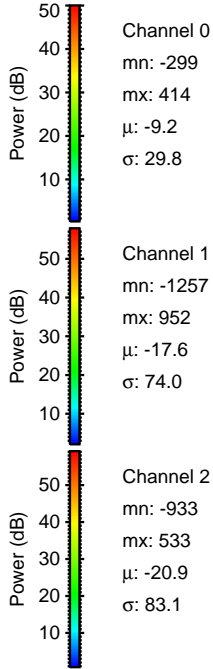
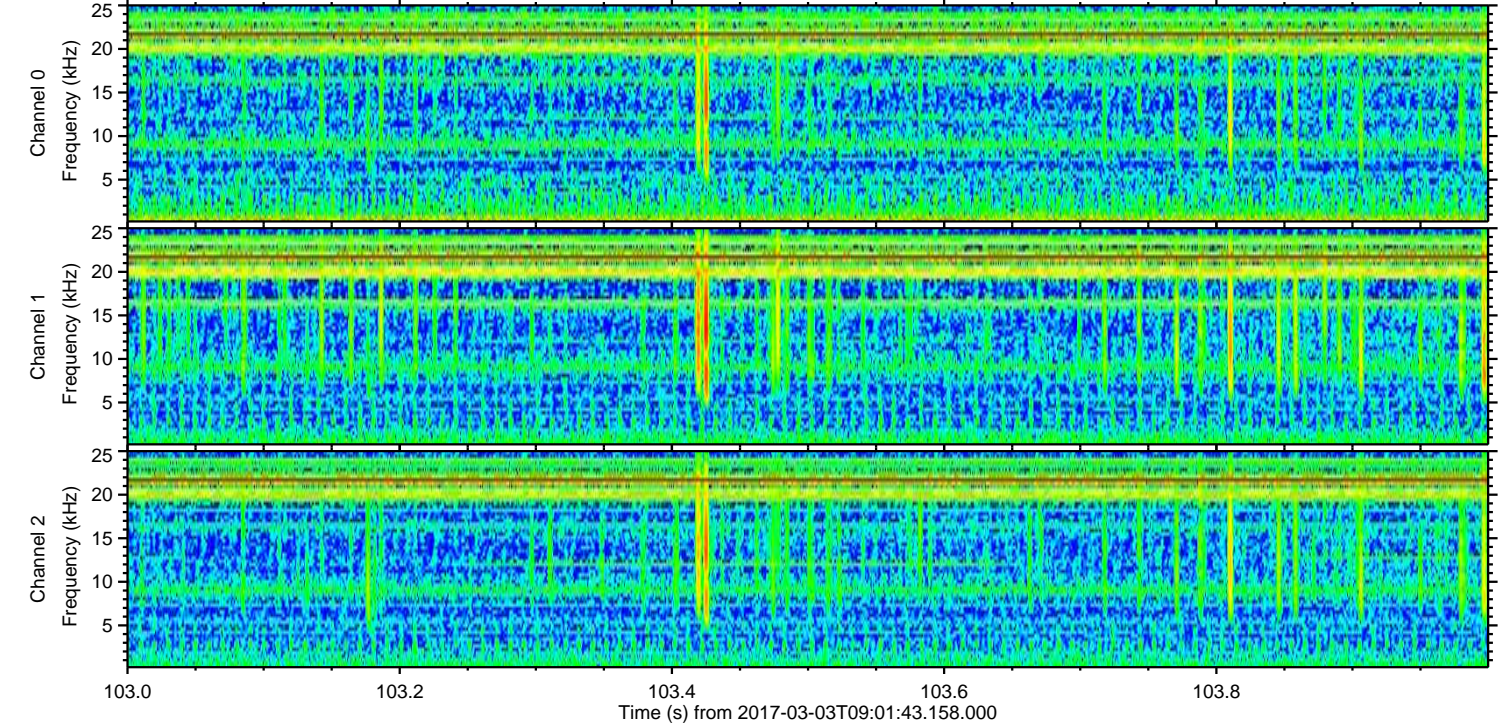
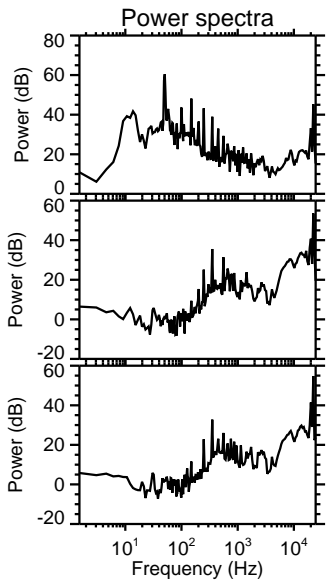
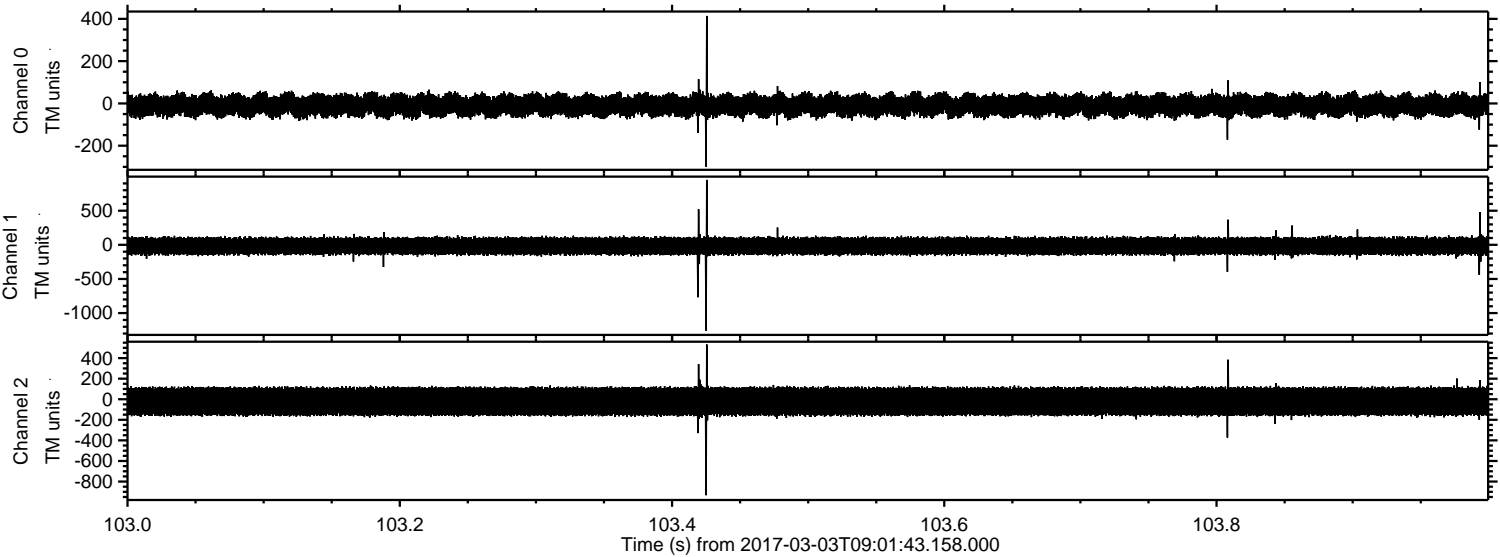
Channel 2
mn: -1522
mx: 1449
 μ : -20.8
 σ : 84.4

ELMAVAN 3D WAVEFORMS (Measured data sampled at 50 kHz) 51000 packets of 144 samples from 2017-03-03T09:01:43.158.000. Part 117/147



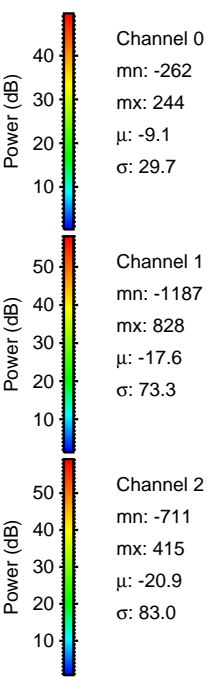
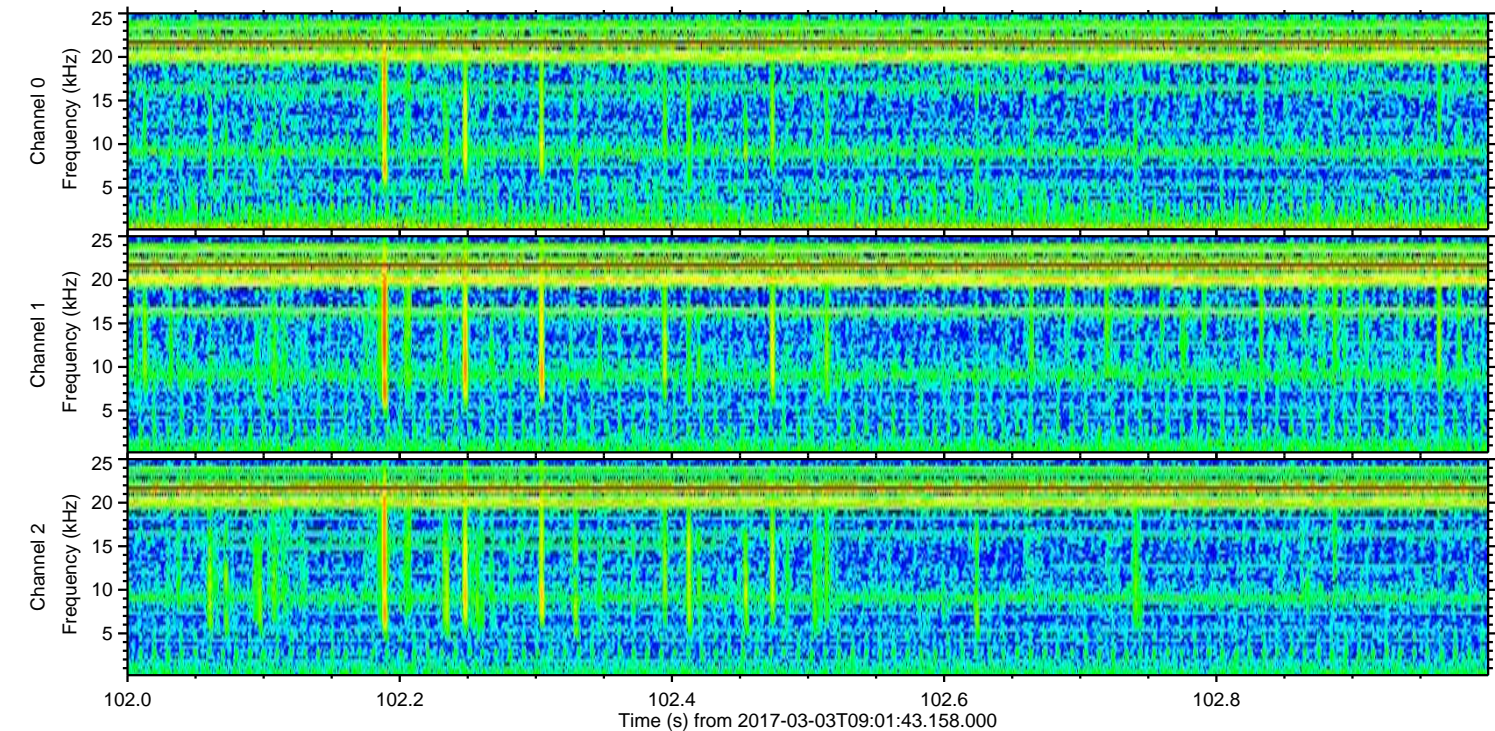
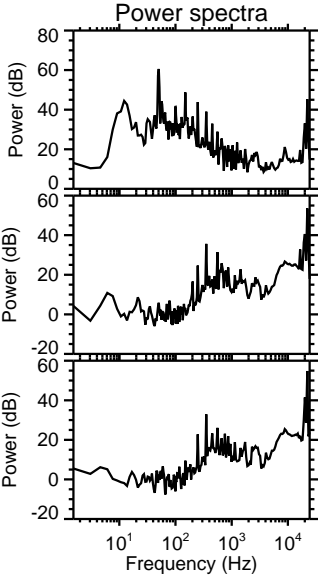
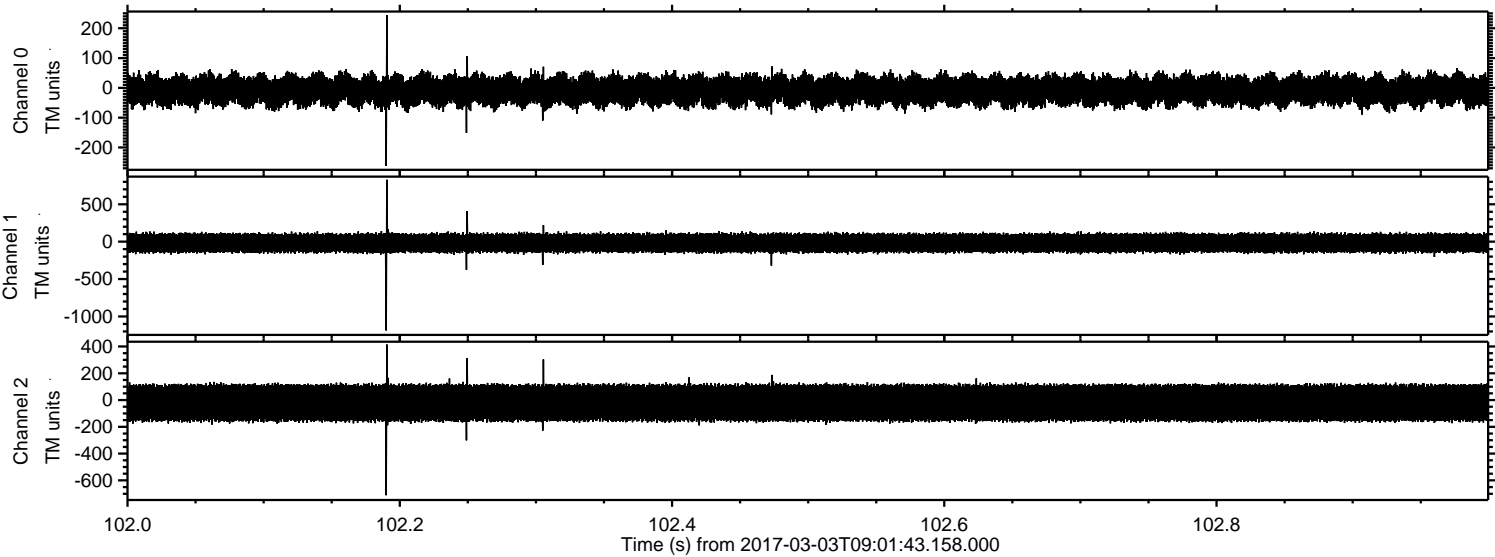
ELMAVAN 3D WAVEFORMS (Measured data sampled at 50 kHz) 51000 packets of 144 samples from 2017-03-03T09:01:43.158.000. Part 104/147

Processed Fri Mar 3 10:09:38 2017 by ELM ver.2012-10-06 from 001__elm20170303_090142__dat00.bin



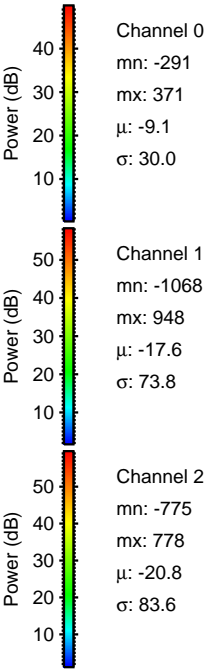
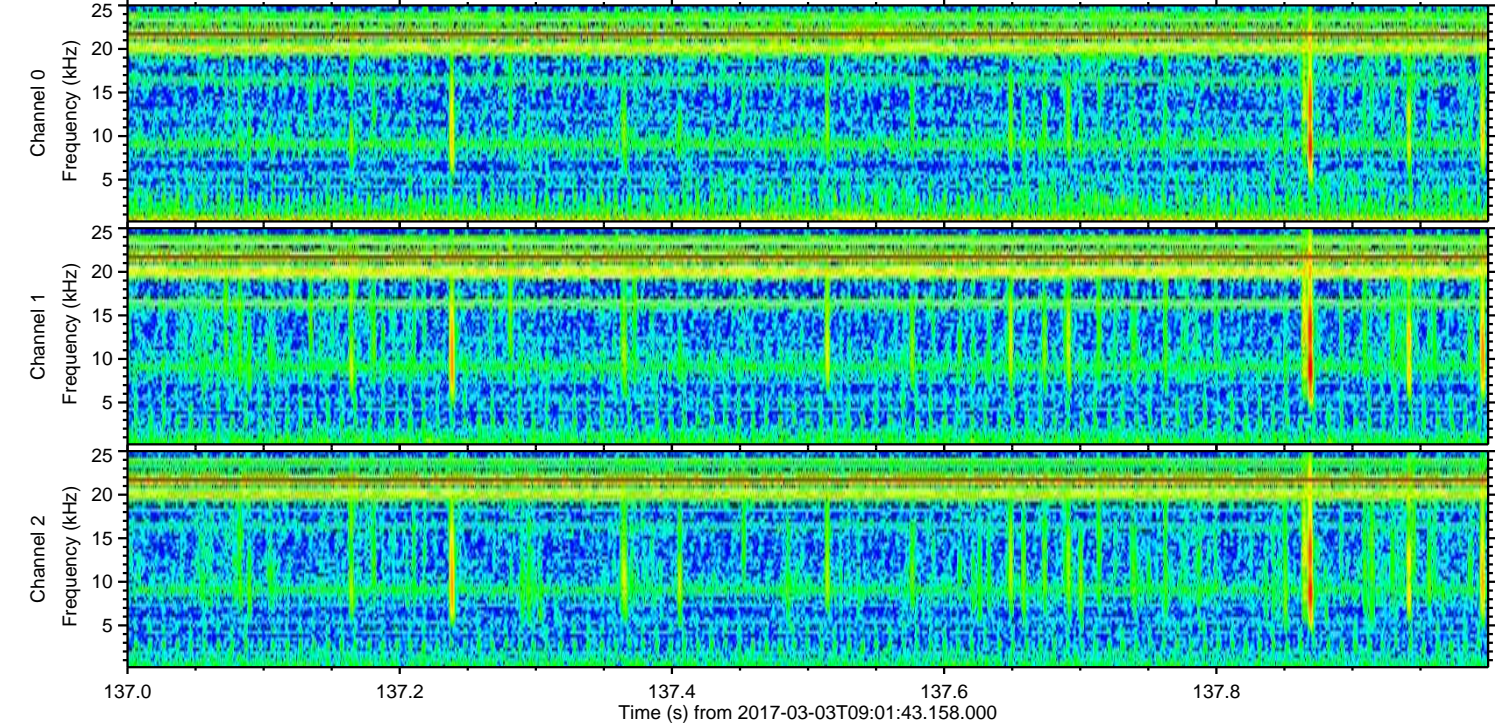
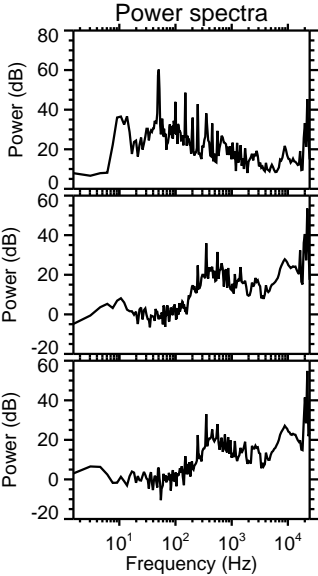
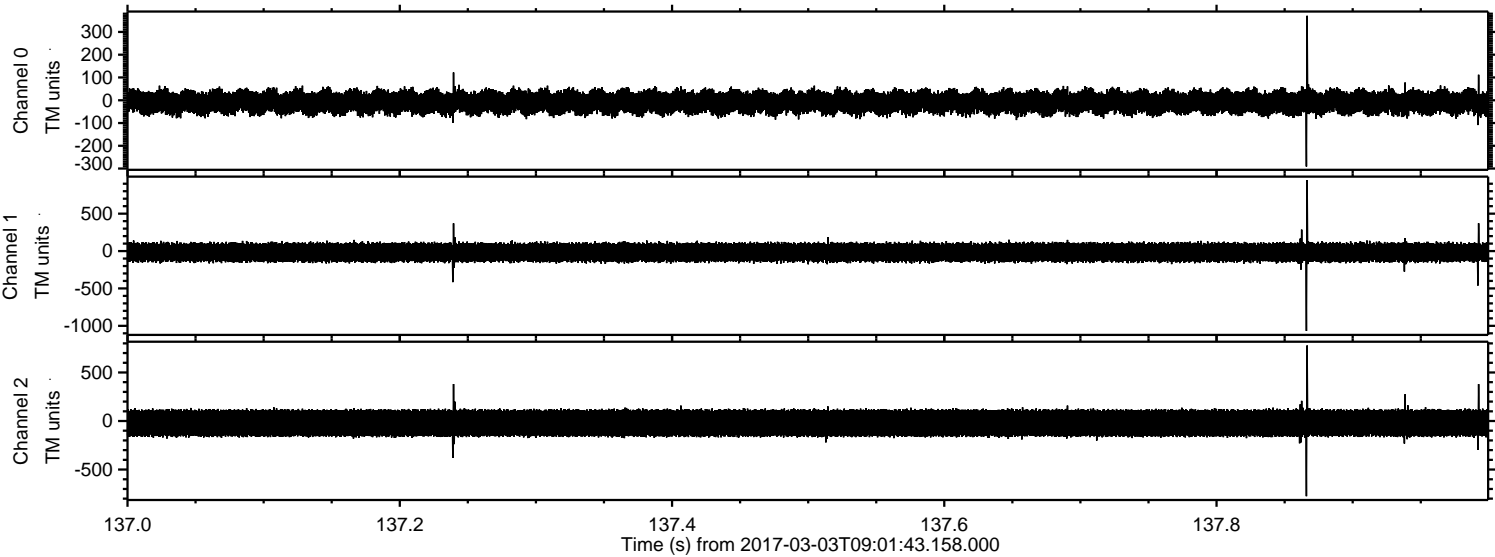
ELMAVAN 3D WAVEFORMS (Measured data sampled at 50 kHz) 51000 packets of 144 samples from 2017-03-03T09:01:43.158.000. Part 103/147

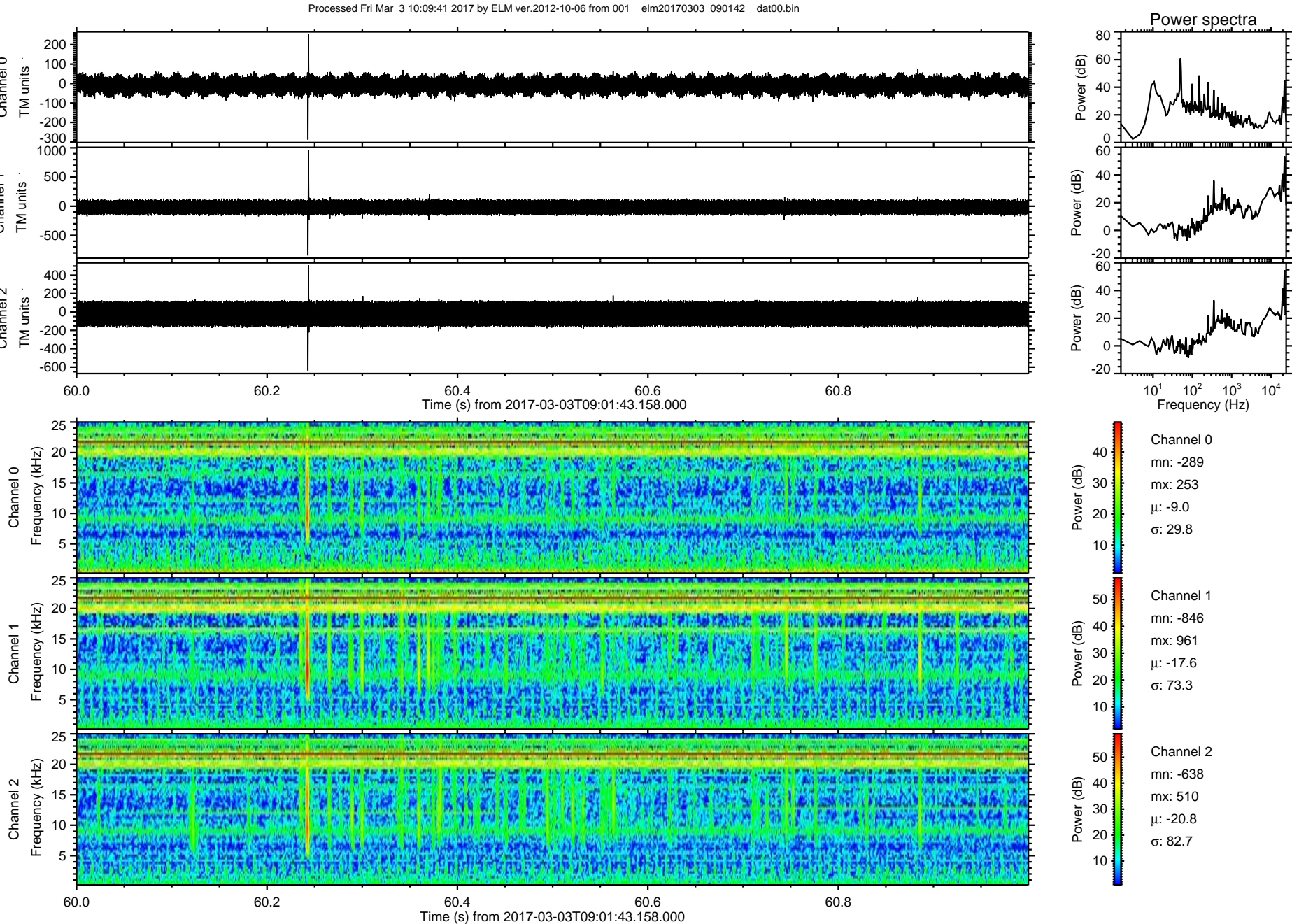
Processed Fri Mar 3 10:09:39 2017 by ELM ver.2012-10-06 from 001__elm20170303_090142__dat00.bin

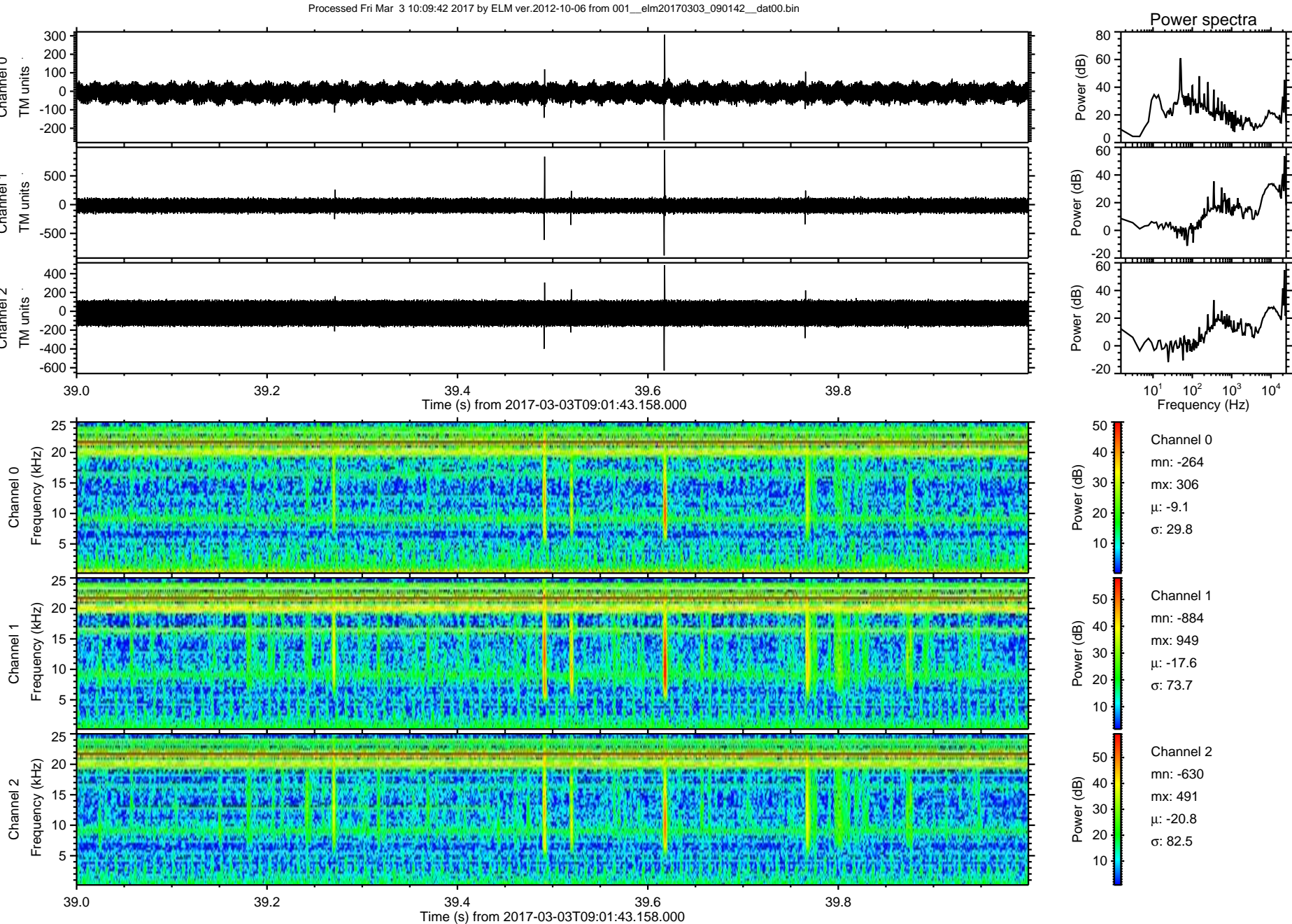


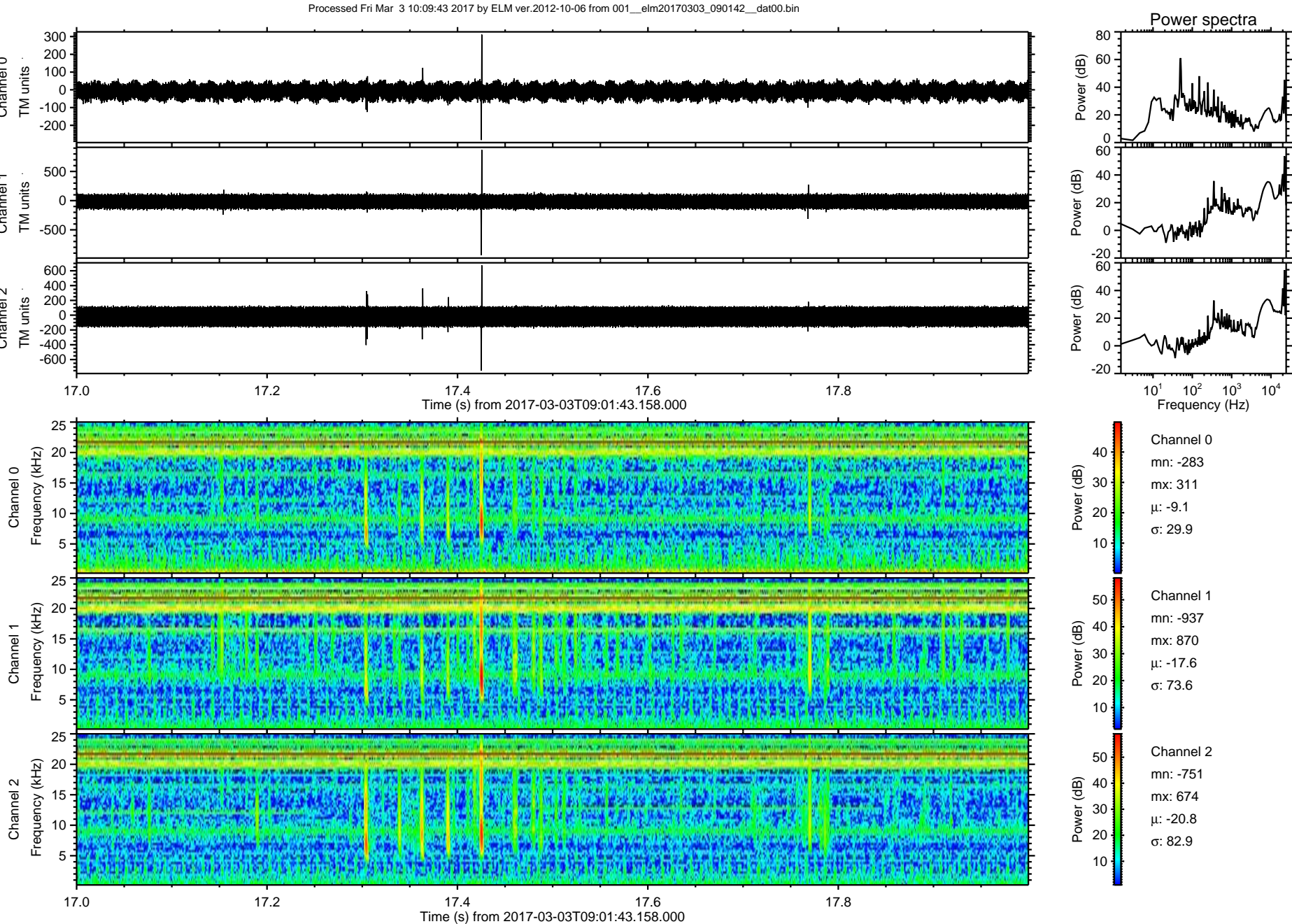
ELMAVAN 3D WAVEFORMS (Measured data sampled at 50 kHz) 51000 packets of 144 samples from 2017-03-03T09:01:43.158.000. Part 138/147

Processed Fri Mar 3 10:09:40 2017 by ELM ver.2012-10-06 from 001__elm20170303_090142__dat00.bin

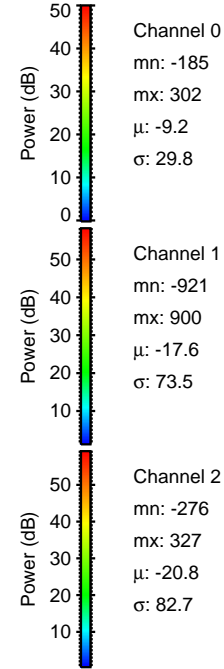
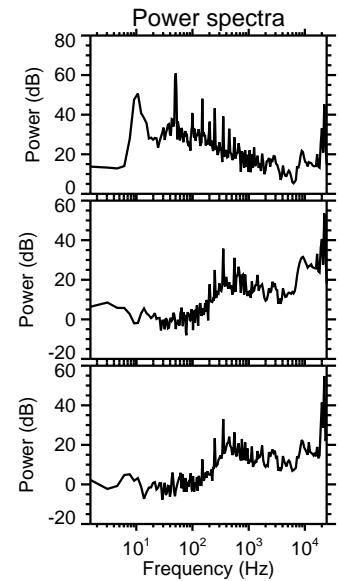
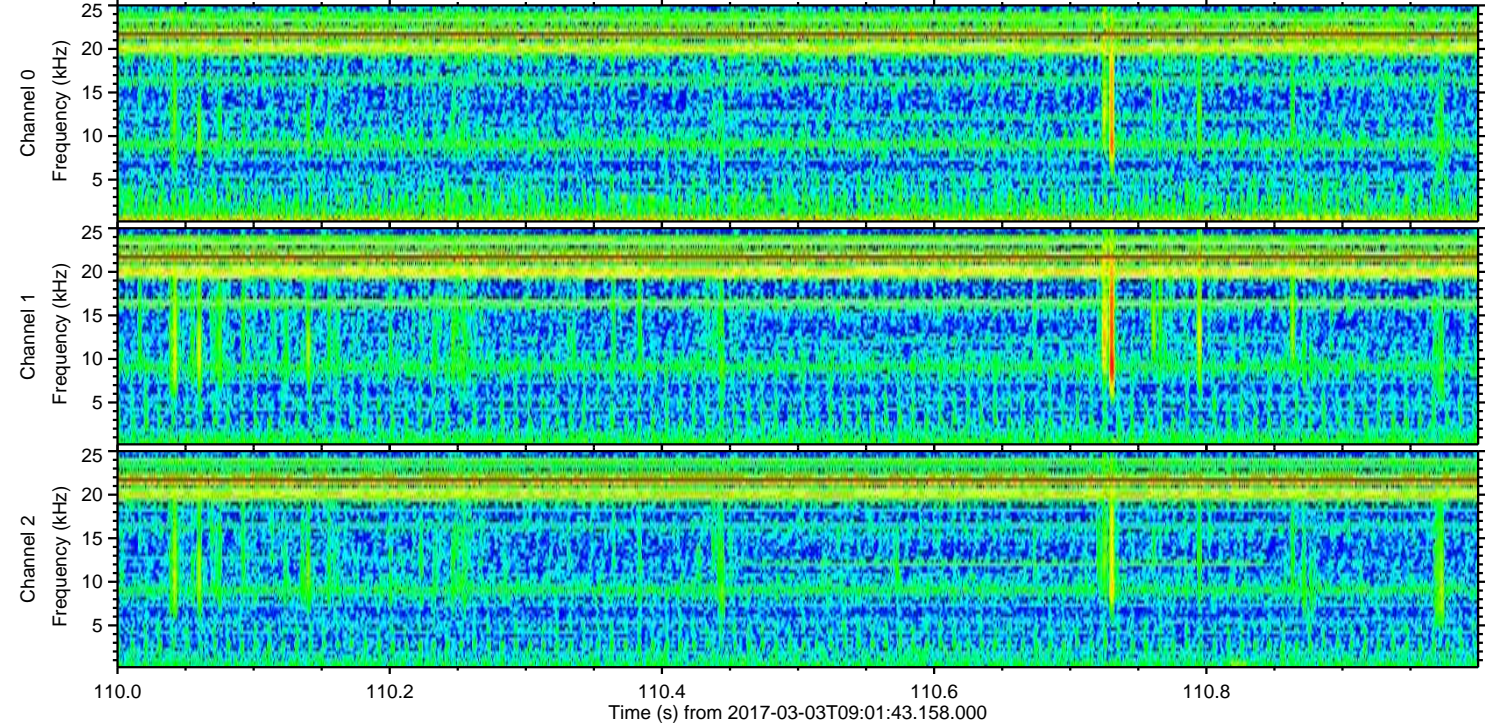
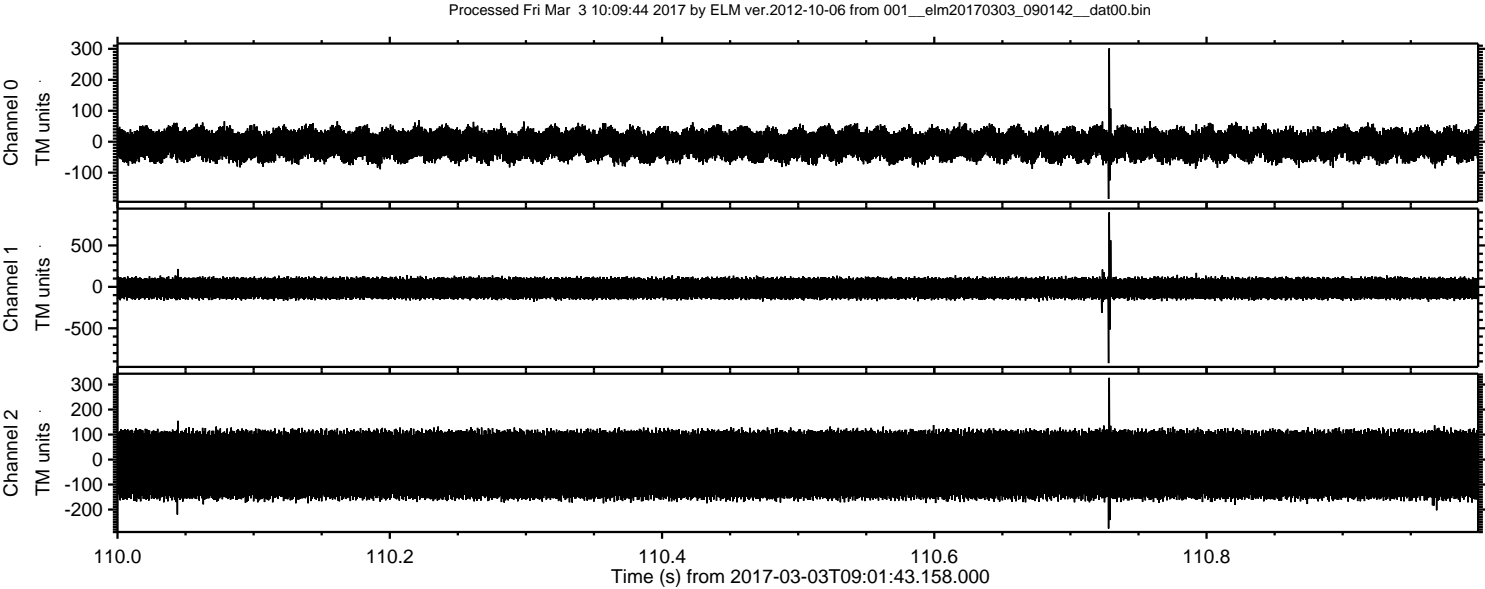








ELMAVAN 3D WAVEFORMS (Measured data sampled at 50 kHz) 51000 packets of 144 samples from 2017-03-03T09:01:43.158.000. Part 111/147



ELMAVAN 3D WAVEFORMS (Measured data sampled at 50 kHz) 51000 packets of 144 samples from 2017-03-03T09:01:43.158.000. Part 33/147

