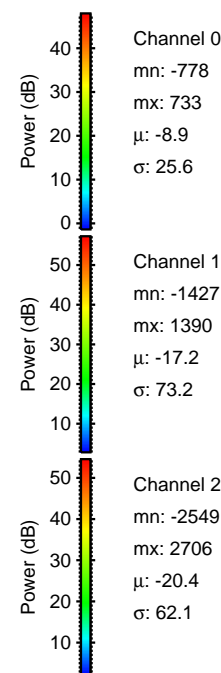
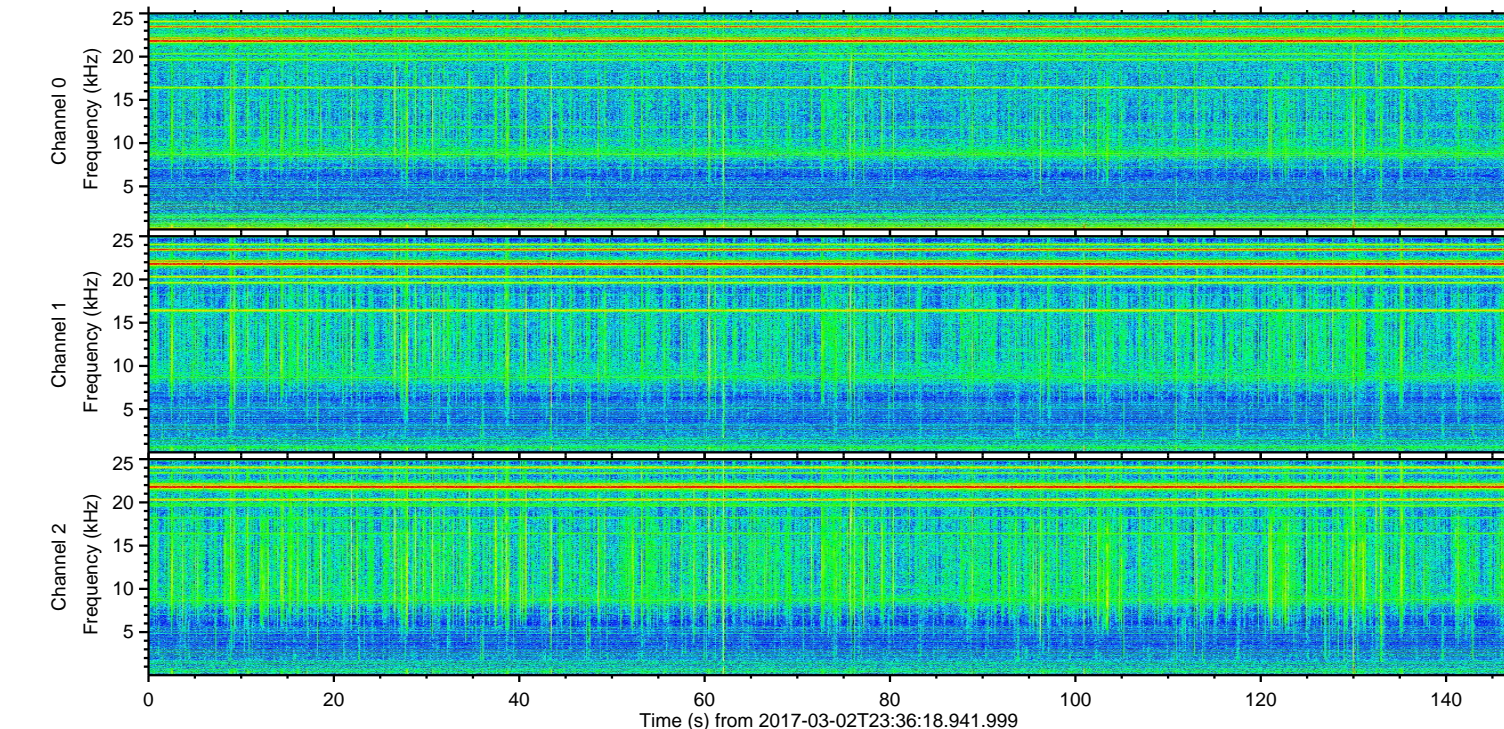
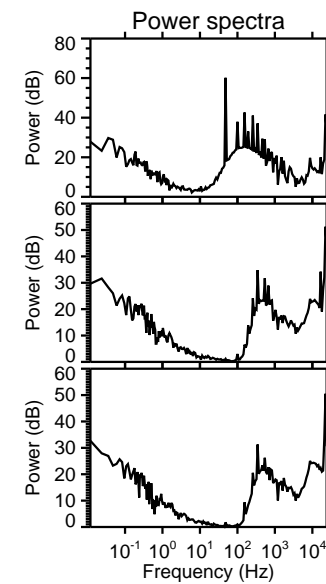
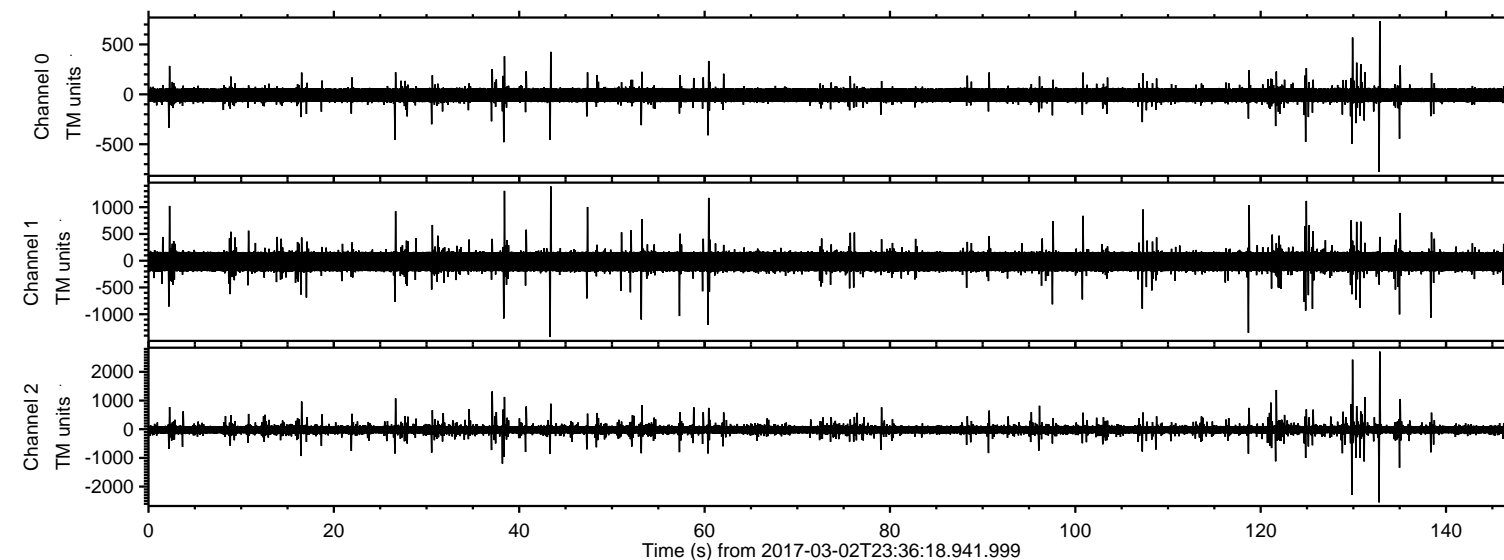


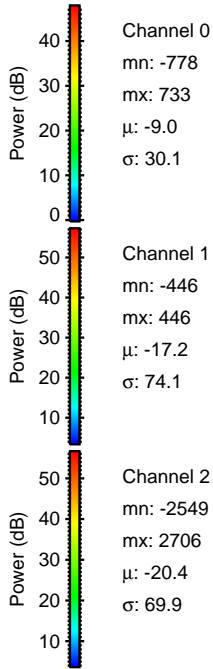
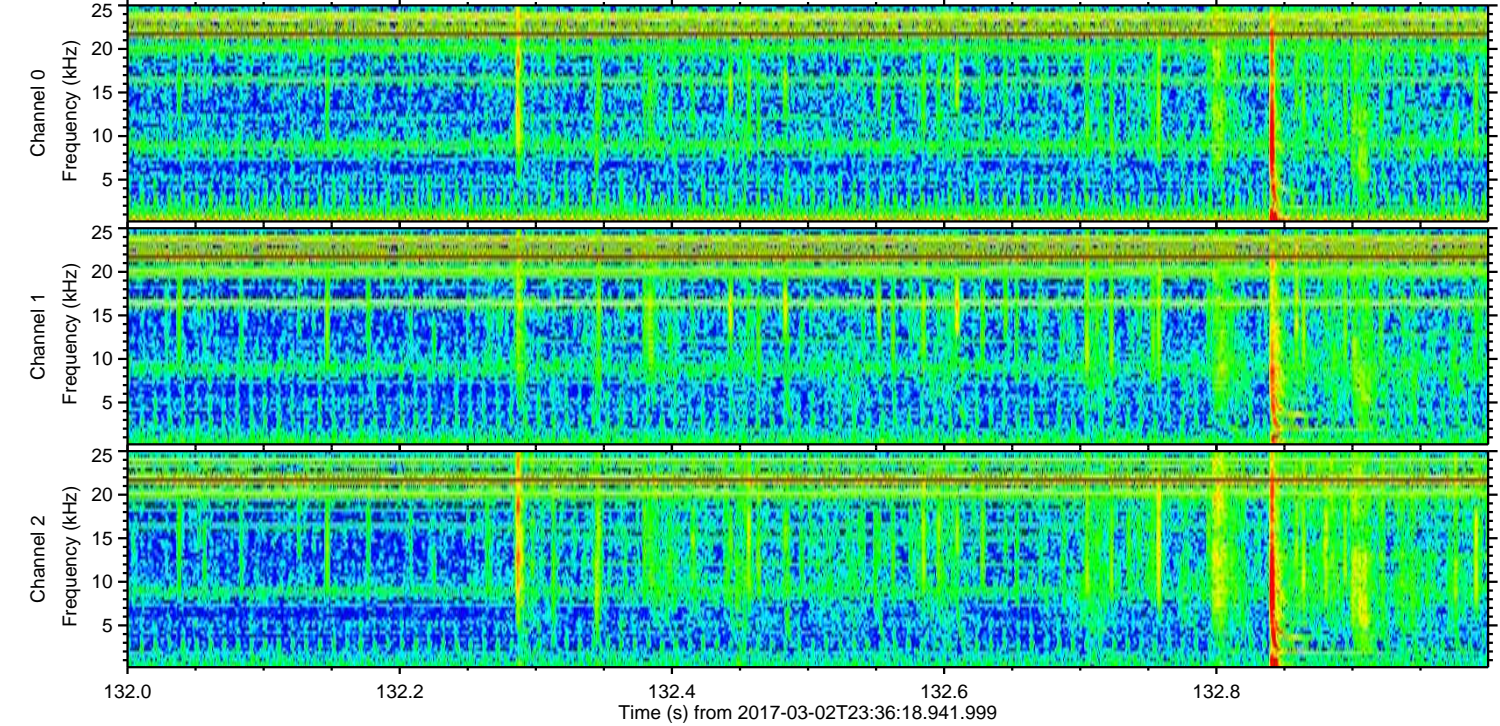
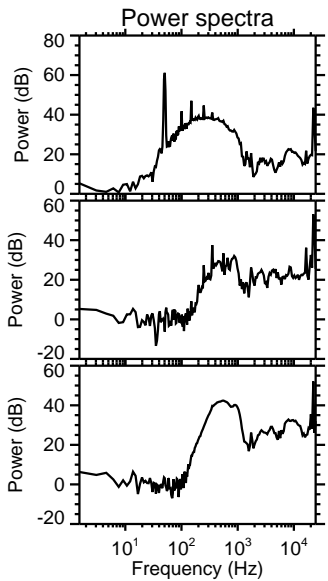
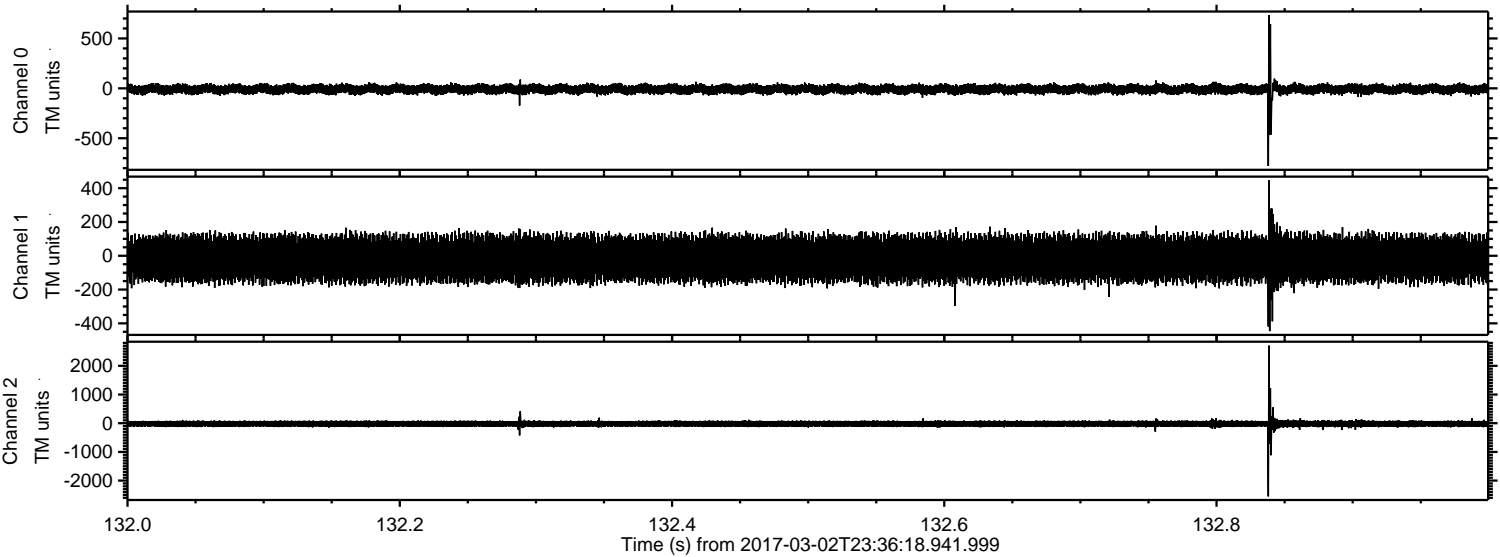
ELMAVAN 3D WAVEFORMS (Measured data sampled at 50 kHz) 51000 packets of 144 samples from 2017-03-02T23:36:18.941.999.

Processed Fri Mar 3 00:44:32 2017 by ELM ver.2012-10-06 from 001__elm20170302_233617__dat00.bin



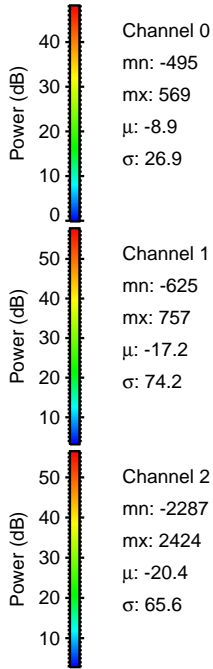
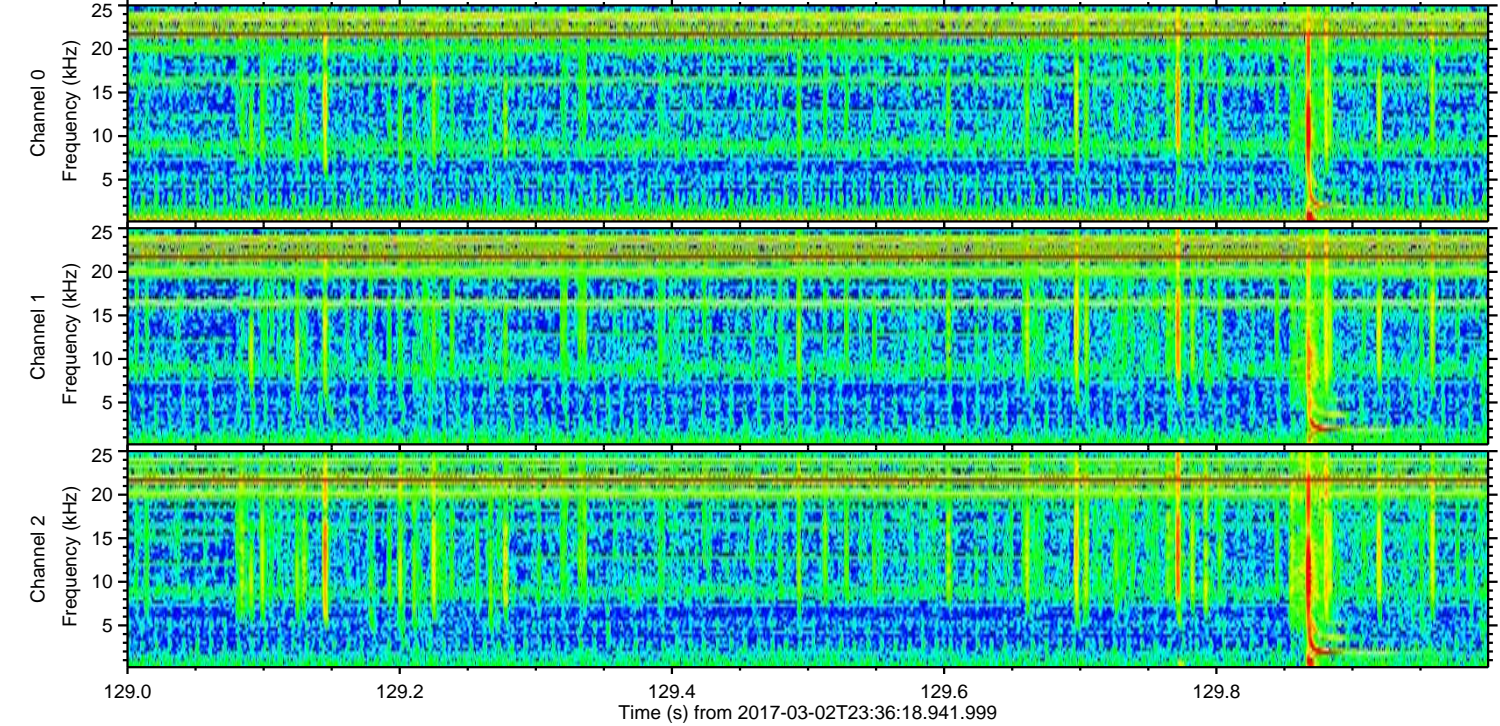
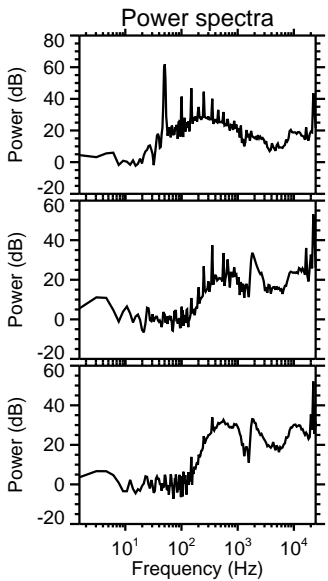
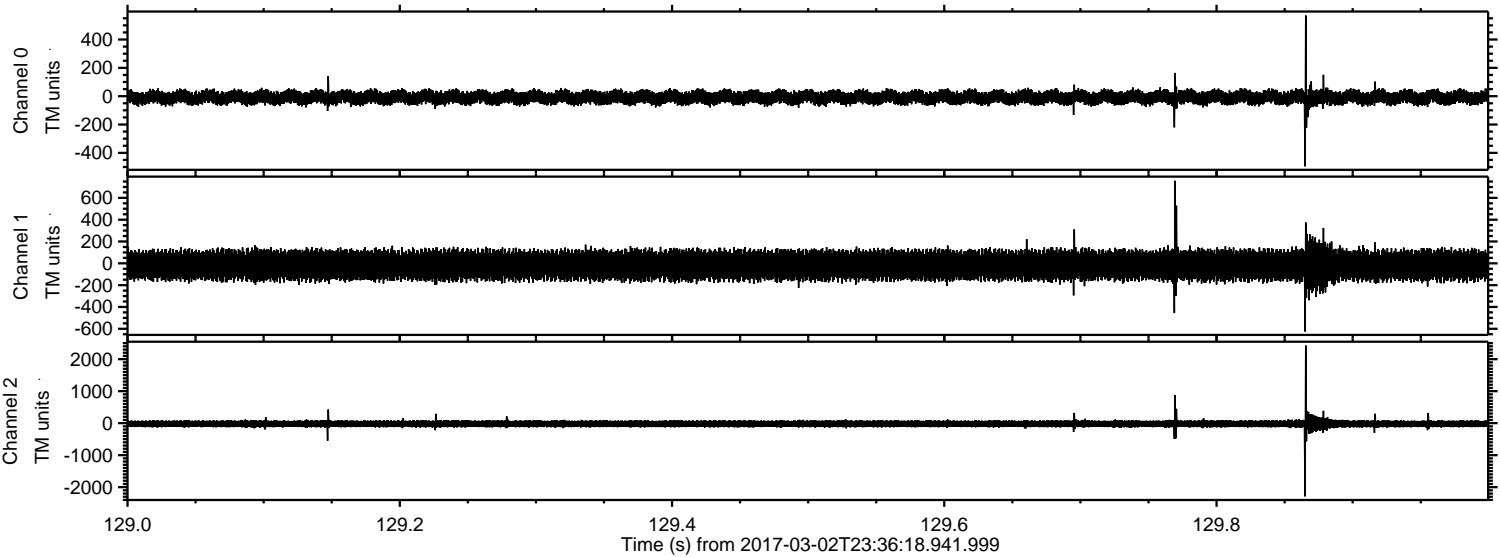
ELMAVAN 3D WAVEFORMS (Measured data sampled at 50 kHz) 51000 packets of 144 samples from 2017-03-02T23:36:18.941.999. Part 133/147

Processed Fri Mar 3 00:44:44 2017 by ELM ver.2012-10-06 from 001__elm20170302_233617__dat00.bin



ELMAVAN 3D WAVEFORMS (Measured data sampled at 50 kHz) 51000 packets of 144 samples from 2017-03-02T23:36:18.941.999. Part 130/147

Processed Fri Mar 3 00:44:45 2017 by ELM ver.2012-10-06 from 001__elm20170302_233617__dat00.bin

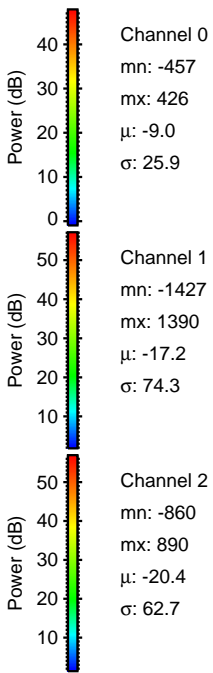
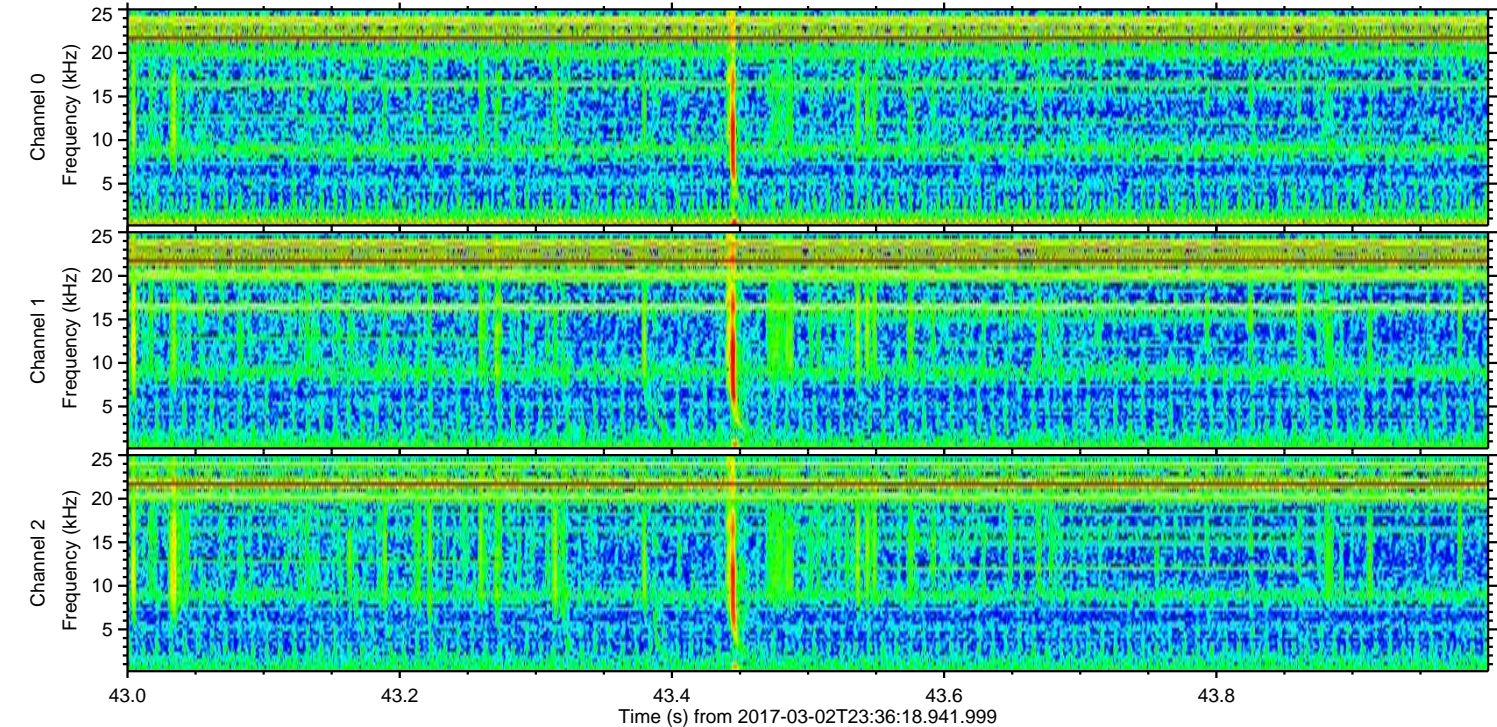
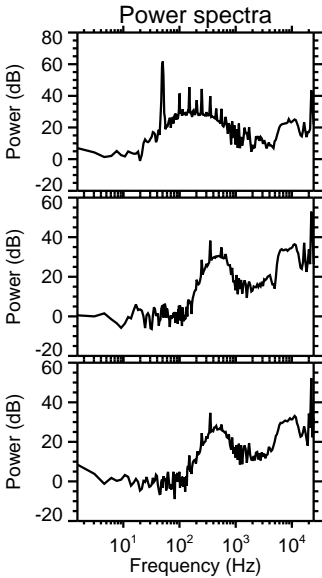
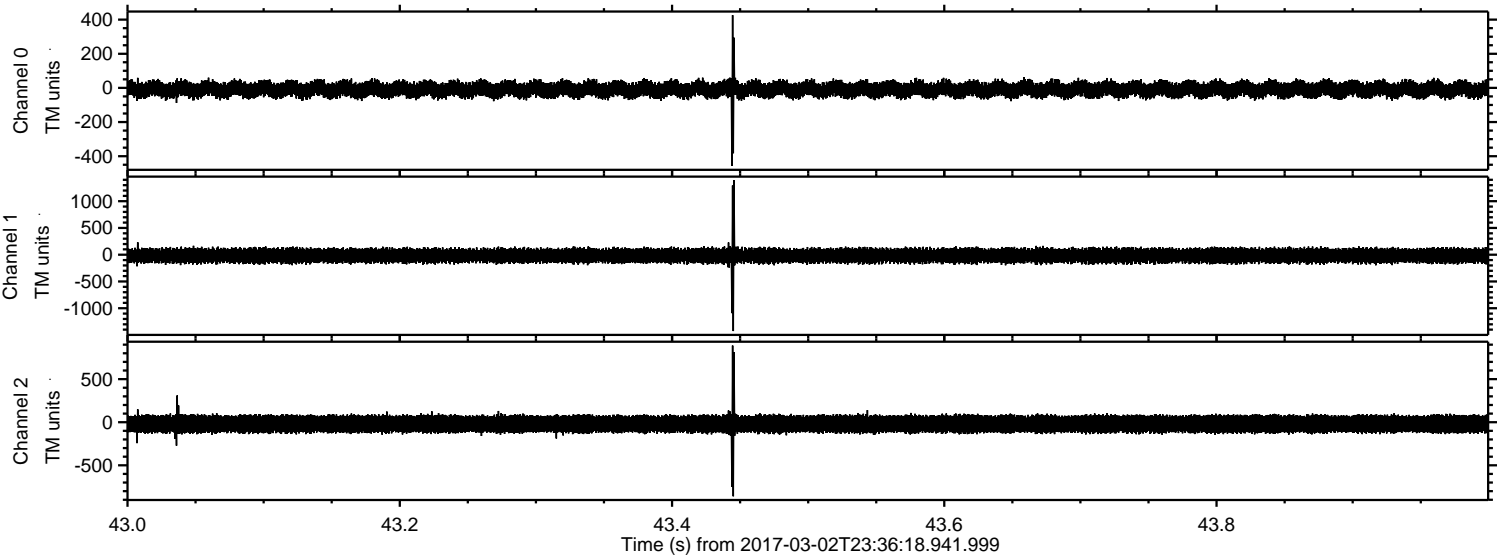


Channel 0
mn: -495
mx: 569
 μ : -8.9
 σ : 26.9

Channel 1
mn: -625
mx: 757
 μ : -17.2
 σ : 74.2

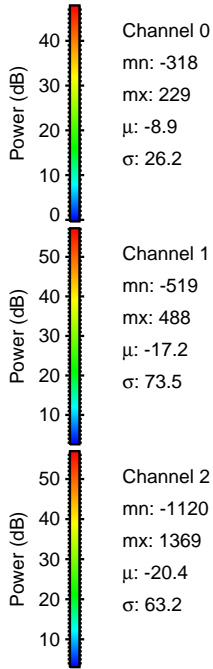
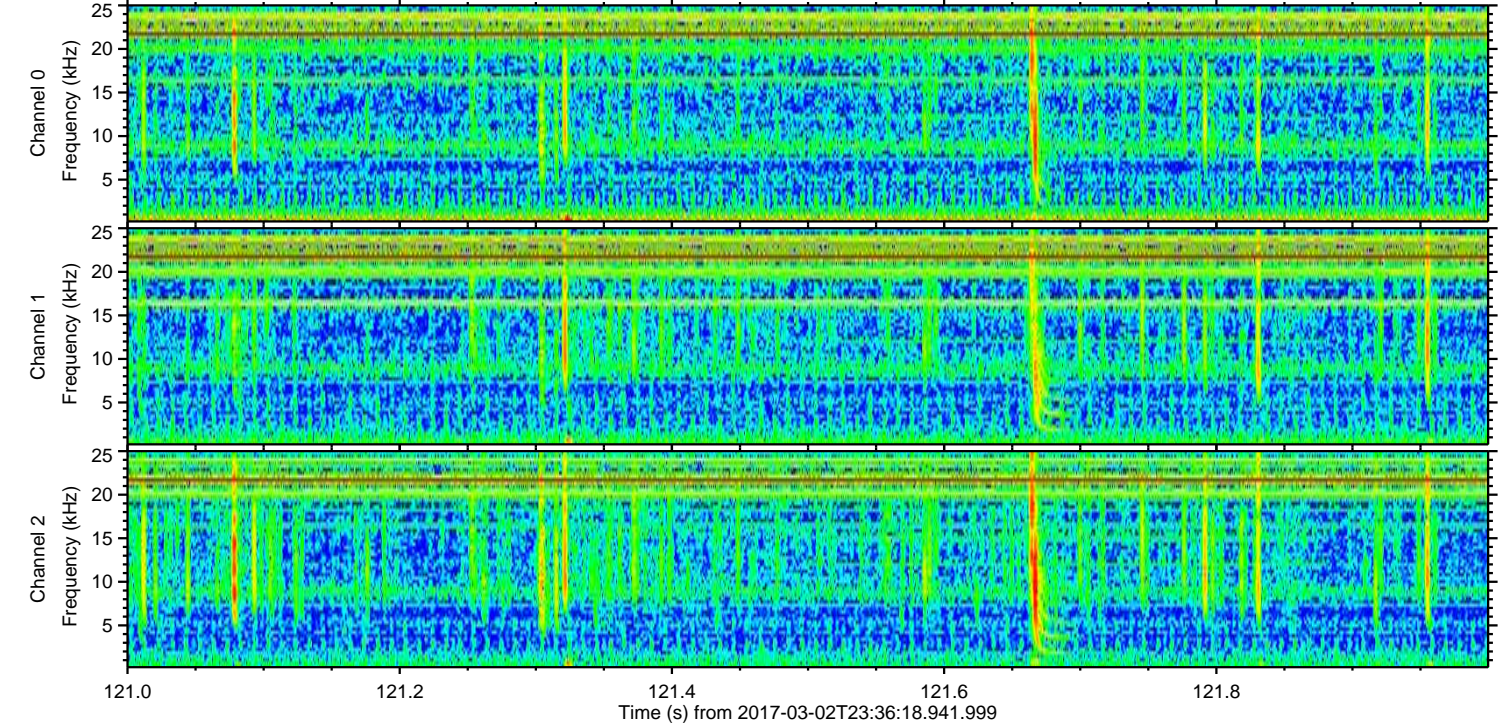
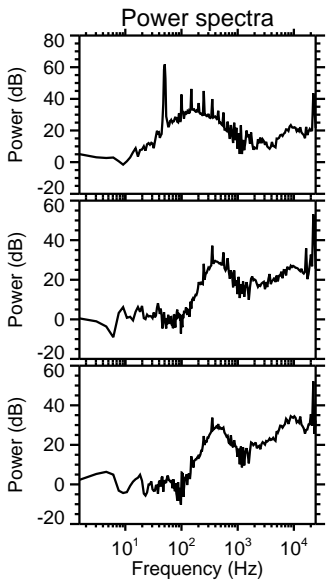
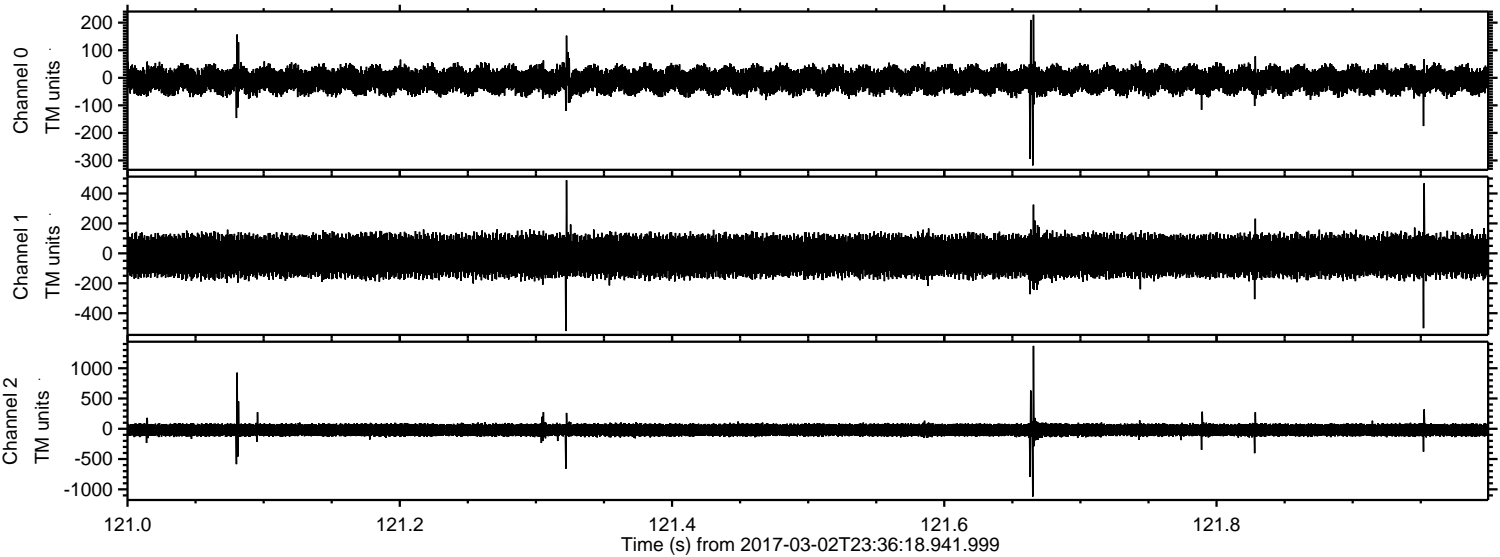
Channel 2
mn: -2287
mx: 2424
 μ : -20.4
 σ : 65.6

Processed Fri Mar 3 00:44:46 2017 by ELM ver.2012-10-06 from 001__elm20170302_233617__dat00.bin



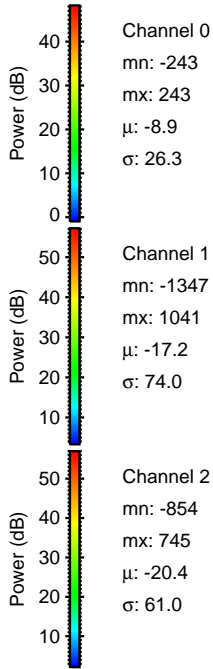
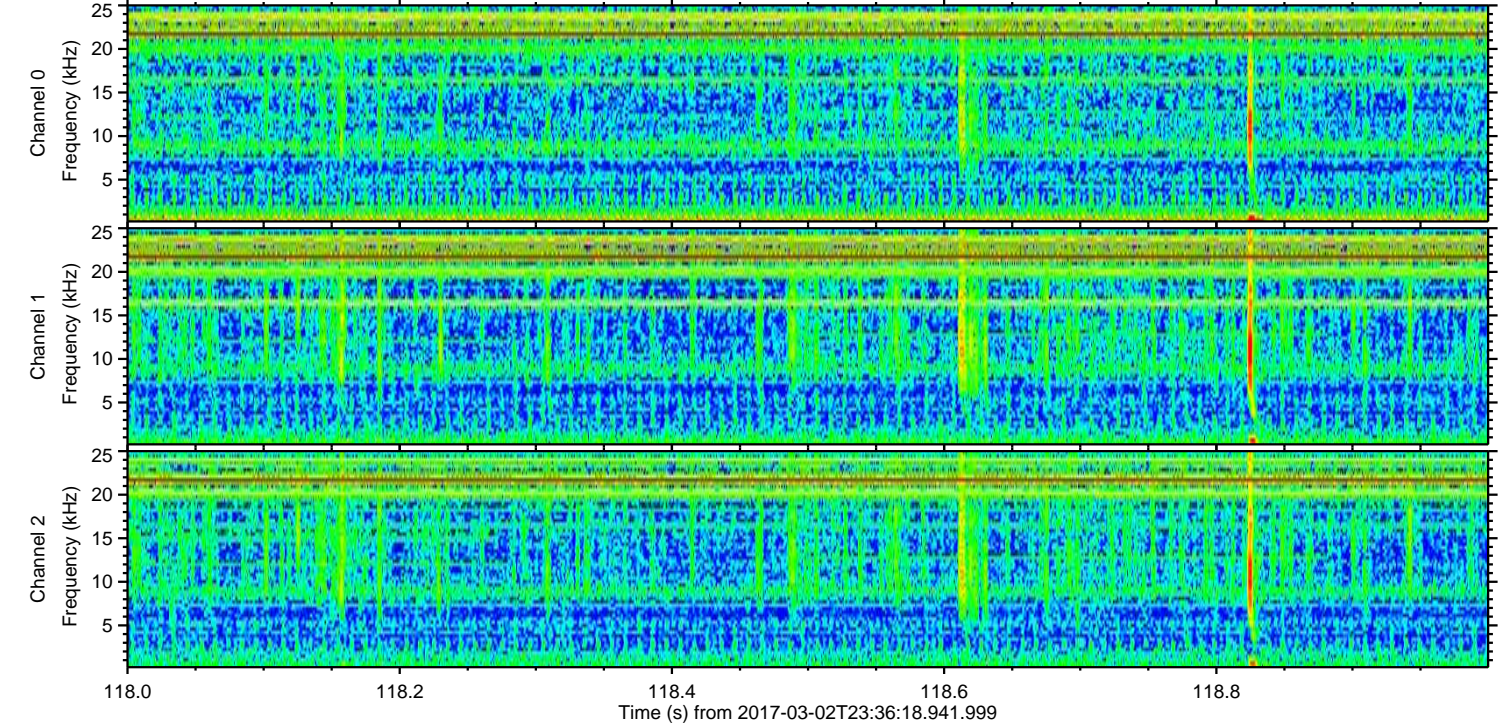
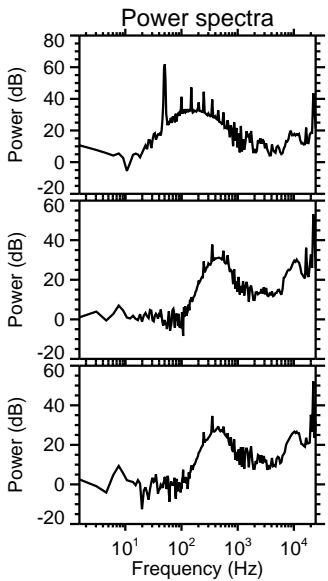
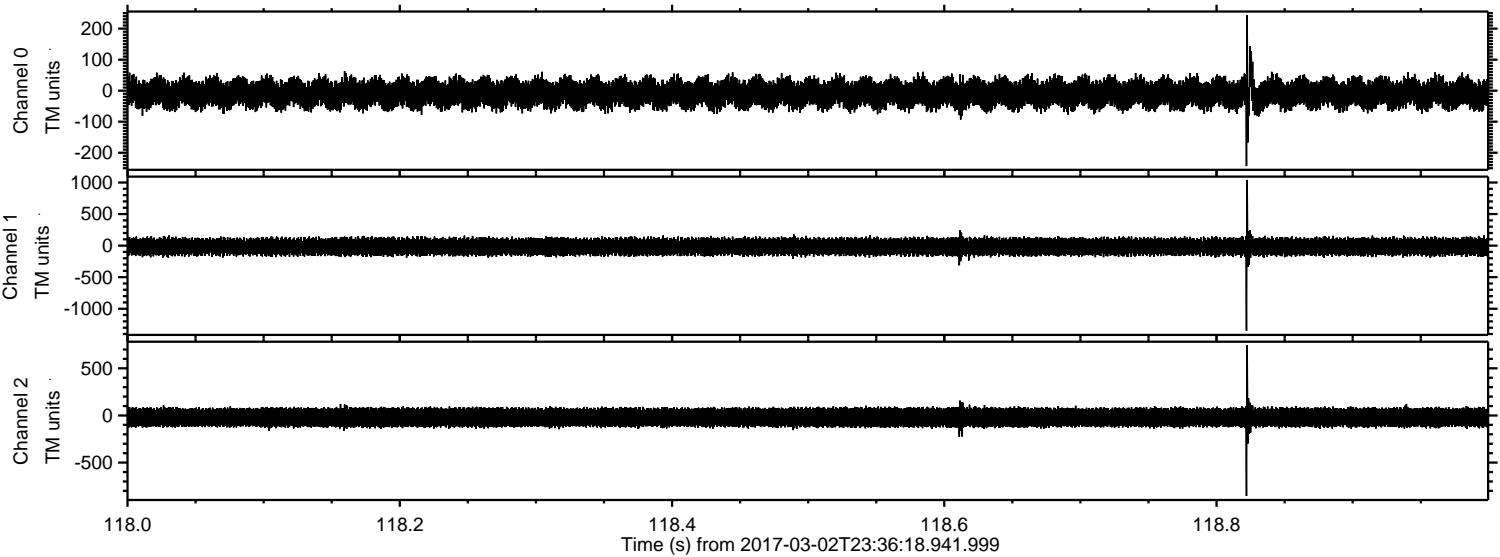
ELMAVAN 3D WAVEFORMS (Measured data sampled at 50 kHz) 51000 packets of 144 samples from 2017-03-02T23:36:18.941.999. Part 122/147

Processed Fri Mar 3 00:44:47 2017 by ELM ver.2012-10-06 from 001__elm20170302_233617__dat00.bin



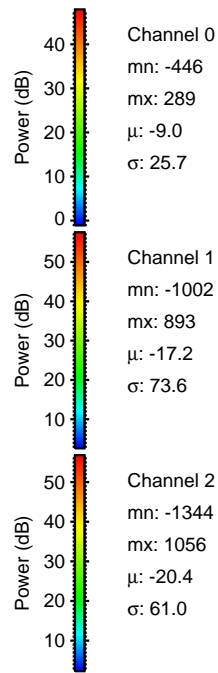
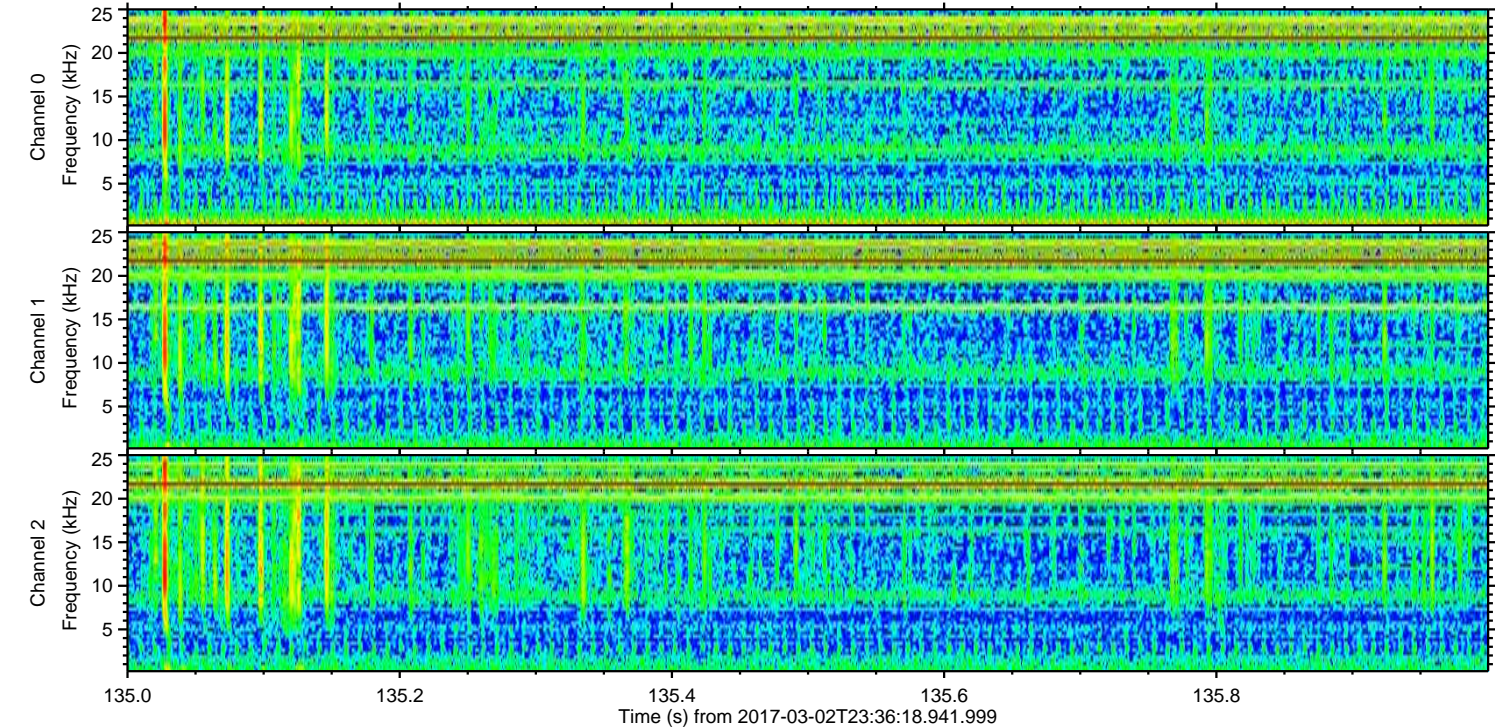
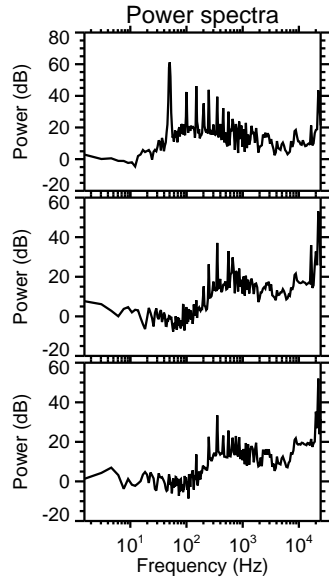
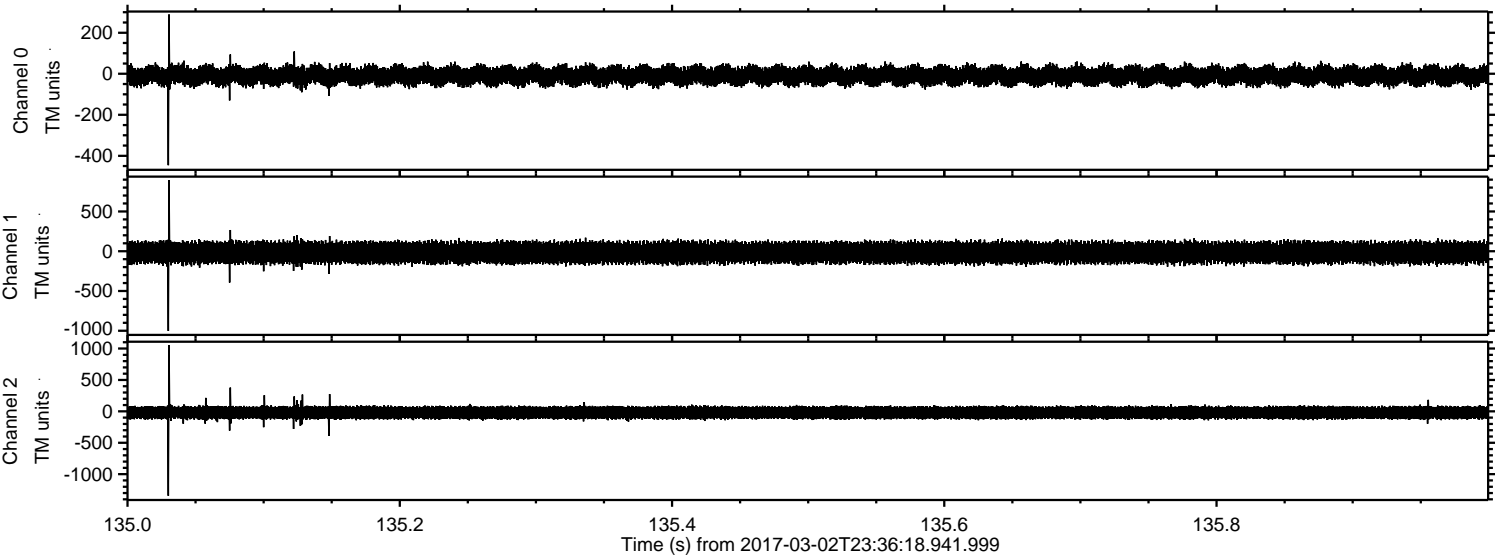
ELMAVAN 3D WAVEFORMS (Measured data sampled at 50 kHz) 51000 packets of 144 samples from 2017-03-02T23:36:18.941.999. Part 119/147

Processed Fri Mar 3 00:44:48 2017 by ELM ver.2012-10-06 from 001__elm20170302_233617__dat00.bin

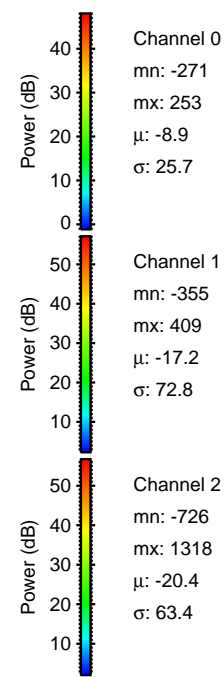
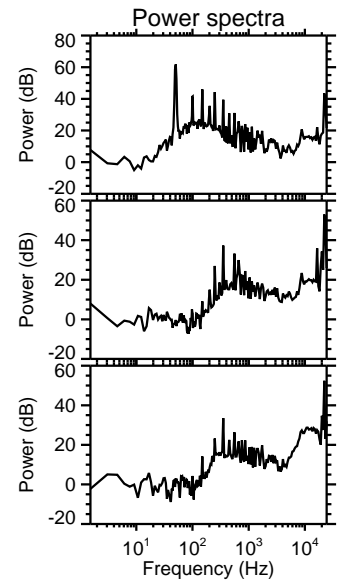
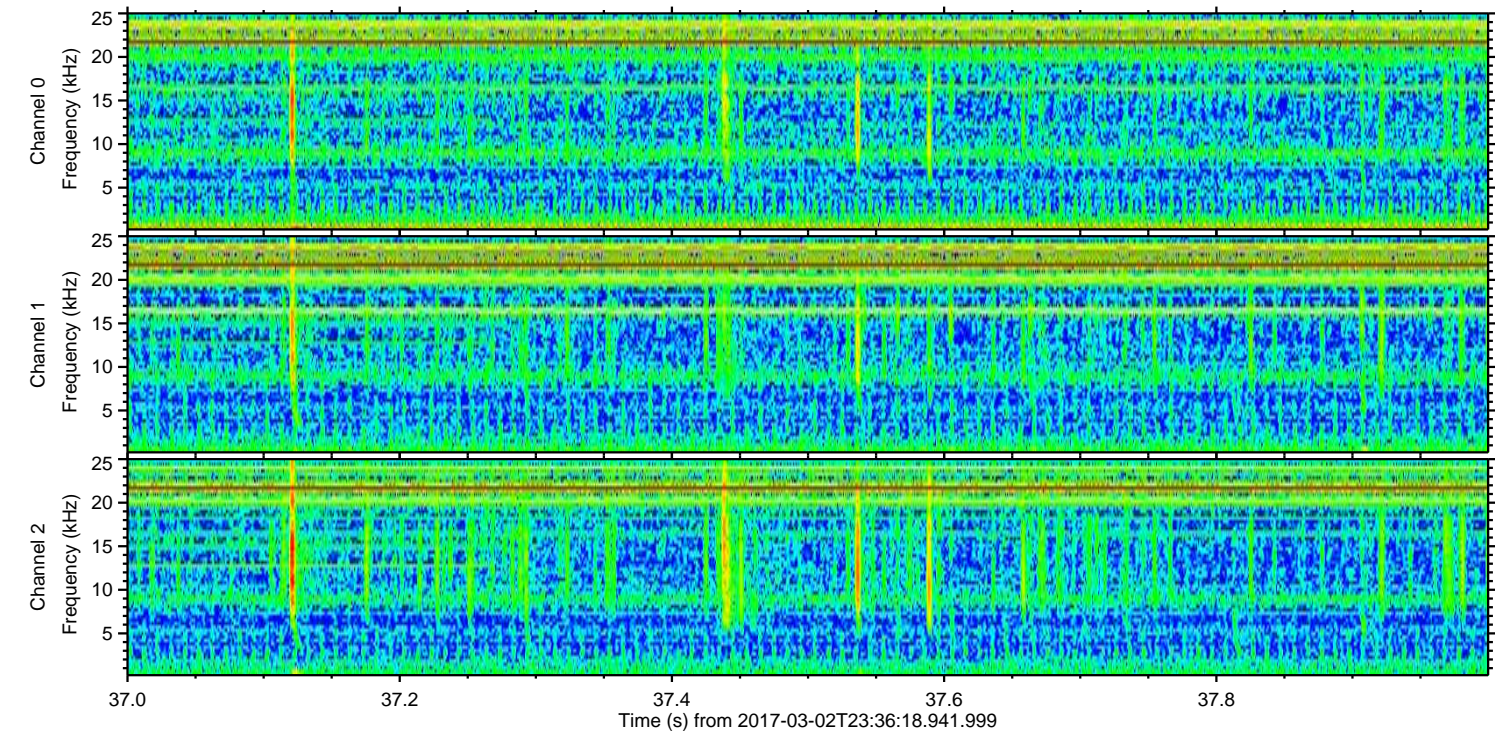
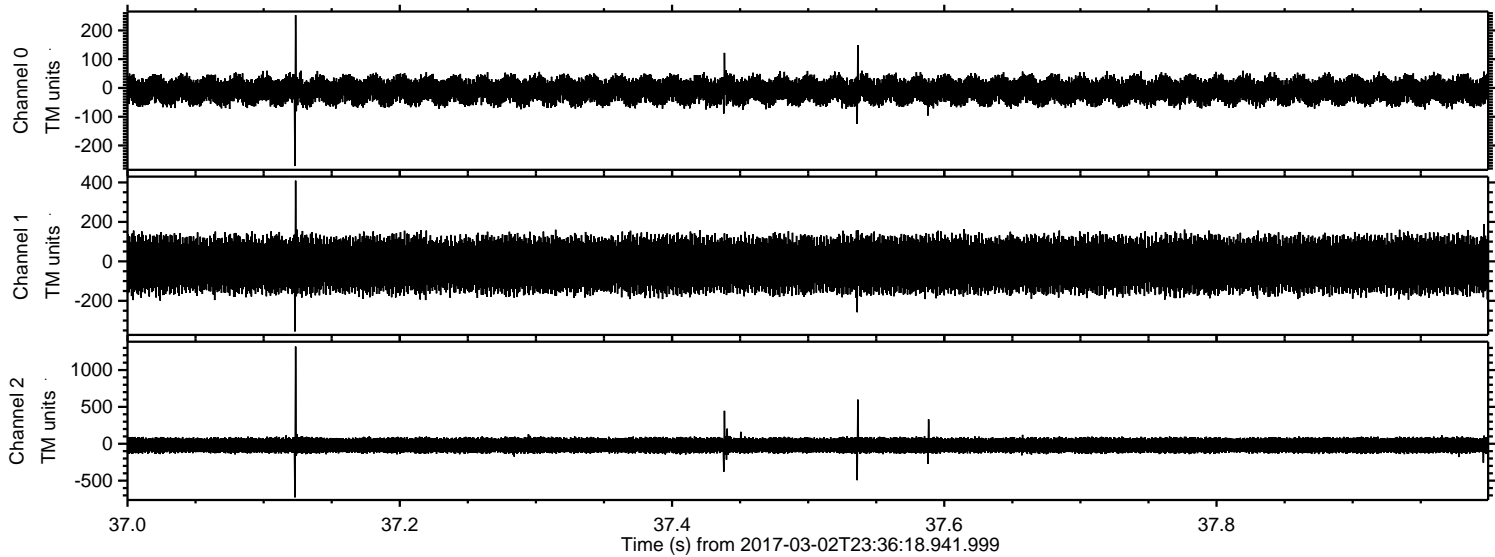


ELMAVAN 3D WAVEFORMS (Measured data sampled at 50 kHz) 51000 packets of 144 samples from 2017-03-02T23:36:18.941.999. Part 136/147

Processed Fri Mar 3 00:44:49 2017 by ELM ver.2012-10-06 from 001__elm20170302_233617__dat00.bin



Processed Fri Mar 3 00:44:50 2017 by ELM ver.2012-10-06 from 001__elm20170302_233617__dat00.bin

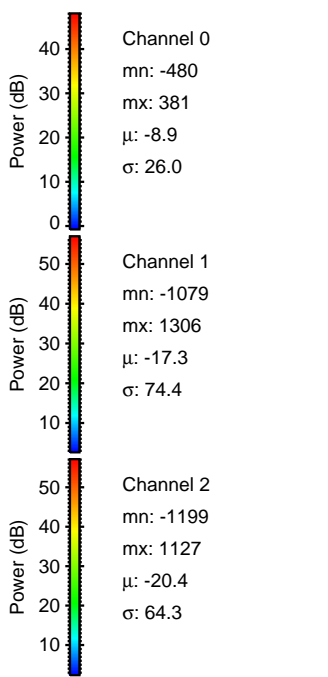
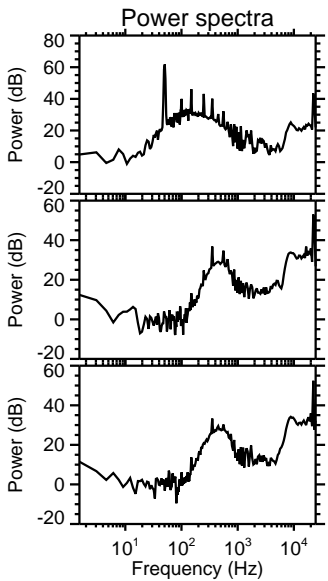
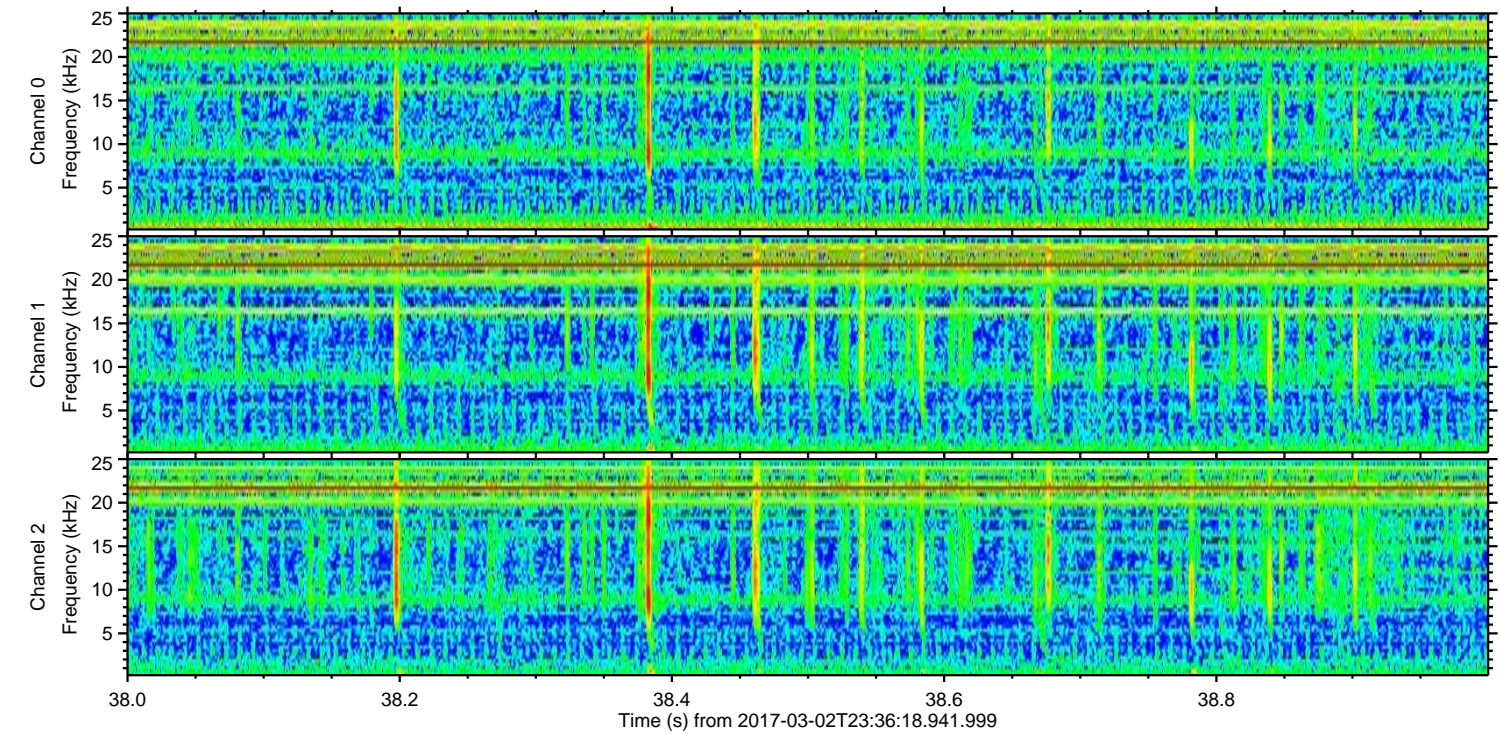
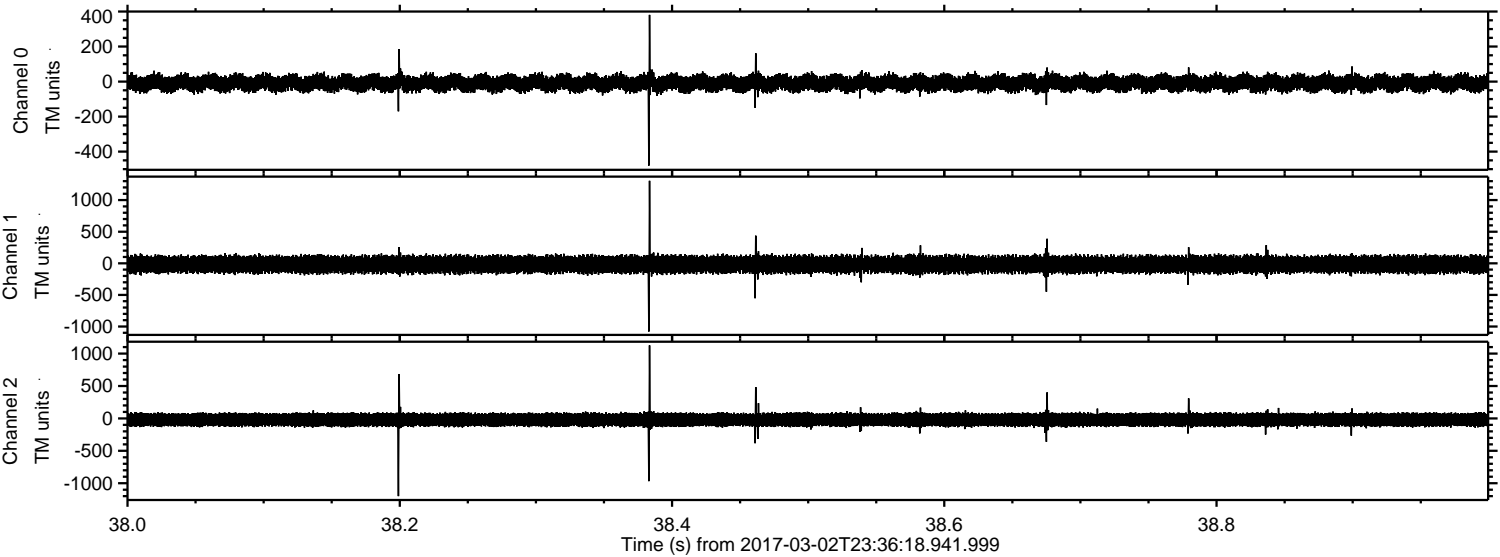


Channel 0
mn: -271
mx: 253
 μ : -8.9
 σ : 25.7

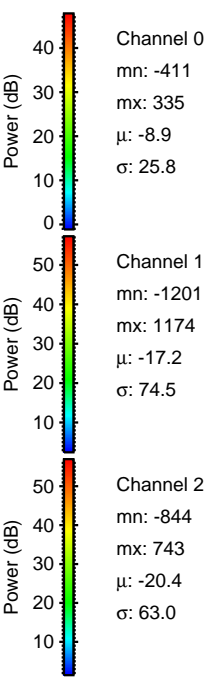
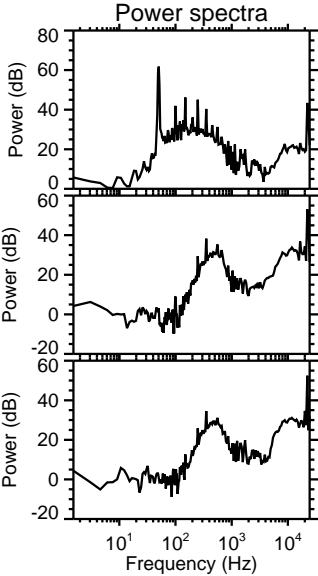
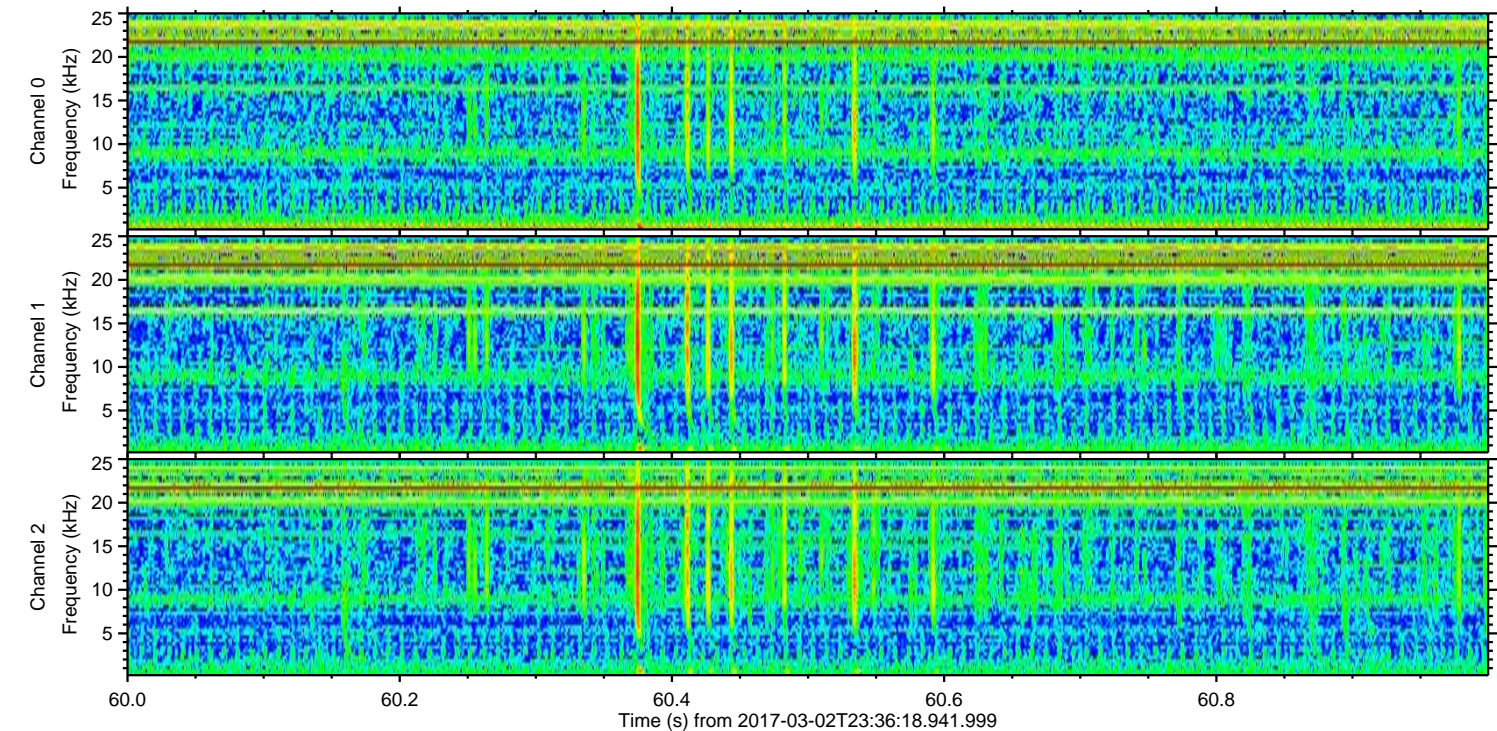
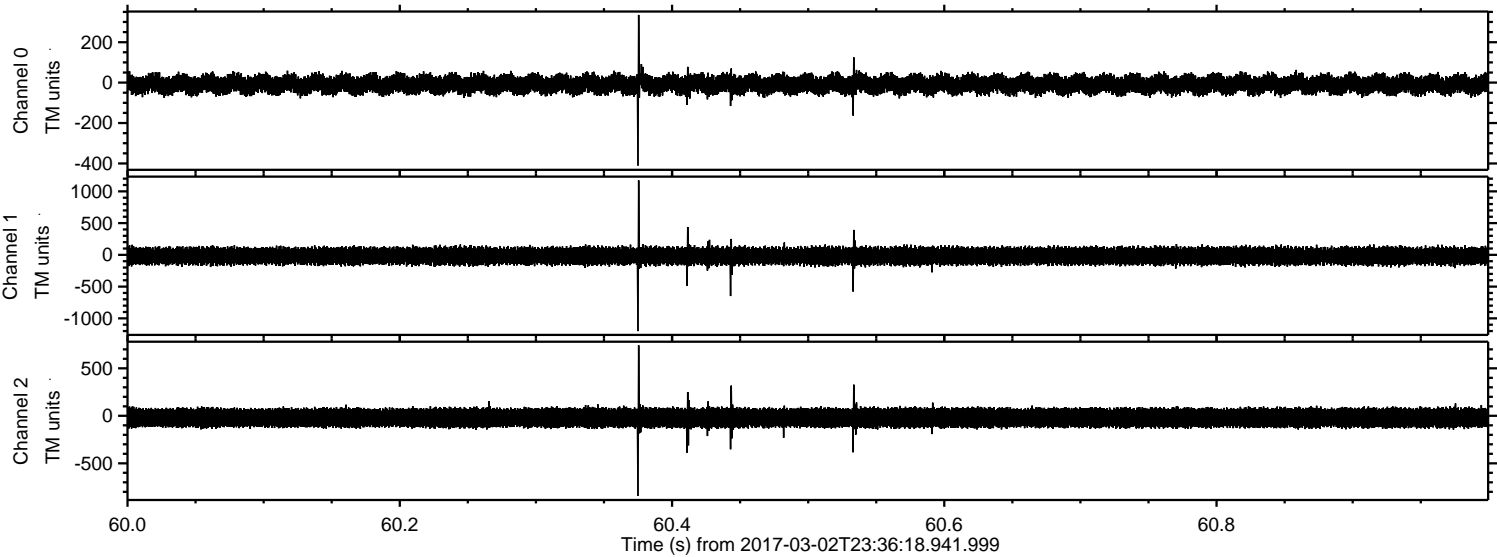
Channel 1
mn: -355
mx: 409
 μ : -17.2
 σ : 72.8

Channel 2
mn: -726
mx: 1318
 μ : -20.4
 σ : 63.4

Processed Fri Mar 3 00:44:51 2017 by ELM ver.2012-10-06 from 001__elm20170302_233617__dat00.bin



Processed Fri Mar 3 00:44:51 2017 by ELM ver.2012-10-06 from 001__elm20170302_233617__dat00.bin



ELMAVAN 3D WAVEFORMS (Measured data sampled at 50 kHz) 51000 packets of 144 samples from 2017-03-02T23:36:18.941.999. Part 141/147

