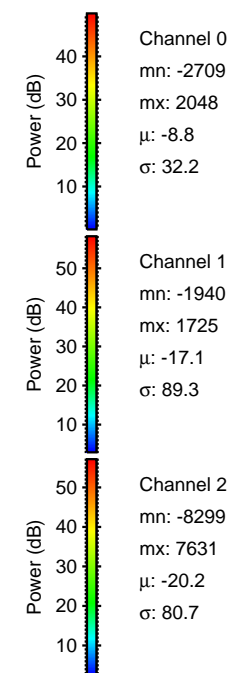
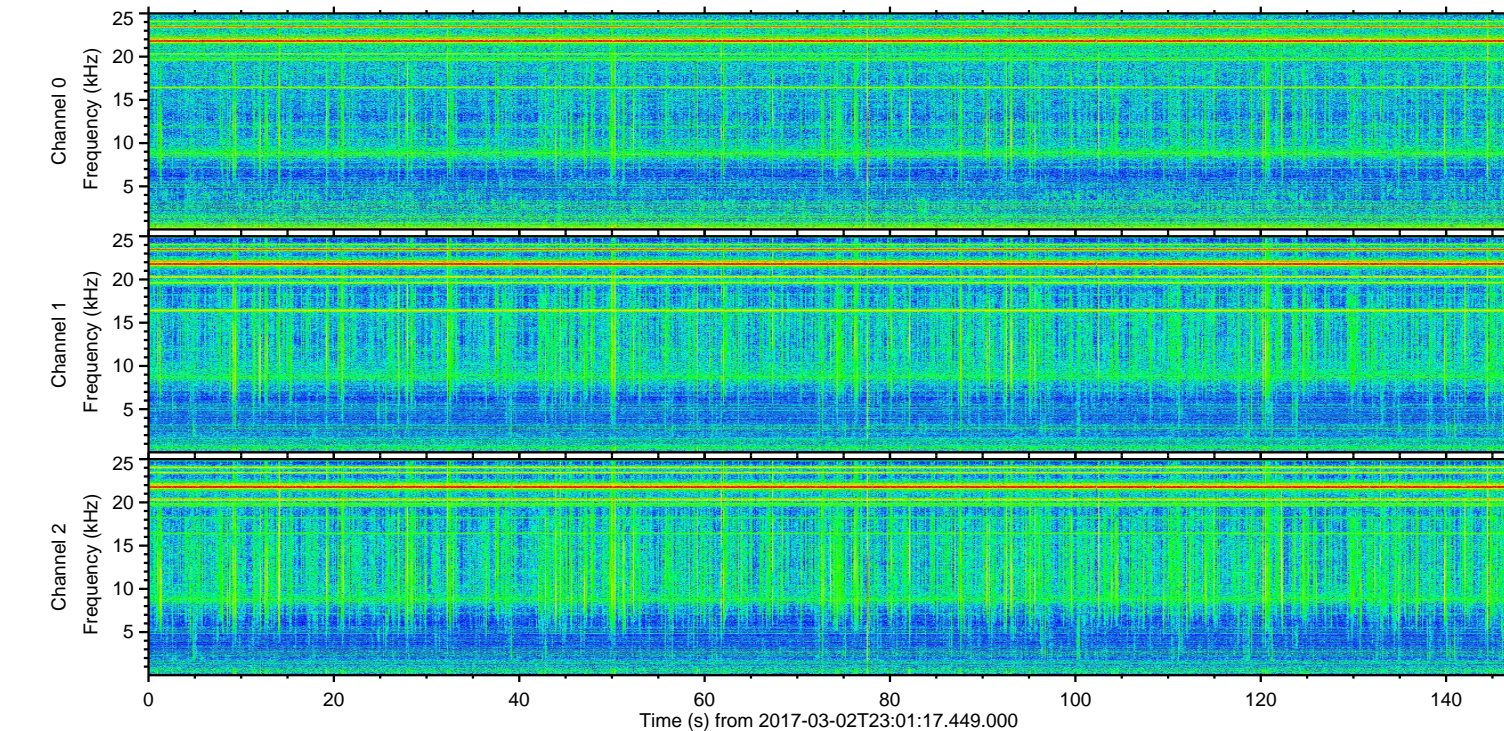
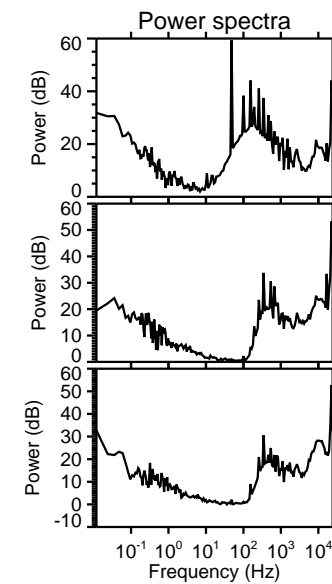
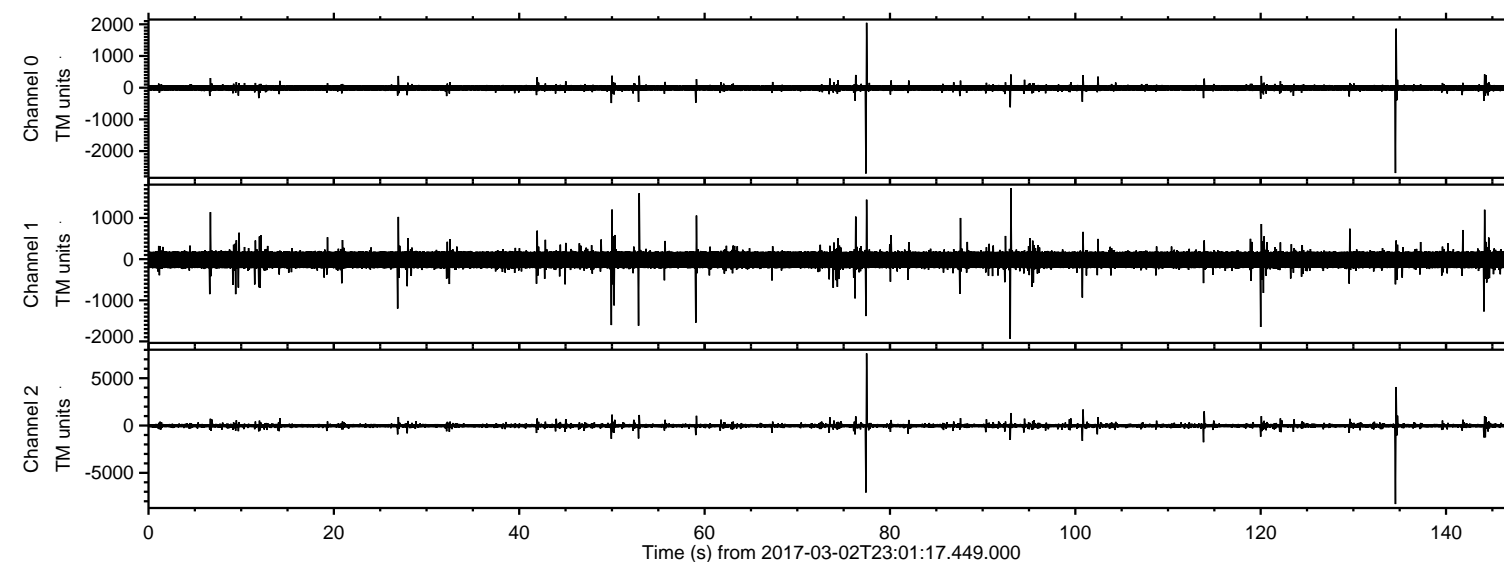


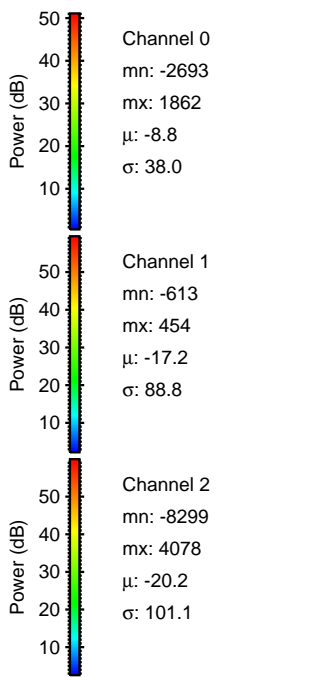
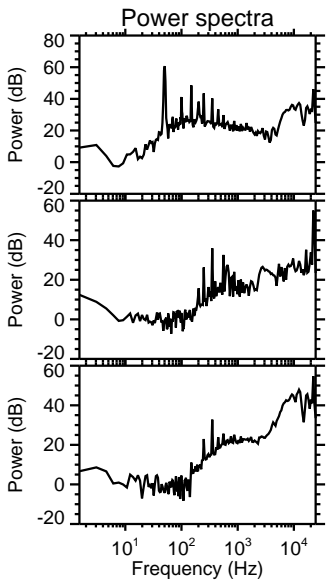
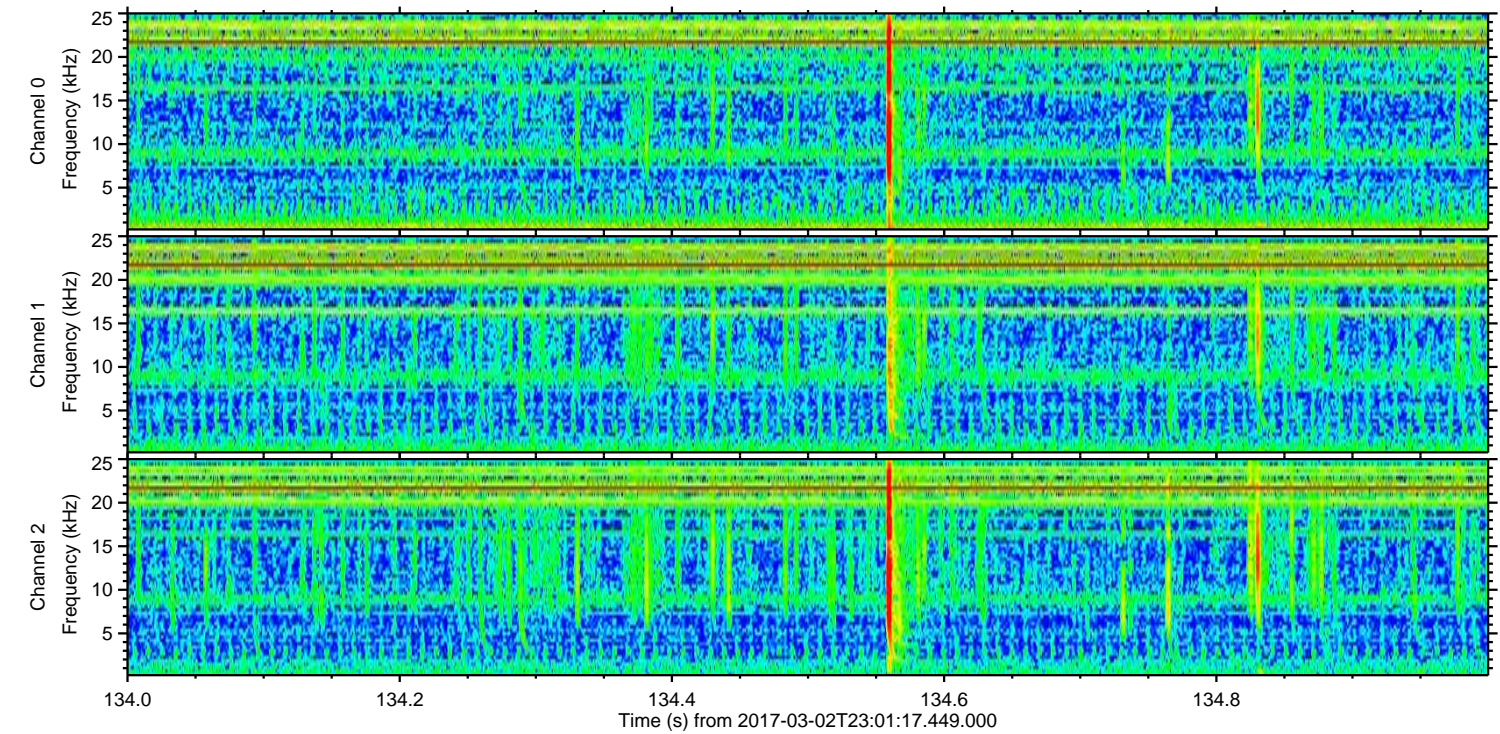
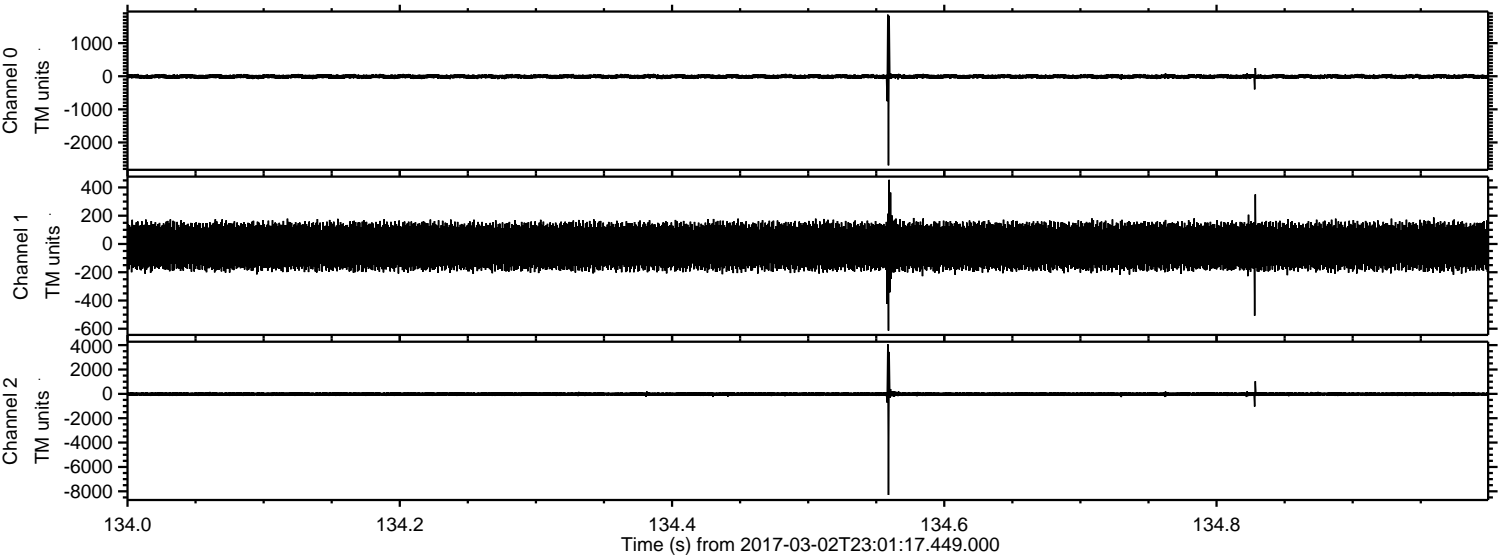
ELMAVAN 3D WAVEFORMS (Measured data sampled at 50 kHz) 51000 packets of 144 samples from 2017-03-02T23:01:17.449.000.

Processed Fri Mar 3 00:09:07 2017 by ELM ver.2012-10-06 from 001__elm20170302_230116__dat00.bin

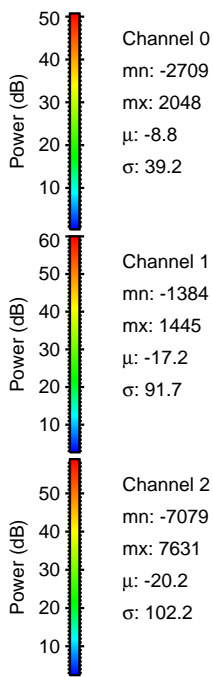
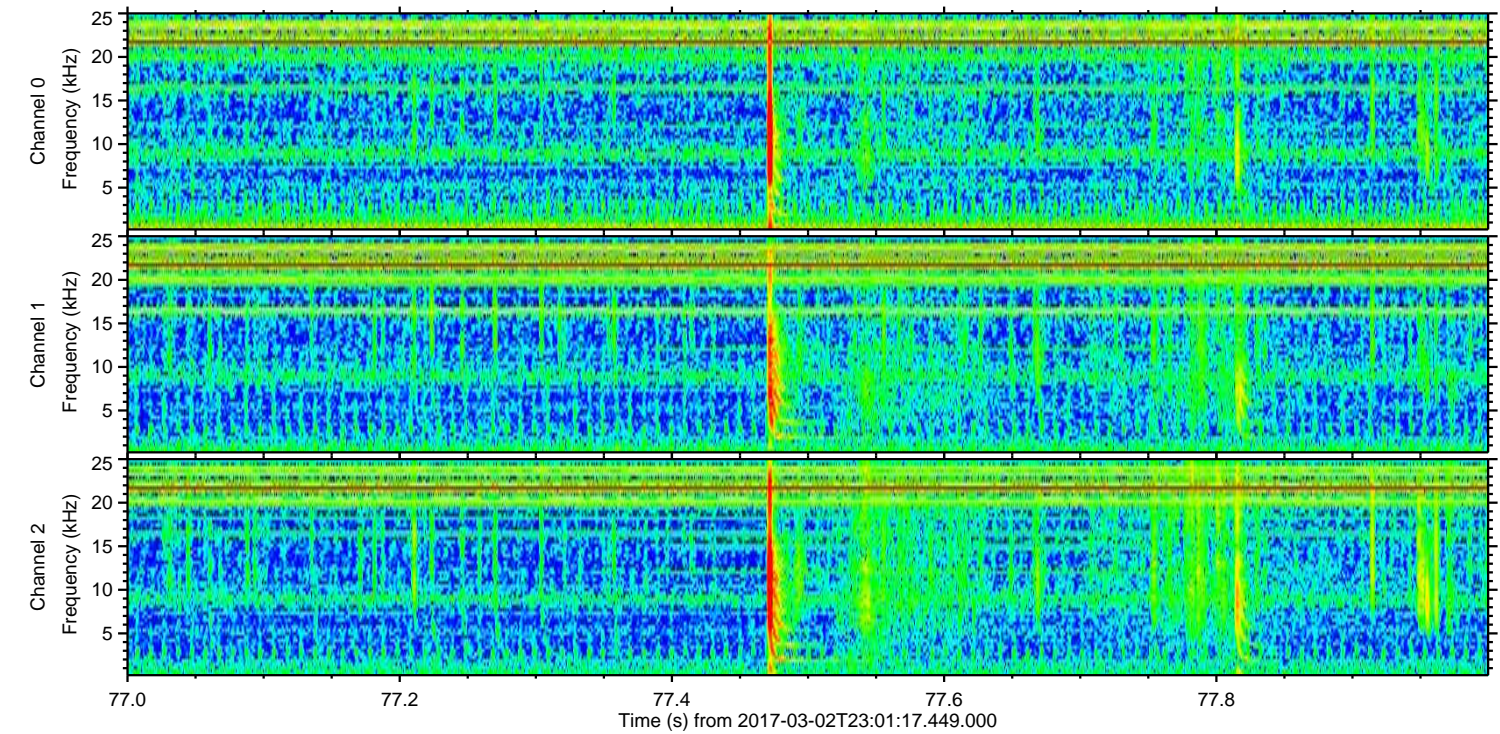
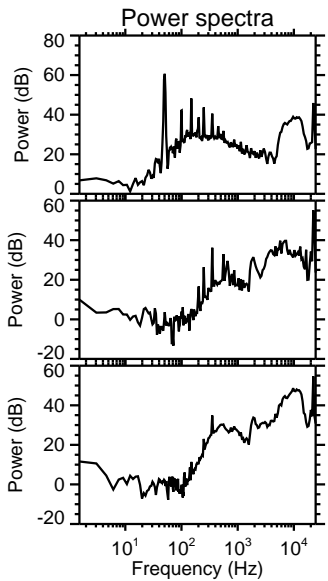
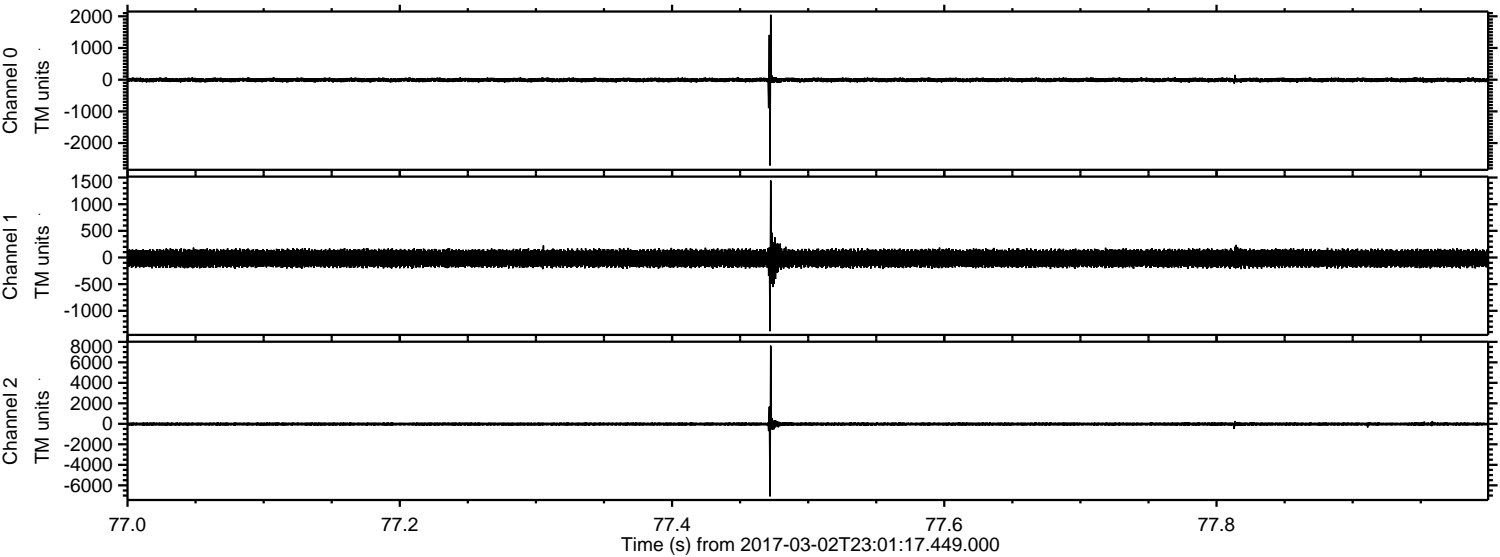


ELMAVAN 3D WAVEFORMS (Measured data sampled at 50 kHz) 51000 packets of 144 samples from 2017-03-02T23:01:17.449.000. Part 135/147

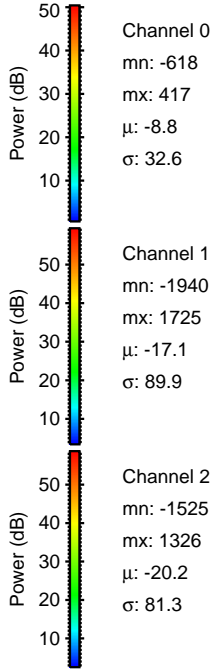
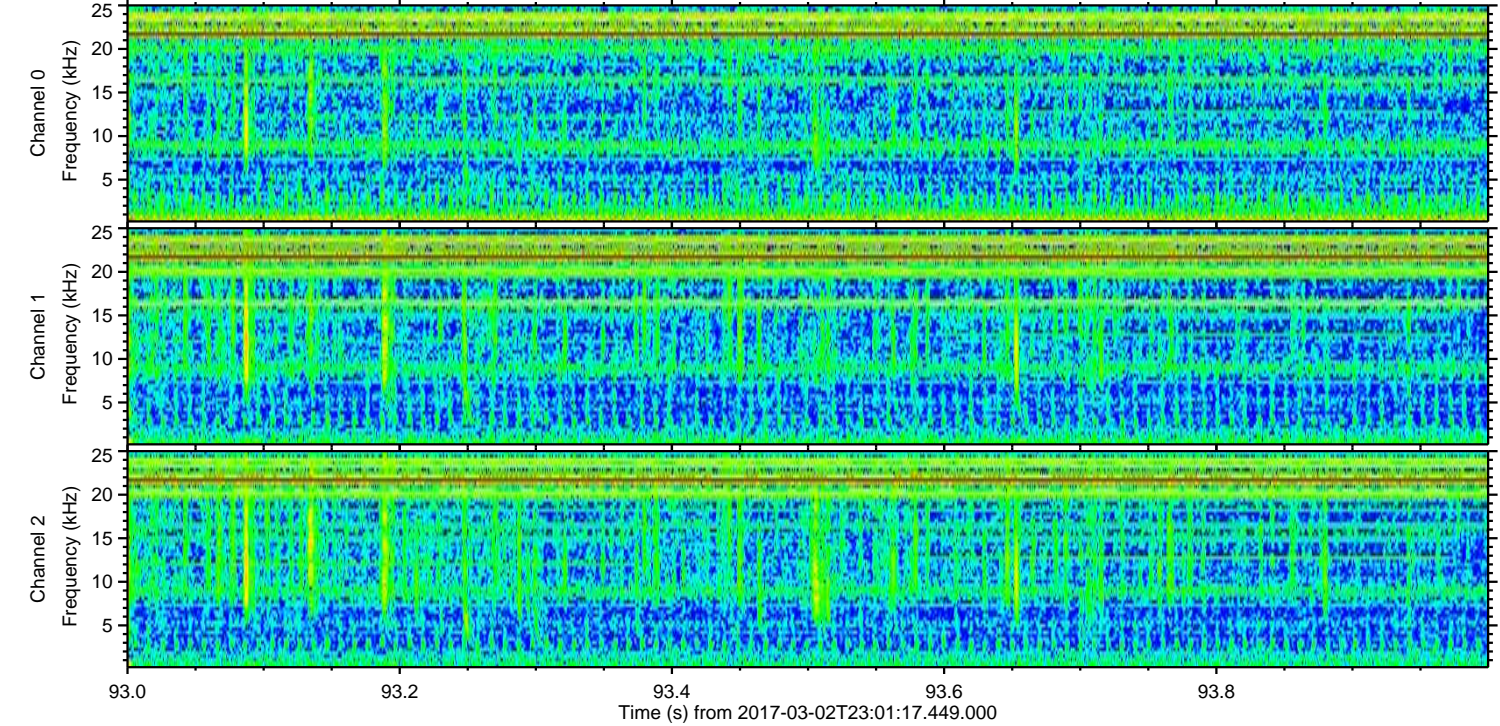
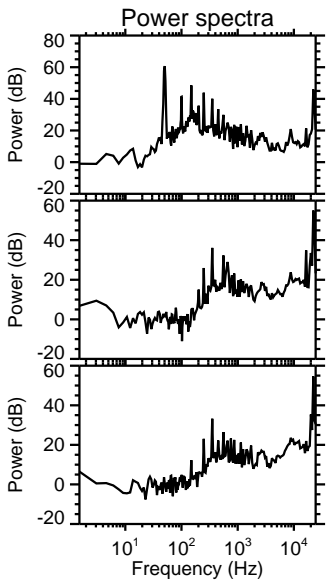
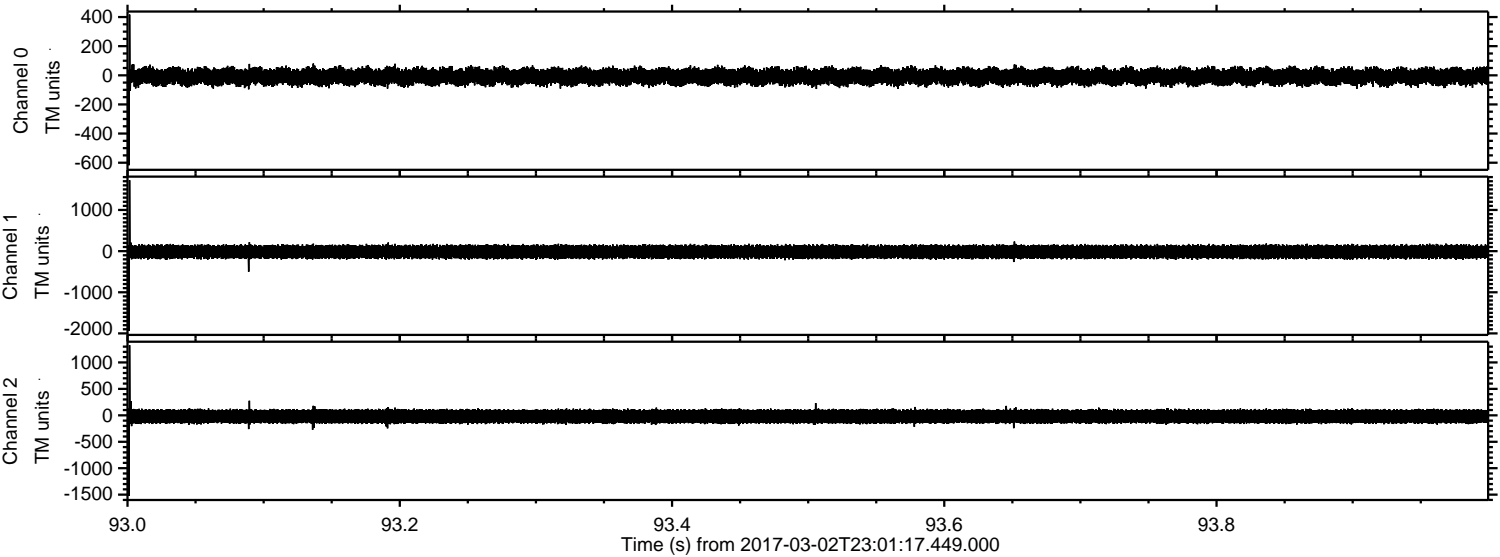
Processed Fri Mar 3 00:09:18 2017 by ELM ver.2012-10-06 from 001__elm20170302_230116__dat00.bin



Processed Fri Mar 3 00:09:19 2017 by ELM ver.2012-10-06 from 001__elm20170302_230116__dat00.bin

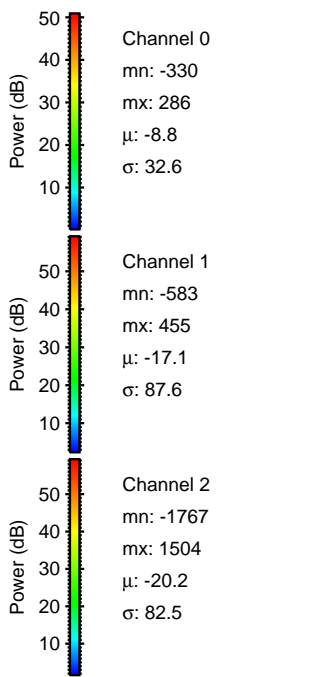
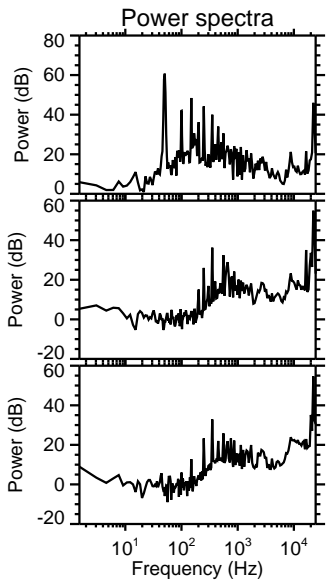
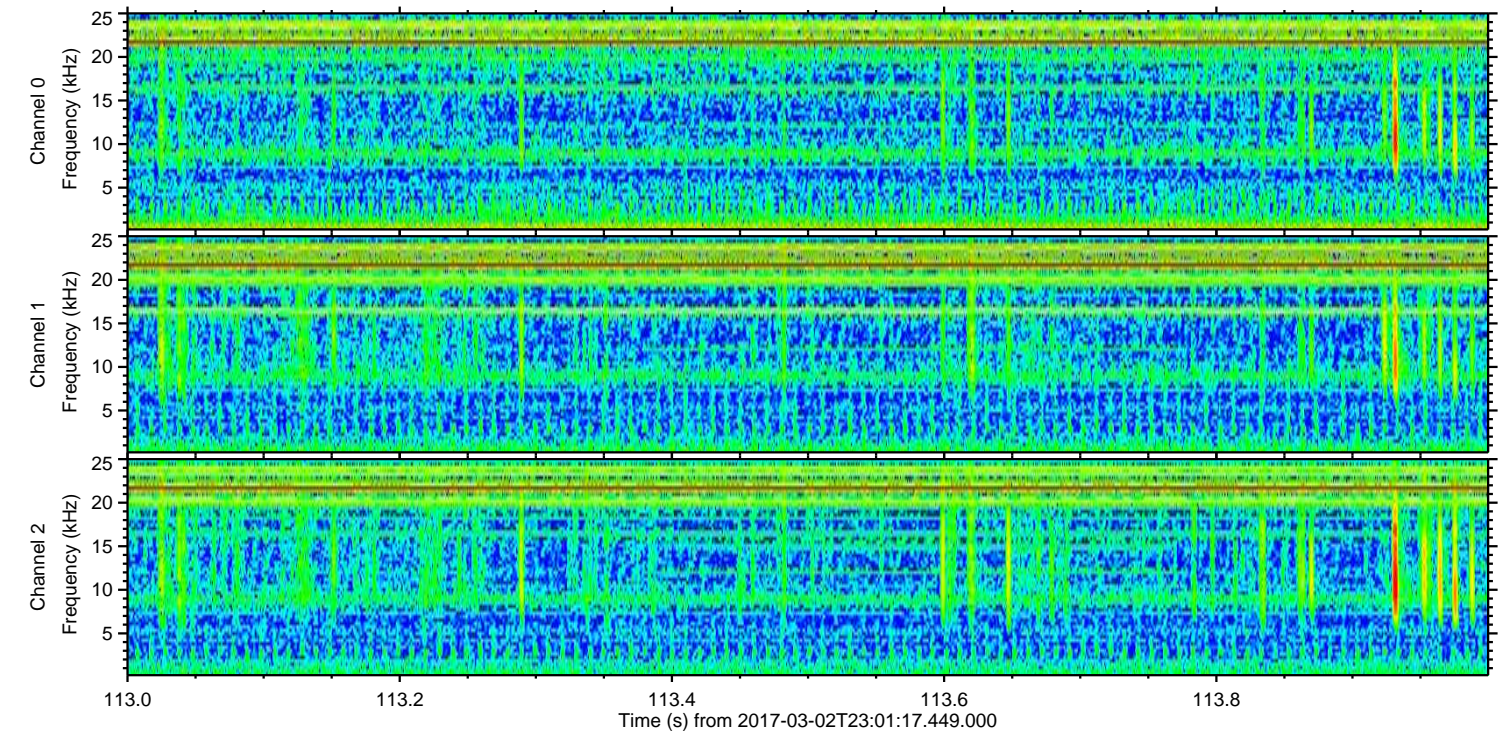
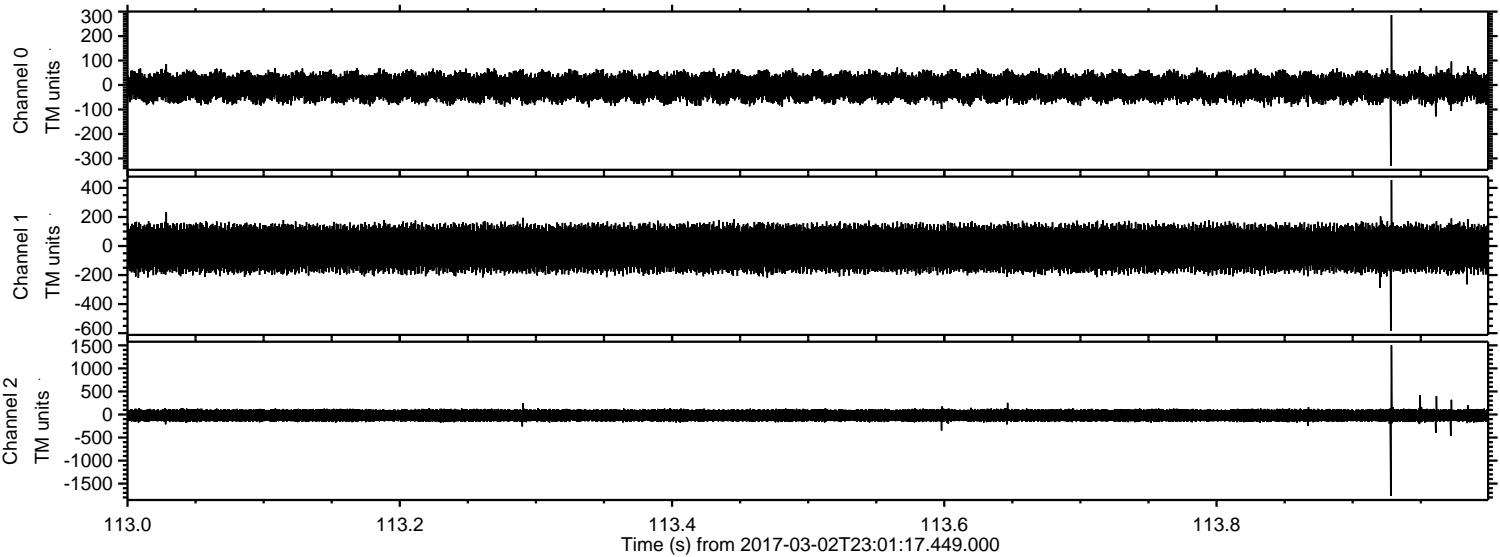


Processed Fri Mar 3 00:09:20 2017 by ELM ver.2012-10-06 from 001__elm20170302_230116__dat00.bin



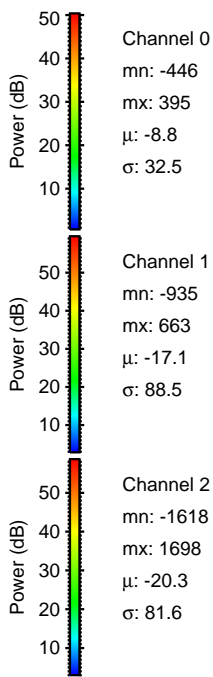
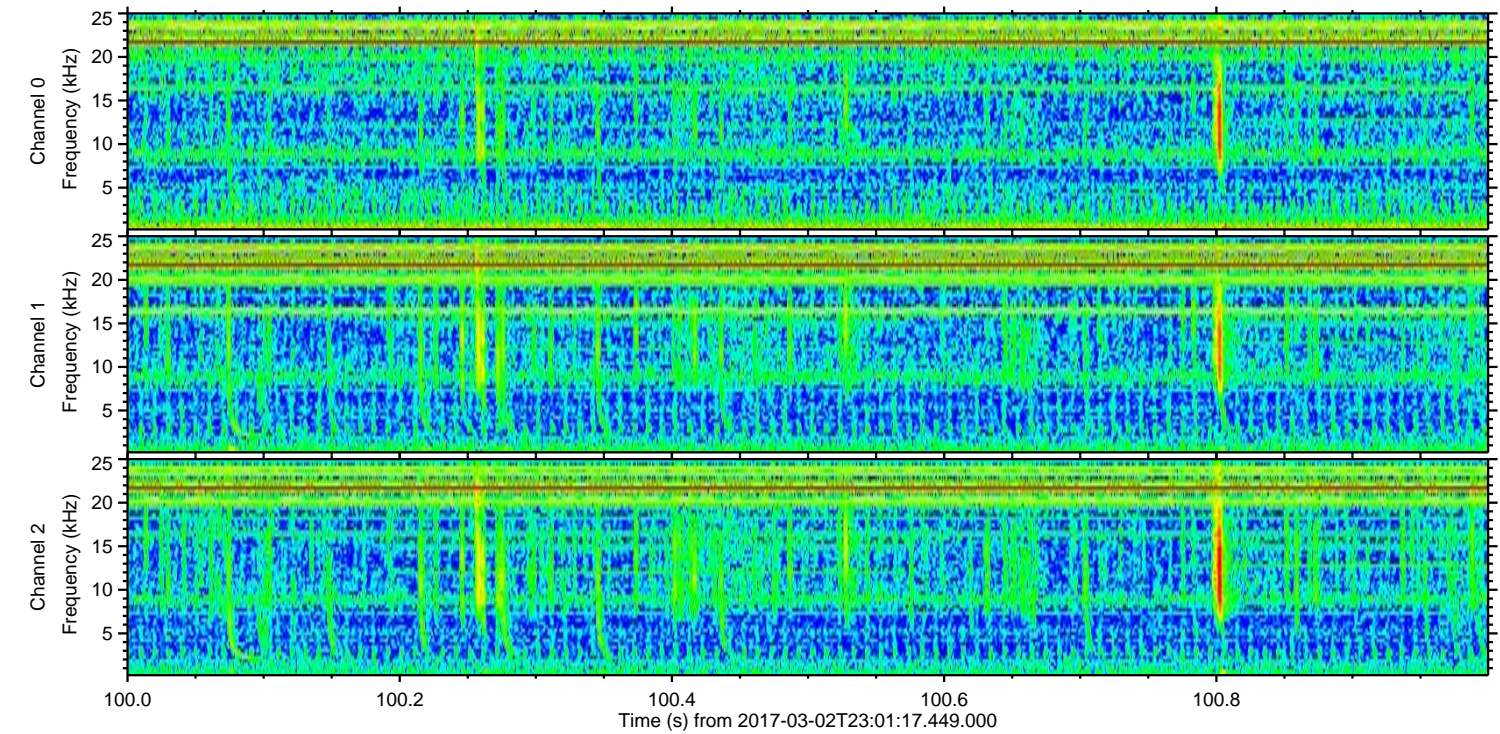
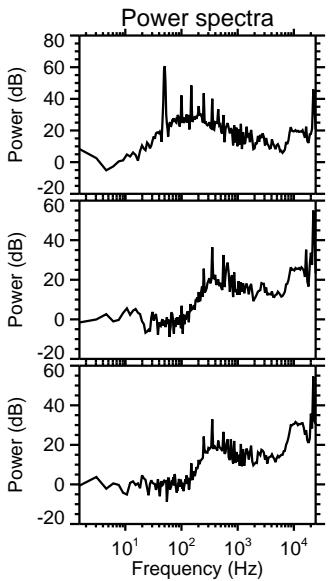
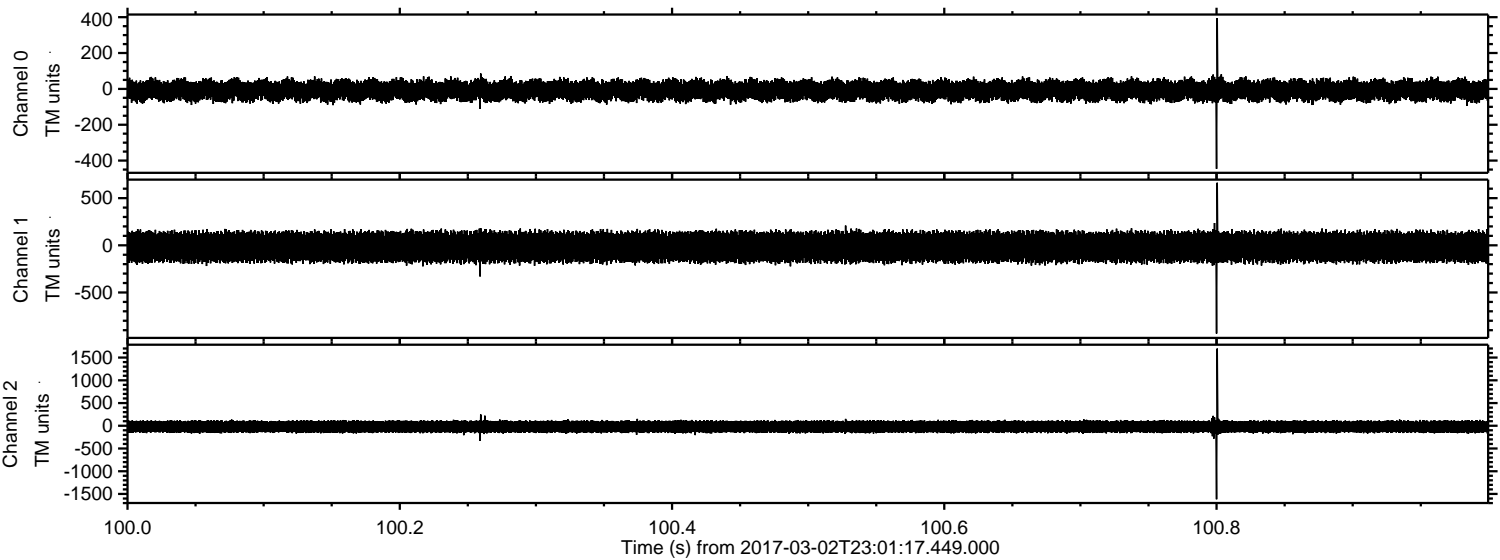
ELMAVAN 3D WAVEFORMS (Measured data sampled at 50 kHz) 51000 packets of 144 samples from 2017-03-02T23:01:17.449.000. Part 114/147

Processed Fri Mar 3 00:09:21 2017 by ELM ver.2012-10-06 from 001__elm20170302_230116__dat00.bin



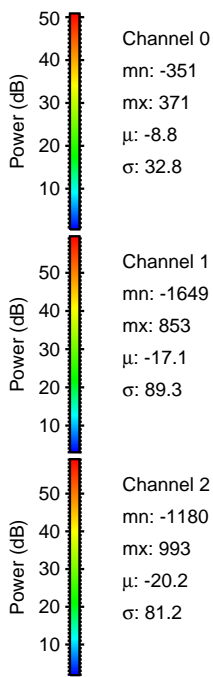
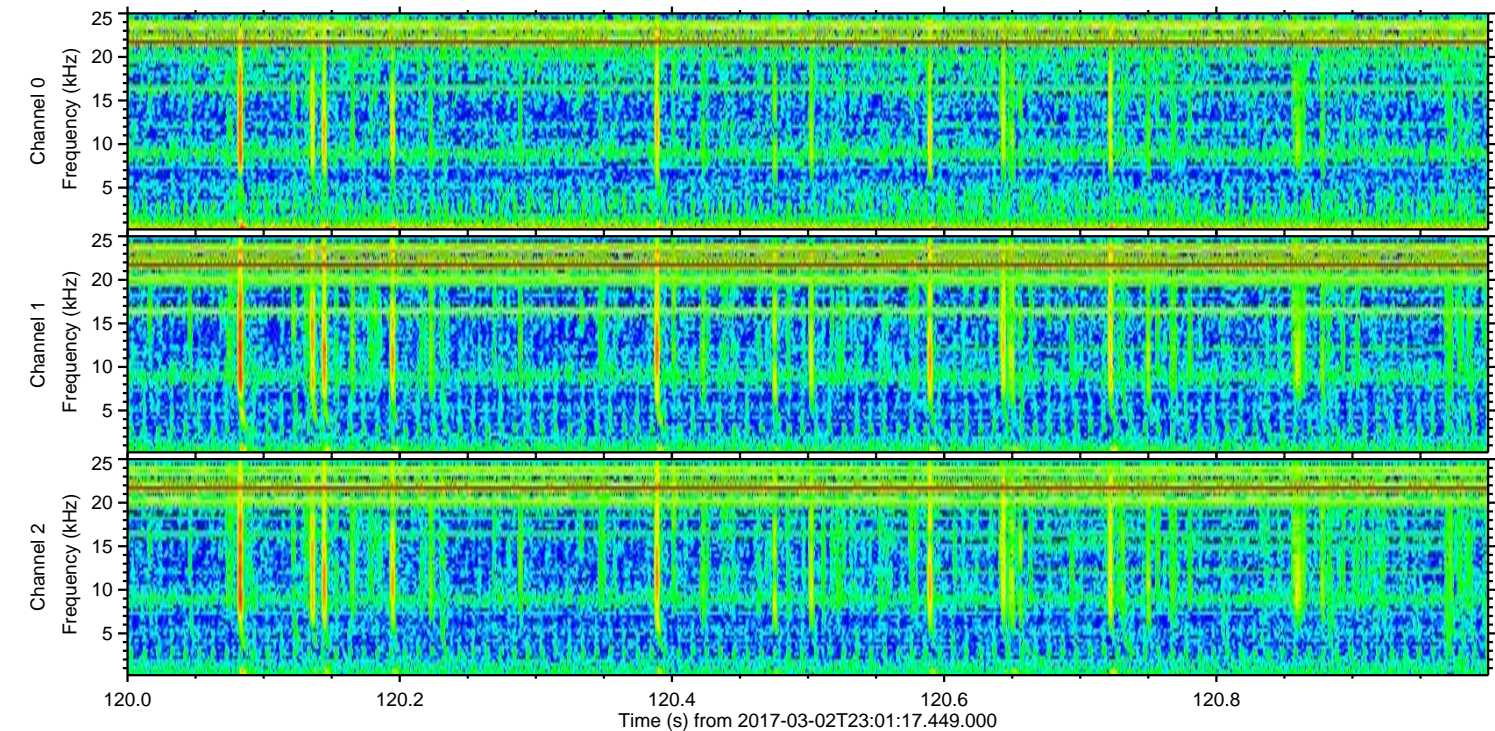
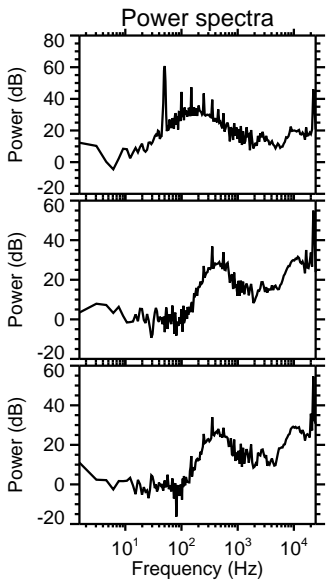
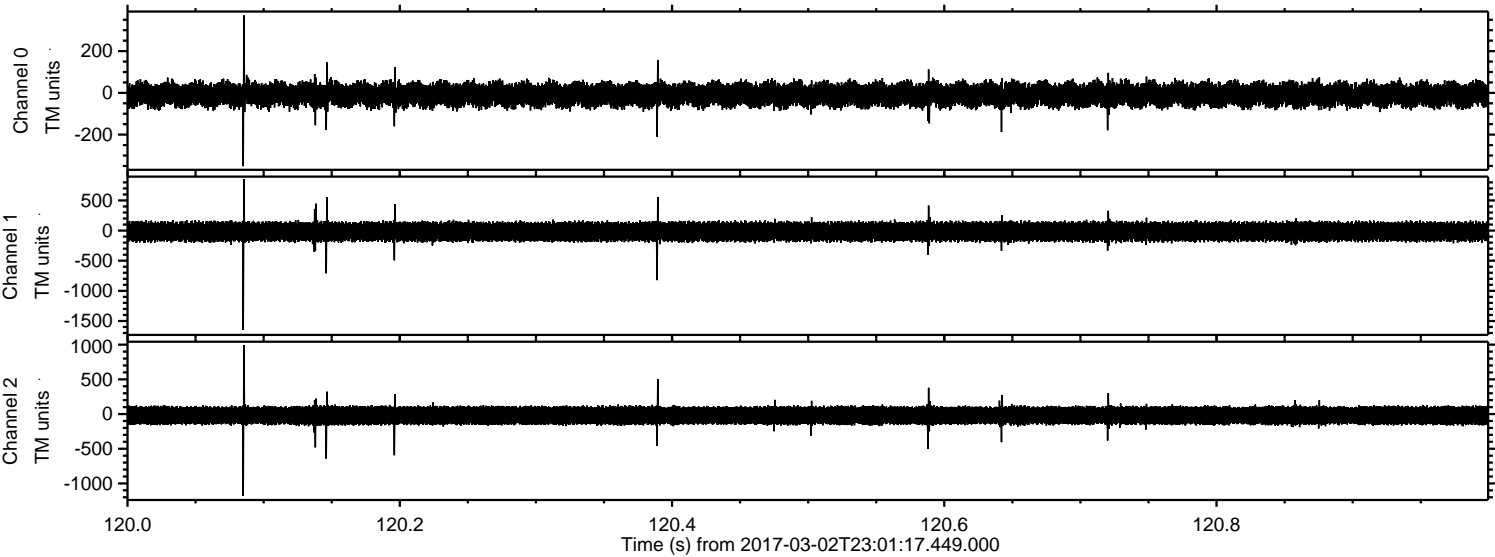
ELMAVAN 3D WAVEFORMS (Measured data sampled at 50 kHz) 51000 packets of 144 samples from 2017-03-02T23:01:17.449.000. Part 101/147

Processed Fri Mar 3 00:09:22 2017 by ELM ver.2012-10-06 from 001__elm20170302_230116__dat00.bin

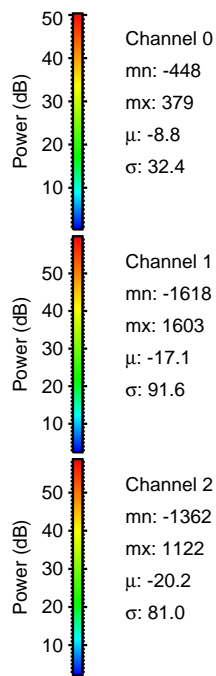
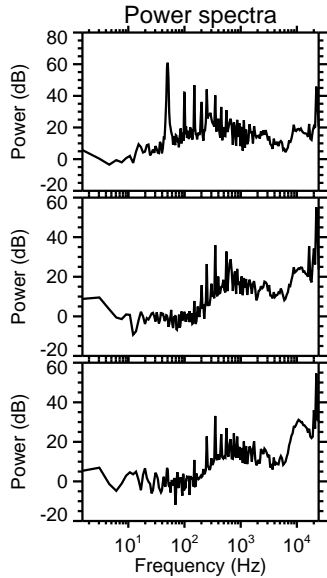
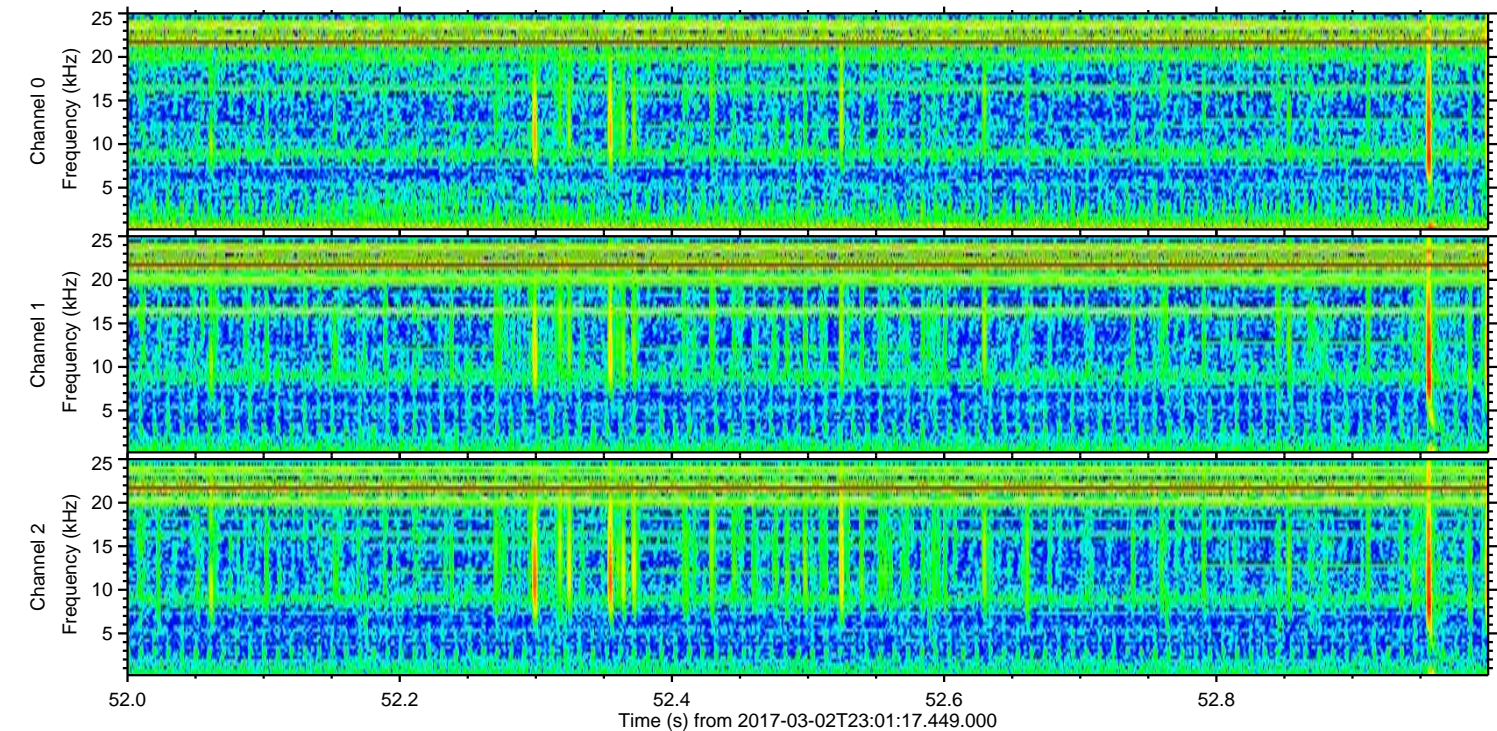
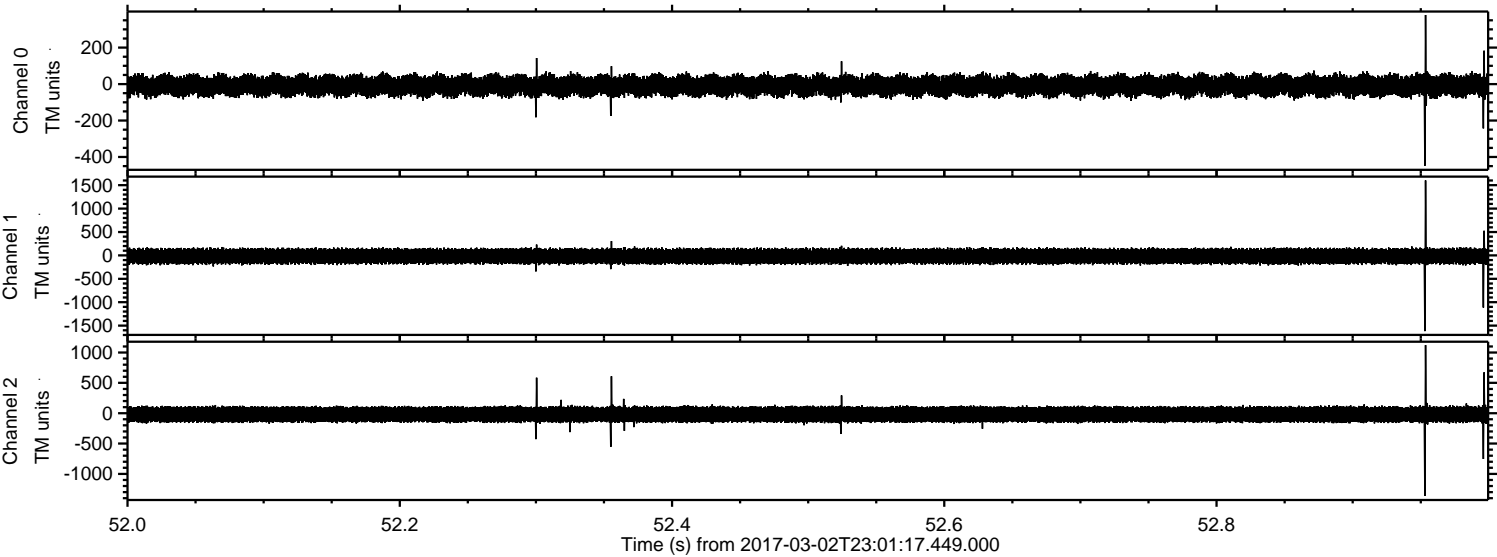


ELMAVAN 3D WAVEFORMS (Measured data sampled at 50 kHz) 51000 packets of 144 samples from 2017-03-02T23:01:17.449.000. Part 121/147

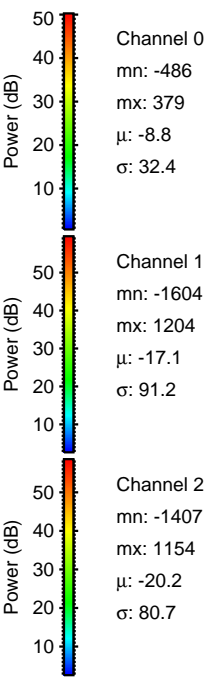
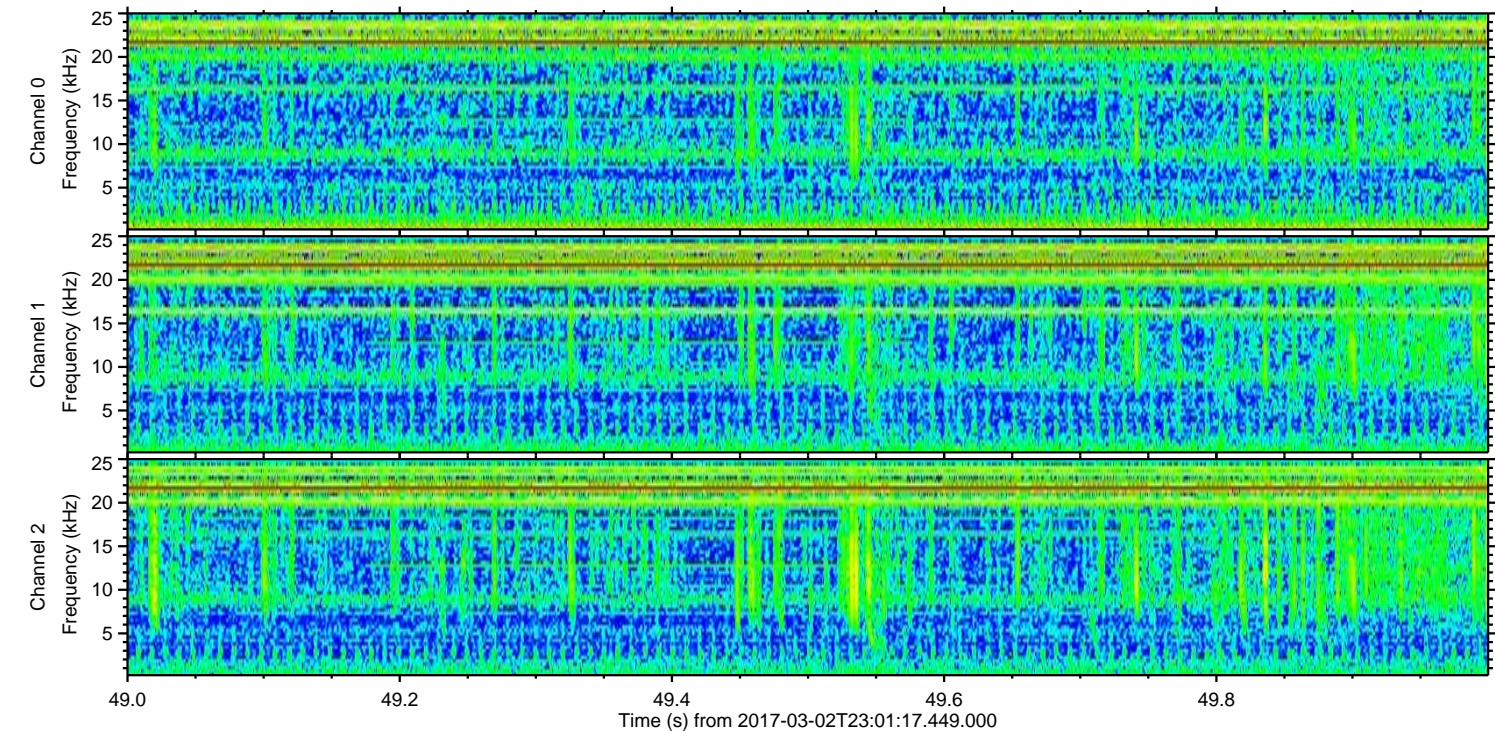
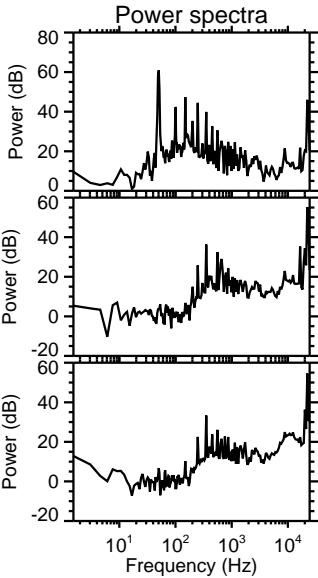
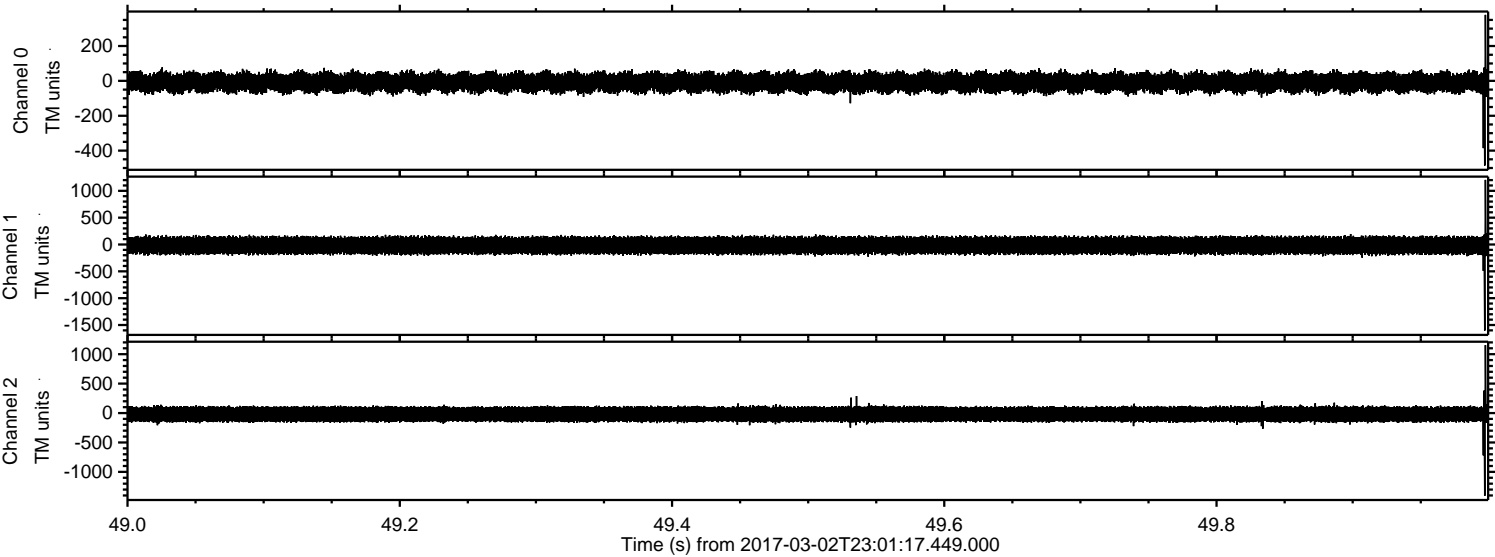
Processed Fri Mar 3 00:09:23 2017 by ELM ver.2012-10-06 from 001__elm20170302_230116__dat00.bin



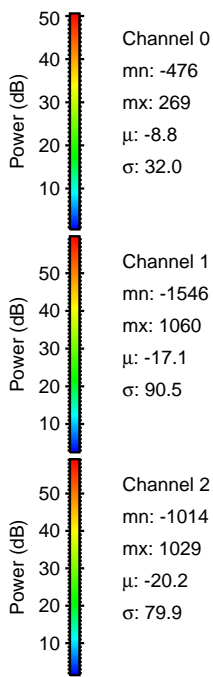
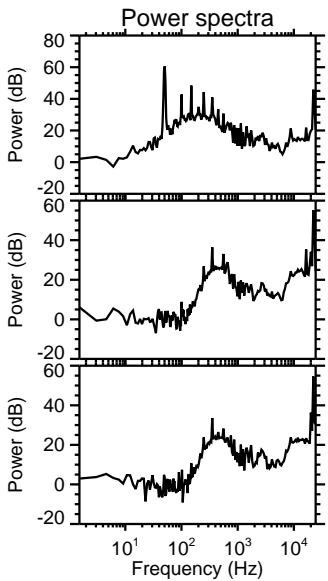
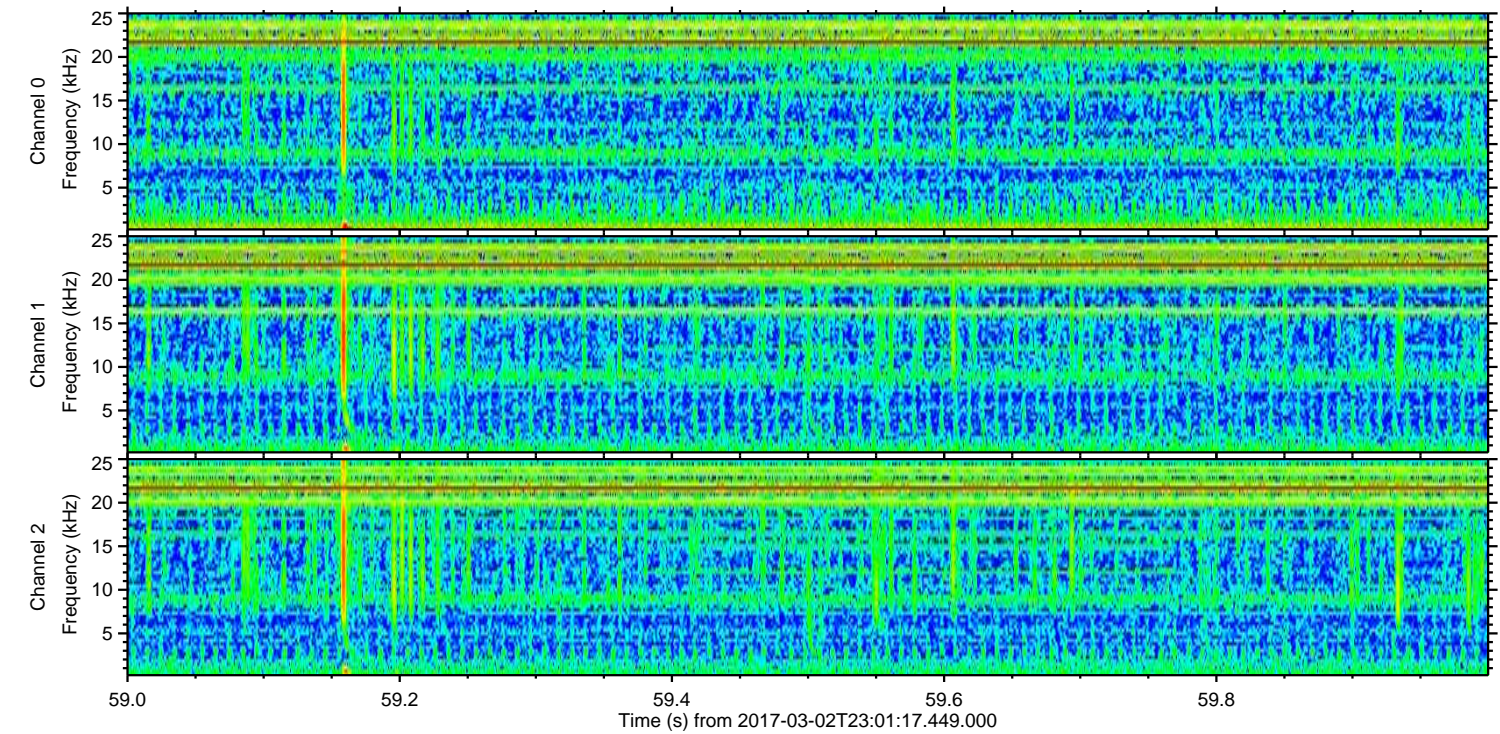
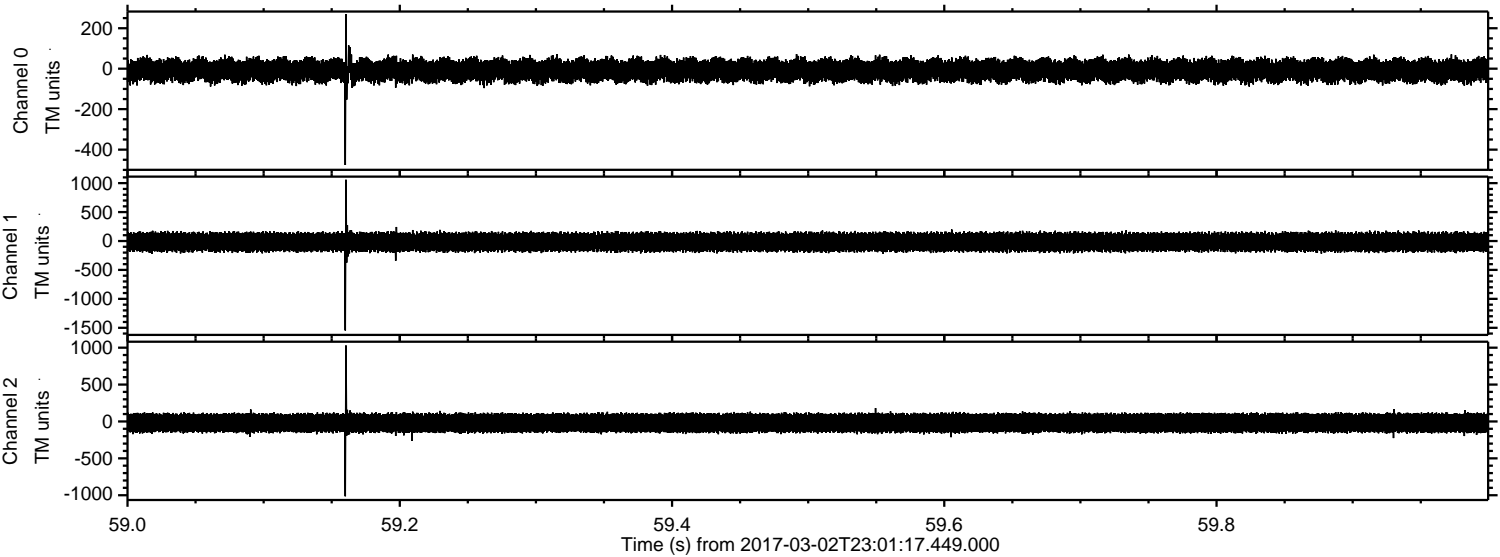
Processed Fri Mar 3 00:09:24 2017 by ELM ver.2012-10-06 from 001__elm20170302_230116__dat00.bin



Processed Fri Mar 3 00:09:25 2017 by ELM ver.2012-10-06 from 001__elm20170302_230116__dat00.bin



Processed Fri Mar 3 00:09:26 2017 by ELM ver.2012-10-06 from 001__elm20170302_230116__dat00.bin



Channel 0
mn: -476
mx: 269
 μ : -8.8
 σ : 32.0

Channel 1
mn: -1546
mx: 1060
 μ : -17.1
 σ : 90.5

Channel 2
mn: -1014
mx: 1029
 μ : -20.2
 σ : 79.9

