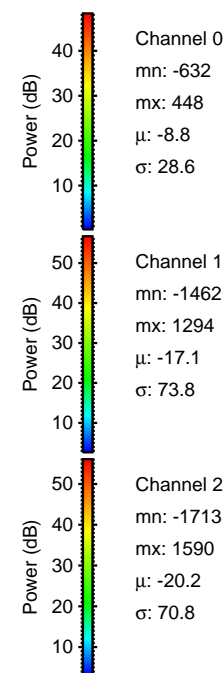
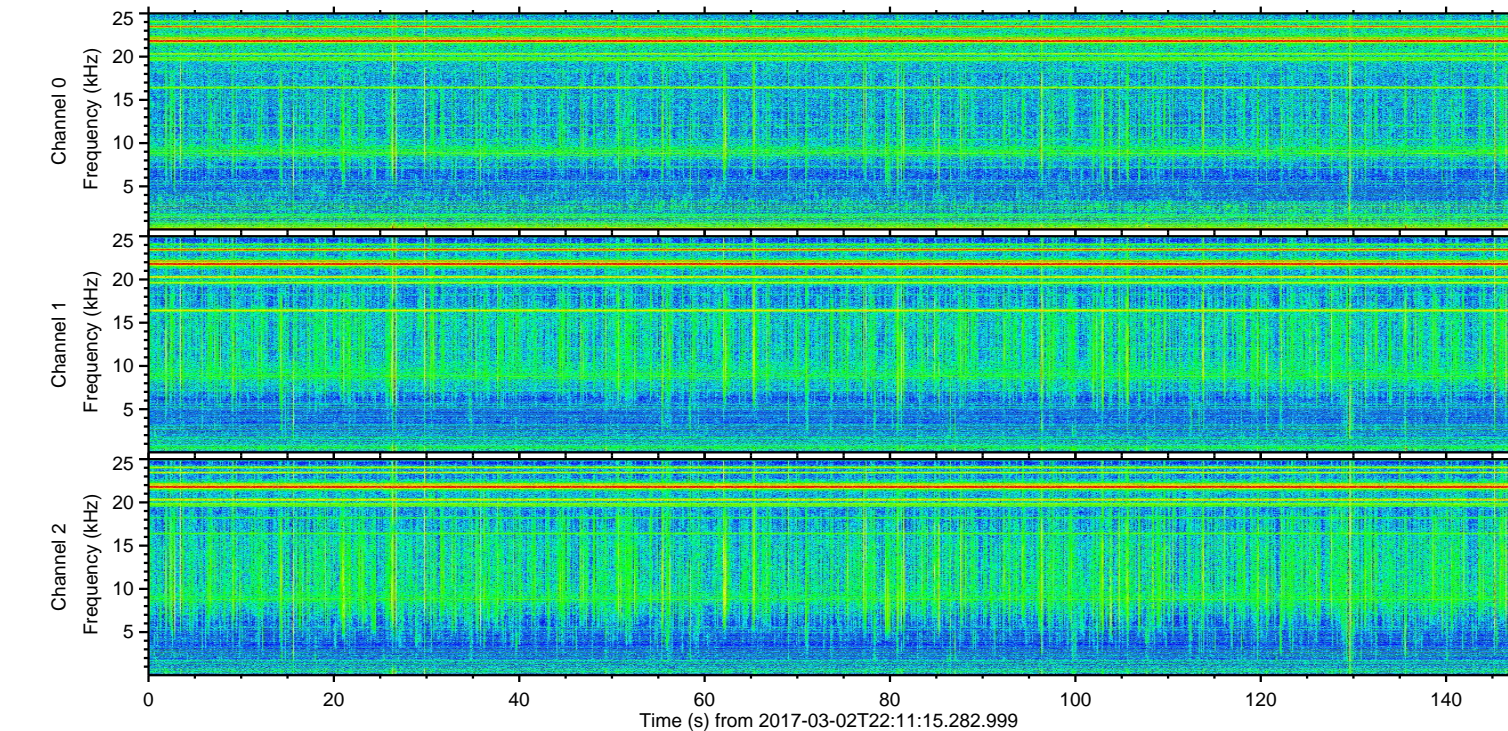
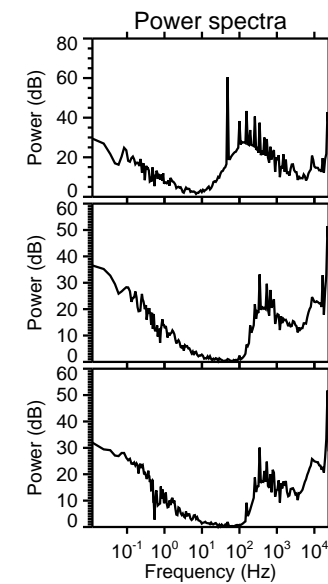
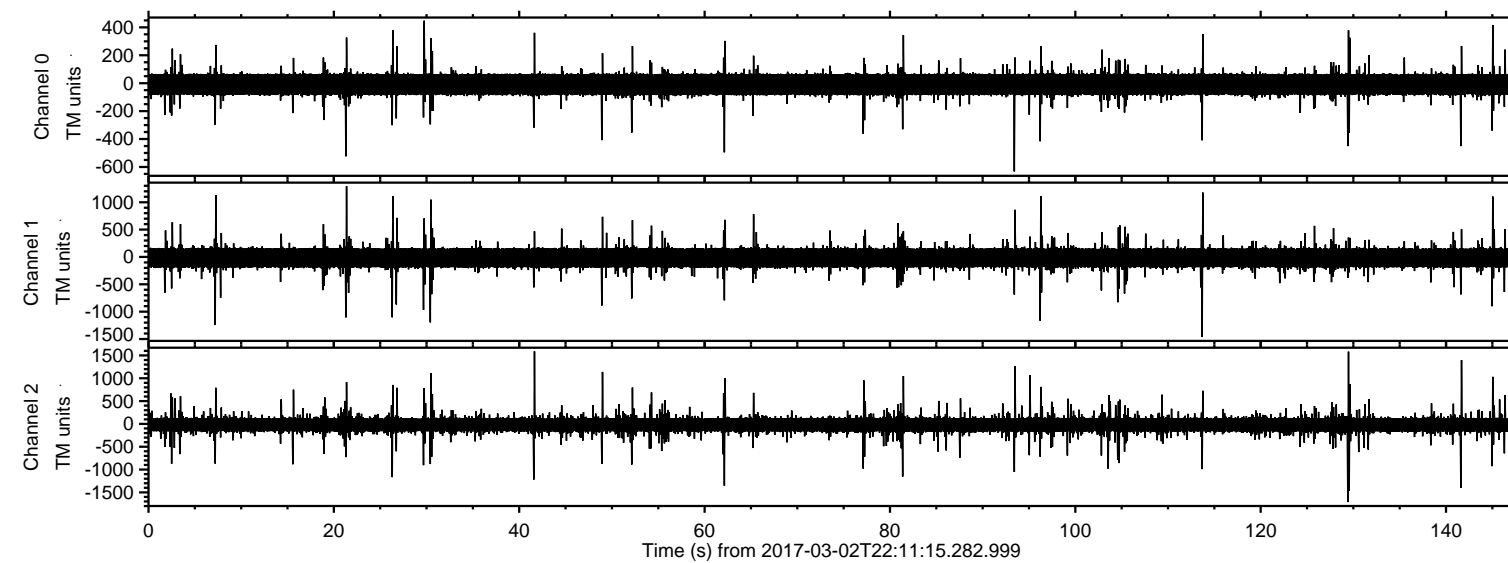


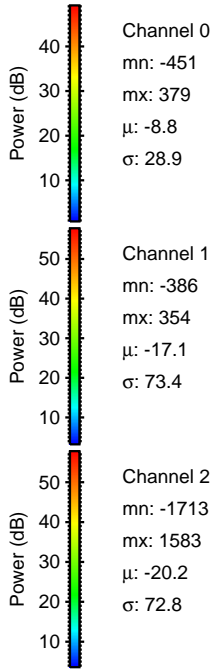
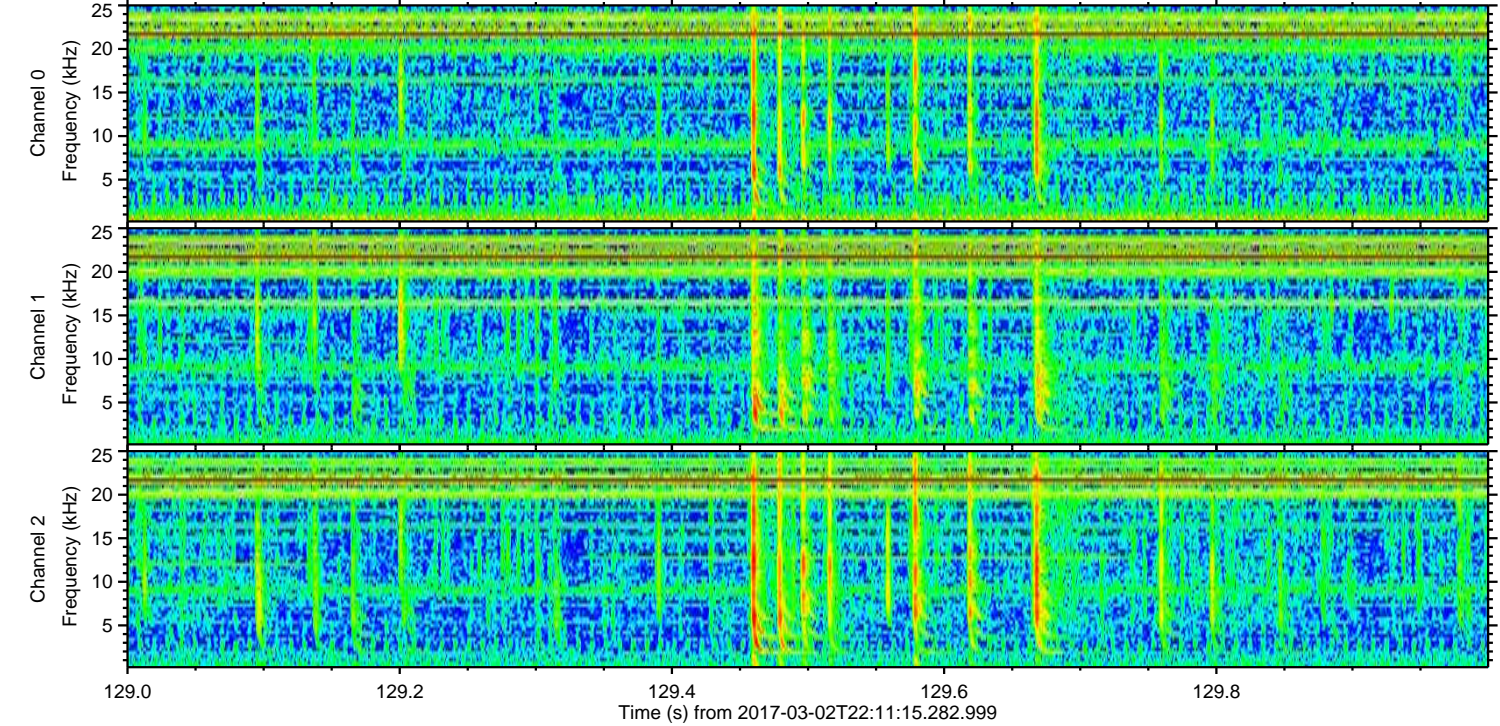
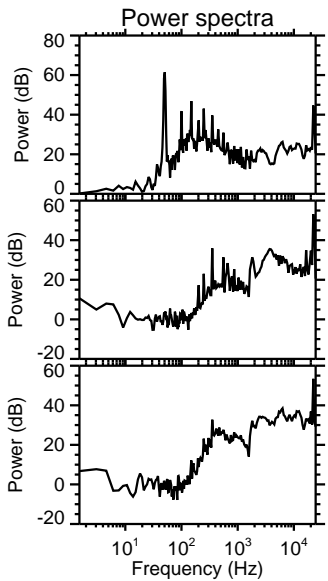
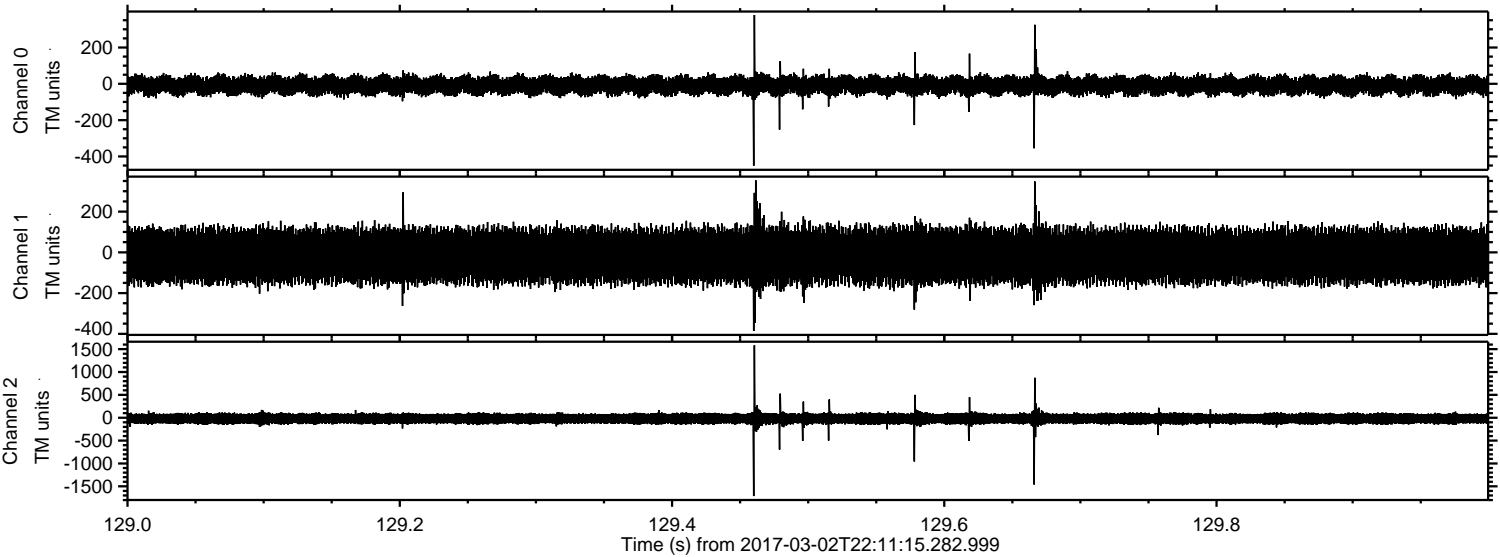
ELMAVAN 3D WAVEFORMS (Measured data sampled at 50 kHz) 51000 packets of 144 samples from 2017-03-02T22:11:15.282.999.

Processed Thu Mar 2 23:18:57 2017 by ELM ver.2012-10-06 from 001__elm20170302_221114__dat00.bin

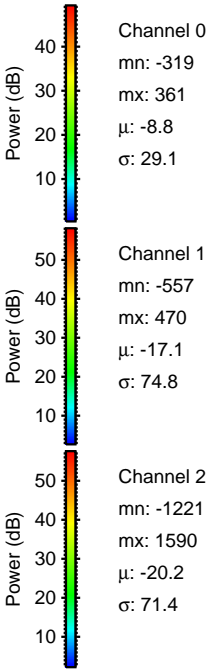
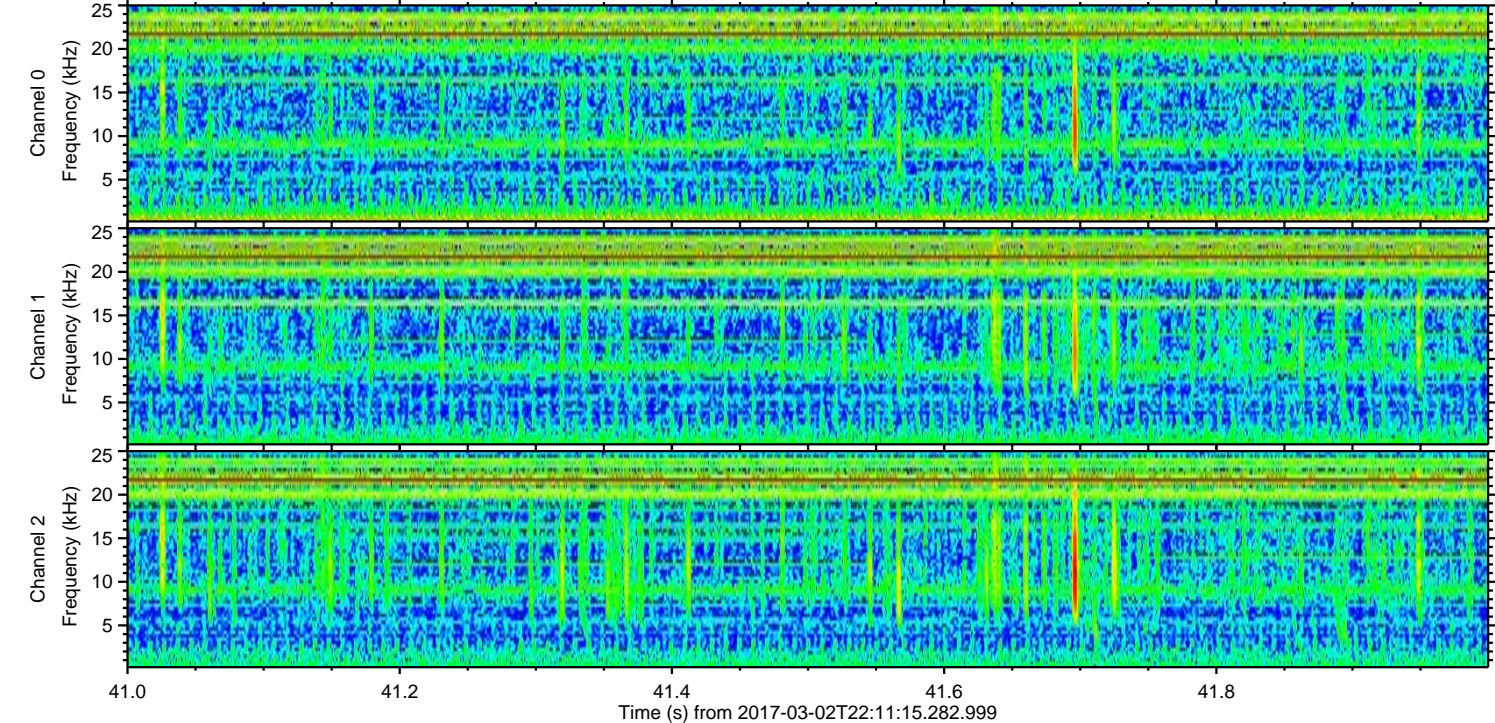
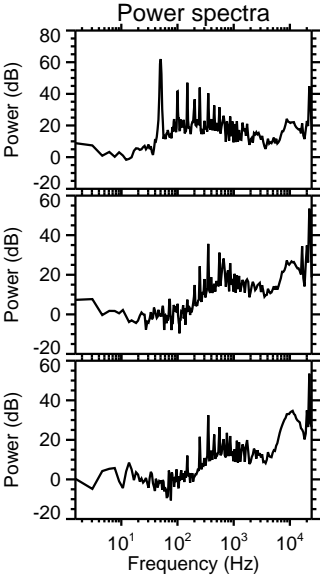
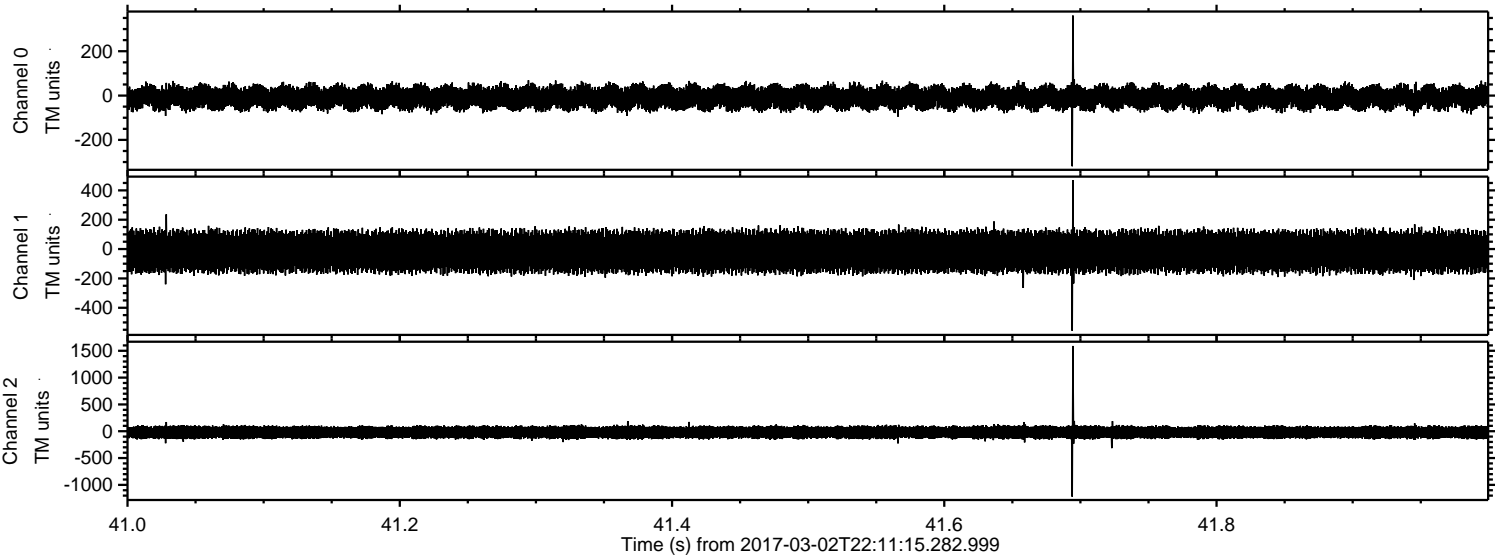


ELMAVAN 3D WAVEFORMS (Measured data sampled at 50 kHz) 51000 packets of 144 samples from 2017-03-02T22:11:15.282.999. Part 130/147

Processed Thu Mar 2 23:19:08 2017 by ELM ver.2012-10-06 from 001__elm20170302_221114__dat00.bin

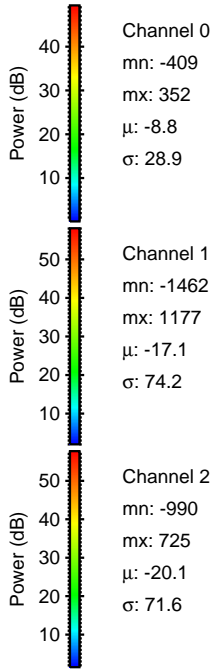
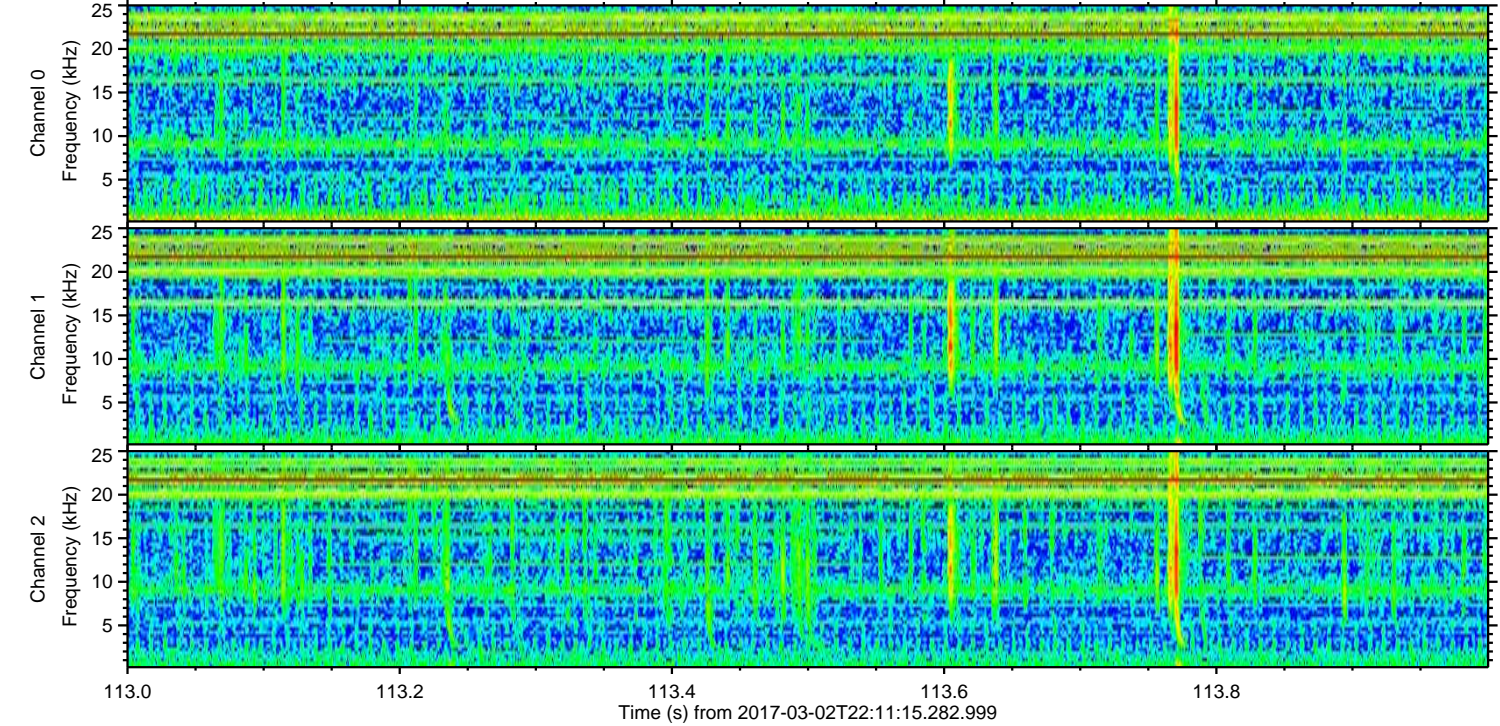
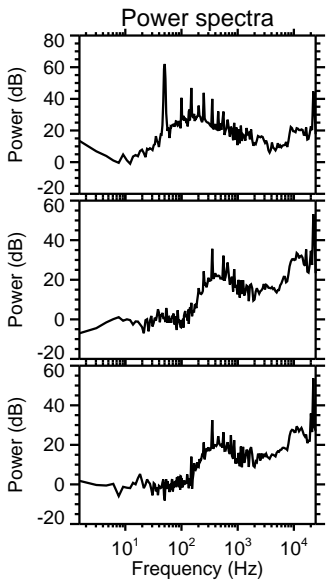
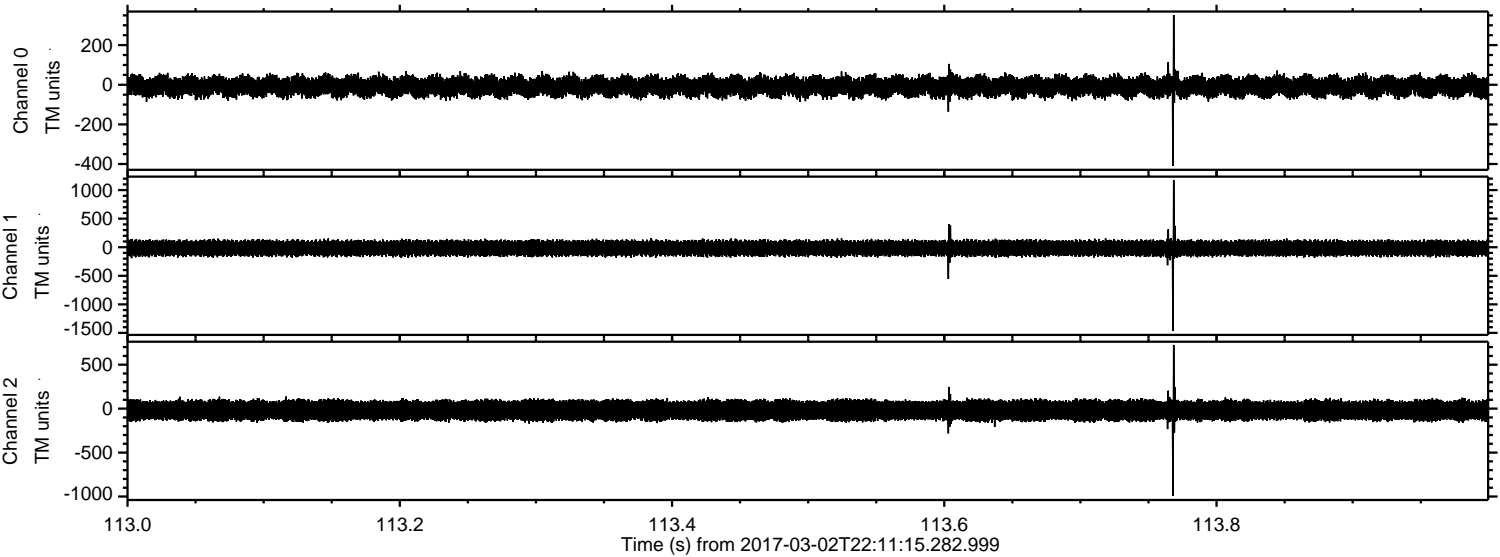


Processed Thu Mar 2 23:19:09 2017 by ELM ver.2012-10-06 from 001__elm20170302_221114__dat00.bin



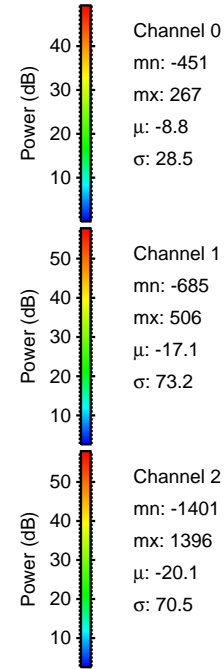
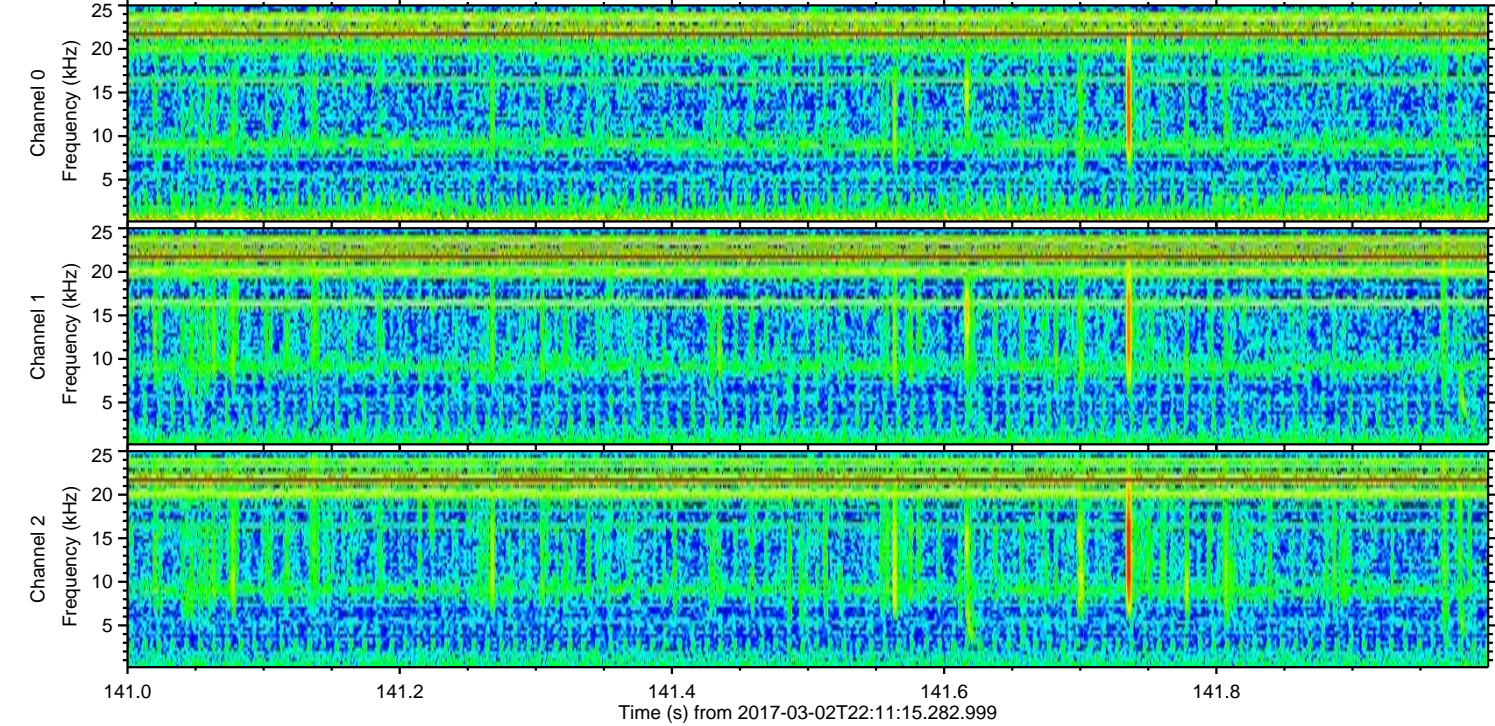
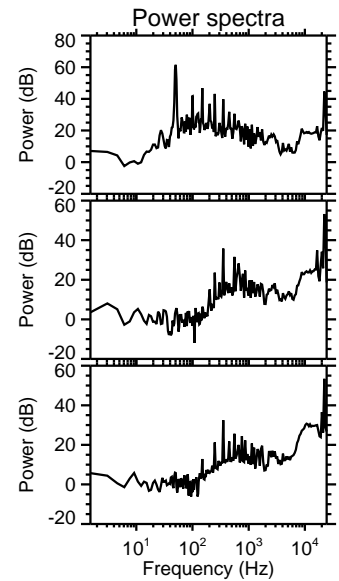
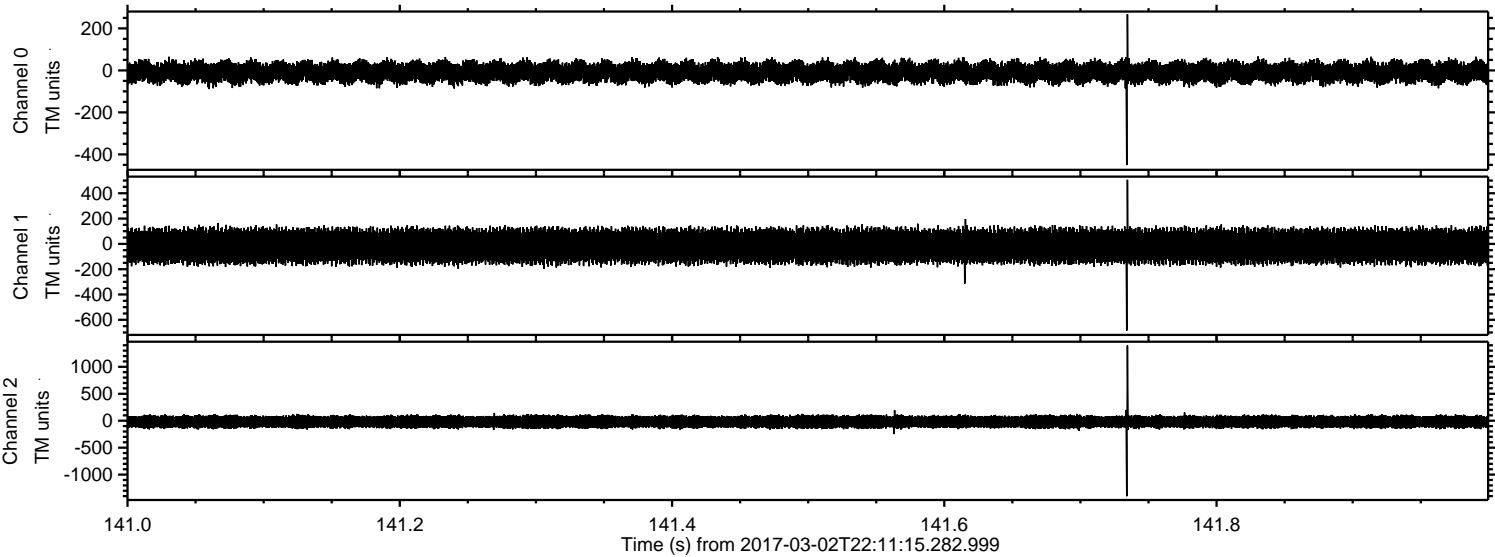
ELMAVAN 3D WAVEFORMS (Measured data sampled at 50 kHz) 51000 packets of 144 samples from 2017-03-02T22:11:15.282.999. Part 114/147

Processed Thu Mar 2 23:19:10 2017 by ELM ver.2012-10-06 from 001__elm20170302_221114__dat00.bin

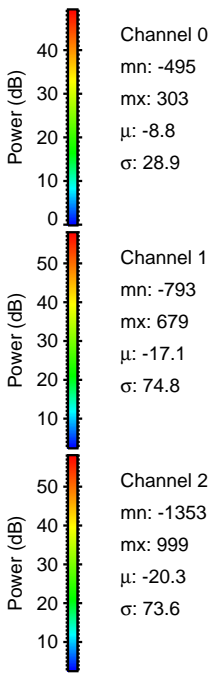
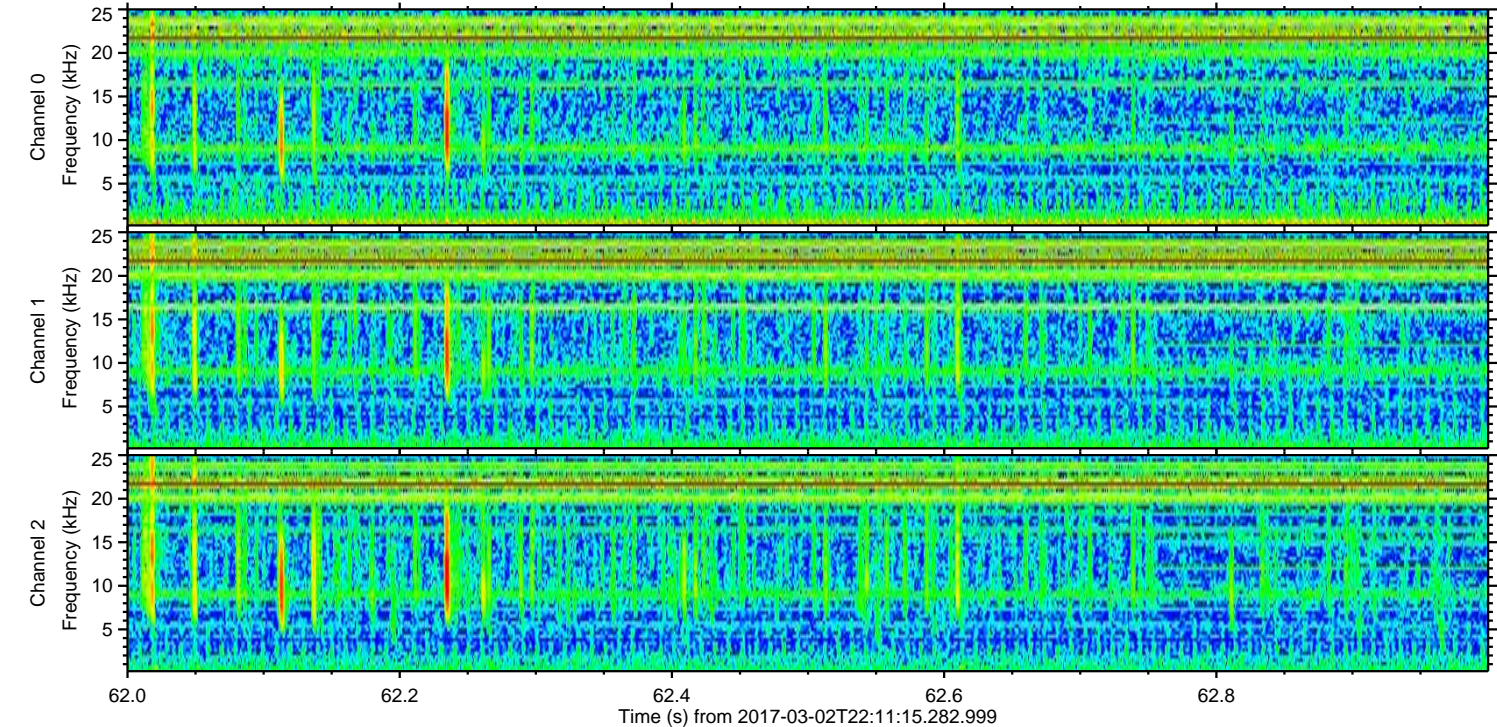
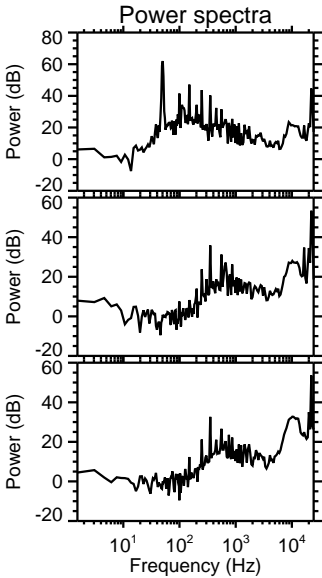
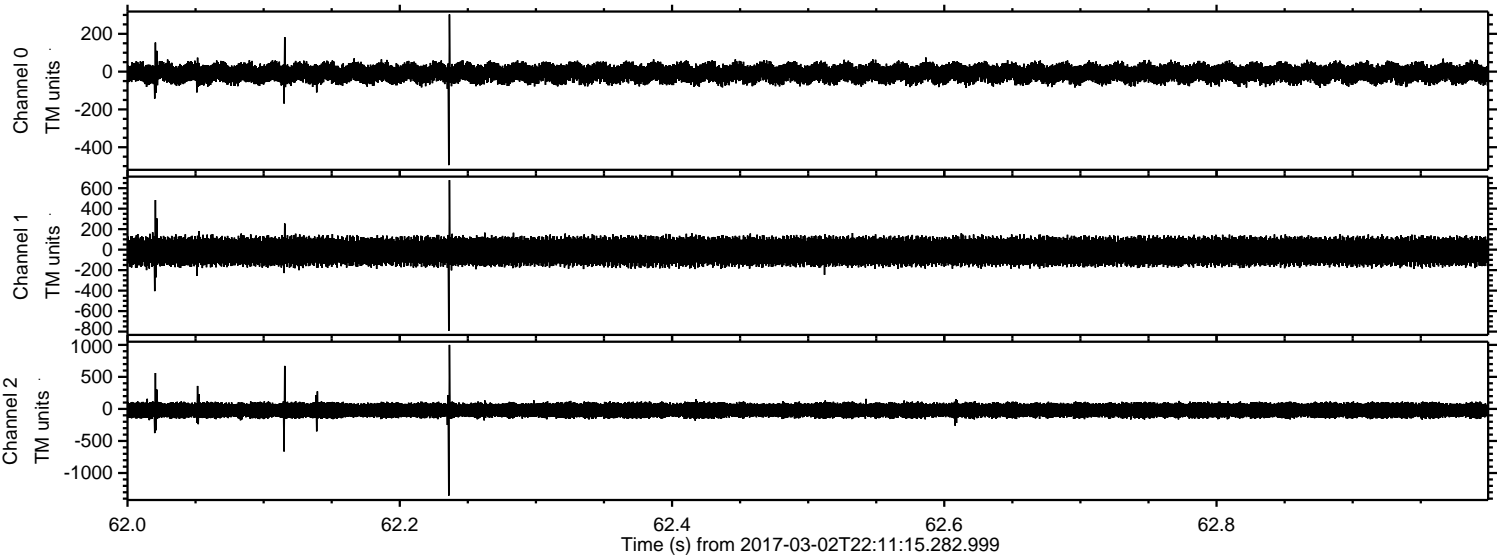


ELMAVAN 3D WAVEFORMS (Measured data sampled at 50 kHz) 51000 packets of 144 samples from 2017-03-02T22:11:15.282.999. Part 142/147

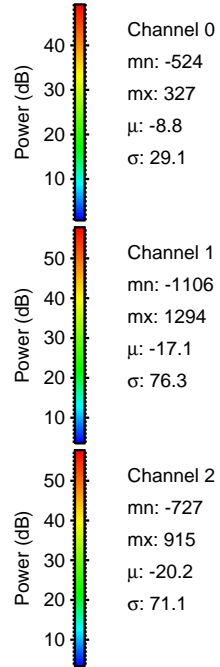
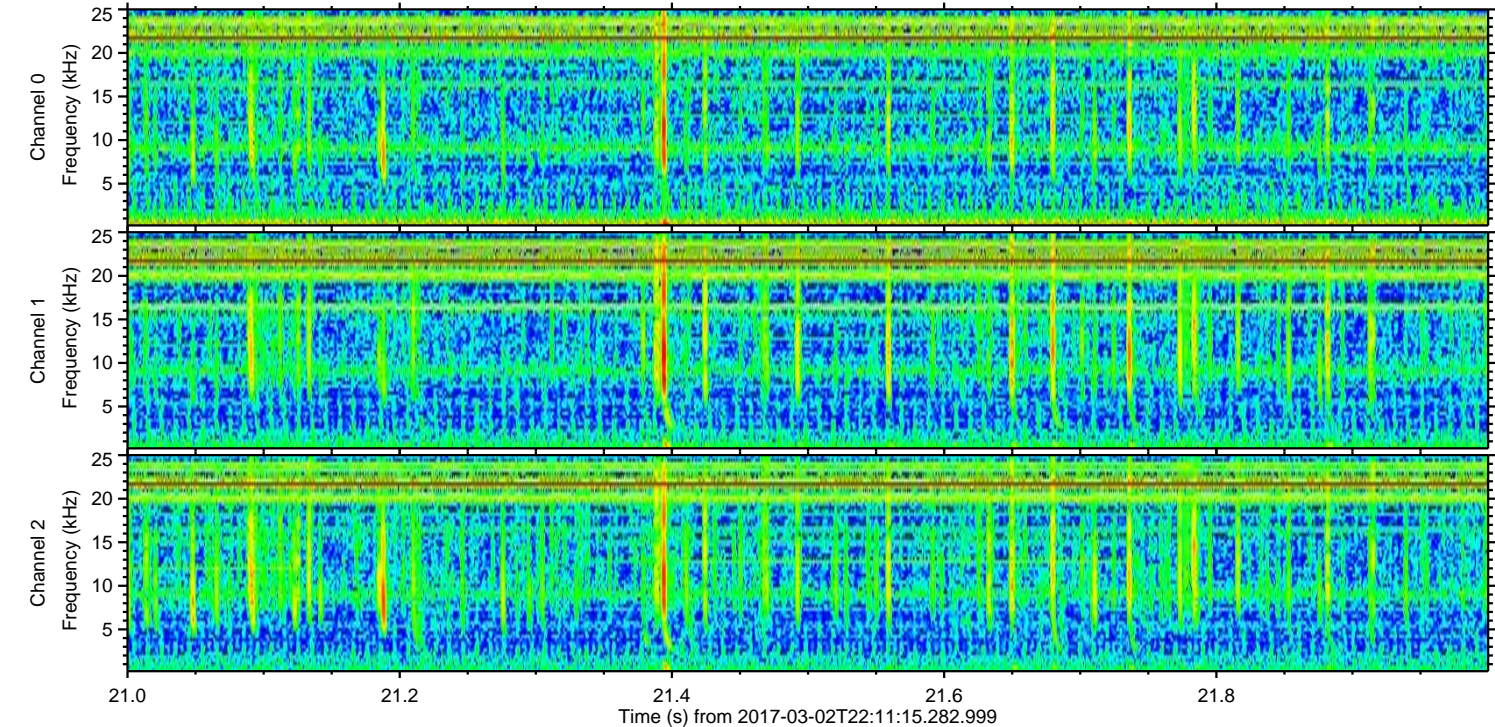
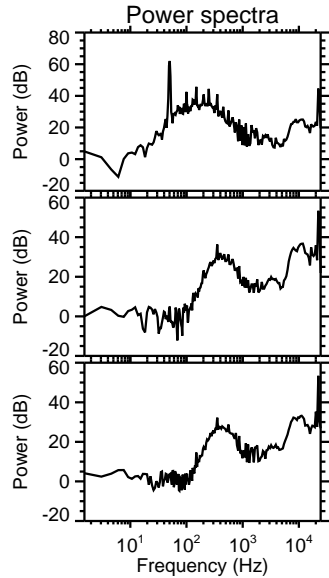
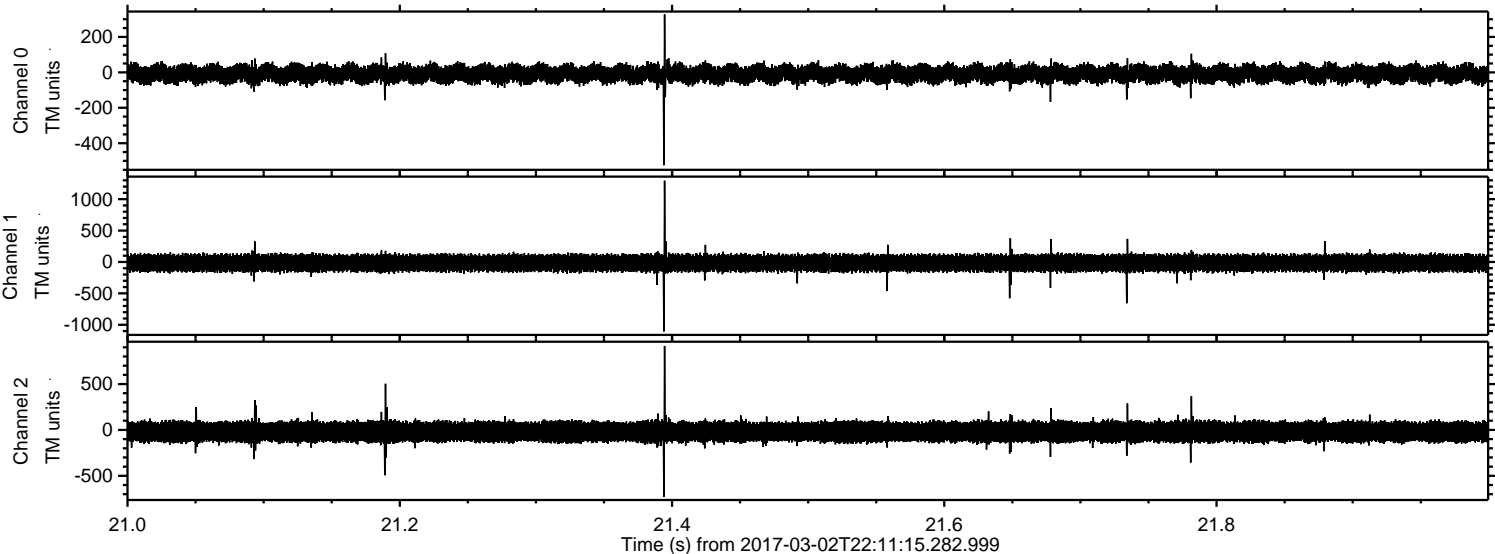
Processed Thu Mar 2 23:19:11 2017 by ELM ver.2012-10-06 from 001__elm20170302_221114__dat00.bin



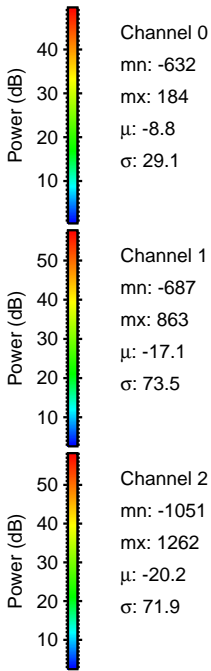
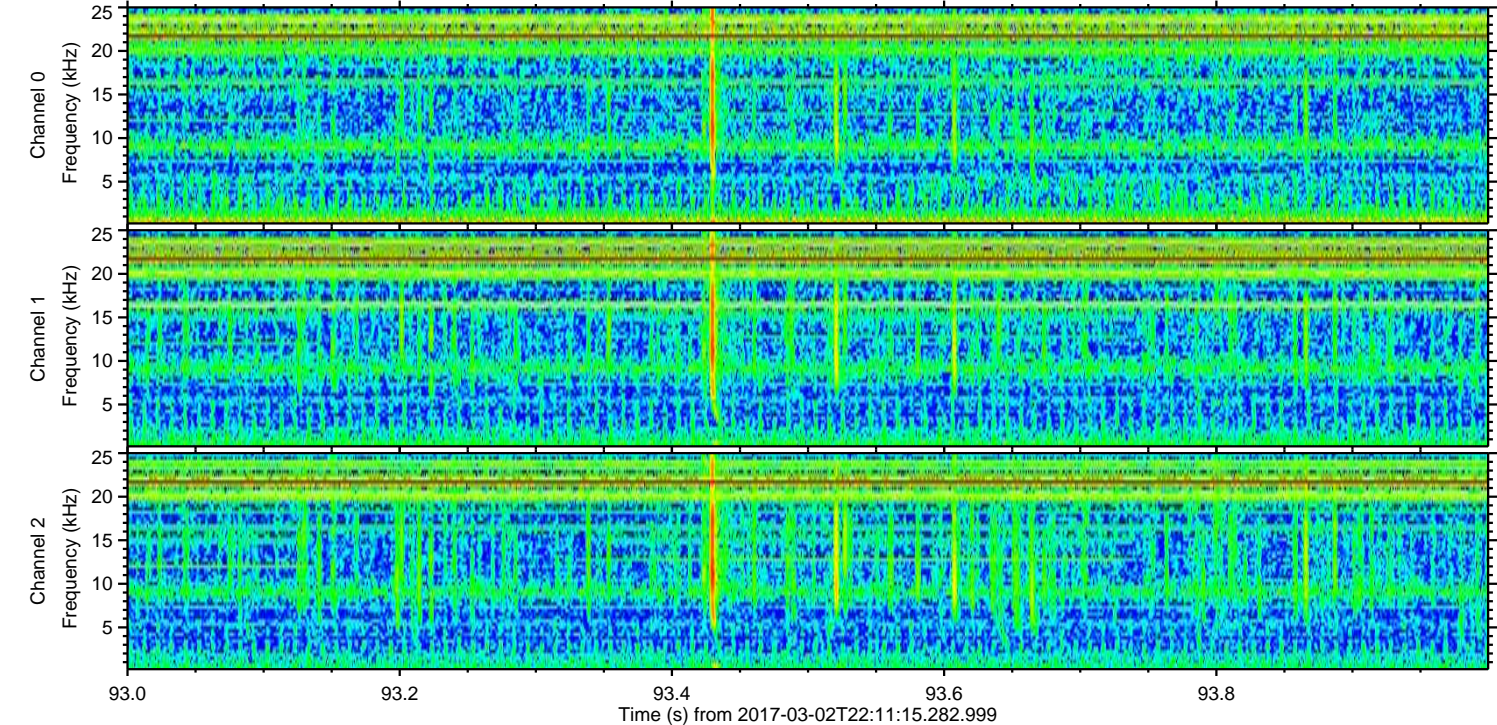
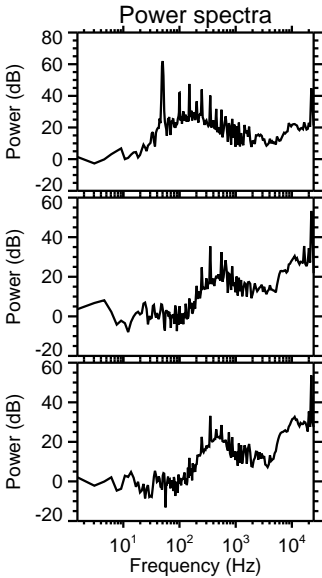
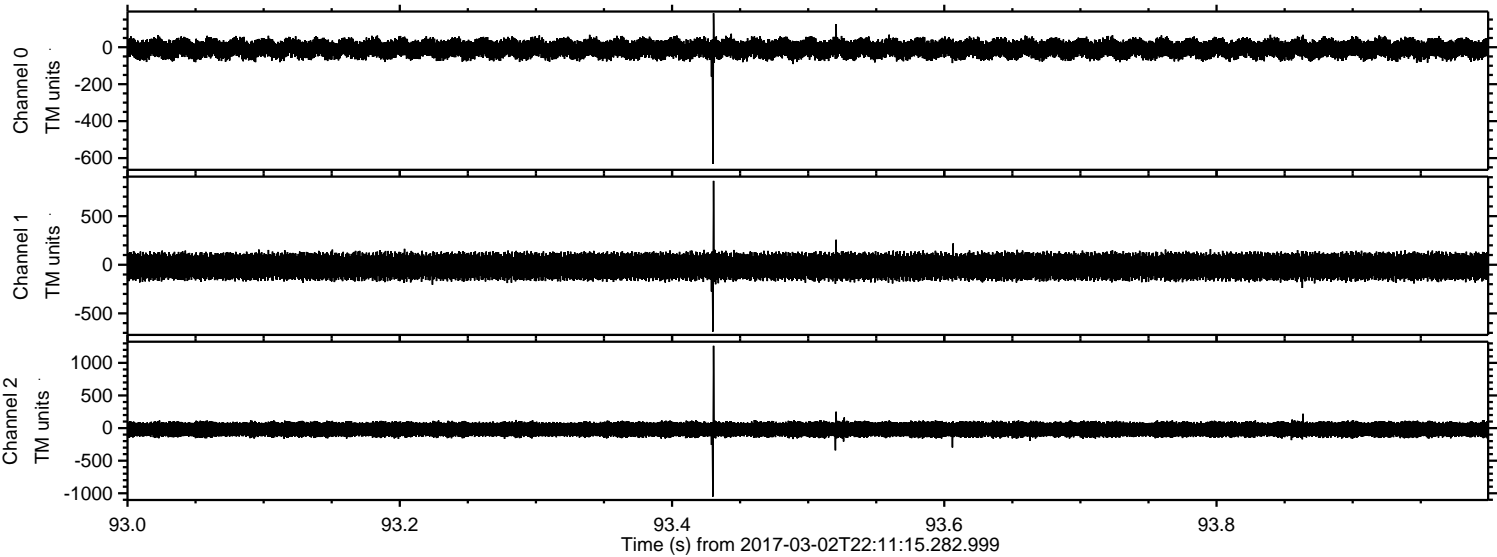
Processed Thu Mar 2 23:19:12 2017 by ELM ver.2012-10-06 from 001__elm20170302_221114__dat00.bin



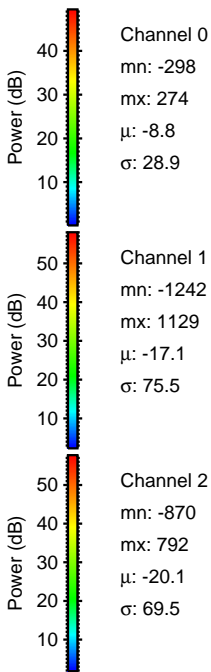
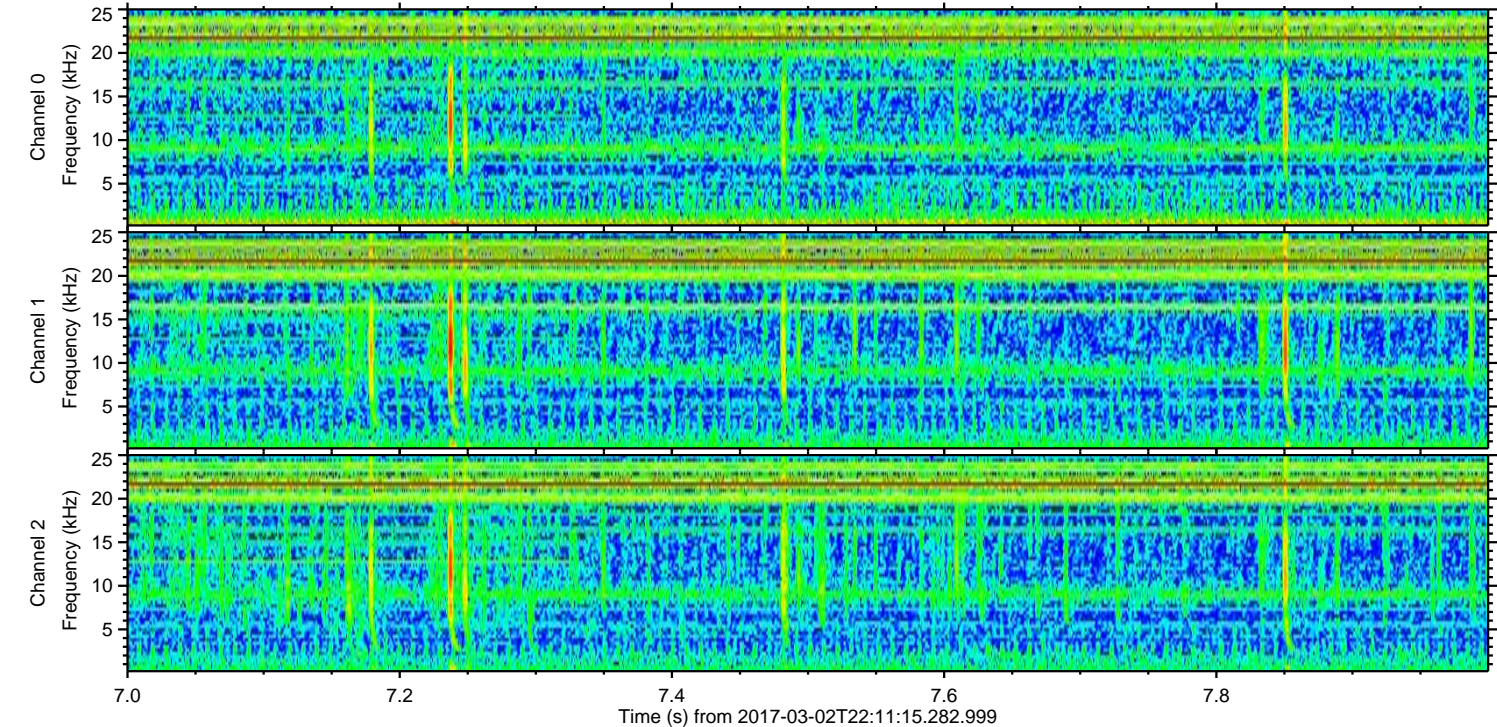
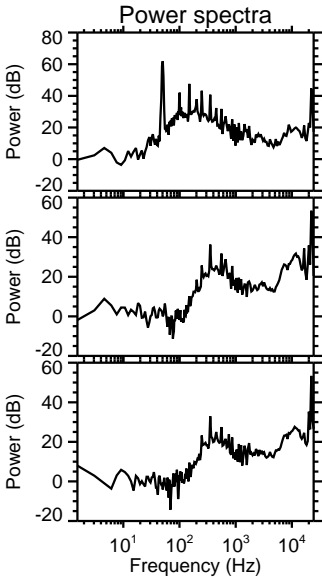
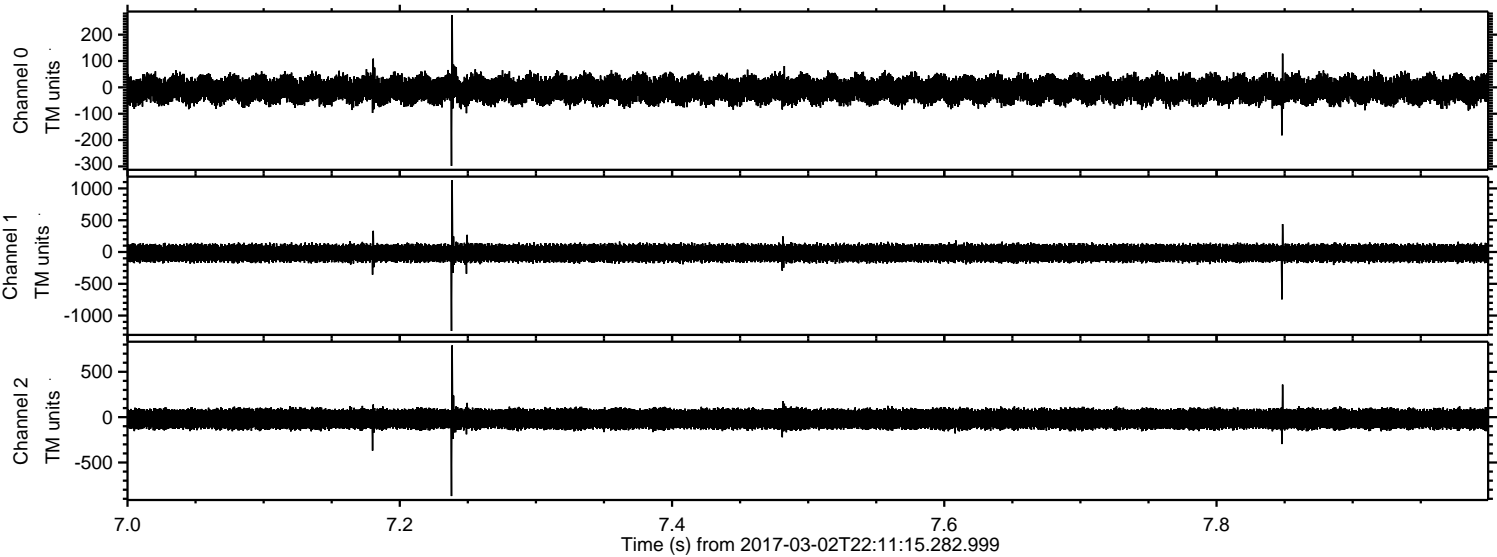
Processed Thu Mar 2 23:19:13 2017 by ELM ver.2012-10-06 from 001__elm20170302_221114__dat00.bin



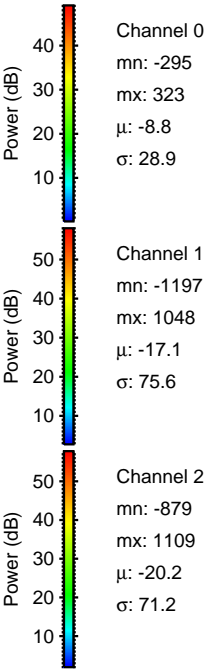
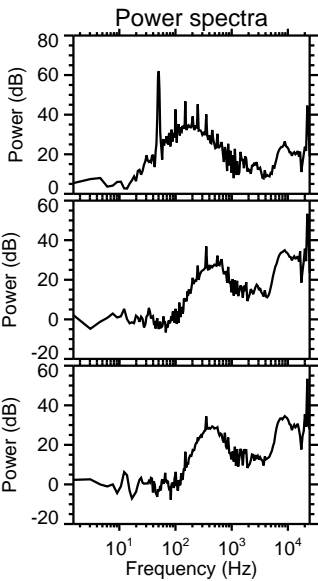
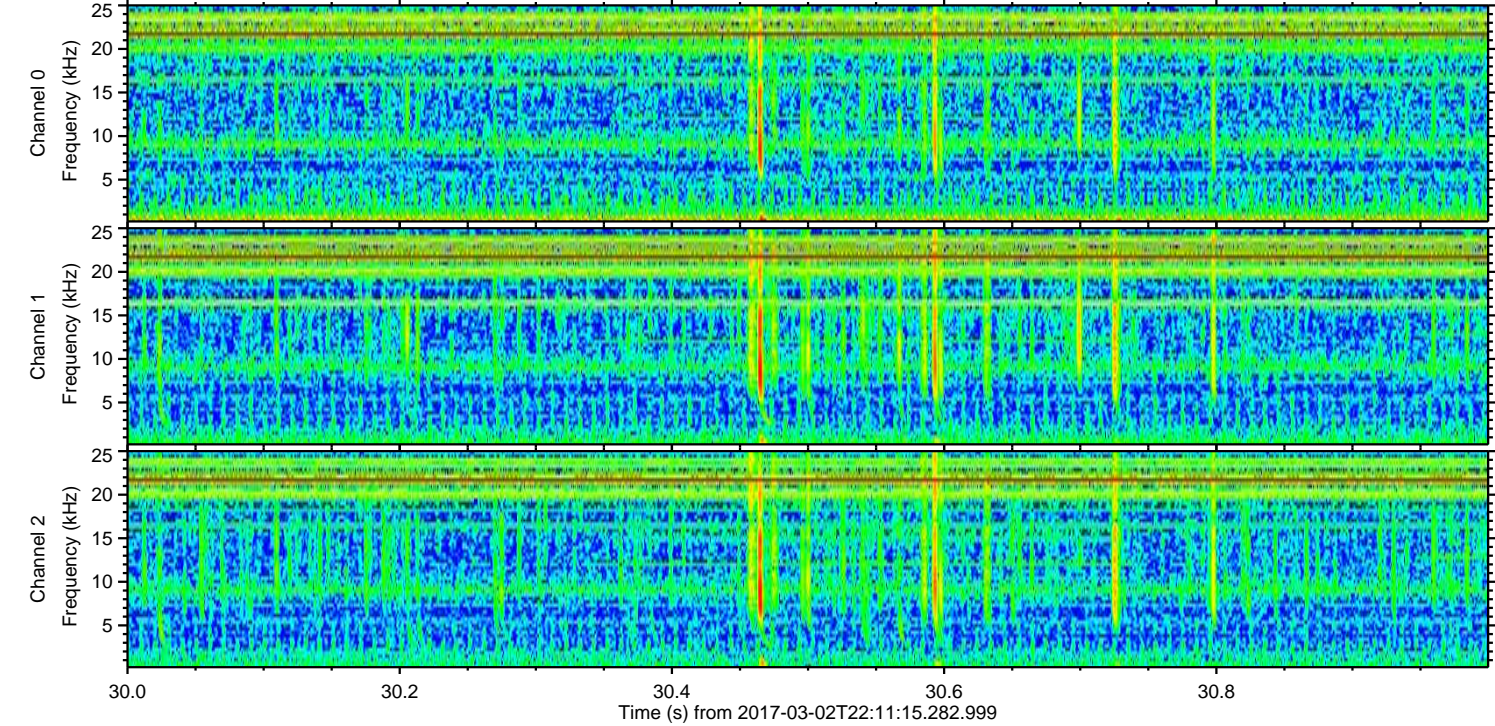
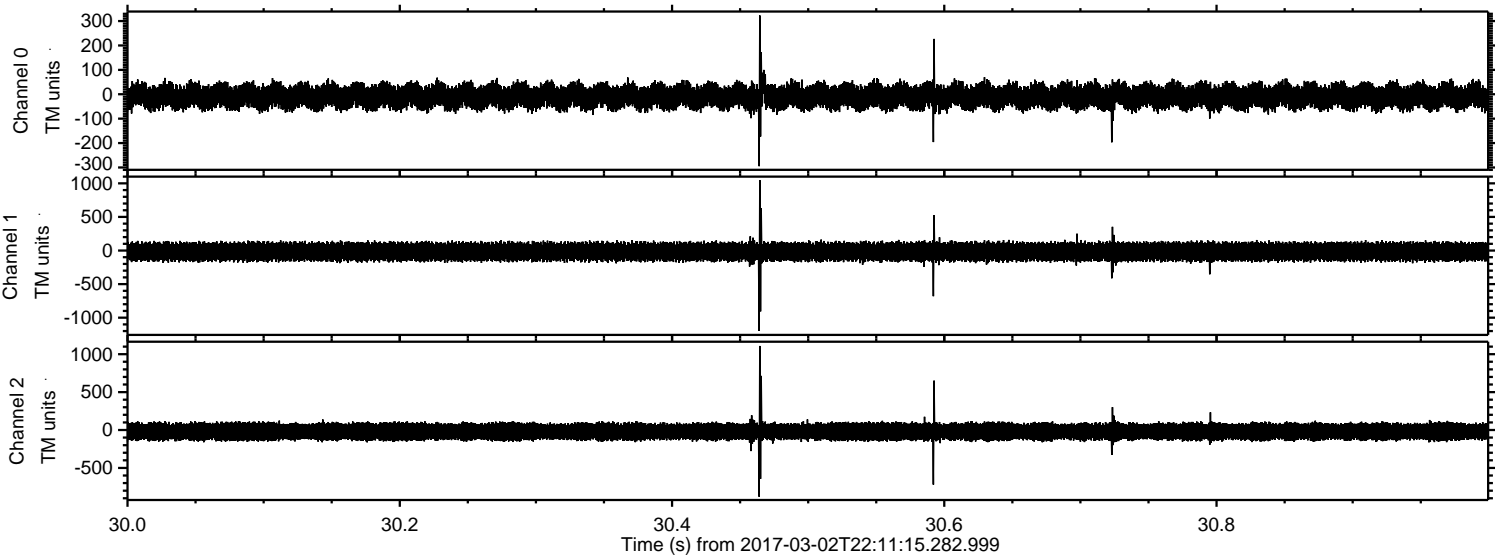
Processed Thu Mar 2 23:19:14 2017 by ELM ver.2012-10-06 from 001__elm20170302_221114__dat00.bin



Processed Thu Mar 2 23:19:15 2017 by ELM ver.2012-10-06 from 001__elm20170302_221114__dat00.bin



Processed Thu Mar 2 23:19:15 2017 by ELM ver.2012-10-06 from 001__elm20170302_221114__dat00.bin



Channel 0
mn: -295
mx: 323
 μ : -8.8
 σ : 28.9

Channel 1
mn: -1197
mx: 1048
 μ : -17.1
 σ : 75.6

Channel 2
mn: -879
mx: 1109
 μ : -20.2
 σ : 71.2

