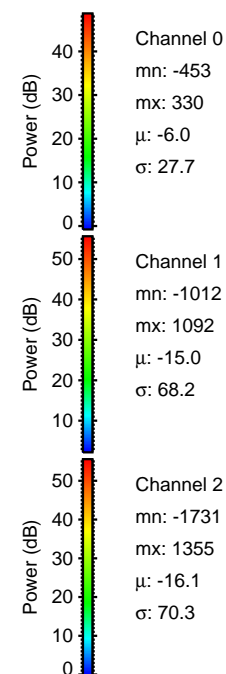
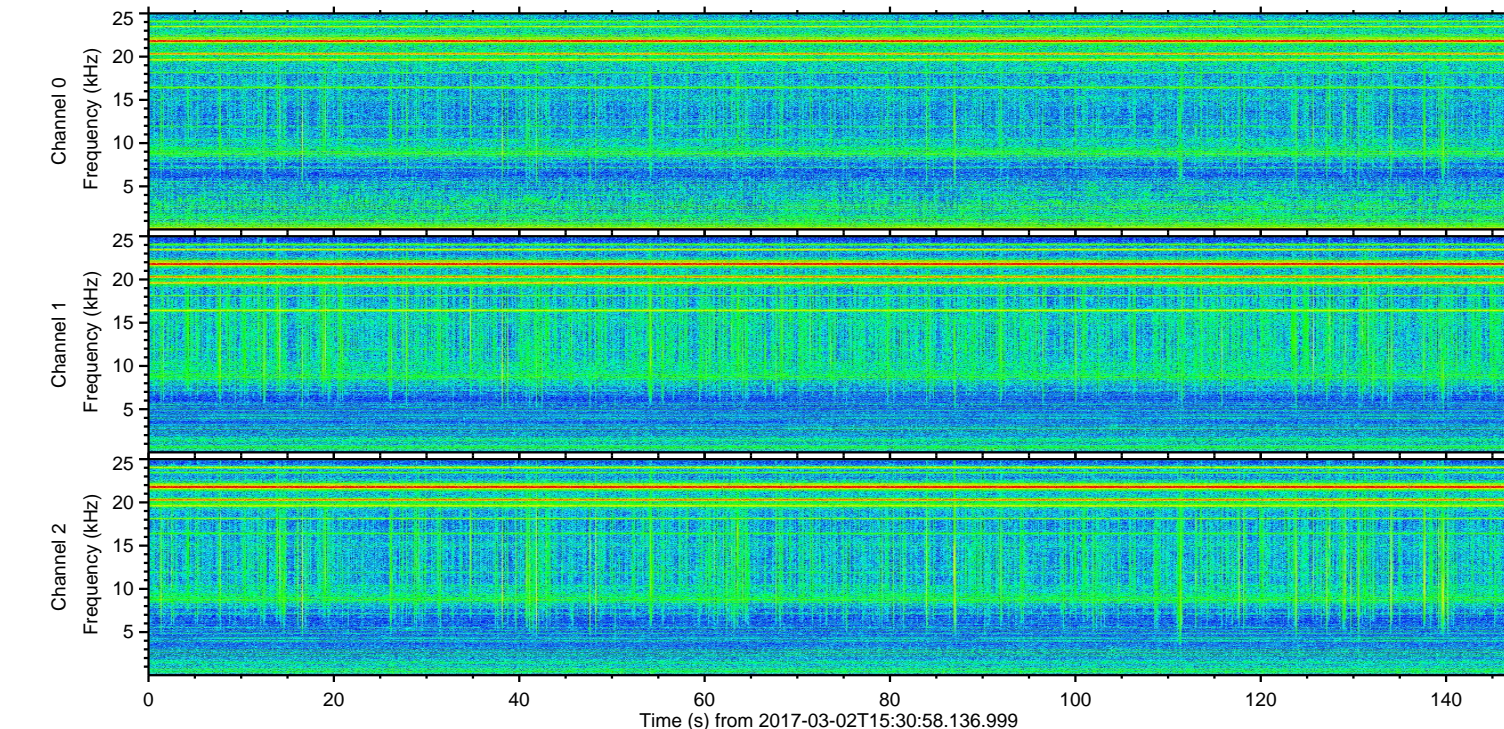
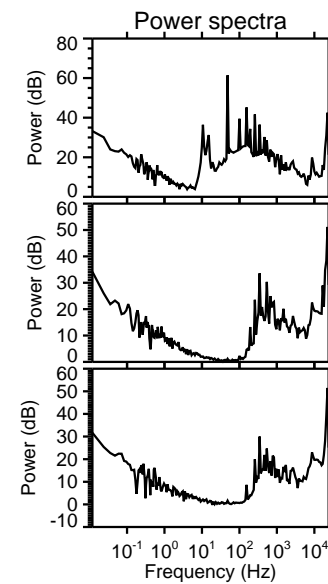
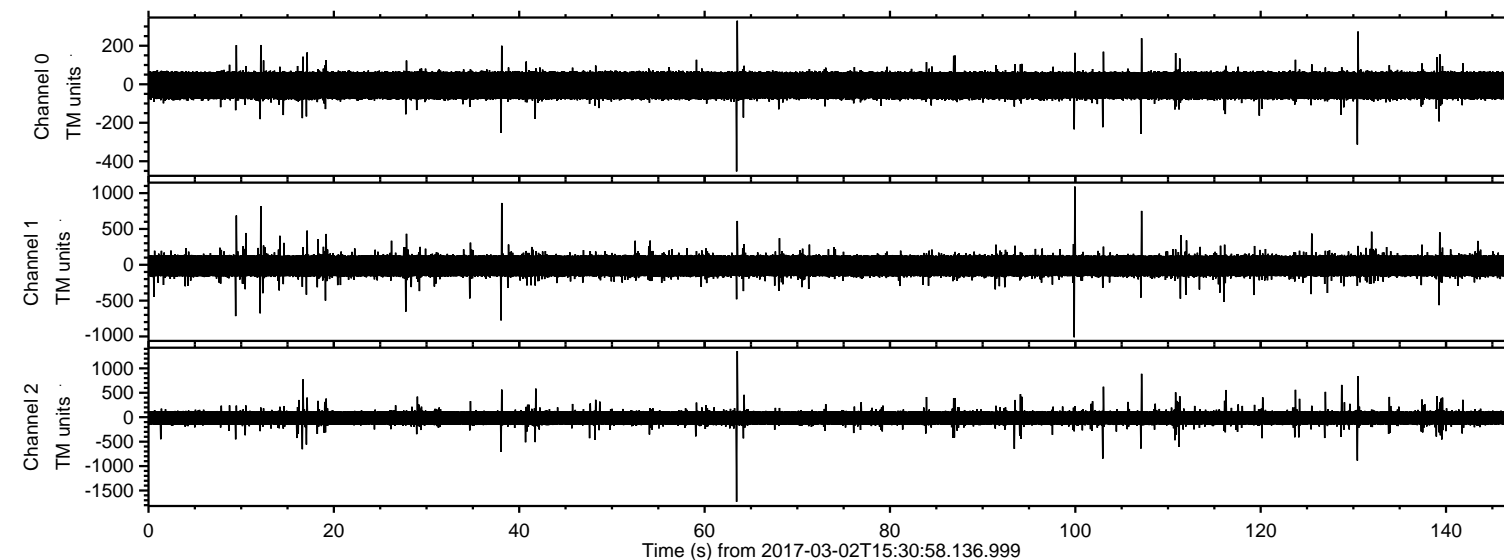
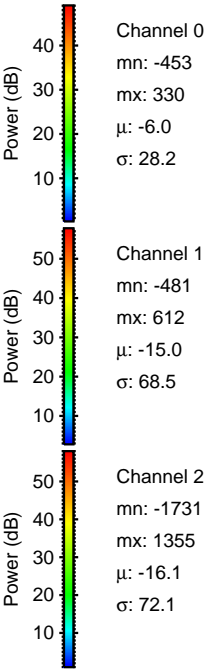
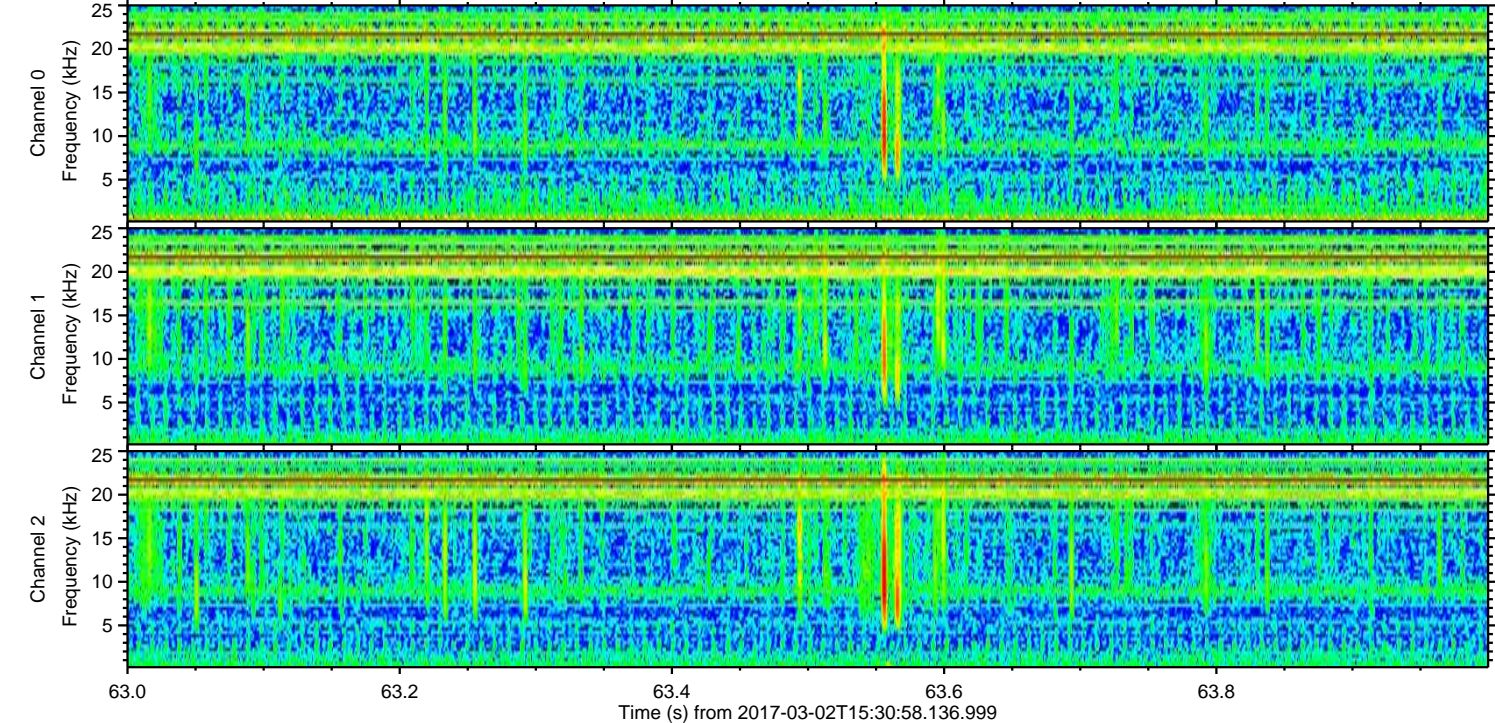
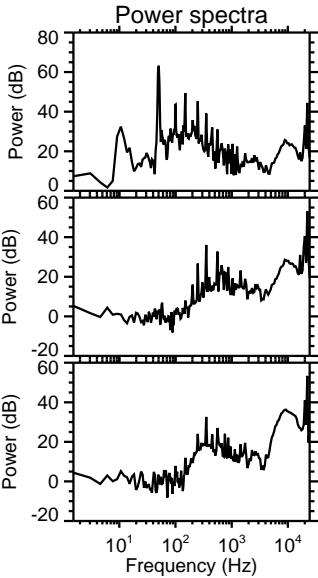
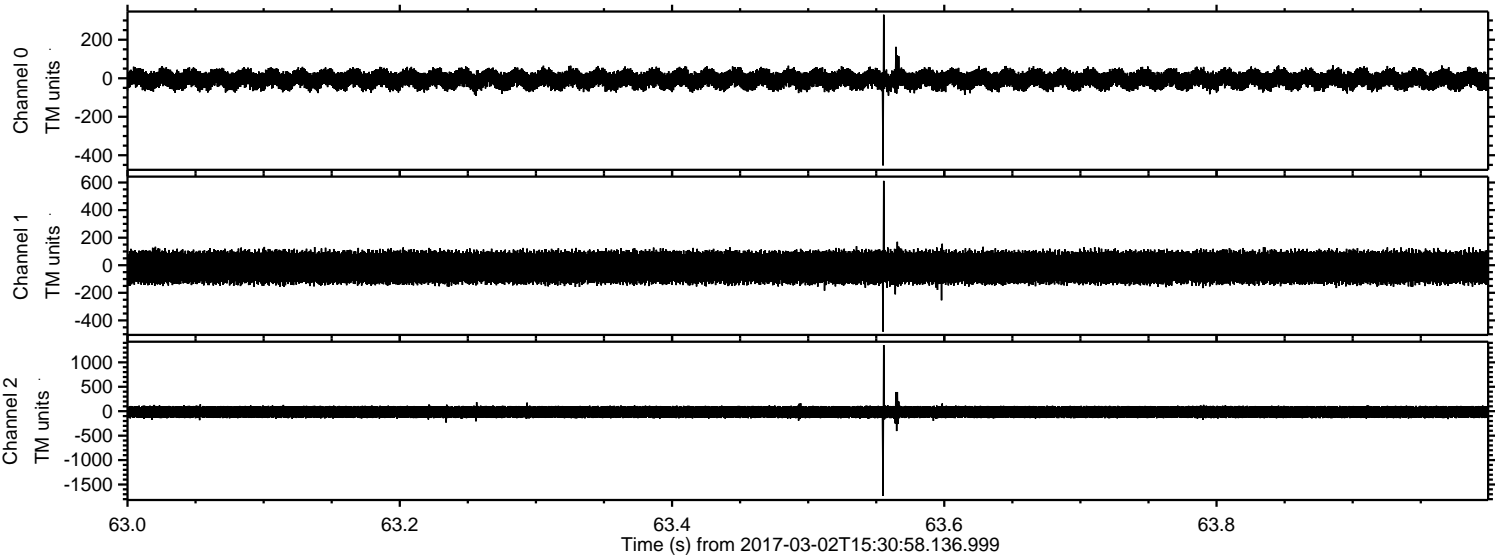


ELMAVAN 3D WAVEFORMS (Measured data sampled at 50 kHz) 51000 packets of 144 samples from 2017-03-02T15:30:58.136.999.

Processed Thu Mar 2 16:38:27 2017 by ELM ver.2012-10-06 from 001__elm20170302_153057__dat00.bin

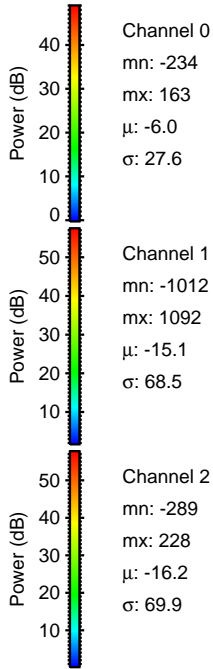
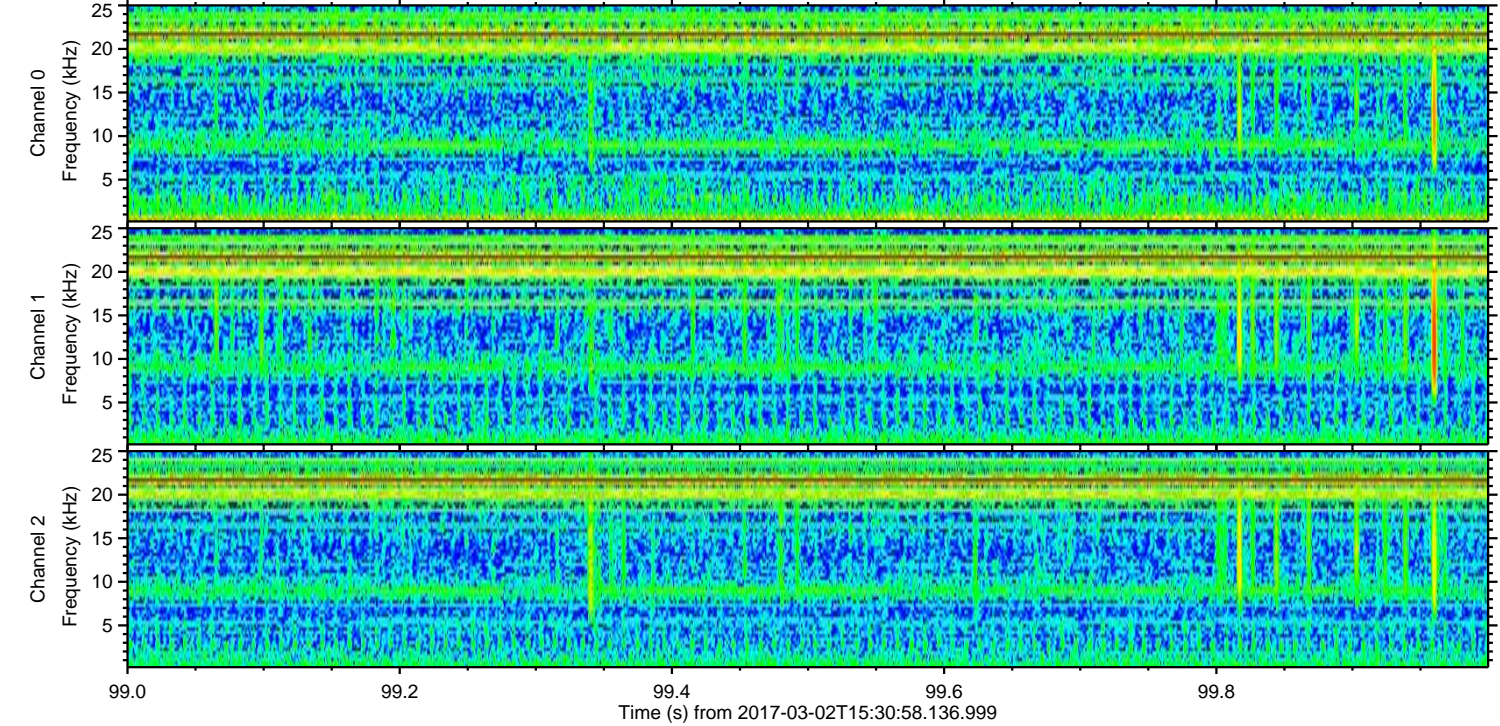
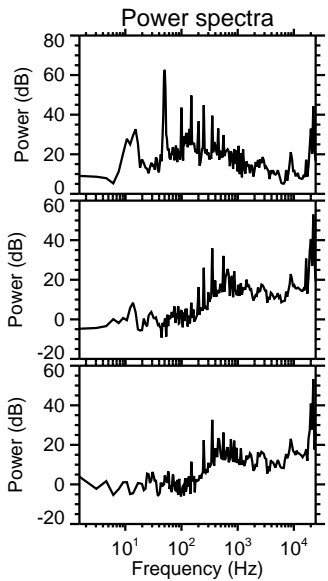
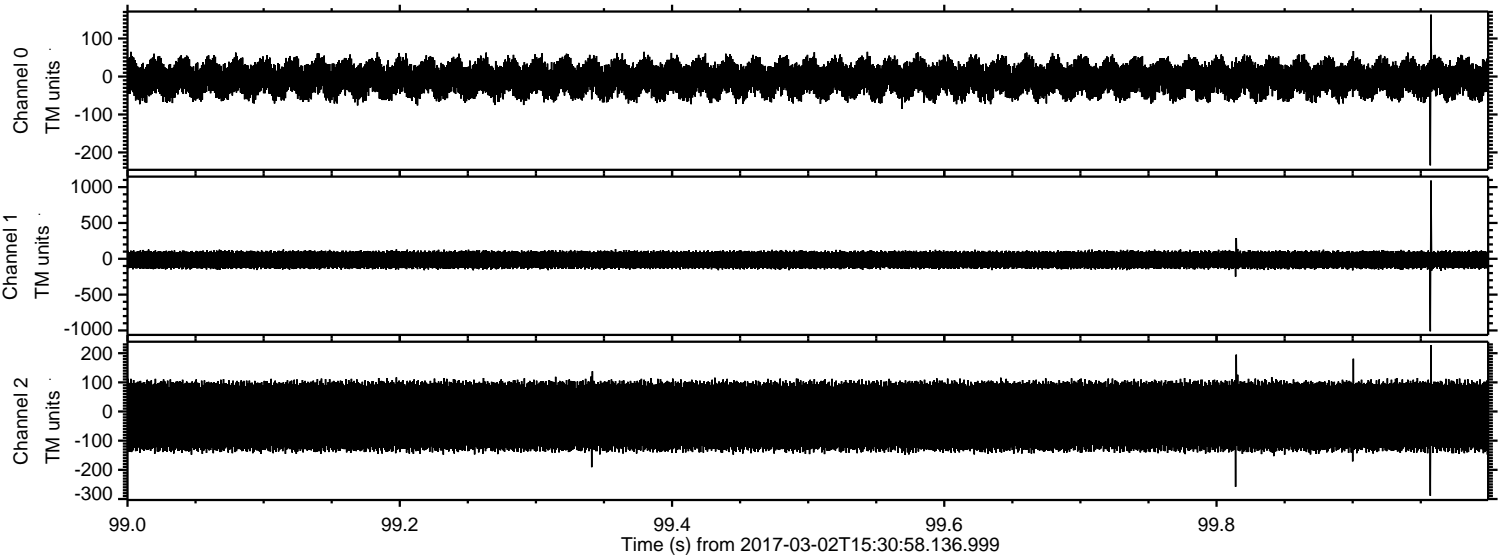


Processed Thu Mar 2 16:38:39 2017 by ELM ver.2012-10-06 from 001__elm20170302_153057__dat00.bin



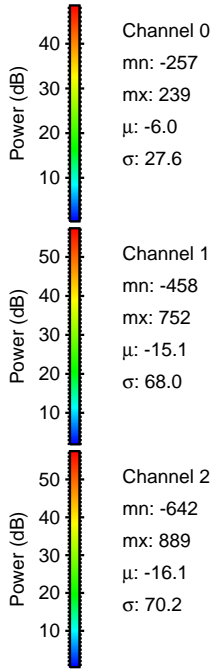
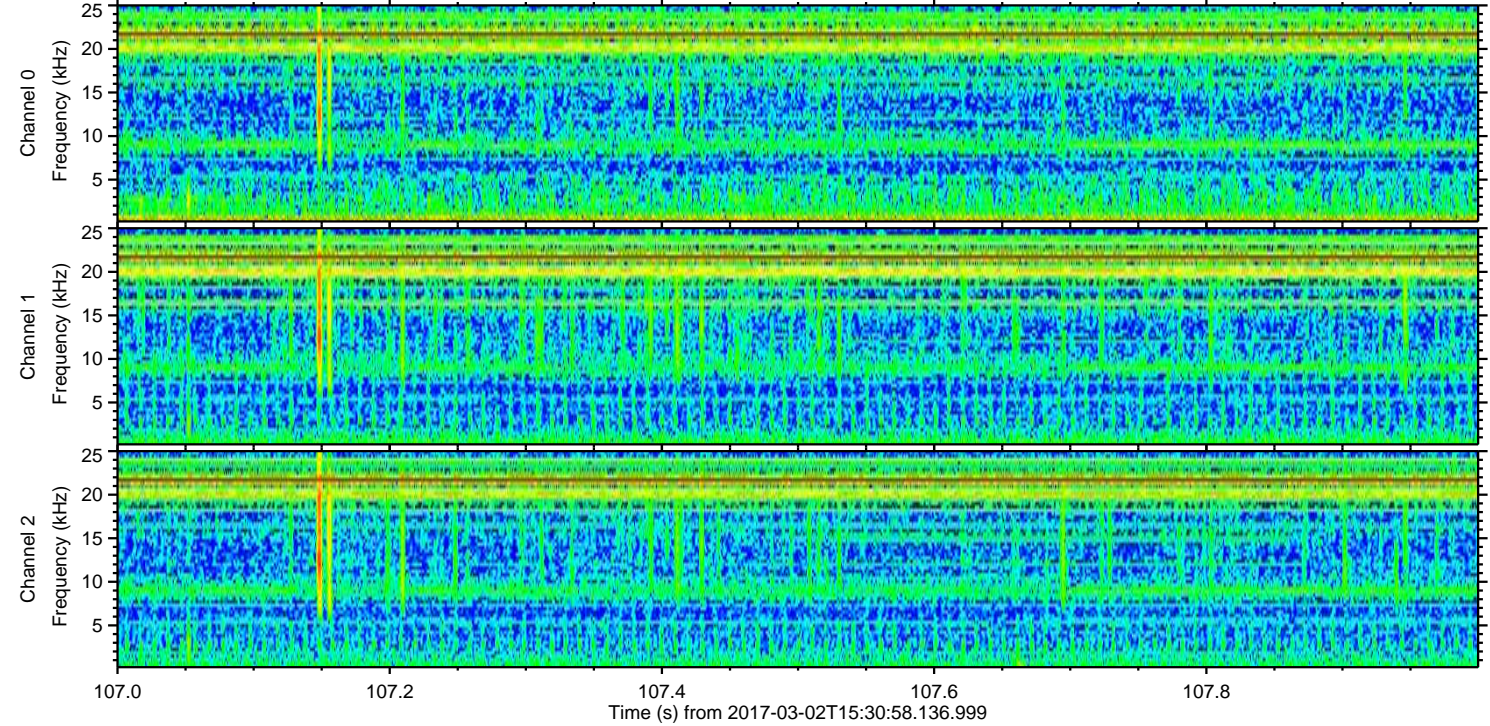
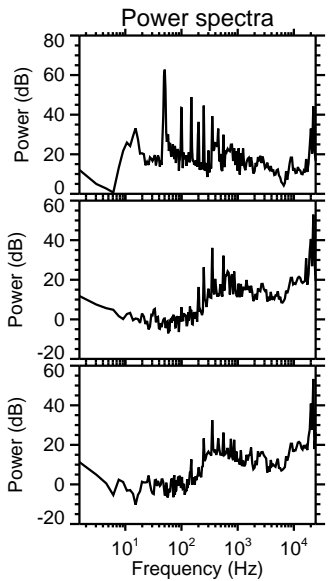
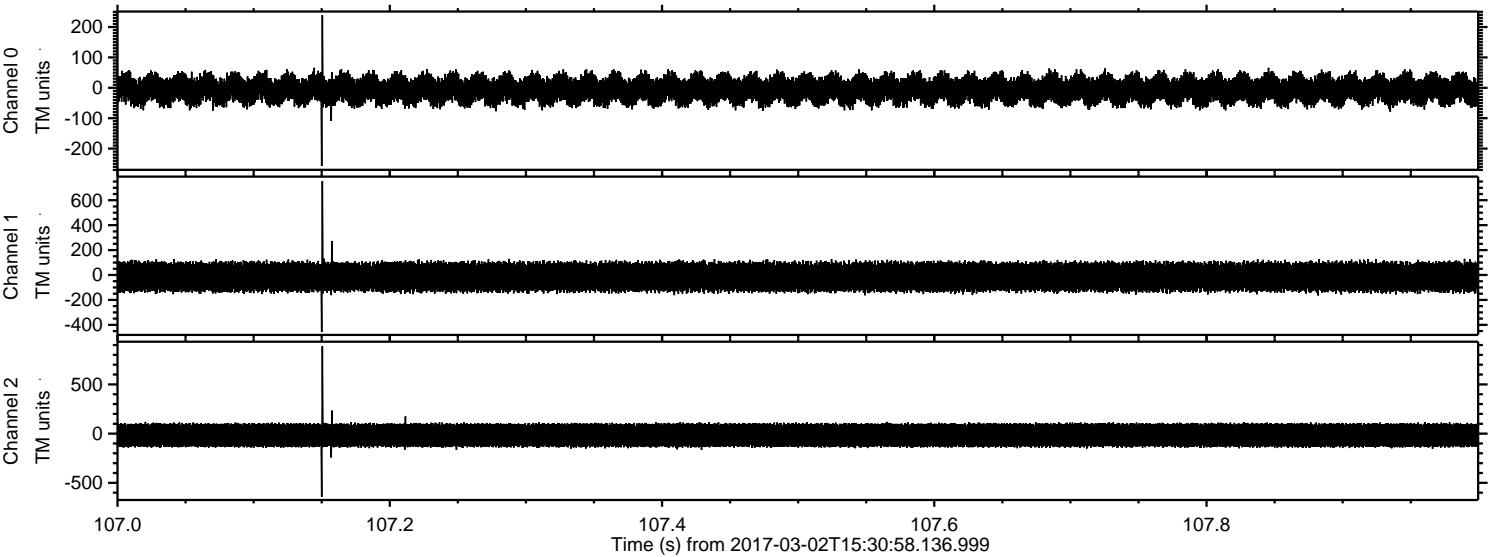
ELMAVAN 3D WAVEFORMS (Measured data sampled at 50 kHz) 51000 packets of 144 samples from 2017-03-02T15:30:58.136.999. Part 100/147

Processed Thu Mar 2 16:38:39 2017 by ELM ver.2012-10-06 from 001__elm20170302_153057__dat00.bin



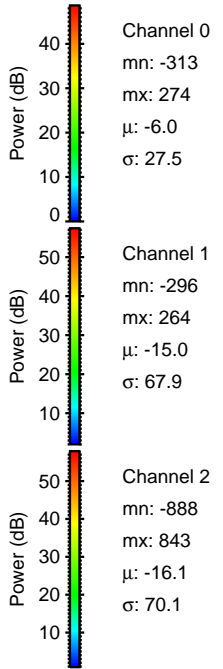
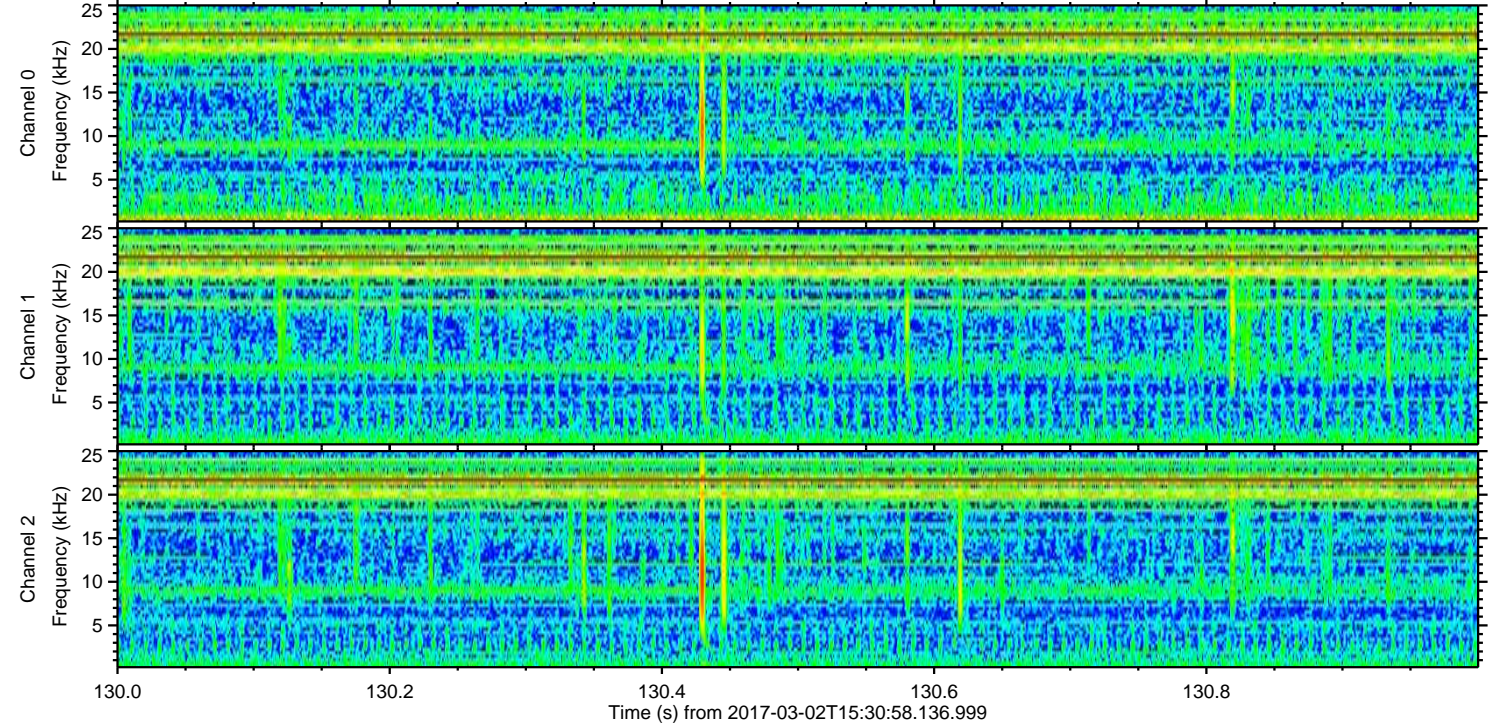
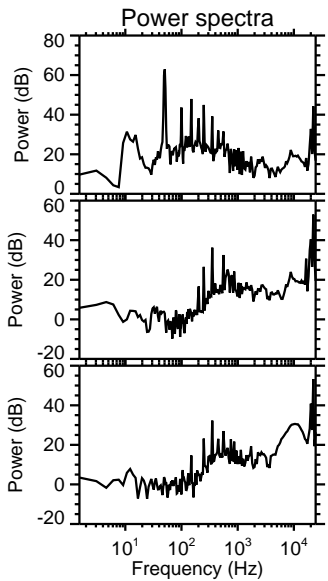
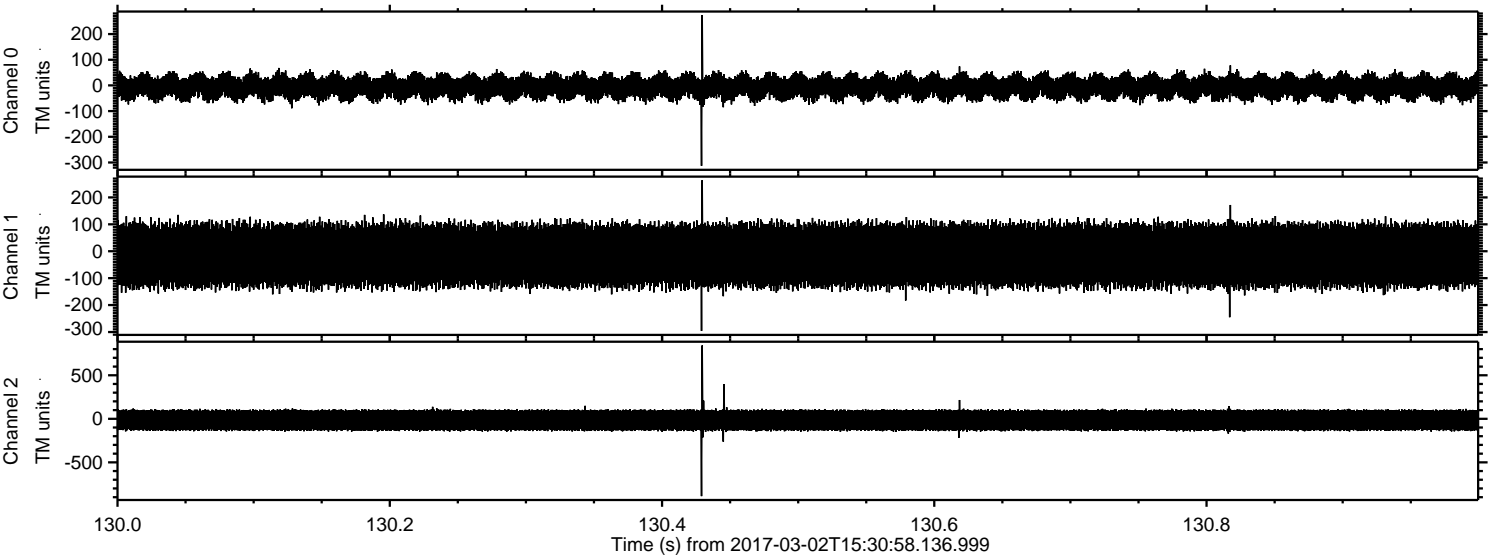
ELMAVAN 3D WAVEFORMS (Measured data sampled at 50 kHz) 51000 packets of 144 samples from 2017-03-02T15:30:58.136.999. Part 108/147

Processed Thu Mar 2 16:38:40 2017 by ELM ver.2012-10-06 from 001__elm20170302_153057__dat00.bin

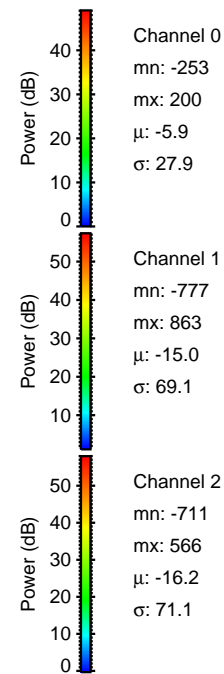
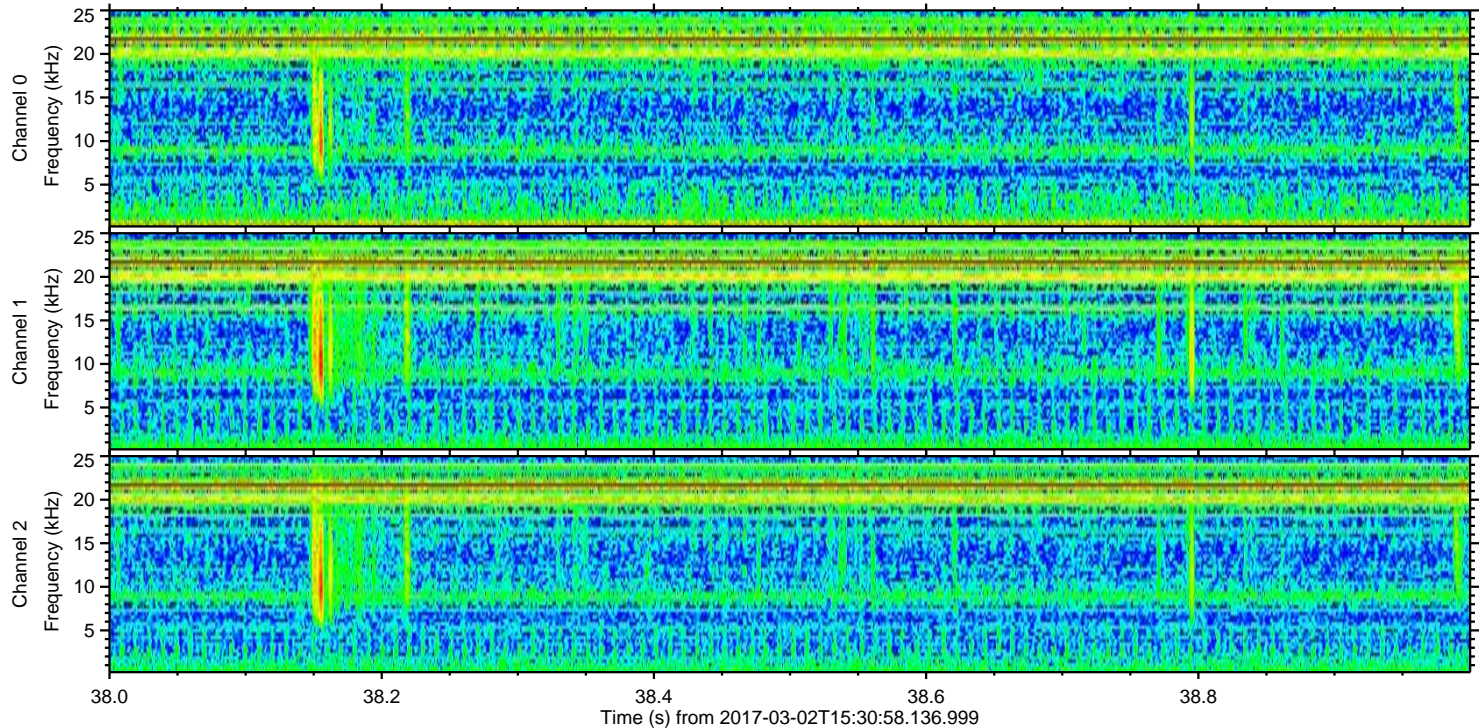
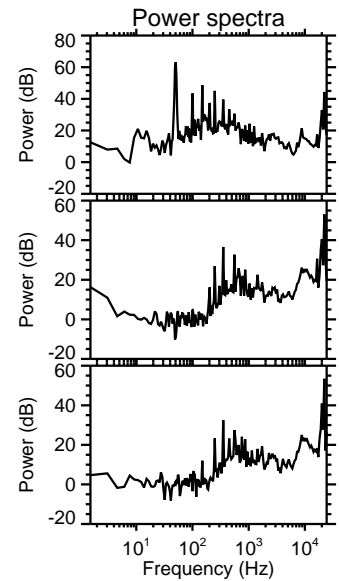
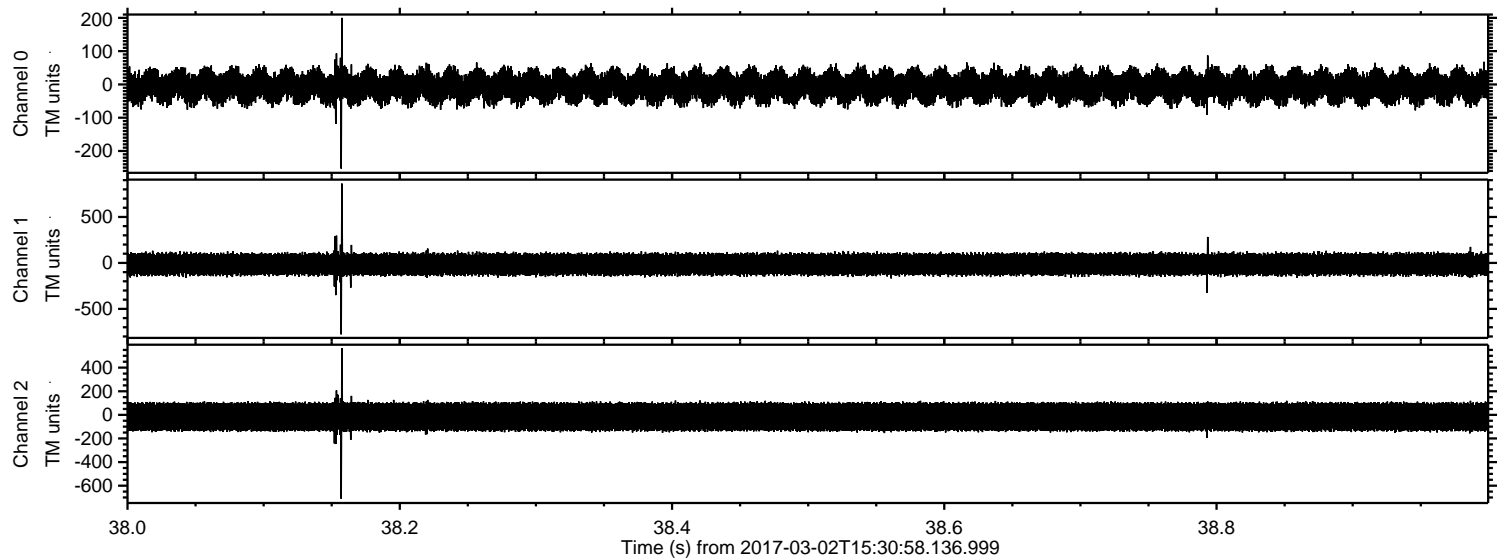


ELMAVAN 3D WAVEFORMS (Measured data sampled at 50 kHz) 51000 packets of 144 samples from 2017-03-02T15:30:58.136.999. Part 131/147

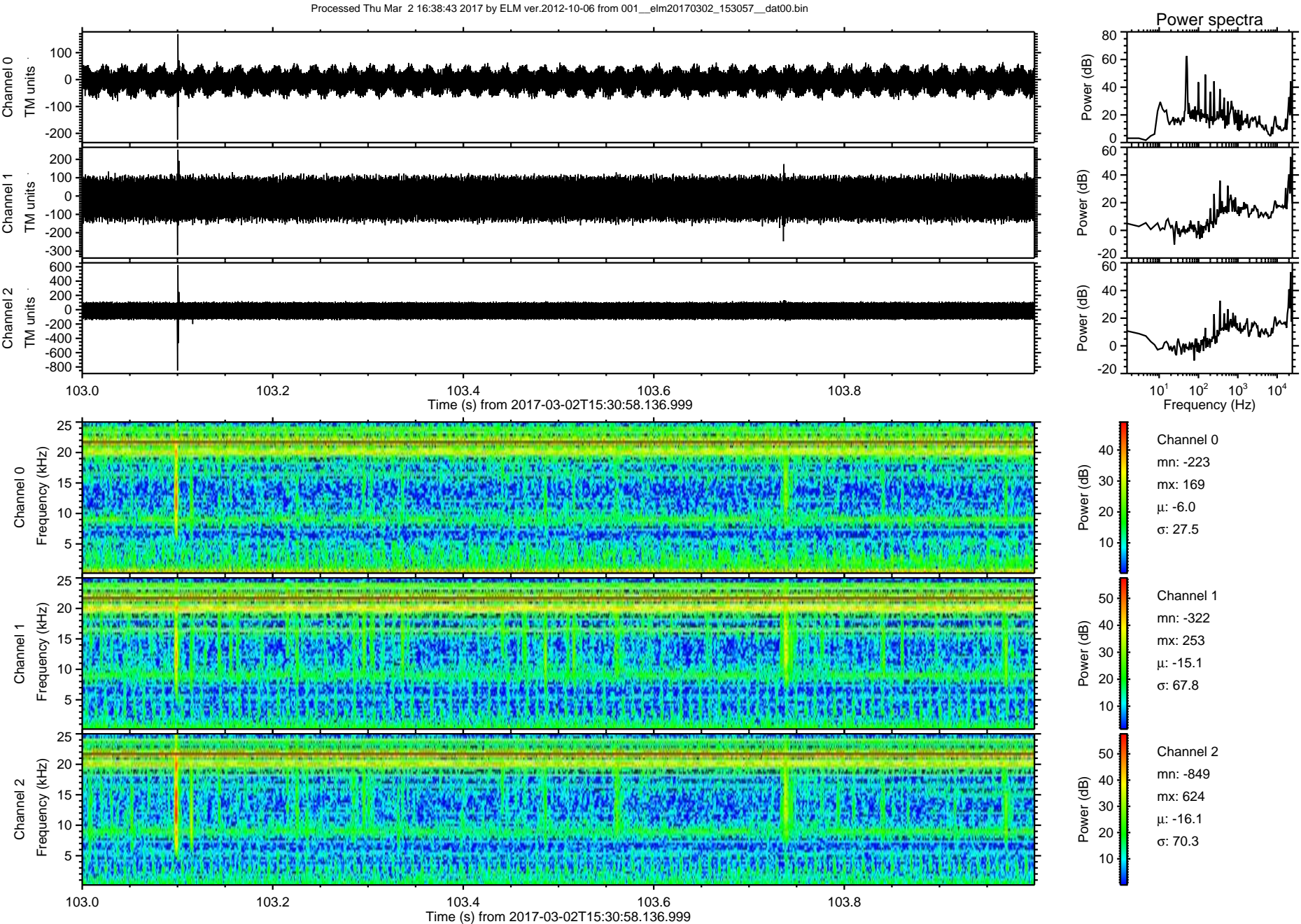
Processed Thu Mar 2 16:38:41 2017 by ELM ver.2012-10-06 from 001__elm20170302_153057__dat00.bin

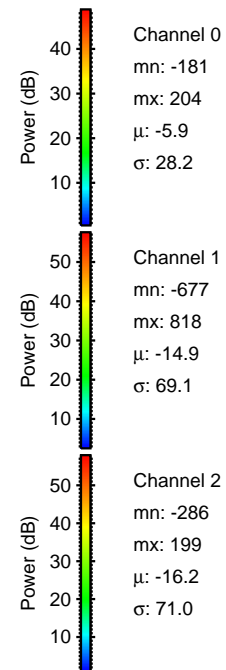
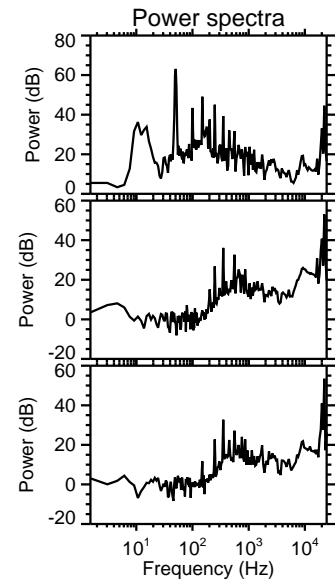
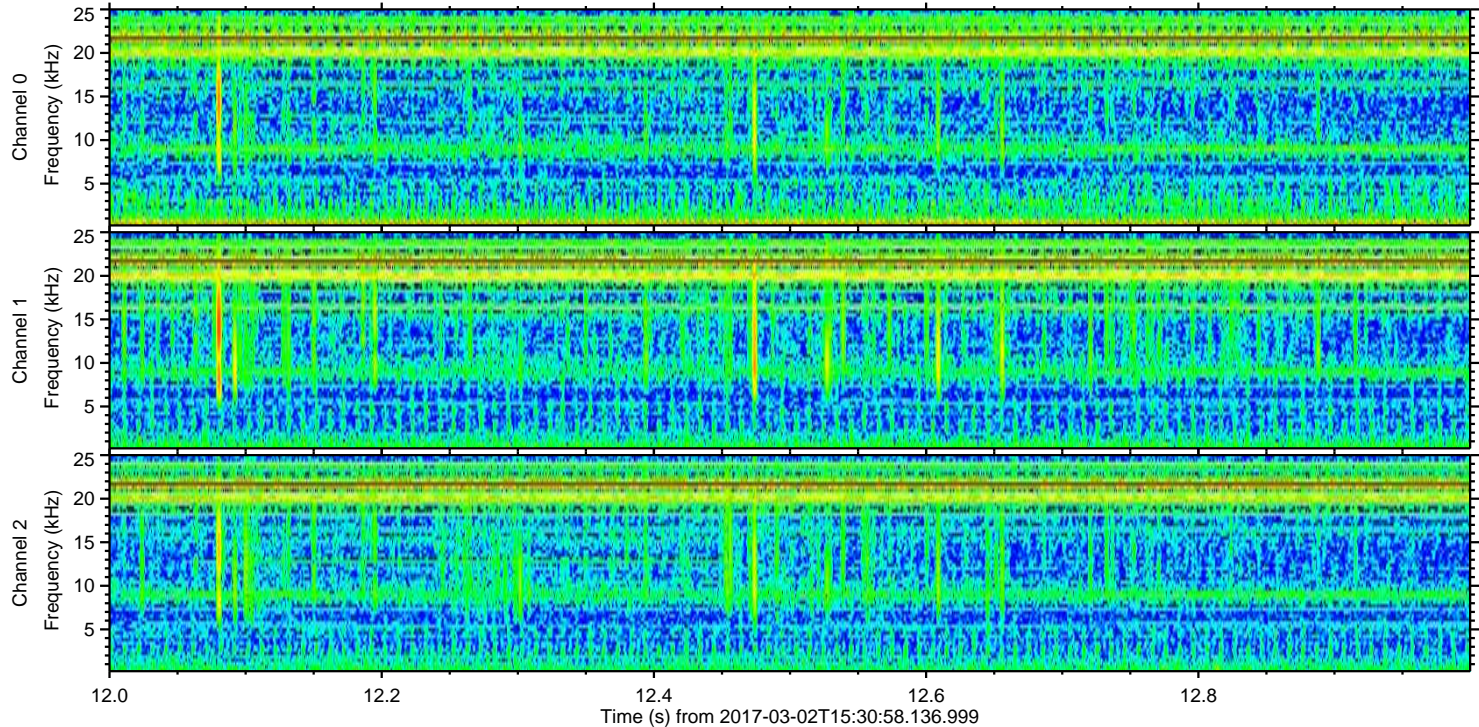
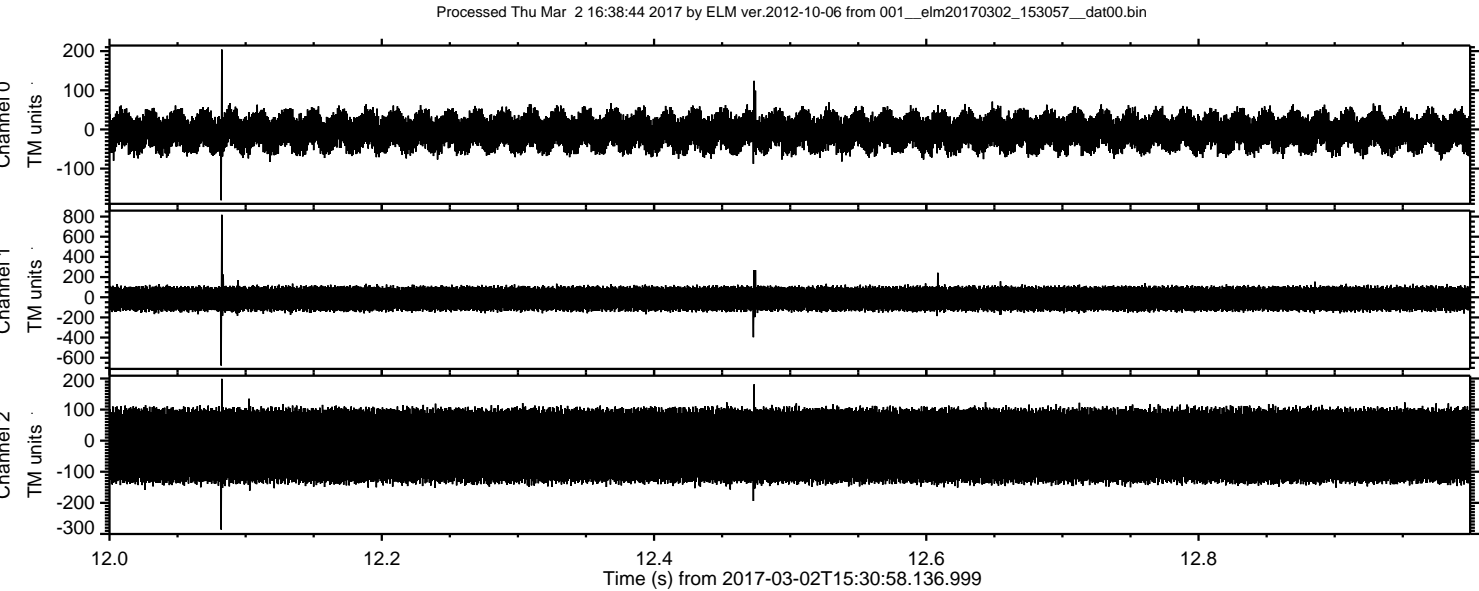


Processed Thu Mar 2 16:38:42 2017 by ELM ver.2012-10-06 from 001__elm20170302_153057__dat00.bin



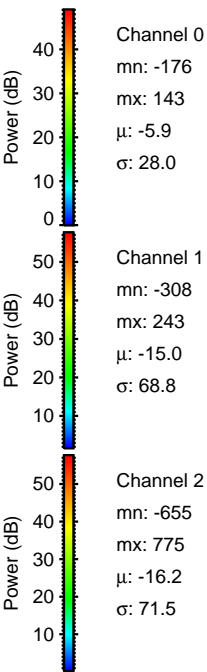
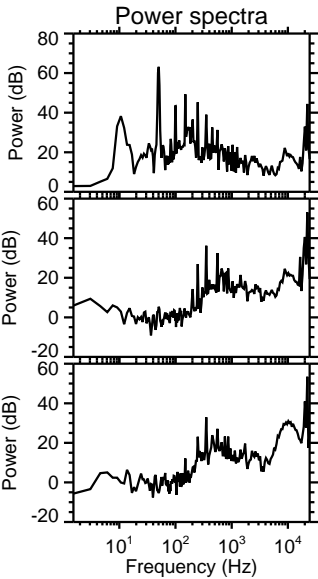
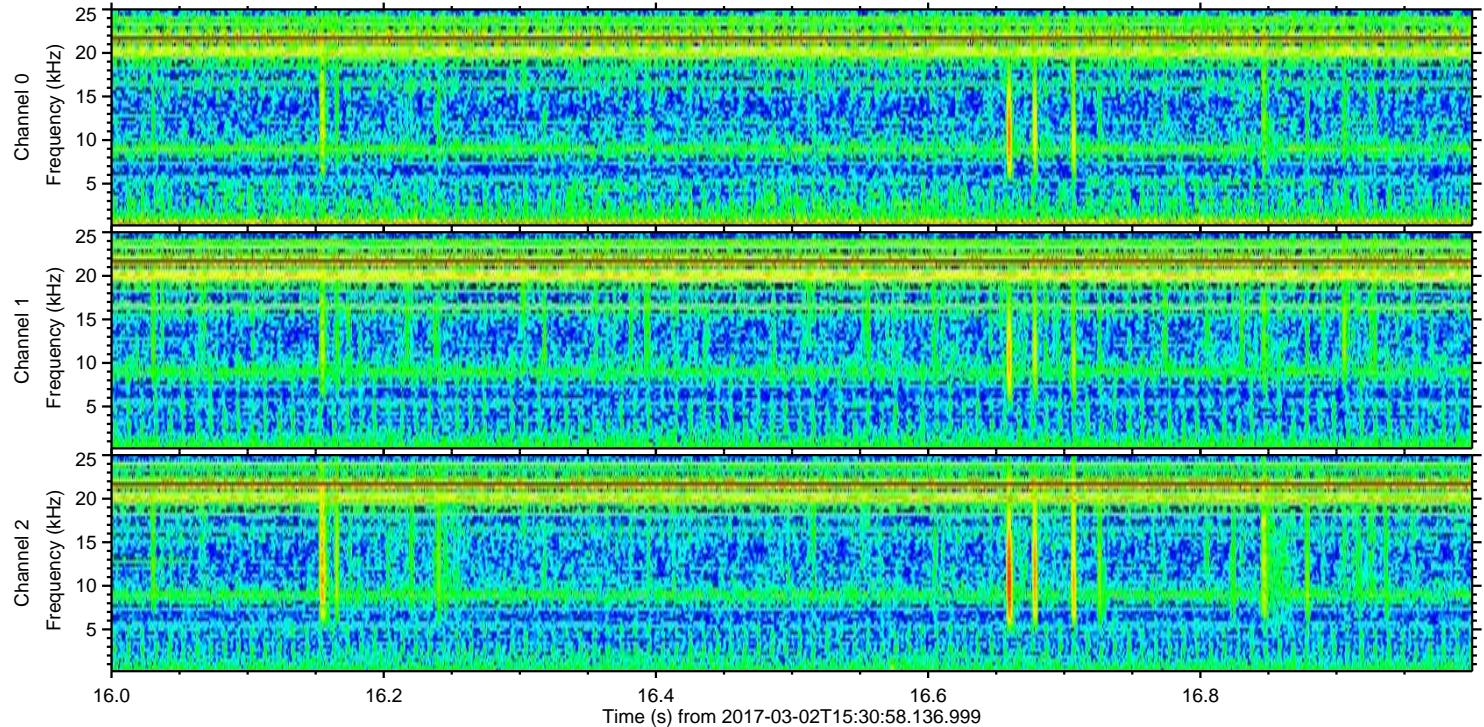
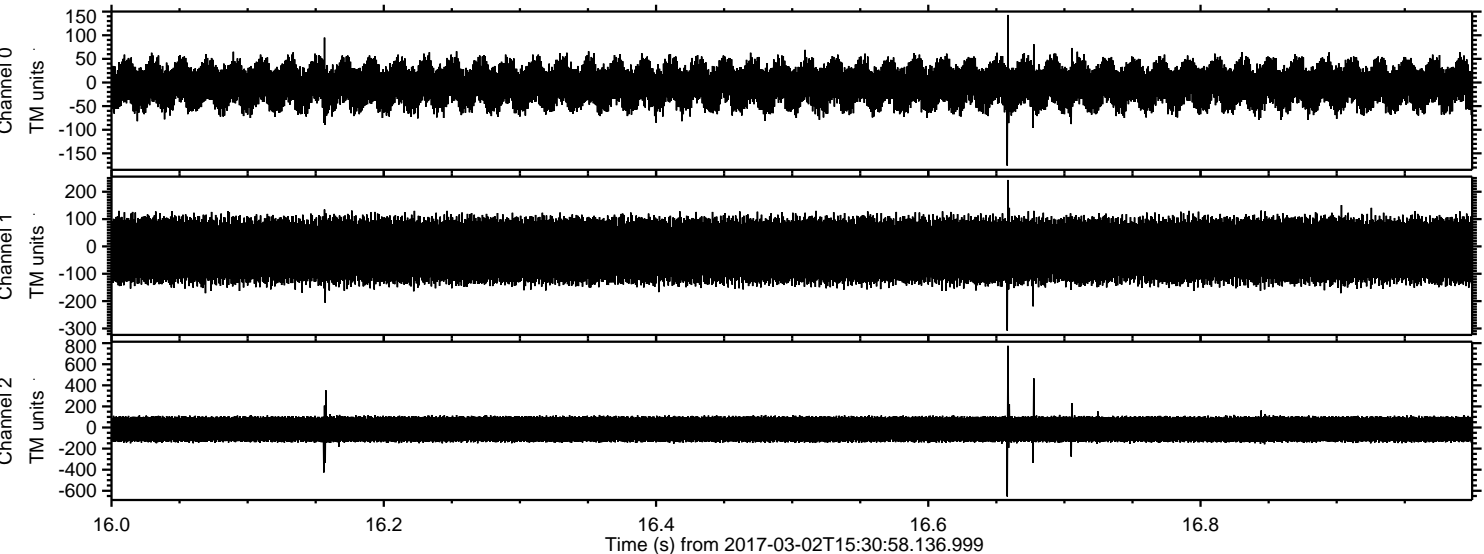
ELMAVAN 3D WAVEFORMS (Measured data sampled at 50 kHz) 51000 packets of 144 samples from 2017-03-02T15:30:58.136.999. Part 104/147





ELMAVAN 3D WAVEFORMS (Measured data sampled at 50 kHz) 51000 packets of 144 samples from 2017-03-02T15:30:58.136.999. Part 17/147

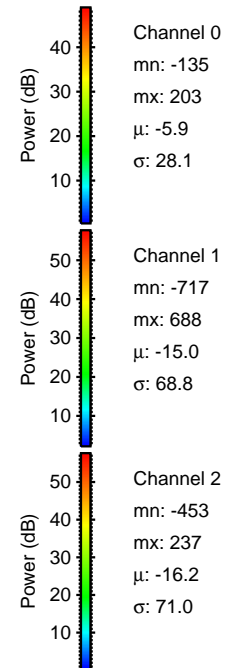
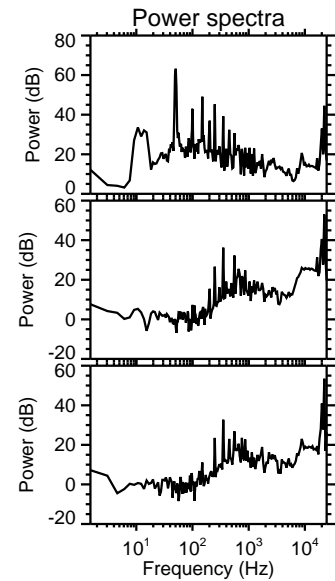
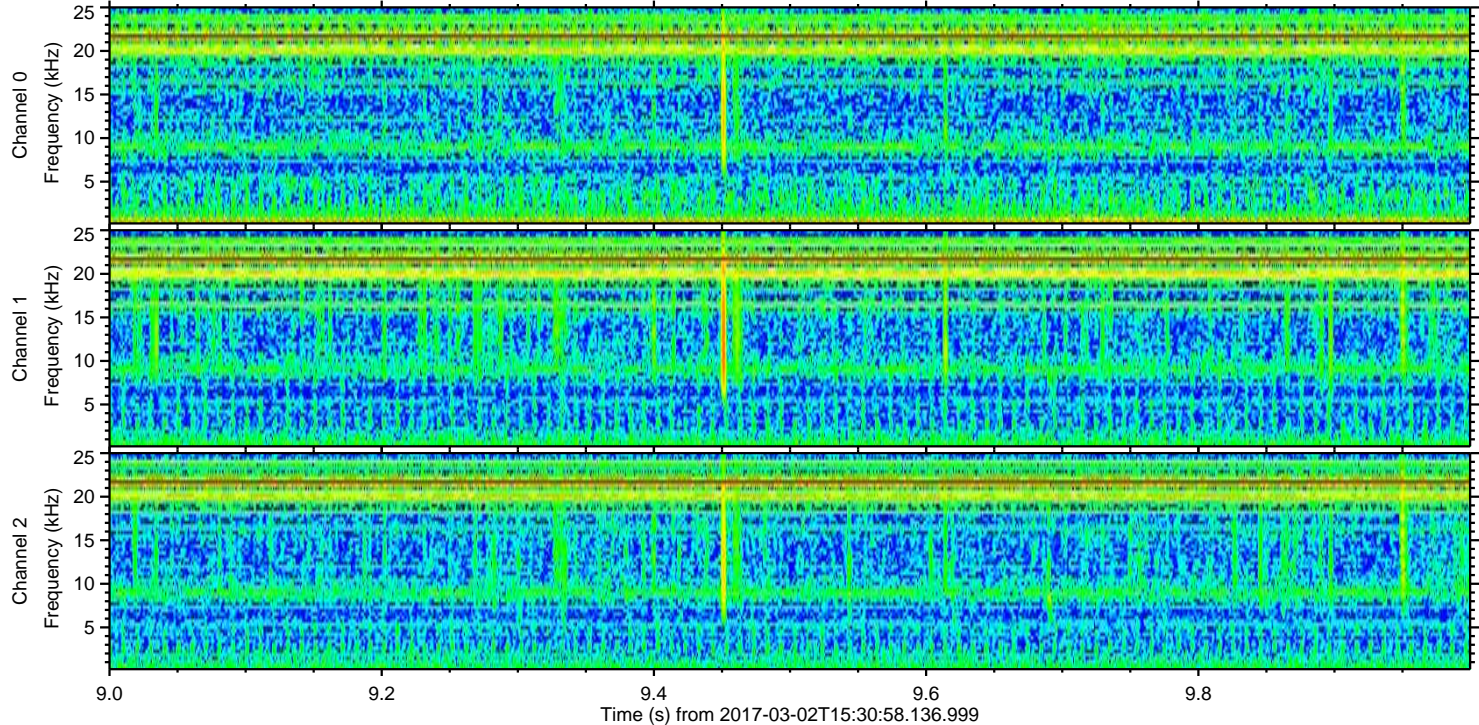
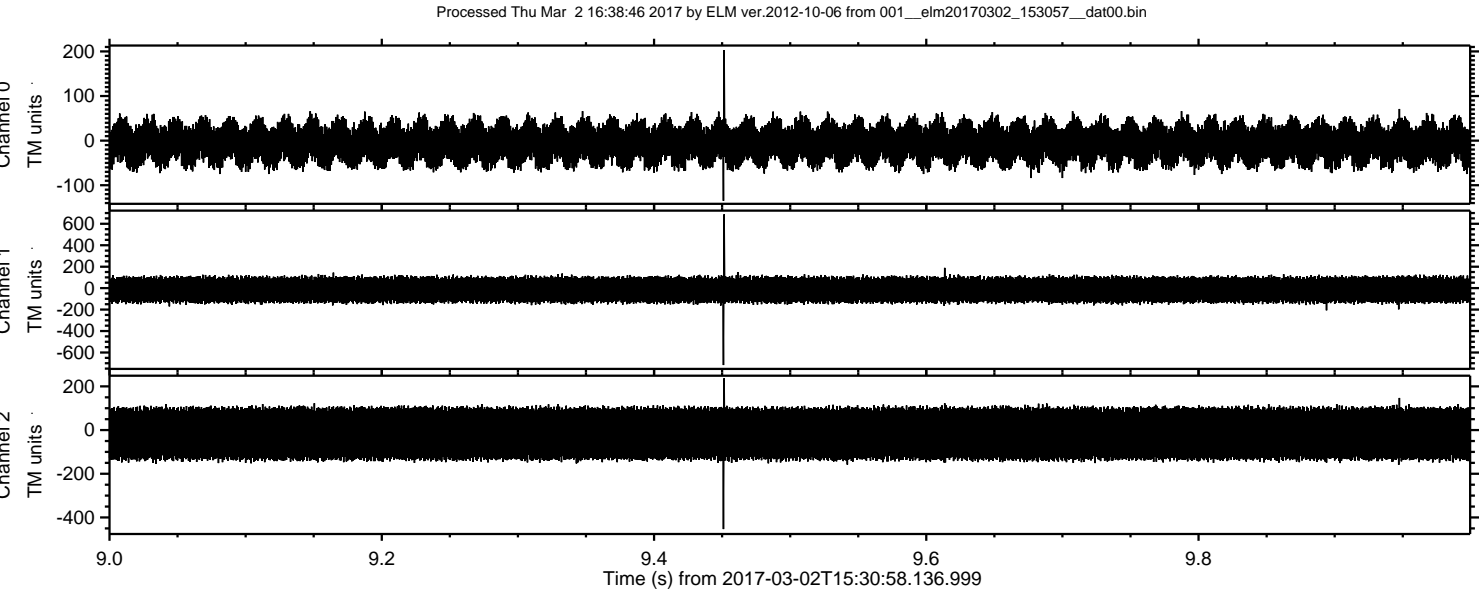
Processed Thu Mar 2 16:38:45 2017 by ELM ver.2012-10-06 from 001__elm20170302_153057__dat00.bin



Channel 0
mn: -176
mx: 143
 μ : -5.9
 σ : 28.0

Channel 1
mn: -308
mx: 243
 μ : -15.0
 σ : 68.8

Channel 2
mn: -655
mx: 775
 μ : -16.2
 σ : 71.5



Processed Thu Mar 2 16:38:47 2017 by ELM ver.2012-10-06 from 001__elm20170302_153057__dat00.bin

