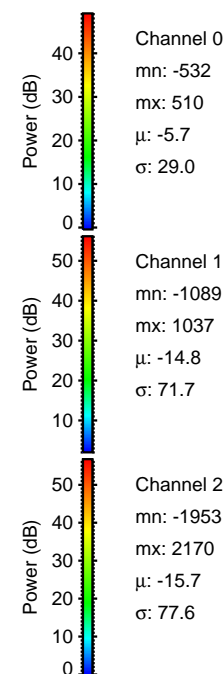
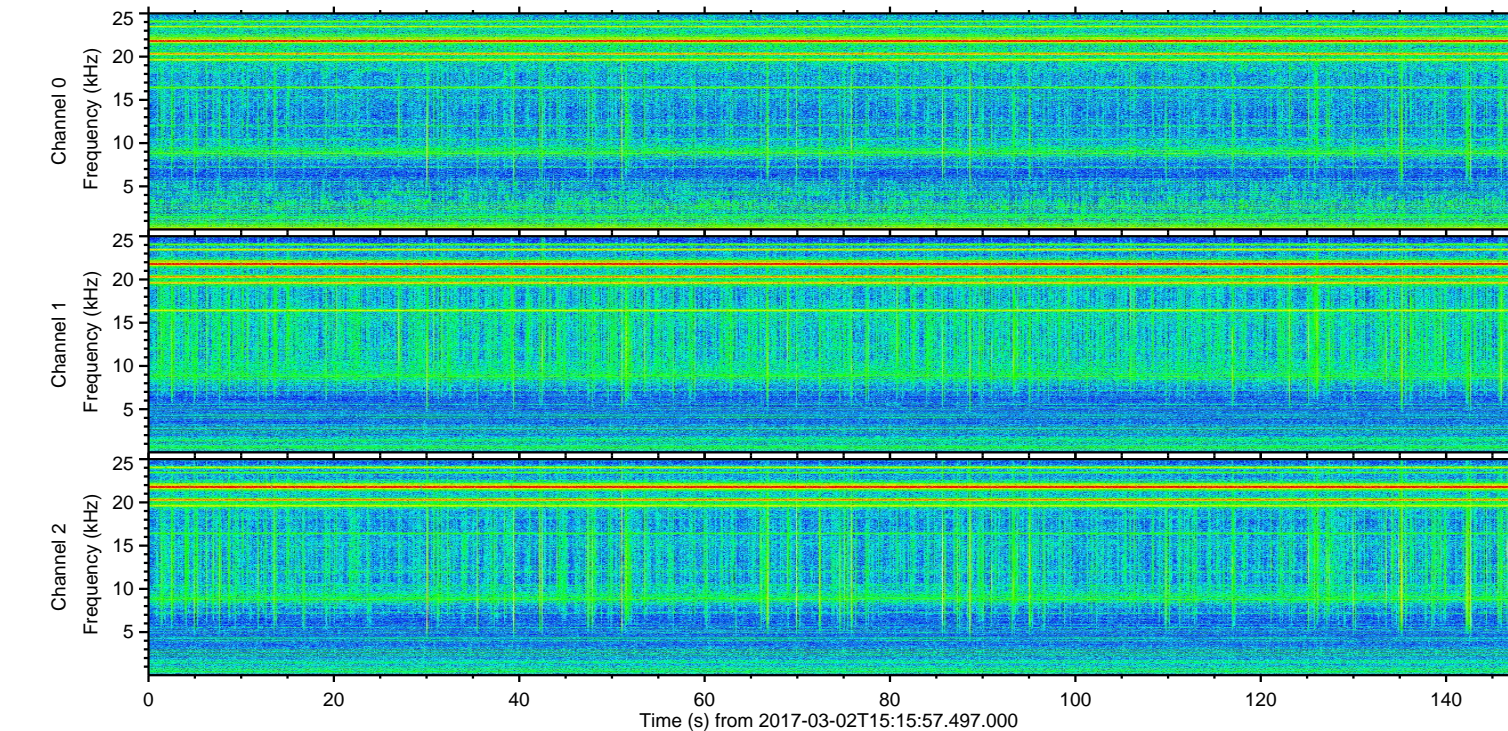
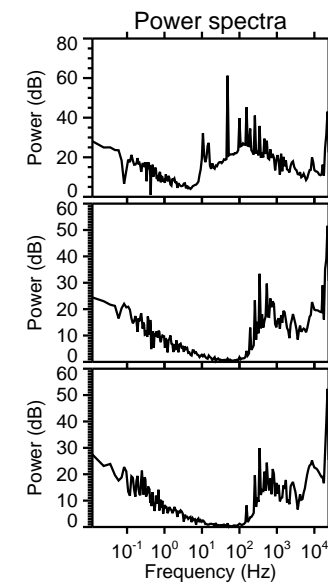
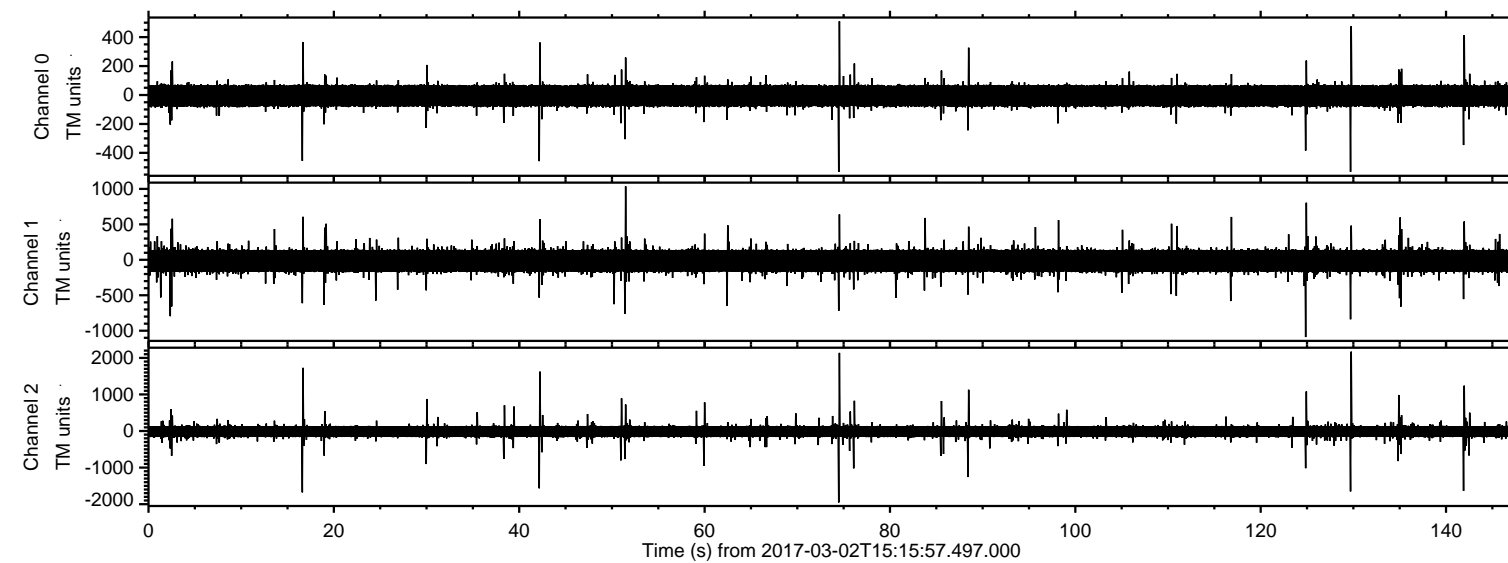


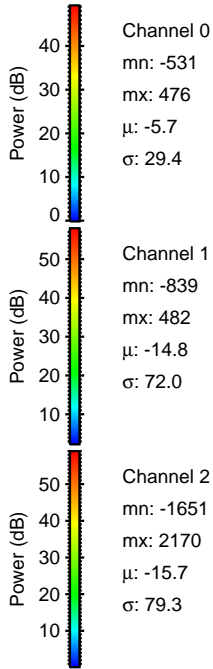
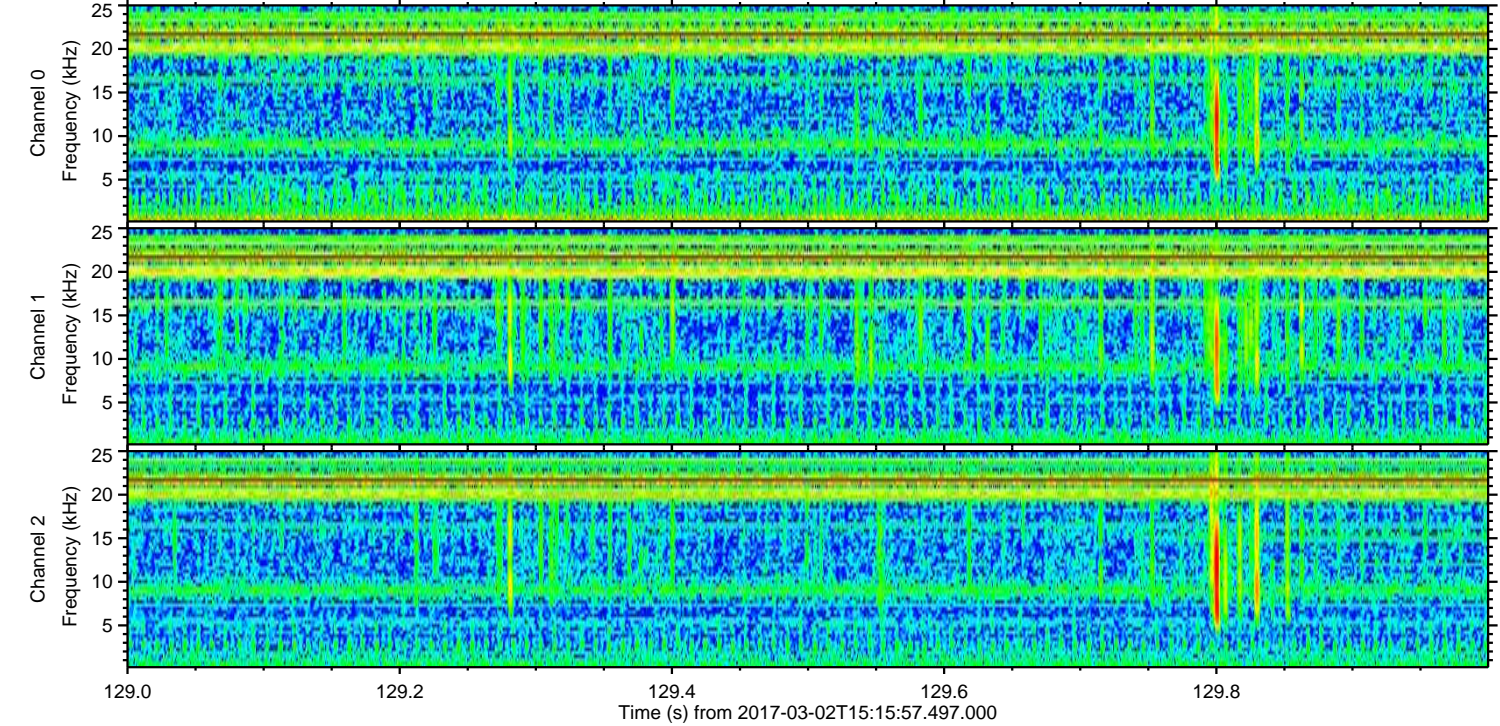
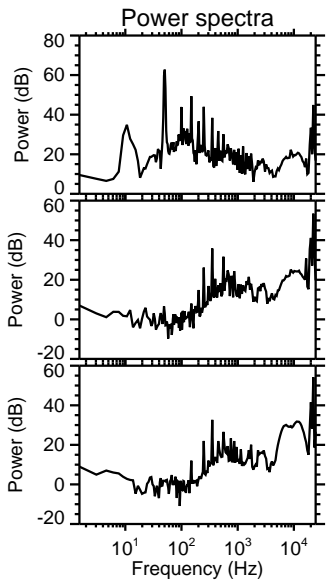
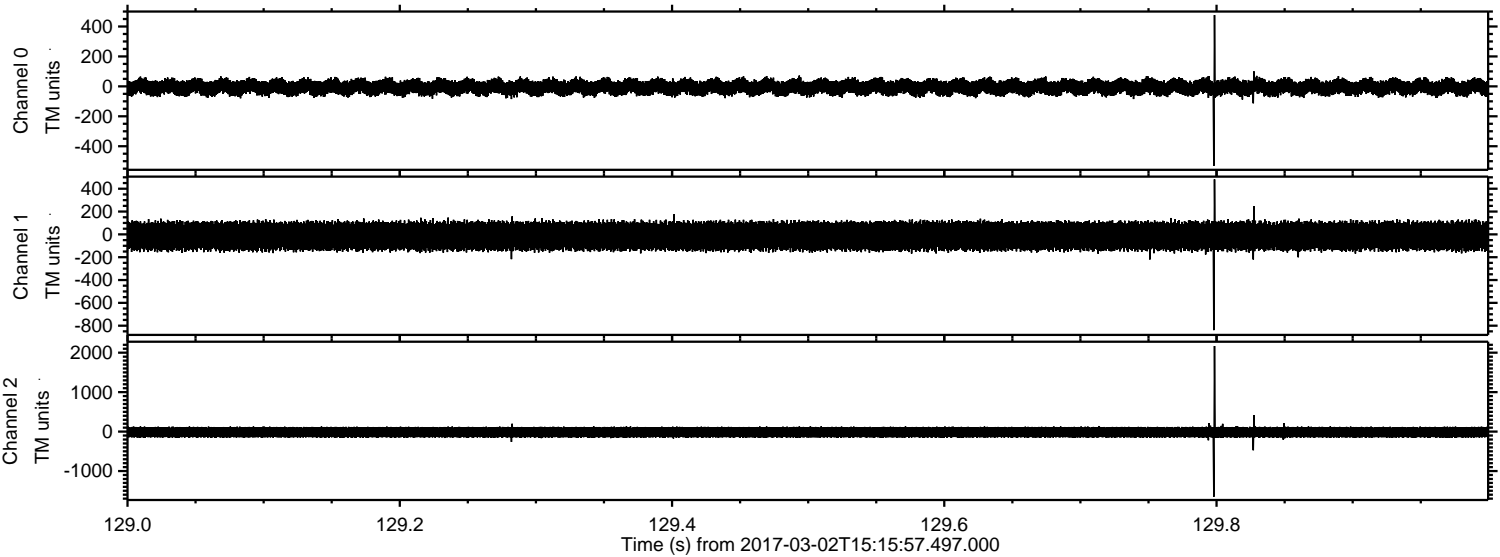
ELMAVAN 3D WAVEFORMS (Measured data sampled at 50 kHz) 51000 packets of 144 samples from 2017-03-02T15:15:57.497.000.

Processed Thu Mar 2 16:23:43 2017 by ELM ver.2012-10-06 from 001__elm20170302_151556__dat00.bin

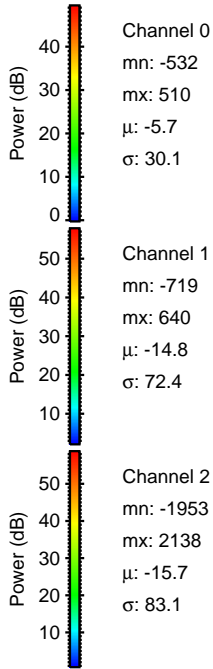
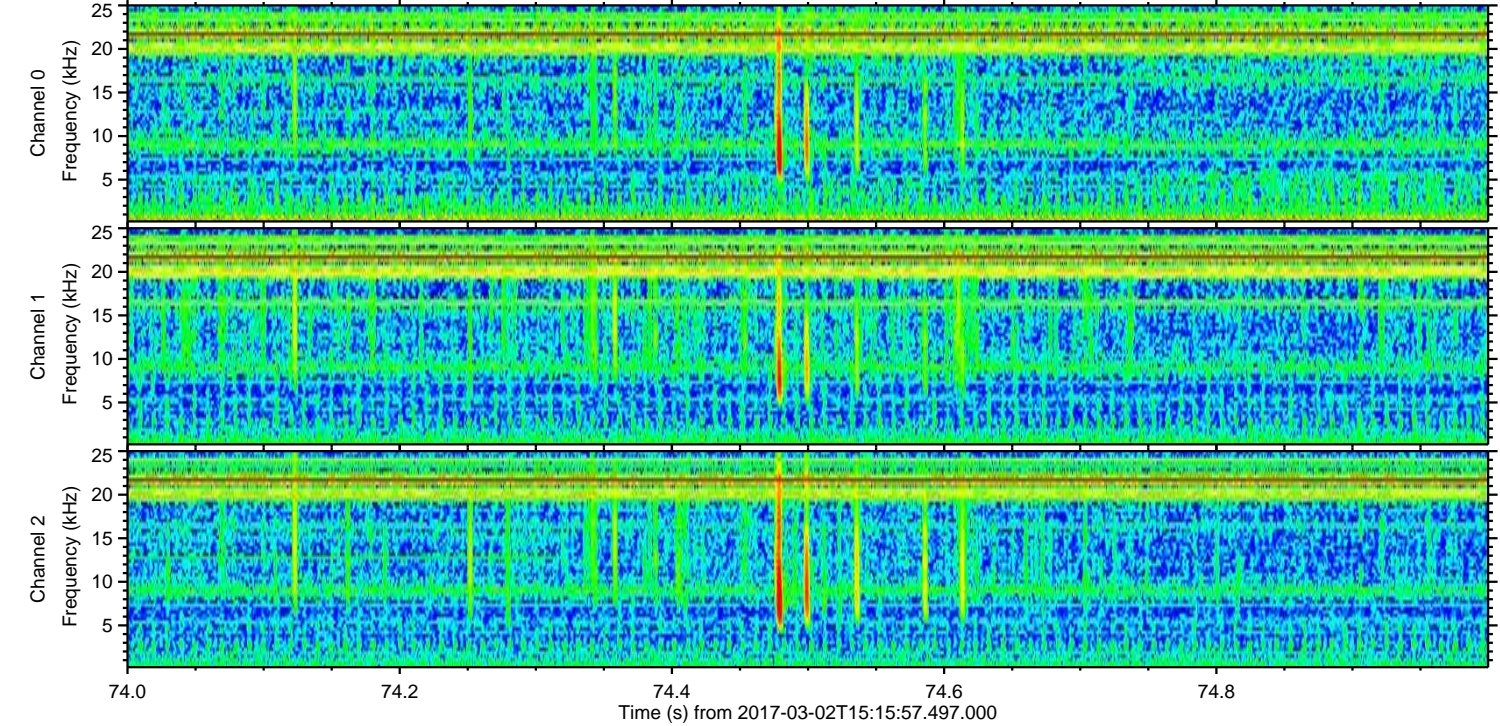
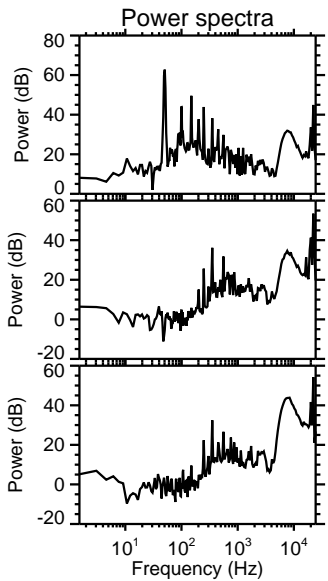
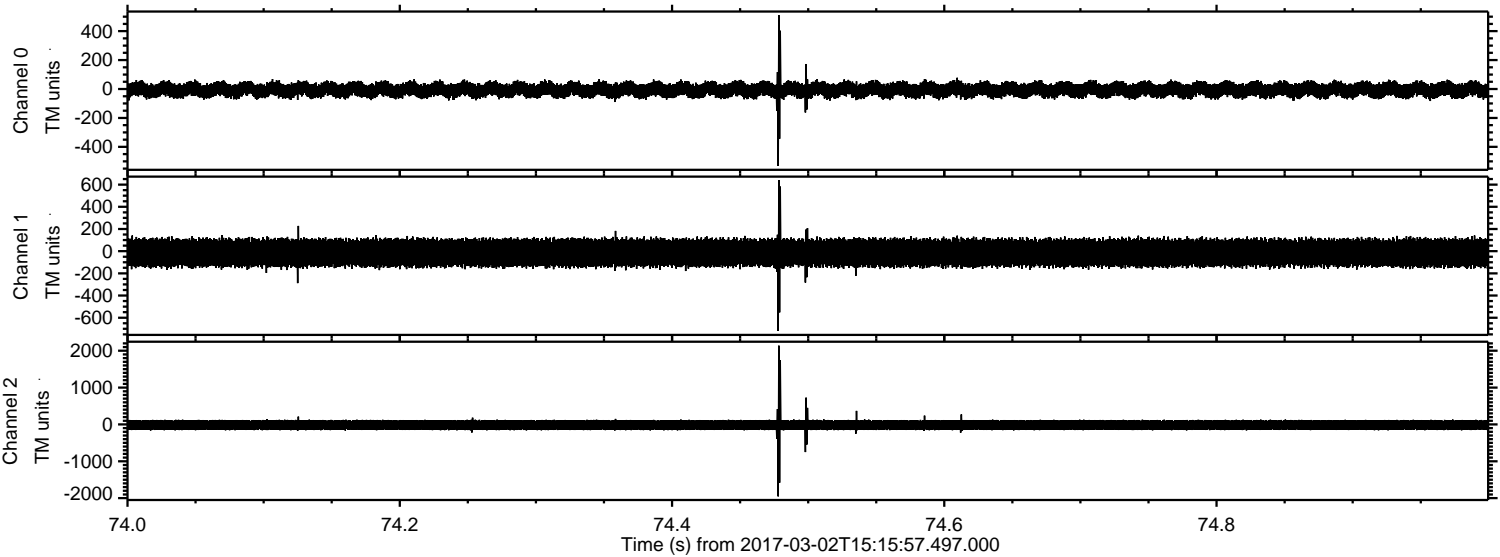


ELMAVAN 3D WAVEFORMS (Measured data sampled at 50 kHz) 51000 packets of 144 samples from 2017-03-02T15:15:57.497.000. Part 130/147

Processed Thu Mar 2 16:23:55 2017 by ELM ver.2012-10-06 from 001__elm20170302_151556__dat00.bin



Processed Thu Mar 2 16:23:56 2017 by ELM ver.2012-10-06 from 001__elm20170302_151556__dat00.bin

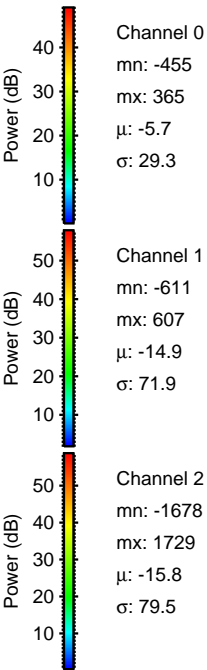
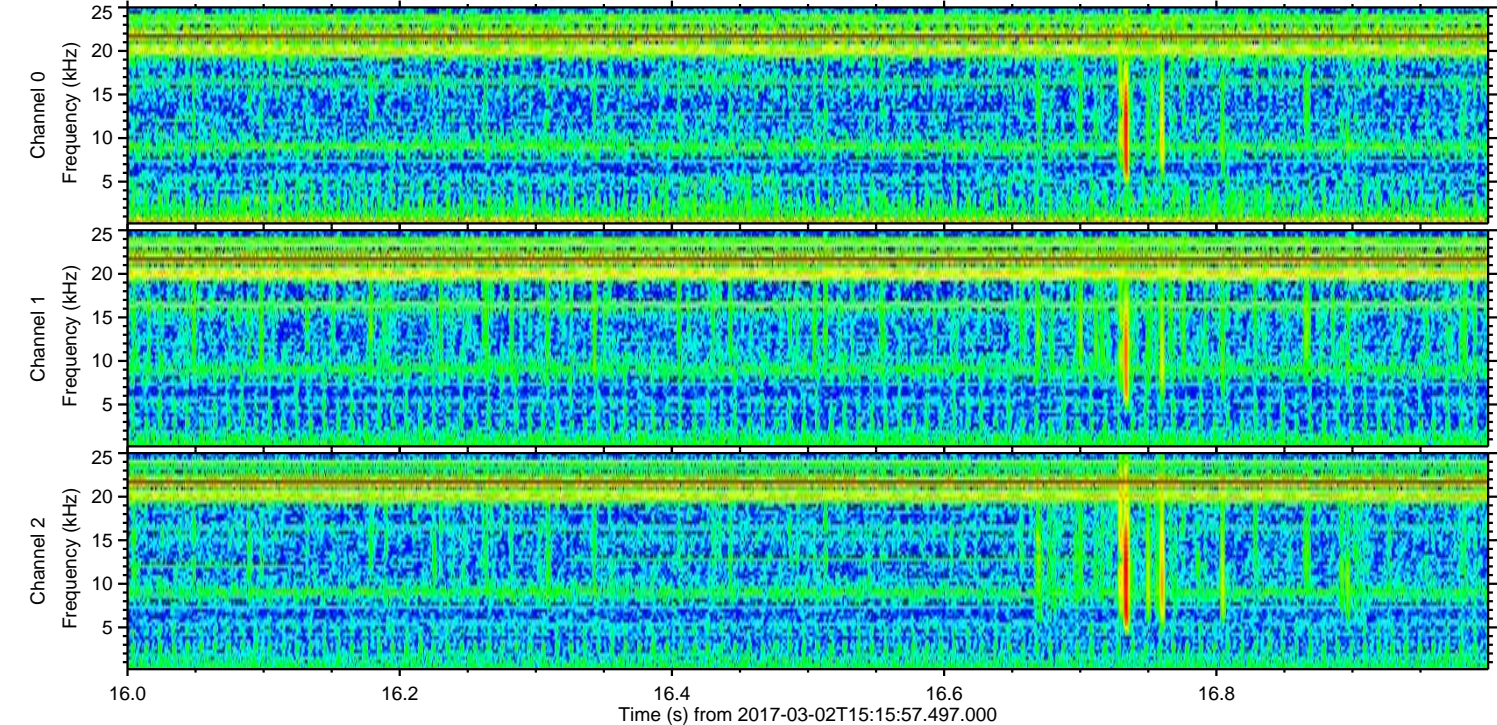
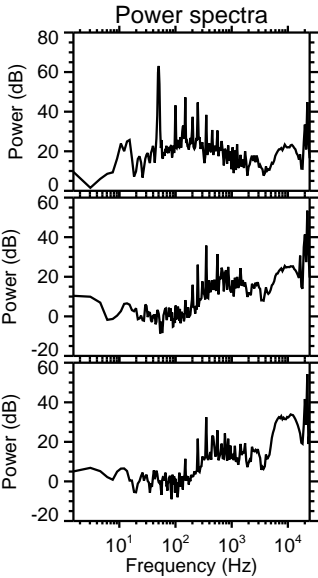
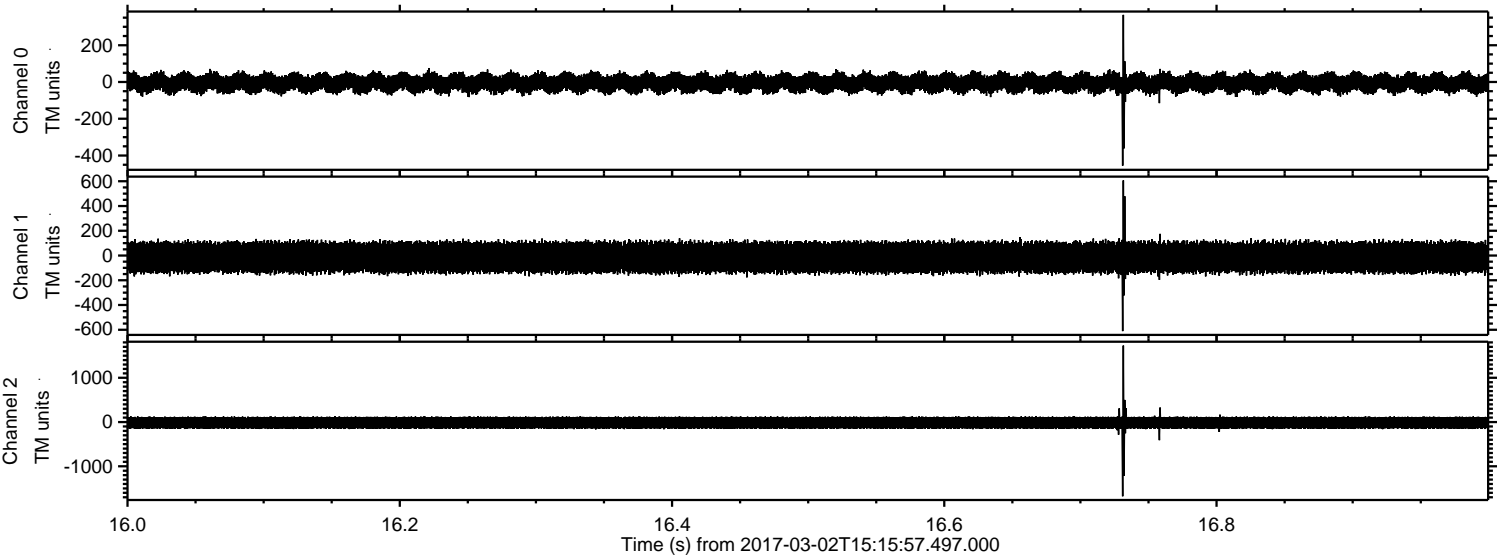


Channel 0
mn: -532
mx: 510
 μ : -5.7
 σ : 30.1

Channel 1
mn: -719
mx: 640
 μ : -14.8
 σ : 72.4

Channel 2
mn: -1953
mx: 2138
 μ : -15.7
 σ : 83.1

Processed Thu Mar 2 16:23:56 2017 by ELM ver.2012-10-06 from 001__elm20170302_151556__dat00.bin



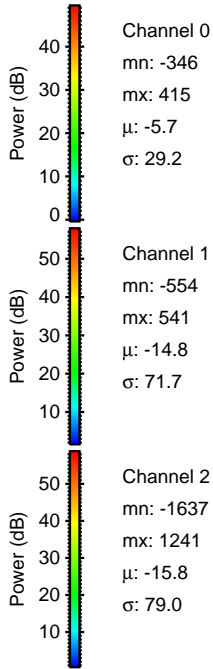
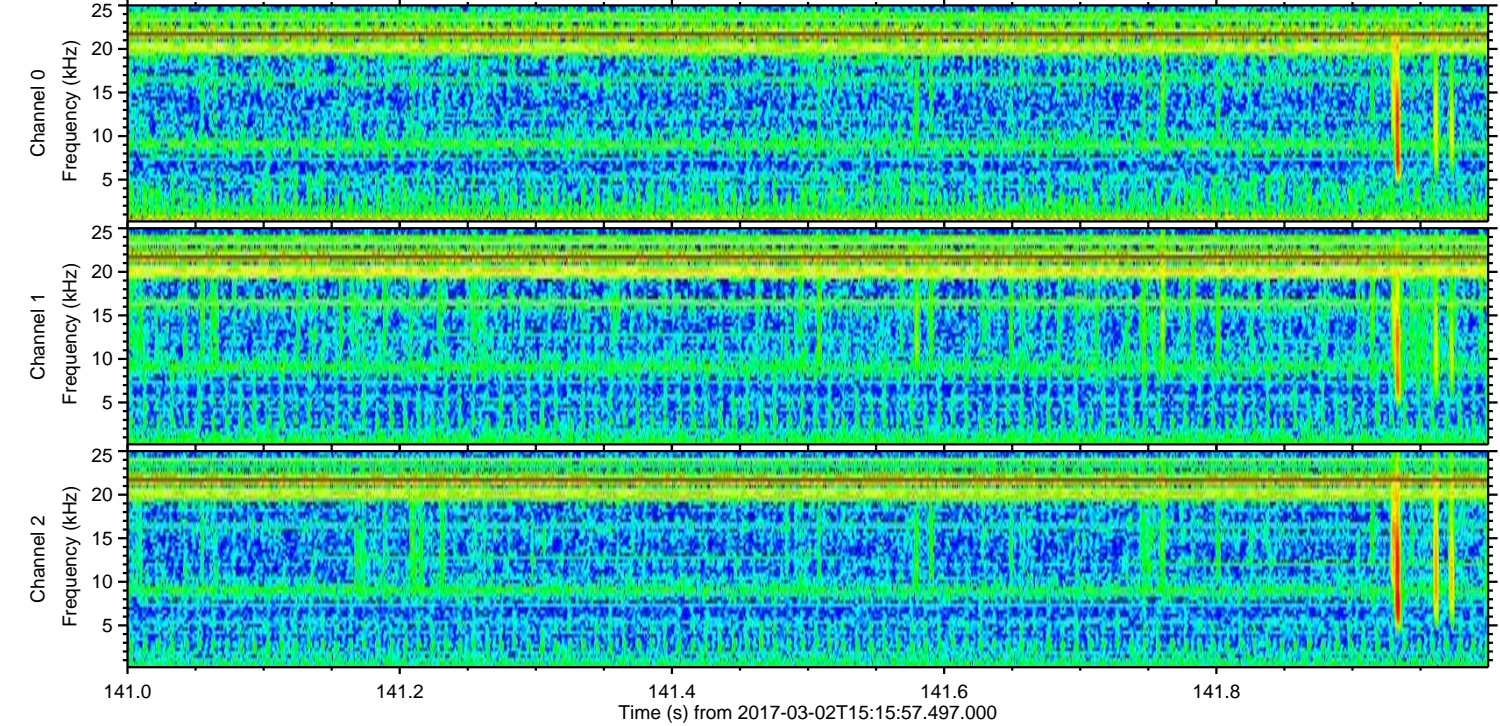
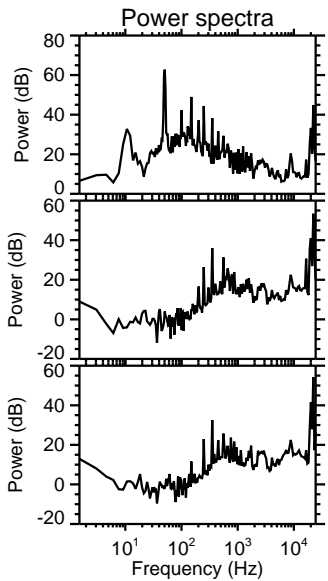
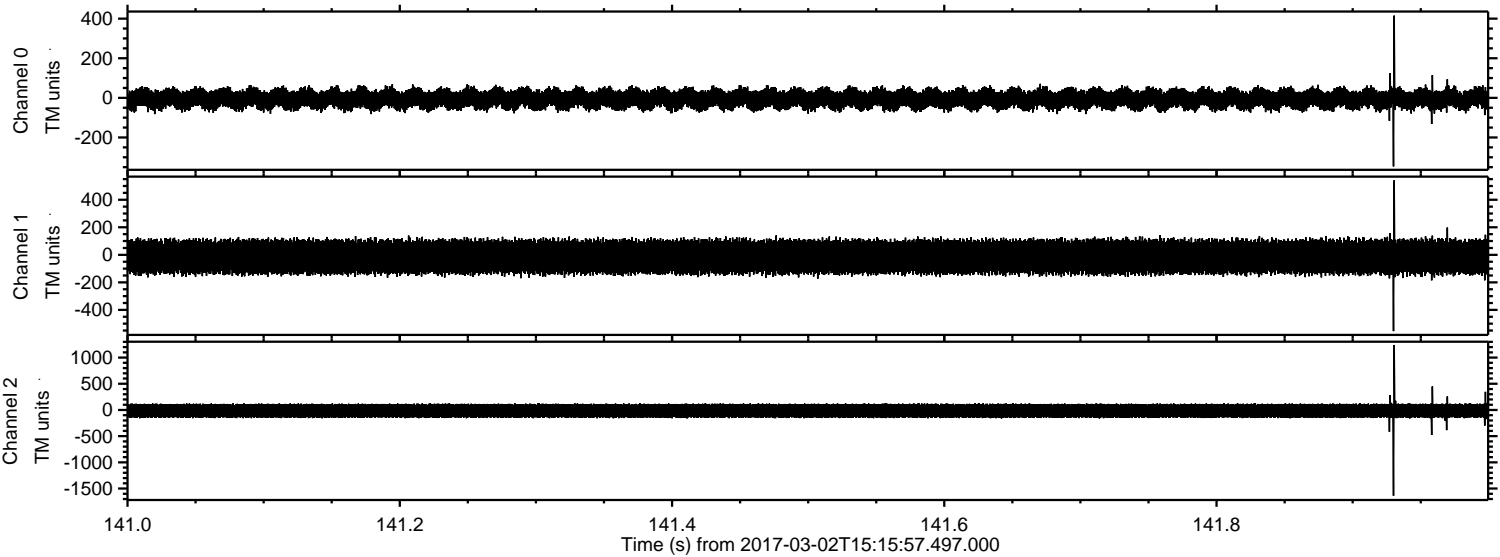
Channel 0
mn: -455
mx: 365
 μ : -5.7
 σ : 29.3

Channel 1
mn: -611
mx: 607
 μ : -14.9
 σ : 71.9

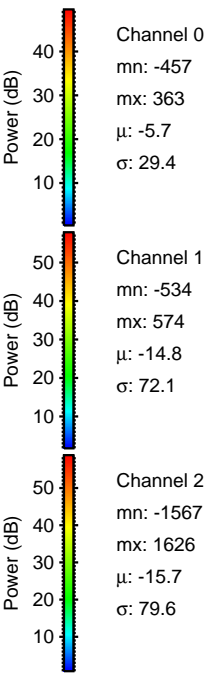
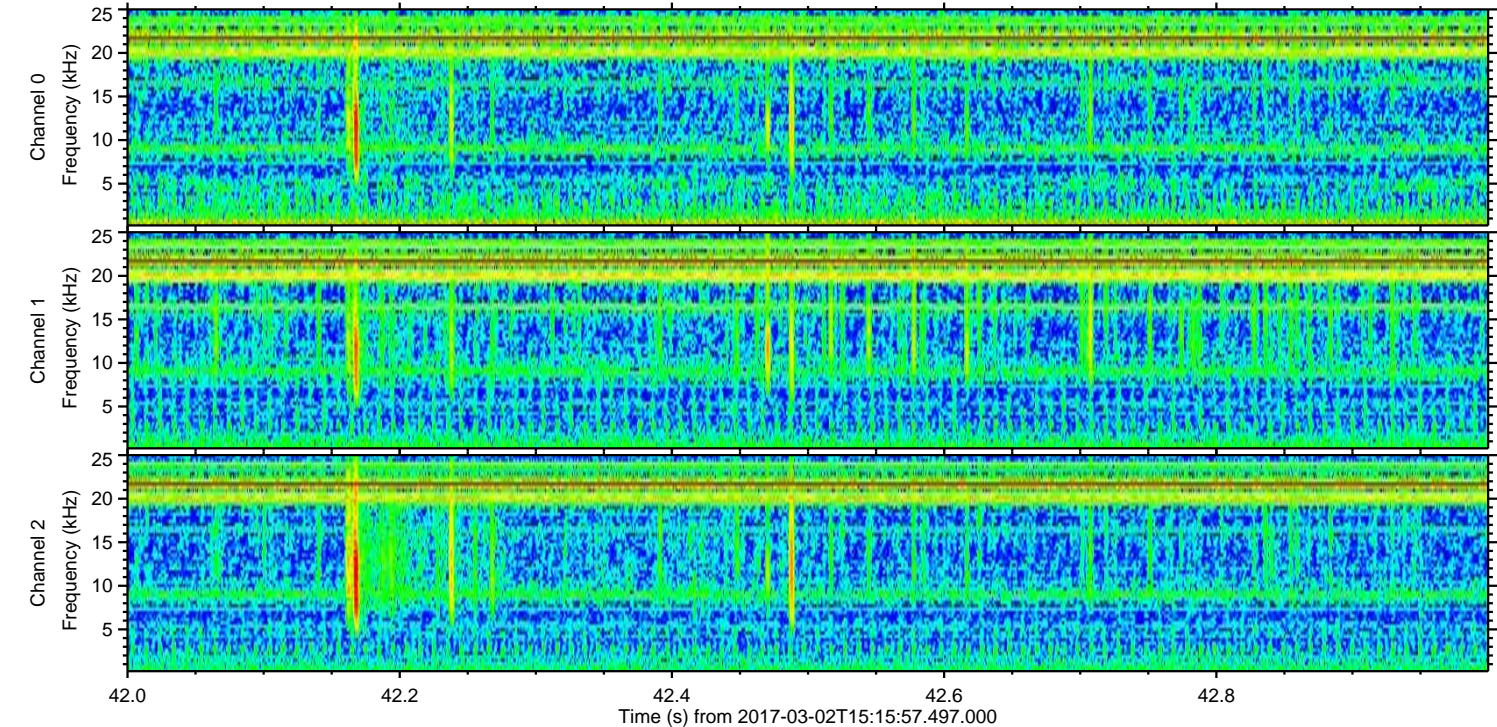
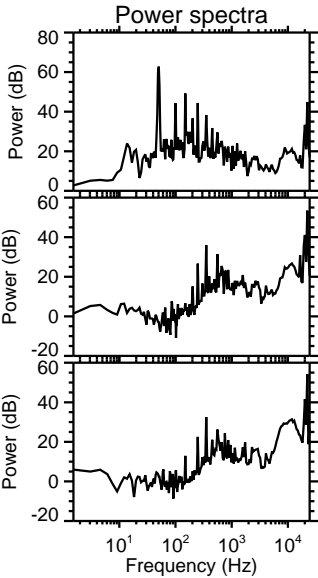
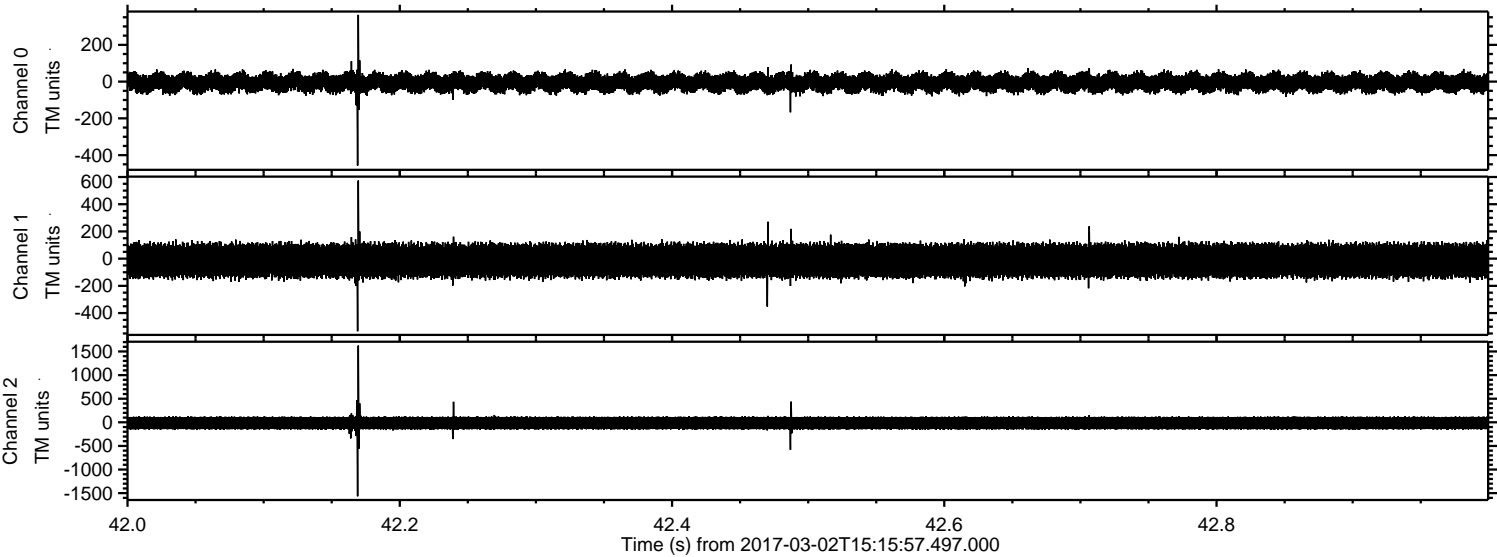
Channel 2
mn: -1678
mx: 1729
 μ : -15.8
 σ : 79.5

ELMAVAN 3D WAVEFORMS (Measured data sampled at 50 kHz) 51000 packets of 144 samples from 2017-03-02T15:15:57.497.000. Part 142/147

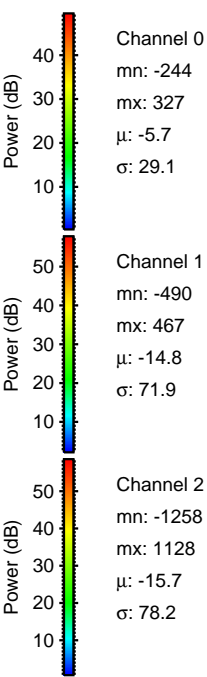
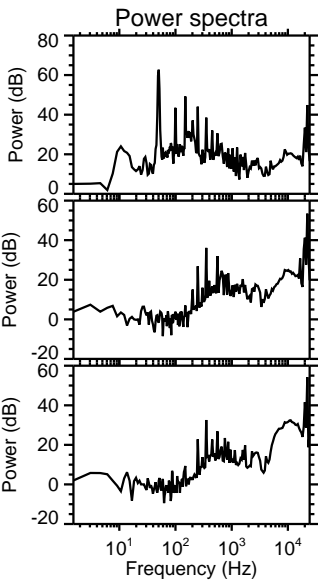
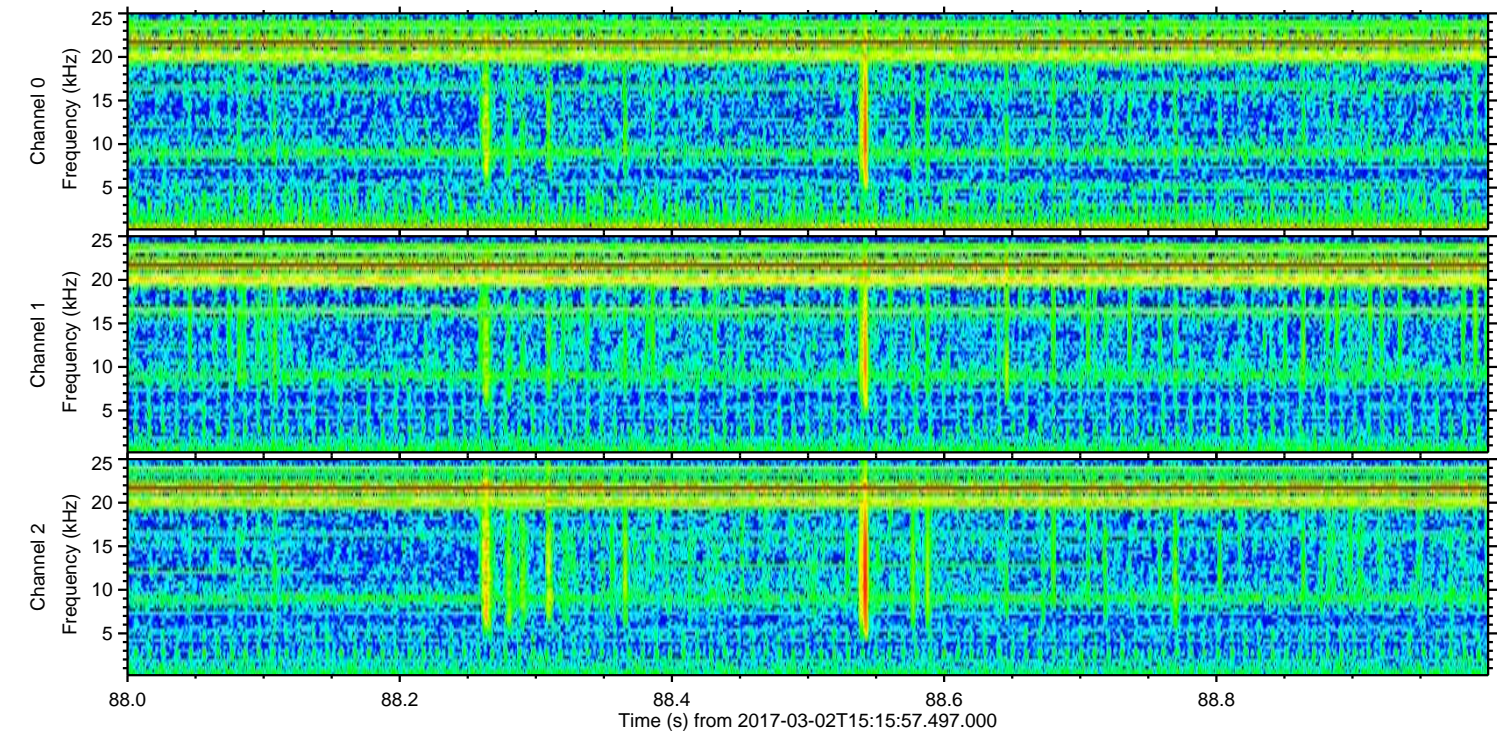
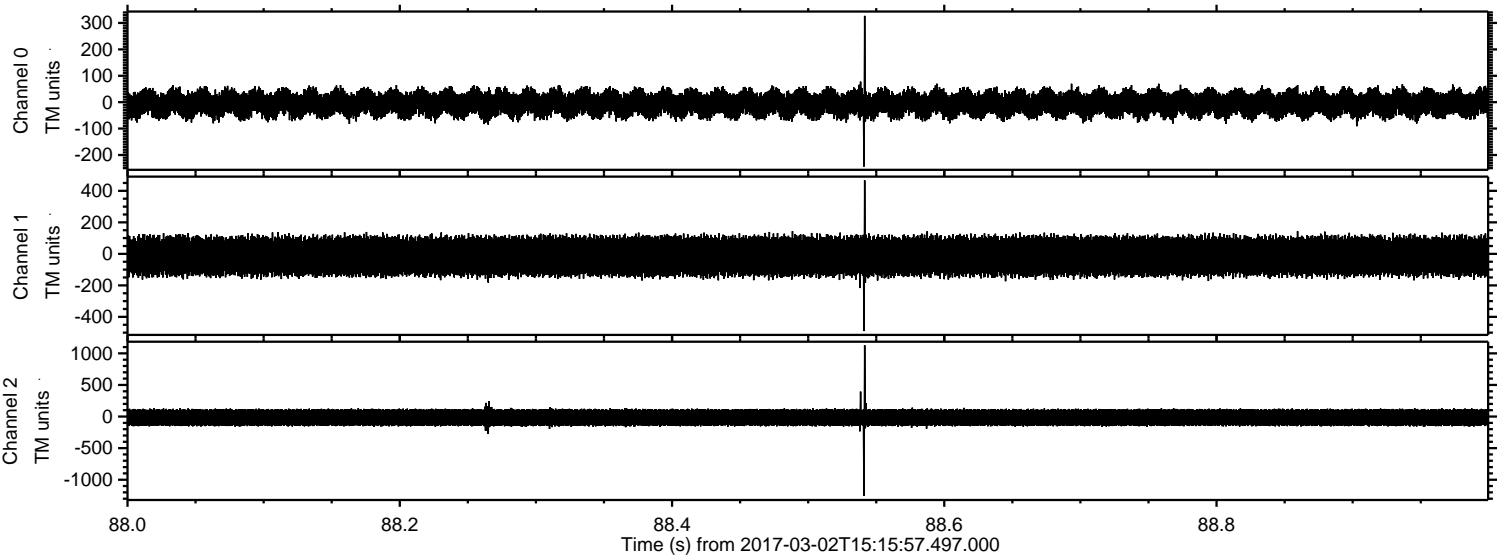
Processed Thu Mar 2 16:23:57 2017 by ELM ver.2012-10-06 from 001__elm20170302_151556__dat00.bin



Processed Thu Mar 2 16:23:58 2017 by ELM ver.2012-10-06 from 001__elm20170302_151556__dat00.bin

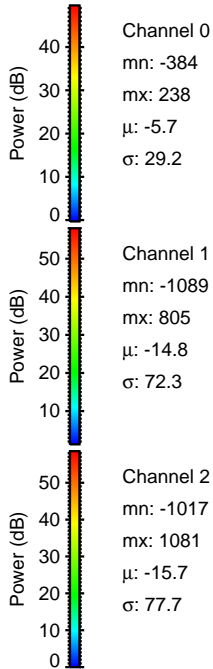
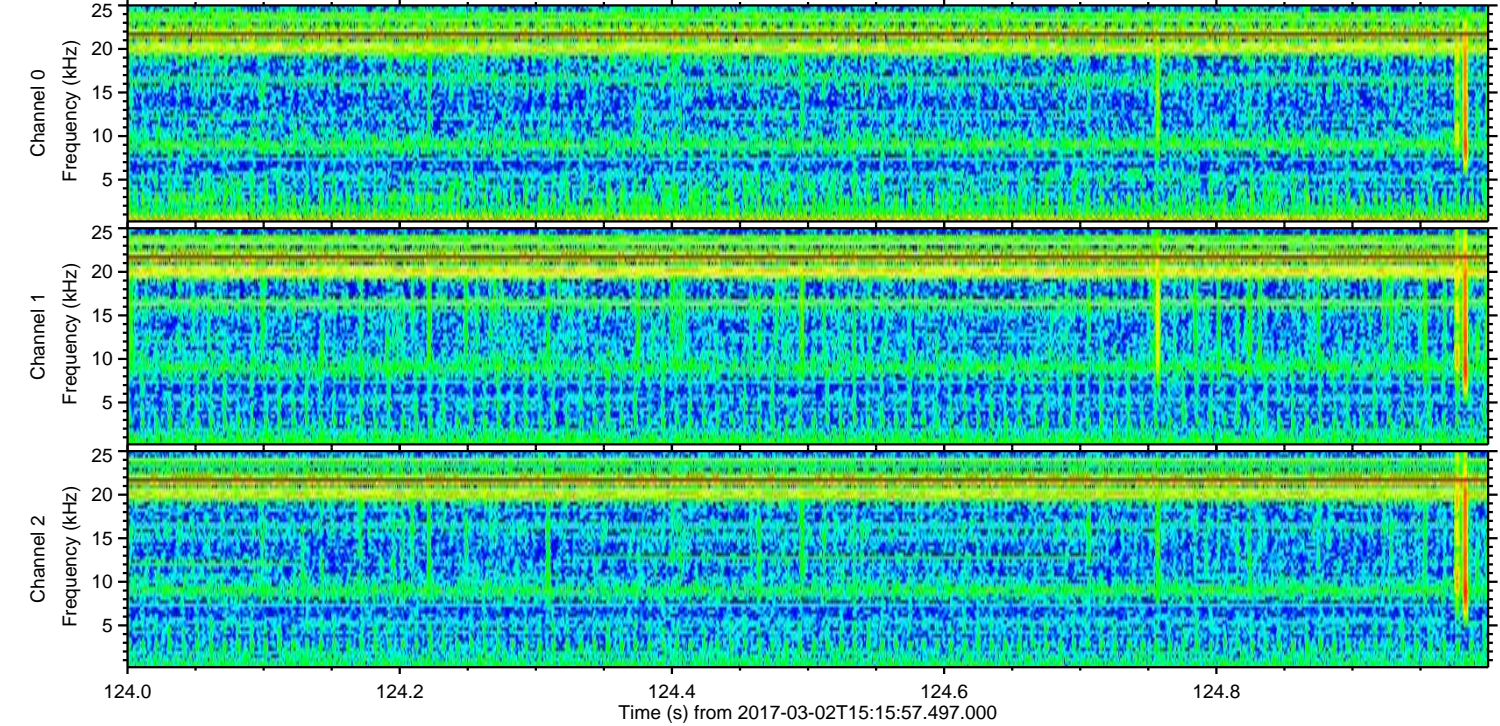
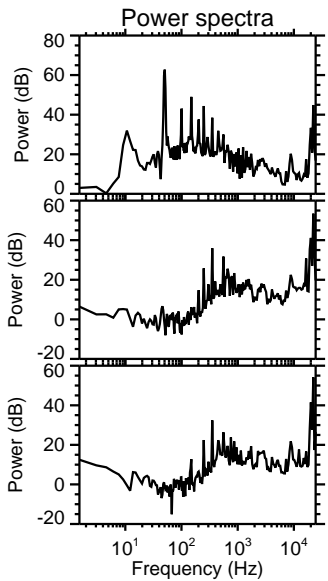
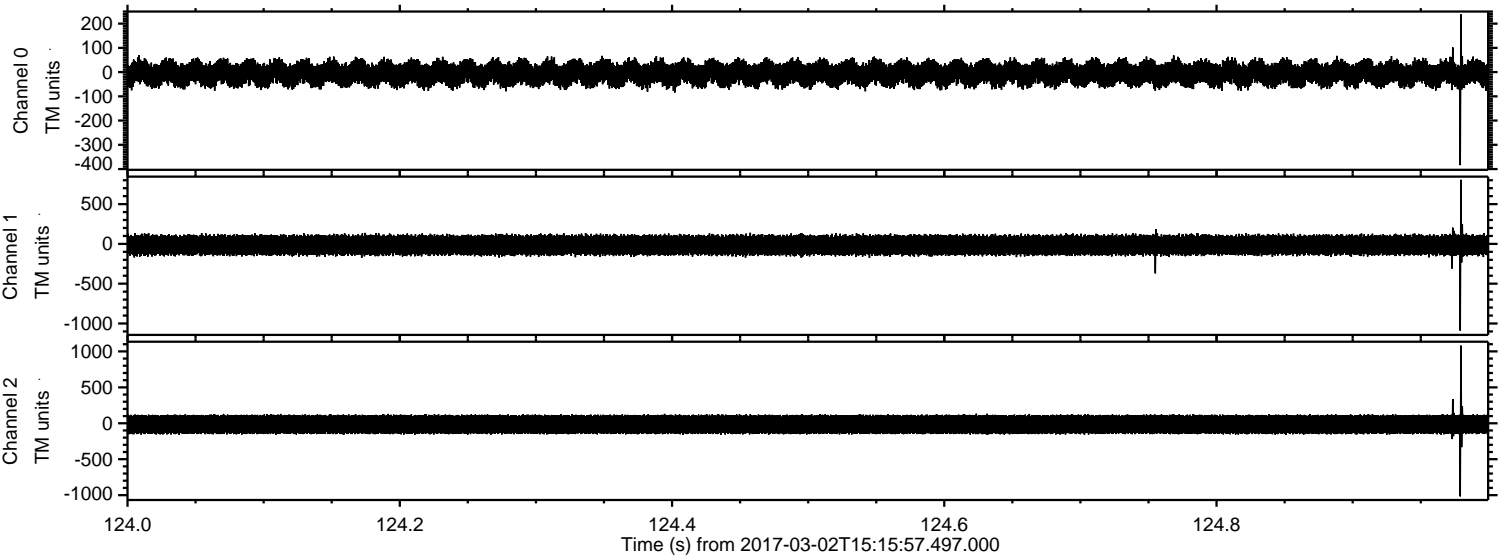


Processed Thu Mar 2 16:23:59 2017 by ELM ver.2012-10-06 from 001__elm20170302_151556__dat00.bin

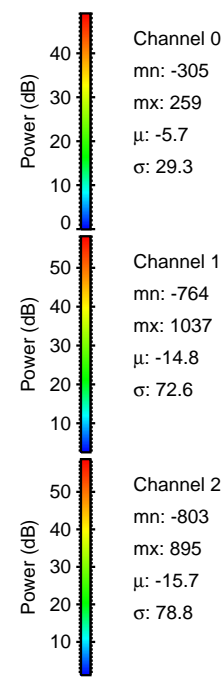
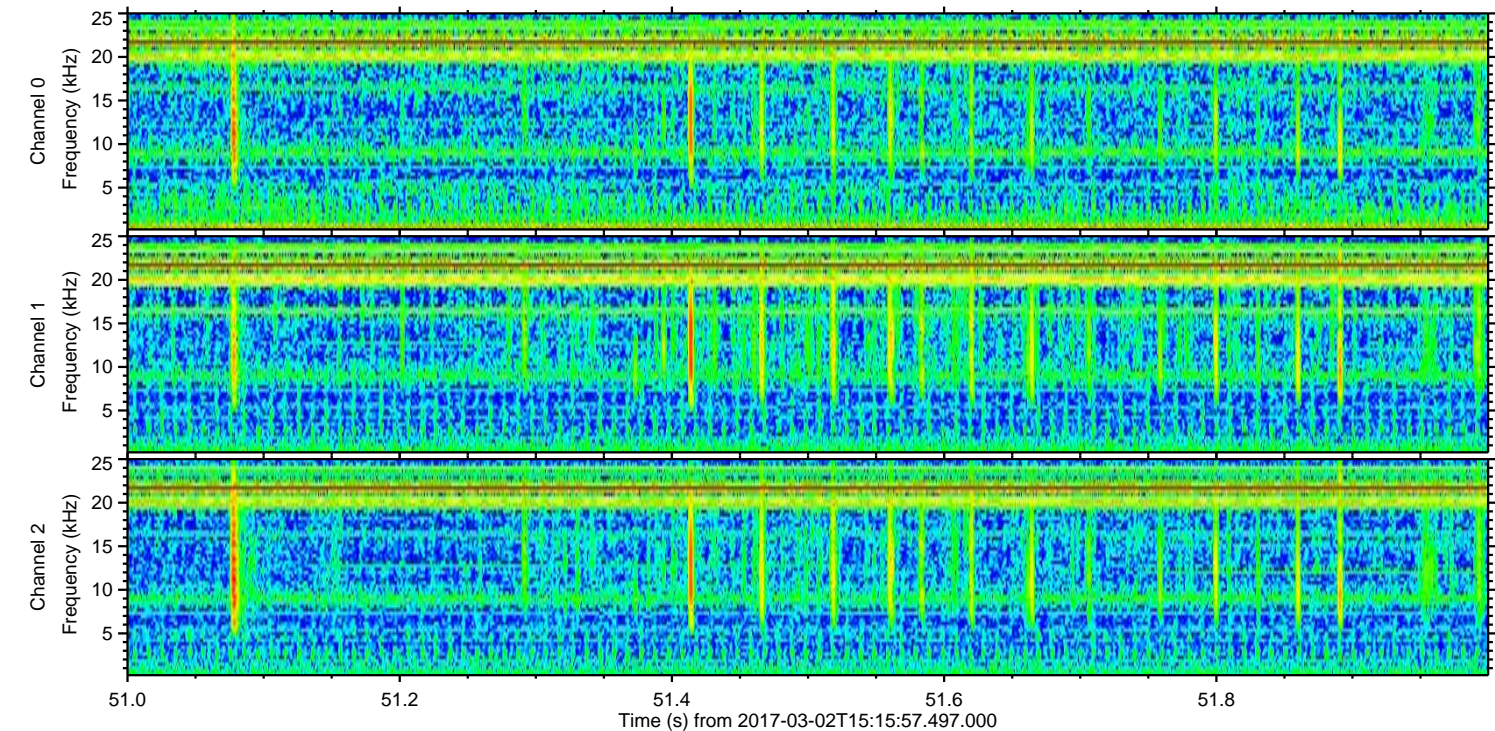
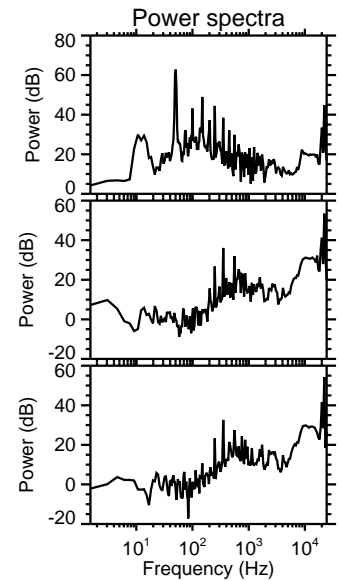
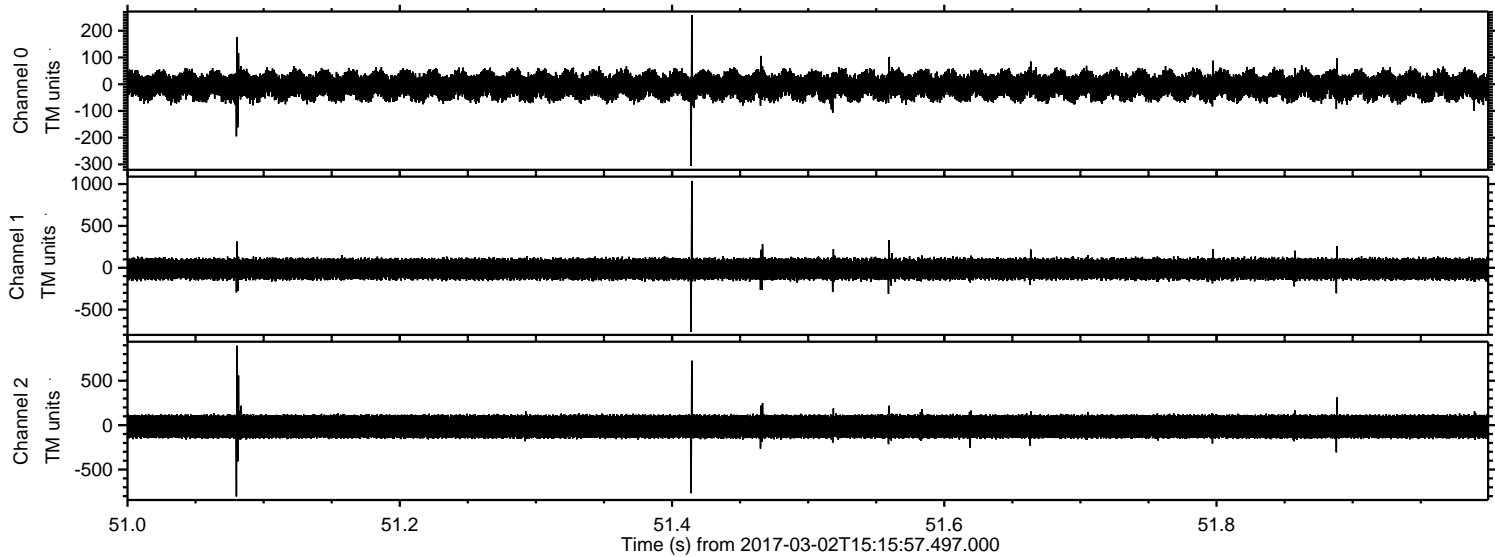


ELMAVAN 3D WAVEFORMS (Measured data sampled at 50 kHz) 51000 packets of 144 samples from 2017-03-02T15:15:57.497.000. Part 125/147

Processed Thu Mar 2 16:24:00 2017 by ELM ver.2012-10-06 from 001__elm20170302_151556__dat00.bin



Processed Thu Mar 2 16:24:01 2017 by ELM ver.2012-10-06 from 001__elm20170302_151556__dat00.bin



Processed Thu Mar 2 16:24:02 2017 by ELM ver.2012-10-06 from 001__elm20170302_151556__dat00.bin

