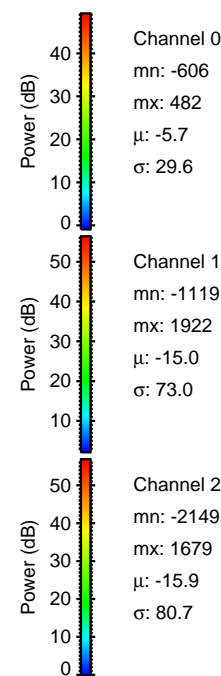
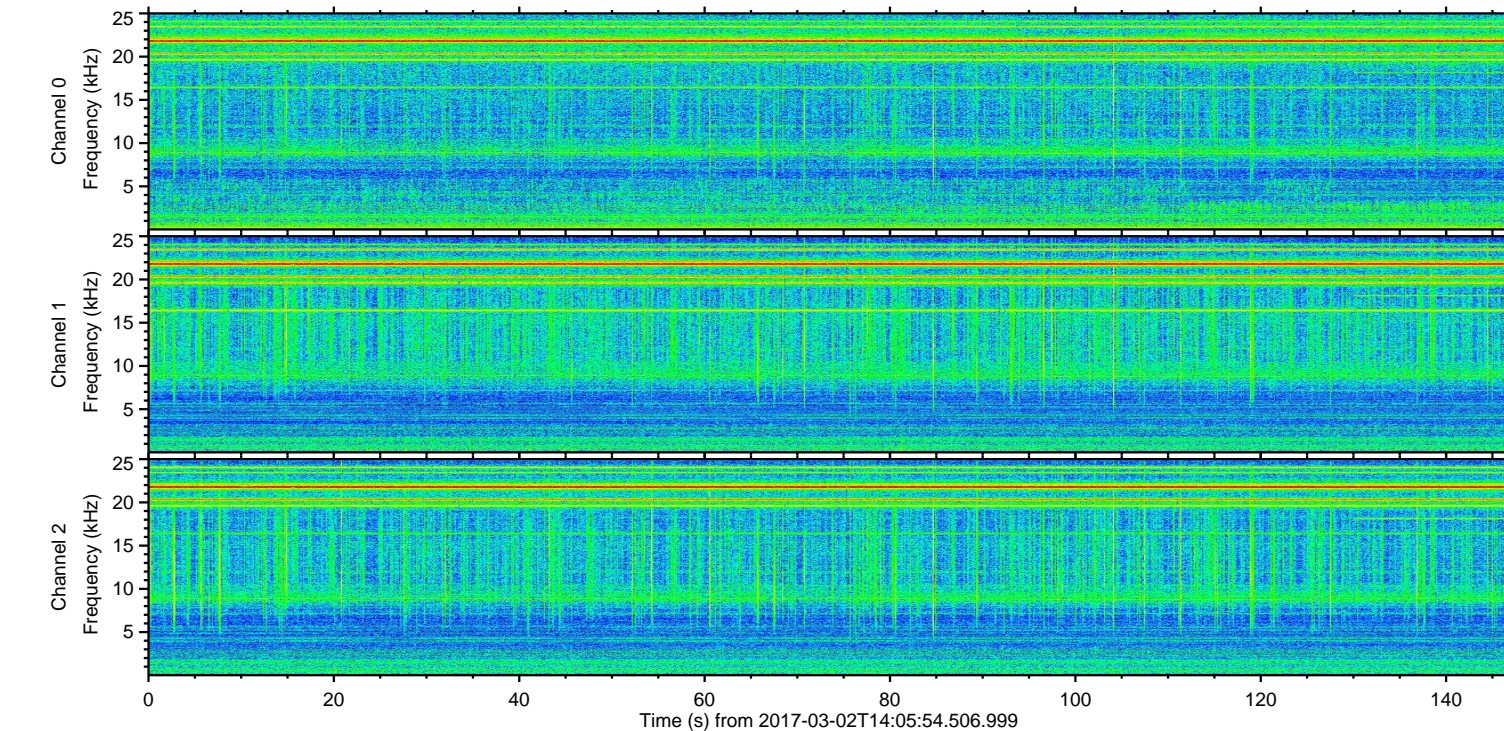
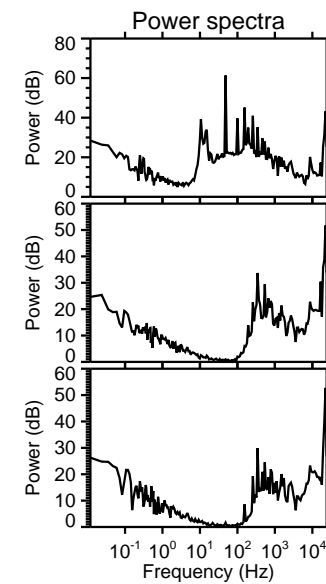
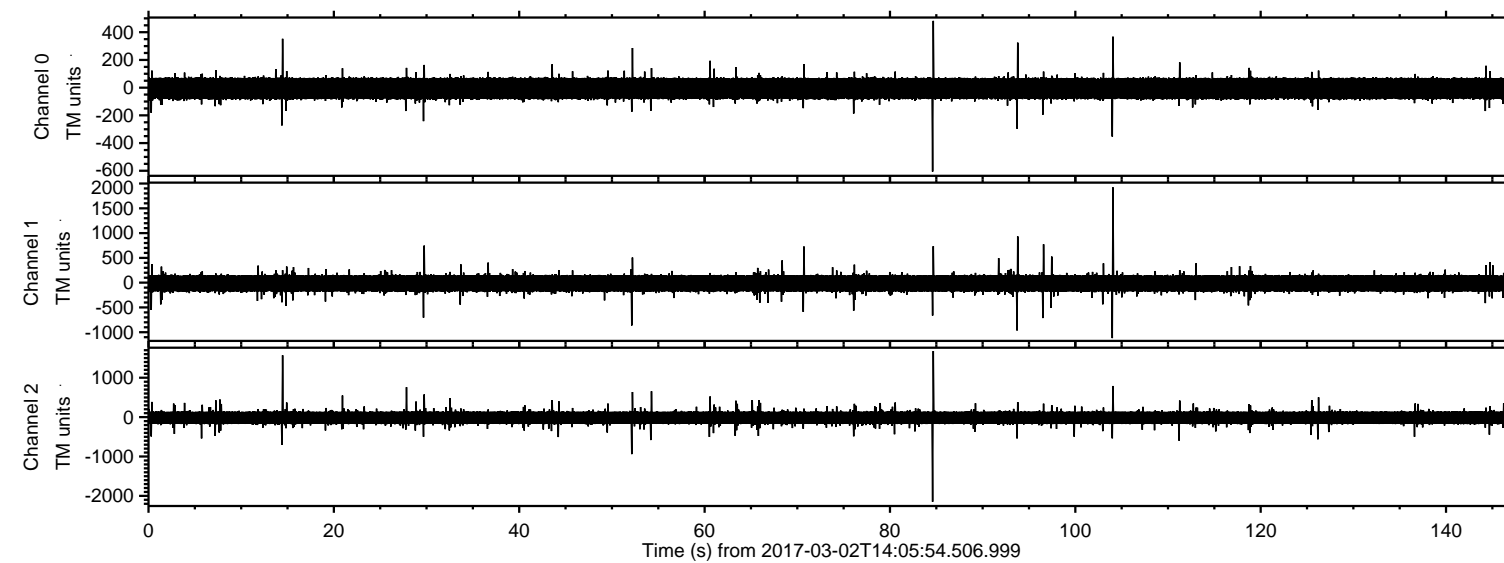
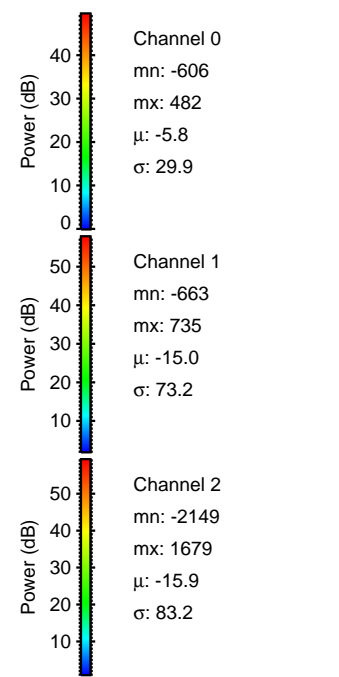
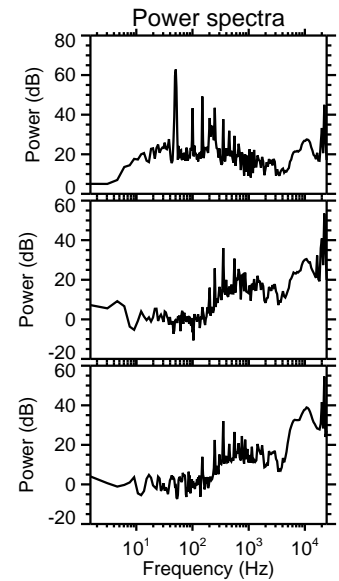
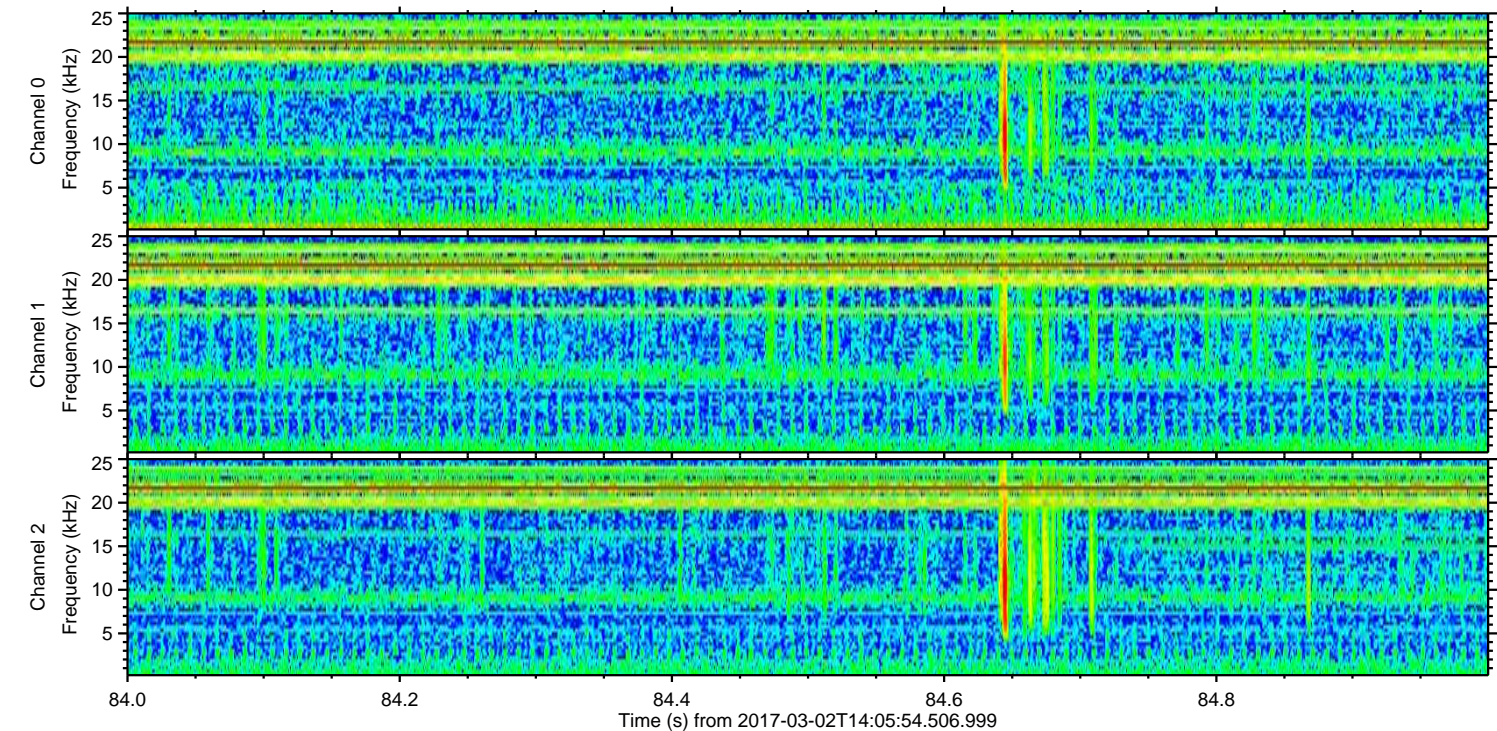
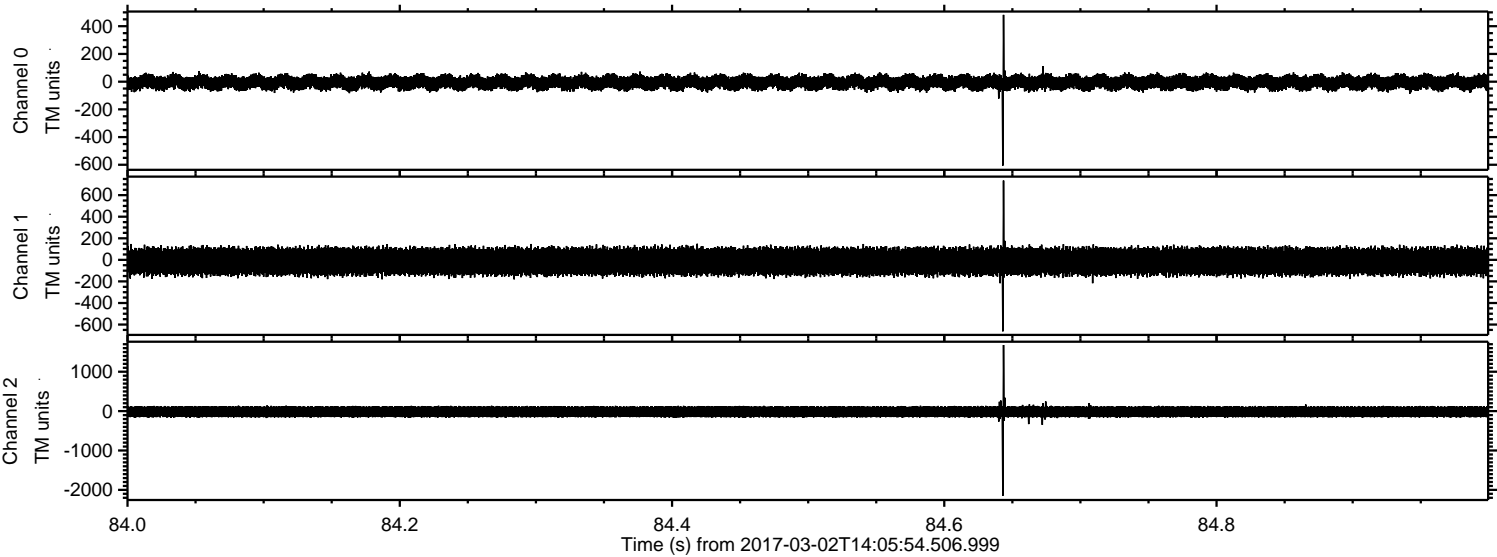


ELMAVAN 3D WAVEFORMS (Measured data sampled at 50 kHz) 51000 packets of 144 samples from 2017-03-02T14:05:54.506.999.

Processed Thu Mar 2 15:13:25 2017 by ELM ver.2012-10-06 from 001__elm20170302_140553__dat00.bin

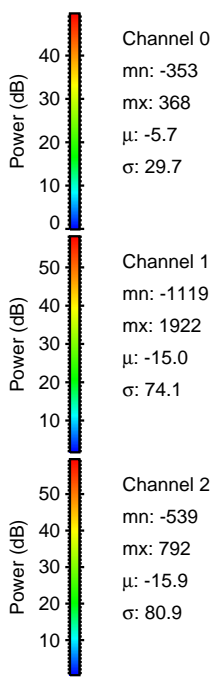
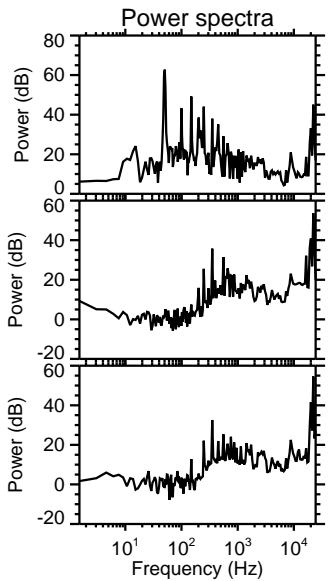
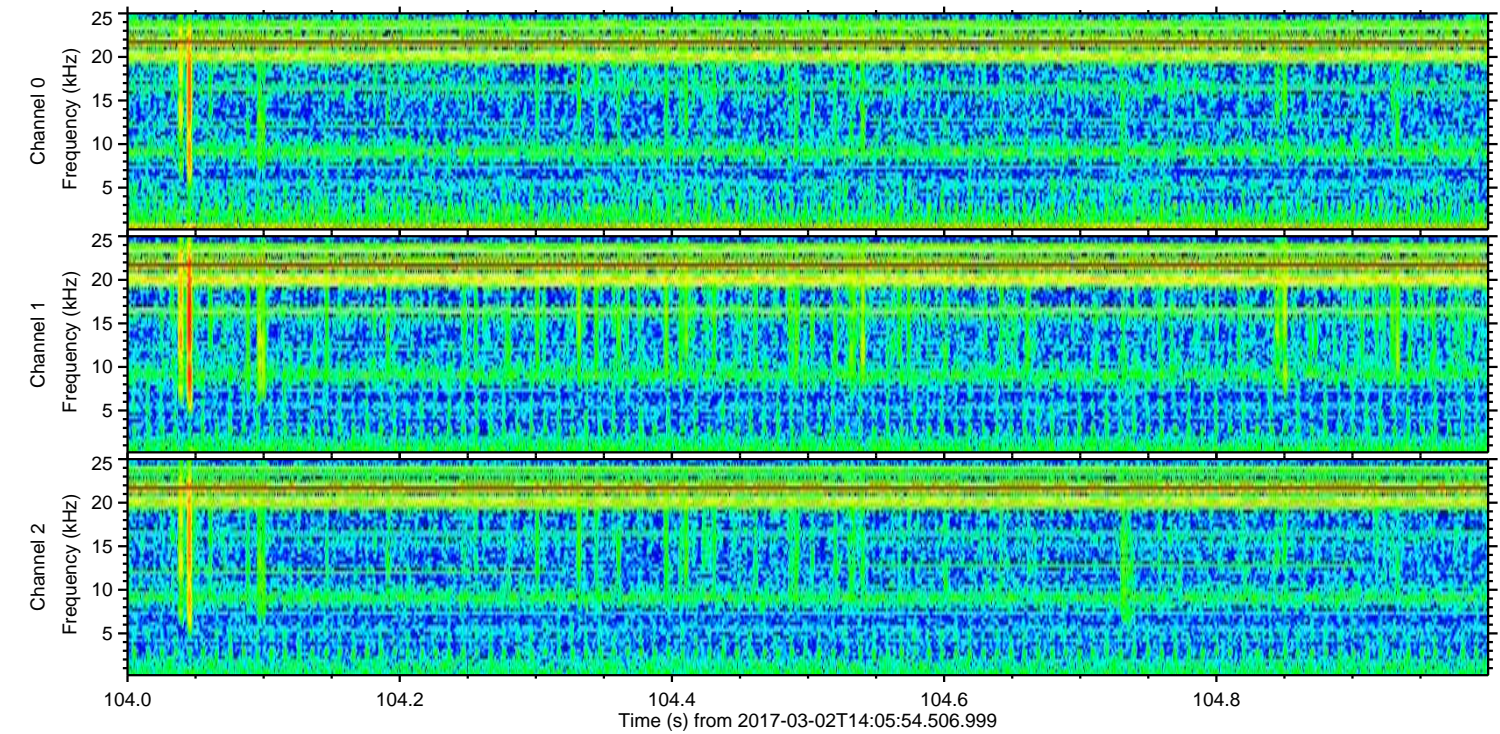
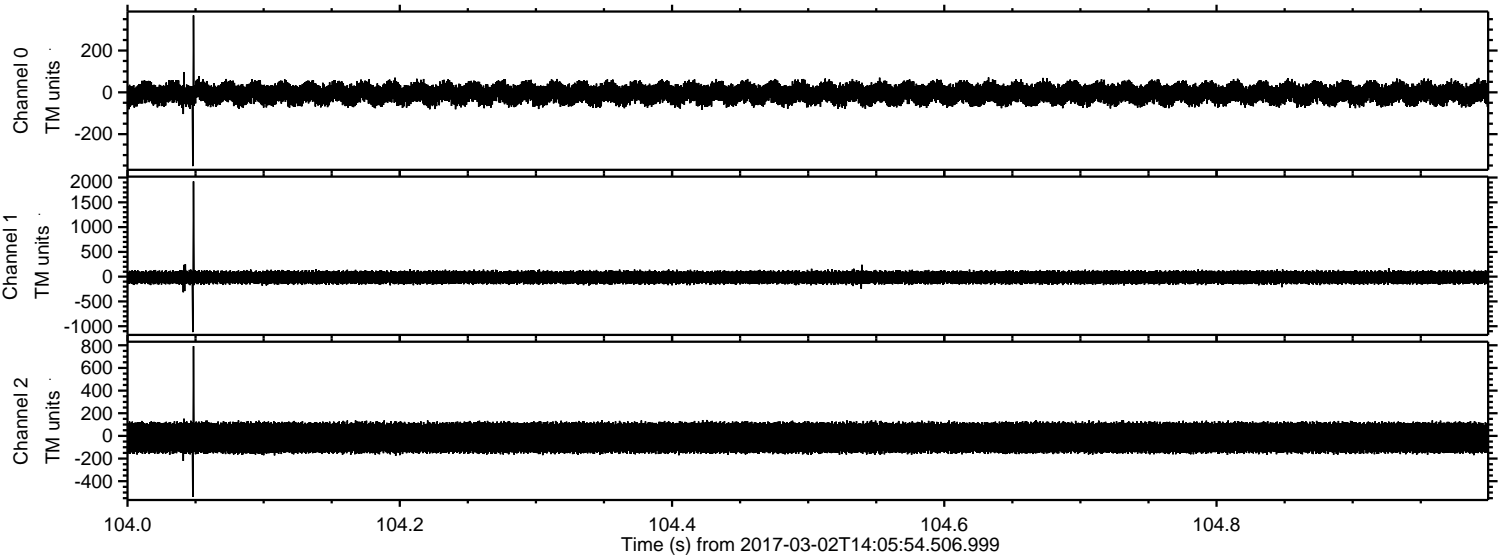


Processed Thu Mar 2 15:13:40 2017 by ELM ver.2012-10-06 from 001__elm20170302_140553__dat00.bin



ELMAVAN 3D WAVEFORMS (Measured data sampled at 50 kHz) 51000 packets of 144 samples from 2017-03-02T14:05:54.506.999. Part 105/147

Processed Thu Mar 2 15:13:41 2017 by ELM ver.2012-10-06 from 001__elm20170302_140553__dat00.bin

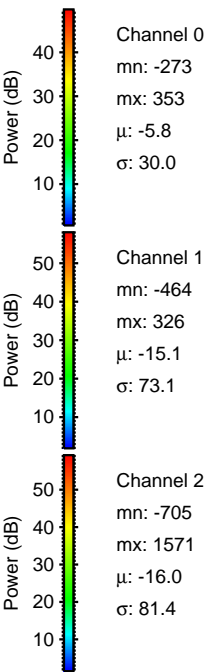
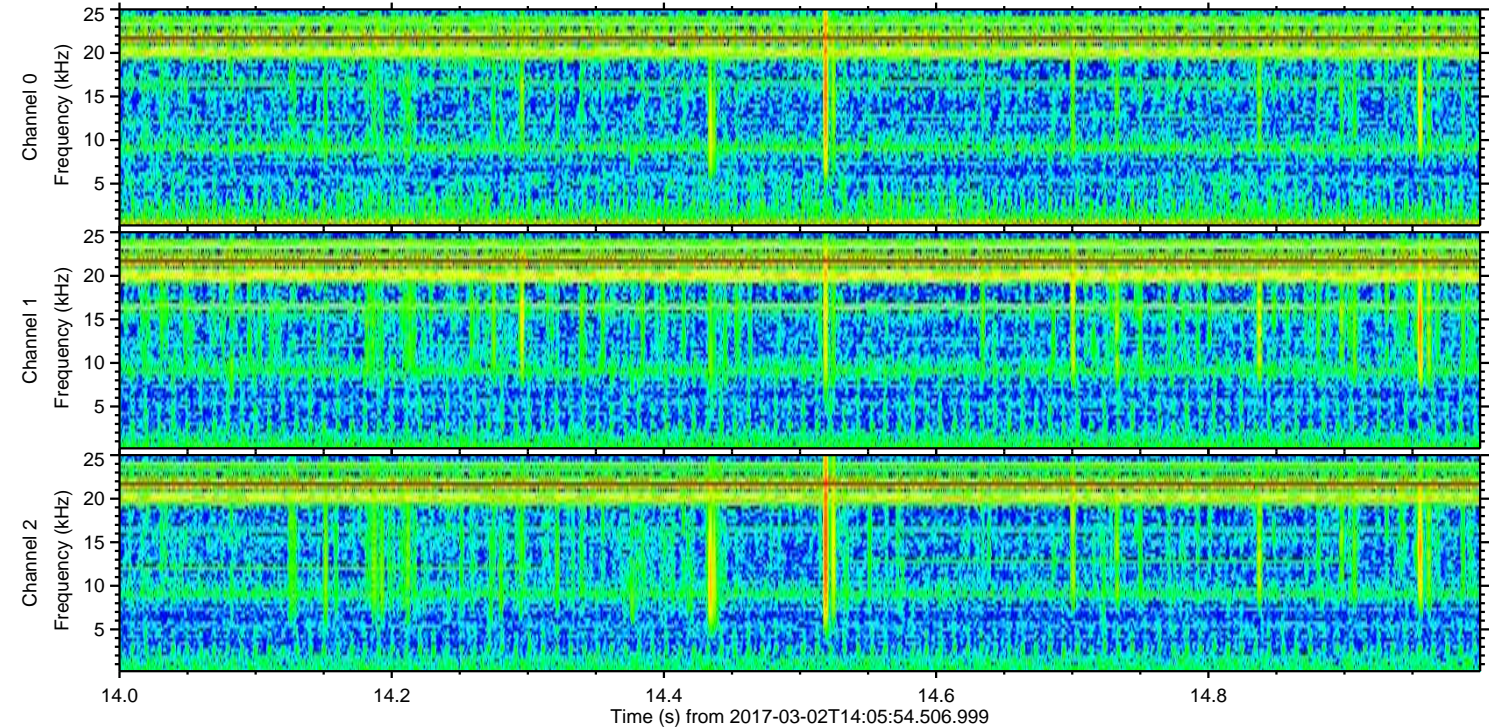
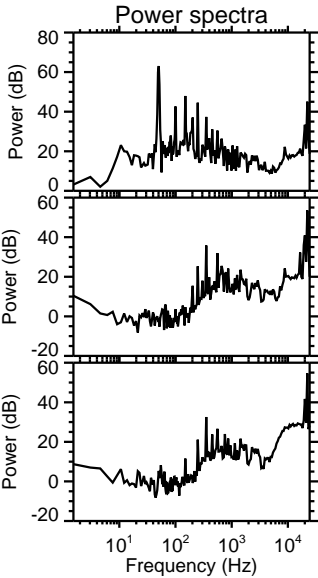
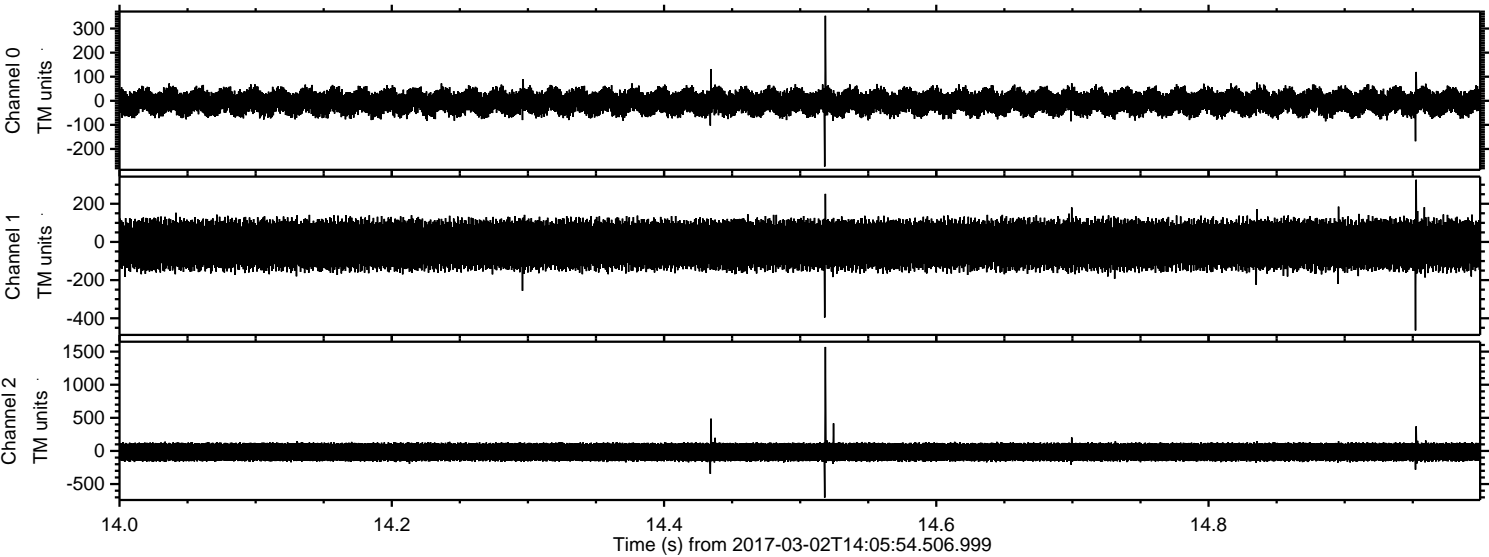


Channel 0
mn: -353
mx: 368
 μ : -5.7
 σ : 29.7

Channel 1
mn: -1119
mx: 1922
 μ : -15.0
 σ : 74.1

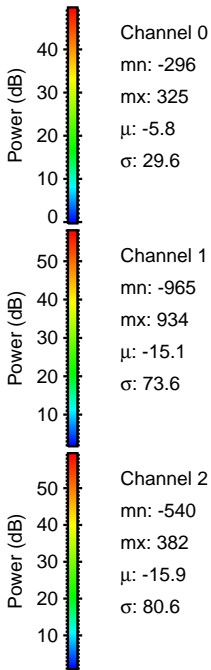
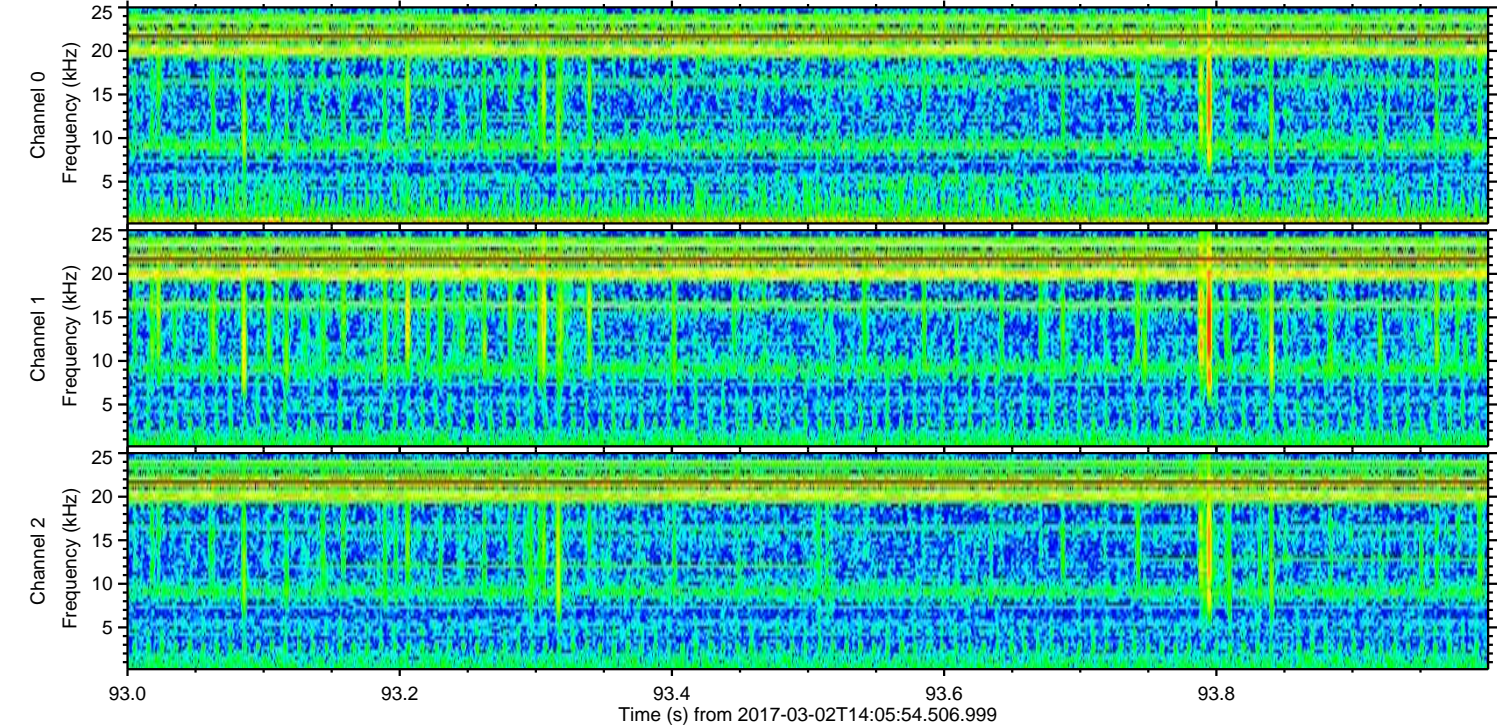
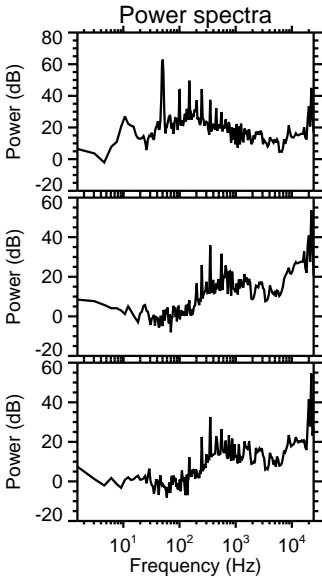
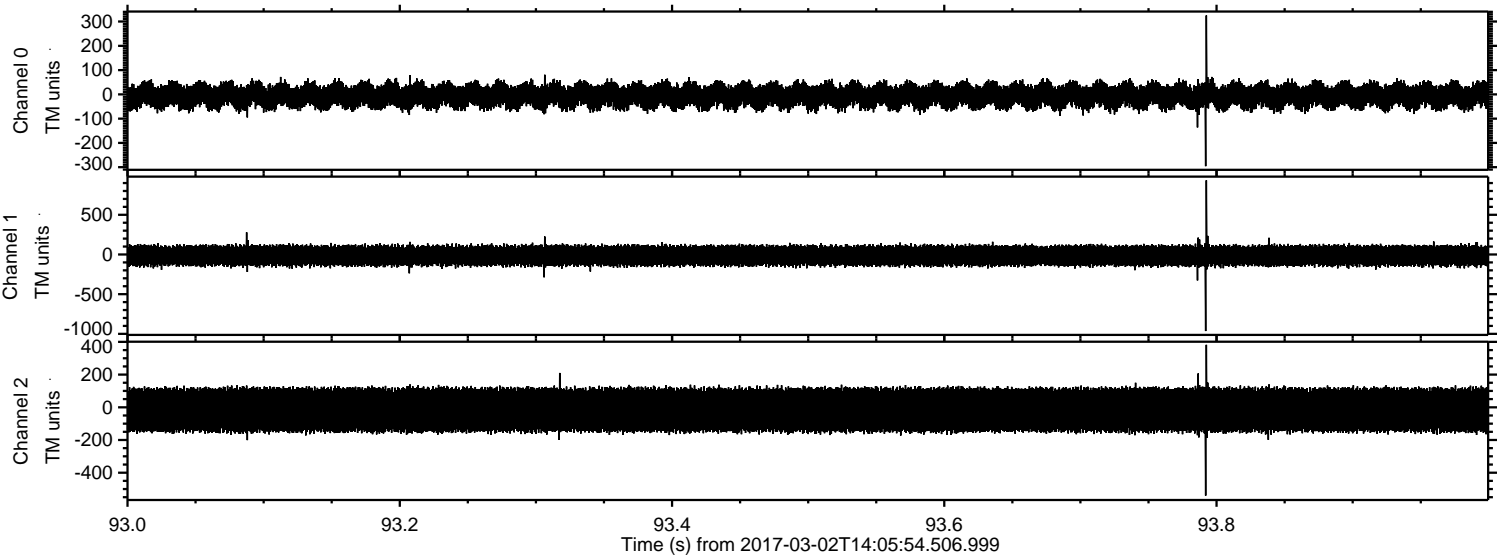
Channel 2
mn: -539
mx: 792
 μ : -15.9
 σ : 80.9

Processed Thu Mar 2 15:13:43 2017 by ELM ver.2012-10-06 from 001__elm20170302_140553__dat00.bin



ELMAVAN 3D WAVEFORMS (Measured data sampled at 50 kHz) 51000 packets of 144 samples from 2017-03-02T14:05:54.506.999. Part 94/147

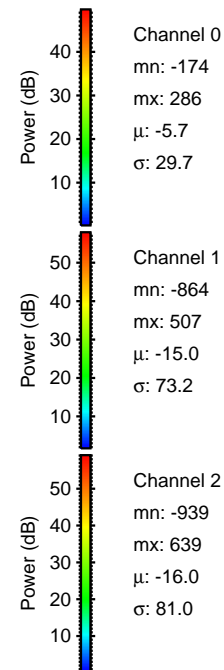
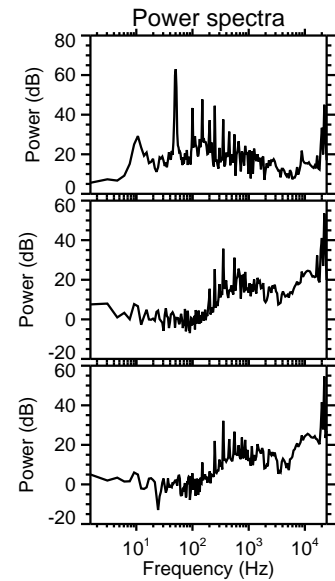
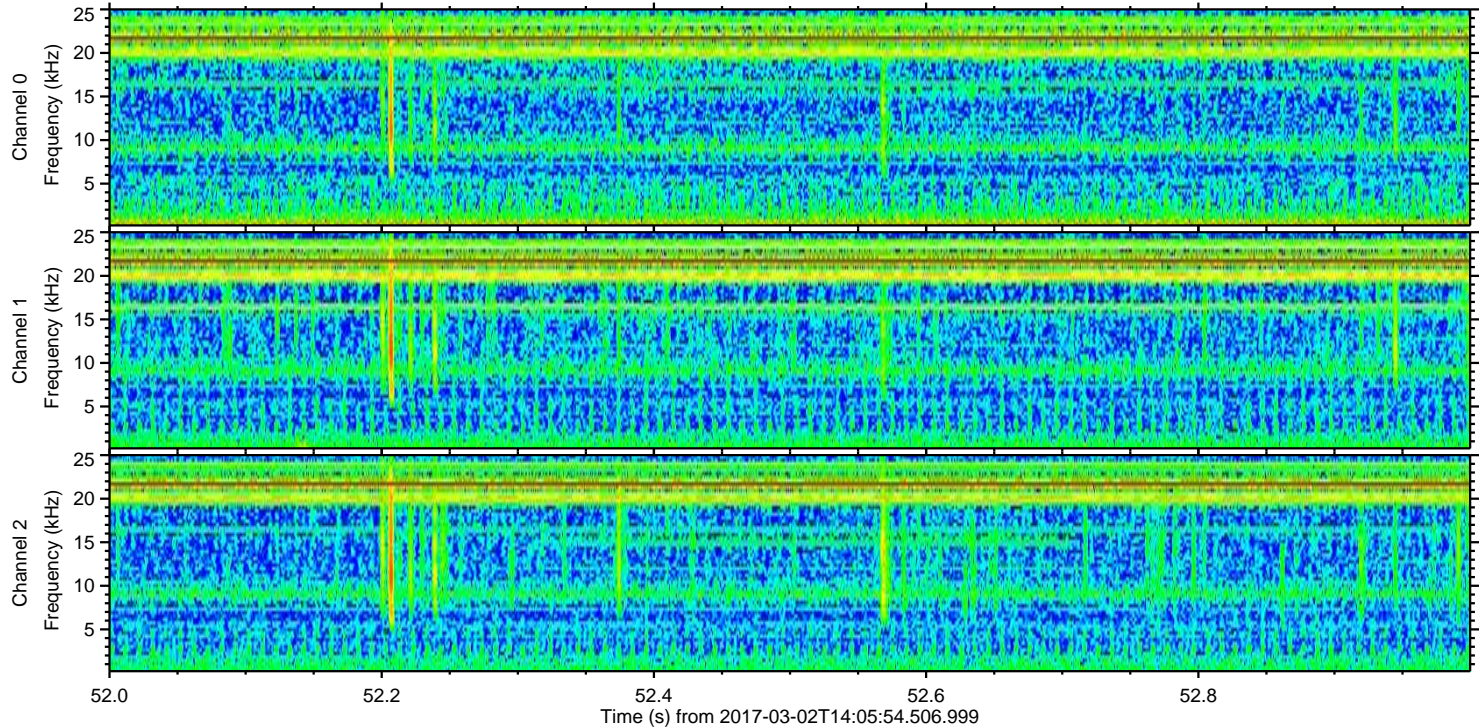
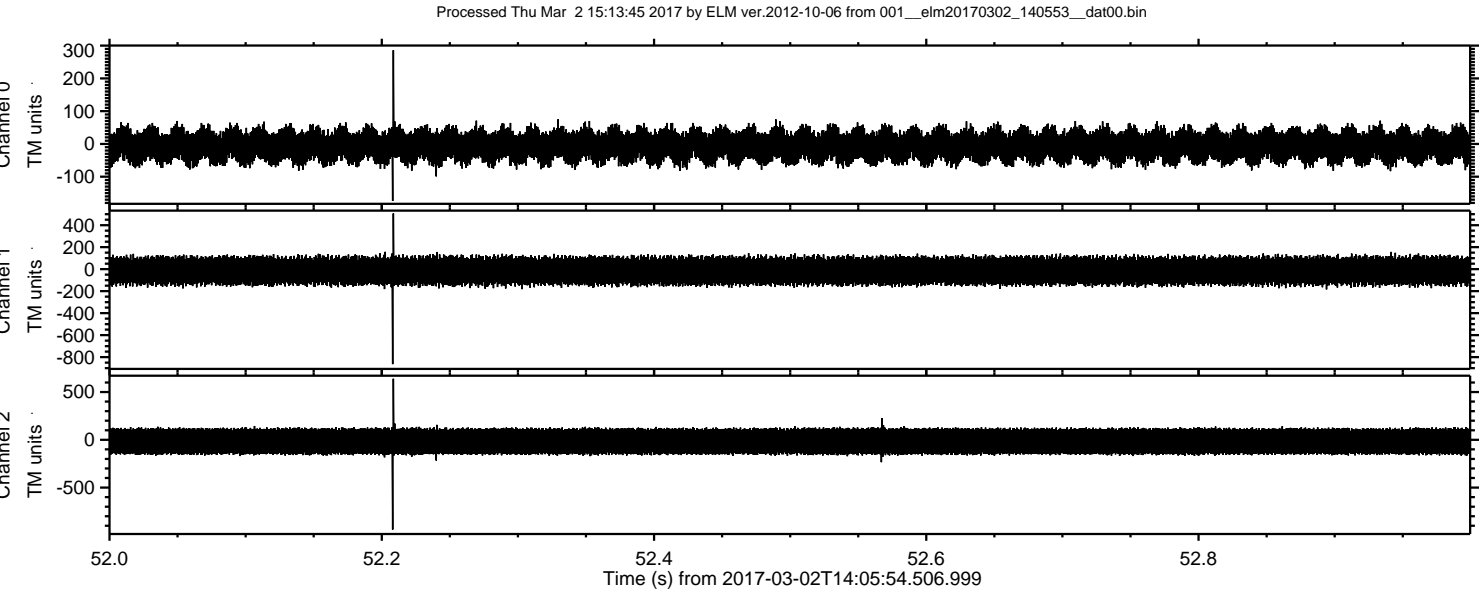
Processed Thu Mar 2 15:13:44 2017 by ELM ver.2012-10-06 from 001__elm20170302_140553__dat00.bin

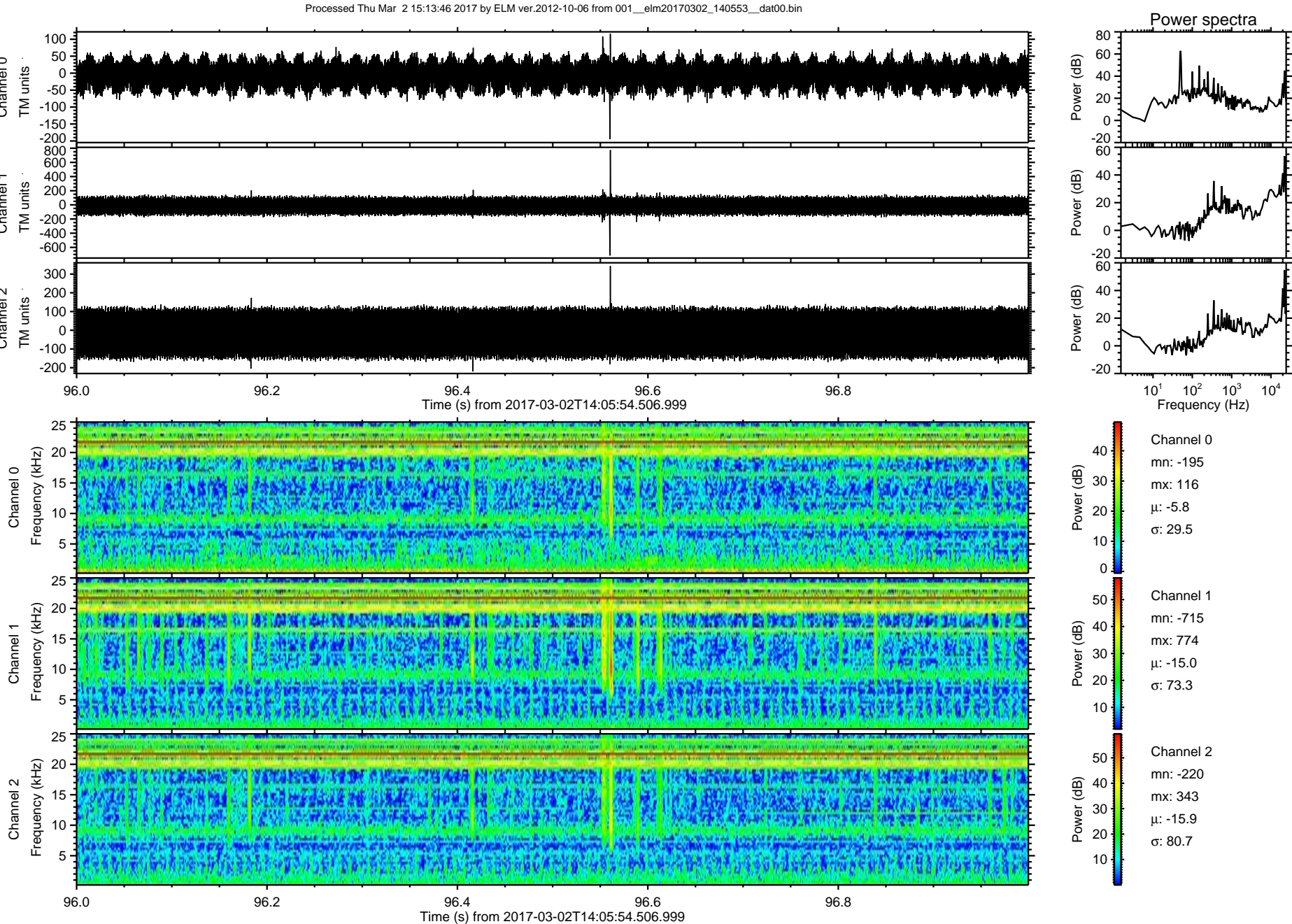


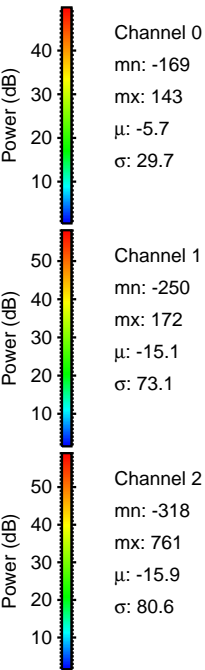
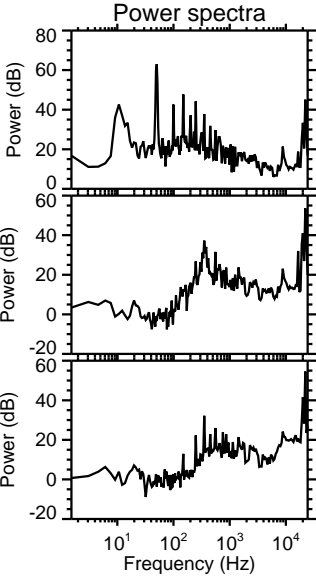
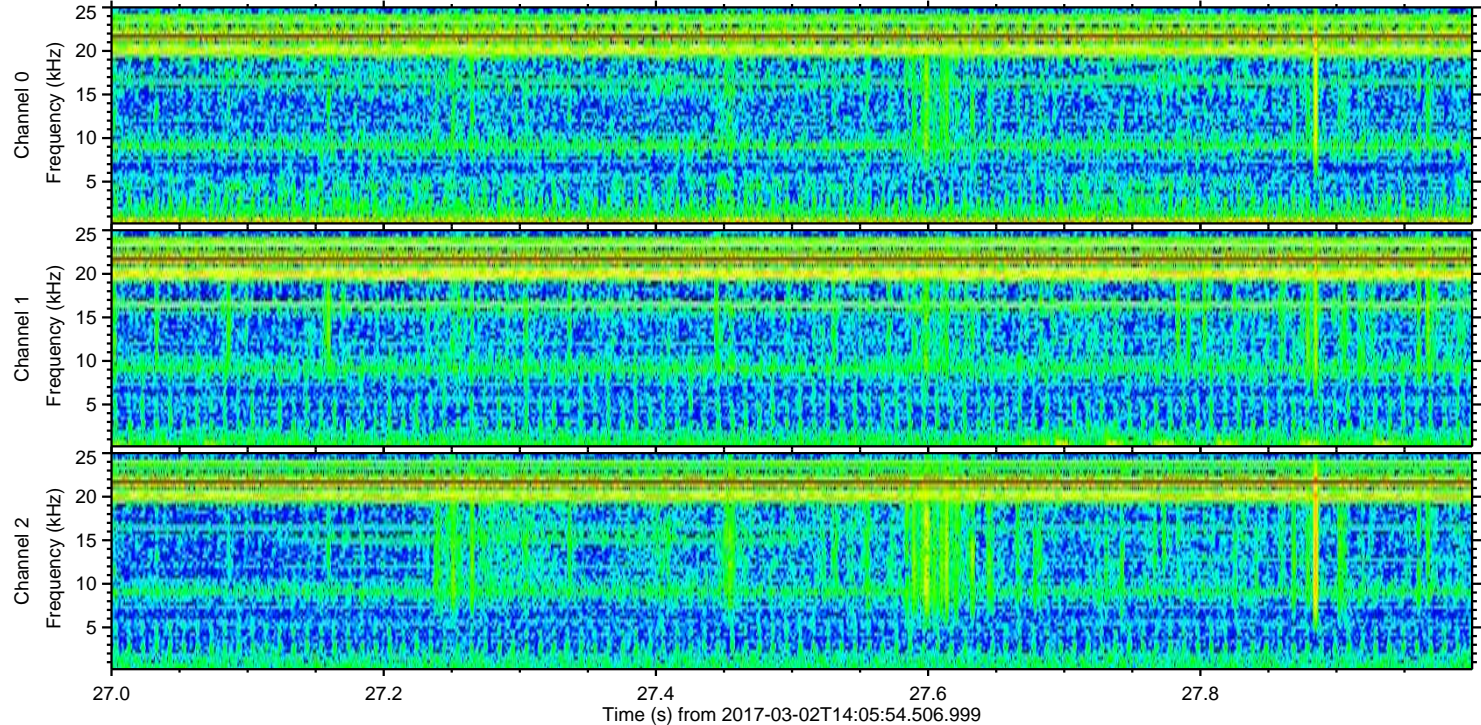
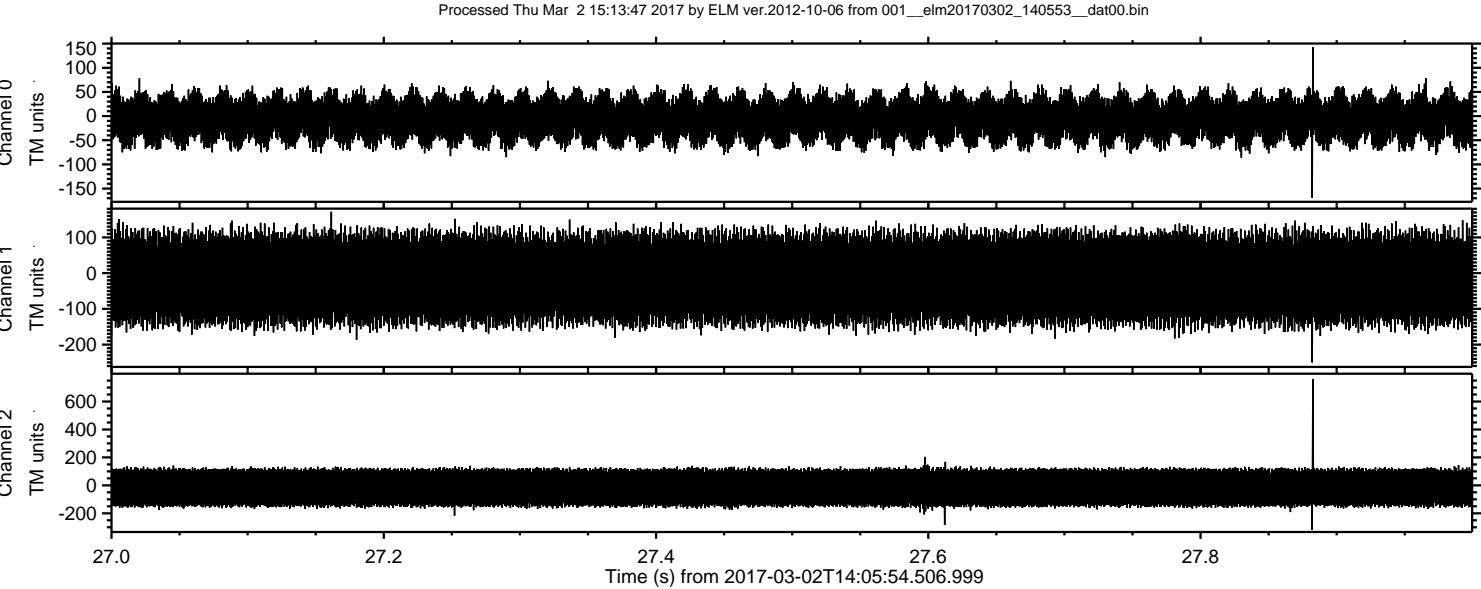
Channel 0
mn: -296
mx: 325
 μ : -5.8
 σ : 29.6

Channel 1
mn: -965
mx: 934
 μ : -15.1
 σ : 73.6

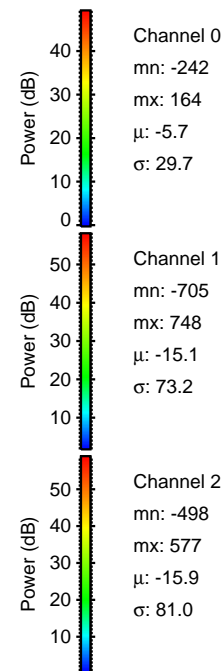
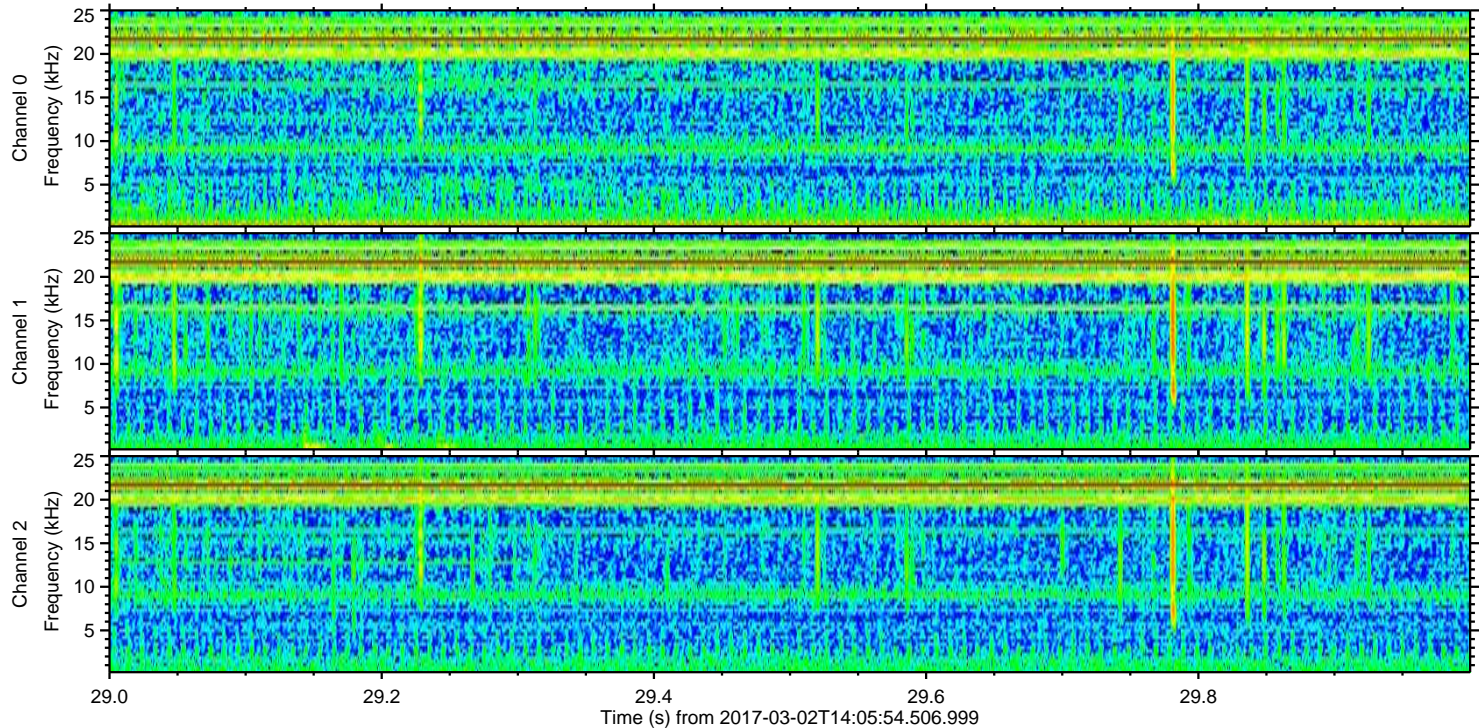
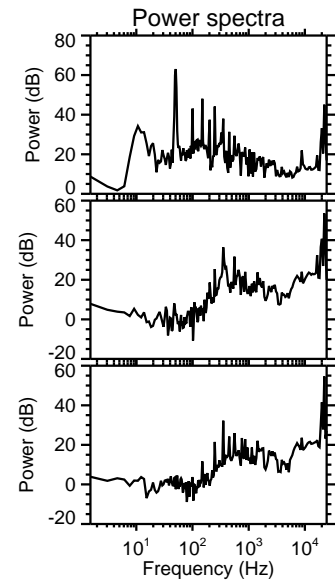
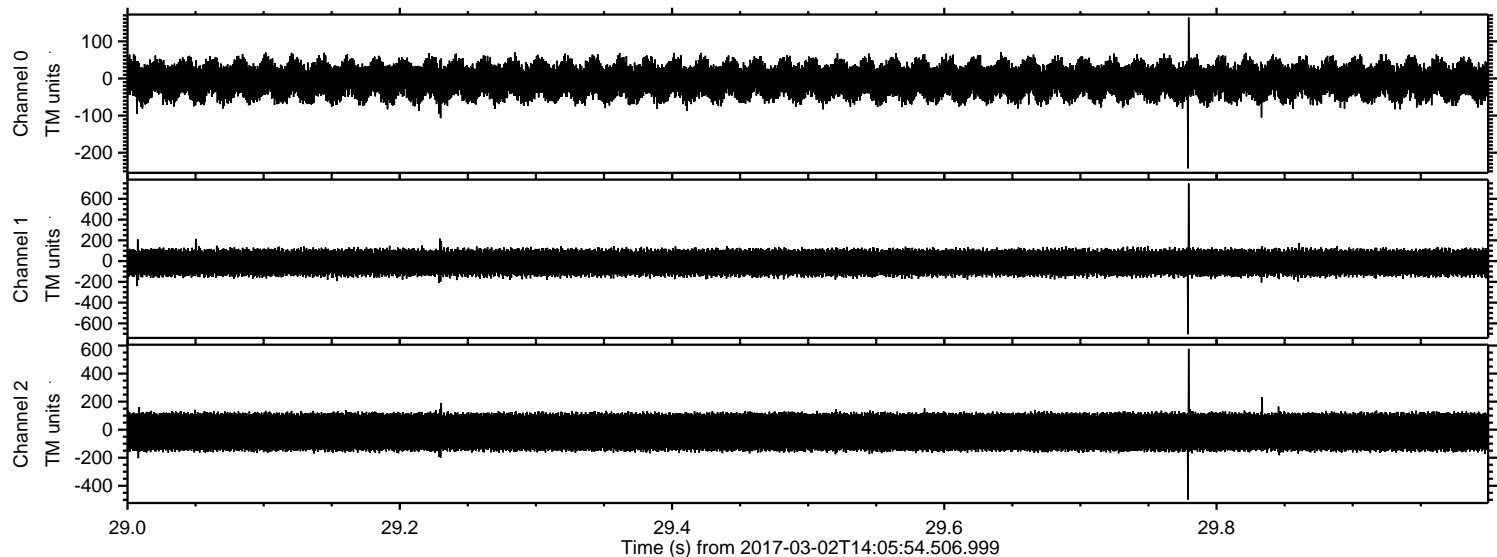
Channel 2
mn: -540
mx: 382
 μ : -15.9
 σ : 80.6





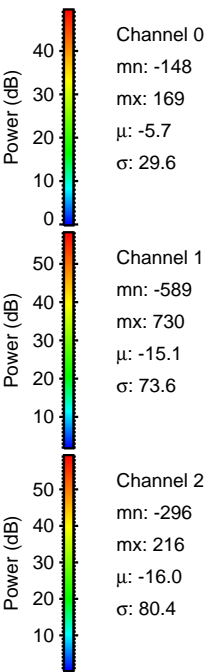
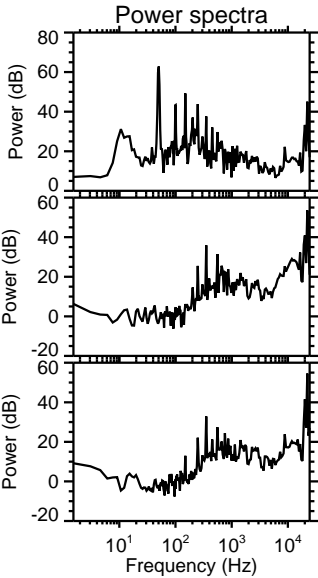
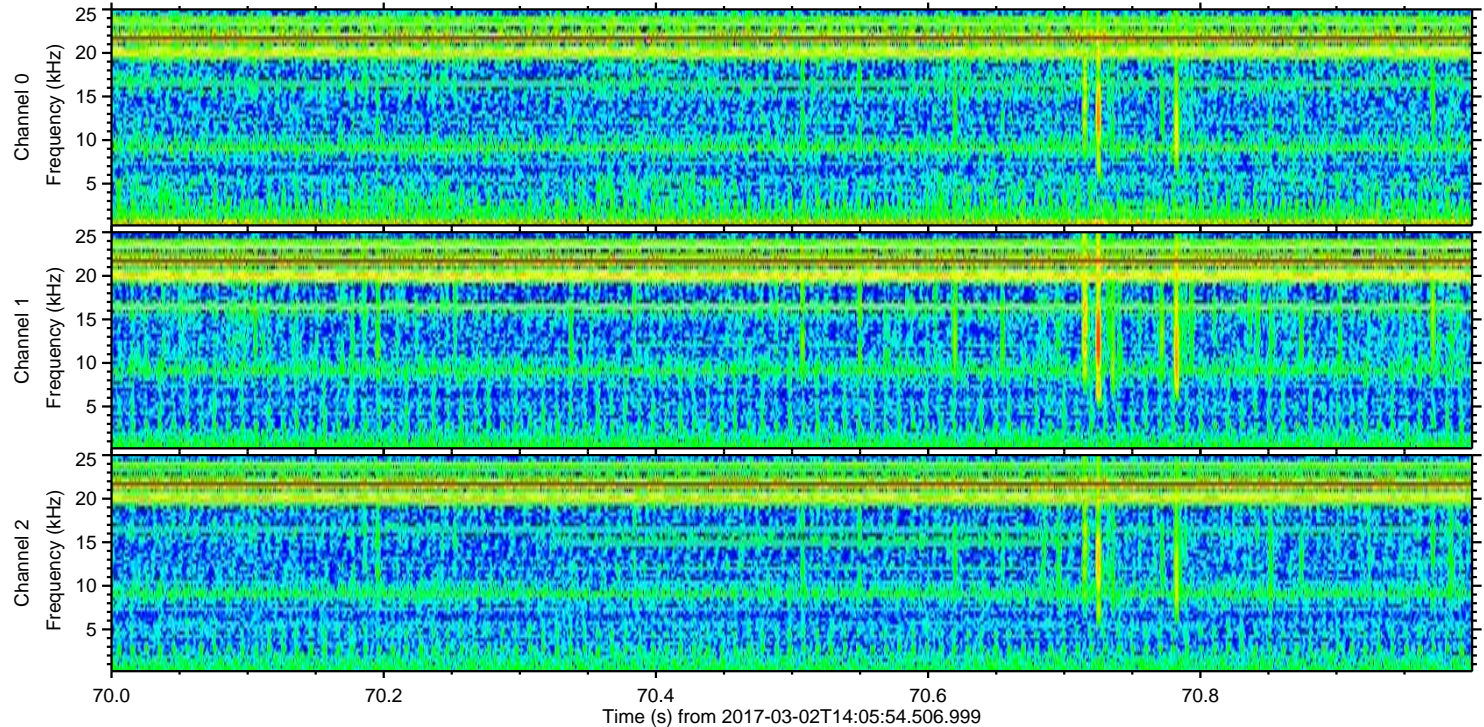
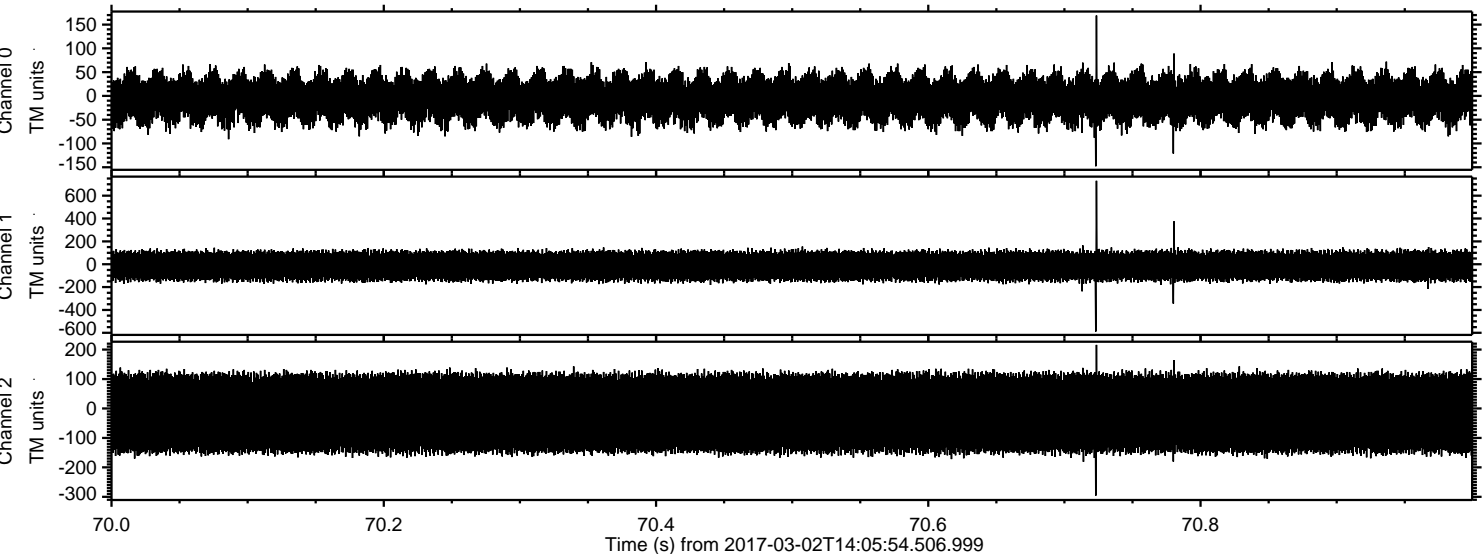


Processed Thu Mar 2 15:13:48 2017 by ELM ver.2012-10-06 from 001__elm20170302_140553__dat00.bin



ELMAVAN 3D WAVEFORMS (Measured data sampled at 50 kHz) 51000 packets of 144 samples from 2017-03-02T14:05:54.506.999. Part 71/147

Processed Thu Mar 2 15:13:49 2017 by ELM ver.2012-10-06 from 001__elm20170302_140553__dat00.bin



Channel 0
mn: -148
mx: 169
 μ : -5.7
 σ : 29.6

Channel 1
mn: -589
mx: 730
 μ : -15.1
 σ : 73.6

Channel 2
mn: -296
mx: 216
 μ : -16.0
 σ : 80.4

