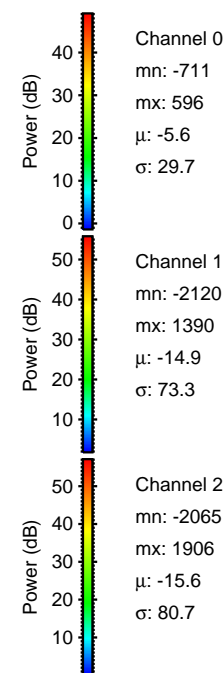
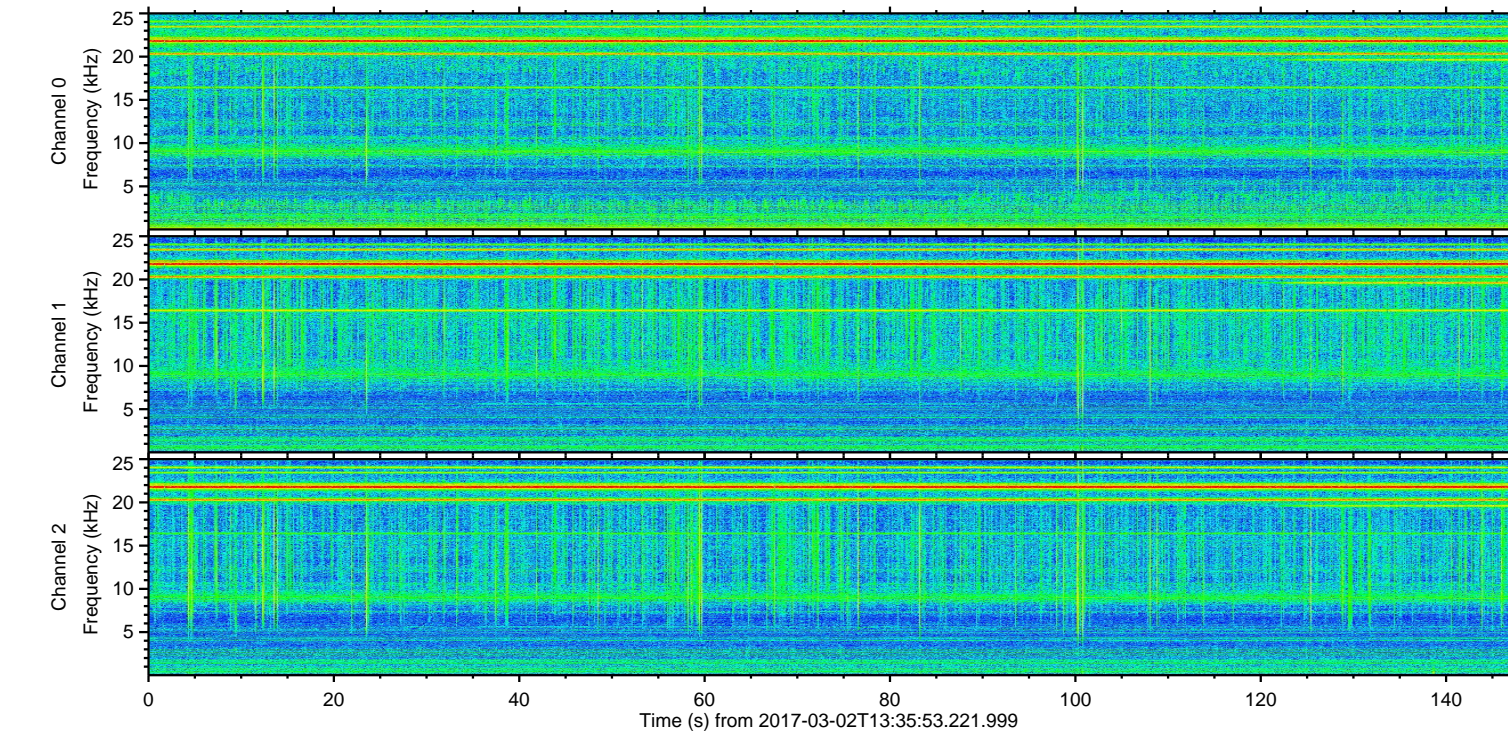
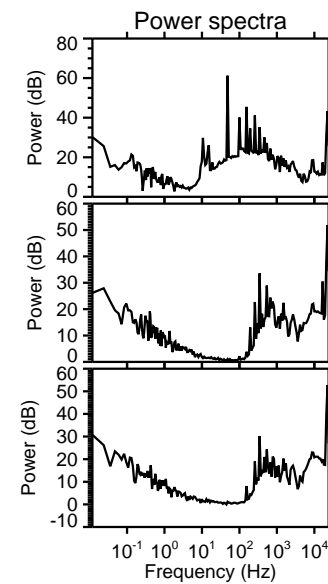
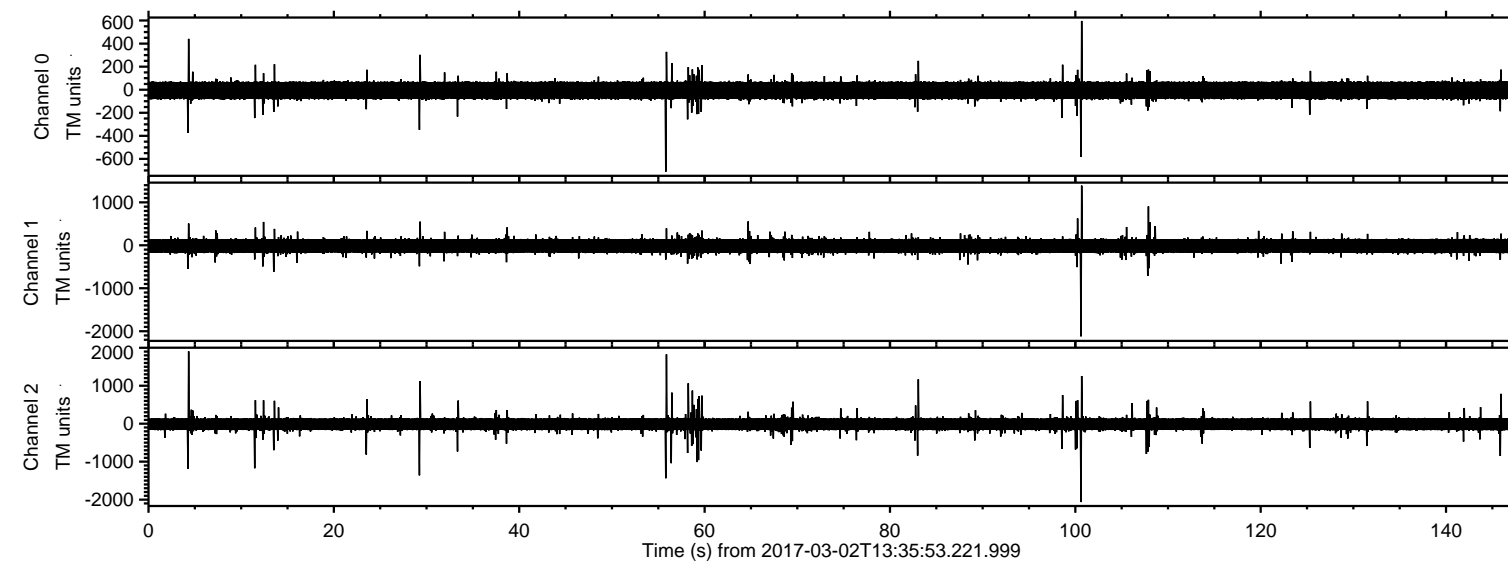


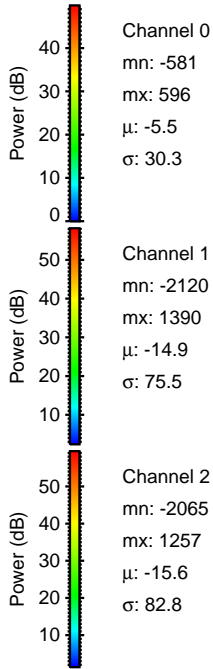
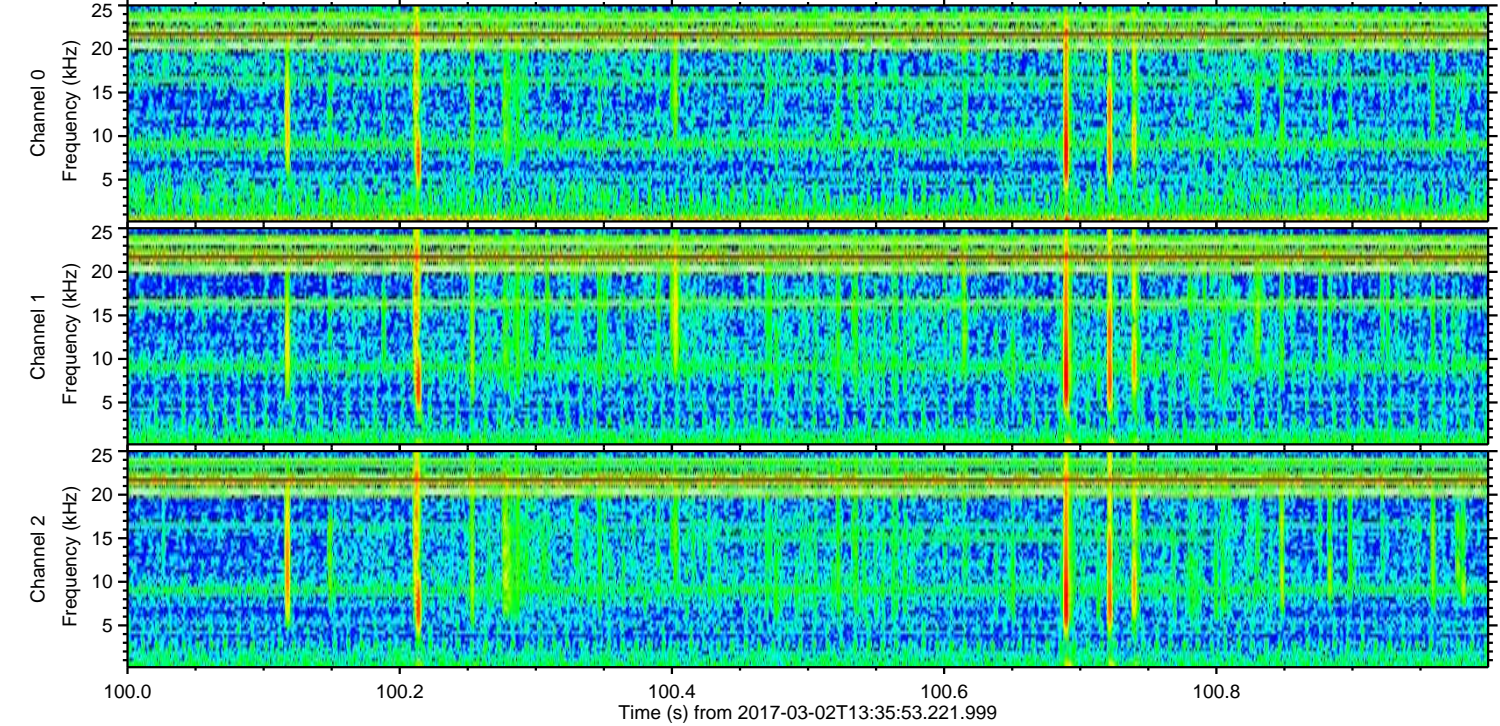
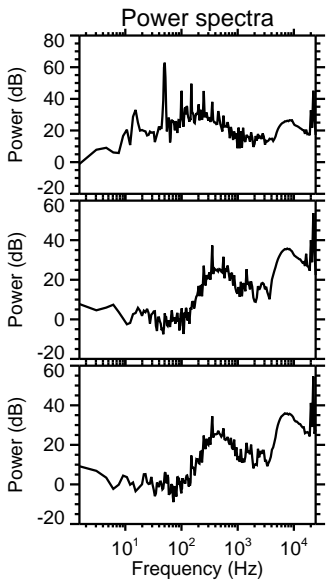
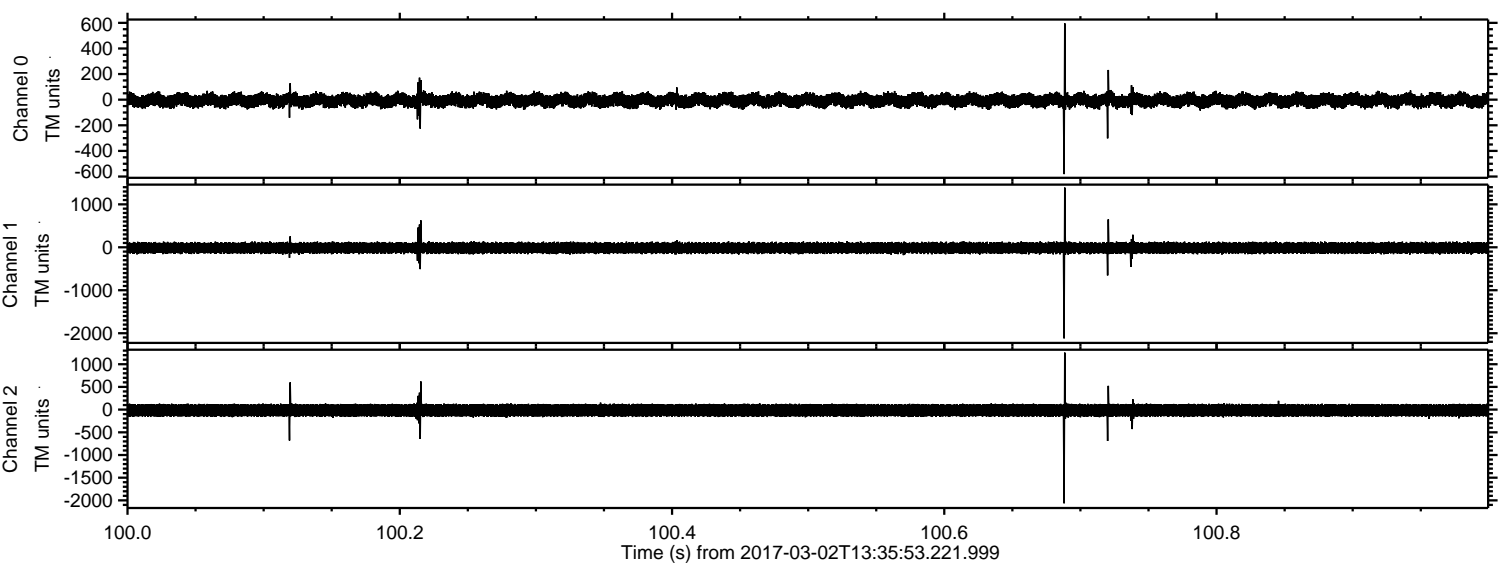
ELMAVAN 3D WAVEFORMS (Measured data sampled at 50 kHz) 51000 packets of 144 samples from 2017-03-02T13:35:53.221.999.

Processed Thu Mar 2 14:43:47 2017 by ELM ver.2012-10-06 from 001__elm20170302_133552__dat00.bin

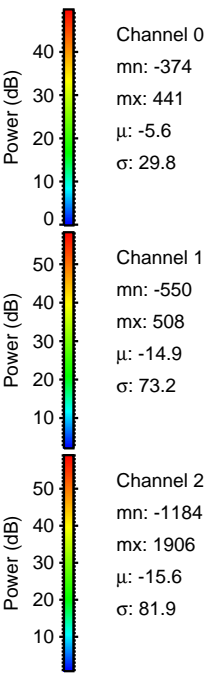
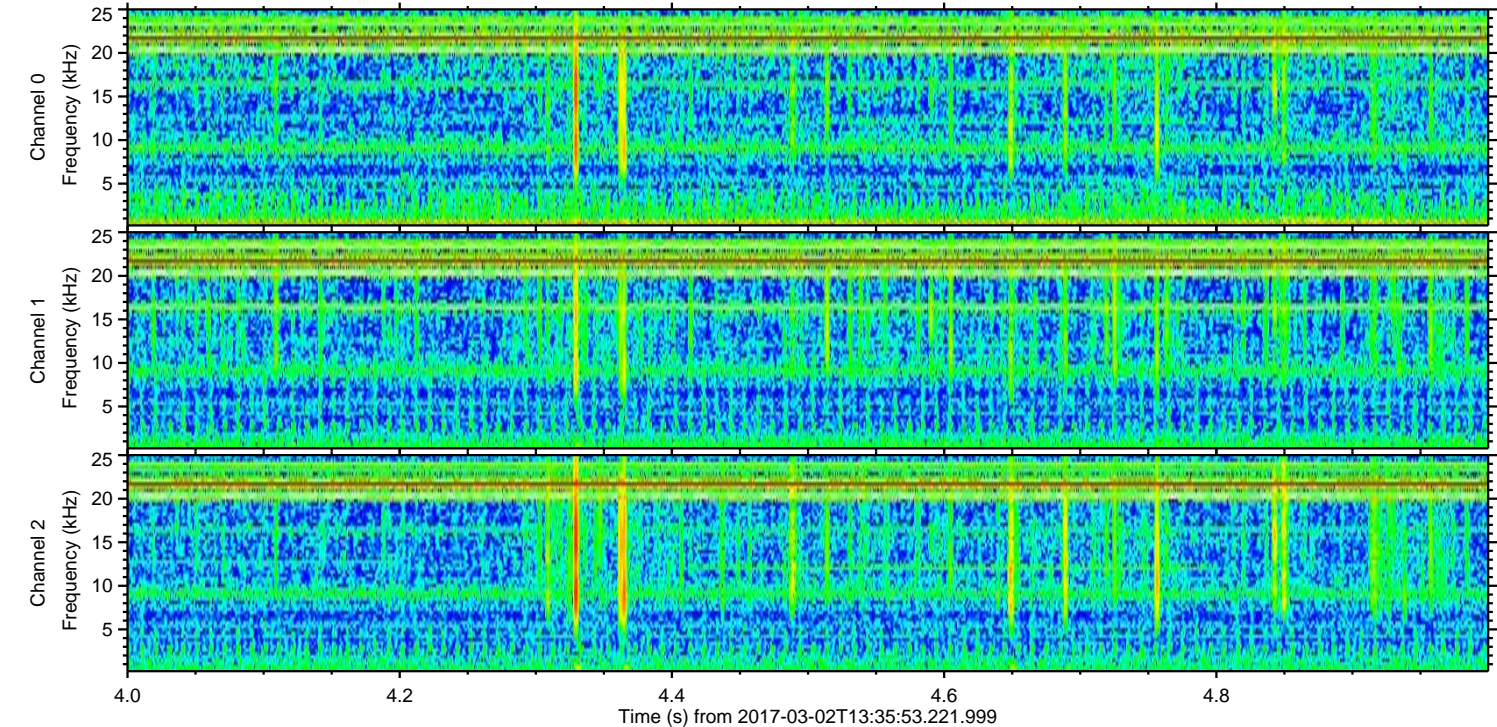
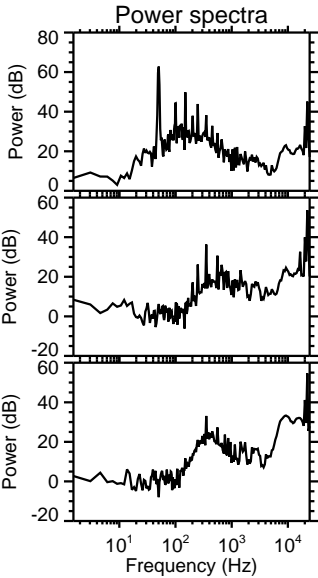
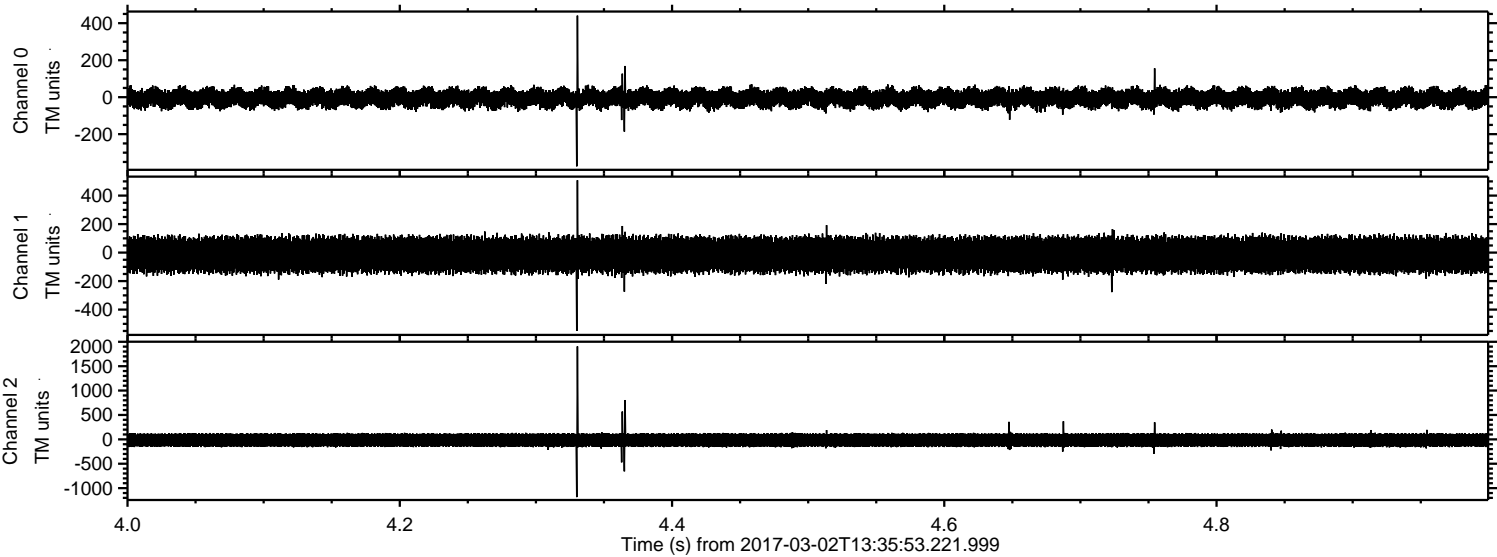


ELMAVAN 3D WAVEFORMS (Measured data sampled at 50 kHz) 51000 packets of 144 samples from 2017-03-02T13:35:53.221.999. Part 101/147

Processed Thu Mar 2 14:43:58 2017 by ELM ver.2012-10-06 from 001__elm20170302_133552__dat00.bin

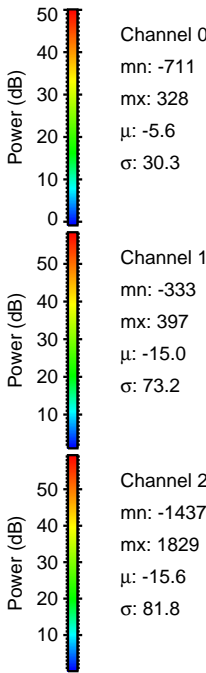
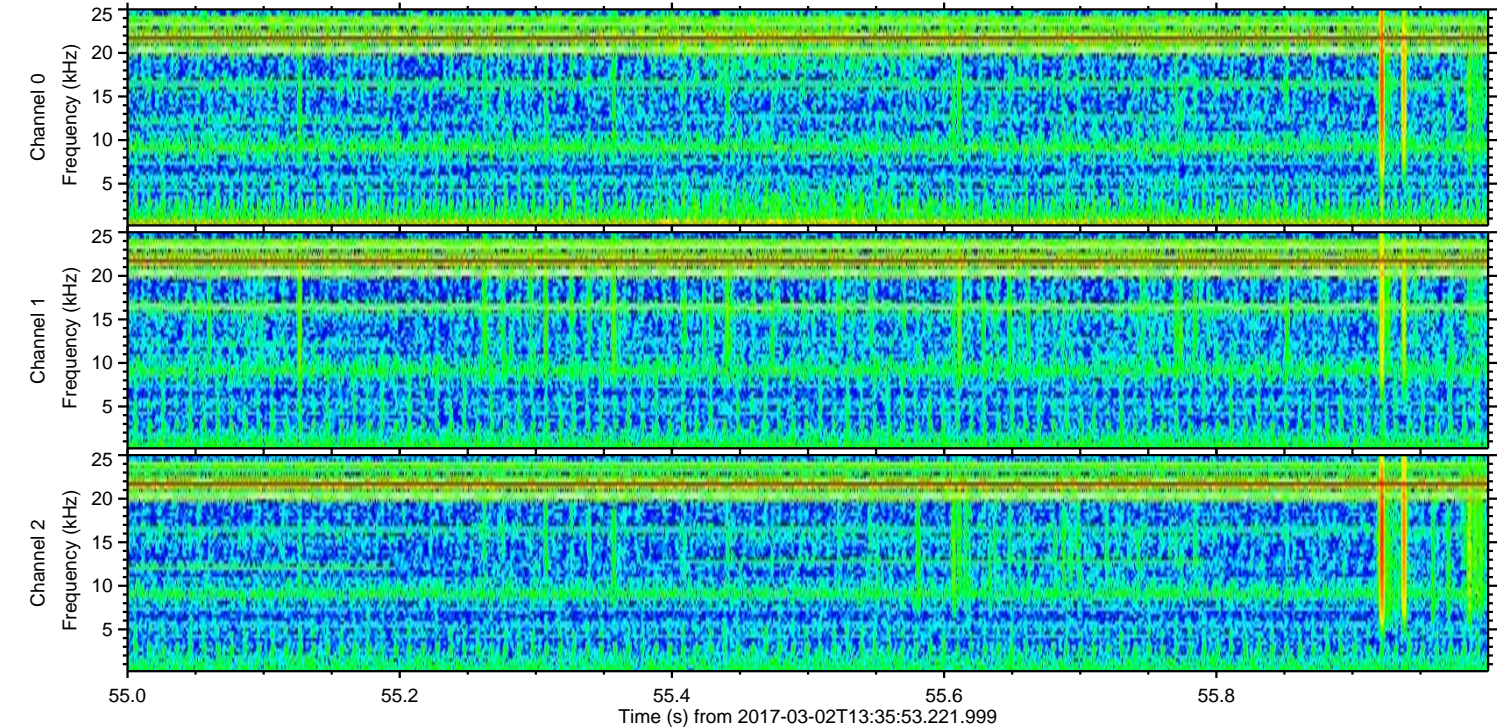
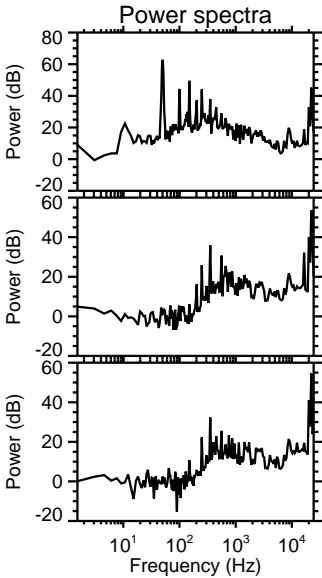
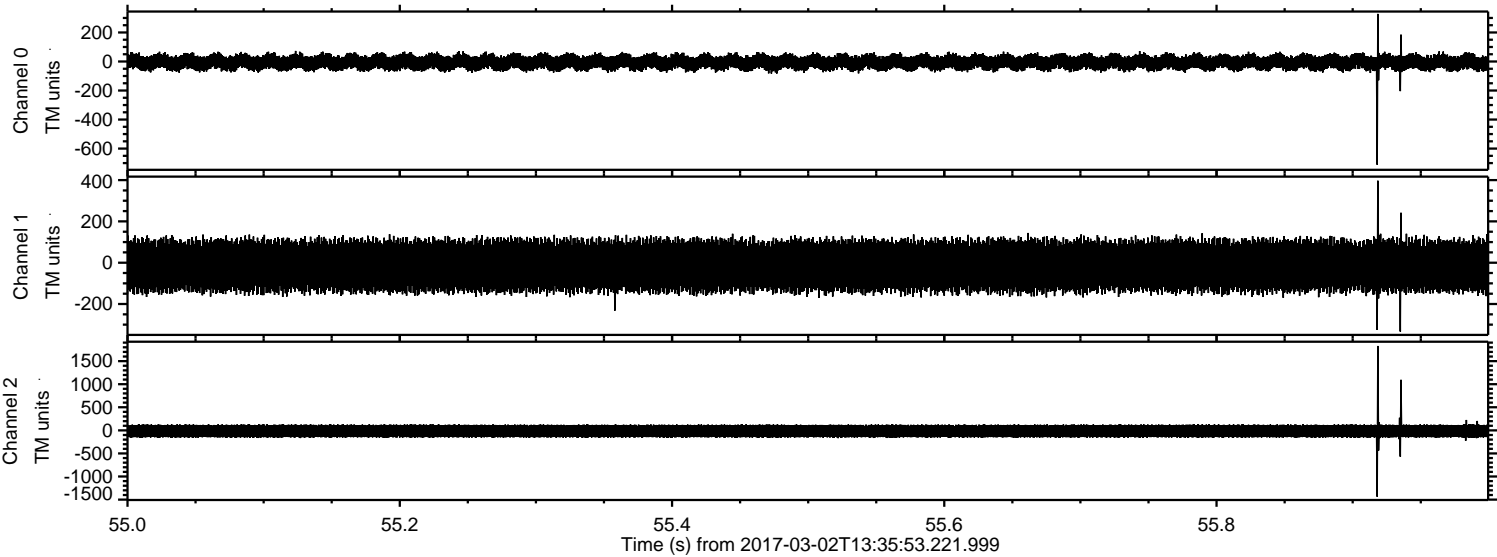


Processed Thu Mar 2 14:43:59 2017 by ELM ver.2012-10-06 from 001__elm20170302_133552__dat00.bin

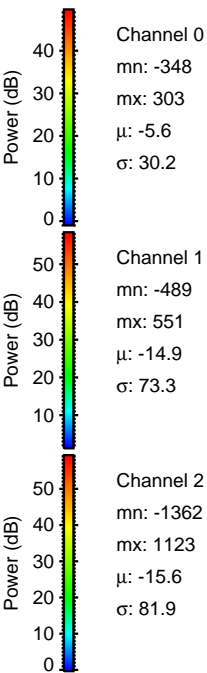
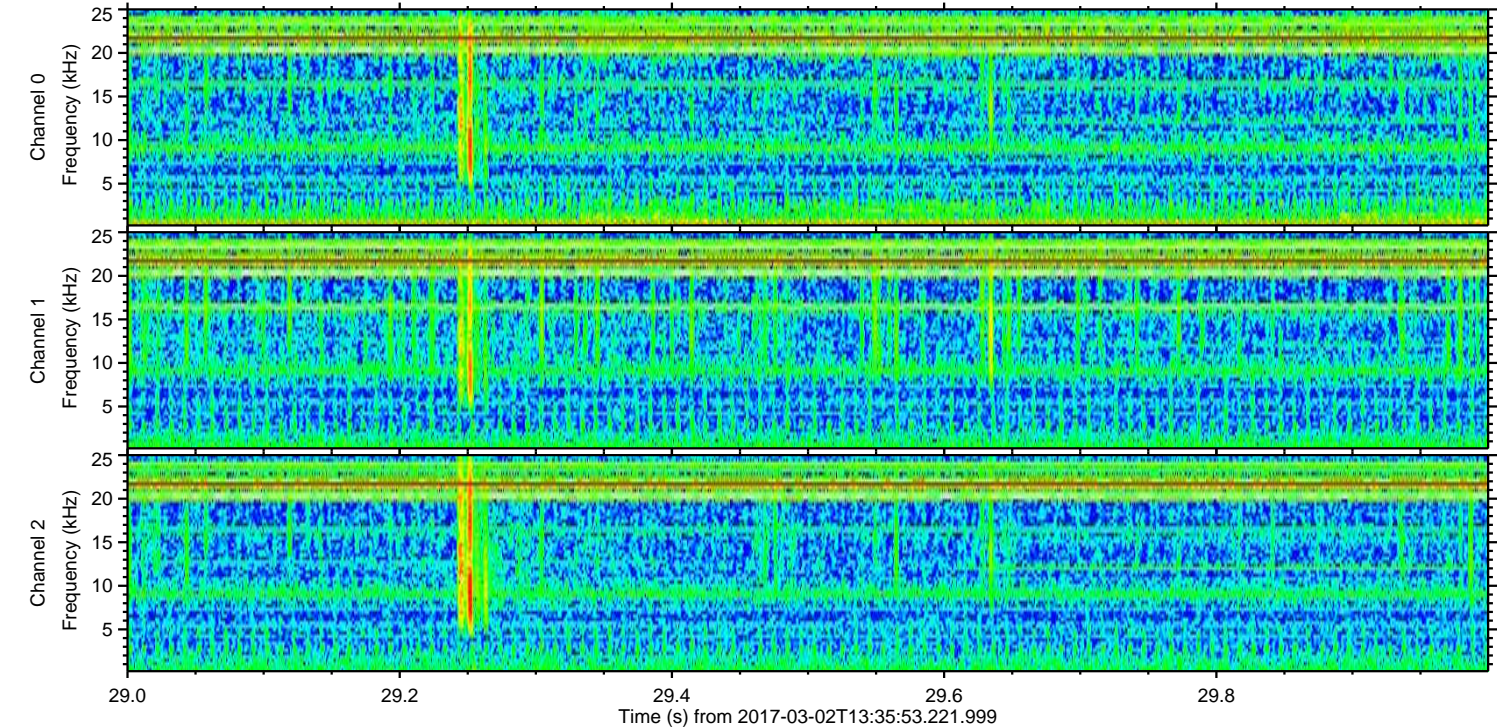
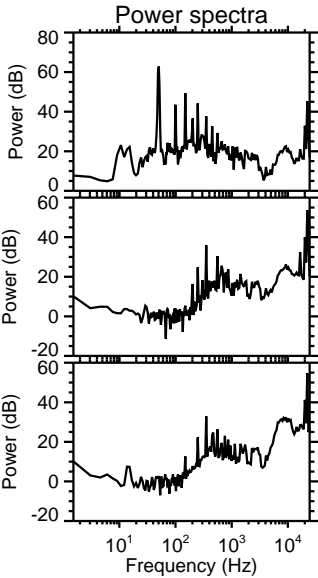
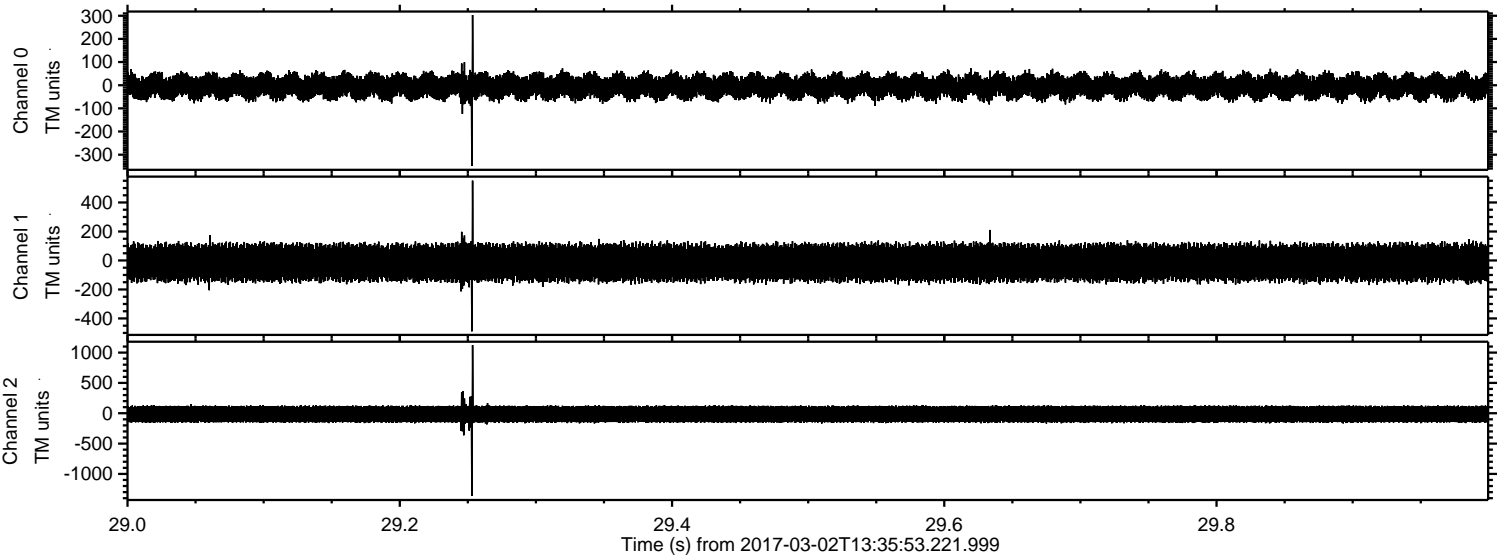


ELMAVAN 3D WAVEFORMS (Measured data sampled at 50 kHz) 51000 packets of 144 samples from 2017-03-02T13:35:53.221.999. Part 56/147

Processed Thu Mar 2 14:44:00 2017 by ELM ver.2012-10-06 from 001__elm20170302_133552__dat00.bin

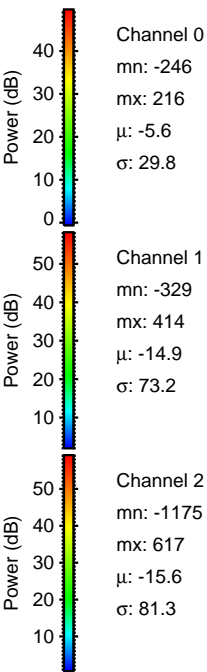
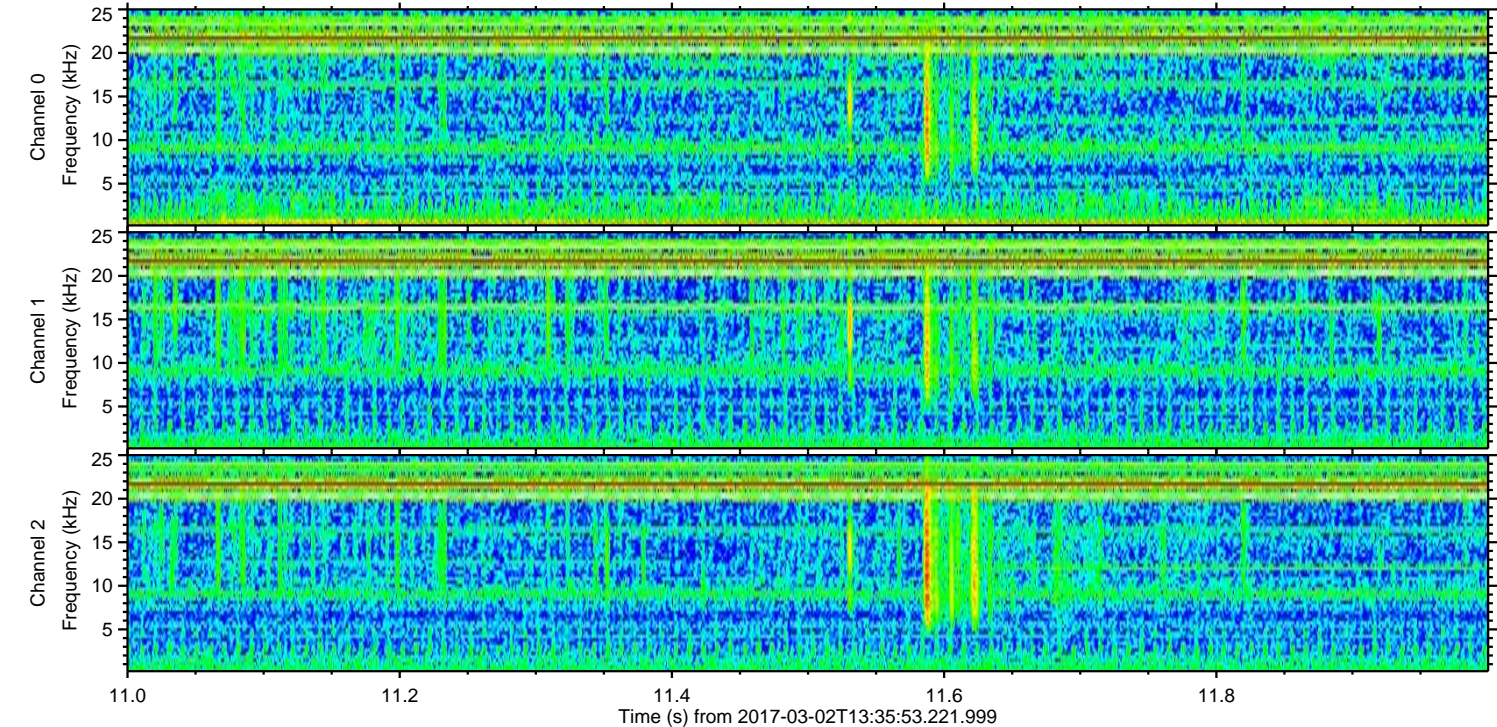
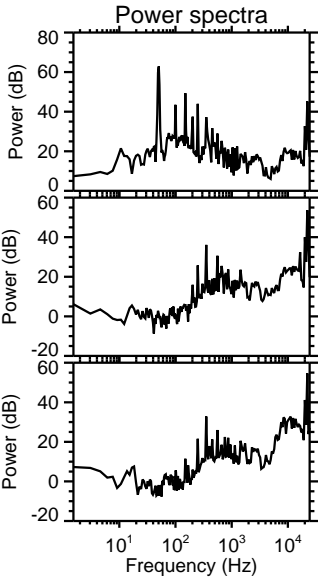
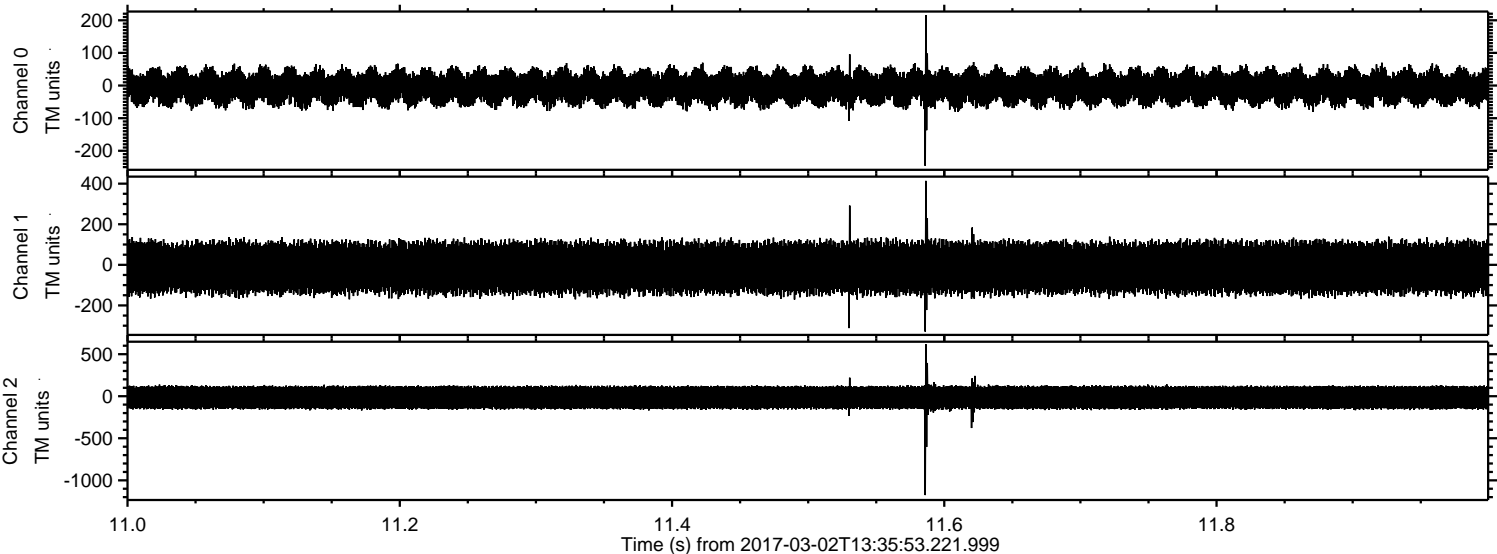


Processed Thu Mar 2 14:44:01 2017 by ELM ver.2012-10-06 from 001__elm20170302_133552__dat00.bin

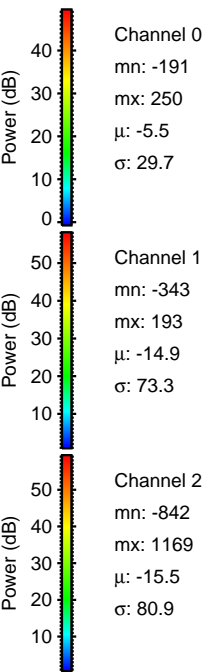
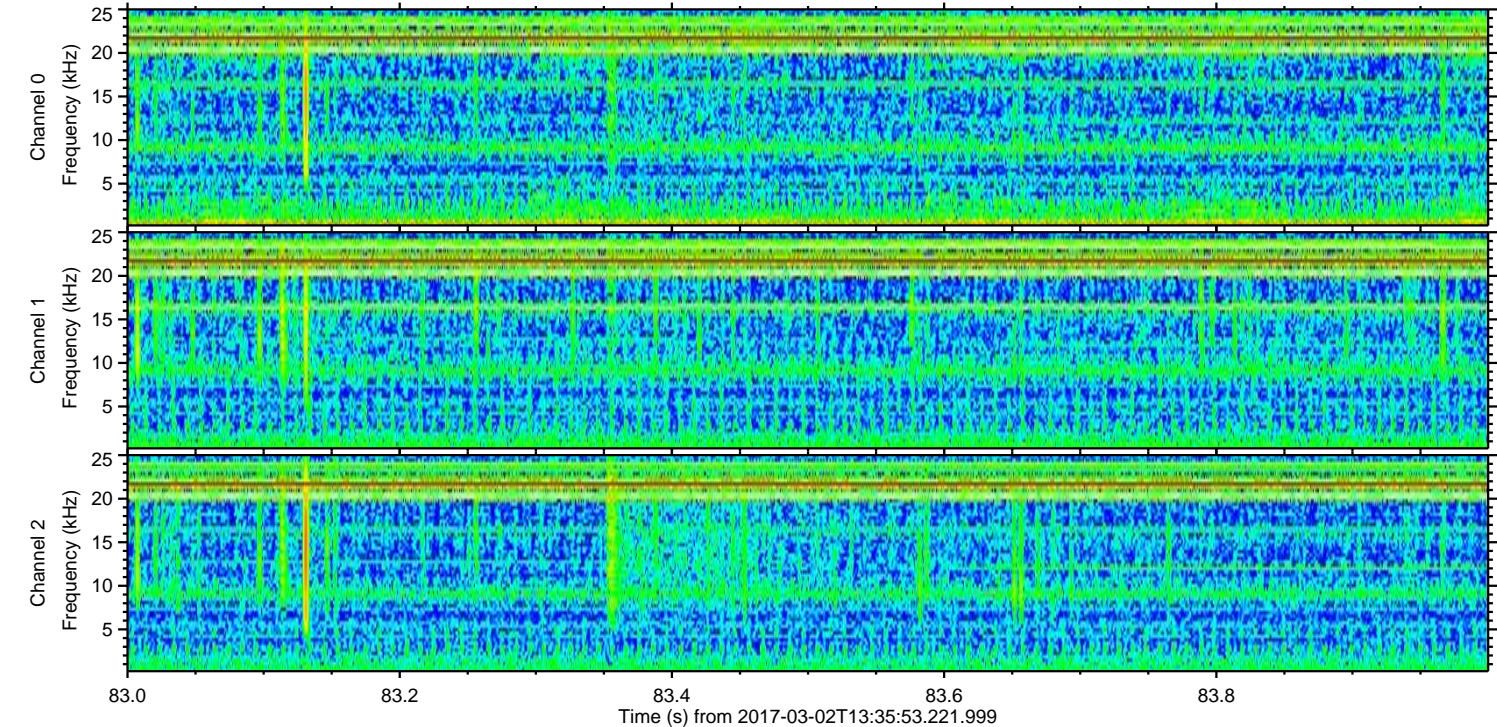
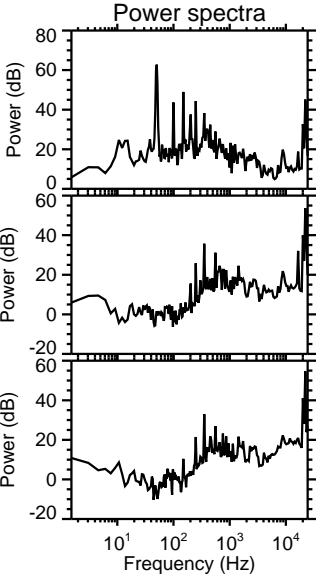
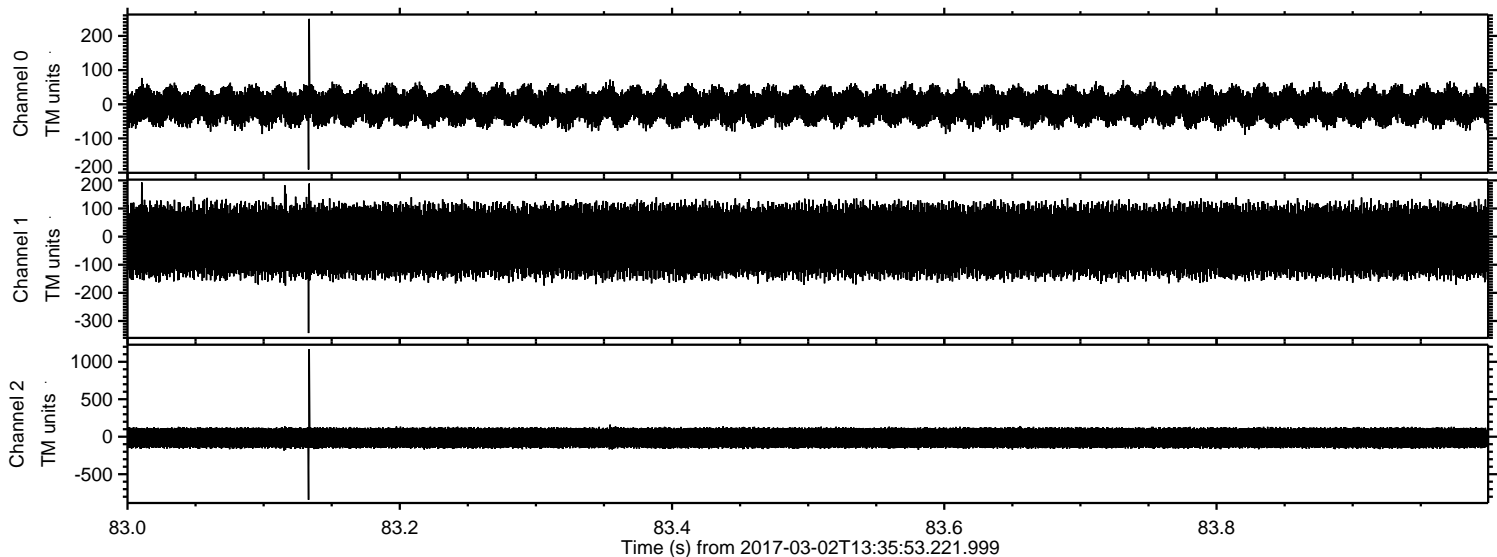


ELMAVAN 3D WAVEFORMS (Measured data sampled at 50 kHz) 51000 packets of 144 samples from 2017-03-02T13:35:53.221.999. Part 12/147

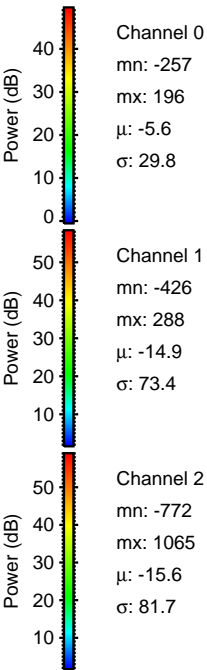
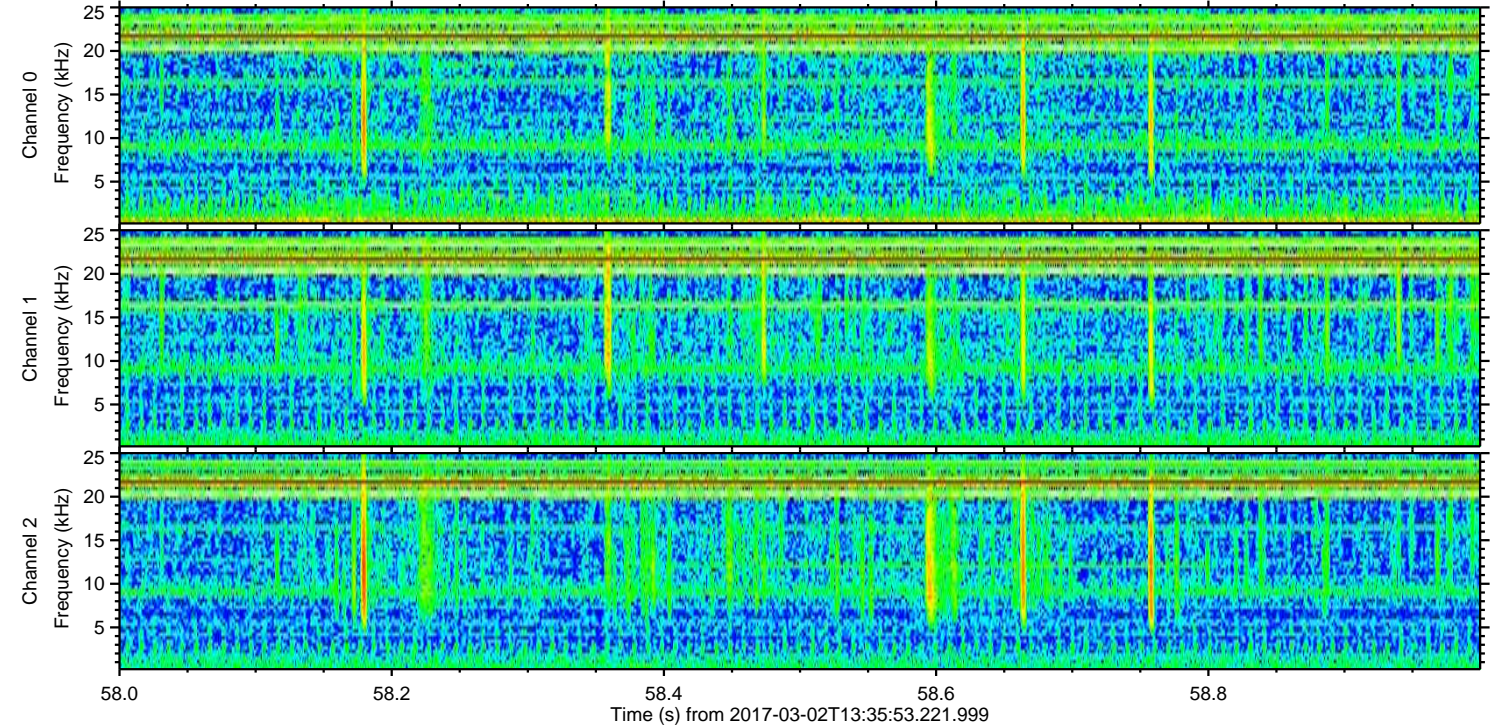
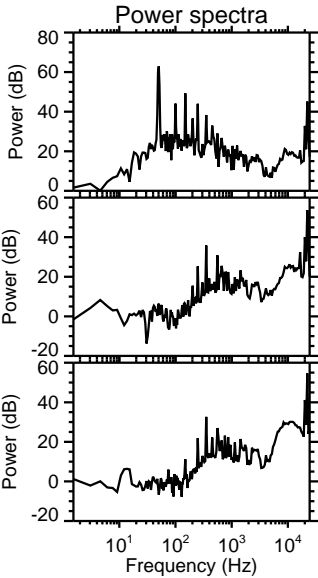
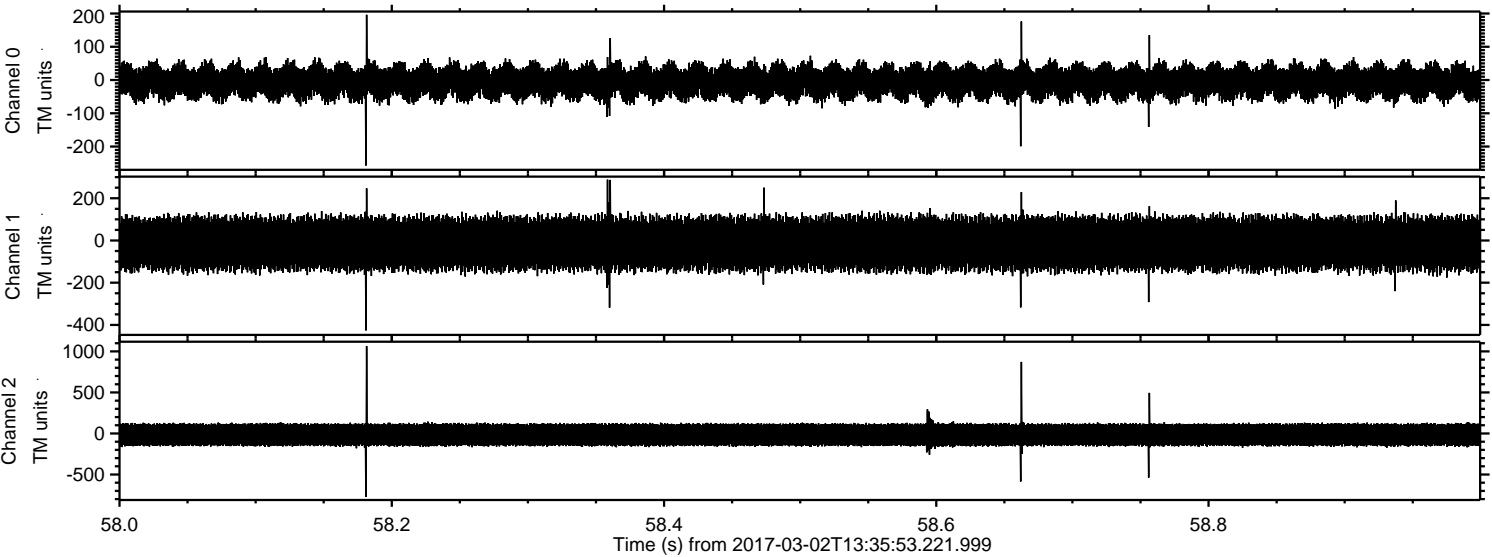
Processed Thu Mar 2 14:44:02 2017 by ELM ver.2012-10-06 from 001__elm20170302_133552__dat00.bin



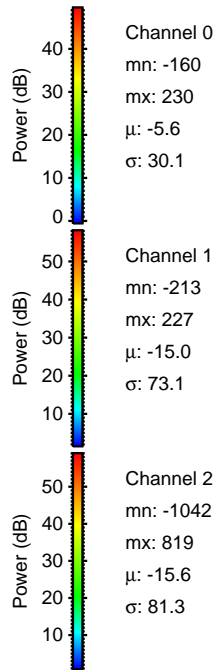
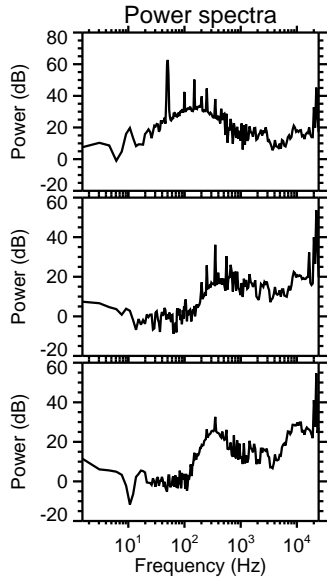
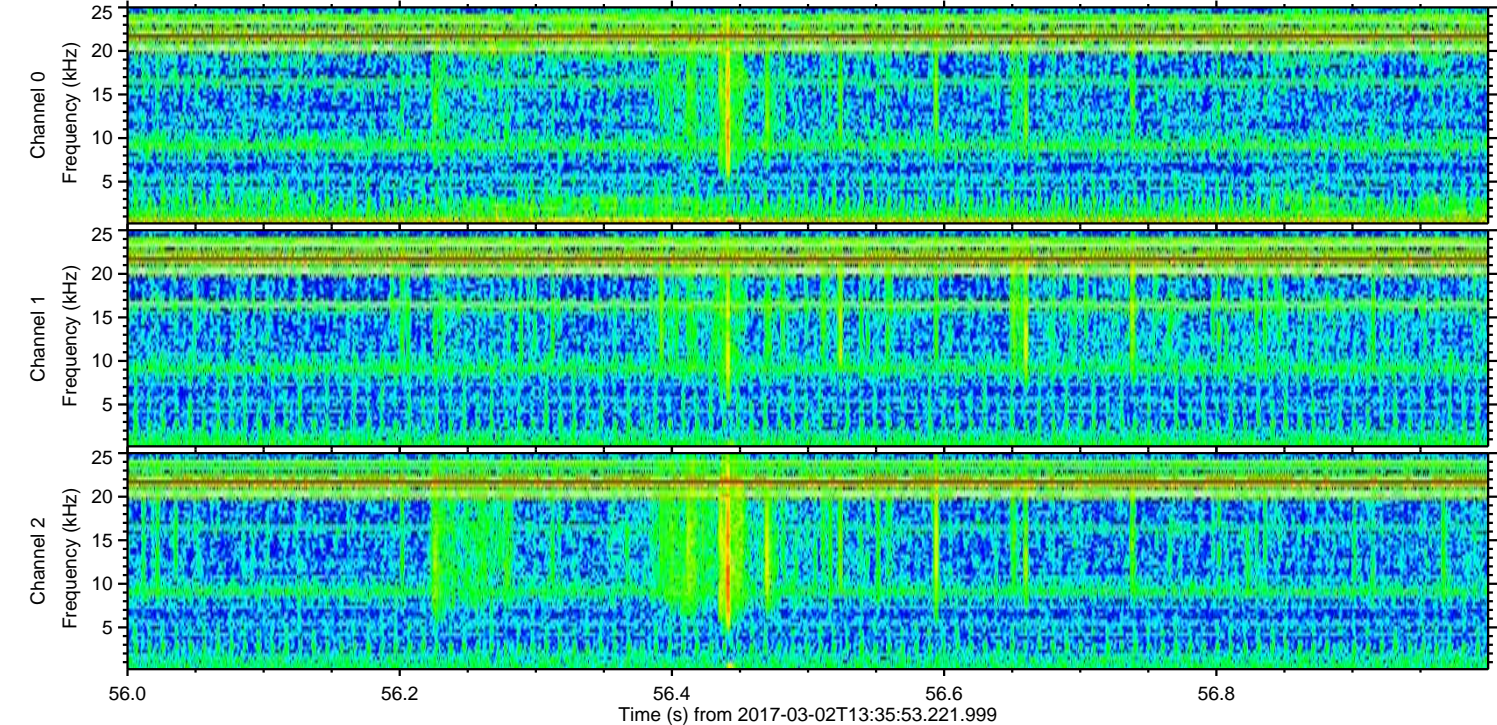
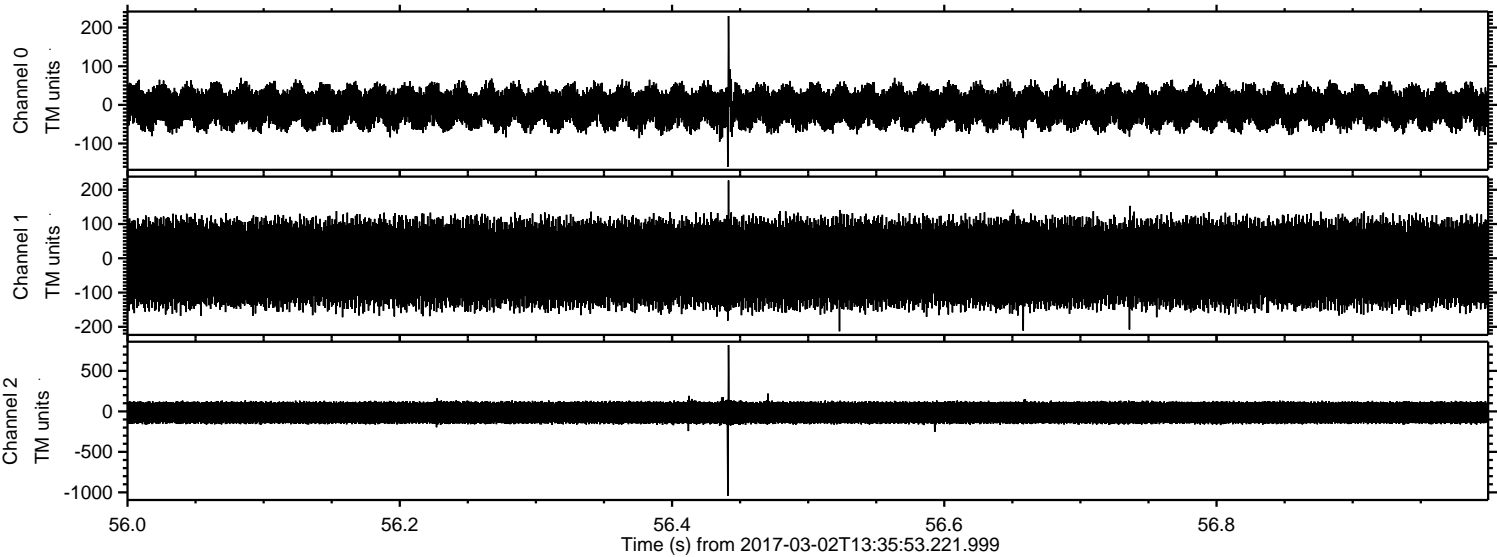
Processed Thu Mar 2 14:44:03 2017 by ELM ver.2012-10-06 from 001__elm20170302_133552__dat00.bin



Processed Thu Mar 2 14:44:04 2017 by ELM ver.2012-10-06 from 001__elm20170302_133552__dat00.bin



Processed Thu Mar 2 14:44:05 2017 by ELM ver.2012-10-06 from 001__elm20170302_133552__dat00.bin

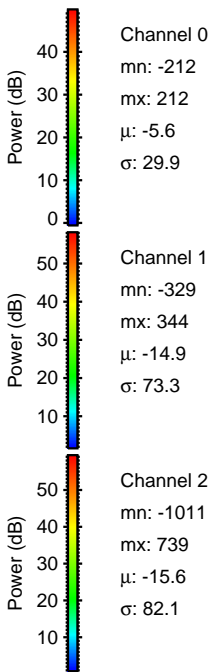
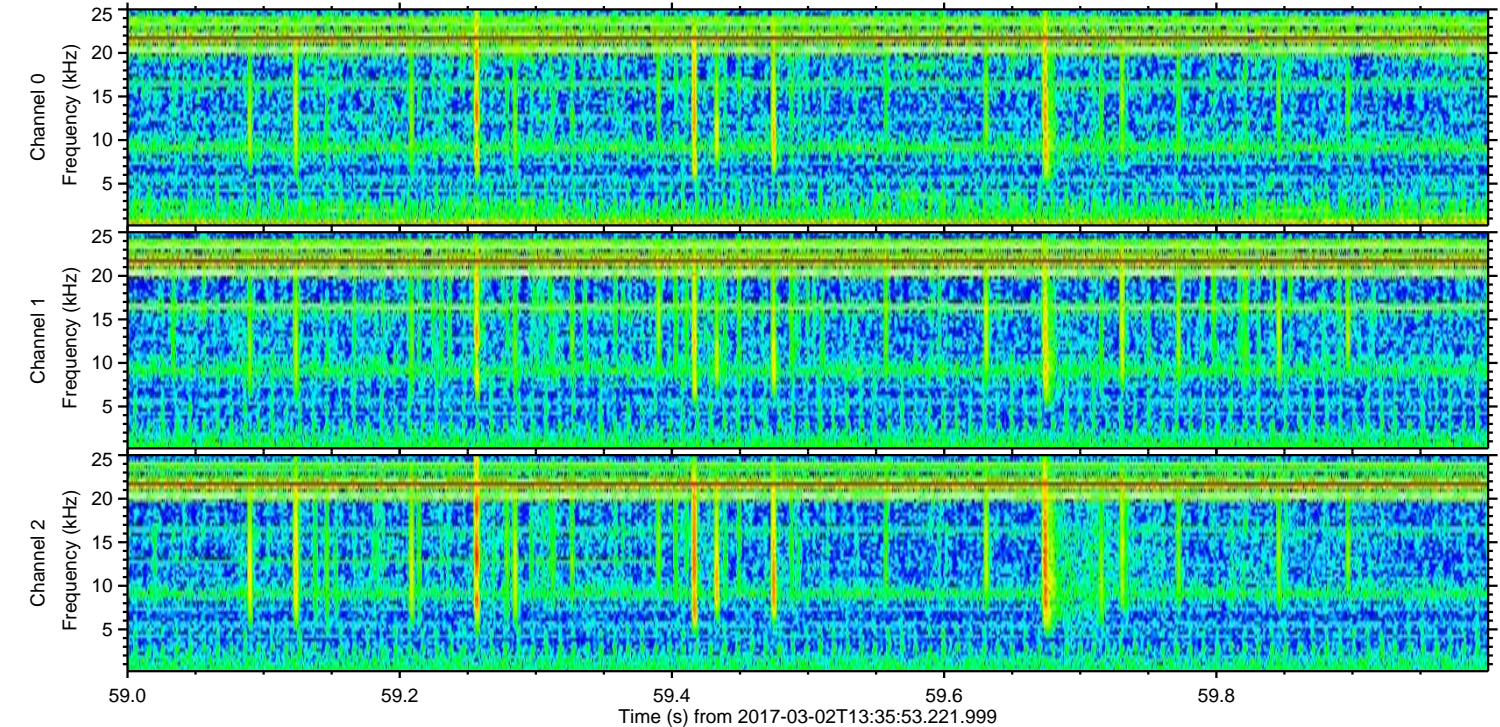
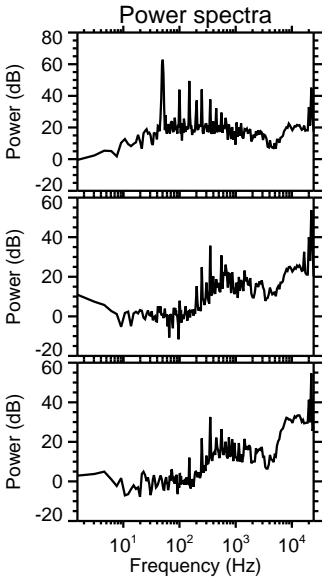
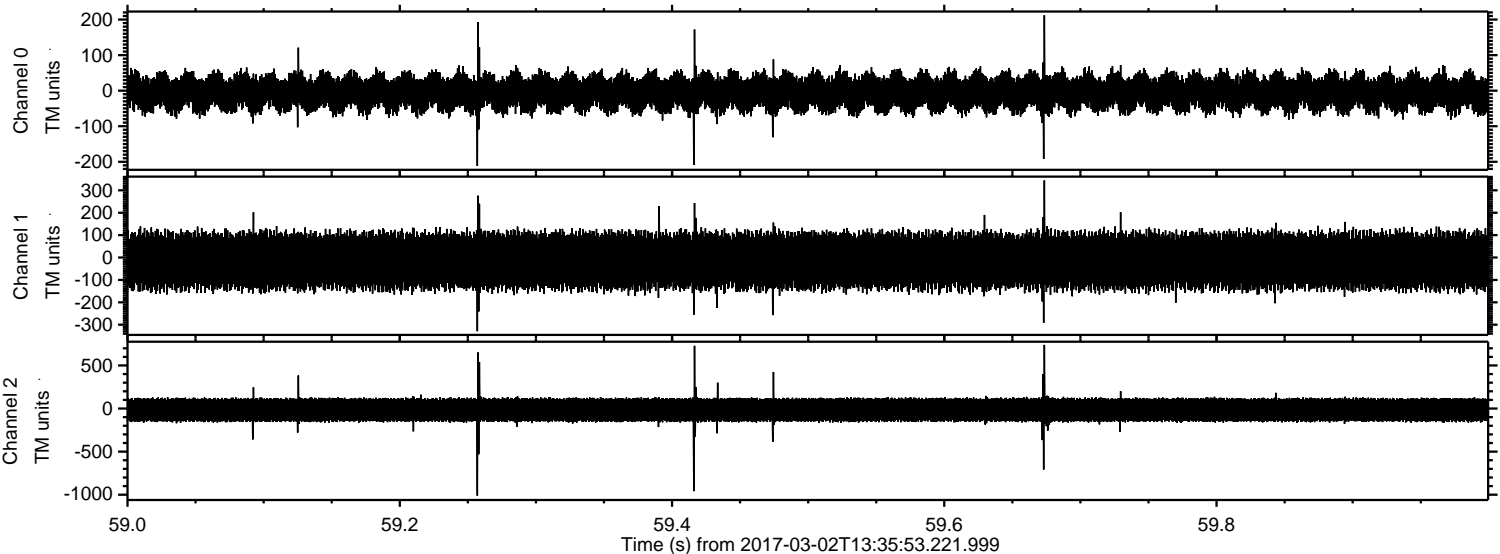


Channel 0
mn: -160
mx: 230
 μ : -5.6
 σ : 30.1

Channel 1
mn: -213
mx: 227
 μ : -15.0
 σ : 73.1

Channel 2
mn: -1042
mx: 819
 μ : -15.6
 σ : 81.3

Processed Thu Mar 2 14:44:06 2017 by ELM ver.2012-10-06 from 001__elm20170302_133552__dat00.bin



Processed Thu Mar 2 14:44:07 2017 by ELM ver.2012-10-06 from 001__elm20170302_133552__dat00.bin

