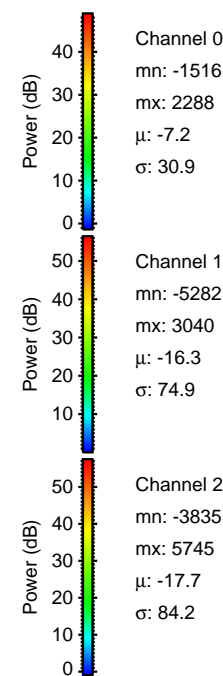
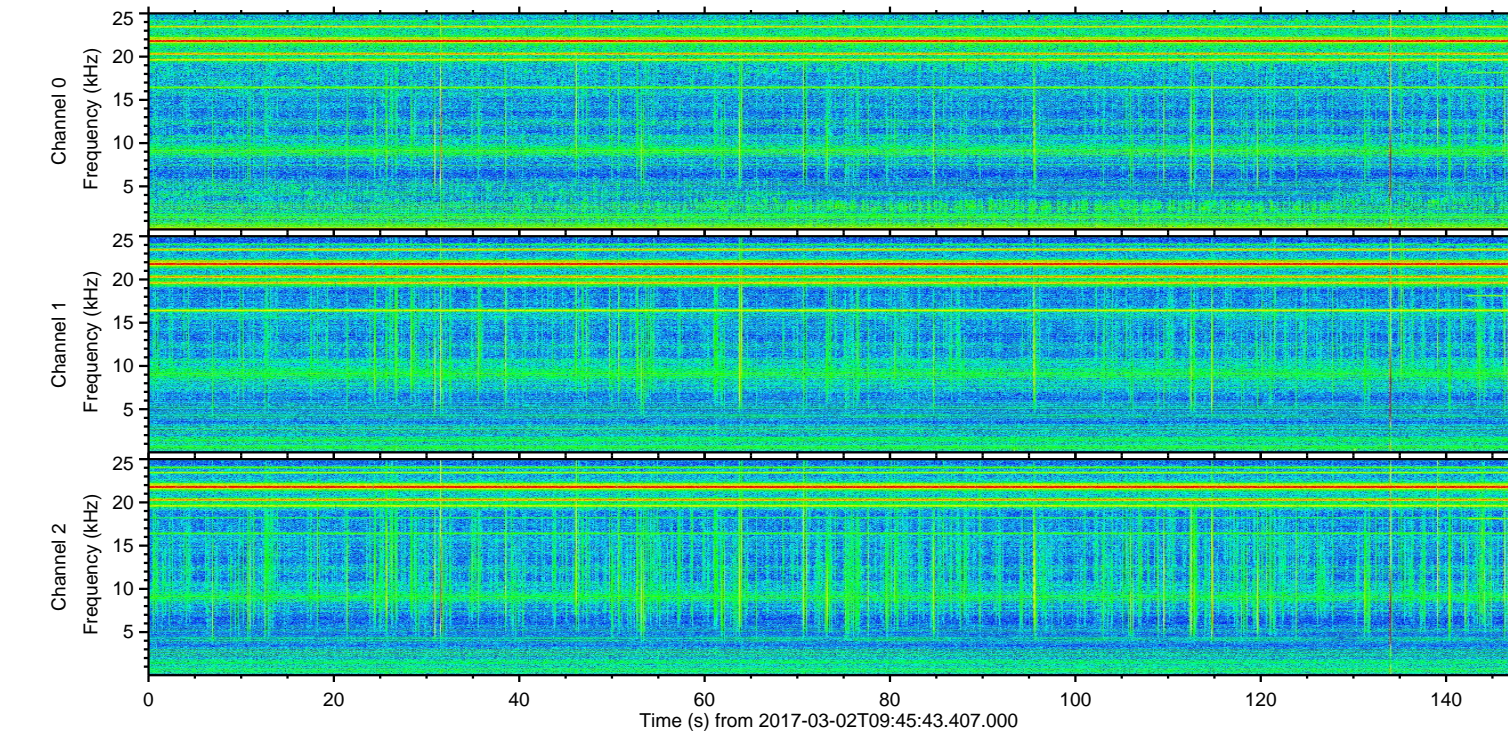
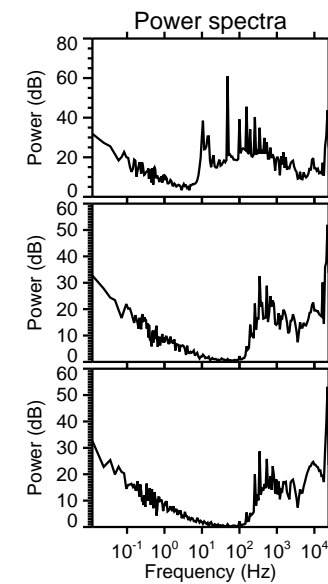
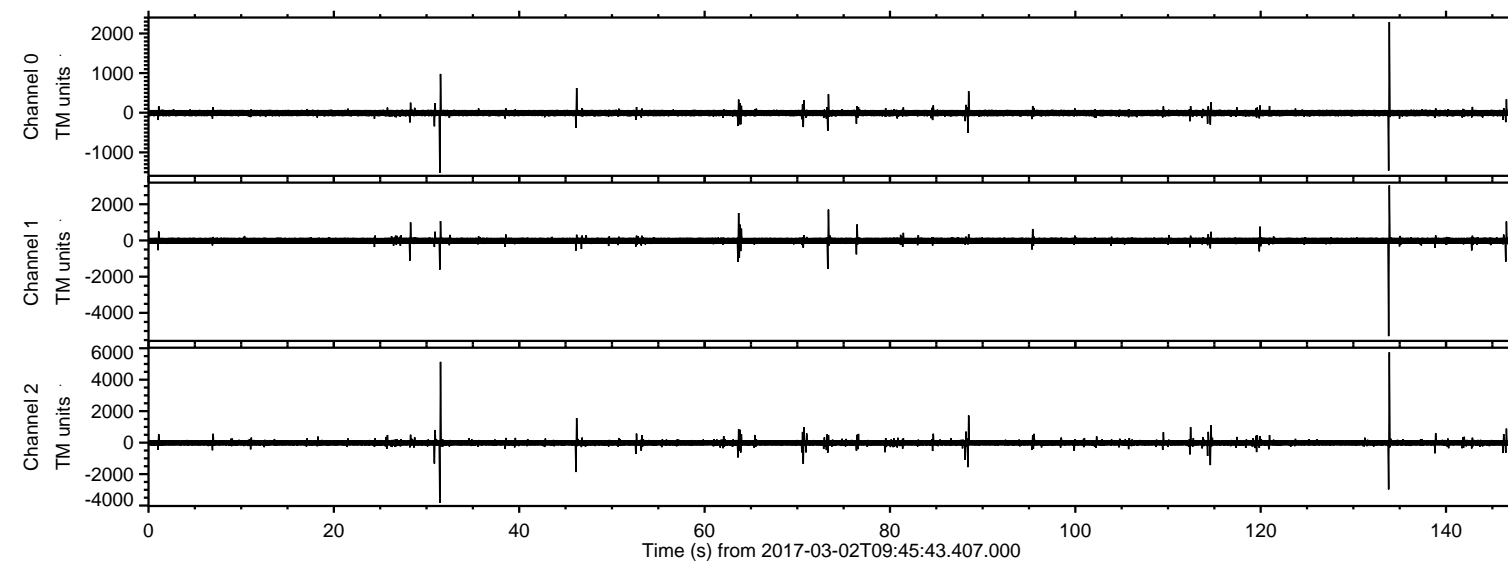


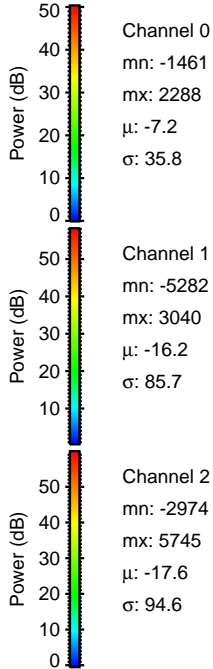
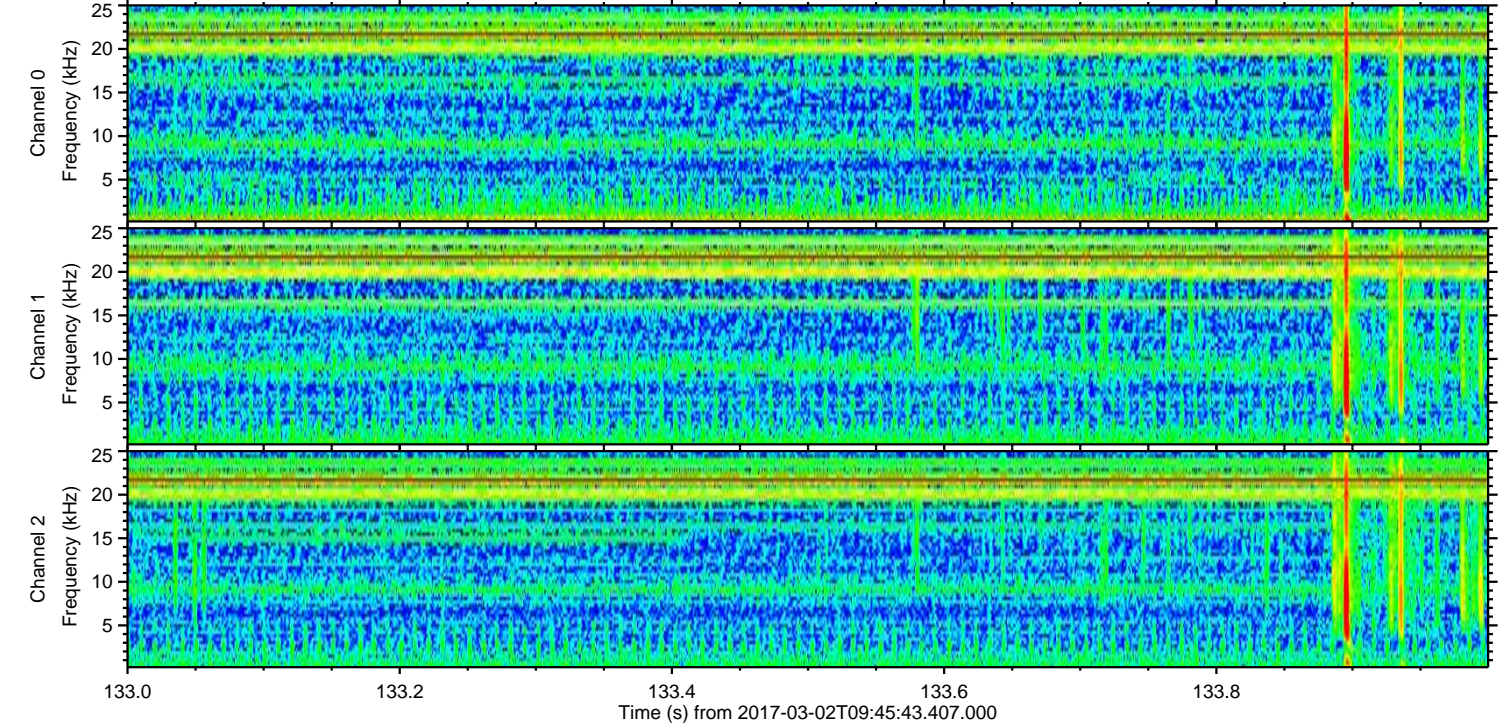
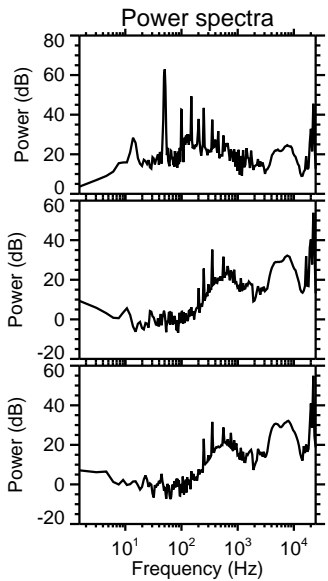
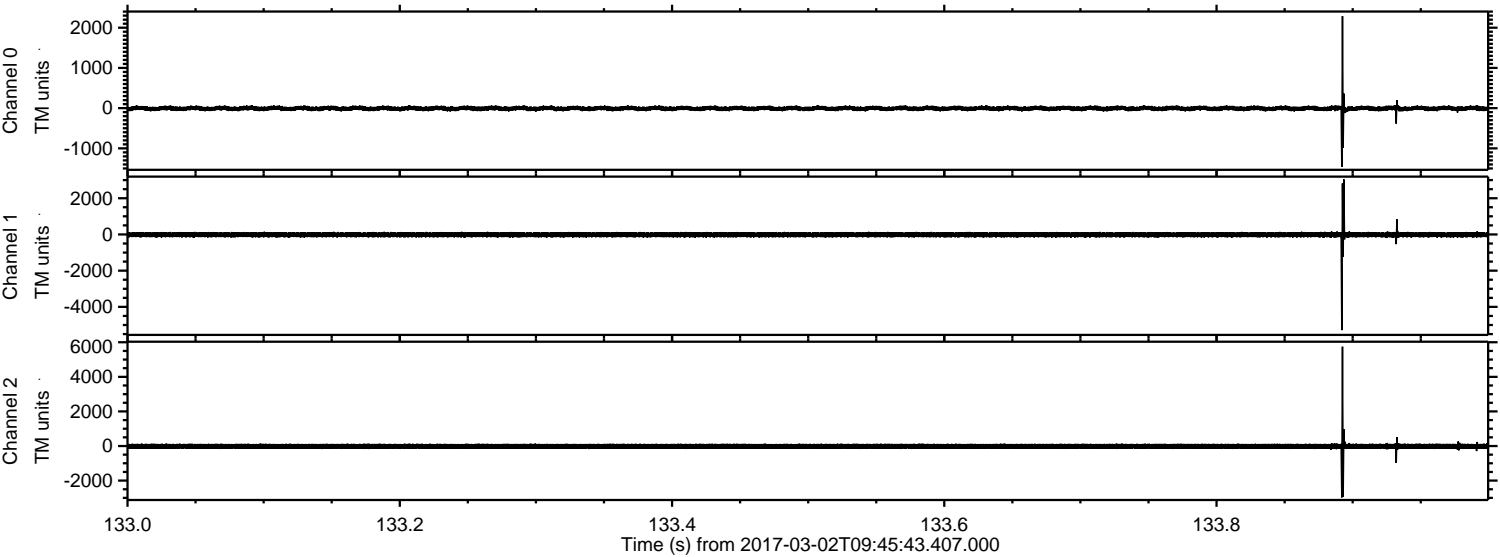
ELMAVAN 3D WAVEFORMS (Measured data sampled at 50 kHz) 51000 packets of 144 samples from 2017-03-02T09:45:43.407.000.

Processed Thu Mar 2 10:53:43 2017 by ELM ver.2012-10-06 from 001__elm20170302_094542__dat00.bin

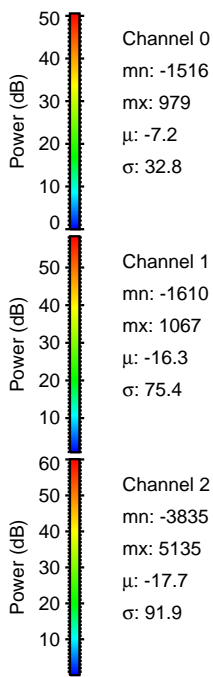
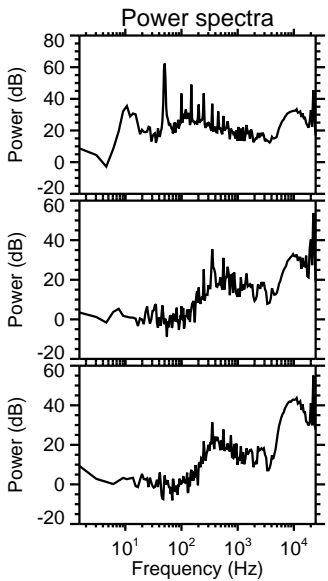
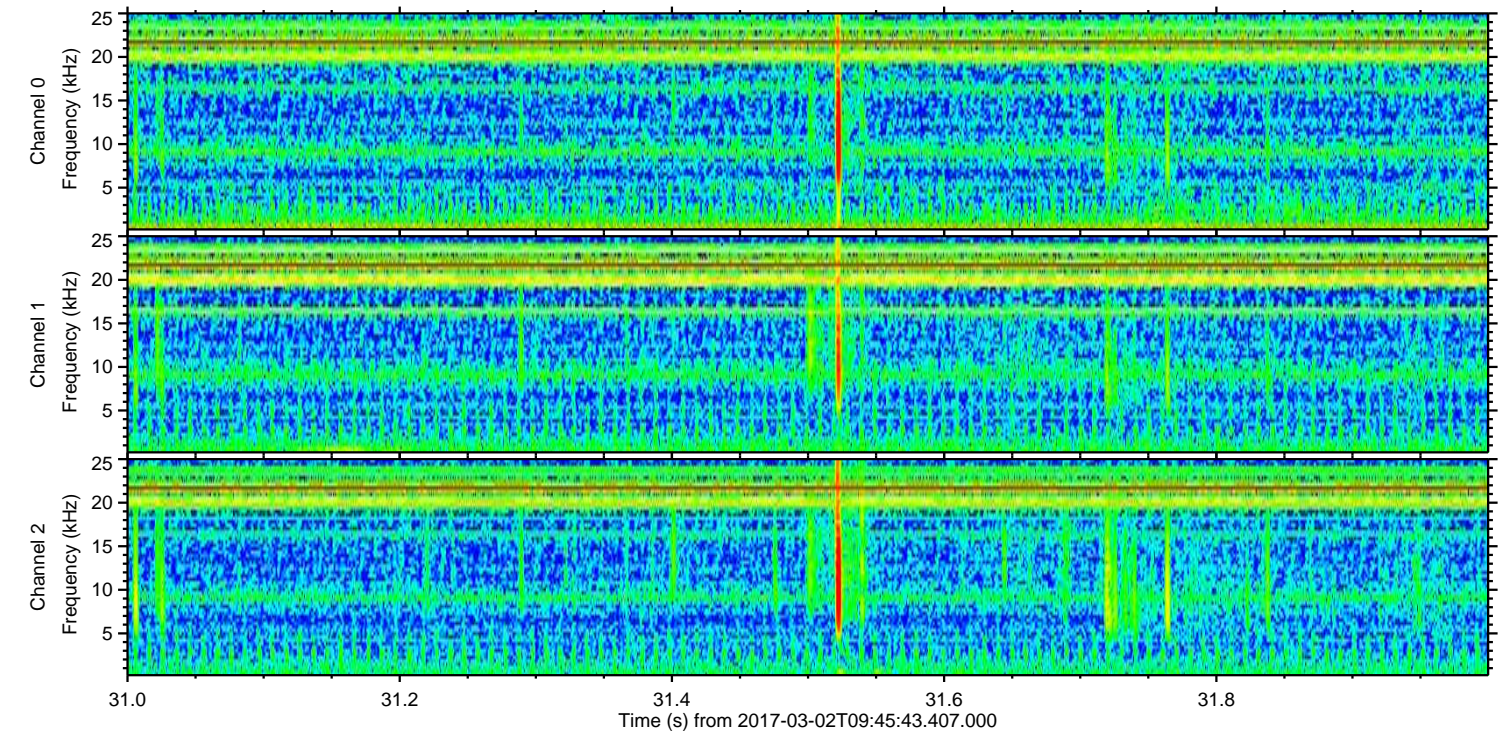
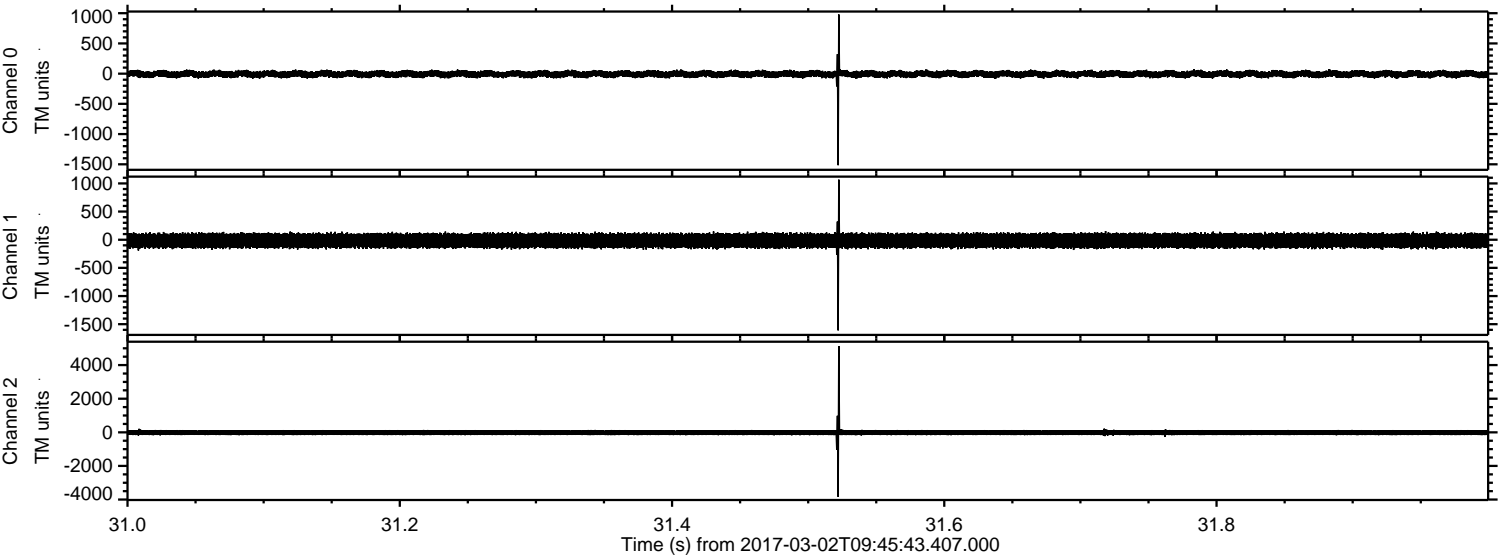


ELMAVAN 3D WAVEFORMS (Measured data sampled at 50 kHz) 51000 packets of 144 samples from 2017-03-02T09:45:43.407.000. Part 134/147

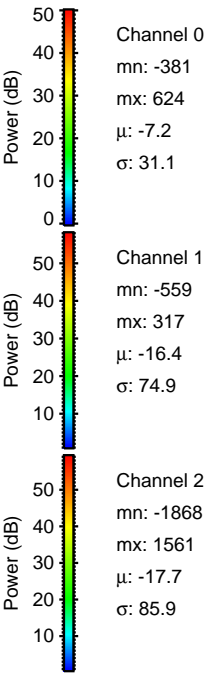
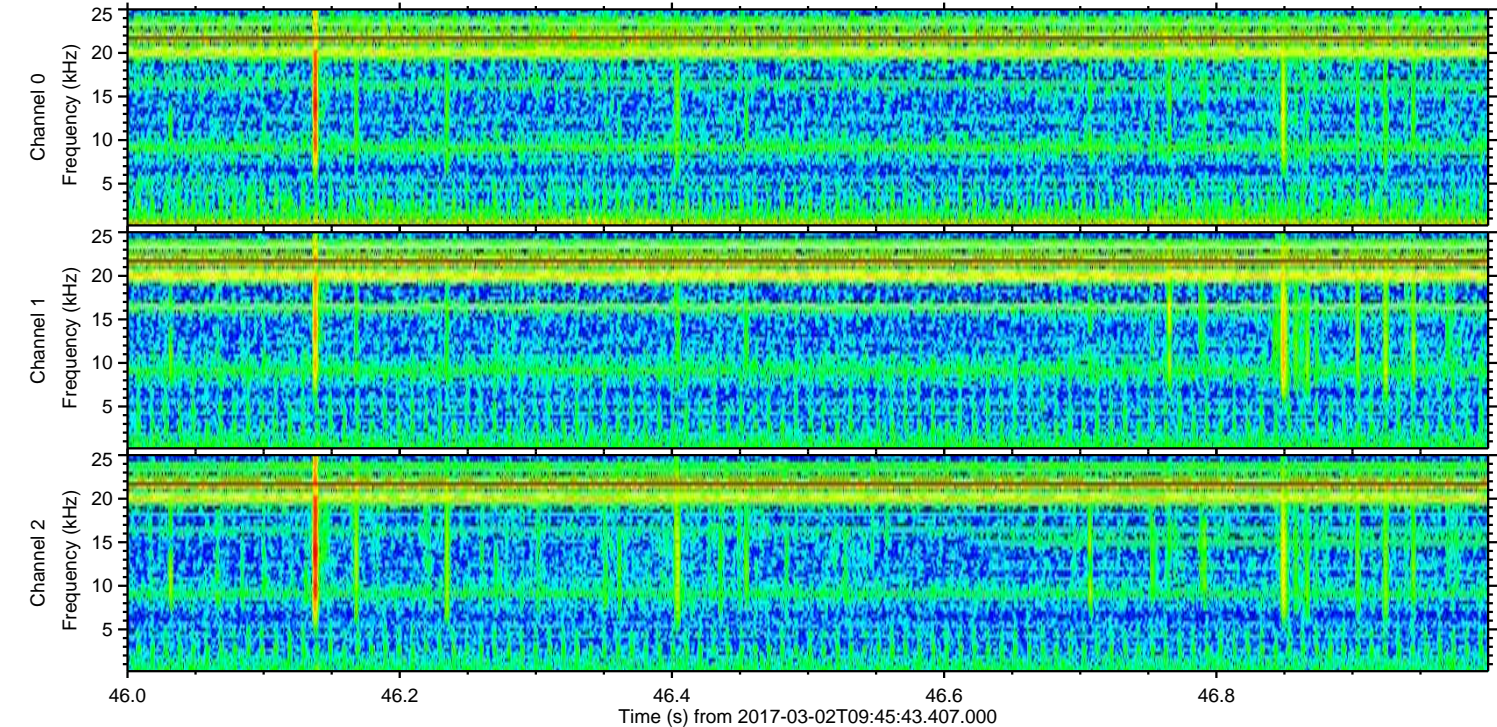
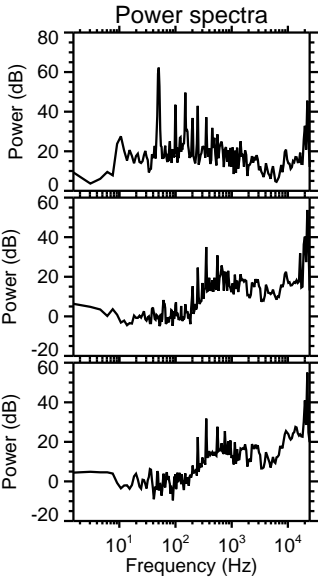
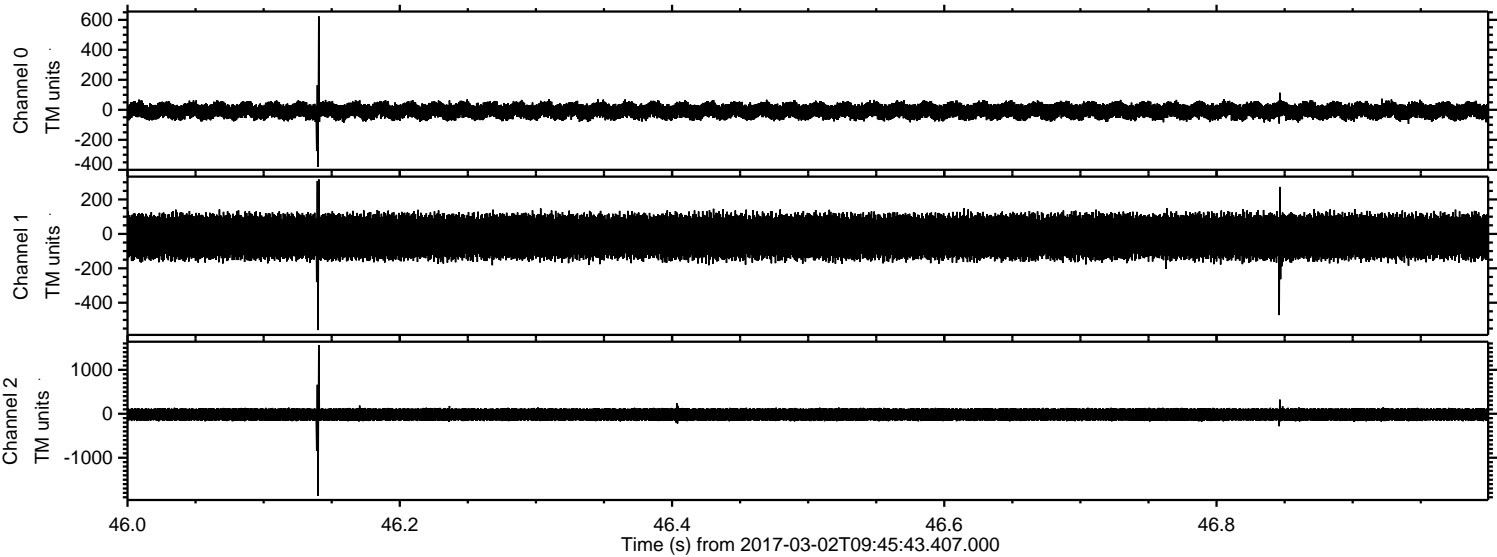
Processed Thu Mar 2 10:53:57 2017 by ELM ver.2012-10-06 from 001__elm20170302_094542__dat00.bin



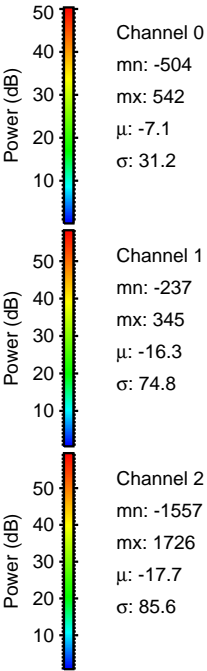
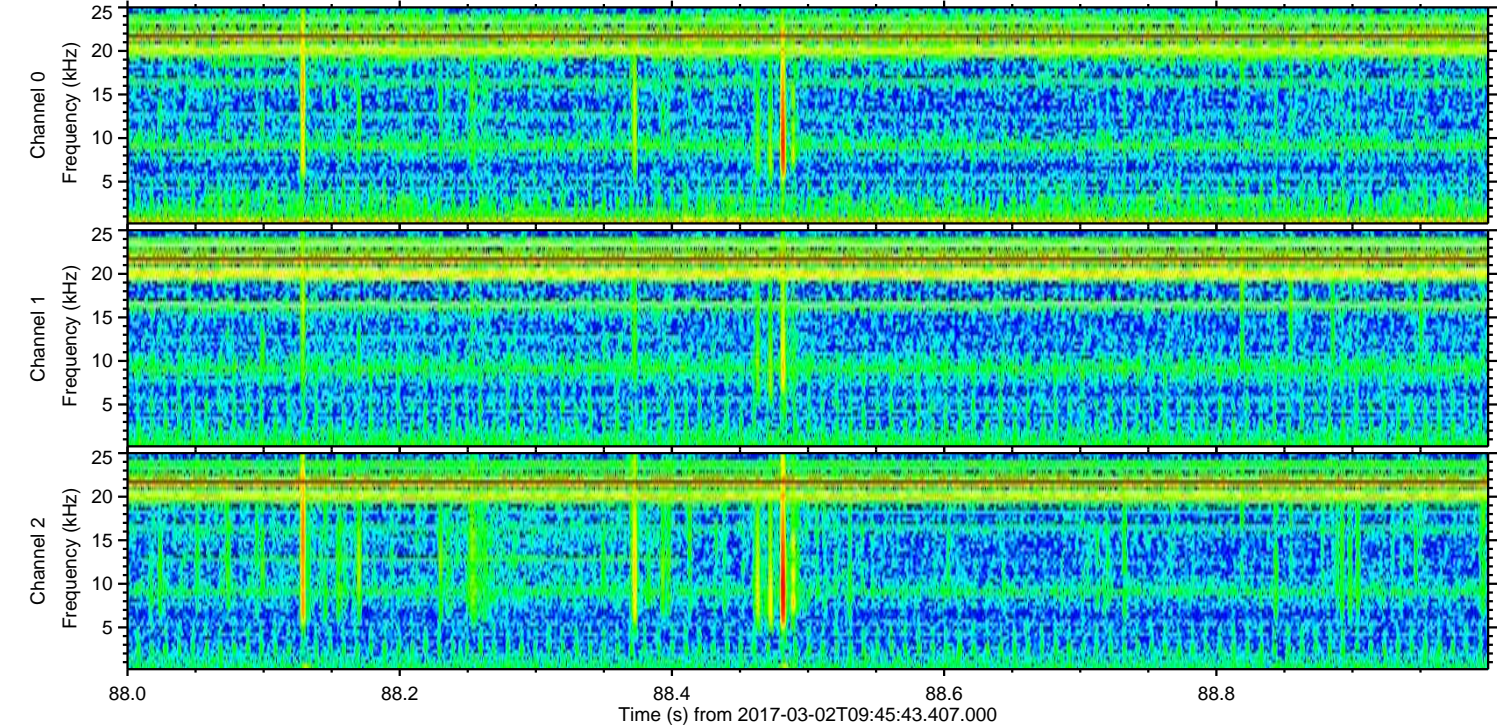
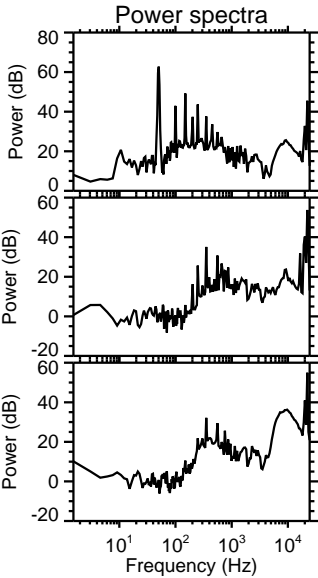
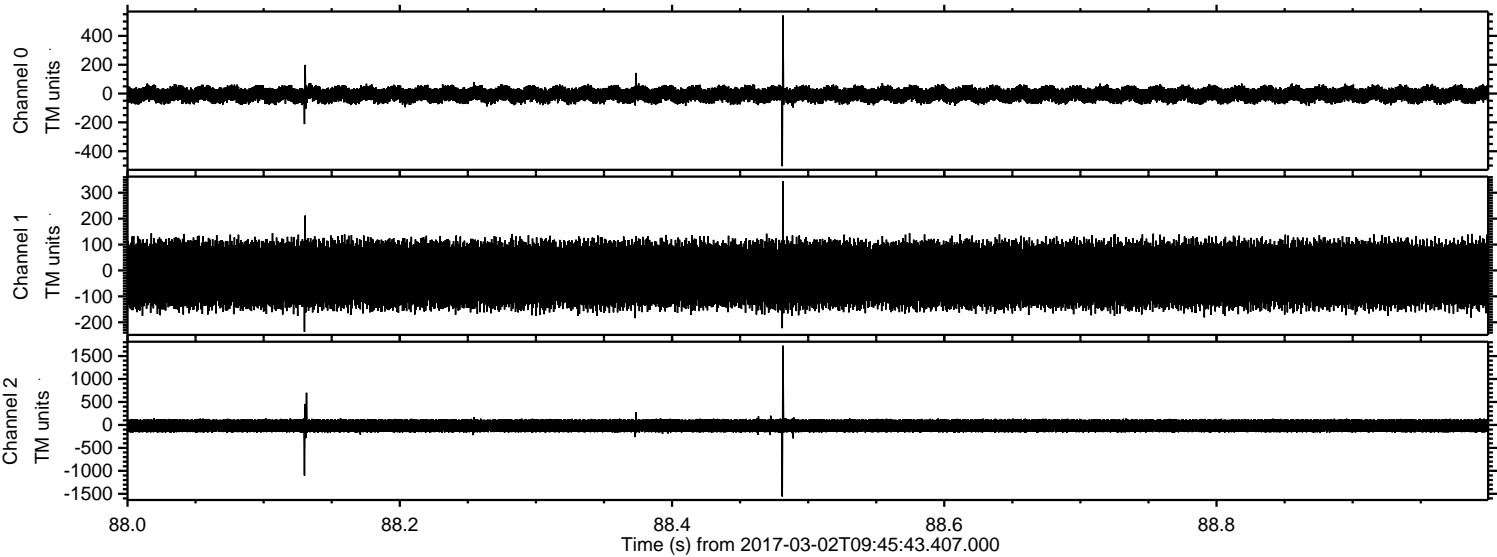
Processed Thu Mar 2 10:53:58 2017 by ELM ver.2012-10-06 from 001__elm20170302_094542__dat00.bin



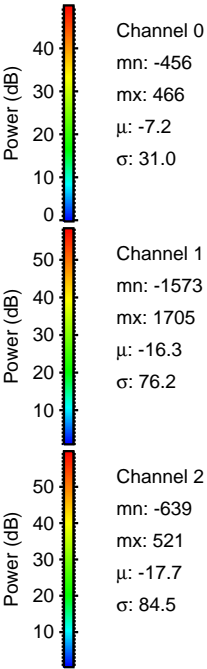
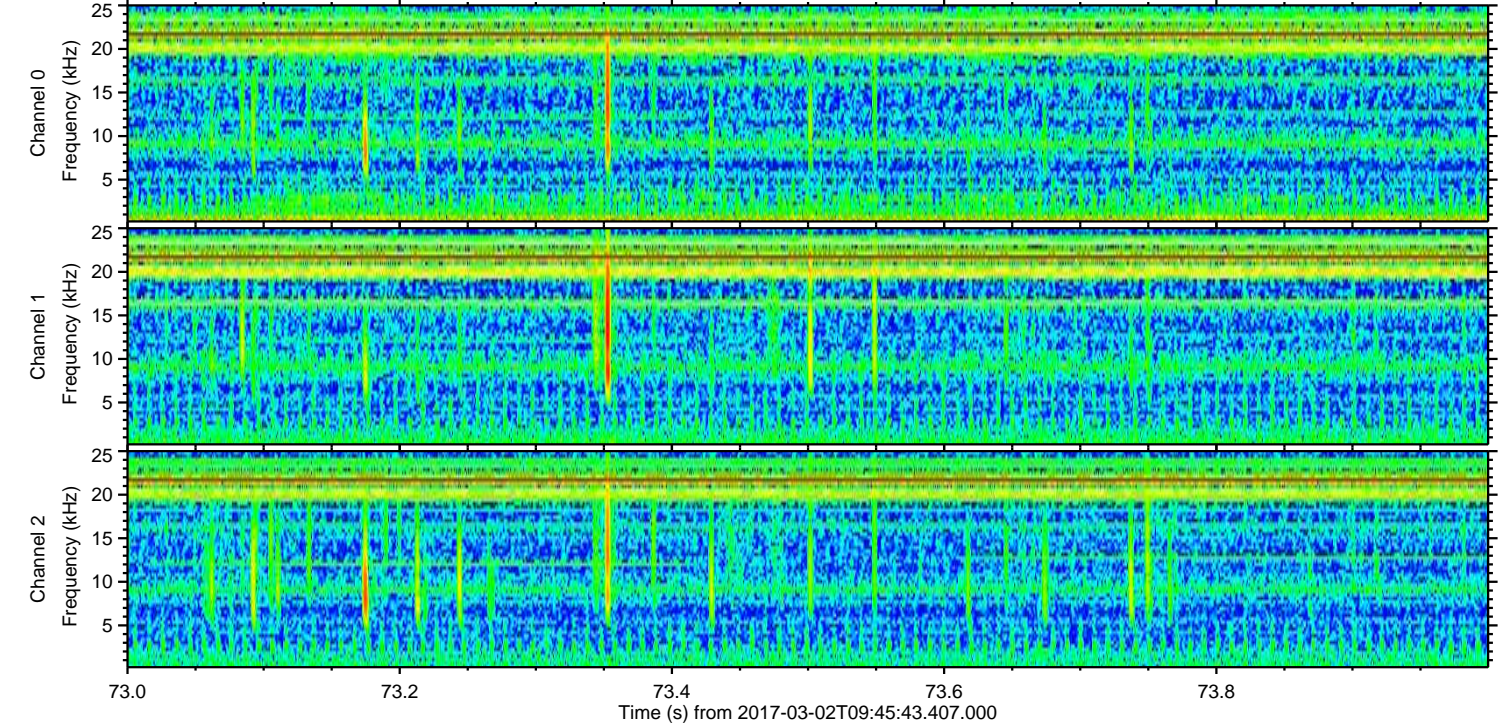
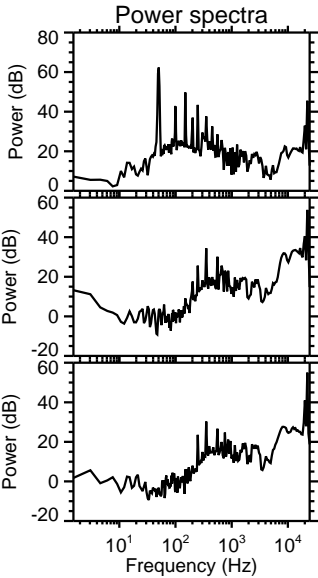
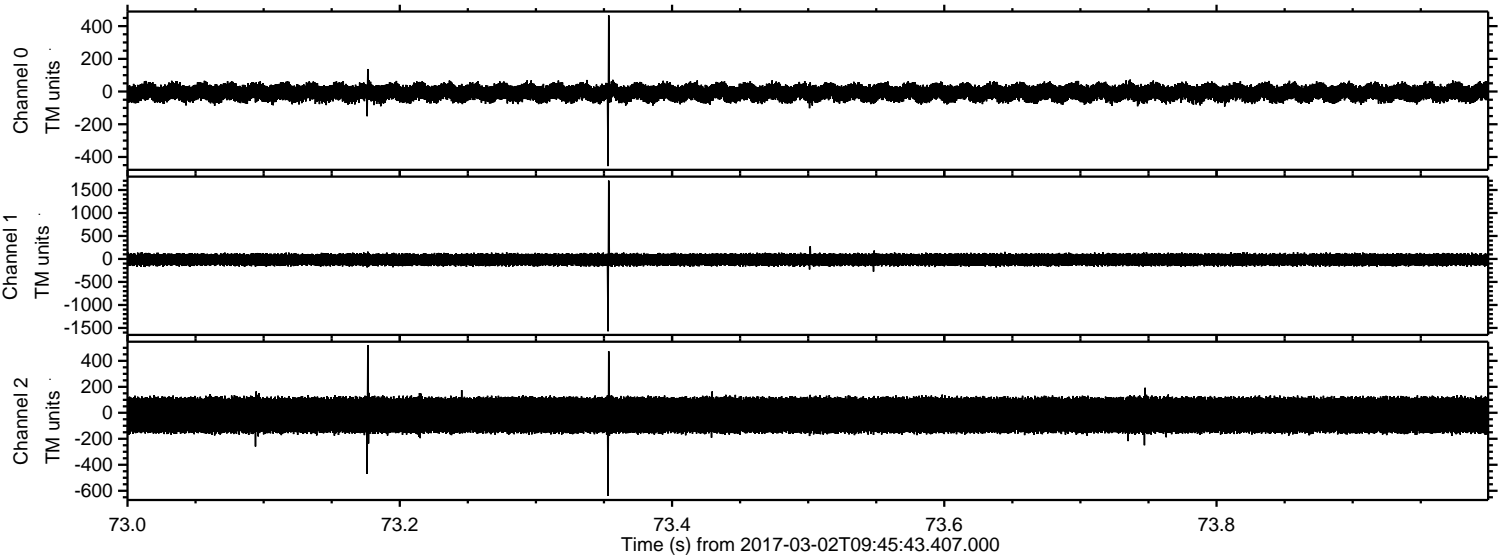
Processed Thu Mar 2 10:54:00 2017 by ELM ver.2012-10-06 from 001__elm20170302_094542__dat00.bin



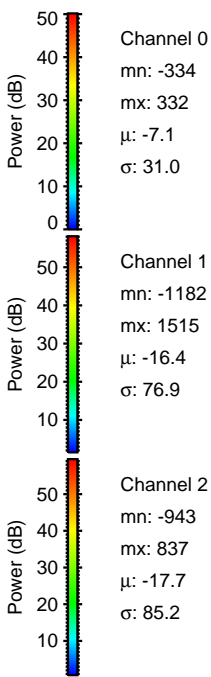
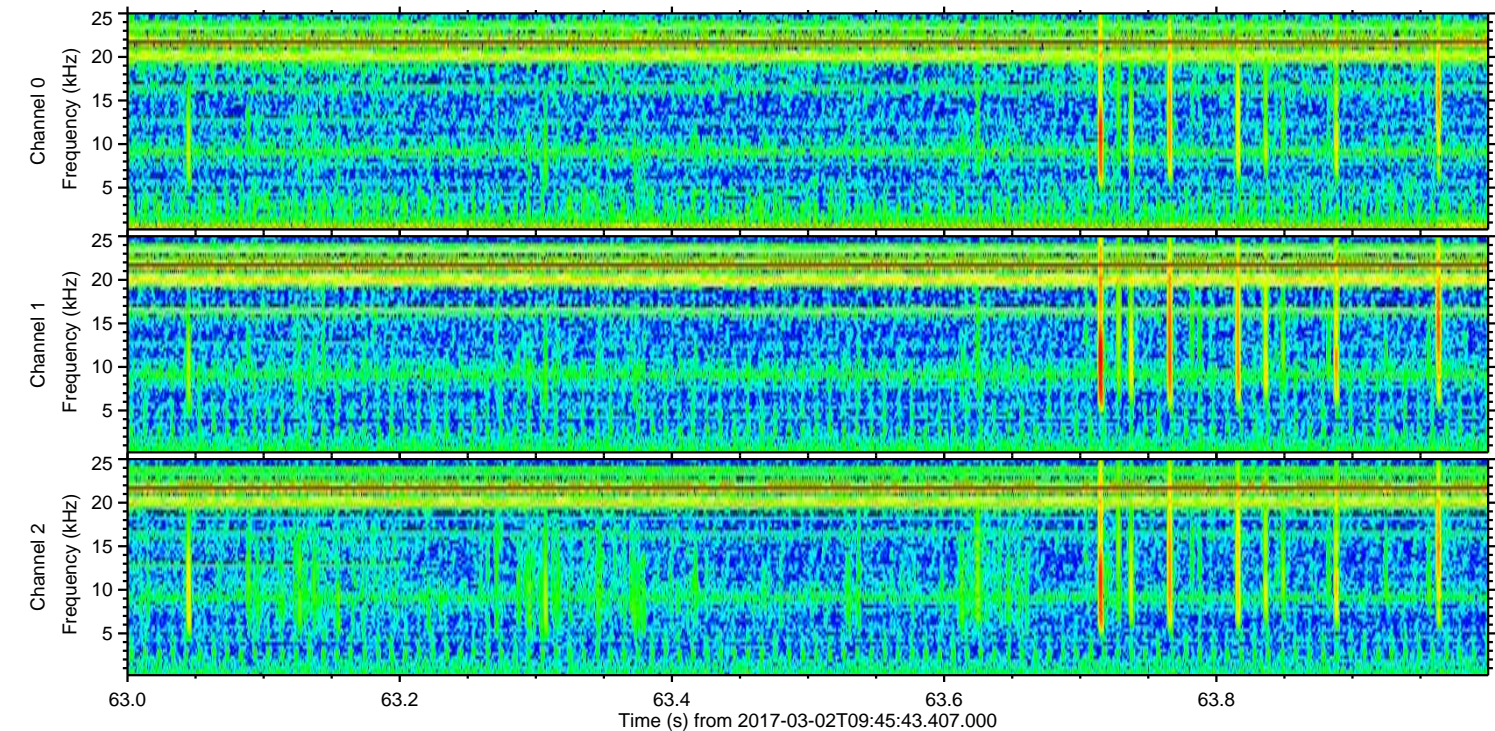
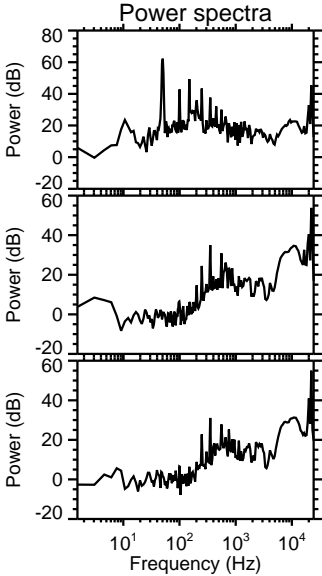
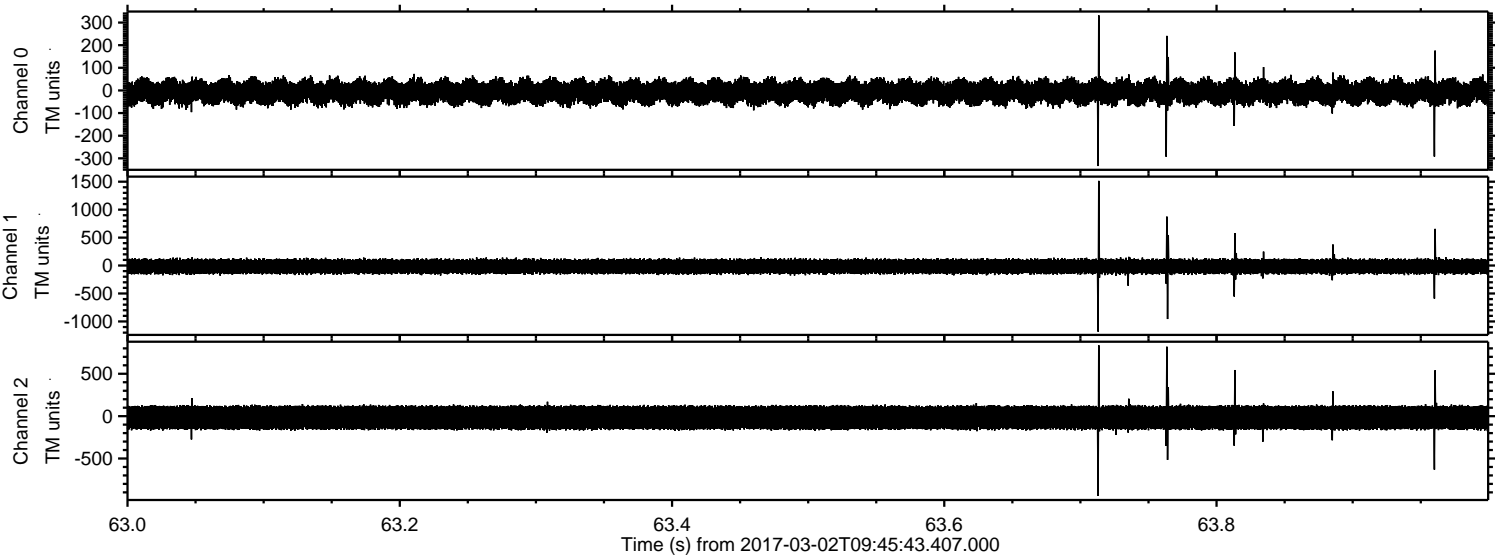
Processed Thu Mar 2 10:54:01 2017 by ELM ver.2012-10-06 from 001__elm20170302_094542__dat00.bin



Processed Thu Mar 2 10:54:03 2017 by ELM ver.2012-10-06 from 001__elm20170302_094542__dat00.bin

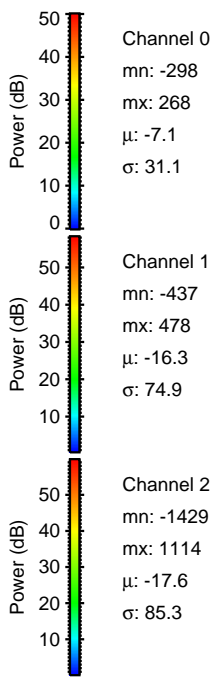
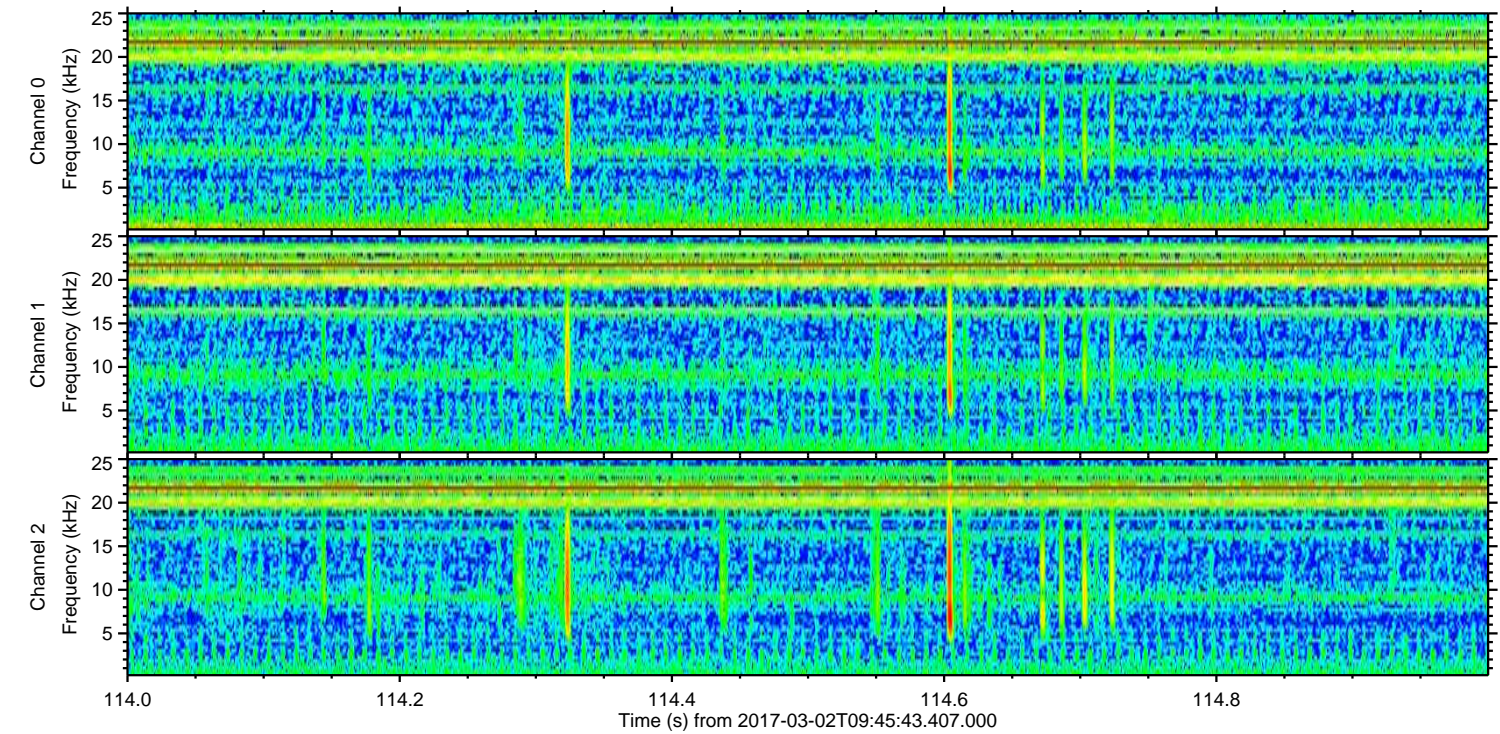
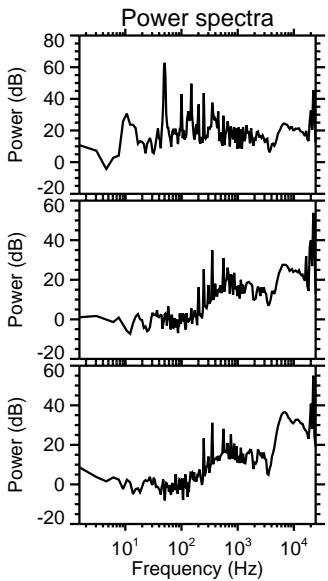
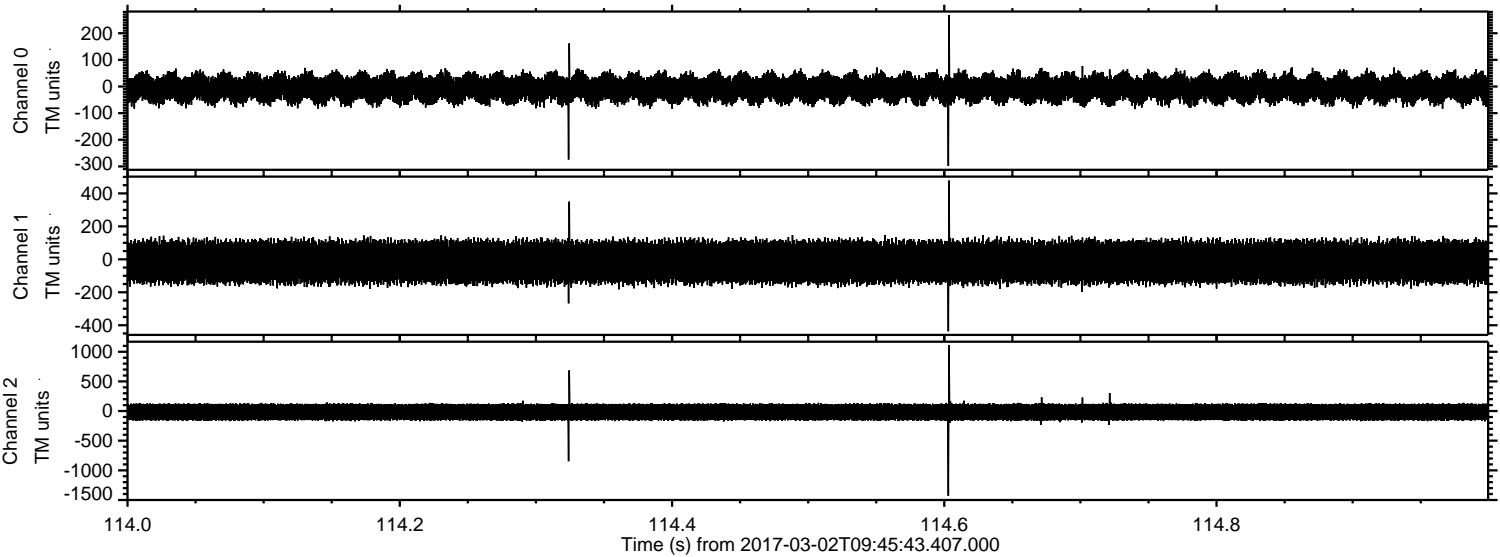


Processed Thu Mar 2 10:54:05 2017 by ELM ver.2012-10-06 from 001__elm20170302_094542__dat00.bin

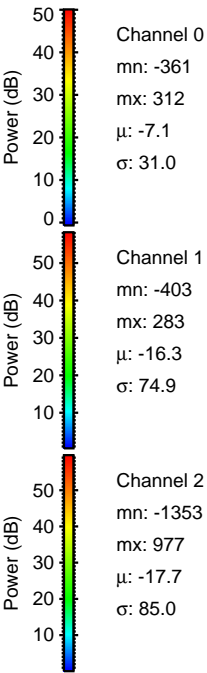
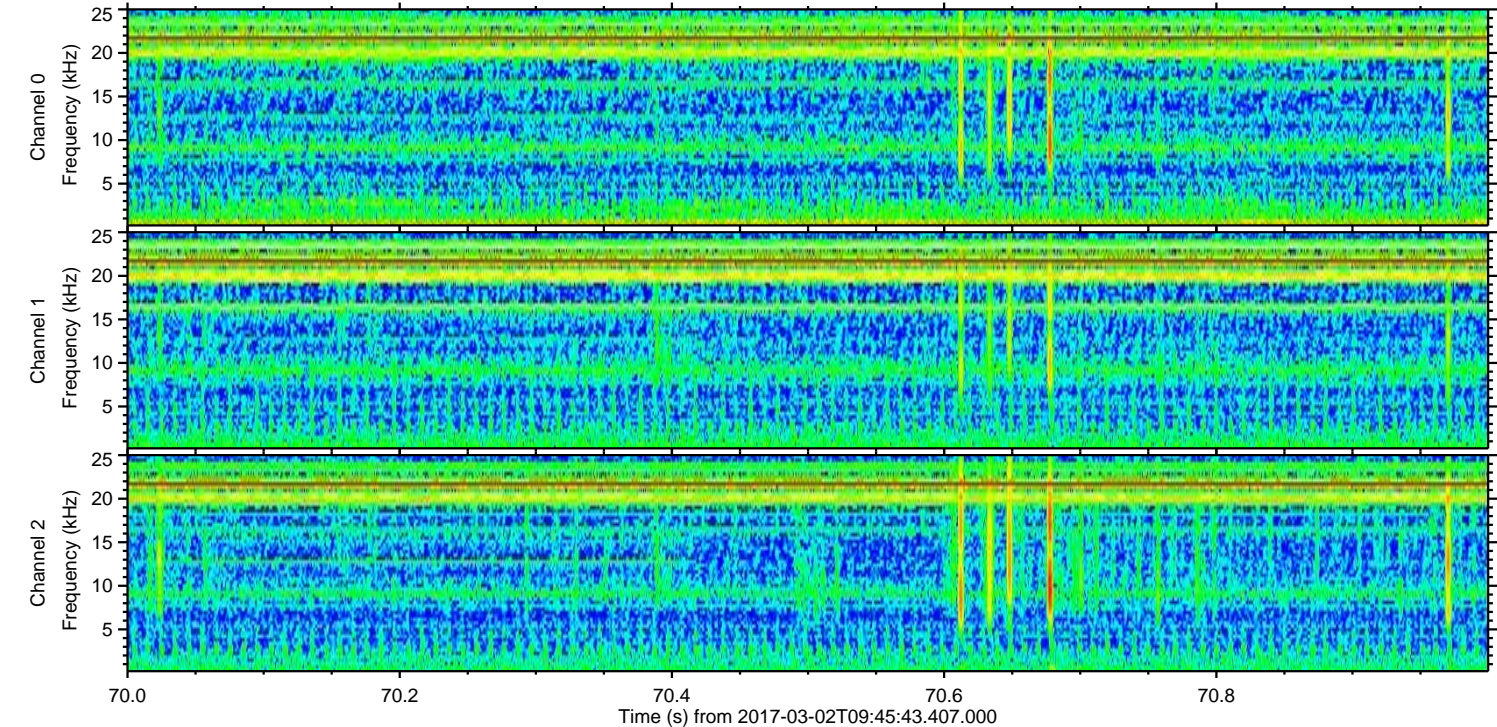
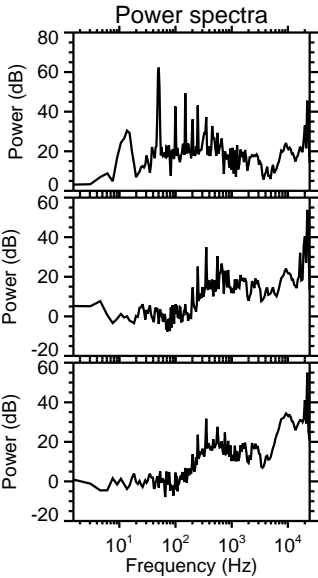
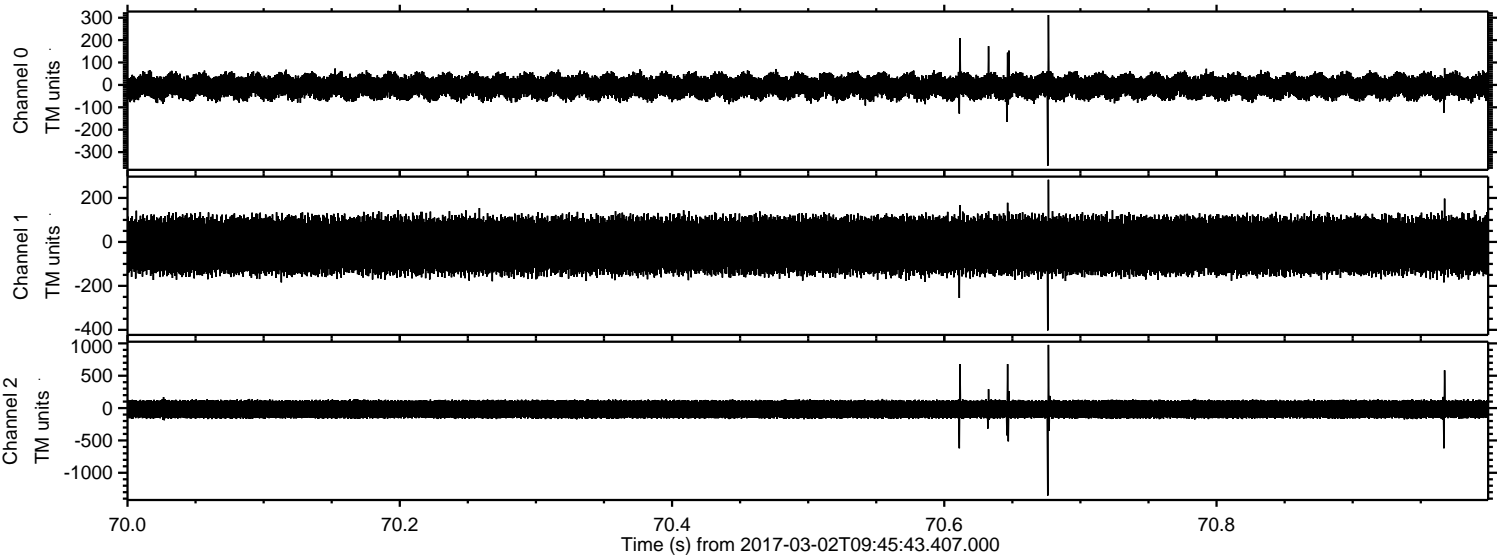


ELMAVAN 3D WAVEFORMS (Measured data sampled at 50 kHz) 51000 packets of 144 samples from 2017-03-02T09:45:43.407.000. Part 115/147

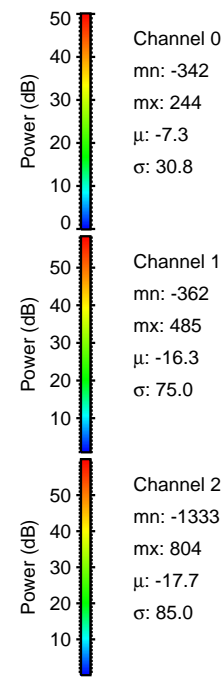
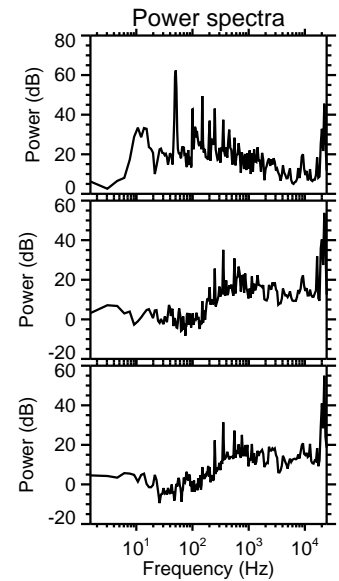
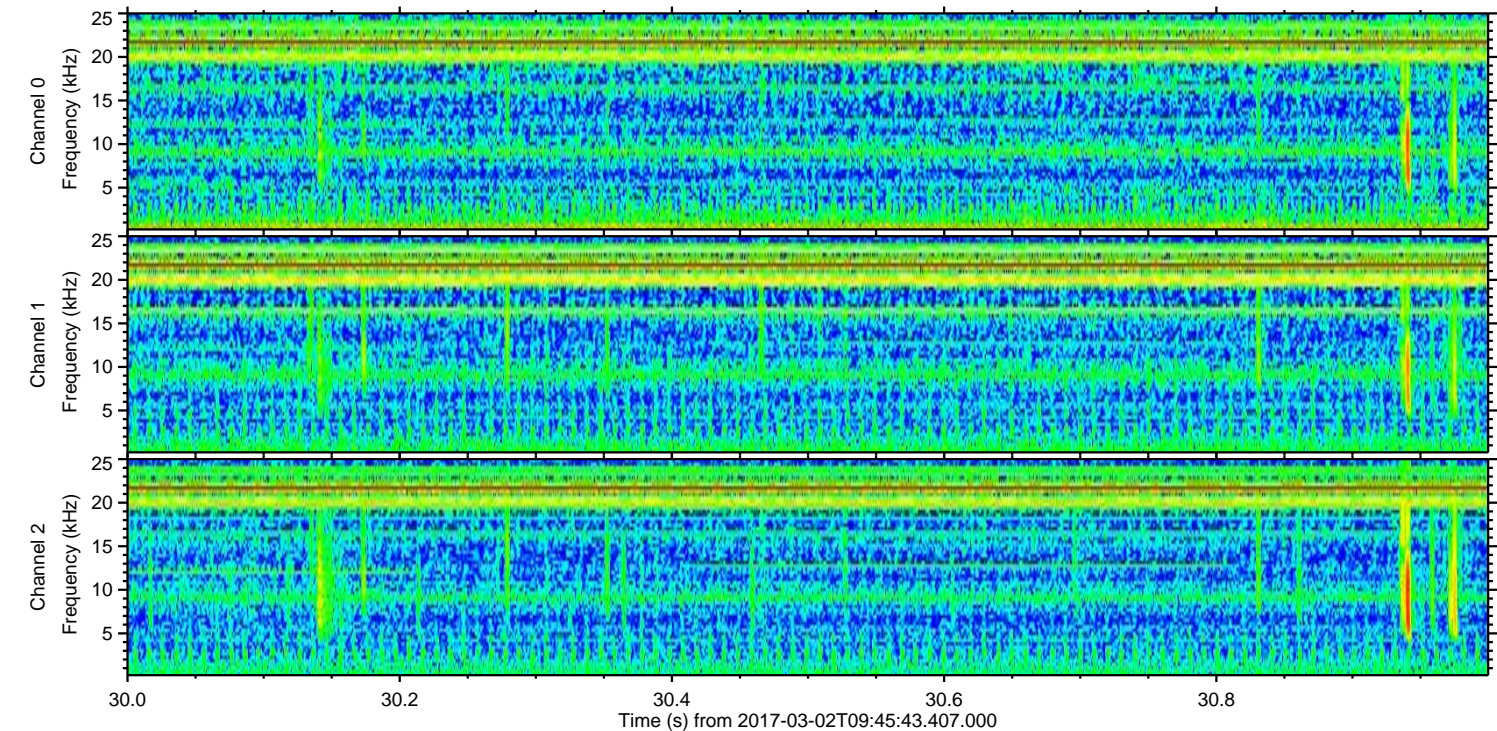
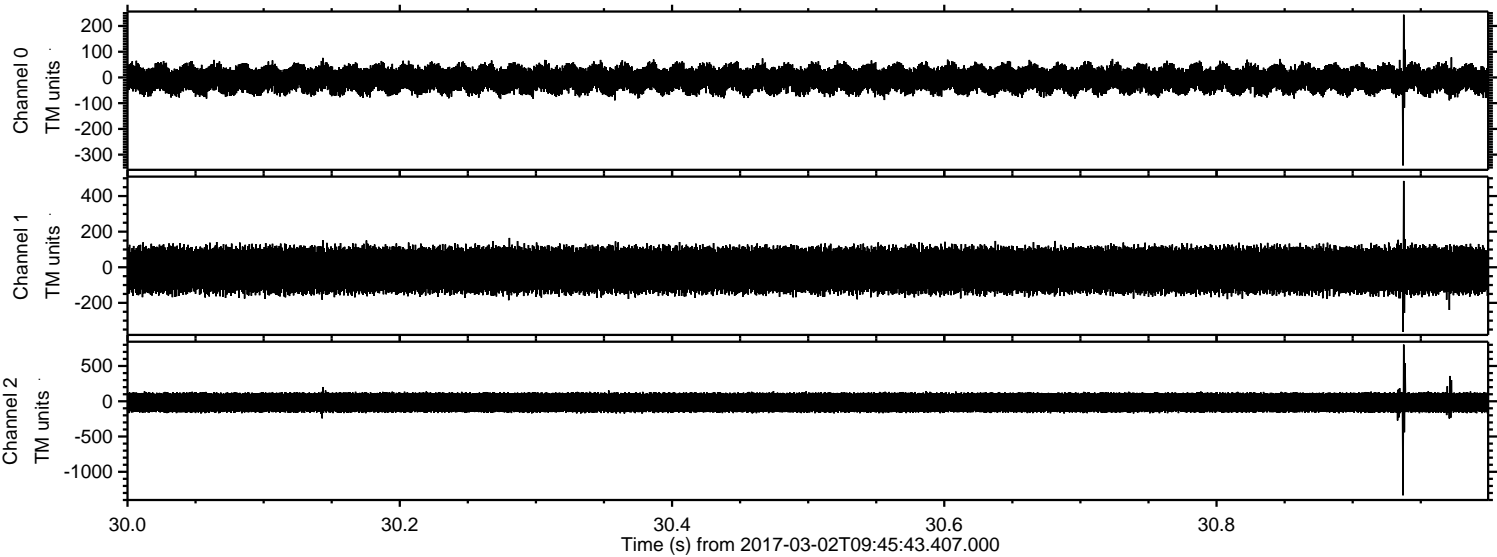
Processed Thu Mar 2 10:54:06 2017 by ELM ver.2012-10-06 from 001__elm20170302_094542__dat00.bin



Processed Thu Mar 2 10:54:07 2017 by ELM ver.2012-10-06 from 001__elm20170302_094542__dat00.bin



Processed Thu Mar 2 10:54:08 2017 by ELM ver.2012-10-06 from 001__elm20170302_094542__dat00.bin



Channel 0
mn: -342
mx: 244
 μ : -7.3
 σ : 30.8

Channel 1
mn: -362
mx: 485
 μ : -16.3
 σ : 75.0

Channel 2
mn: -1333
mx: 804
 μ : -17.7
 σ : 85.0

