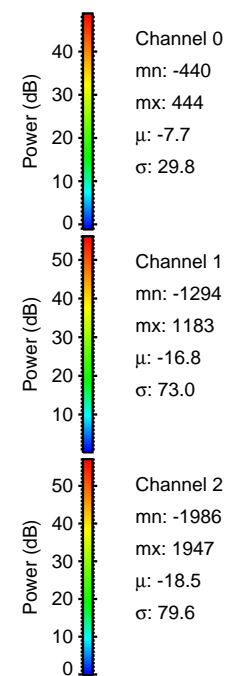
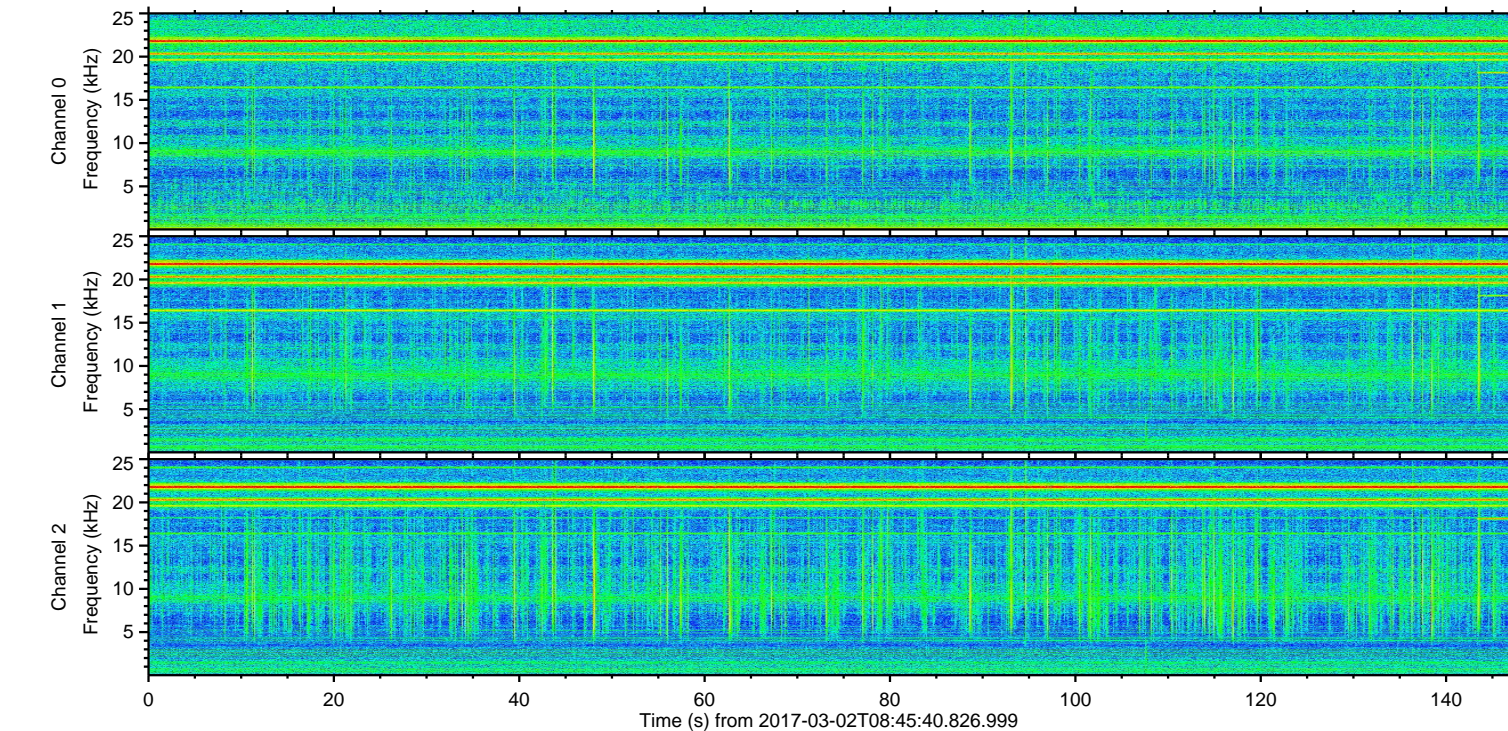
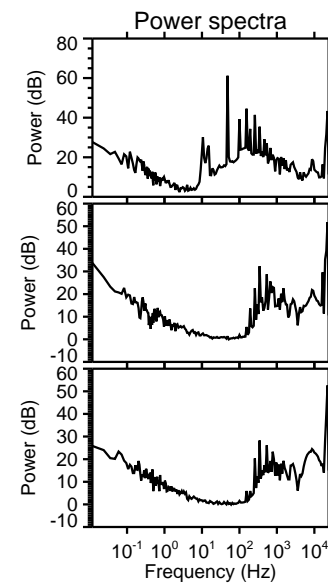
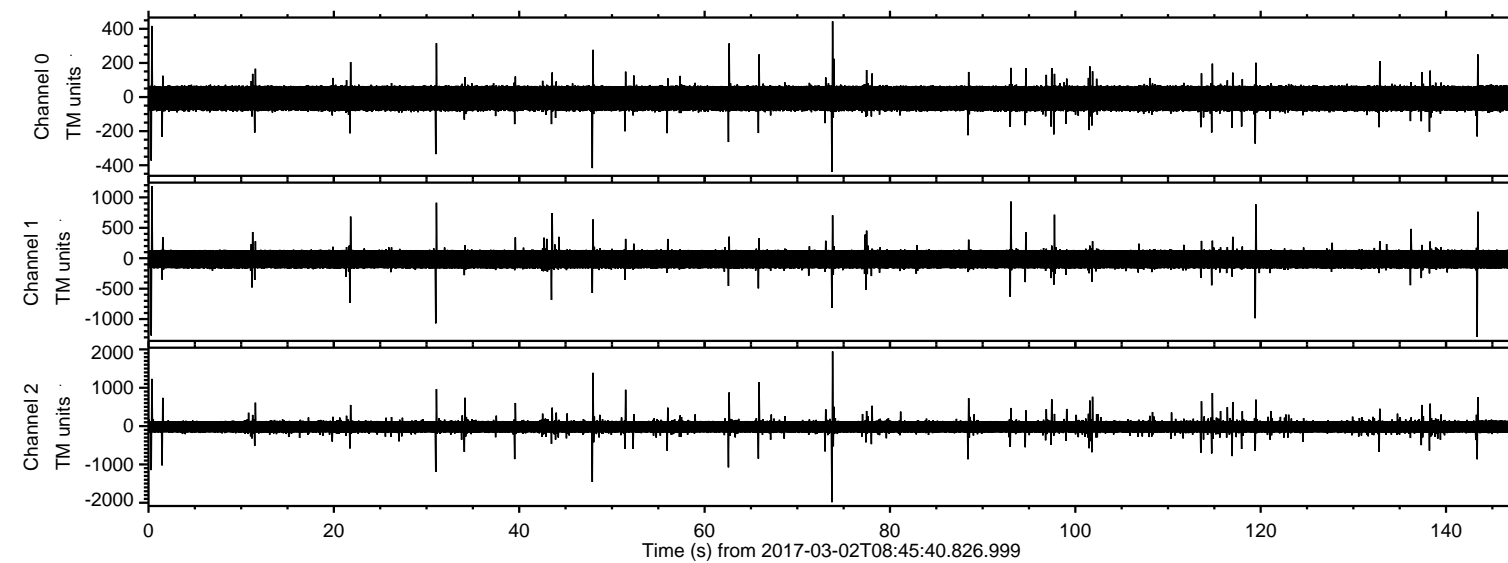
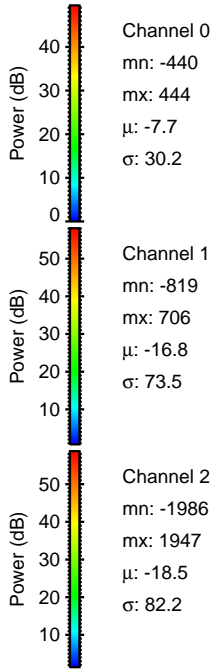
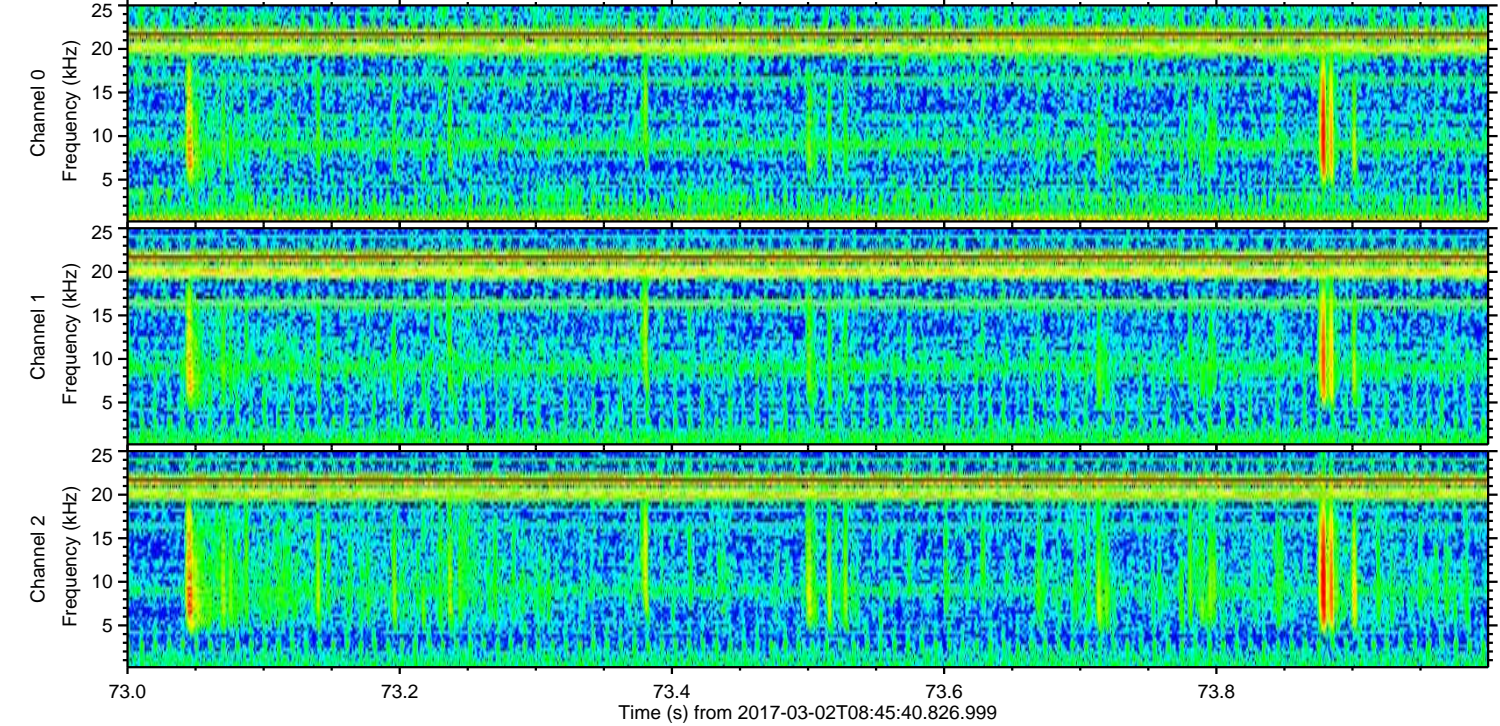
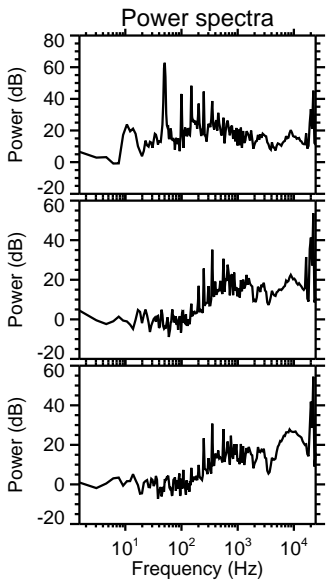
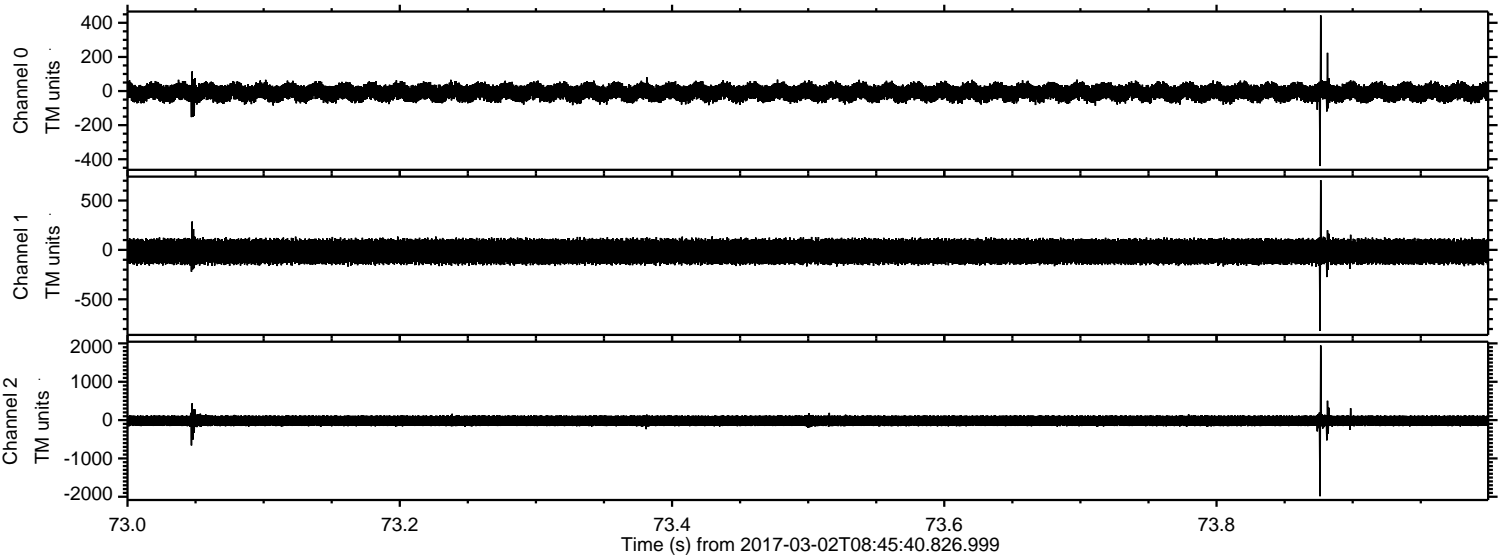


ELMAVAN 3D WAVEFORMS (Measured data sampled at 50 kHz) 51000 packets of 144 samples from 2017-03-02T08:45:40.826.999.

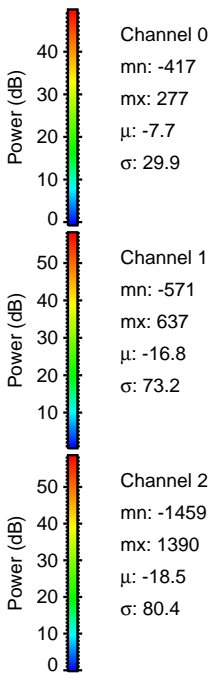
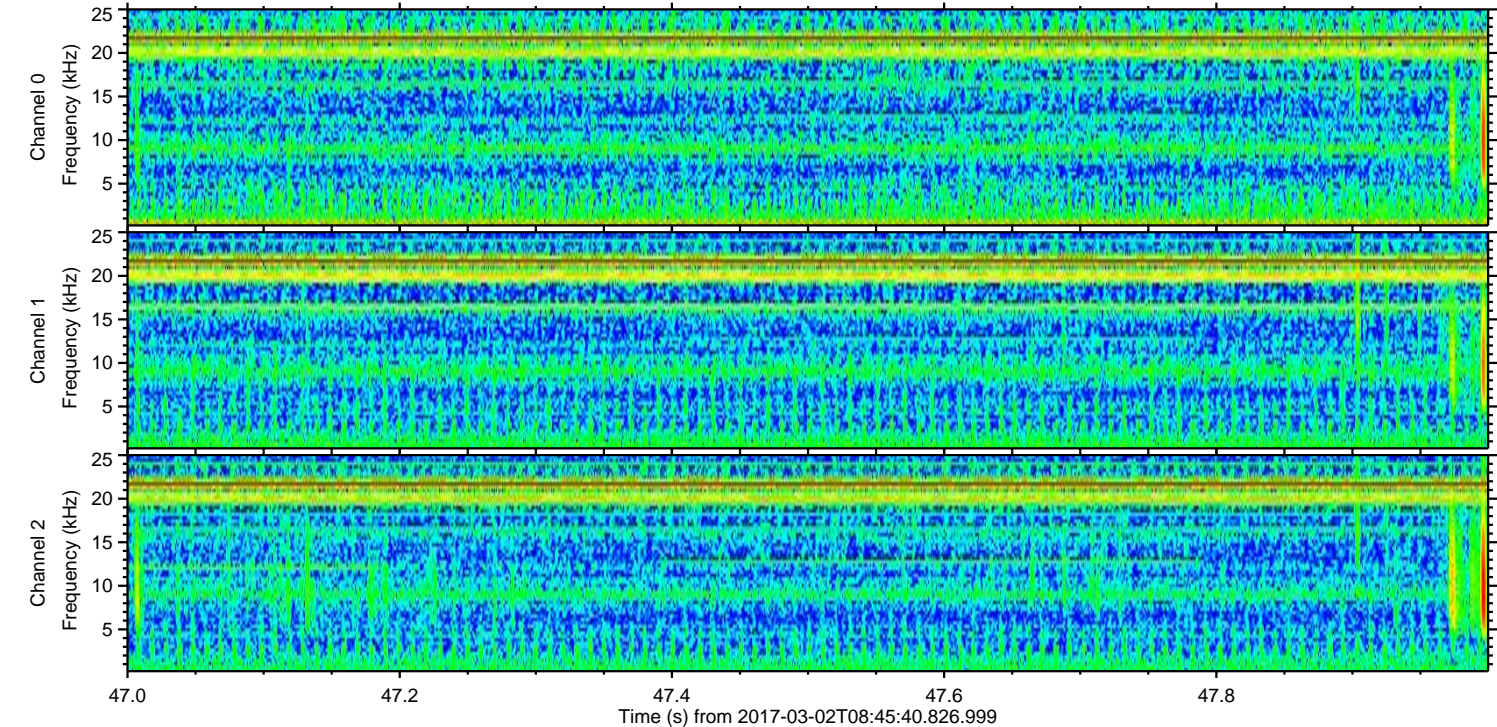
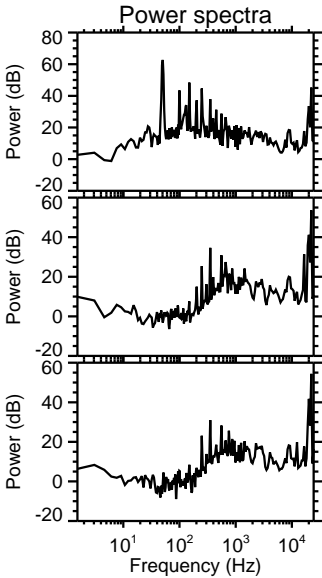
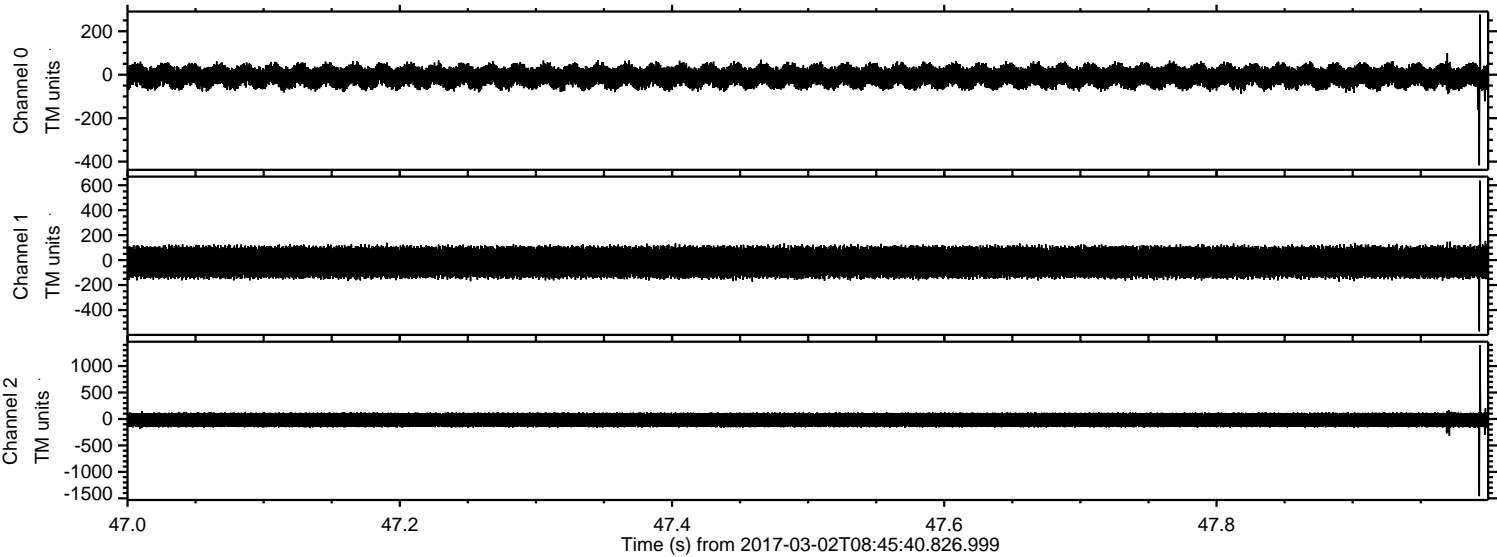
Processed Thu Mar 2 09:52:56 2017 by ELM ver.2012-10-06 from 001__elm20170302_084539__dat00.bin



Processed Thu Mar 2 09:53:07 2017 by ELM ver.2012-10-06 from 001__elm20170302_084539__dat00.bin

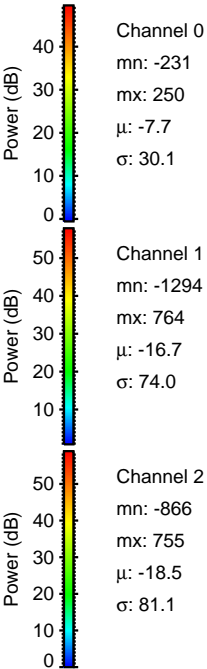
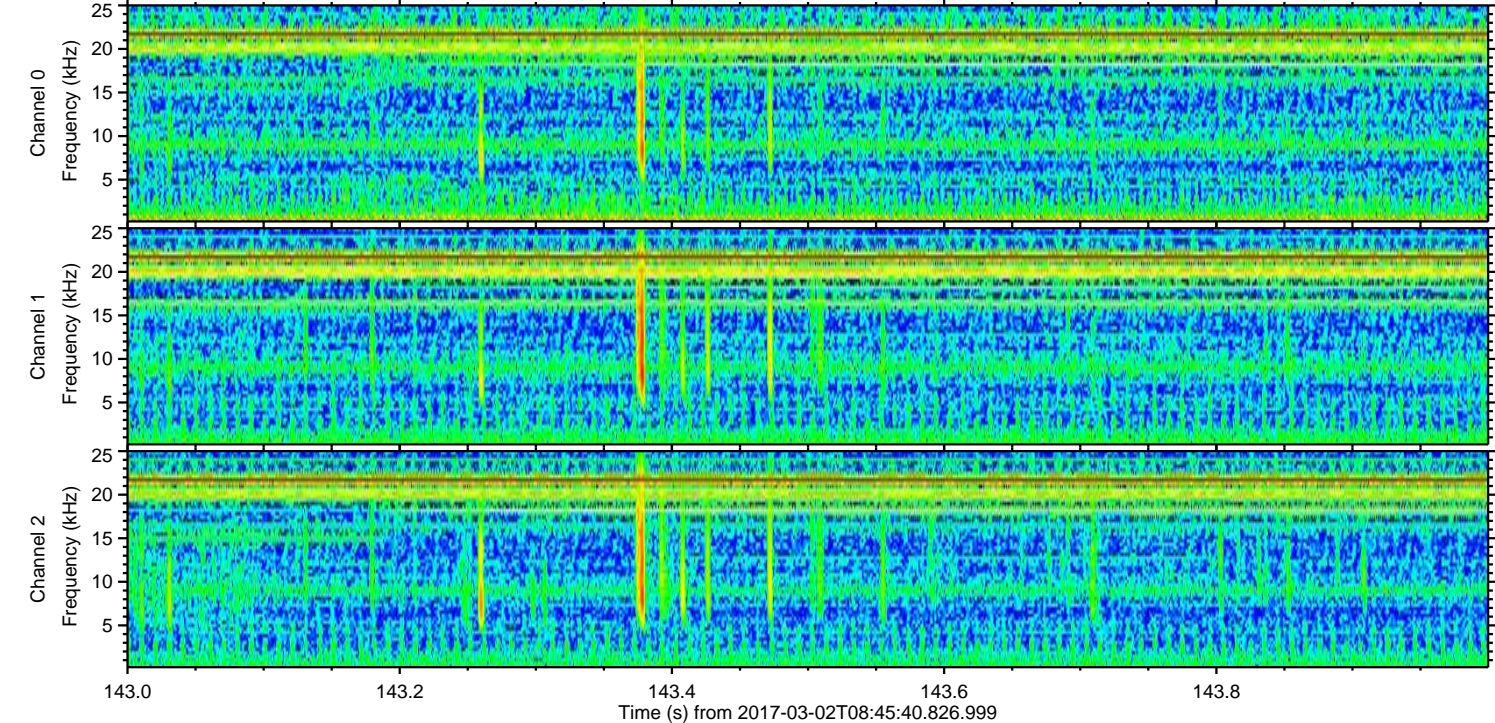
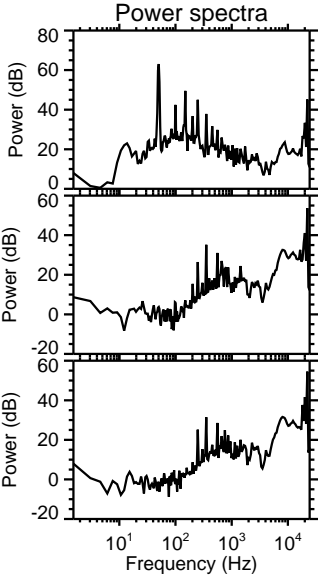
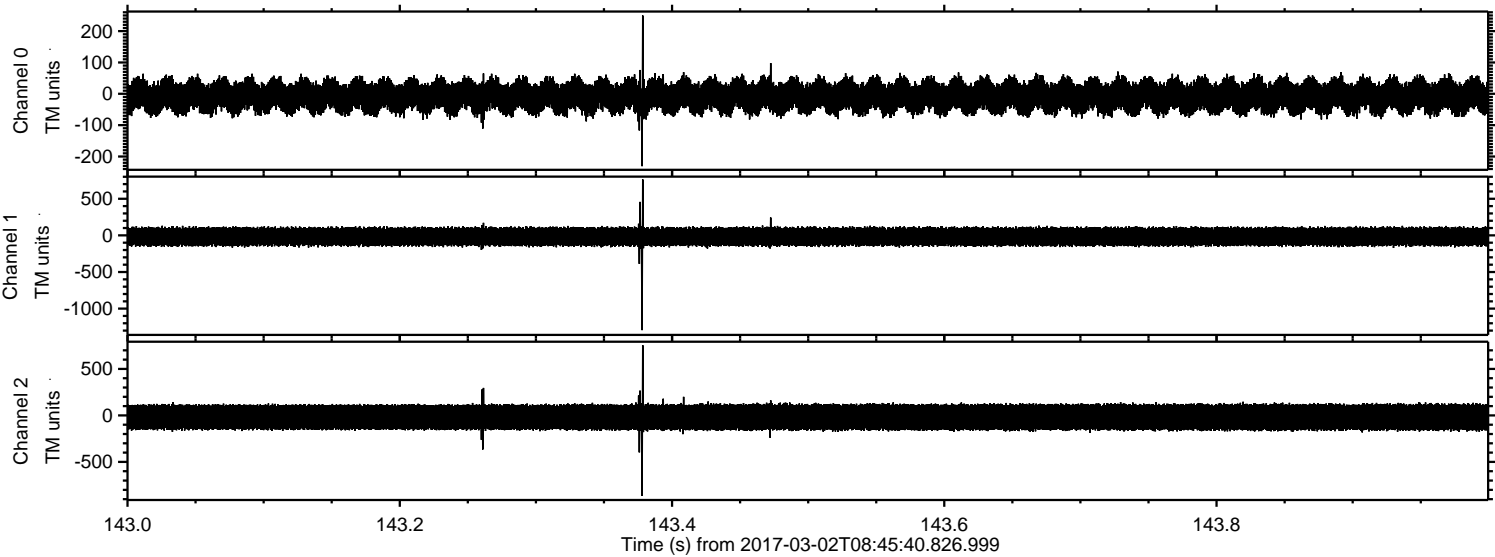


Processed Thu Mar 2 09:53:08 2017 by ELM ver.2012-10-06 from 001__elm20170302_084539__dat00.bin



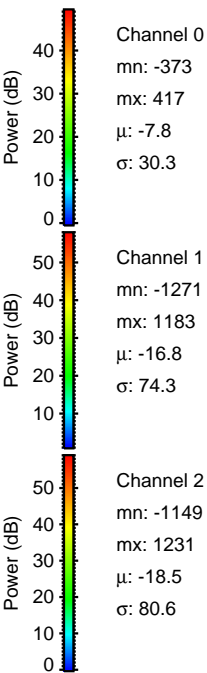
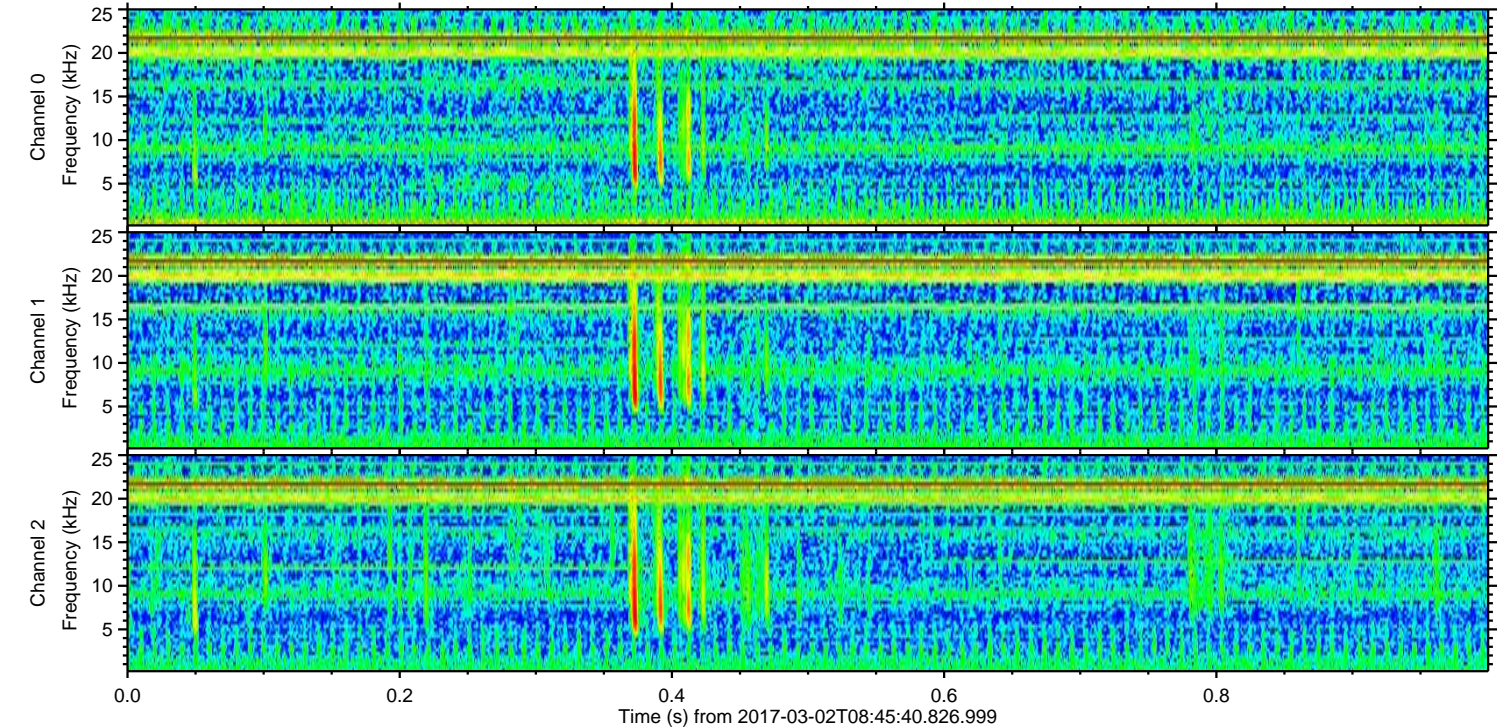
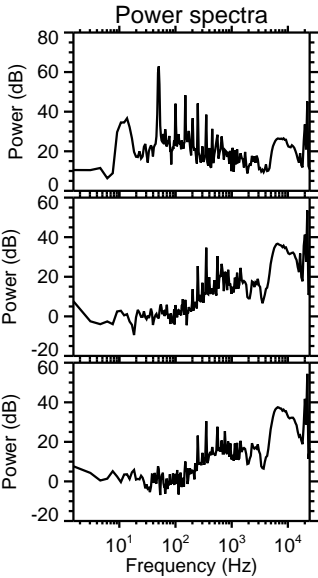
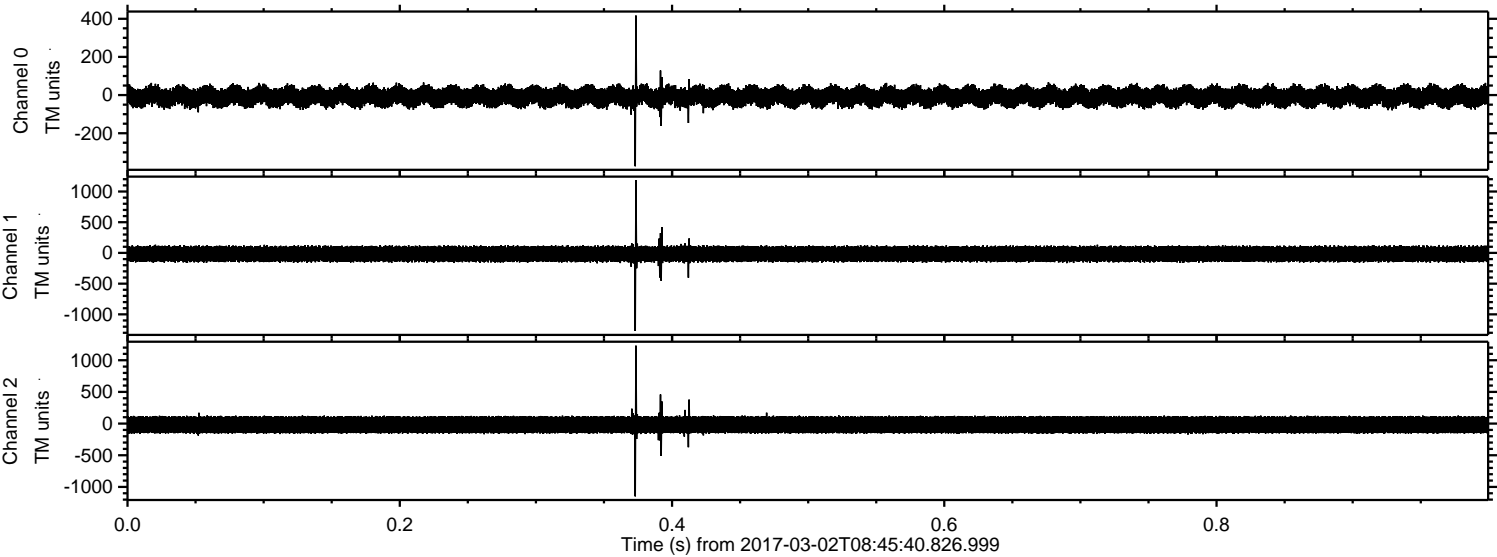
ELMAVAN 3D WAVEFORMS (Measured data sampled at 50 kHz) 51000 packets of 144 samples from 2017-03-02T08:45:40.826.999. Part 144/147

Processed Thu Mar 2 09:53:09 2017 by ELM ver.2012-10-06 from 001__elm20170302_084539__dat00.bin

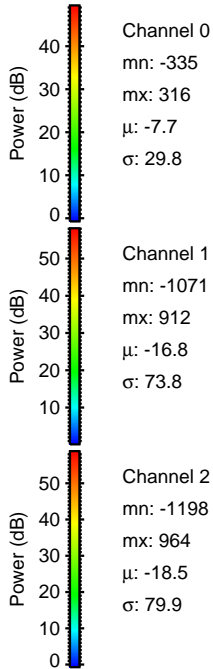
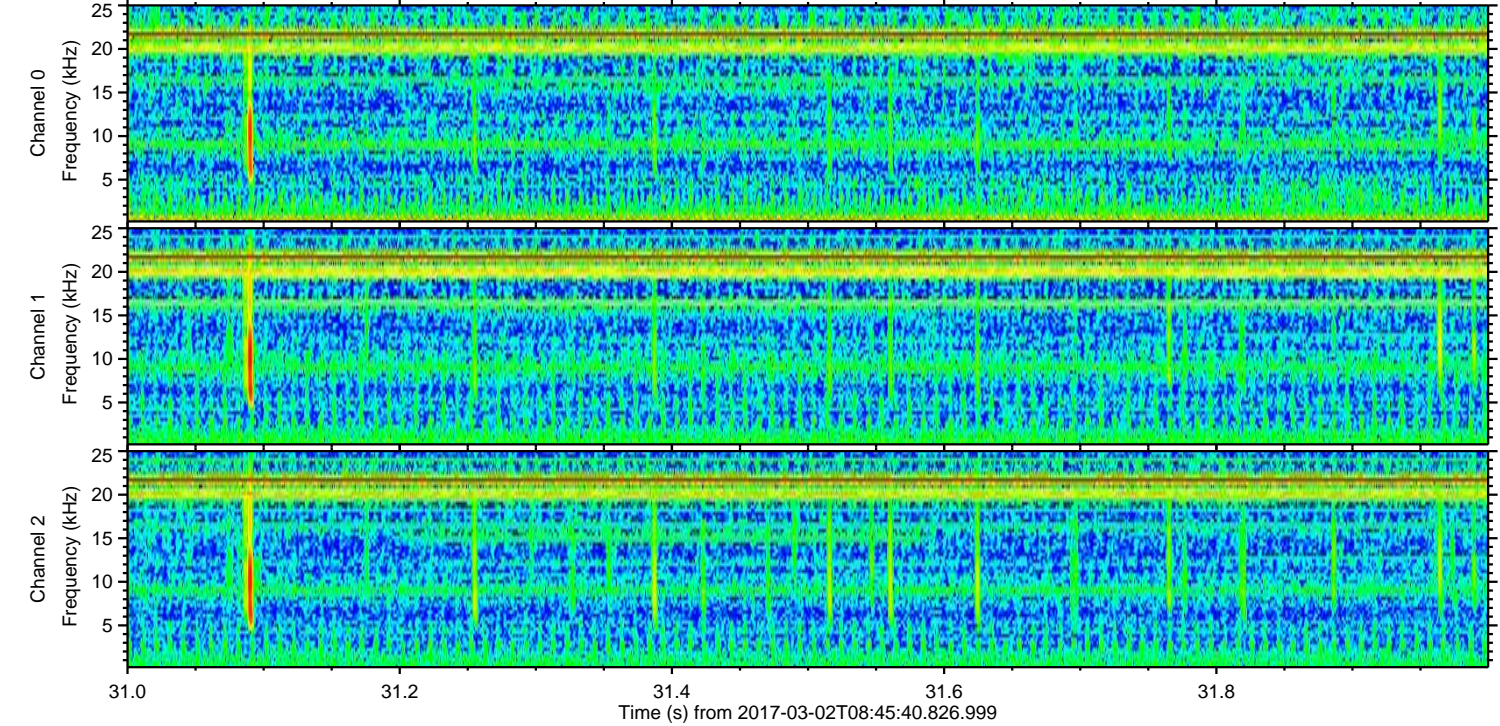
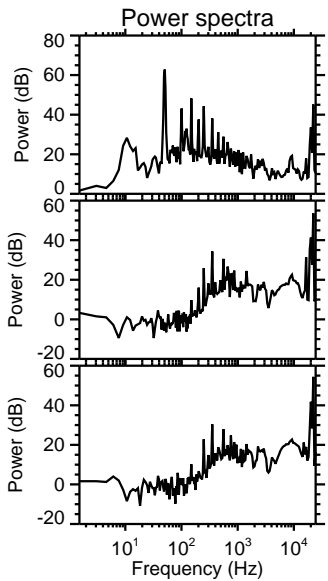
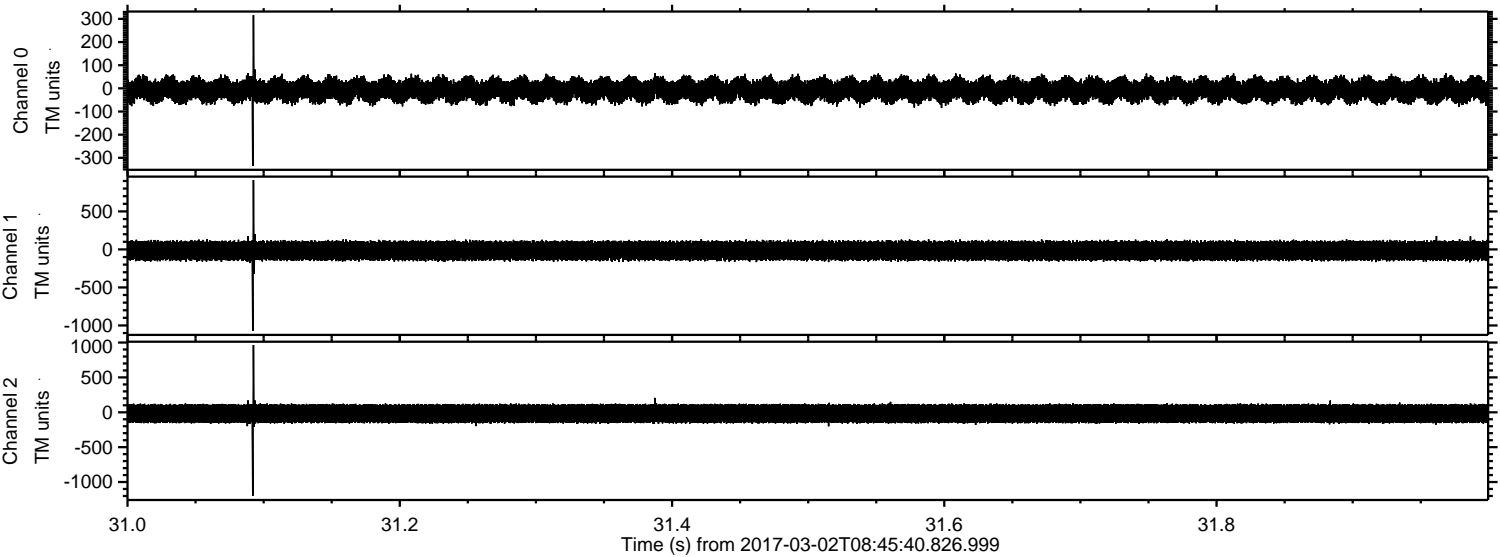


ELMAVAN 3D WAVEFORMS (Measured data sampled at 50 kHz) 51000 packets of 144 samples from 2017-03-02T08:45:40.826.999. Part 1/147

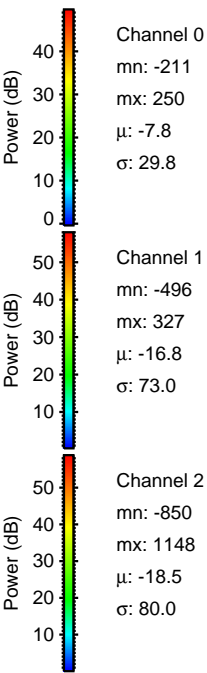
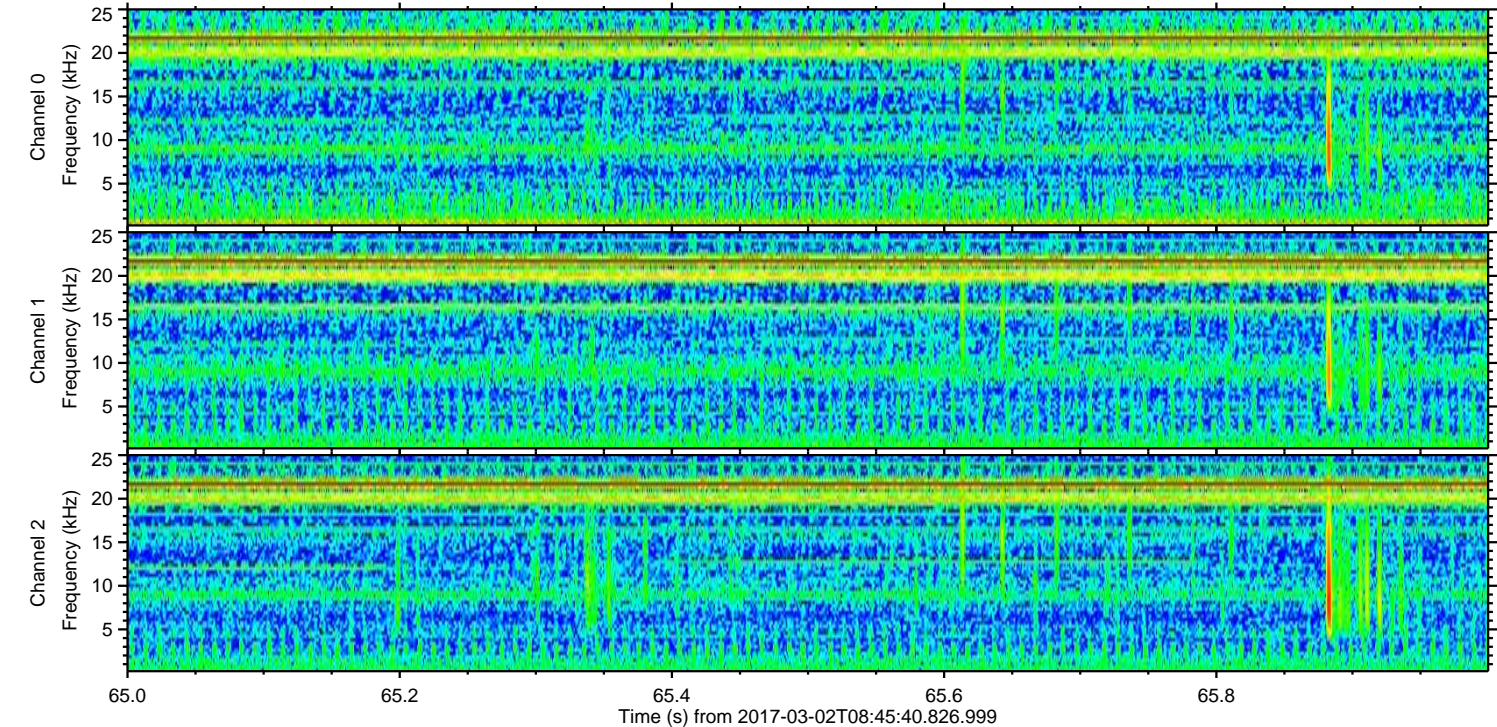
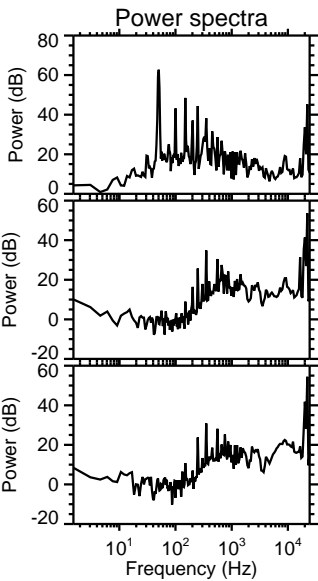
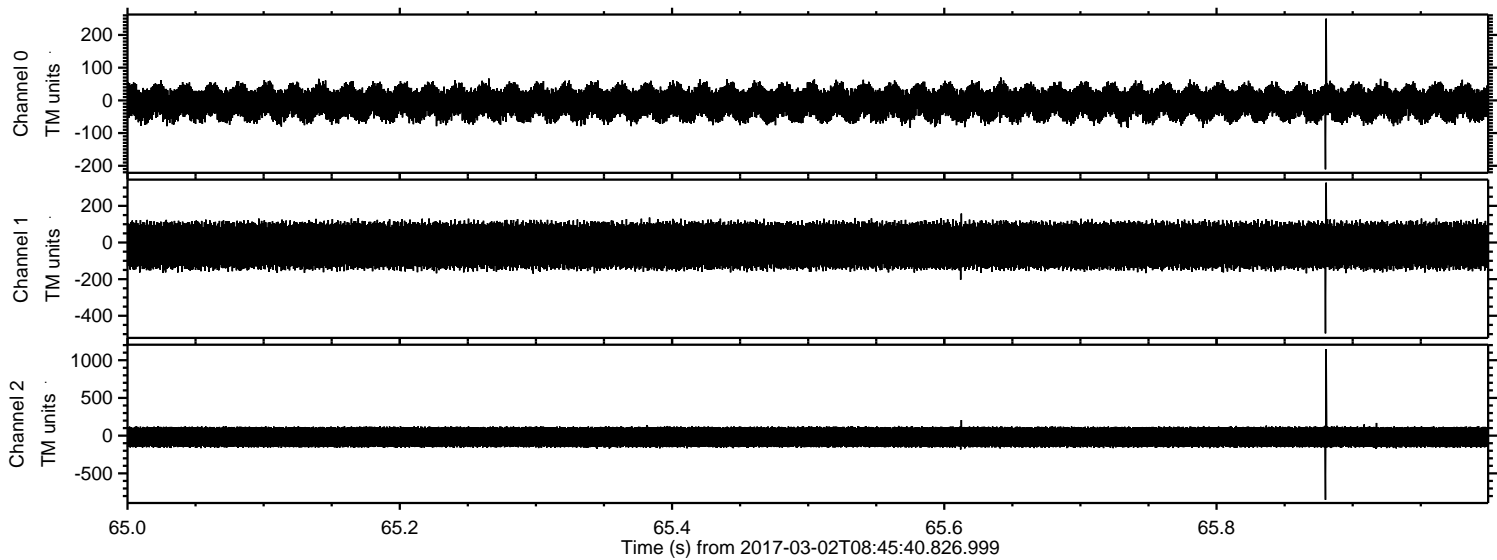
Processed Thu Mar 2 09:53:10 2017 by ELM ver.2012-10-06 from 001__elm20170302_084539__dat00.bin



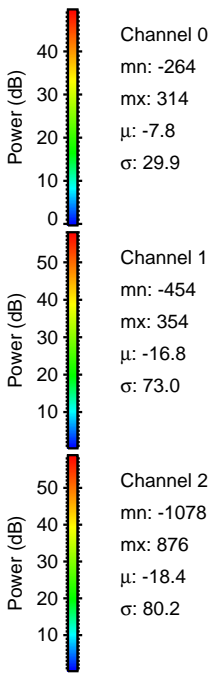
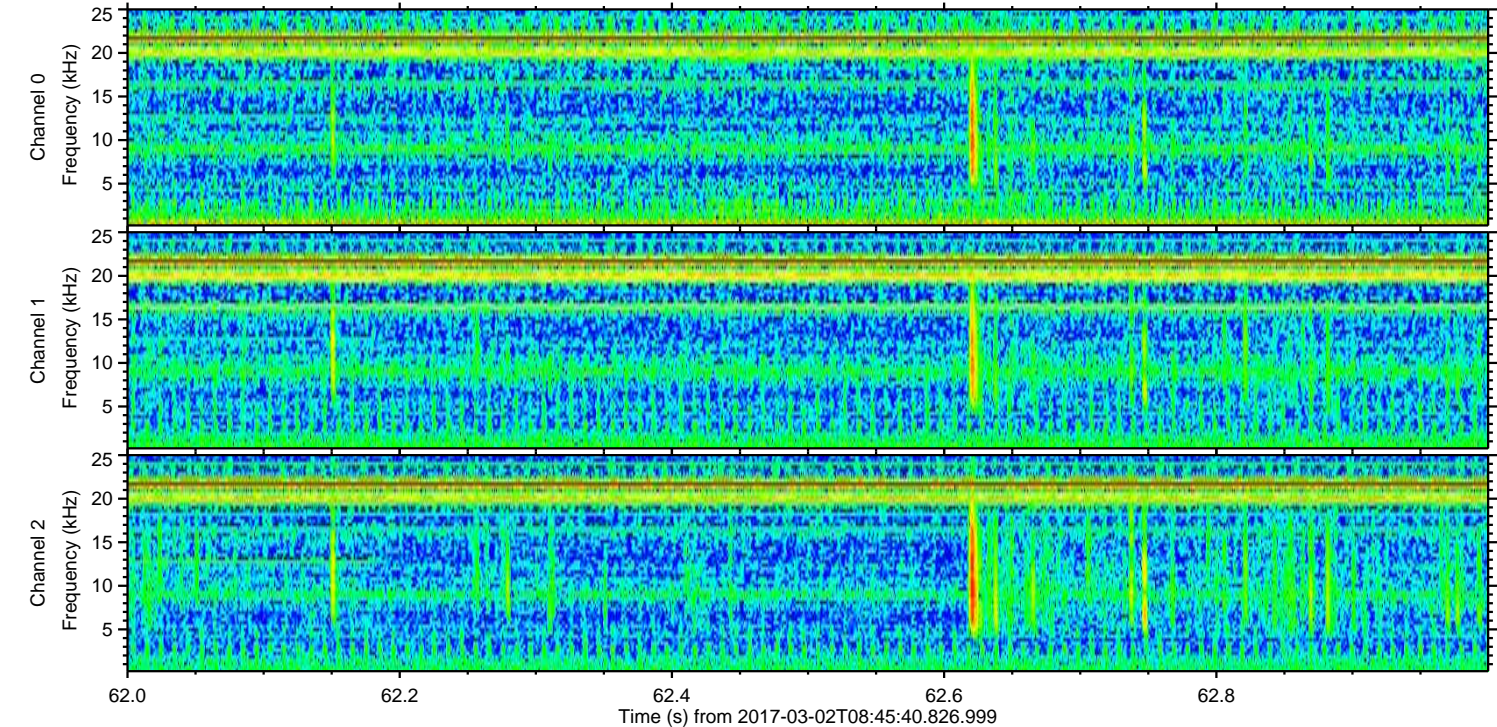
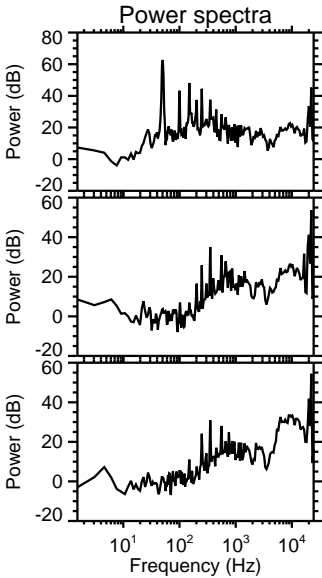
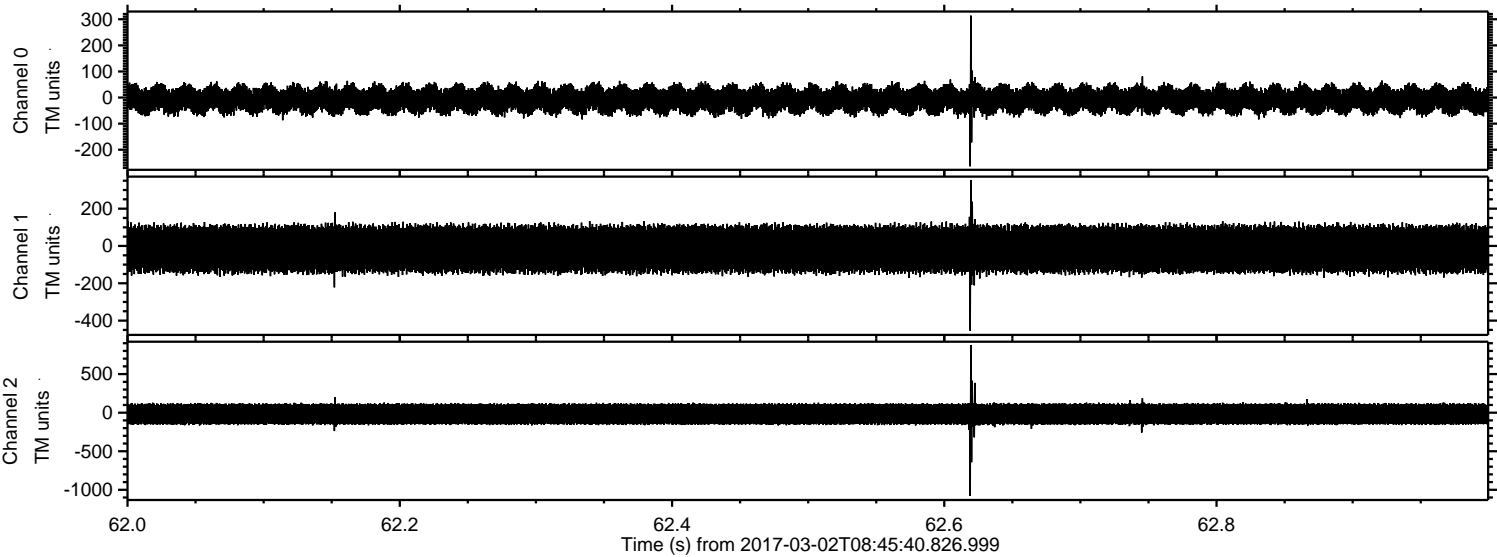
Processed Thu Mar 2 09:53:11 2017 by ELM ver.2012-10-06 from 001__elm20170302_084539__dat00.bin



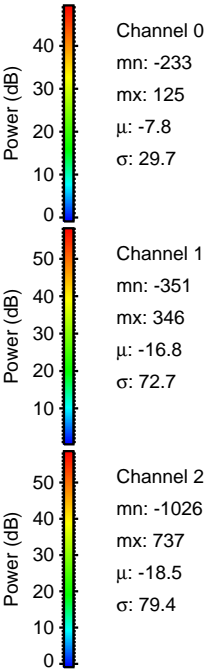
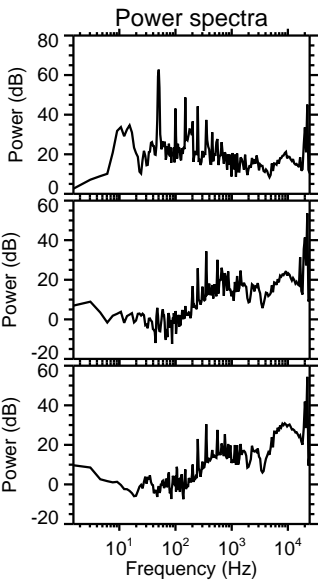
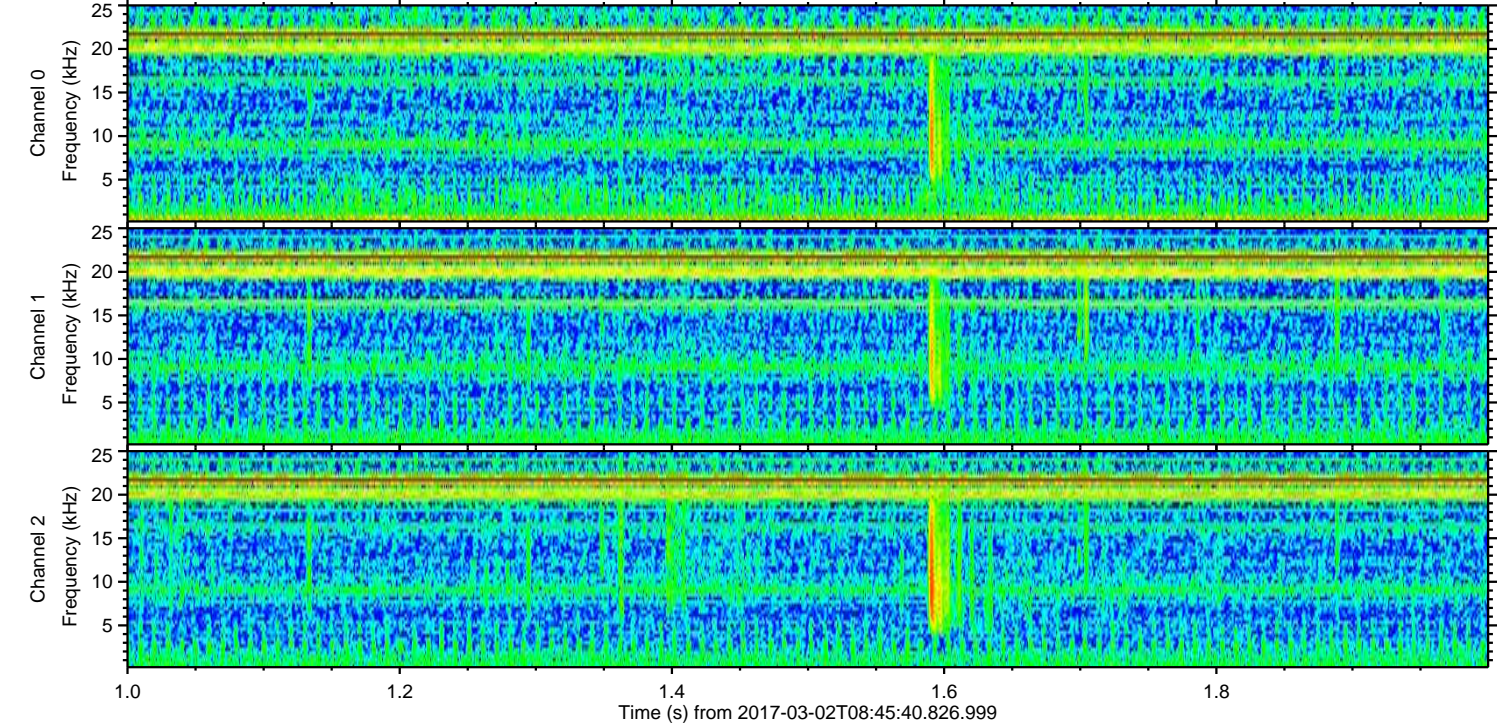
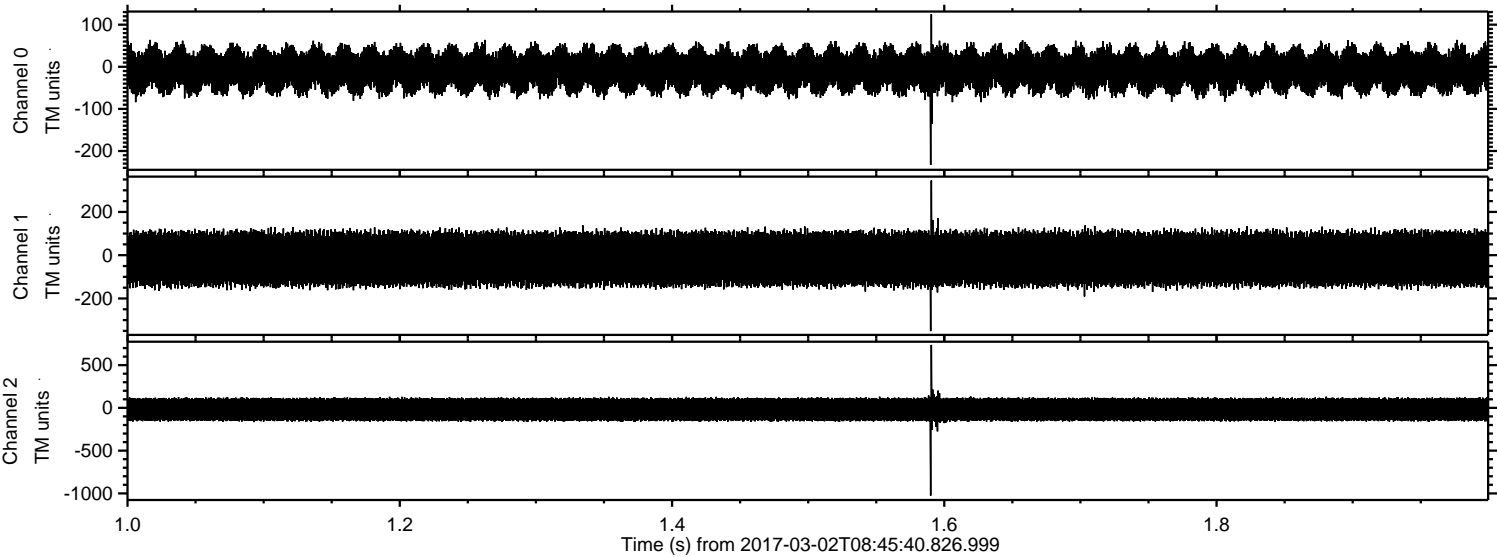
Processed Thu Mar 2 09:53:12 2017 by ELM ver.2012-10-06 from 001__elm20170302_084539__dat00.bin



Processed Thu Mar 2 09:53:13 2017 by ELM ver.2012-10-06 from 001__elm20170302_084539__dat00.bin

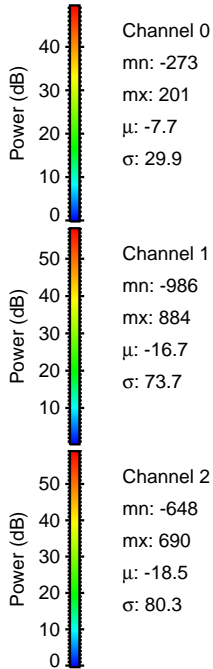
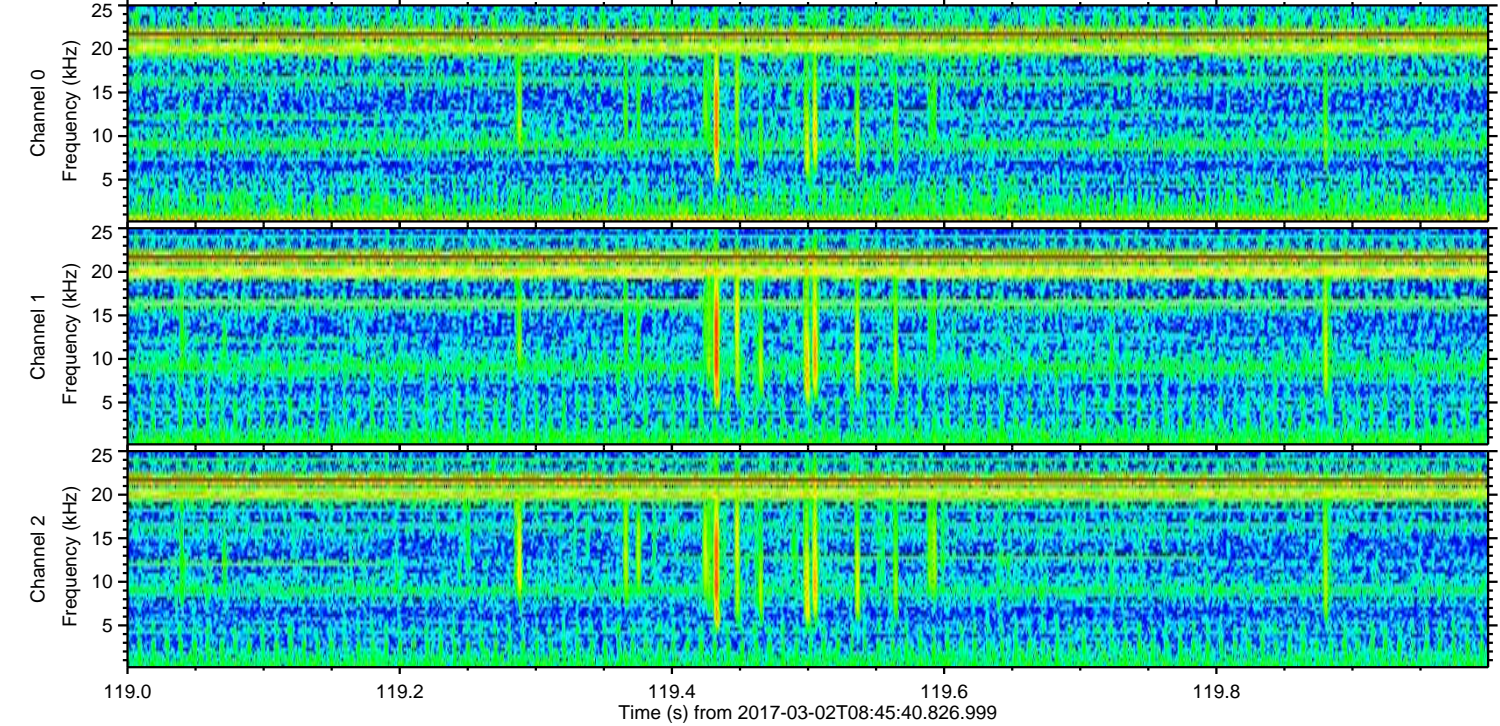
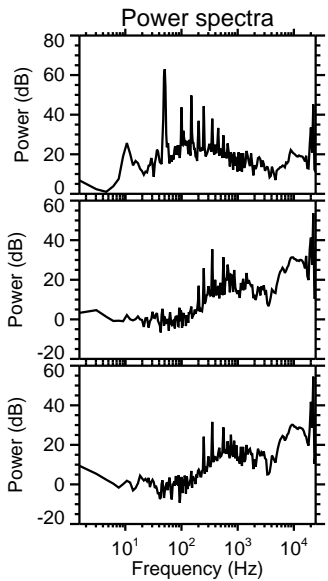
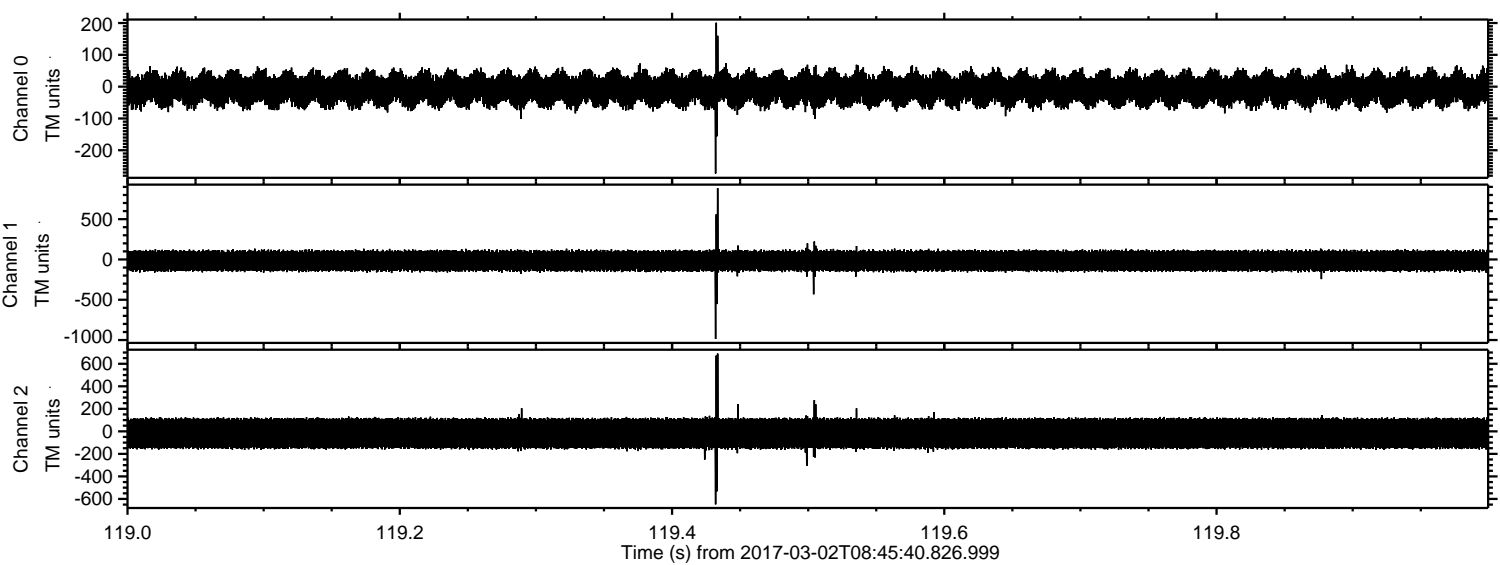


Processed Thu Mar 2 09:53:14 2017 by ELM ver.2012-10-06 from 001__elm20170302_084539__dat00.bin



ELMAVAN 3D WAVEFORMS (Measured data sampled at 50 kHz) 51000 packets of 144 samples from 2017-03-02T08:45:40.826.999. Part 120/147

Processed Thu Mar 2 09:53:15 2017 by ELM ver.2012-10-06 from 001__elm20170302_084539__dat00.bin



Channel 0
mn: -273
mx: 201
 μ : -7.7
 σ : 29.9

Channel 1
mn: -986
mx: 884
 μ : -16.7
 σ : 73.7

Channel 2
mn: -648
mx: 690
 μ : -18.5
 σ : 80.3

