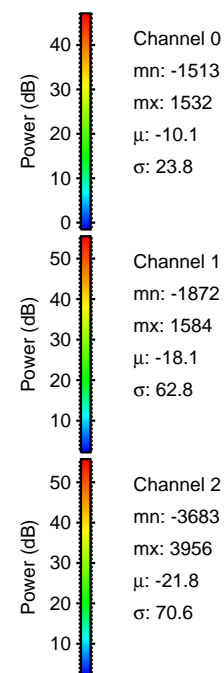
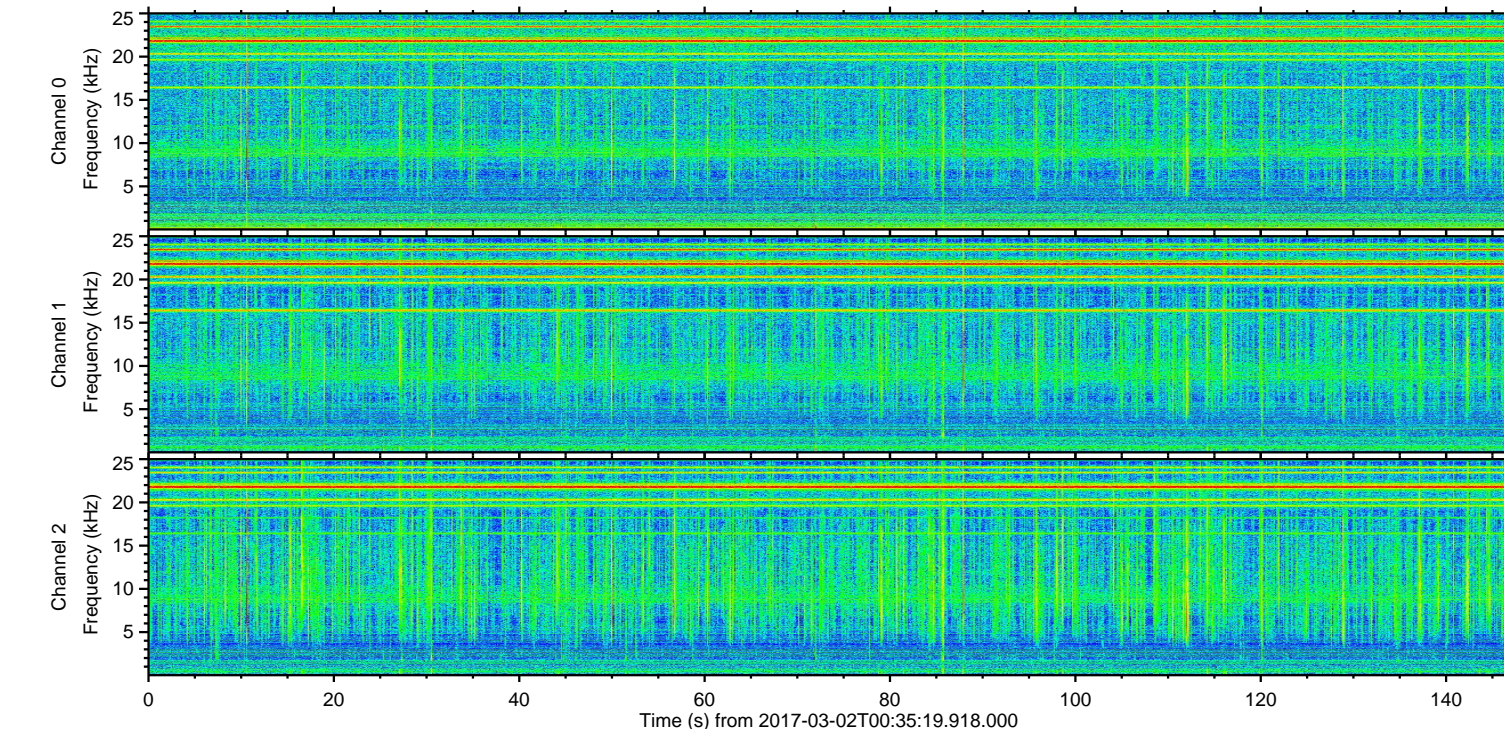
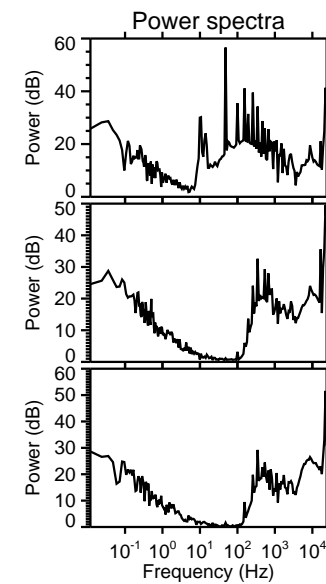
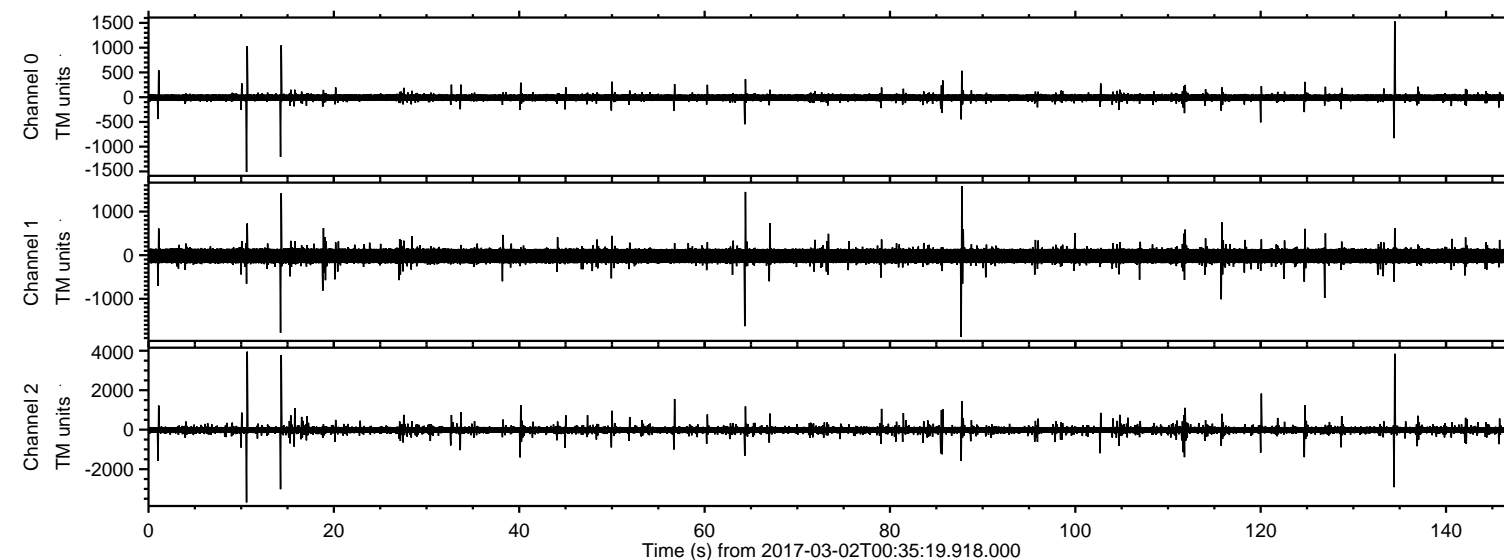


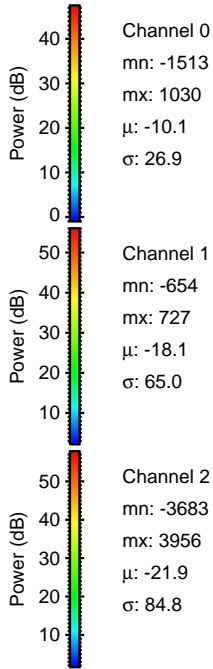
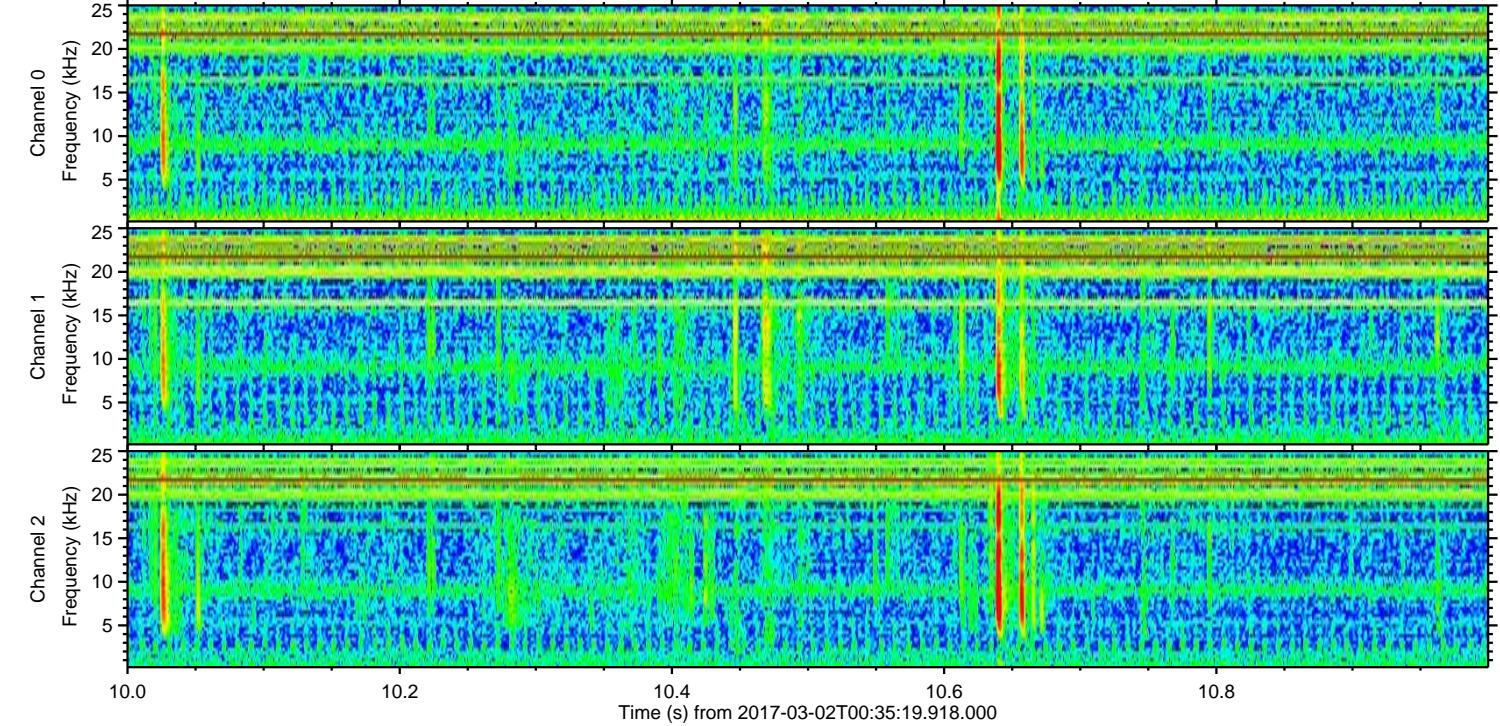
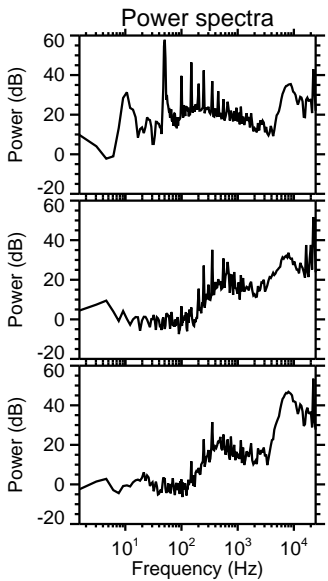
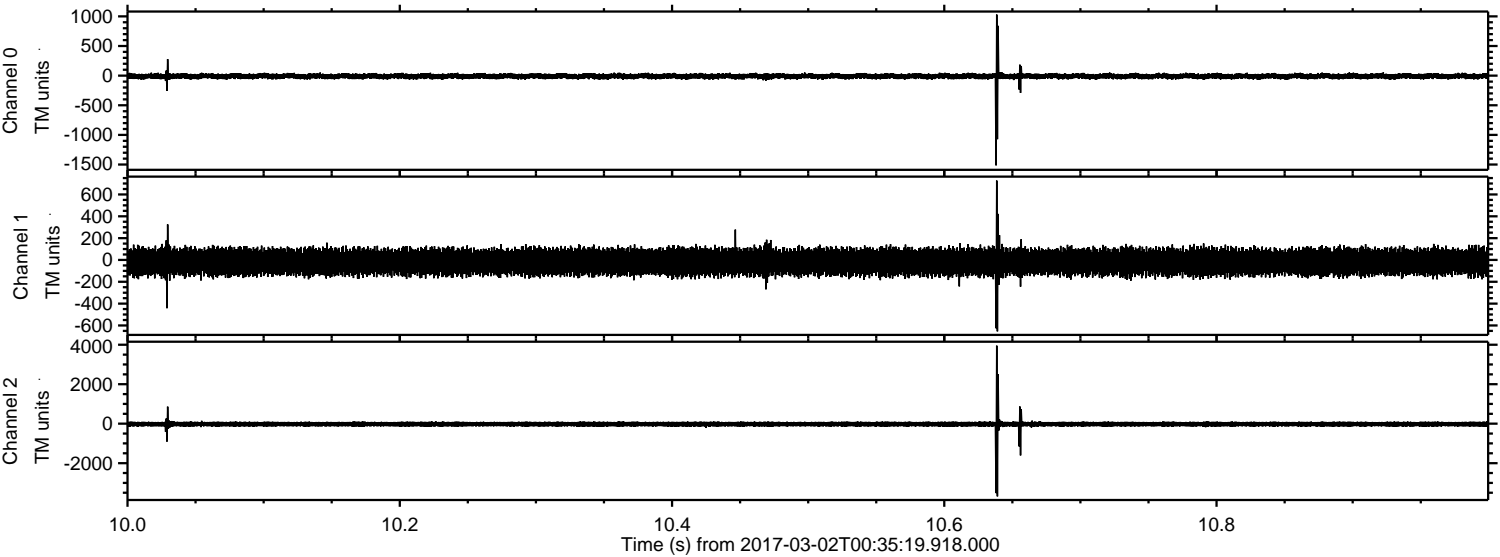
# ELMAVAN 3D WAVEFORMS (Measured data sampled at 50 kHz) 51000 packets of 144 samples from 2017-03-02T00:35:19.918.000.

Processed Thu Mar 2 01:42:52 2017 by ELM ver.2012-10-06 from 001\_\_elm20170302\_003518\_\_dat00.bin





Processed Thu Mar 2 01:43:03 2017 by ELM ver.2012-10-06 from 001\_\_elm20170302\_003518\_\_dat00.bin



Channel 0  
mn: -1513  
mx: 1030  
 $\mu$ : -10.1  
 $\sigma$ : 26.9

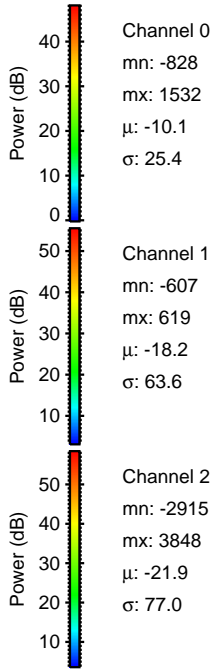
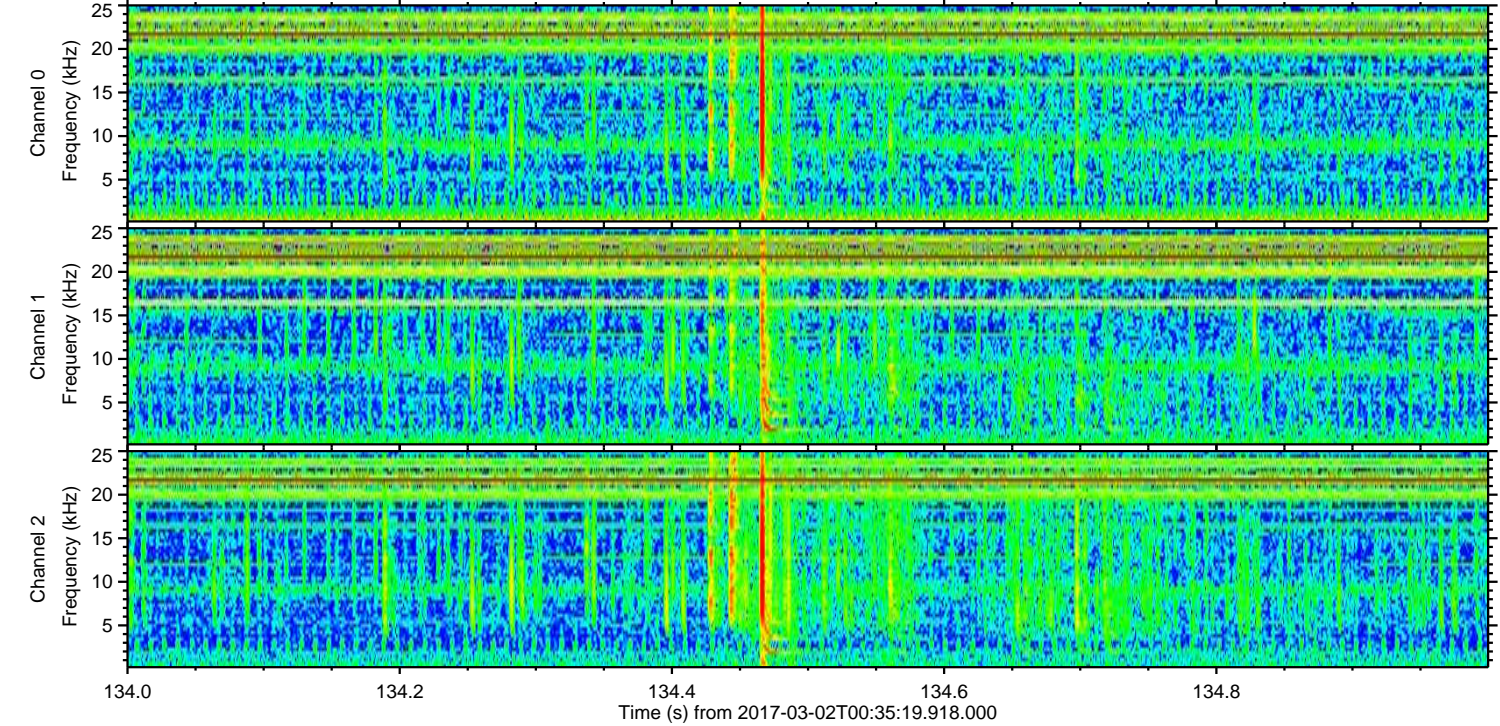
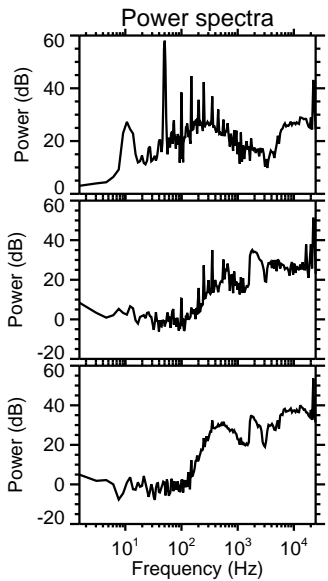
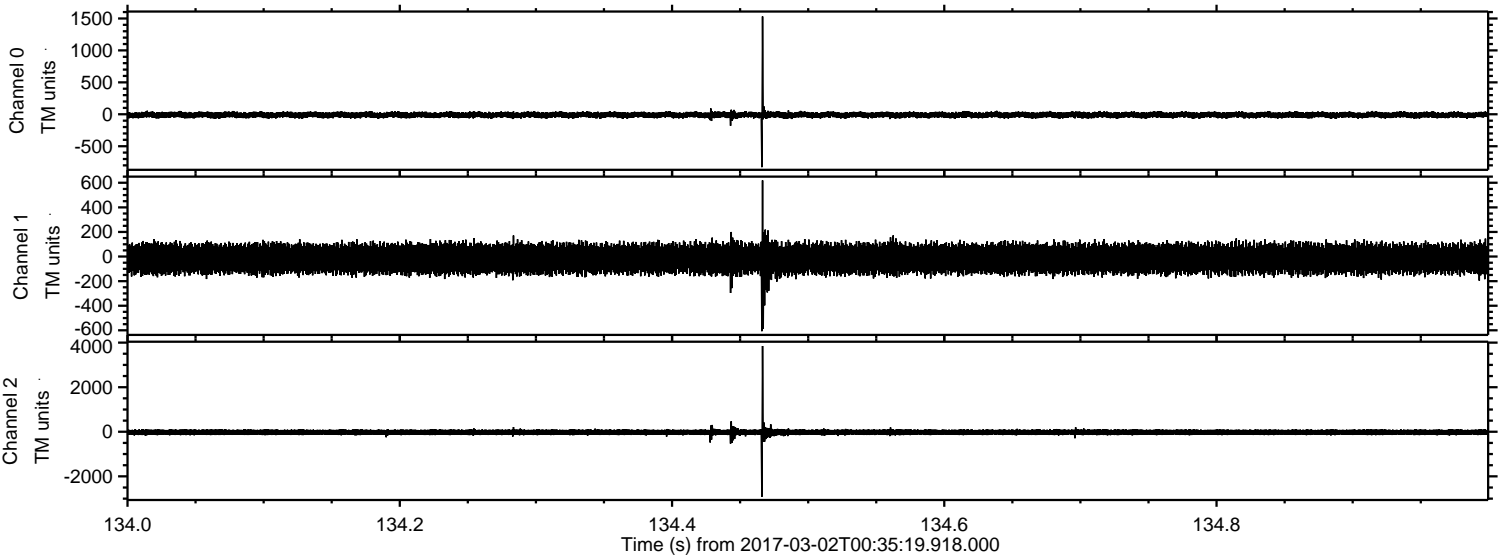
Channel 1  
mn: -654  
mx: 727  
 $\mu$ : -18.1  
 $\sigma$ : 65.0

Channel 2  
mn: -3683  
mx: 3956  
 $\mu$ : -21.9  
 $\sigma$ : 84.8



ELMAVAN 3D WAVEFORMS (Measured data sampled at 50 kHz) 51000 packets of 144 samples from 2017-03-02T00:35:19.918.000. Part 135/147

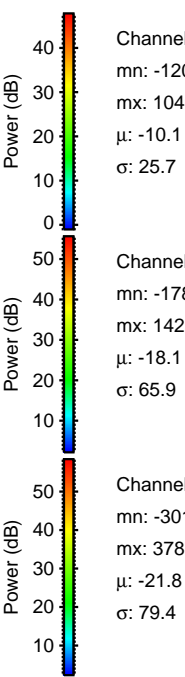
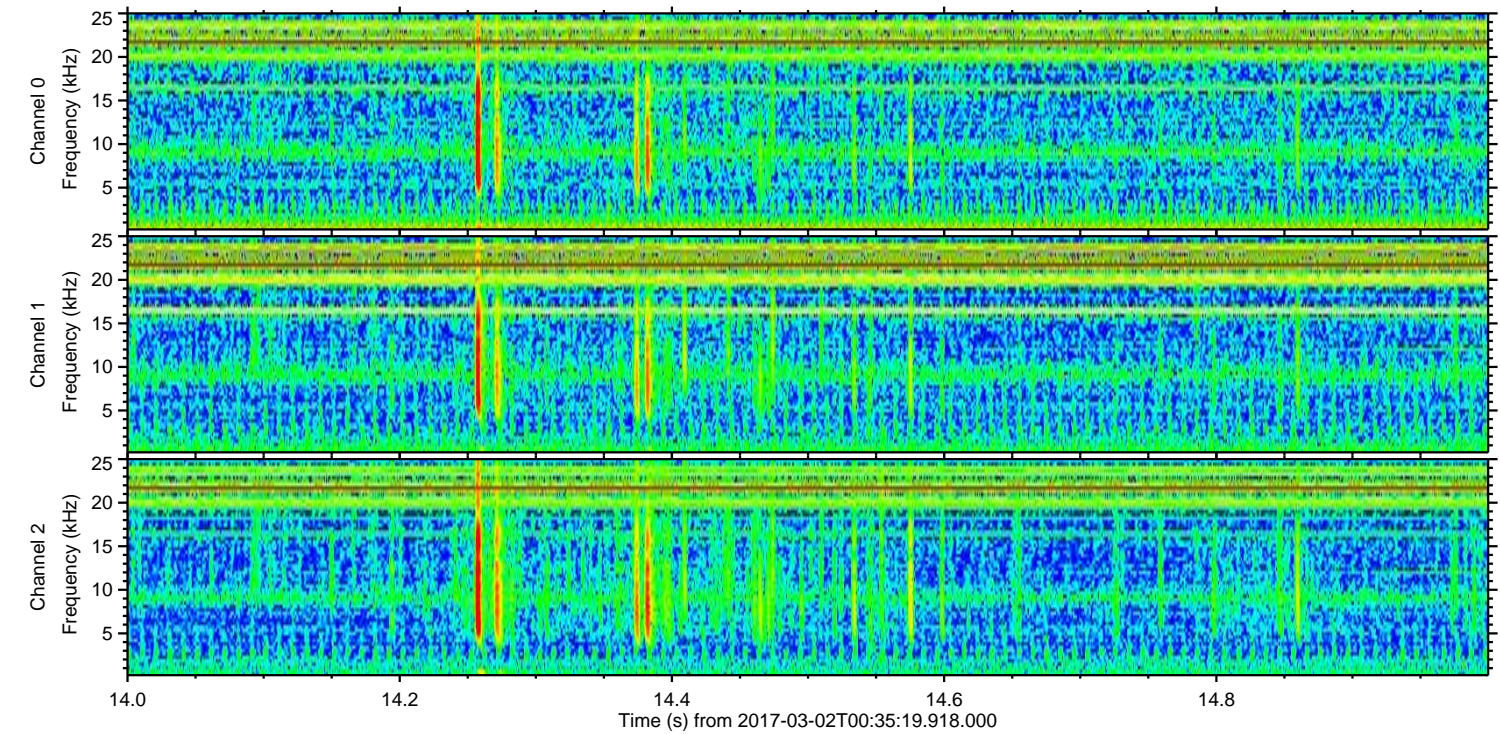
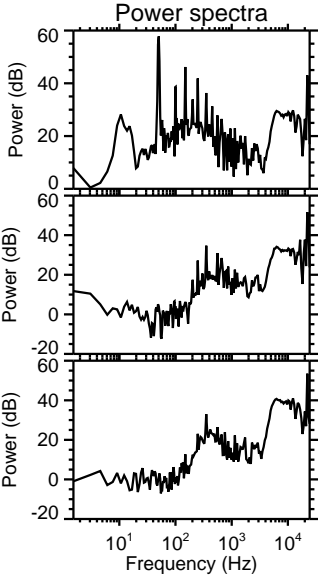
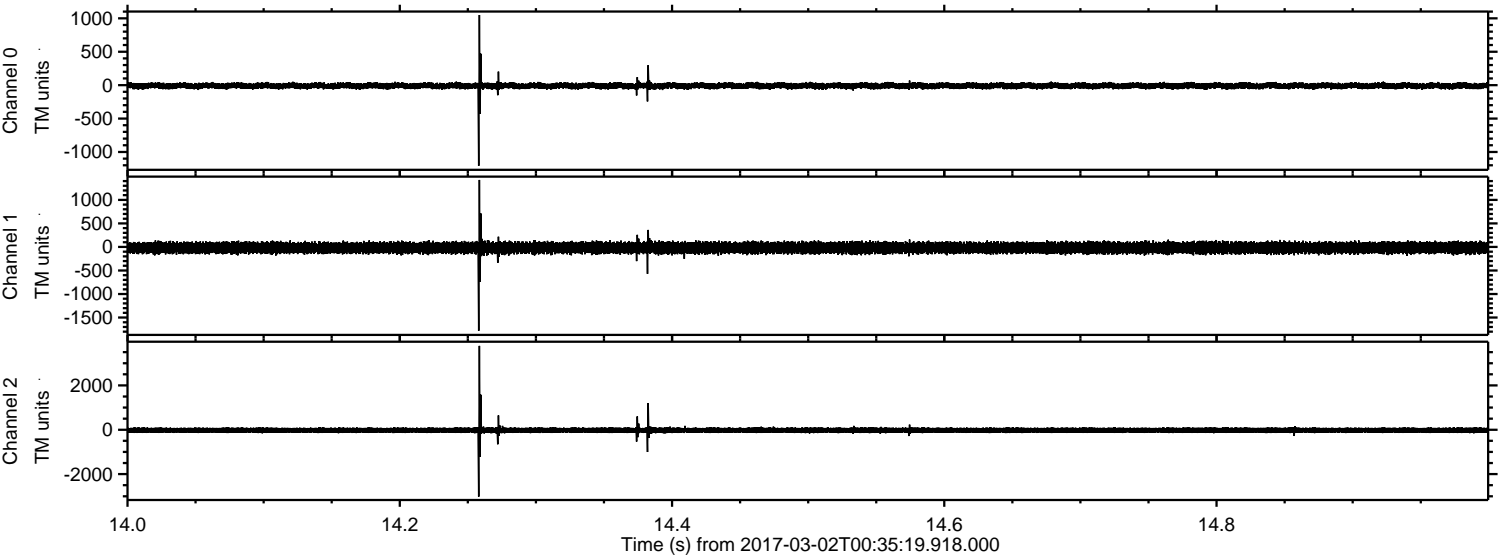
Processed Thu Mar 2 01:43:04 2017 by ELM ver.2012-10-06 from 001\_\_elm20170302\_003518\_\_dat00.bin





ELMAVAN 3D WAVEFORMS (Measured data sampled at 50 kHz) 51000 packets of 144 samples from 2017-03-02T00:35:19.918.000. Part 15/147

Processed Thu Mar 2 01:43:05 2017 by ELM ver.2012-10-06 from 001\_\_elm20170302\_003518\_\_dat00.bin



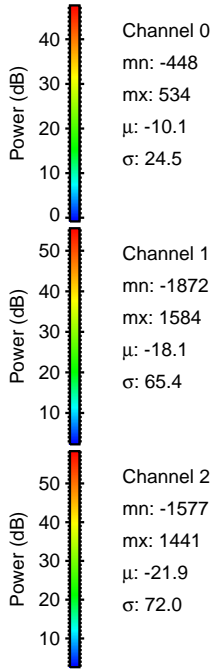
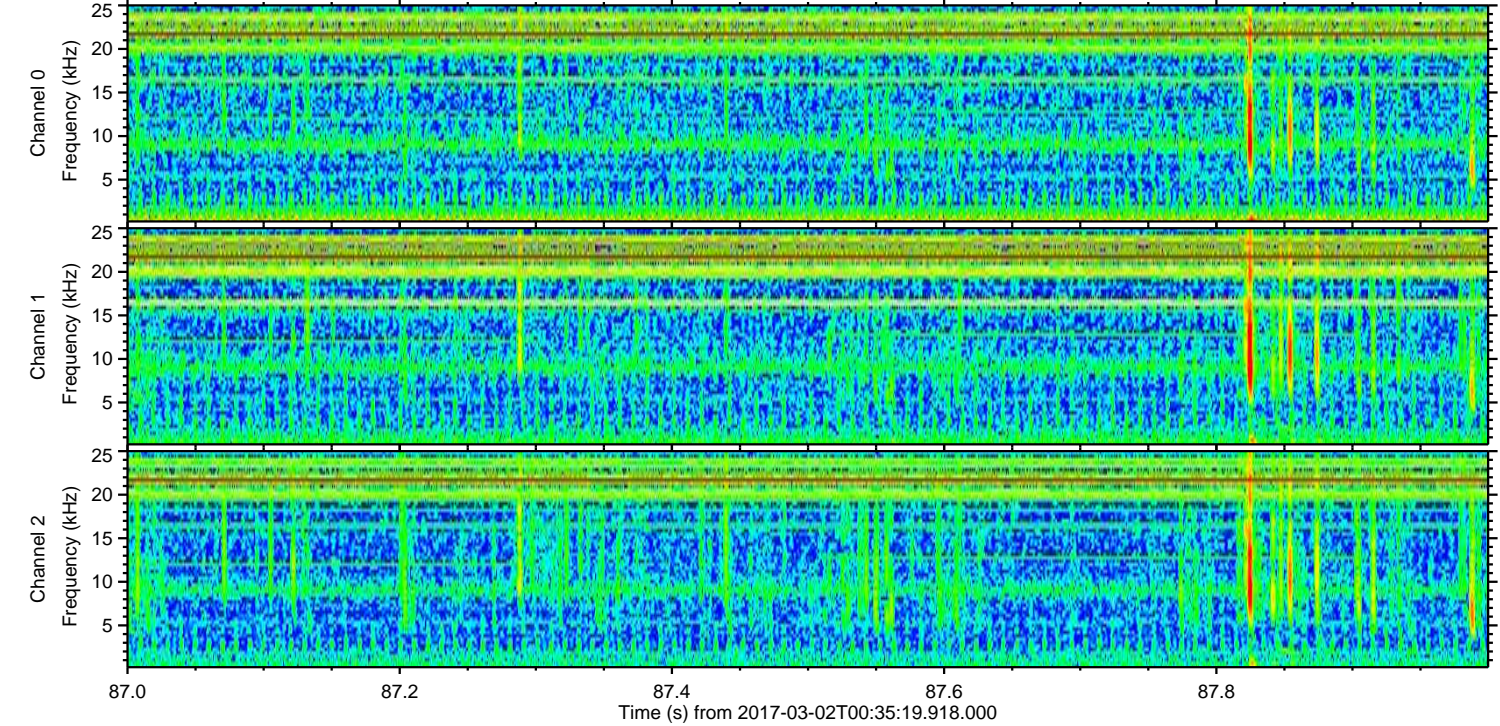
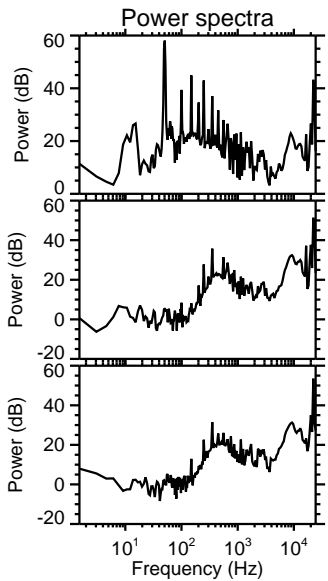
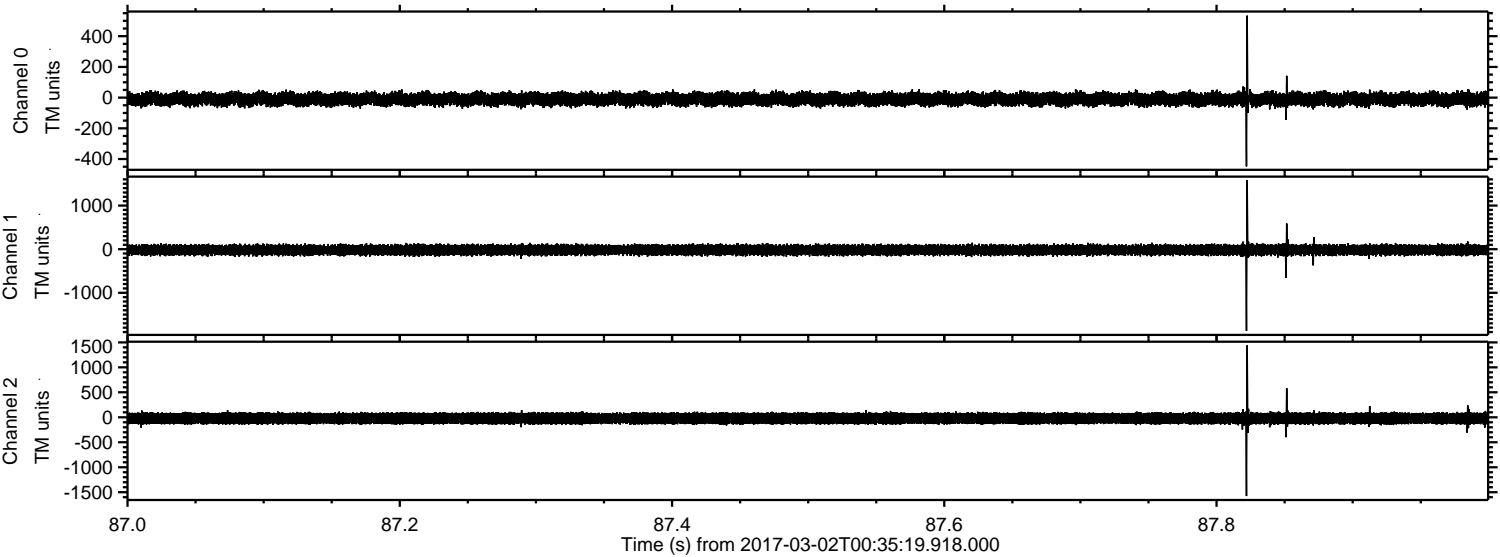
Channel 0  
mn: -1207  
mx: 1049  
 $\mu$ : -10.1  
 $\sigma$ : 25.7

Channel 1  
mn: -1780  
mx: 1423  
 $\mu$ : -18.1  
 $\sigma$ : 65.9

Channel 2  
mn: -3017  
mx: 3781  
 $\mu$ : -21.8  
 $\sigma$ : 79.4



Processed Thu Mar 2 01:43:06 2017 by ELM ver.2012-10-06 from 001\_\_elm20170302\_003518\_\_dat00.bin



Channel 0  
mn: -448  
mx: 534  
 $\mu$ : -10.1  
 $\sigma$ : 24.5

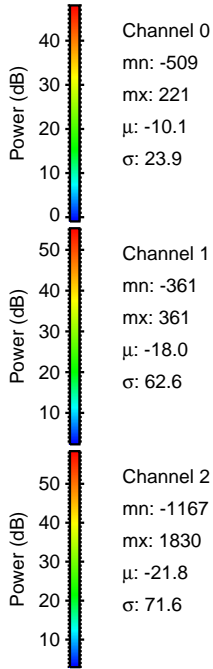
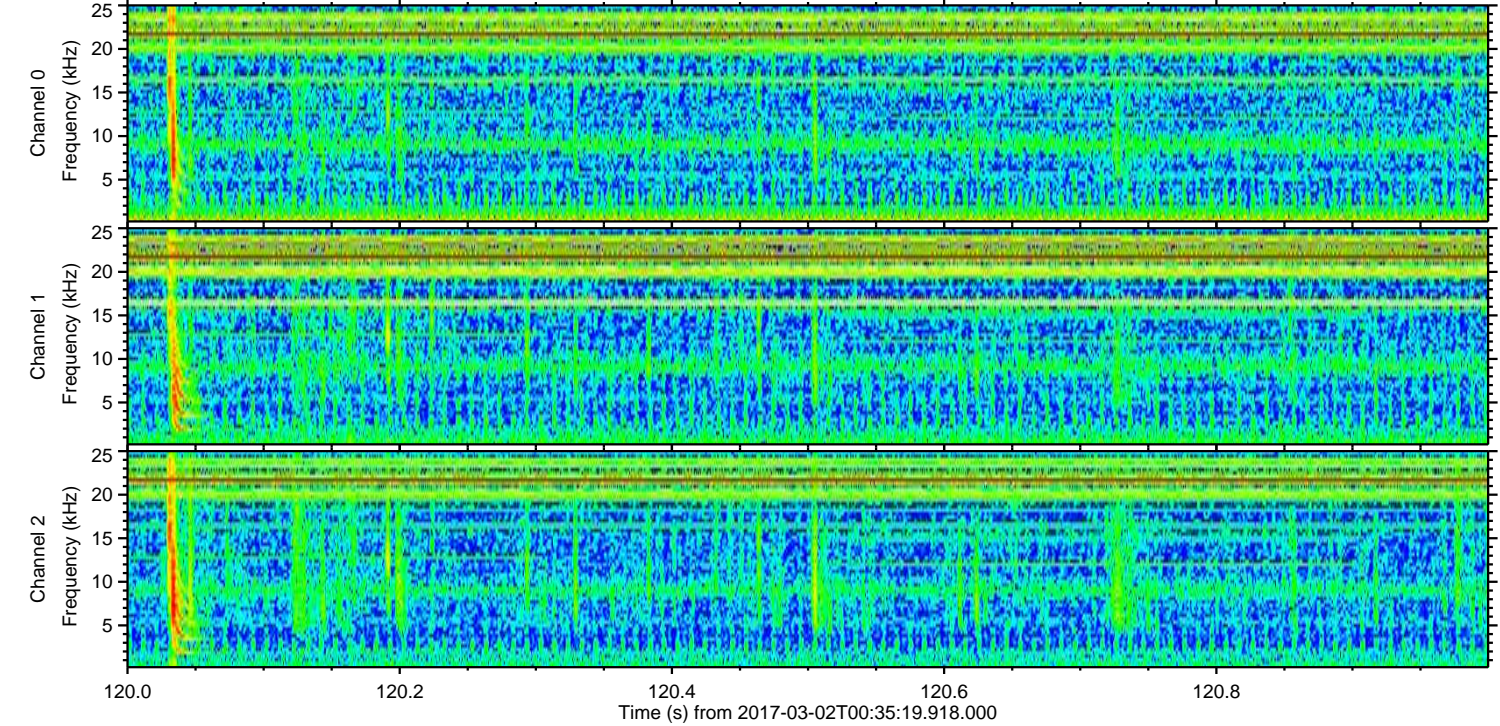
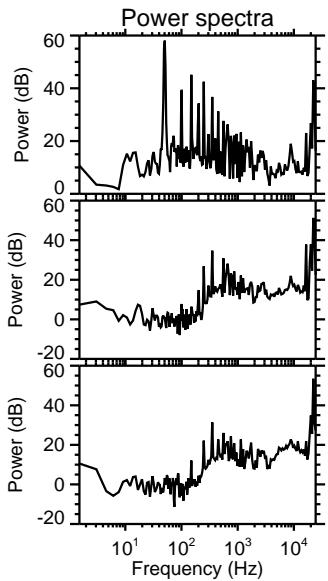
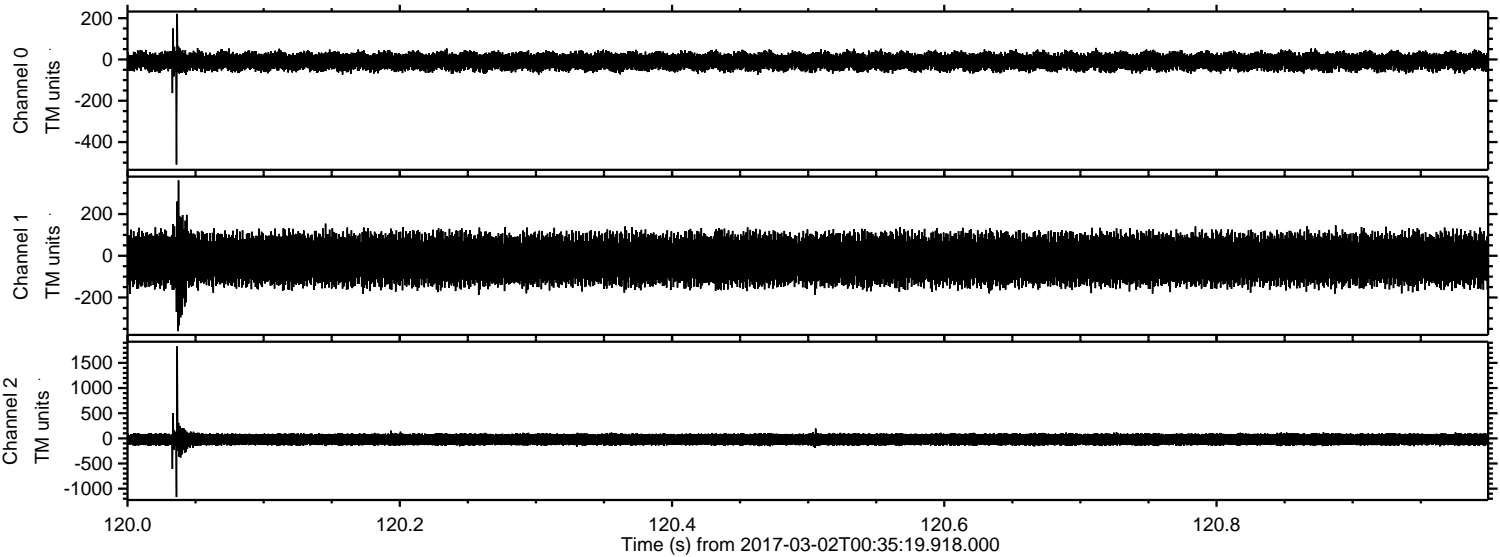
Channel 1  
mn: -1872  
mx: 1584  
 $\mu$ : -18.1  
 $\sigma$ : 65.4

Channel 2  
mn: -1577  
mx: 1441  
 $\mu$ : -21.9  
 $\sigma$ : 72.0



ELMAVAN 3D WAVEFORMS (Measured data sampled at 50 kHz) 51000 packets of 144 samples from 2017-03-02T00:35:19.918.000. Part 121/147

Processed Thu Mar 2 01:43:07 2017 by ELM ver.2012-10-06 from 001\_\_elm20170302\_003518\_\_dat00.bin



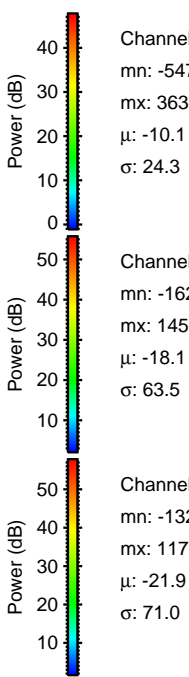
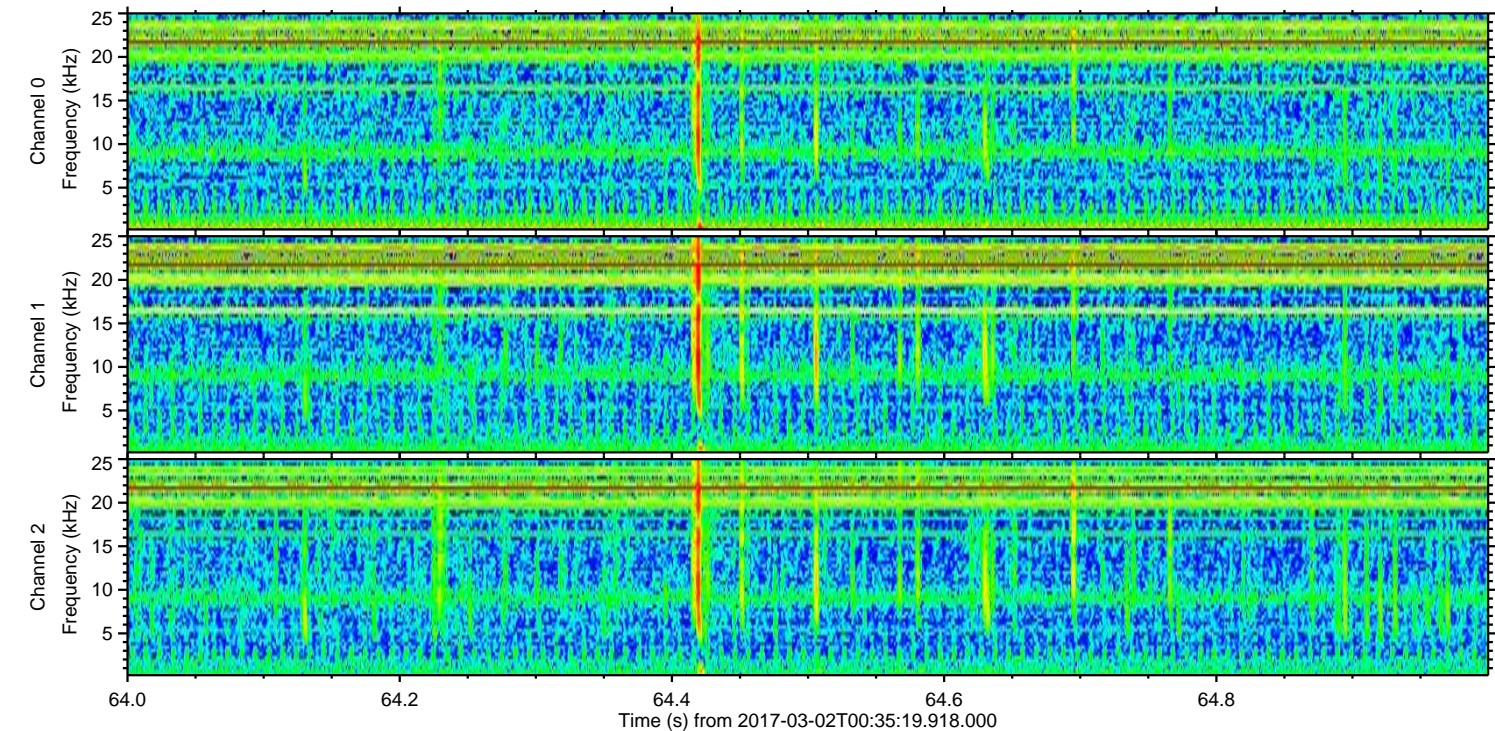
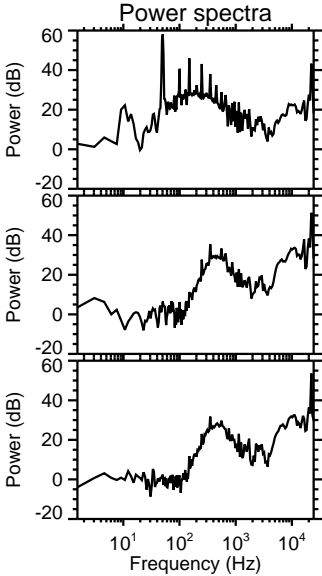
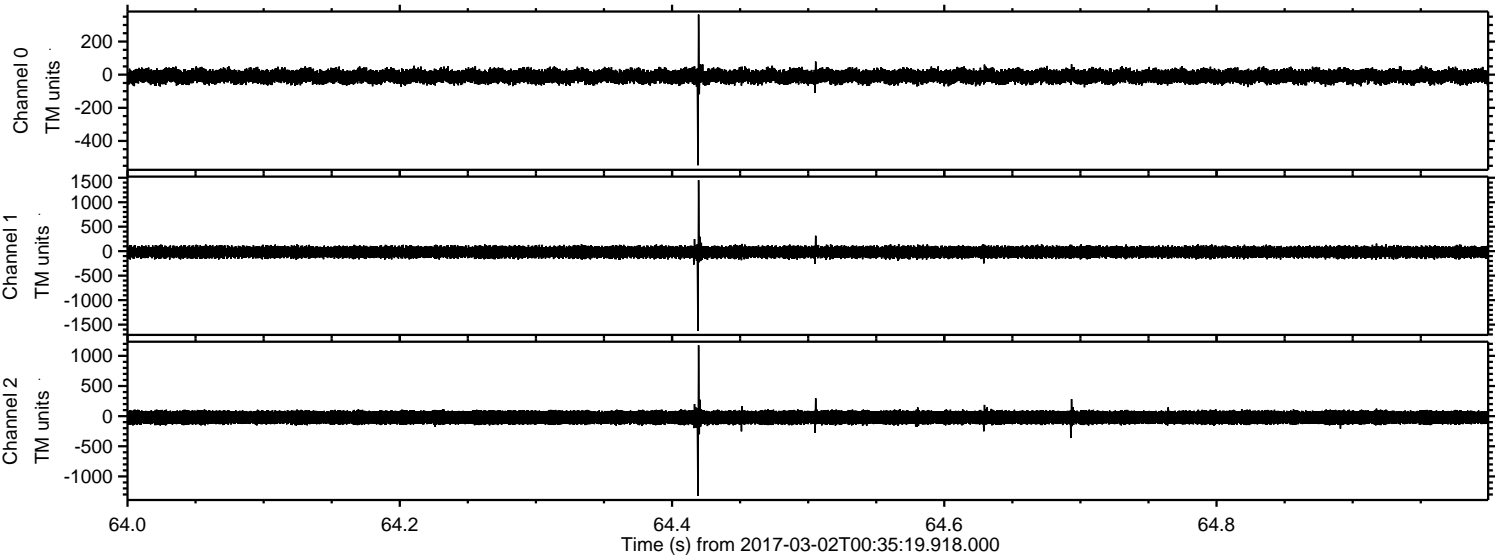
Channel 0  
mn: -509  
mx: 221  
 $\mu$ : -10.1  
 $\sigma$ : 23.9

Channel 1  
mn: -361  
mx: 361  
 $\mu$ : -18.0  
 $\sigma$ : 62.6

Channel 2  
mn: -1167  
mx: 1830  
 $\mu$ : -21.8  
 $\sigma$ : 71.6



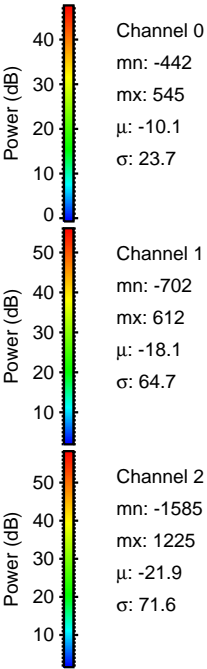
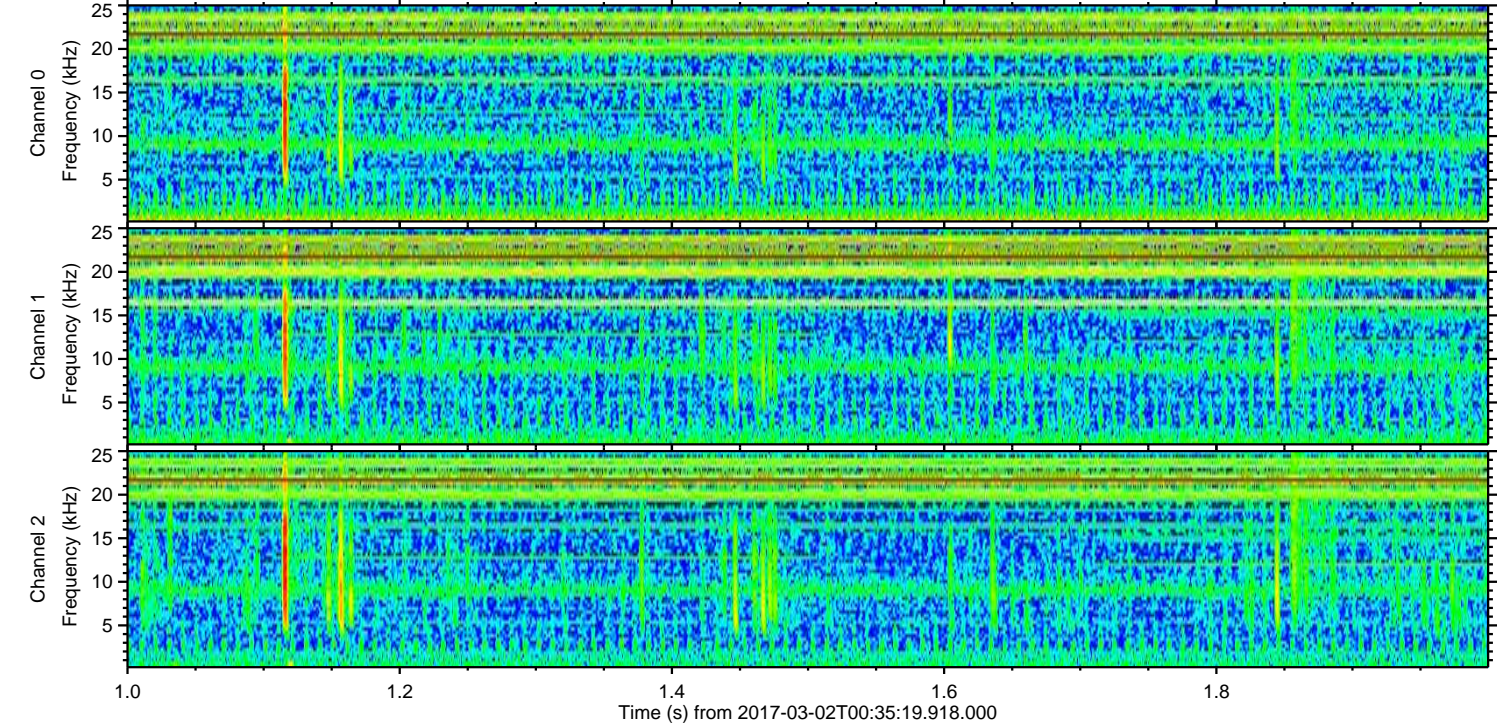
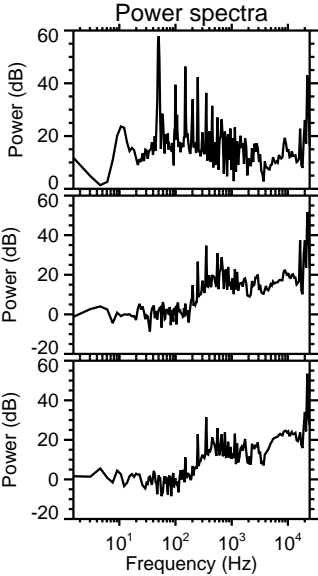
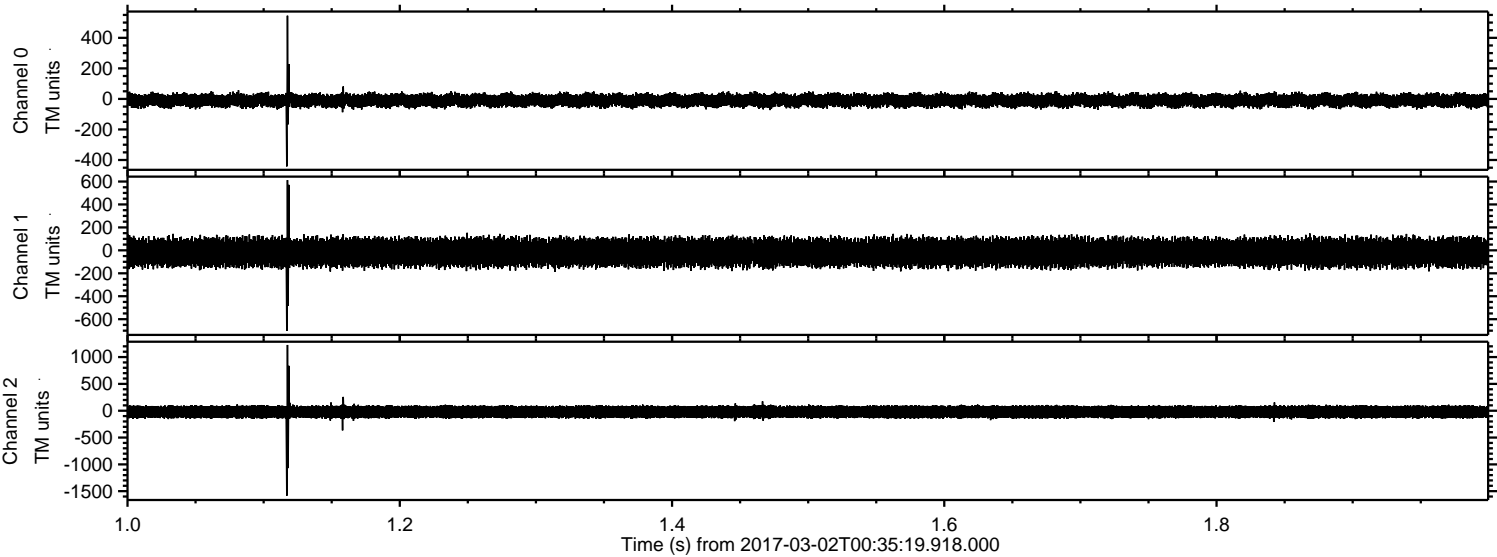
Processed Thu Mar 2 01:43:08 2017 by ELM ver.2012-10-06 from 001\_\_elm20170302\_003518\_\_dat00.bin





ELMAVAN 3D WAVEFORMS (Measured data sampled at 50 kHz) 51000 packets of 144 samples from 2017-03-02T00:35:19.918.000. Part 2/147

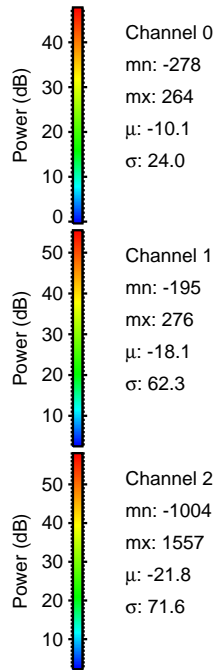
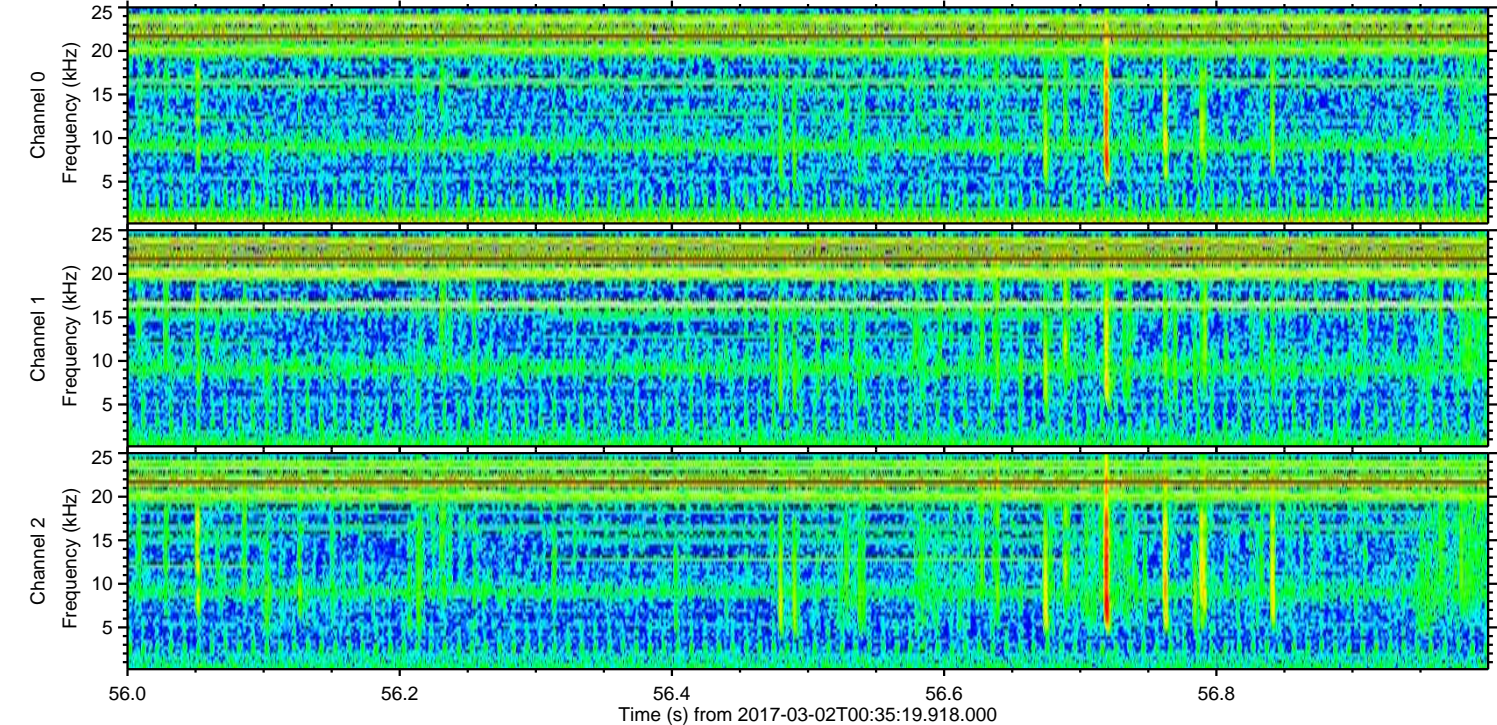
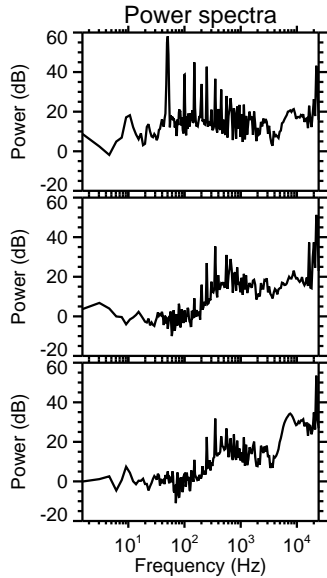
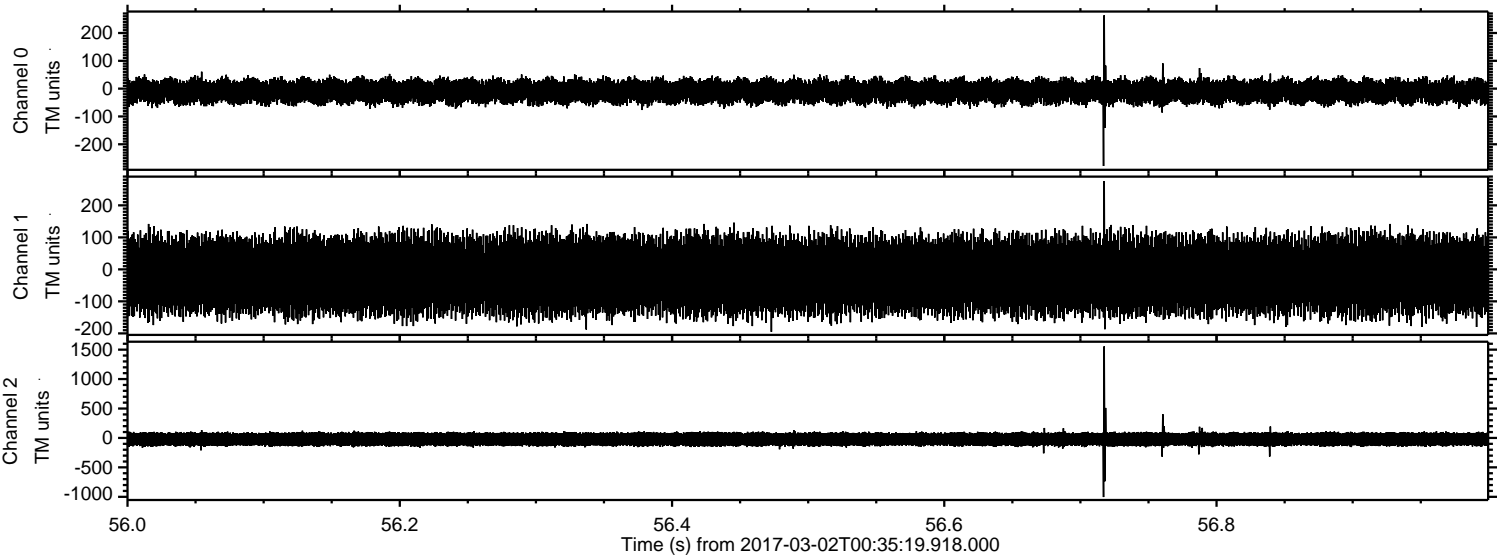
Processed Thu Mar 2 01:43:09 2017 by ELM ver.2012-10-06 from 001\_\_elm20170302\_003518\_\_dat00.bin





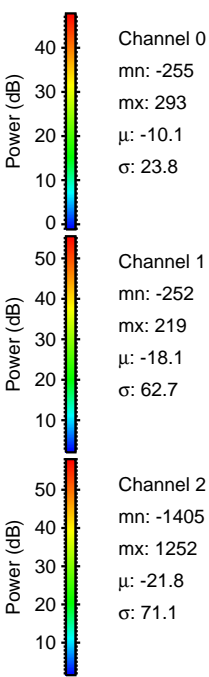
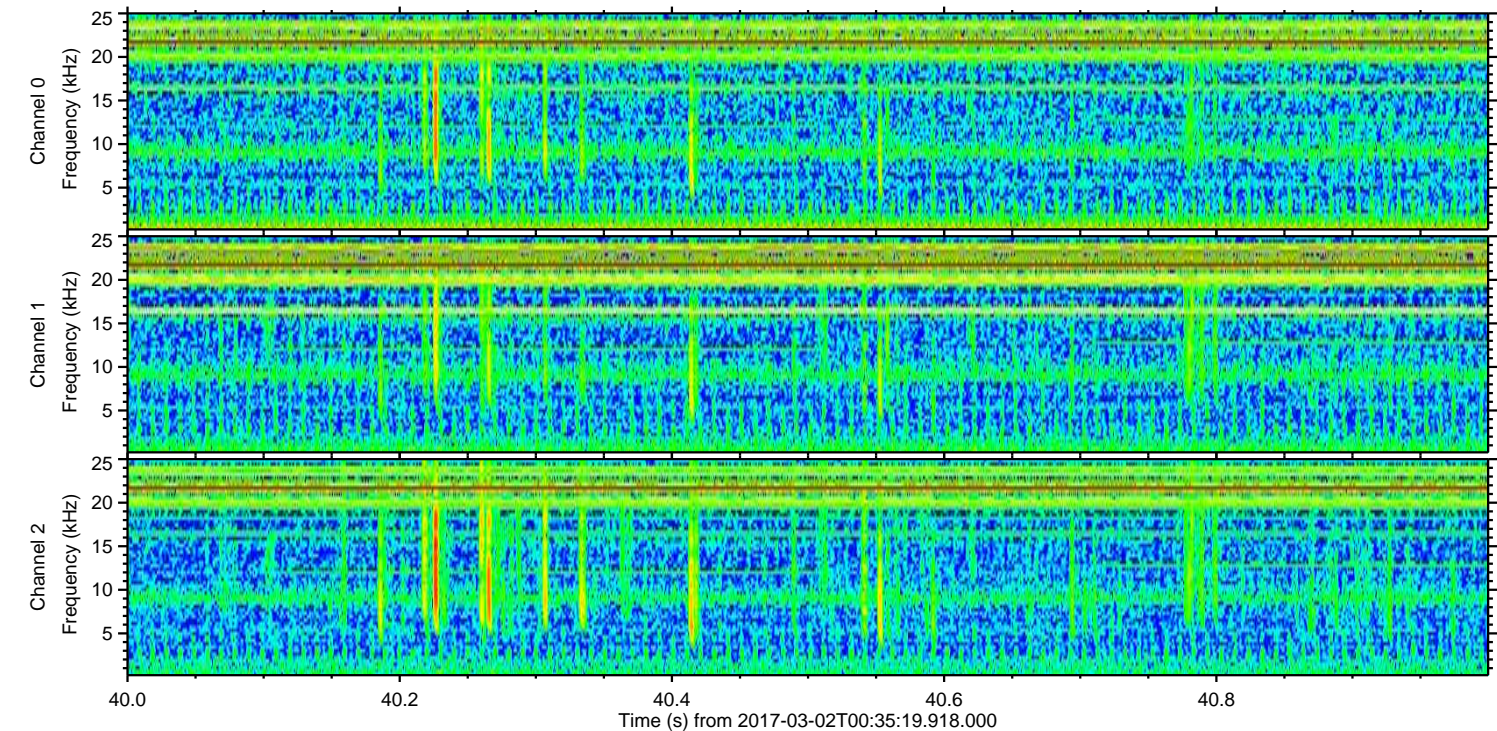
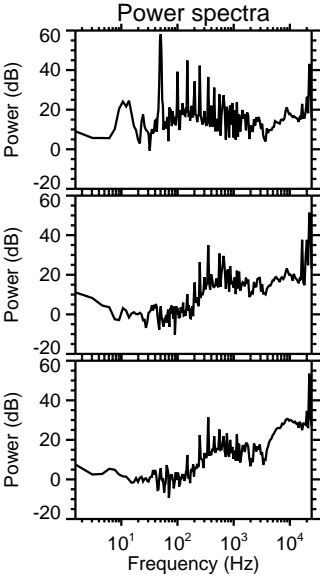
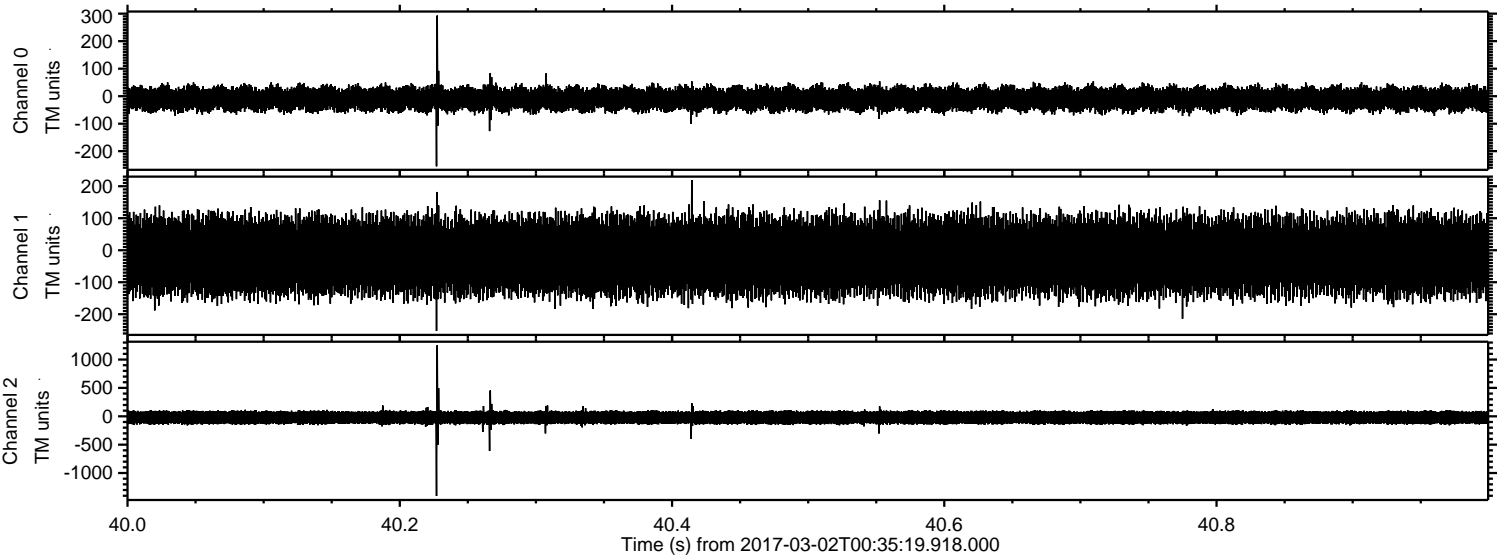
ELMAVAN 3D WAVEFORMS (Measured data sampled at 50 kHz) 51000 packets of 144 samples from 2017-03-02T00:35:19.918.000. Part 57/147

Processed Thu Mar 2 01:43:10 2017 by ELM ver.2012-10-06 from 001\_\_elm20170302\_003518\_\_dat00.bin





Processed Thu Mar 2 01:43:11 2017 by ELM ver.2012-10-06 from 001\_\_elm20170302\_003518\_\_dat00.bin





Processed Thu Mar 2 01:43:12 2017 by ELM ver.2012-10-06 from 001\_\_elm20170302\_003518\_\_dat00.bin

