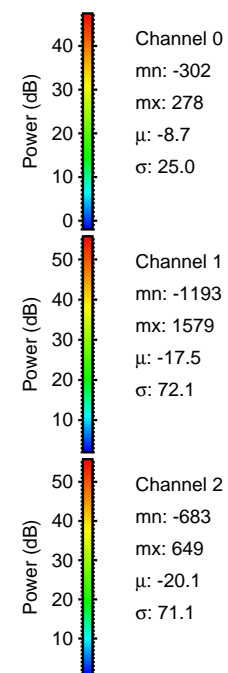
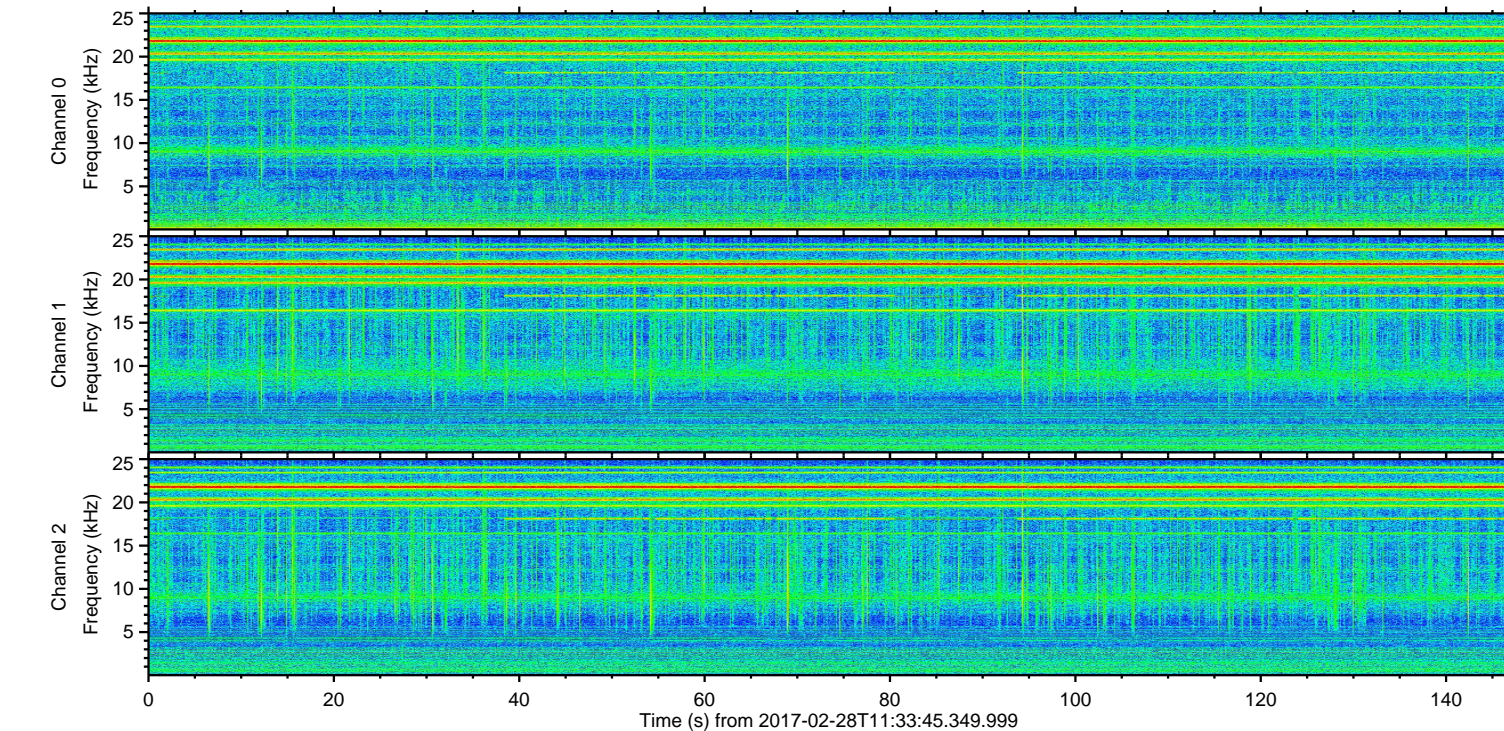
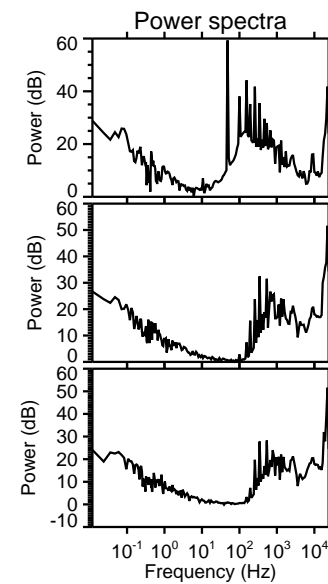
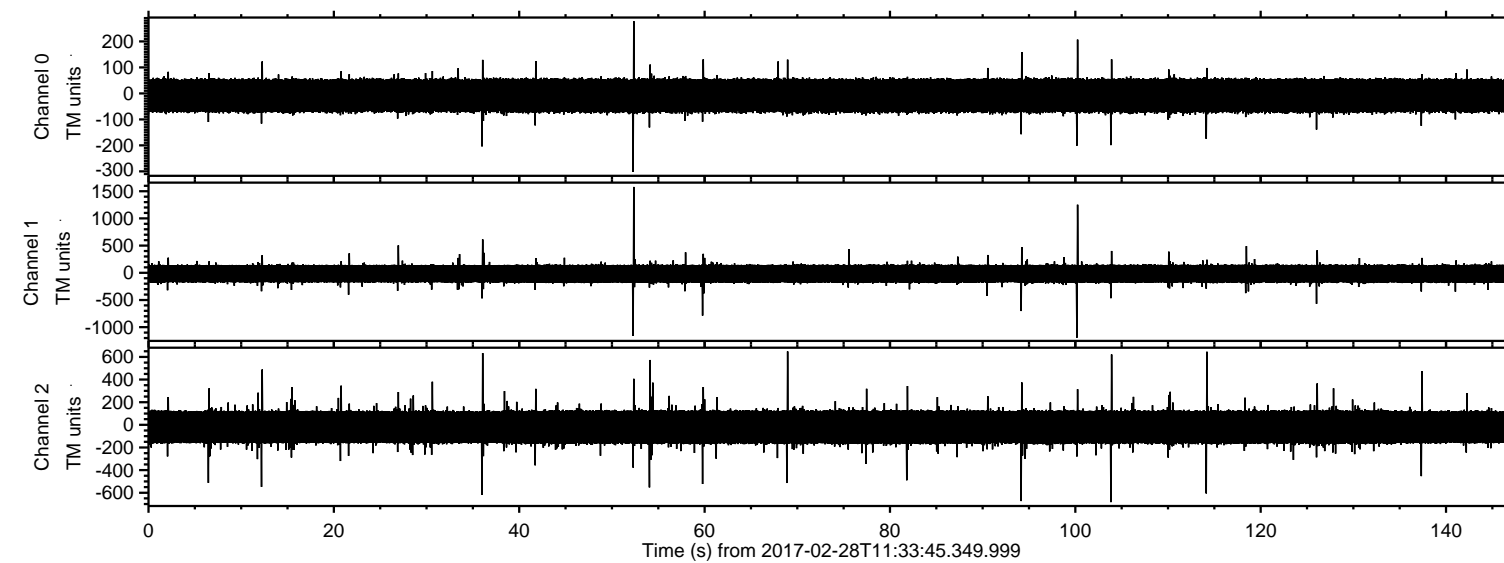
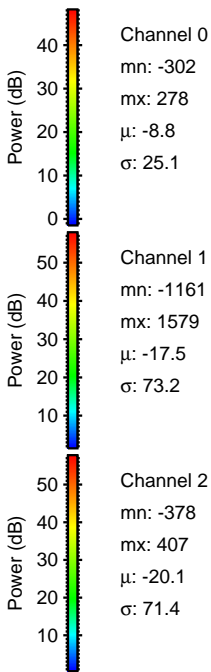
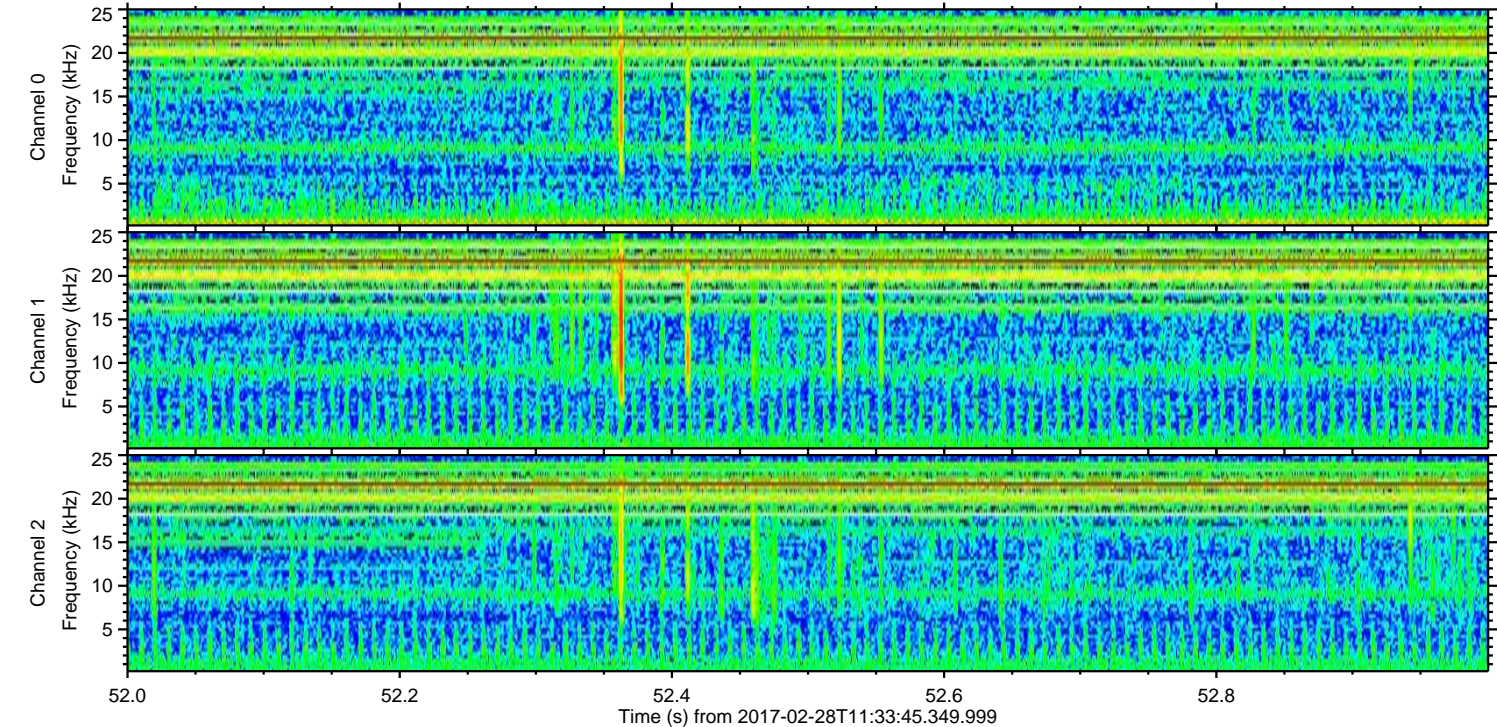
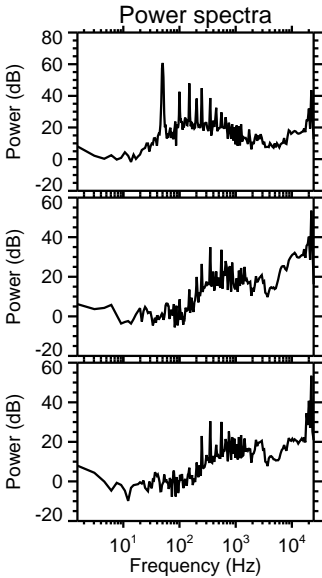
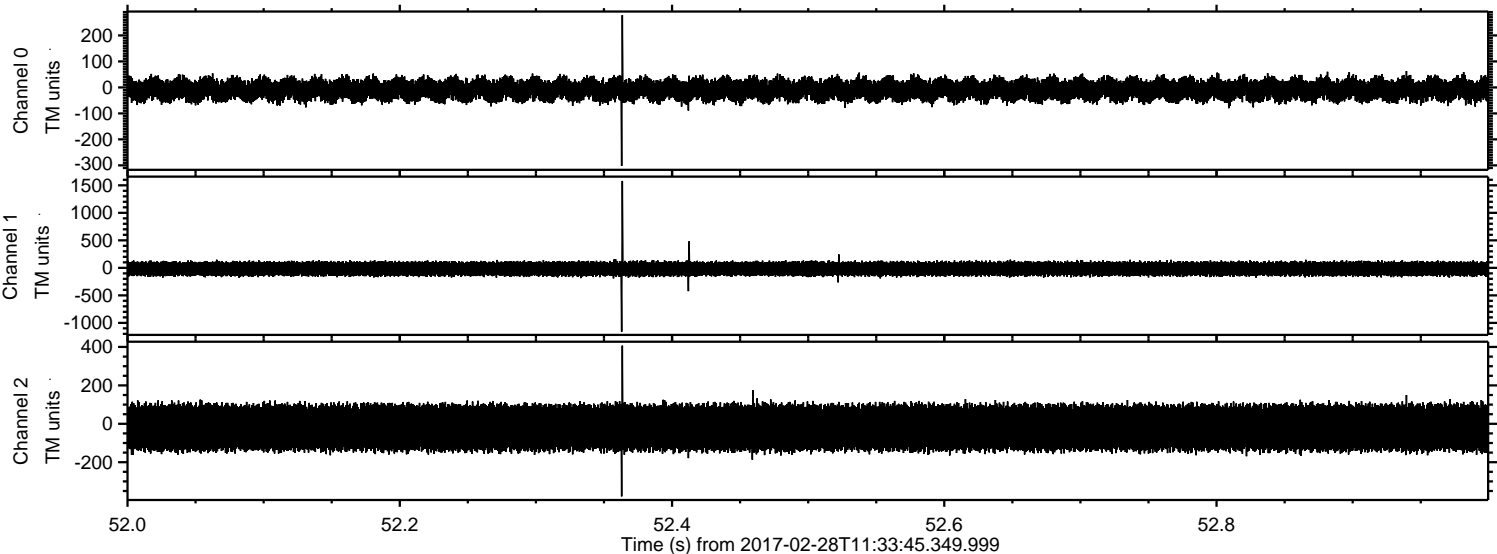


ELMAVAN 3D WAVEFORMS (Measured data sampled at 50 kHz) 51000 packets of 144 samples from 2017-02-28T11:33:45.349.999.

Processed Tue Feb 28 12:41:50 2017 by ELM ver.2012-10-06 from 001__elm20170228_113344__dat00.bin

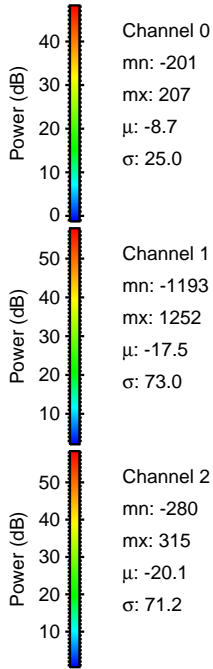
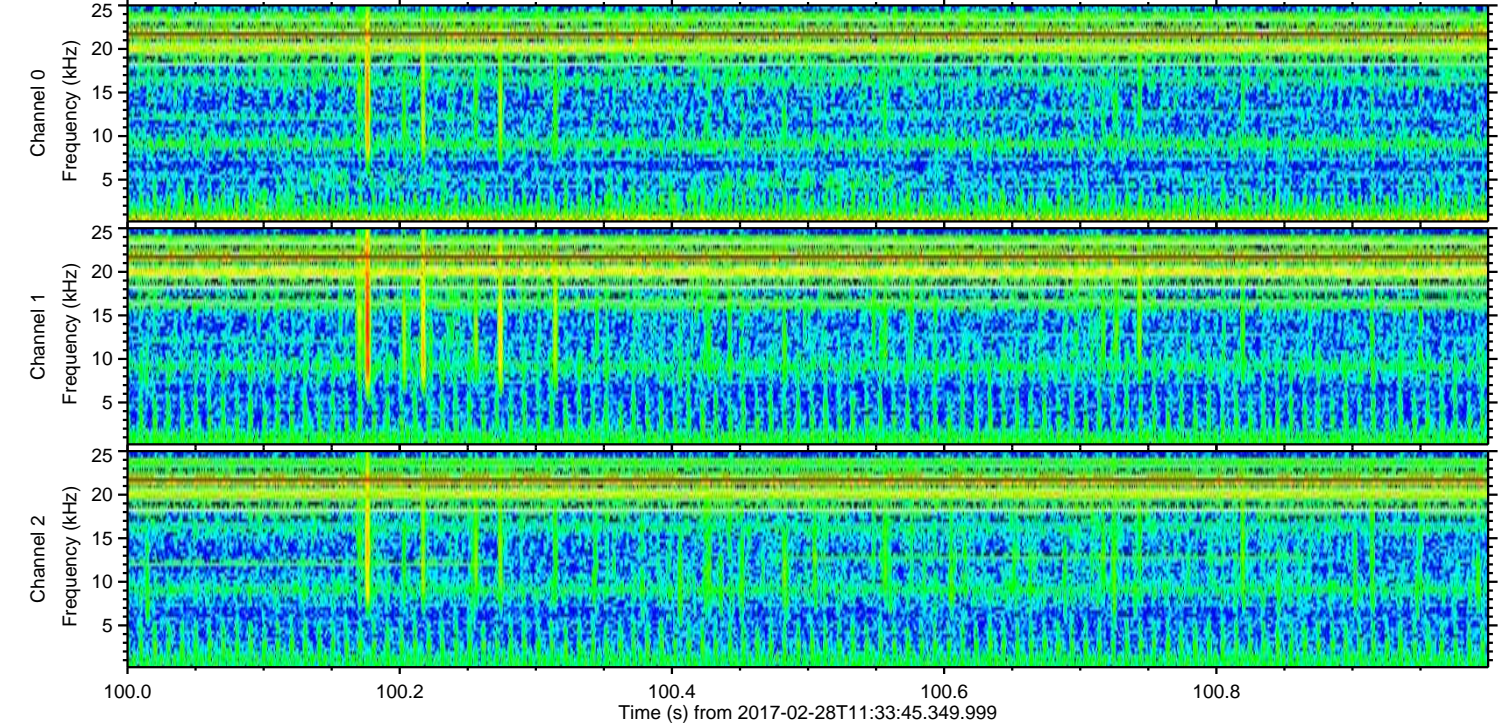
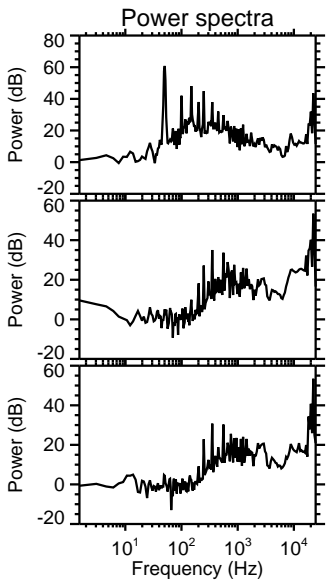
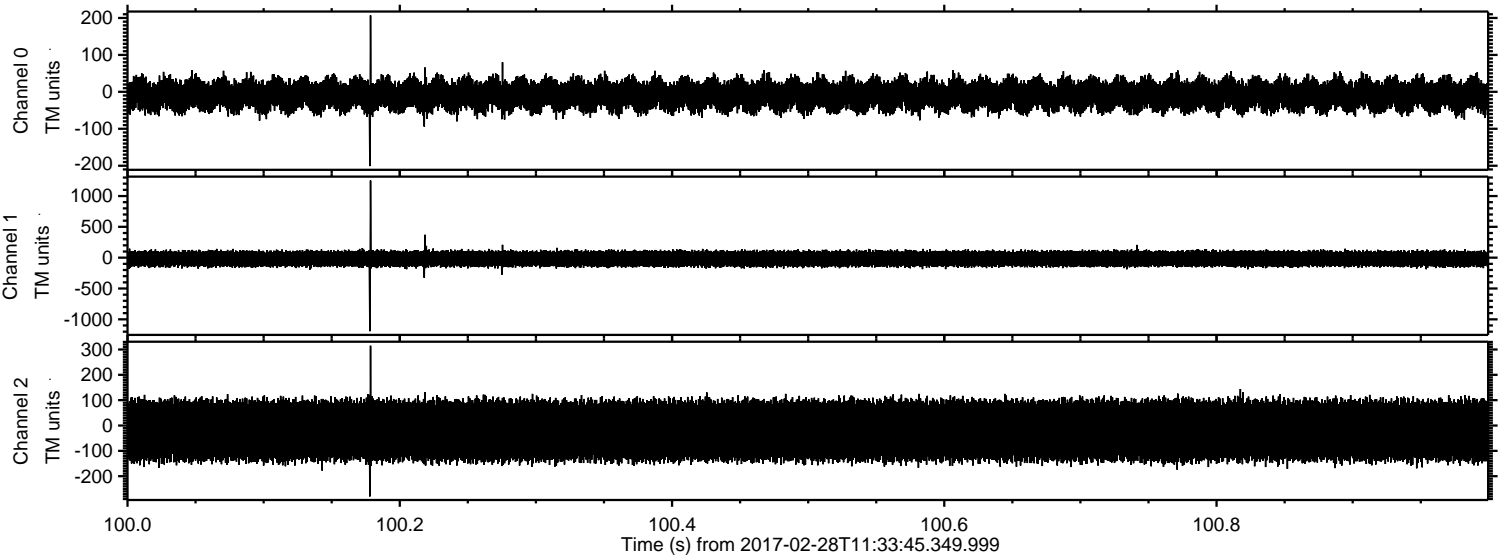


Processed Tue Feb 28 12:42:02 2017 by ELM ver.2012-10-06 from 001__elm20170228_113344__dat00.bin



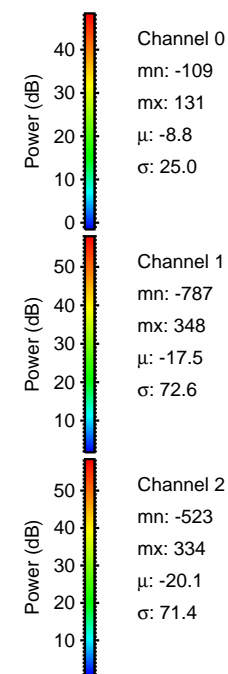
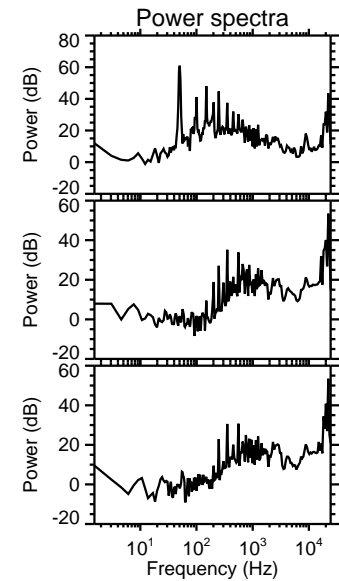
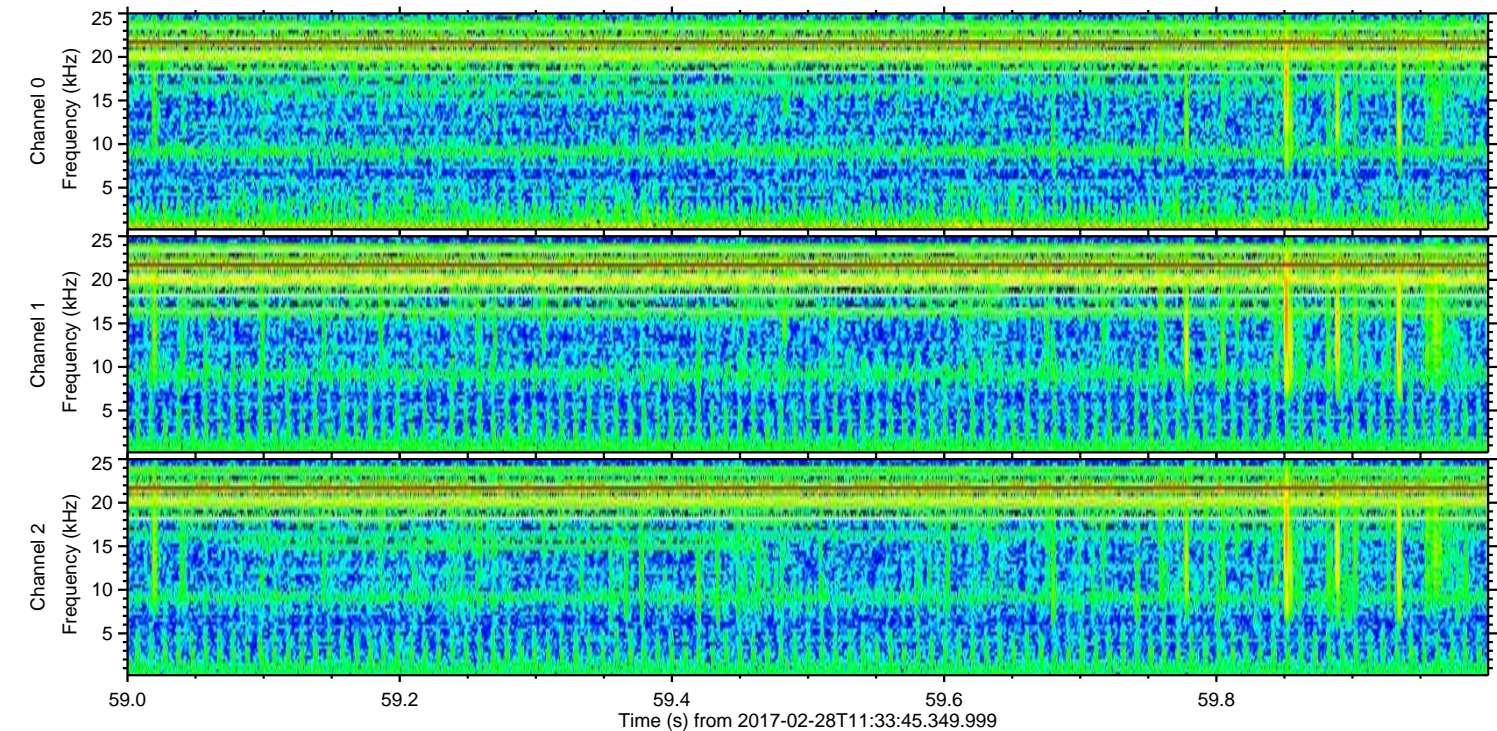
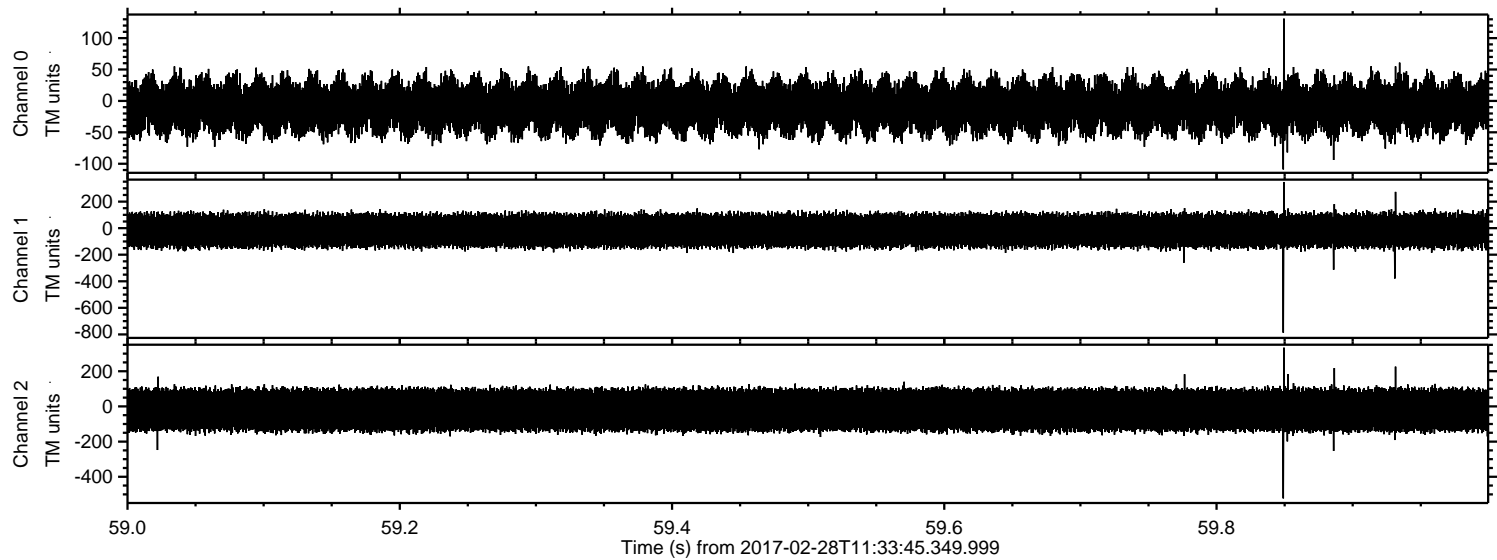
ELMAVAN 3D WAVEFORMS (Measured data sampled at 50 kHz) 51000 packets of 144 samples from 2017-02-28T11:33:45.349.999. Part 101/147

Processed Tue Feb 28 12:42:03 2017 by ELM ver.2012-10-06 from 001__elm20170228_113344__dat00.bin



ELMAVAN 3D WAVEFORMS (Measured data sampled at 50 kHz) 51000 packets of 144 samples from 2017-02-28T11:33:45.349.999. Part 60/147

Processed Tue Feb 28 12:42:04 2017 by ELM ver.2012-10-06 from 001__elm20170228_113344__dat00.bin



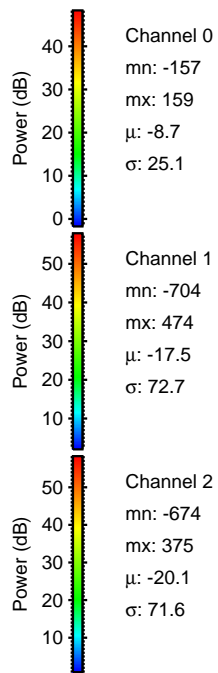
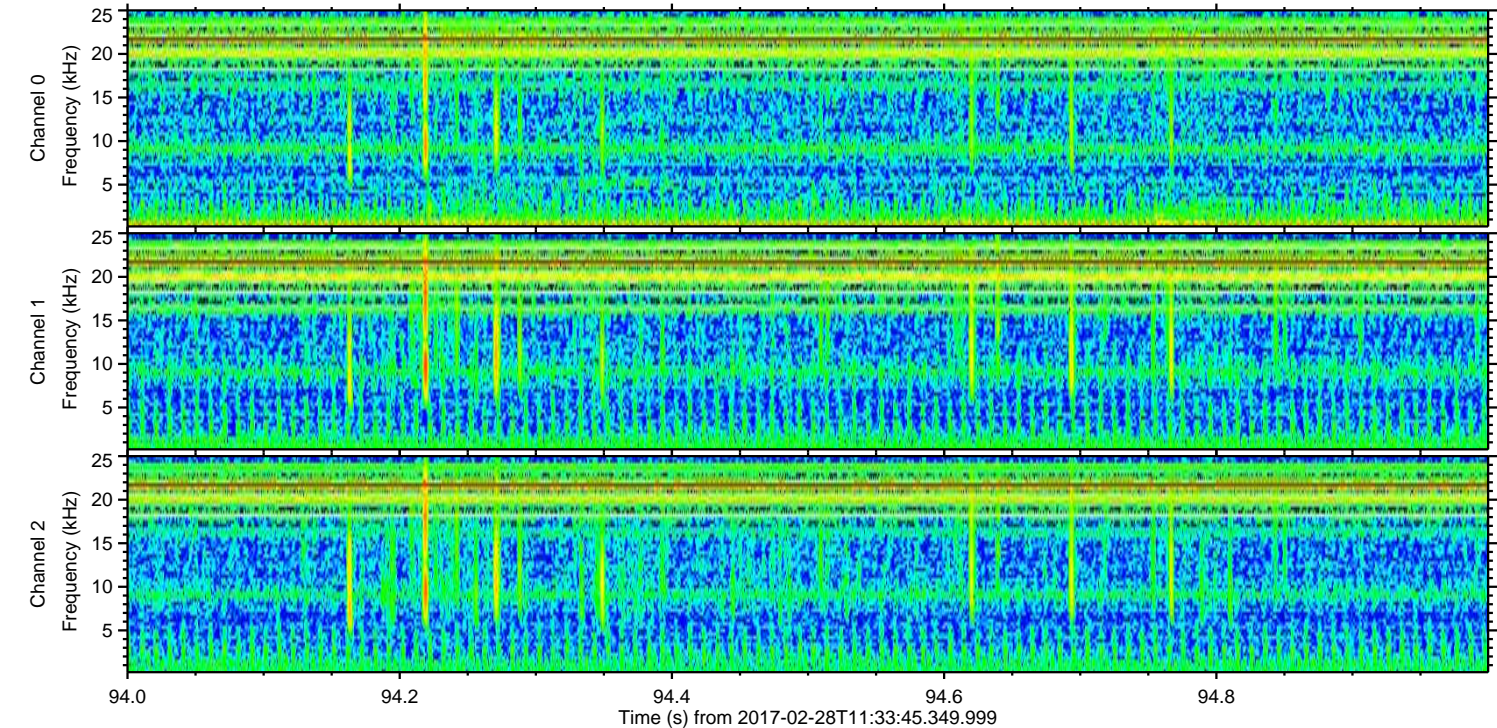
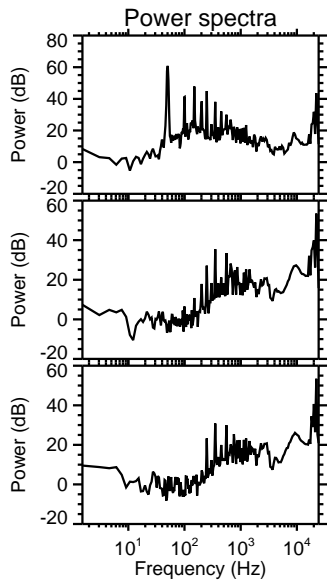
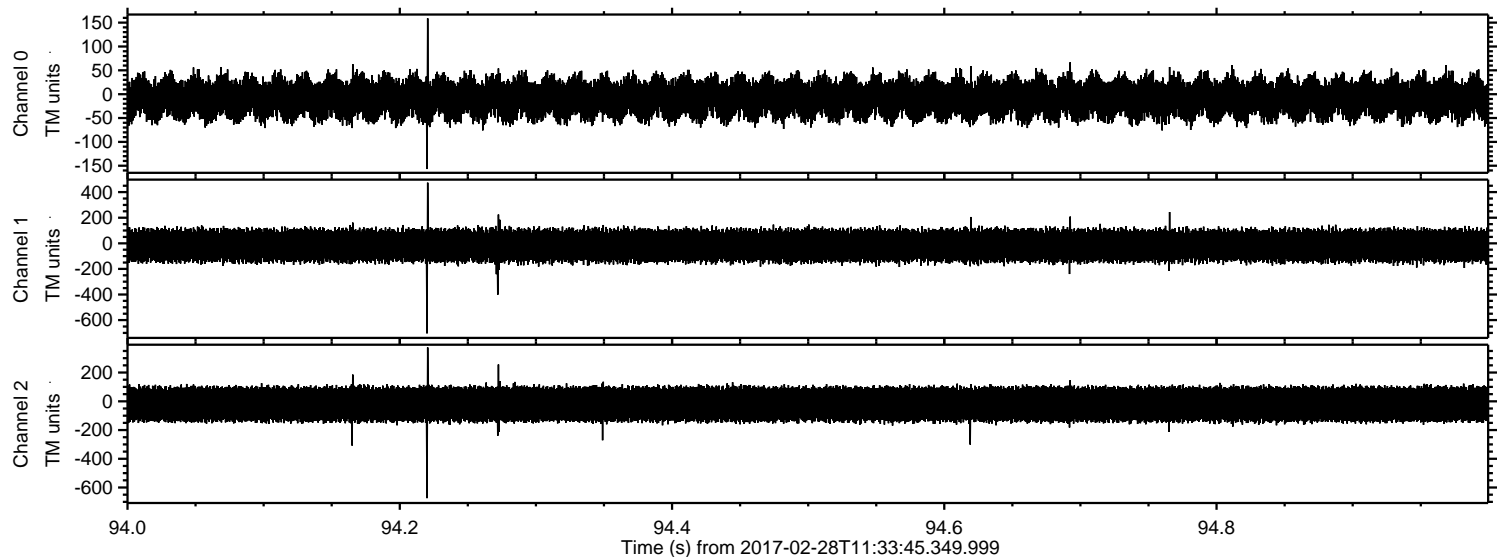
Power spectra

Channel 0
mn: -109
mx: 131
 μ : -8.8
 σ : 25.0

Channel 1
mn: -787
mx: 348
 μ : -17.5
 σ : 72.6

Channel 2
mn: -523
mx: 334
 μ : -20.1
 σ : 71.4

Processed Tue Feb 28 12:42:05 2017 by ELM ver.2012-10-06 from 001__elm20170228_113344__dat00.bin



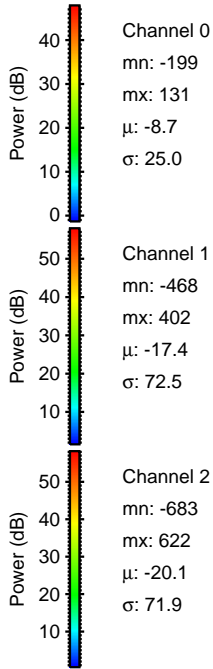
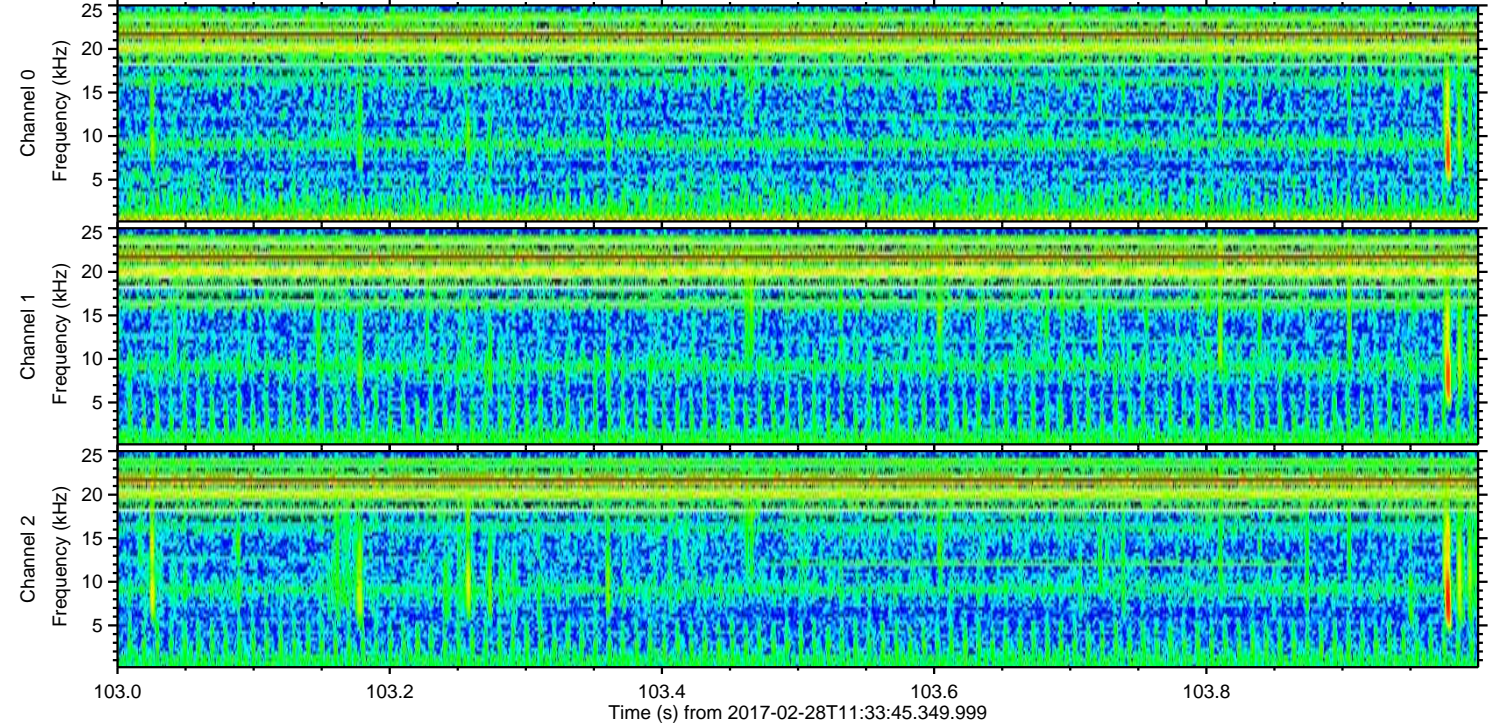
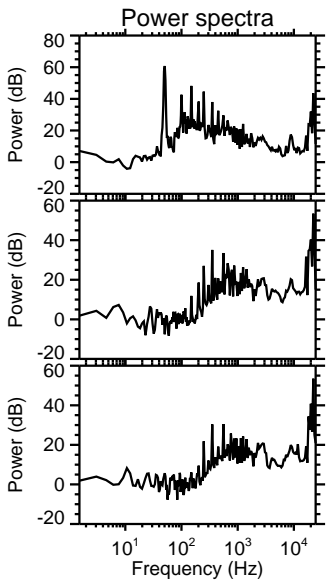
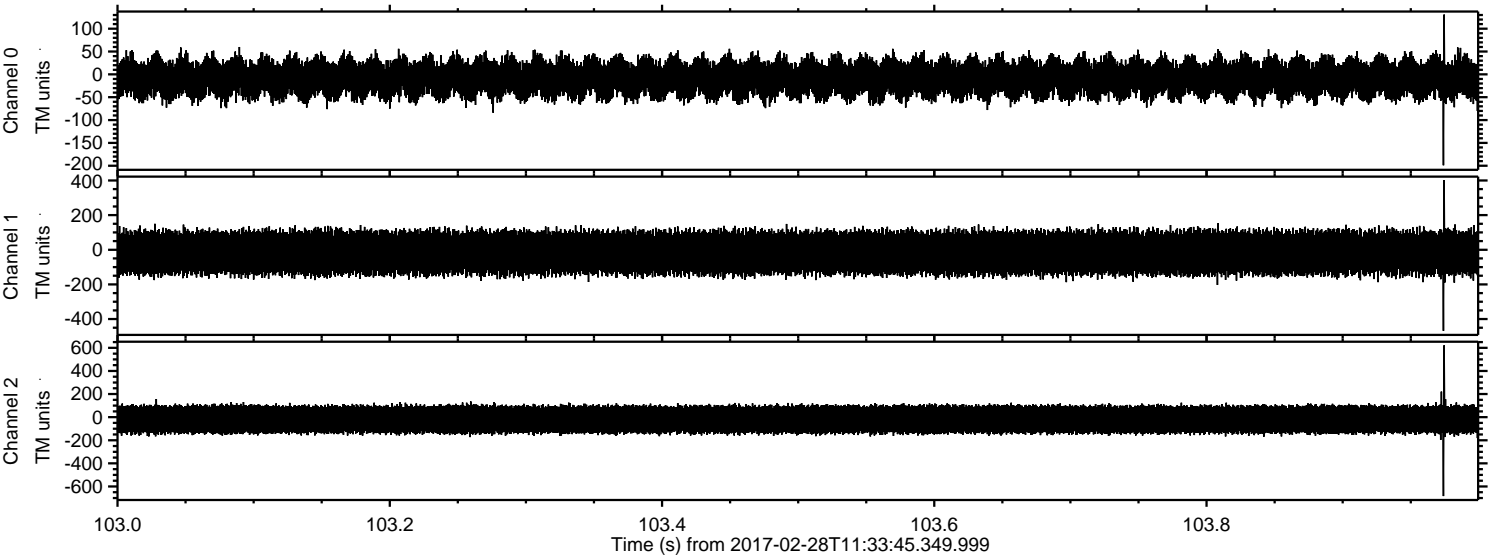
Channel 0
mn: -157
mx: 159
 μ : -8.7
 σ : 25.1

Channel 1
mn: -704
mx: 474
 μ : -17.5
 σ : 72.7

Channel 2
mn: -674
mx: 375
 μ : -20.1
 σ : 71.6

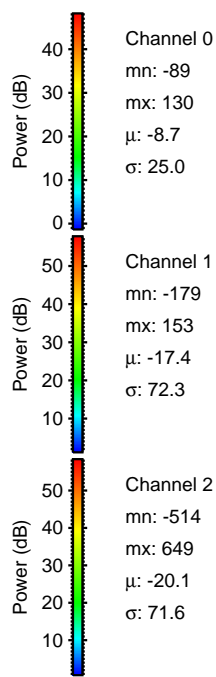
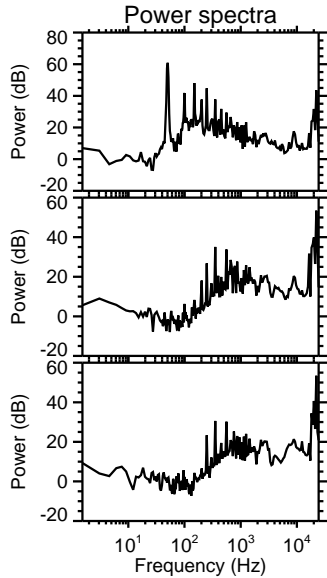
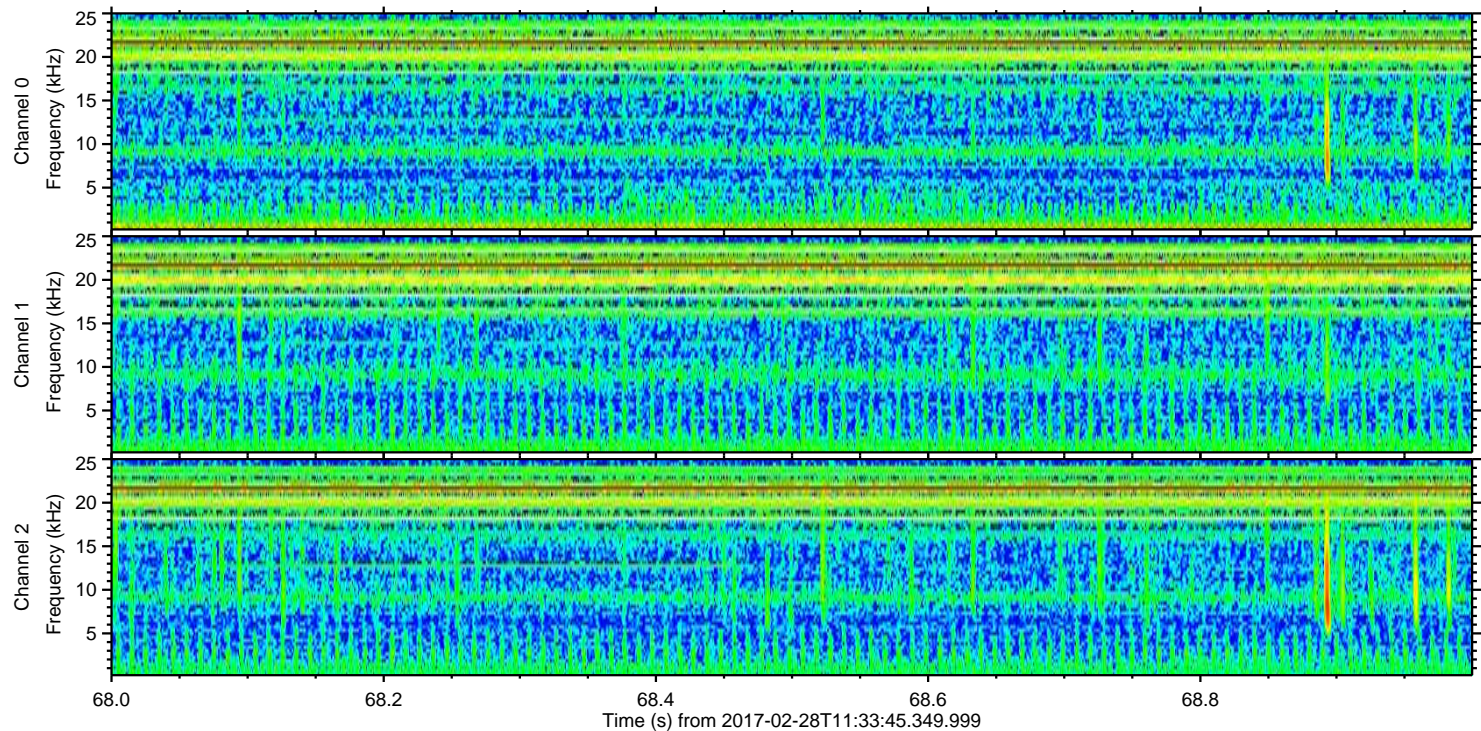
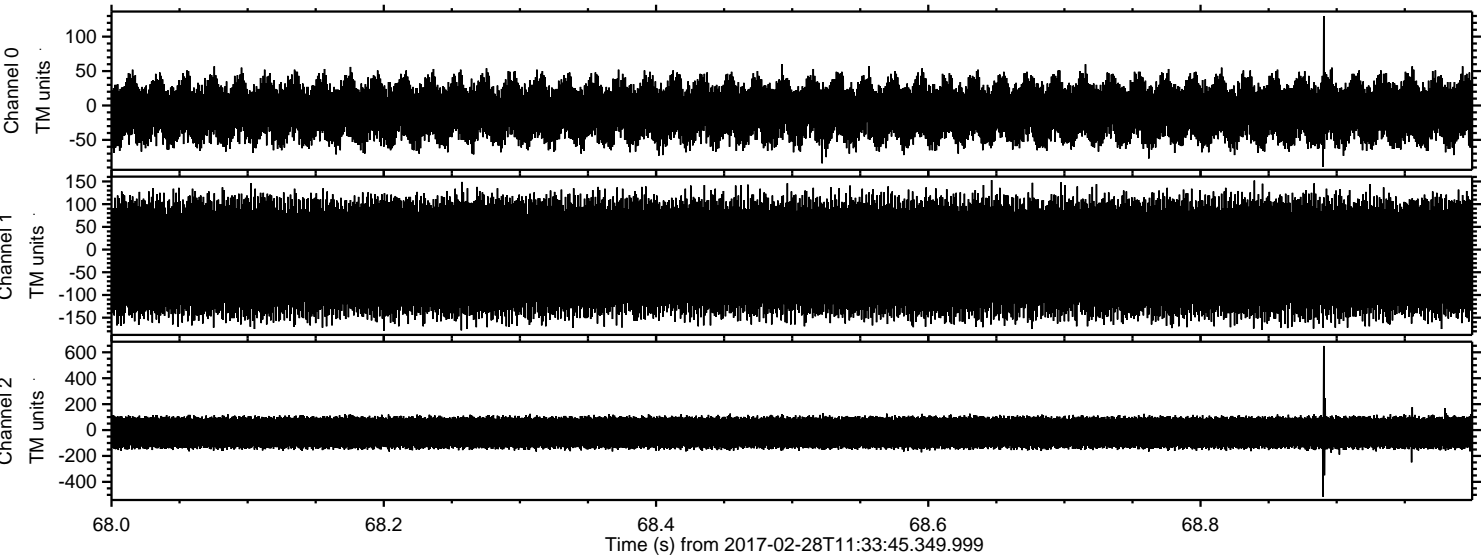
ELMAVAN 3D WAVEFORMS (Measured data sampled at 50 kHz) 51000 packets of 144 samples from 2017-02-28T11:33:45.349.999. Part 104/147

Processed Tue Feb 28 12:42:05 2017 by ELM ver.2012-10-06 from 001__elm20170228_113344__dat00.bin



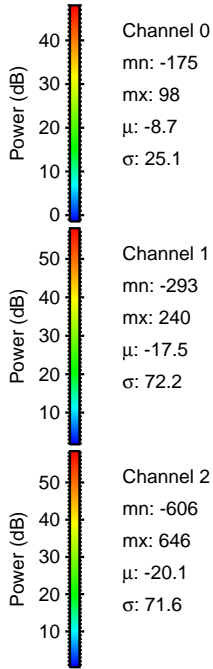
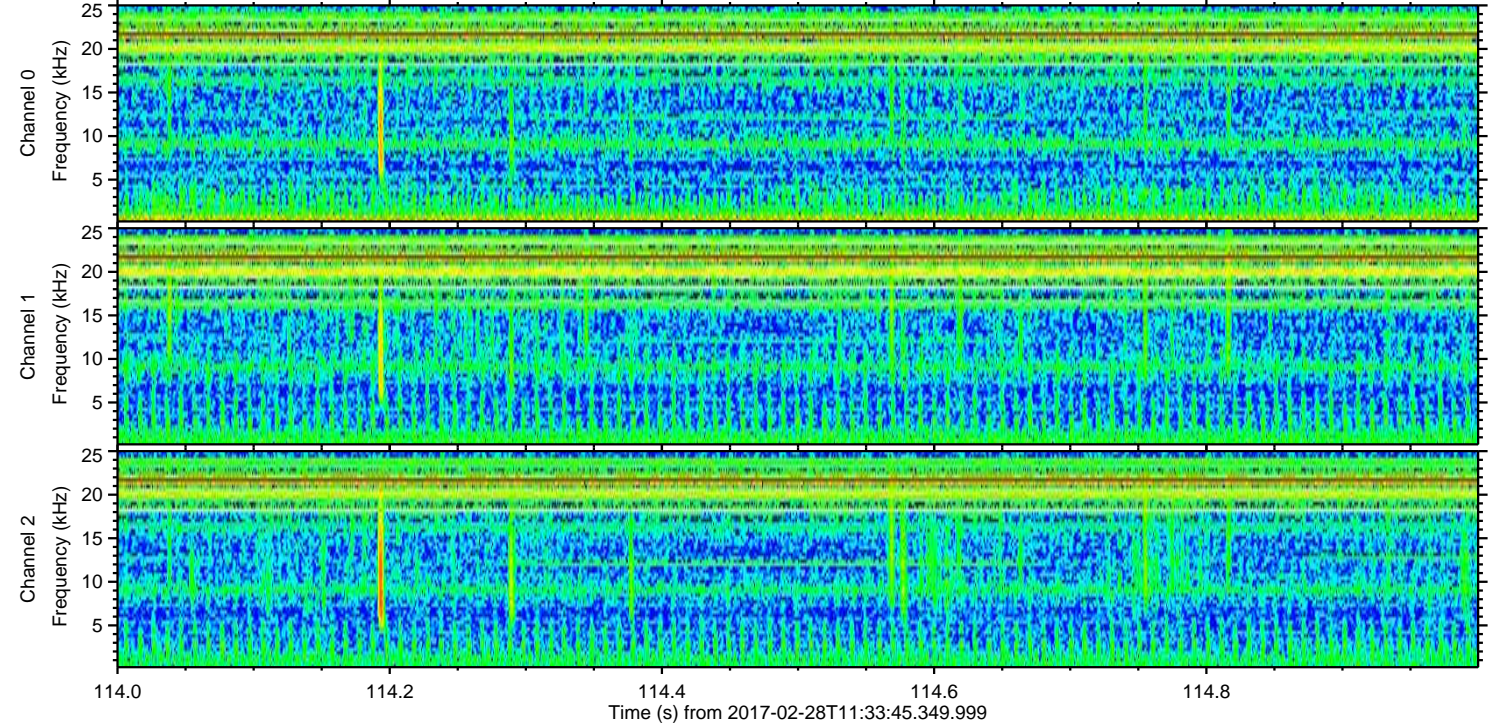
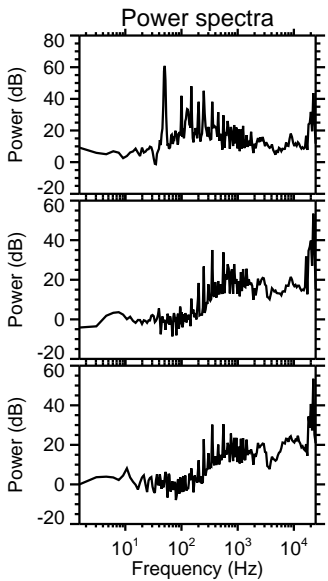
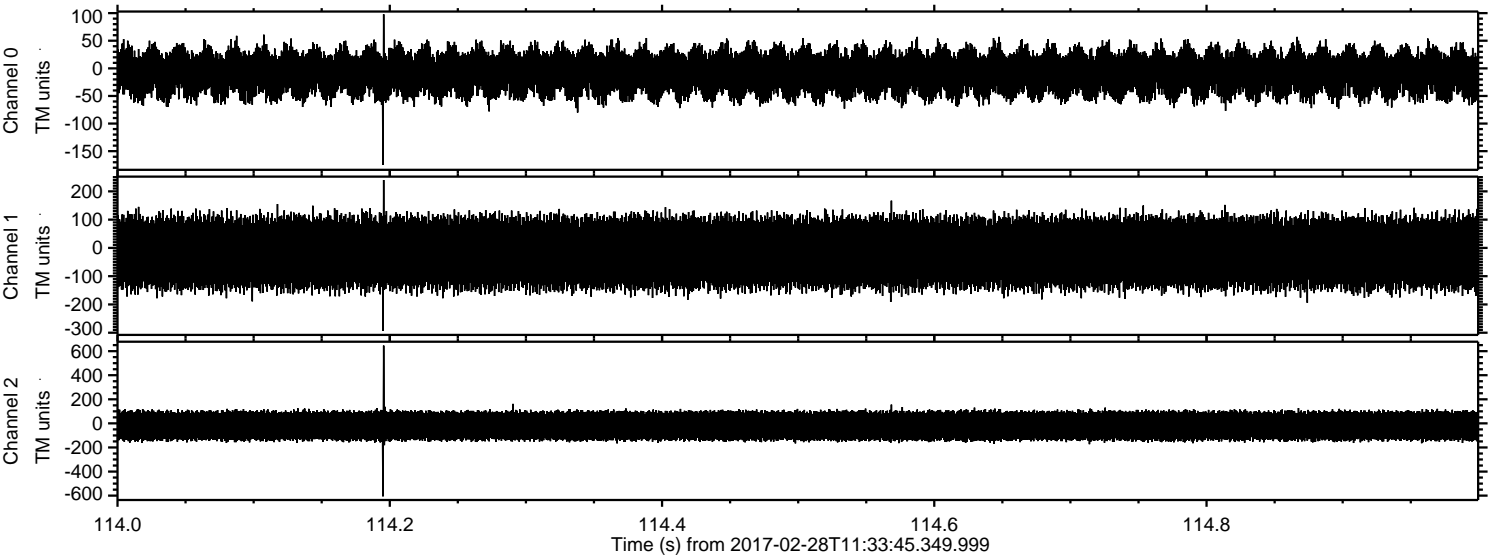
ELMAVAN 3D WAVEFORMS (Measured data sampled at 50 kHz) 51000 packets of 144 samples from 2017-02-28T11:33:45.349.999. Part 69/147

Processed Tue Feb 28 12:42:06 2017 by ELM ver.2012-10-06 from 001__elm20170228_113344__dat00.bin



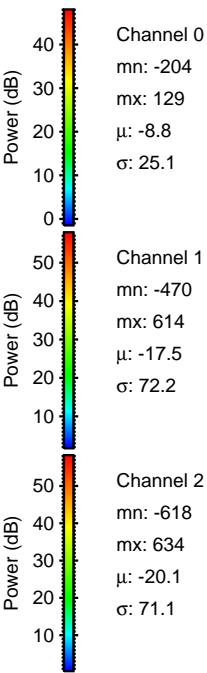
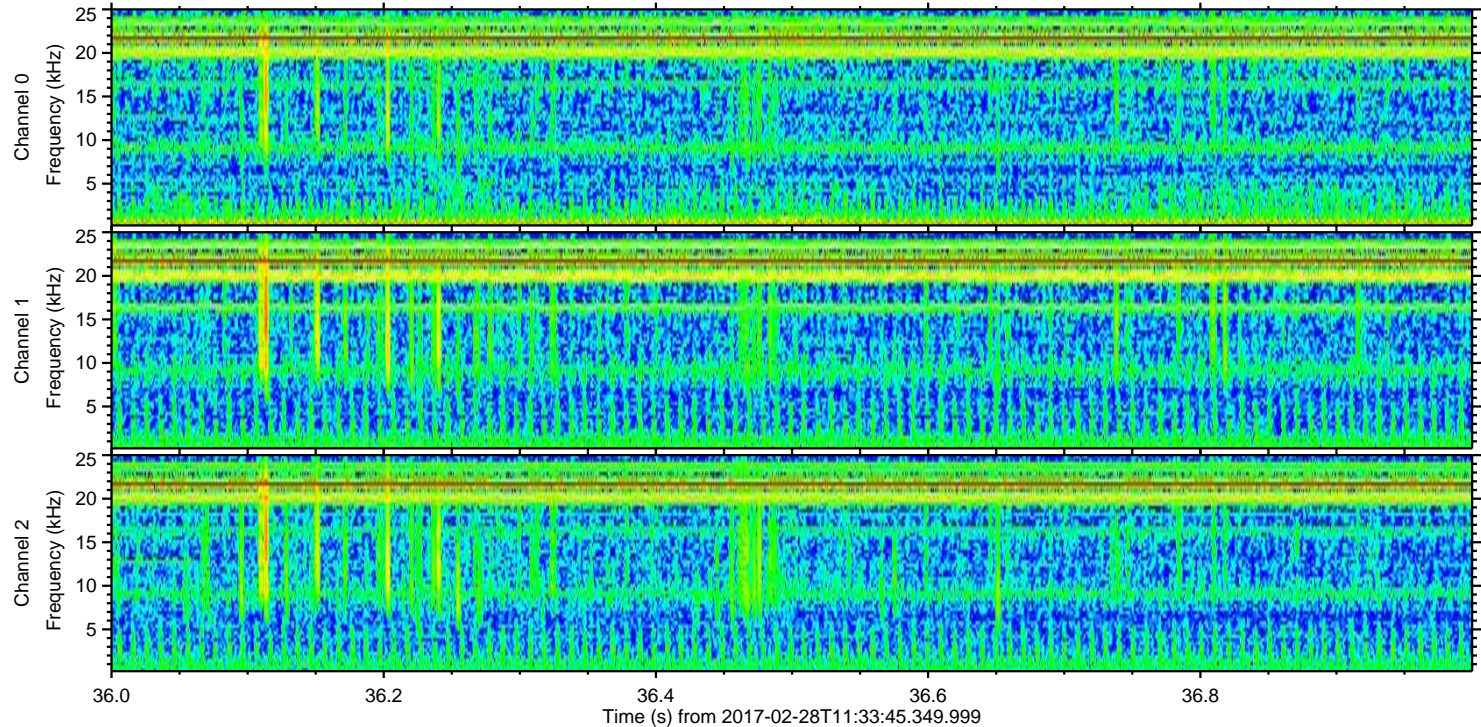
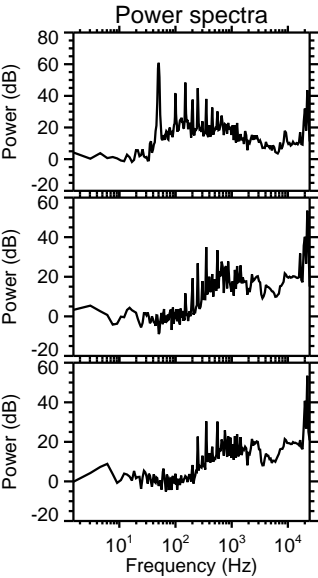
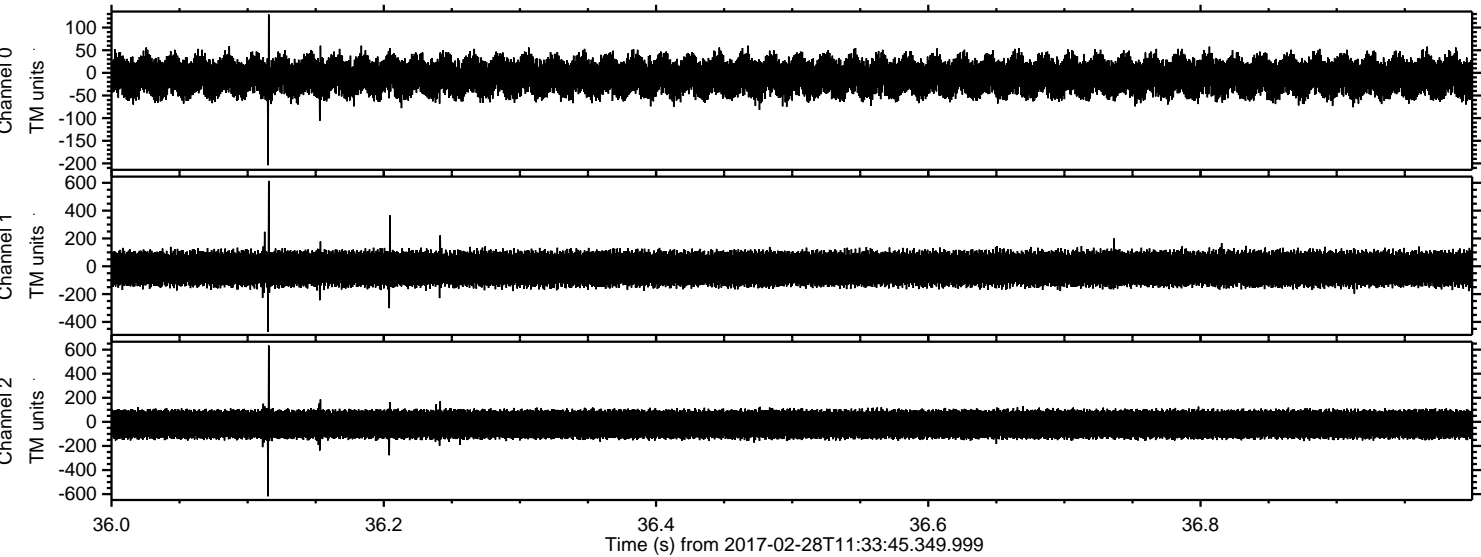
ELMAVAN 3D WAVEFORMS (Measured data sampled at 50 kHz) 51000 packets of 144 samples from 2017-02-28T11:33:45.349.999. Part 115/147

Processed Tue Feb 28 12:42:07 2017 by ELM ver.2012-10-06 from 001__elm20170228_113344__dat00.bin



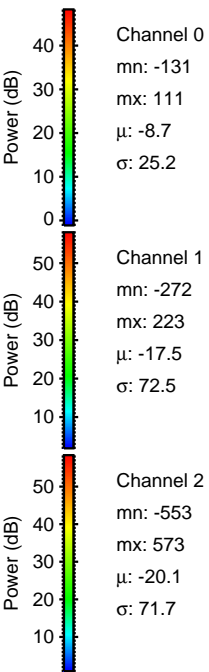
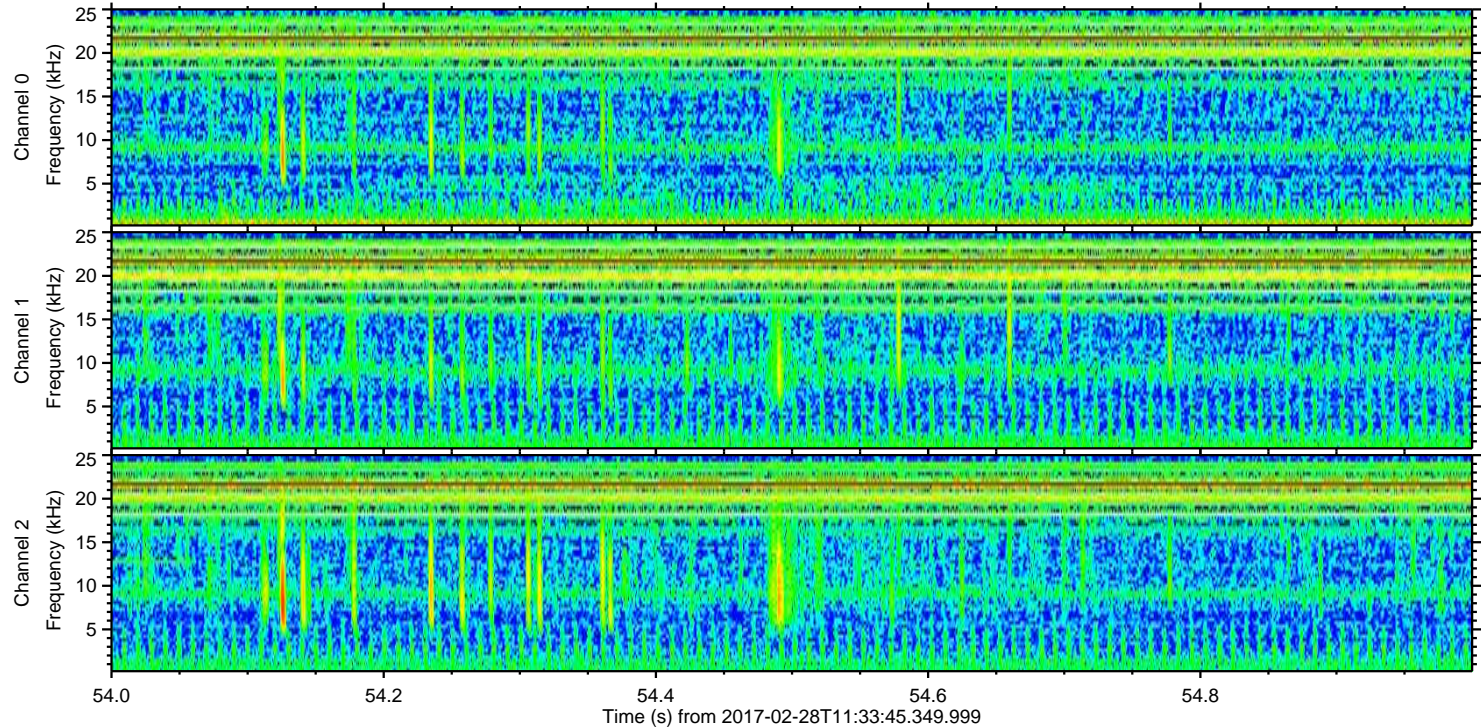
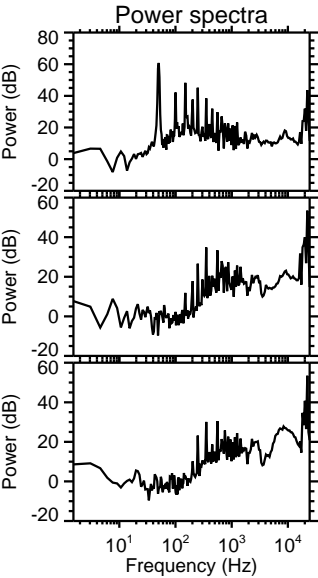
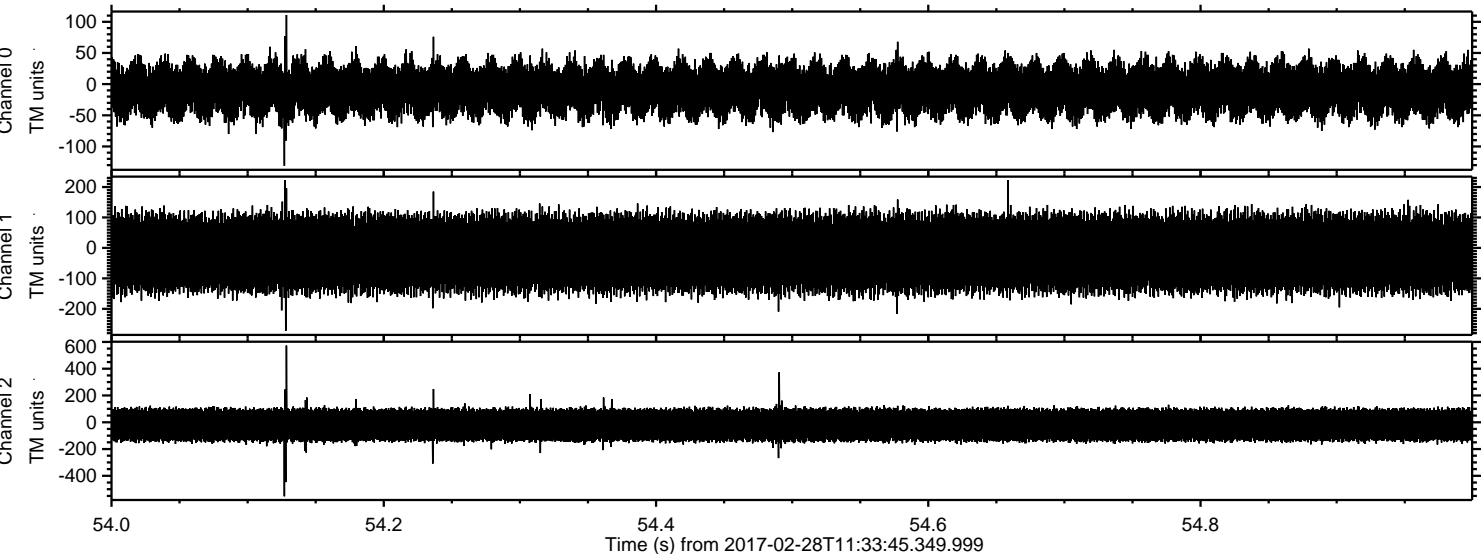
ELMAVAN 3D WAVEFORMS (Measured data sampled at 50 kHz) 51000 packets of 144 samples from 2017-02-28T11:33:45.349.999. Part 37/147

Processed Tue Feb 28 12:42:08 2017 by ELM ver.2012-10-06 from 001__elm20170228_113344__dat00.bin



ELMAVAN 3D WAVEFORMS (Measured data sampled at 50 kHz) 51000 packets of 144 samples from 2017-02-28T11:33:45.349.999. Part 55/147

Processed Tue Feb 28 12:42:09 2017 by ELM ver.2012-10-06 from 001__elm20170228_113344__dat00.bin



ELMAVAN 3D WAVEFORMS (Measured data sampled at 50 kHz) 51000 packets of 144 samples from 2017-02-28T11:33:45.349.999. Part 32/147

Processed Tue Feb 28 12:42:10 2017 by ELM ver.2012-10-06 from 001__elm20170228_113344__dat00.bin

