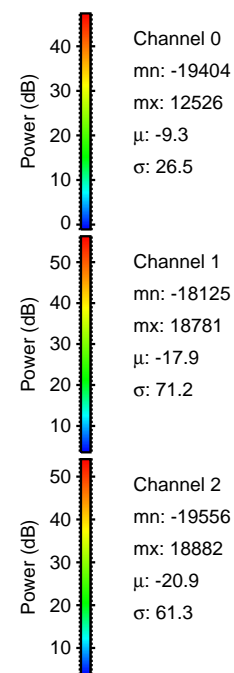
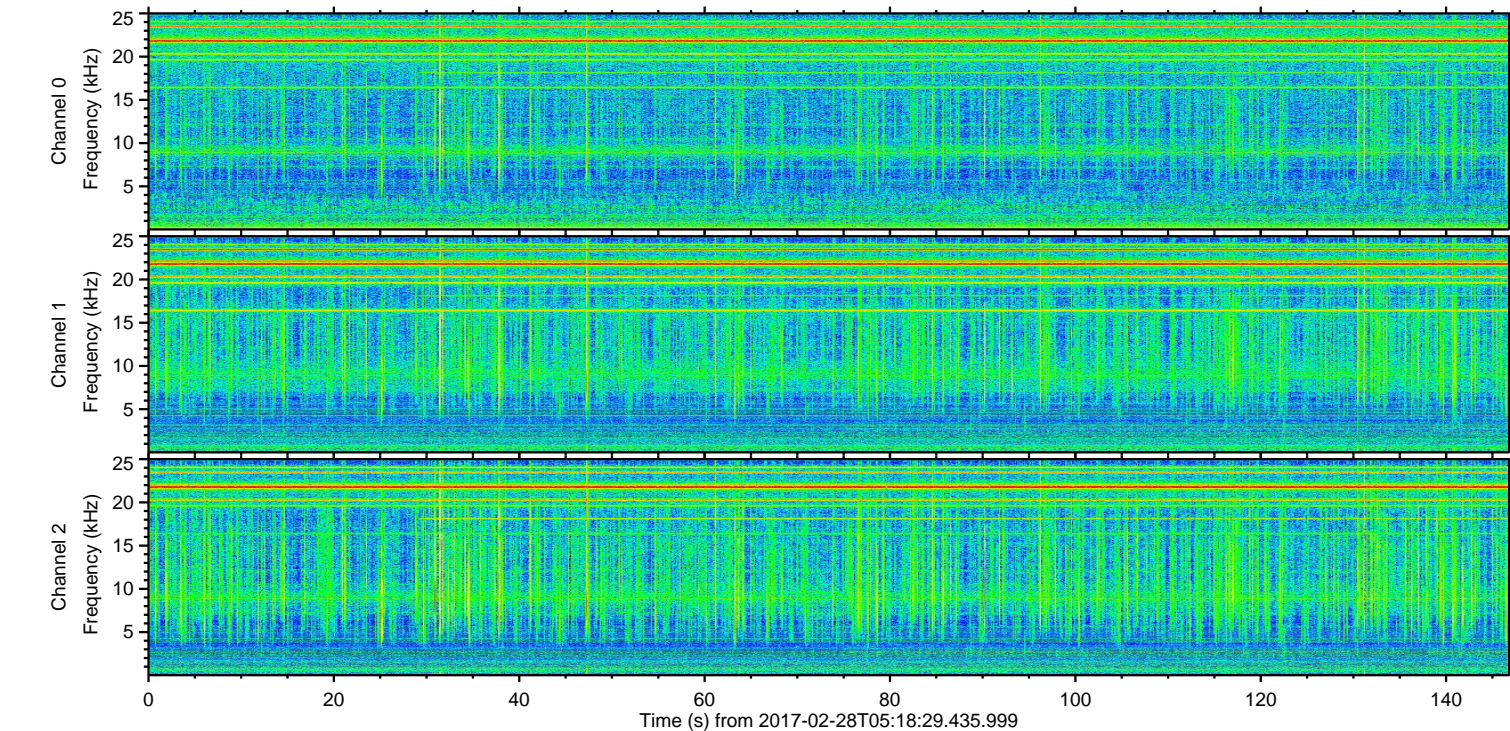
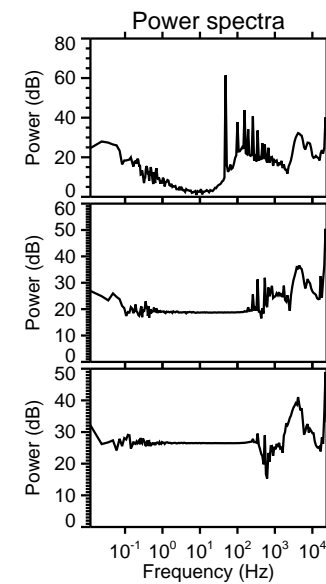
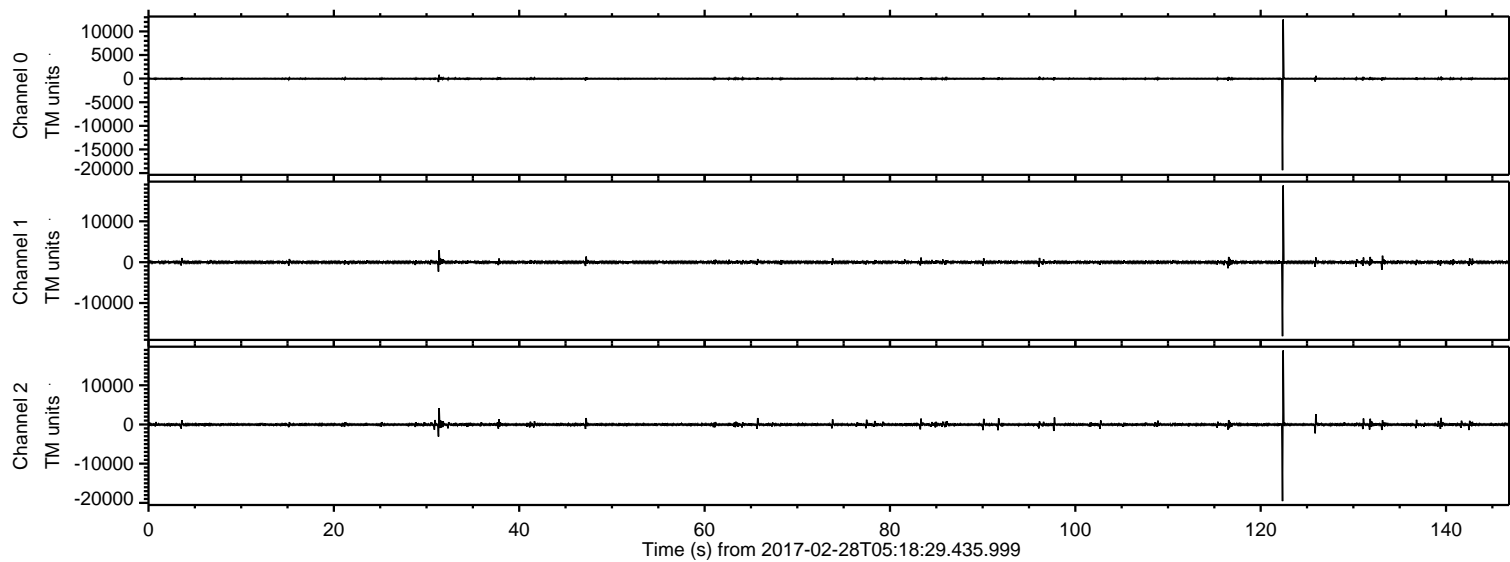


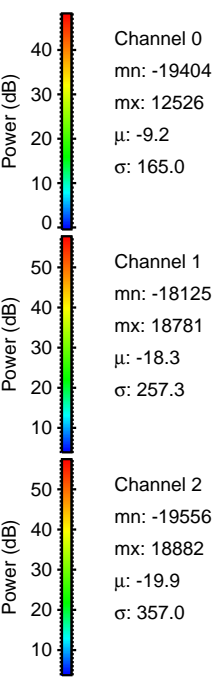
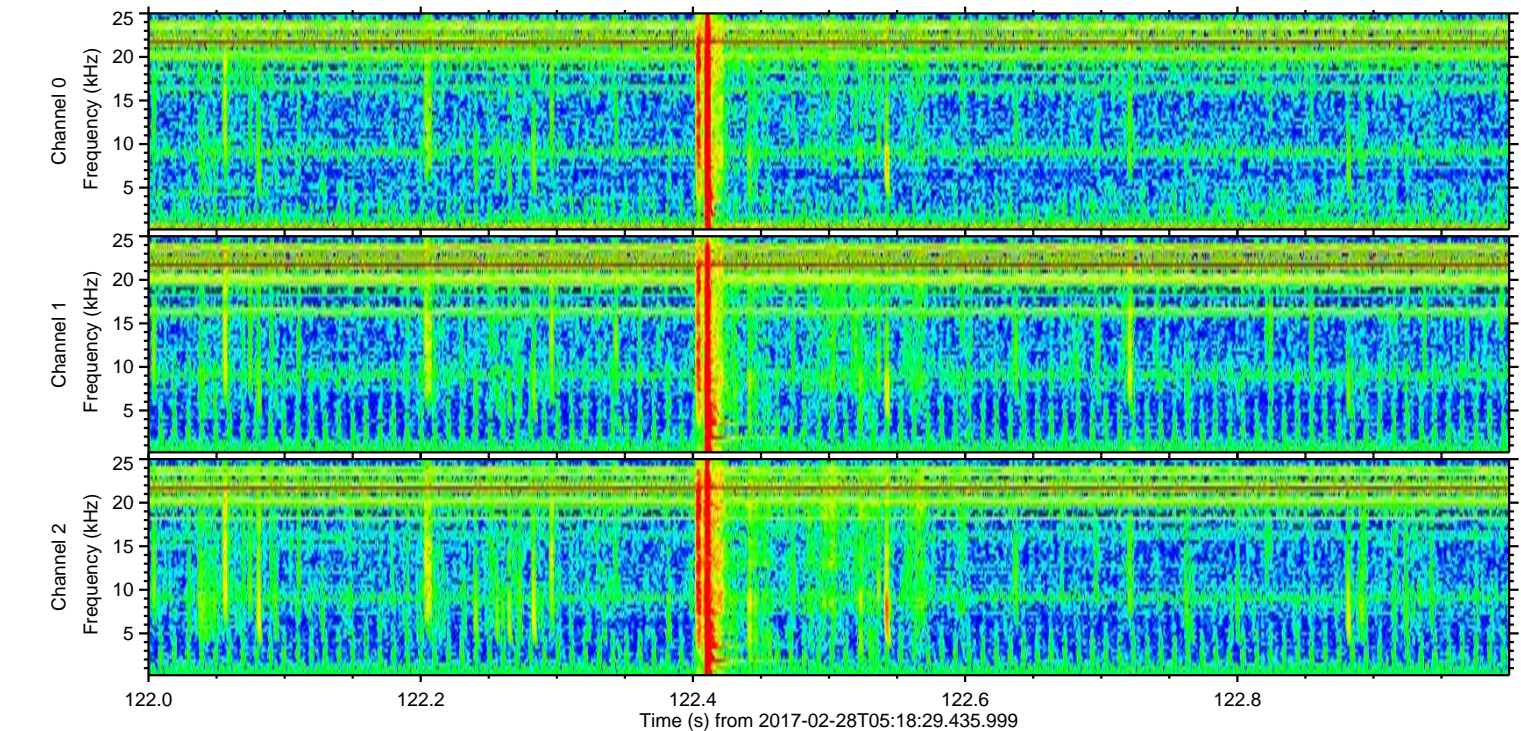
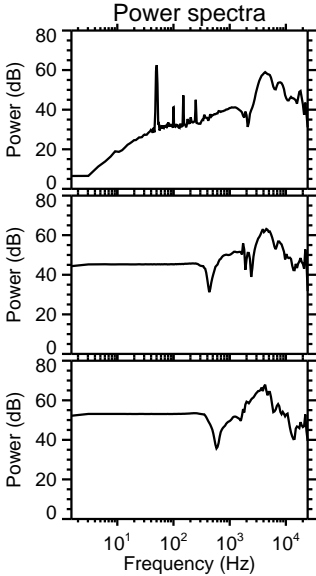
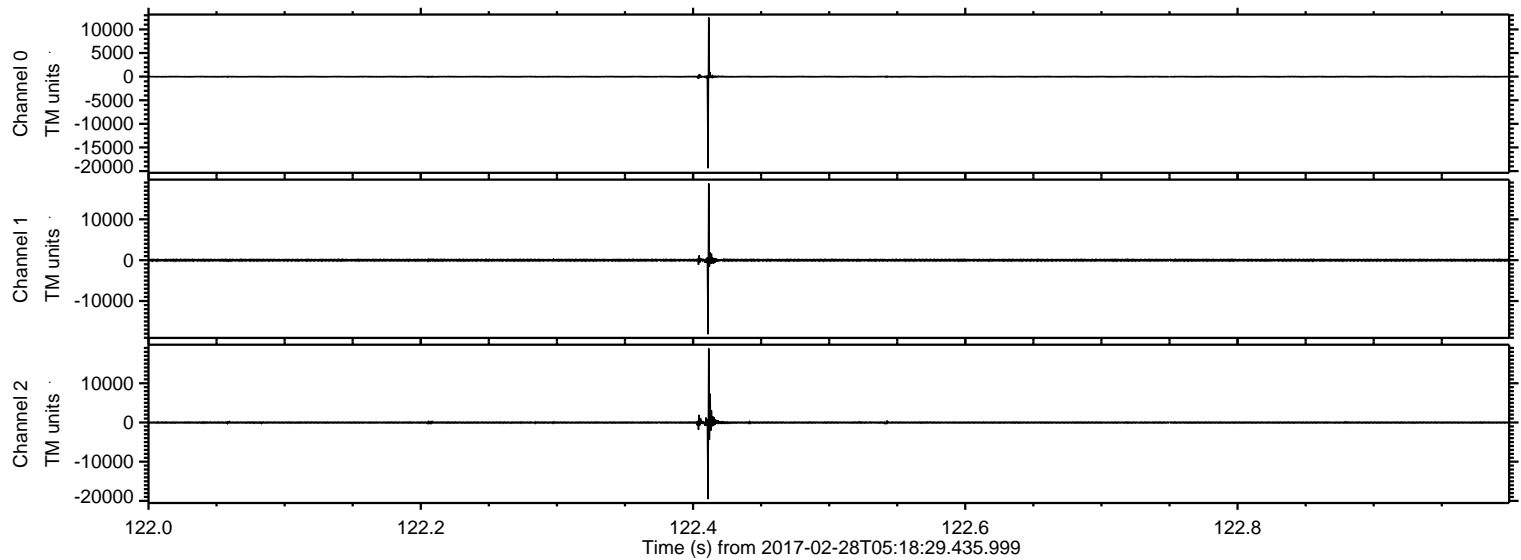
ELMAVAN 3D WAVEFORMS (Measured data sampled at 50 kHz) 51000 packets of 144 samples from 2017-02-28T05:18:29.435.999.

Processed Tue Feb 28 06:26:40 2017 by ELM ver.2012-10-06 from 001__elm20170228_051828__dat00.bin

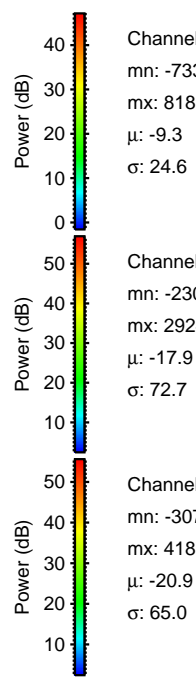
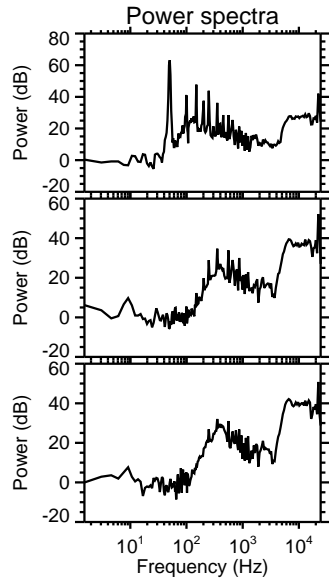
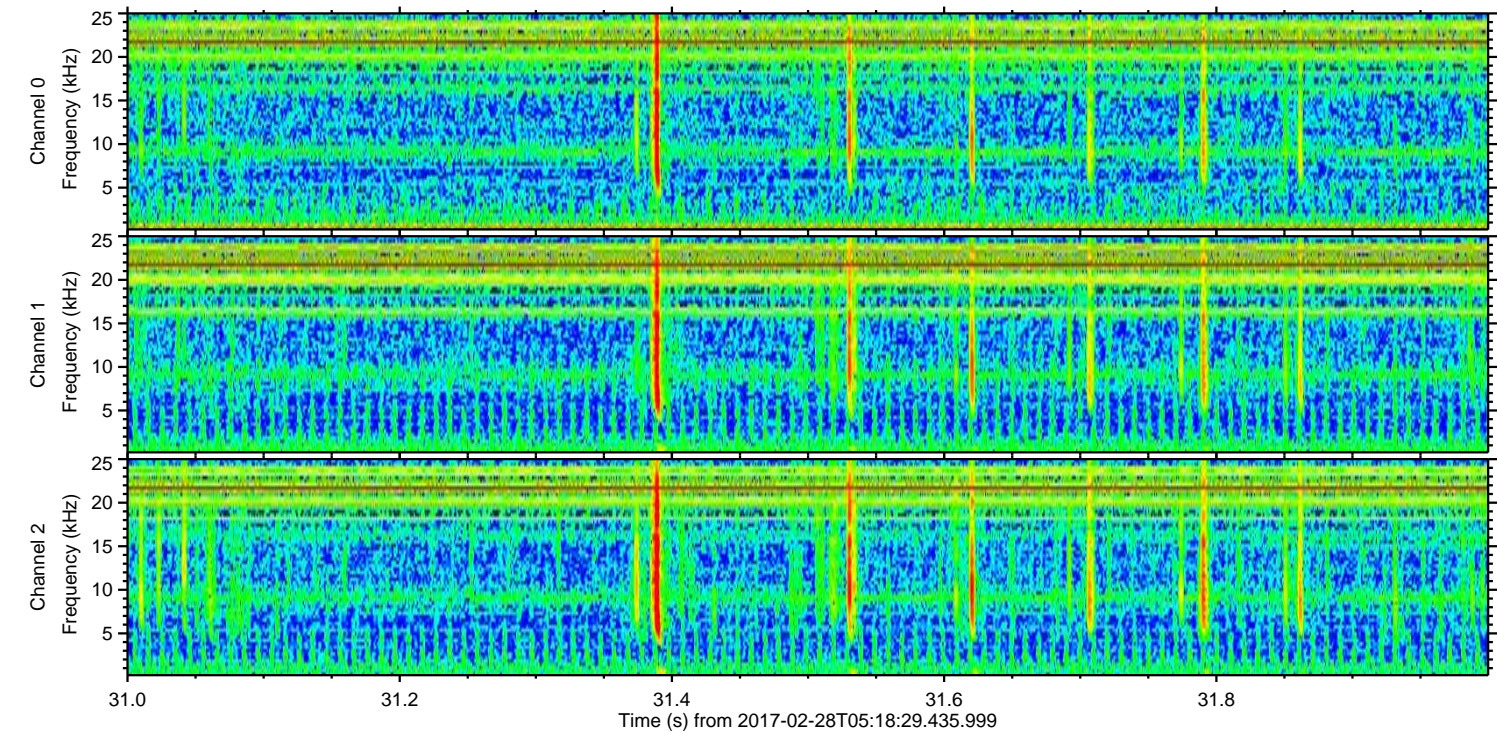
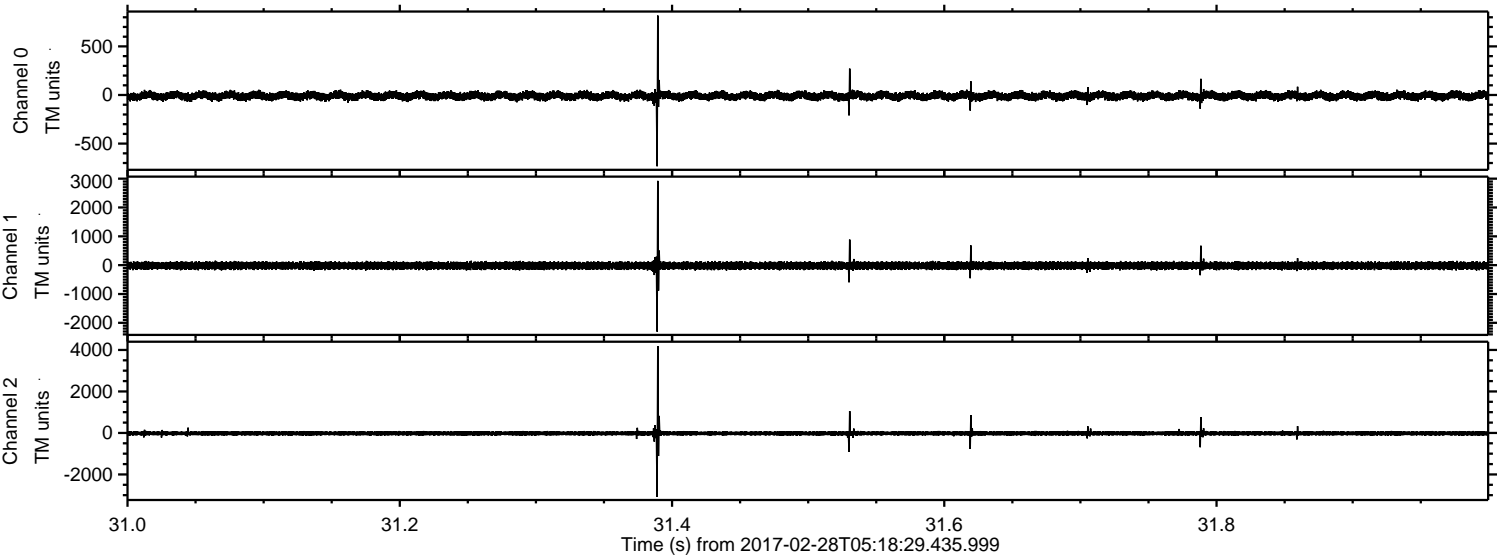


ELMAVAN 3D WAVEFORMS (Measured data sampled at 50 kHz) 51000 packets of 144 samples from 2017-02-28T05:18:29.435.999. Part 123/147

Processed Tue Feb 28 06:26:51 2017 by ELM ver.2012-10-06 from 001__elm20170228_051828__dat00.bin

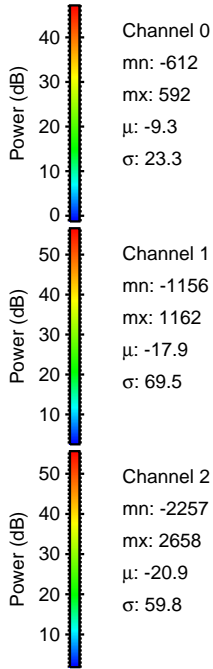
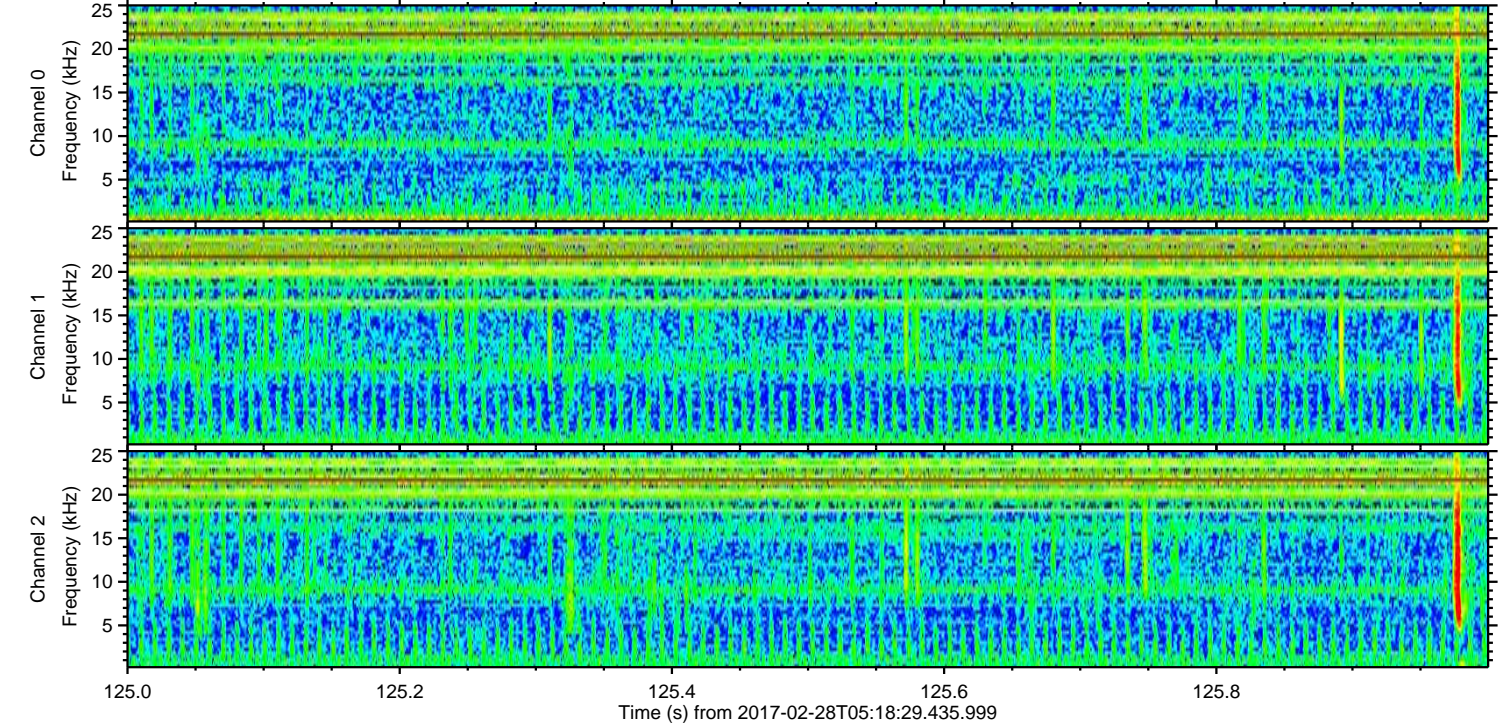
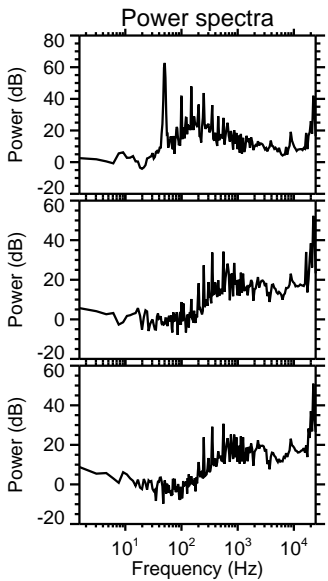
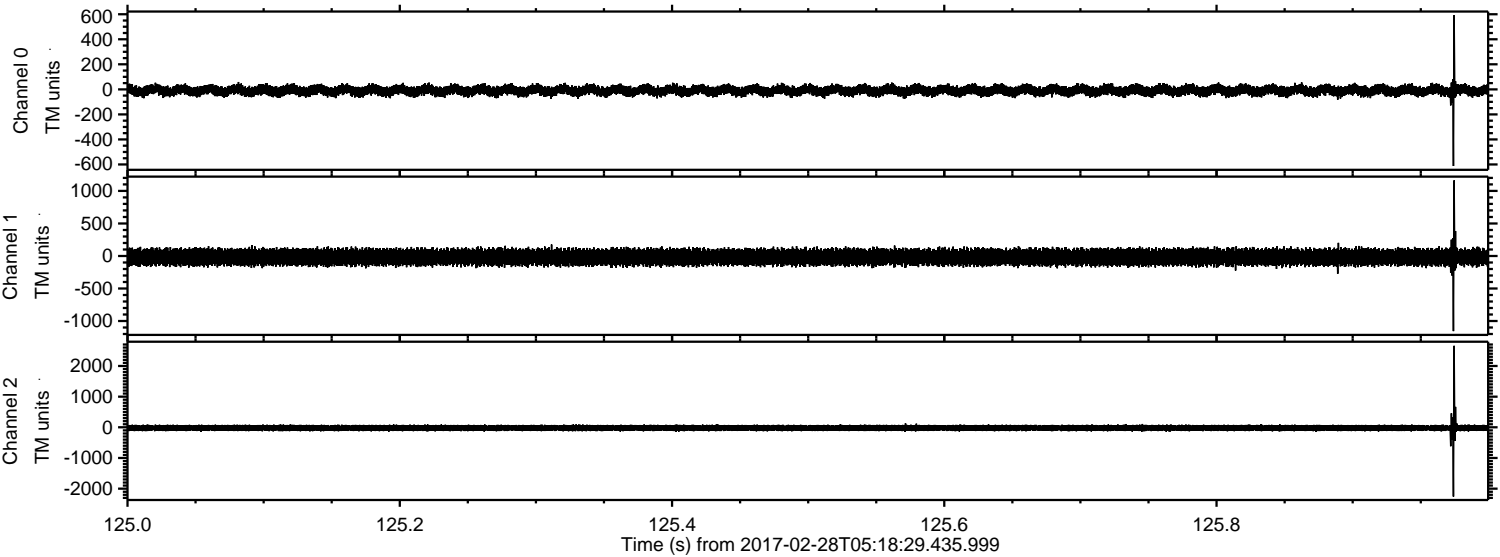


Processed Tue Feb 28 06:26:52 2017 by ELM ver.2012-10-06 from 001__elm20170228_051828__dat00.bin



ELMAVAN 3D WAVEFORMS (Measured data sampled at 50 kHz) 51000 packets of 144 samples from 2017-02-28T05:18:29.435.999. Part 126/147

Processed Tue Feb 28 06:26:53 2017 by ELM ver.2012-10-06 from 001__elm20170228_051828__dat00.bin



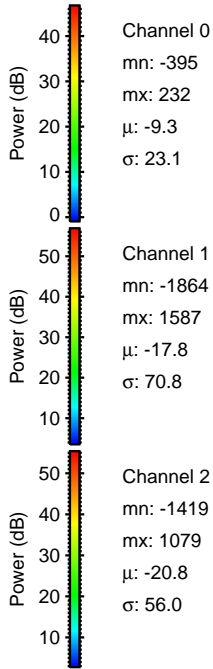
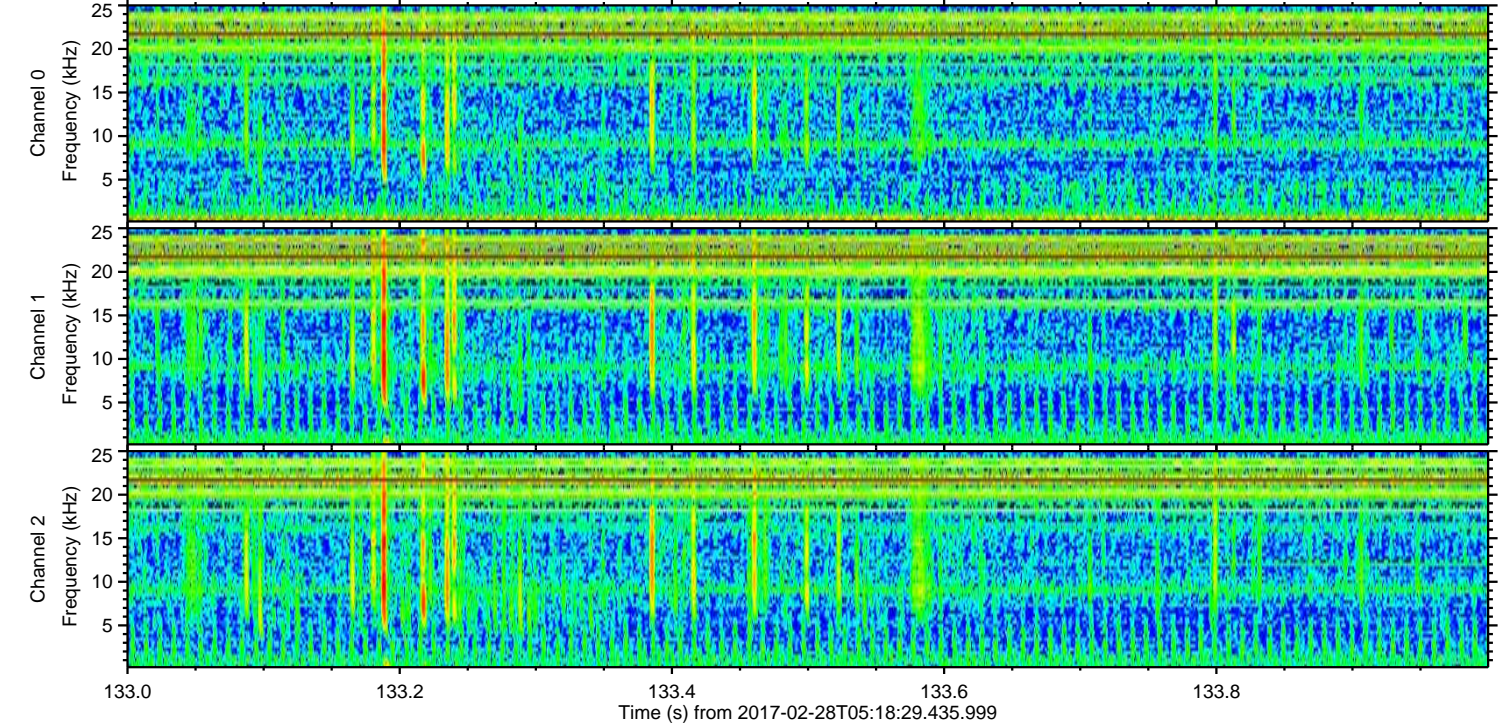
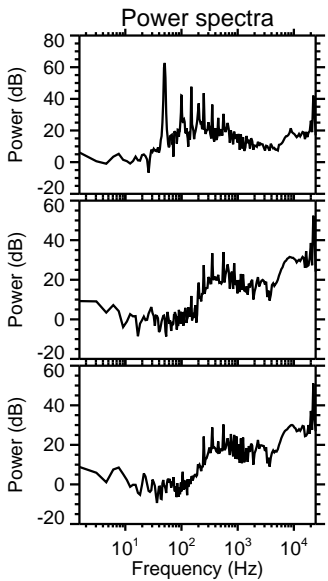
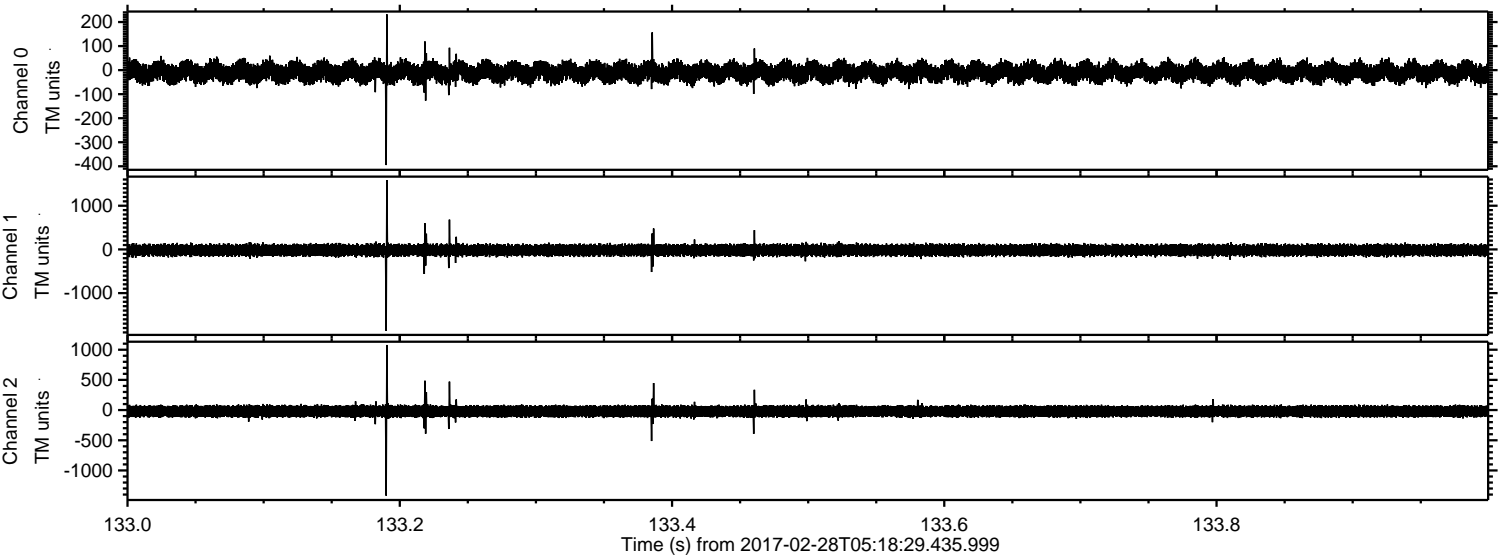
Channel 0
mn: -612
mx: 592
 μ : -9.3
 σ : 23.3

Channel 1
mn: -1156
mx: 1162
 μ : -17.9
 σ : 69.5

Channel 2
mn: -2257
mx: 2658
 μ : -20.9
 σ : 59.8

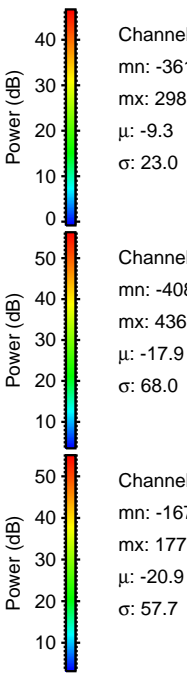
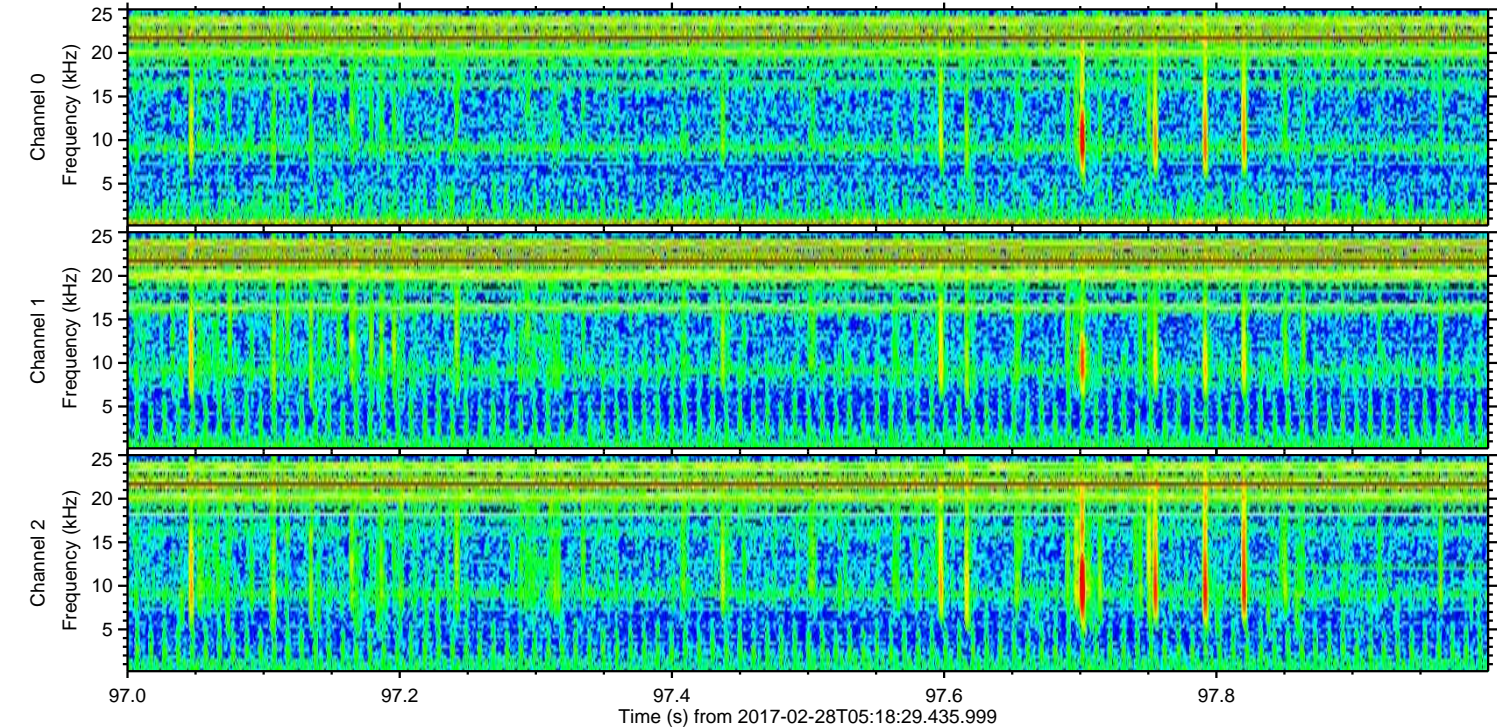
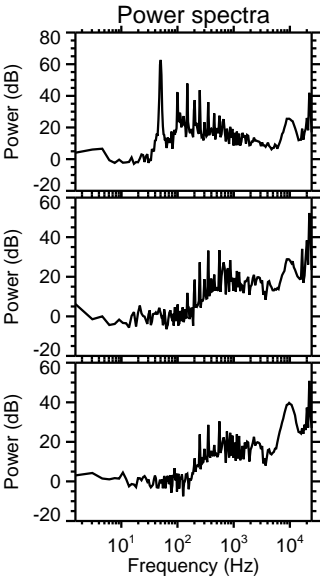
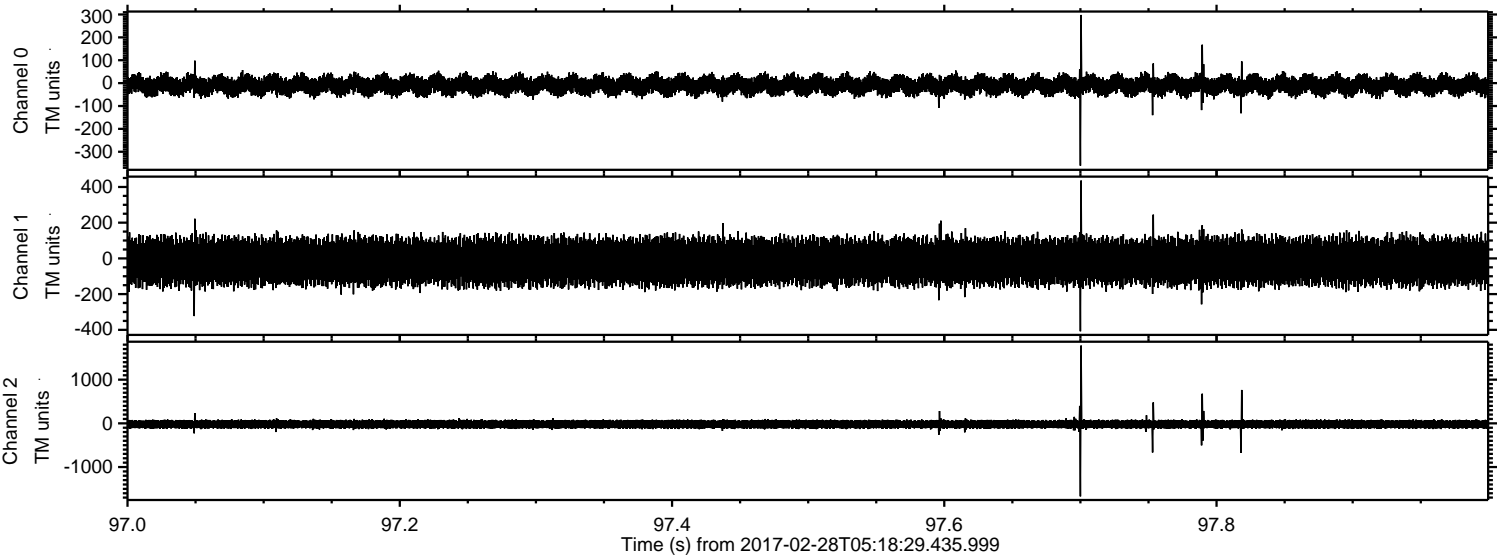
ELMAVAN 3D WAVEFORMS (Measured data sampled at 50 kHz) 51000 packets of 144 samples from 2017-02-28T05:18:29.435.999. Part 134/147

Processed Tue Feb 28 06:26:54 2017 by ELM ver.2012-10-06 from 001__elm20170228_051828__dat00.bin



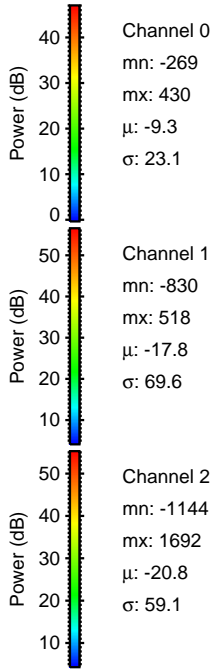
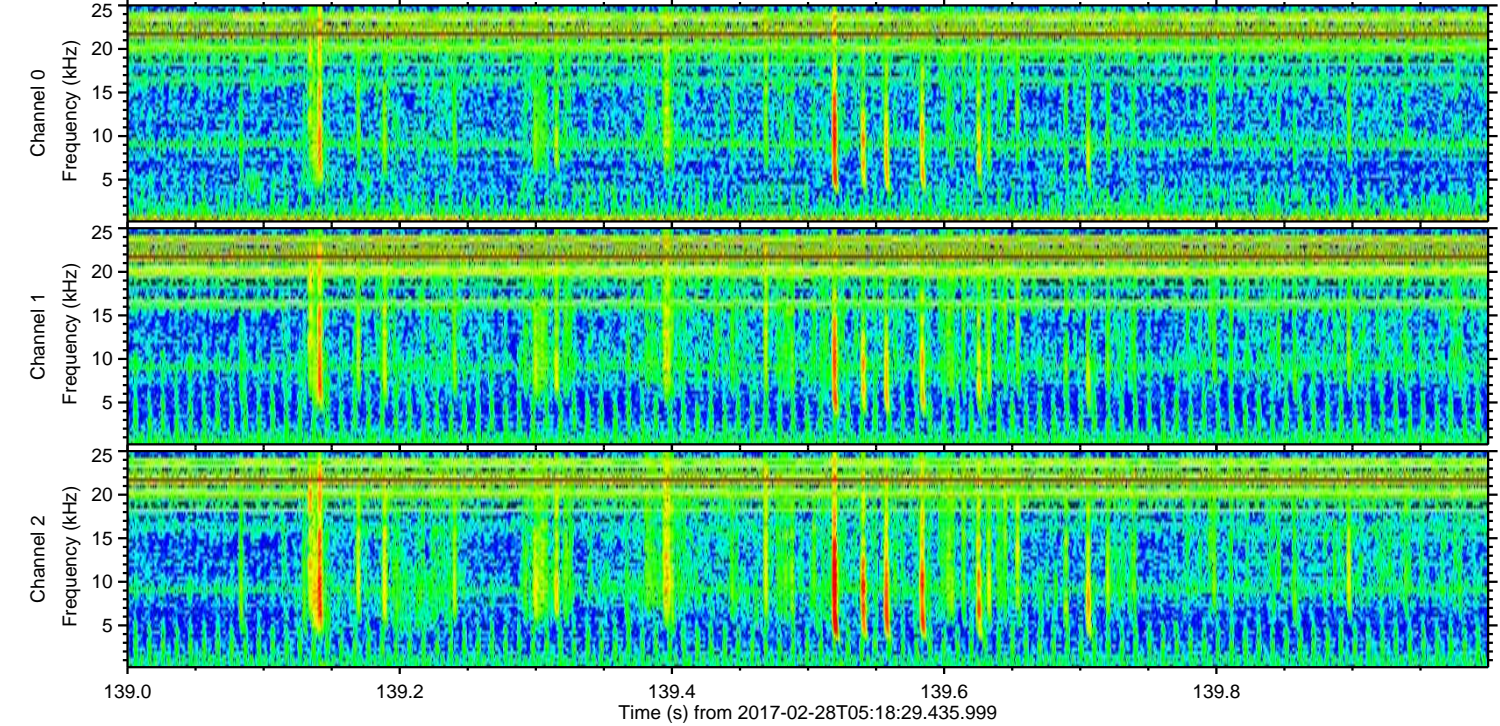
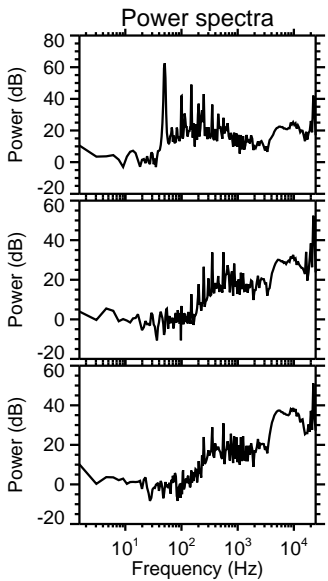
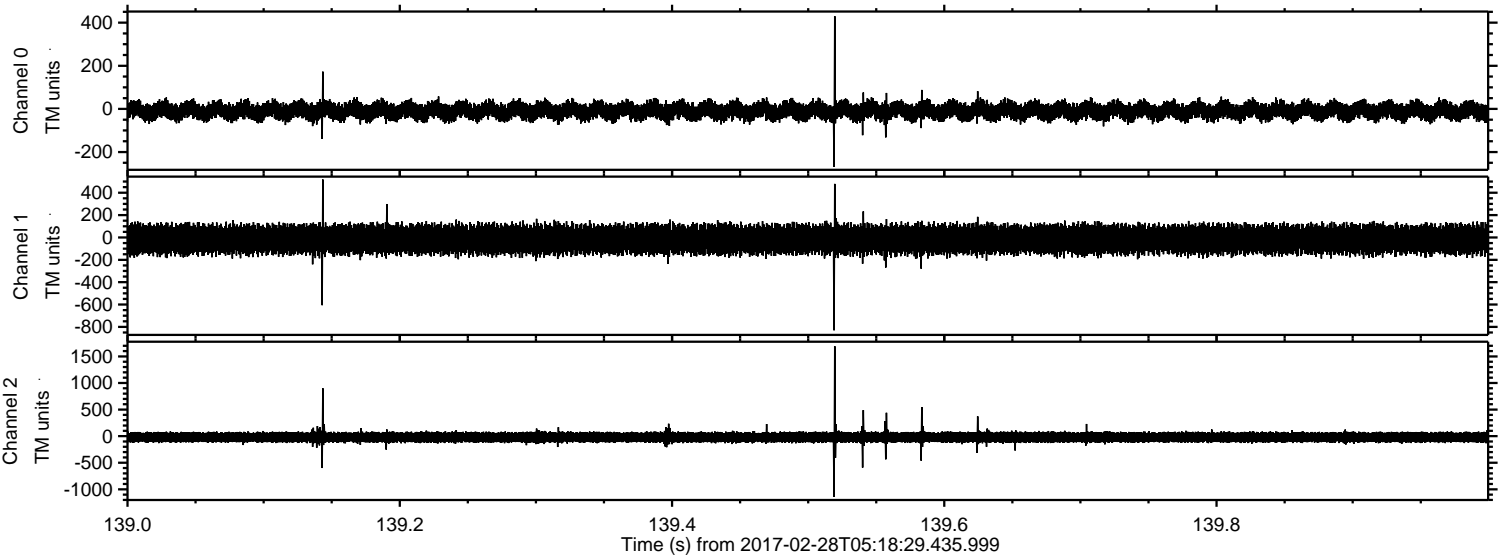
ELMAVAN 3D WAVEFORMS (Measured data sampled at 50 kHz) 51000 packets of 144 samples from 2017-02-28T05:18:29.435.999. Part 98/147

Processed Tue Feb 28 06:26:55 2017 by ELM ver.2012-10-06 from 001__elm20170228_051828__dat00.bin



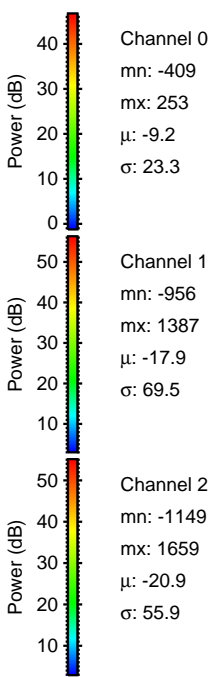
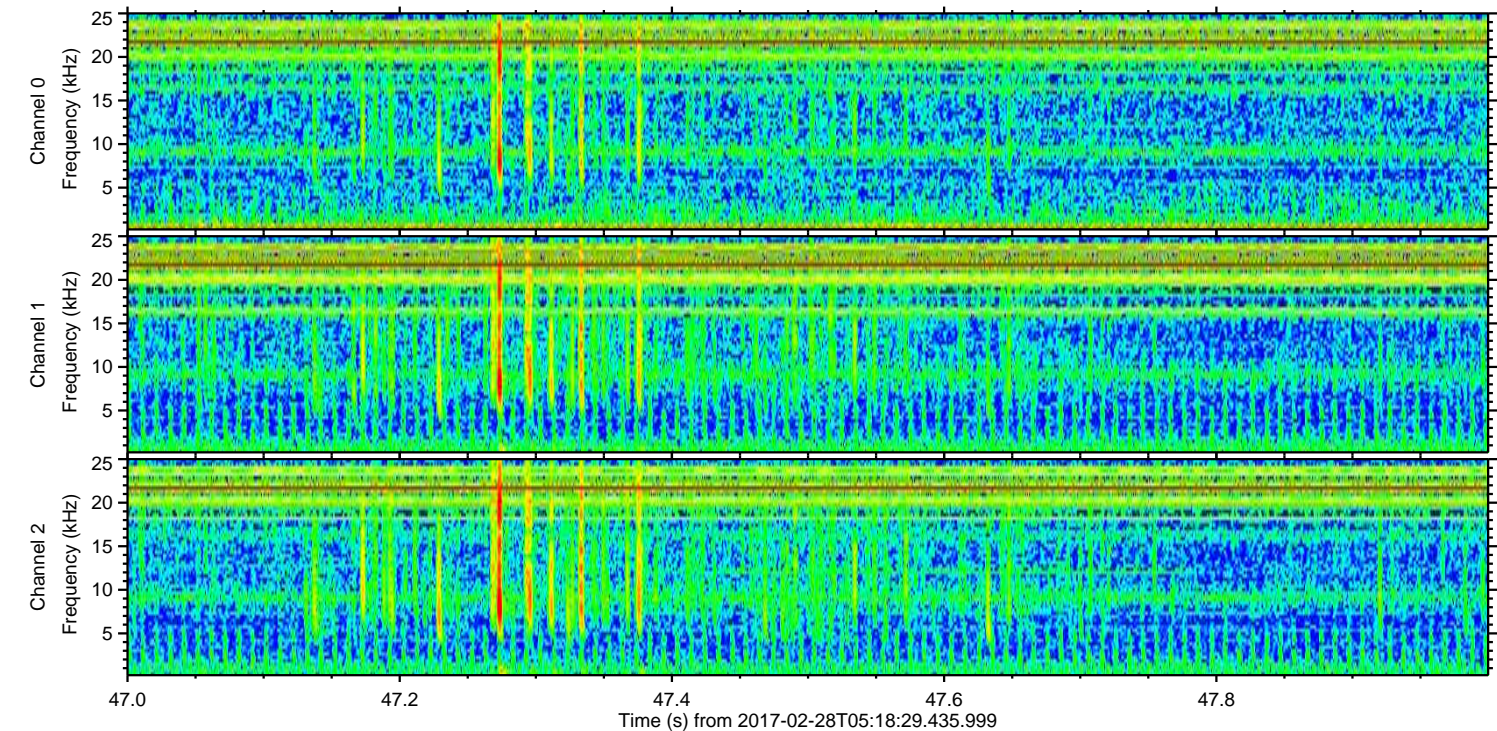
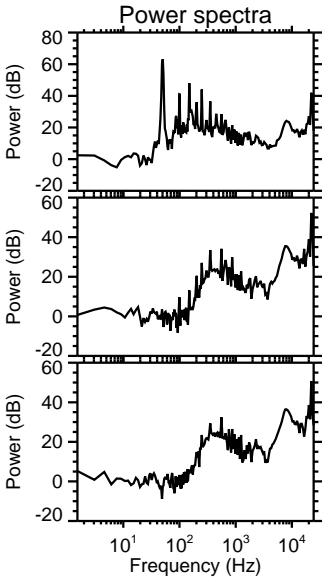
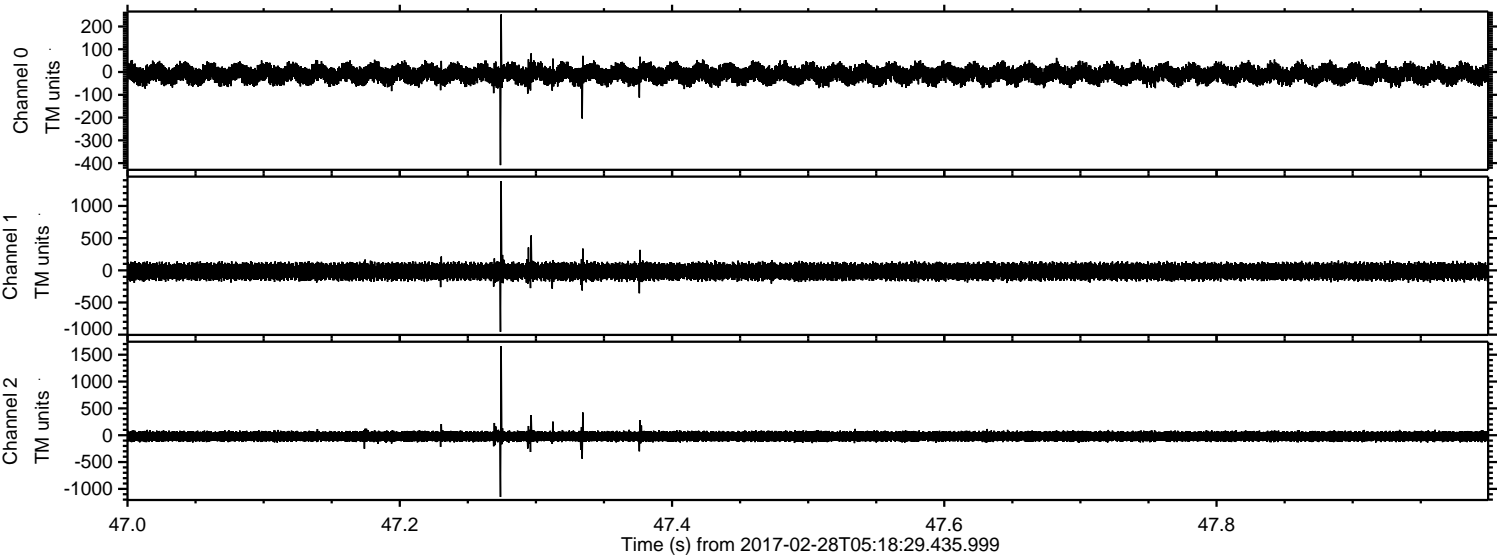
ELMAVAN 3D WAVEFORMS (Measured data sampled at 50 kHz) 51000 packets of 144 samples from 2017-02-28T05:18:29.435.999. Part 140/147

Processed Tue Feb 28 06:26:56 2017 by ELM ver.2012-10-06 from 001__elm20170228_051828__dat00.bin

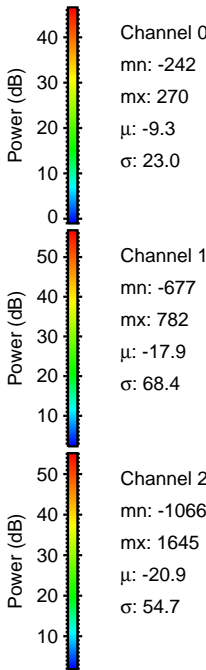
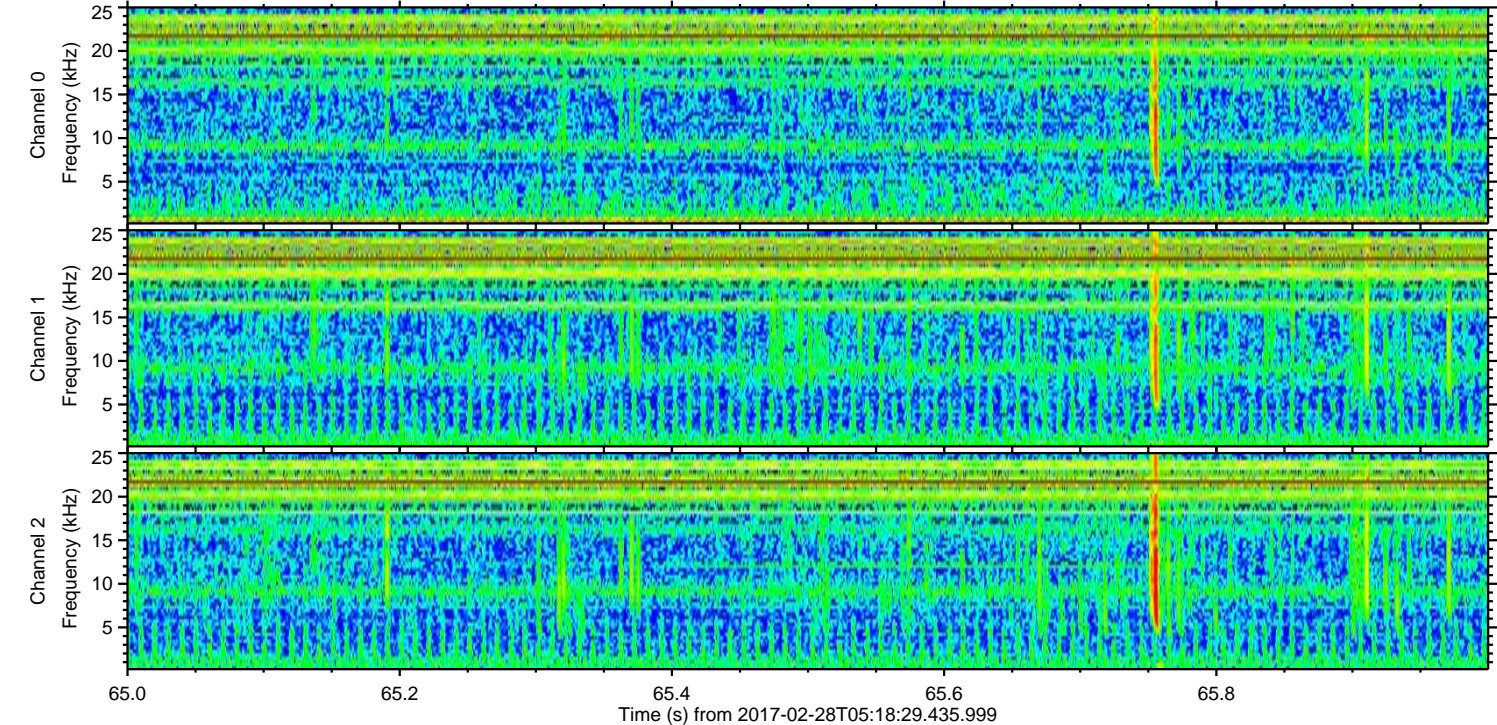
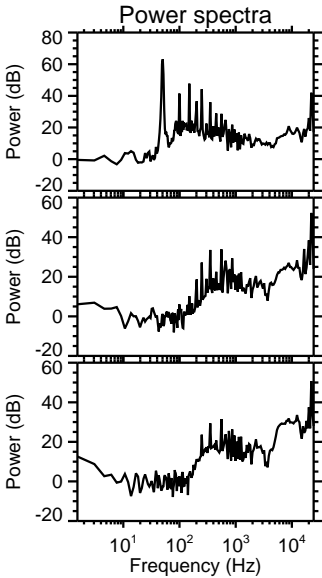
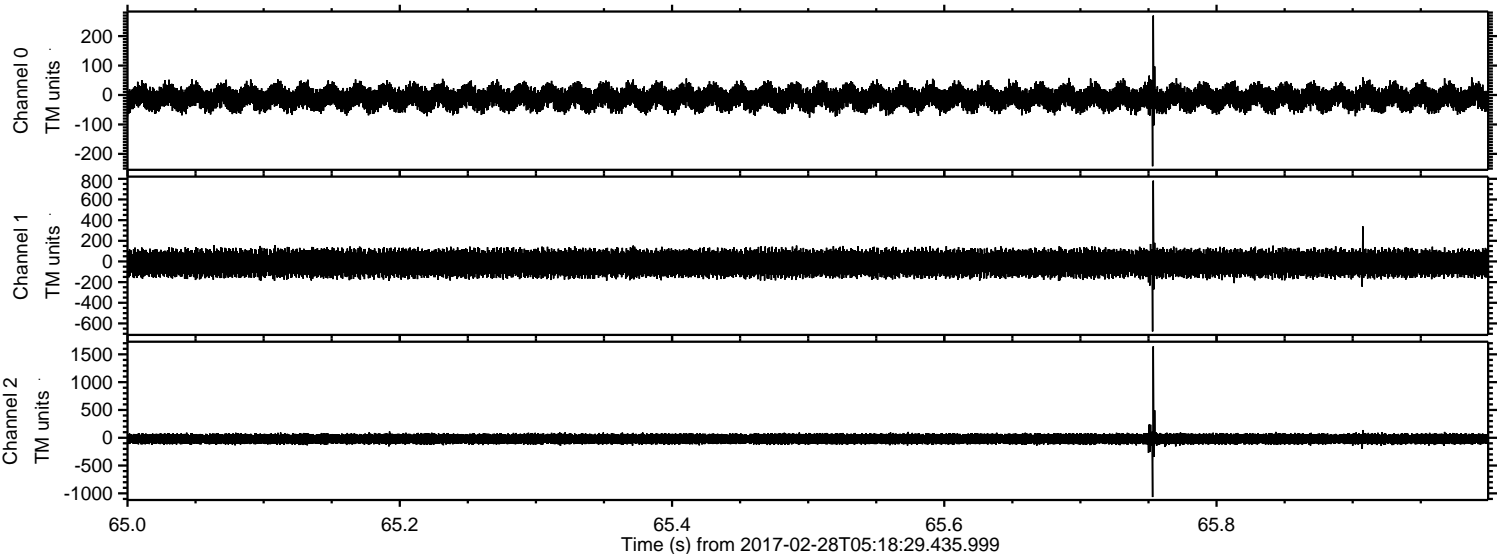


ELMAVAN 3D WAVEFORMS (Measured data sampled at 50 kHz) 51000 packets of 144 samples from 2017-02-28T05:18:29.435.999. Part 48/147

Processed Tue Feb 28 06:26:57 2017 by ELM ver.2012-10-06 from 001__elm20170228_051828__dat00.bin

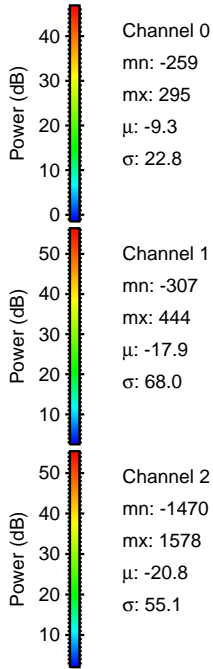
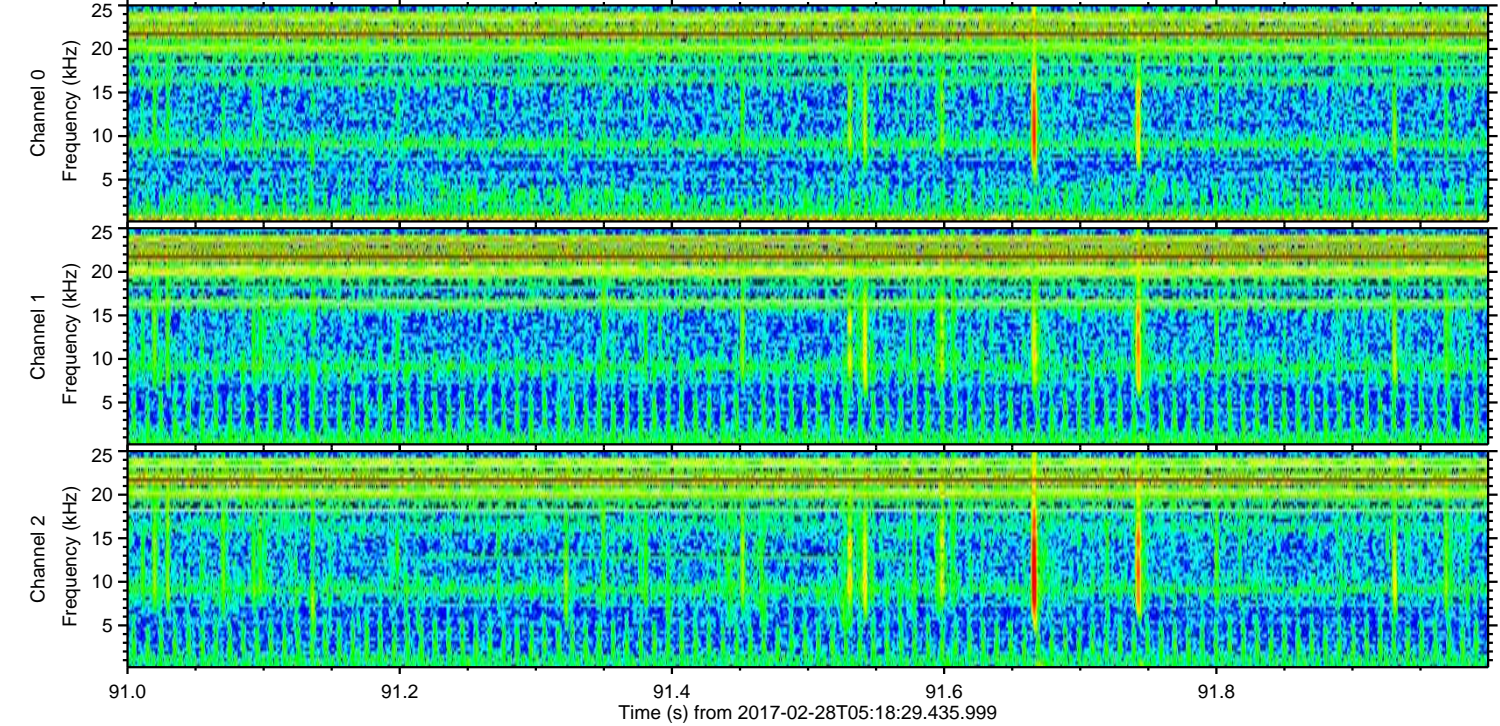
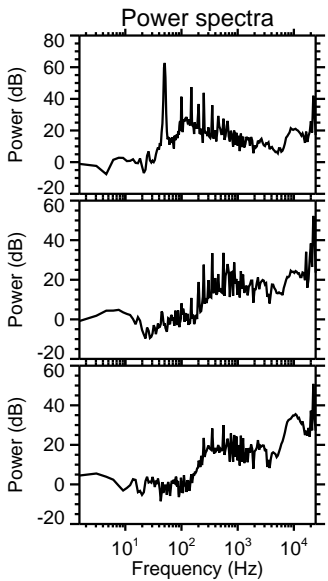
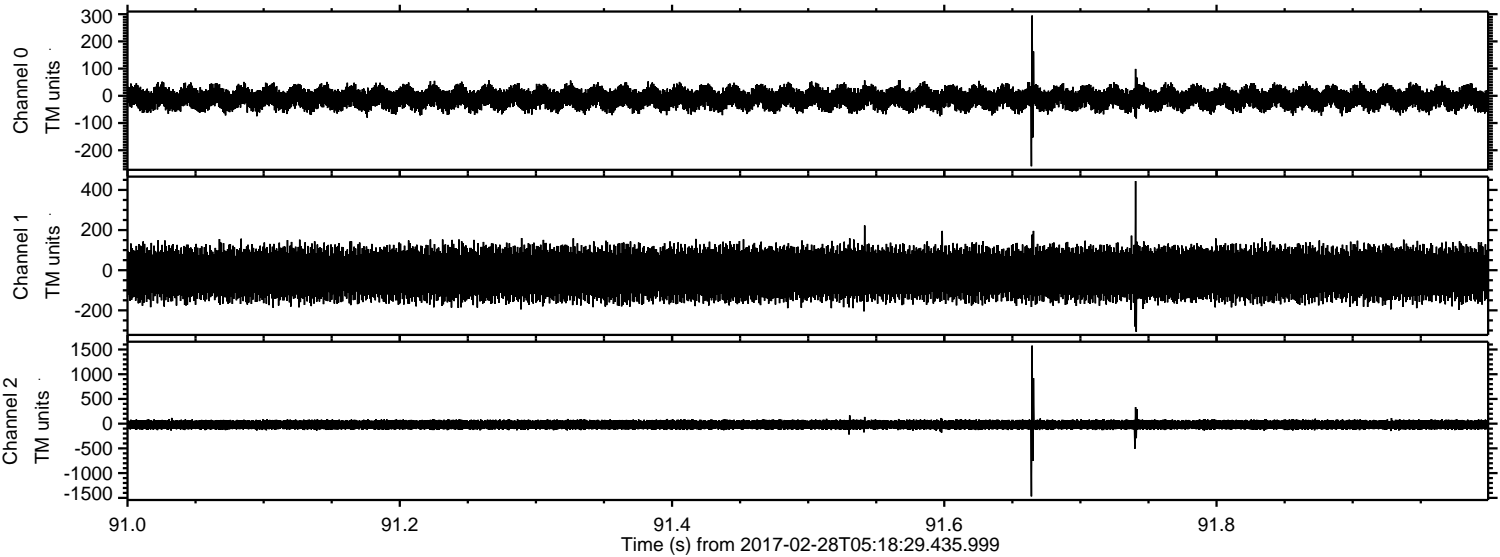


Processed Tue Feb 28 06:26:58 2017 by ELM ver.2012-10-06 from 001__elm20170228_051828__dat00.bin



ELMAVAN 3D WAVEFORMS (Measured data sampled at 50 kHz) 51000 packets of 144 samples from 2017-02-28T05:18:29.435.999. Part 92/147

Processed Tue Feb 28 06:26:59 2017 by ELM ver.2012-10-06 from 001__elm20170228_051828__dat00.bin



Channel 0
mn: -259
mx: 295
 μ : -9.3
 σ : 22.8

Channel 1
mn: -307
mx: 444
 μ : -17.9
 σ : 68.0

Channel 2
mn: -1470
mx: 1578
 μ : -20.8
 σ : 55.1

ELMAVAN 3D WAVEFORMS (Measured data sampled at 50 kHz) 51000 packets of 144 samples from 2017-02-28T05:18:29.435.999. Part 11/147

Processed Tue Feb 28 06:27:00 2017 by ELM ver.2012-10-06 from 001__elm20170228_051828__dat00.bin

