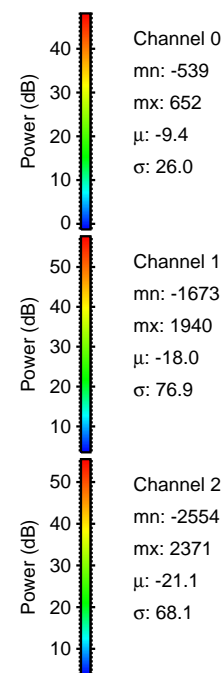
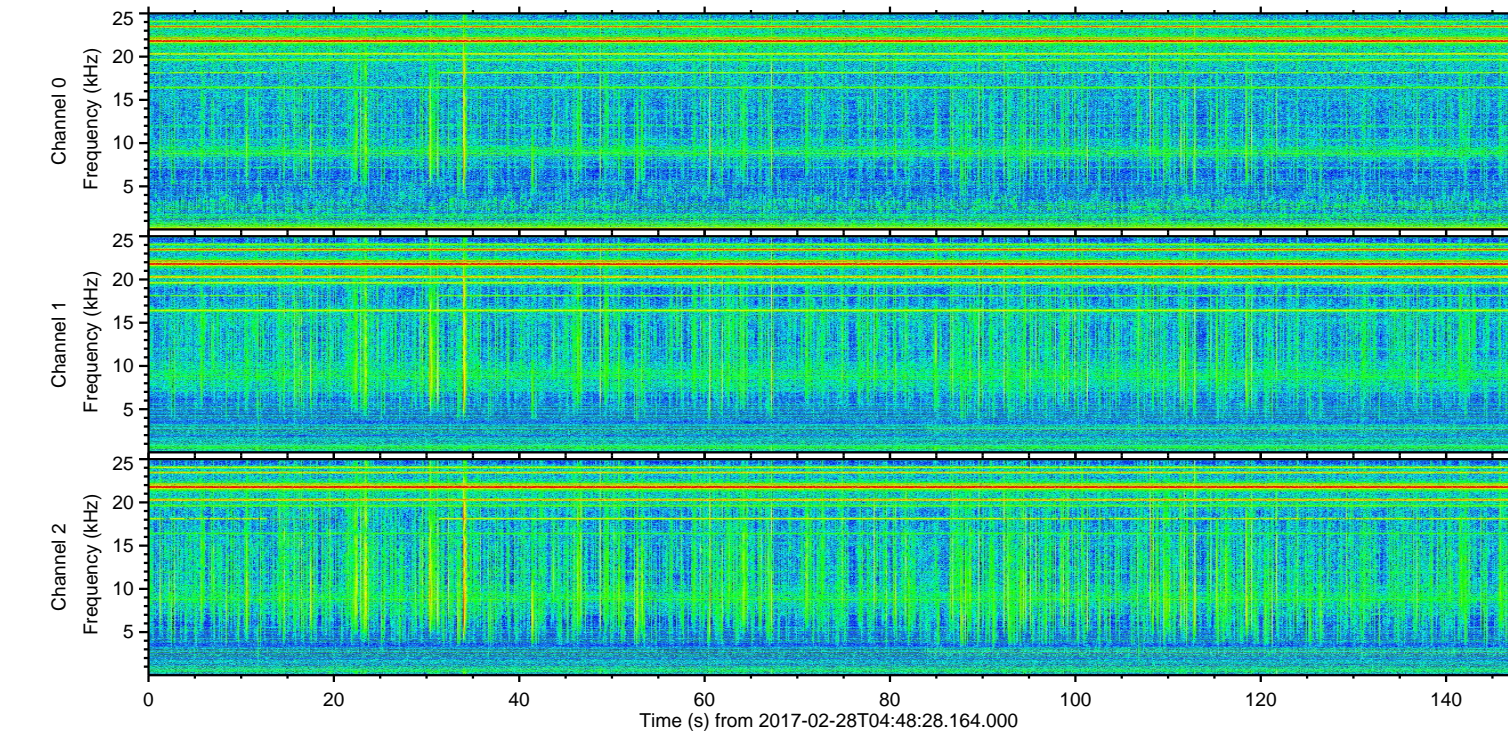
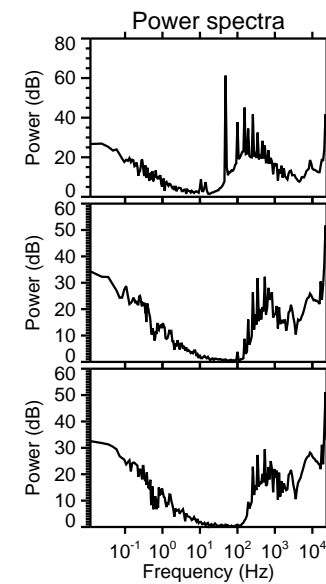
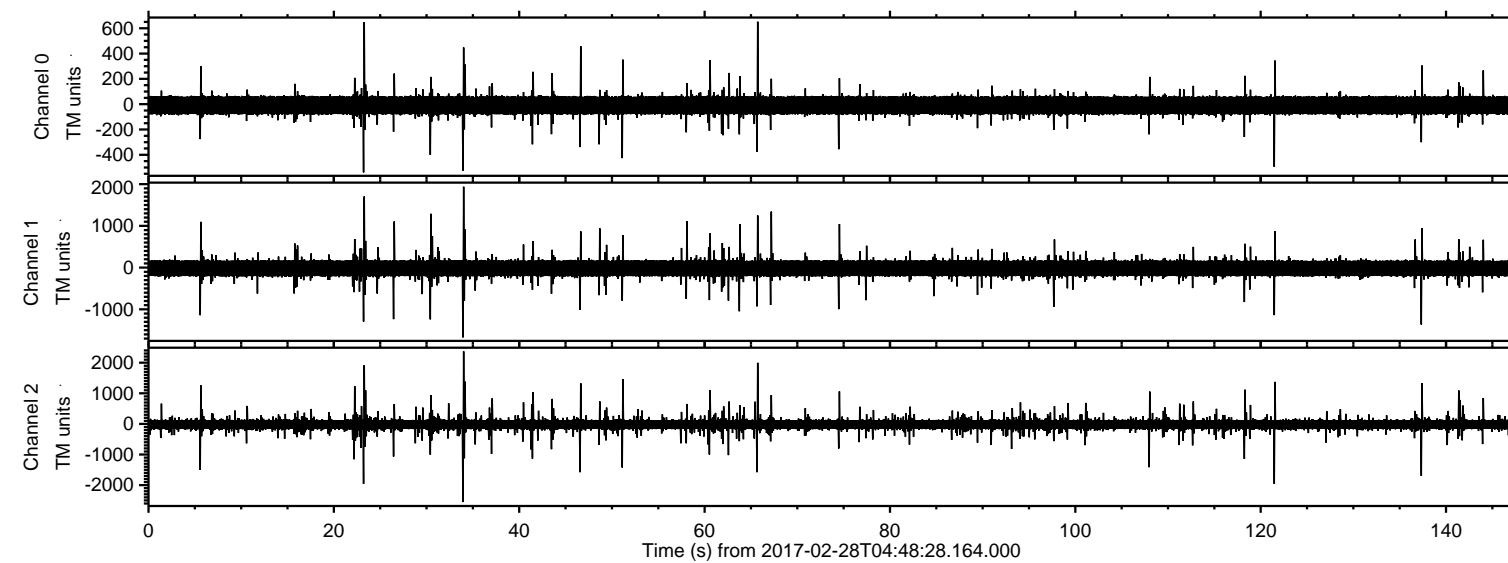


ELMAVAN 3D WAVEFORMS (Measured data sampled at 50 kHz) 51000 packets of 144 samples from 2017-02-28T04:48:28.164.000.

Processed Tue Feb 28 05:56:08 2017 by ELM ver.2012-10-06 from 001__elm20170228_044827__dat00.bin

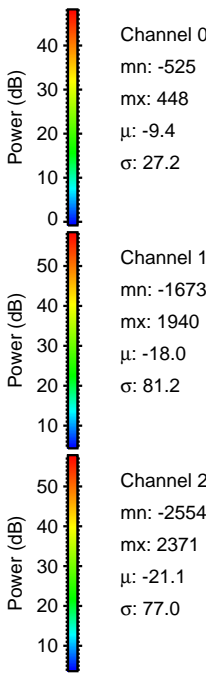
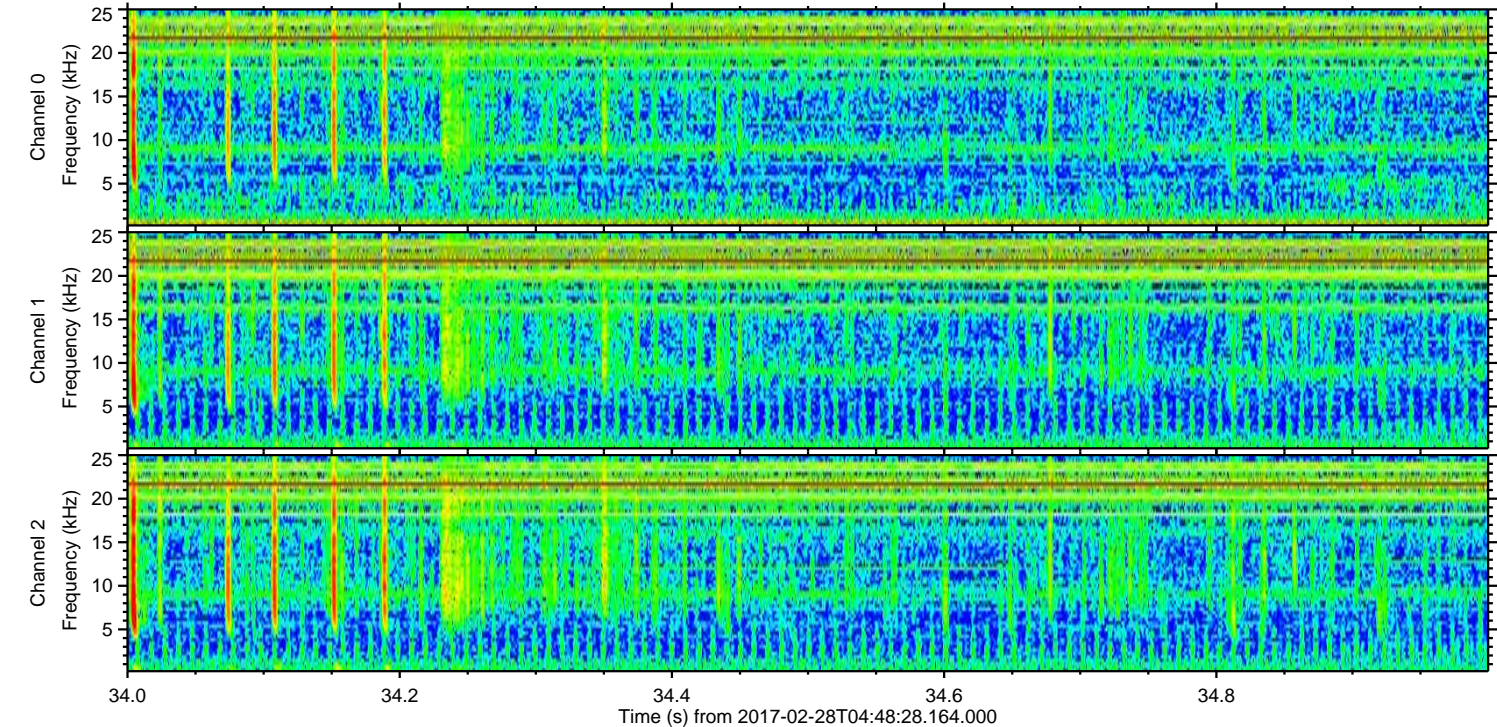
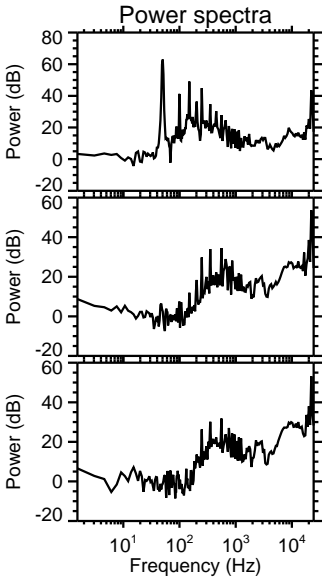
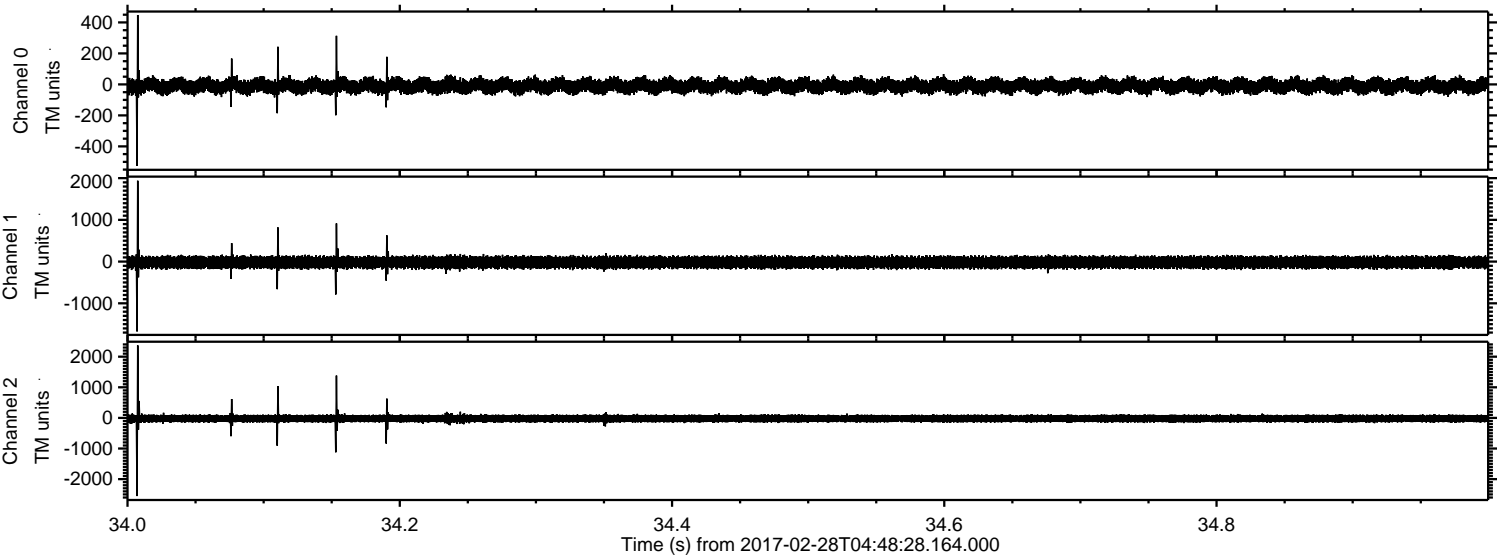


Channel 0
mn: -539
mx: 652
 μ : -9.4
 σ : 26.0

Channel 1
mn: -1673
mx: 1940
 μ : -18.0
 σ : 76.9

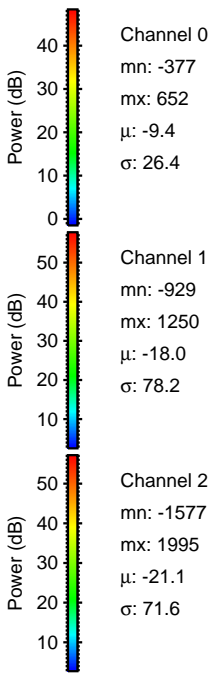
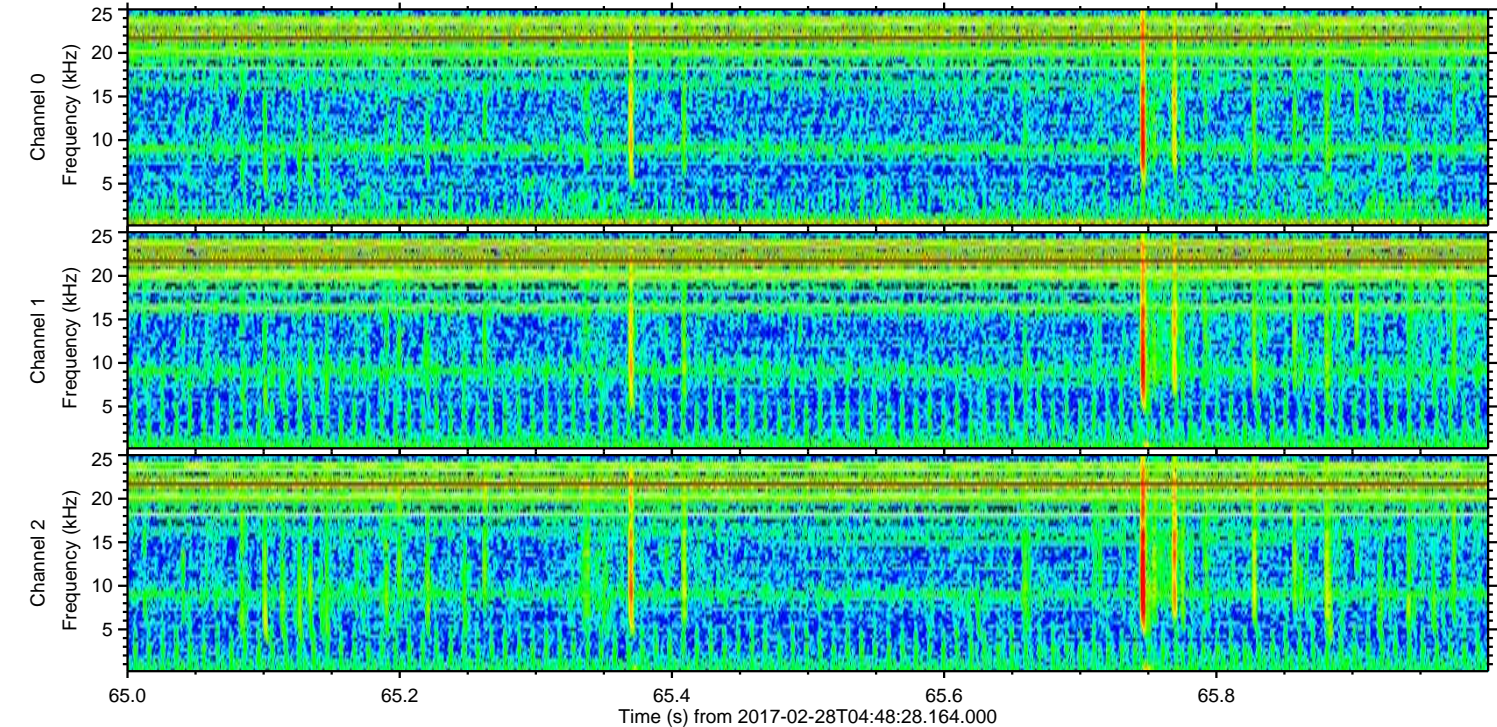
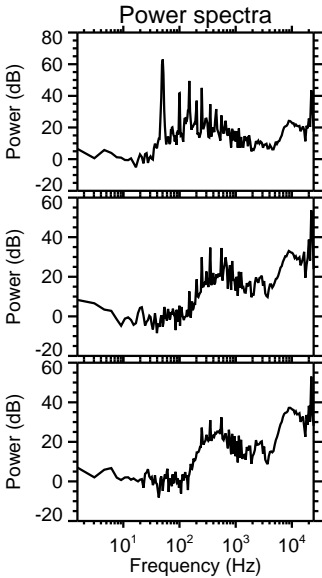
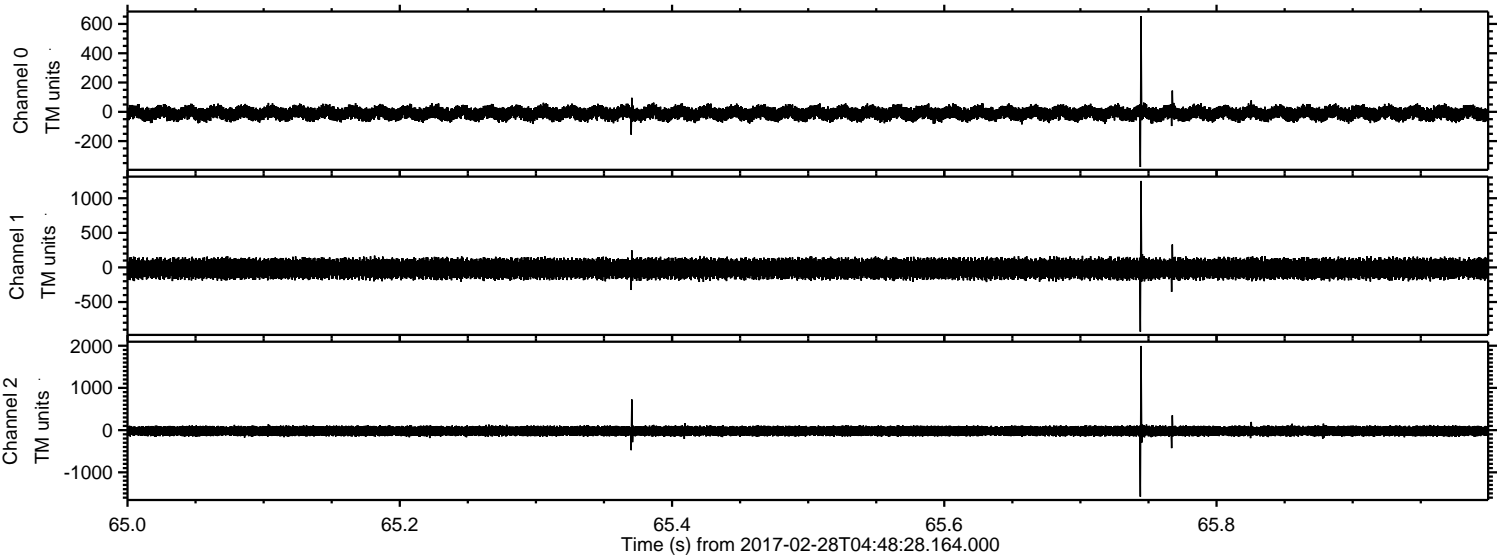
Channel 2
mn: -2554
mx: 2371
 μ : -21.1
 σ : 68.1

Processed Tue Feb 28 05:56:24 2017 by ELM ver.2012-10-06 from 001__elm20170228_044827__dat00.bin



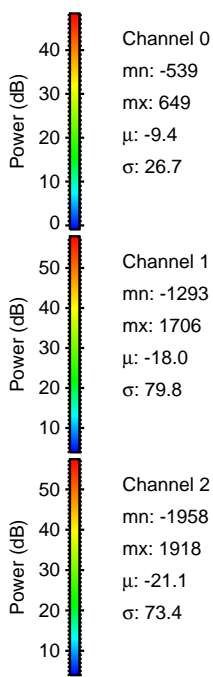
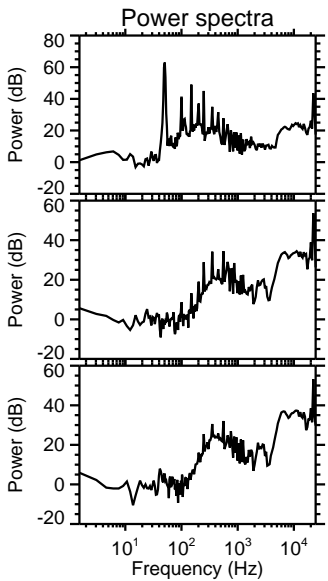
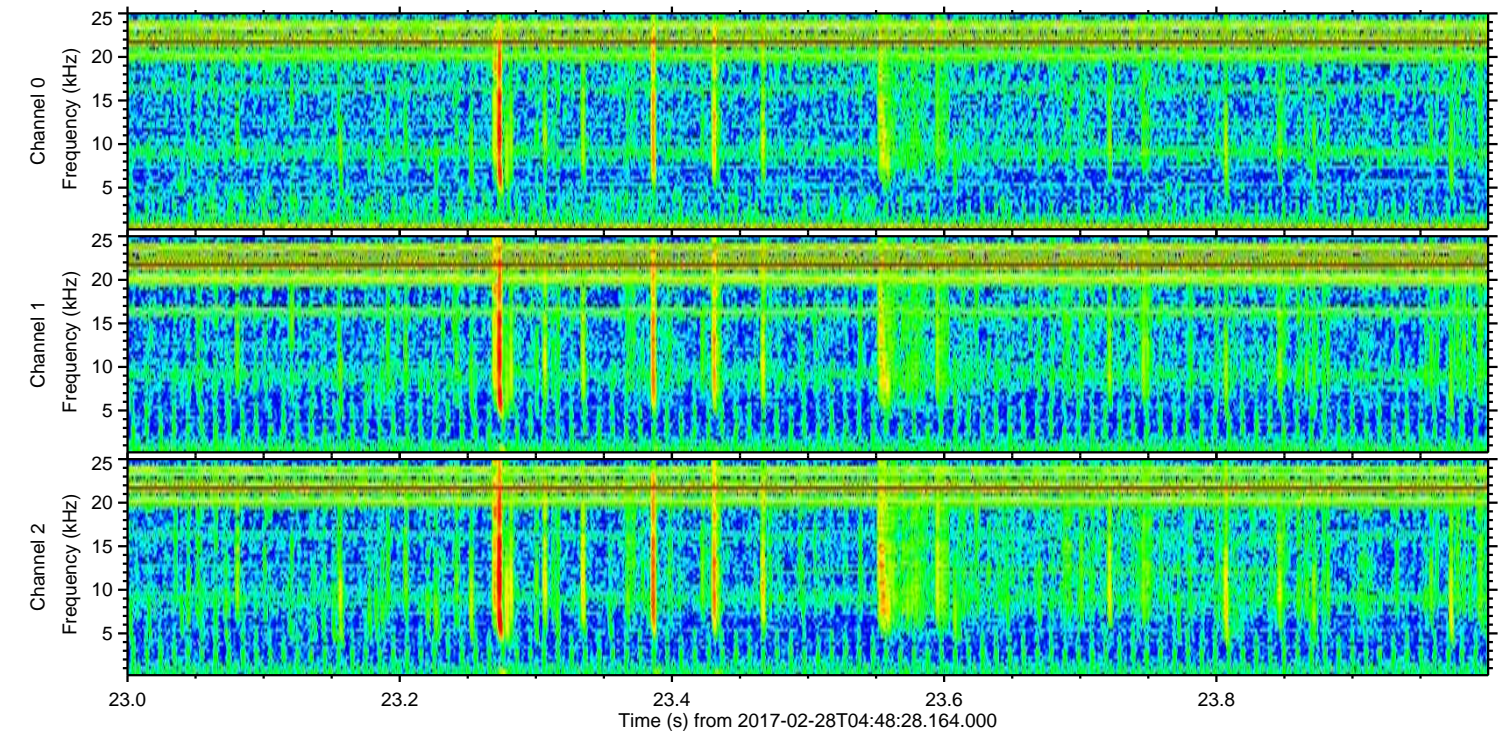
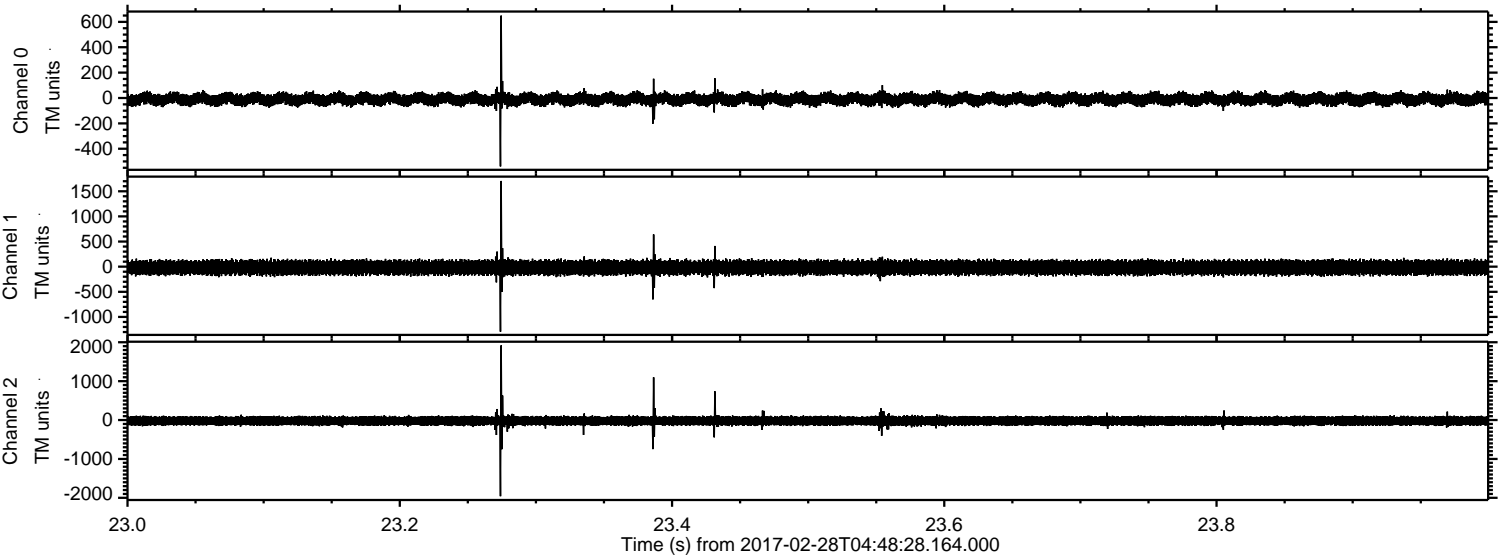
ELMAVAN 3D WAVEFORMS (Measured data sampled at 50 kHz) 51000 packets of 144 samples from 2017-02-28T04:48:28.164.000. Part 66/147

Processed Tue Feb 28 05:56:25 2017 by ELM ver.2012-10-06 from 001__elm20170228_044827__dat00.bin



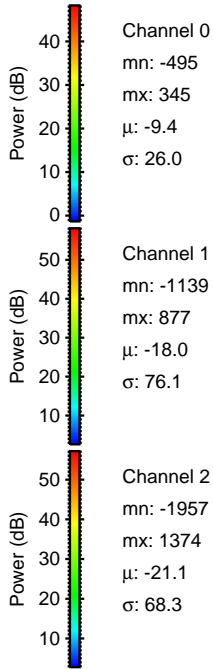
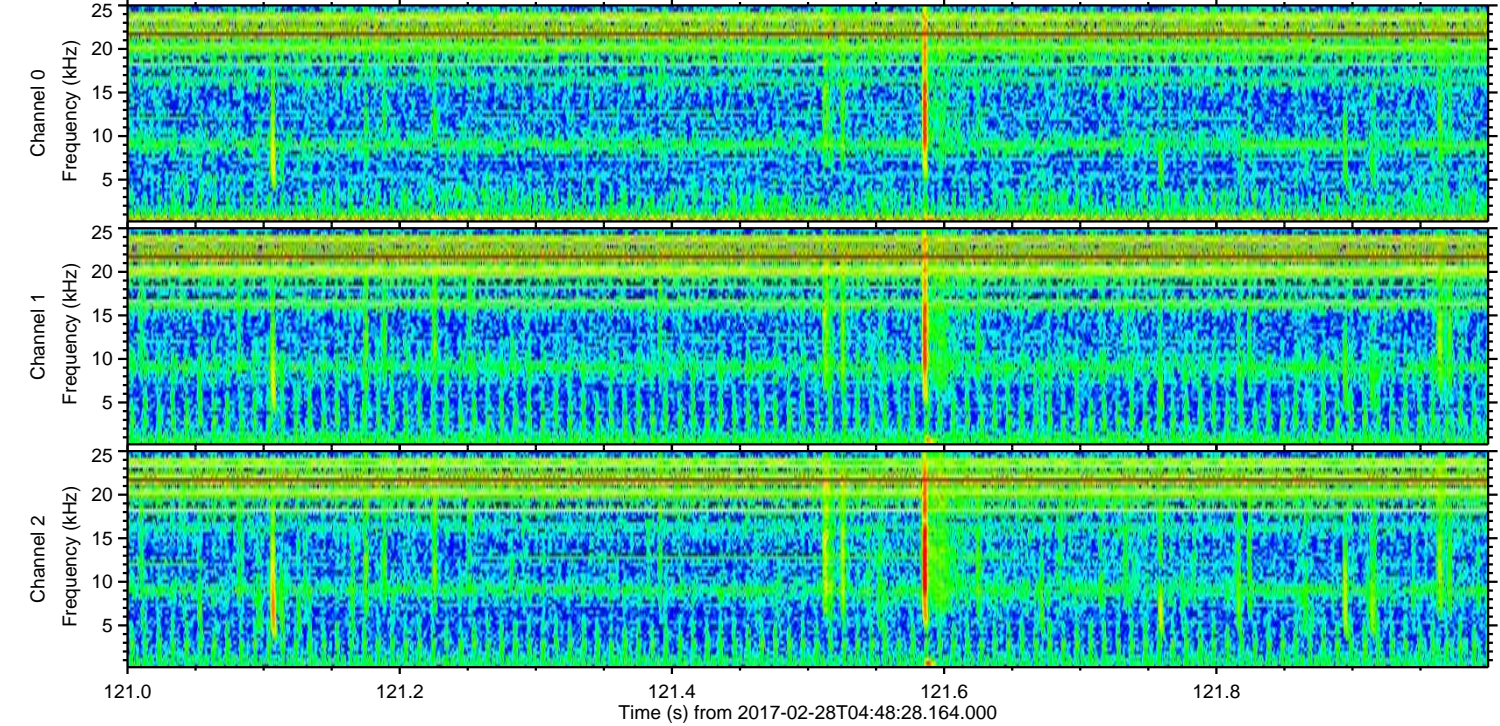
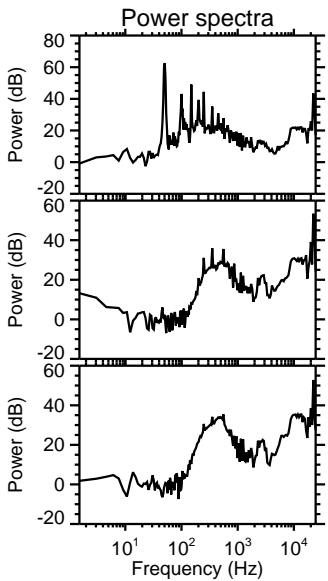
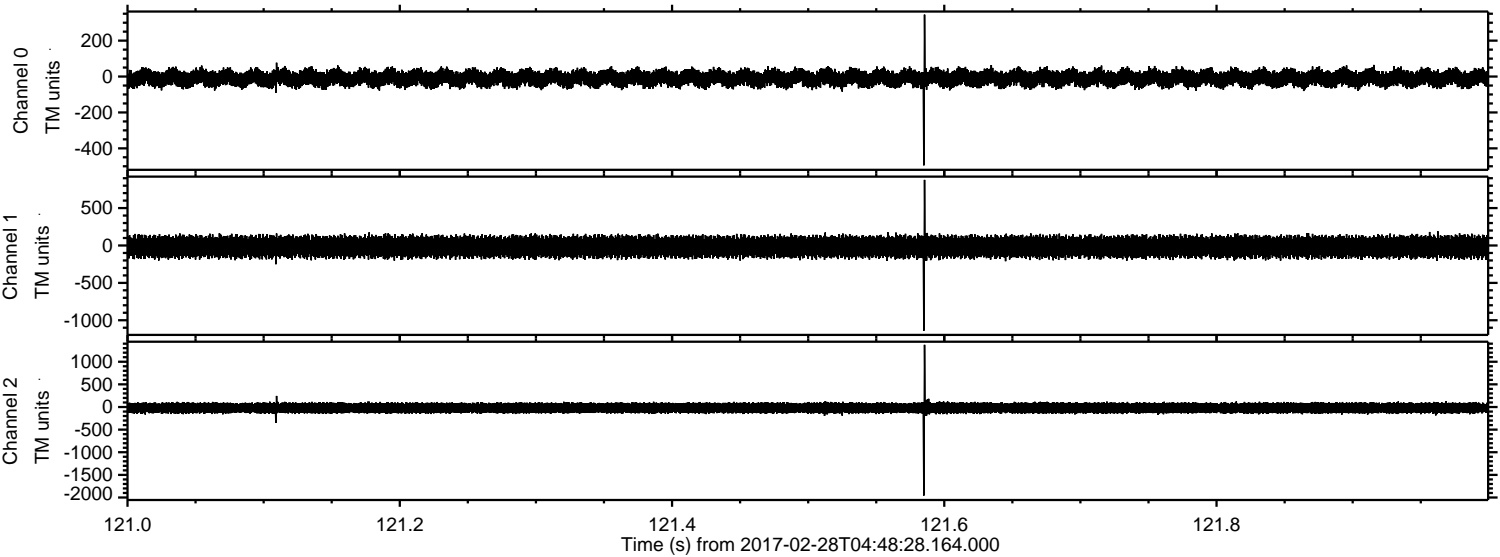
ELMAVAN 3D WAVEFORMS (Measured data sampled at 50 kHz) 51000 packets of 144 samples from 2017-02-28T04:48:28.164.000. Part 24/147

Processed Tue Feb 28 05:56:26 2017 by ELM ver.2012-10-06 from 001__elm20170228_044827__dat00.bin



ELMAVAN 3D WAVEFORMS (Measured data sampled at 50 kHz) 51000 packets of 144 samples from 2017-02-28T04:48:28.164.000. Part 122/147

Processed Tue Feb 28 05:56:27 2017 by ELM ver.2012-10-06 from 001__elm20170228_044827__dat00.bin



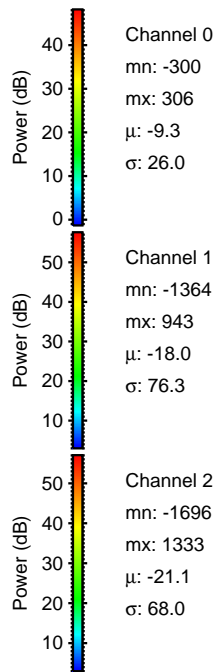
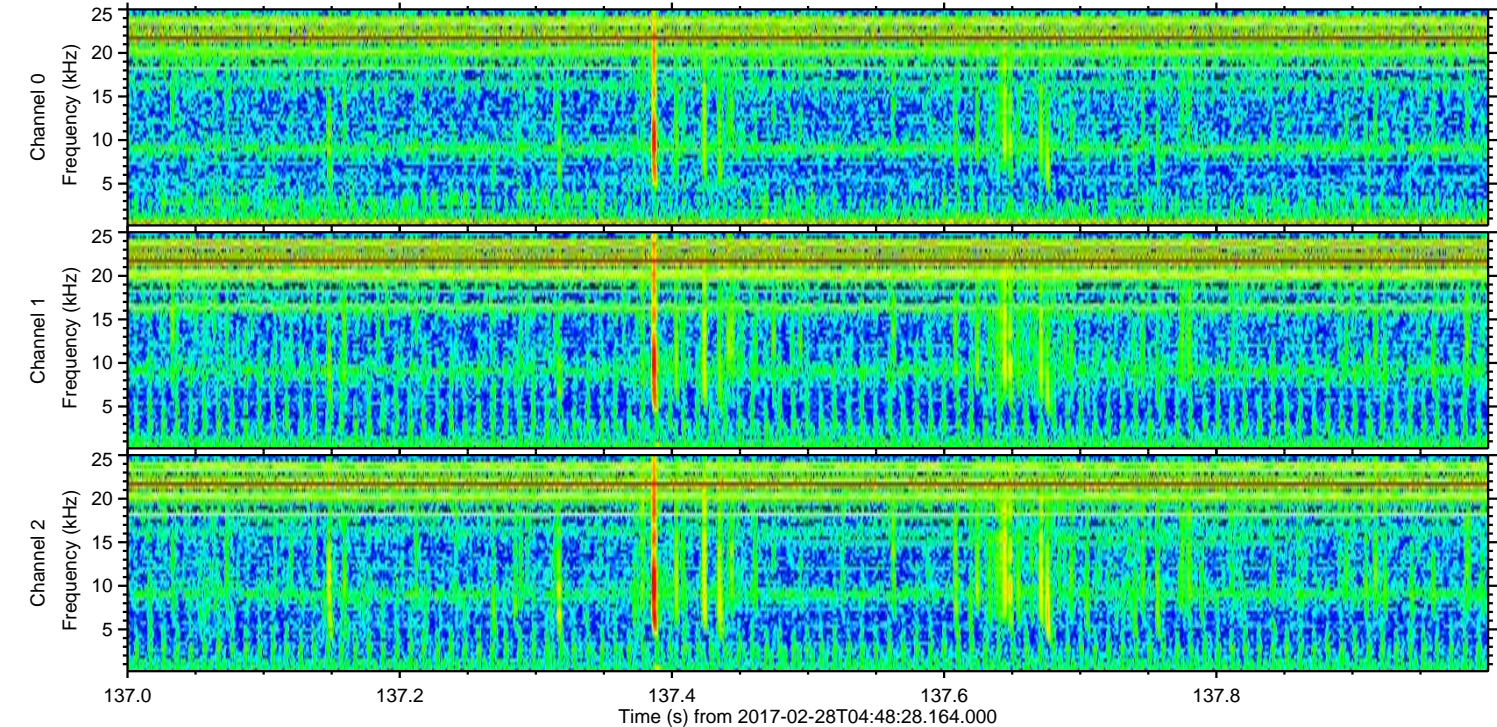
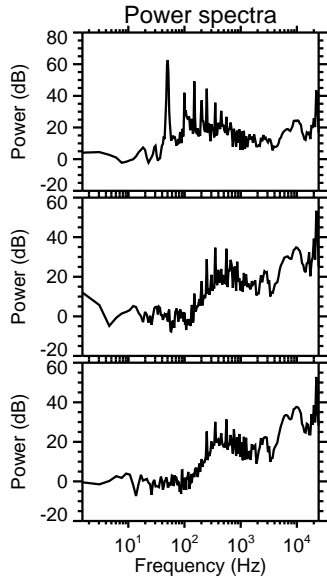
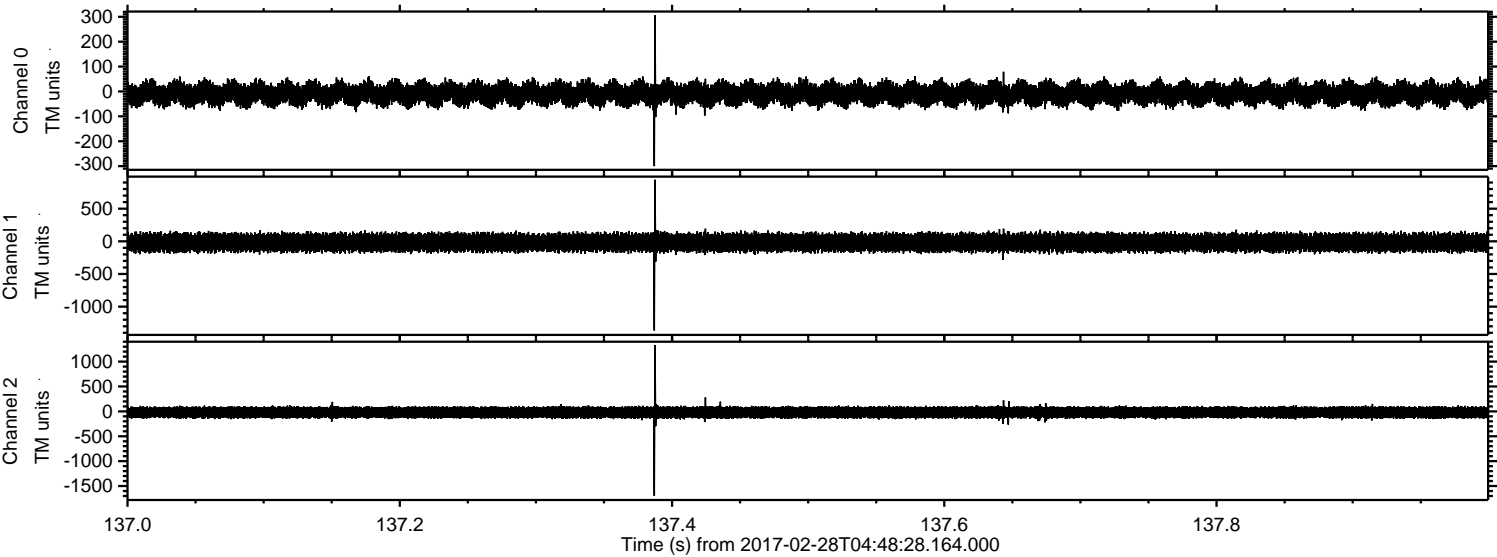
Channel 0
mn: -495
mx: 345
 μ : -9.4
 σ : 26.0

Channel 1
mn: -1139
mx: 877
 μ : -18.0
 σ : 76.1

Channel 2
mn: -1957
mx: 1374
 μ : -21.1
 σ : 68.3

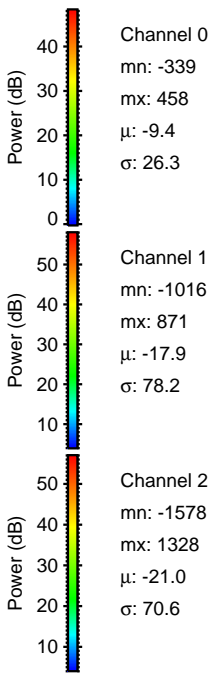
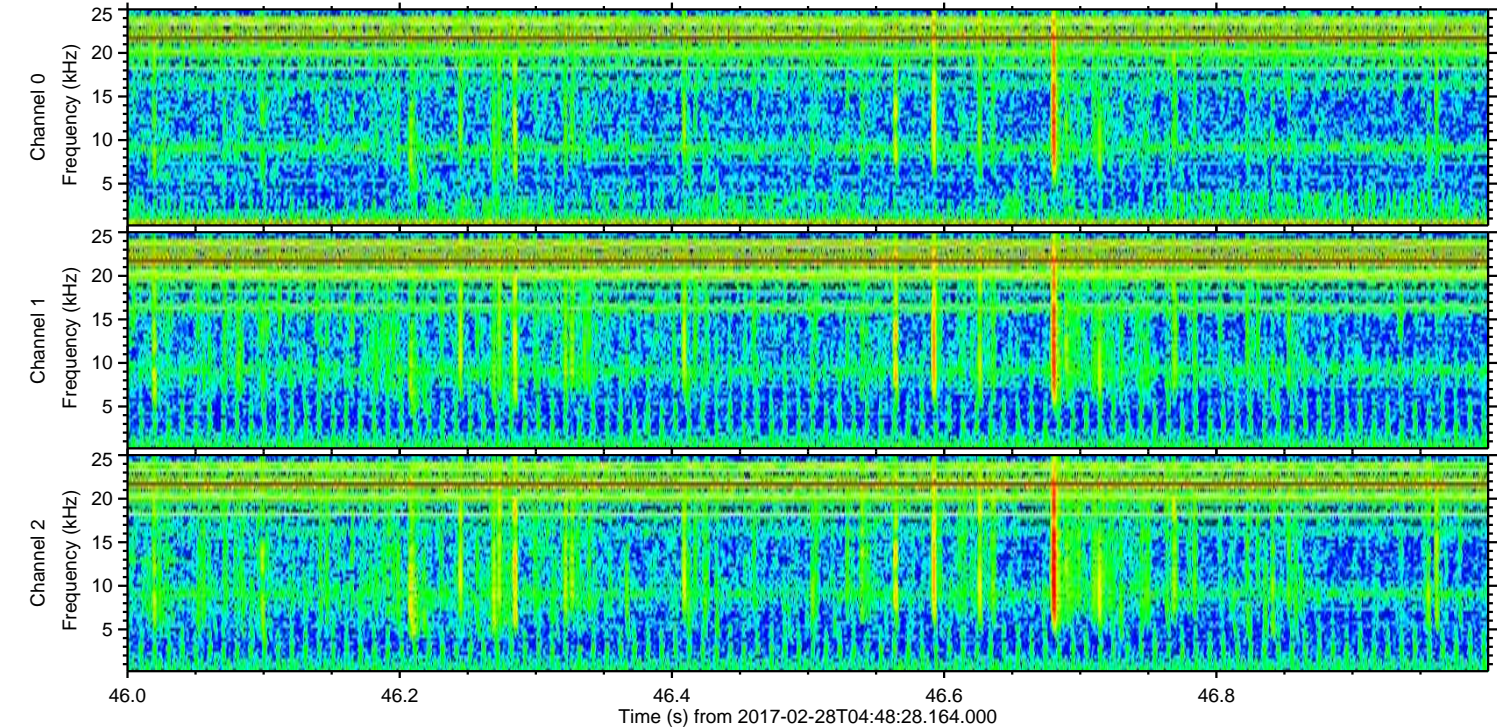
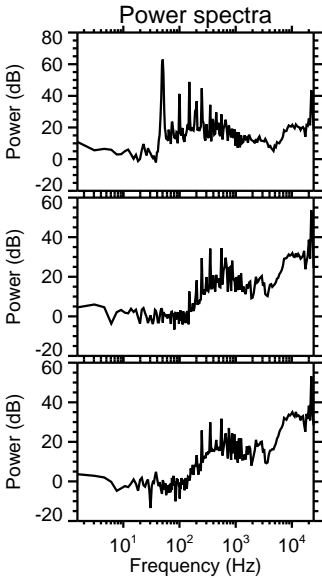
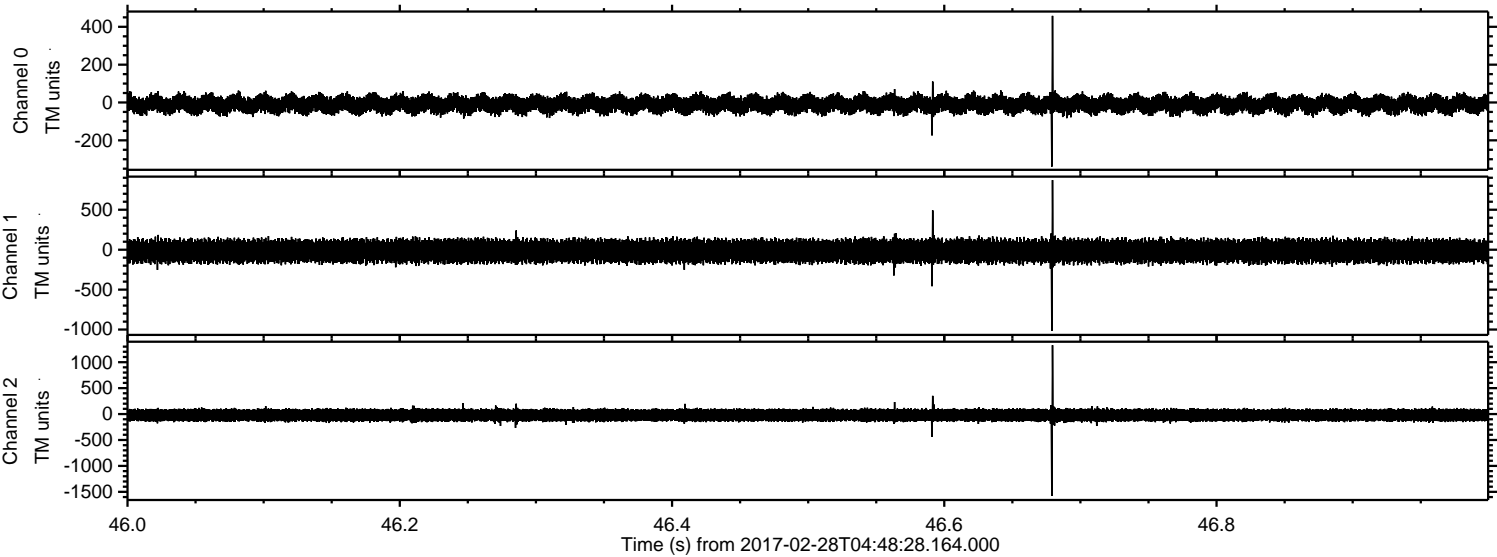
ELMAVAN 3D WAVEFORMS (Measured data sampled at 50 kHz) 51000 packets of 144 samples from 2017-02-28T04:48:28.164.000. Part 138/147

Processed Tue Feb 28 05:56:29 2017 by ELM ver.2012-10-06 from 001__elm20170228_044827__dat00.bin

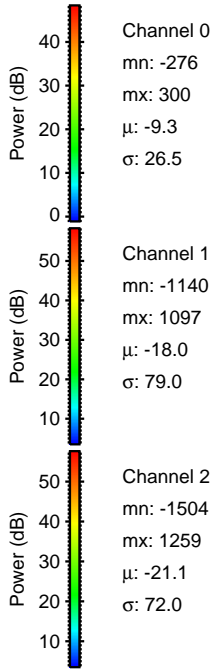
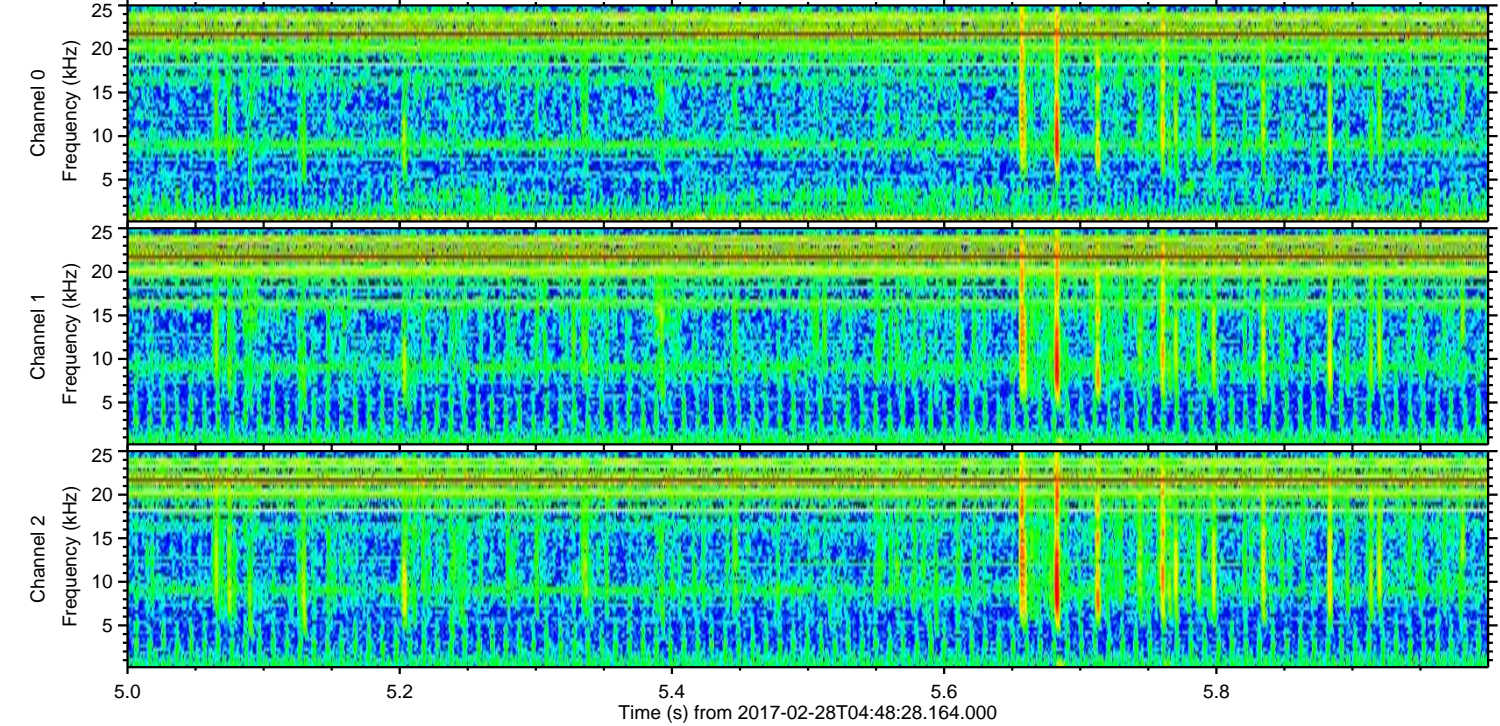
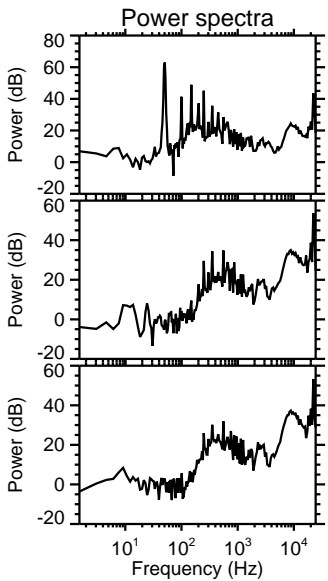
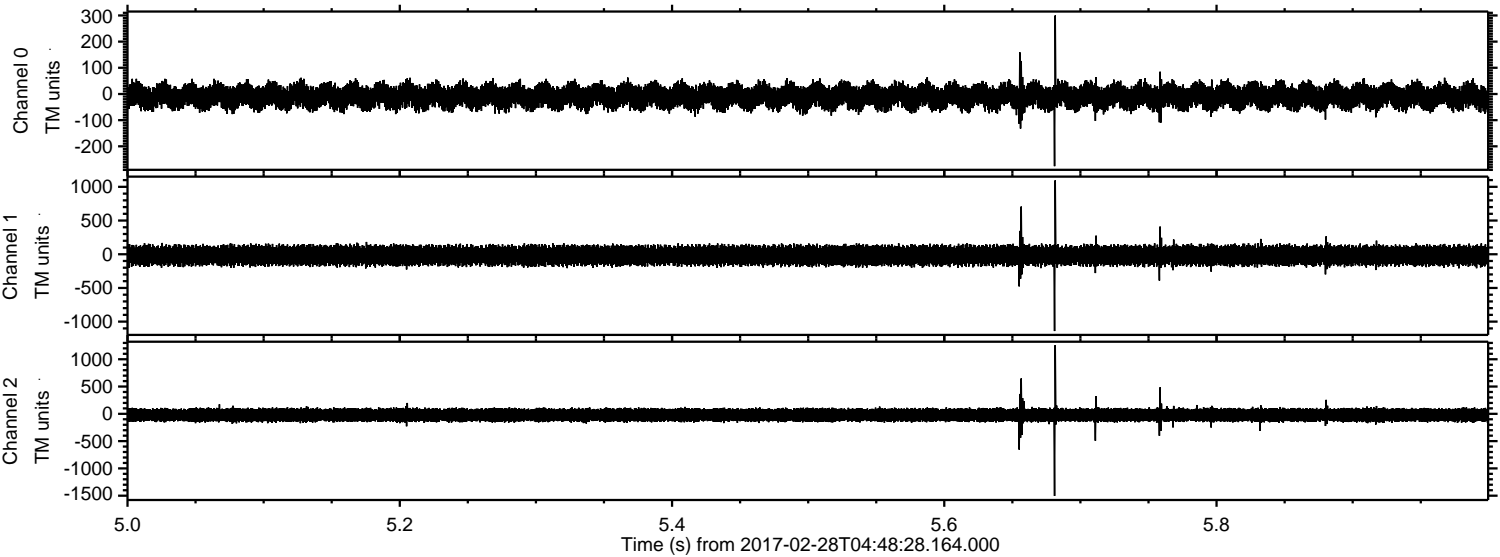


ELMAVAN 3D WAVEFORMS (Measured data sampled at 50 kHz) 51000 packets of 144 samples from 2017-02-28T04:48:28.164.000. Part 47/147

Processed Tue Feb 28 05:56:30 2017 by ELM ver.2012-10-06 from 001__elm20170228_044827__dat00.bin



Processed Tue Feb 28 05:56:31 2017 by ELM ver.2012-10-06 from 001__elm20170228_044827__dat00.bin

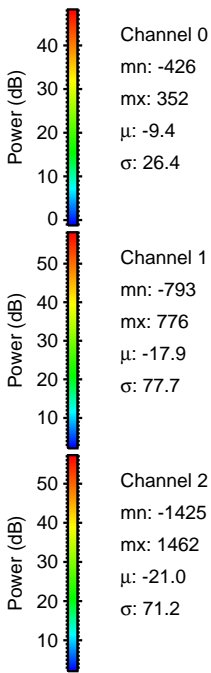
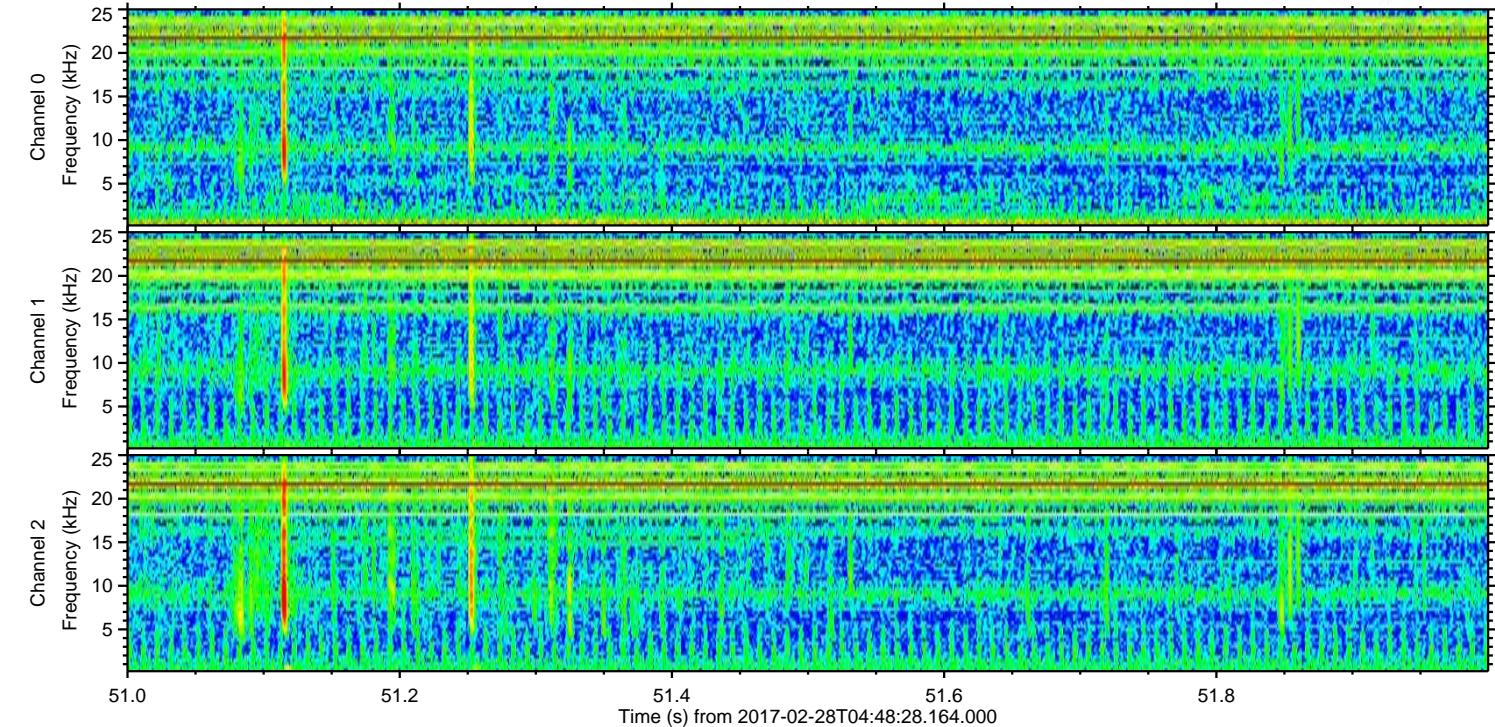
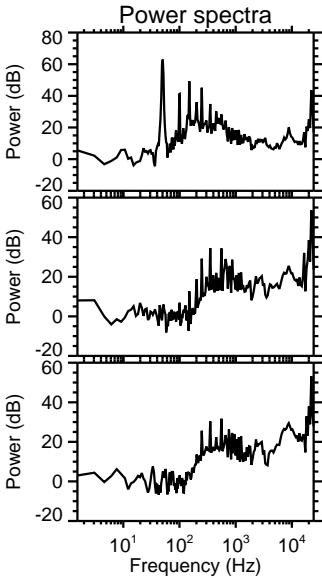
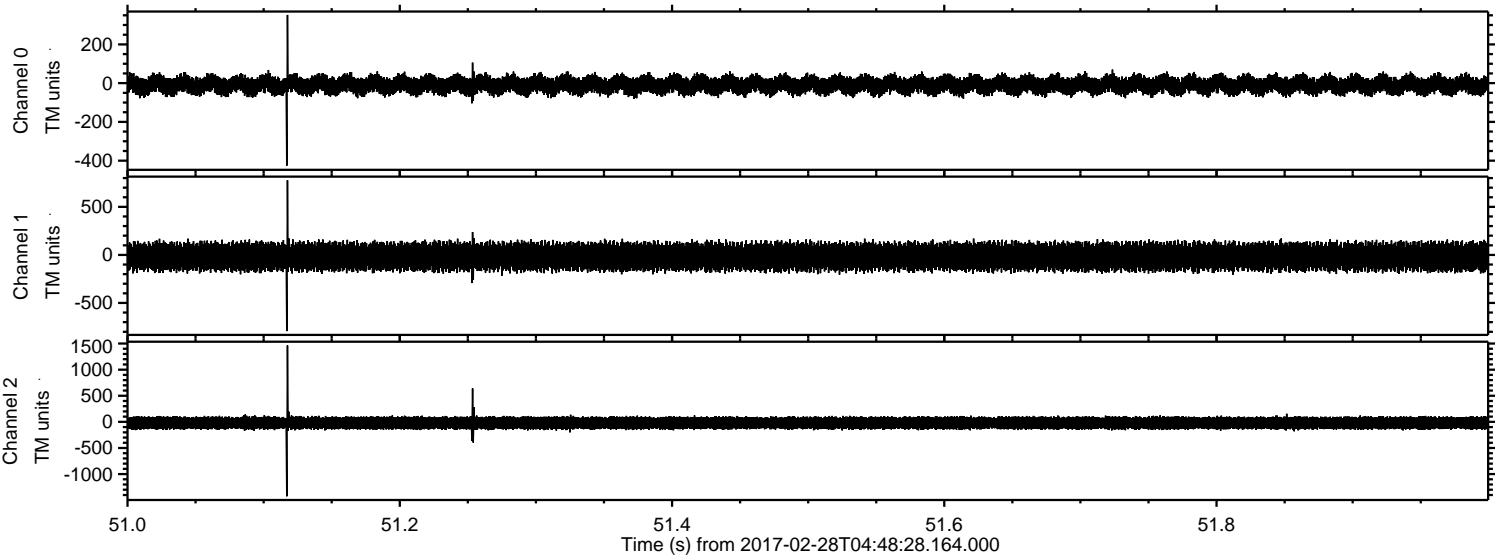


Channel 0
mn: -276
mx: 300
 μ : -9.3
 σ : 26.5

Channel 1
mn: -1140
mx: 1097
 μ : -18.0
 σ : 79.0

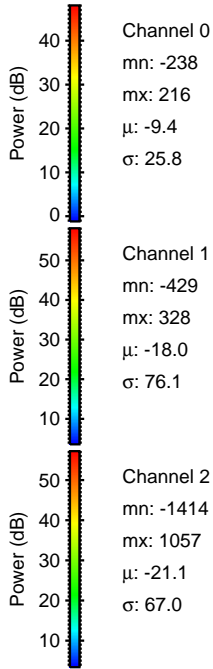
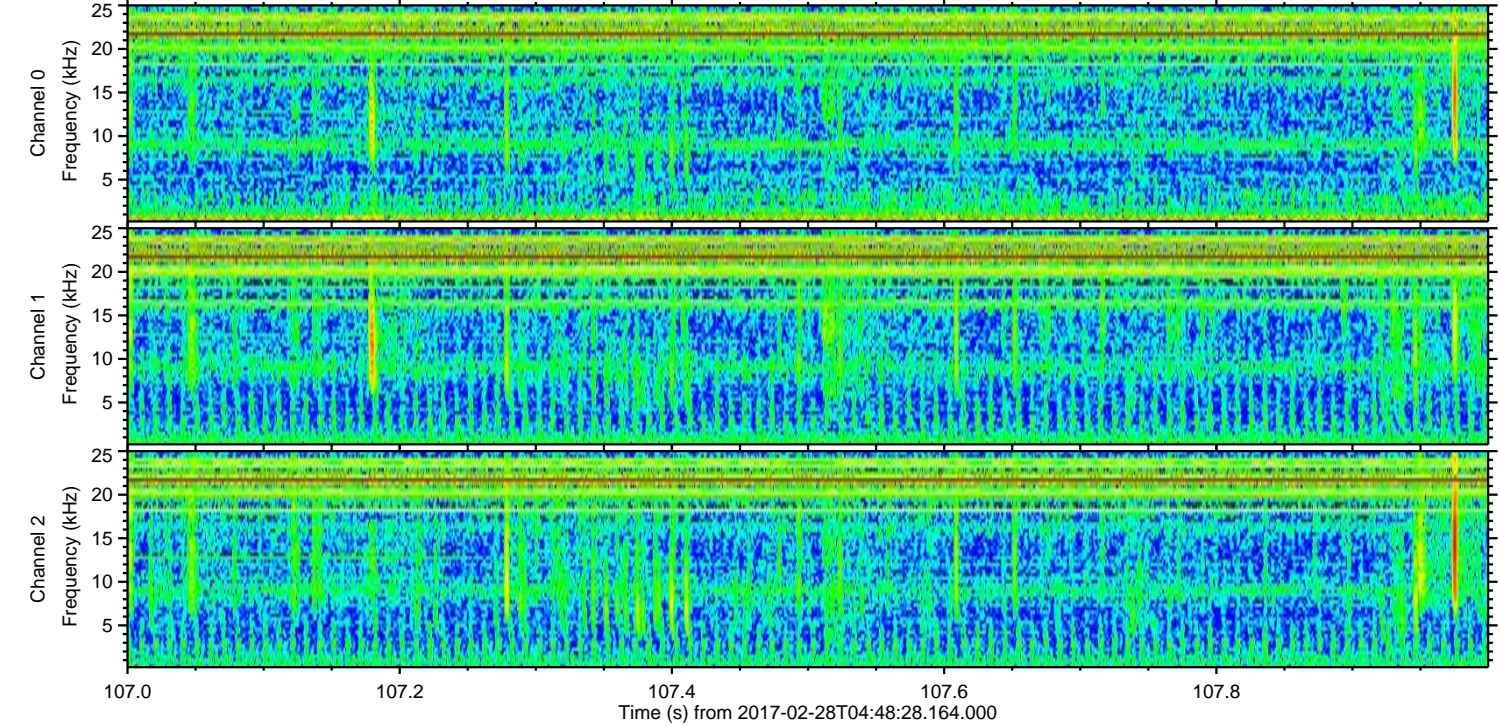
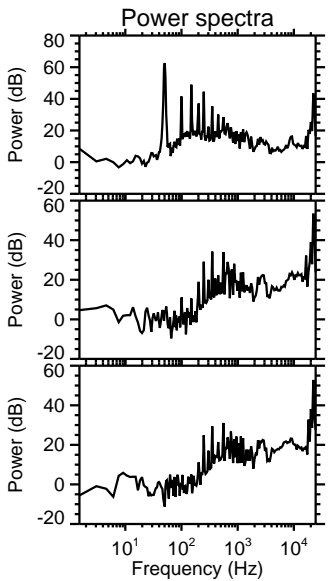
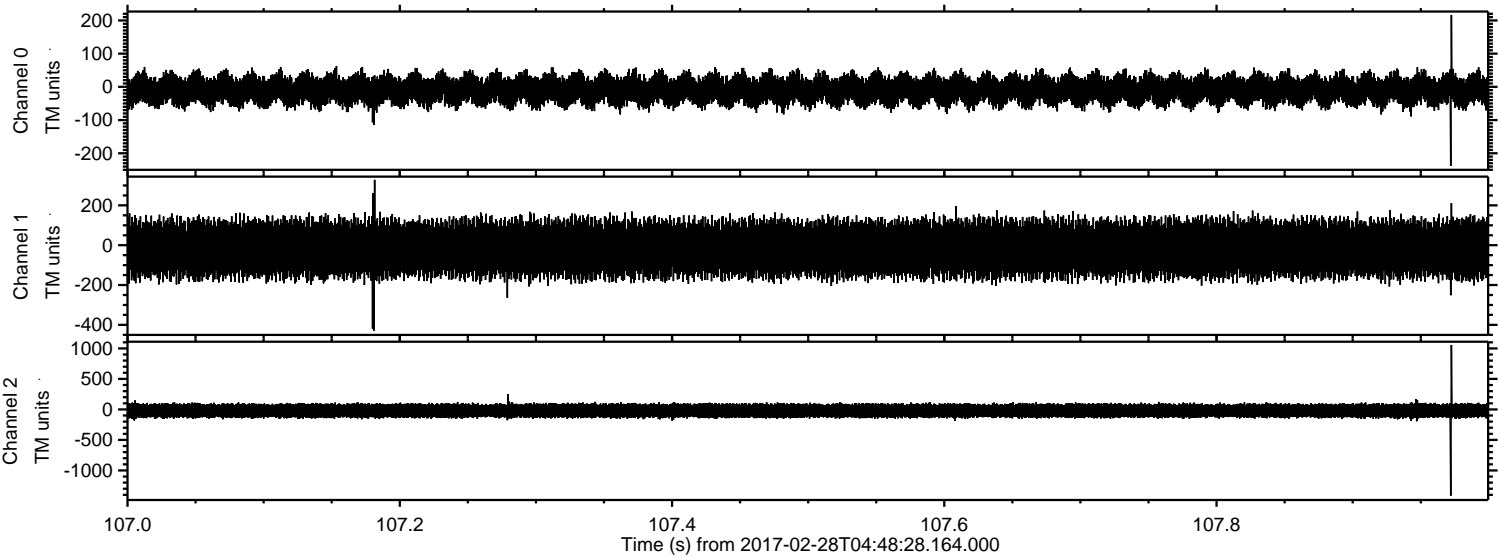
Channel 2
mn: -1504
mx: 1259
 μ : -21.1
 σ : 72.0

Processed Tue Feb 28 05:56:32 2017 by ELM ver.2012-10-06 from 001__elm20170228_044827__dat00.bin



ELMAVAN 3D WAVEFORMS (Measured data sampled at 50 kHz) 51000 packets of 144 samples from 2017-02-28T04:48:28.164.000. Part 108/147

Processed Tue Feb 28 05:56:34 2017 by ELM ver.2012-10-06 from 001__elm20170228_044827__dat00.bin



Channel 0
mn: -238
mx: 216
 μ : -9.4
 σ : 25.8

Channel 1
mn: -429
mx: 328
 μ : -18.0
 σ : 76.1

Channel 2
mn: -1414
mx: 1057
 μ : -21.1
 σ : 67.0

ELMAVAN 3D WAVEFORMS (Measured data sampled at 50 kHz) 51000 packets of 144 samples from 2017-02-28T04:48:28.164.000. Part 84/147

Processed Tue Feb 28 05:56:35 2017 by ELM ver.2012-10-06 from 001__elm20170228_044827__dat00.bin

