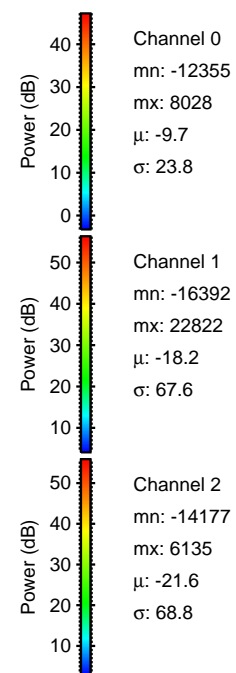
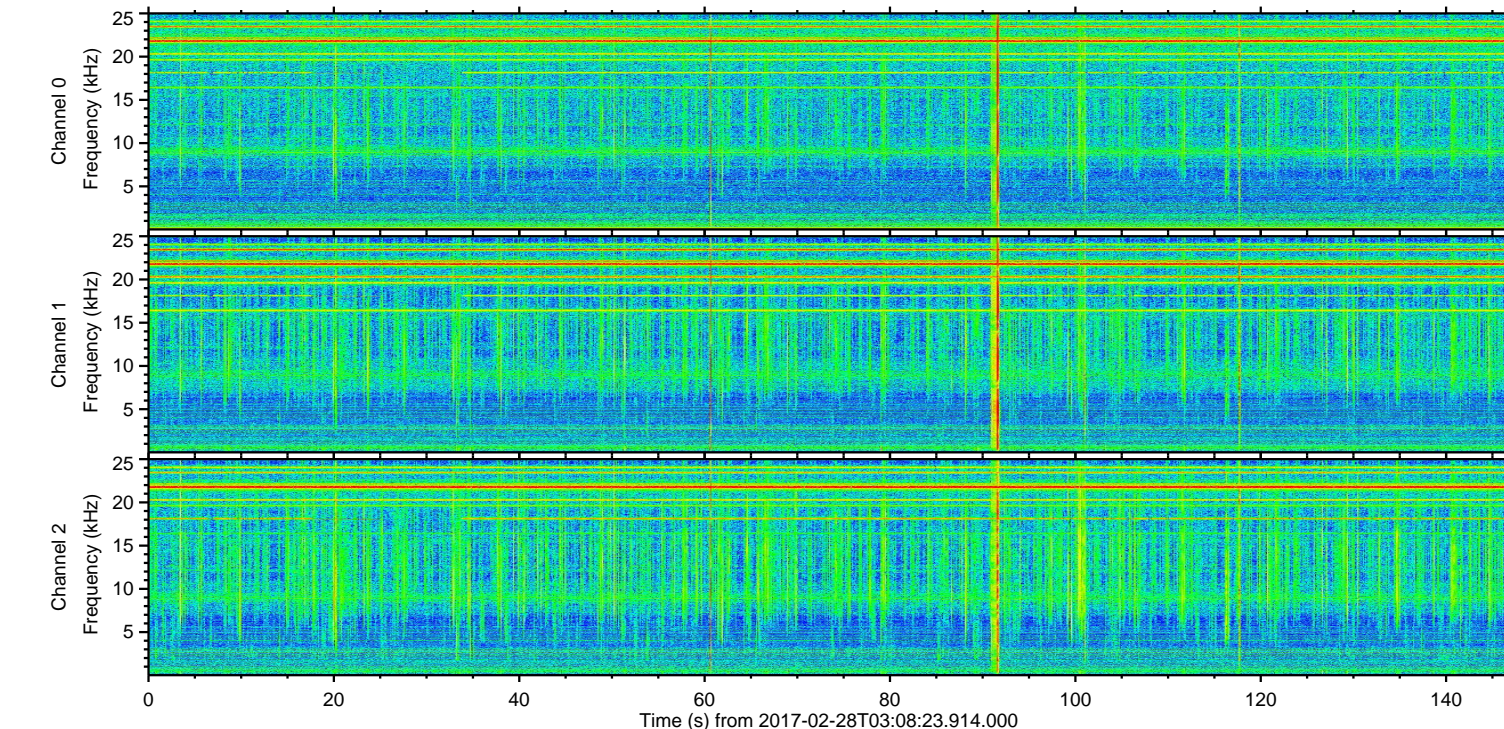
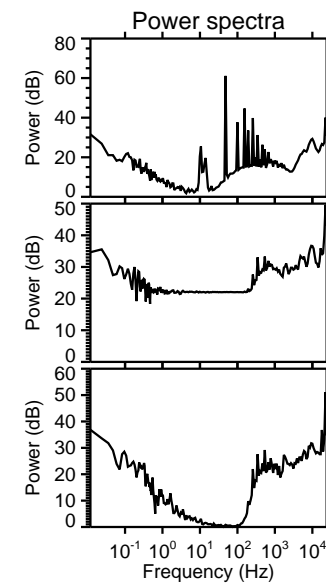
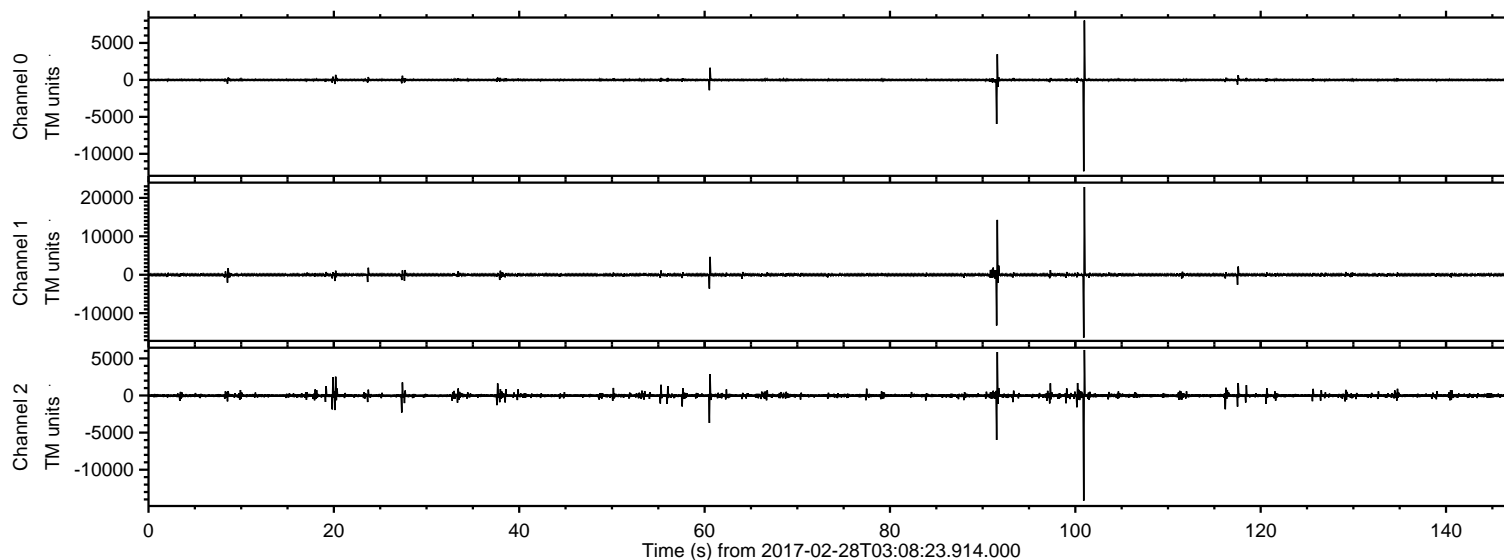


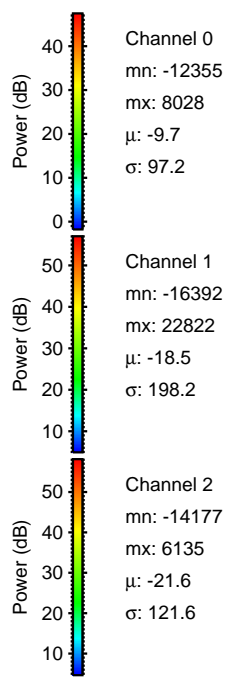
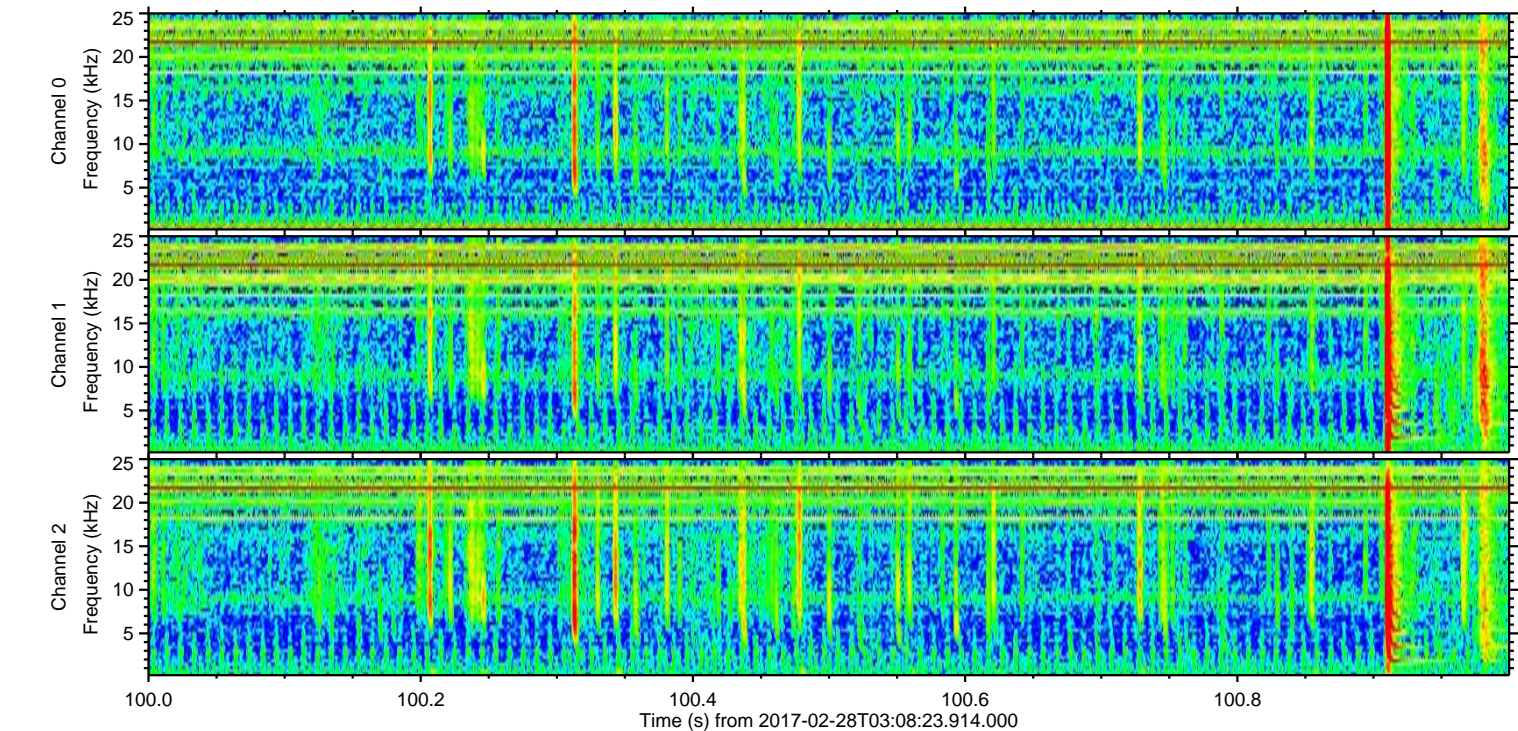
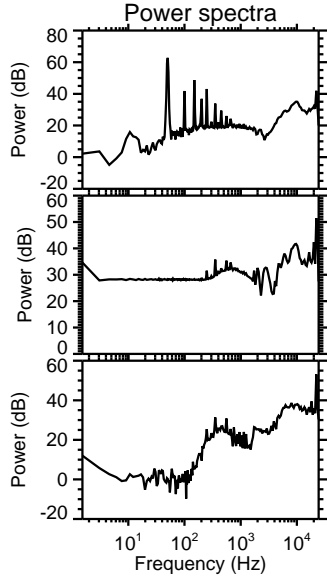
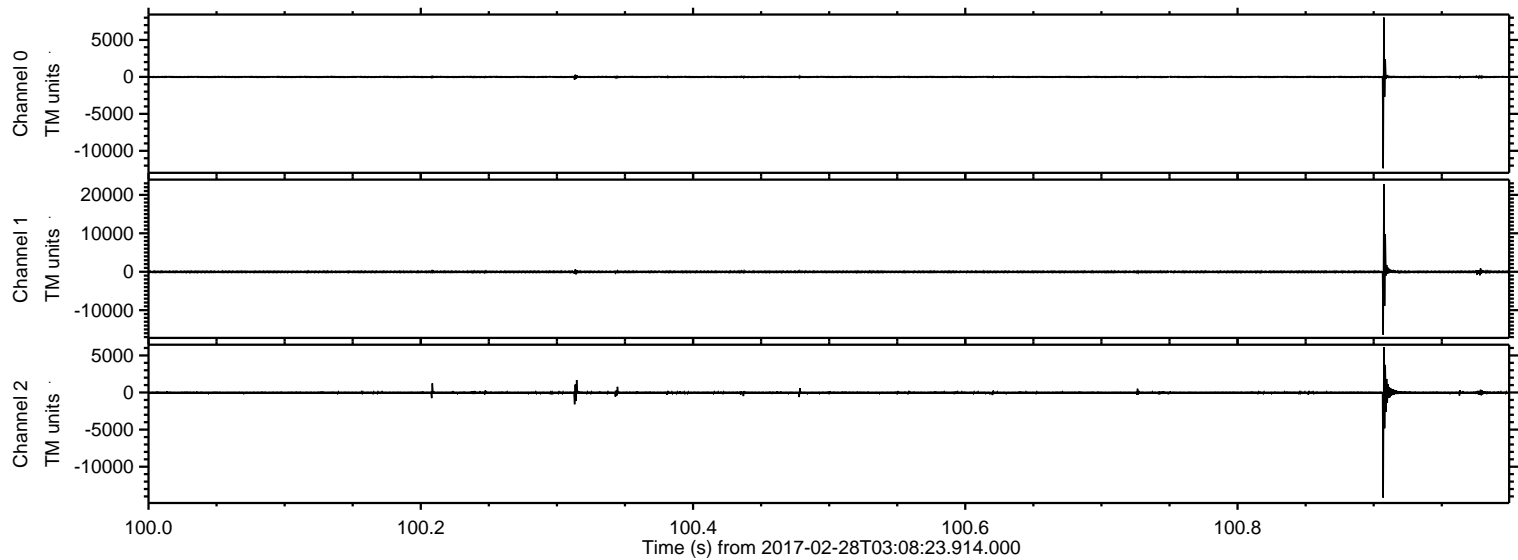
ELMAVAN 3D WAVEFORMS (Measured data sampled at 50 kHz) 51000 packets of 144 samples from 2017-02-28T03:08:23.914.000.

Processed Tue Feb 28 04:16:08 2017 by ELM ver.2012-10-06 from 001__elm20170228_030822__dat00.bin



ELMAVAN 3D WAVEFORMS (Measured data sampled at 50 kHz) 51000 packets of 144 samples from 2017-02-28T03:08:23.914.000. Part 101/147

Processed Tue Feb 28 04:16:23 2017 by ELM ver.2012-10-06 from 001__elm20170228_030822__dat00.bin

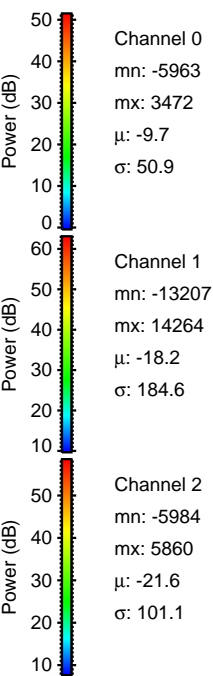
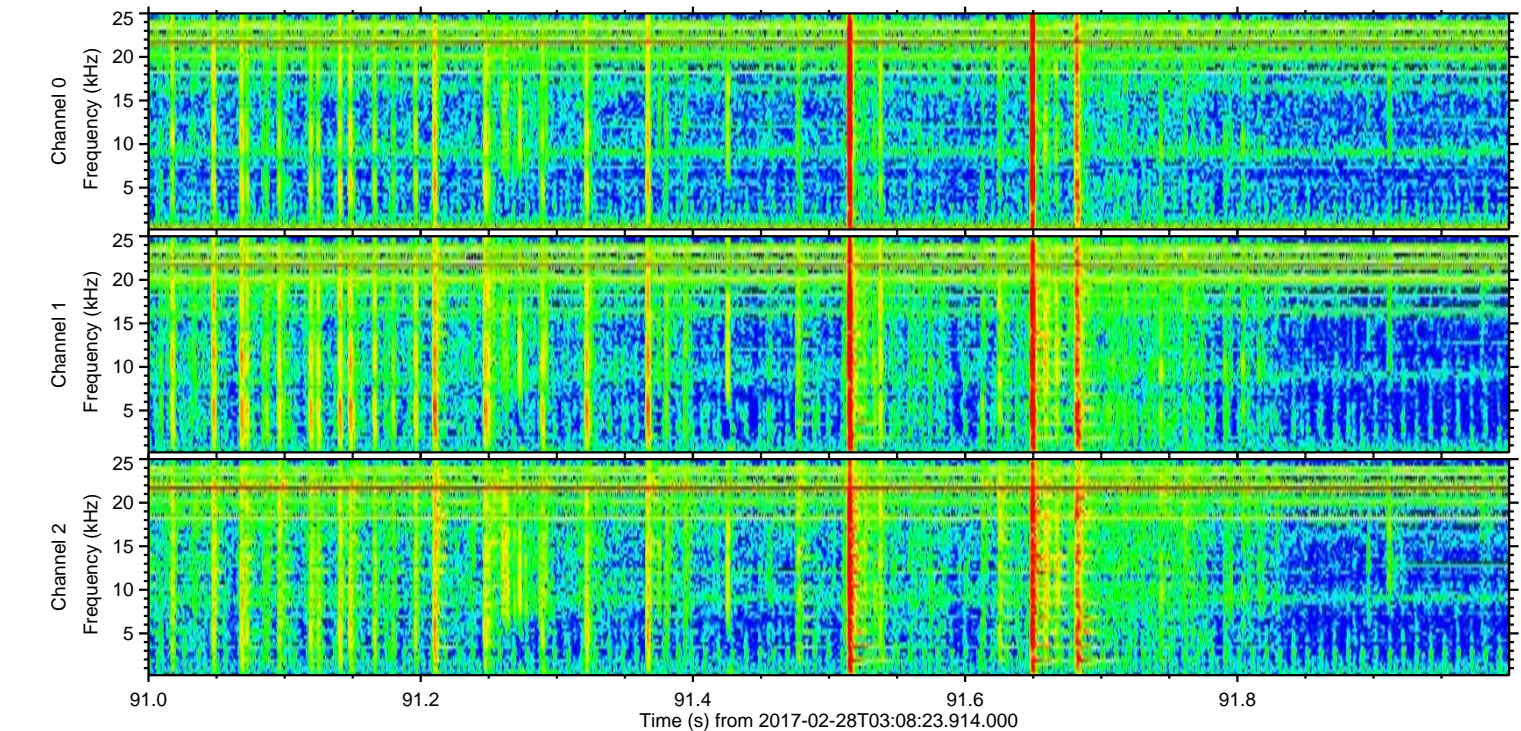
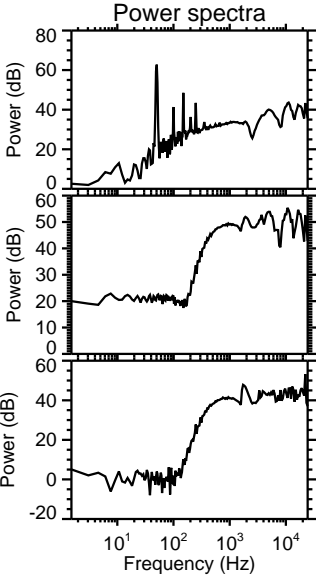
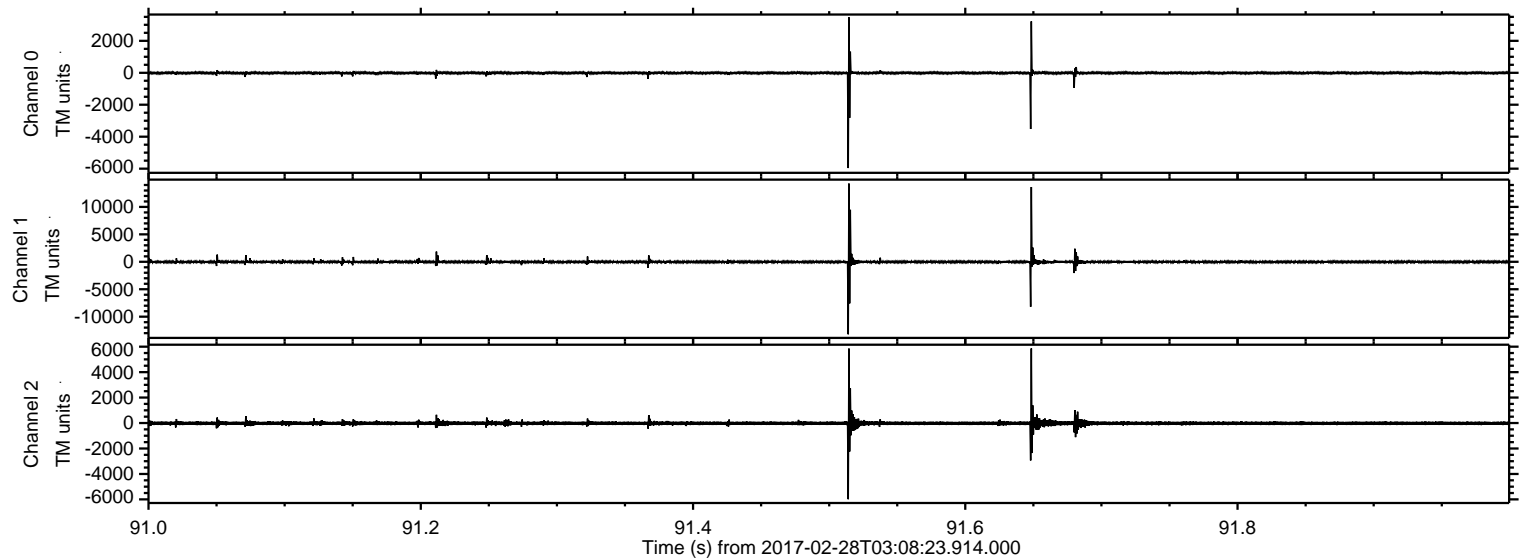


Channel 0
mn: -12355
mx: 8028
 μ : -9.7
 σ : 97.2

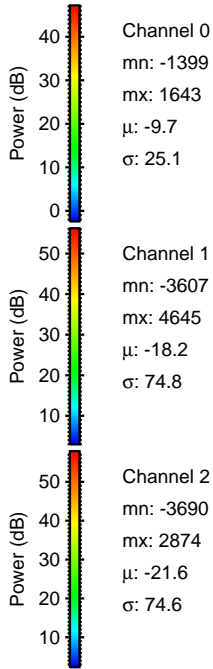
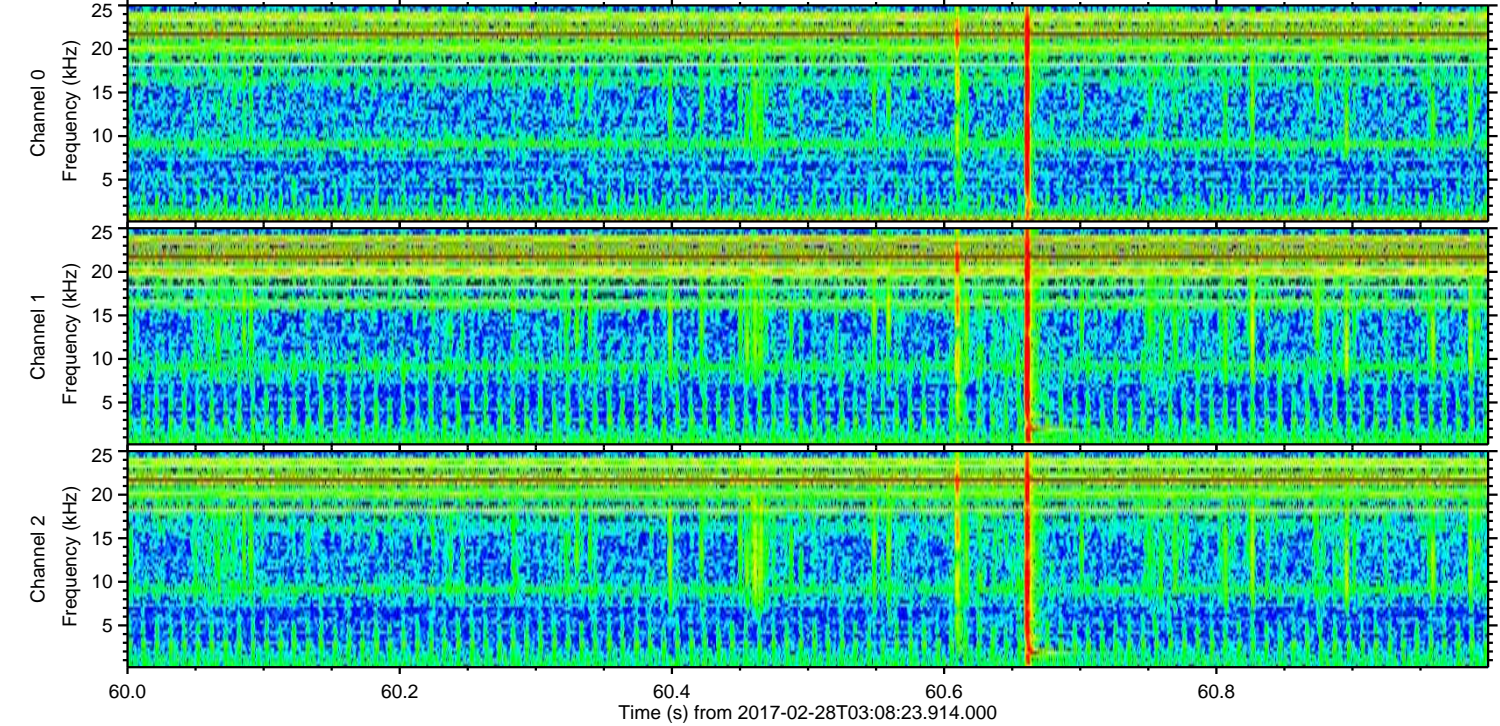
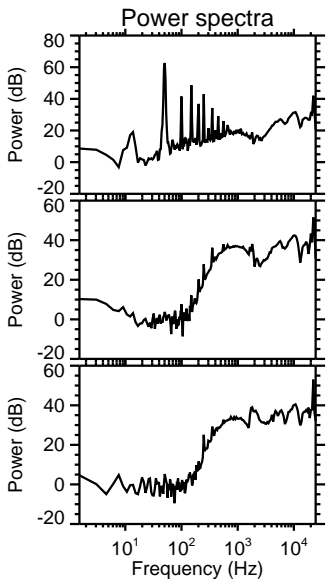
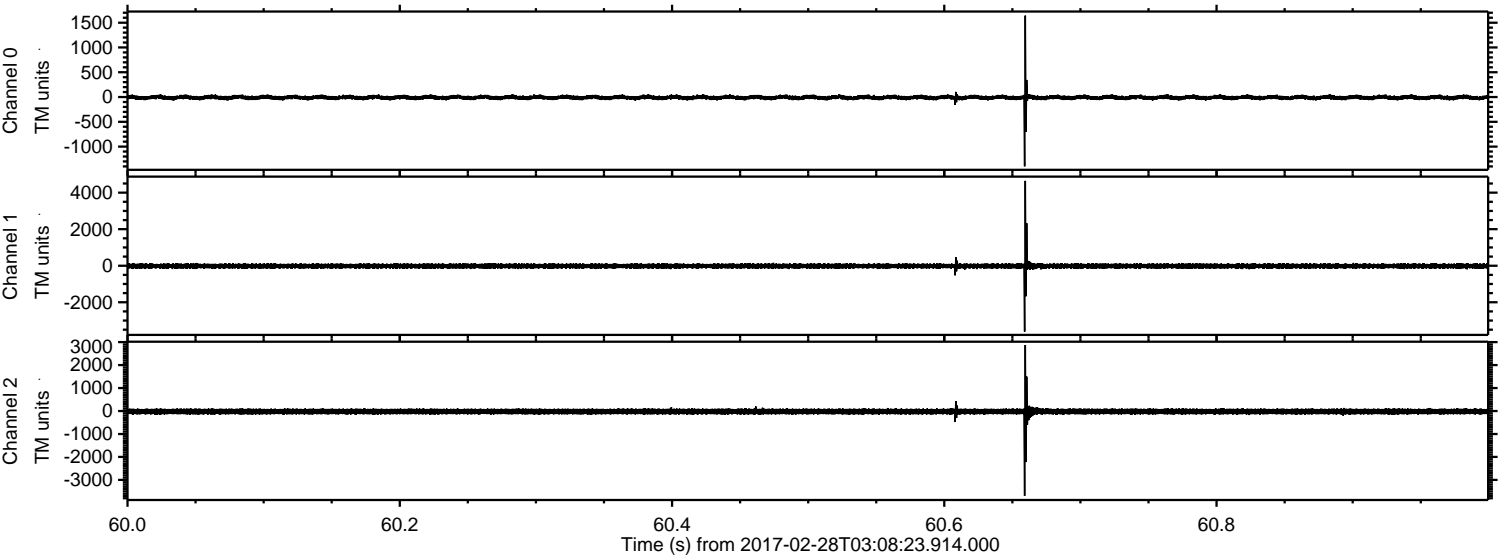
Channel 1
mn: -16392
mx: 22822
 μ : -18.5
 σ : 198.2

Channel 2
mn: -14177
mx: 6135
 μ : -21.6
 σ : 121.6

Processed Tue Feb 28 04:16:24 2017 by ELM ver.2012-10-06 from 001__elm20170228_030822__dat00.bin



Processed Tue Feb 28 04:16:25 2017 by ELM ver.2012-10-06 from 001__elm20170228_030822__dat00.bin



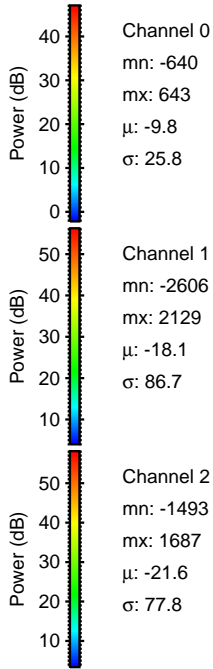
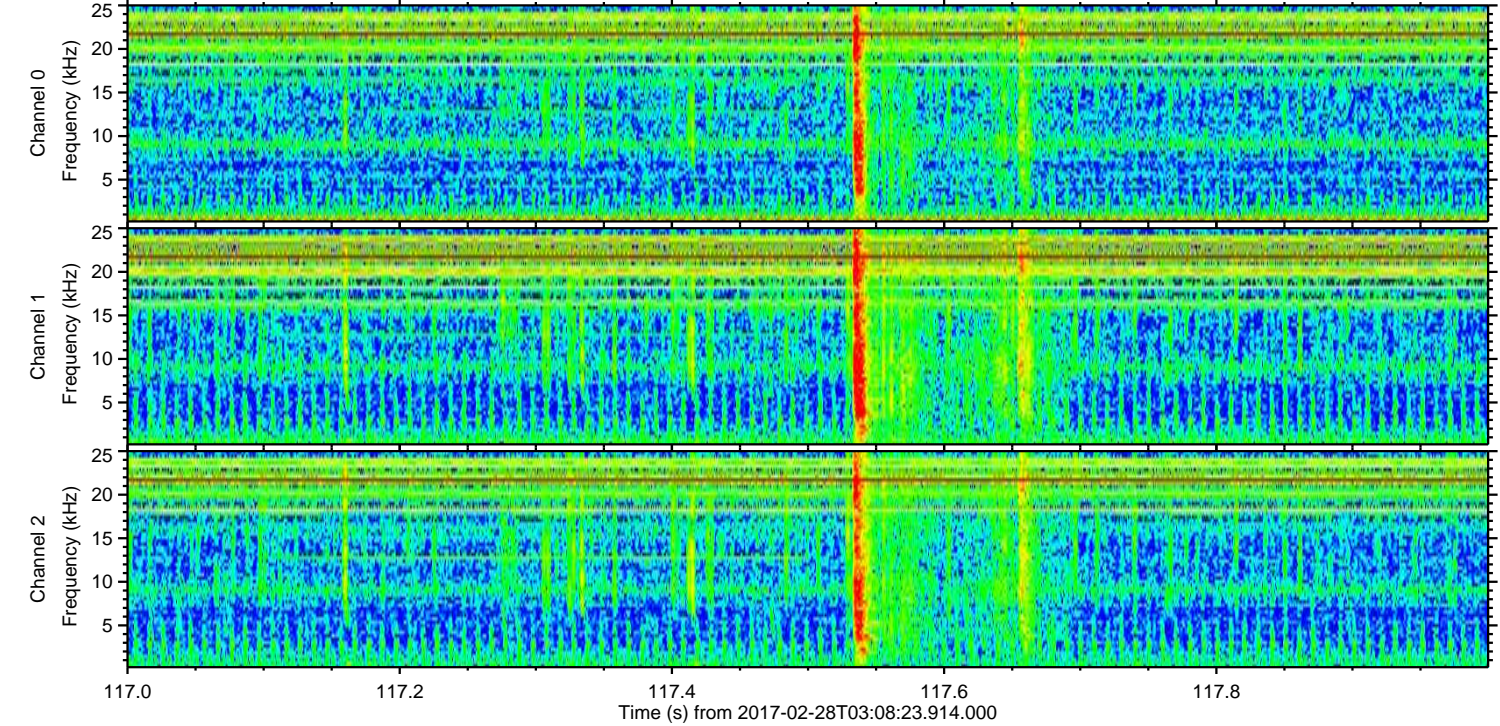
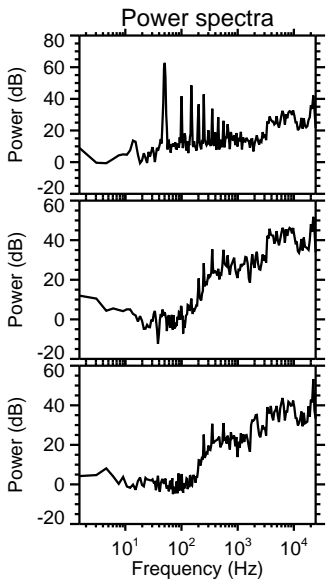
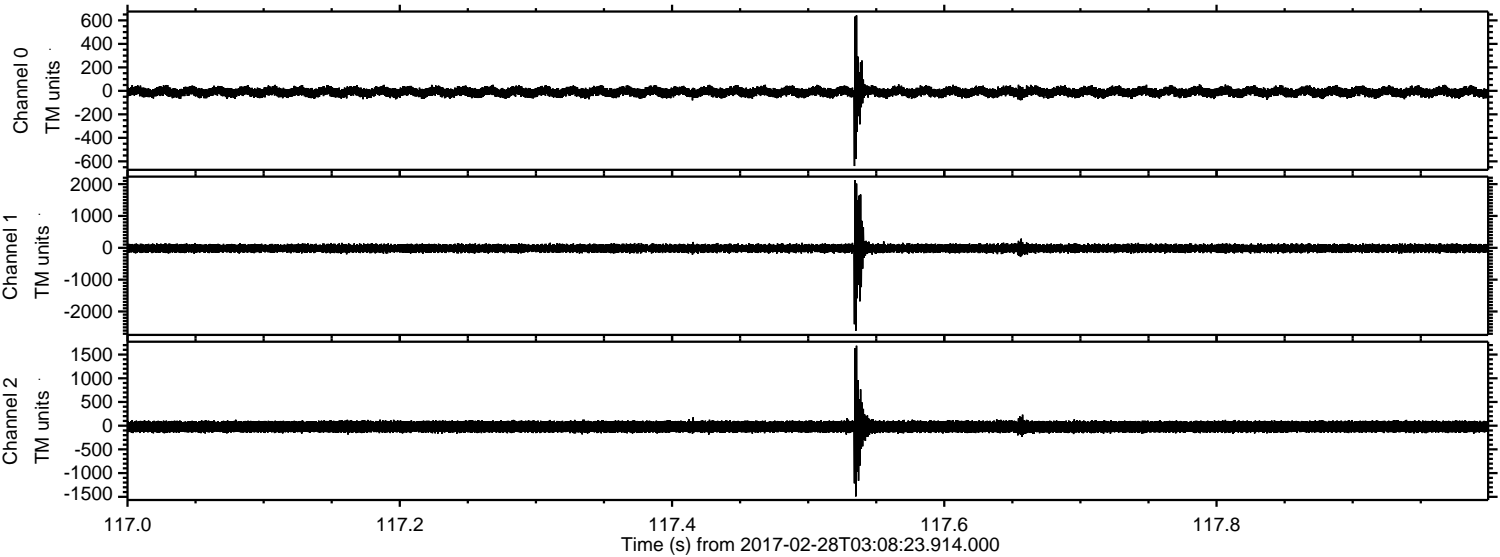
Channel 0
mn: -1399
mx: 1643
 μ : -9.7
 σ : 25.1

Channel 1
mn: -3607
mx: 4645
 μ : -18.2
 σ : 74.8

Channel 2
mn: -3690
mx: 2874
 μ : -21.6
 σ : 74.6

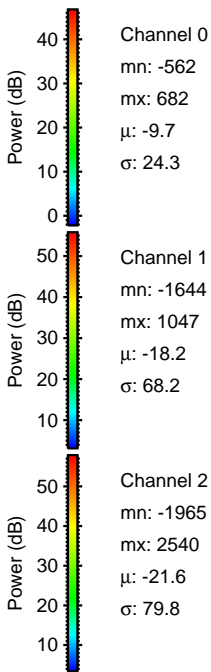
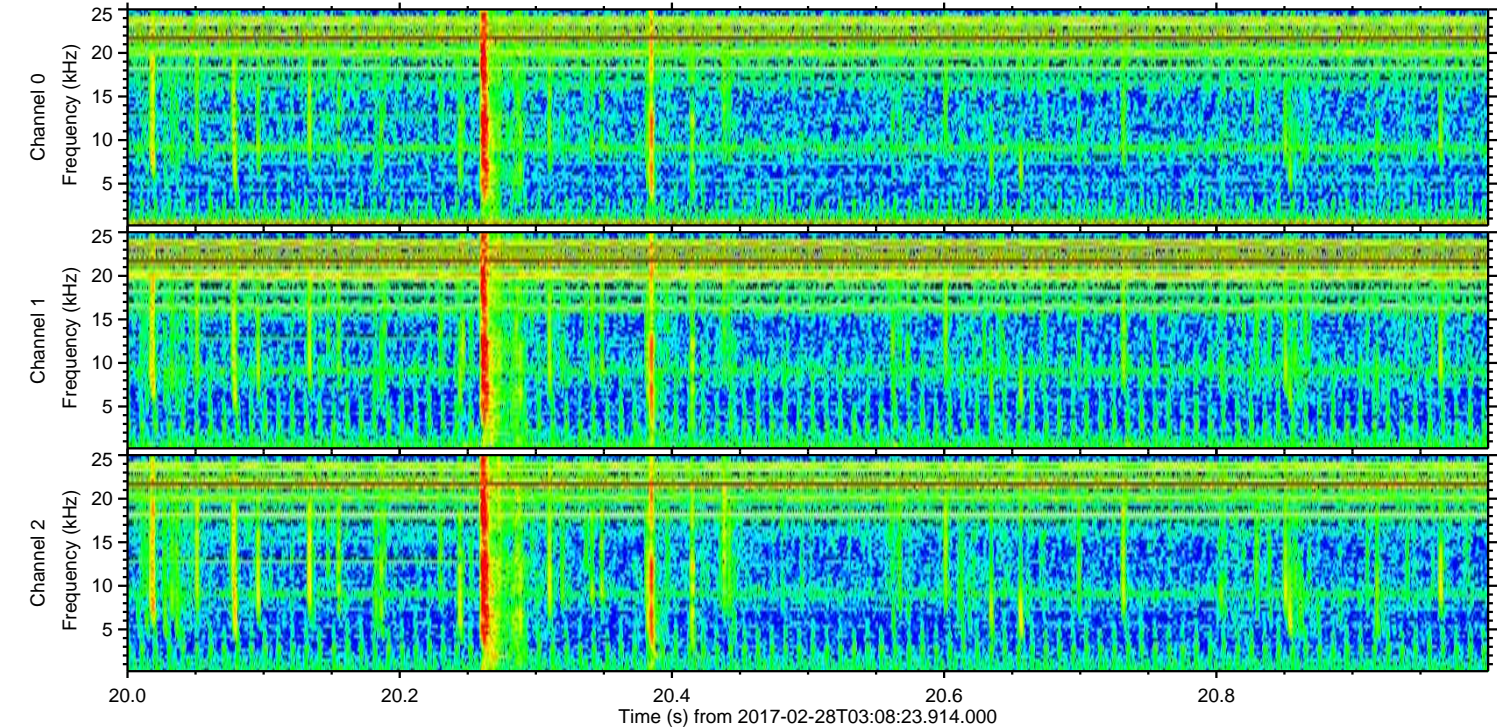
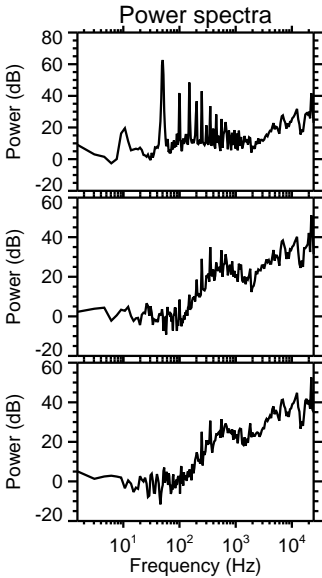
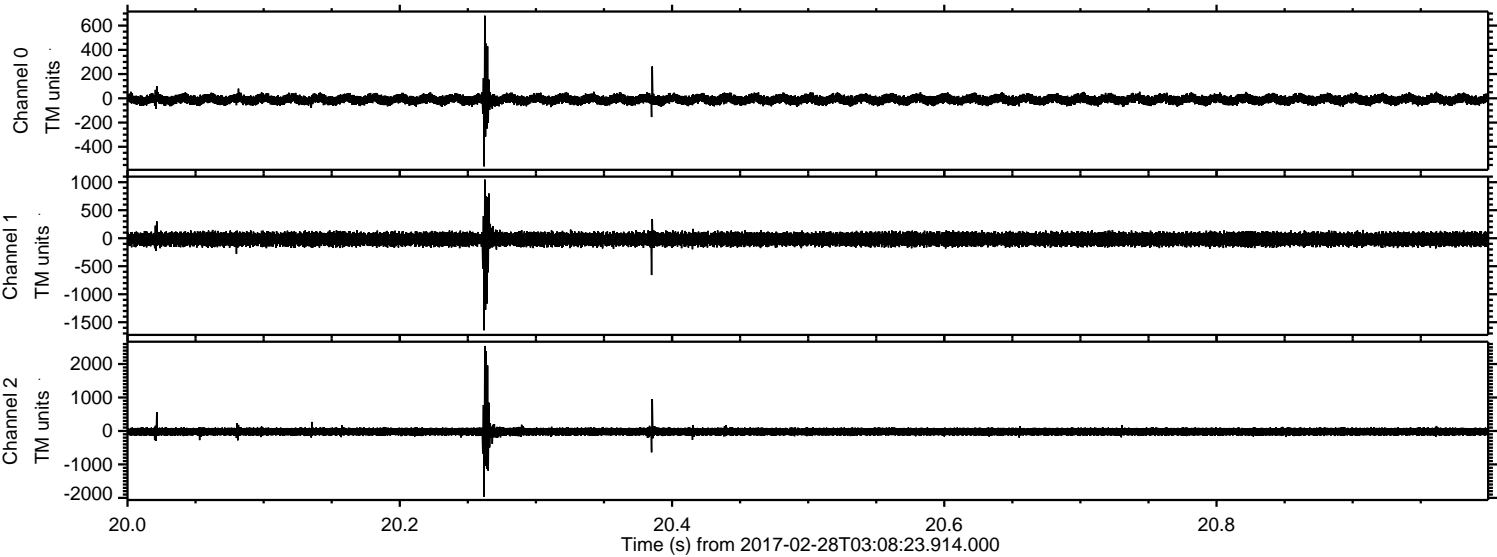
ELMAVAN 3D WAVEFORMS (Measured data sampled at 50 kHz) 51000 packets of 144 samples from 2017-02-28T03:08:23.914.000. Part 118/147

Processed Tue Feb 28 04:16:26 2017 by ELM ver.2012-10-06 from 001__elm20170228_030822__dat00.bin



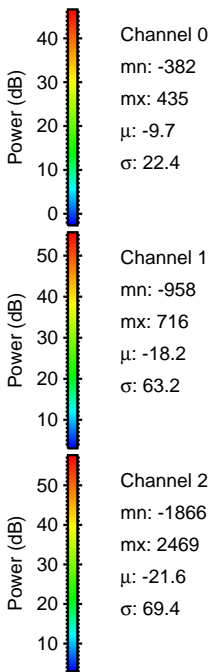
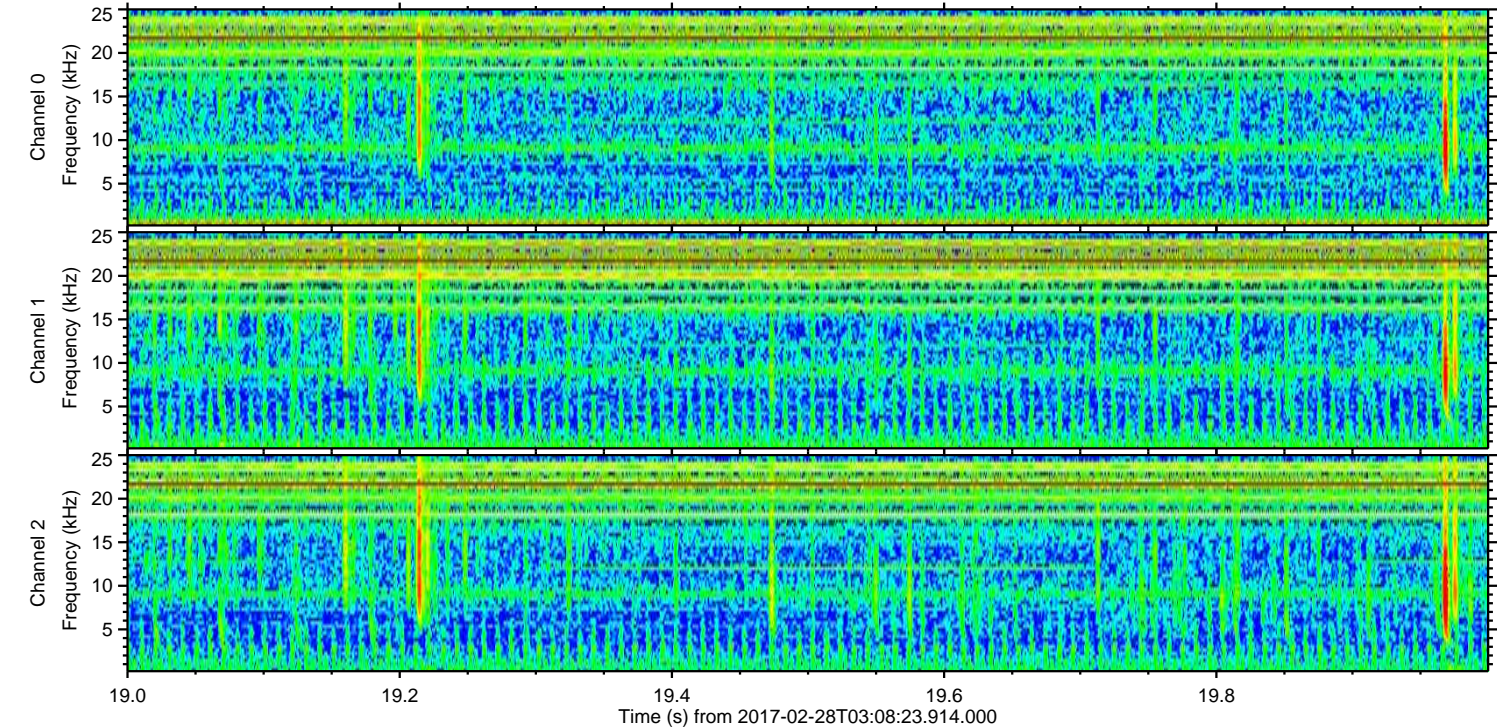
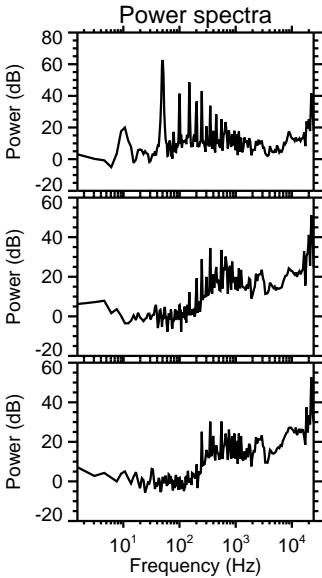
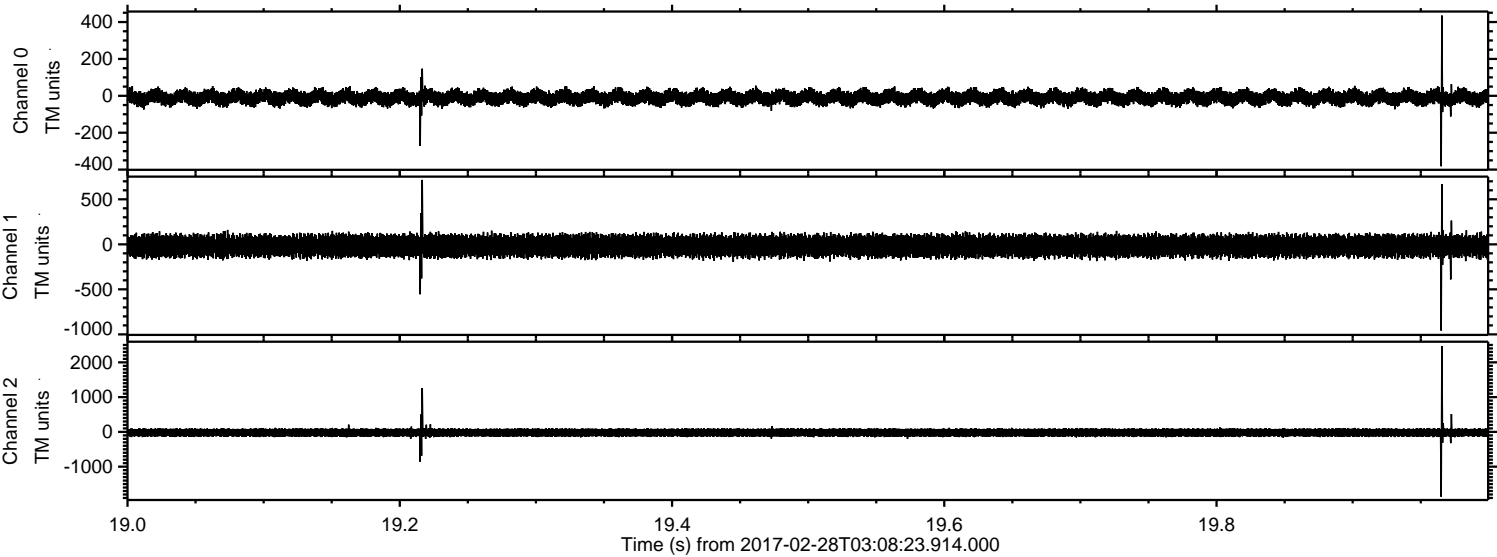
ELMAVAN 3D WAVEFORMS (Measured data sampled at 50 kHz) 51000 packets of 144 samples from 2017-02-28T03:08:23.914.000. Part 21/147

Processed Tue Feb 28 04:16:27 2017 by ELM ver.2012-10-06 from 001__elm20170228_030822__dat00.bin



ELMAVAN 3D WAVEFORMS (Measured data sampled at 50 kHz) 51000 packets of 144 samples from 2017-02-28T03:08:23.914.000. Part 20/147

Processed Tue Feb 28 04:16:28 2017 by ELM ver.2012-10-06 from 001__elm20170228_030822__dat00.bin

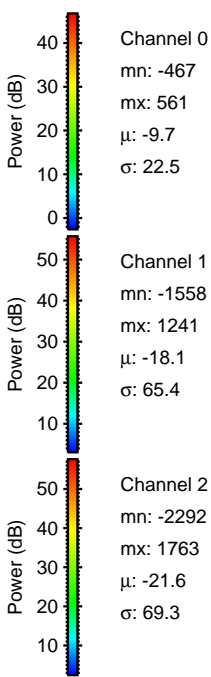
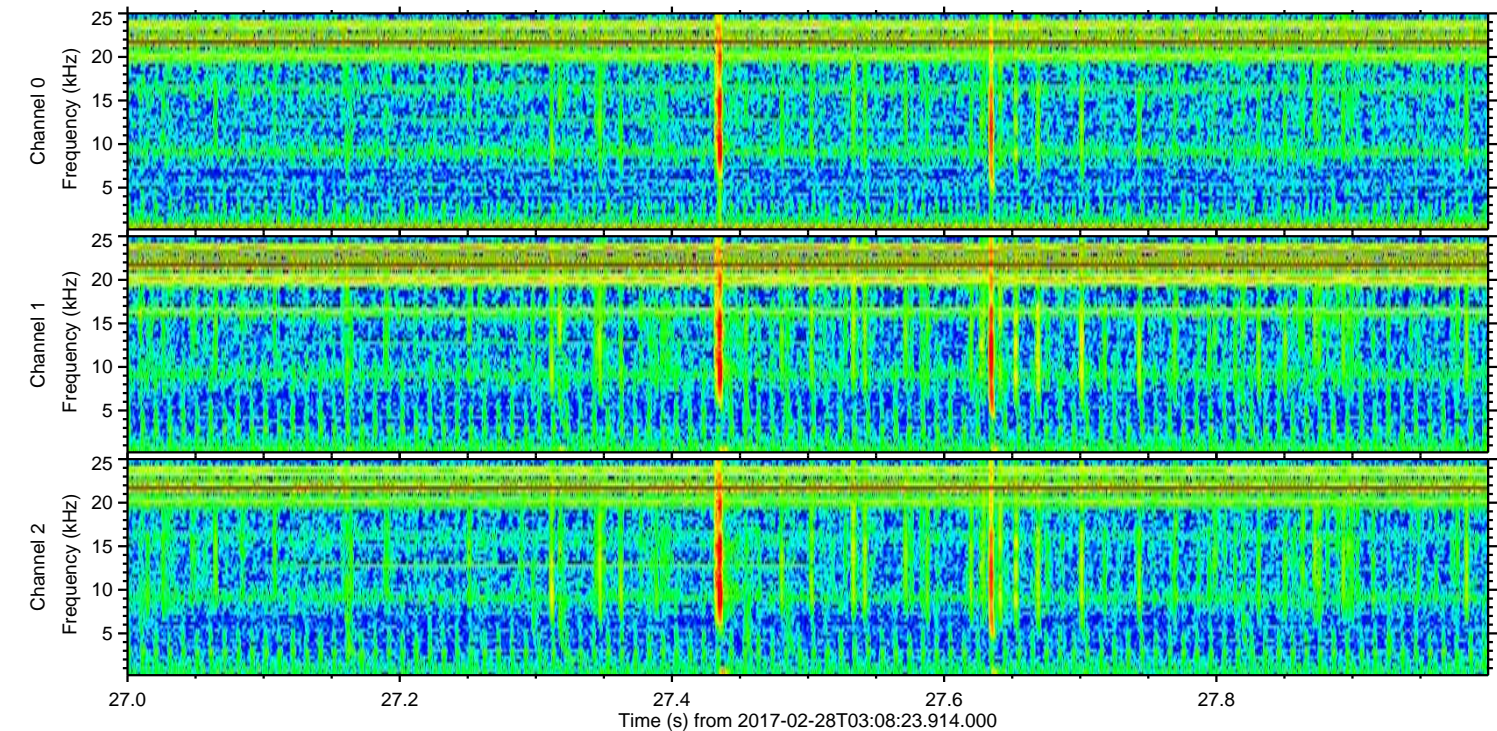
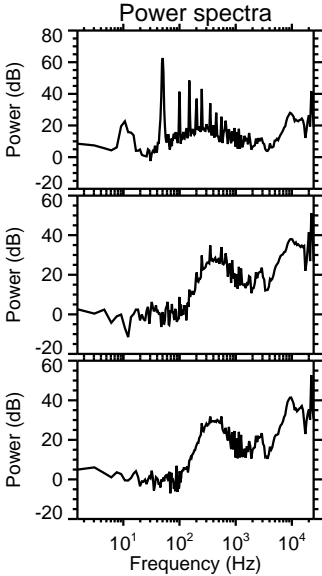
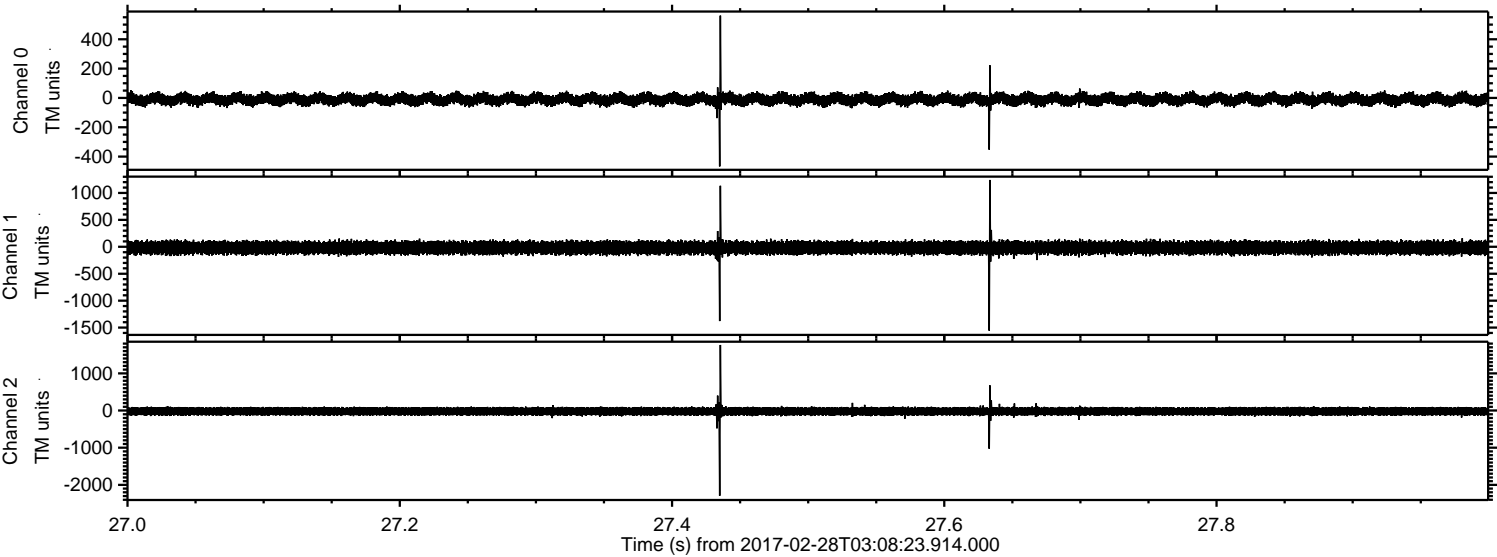


Channel 0
mn: -382
mx: 435
 μ : -9.7
 σ : 22.4

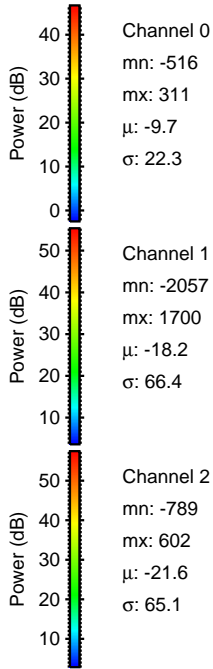
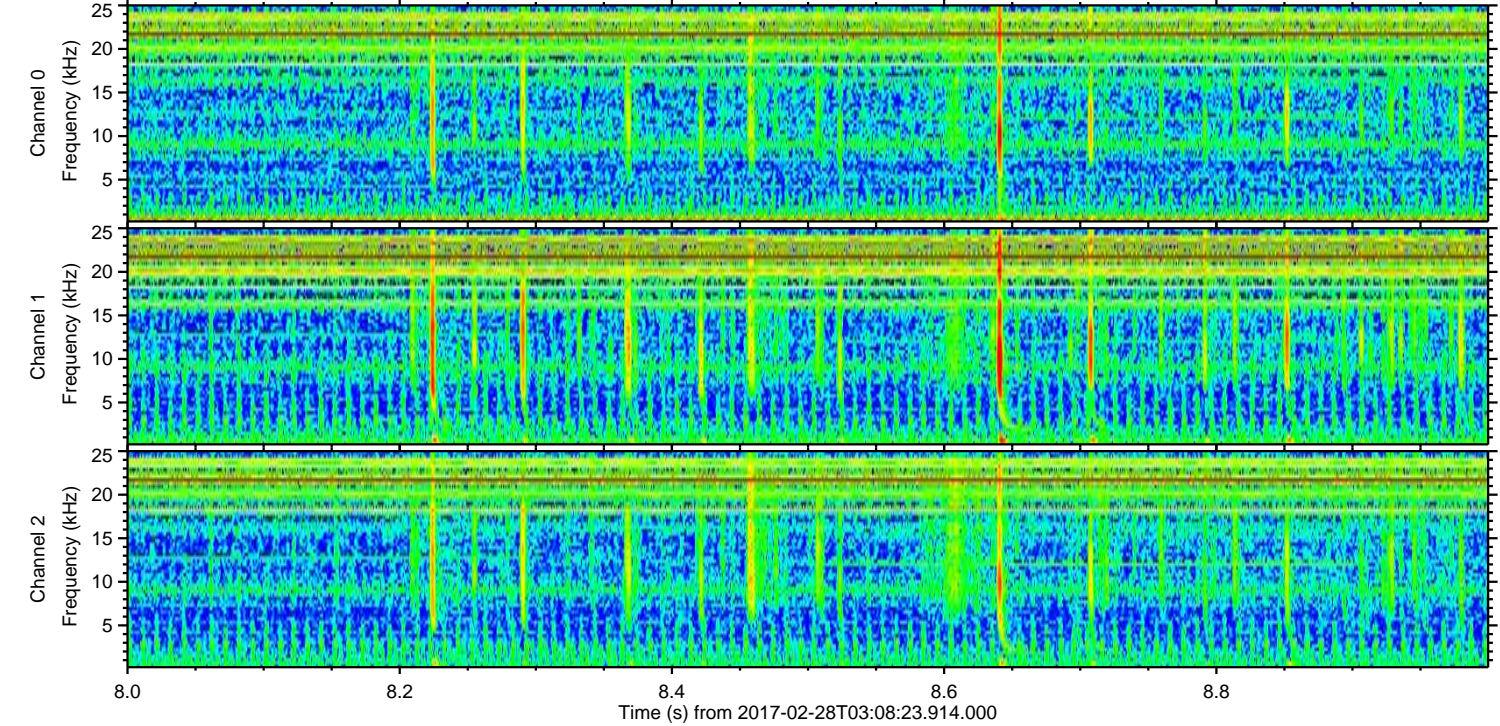
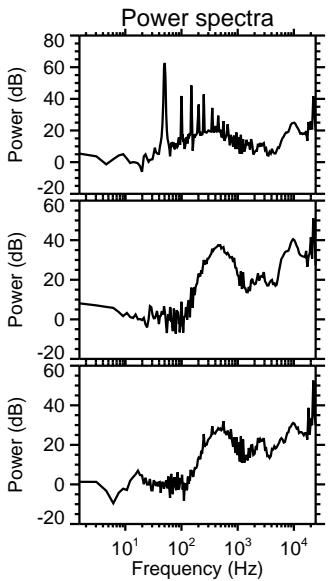
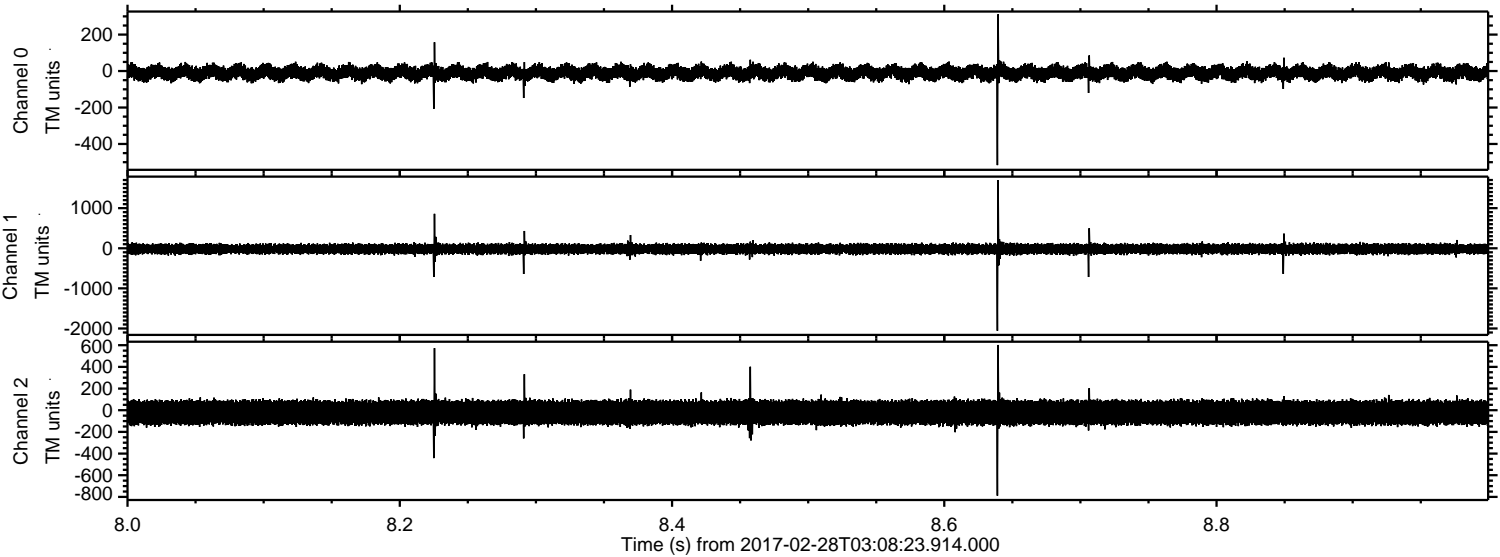
Channel 1
mn: -958
mx: 716
 μ : -18.2
 σ : 63.2

Channel 2
mn: -1866
mx: 2469
 μ : -21.6
 σ : 69.4

Processed Tue Feb 28 04:16:29 2017 by ELM ver.2012-10-06 from 001__elm20170228_030822__dat00.bin

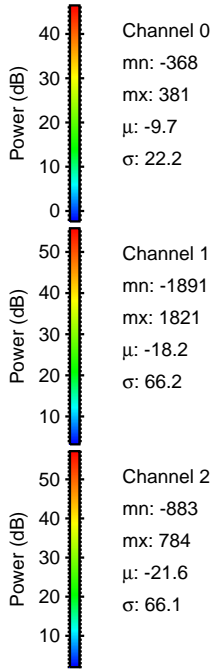
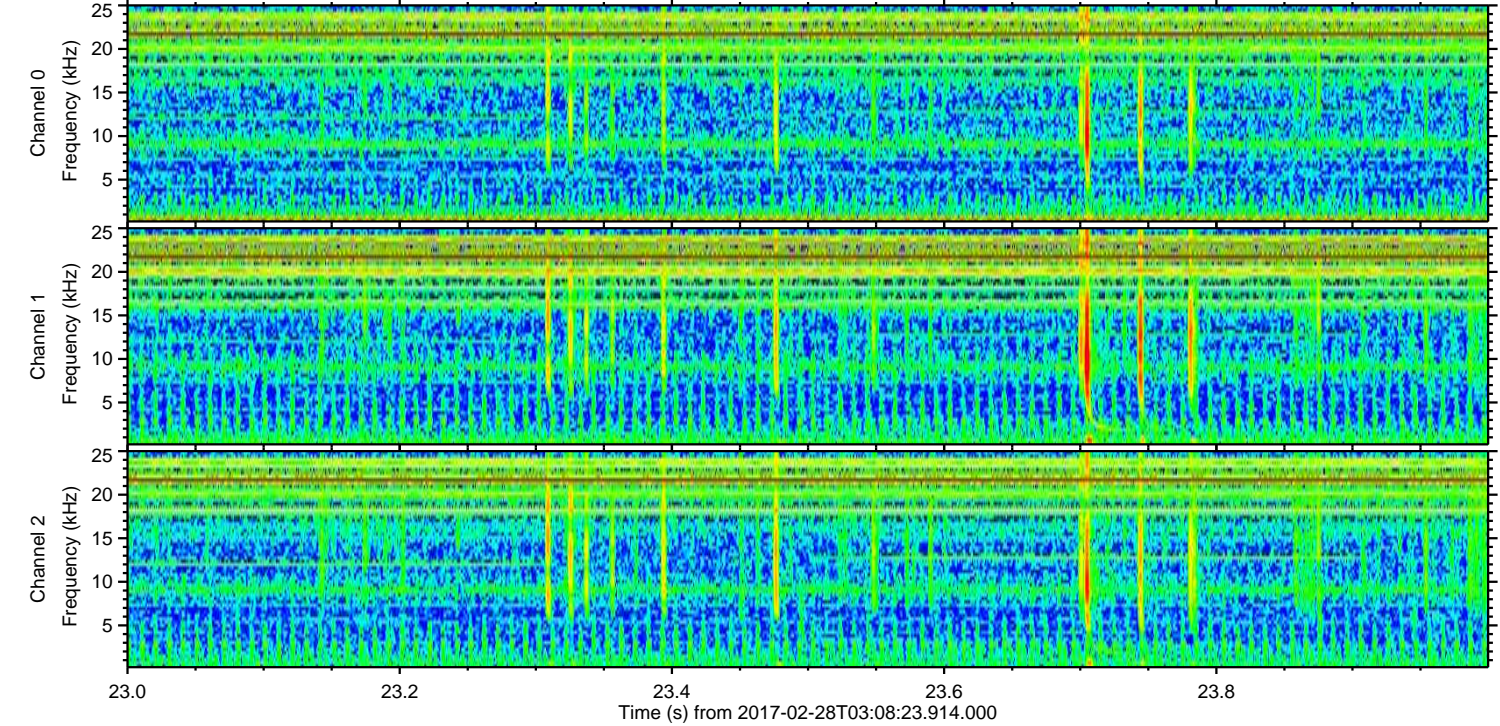
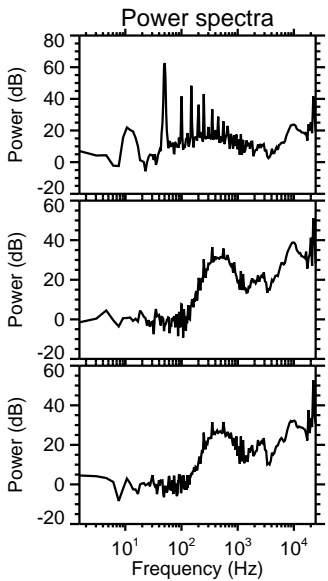
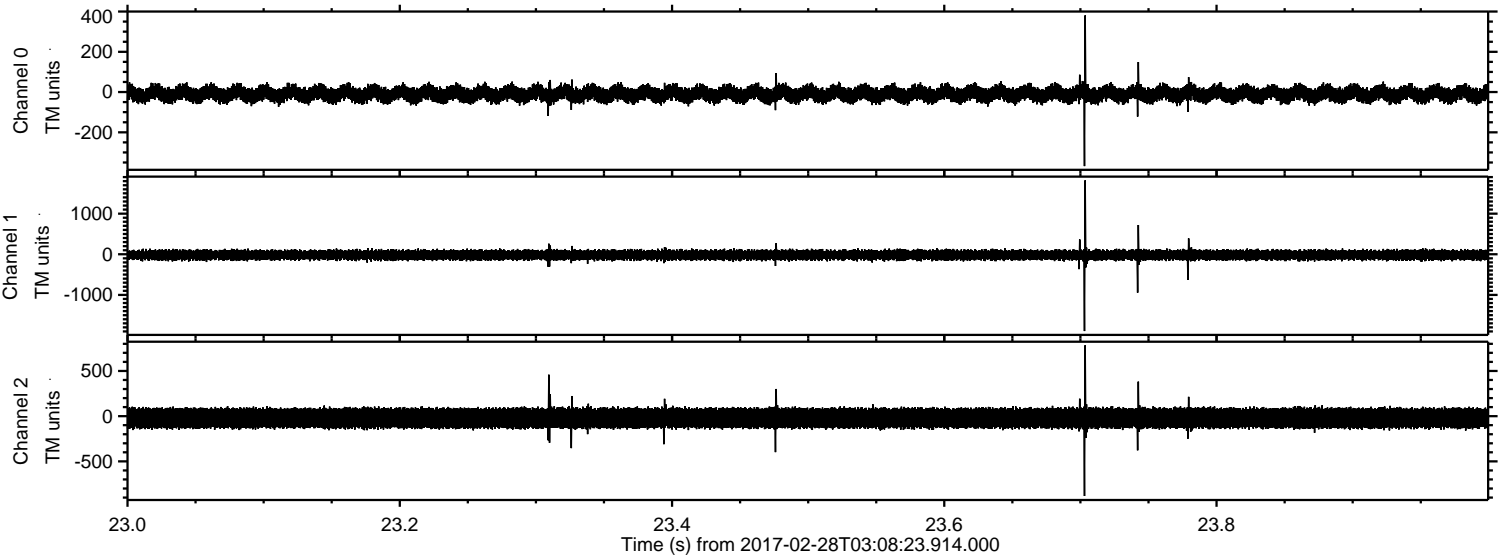


Processed Tue Feb 28 04:16:30 2017 by ELM ver.2012-10-06 from 001__elm20170228_030822__dat00.bin



ELMAVAN 3D WAVEFORMS (Measured data sampled at 50 kHz) 51000 packets of 144 samples from 2017-02-28T03:08:23.914.000. Part 24/147

Processed Tue Feb 28 04:16:31 2017 by ELM ver.2012-10-06 from 001__elm20170228_030822__dat00.bin



ELMAVAN 3D WAVEFORMS (Measured data sampled at 50 kHz) 51000 packets of 144 samples from 2017-02-28T03:08:23.914.000. Part 14/147

Processed Tue Feb 28 04:16:32 2017 by ELM ver.2012-10-06 from 001__elm20170228_030822__dat00.bin

