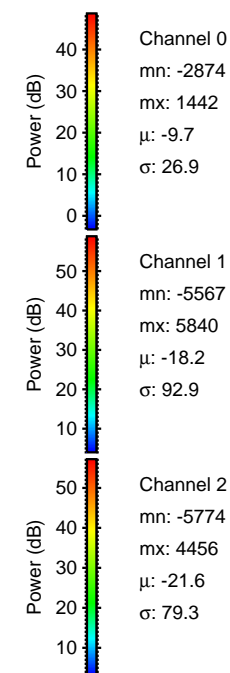
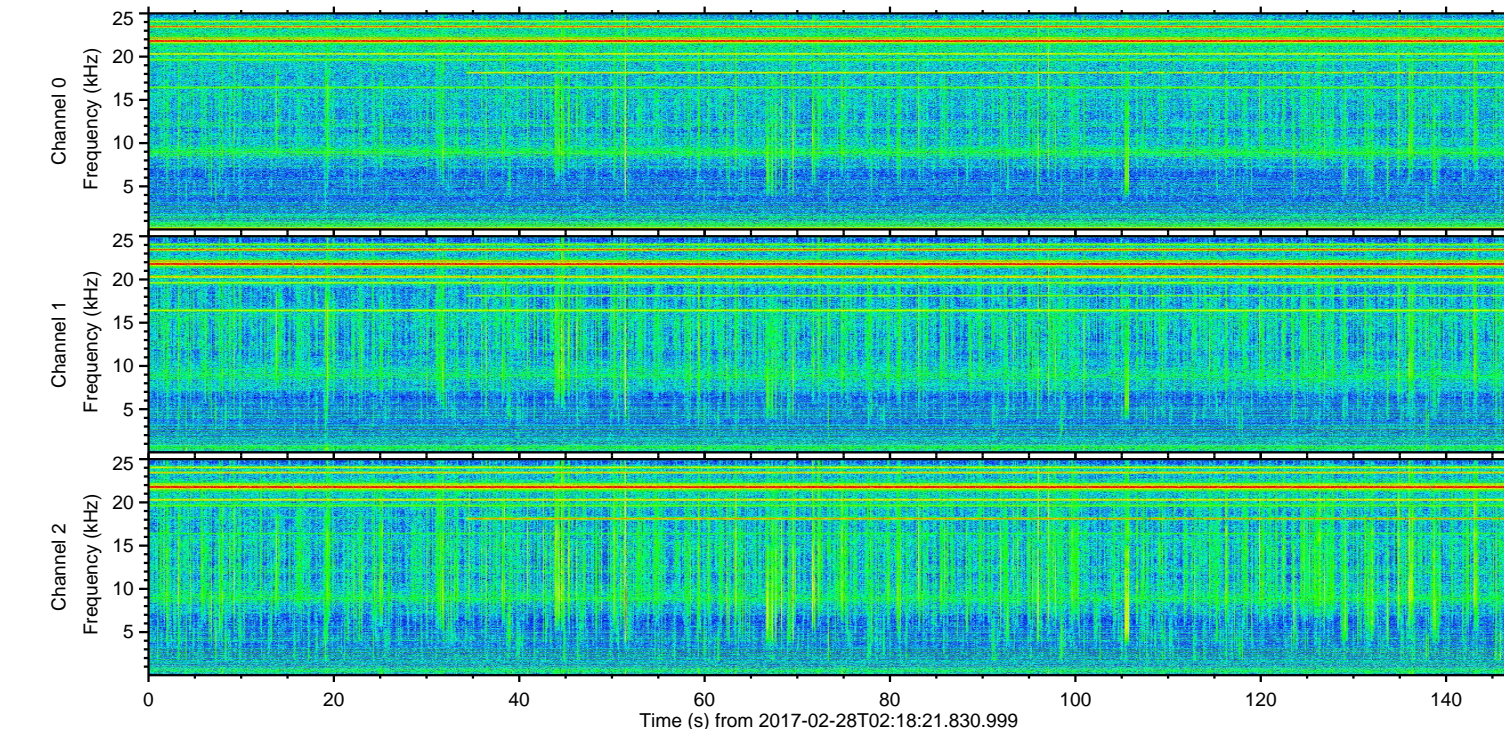
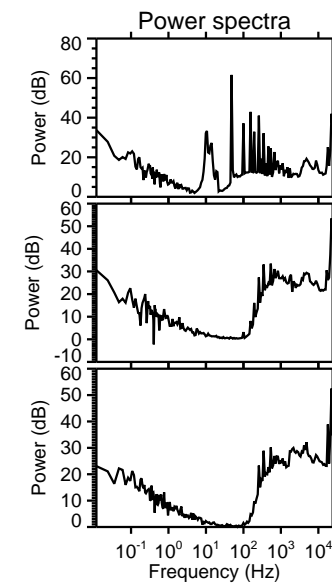
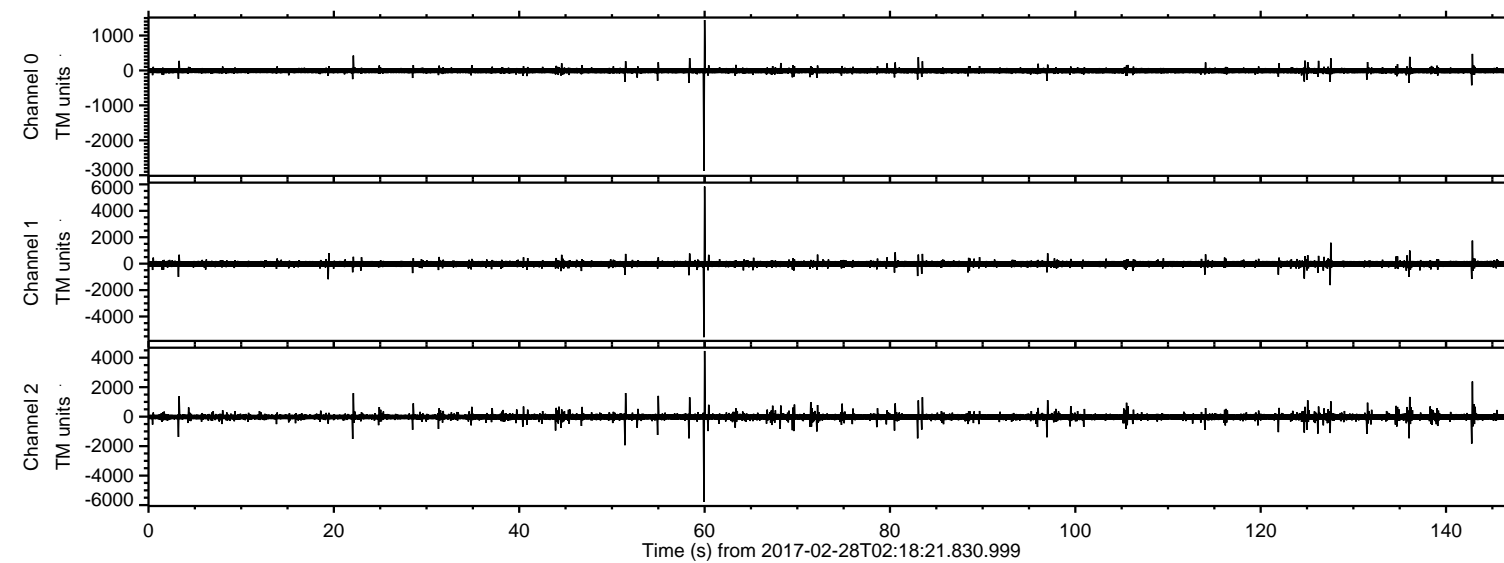


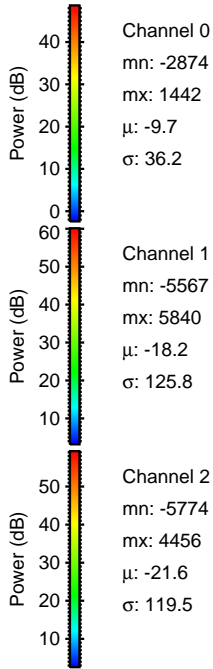
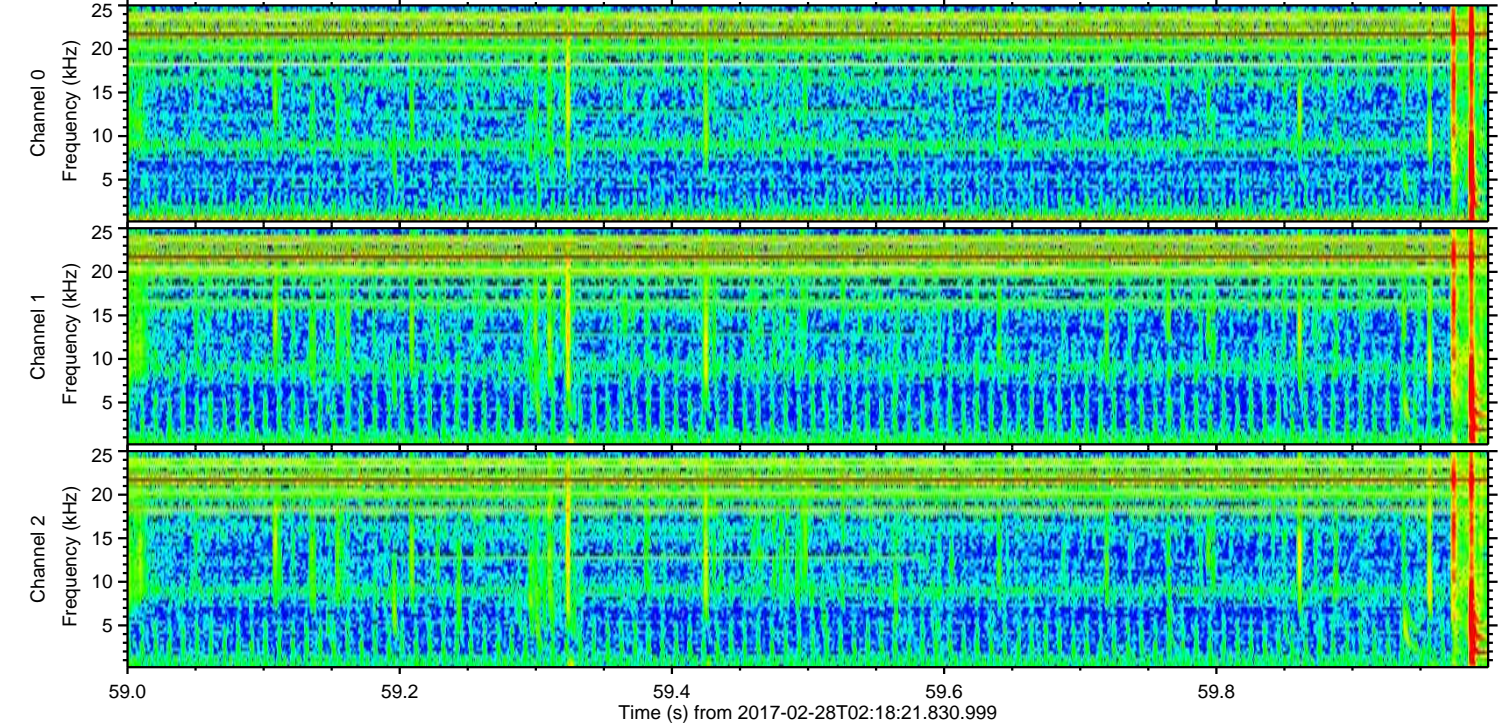
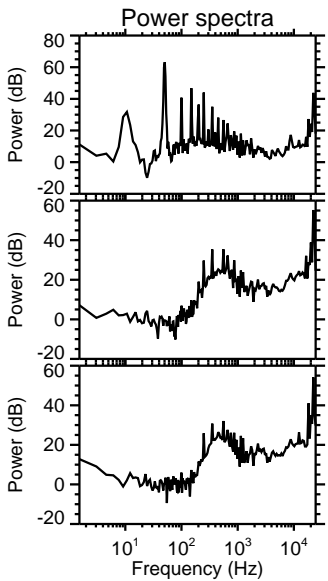
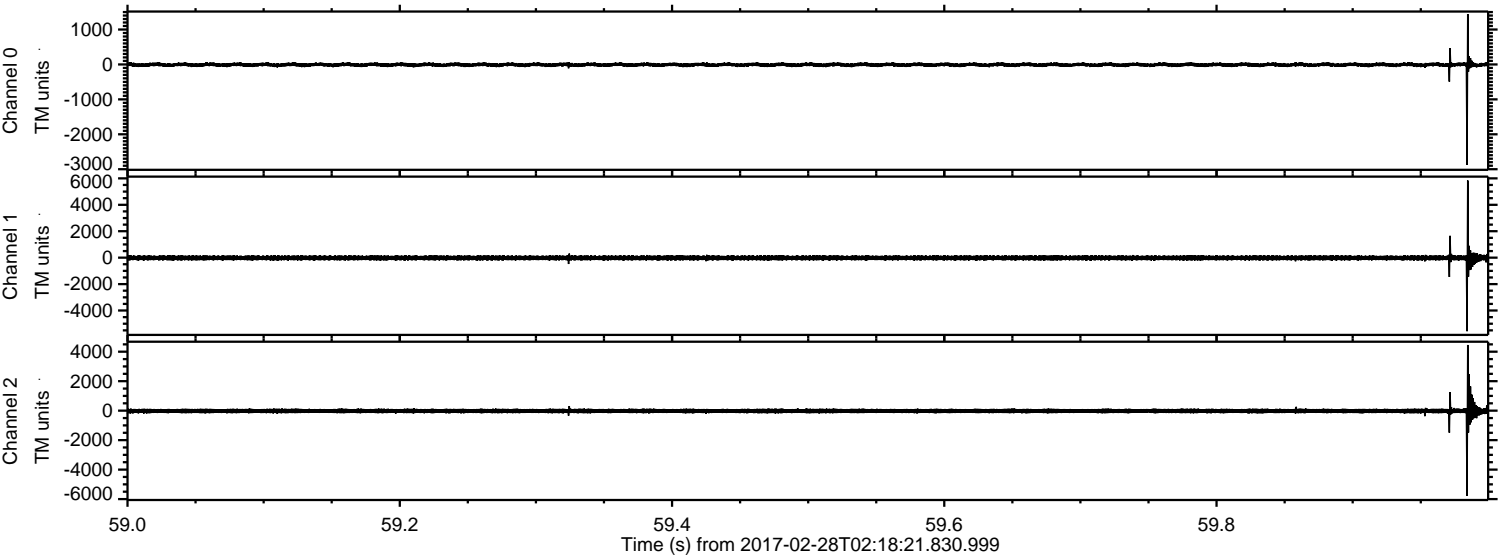
# ELMAVAN 3D WAVEFORMS (Measured data sampled at 50 kHz) 51000 packets of 144 samples from 2017-02-28T02:18:21.830.999.

Processed Tue Feb 28 03:26:15 2017 by ELM ver.2012-10-06 from 001\_\_elm20170228\_021820\_\_dat00.bin





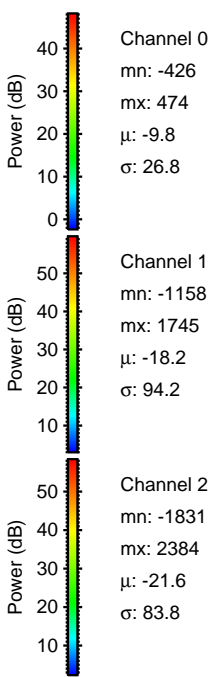
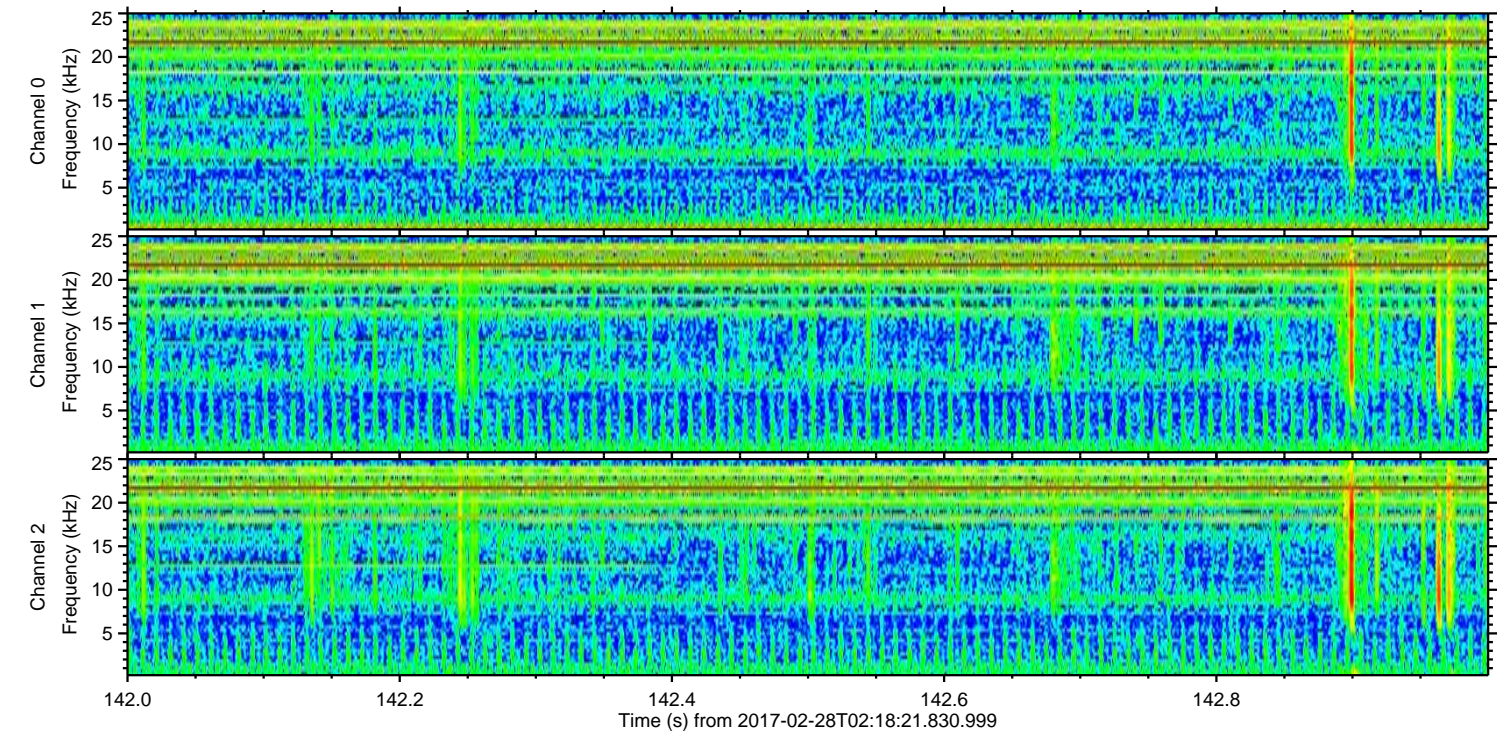
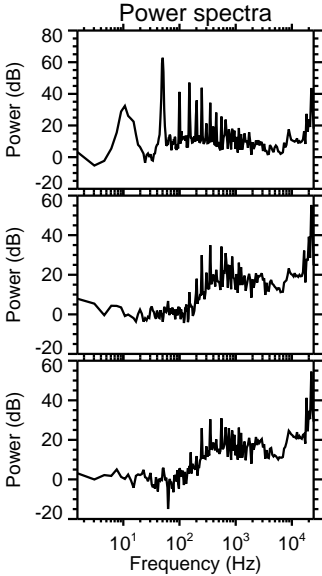
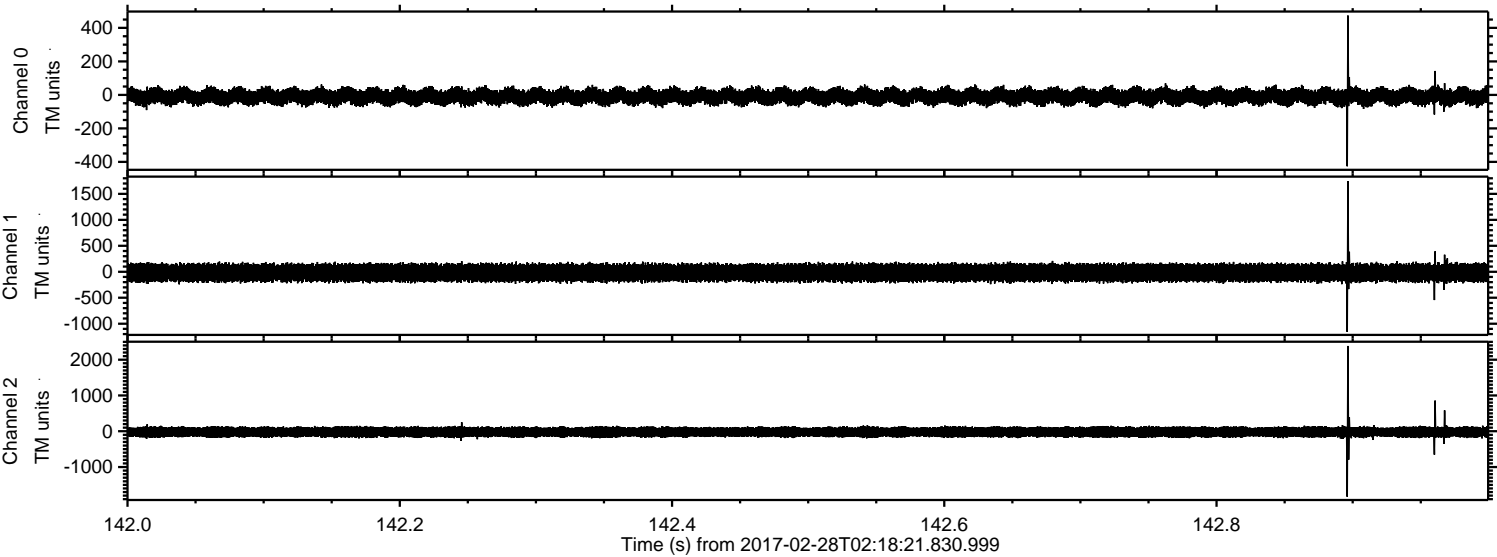
Processed Tue Feb 28 03:26:27 2017 by ELM ver.2012-10-06 from 001\_\_elm20170228\_021820\_\_dat00.bin





ELMAVAN 3D WAVEFORMS (Measured data sampled at 50 kHz) 51000 packets of 144 samples from 2017-02-28T02:18:21.830.999. Part 143/147

Processed Tue Feb 28 03:26:28 2017 by ELM ver.2012-10-06 from 001\_\_elm20170228\_021820\_\_dat00.bin



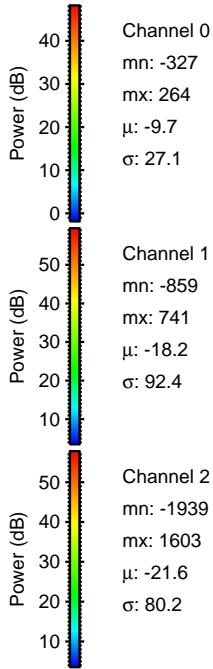
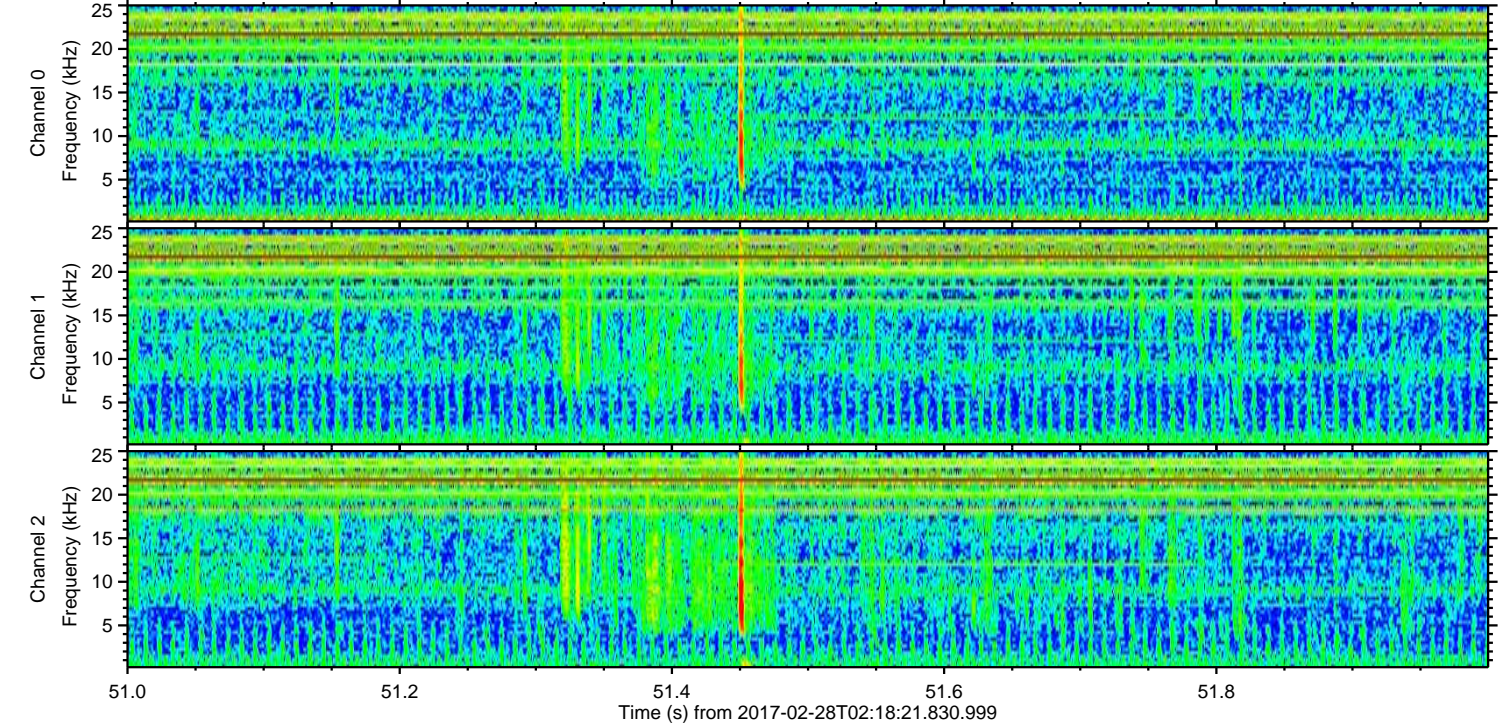
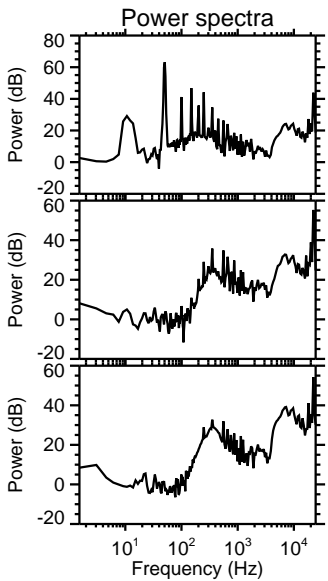
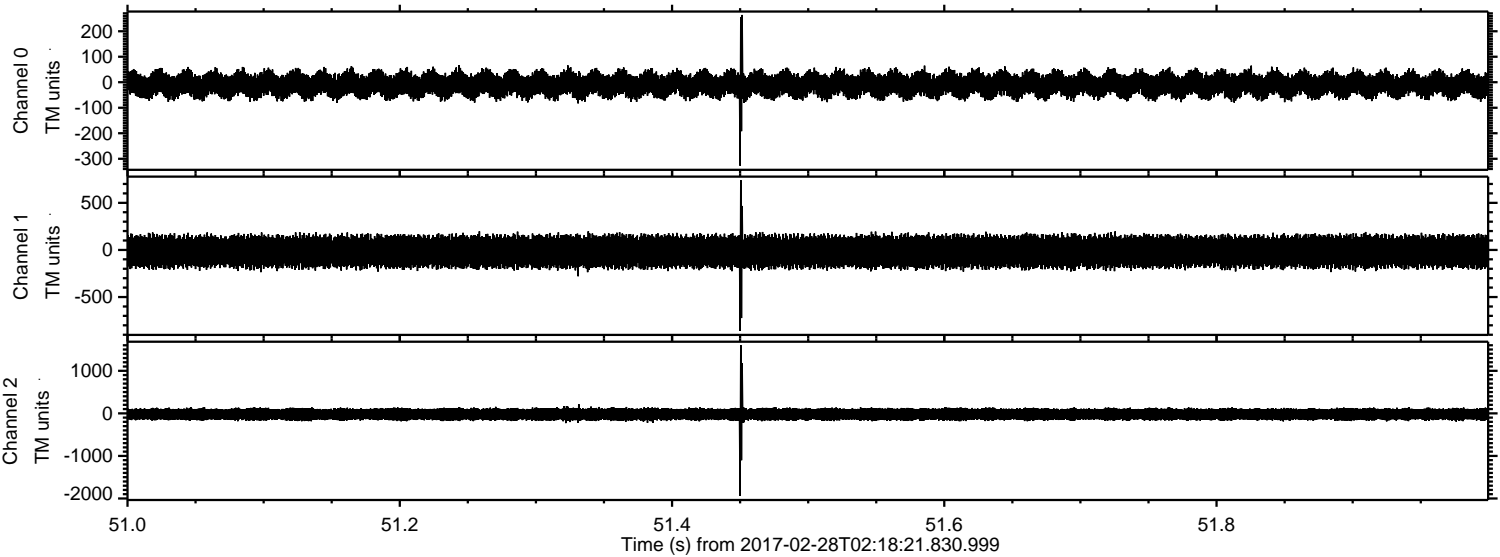
Channel 0  
mn: -426  
mx: 474  
 $\mu$ : -9.8  
 $\sigma$ : 26.8

Channel 1  
mn: -1158  
mx: 1745  
 $\mu$ : -18.2  
 $\sigma$ : 94.2

Channel 2  
mn: -1831  
mx: 2384  
 $\mu$ : -21.6  
 $\sigma$ : 83.8



Processed Tue Feb 28 03:26:28 2017 by ELM ver.2012-10-06 from 001\_\_elm20170228\_021820\_\_dat00.bin



Channel 0  
mn: -327  
mx: 264  
 $\mu$ : -9.7  
 $\sigma$ : 27.1

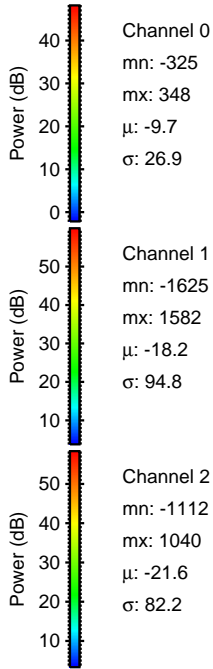
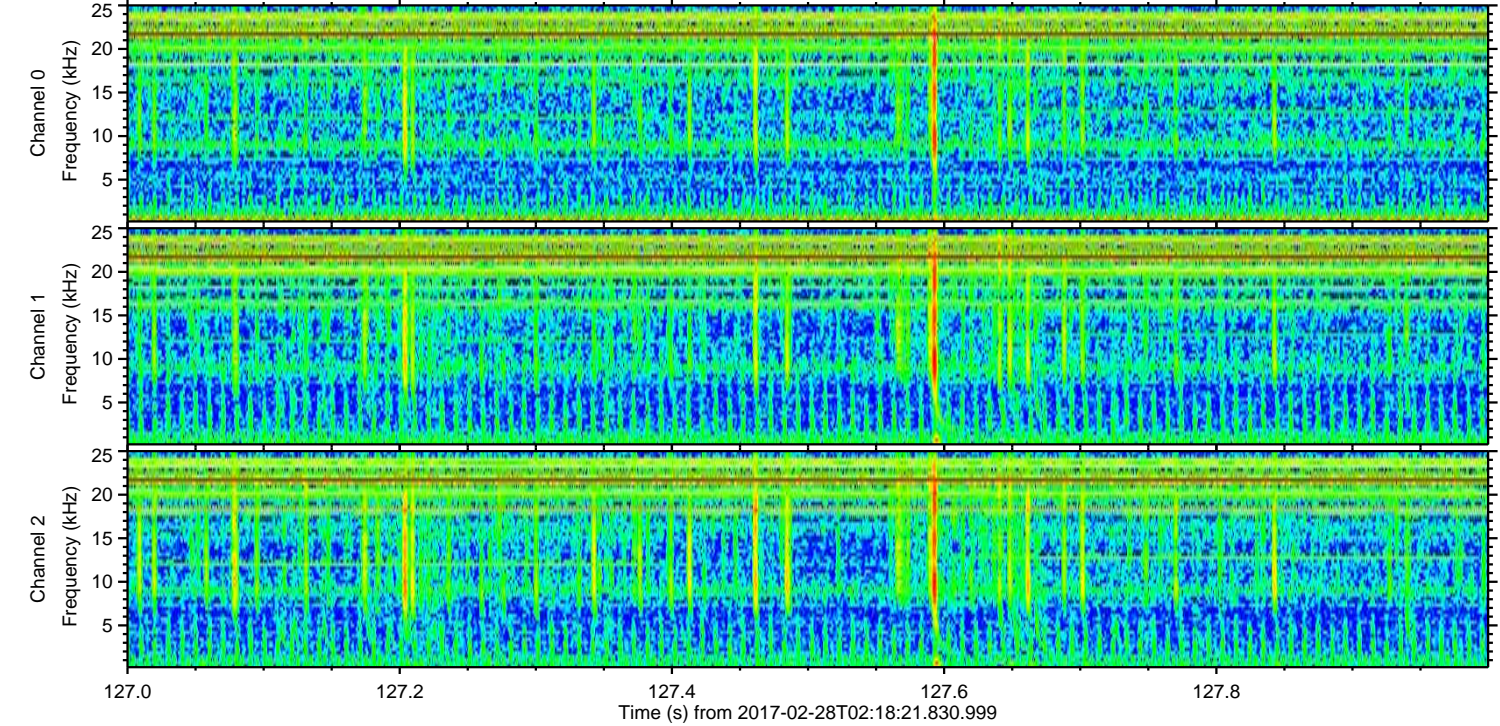
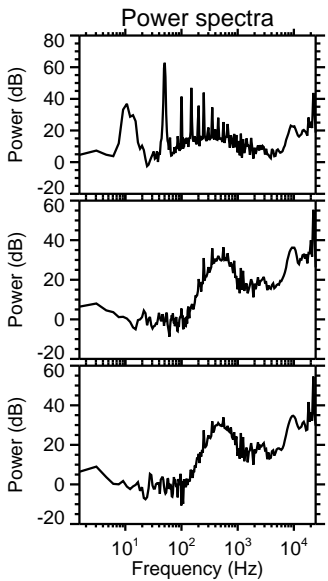
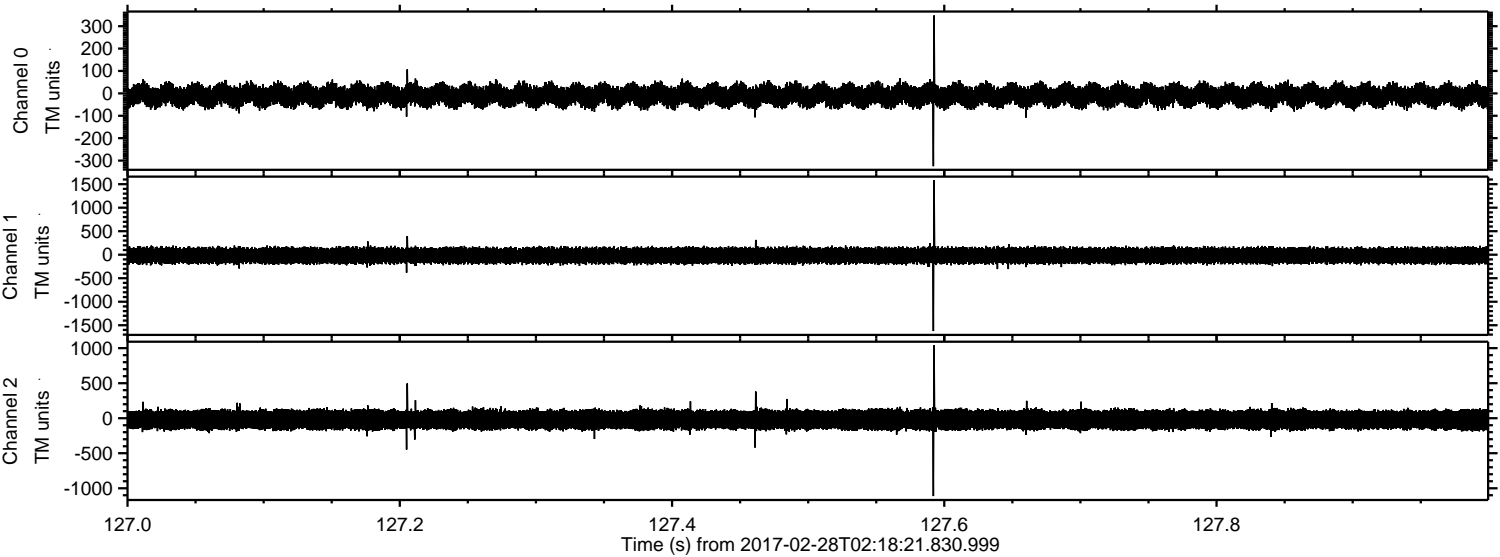
Channel 1  
mn: -859  
mx: 741  
 $\mu$ : -18.2  
 $\sigma$ : 92.4

Channel 2  
mn: -1939  
mx: 1603  
 $\mu$ : -21.6  
 $\sigma$ : 80.2



ELMAVAN 3D WAVEFORMS (Measured data sampled at 50 kHz) 51000 packets of 144 samples from 2017-02-28T02:18:21.830.999. Part 128/147

Processed Tue Feb 28 03:26:29 2017 by ELM ver.2012-10-06 from 001\_\_elm20170228\_021820\_\_dat00.bin



Channel 0  
mn: -325  
mx: 348  
 $\mu$ : -9.7  
 $\sigma$ : 26.9

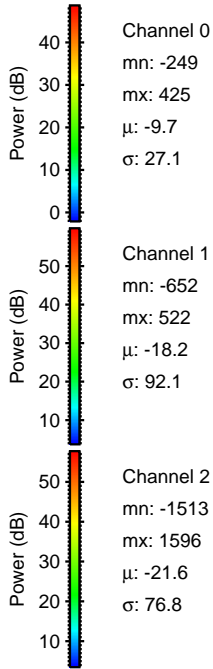
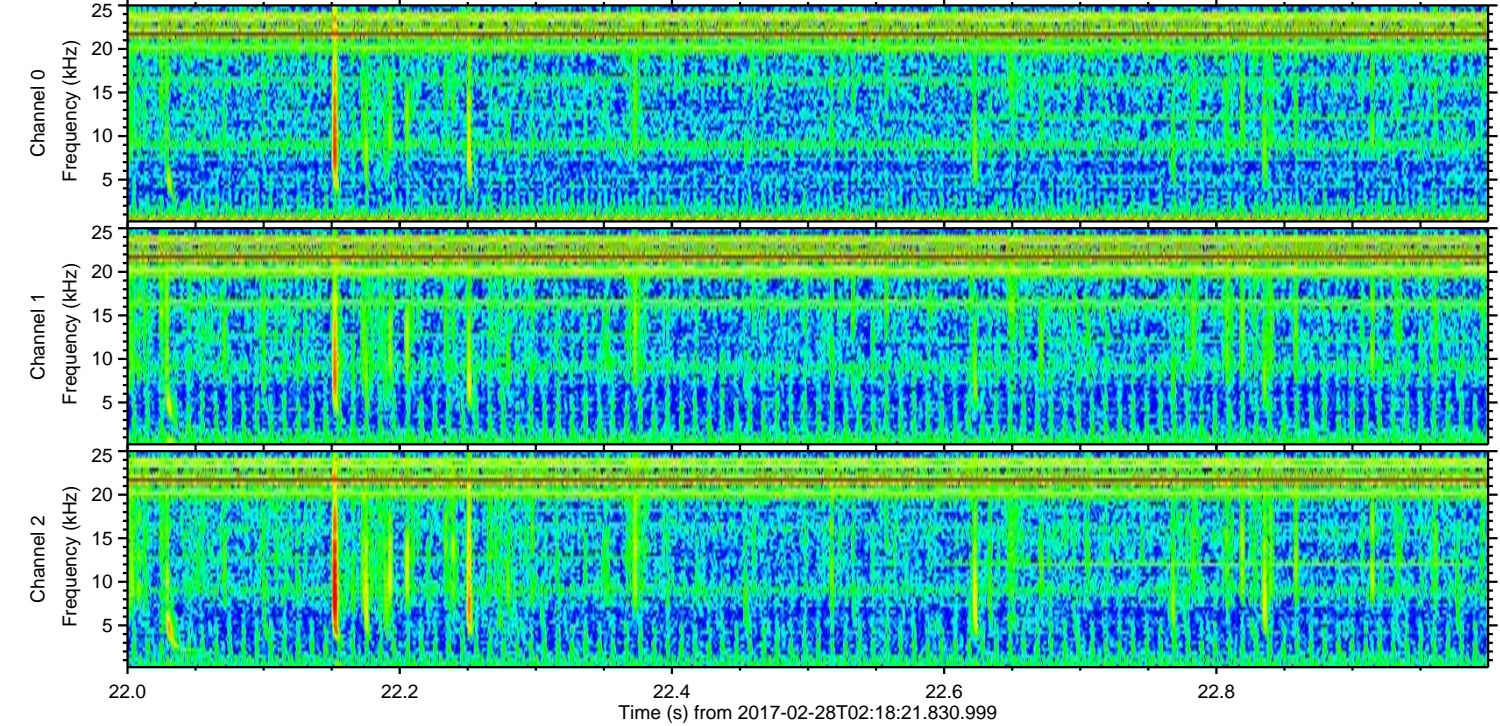
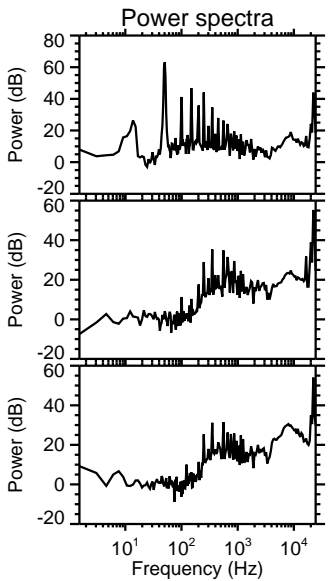
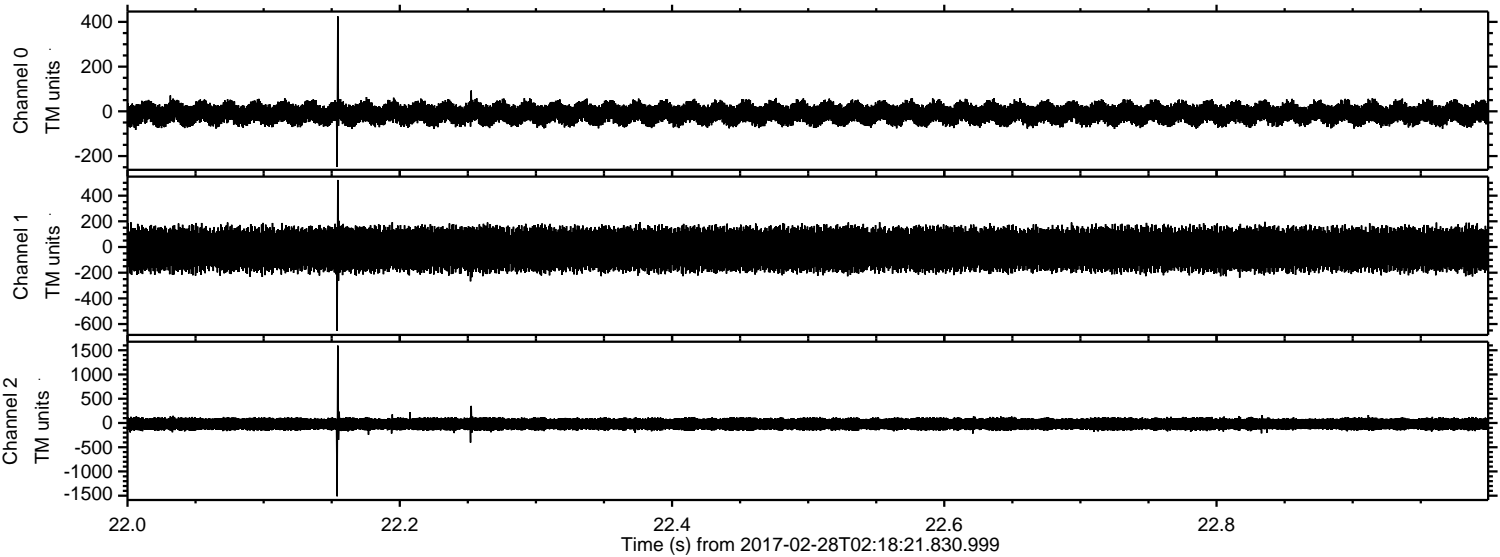
Channel 1  
mn: -1625  
mx: 1582  
 $\mu$ : -18.2  
 $\sigma$ : 94.8

Channel 2  
mn: -1112  
mx: 1040  
 $\mu$ : -21.6  
 $\sigma$ : 82.2



ELMAVAN 3D WAVEFORMS (Measured data sampled at 50 kHz) 51000 packets of 144 samples from 2017-02-28T02:18:21.830.999. Part 23/147

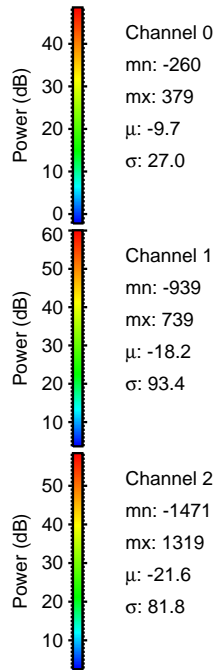
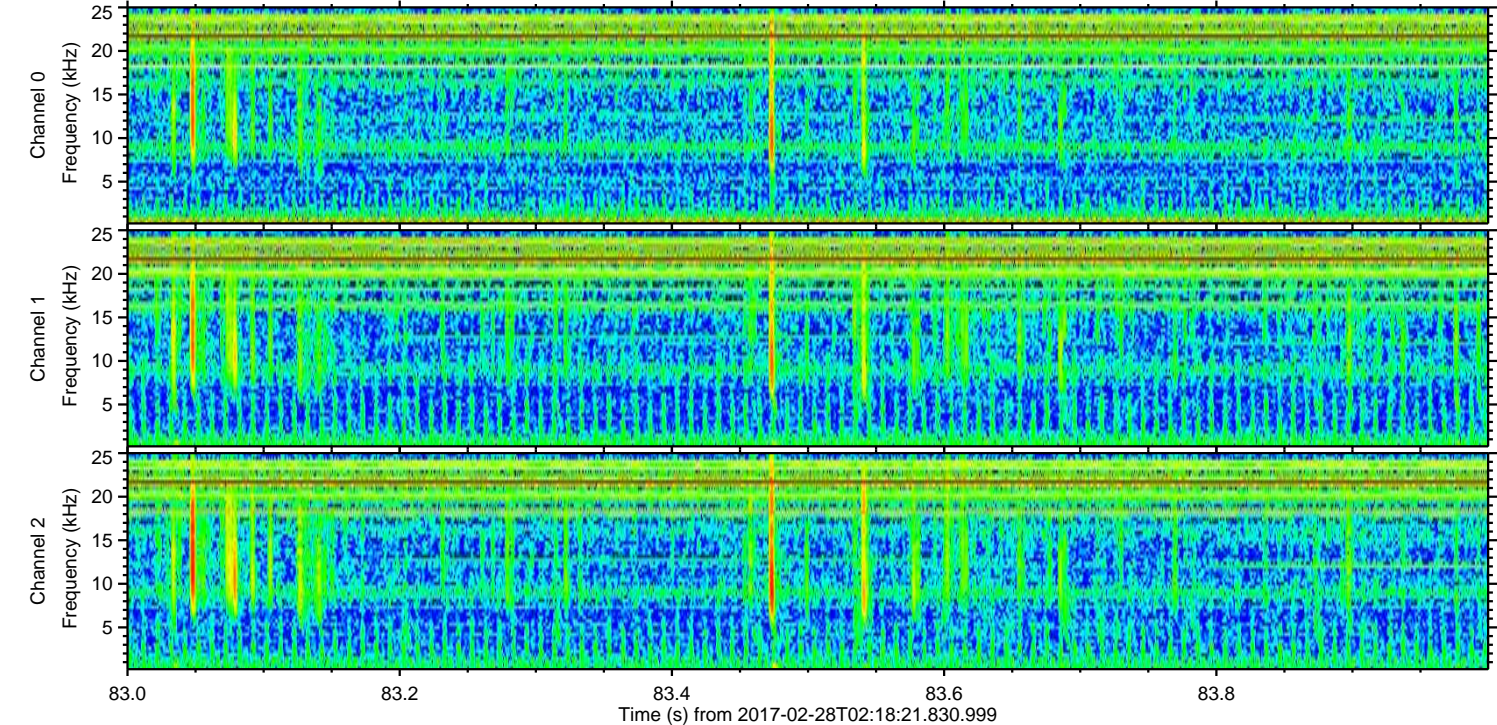
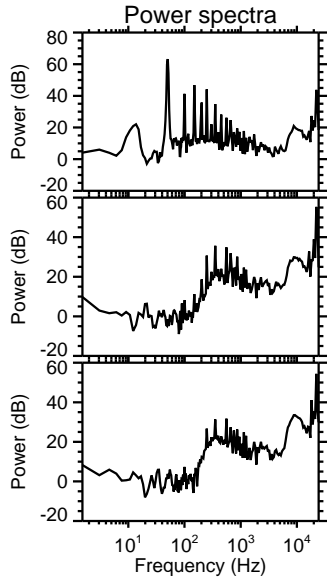
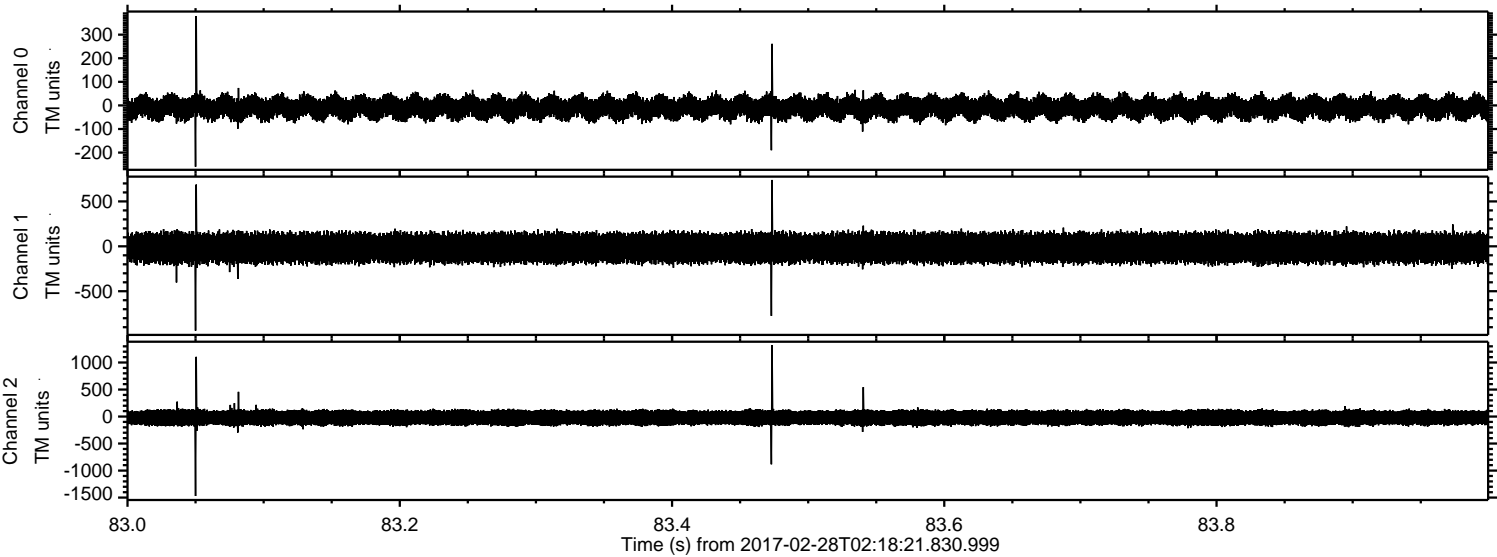
Processed Tue Feb 28 03:26:30 2017 by ELM ver.2012-10-06 from 001\_\_elm20170228\_021820\_\_dat00.bin





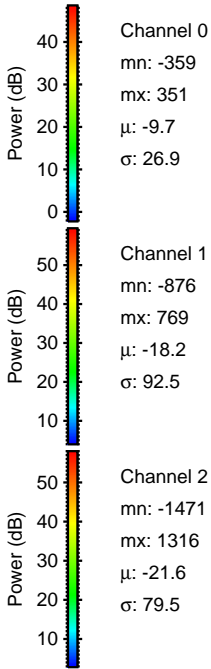
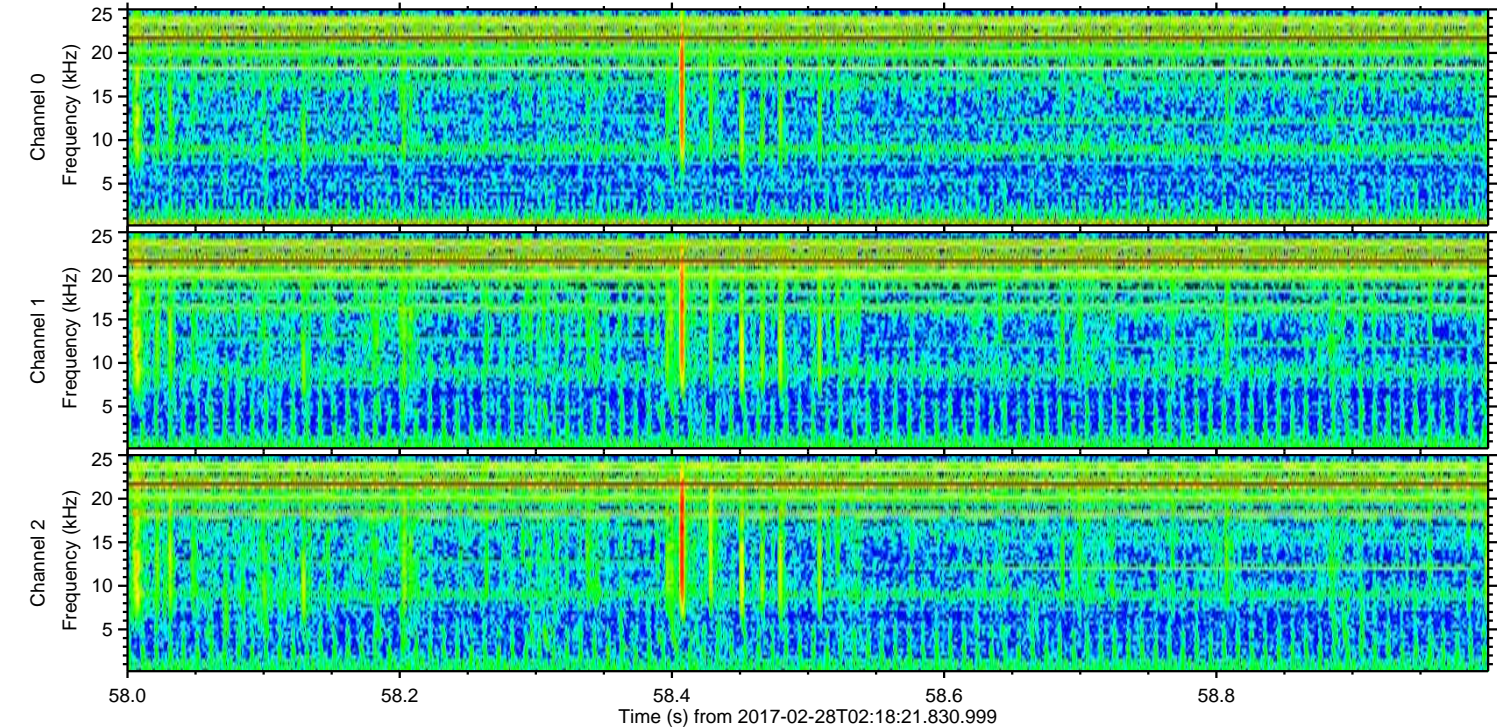
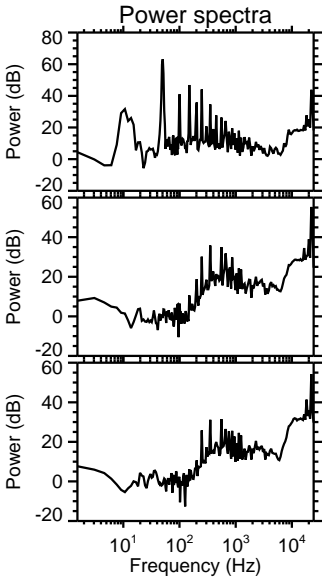
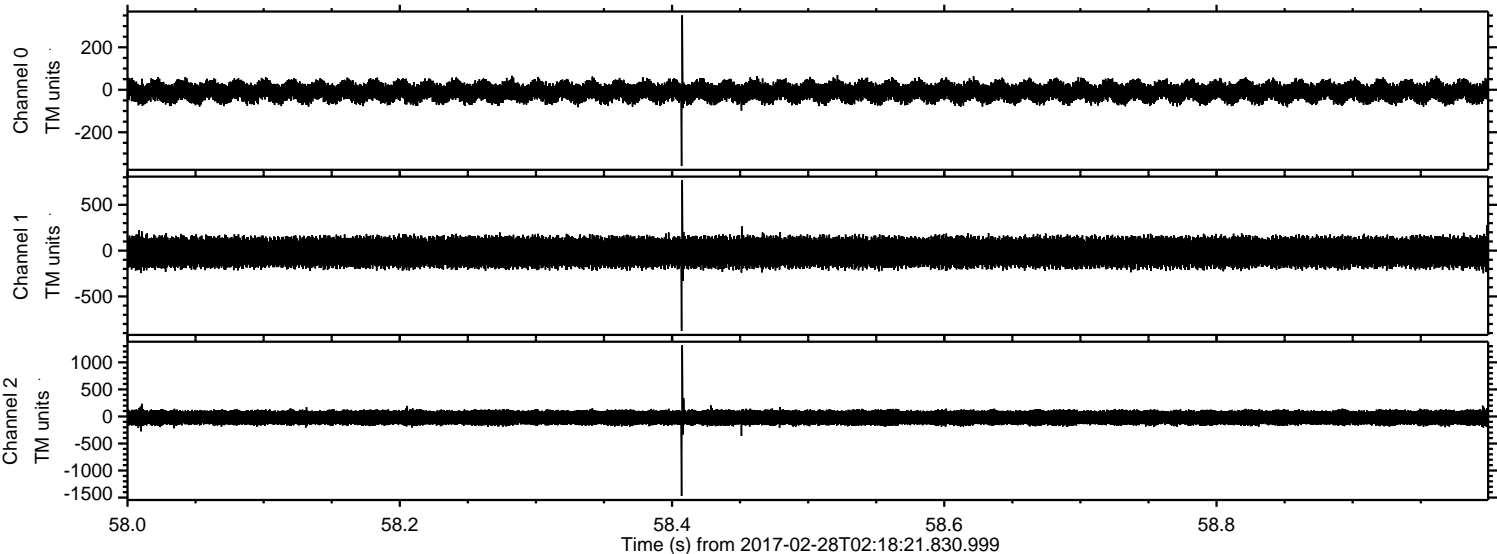
ELMAVAN 3D WAVEFORMS (Measured data sampled at 50 kHz) 51000 packets of 144 samples from 2017-02-28T02:18:21.830.999. Part 84/147

Processed Tue Feb 28 03:26:31 2017 by ELM ver.2012-10-06 from 001\_\_elm20170228\_021820\_\_dat00.bin





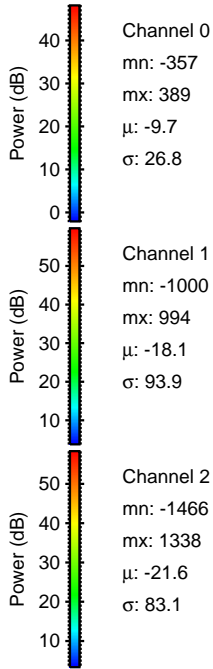
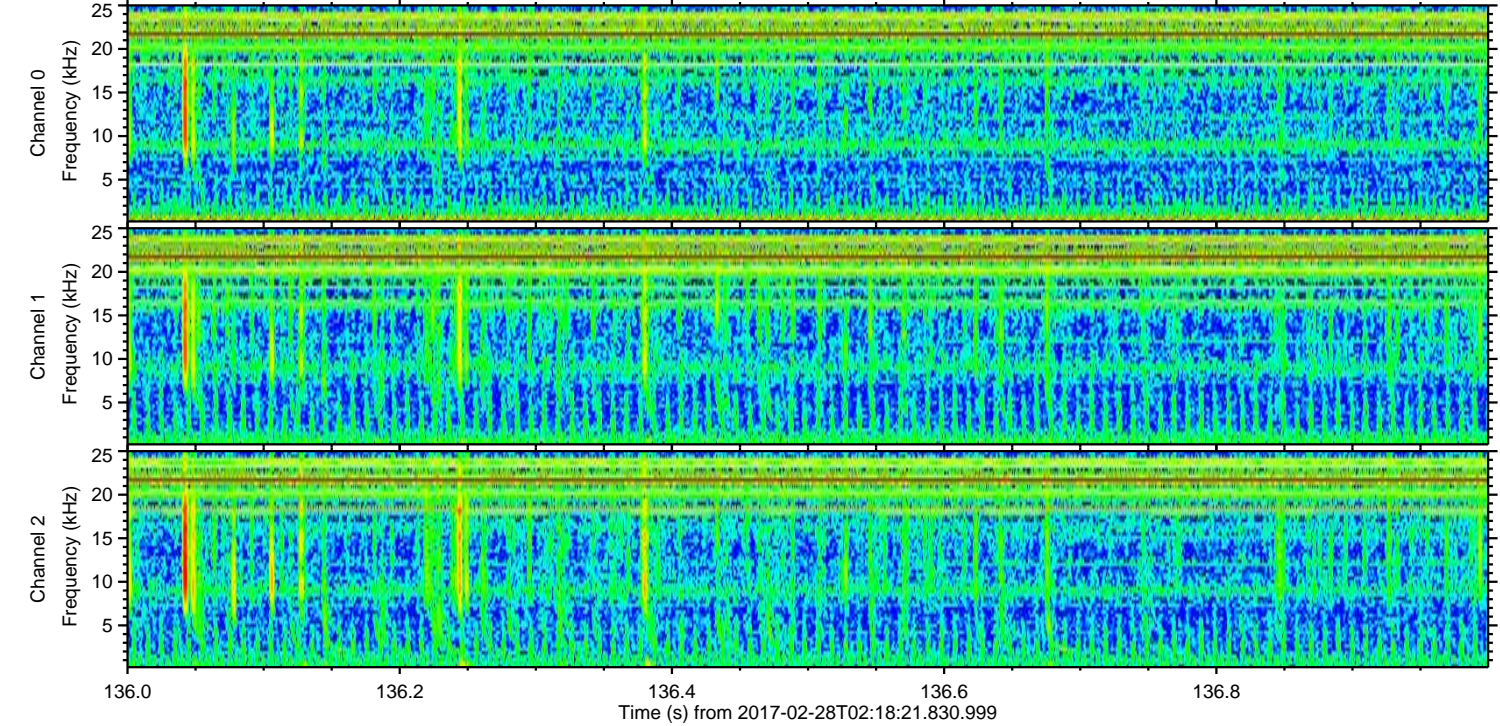
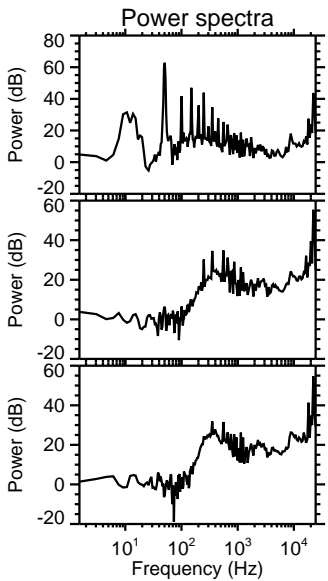
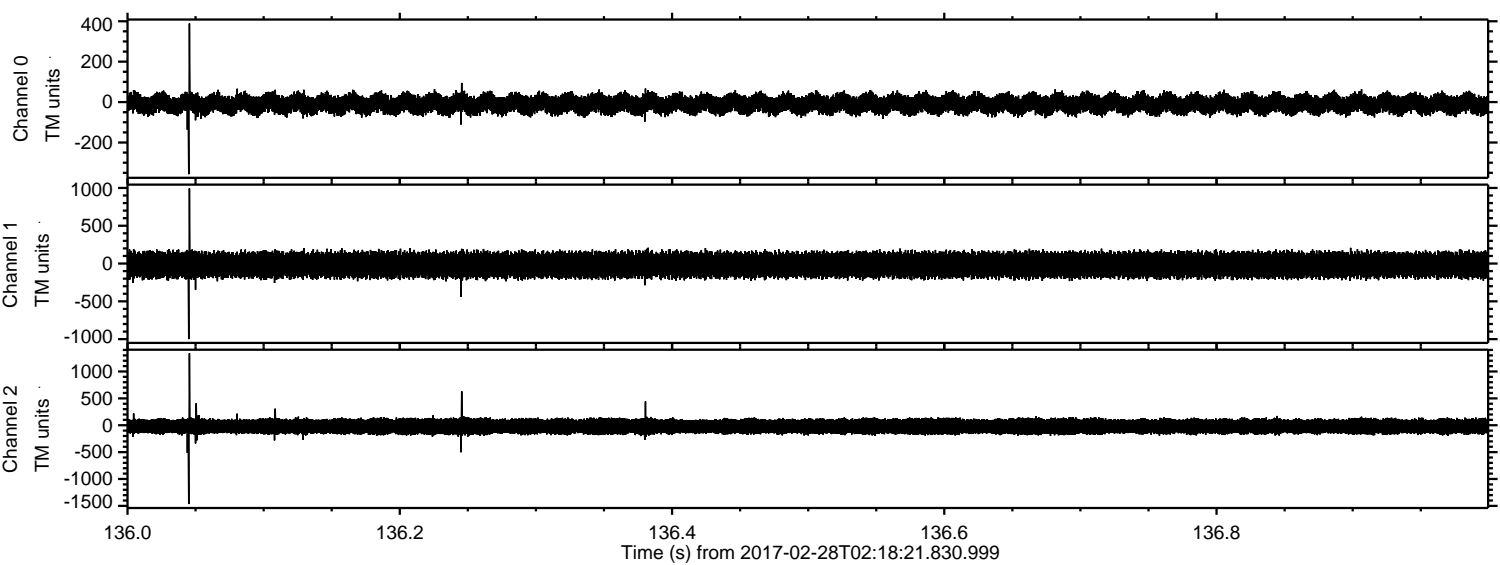
Processed Tue Feb 28 03:26:32 2017 by ELM ver.2012-10-06 from 001\_\_elm20170228\_021820\_\_dat00.bin





ELMAVAN 3D WAVEFORMS (Measured data sampled at 50 kHz) 51000 packets of 144 samples from 2017-02-28T02:18:21.830.999. Part 137/147

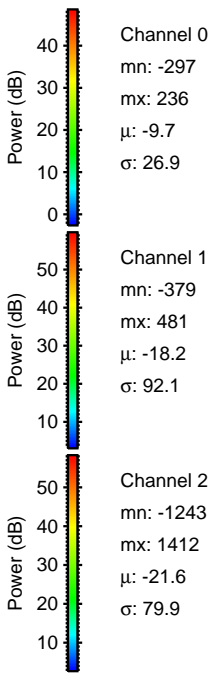
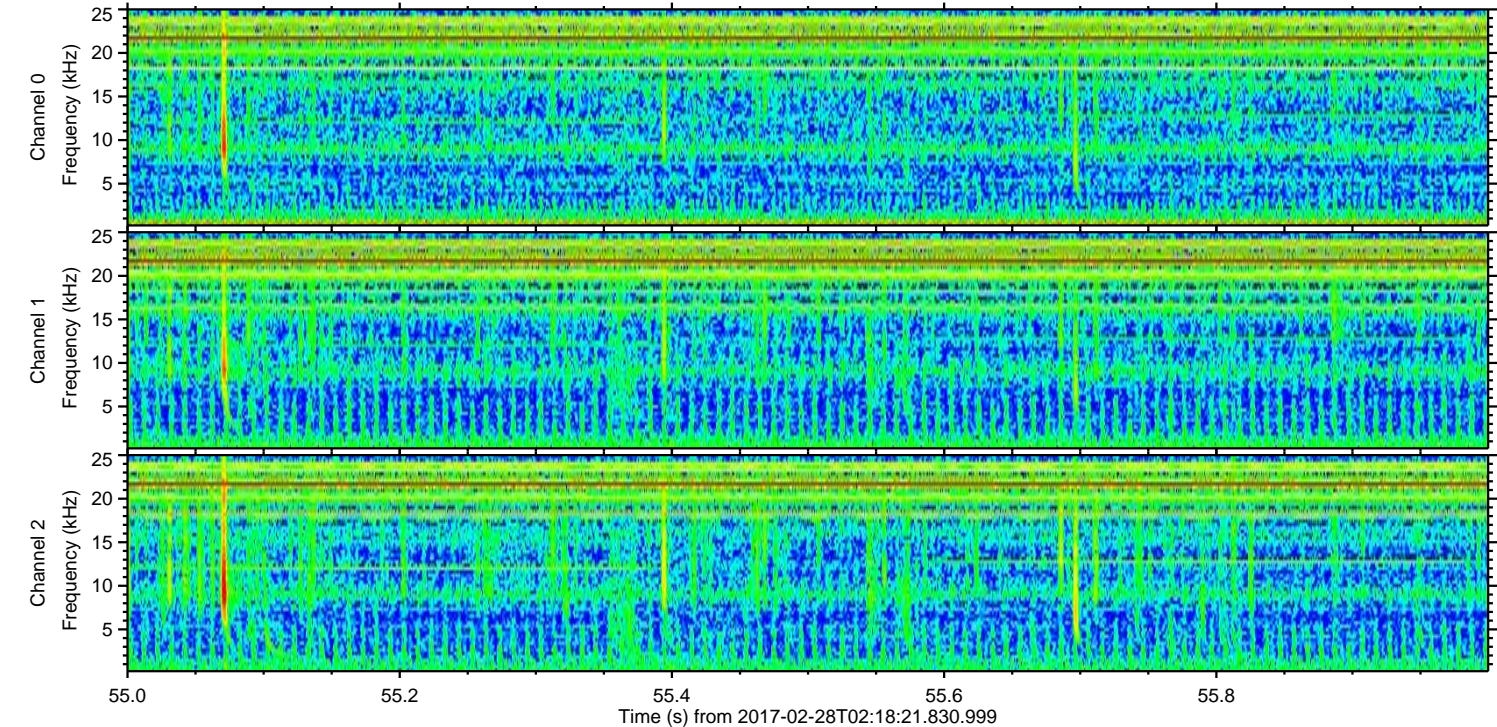
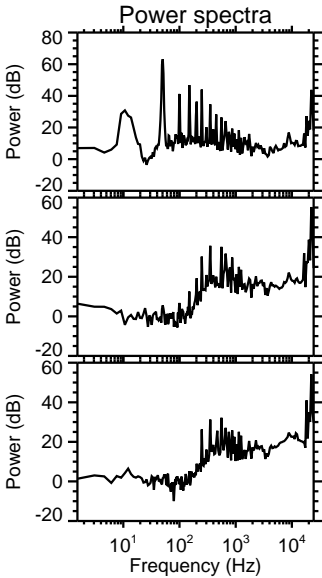
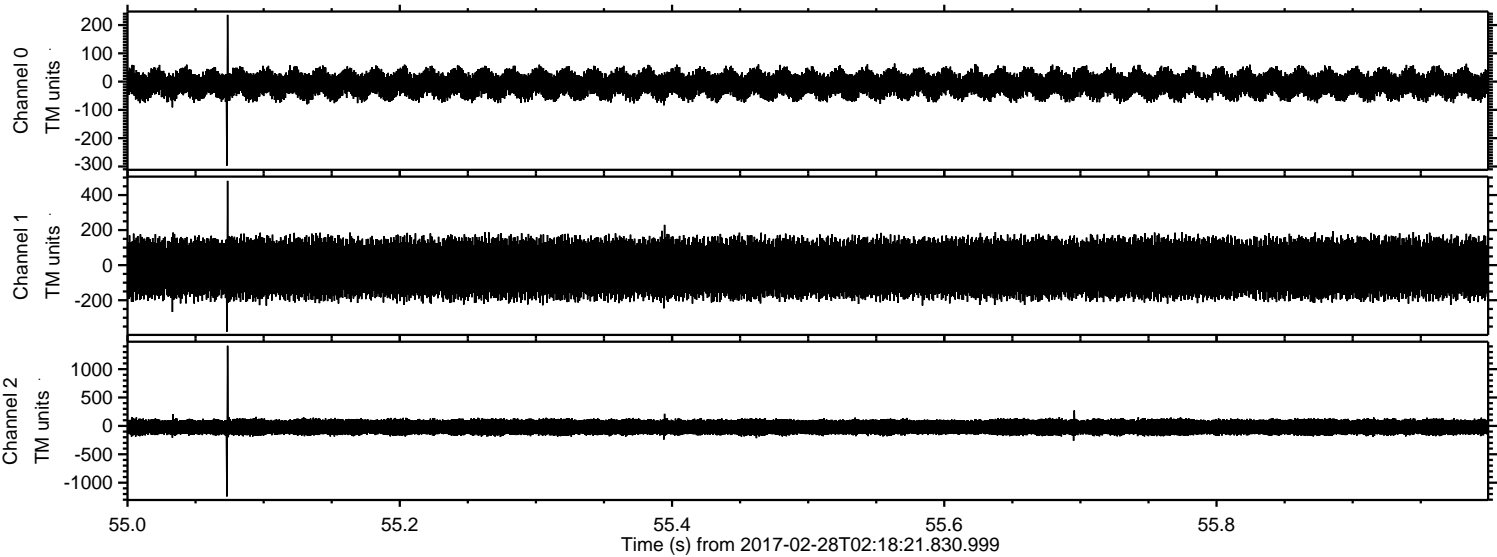
Processed Tue Feb 28 03:26:33 2017 by ELM ver.2012-10-06 from 001\_\_elm20170228\_021820\_\_dat00.bin





ELMAVAN 3D WAVEFORMS (Measured data sampled at 50 kHz) 51000 packets of 144 samples from 2017-02-28T02:18:21.830.999. Part 56/147

Processed Tue Feb 28 03:26:34 2017 by ELM ver.2012-10-06 from 001\_\_elm20170228\_021820\_\_dat00.bin





ELMAVAN 3D WAVEFORMS (Measured data sampled at 50 kHz) 51000 packets of 144 samples from 2017-02-28T02:18:21.830.999. Part 18/147

Processed Tue Feb 28 03:26:35 2017 by ELM ver.2012-10-06 from 001\_\_elm20170228\_021820\_\_dat00.bin

