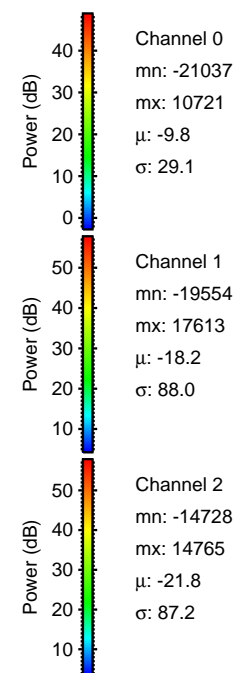
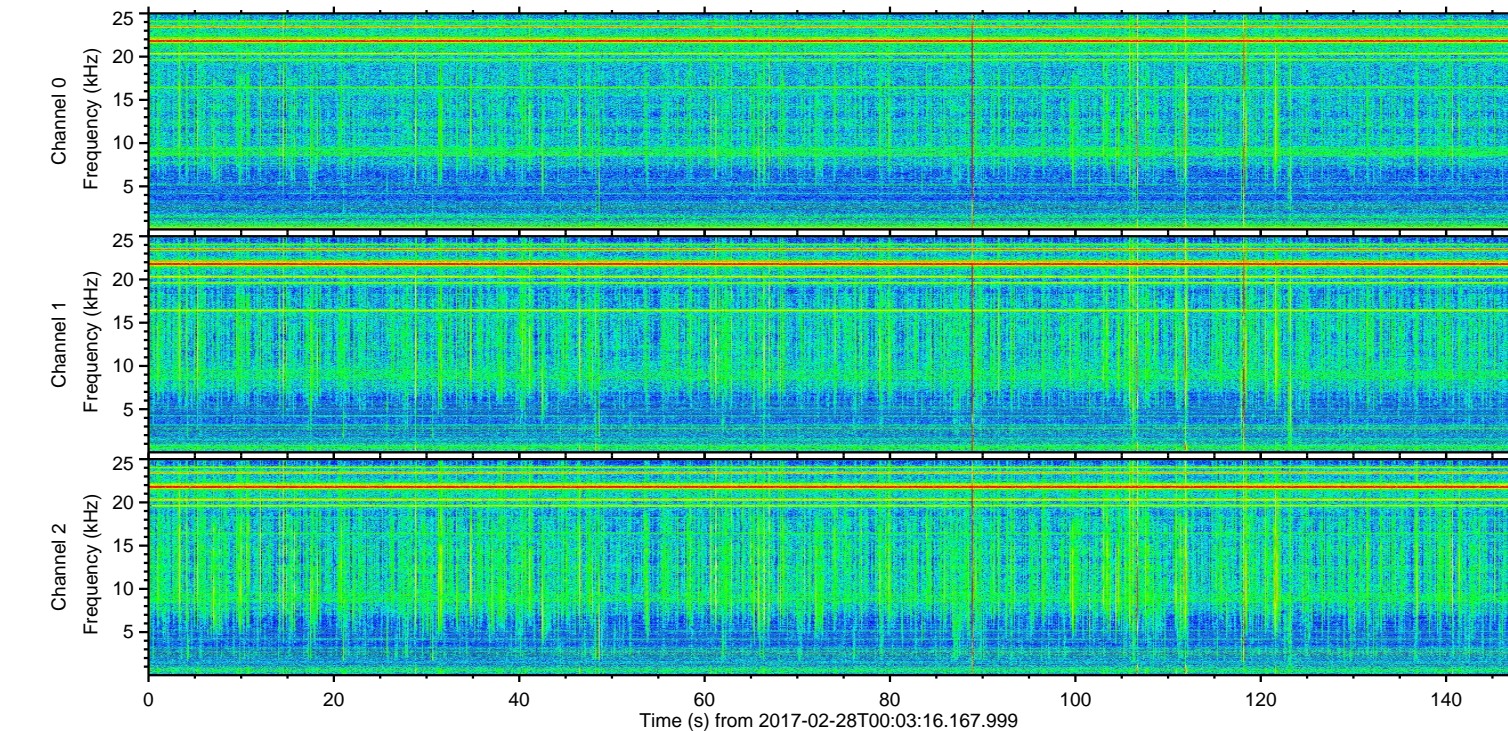
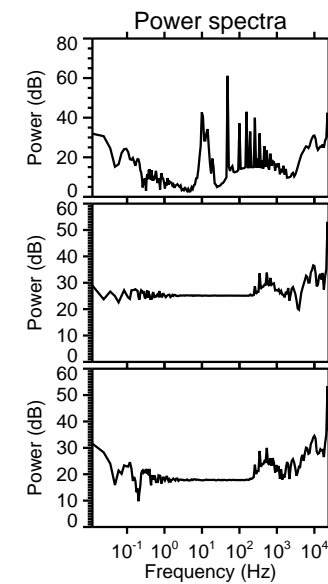
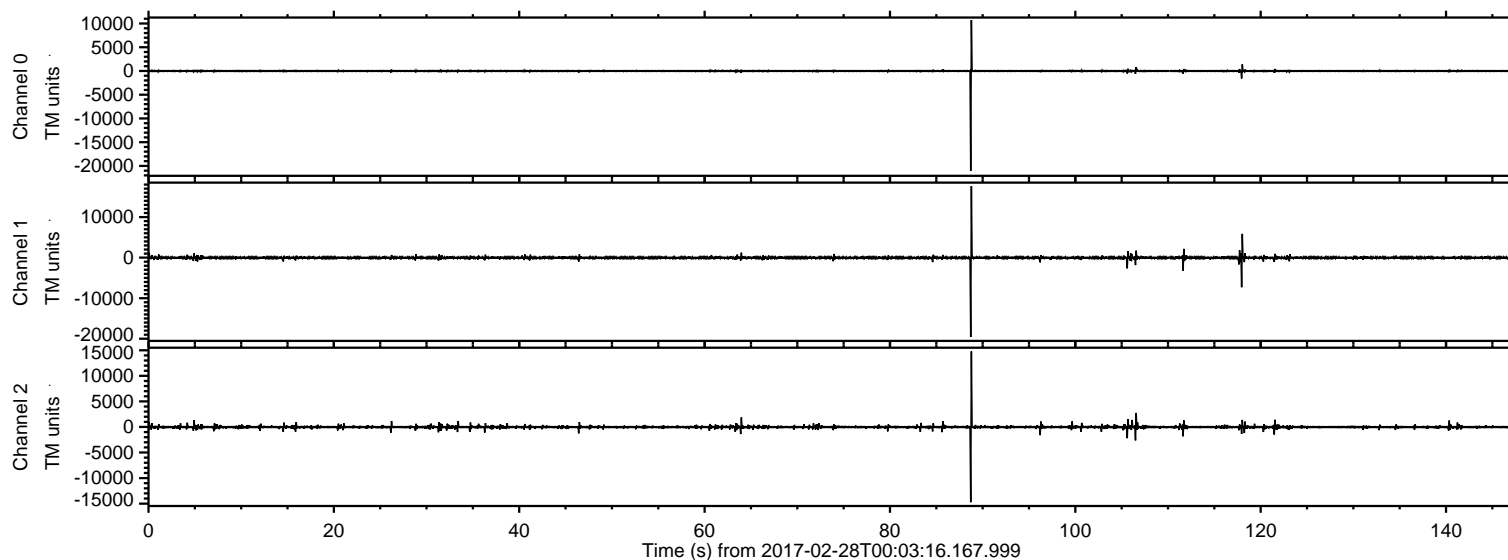
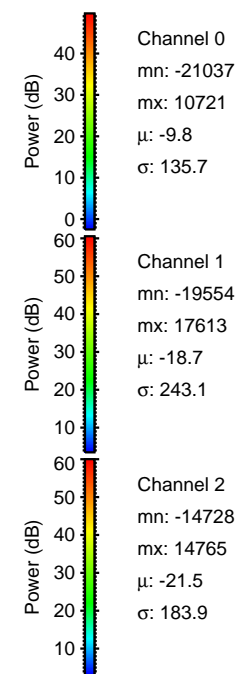
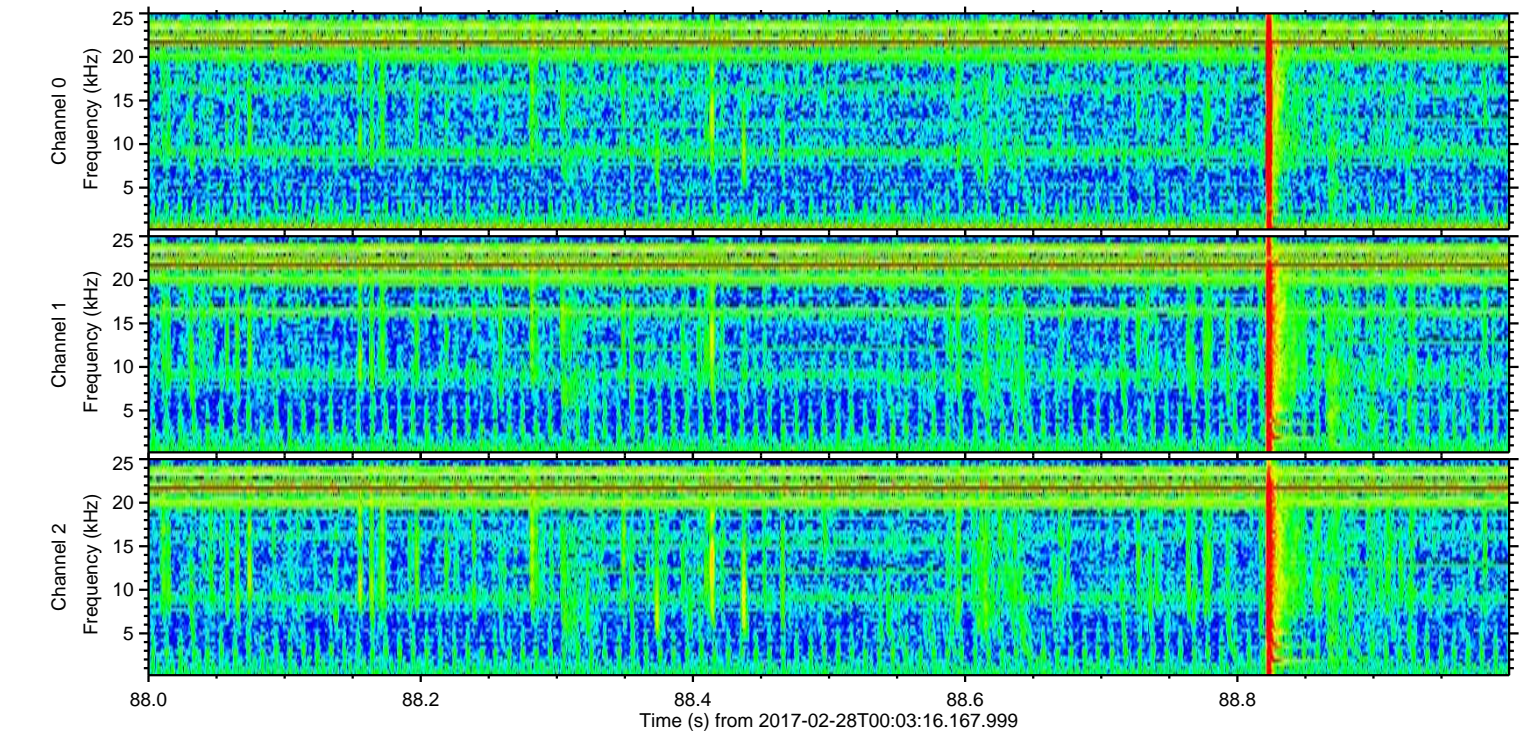
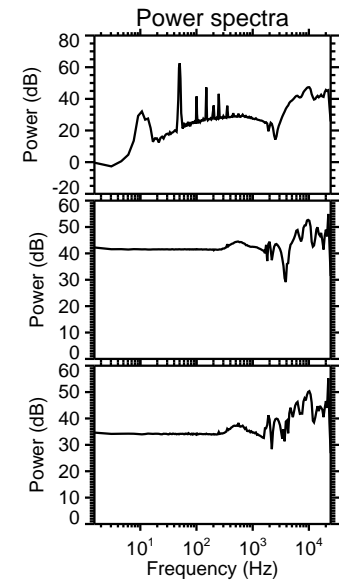
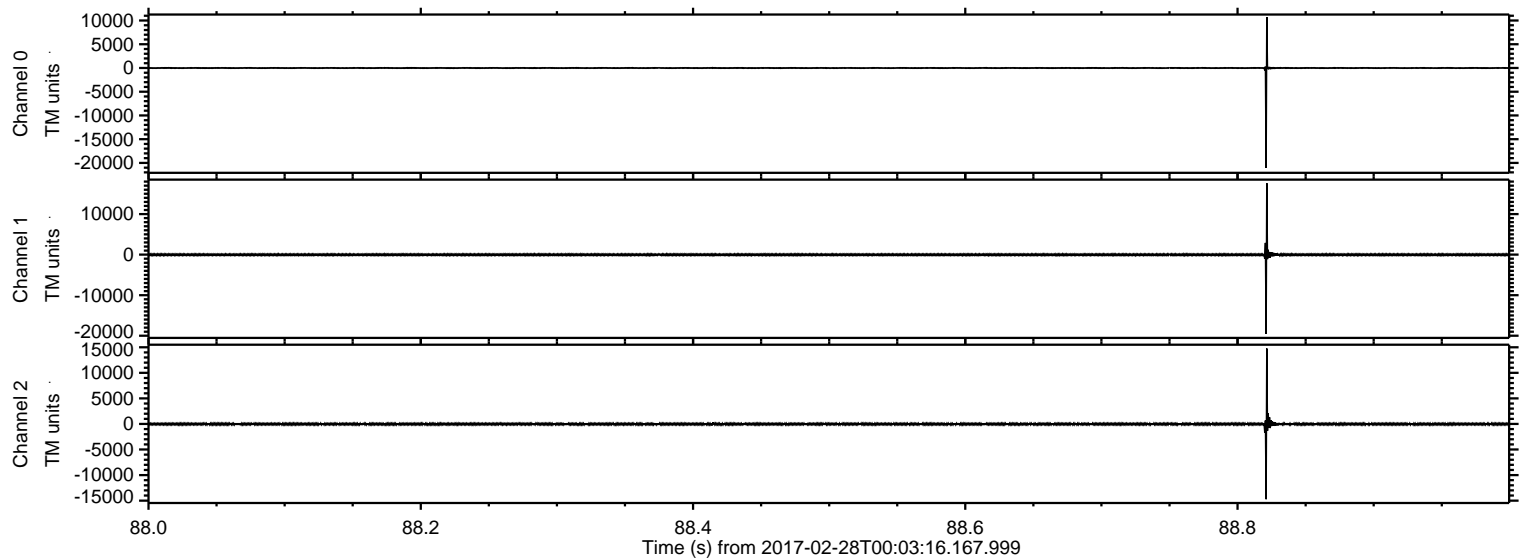


ELMAVAN 3D WAVEFORMS (Measured data sampled at 50 kHz) 51000 packets of 144 samples from 2017-02-28T00:03:16.167.999.

Processed Tue Feb 28 01:10:34 2017 by ELM ver.2012-10-06 from 001__elm20170228_000315__dat00.bin

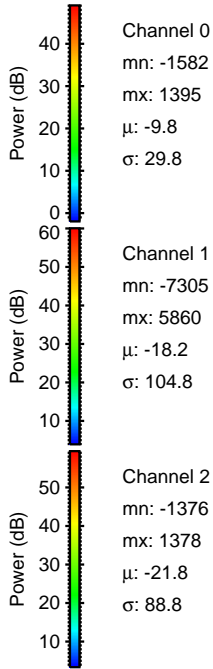
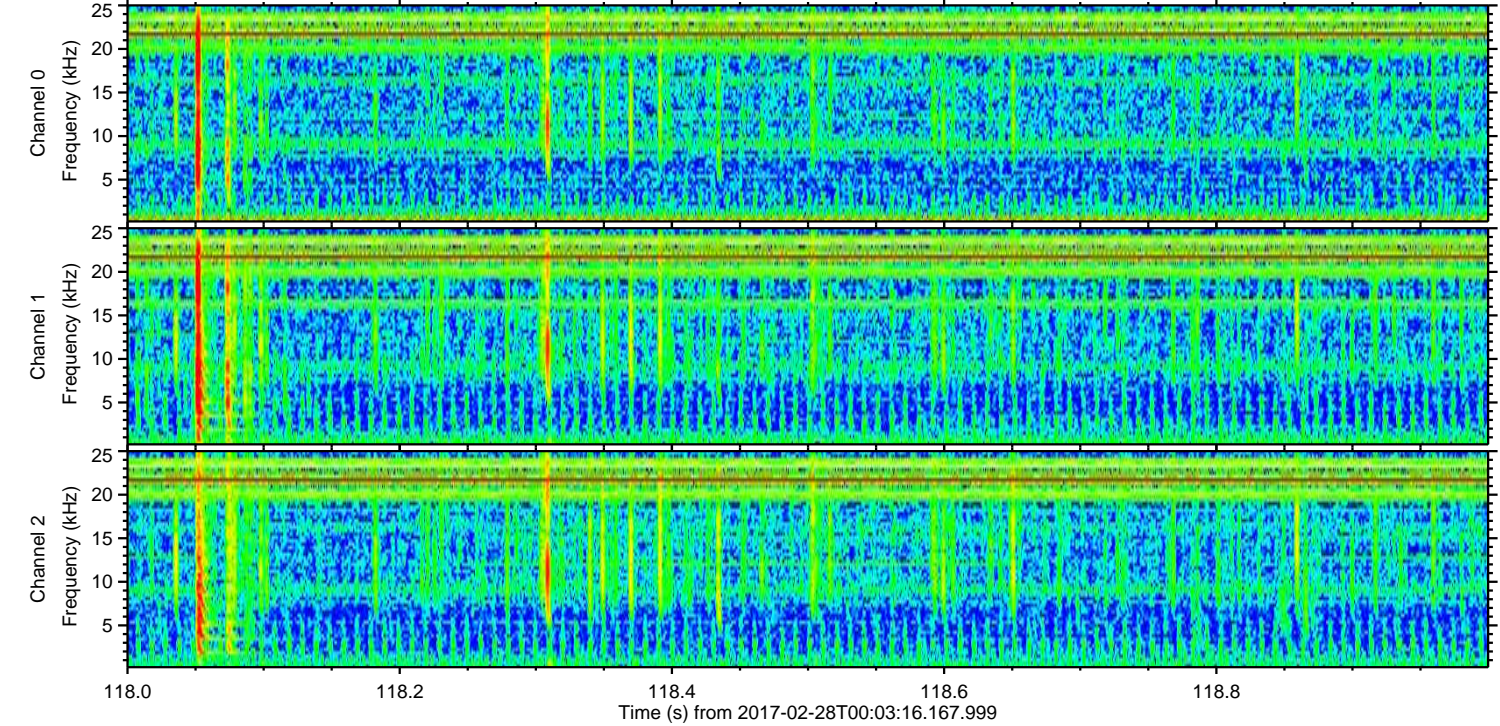
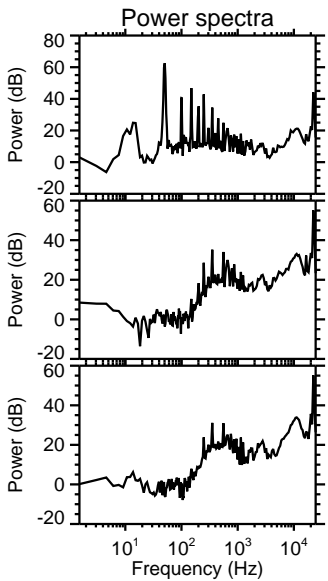
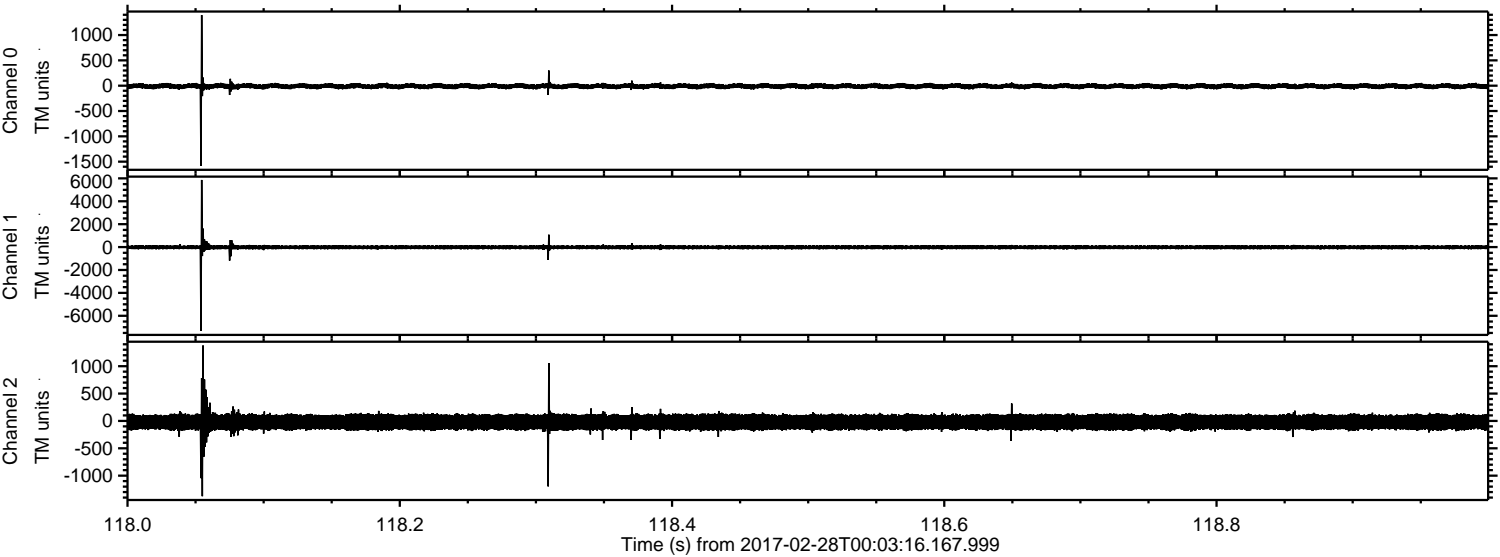


Processed Tue Feb 28 01:10:45 2017 by ELM ver.2012-10-06 from 001__elm20170228_000315__dat00.bin



ELMAVAN 3D WAVEFORMS (Measured data sampled at 50 kHz) 51000 packets of 144 samples from 2017-02-28T00:03:16.167.999. Part 119/147

Processed Tue Feb 28 01:10:46 2017 by ELM ver.2012-10-06 from 001__elm20170228_000315__dat00.bin



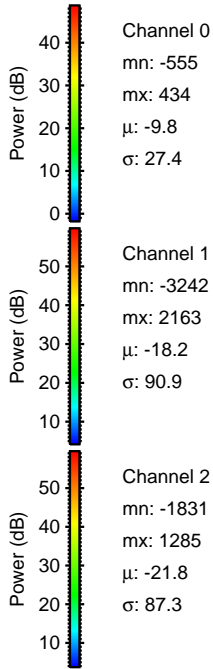
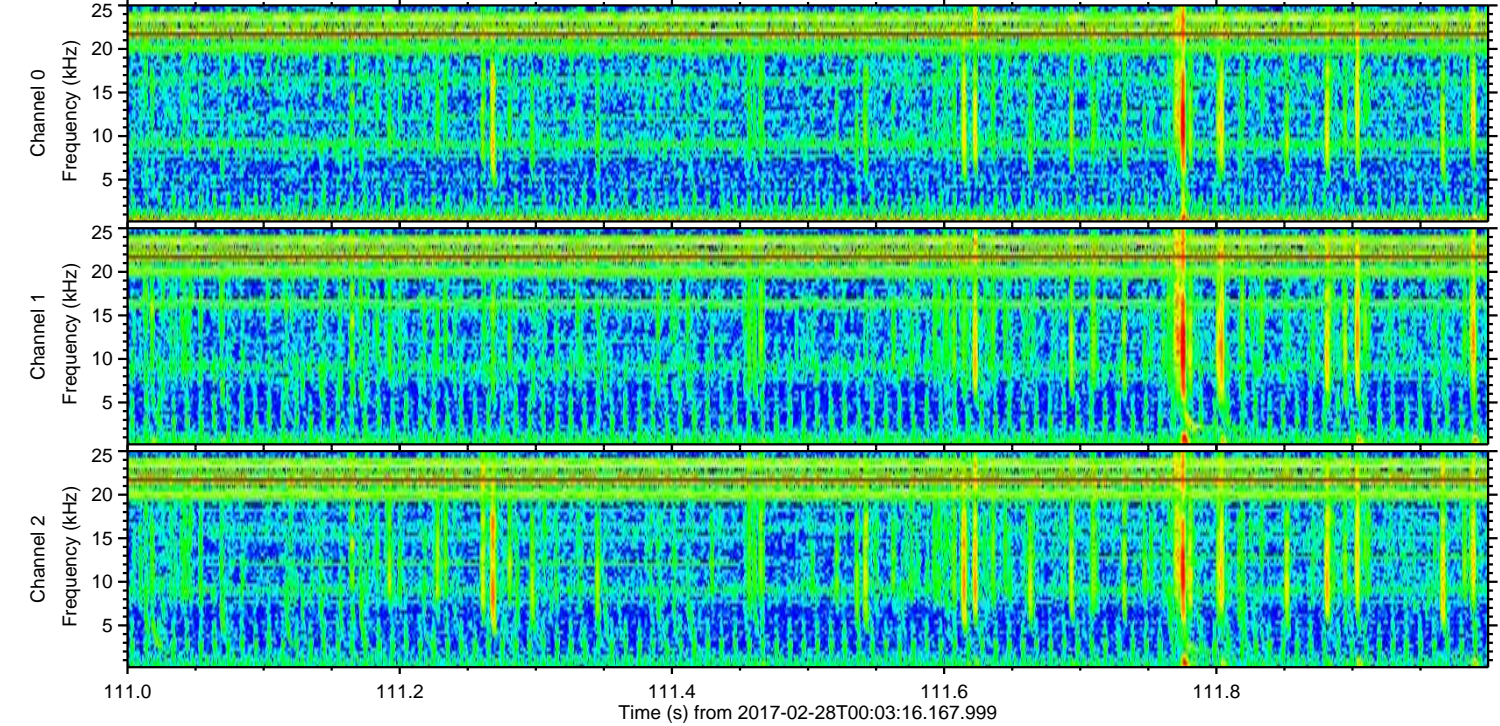
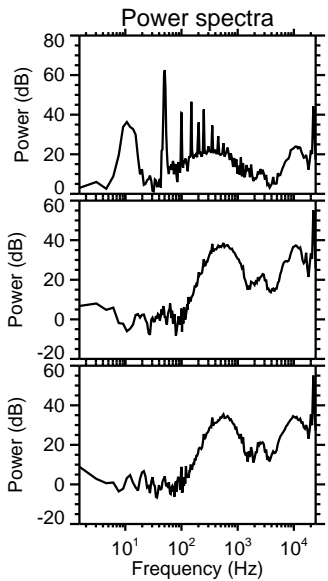
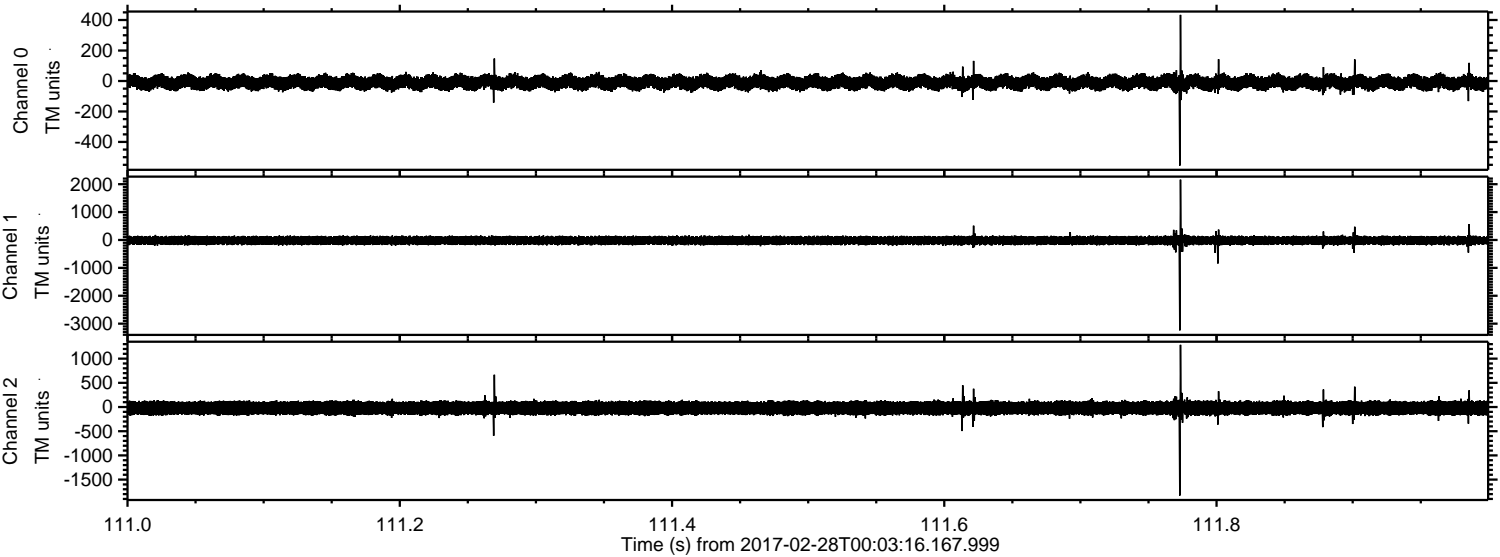
Channel 0
mn: -1582
mx: 1395
 μ : -9.8
 σ : 29.8

Channel 1
mn: -7305
mx: 5860
 μ : -18.2
 σ : 104.8

Channel 2
mn: -1376
mx: 1378
 μ : -21.8
 σ : 88.8

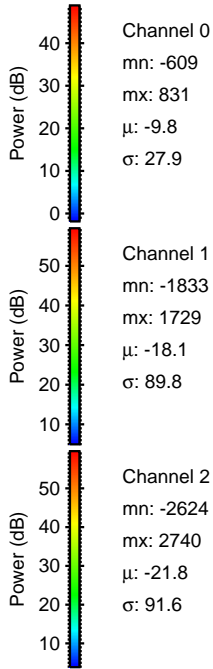
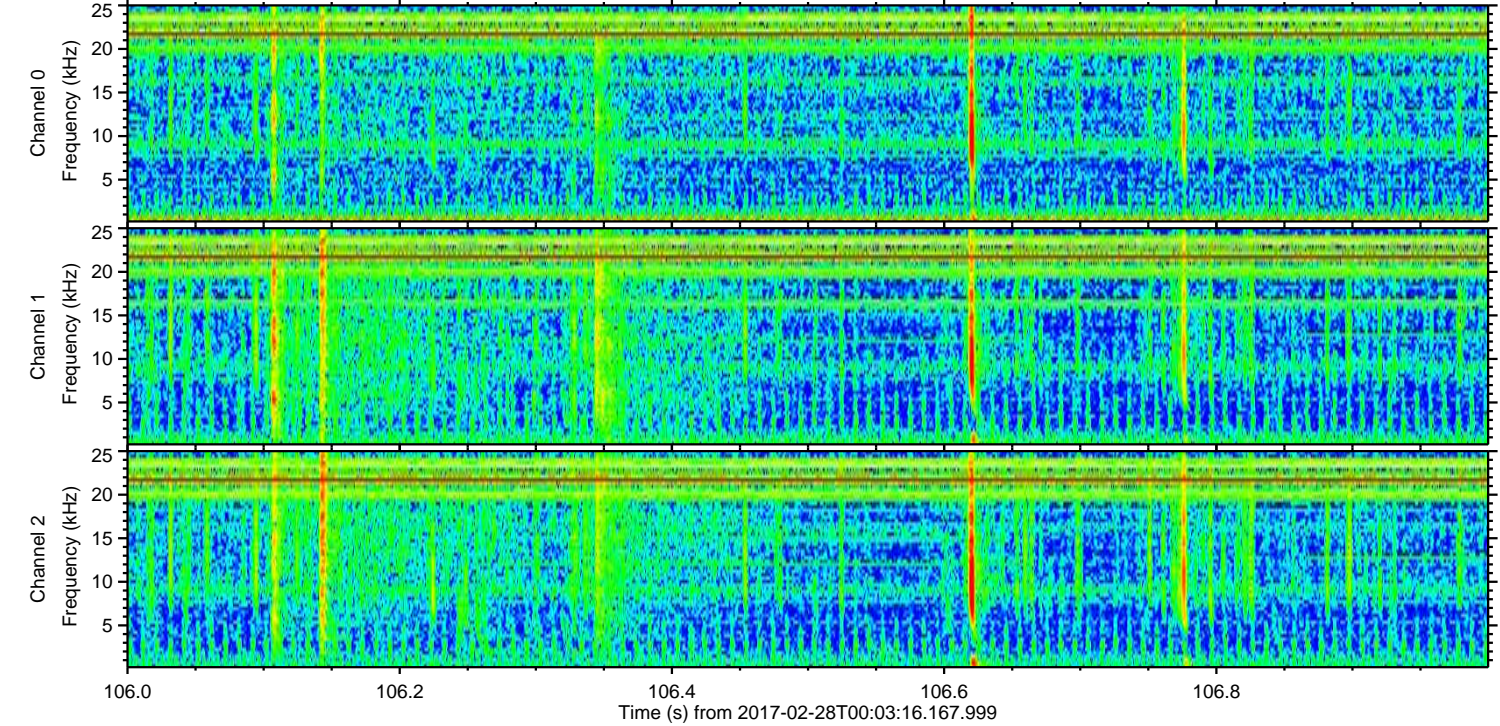
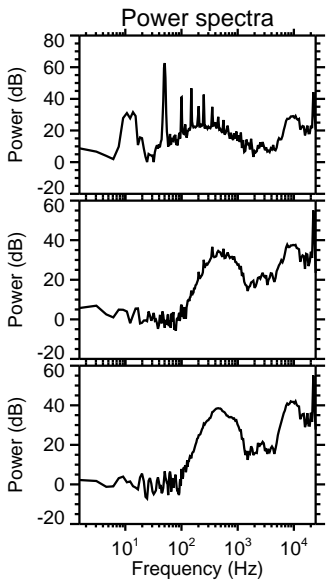
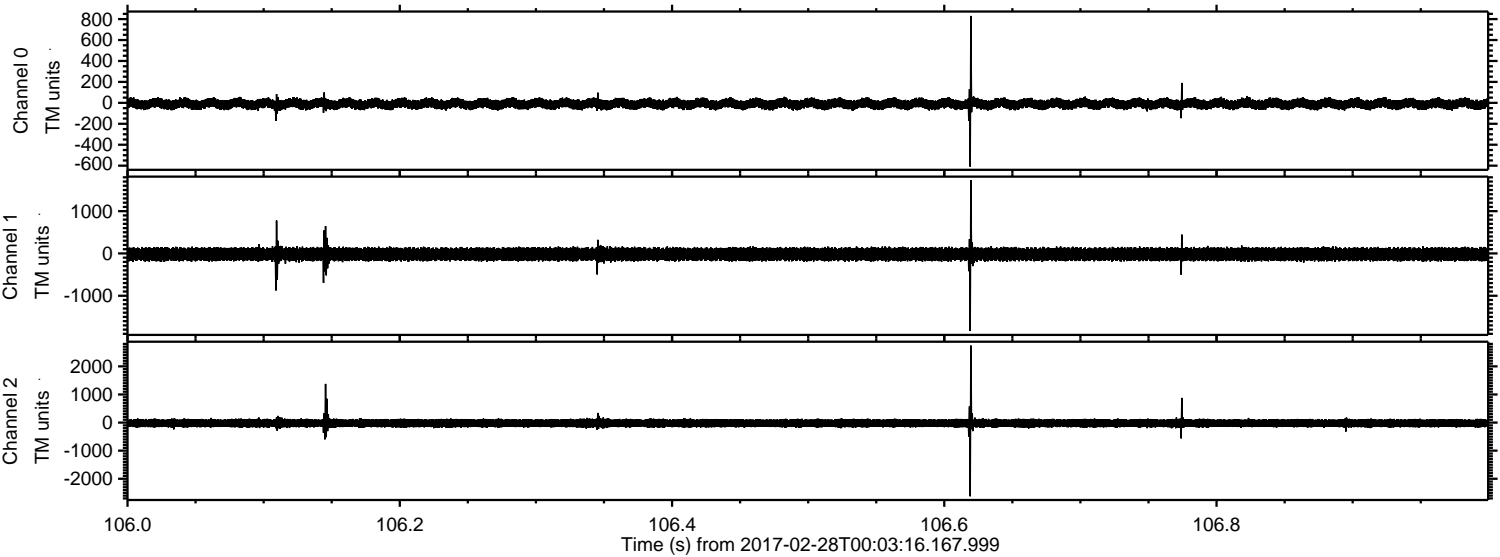
ELMAVAN 3D WAVEFORMS (Measured data sampled at 50 kHz) 51000 packets of 144 samples from 2017-02-28T00:03:16.167.999. Part 112/147

Processed Tue Feb 28 01:10:47 2017 by ELM ver.2012-10-06 from 001__elm20170228_000315__dat00.bin



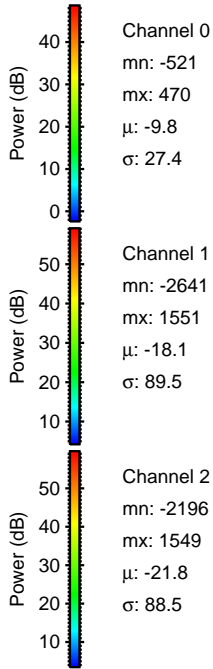
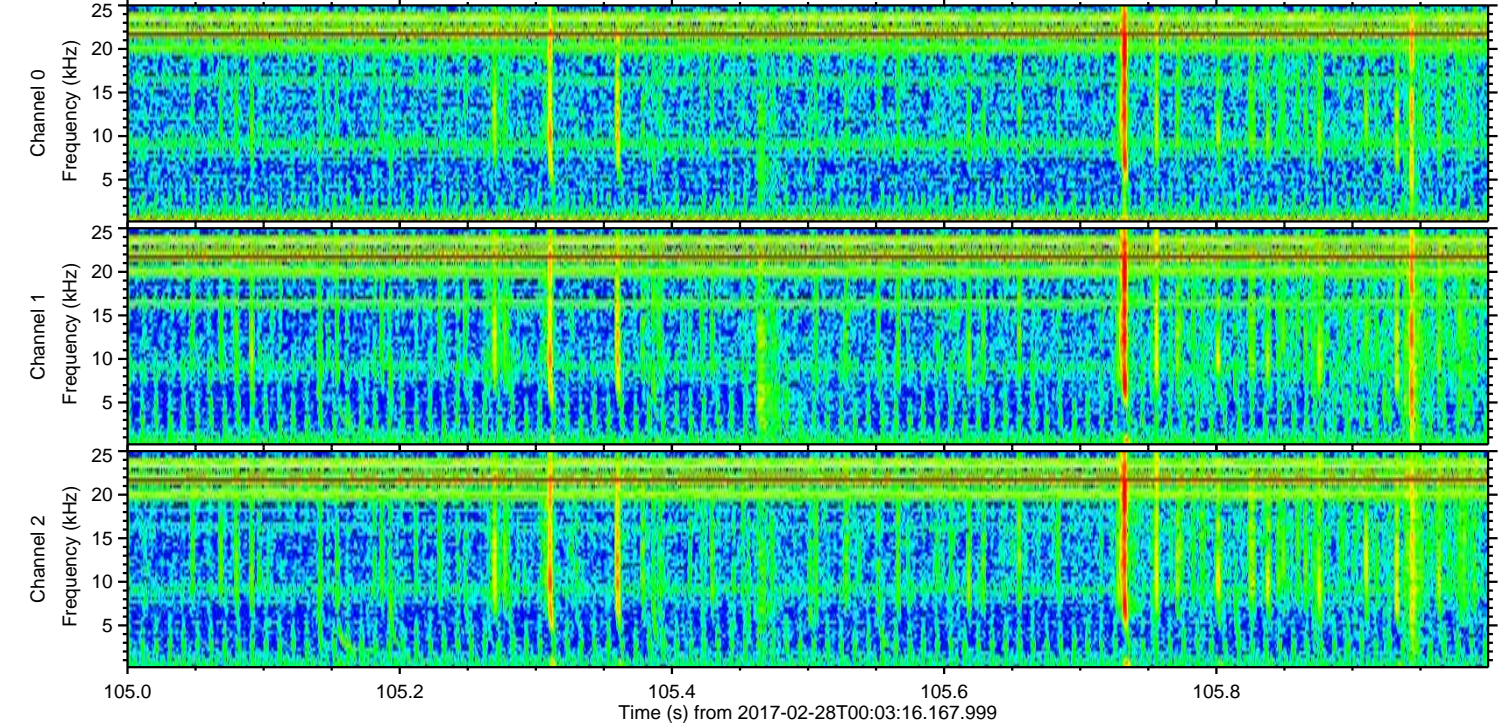
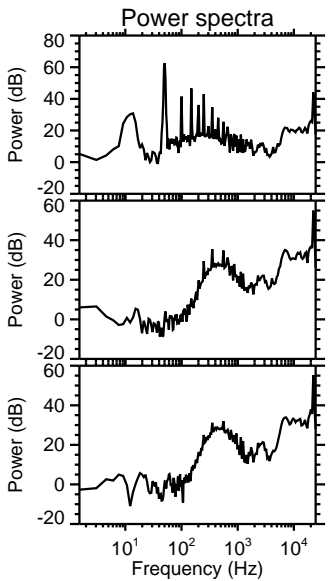
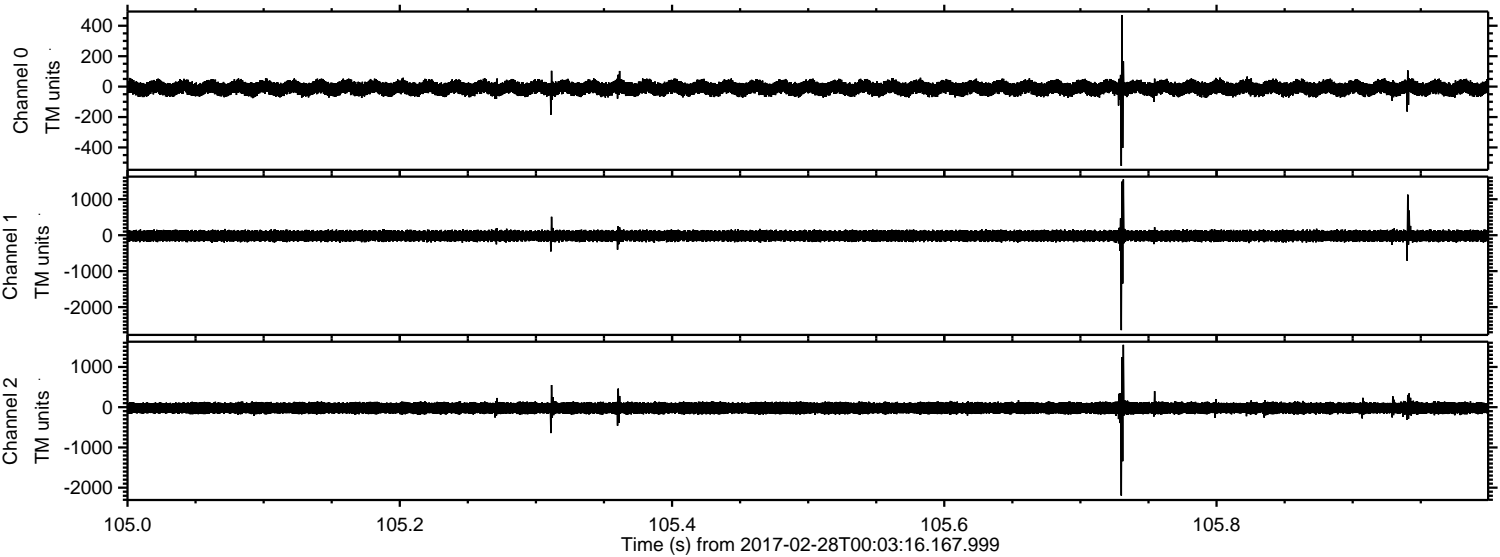
ELMAVAN 3D WAVEFORMS (Measured data sampled at 50 kHz) 51000 packets of 144 samples from 2017-02-28T00:03:16.167.999. Part 107/147

Processed Tue Feb 28 01:10:48 2017 by ELM ver.2012-10-06 from 001__elm20170228_000315__dat00.bin



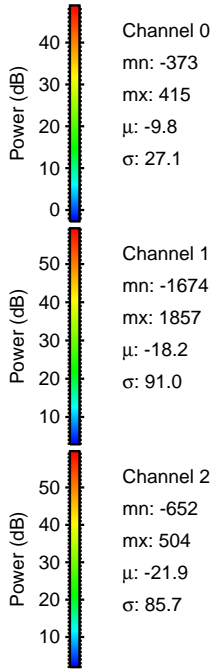
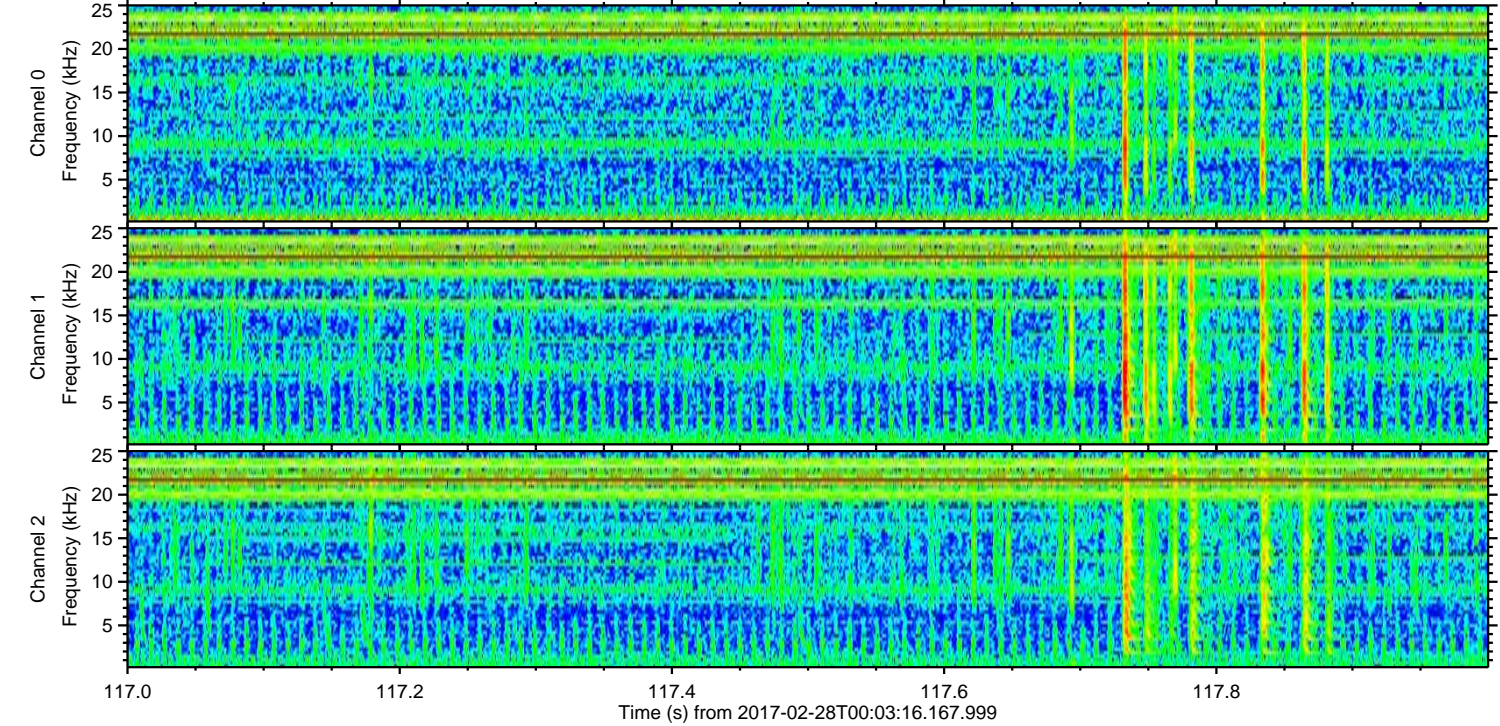
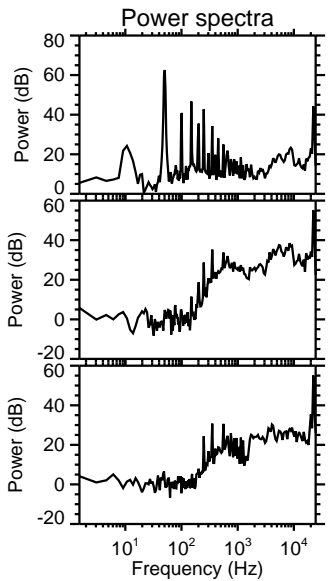
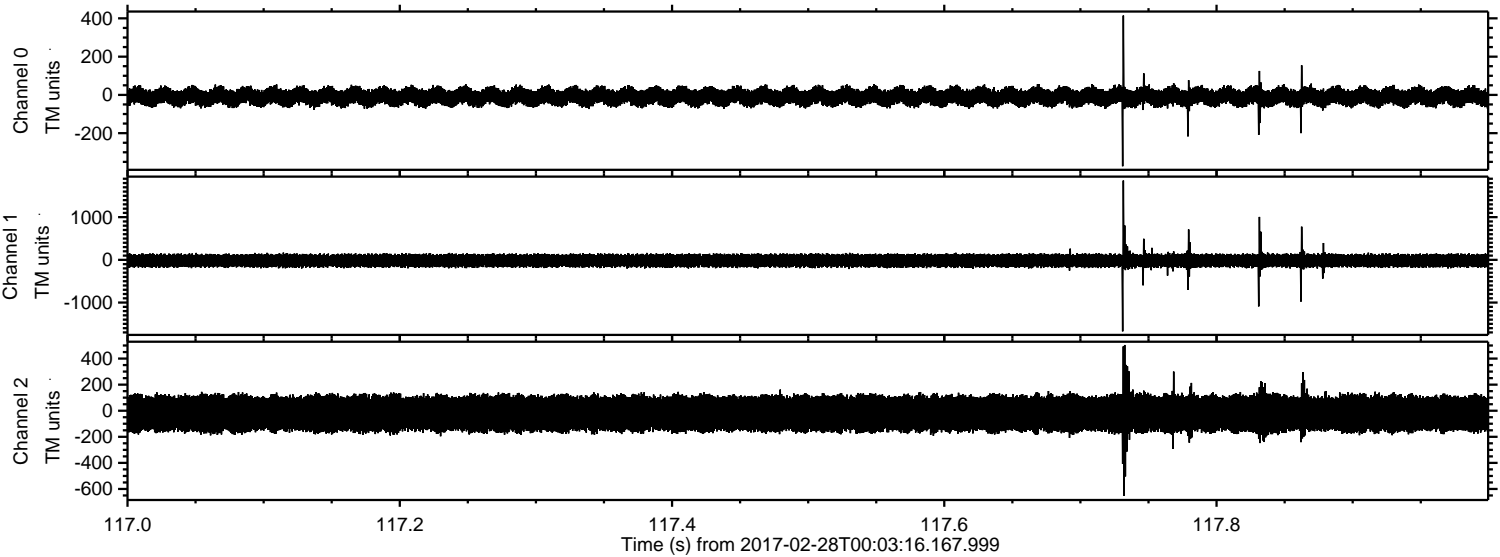
ELMAVAN 3D WAVEFORMS (Measured data sampled at 50 kHz) 51000 packets of 144 samples from 2017-02-28T00:03:16.167.999. Part 106/147

Processed Tue Feb 28 01:10:49 2017 by ELM ver.2012-10-06 from 001__elm20170228_000315__dat00.bin



ELMAVAN 3D WAVEFORMS (Measured data sampled at 50 kHz) 51000 packets of 144 samples from 2017-02-28T00:03:16.167.999. Part 118/147

Processed Tue Feb 28 01:10:50 2017 by ELM ver.2012-10-06 from 001__elm20170228_000315__dat00.bin

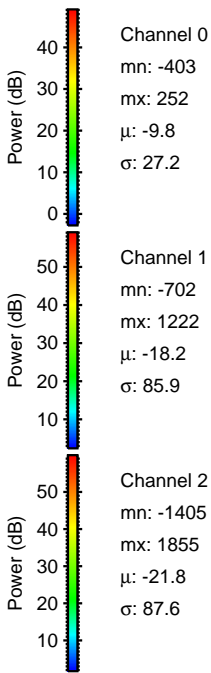
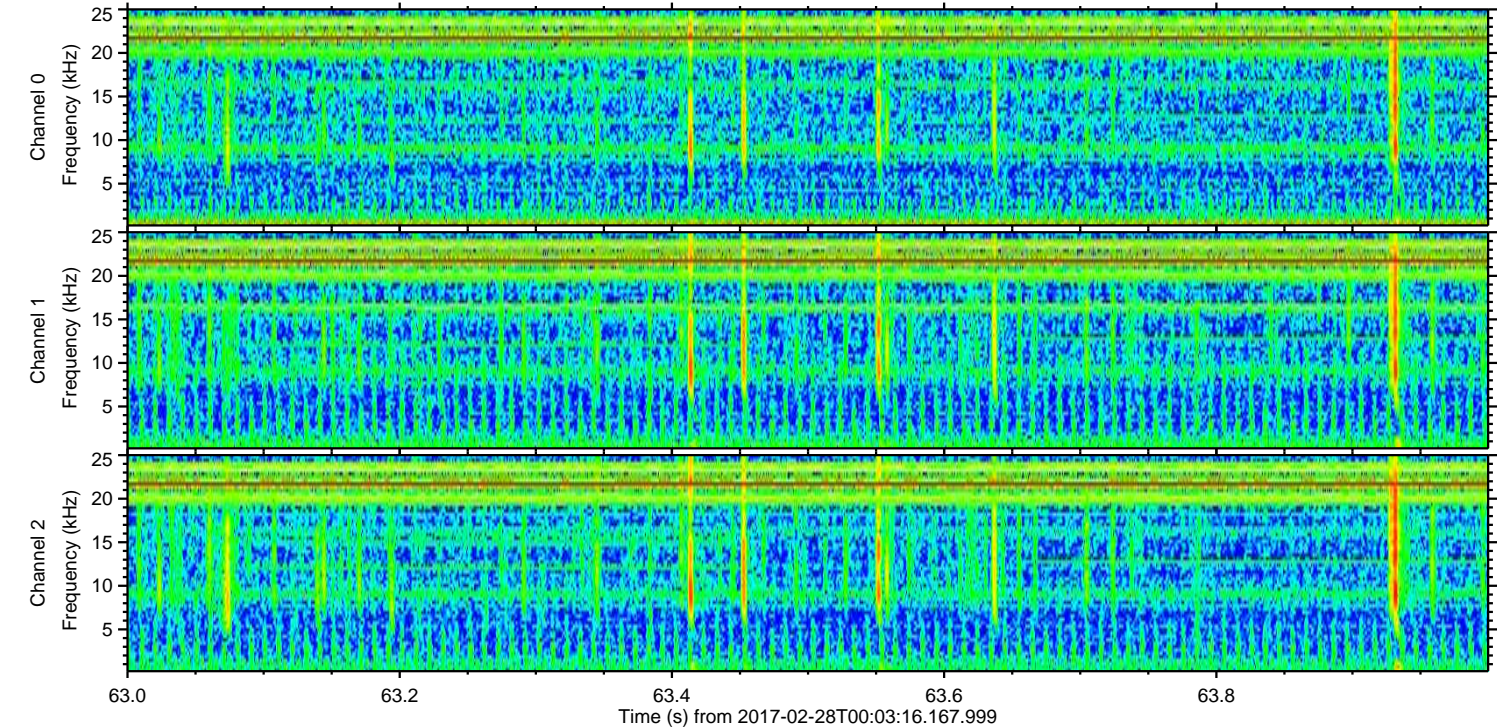
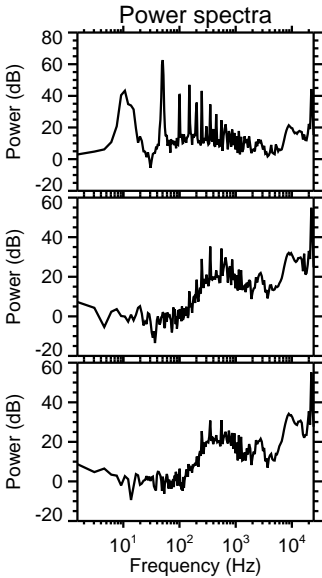
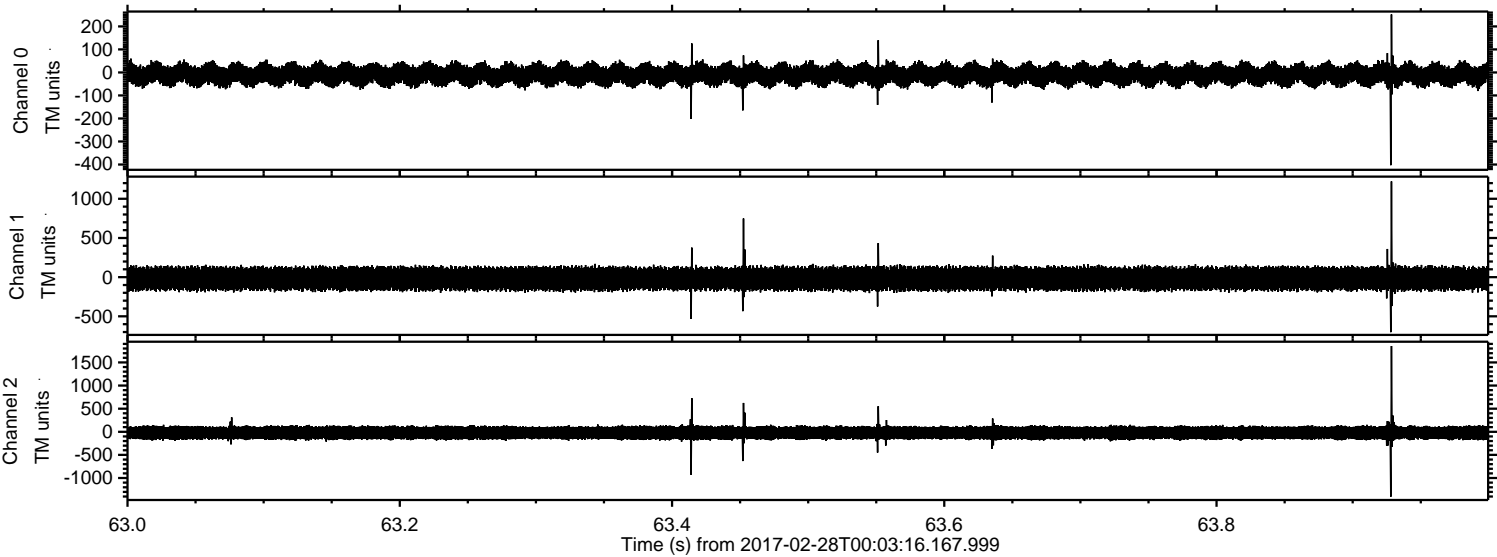


Channel 0
mn: -373
mx: 415
 μ : -9.8
 σ : 27.1

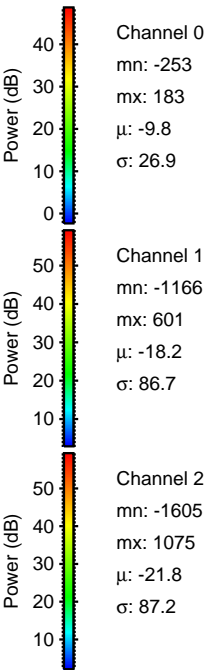
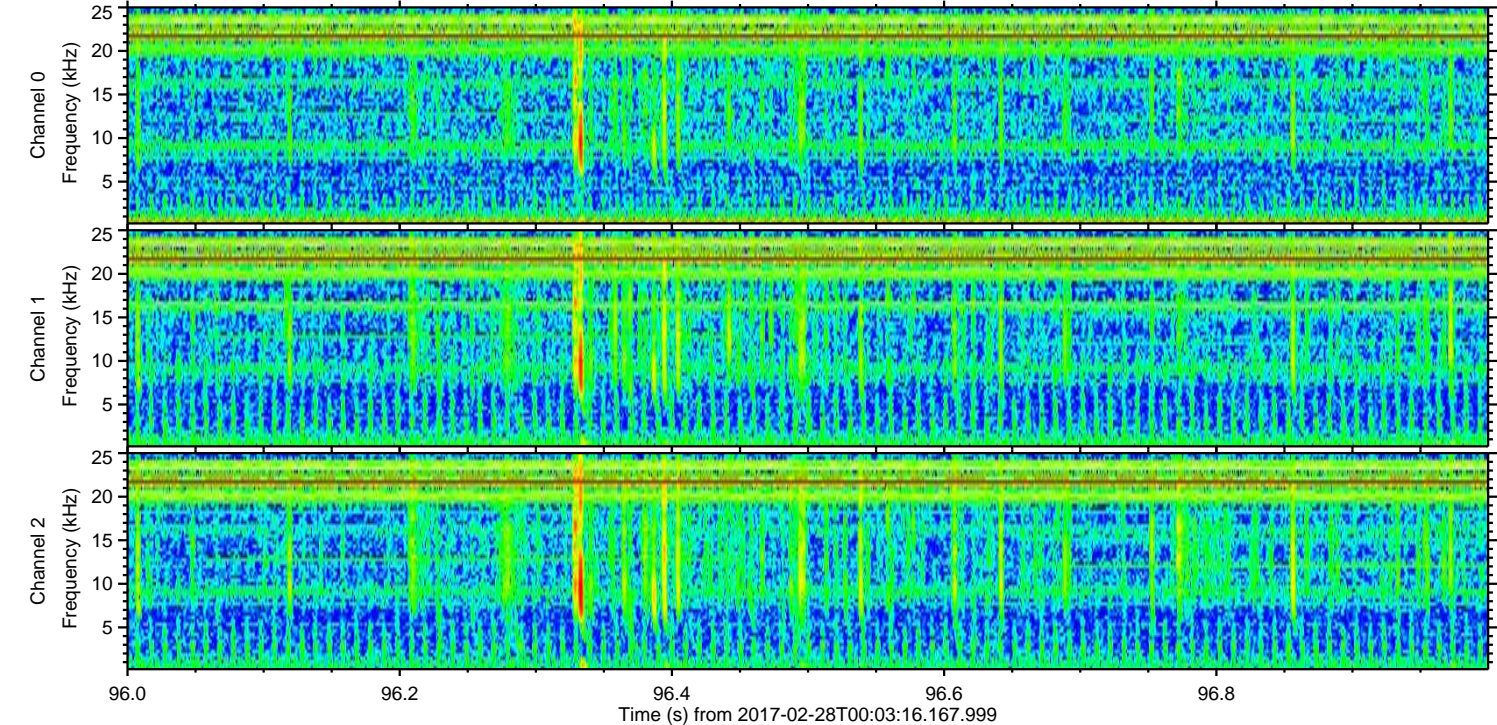
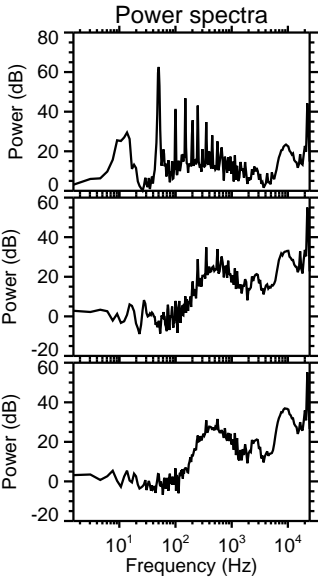
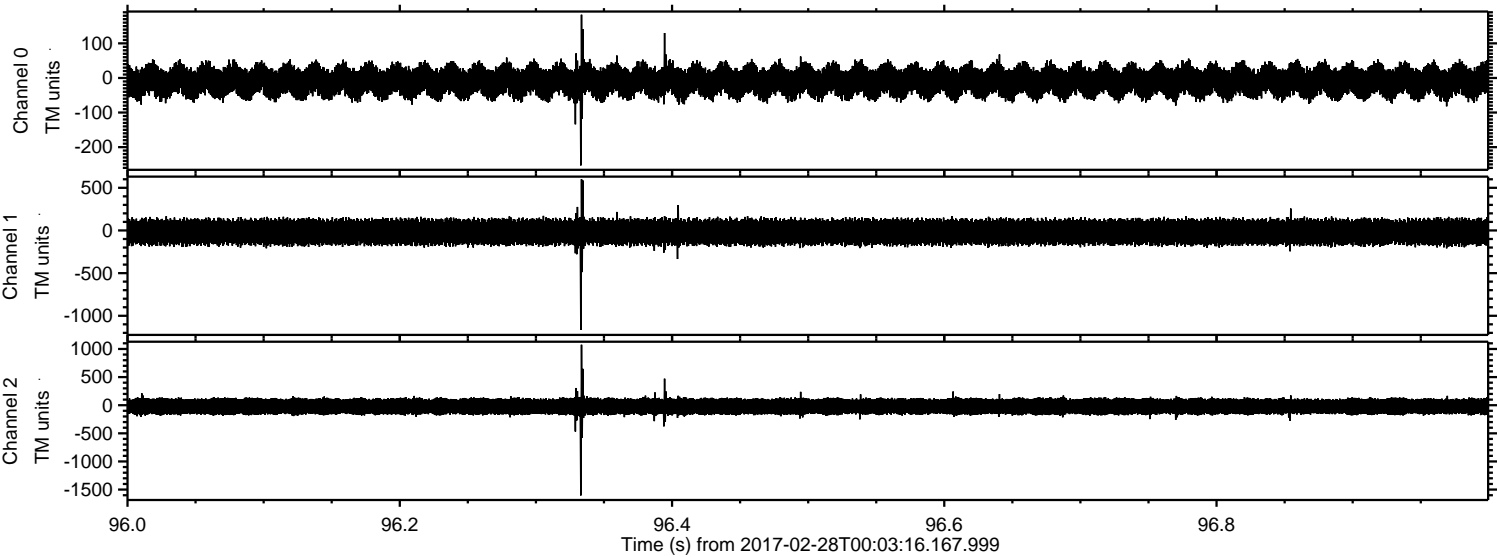
Channel 1
mn: -1674
mx: 1857
 μ : -18.2
 σ : 91.0

Channel 2
mn: -652
mx: 504
 μ : -21.9
 σ : 85.7

Processed Tue Feb 28 01:10:51 2017 by ELM ver.2012-10-06 from 001__elm20170228_000315__dat00.bin

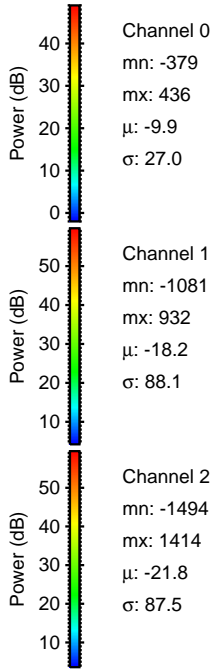
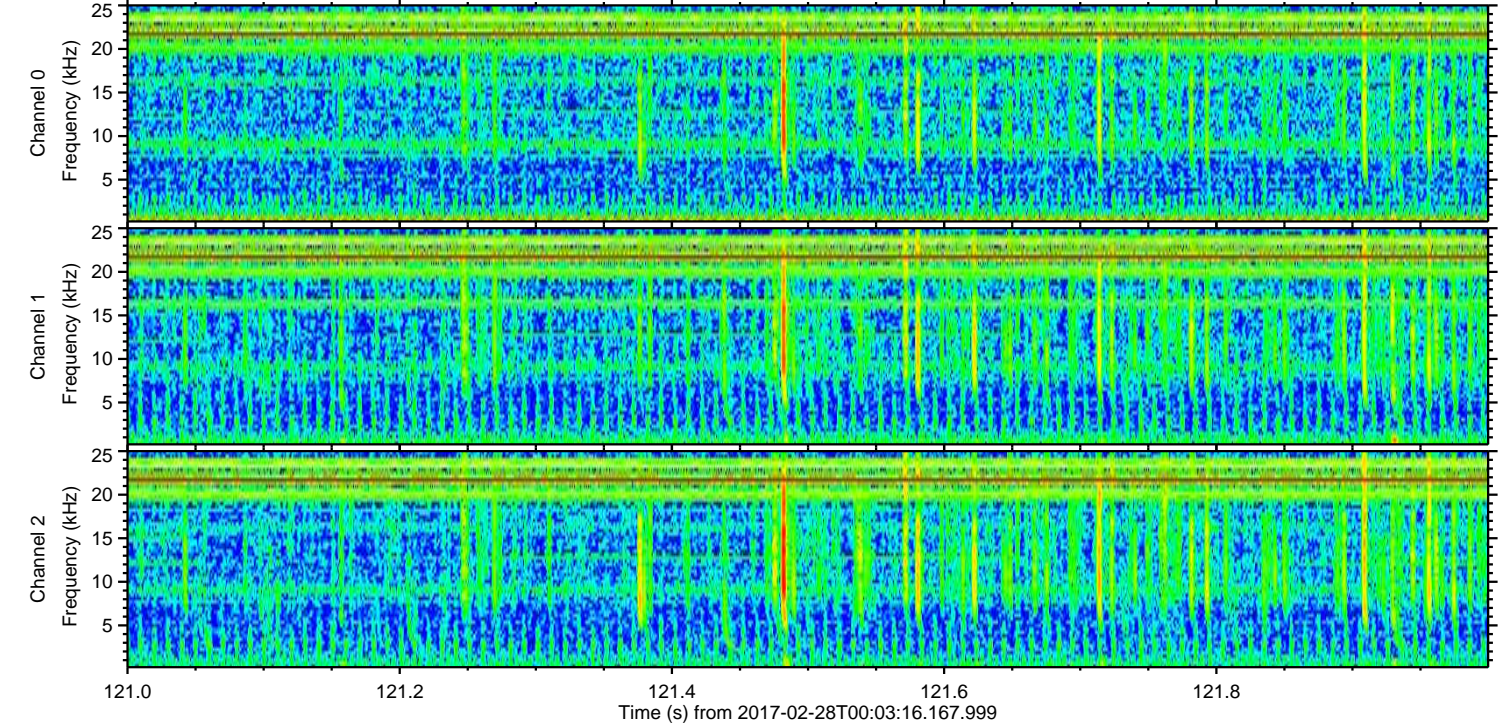
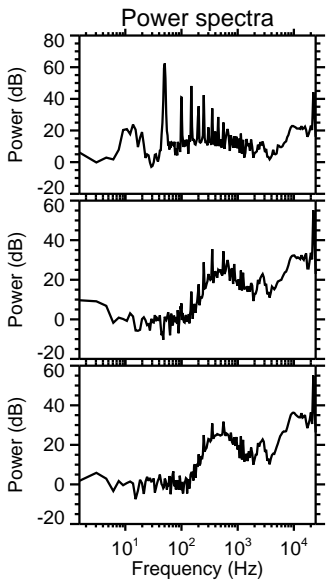
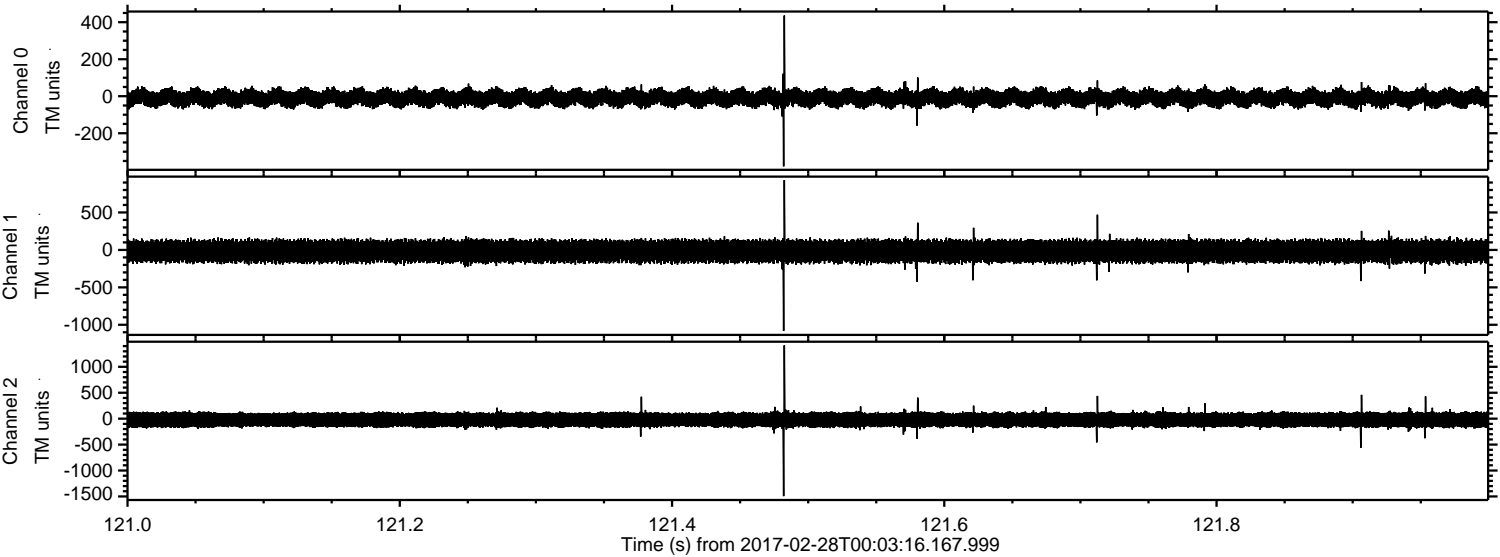


Processed Tue Feb 28 01:10:52 2017 by ELM ver.2012-10-06 from 001__elm20170228_000315__dat00.bin



ELMAVAN 3D WAVEFORMS (Measured data sampled at 50 kHz) 51000 packets of 144 samples from 2017-02-28T00:03:16.167.999. Part 122/147

Processed Tue Feb 28 01:10:53 2017 by ELM ver.2012-10-06 from 001__elm20170228_000315__dat00.bin



ELMAVAN 3D WAVEFORMS (Measured data sampled at 50 kHz) 51000 packets of 144 samples from 2017-02-28T00:03:16.167.999. Part 128/147

