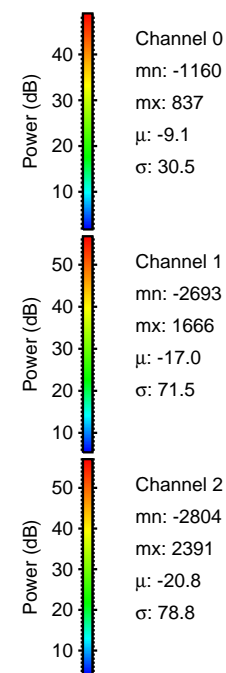
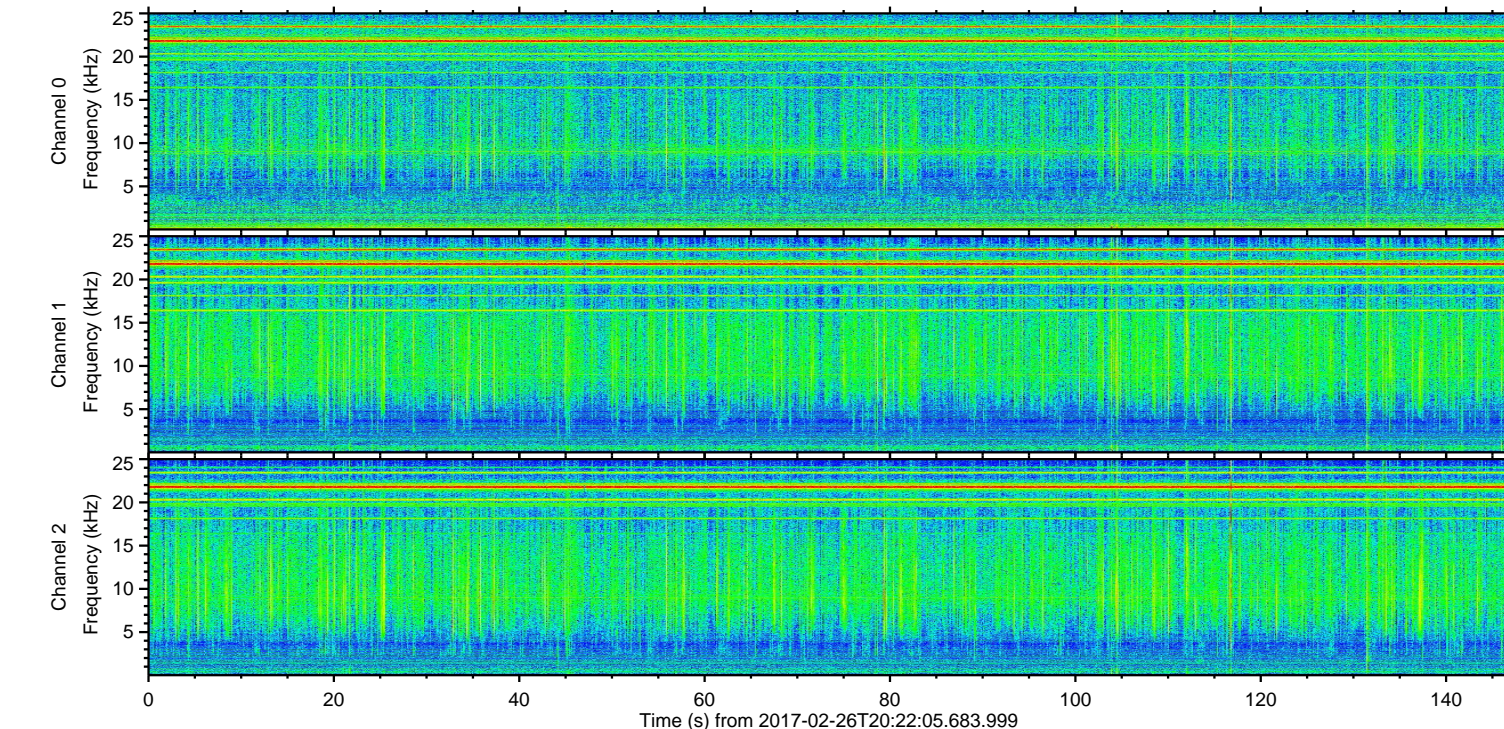
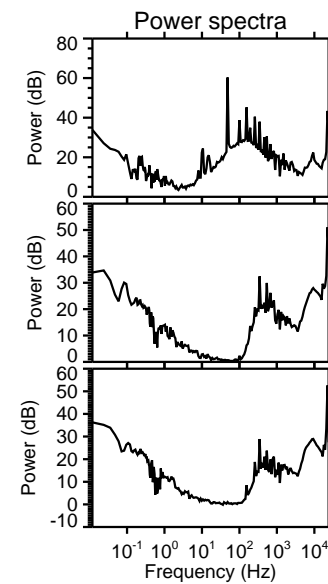
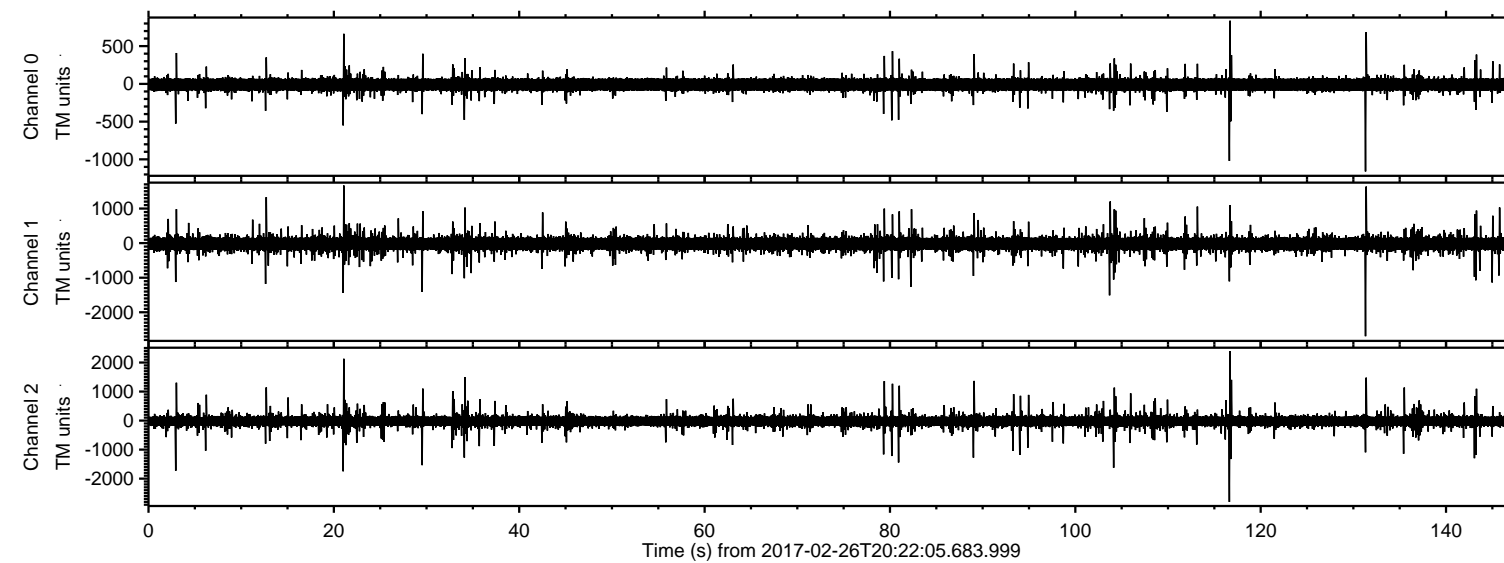


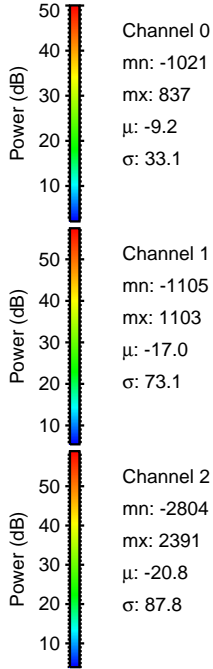
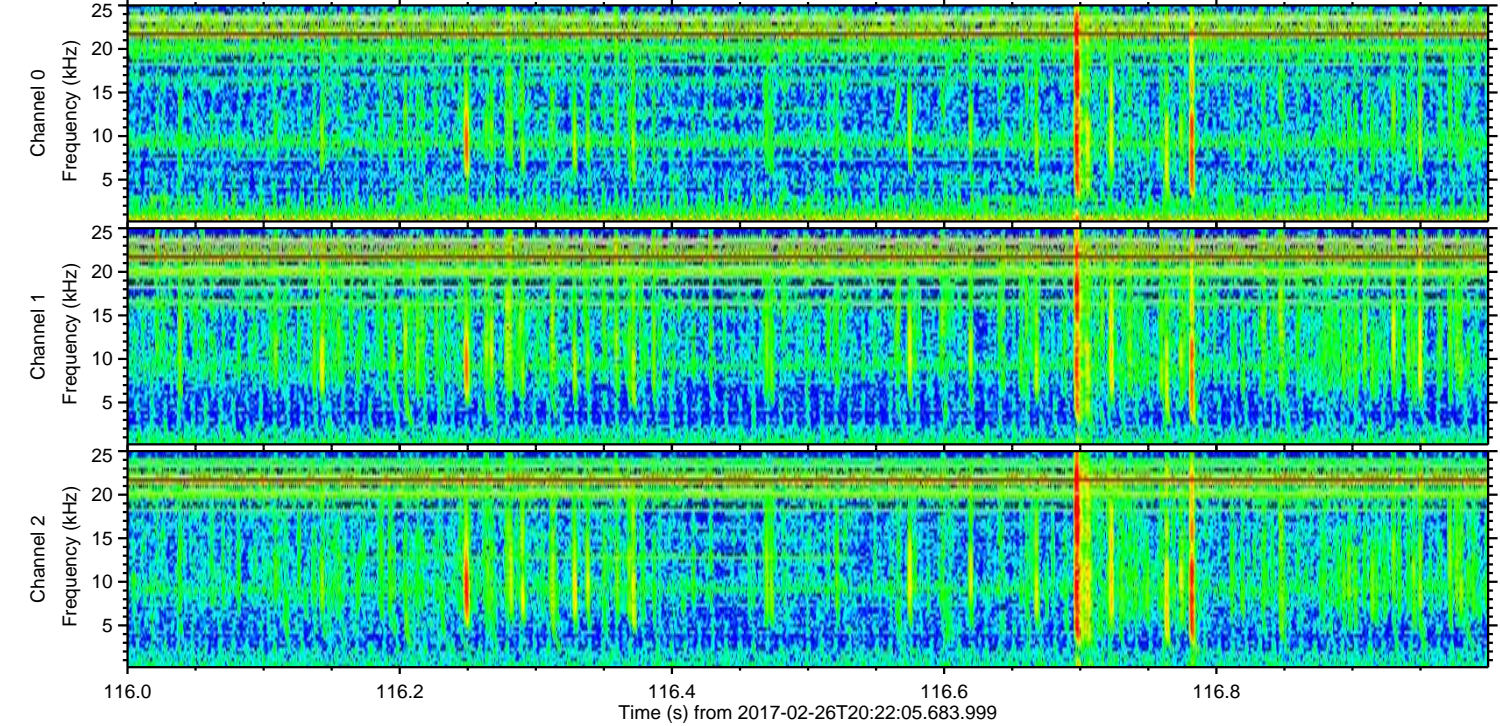
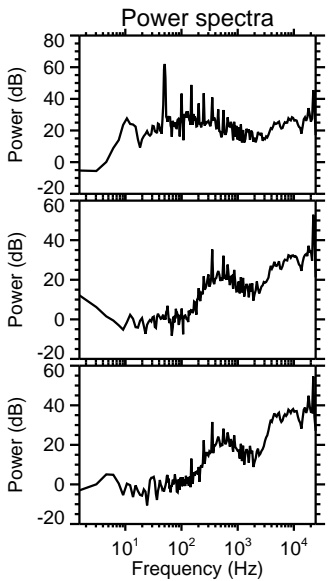
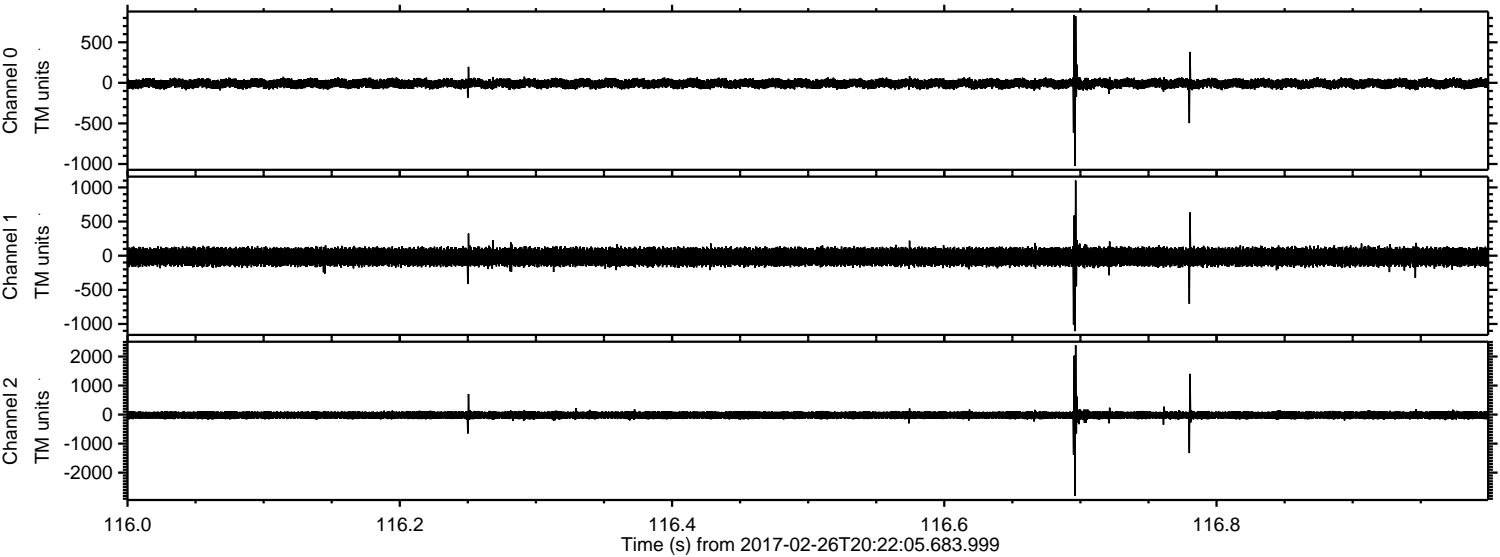
ELMAVAN 3D WAVEFORMS (Measured data sampled at 50 kHz) 51000 packets of 144 samples from 2017-02-26T20:22:05.683.999.

Processed Sun Feb 26 21:29:32 2017 by ELM ver.2012-10-06 from 001__elm20170226_202204__dat00.bin



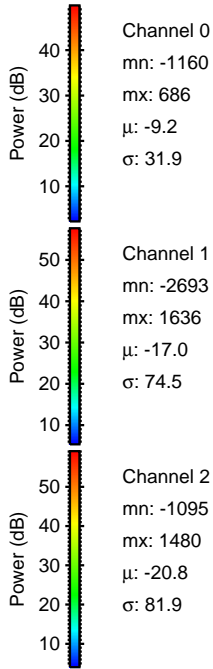
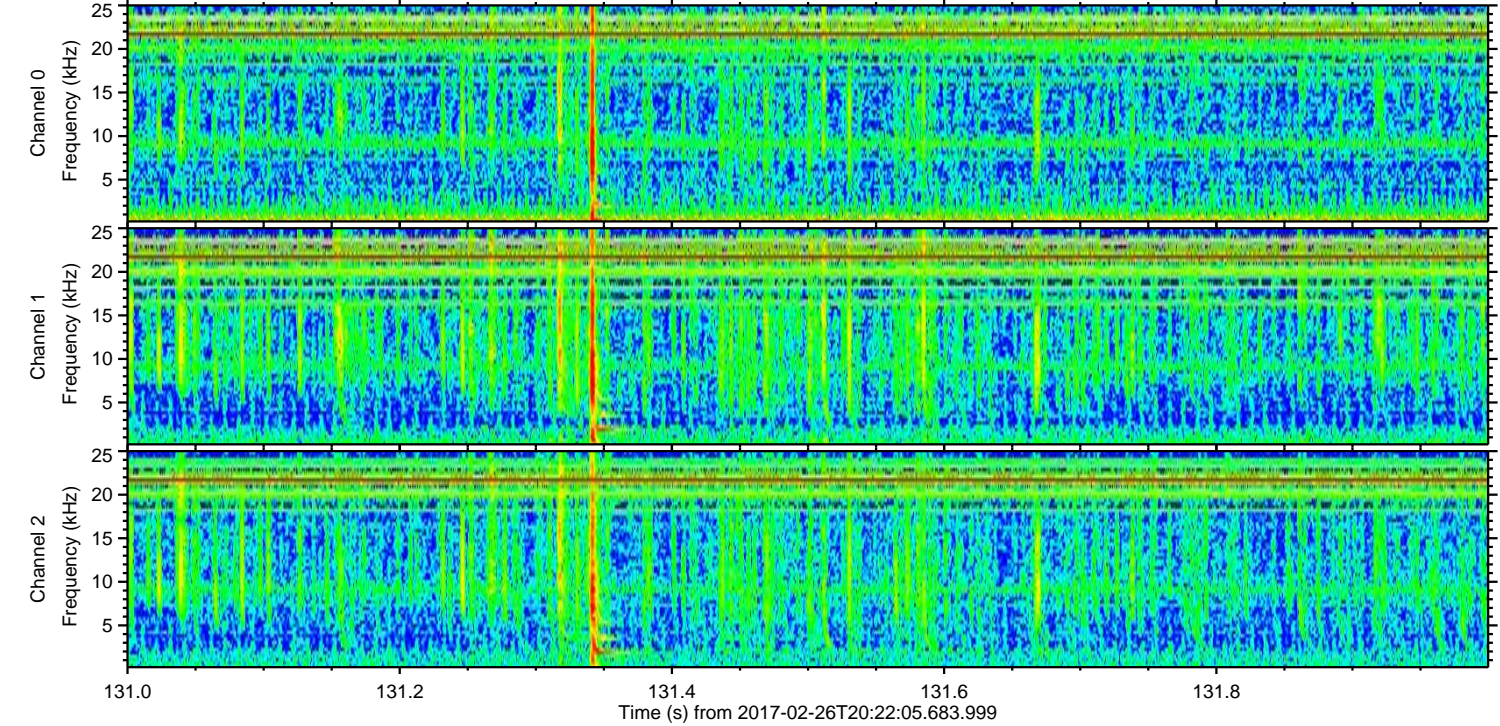
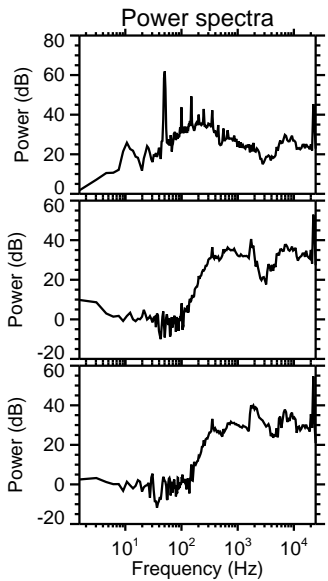
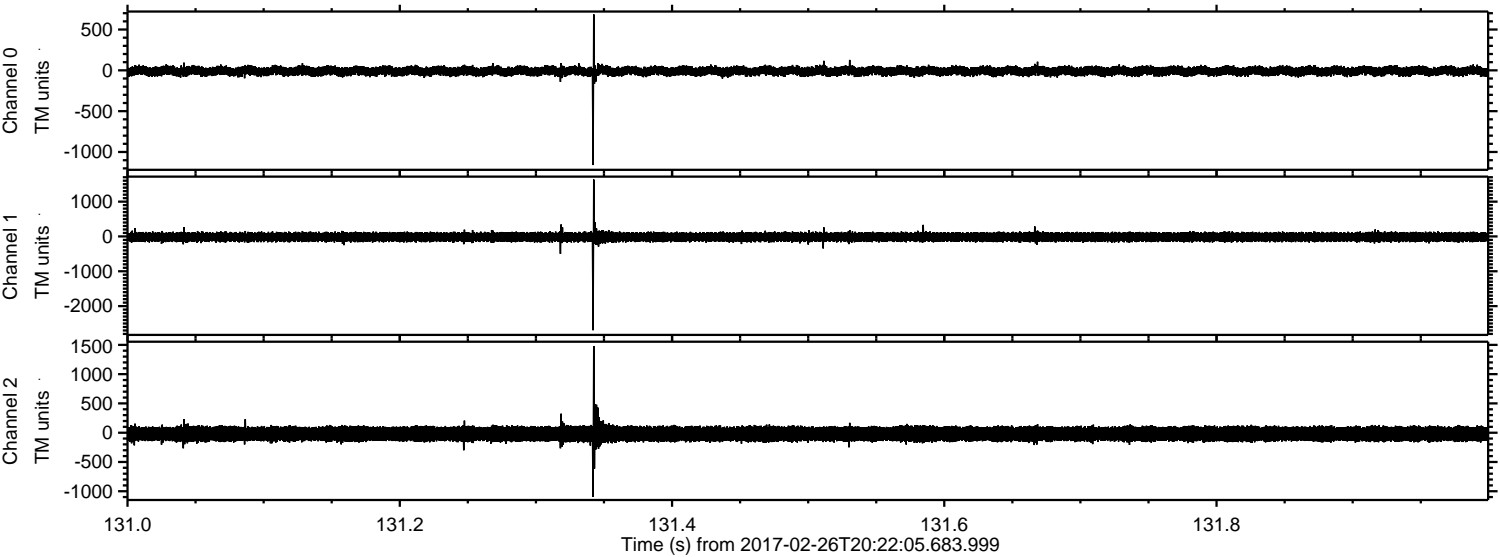
ELMAVAN 3D WAVEFORMS (Measured data sampled at 50 kHz) 51000 packets of 144 samples from 2017-02-26T20:22:05.683.999. Part 117/147

Processed Sun Feb 26 21:29:48 2017 by ELM ver.2012-10-06 from 001__elm20170226_202204__dat00.bin



ELMAVAN 3D WAVEFORMS (Measured data sampled at 50 kHz) 51000 packets of 144 samples from 2017-02-26T20:22:05.683.999. Part 132/147

Processed Sun Feb 26 21:29:49 2017 by ELM ver.2012-10-06 from 001__elm20170226_202204__dat00.bin



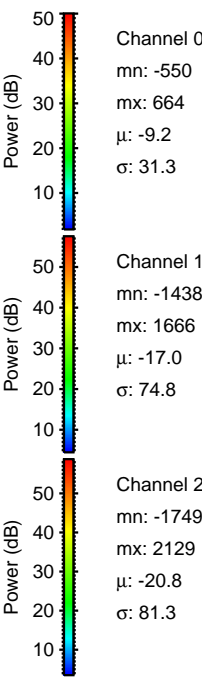
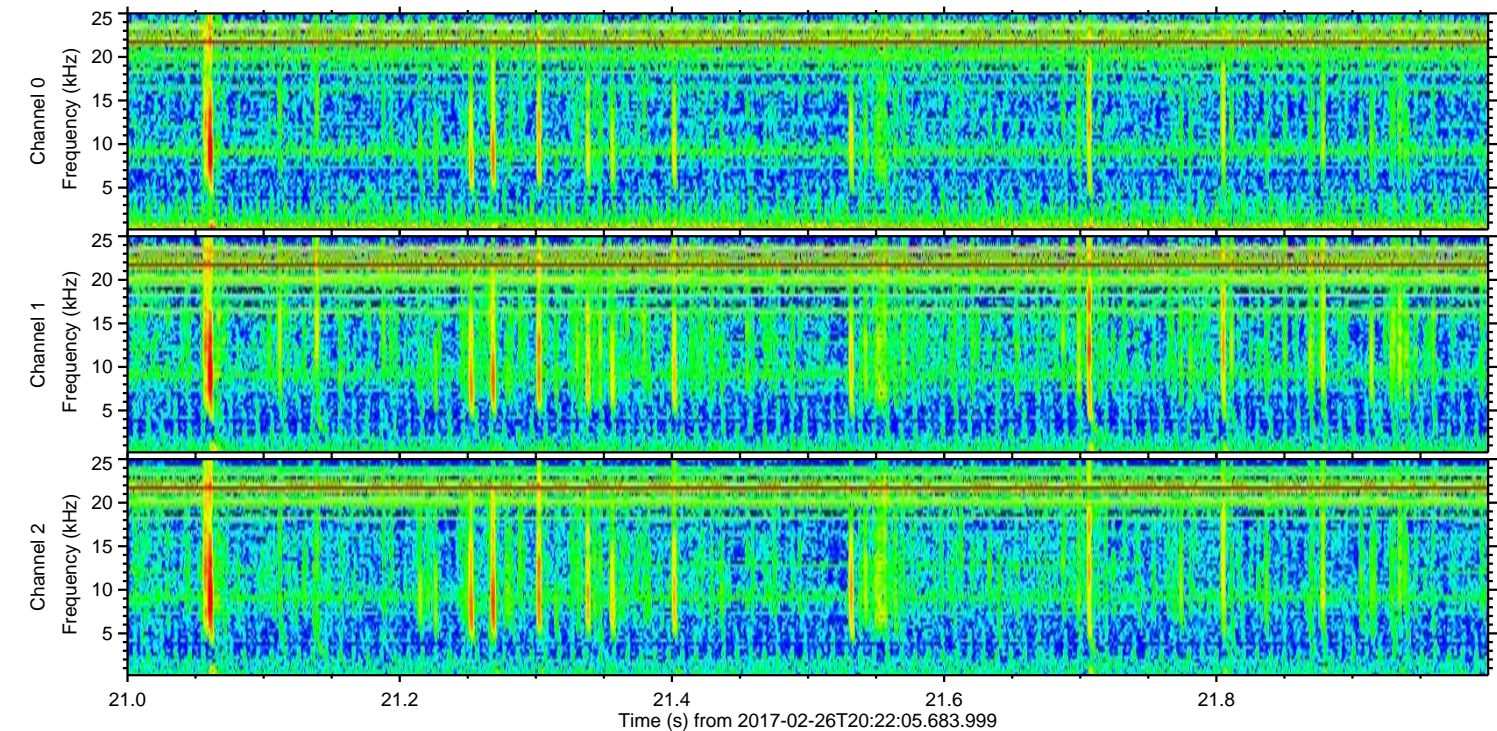
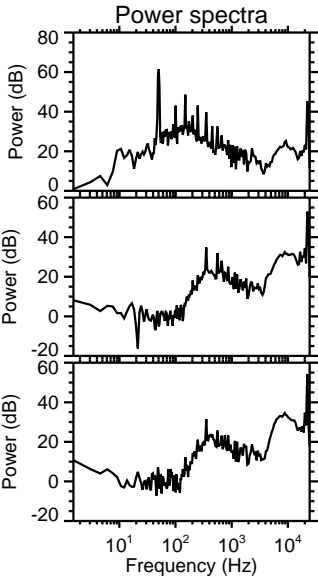
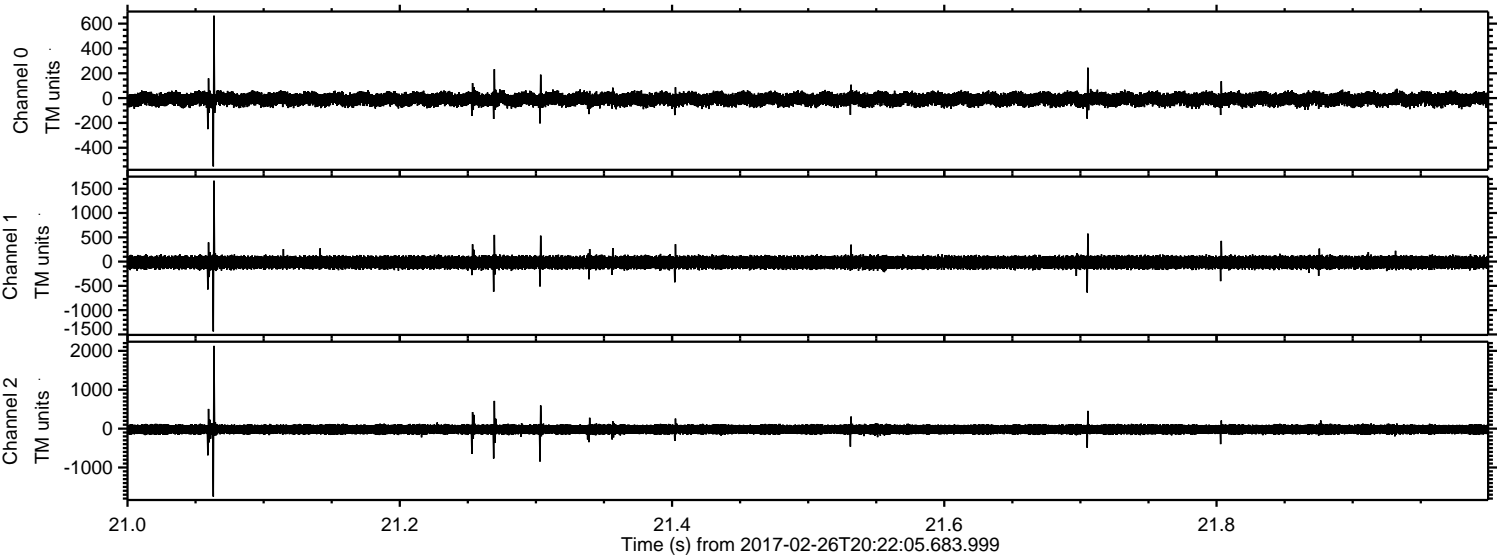
Channel 0
mn: -1160
mx: 686
 μ : -9.2
 σ : 31.9

Channel 1
mn: -2693
mx: 1636
 μ : -17.0
 σ : 74.5

Channel 2
mn: -1095
mx: 1480
 μ : -20.8
 σ : 81.9

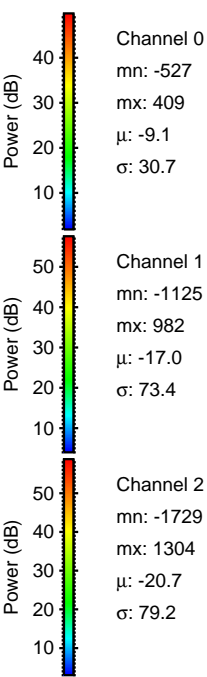
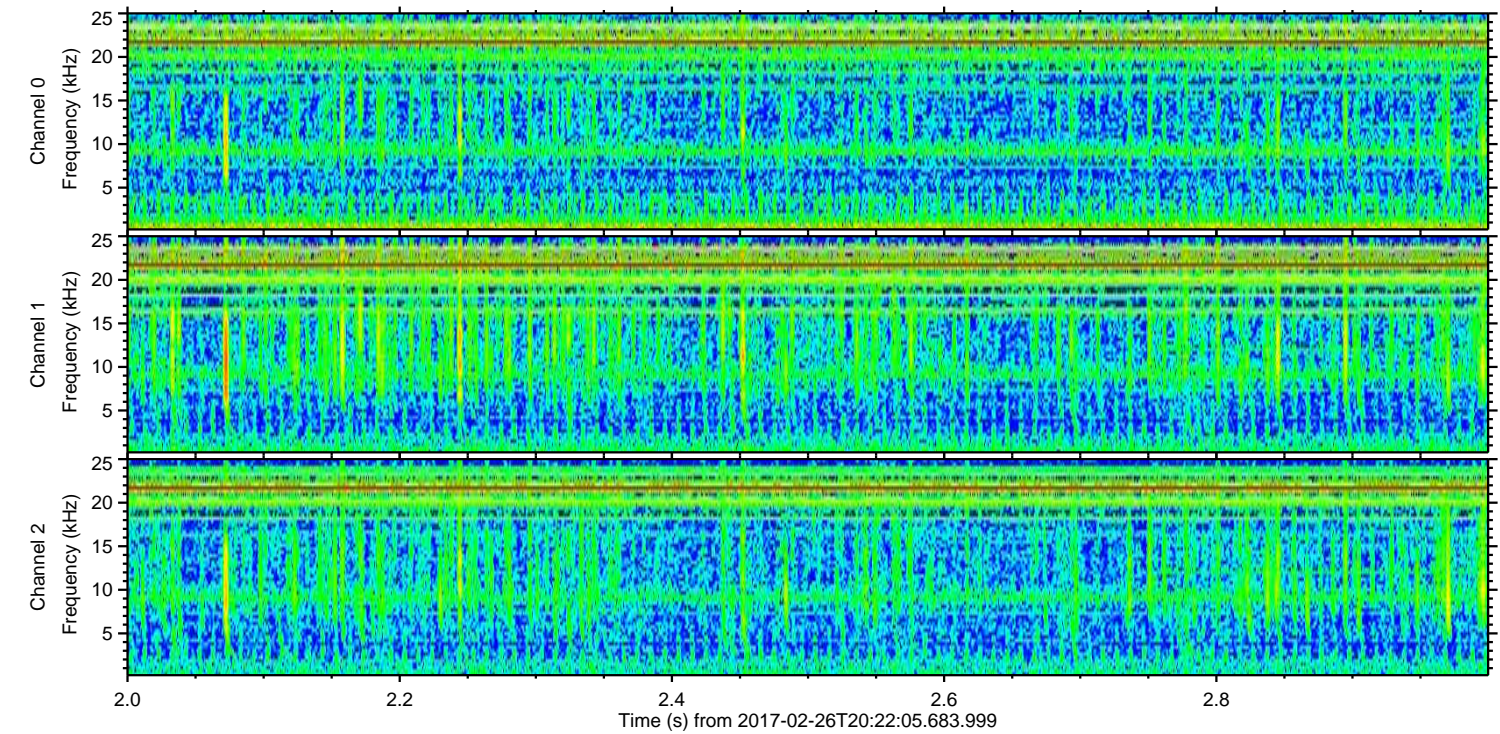
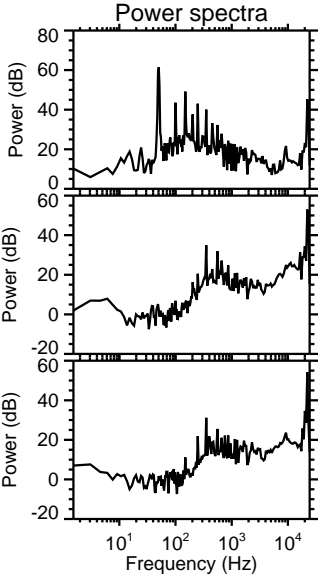
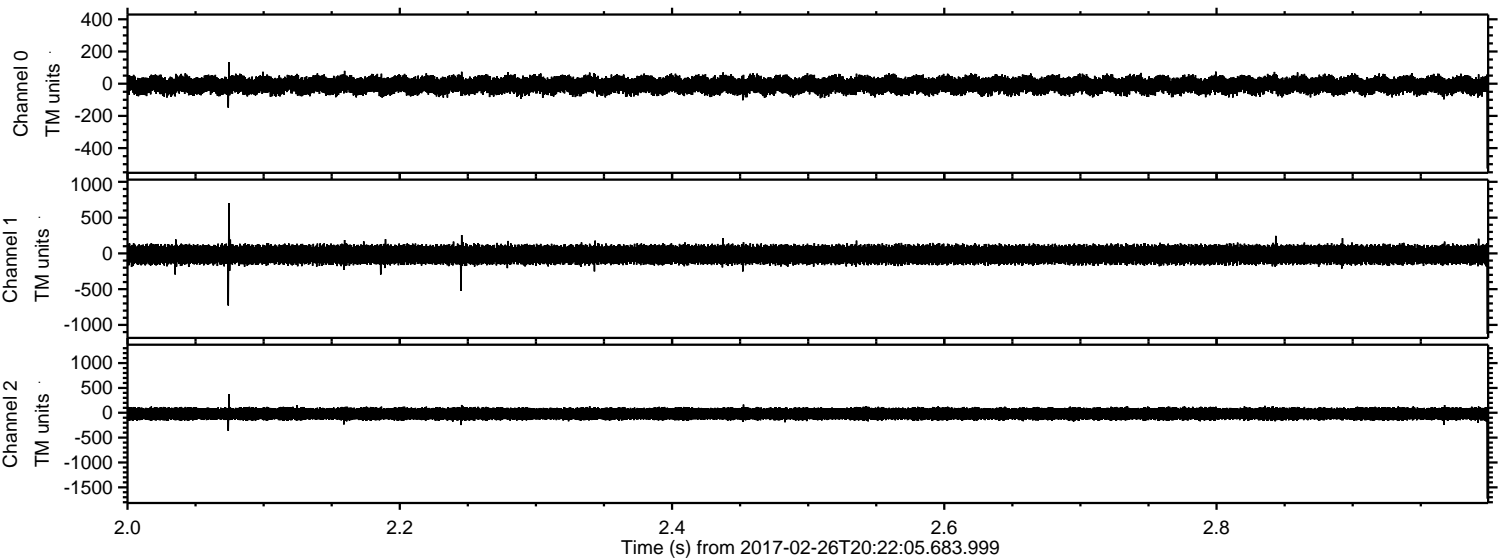
ELMAVAN 3D WAVEFORMS (Measured data sampled at 50 kHz) 51000 packets of 144 samples from 2017-02-26T20:22:05.683.999. Part 22/147

Processed Sun Feb 26 21:29:50 2017 by ELM ver.2012-10-06 from 001__elm20170226_202204__dat00.bin



ELMAVAN 3D WAVEFORMS (Measured data sampled at 50 kHz) 51000 packets of 144 samples from 2017-02-26T20:22:05.683.999. Part 3/147

Processed Sun Feb 26 21:29:51 2017 by ELM ver.2012-10-06 from 001__elm20170226_202204__dat00.bin



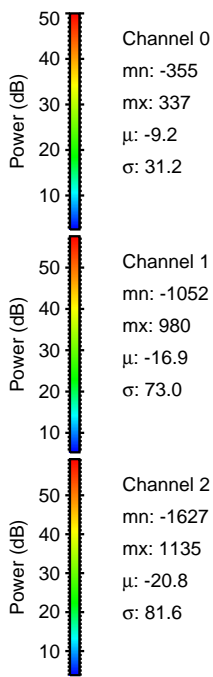
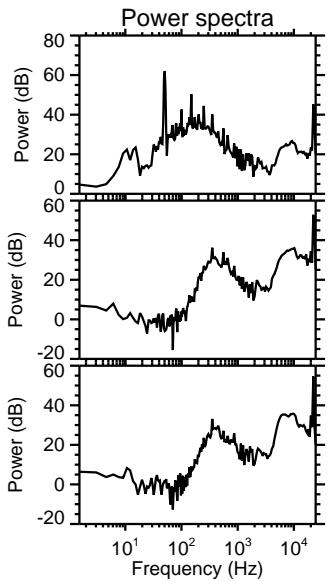
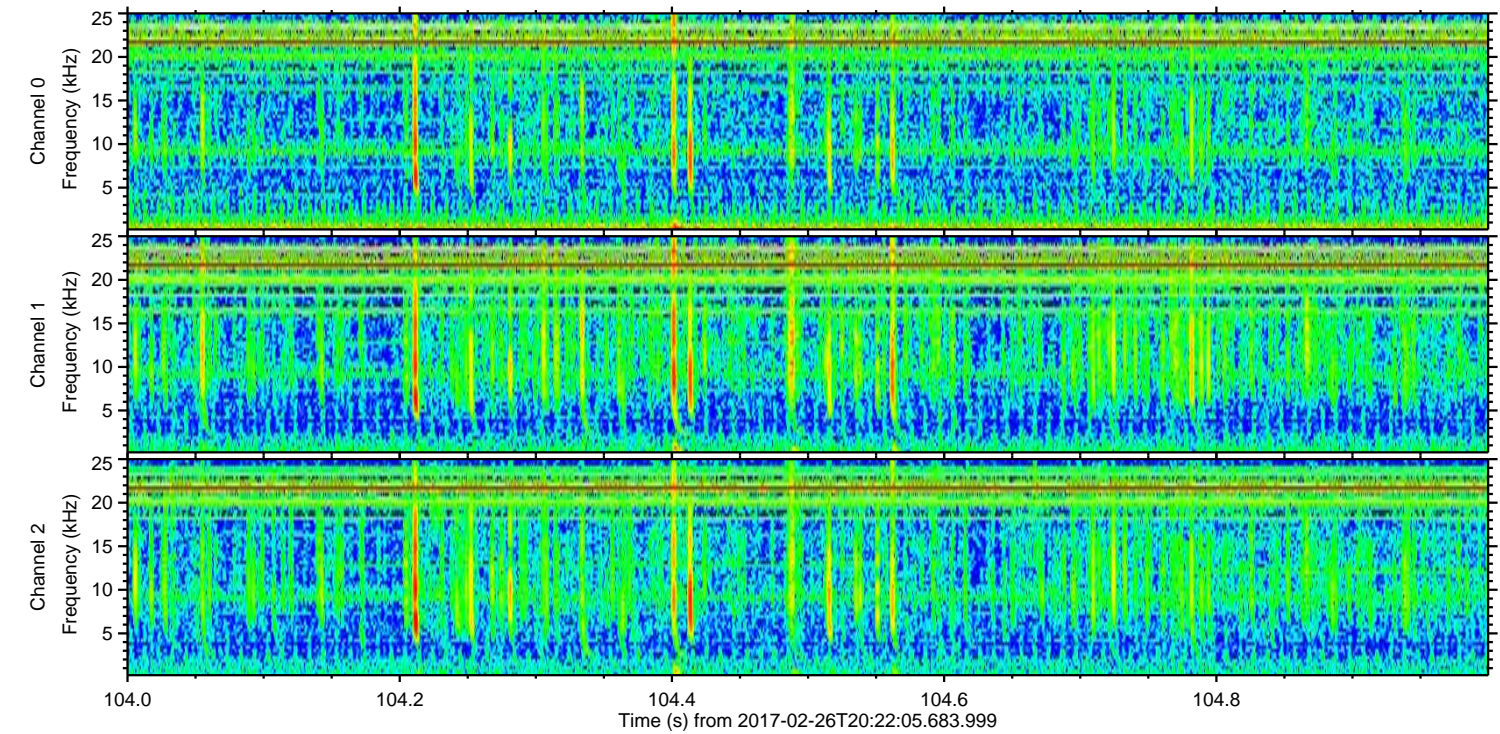
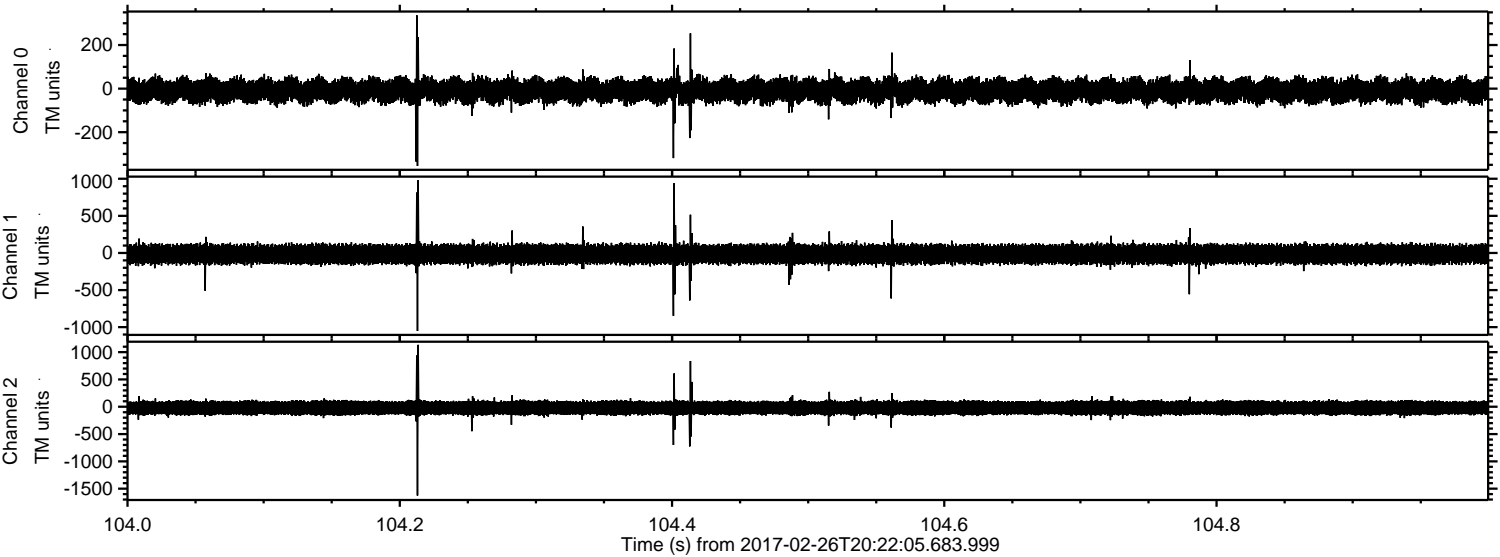
Channel 0
mn: -527
mx: 409
 μ : -9.1
 σ : 30.7

Channel 1
mn: -1125
mx: 982
 μ : -17.0
 σ : 73.4

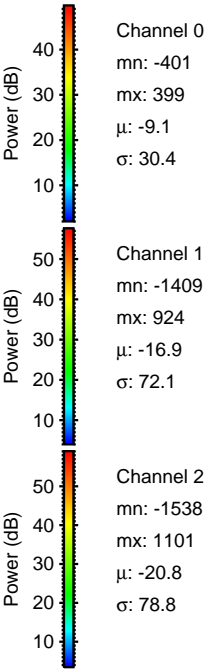
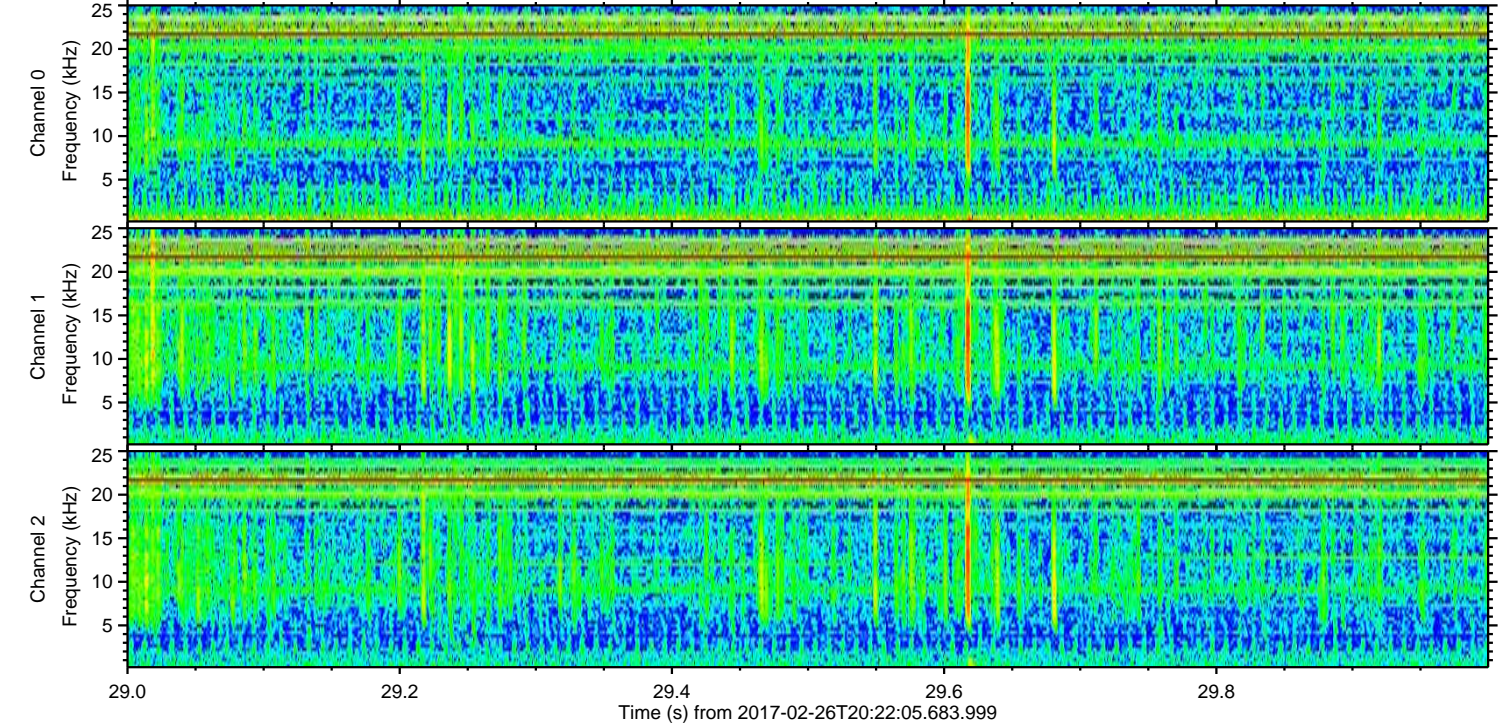
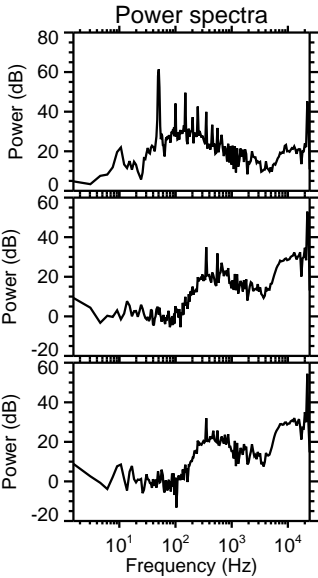
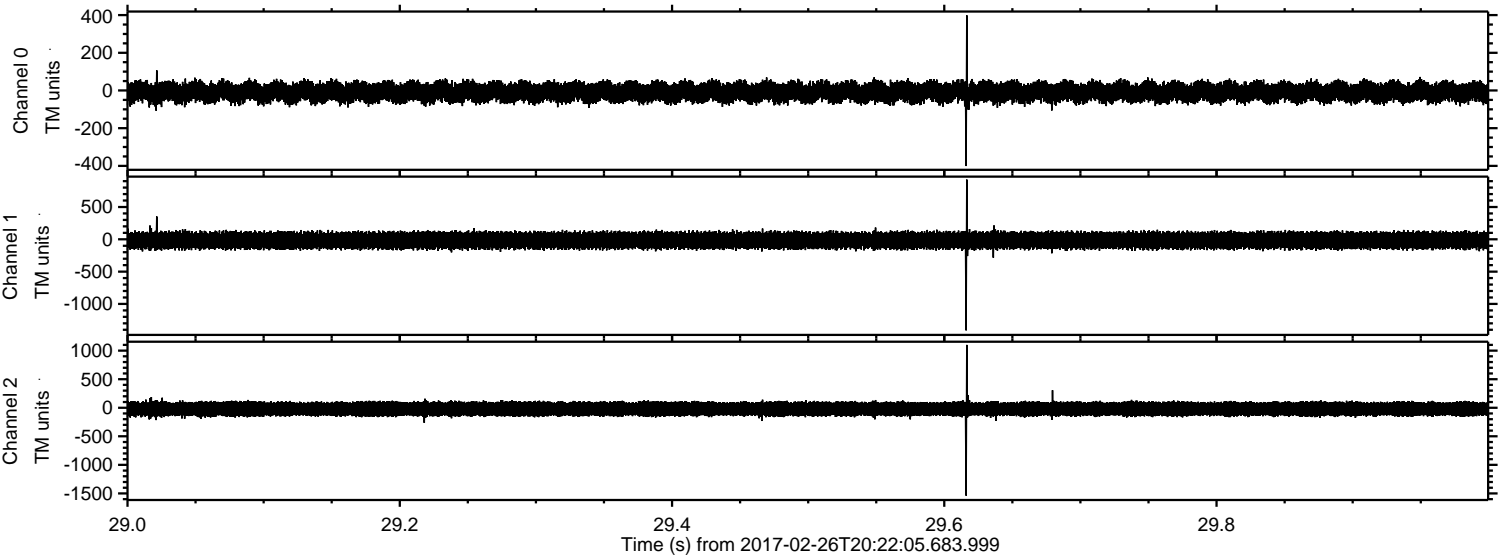
Channel 2
mn: -1729
mx: 1304
 μ : -20.7
 σ : 79.2

ELMAVAN 3D WAVEFORMS (Measured data sampled at 50 kHz) 51000 packets of 144 samples from 2017-02-26T20:22:05.683.999. Part 105/147

Processed Sun Feb 26 21:29:53 2017 by ELM ver.2012-10-06 from 001__elm20170226_202204__dat00.bin

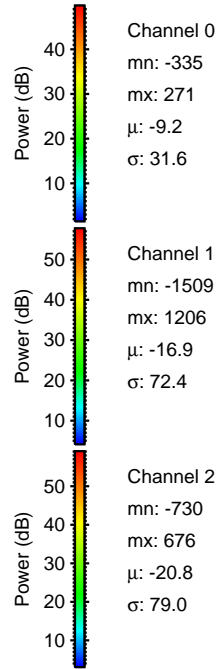
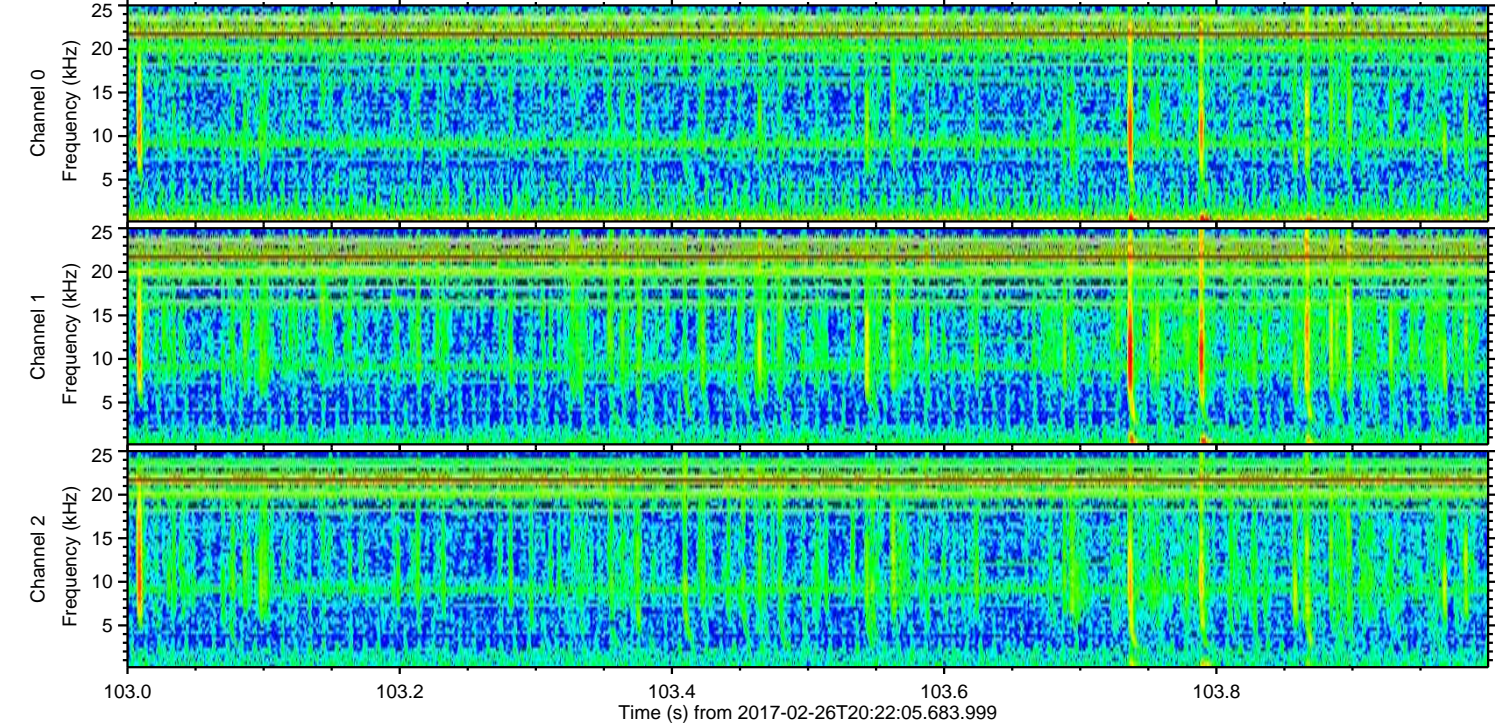
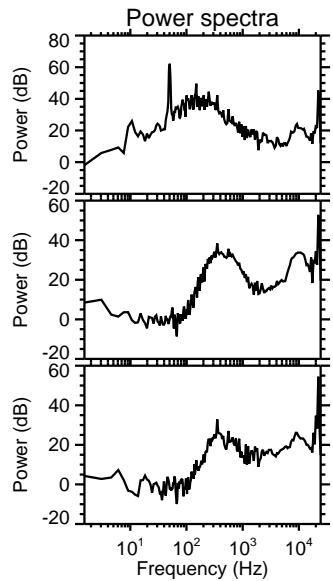
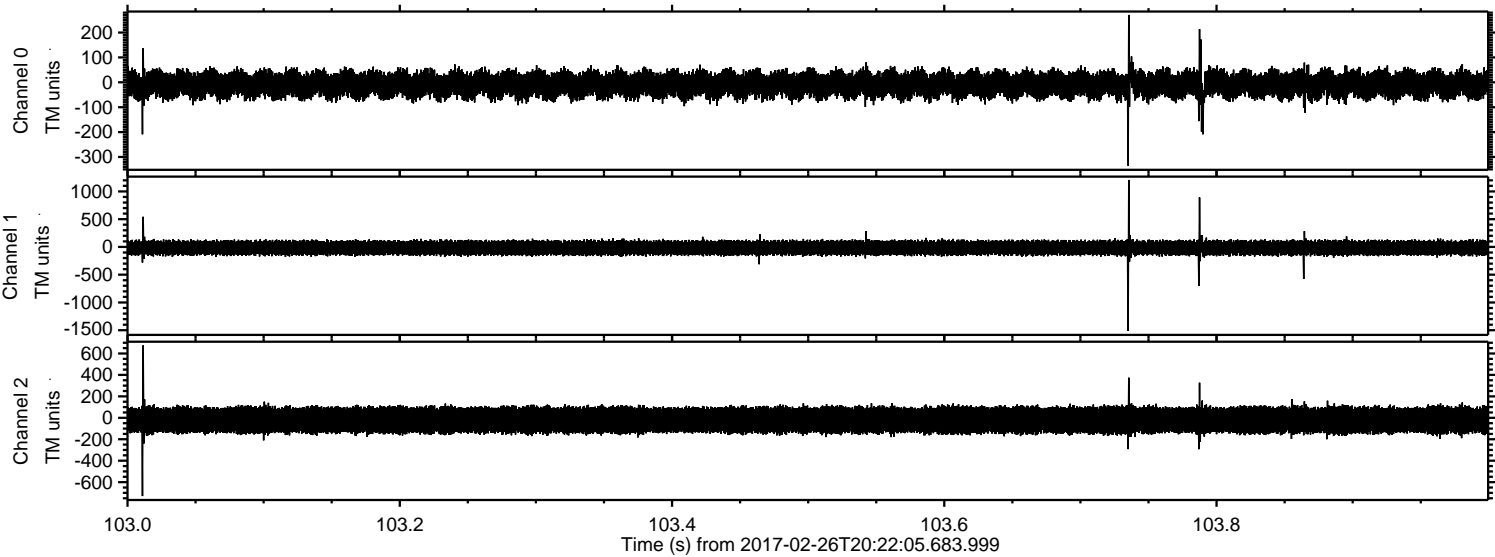


Processed Sun Feb 26 21:29:54 2017 by ELM ver.2012-10-06 from 001__elm20170226_202204__dat00.bin



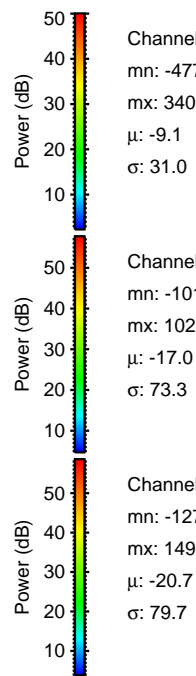
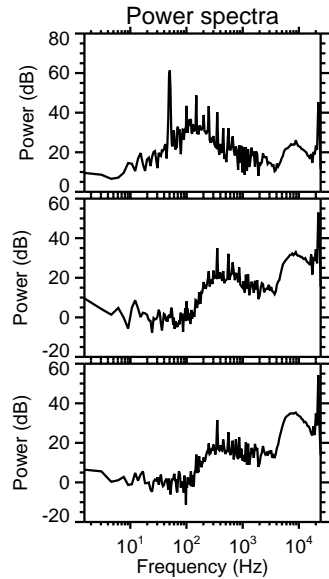
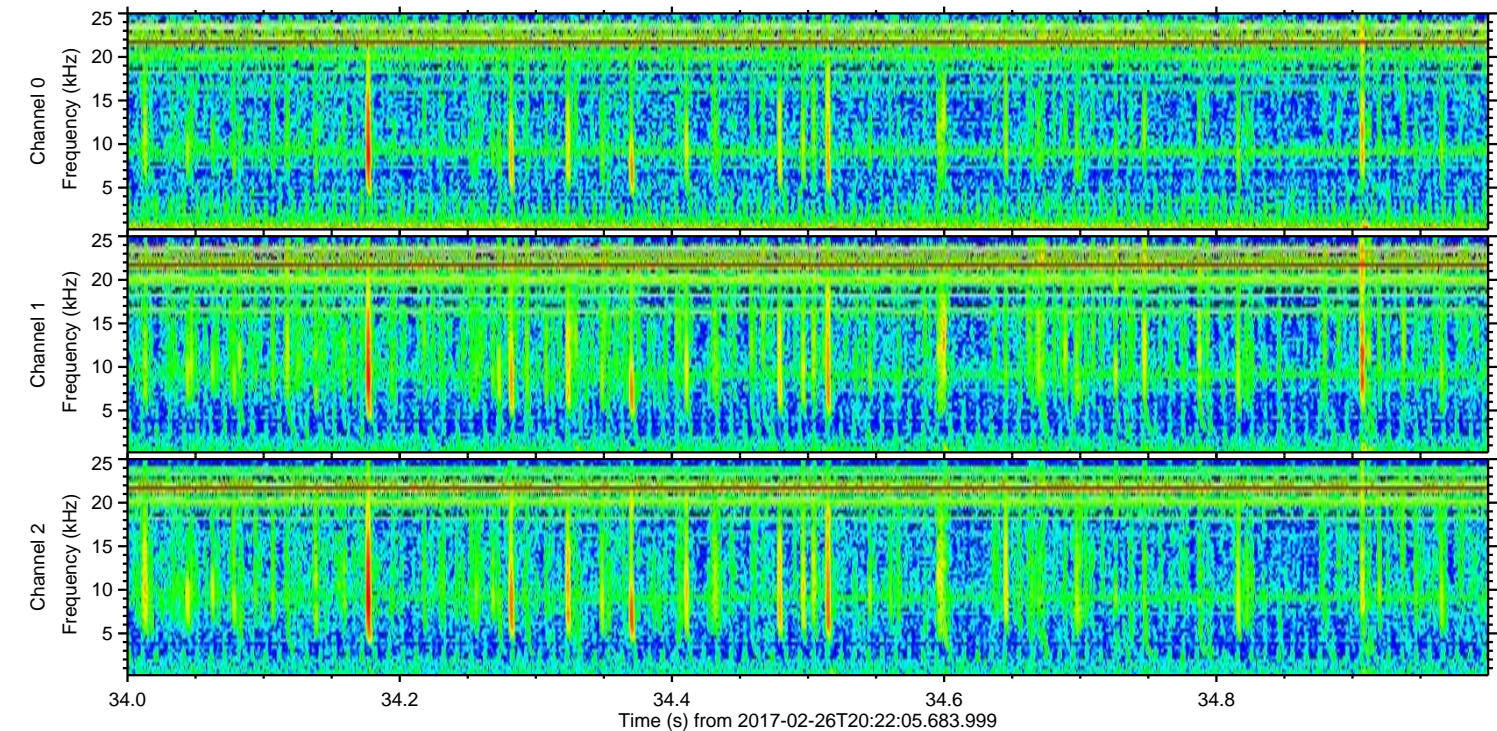
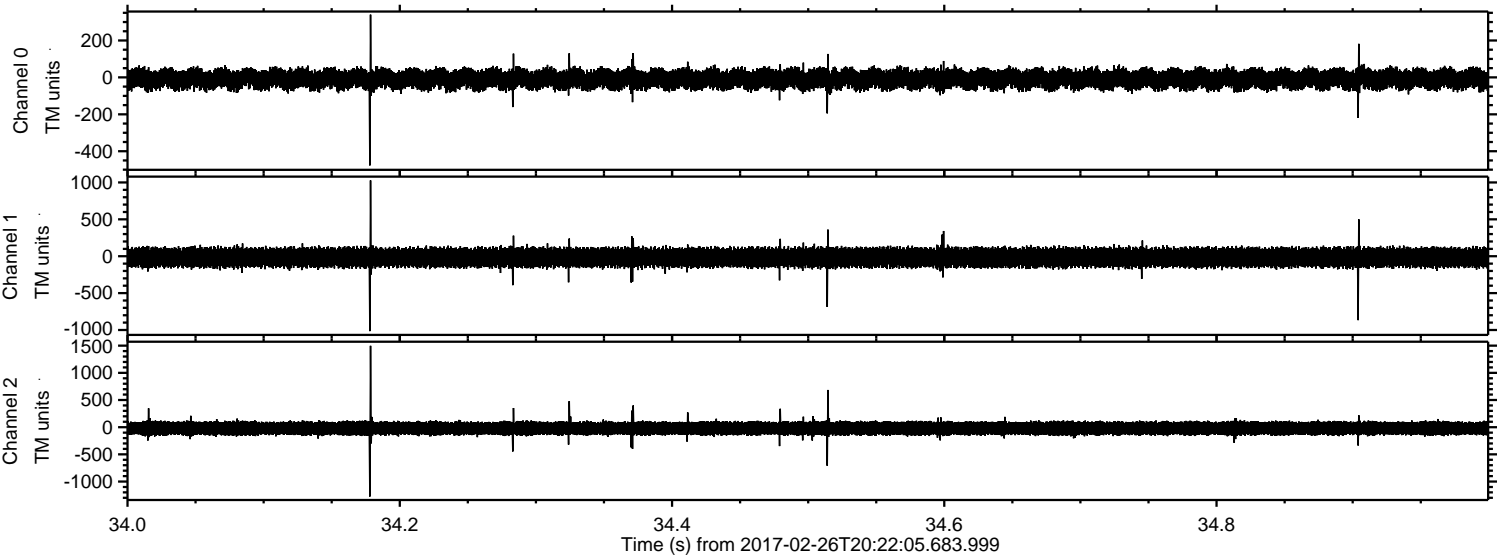
ELMAVAN 3D WAVEFORMS (Measured data sampled at 50 kHz) 51000 packets of 144 samples from 2017-02-26T20:22:05.683.999. Part 104/147

Processed Sun Feb 26 21:29:55 2017 by ELM ver.2012-10-06 from 001__elm20170226_202204__dat00.bin



ELMAVAN 3D WAVEFORMS (Measured data sampled at 50 kHz) 51000 packets of 144 samples from 2017-02-26T20:22:05.683.999. Part 35/147

Processed Sun Feb 26 21:29:56 2017 by ELM ver.2012-10-06 from 001__elm20170226_202204__dat00.bin

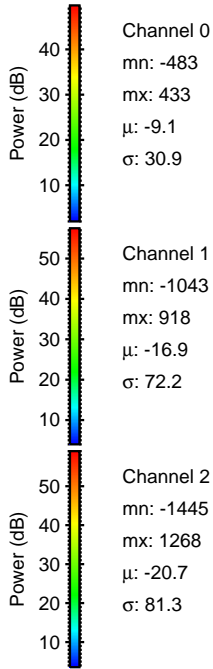
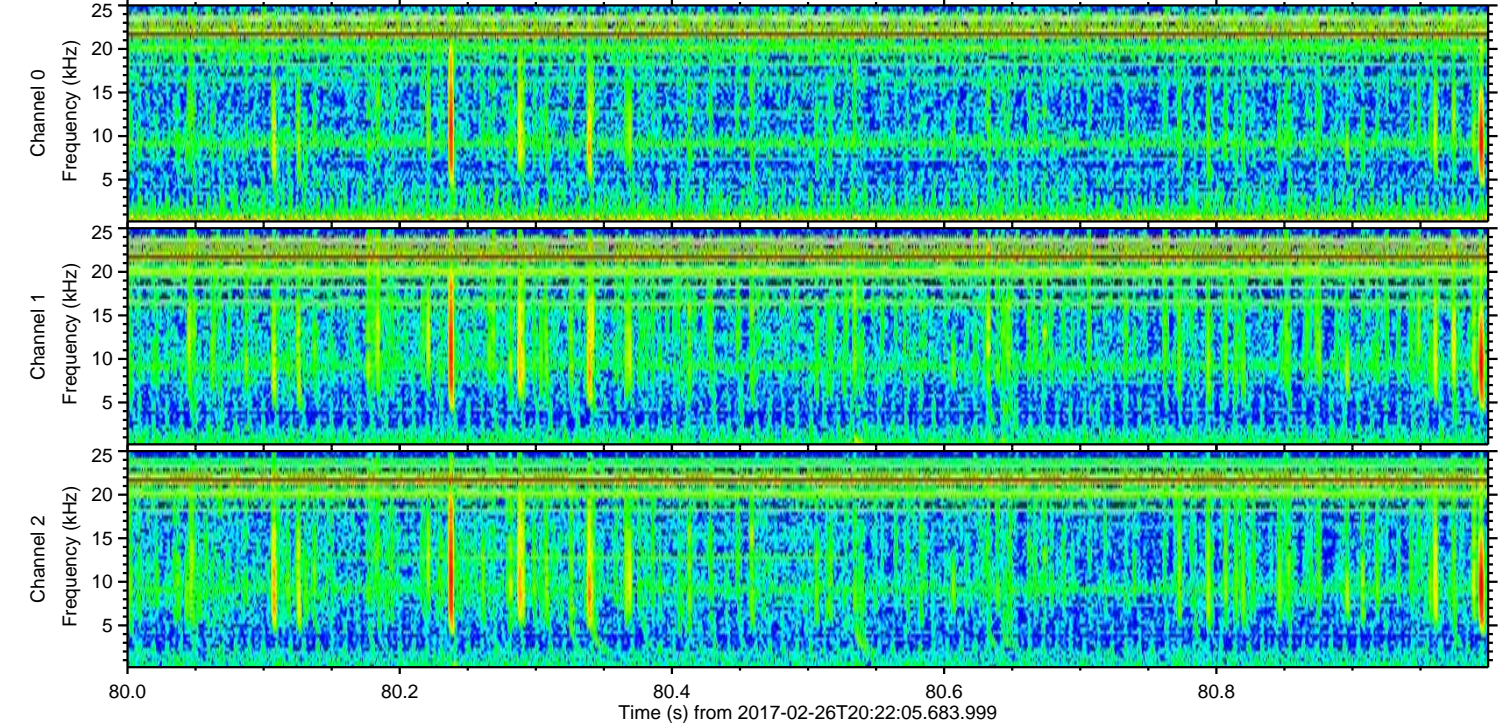
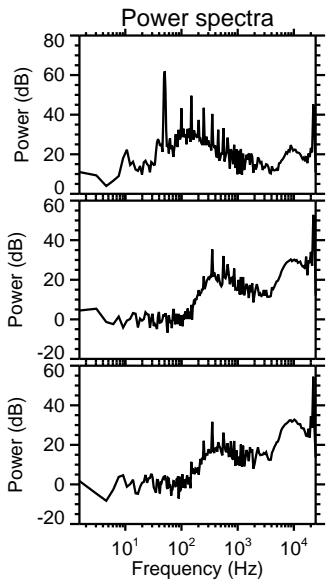
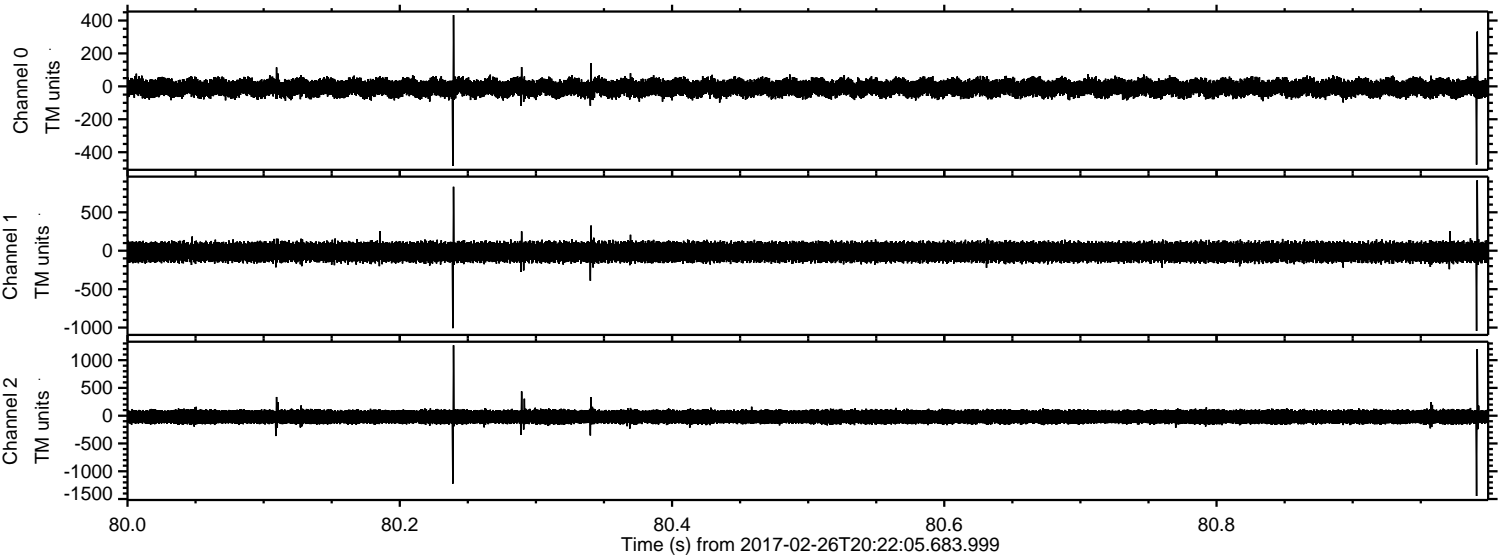


Channel 0
mn: -477
mx: 340
 μ : -9.1
 σ : 31.0

Channel 1
mn: -1016
mx: 1028
 μ : -17.0
 σ : 73.3

Channel 2
mn: -1276
mx: 1498
 μ : -20.7
 σ : 79.7

Processed Sun Feb 26 21:29:57 2017 by ELM ver.2012-10-06 from 001__elm20170226_202204__dat00.bin



ELMAVAN 3D WAVEFORMS (Measured data sampled at 50 kHz) 51000 packets of 144 samples from 2017-02-26T20:22:05.683.999. Part 145/147

Processed Sun Feb 26 21:29:58 2017 by ELM ver.2012-10-06 from 001__elm20170226_202204__dat00.bin

