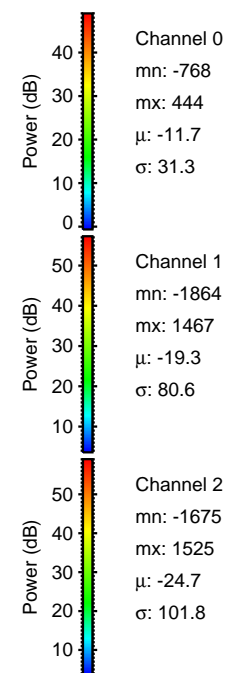
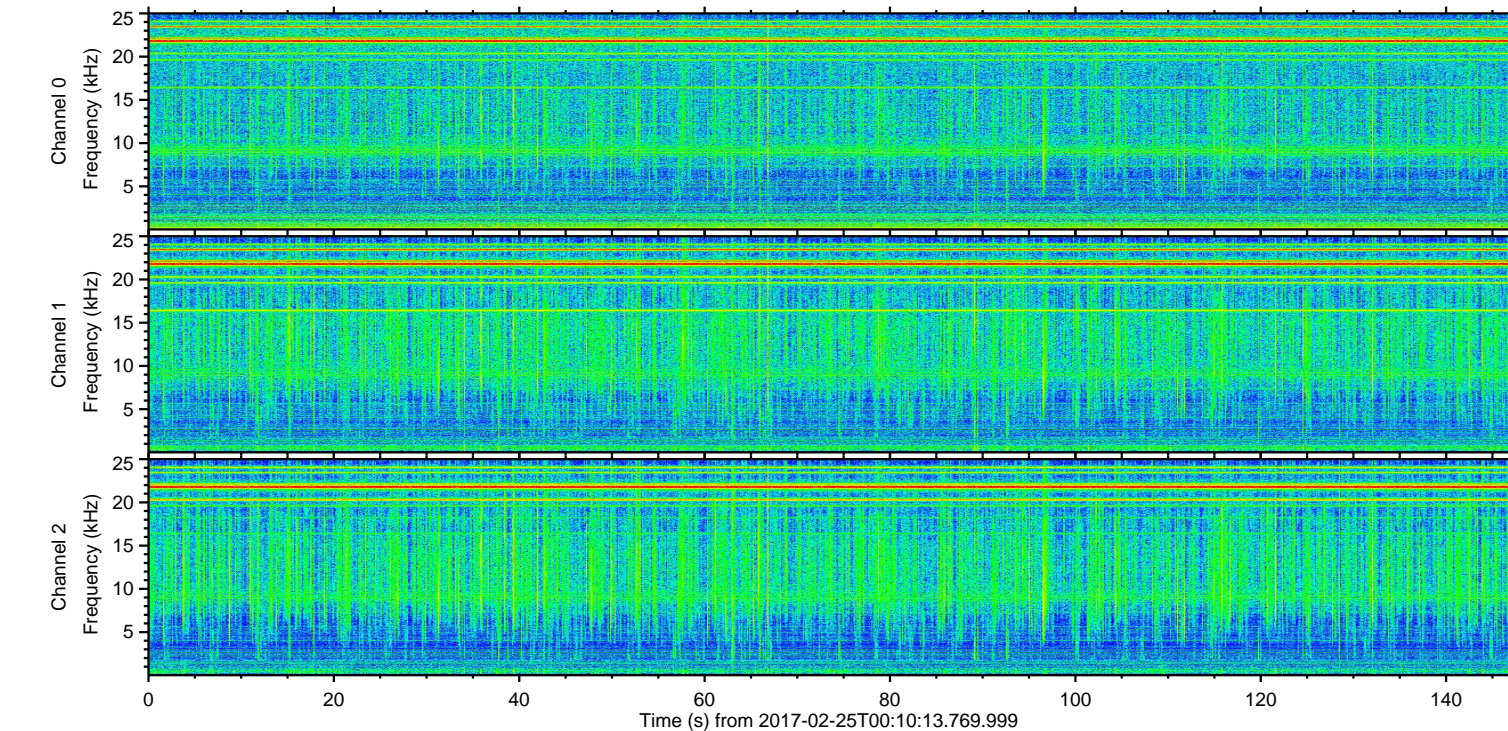
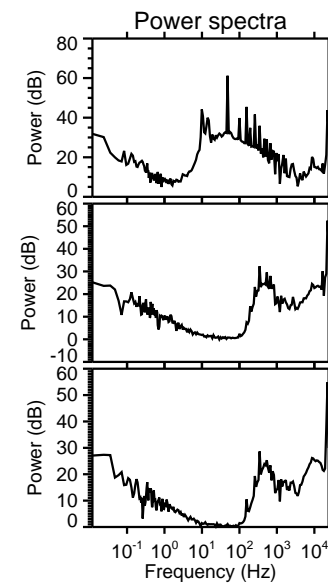
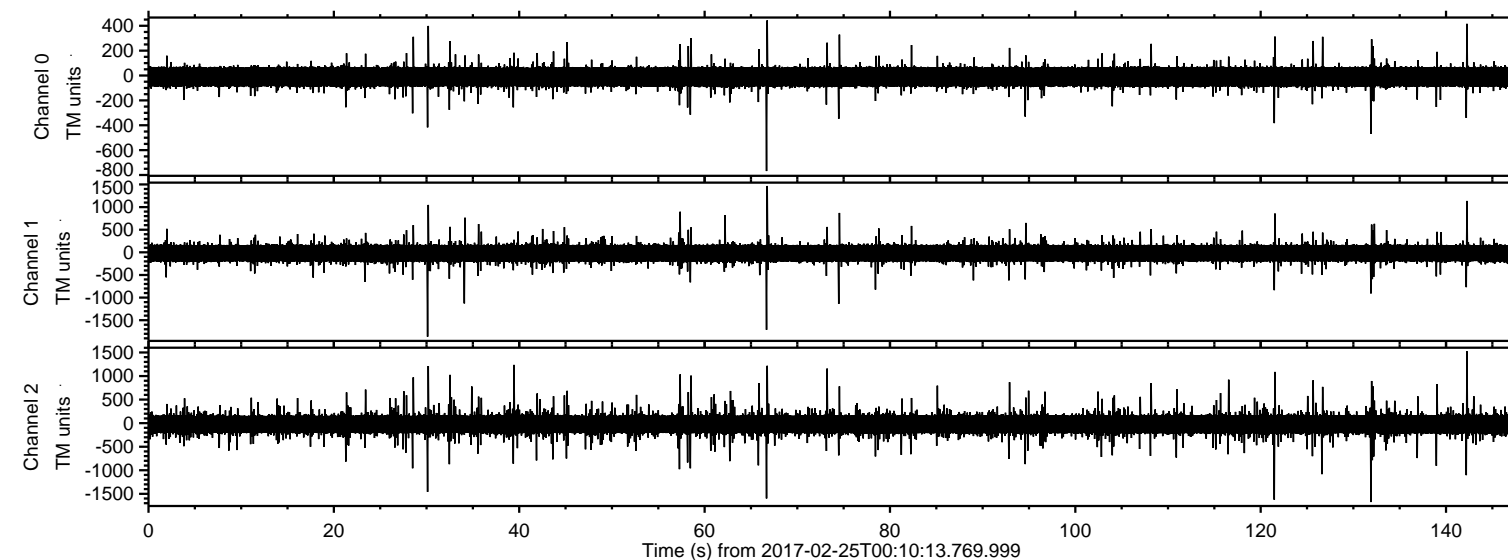
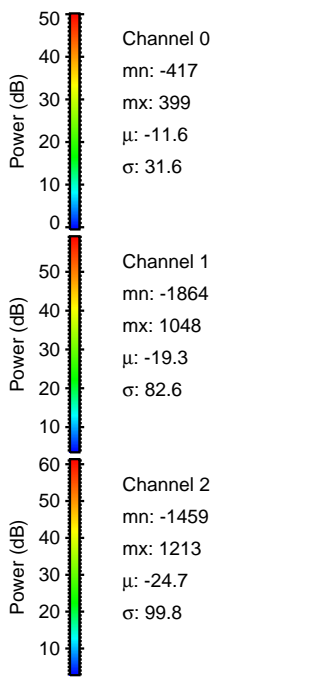
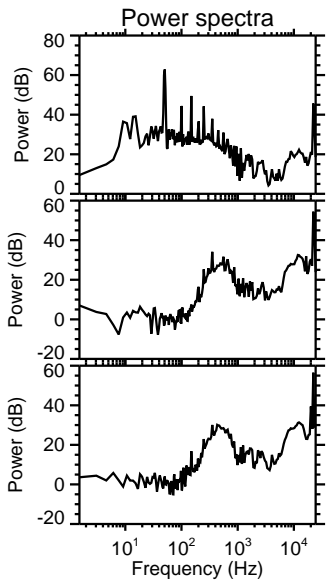
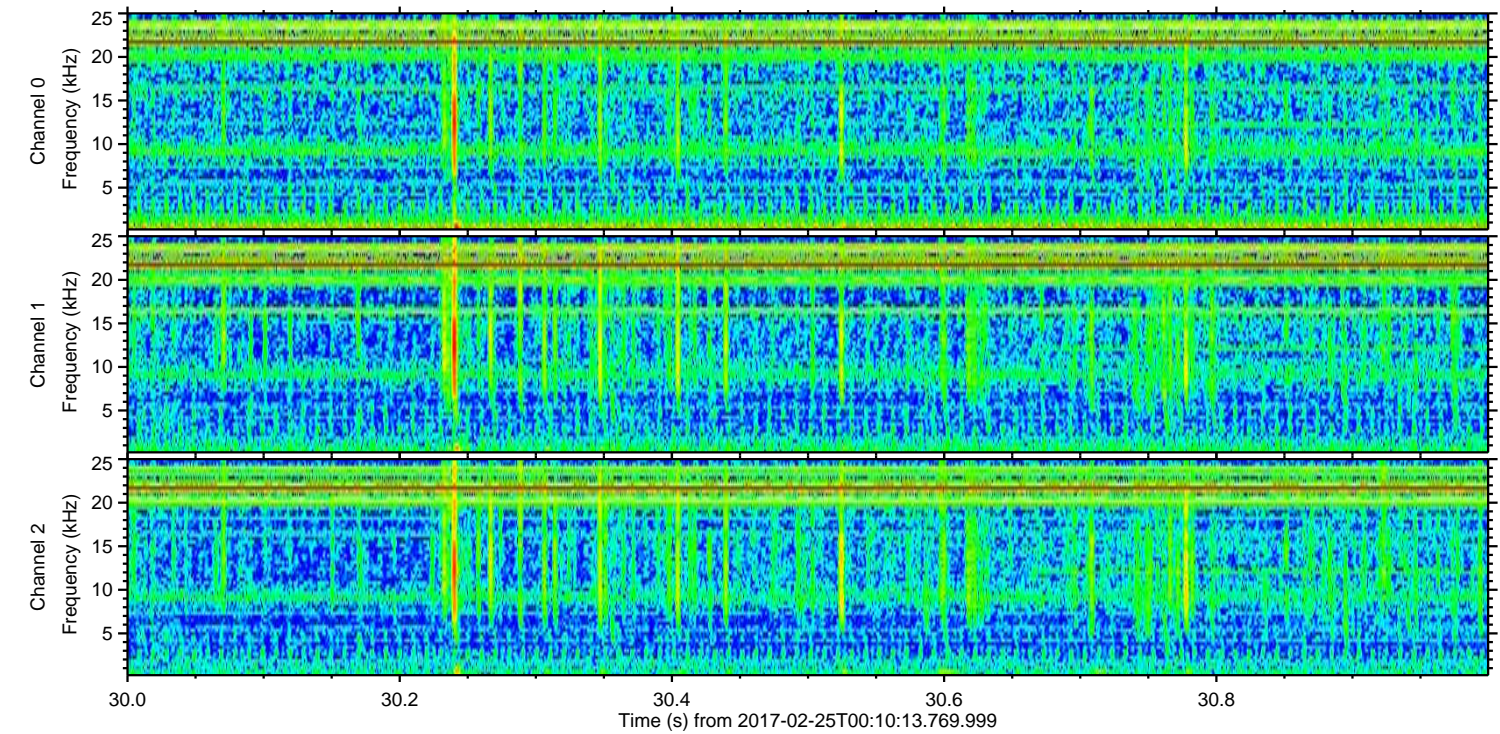
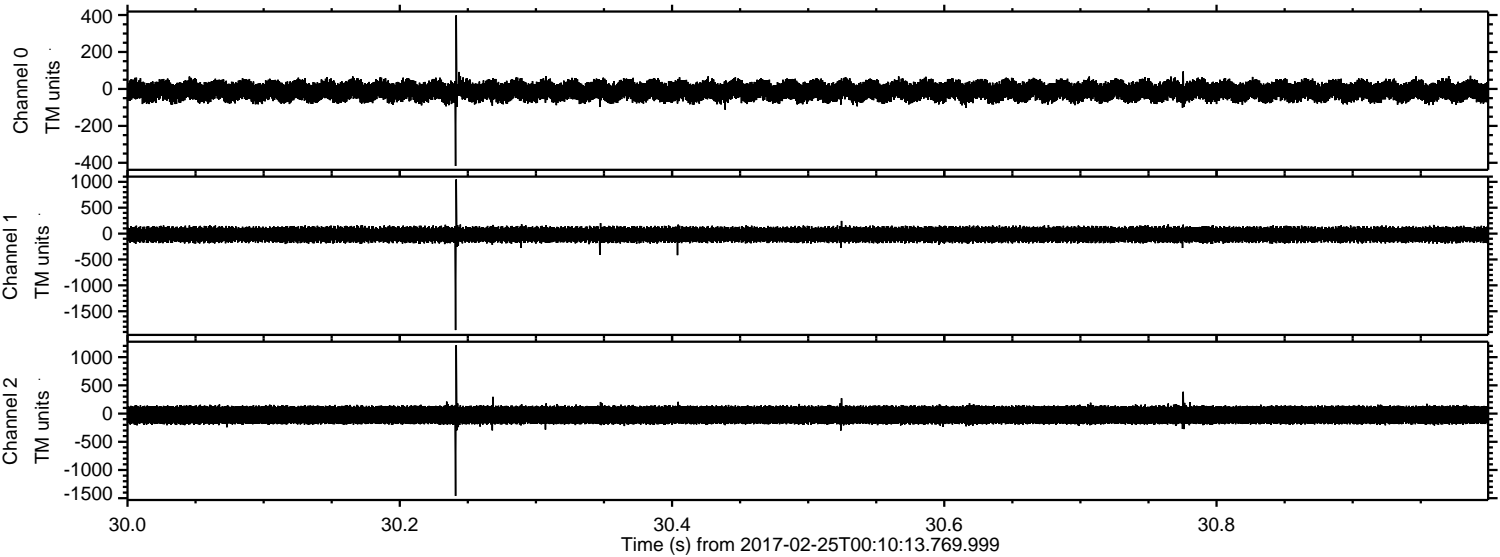


ELMAVAN 3D WAVEFORMS (Measured data sampled at 50 kHz) 51000 packets of 144 samples from 2017-02-25T00:10:13.769.999.

Processed Sat Feb 25 01:18:09 2017 by ELM ver.2012-10-06 from 001__elm20170225_001012__dat00.bin

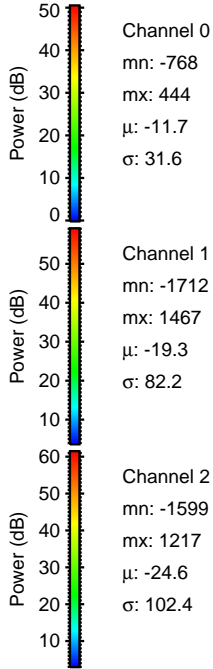
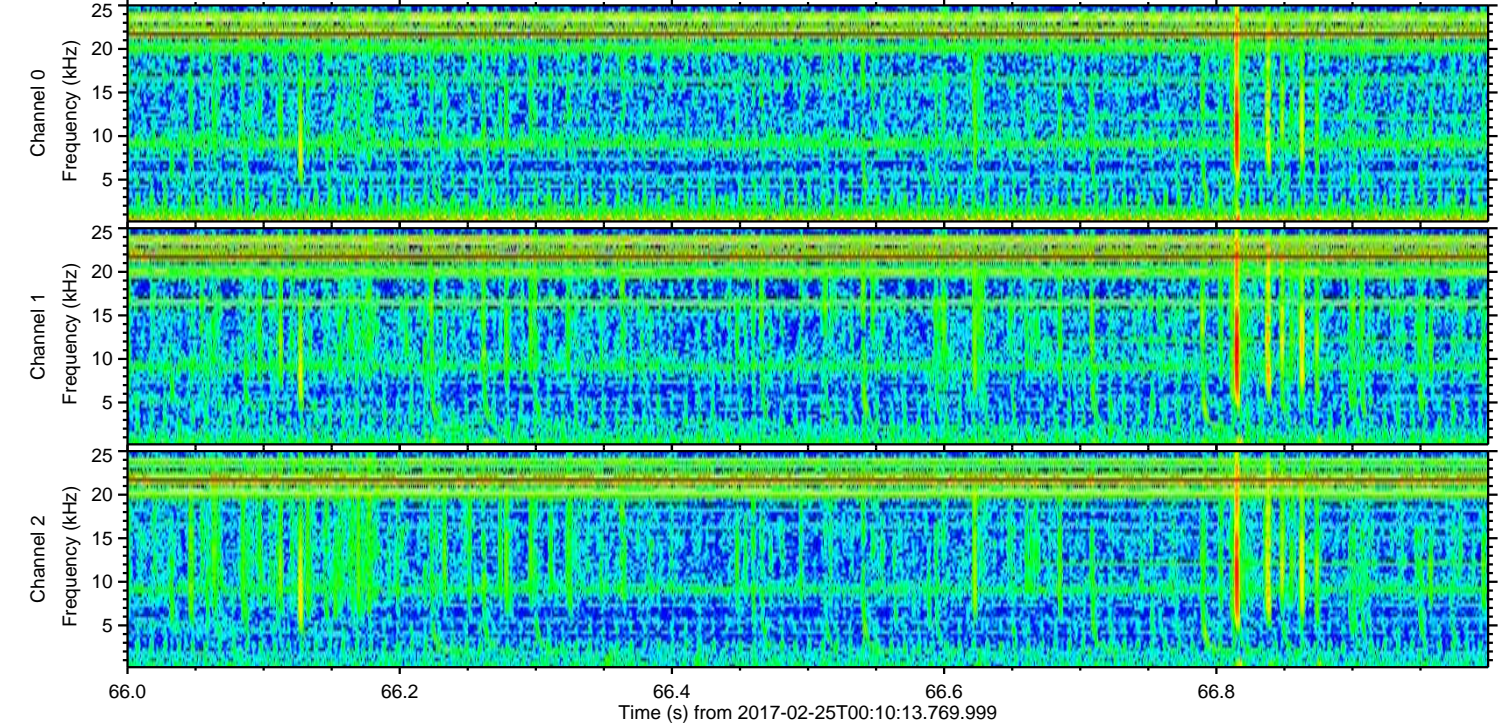
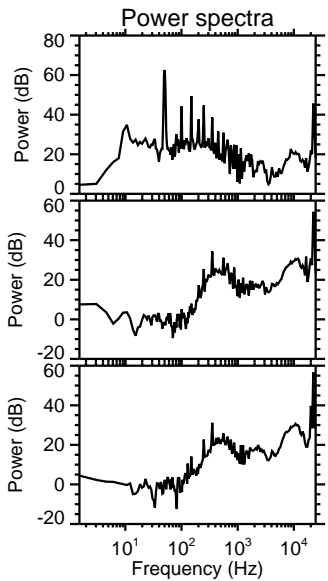
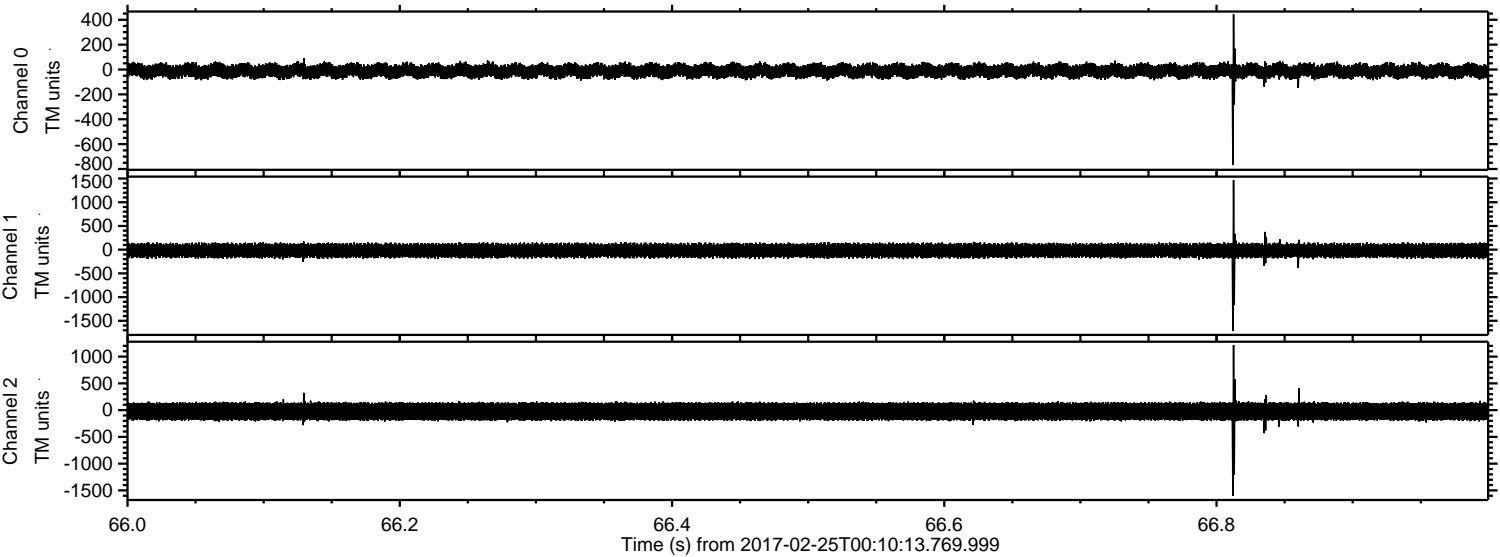


Processed Sat Feb 25 01:18:20 2017 by ELM ver.2012-10-06 from 001__elm20170225_001012__dat00.bin



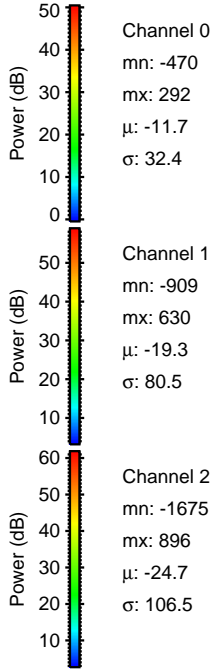
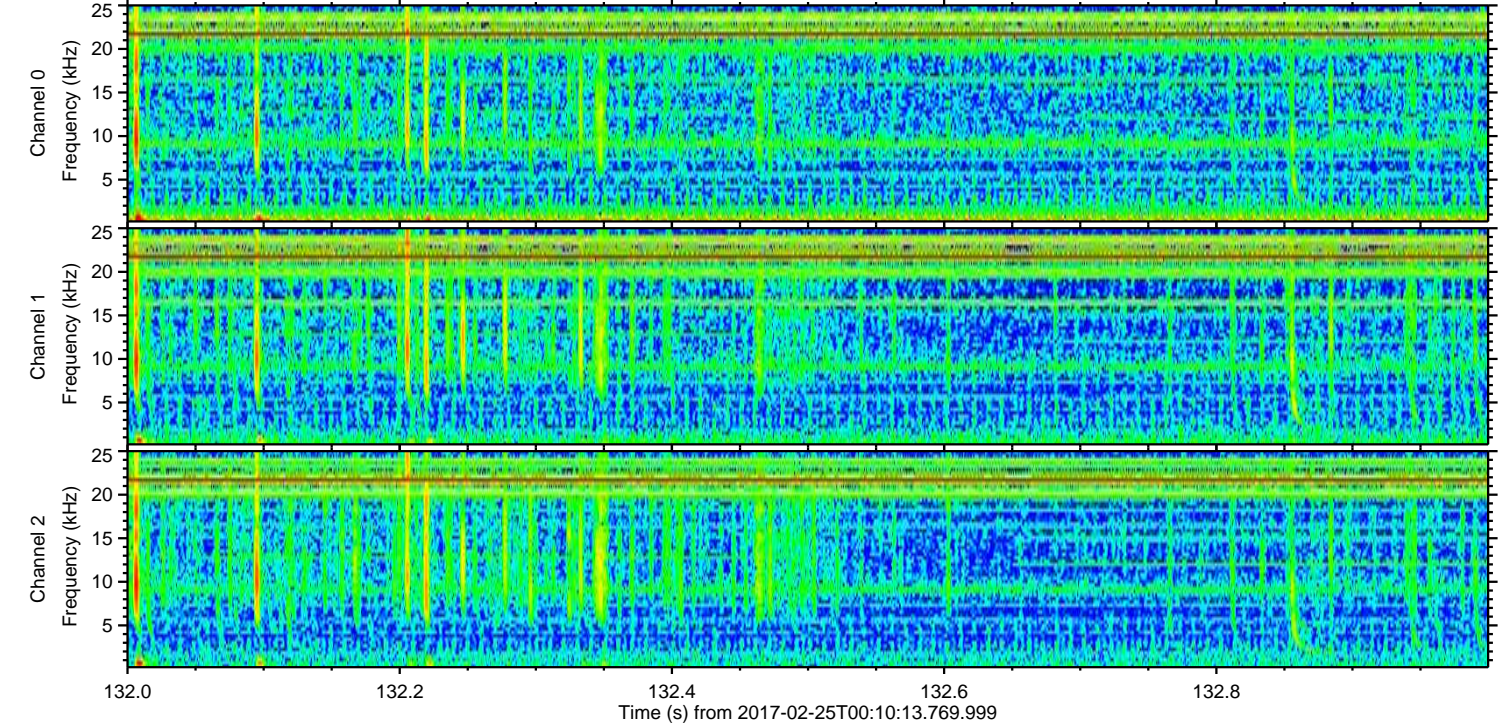
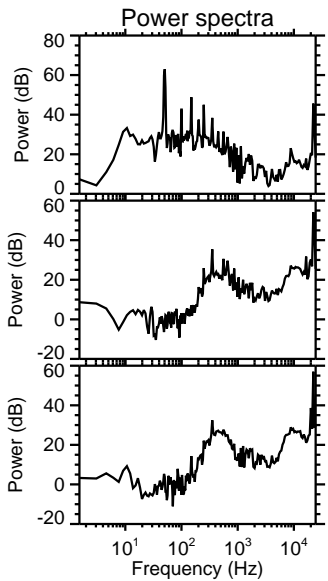
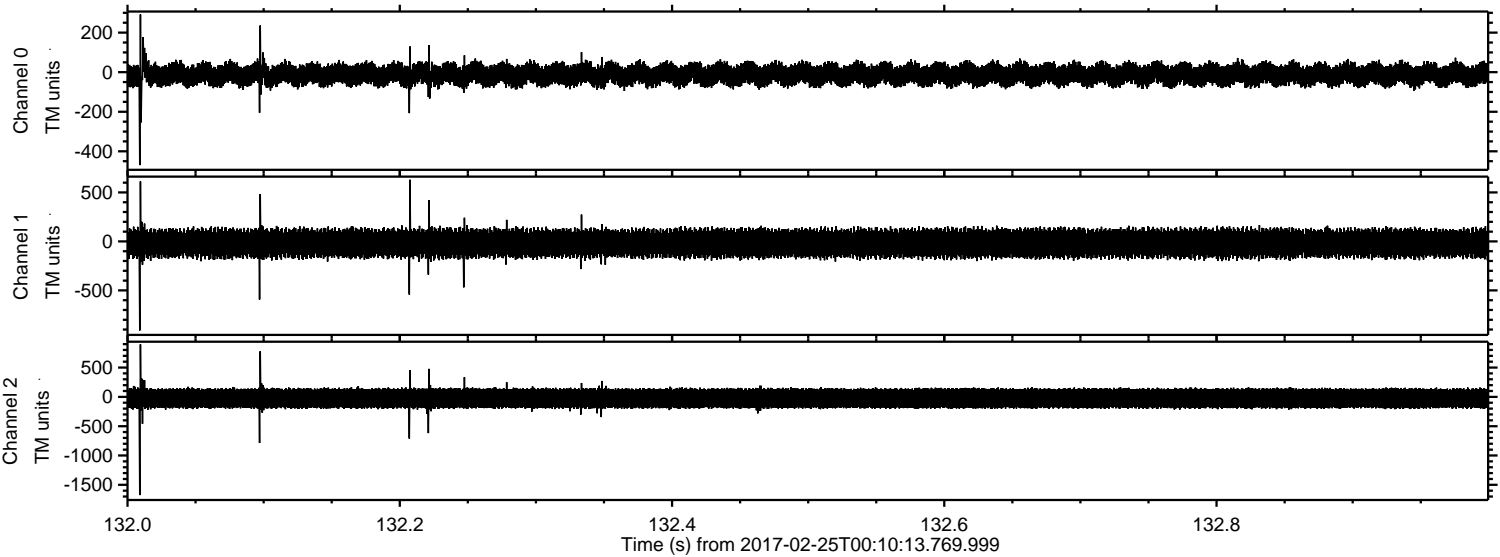
ELMAVAN 3D WAVEFORMS (Measured data sampled at 50 kHz) 51000 packets of 144 samples from 2017-02-25T00:10:13.769.999. Part 67/147

Processed Sat Feb 25 01:18:21 2017 by ELM ver.2012-10-06 from 001__elm20170225_001012__dat00.bin



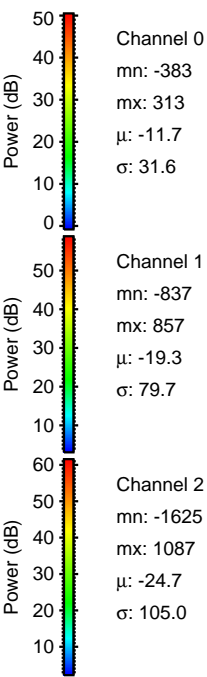
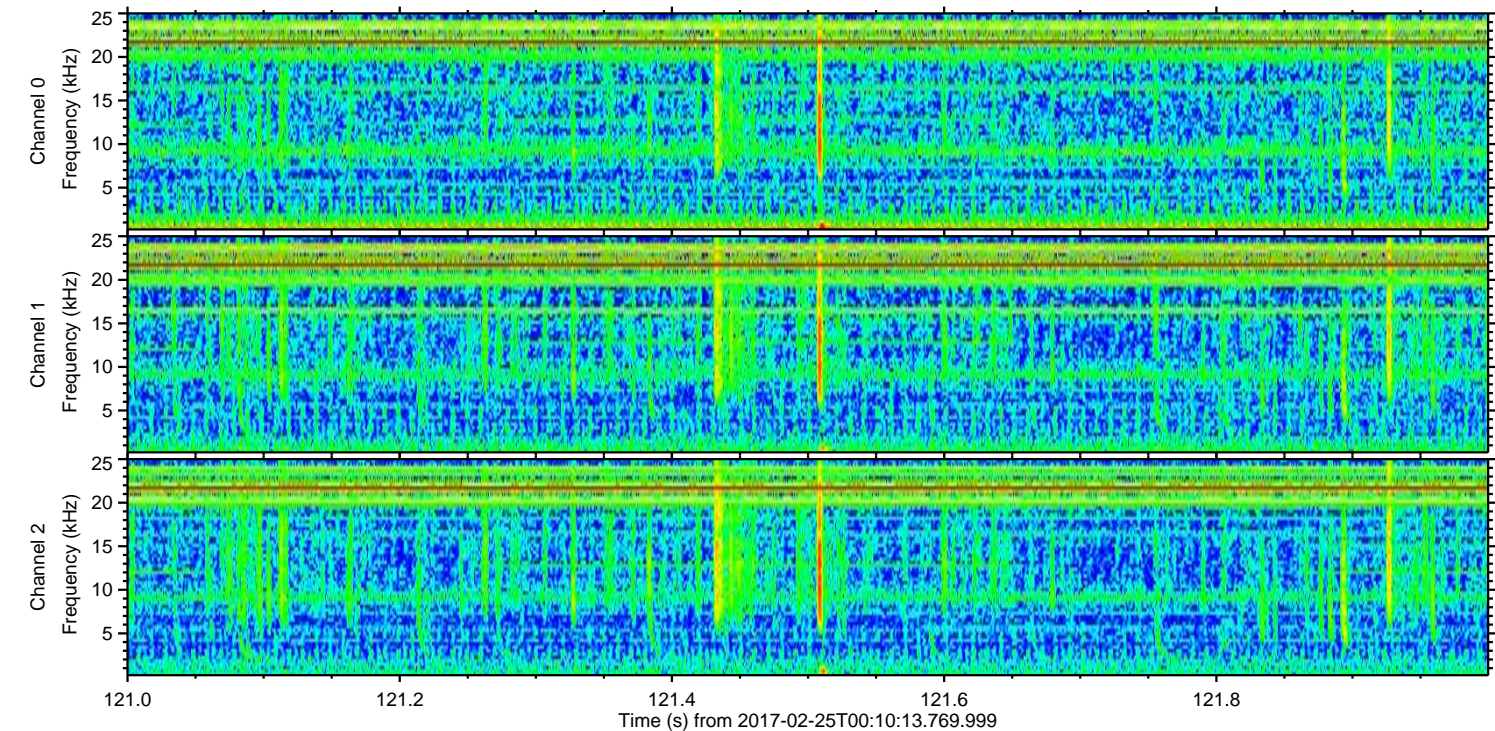
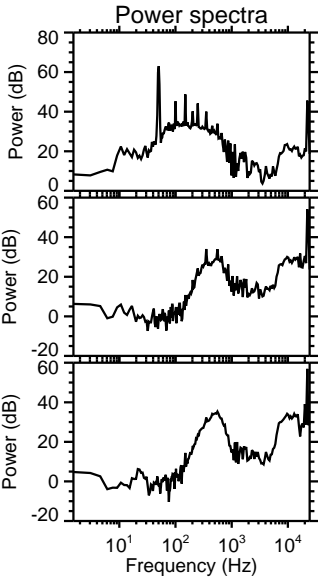
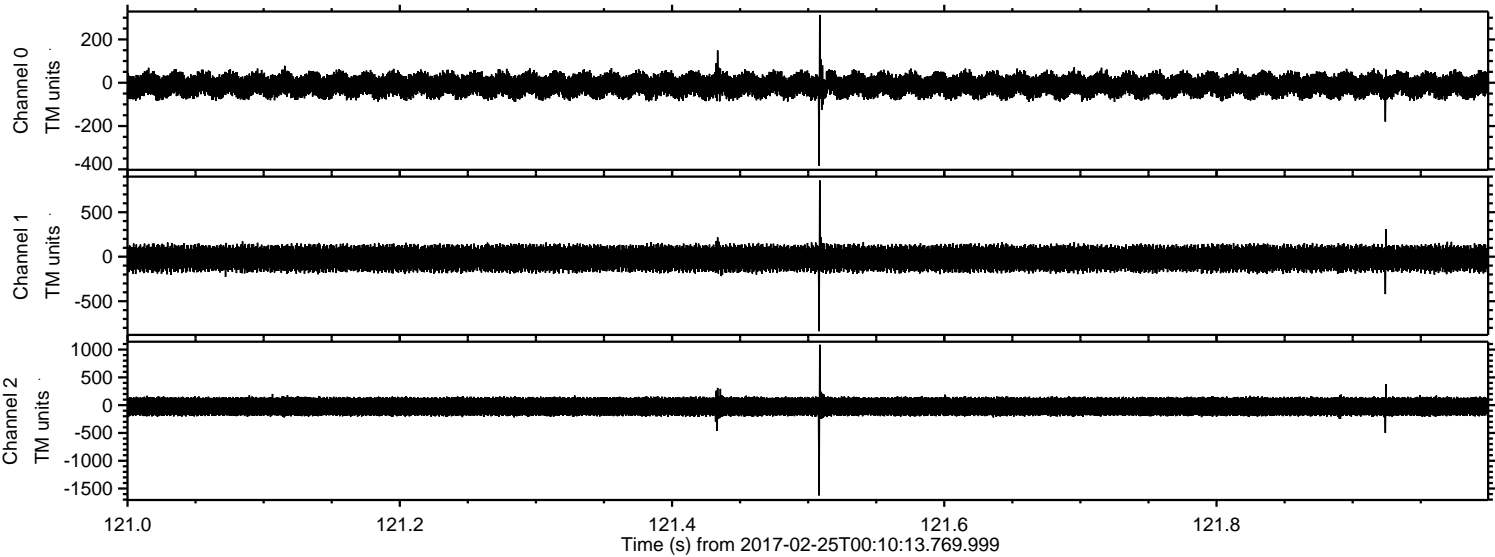
ELMAVAN 3D WAVEFORMS (Measured data sampled at 50 kHz) 51000 packets of 144 samples from 2017-02-25T00:10:13.769.999. Part 133/147

Processed Sat Feb 25 01:18:22 2017 by ELM ver.2012-10-06 from 001__elm20170225_001012__dat00.bin



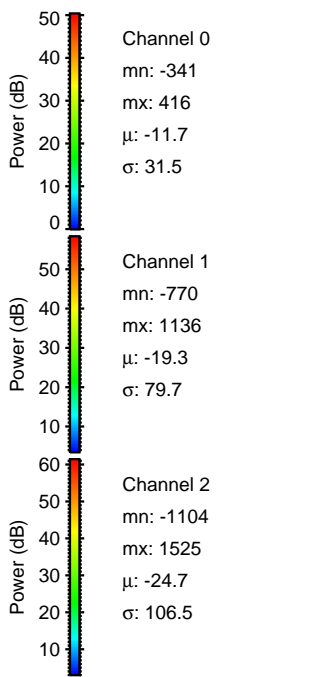
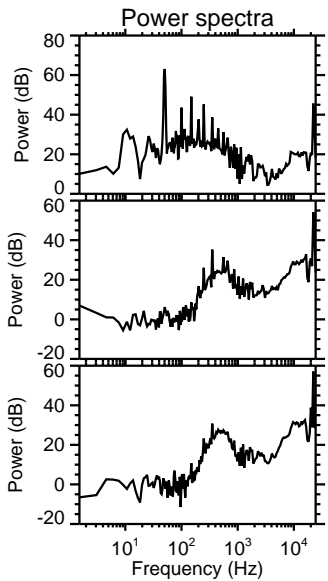
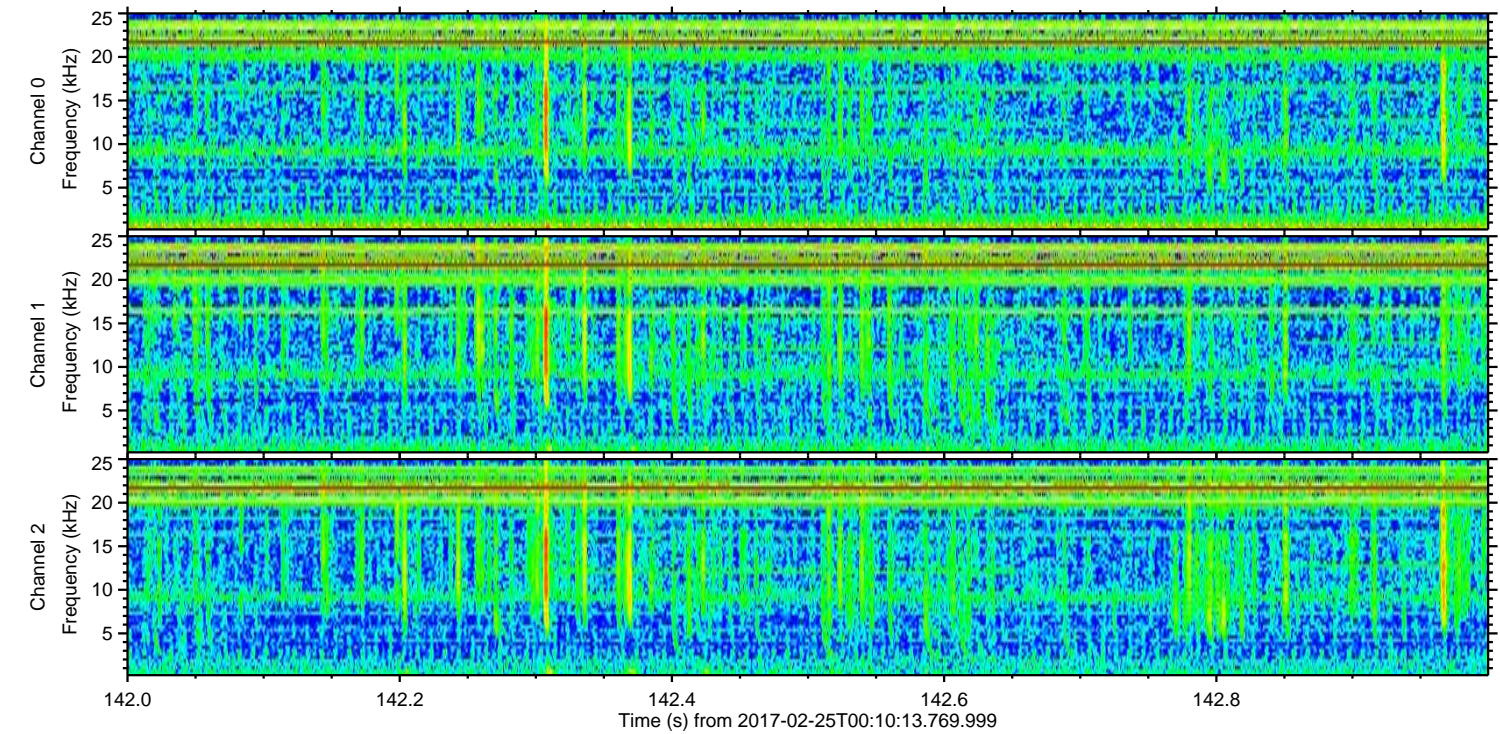
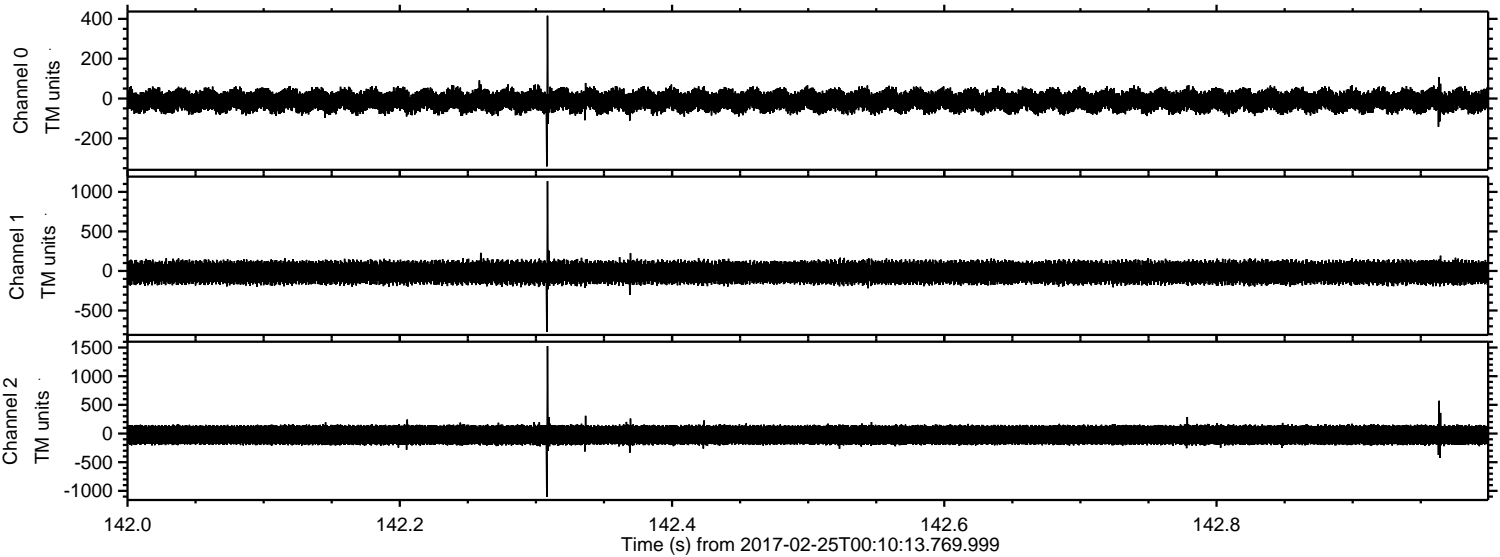
ELMAVAN 3D WAVEFORMS (Measured data sampled at 50 kHz) 51000 packets of 144 samples from 2017-02-25T00:10:13.769.999. Part 122/147

Processed Sat Feb 25 01:18:23 2017 by ELM ver.2012-10-06 from 001__elm20170225_001012__dat00.bin



ELMAVAN 3D WAVEFORMS (Measured data sampled at 50 kHz) 51000 packets of 144 samples from 2017-02-25T00:10:13.769.999. Part 143/147

Processed Sat Feb 25 01:18:24 2017 by ELM ver.2012-10-06 from 001__elm20170225_001012__dat00.bin



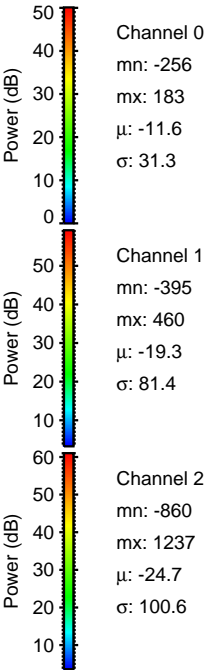
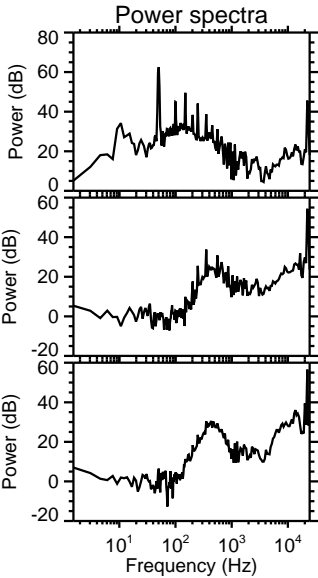
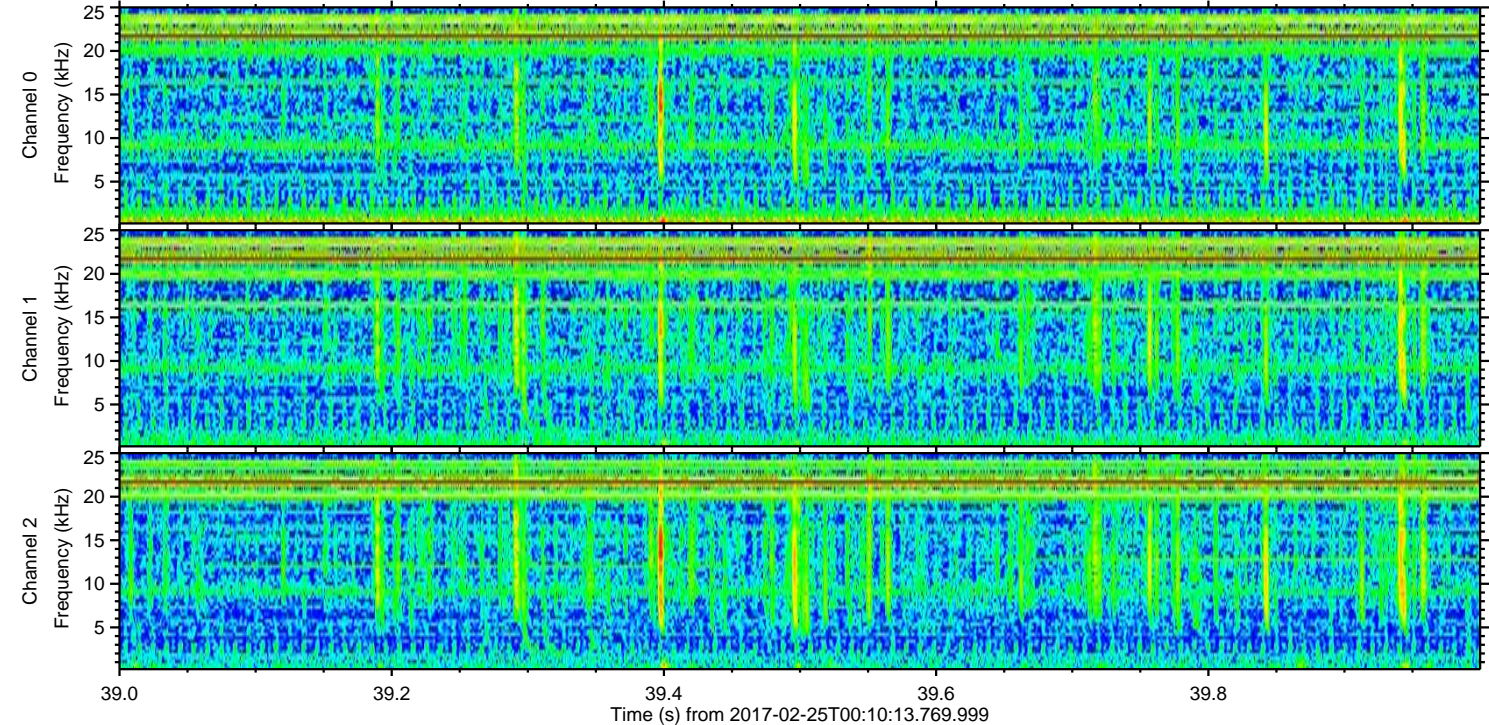
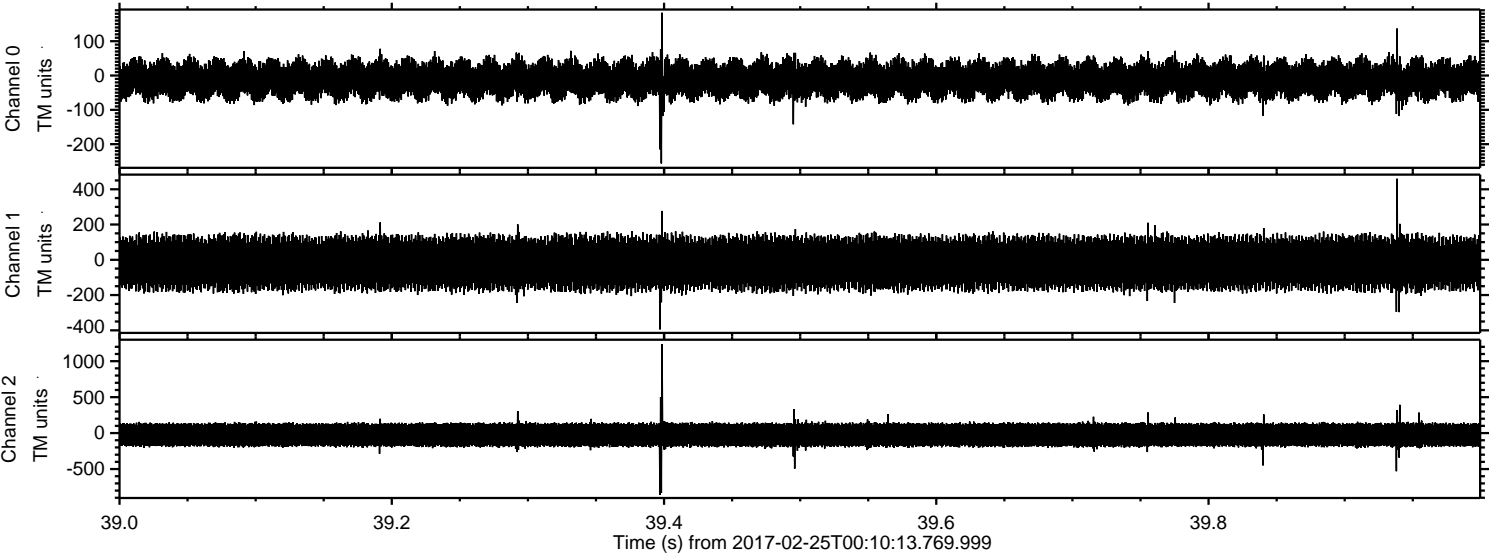
Channel 0
mn: -341
mx: 416
 μ : -11.7
 σ : 31.5

Channel 1
mn: -770
mx: 1136
 μ : -19.3
 σ : 79.7

Channel 2
mn: -1104
mx: 1525
 μ : -24.7
 σ : 106.5

ELMAVAN 3D WAVEFORMS (Measured data sampled at 50 kHz) 51000 packets of 144 samples from 2017-02-25T00:10:13.769.999. Part 40/147

Processed Sat Feb 25 01:18:25 2017 by ELM ver.2012-10-06 from 001__elm20170225_001012__dat00.bin

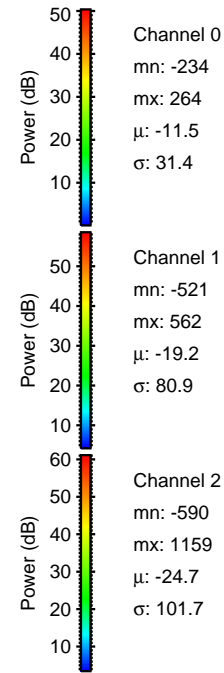
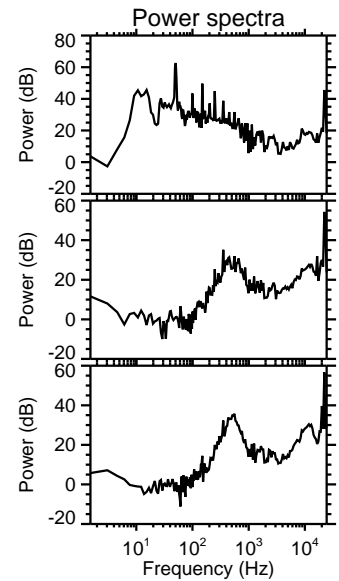
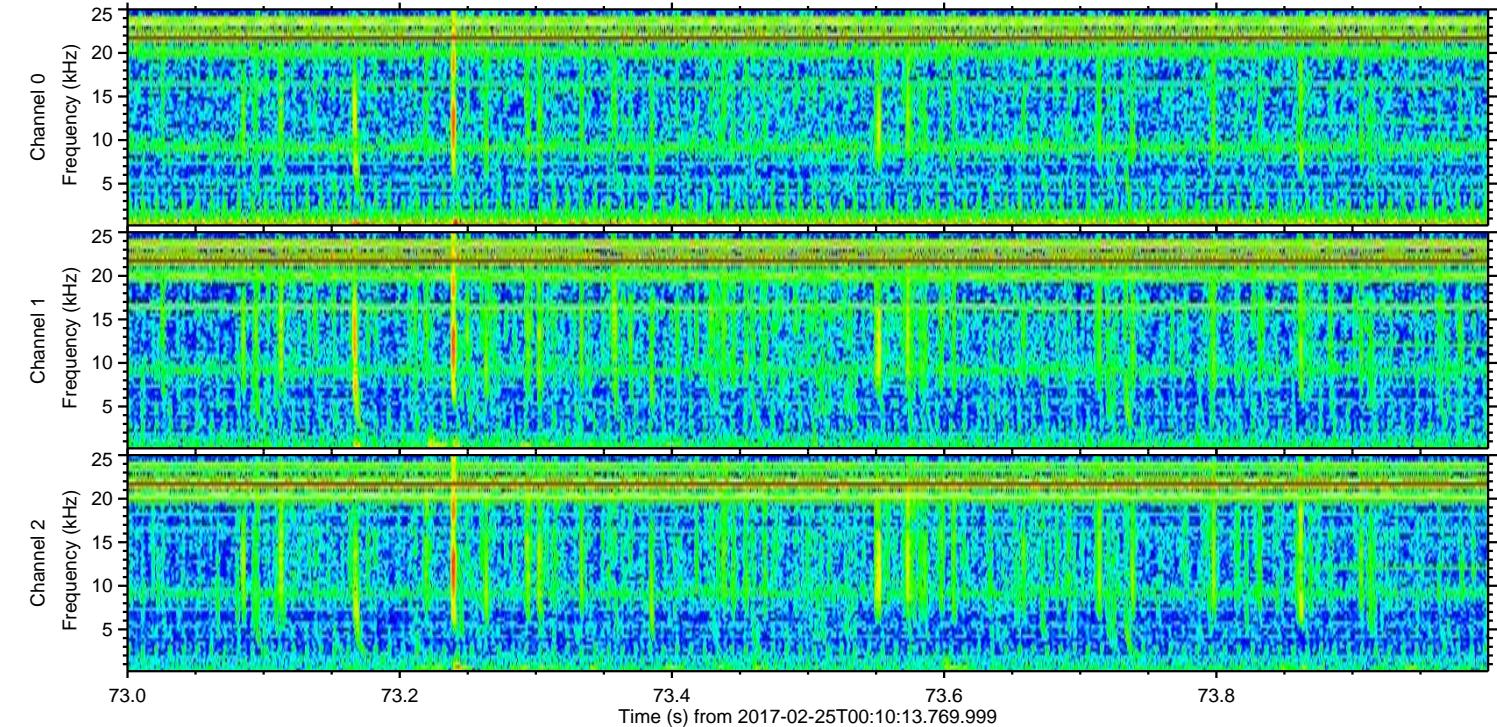
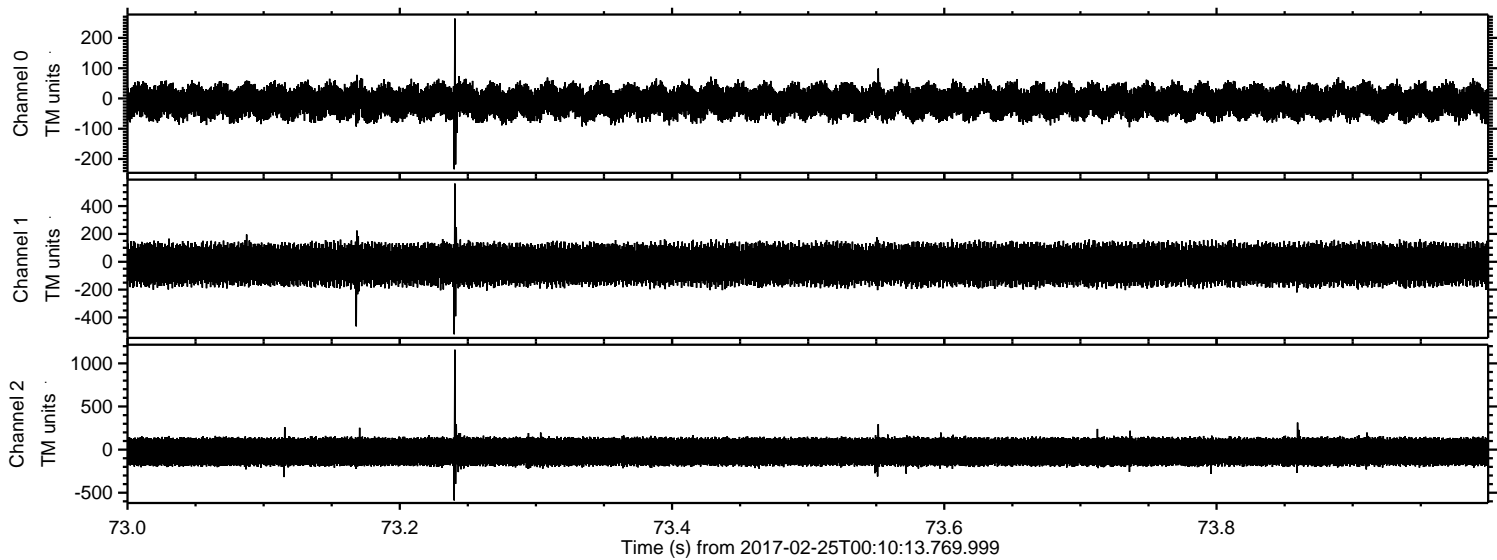


Channel 0
mn: -256
mx: 183
 μ : -11.6
 σ : 31.3

Channel 1
mn: -395
mx: 460
 μ : -19.3
 σ : 81.4

Channel 2
mn: -860
mx: 1237
 μ : -24.7
 σ : 100.6

Processed Sat Feb 25 01:18:26 2017 by ELM ver.2012-10-06 from 001__elm20170225_001012__dat00.bin

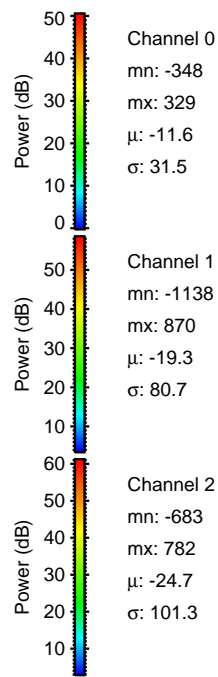
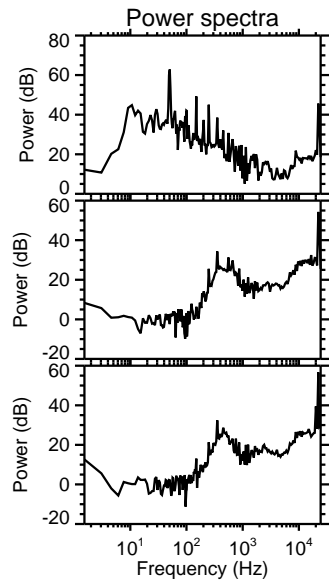
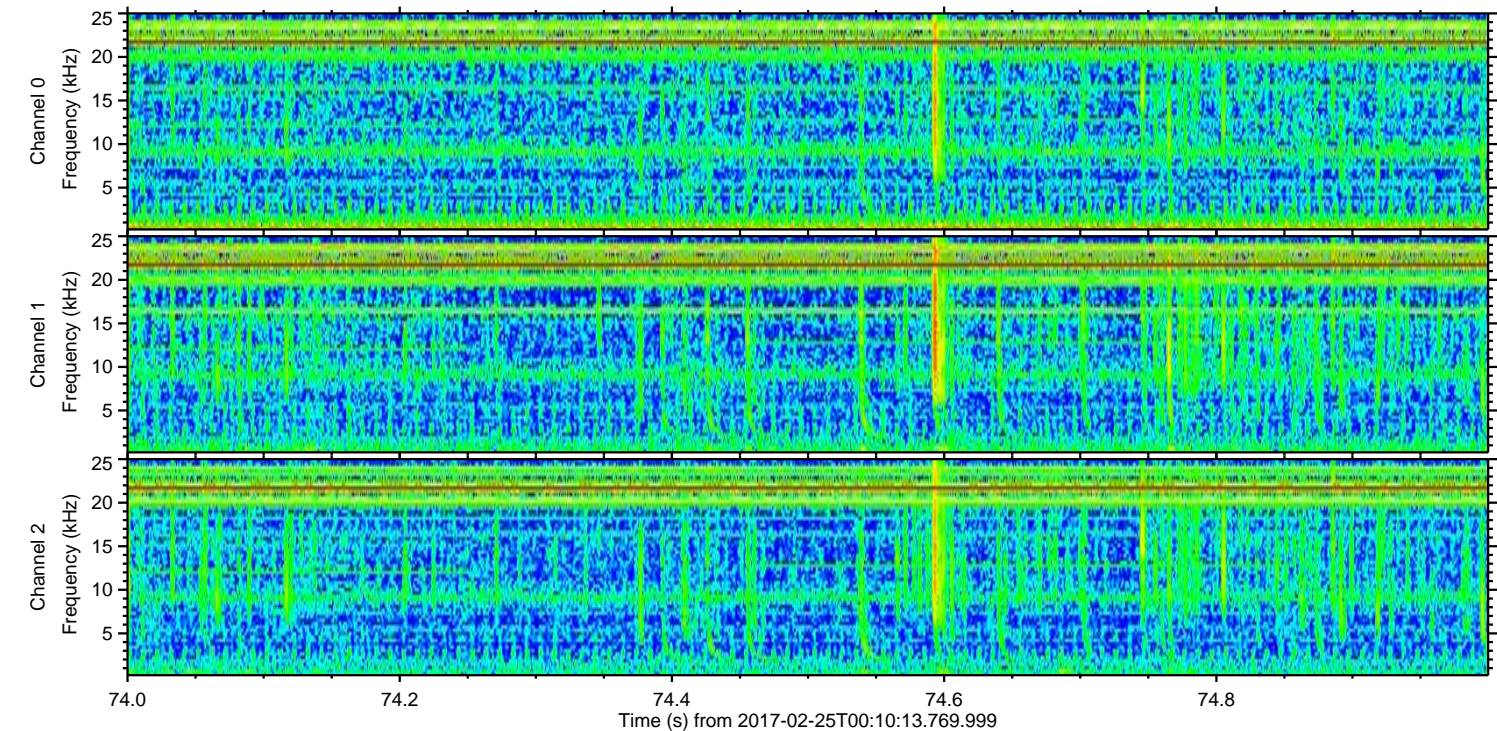
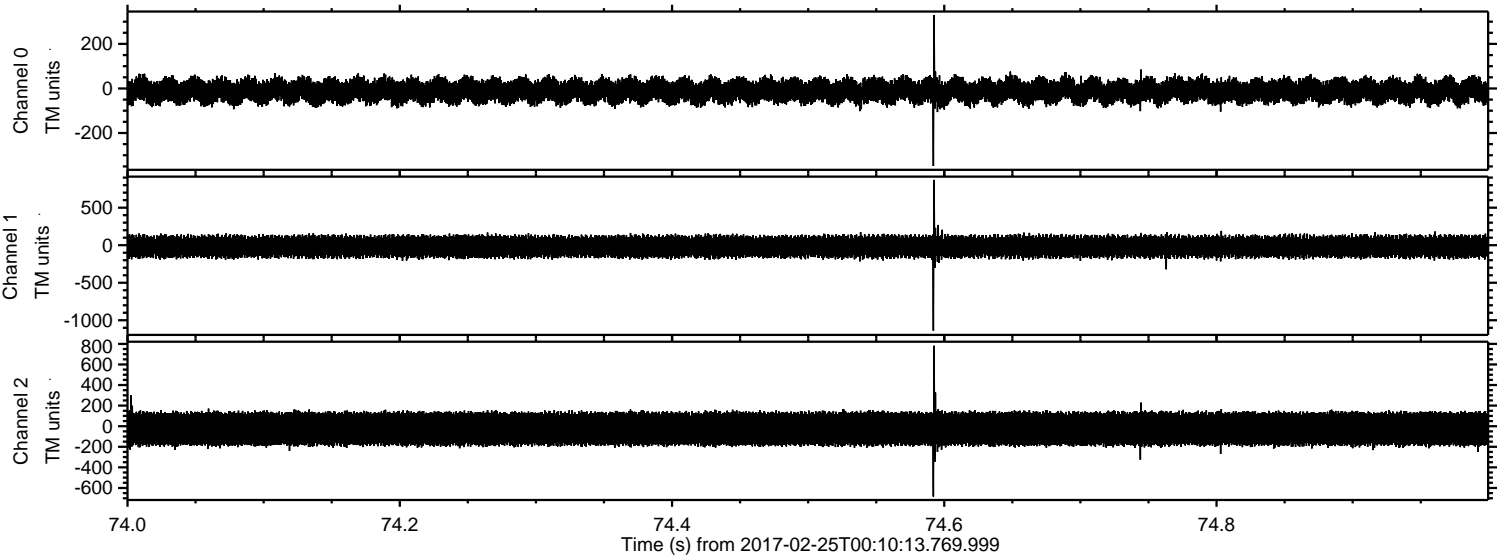


Channel 0
mn: -234
mx: 264
 μ : -11.5
 σ : 31.4

Channel 1
mn: -521
mx: 562
 μ : -19.2
 σ : 80.9

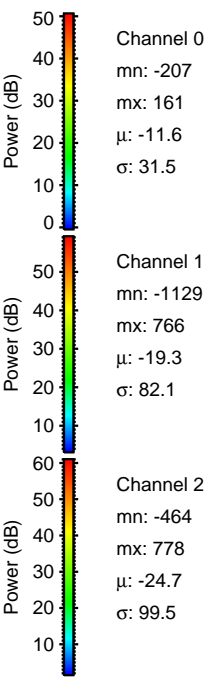
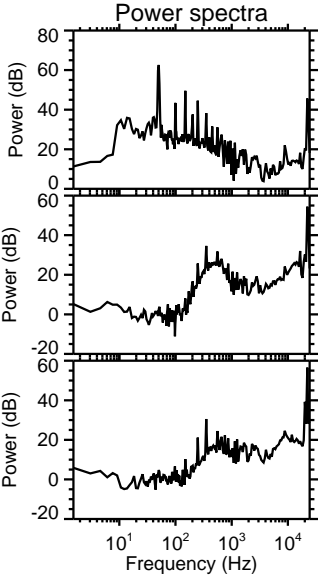
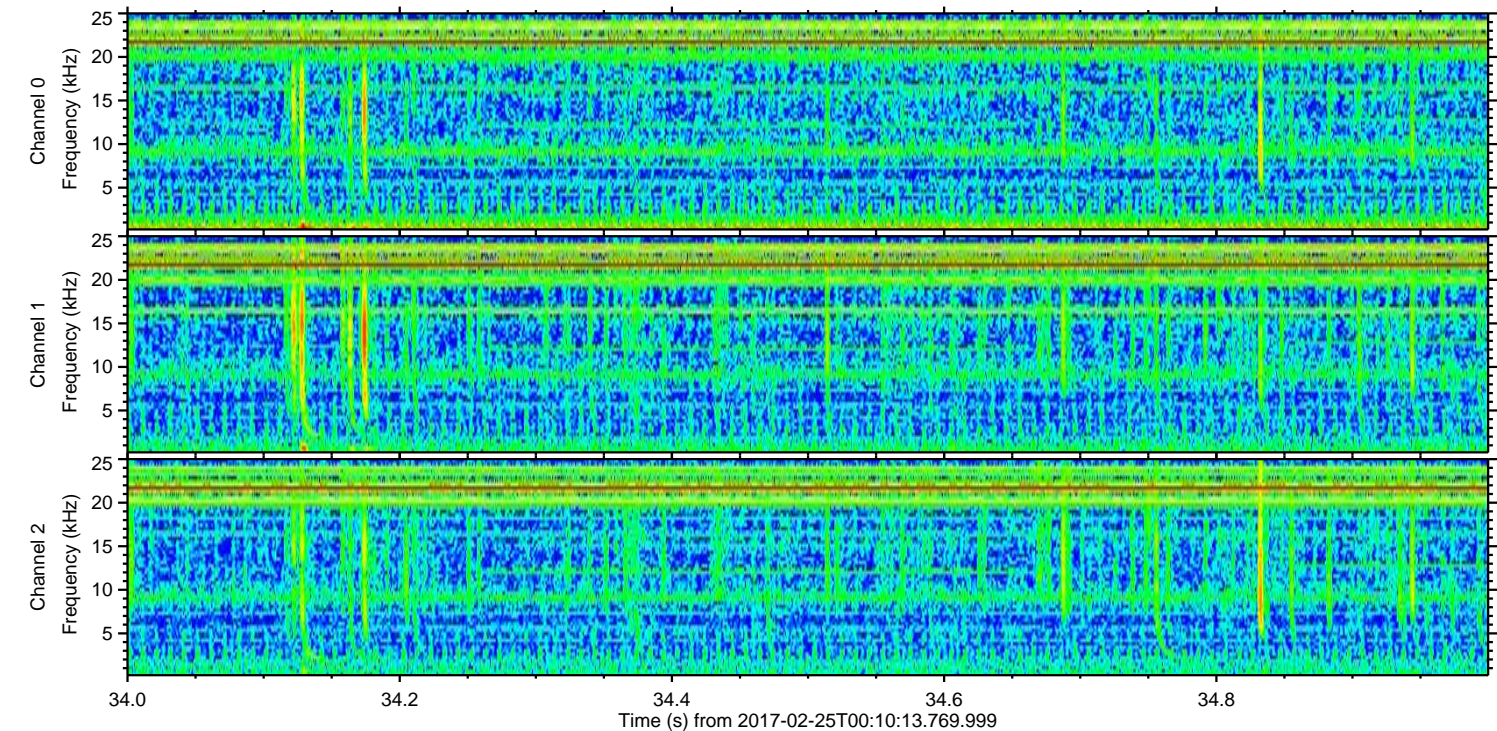
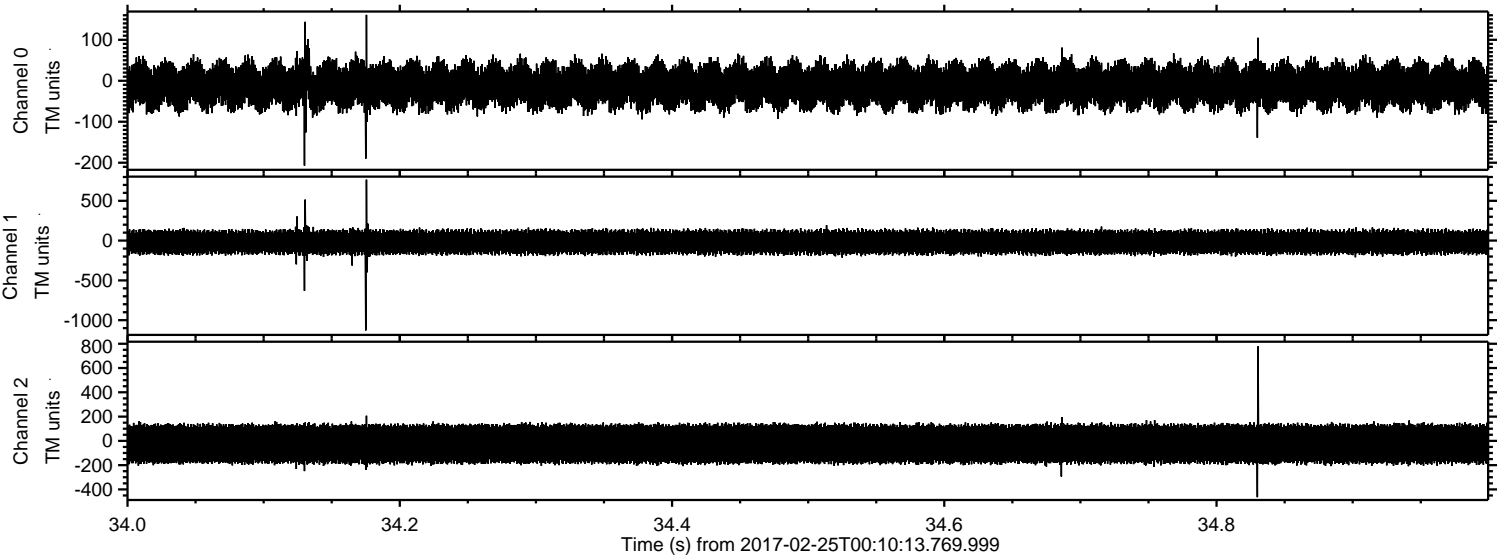
Channel 2
mn: -590
mx: 1159
 μ : -24.7
 σ : 101.7

Processed Sat Feb 25 01:18:27 2017 by ELM ver.2012-10-06 from 001__elm20170225_001012__dat00.bin



ELMAVAN 3D WAVEFORMS (Measured data sampled at 50 kHz) 51000 packets of 144 samples from 2017-02-25T00:10:13.769.999. Part 35/147

Processed Sat Feb 25 01:18:28 2017 by ELM ver.2012-10-06 from 001__elm20170225_001012__dat00.bin



Channel 0
mn: -207
mx: 161
 μ : -11.6
 σ : 31.5

Channel 1
mn: -1129
mx: 766
 μ : -19.3
 σ : 82.1

Channel 2
mn: -464
mx: 778
 μ : -24.7
 σ : 99.5

Processed Sat Feb 25 01:18:29 2017 by ELM ver.2012-10-06 from 001__elm20170225_001012__dat00.bin

