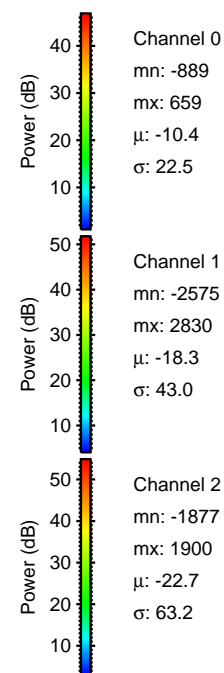
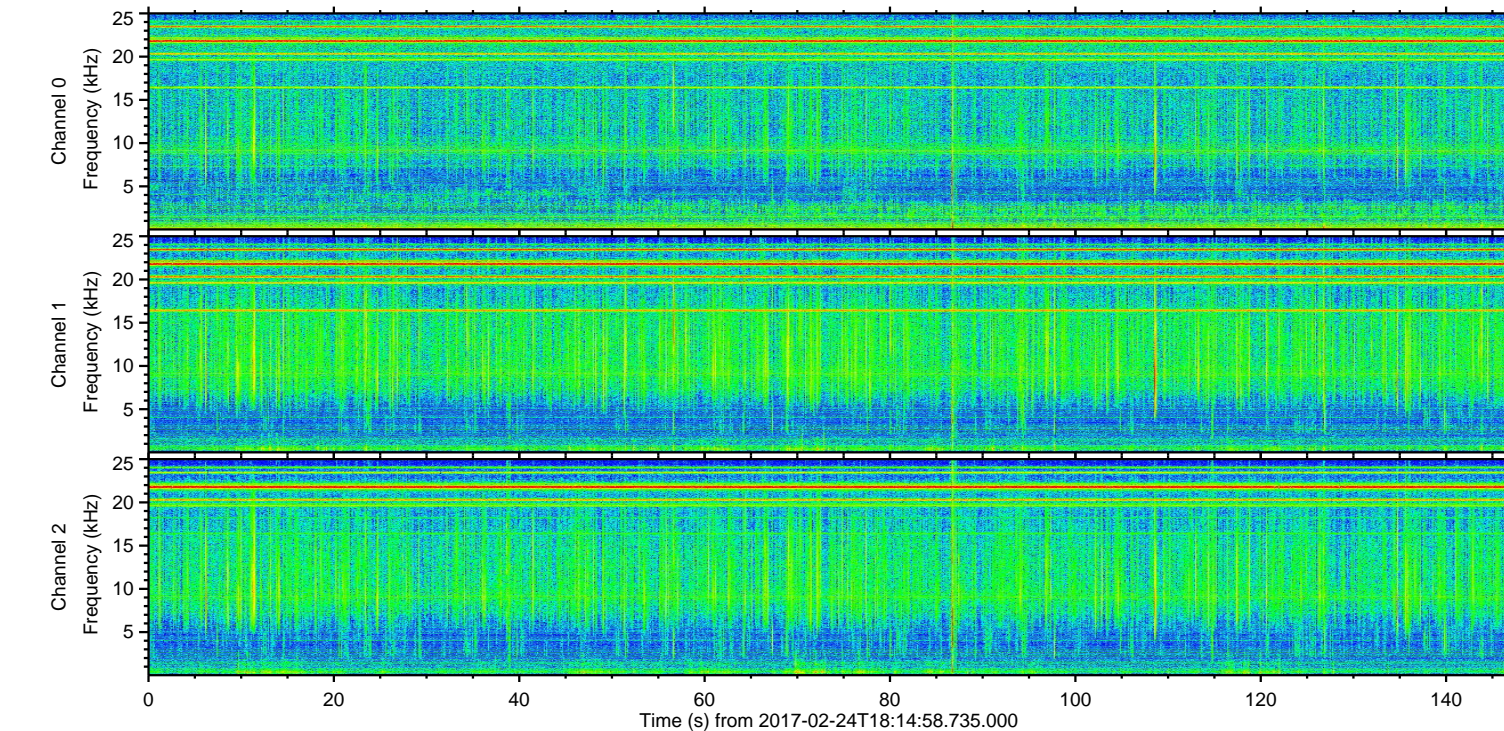
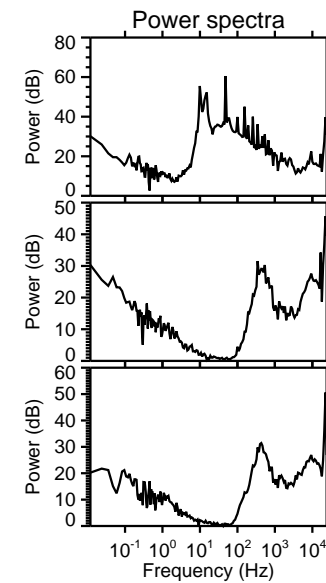
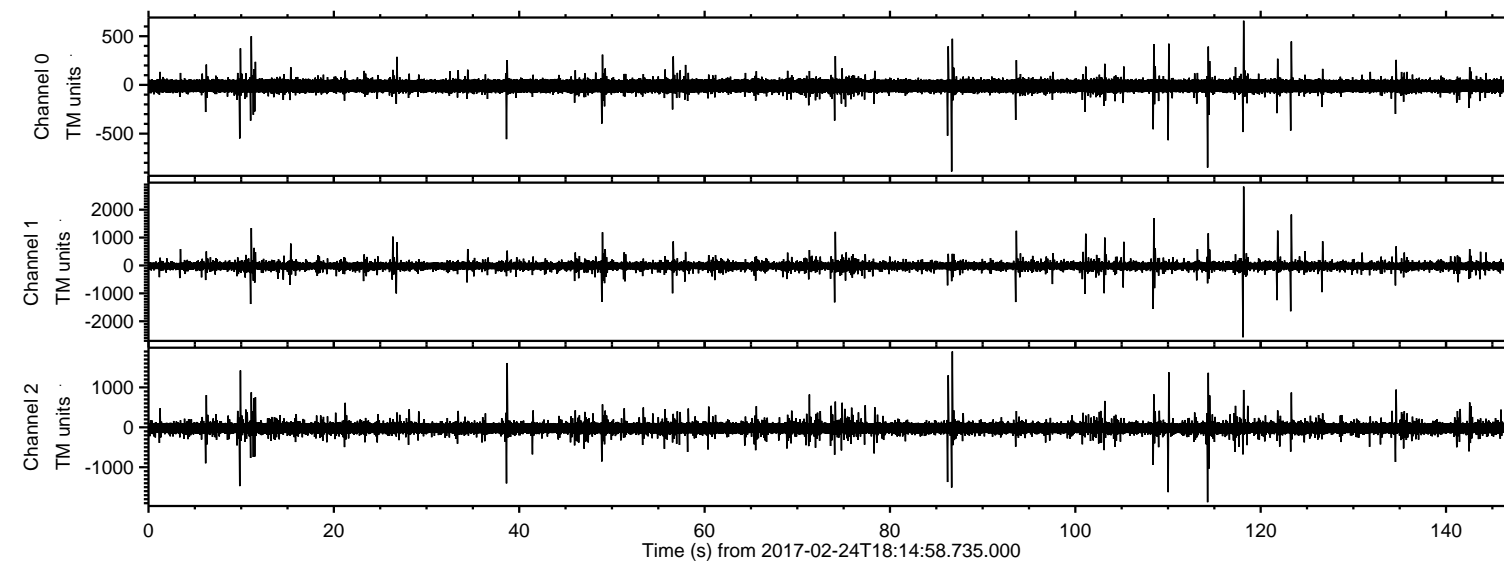


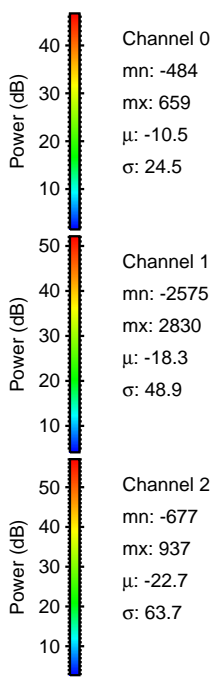
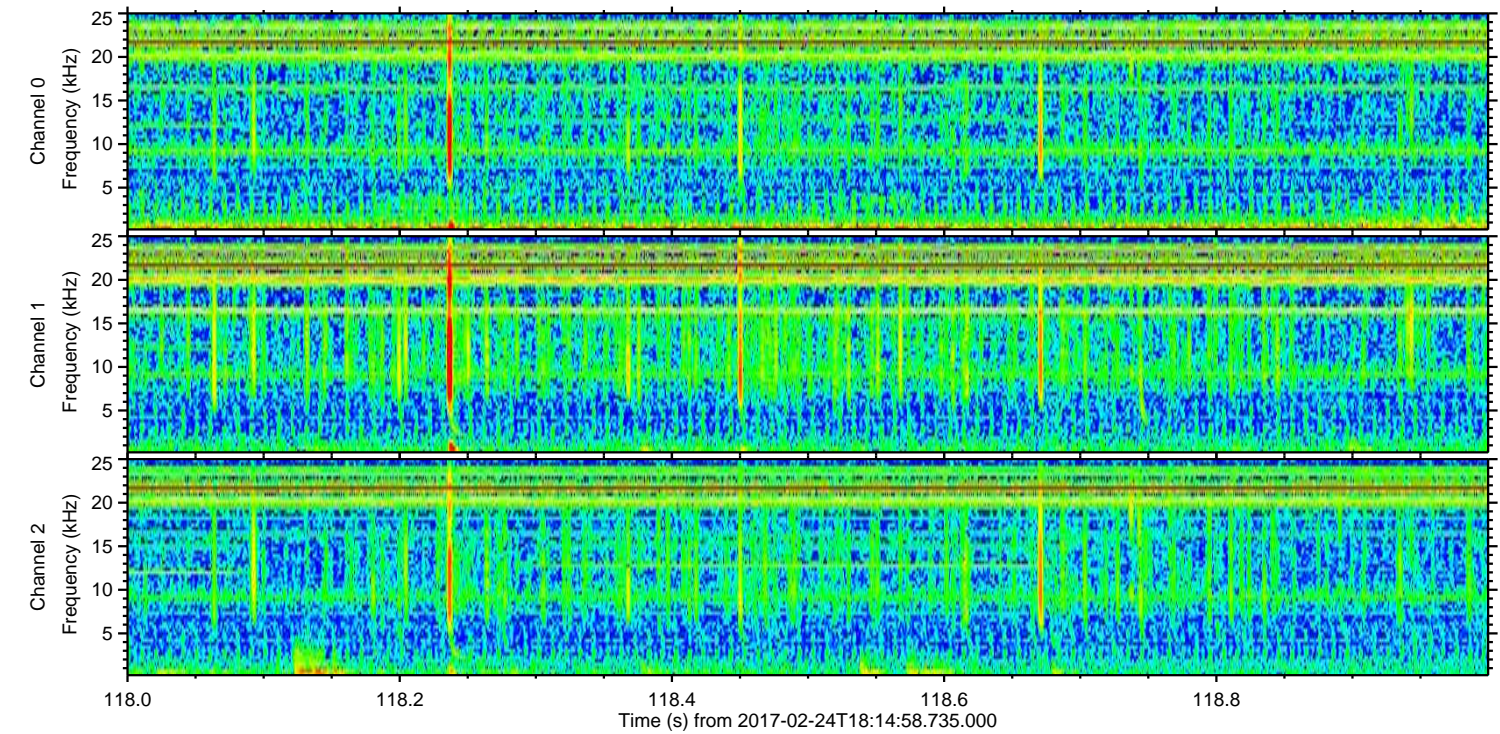
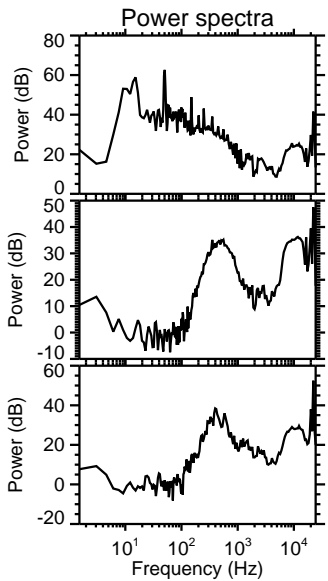
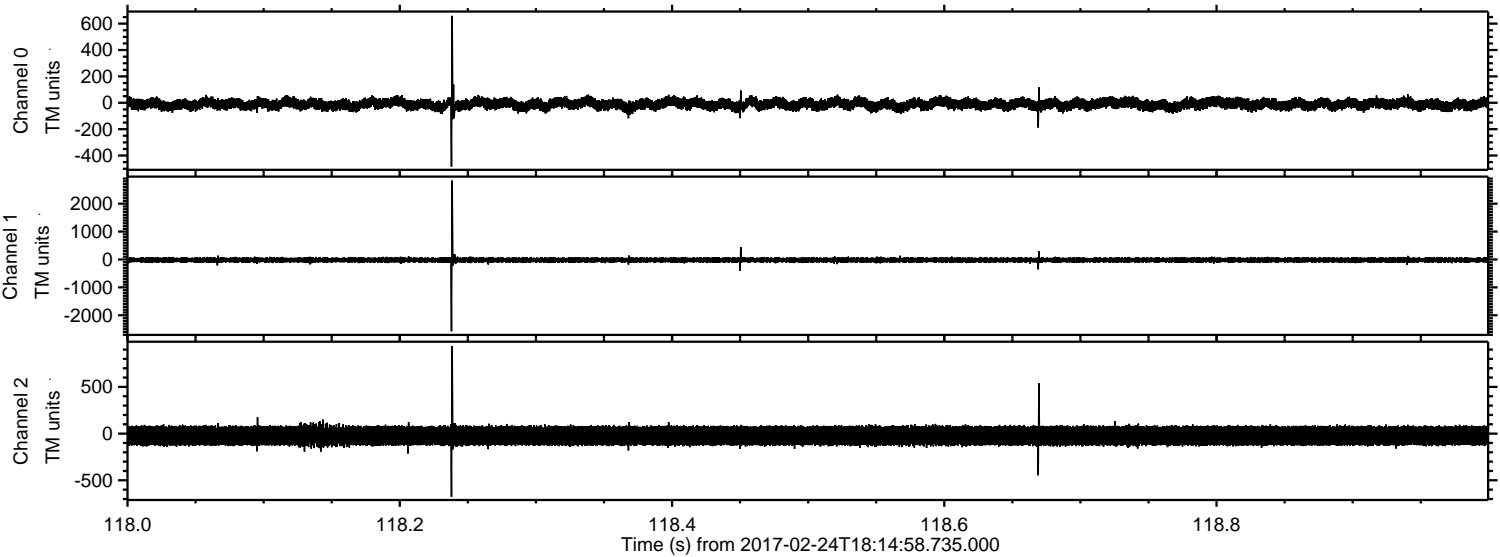
ELMAVAN 3D WAVEFORMS (Measured data sampled at 50 kHz) 51000 packets of 144 samples from 2017-02-24T18:14:58.735.000.

Processed Fri Feb 24 19:23:11 2017 by ELM ver.2012-10-06 from 001__elm20170224_181457__dat00.bin



ELMAVAN 3D WAVEFORMS (Measured data sampled at 50 kHz) 51000 packets of 144 samples from 2017-02-24T18:14:58.735.000. Part 119/147

Processed Fri Feb 24 19:23:23 2017 by ELM ver.2012-10-06 from 001__elm20170224_181457__dat00.bin

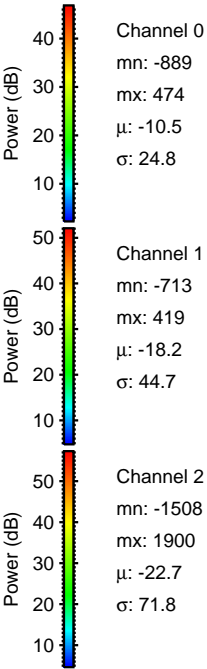
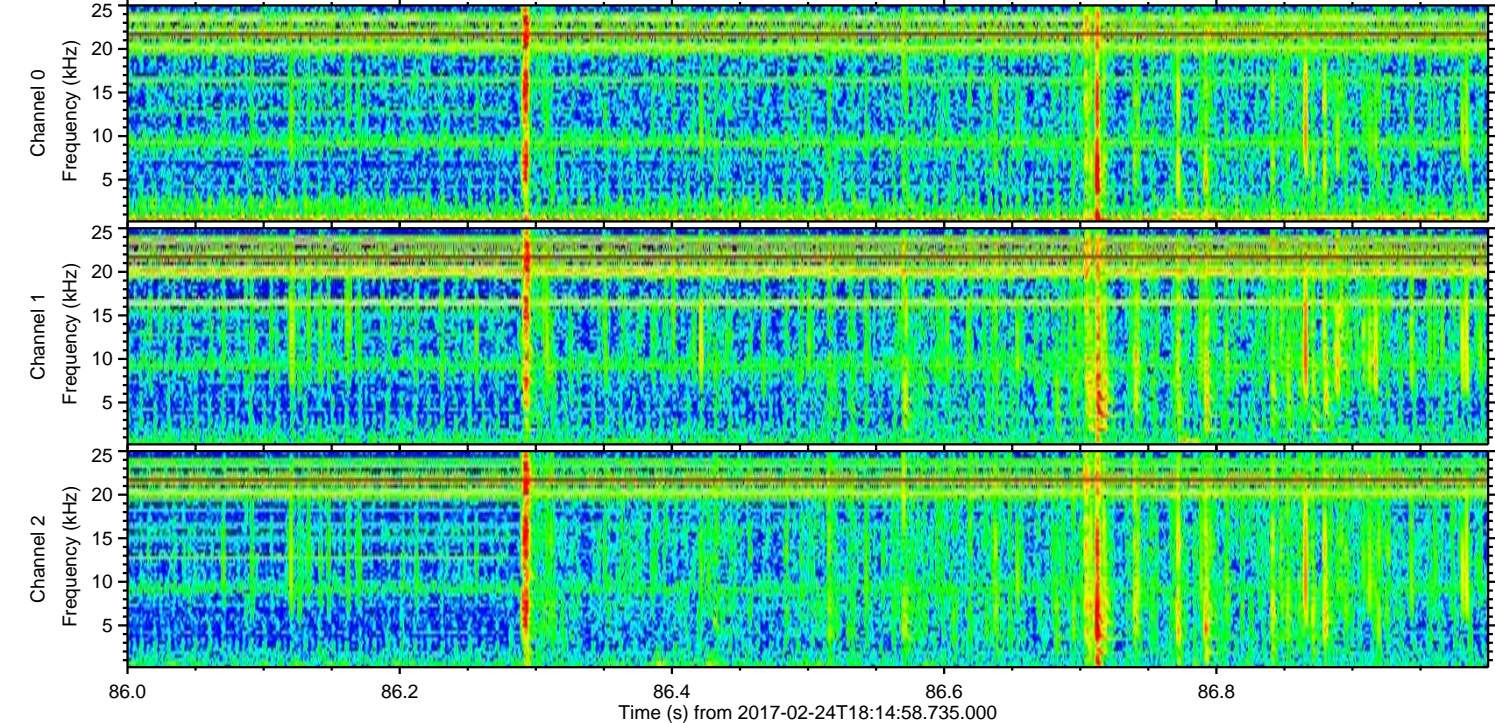
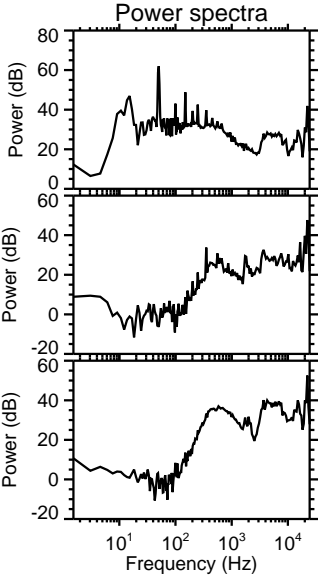
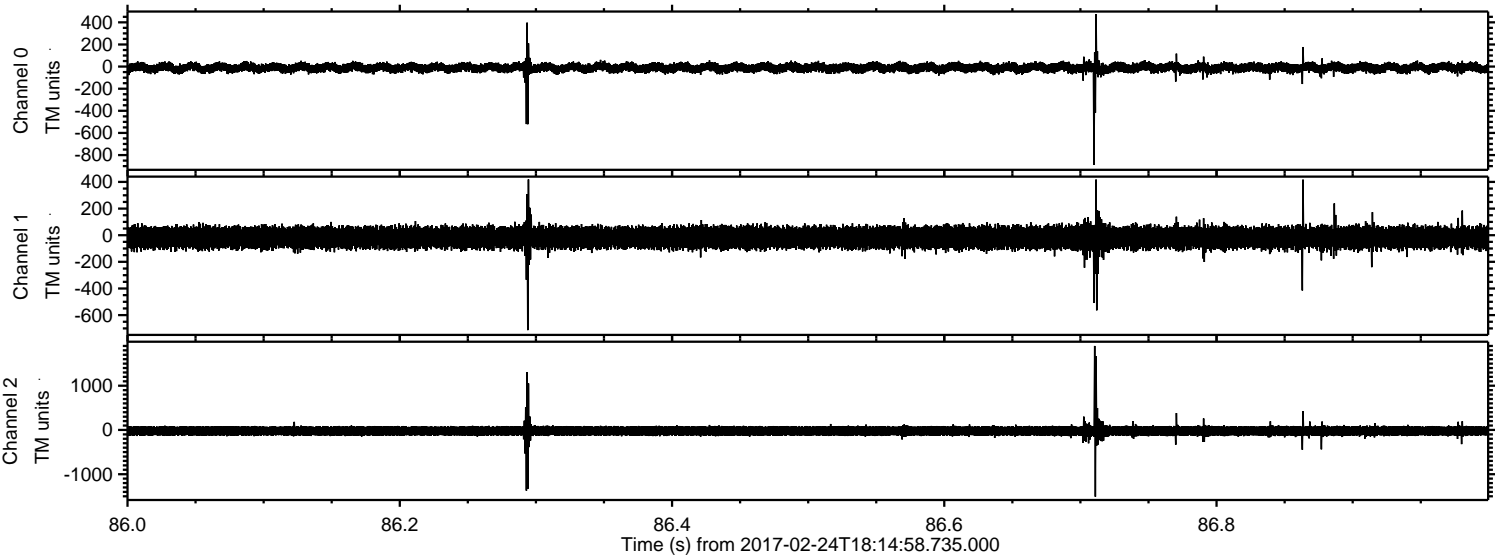


Channel 0
mn: -484
mx: 659
 μ : -10.5
 σ : 24.5

Channel 1
mn: -2575
mx: 2830
 μ : -18.3
 σ : 48.9

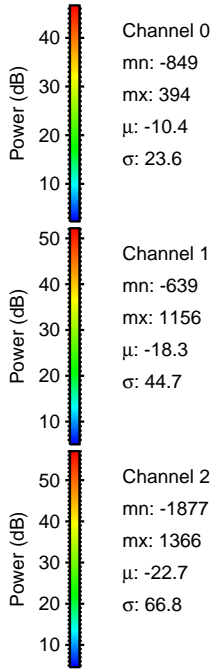
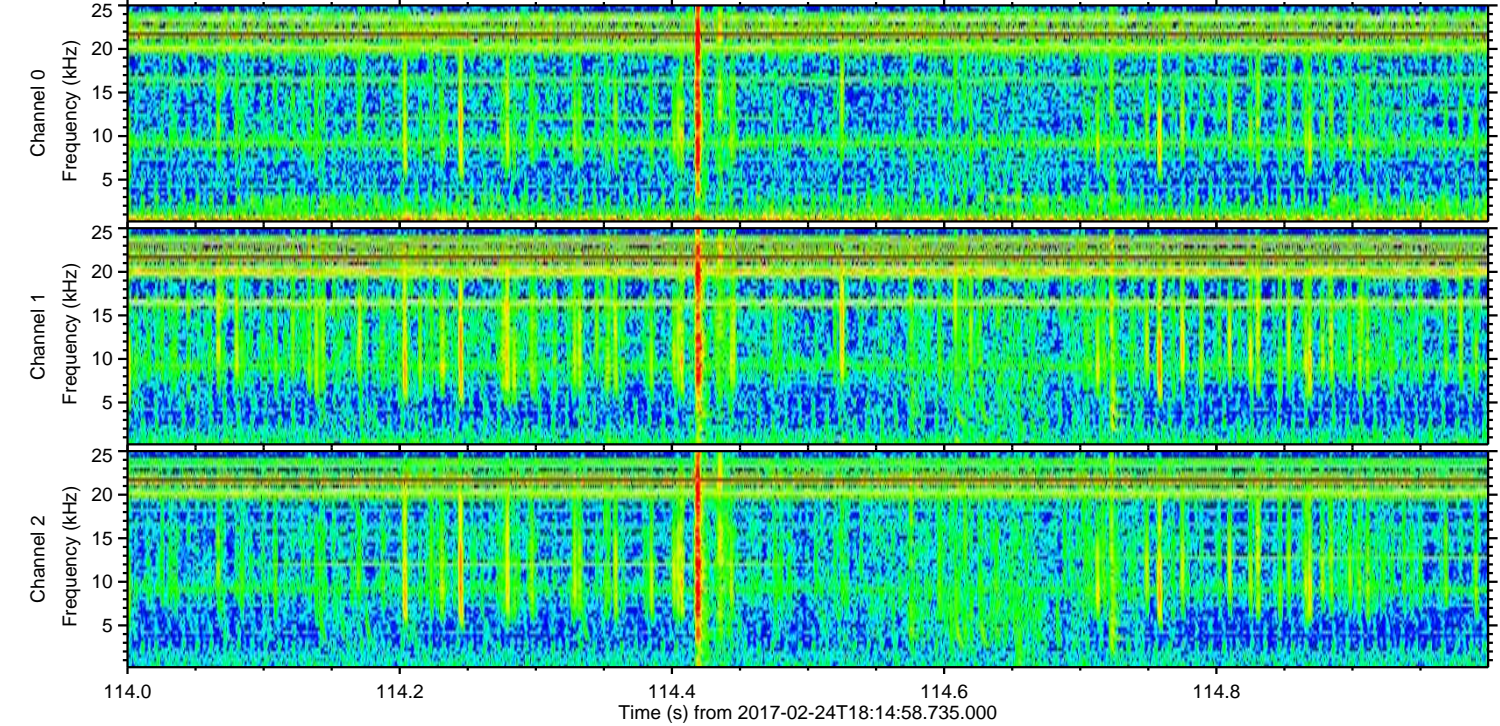
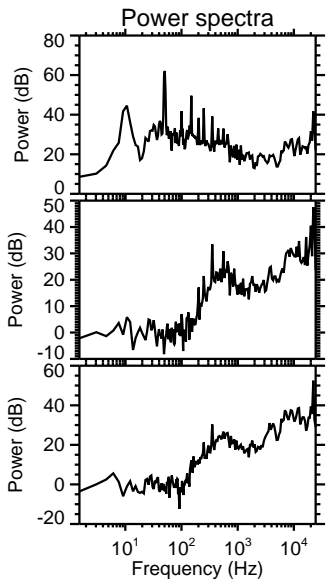
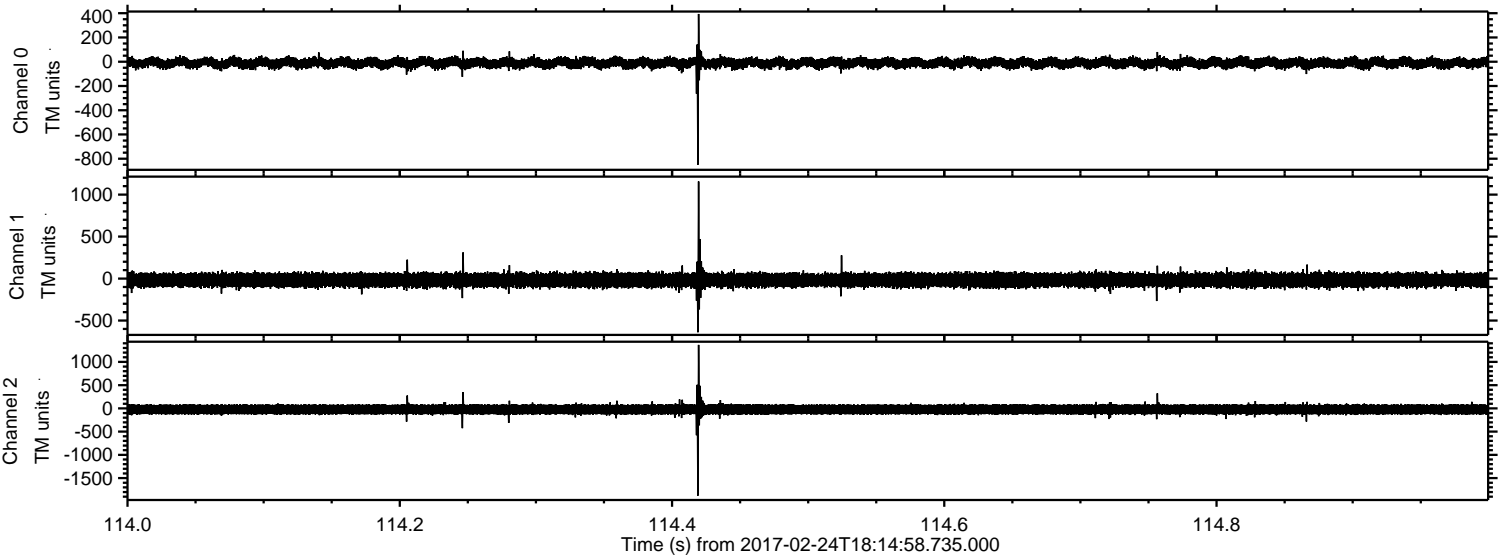
Channel 2
mn: -677
mx: 937
 μ : -22.7
 σ : 63.7

Processed Fri Feb 24 19:23:24 2017 by ELM ver.2012-10-06 from 001__elm20170224_181457__dat00.bin



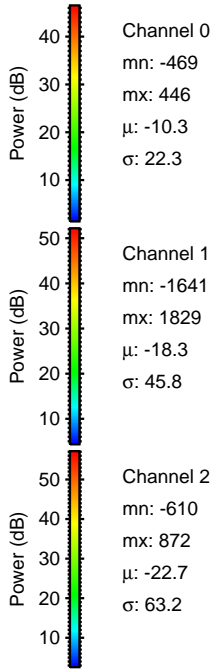
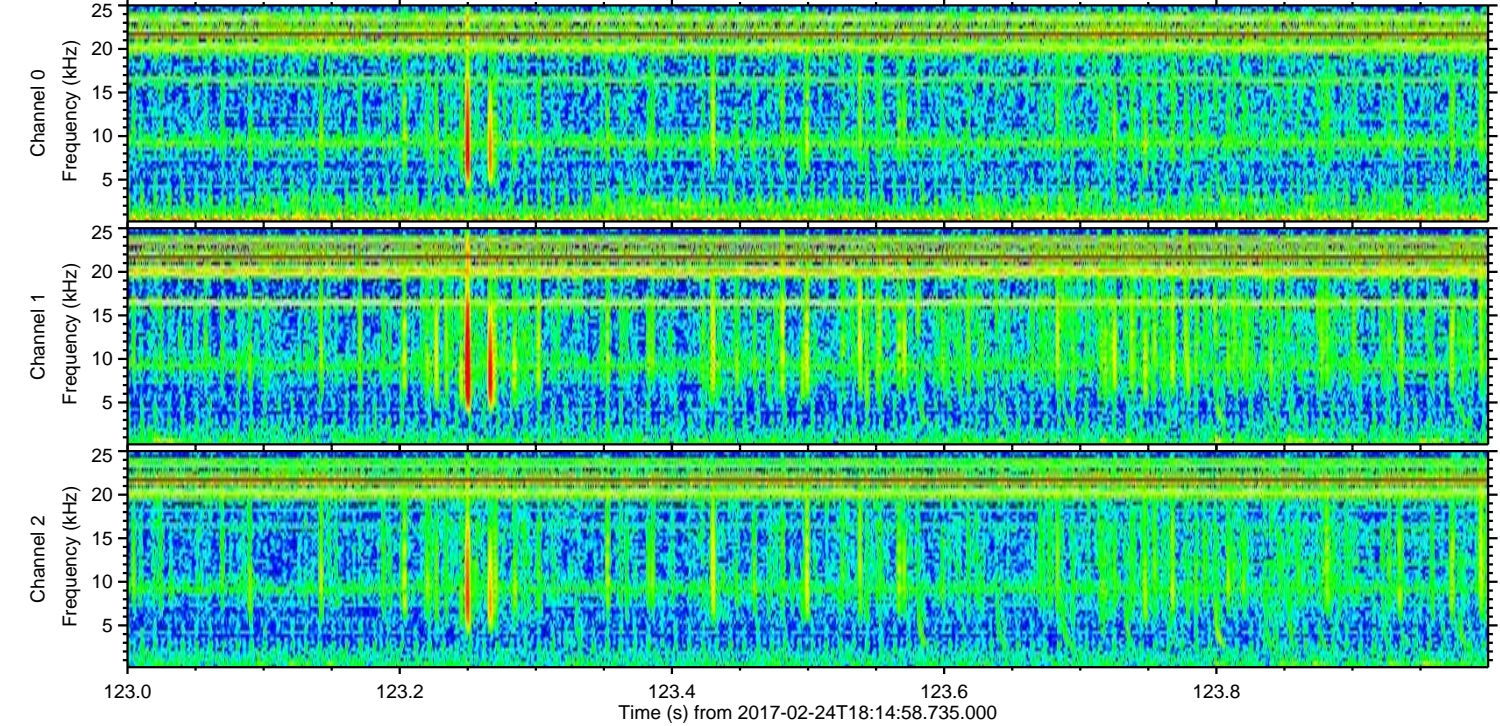
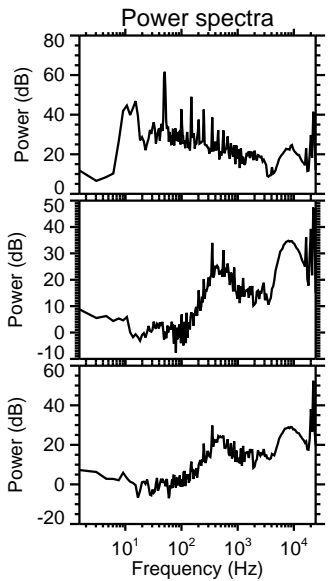
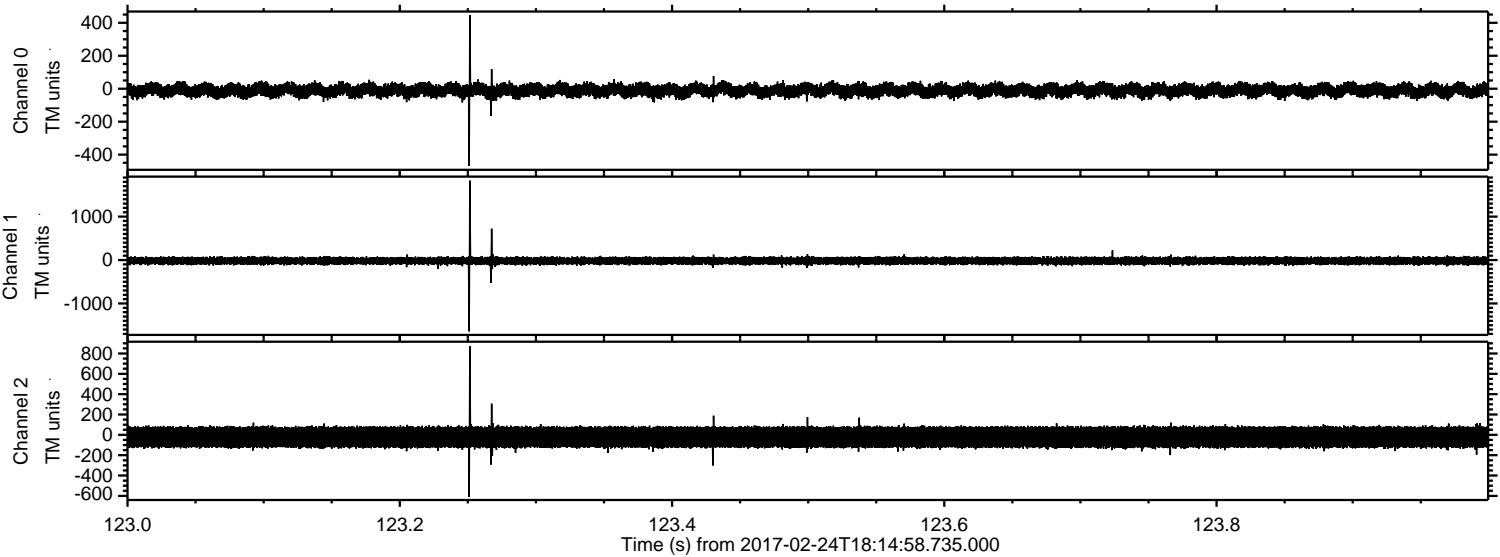
ELMAVAN 3D WAVEFORMS (Measured data sampled at 50 kHz) 51000 packets of 144 samples from 2017-02-24T18:14:58.735.000. Part 115/147

Processed Fri Feb 24 19:23:25 2017 by ELM ver.2012-10-06 from 001__elm20170224_181457__dat00.bin



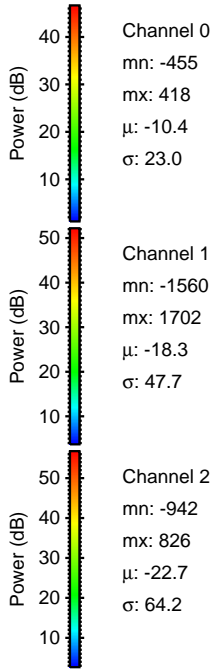
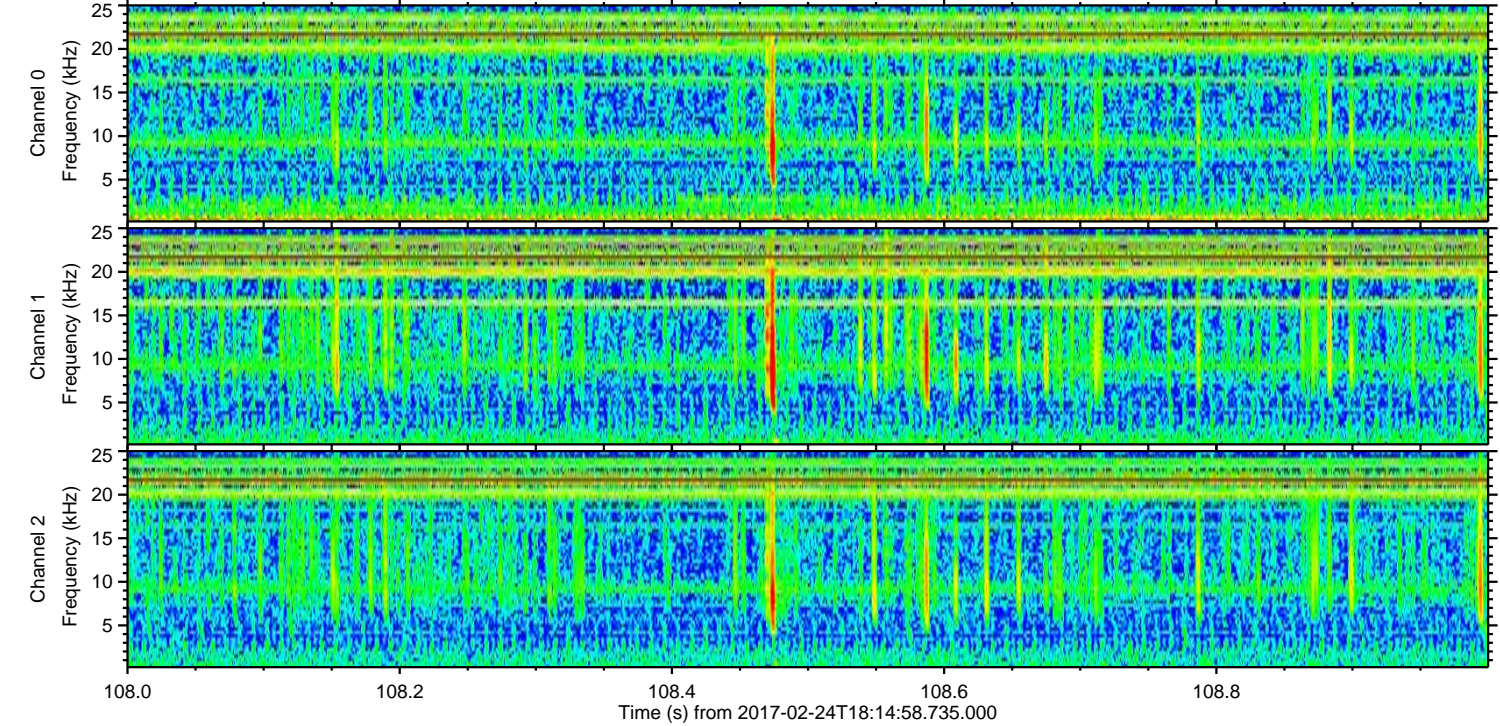
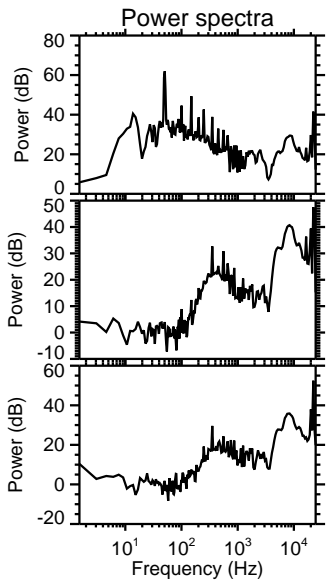
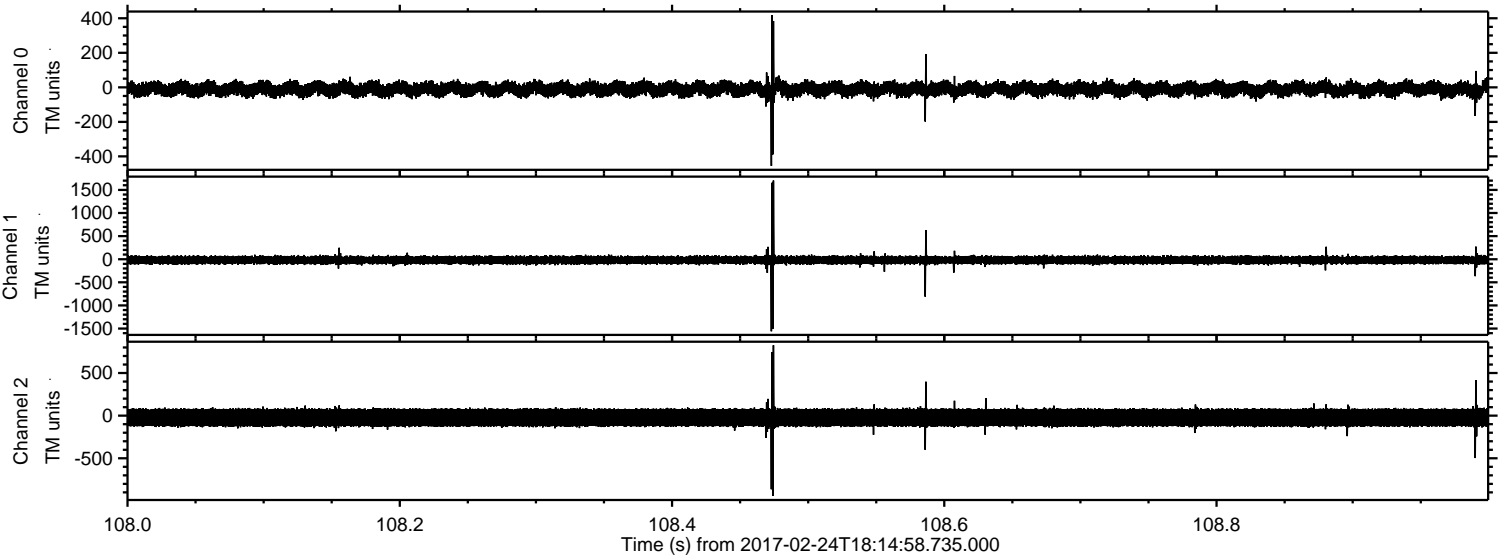
ELMAVAN 3D WAVEFORMS (Measured data sampled at 50 kHz) 51000 packets of 144 samples from 2017-02-24T18:14:58.735.000. Part 124/147

Processed Fri Feb 24 19:23:26 2017 by ELM ver.2012-10-06 from 001__elm20170224_181457__dat00.bin



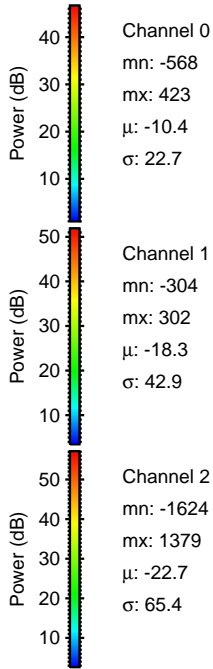
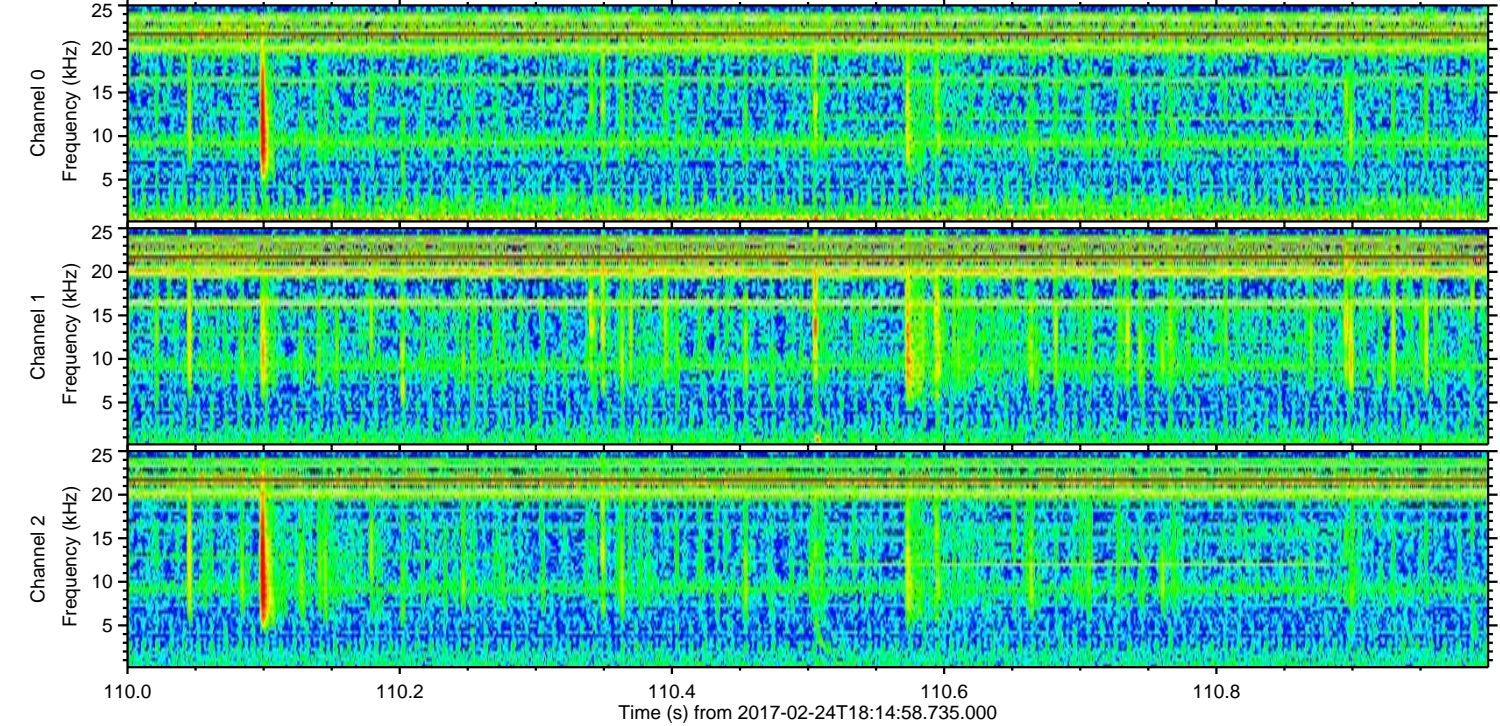
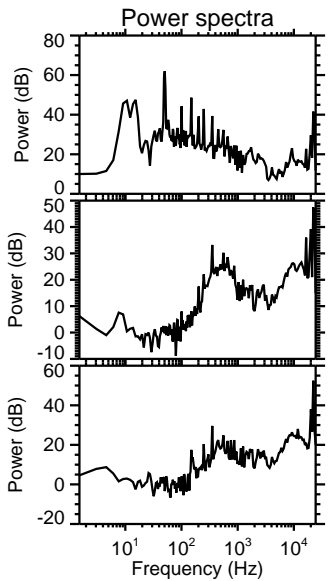
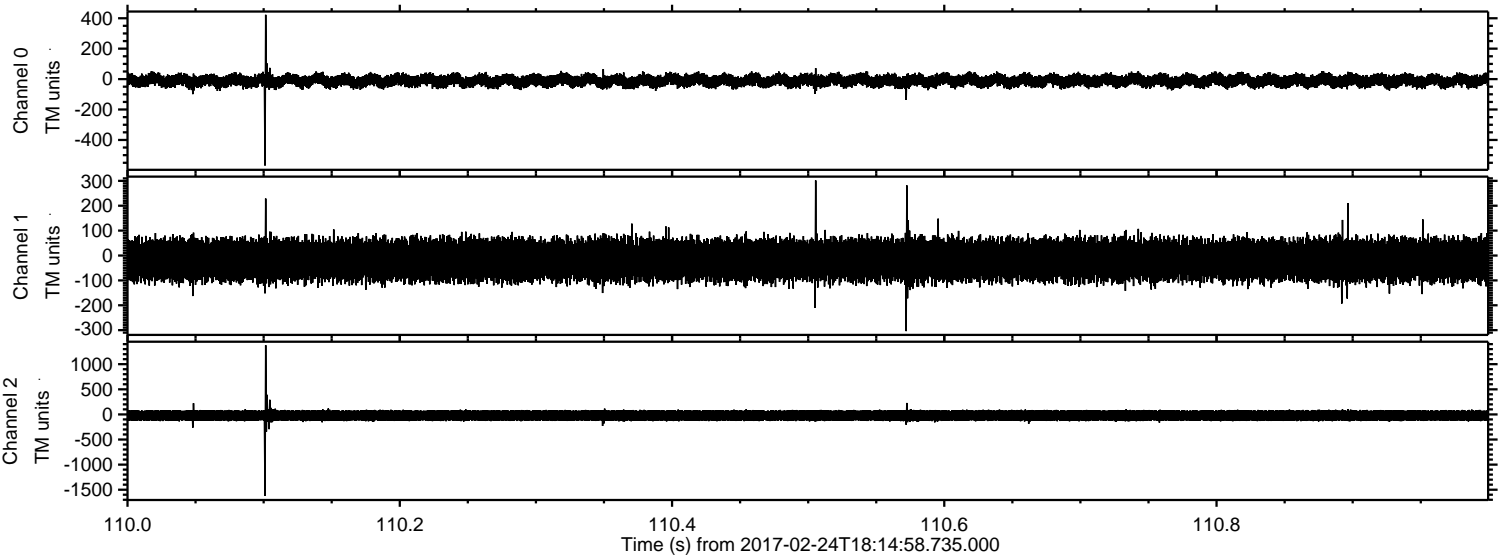
ELMAVAN 3D WAVEFORMS (Measured data sampled at 50 kHz) 51000 packets of 144 samples from 2017-02-24T18:14:58.735.000. Part 109/147

Processed Fri Feb 24 19:23:27 2017 by ELM ver.2012-10-06 from 001__elm20170224_181457__dat00.bin



ELMAVAN 3D WAVEFORMS (Measured data sampled at 50 kHz) 51000 packets of 144 samples from 2017-02-24T18:14:58.735.000. Part 111/147

Processed Fri Feb 24 19:23:28 2017 by ELM ver.2012-10-06 from 001__elm20170224_181457__dat00.bin

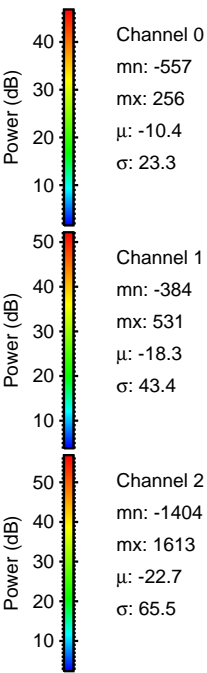
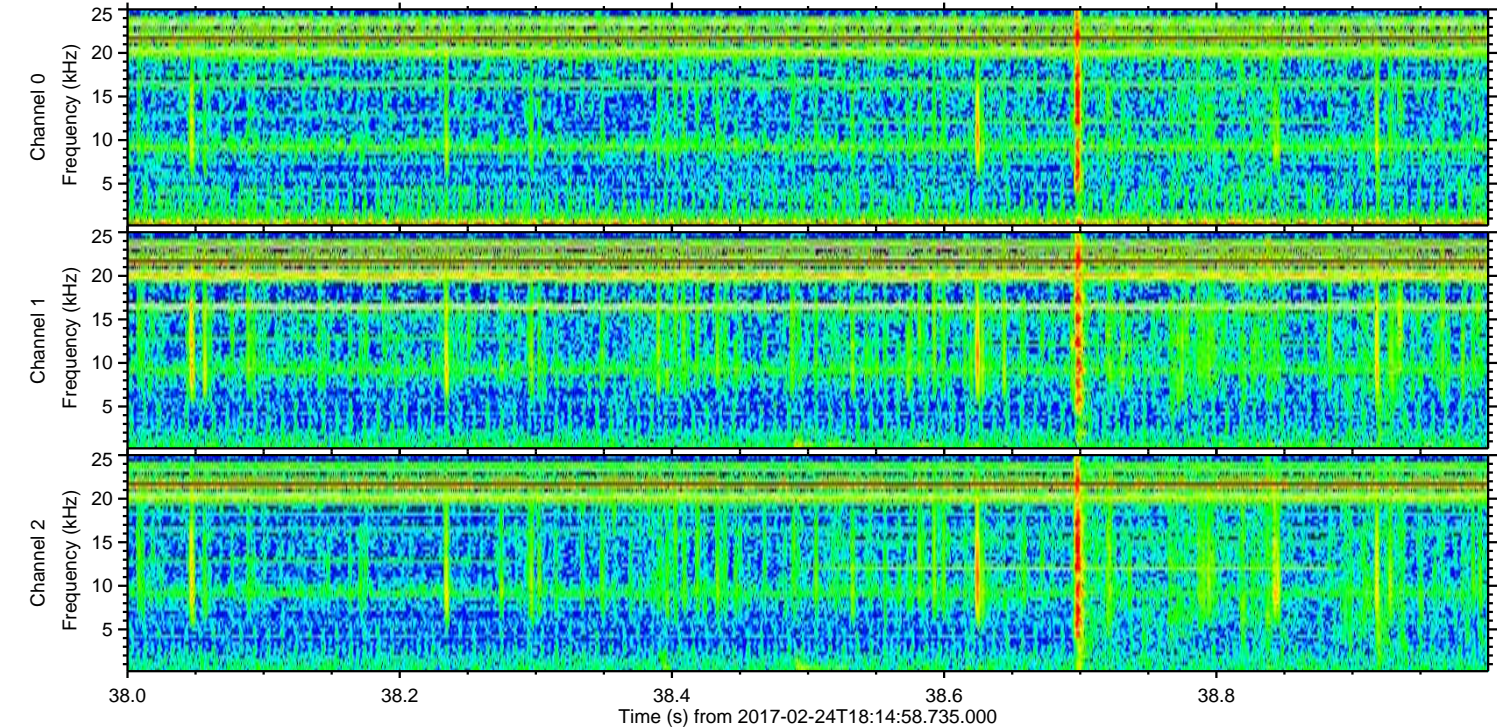
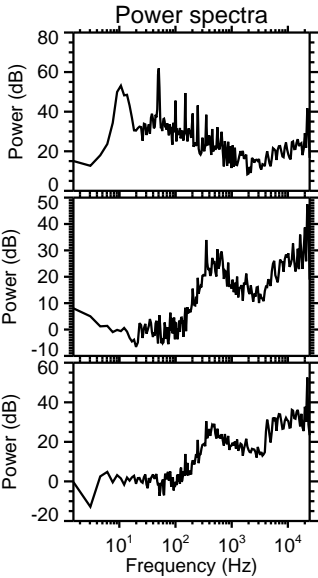
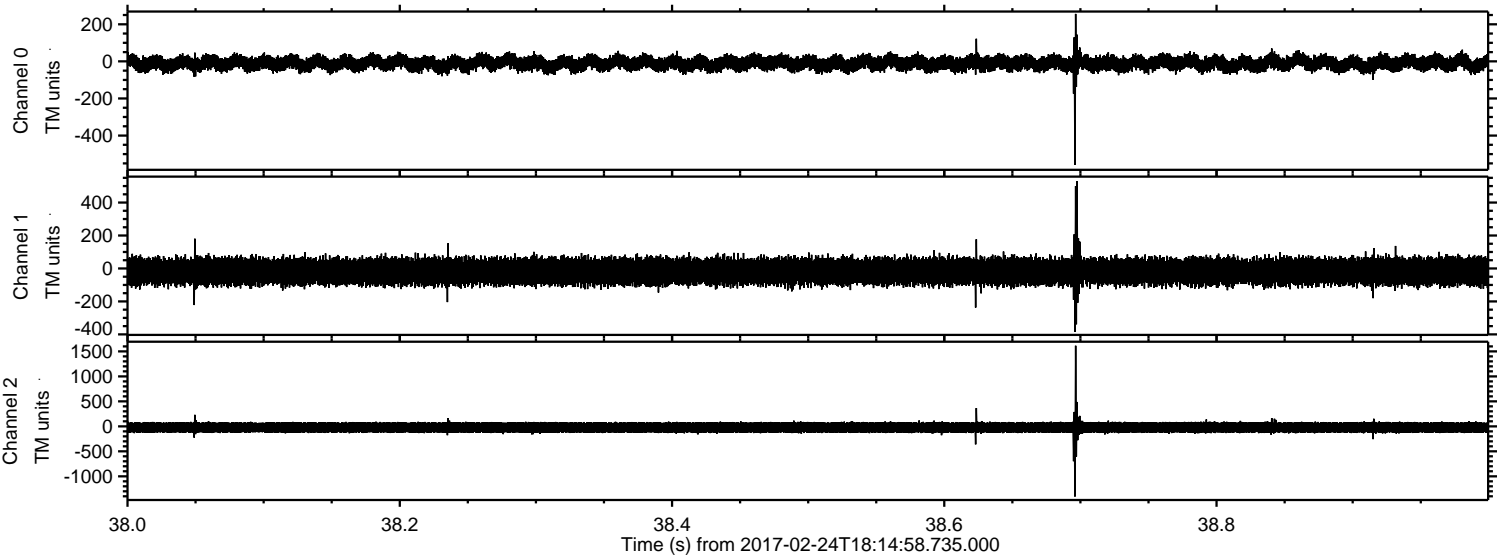


Channel 0
mn: -568
mx: 423
 μ : -10.4
 σ : 22.7

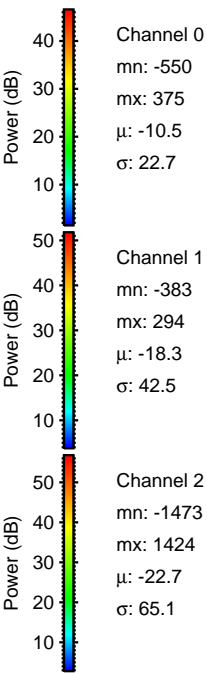
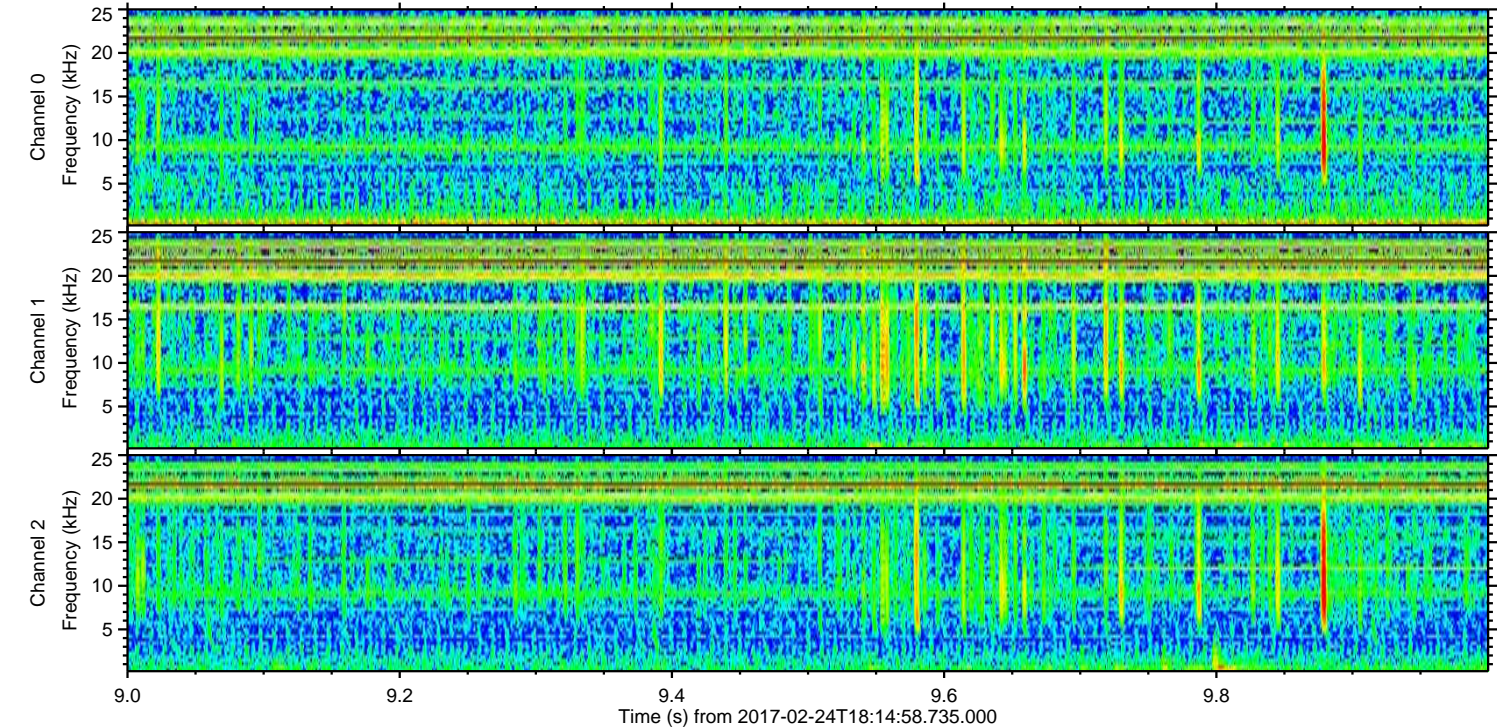
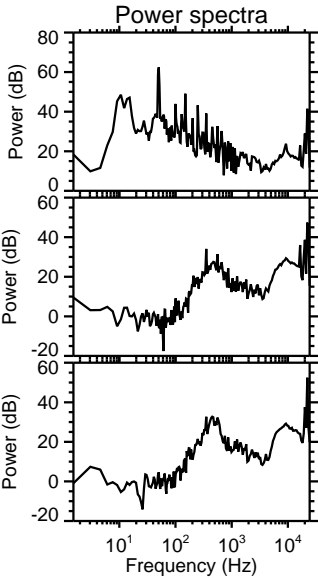
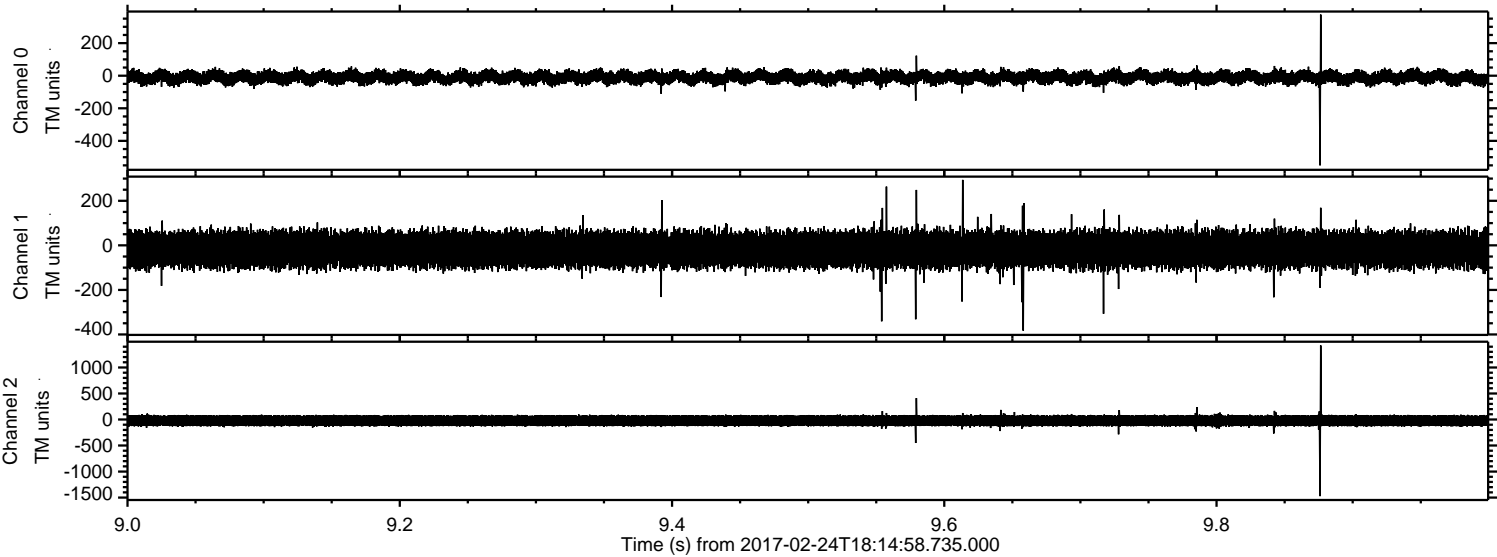
Channel 1
mn: -304
mx: 302
 μ : -18.3
 σ : 42.9

Channel 2
mn: -1624
mx: 1379
 μ : -22.7
 σ : 65.4

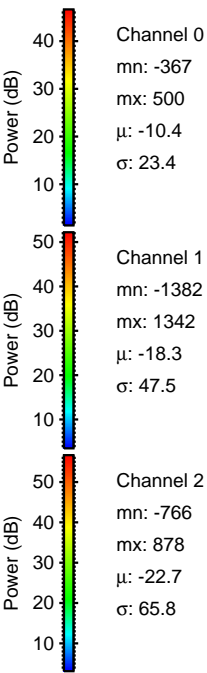
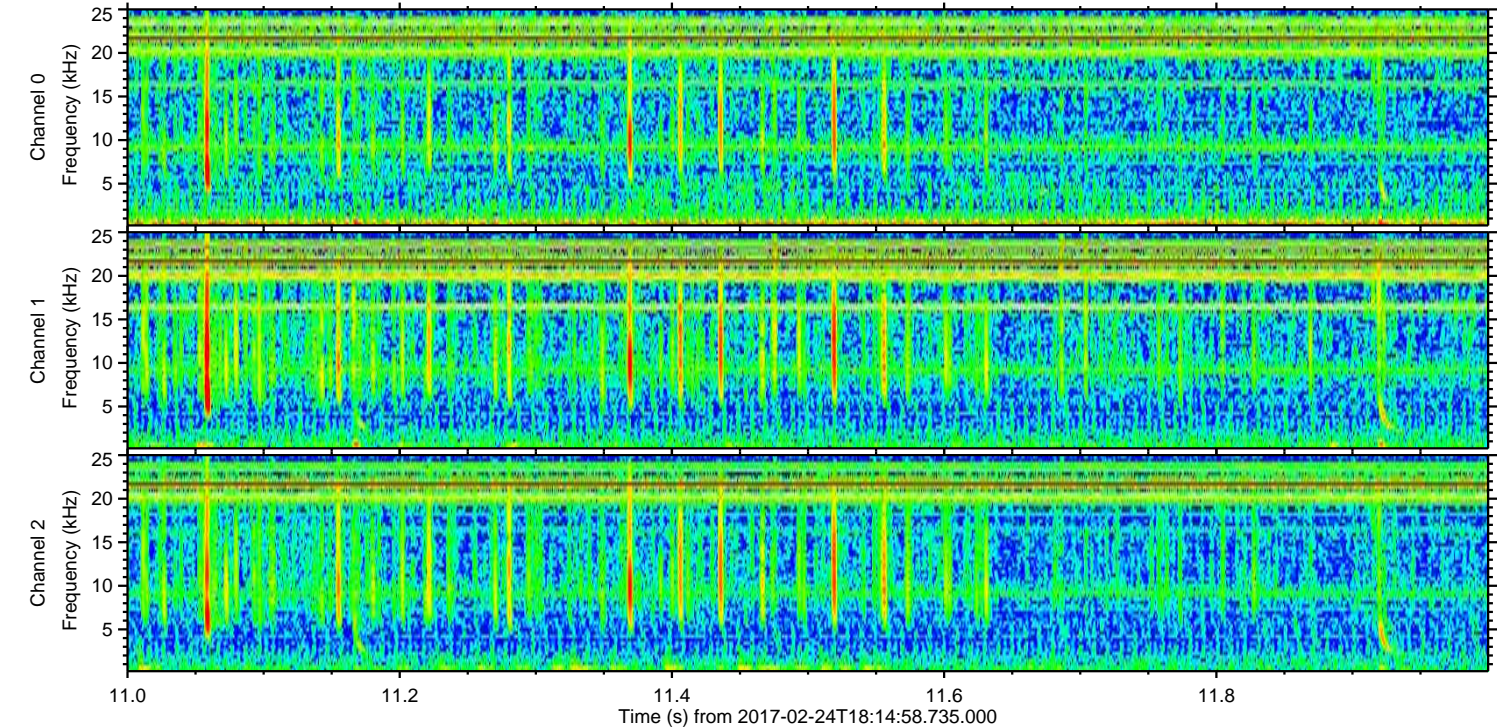
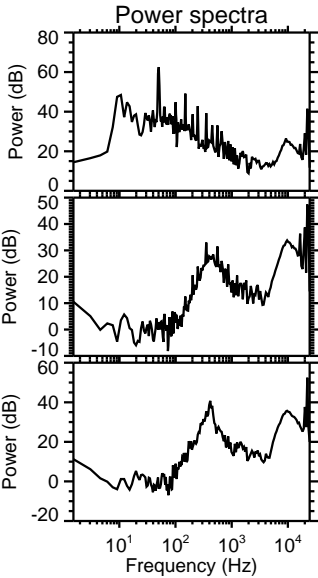
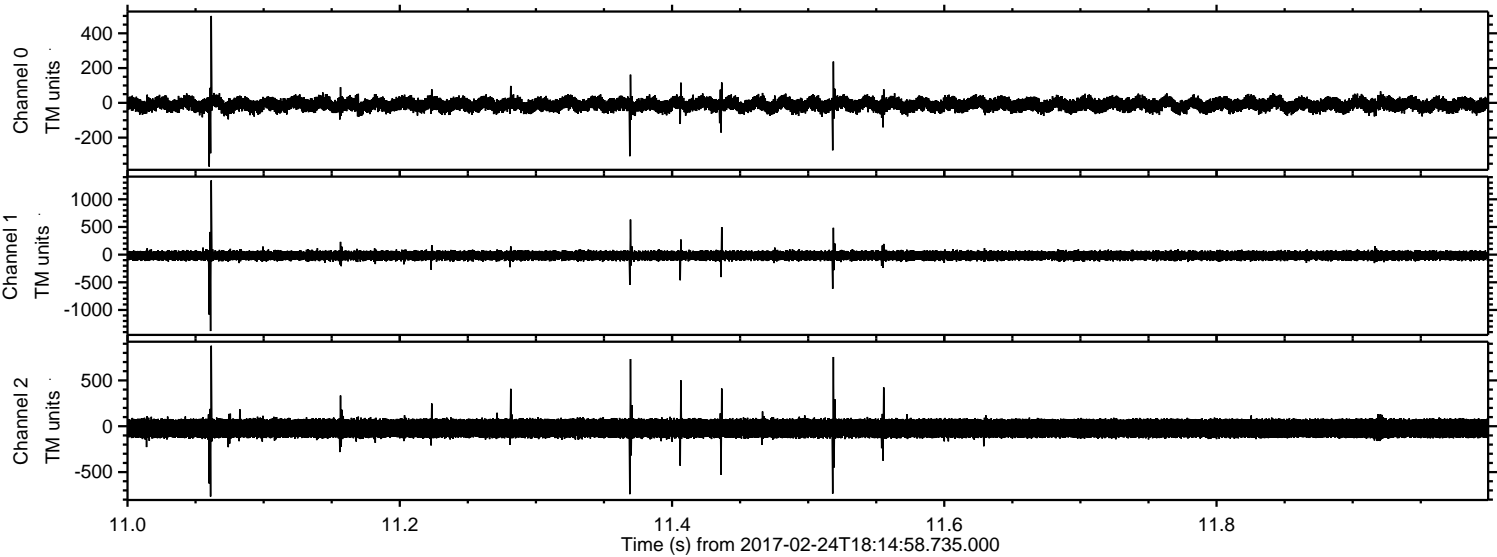
Processed Fri Feb 24 19:23:29 2017 by ELM ver.2012-10-06 from 001__elm20170224_181457__dat00.bin



Processed Fri Feb 24 19:23:30 2017 by ELM ver.2012-10-06 from 001__elm20170224_181457__dat00.bin



Processed Fri Feb 24 19:23:31 2017 by ELM ver.2012-10-06 from 001__elm20170224_181457__dat00.bin



Processed Fri Feb 24 19:23:32 2017 by ELM ver.2012-10-06 from 001__elm20170224_181457__dat00.bin

