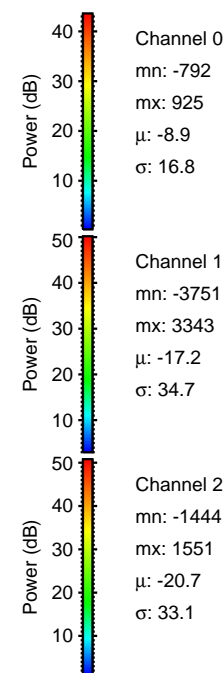
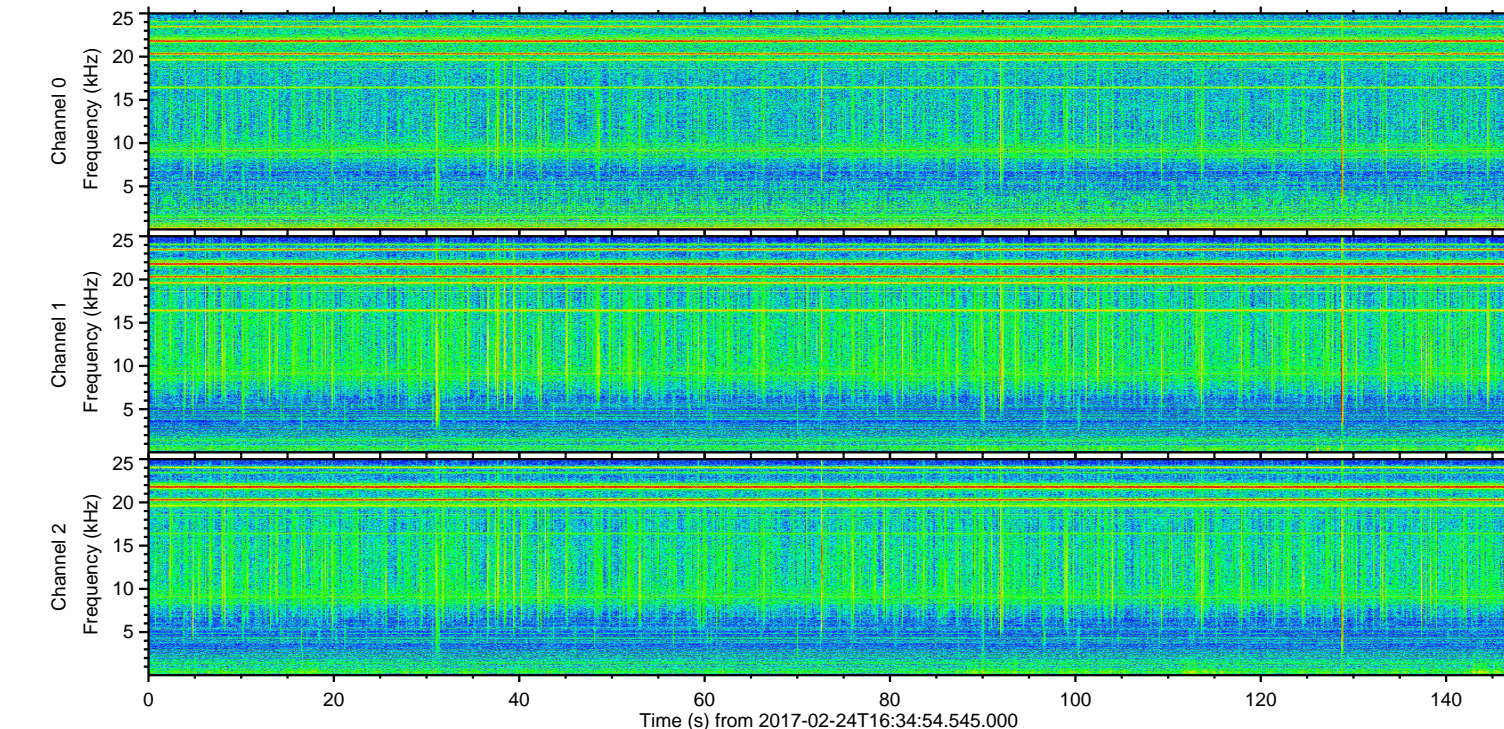
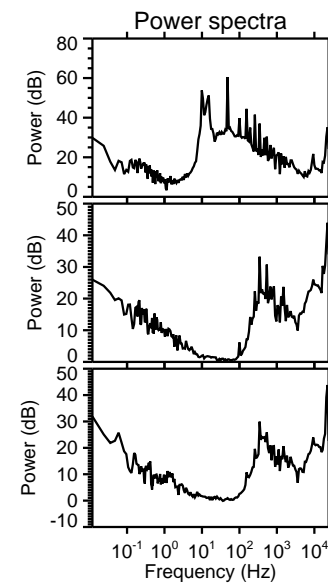
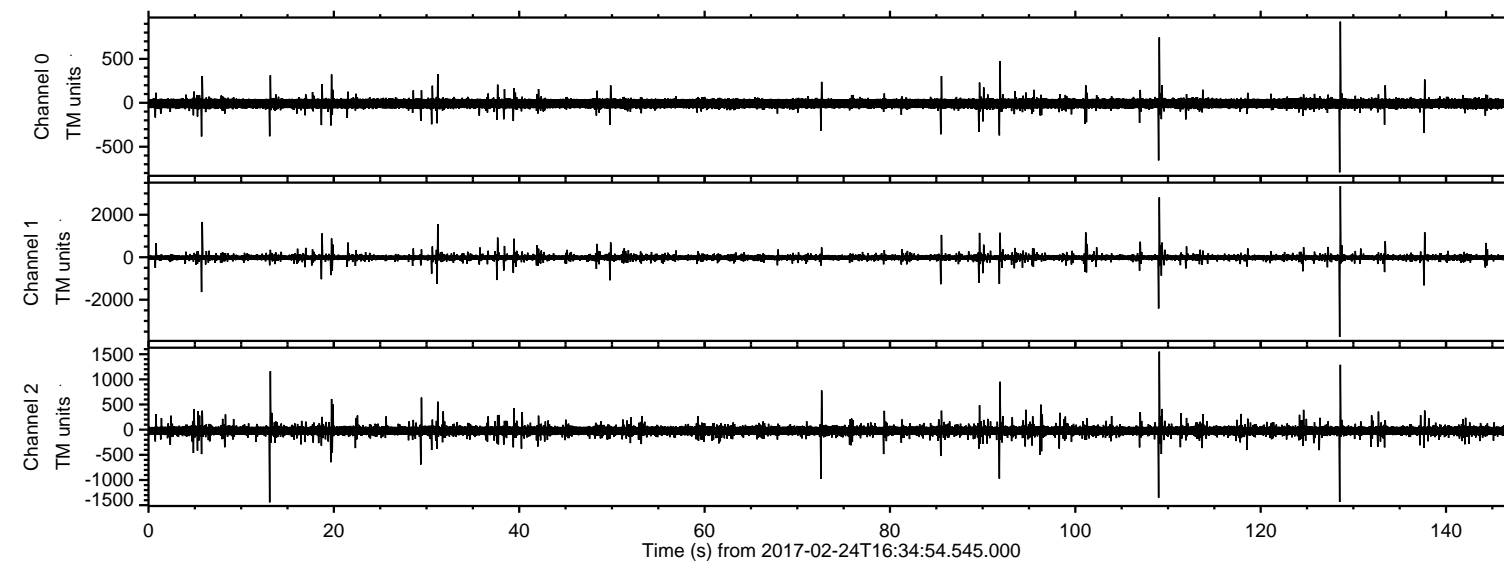


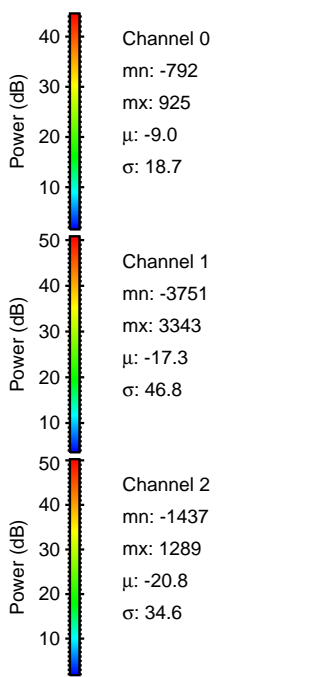
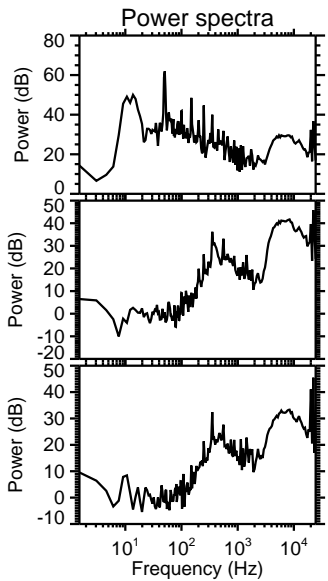
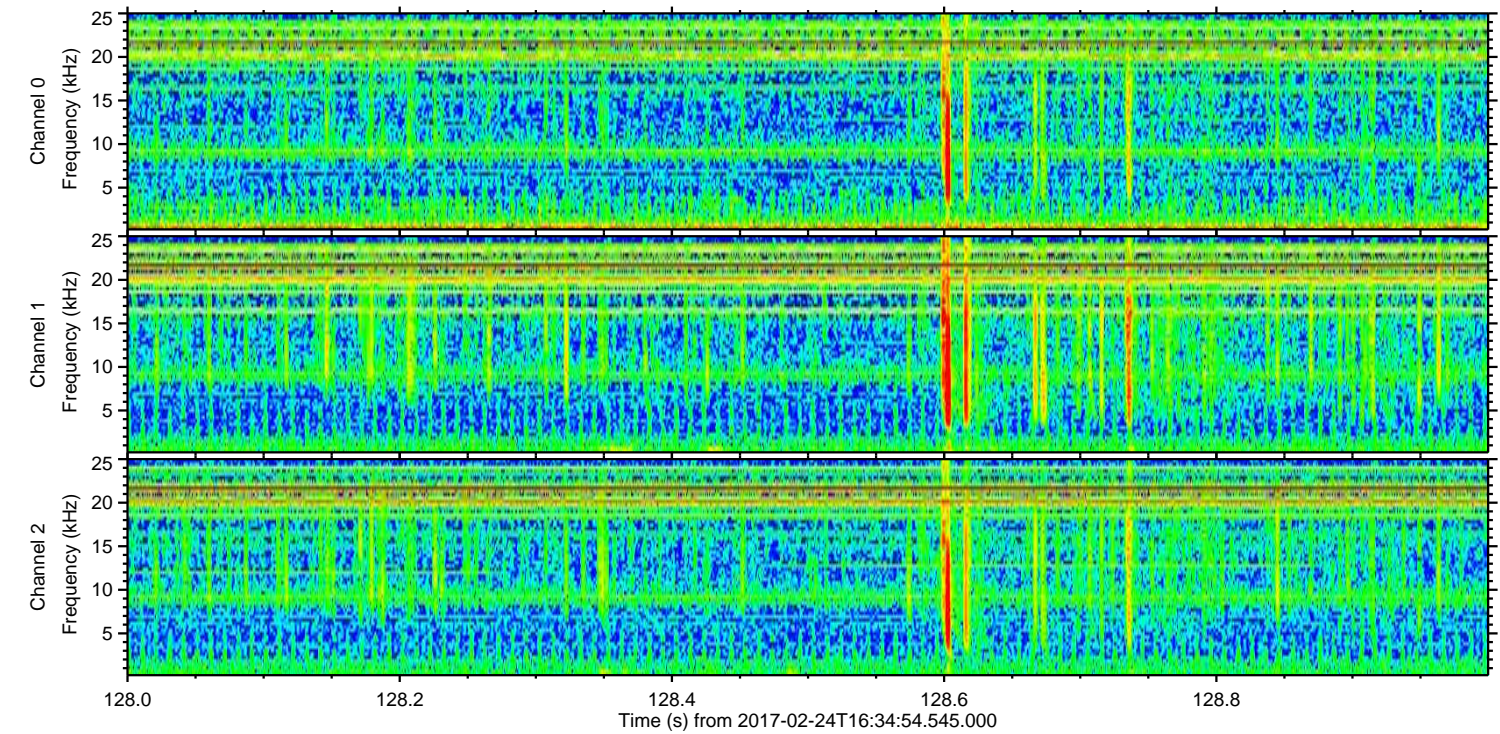
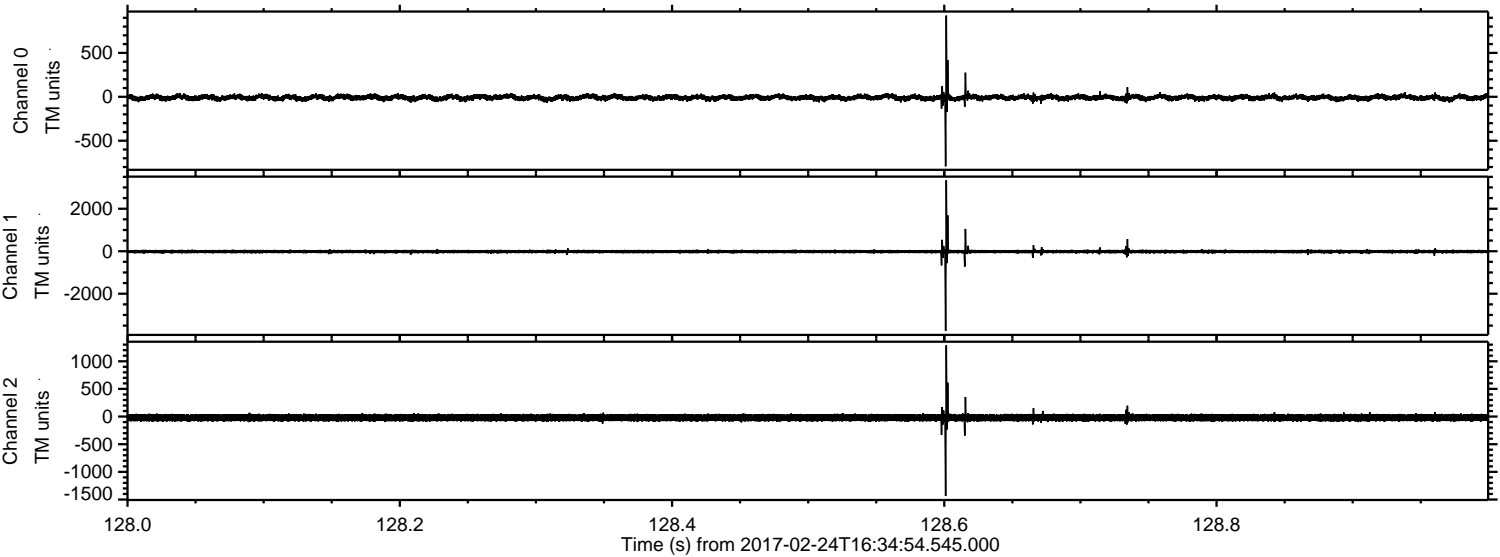
ELMAVAN 3D WAVEFORMS (Measured data sampled at 50 kHz) 51000 packets of 144 samples from 2017-02-24T16:34:54.545.000.

Processed Fri Feb 24 17:42:54 2017 by ELM ver.2012-10-06 from 001__elm20170224_163453__dat00.bin



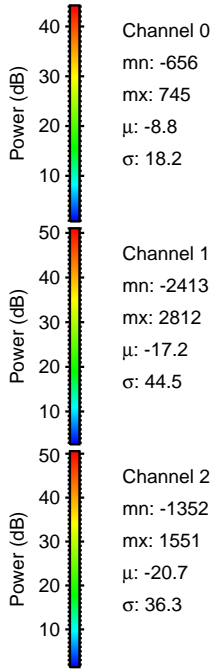
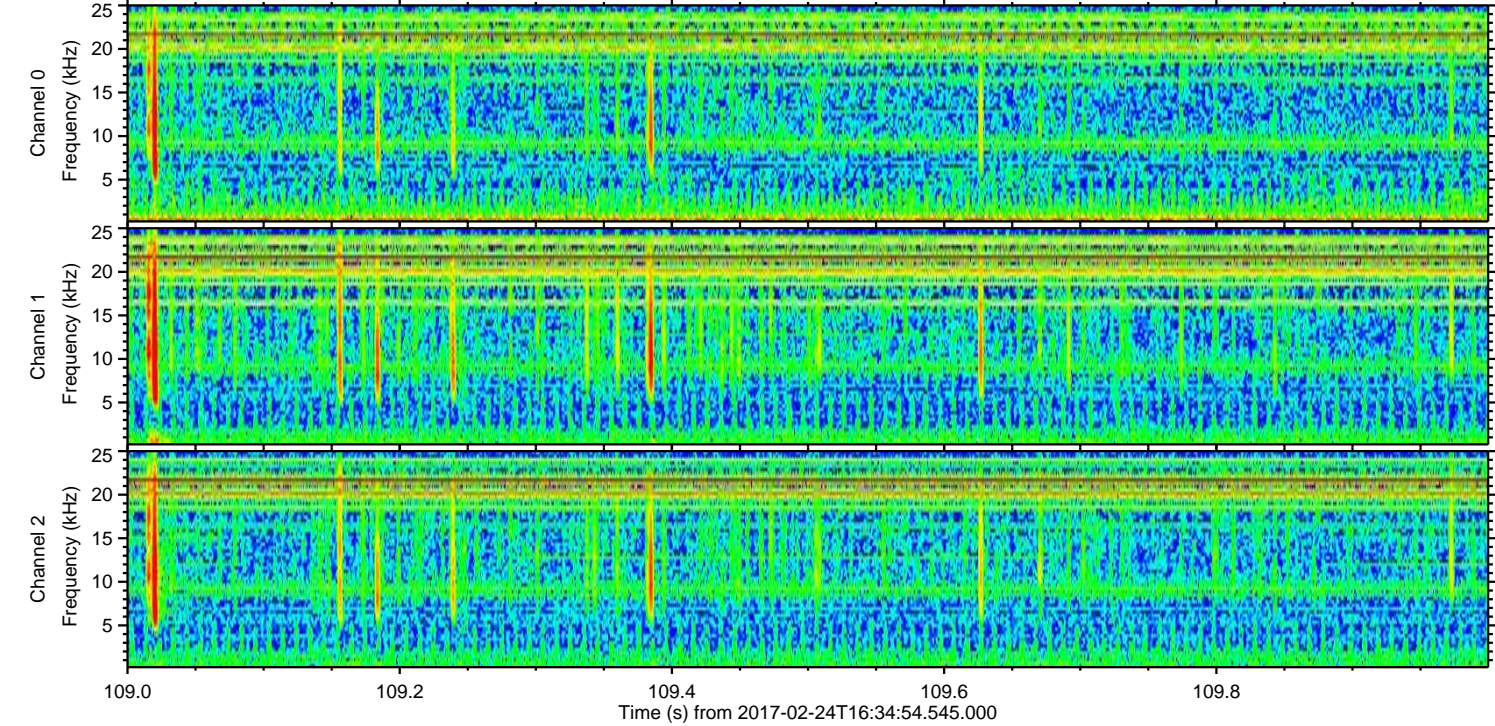
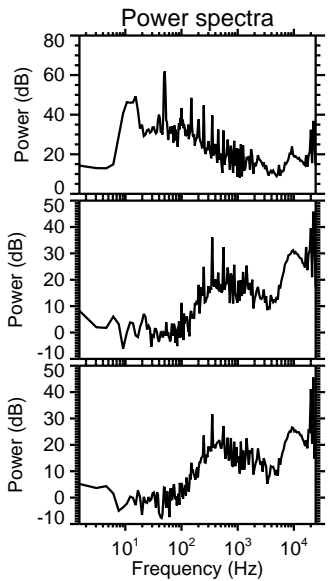
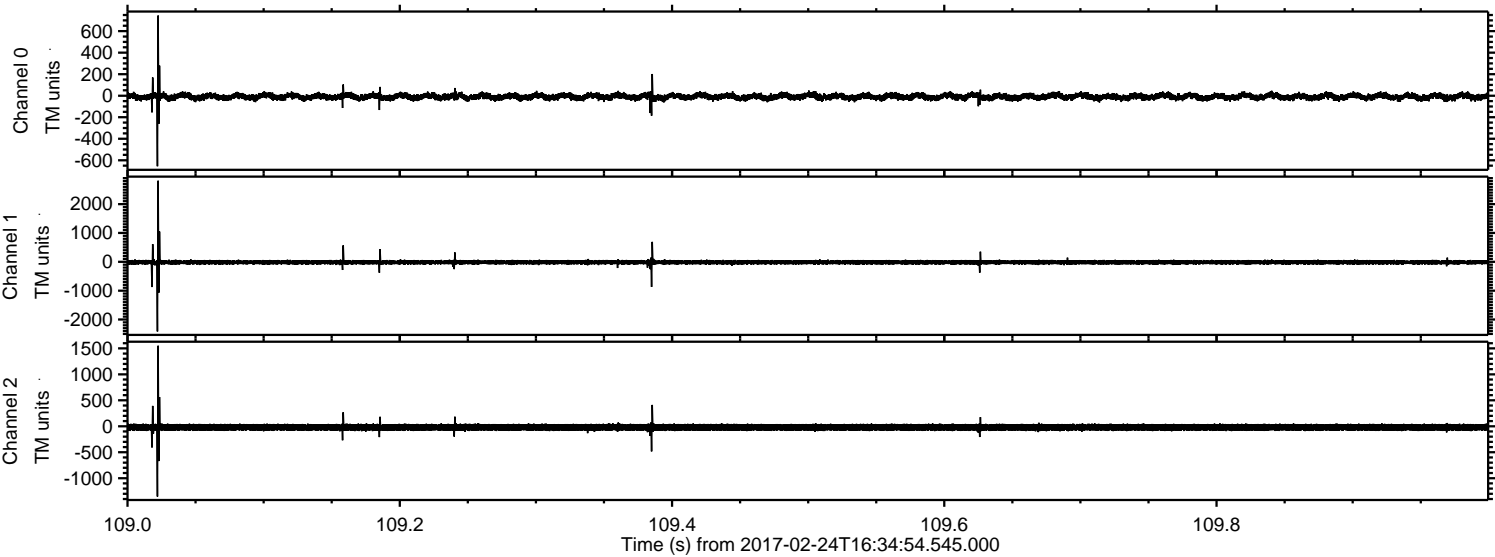
ELMAVAN 3D WAVEFORMS (Measured data sampled at 50 kHz) 51000 packets of 144 samples from 2017-02-24T16:34:54.545.000. Part 129/147

Processed Fri Feb 24 17:43:06 2017 by ELM ver.2012-10-06 from 001__elm20170224_163453__dat00.bin

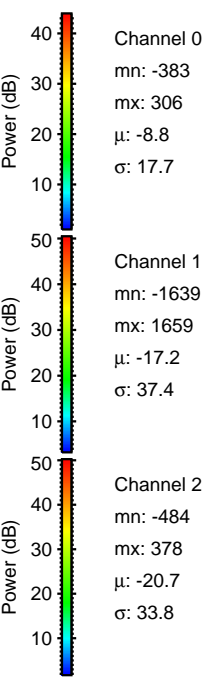
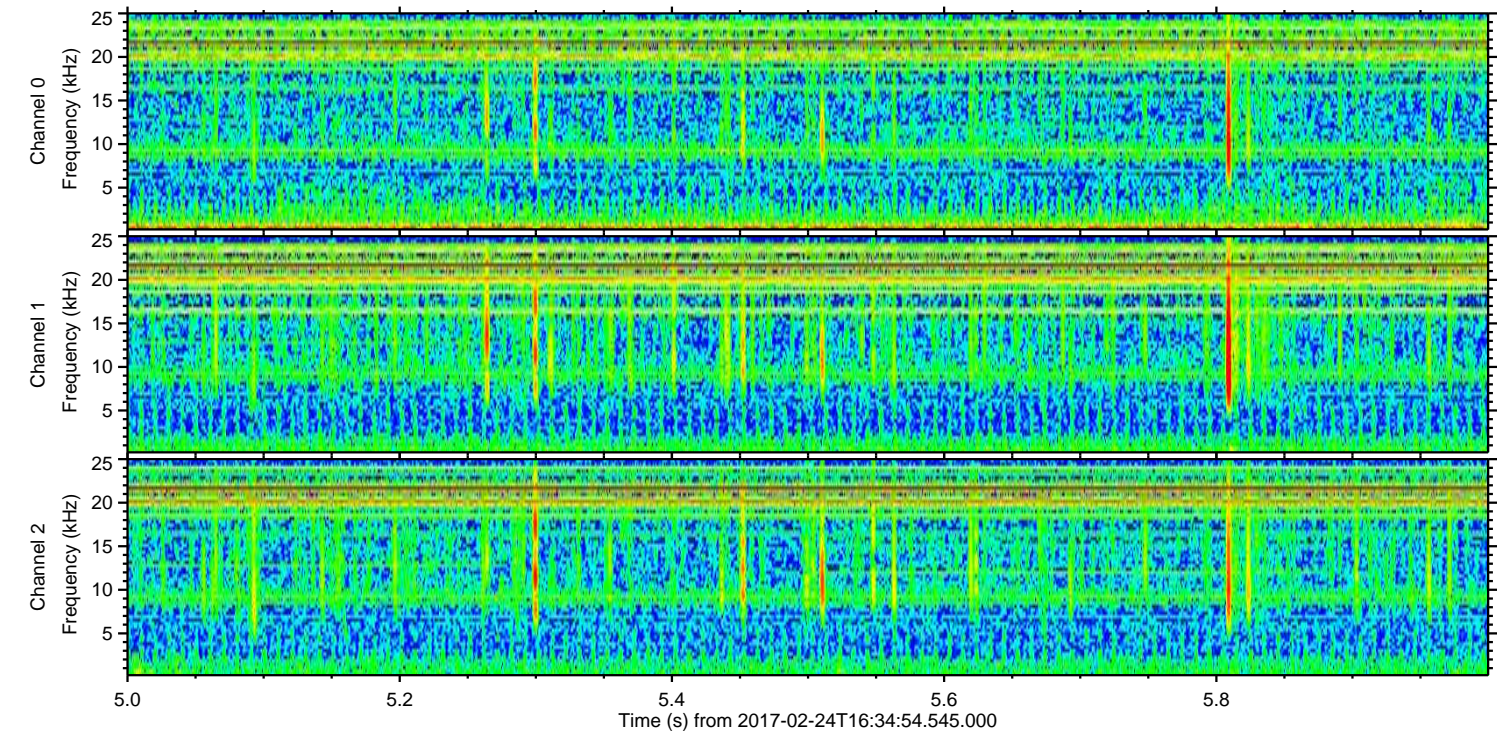
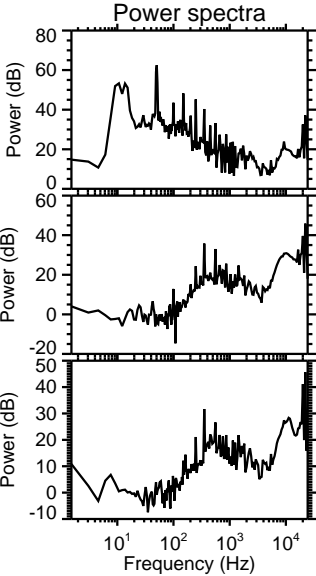
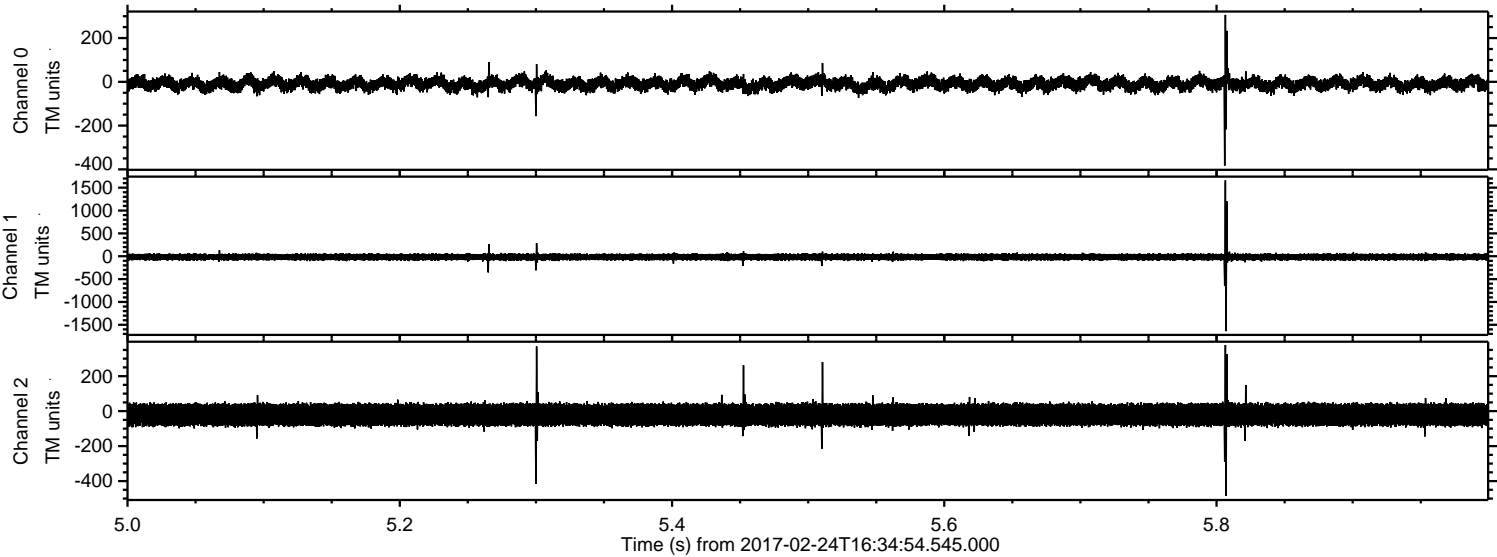


ELMAVAN 3D WAVEFORMS (Measured data sampled at 50 kHz) 51000 packets of 144 samples from 2017-02-24T16:34:54.545.000. Part 110/147

Processed Fri Feb 24 17:43:07 2017 by ELM ver.2012-10-06 from 001__elm20170224_163453__dat00.bin

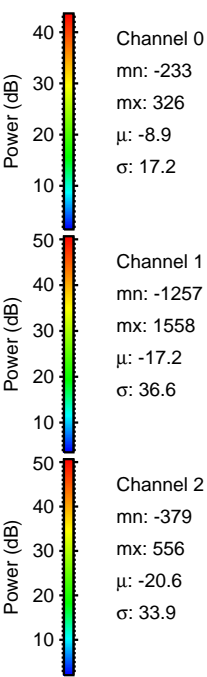
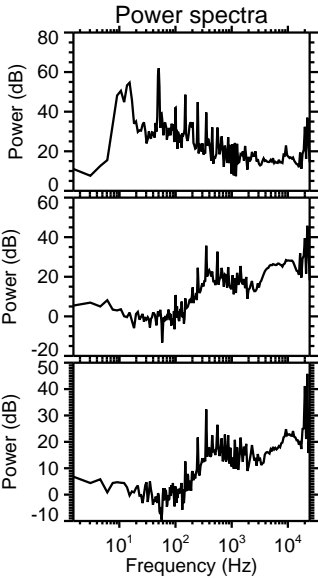
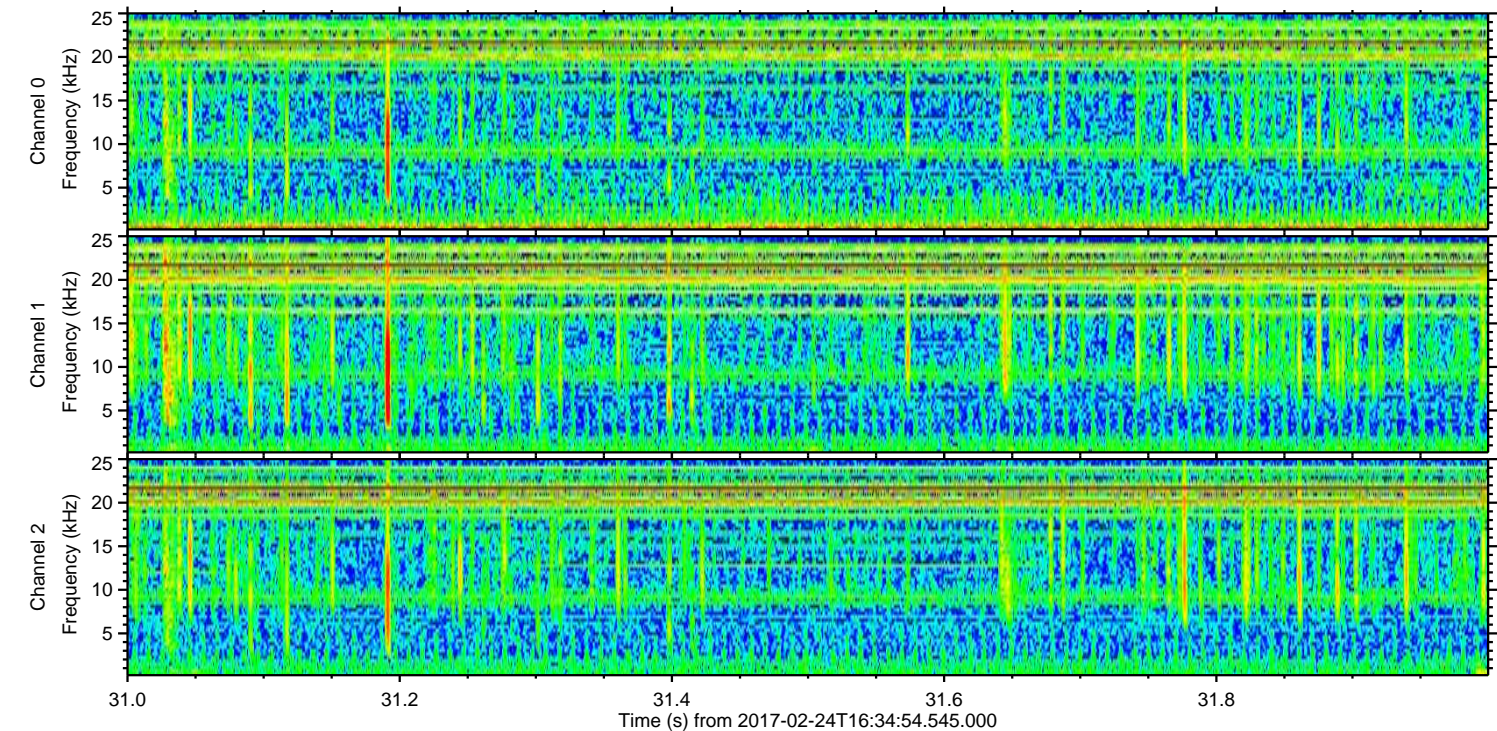
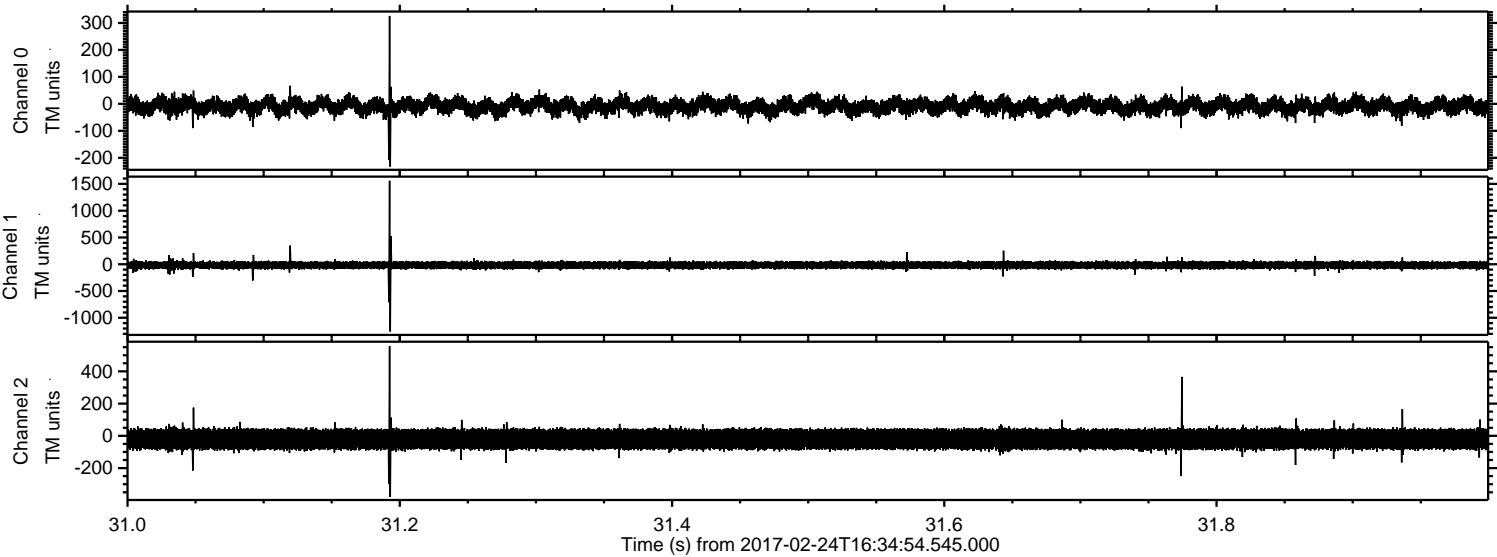


Processed Fri Feb 24 17:43:07 2017 by ELM ver.2012-10-06 from 001__elm20170224_163453__dat00.bin

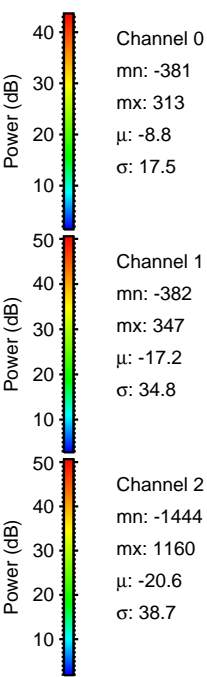
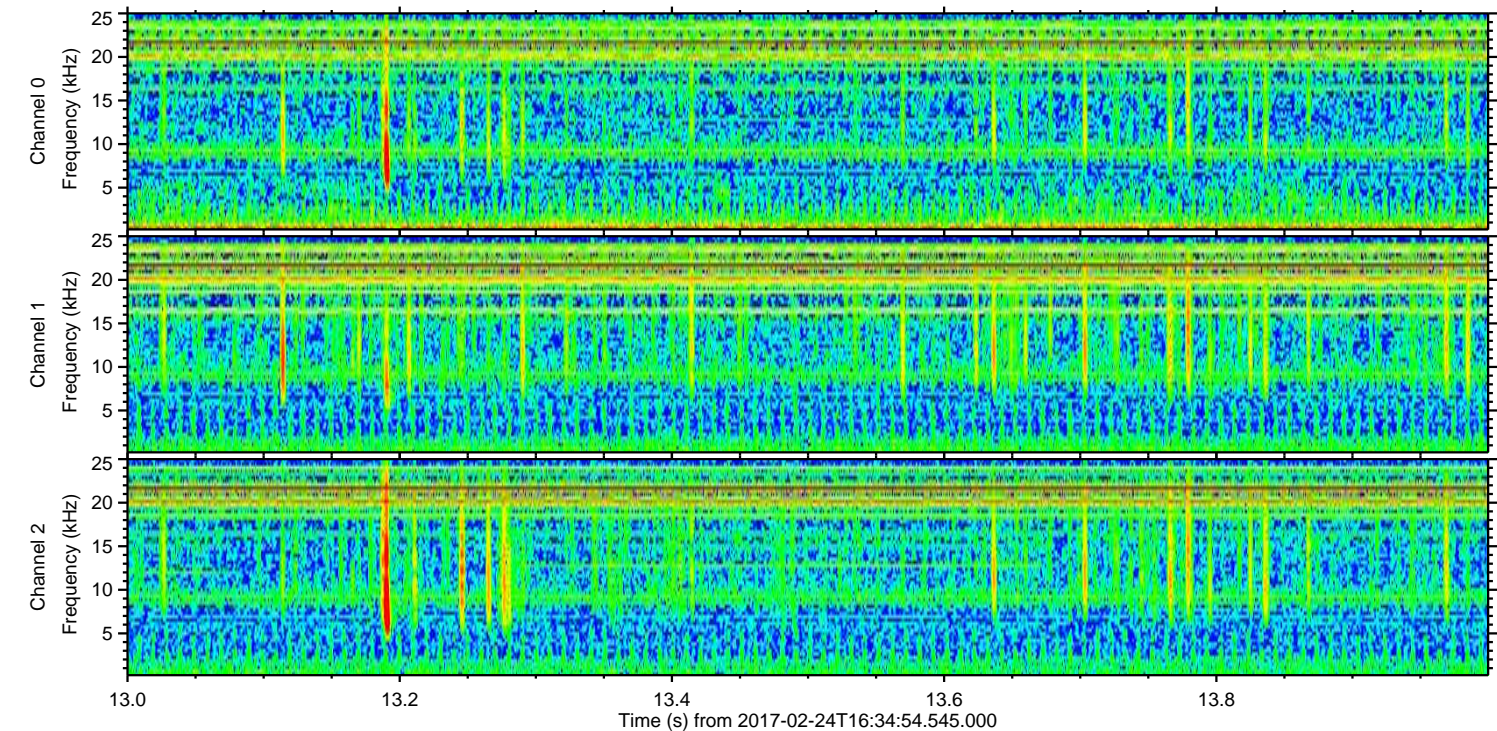
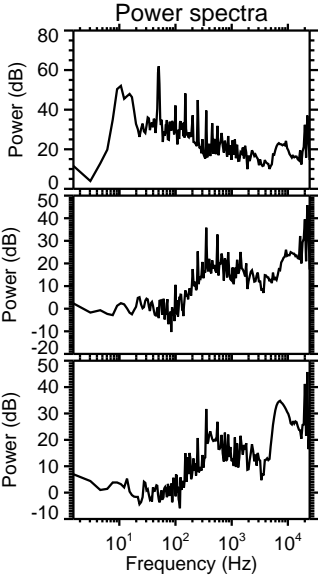
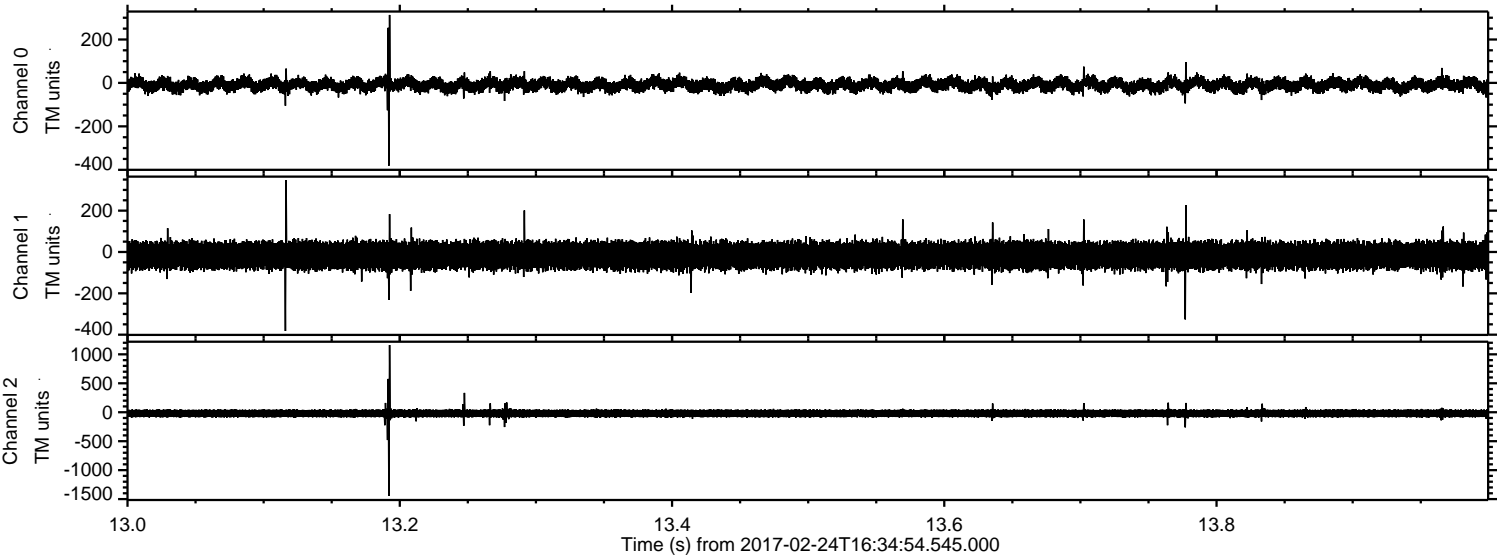


ELMAVAN 3D WAVEFORMS (Measured data sampled at 50 kHz) 51000 packets of 144 samples from 2017-02-24T16:34:54.545.000. Part 32/147

Processed Fri Feb 24 17:43:08 2017 by ELM ver.2012-10-06 from 001__elm20170224_163453__dat00.bin

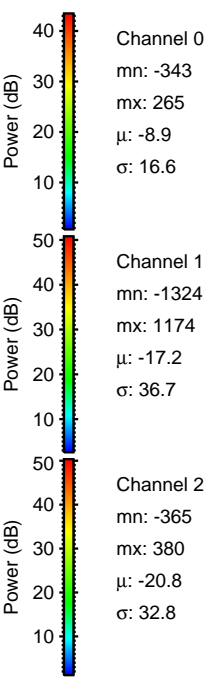
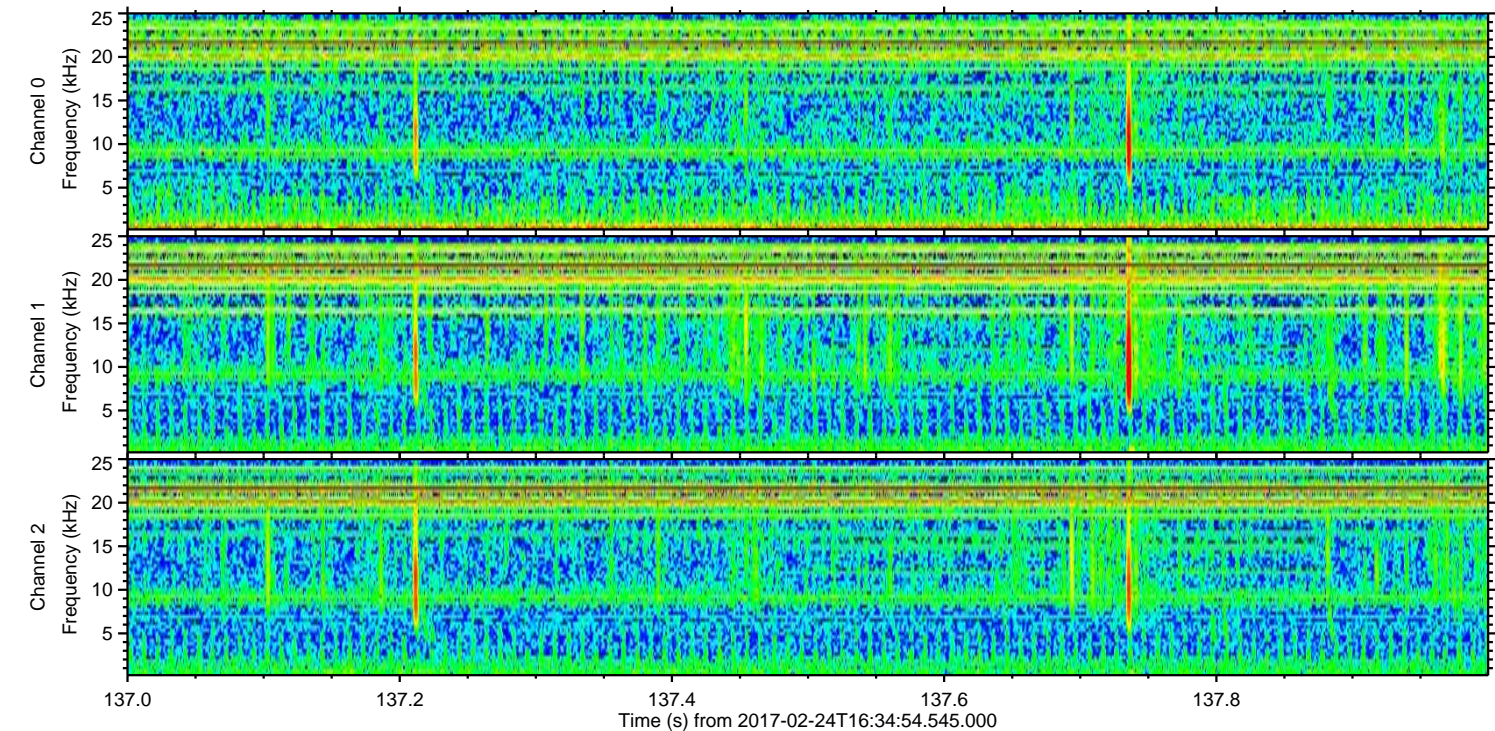
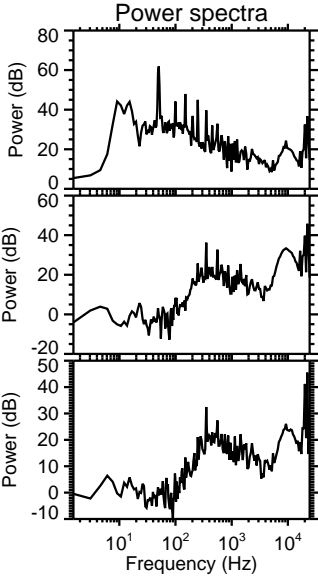
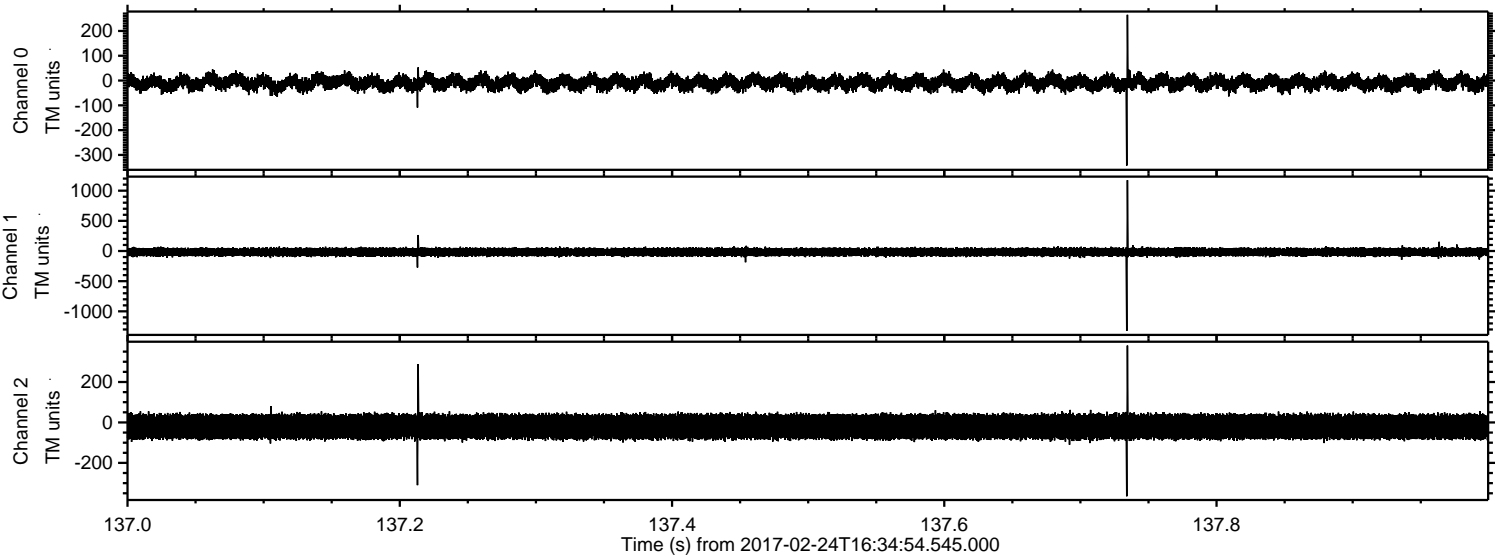


Processed Fri Feb 24 17:43:09 2017 by ELM ver.2012-10-06 from 001__elm20170224_163453__dat00.bin

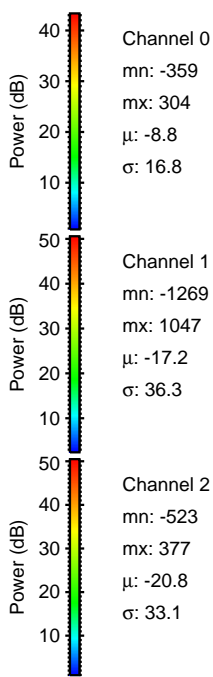
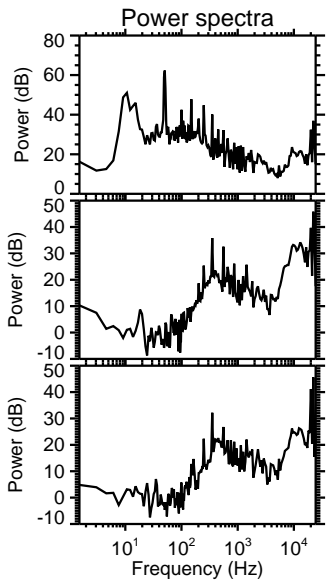
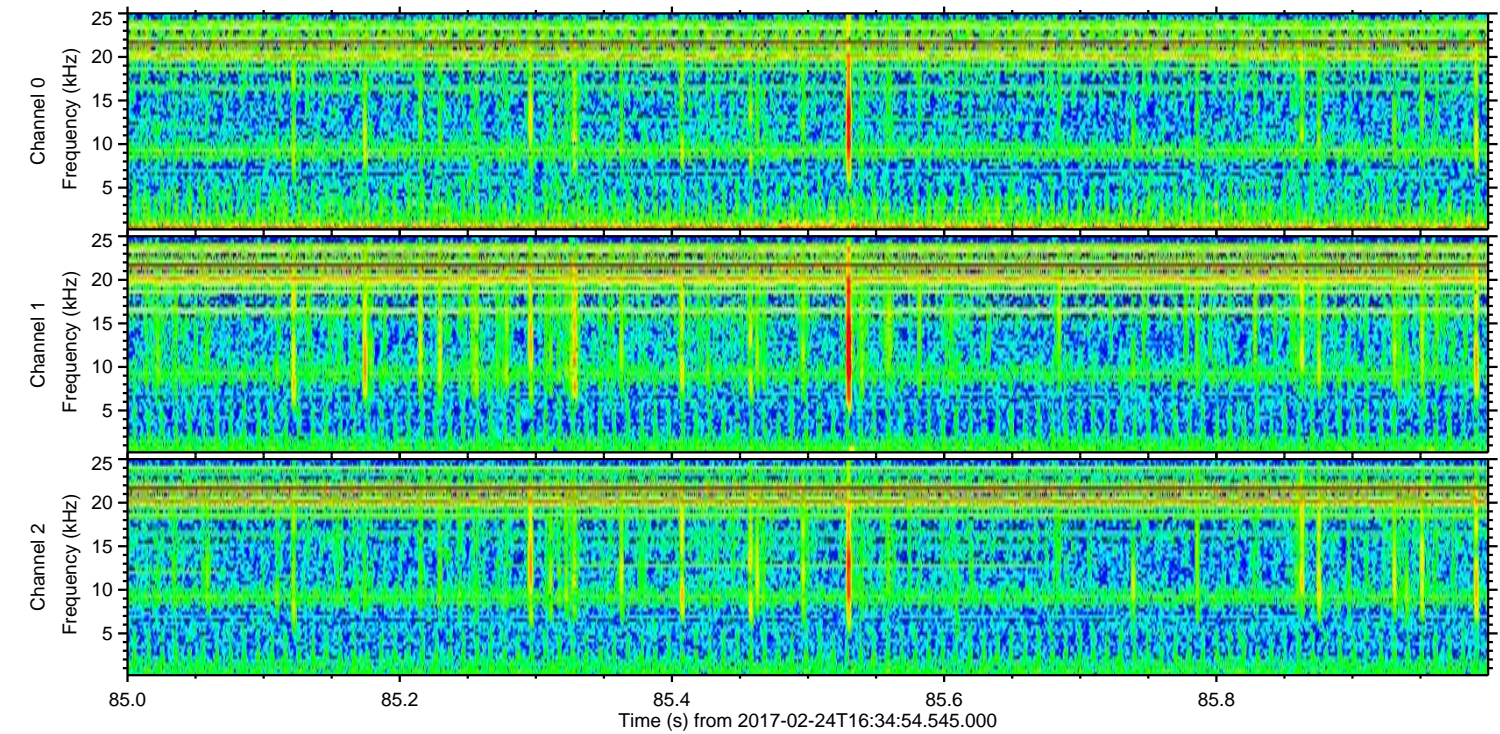
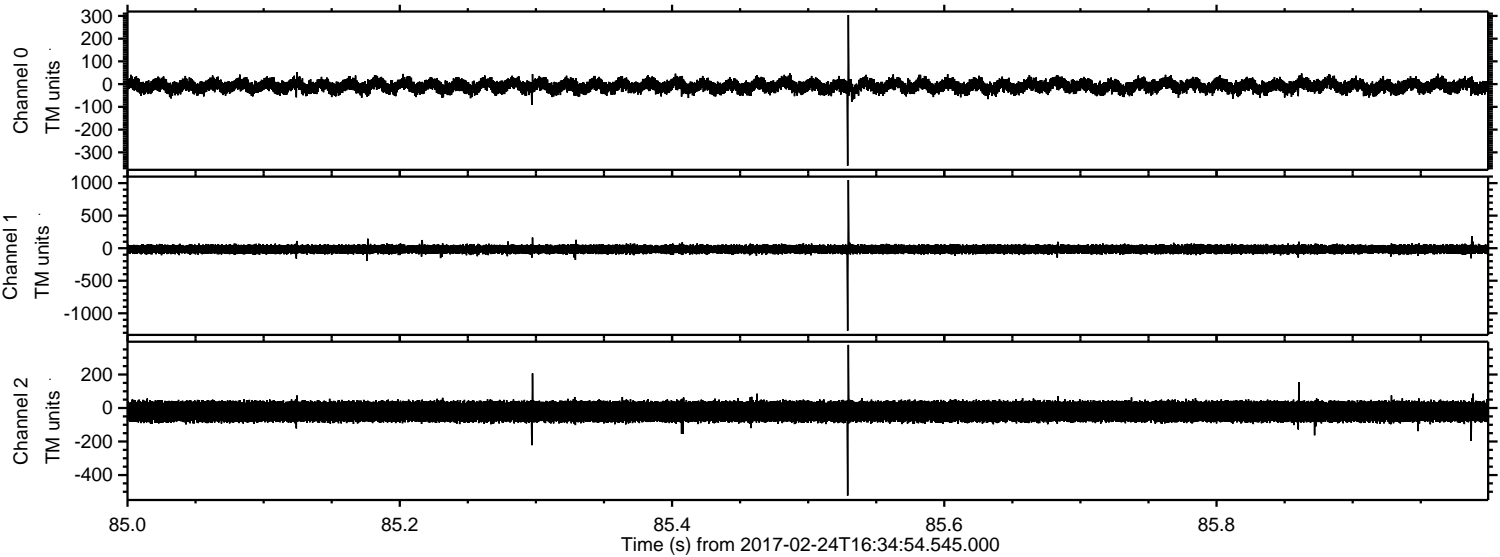


ELMAVAN 3D WAVEFORMS (Measured data sampled at 50 kHz) 51000 packets of 144 samples from 2017-02-24T16:34:54.545.000. Part 138/147

Processed Fri Feb 24 17:43:10 2017 by ELM ver.2012-10-06 from 001__elm20170224_163453__dat00.bin



Processed Fri Feb 24 17:43:11 2017 by ELM ver.2012-10-06 from 001__elm20170224_163453__dat00.bin

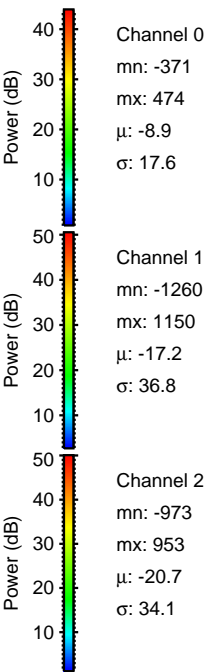
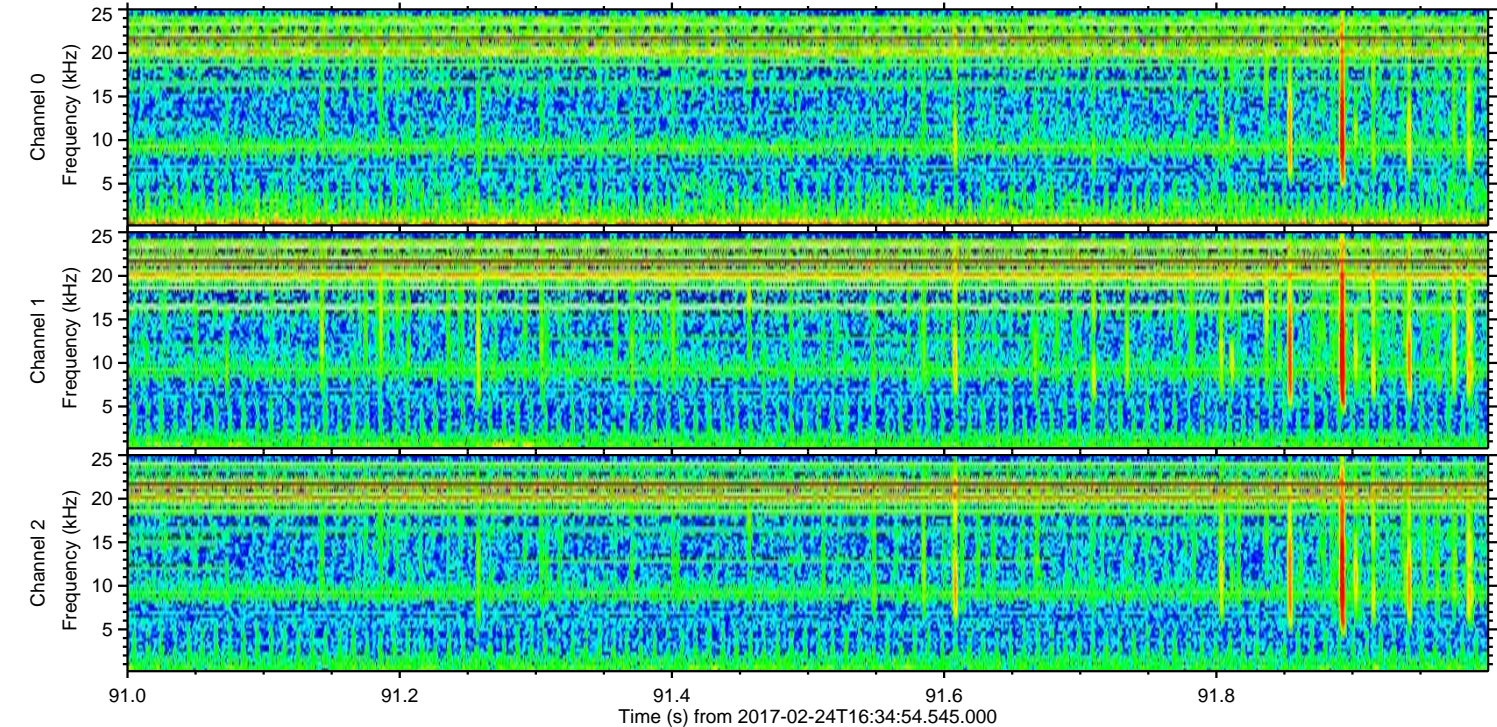
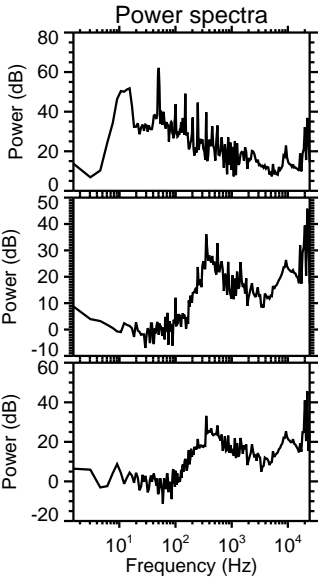
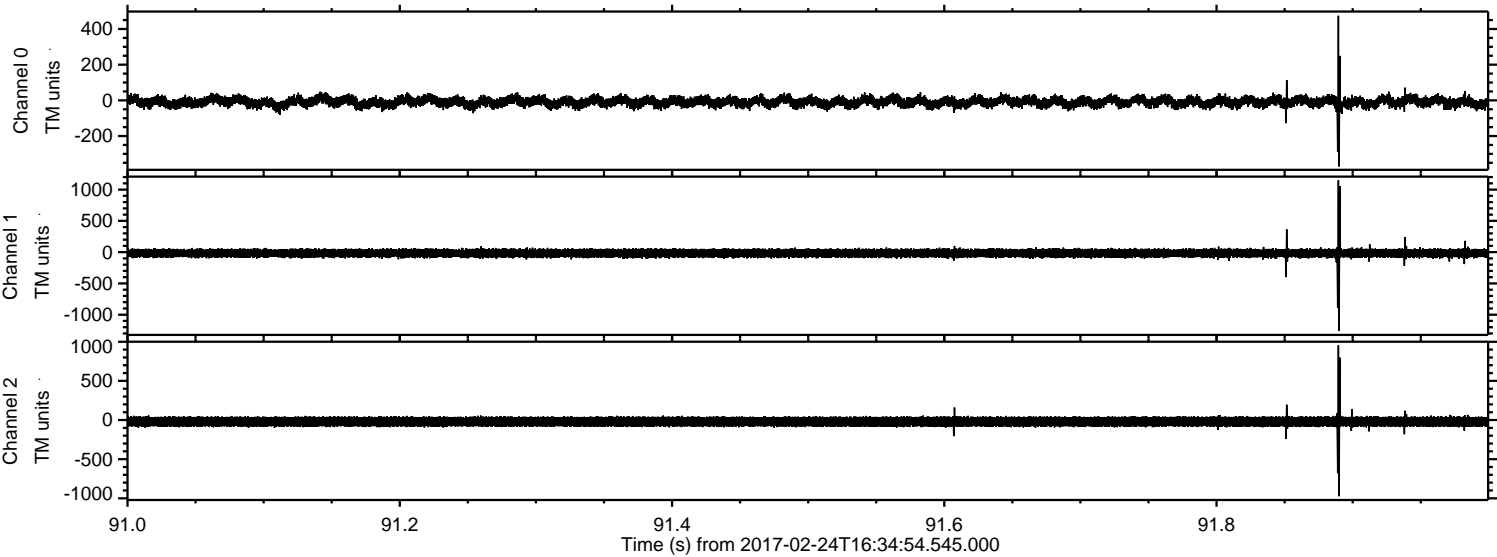


Channel 0
mn: -359
mx: 304
 μ : -8.8
 σ : 16.8

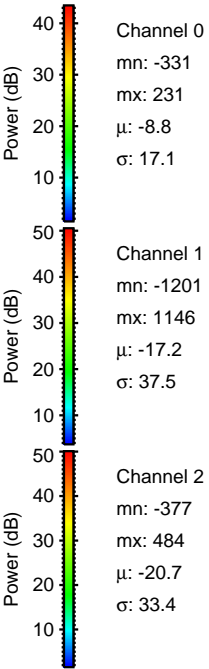
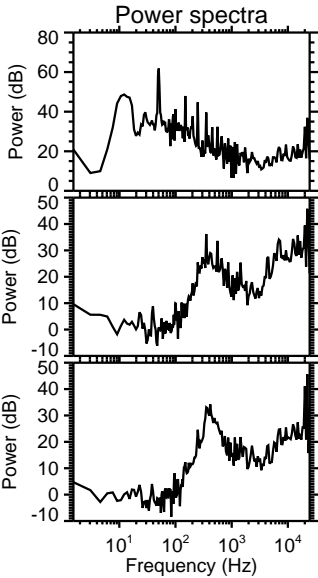
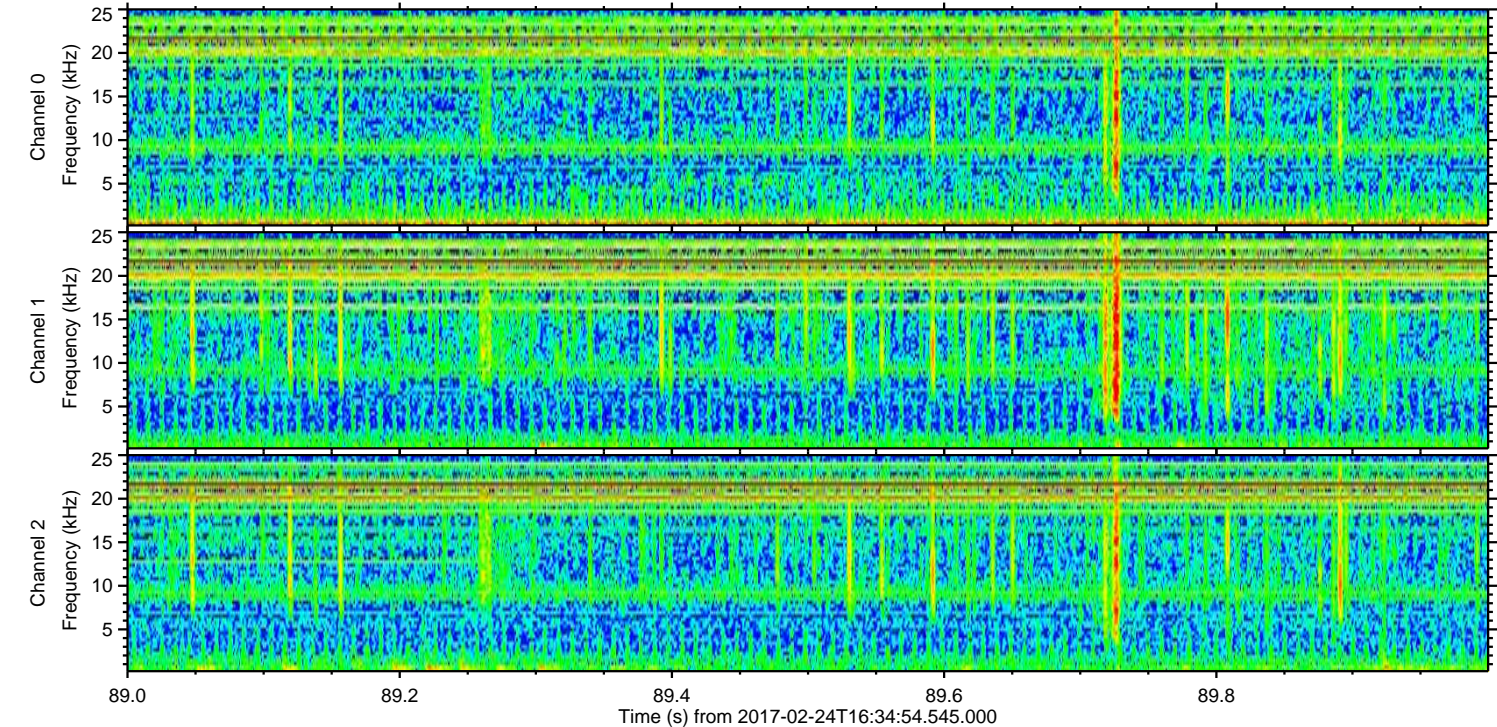
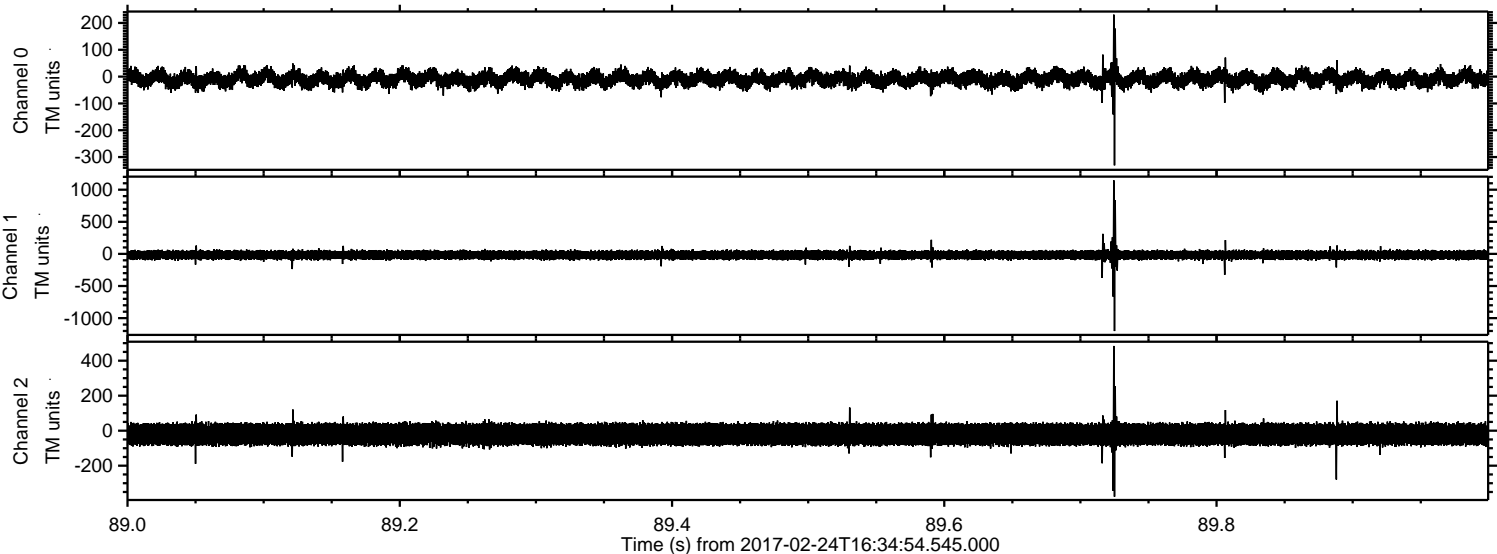
Channel 1
mn: -1269
mx: 1047
 μ : -17.2
 σ : 36.3

Channel 2
mn: -523
mx: 377
 μ : -20.8
 σ : 33.1

Processed Fri Feb 24 17:43:12 2017 by ELM ver.2012-10-06 from 001__elm20170224_163453__dat00.bin



Processed Fri Feb 24 17:43:13 2017 by ELM ver.2012-10-06 from 001__elm20170224_163453__dat00.bin



Processed Fri Feb 24 17:43:14 2017 by ELM ver.2012-10-06 from 001__elm20170224_163453__dat00.bin

