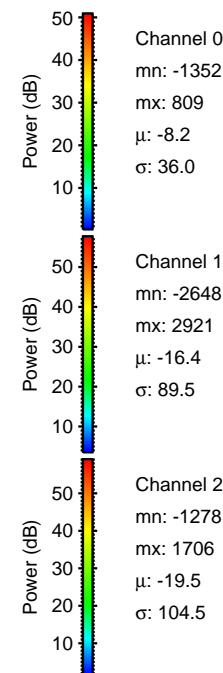
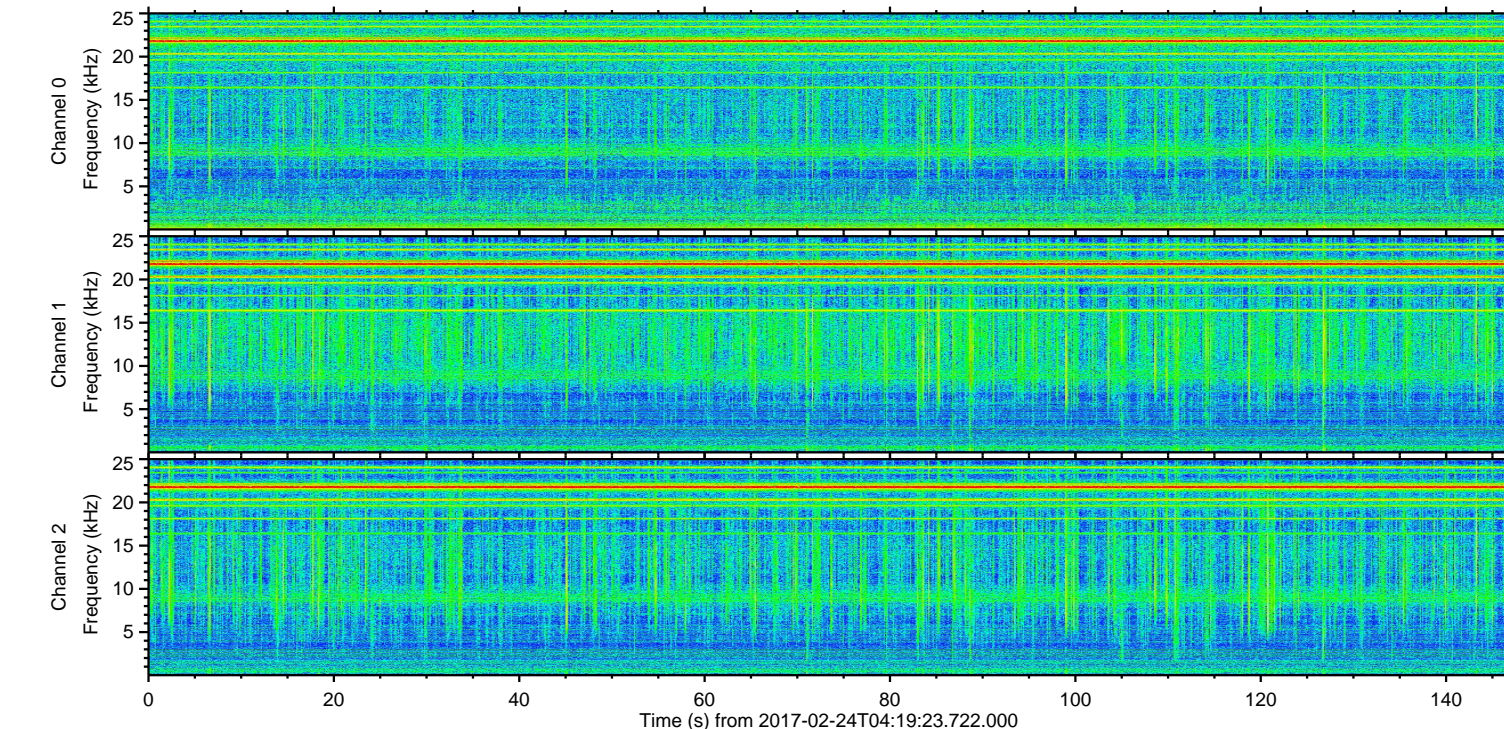
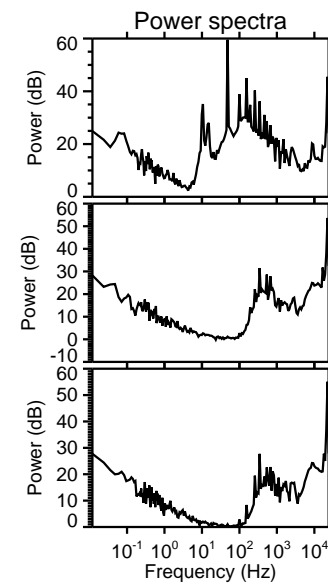
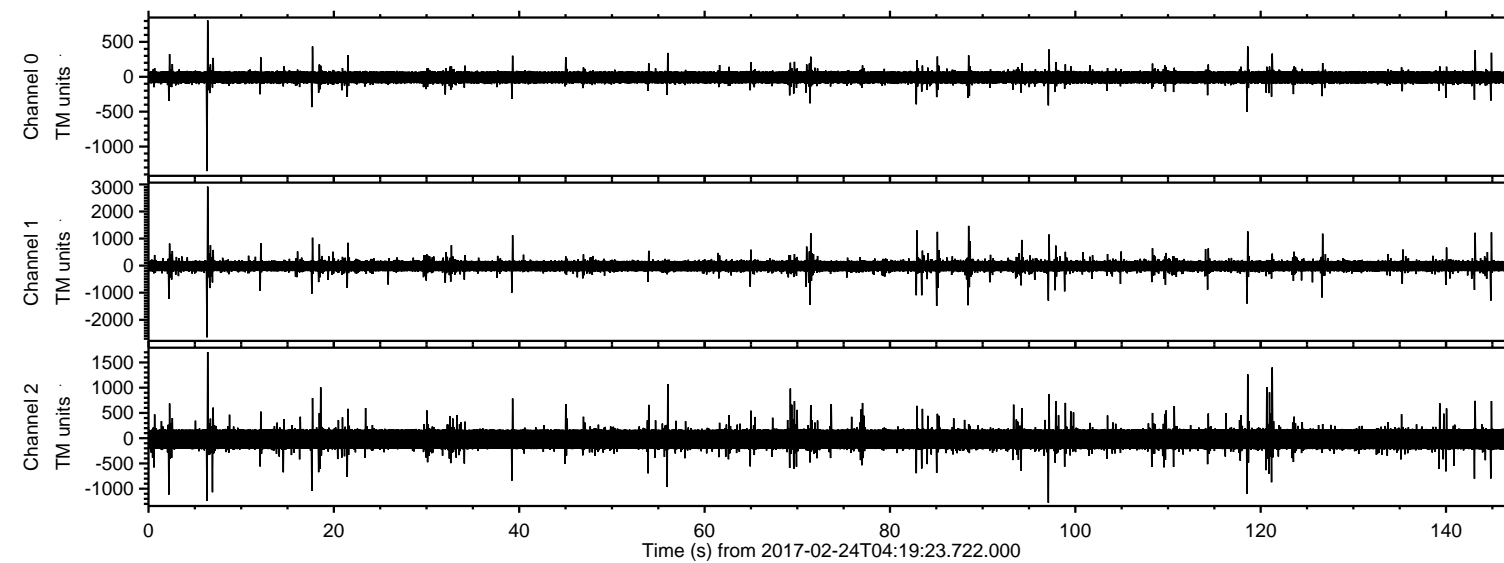


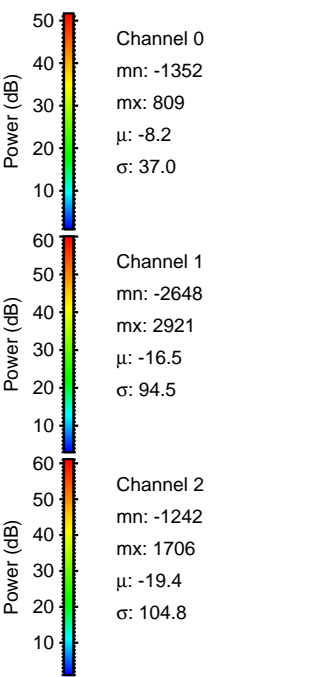
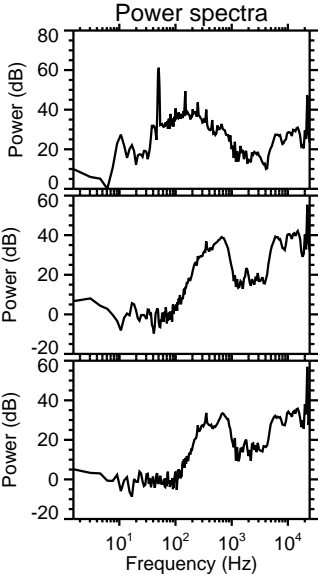
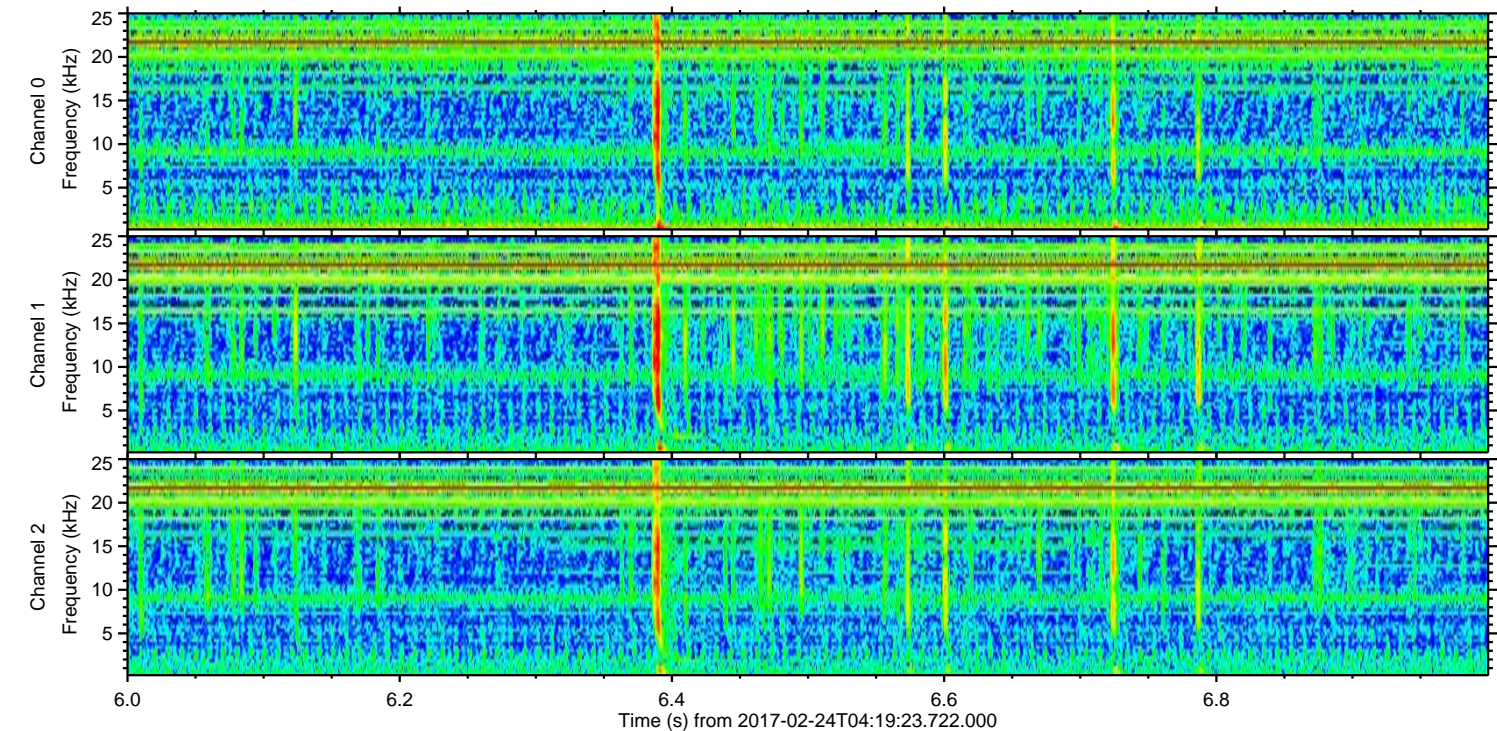
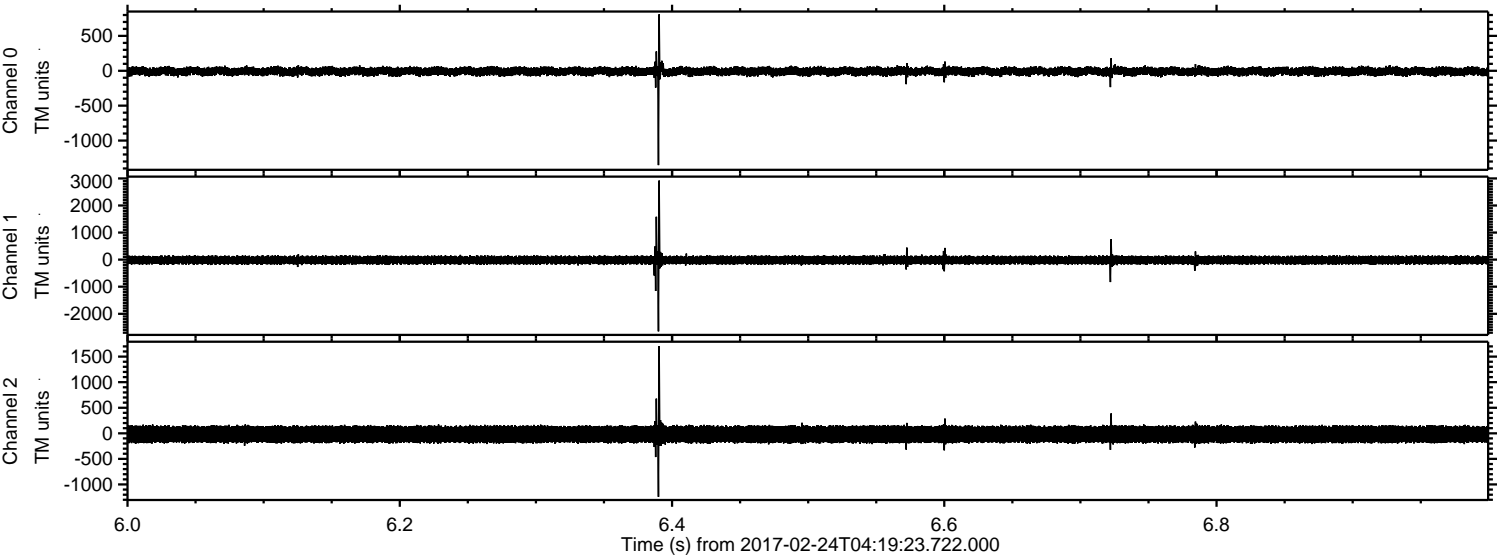
ELMAVAN 3D WAVEFORMS (Measured data sampled at 50 kHz) 51000 packets of 144 samples from 2017-02-24T04:19:23.722.000.

Processed Fri Feb 24 05:26:47 2017 by ELM ver.2012-10-06 from 001__elm20170224_041922__dat00.bin

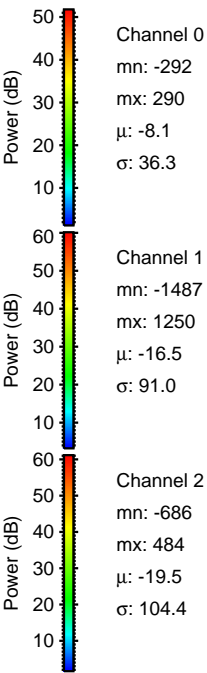
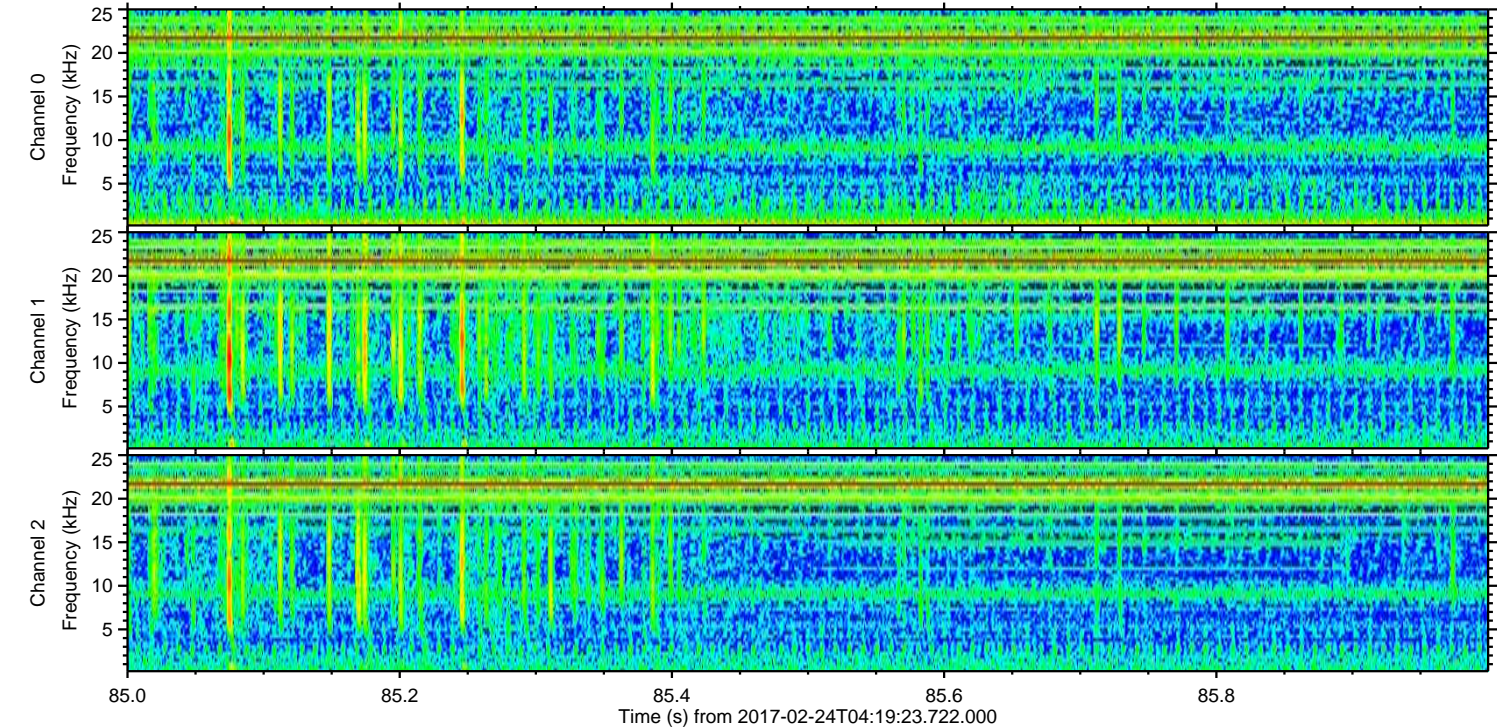
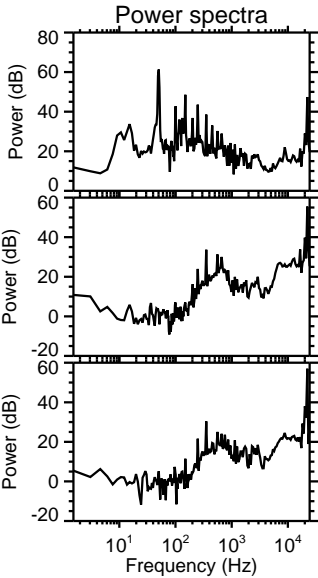
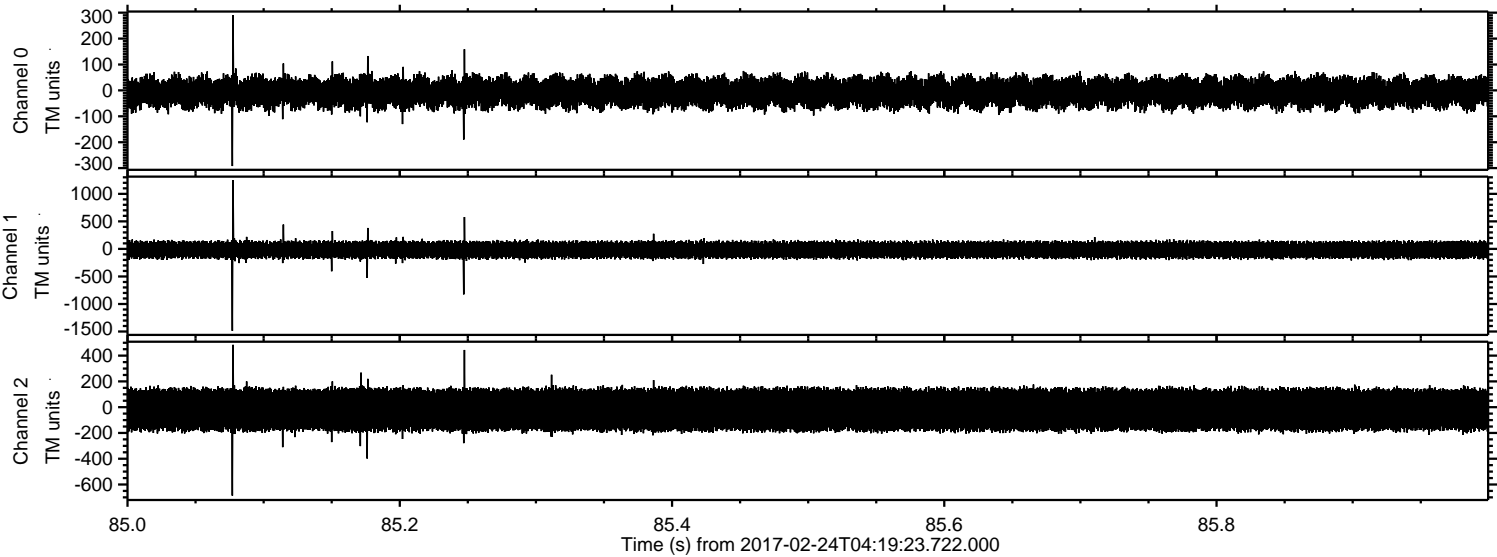


ELMAVAN 3D WAVEFORMS (Measured data sampled at 50 kHz) 51000 packets of 144 samples from 2017-02-24T04:19:23.722.000. Part 7/147

Processed Fri Feb 24 05:26:59 2017 by ELM ver.2012-10-06 from 001__elm20170224_041922__dat00.bin

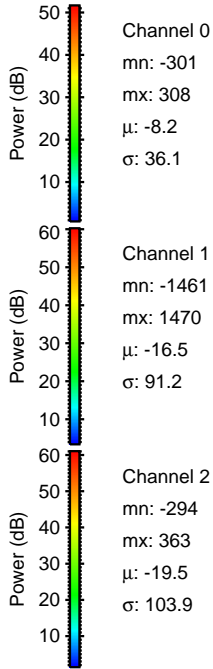
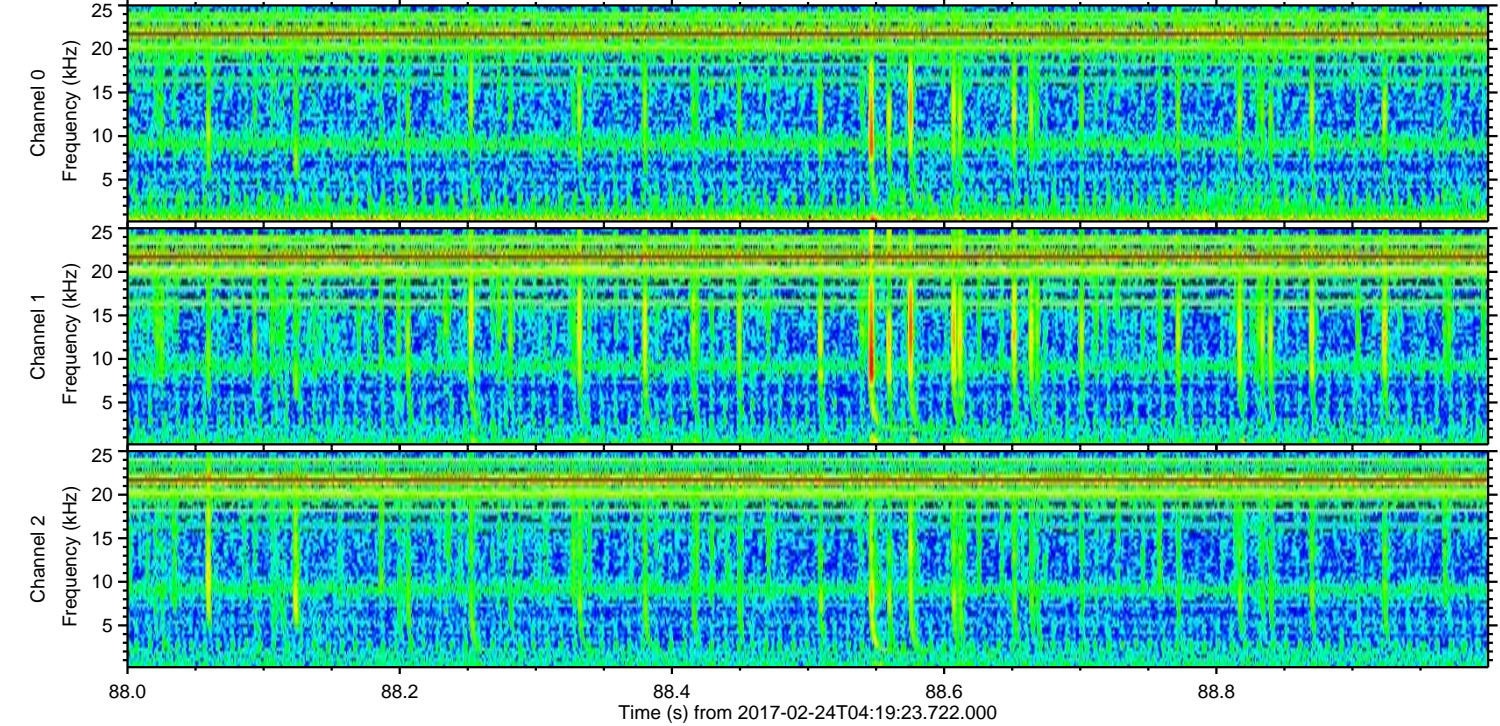
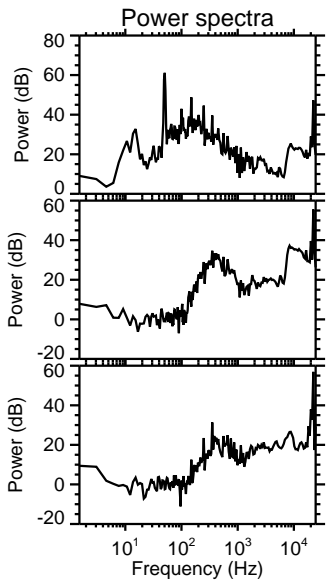
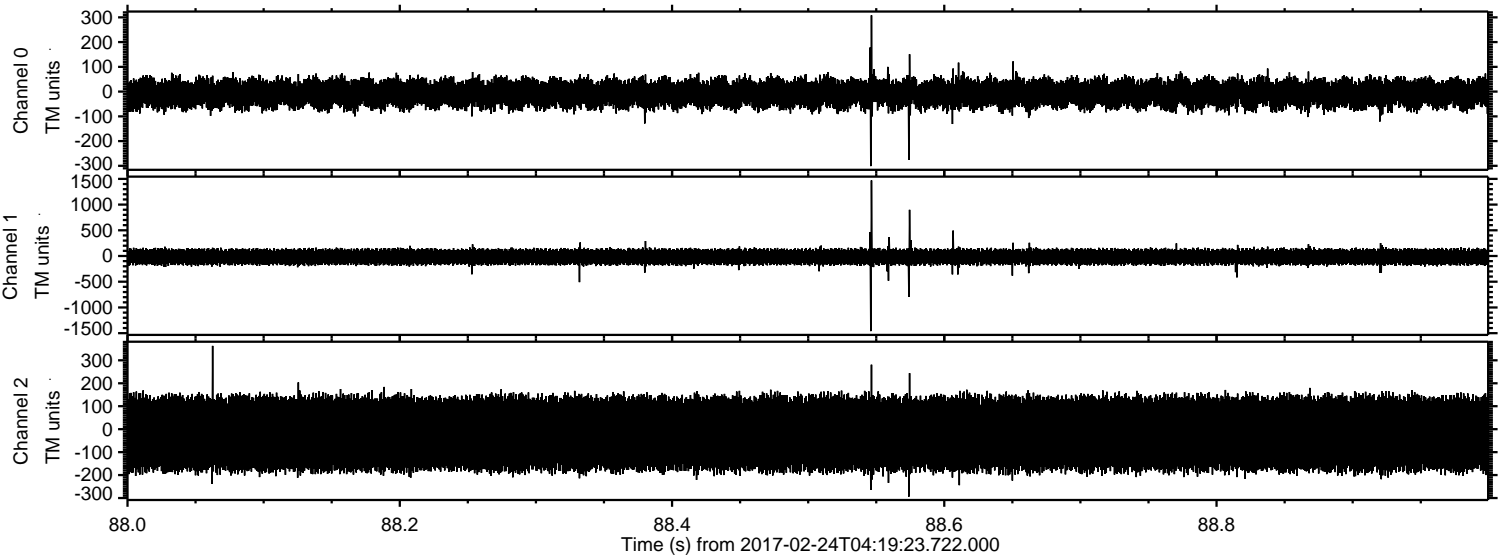


Processed Fri Feb 24 05:27:00 2017 by ELM ver.2012-10-06 from 001__elm20170224_041922__dat00.bin



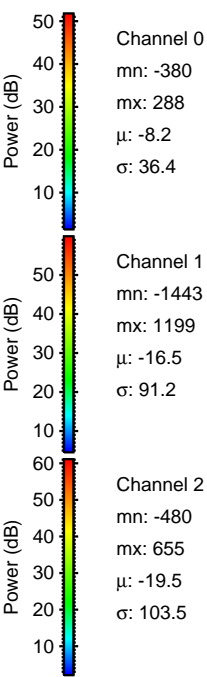
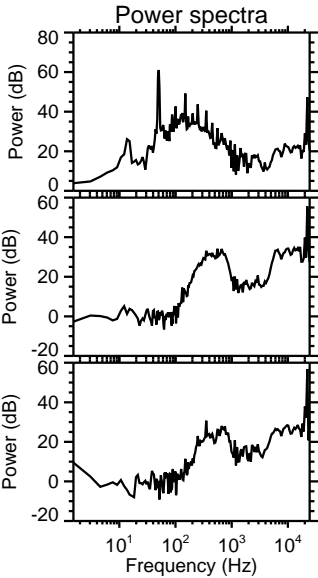
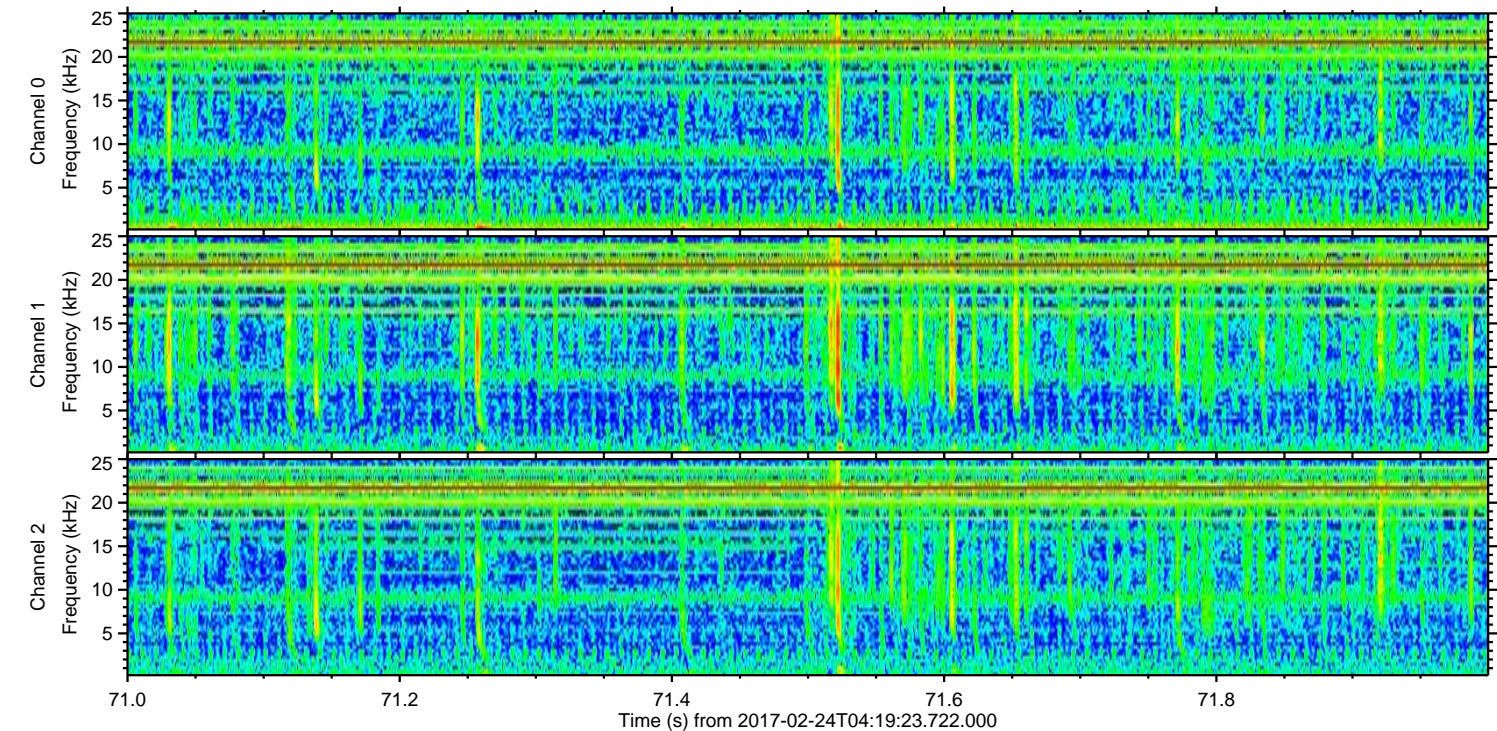
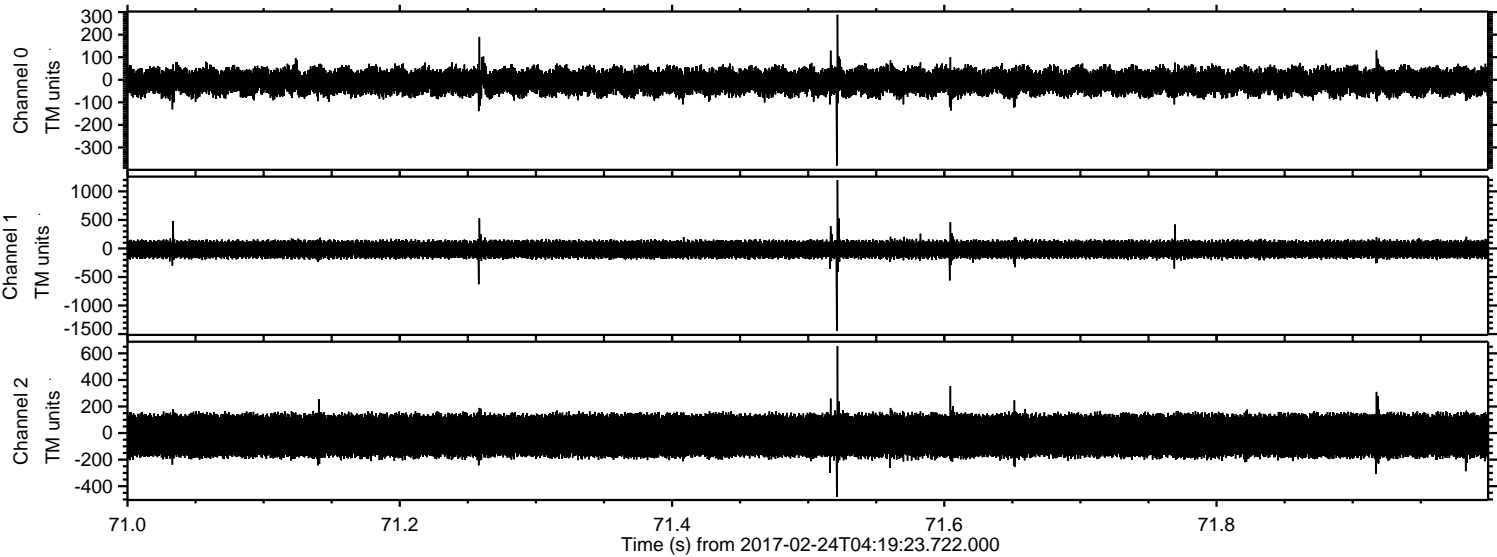
ELMAVAN 3D WAVEFORMS (Measured data sampled at 50 kHz) 51000 packets of 144 samples from 2017-02-24T04:19:23.722.000. Part 89/147

Processed Fri Feb 24 05:27:01 2017 by ELM ver.2012-10-06 from 001__elm20170224_041922__dat00.bin



ELMAVAN 3D WAVEFORMS (Measured data sampled at 50 kHz) 51000 packets of 144 samples from 2017-02-24T04:19:23.722.000. Part 72/147

Processed Fri Feb 24 05:27:02 2017 by ELM ver.2012-10-06 from 001__elm20170224_041922__dat00.bin



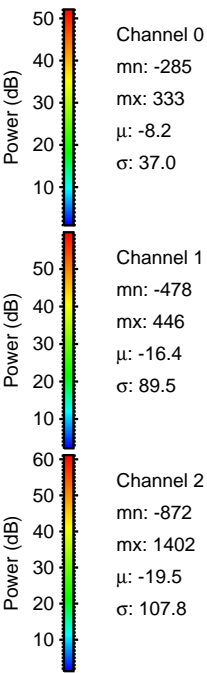
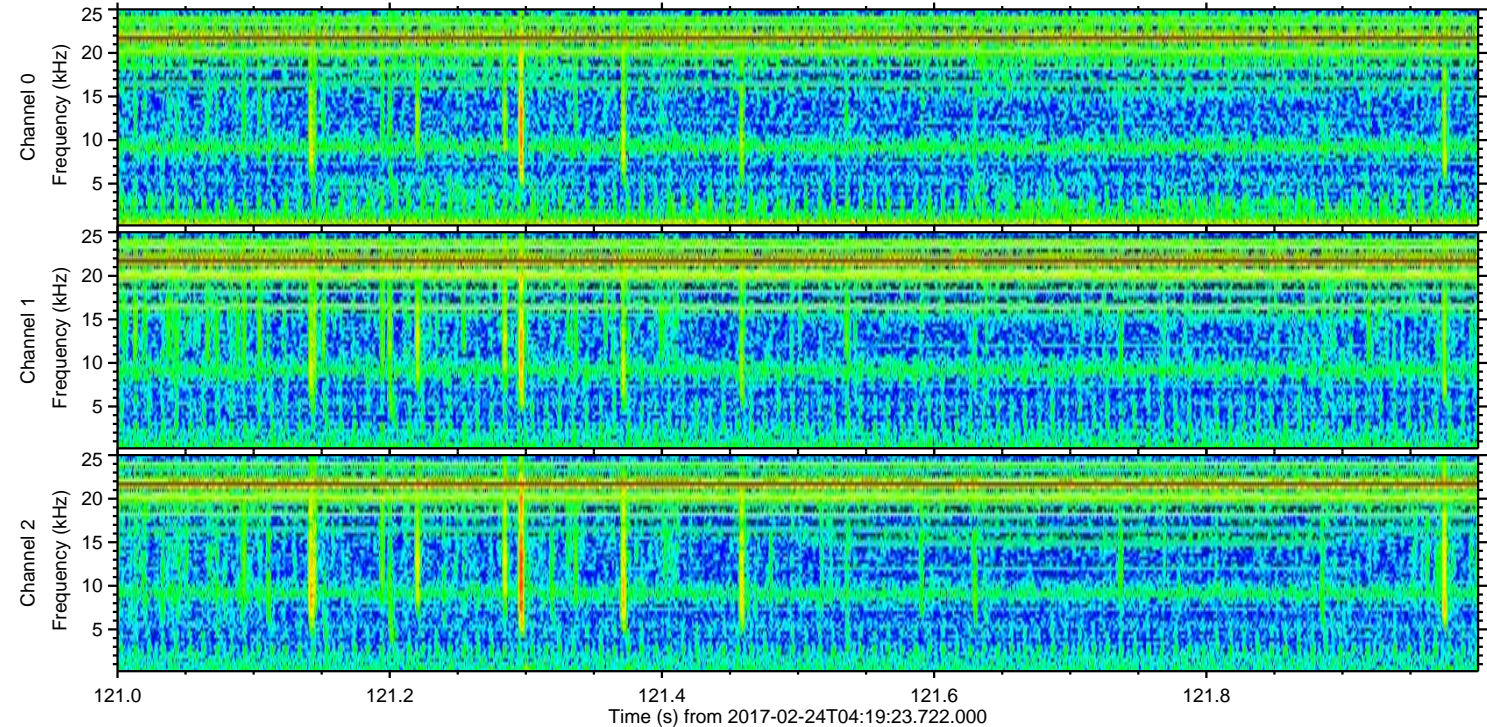
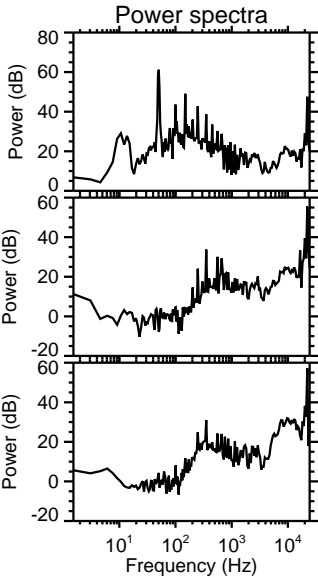
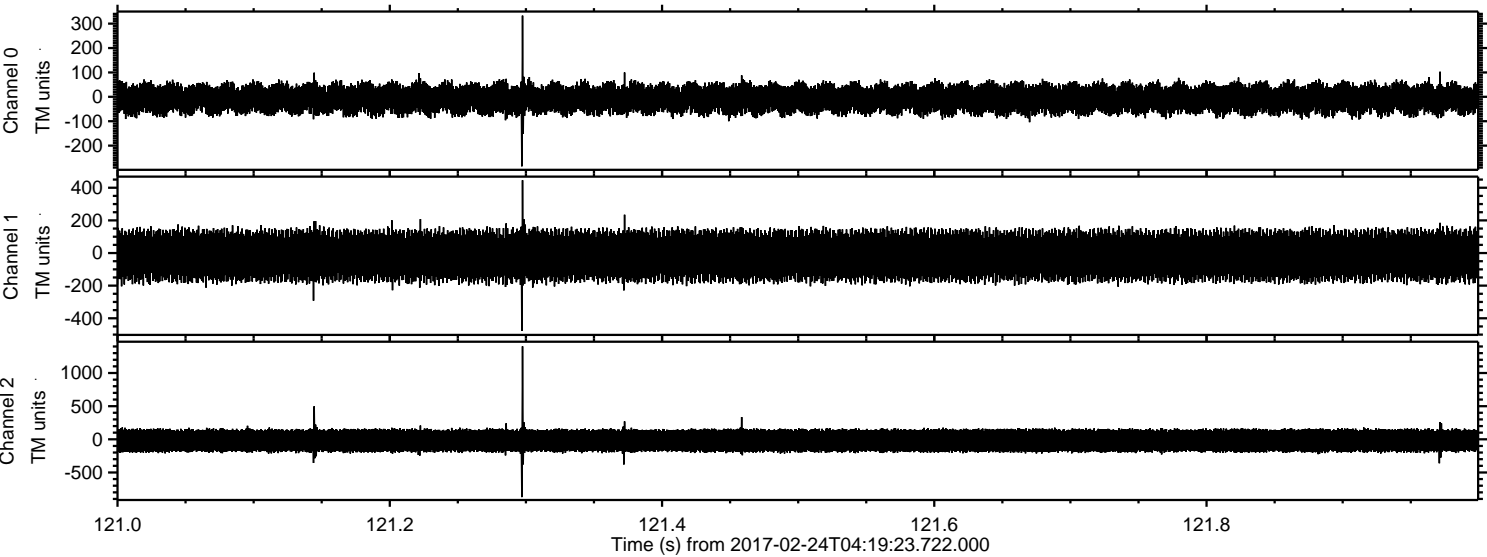
Channel 0
mn: -380
mx: 288
 μ : -8.2
 σ : 36.4

Channel 1
mn: -1443
mx: 1199
 μ : -16.5
 σ : 91.2

Channel 2
mn: -480
mx: 655
 μ : -19.5
 σ : 103.5

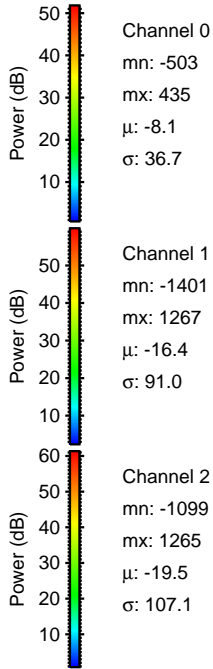
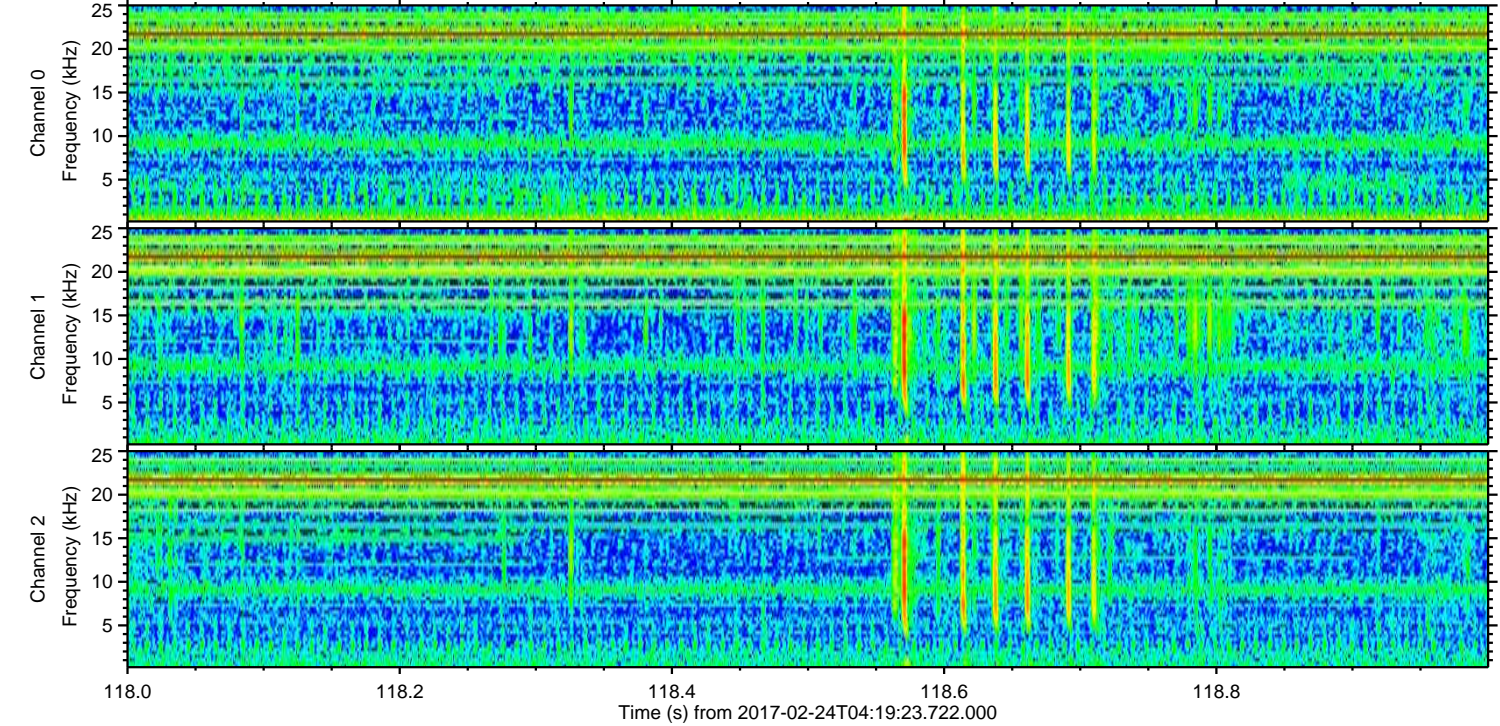
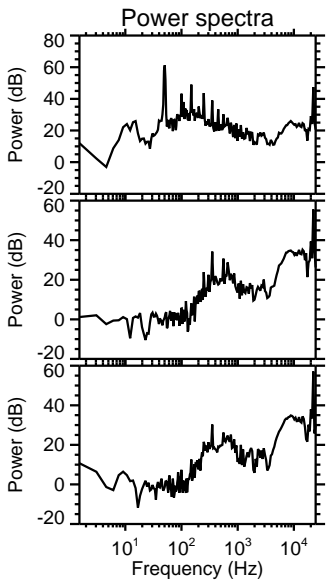
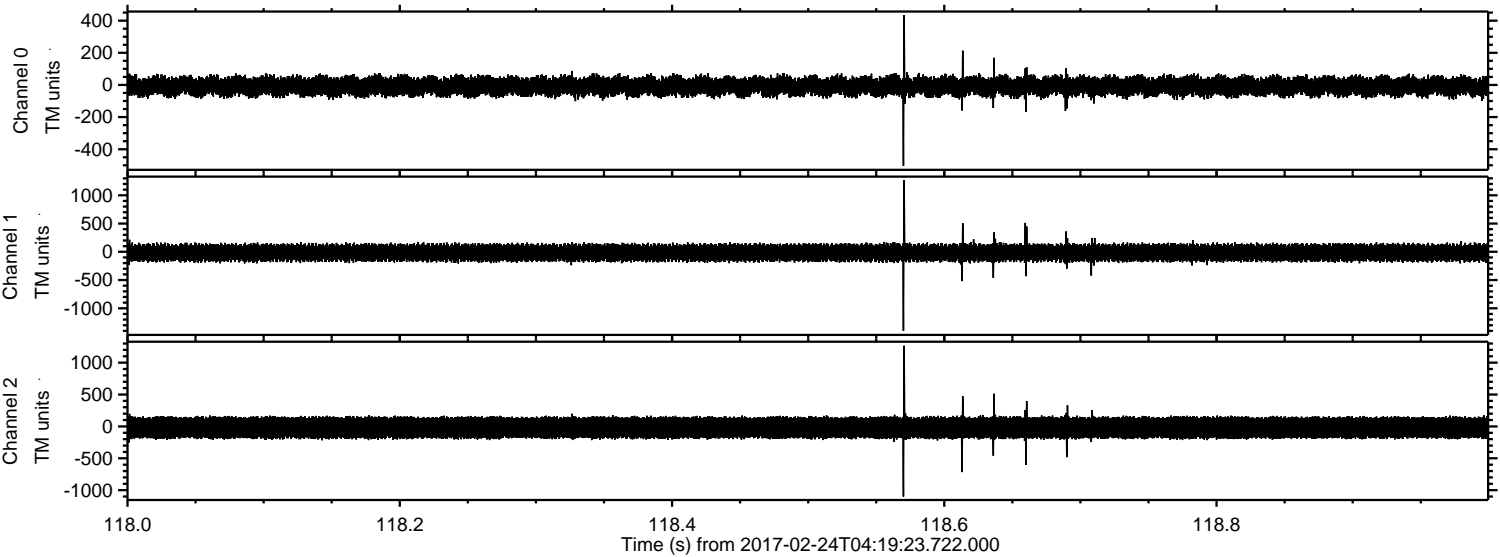
ELMAVAN 3D WAVEFORMS (Measured data sampled at 50 kHz) 51000 packets of 144 samples from 2017-02-24T04:19:23.722.000. Part 122/147

Processed Fri Feb 24 05:27:03 2017 by ELM ver.2012-10-06 from 001__elm20170224_041922__dat00.bin

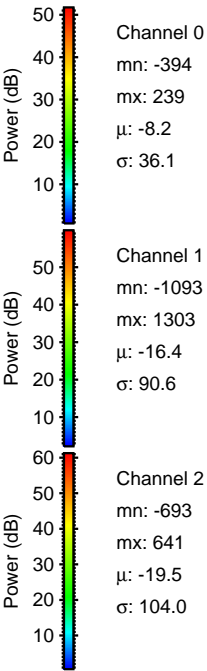
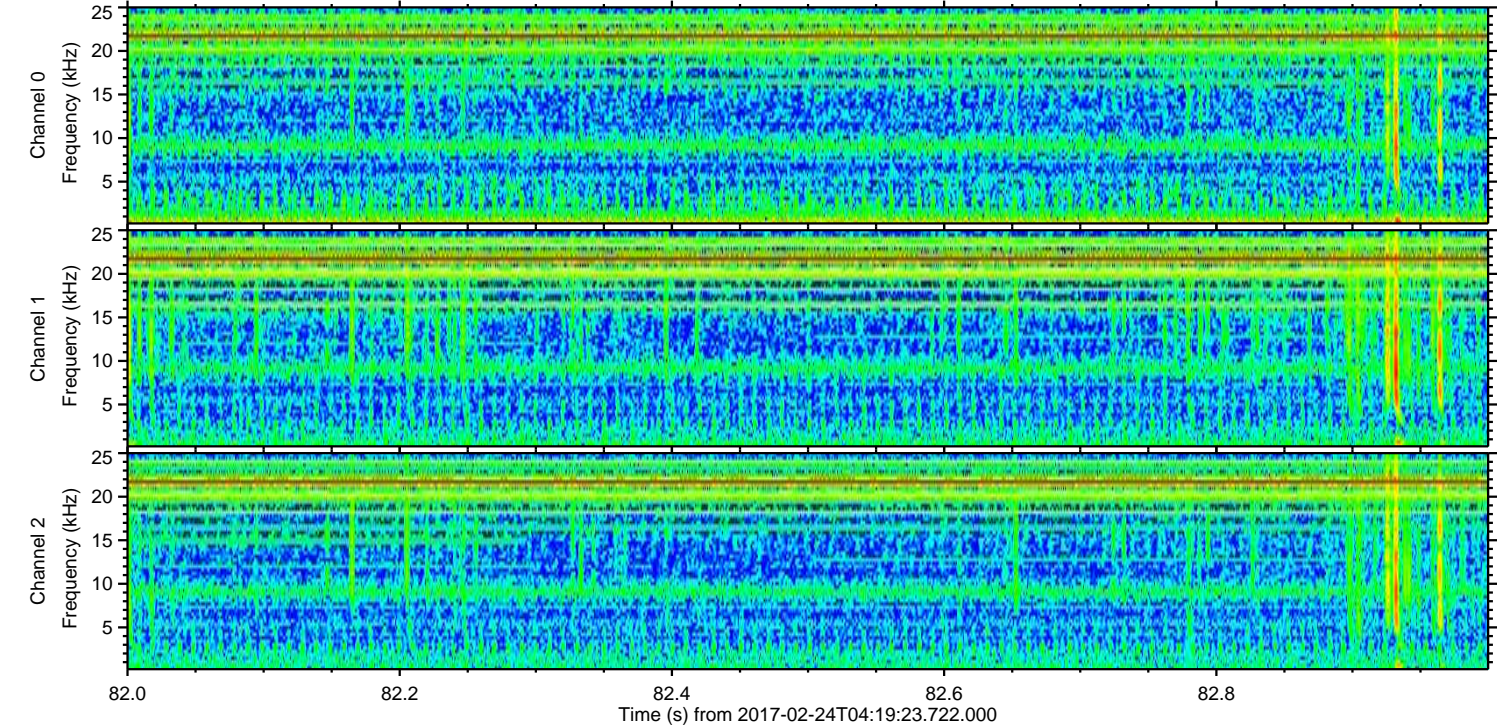
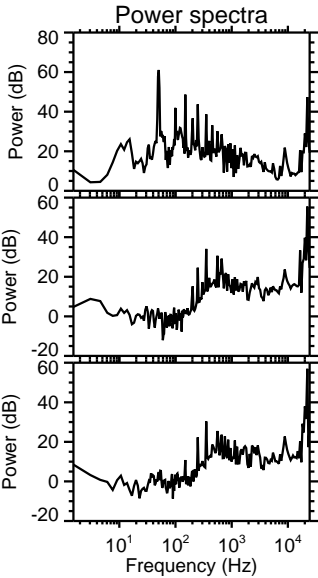
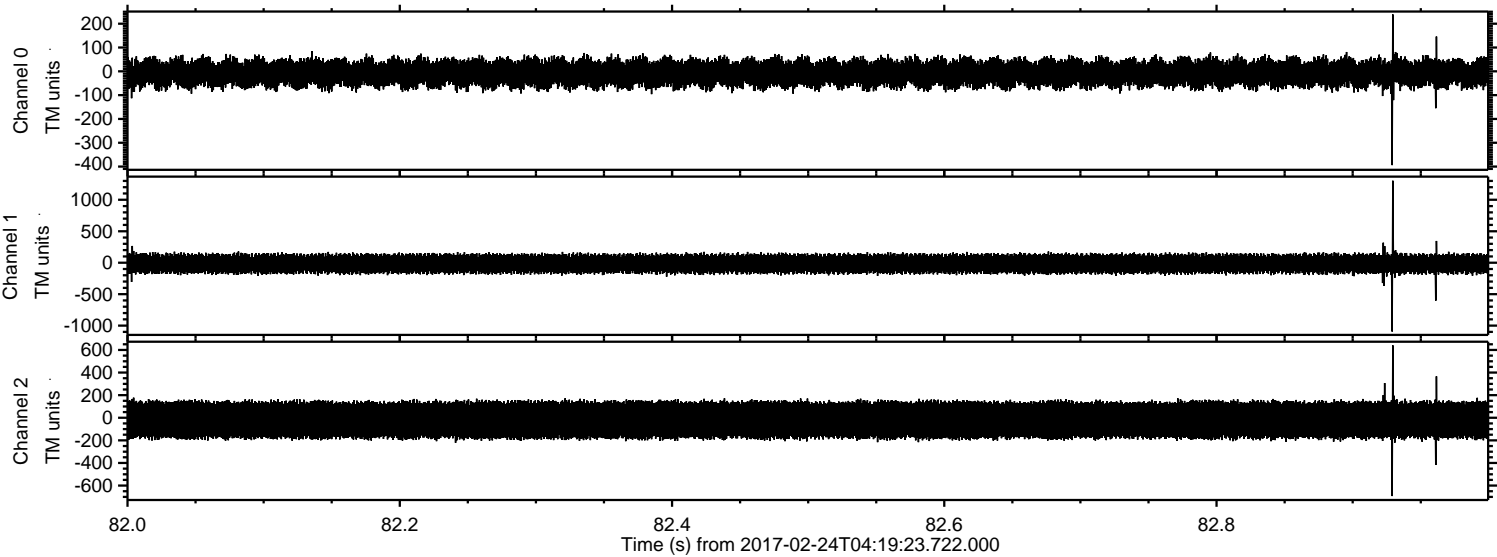


ELMAVAN 3D WAVEFORMS (Measured data sampled at 50 kHz) 51000 packets of 144 samples from 2017-02-24T04:19:23.722.000. Part 119/147

Processed Fri Feb 24 05:27:04 2017 by ELM ver.2012-10-06 from 001__elm20170224_041922__dat00.bin

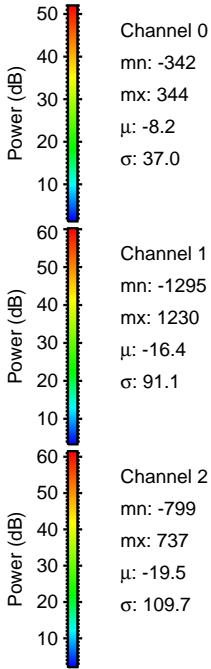
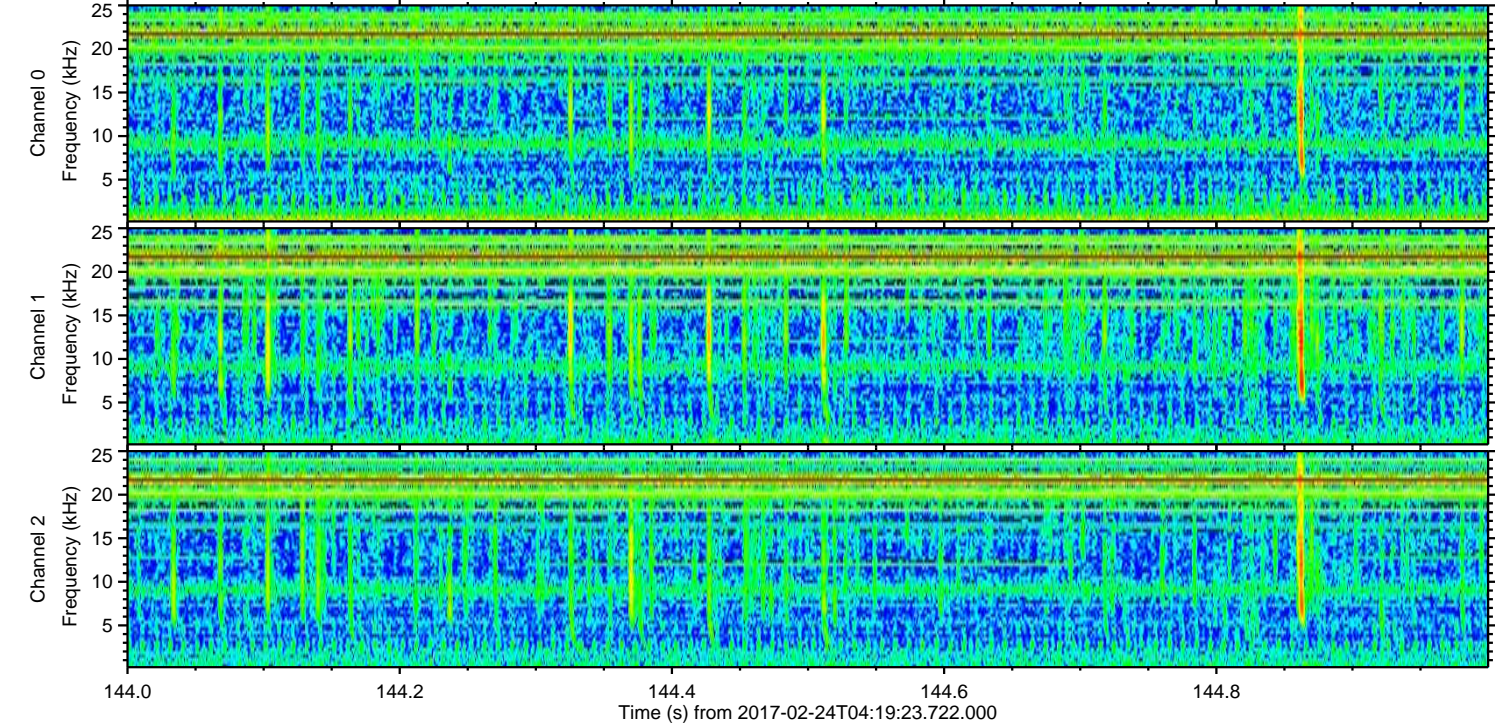
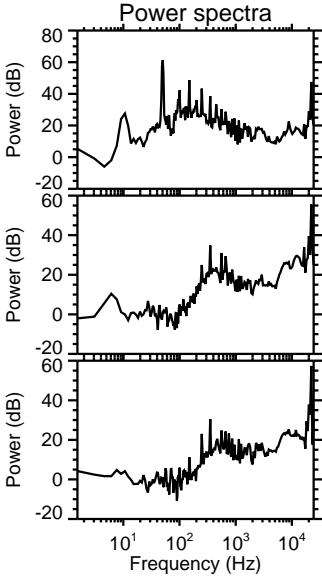
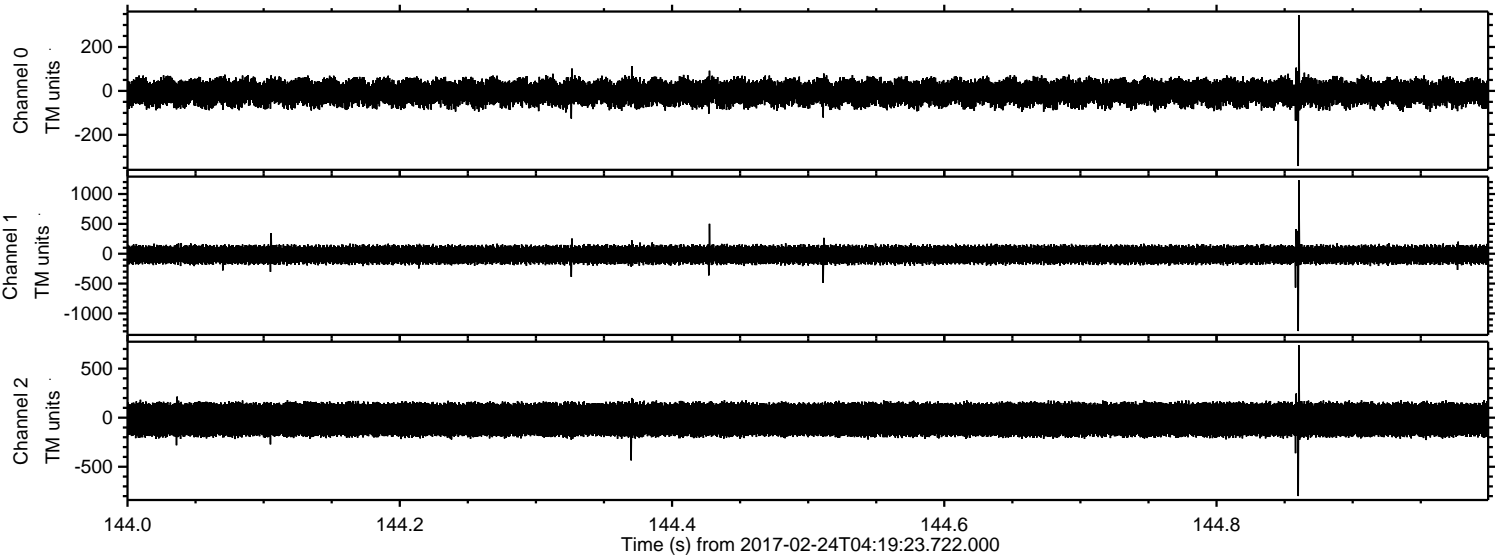


Processed Fri Feb 24 05:27:05 2017 by ELM ver.2012-10-06 from 001__elm20170224_041922__dat00.bin



ELMAVAN 3D WAVEFORMS (Measured data sampled at 50 kHz) 51000 packets of 144 samples from 2017-02-24T04:19:23.722.000. Part 145/147

Processed Fri Feb 24 05:27:05 2017 by ELM ver.2012-10-06 from 001__elm20170224_041922__dat00.bin

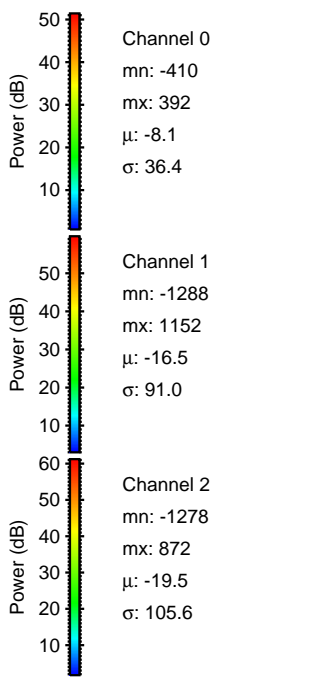
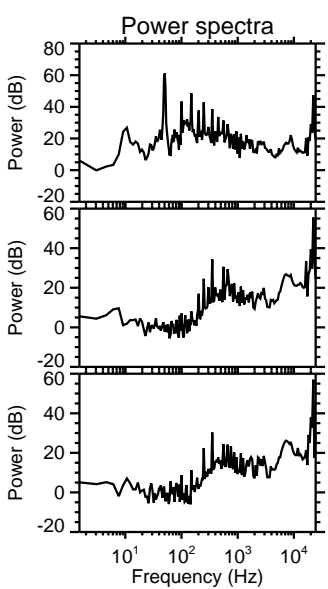
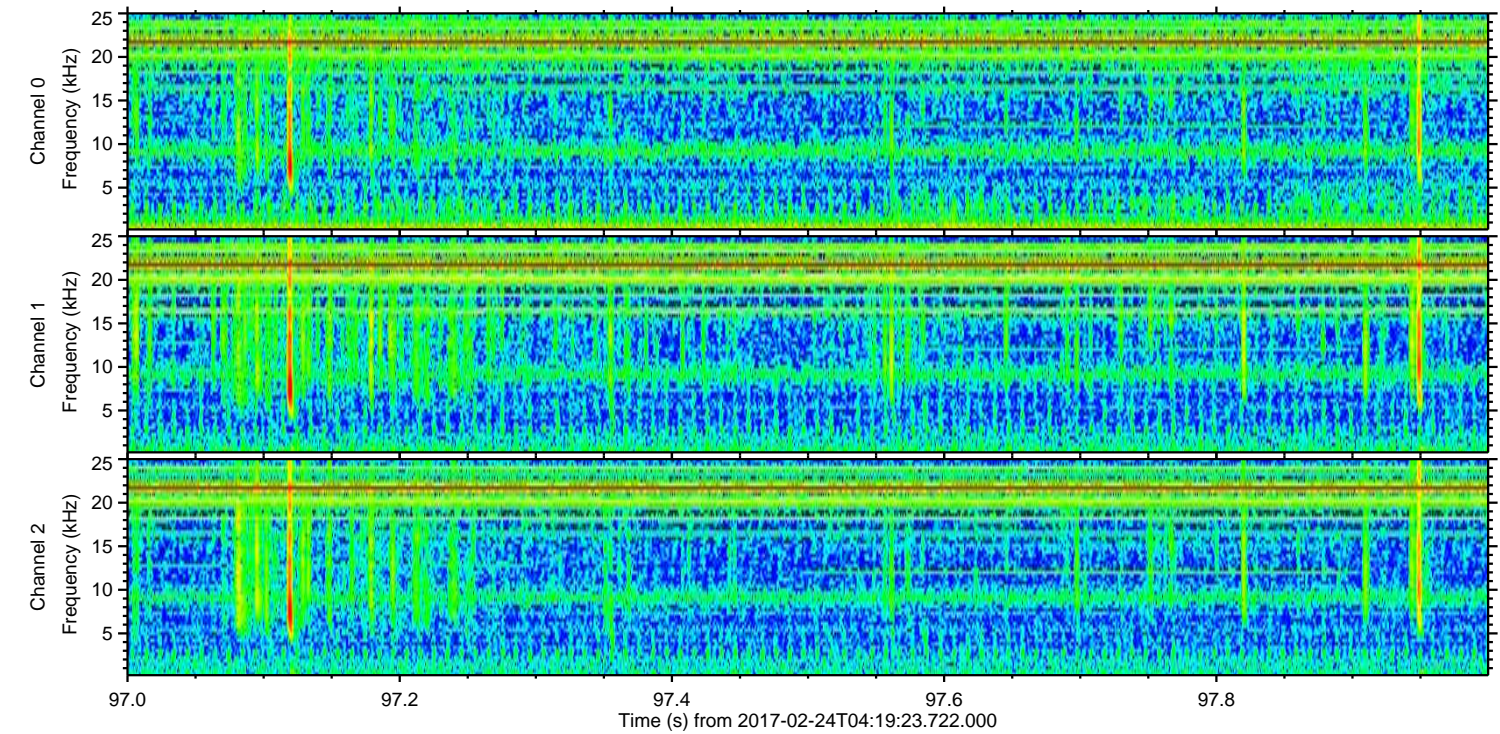
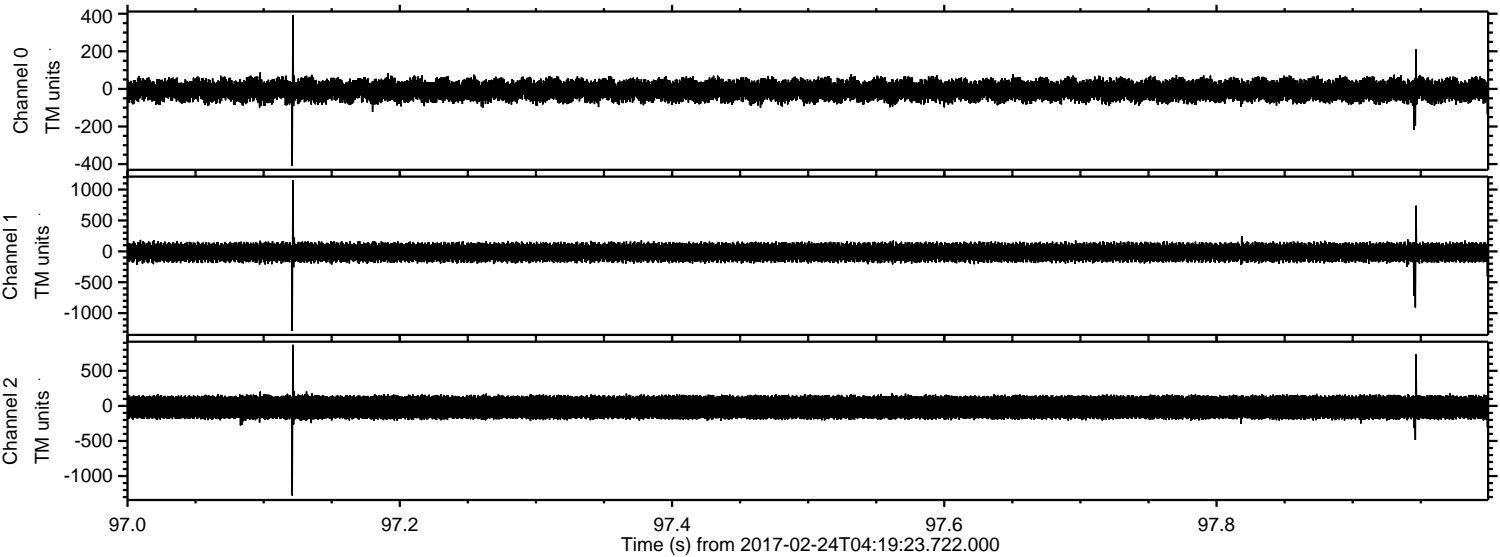


Channel 0
mn: -342
mx: 344
 μ : -8.2
 σ : 37.0

Channel 1
mn: -1295
mx: 1230
 μ : -16.4
 σ : 91.1

Channel 2
mn: -799
mx: 737
 μ : -19.5
 σ : 109.7

Processed Fri Feb 24 05:27:06 2017 by ELM ver.2012-10-06 from 001__elm20170224_041922__dat00.bin



Processed Fri Feb 24 05:27:07 2017 by ELM ver.2012-10-06 from 001__elm20170224_041922__dat00.bin

