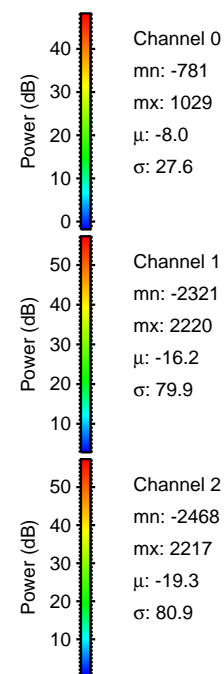
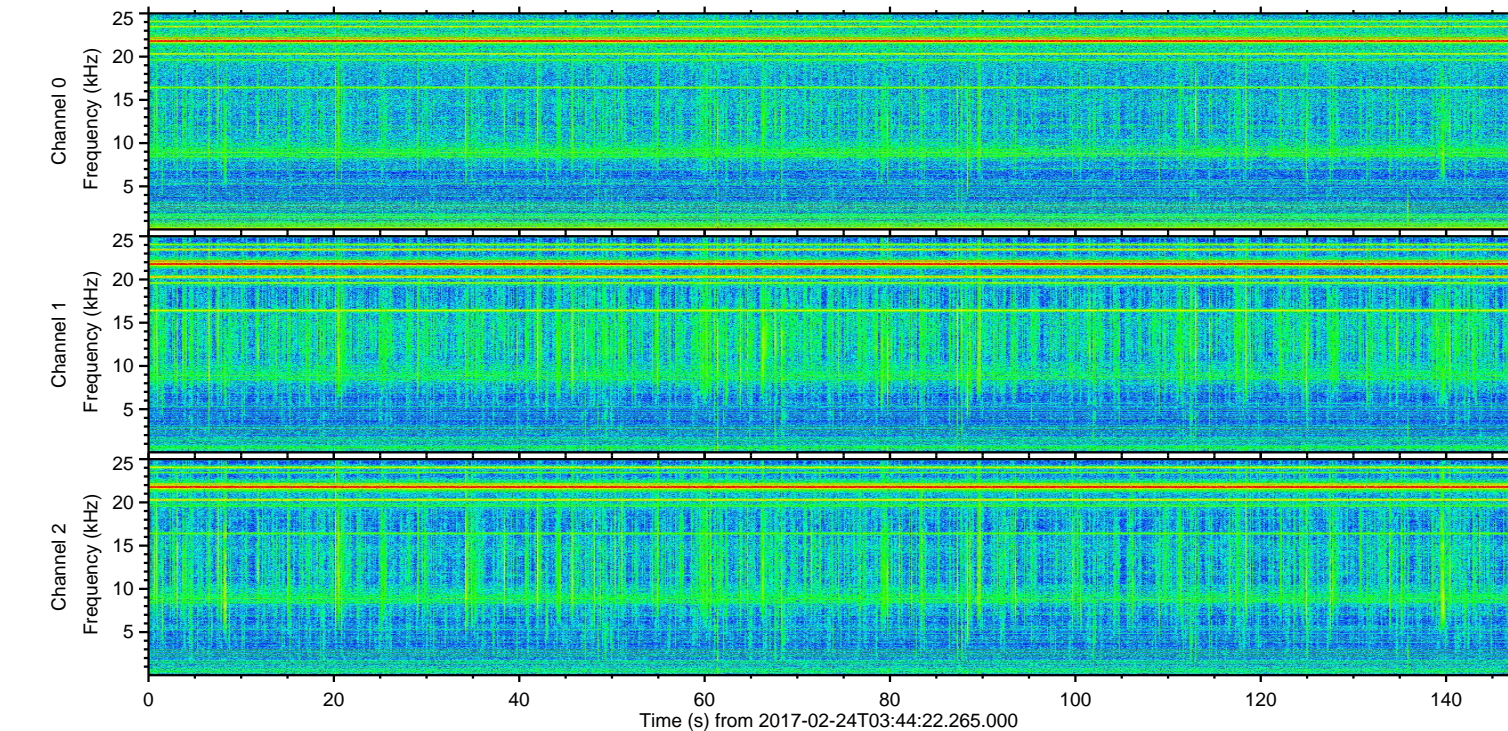
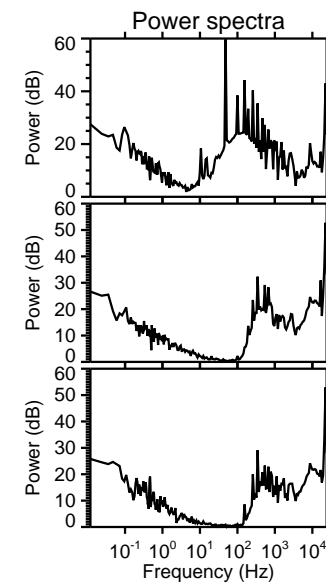
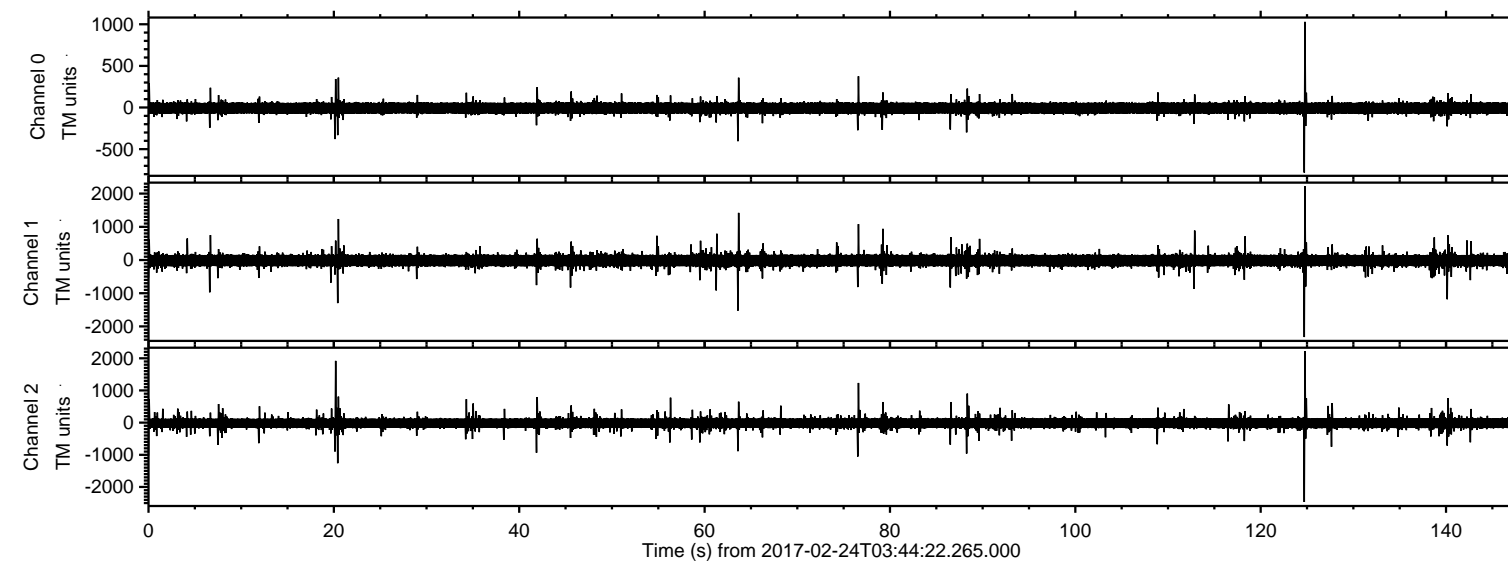


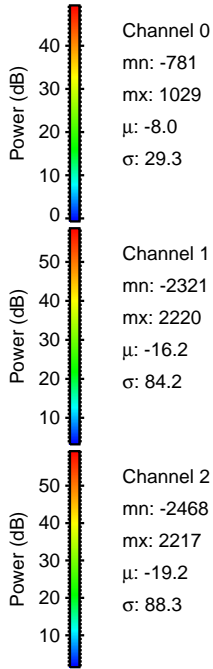
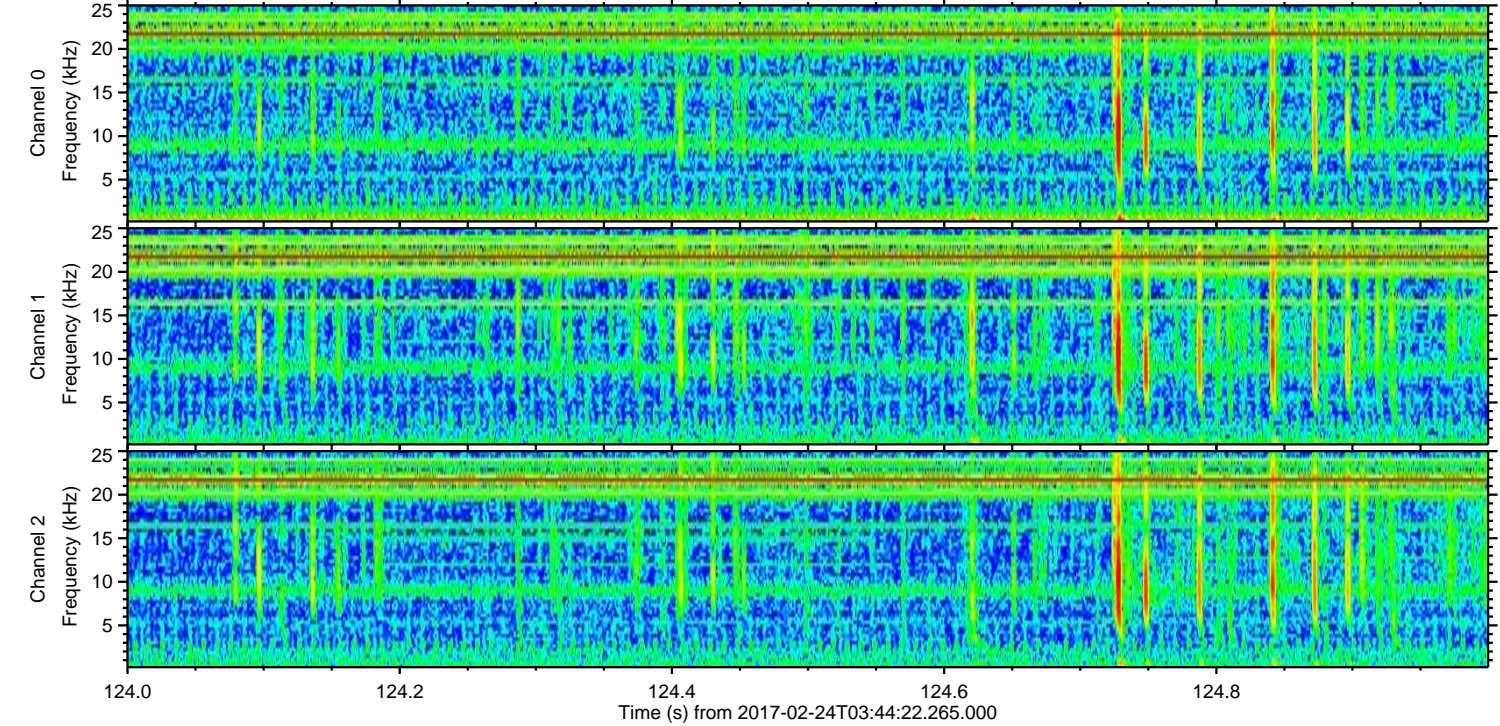
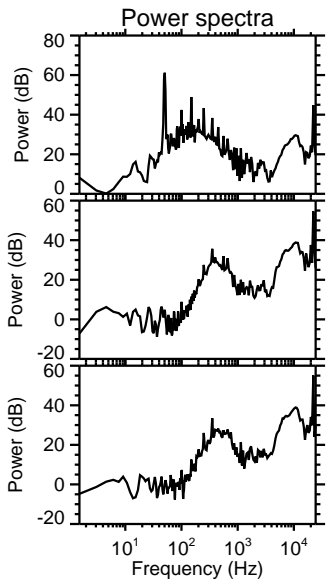
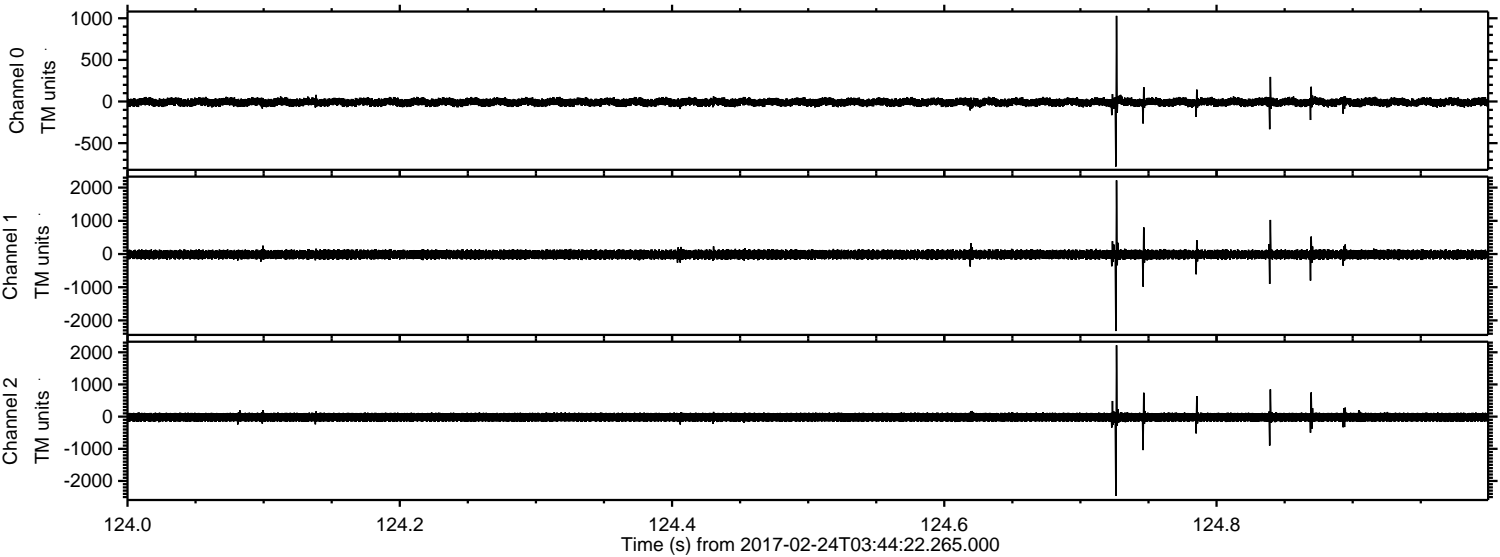
ELMAVAN 3D WAVEFORMS (Measured data sampled at 50 kHz) 51000 packets of 144 samples from 2017-02-24T03:44:22.265.000.

Processed Fri Feb 24 04:52:19 2017 by ELM ver.2012-10-06 from 001__elm20170224_034421__dat00.bin



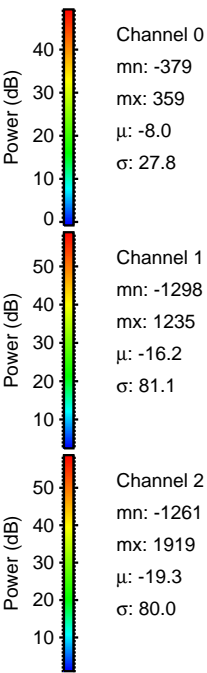
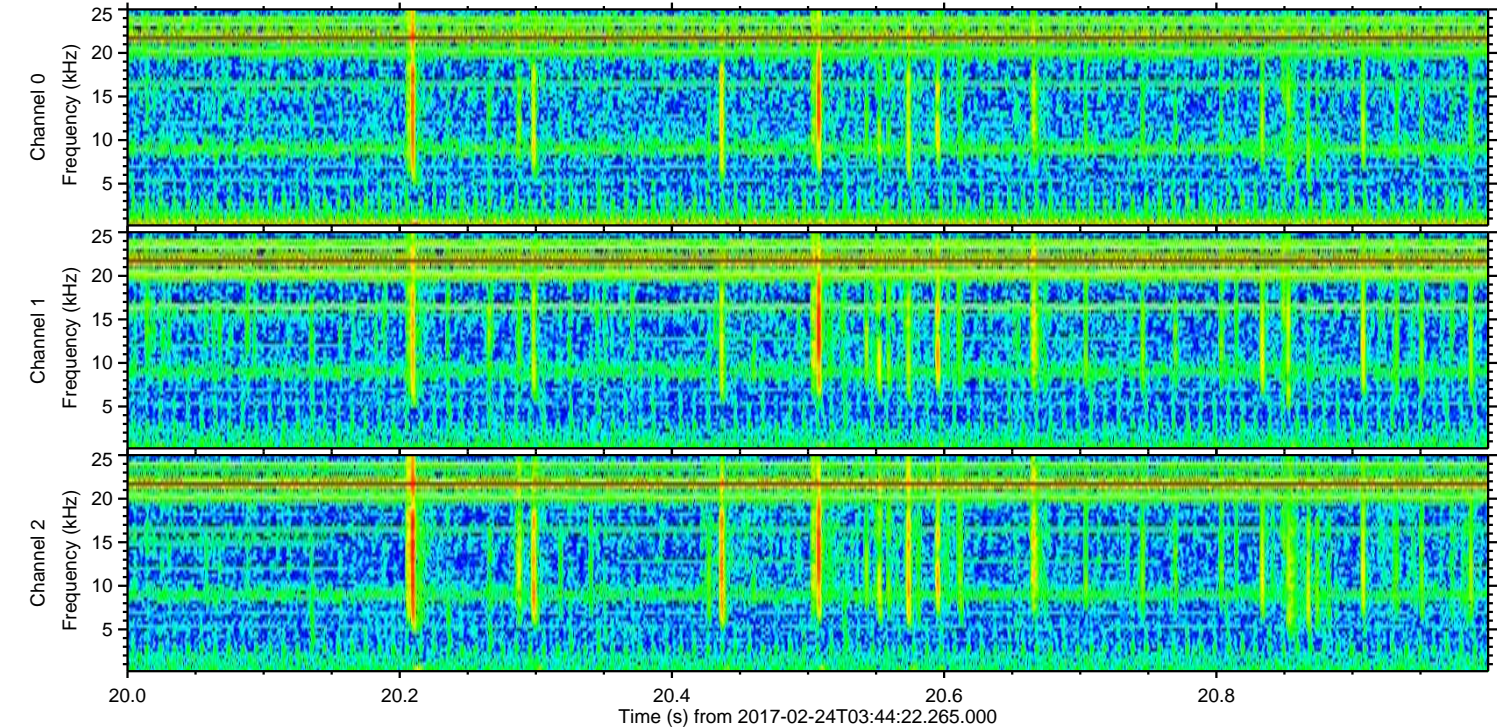
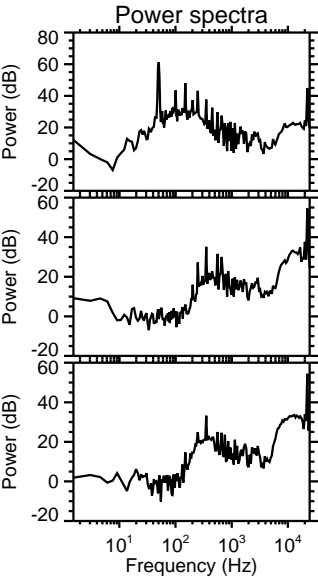
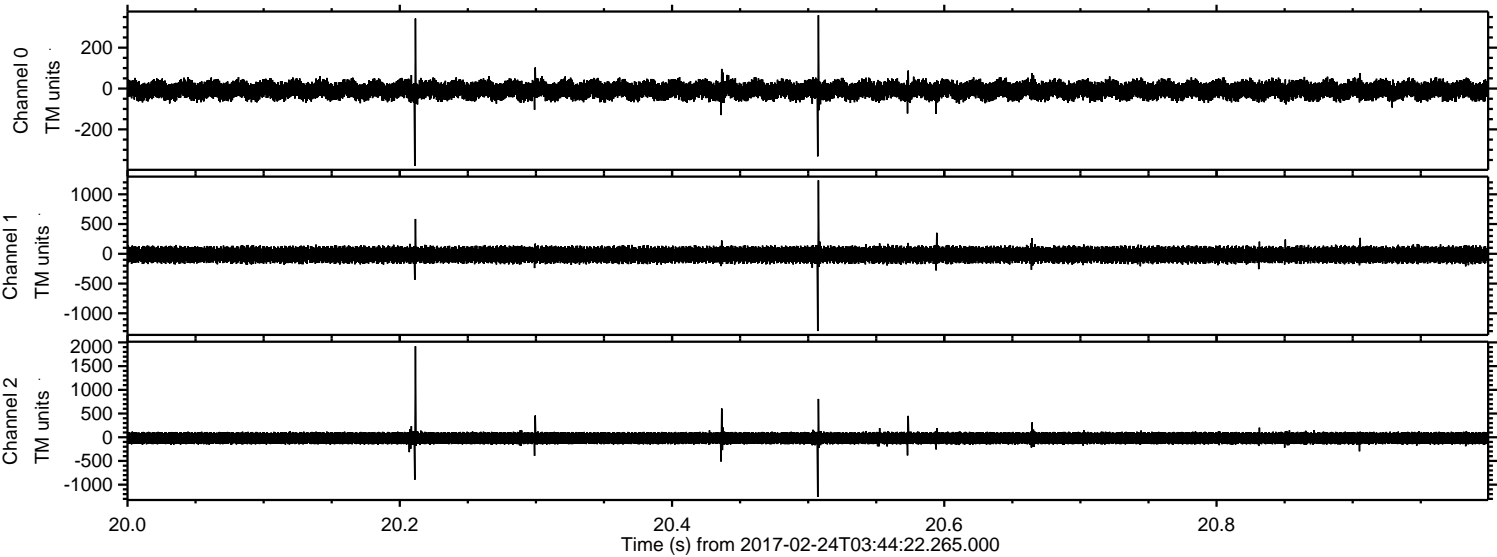
ELMAVAN 3D WAVEFORMS (Measured data sampled at 50 kHz) 51000 packets of 144 samples from 2017-02-24T03:44:22.265.000. Part 125/147

Processed Fri Feb 24 04:52:34 2017 by ELM ver.2012-10-06 from 001__elm20170224_034421__dat00.bin

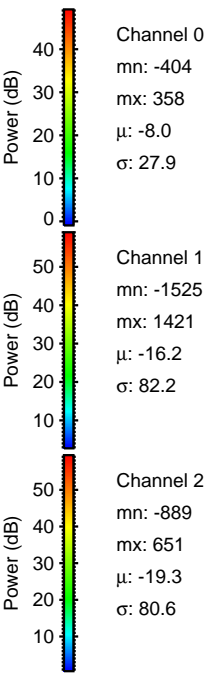
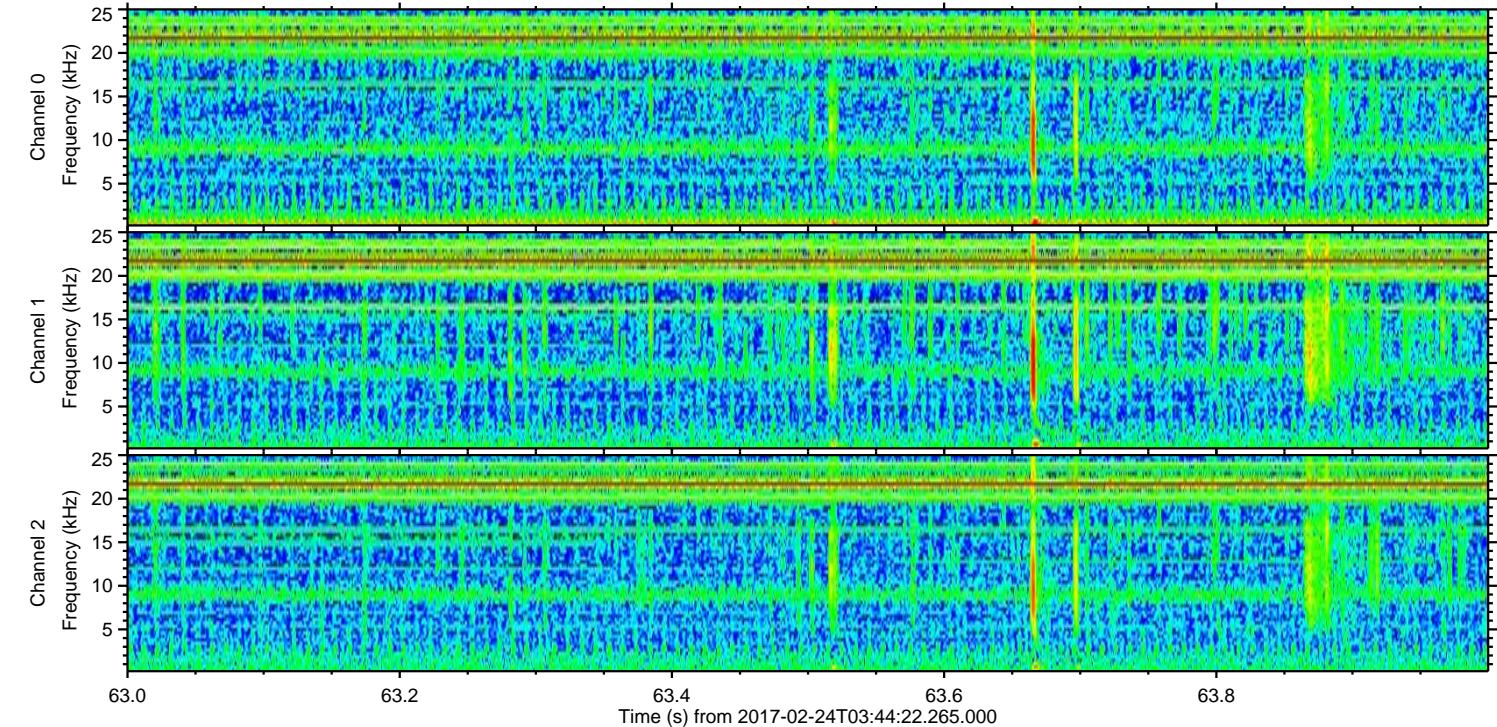
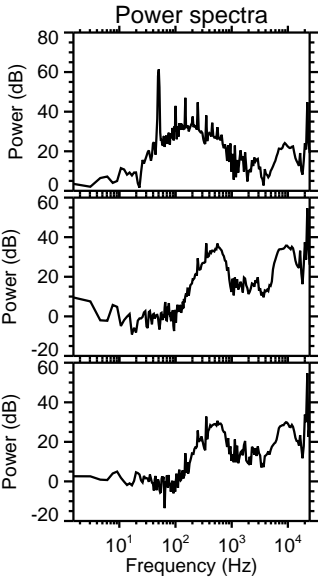
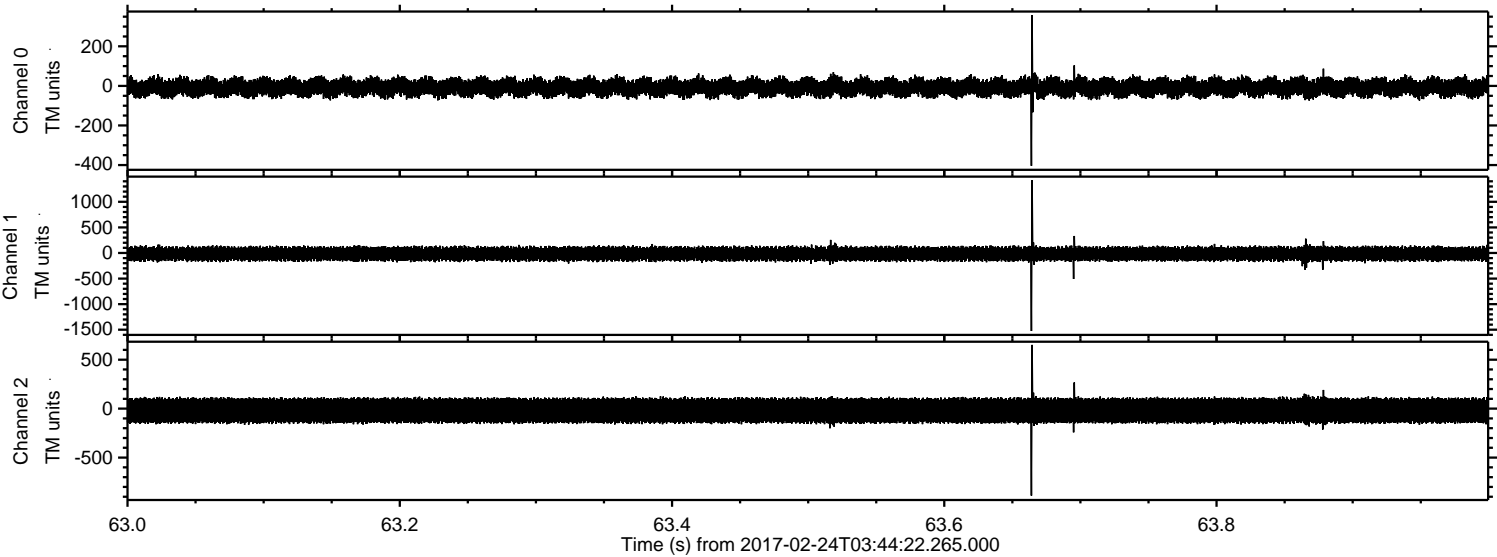


ELMAVAN 3D WAVEFORMS (Measured data sampled at 50 kHz) 51000 packets of 144 samples from 2017-02-24T03:44:22.265.000. Part 21/147

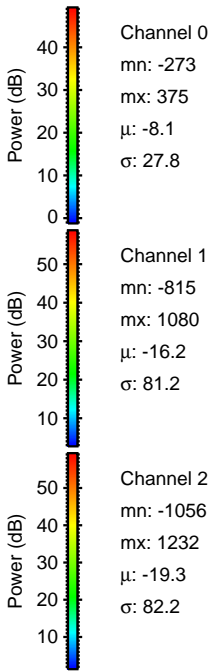
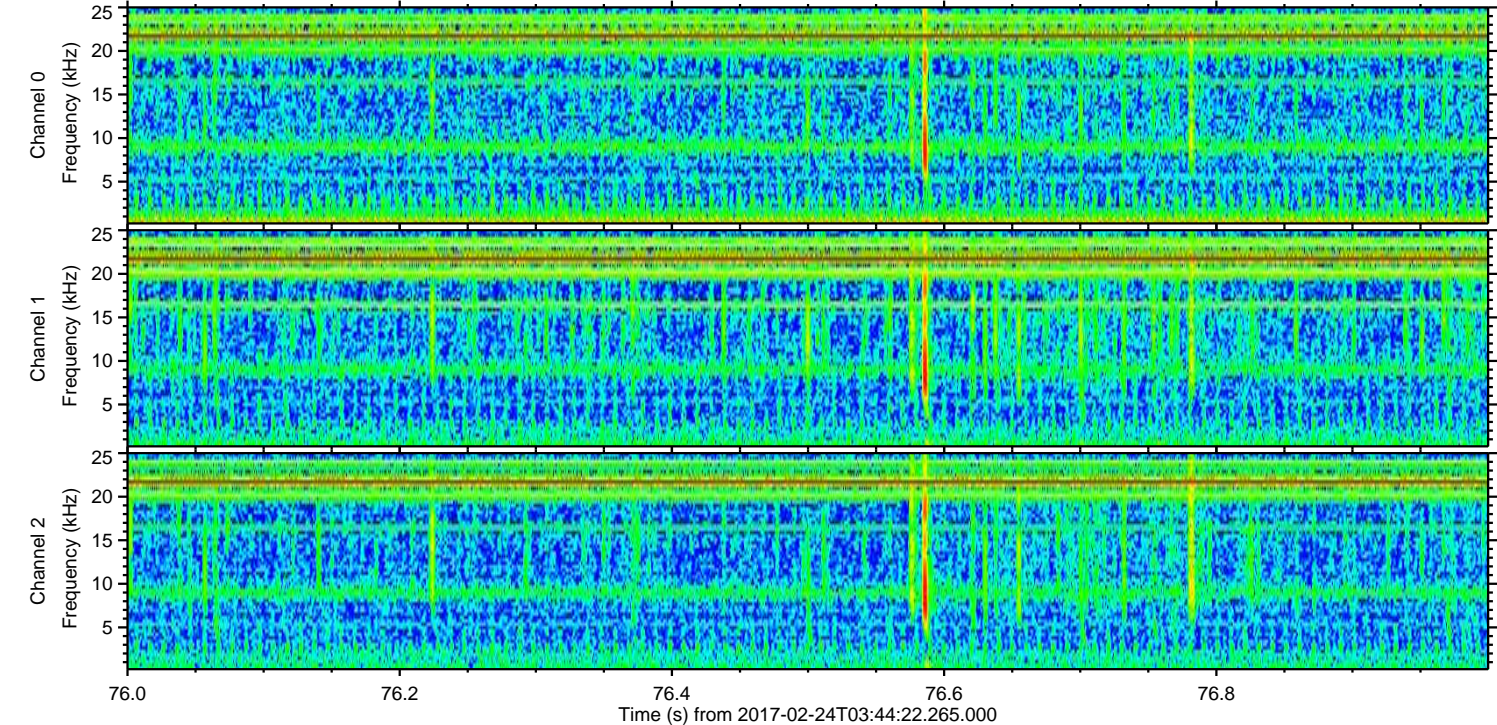
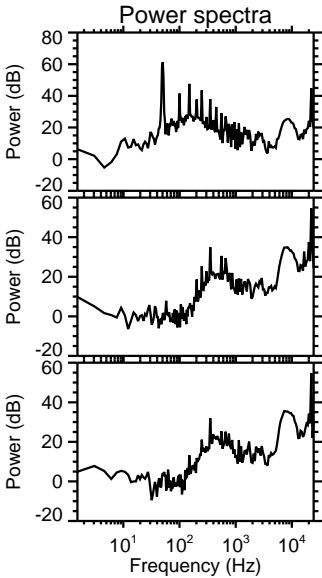
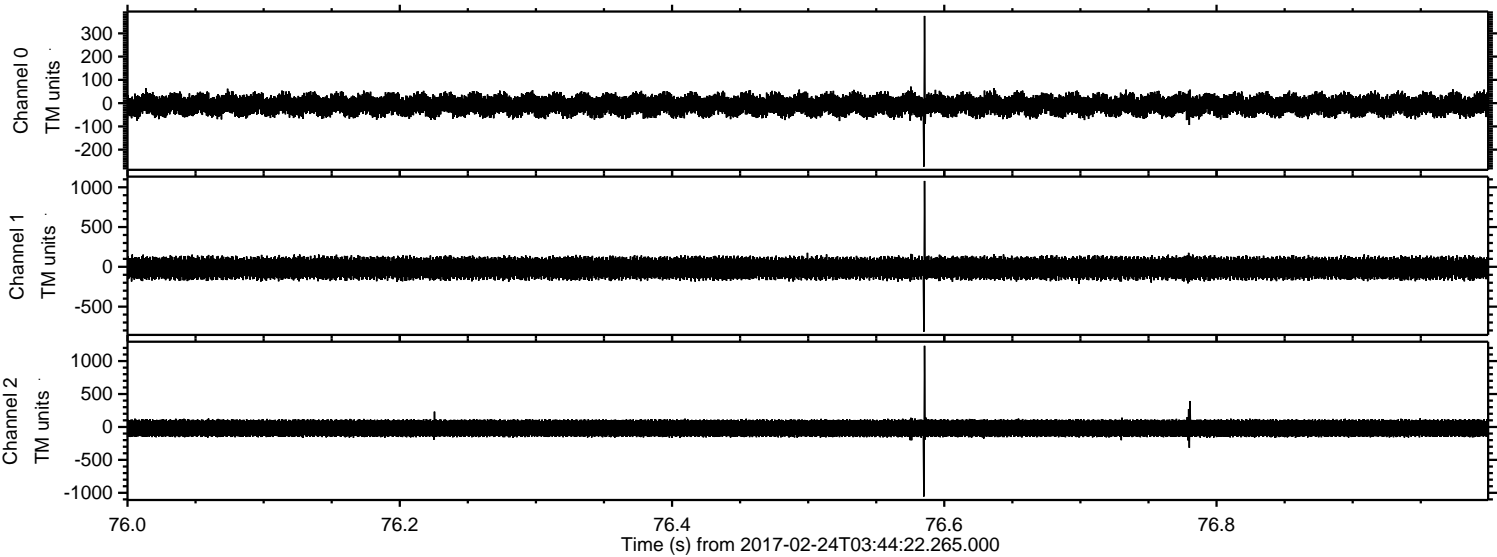
Processed Fri Feb 24 04:52:35 2017 by ELM ver.2012-10-06 from 001__elm20170224_034421__dat00.bin



Processed Fri Feb 24 04:52:36 2017 by ELM ver.2012-10-06 from 001__elm20170224_034421__dat00.bin

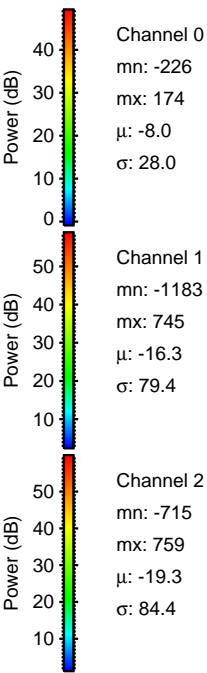
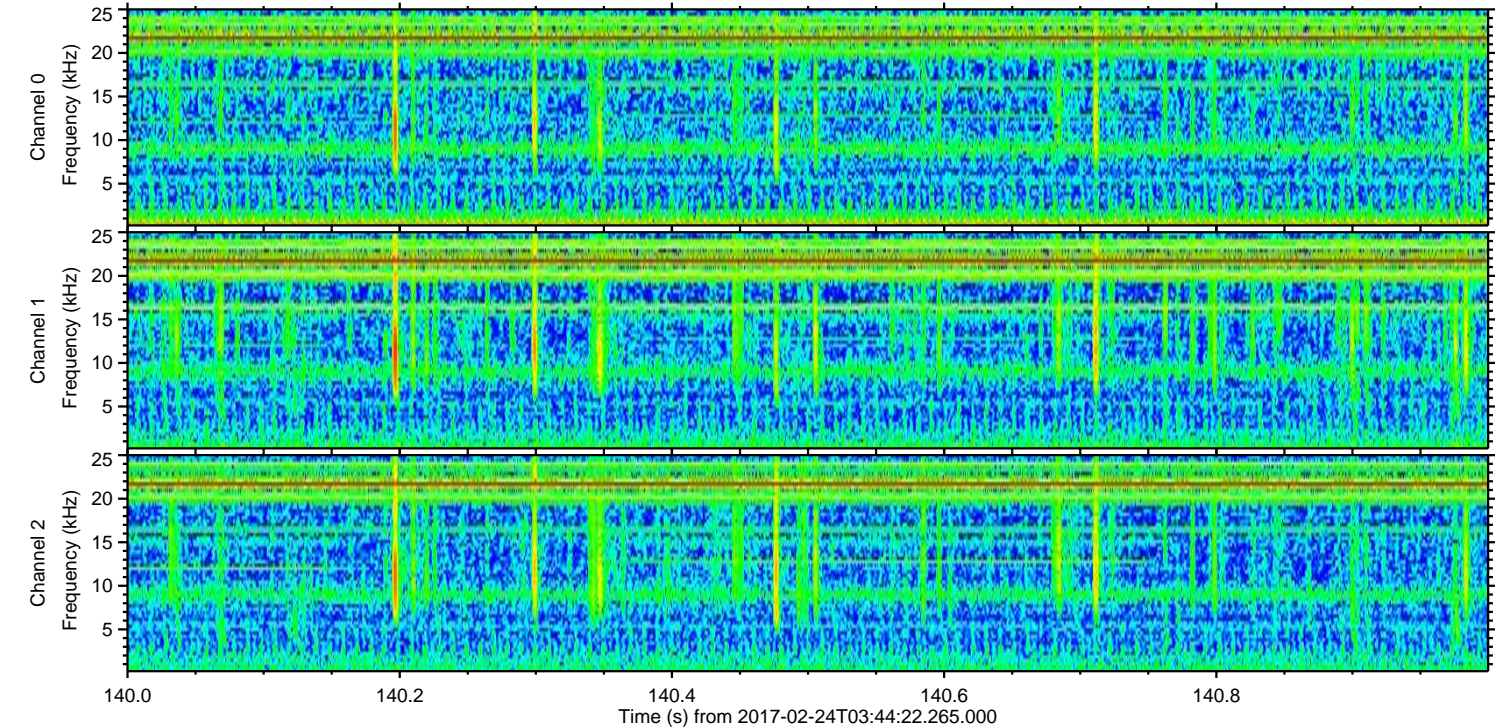
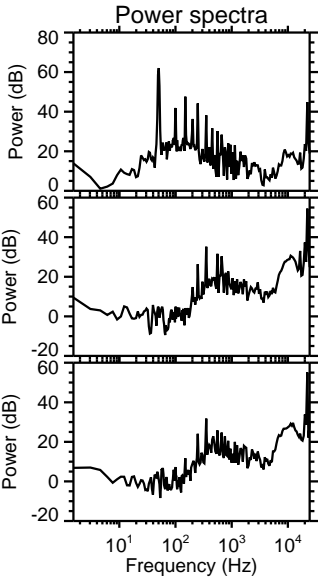
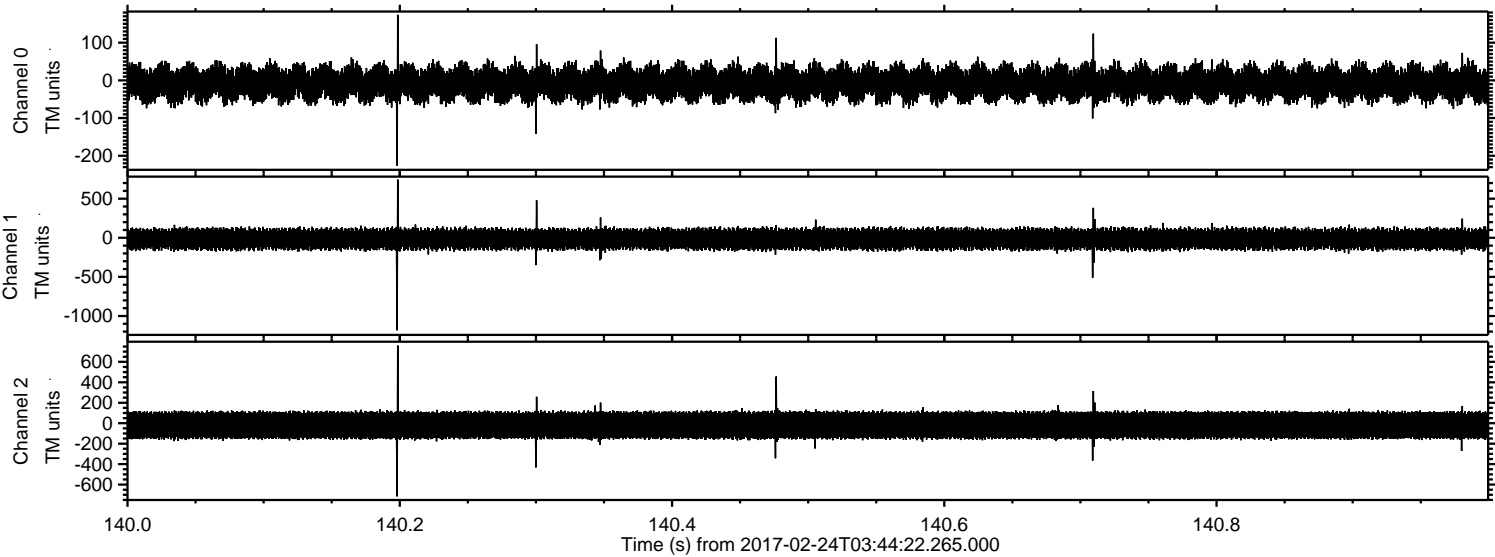


Processed Fri Feb 24 04:52:37 2017 by ELM ver.2012-10-06 from 001__elm20170224_034421__dat00.bin

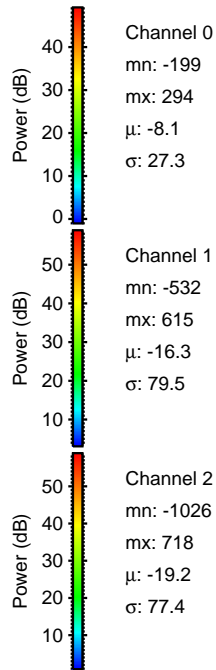
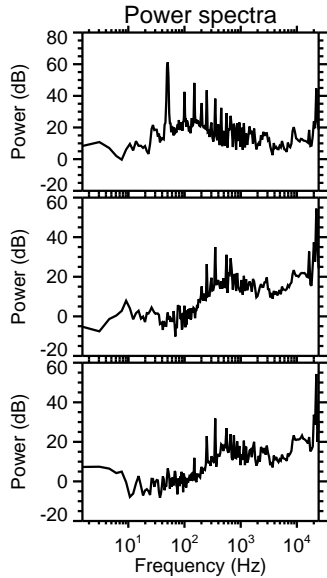
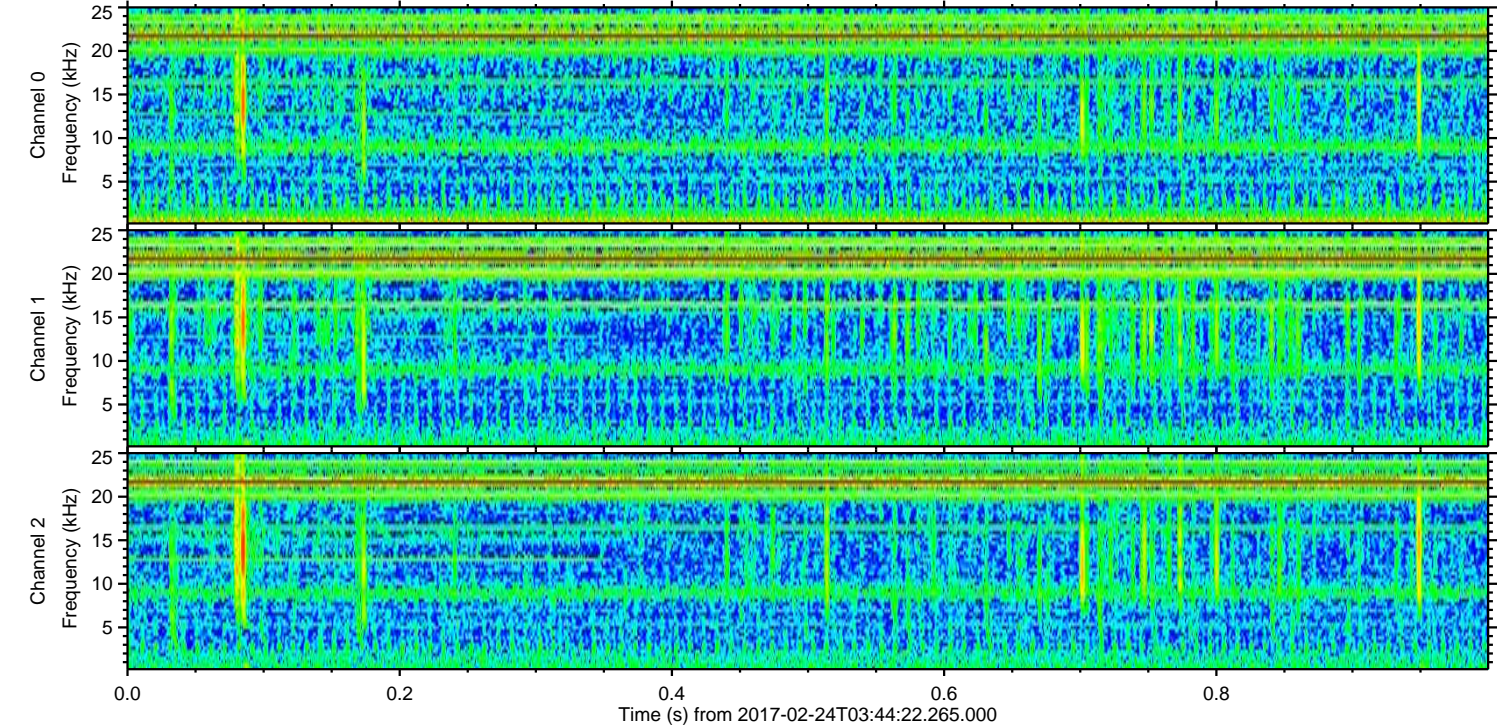
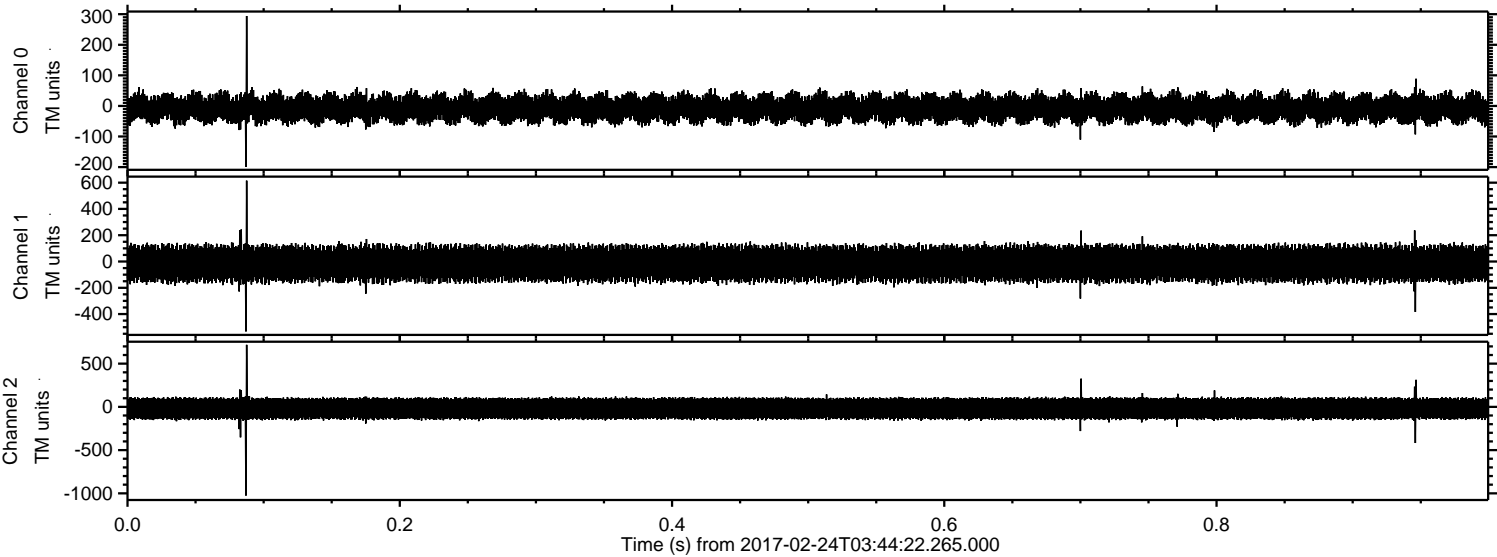


ELMAVAN 3D WAVEFORMS (Measured data sampled at 50 kHz) 51000 packets of 144 samples from 2017-02-24T03:44:22.265.000. Part 141/147

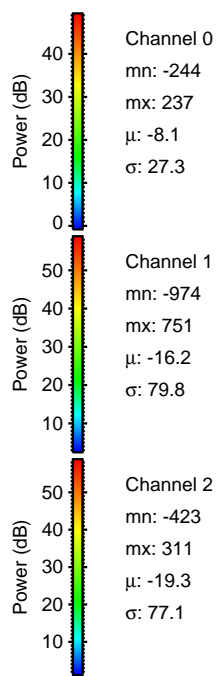
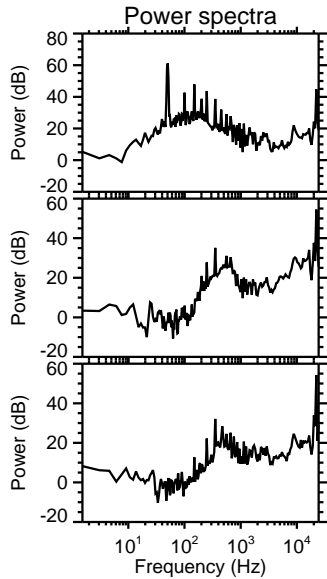
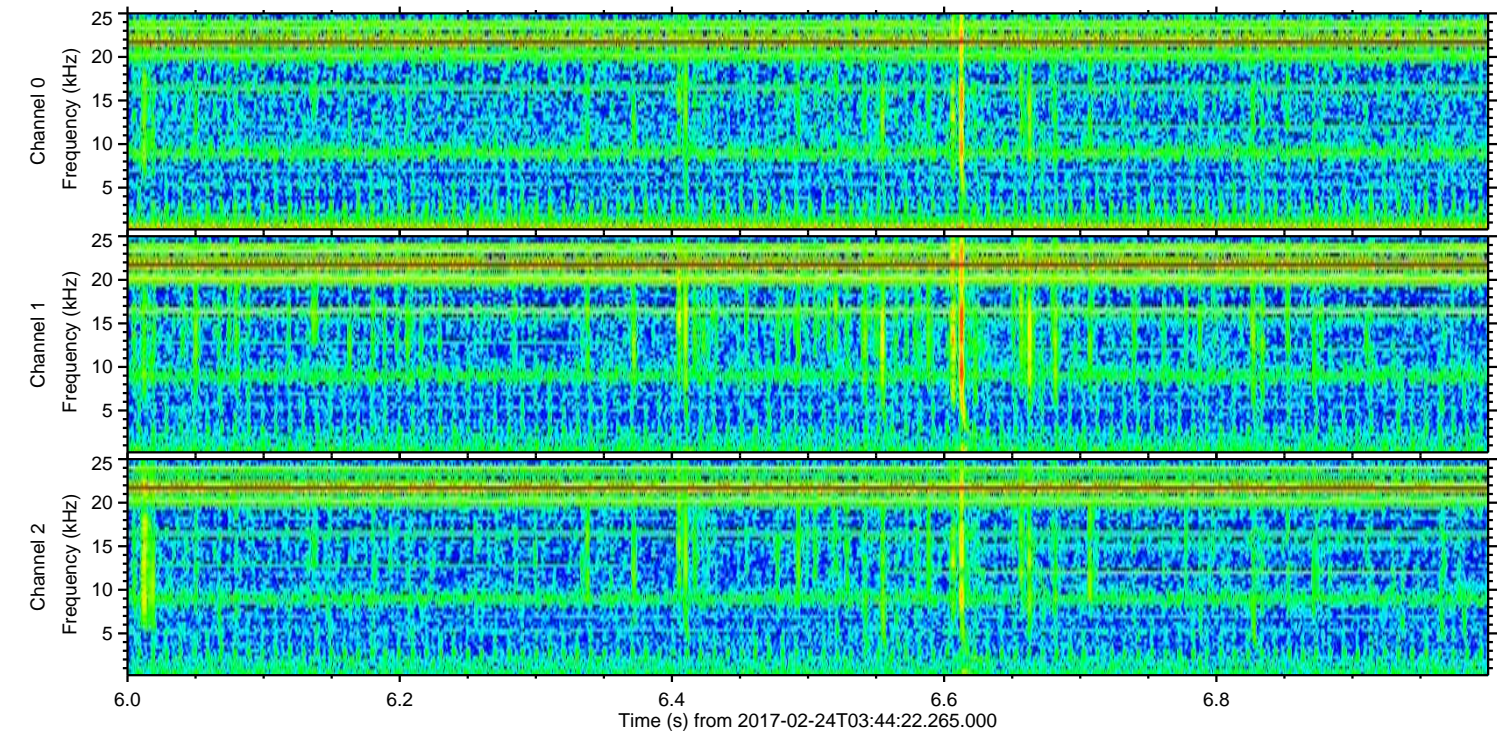
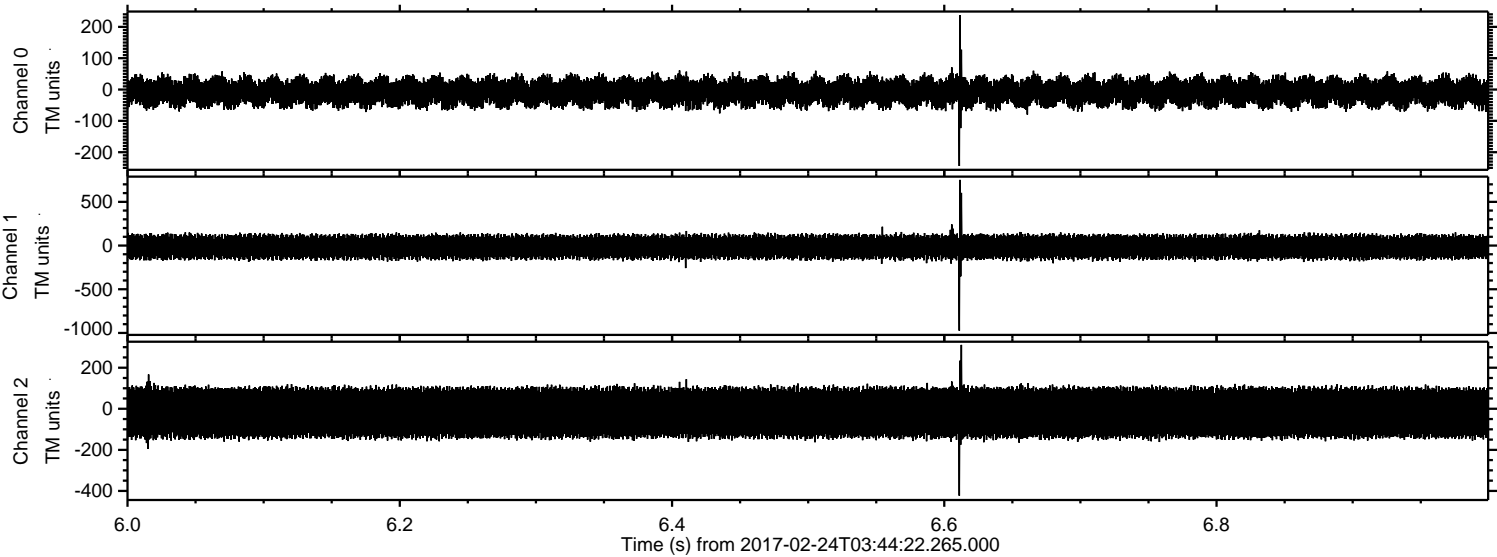
Processed Fri Feb 24 04:52:38 2017 by ELM ver.2012-10-06 from 001__elm20170224_034421__dat00.bin



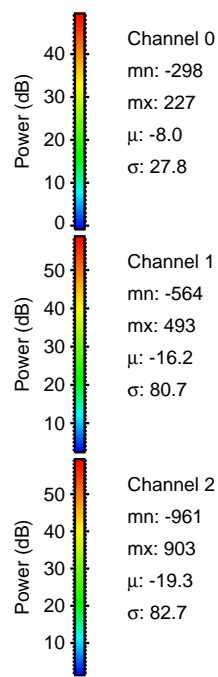
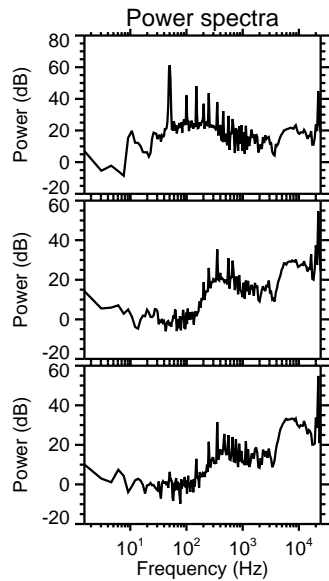
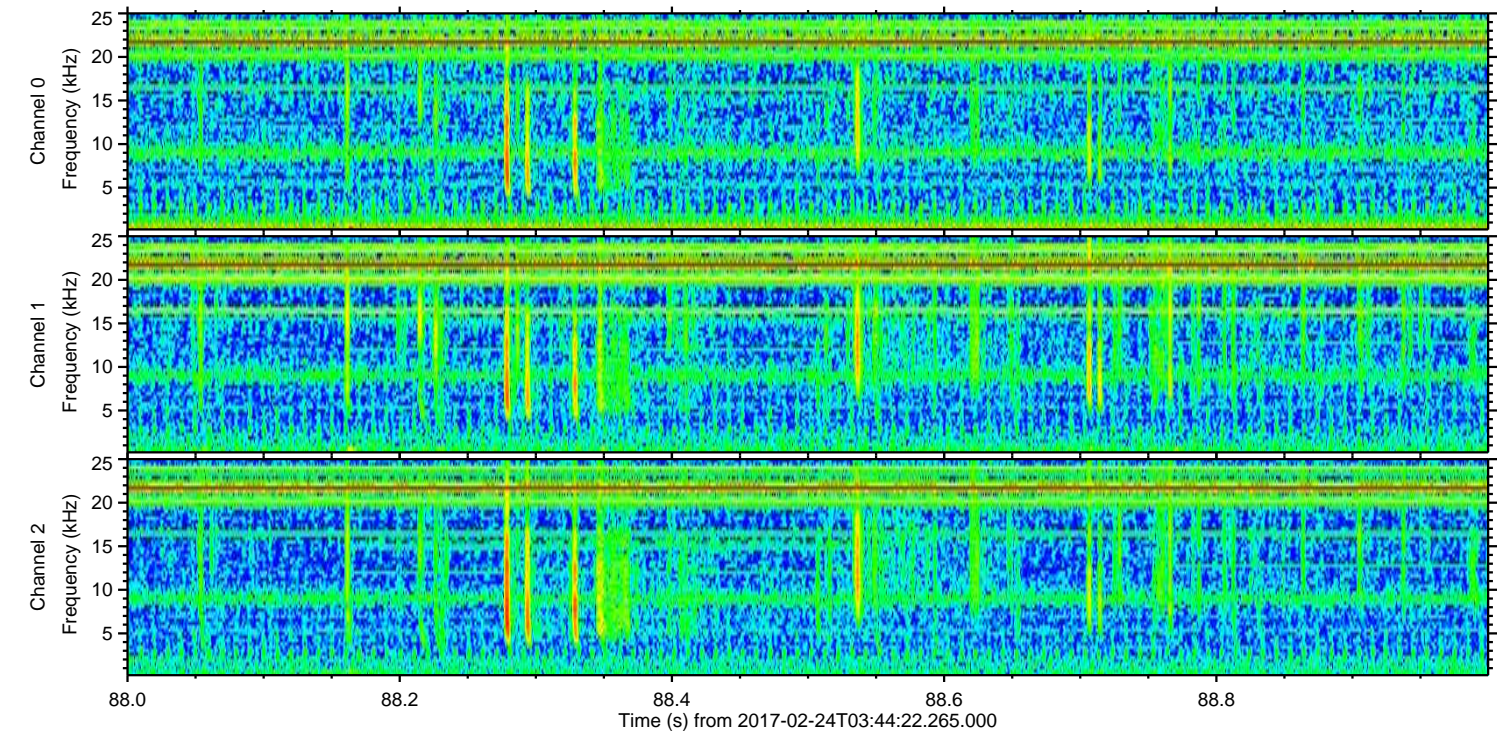
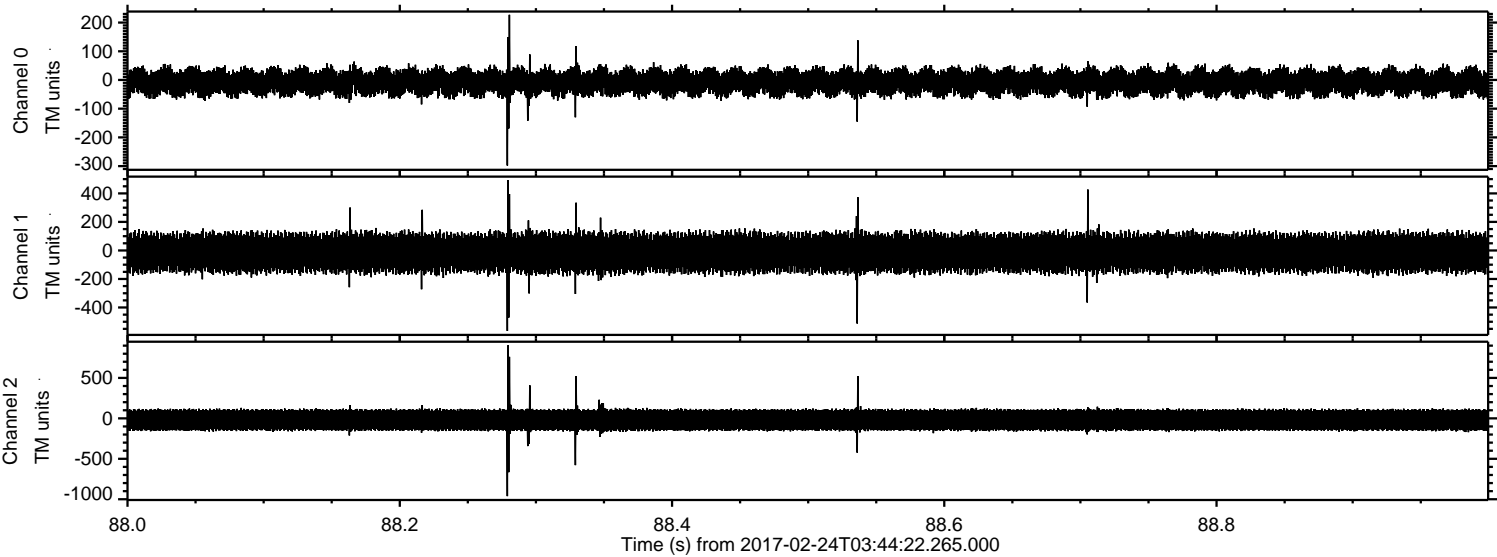
Processed Fri Feb 24 04:52:39 2017 by ELM ver.2012-10-06 from 001__elm20170224_034421__dat00.bin



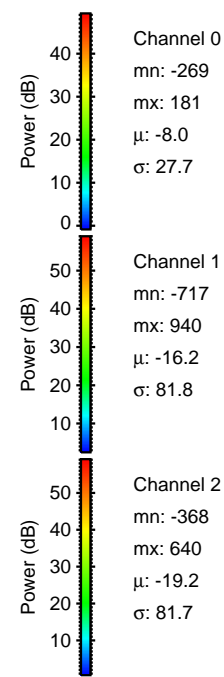
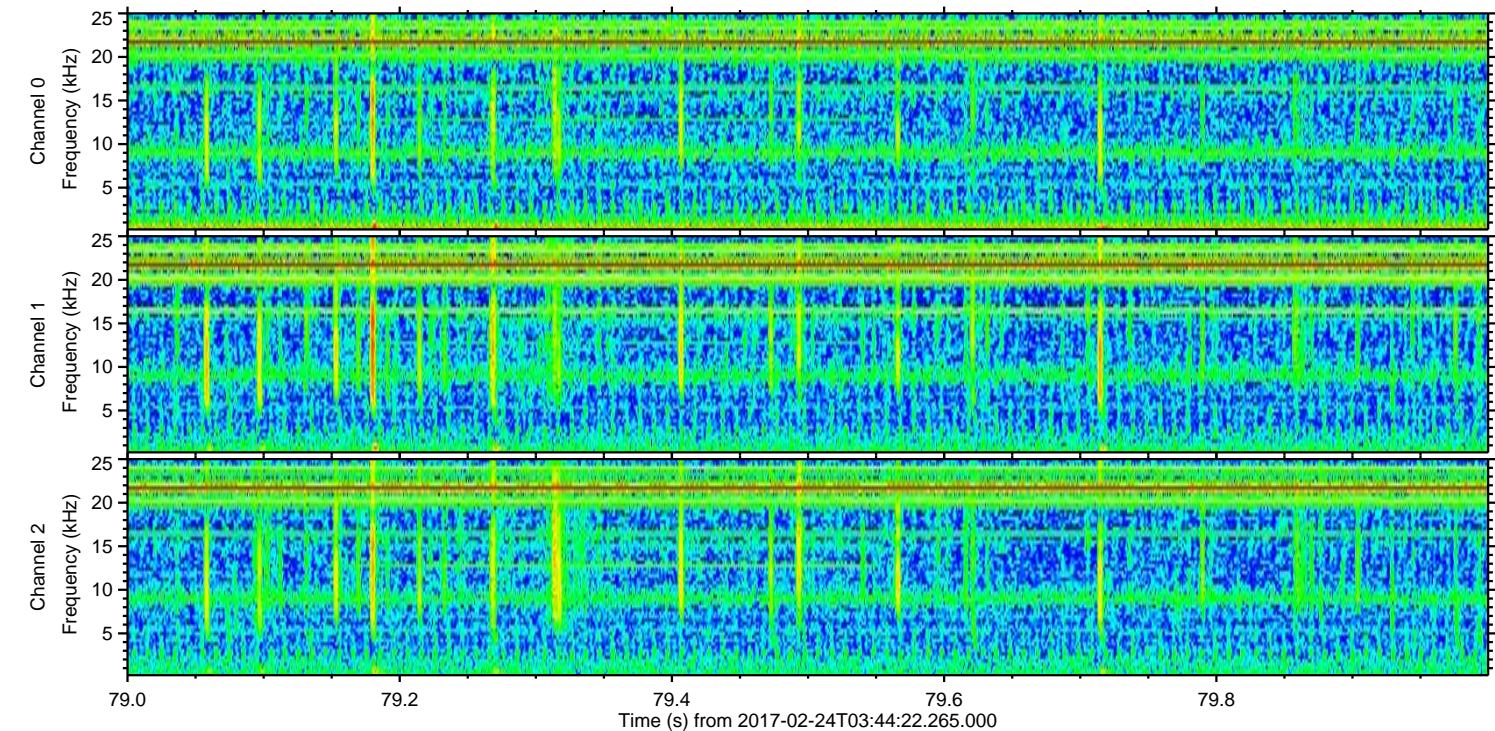
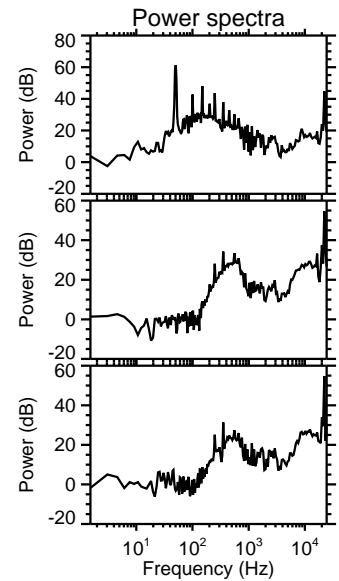
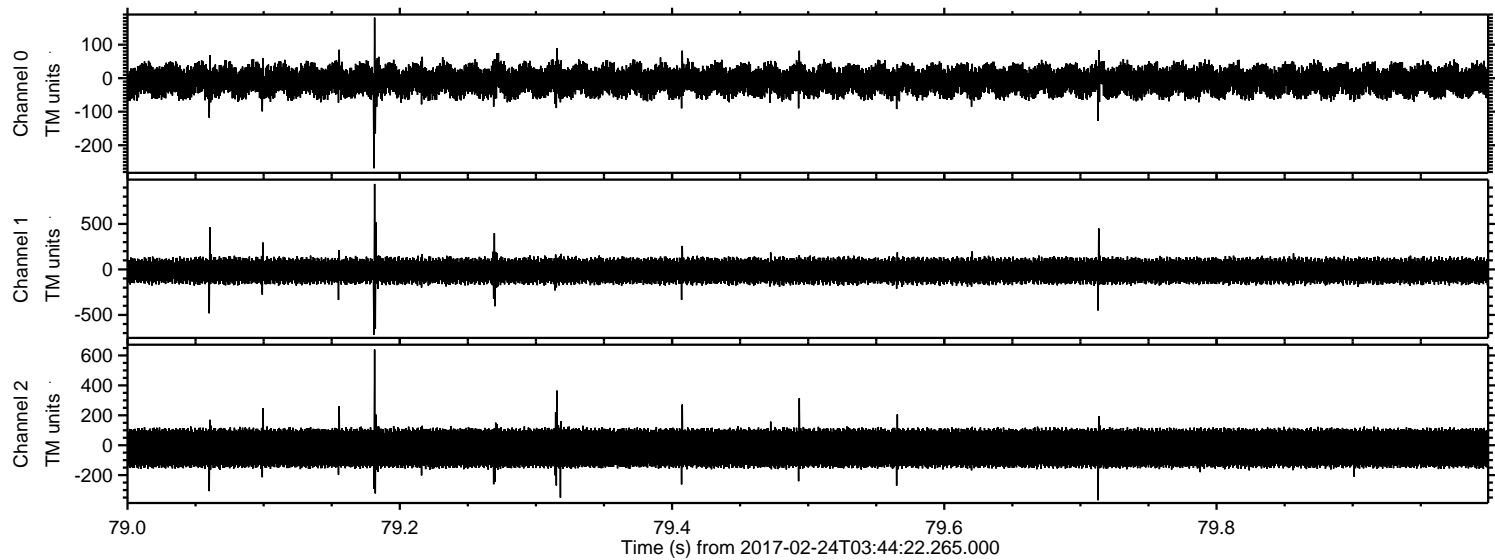
Processed Fri Feb 24 04:52:40 2017 by ELM ver.2012-10-06 from 001__elm20170224_034421__dat00.bin



Processed Fri Feb 24 04:52:41 2017 by ELM ver.2012-10-06 from 001__elm20170224_034421__dat00.bin



Processed Fri Feb 24 04:52:42 2017 by ELM ver.2012-10-06 from 001__elm20170224_034421__dat00.bin



Channel 0
mn: -269
mx: 181
 μ : -8.0
 σ : 27.7

Channel 1
mn: -717
mx: 940
 μ : -16.2
 σ : 81.8

Channel 2
mn: -368
mx: 640
 μ : -19.2
 σ : 81.7

Processed Fri Feb 24 04:52:43 2017 by ELM ver.2012-10-06 from 001__elm20170224_034421__dat00.bin

