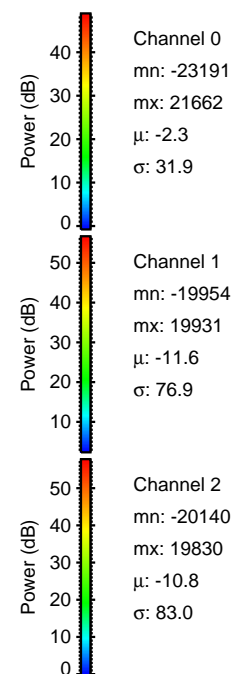
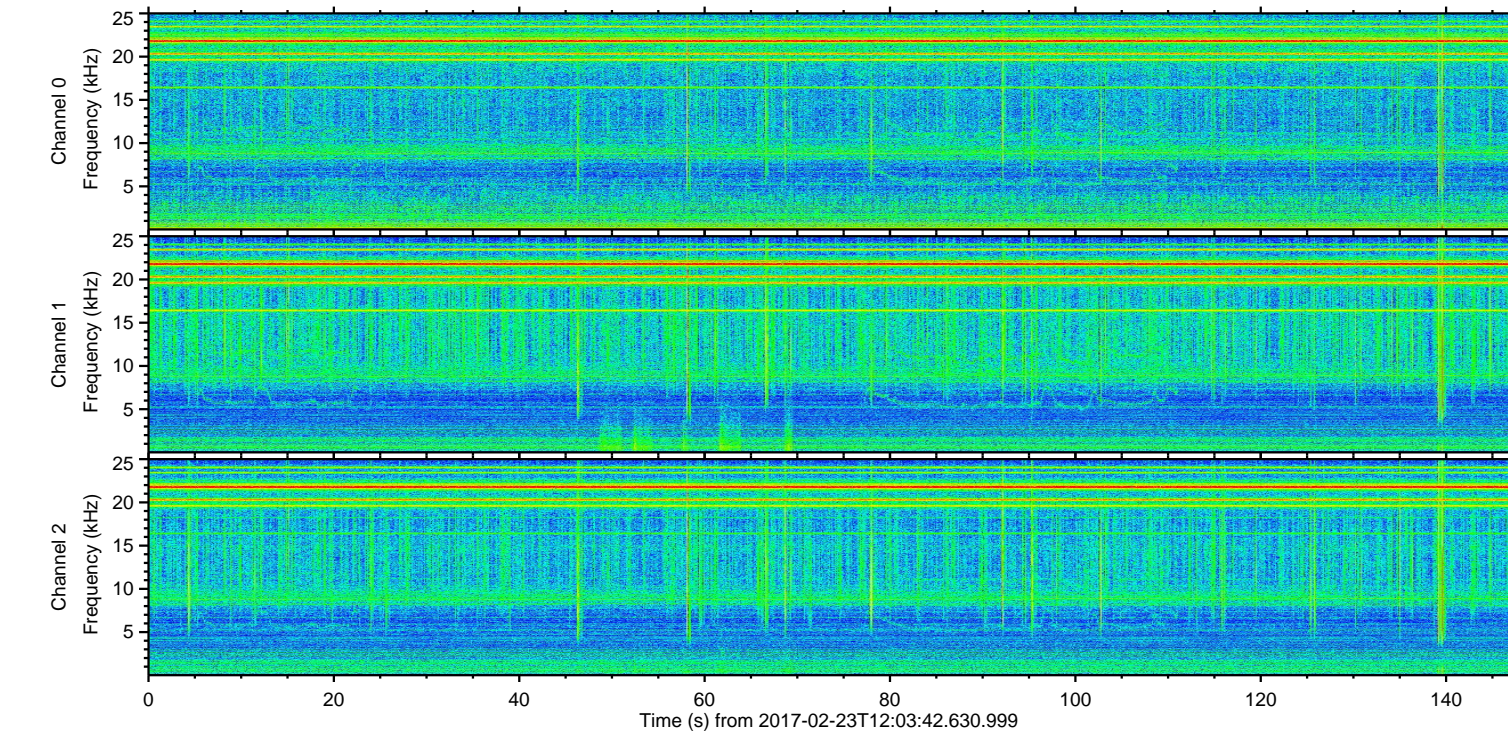
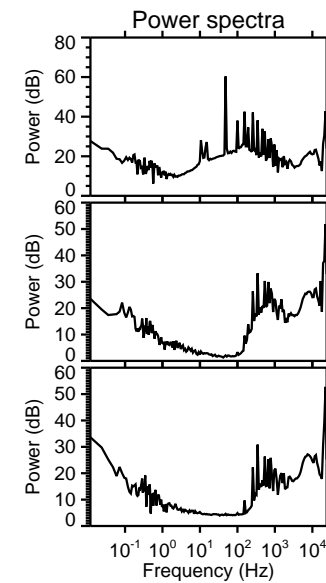
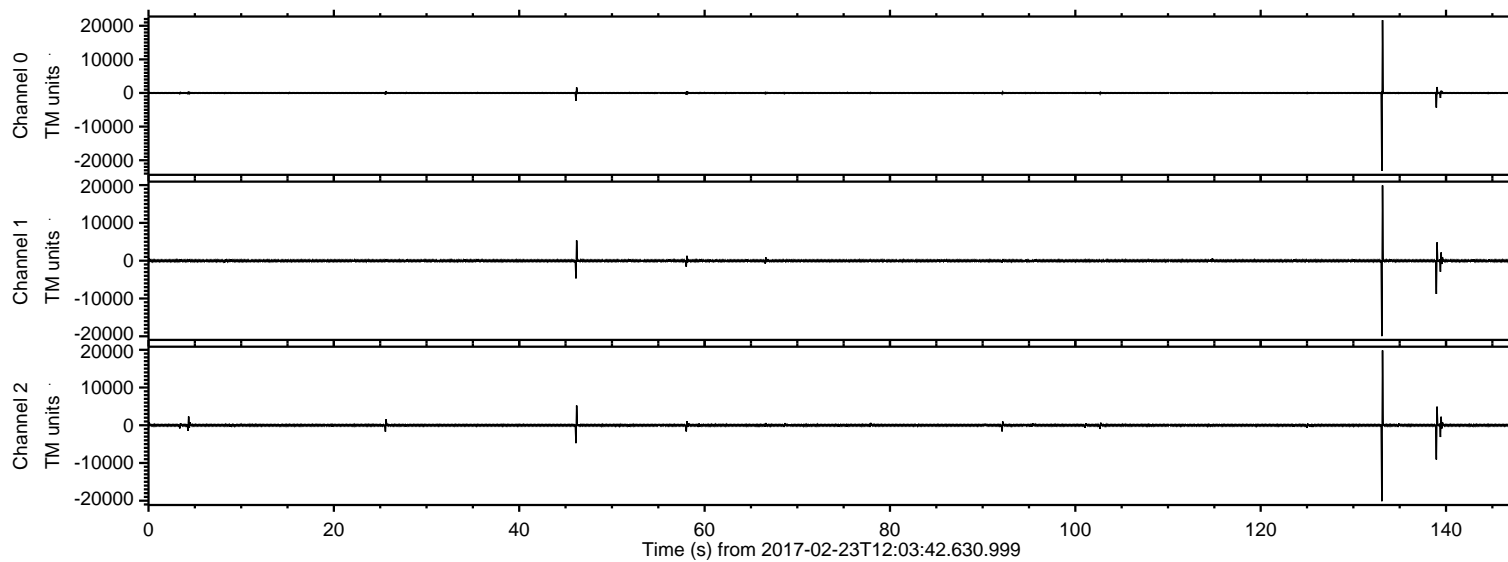


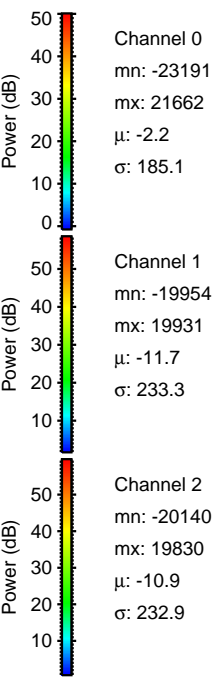
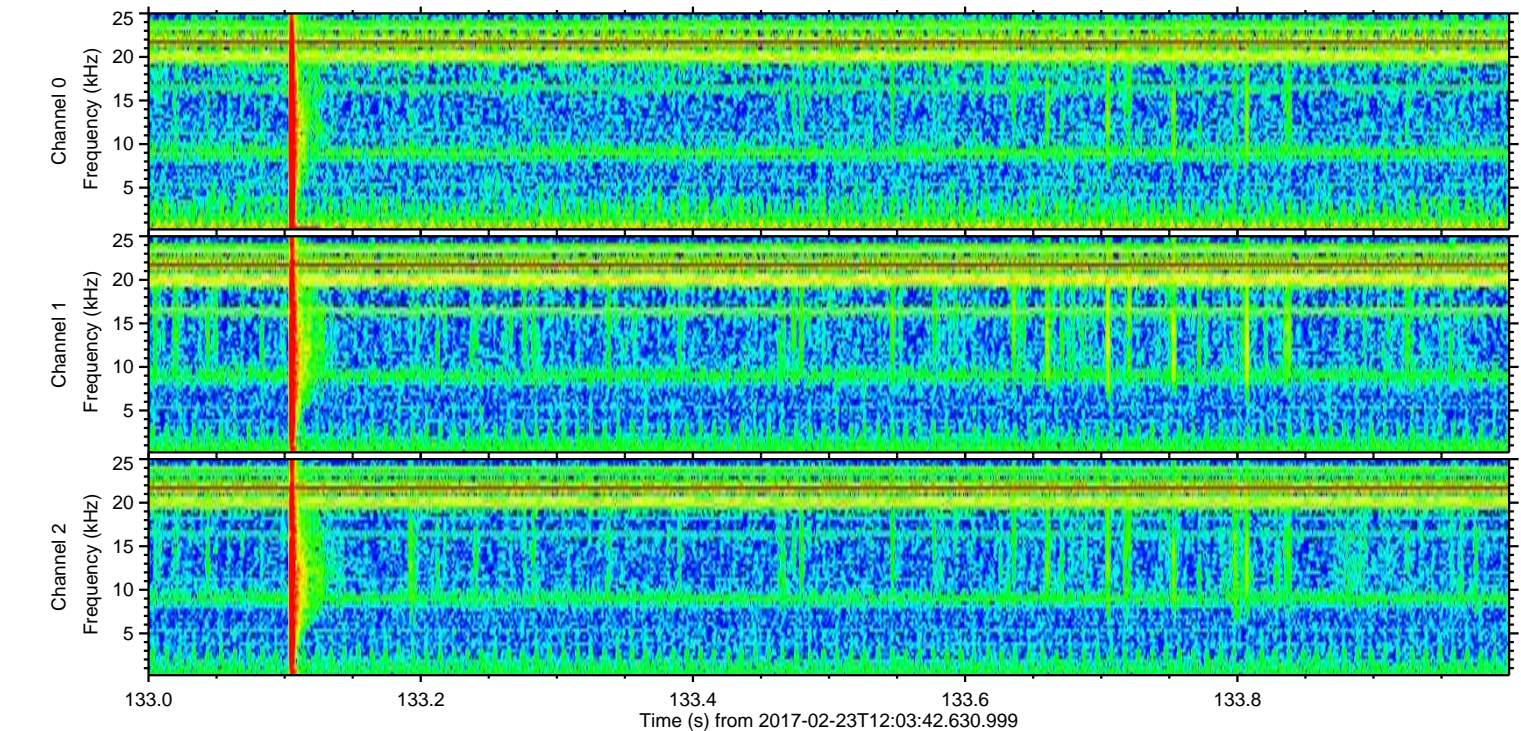
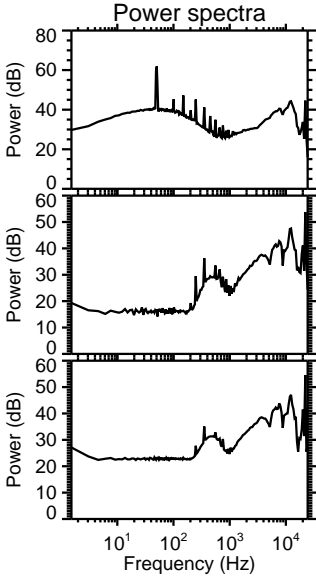
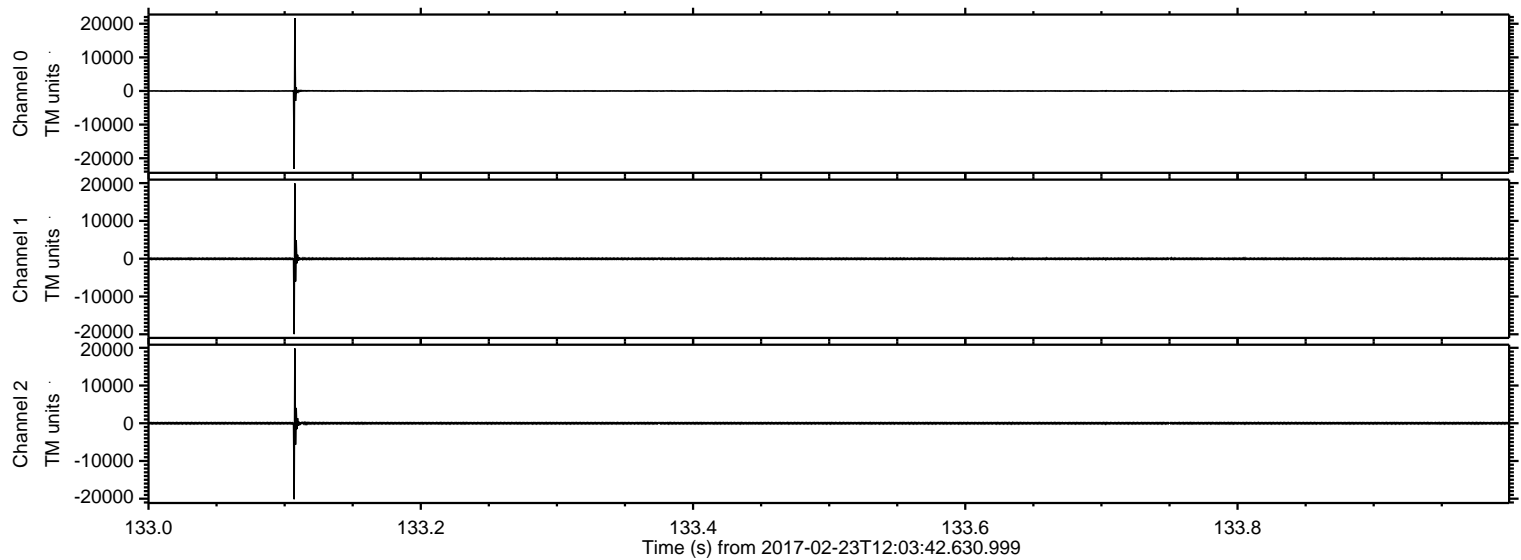
ELMAVAN 3D WAVEFORMS (Measured data sampled at 50 kHz) 51000 packets of 144 samples from 2017-02-23T12:03:42.630.999.

Processed Thu Feb 23 13:11:15 2017 by ELM ver.2012-10-06 from 001__elm20170223_120341__dat00.bin



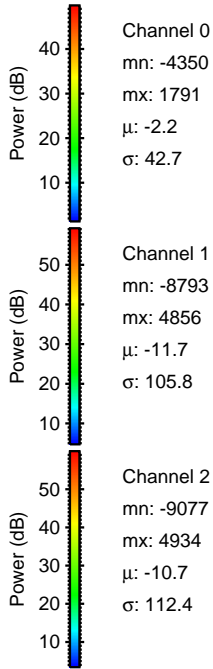
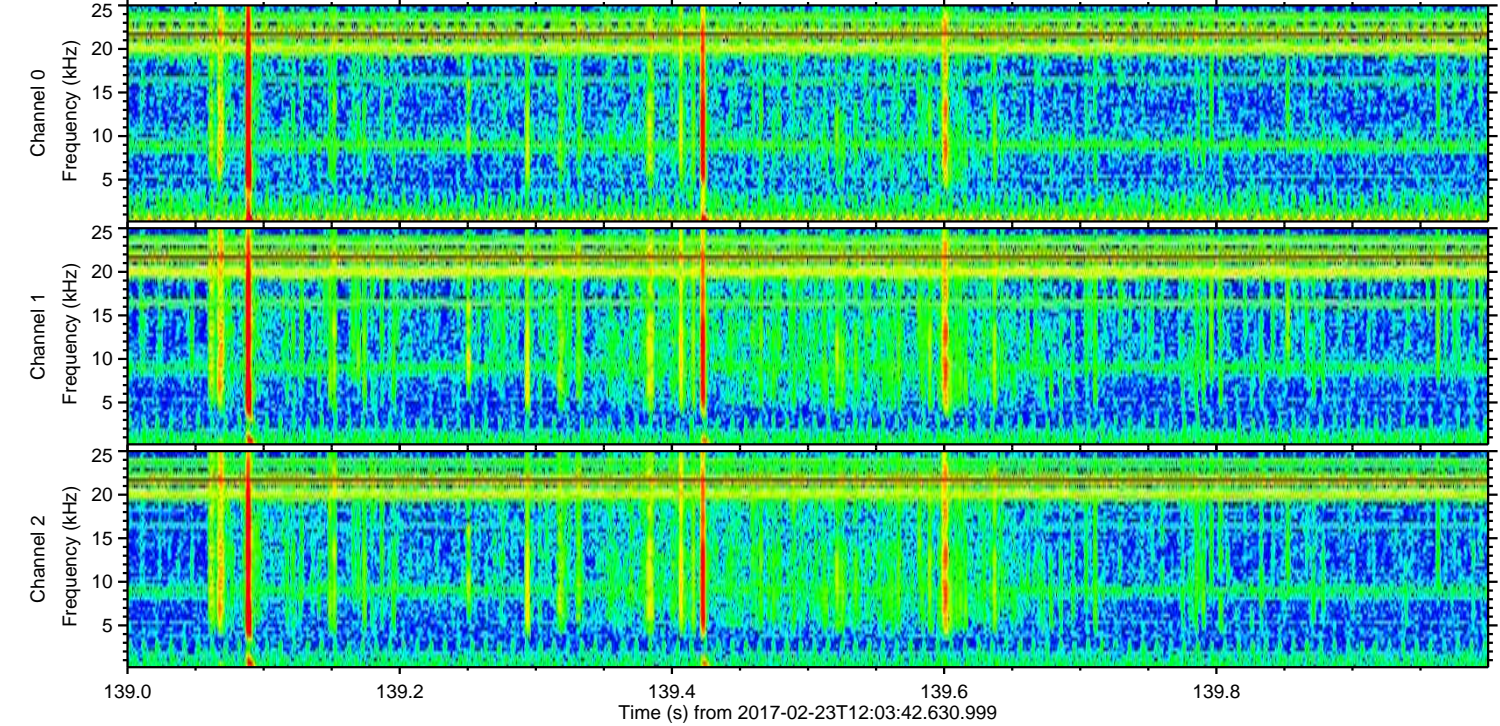
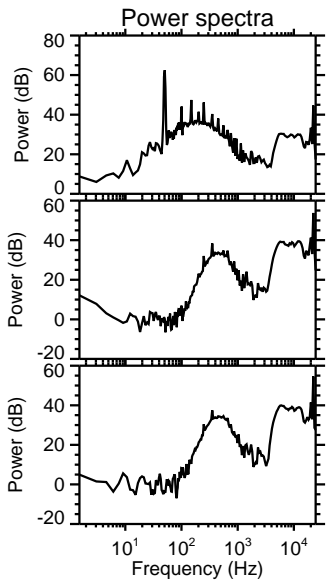
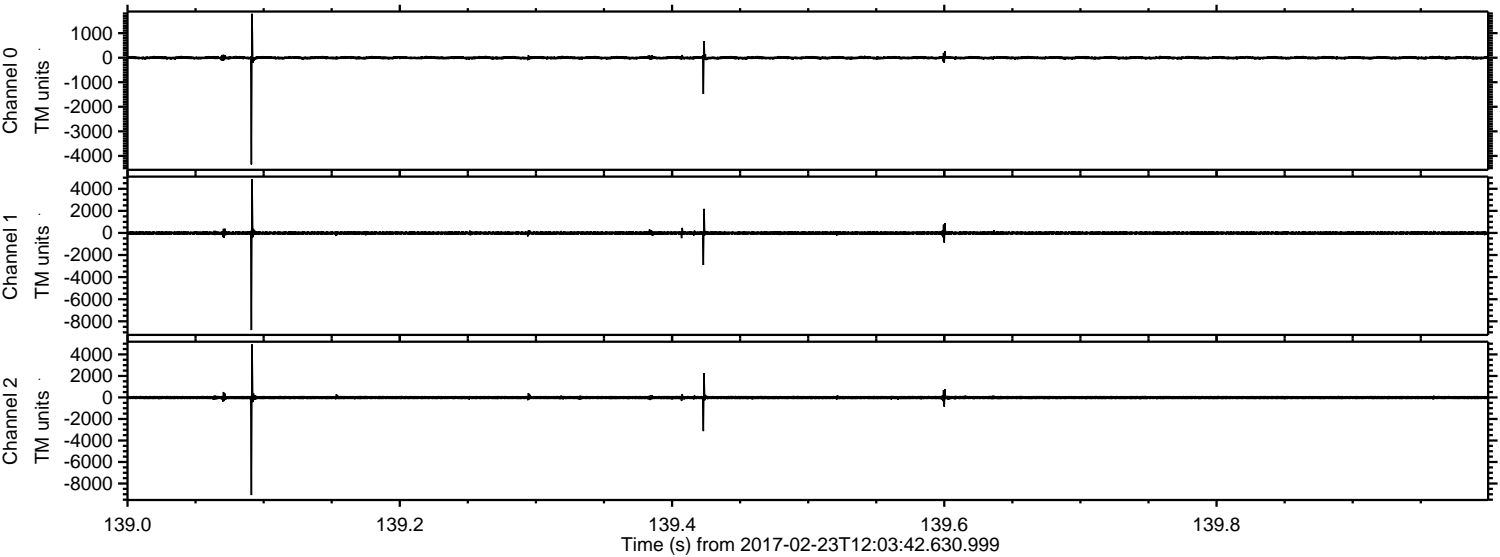
ELMAVAN 3D WAVEFORMS (Measured data sampled at 50 kHz) 51000 packets of 144 samples from 2017-02-23T12:03:42.630.999. Part 134/147

Processed Thu Feb 23 13:11:26 2017 by ELM ver.2012-10-06 from 001__elm20170223_120341__dat00.bin

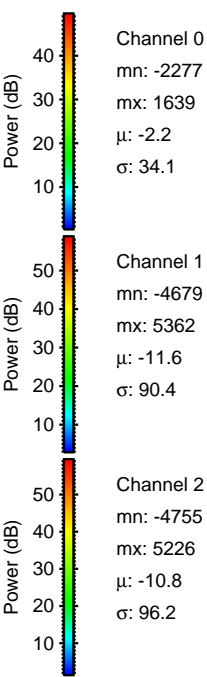
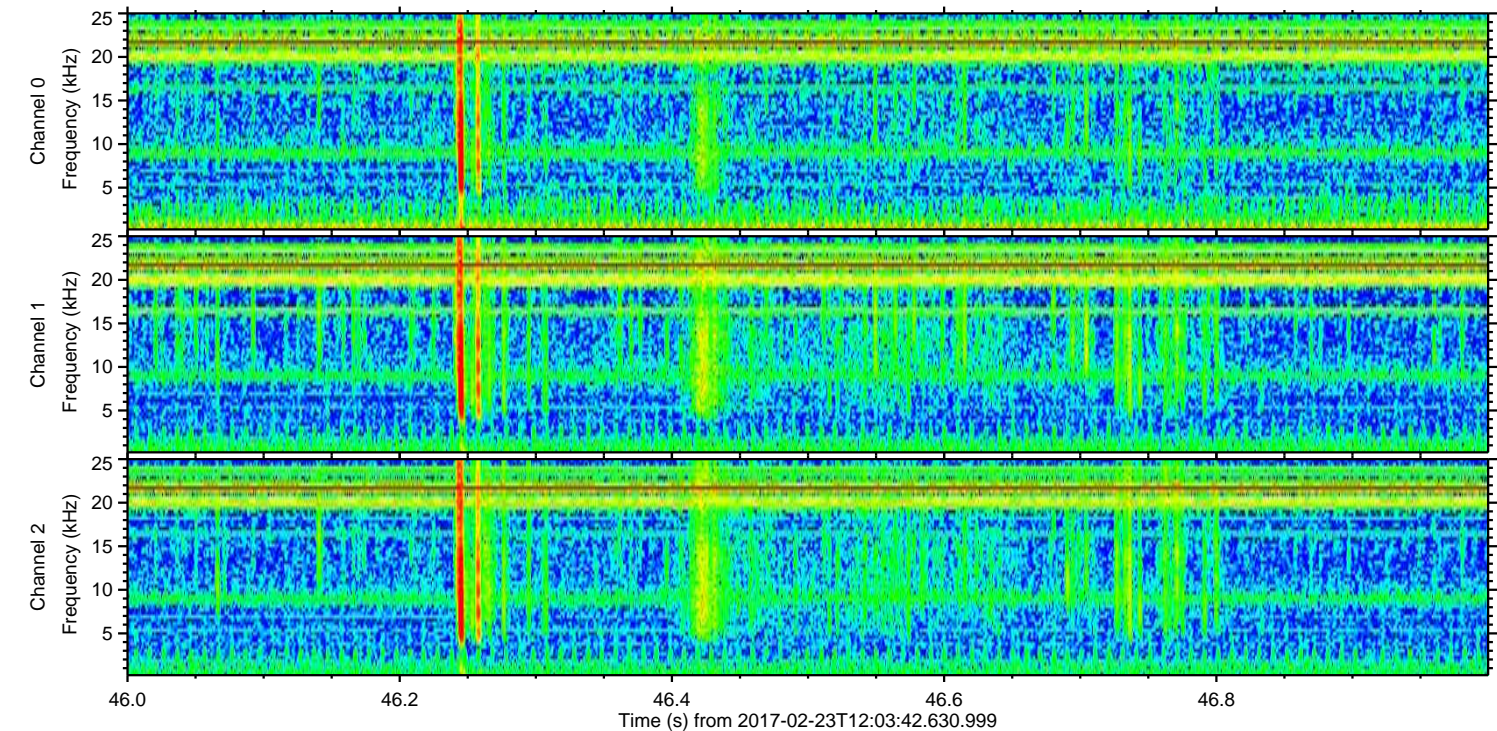
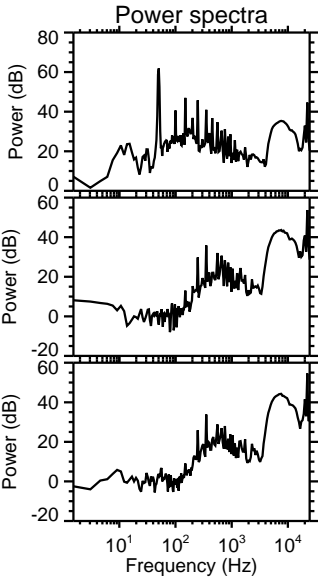
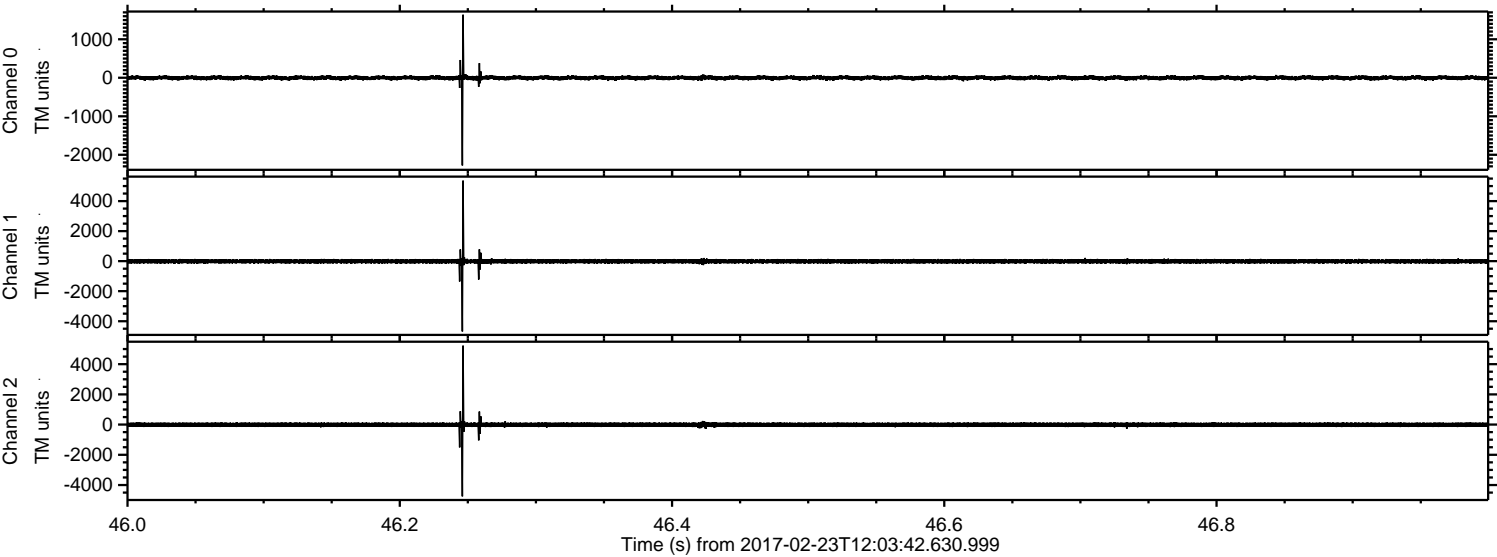


ELMAVAN 3D WAVEFORMS (Measured data sampled at 50 kHz) 51000 packets of 144 samples from 2017-02-23T12:03:42.630.999. Part 140/147

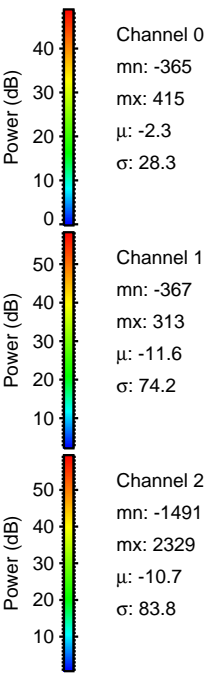
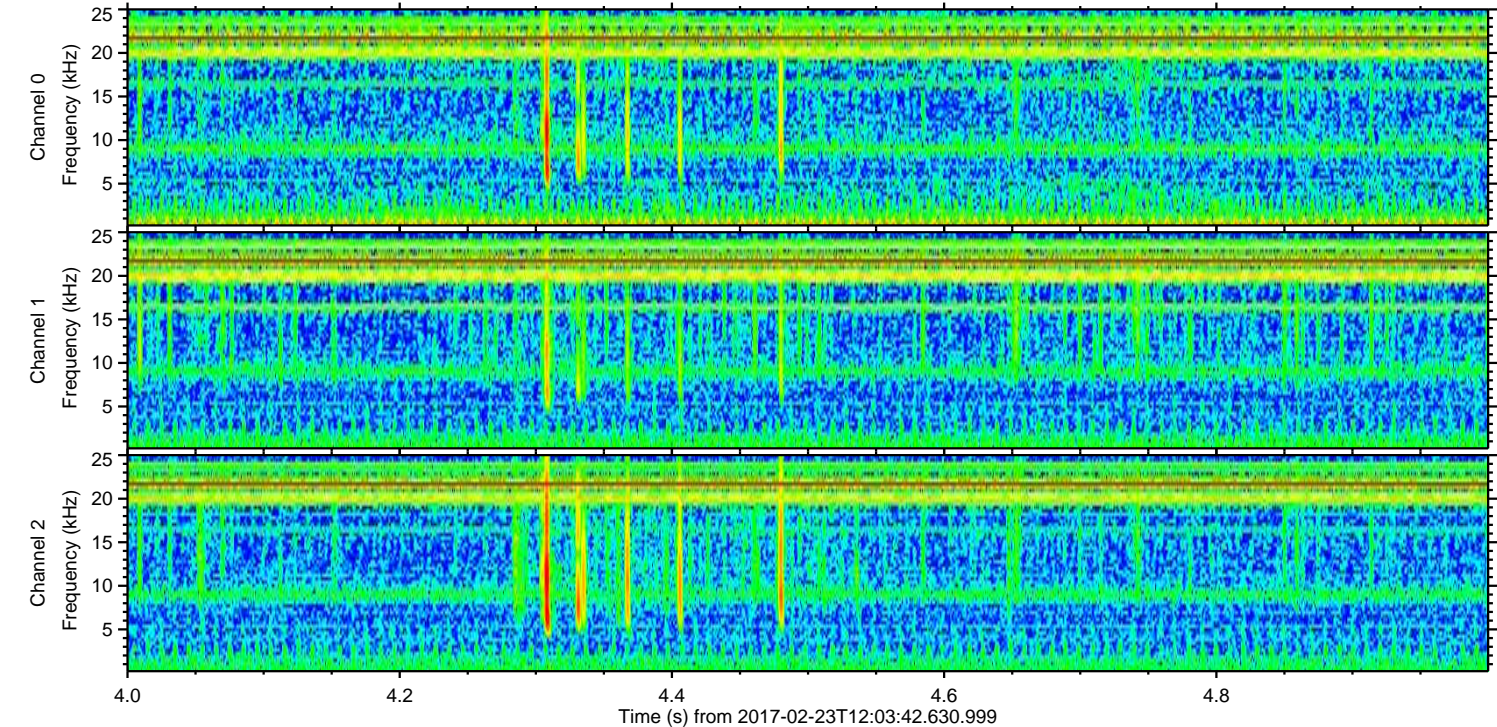
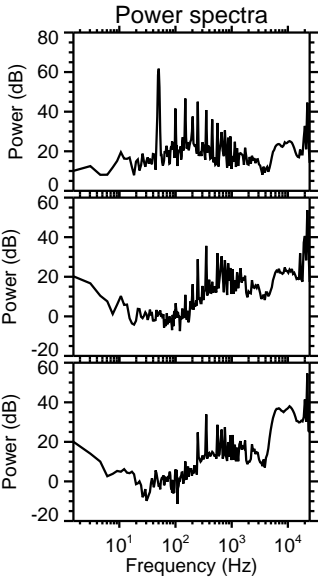
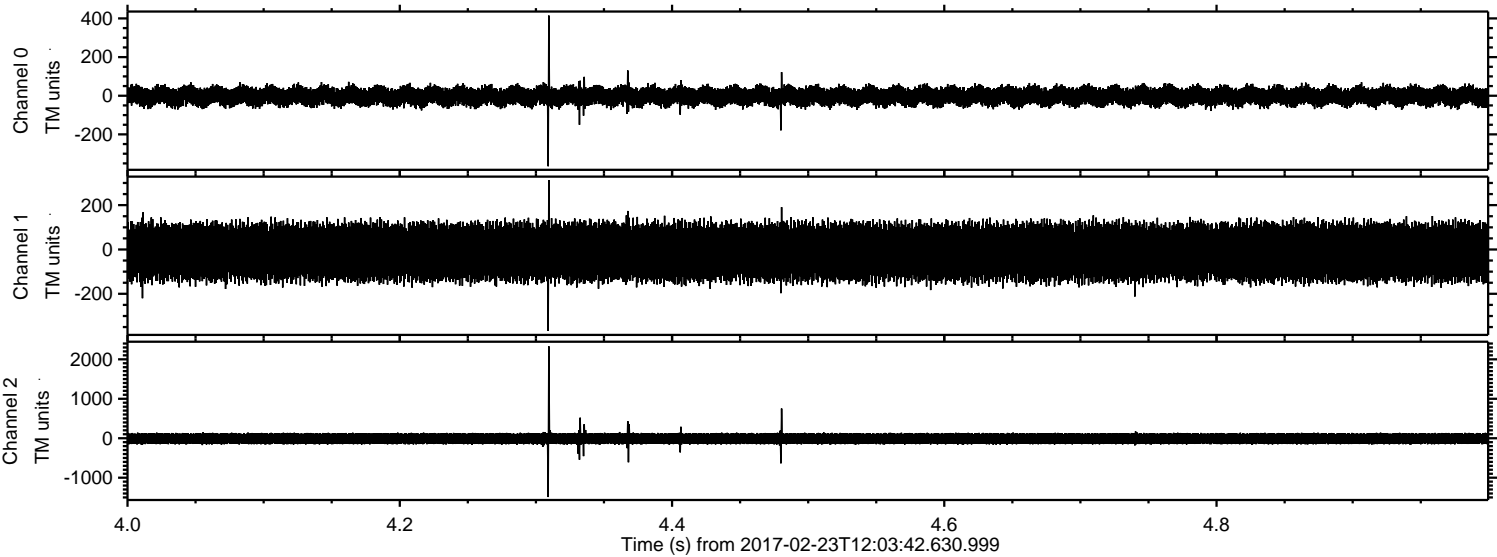
Processed Thu Feb 23 13:11:27 2017 by ELM ver.2012-10-06 from 001__elm20170223_120341__dat00.bin



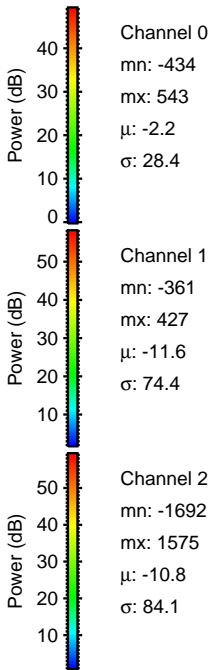
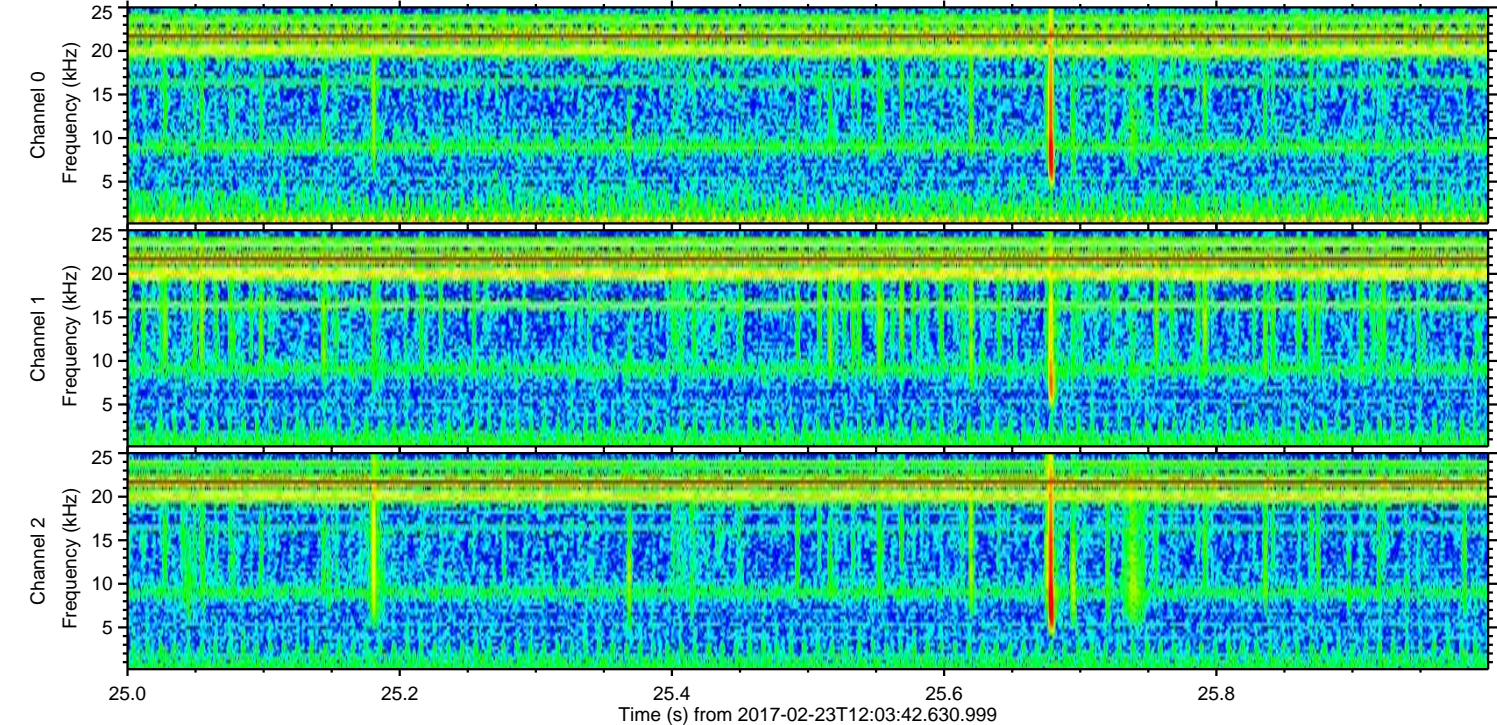
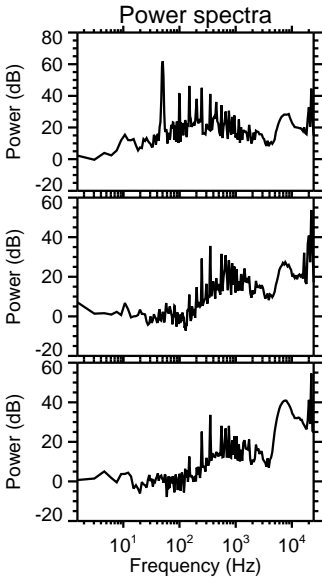
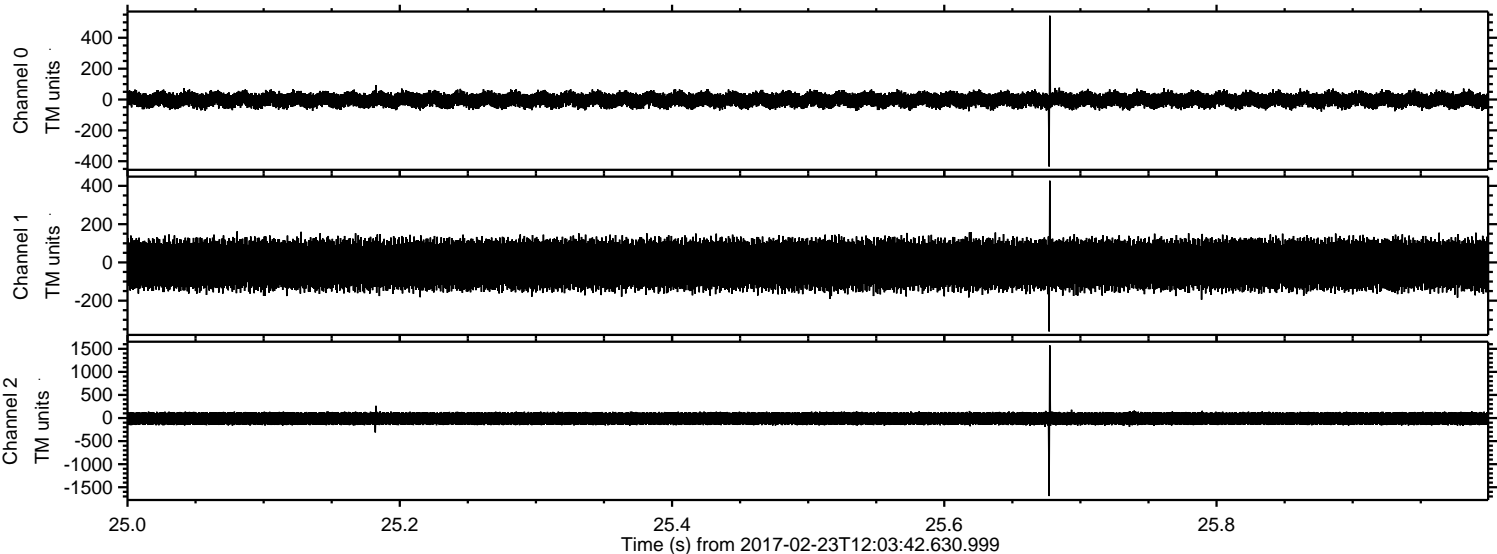
Processed Thu Feb 23 13:11:28 2017 by ELM ver.2012-10-06 from 001__elm20170223_120341__dat00.bin



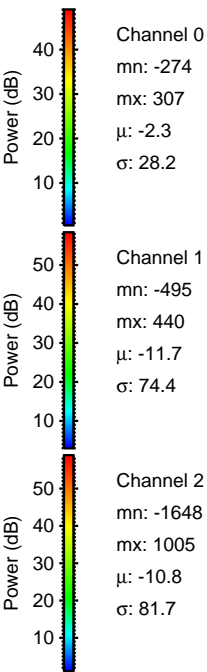
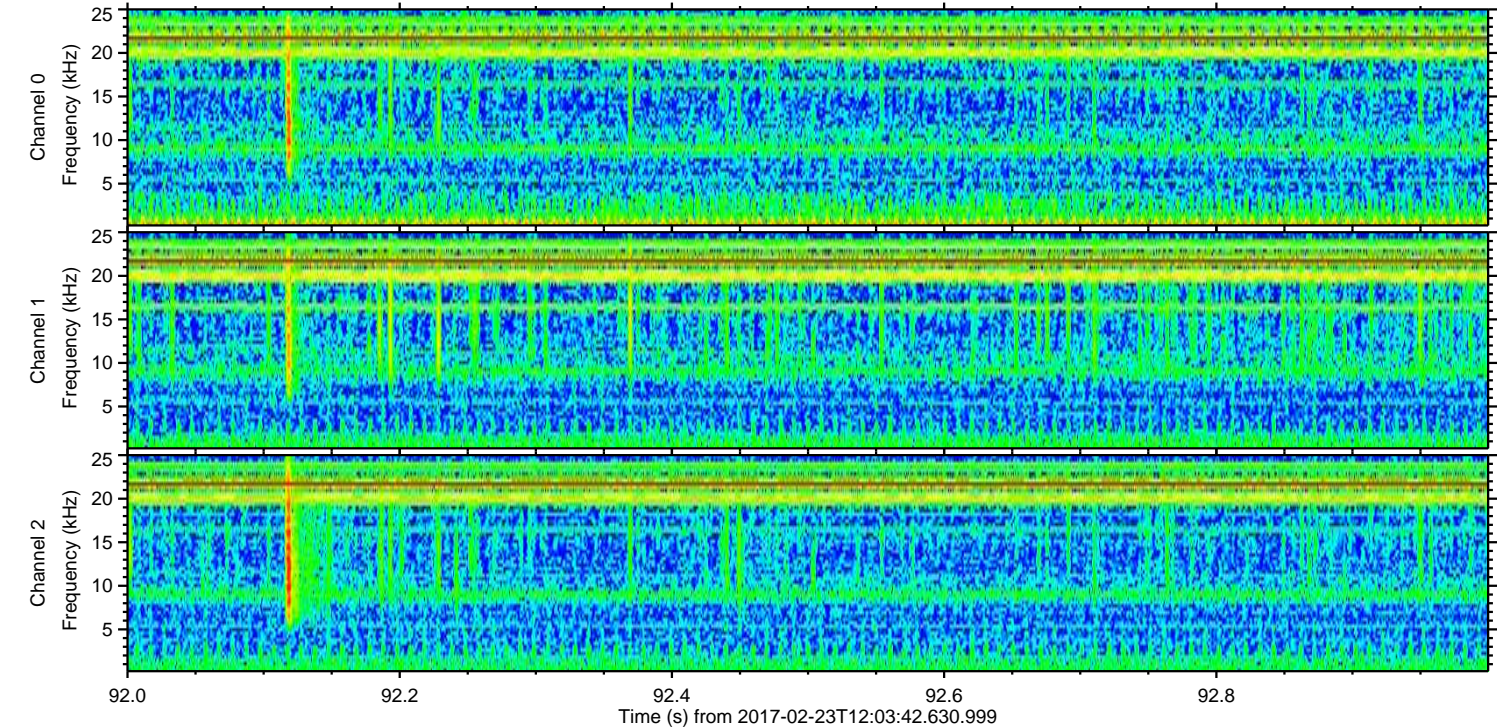
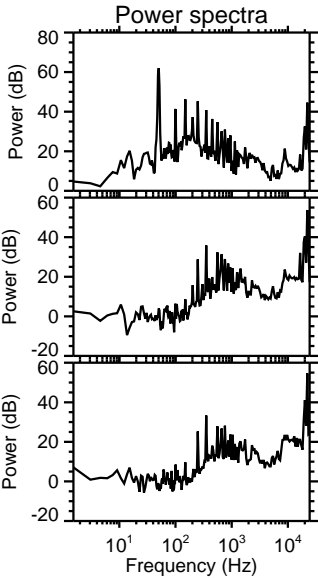
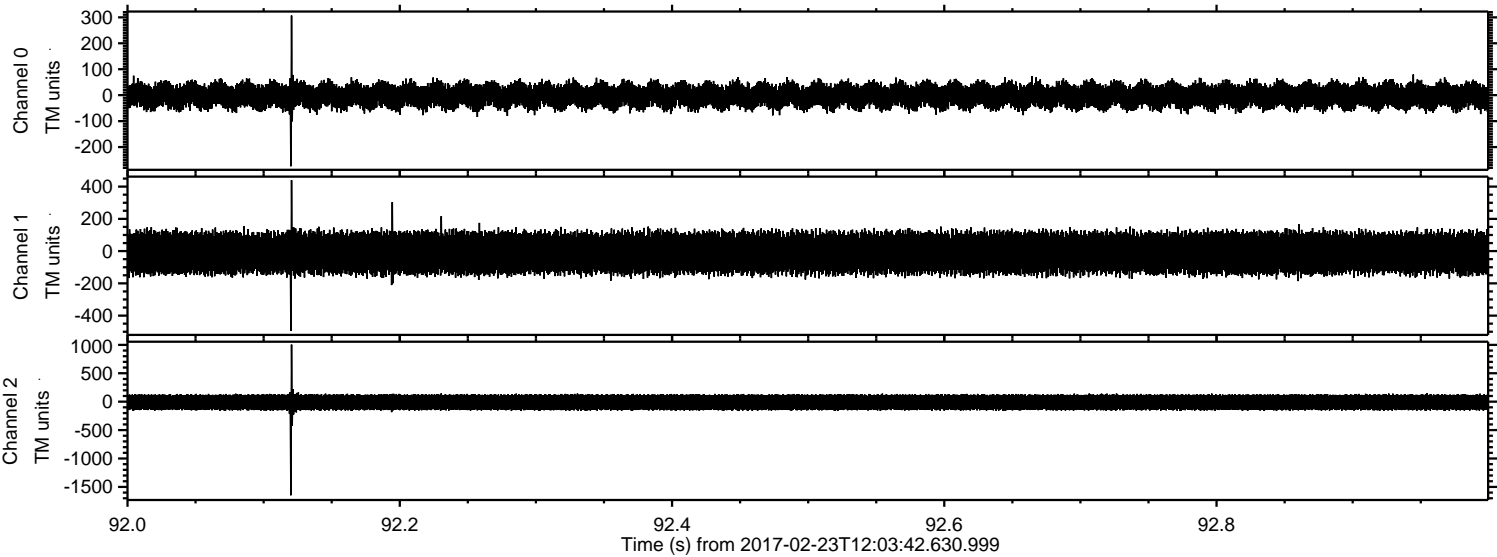
Processed Thu Feb 23 13:11:29 2017 by ELM ver.2012-10-06 from 001__elm20170223_120341__dat00.bin



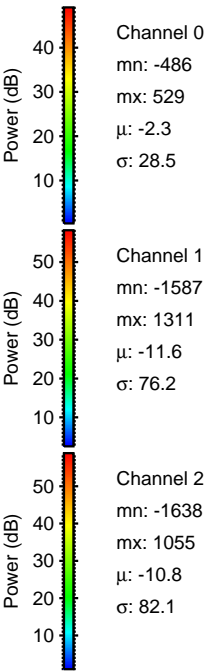
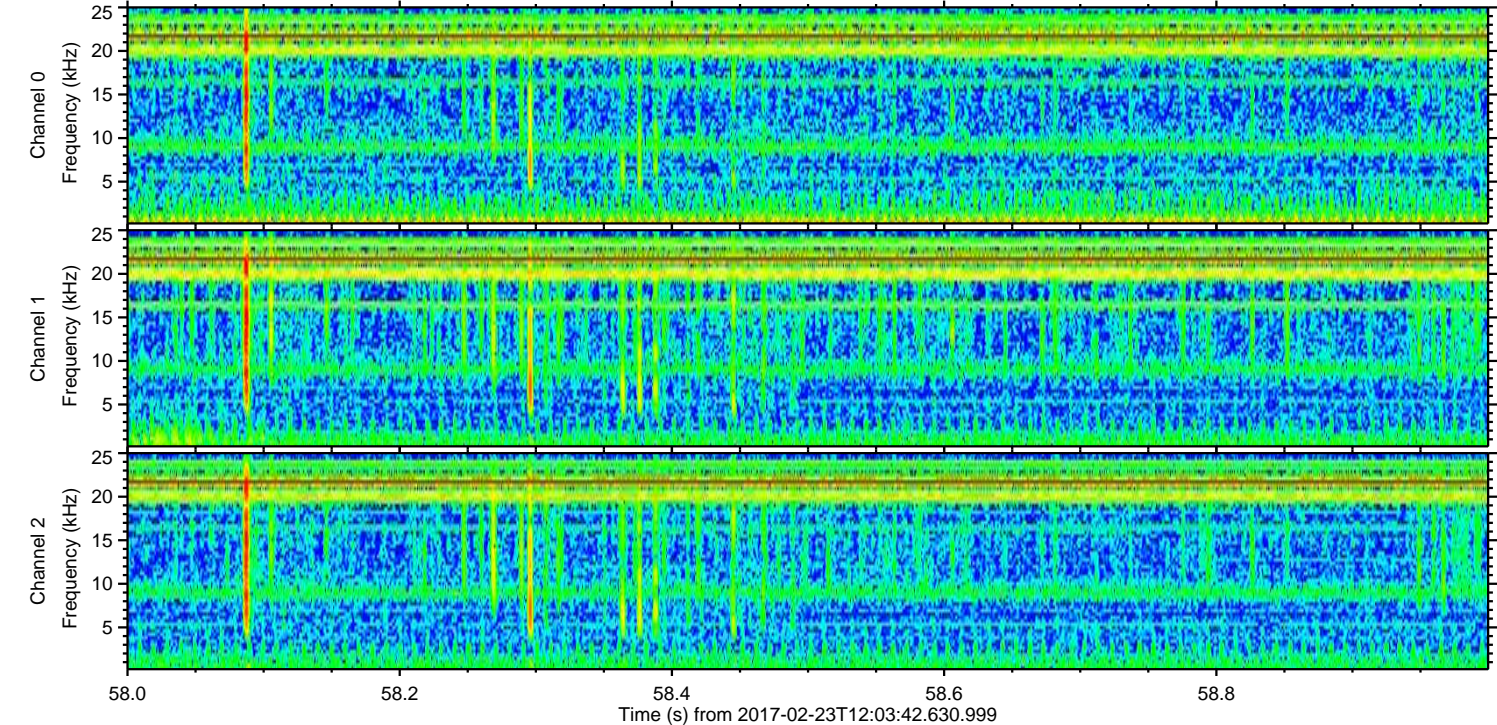
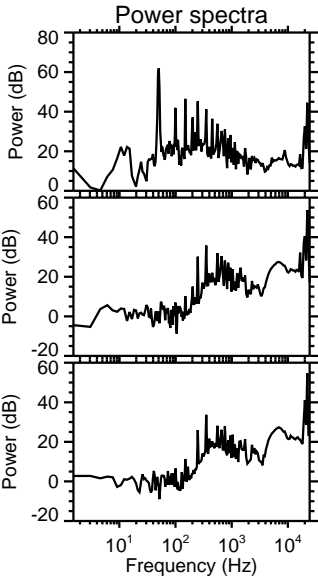
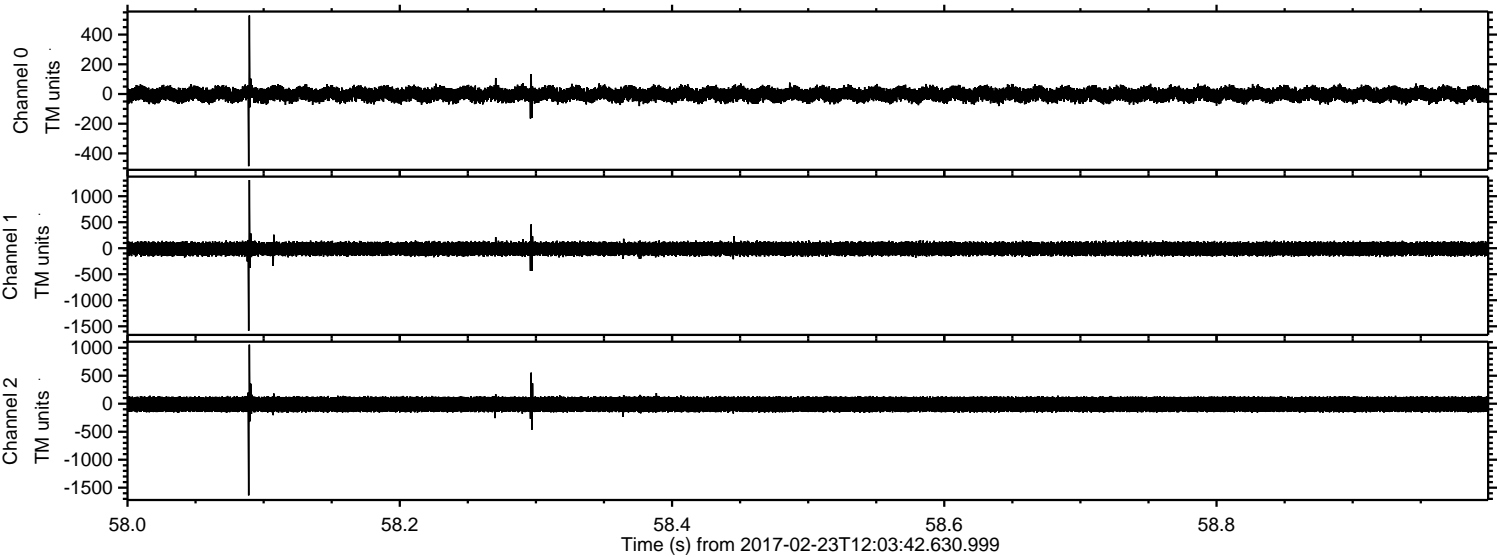
Processed Thu Feb 23 13:11:30 2017 by ELM ver.2012-10-06 from 001__elm20170223_120341__dat00.bin



Processed Thu Feb 23 13:11:31 2017 by ELM ver.2012-10-06 from 001__elm20170223_120341__dat00.bin

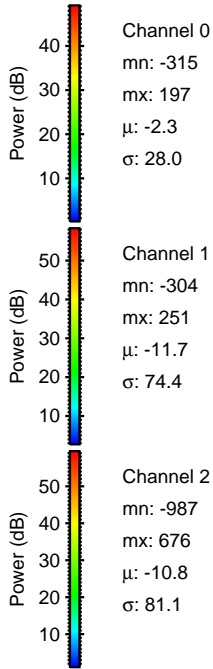
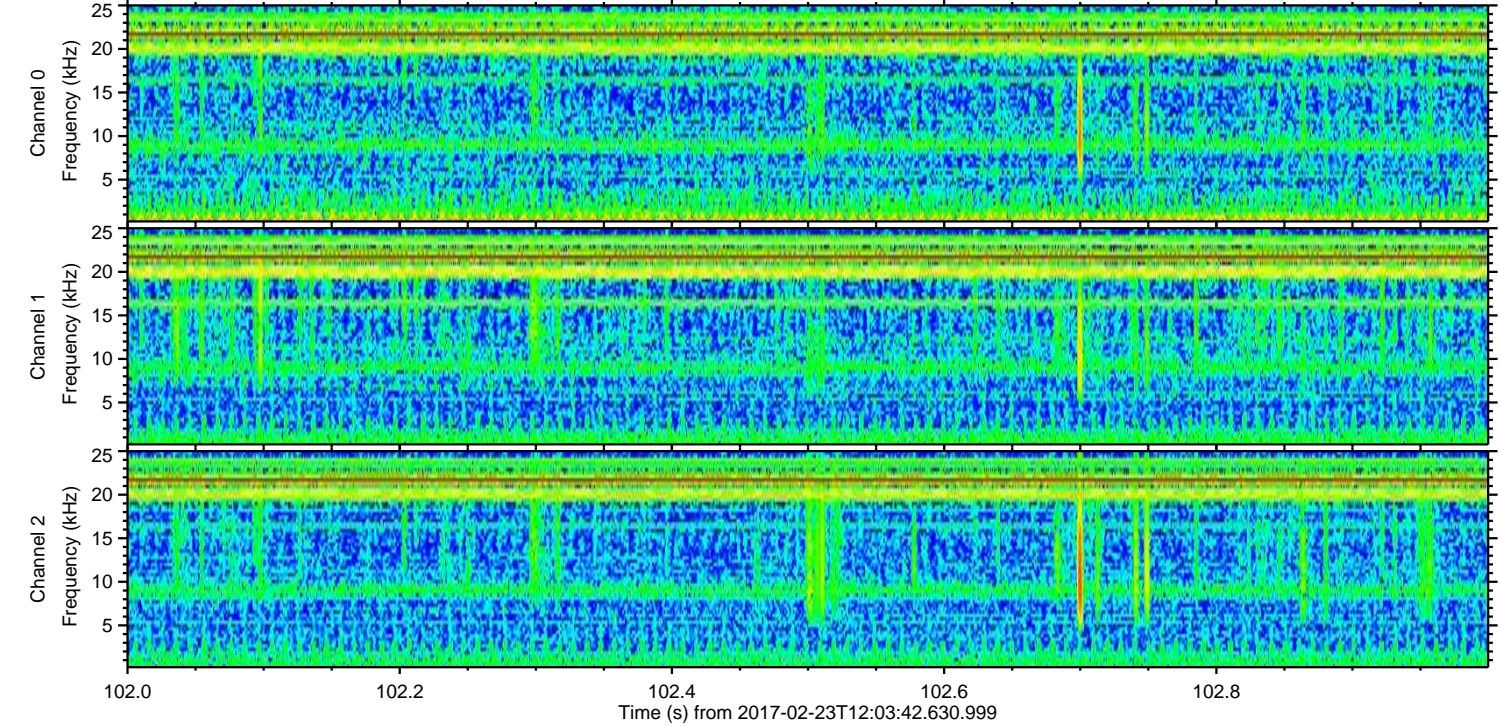
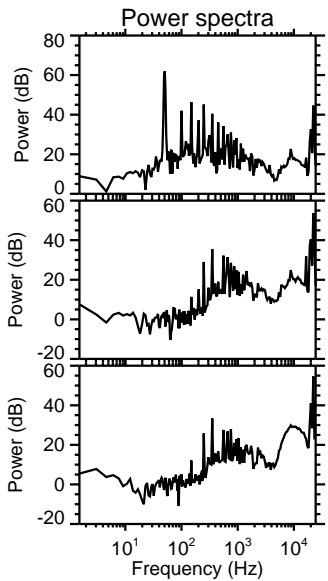
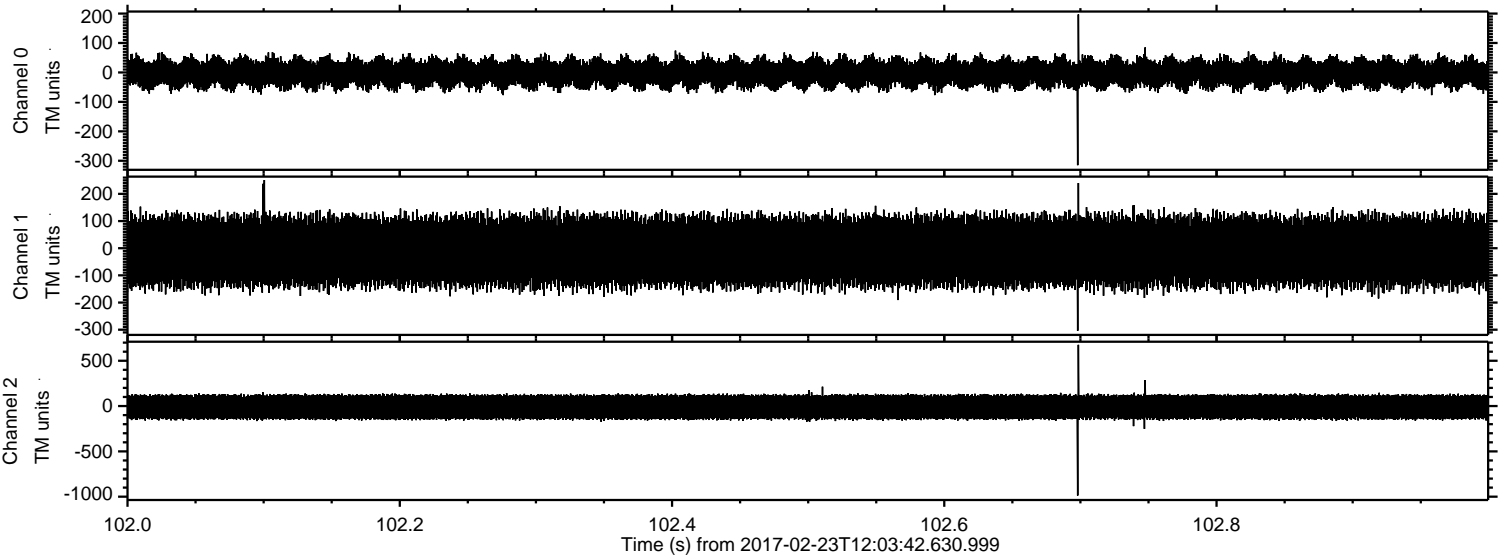


Processed Thu Feb 23 13:11:32 2017 by ELM ver.2012-10-06 from 001__elm20170223_120341__dat00.bin

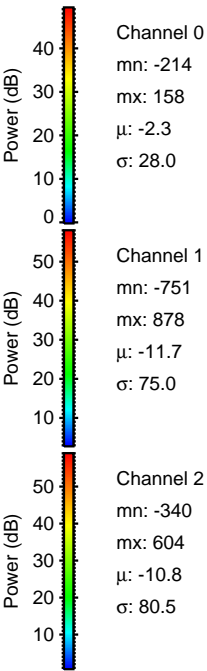
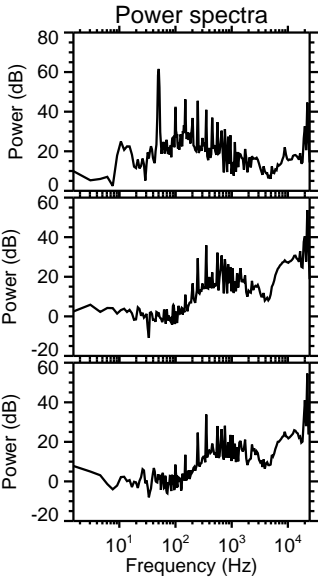
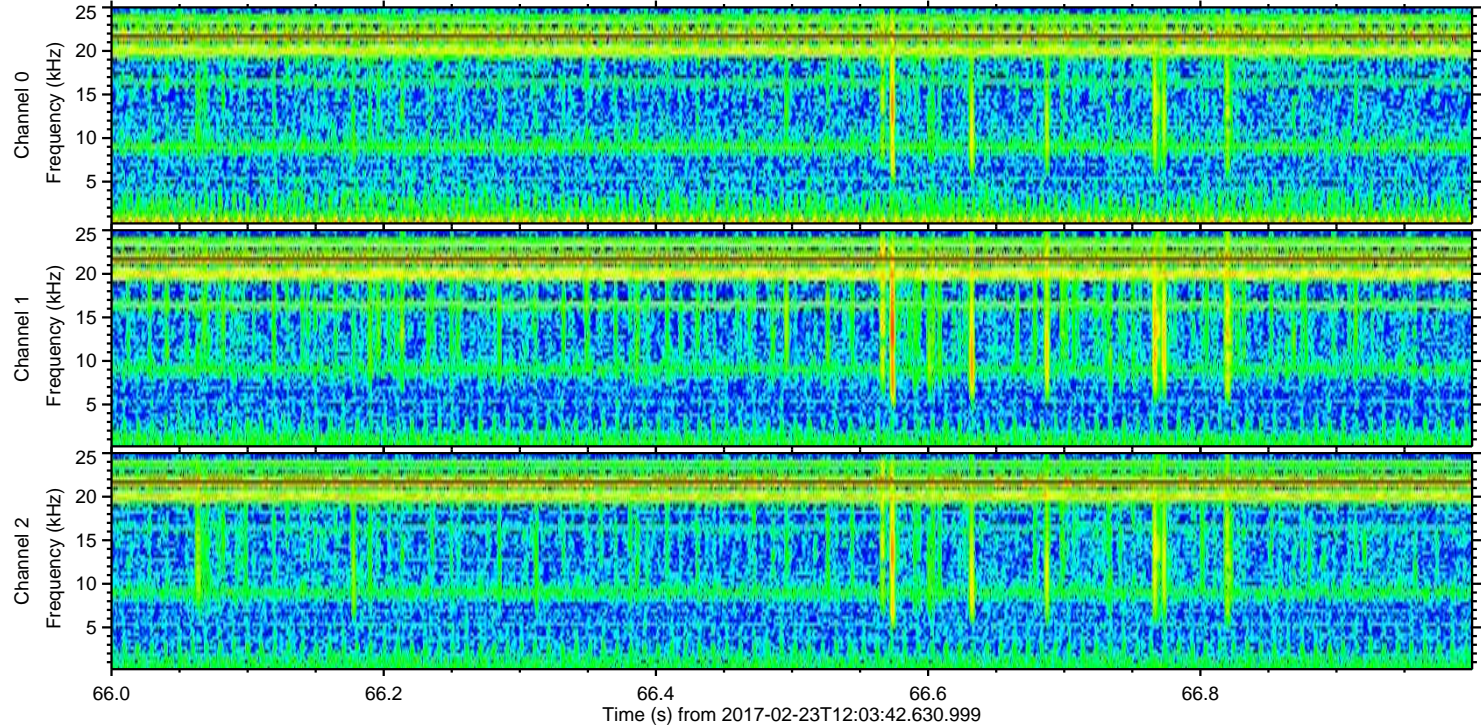
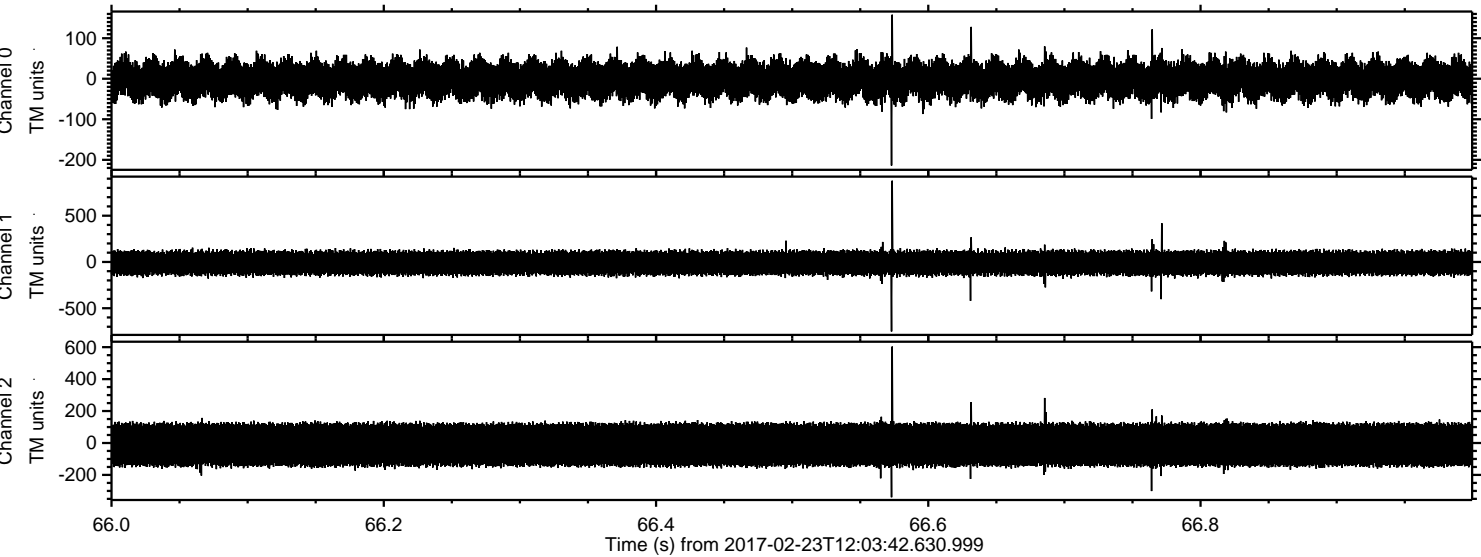


ELMAVAN 3D WAVEFORMS (Measured data sampled at 50 kHz) 51000 packets of 144 samples from 2017-02-23T12:03:42.630.999. Part 103/147

Processed Thu Feb 23 13:11:33 2017 by ELM ver.2012-10-06 from 001__elm20170223_120341__dat00.bin



Processed Thu Feb 23 13:11:34 2017 by ELM ver.2012-10-06 from 001__elm20170223_120341__dat00.bin



Channel 0
mn: -214
mx: 158
 μ : -2.3
 σ : 28.0

Channel 1
mn: -751
mx: 878
 μ : -11.7
 σ : 75.0

Channel 2
mn: -340
mx: 604
 μ : -10.8
 σ : 80.5

Processed Thu Feb 23 13:11:35 2017 by ELM ver.2012-10-06 from 001__elm20170223_120341__dat00.bin

