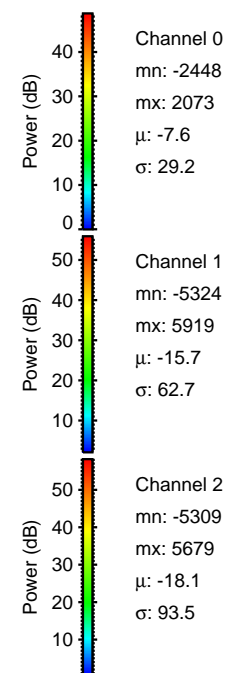
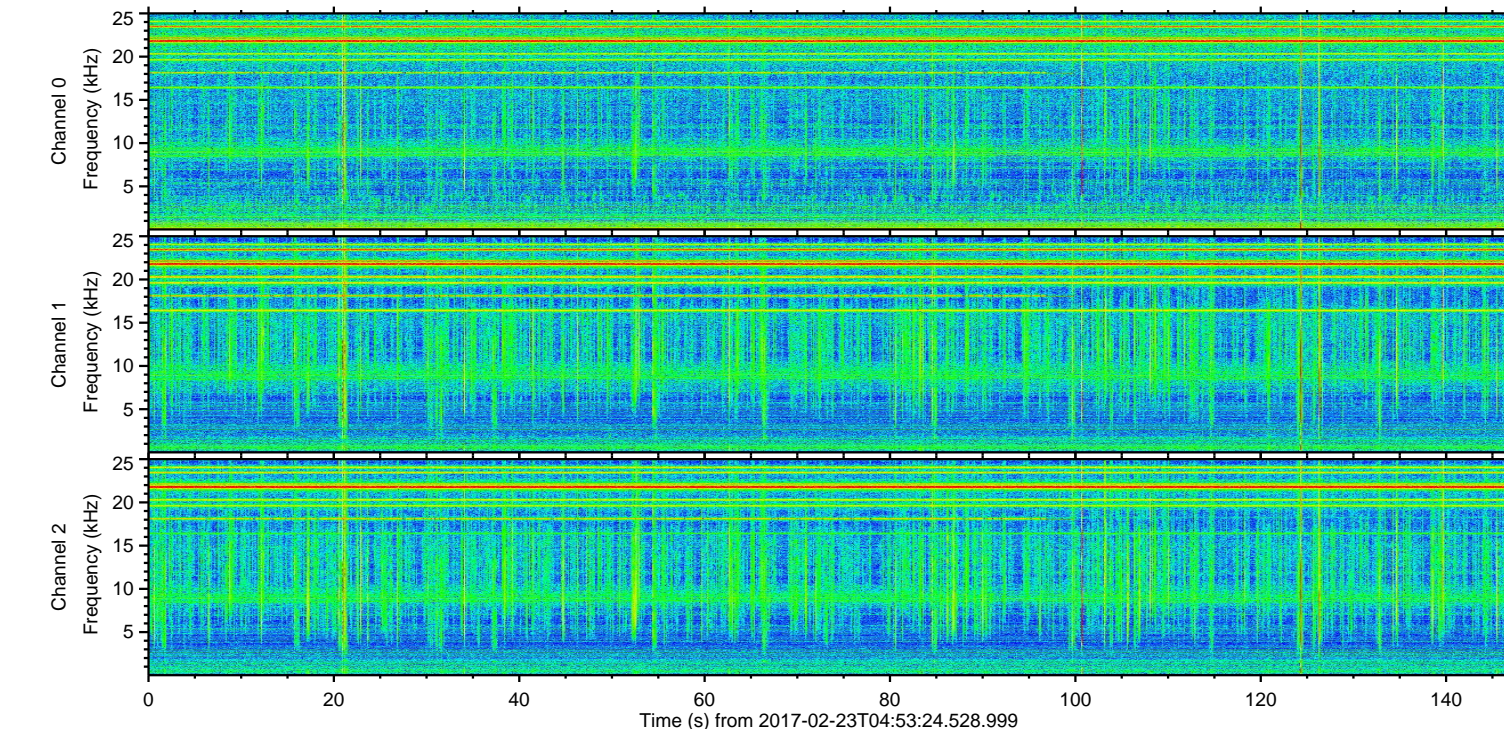
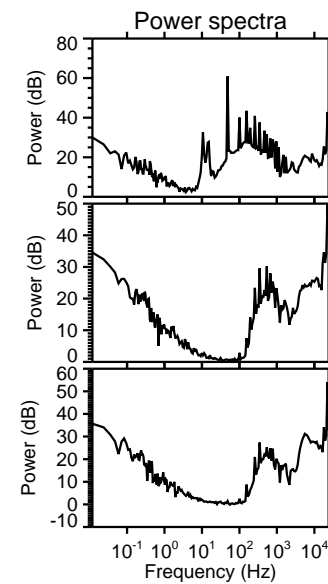
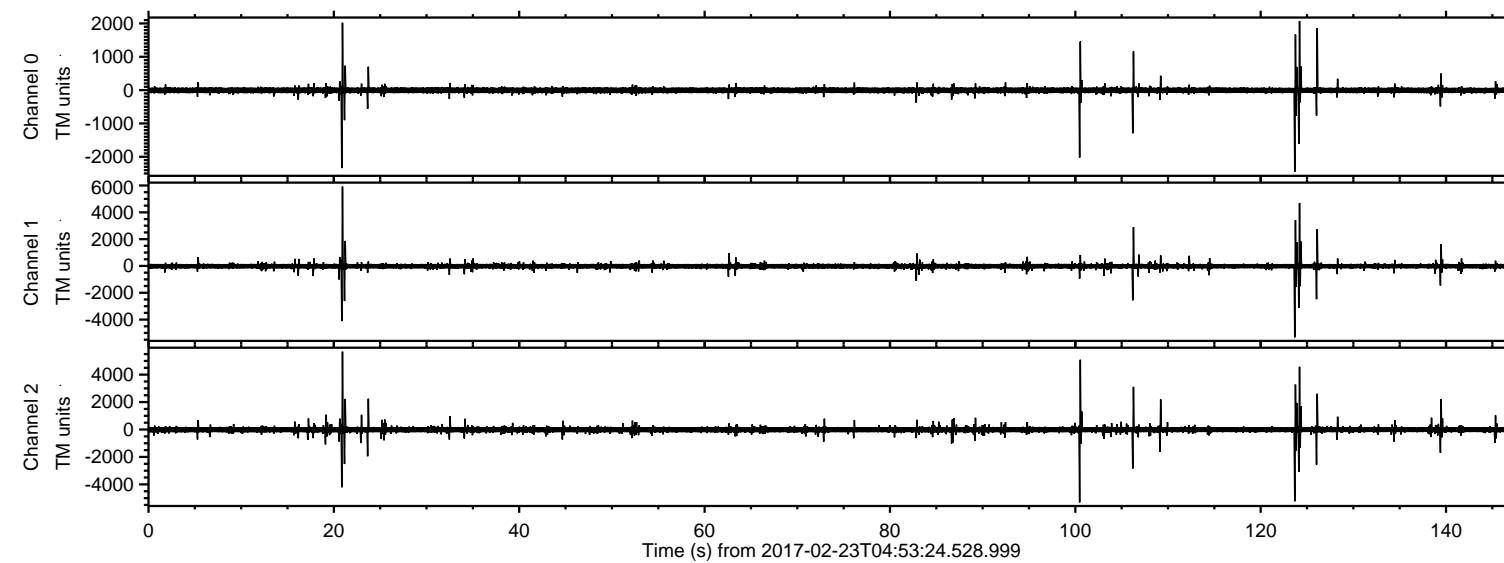


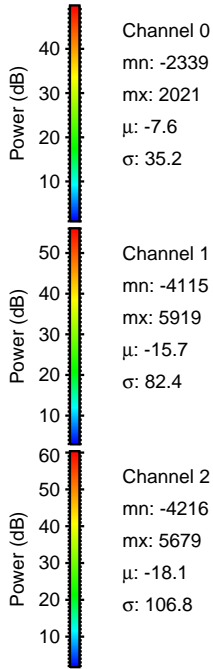
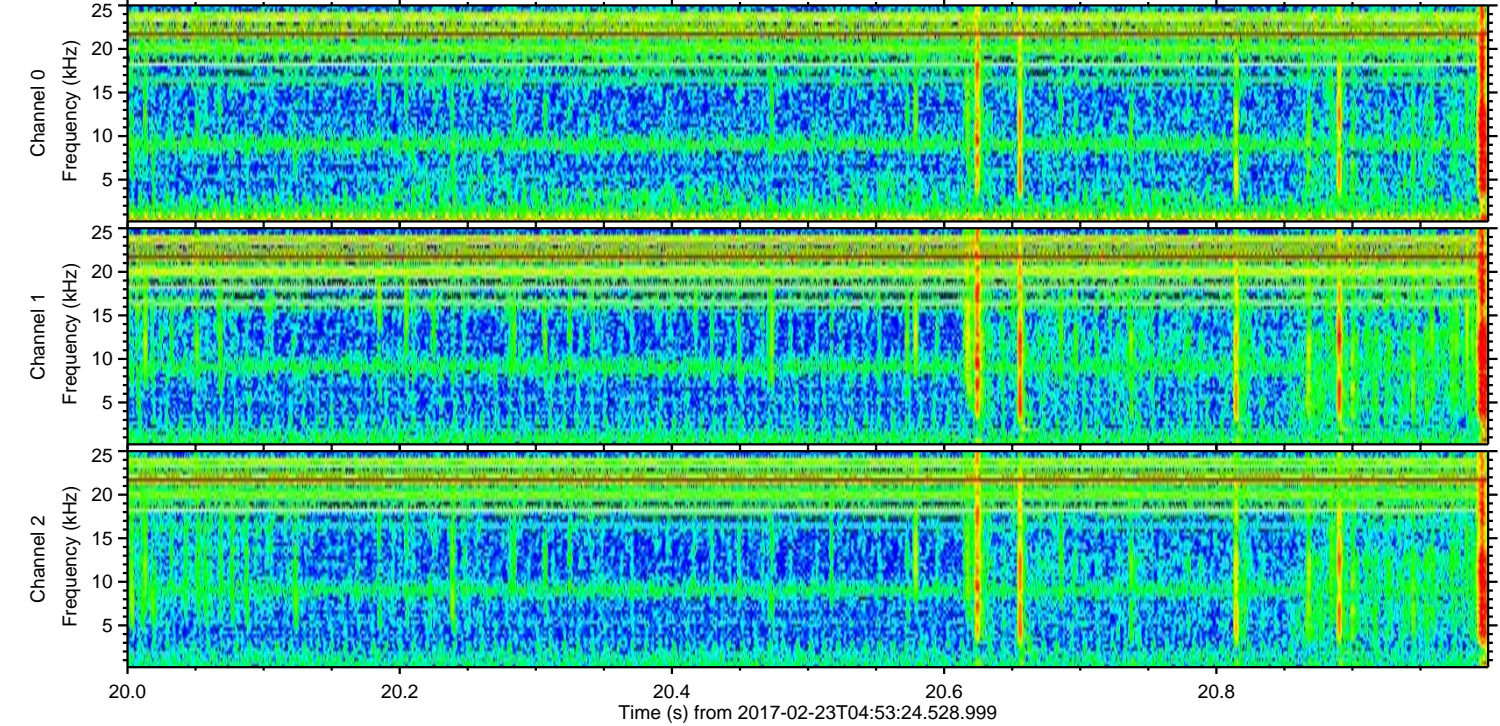
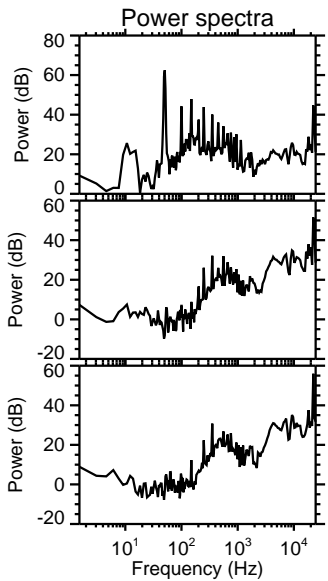
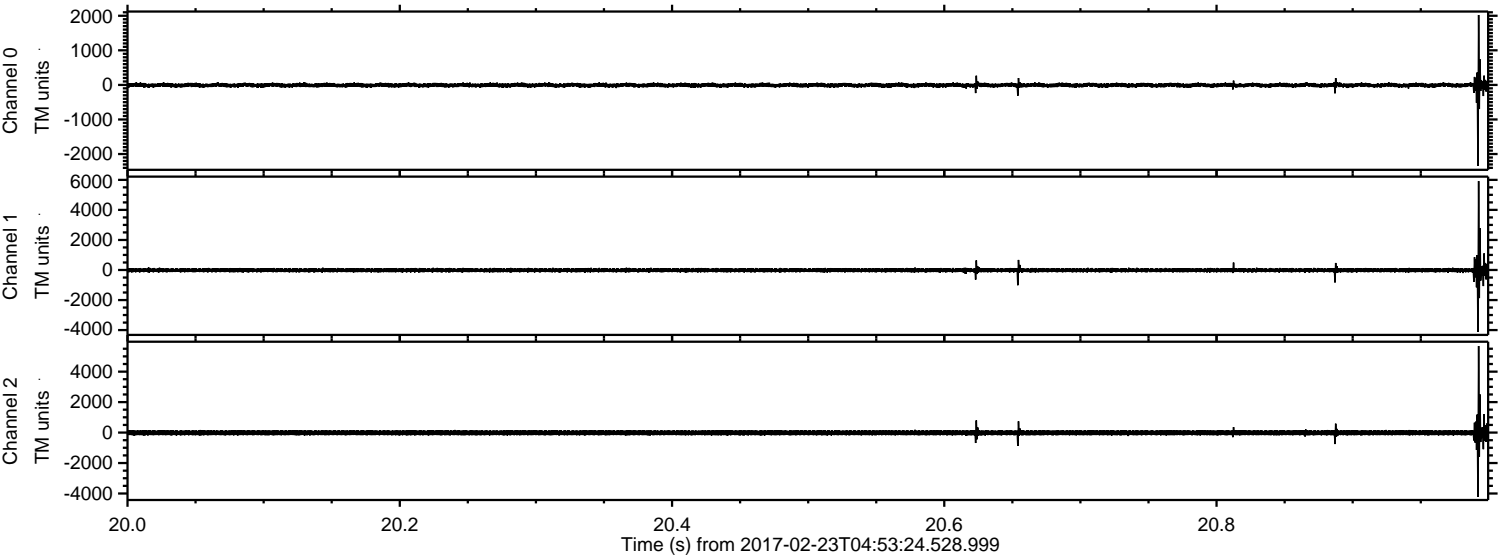
ELMAVAN 3D WAVEFORMS (Measured data sampled at 50 kHz) 51000 packets of 144 samples from 2017-02-23T04:53:24.528.999.

Processed Thu Feb 23 06:00:43 2017 by ELM ver.2012-10-06 from 001__elm20170223_045323__dat00.bin



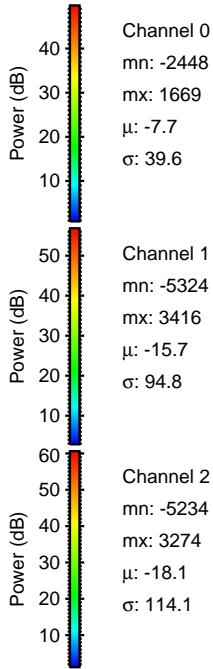
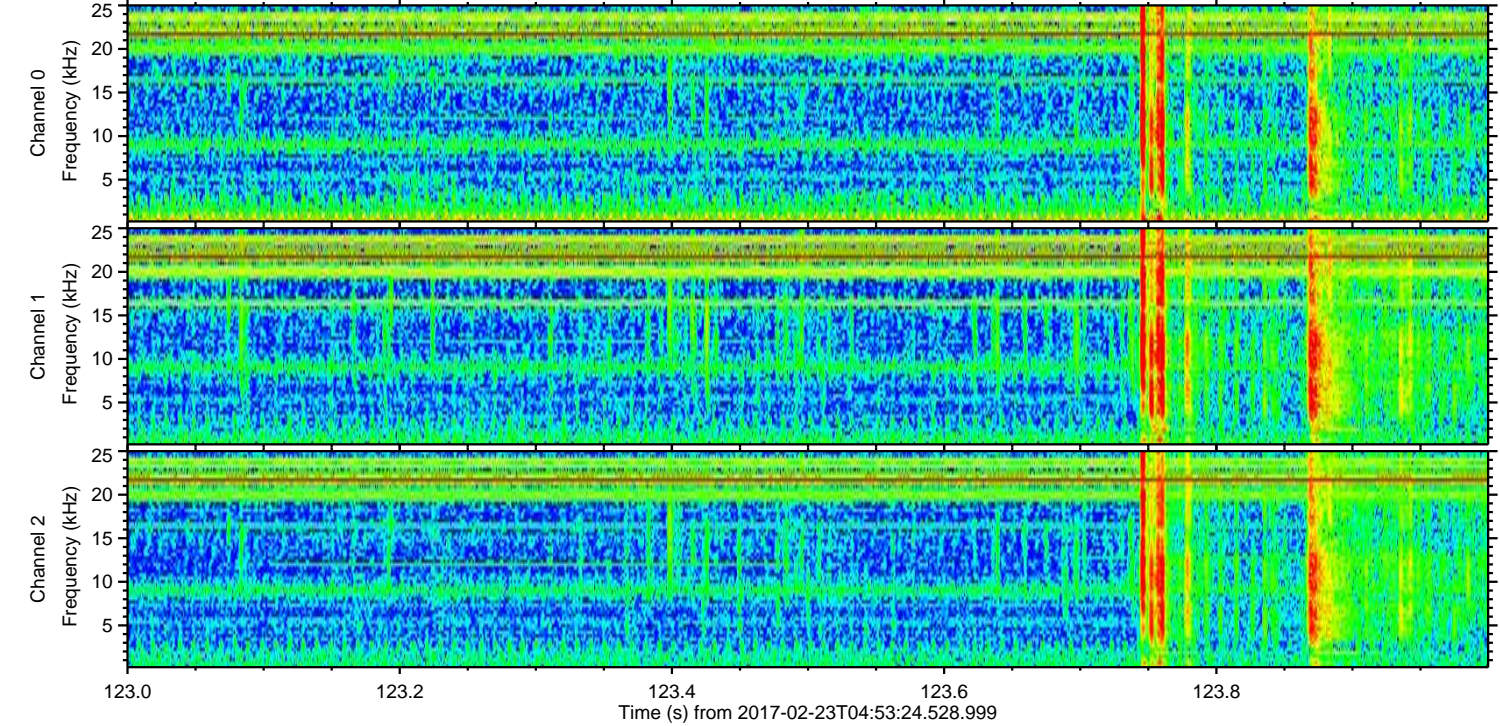
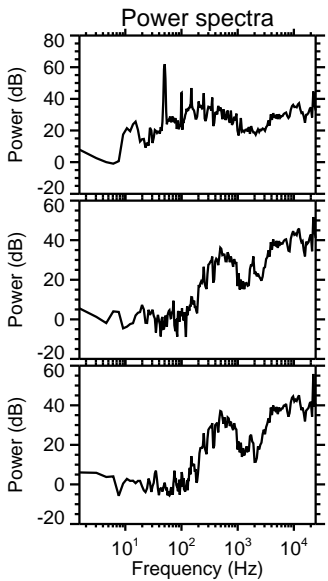
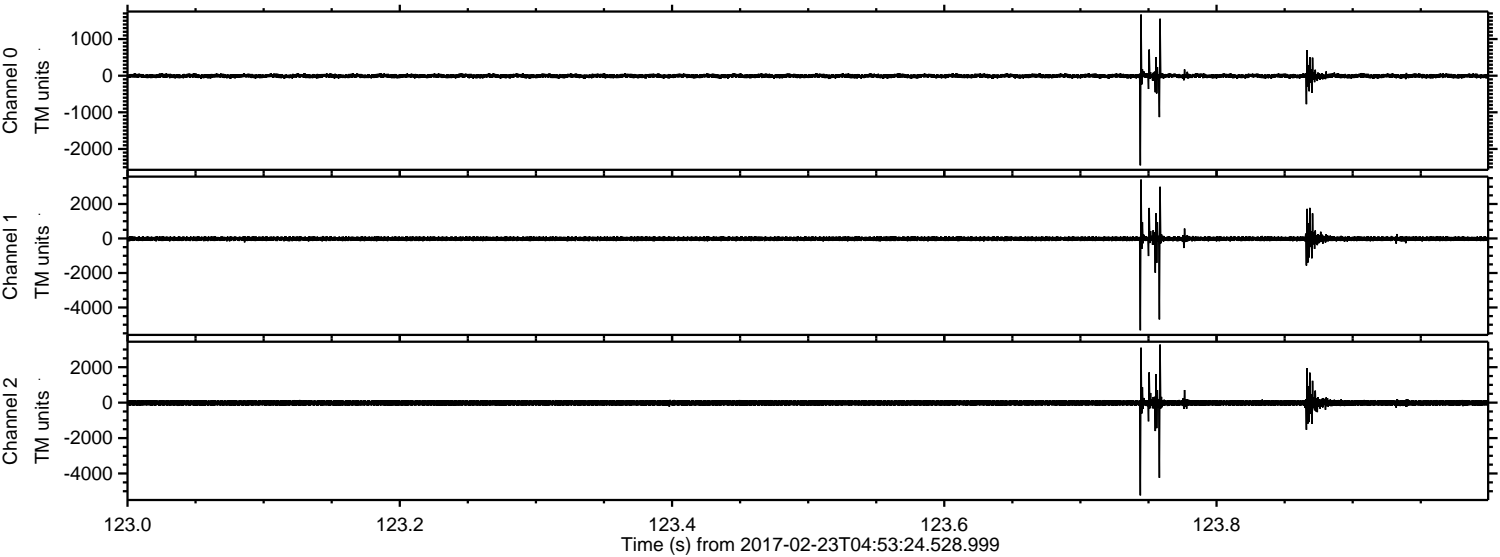
ELMAVAN 3D WAVEFORMS (Measured data sampled at 50 kHz) 51000 packets of 144 samples from 2017-02-23T04:53:24.528.999. Part 21/147

Processed Thu Feb 23 06:00:54 2017 by ELM ver.2012-10-06 from 001__elm20170223_045323__dat00.bin



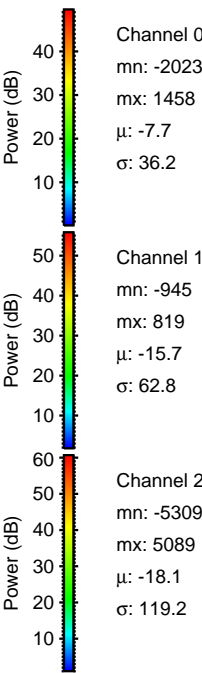
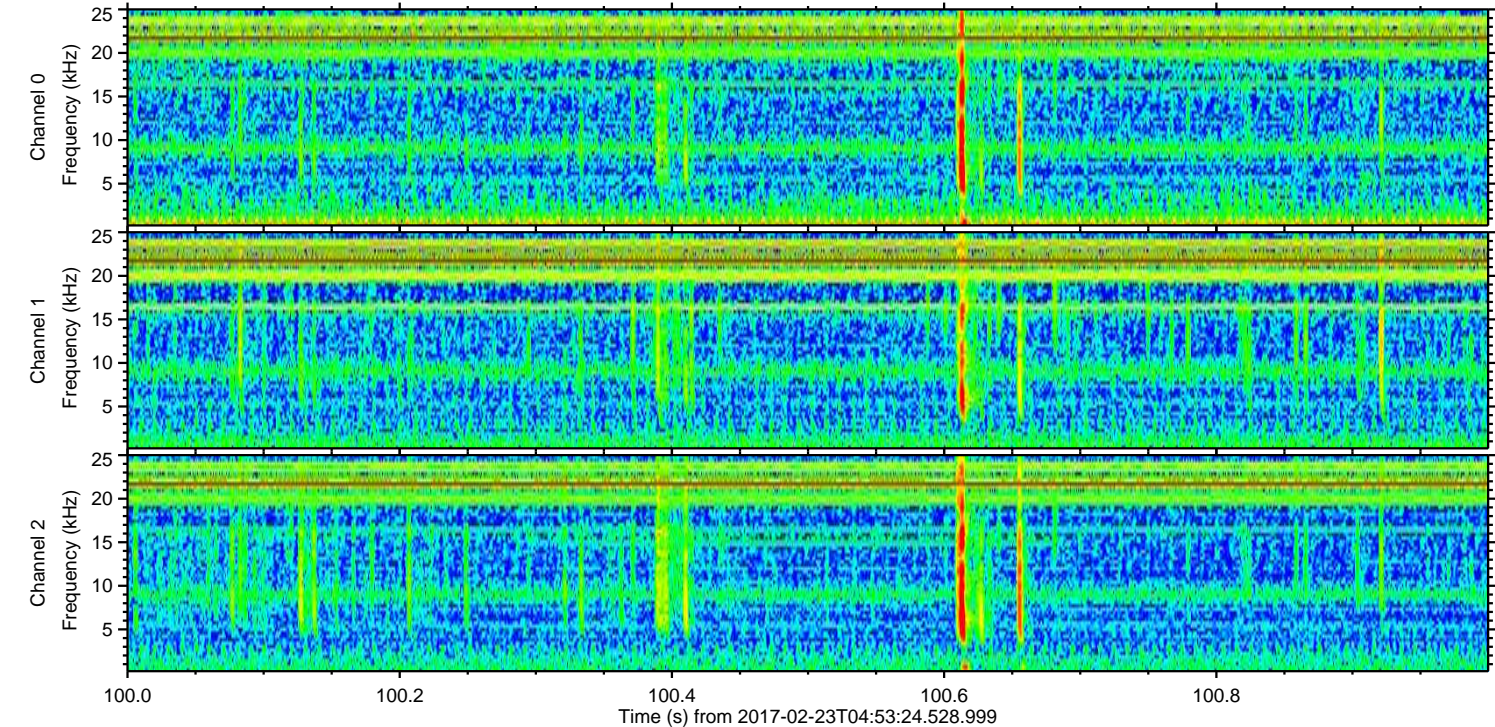
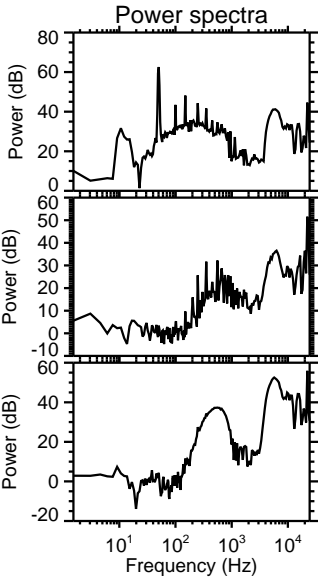
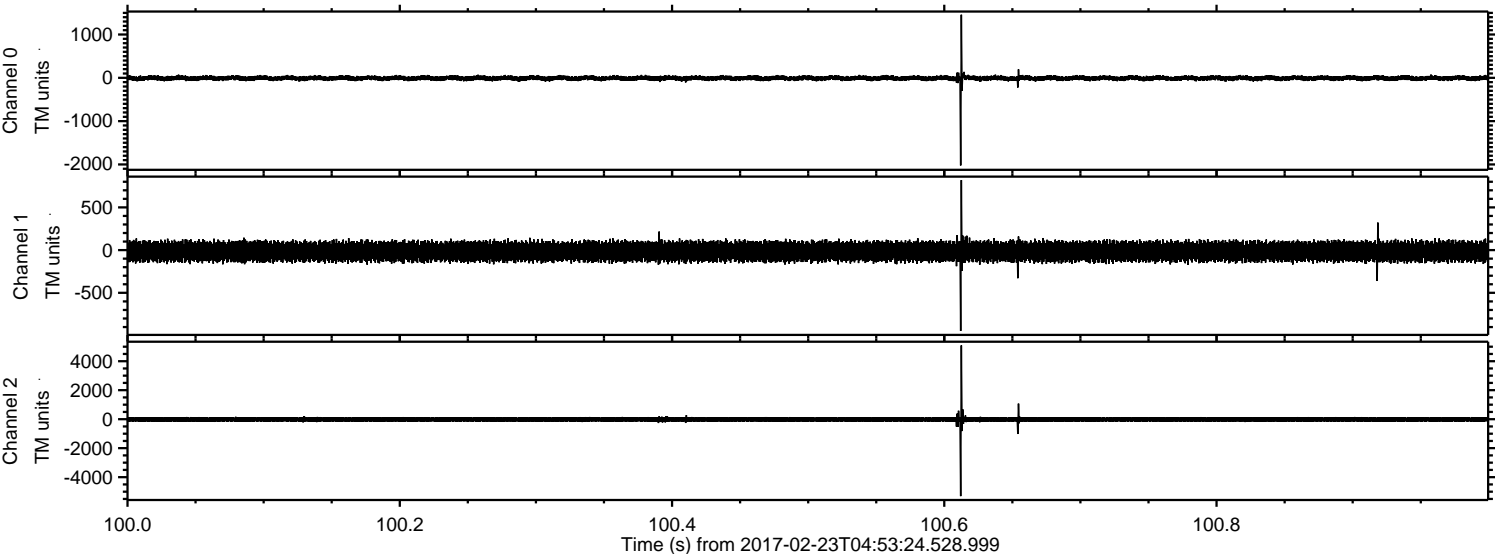
ELMAVAN 3D WAVEFORMS (Measured data sampled at 50 kHz) 51000 packets of 144 samples from 2017-02-23T04:53:24.528.999. Part 124/147

Processed Thu Feb 23 06:00:55 2017 by ELM ver.2012-10-06 from 001__elm20170223_045323__dat00.bin



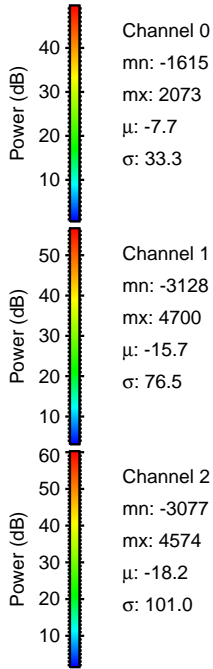
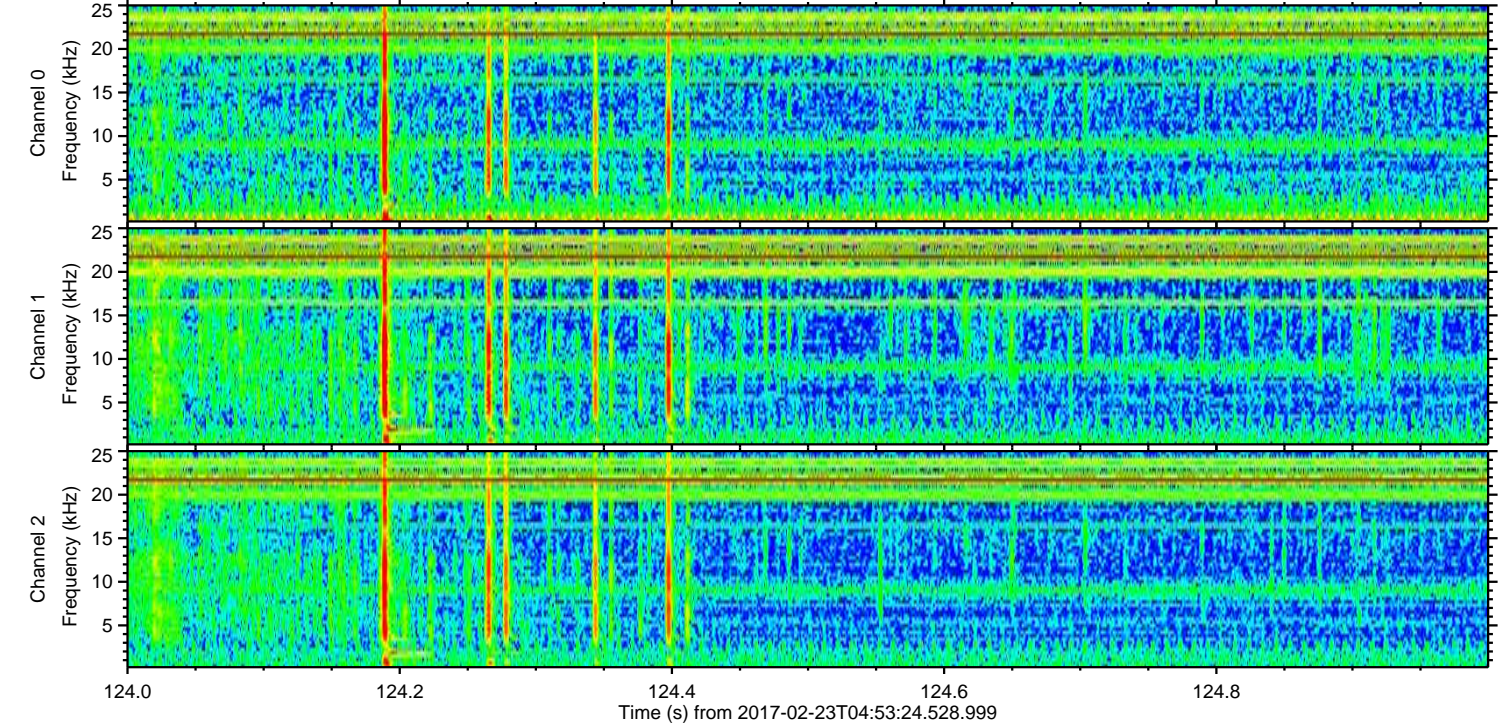
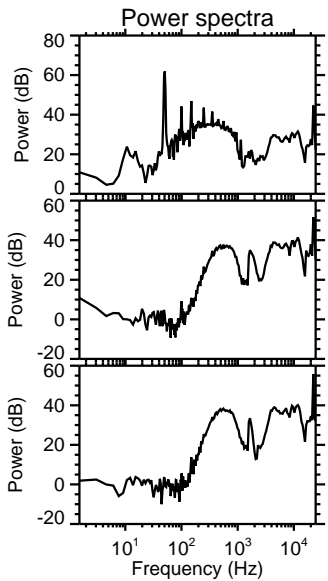
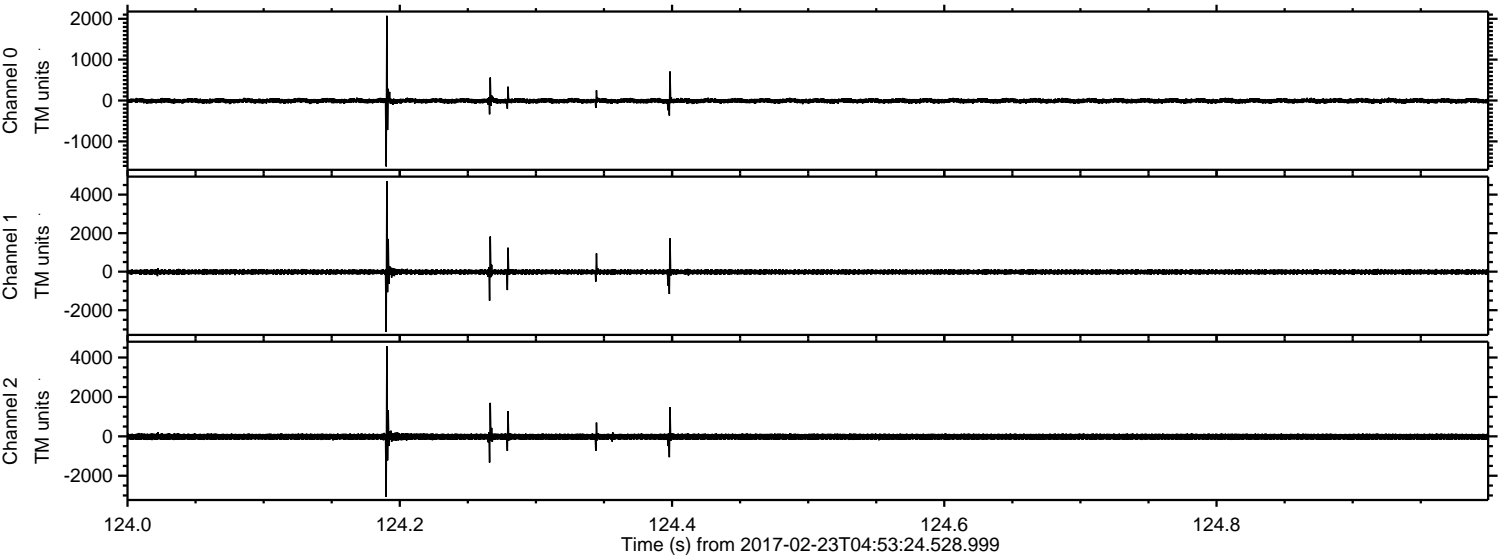
ELMAVAN 3D WAVEFORMS (Measured data sampled at 50 kHz) 51000 packets of 144 samples from 2017-02-23T04:53:24.528.999. Part 101/147

Processed Thu Feb 23 06:00:56 2017 by ELM ver.2012-10-06 from 001__elm20170223_045323__dat00.bin



ELMAVAN 3D WAVEFORMS (Measured data sampled at 50 kHz) 51000 packets of 144 samples from 2017-02-23T04:53:24.528.999. Part 125/147

Processed Thu Feb 23 06:00:57 2017 by ELM ver.2012-10-06 from 001__elm20170223_045323__dat00.bin



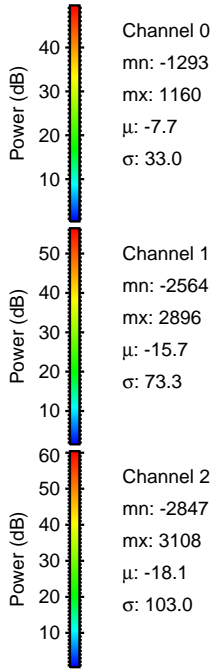
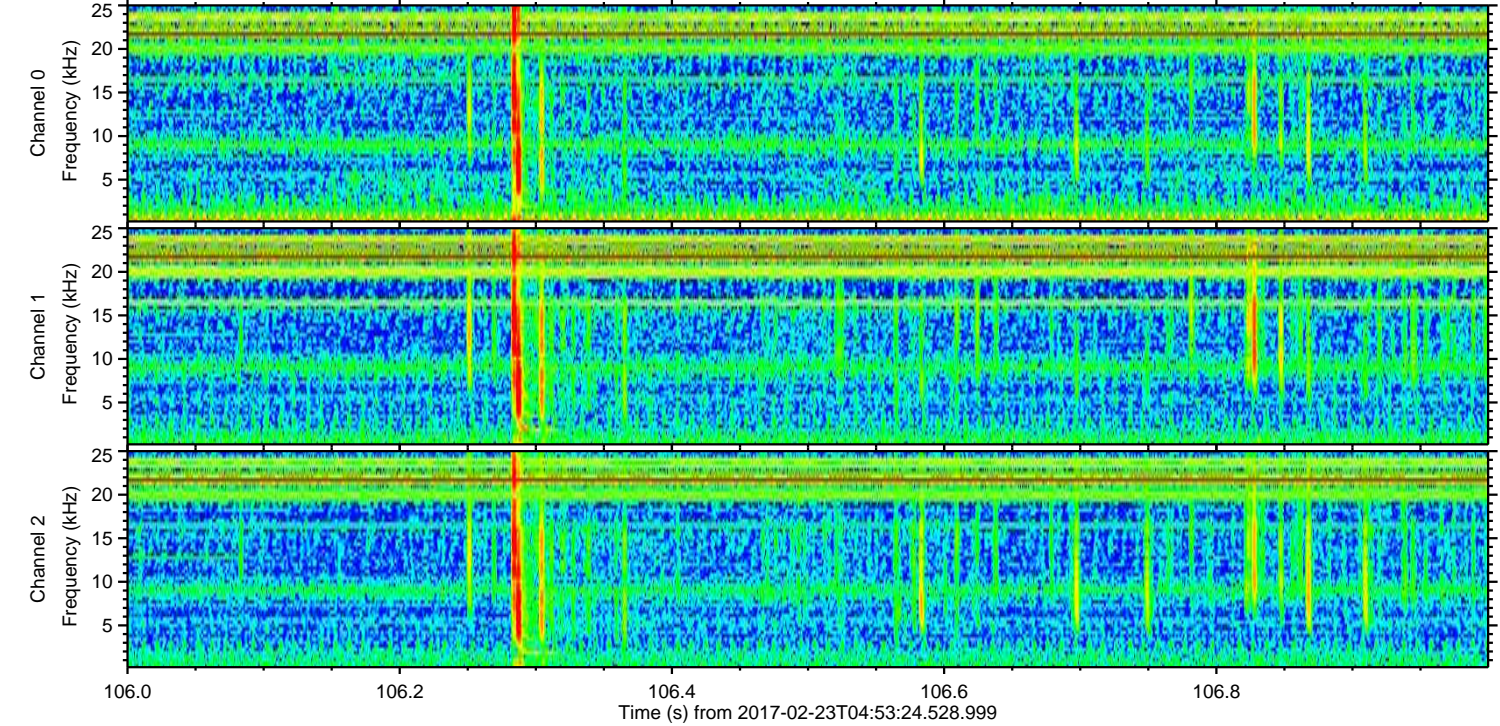
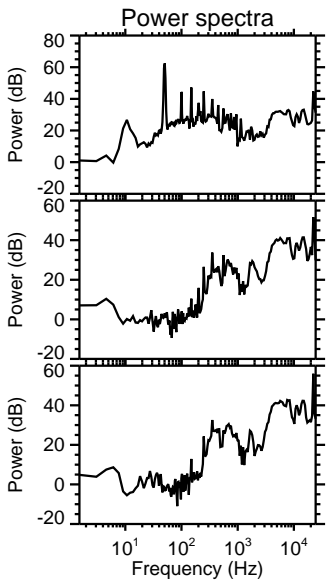
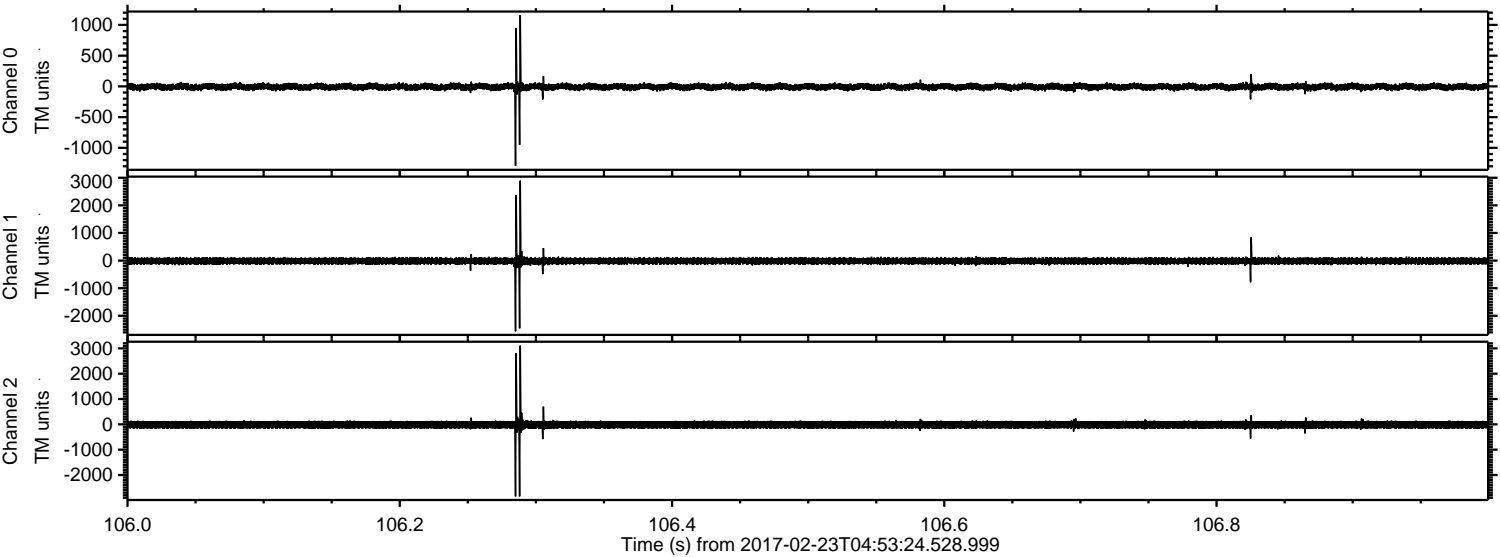
Channel 0
mn: -1615
mx: 2073
 μ : -7.7
 σ : 33.3

Channel 1
mn: -3128
mx: 4700
 μ : -15.7
 σ : 76.5

Channel 2
mn: -3077
mx: 4574
 μ : -18.2
 σ : 101.0

ELMAVAN 3D WAVEFORMS (Measured data sampled at 50 kHz) 51000 packets of 144 samples from 2017-02-23T04:53:24.528.999. Part 107/147

Processed Thu Feb 23 06:00:58 2017 by ELM ver.2012-10-06 from 001__elm20170223_045323__dat00.bin



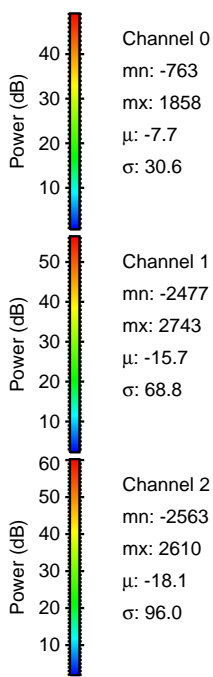
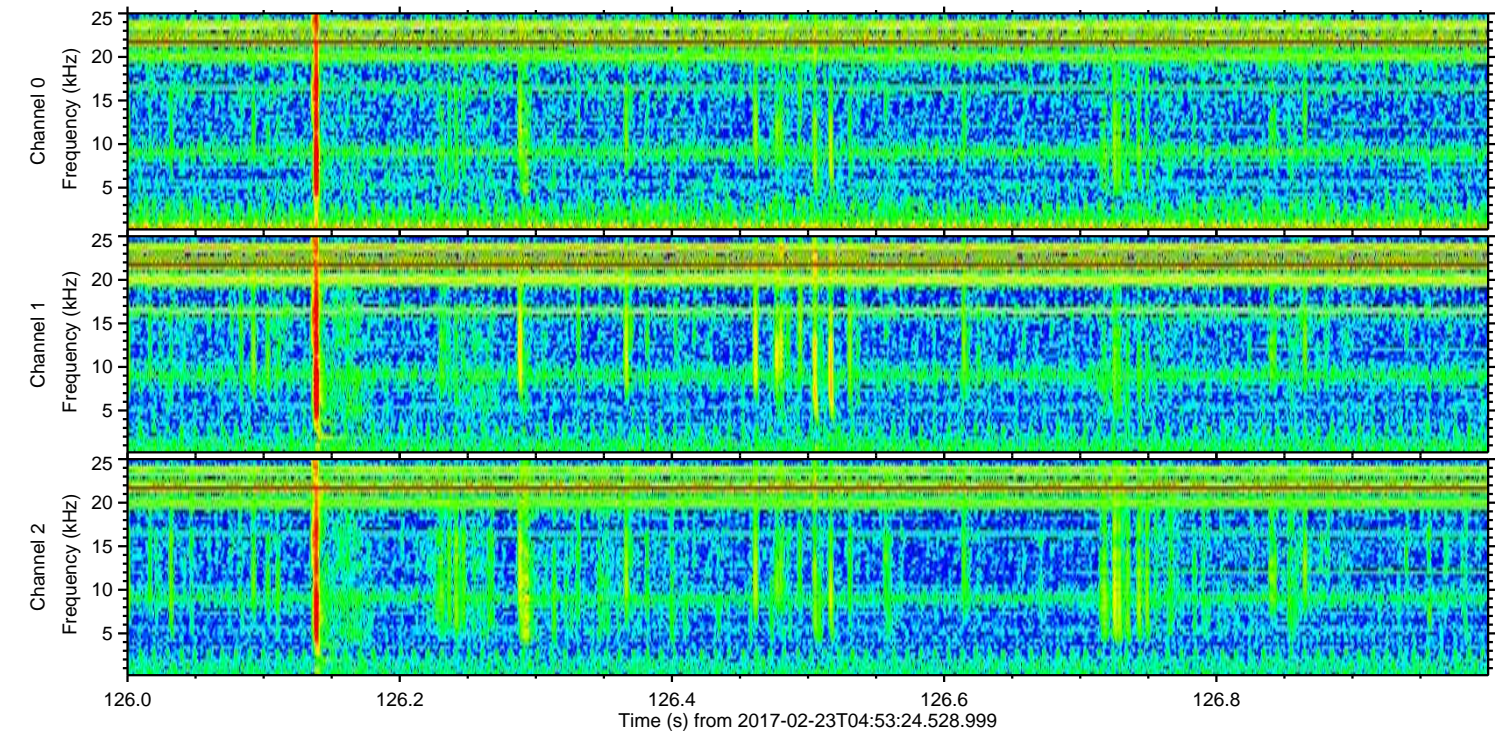
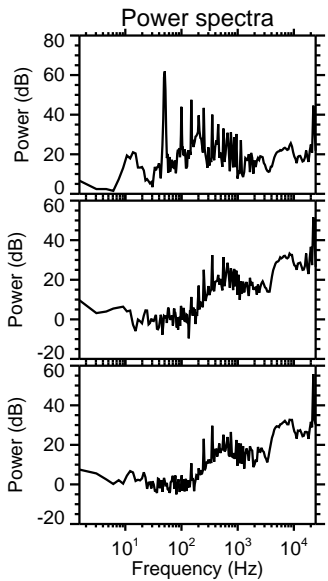
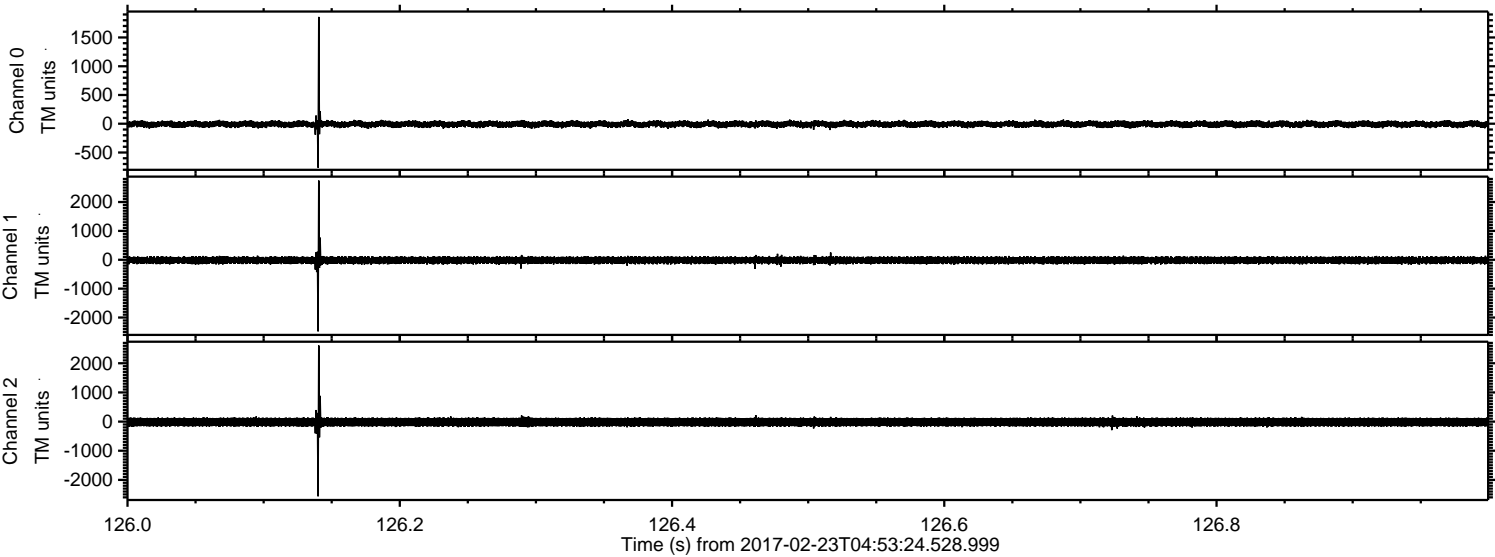
Channel 0
mn: -1293
mx: 1160
 μ : -7.7
 σ : 33.0

Channel 1
mn: -2564
mx: 2896
 μ : -15.7
 σ : 73.3

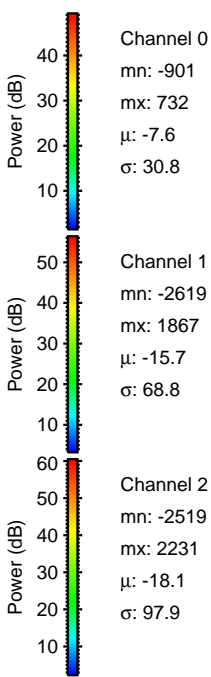
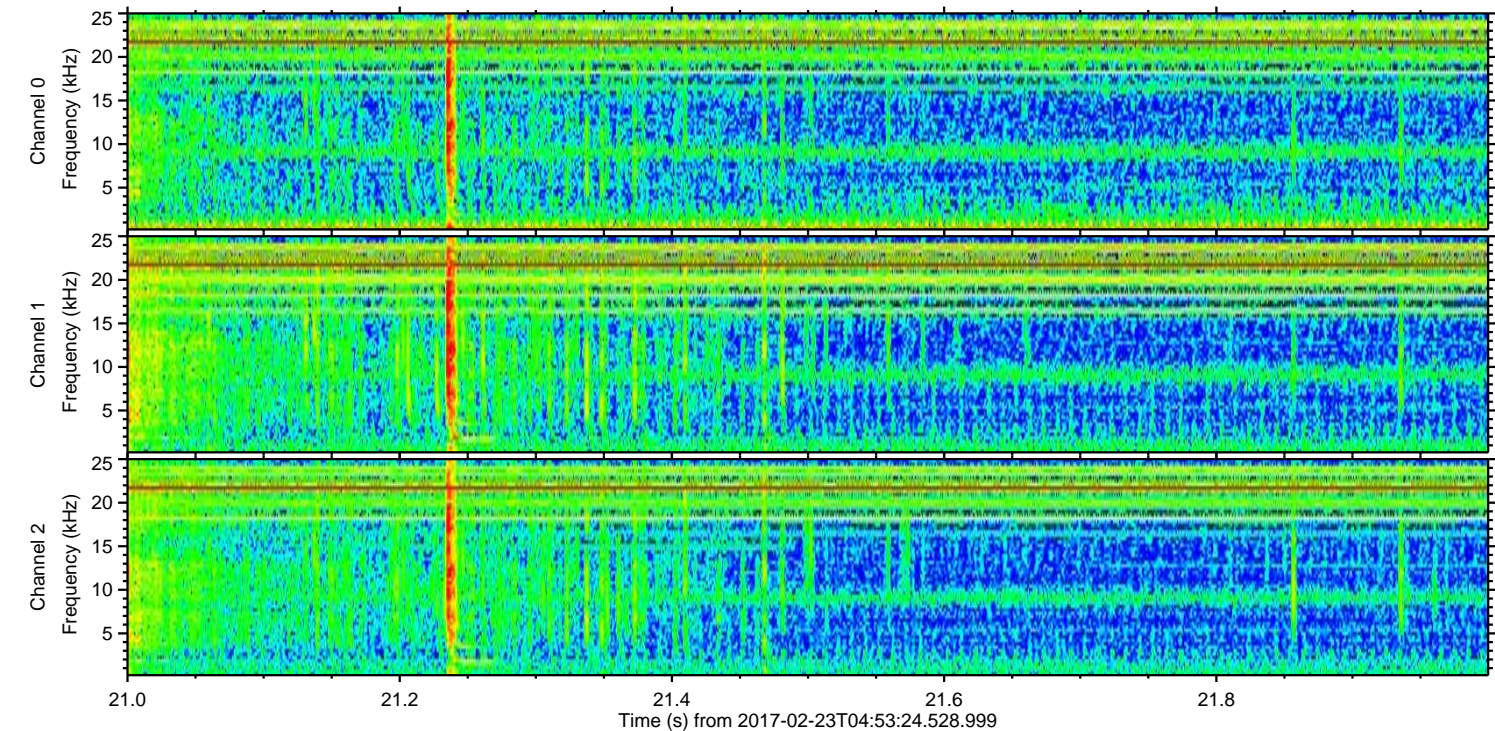
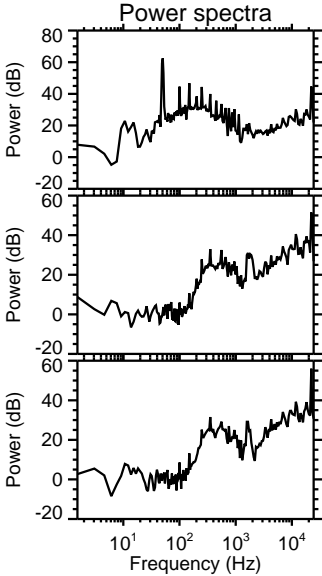
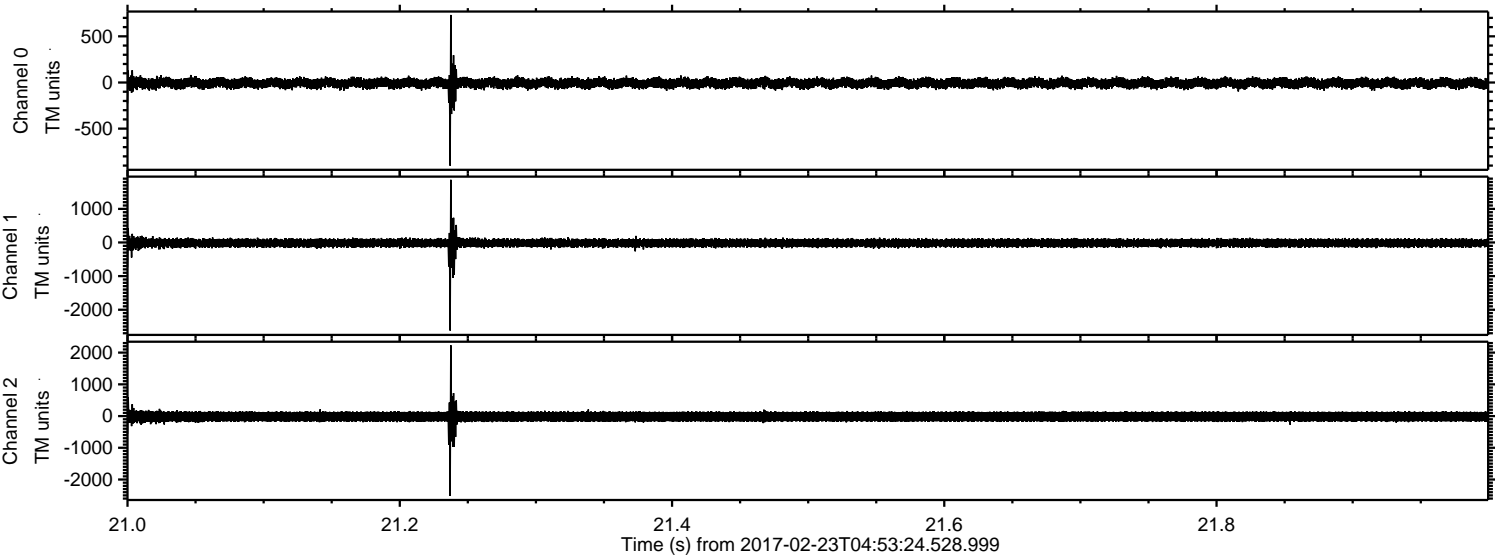
Channel 2
mn: -2847
mx: 3108
 μ : -18.1
 σ : 103.0

ELMAVAN 3D WAVEFORMS (Measured data sampled at 50 kHz) 51000 packets of 144 samples from 2017-02-23T04:53:24.528.999. Part 127/147

Processed Thu Feb 23 06:00:59 2017 by ELM ver.2012-10-06 from 001__elm20170223_045323__dat00.bin

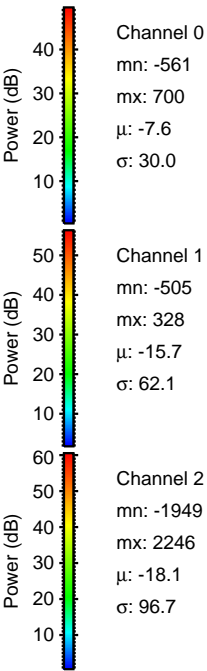
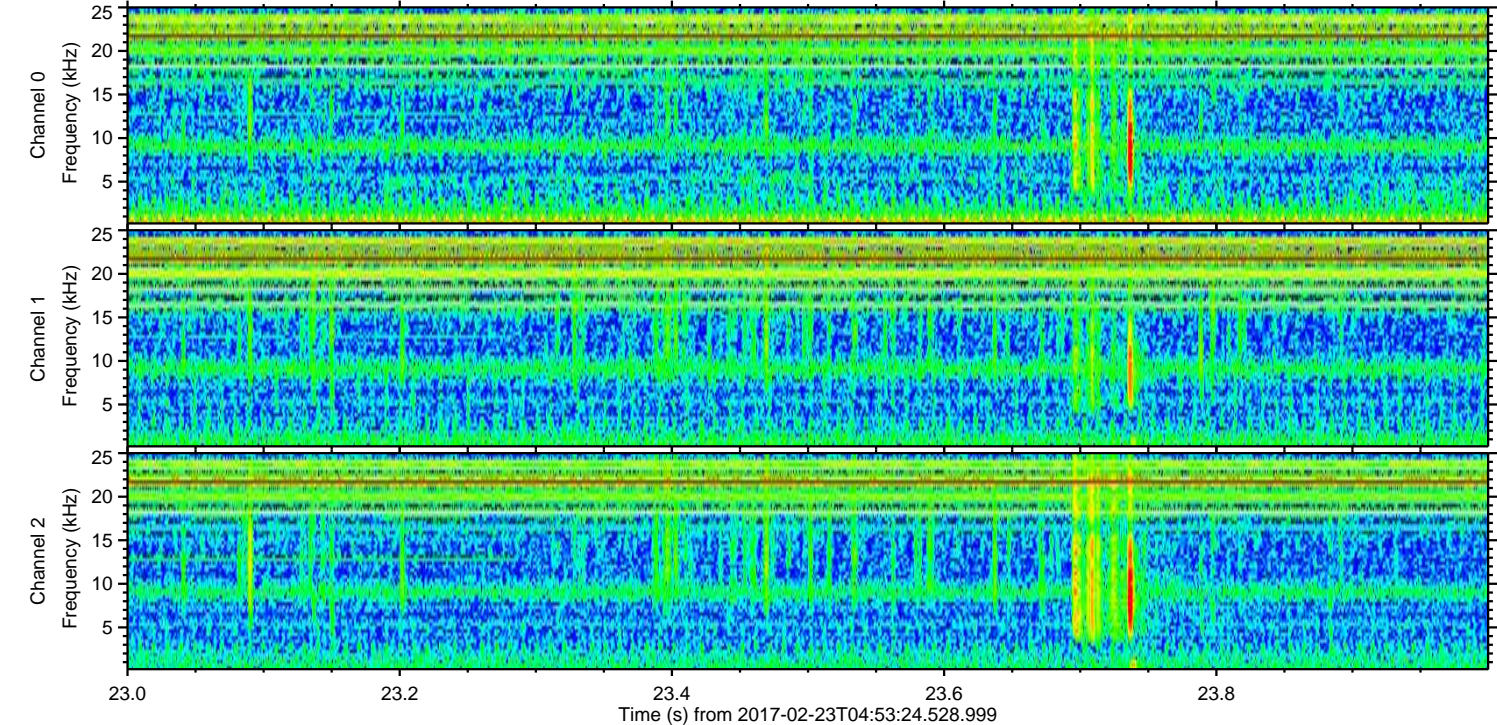
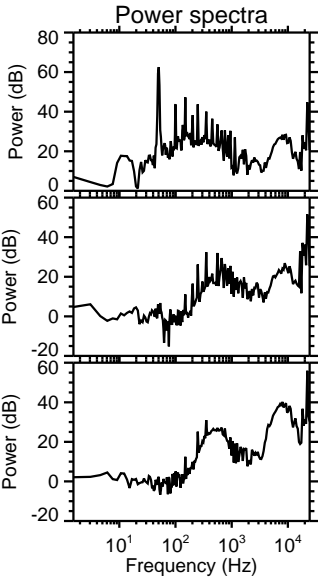
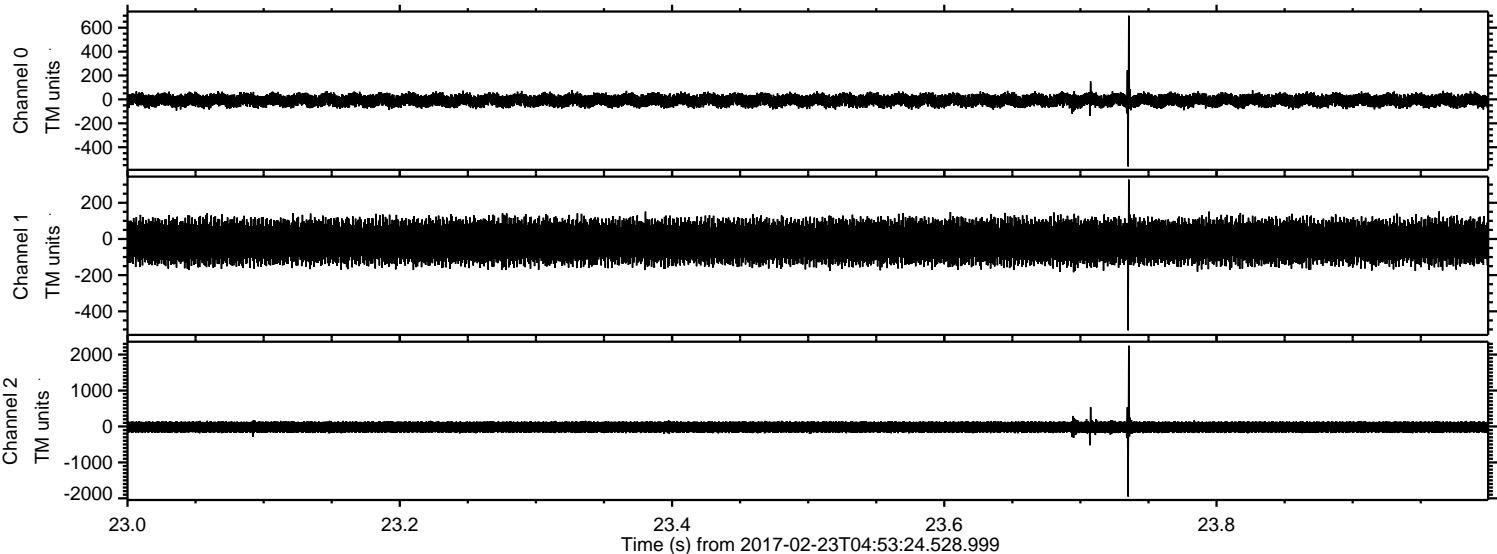


Processed Thu Feb 23 06:01:00 2017 by ELM ver.2012-10-06 from 001__elm20170223_045323__dat00.bin



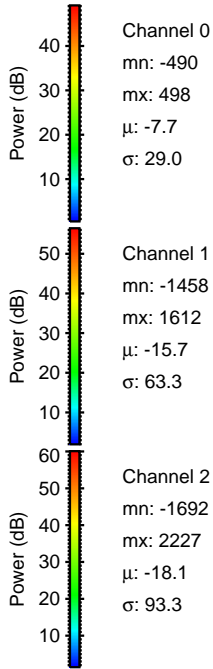
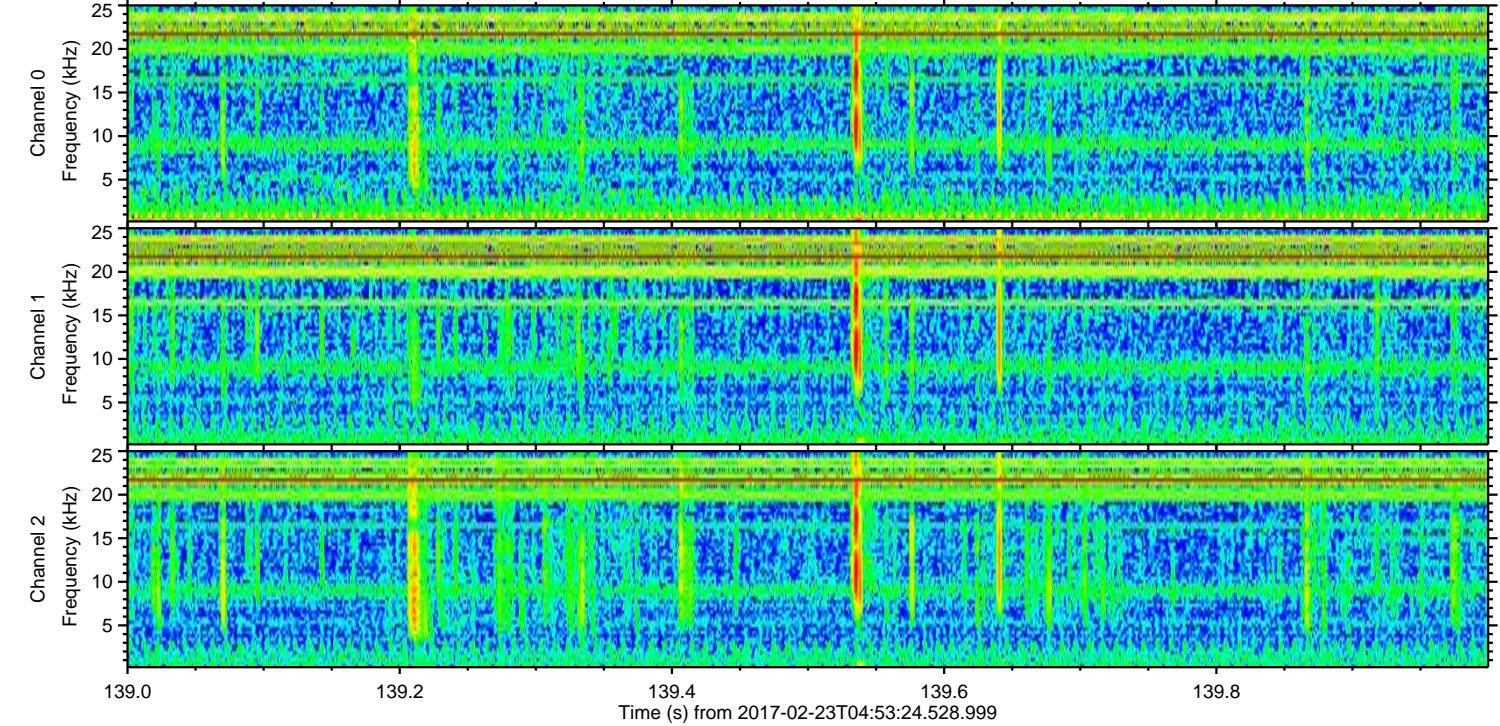
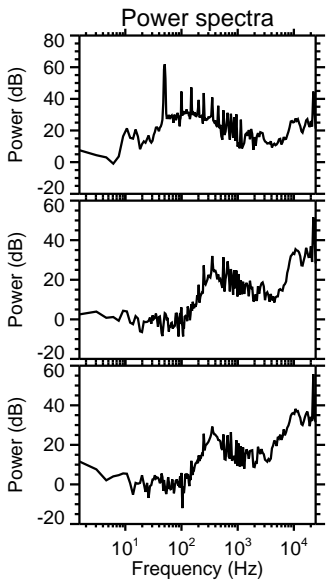
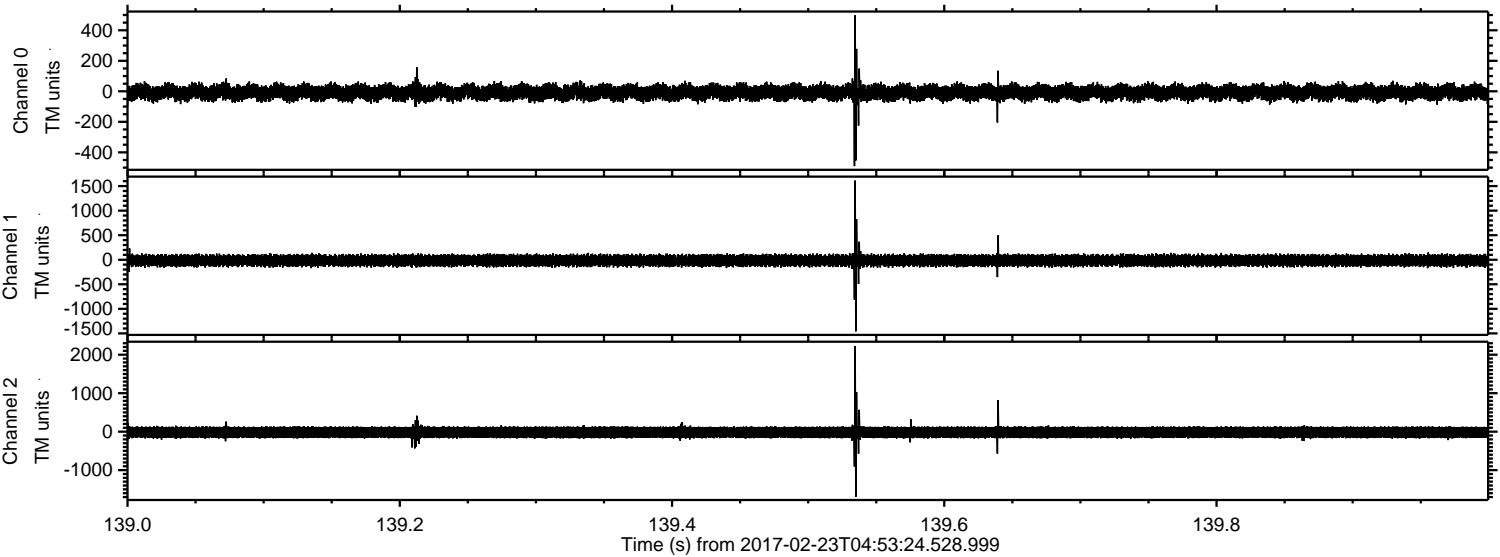
ELMAVAN 3D WAVEFORMS (Measured data sampled at 50 kHz) 51000 packets of 144 samples from 2017-02-23T04:53:24.528.999. Part 24/147

Processed Thu Feb 23 06:01:01 2017 by ELM ver.2012-10-06 from 001__elm20170223_045323__dat00.bin



ELMAVAN 3D WAVEFORMS (Measured data sampled at 50 kHz) 51000 packets of 144 samples from 2017-02-23T04:53:24.528.999. Part 140/147

Processed Thu Feb 23 06:01:02 2017 by ELM ver.2012-10-06 from 001__elm20170223_045323__dat00.bin



ELMAVAN 3D WAVEFORMS (Measured data sampled at 50 kHz) 51000 packets of 144 samples from 2017-02-23T04:53:24.528.999. Part 143/147

Processed Thu Feb 23 06:01:03 2017 by ELM ver.2012-10-06 from 001__elm20170223_045323__dat00.bin

