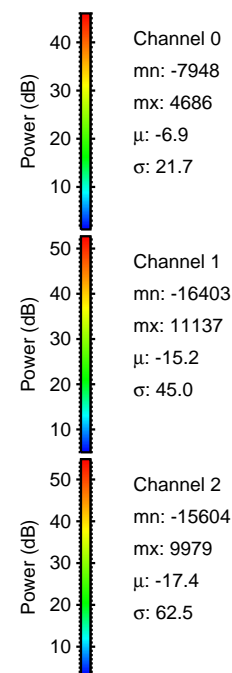
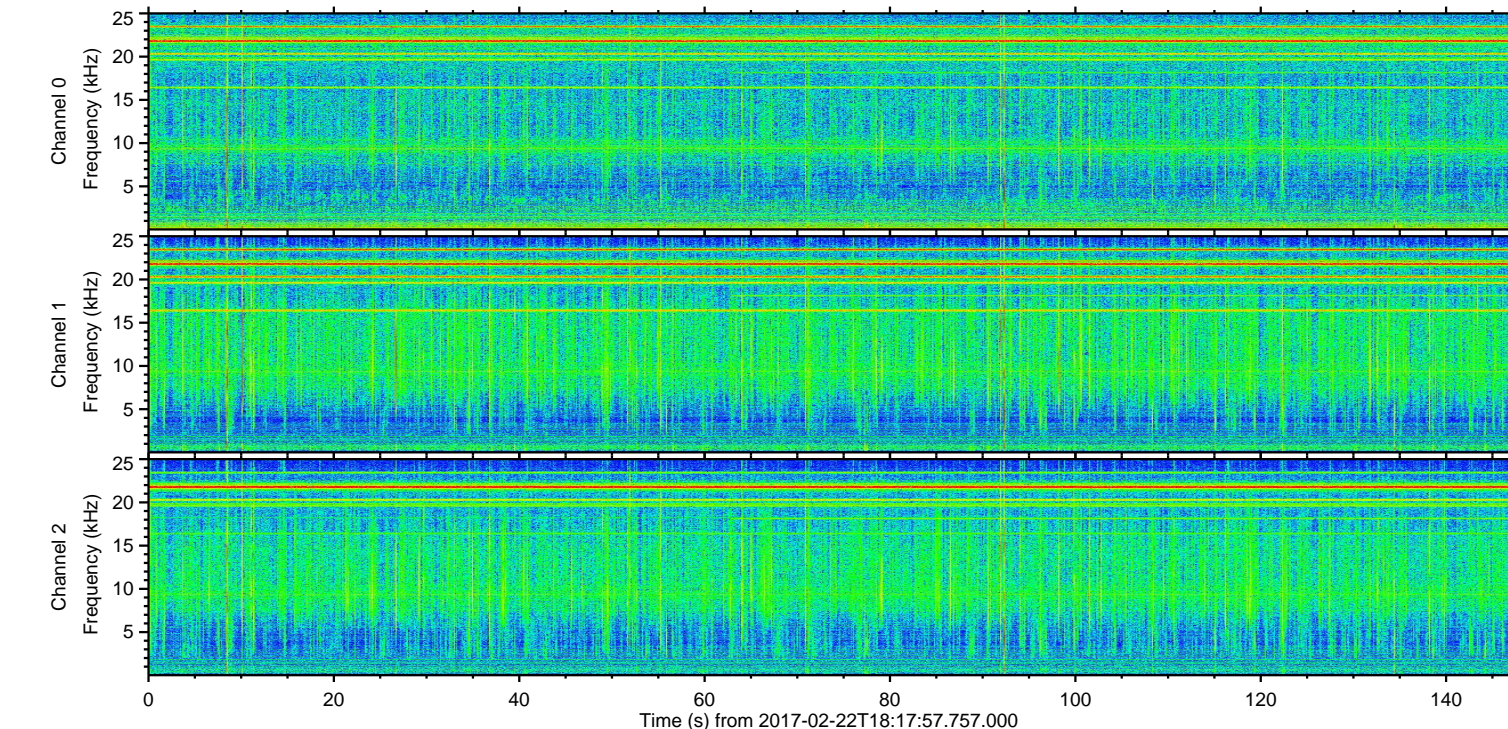
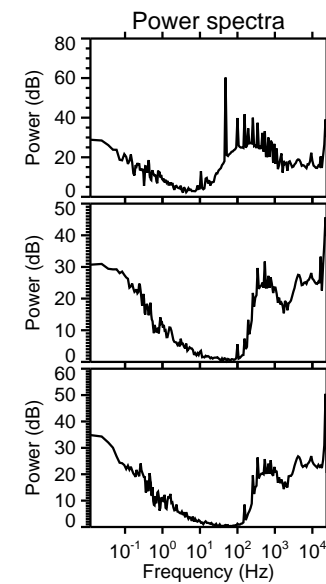
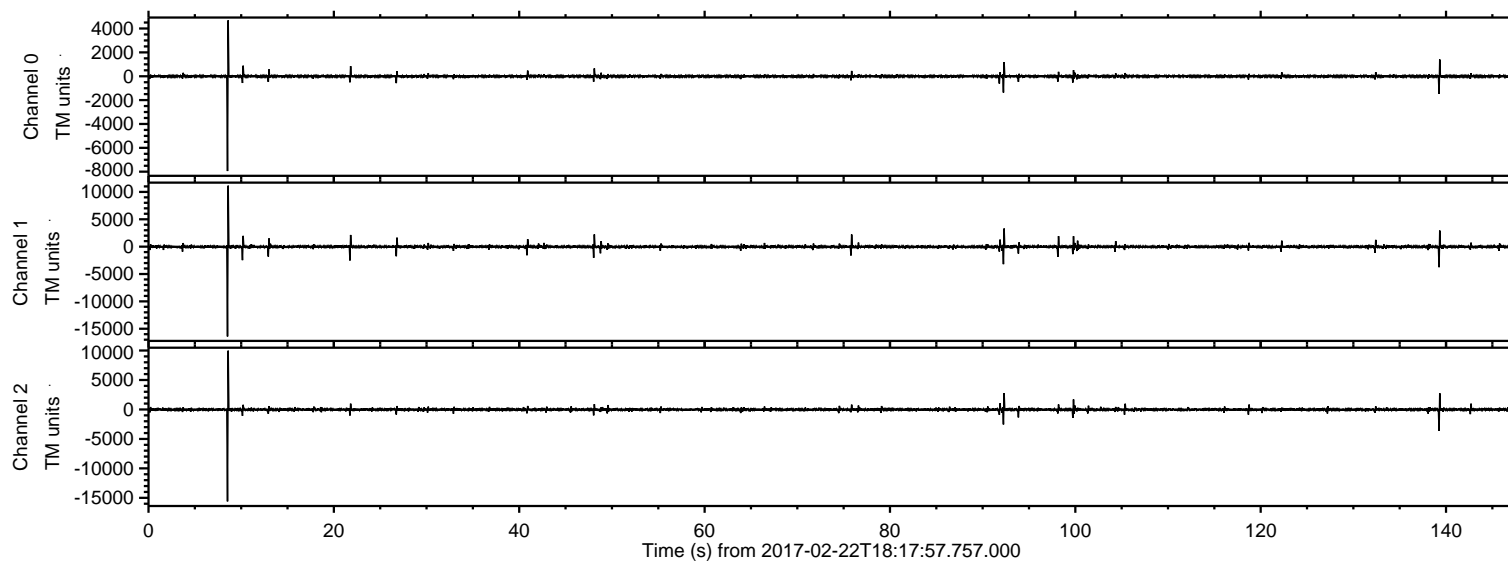
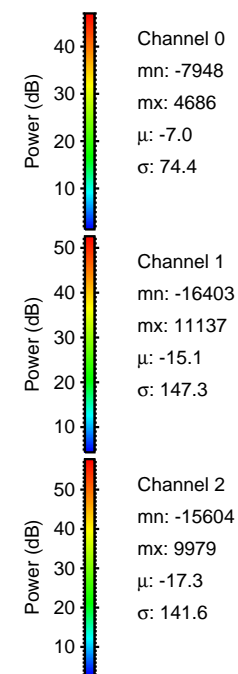
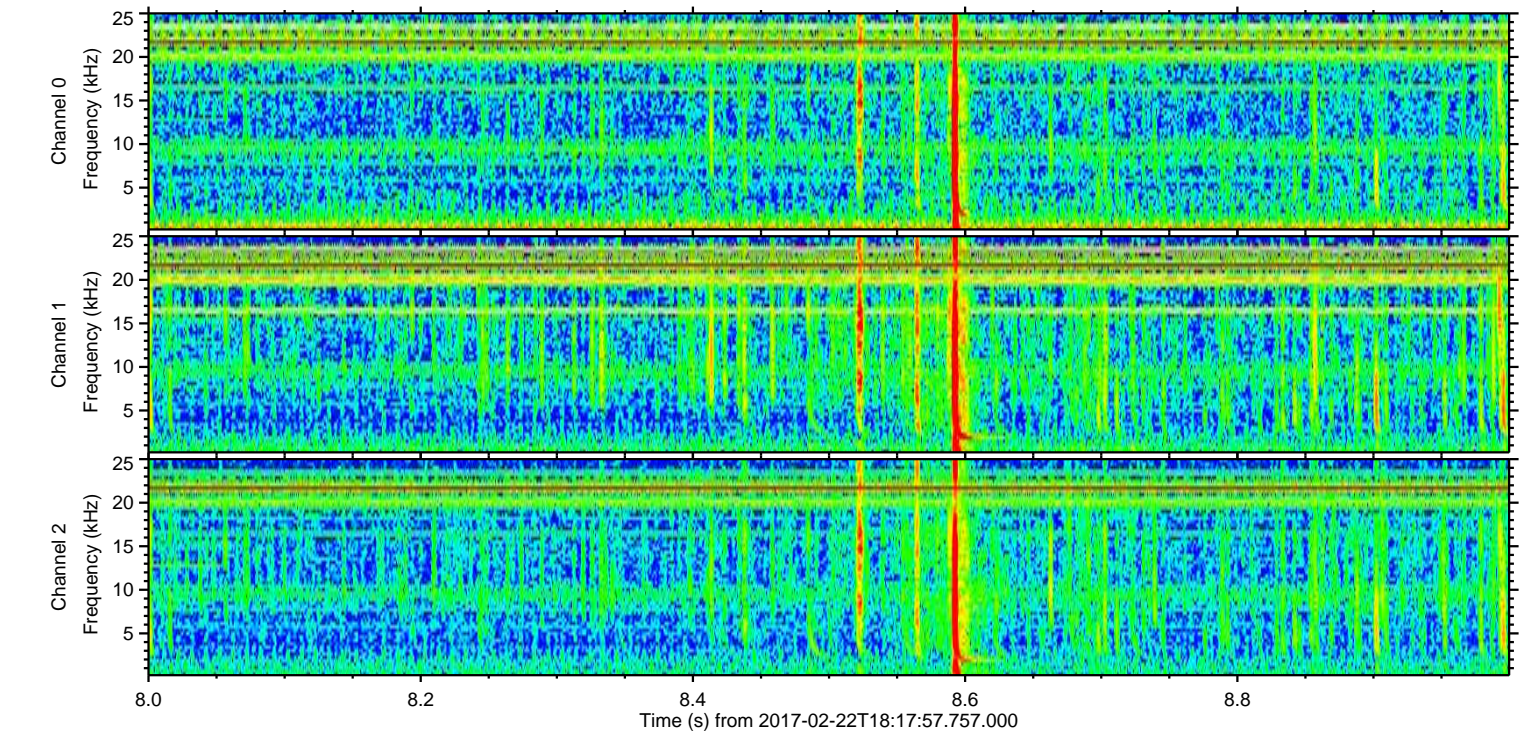
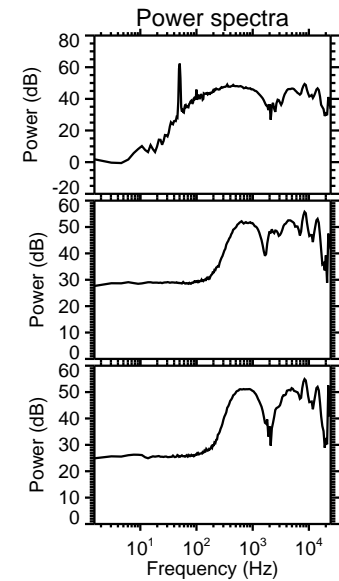
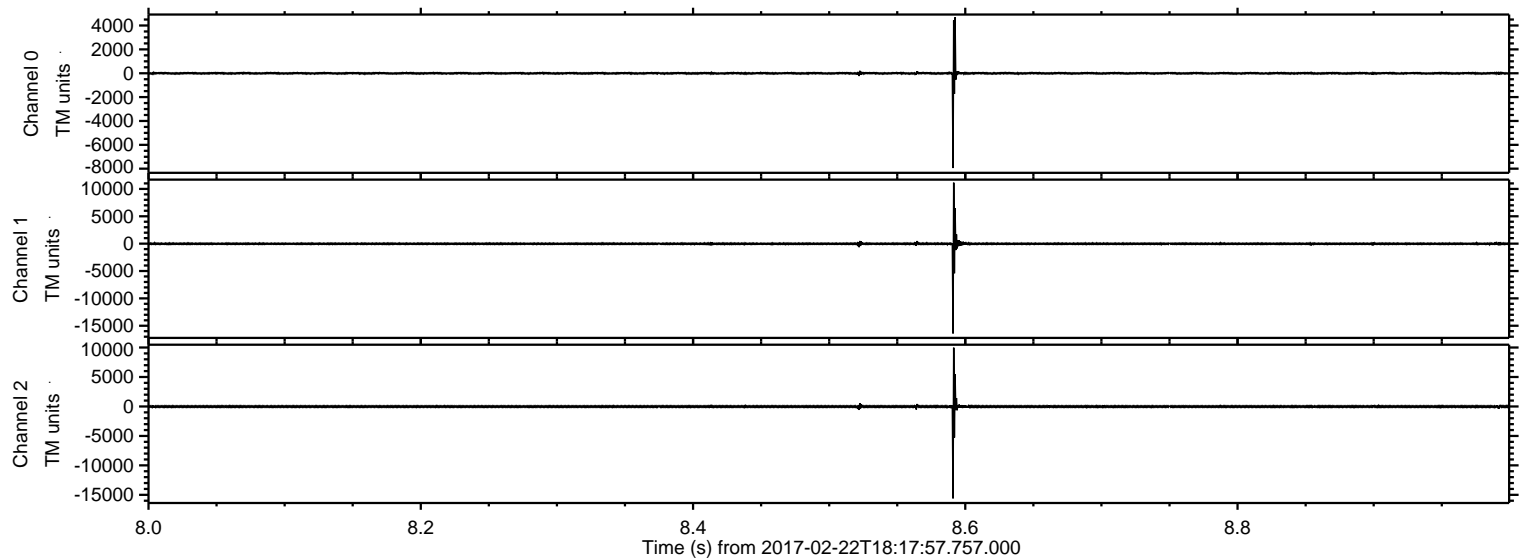


# ELMAVAN 3D WAVEFORMS (Measured data sampled at 50 kHz) 51000 packets of 144 samples from 2017-02-22T18:17:57.757.000.

Processed Wed Feb 22 19:26:07 2017 by ELM ver.2012-10-06 from 001\_\_elm20170222\_181756\_\_dat00.bin

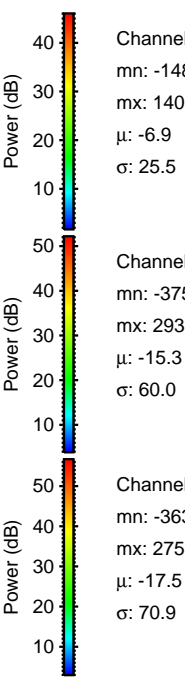
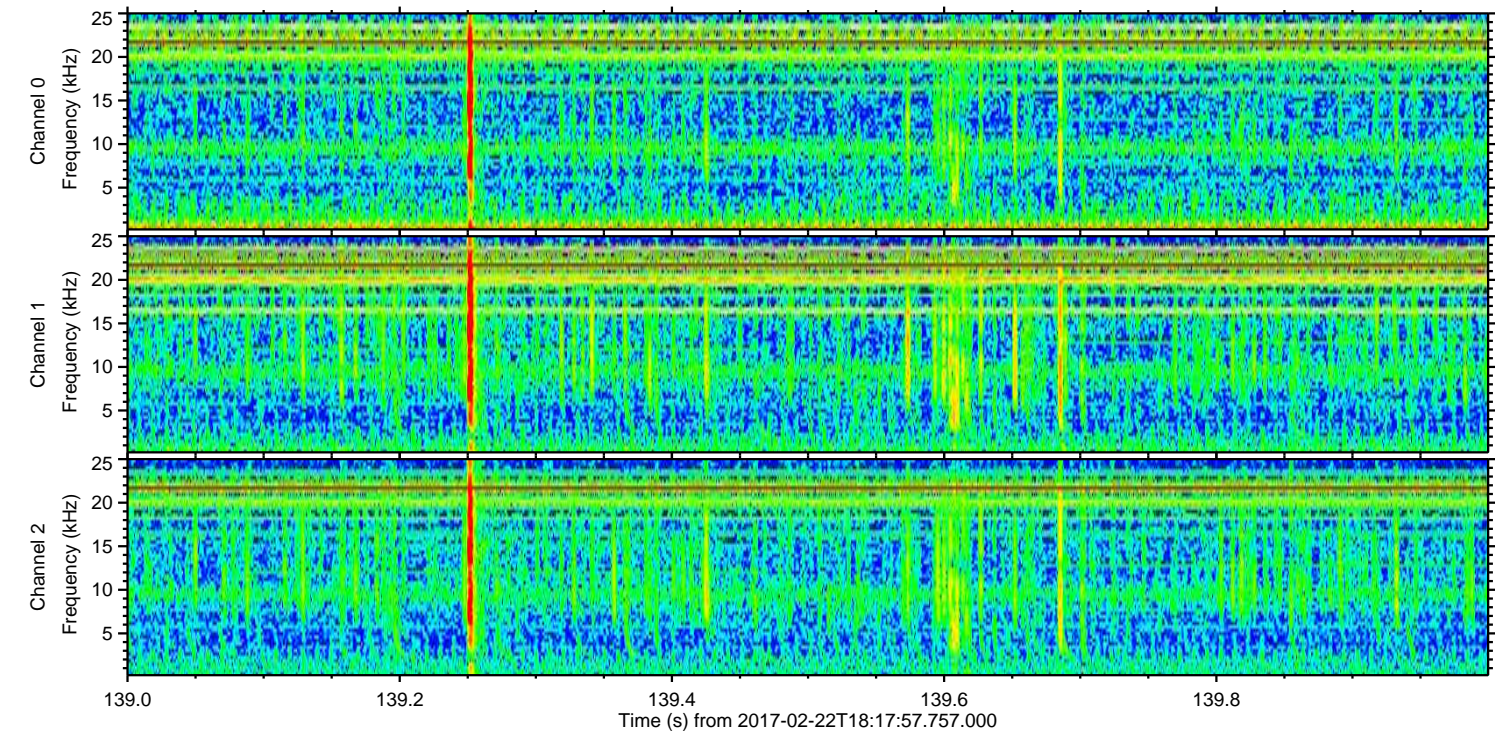
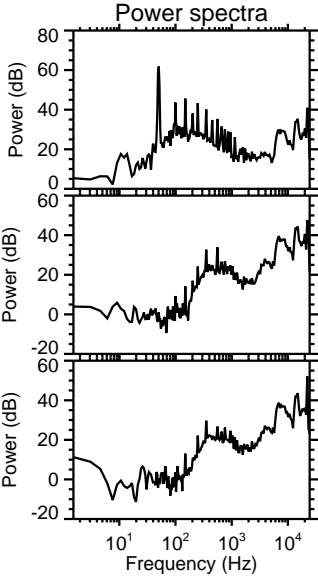
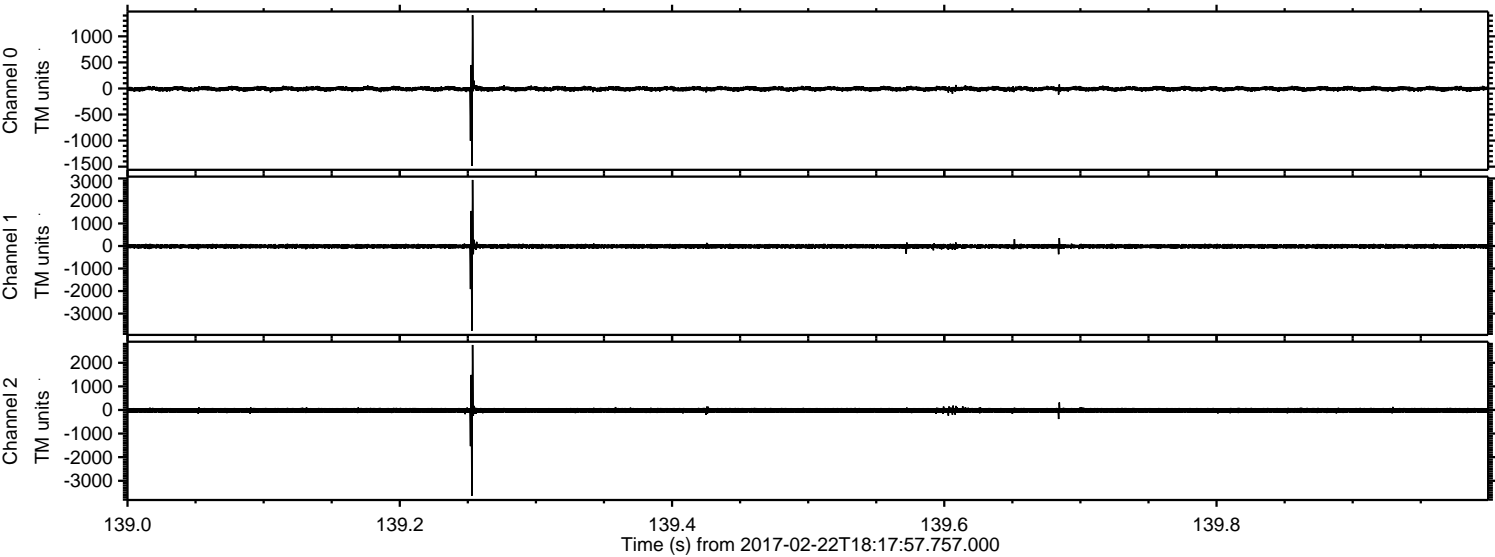


Processed Wed Feb 22 19:26:18 2017 by ELM ver.2012-10-06 from 001\_\_elm20170222\_181756\_\_dat00.bin

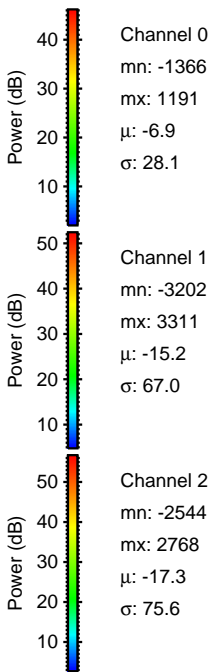
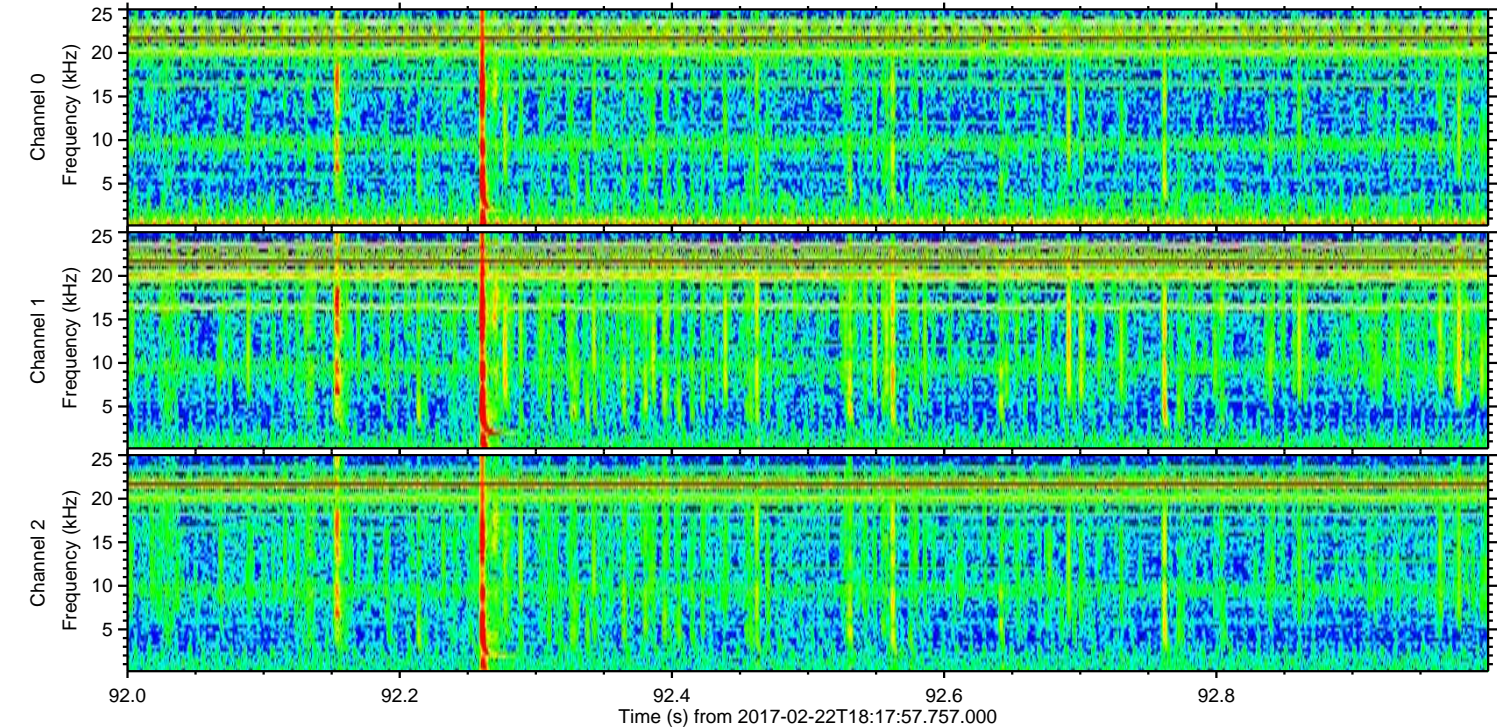
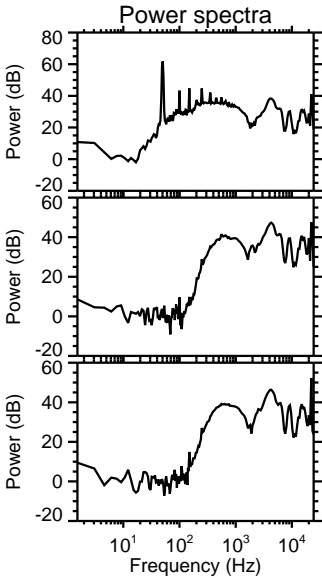
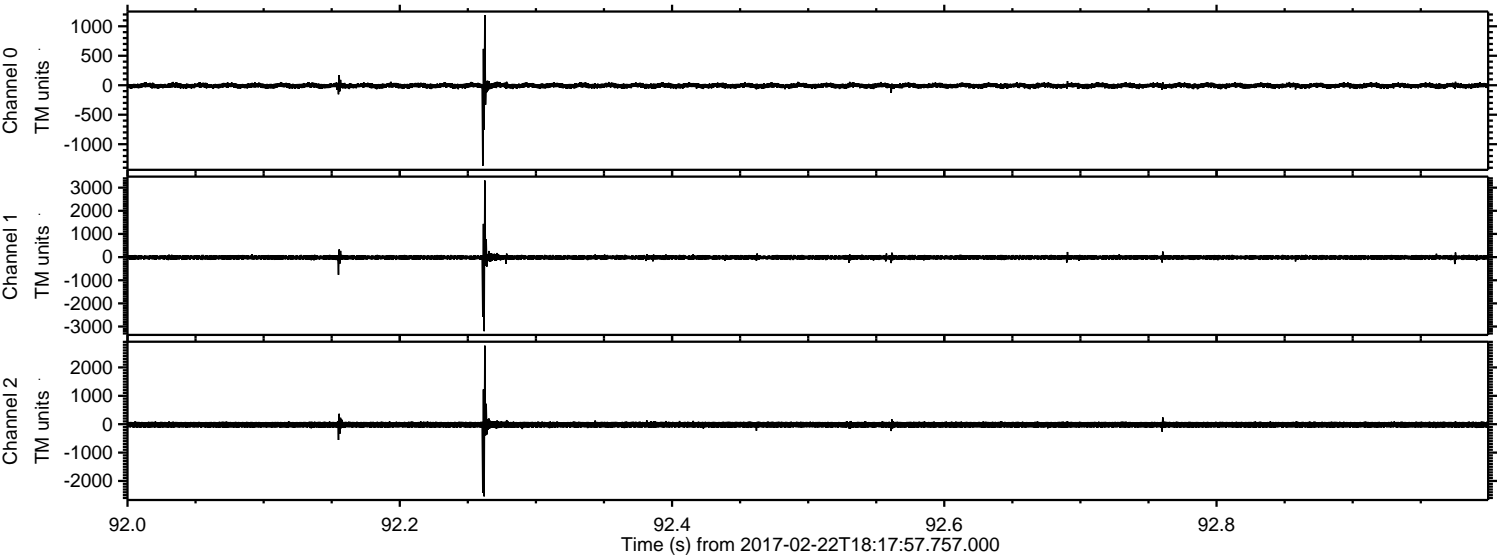


ELMAVAN 3D WAVEFORMS (Measured data sampled at 50 kHz) 51000 packets of 144 samples from 2017-02-22T18:17:57.757.000. Part 140/147

Processed Wed Feb 22 19:26:19 2017 by ELM ver.2012-10-06 from 001\_\_elm20170222\_181756\_\_dat00.bin

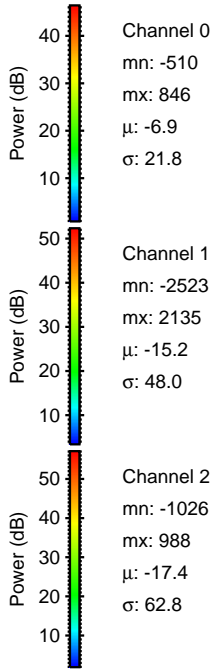
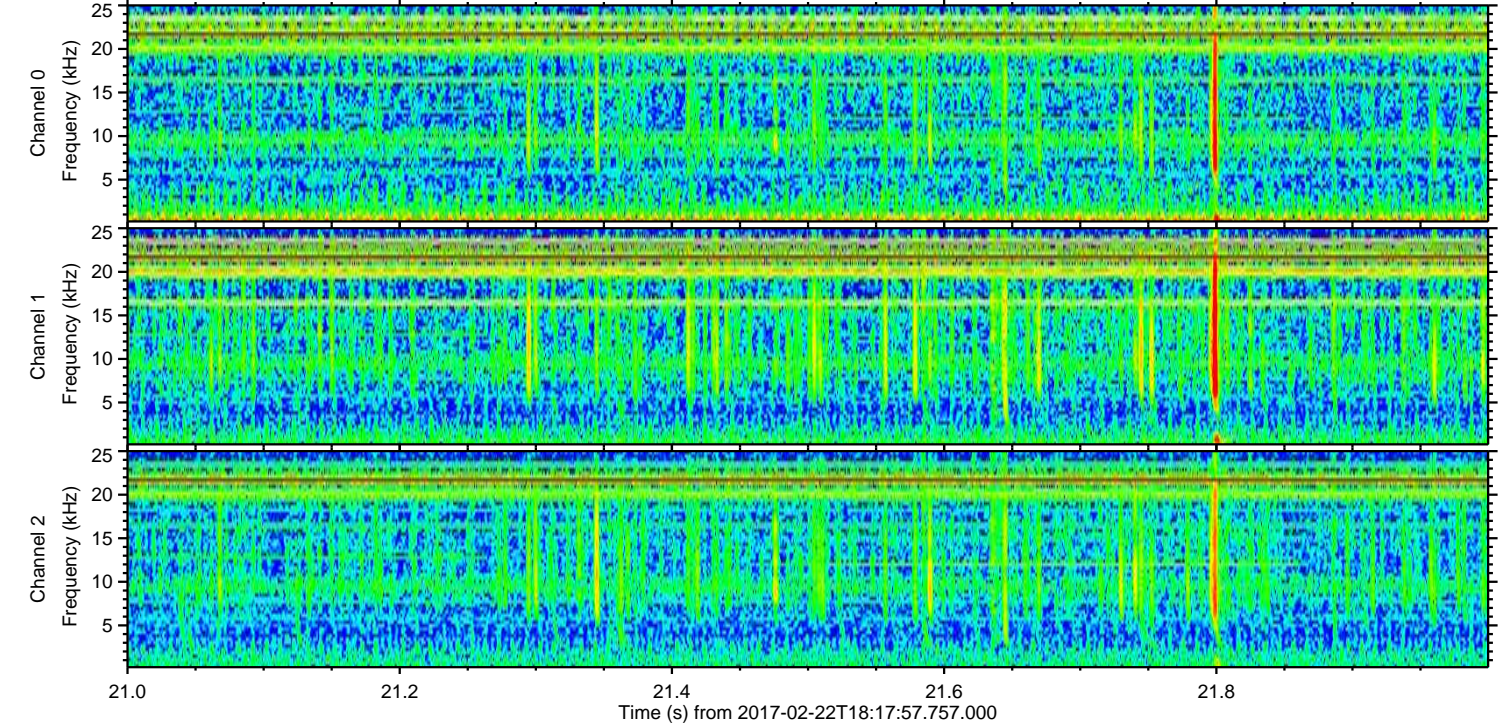
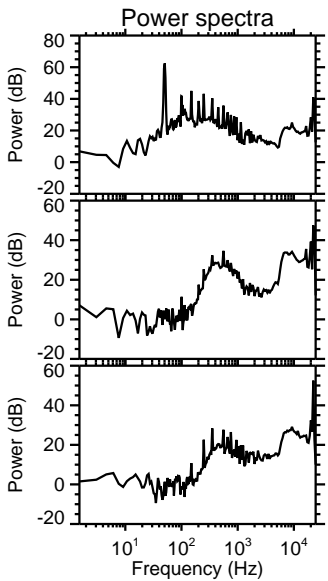
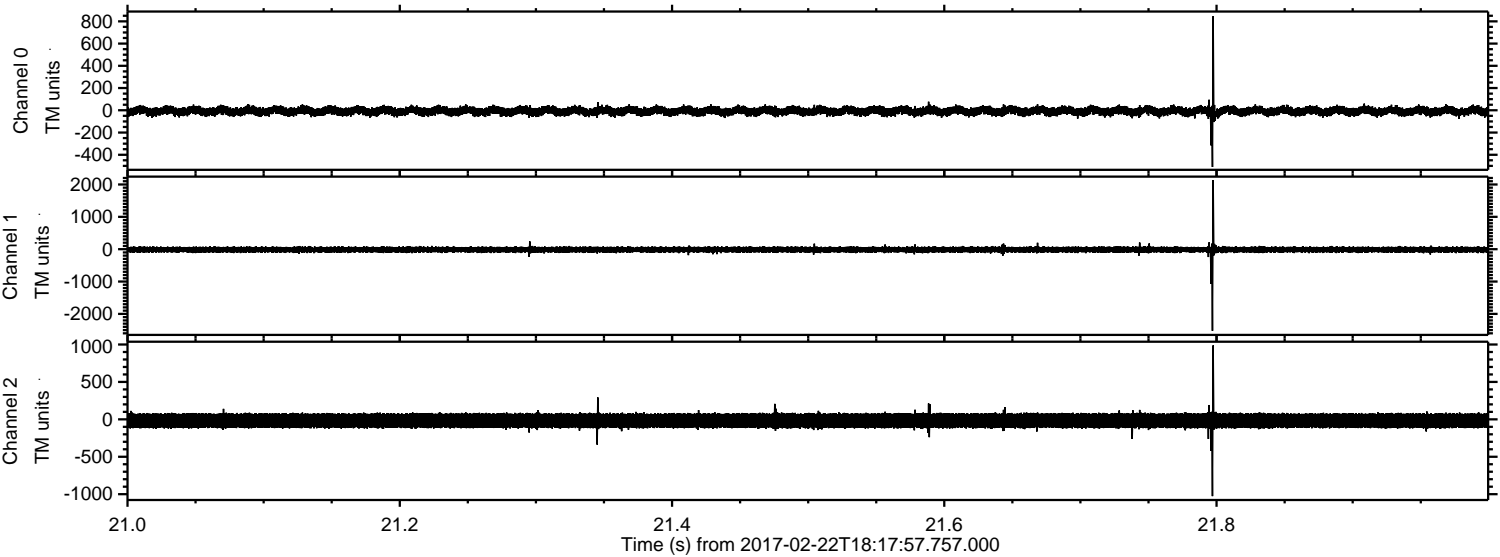


Processed Wed Feb 22 19:26:20 2017 by ELM ver.2012-10-06 from 001\_\_elm20170222\_181756\_\_dat00.bin

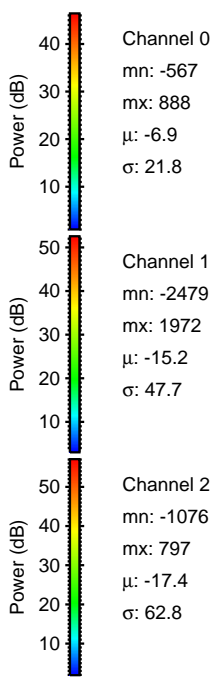
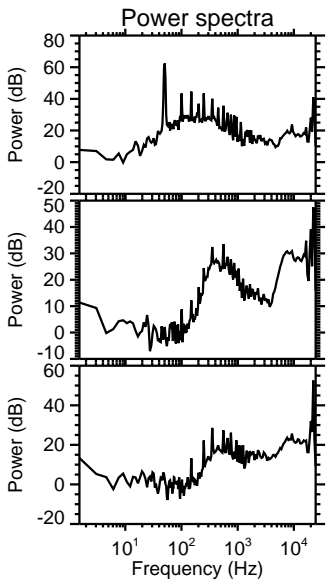
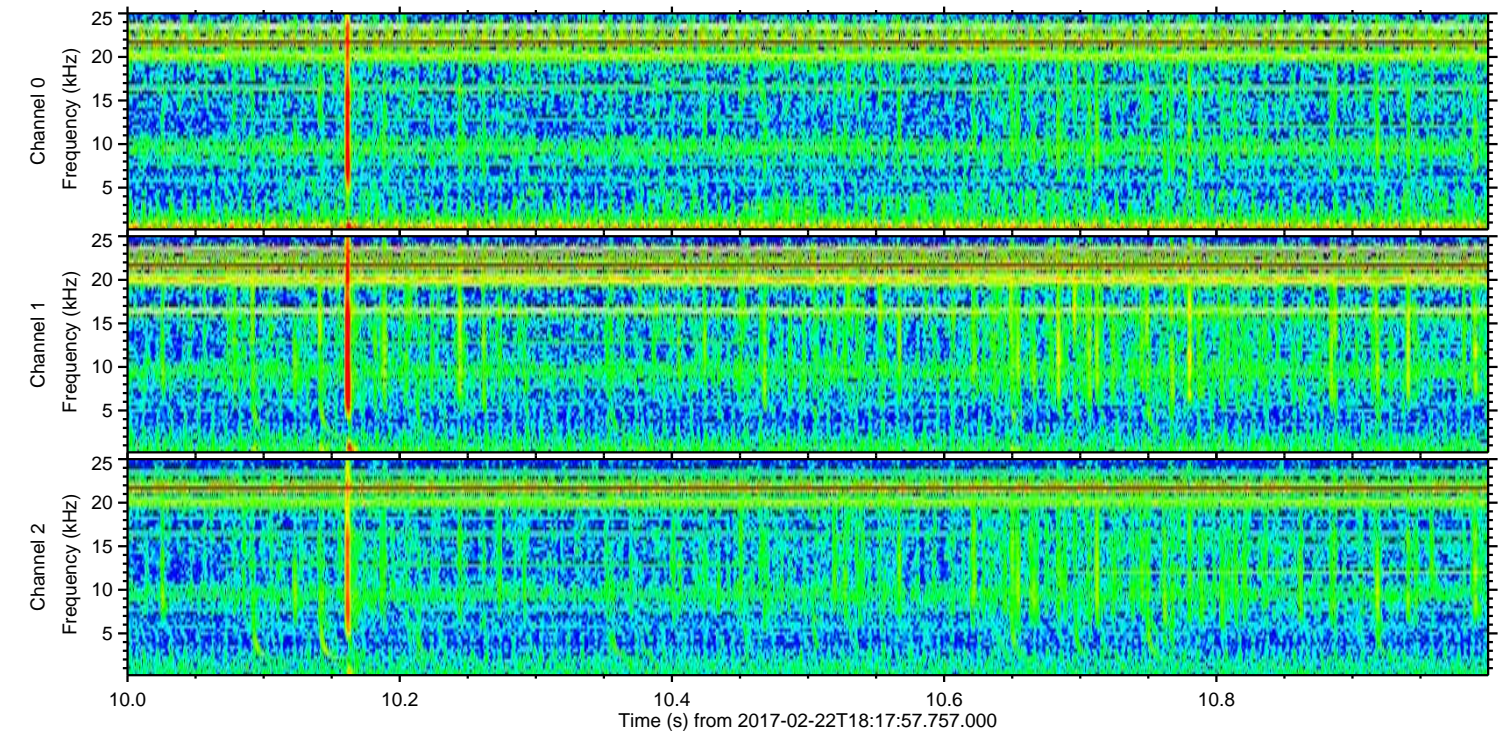
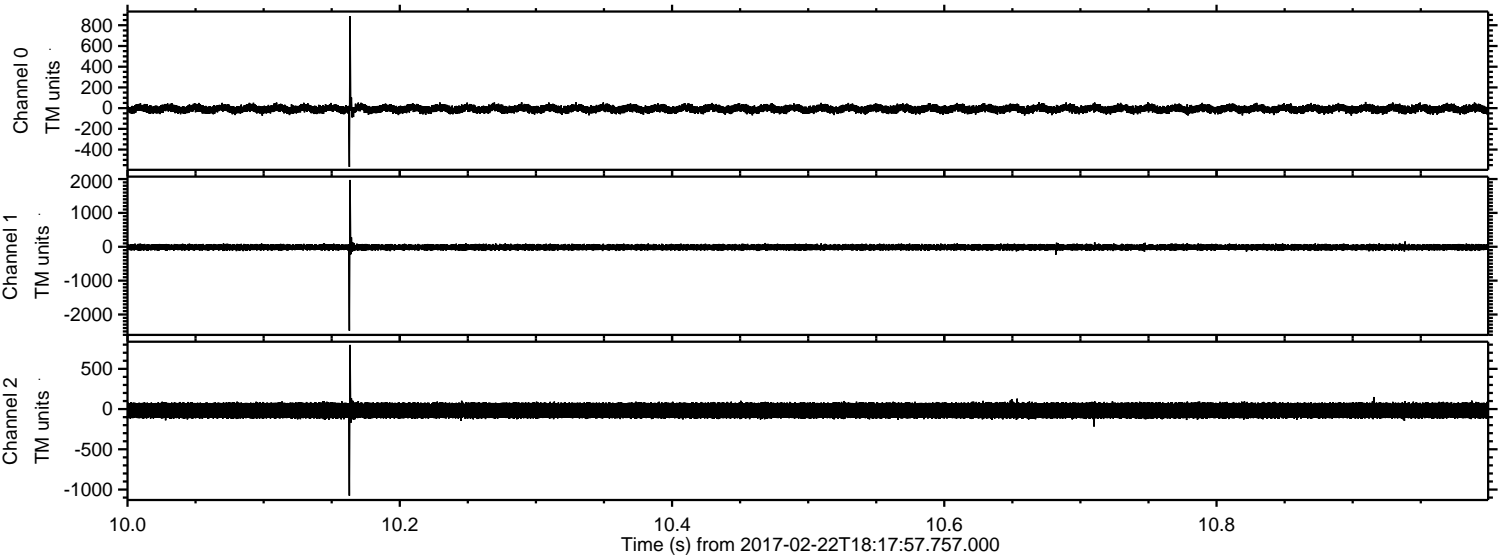


ELMAVAN 3D WAVEFORMS (Measured data sampled at 50 kHz) 51000 packets of 144 samples from 2017-02-22T18:17:57.757.000. Part 22/147

Processed Wed Feb 22 19:26:21 2017 by ELM ver.2012-10-06 from 001\_\_elm20170222\_181756\_\_dat00.bin



Processed Wed Feb 22 19:26:22 2017 by ELM ver.2012-10-06 from 001\_\_elm20170222\_181756\_\_dat00.bin

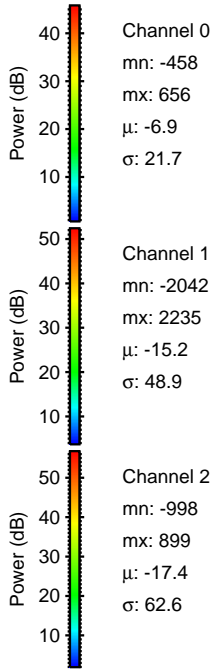
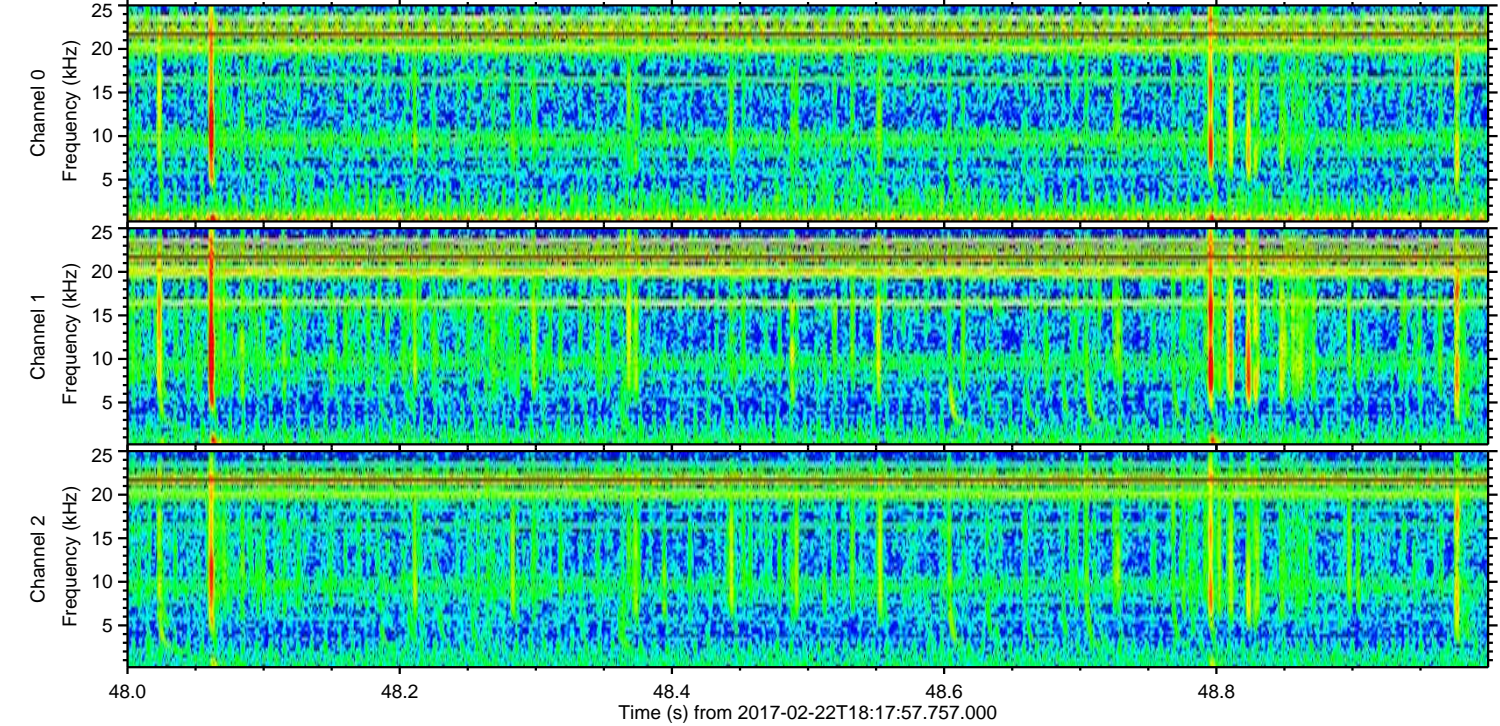
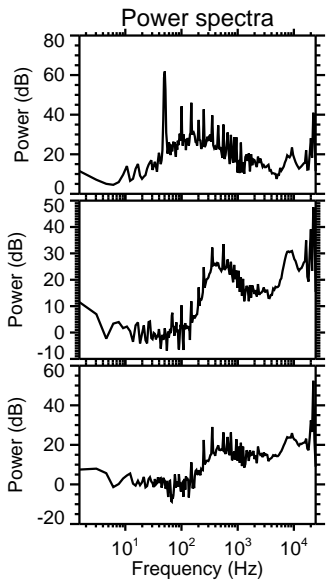
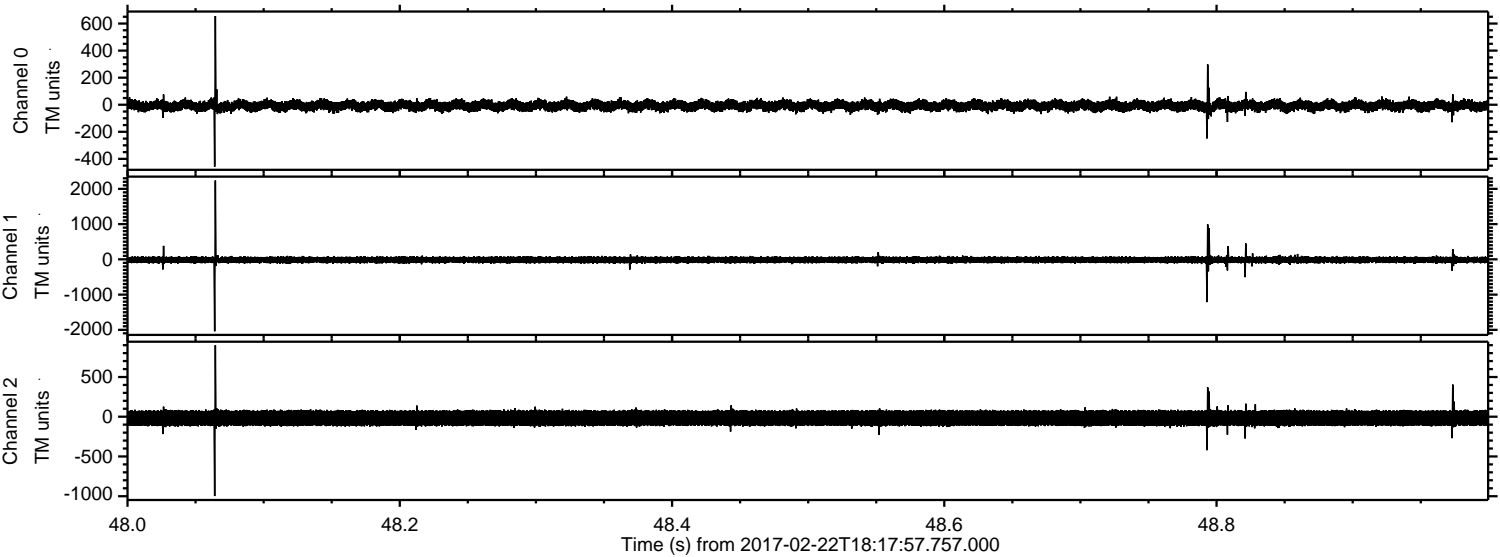


Channel 0  
mn: -567  
mx: 888  
 $\mu$ : -6.9  
 $\sigma$ : 21.8

Channel 1  
mn: -2479  
mx: 1972  
 $\mu$ : -15.2  
 $\sigma$ : 47.7

Channel 2  
mn: -1076  
mx: 797  
 $\mu$ : -17.4  
 $\sigma$ : 62.8

Processed Wed Feb 22 19:26:23 2017 by ELM ver.2012-10-06 from 001\_\_elm20170222\_181756\_\_dat00.bin

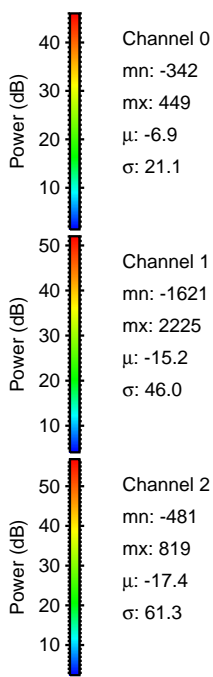
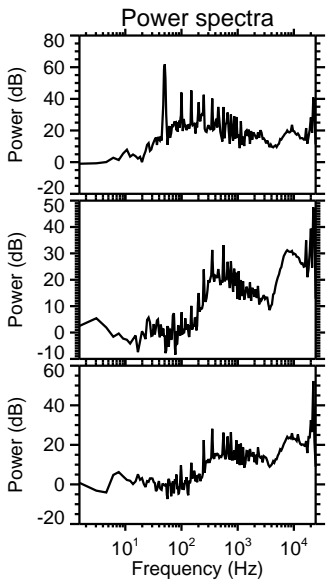
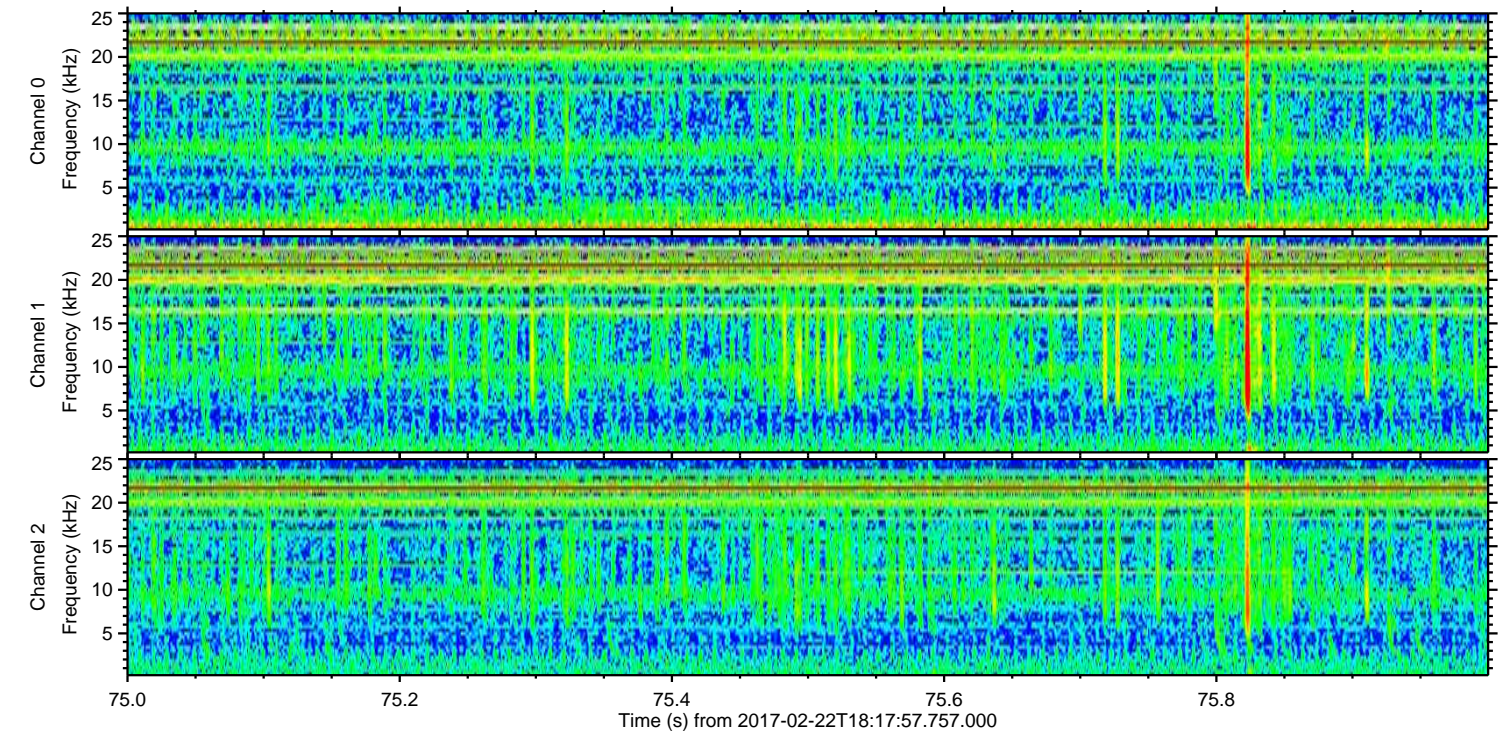
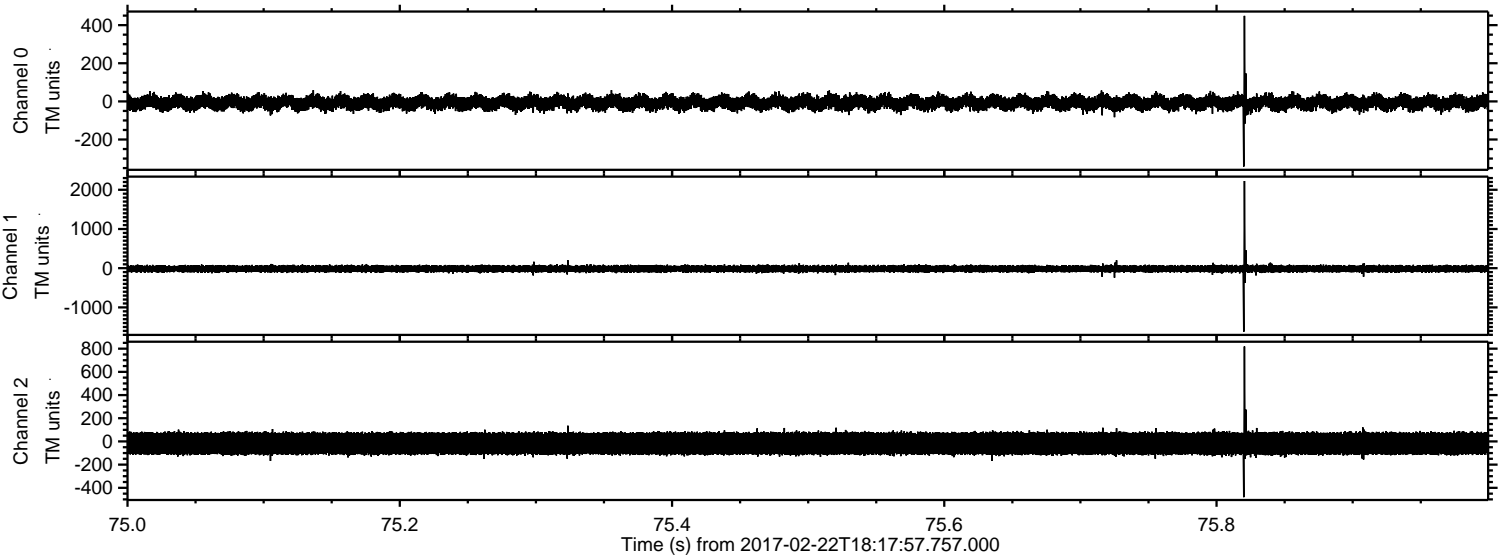


Channel 0  
mn: -458  
mx: 656  
 $\mu$ : -6.9  
 $\sigma$ : 21.7

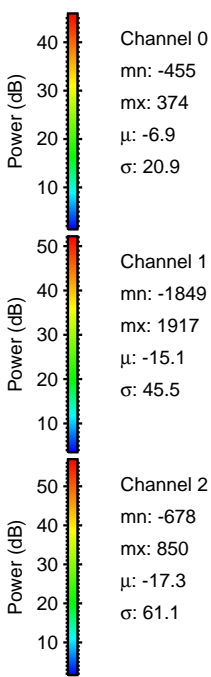
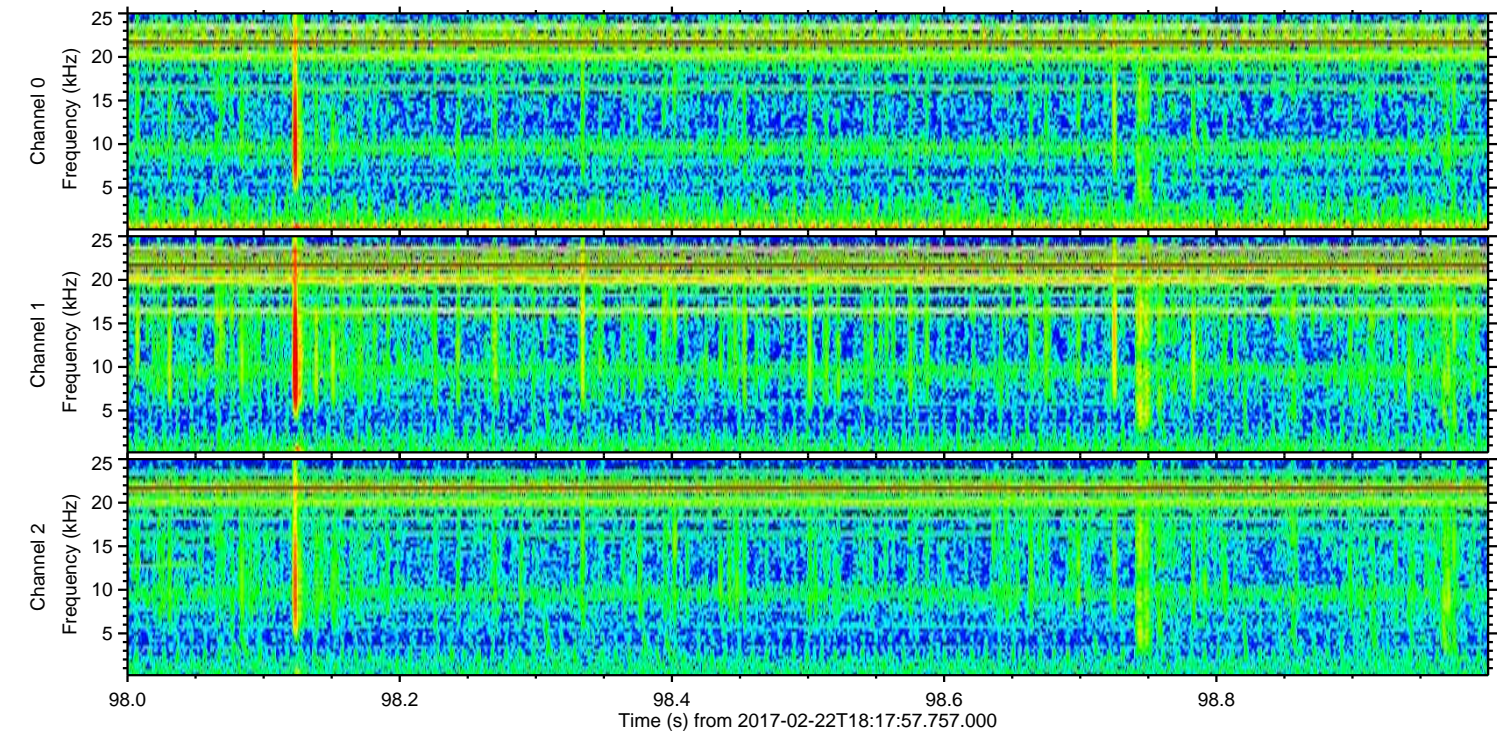
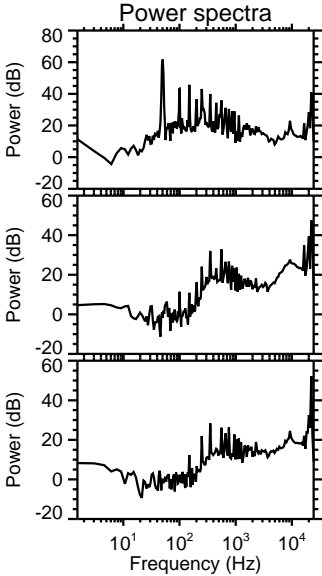
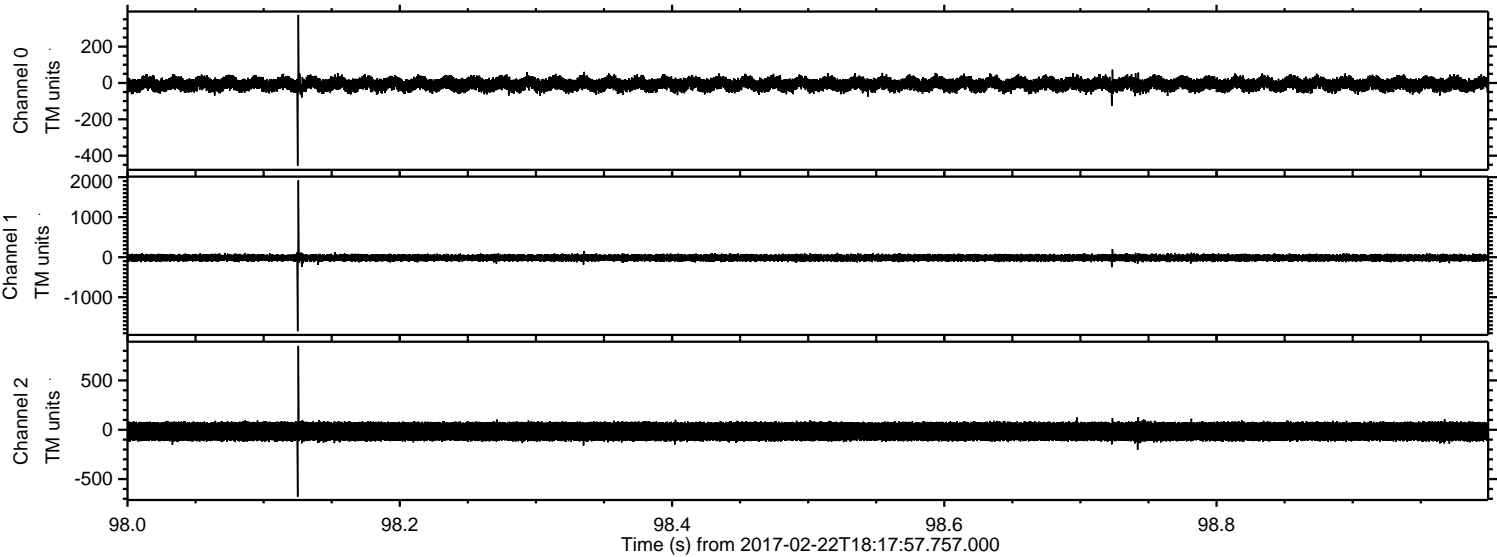
Channel 1  
mn: -2042  
mx: 2235  
 $\mu$ : -15.2  
 $\sigma$ : 48.9

Channel 2  
mn: -998  
mx: 899  
 $\mu$ : -17.4  
 $\sigma$ : 62.6

Processed Wed Feb 22 19:26:24 2017 by ELM ver.2012-10-06 from 001\_\_elm20170222\_181756\_\_dat00.bin



Processed Wed Feb 22 19:26:25 2017 by ELM ver.2012-10-06 from 001\_\_elm20170222\_181756\_\_dat00.bin



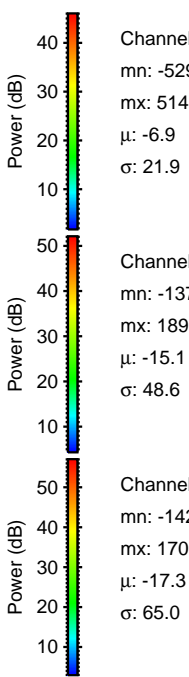
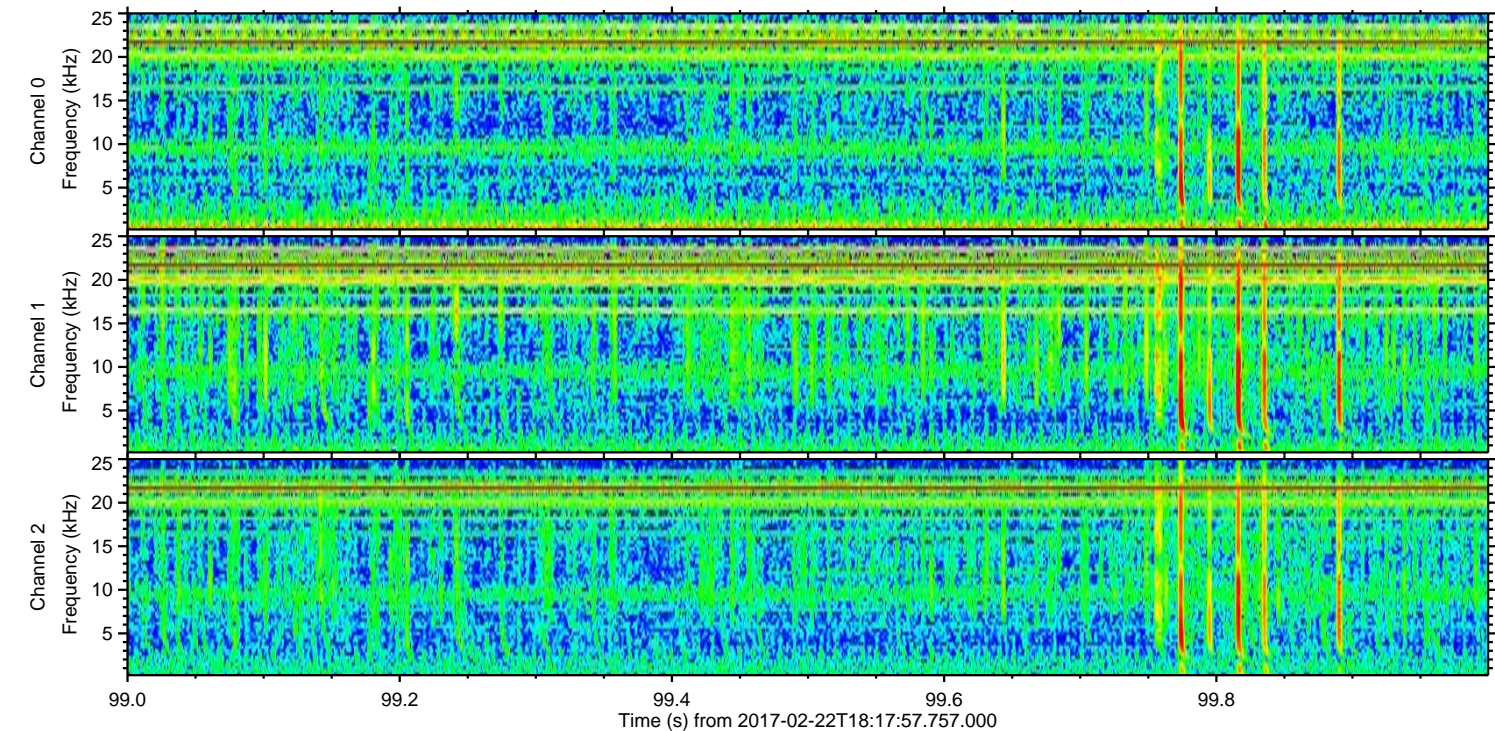
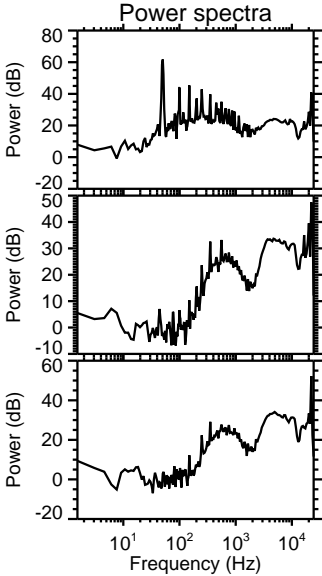
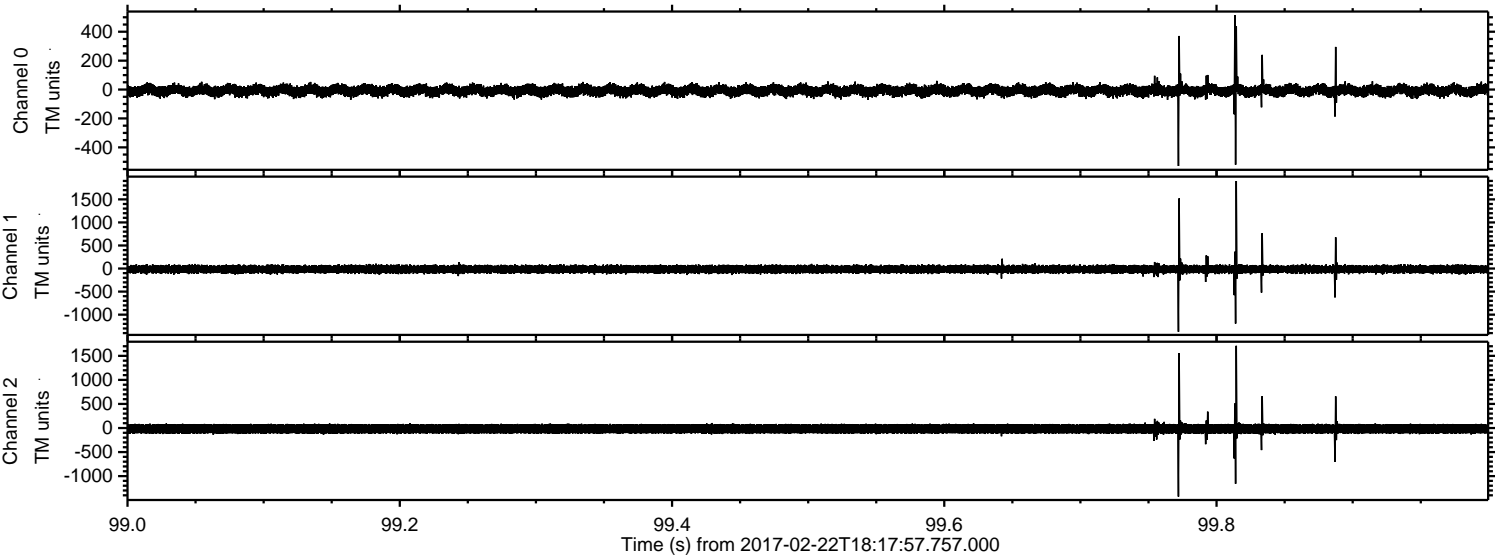
Channel 0  
mn: -455  
mx: 374  
 $\mu$ : -6.9  
 $\sigma$ : 20.9

Channel 1  
mn: -1849  
mx: 1917  
 $\mu$ : -15.1  
 $\sigma$ : 45.5

Channel 2  
mn: -678  
mx: 850  
 $\mu$ : -17.3  
 $\sigma$ : 61.1

ELMAVAN 3D WAVEFORMS (Measured data sampled at 50 kHz) 51000 packets of 144 samples from 2017-02-22T18:17:57.757.000. Part 100/147

Processed Wed Feb 22 19:26:26 2017 by ELM ver.2012-10-06 from 001\_\_elm20170222\_181756\_\_dat00.bin



ELMAVAN 3D WAVEFORMS (Measured data sampled at 50 kHz) 51000 packets of 144 samples from 2017-02-22T18:17:57.757.000. Part 20/147

Processed Wed Feb 22 19:26:26 2017 by ELM ver.2012-10-06 from 001\_\_elm20170222\_181756\_\_dat00.bin

