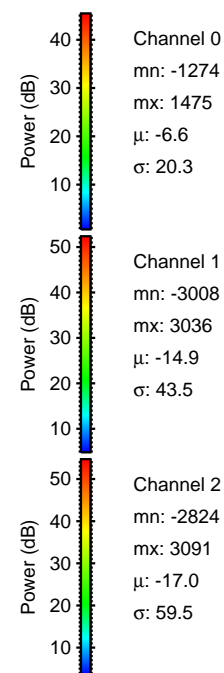
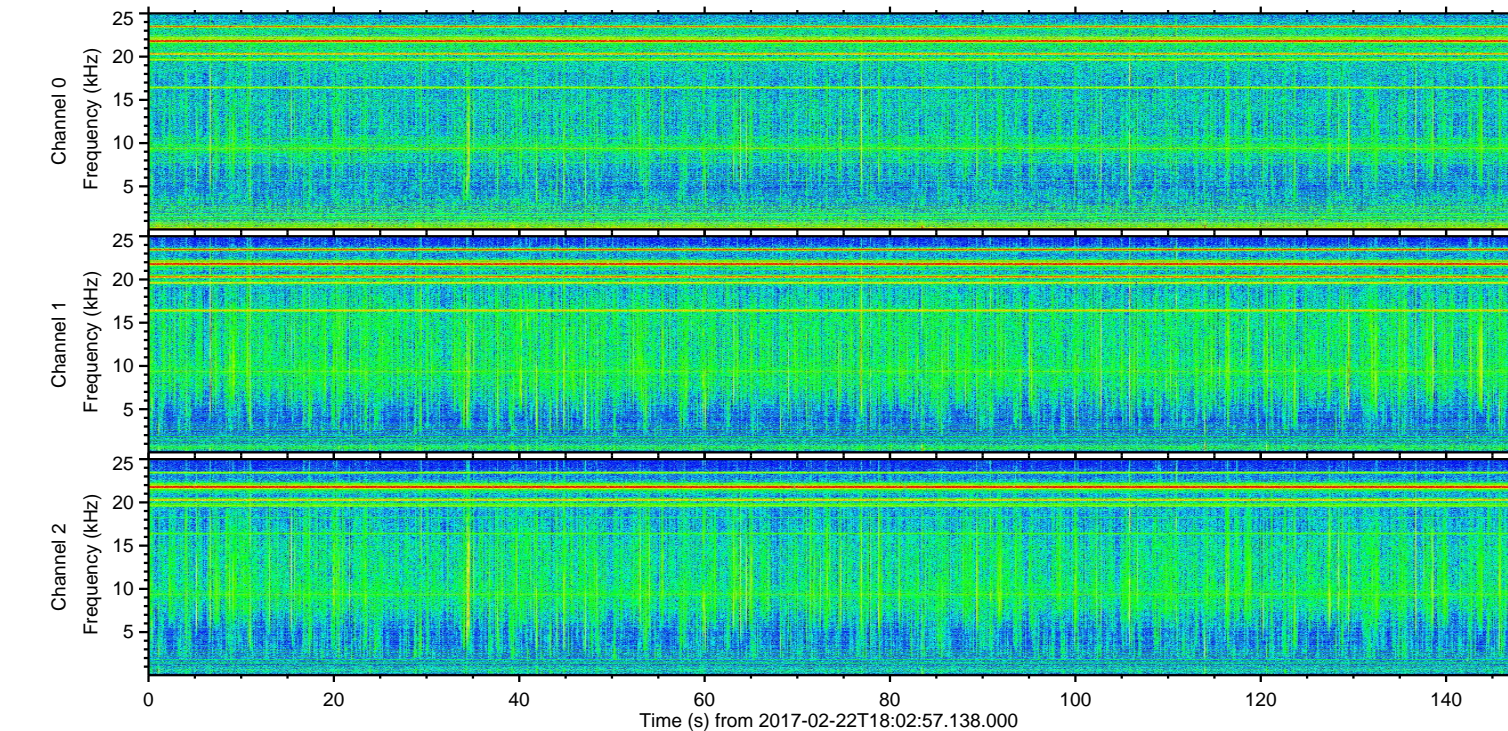
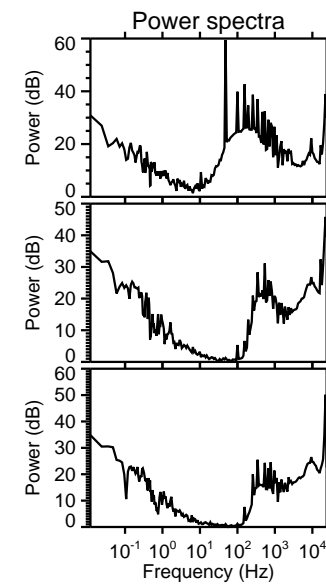
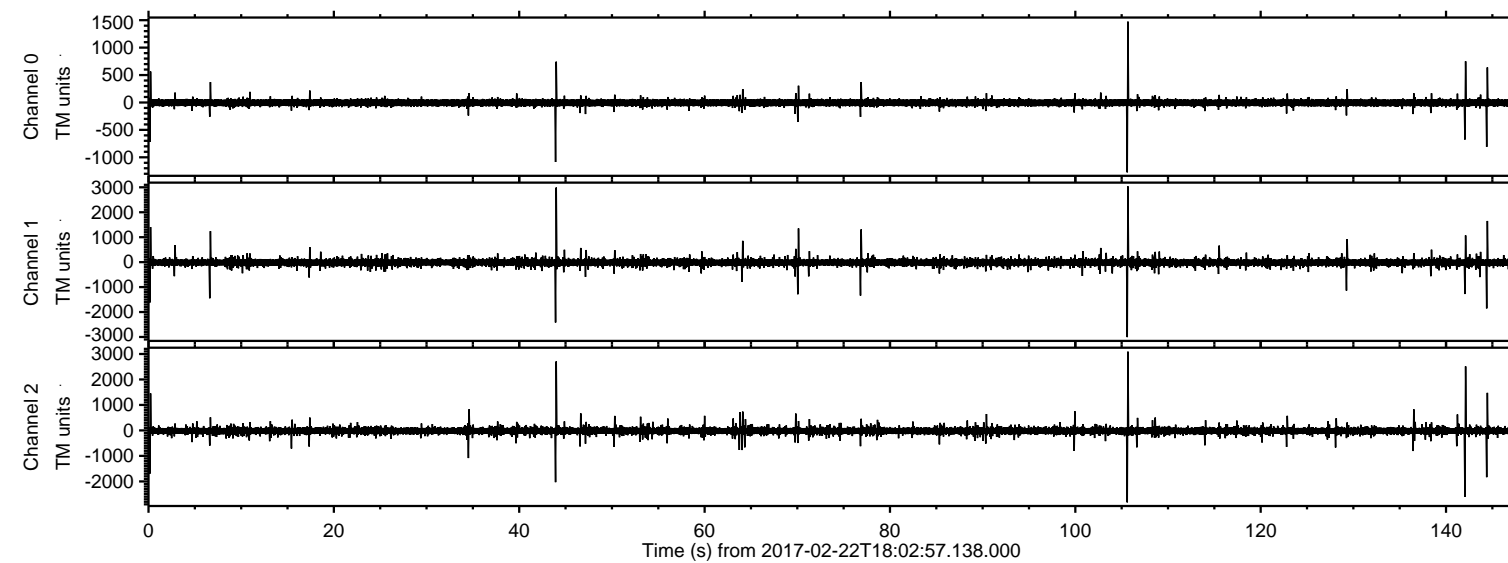


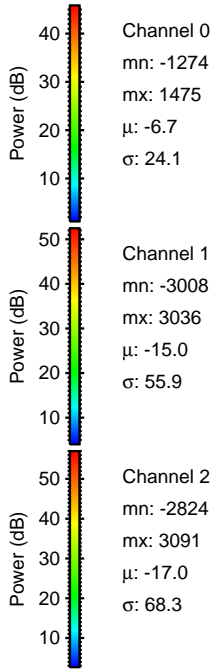
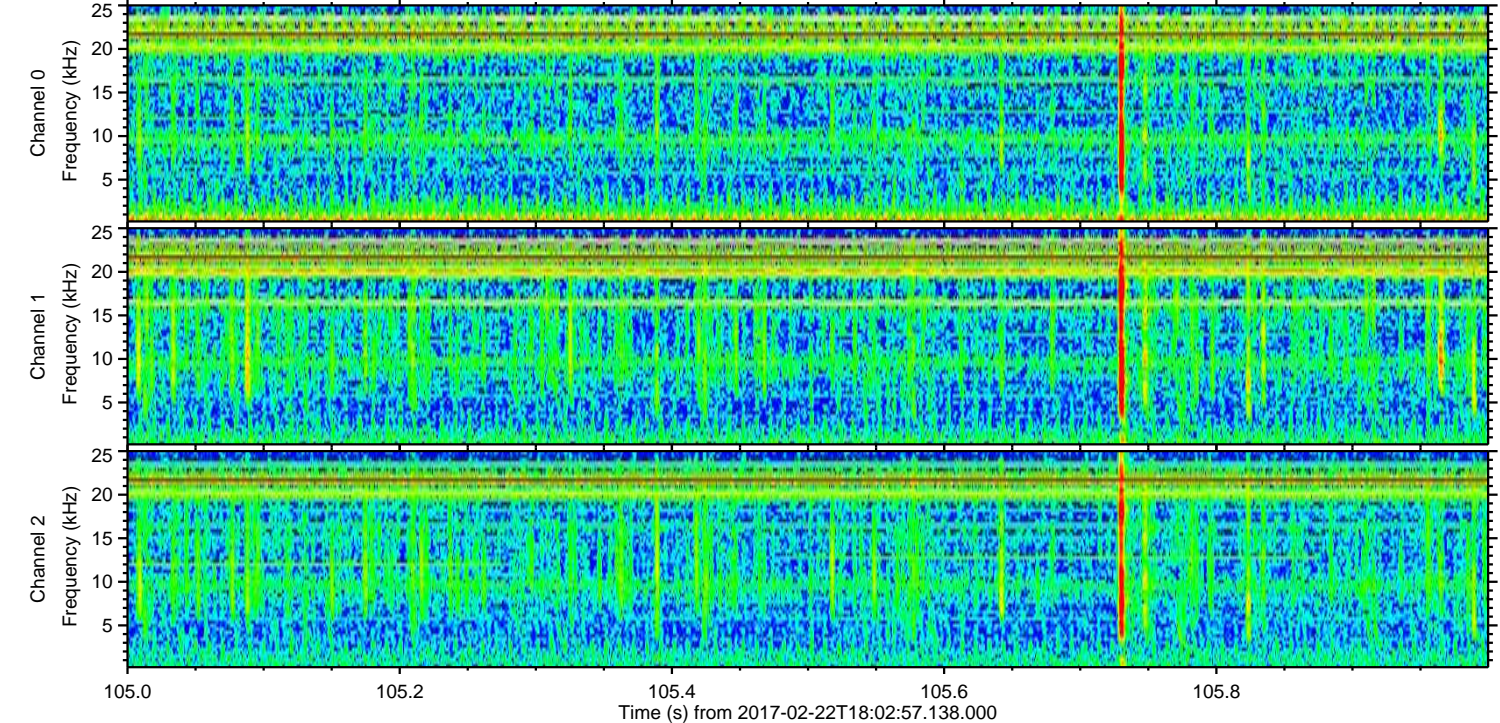
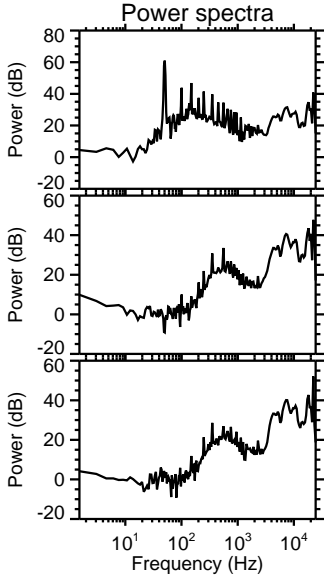
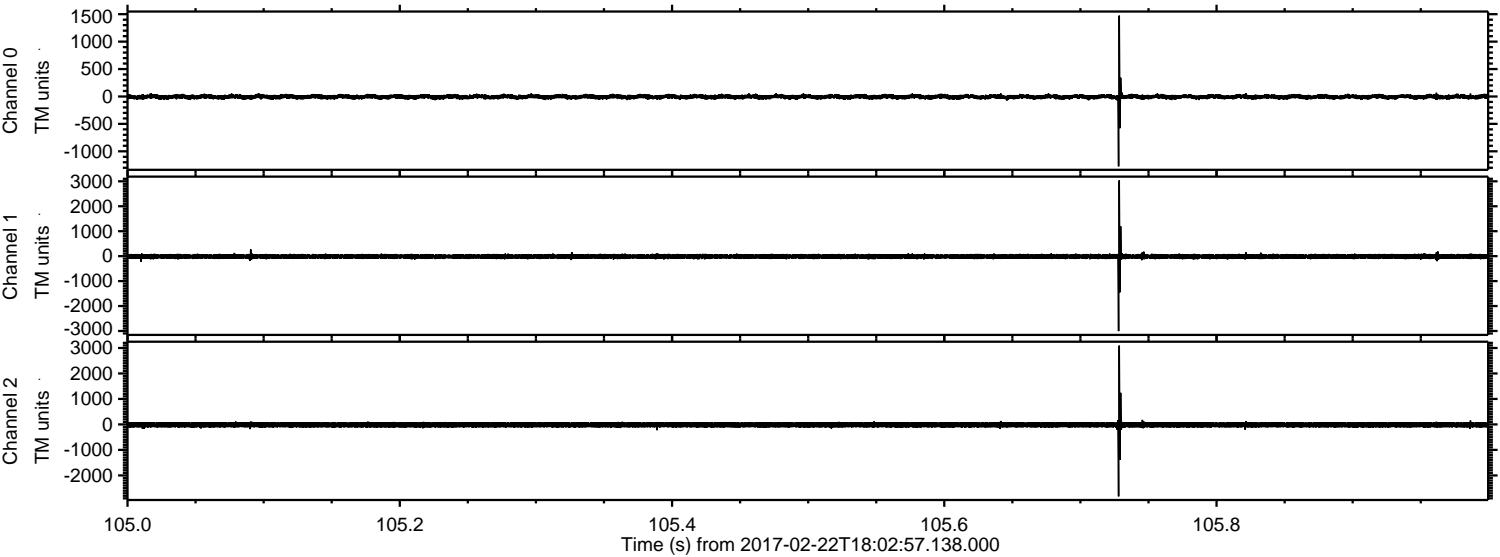
ELMAVAN 3D WAVEFORMS (Measured data sampled at 50 kHz) 51000 packets of 144 samples from 2017-02-22T18:02:57.138.000.

Processed Wed Feb 22 19:10:40 2017 by ELM ver.2012-10-06 from 001__elm20170222_180256__dat00.bin

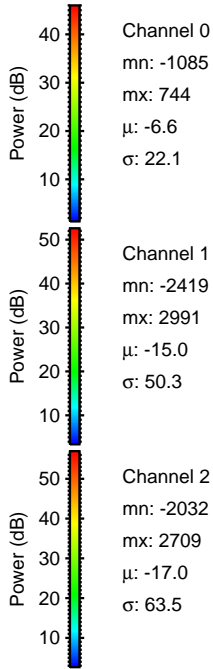
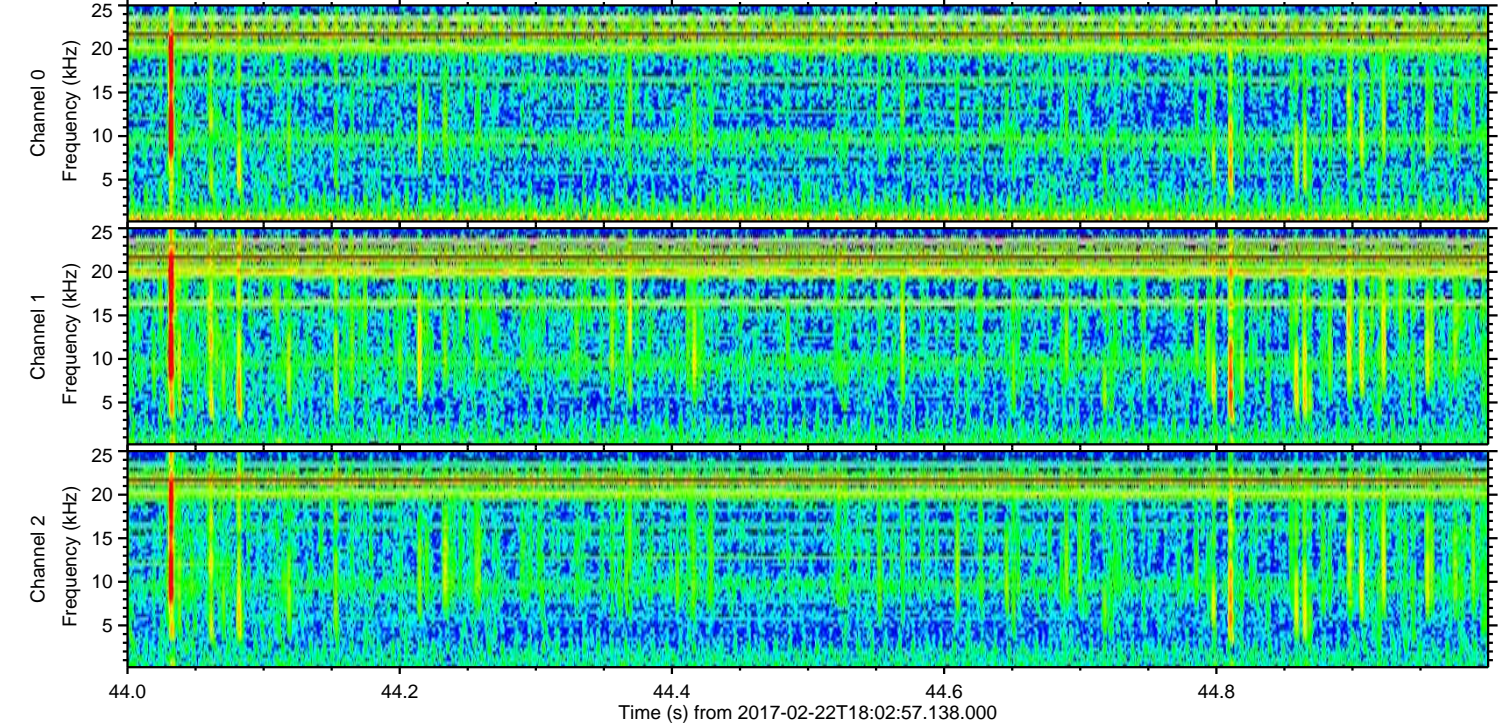
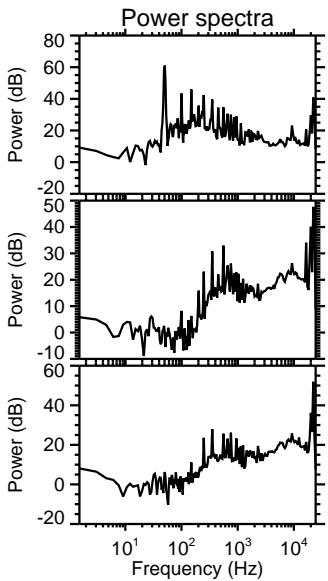
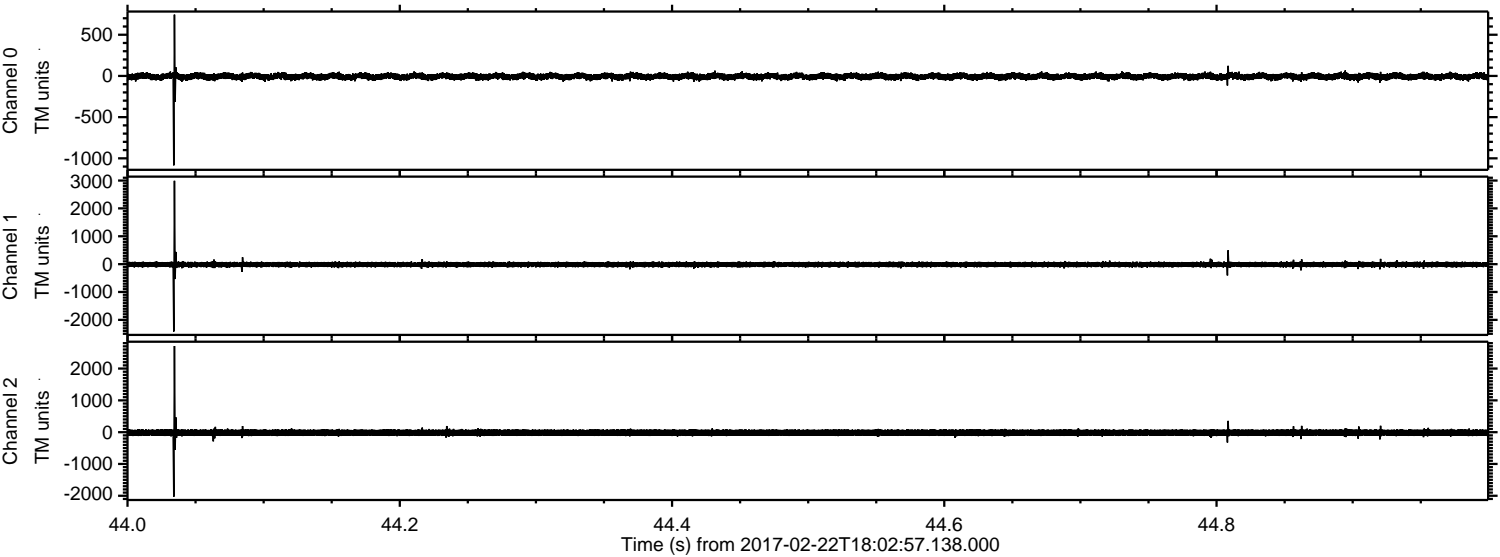


ELMAVAN 3D WAVEFORMS (Measured data sampled at 50 kHz) 51000 packets of 144 samples from 2017-02-22T18:02:57.138.000. Part 106/147

Processed Wed Feb 22 19:10:51 2017 by ELM ver.2012-10-06 from 001__elm20170222_180256__dat00.bin

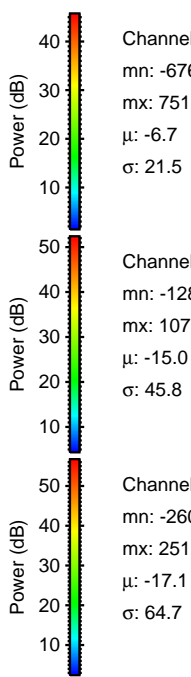
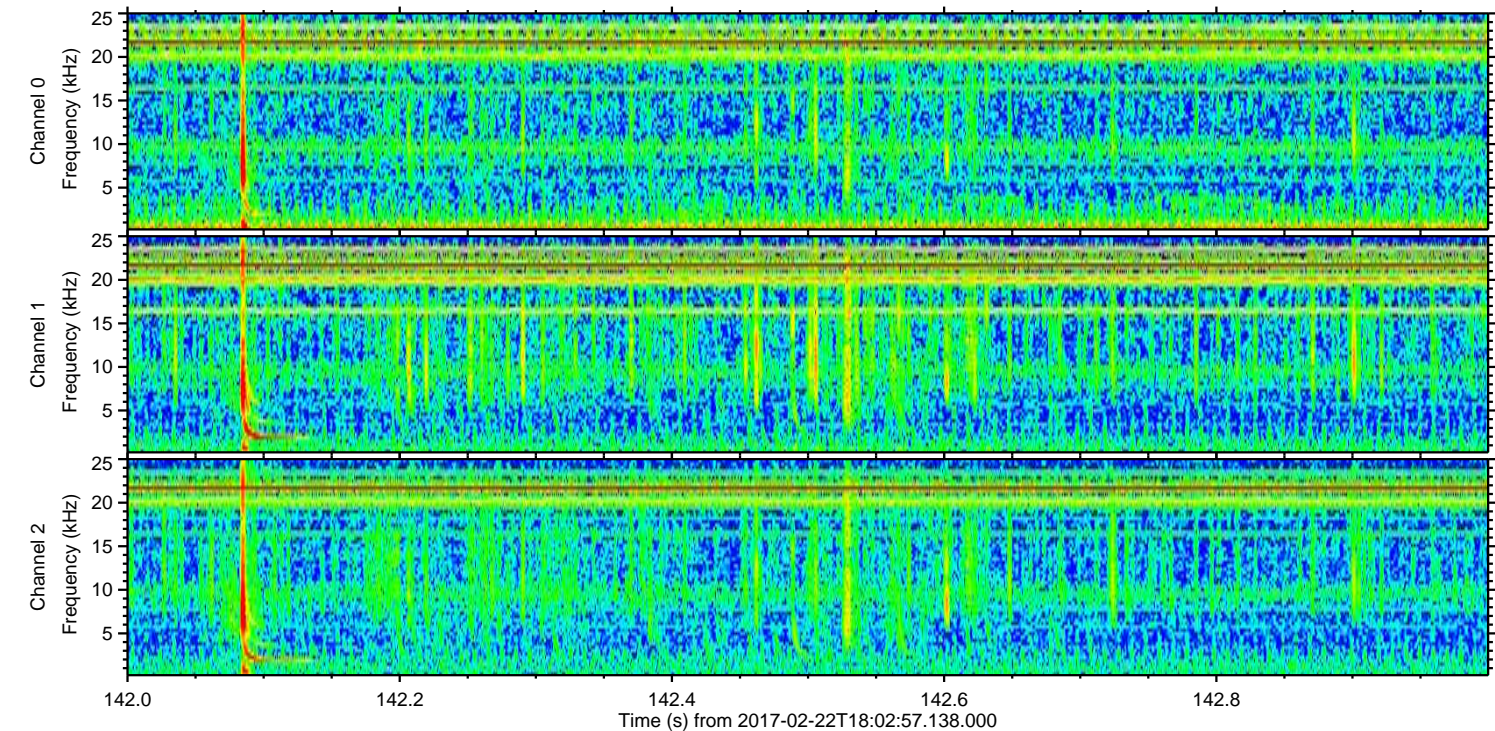
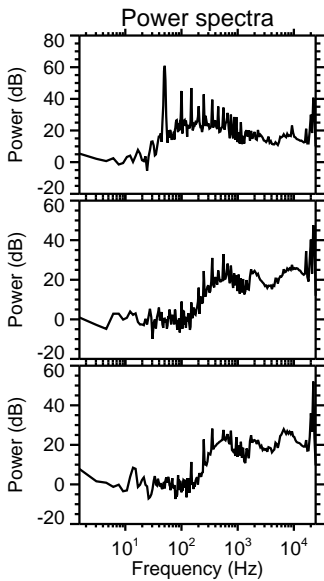
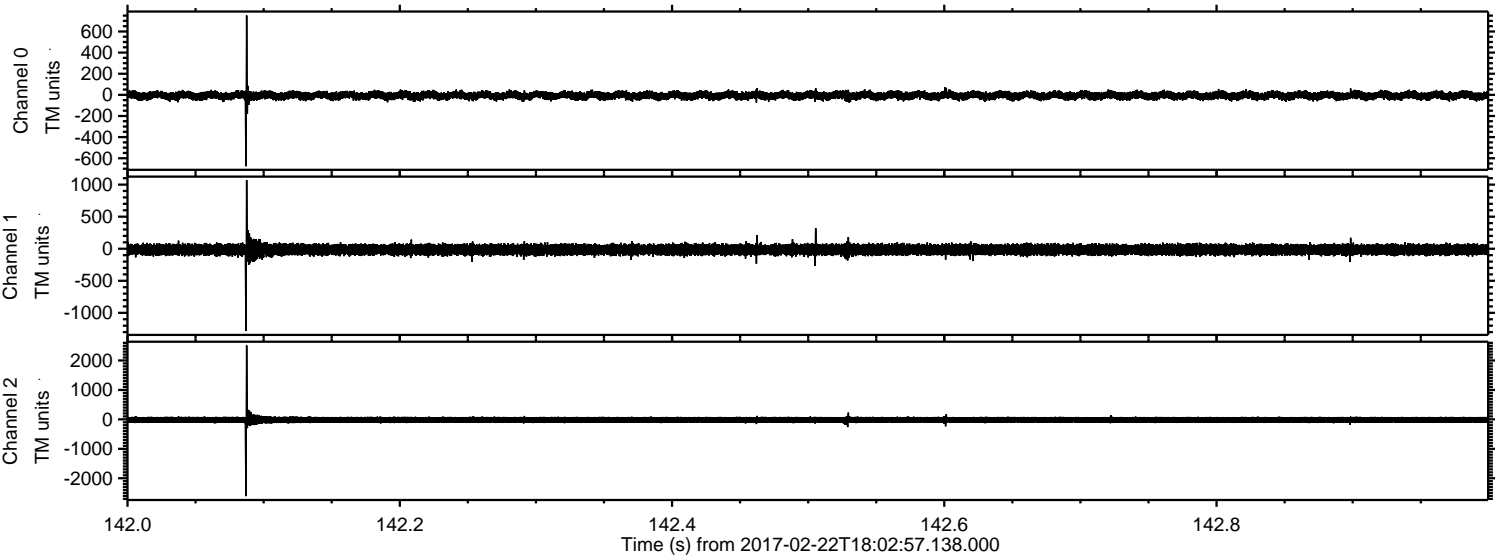


Processed Wed Feb 22 19:10:52 2017 by ELM ver.2012-10-06 from 001__elm20170222_180256__dat00.bin



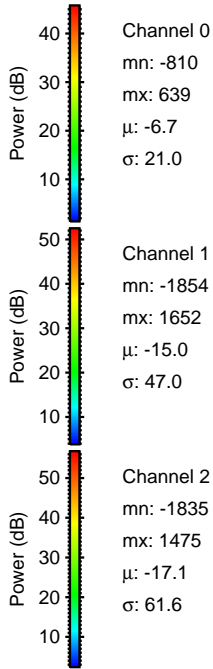
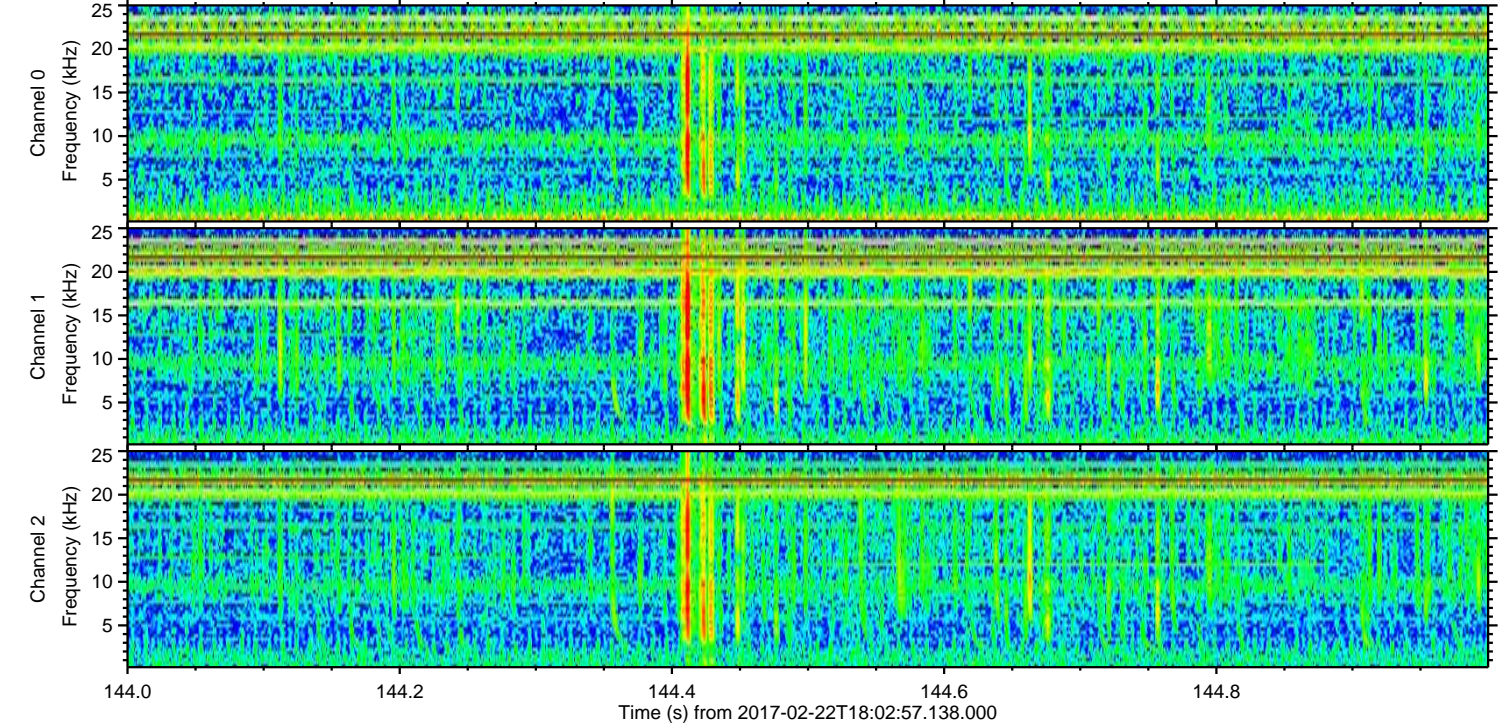
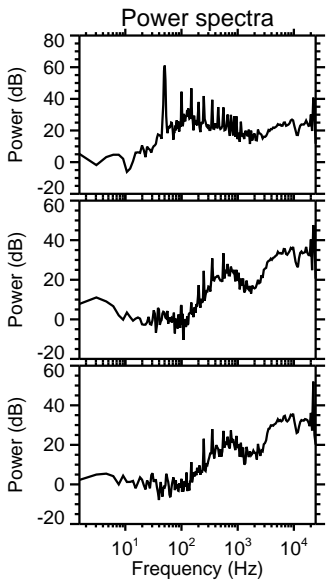
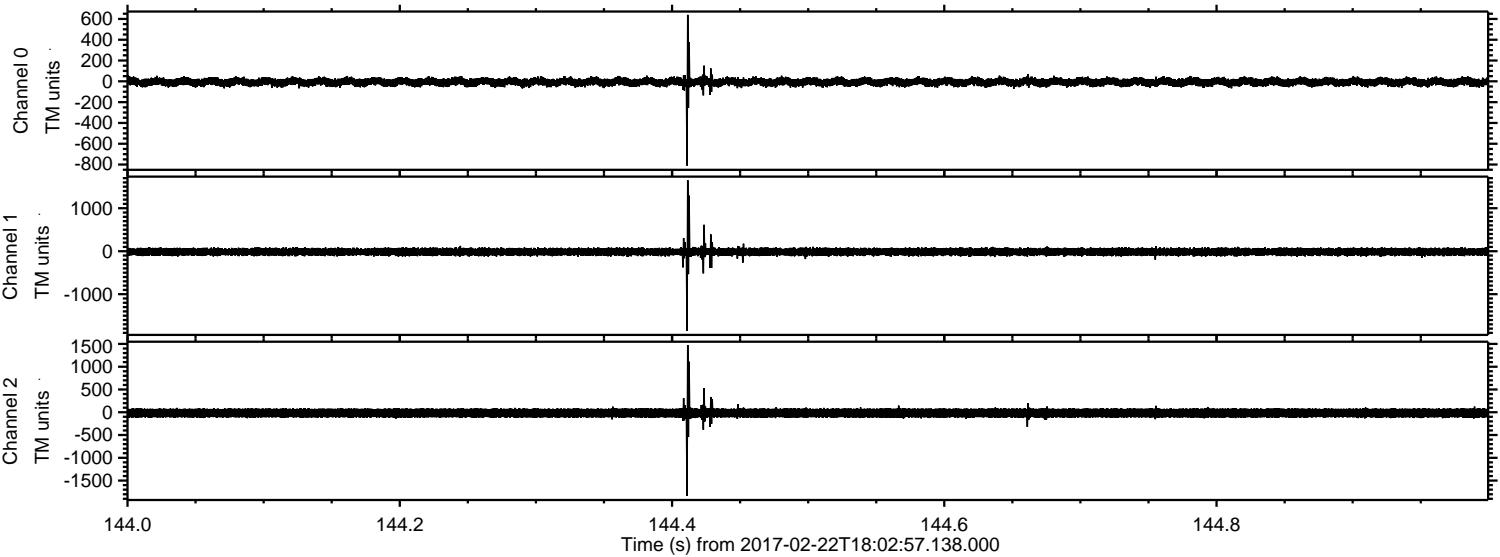
ELMAVAN 3D WAVEFORMS (Measured data sampled at 50 kHz) 51000 packets of 144 samples from 2017-02-22T18:02:57.138.000. Part 143/147

Processed Wed Feb 22 19:10:53 2017 by ELM ver.2012-10-06 from 001__elm20170222_180256__dat00.bin



ELMAVAN 3D WAVEFORMS (Measured data sampled at 50 kHz) 51000 packets of 144 samples from 2017-02-22T18:02:57.138.000. Part 145/147

Processed Wed Feb 22 19:10:54 2017 by ELM ver.2012-10-06 from 001__elm20170222_180256__dat00.bin



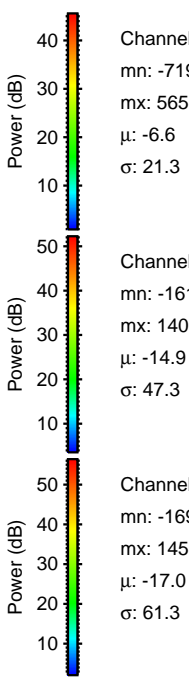
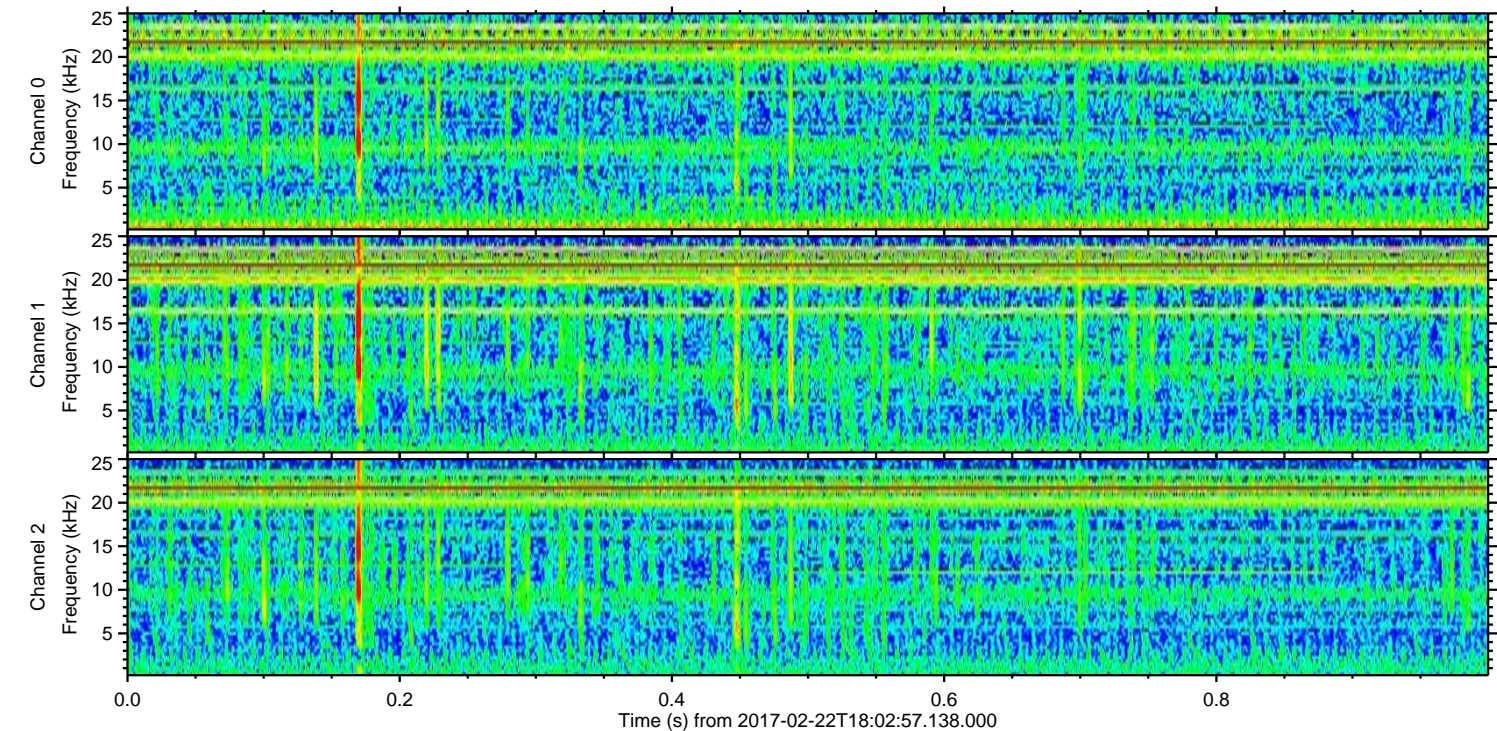
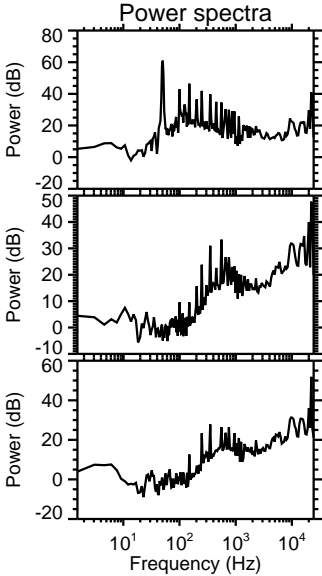
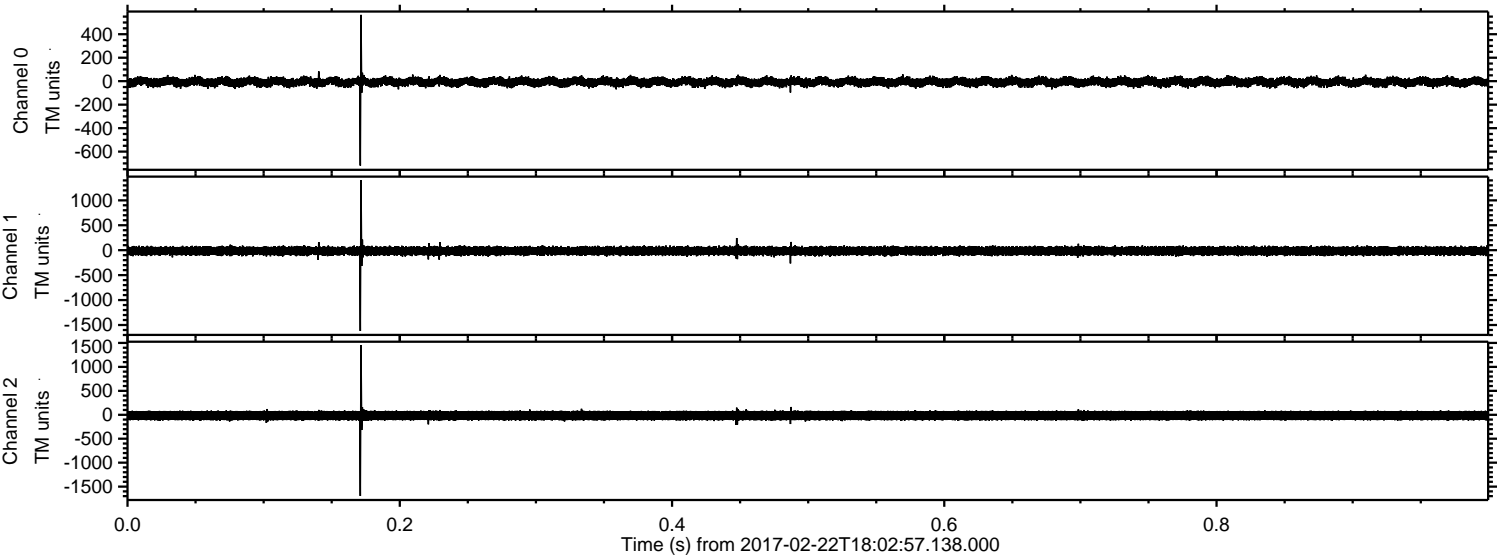
Channel 0
mn: -810
mx: 639
 μ : -6.7
 σ : 21.0

Channel 1
mn: -1854
mx: 1652
 μ : -15.0
 σ : 47.0

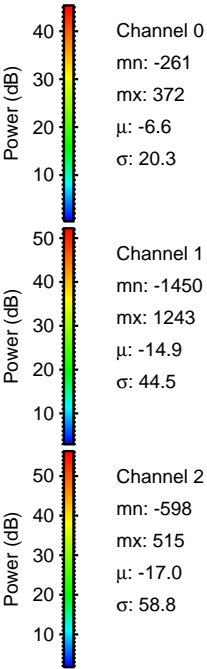
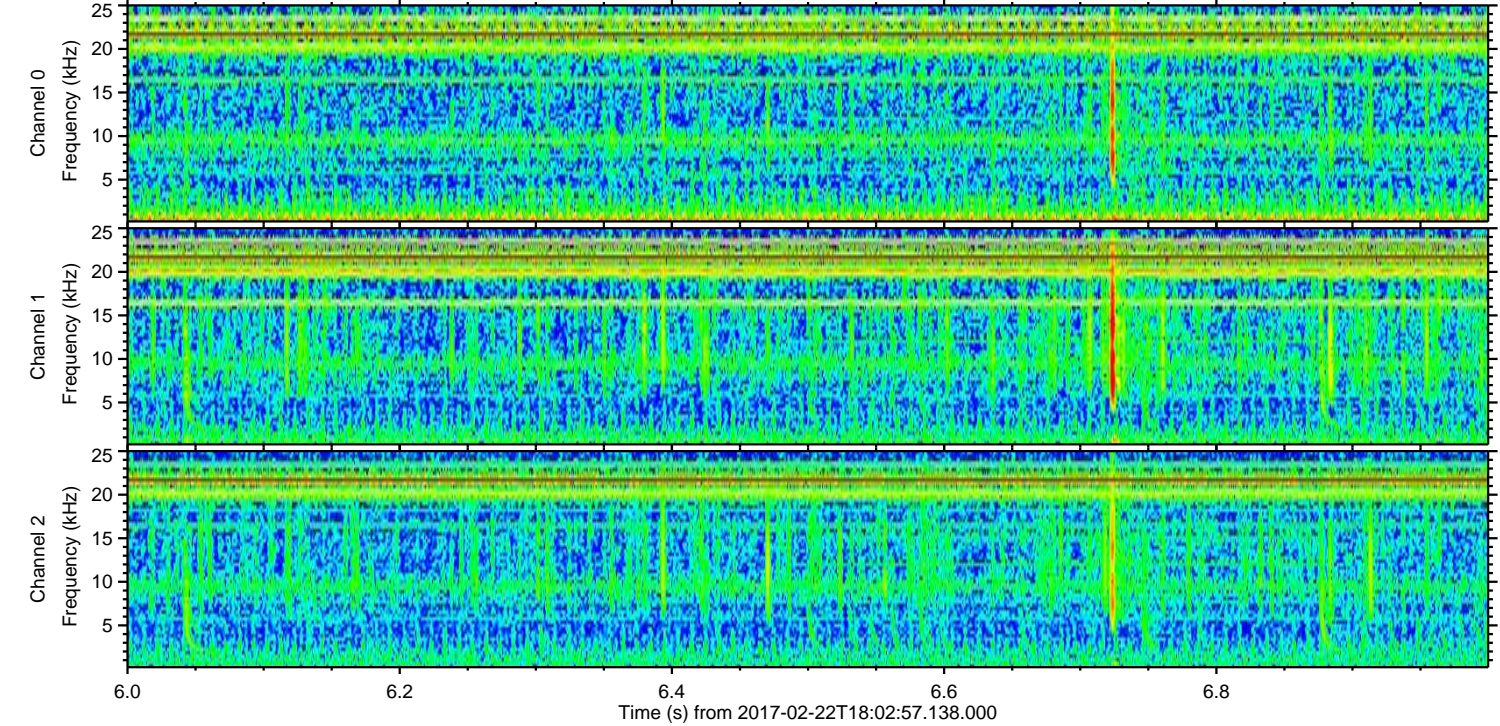
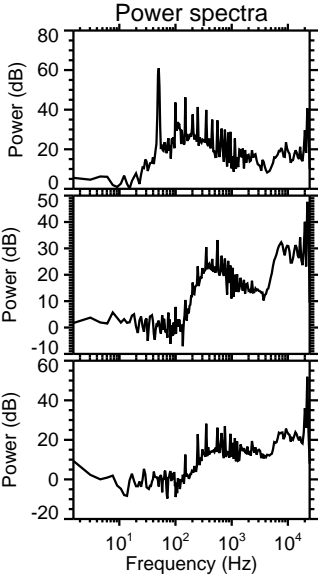
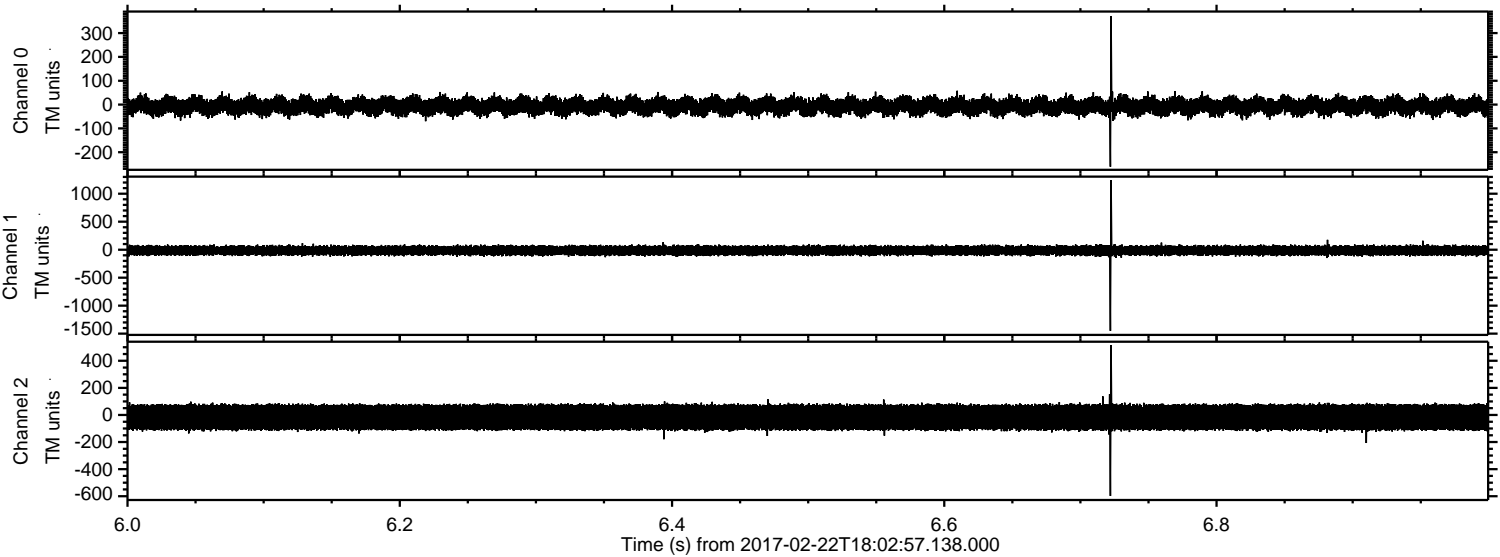
Channel 2
mn: -1835
mx: 1475
 μ : -17.1
 σ : 61.6

ELMAVAN 3D WAVEFORMS (Measured data sampled at 50 kHz) 51000 packets of 144 samples from 2017-02-22T18:02:57.138.000. Part 1/147

Processed Wed Feb 22 19:10:55 2017 by ELM ver.2012-10-06 from 001__elm20170222_180256__dat00.bin



Processed Wed Feb 22 19:10:56 2017 by ELM ver.2012-10-06 from 001__elm20170222_180256__dat00.bin

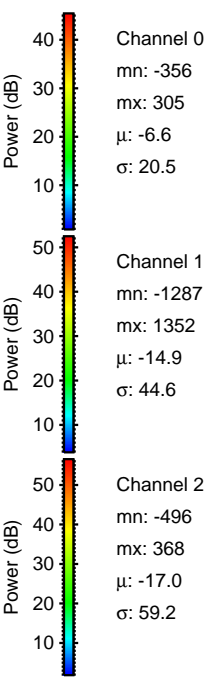
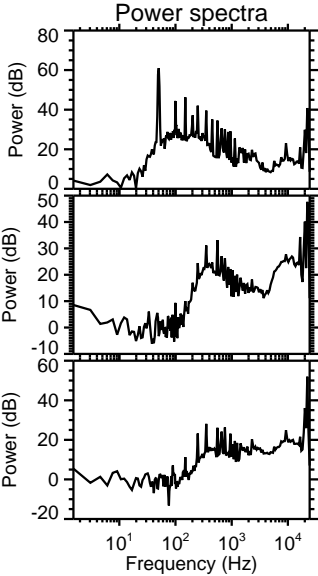
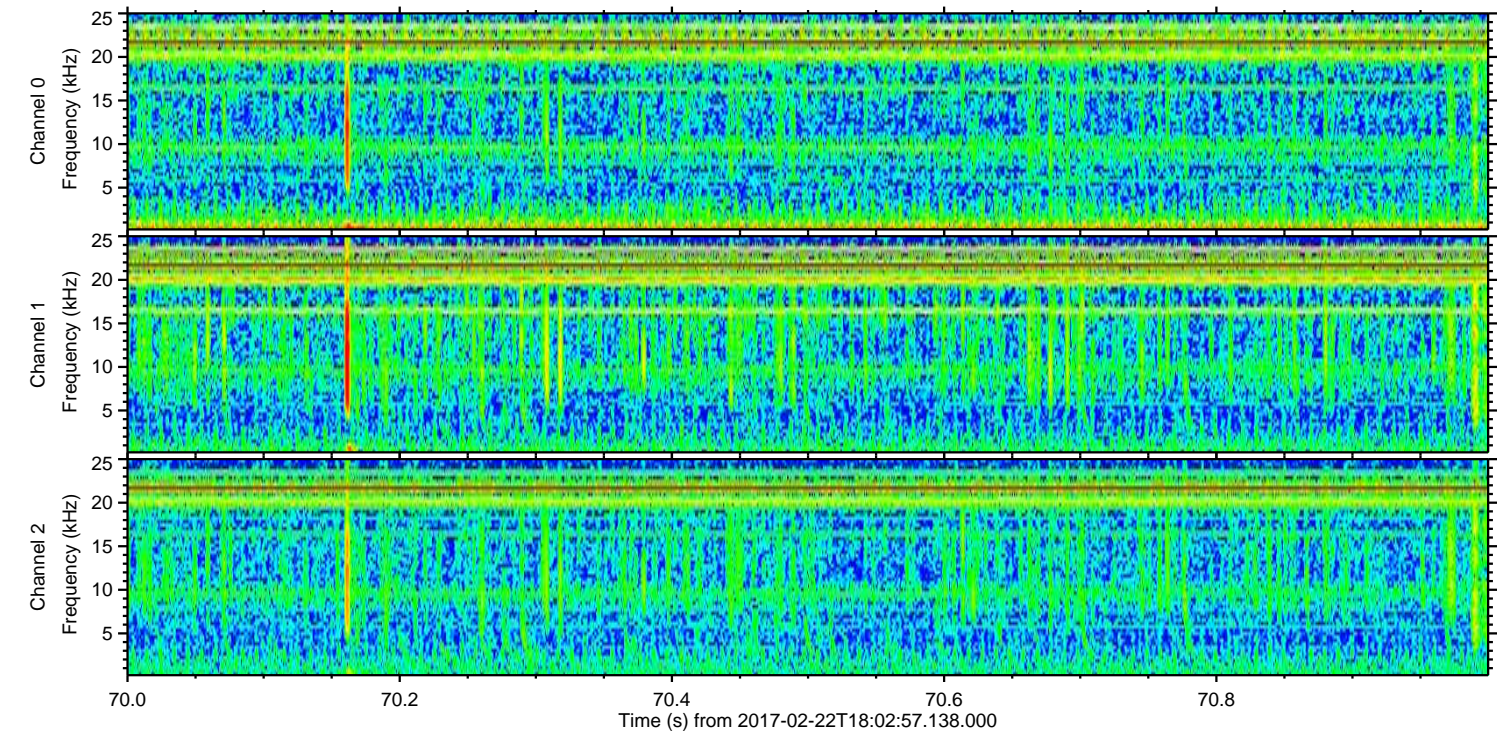
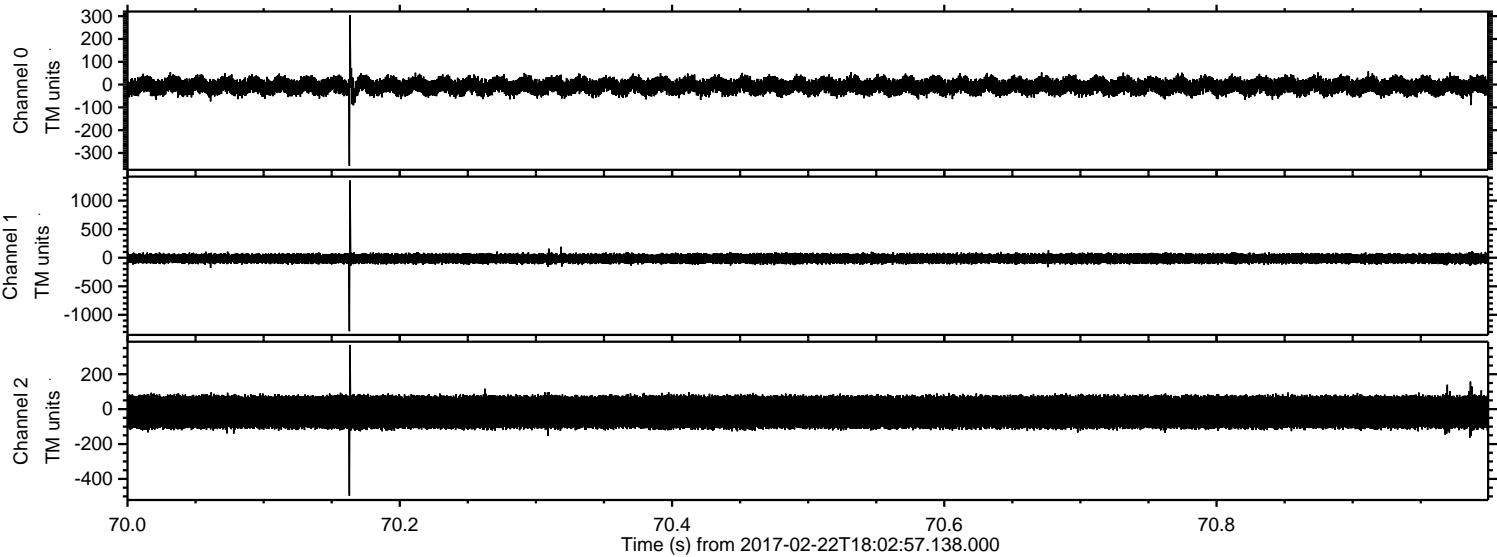


Channel 0
mn: -261
mx: 372
 μ : -6.6
 σ : 20.3

Channel 1
mn: -1450
mx: 1243
 μ : -14.9
 σ : 44.5

Channel 2
mn: -598
mx: 515
 μ : -17.0
 σ : 58.8

Processed Wed Feb 22 19:10:57 2017 by ELM ver.2012-10-06 from 001__elm20170222_180256__dat00.bin

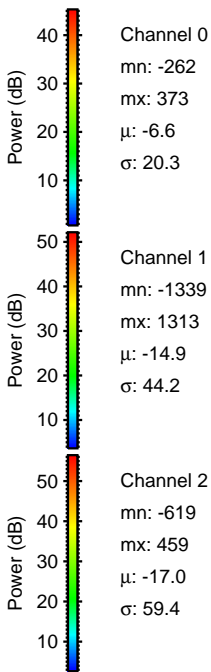
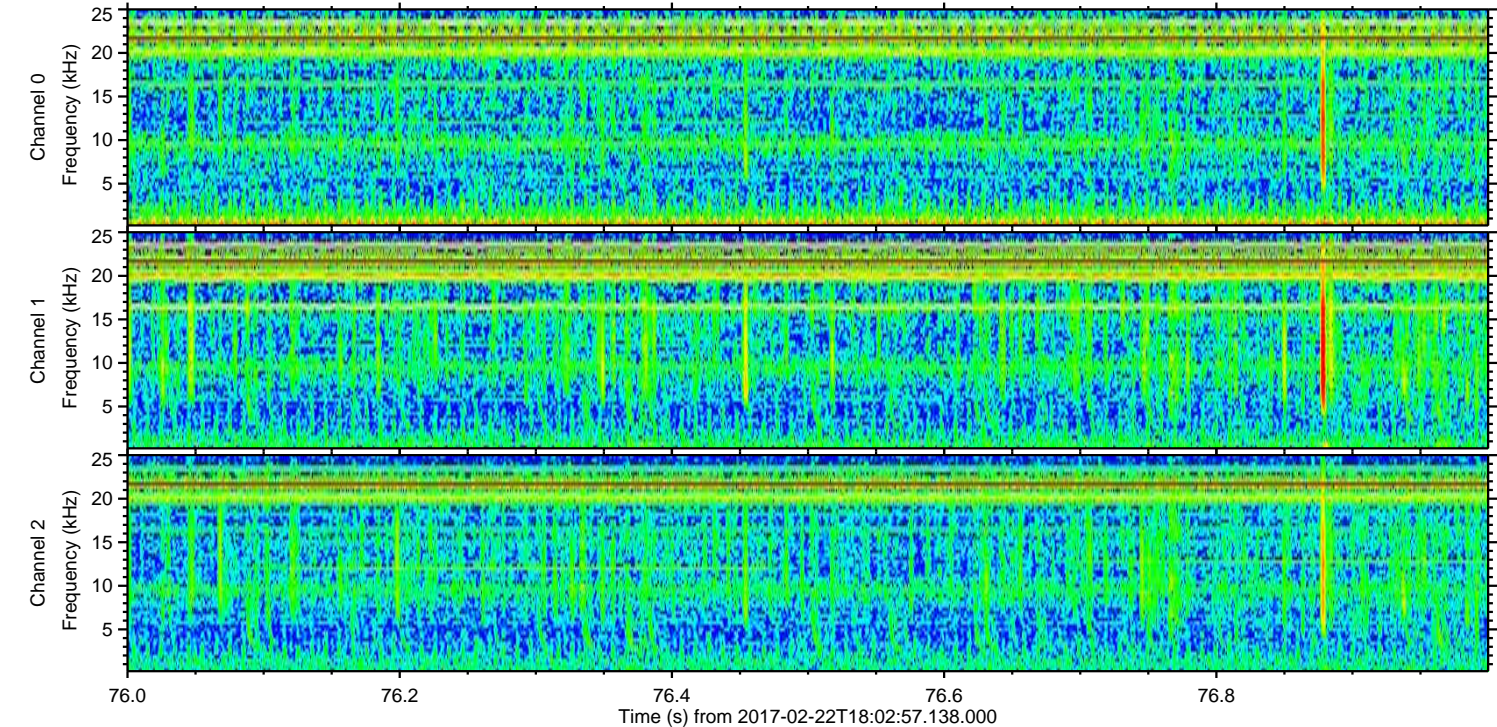
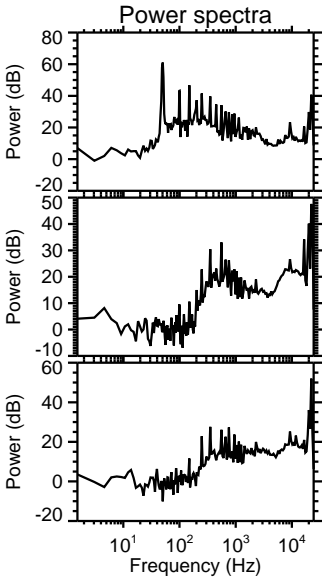
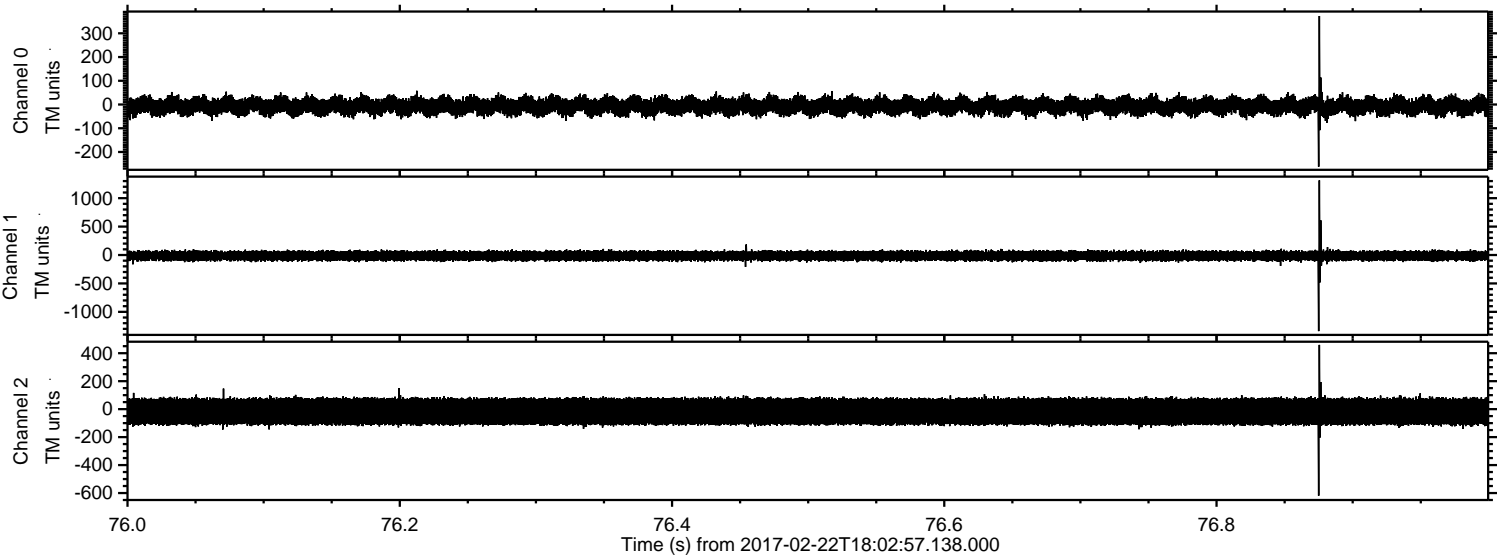


Channel 0
mn: -356
mx: 305
 μ : -6.6
 σ : 20.5

Channel 1
mn: -1287
mx: 1352
 μ : -14.9
 σ : 44.6

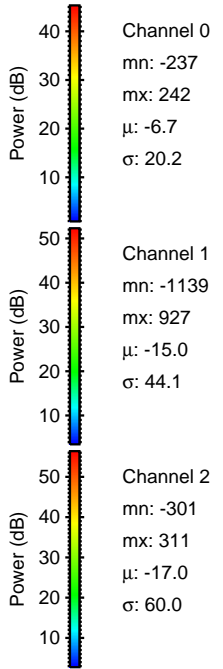
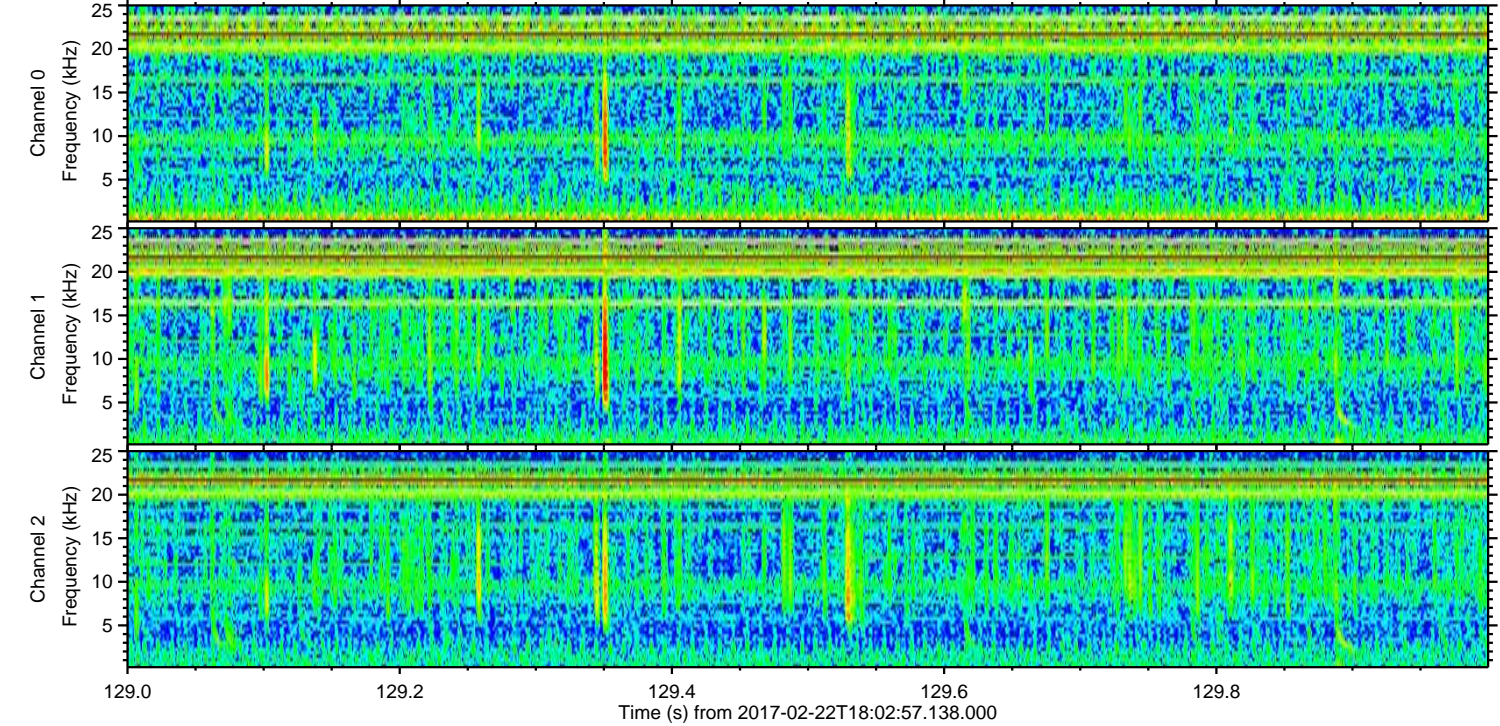
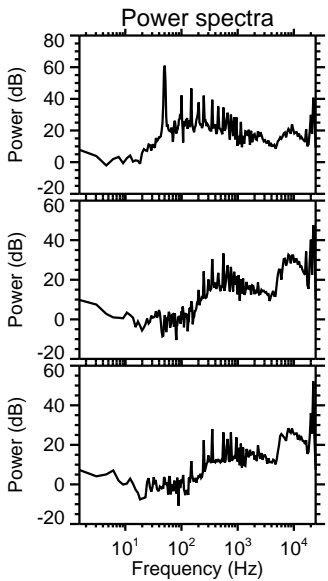
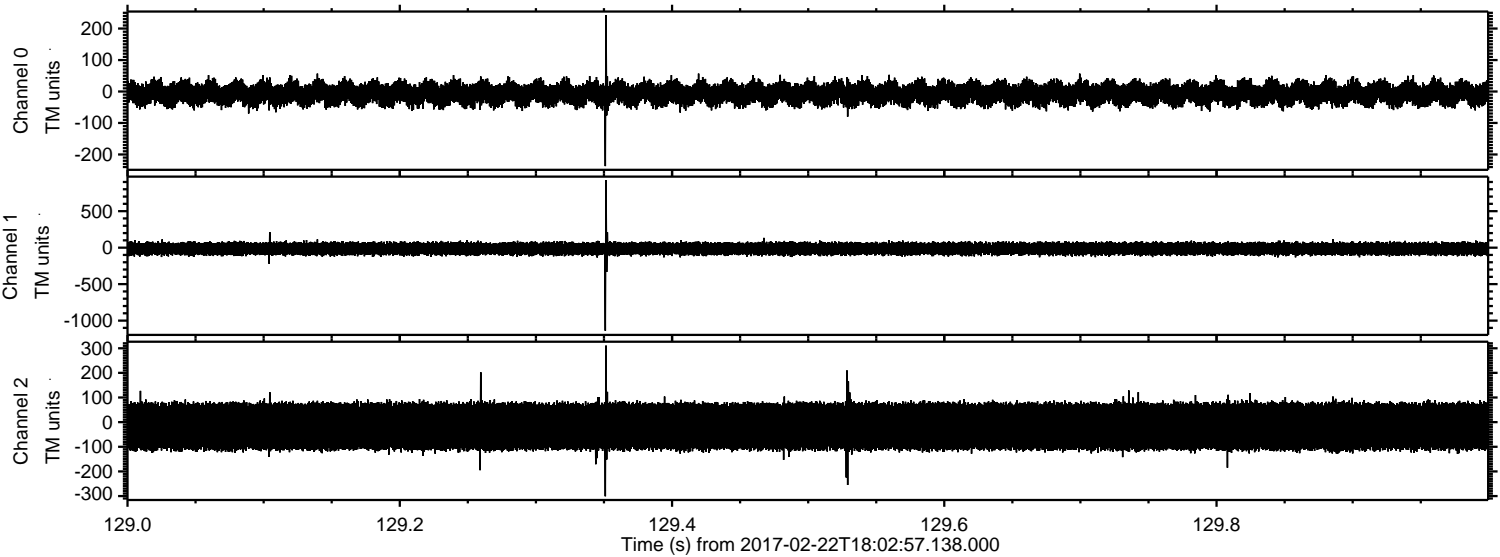
Channel 2
mn: -496
mx: 368
 μ : -17.0
 σ : 59.2

Processed Wed Feb 22 19:10:58 2017 by ELM ver.2012-10-06 from 001__elm20170222_180256__dat00.bin



ELMAVAN 3D WAVEFORMS (Measured data sampled at 50 kHz) 51000 packets of 144 samples from 2017-02-22T18:02:57.138.000. Part 130/147

Processed Wed Feb 22 19:10:59 2017 by ELM ver.2012-10-06 from 001__elm20170222_180256__dat00.bin



Processed Wed Feb 22 19:11:00 2017 by ELM ver.2012-10-06 from 001__elm20170222_180256__dat00.bin

