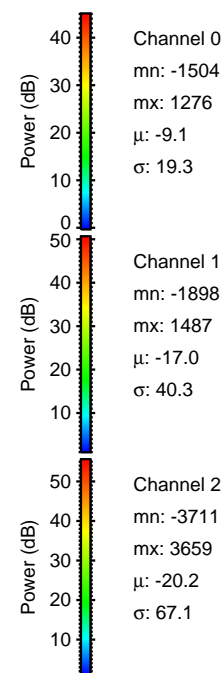
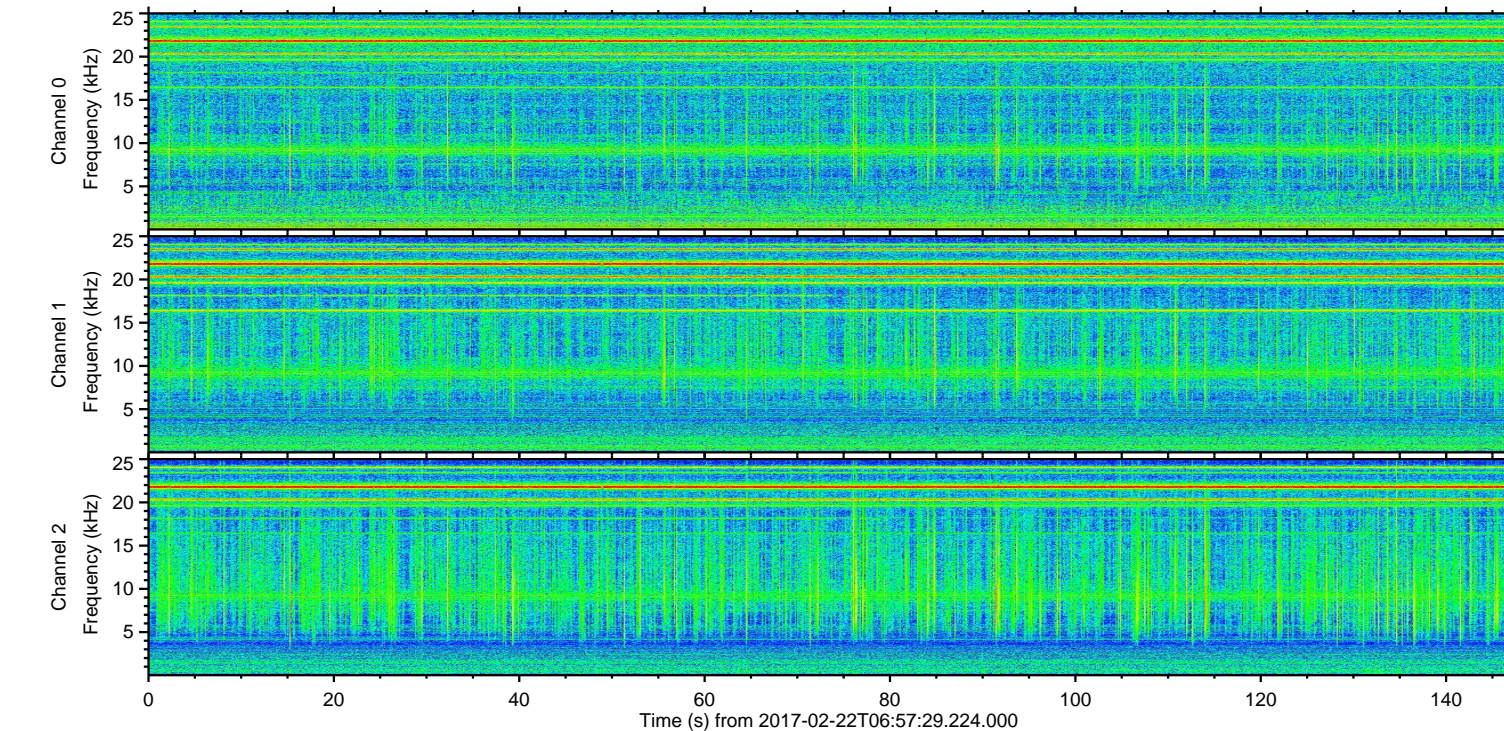
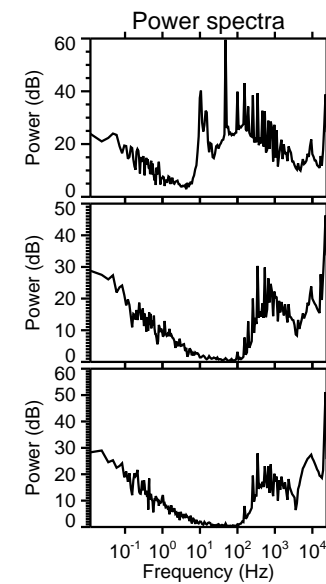
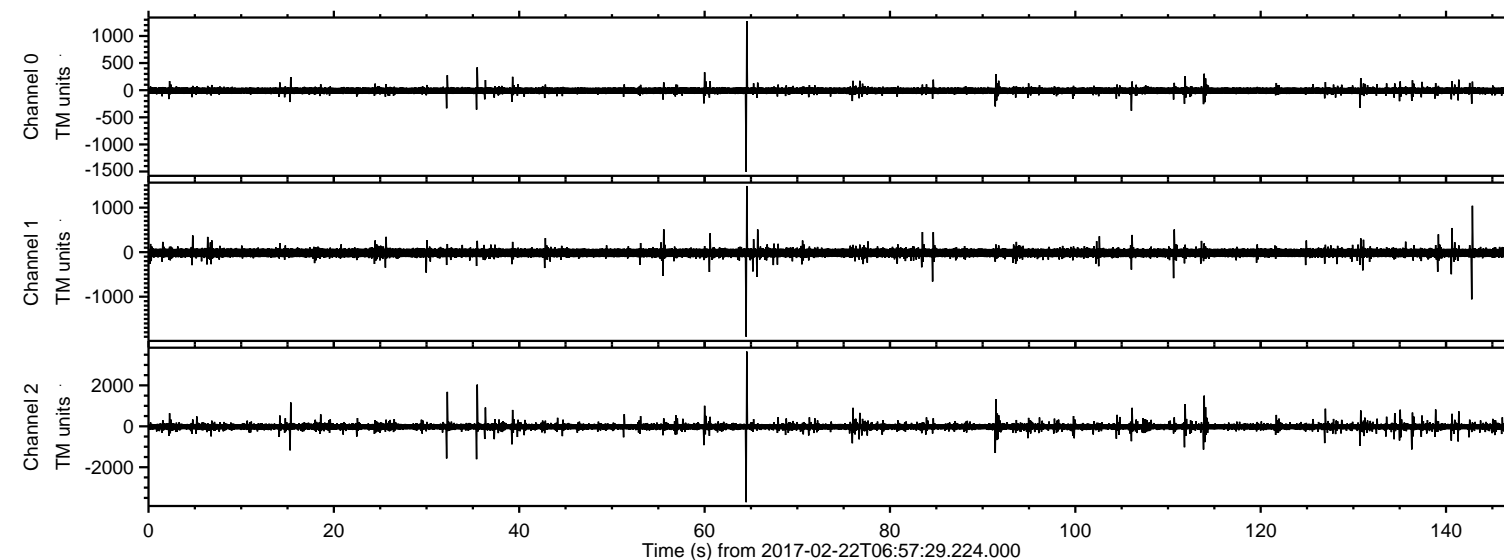
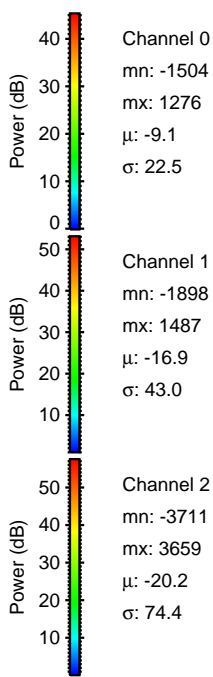
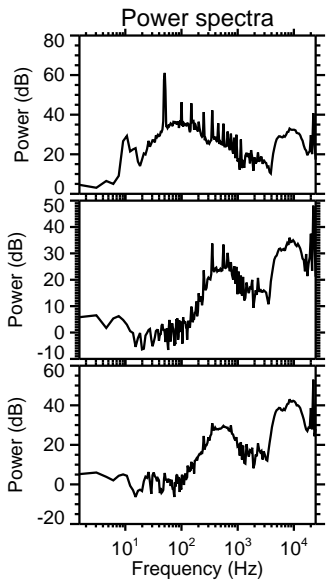
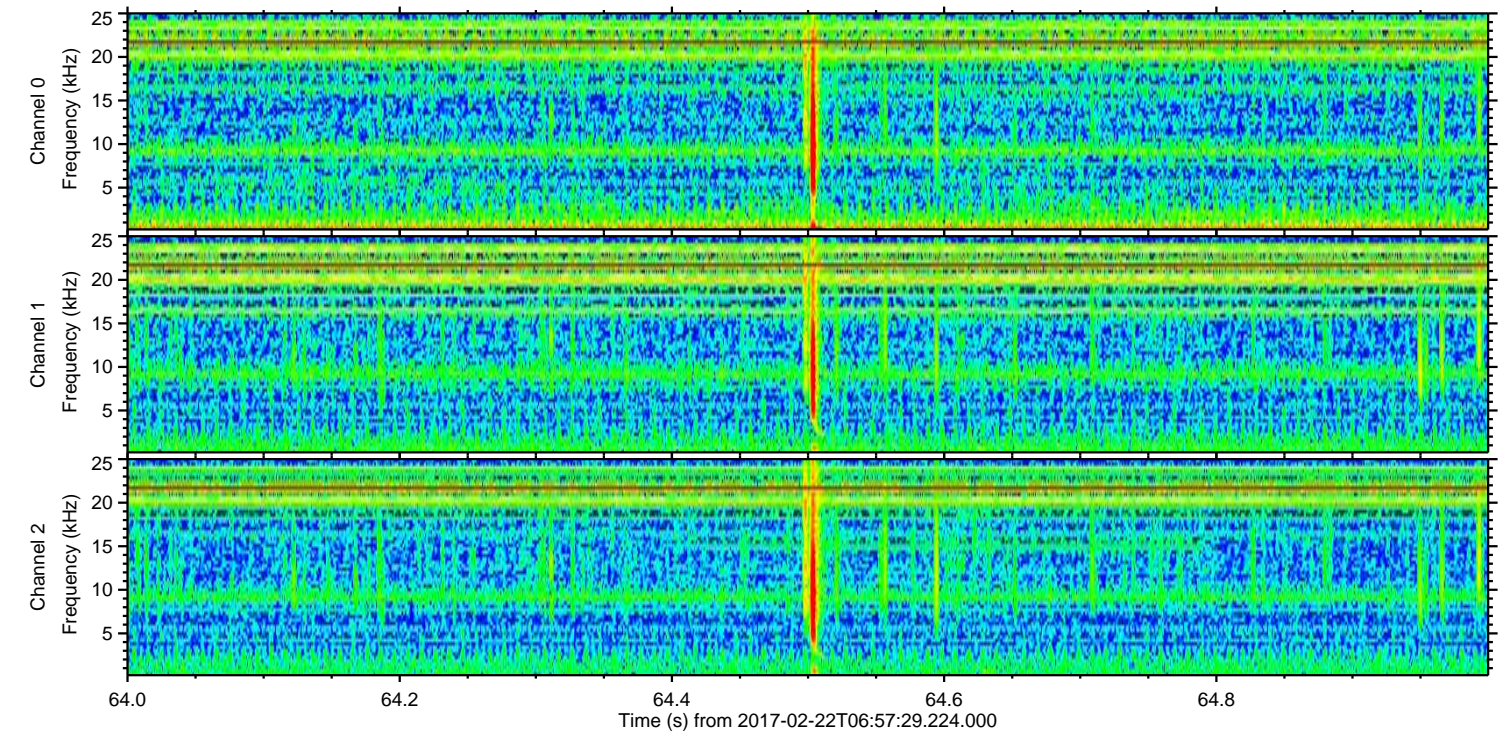
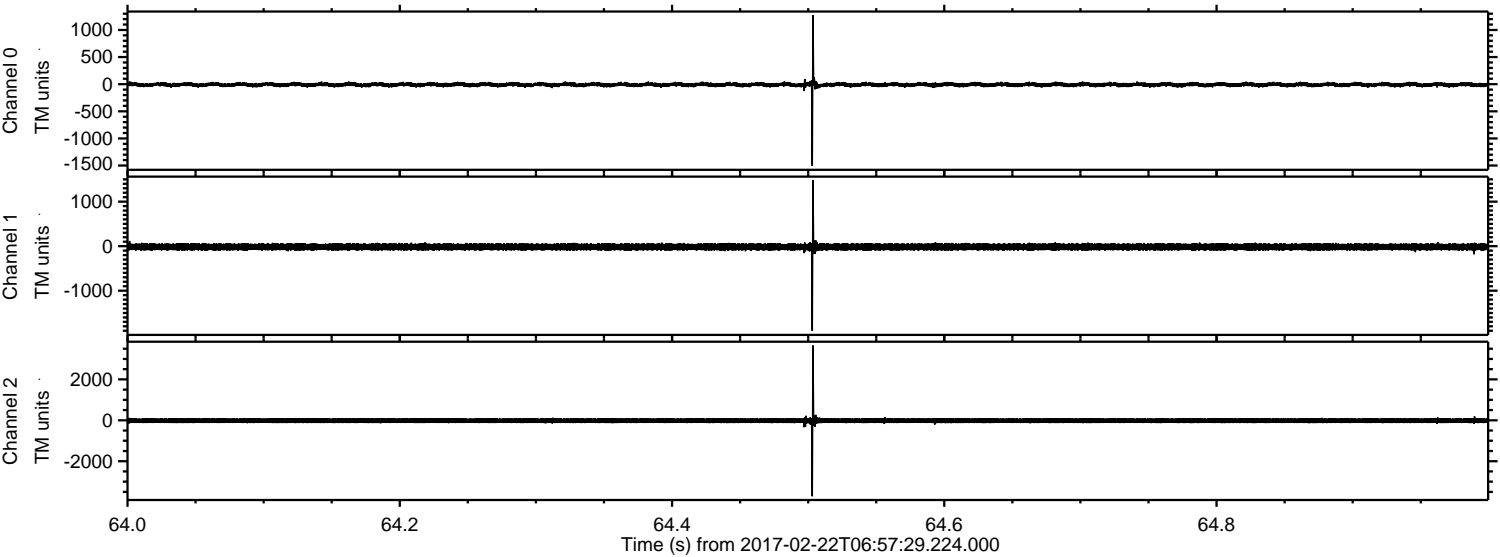


ELMAVAN 3D WAVEFORMS (Measured data sampled at 50 kHz) 51000 packets of 144 samples from 2017-02-22T06:57:29.224.000.

Processed Wed Feb 22 08:05:06 2017 by ELM ver.2012-10-06 from 001__elm20170222_065728__dat00.bin



Processed Wed Feb 22 08:05:18 2017 by ELM ver.2012-10-06 from 001__elm20170222_065728__dat00.bin



Channel 0

mn: -1504

mx: 1276

μ : -9.1

σ : 22.5

Channel 1

mn: -1898

mx: 1487

μ : -16.9

σ : 43.0

Channel 2

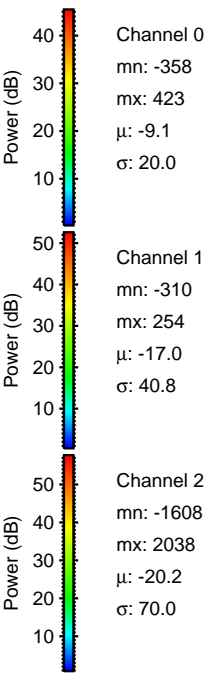
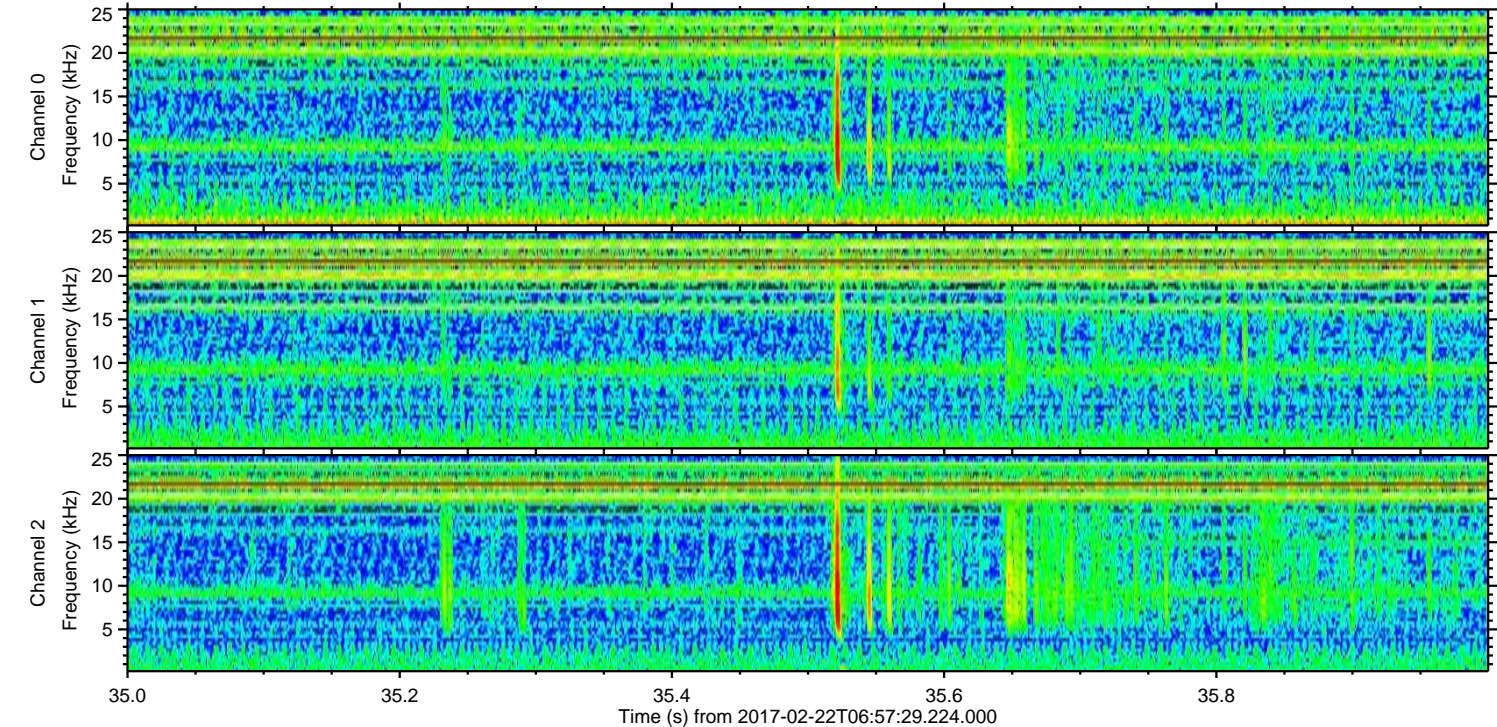
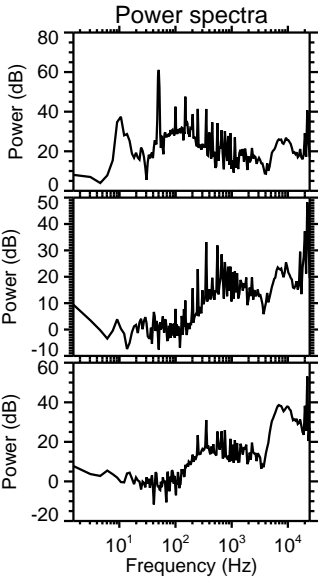
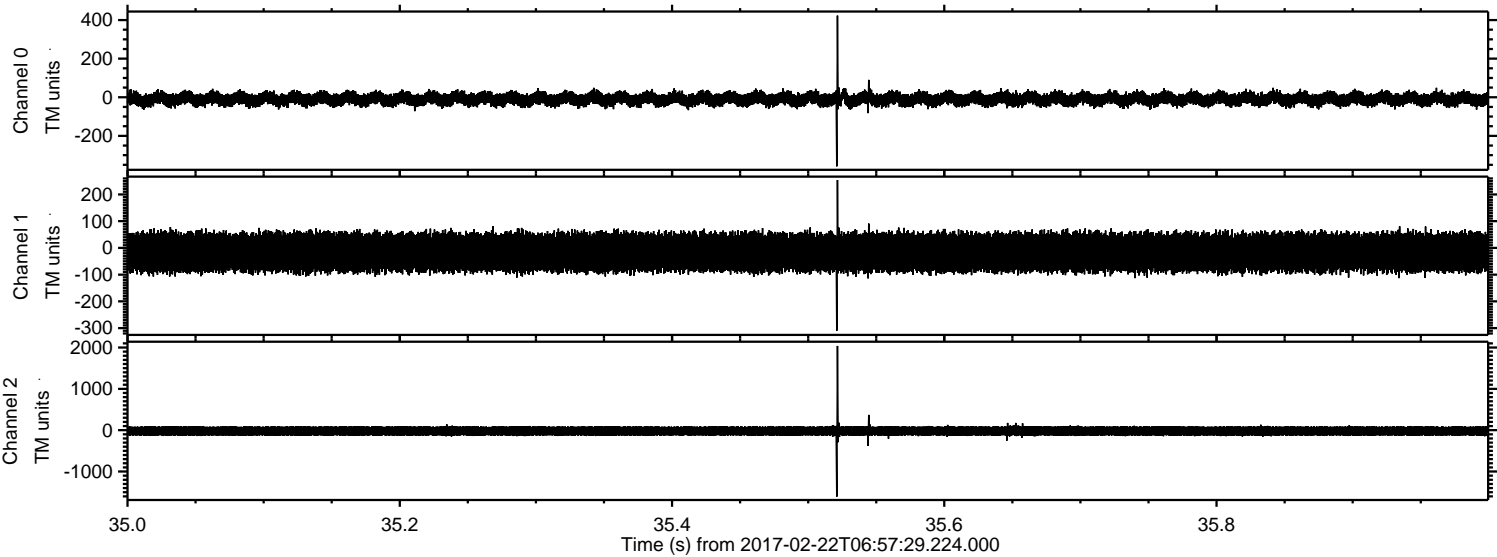
mn: -3711

mx: 3659

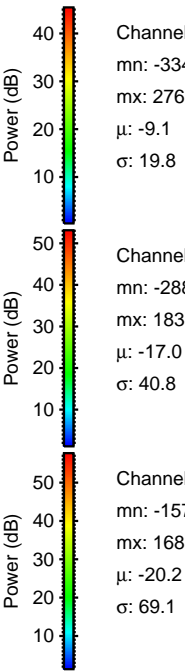
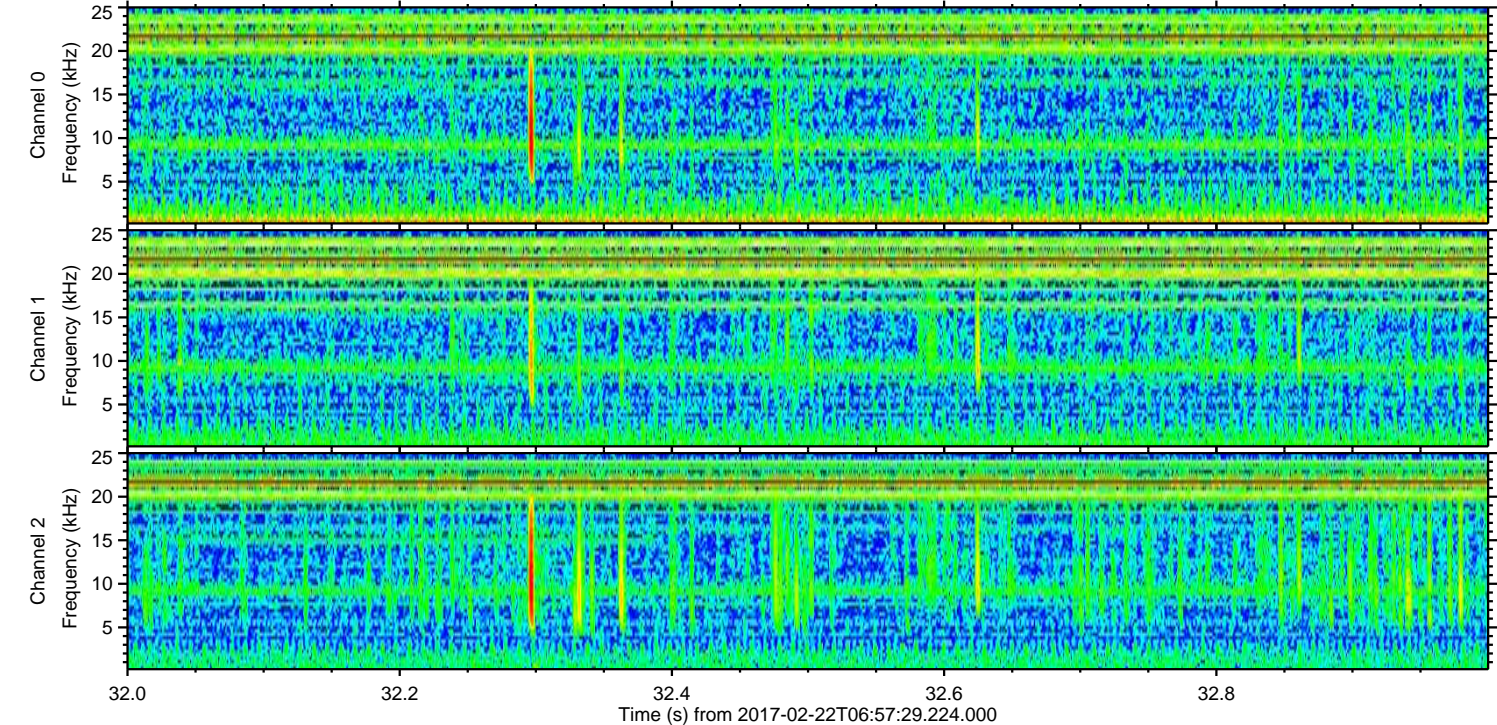
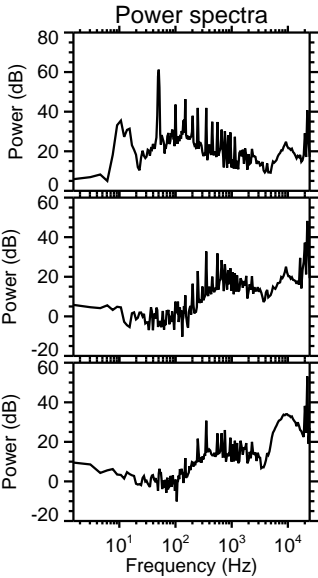
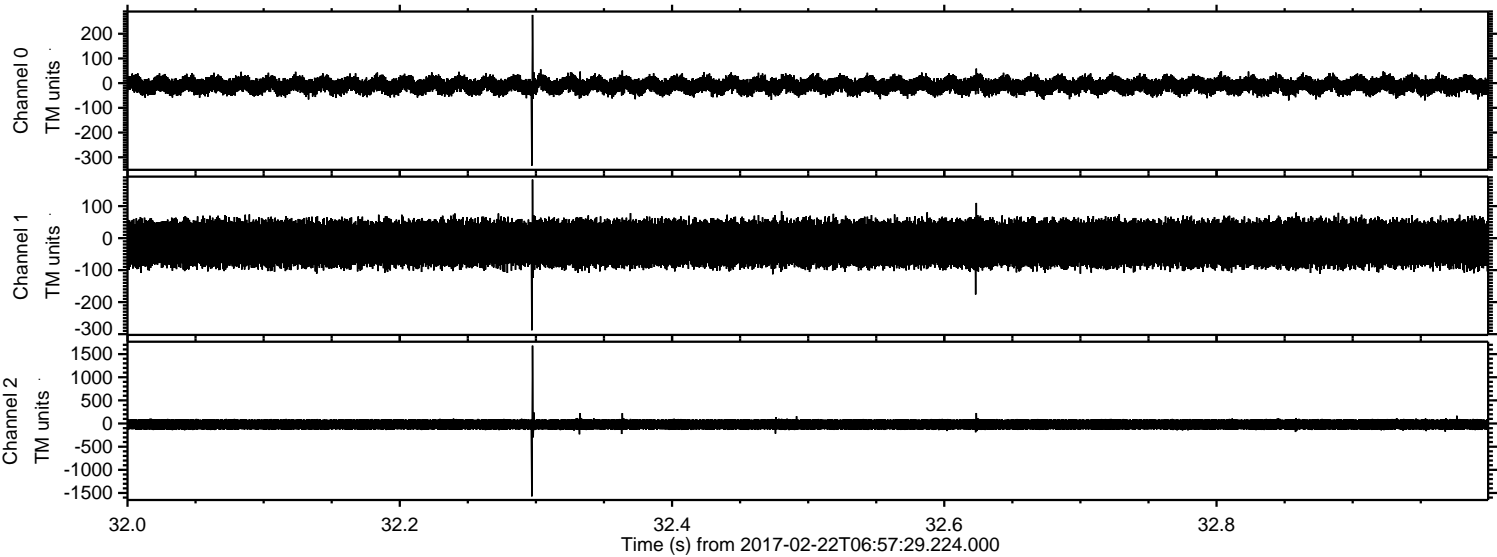
μ : -20.2

σ : 74.4

Processed Wed Feb 22 08:05:18 2017 by ELM ver.2012-10-06 from 001__elm20170222_065728__dat00.bin



Processed Wed Feb 22 08:05:19 2017 by ELM ver.2012-10-06 from 001__elm20170222_065728__dat00.bin



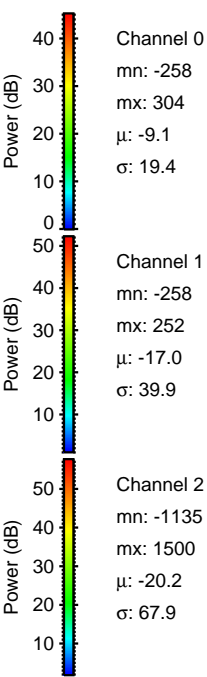
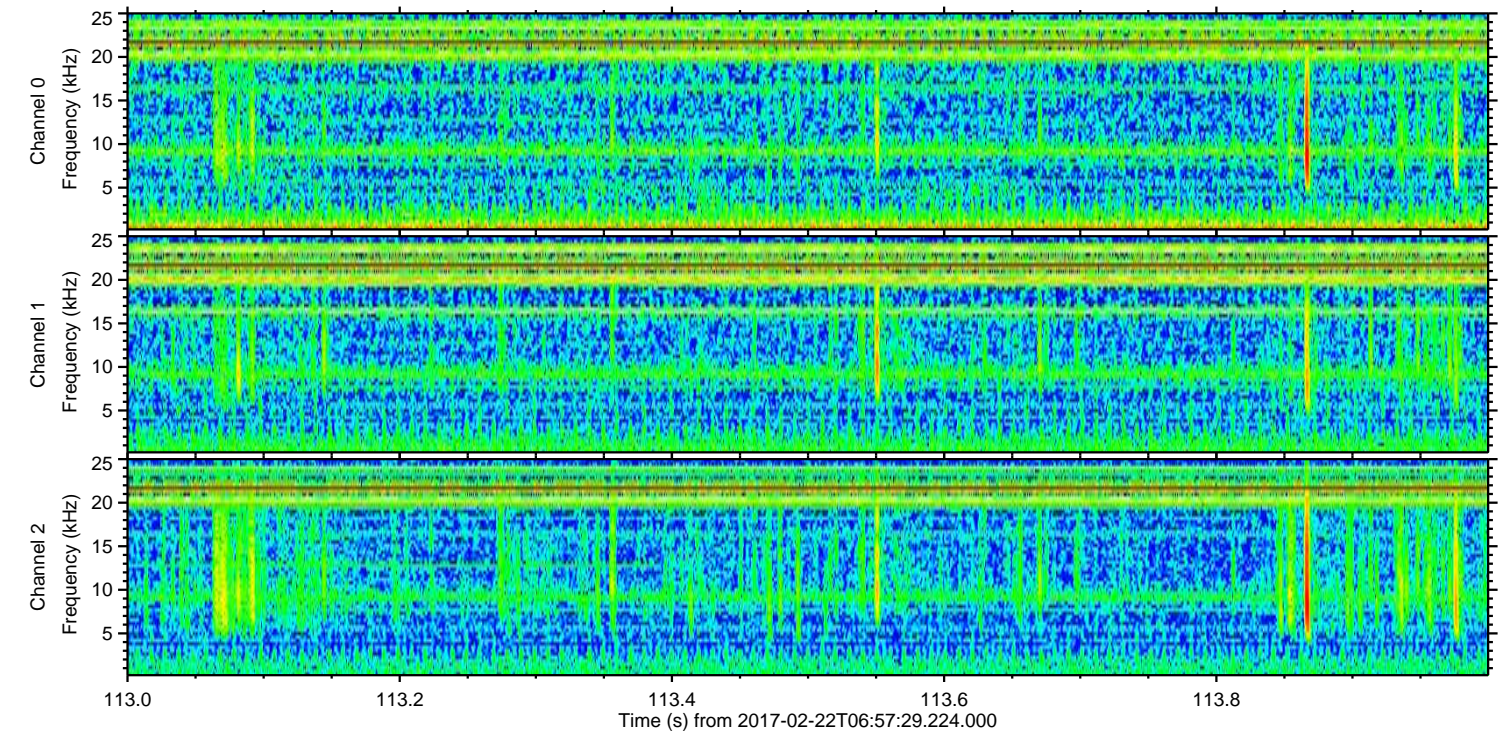
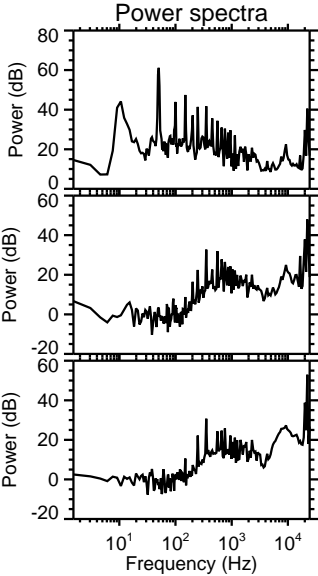
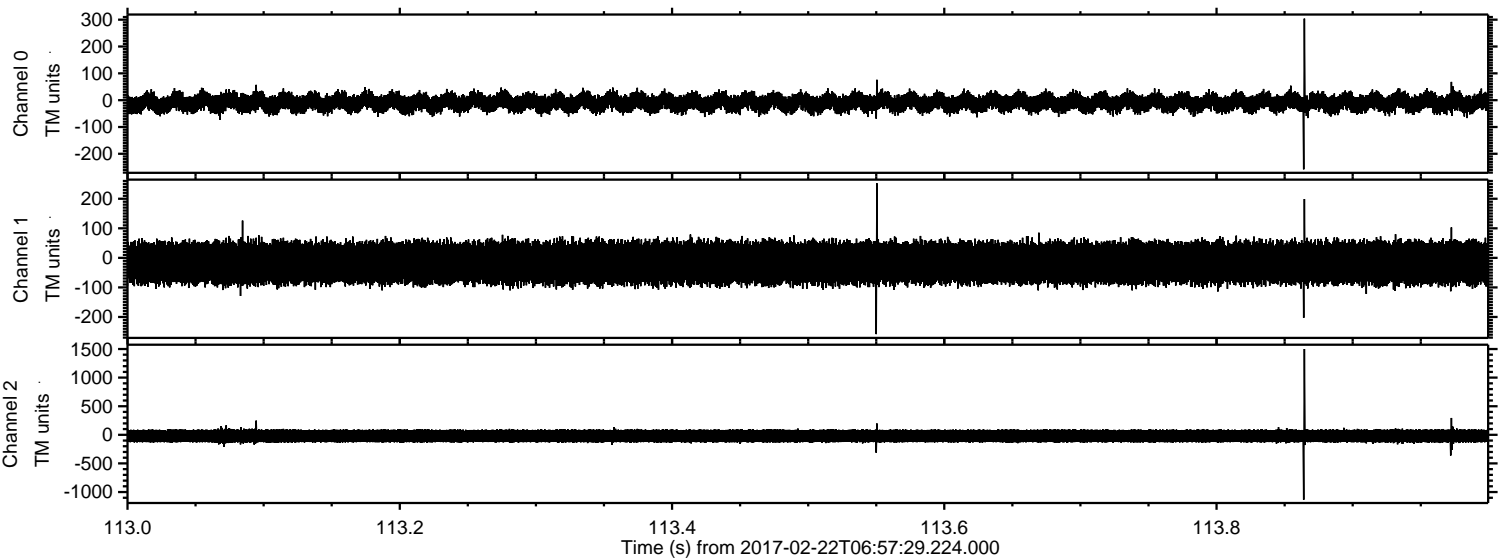
Channel 0
mn: -334
mx: 276
 μ : -9.1
 σ : 19.8

Channel 1
mn: -288
mx: 183
 μ : -17.0
 σ : 40.8

Channel 2
mn: -1573
mx: 1683
 μ : -20.2
 σ : 69.1

ELMAVAN 3D WAVEFORMS (Measured data sampled at 50 kHz) 51000 packets of 144 samples from 2017-02-22T06:57:29.224.000. Part 114/147

Processed Wed Feb 22 08:05:20 2017 by ELM ver.2012-10-06 from 001__elm20170222_065728__dat00.bin

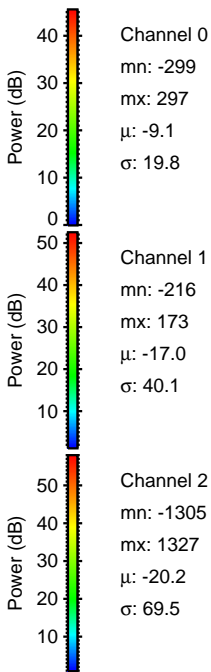
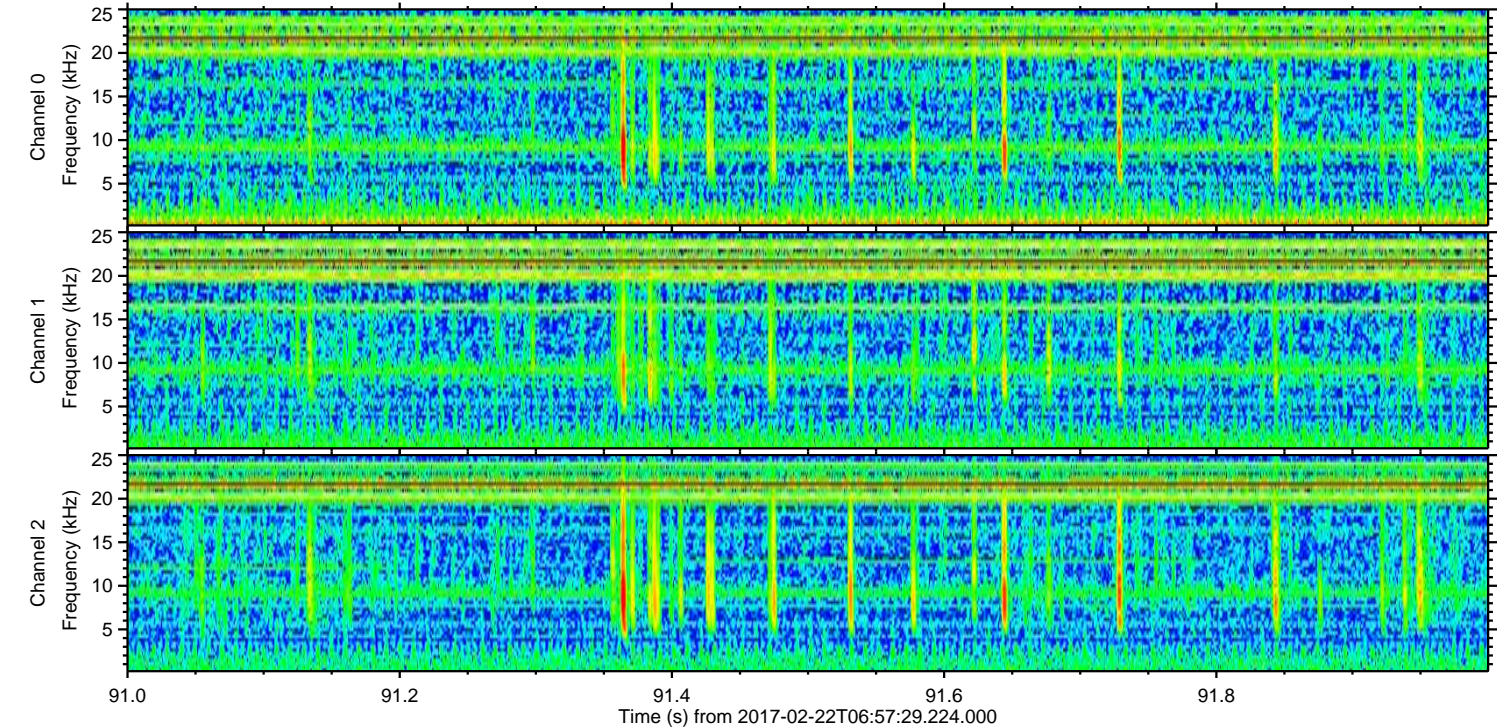
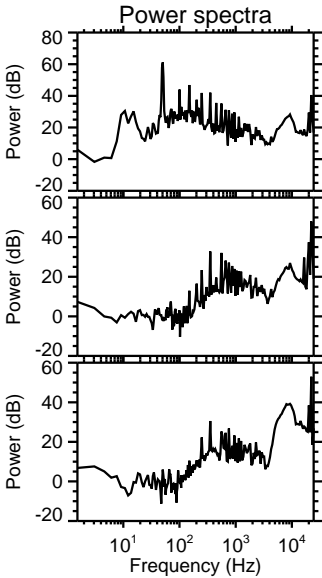
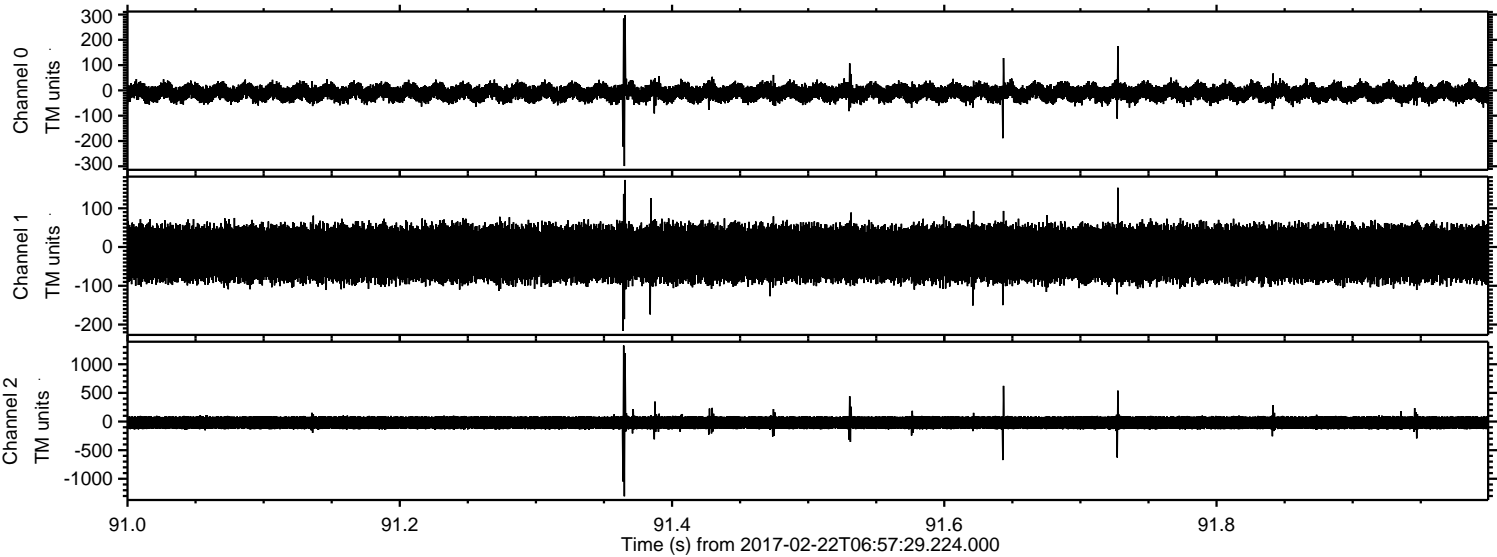


Channel 0
mn: -258
mx: 304
 μ : -9.1
 σ : 19.4

Channel 1
mn: -258
mx: 252
 μ : -17.0
 σ : 39.9

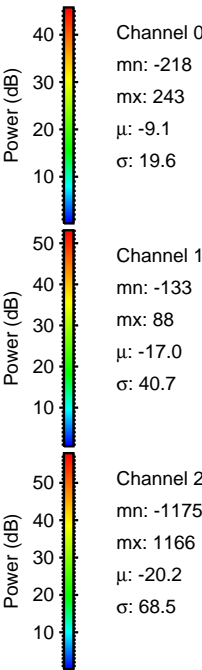
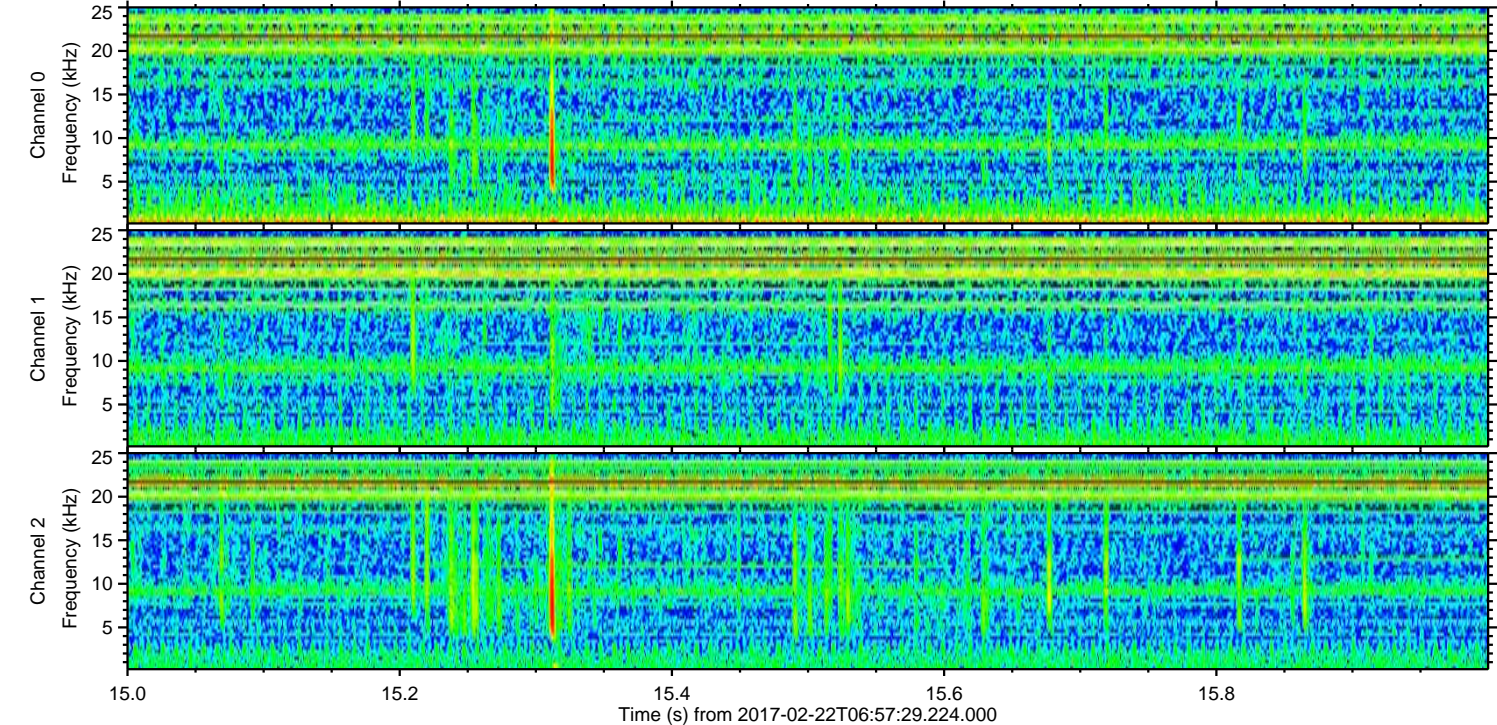
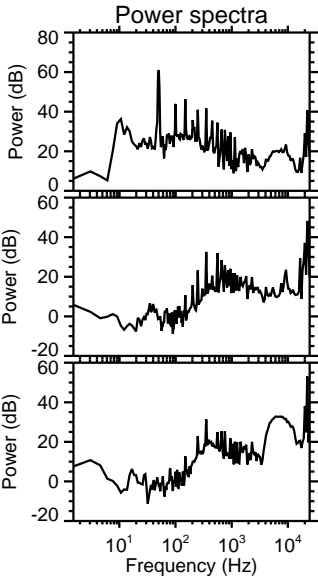
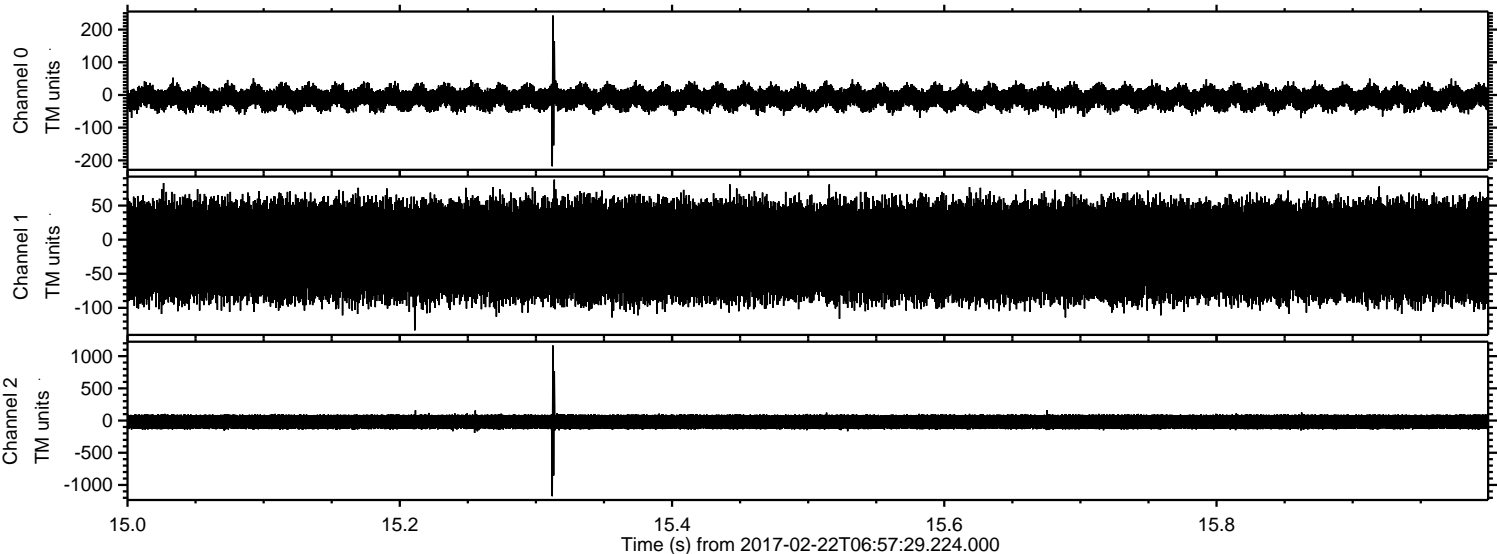
Channel 2
mn: -1135
mx: 1500
 μ : -20.2
 σ : 67.9

Processed Wed Feb 22 08:05:21 2017 by ELM ver.2012-10-06 from 001__elm20170222_065728__dat00.bin



ELMAVAN 3D WAVEFORMS (Measured data sampled at 50 kHz) 51000 packets of 144 samples from 2017-02-22T06:57:29.224.000. Part 16/147

Processed Wed Feb 22 08:05:22 2017 by ELM ver.2012-10-06 from 001__elm20170222_065728__dat00.bin



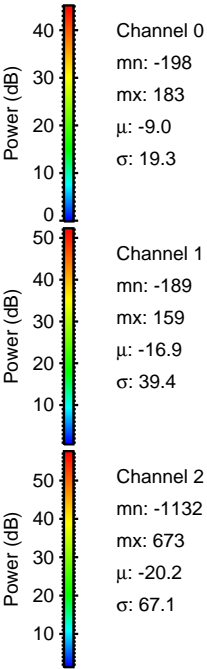
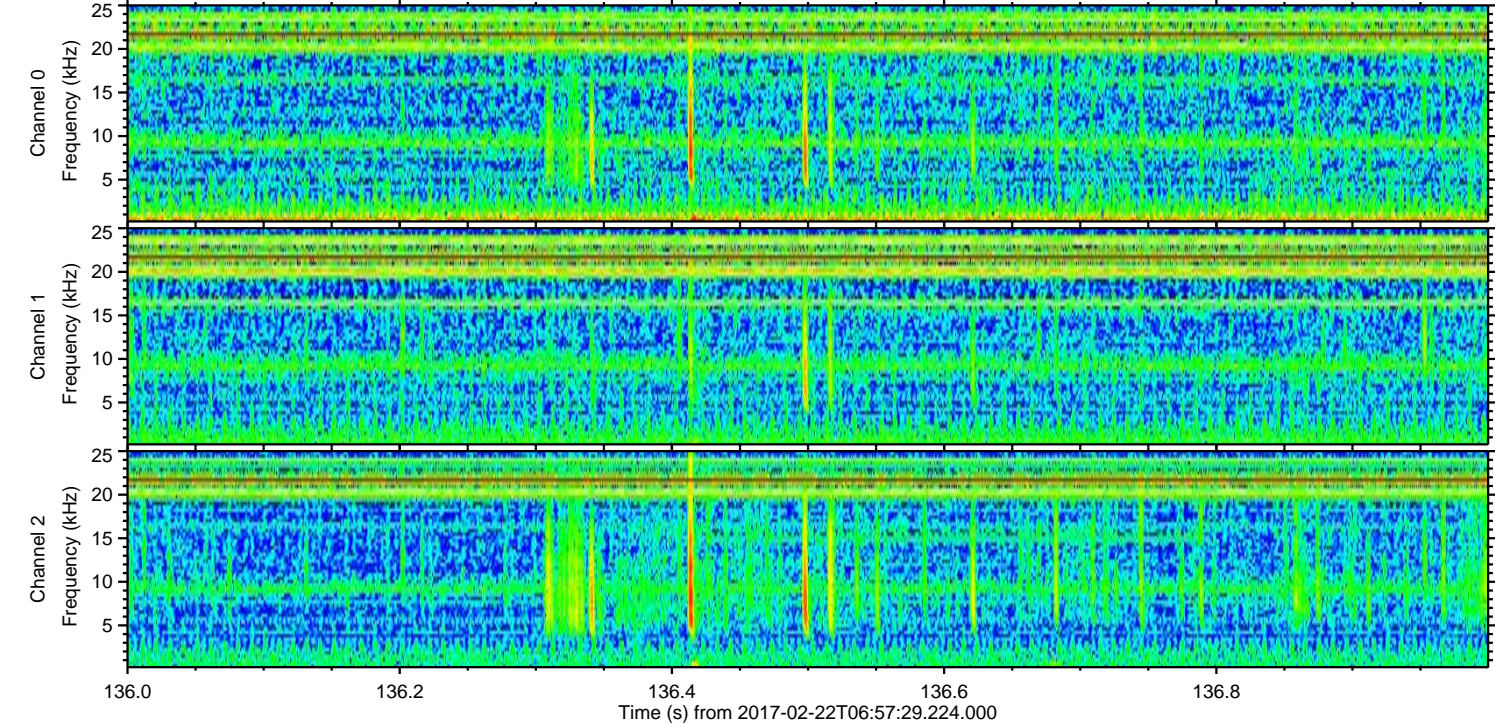
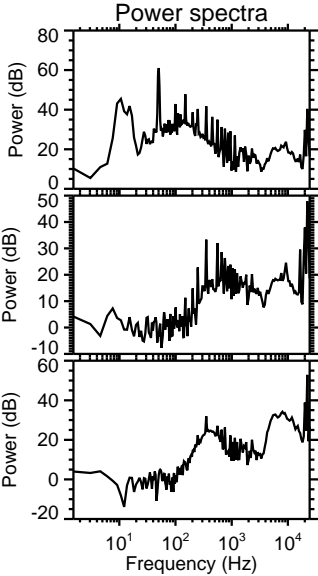
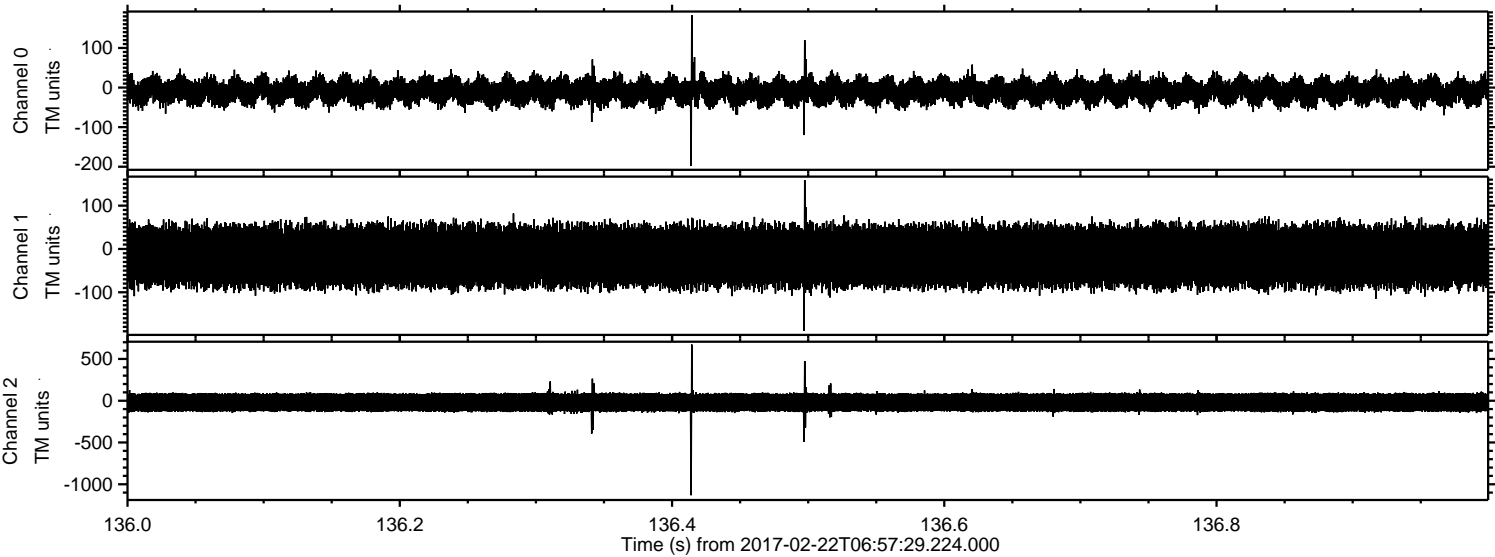
Channel 0
mn: -218
mx: 243
 μ : -9.1
 σ : 19.6

Channel 1
mn: -133
mx: 88
 μ : -17.0
 σ : 40.7

Channel 2
mn: -1175
mx: 1166
 μ : -20.2
 σ : 68.5

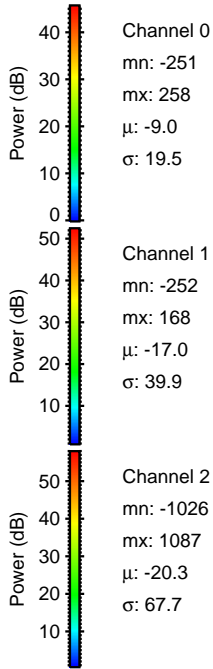
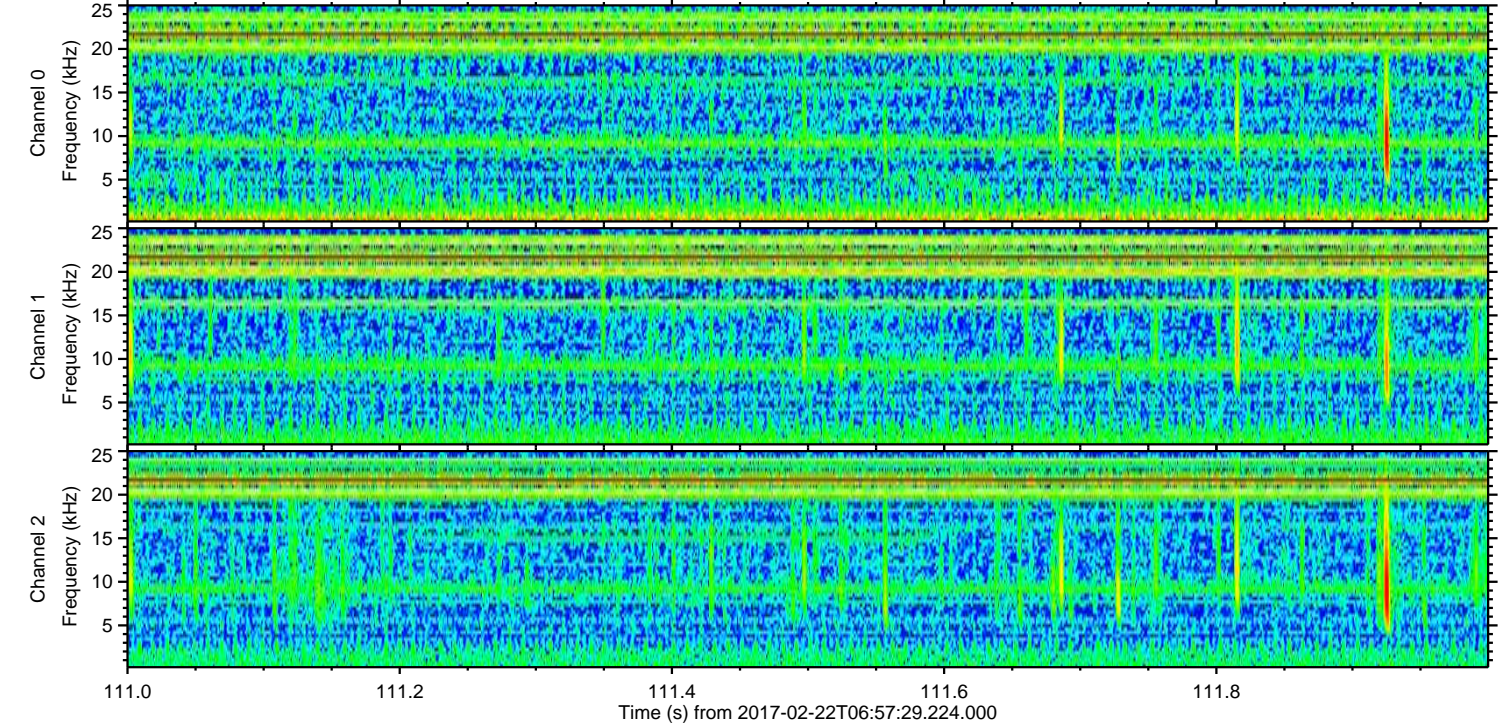
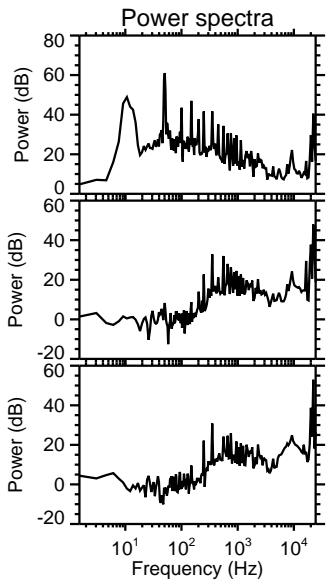
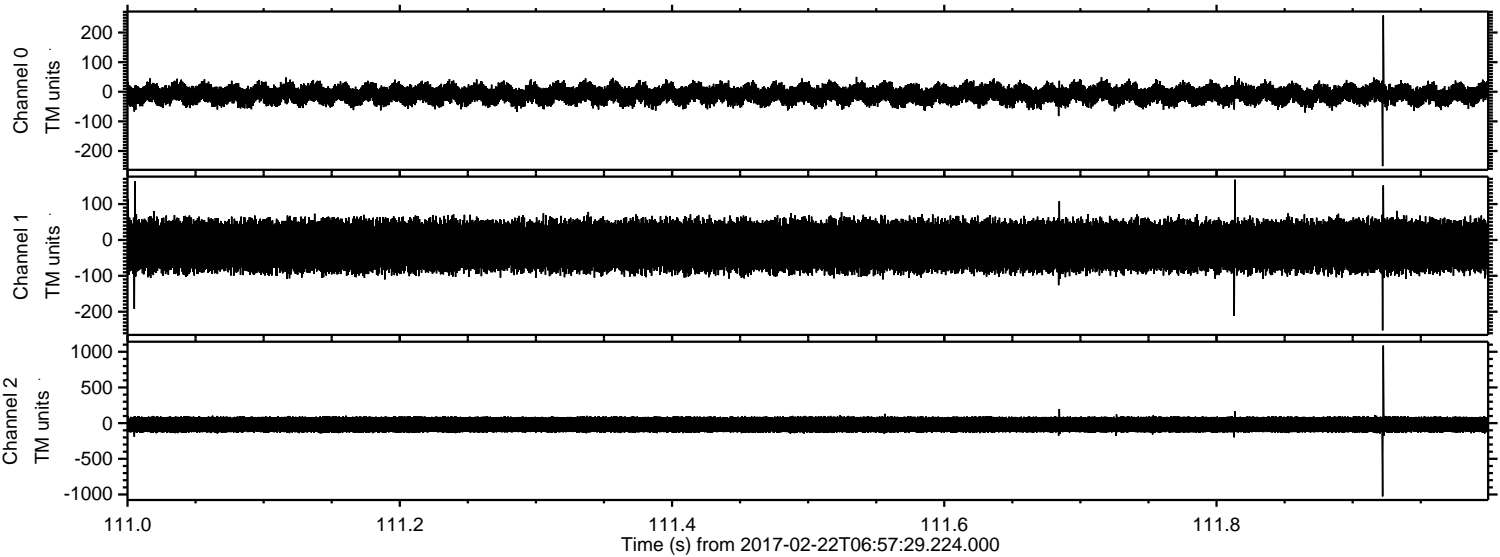
ELMAVAN 3D WAVEFORMS (Measured data sampled at 50 kHz) 51000 packets of 144 samples from 2017-02-22T06:57:29.224.000. Part 137/147

Processed Wed Feb 22 08:05:23 2017 by ELM ver.2012-10-06 from 001__elm20170222_065728__dat00.bin



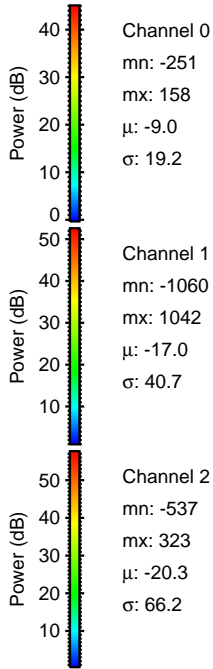
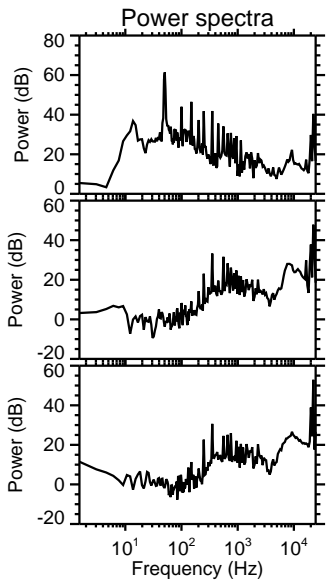
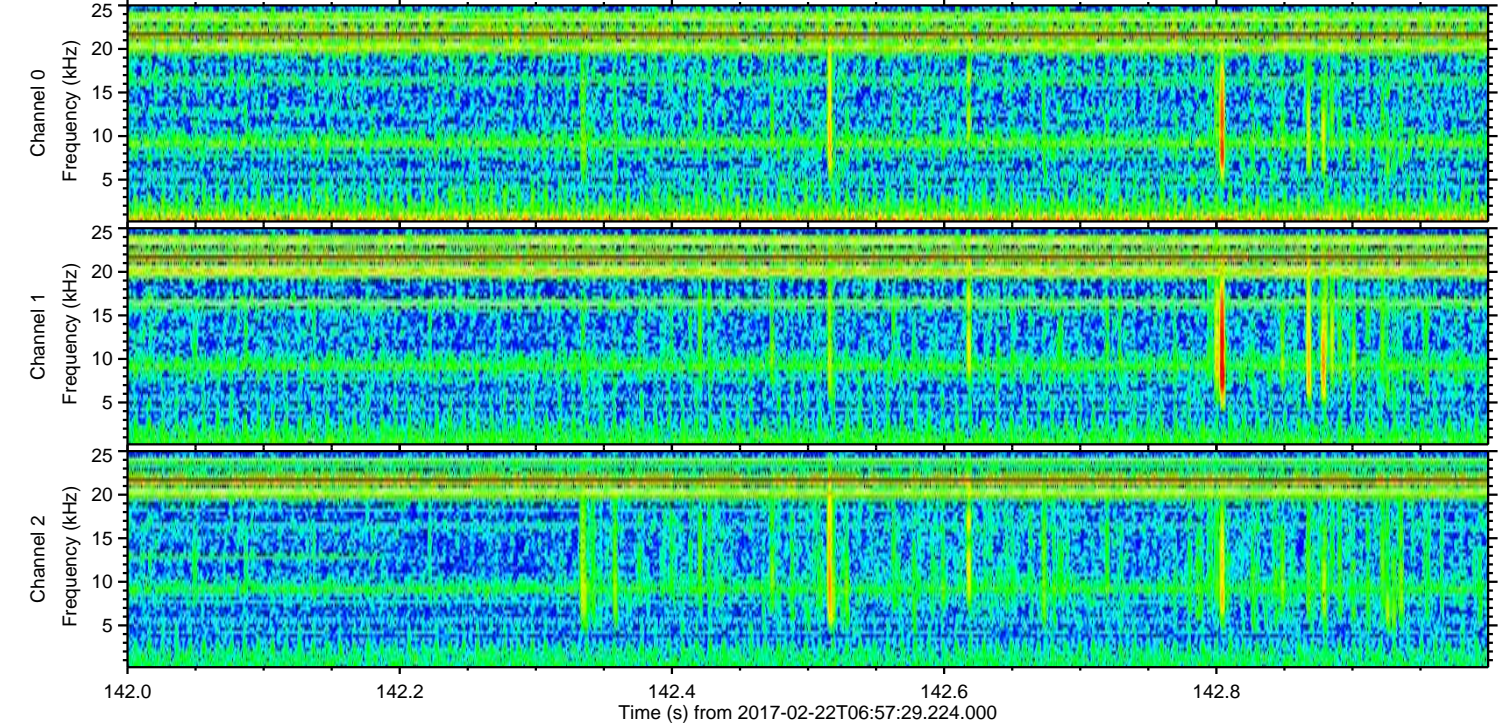
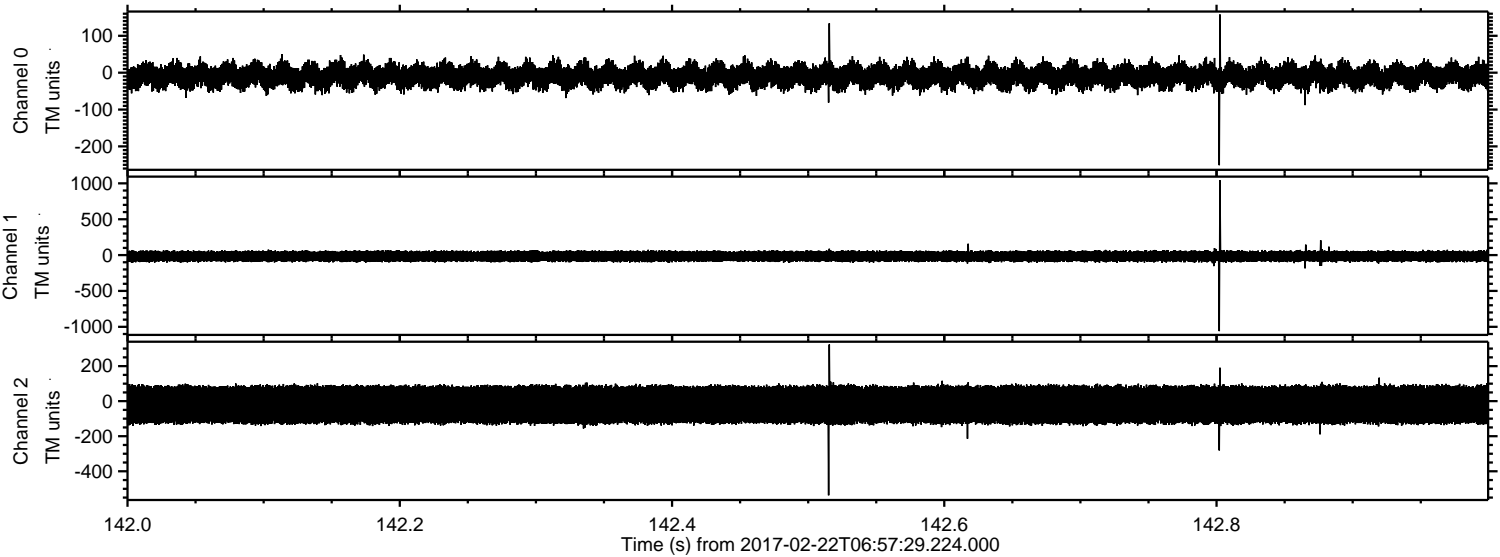
ELMAVAN 3D WAVEFORMS (Measured data sampled at 50 kHz) 51000 packets of 144 samples from 2017-02-22T06:57:29.224.000. Part 112/147

Processed Wed Feb 22 08:05:24 2017 by ELM ver.2012-10-06 from 001__elm20170222_065728__dat00.bin



ELMAVAN 3D WAVEFORMS (Measured data sampled at 50 kHz) 51000 packets of 144 samples from 2017-02-22T06:57:29.224.000. Part 143/147

Processed Wed Feb 22 08:05:25 2017 by ELM ver.2012-10-06 from 001__elm20170222_065728__dat00.bin



ELMAVAN 3D WAVEFORMS (Measured data sampled at 50 kHz) 51000 packets of 144 samples from 2017-02-22T06:57:29.224.000. Part 116/147

Processed Wed Feb 22 08:05:26 2017 by ELM ver.2012-10-06 from 001__elm20170222_065728__dat00.bin

