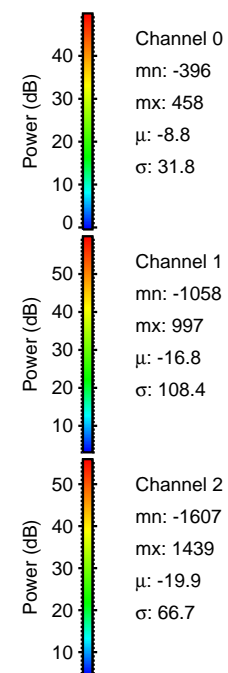
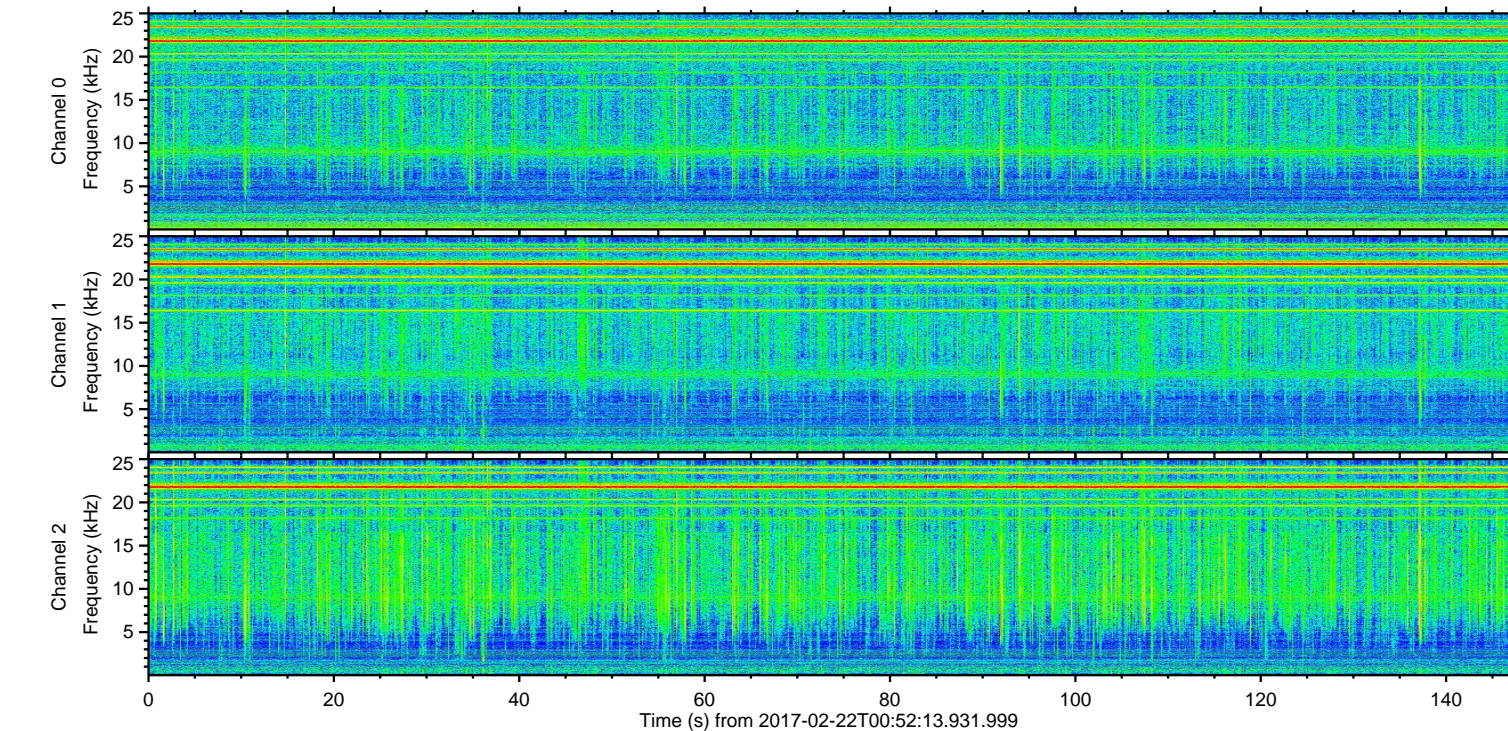
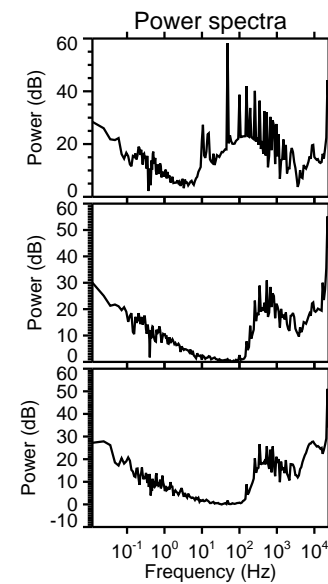
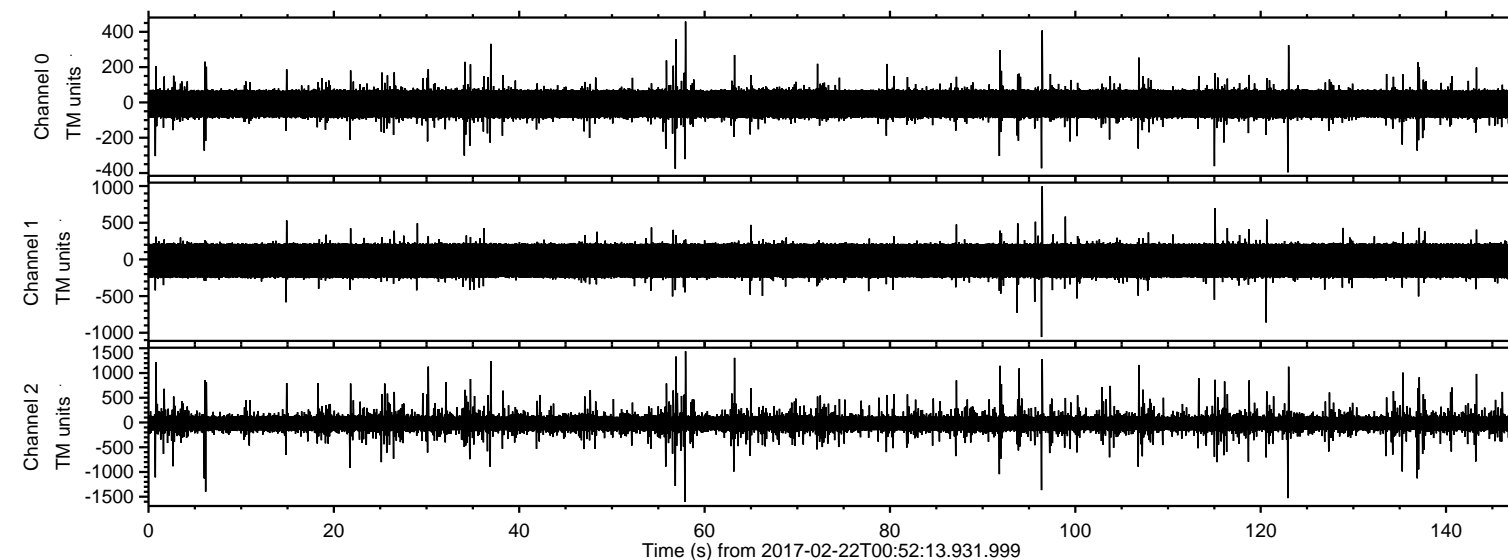


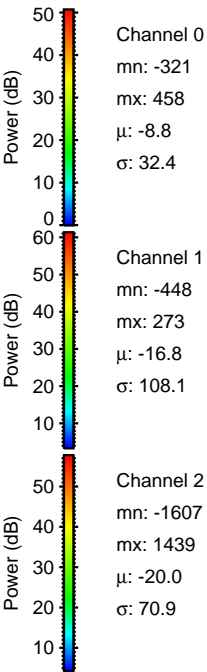
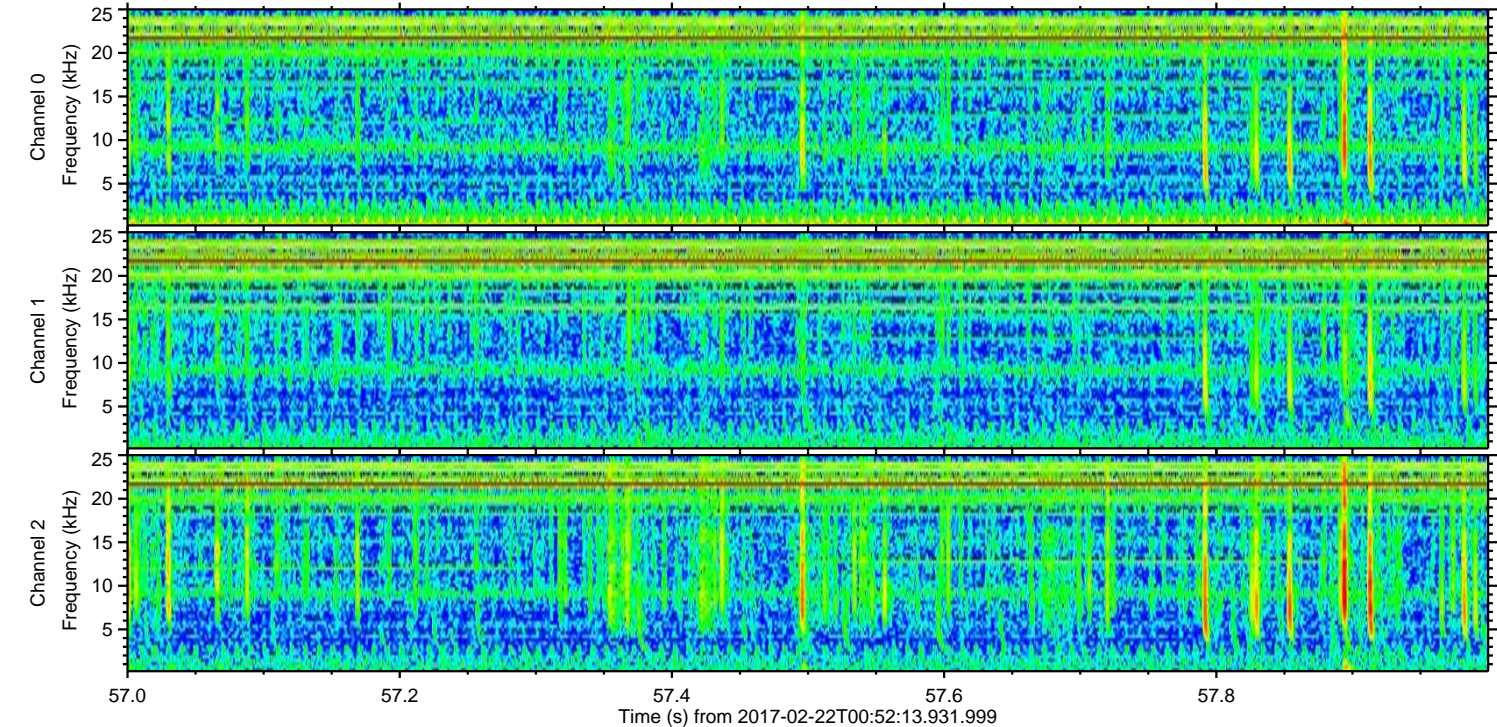
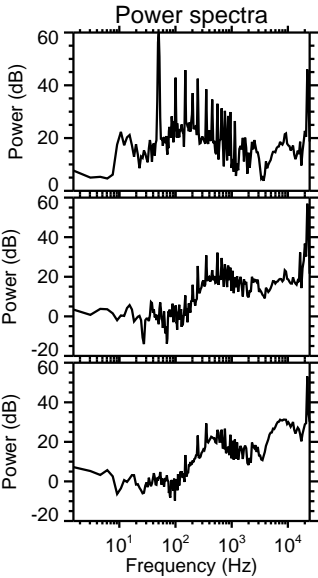
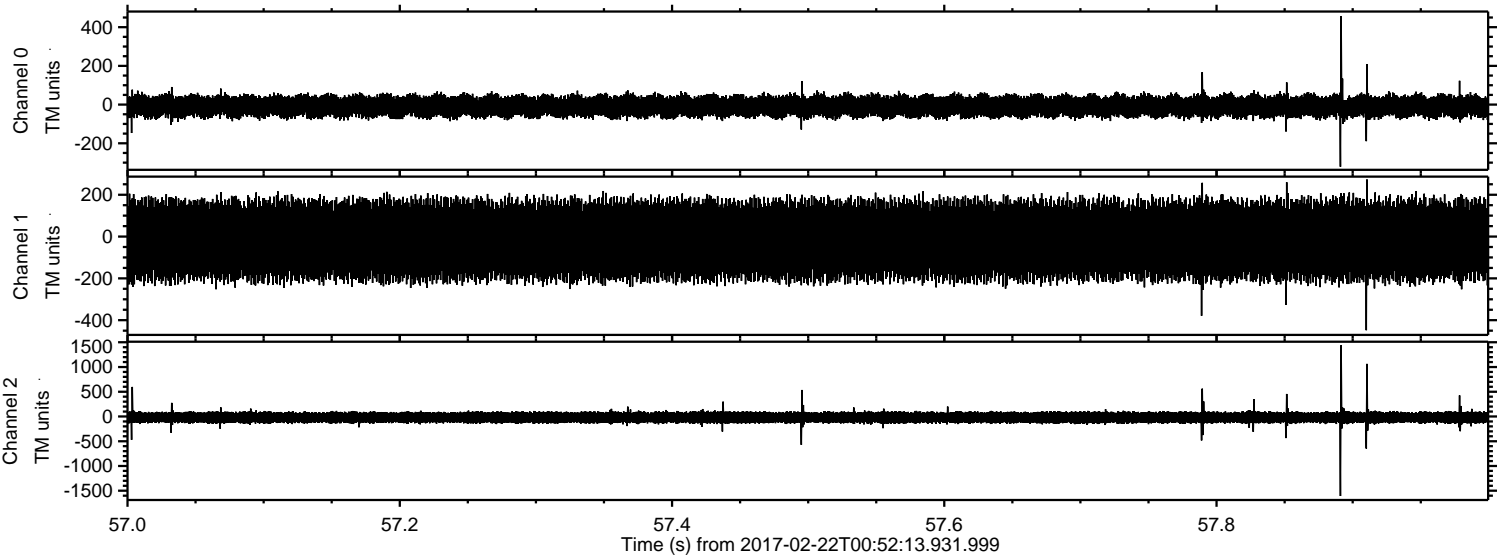
ELMAVAN 3D WAVEFORMS (Measured data sampled at 50 kHz) 51000 packets of 144 samples from 2017-02-22T00:52:13.931.999.

Processed Wed Feb 22 02:00:21 2017 by ELM ver.2012-10-06 from 001__elm20170222_005212__dat00.bin



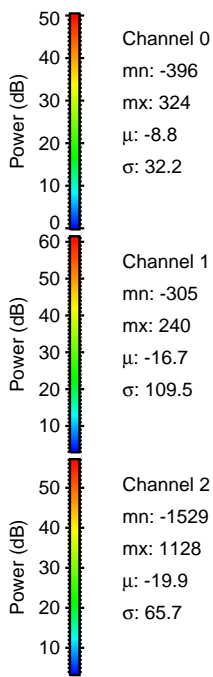
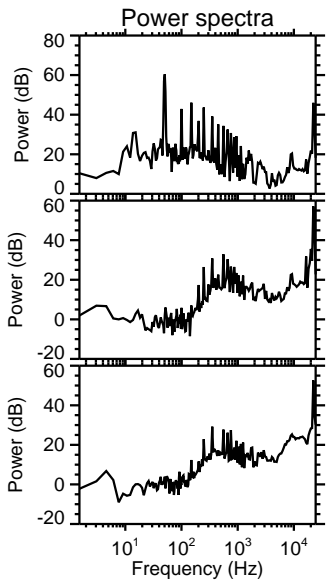
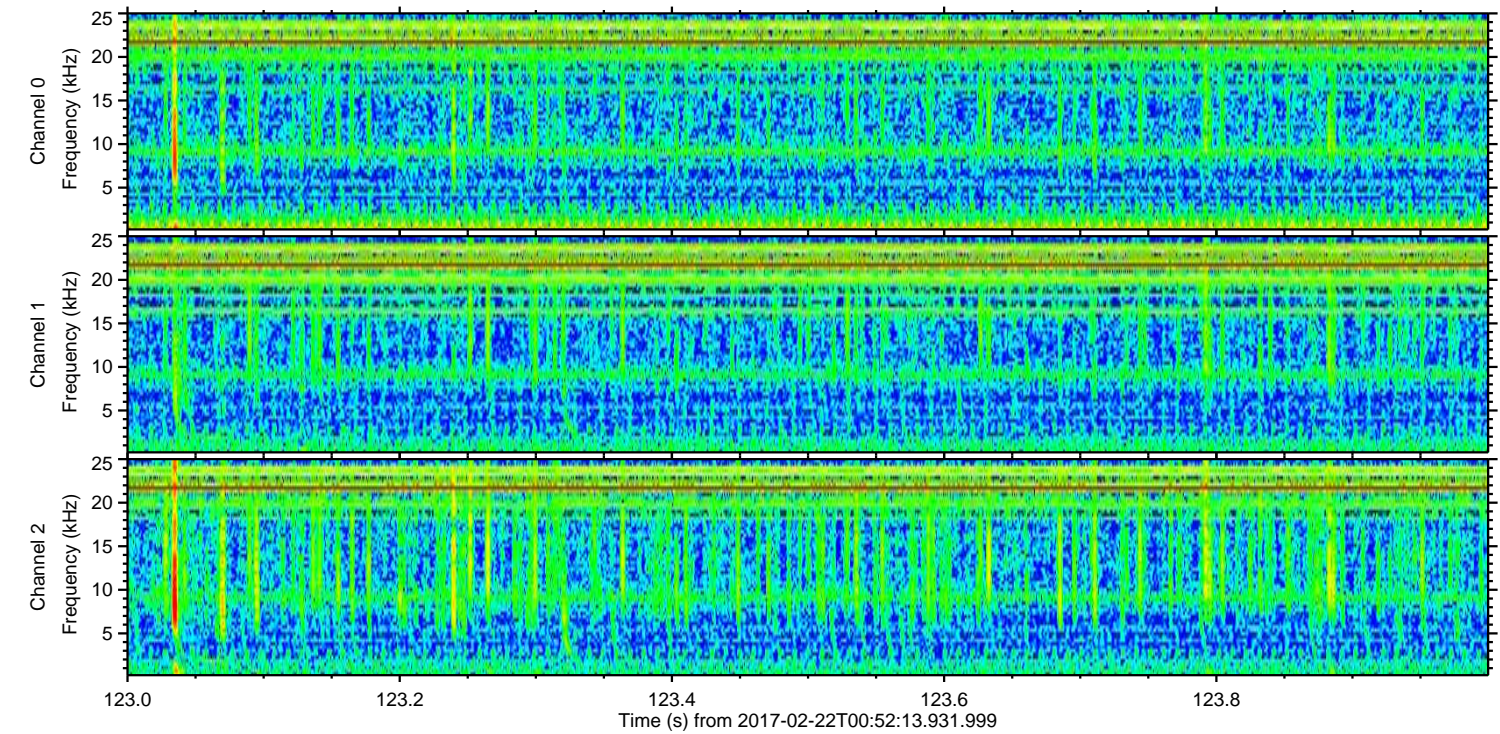
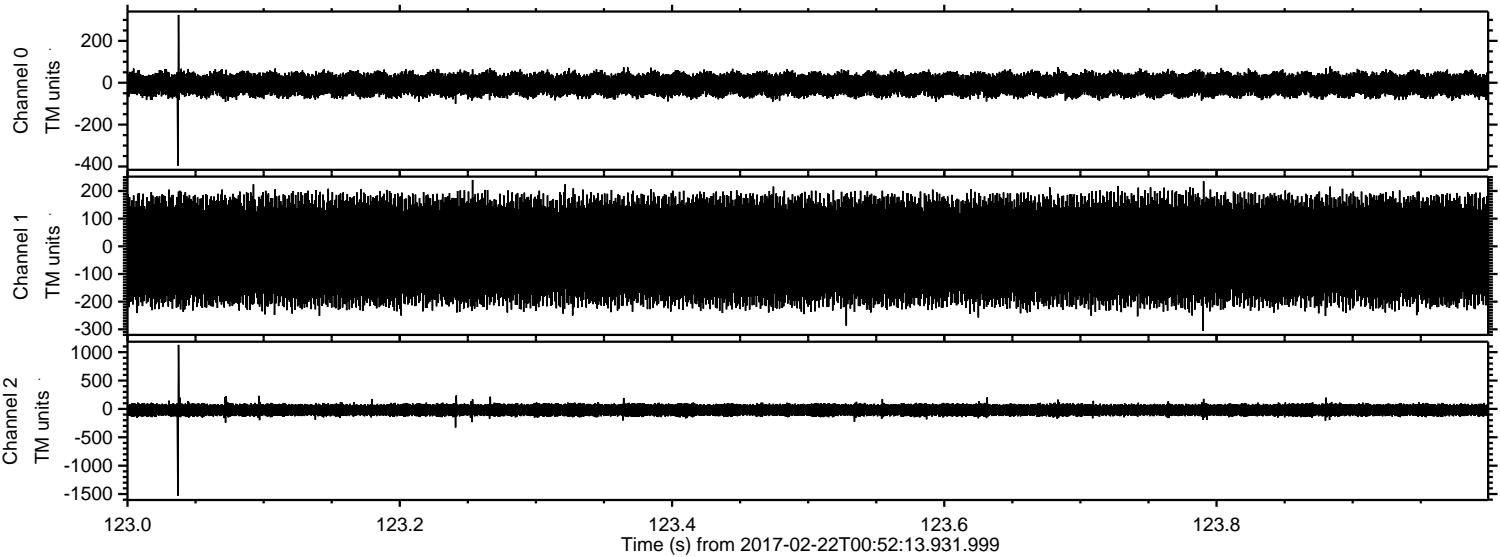
ELMAVAN 3D WAVEFORMS (Measured data sampled at 50 kHz) 51000 packets of 144 samples from 2017-02-22T00:52:13.931.999. Part 58/147

Processed Wed Feb 22 02:00:33 2017 by ELM ver.2012-10-06 from 001__elm20170222_005212__dat00.bin



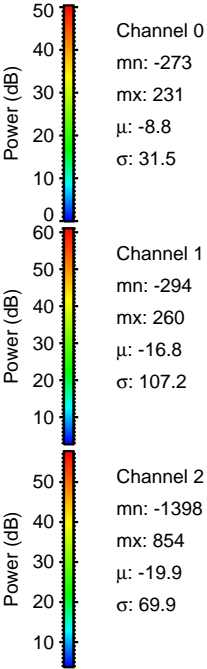
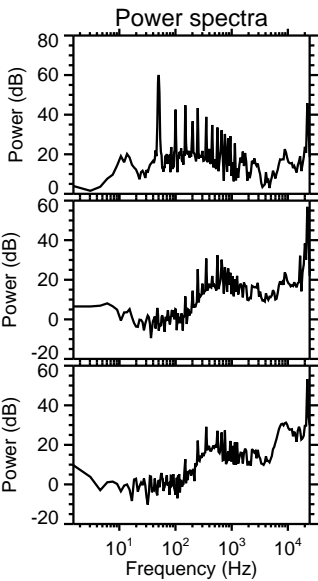
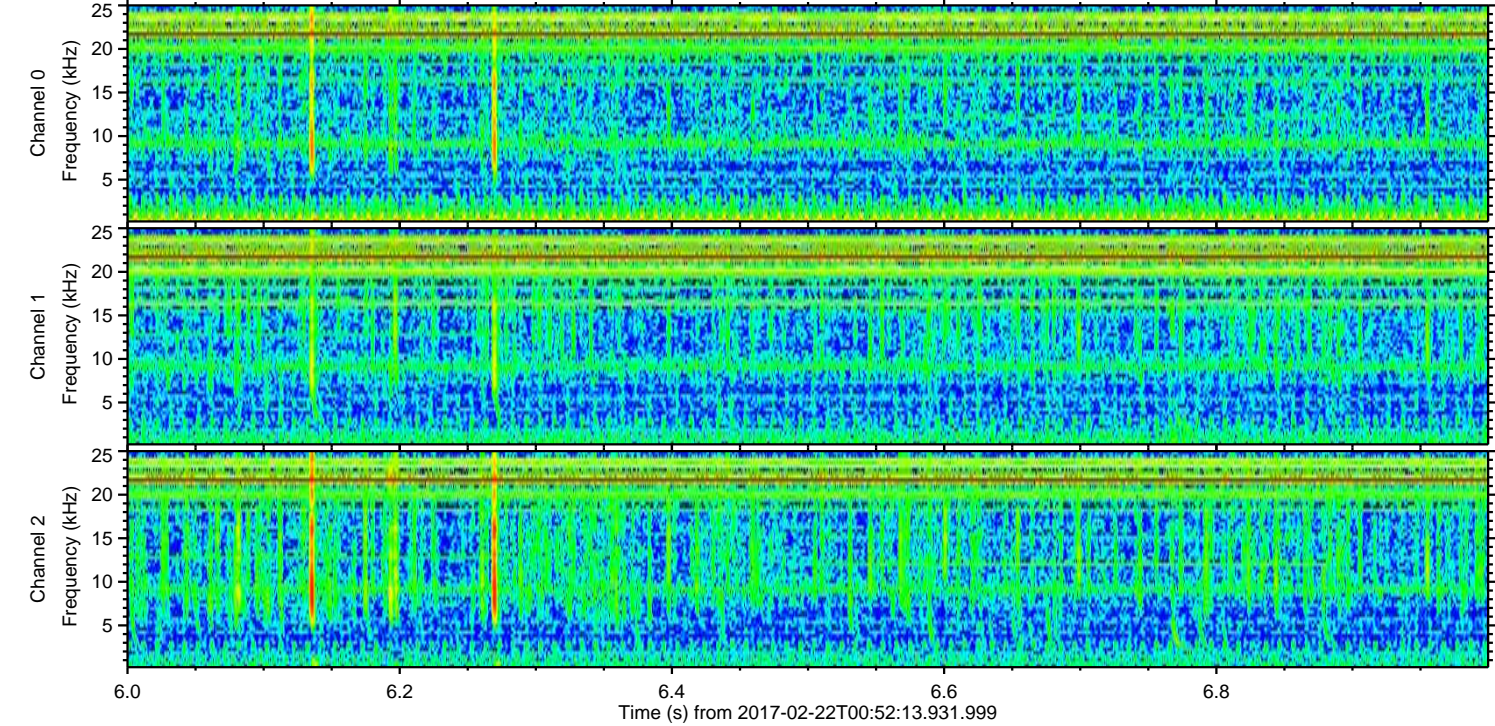
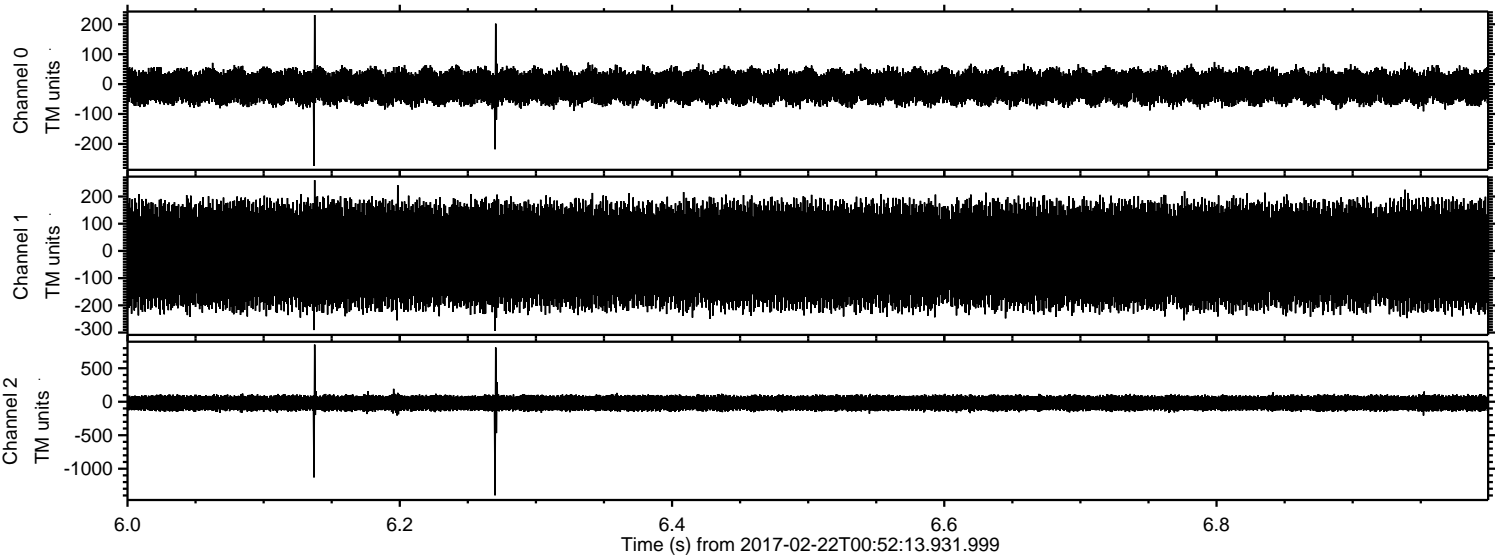
ELMAVAN 3D WAVEFORMS (Measured data sampled at 50 kHz) 51000 packets of 144 samples from 2017-02-22T00:52:13.931.999. Part 124/147

Processed Wed Feb 22 02:00:34 2017 by ELM ver.2012-10-06 from 001__elm20170222_005212__dat00.bin

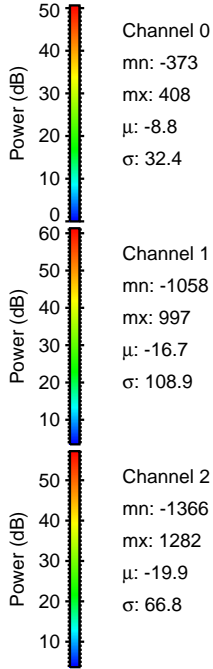
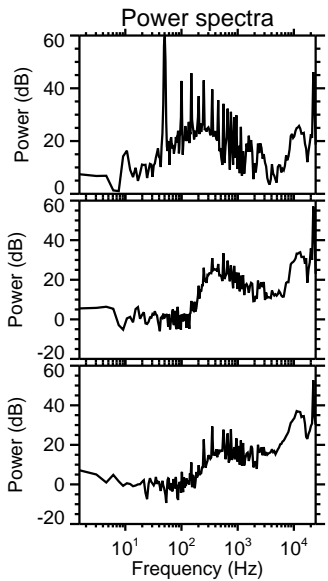
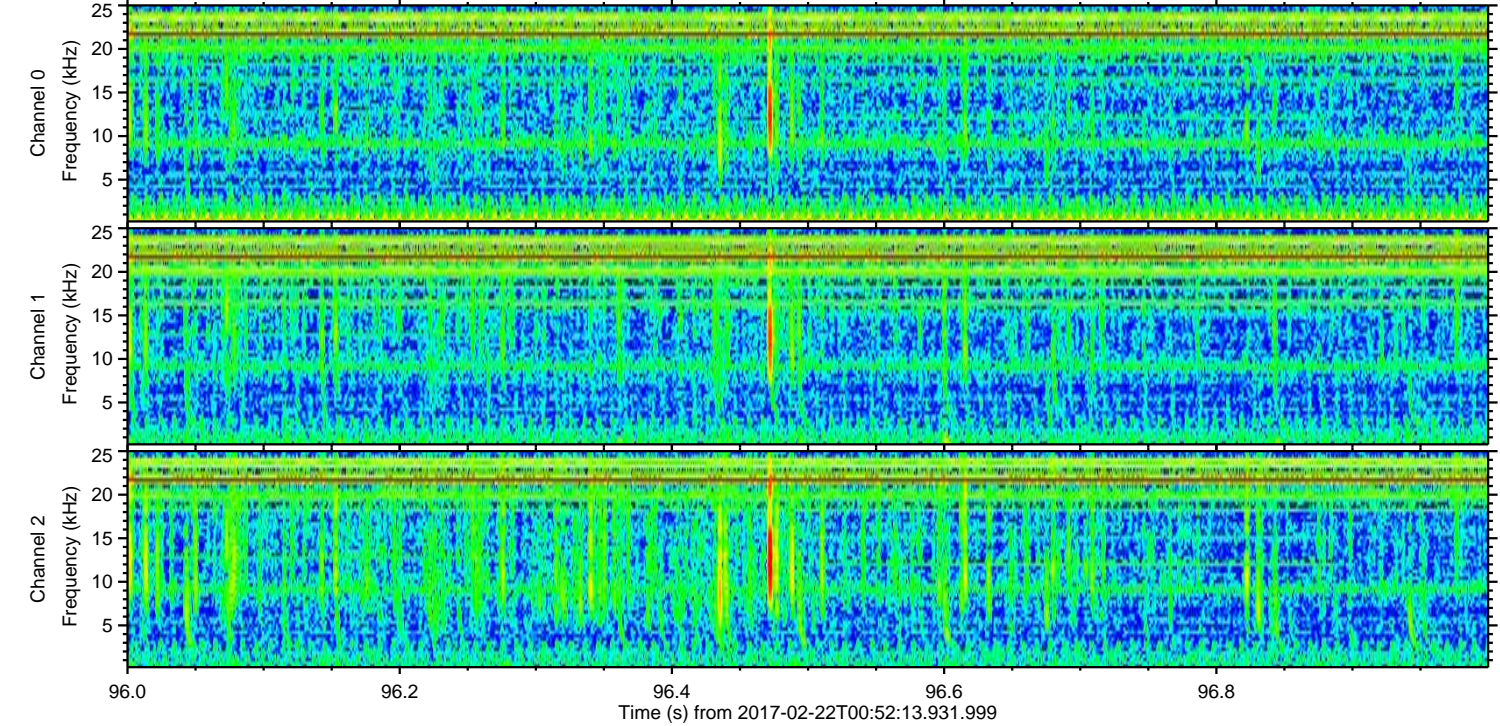
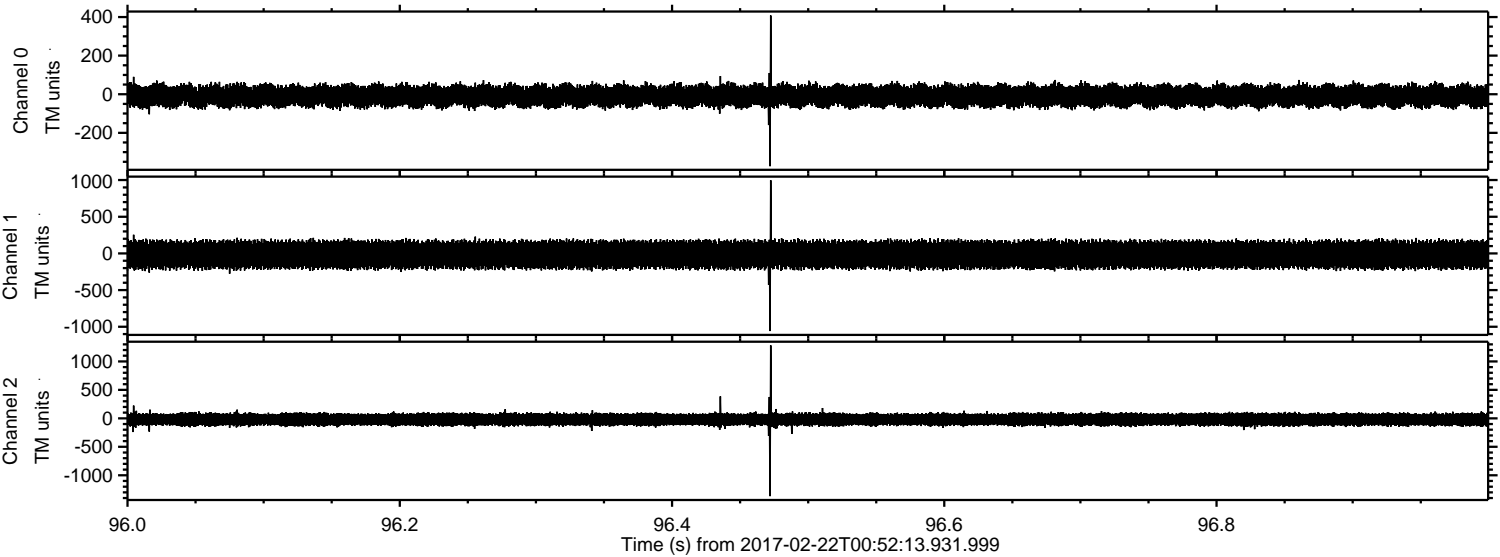


ELMAVAN 3D WAVEFORMS (Measured data sampled at 50 kHz) 51000 packets of 144 samples from 2017-02-22T00:52:13.931.999. Part 7/147

Processed Wed Feb 22 02:00:35 2017 by ELM ver.2012-10-06 from 001__elm20170222_005212__dat00.bin

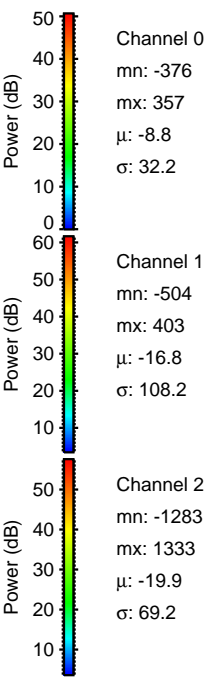
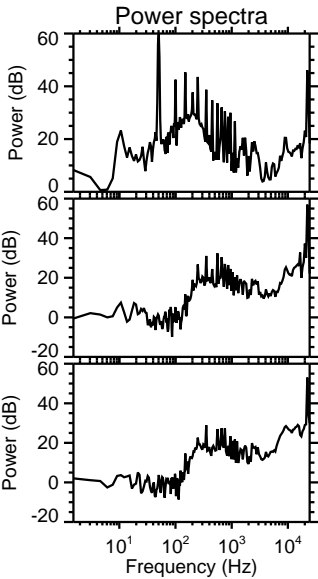
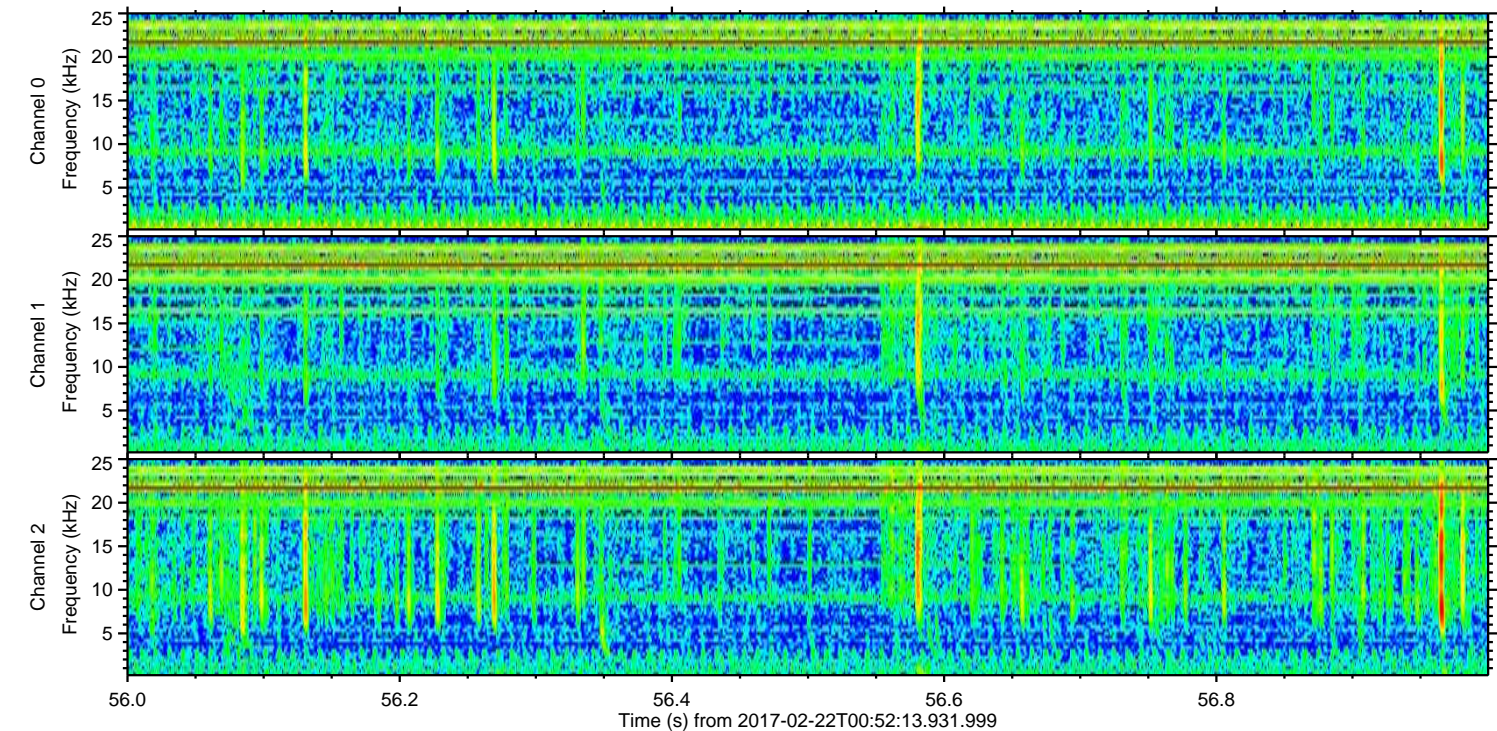
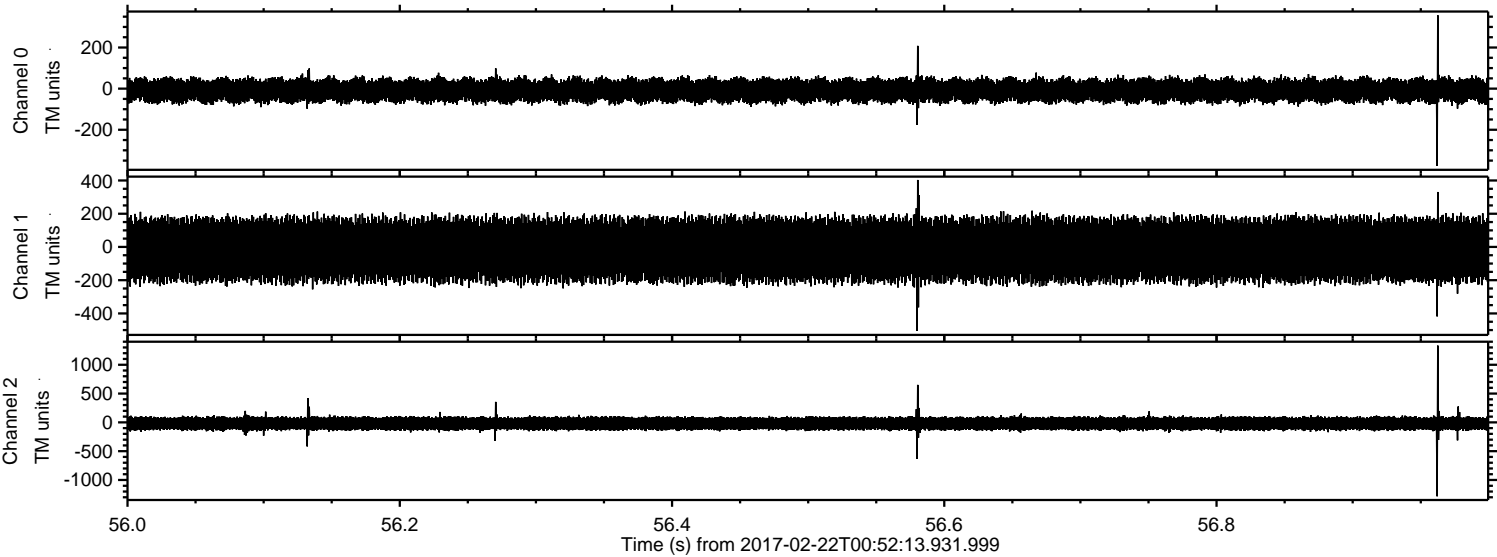


Processed Wed Feb 22 02:00:36 2017 by ELM ver.2012-10-06 from 001__elm20170222_005212__dat00.bin

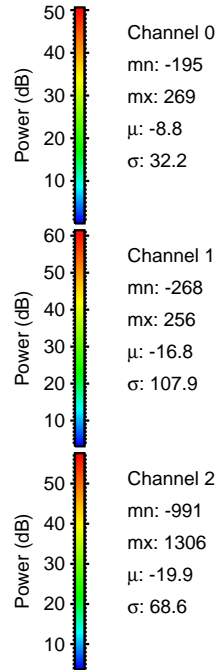
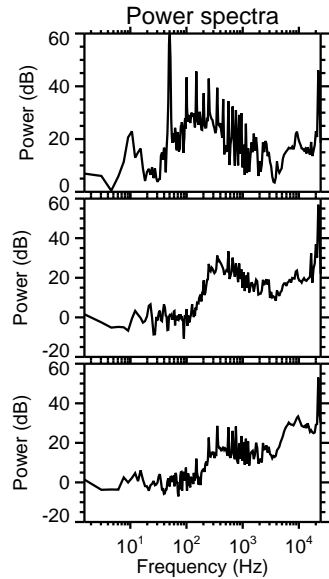
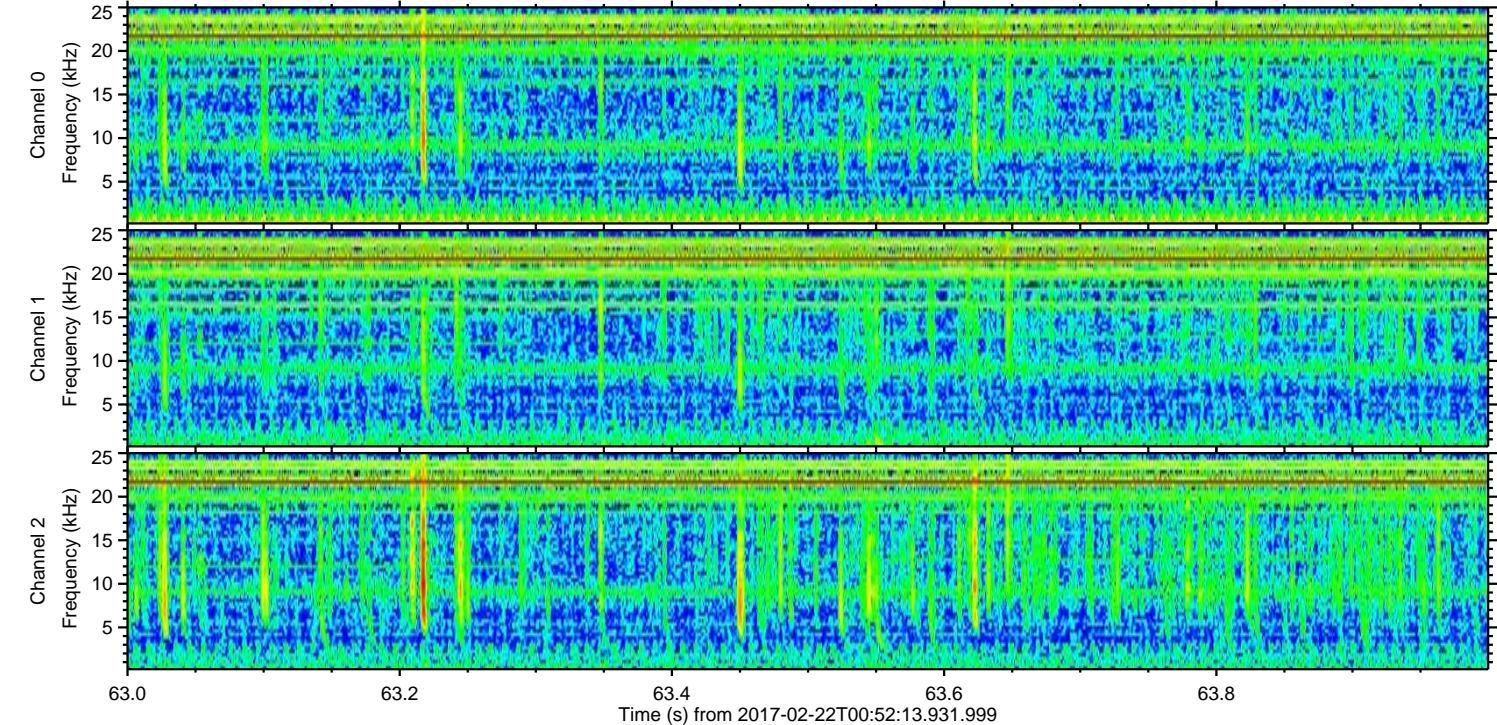
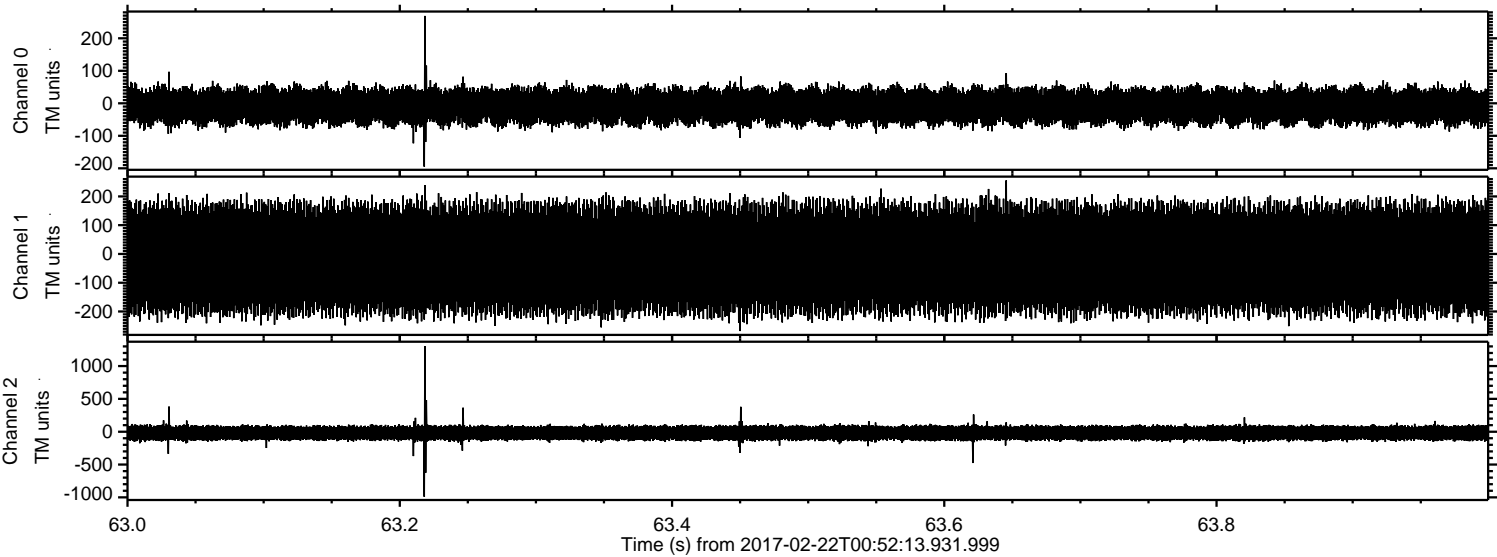


ELMAVAN 3D WAVEFORMS (Measured data sampled at 50 kHz) 51000 packets of 144 samples from 2017-02-22T00:52:13.931.999. Part 57/147

Processed Wed Feb 22 02:00:36 2017 by ELM ver.2012-10-06 from 001__elm20170222_005212__dat00.bin

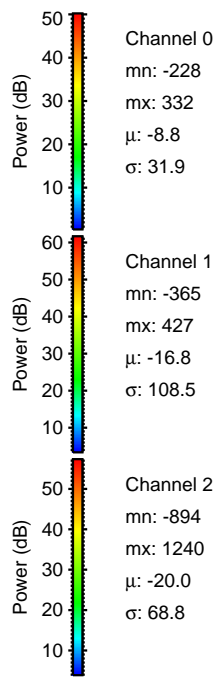
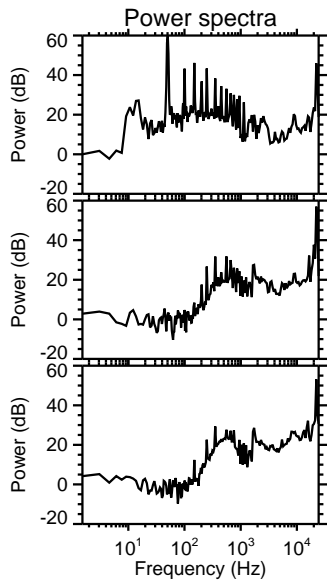
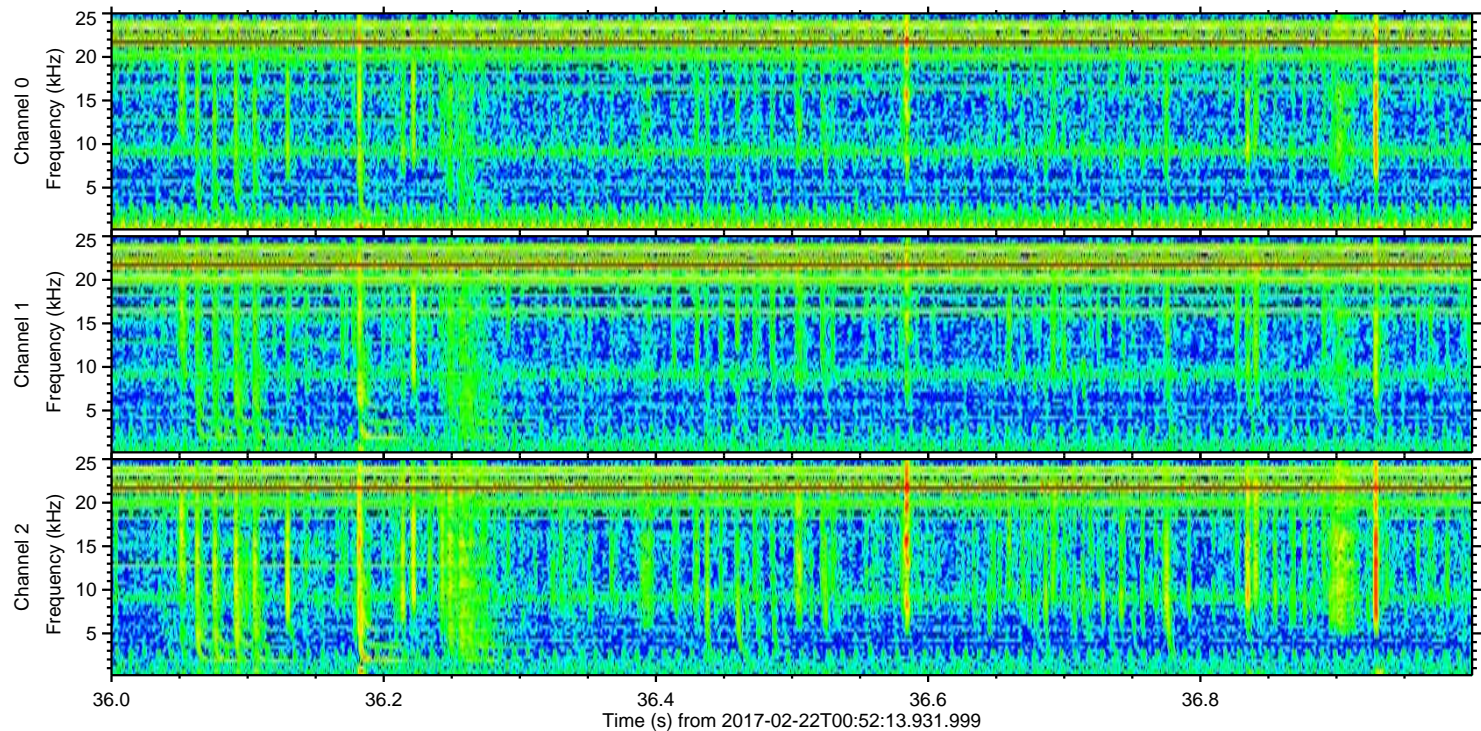
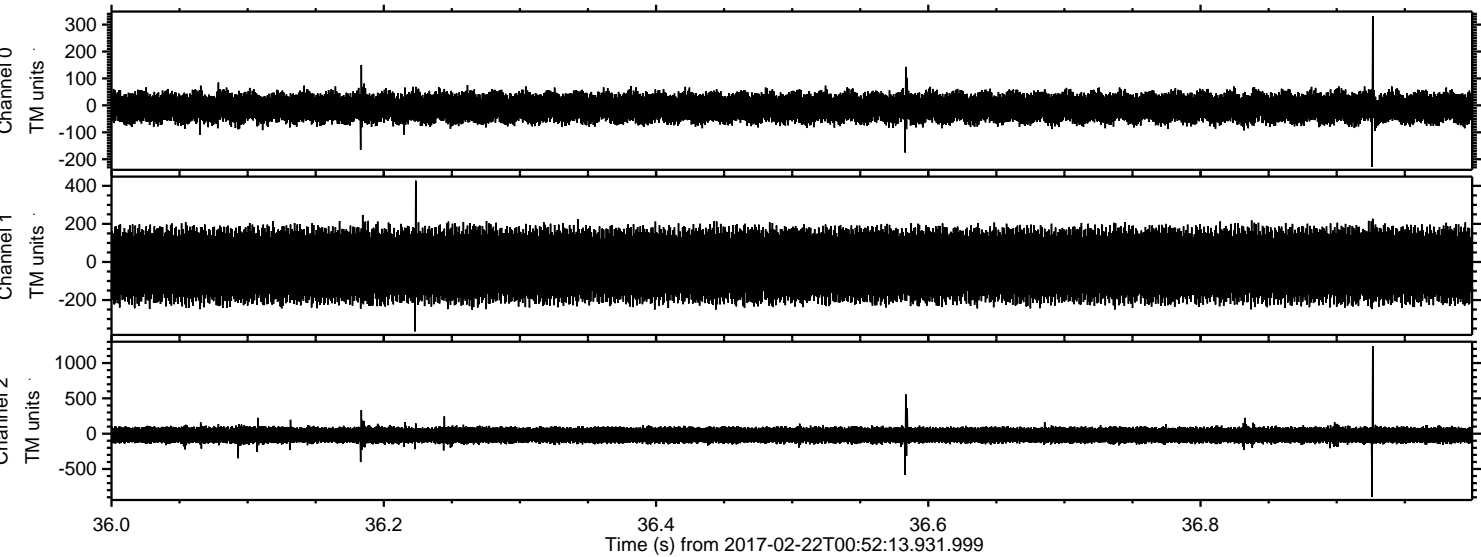


Processed Wed Feb 22 02:00:37 2017 by ELM ver.2012-10-06 from 001__elm20170222_005212__dat00.bin



ELMAVAN 3D WAVEFORMS (Measured data sampled at 50 kHz) 51000 packets of 144 samples from 2017-02-22T00:52:13.931.999. Part 37/147

Processed Wed Feb 22 02:00:38 2017 by ELM ver.2012-10-06 from 001__elm20170222_005212__dat00.bin



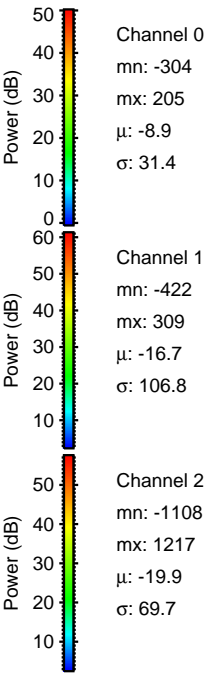
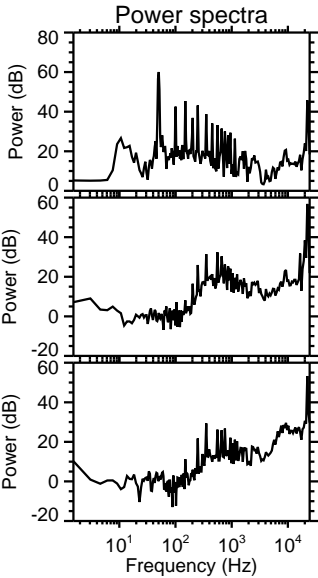
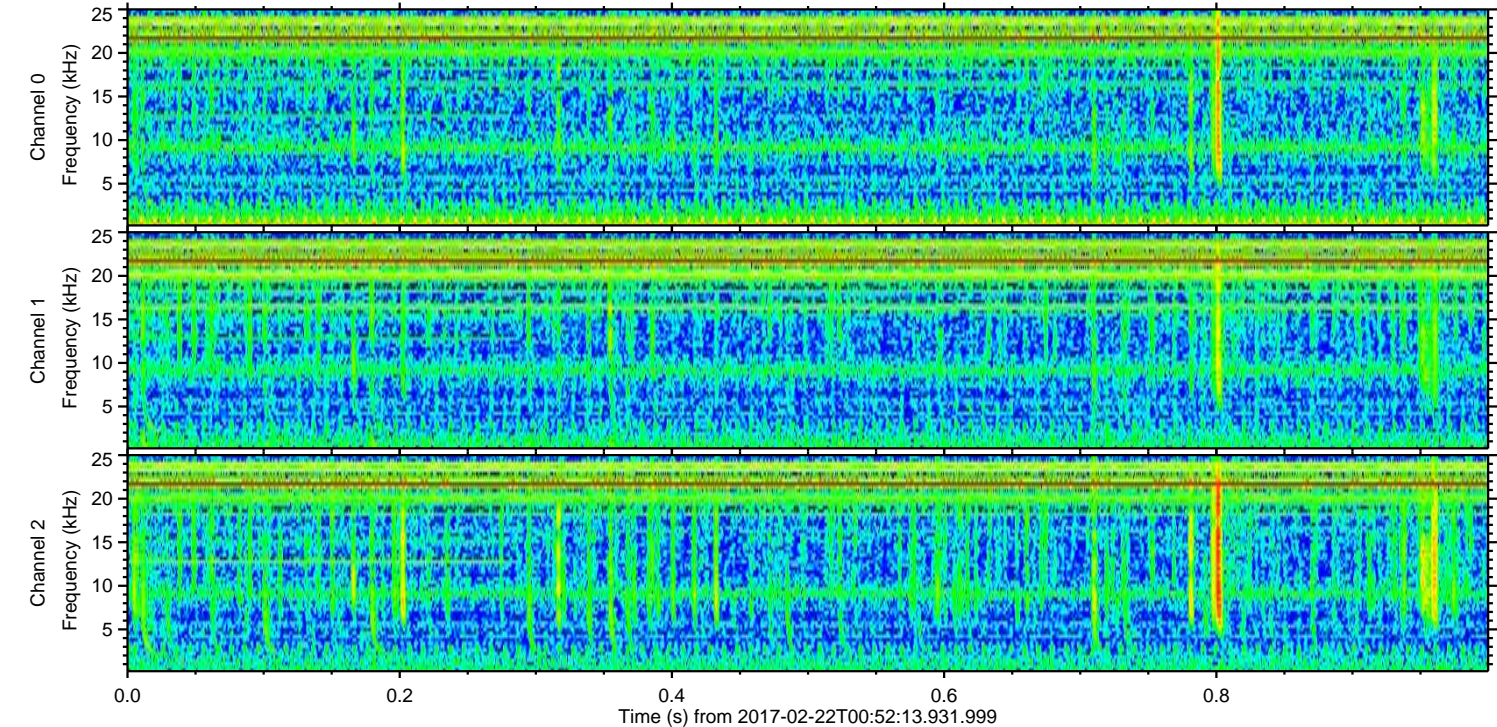
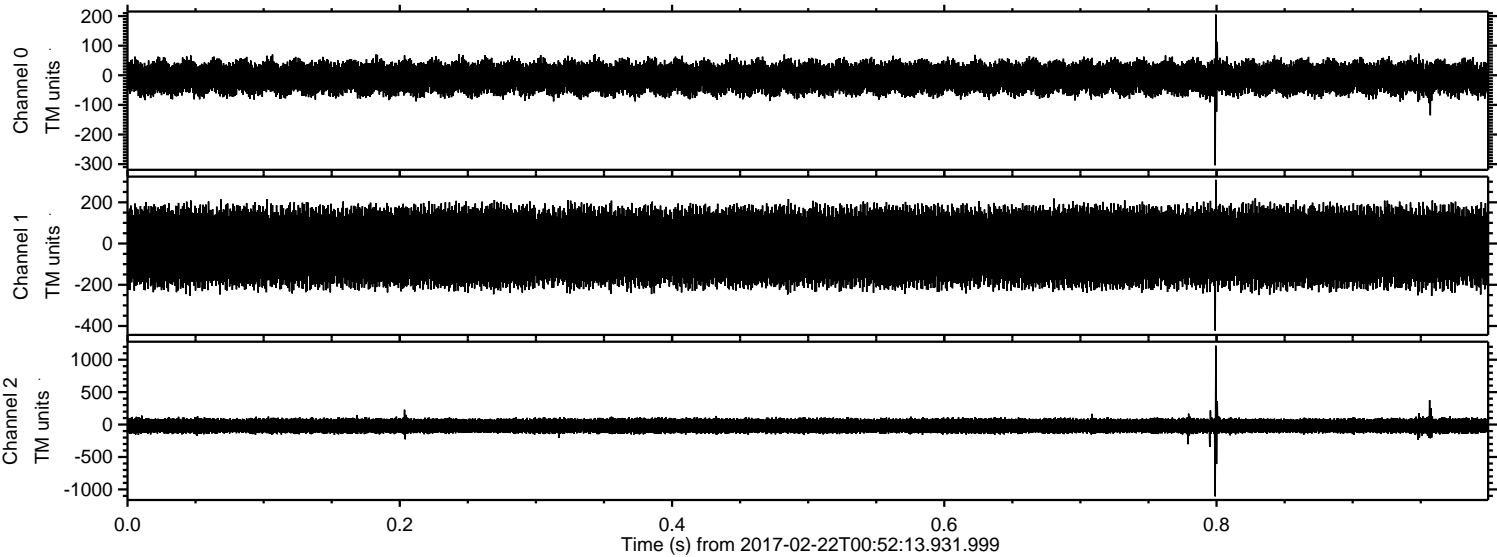
Channel 0
mn: -228
mx: 332
 μ : -8.8
 σ : 31.9

Channel 1
mn: -365
mx: 427
 μ : -16.8
 σ : 108.5

Channel 2
mn: -894
mx: 1240
 μ : -20.0
 σ : 68.8

ELMAVAN 3D WAVEFORMS (Measured data sampled at 50 kHz) 51000 packets of 144 samples from 2017-02-22T00:52:13.931.999. Part 1/147

Processed Wed Feb 22 02:00:39 2017 by ELM ver.2012-10-06 from 001__elm20170222_005212__dat00.bin



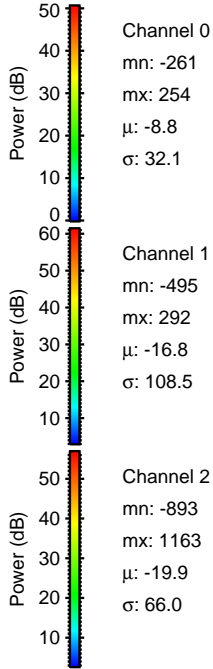
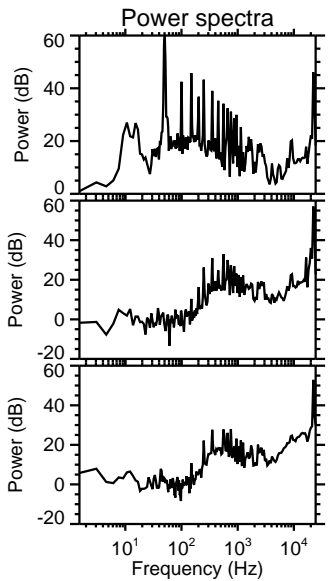
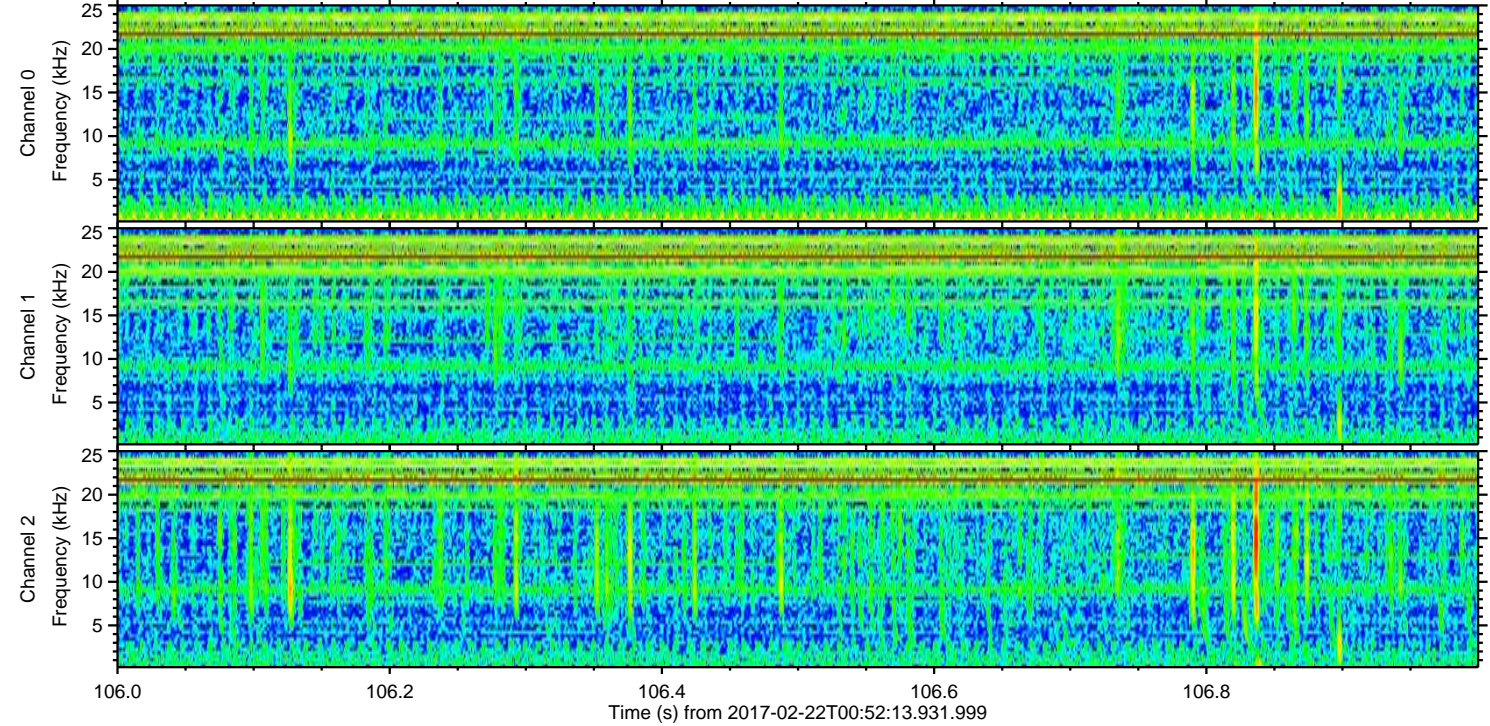
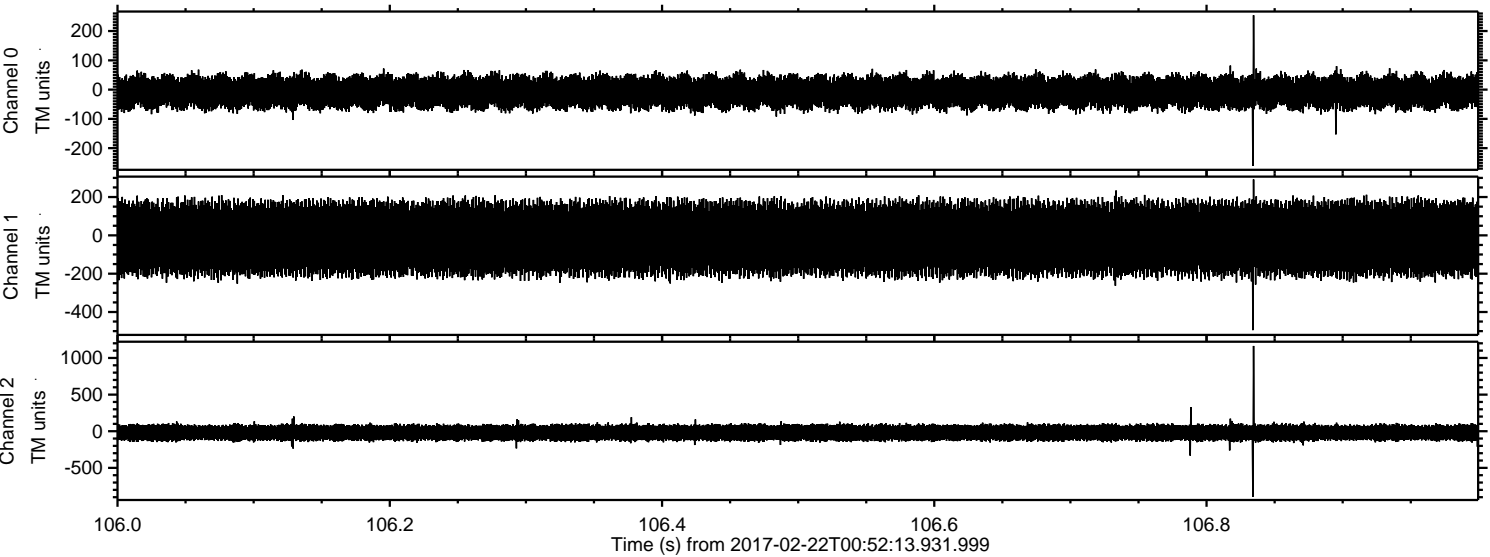
Channel 0
mn: -304
mx: 205
 μ : -8.9
 σ : 31.4

Channel 1
mn: -422
mx: 309
 μ : -16.7
 σ : 106.8

Channel 2
mn: -1108
mx: 1217
 μ : -19.9
 σ : 69.7

ELMAVAN 3D WAVEFORMS (Measured data sampled at 50 kHz) 51000 packets of 144 samples from 2017-02-22T00:52:13.931.999. Part 107/147

Processed Wed Feb 22 02:00:40 2017 by ELM ver.2012-10-06 from 001__elm20170222_005212__dat00.bin



Channel 0
mn: -261
mx: 254
 μ : -8.8
 σ : 32.1

Channel 1
mn: -495
mx: 292
 μ : -16.8
 σ : 108.5

Channel 2
mn: -893
mx: 1163
 μ : -19.9
 σ : 66.0

ELMAVAN 3D WAVEFORMS (Measured data sampled at 50 kHz) 51000 packets of 144 samples from 2017-02-22T00:52:13.931.999. Part 10/147

Processed Wed Feb 22 02:00:41 2017 by ELM ver.2012-10-06 from 001__elm20170222_005212__dat00.bin

