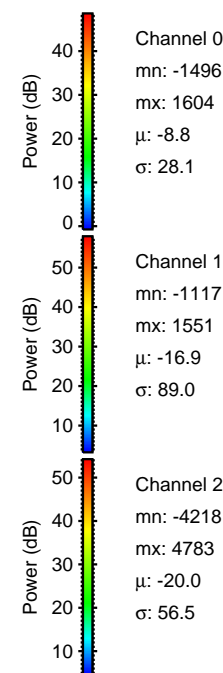
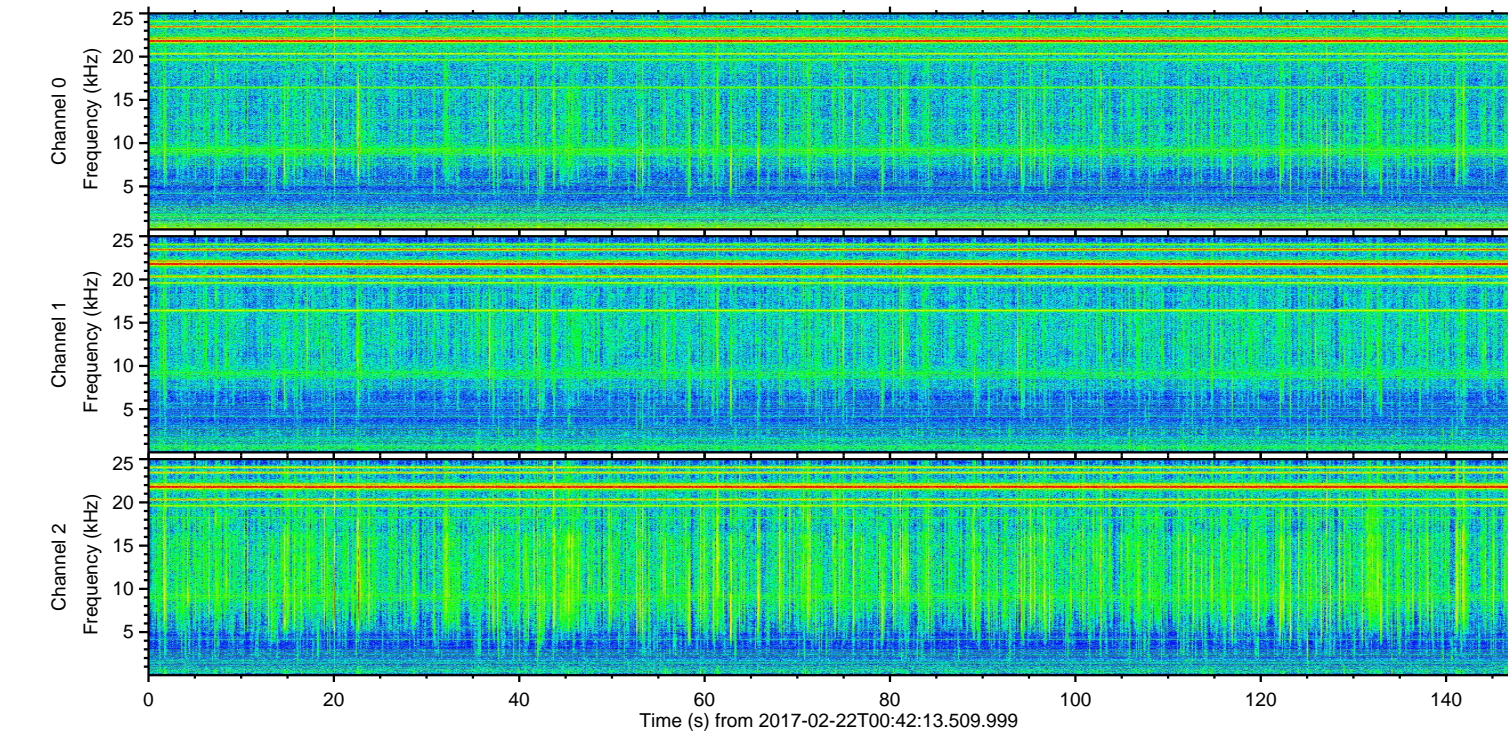
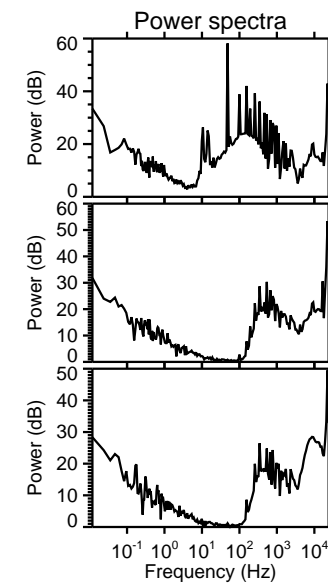
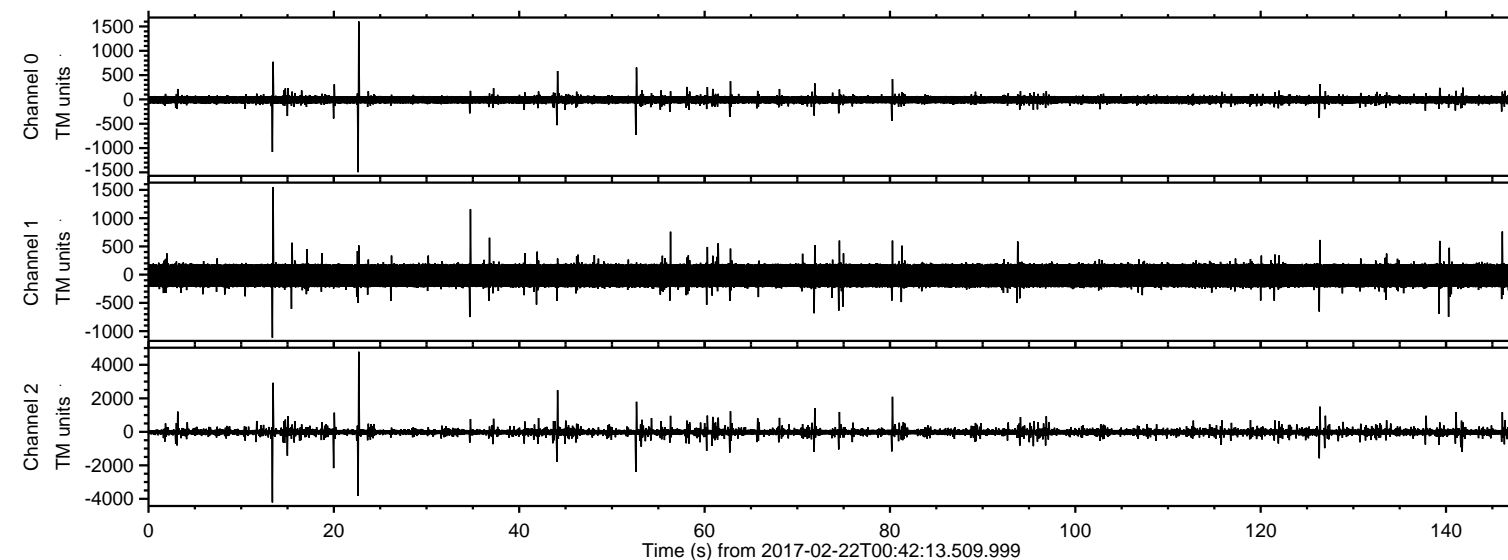
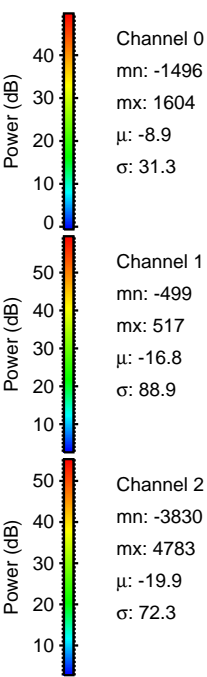
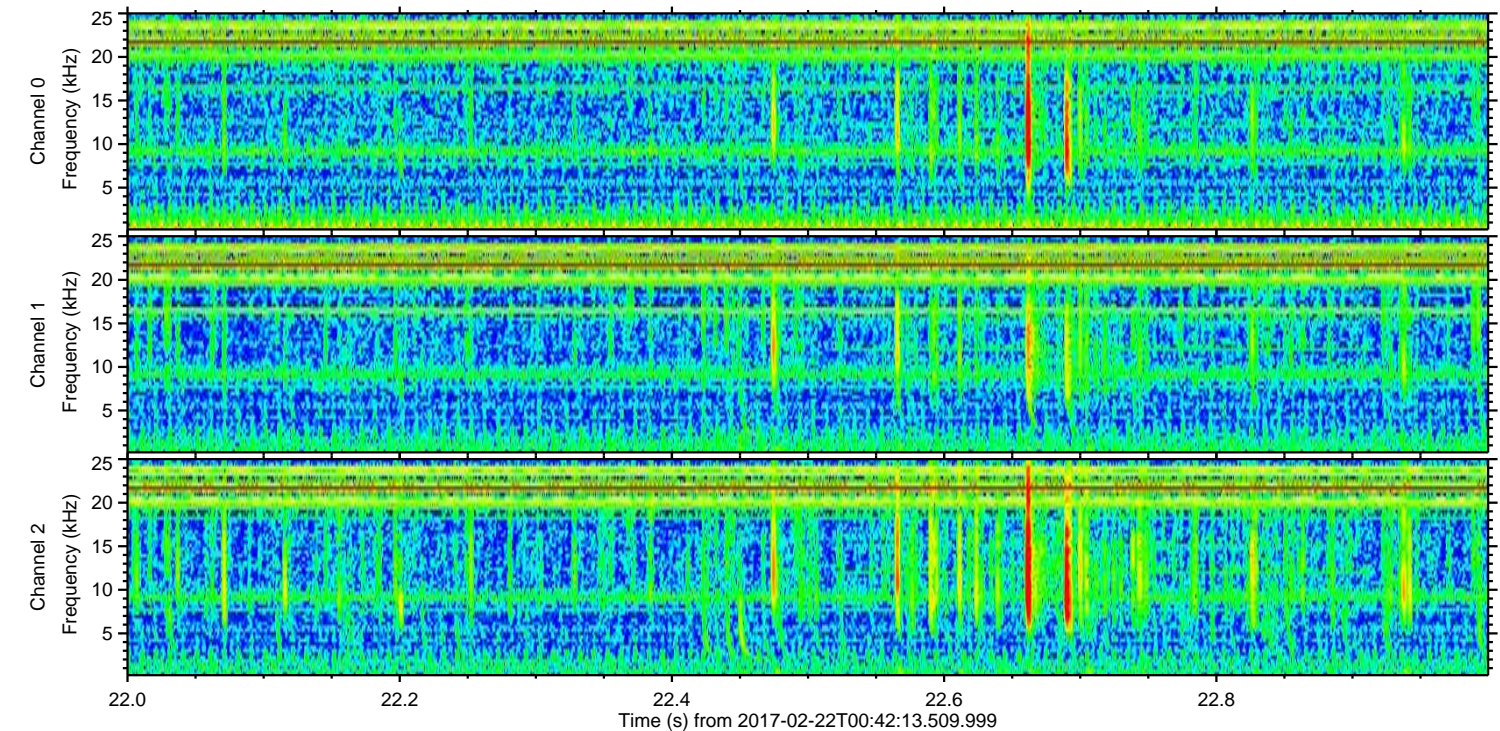
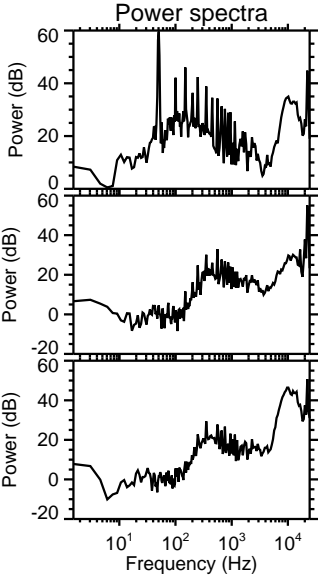
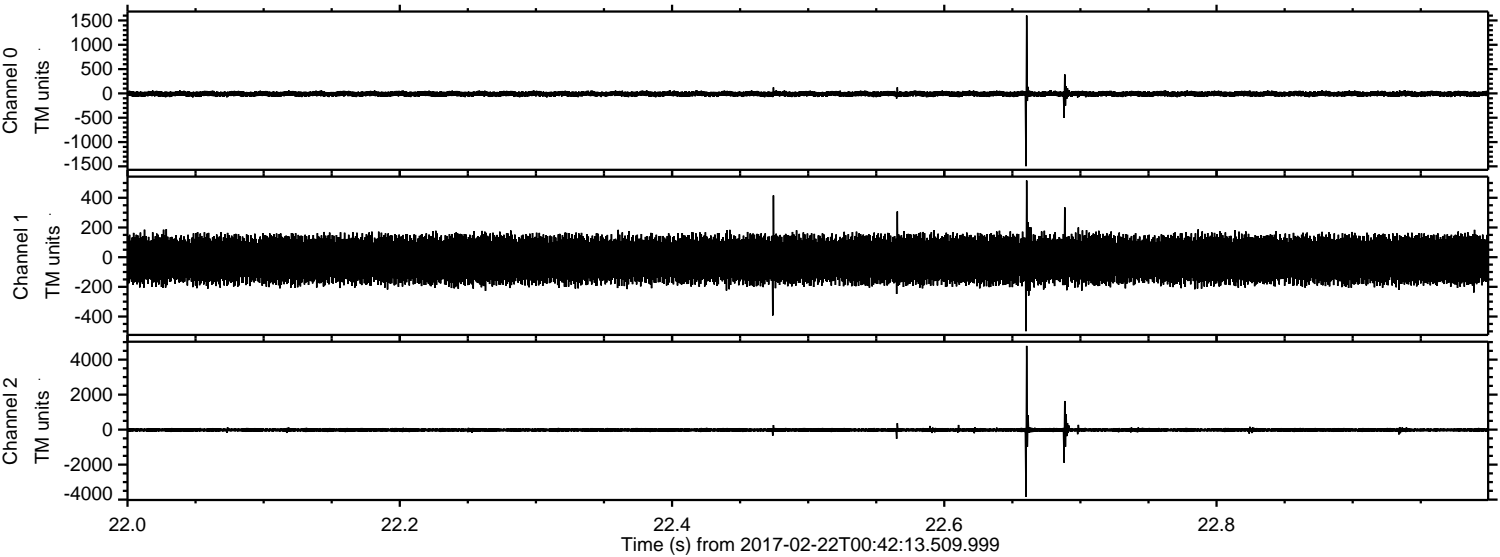


ELMAVAN 3D WAVEFORMS (Measured data sampled at 50 kHz) 51000 packets of 144 samples from 2017-02-22T00:42:13.509.999.

Processed Wed Feb 22 01:49:54 2017 by ELM ver.2012-10-06 from 001__elm20170222_004212__dat00.bin

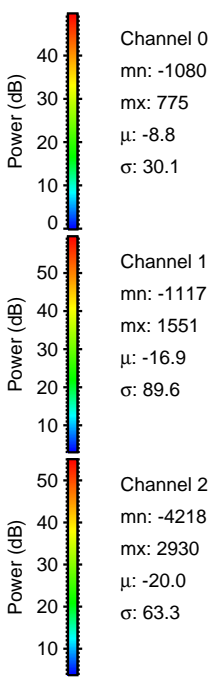
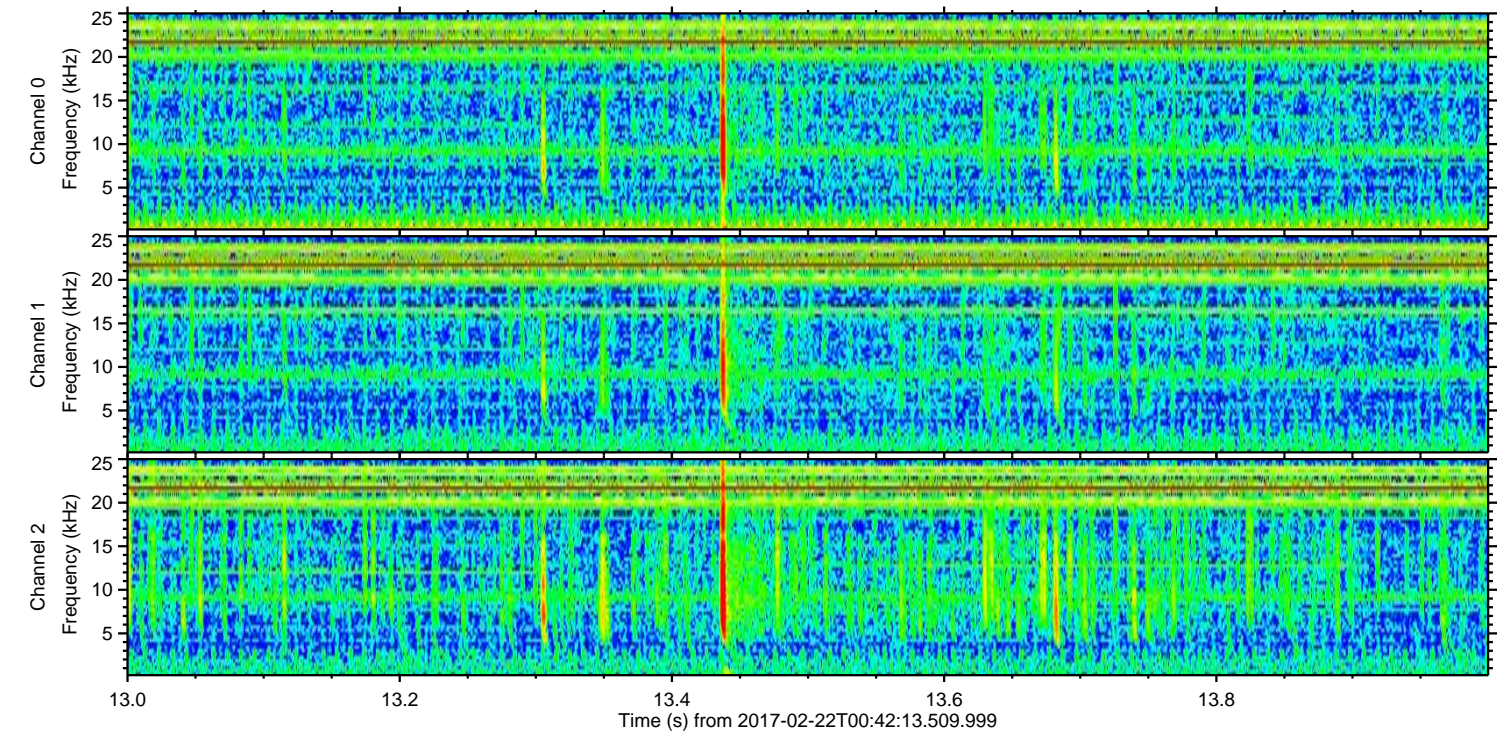
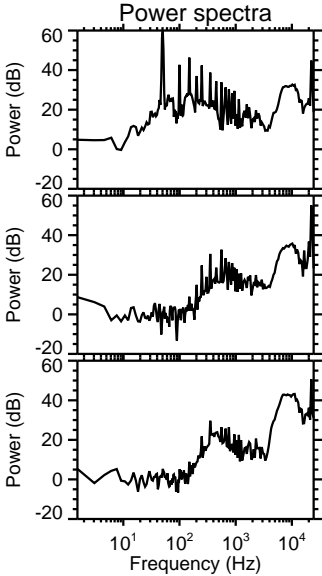
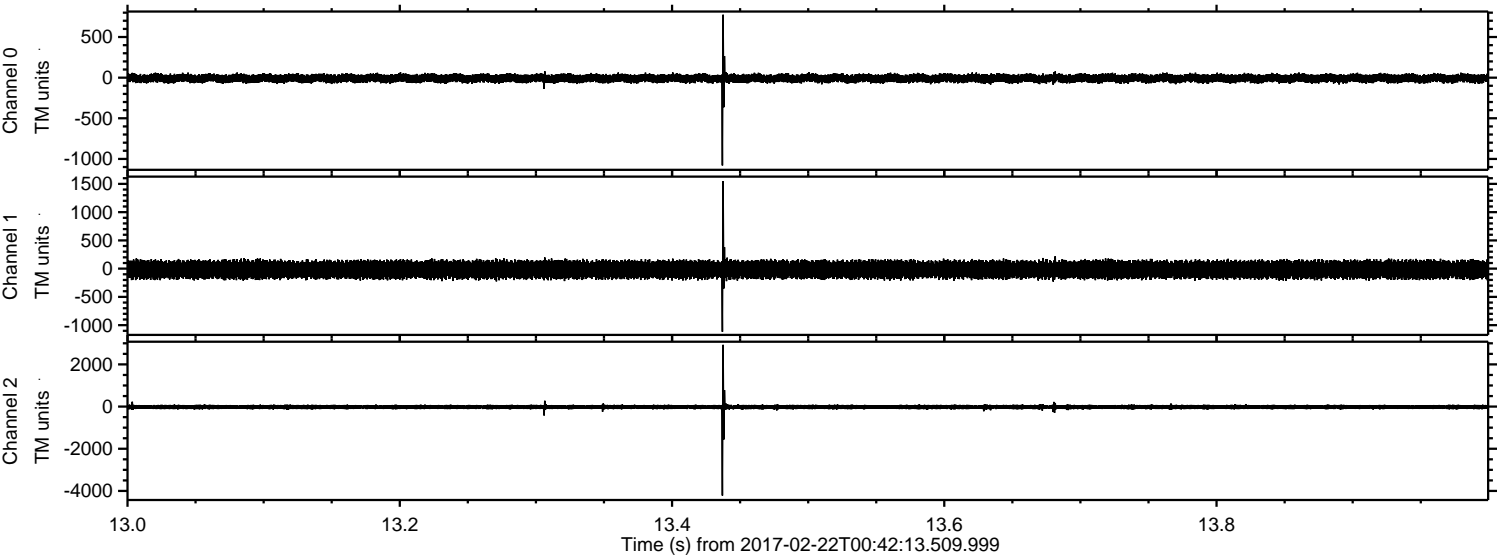


Processed Wed Feb 22 01:50:06 2017 by ELM ver.2012-10-06 from 001__elm20170222_004212__dat00.bin



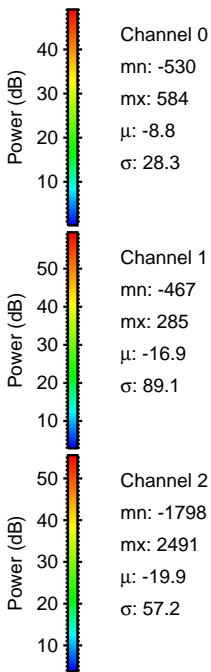
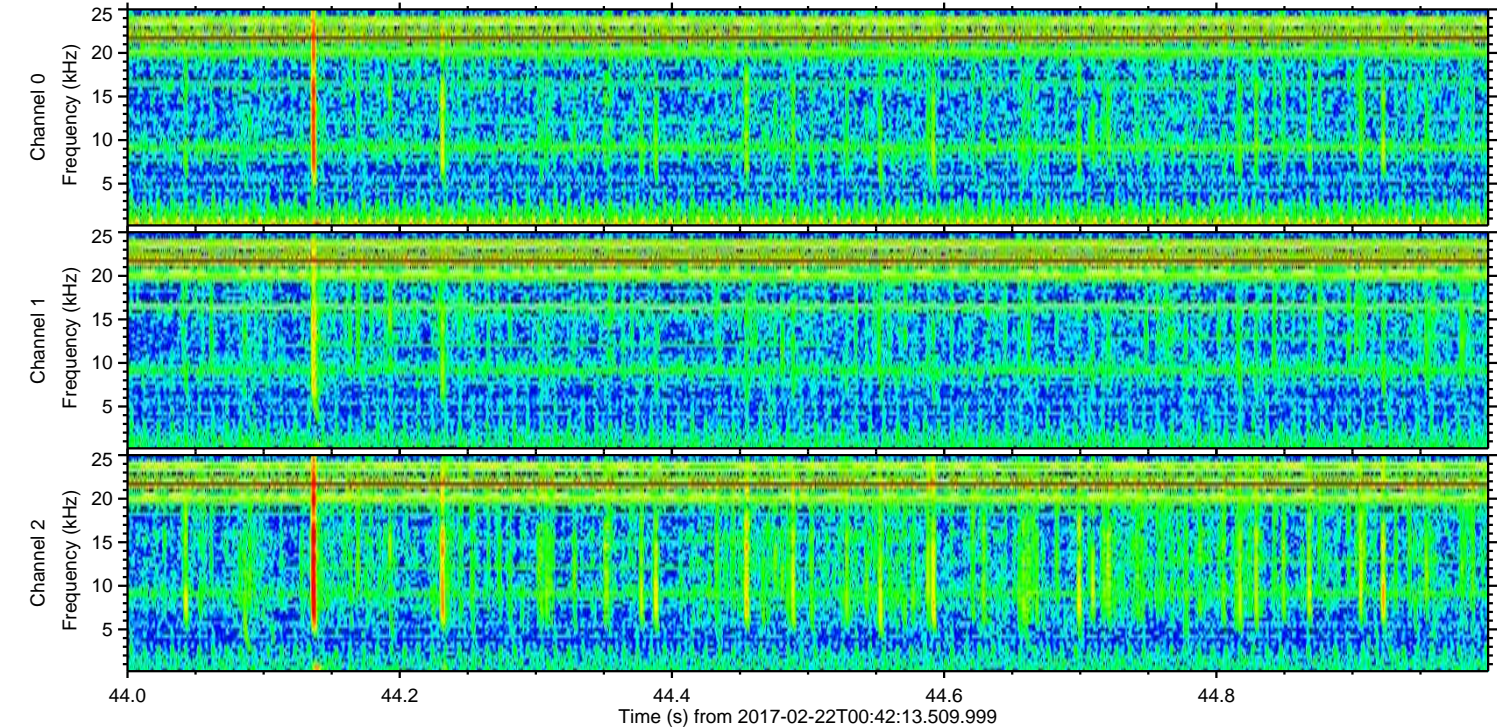
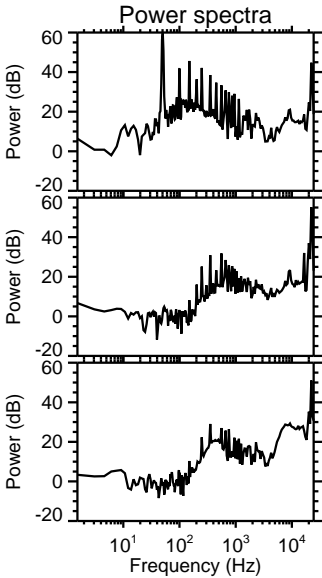
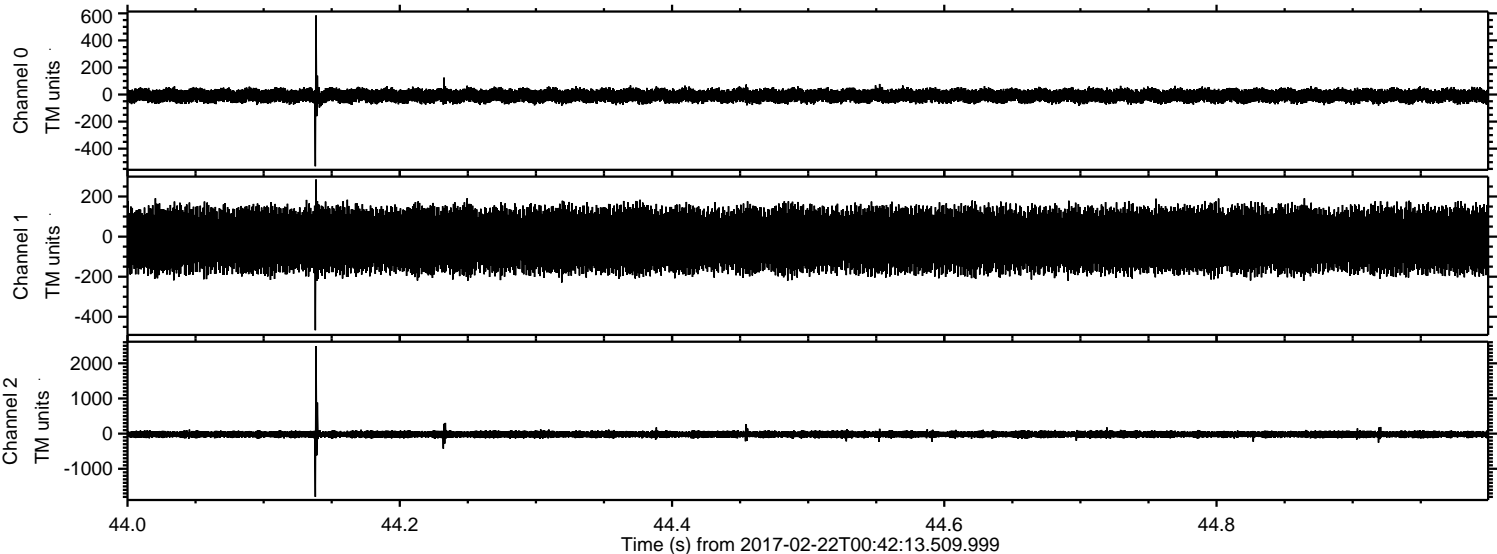
ELMAVAN 3D WAVEFORMS (Measured data sampled at 50 kHz) 51000 packets of 144 samples from 2017-02-22T00:42:13.509.999. Part 14/147

Processed Wed Feb 22 01:50:06 2017 by ELM ver.2012-10-06 from 001__elm20170222_004212__dat00.bin



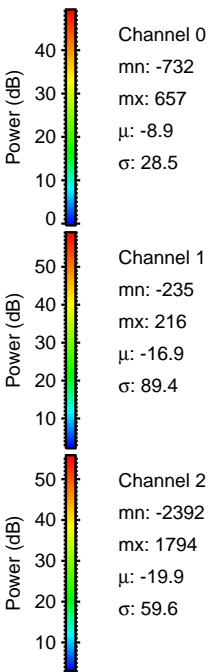
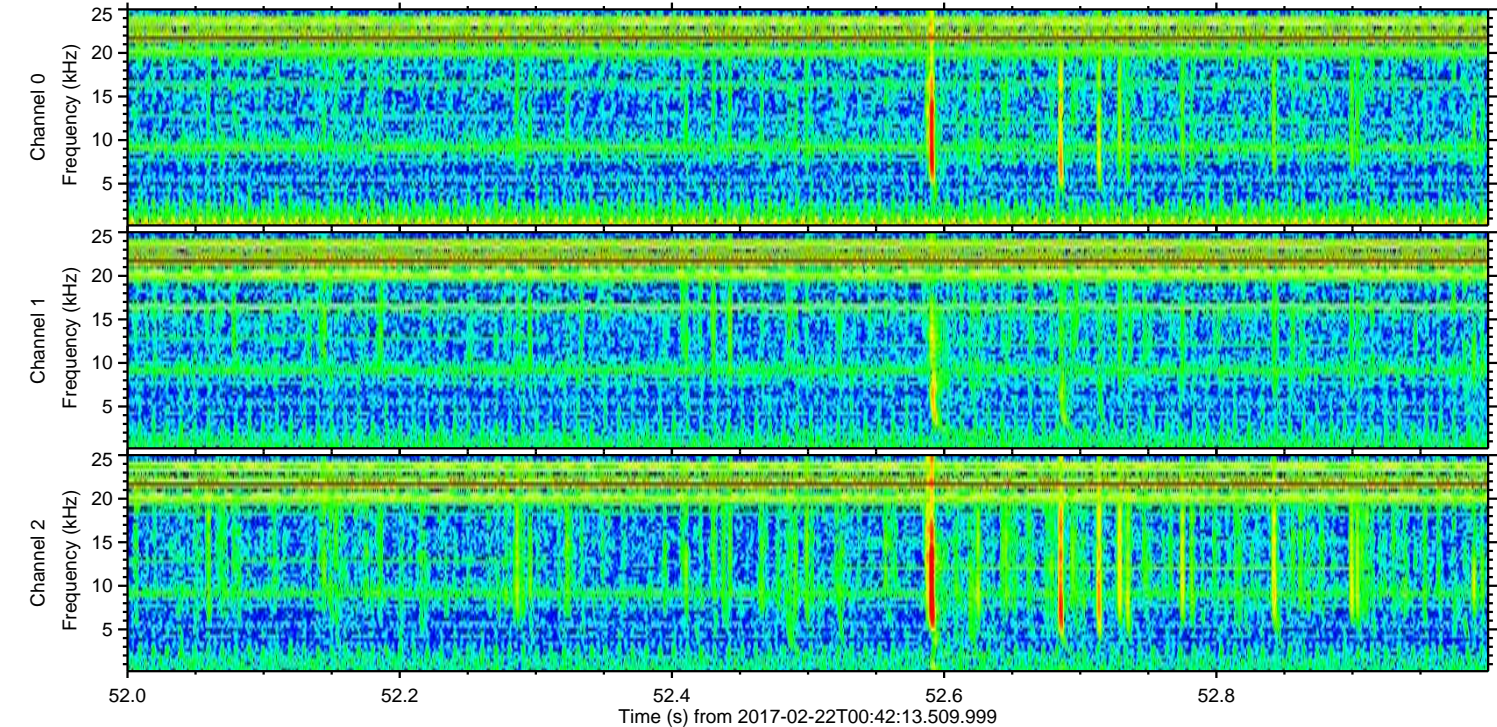
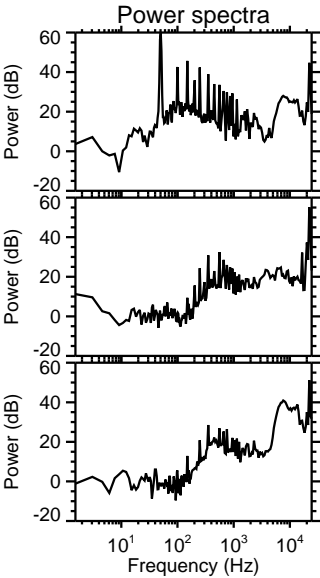
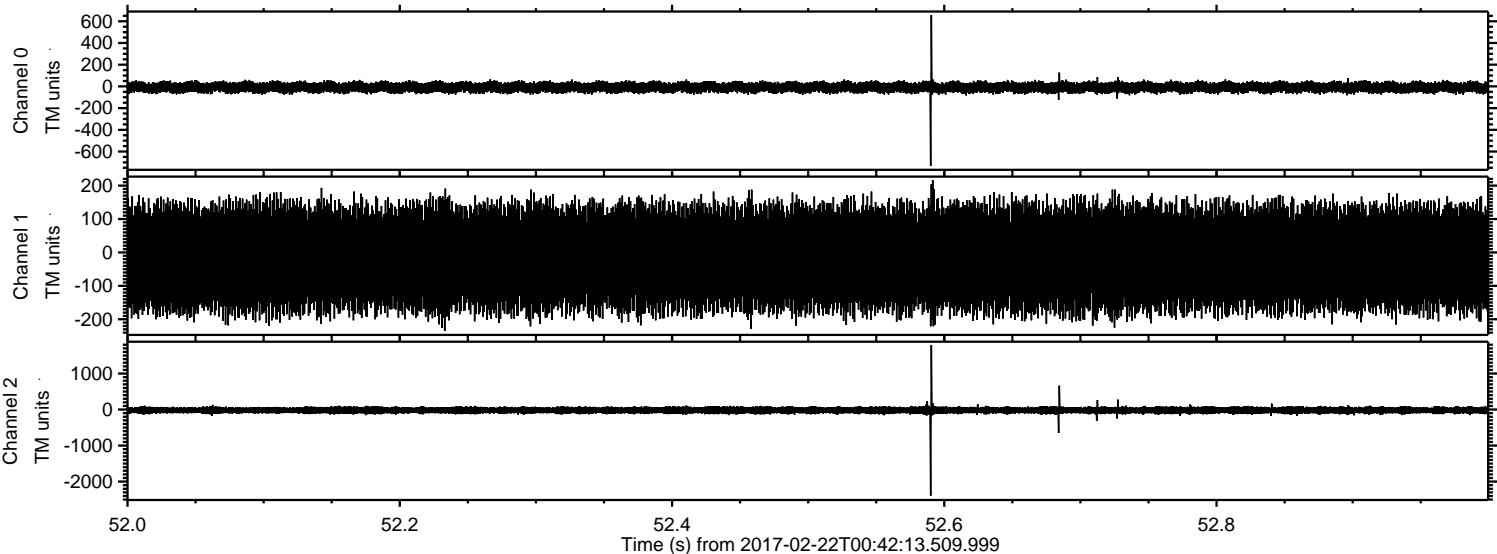
ELMAVAN 3D WAVEFORMS (Measured data sampled at 50 kHz) 51000 packets of 144 samples from 2017-02-22T00:42:13.509.999. Part 45/147

Processed Wed Feb 22 01:50:07 2017 by ELM ver.2012-10-06 from 001__elm20170222_004212__dat00.bin



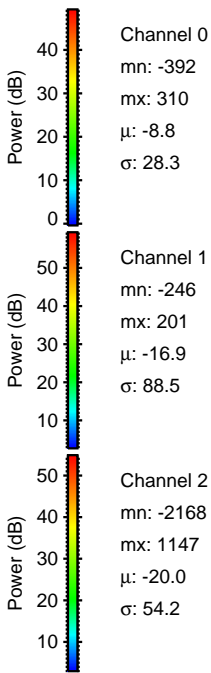
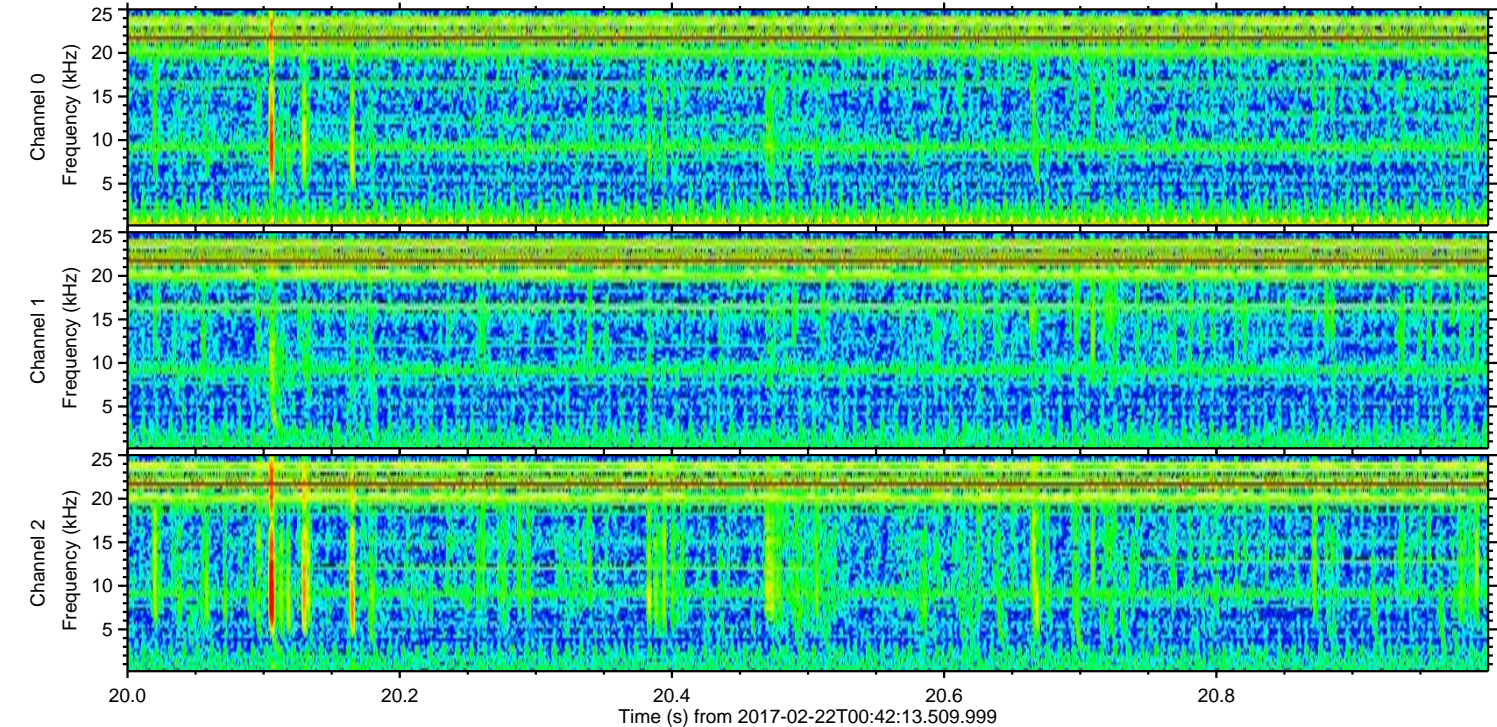
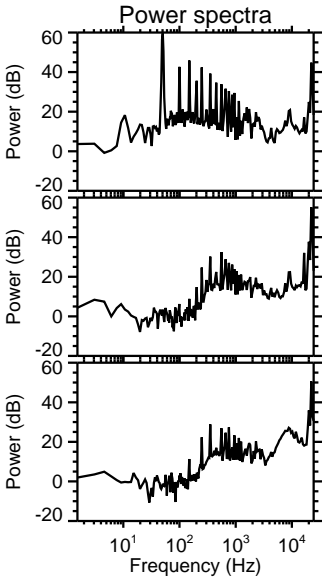
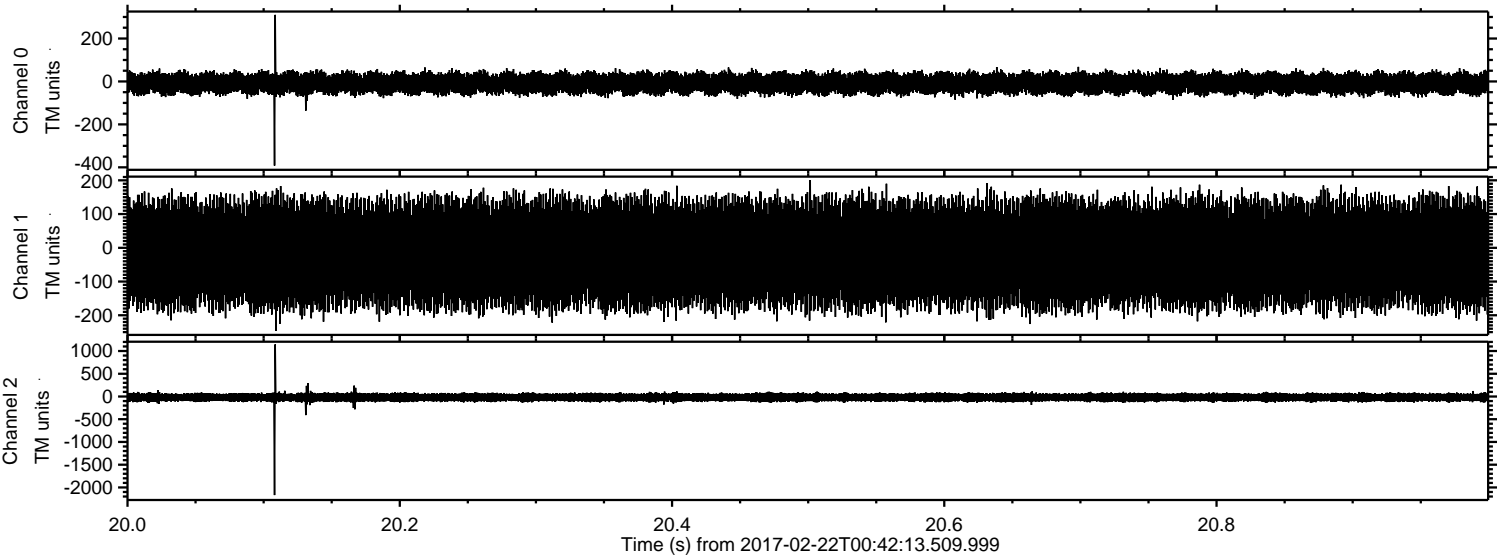
ELMAVAN 3D WAVEFORMS (Measured data sampled at 50 kHz) 51000 packets of 144 samples from 2017-02-22T00:42:13.509.999. Part 53/147

Processed Wed Feb 22 01:50:08 2017 by ELM ver.2012-10-06 from 001__elm20170222_004212__dat00.bin

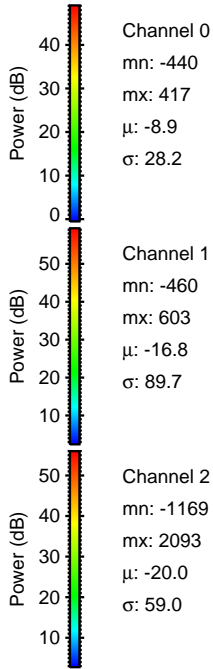
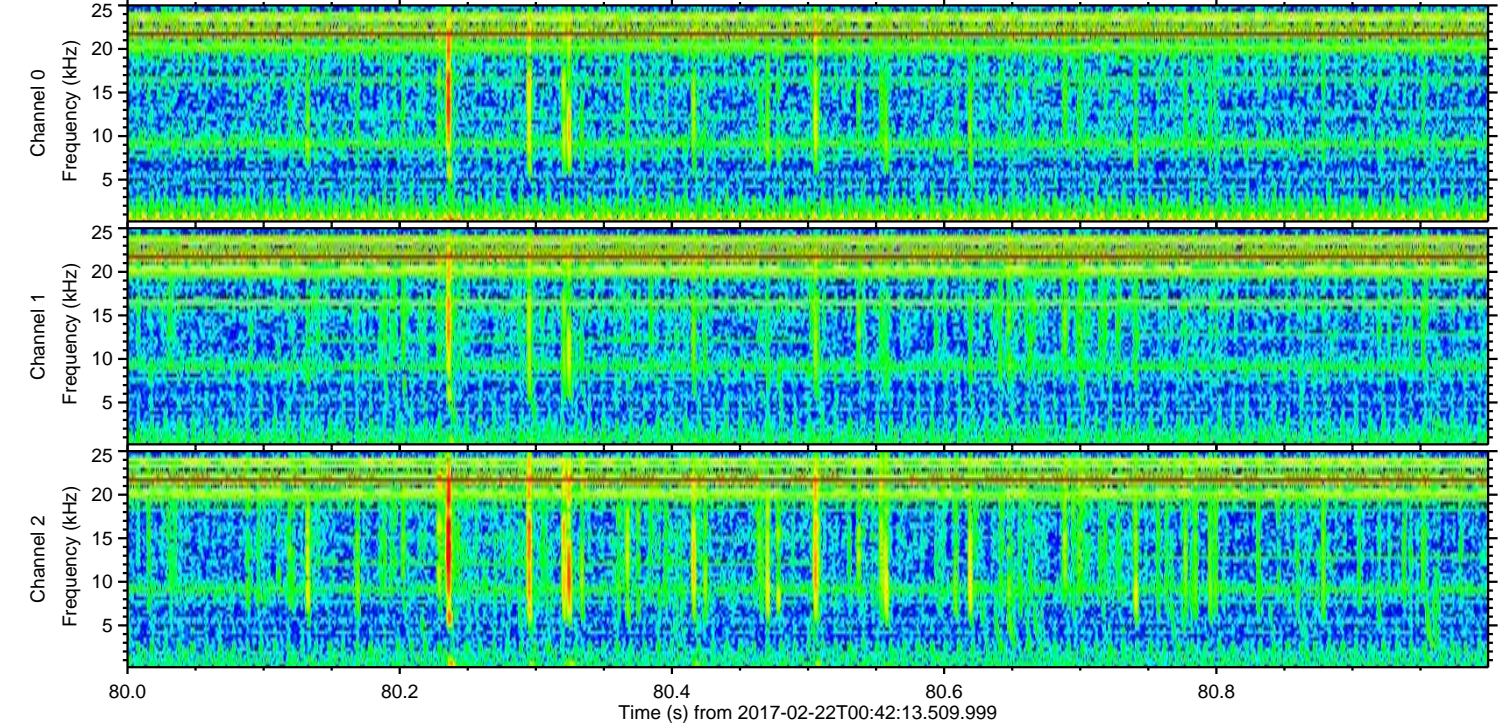
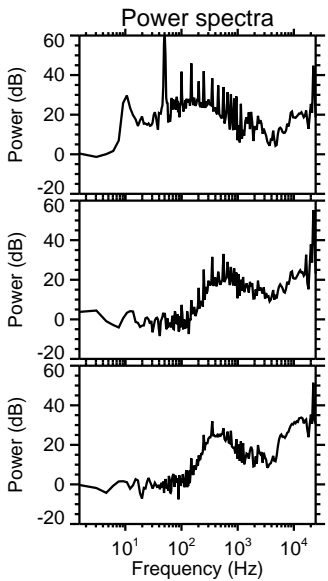
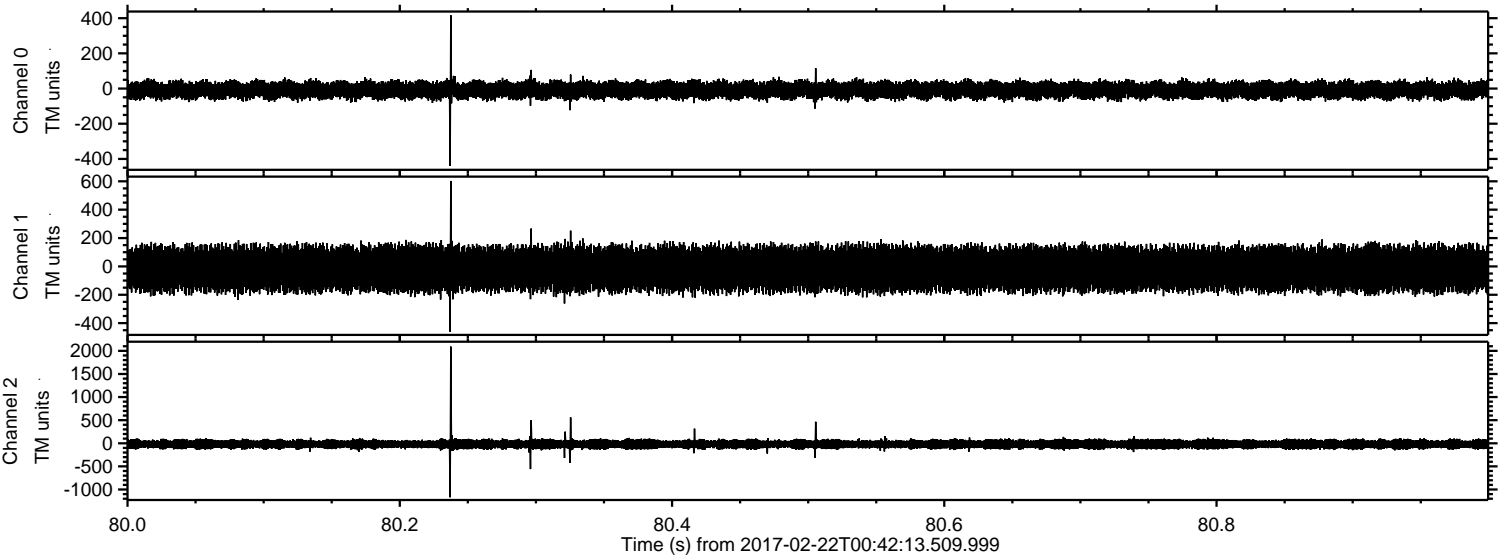


ELMAVAN 3D WAVEFORMS (Measured data sampled at 50 kHz) 51000 packets of 144 samples from 2017-02-22T00:42:13.509.999. Part 21/147

Processed Wed Feb 22 01:50:09 2017 by ELM ver.2012-10-06 from 001__elm20170222_004212__dat00.bin

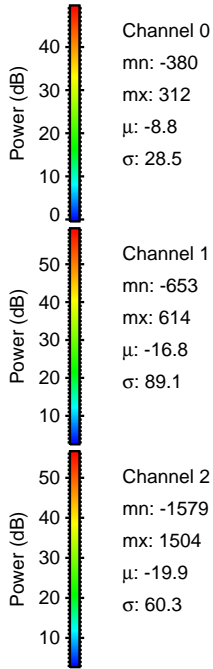
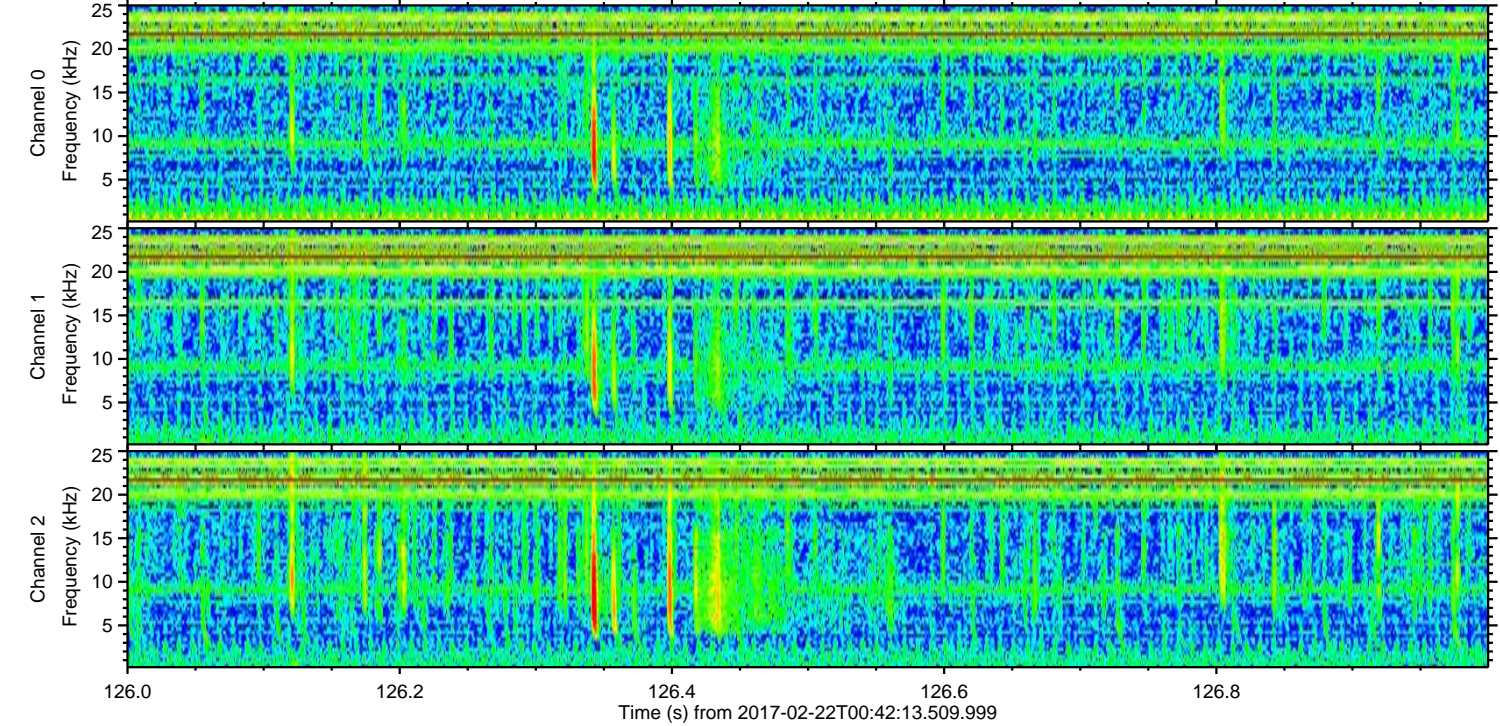
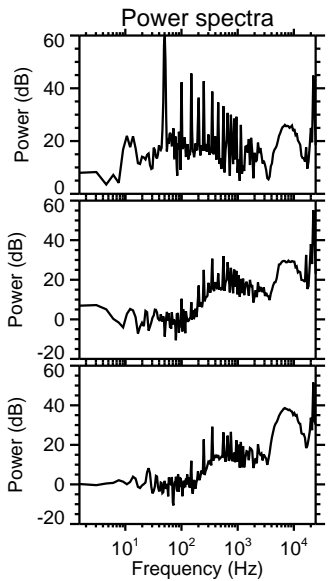
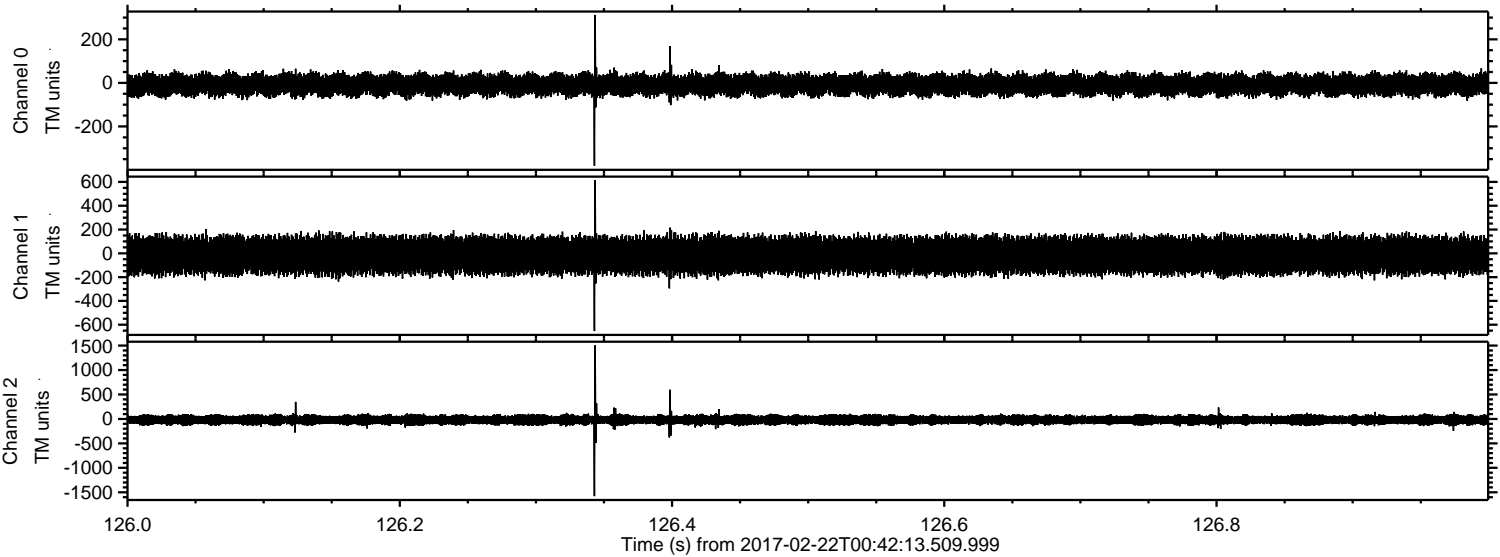


Processed Wed Feb 22 01:50:10 2017 by ELM ver.2012-10-06 from 001__elm20170222_004212__dat00.bin



ELMAVAN 3D WAVEFORMS (Measured data sampled at 50 kHz) 51000 packets of 144 samples from 2017-02-22T00:42:13.509.999. Part 127/147

Processed Wed Feb 22 01:50:11 2017 by ELM ver.2012-10-06 from 001__elm20170222_004212__dat00.bin

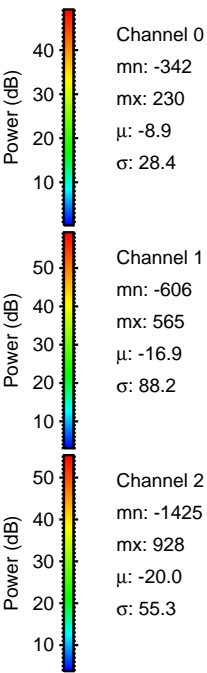
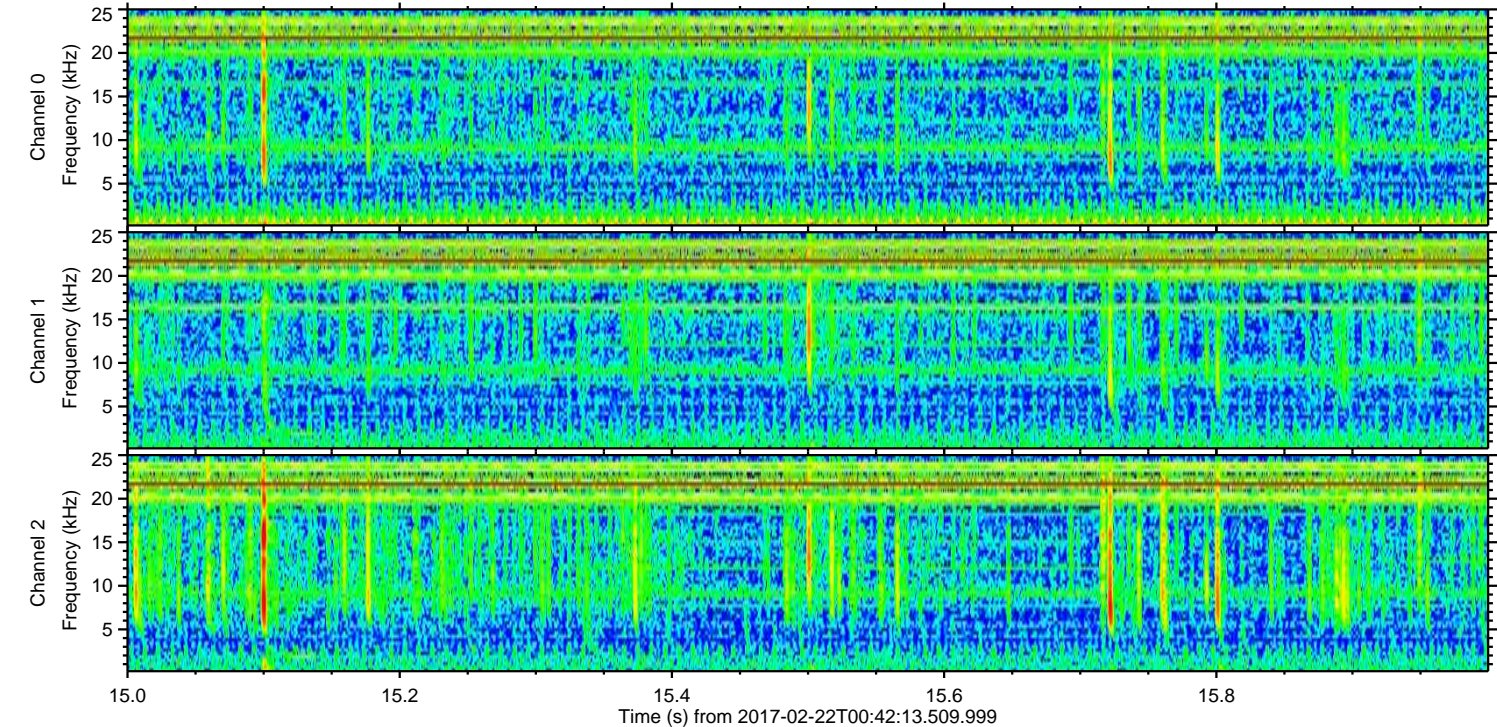
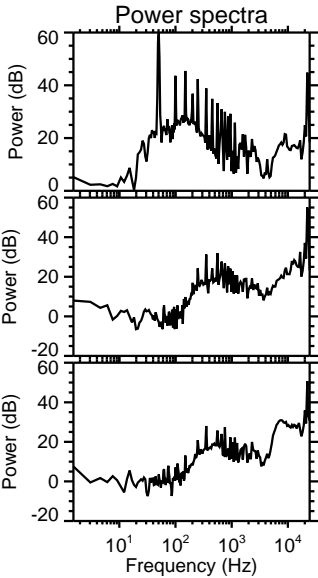
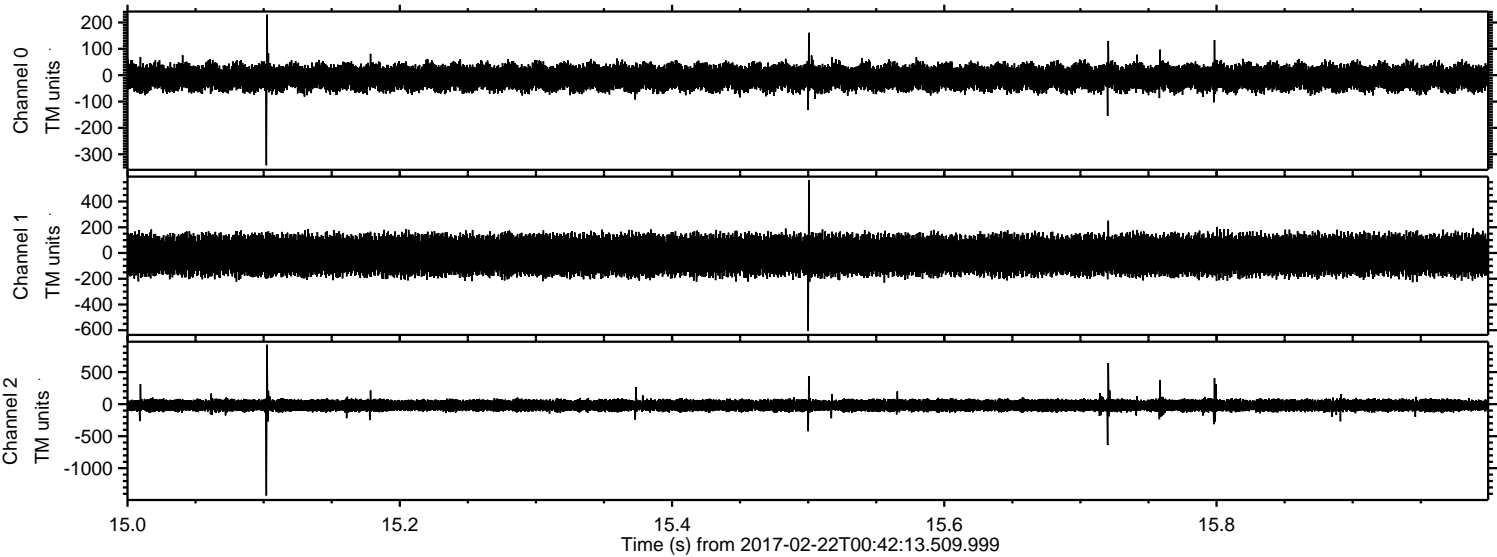


Channel 0
mn: -380
mx: 312
 μ : -8.8
 σ : 28.5

Channel 1
mn: -653
mx: 614
 μ : -16.8
 σ : 89.1

Channel 2
mn: -1579
mx: 1504
 μ : -19.9
 σ : 60.3

Processed Wed Feb 22 01:50:12 2017 by ELM ver.2012-10-06 from 001__elm20170222_004212__dat00.bin

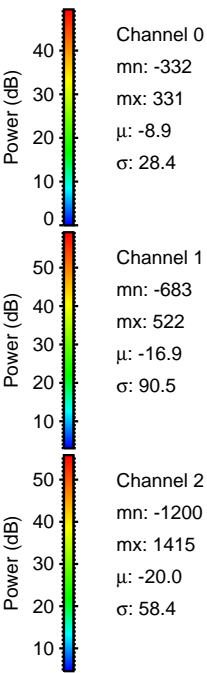
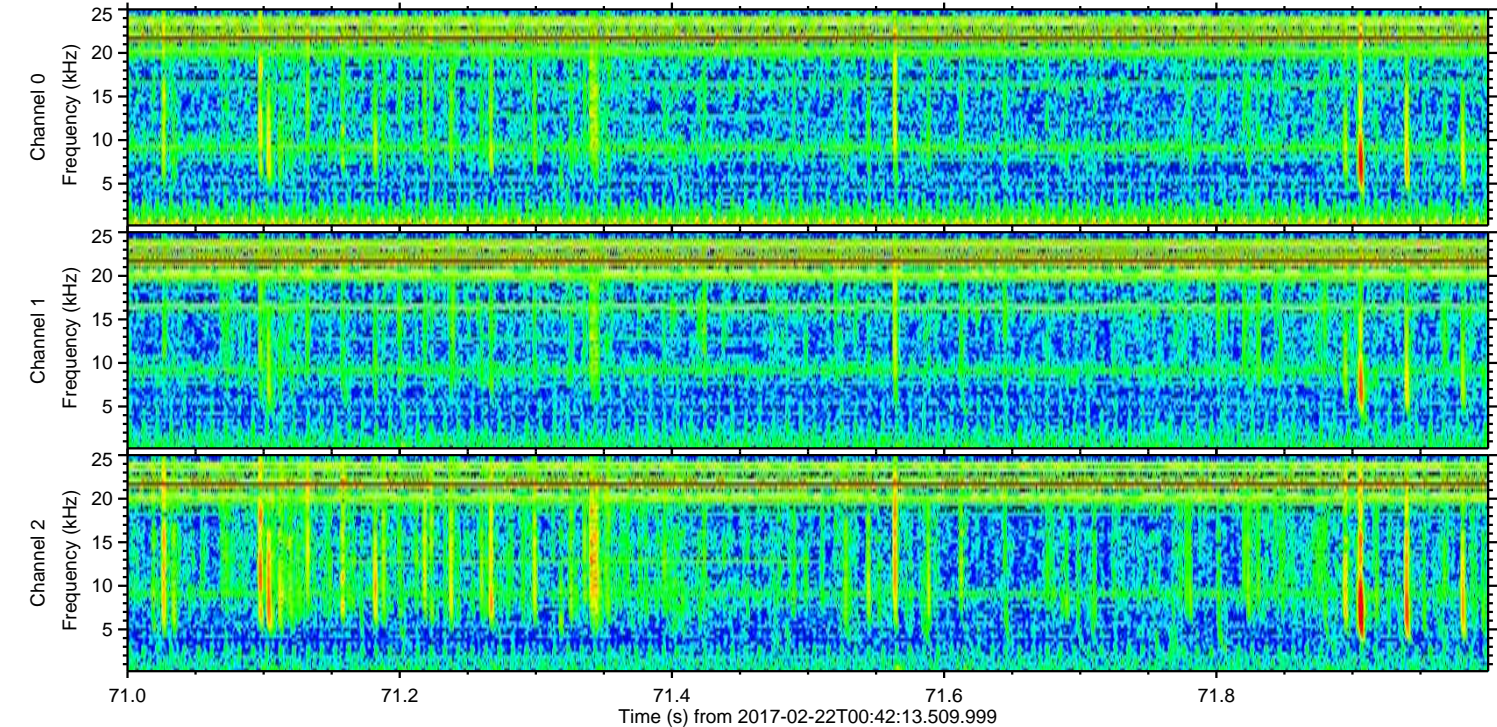
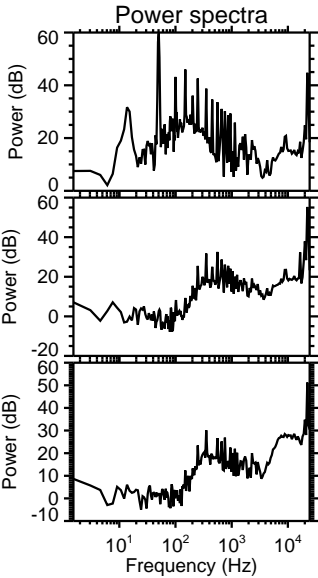
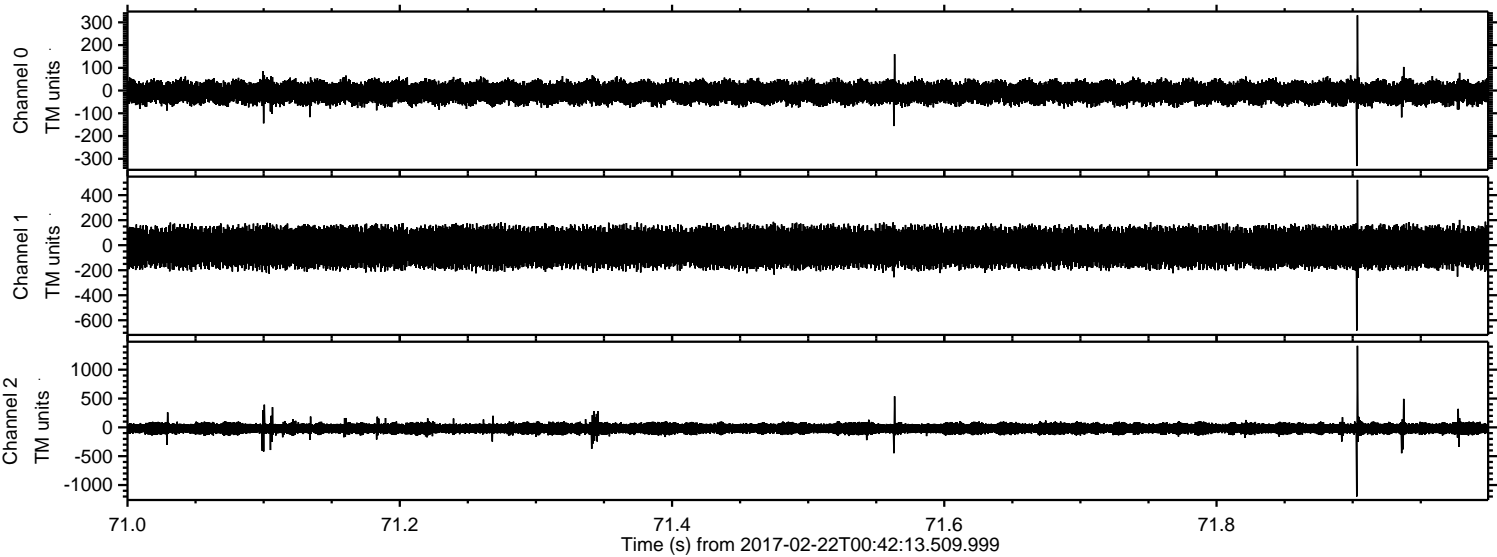


Channel 0
mn: -342
mx: 230
 μ : -8.9
 σ : 28.4

Channel 1
mn: -606
mx: 565
 μ : -16.9
 σ : 88.2

Channel 2
mn: -1425
mx: 928
 μ : -20.0
 σ : 55.3

Processed Wed Feb 22 01:50:13 2017 by ELM ver.2012-10-06 from 001__elm20170222_004212__dat00.bin



Channel 0
mn: -332
mx: 331
 μ : -8.9
 σ : 28.4

Channel 1
mn: -683
mx: 522
 μ : -16.9
 σ : 90.5

Channel 2
mn: -1200
mx: 1415
 μ : -20.0
 σ : 58.4

Processed Wed Feb 22 01:50:14 2017 by ELM ver.2012-10-06 from 001__elm20170222_004212__dat00.bin

