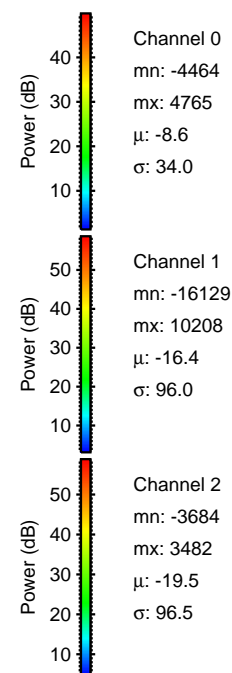
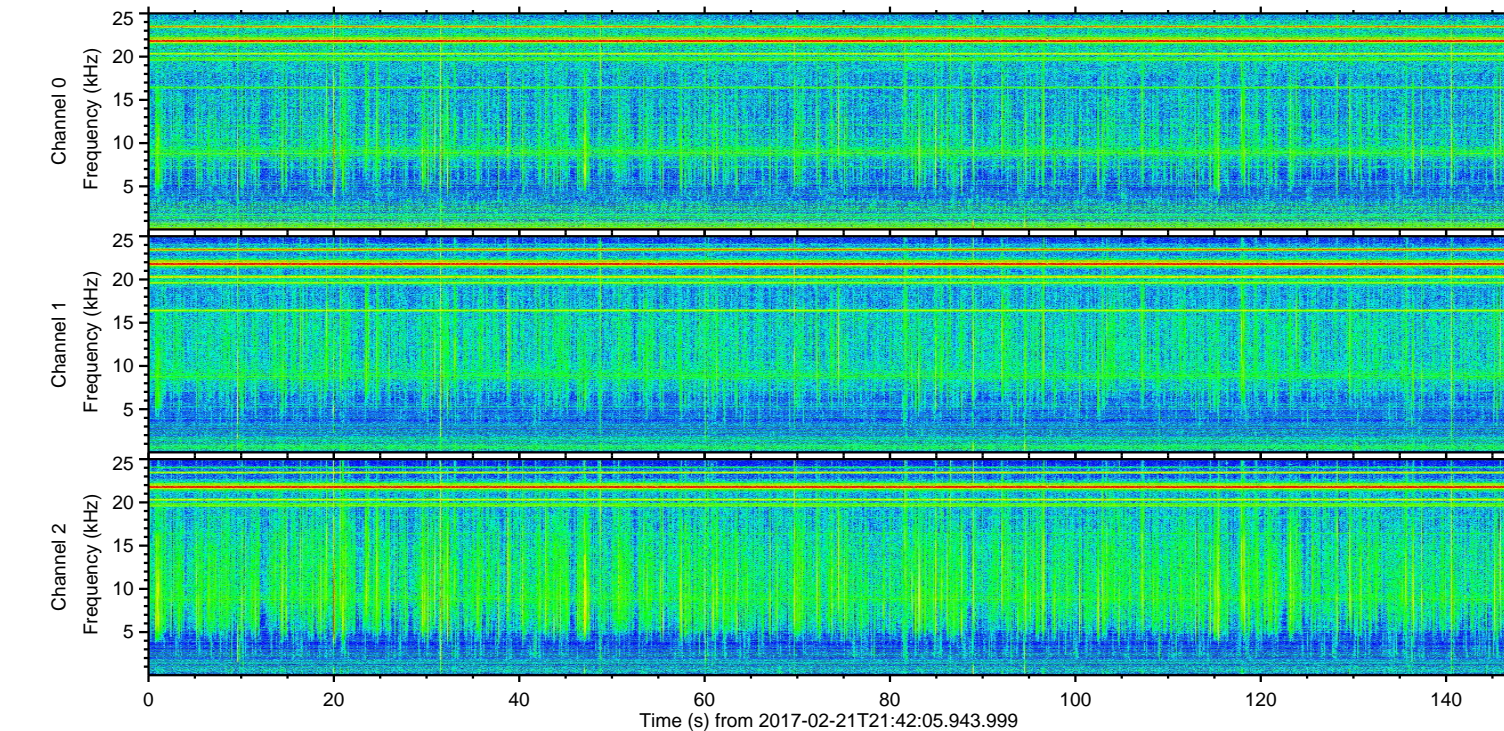
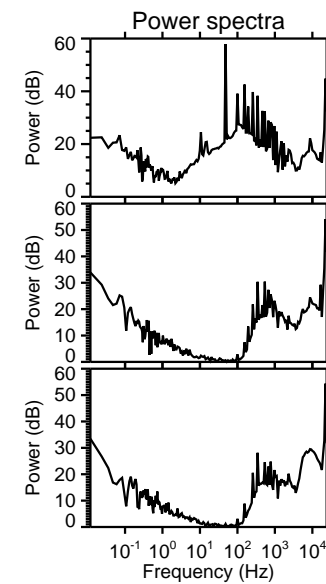
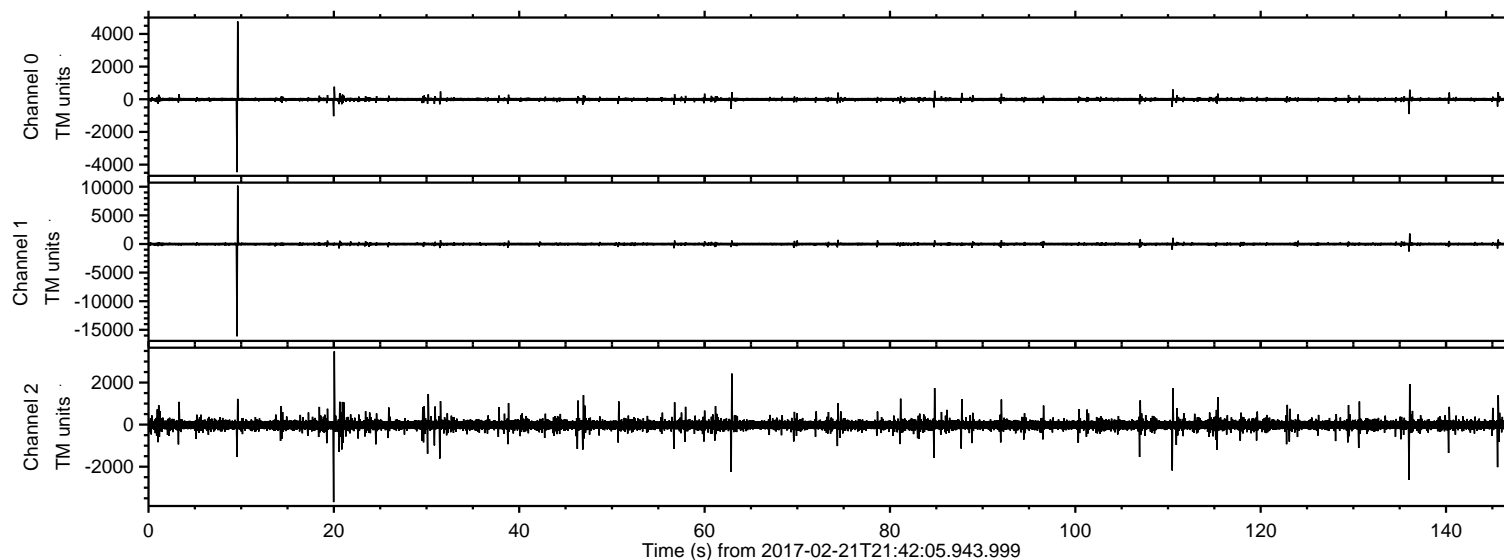


# ELMAVAN 3D WAVEFORMS (Measured data sampled at 50 kHz) 51000 packets of 144 samples from 2017-02-21T21:42:05.943.999.

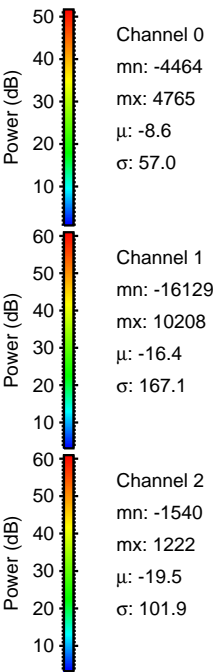
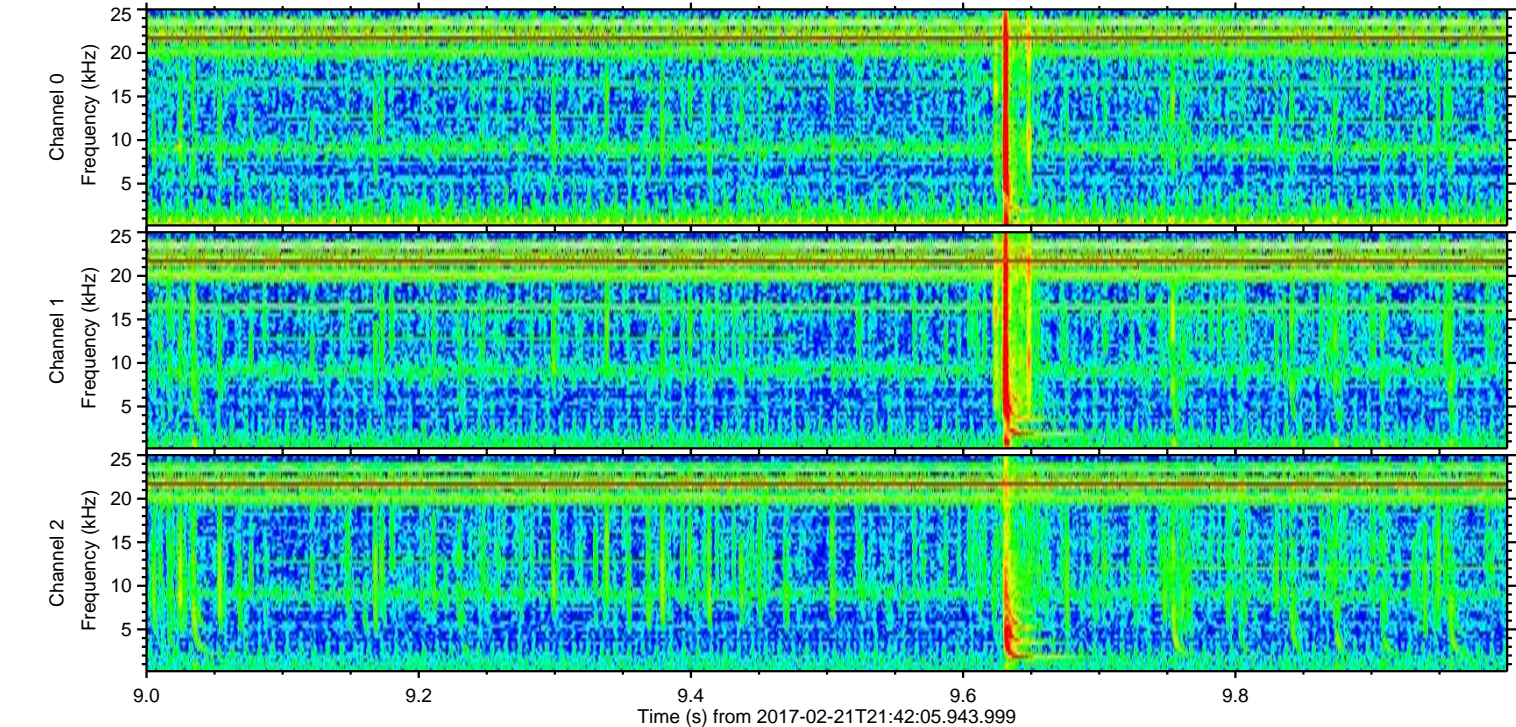
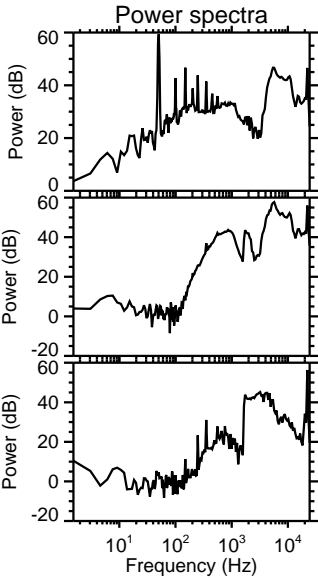
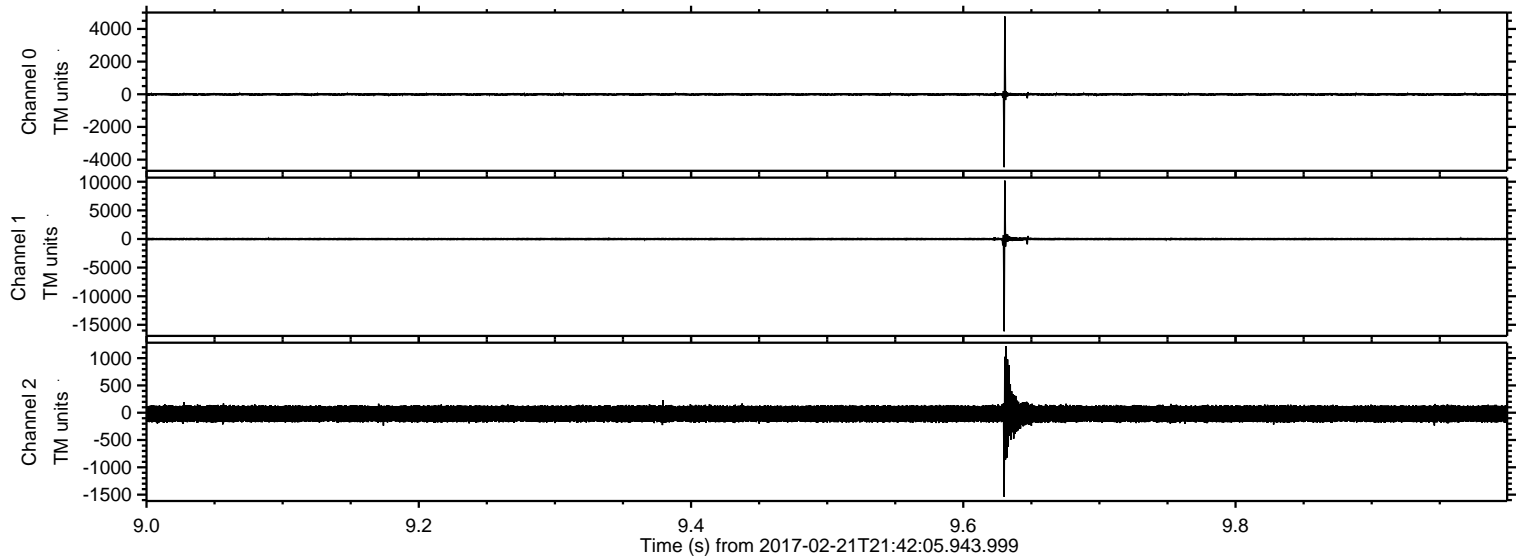
Processed Tue Feb 21 22:49:33 2017 by ELM ver.2012-10-06 from 001\_\_elm20170221\_214204\_\_dat00.bin





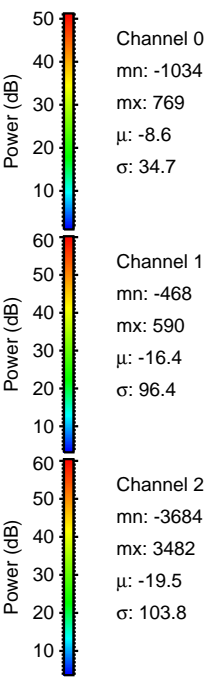
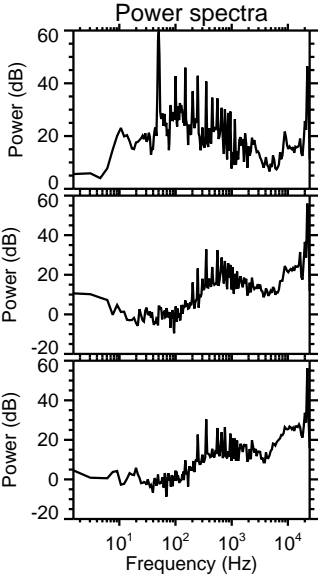
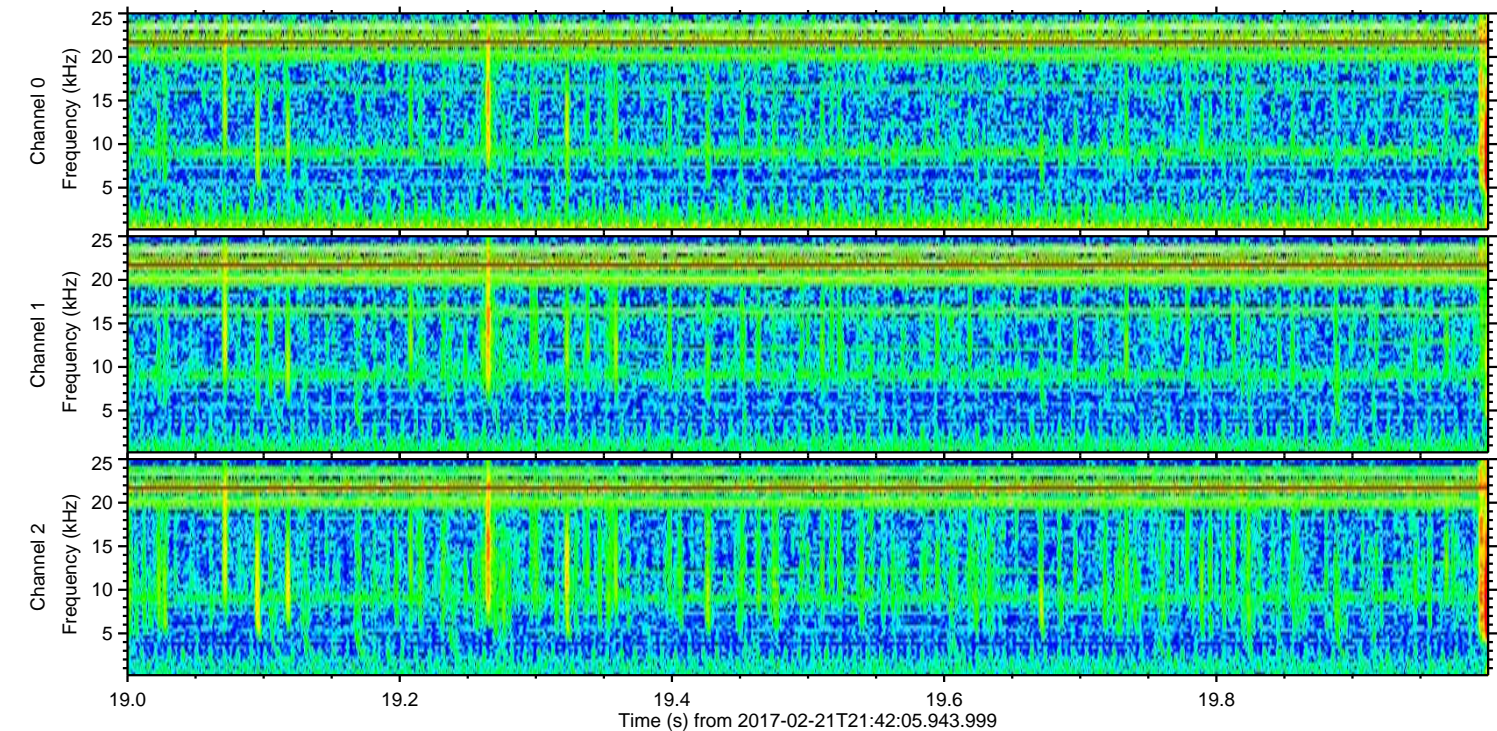
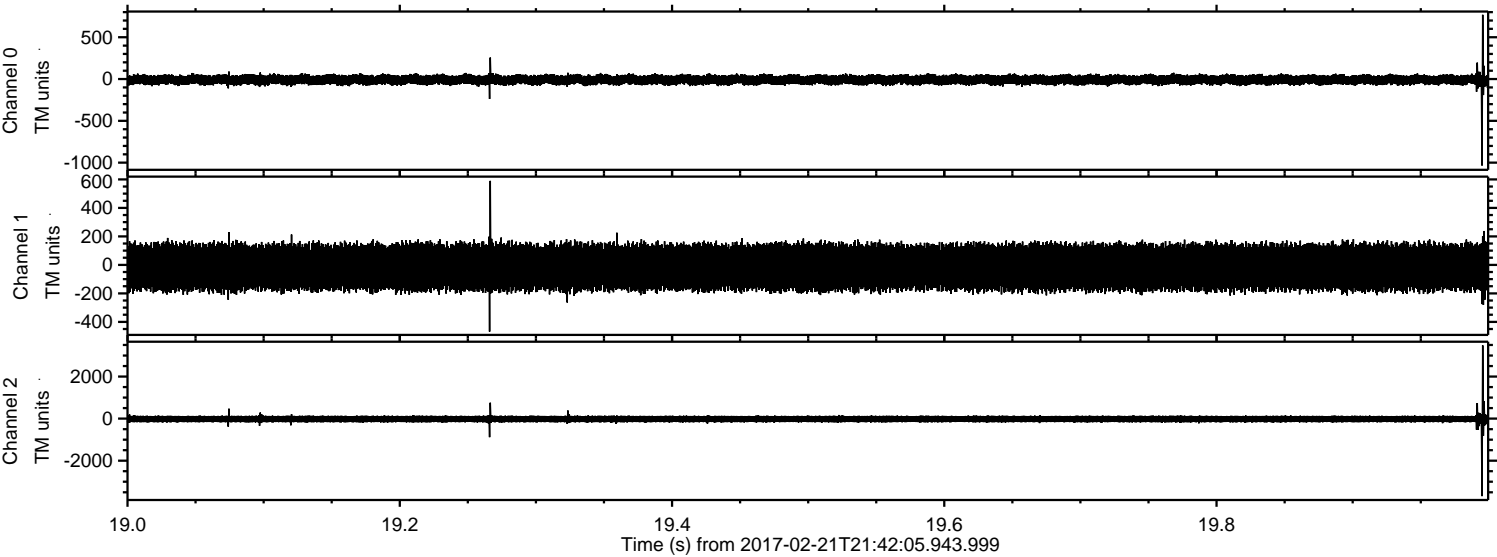
ELMAVAN 3D WAVEFORMS (Measured data sampled at 50 kHz) 51000 packets of 144 samples from 2017-02-21T21:42:05.943.999. Part 10/147

Processed Tue Feb 21 22:49:44 2017 by ELM ver.2012-10-06 from 001\_\_elm20170221\_214204\_\_dat00.bin





Processed Tue Feb 21 22:49:45 2017 by ELM ver.2012-10-06 from 001\_\_elm20170221\_214204\_\_dat00.bin



Channel 0  
mn: -1034  
mx: 769  
 $\mu$ : -8.6  
 $\sigma$ : 34.7

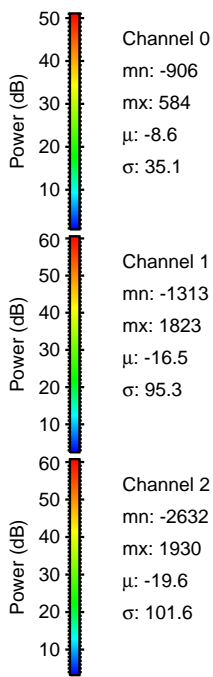
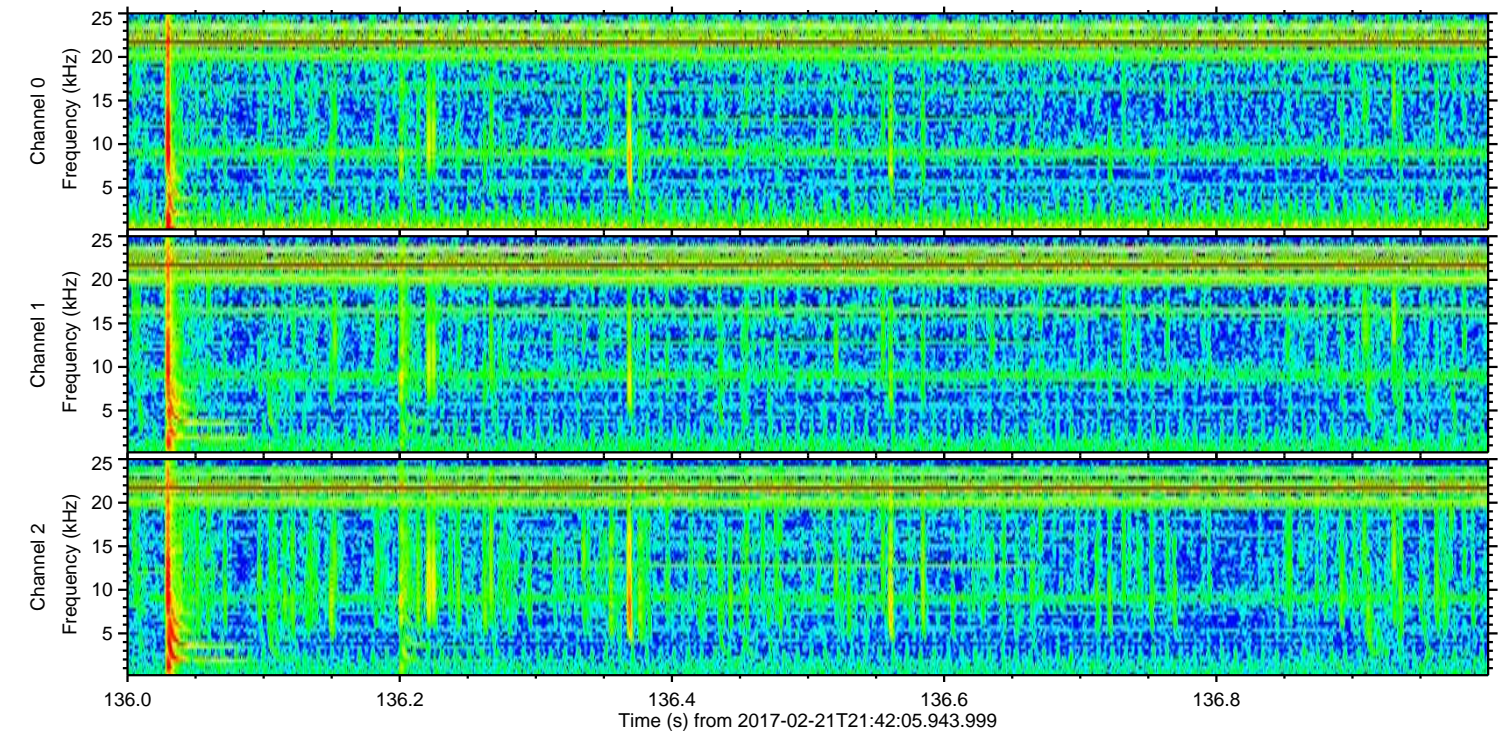
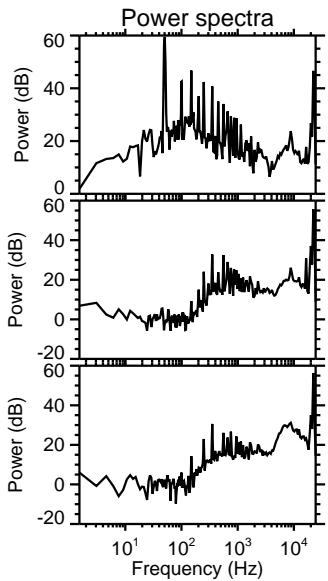
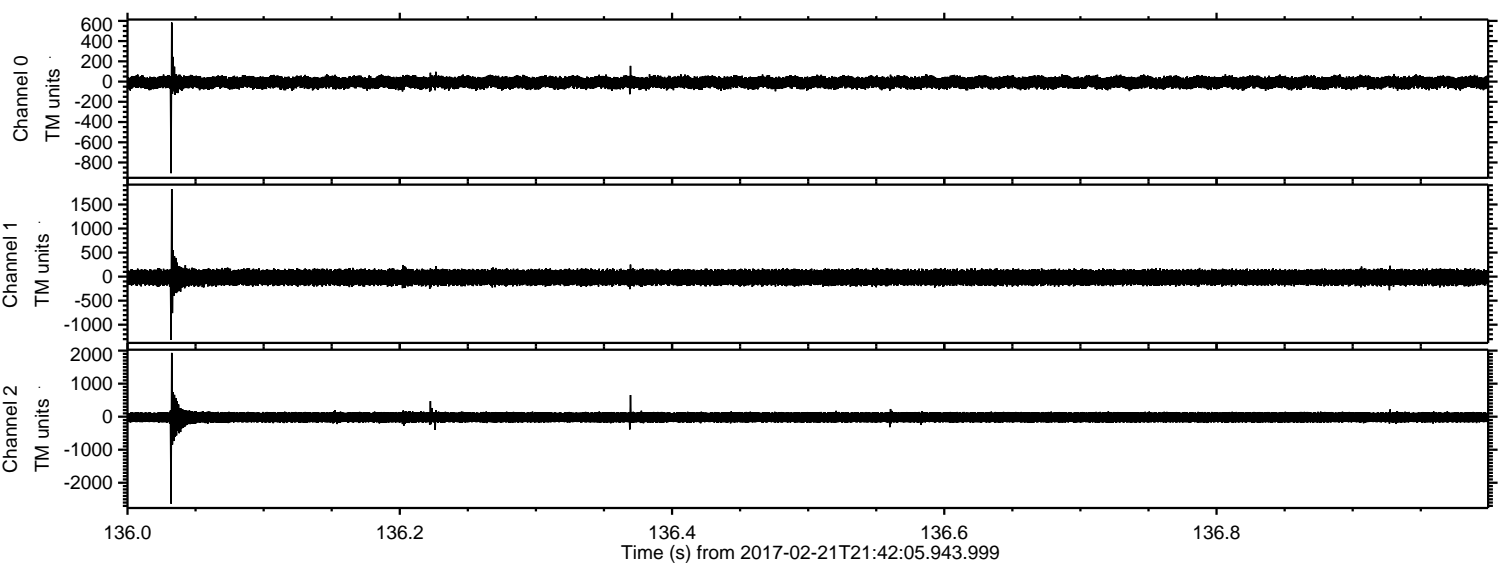
Channel 1  
mn: -468  
mx: 590  
 $\mu$ : -16.4  
 $\sigma$ : 96.4

Channel 2  
mn: -3684  
mx: 3482  
 $\mu$ : -19.5  
 $\sigma$ : 103.8



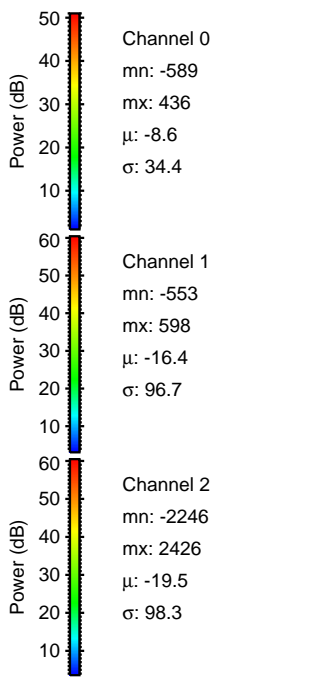
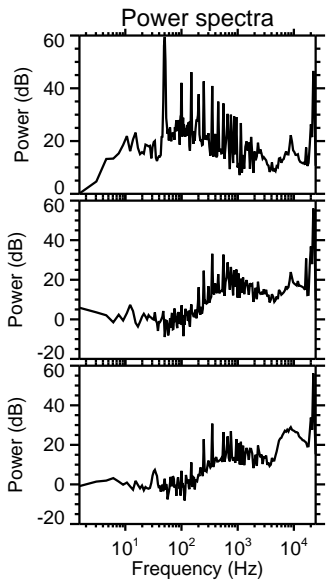
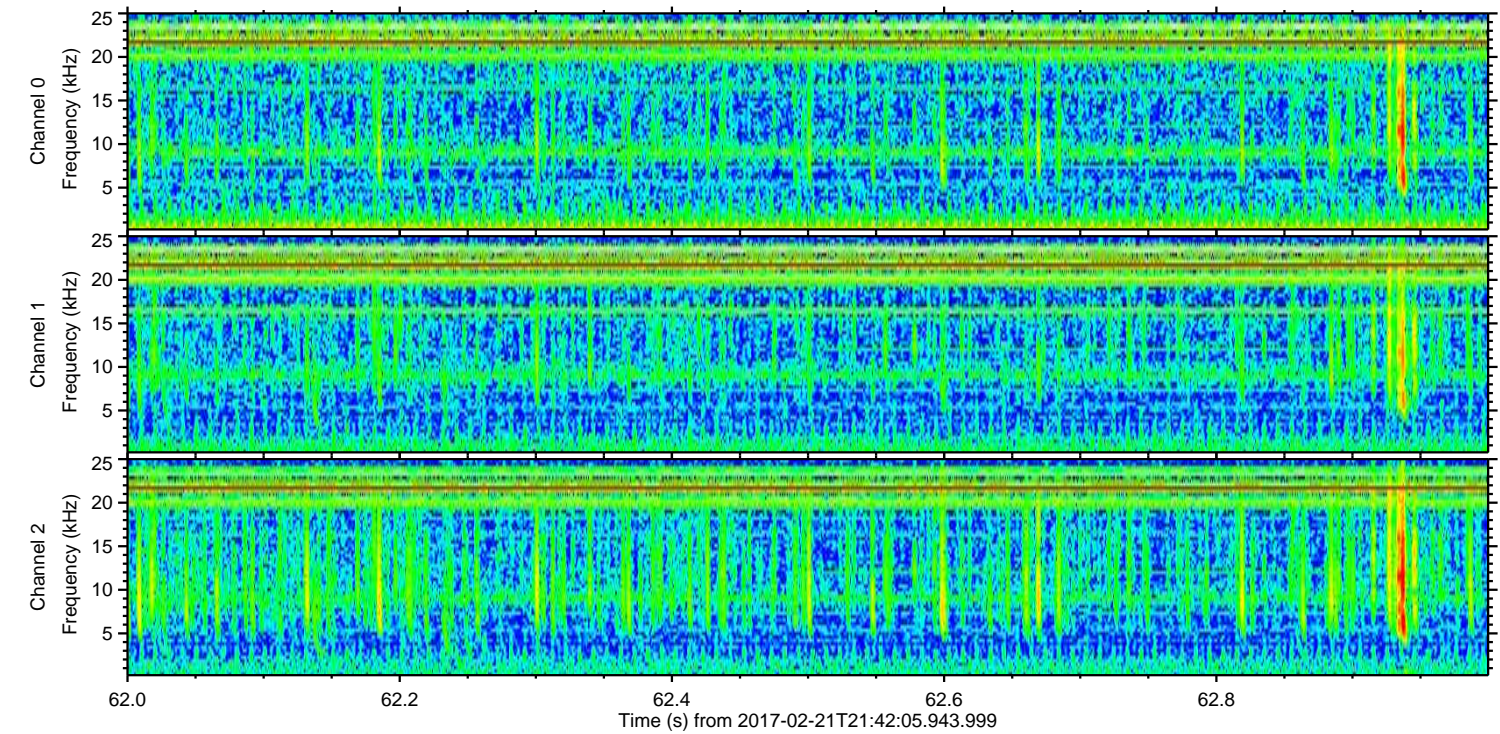
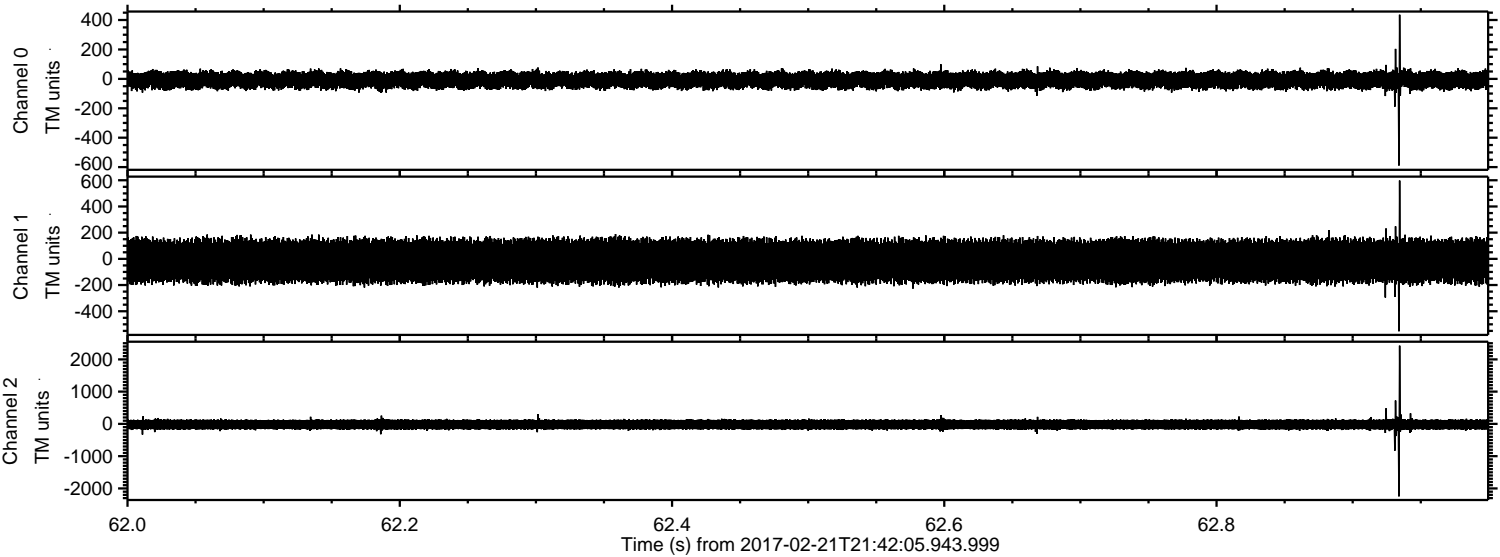
ELMAVAN 3D WAVEFORMS (Measured data sampled at 50 kHz) 51000 packets of 144 samples from 2017-02-21T21:42:05.943.999. Part 137/147

Processed Tue Feb 21 22:49:46 2017 by ELM ver.2012-10-06 from 001\_\_elm20170221\_214204\_\_dat00.bin





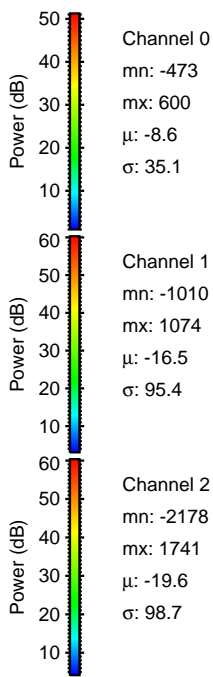
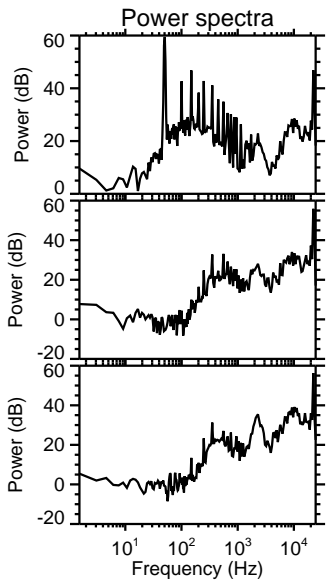
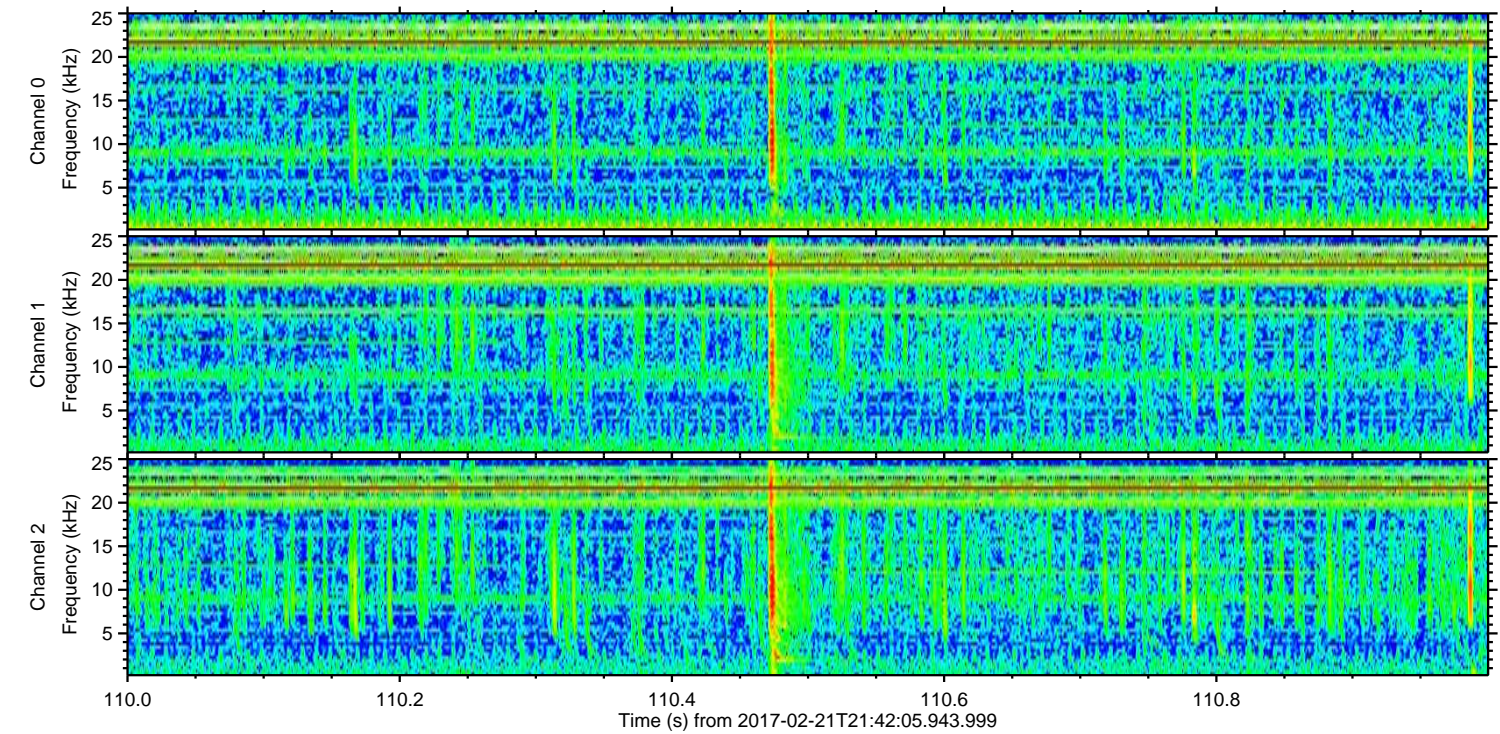
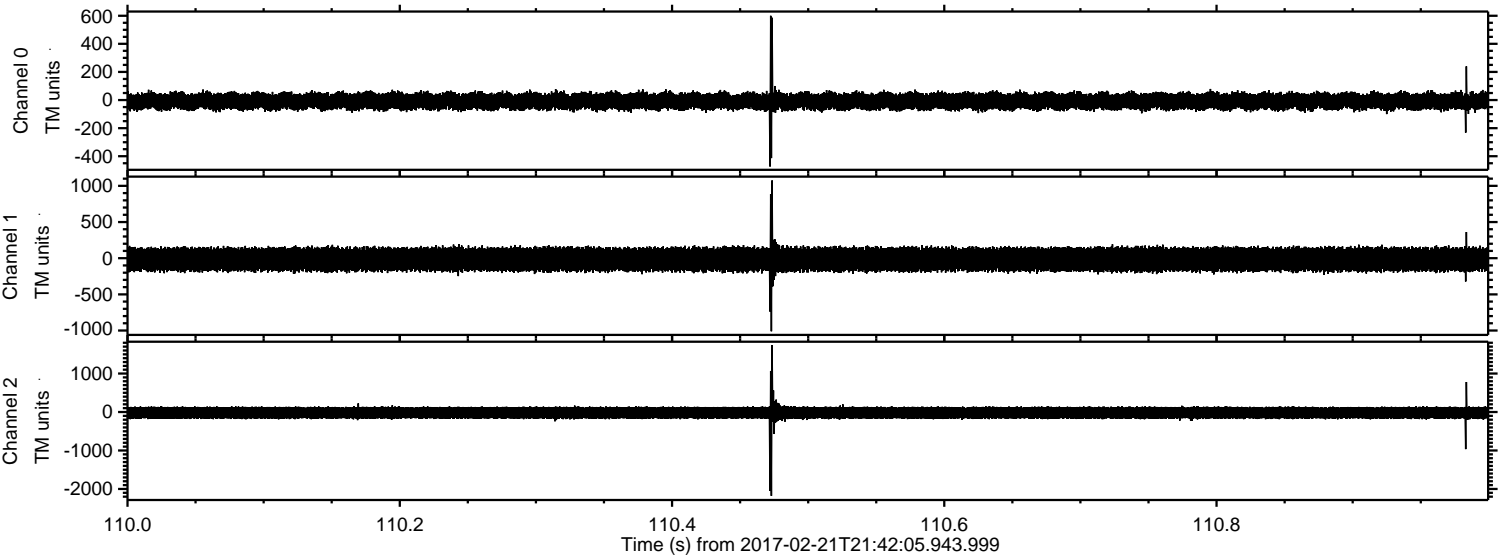
Processed Tue Feb 21 22:49:47 2017 by ELM ver.2012-10-06 from 001\_\_elm20170221\_214204\_\_dat00.bin





ELMAVAN 3D WAVEFORMS (Measured data sampled at 50 kHz) 51000 packets of 144 samples from 2017-02-21T21:42:05.943.999. Part 111/147

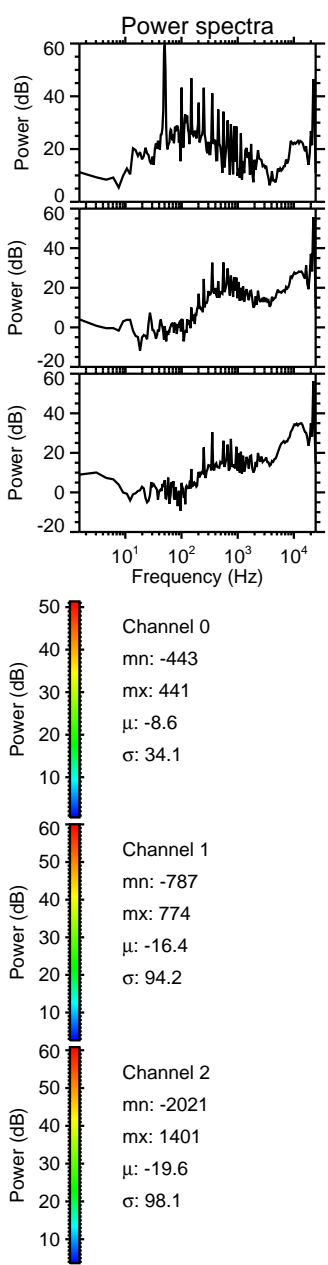
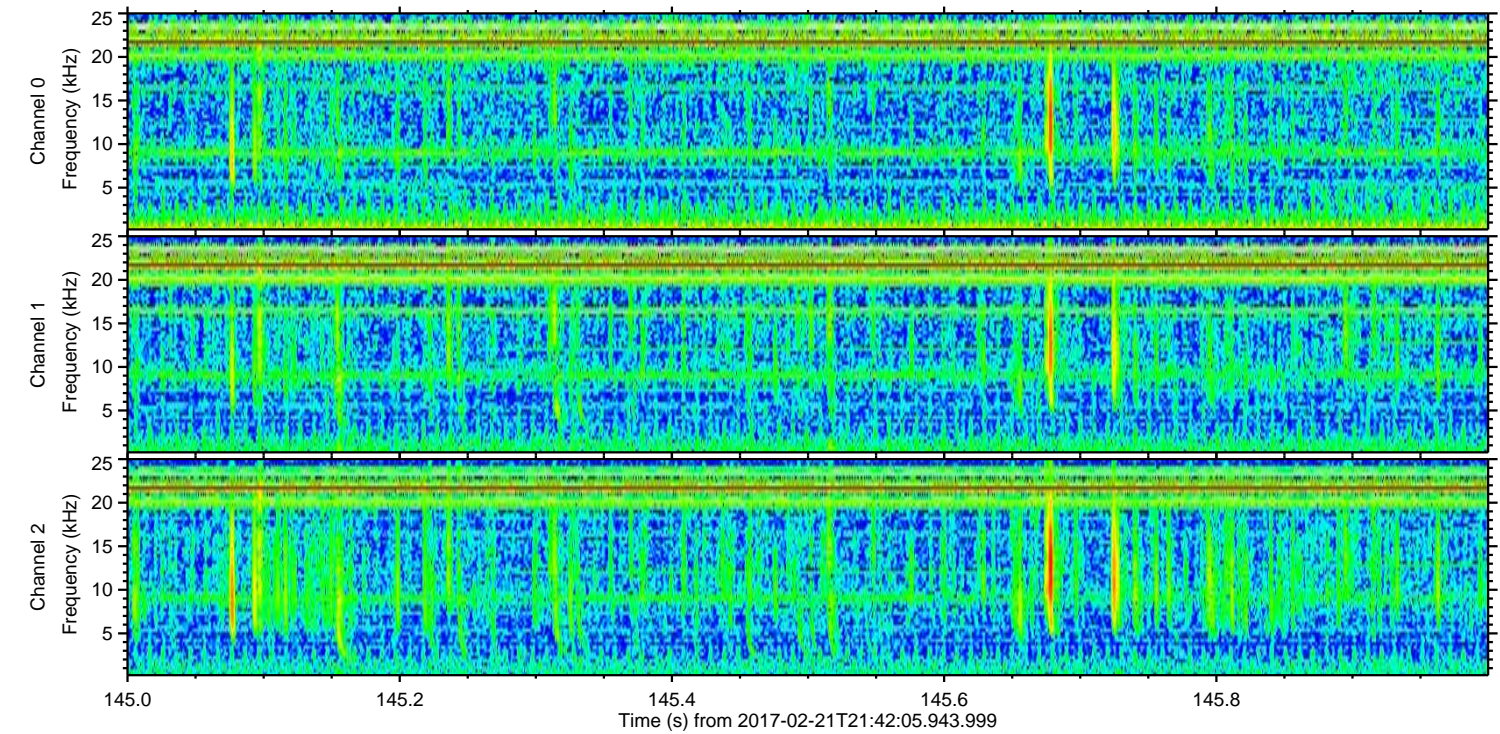
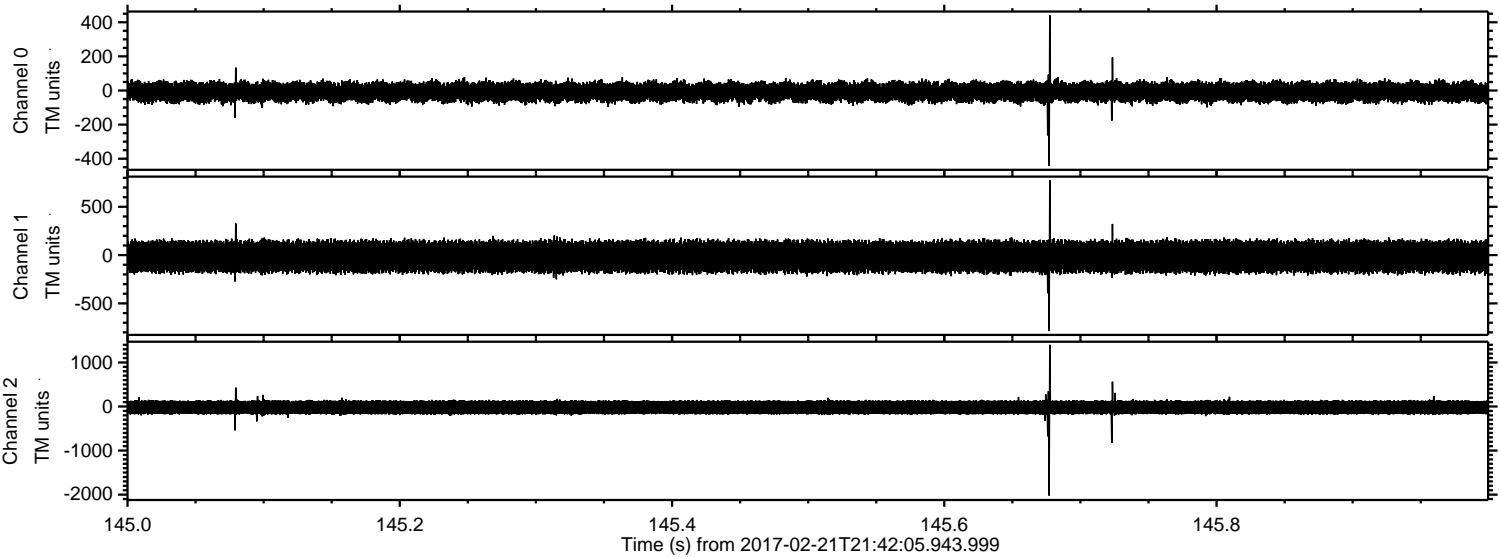
Processed Tue Feb 21 22:49:48 2017 by ELM ver.2012-10-06 from 001\_\_elm20170221\_214204\_\_dat00.bin





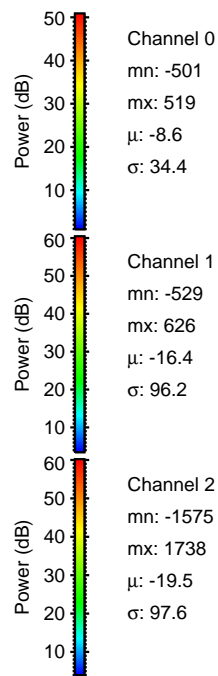
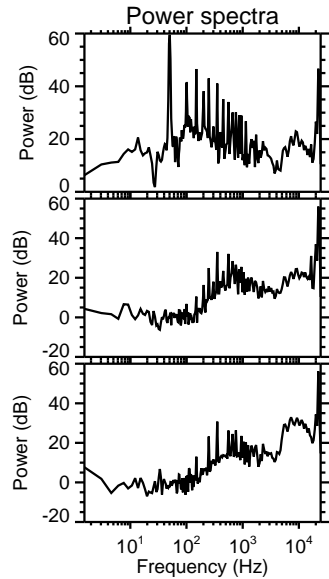
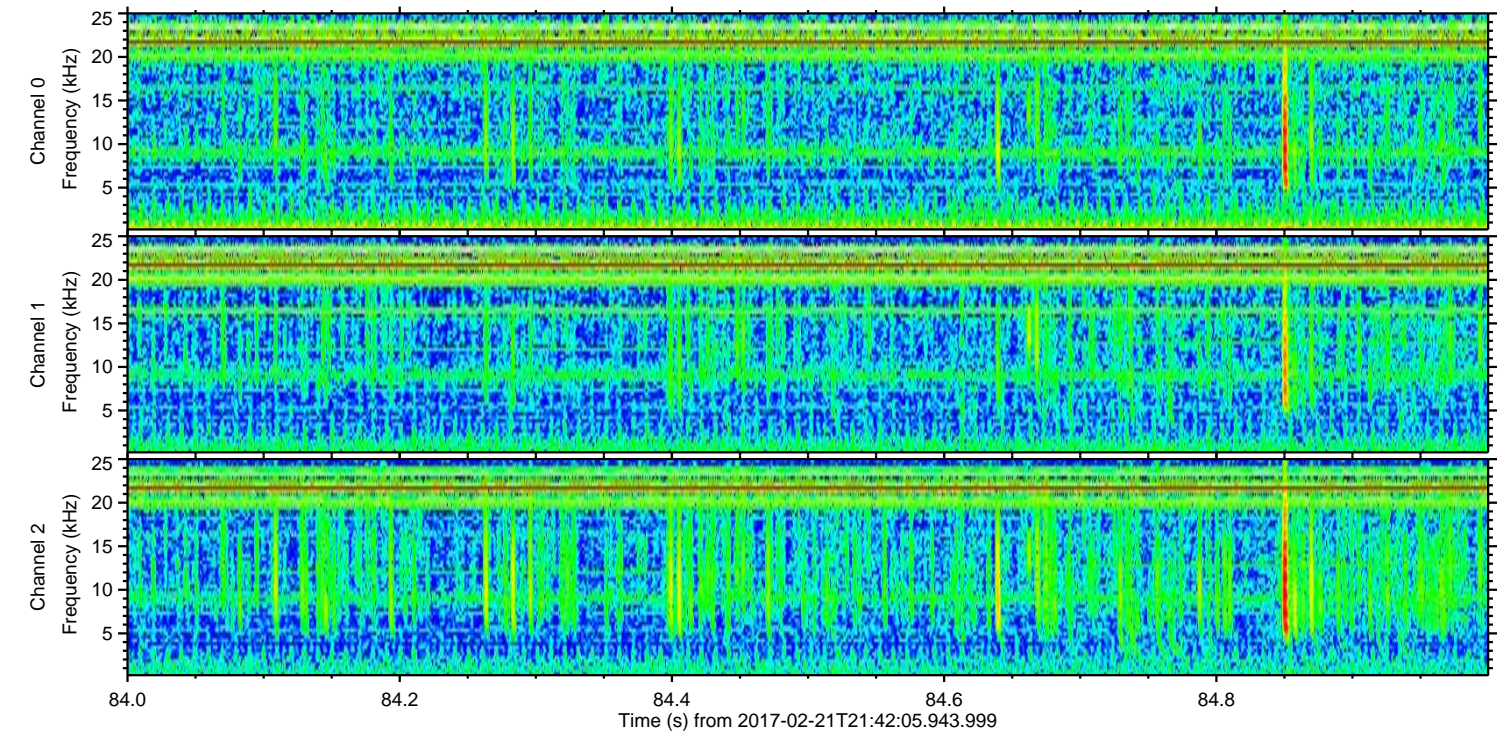
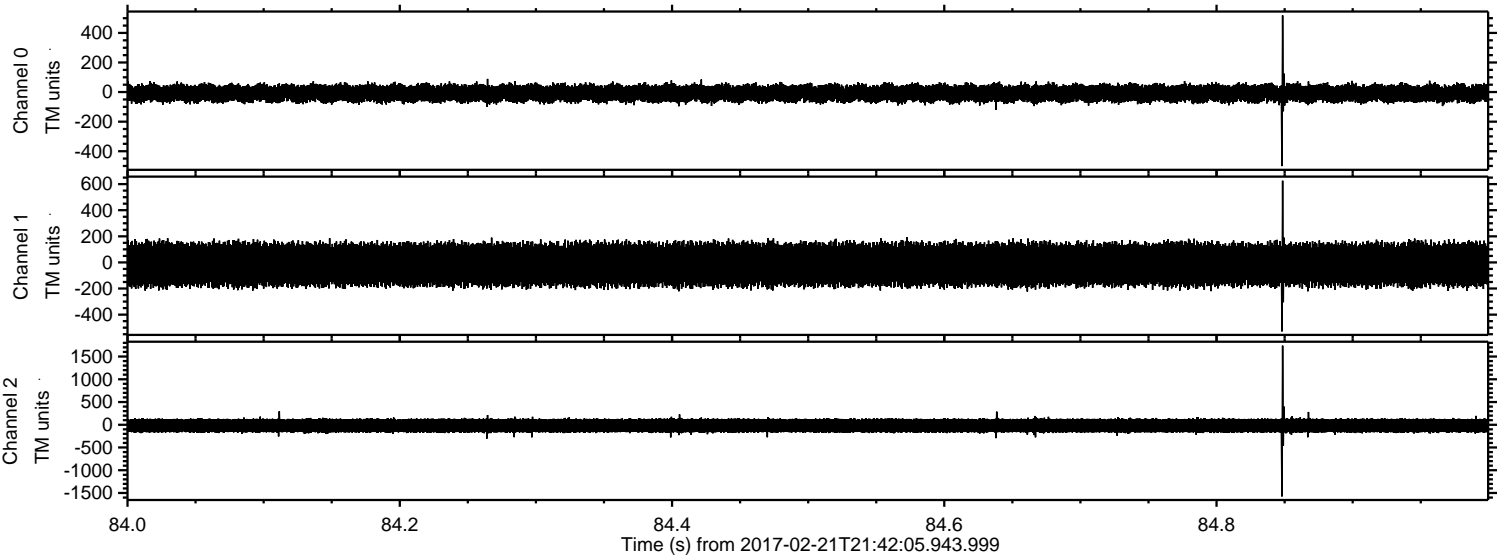
ELMAVAN 3D WAVEFORMS (Measured data sampled at 50 kHz) 51000 packets of 144 samples from 2017-02-21T21:42:05.943.999. Part 146/147

Processed Tue Feb 21 22:49:49 2017 by ELM ver.2012-10-06 from 001\_\_elm20170221\_214204\_\_dat00.bin





Processed Tue Feb 21 22:49:50 2017 by ELM ver.2012-10-06 from 001\_\_elm20170221\_214204\_\_dat00.bin



Channel 0  
mn: -501  
mx: 519  
 $\mu$ : -8.6  
 $\sigma$ : 34.4

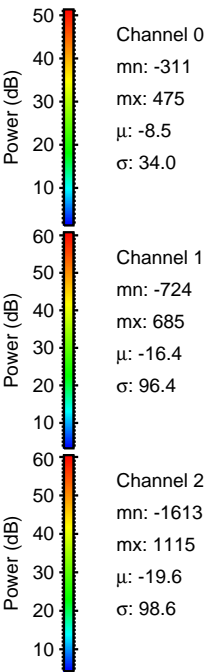
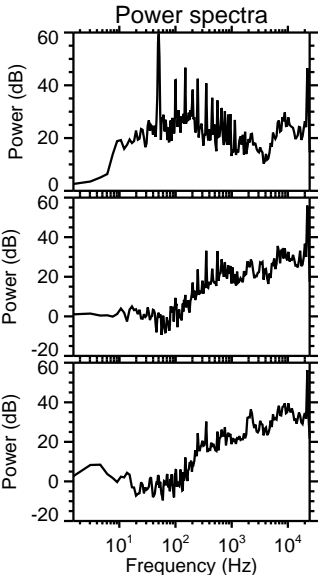
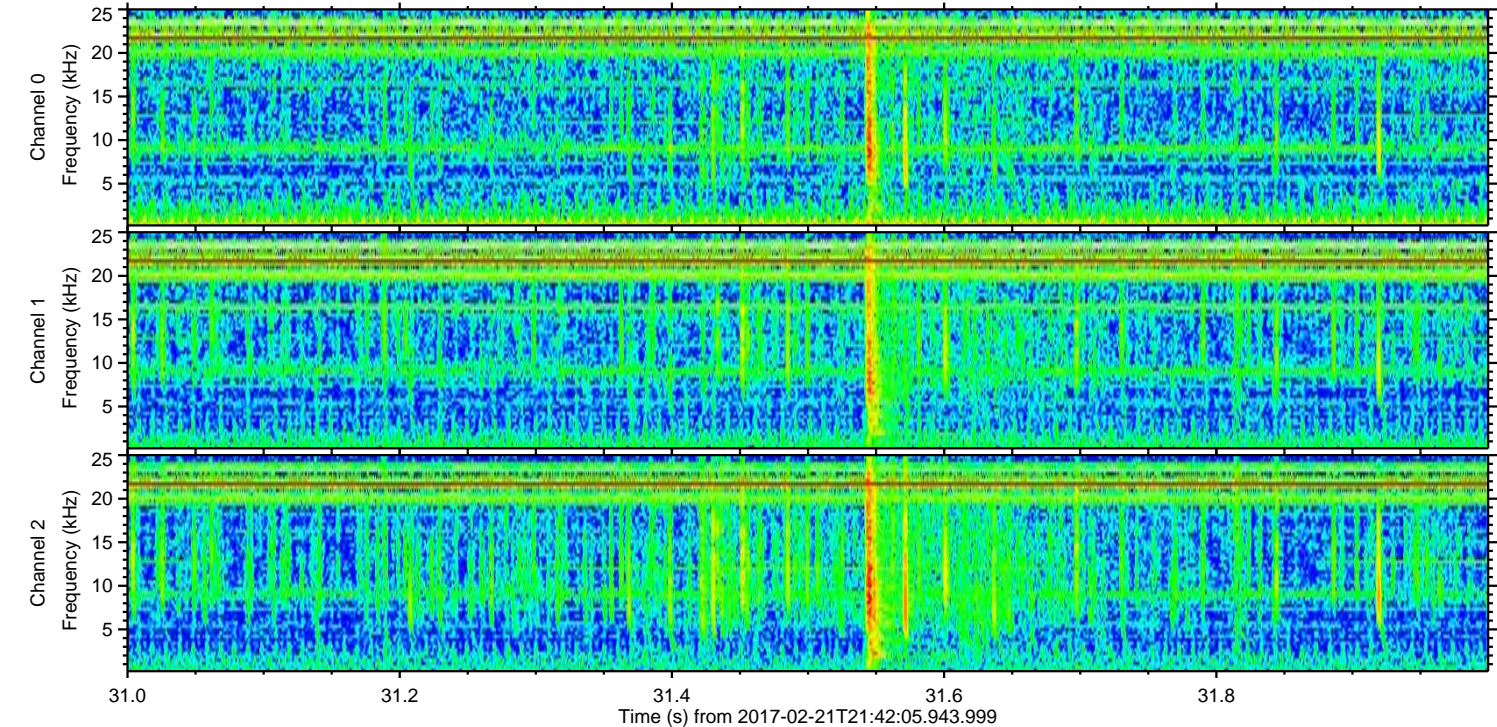
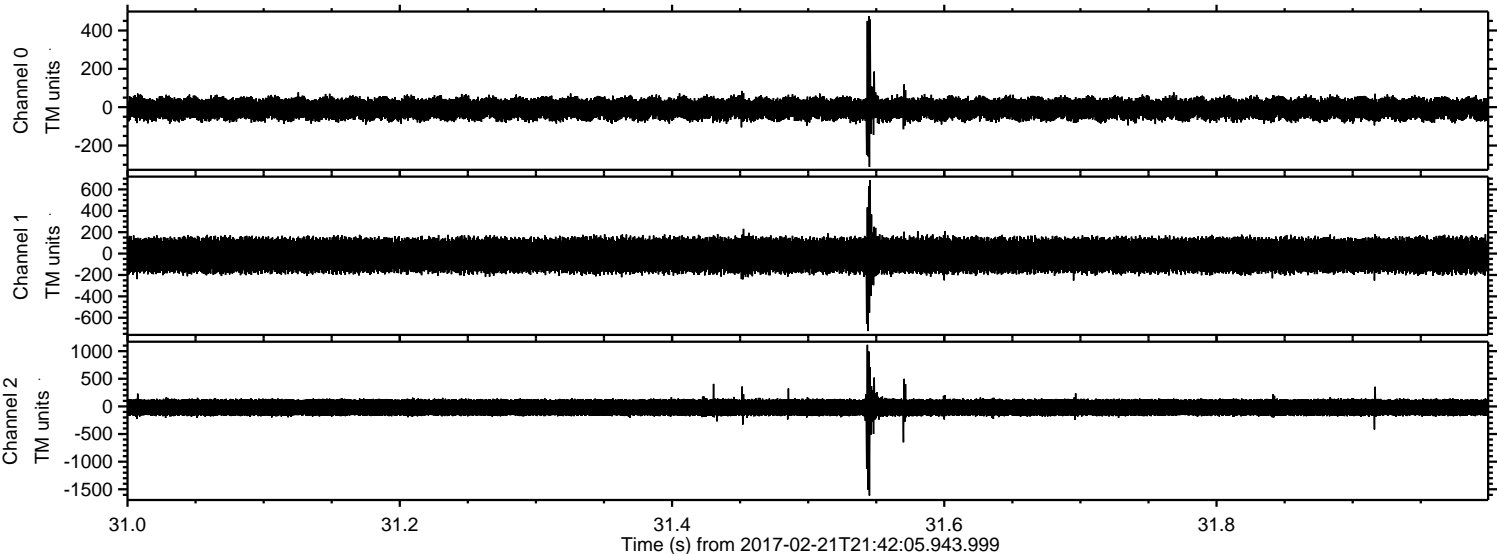
Channel 1  
mn: -529  
mx: 626  
 $\mu$ : -16.4  
 $\sigma$ : 96.2

Channel 2  
mn: -1575  
mx: 1738  
 $\mu$ : -19.5  
 $\sigma$ : 97.6



ELMAVAN 3D WAVEFORMS (Measured data sampled at 50 kHz) 51000 packets of 144 samples from 2017-02-21T21:42:05.943.999. Part 32/147

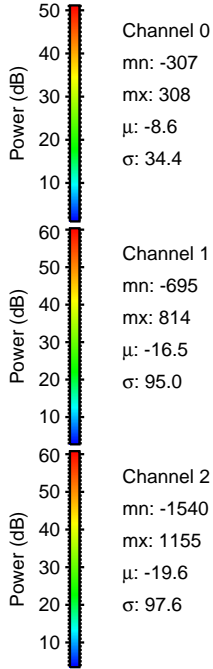
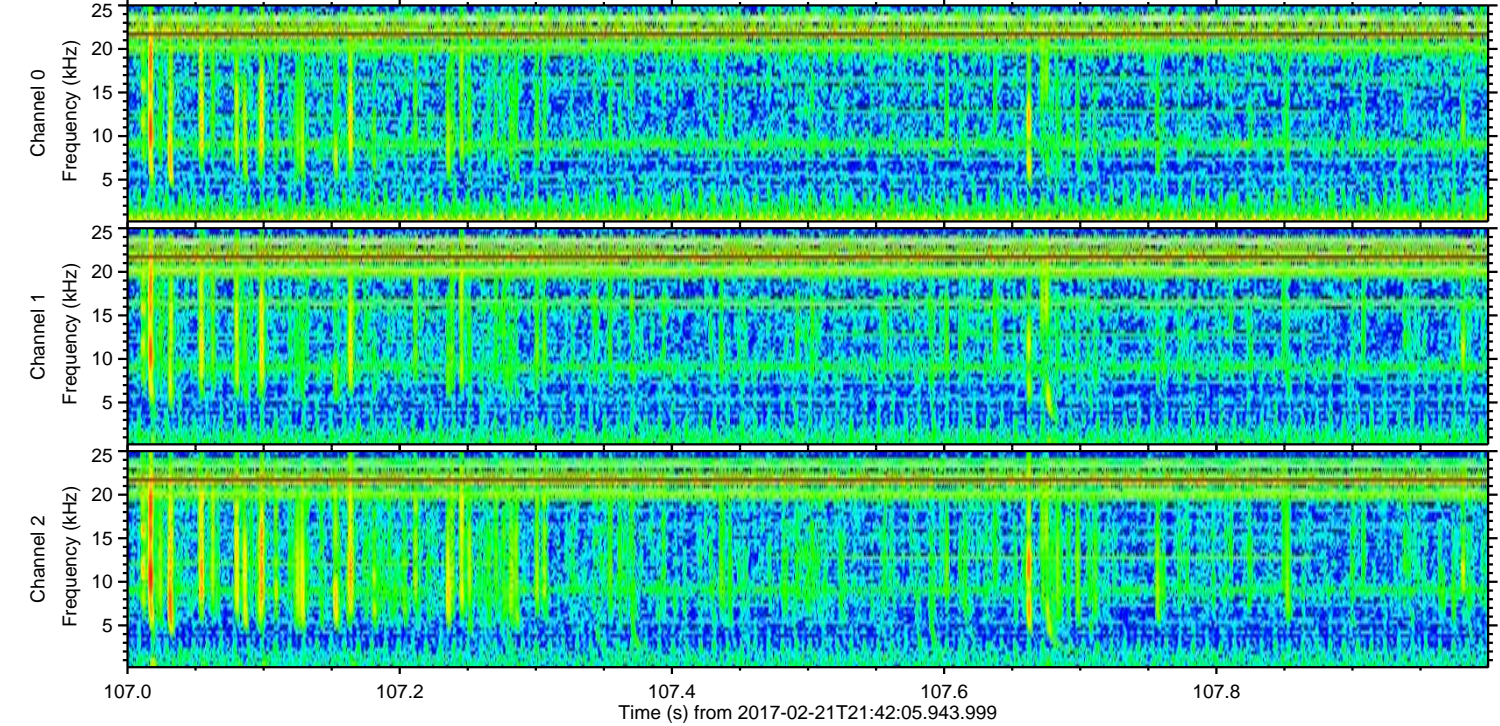
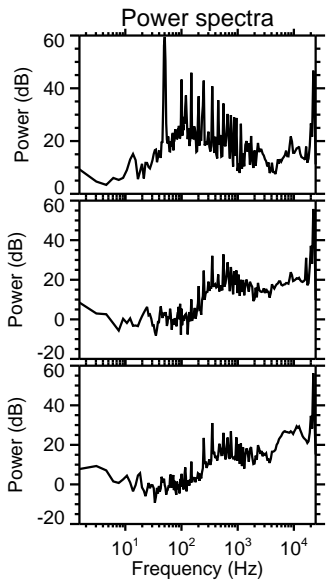
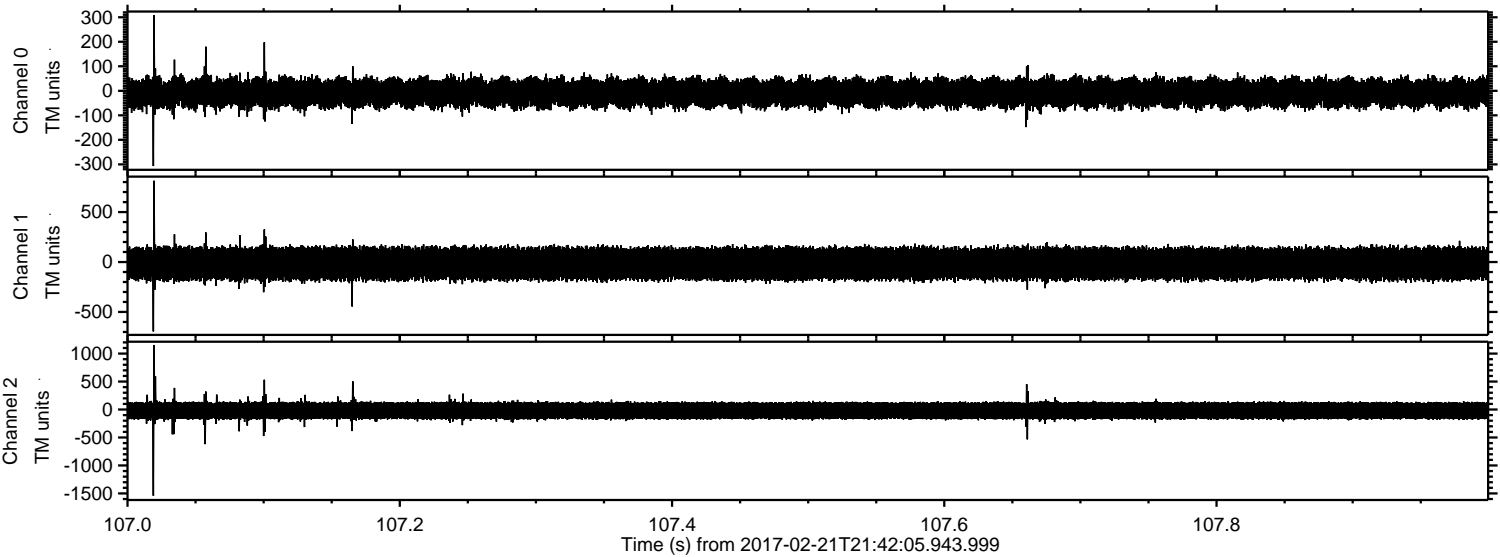
Processed Tue Feb 21 22:49:51 2017 by ELM ver.2012-10-06 from 001\_\_elm20170221\_214204\_\_dat00.bin





ELMAVAN 3D WAVEFORMS (Measured data sampled at 50 kHz) 51000 packets of 144 samples from 2017-02-21T21:42:05.943.999. Part 108/147

Processed Tue Feb 21 22:49:52 2017 by ELM ver.2012-10-06 from 001\_\_elm20170221\_214204\_\_dat00.bin





Processed Tue Feb 21 22:49:53 2017 by ELM ver.2012-10-06 from 001\_\_elm20170221\_214204\_\_dat00.bin

