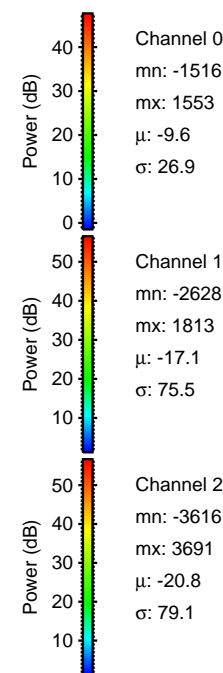
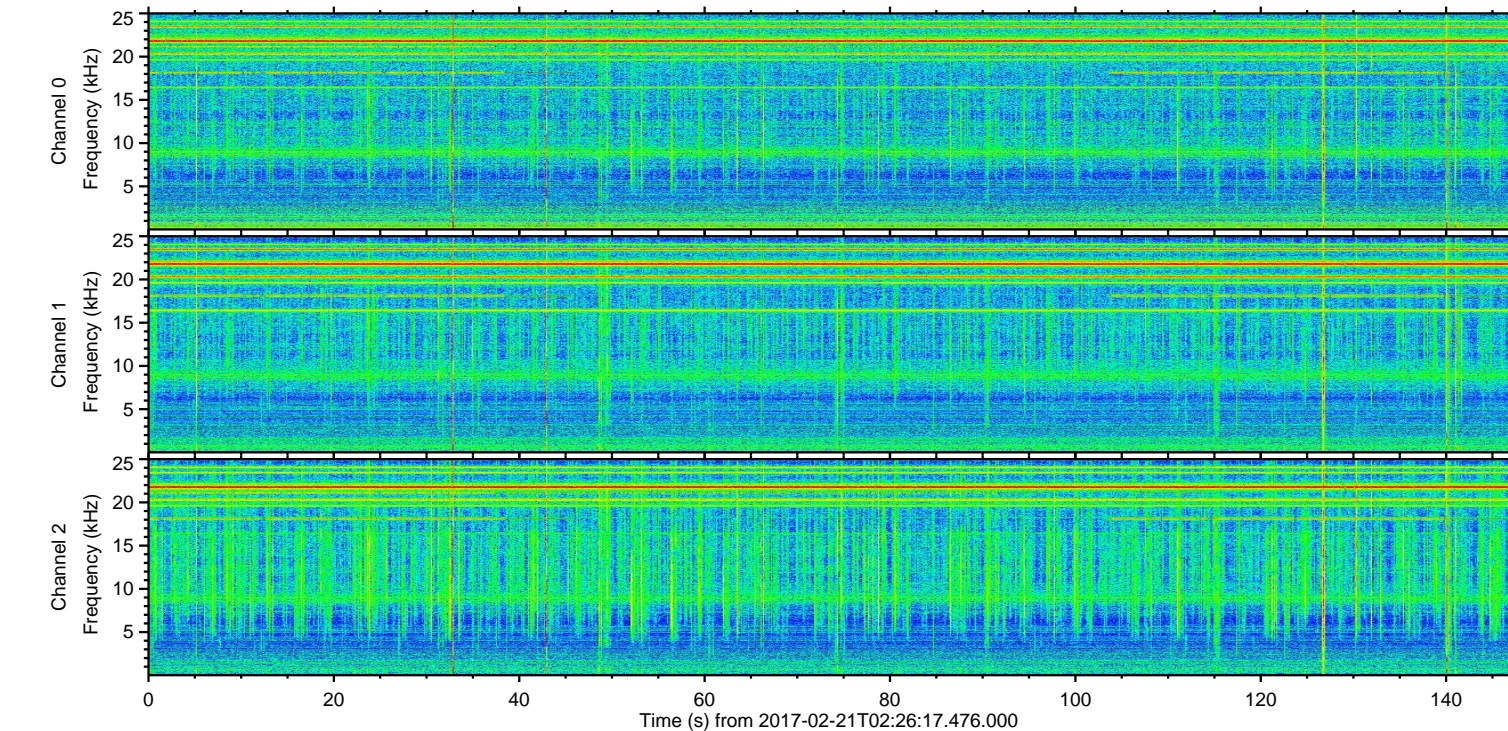
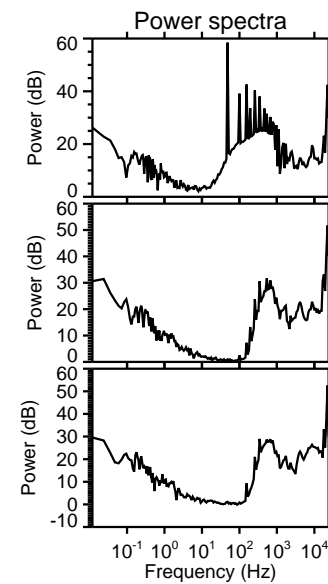
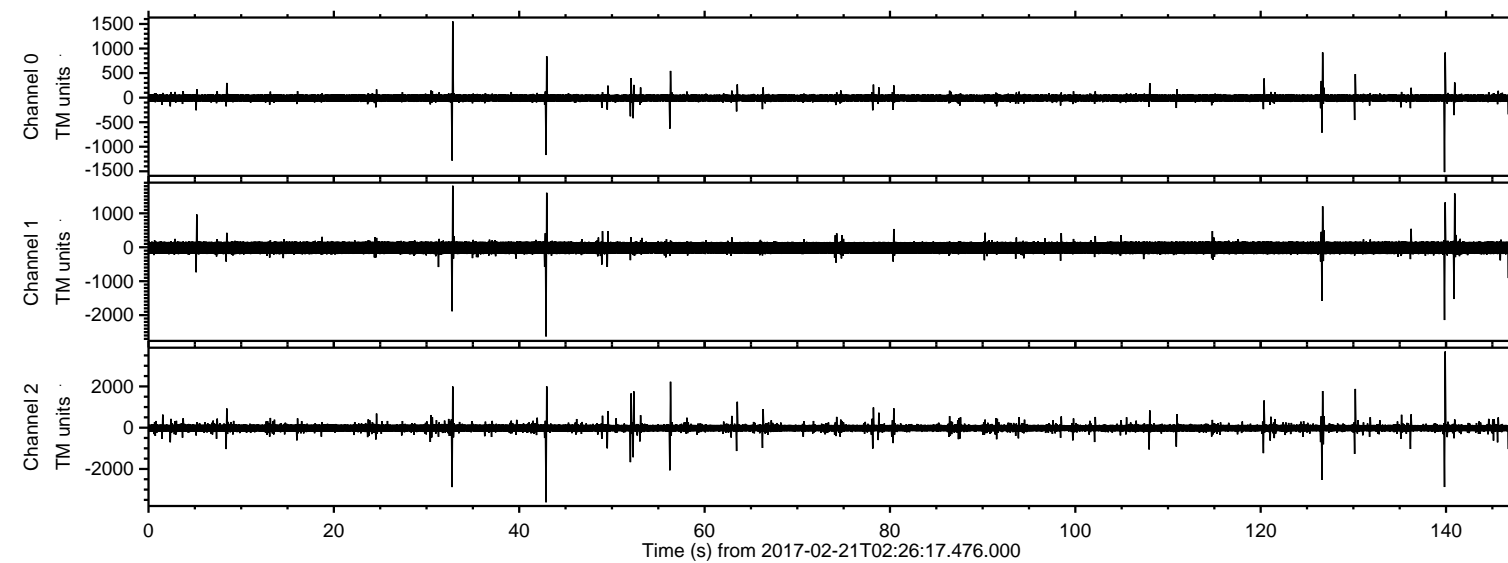


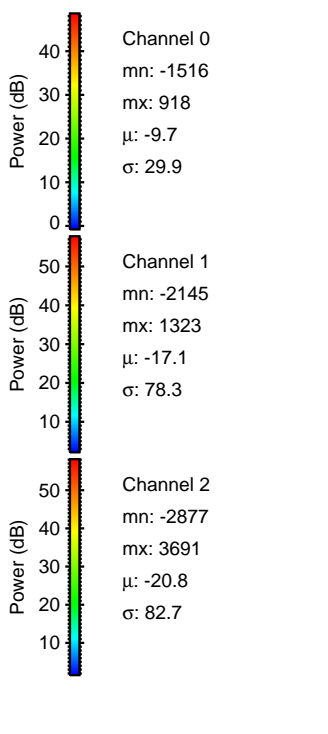
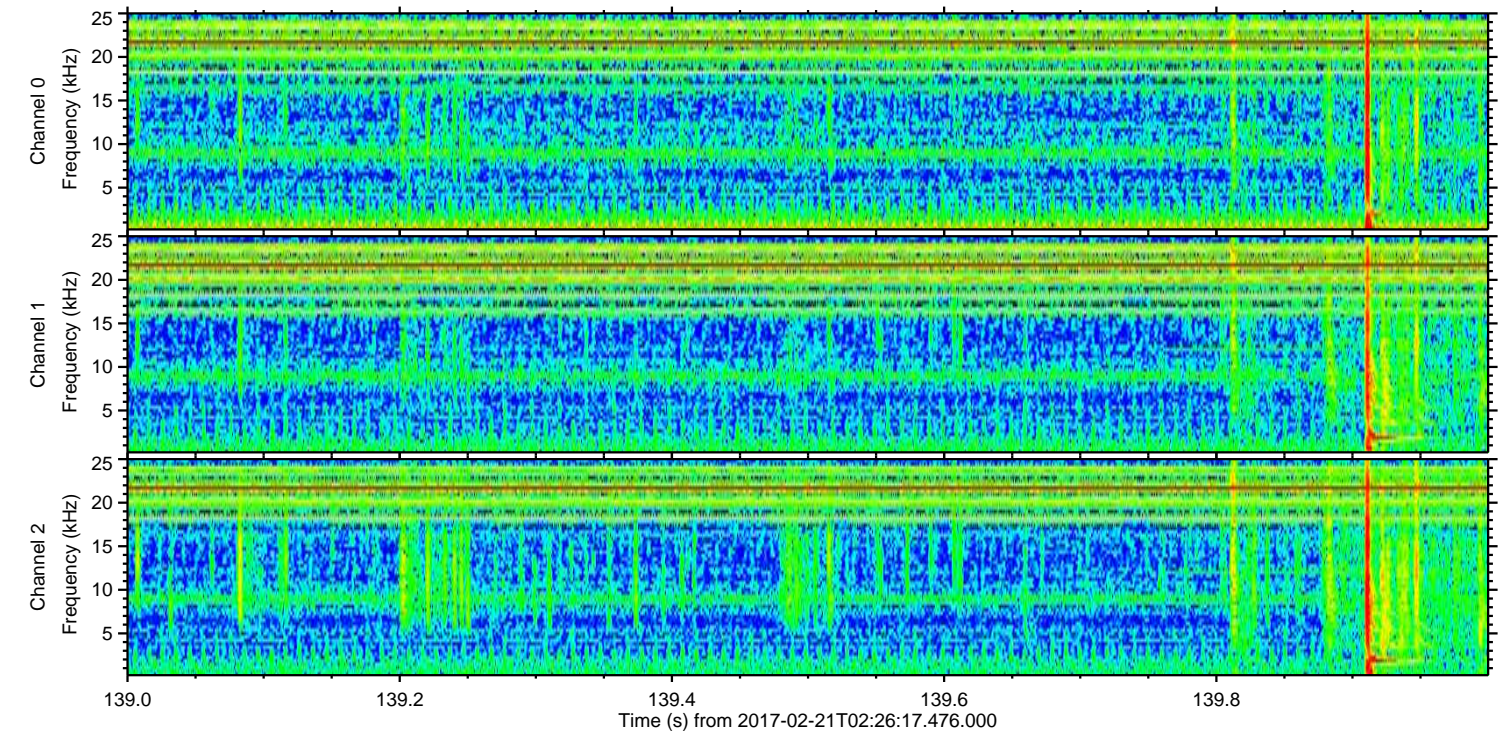
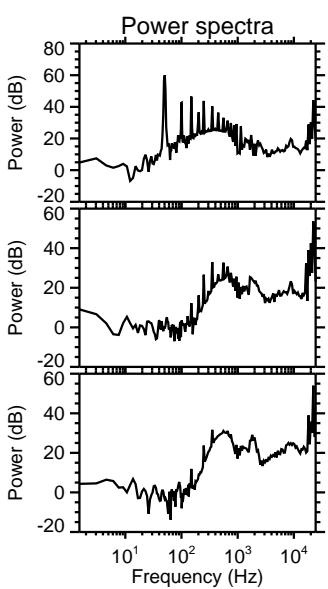
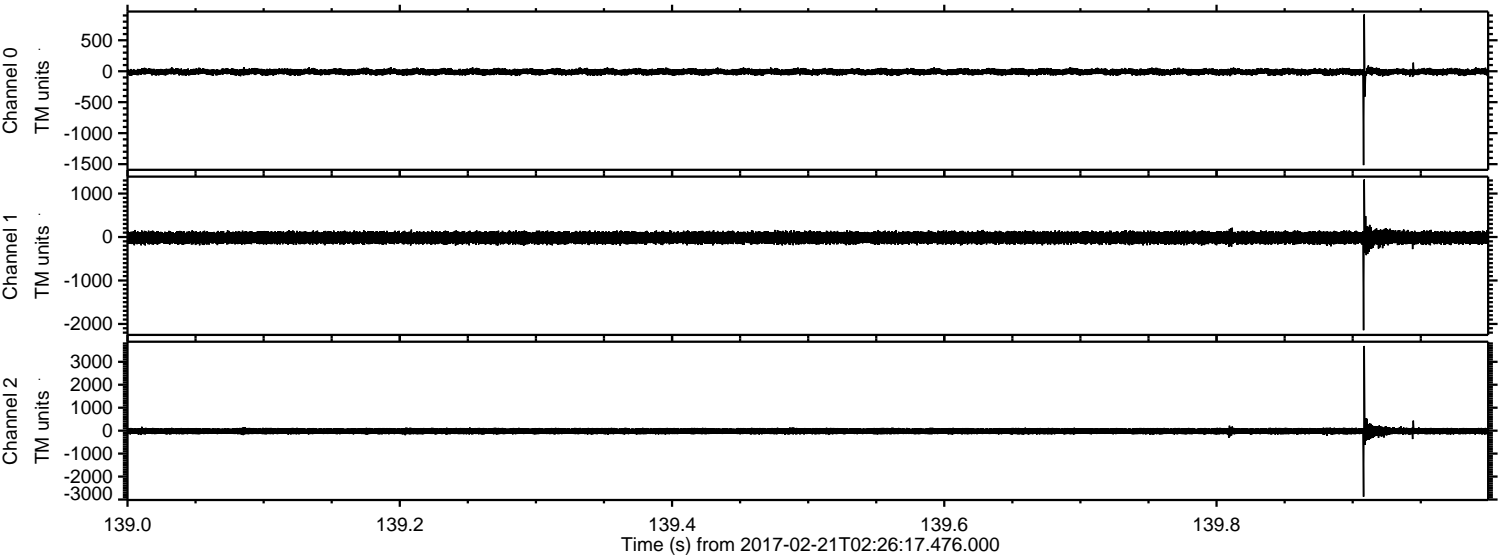
ELMAVAN 3D WAVEFORMS (Measured data sampled at 50 kHz) 51000 packets of 144 samples from 2017-02-21T02:26:17.476.000.

Processed Tue Feb 21 03:33:43 2017 by ELM ver.2012-10-06 from 001__elm20170221_022616__dat00.bin

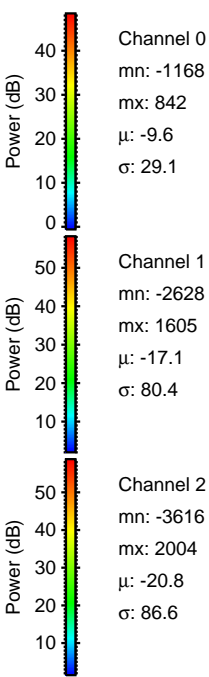
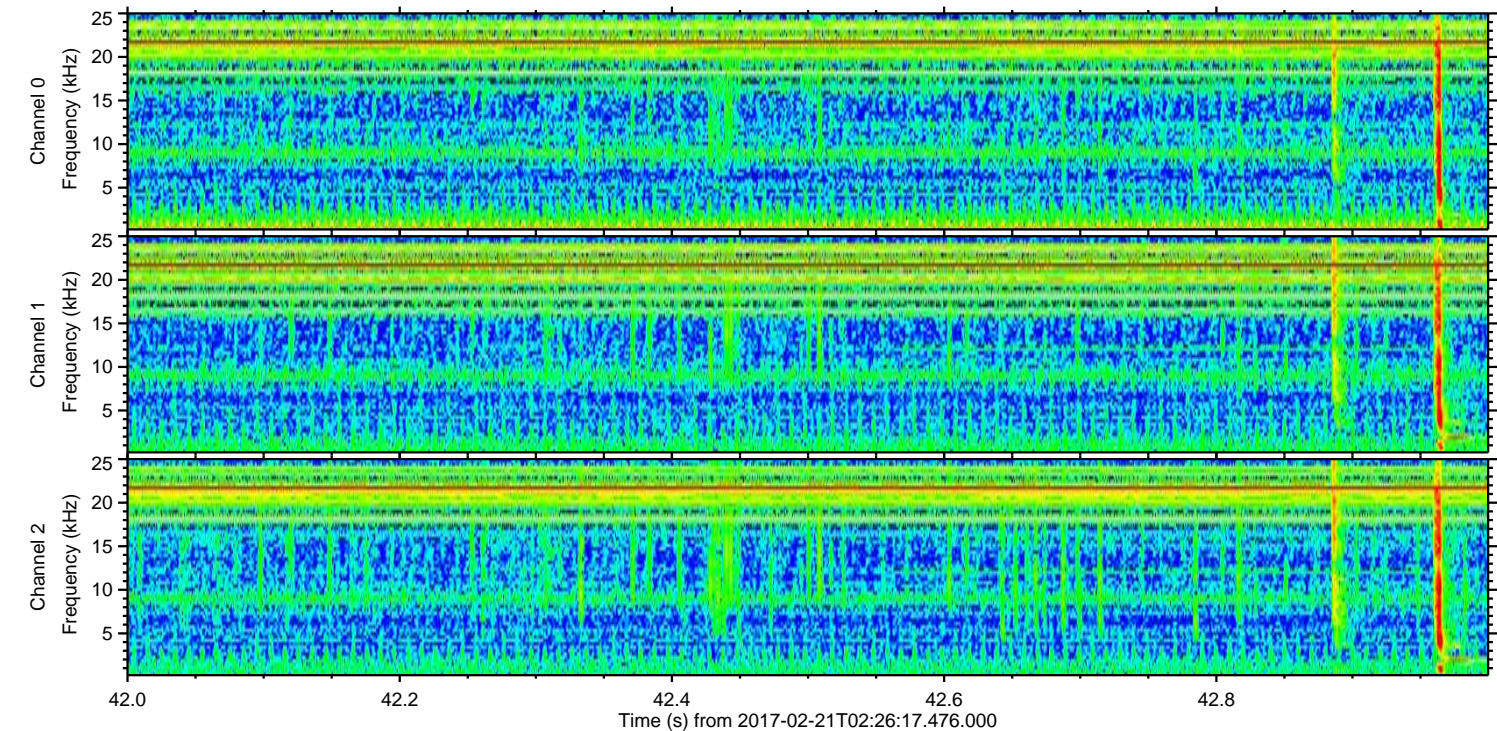
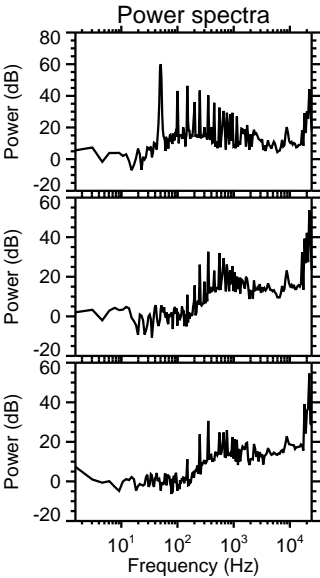
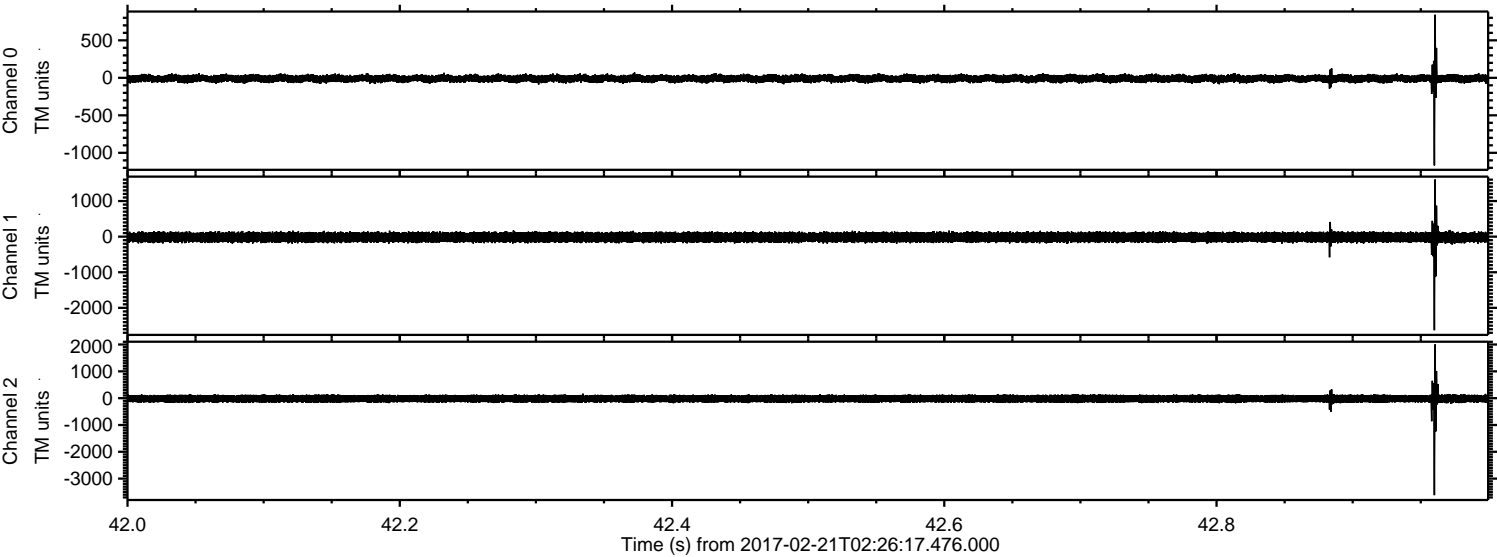


ELMAVAN 3D WAVEFORMS (Measured data sampled at 50 kHz) 51000 packets of 144 samples from 2017-02-21T02:26:17.476.000. Part 140/147

Processed Tue Feb 21 03:33:54 2017 by ELM ver.2012-10-06 from 001__elm20170221_022616__dat00.bin

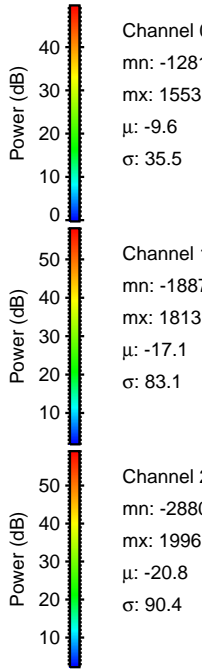
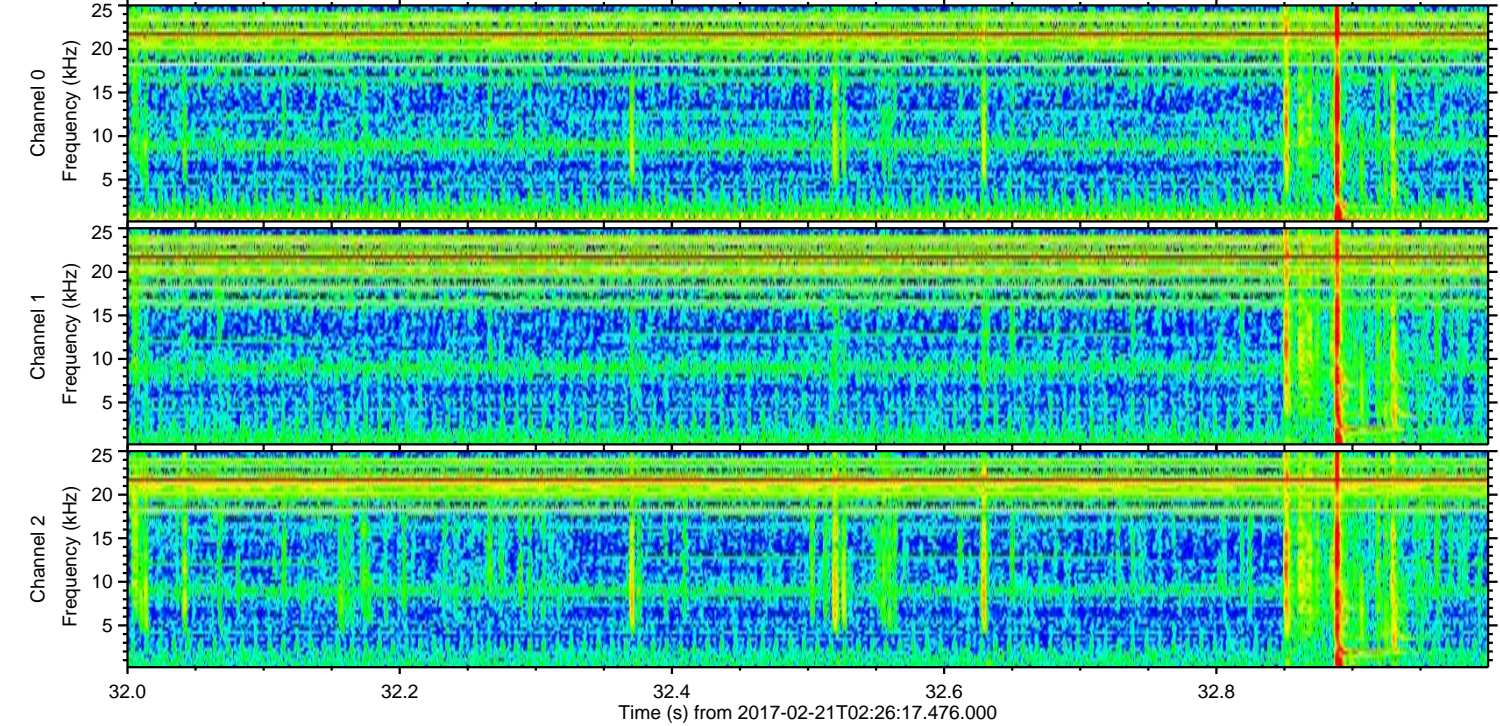
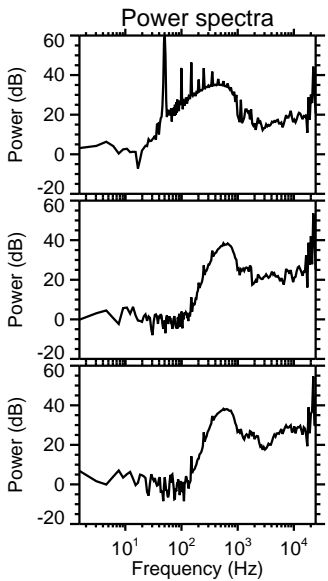
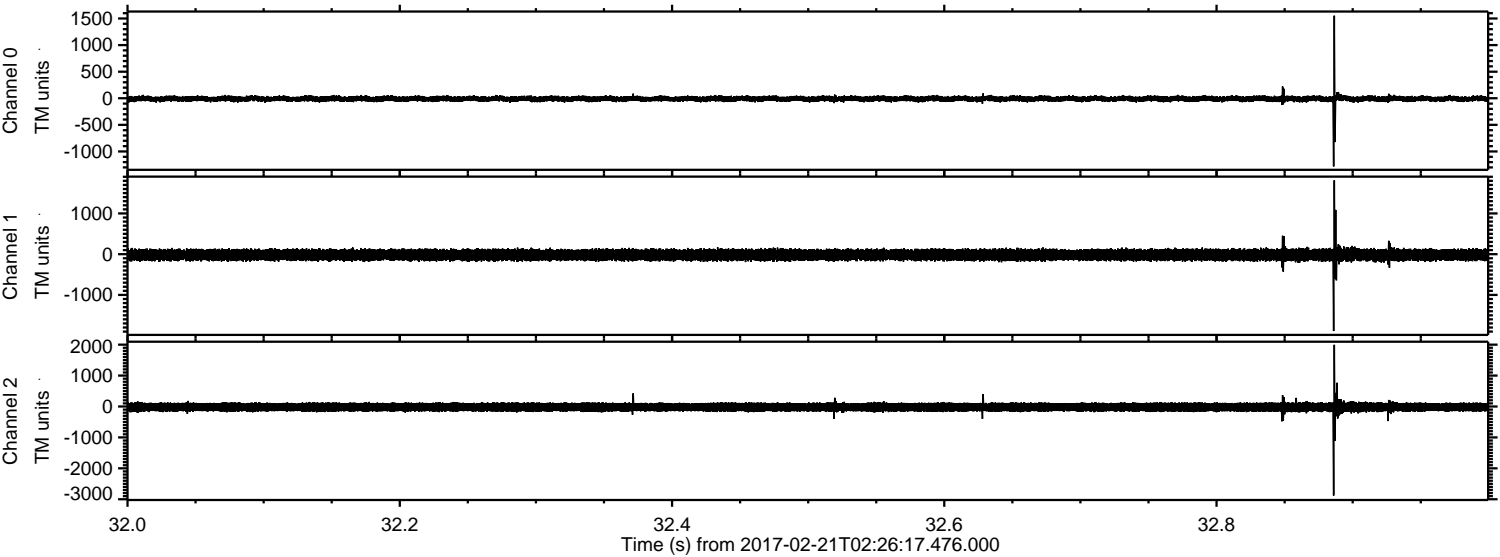


Processed Tue Feb 21 03:33:55 2017 by ELM ver.2012-10-06 from 001__elm20170221_022616__dat00.bin



ELMAVAN 3D WAVEFORMS (Measured data sampled at 50 kHz) 51000 packets of 144 samples from 2017-02-21T02:26:17.476.000. Part 33/147

Processed Tue Feb 21 03:33:56 2017 by ELM ver.2012-10-06 from 001__elm20170221_022616__dat00.bin



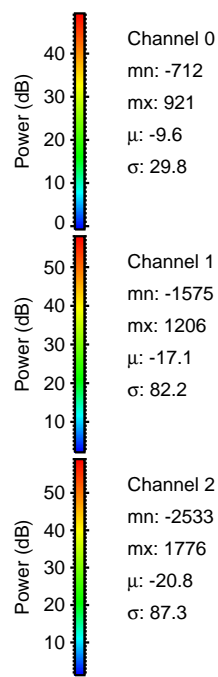
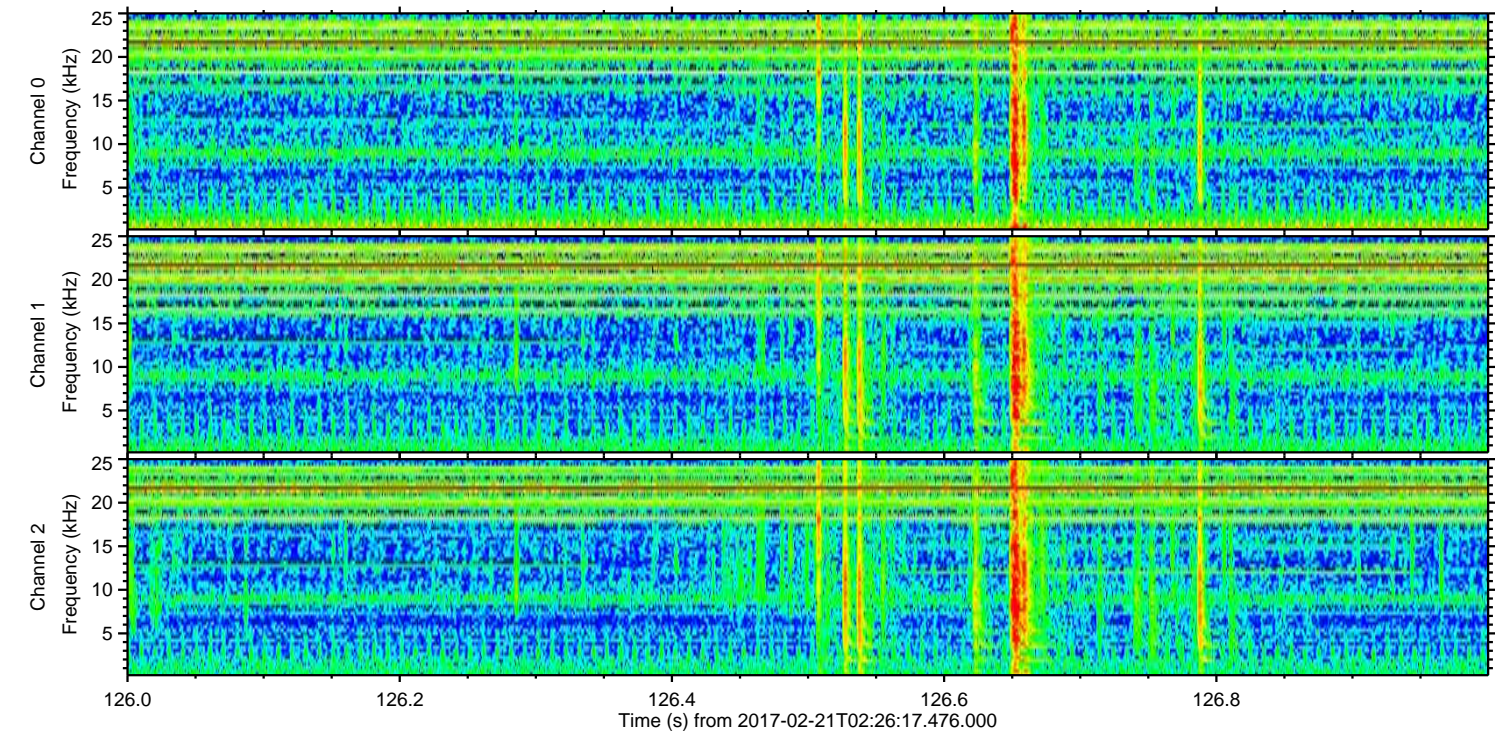
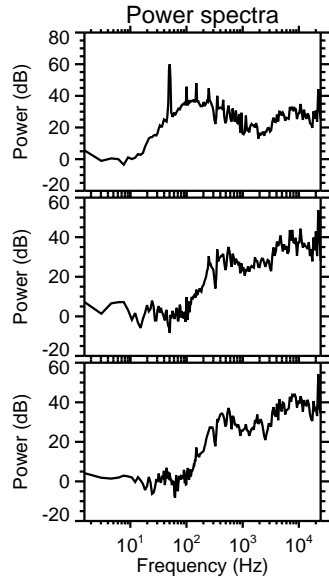
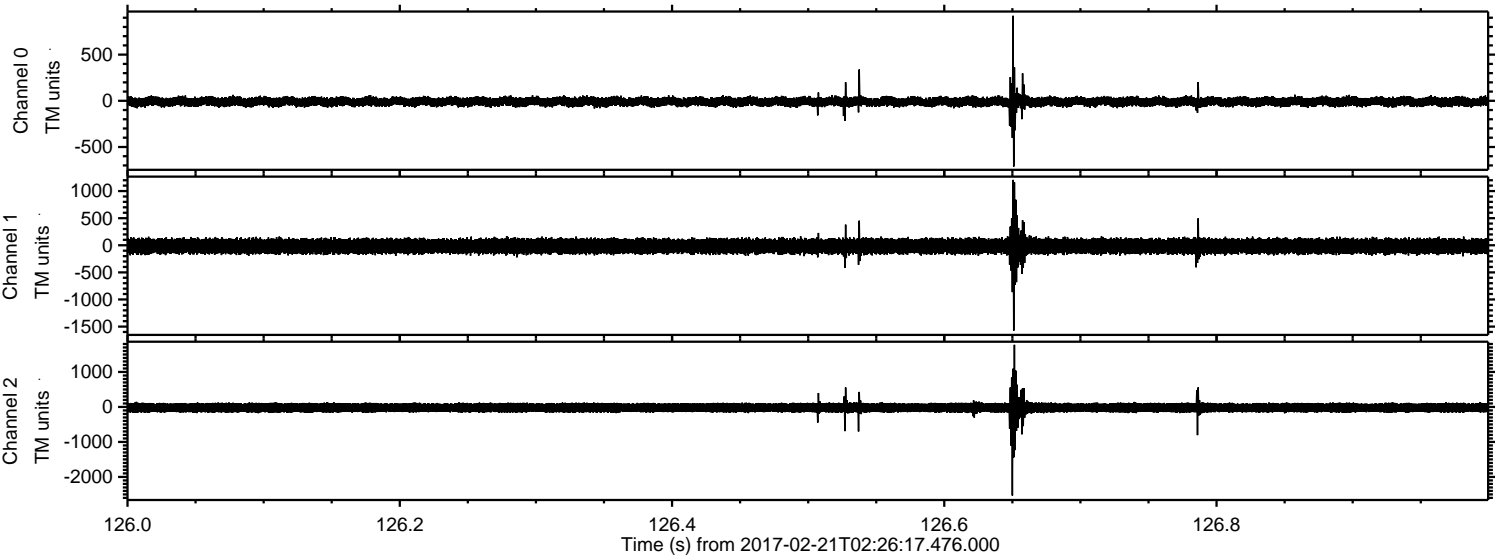
Channel 0
mn: -1281
mx: 1553
 μ : -9.6
 σ : 35.5

Channel 1
mn: -1887
mx: 1813
 μ : -17.1
 σ : 83.1

Channel 2
mn: -2880
mx: 1996
 μ : -20.8
 σ : 90.4

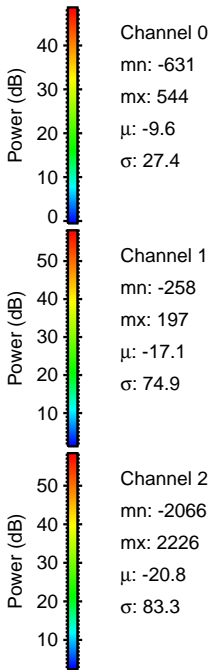
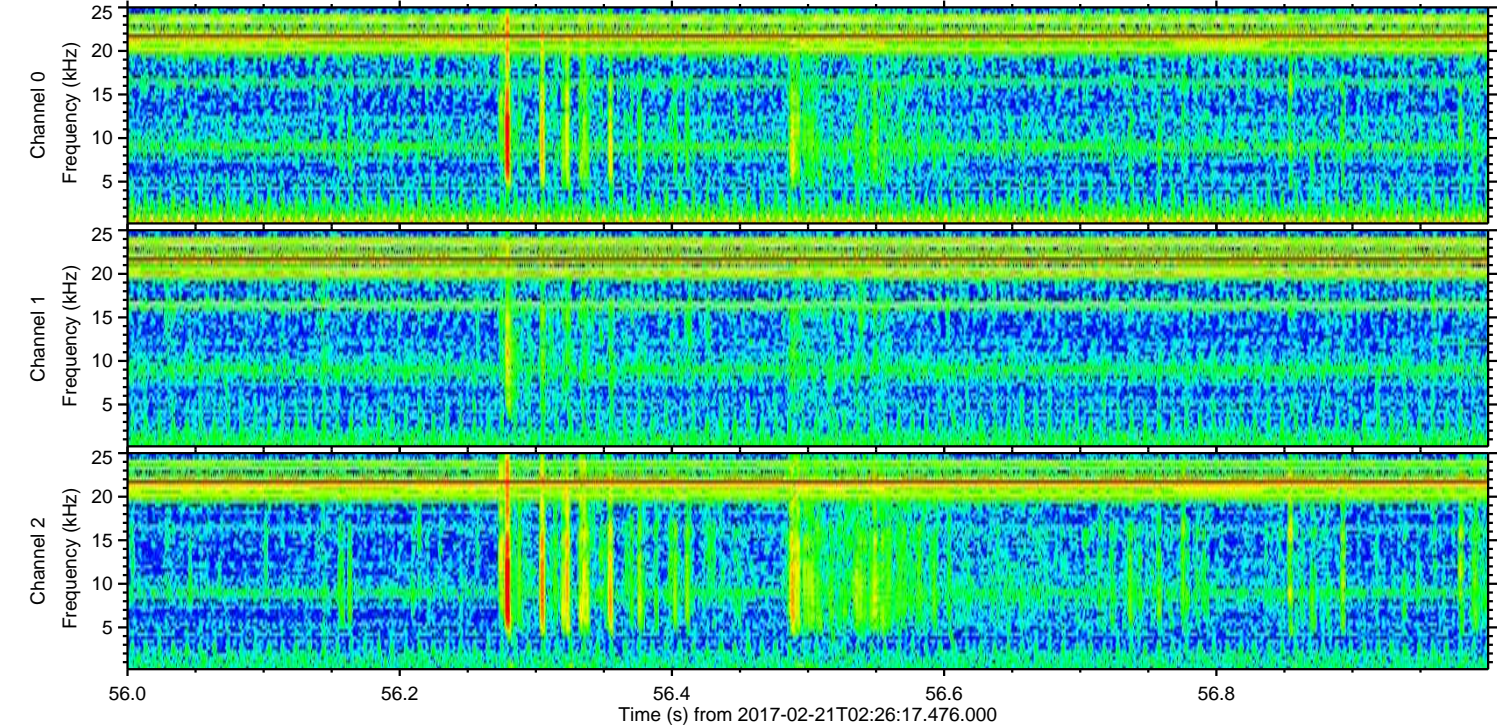
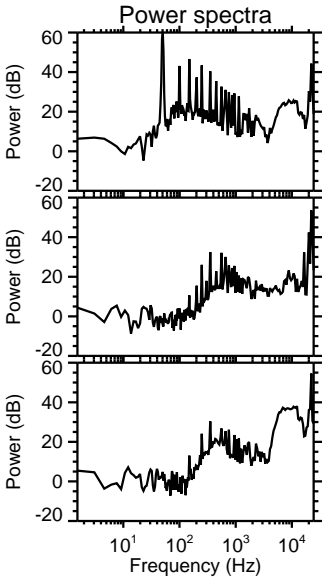
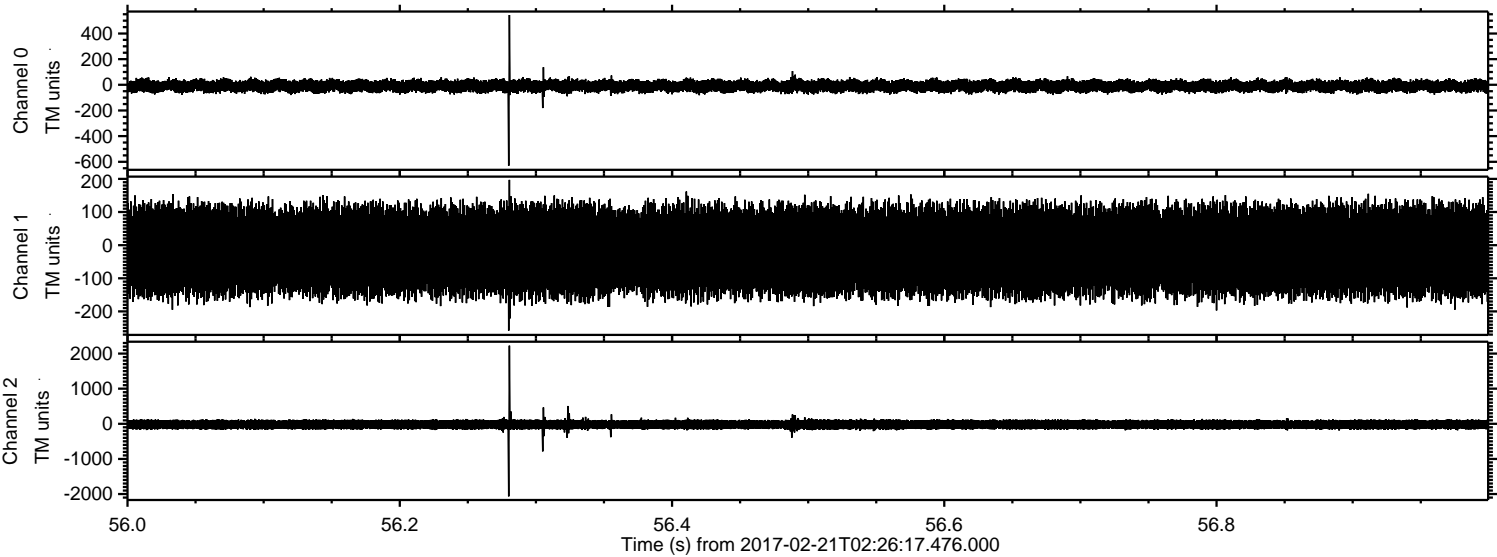
ELMAVAN 3D WAVEFORMS (Measured data sampled at 50 kHz) 51000 packets of 144 samples from 2017-02-21T02:26:17.476.000. Part 127/147

Processed Tue Feb 21 03:33:57 2017 by ELM ver.2012-10-06 from 001__elm20170221_022616__dat00.bin



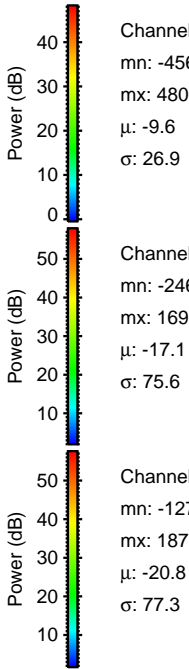
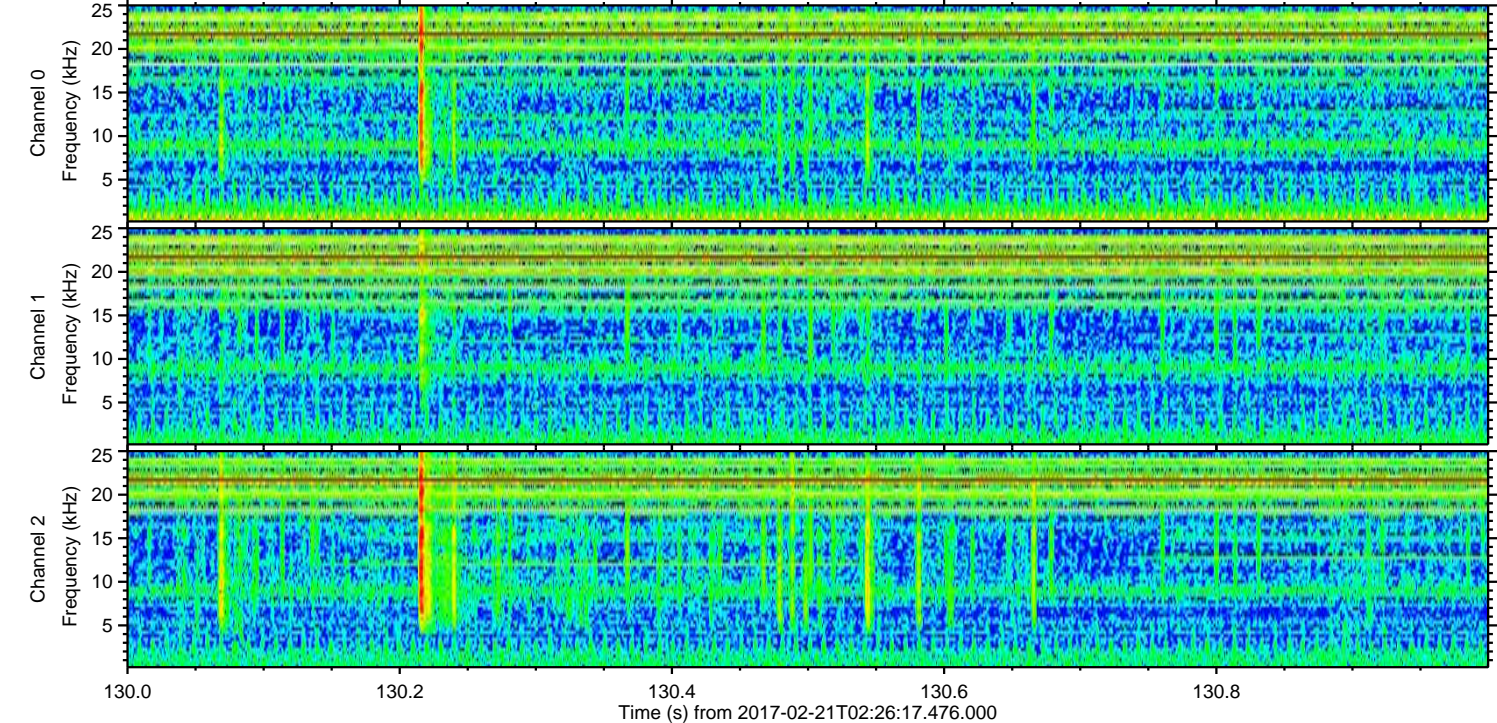
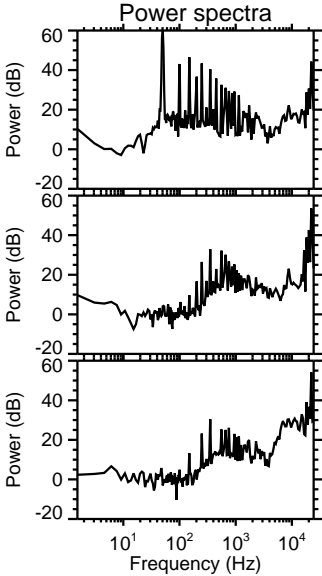
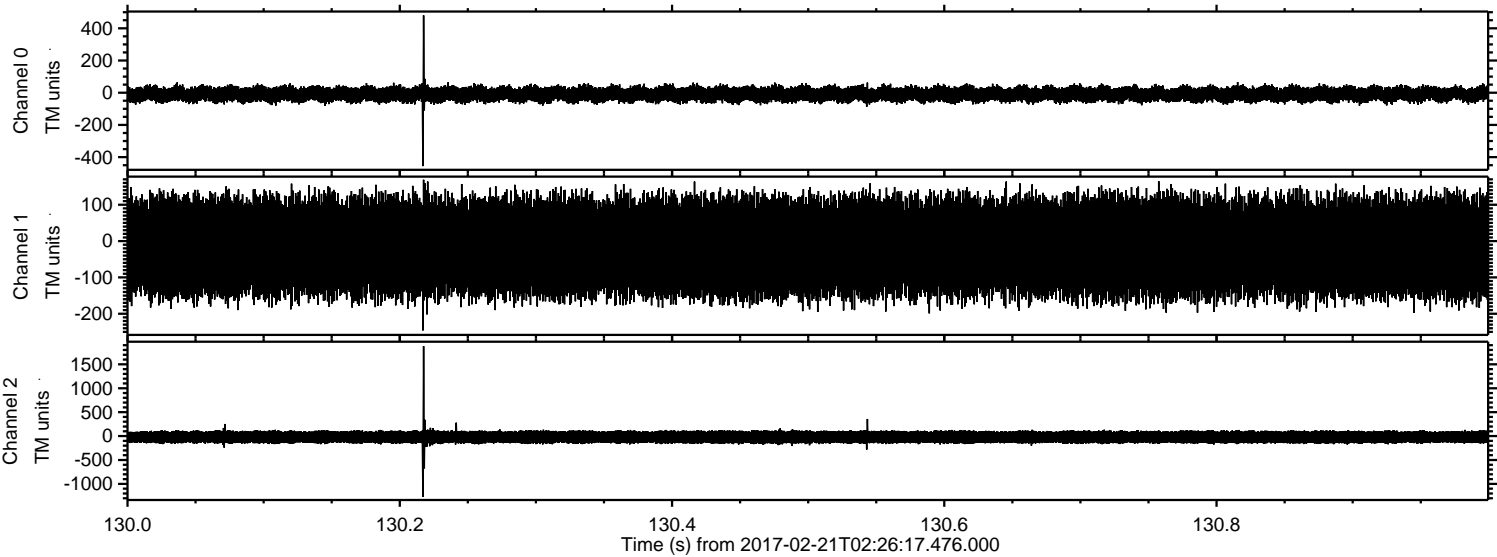
ELMAVAN 3D WAVEFORMS (Measured data sampled at 50 kHz) 51000 packets of 144 samples from 2017-02-21T02:26:17.476.000. Part 57/147

Processed Tue Feb 21 03:33:58 2017 by ELM ver.2012-10-06 from 001__elm20170221_022616__dat00.bin

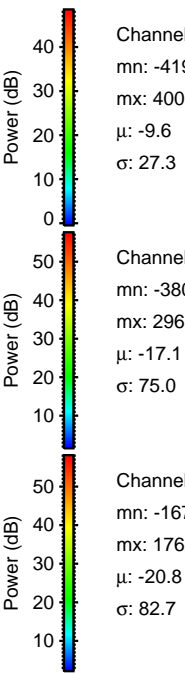
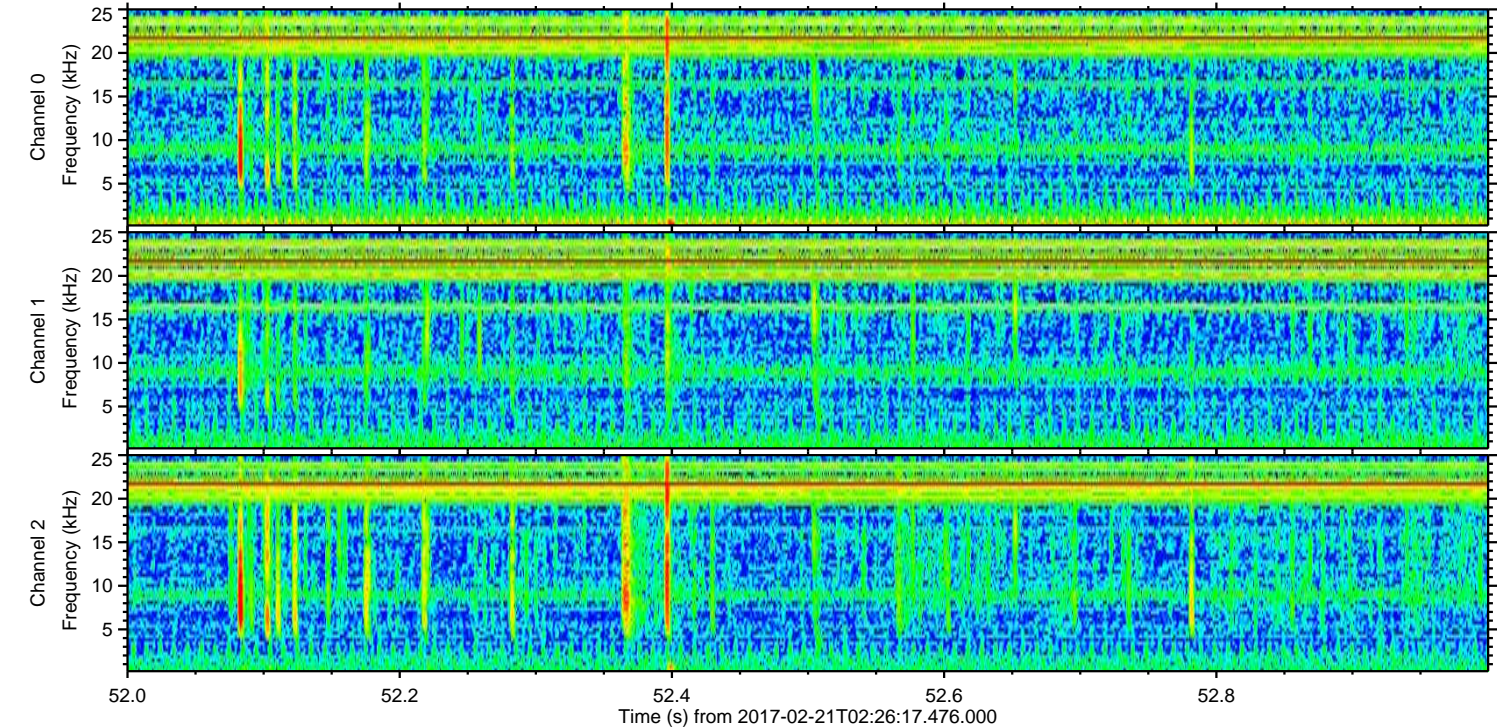
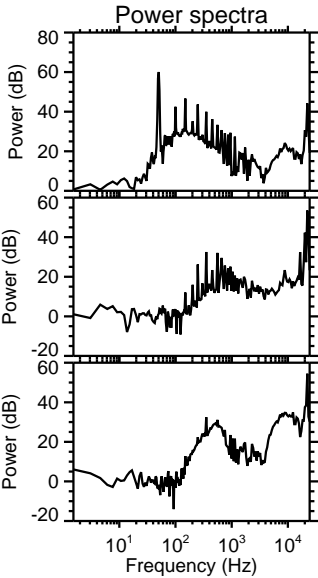
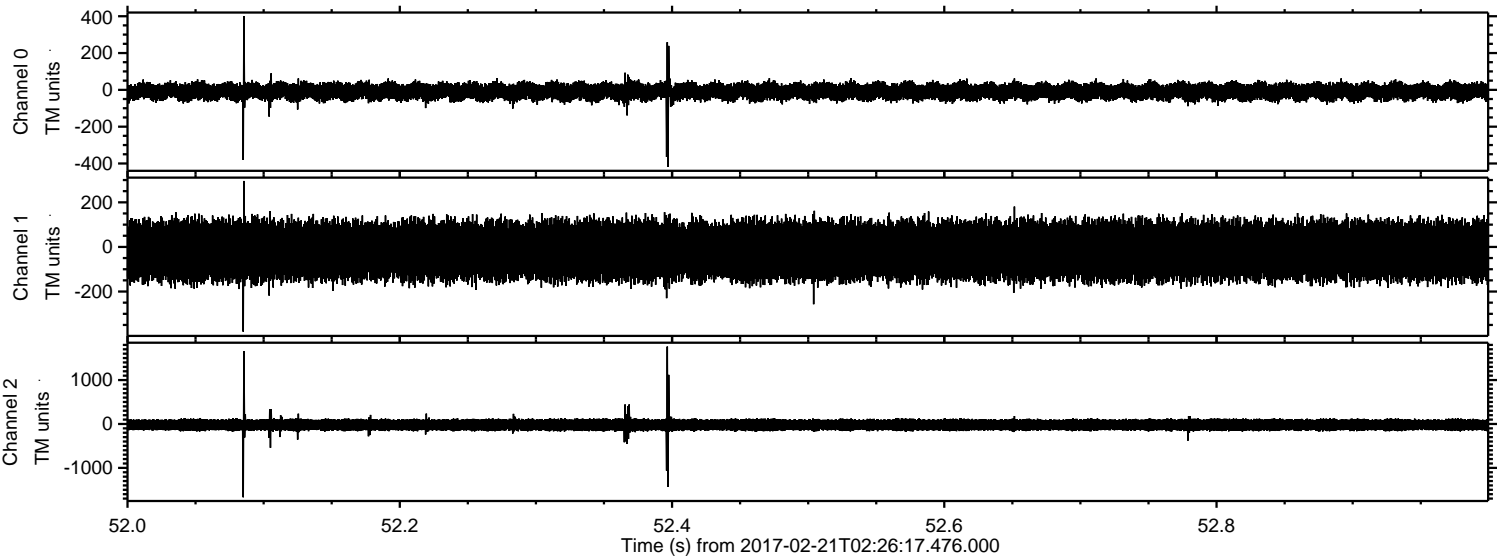


ELMAVAN 3D WAVEFORMS (Measured data sampled at 50 kHz) 51000 packets of 144 samples from 2017-02-21T02:26:17.476.000. Part 131/147

Processed Tue Feb 21 03:33:59 2017 by ELM ver.2012-10-06 from 001__elm20170221_022616__dat00.bin

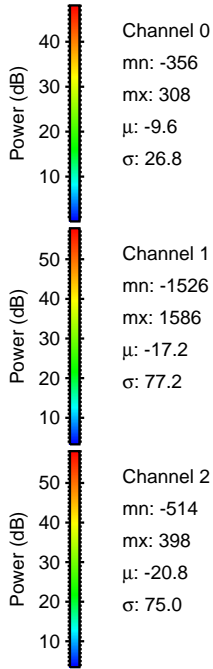
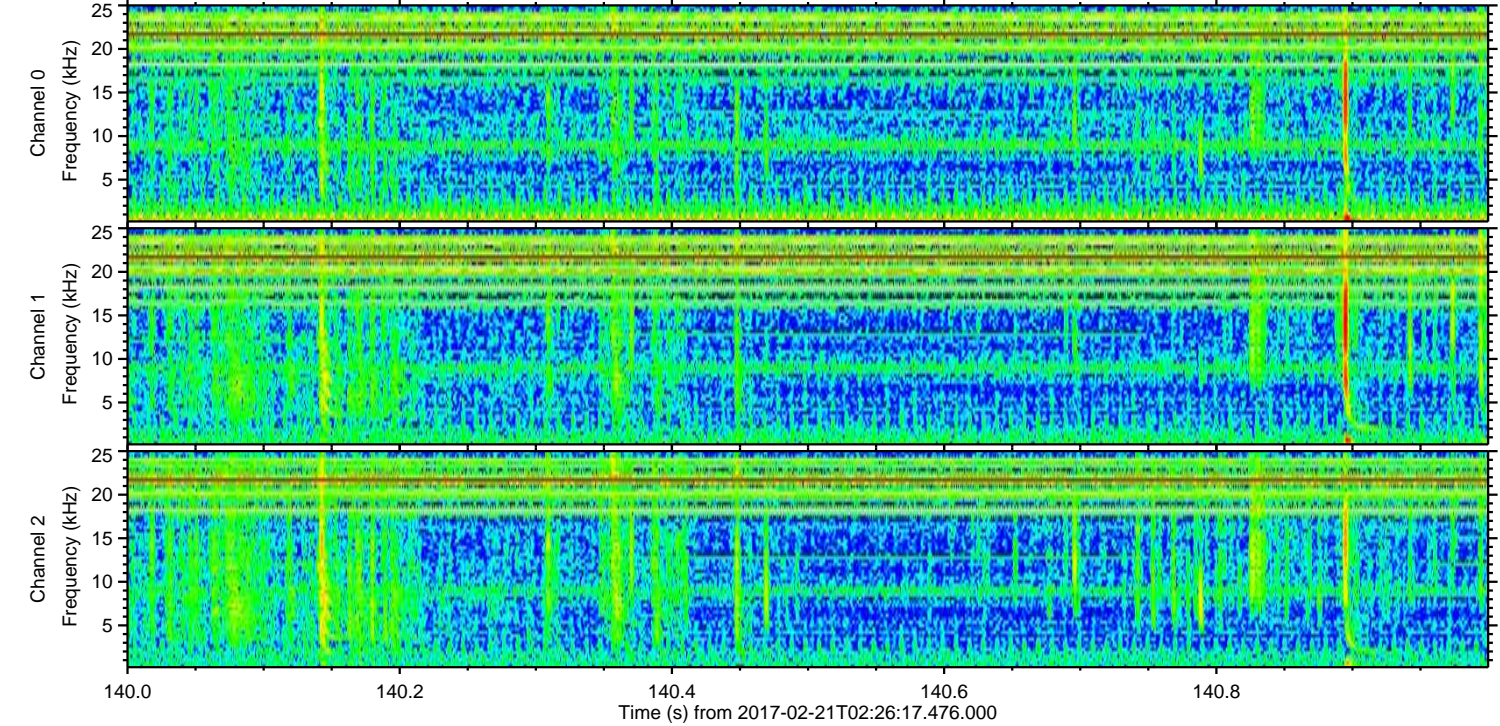
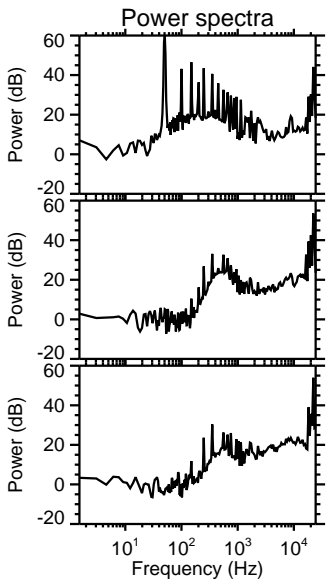
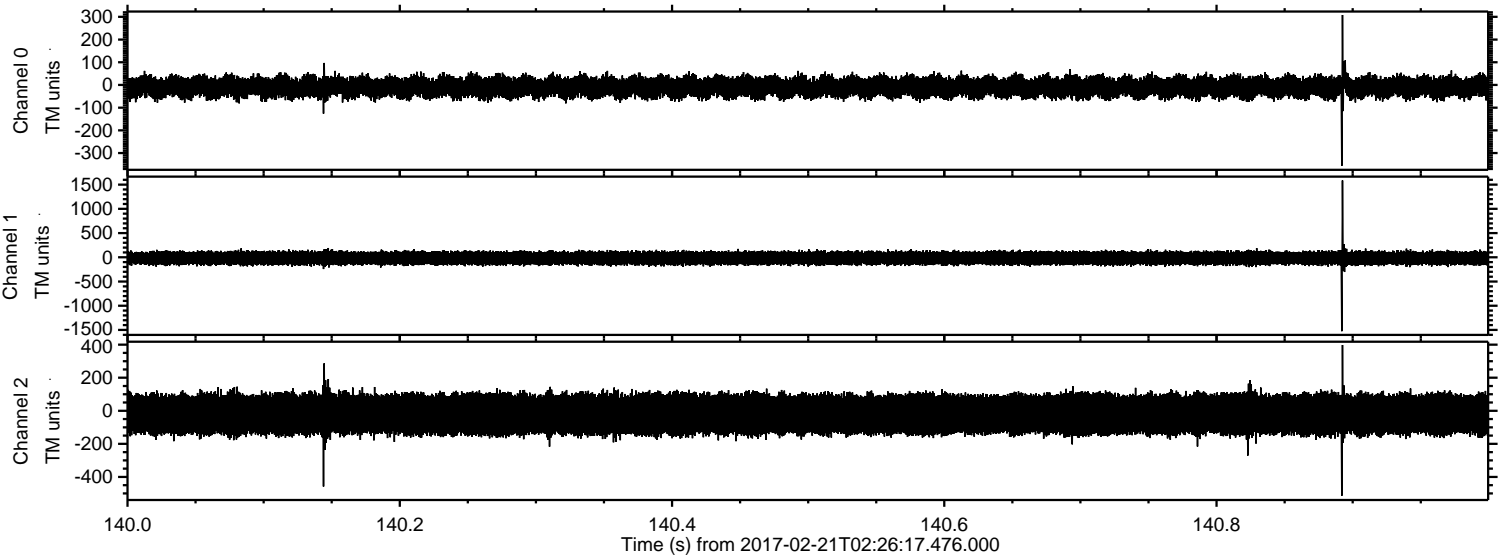


Processed Tue Feb 21 03:34:00 2017 by ELM ver.2012-10-06 from 001__elm20170221_022616__dat00.bin



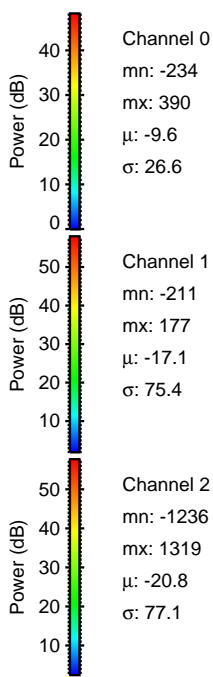
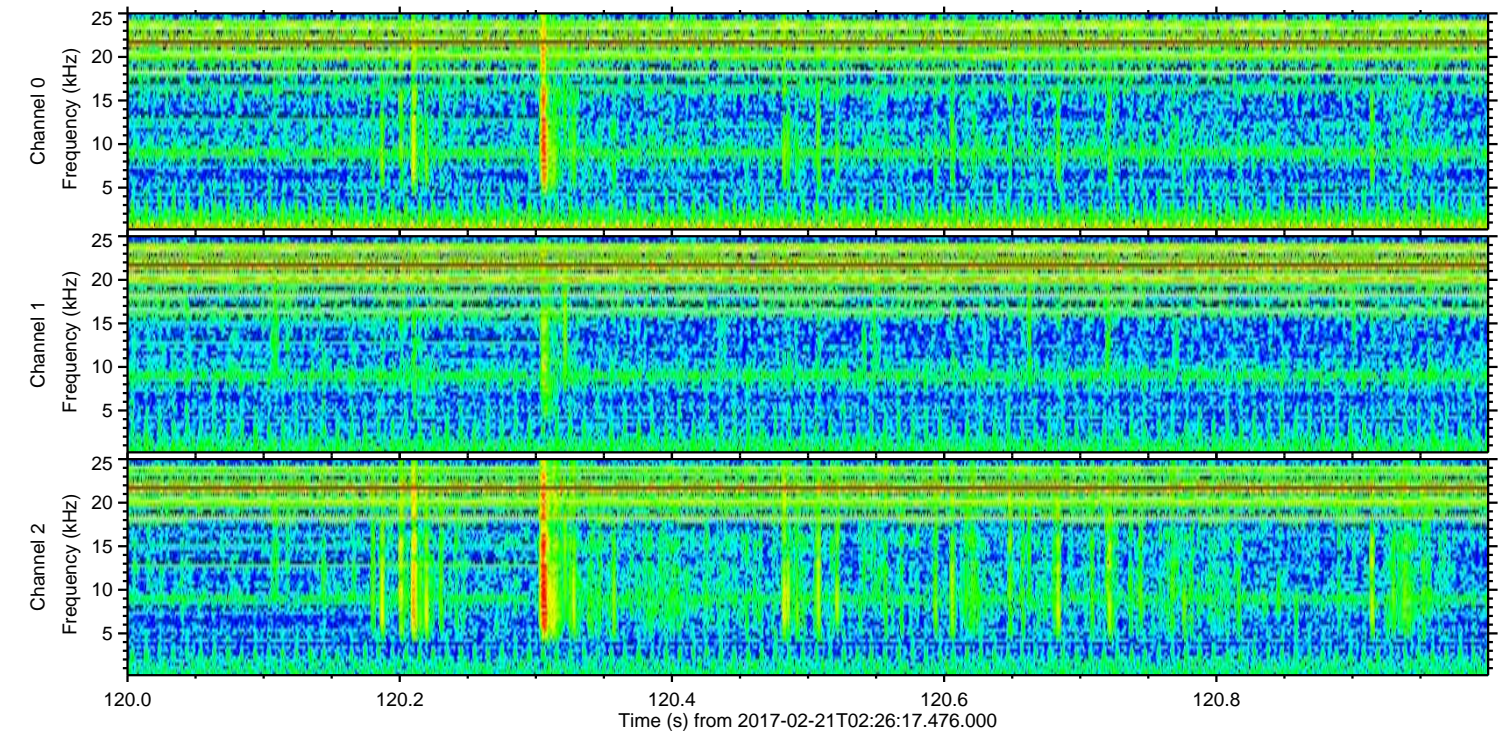
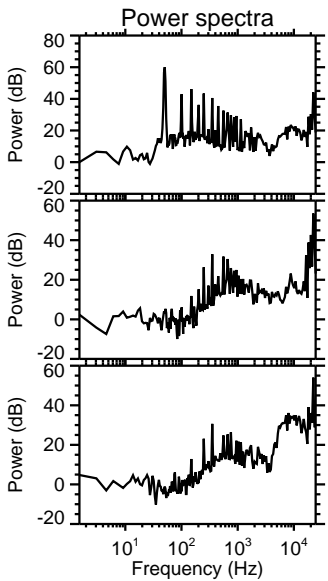
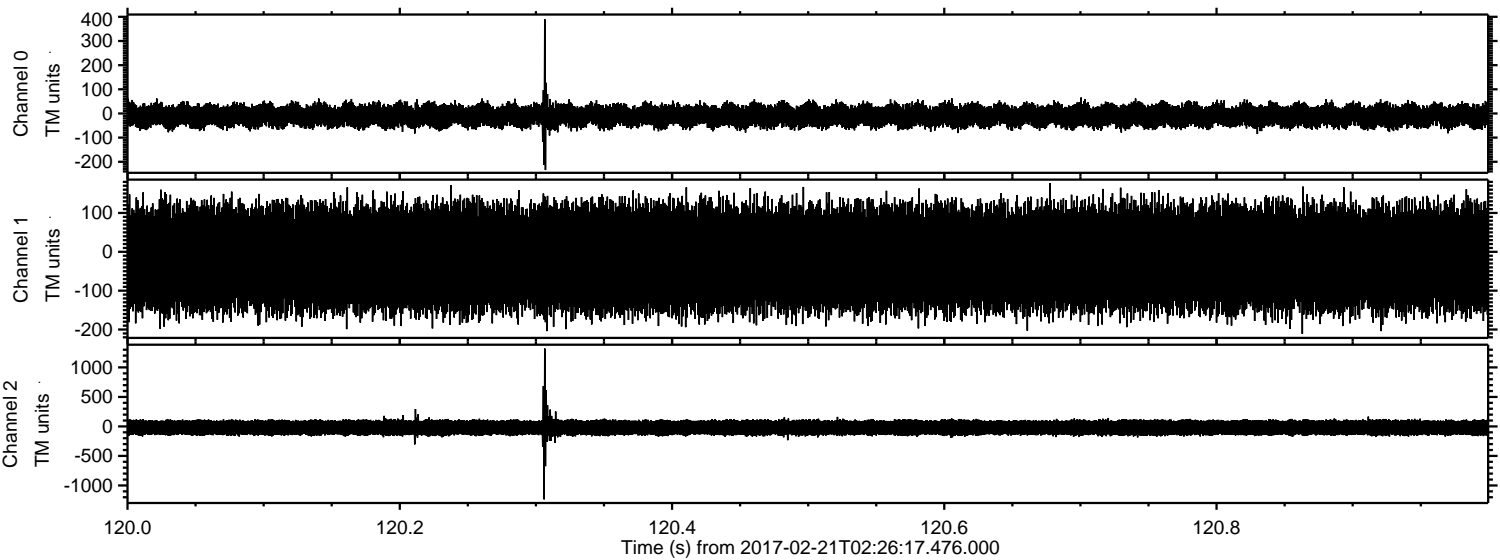
ELMAVAN 3D WAVEFORMS (Measured data sampled at 50 kHz) 51000 packets of 144 samples from 2017-02-21T02:26:17.476.000. Part 141/147

Processed Tue Feb 21 03:34:01 2017 by ELM ver.2012-10-06 from 001__elm20170221_022616__dat00.bin



ELMAVAN 3D WAVEFORMS (Measured data sampled at 50 kHz) 51000 packets of 144 samples from 2017-02-21T02:26:17.476.000. Part 121/147

Processed Tue Feb 21 03:34:02 2017 by ELM ver.2012-10-06 from 001__elm20170221_022616__dat00.bin



Channel 0
mn: -234
mx: 390
 μ : -9.6
 σ : 26.6

Channel 1
mn: -211
mx: 177
 μ : -17.1
 σ : 75.4

Channel 2
mn: -1236
mx: 1319
 μ : -20.8
 σ : 77.1

Processed Tue Feb 21 03:34:03 2017 by ELM ver.2012-10-06 from 001__elm20170221_022616__dat00.bin

