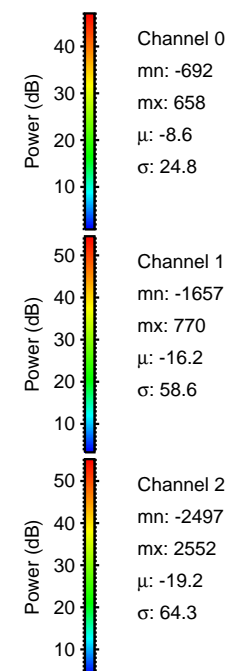
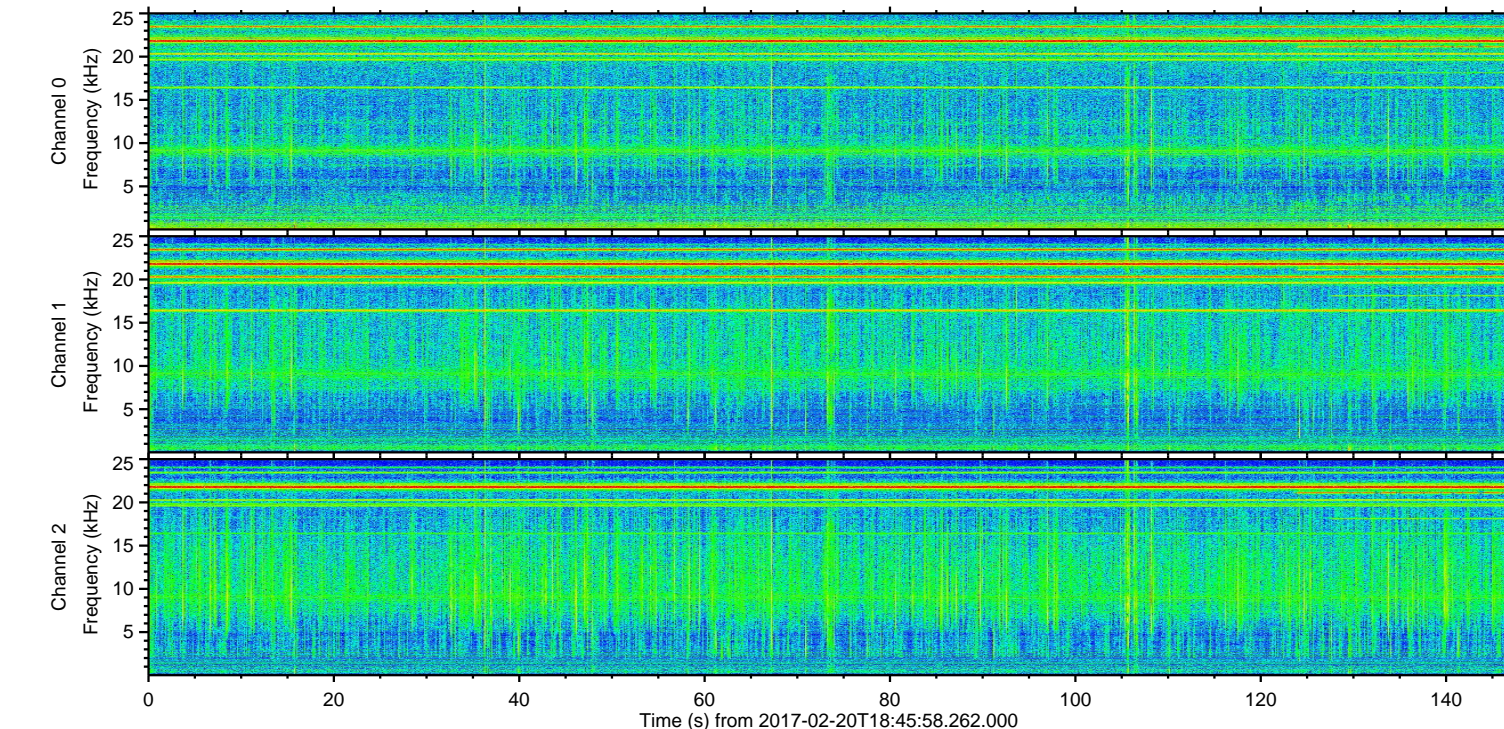
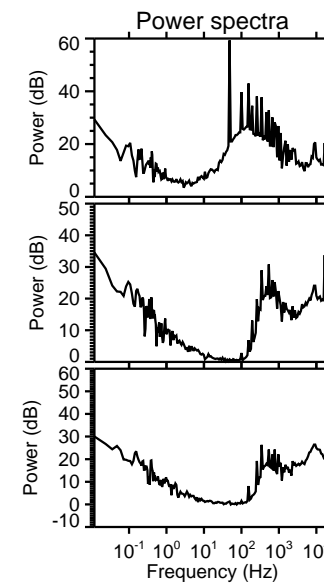
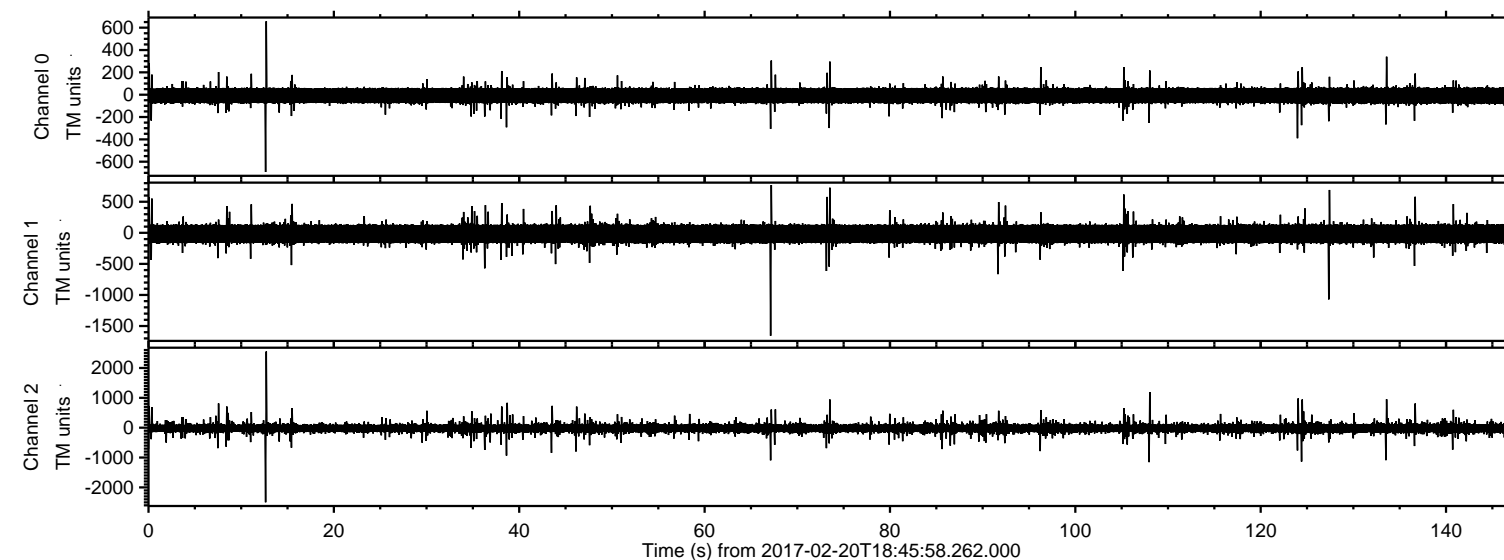


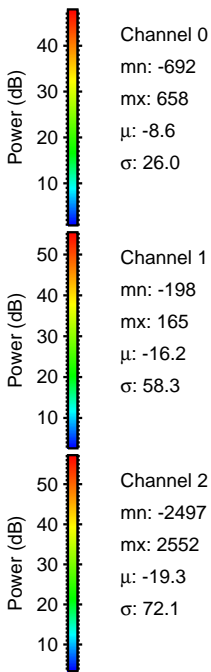
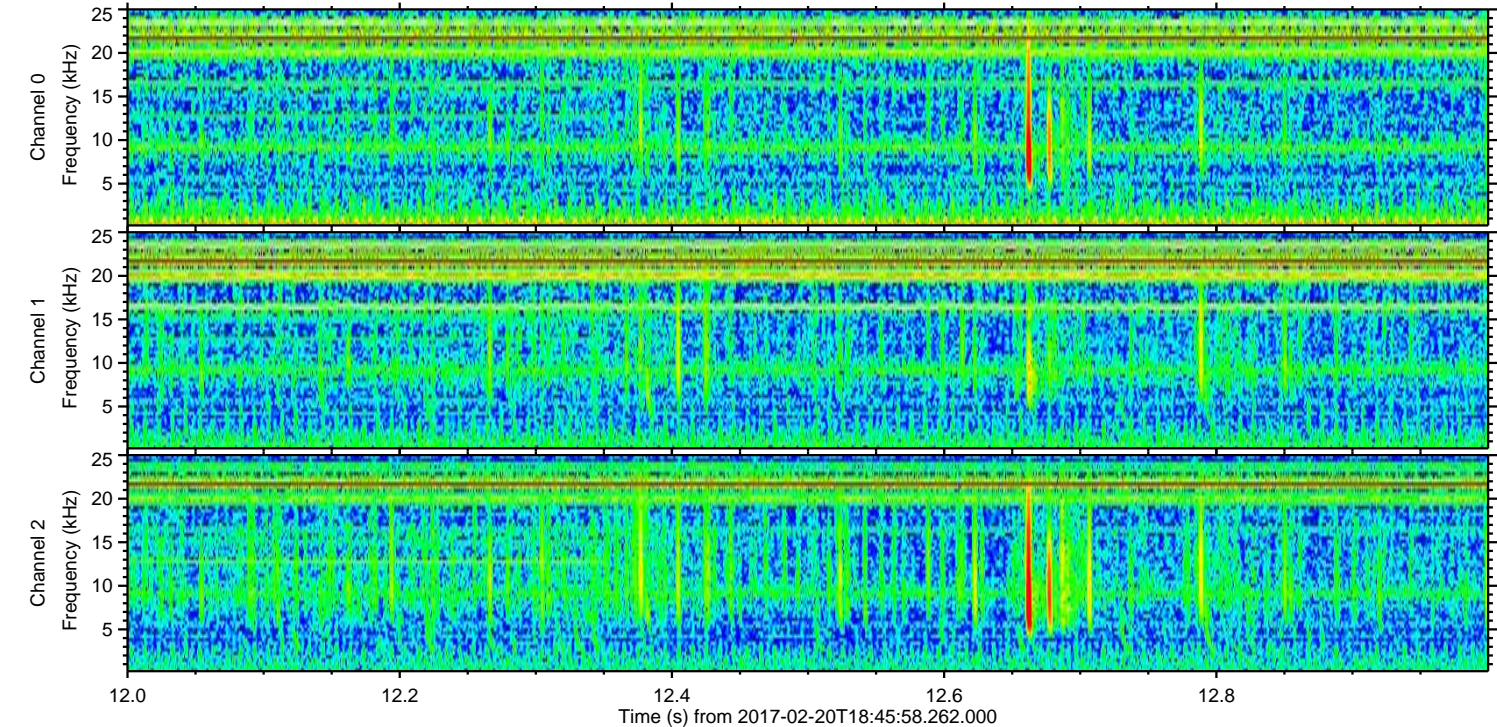
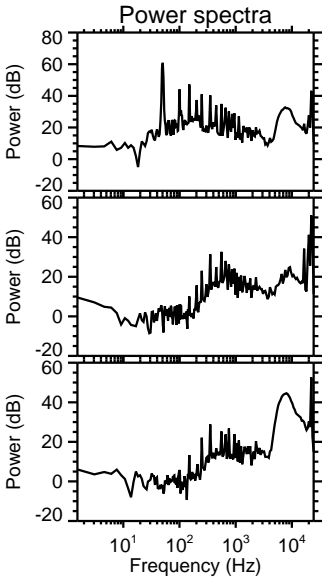
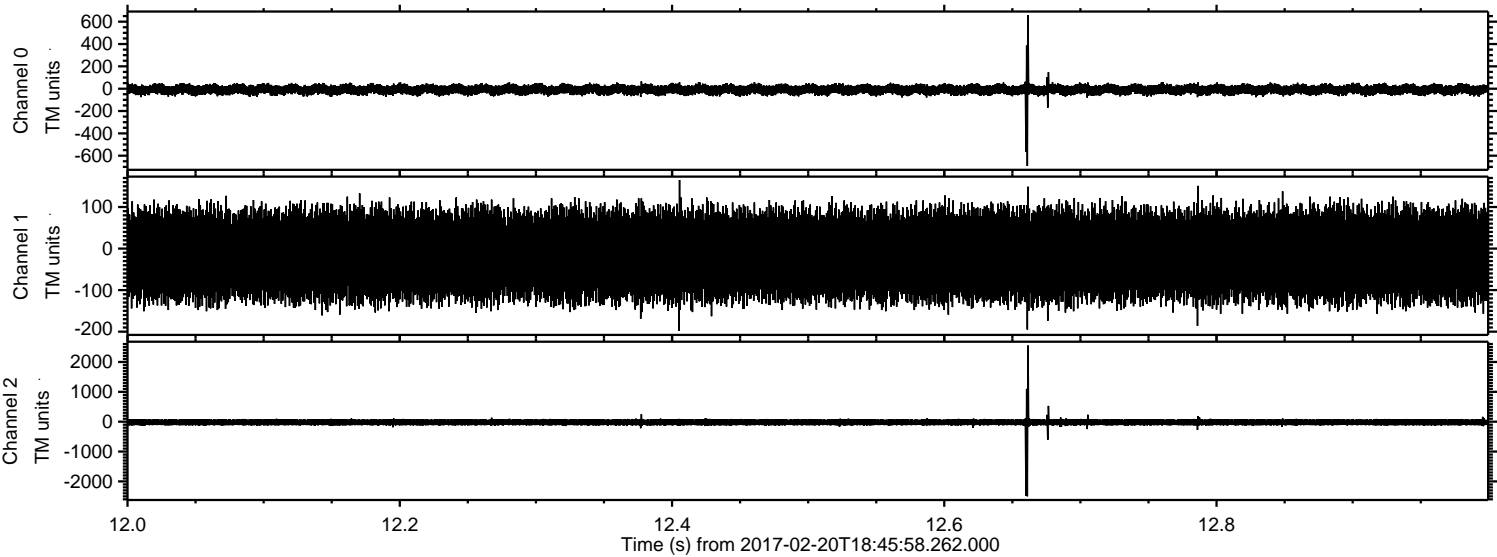
ELMAVAN 3D WAVEFORMS (Measured data sampled at 50 kHz) 51000 packets of 144 samples from 2017-02-20T18:45:58.262.000.

Processed Mon Feb 20 19:53:33 2017 by ELM ver.2012-10-06 from 001__elm20170220_184557__dat00.bin

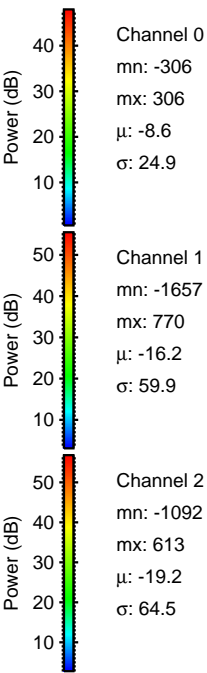
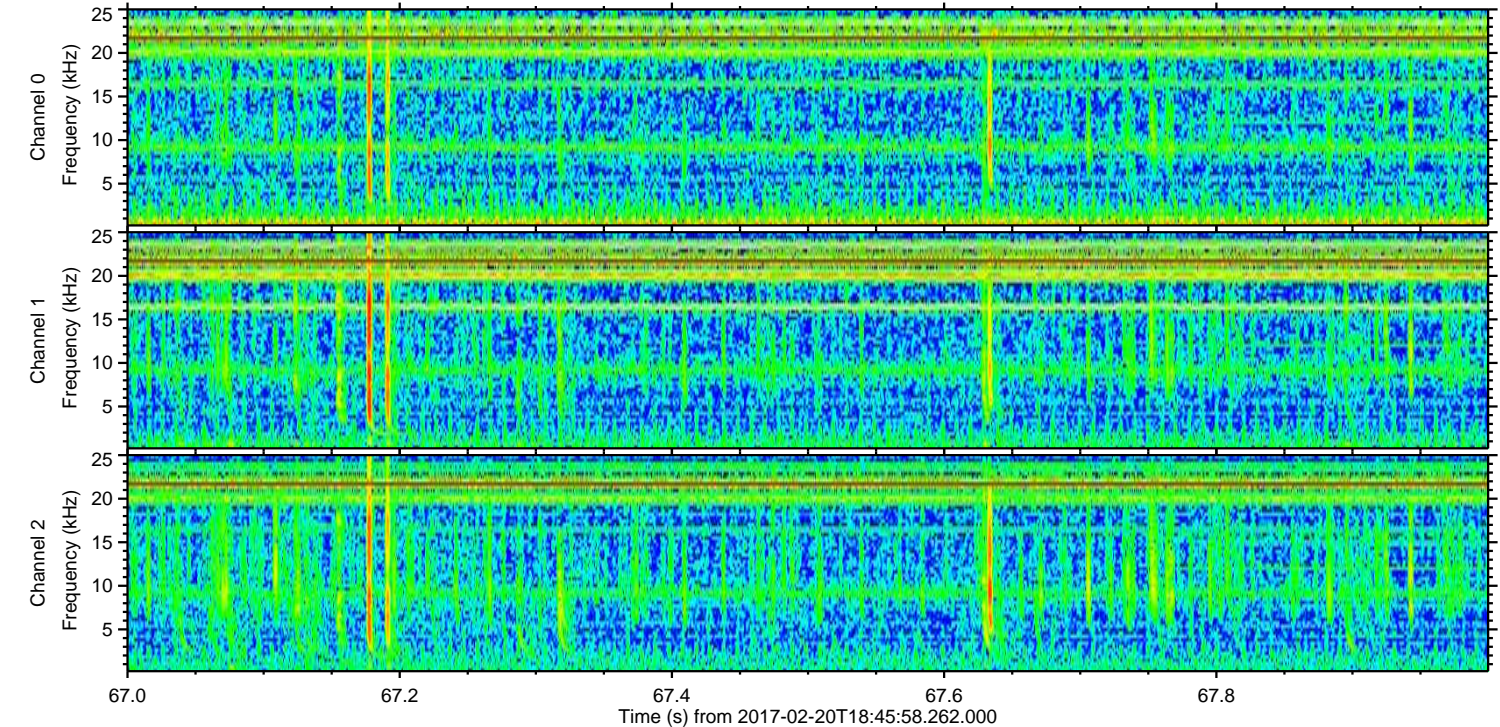
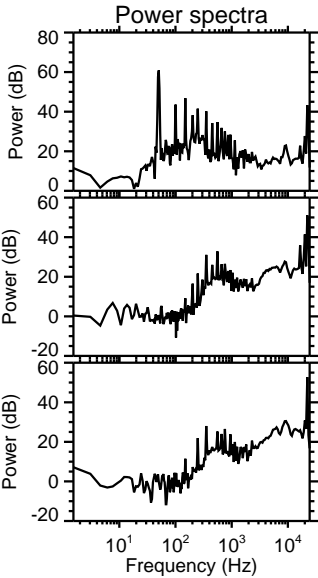
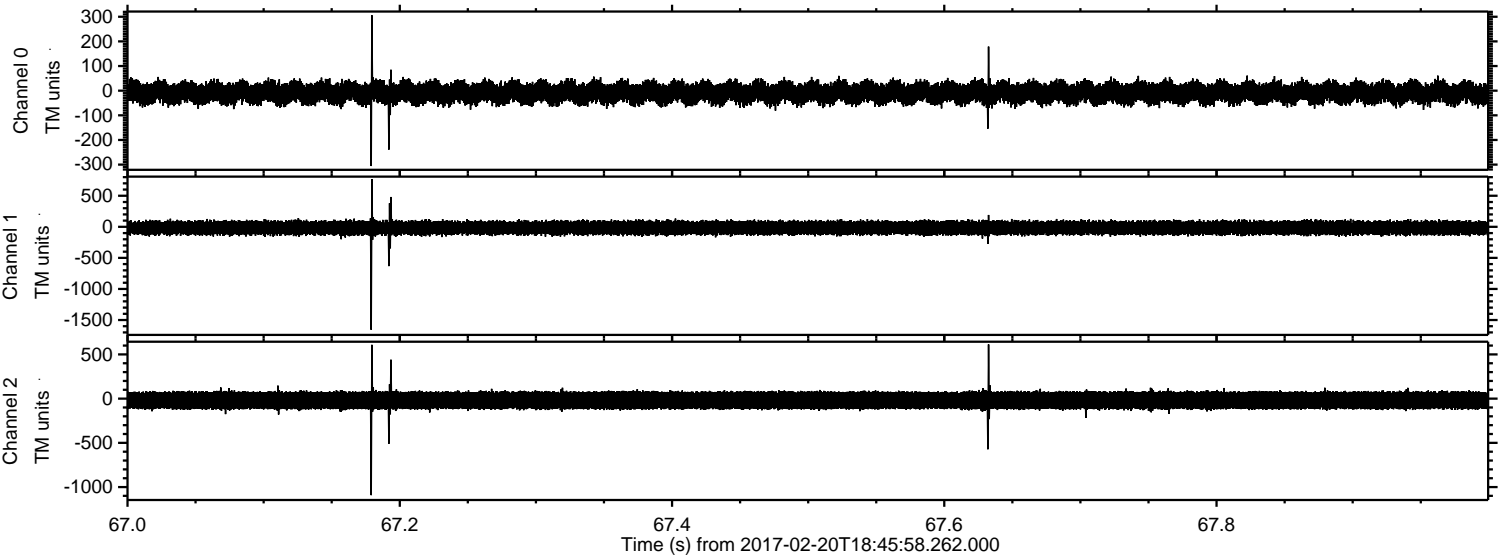


ELMAVAN 3D WAVEFORMS (Measured data sampled at 50 kHz) 51000 packets of 144 samples from 2017-02-20T18:45:58.262.000. Part 13/147

Processed Mon Feb 20 19:53:44 2017 by ELM ver.2012-10-06 from 001__elm20170220_184557__dat00.bin

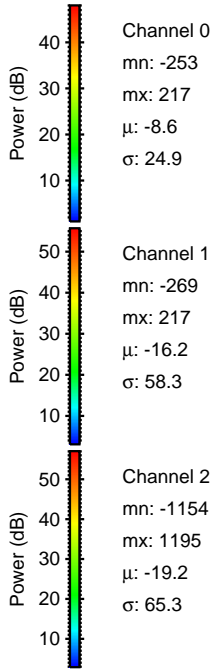
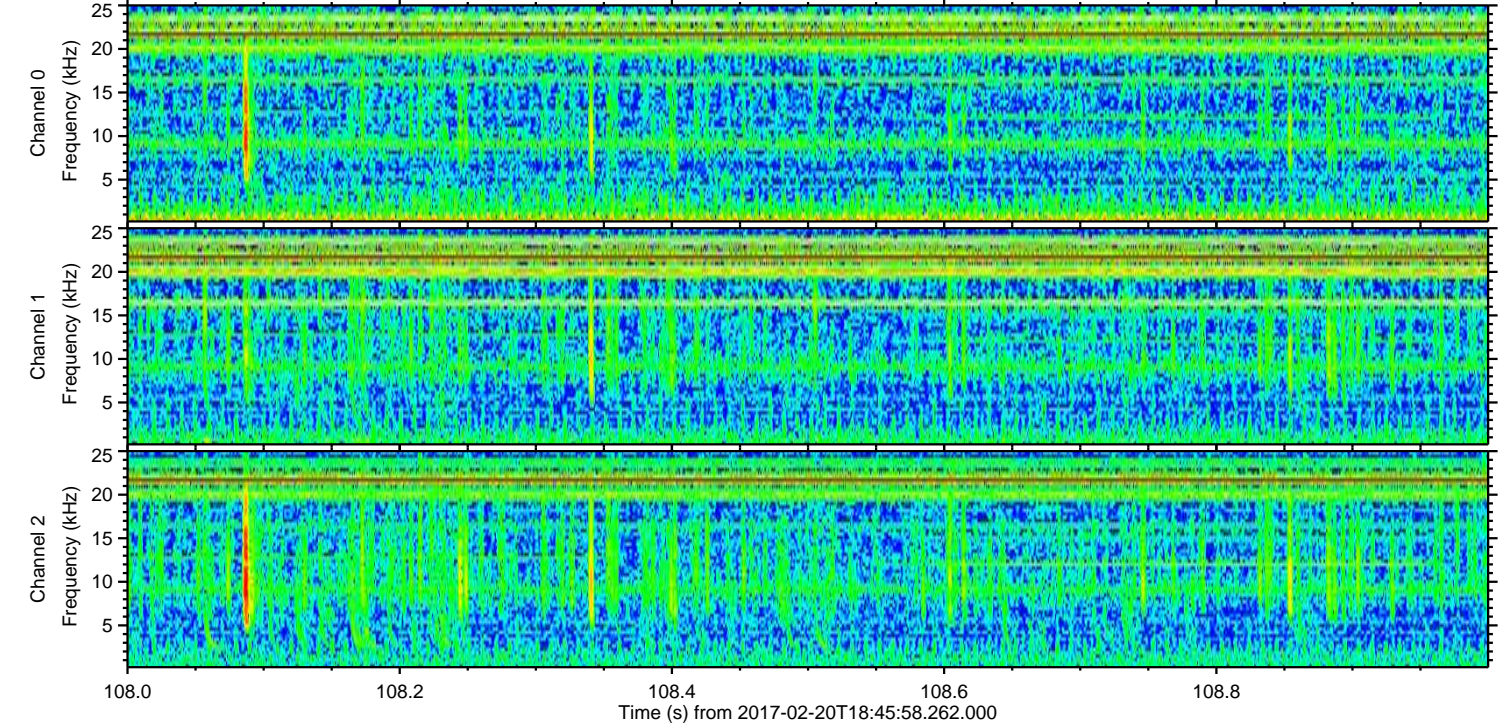
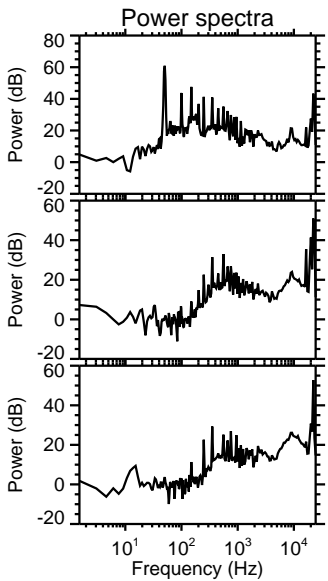
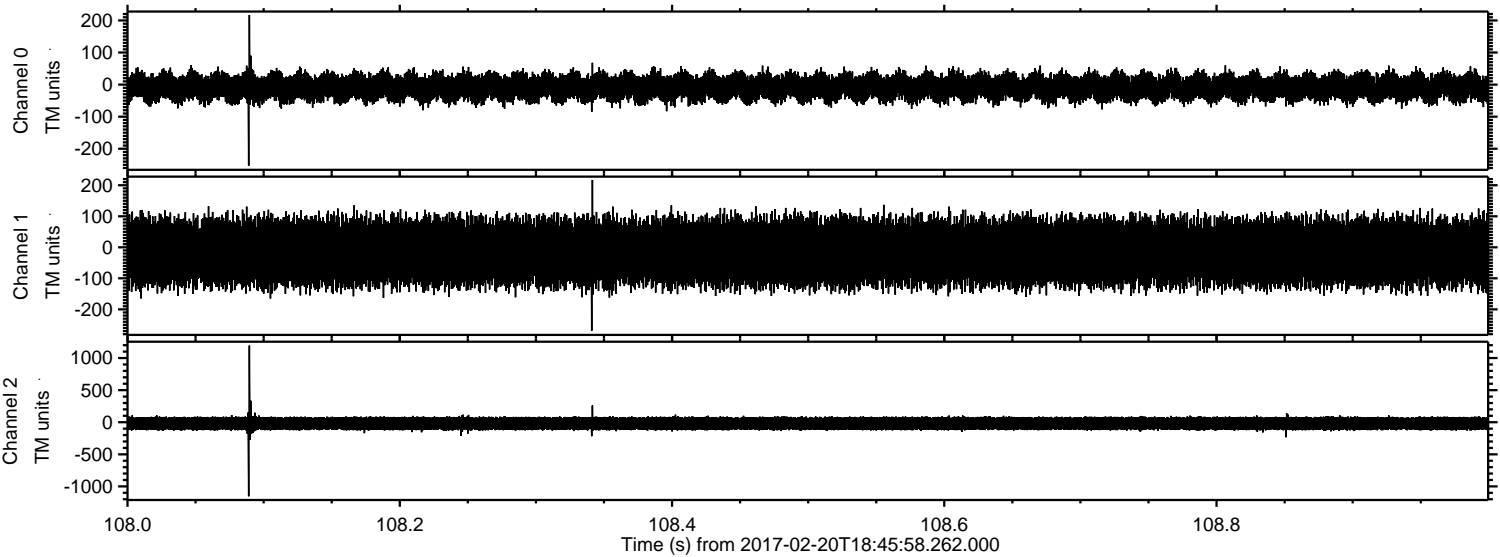


Processed Mon Feb 20 19:53:45 2017 by ELM ver.2012-10-06 from 001__elm20170220_184557__dat00.bin



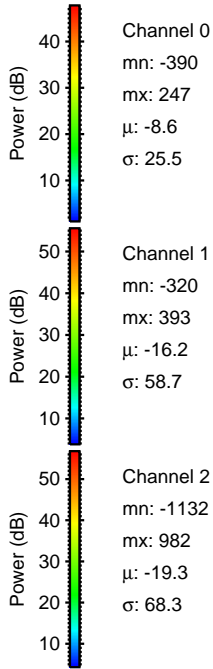
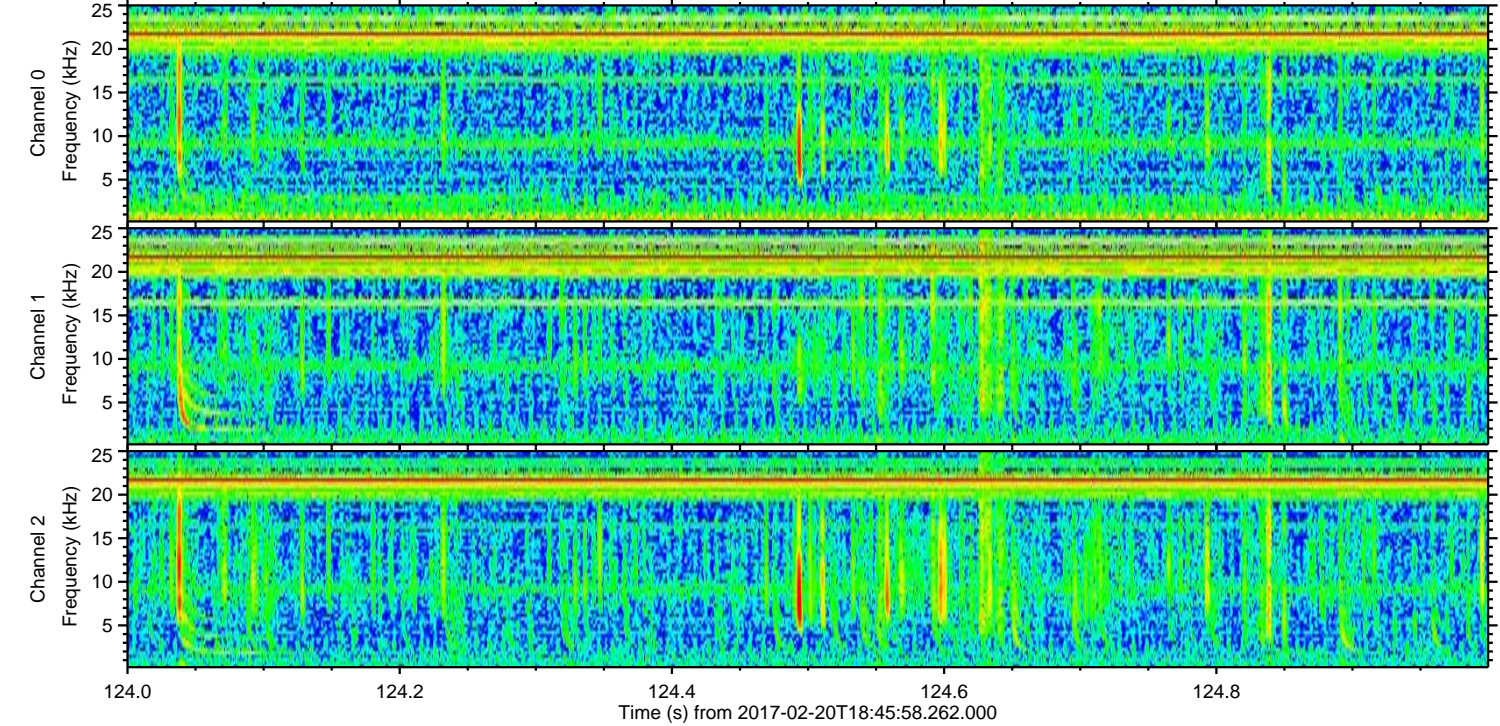
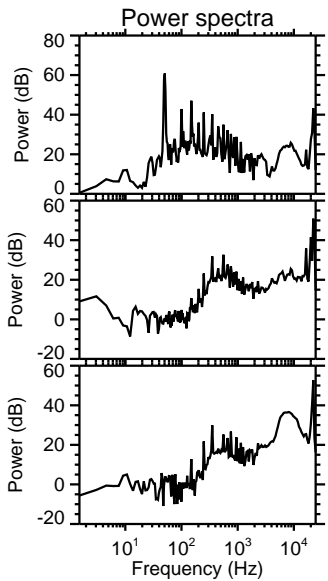
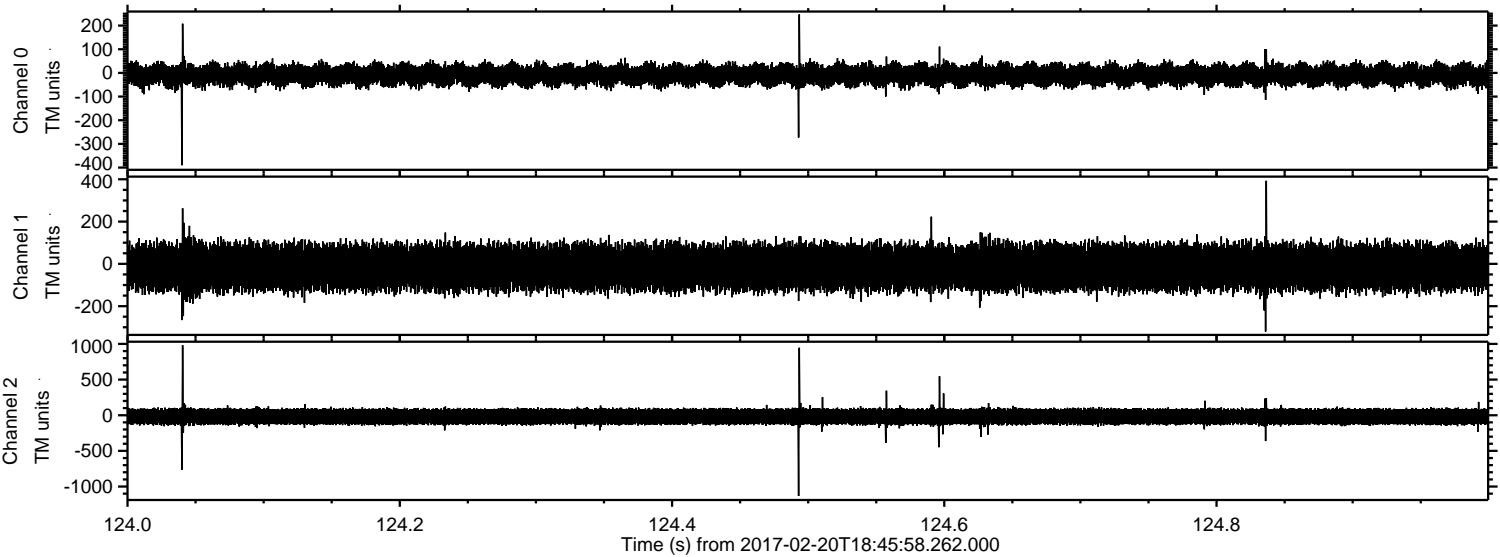
ELMAVAN 3D WAVEFORMS (Measured data sampled at 50 kHz) 51000 packets of 144 samples from 2017-02-20T18:45:58.262.000. Part 109/147

Processed Mon Feb 20 19:53:46 2017 by ELM ver.2012-10-06 from 001__elm20170220_184557__dat00.bin



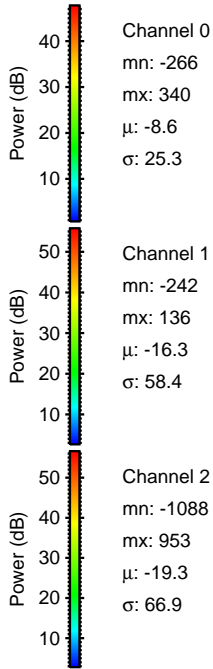
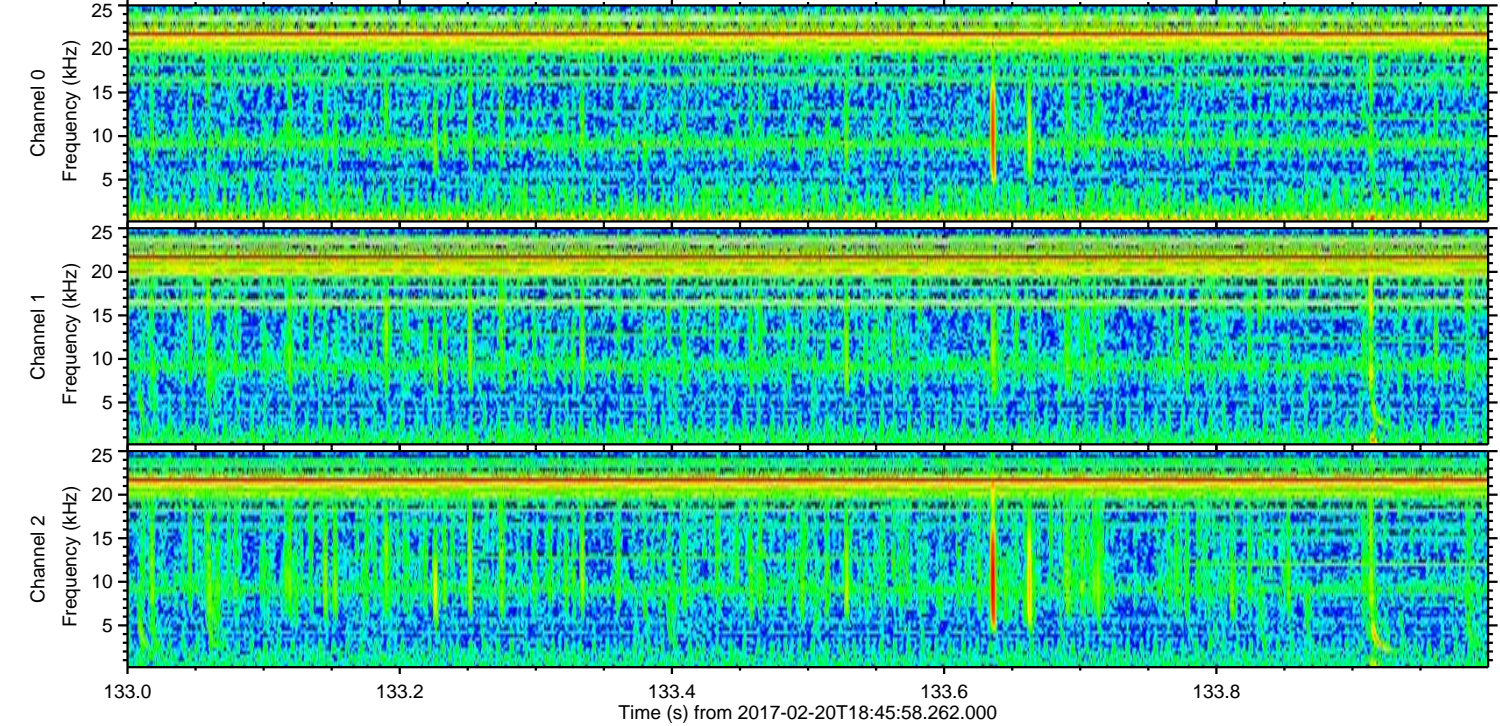
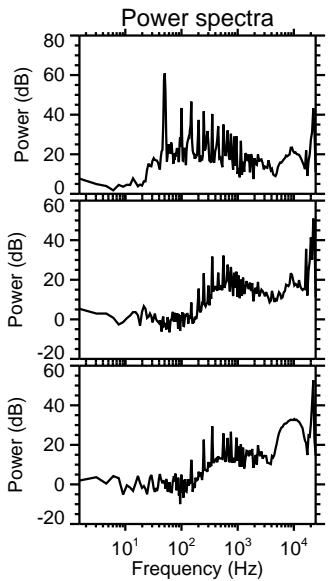
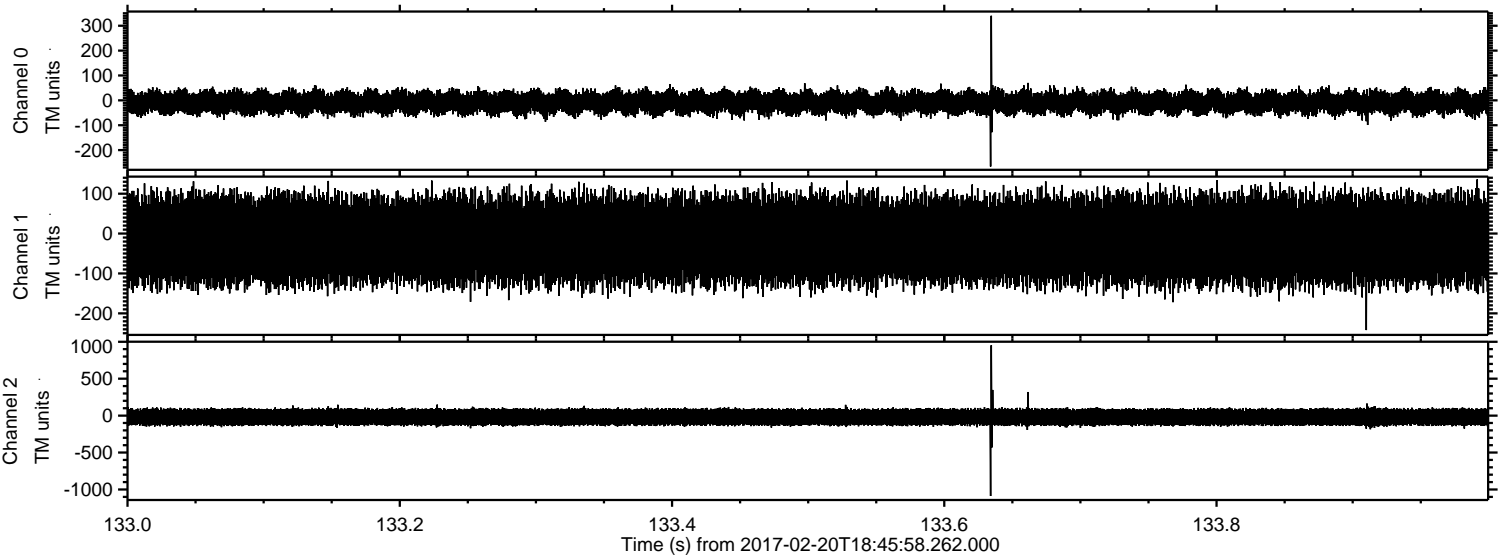
ELMAVAN 3D WAVEFORMS (Measured data sampled at 50 kHz) 51000 packets of 144 samples from 2017-02-20T18:45:58.262.000. Part 125/147

Processed Mon Feb 20 19:53:47 2017 by ELM ver.2012-10-06 from 001__elm20170220_184557__dat00.bin



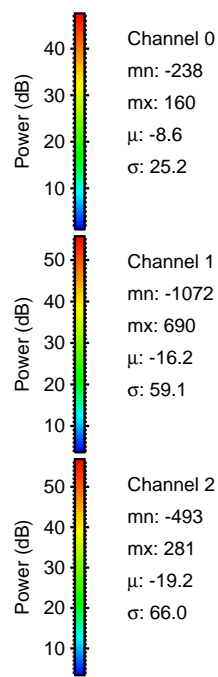
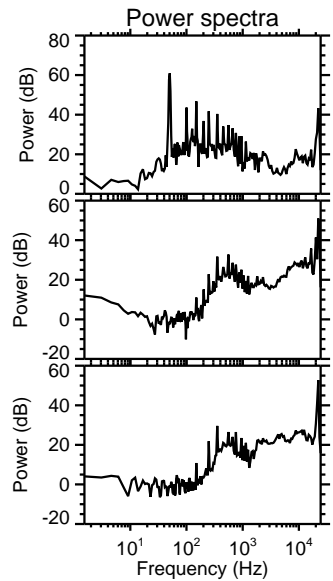
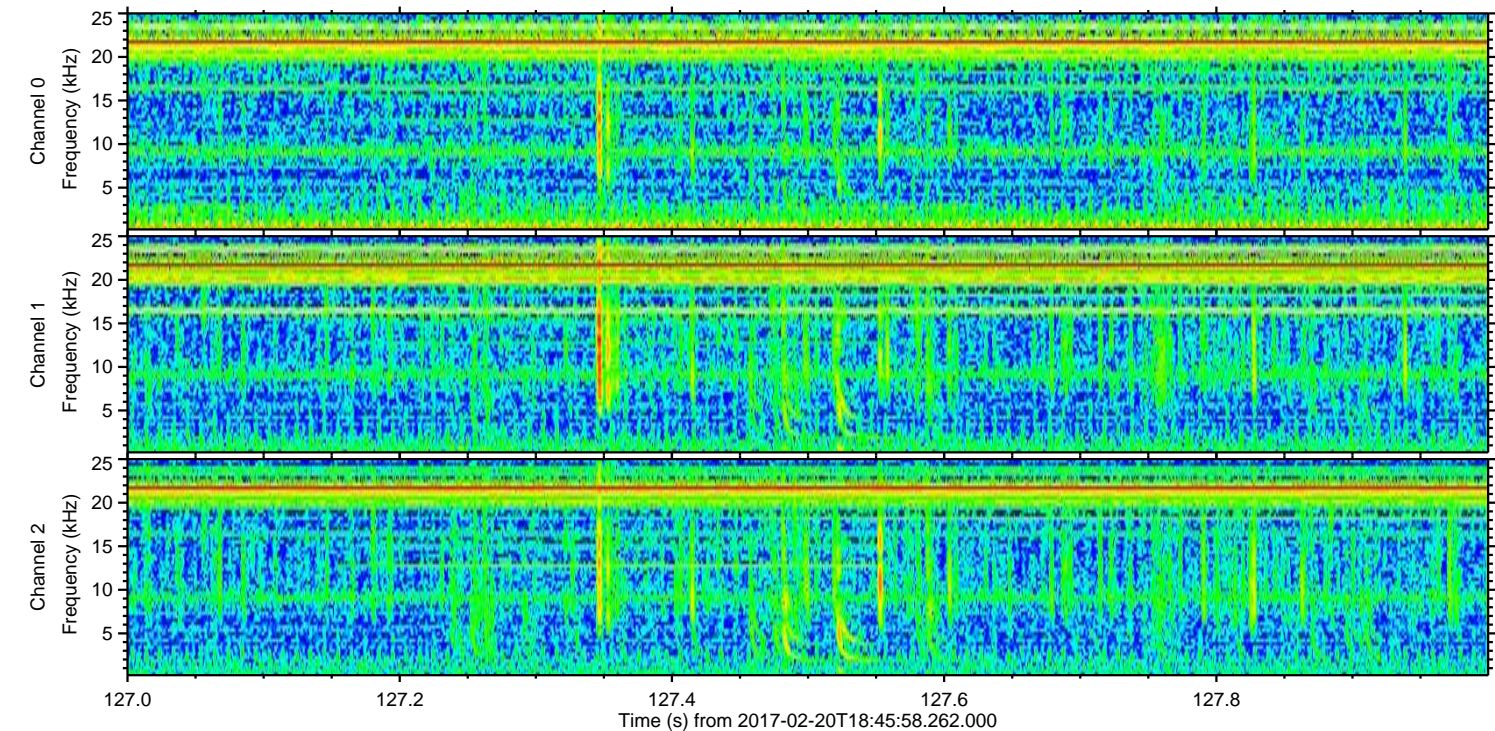
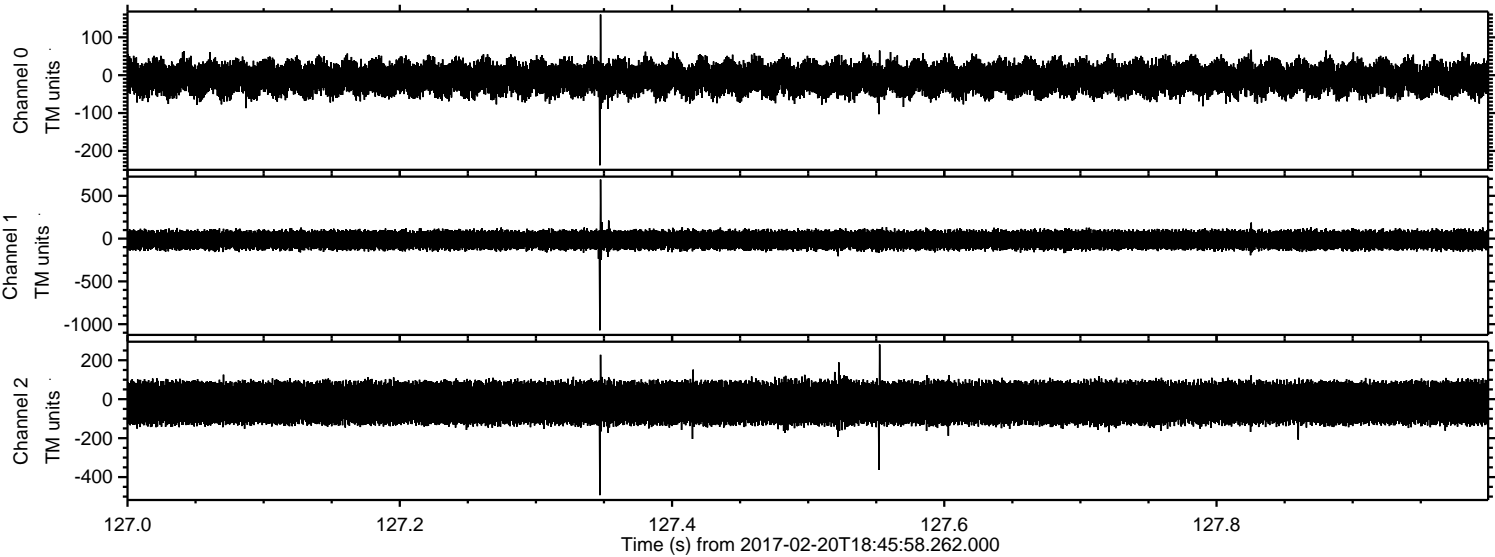
ELMAVAN 3D WAVEFORMS (Measured data sampled at 50 kHz) 51000 packets of 144 samples from 2017-02-20T18:45:58.262.000. Part 134/147

Processed Mon Feb 20 19:53:48 2017 by ELM ver.2012-10-06 from 001__elm20170220_184557__dat00.bin



ELMAVAN 3D WAVEFORMS (Measured data sampled at 50 kHz) 51000 packets of 144 samples from 2017-02-20T18:45:58.262.000. Part 128/147

Processed Mon Feb 20 19:53:49 2017 by ELM ver.2012-10-06 from 001__elm20170220_184557__dat00.bin

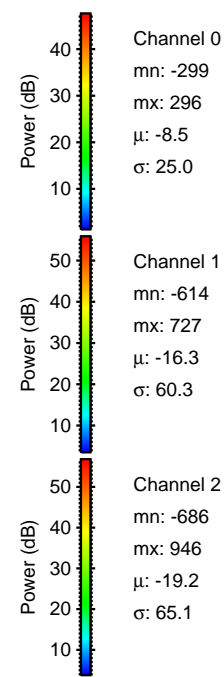
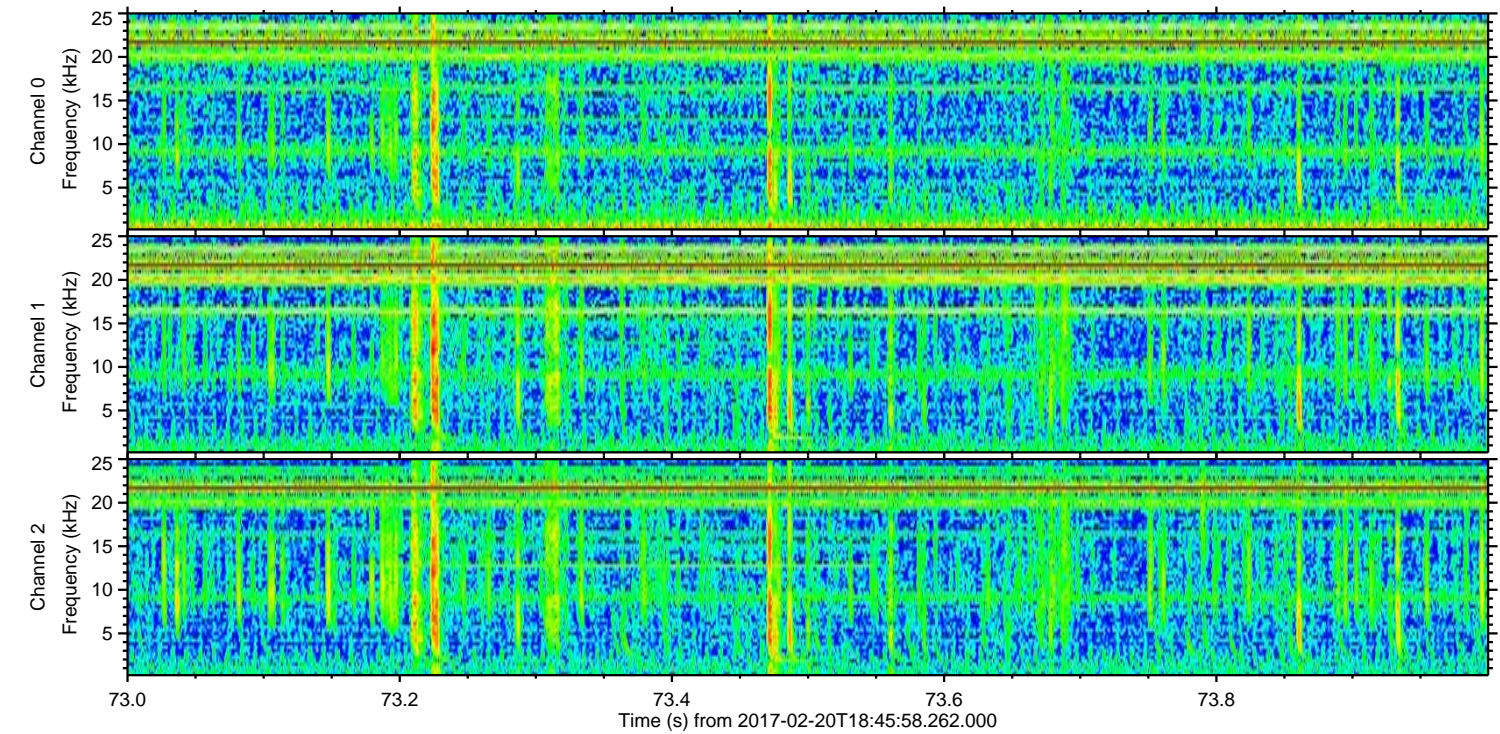
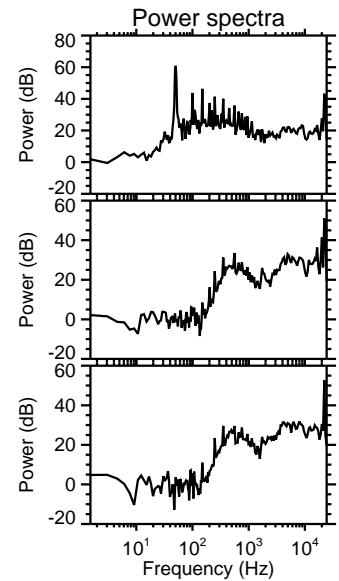
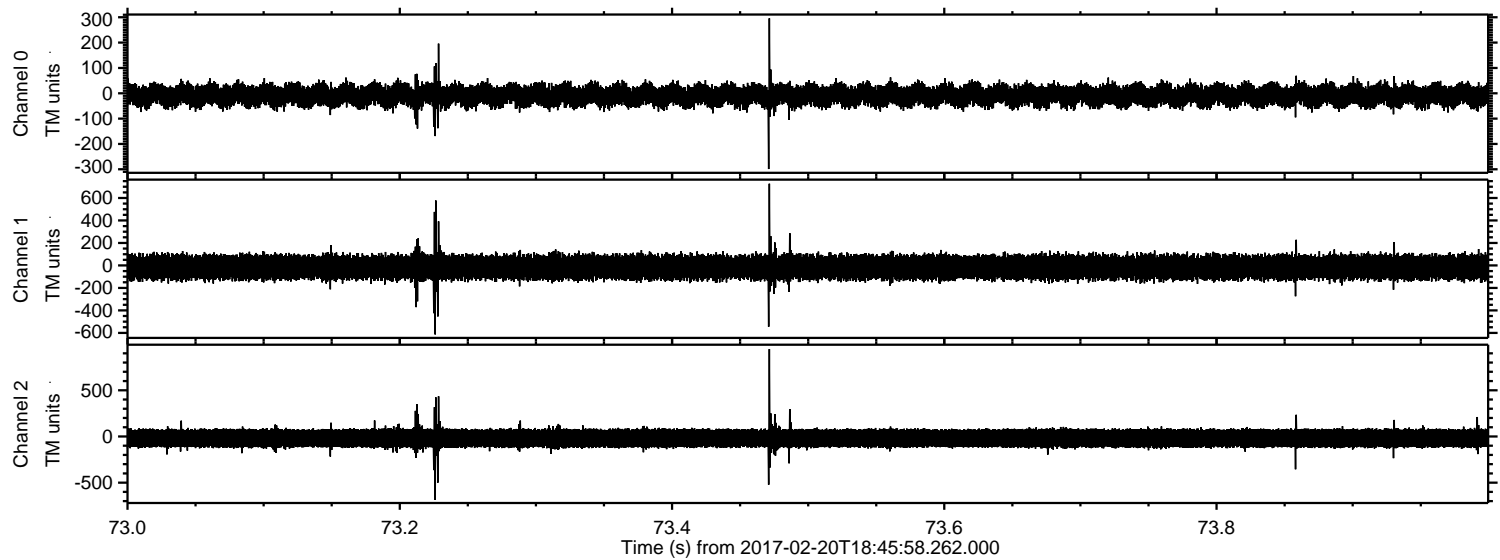


Channel 0
mn: -238
mx: 160
 μ : -8.6
 σ : 25.2

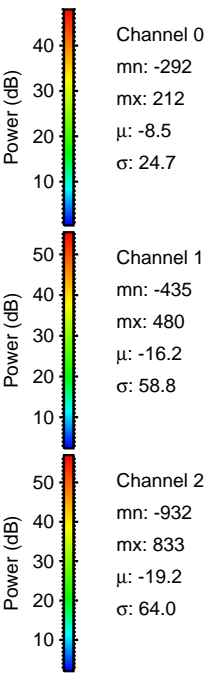
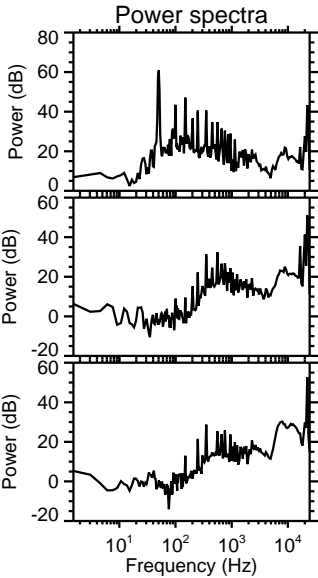
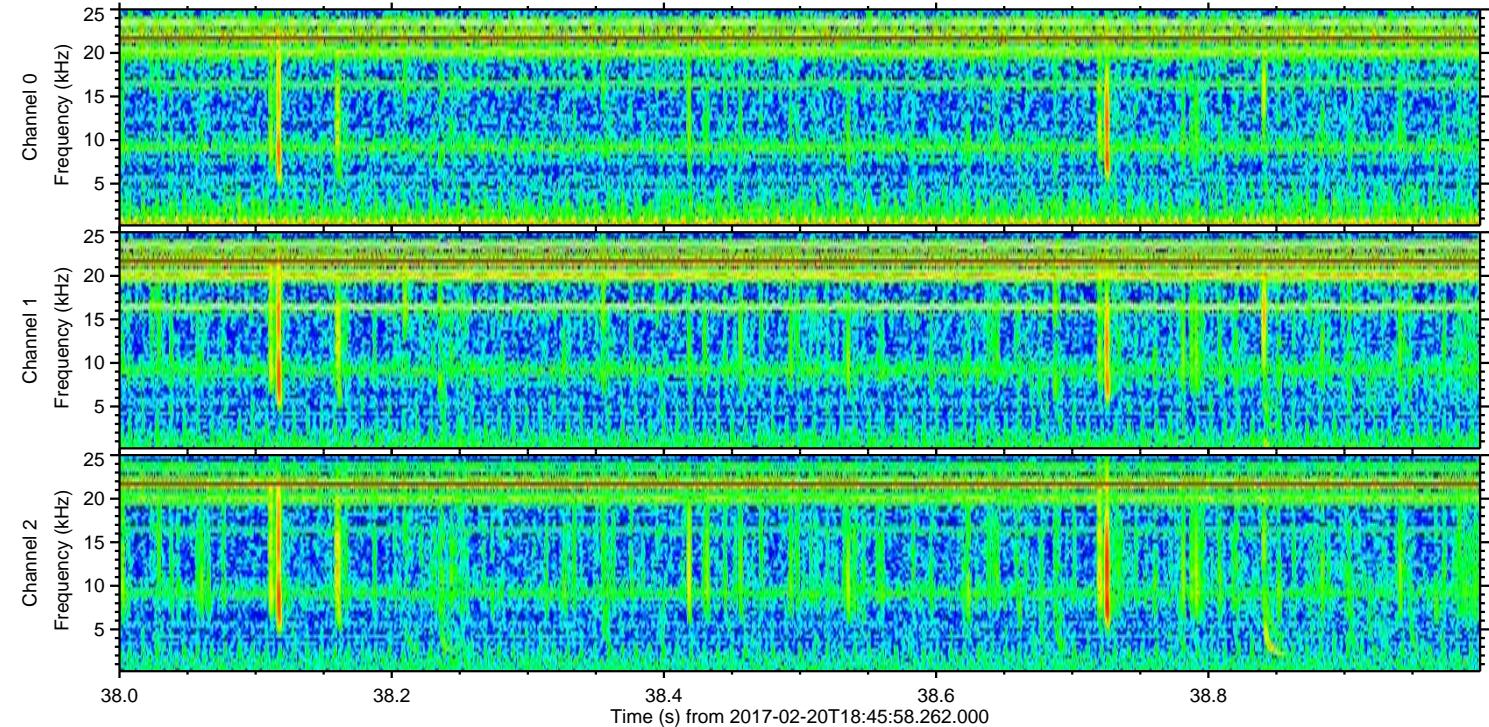
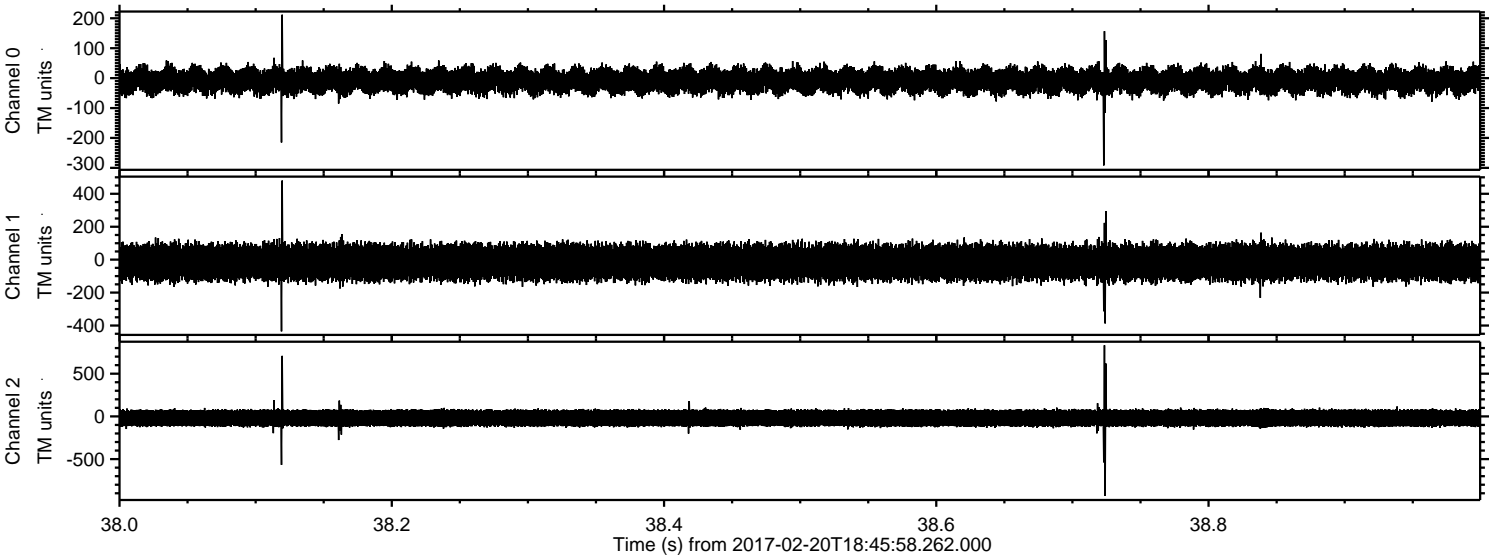
Channel 1
mn: -1072
mx: 690
 μ : -16.2
 σ : 59.1

Channel 2
mn: -493
mx: 281
 μ : -19.2
 σ : 66.0

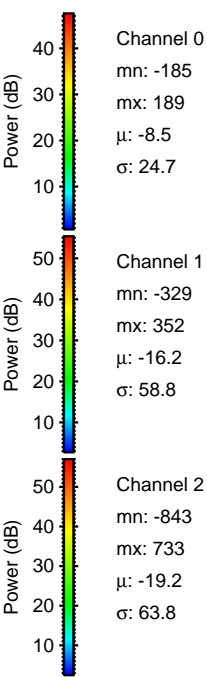
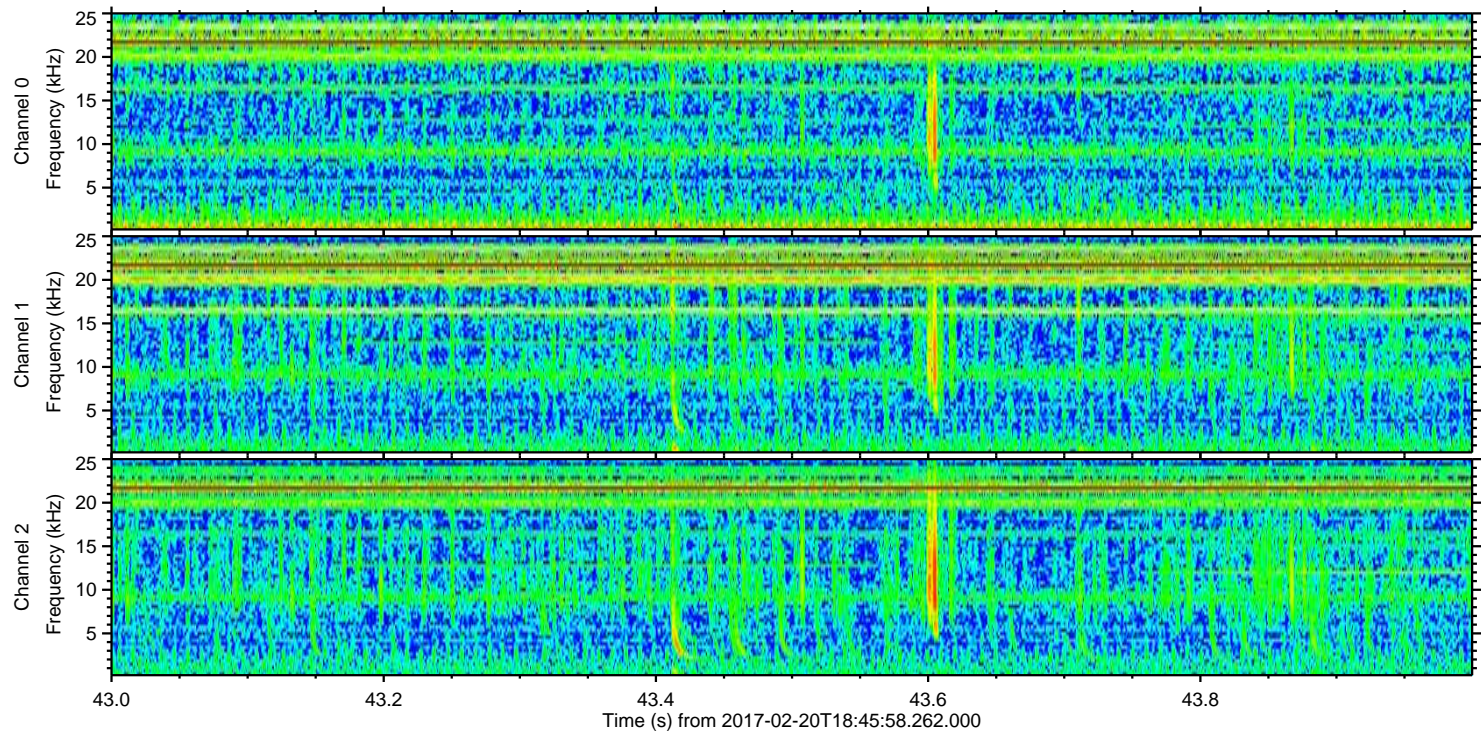
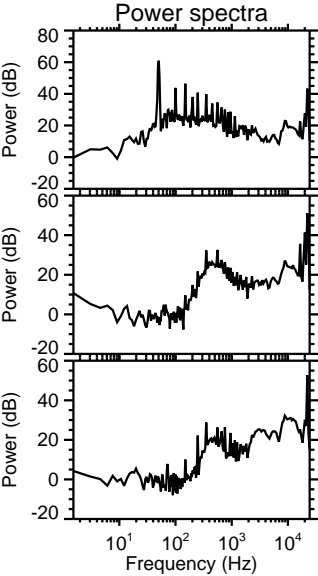
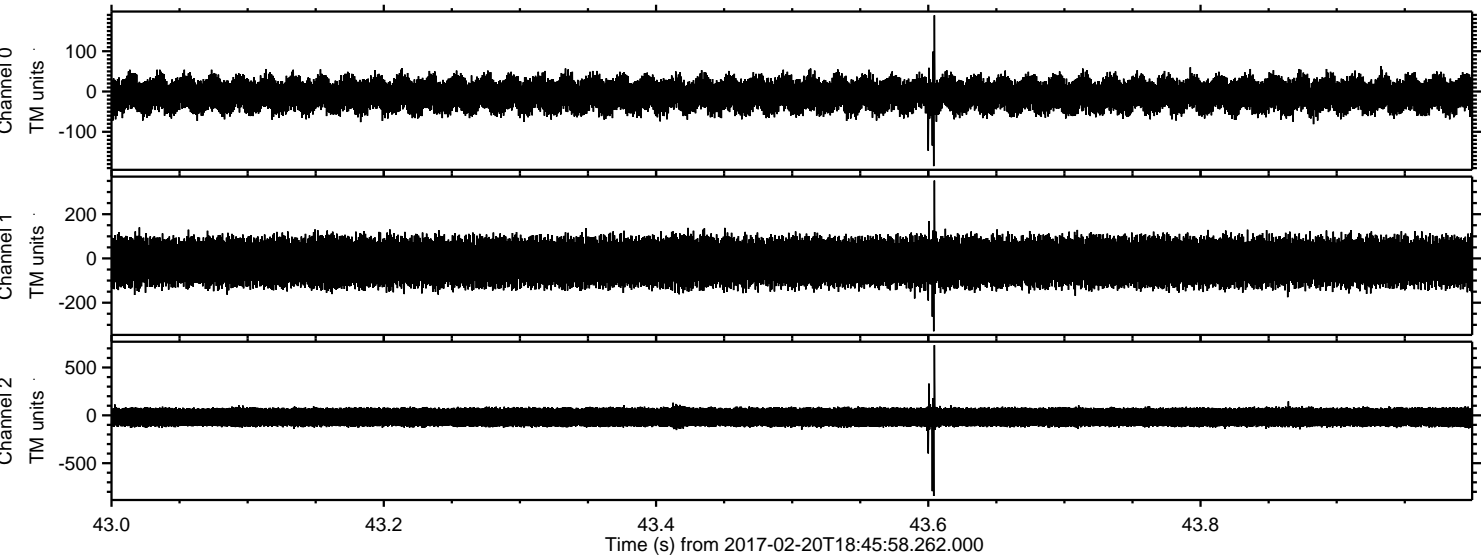
Processed Mon Feb 20 19:53:50 2017 by ELM ver.2012-10-06 from 001__elm20170220_184557__dat00.bin



Processed Mon Feb 20 19:53:51 2017 by ELM ver.2012-10-06 from 001__elm20170220_184557__dat00.bin



Processed Mon Feb 20 19:53:52 2017 by ELM ver.2012-10-06 from 001_elm20170220_184557__dat00.bin



Processed Mon Feb 20 19:53:53 2017 by ELM ver.2012-10-06 from 001__elm20170220_184557__dat00.bin

