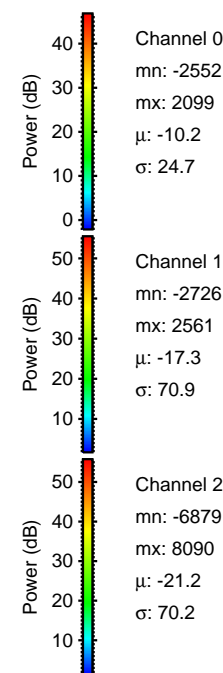
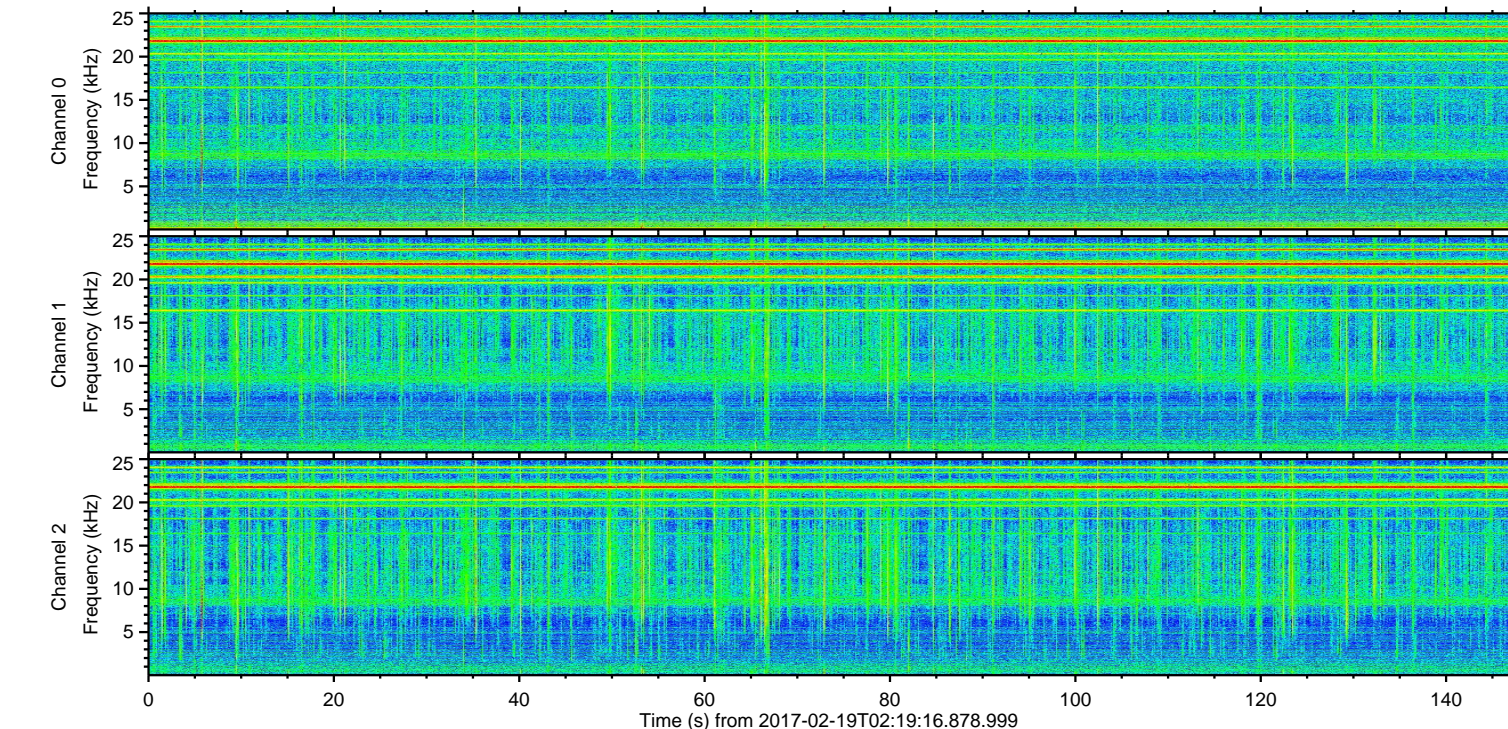
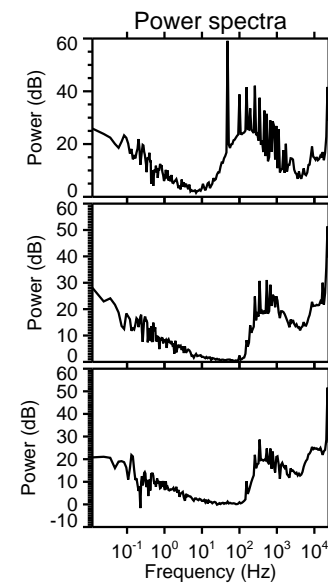
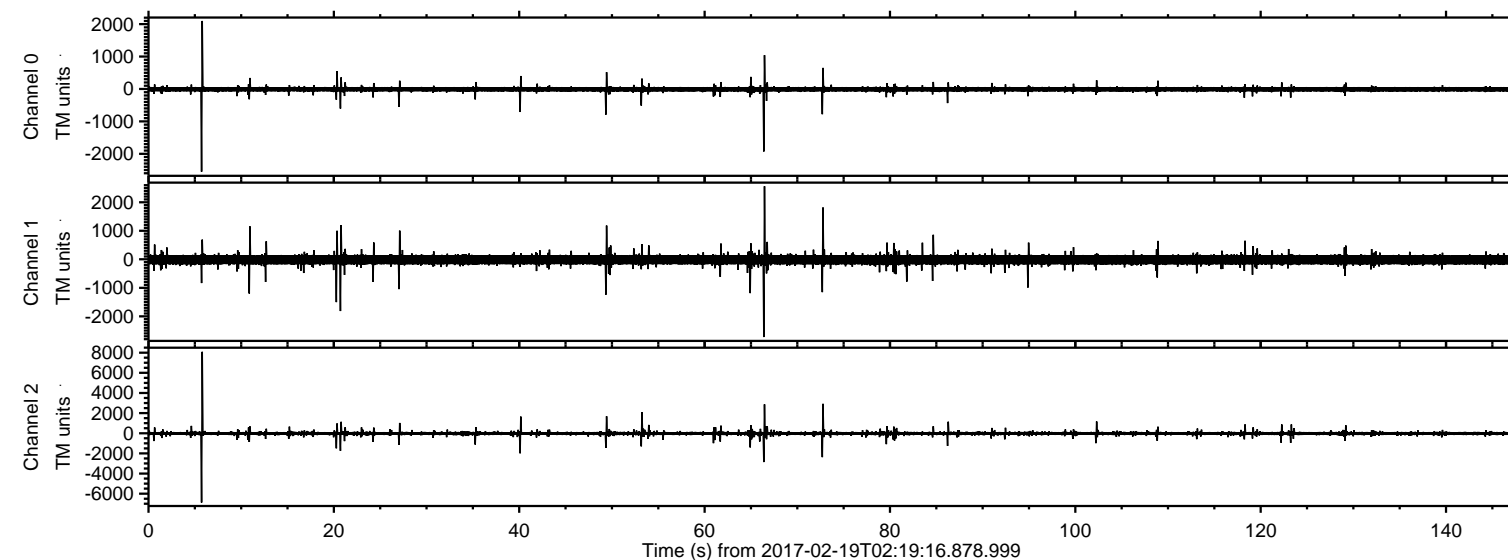


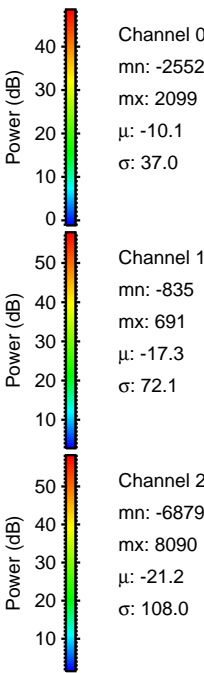
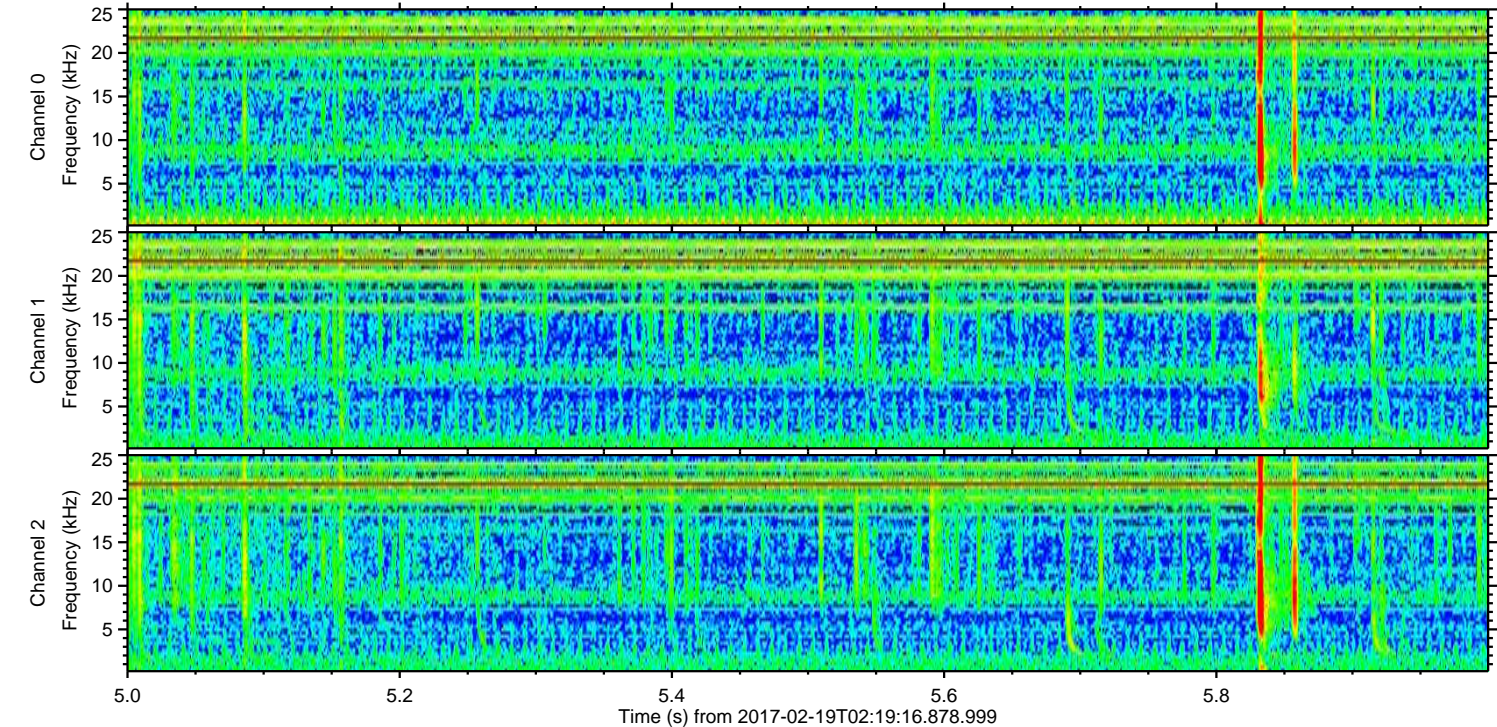
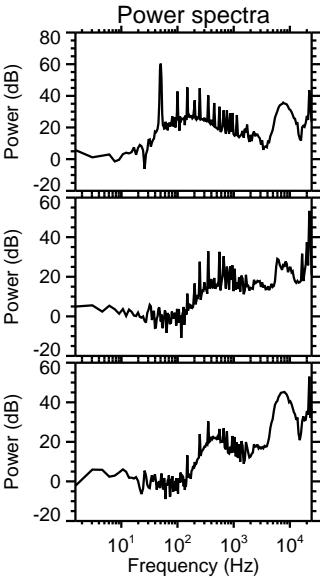
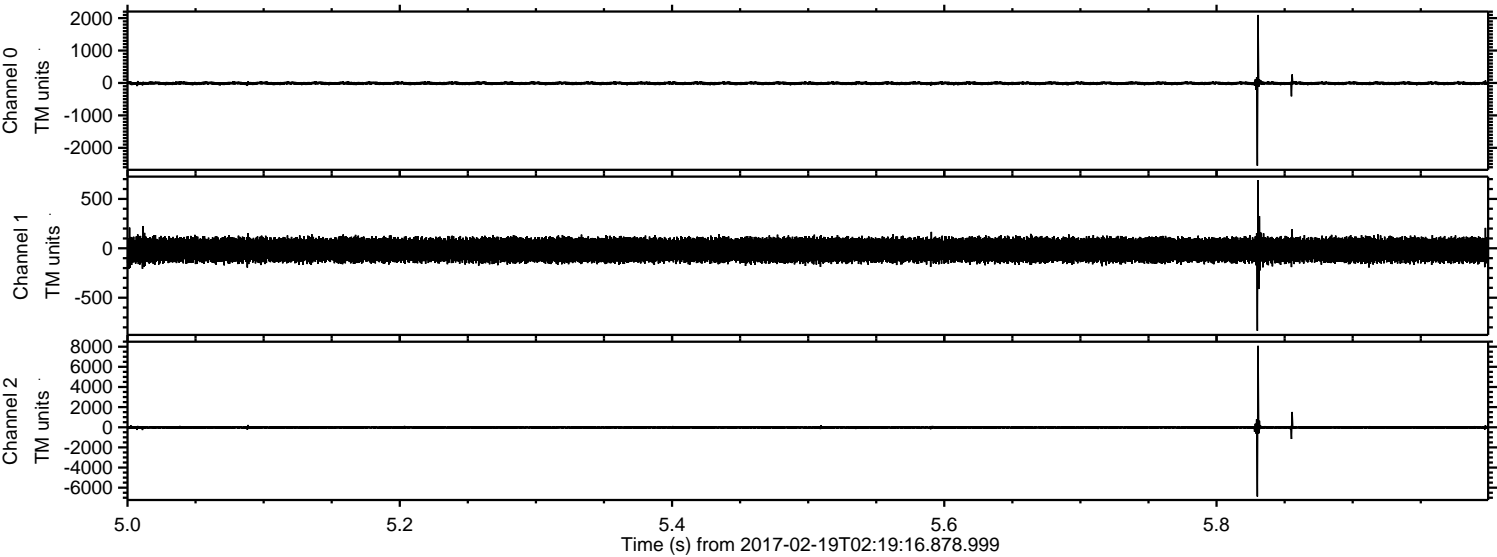
ELMAVAN 3D WAVEFORMS (Measured data sampled at 50 kHz) 51000 packets of 144 samples from 2017-02-19T02:19:16.878.999.

Processed Sun Feb 19 03:26:41 2017 by ELM ver.2012-10-06 from 001__elm20170219_021915__dat00.bin



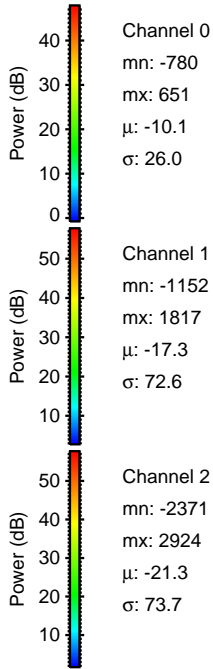
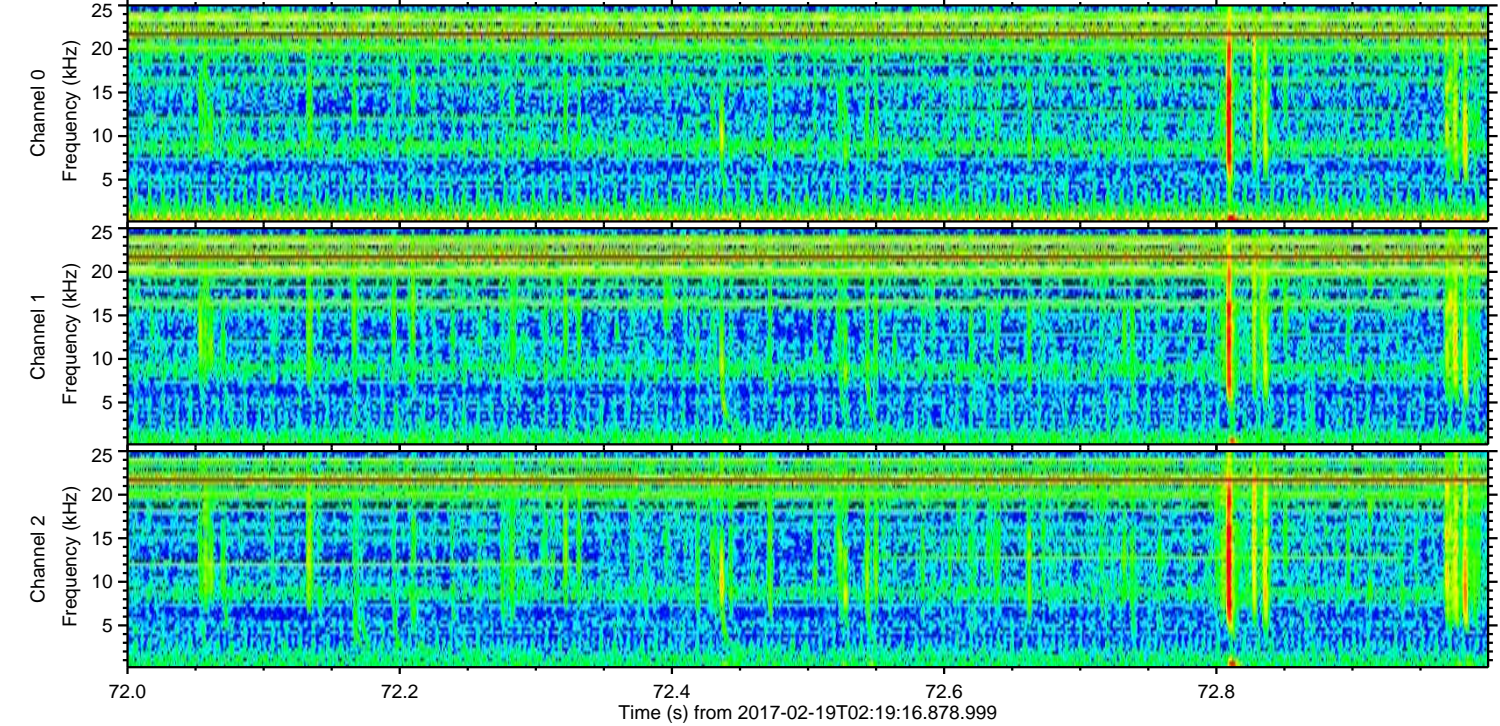
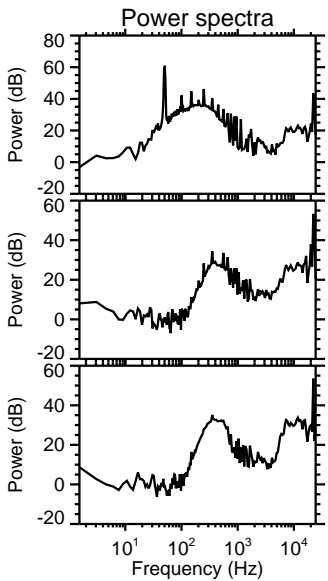
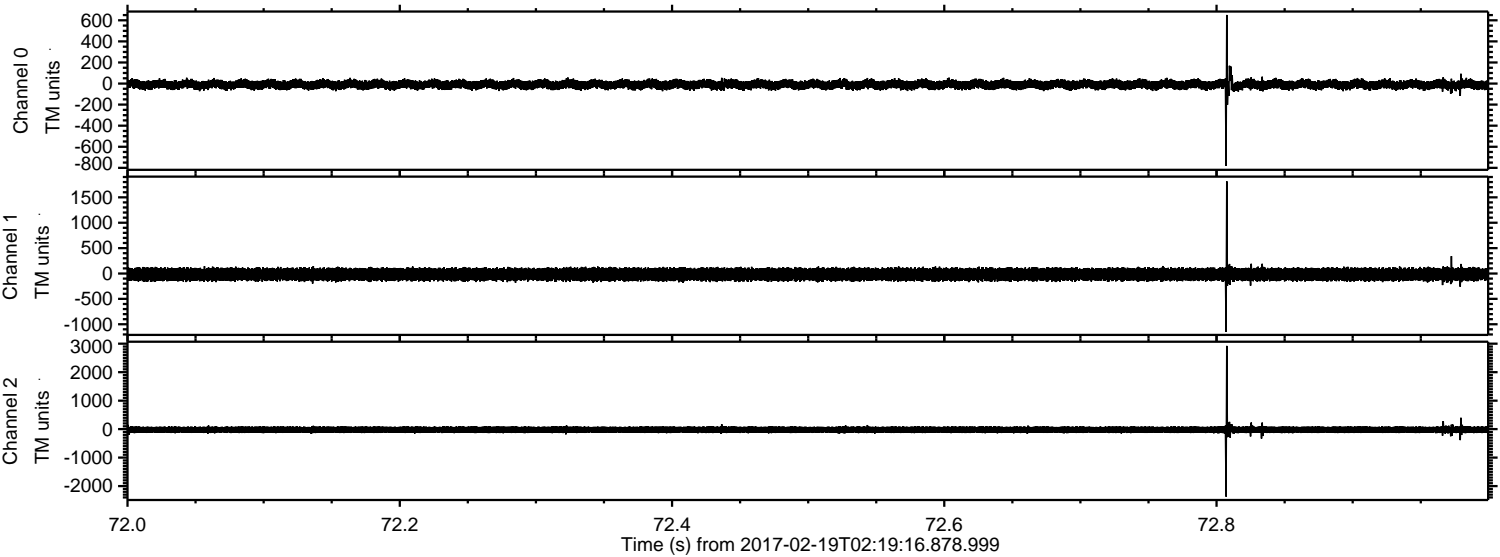
ELMAVAN 3D WAVEFORMS (Measured data sampled at 50 kHz) 51000 packets of 144 samples from 2017-02-19T02:19:16.878.999. Part 6/147

Processed Sun Feb 19 03:26:52 2017 by ELM ver.2012-10-06 from 001__elm20170219_021915__dat00.bin



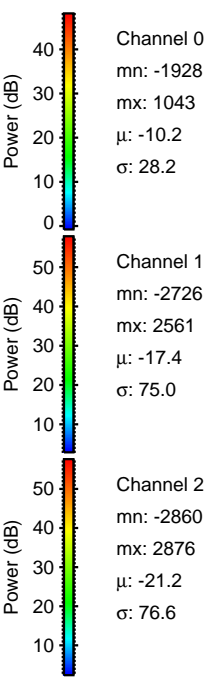
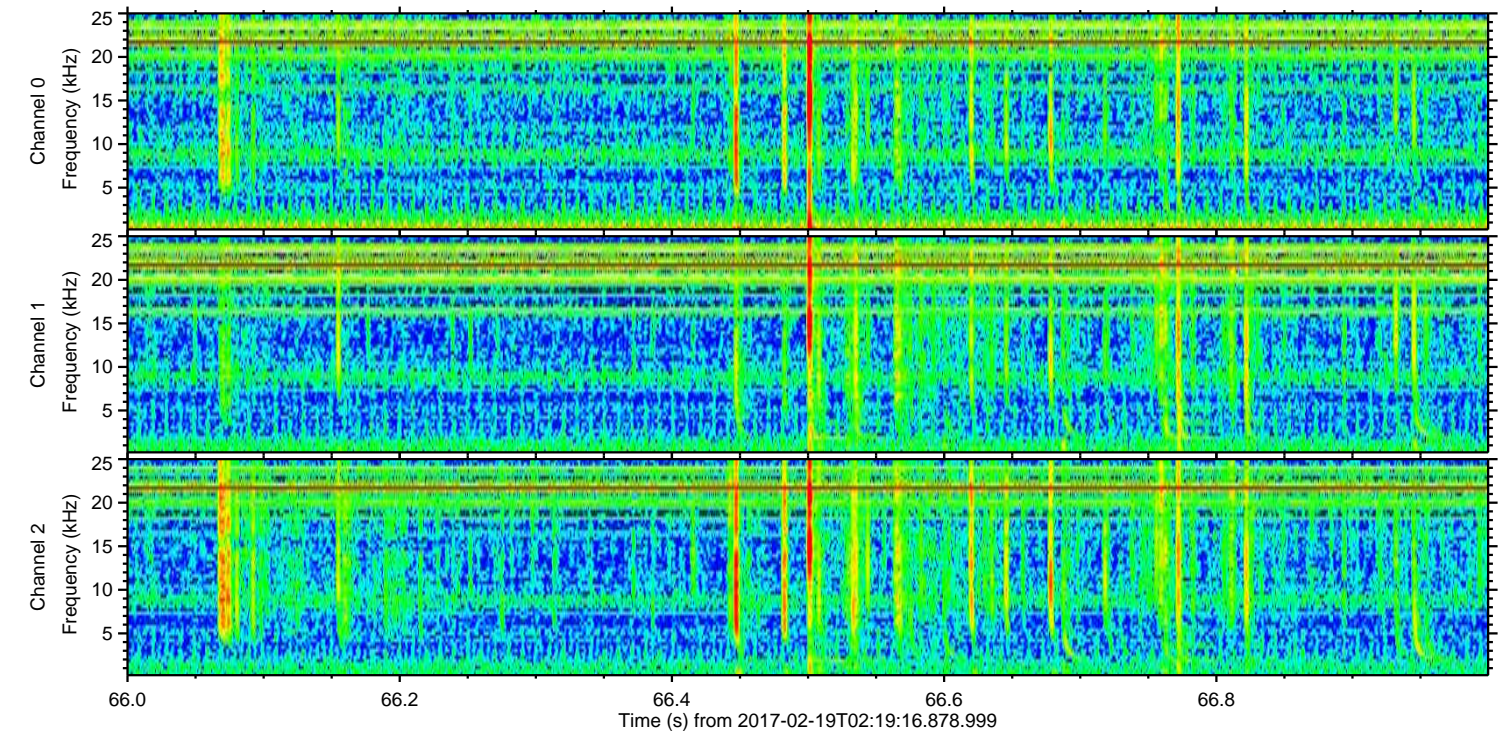
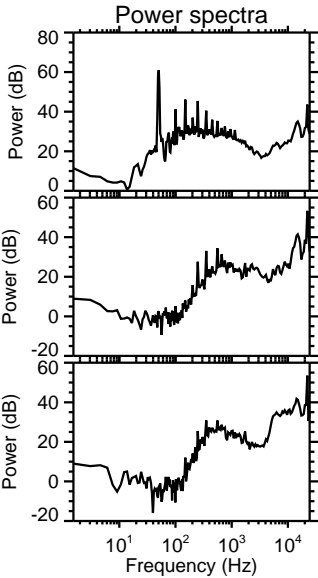
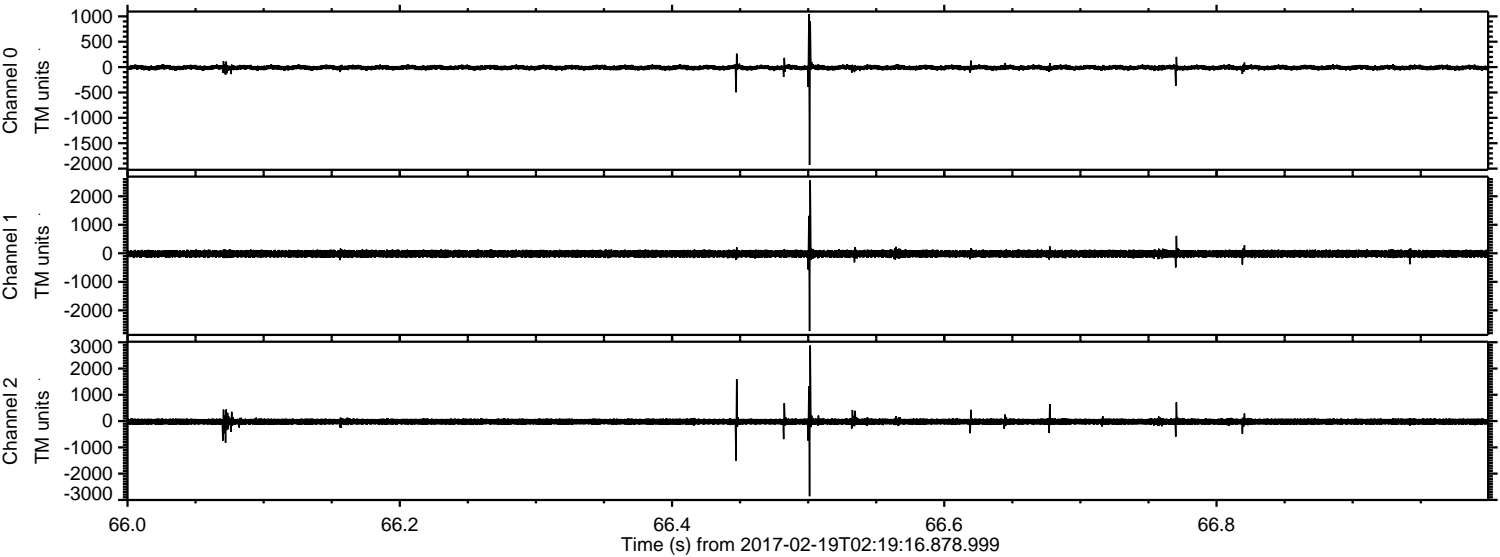
ELMAVAN 3D WAVEFORMS (Measured data sampled at 50 kHz) 51000 packets of 144 samples from 2017-02-19T02:19:16.878.999. Part 73/147

Processed Sun Feb 19 03:26:53 2017 by ELM ver.2012-10-06 from 001__elm20170219_021915__dat00.bin



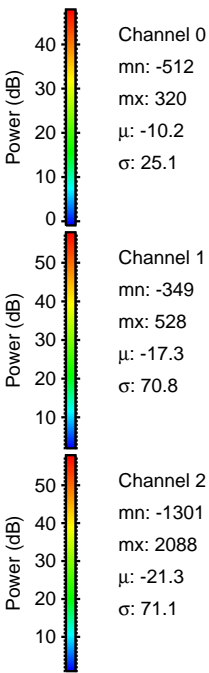
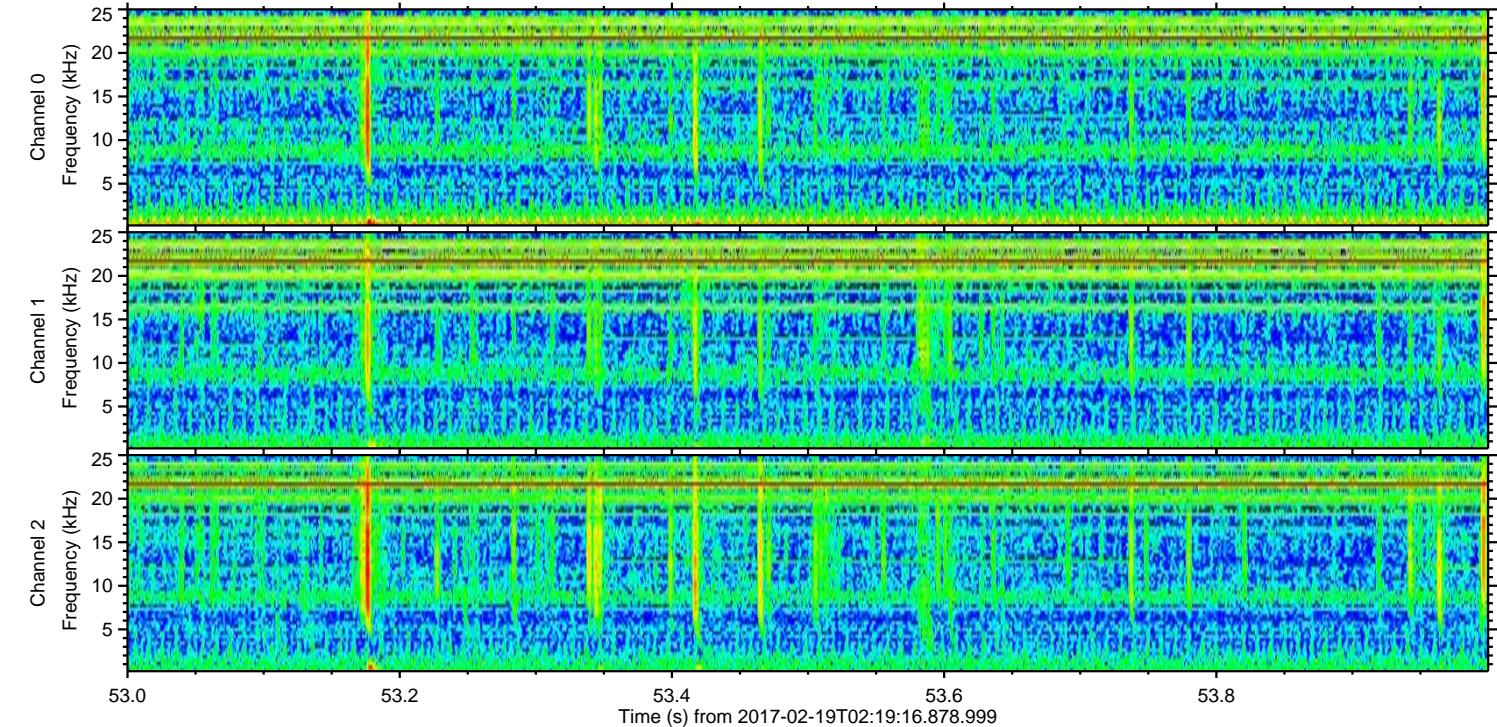
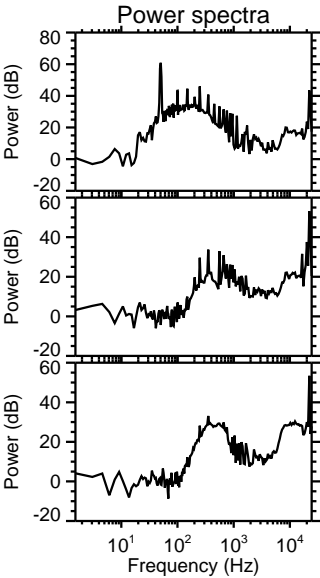
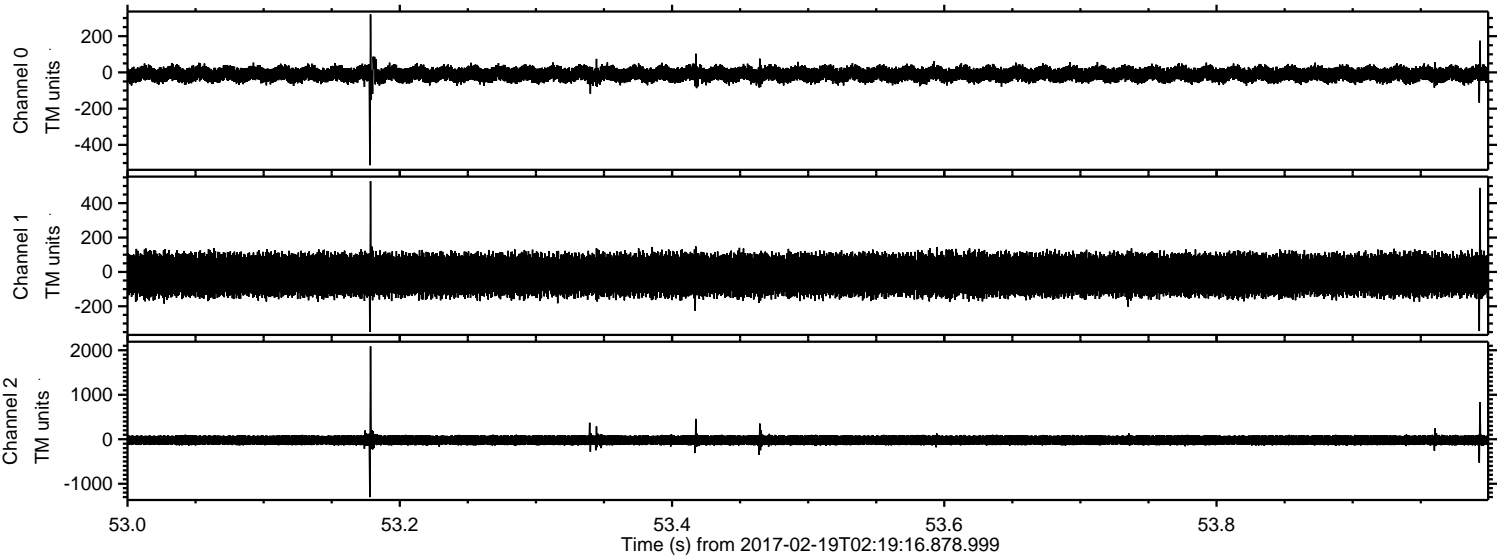
ELMAVAN 3D WAVEFORMS (Measured data sampled at 50 kHz) 51000 packets of 144 samples from 2017-02-19T02:19:16.878.999. Part 67/147

Processed Sun Feb 19 03:26:54 2017 by ELM ver.2012-10-06 from 001__elm20170219_021915__dat00.bin



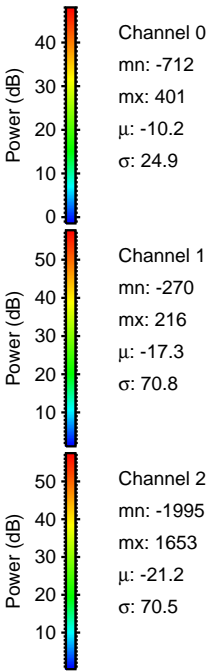
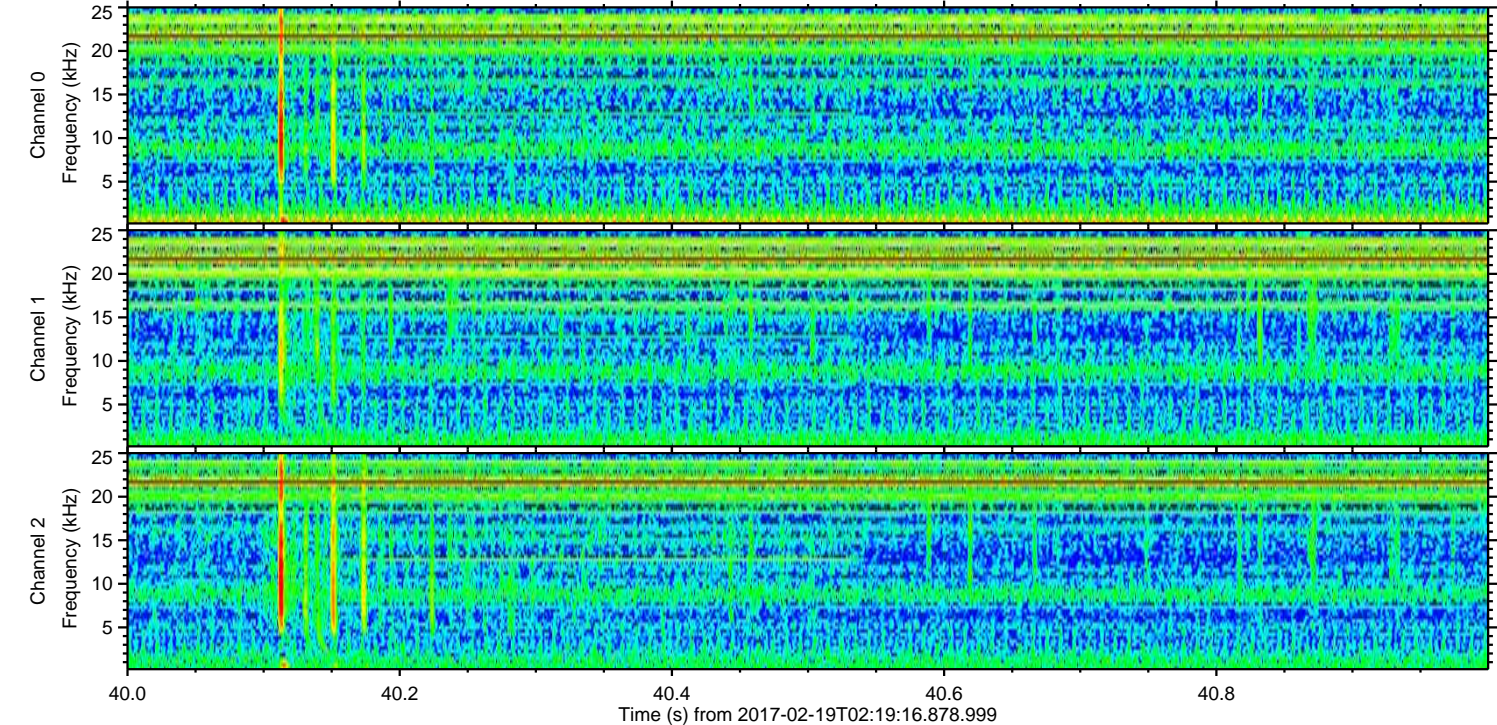
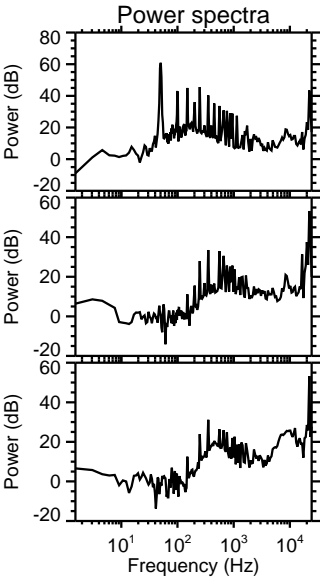
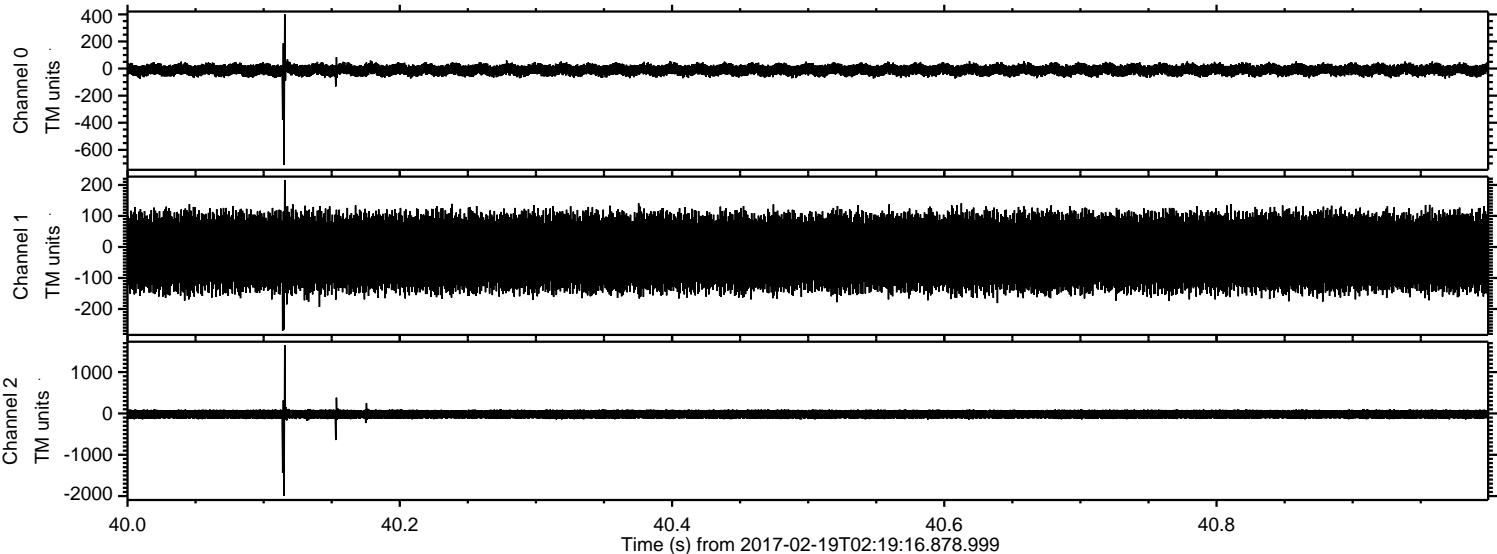
ELMAVAN 3D WAVEFORMS (Measured data sampled at 50 kHz) 51000 packets of 144 samples from 2017-02-19T02:19:16.878.999. Part 54/147

Processed Sun Feb 19 03:26:55 2017 by ELM ver.2012-10-06 from 001__elm20170219_021915__dat00.bin



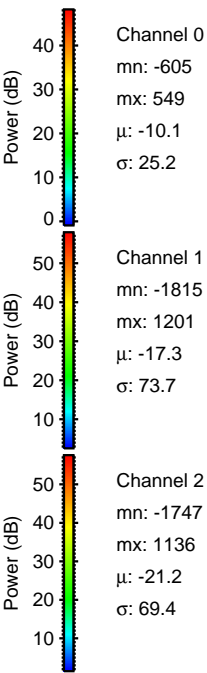
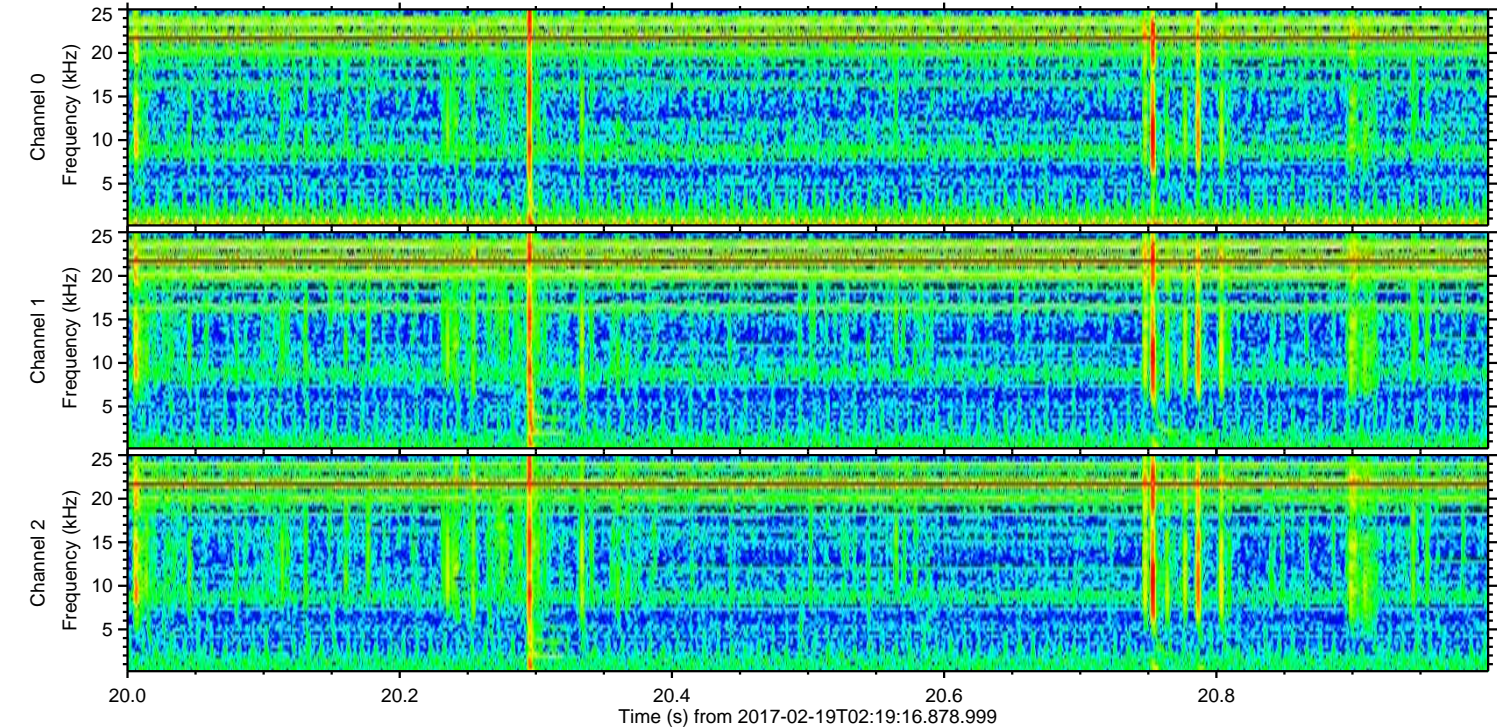
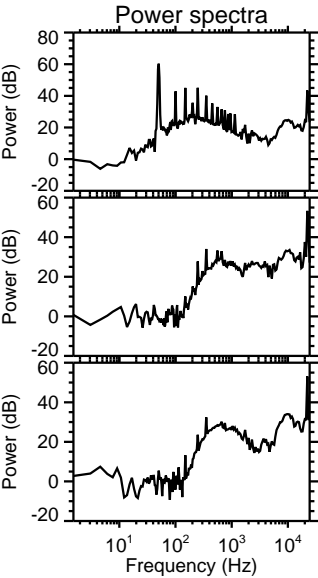
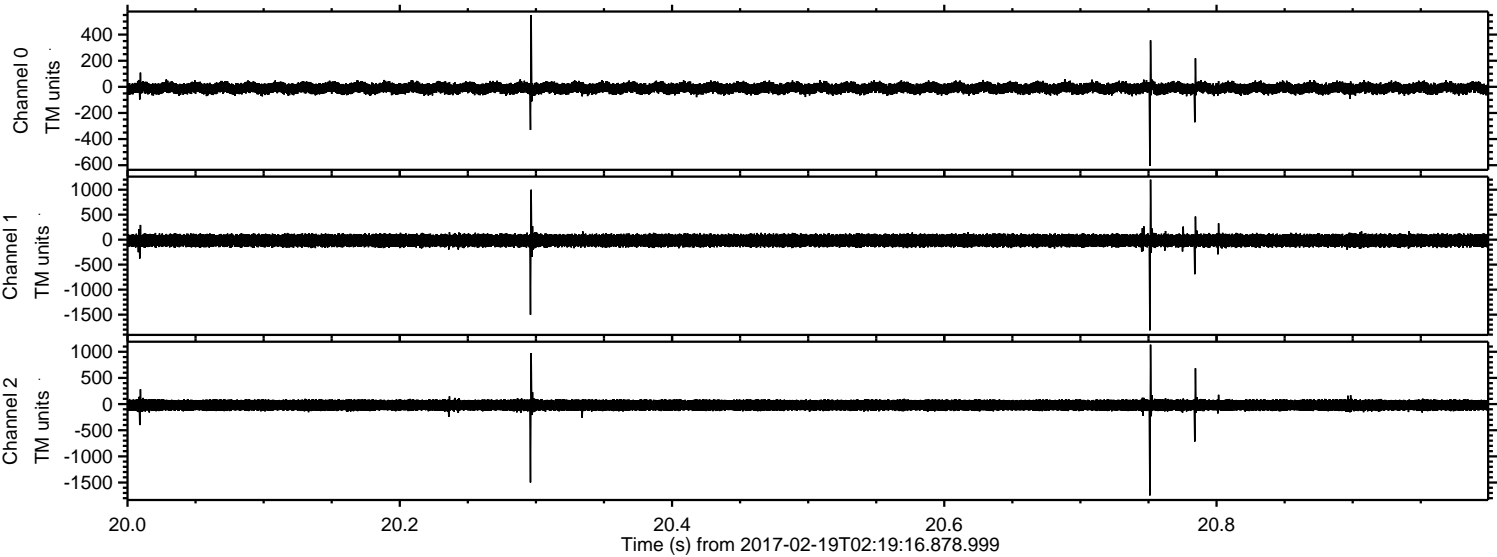
ELMAVAN 3D WAVEFORMS (Measured data sampled at 50 kHz) 51000 packets of 144 samples from 2017-02-19T02:19:16.878.999. Part 41/147

Processed Sun Feb 19 03:26:56 2017 by ELM ver.2012-10-06 from 001__elm20170219_021915__dat00.bin

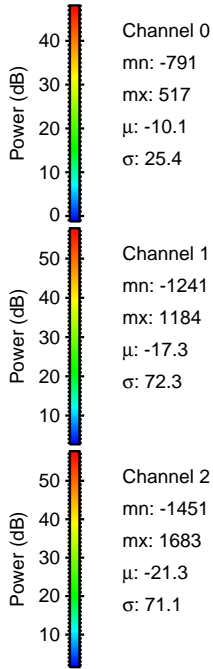
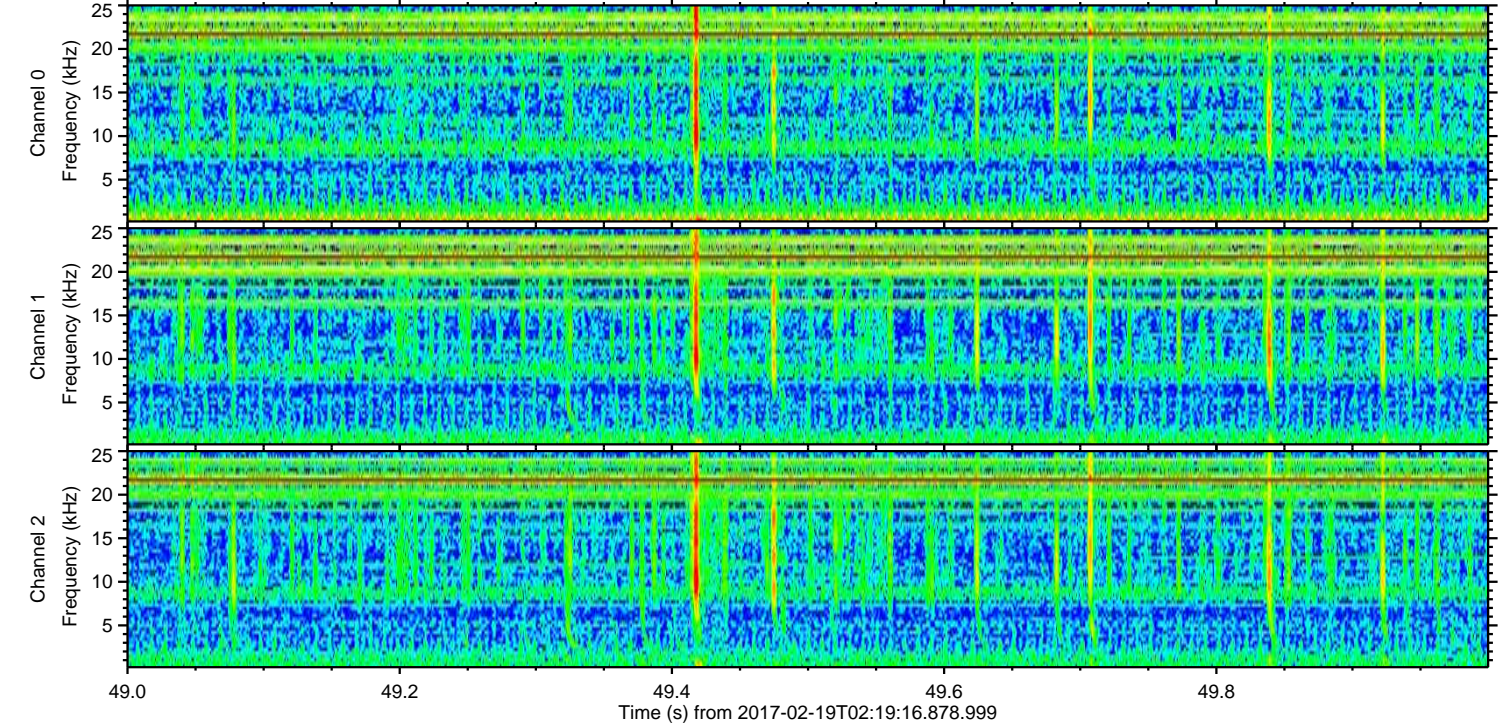
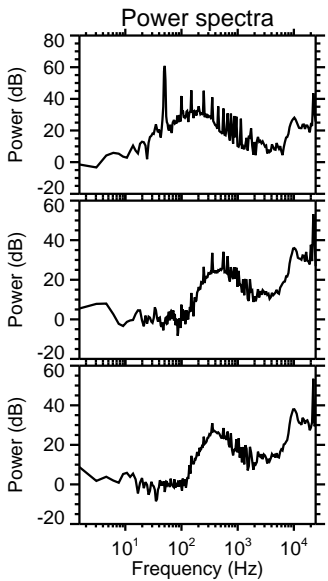
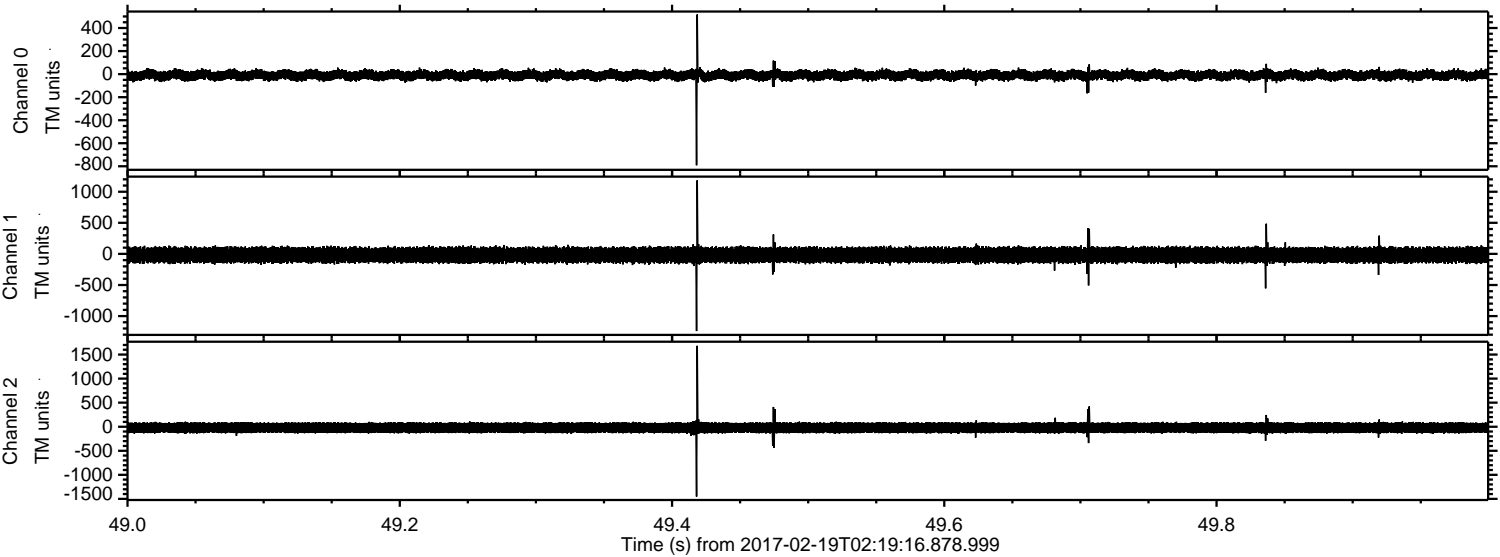


ELMAVAN 3D WAVEFORMS (Measured data sampled at 50 kHz) 51000 packets of 144 samples from 2017-02-19T02:19:16.878.999. Part 21/147

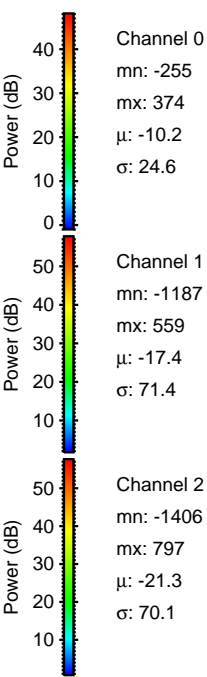
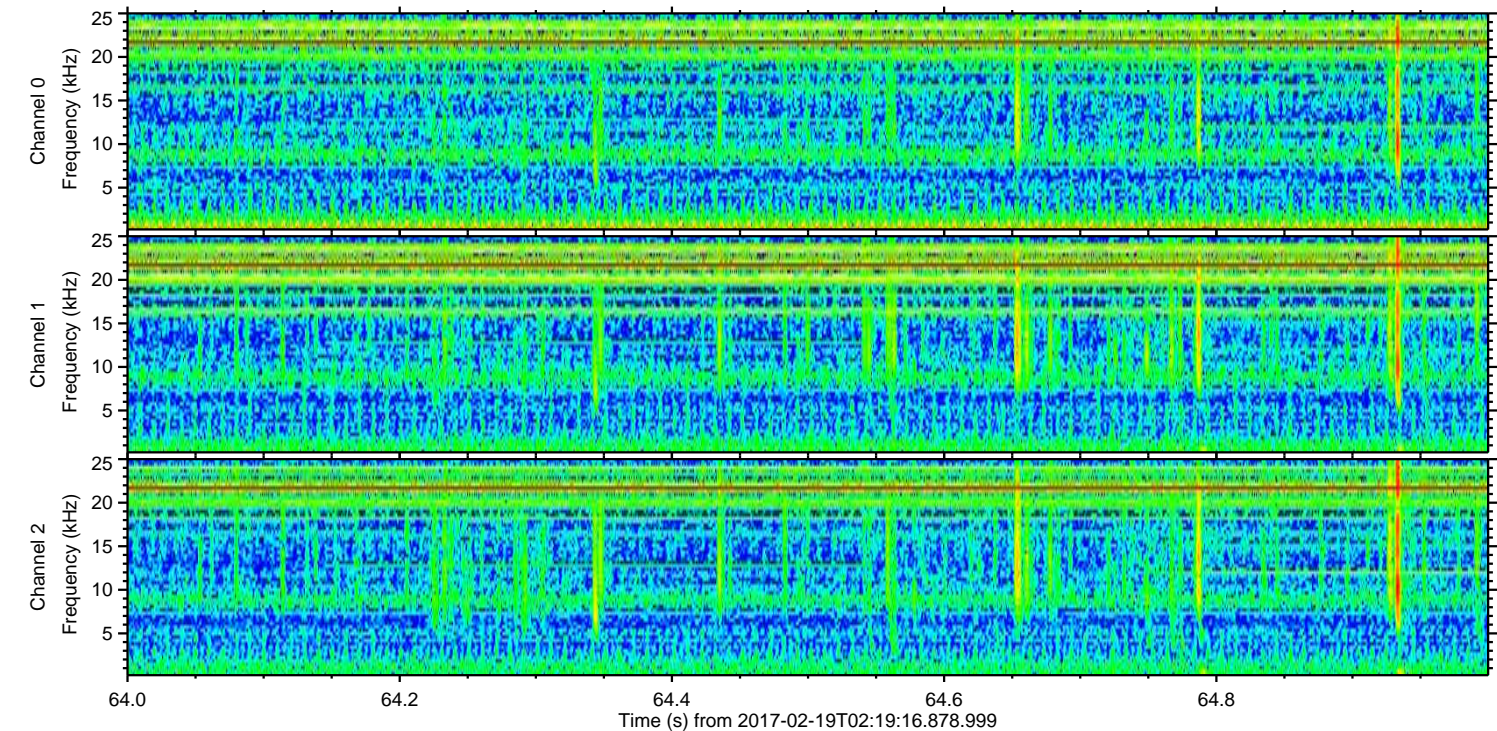
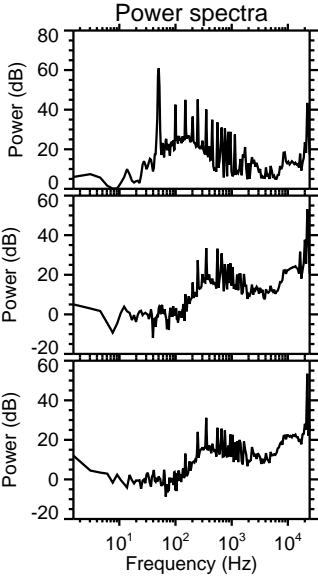
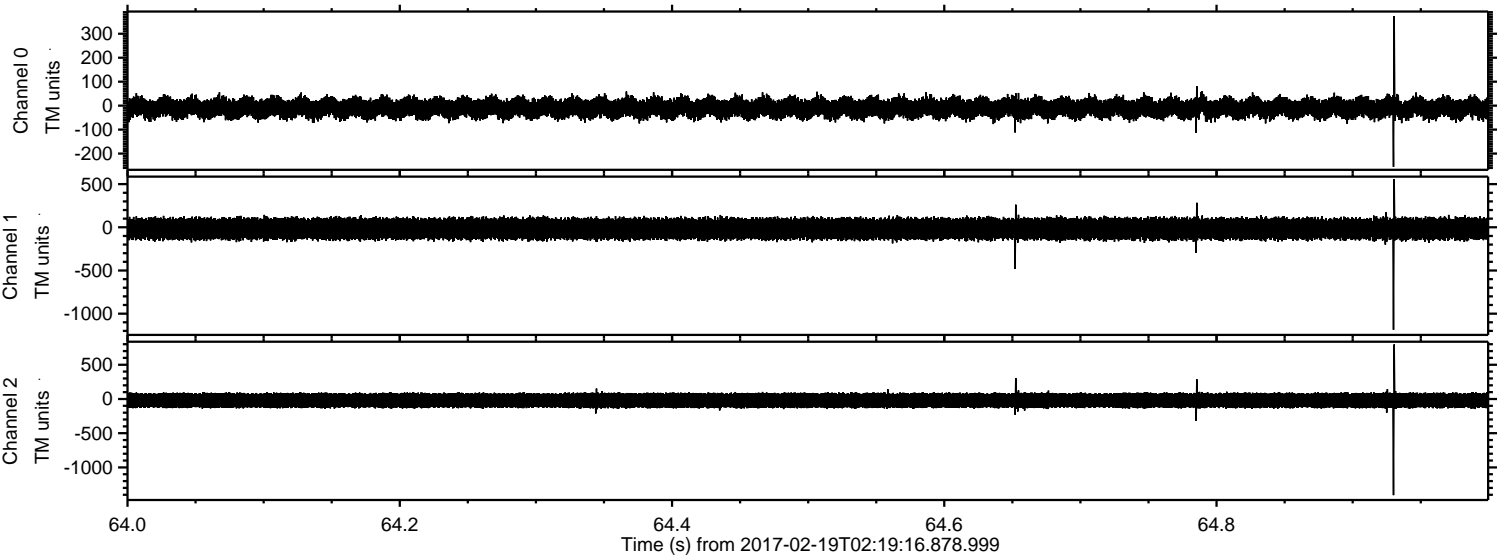
Processed Sun Feb 19 03:26:57 2017 by ELM ver.2012-10-06 from 001__elm20170219_021915__dat00.bin



Processed Sun Feb 19 03:26:58 2017 by ELM ver.2012-10-06 from 001__elm20170219_021915__dat00.bin



Processed Sun Feb 19 03:26:59 2017 by ELM ver.2012-10-06 from 001__elm20170219_021915__dat00.bin



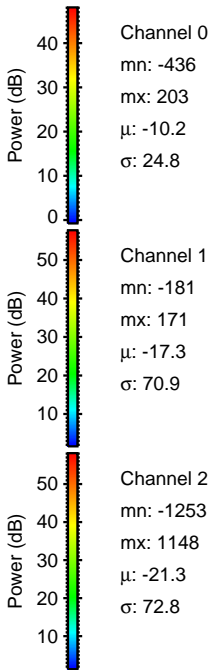
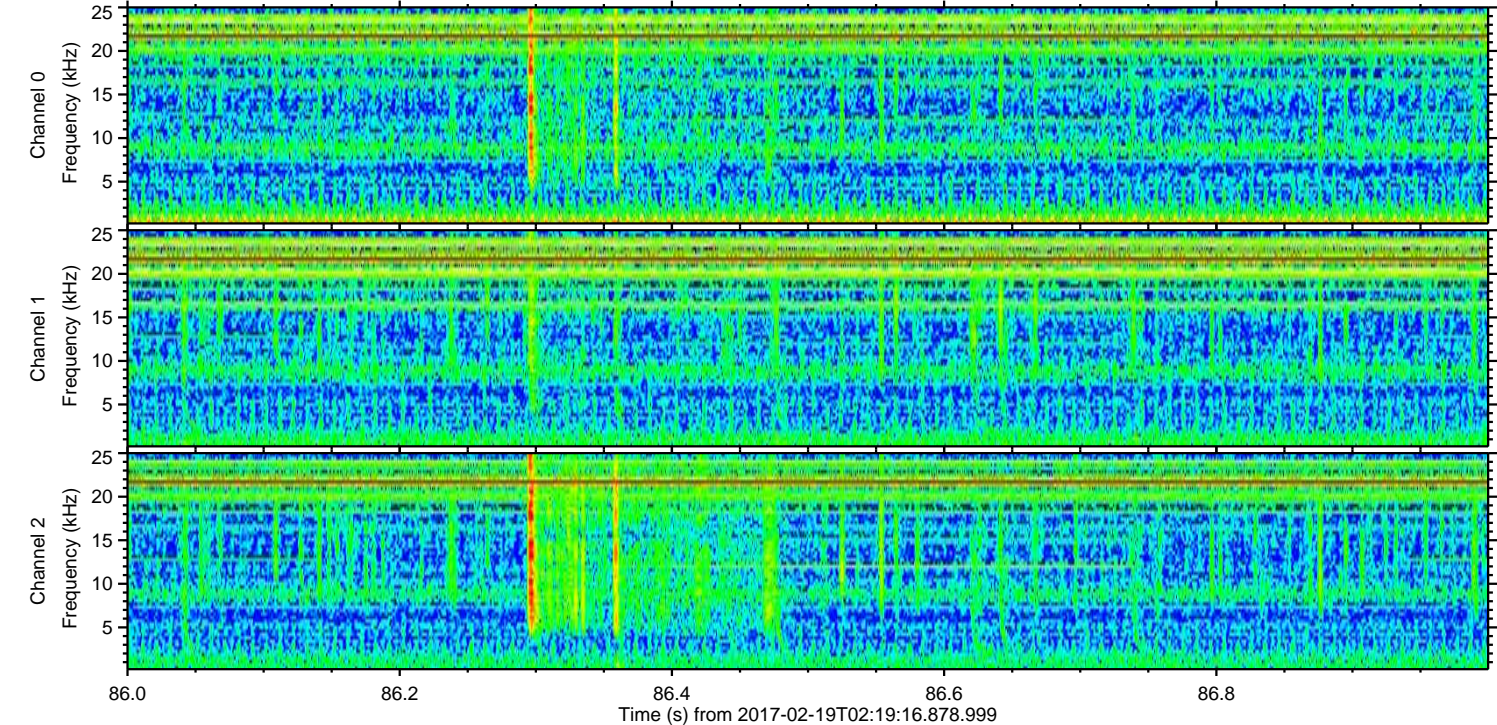
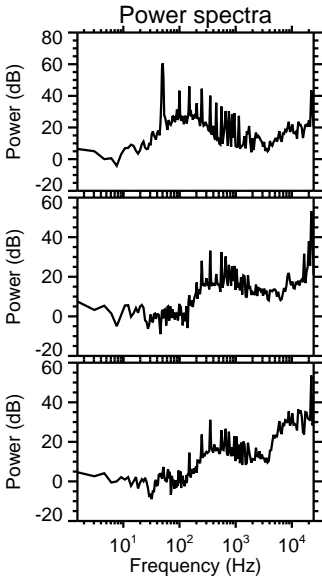
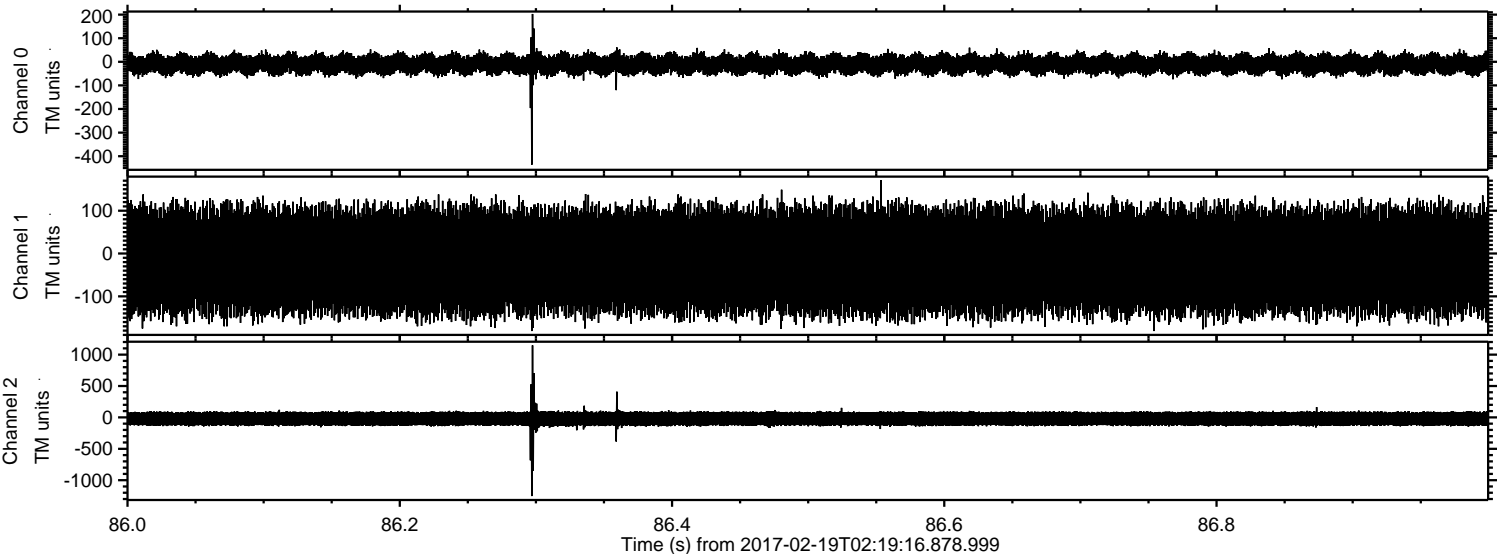
Channel 0
mn: -255
mx: 374
 μ : -10.2
 σ : 24.6

Channel 1
mn: -1187
mx: 559
 μ : -17.4
 σ : 71.4

Channel 2
mn: -1406
mx: 797
 μ : -21.3
 σ : 70.1

ELMAVAN 3D WAVEFORMS (Measured data sampled at 50 kHz) 51000 packets of 144 samples from 2017-02-19T02:19:16.878.999. Part 87/147

Processed Sun Feb 19 03:27:00 2017 by ELM ver.2012-10-06 from 001__elm20170219_021915__dat00.bin



ELMAVAN 3D WAVEFORMS (Measured data sampled at 50 kHz) 51000 packets of 144 samples from 2017-02-19T02:19:16.878.999. Part 39/147

Processed Sun Feb 19 03:27:01 2017 by ELM ver.2012-10-06 from 001__elm20170219_021915__dat00.bin

