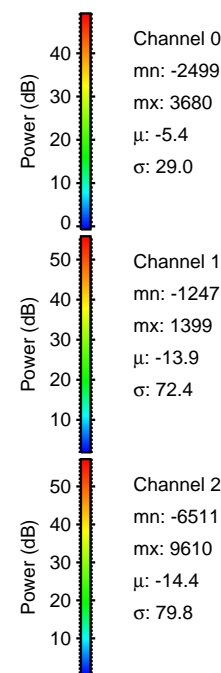
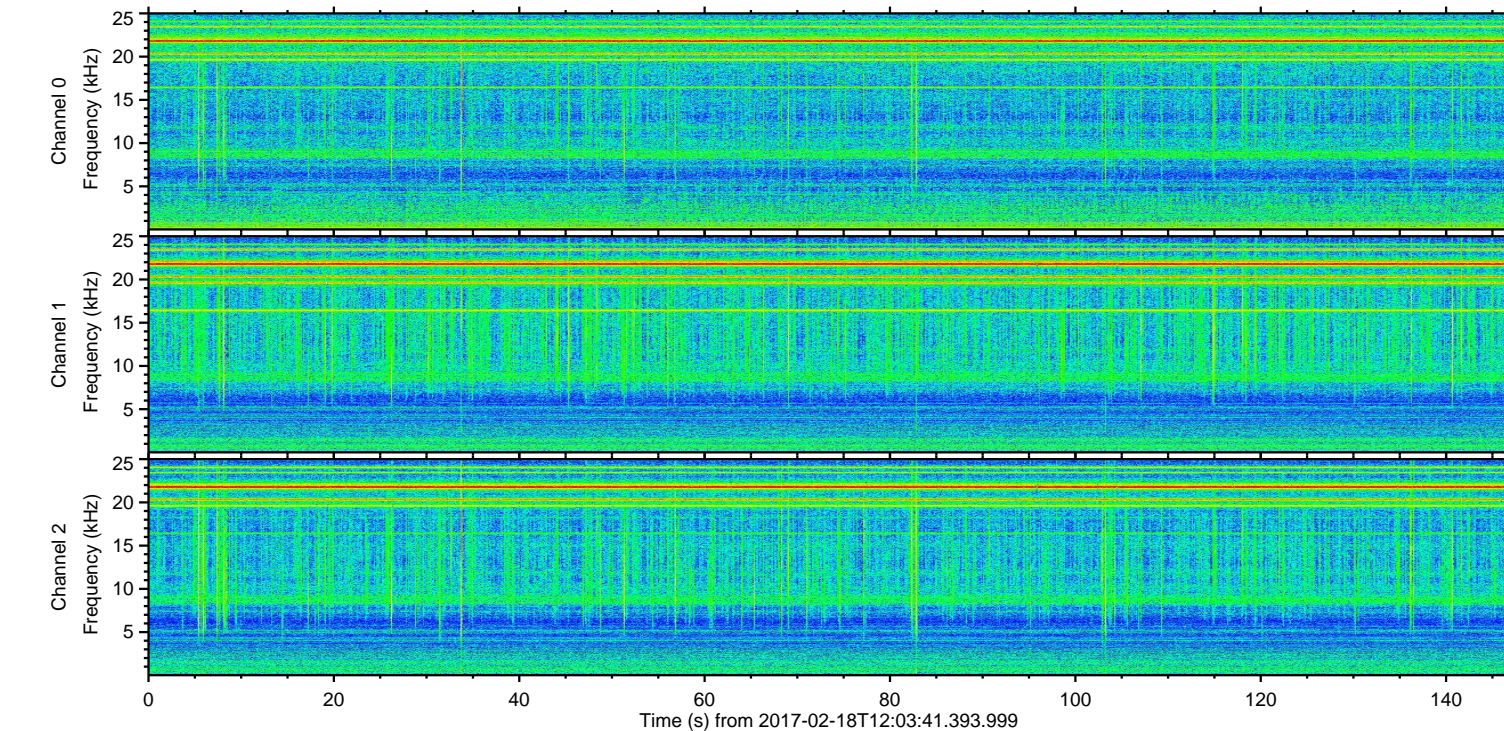
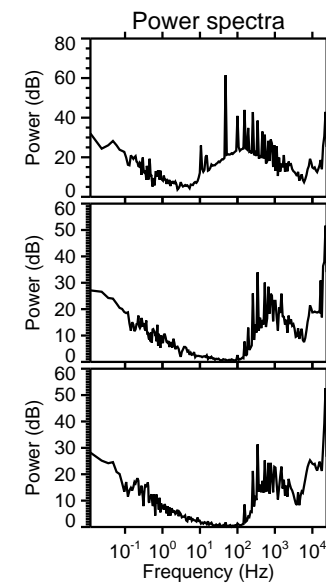
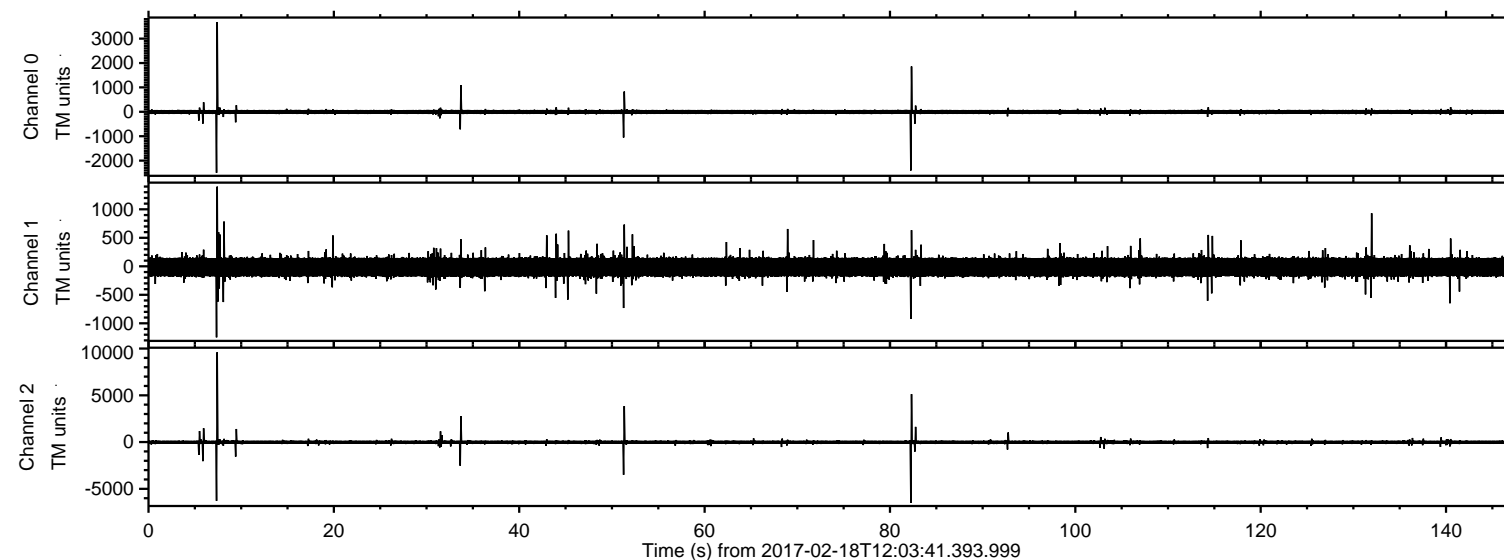


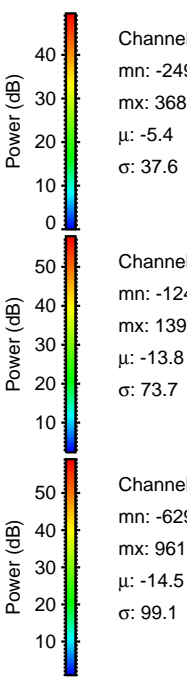
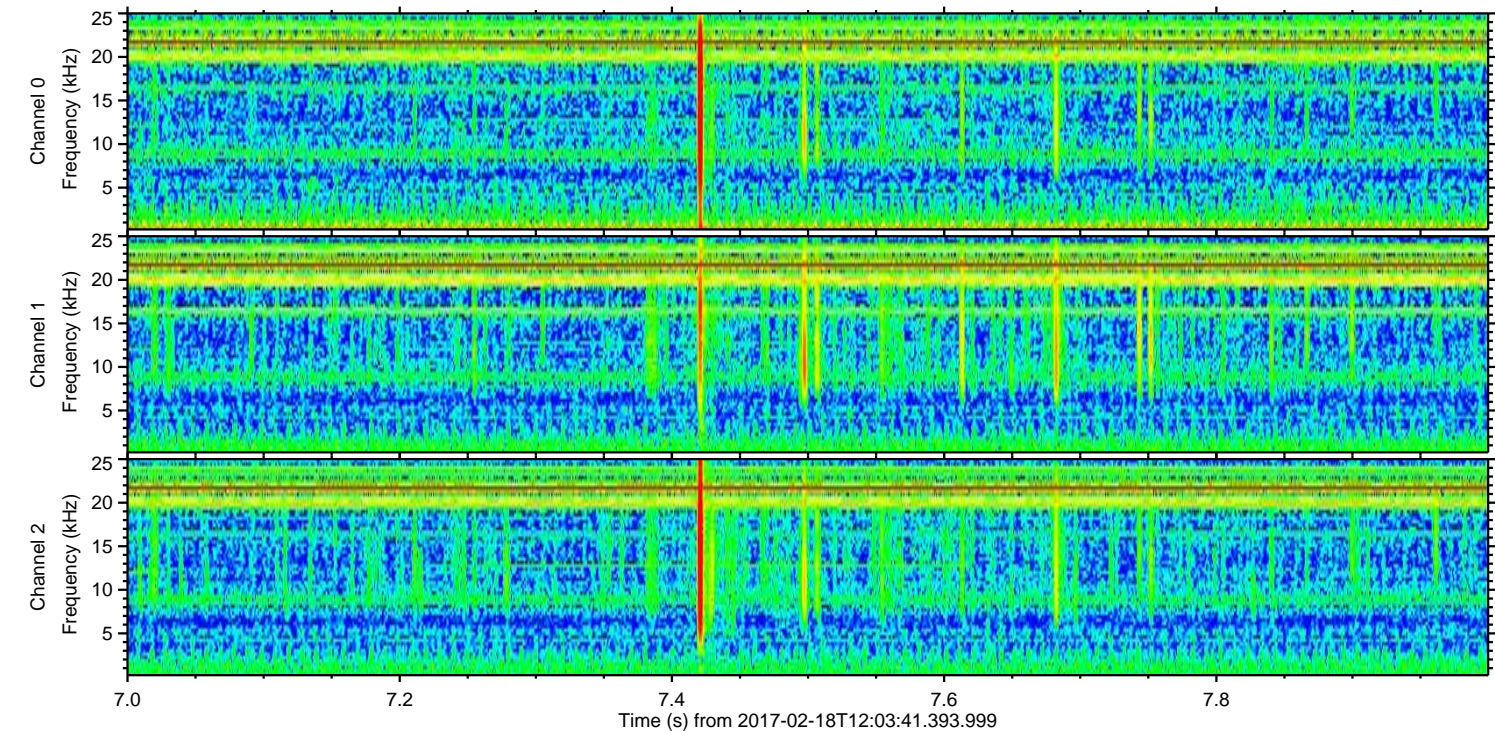
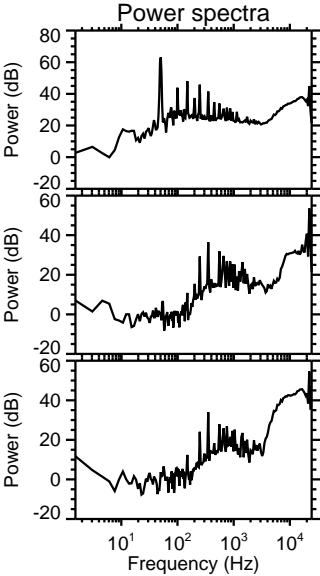
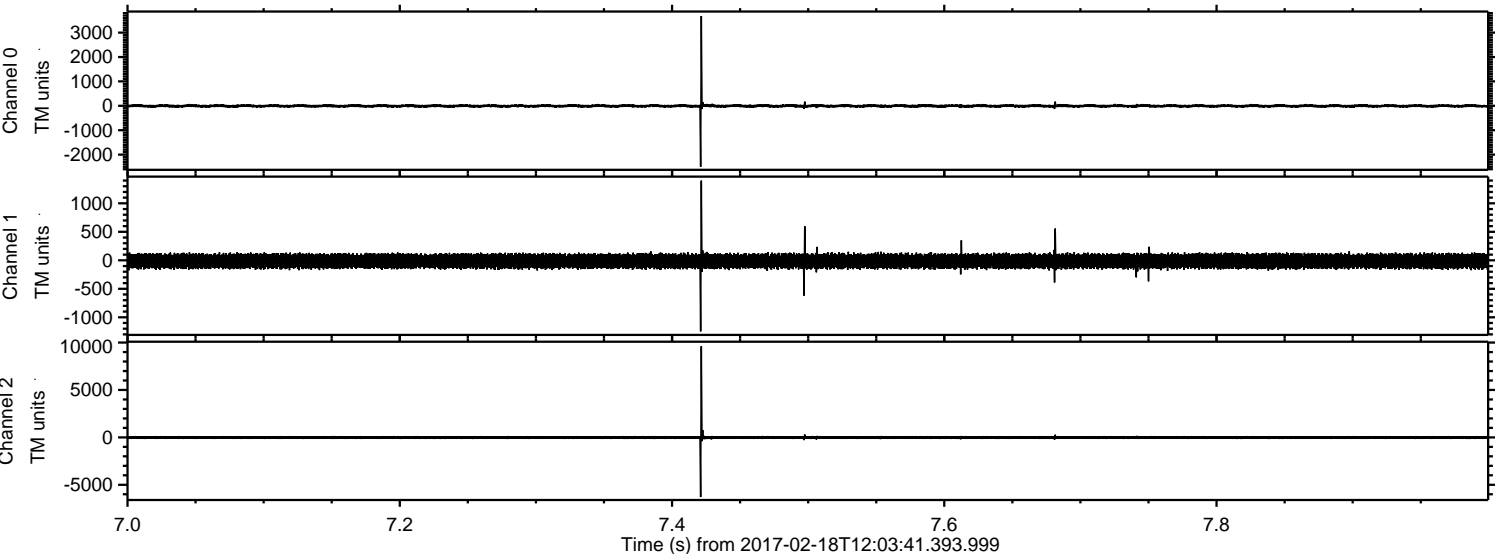
ELMAVAN 3D WAVEFORMS (Measured data sampled at 50 kHz) 51000 packets of 144 samples from 2017-02-18T12:03:41.393.999.

Processed Sat Feb 18 13:11:14 2017 by ELM ver.2012-10-06 from 001__elm20170218_120340__dat00.bin



ELMAVAN 3D WAVEFORMS (Measured data sampled at 50 kHz) 51000 packets of 144 samples from 2017-02-18T12:03:41.393.999. Part 8/147

Processed Sat Feb 18 13:11:25 2017 by ELM ver.2012-10-06 from 001__elm20170218_120340__dat00.bin



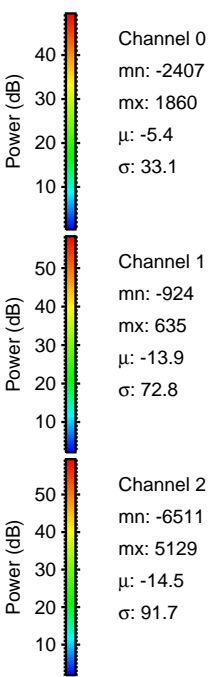
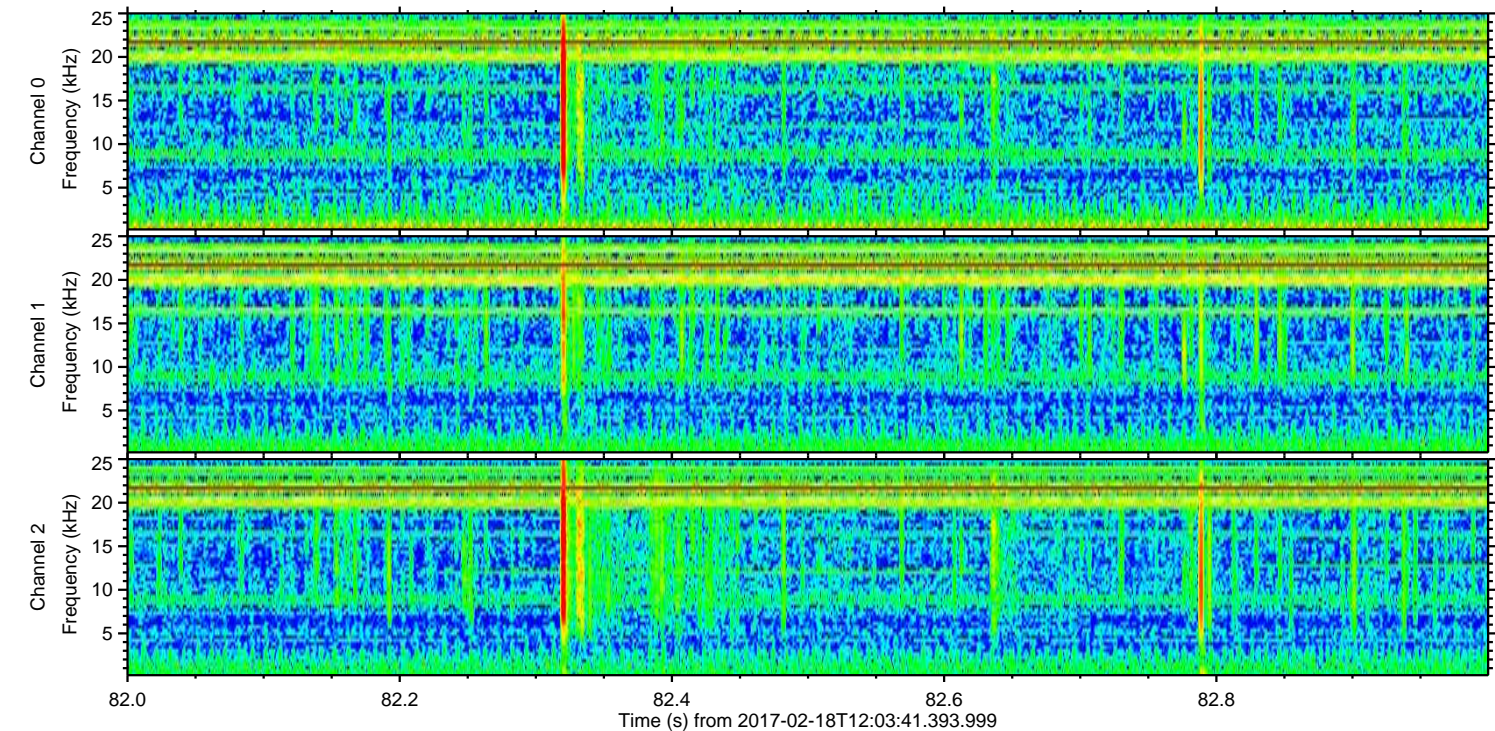
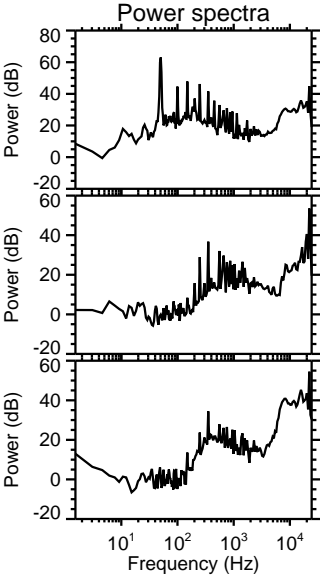
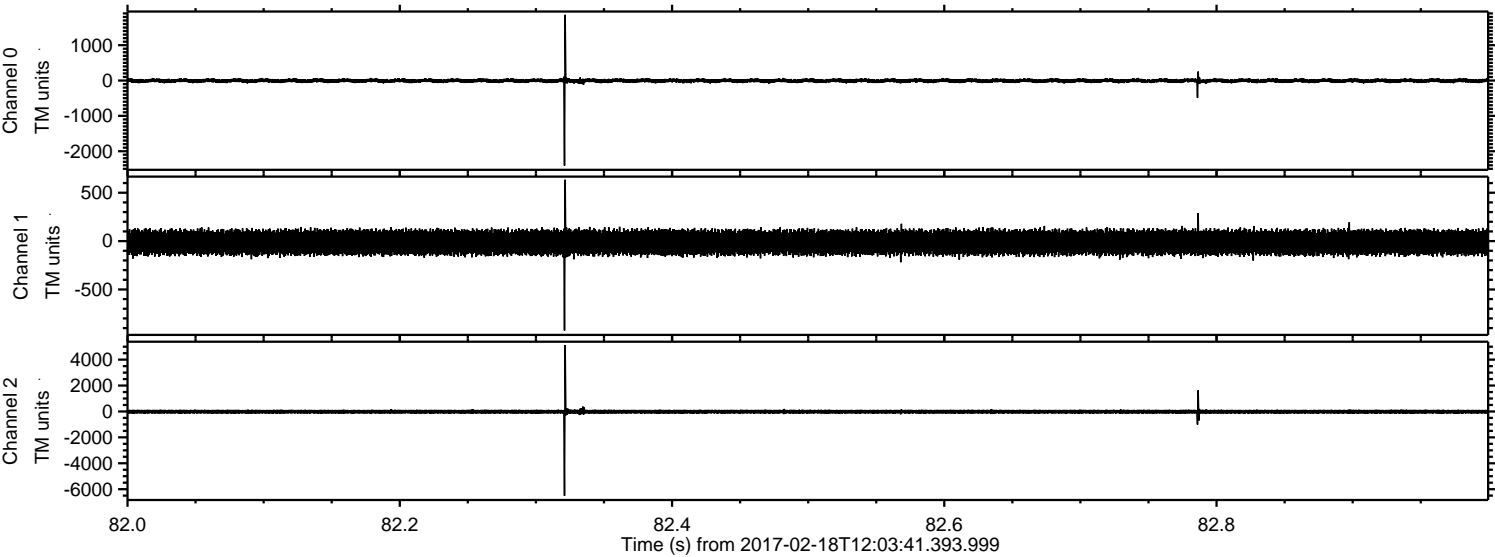
Channel 0
mn: -2499
mx: 3680
 μ : -5.4
 σ : 37.6

Channel 1
mn: -1247
mx: 1399
 μ : -13.8
 σ : 73.7

Channel 2
mn: -6290
mx: 9610
 μ : -14.5
 σ : 99.1

ELMAVAN 3D WAVEFORMS (Measured data sampled at 50 kHz) 51000 packets of 144 samples from 2017-02-18T12:03:41.393.999. Part 83/147

Processed Sat Feb 18 13:11:26 2017 by ELM ver.2012-10-06 from 001__elm20170218_120340__dat00.bin



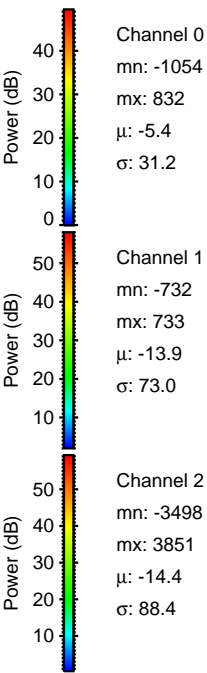
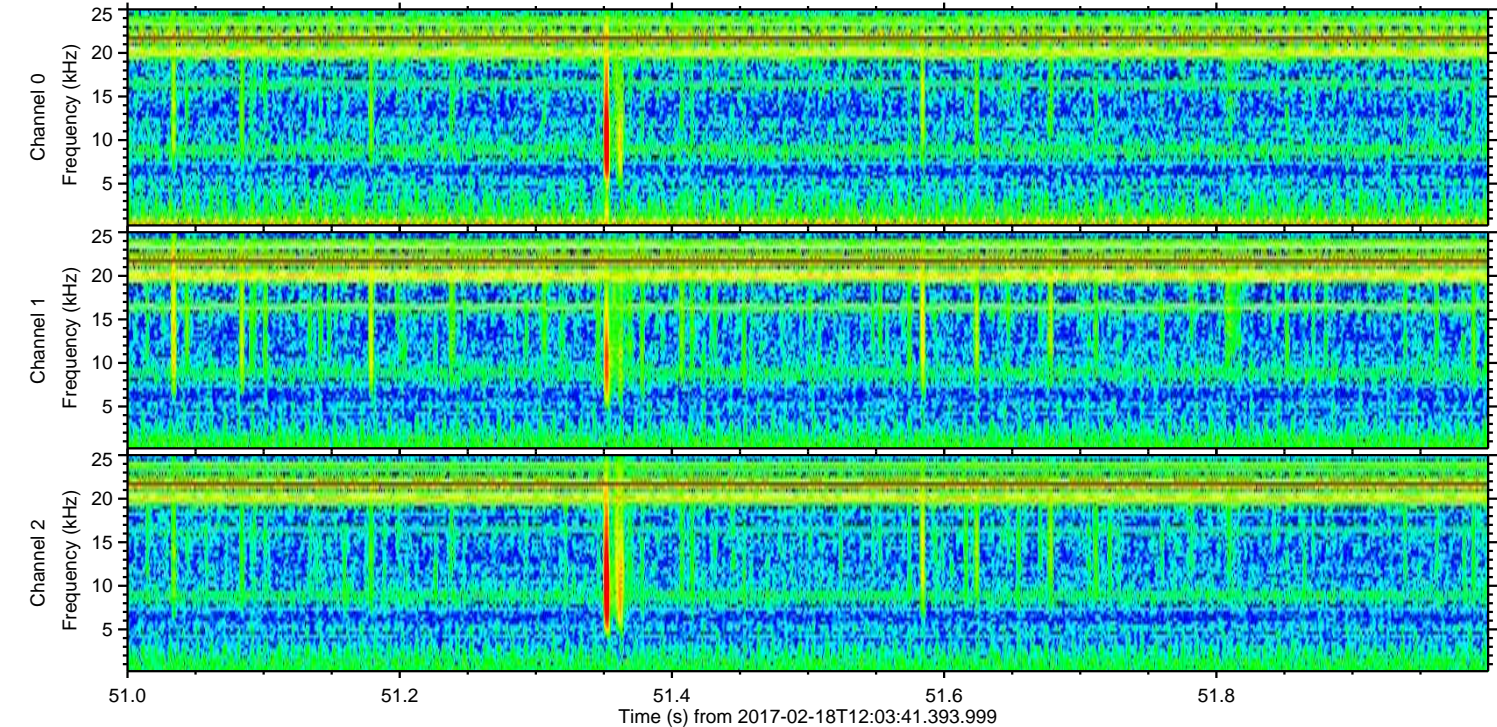
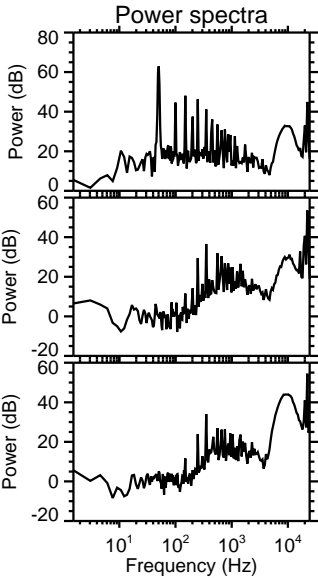
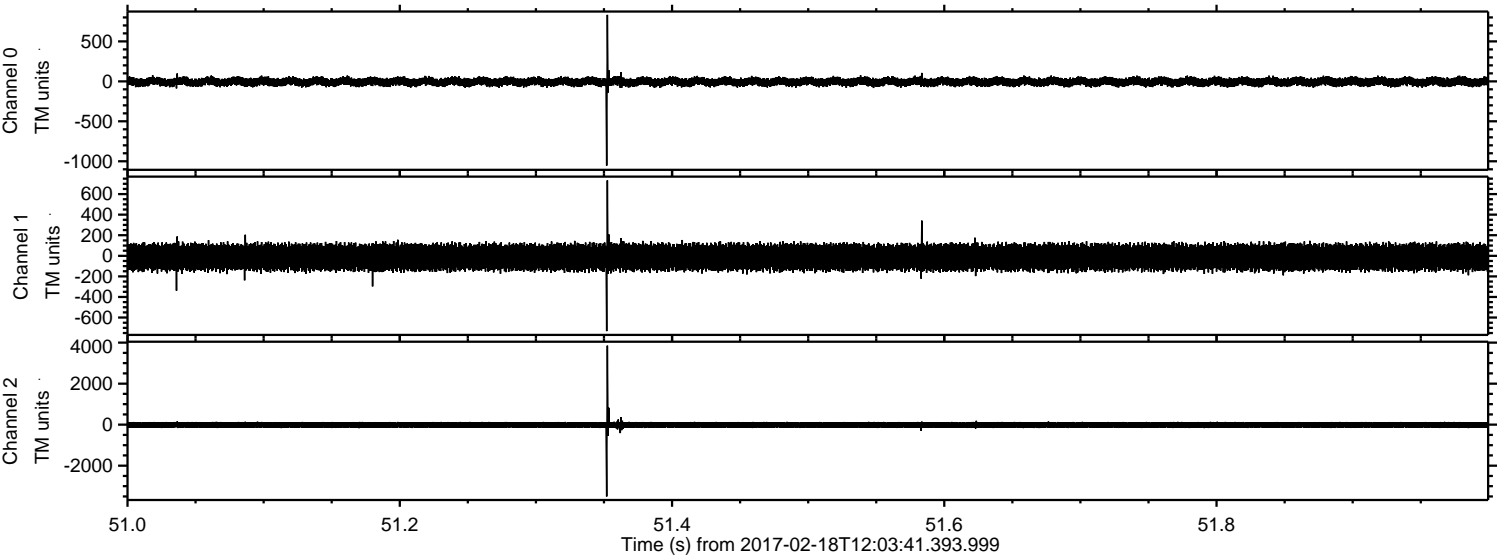
Channel 0
mn: -2407
mx: 1860
 μ : -5.4
 σ : 33.1

Channel 1
mn: -924
mx: 635
 μ : -13.9
 σ : 72.8

Channel 2
mn: -6511
mx: 5129
 μ : -14.5
 σ : 91.7

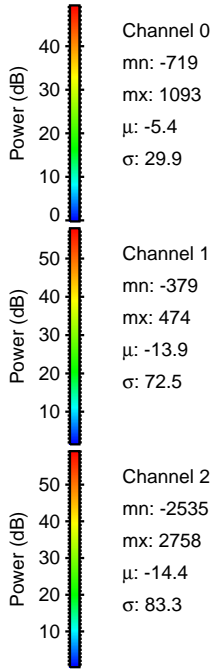
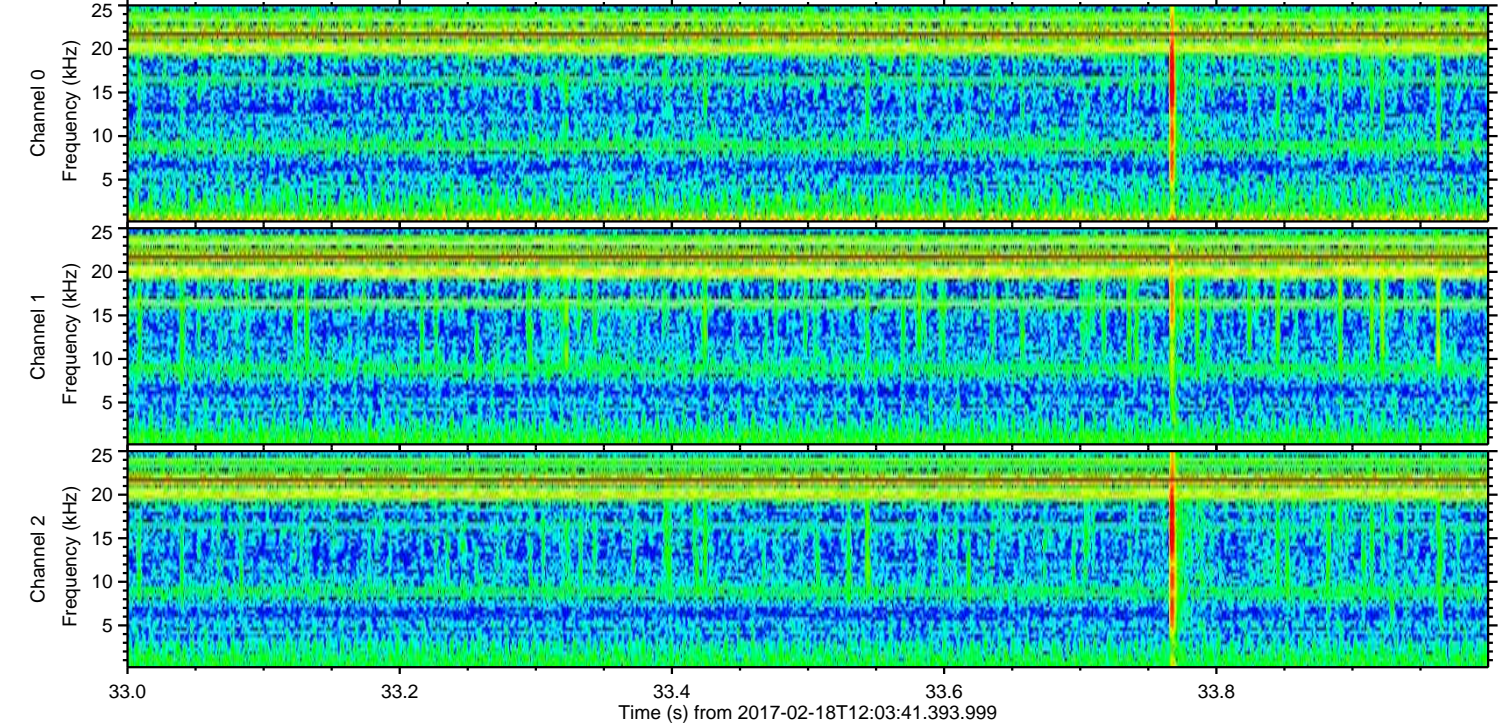
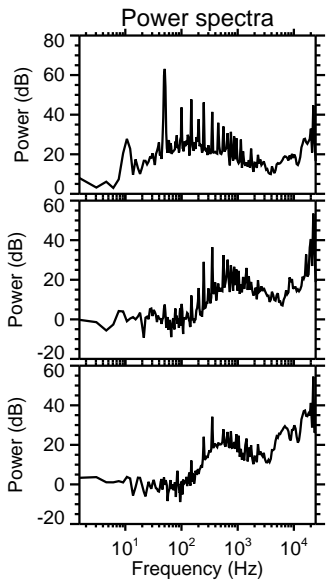
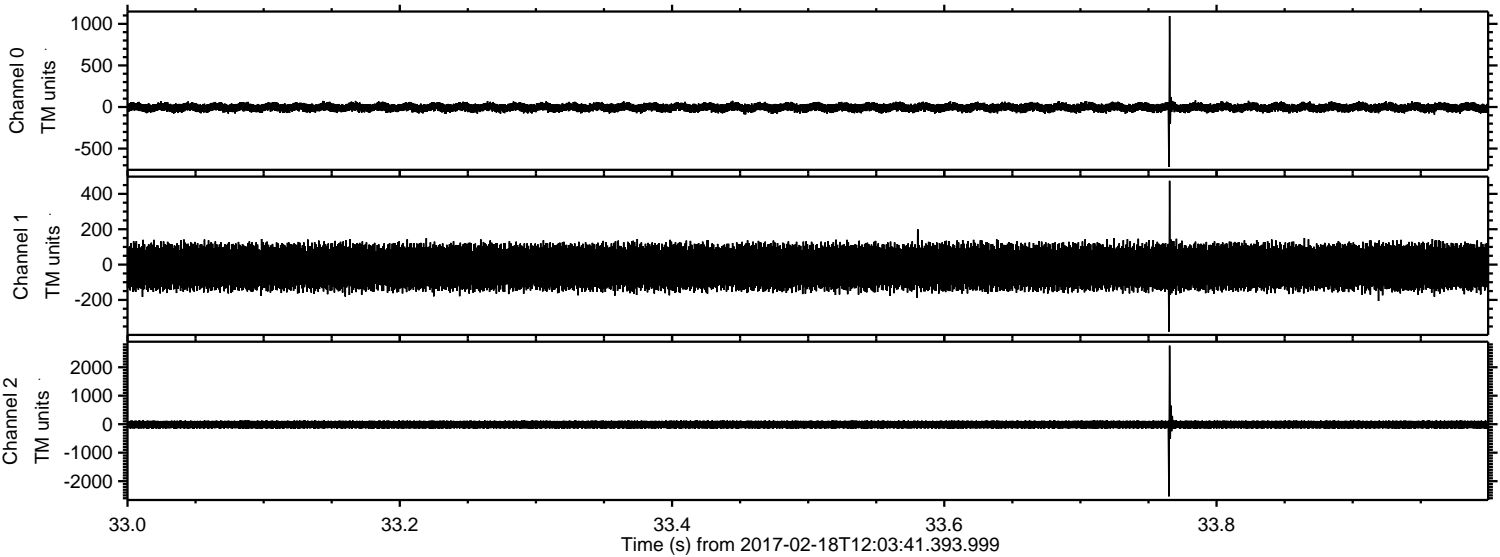
ELMAVAN 3D WAVEFORMS (Measured data sampled at 50 kHz) 51000 packets of 144 samples from 2017-02-18T12:03:41.393.999. Part 52/147

Processed Sat Feb 18 13:11:27 2017 by ELM ver.2012-10-06 from 001__elm20170218_120340__dat00.bin



ELMAVAN 3D WAVEFORMS (Measured data sampled at 50 kHz) 51000 packets of 144 samples from 2017-02-18T12:03:41.393.999. Part 34/147

Processed Sat Feb 18 13:11:28 2017 by ELM ver.2012-10-06 from 001__elm20170218_120340__dat00.bin



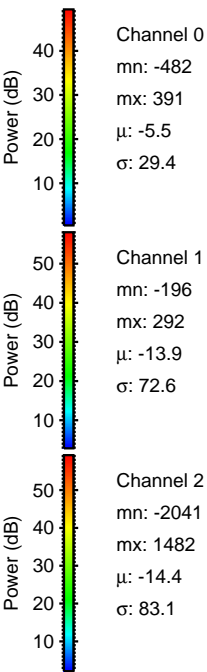
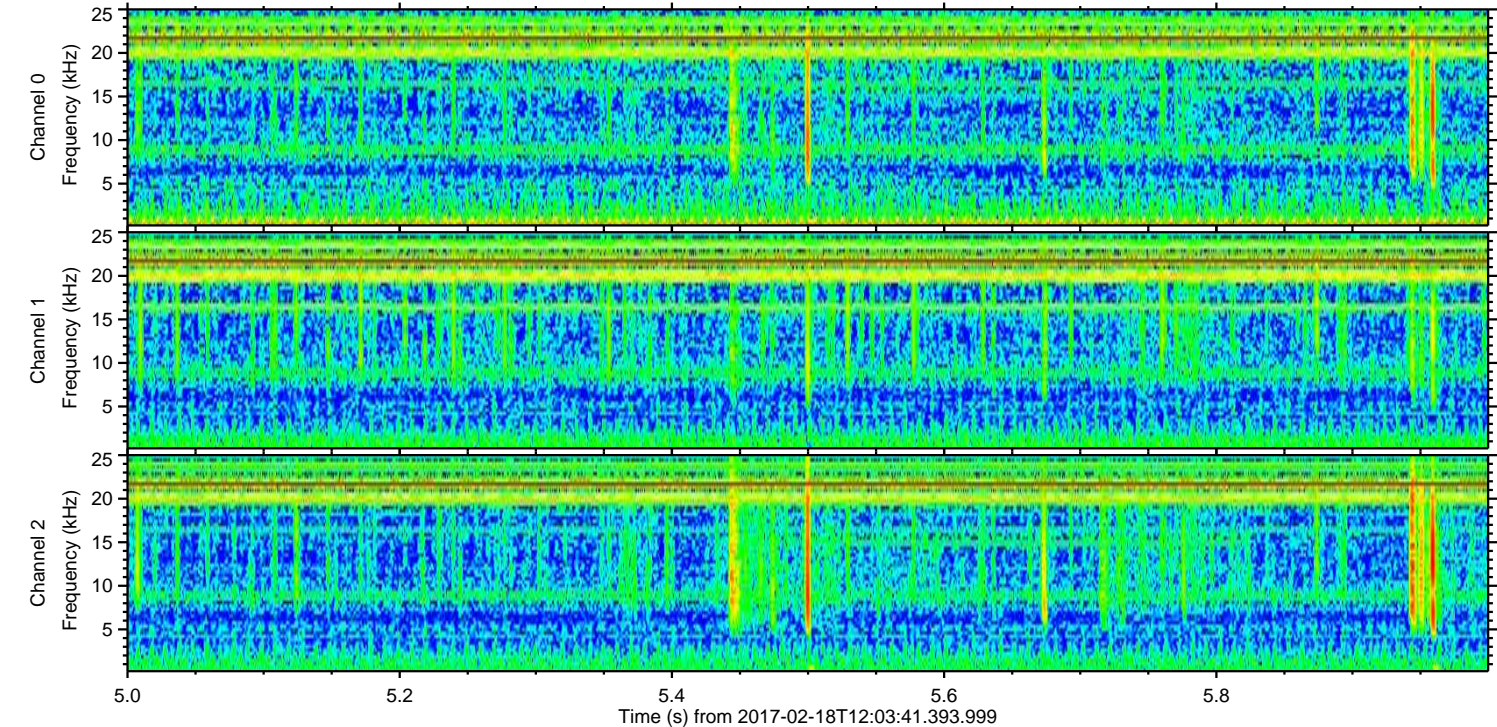
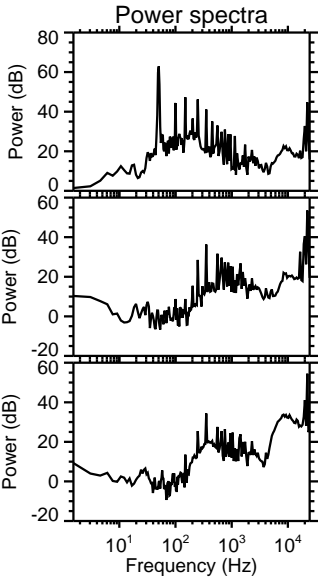
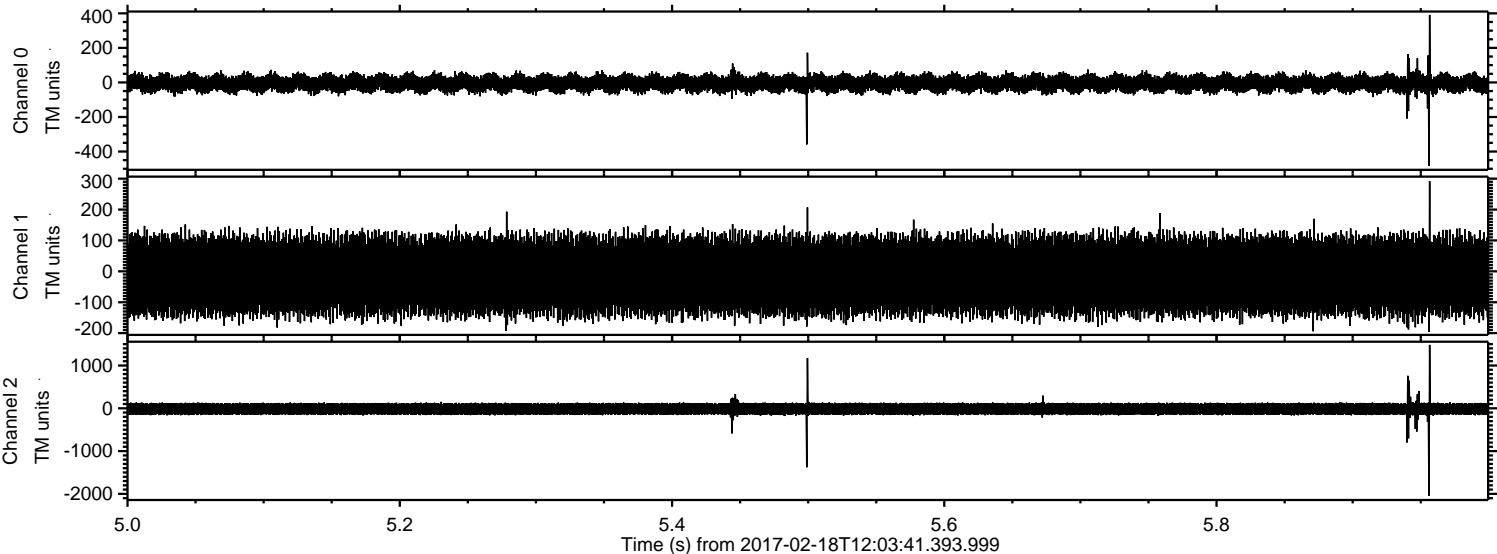
Channel 0
mn: -719
mx: 1093
 μ : -5.4
 σ : 29.9

Channel 1
mn: -379
mx: 474
 μ : -13.9
 σ : 72.5

Channel 2
mn: -2535
mx: 2758
 μ : -14.4
 σ : 83.3

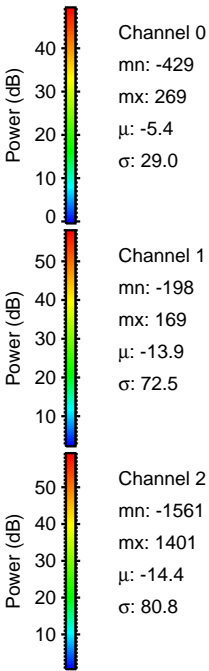
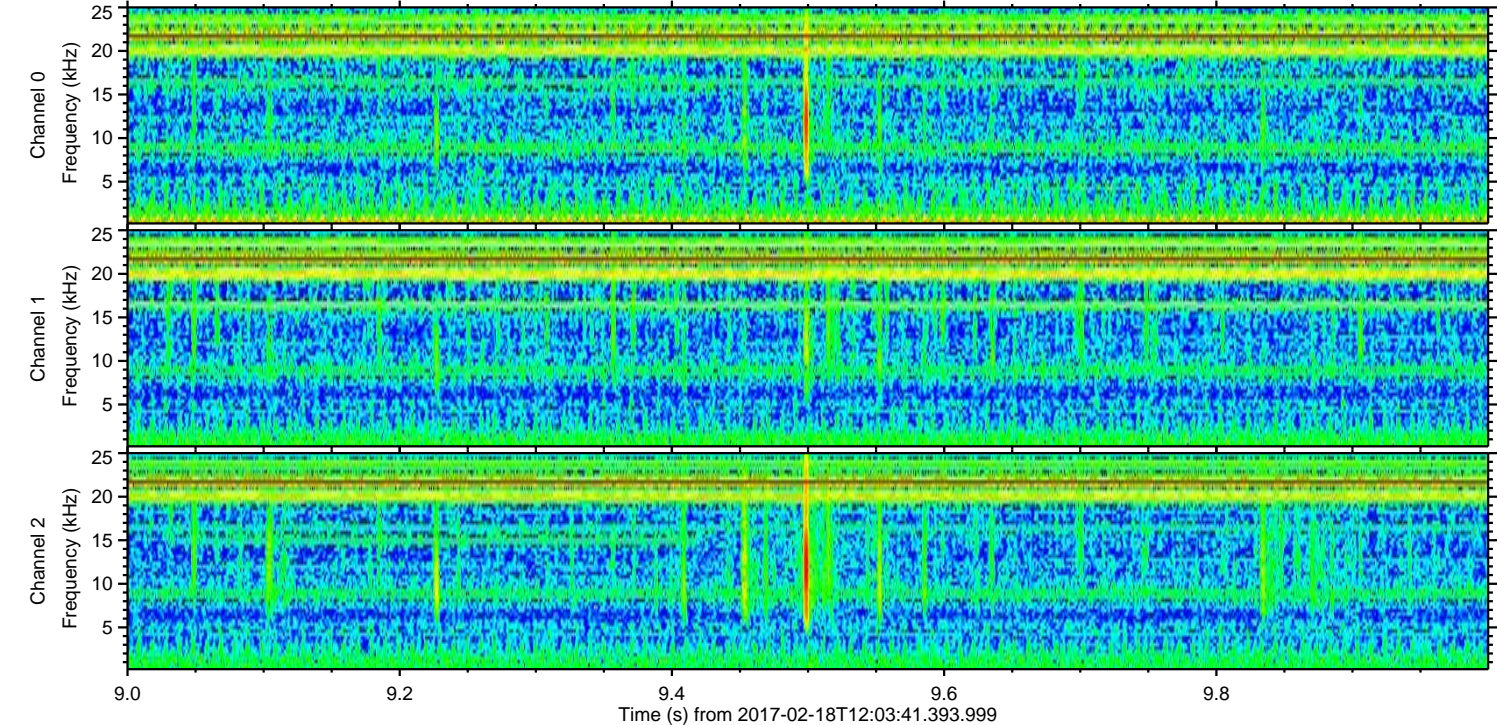
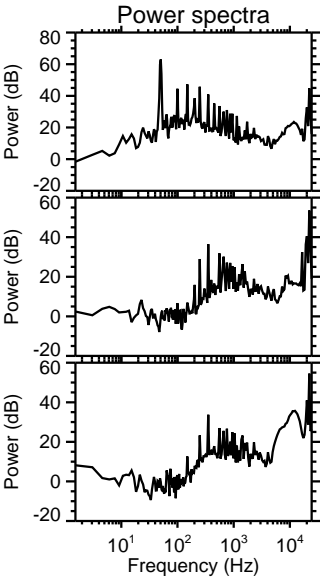
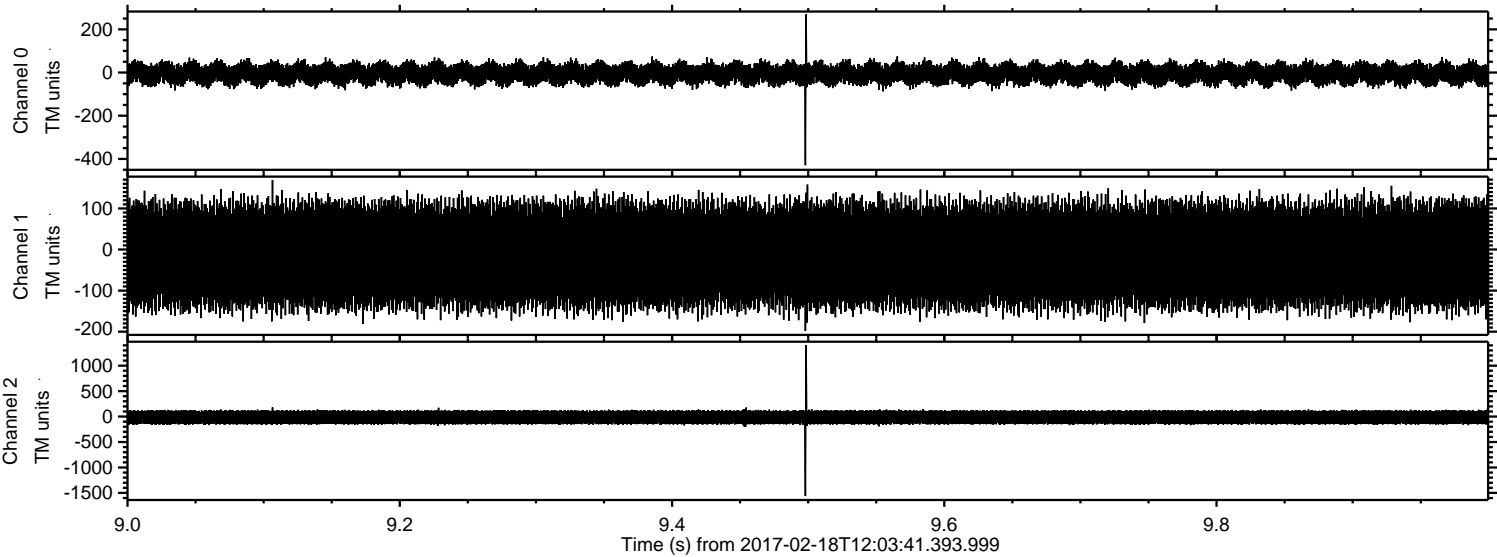
ELMAVAN 3D WAVEFORMS (Measured data sampled at 50 kHz) 51000 packets of 144 samples from 2017-02-18T12:03:41.393.999. Part 6/147

Processed Sat Feb 18 13:11:29 2017 by ELM ver.2012-10-06 from 001__elm20170218_120340__dat00.bin

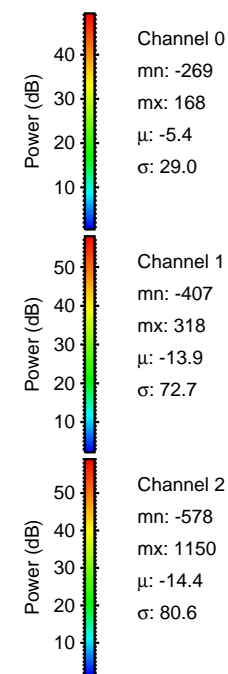
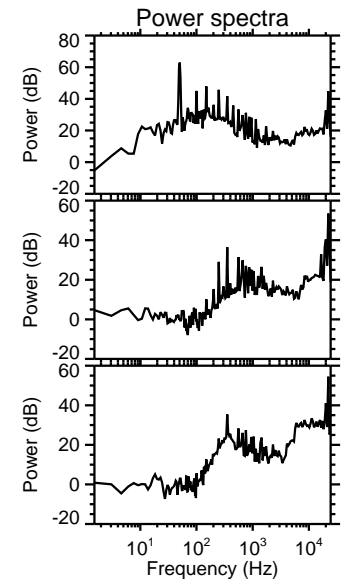
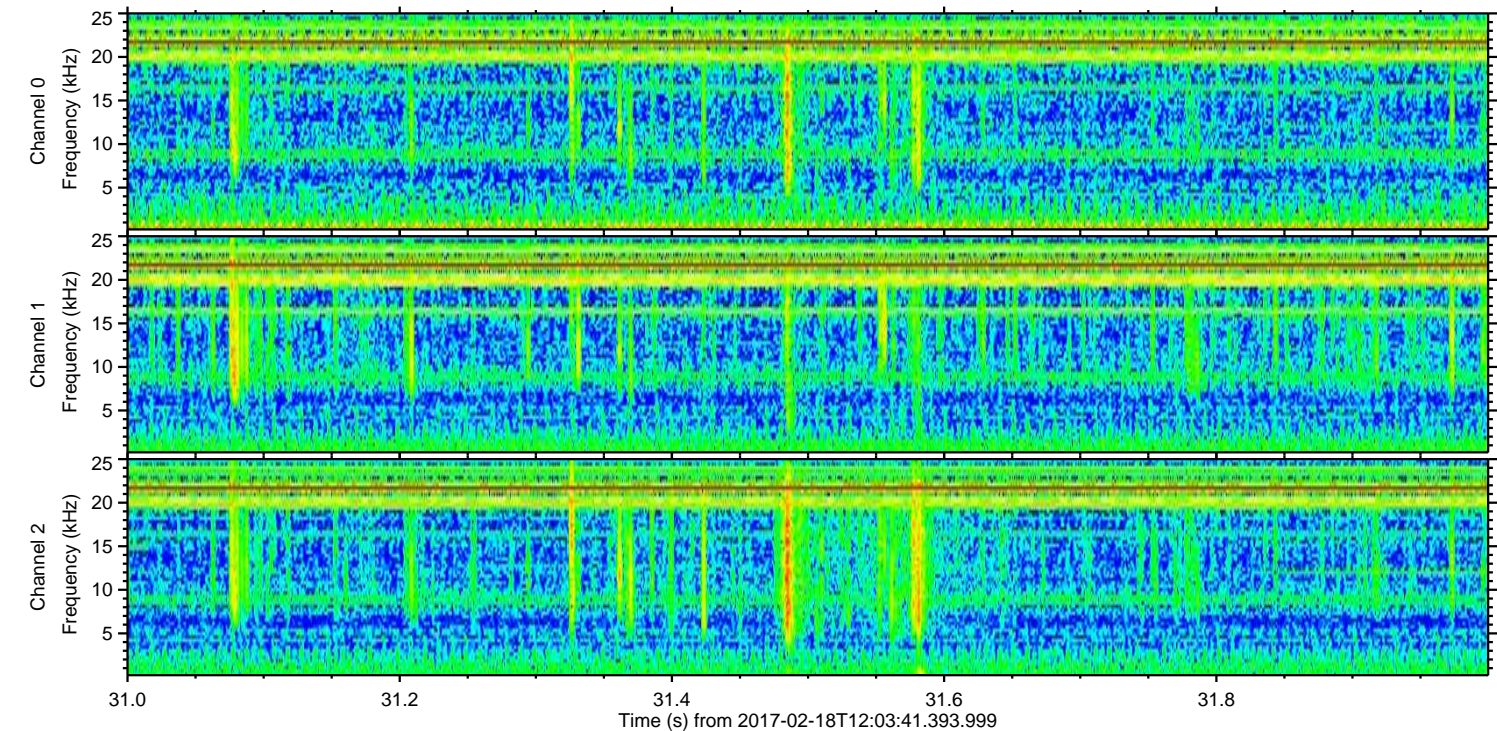
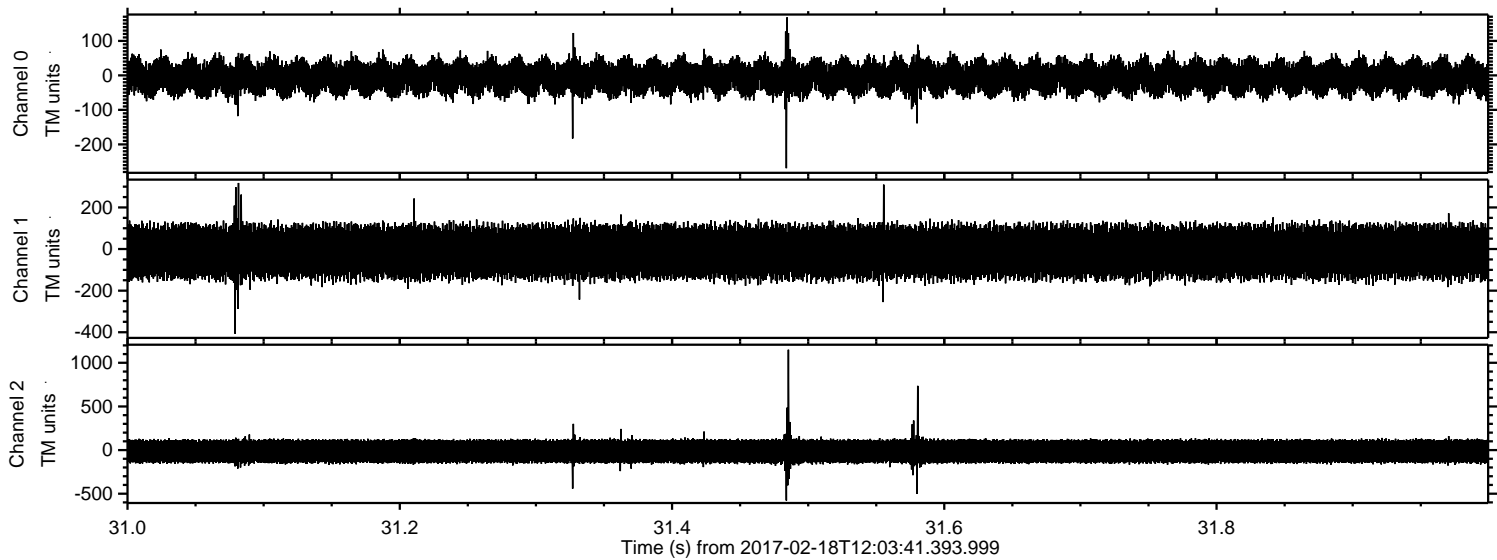


ELMAVAN 3D WAVEFORMS (Measured data sampled at 50 kHz) 51000 packets of 144 samples from 2017-02-18T12:03:41.393.999. Part 10/147

Processed Sat Feb 18 13:11:30 2017 by ELM ver.2012-10-06 from 001__elm20170218_120340__dat00.bin



Processed Sat Feb 18 13:11:31 2017 by ELM ver.2012-10-06 from 001__elm20170218_120340__dat00.bin



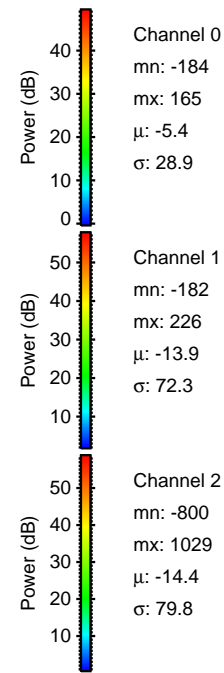
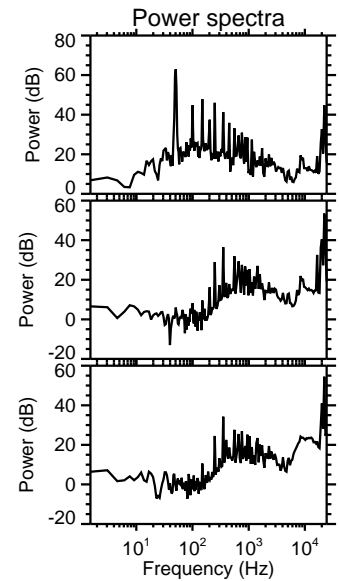
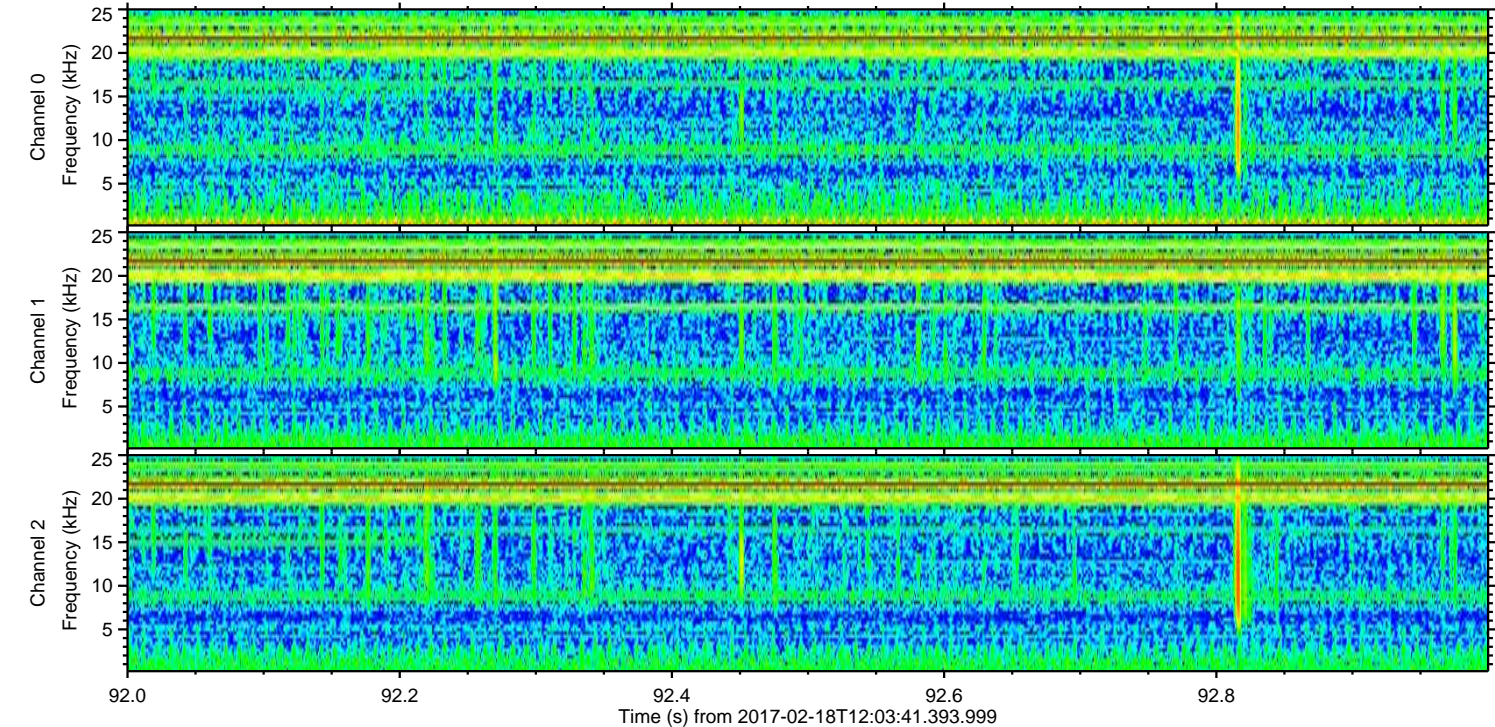
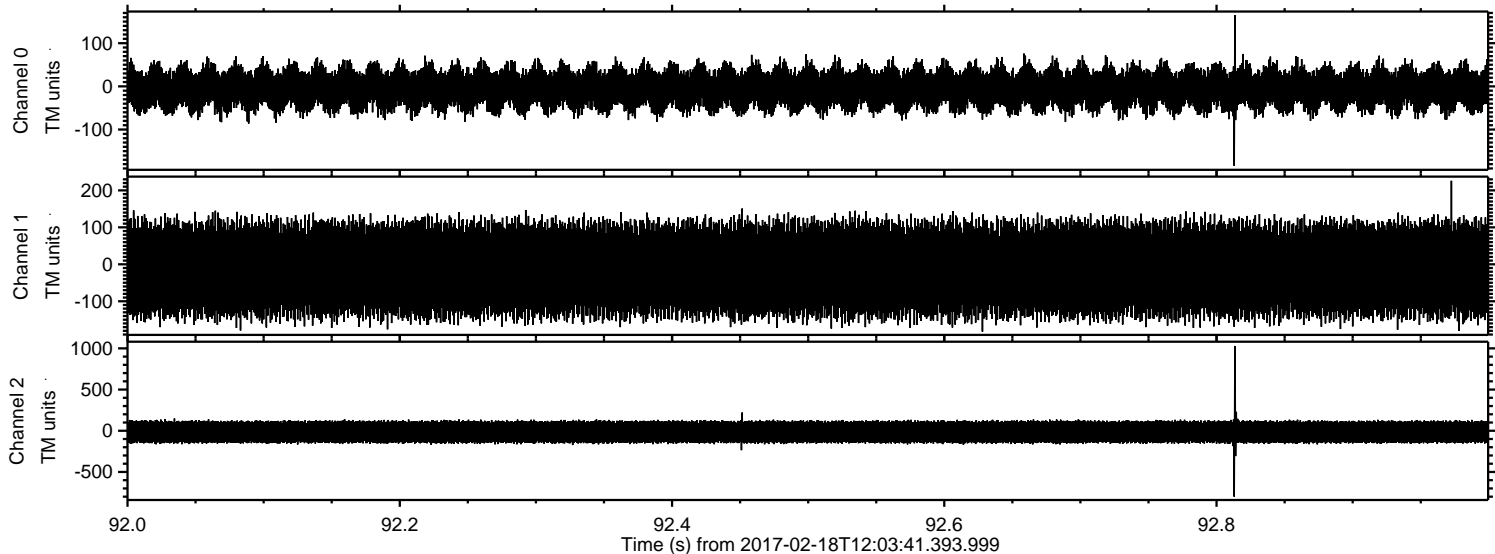
Power spectra

Channel 0
mn: -269
mx: 168
 μ : -5.4
 σ : 29.0

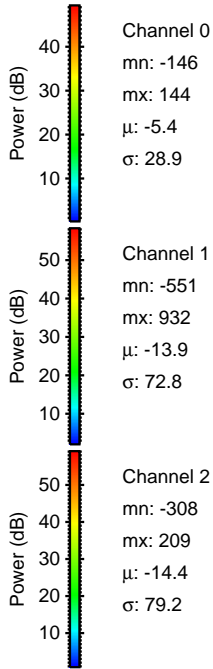
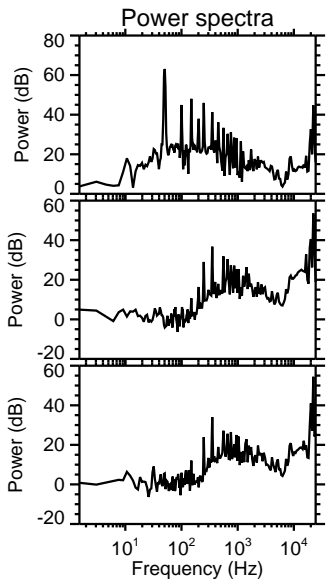
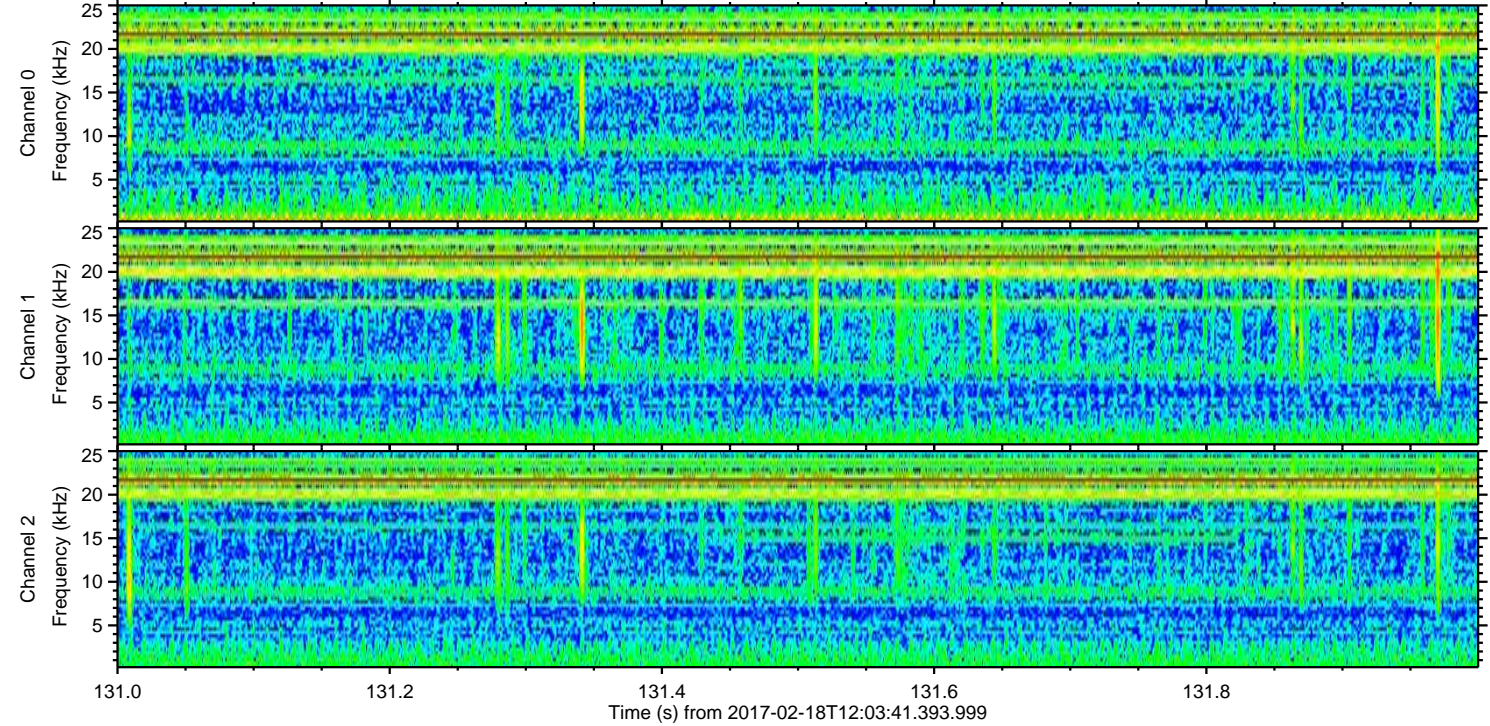
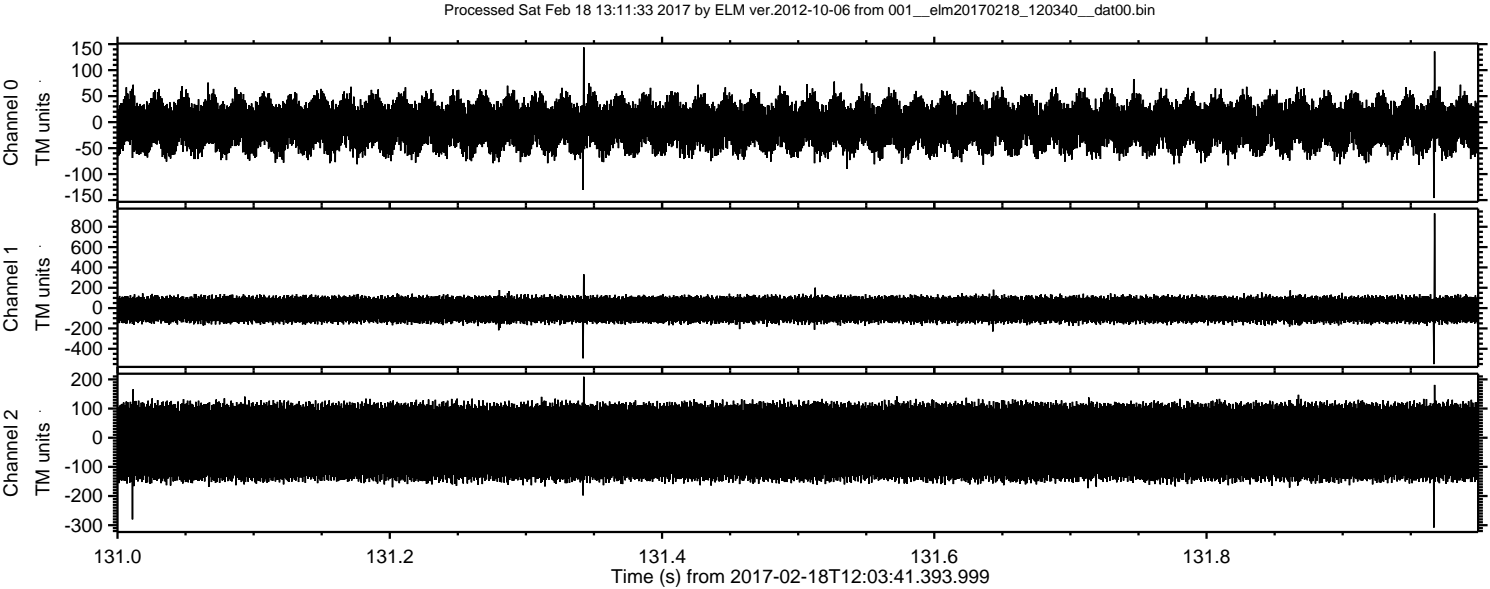
Channel 1
mn: -407
mx: 318
 μ : -13.9
 σ : 72.7

Channel 2
mn: -578
mx: 1150
 μ : -14.4
 σ : 80.6

Processed Sat Feb 18 13:11:32 2017 by ELM ver.2012-10-06 from 001__elm20170218_120340__dat00.bin



ELMAVAN 3D WAVEFORMS (Measured data sampled at 50 kHz) 51000 packets of 144 samples from 2017-02-18T12:03:41.393.999. Part 132/147



ELMAVAN 3D WAVEFORMS (Measured data sampled at 50 kHz) 51000 packets of 144 samples from 2017-02-18T12:03:41.393.999. Part 77/147

Processed Sat Feb 18 13:11:33 2017 by ELM ver.2012-10-06 from 001__elm20170218_120340__dat00.bin

