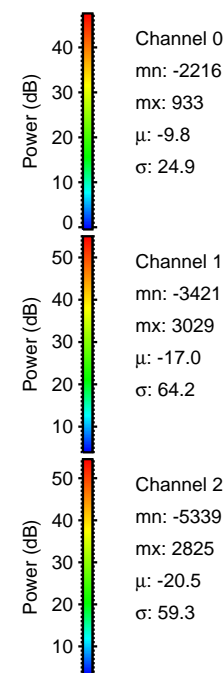
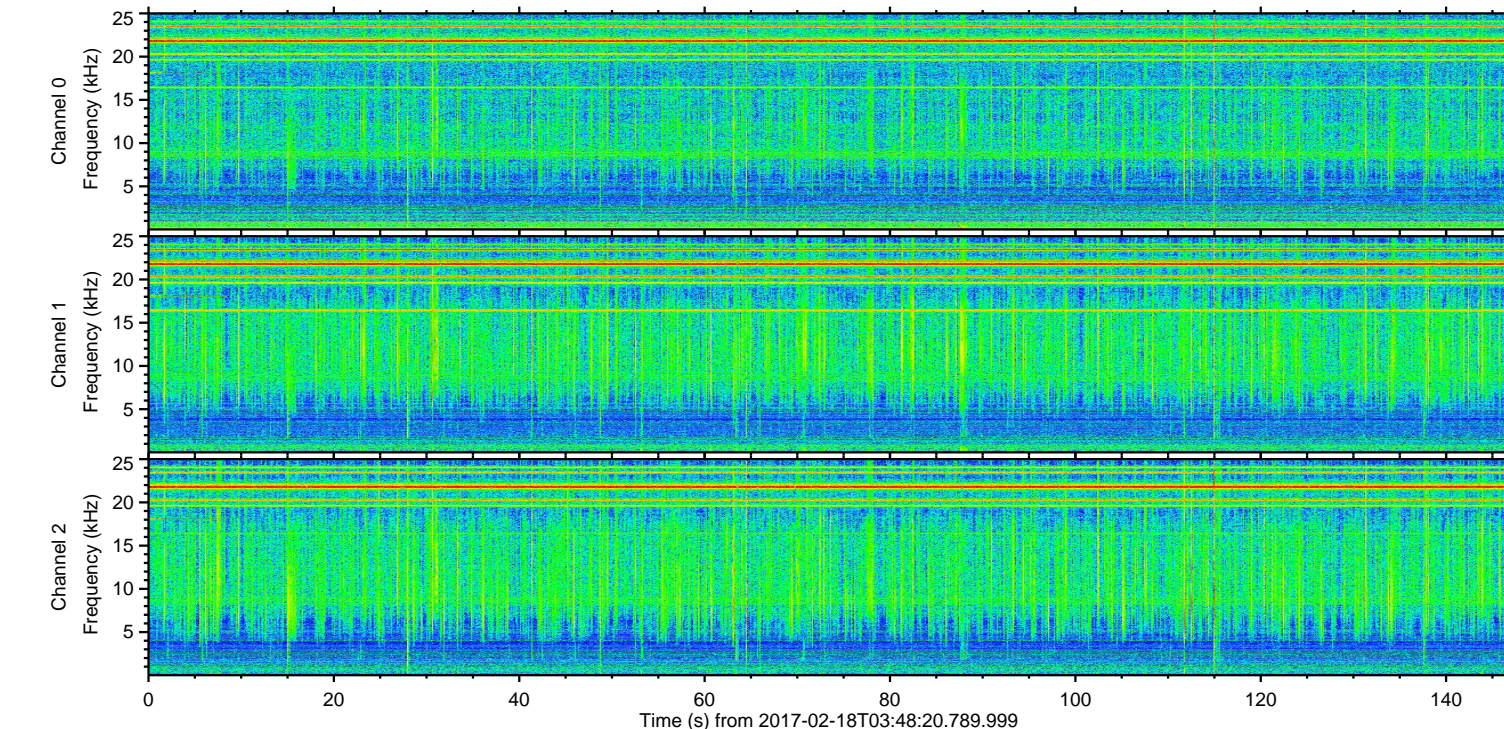
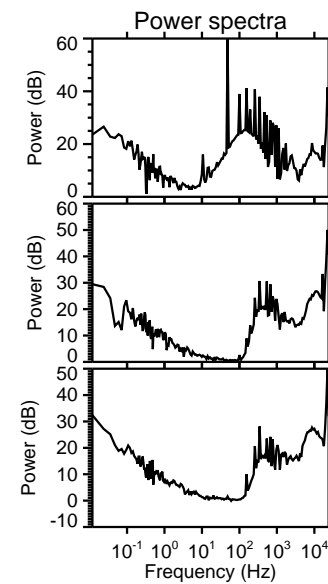
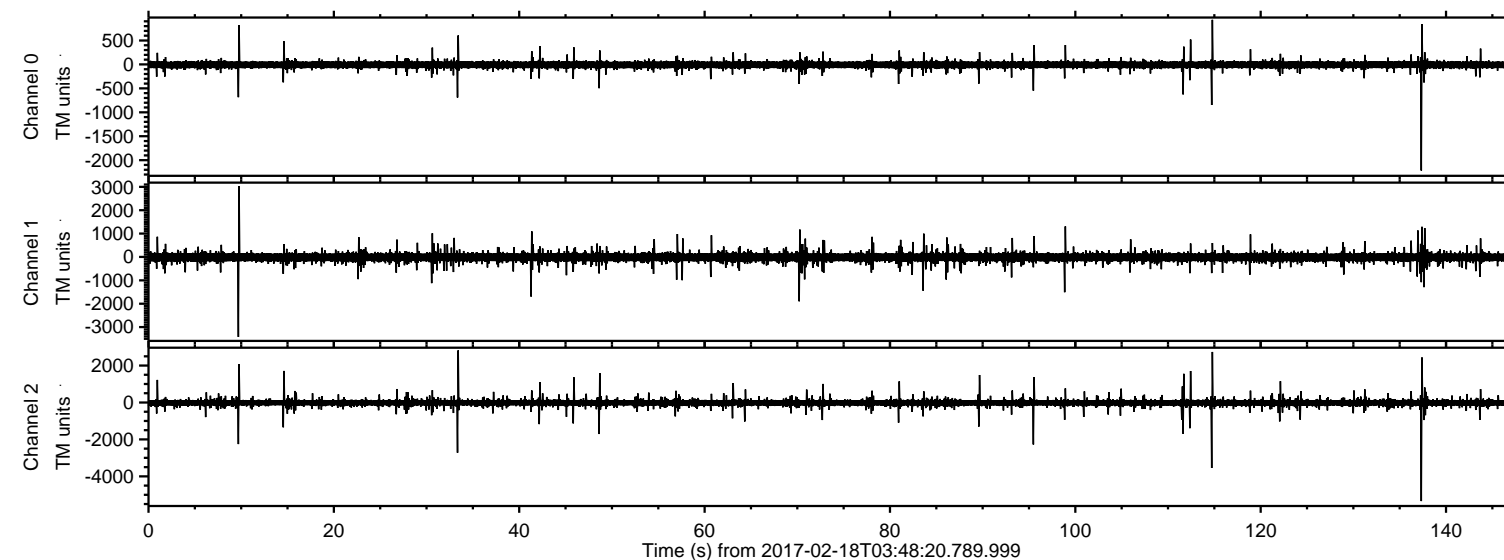


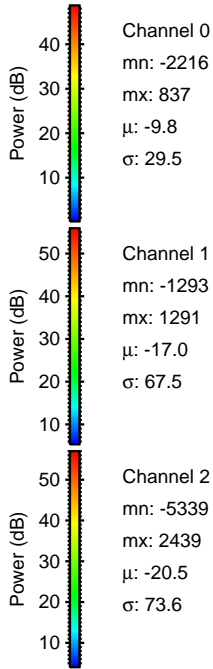
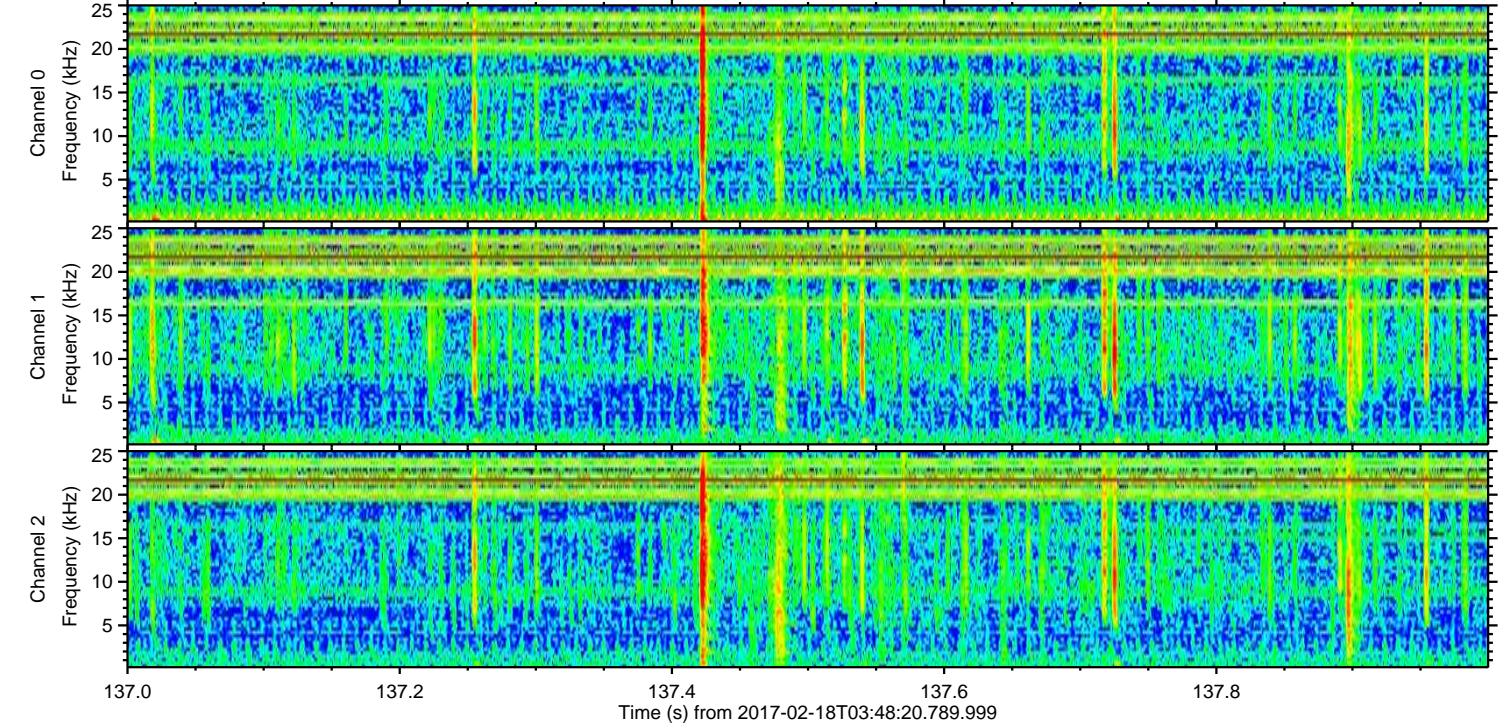
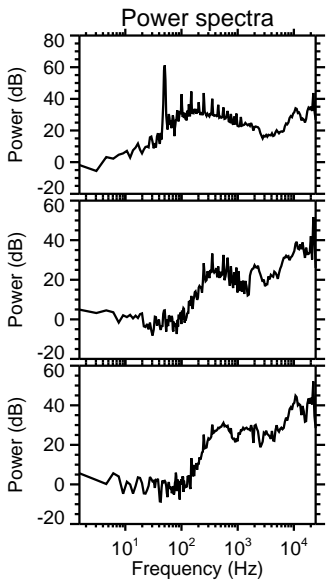
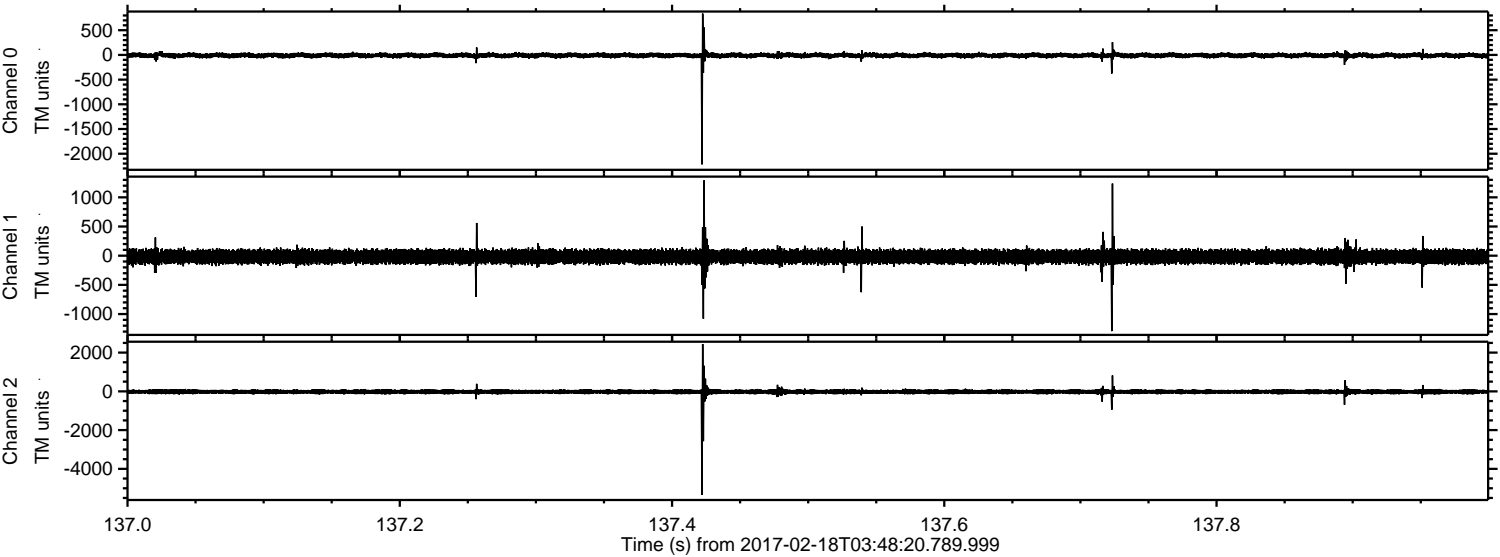
ELMAVAN 3D WAVEFORMS (Measured data sampled at 50 kHz) 51000 packets of 144 samples from 2017-02-18T03:48:20.789.999.

Processed Sat Feb 18 04:55:57 2017 by ELM ver.2012-10-06 from 001__elm20170218_034819__dat00.bin



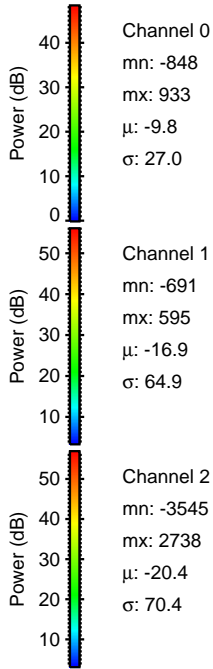
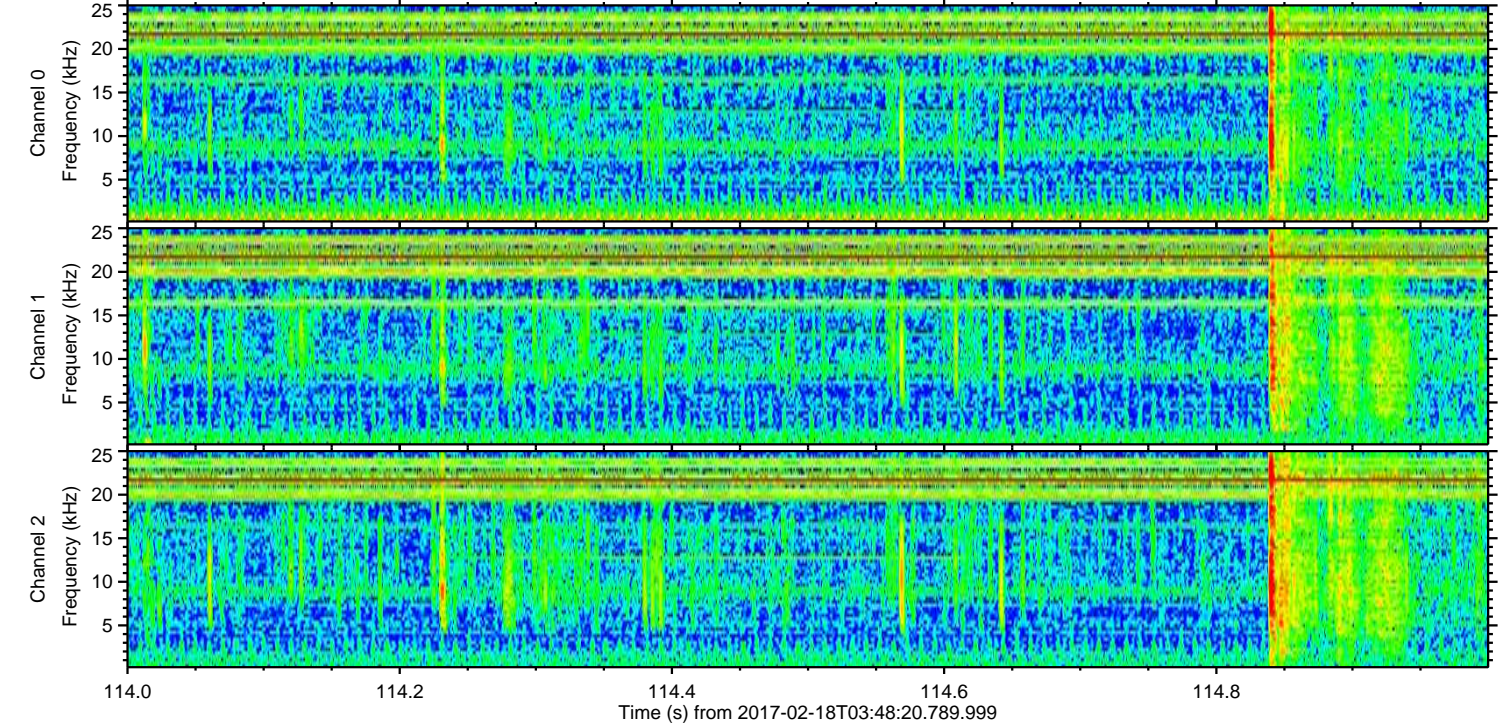
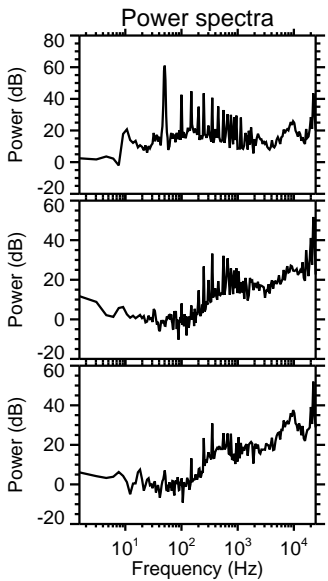
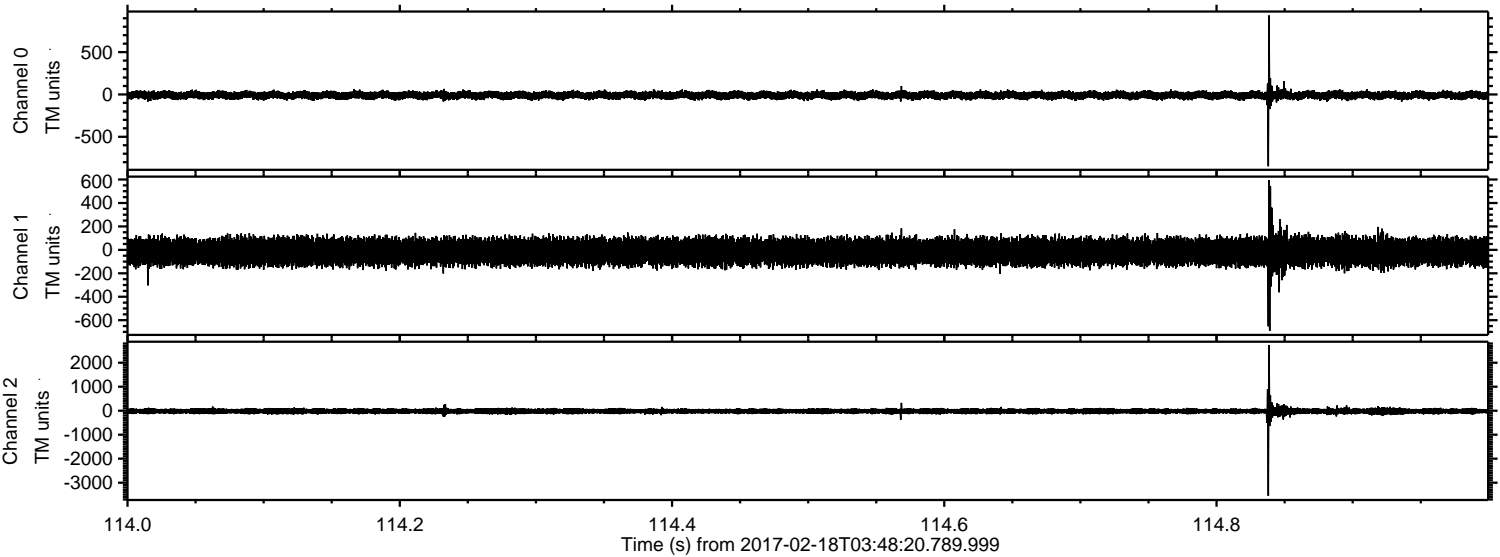
ELMAVAN 3D WAVEFORMS (Measured data sampled at 50 kHz) 51000 packets of 144 samples from 2017-02-18T03:48:20.789.999. Part 138/147

Processed Sat Feb 18 04:56:08 2017 by ELM ver.2012-10-06 from 001__elm20170218_034819__dat00.bin



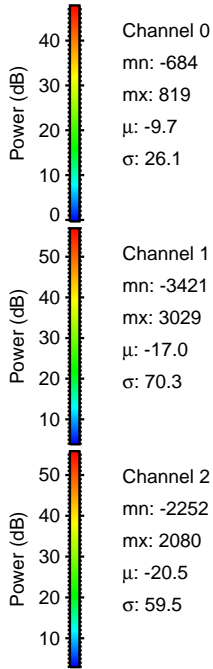
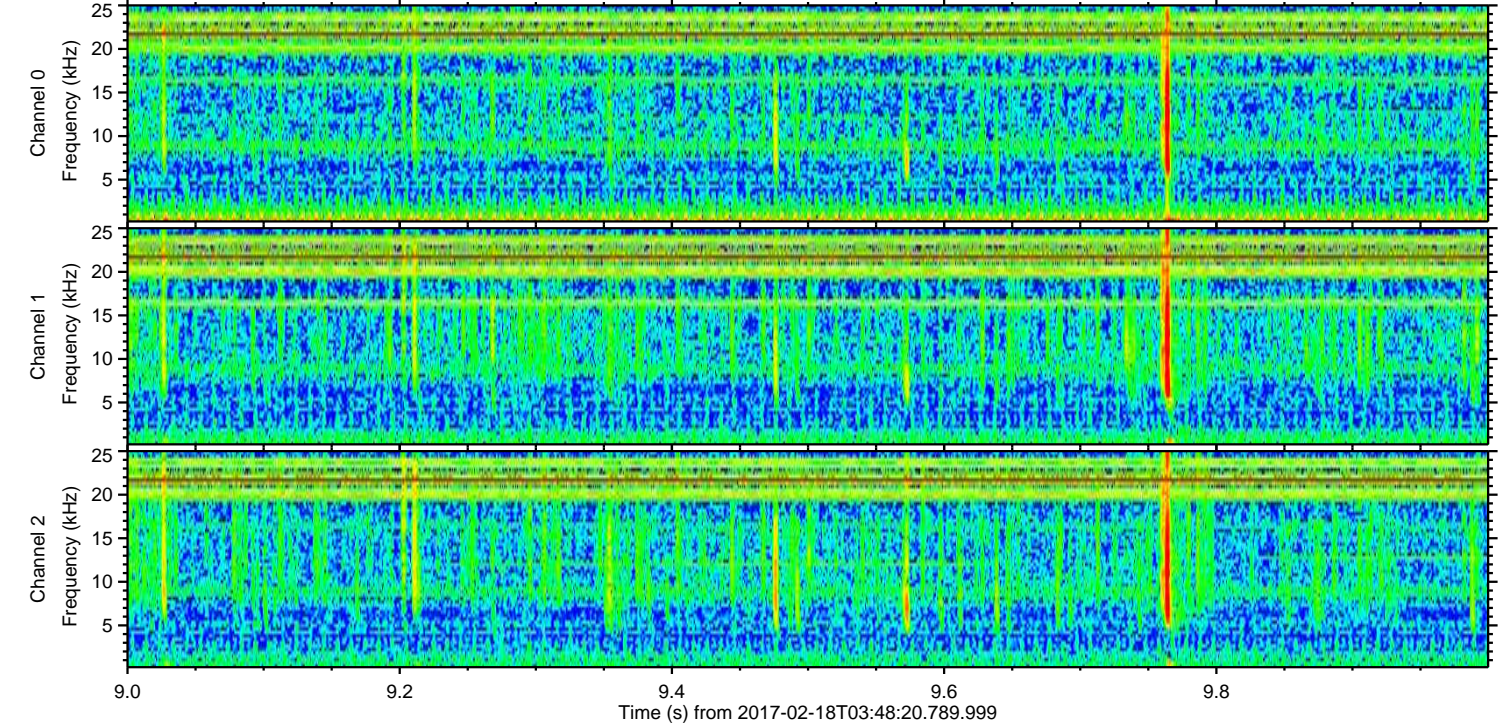
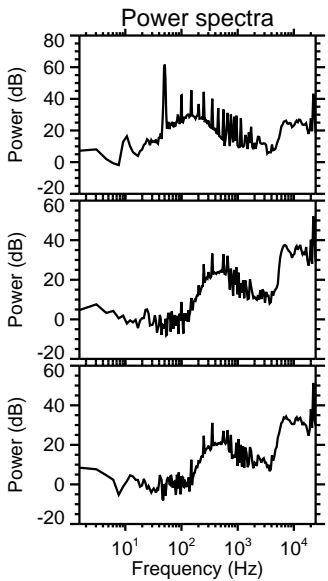
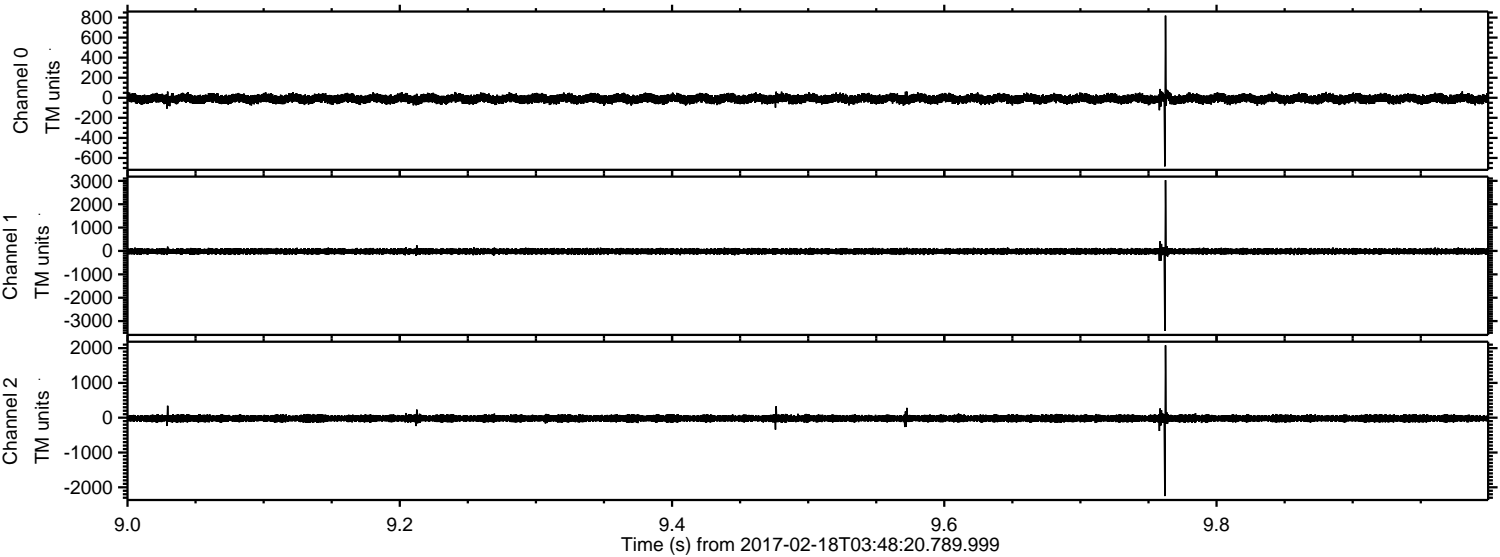
ELMAVAN 3D WAVEFORMS (Measured data sampled at 50 kHz) 51000 packets of 144 samples from 2017-02-18T03:48:20.789.999. Part 115/147

Processed Sat Feb 18 04:56:09 2017 by ELM ver.2012-10-06 from 001__elm20170218_034819__dat00.bin

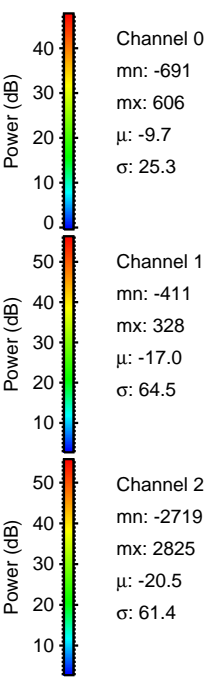
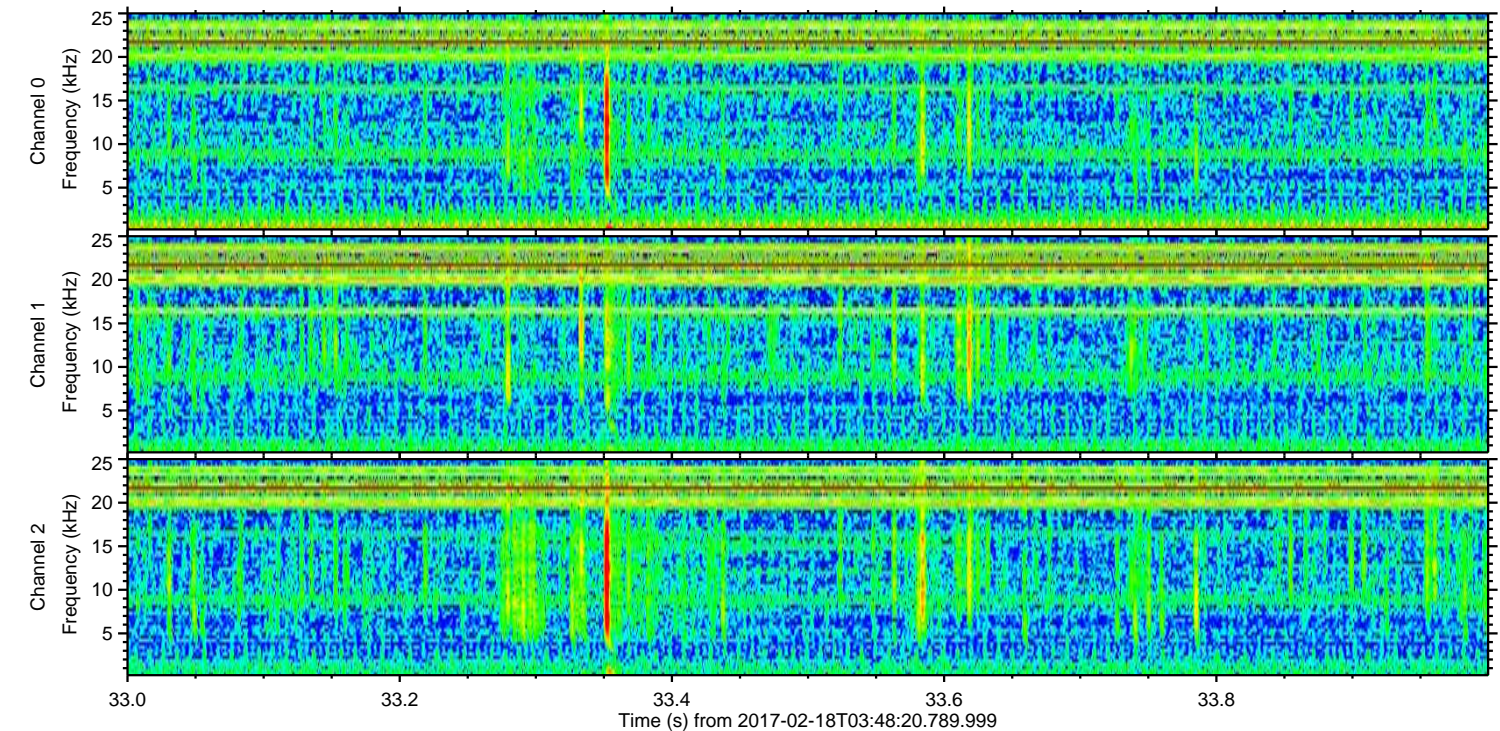
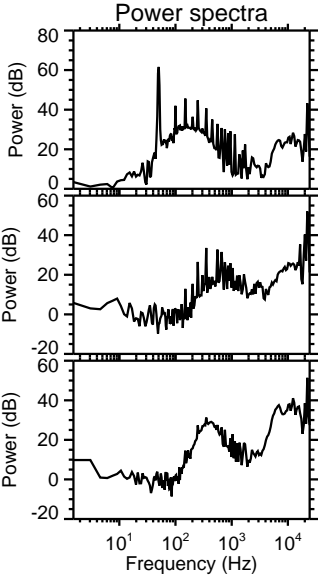
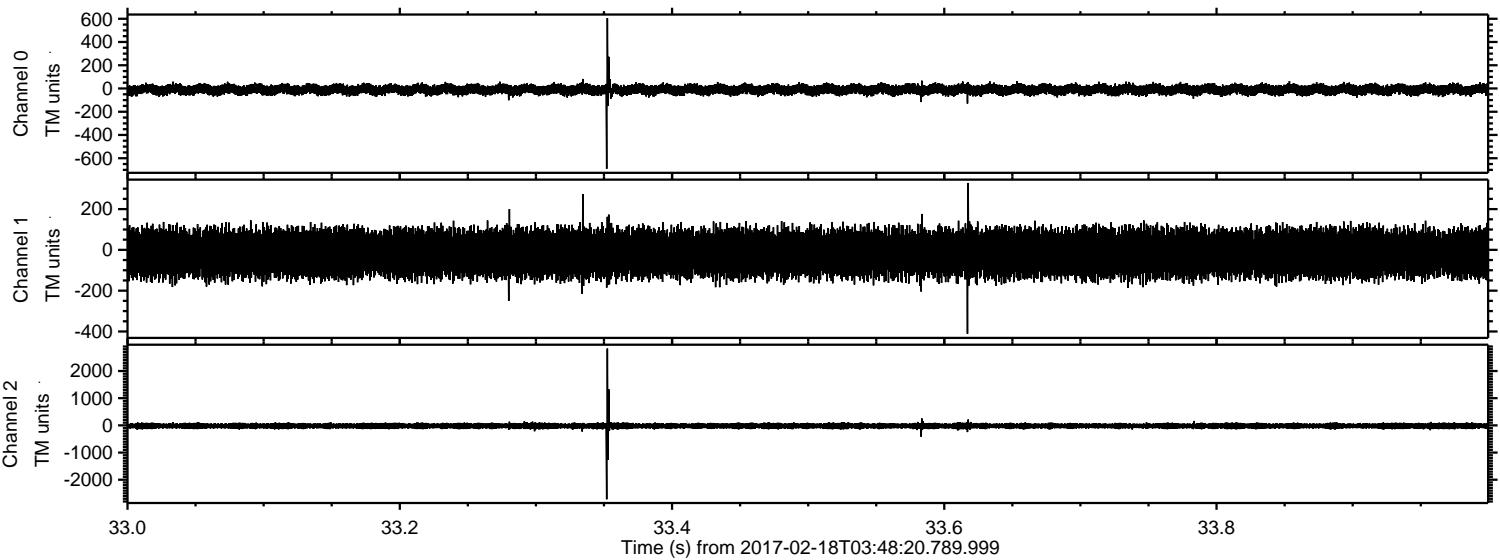


ELMAVAN 3D WAVEFORMS (Measured data sampled at 50 kHz) 51000 packets of 144 samples from 2017-02-18T03:48:20.789.999. Part 10/147

Processed Sat Feb 18 04:56:10 2017 by ELM ver.2012-10-06 from 001__elm20170218_034819__dat00.bin



Processed Sat Feb 18 04:56:11 2017 by ELM ver.2012-10-06 from 001__elm20170218_034819__dat00.bin



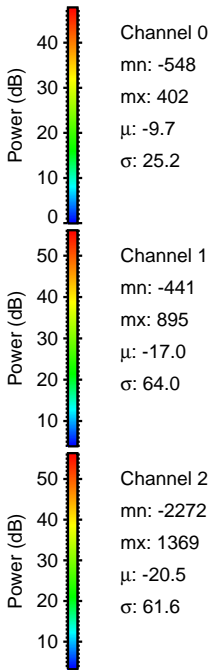
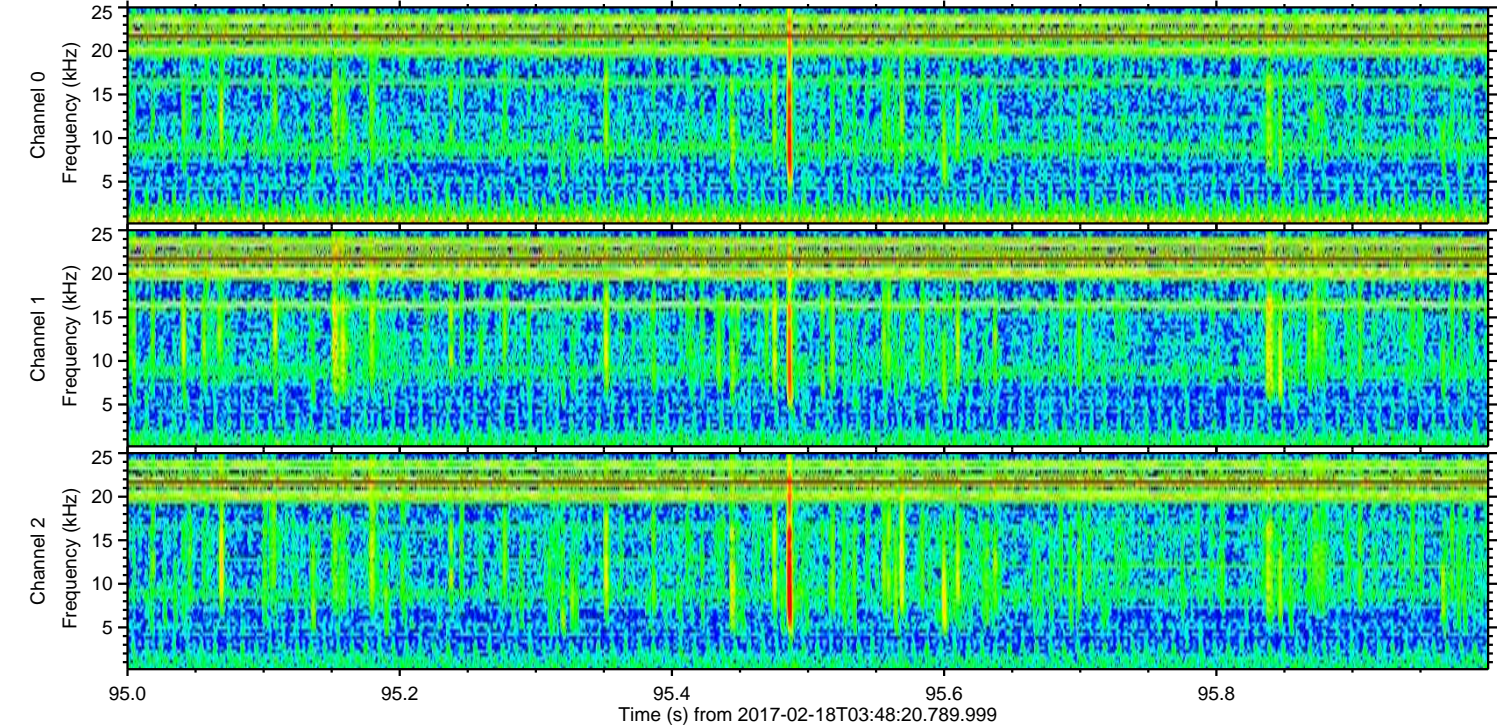
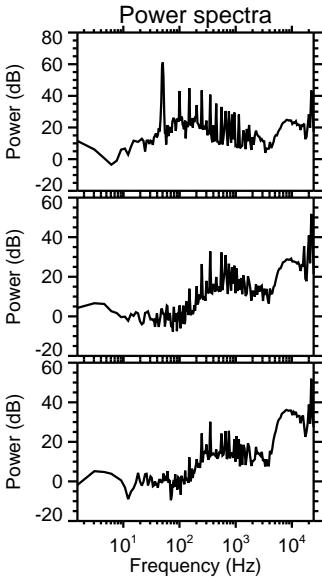
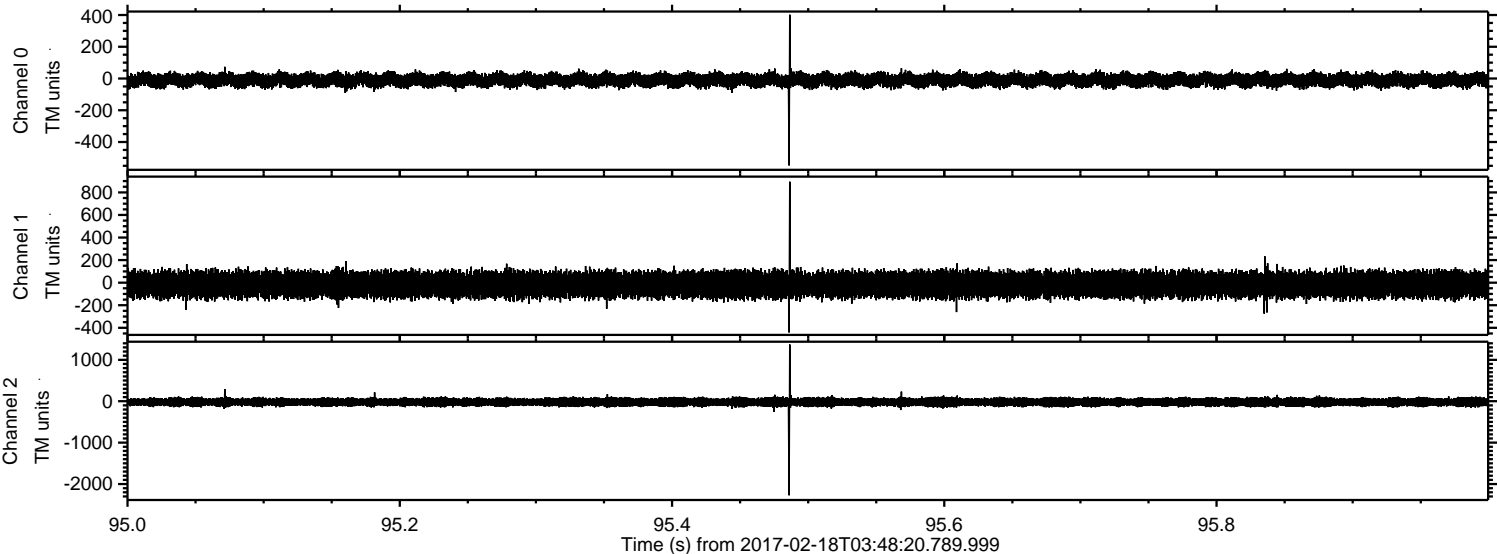
Channel 0
mn: -691
mx: 606
 μ : -9.7
 σ : 25.3

Channel 1
mn: -411
mx: 328
 μ : -17.0
 σ : 64.5

Channel 2
mn: -2719
mx: 2825
 μ : -20.5
 σ : 61.4

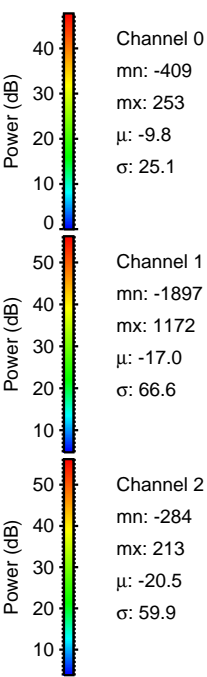
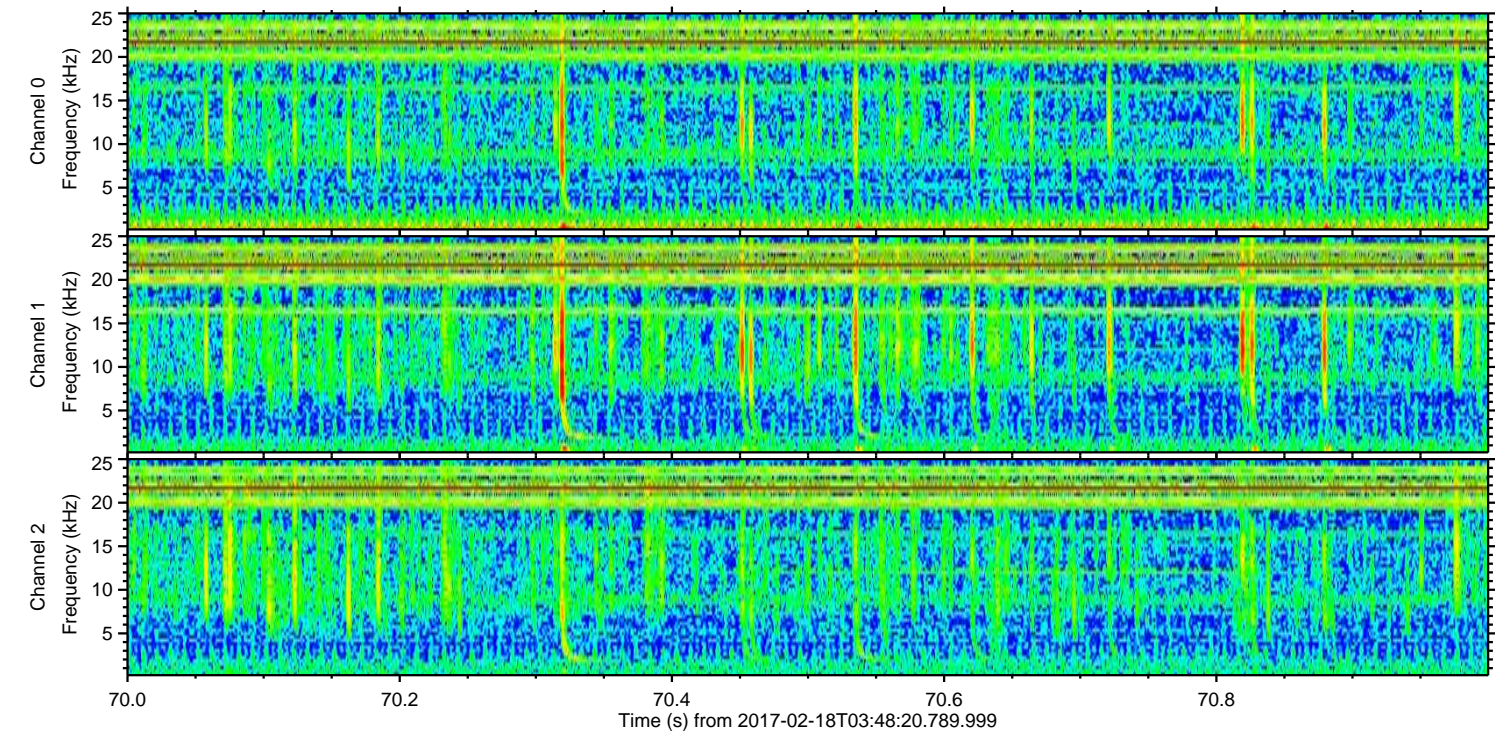
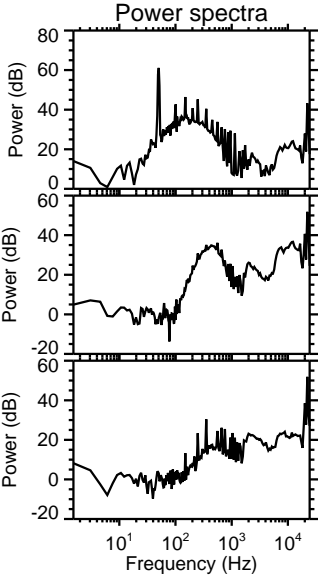
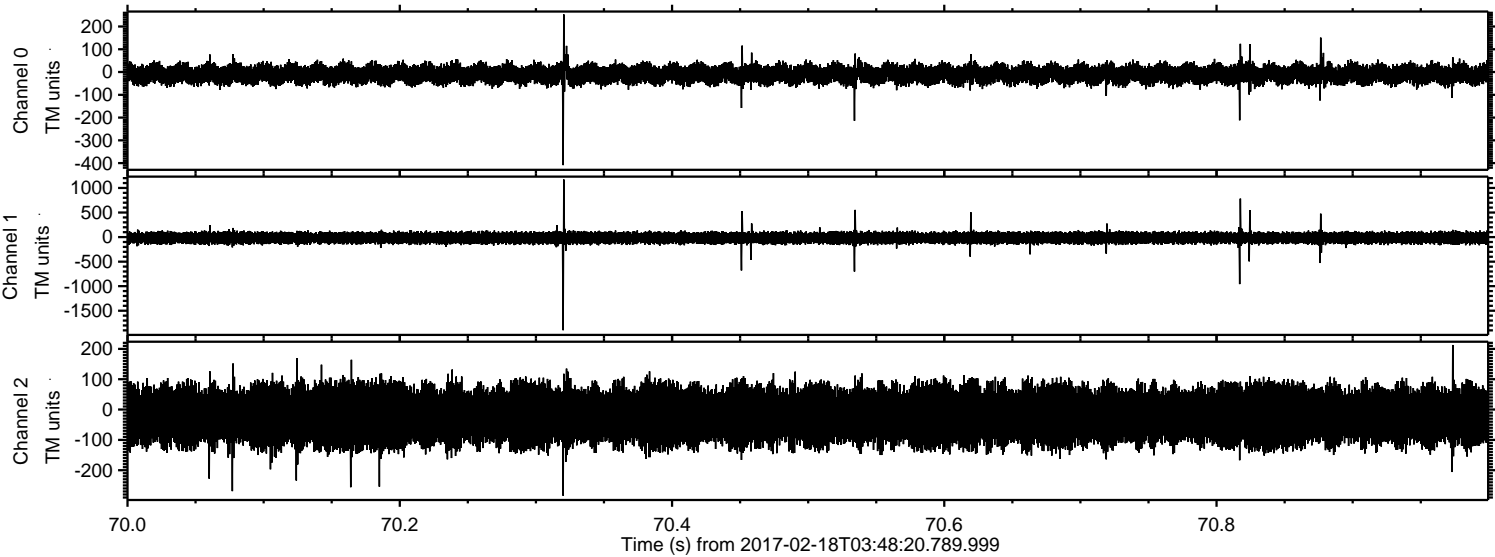
ELMAVAN 3D WAVEFORMS (Measured data sampled at 50 kHz) 51000 packets of 144 samples from 2017-02-18T03:48:20.789.999. Part 96/147

Processed Sat Feb 18 04:56:12 2017 by ELM ver.2012-10-06 from 001__elm20170218_034819__dat00.bin



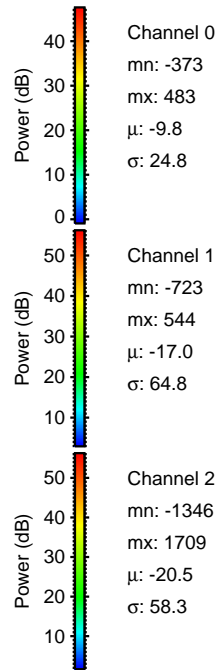
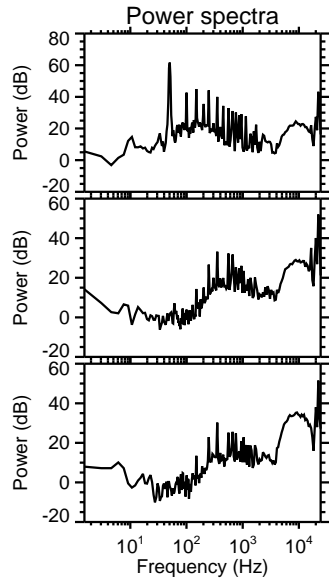
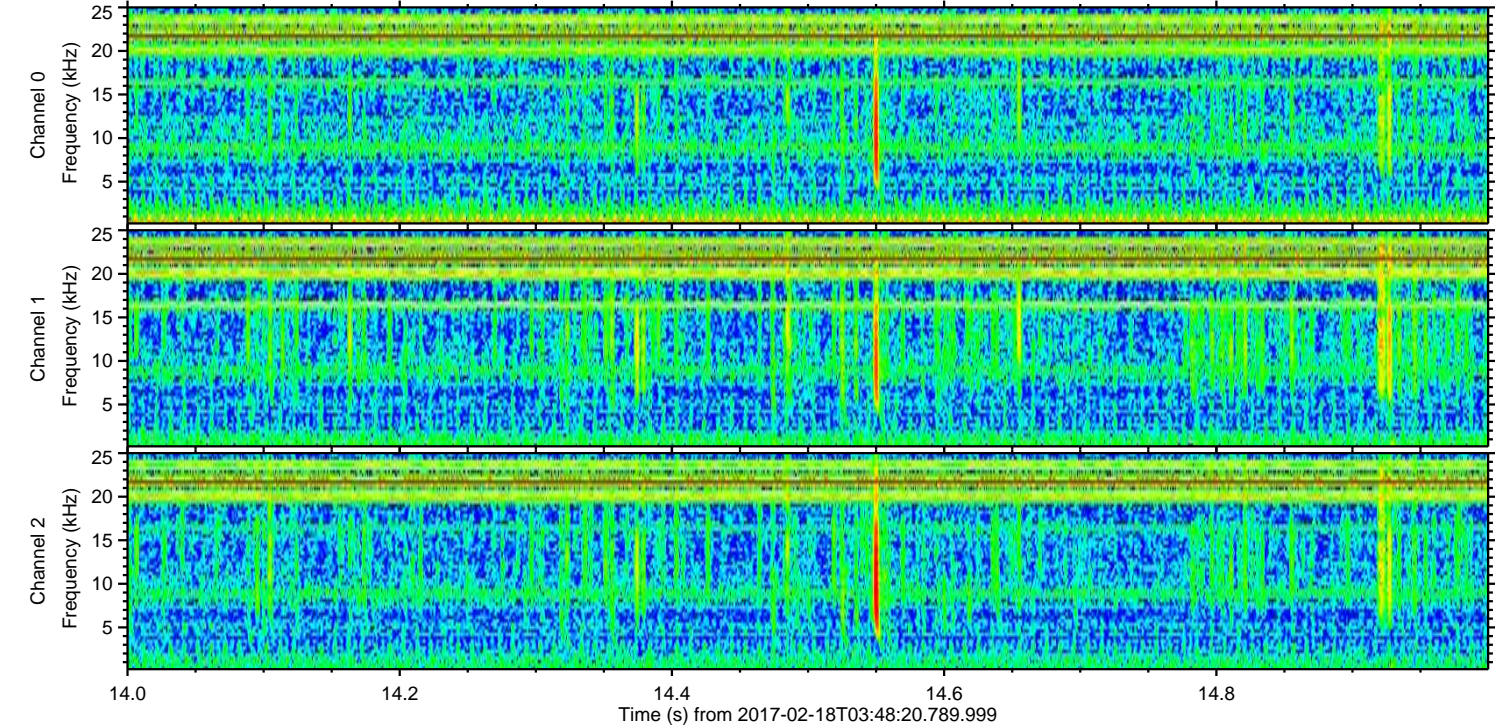
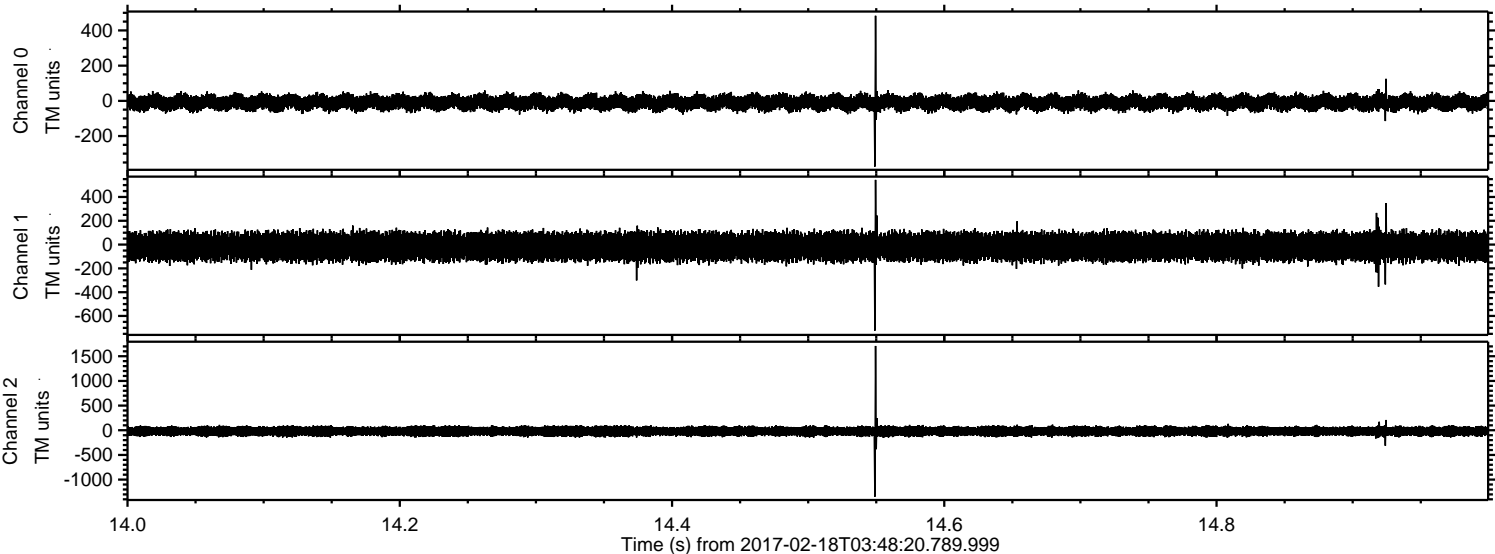
ELMAVAN 3D WAVEFORMS (Measured data sampled at 50 kHz) 51000 packets of 144 samples from 2017-02-18T03:48:20.789.999. Part 71/147

Processed Sat Feb 18 04:56:13 2017 by ELM ver.2012-10-06 from 001__elm20170218_034819__dat00.bin



ELMAVAN 3D WAVEFORMS (Measured data sampled at 50 kHz) 51000 packets of 144 samples from 2017-02-18T03:48:20.789.999. Part 15/147

Processed Sat Feb 18 04:56:14 2017 by ELM ver.2012-10-06 from 001__elm20170218_034819__dat00.bin



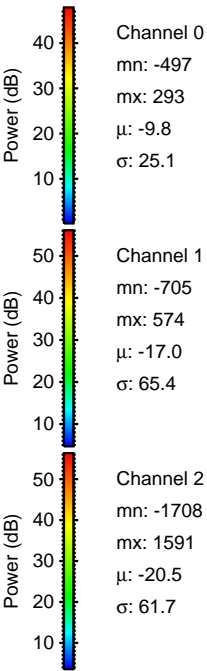
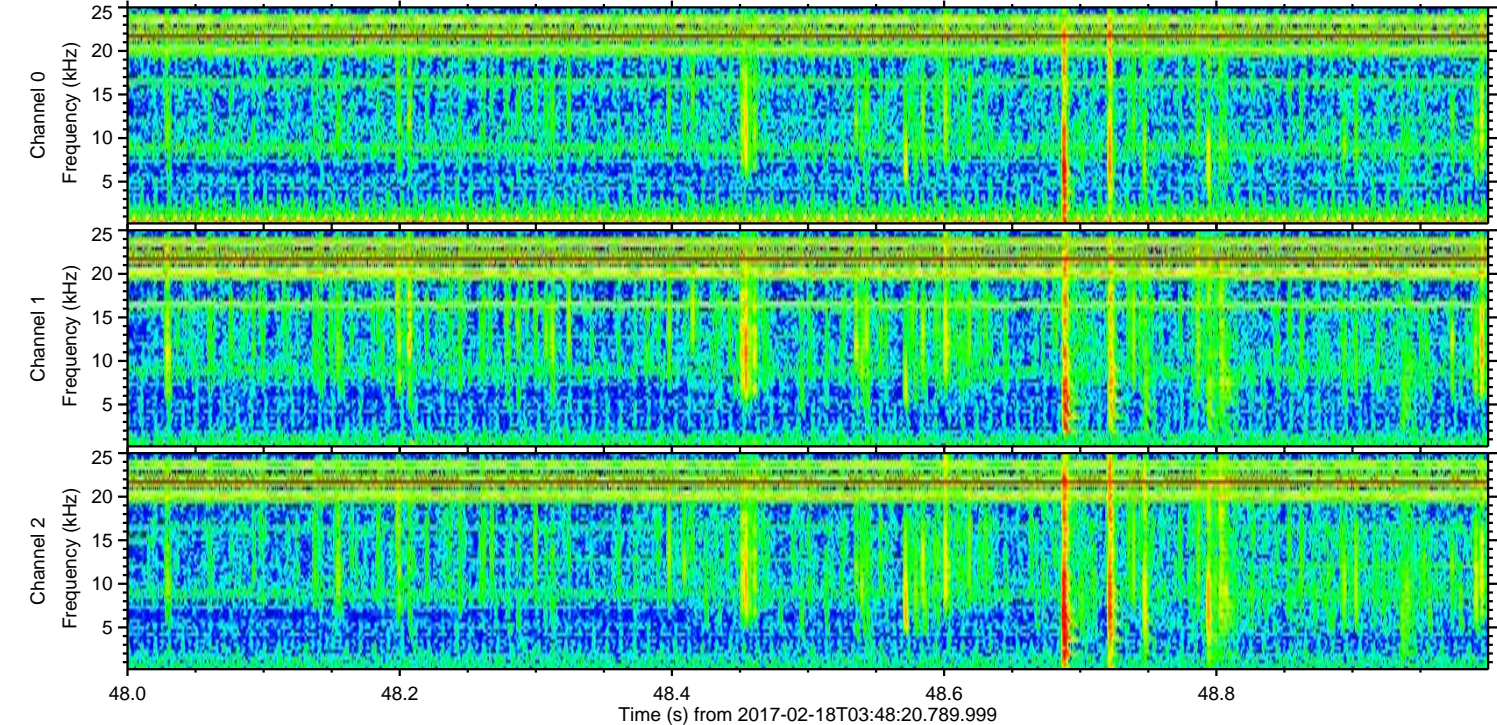
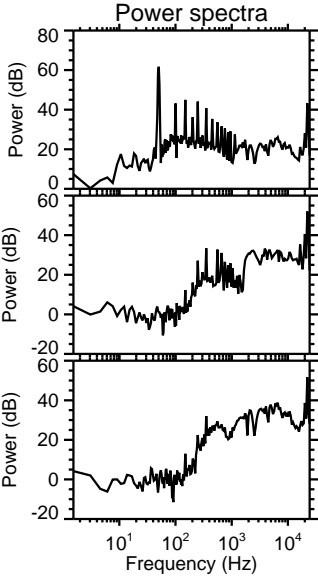
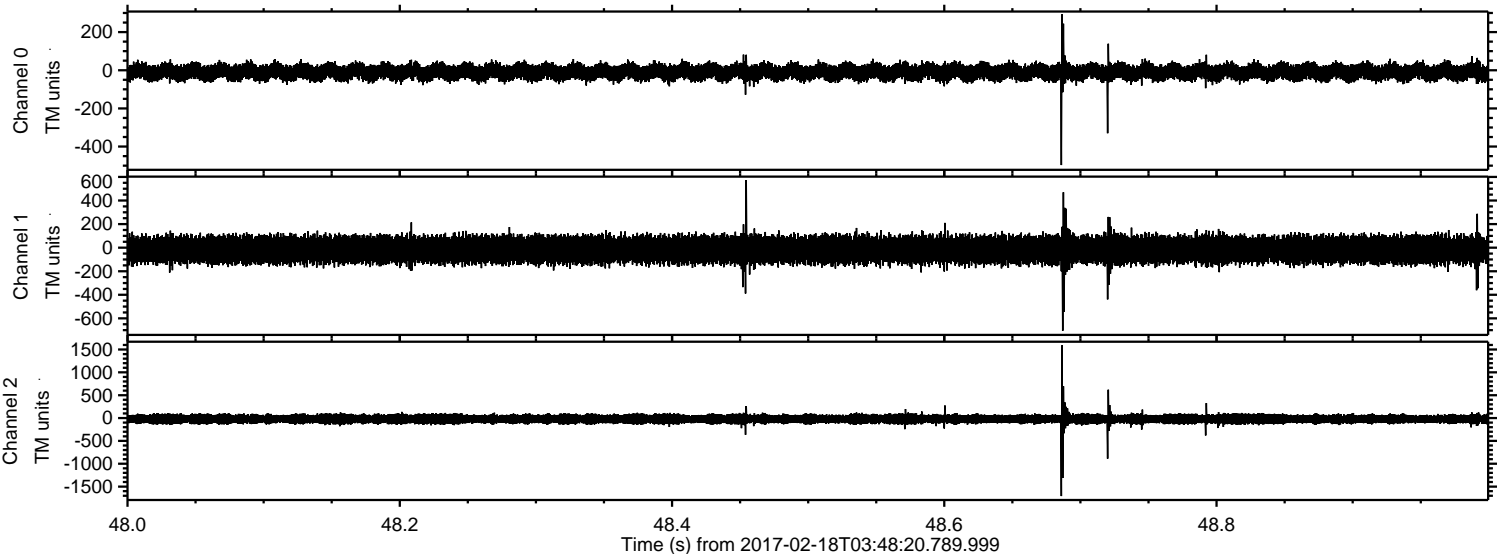
Power spectra

Channel 0
mn: -373
mx: 483
 μ : -9.8
 σ : 24.8

Channel 1
mn: -723
mx: 544
 μ : -17.0
 σ : 64.8

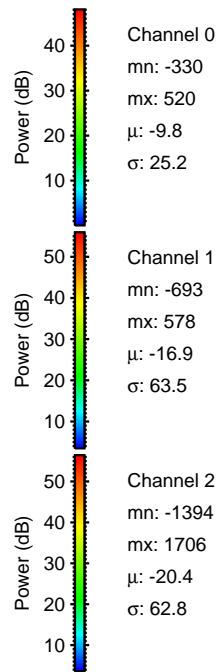
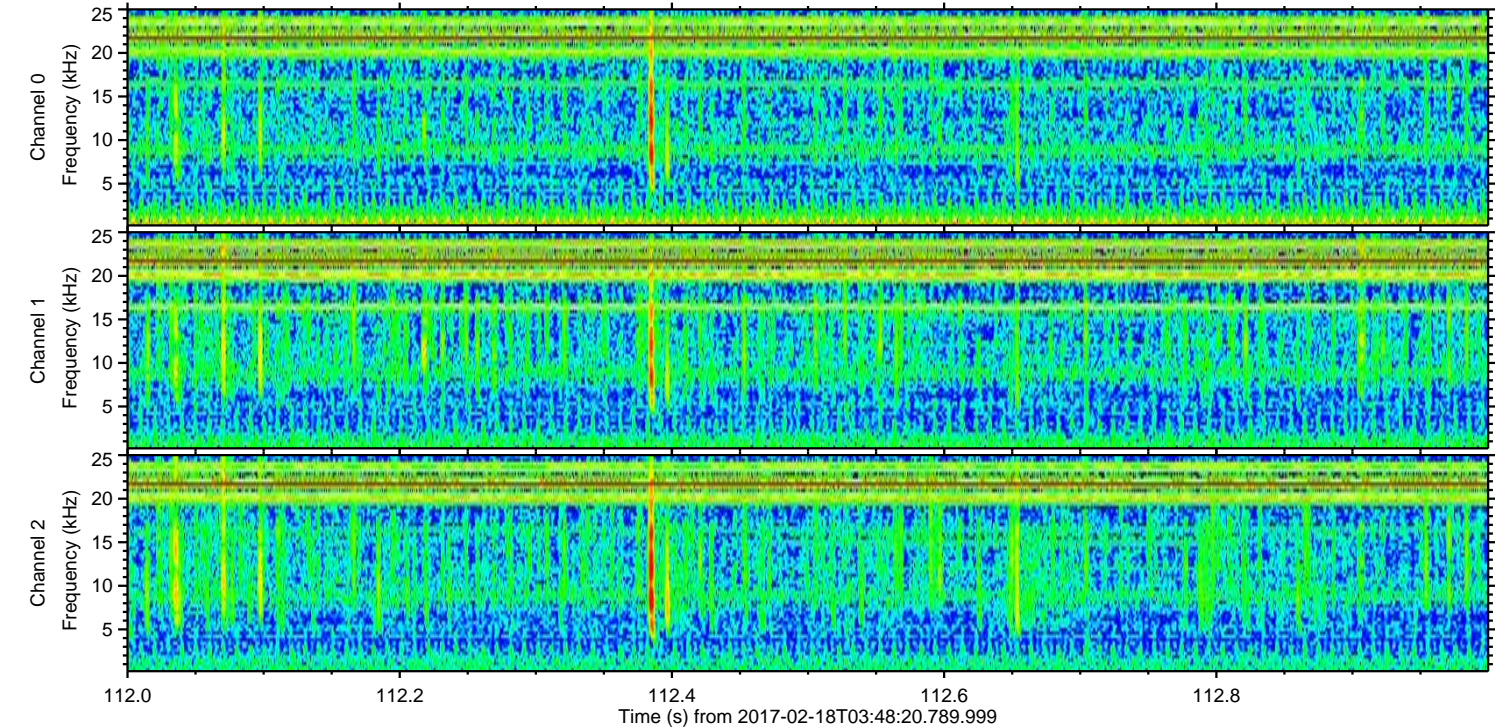
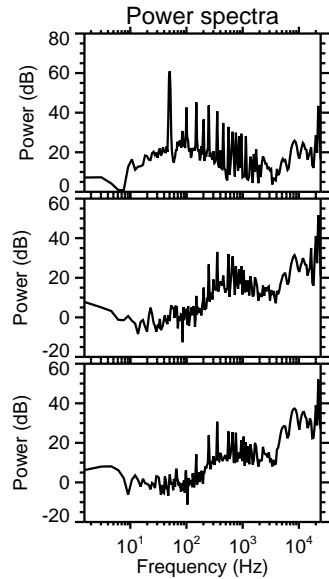
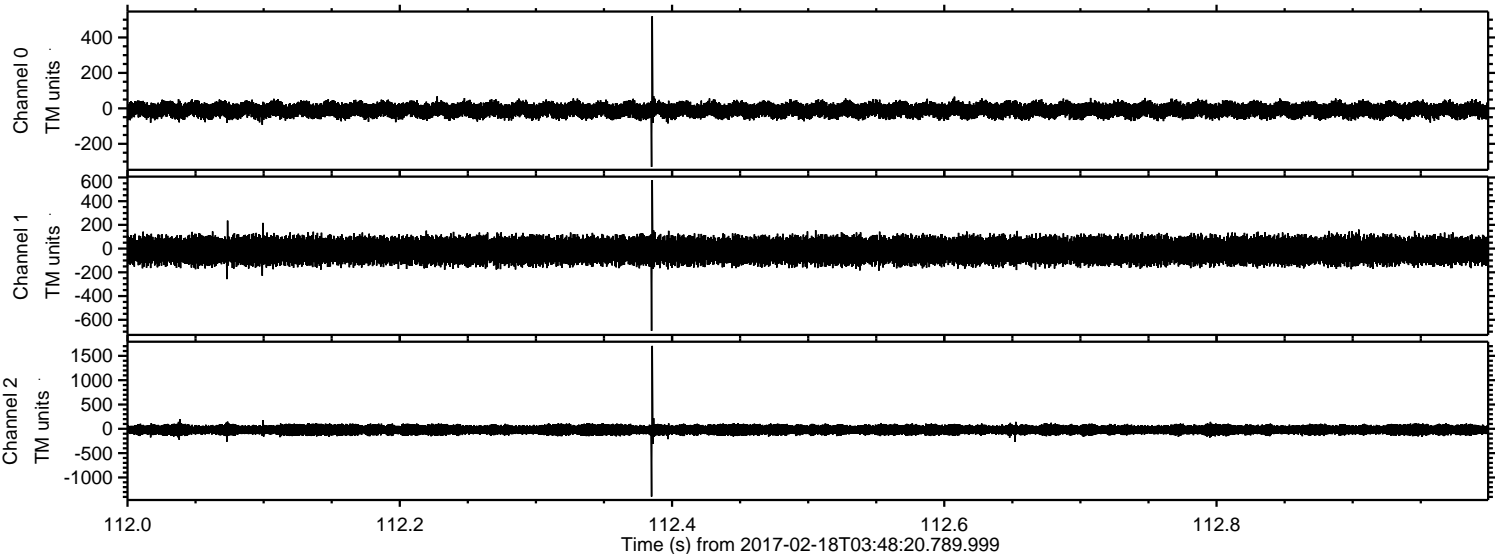
Channel 2
mn: -1346
mx: 1709
 μ : -20.5
 σ : 58.3

Processed Sat Feb 18 04:56:15 2017 by ELM ver.2012-10-06 from 001__elm20170218_034819__dat00.bin



ELMAVAN 3D WAVEFORMS (Measured data sampled at 50 kHz) 51000 packets of 144 samples from 2017-02-18T03:48:20.789.999. Part 113/147

Processed Sat Feb 18 04:56:16 2017 by ELM ver.2012-10-06 from 001__elm20170218_034819__dat00.bin



ELMAVAN 3D WAVEFORMS (Measured data sampled at 50 kHz) 51000 packets of 144 samples from 2017-02-18T03:48:20.789.999. Part 75/147

Processed Sat Feb 18 04:56:16 2017 by ELM ver.2012-10-06 from 001__elm20170218_034819__dat00.bin

