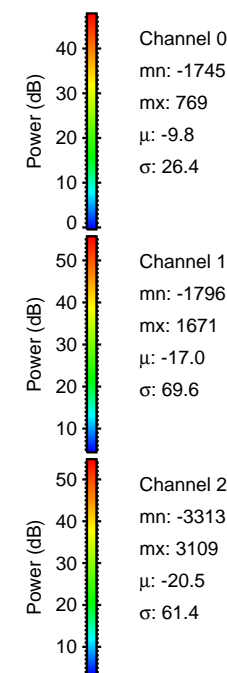
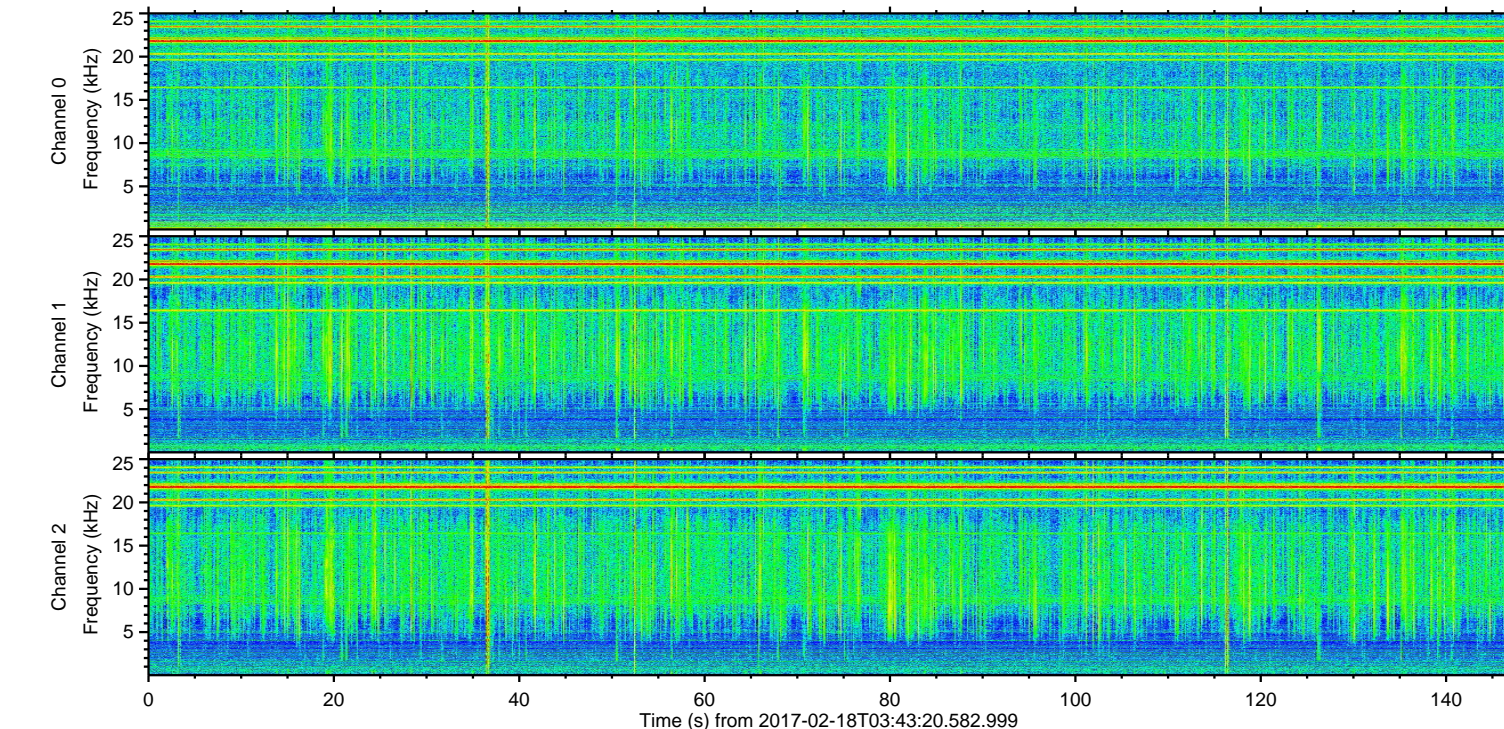
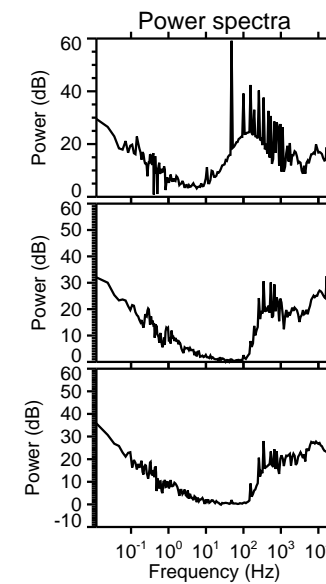
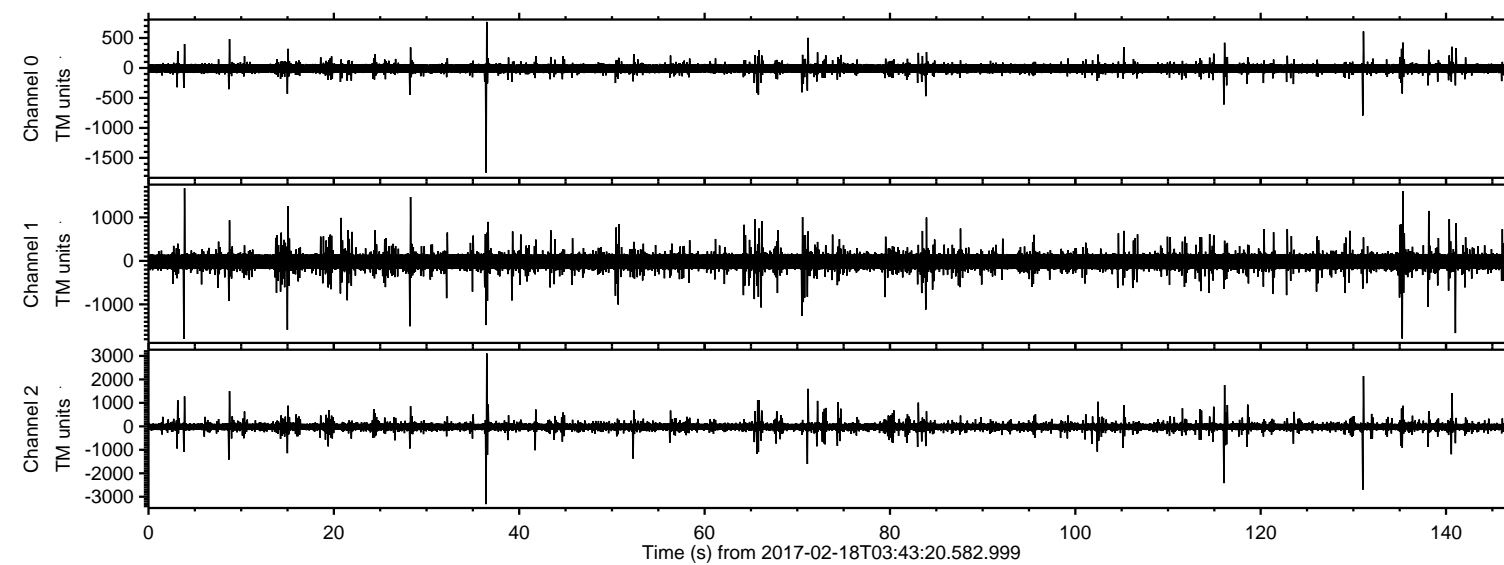


ELMAVAN 3D WAVEFORMS (Measured data sampled at 50 kHz) 51000 packets of 144 samples from 2017-02-18T03:43:20.582.999.

Processed Sat Feb 18 04:50:41 2017 by ELM ver.2012-10-06 from 001__elm20170218_034319__dat00.bin

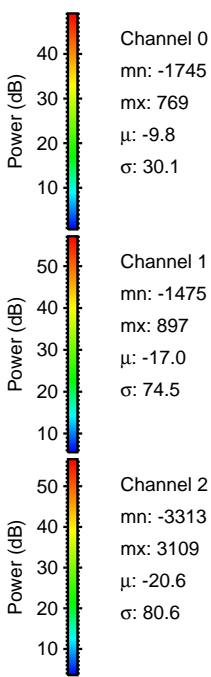
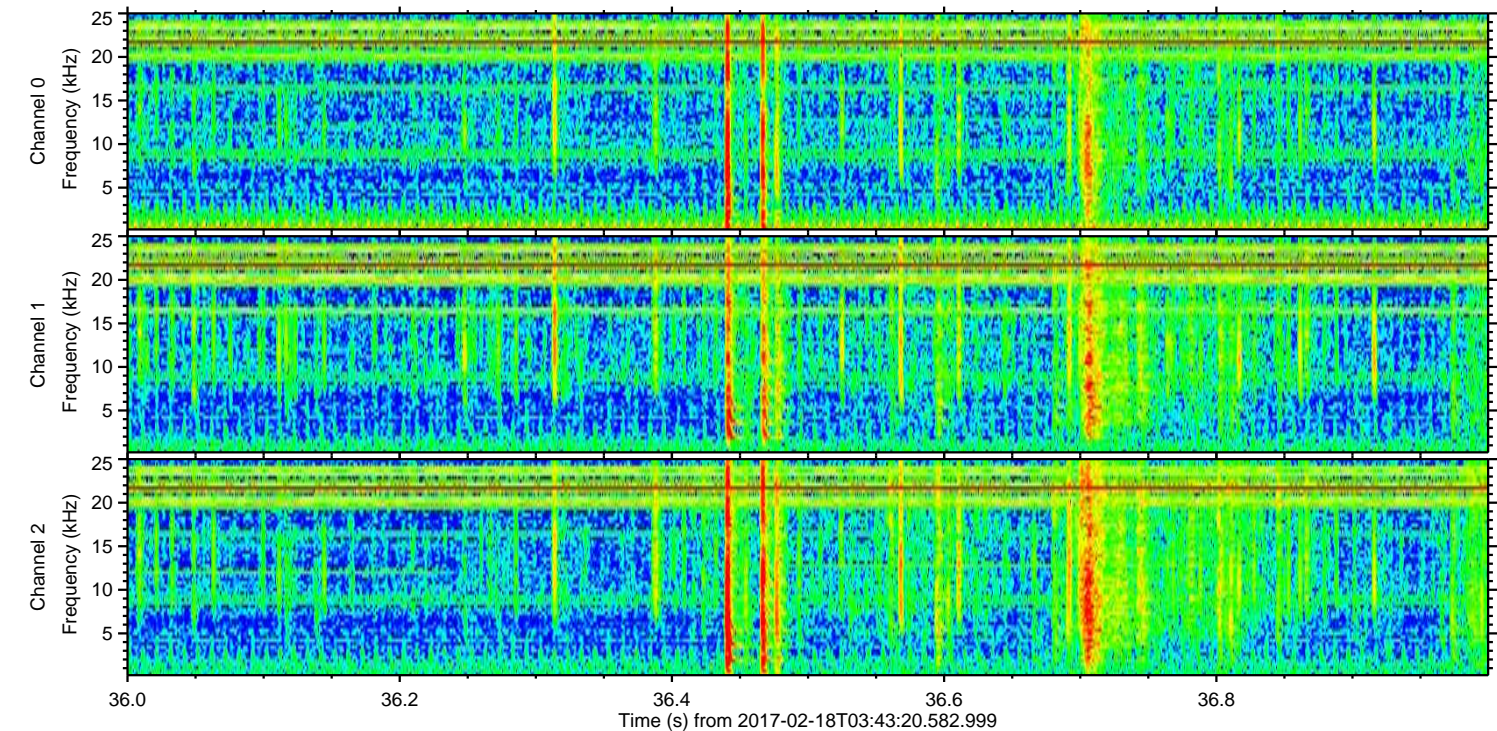
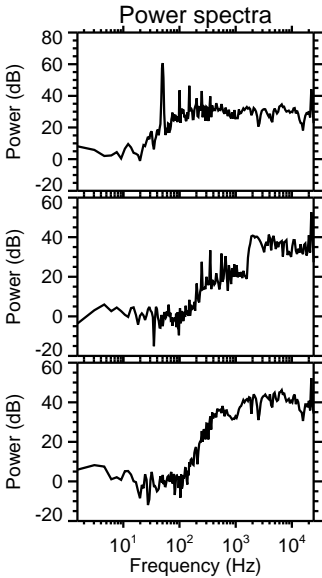
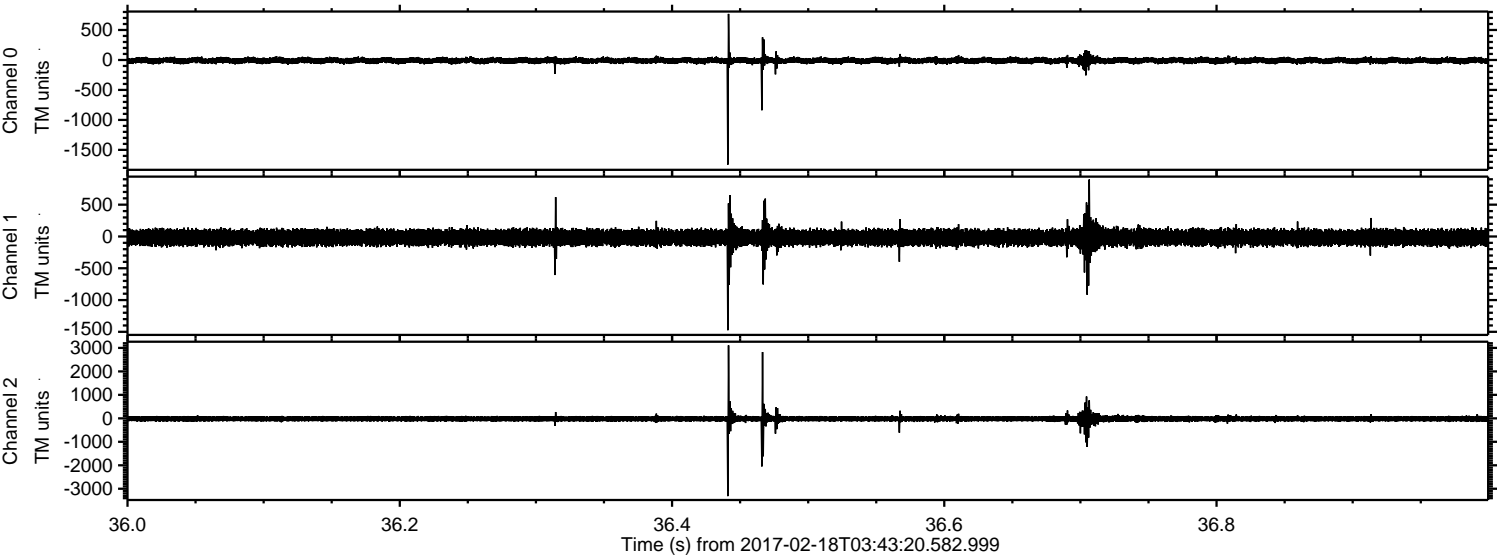


Channel 0
mn: -1745
mx: 769
 μ : -9.8
 σ : 26.4

Channel 1
mn: -1796
mx: 1671
 μ : -17.0
 σ : 69.6

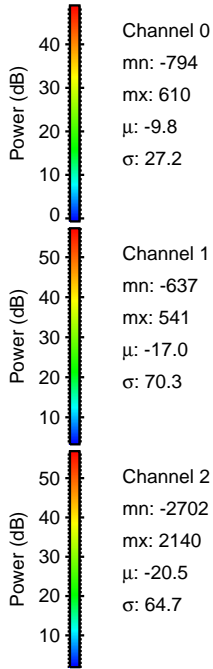
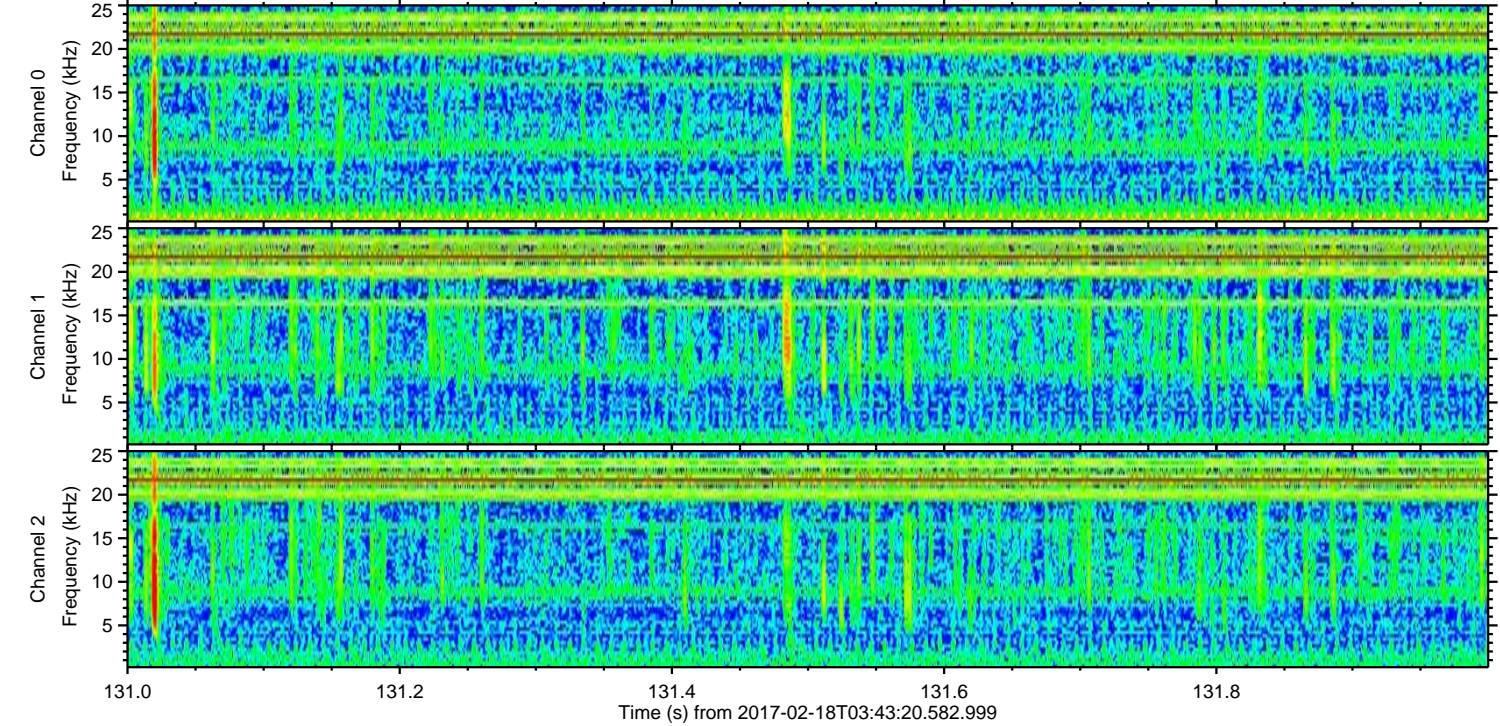
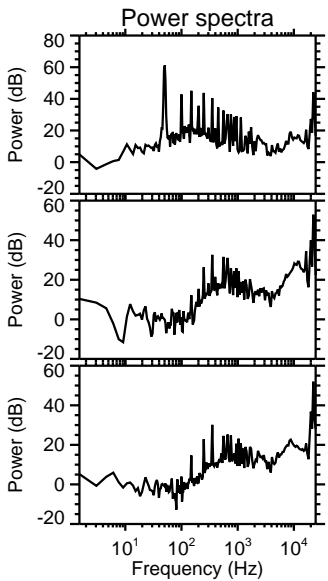
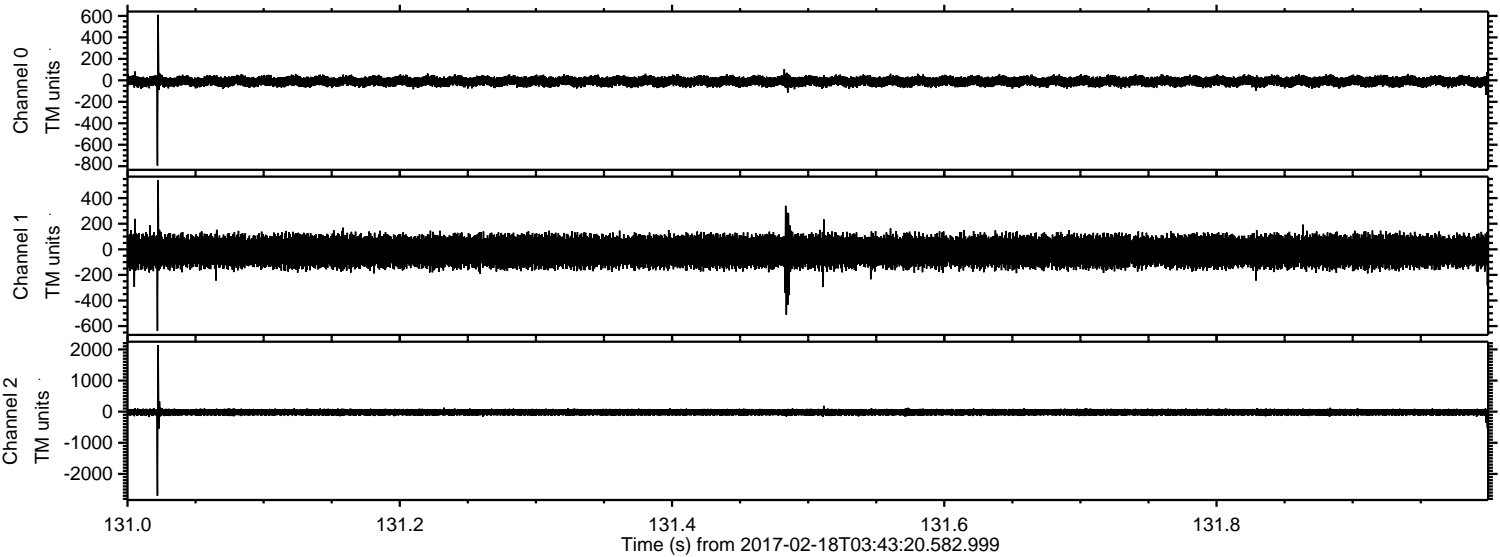
Channel 2
mn: -3313
mx: 3109
 μ : -20.5
 σ : 61.4

Processed Sat Feb 18 04:50:52 2017 by ELM ver.2012-10-06 from 001__elm20170218_034319__dat00.bin



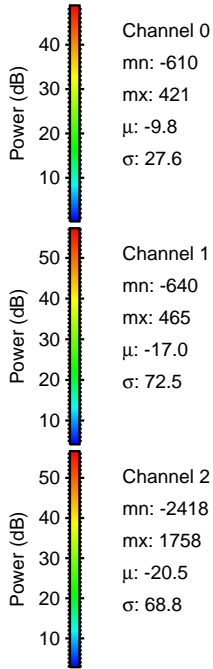
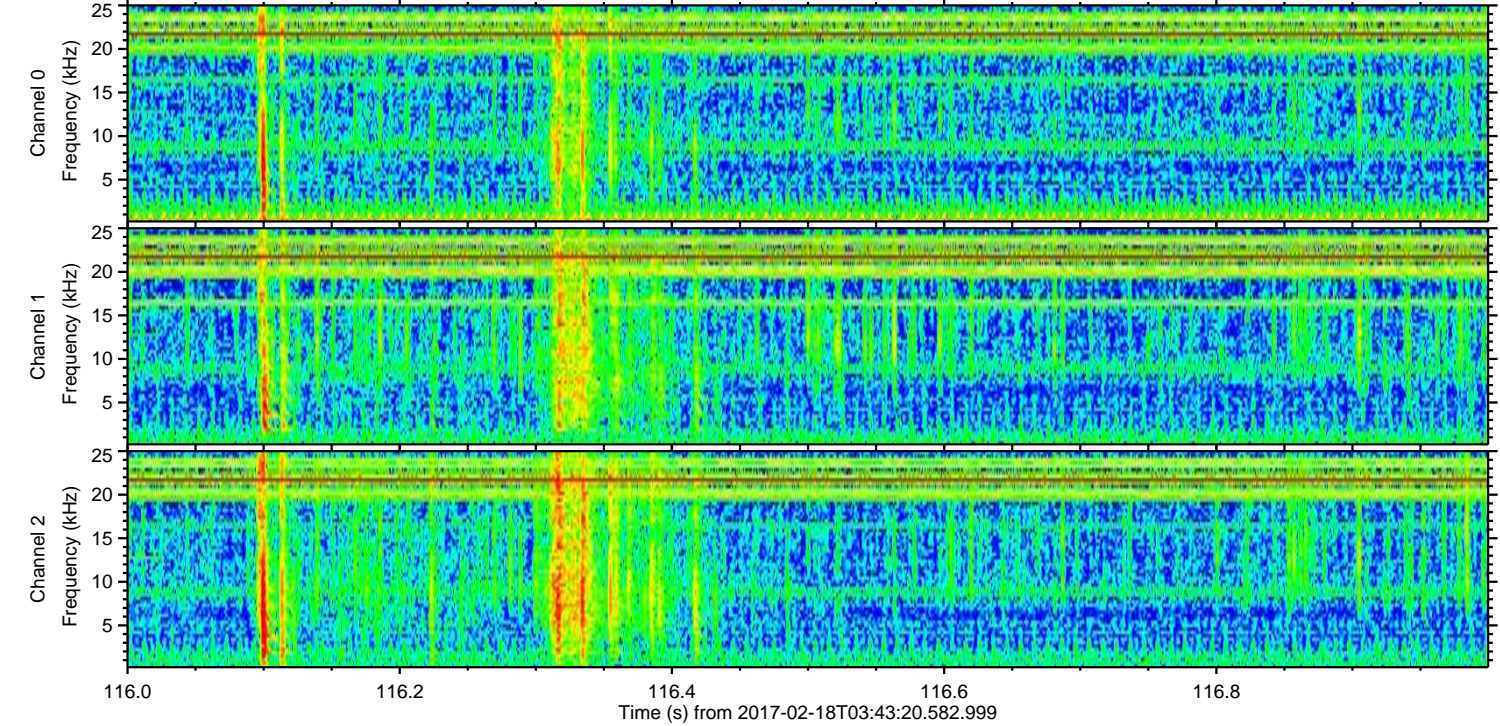
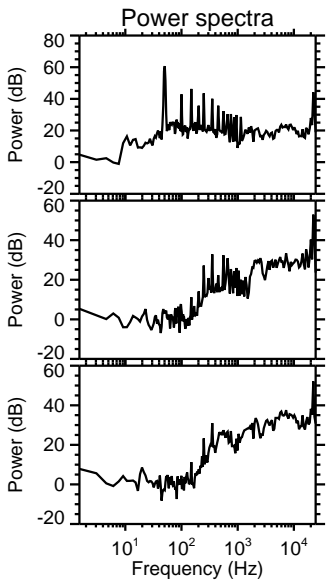
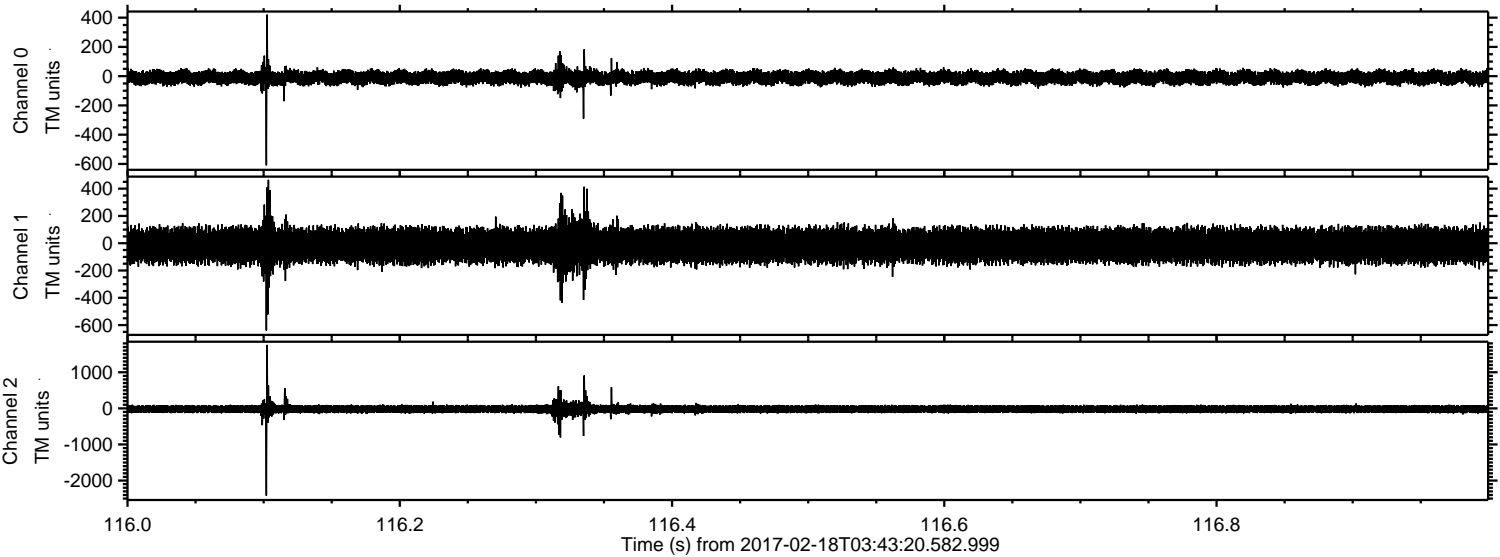
ELMAVAN 3D WAVEFORMS (Measured data sampled at 50 kHz) 51000 packets of 144 samples from 2017-02-18T03:43:20.582.999. Part 132/147

Processed Sat Feb 18 04:50:53 2017 by ELM ver.2012-10-06 from 001__elm20170218_034319__dat00.bin

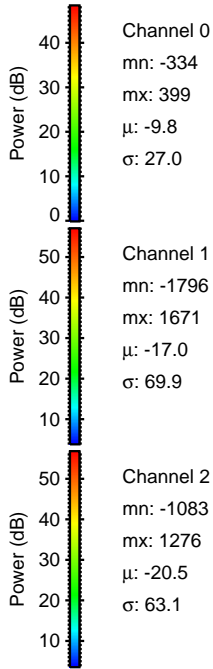
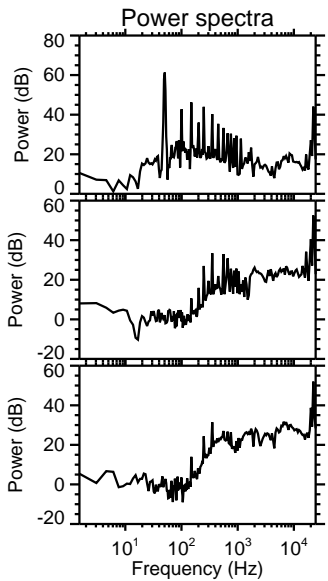
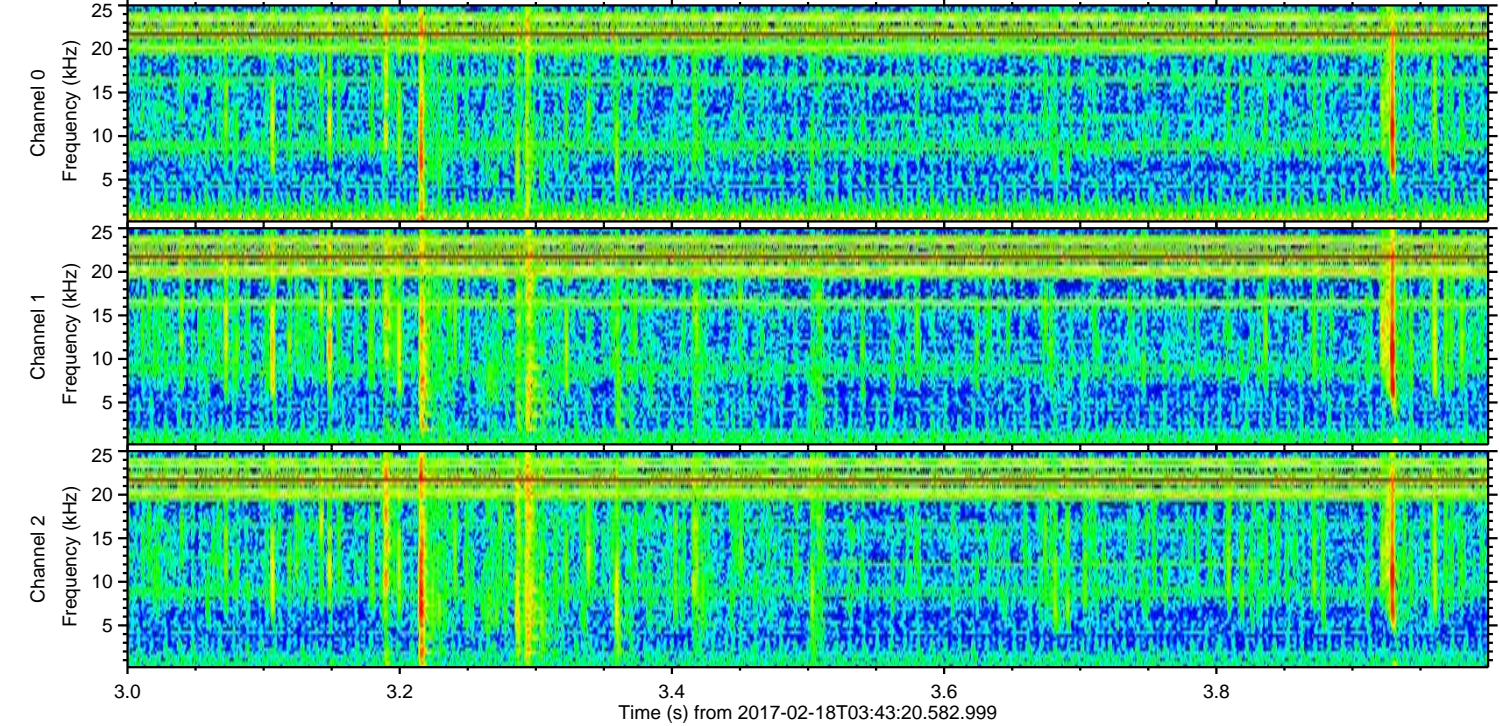
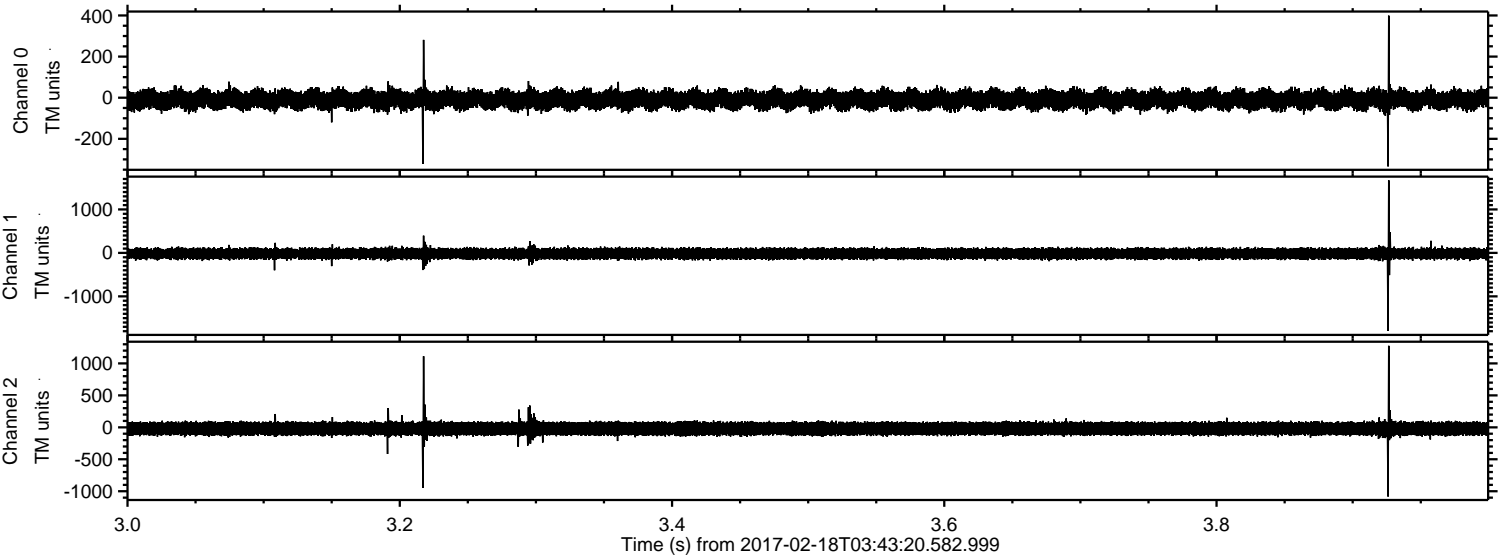


ELMAVAN 3D WAVEFORMS (Measured data sampled at 50 kHz) 51000 packets of 144 samples from 2017-02-18T03:43:20.582.999. Part 117/147

Processed Sat Feb 18 04:50:54 2017 by ELM ver.2012-10-06 from 001__elm20170218_034319__dat00.bin



Processed Sat Feb 18 04:50:55 2017 by ELM ver.2012-10-06 from 001__elm20170218_034319__dat00.bin



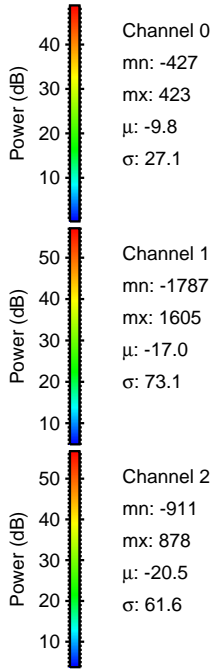
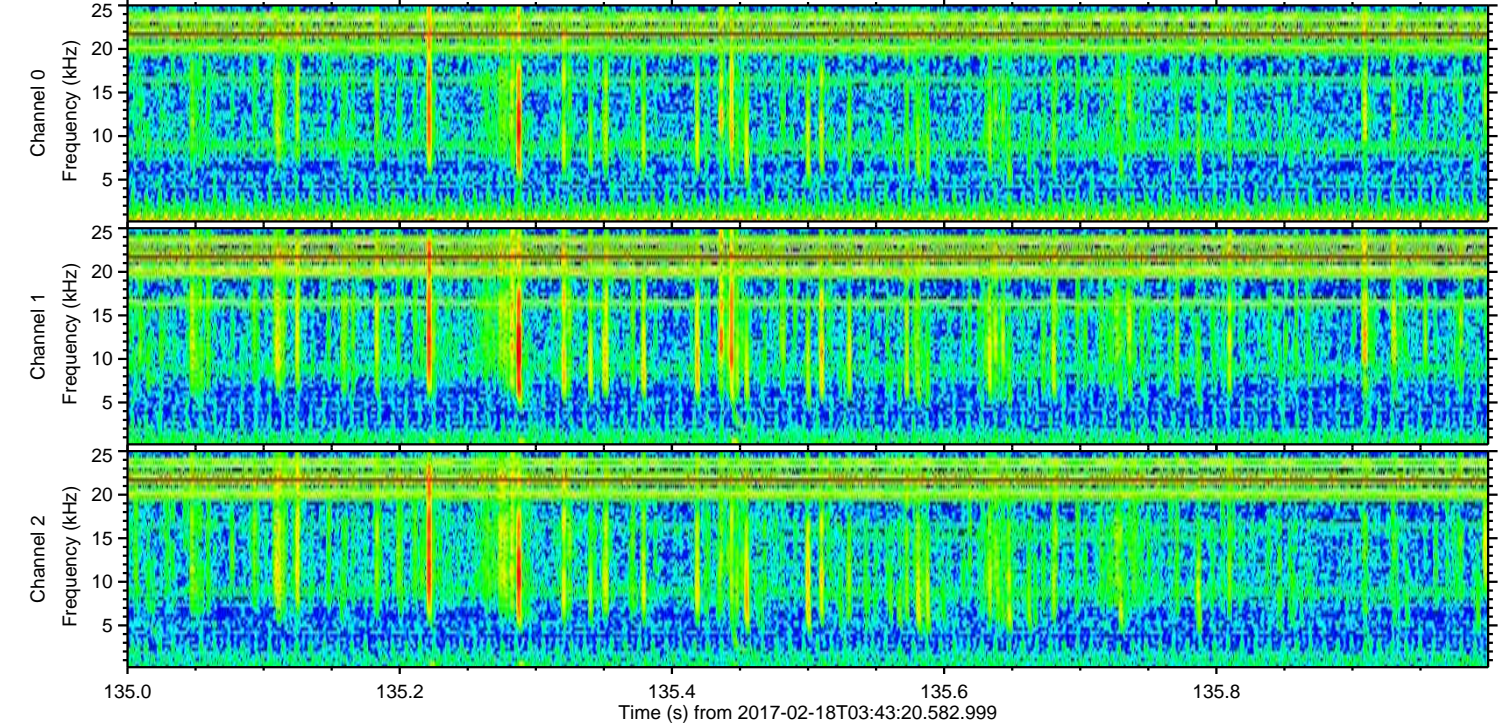
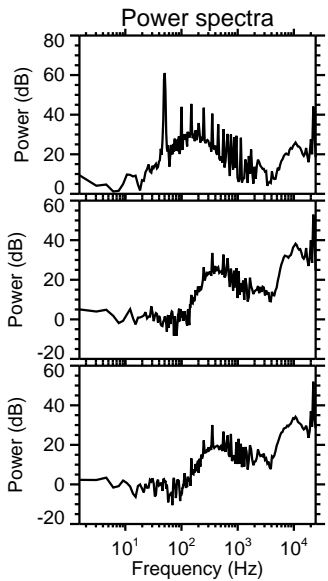
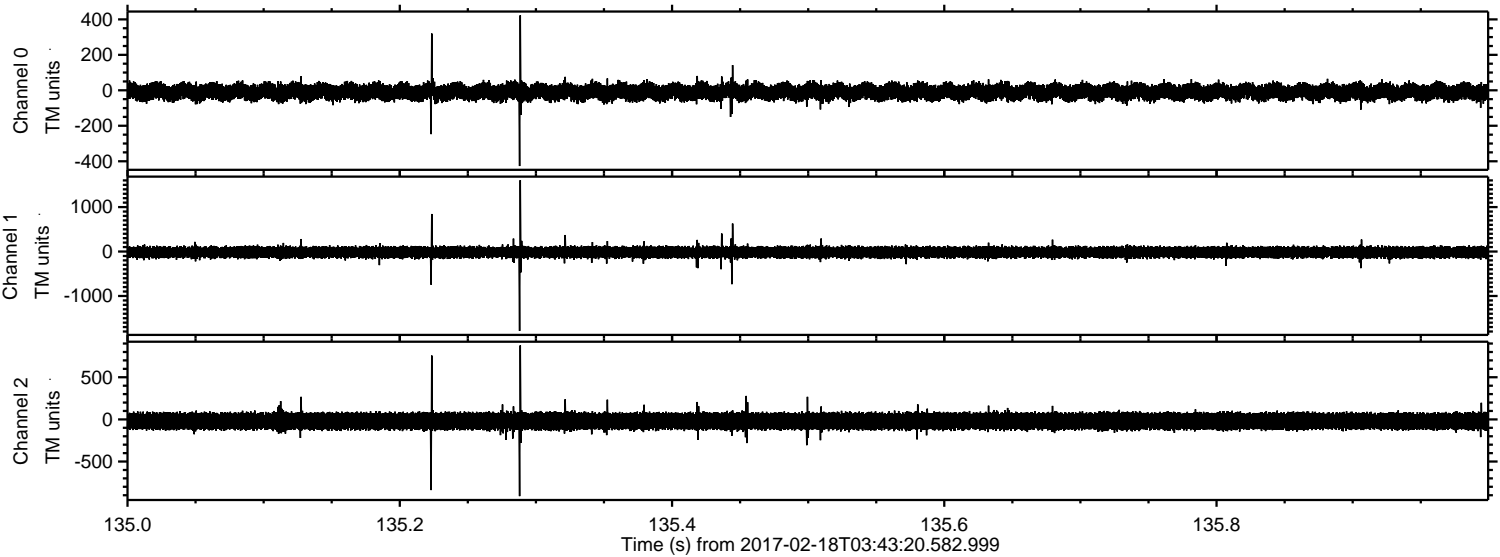
Channel 0
mn: -334
mx: 399
μ: -9.8
σ: 27.0

Channel 1
mn: -1796
mx: 1671
μ: -17.0
σ: 69.9

Channel 2
mn: -1083
mx: 1276
μ: -20.5
σ: 63.1

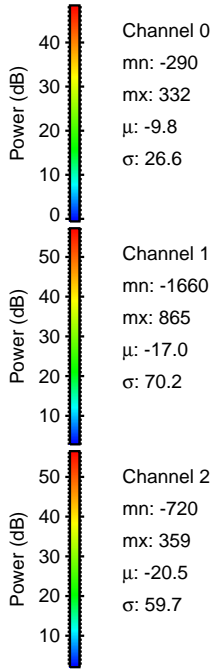
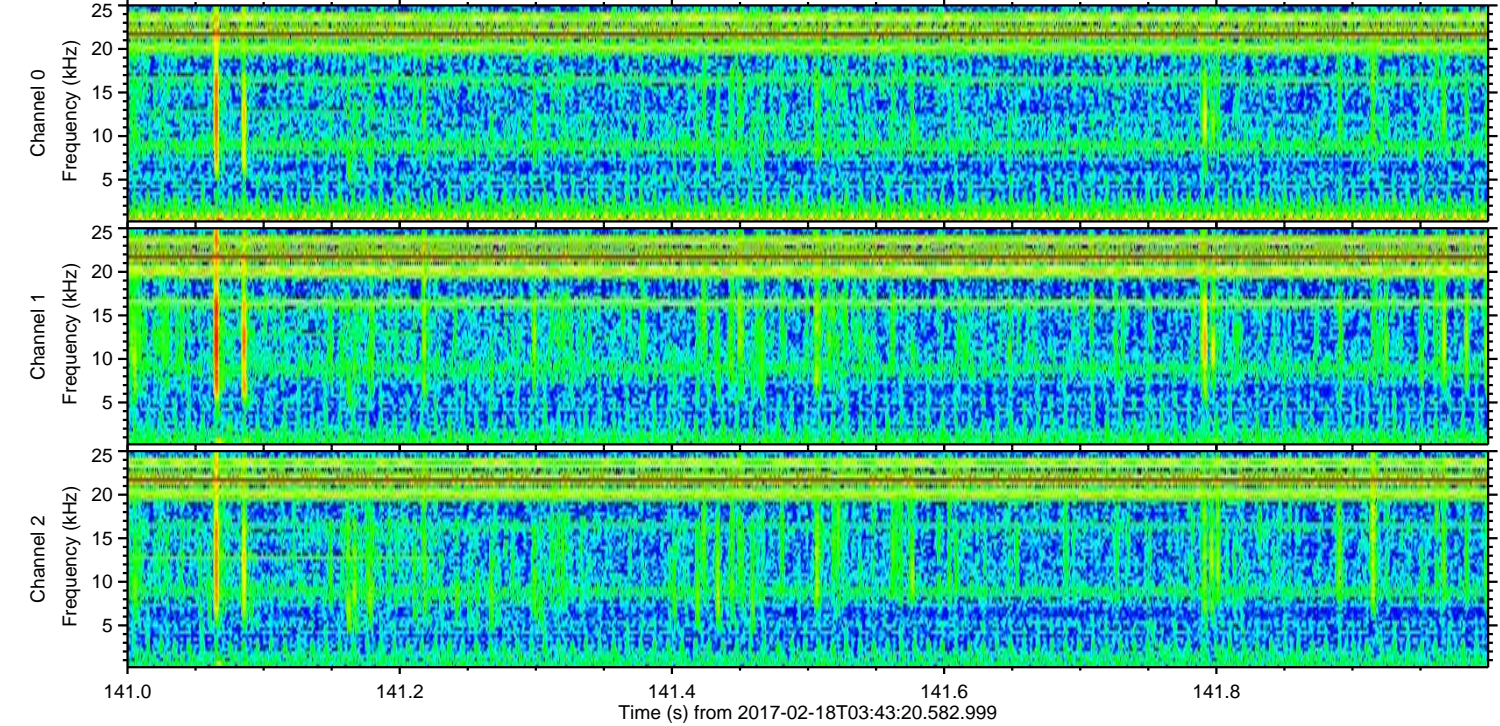
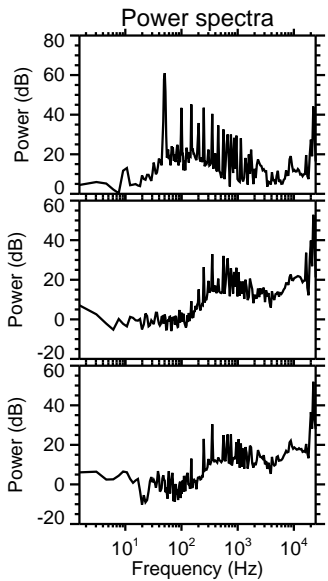
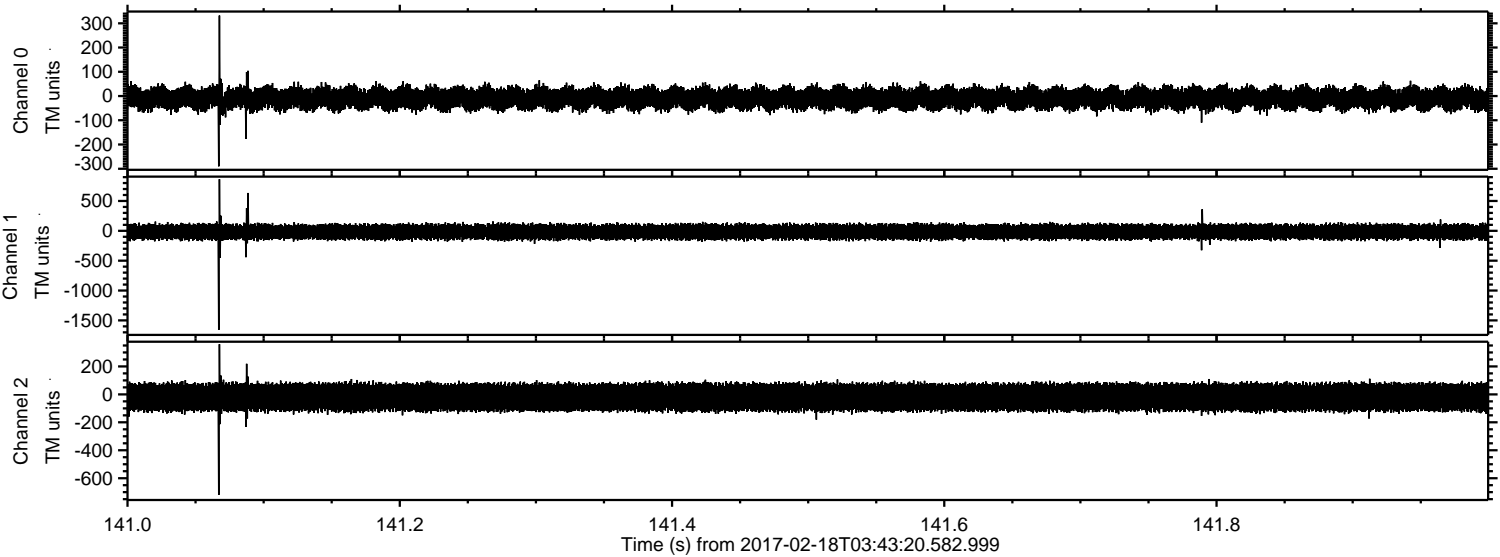
ELMAVAN 3D WAVEFORMS (Measured data sampled at 50 kHz) 51000 packets of 144 samples from 2017-02-18T03:43:20.582.999. Part 136/147

Processed Sat Feb 18 04:50:56 2017 by ELM ver.2012-10-06 from 001__elm20170218_034319__dat00.bin

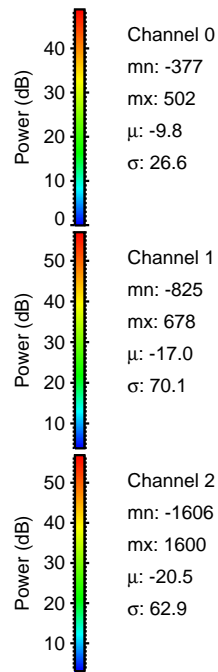
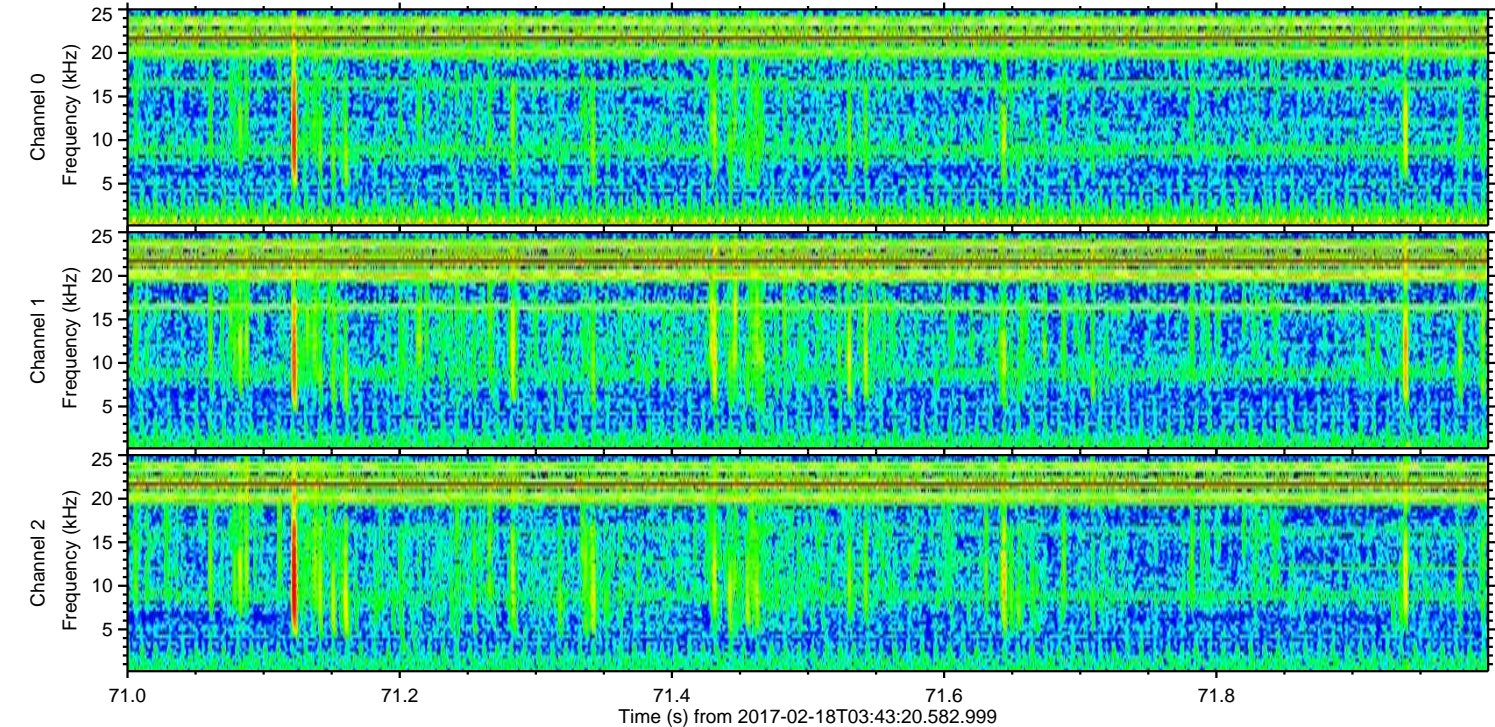
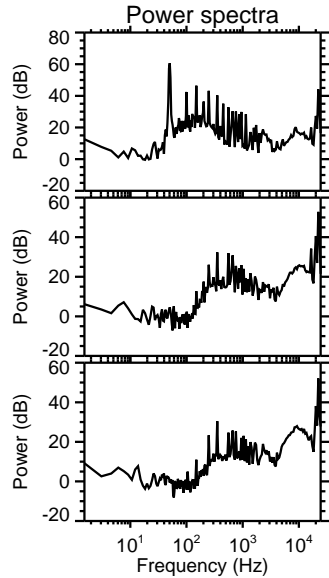
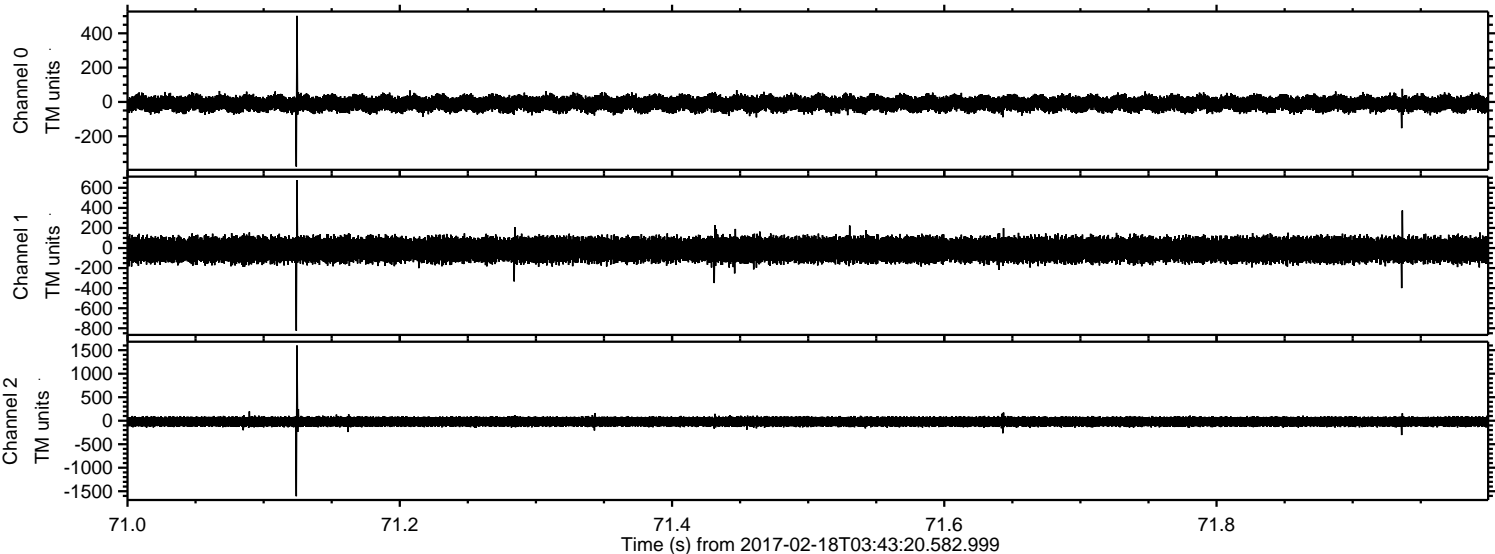


ELMAVAN 3D WAVEFORMS (Measured data sampled at 50 kHz) 51000 packets of 144 samples from 2017-02-18T03:43:20.582.999. Part 142/147

Processed Sat Feb 18 04:50:57 2017 by ELM ver.2012-10-06 from 001__elm20170218_034319__dat00.bin

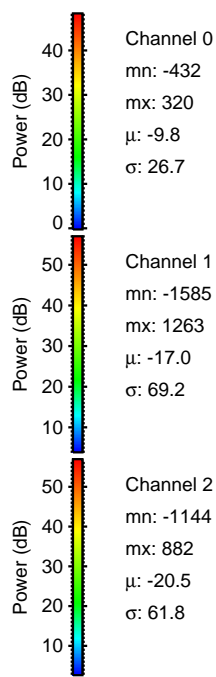
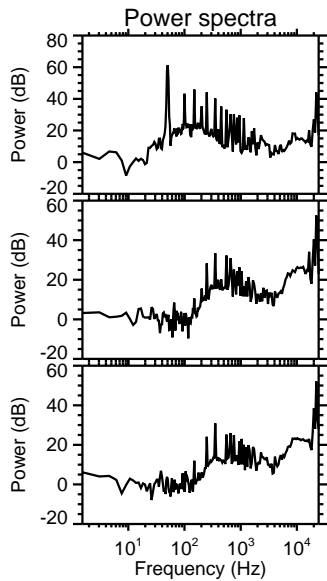
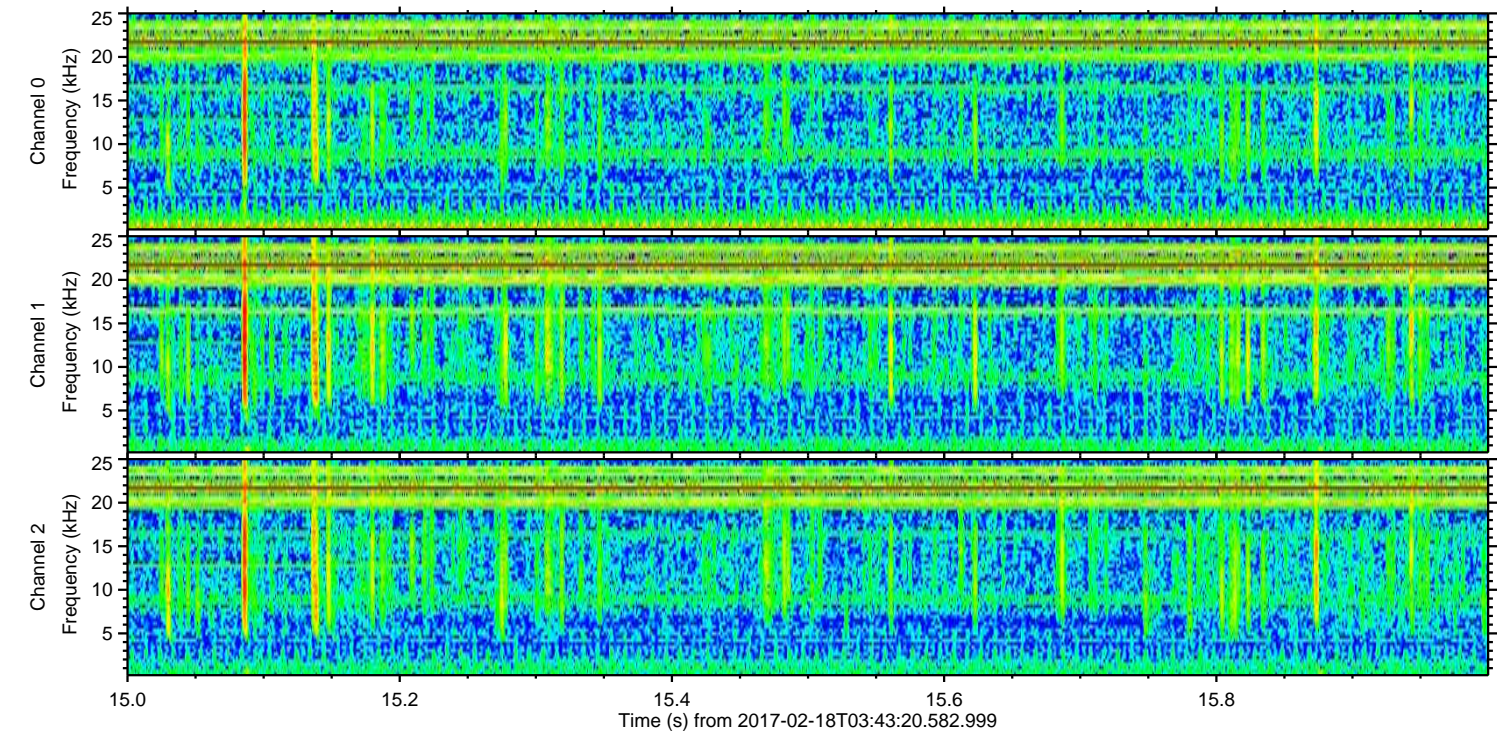
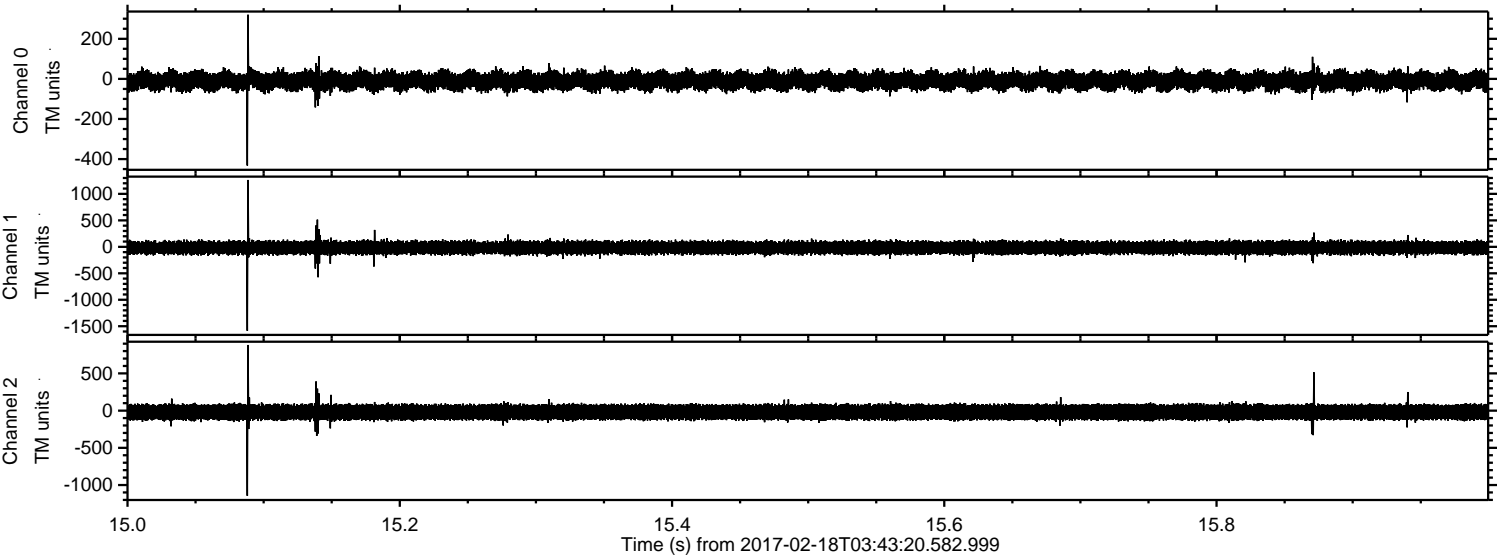


Processed Sat Feb 18 04:50:58 2017 by ELM ver.2012-10-06 from 001__elm20170218_034319__dat00.bin



ELMAVAN 3D WAVEFORMS (Measured data sampled at 50 kHz) 51000 packets of 144 samples from 2017-02-18T03:43:20.582.999. Part 16/147

Processed Sat Feb 18 04:50:59 2017 by ELM ver.2012-10-06 from 001__elm20170218_034319__dat00.bin

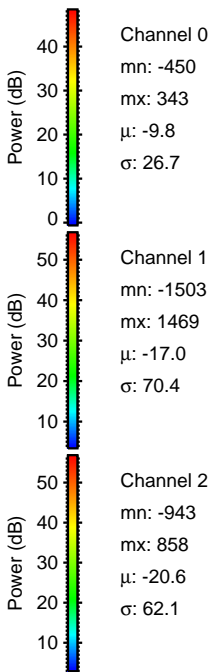
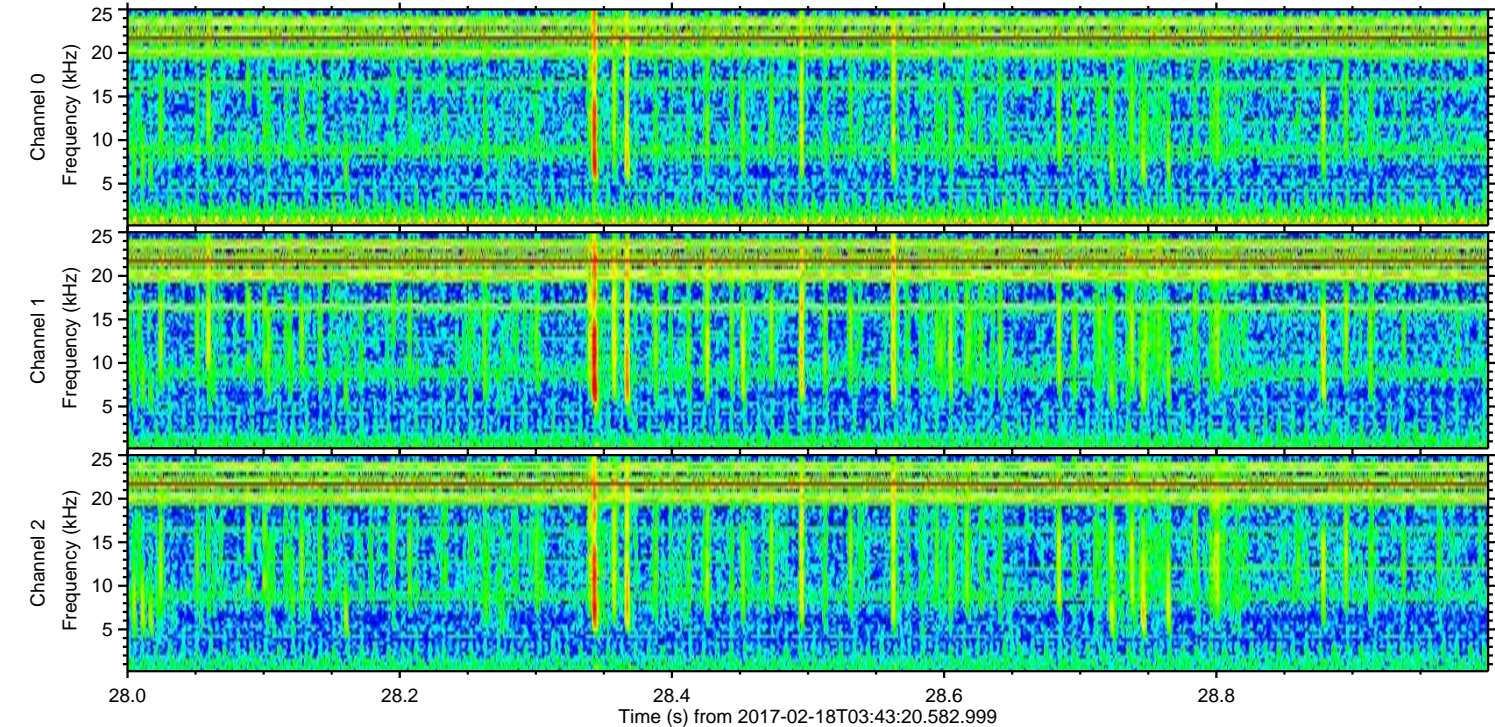
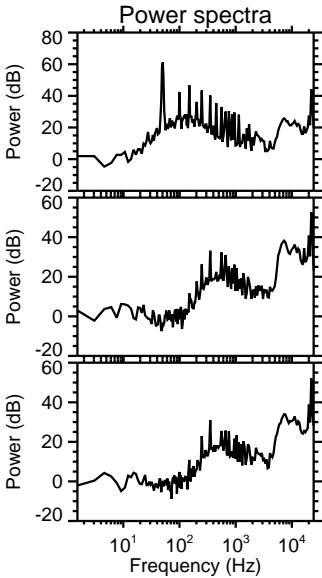
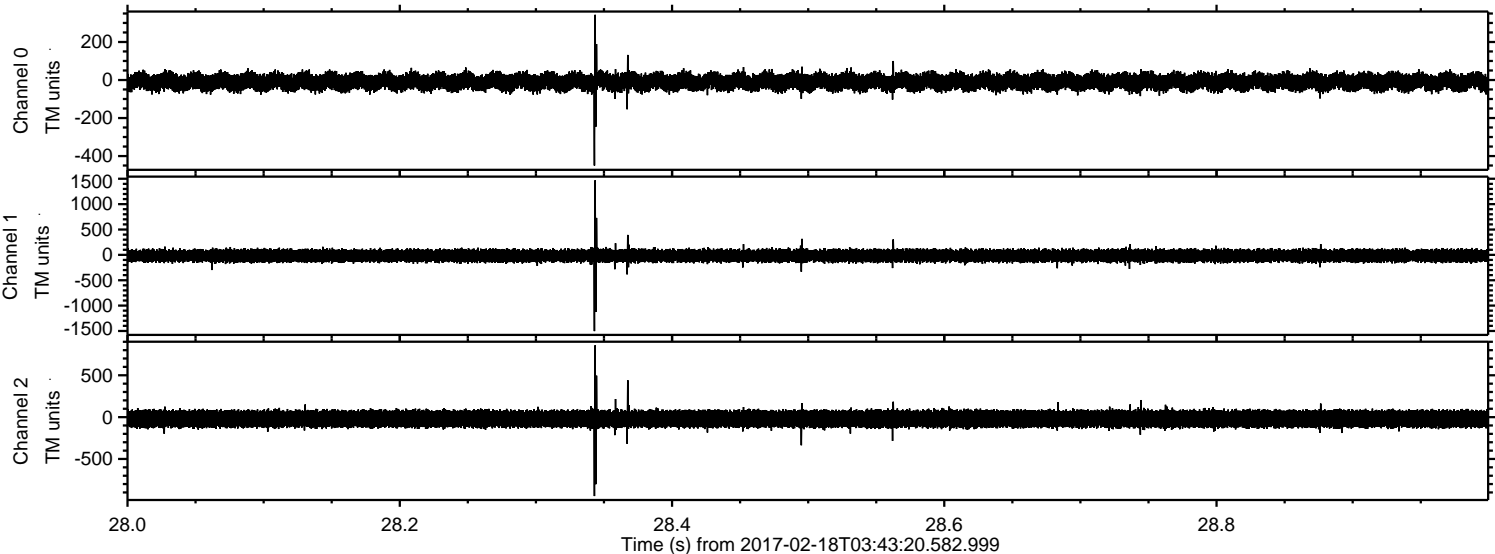


Channel 0
mn: -432
mx: 320
 μ : -9.8
 σ : 26.7

Channel 1
mn: -1585
mx: 1263
 μ : -17.0
 σ : 69.2

Channel 2
mn: -1144
mx: 882
 μ : -20.5
 σ : 61.8

Processed Sat Feb 18 04:51:00 2017 by ELM ver.2012-10-06 from 001__elm20170218_034319__dat00.bin



ELMAVAN 3D WAVEFORMS (Measured data sampled at 50 kHz) 51000 packets of 144 samples from 2017-02-18T03:43:20.582.999. Part 146/147

