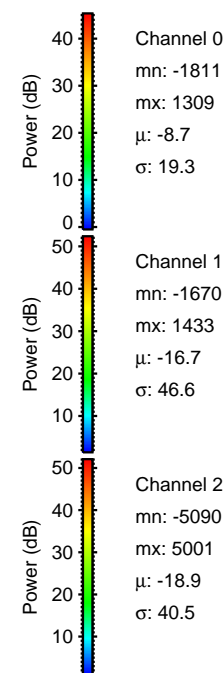
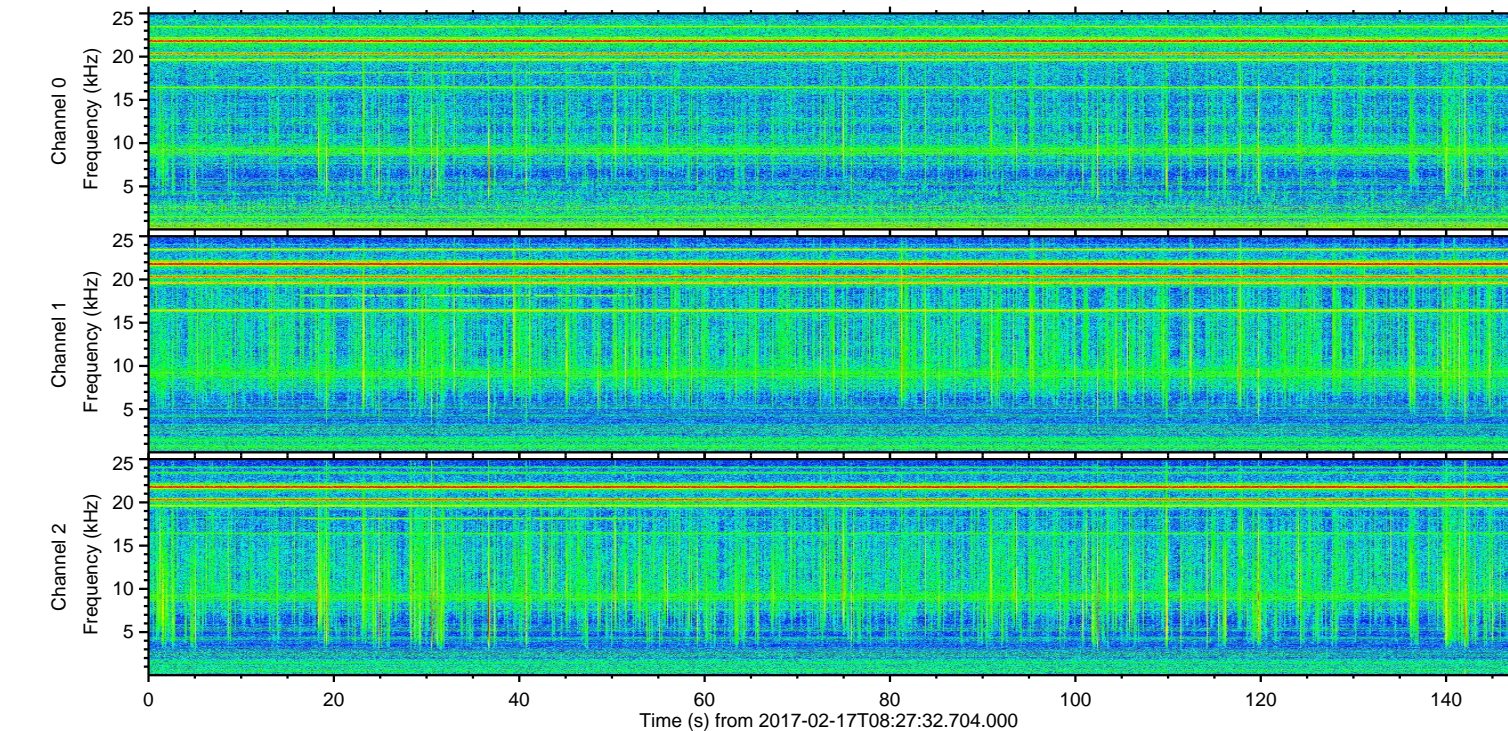
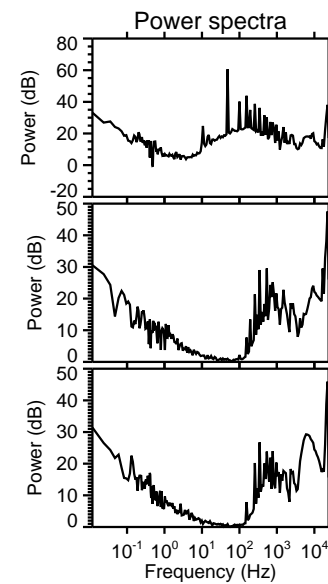
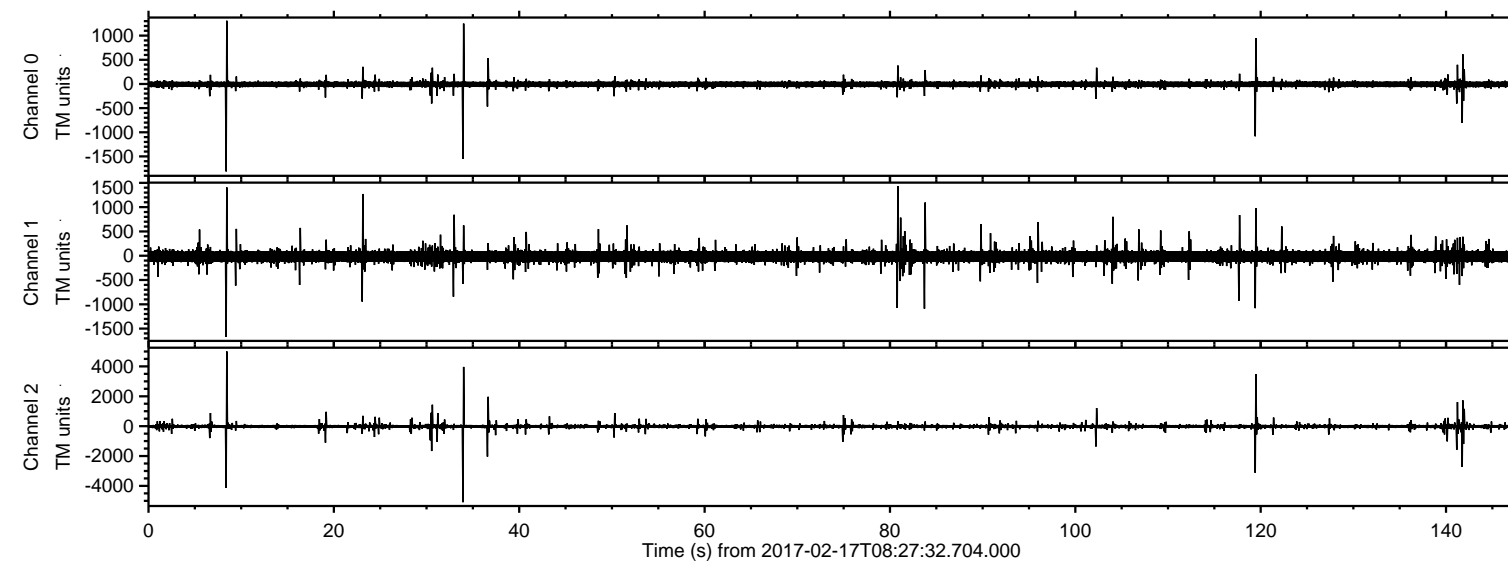


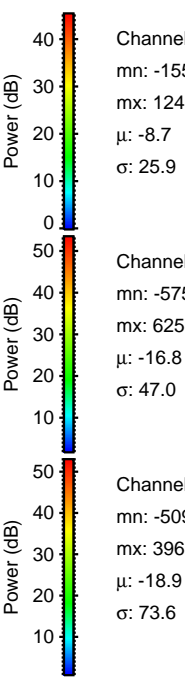
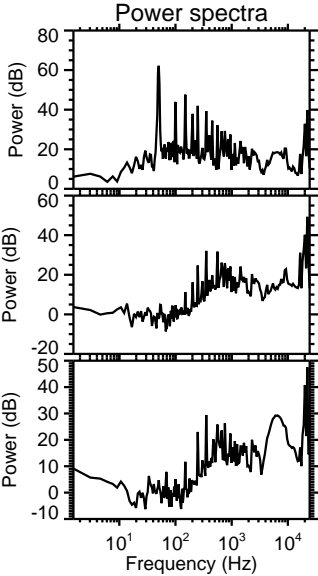
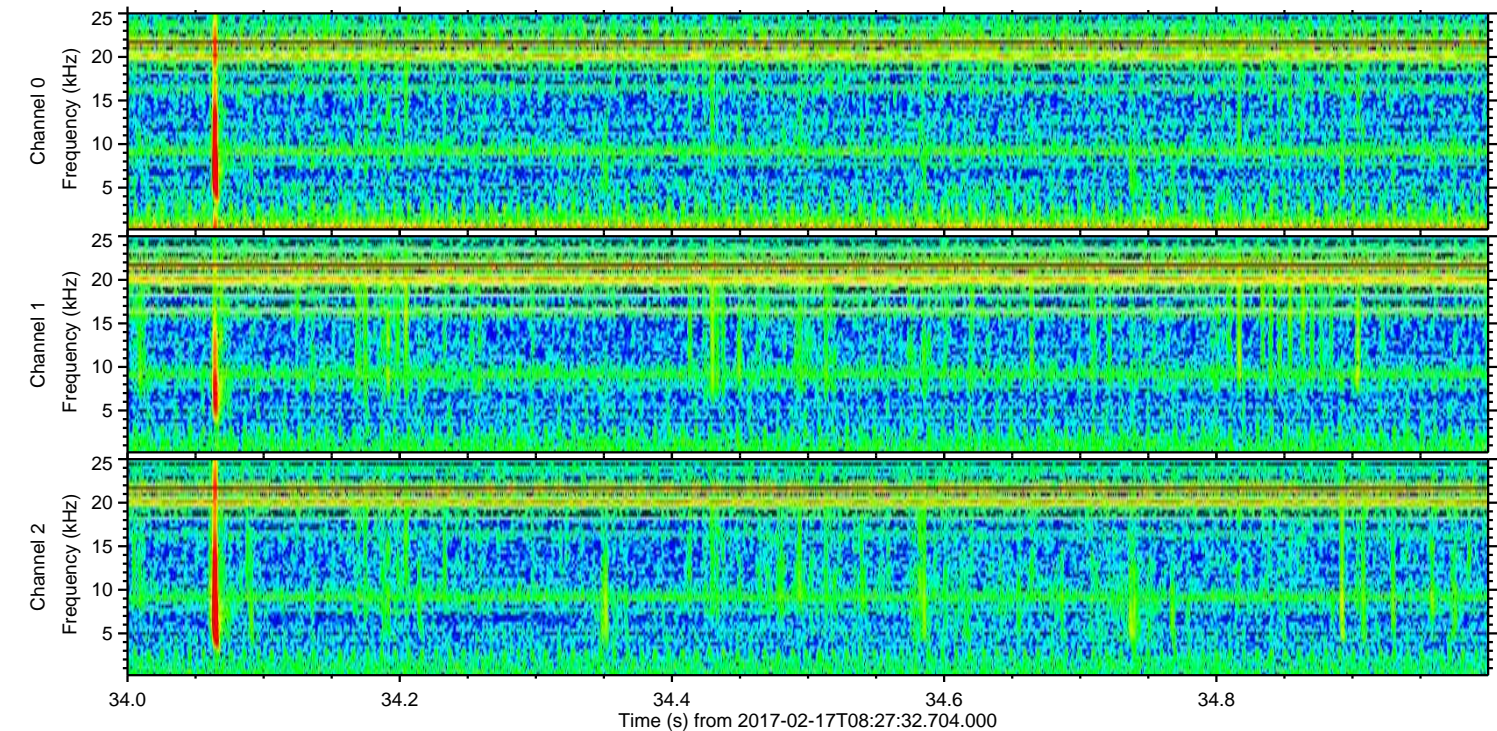
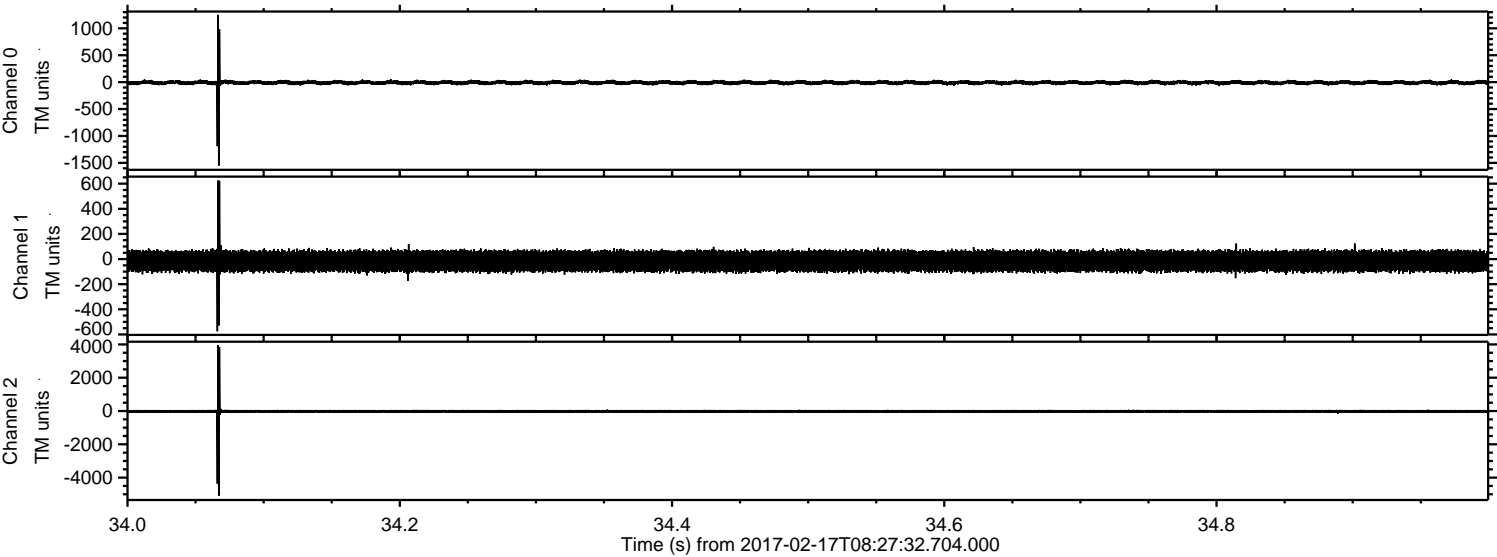
ELMAVAN 3D WAVEFORMS (Measured data sampled at 50 kHz) 51000 packets of 144 samples from 2017-02-17T08:27:32.704.000.

Processed Fri Feb 17 09:35:44 2017 by ELM ver.2012-10-06 from 001__elm20170217_082731__dat00.bin

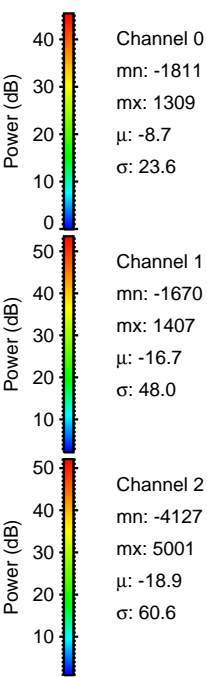
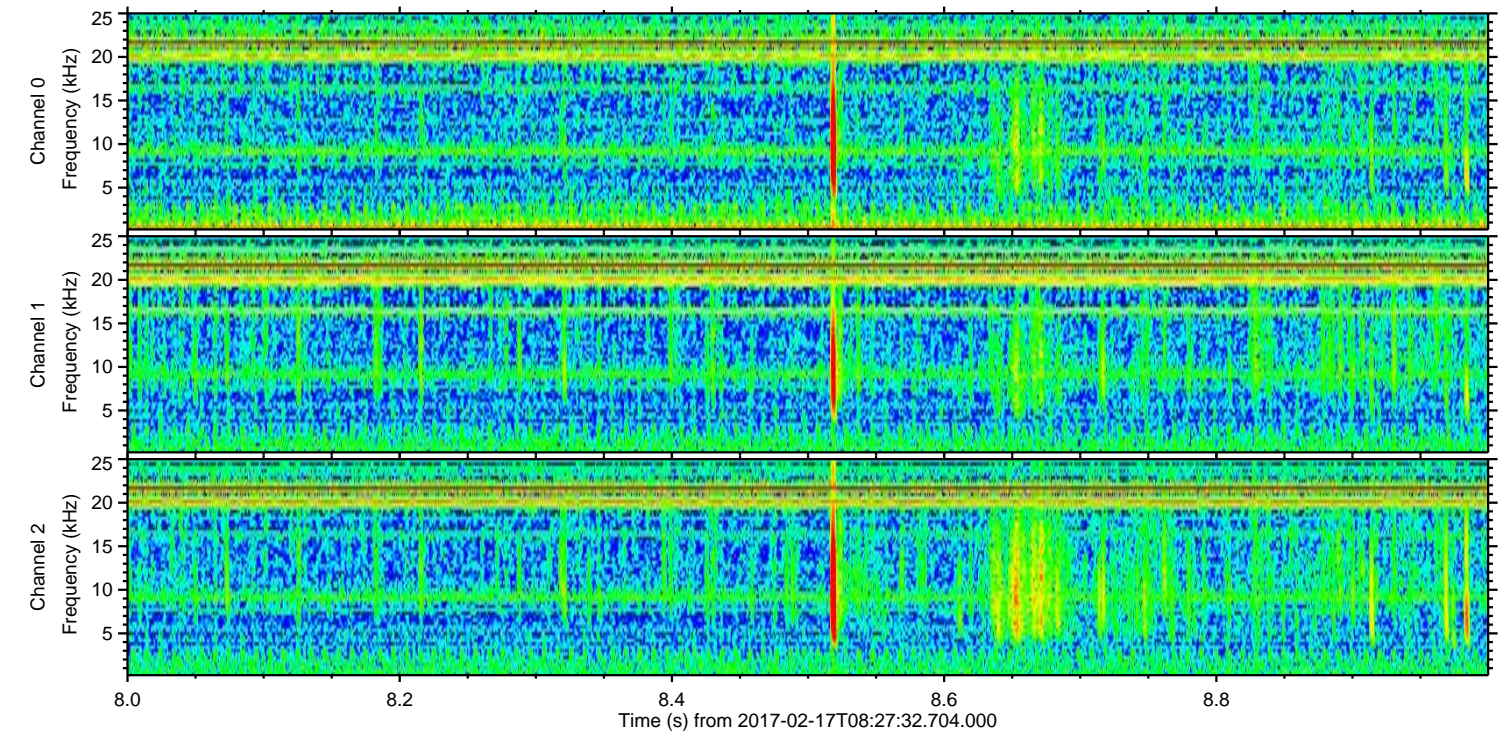
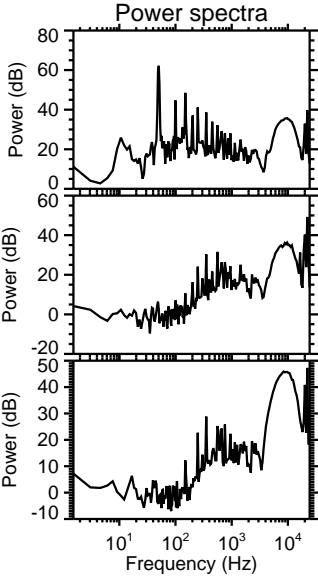
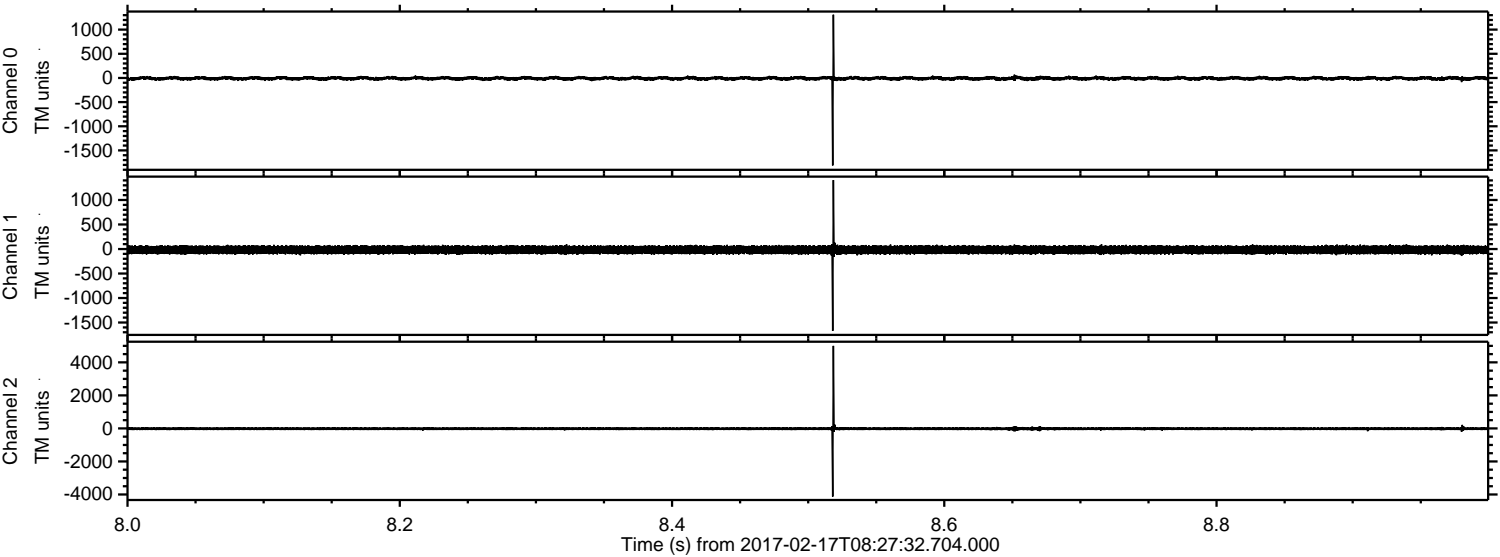


ELMAVAN 3D WAVEFORMS (Measured data sampled at 50 kHz) 51000 packets of 144 samples from 2017-02-17T08:27:32.704.000. Part 35/147

Processed Fri Feb 17 09:35:56 2017 by ELM ver.2012-10-06 from 001__elm20170217_082731__dat00.bin



Processed Fri Feb 17 09:35:57 2017 by ELM ver.2012-10-06 from 001__elm20170217_082731__dat00.bin



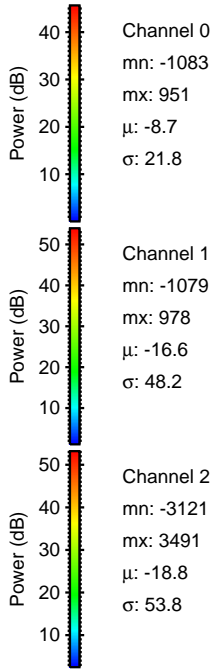
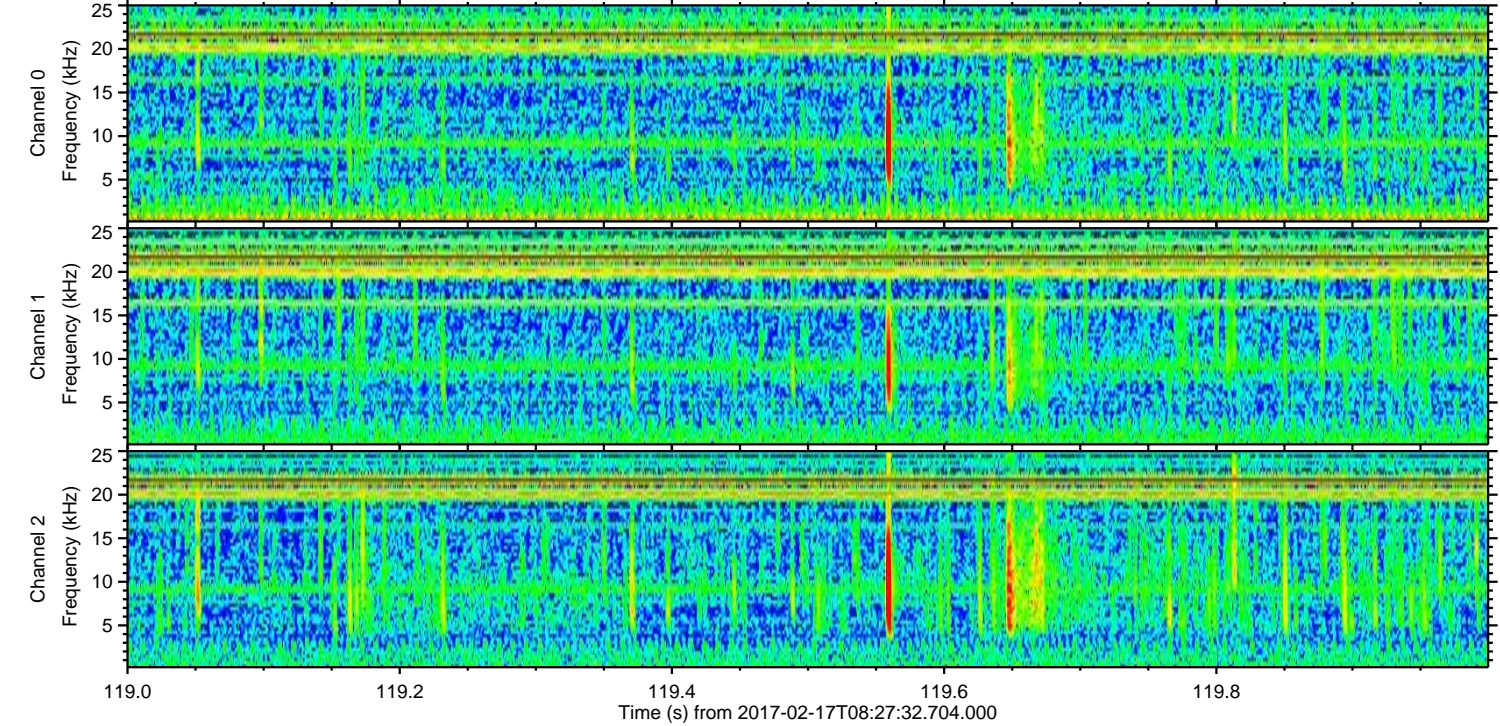
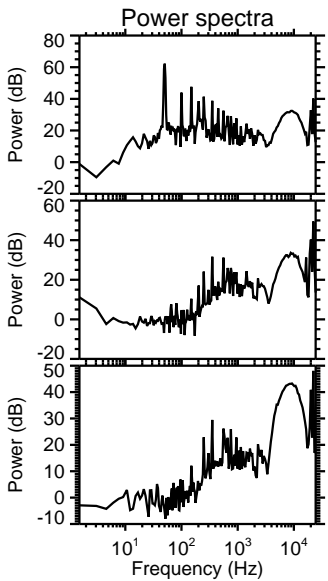
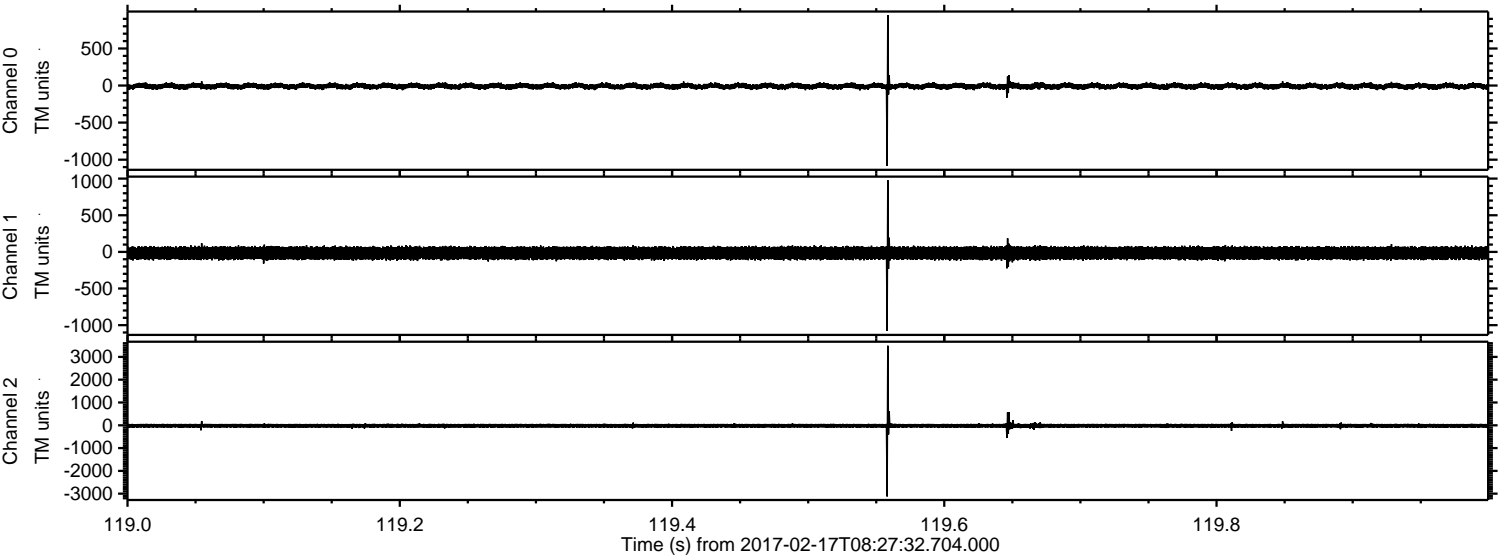
Channel 0
mn: -1811
mx: 1309
 μ : -8.7
 σ : 23.6

Channel 1
mn: -1670
mx: 1407
 μ : -16.7
 σ : 48.0

Channel 2
mn: -4127
mx: 5001
 μ : -18.9
 σ : 60.6

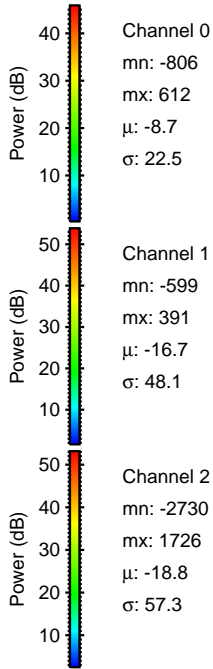
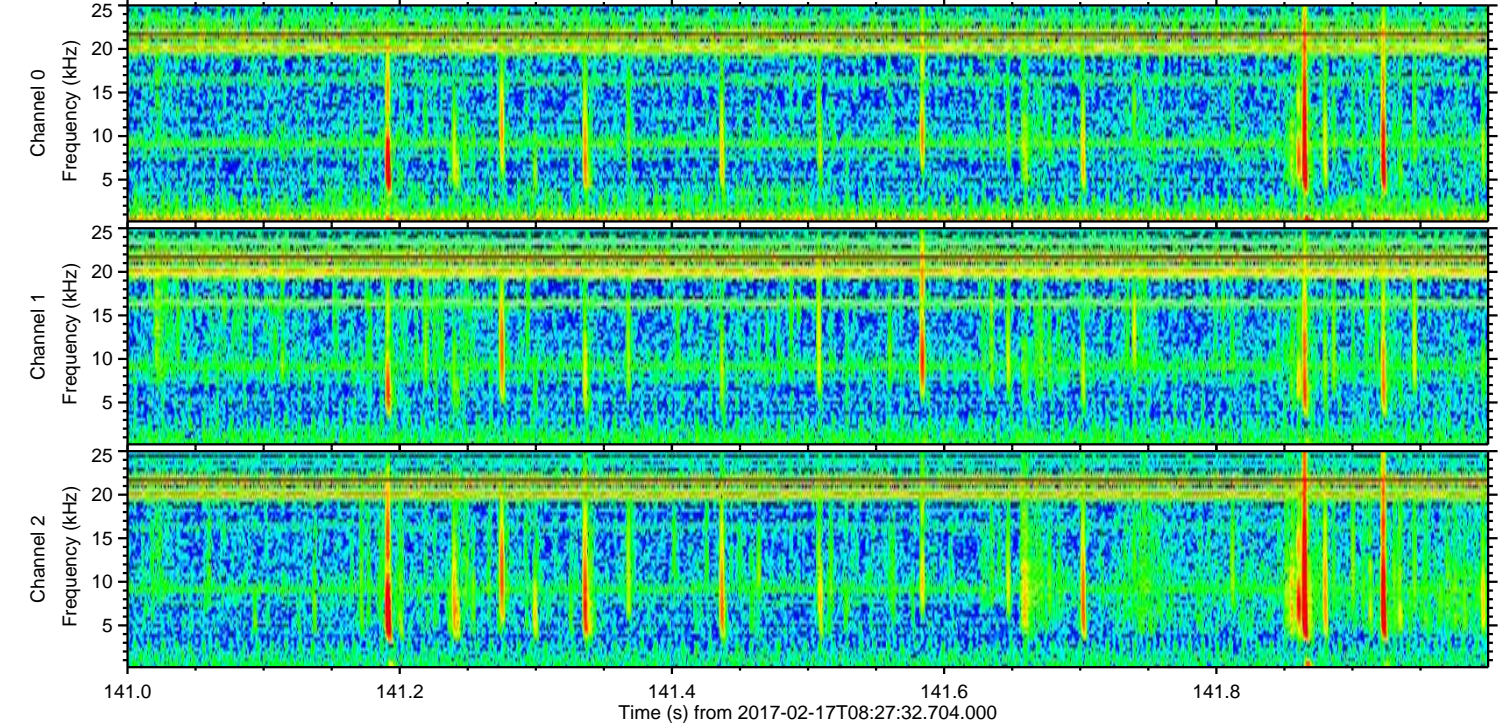
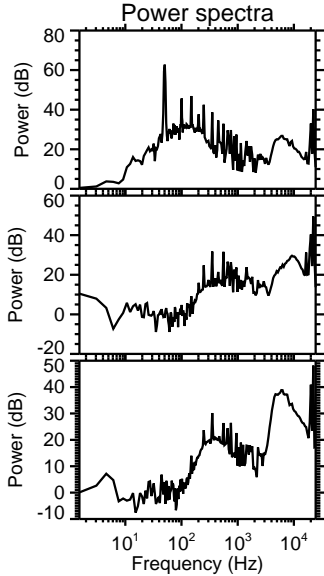
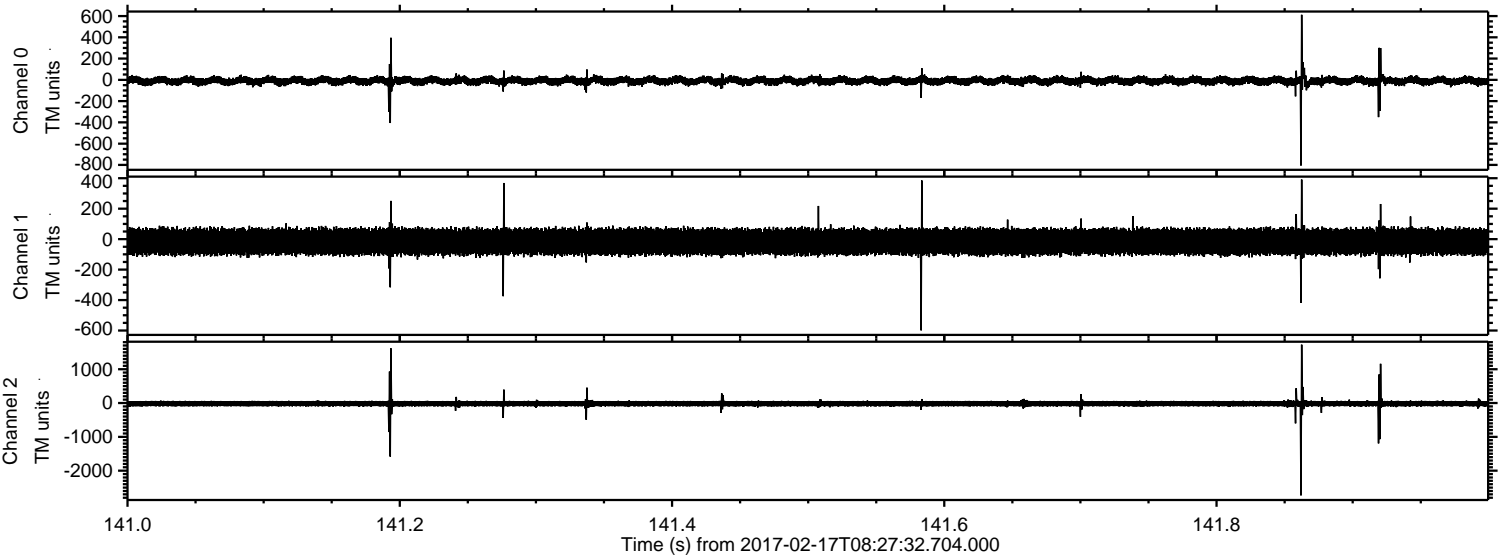
ELMAVAN 3D WAVEFORMS (Measured data sampled at 50 kHz) 51000 packets of 144 samples from 2017-02-17T08:27:32.704.000. Part 120/147

Processed Fri Feb 17 09:35:57 2017 by ELM ver.2012-10-06 from 001__elm20170217_082731__dat00.bin



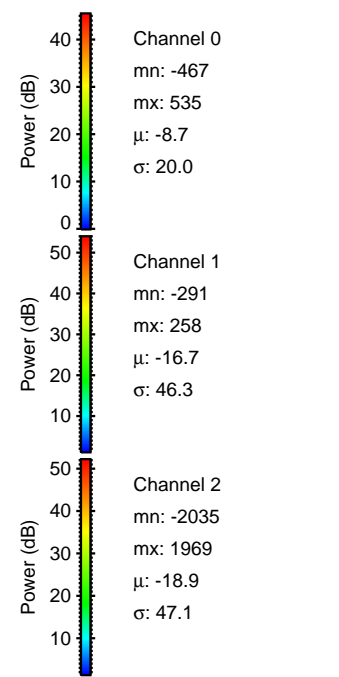
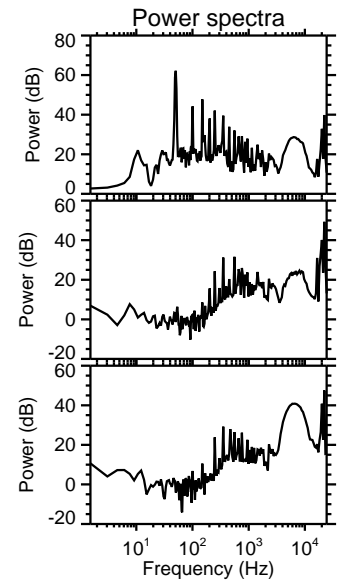
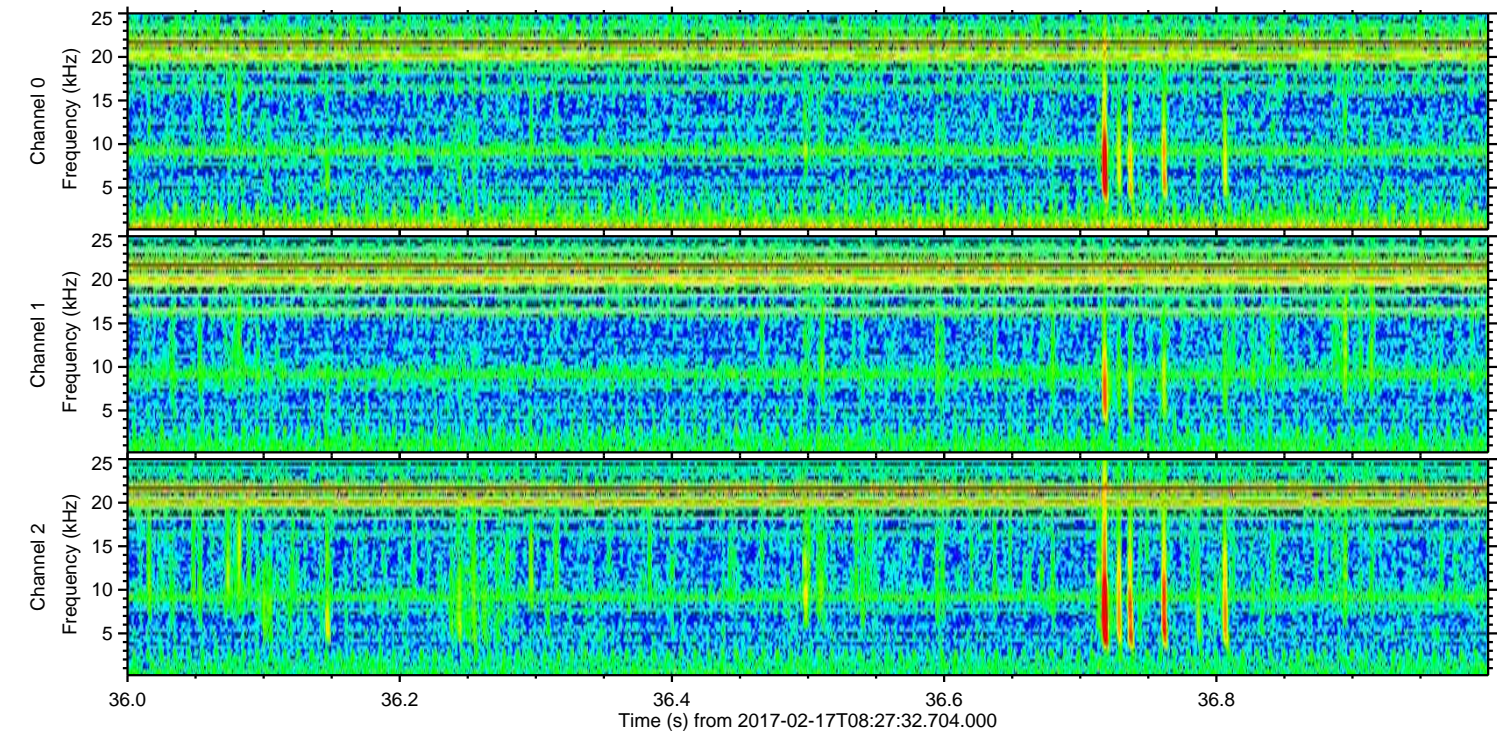
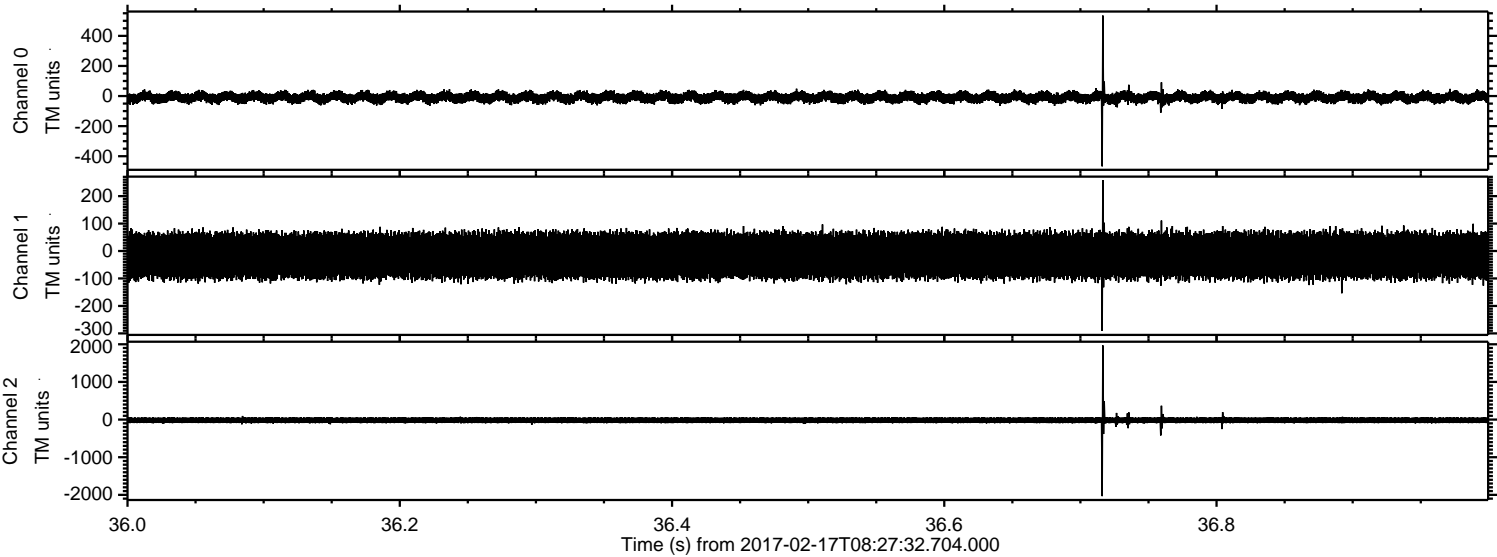
ELMAVAN 3D WAVEFORMS (Measured data sampled at 50 kHz) 51000 packets of 144 samples from 2017-02-17T08:27:32.704.000. Part 142/147

Processed Fri Feb 17 09:35:58 2017 by ELM ver.2012-10-06 from 001__elm20170217_082731__dat00.bin



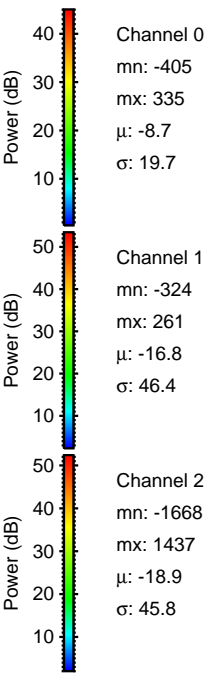
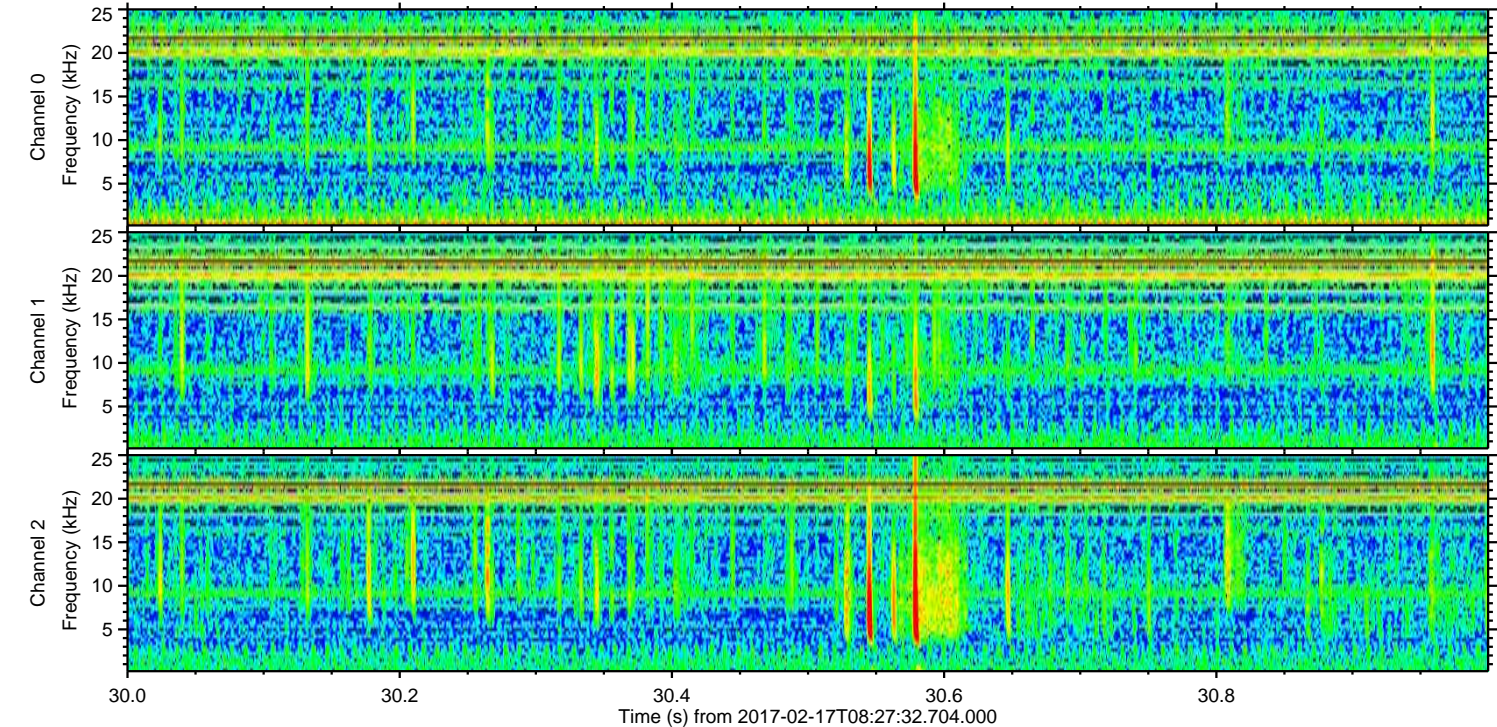
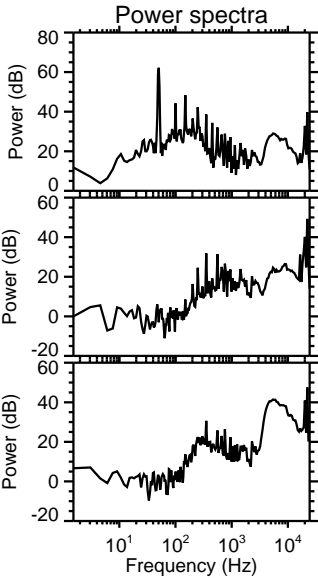
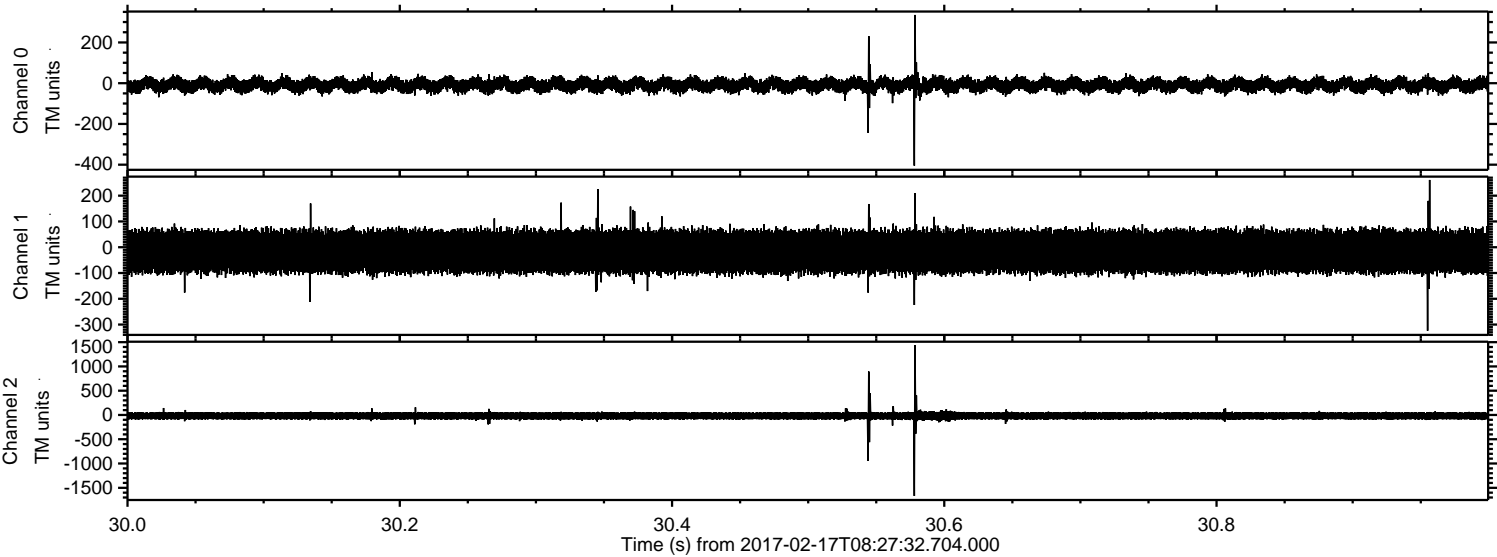
ELMAVAN 3D WAVEFORMS (Measured data sampled at 50 kHz) 51000 packets of 144 samples from 2017-02-17T08:27:32.704.000. Part 37/147

Processed Fri Feb 17 09:35:59 2017 by ELM ver.2012-10-06 from 001__elm20170217_082731__dat00.bin

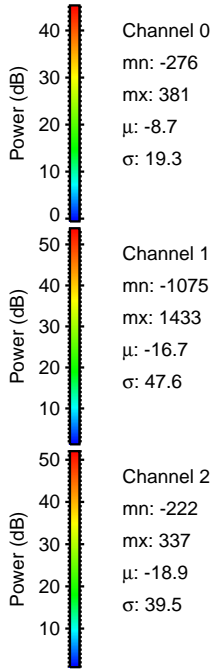
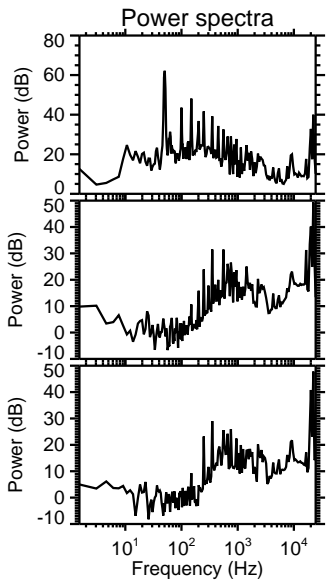
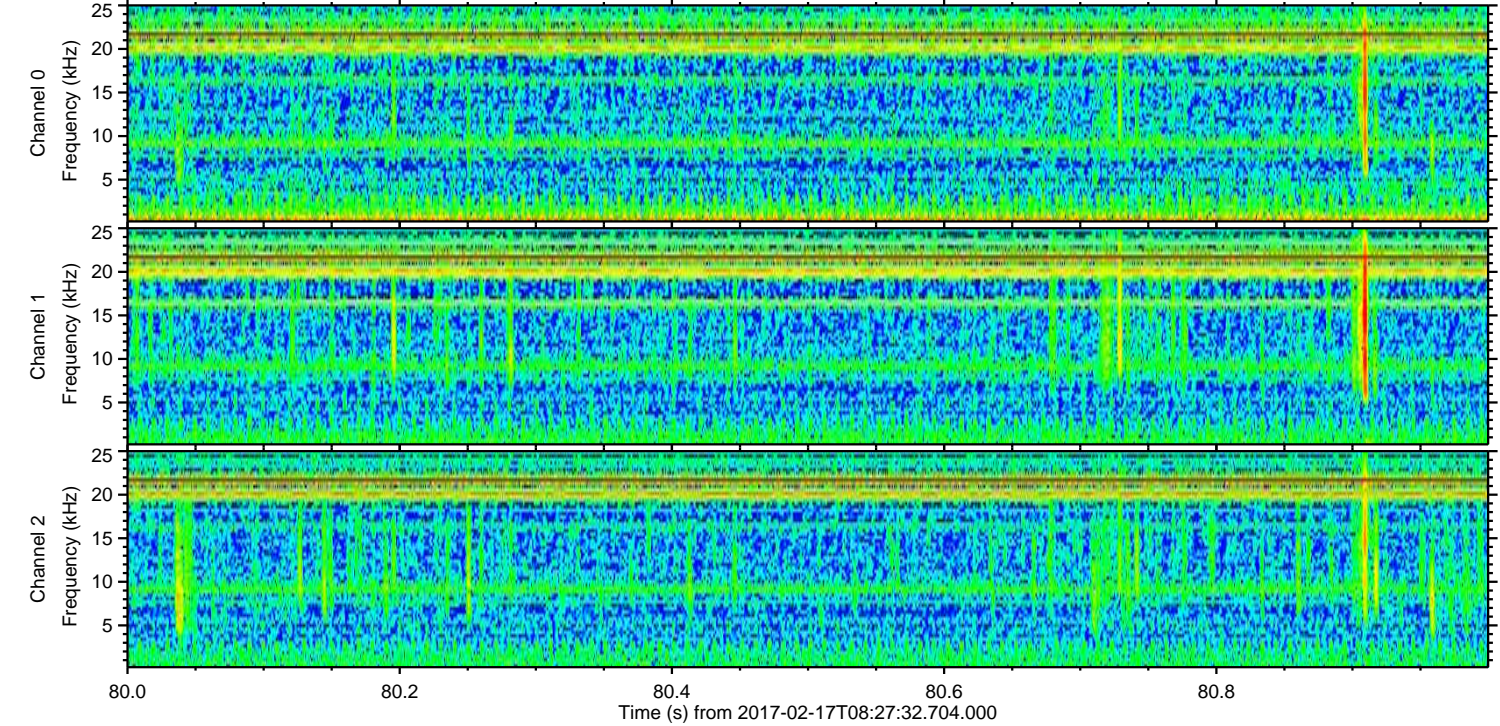
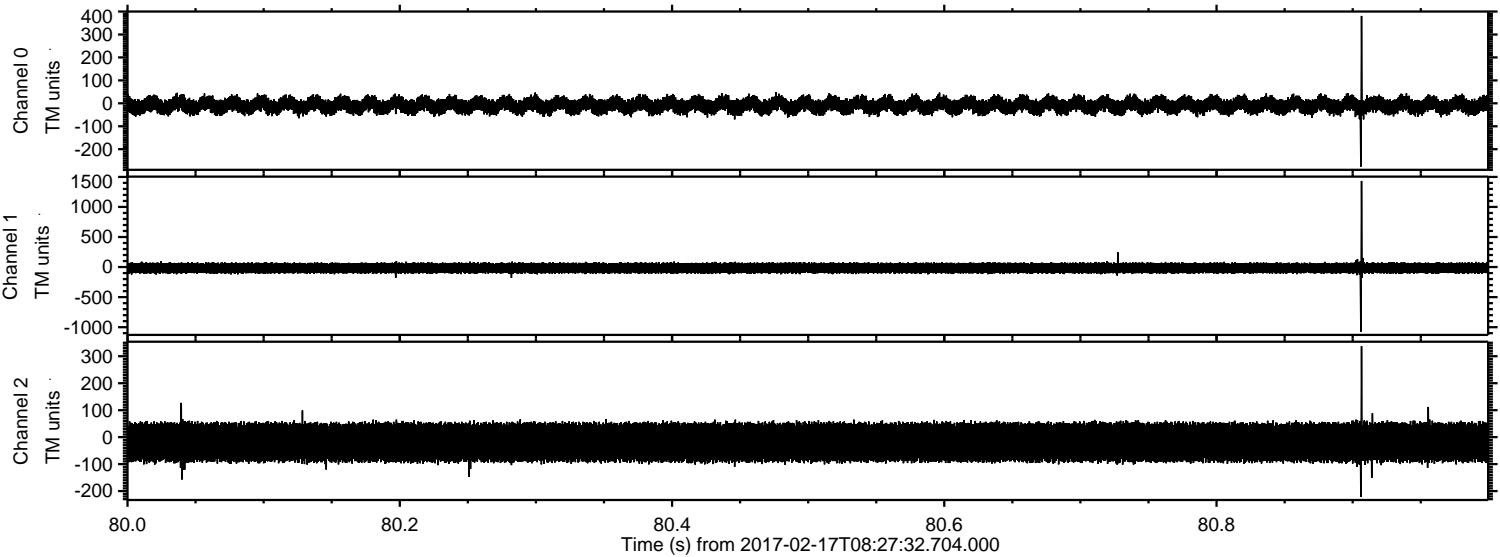


ELMAVAN 3D WAVEFORMS (Measured data sampled at 50 kHz) 51000 packets of 144 samples from 2017-02-17T08:27:32.704.000. Part 31/147

Processed Fri Feb 17 09:36:00 2017 by ELM ver.2012-10-06 from 001__elm20170217_082731__dat00.bin



Processed Fri Feb 17 09:36:01 2017 by ELM ver.2012-10-06 from 001__elm20170217_082731__dat00.bin



Power spectra

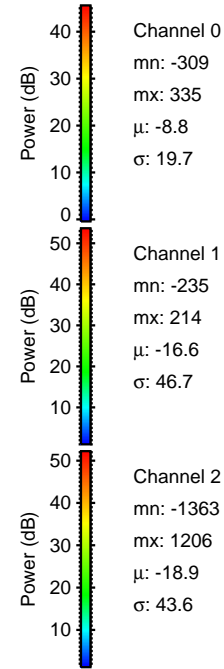
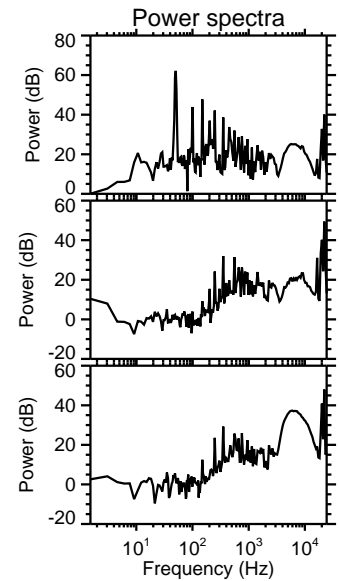
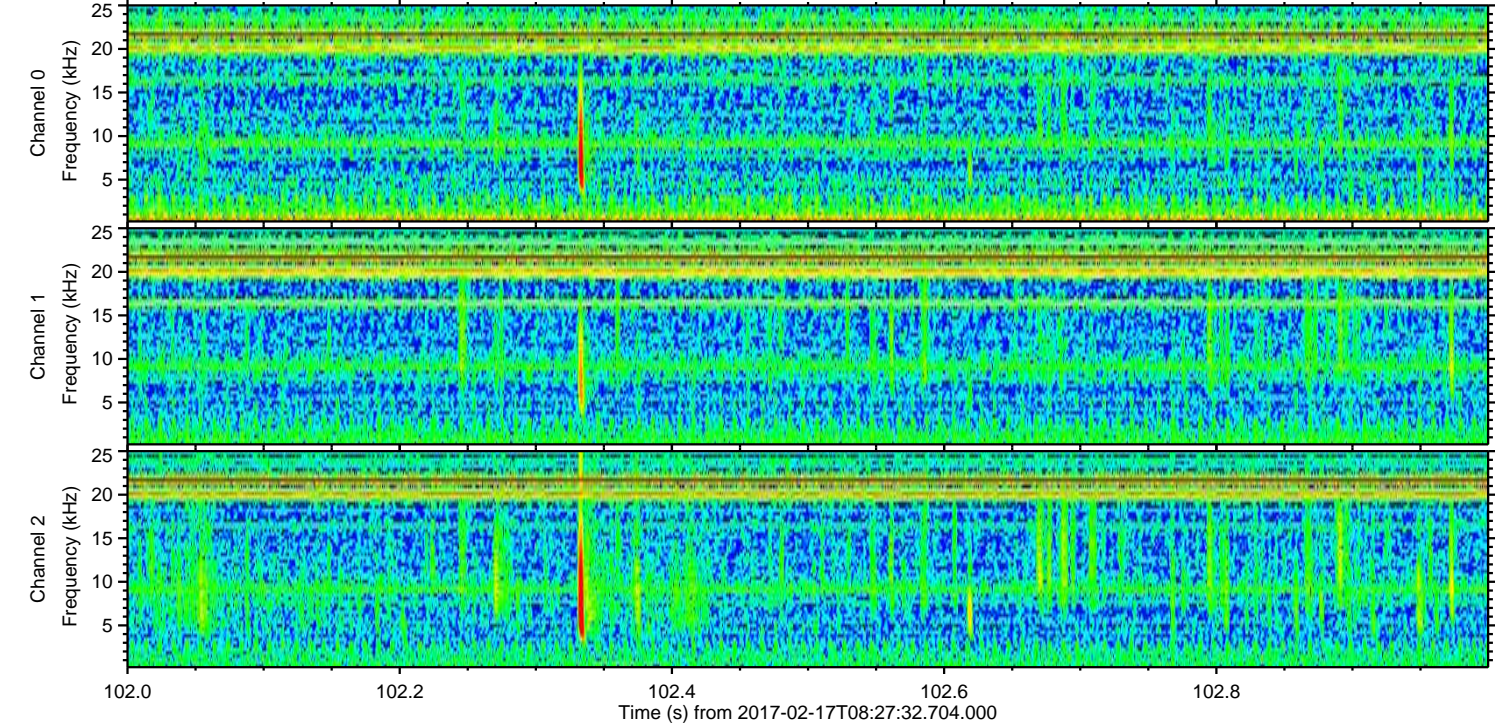
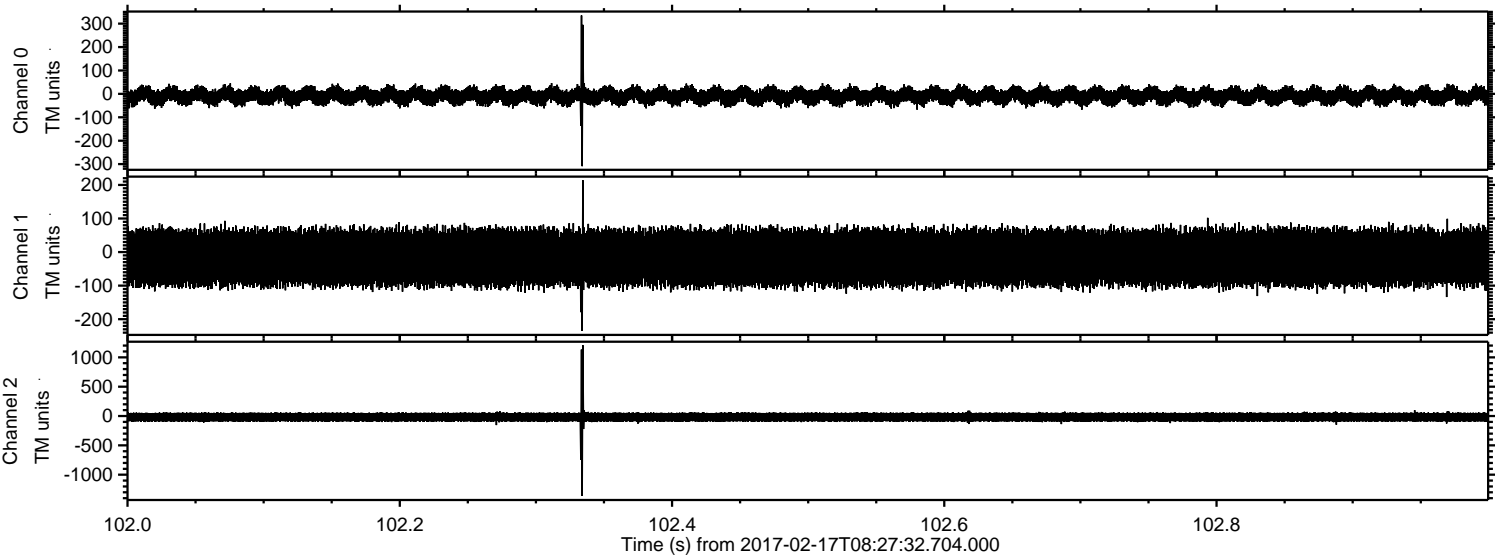
Channel 0
mn: -276
mx: 381
 μ : -8.7
 σ : 19.3

Channel 1
mn: -1075
mx: 1433
 μ : -16.7
 σ : 47.6

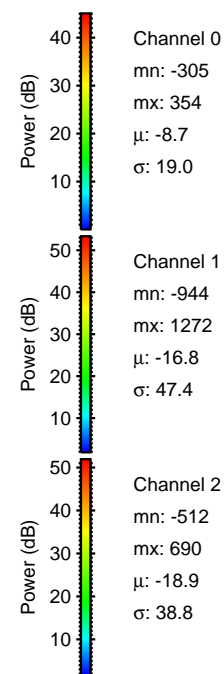
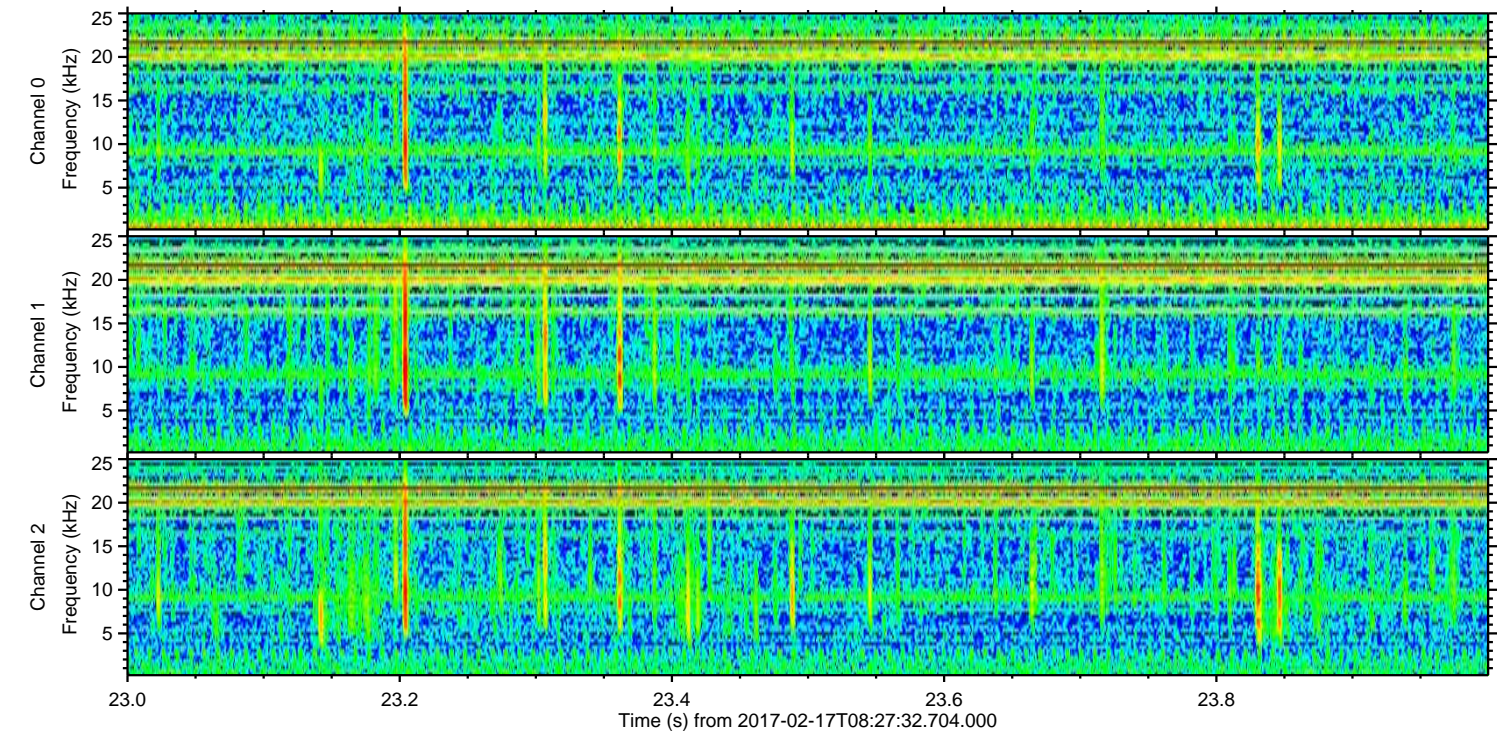
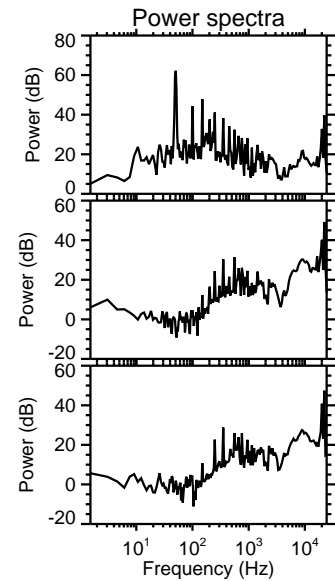
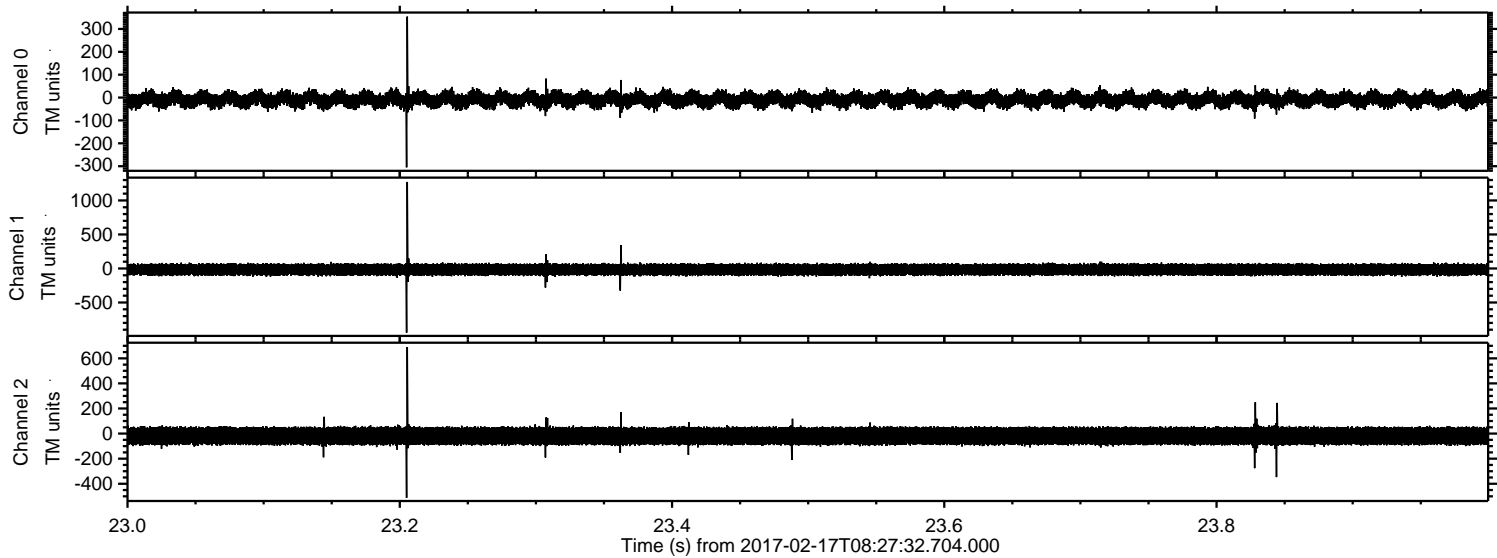
Channel 2
mn: -222
mx: 337
 μ : -18.9
 σ : 39.5

ELMAVAN 3D WAVEFORMS (Measured data sampled at 50 kHz) 51000 packets of 144 samples from 2017-02-17T08:27:32.704.000. Part 103/147

Processed Fri Feb 17 09:36:02 2017 by ELM ver.2012-10-06 from 001__elm20170217_082731__dat00.bin



Processed Fri Feb 17 09:36:03 2017 by ELM ver.2012-10-06 from 001__elm20170217_082731__dat00.bin



ELMAVAN 3D WAVEFORMS (Measured data sampled at 50 kHz) 51000 packets of 144 samples from 2017-02-17T08:27:32.704.000. Part 36/147

Processed Fri Feb 17 09:36:04 2017 by ELM ver.2012-10-06 from 001__elm20170217_082731__dat00.bin

