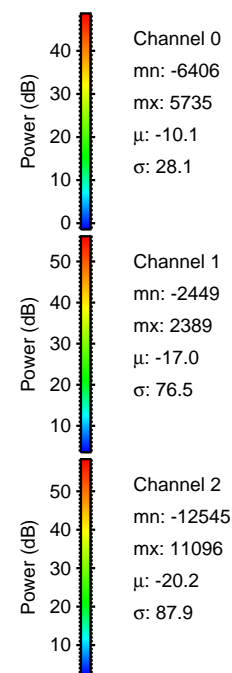
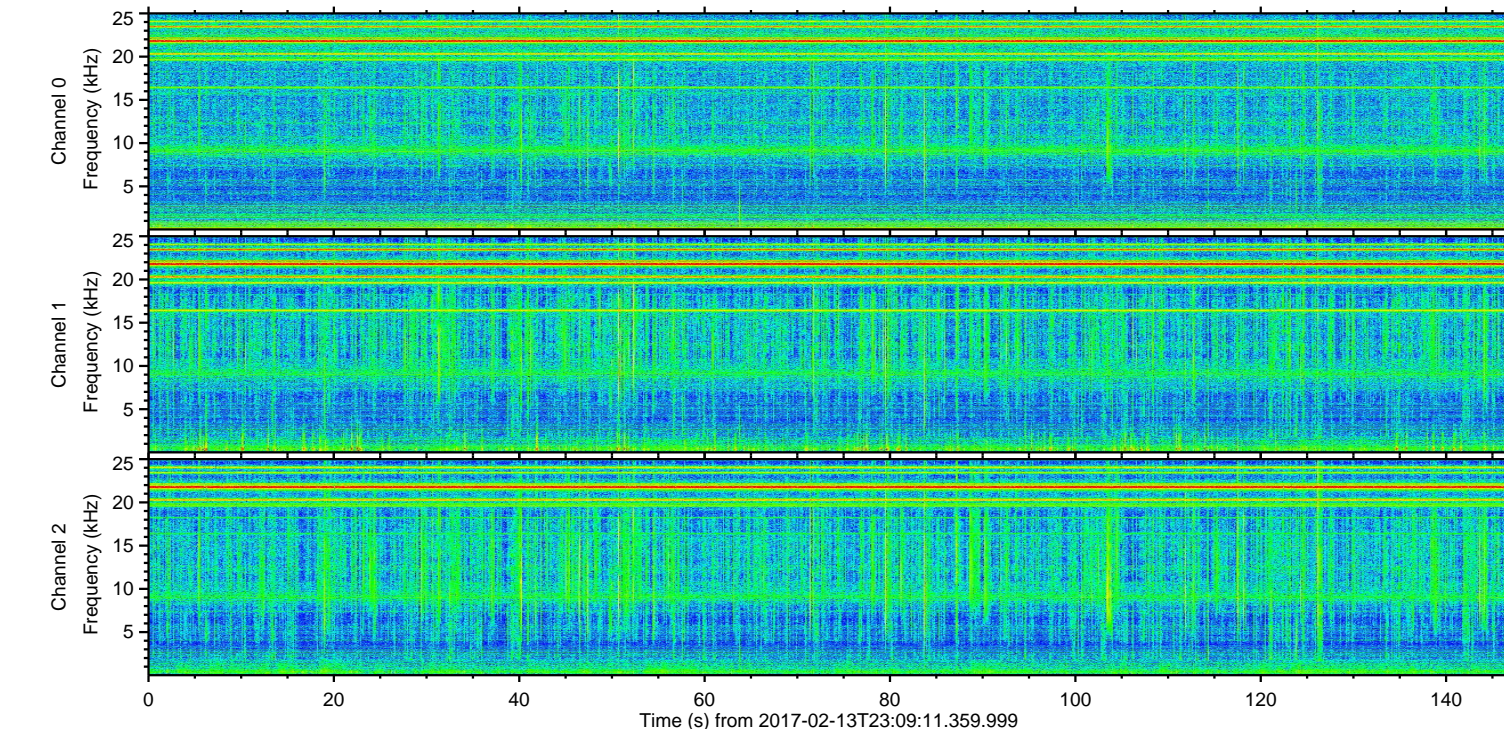
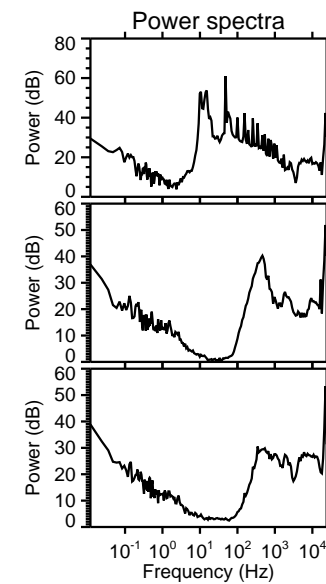
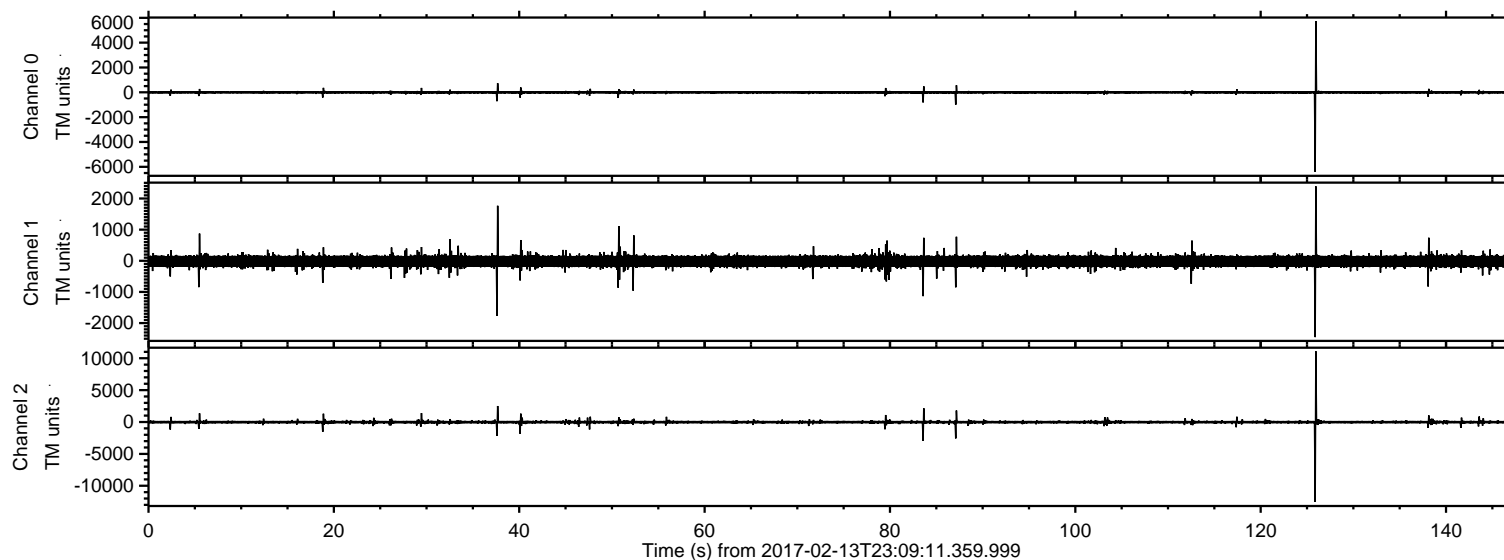


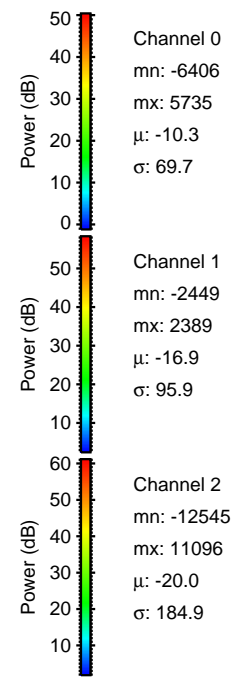
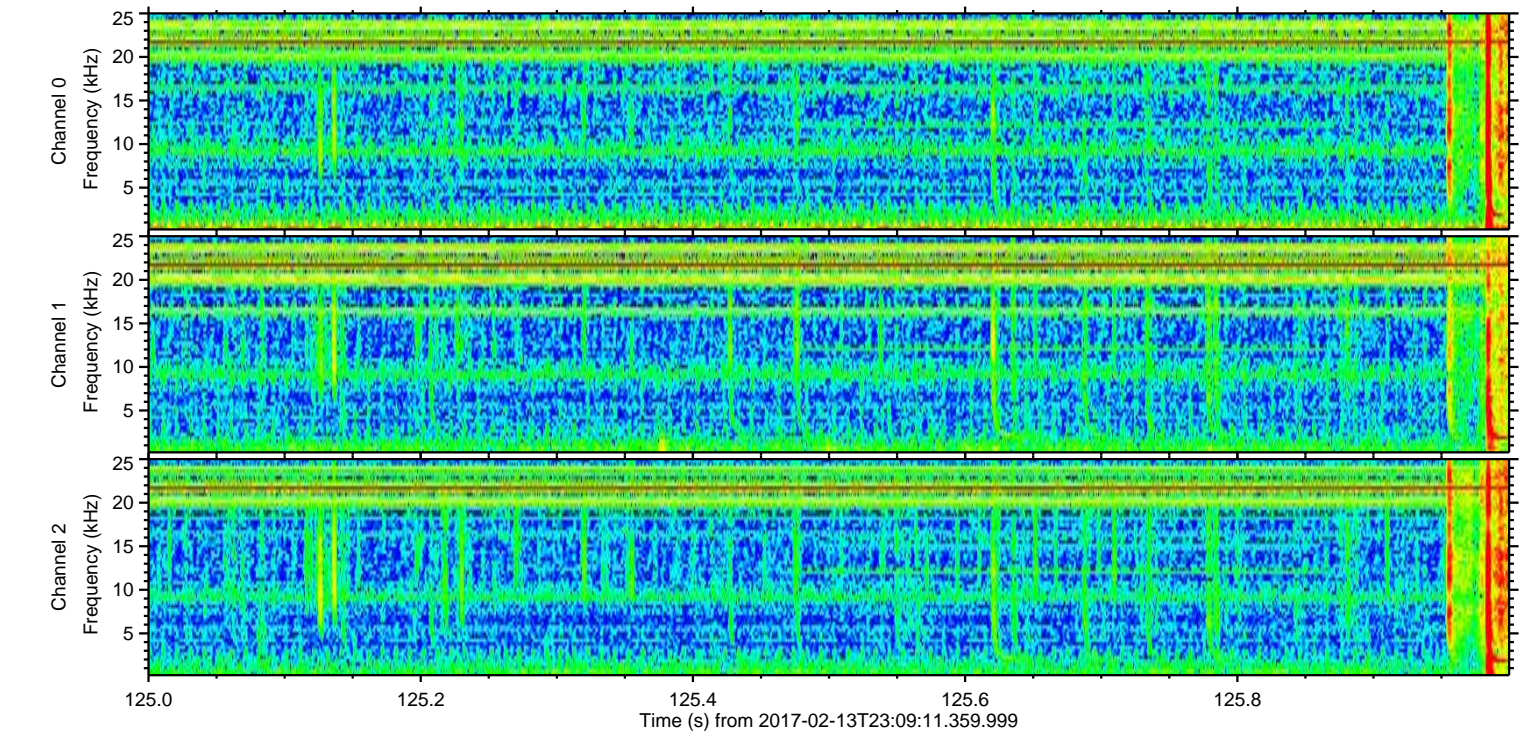
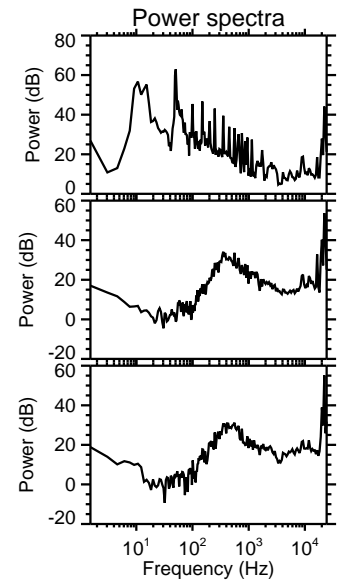
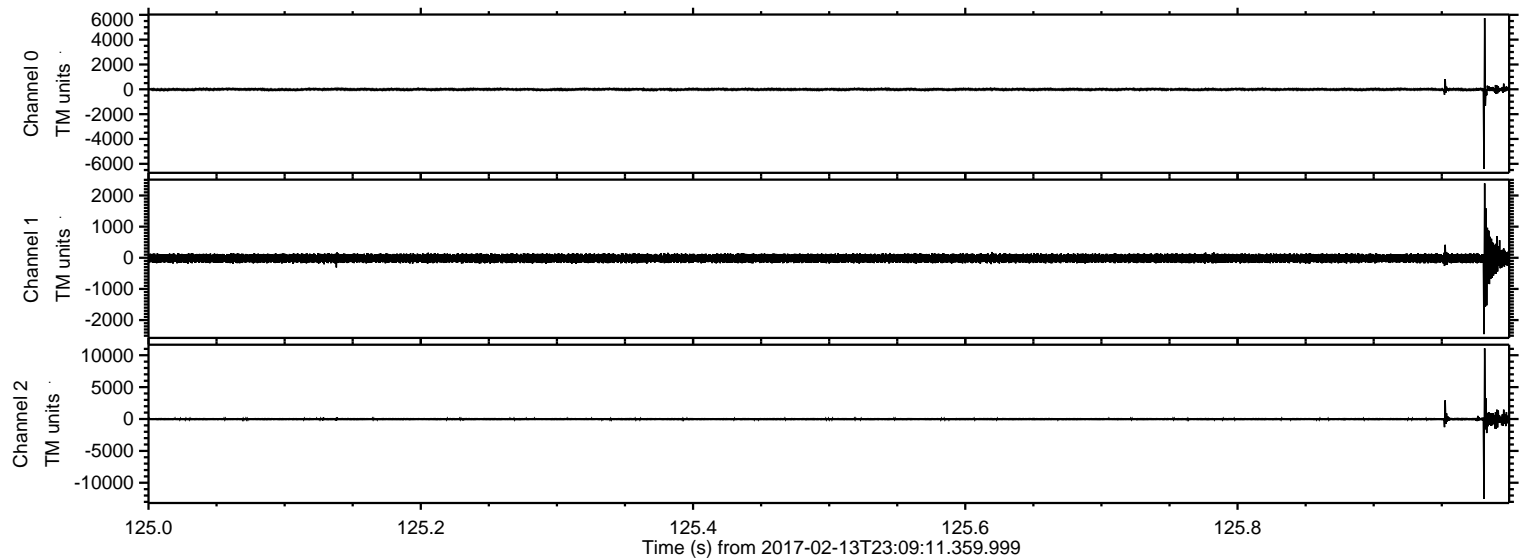
ELMAVAN 3D WAVEFORMS (Measured data sampled at 50 kHz) 51000 packets of 144 samples from 2017-02-13T23:09:11.359.999.

Processed Tue Feb 14 00:17:04 2017 by ELM ver.2012-10-06 from 001__elm20170213_230910__dat00.bin



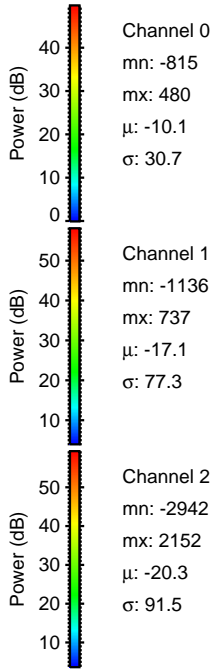
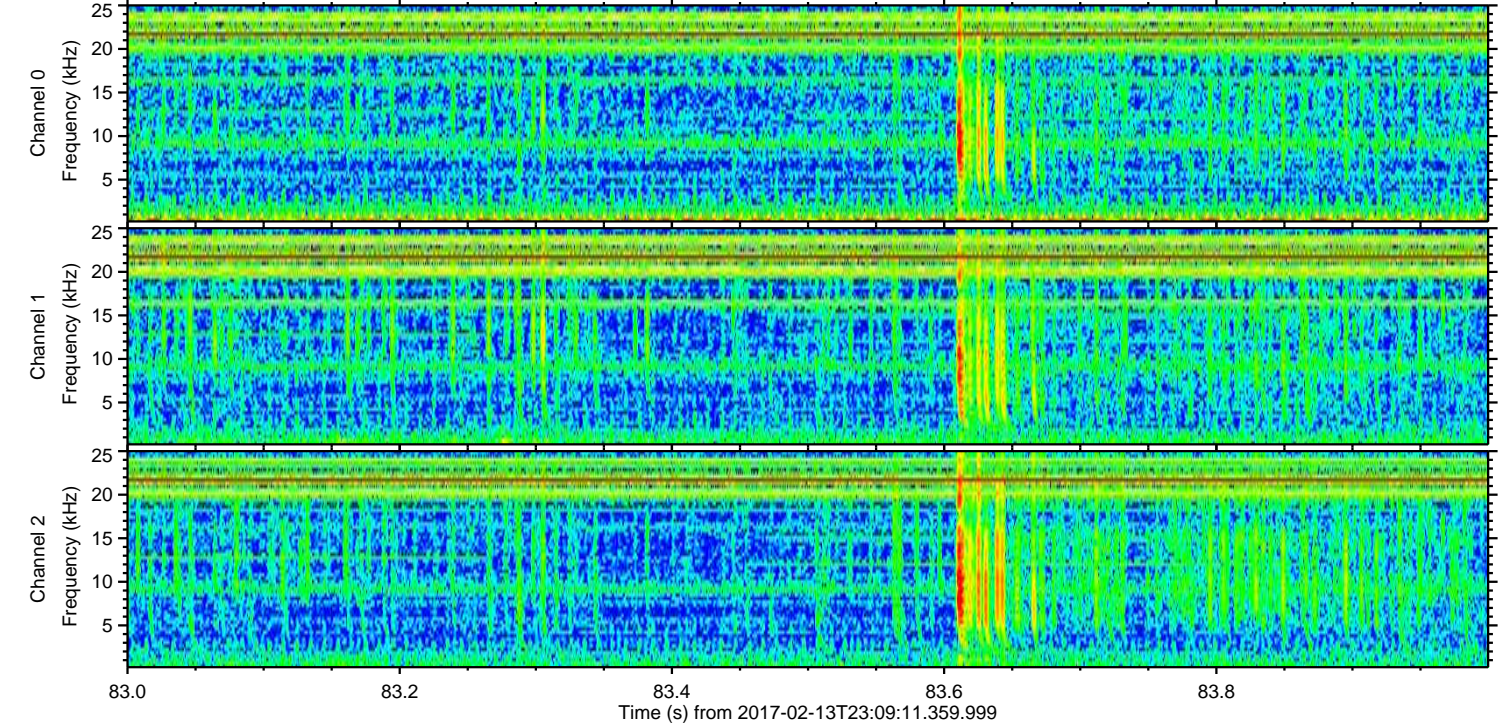
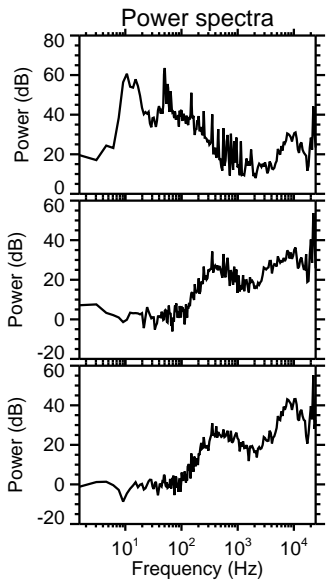
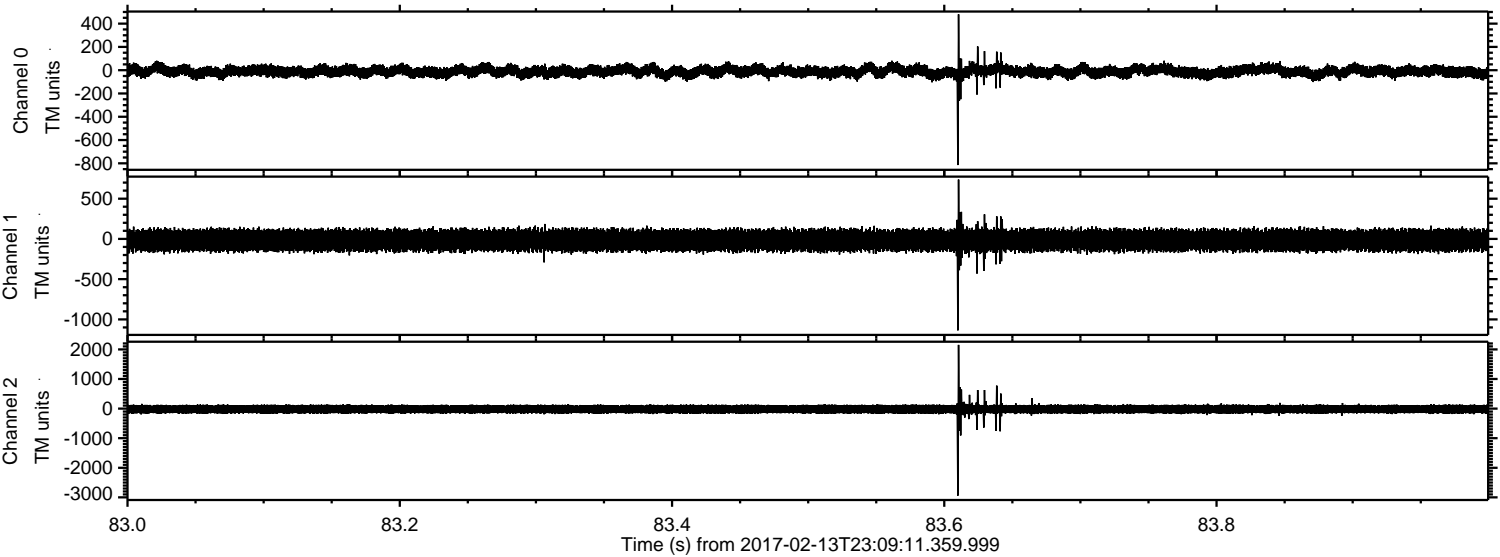
ELMAVAN 3D WAVEFORMS (Measured data sampled at 50 kHz) 51000 packets of 144 samples from 2017-02-13T23:09:11.359.999. Part 126/147

Processed Tue Feb 14 00:17:15 2017 by ELM ver.2012-10-06 from 001__elm20170213_230910__dat00.bin

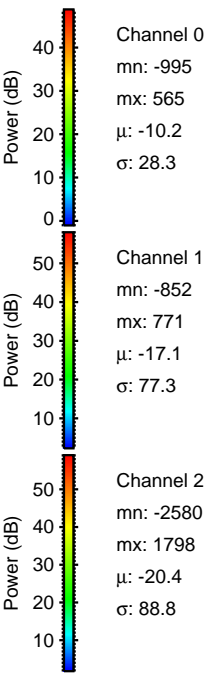
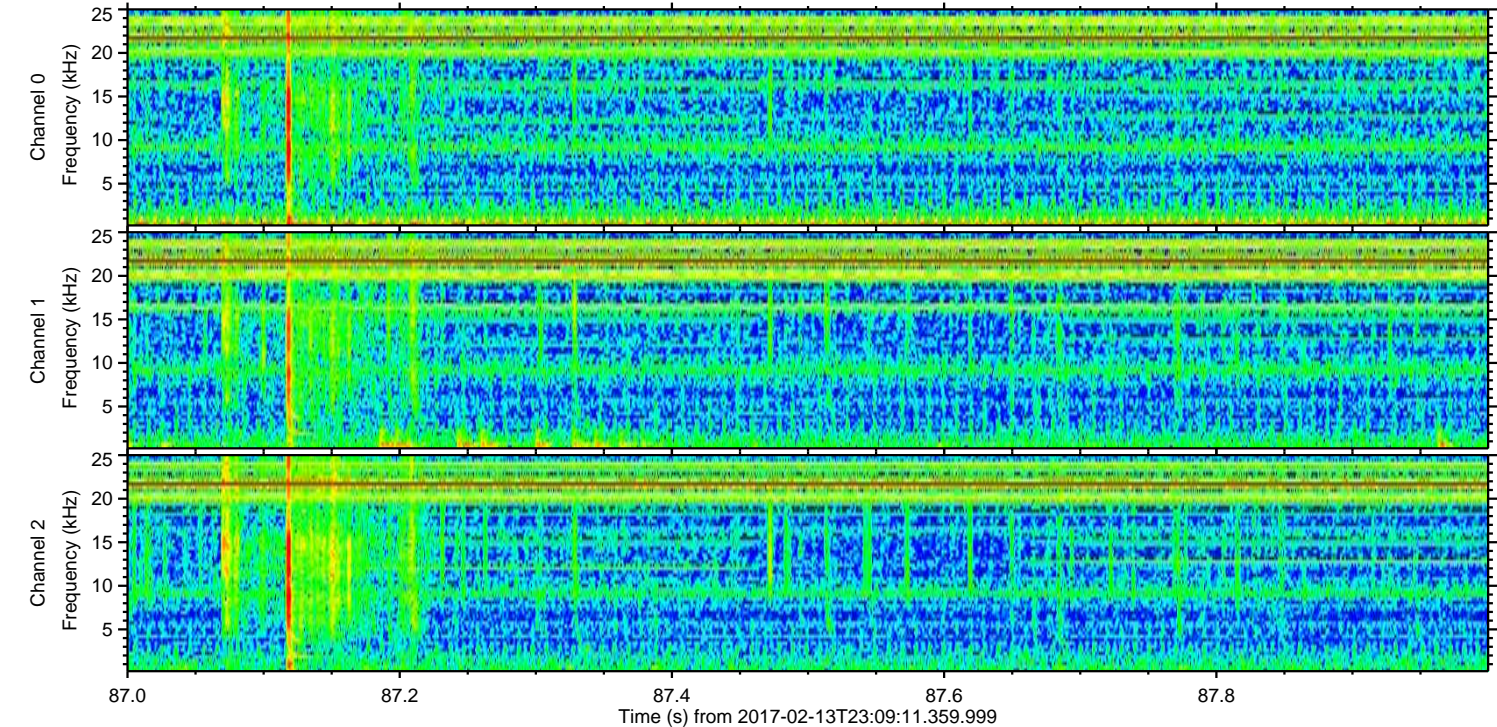
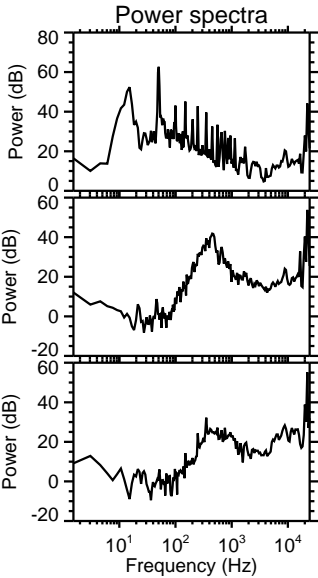
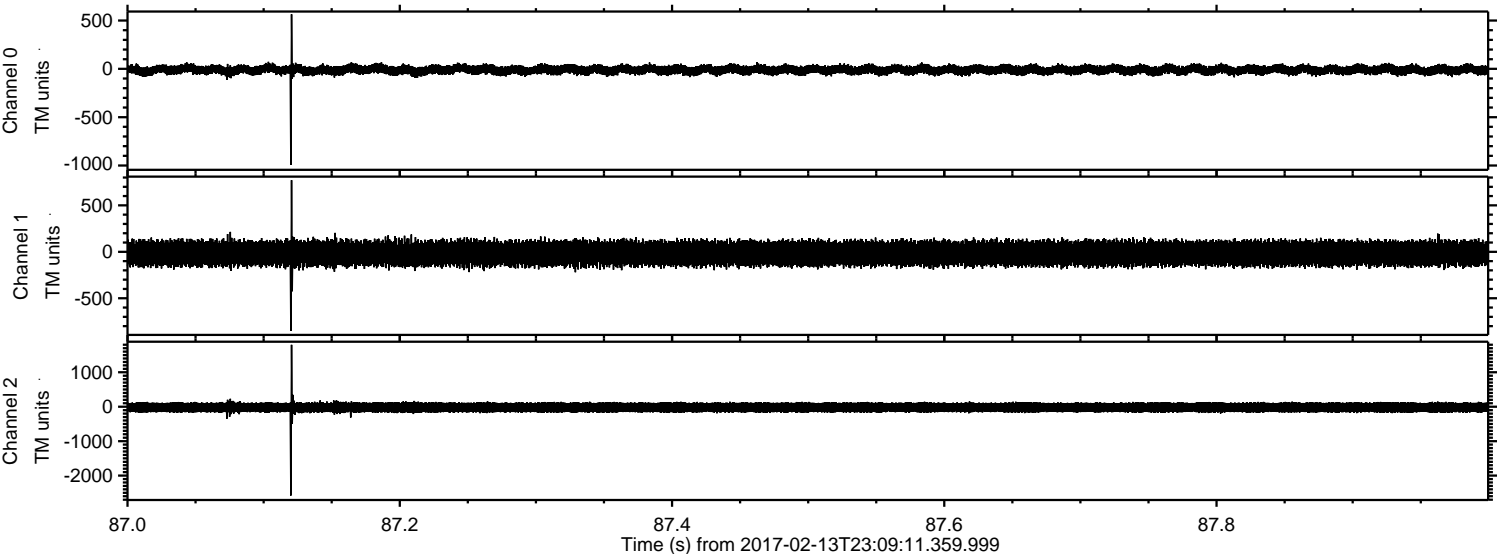


ELMAVAN 3D WAVEFORMS (Measured data sampled at 50 kHz) 51000 packets of 144 samples from 2017-02-13T23:09:11.359.999. Part 84/147

Processed Tue Feb 14 00:17:16 2017 by ELM ver.2012-10-06 from 001__elm20170213_230910__dat00.bin



Processed Tue Feb 14 00:17:17 2017 by ELM ver.2012-10-06 from 001__elm20170213_230910__dat00.bin

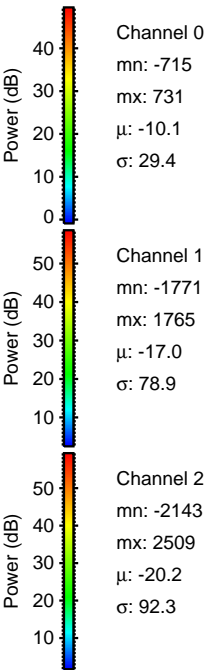
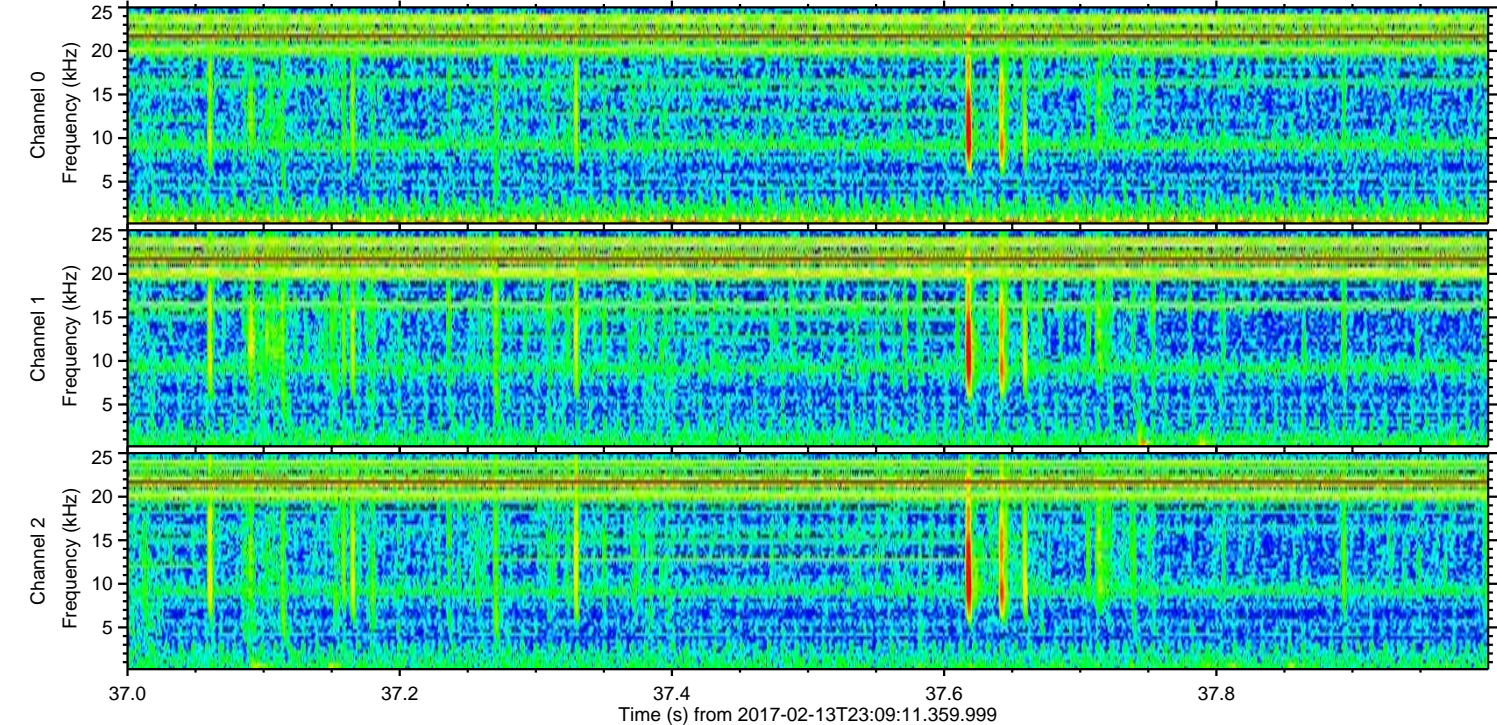
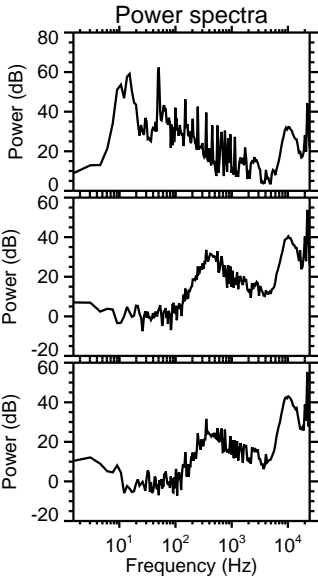
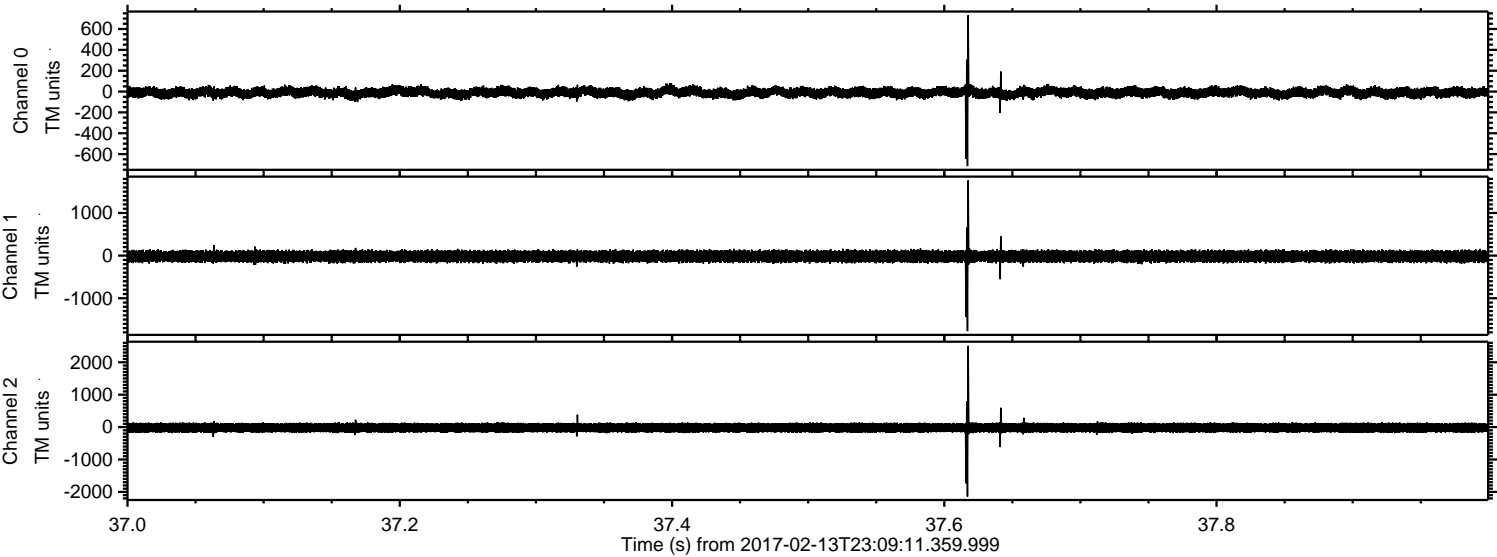


Channel 0
mn: -995
mx: 565
 μ : -10.2
 σ : 28.3

Channel 1
mn: -852
mx: 771
 μ : -17.1
 σ : 77.3

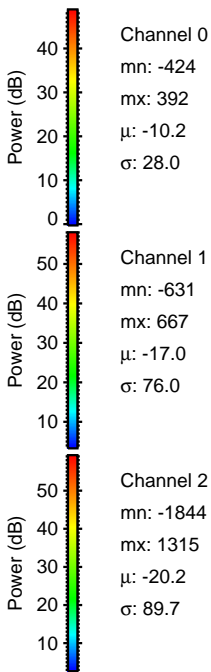
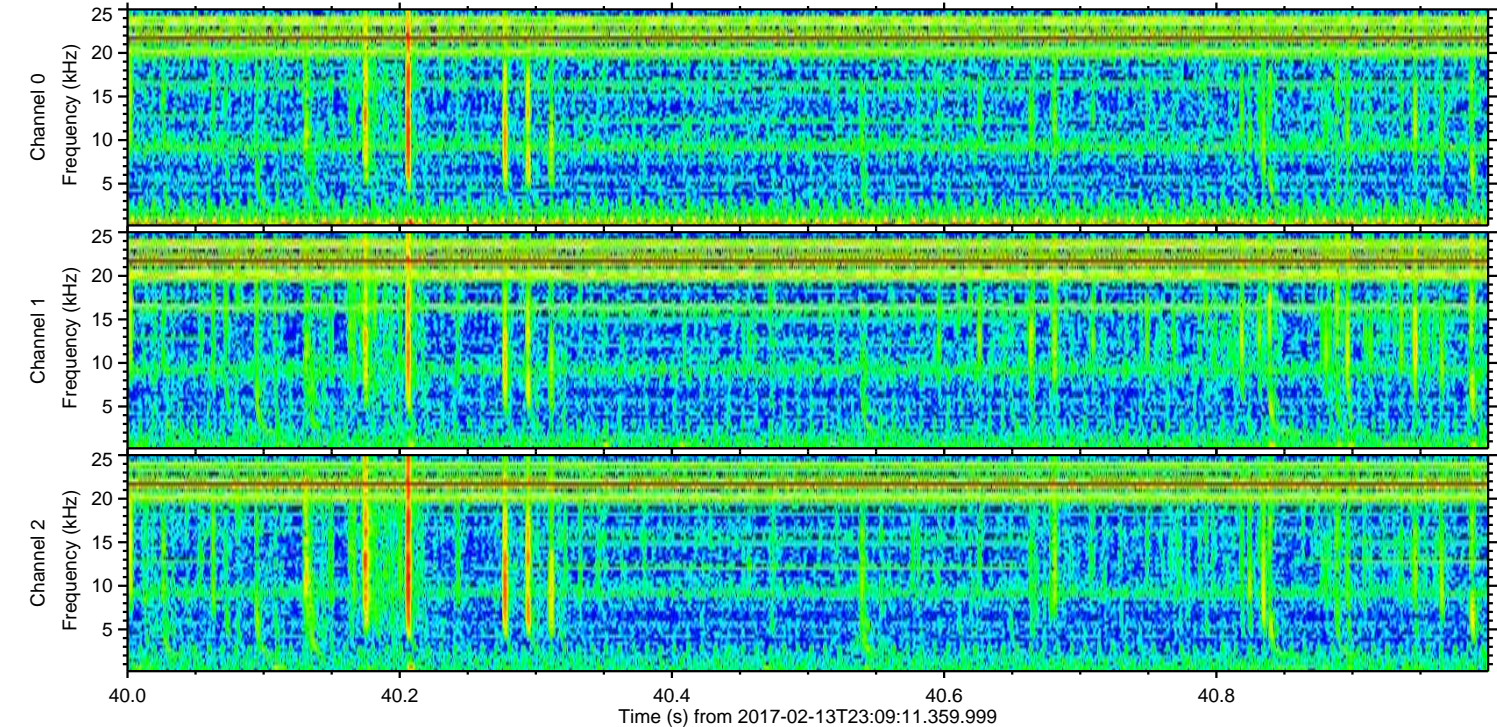
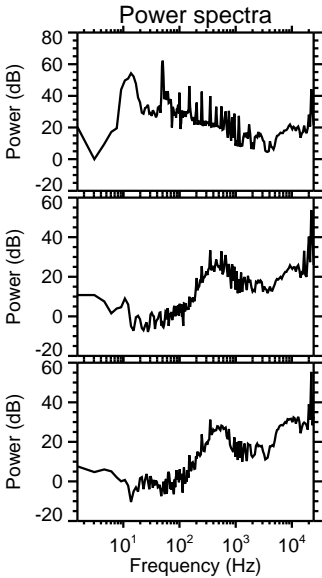
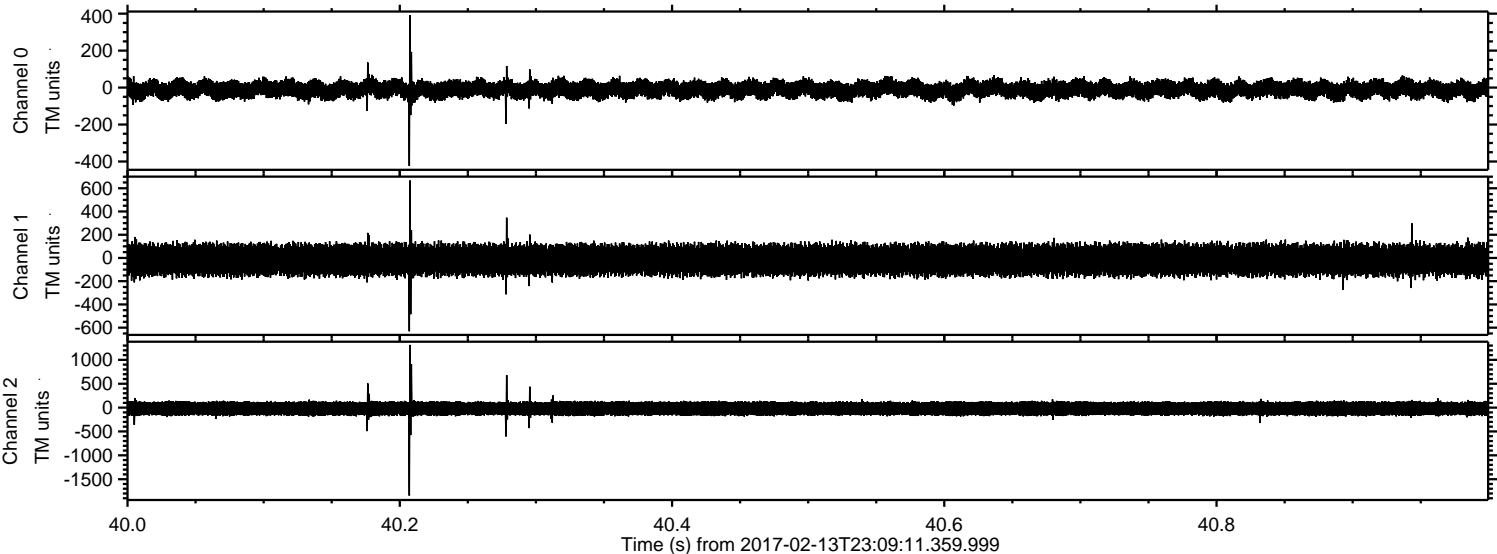
Channel 2
mn: -2580
mx: 1798
 μ : -20.4
 σ : 88.8

Processed Tue Feb 14 00:17:18 2017 by ELM ver.2012-10-06 from 001__elm20170213_230910__dat00.bin



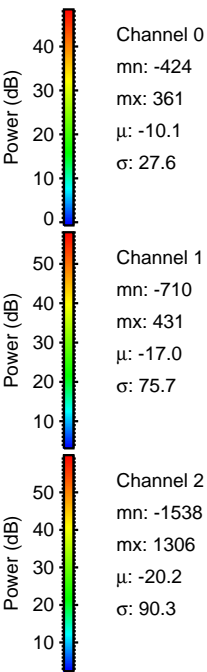
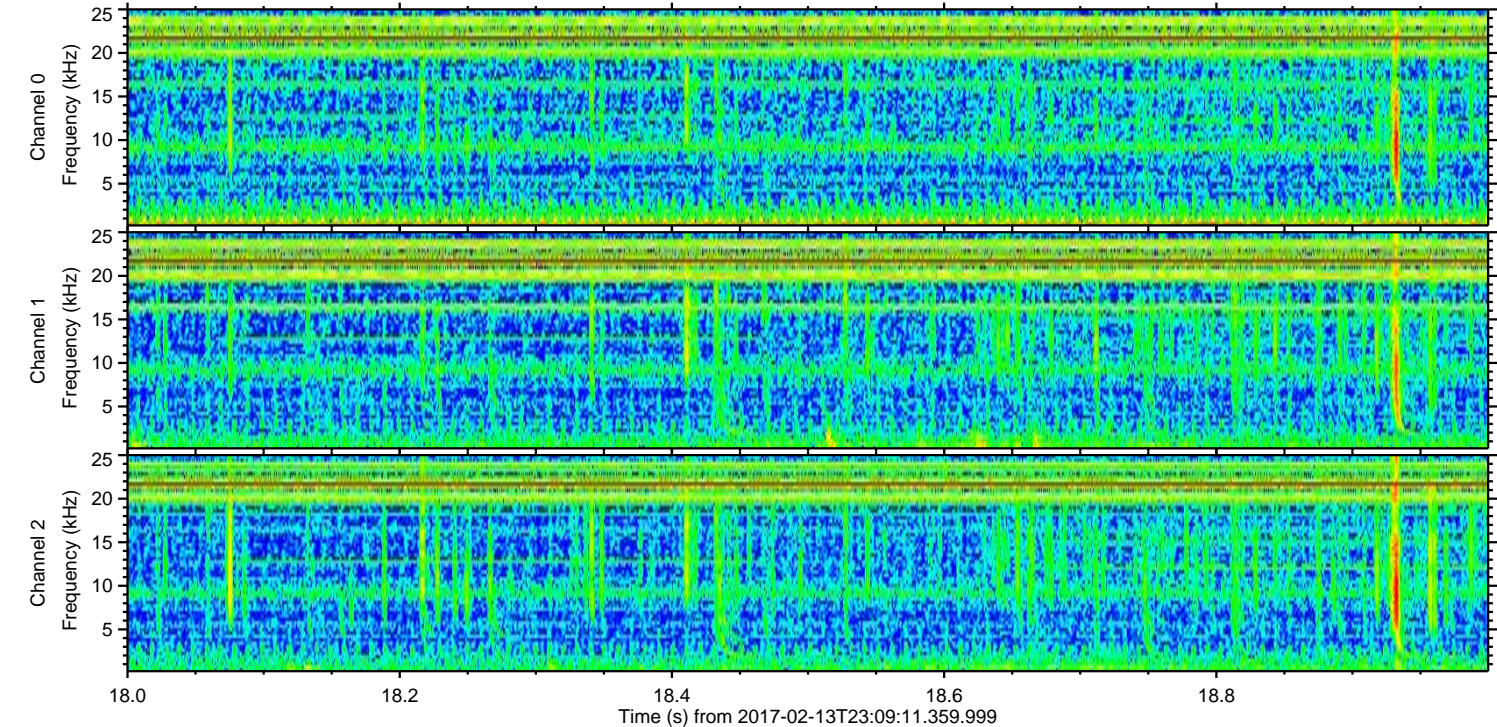
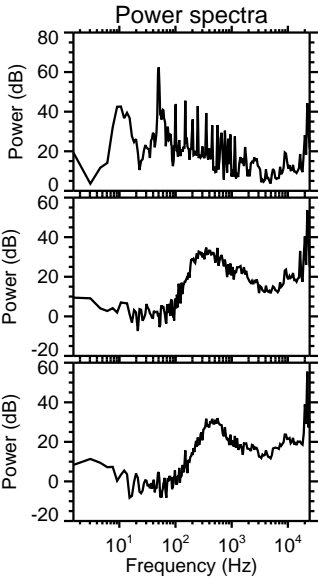
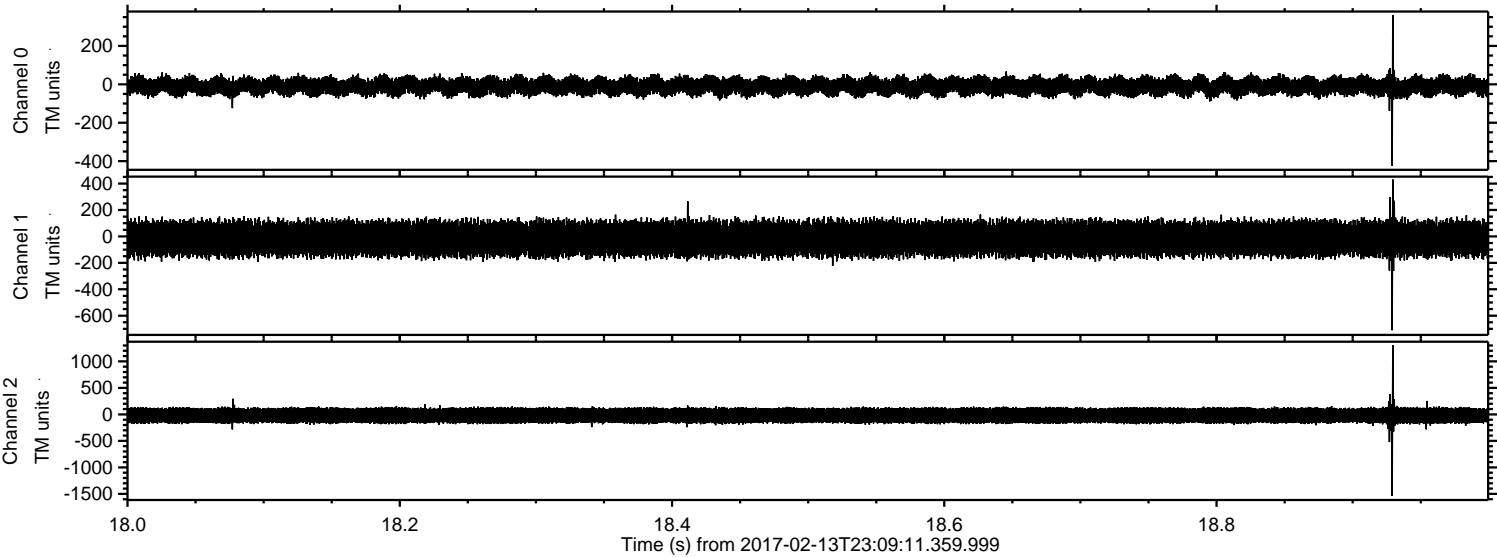
ELMAVAN 3D WAVEFORMS (Measured data sampled at 50 kHz) 51000 packets of 144 samples from 2017-02-13T23:09:11.359.999. Part 41/147

Processed Tue Feb 14 00:17:19 2017 by ELM ver.2012-10-06 from 001__elm20170213_230910__dat00.bin



ELMAVAN 3D WAVEFORMS (Measured data sampled at 50 kHz) 51000 packets of 144 samples from 2017-02-13T23:09:11.359.999. Part 19/147

Processed Tue Feb 14 00:17:20 2017 by ELM ver.2012-10-06 from 001__elm20170213_230910__dat00.bin



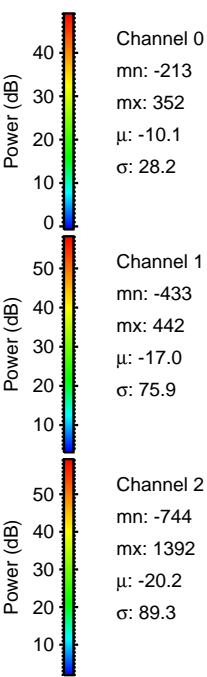
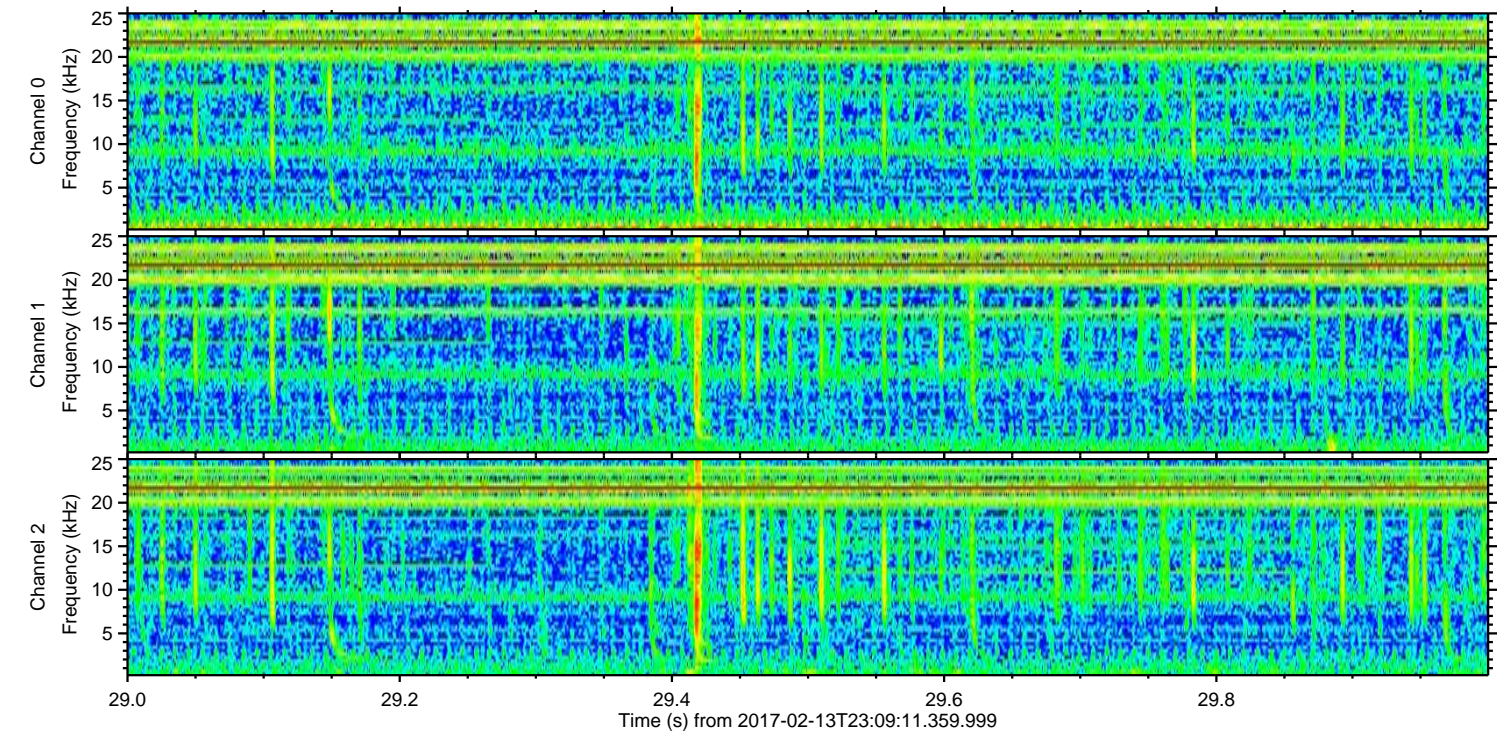
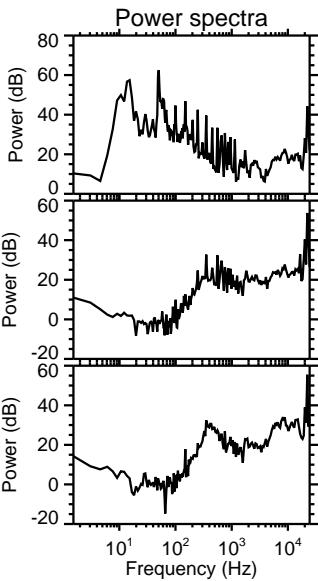
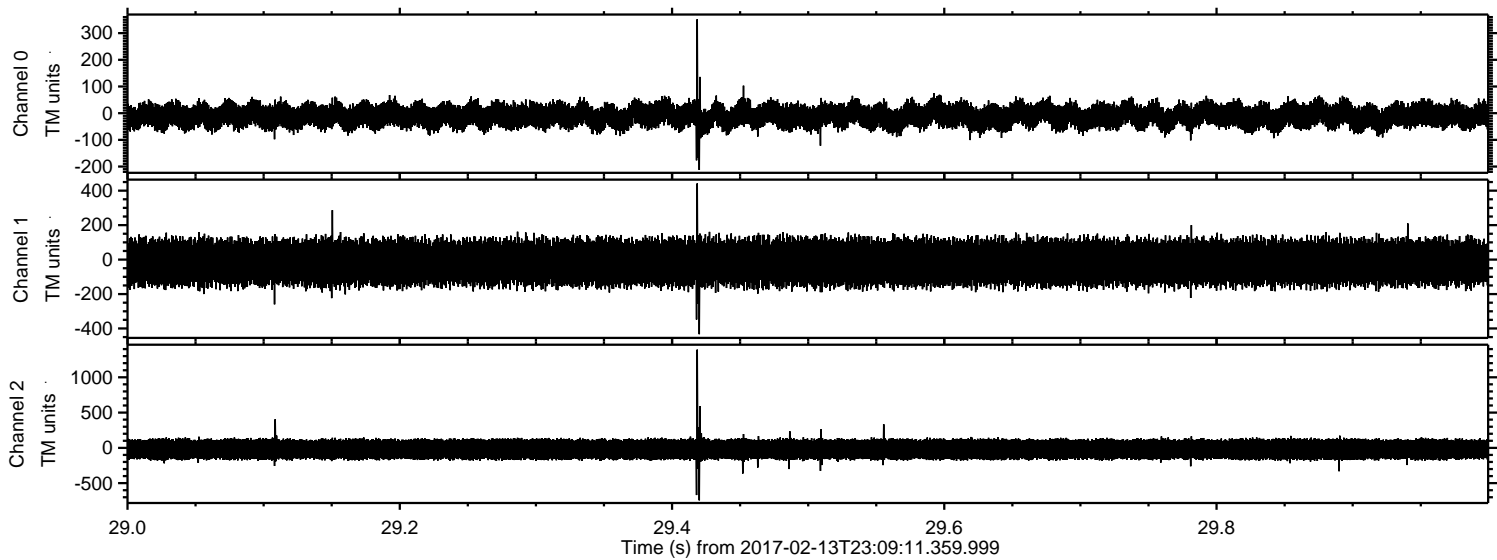
Channel 0
mn: -424
mx: 361
 μ : -10.1
 σ : 27.6

Channel 1
mn: -710
mx: 431
 μ : -17.0
 σ : 75.7

Channel 2
mn: -1538
mx: 1306
 μ : -20.2
 σ : 90.3

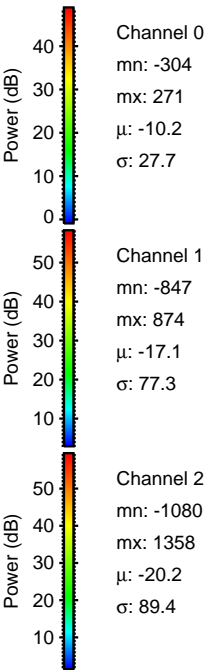
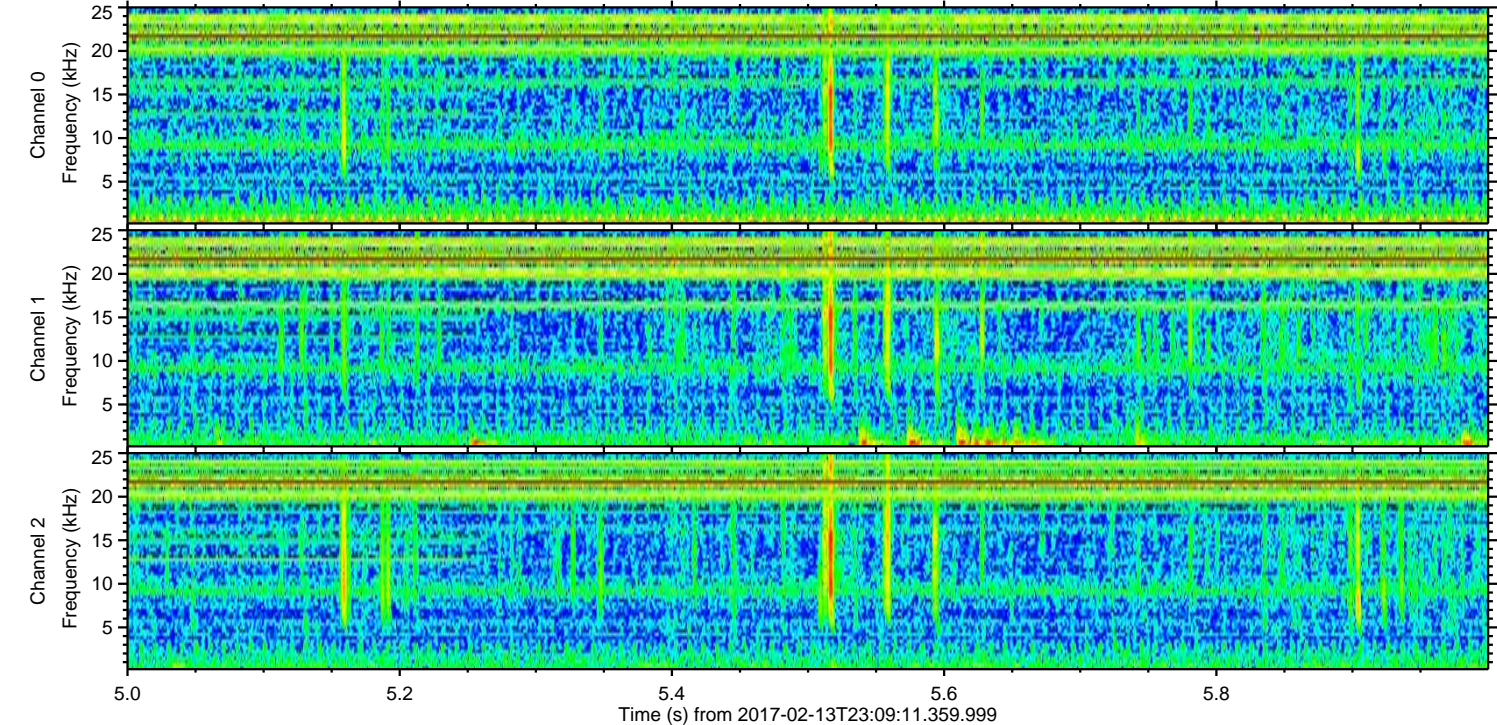
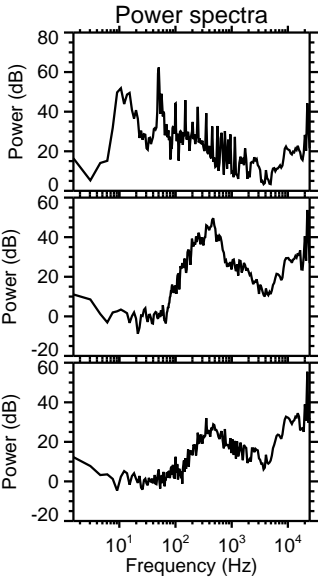
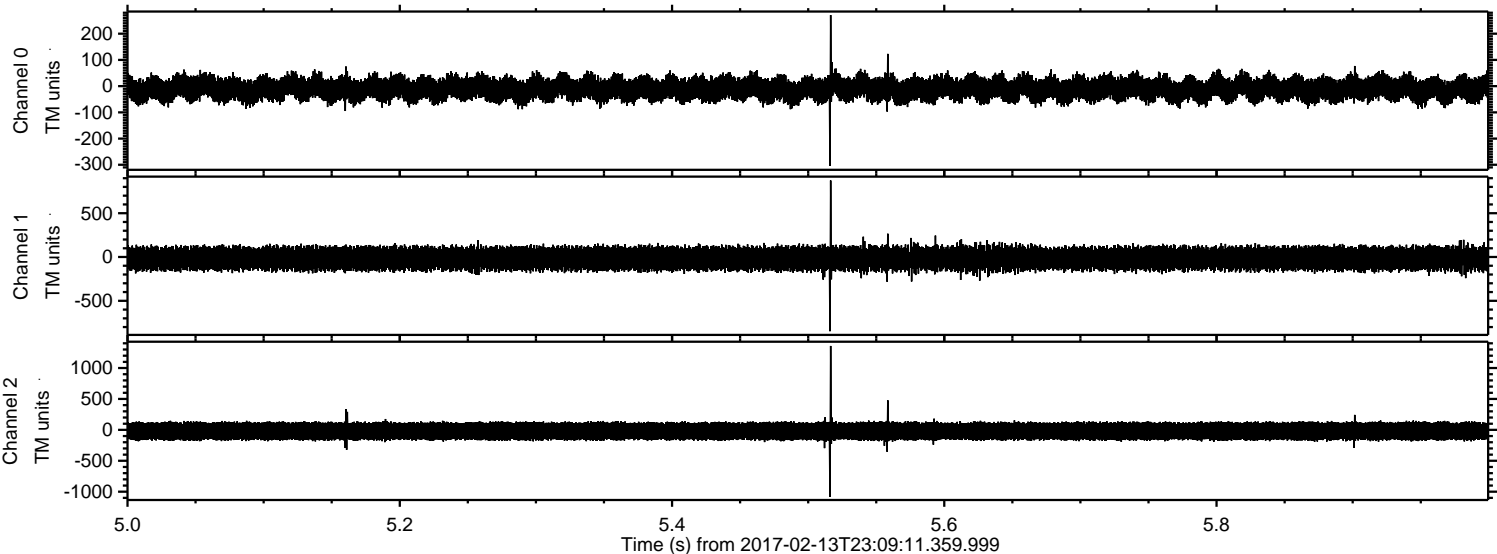
ELMAVAN 3D WAVEFORMS (Measured data sampled at 50 kHz) 51000 packets of 144 samples from 2017-02-13T23:09:11.359.999. Part 30/147

Processed Tue Feb 14 00:17:21 2017 by ELM ver.2012-10-06 from 001__elm20170213_230910__dat00.bin



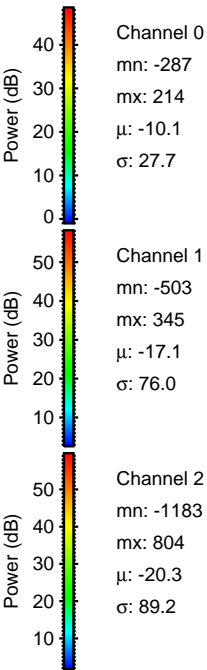
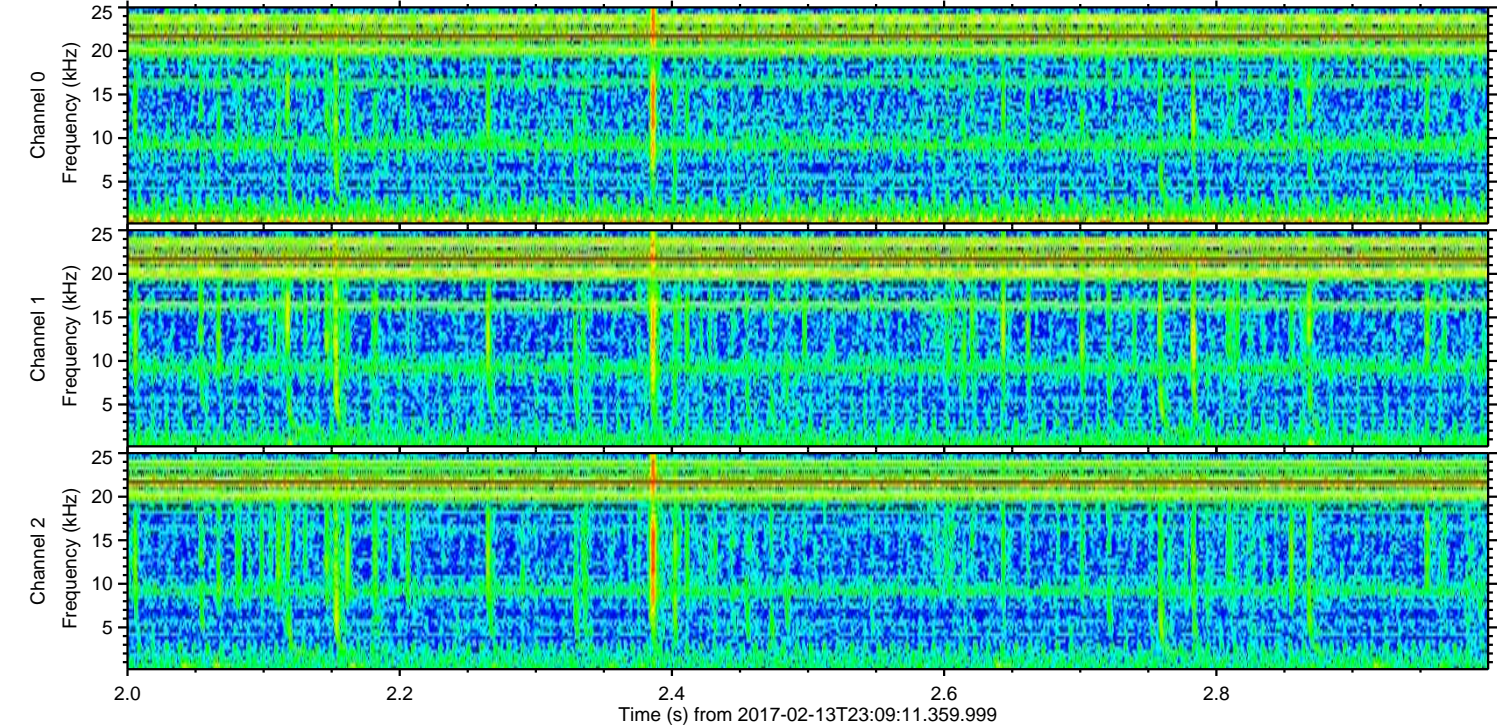
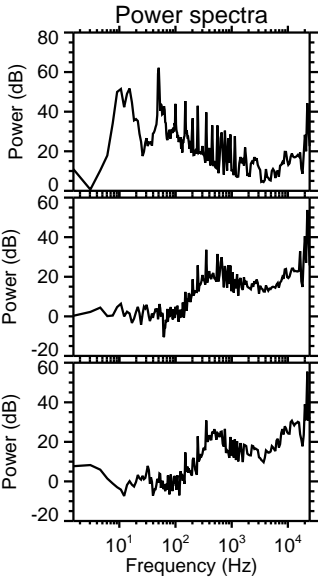
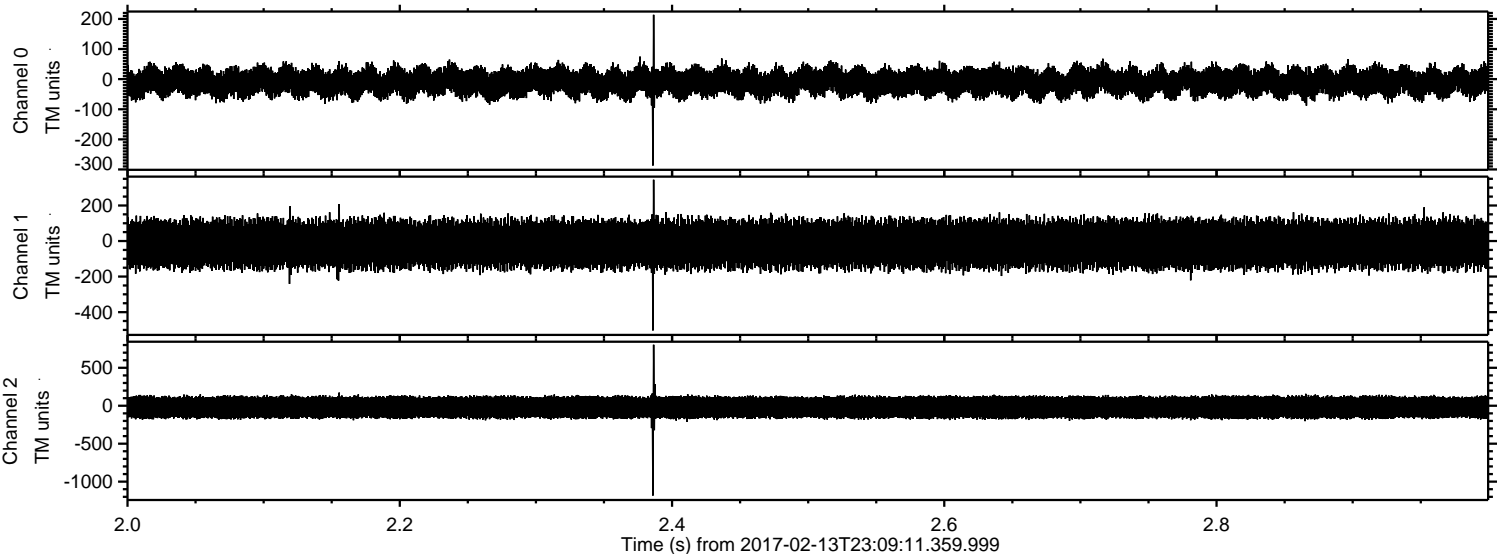
ELMAVAN 3D WAVEFORMS (Measured data sampled at 50 kHz) 51000 packets of 144 samples from 2017-02-13T23:09:11.359.999. Part 6/147

Processed Tue Feb 14 00:17:22 2017 by ELM ver.2012-10-06 from 001__elm20170213_230910__dat00.bin



ELMAVAN 3D WAVEFORMS (Measured data sampled at 50 kHz) 51000 packets of 144 samples from 2017-02-13T23:09:11.359.999. Part 3/147

Processed Tue Feb 14 00:17:23 2017 by ELM ver.2012-10-06 from 001__elm20170213_230910__dat00.bin



ELMAVAN 3D WAVEFORMS (Measured data sampled at 50 kHz) 51000 packets of 144 samples from 2017-02-13T23:09:11.359.999. Part 76/147

Processed Tue Feb 14 00:17:24 2017 by ELM ver.2012-10-06 from 001__elm20170213_230910__dat00.bin

