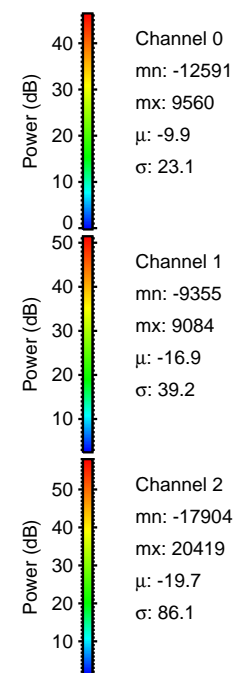
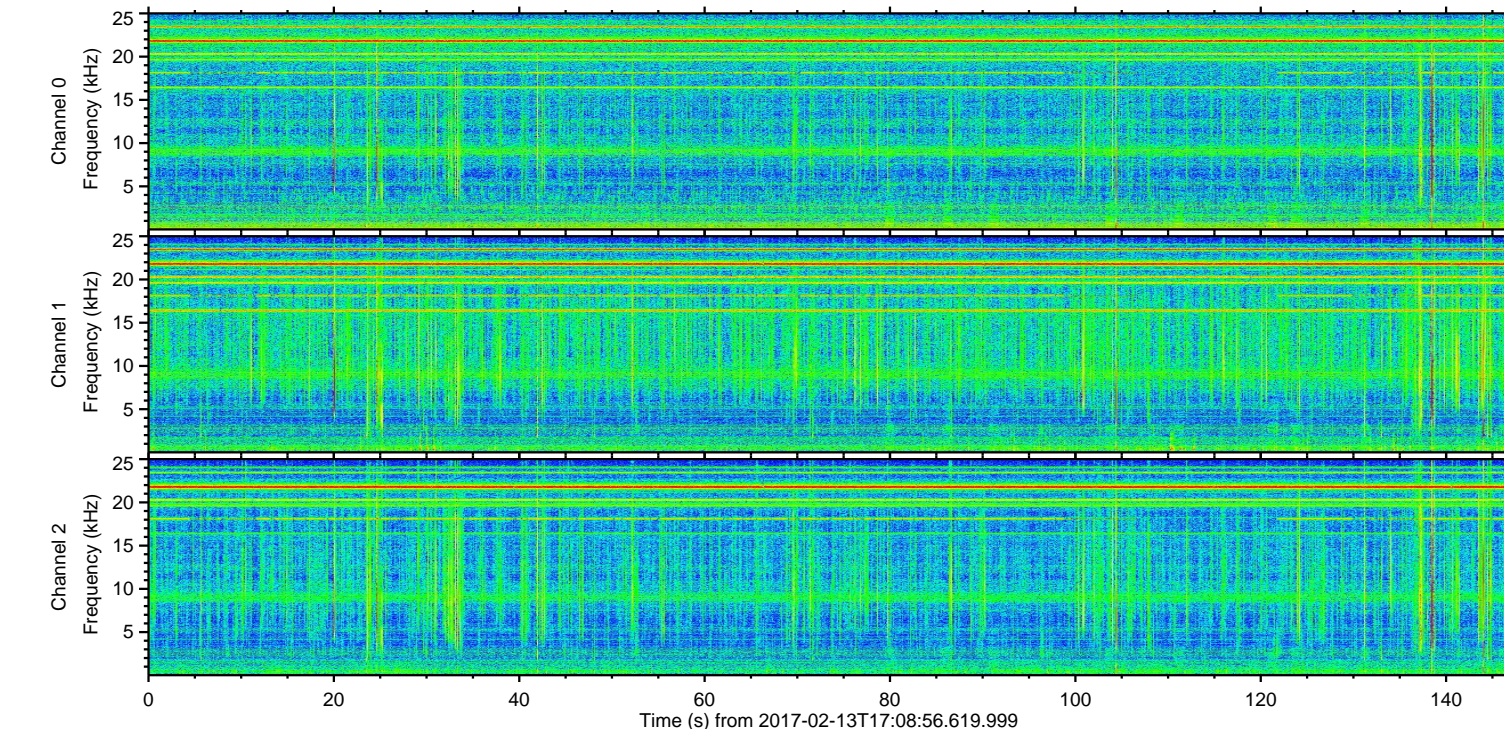
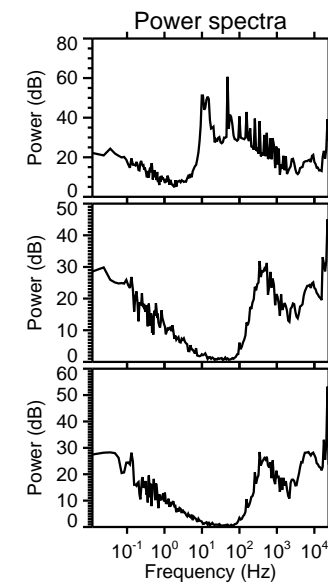
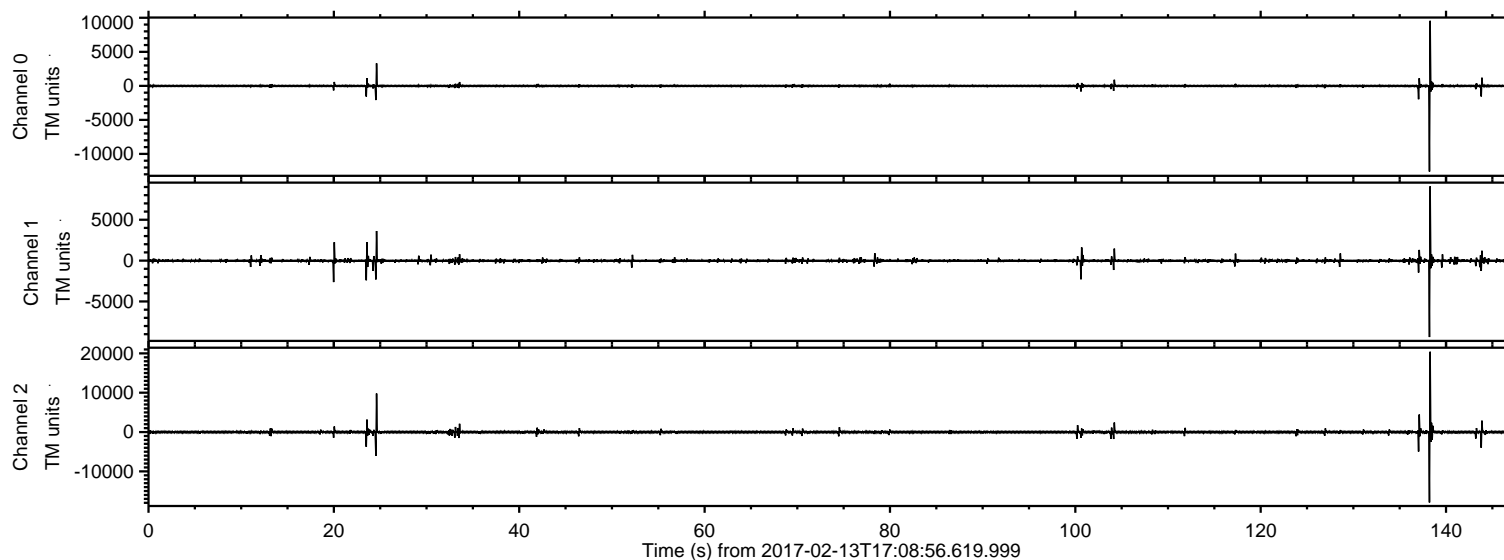


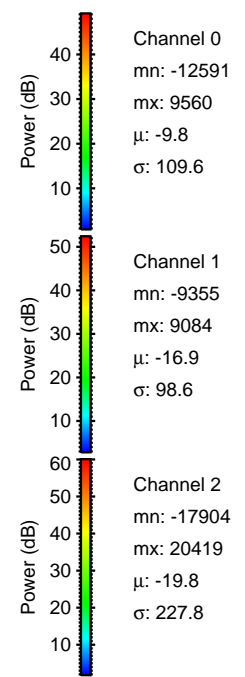
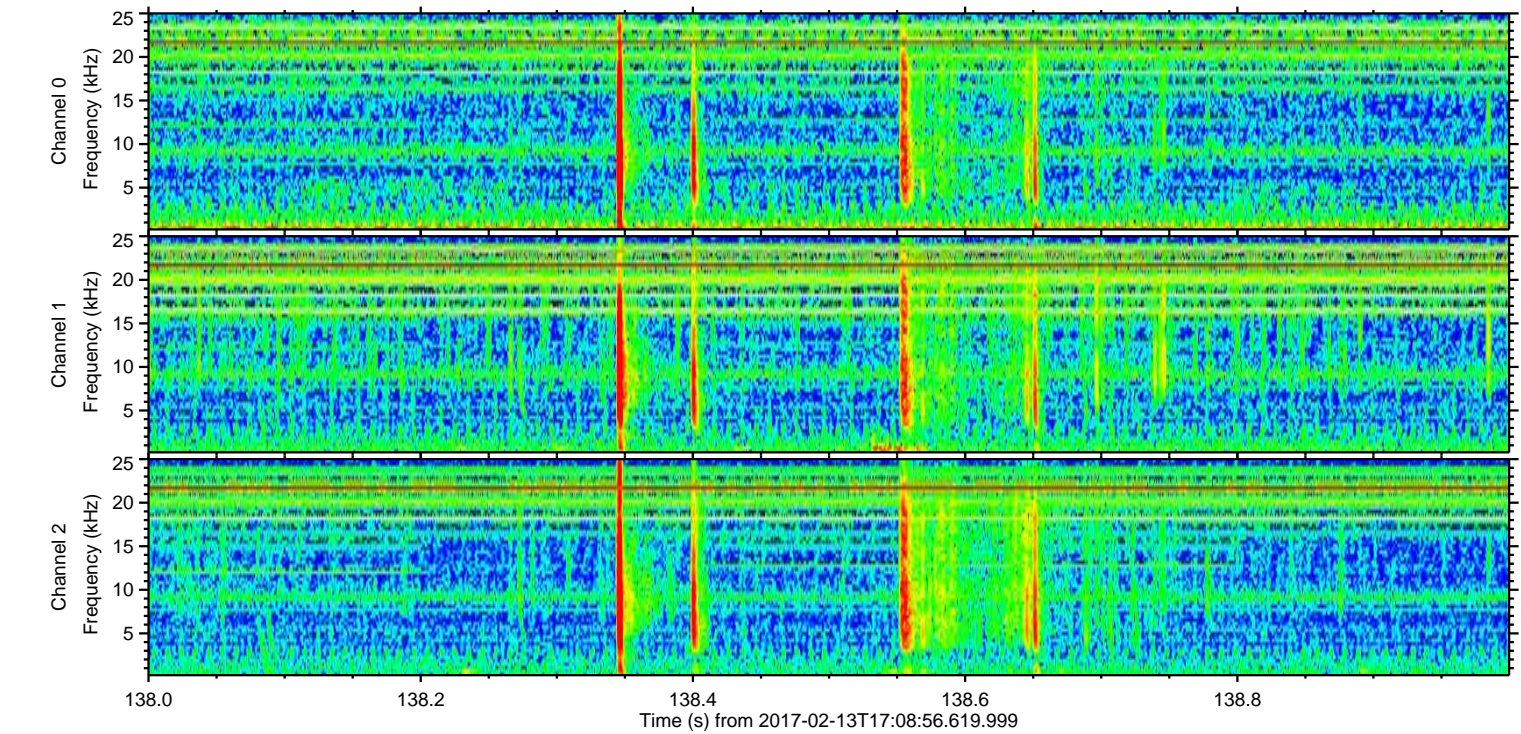
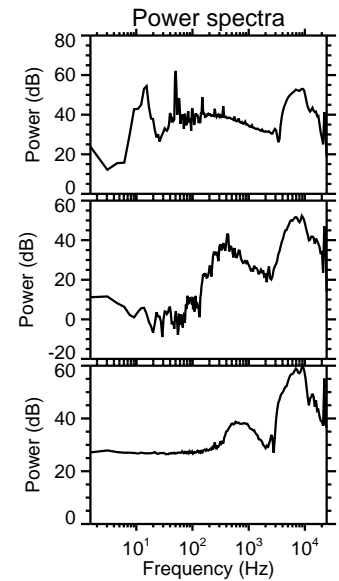
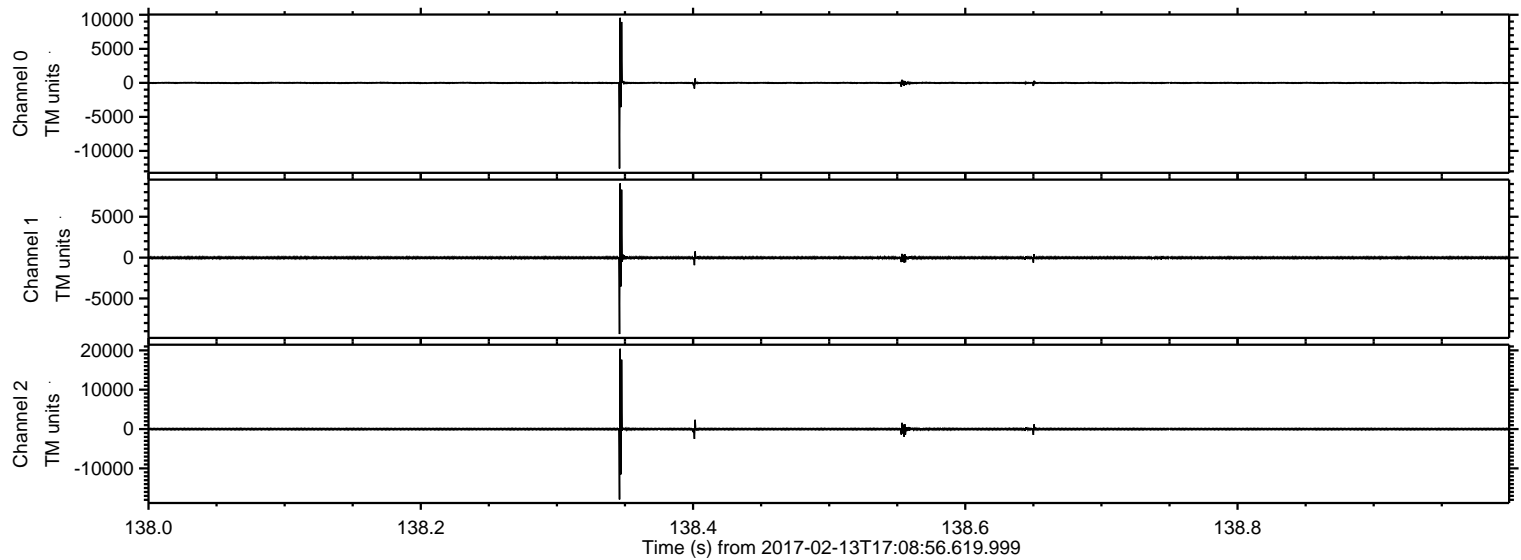
ELMAVAN 3D WAVEFORMS (Measured data sampled at 50 kHz) 51000 packets of 144 samples from 2017-02-13T17:08:56.619.999.

Processed Mon Feb 13 18:16:54 2017 by ELM ver.2012-10-06 from 001__elm20170213_170855__dat00.bin



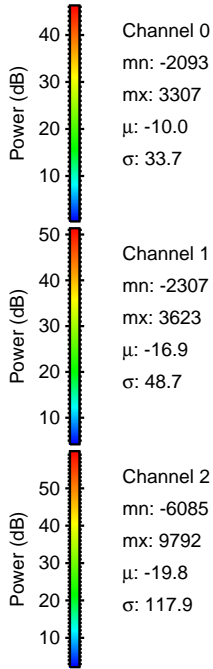
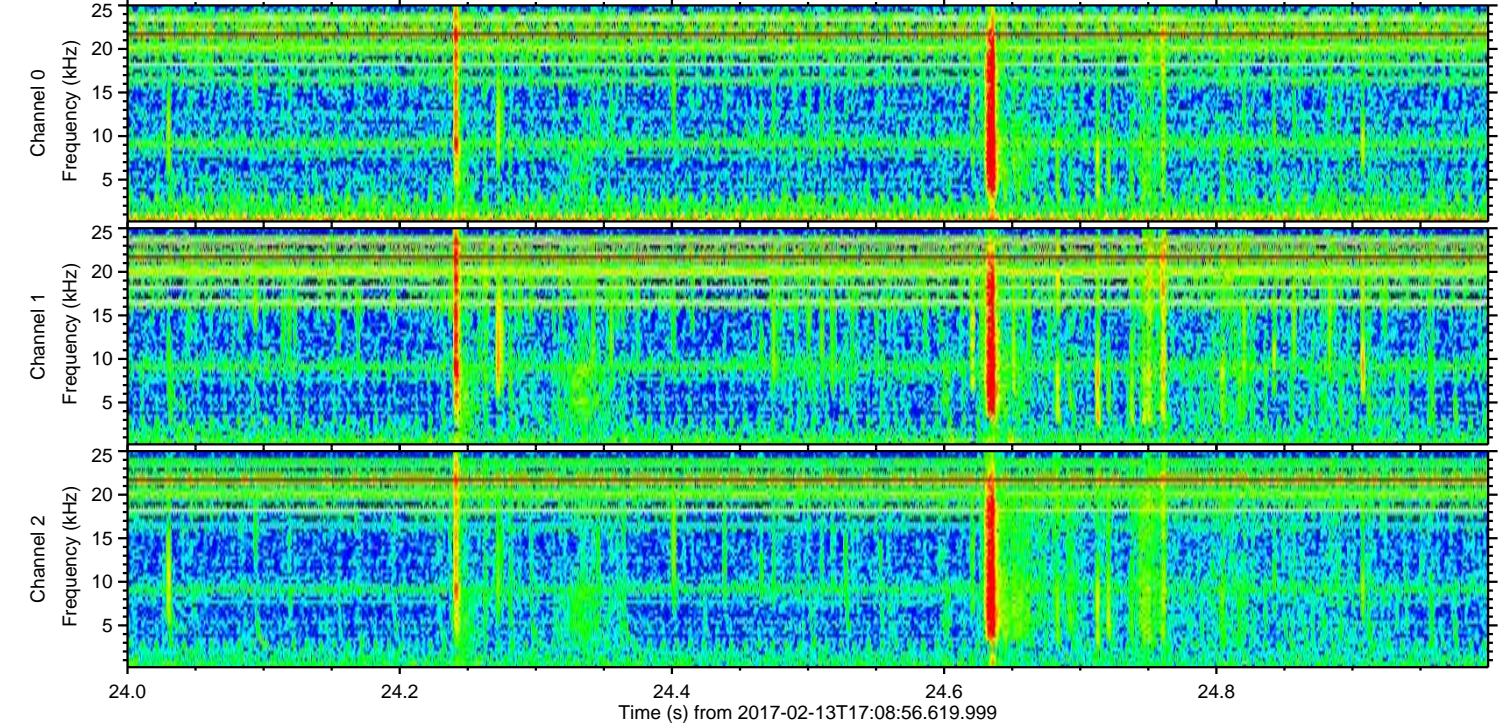
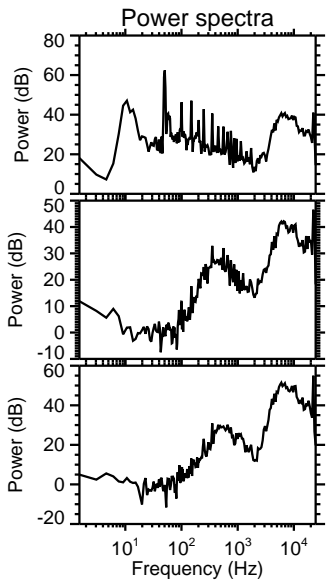
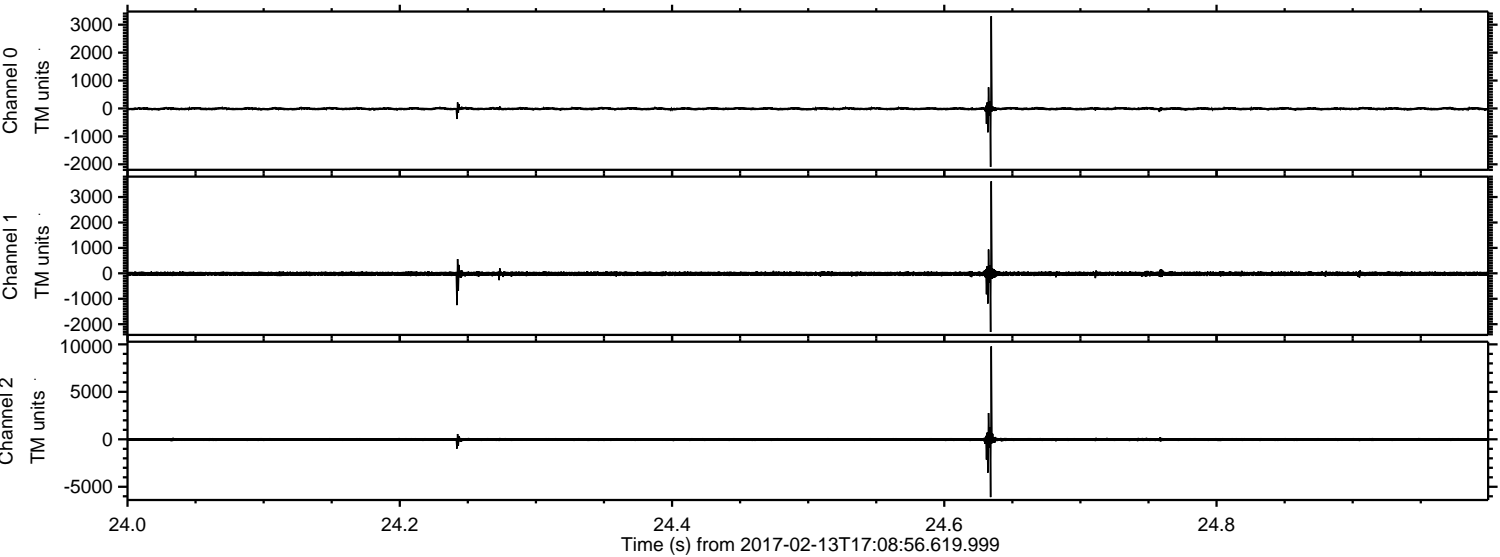
ELMAVAN 3D WAVEFORMS (Measured data sampled at 50 kHz) 51000 packets of 144 samples from 2017-02-13T17:08:56.619.999. Part 139/147

Processed Mon Feb 13 18:17:06 2017 by ELM ver.2012-10-06 from 001__elm20170213_170855__dat00.bin



ELMAVAN 3D WAVEFORMS (Measured data sampled at 50 kHz) 51000 packets of 144 samples from 2017-02-13T17:08:56.619.999. Part 25/147

Processed Mon Feb 13 18:17:07 2017 by ELM ver.2012-10-06 from 001__elm20170213_170855__dat00.bin



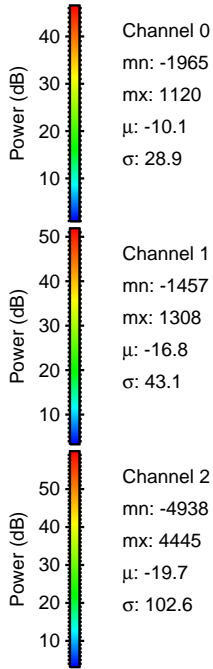
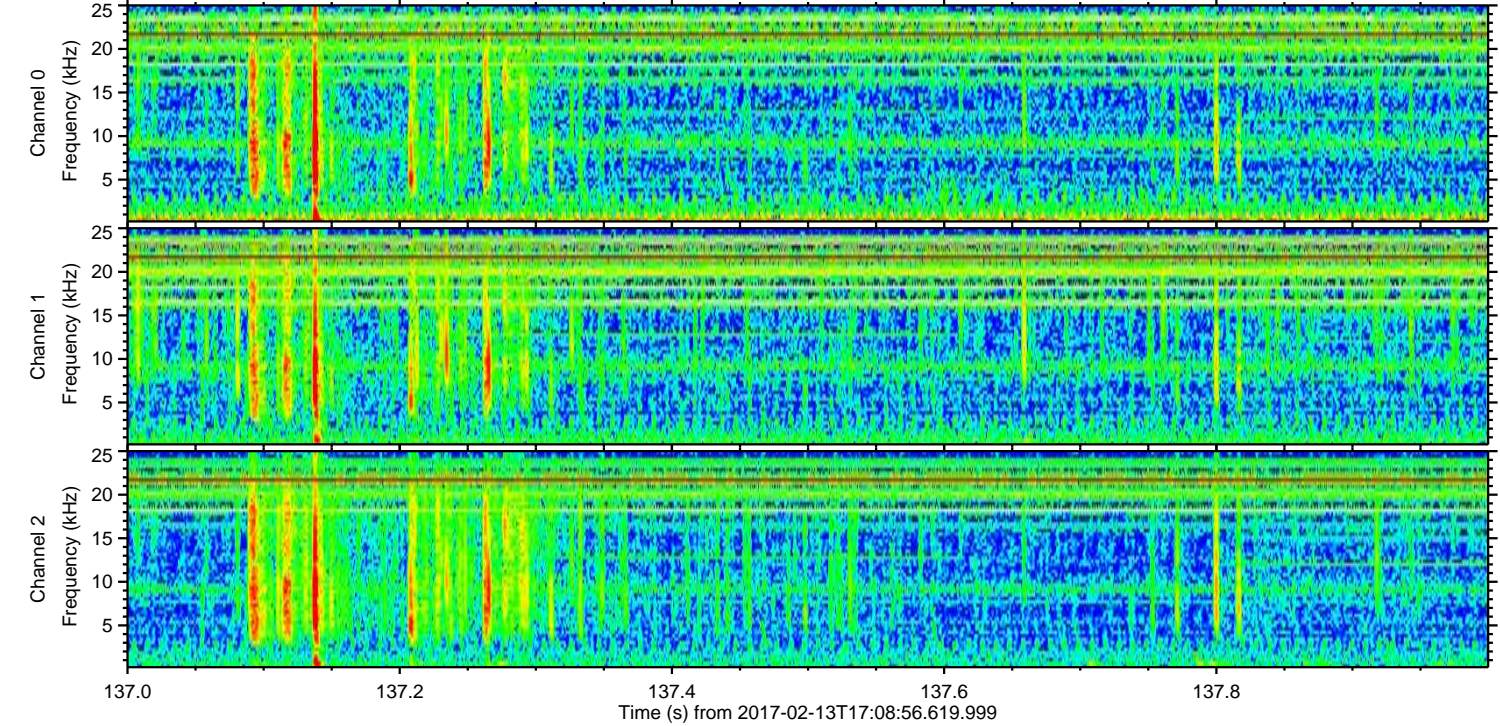
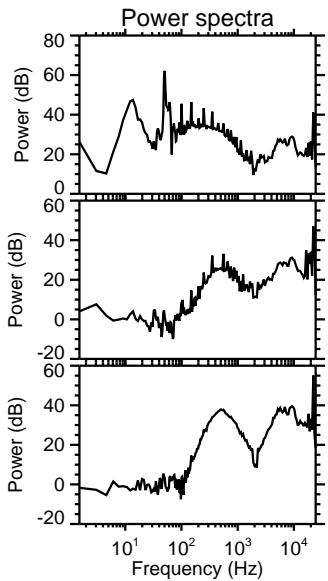
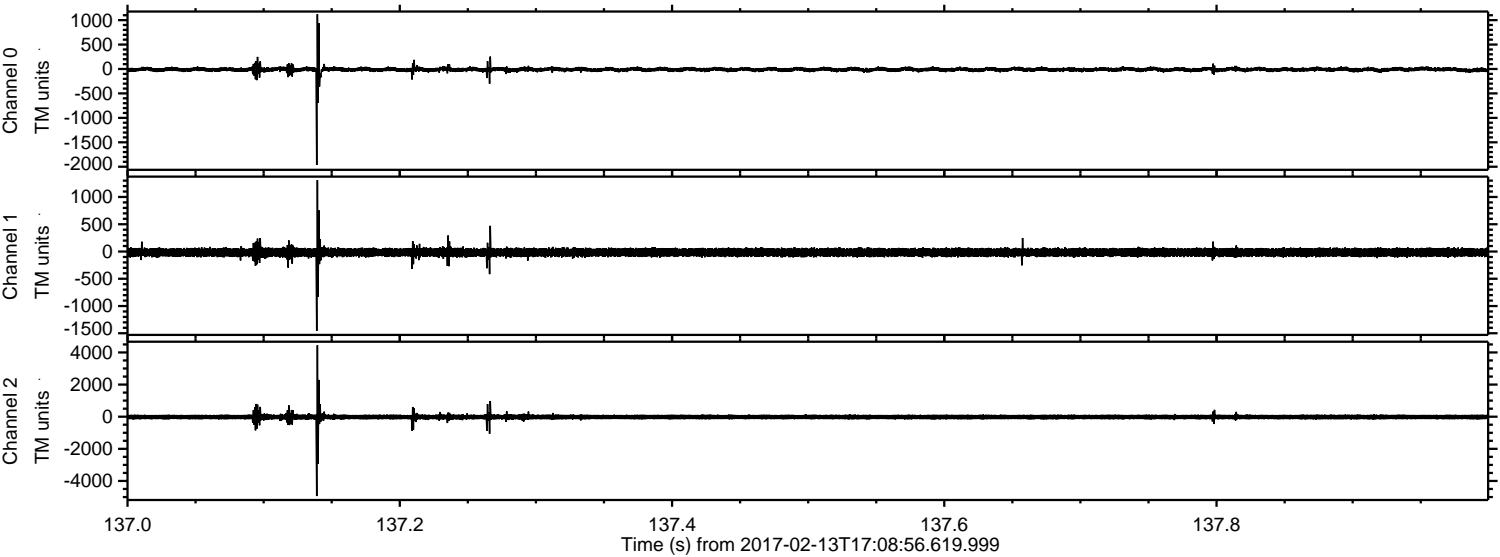
Channel 0
mn: -2093
mx: 3307
 μ : -10.0
 σ : 33.7

Channel 1
mn: -2307
mx: 3623
 μ : -16.9
 σ : 48.7

Channel 2
mn: -6085
mx: 9792
 μ : -19.8
 σ : 117.9

ELMAVAN 3D WAVEFORMS (Measured data sampled at 50 kHz) 51000 packets of 144 samples from 2017-02-13T17:08:56.619.999. Part 138/147

Processed Mon Feb 13 18:17:08 2017 by ELM ver.2012-10-06 from 001__elm20170213_170855__dat00.bin



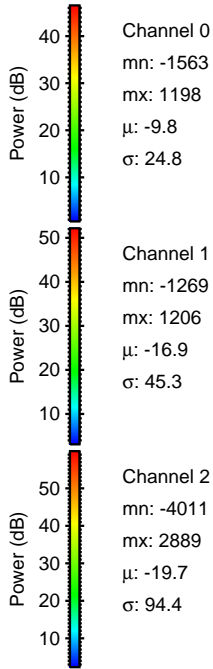
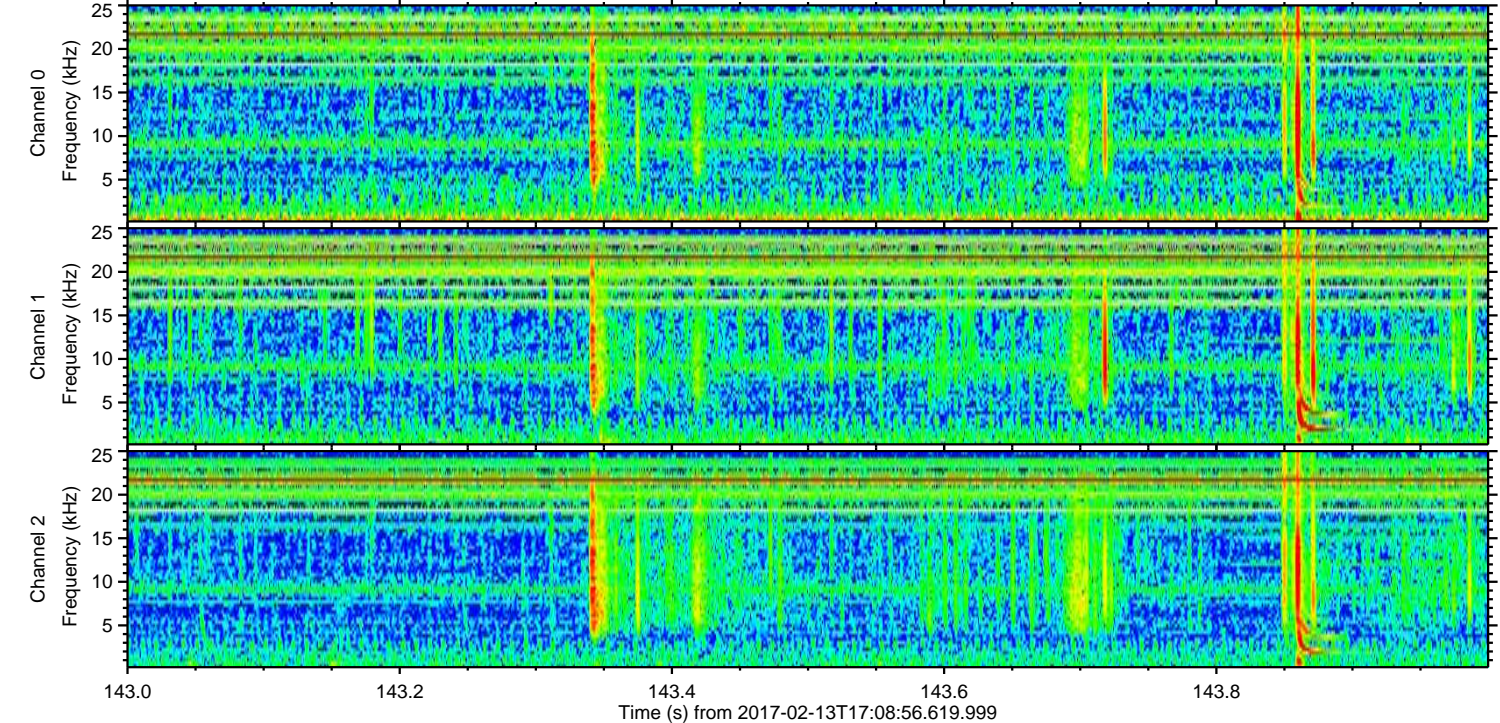
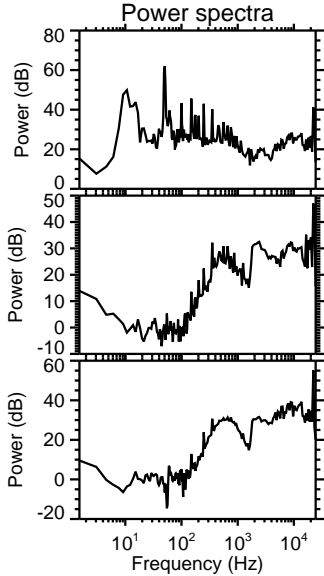
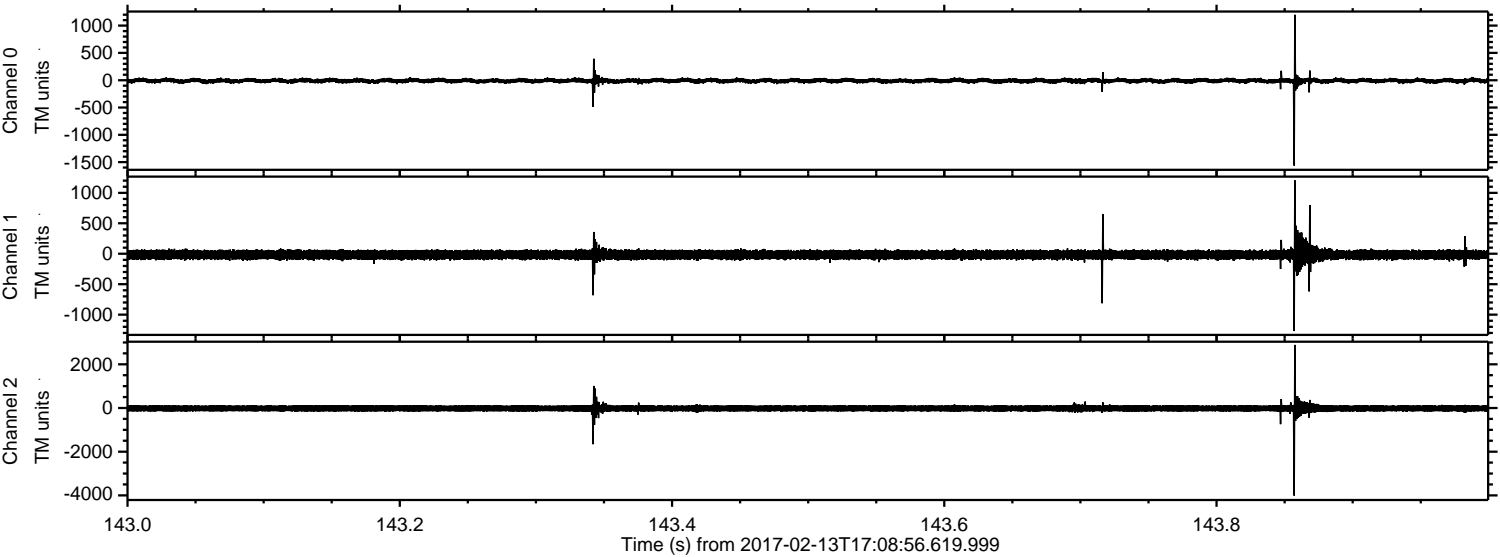
Channel 0
mn: -1965
mx: 1120
 μ : -10.1
 σ : 28.9

Channel 1
mn: -1457
mx: 1308
 μ : -16.8
 σ : 43.1

Channel 2
mn: -4938
mx: 4445
 μ : -19.7
 σ : 102.6

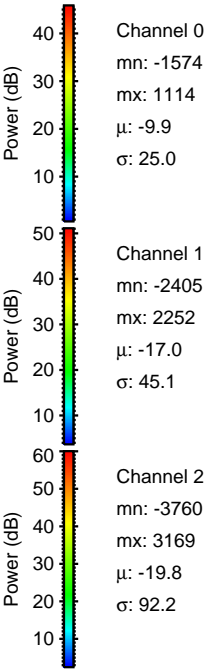
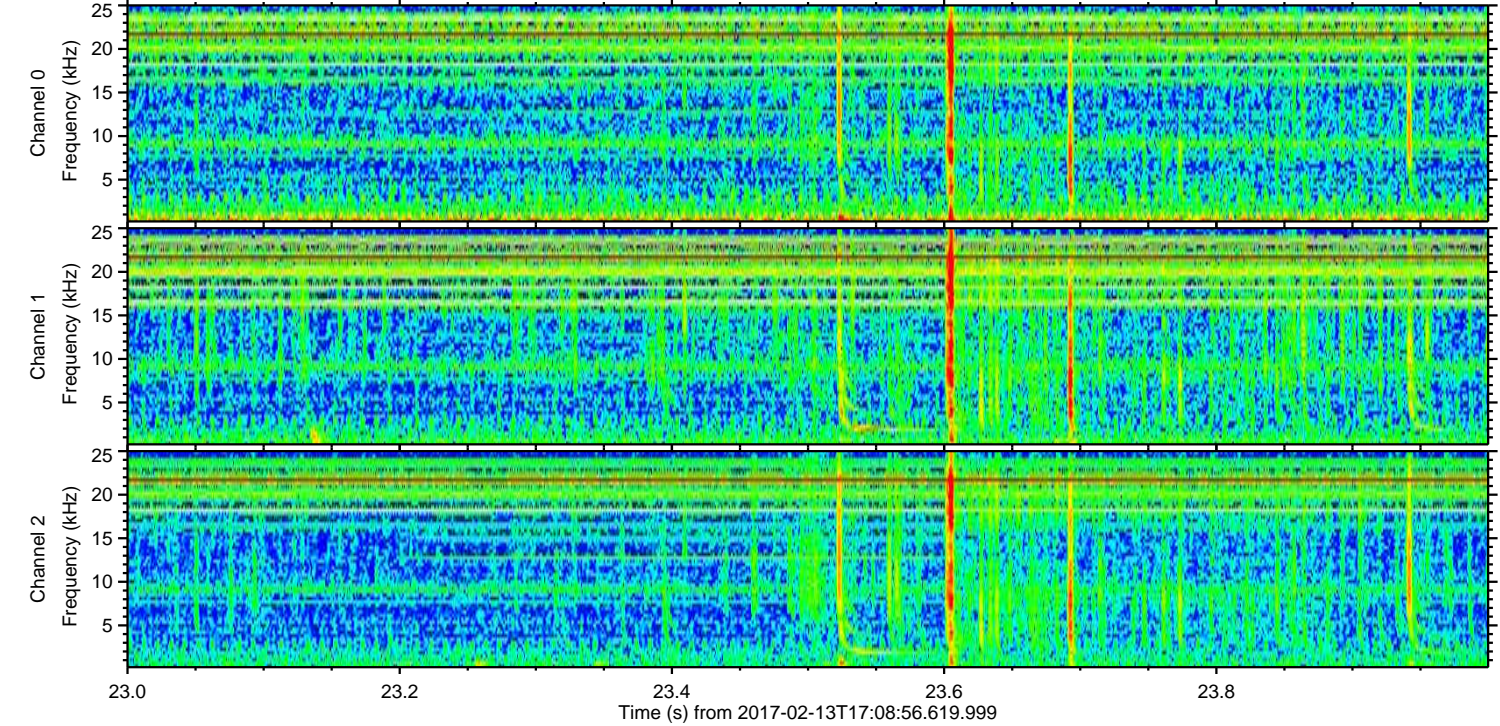
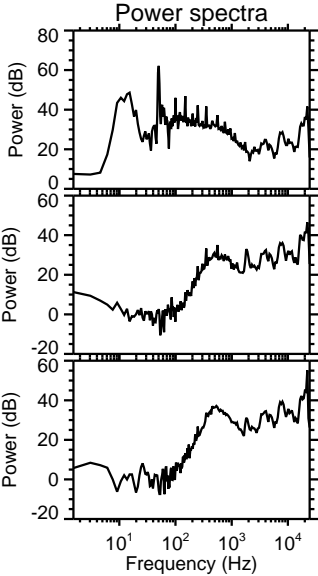
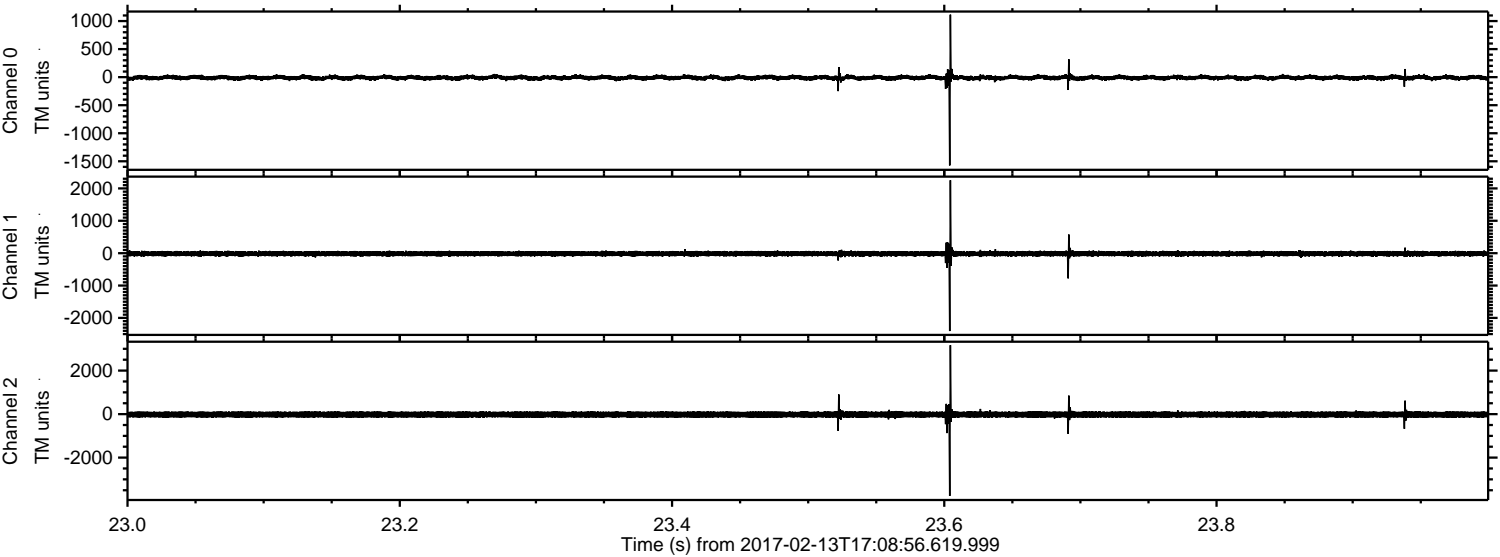
ELMAVAN 3D WAVEFORMS (Measured data sampled at 50 kHz) 51000 packets of 144 samples from 2017-02-13T17:08:56.619.999. Part 144/147

Processed Mon Feb 13 18:17:08 2017 by ELM ver.2012-10-06 from 001__elm20170213_170855__dat00.bin



ELMAVAN 3D WAVEFORMS (Measured data sampled at 50 kHz) 51000 packets of 144 samples from 2017-02-13T17:08:56.619.999. Part 24/147

Processed Mon Feb 13 18:17:09 2017 by ELM ver.2012-10-06 from 001__elm20170213_170855__dat00.bin



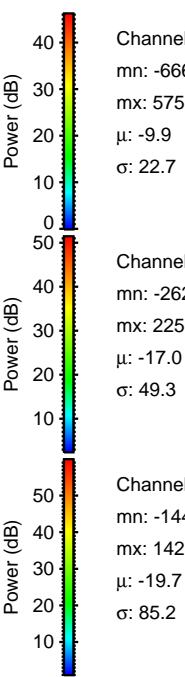
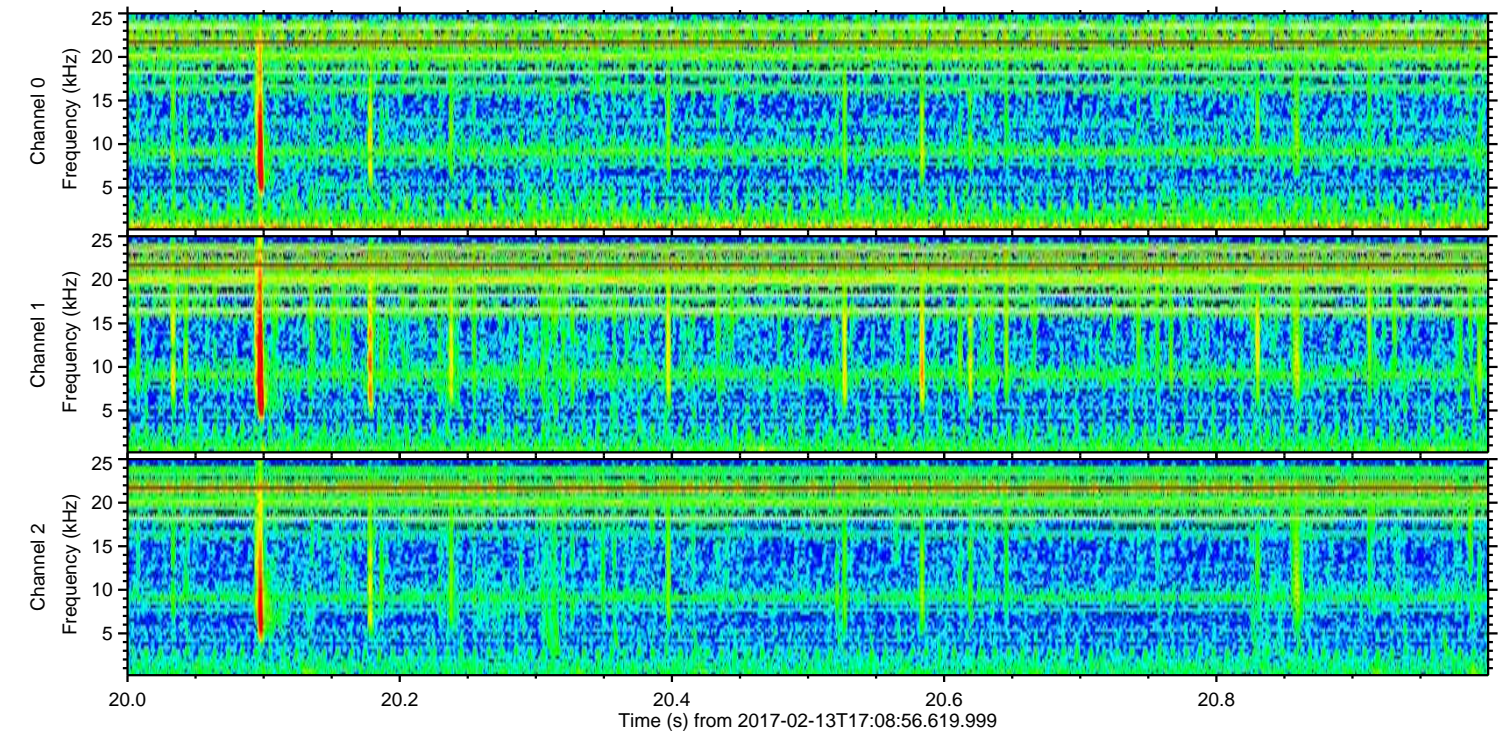
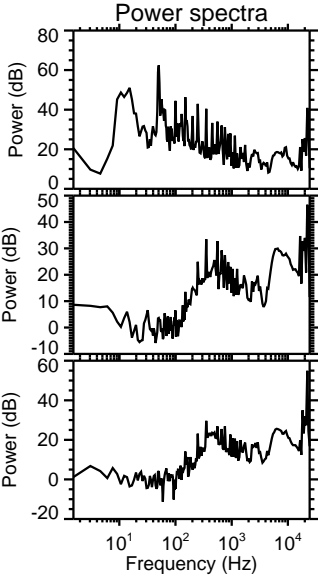
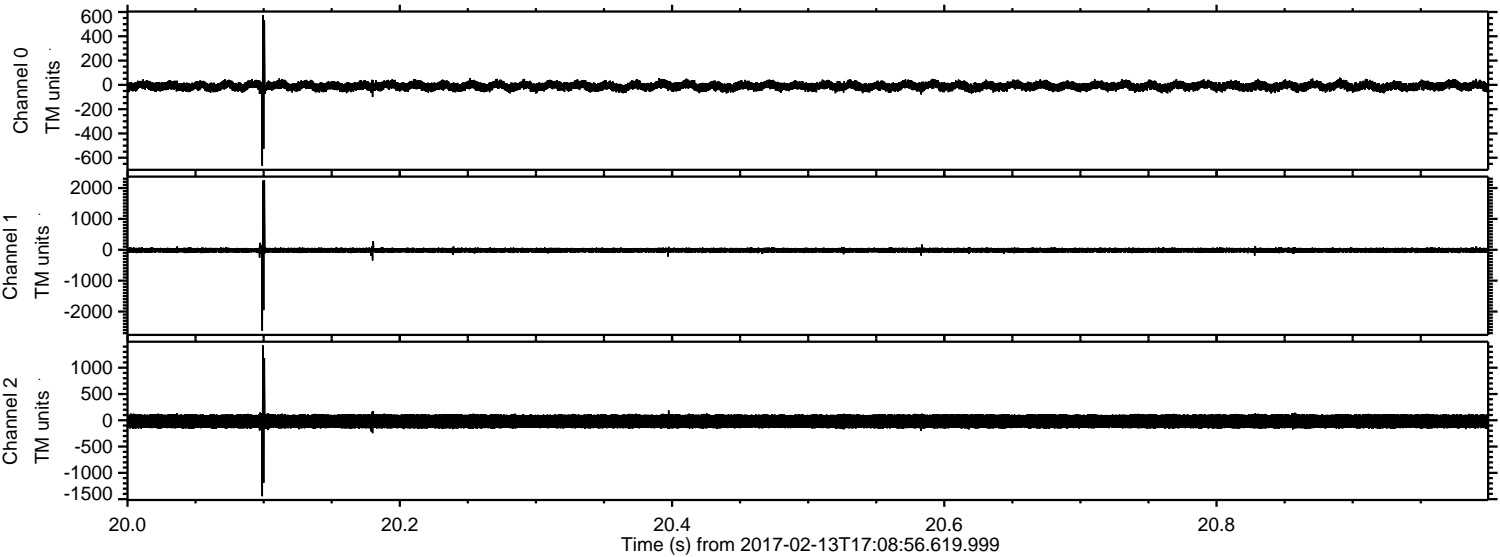
Power spectra

Channel 0
mn: -1574
mx: 1114
 μ : -9.9
 σ : 25.0

Channel 1
mn: -2405
mx: 2252
 μ : -17.0
 σ : 45.1

Channel 2
mn: -3760
mx: 3169
 μ : -19.8
 σ : 92.2

Processed Mon Feb 13 18:17:10 2017 by ELM ver.2012-10-06 from 001__elm20170213_170855__dat00.bin



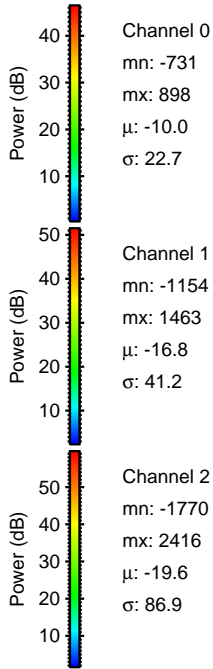
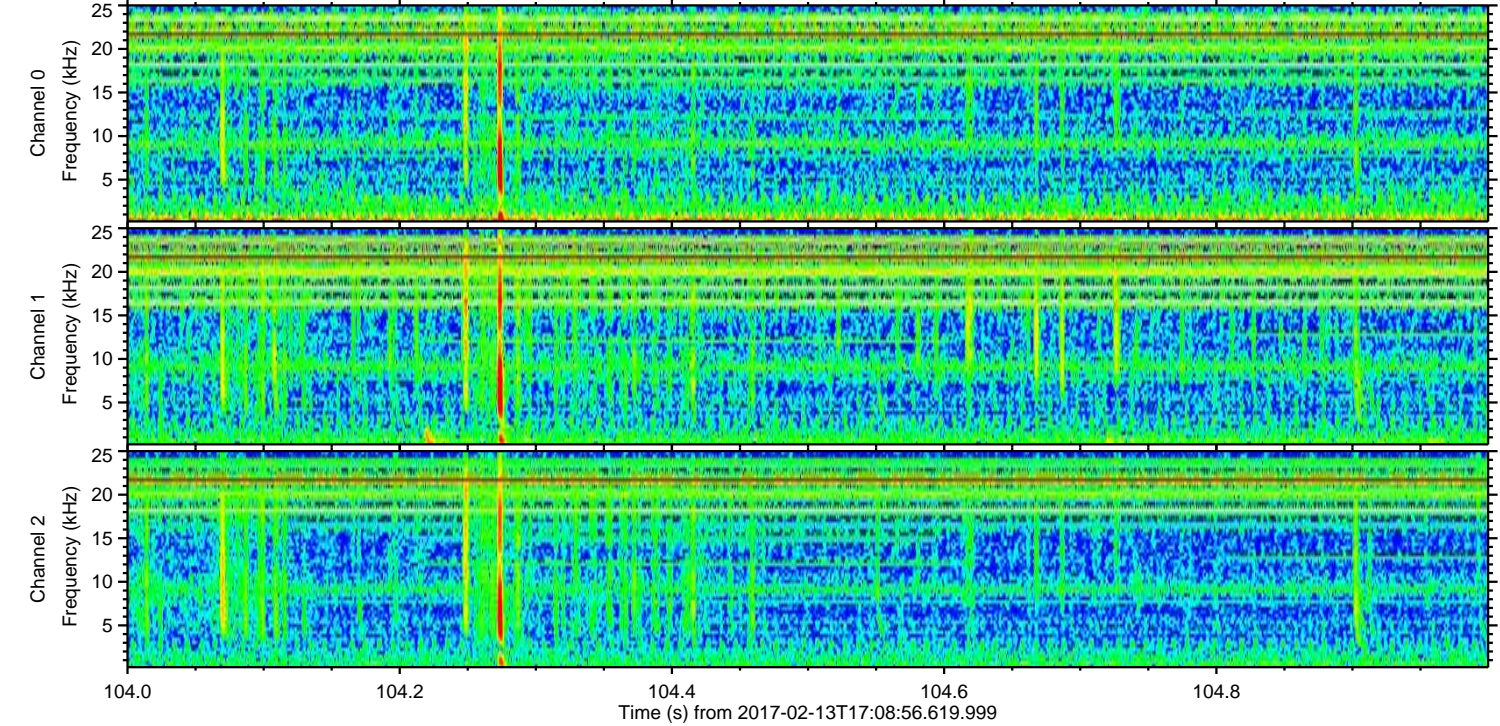
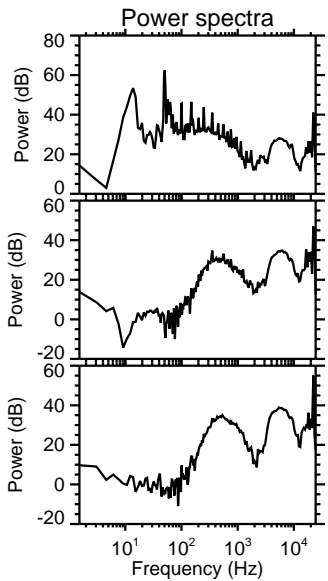
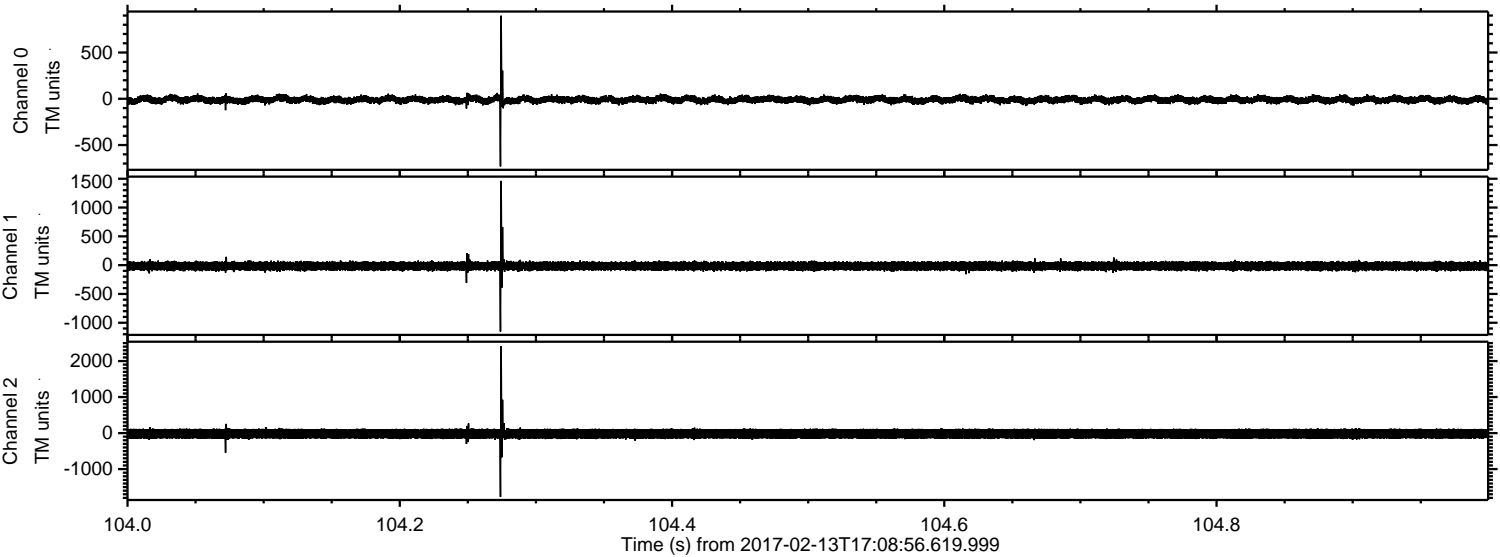
Channel 0
mn: -666
mx: 575
 μ : -9.9
 σ : 22.7

Channel 1
mn: -2626
mx: 2256
 μ : -17.0
 σ : 49.3

Channel 2
mn: -1444
mx: 1423
 μ : -19.7
 σ : 85.2

ELMAVAN 3D WAVEFORMS (Measured data sampled at 50 kHz) 51000 packets of 144 samples from 2017-02-13T17:08:56.619.999. Part 105/147

Processed Mon Feb 13 18:17:11 2017 by ELM ver.2012-10-06 from 001__elm20170213_170855__dat00.bin



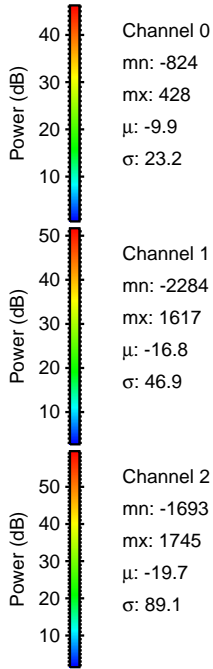
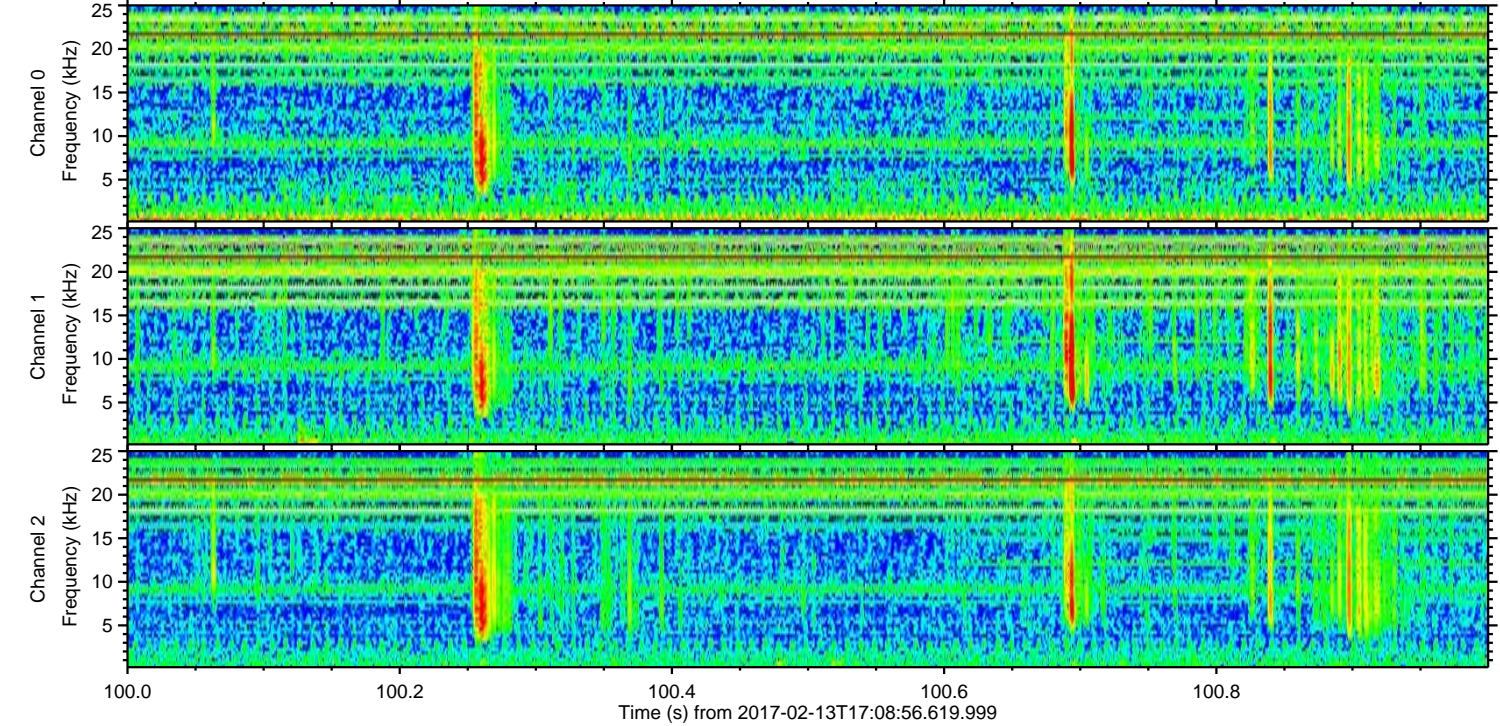
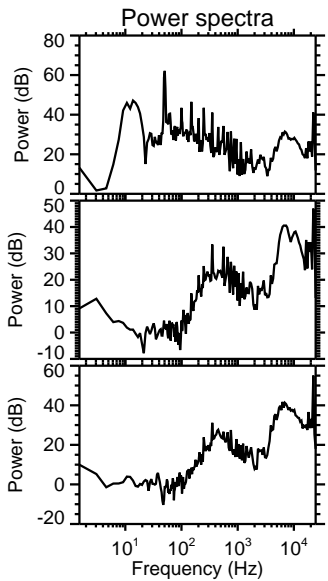
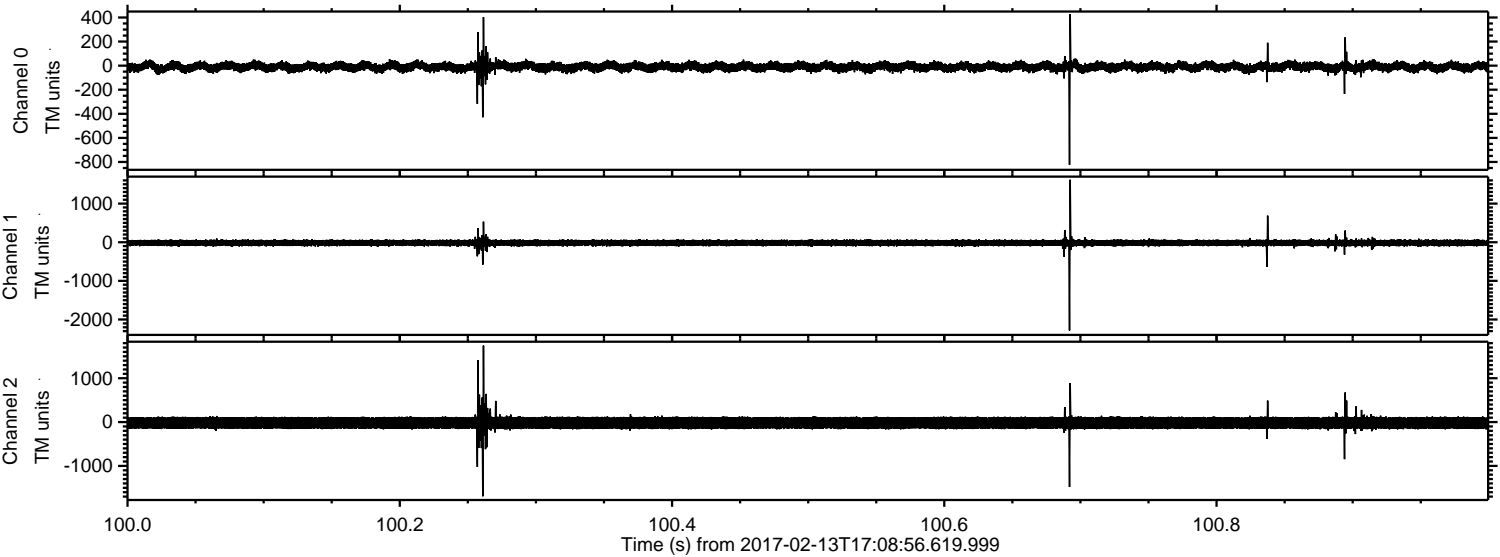
Channel 0
mn: -731
mx: 898
 μ : -10.0
 σ : 22.7

Channel 1
mn: -1154
mx: 1463
 μ : -16.8
 σ : 41.2

Channel 2
mn: -1770
mx: 2416
 μ : -19.6
 σ : 86.9

ELMAVAN 3D WAVEFORMS (Measured data sampled at 50 kHz) 51000 packets of 144 samples from 2017-02-13T17:08:56.619.999. Part 101/147

Processed Mon Feb 13 18:17:12 2017 by ELM ver.2012-10-06 from 001__elm20170213_170855__dat00.bin

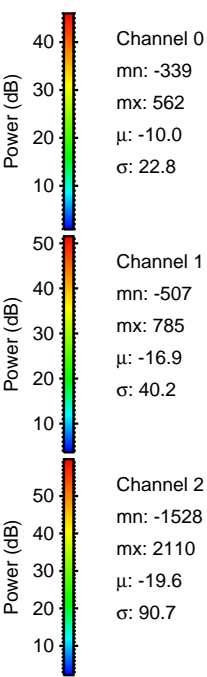
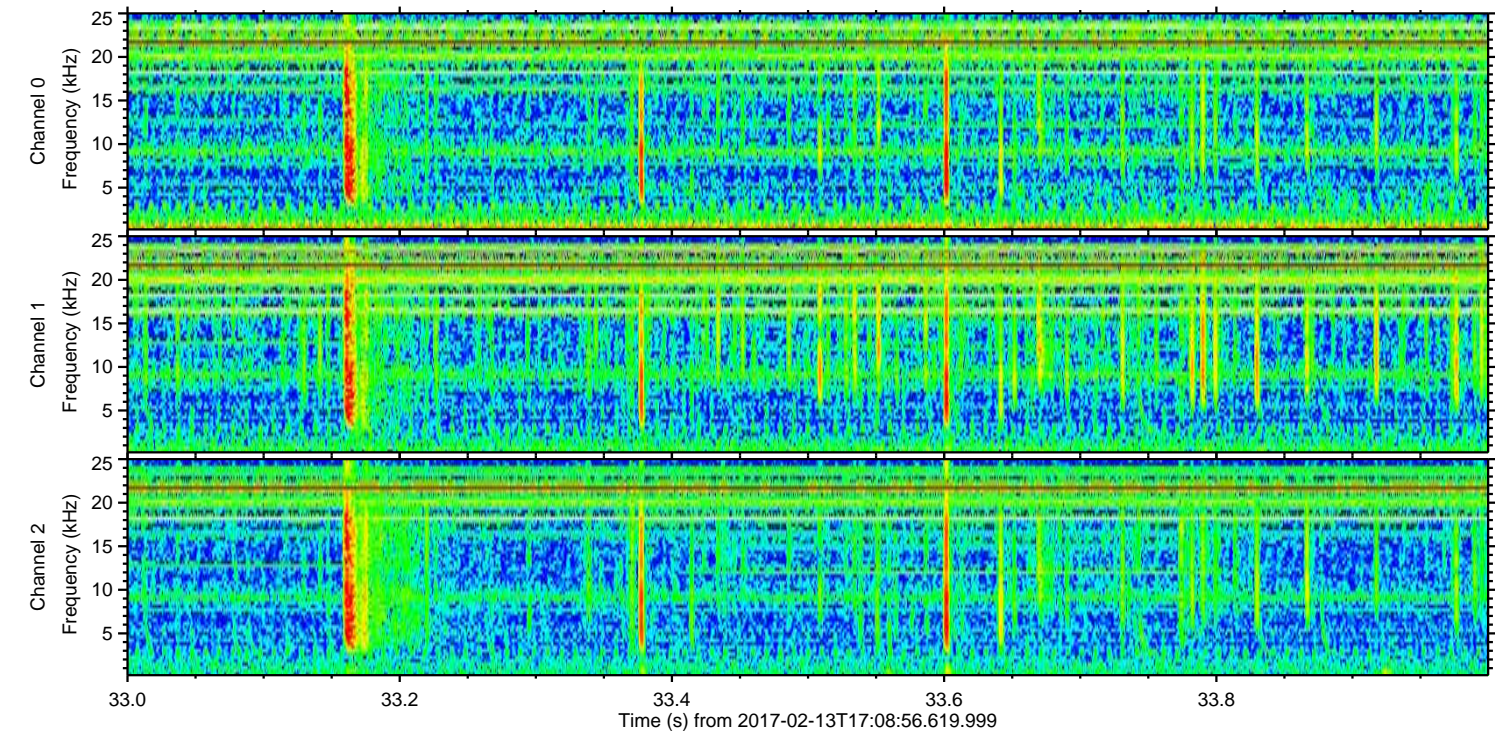
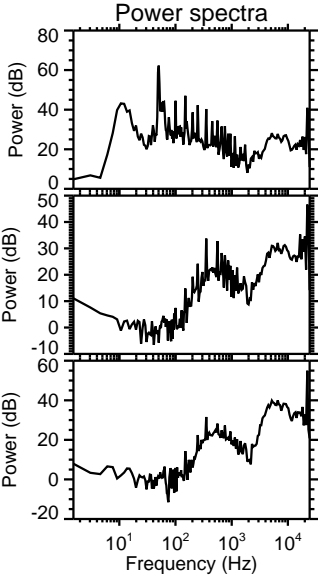
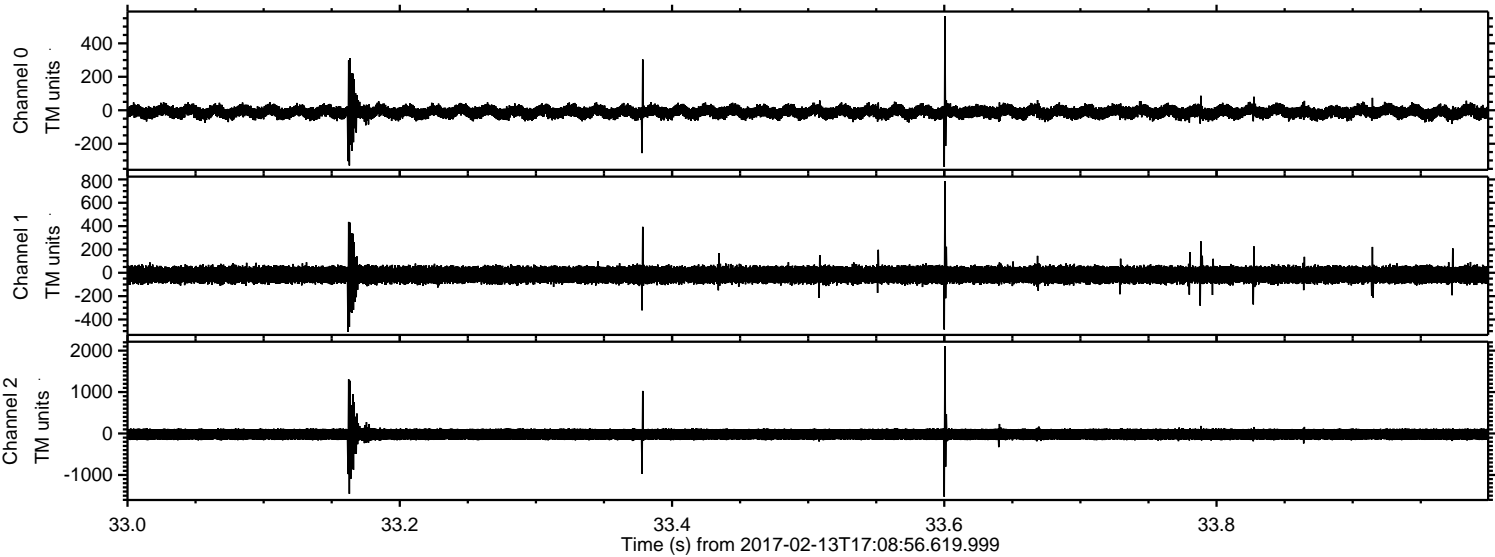


Channel 0
mn: -824
mx: 428
 μ : -9.9
 σ : 23.2

Channel 1
mn: -2284
mx: 1617
 μ : -16.8
 σ : 46.9

Channel 2
mn: -1693
mx: 1745
 μ : -19.7
 σ : 89.1

Processed Mon Feb 13 18:17:13 2017 by ELM ver.2012-10-06 from 001__elm20170213_170855__dat00.bin



Processed Mon Feb 13 18:17:14 2017 by ELM ver.2012-10-06 from 001__elm20170213_170855__dat00.bin

