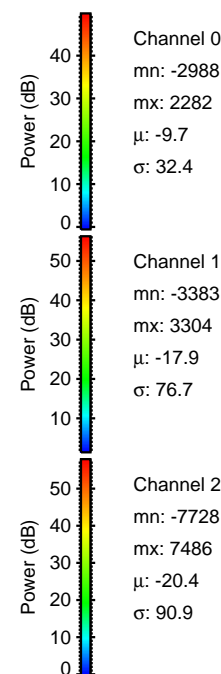
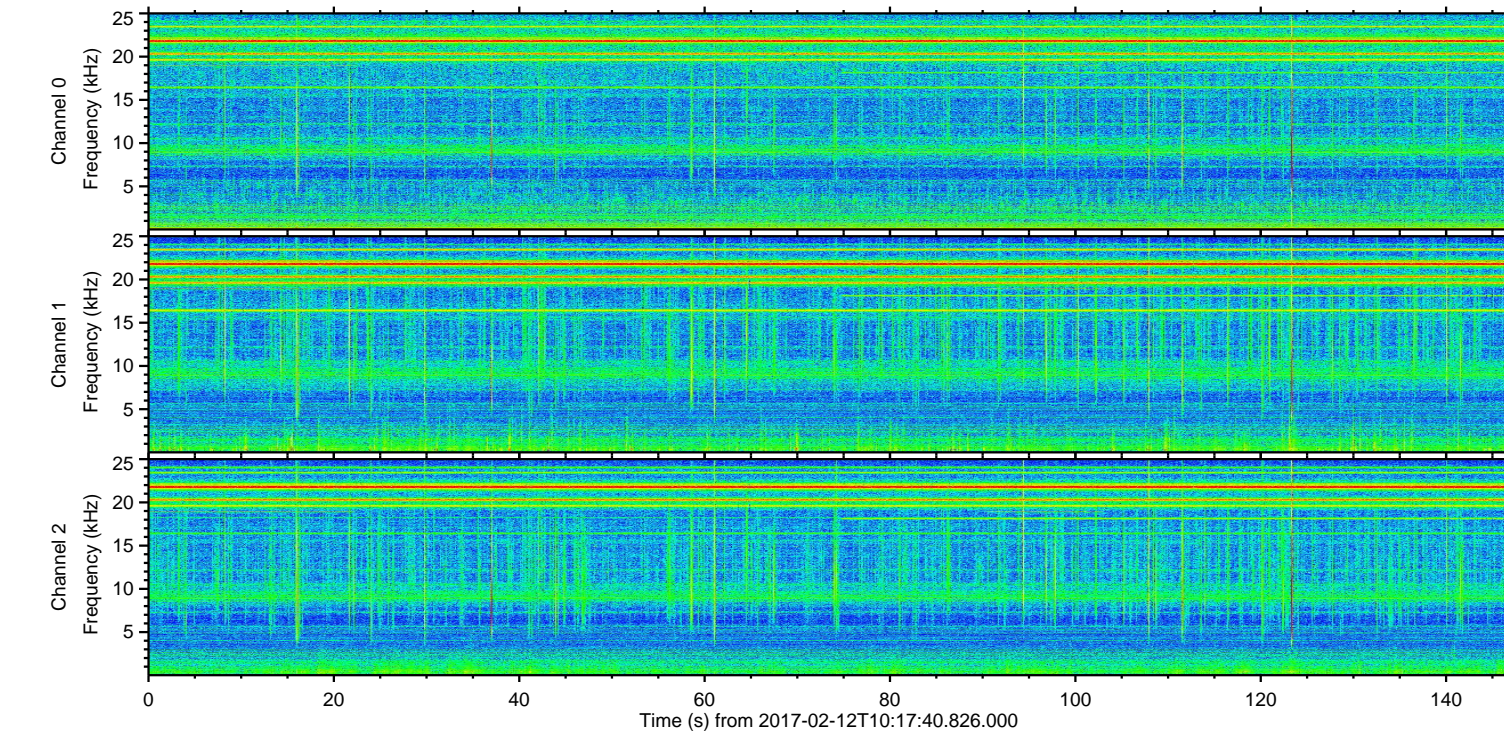
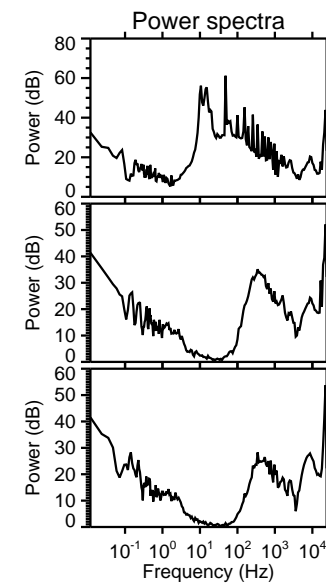
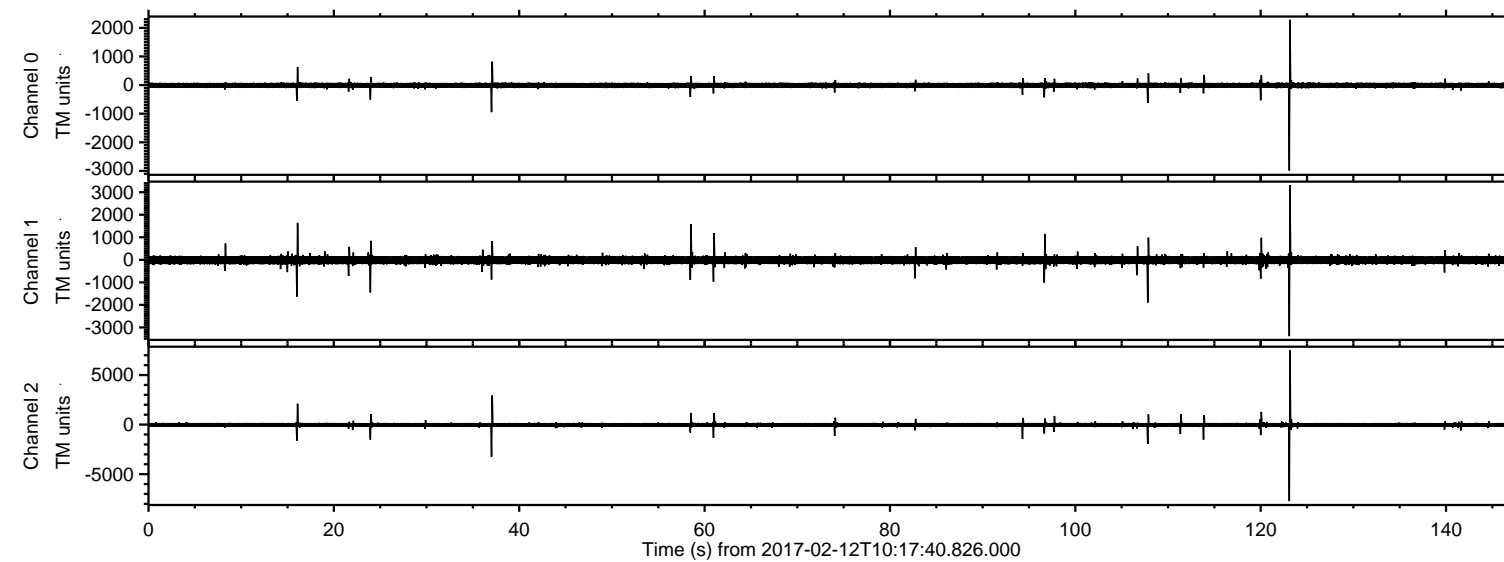


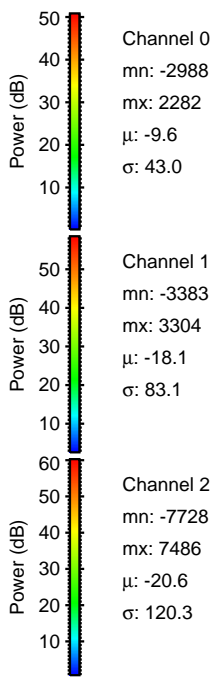
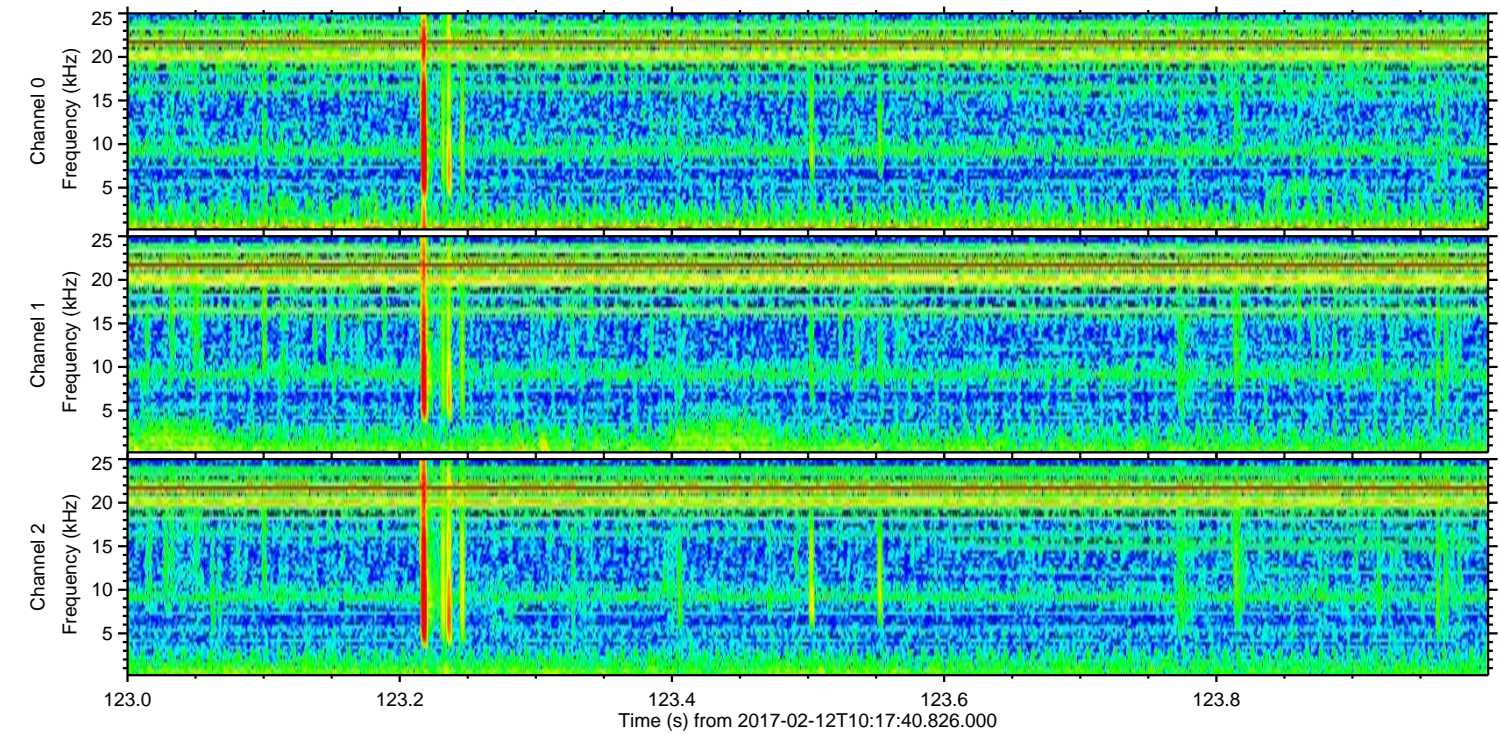
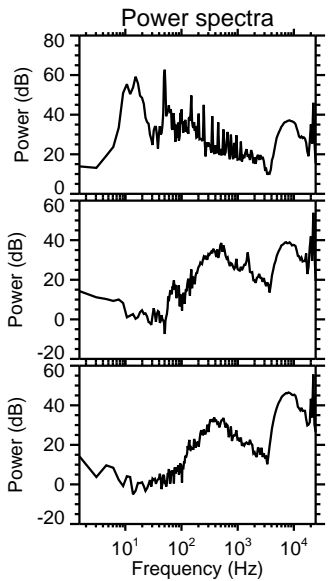
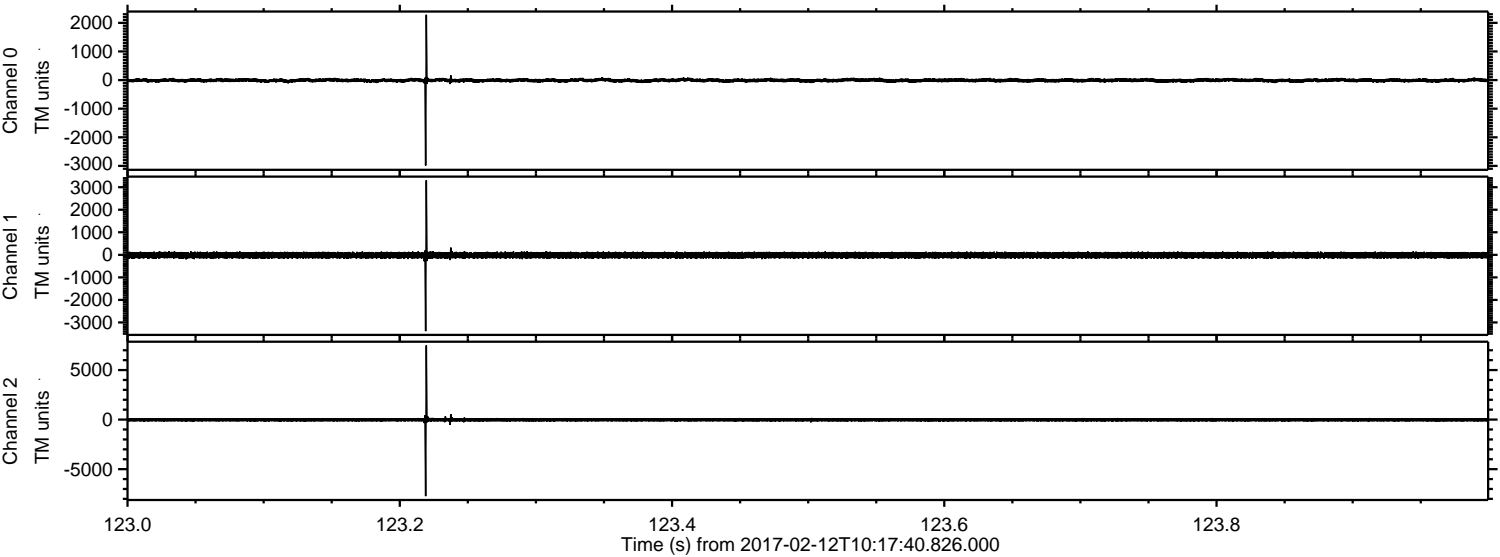
ELMAVAN 3D WAVEFORMS (Measured data sampled at 50 kHz) 51000 packets of 144 samples from 2017-02-12T10:17:40.826.000.

Processed Sun Feb 12 11:25:08 2017 by ELM ver.2012-10-06 from 001__elm20170212_101739__dat00.bin

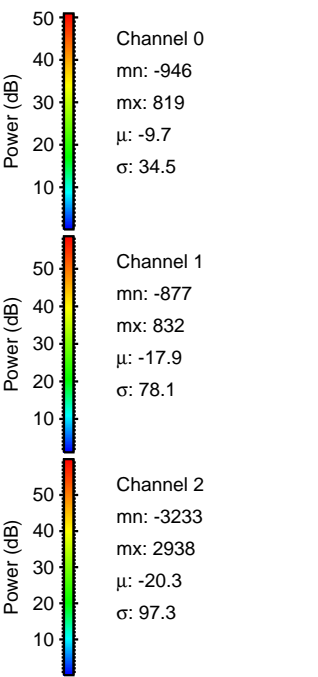
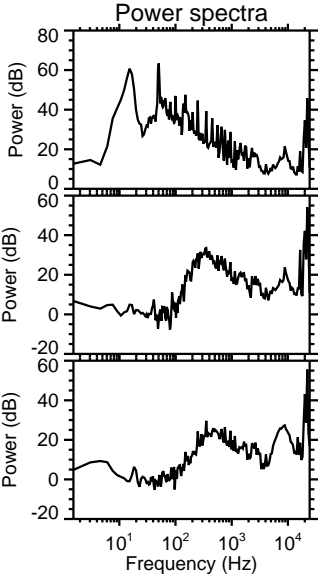
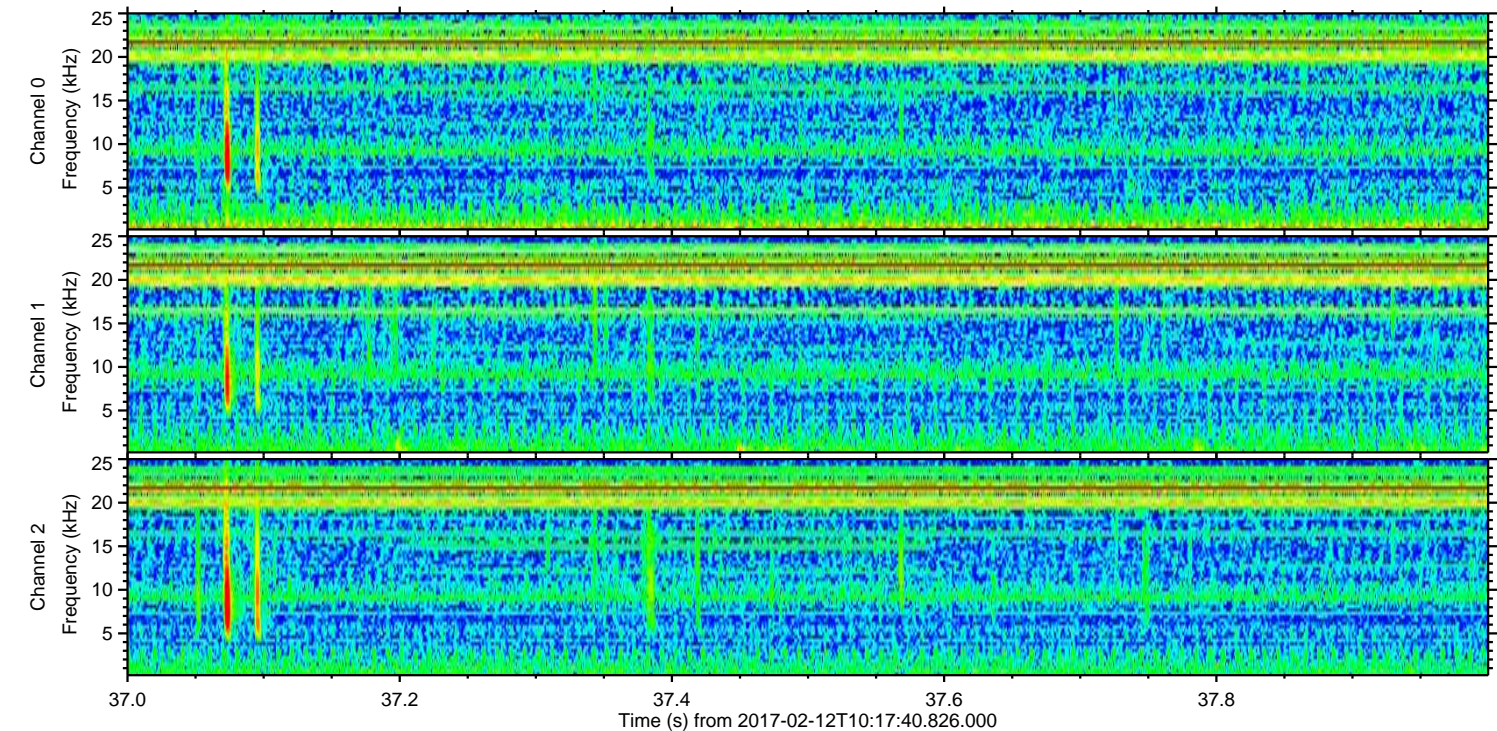
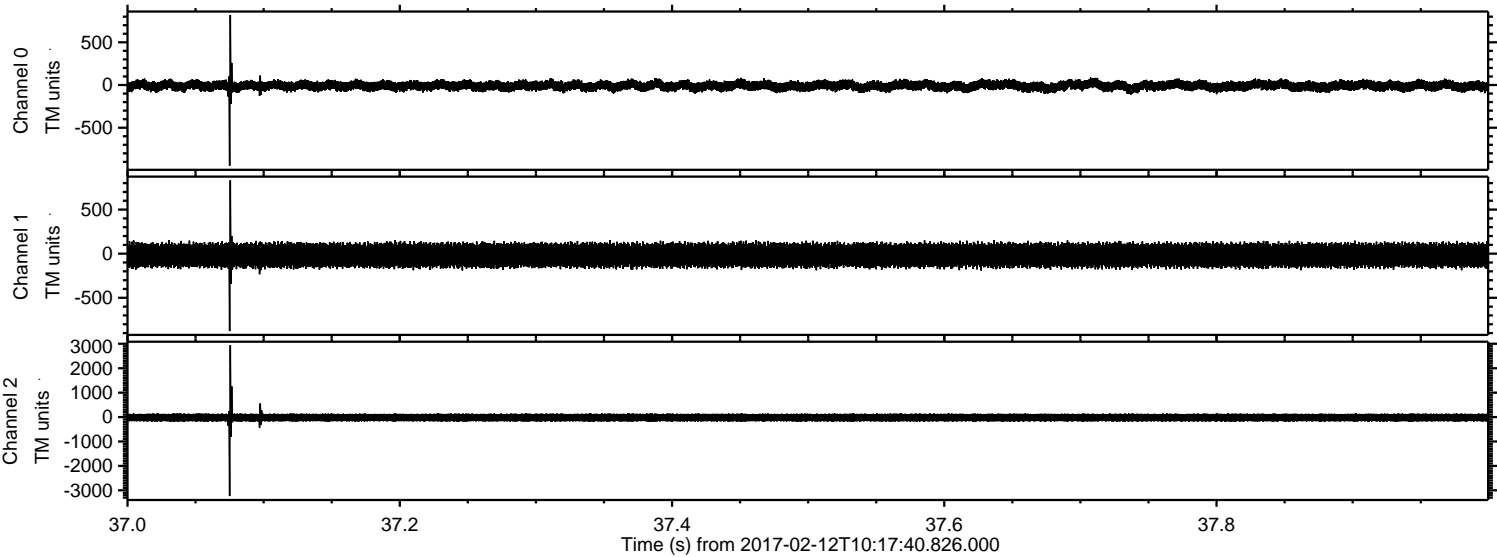


ELMAVAN 3D WAVEFORMS (Measured data sampled at 50 kHz) 51000 packets of 144 samples from 2017-02-12T10:17:40.826.000. Part 124/147

Processed Sun Feb 12 11:25:19 2017 by ELM ver.2012-10-06 from 001__elm20170212_101739__dat00.bin

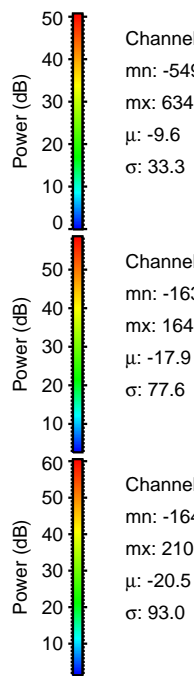
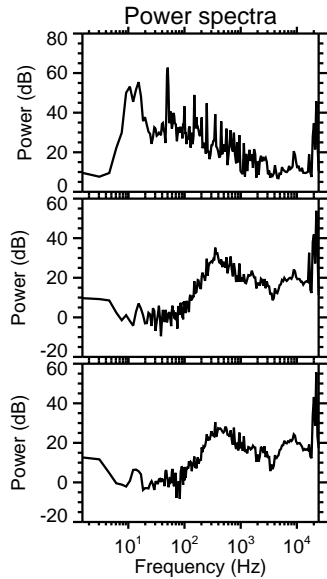
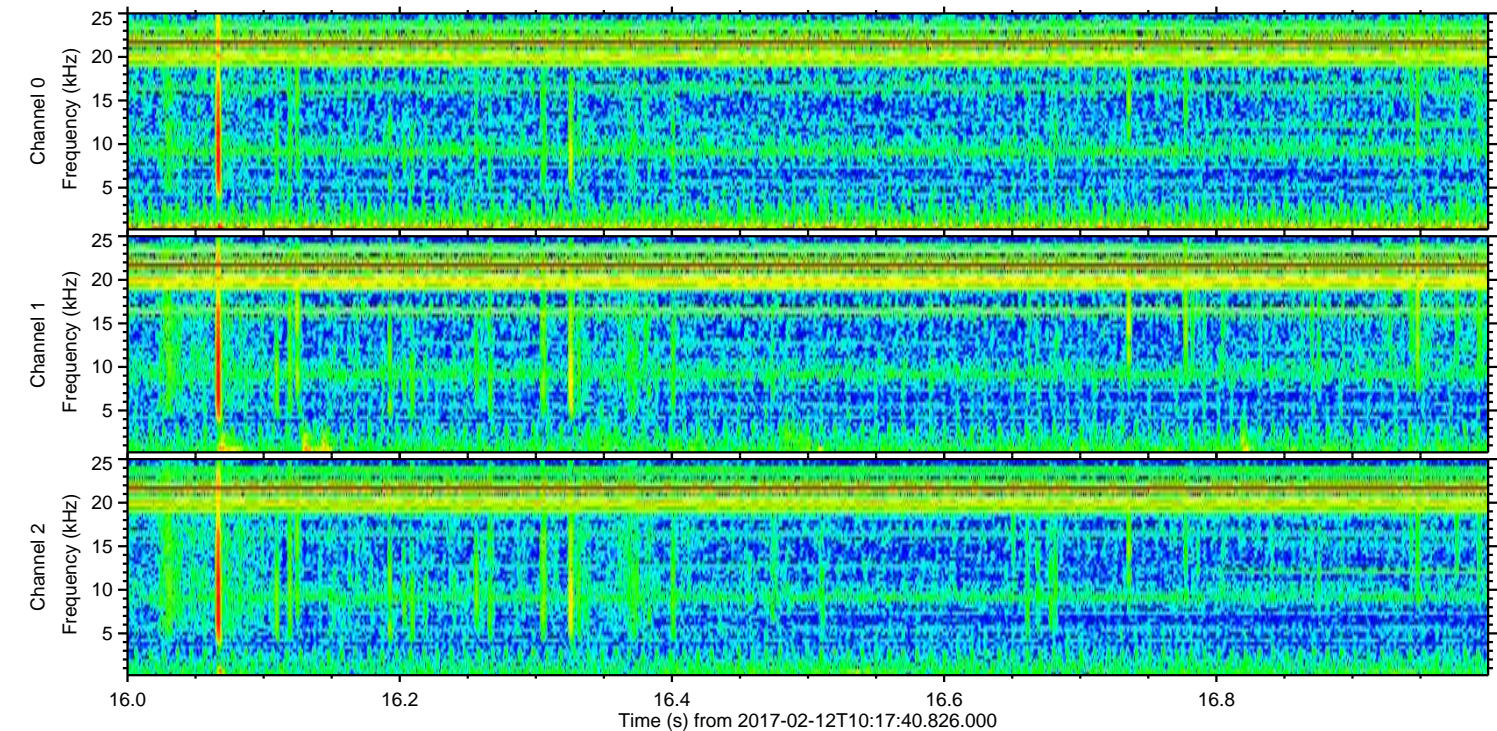
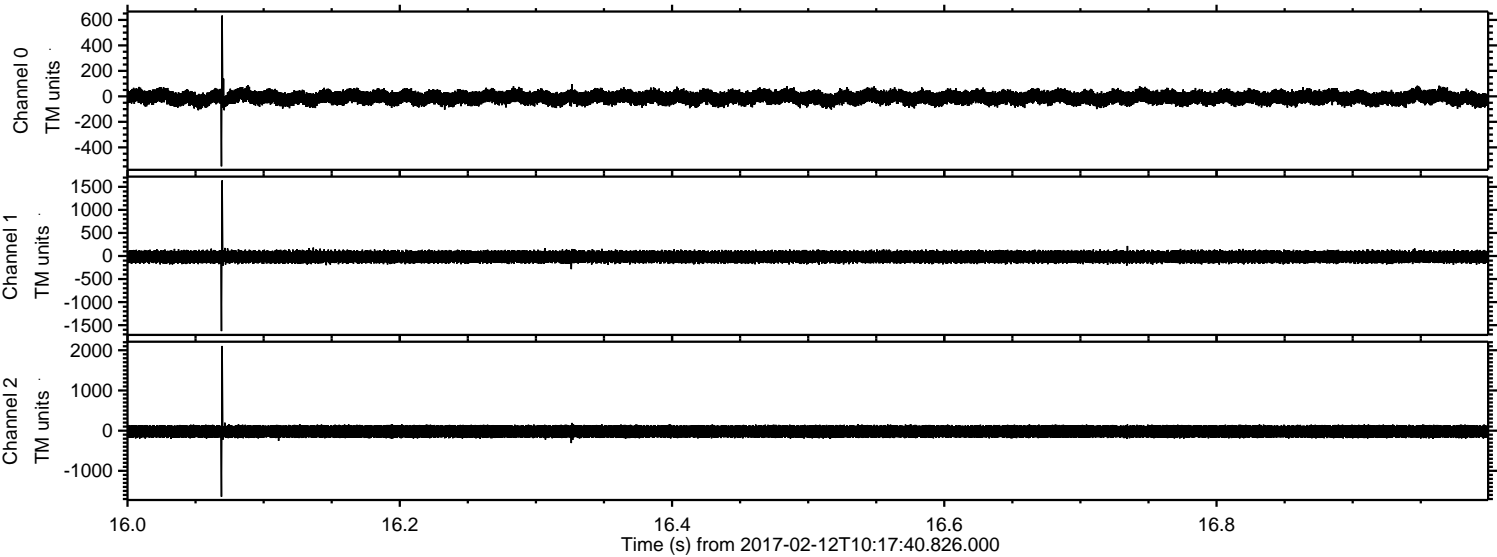


Processed Sun Feb 12 11:25:20 2017 by ELM ver.2012-10-06 from 001__elm20170212_101739__dat00.bin



ELMAVAN 3D WAVEFORMS (Measured data sampled at 50 kHz) 51000 packets of 144 samples from 2017-02-12T10:17:40.826.000. Part 17/147

Processed Sun Feb 12 11:25:21 2017 by ELM ver.2012-10-06 from 001__elm20170212_101739__dat00.bin



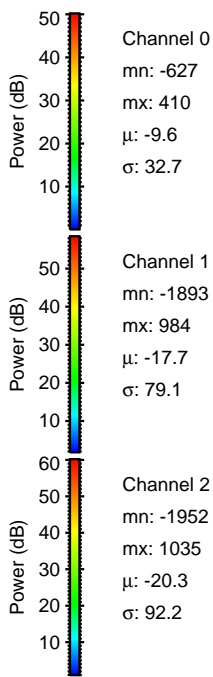
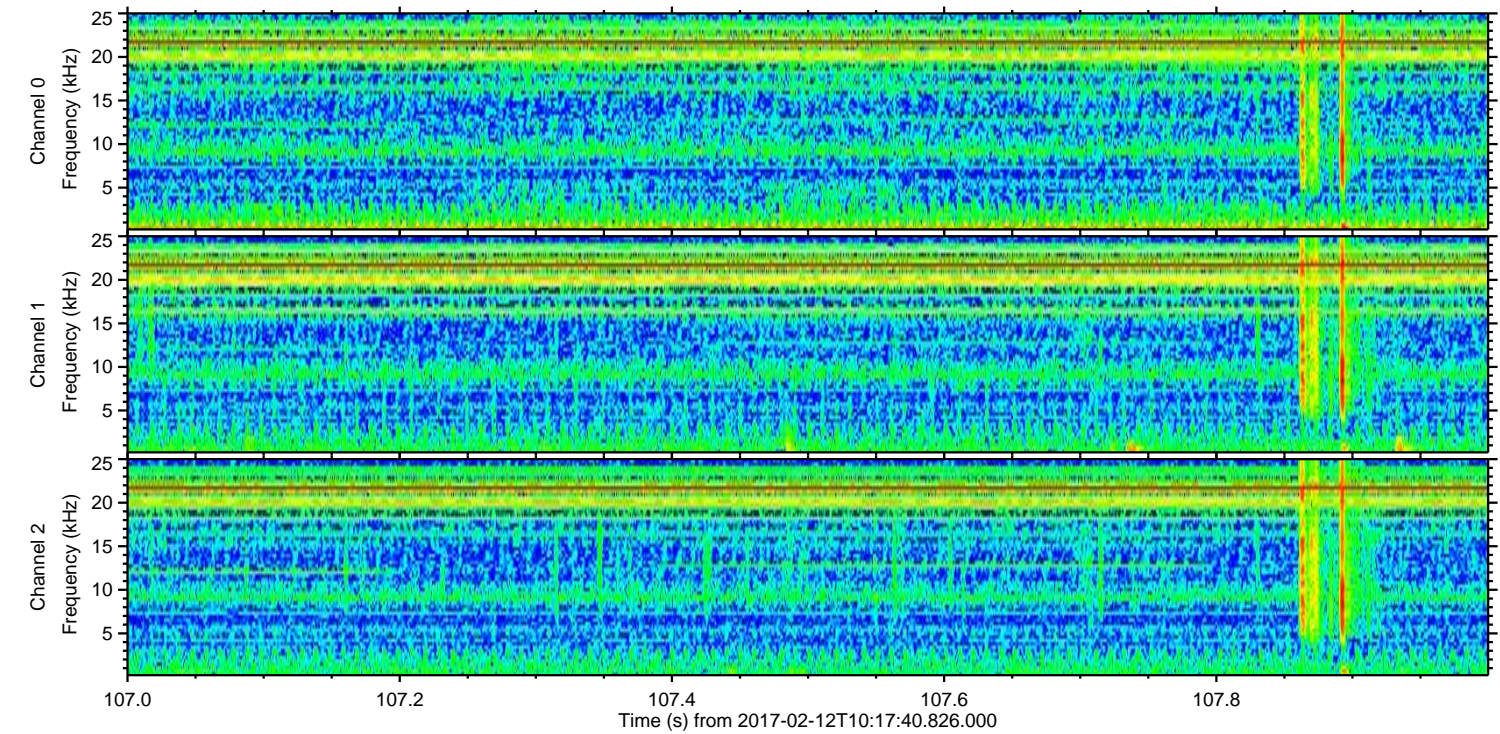
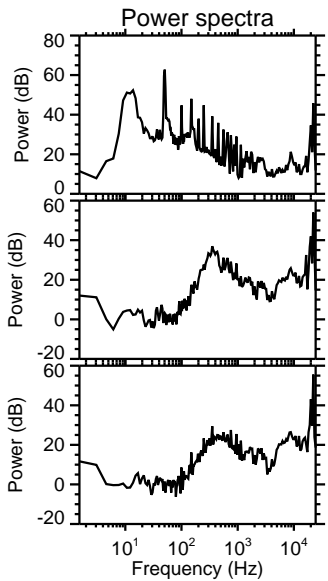
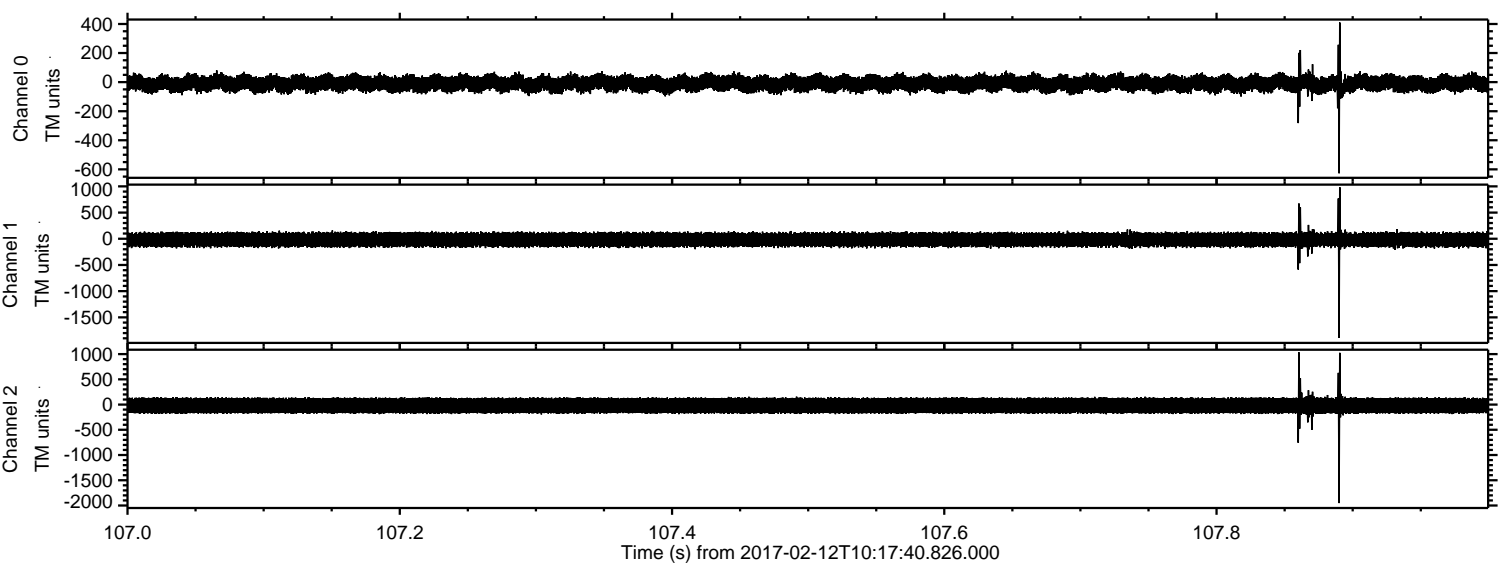
Channel 0
mn: -549
mx: 634
 μ : -9.6
 σ : 33.3

Channel 1
mn: -1630
mx: 1640
 μ : -17.9
 σ : 77.6

Channel 2
mn: -1643
mx: 2107
 μ : -20.5
 σ : 93.0

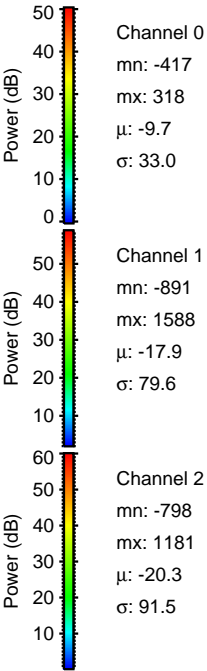
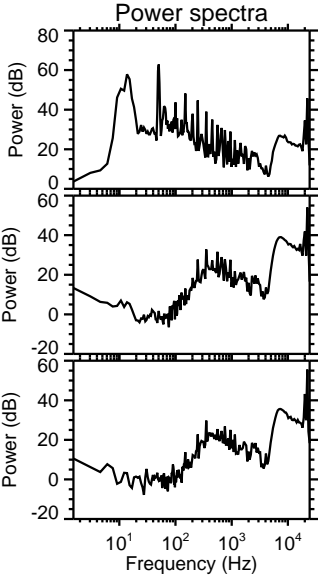
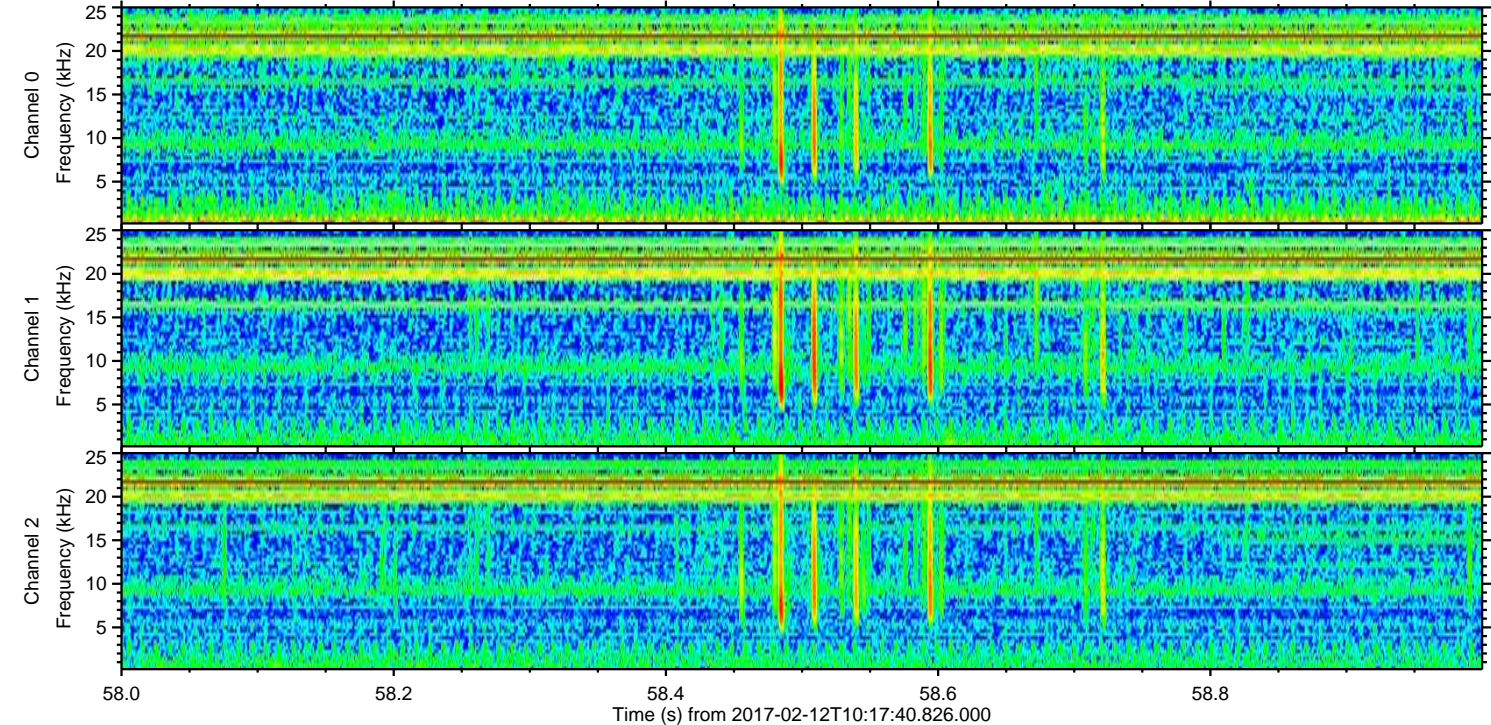
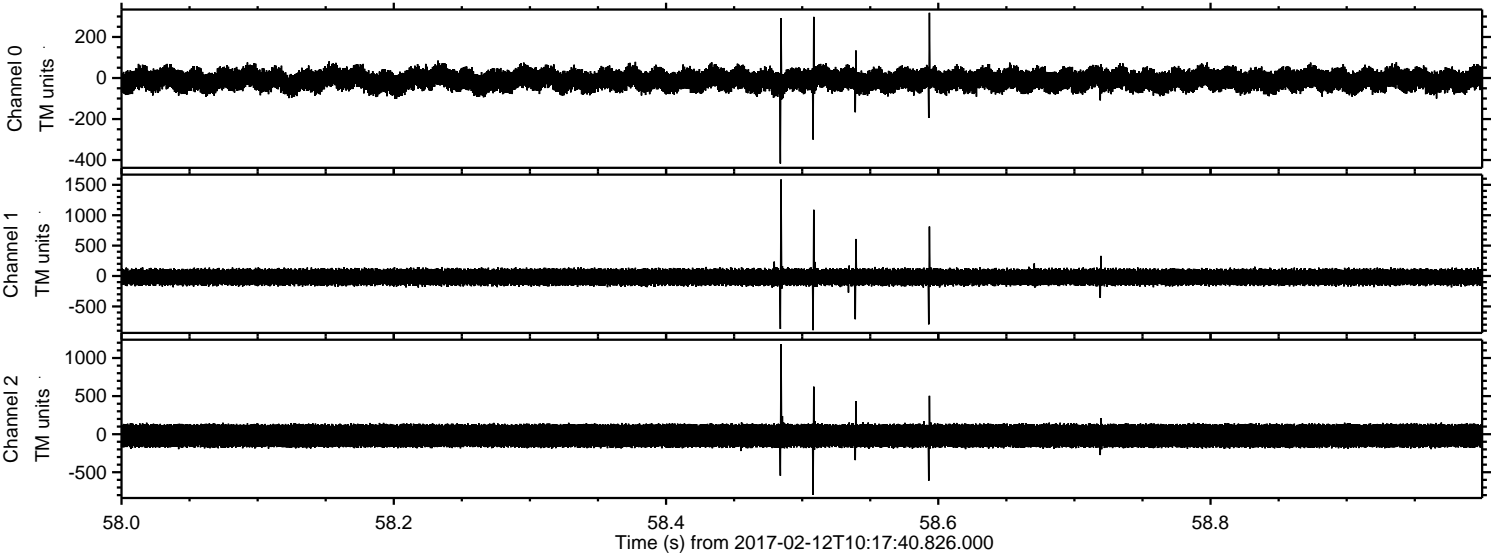
ELMAVAN 3D WAVEFORMS (Measured data sampled at 50 kHz) 51000 packets of 144 samples from 2017-02-12T10:17:40.826.000. Part 108/147

Processed Sun Feb 12 11:25:22 2017 by ELM ver.2012-10-06 from 001__elm20170212_101739__dat00.bin



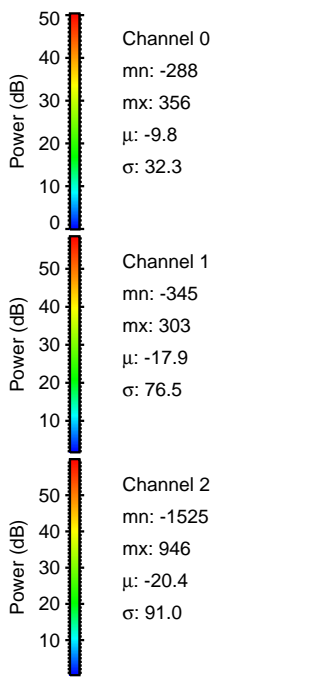
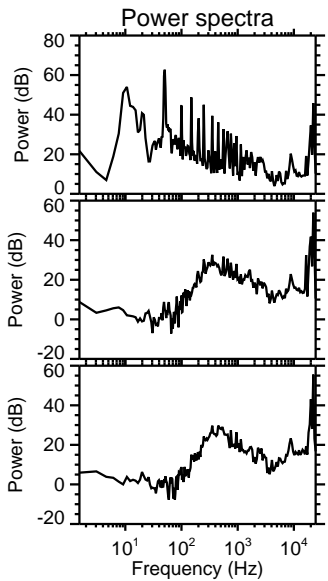
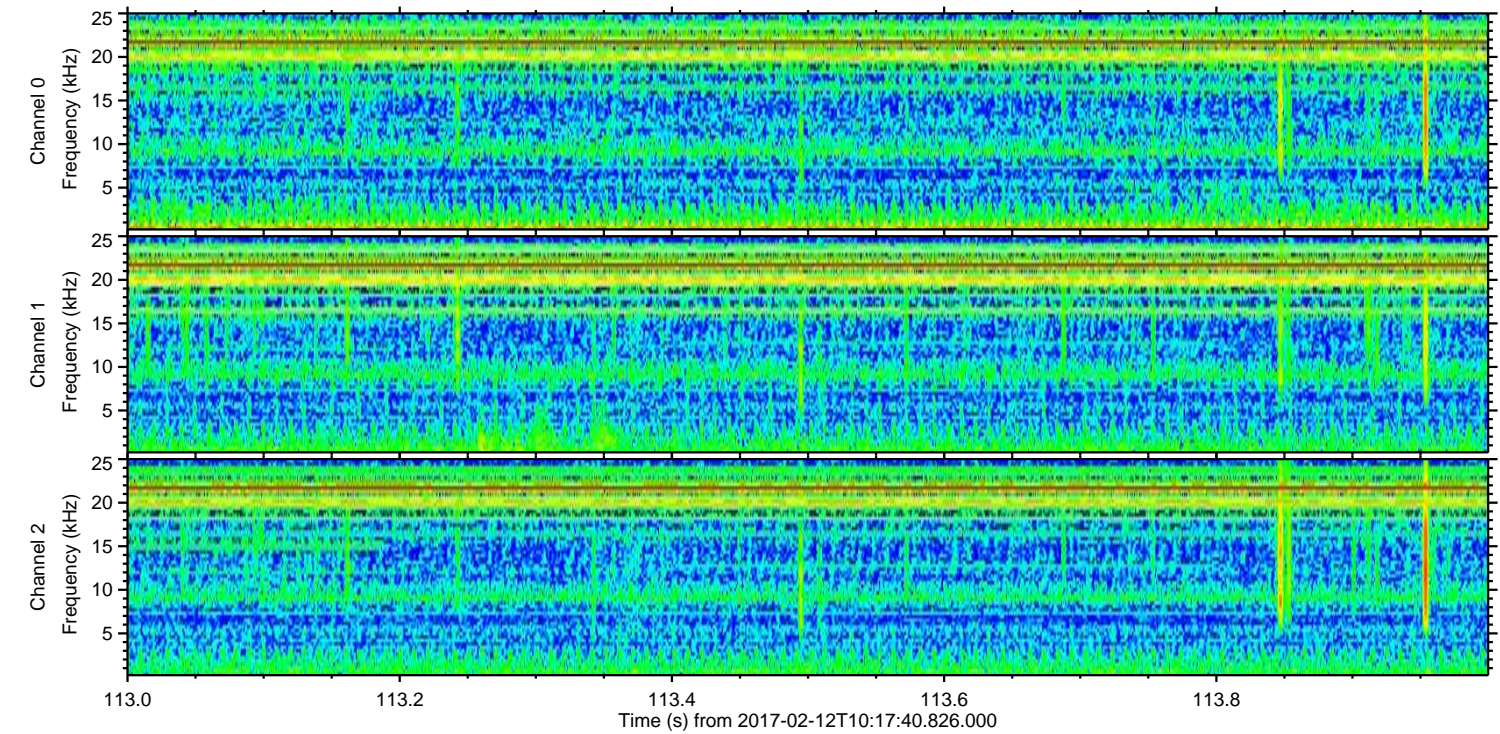
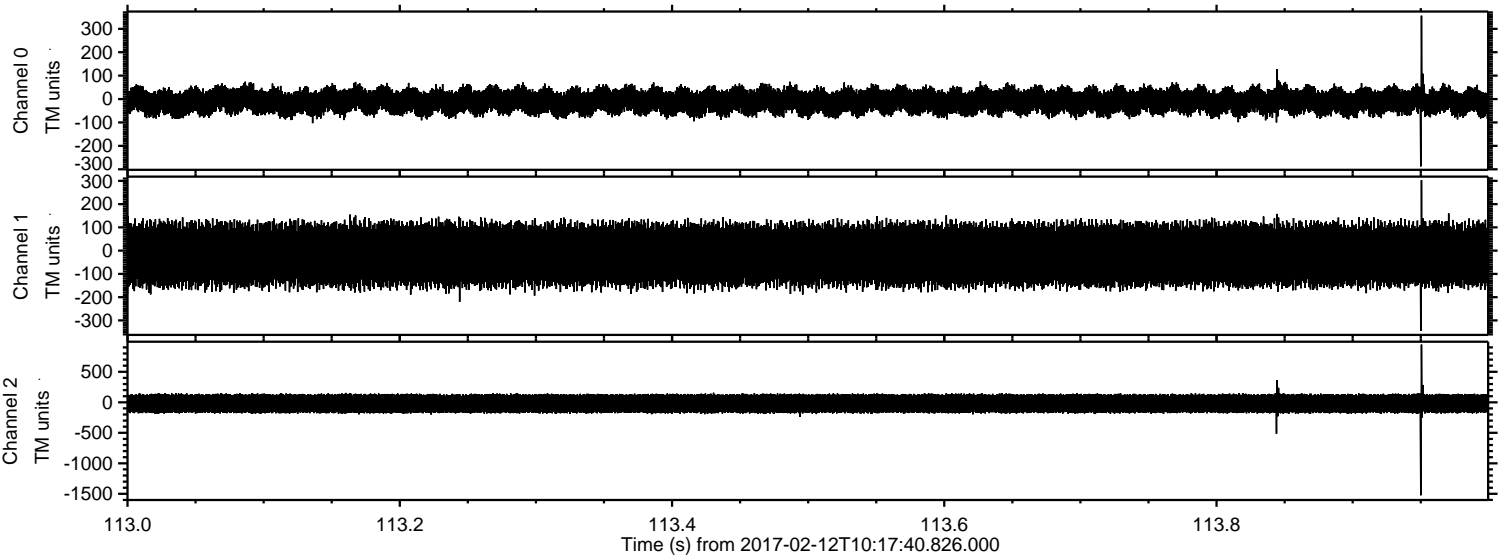
ELMAVAN 3D WAVEFORMS (Measured data sampled at 50 kHz) 51000 packets of 144 samples from 2017-02-12T10:17:40.826.000. Part 59/147

Processed Sun Feb 12 11:25:23 2017 by ELM ver.2012-10-06 from 001__elm20170212_101739__dat00.bin

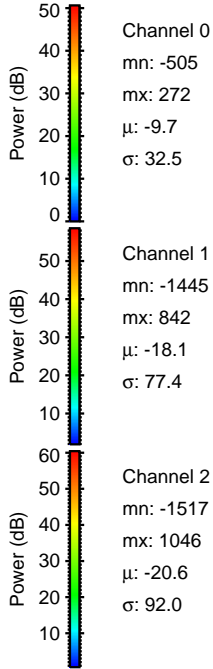
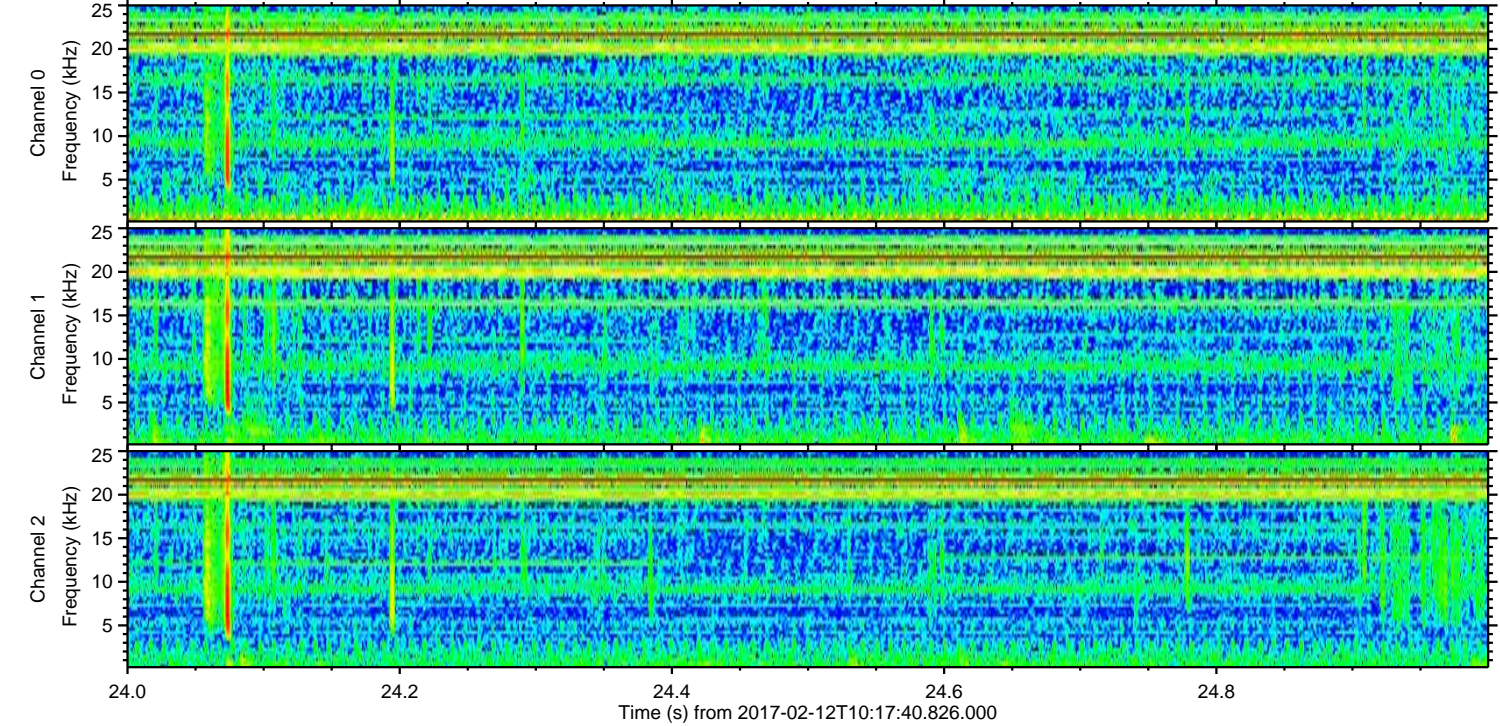
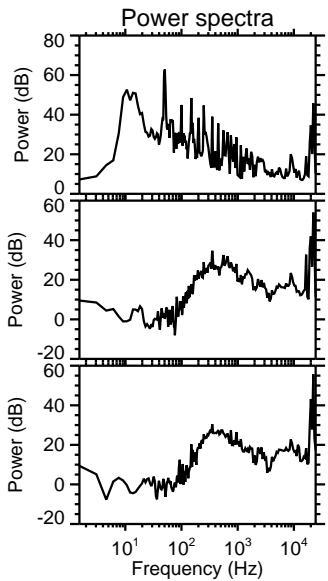
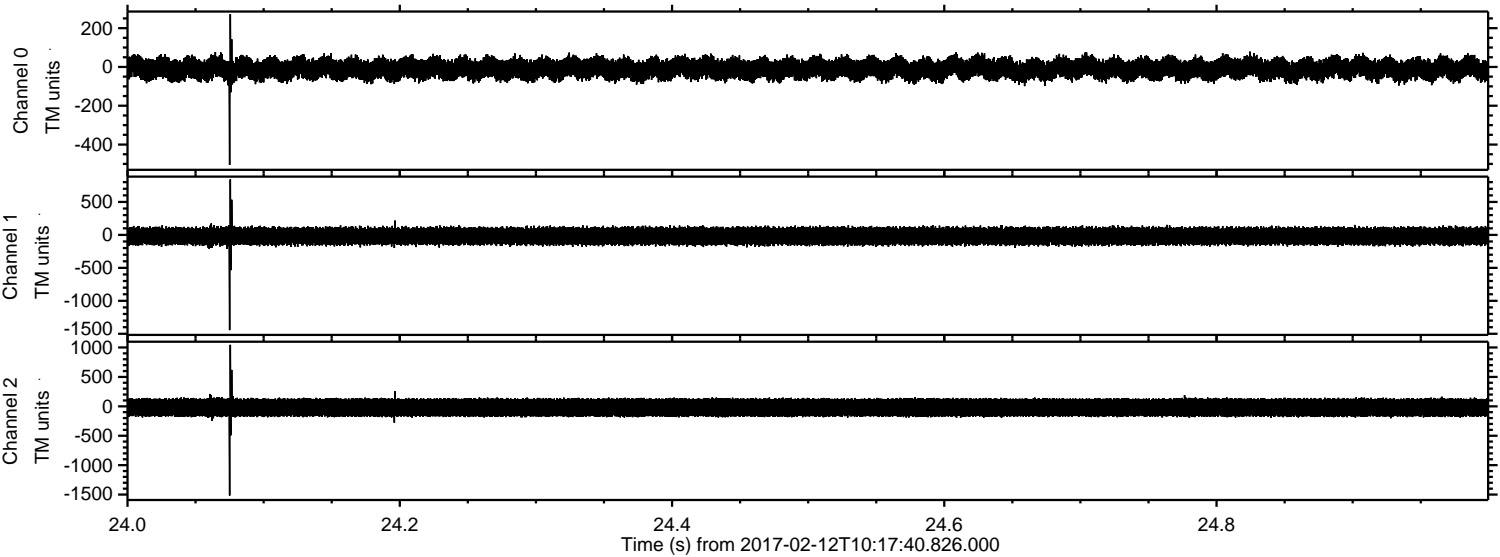


ELMAVAN 3D WAVEFORMS (Measured data sampled at 50 kHz) 51000 packets of 144 samples from 2017-02-12T10:17:40.826.000. Part 114/147

Processed Sun Feb 12 11:25:24 2017 by ELM ver.2012-10-06 from 001__elm20170212_101739__dat00.bin



Processed Sun Feb 12 11:25:25 2017 by ELM ver.2012-10-06 from 001__elm20170212_101739__dat00.bin

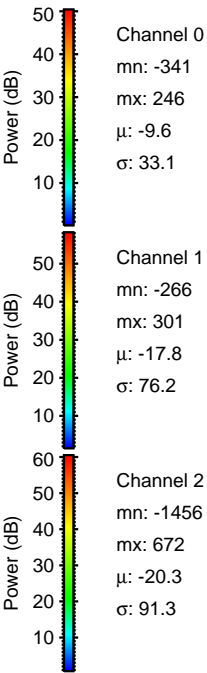
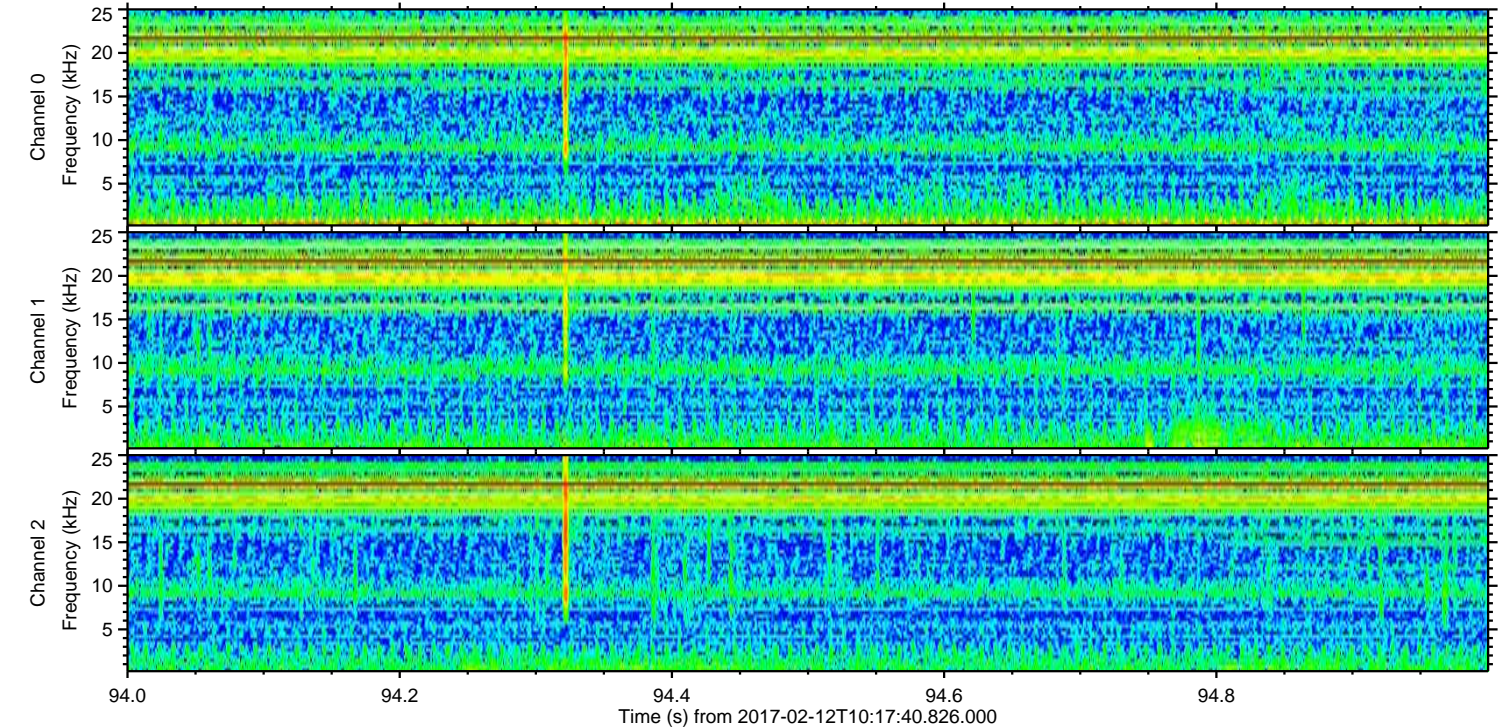
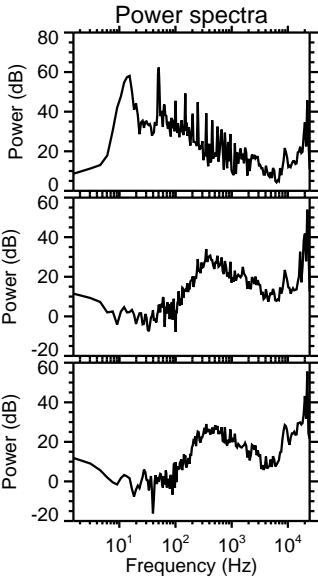
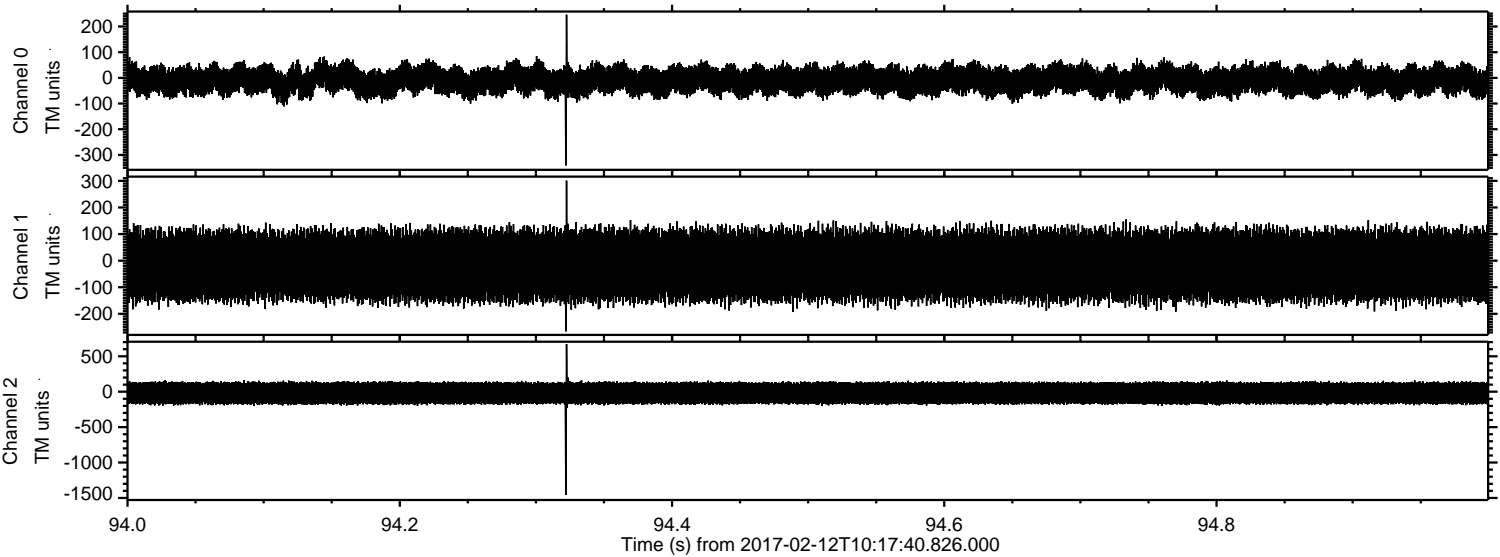


Channel 0
mn: -505
mx: 272
 μ : -9.7
 σ : 32.5

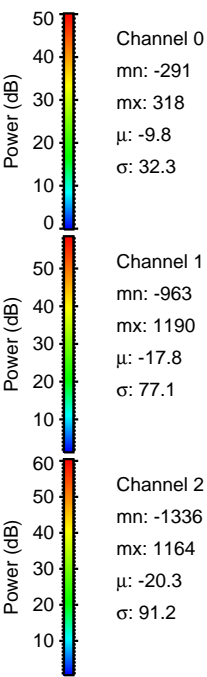
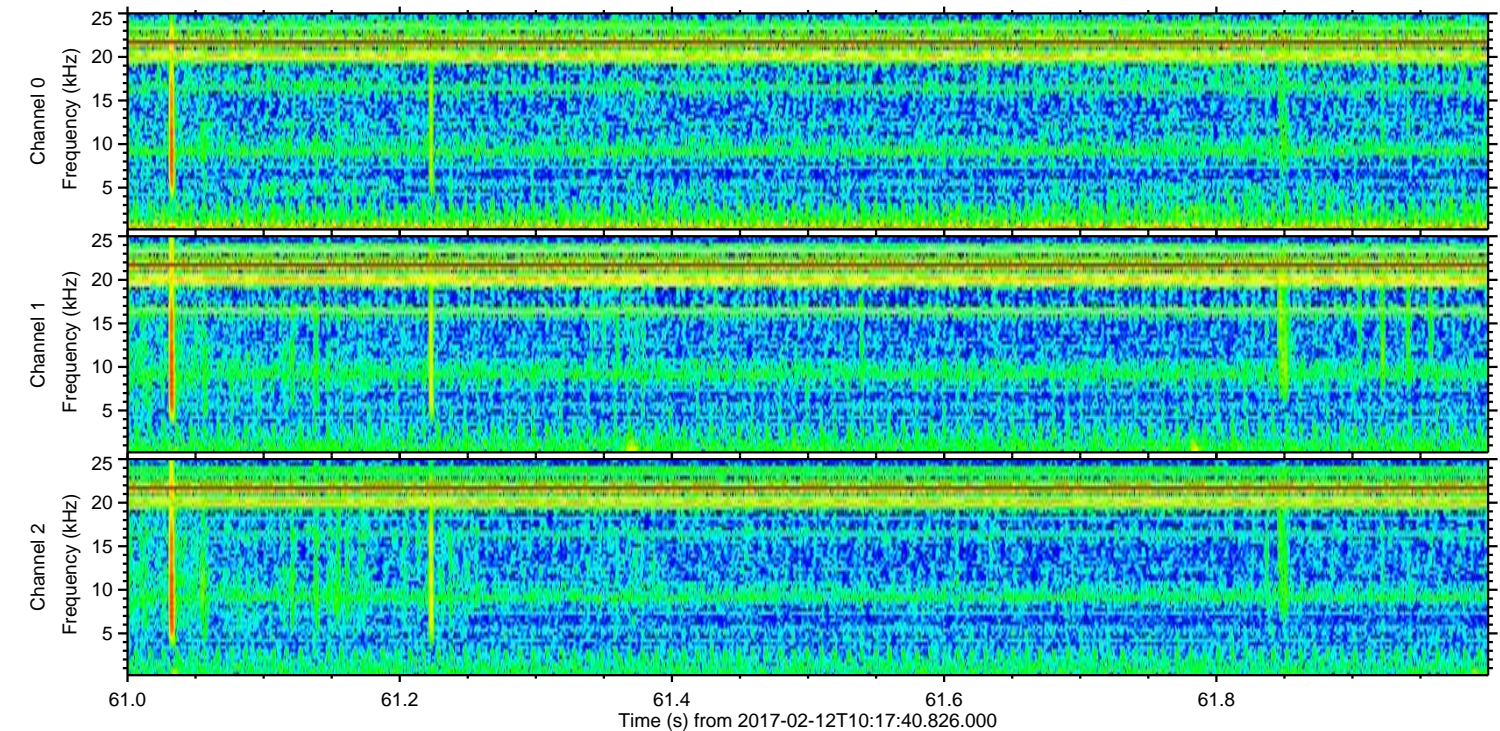
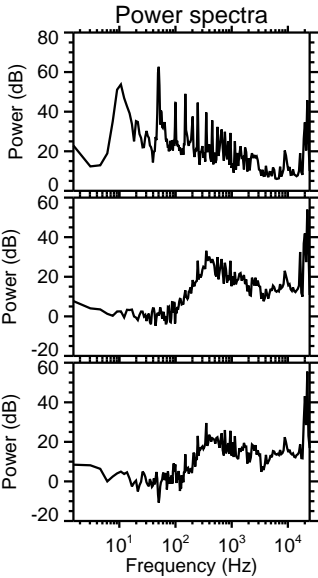
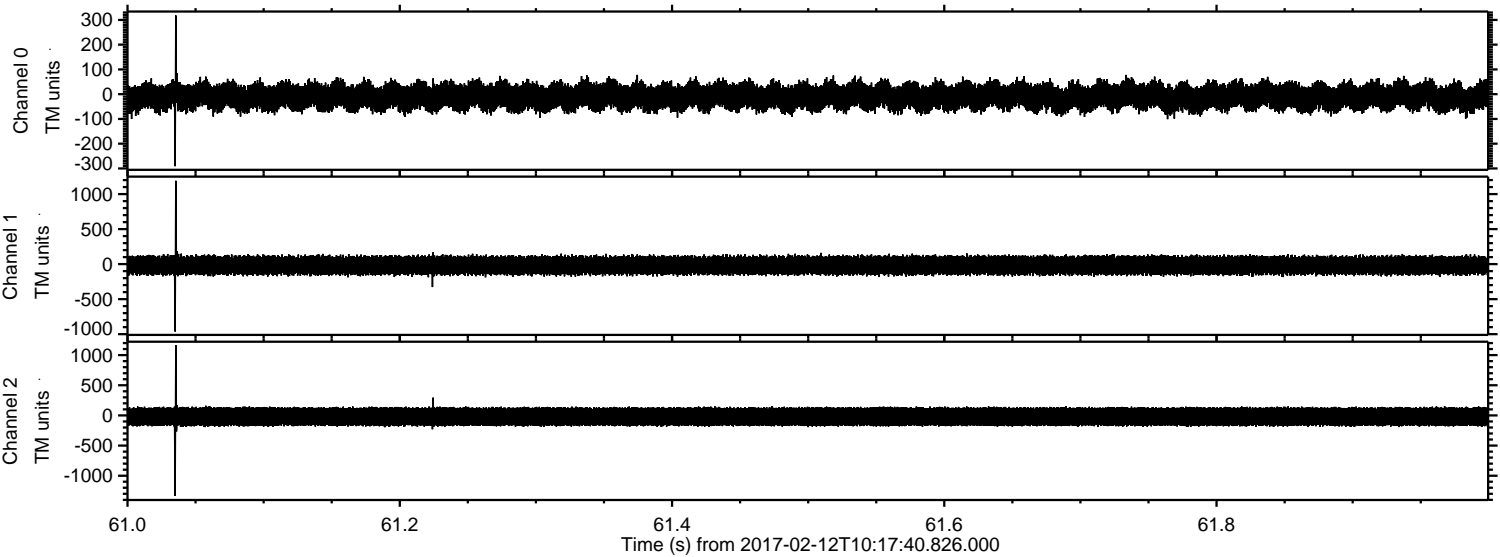
Channel 1
mn: -1445
mx: 842
 μ : -18.1
 σ : 77.4

Channel 2
mn: -1517
mx: 1046
 μ : -20.6
 σ : 92.0

Processed Sun Feb 12 11:25:26 2017 by ELM ver.2012-10-06 from 001__elm20170212_101739__dat00.bin



Processed Sun Feb 12 11:25:27 2017 by ELM ver.2012-10-06 from 001__elm20170212_101739__dat00.bin



Channel 0
mn: -291
mx: 318
 μ : -9.8
 σ : 32.3

Channel 1
mn: -963
mx: 1190
 μ : -17.8
 σ : 77.1

Channel 2
mn: -1336
mx: 1164
 μ : -20.3
 σ : 91.2

Processed Sun Feb 12 11:25:28 2017 by ELM ver.2012-10-06 from 001__elm20170212_101739__dat00.bin

