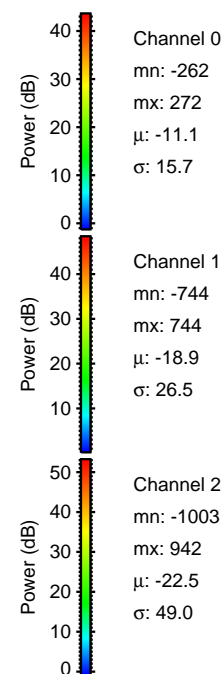
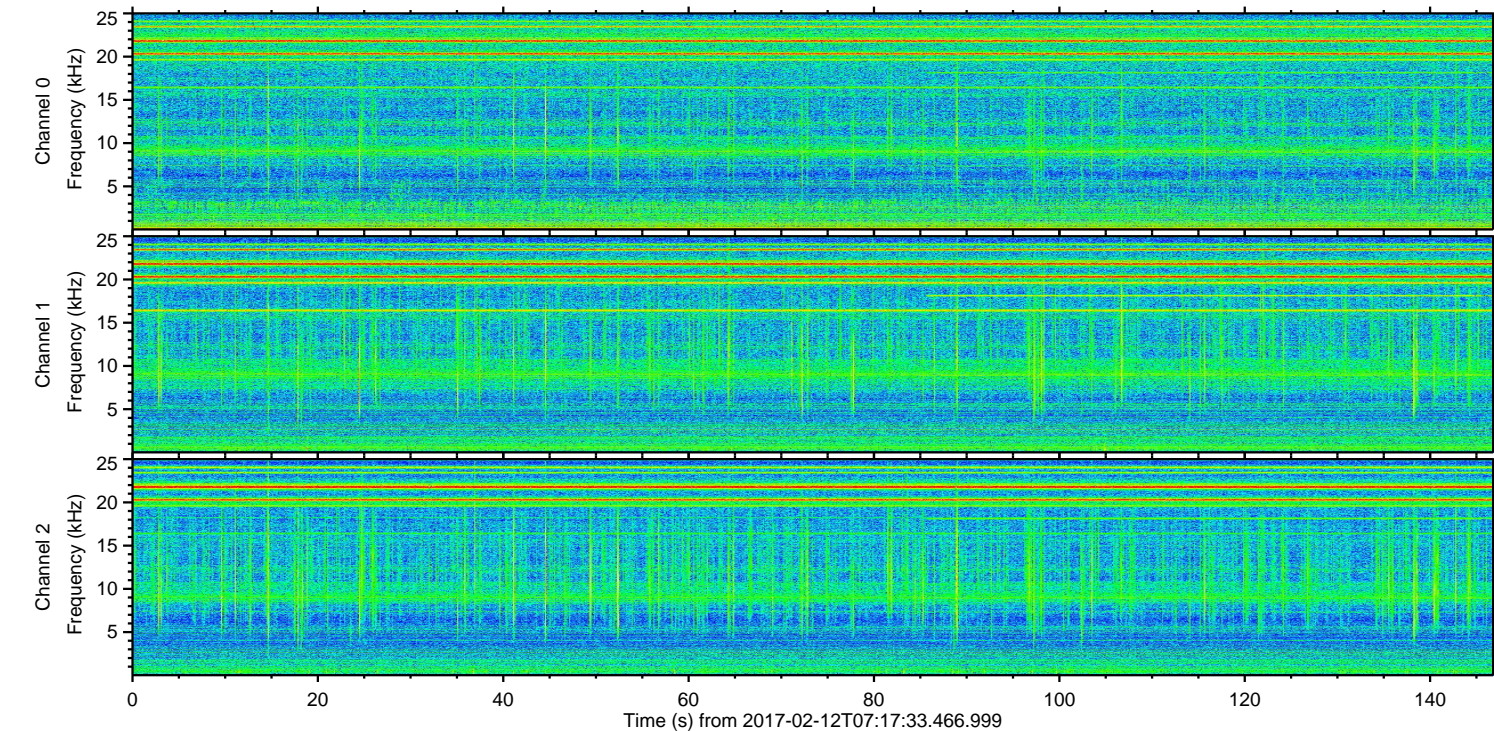
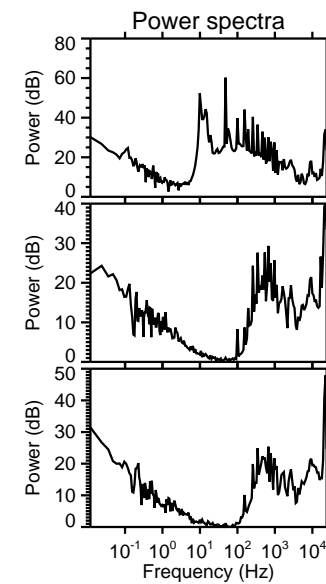
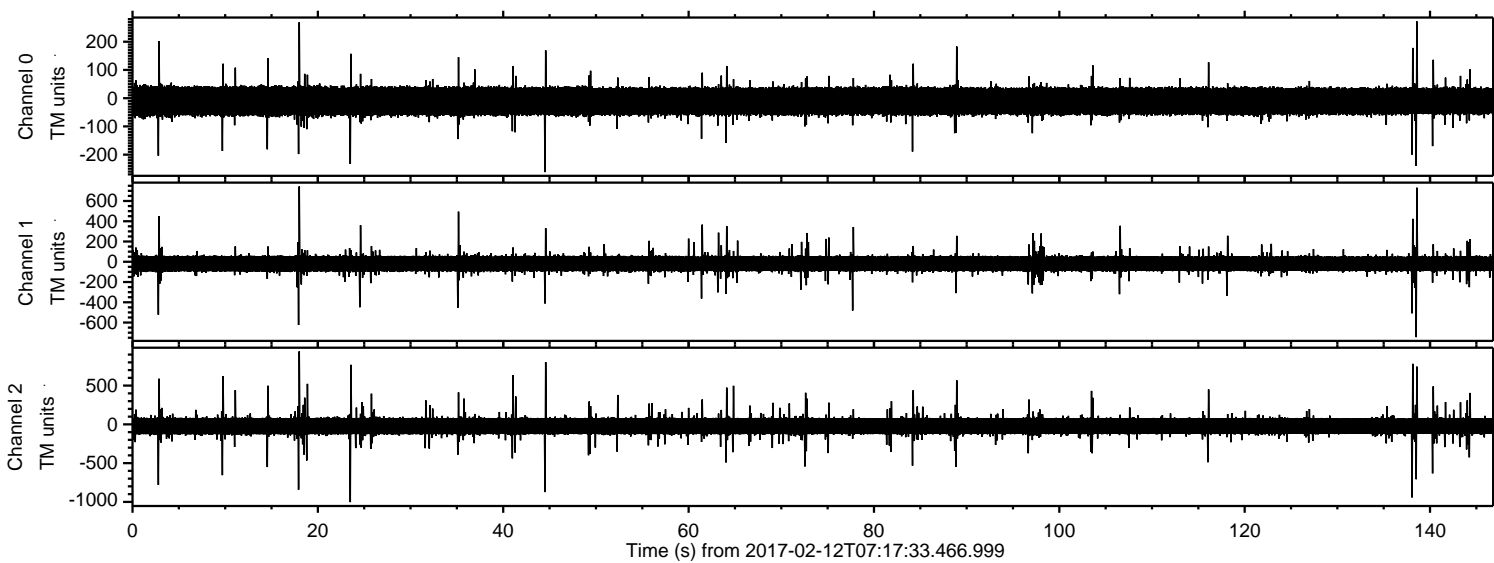


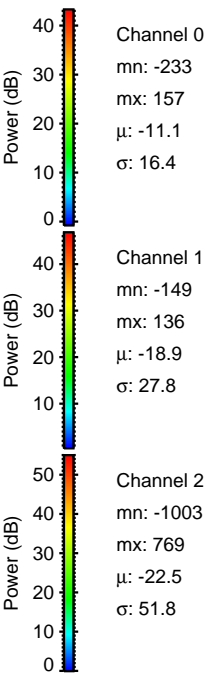
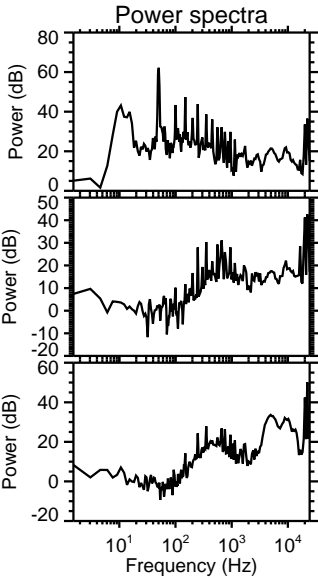
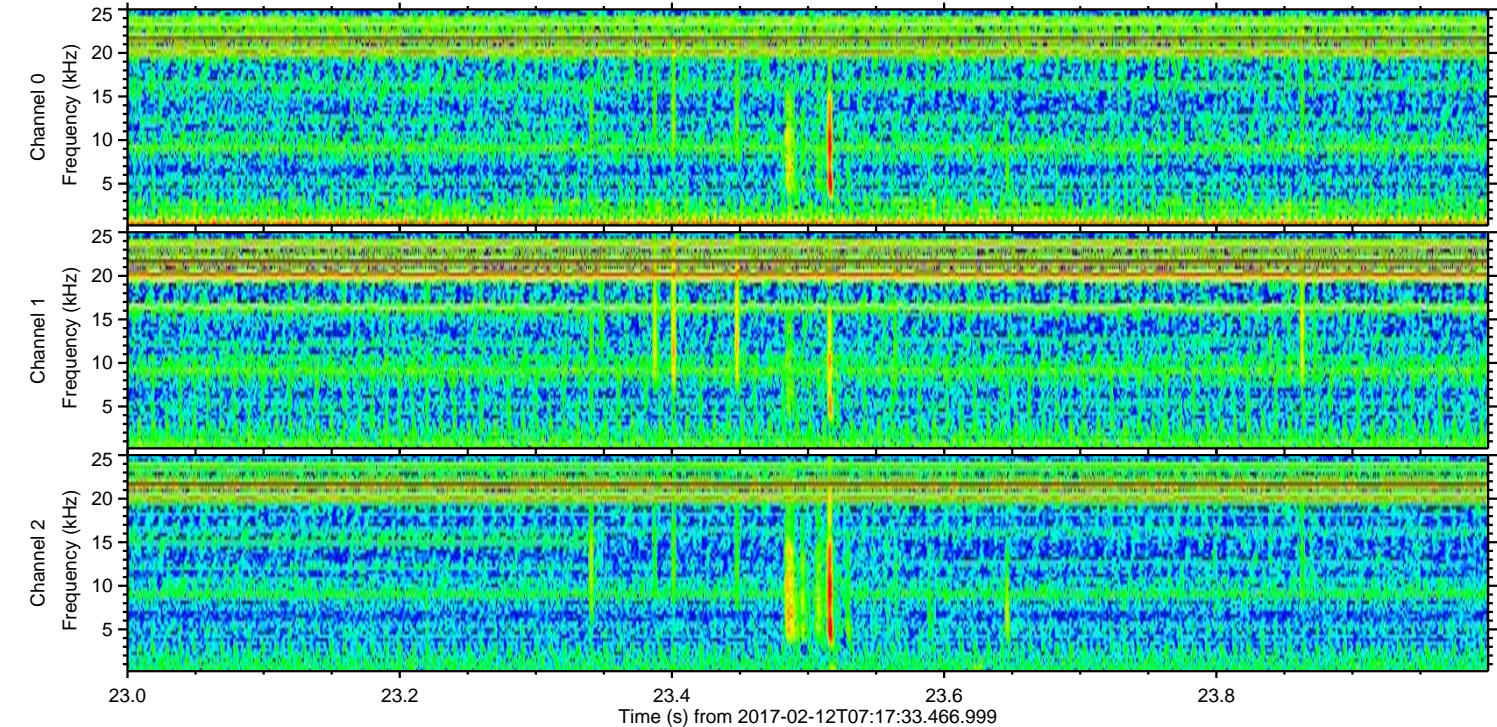
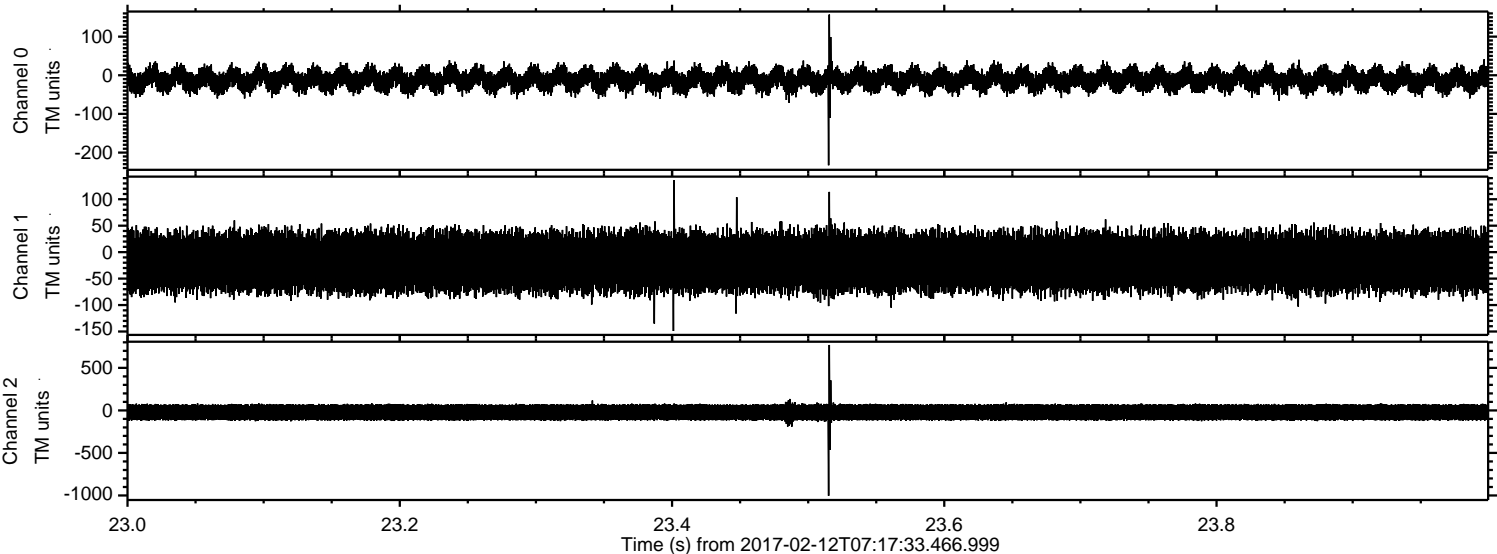
ELMAVAN 3D WAVEFORMS (Measured data sampled at 50 kHz) 51000 packets of 144 samples from 2017-02-12T07:17:33.466.999.

Processed Sun Feb 12 08:25:31 2017 by ELM ver.2012-10-06 from 001__elm20170212_071732__dat00.bin



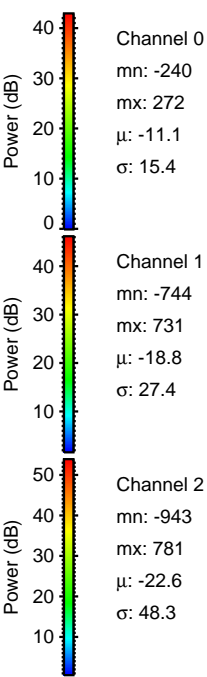
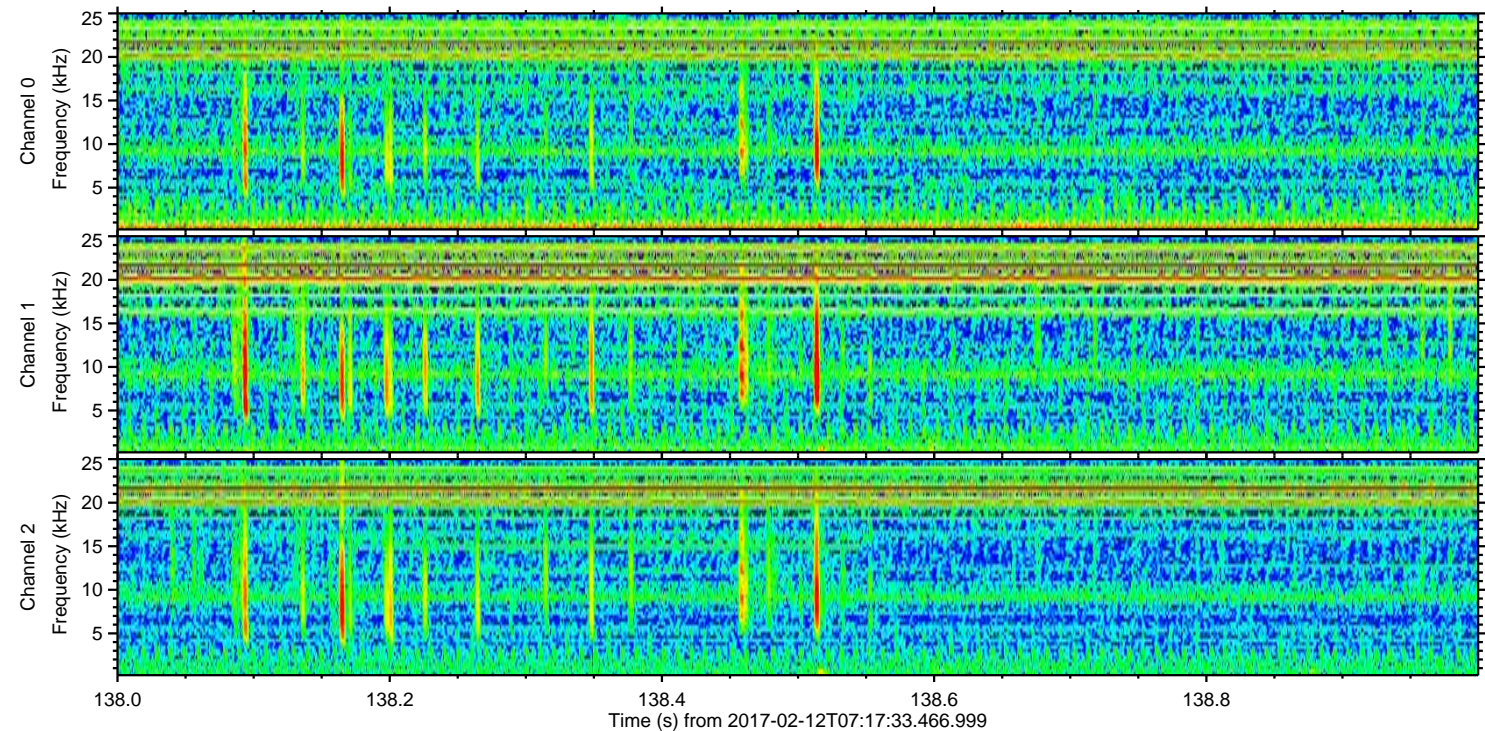
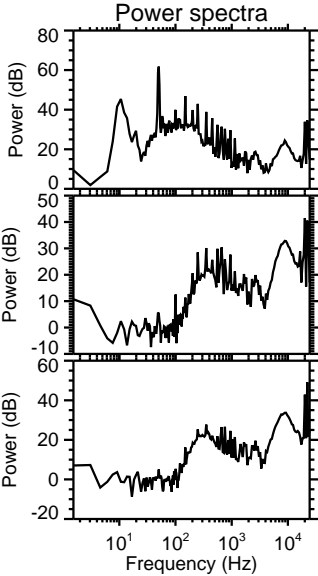
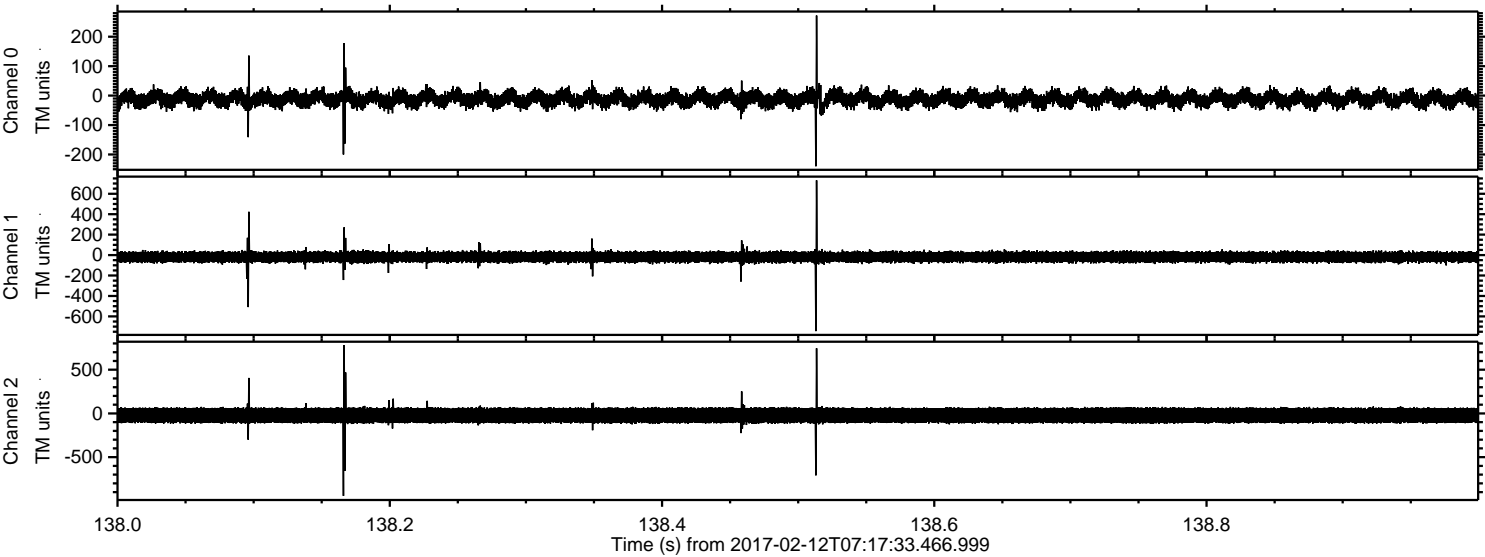
ELMAVAN 3D WAVEFORMS (Measured data sampled at 50 kHz) 51000 packets of 144 samples from 2017-02-12T07:17:33.466.999. Part 24/147

Processed Sun Feb 12 08:25:42 2017 by ELM ver.2012-10-06 from 001__elm20170212_071732__dat00.bin

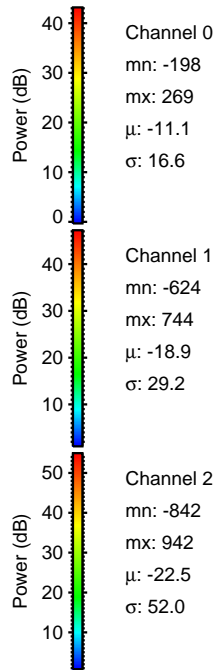
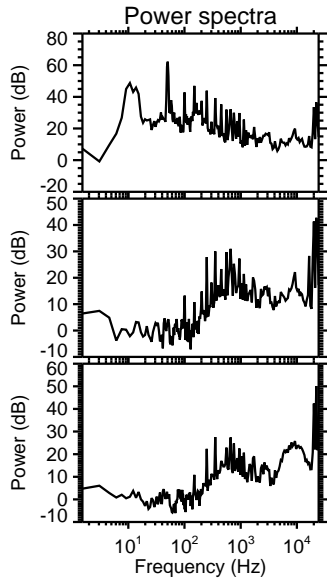
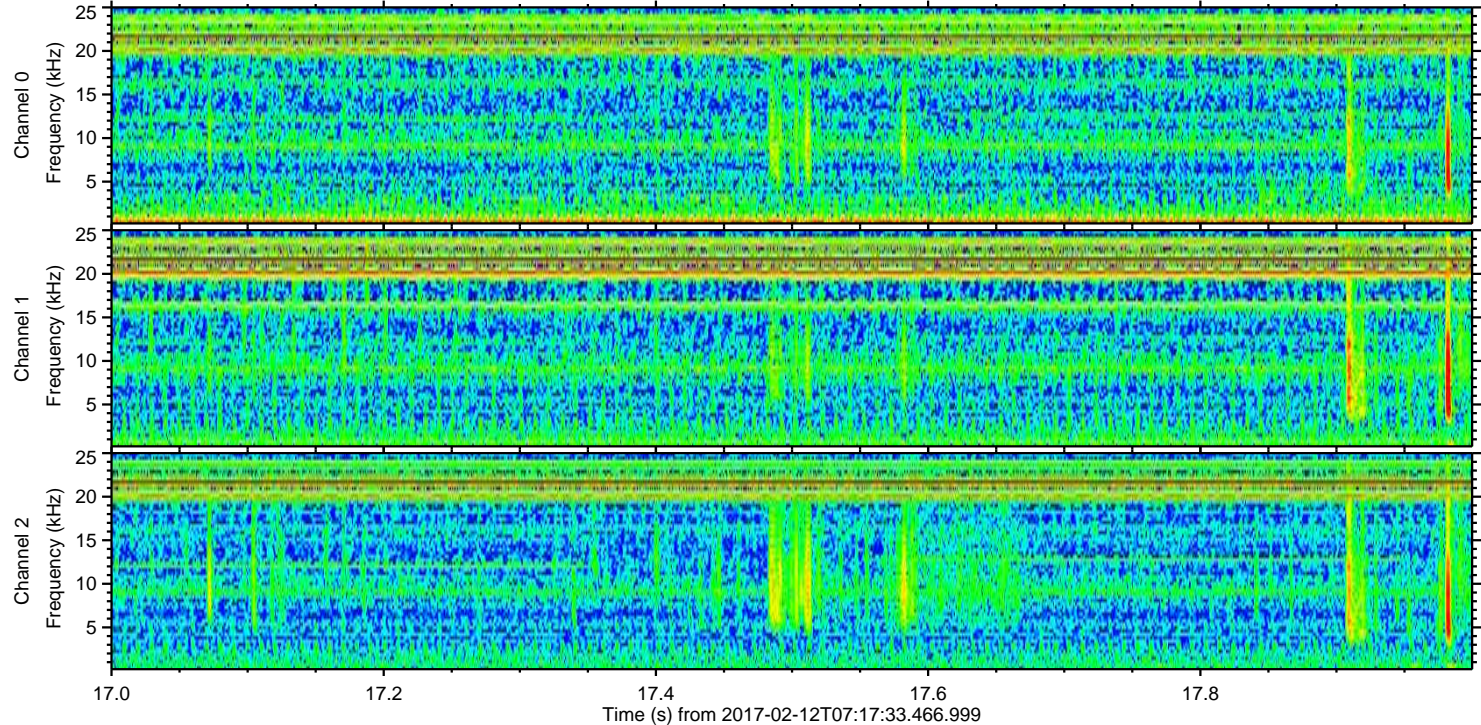
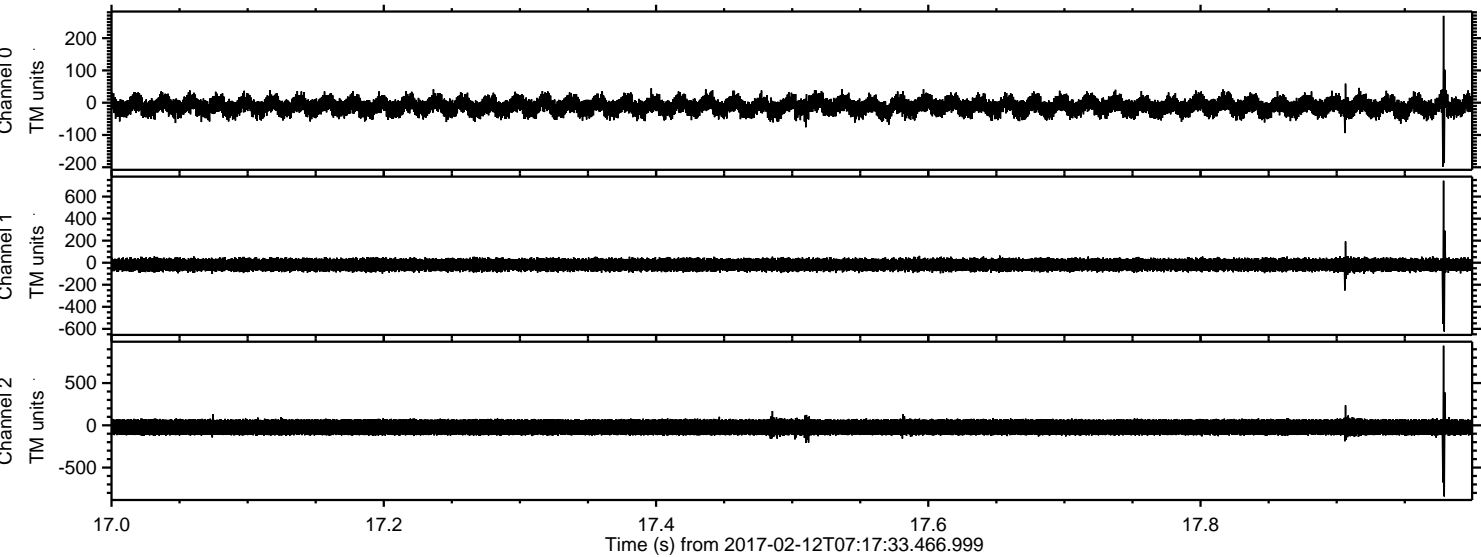


ELMAVAN 3D WAVEFORMS (Measured data sampled at 50 kHz) 51000 packets of 144 samples from 2017-02-12T07:17:33.466.999. Part 139/147

Processed Sun Feb 12 08:25:43 2017 by ELM ver.2012-10-06 from 001__elm20170212_071732__dat00.bin



Processed Sun Feb 12 08:25:44 2017 by ELM ver.2012-10-06 from 001__elm20170212_071732__dat00.bin



Power spectra

Channel 0

mn: -198
mx: 269
 μ : -11.1
 σ : 16.6

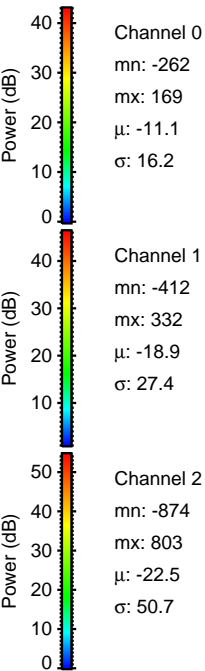
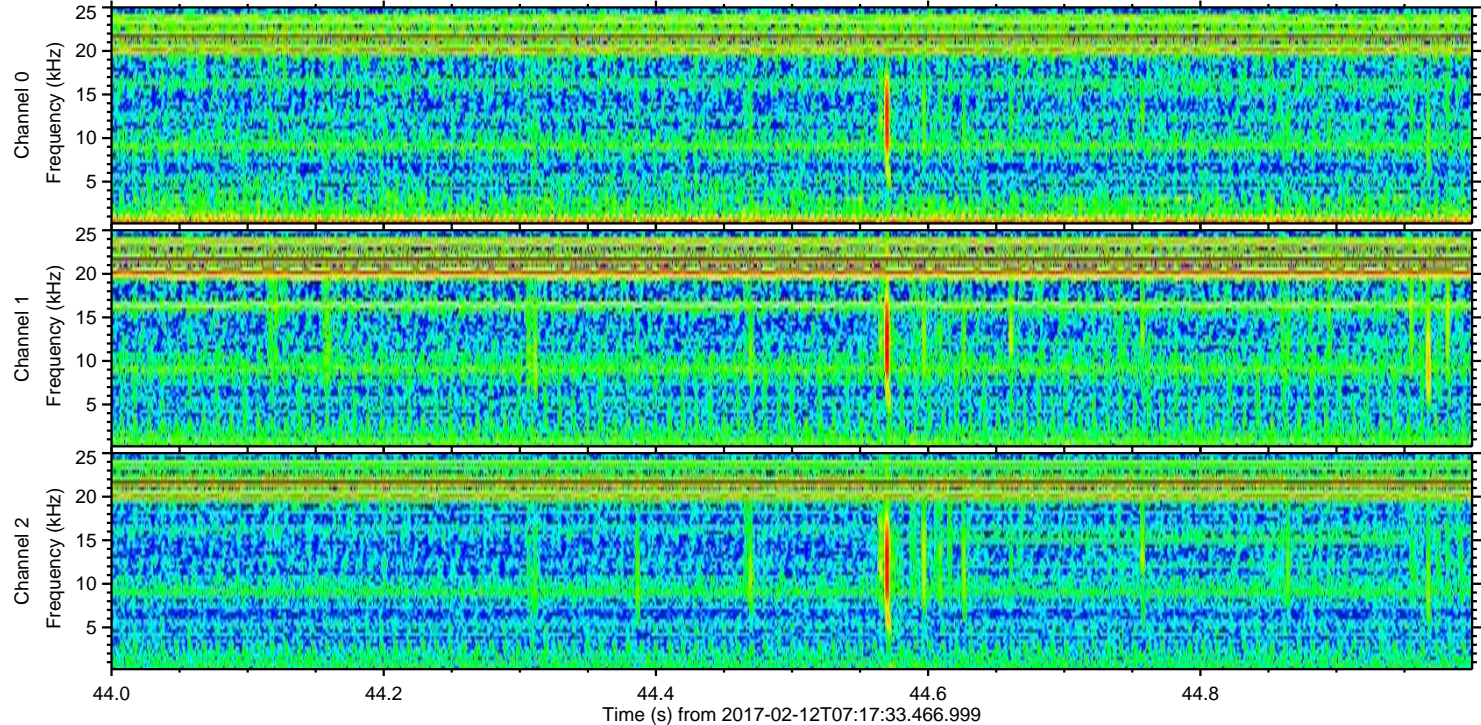
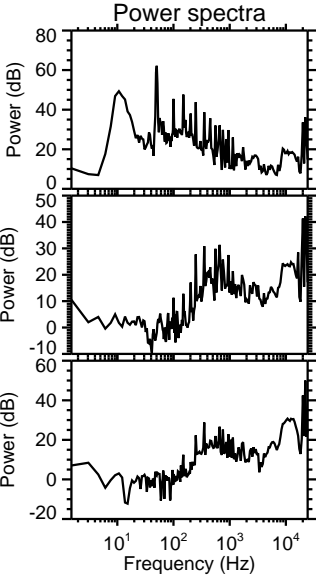
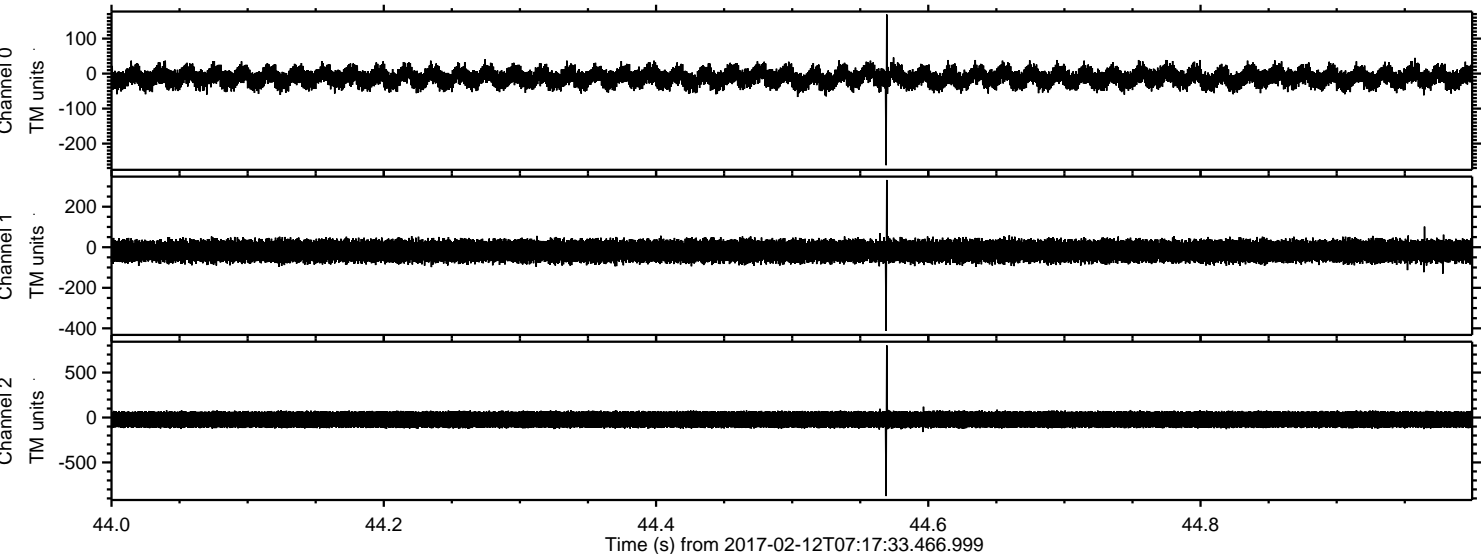
Channel 1

mn: -624
mx: 744
 μ : -18.9
 σ : 29.2

Channel 2

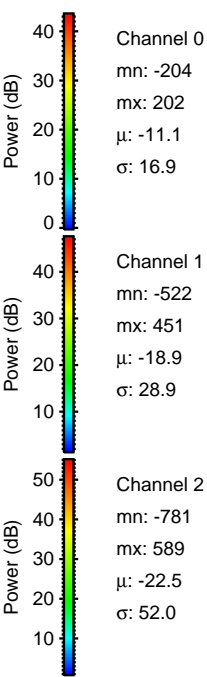
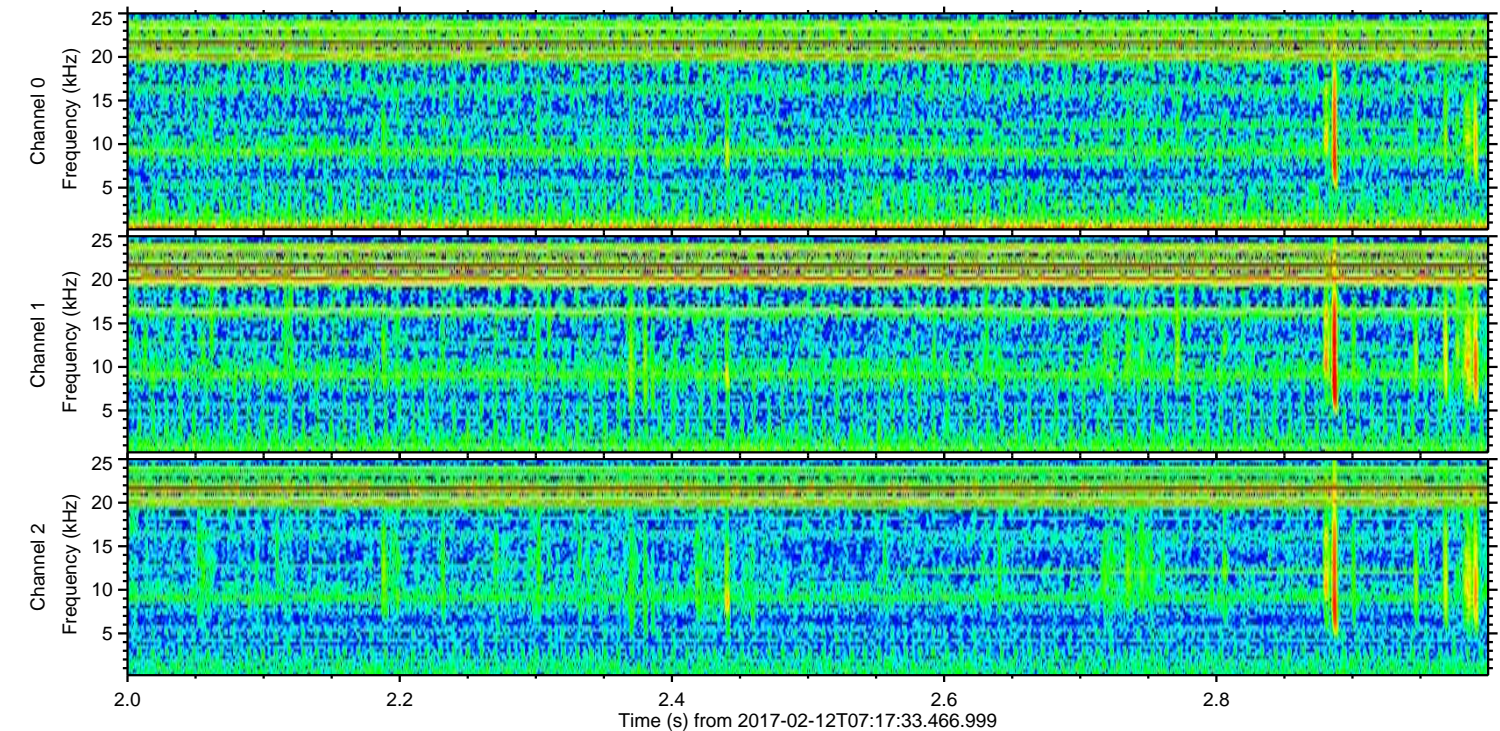
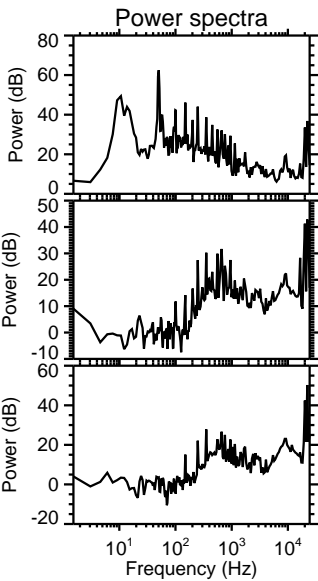
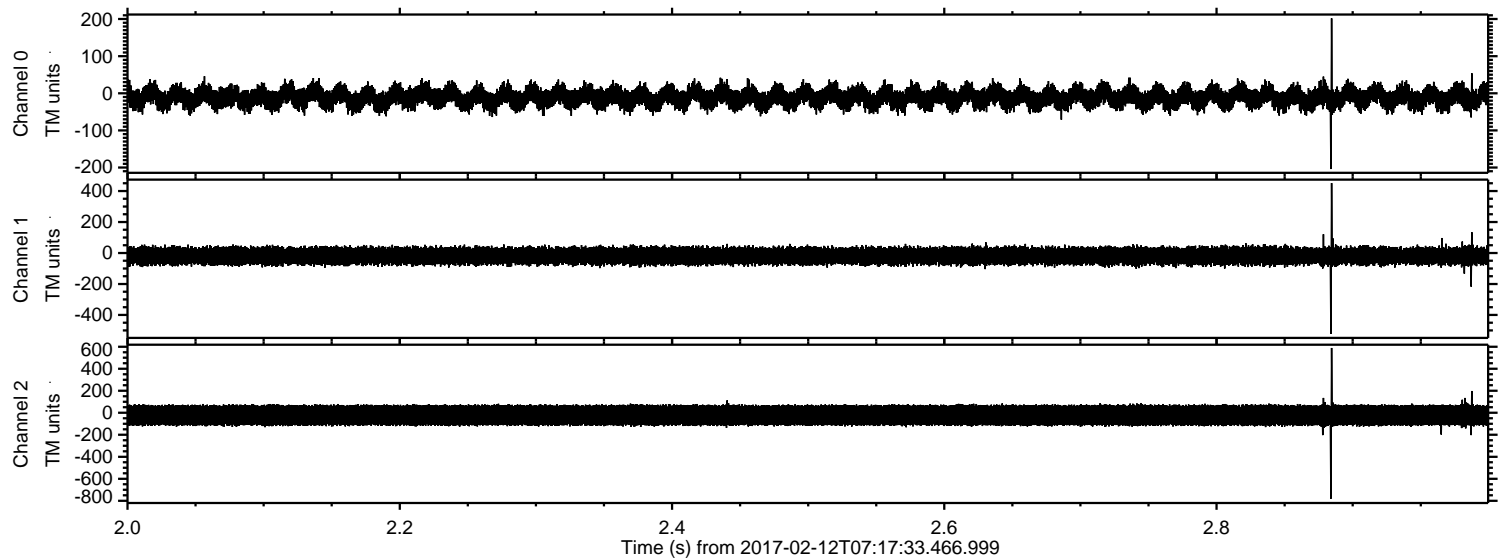
mn: -842
mx: 942
 μ : -22.5
 σ : 52.0

Processed Sun Feb 12 08:25:45 2017 by ELM ver.2012-10-06 from 001__elm20170212_071732__dat00.bin



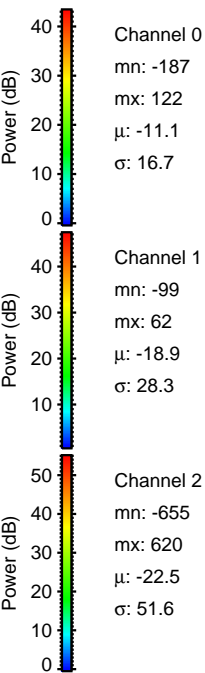
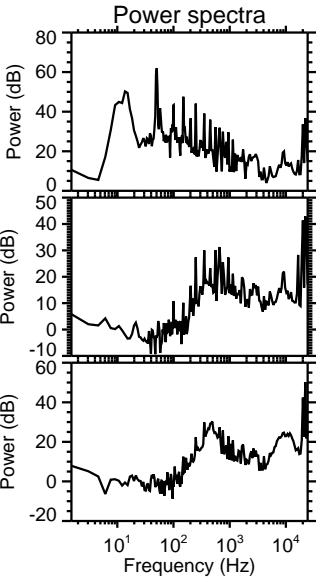
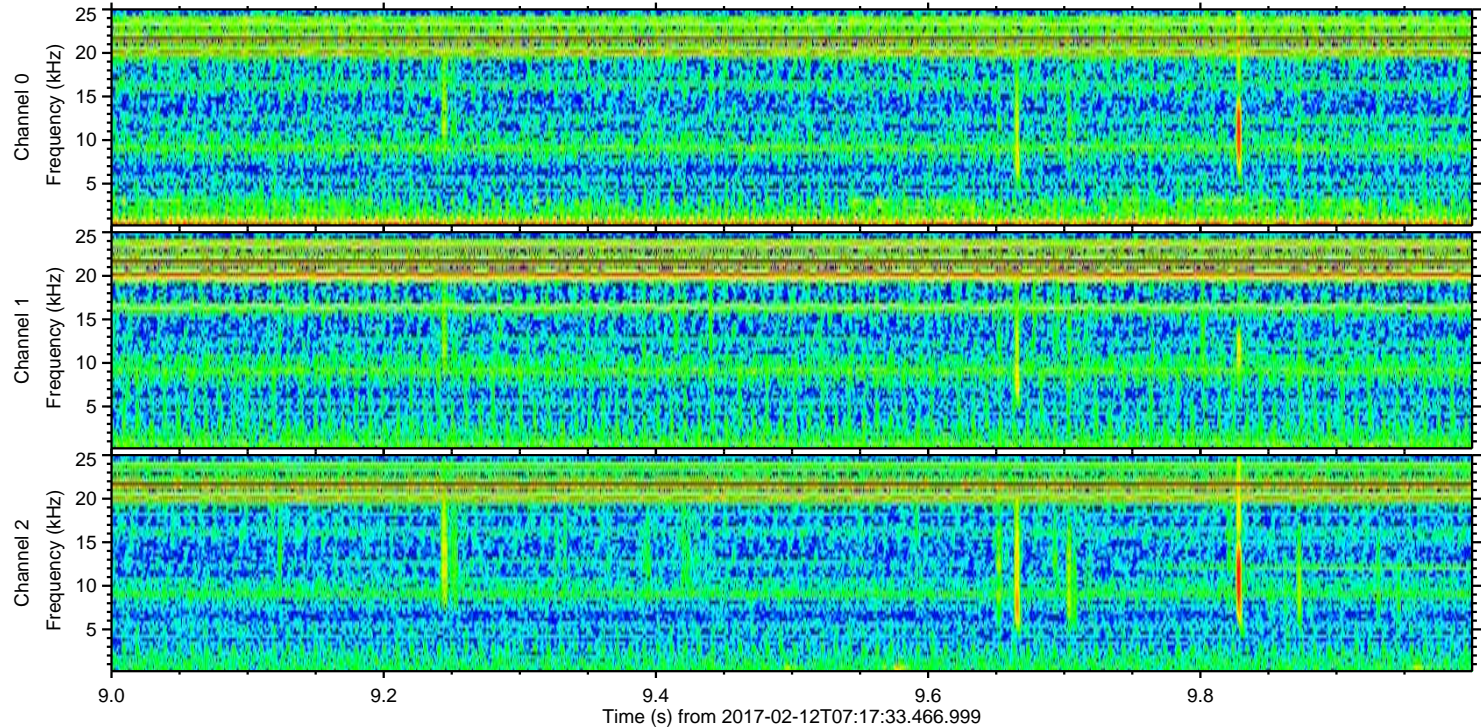
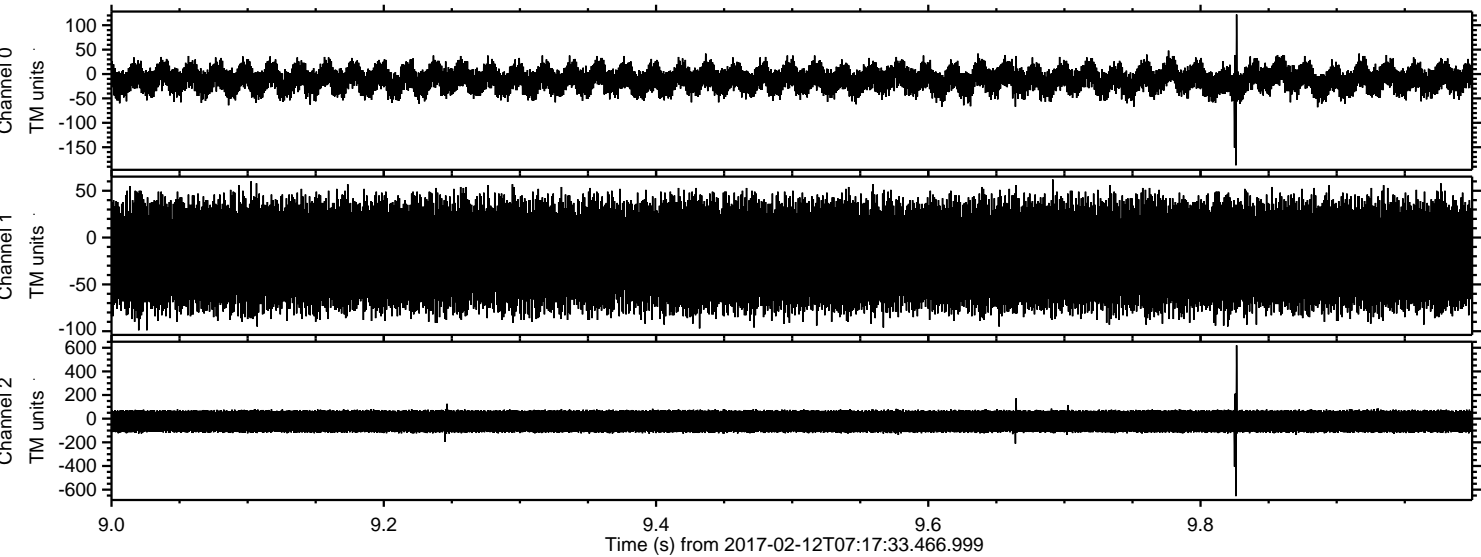
ELMAVAN 3D WAVEFORMS (Measured data sampled at 50 kHz) 51000 packets of 144 samples from 2017-02-12T07:17:33.466.999. Part 3/147

Processed Sun Feb 12 08:25:46 2017 by ELM ver.2012-10-06 from 001__elm20170212_071732__dat00.bin



ELMAVAN 3D WAVEFORMS (Measured data sampled at 50 kHz) 51000 packets of 144 samples from 2017-02-12T07:17:33.466.999. Part 10/147

Processed Sun Feb 12 08:25:47 2017 by ELM ver.2012-10-06 from 001__elm20170212_071732__dat00.bin

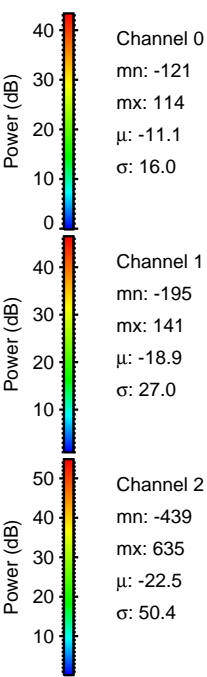
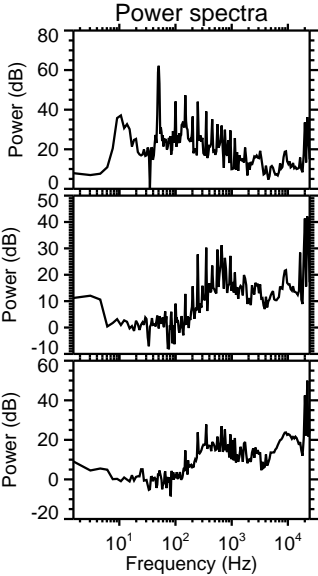
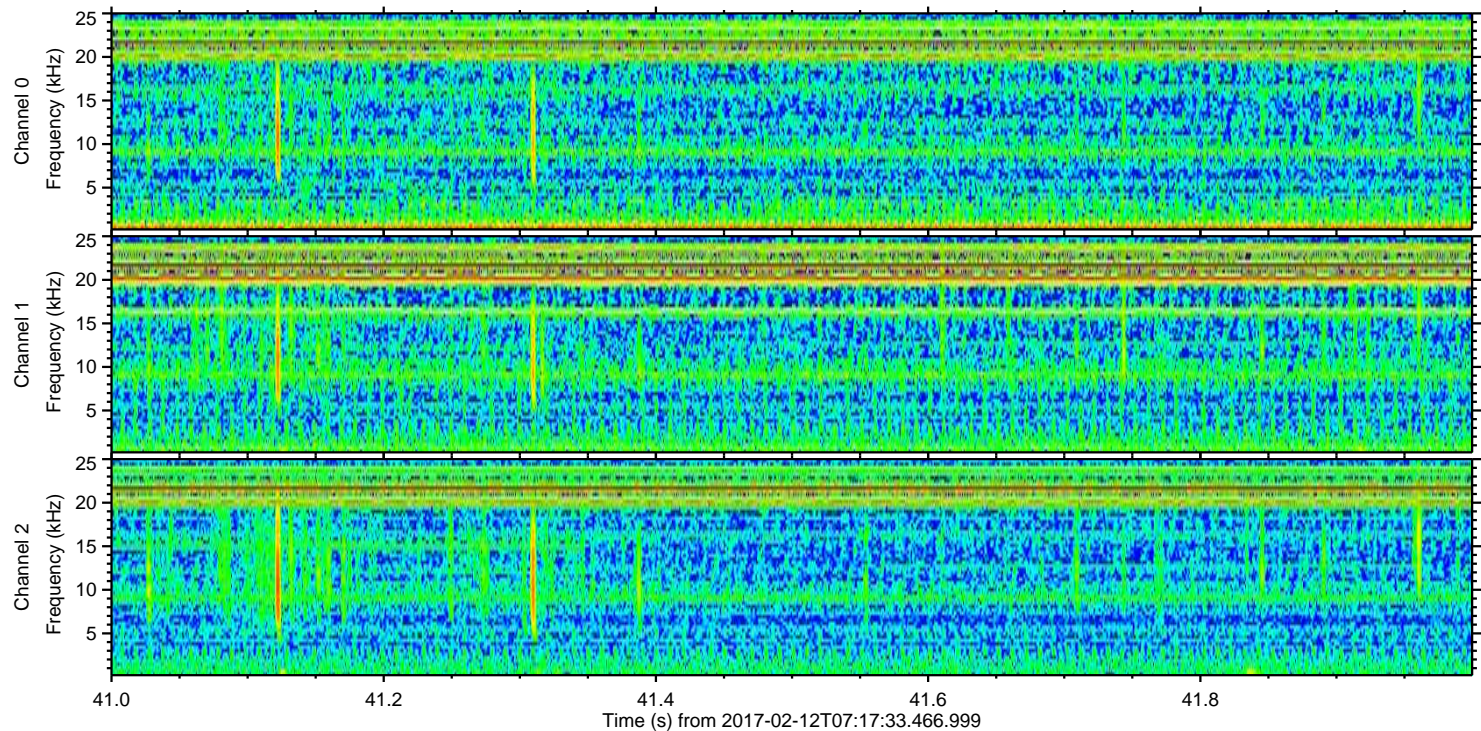
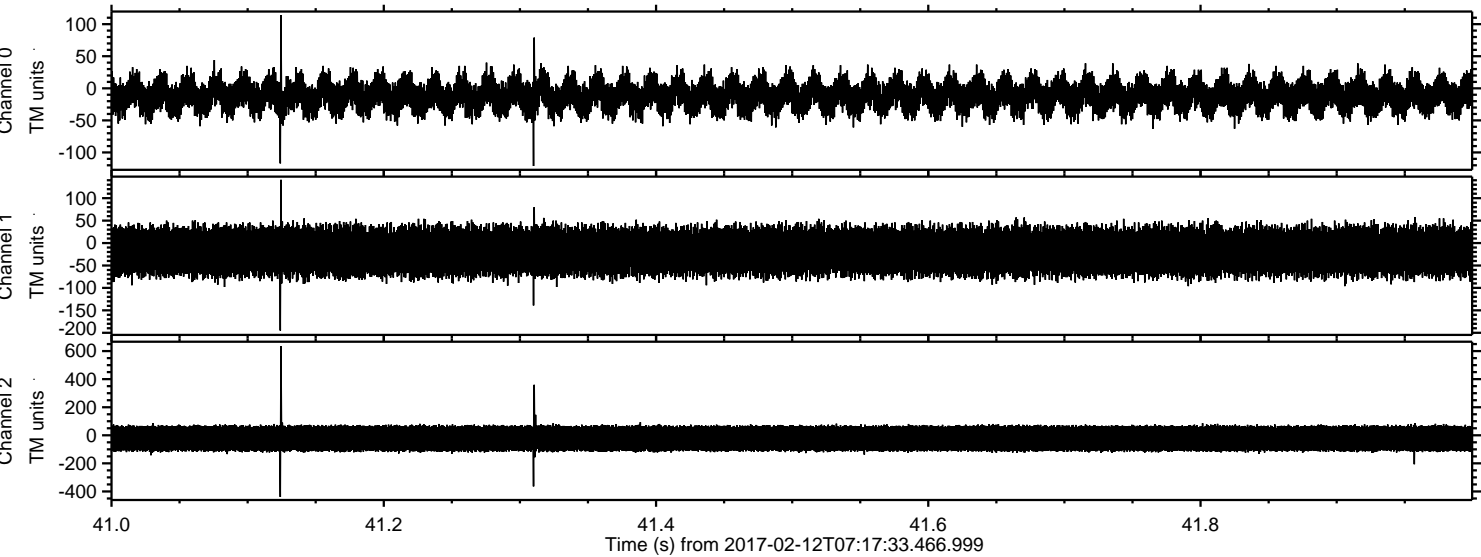


Channel 0
mn: -187
mx: 122
 μ : -11.1
 σ : 16.7

Channel 1
mn: -99
mx: 62
 μ : -18.9
 σ : 28.3

Channel 2
mn: -655
mx: 620
 μ : -22.5
 σ : 51.6

Processed Sun Feb 12 08:25:48 2017 by ELM ver.2012-10-06 from 001__elm20170212_071732__dat00.bin



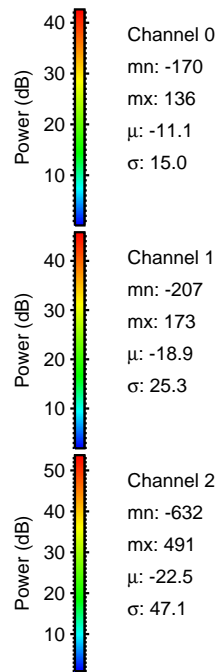
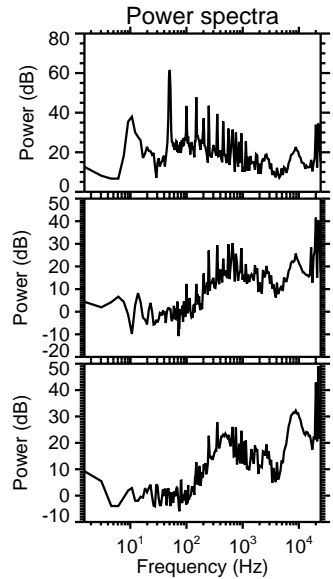
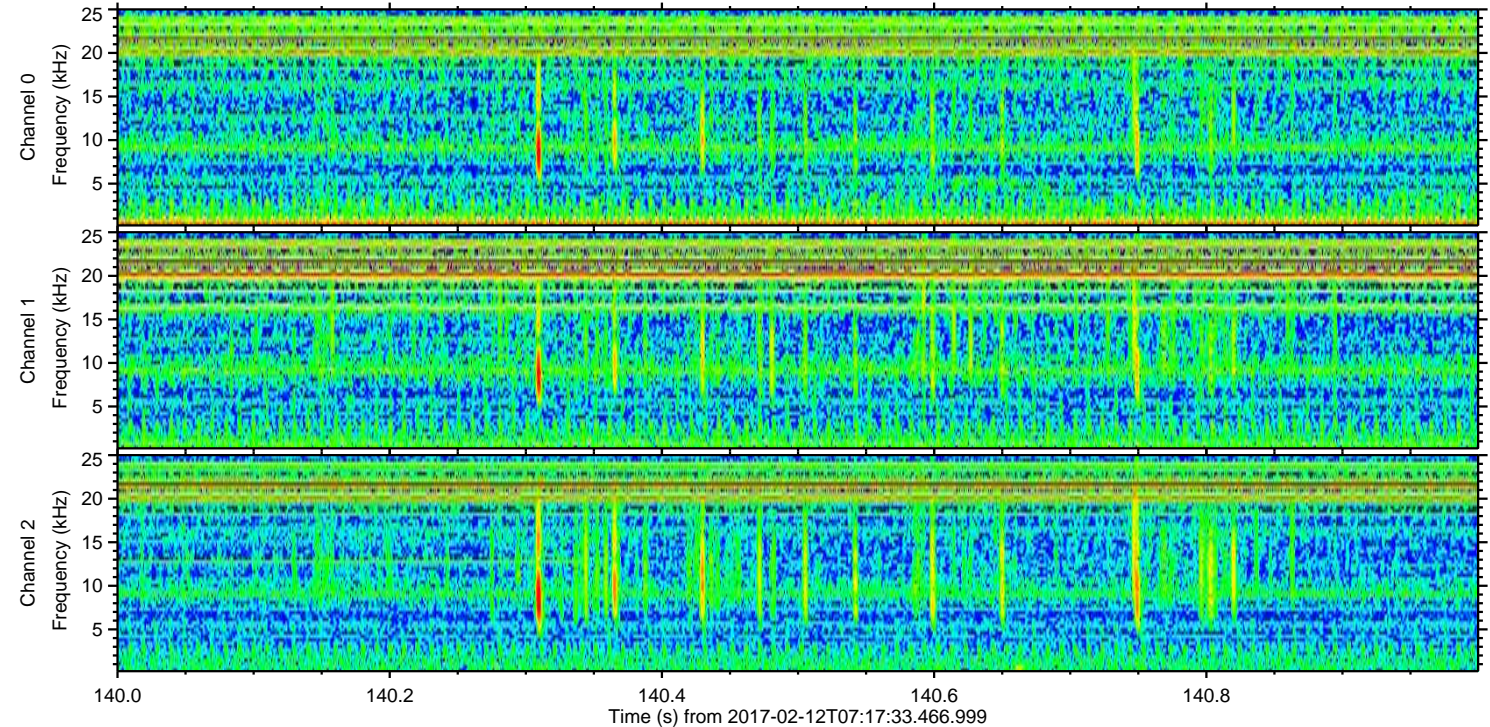
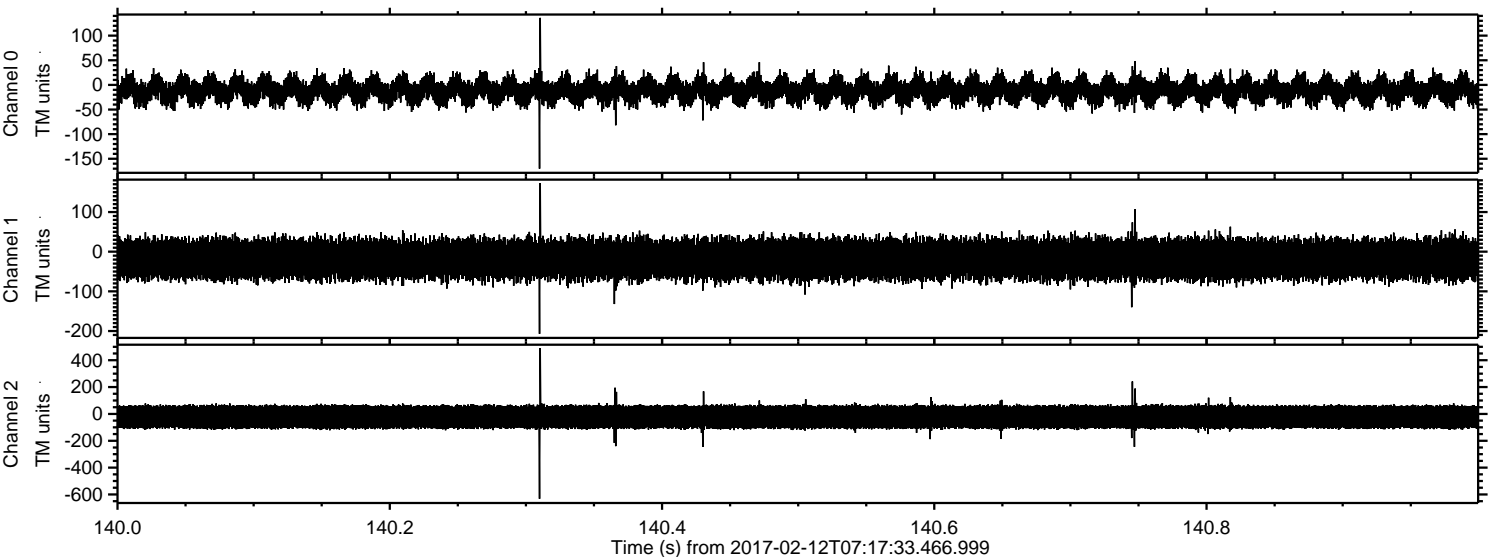
Channel 0
mn: -121
mx: 114
 μ : -11.1
 σ : 16.0

Channel 1
mn: -195
mx: 141
 μ : -18.9
 σ : 27.0

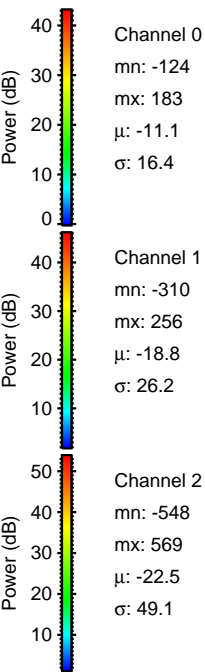
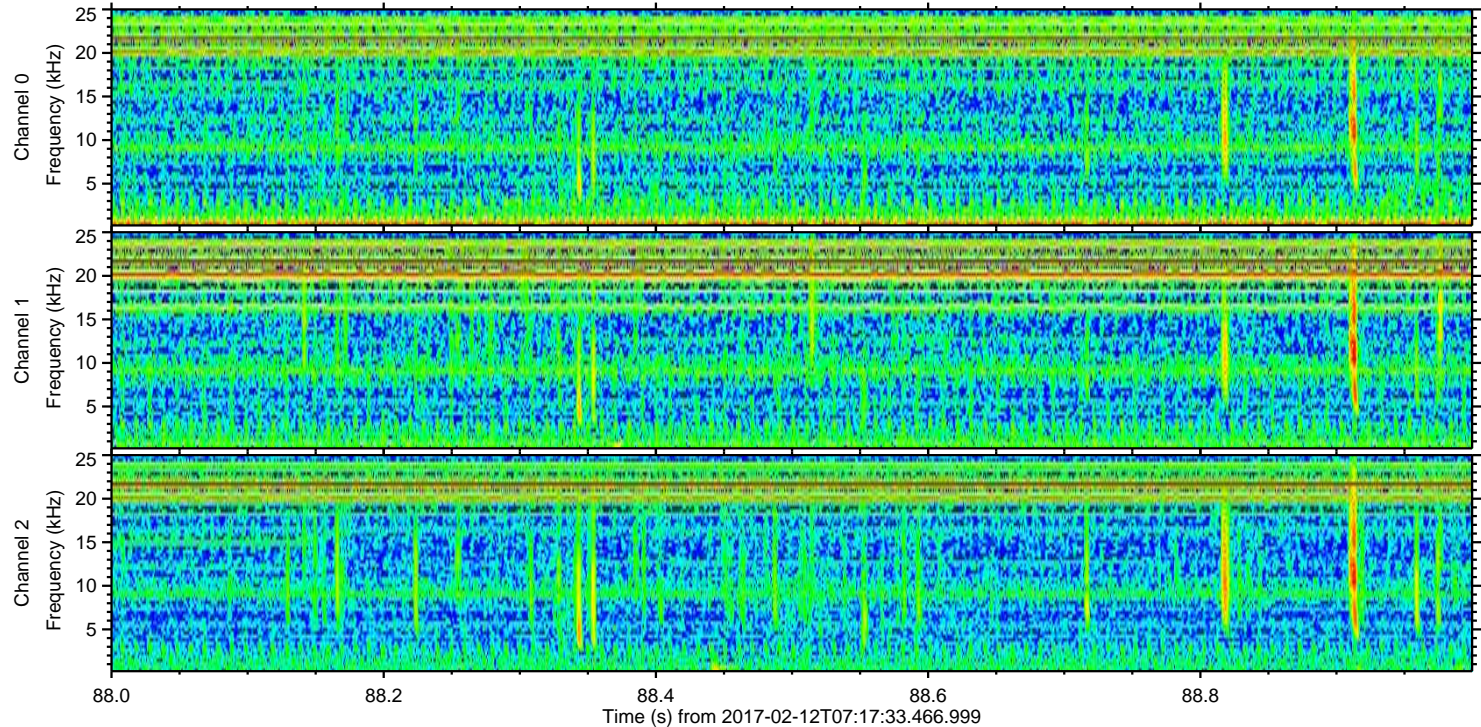
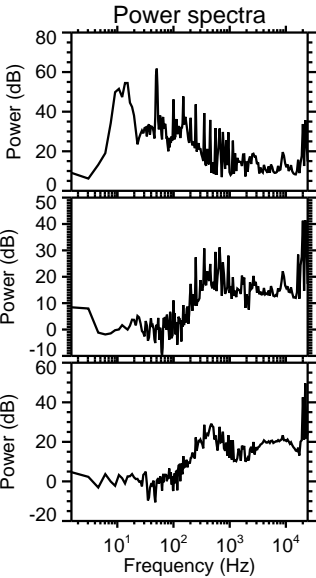
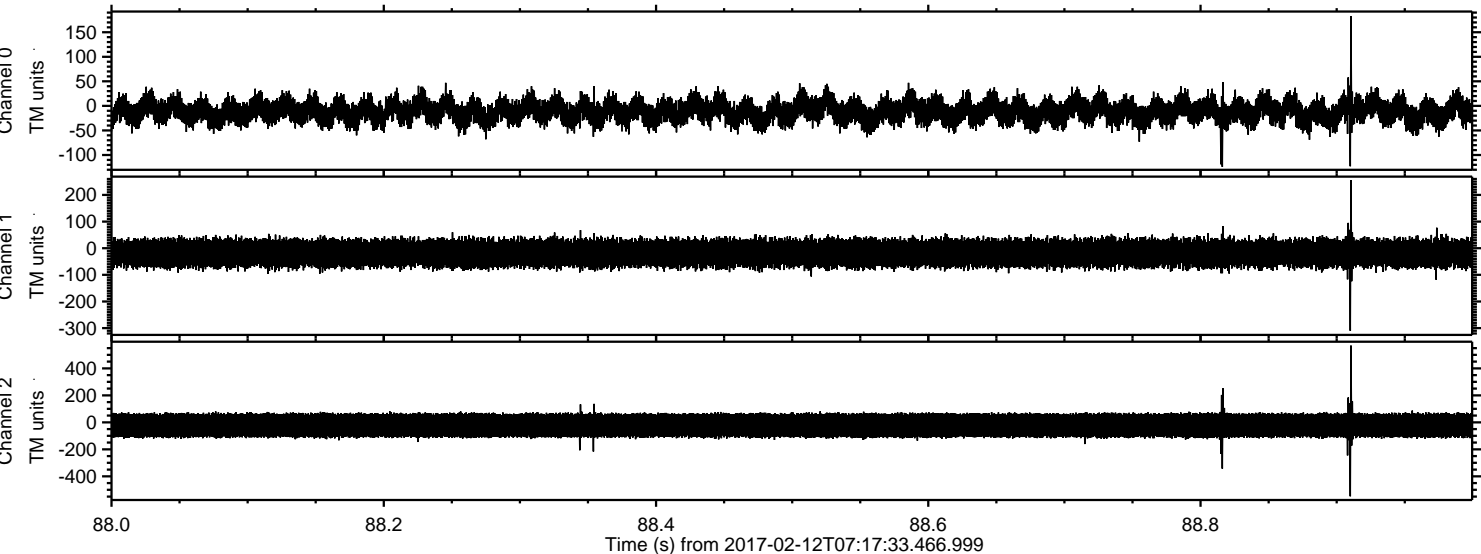
Channel 2
mn: -439
mx: 635
 μ : -22.5
 σ : 50.4

ELMAVAN 3D WAVEFORMS (Measured data sampled at 50 kHz) 51000 packets of 144 samples from 2017-02-12T07:17:33.466.999. Part 141/147

Processed Sun Feb 12 08:25:49 2017 by ELM ver.2012-10-06 from 001__elm20170212_071732__dat00.bin



Processed Sun Feb 12 08:25:50 2017 by ELM ver.2012-10-06 from 001__elm20170212_071732__dat00.bin



ELMAVAN 3D WAVEFORMS (Measured data sampled at 50 kHz) 51000 packets of 144 samples from 2017-02-12T07:17:33.466.999. Part 126/147

